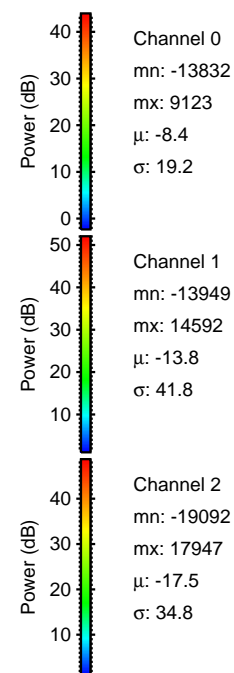
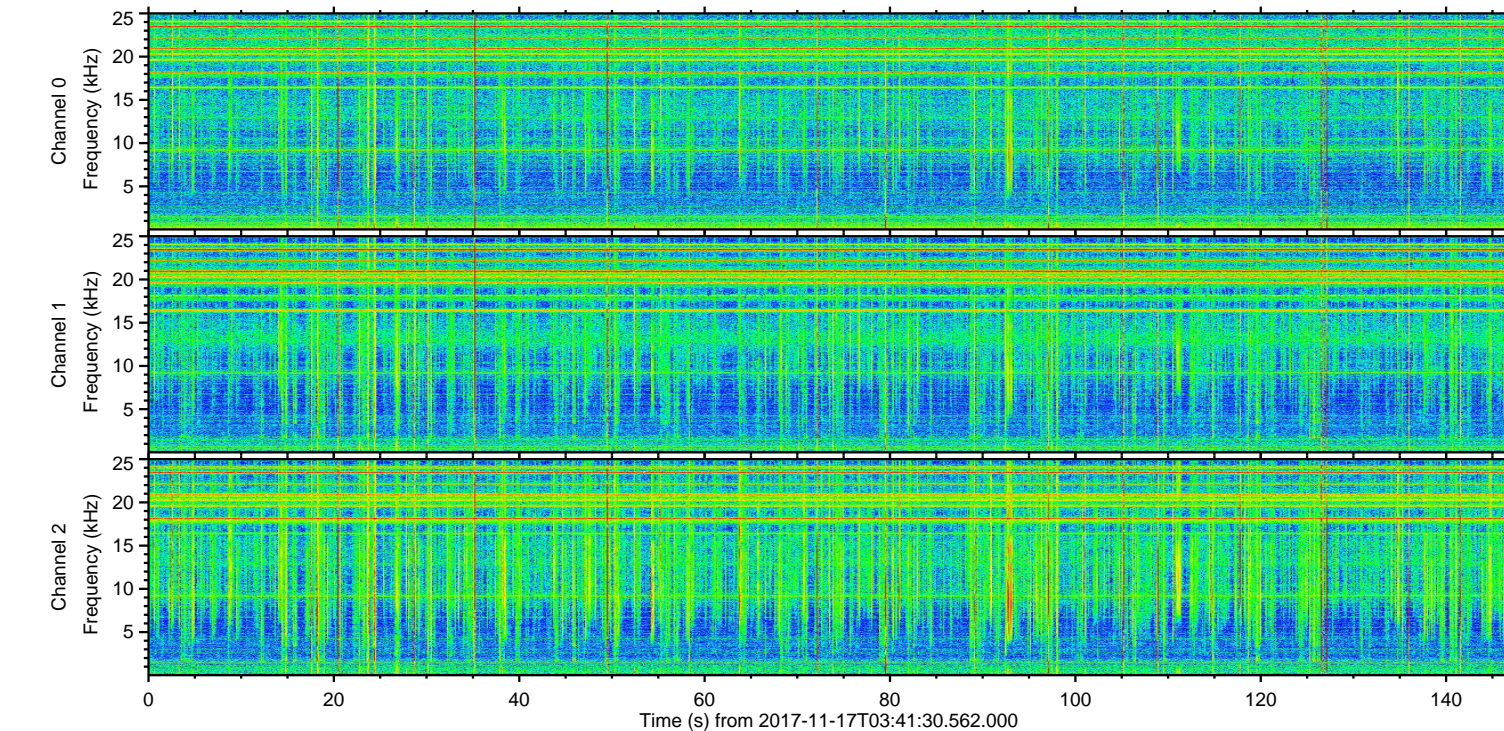
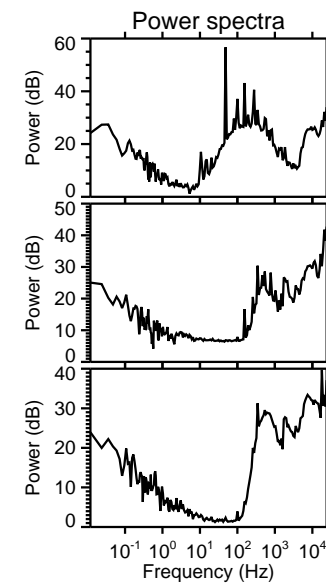
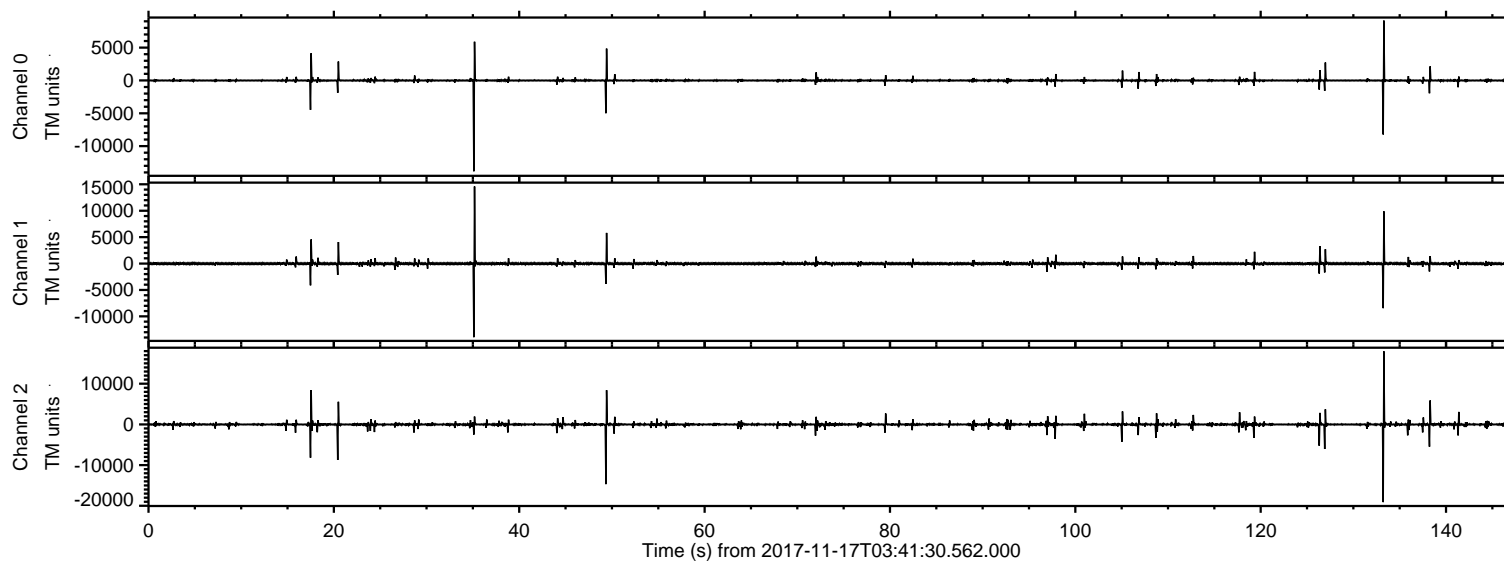


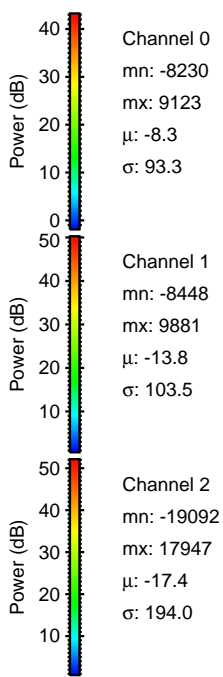
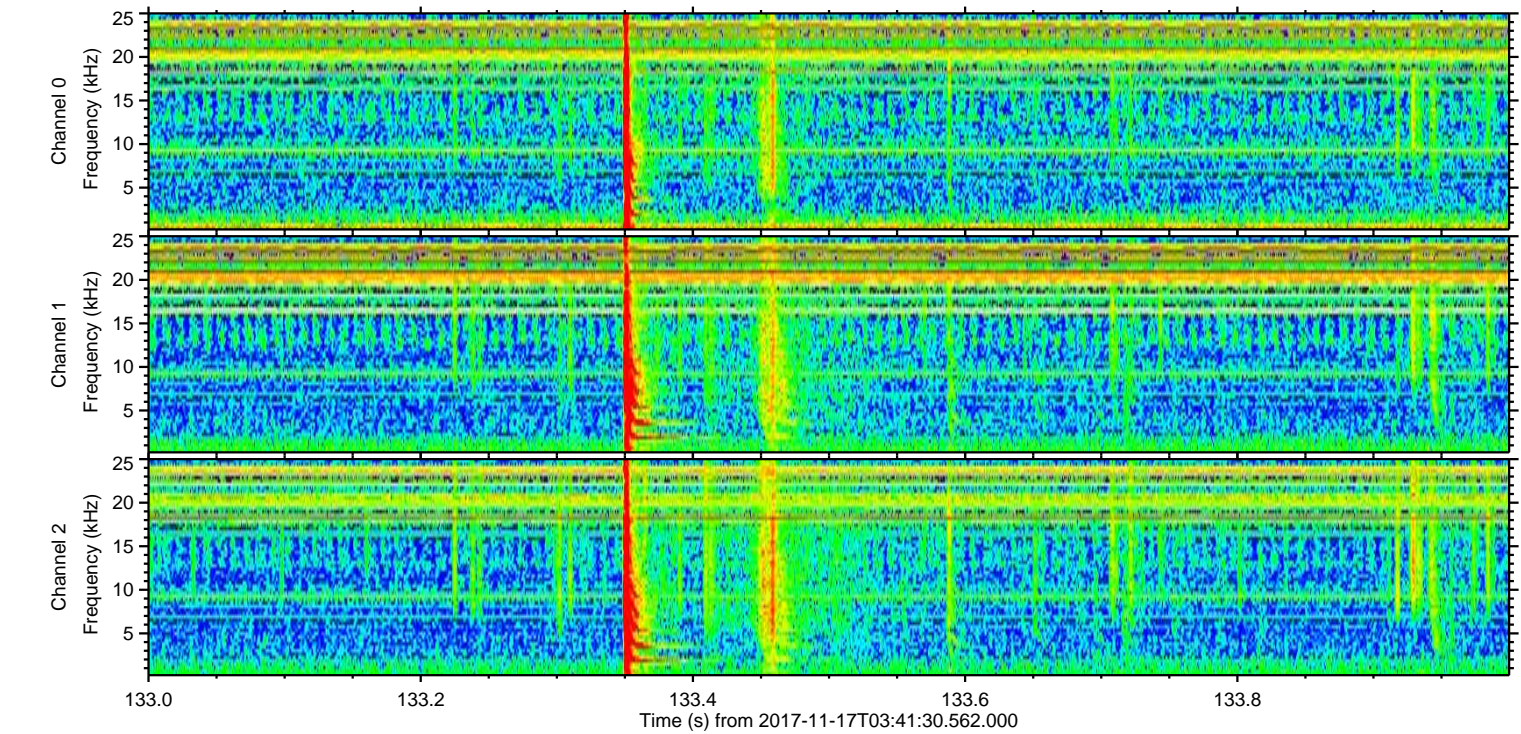
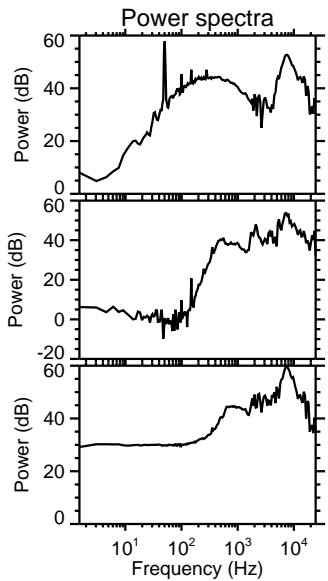
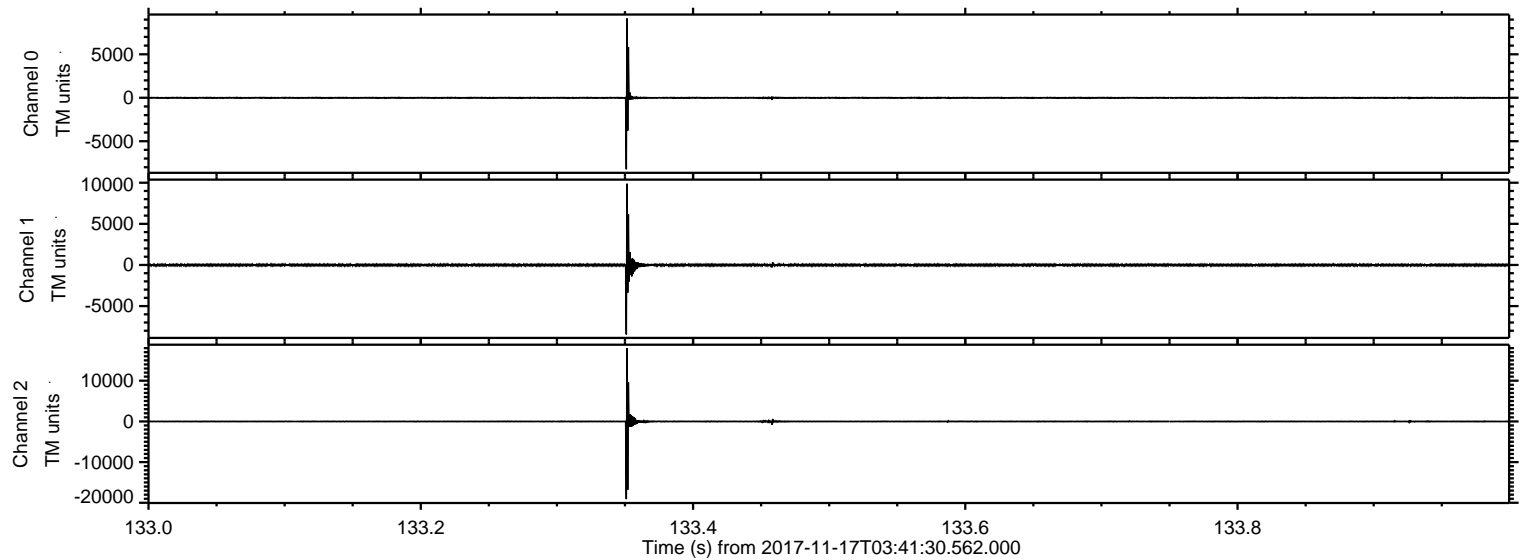
ELMAVAN 3D WAVEFORMS (Measured data sampled at 50 kHz) 51000 packets of 144 samples from 2017-11-17T03:41:30.562.000.

Processed Fri Nov 17 04:50:05 2017 by ELM ver.2012-10-06 from 001__elm20171117_034129__dat00.bin



ELMAVAN 3D WAVEFORMS (Measured data sampled at 50 kHz) 51000 packets of 144 samples from 2017-11-17T03:41:30.562.000. Part 134/147

Processed Fri Nov 17 04:50:11 2017 by ELM ver.2012-10-06 from 001__elm20171117_034129__dat00.bin



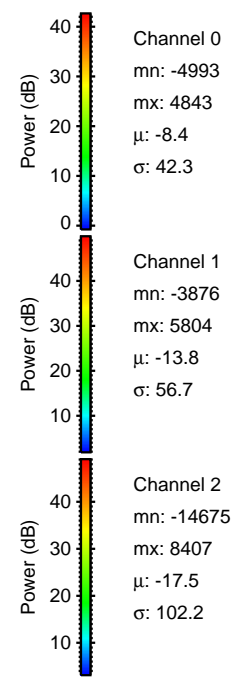
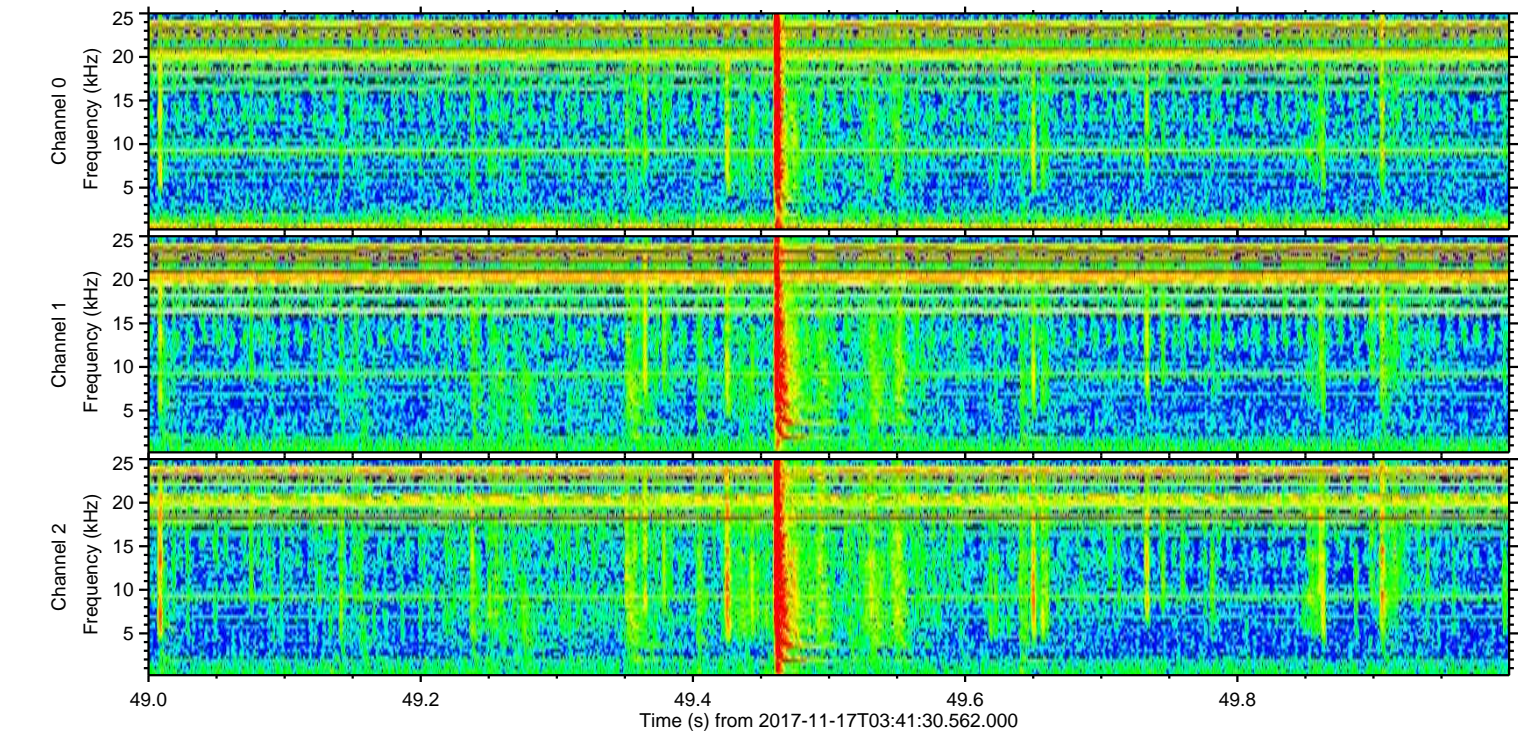
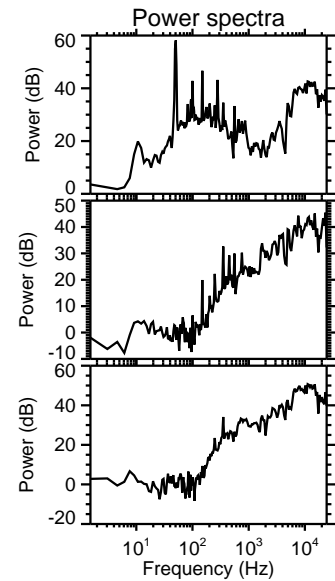
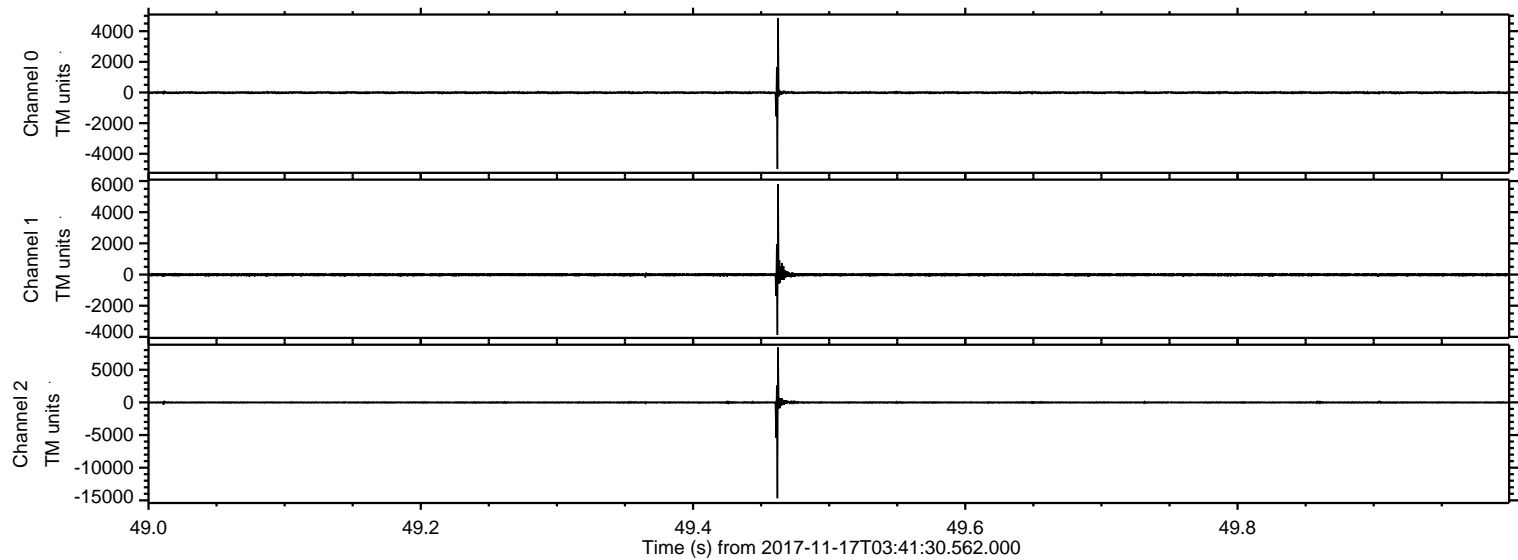
Channel 0
mn: -8230
mx: 9123
 μ : -8.3
 σ : 93.3

Channel 1
mn: -8448
mx: 9881
 μ : -13.8
 σ : 103.5

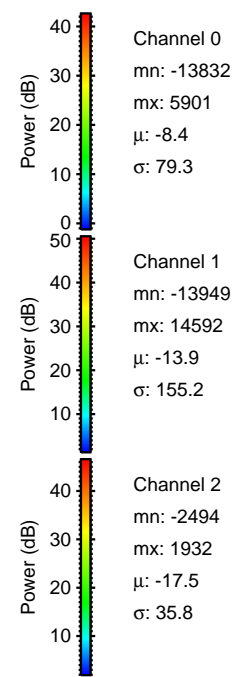
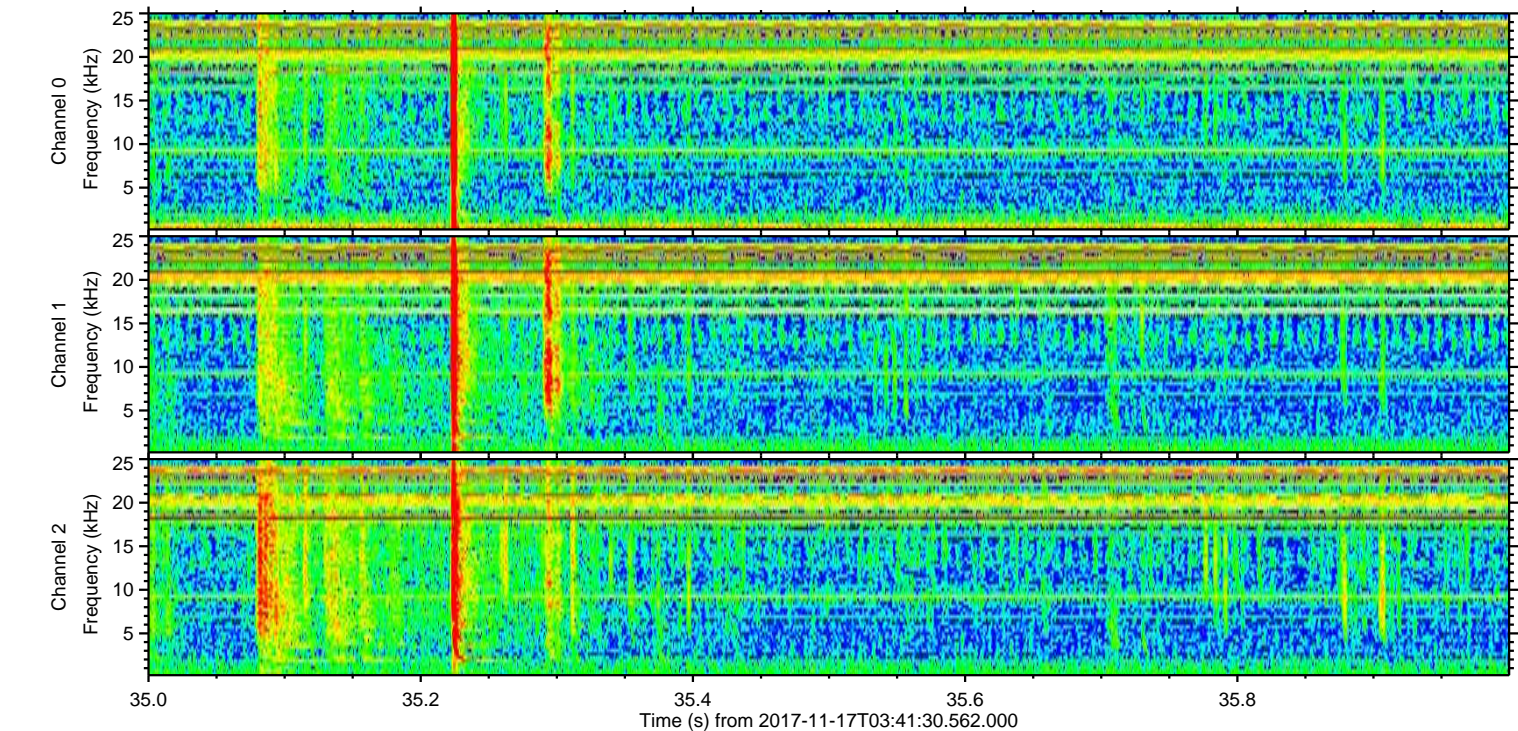
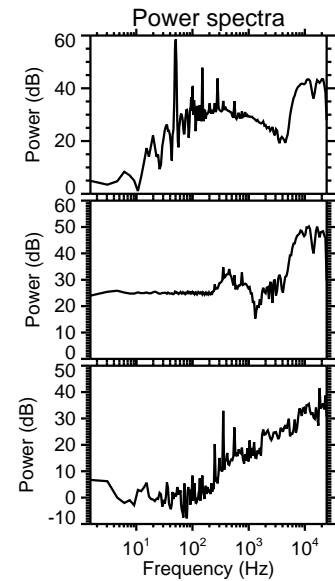
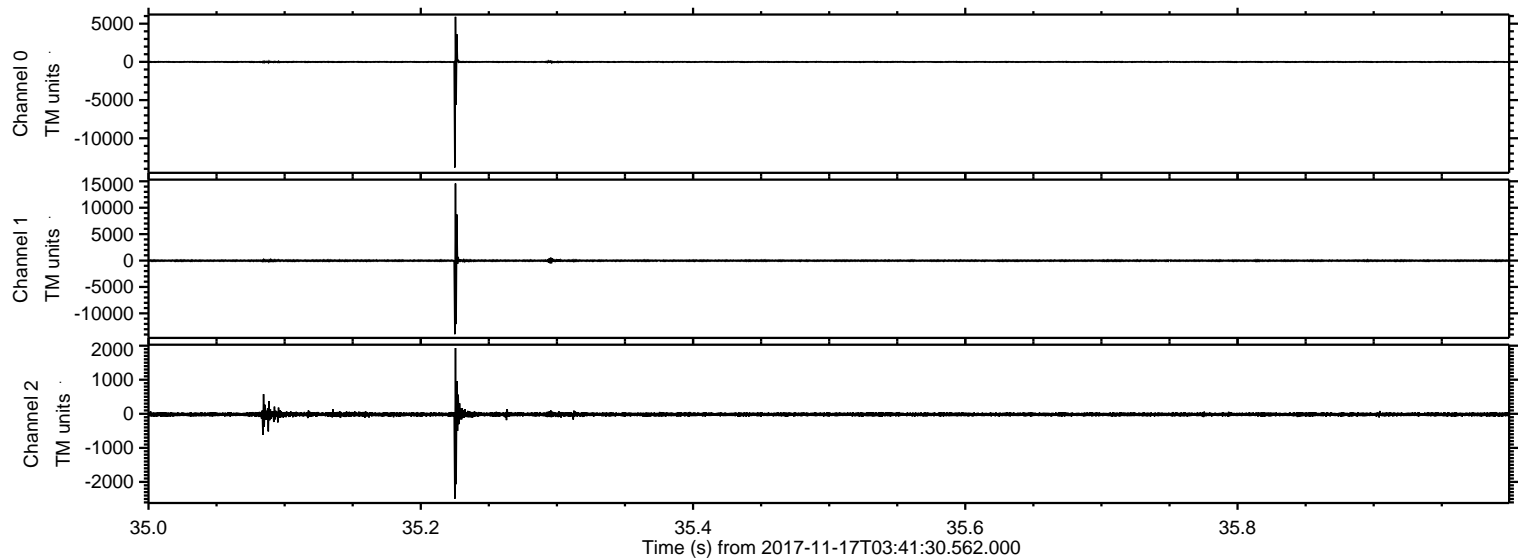
Channel 2
mn: -19092
mx: 17947
 μ : -17.4
 σ : 194.0

ELMAVAN 3D WAVEFORMS (Measured data sampled at 50 kHz) 51000 packets of 144 samples from 2017-11-17T03:41:30.562.000. Part 50/147

Processed Fri Nov 17 04:50:12 2017 by ELM ver.2012-10-06 from 001__elm20171117_034129__dat00.bin



Processed Fri Nov 17 04:50:13 2017 by ELM ver.2012-10-06 from 001__elm20171117_034129__dat00.bin

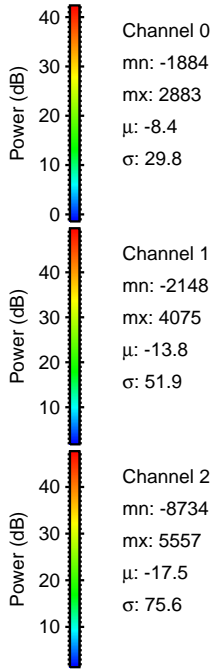
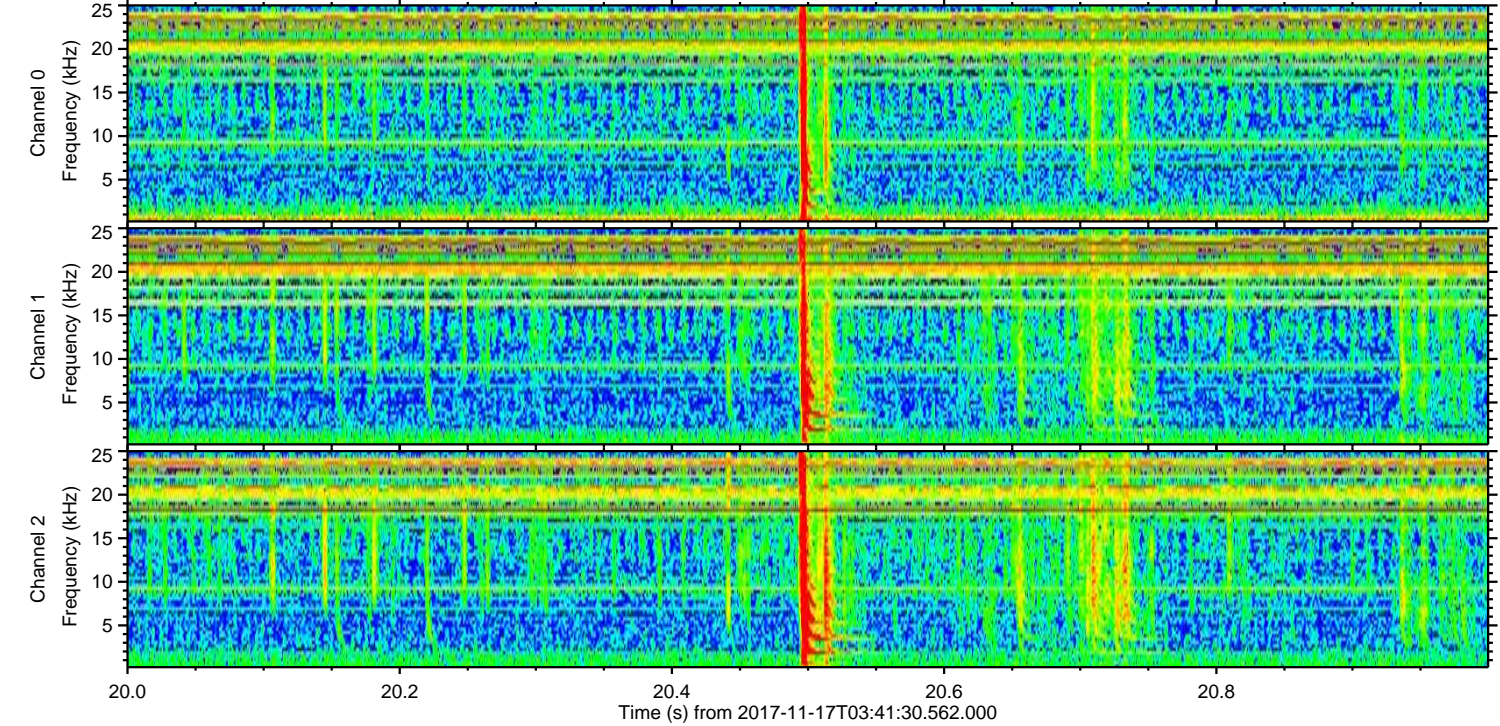
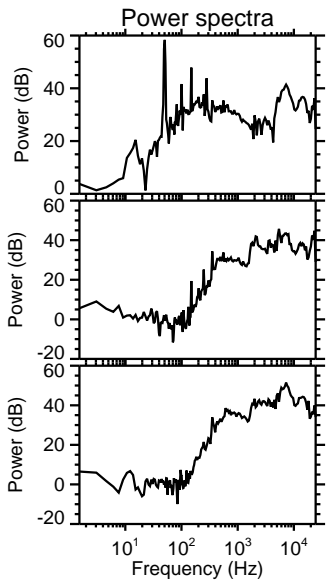
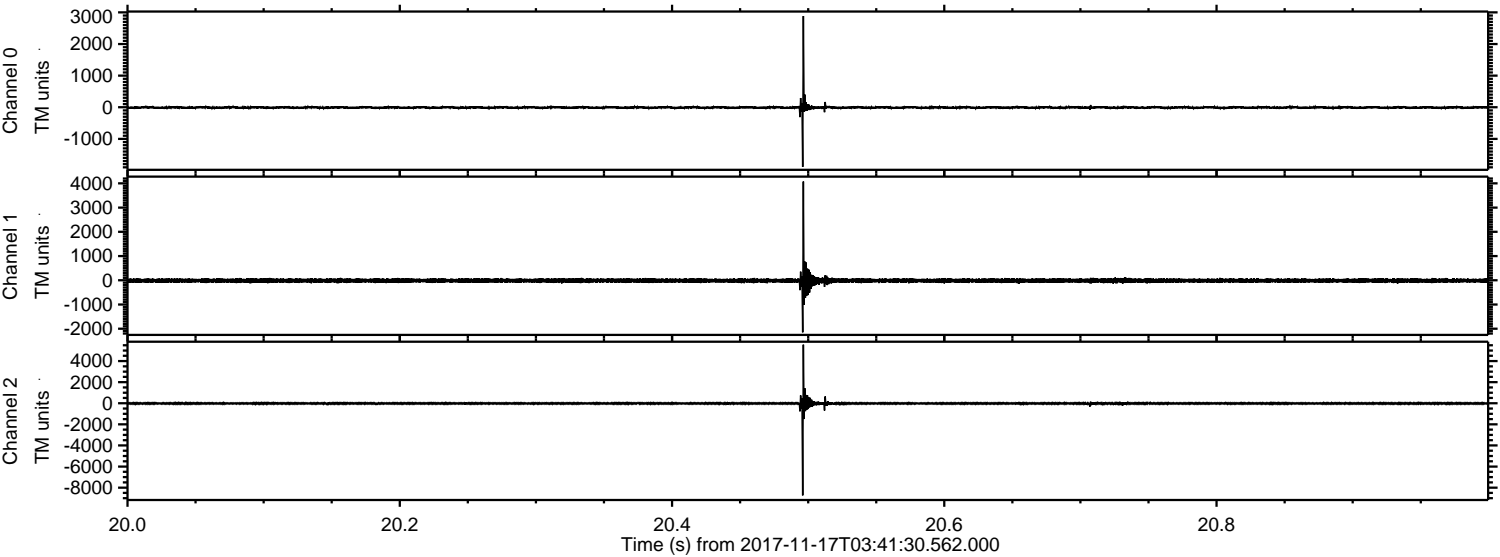


Channel 0
mn: -13832
mx: 5901
 μ : -8.4
 σ : 79.3

Channel 1
mn: -13949
mx: 14592
 μ : -13.9
 σ : 155.2

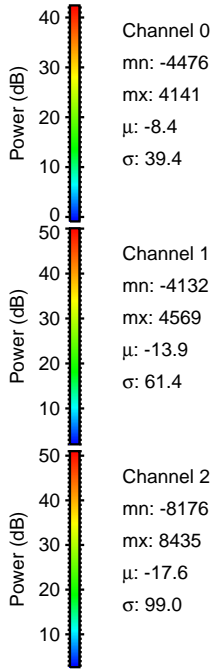
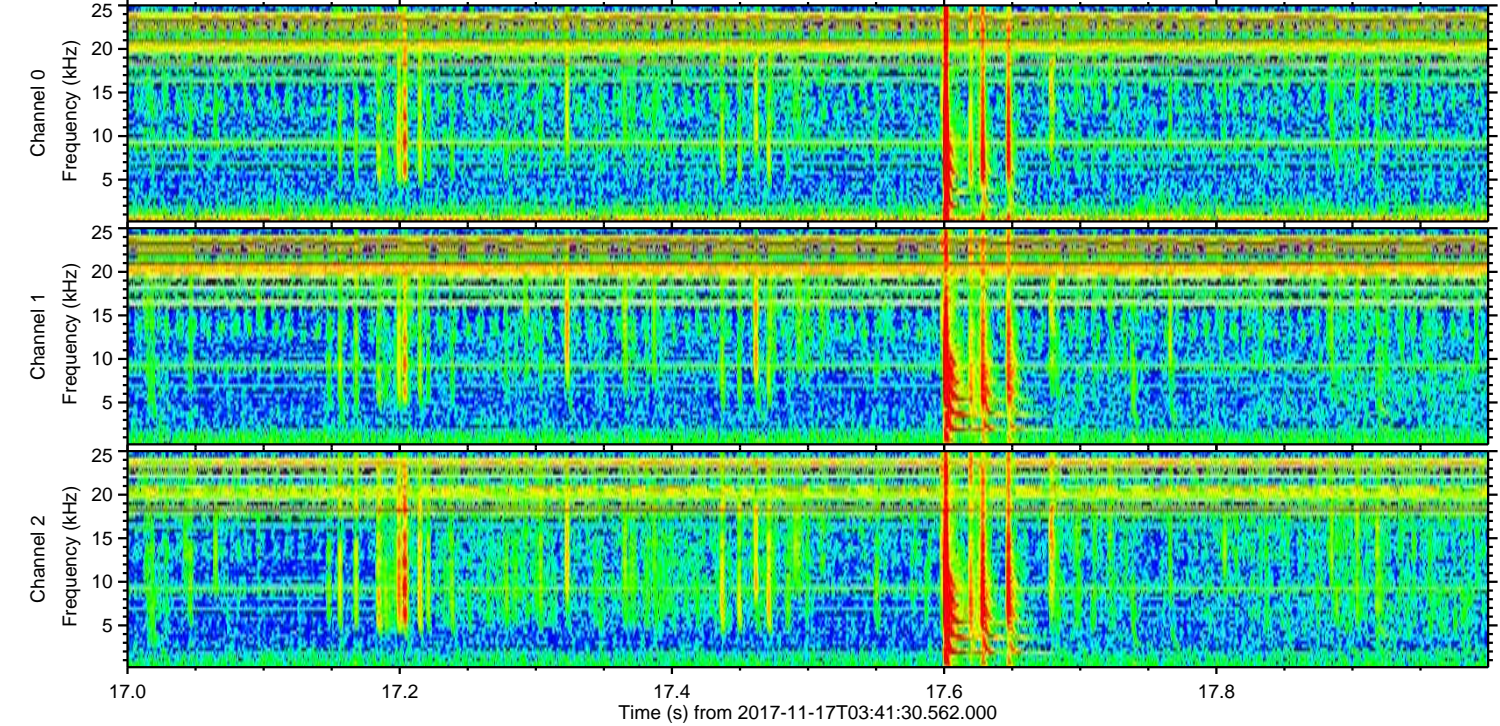
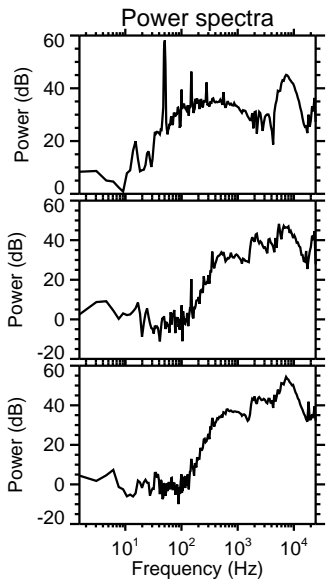
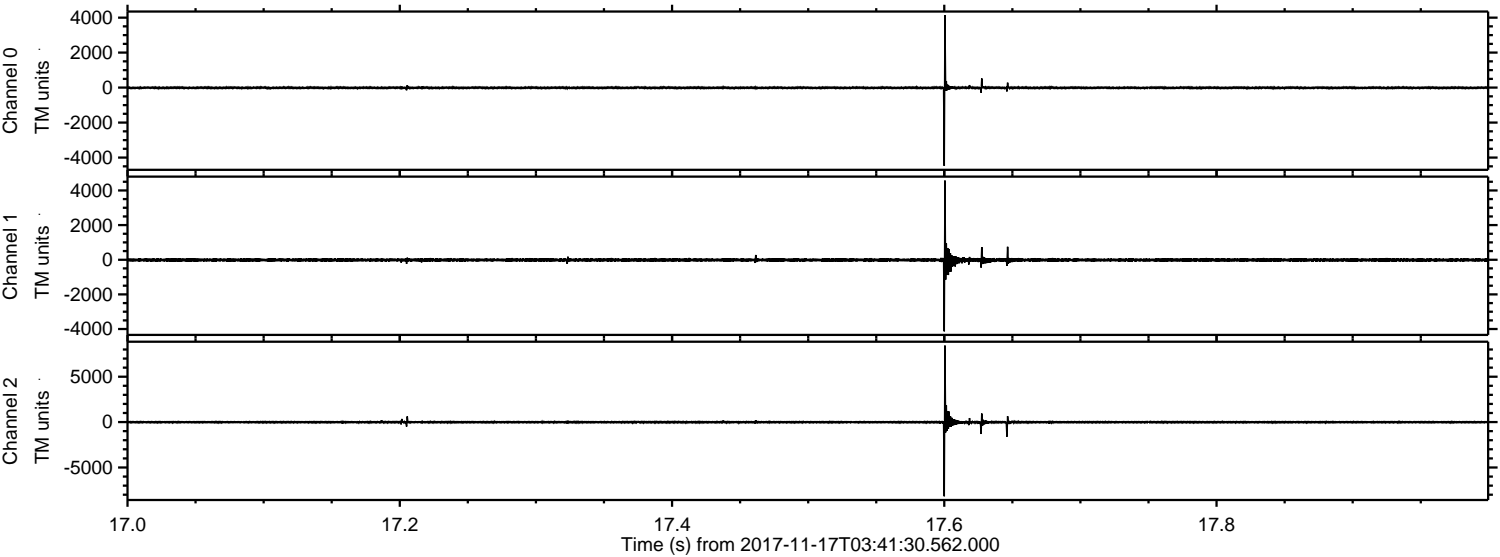
Channel 2
mn: -2494
mx: 1932
 μ : -17.5
 σ : 35.8

Processed Fri Nov 17 04:50:14 2017 by ELM ver.2012-10-06 from 001__elm20171117_034129__dat00.bin



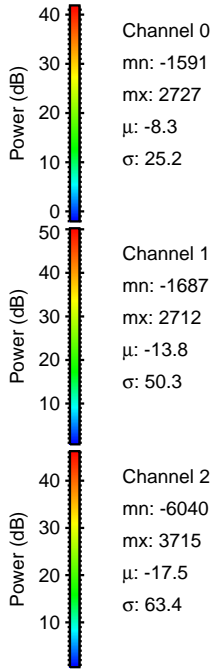
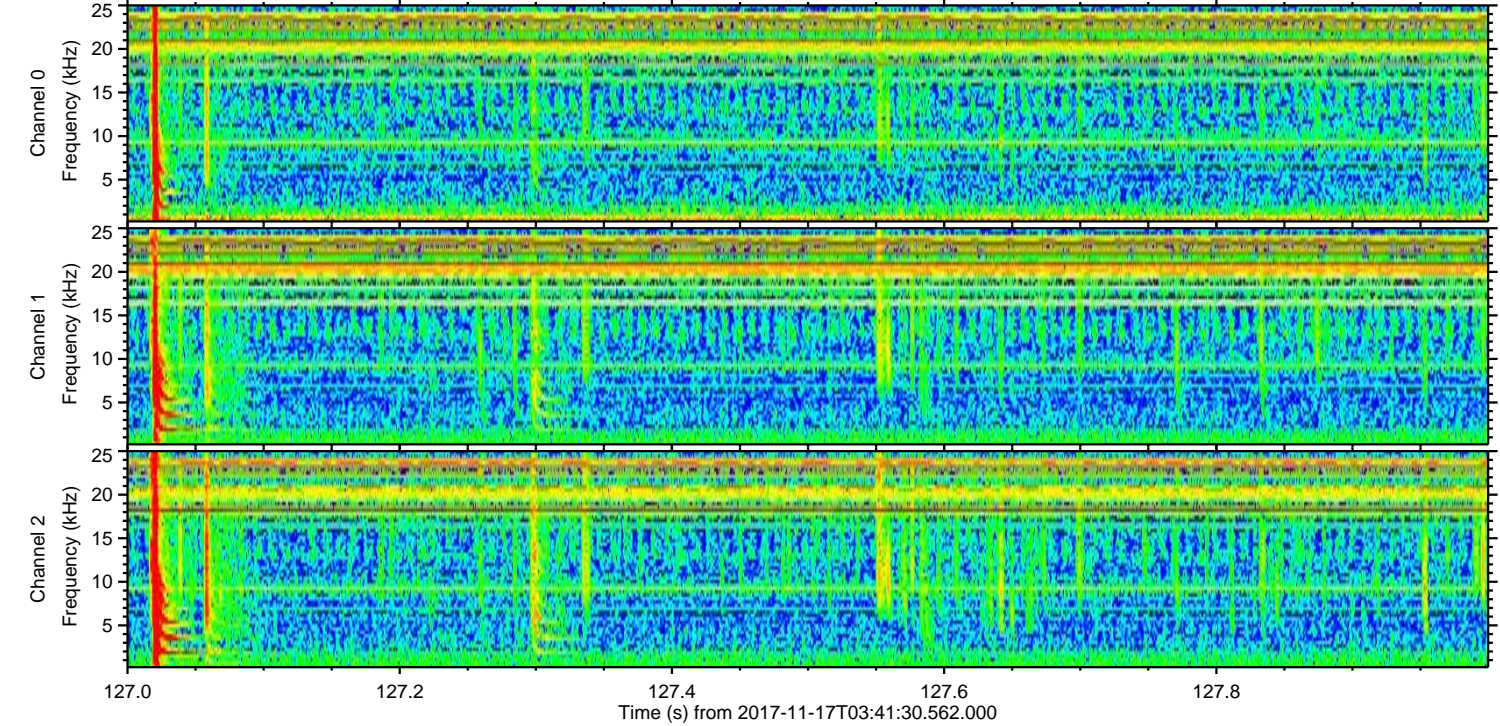
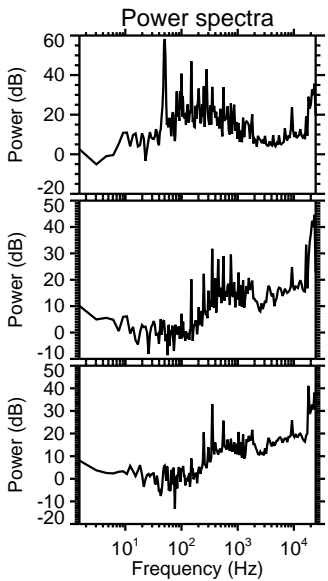
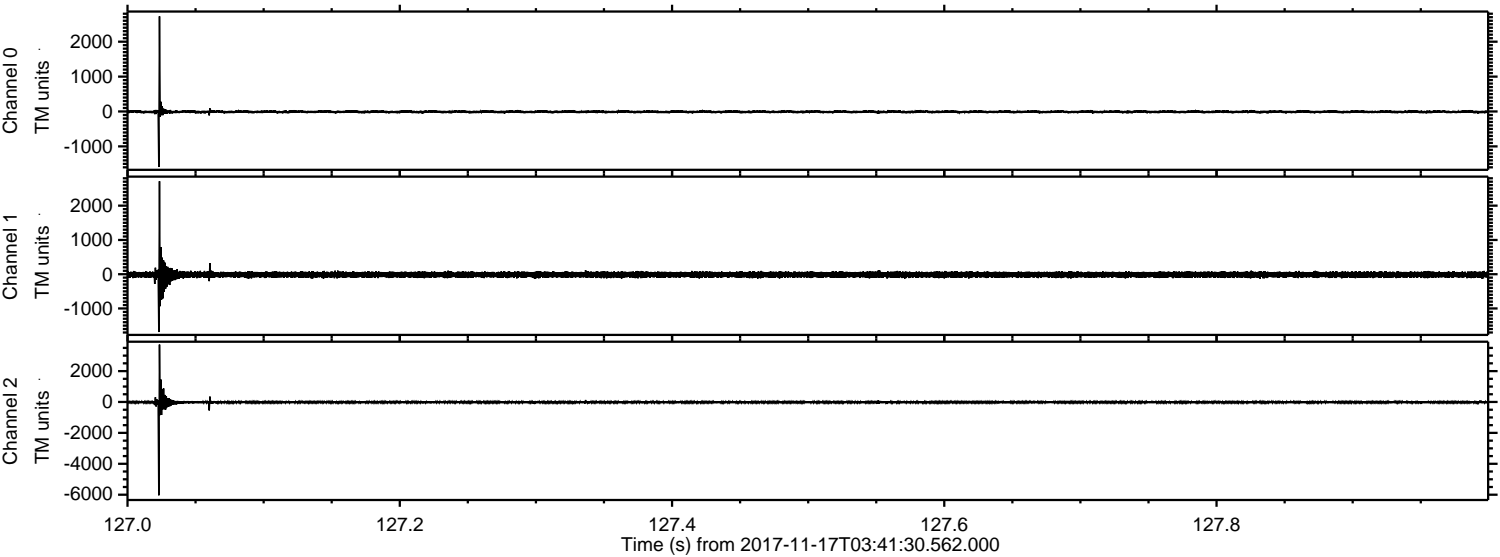
ELMAVAN 3D WAVEFORMS (Measured data sampled at 50 kHz) 51000 packets of 144 samples from 2017-11-17T03:41:30.562.000. Part 18/147

Processed Fri Nov 17 04:50:14 2017 by ELM ver.2012-10-06 from 001__elm20171117_034129__dat00.bin



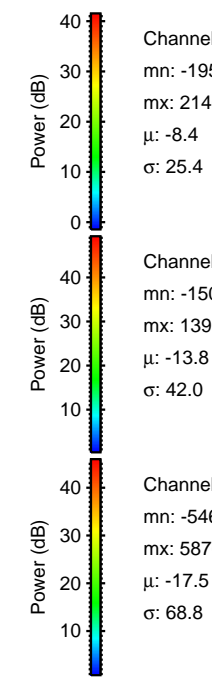
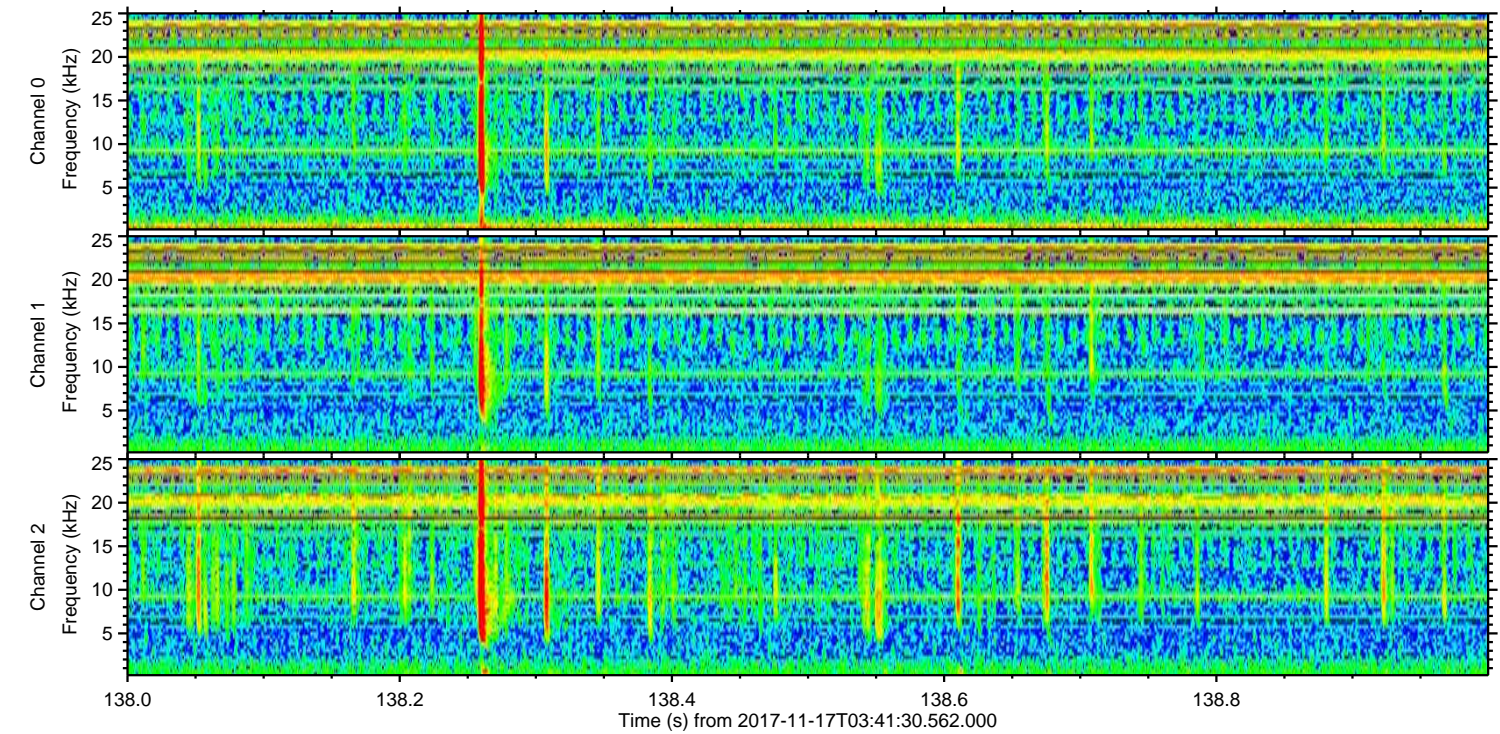
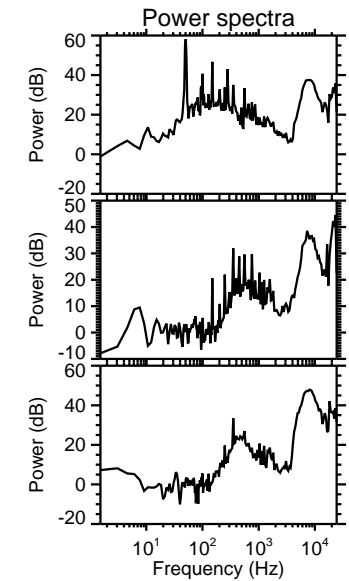
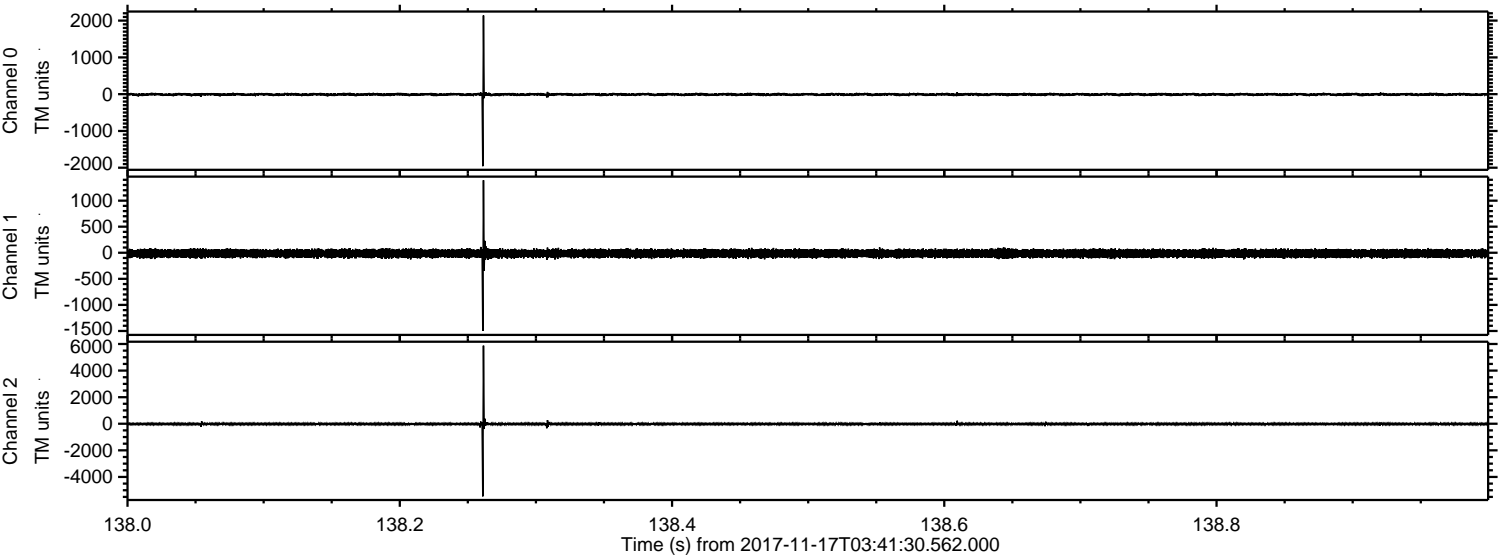
ELMAVAN 3D WAVEFORMS (Measured data sampled at 50 kHz) 51000 packets of 144 samples from 2017-11-17T03:41:30.562.000. Part 128/147

Processed Fri Nov 17 04:50:15 2017 by ELM ver.2012-10-06 from 001__elm20171117_034129__dat00.bin



ELMAVAN 3D WAVEFORMS (Measured data sampled at 50 kHz) 51000 packets of 144 samples from 2017-11-17T03:41:30.562.000. Part 139/147

Processed Fri Nov 17 04:50:16 2017 by ELM ver.2012-10-06 from 001__elm20171117_034129__dat00.bin



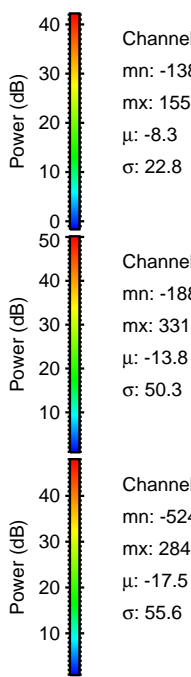
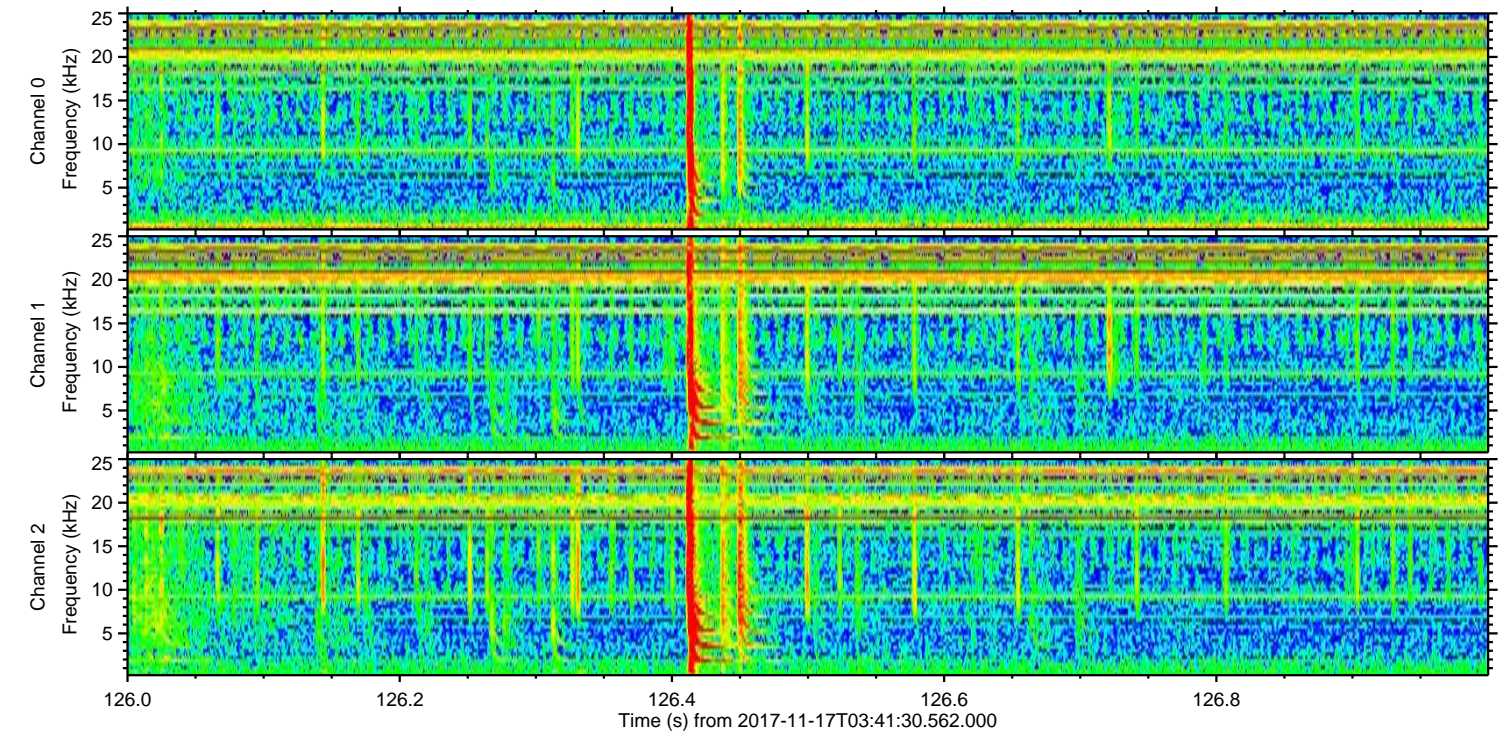
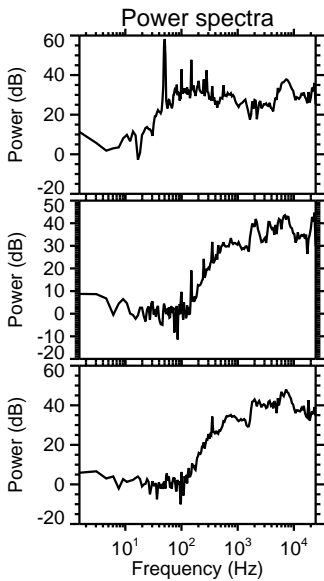
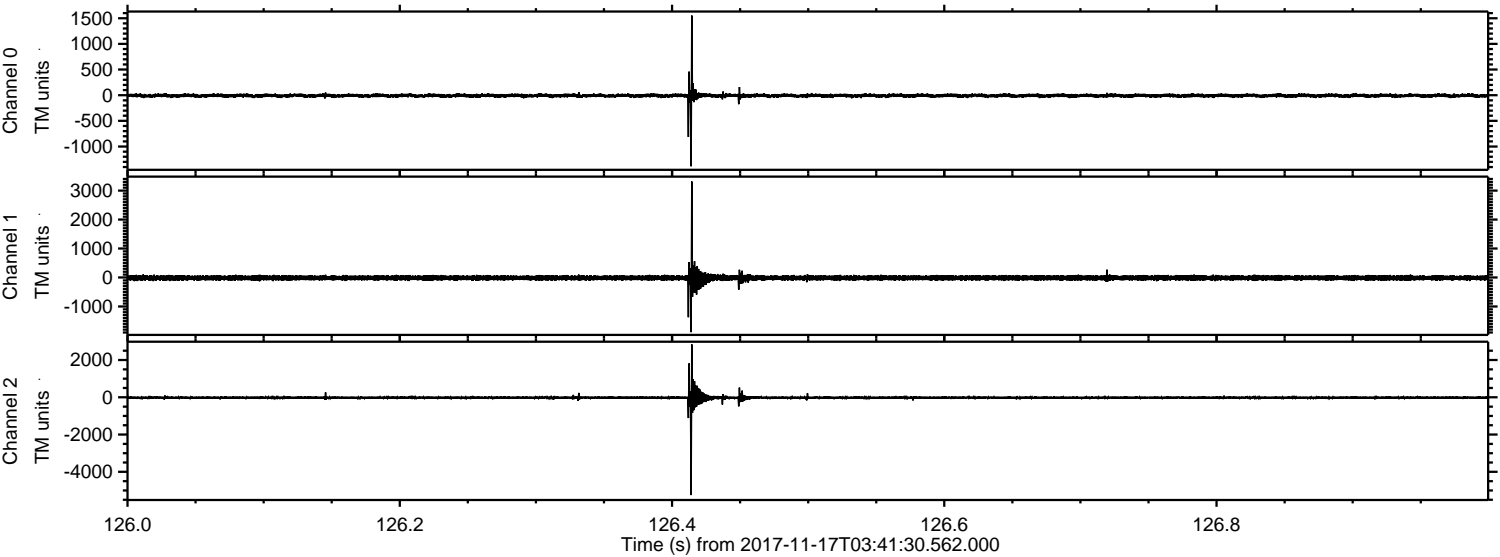
Channel 0
mn: -1959
mx: 2140
 μ : -8.4
 σ : 25.4

Channel 1
mn: -1501
mx: 1391
 μ : -13.8
 σ : 42.0

Channel 2
mn: -5461
mx: 5876
 μ : -17.5
 σ : 68.8

ELMAVAN 3D WAVEFORMS (Measured data sampled at 50 kHz) 51000 packets of 144 samples from 2017-11-17T03:41:30.562.000. Part 127/147

Processed Fri Nov 17 04:50:17 2017 by ELM ver.2012-10-06 from 001__elm20171117_034129__dat00.bin



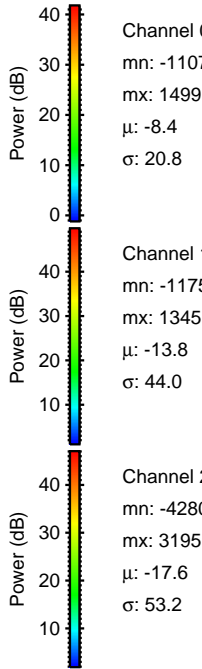
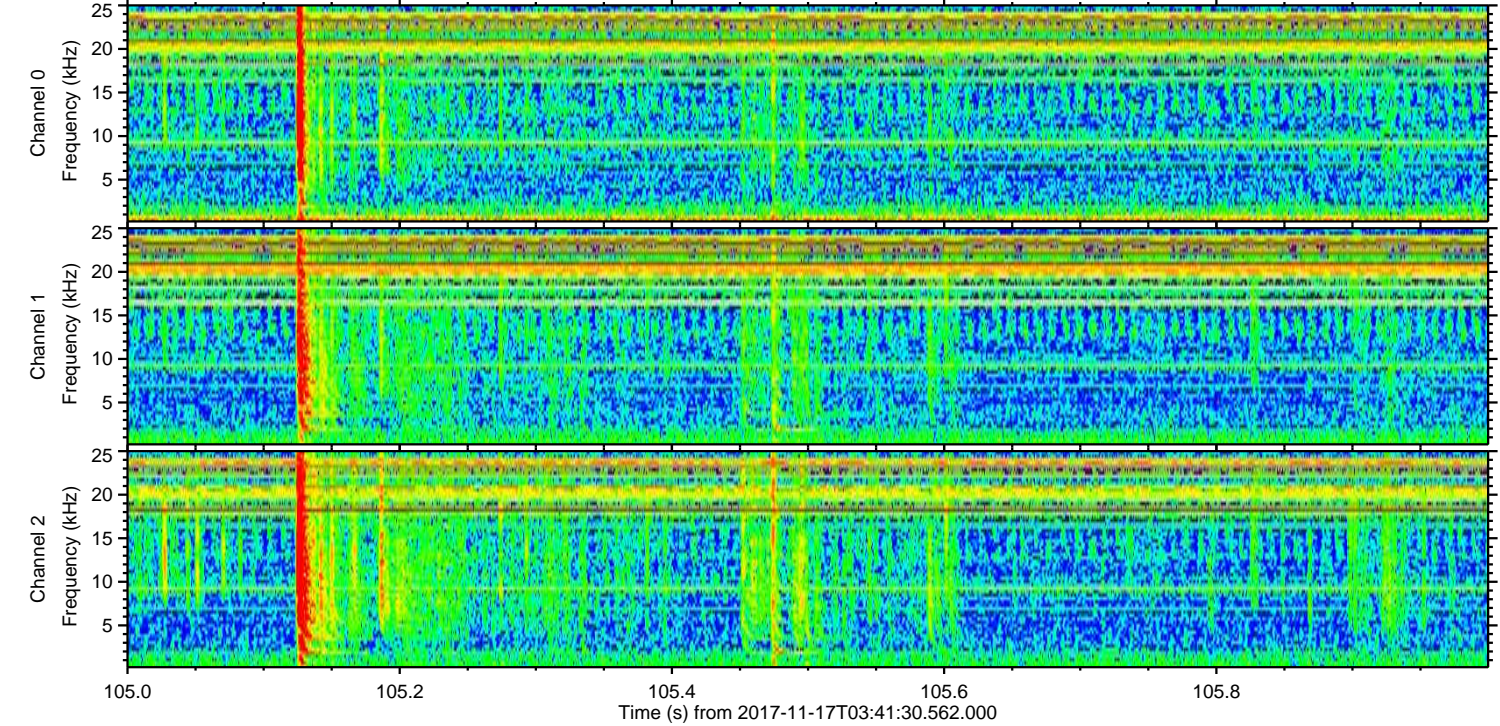
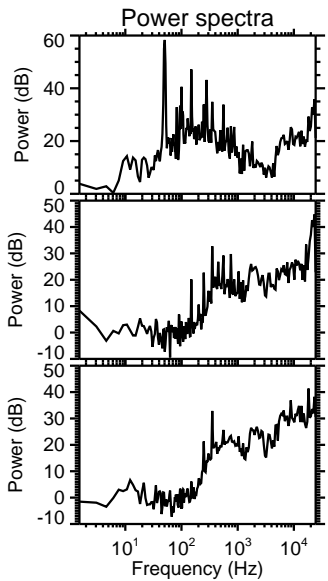
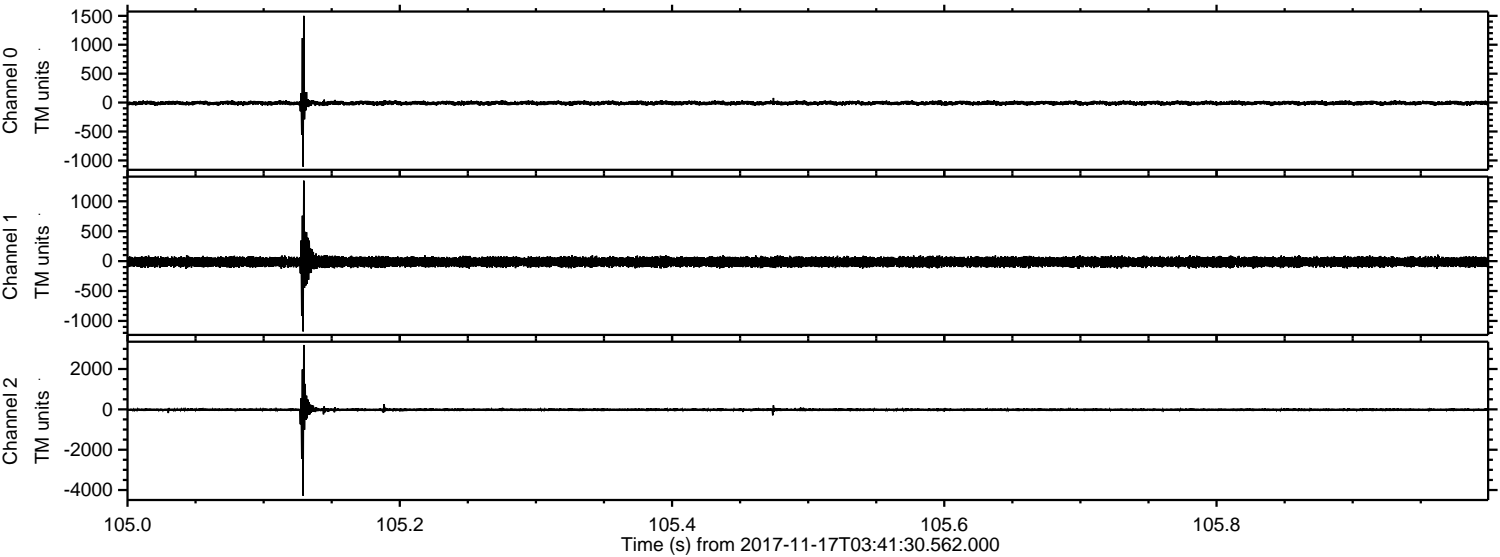
Channel 0
mn: -1385
mx: 1553
 μ : -8.3
 σ : 22.8

Channel 1
mn: -1888
mx: 3316
 μ : -13.8
 σ : 50.3

Channel 2
mn: -5249
mx: 2841
 μ : -17.5
 σ : 55.6

ELMAVAN 3D WAVEFORMS (Measured data sampled at 50 kHz) 51000 packets of 144 samples from 2017-11-17T03:41:30.562.000. Part 106/147

Processed Fri Nov 17 04:50:17 2017 by ELM ver.2012-10-06 from 001__elm20171117_034129__dat00.bin



Processed Fri Nov 17 04:50:18 2017 by ELM ver.2012-10-06 from 001__elm20171117_034129__dat00.bin

