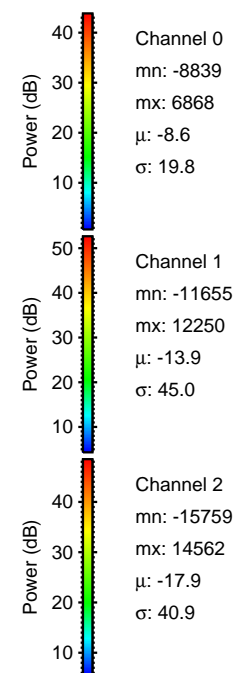
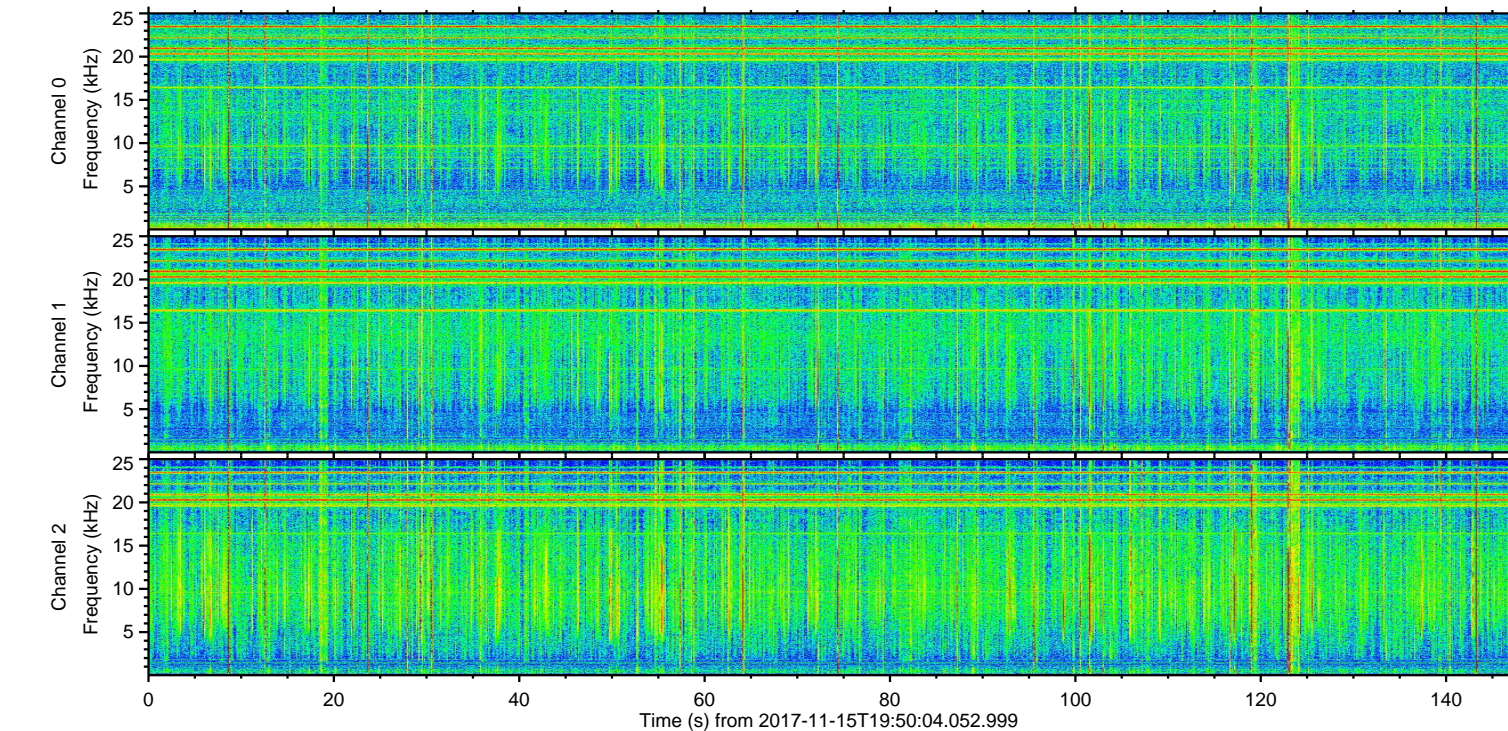
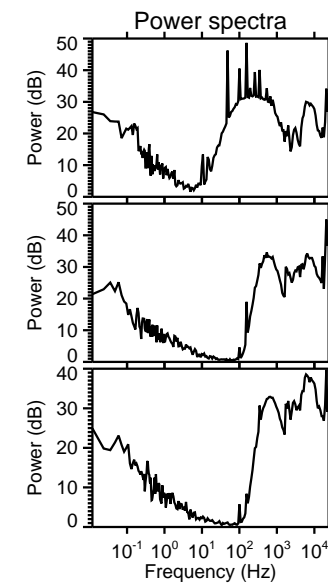
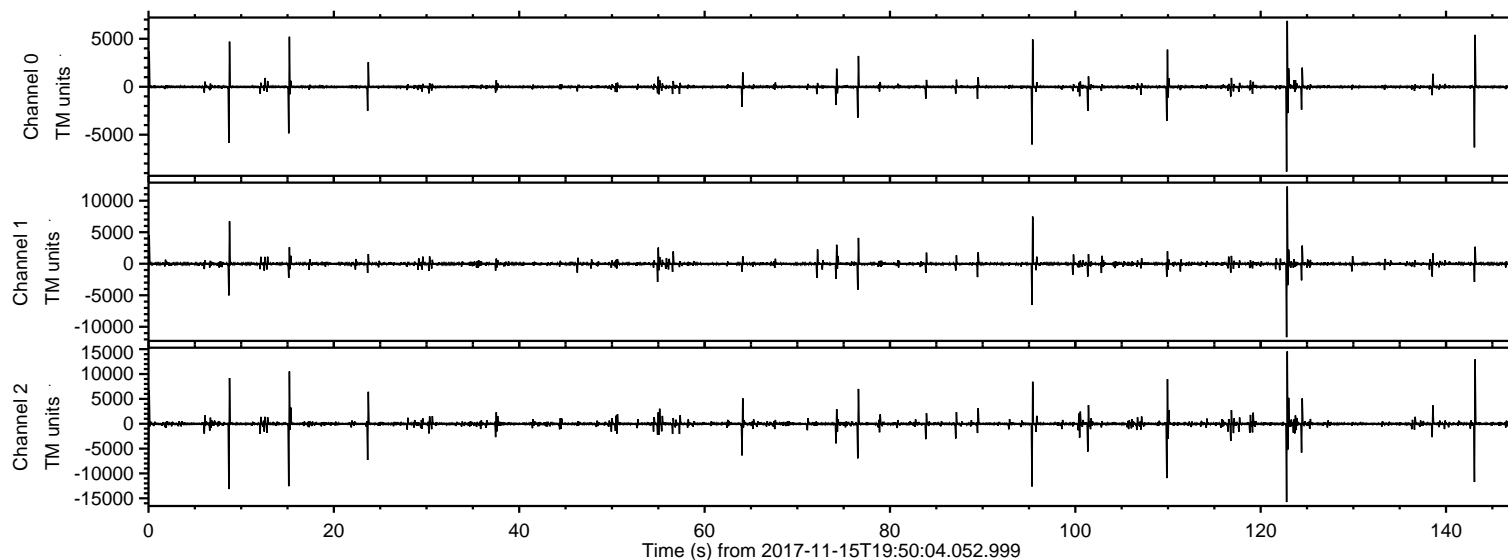


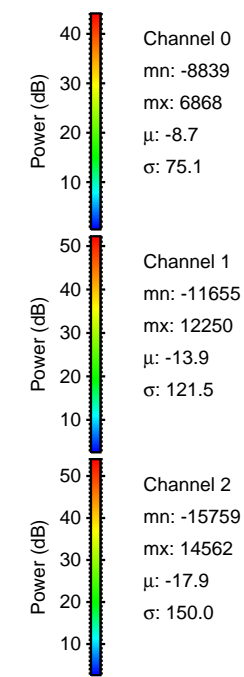
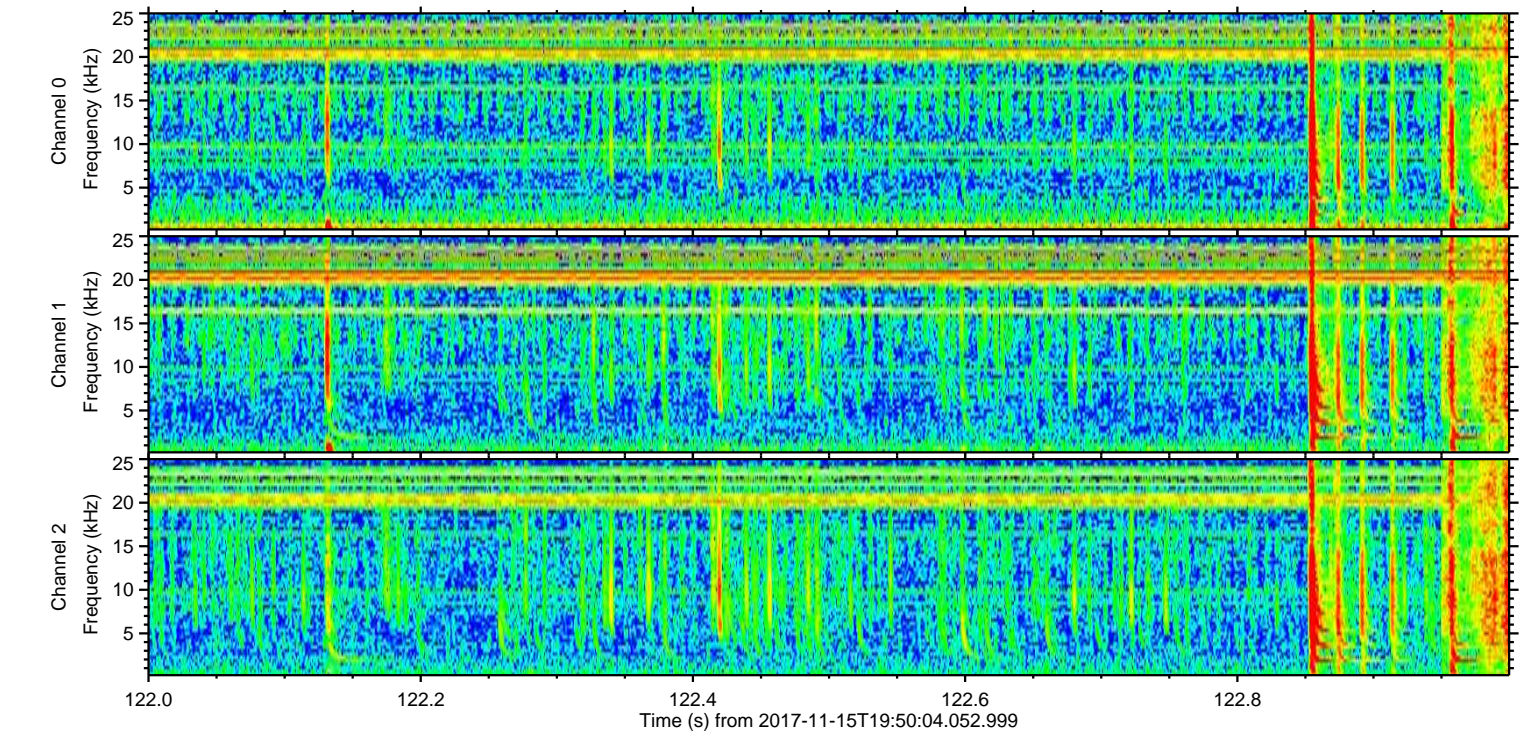
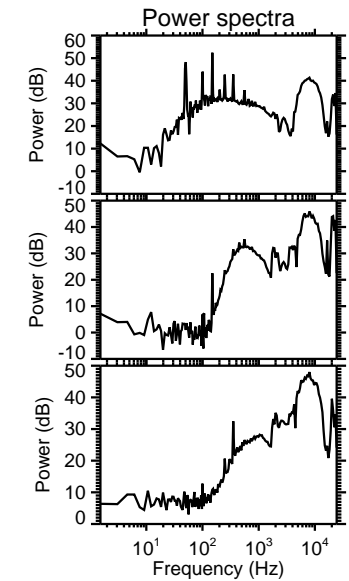
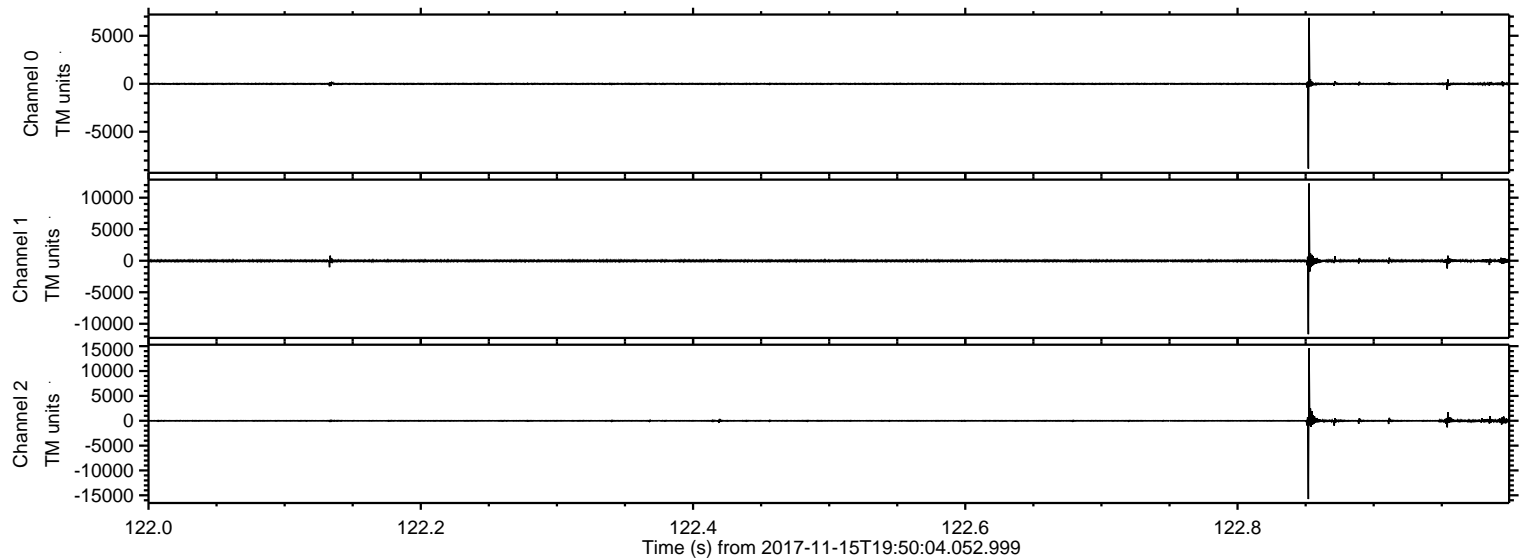
ELMAVAN 3D WAVEFORMS (Measured data sampled at 50 kHz) 51000 packets of 144 samples from 2017-11-15T19:50:04.052.999.

Processed Wed Nov 15 20:58:24 2017 by ELM ver.2012-10-06 from 001__elm20171115_195003__dat00.bin

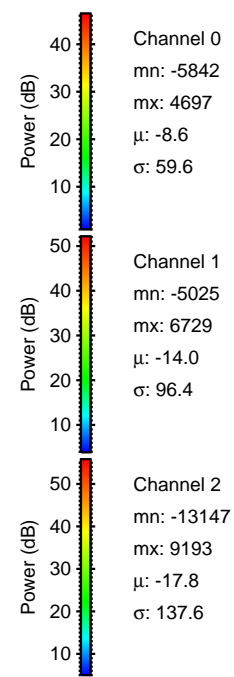
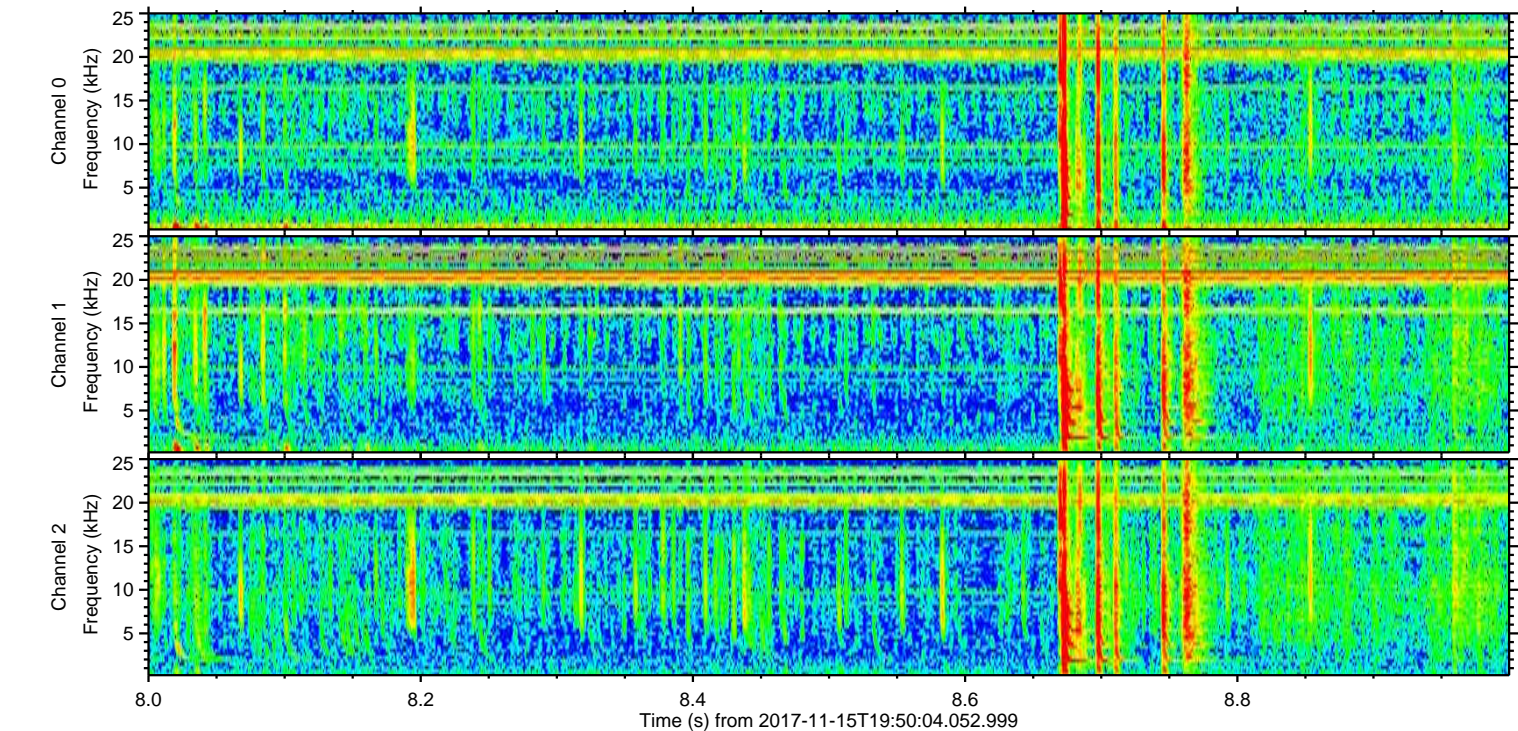
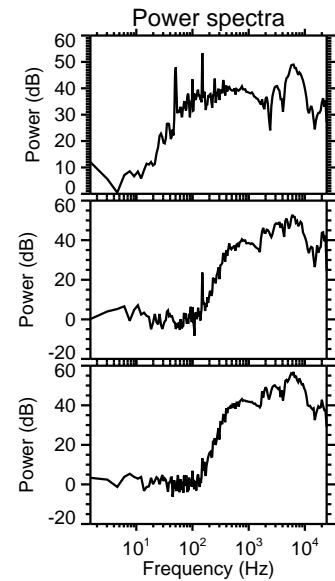
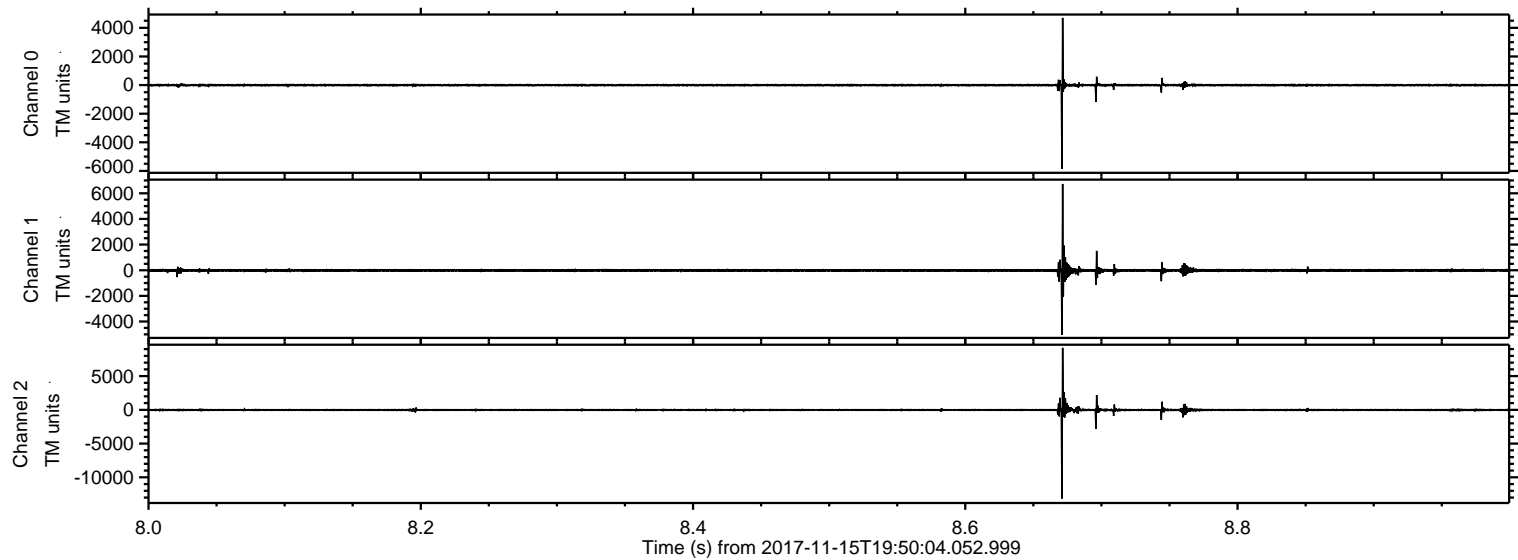


ELMAVAN 3D WAVEFORMS (Measured data sampled at 50 kHz) 51000 packets of 144 samples from 2017-11-15T19:50:04.052.999. Part 123/147

Processed Wed Nov 15 20:58:30 2017 by ELM ver.2012-10-06 from 001__elm20171115_195003__dat00.bin

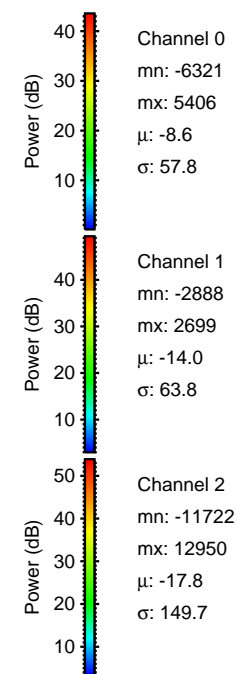
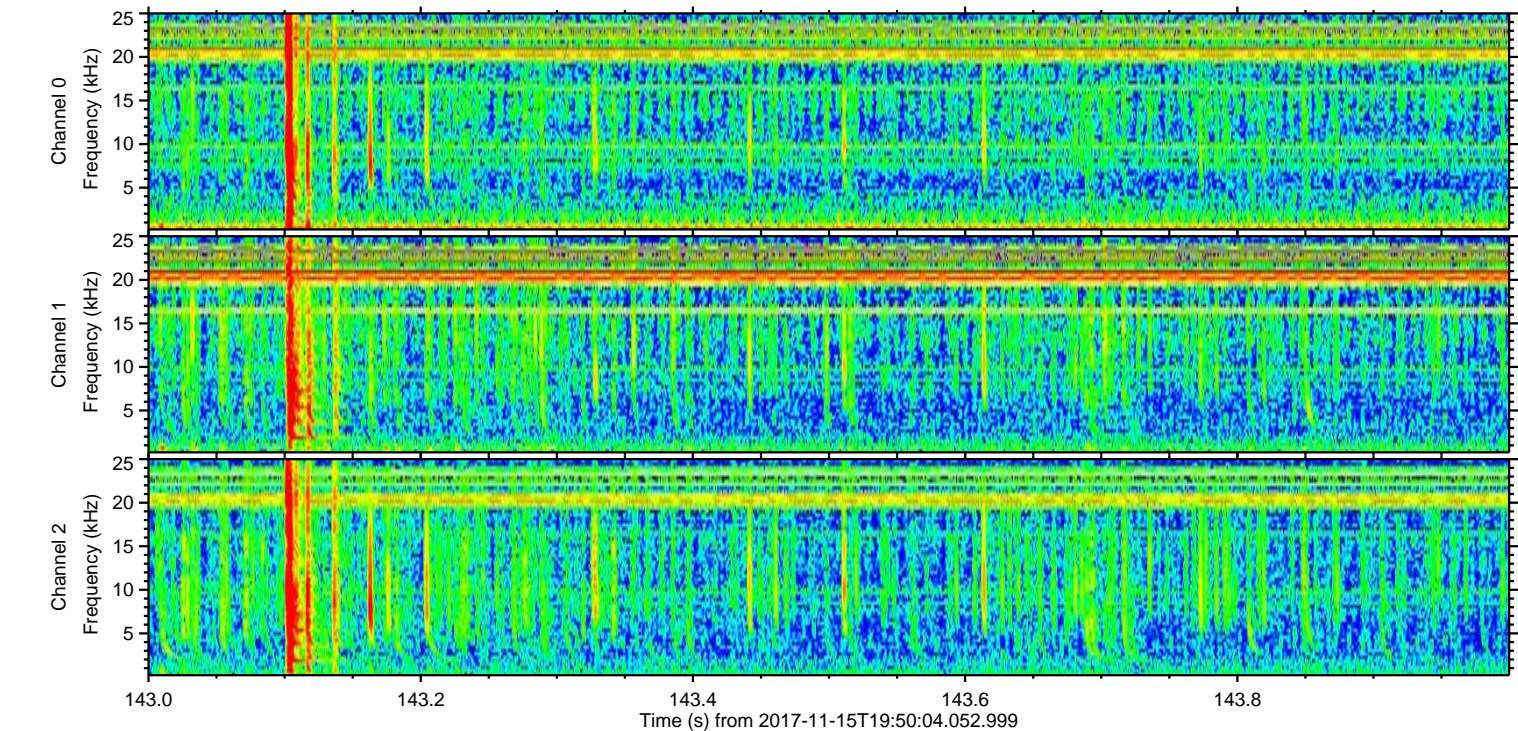
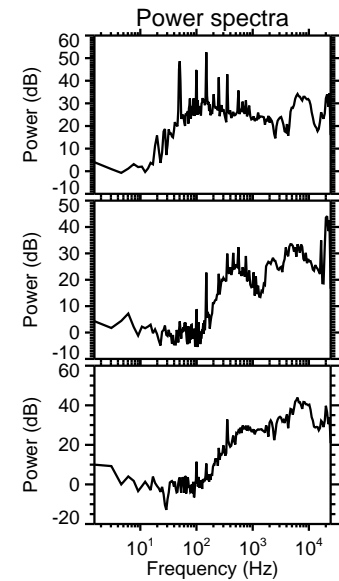
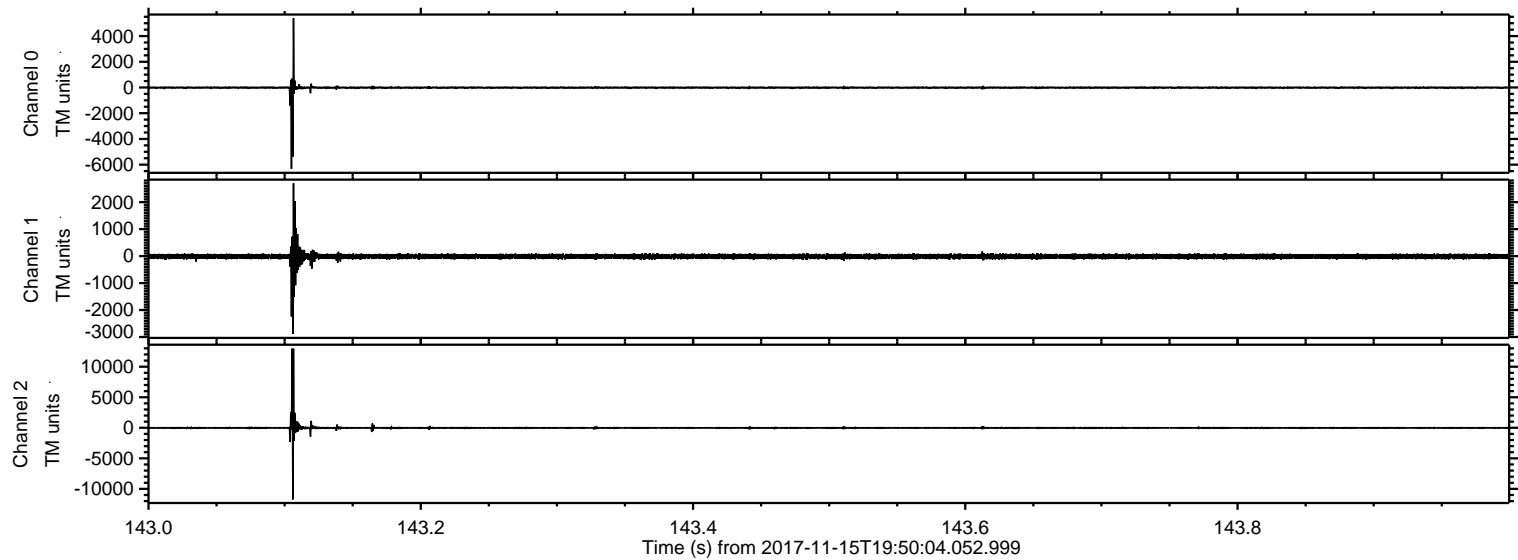


Processed Wed Nov 15 20:58:31 2017 by ELM ver.2012-10-06 from 001__elm20171115_195003__dat00.bin

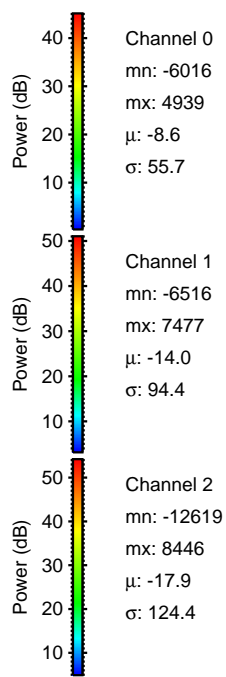
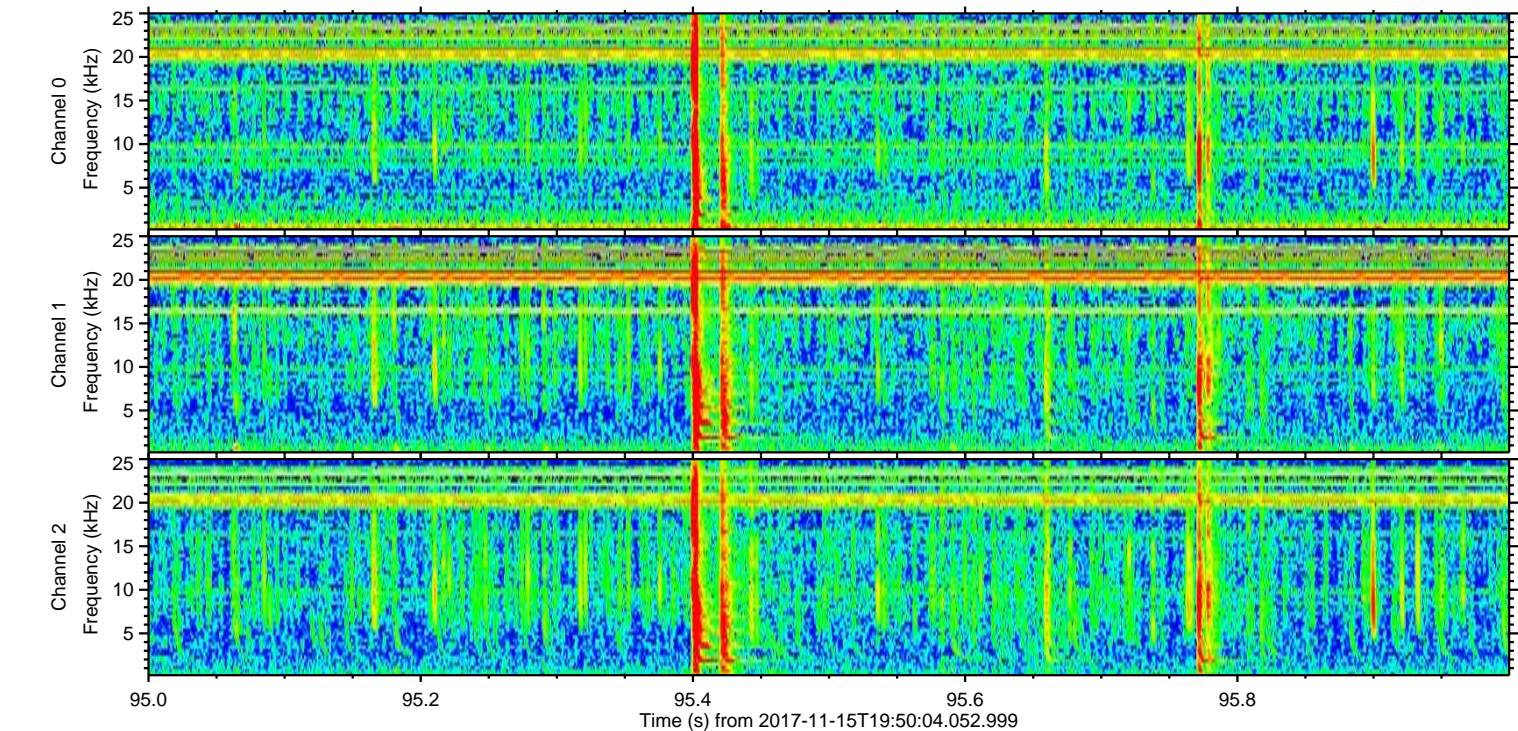
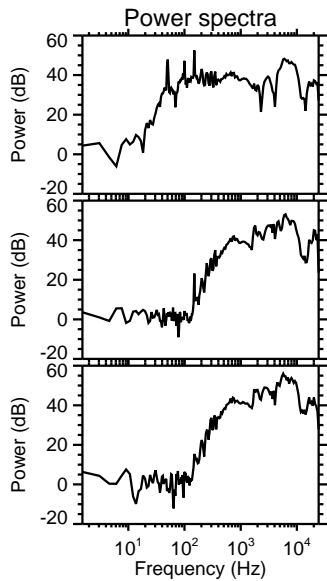
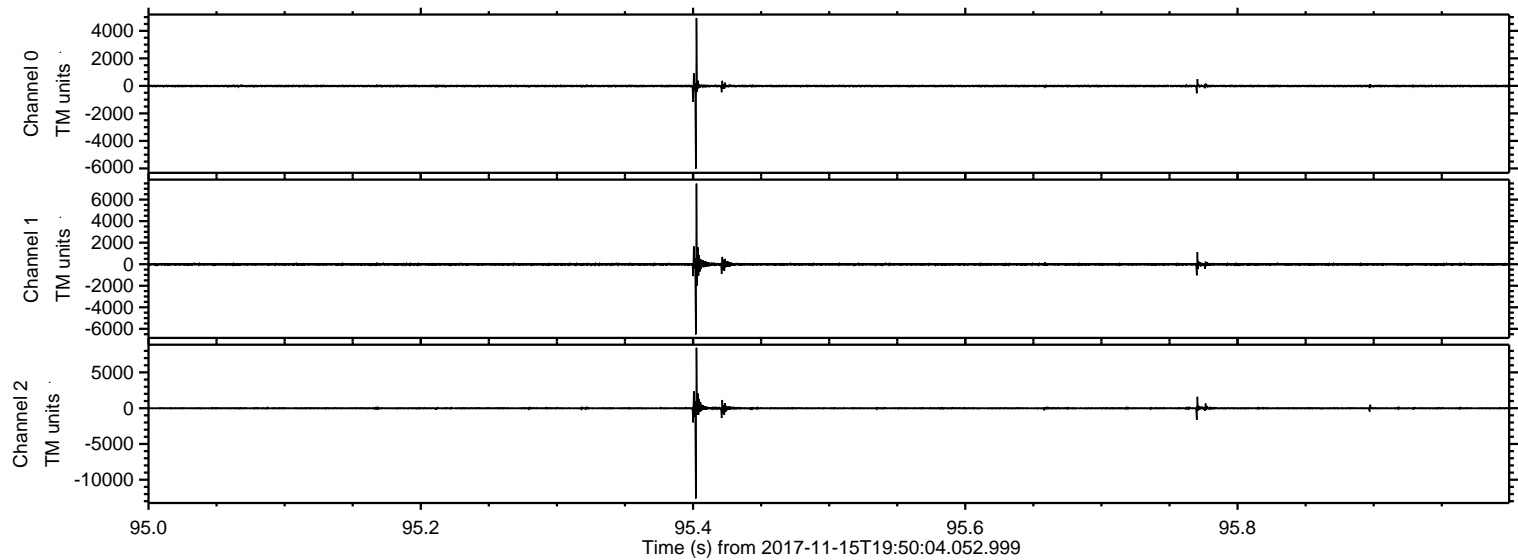


ELMAVAN 3D WAVEFORMS (Measured data sampled at 50 kHz) 51000 packets of 144 samples from 2017-11-15T19:50:04.052.999. Part 144/147

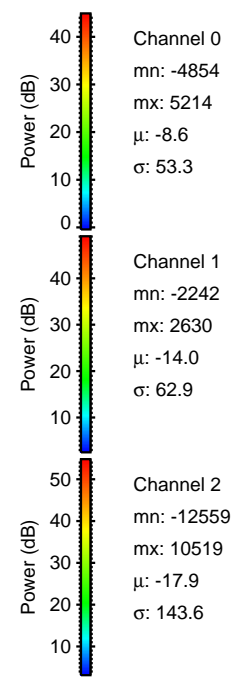
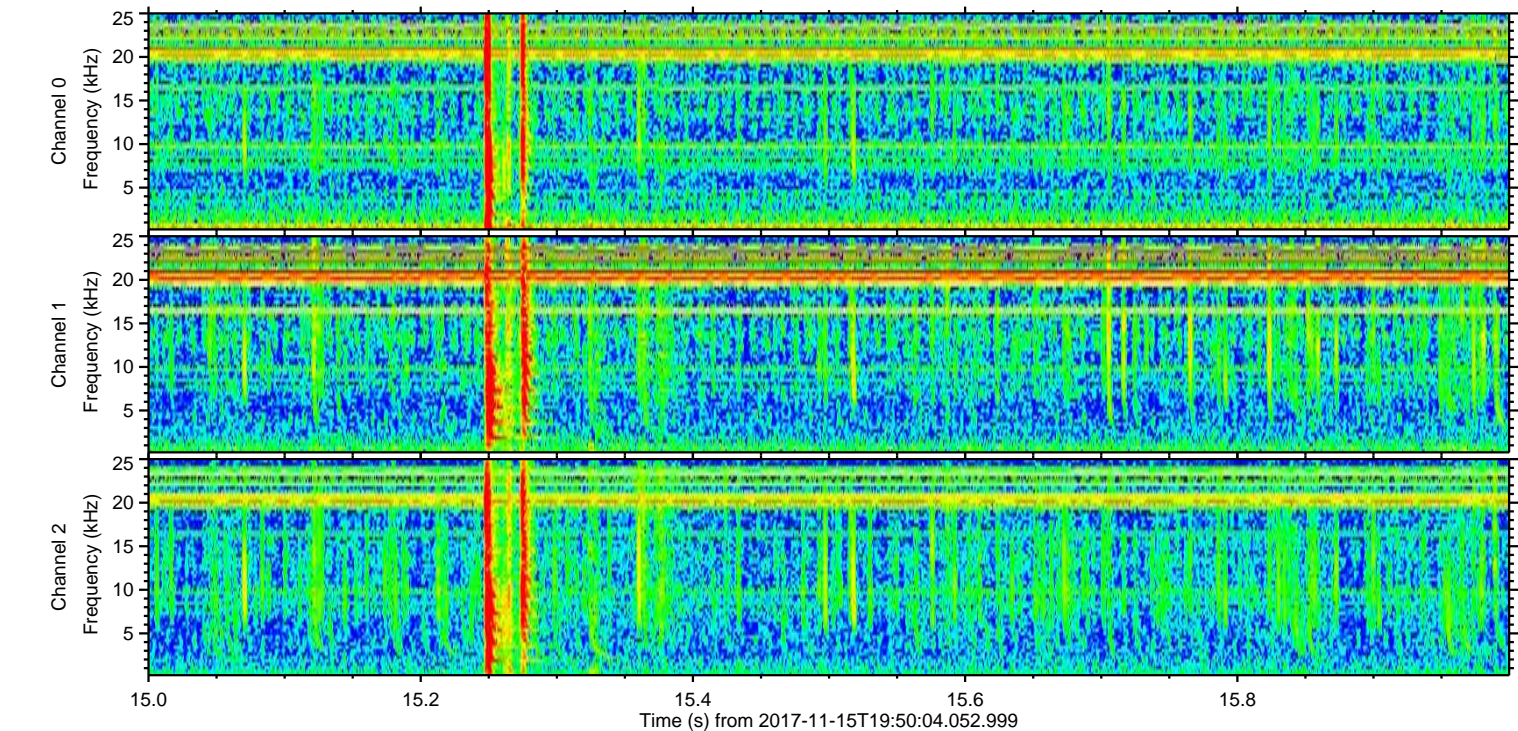
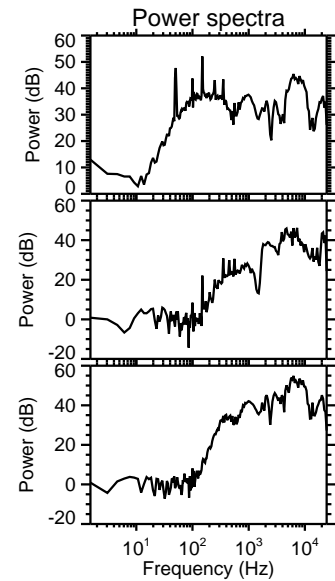
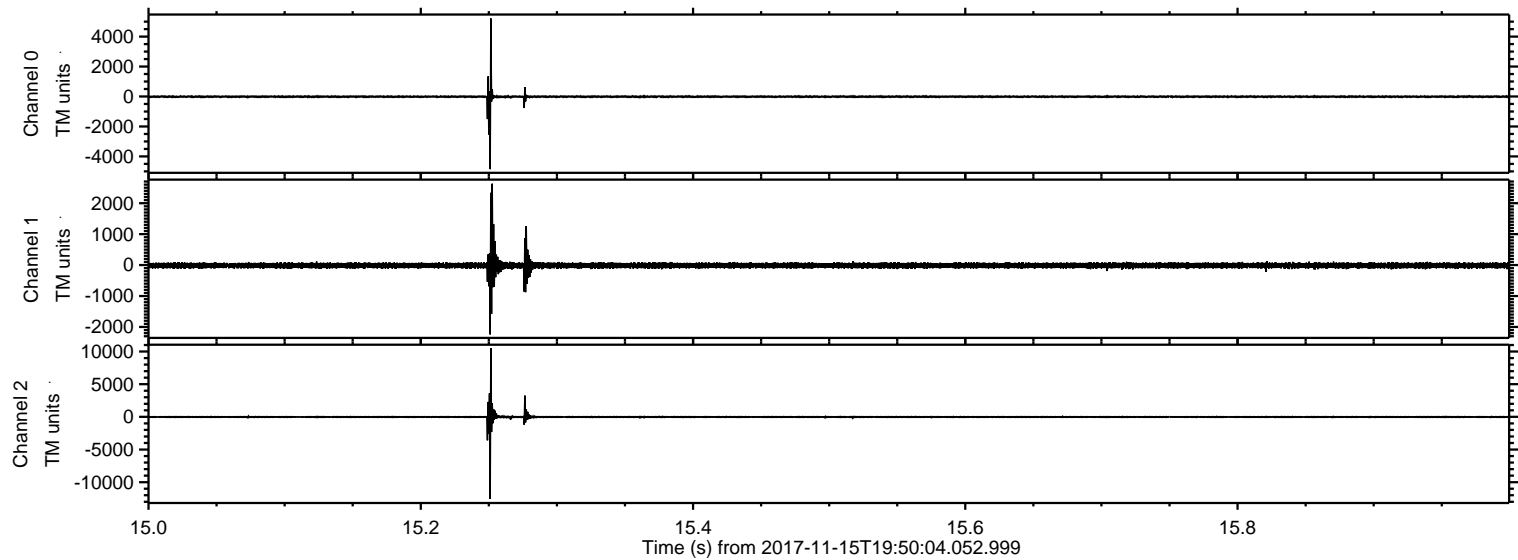
Processed Wed Nov 15 20:58:32 2017 by ELM ver.2012-10-06 from 001__elm20171115_195003__dat00.bin



Processed Wed Nov 15 20:58:32 2017 by ELM ver.2012-10-06 from 001__elm20171115_195003__dat00.bin

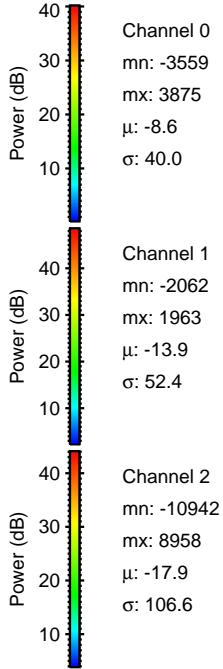
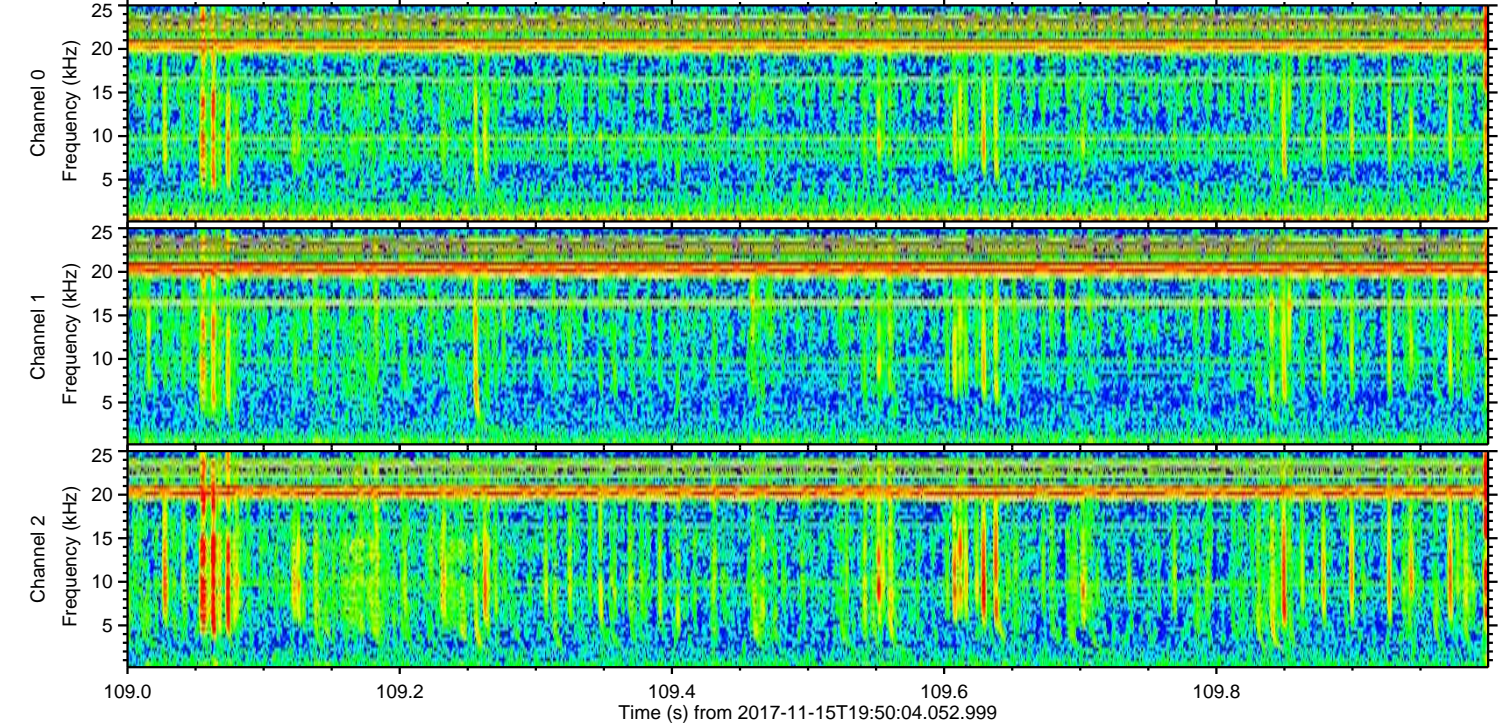
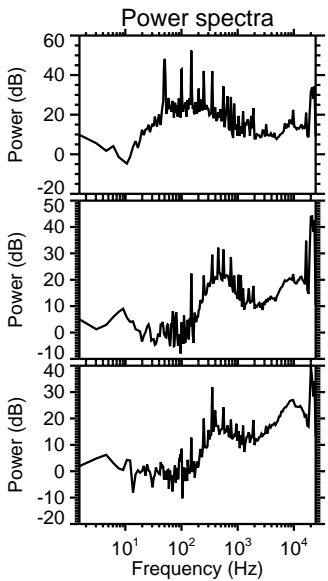
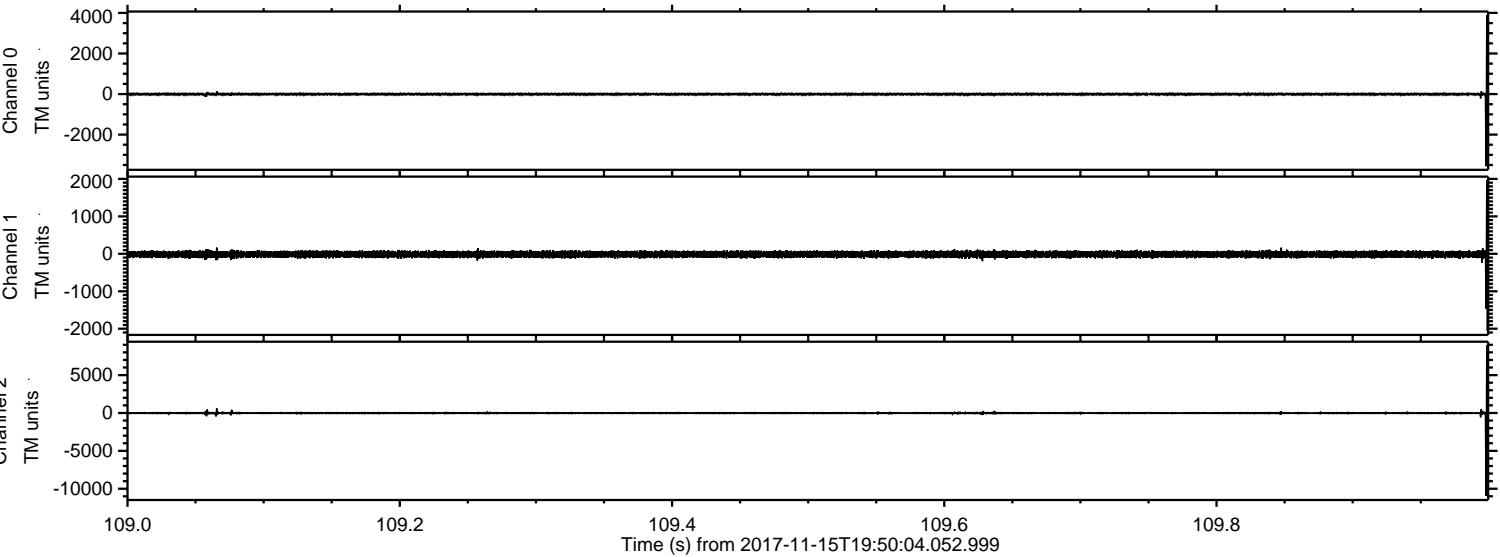


Processed Wed Nov 15 20:58:33 2017 by ELM ver.2012-10-06 from 001__elm20171115_195003__dat00.bin

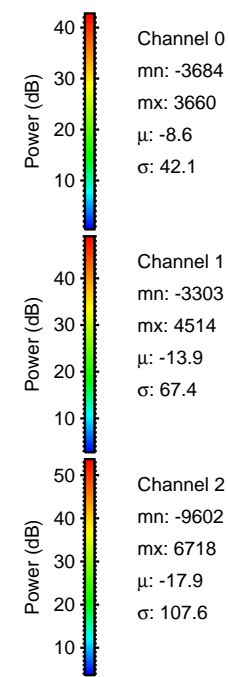
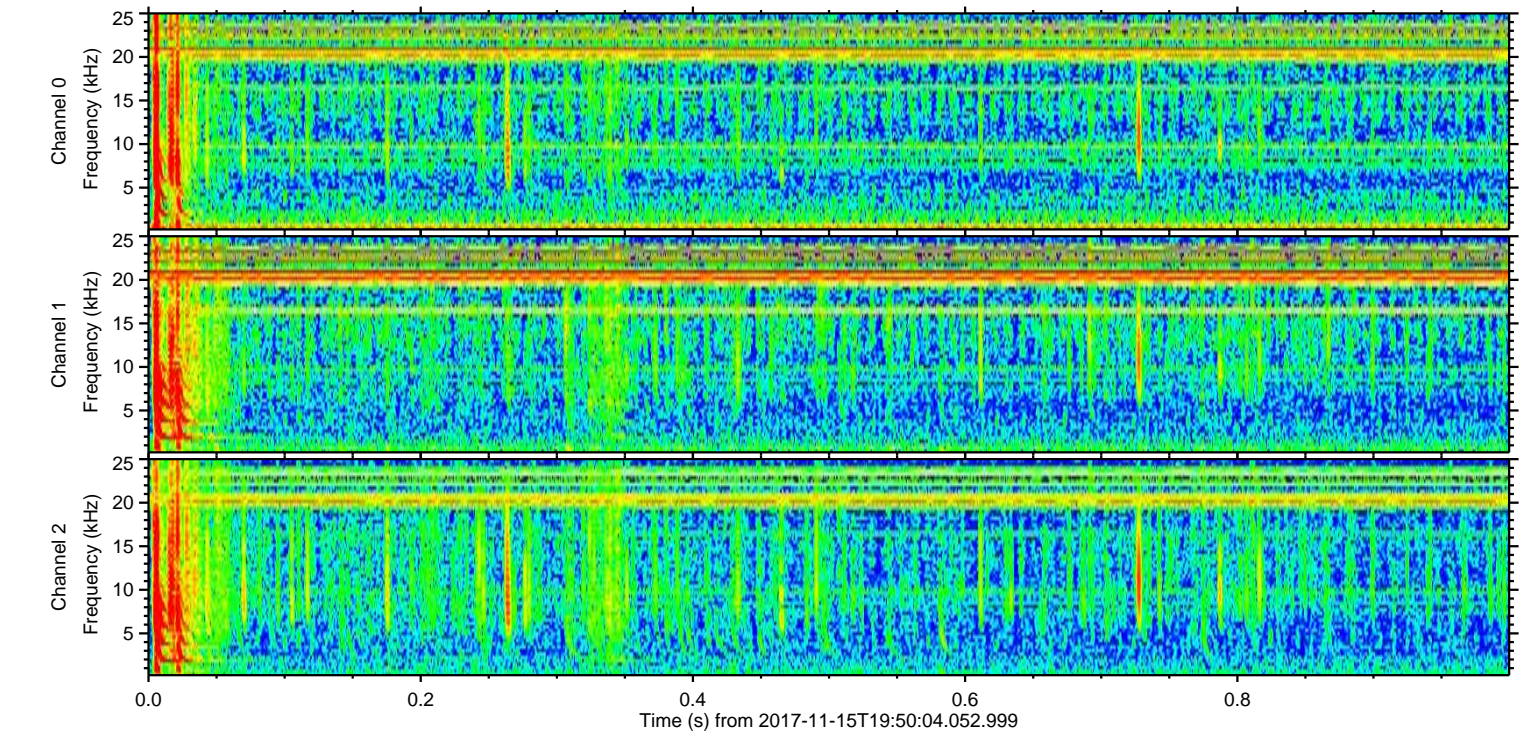
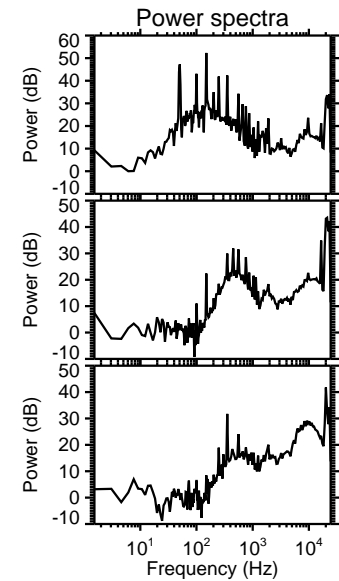
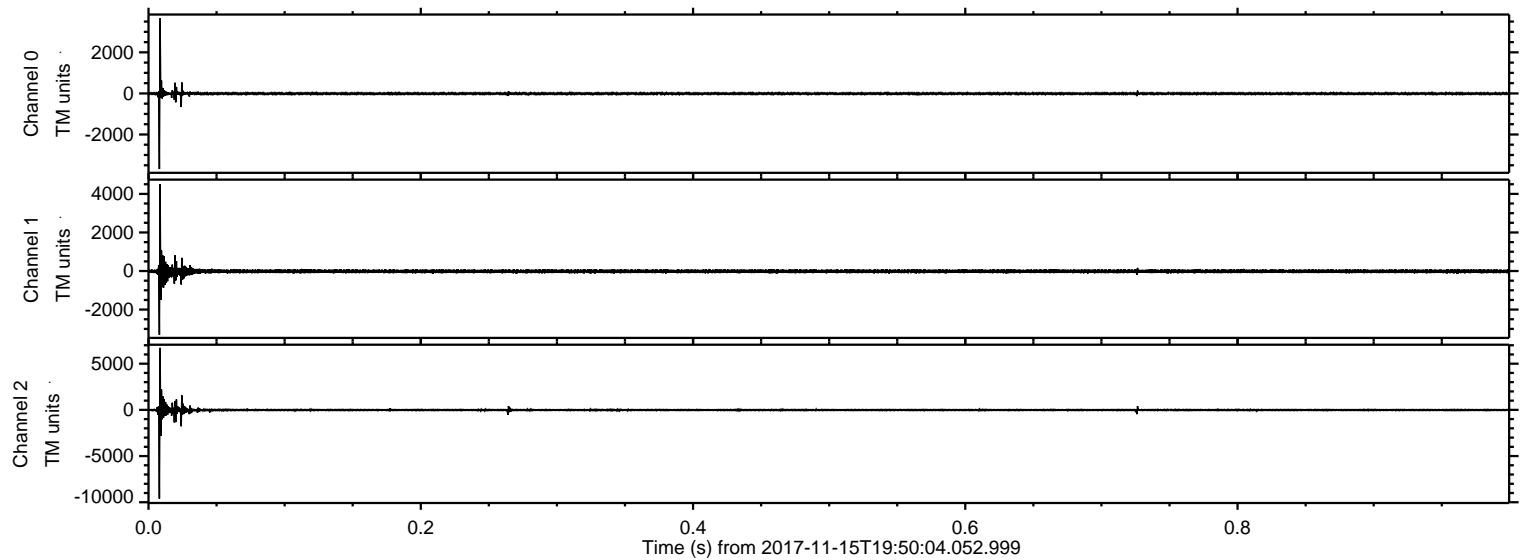


ELMAVAN 3D WAVEFORMS (Measured data sampled at 50 kHz) 51000 packets of 144 samples from 2017-11-15T19:50:04.052.999. Part 110/147

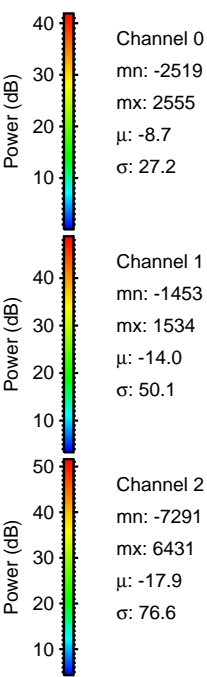
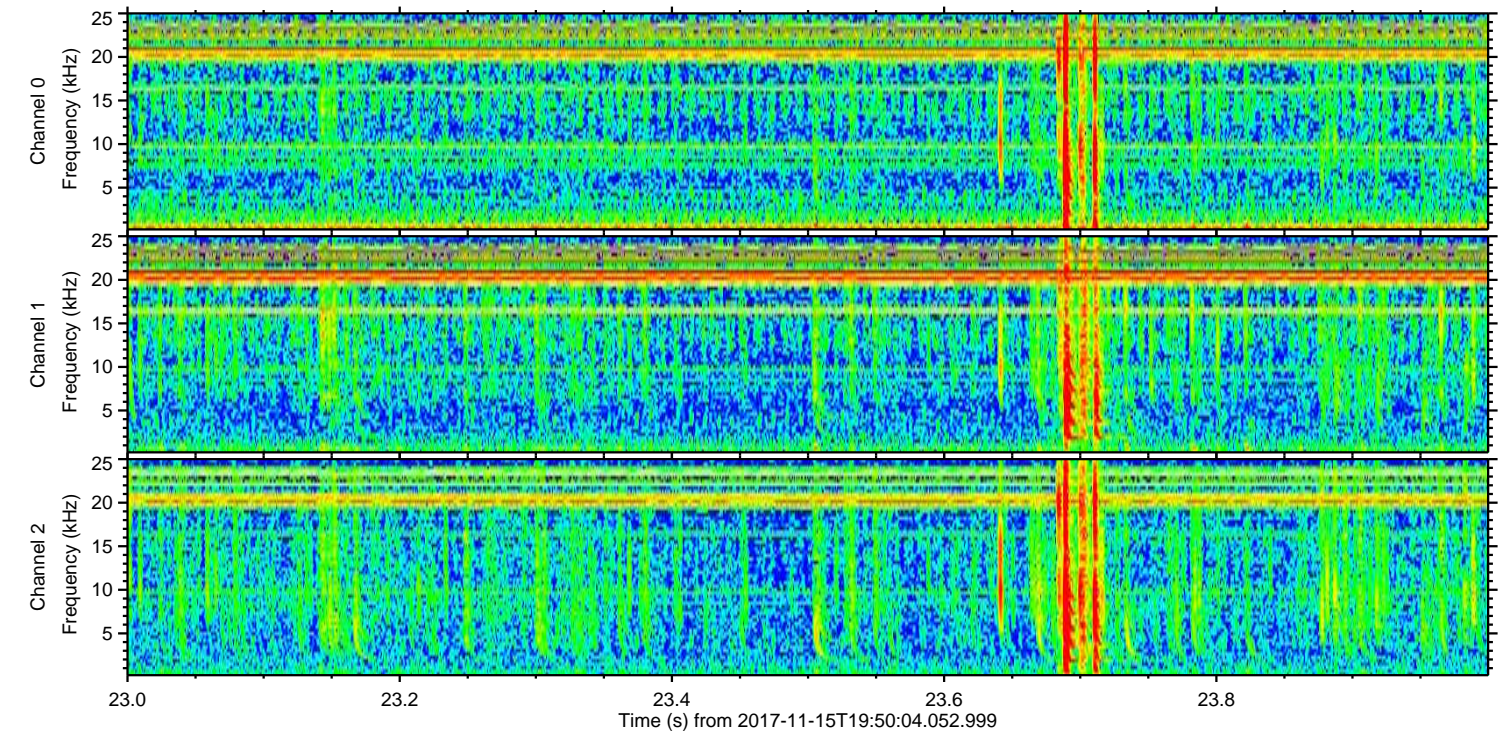
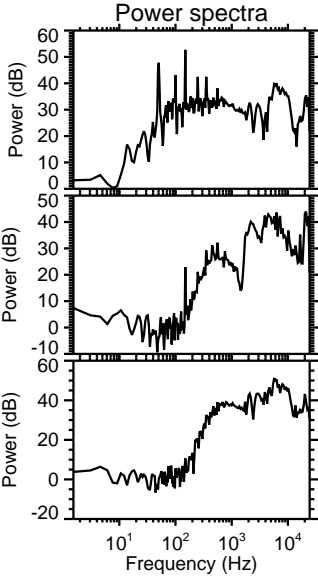
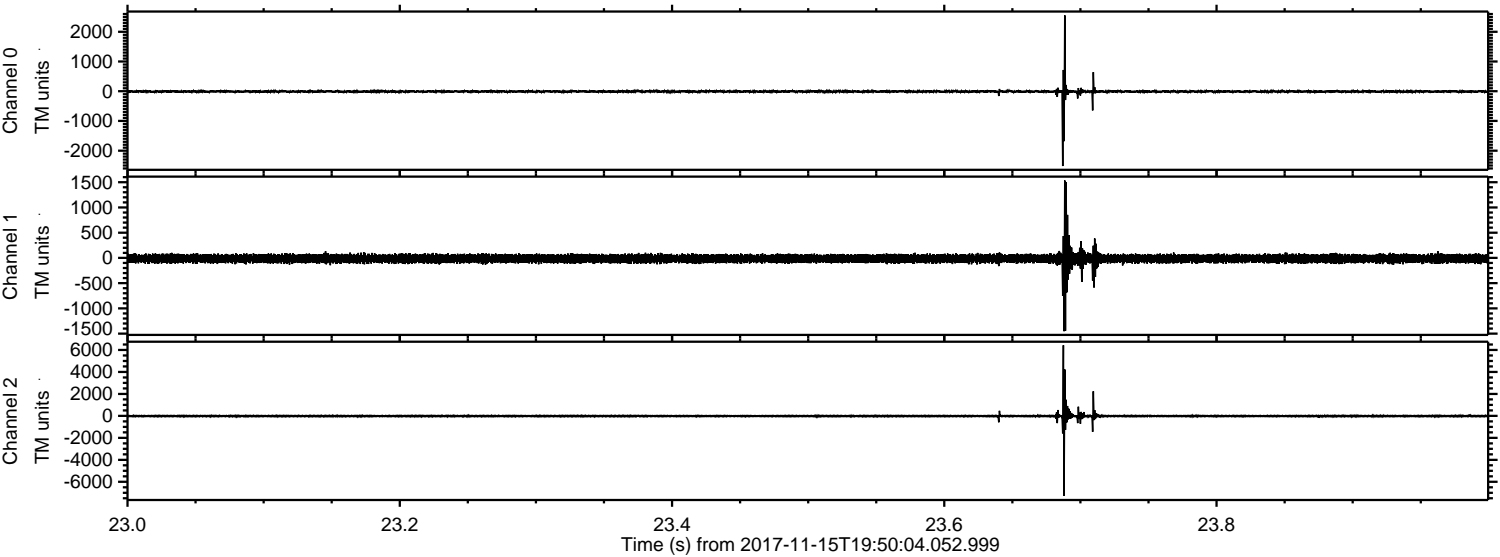
Processed Wed Nov 15 20:58:34 2017 by ELM ver.2012-10-06 from 001__elm20171115_195003__dat00.bin



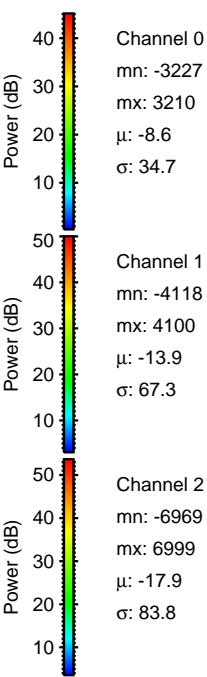
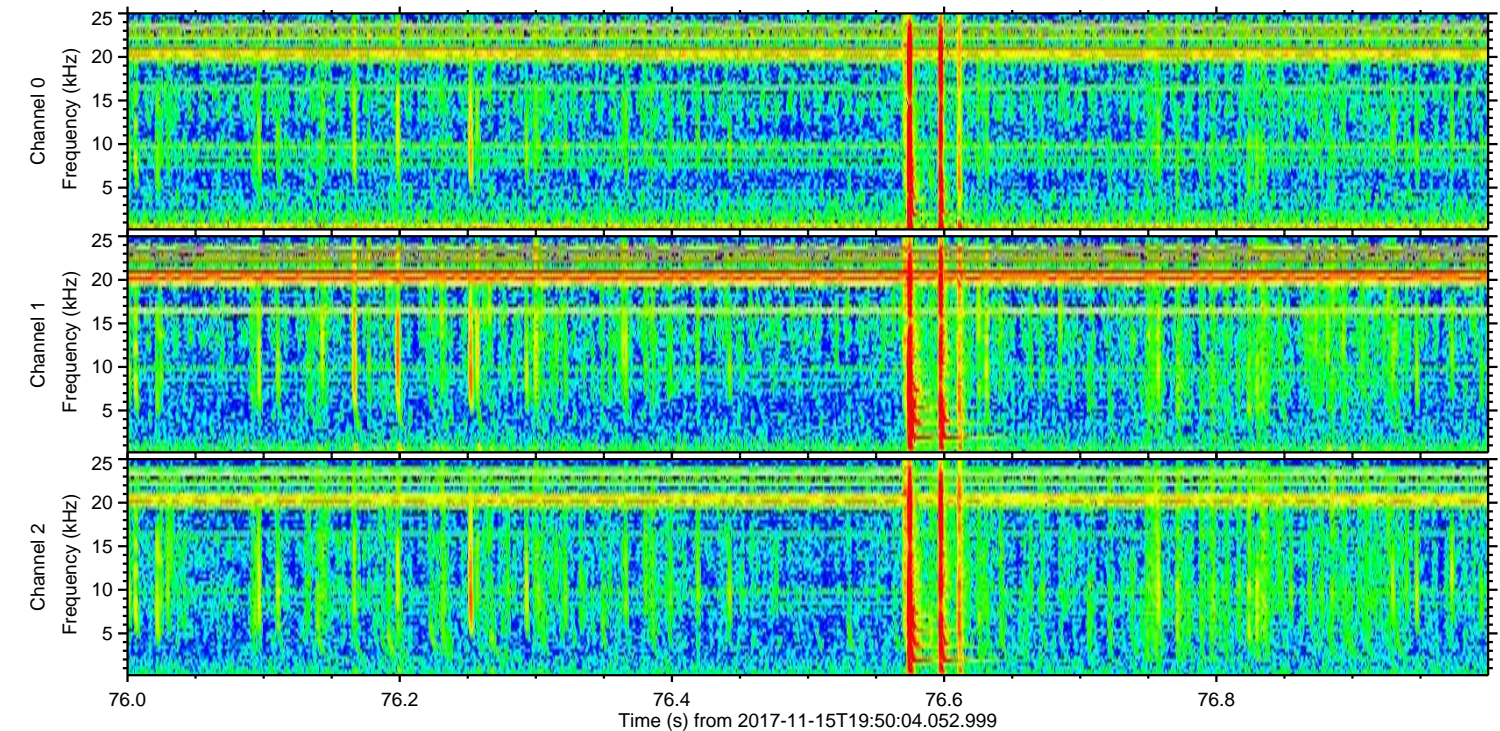
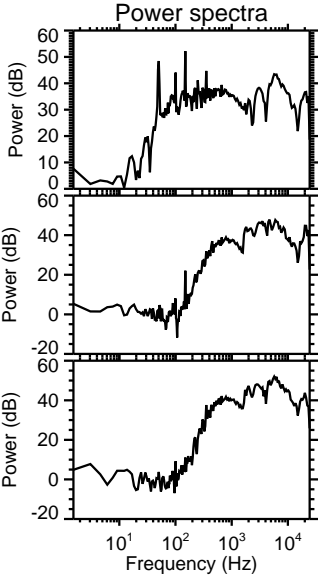
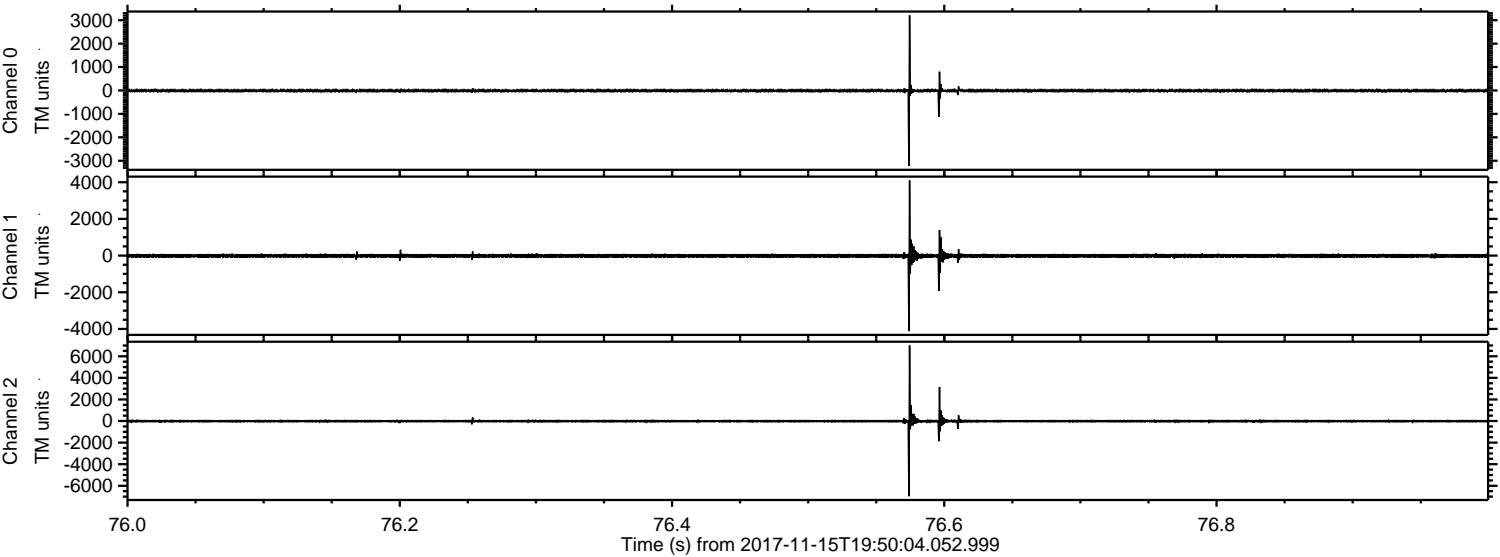
Processed Wed Nov 15 20:58:35 2017 by ELM ver.2012-10-06 from 001__elm20171115_195003__dat00.bin



Processed Wed Nov 15 20:58:36 2017 by ELM ver.2012-10-06 from 001__elm20171115_195003__dat00.bin



Processed Wed Nov 15 20:58:36 2017 by ELM ver.2012-10-06 from 001__elm20171115_195003__dat00.bin



Channel 0
mn: -3227
mx: 3210
 μ : -8.6
 σ : 34.7

Channel 1
mn: -4118
mx: 4100
 μ : -13.9
 σ : 67.3

Channel 2
mn: -6969
mx: 6999
 μ : -17.9
 σ : 83.8

