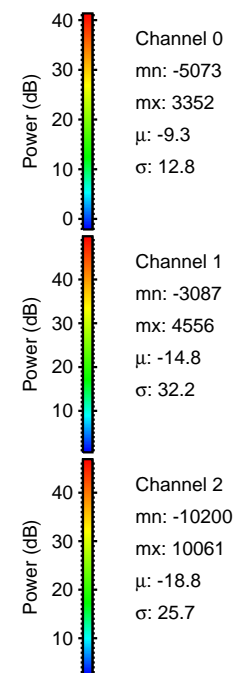
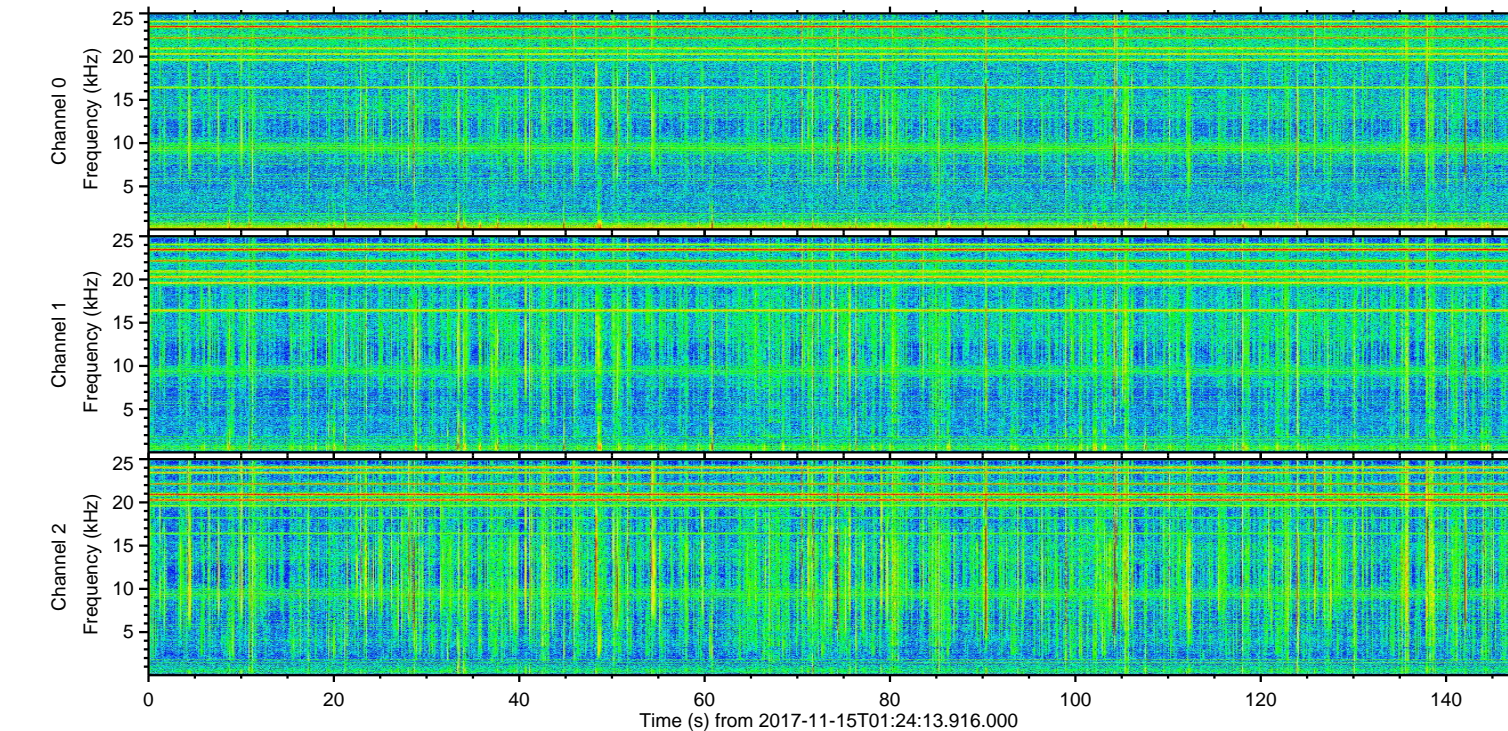
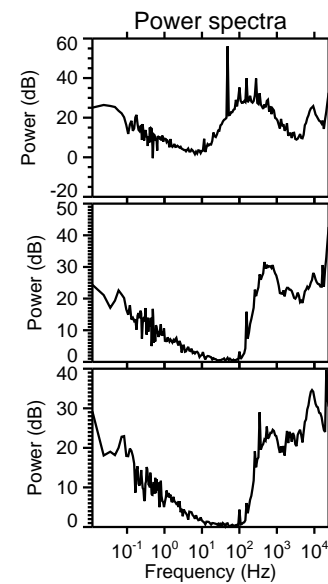
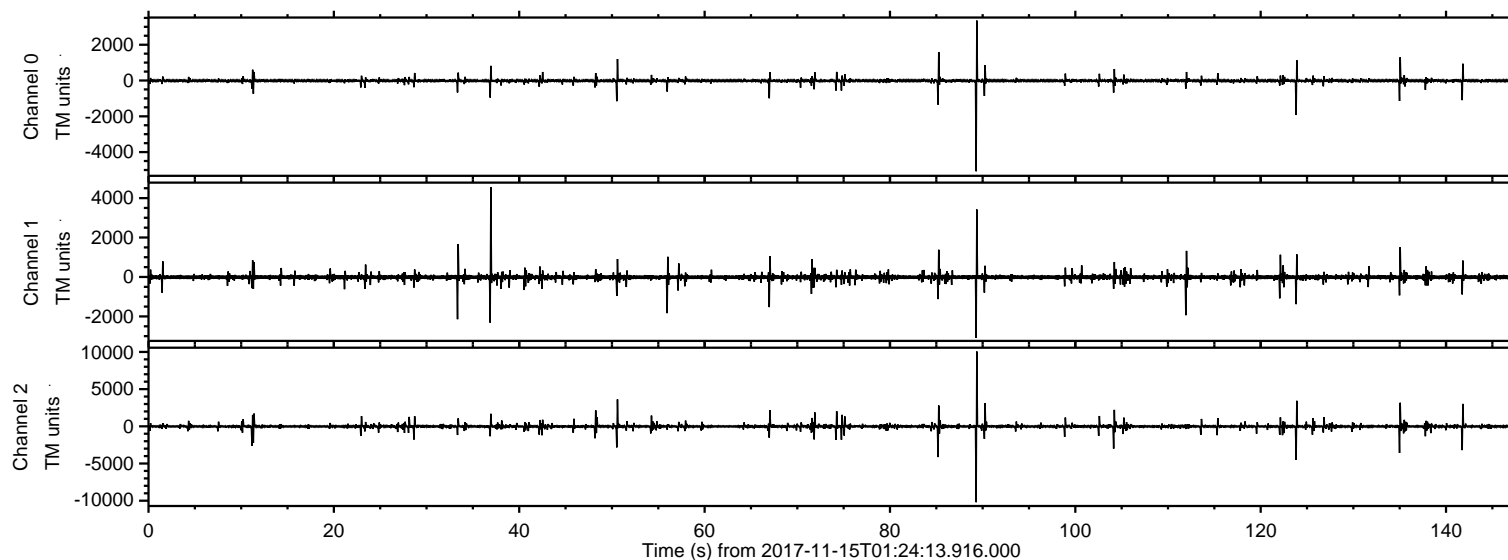
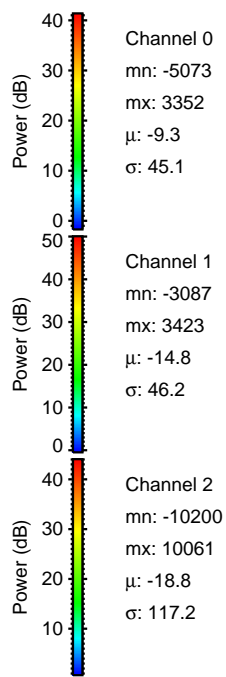
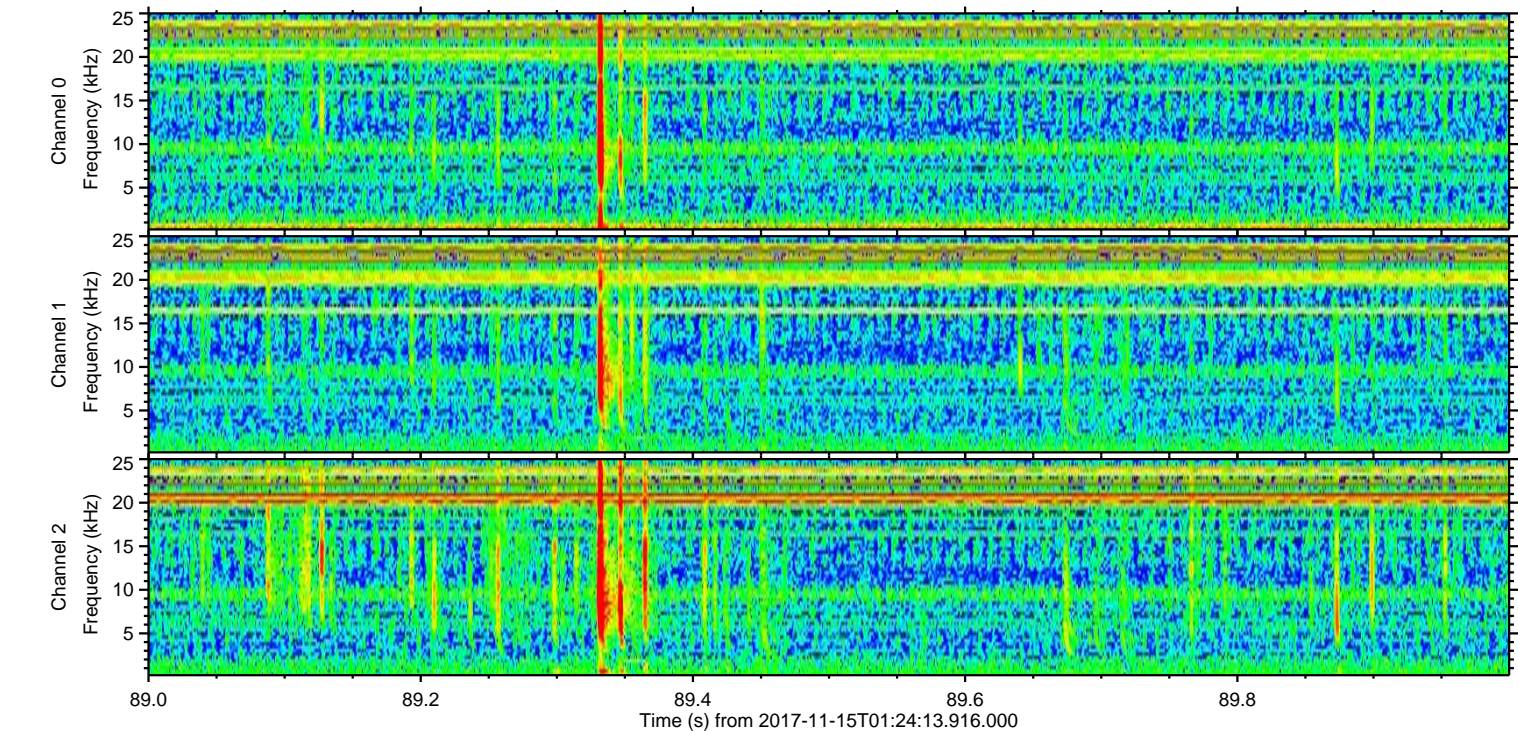
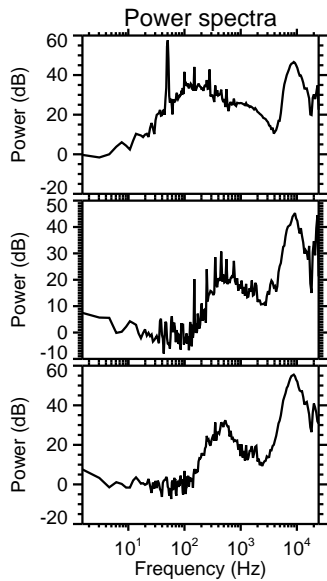
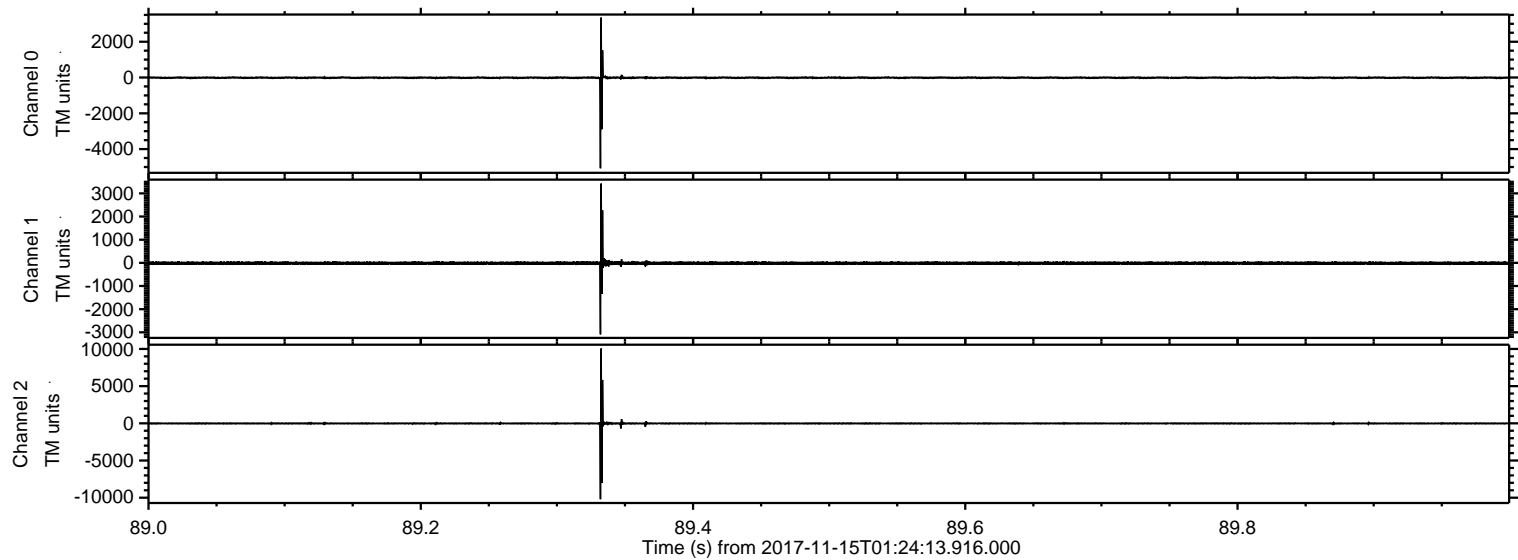


ELMAVAN 3D WAVEFORMS (Measured data sampled at 50 kHz) 51000 packets of 144 samples from 2017-11-15T01:24:13.916.000.

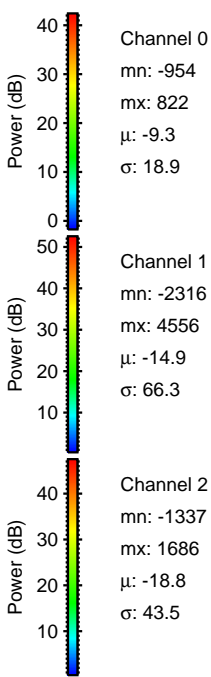
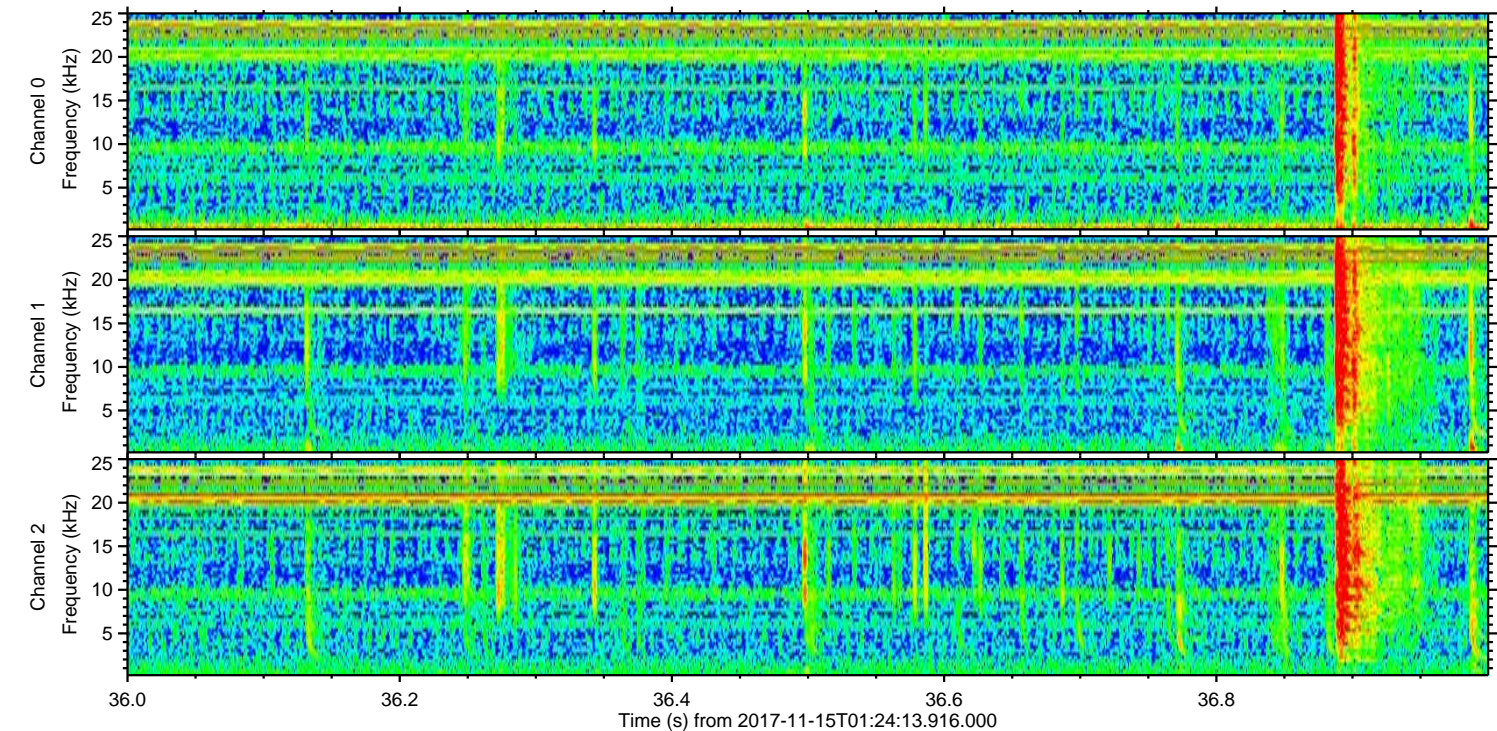
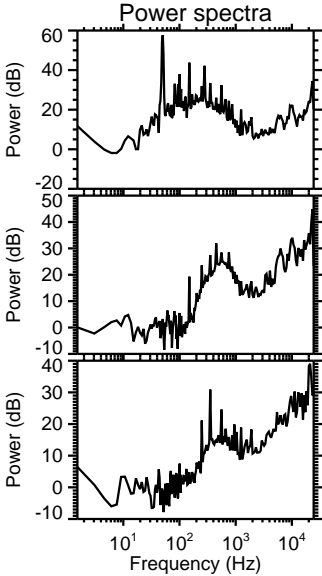
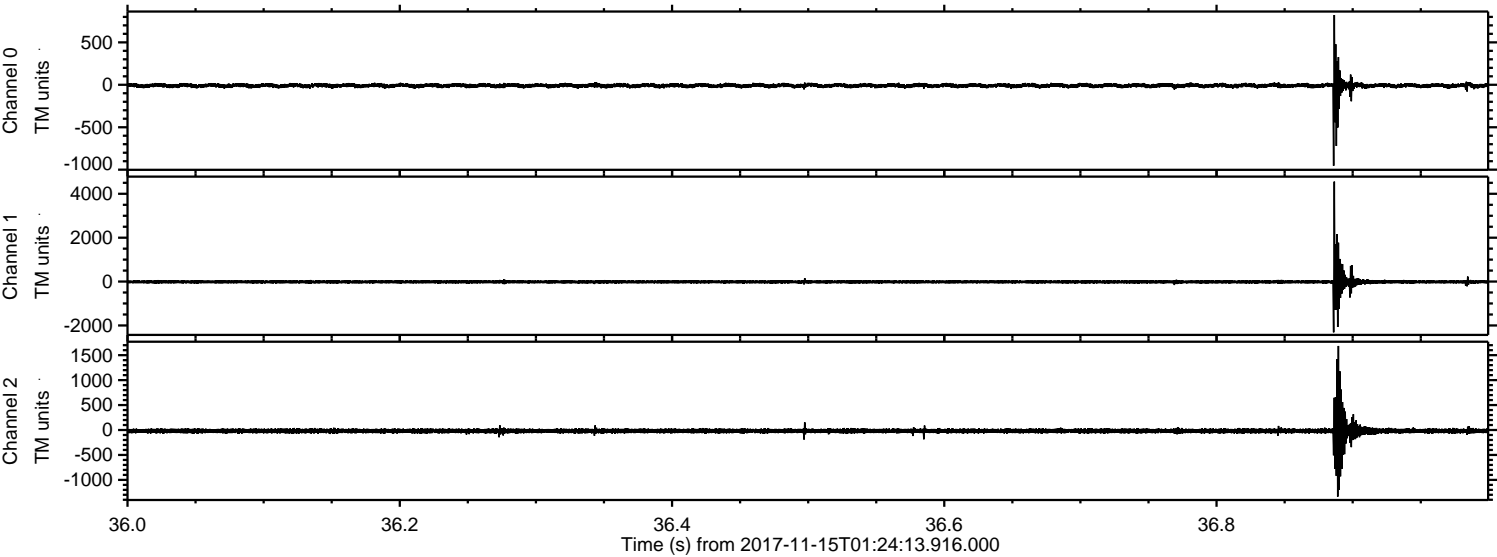
Processed Wed Nov 15 02:33:11 2017 by ELM ver.2012-10-06 from 001__elm20171115_012412__dat00.bin



Processed Wed Nov 15 02:33:18 2017 by ELM ver.2012-10-06 from 001__elm20171115_012412__dat00.bin

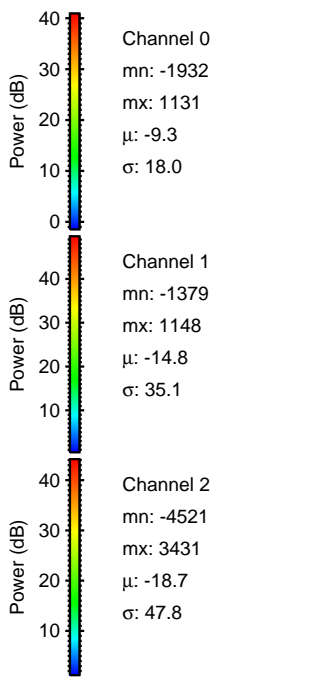
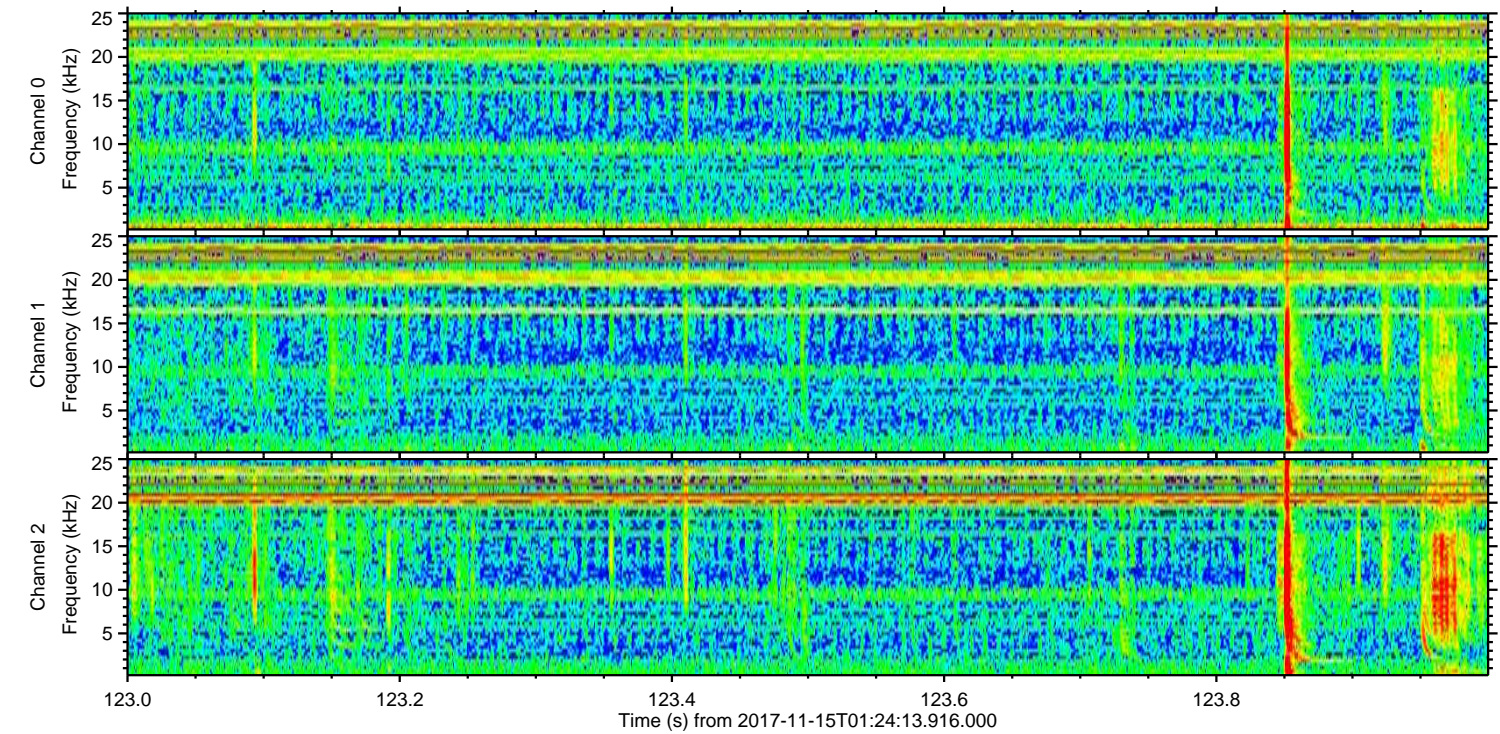
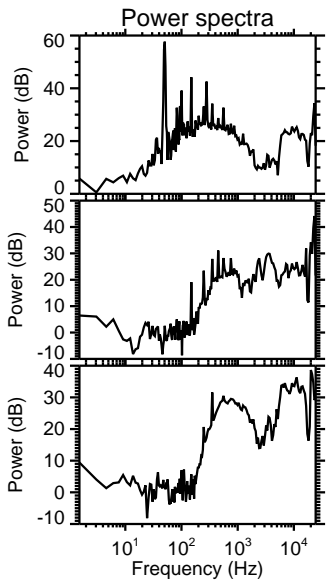
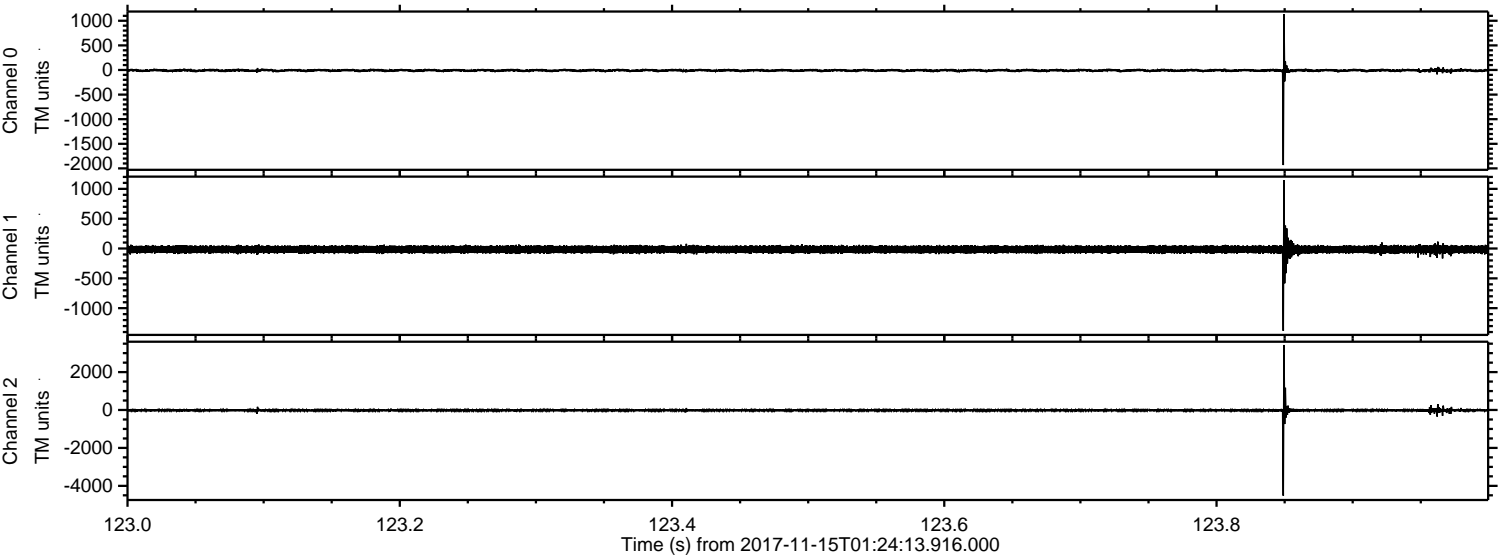


Processed Wed Nov 15 02:33:19 2017 by ELM ver.2012-10-06 from 001__elm20171115_012412__dat00.bin

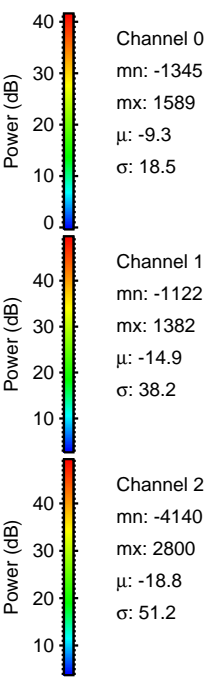
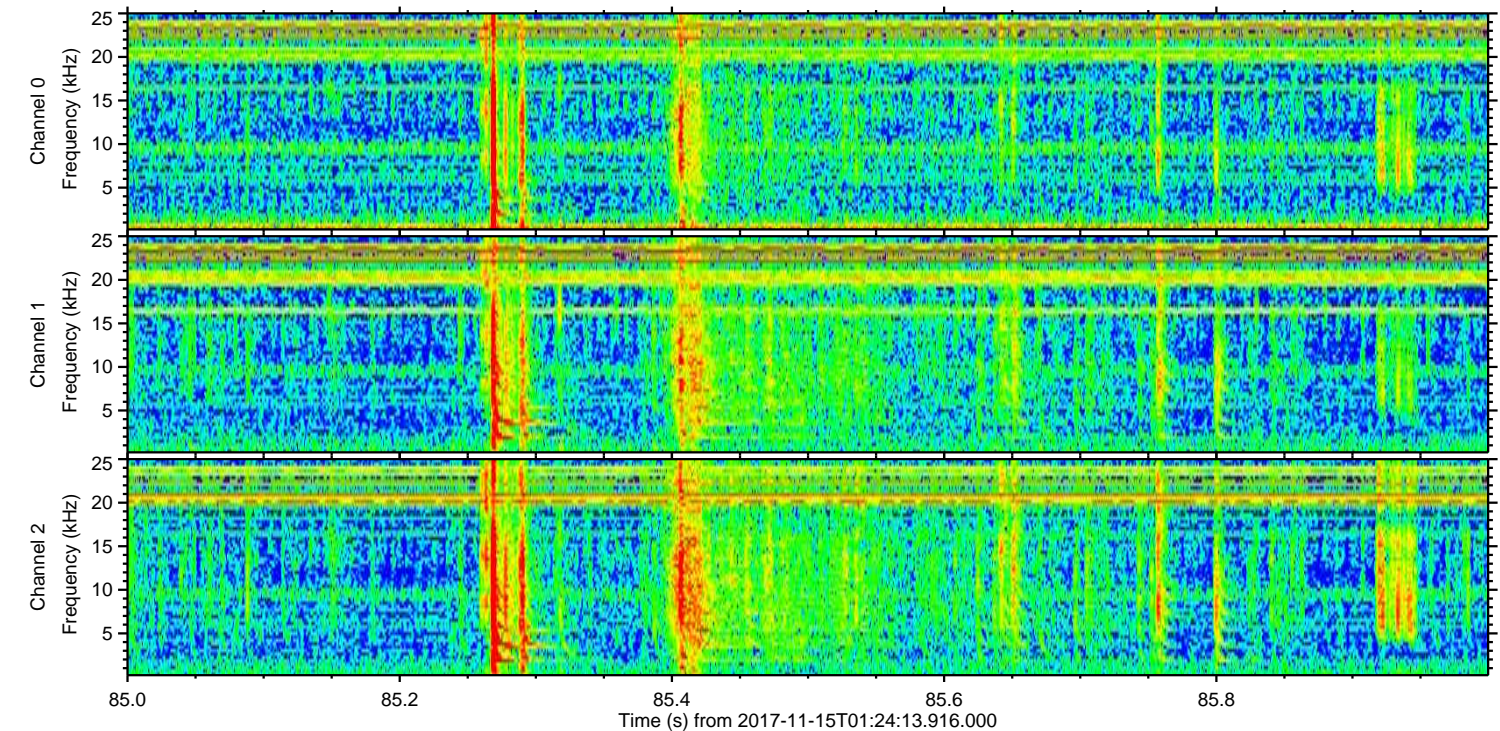
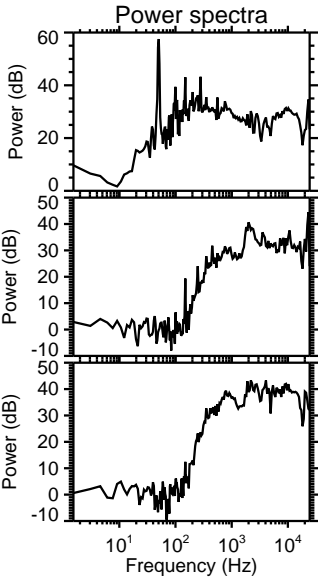
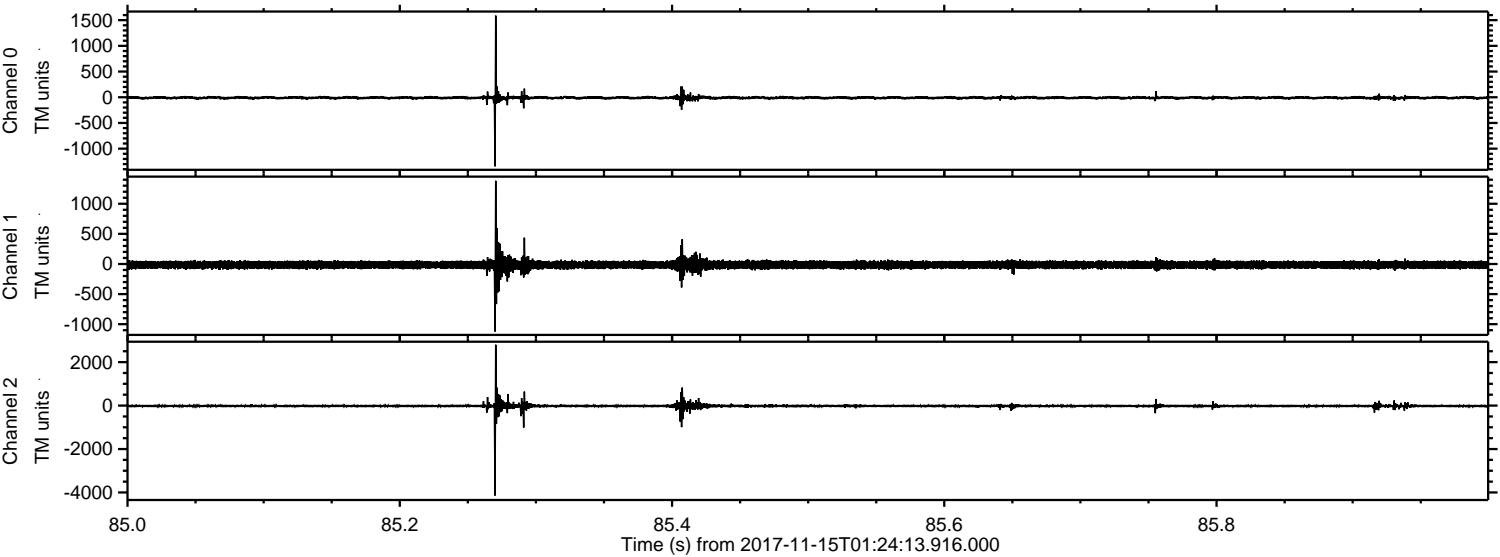


ELMAVAN 3D WAVEFORMS (Measured data sampled at 50 kHz) 51000 packets of 144 samples from 2017-11-15T01:24:13.916.000. Part 124/147

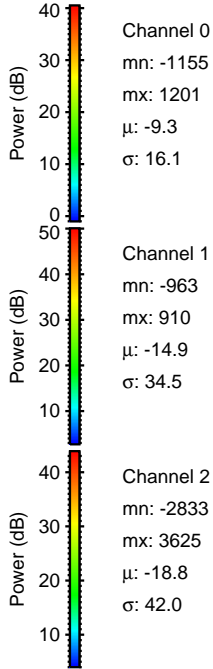
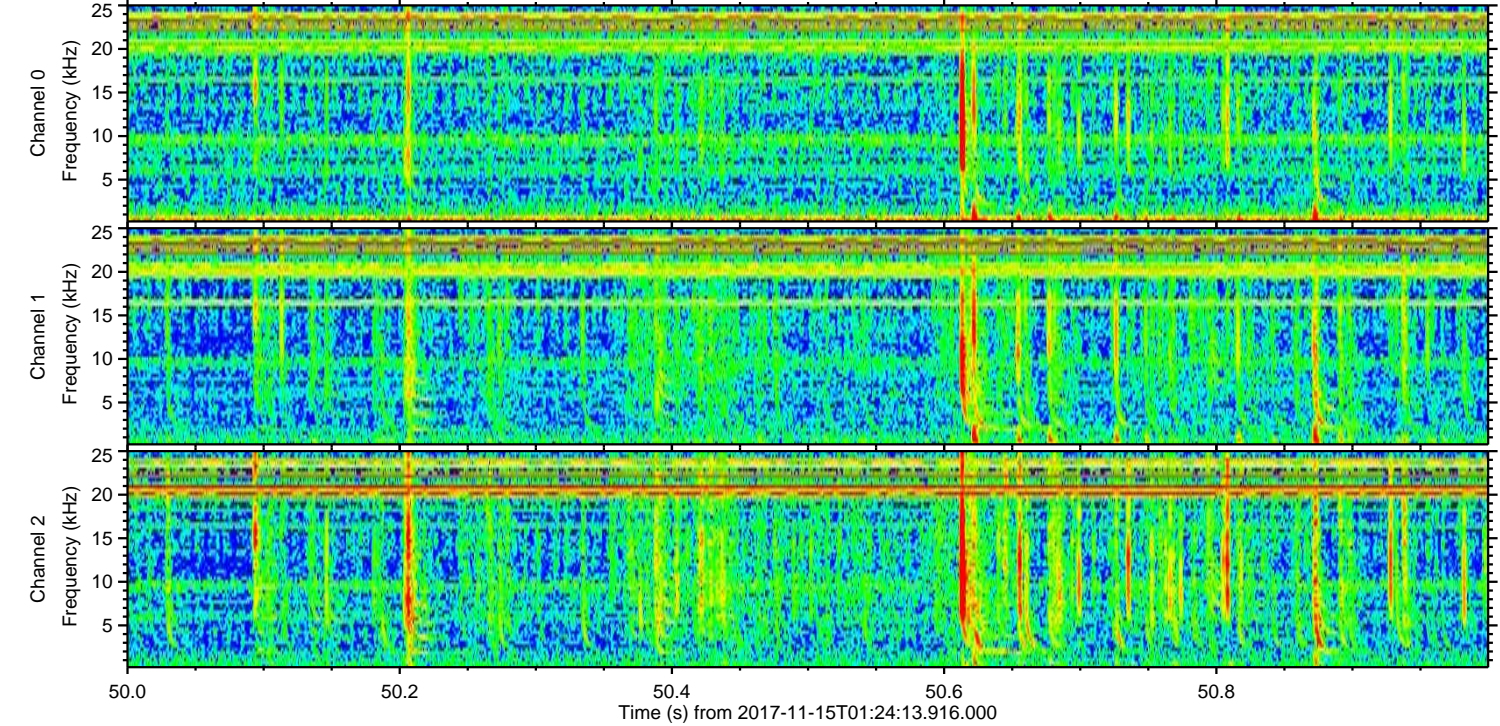
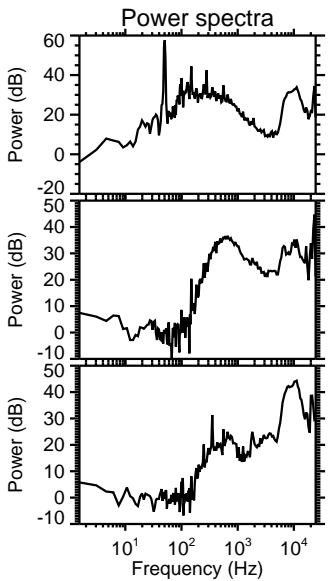
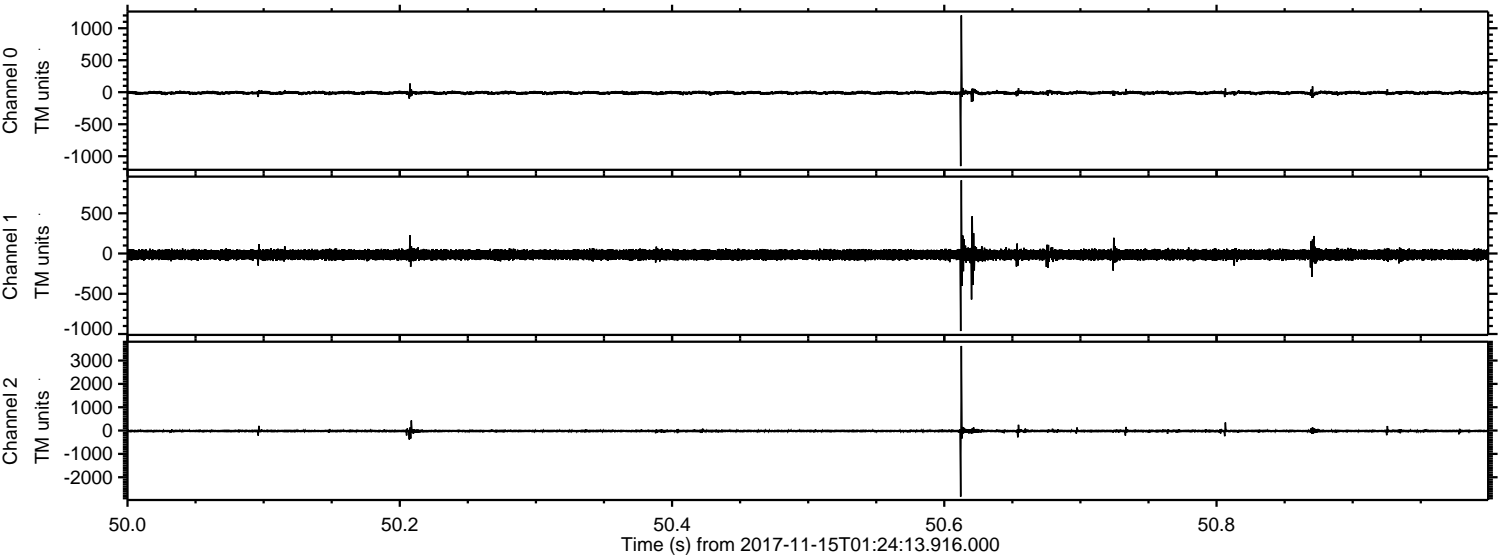
Processed Wed Nov 15 02:33:20 2017 by ELM ver.2012-10-06 from 001__elm20171115_012412__dat00.bin



Processed Wed Nov 15 02:33:20 2017 by ELM ver.2012-10-06 from 001__elm20171115_012412__dat00.bin

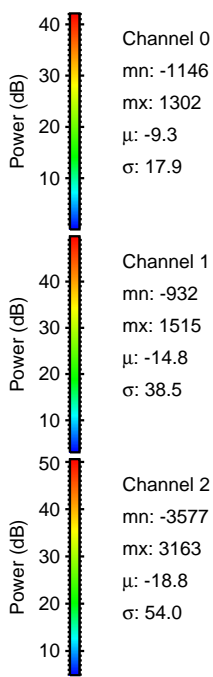
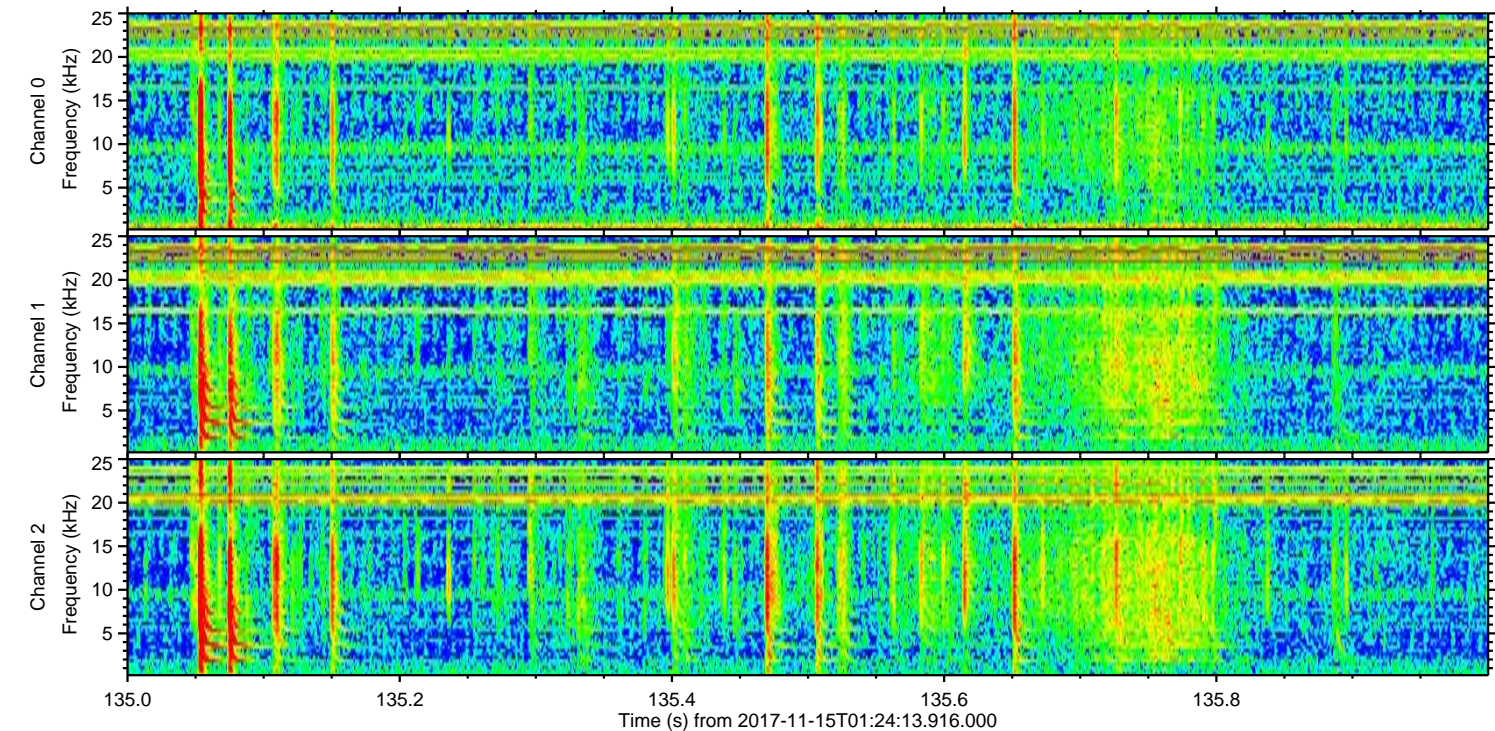
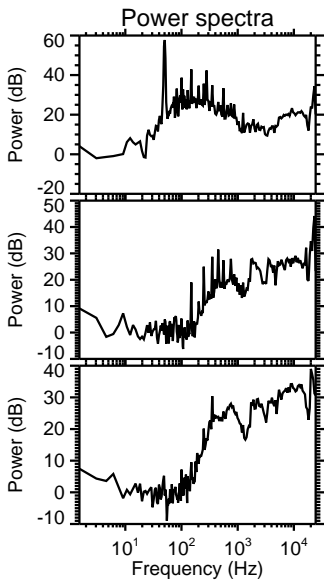
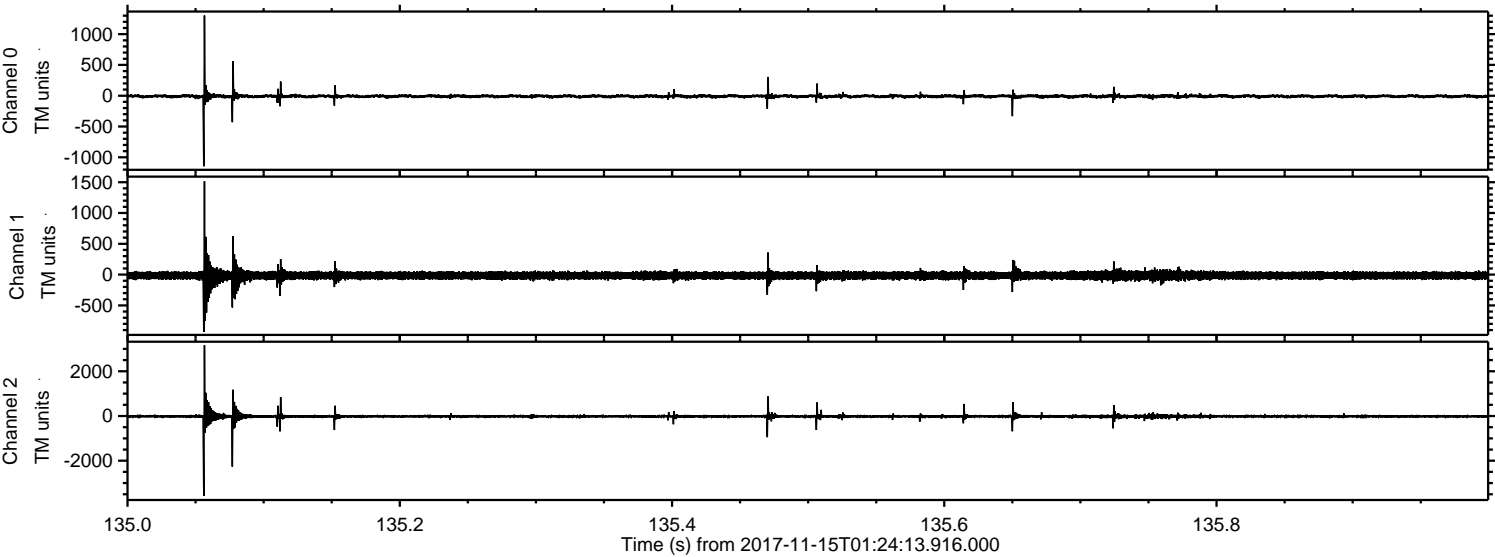


Processed Wed Nov 15 02:33:21 2017 by ELM ver.2012-10-06 from 001__elm20171115_012412__dat00.bin



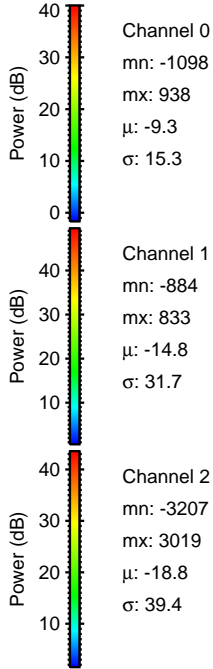
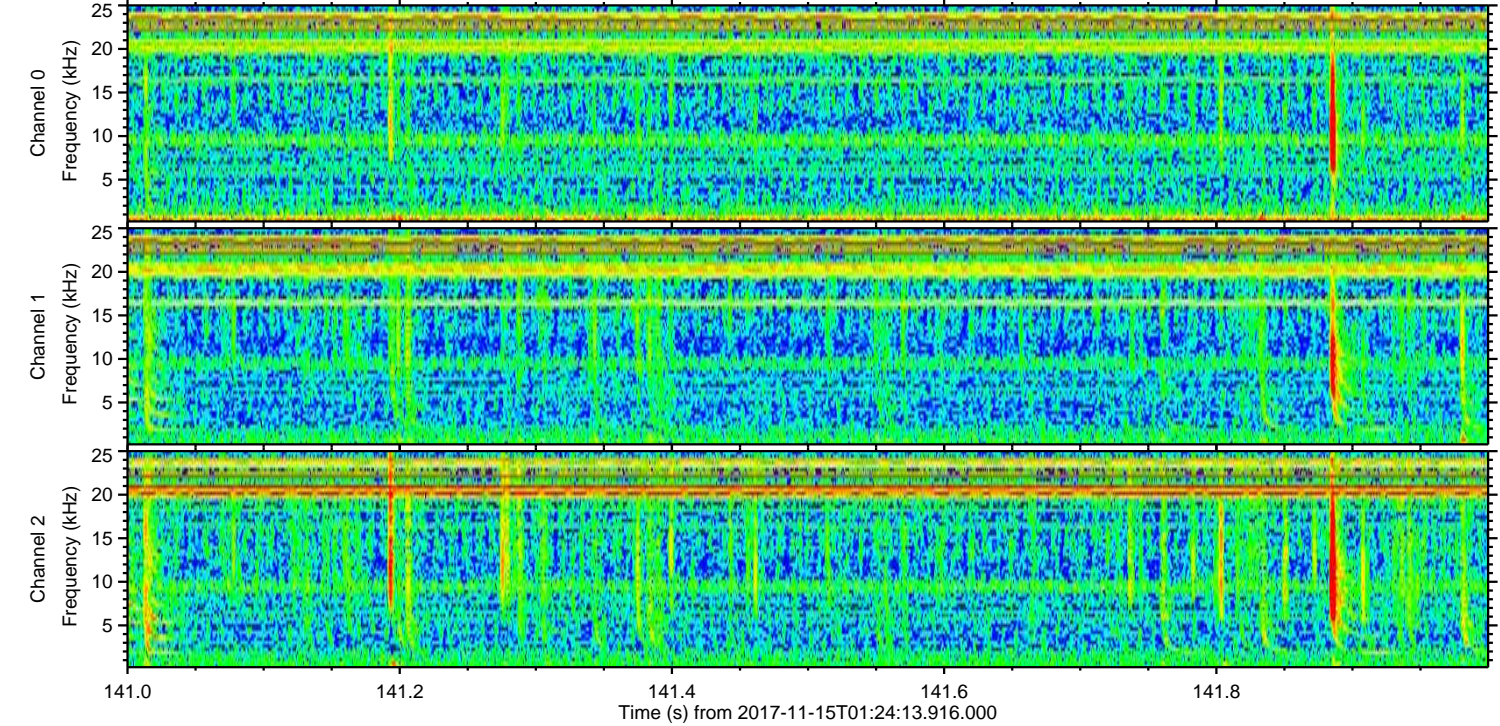
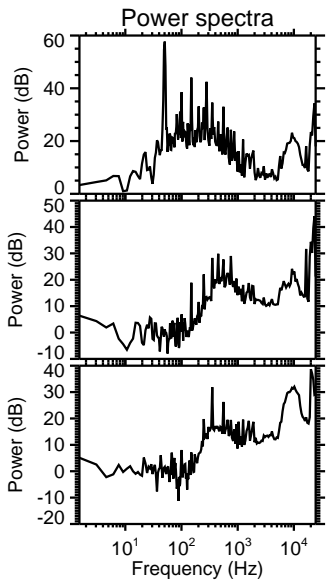
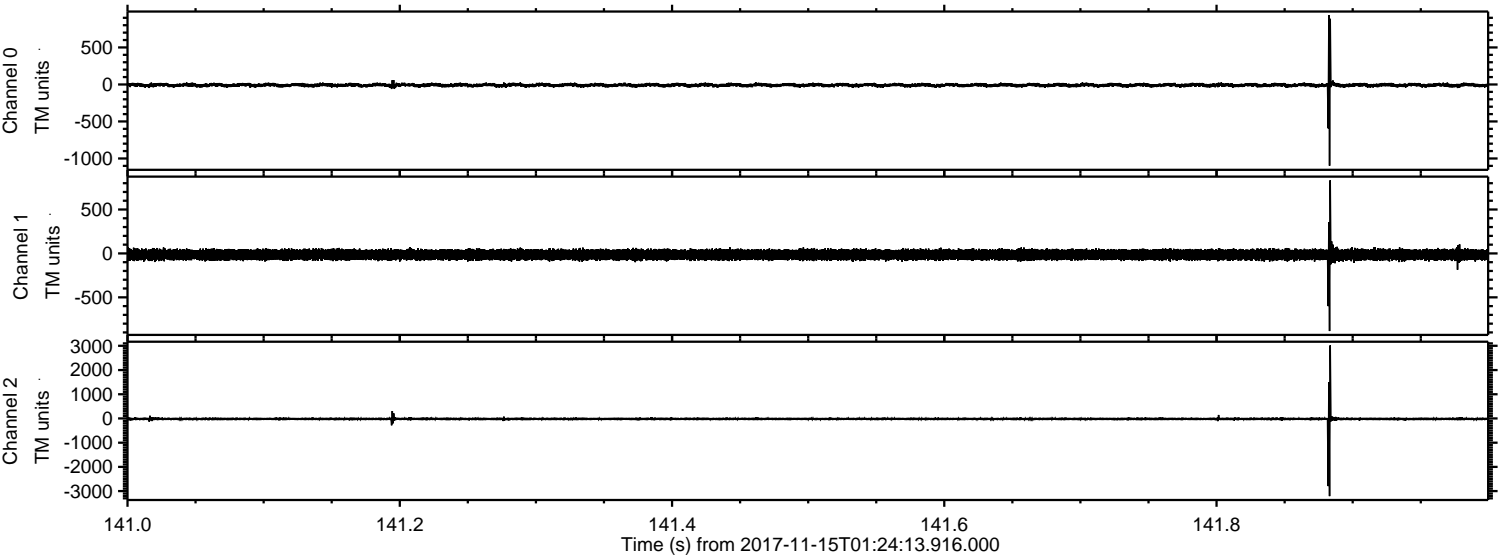
ELMAVAN 3D WAVEFORMS (Measured data sampled at 50 kHz) 51000 packets of 144 samples from 2017-11-15T01:24:13.916.000. Part 136/147

Processed Wed Nov 15 02:33:22 2017 by ELM ver.2012-10-06 from 001__elm20171115_012412__dat00.bin

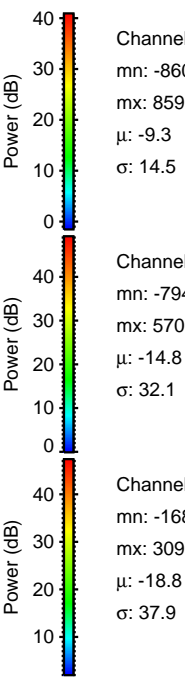
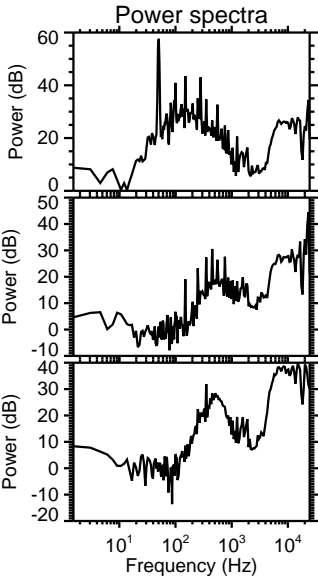
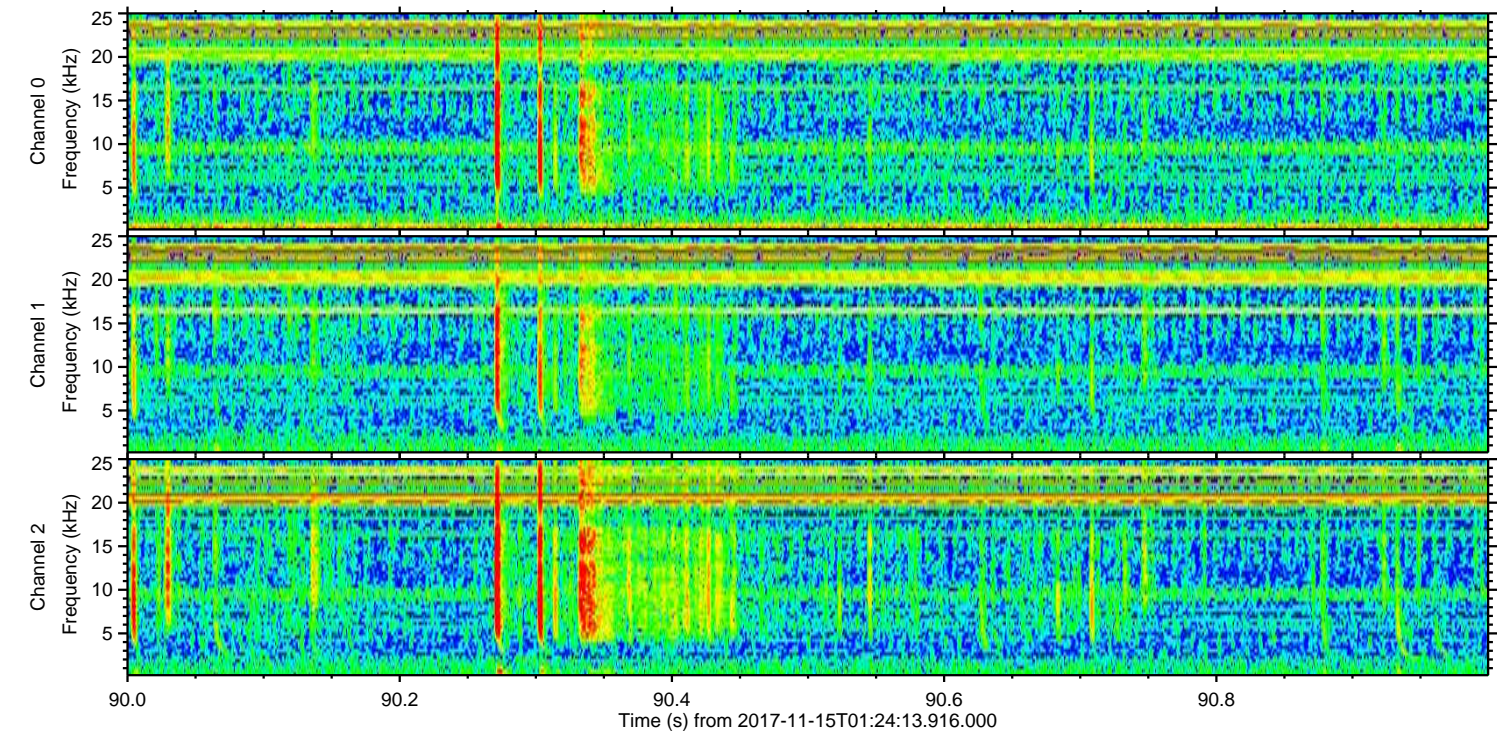
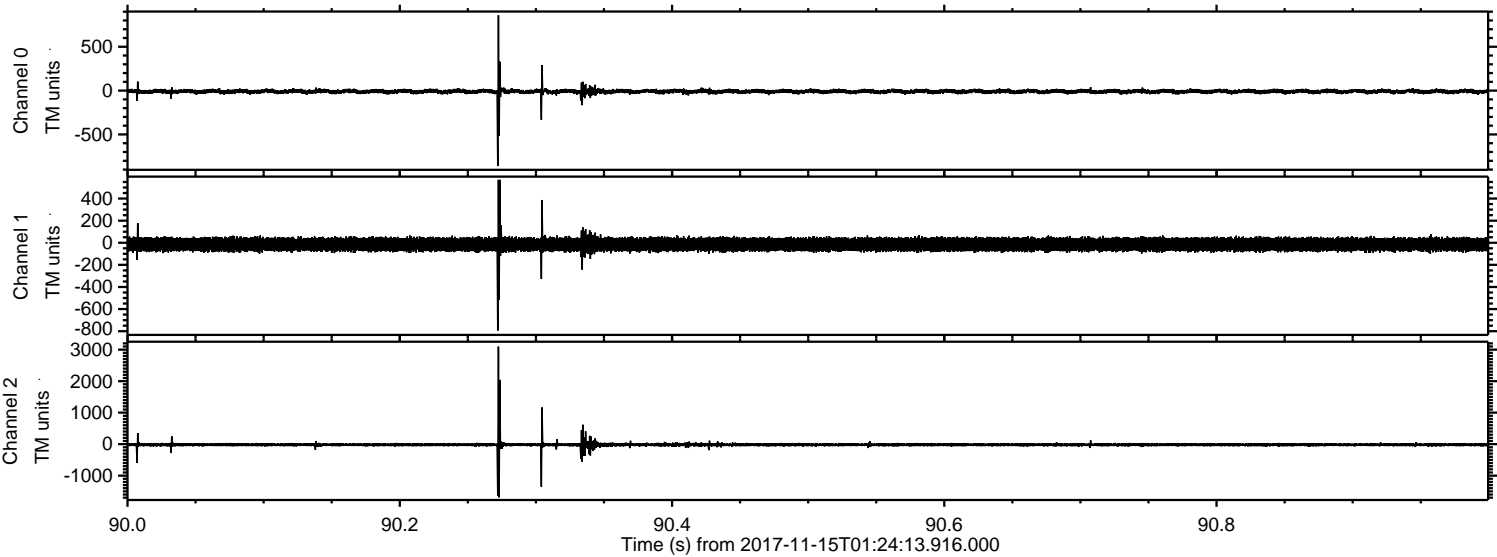


ELMAVAN 3D WAVEFORMS (Measured data sampled at 50 kHz) 51000 packets of 144 samples from 2017-11-15T01:24:13.916.000. Part 142/147

Processed Wed Nov 15 02:33:23 2017 by ELM ver.2012-10-06 from 001__elm20171115_012412__dat00.bin



Processed Wed Nov 15 02:33:23 2017 by ELM ver.2012-10-06 from 001__elm20171115_012412__dat00.bin

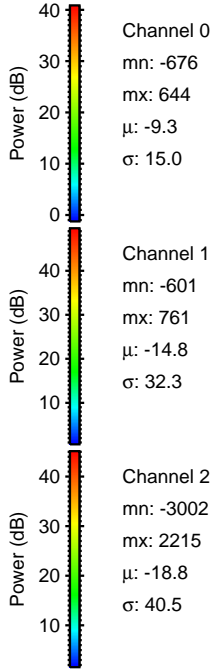
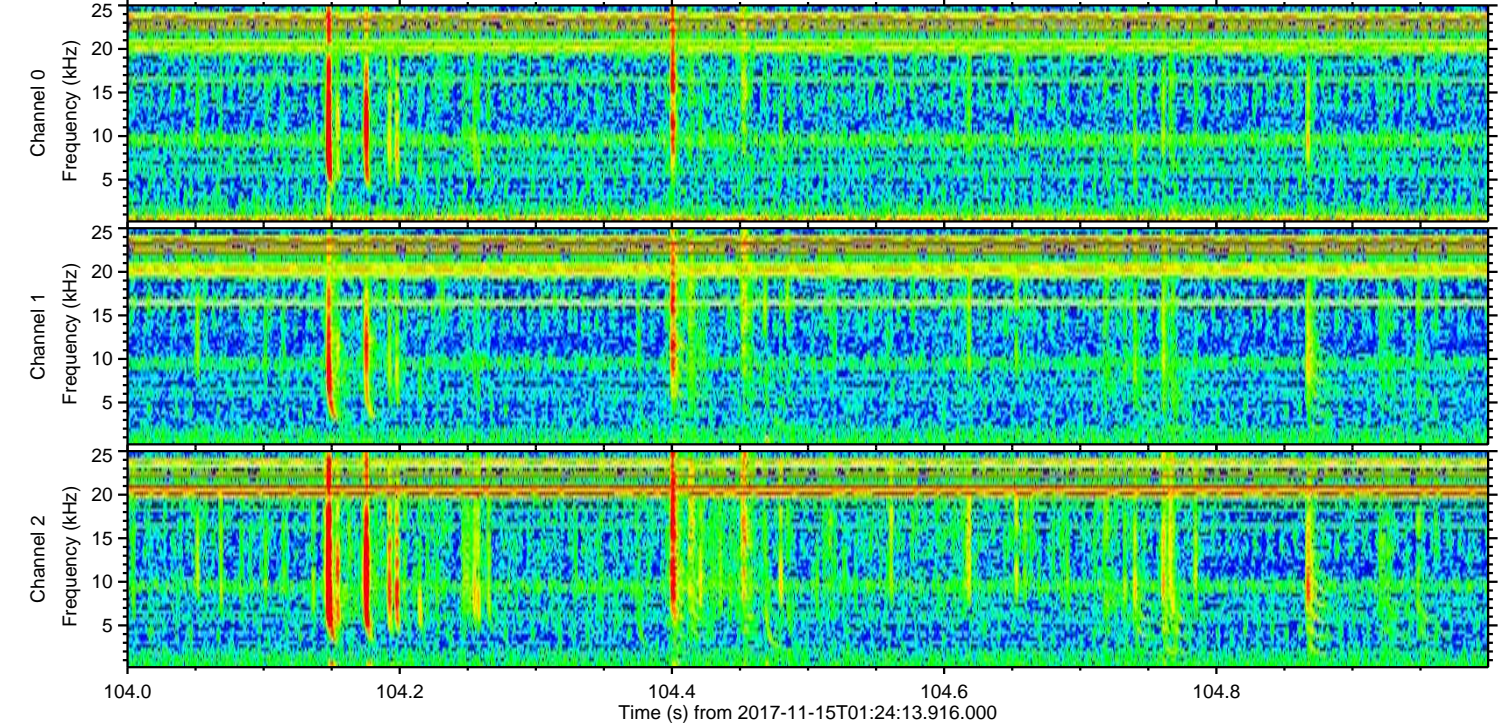
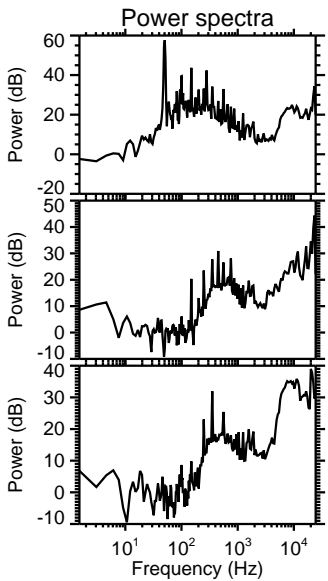
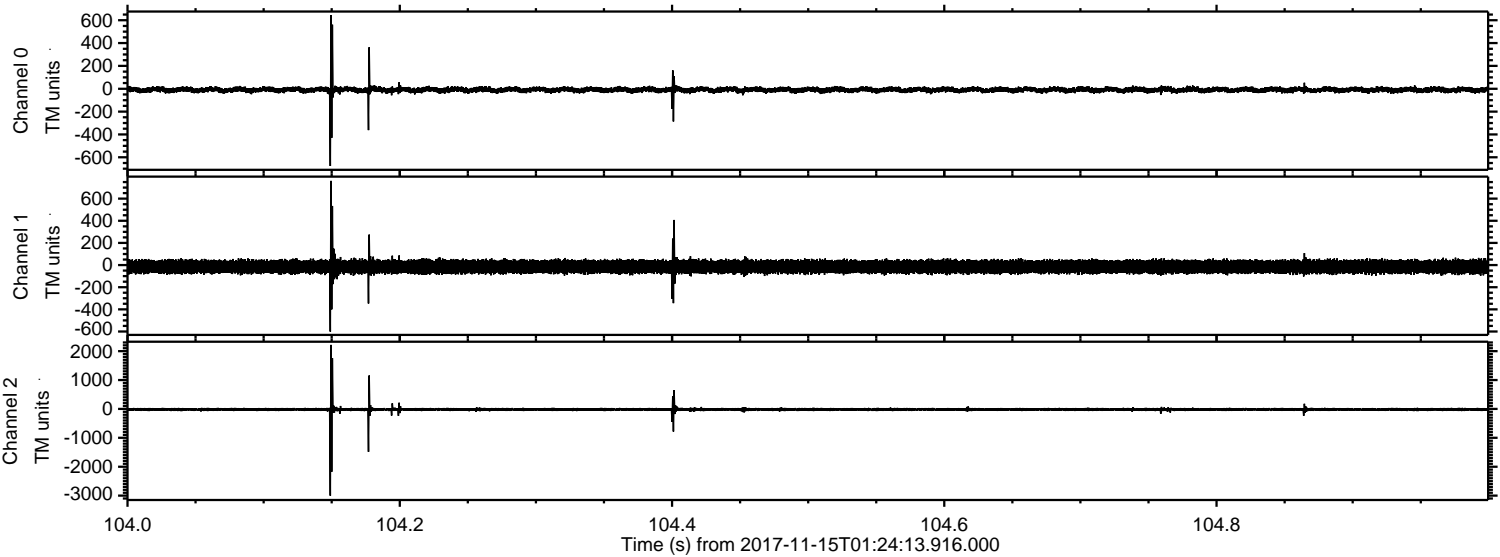


Channel 0
mn: -860
mx: 859
 μ : -9.3
 σ : 14.5

Channel 1
mn: -794
mx: 570
 μ : -14.8
 σ : 32.1

Channel 2
mn: -1689
mx: 3097
 μ : -18.8
 σ : 37.9

Processed Wed Nov 15 02:33:24 2017 by ELM ver.2012-10-06 from 001__elm20171115_012412__dat00.bin



Processed Wed Nov 15 02:33:25 2017 by ELM ver.2012-10-06 from 001__elm20171115_012412__dat00.bin

