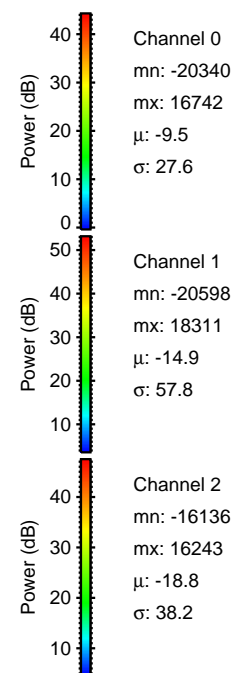
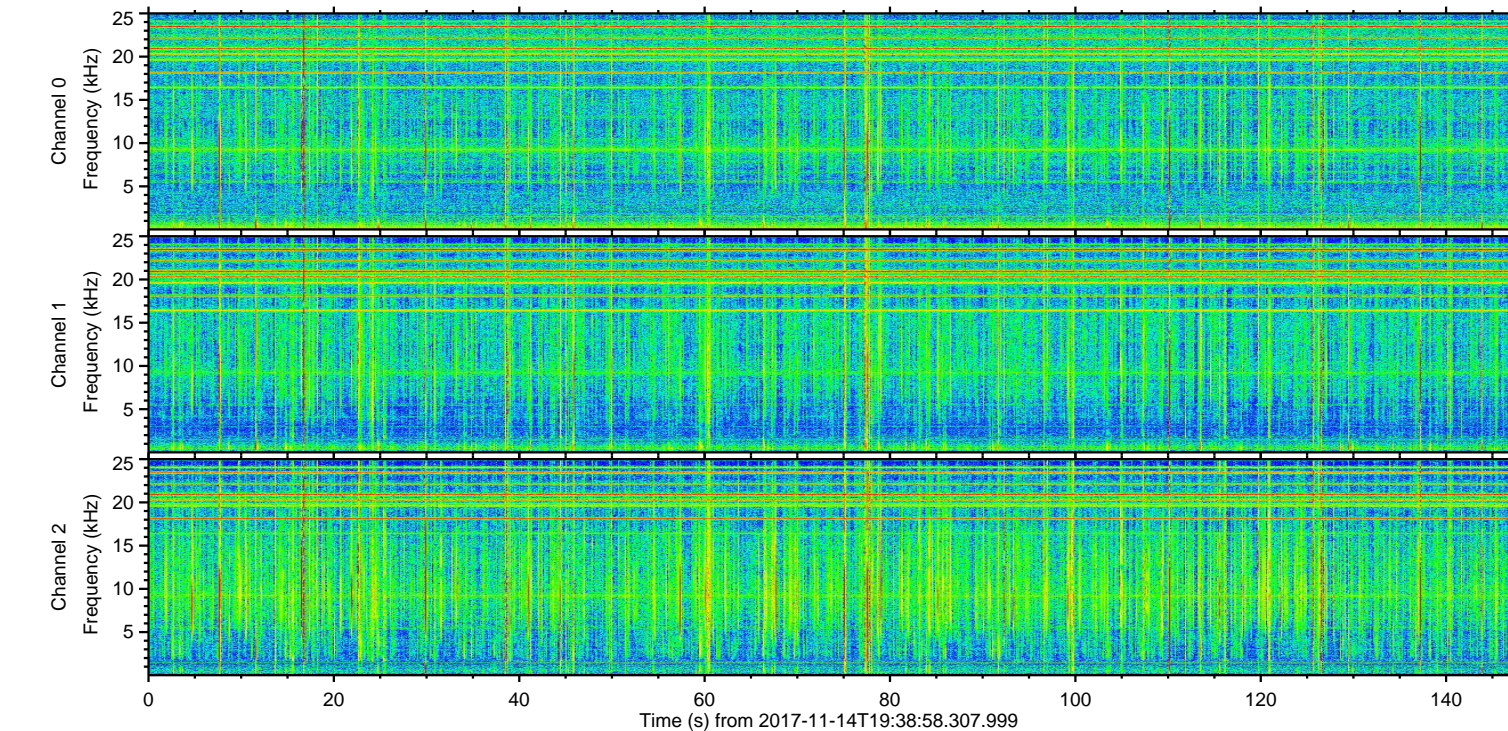
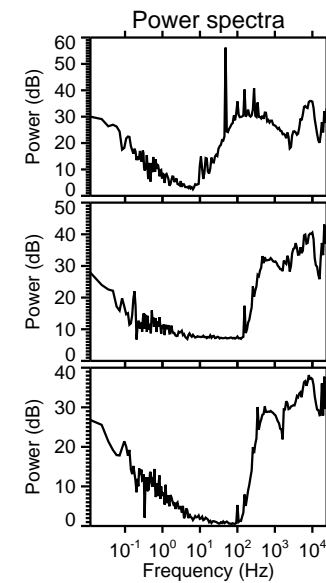
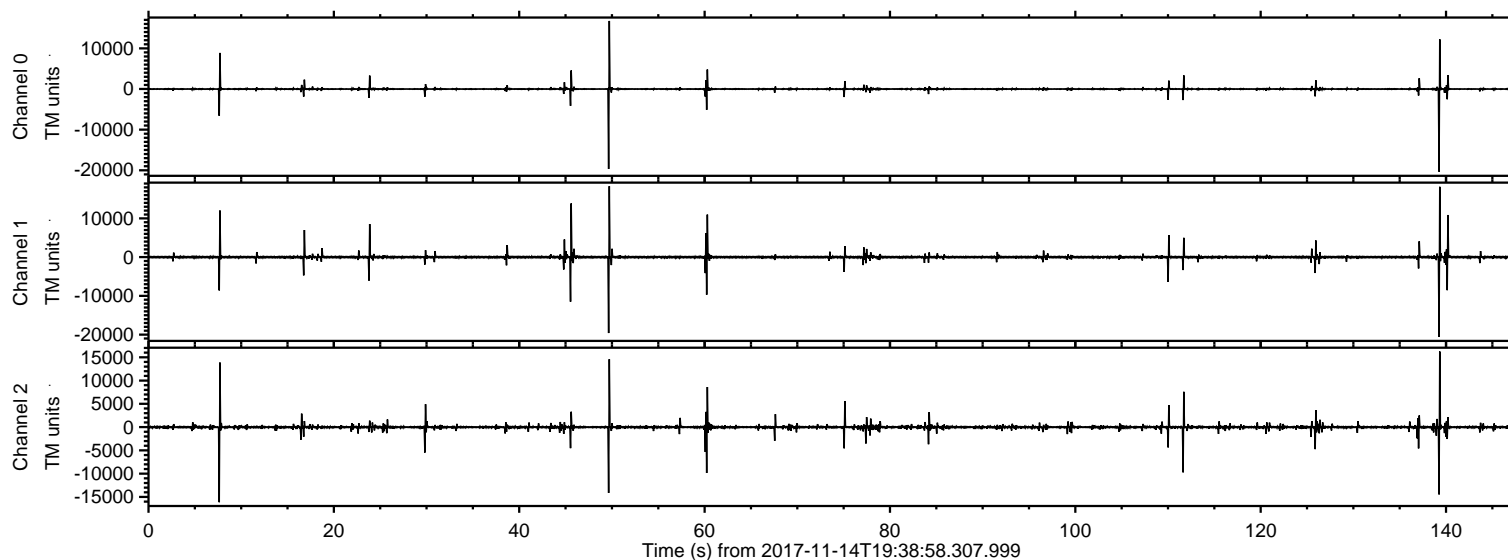


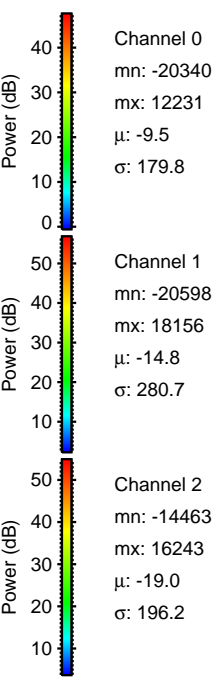
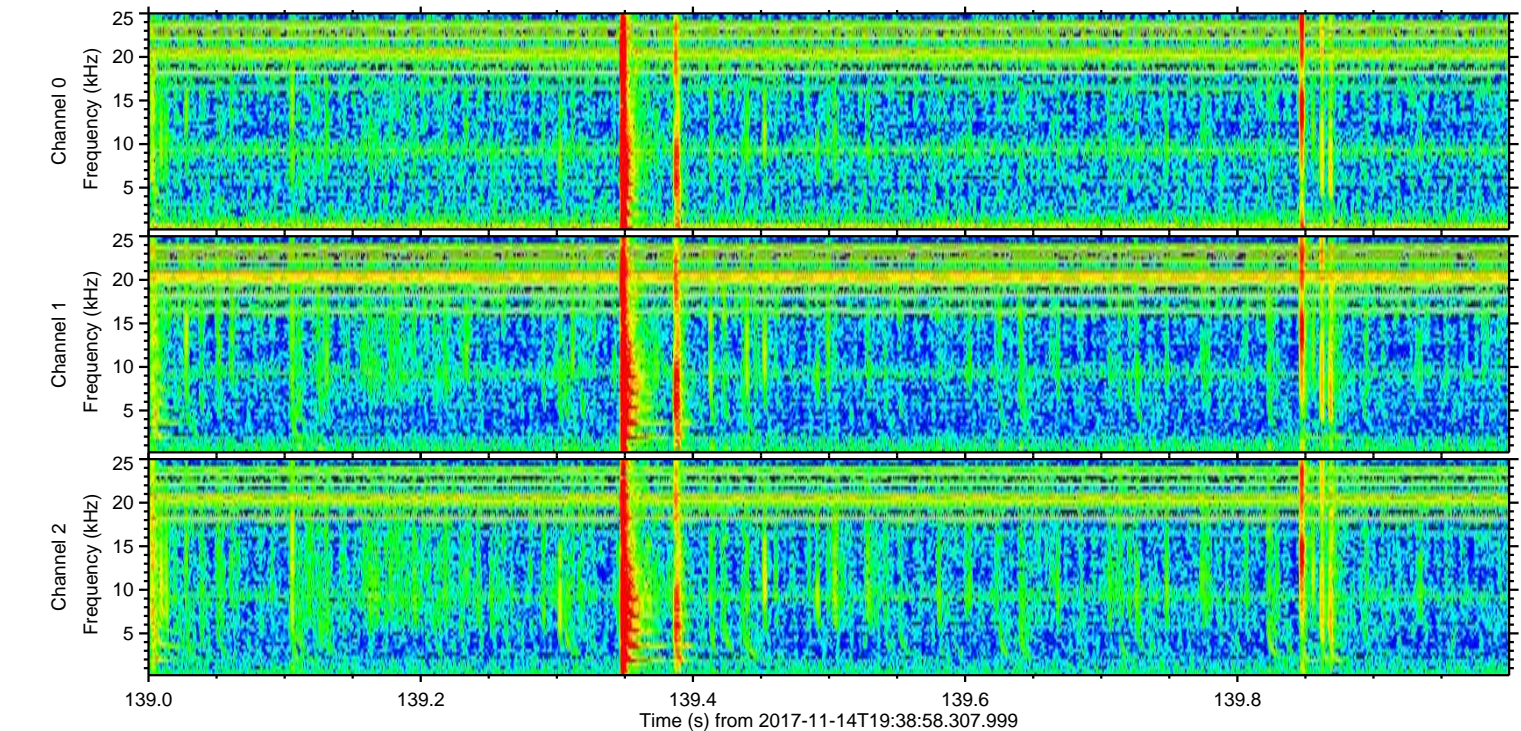
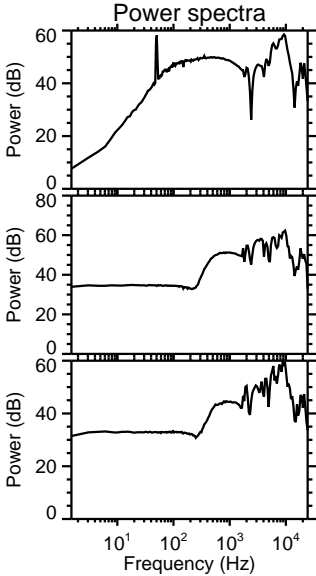
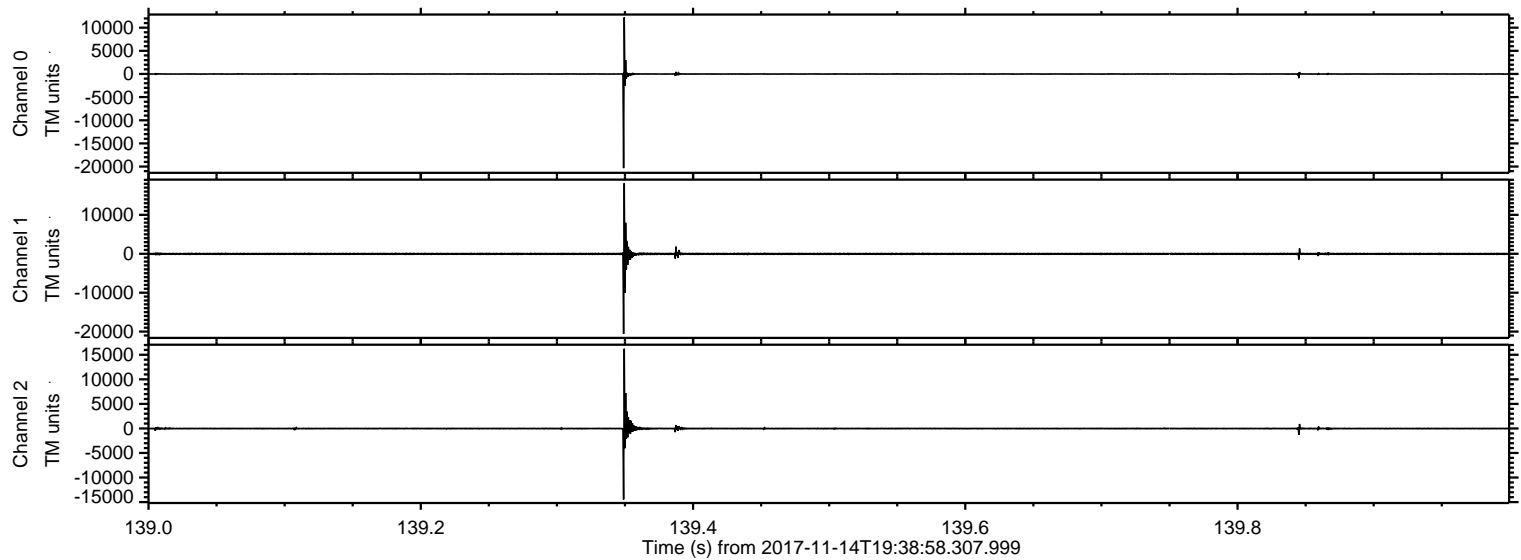
ELMAVAN 3D WAVEFORMS (Measured data sampled at 50 kHz) 51000 packets of 144 samples from 2017-11-14T19:38:58.307.999.

Processed Tue Nov 14 20:47:26 2017 by ELM ver.2012-10-06 from 001__elm20171114_193857__dat00.bin

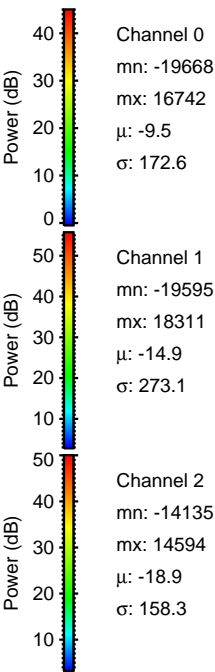
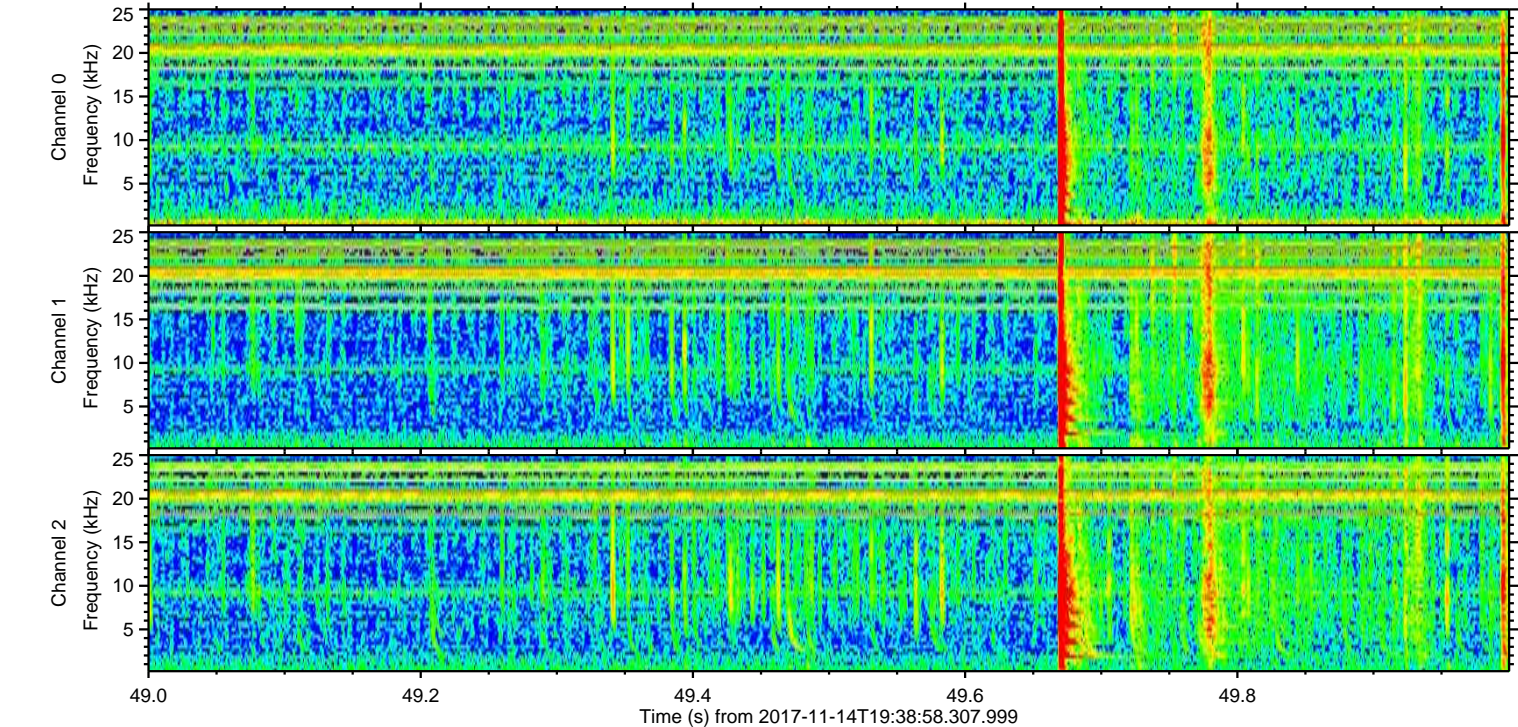
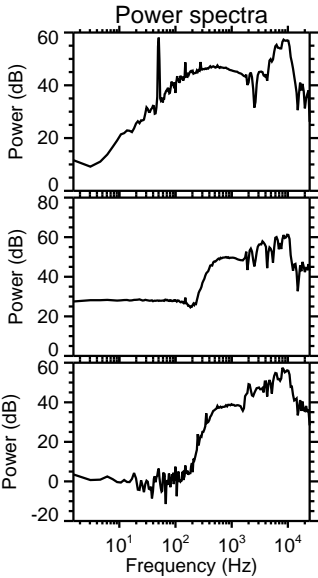
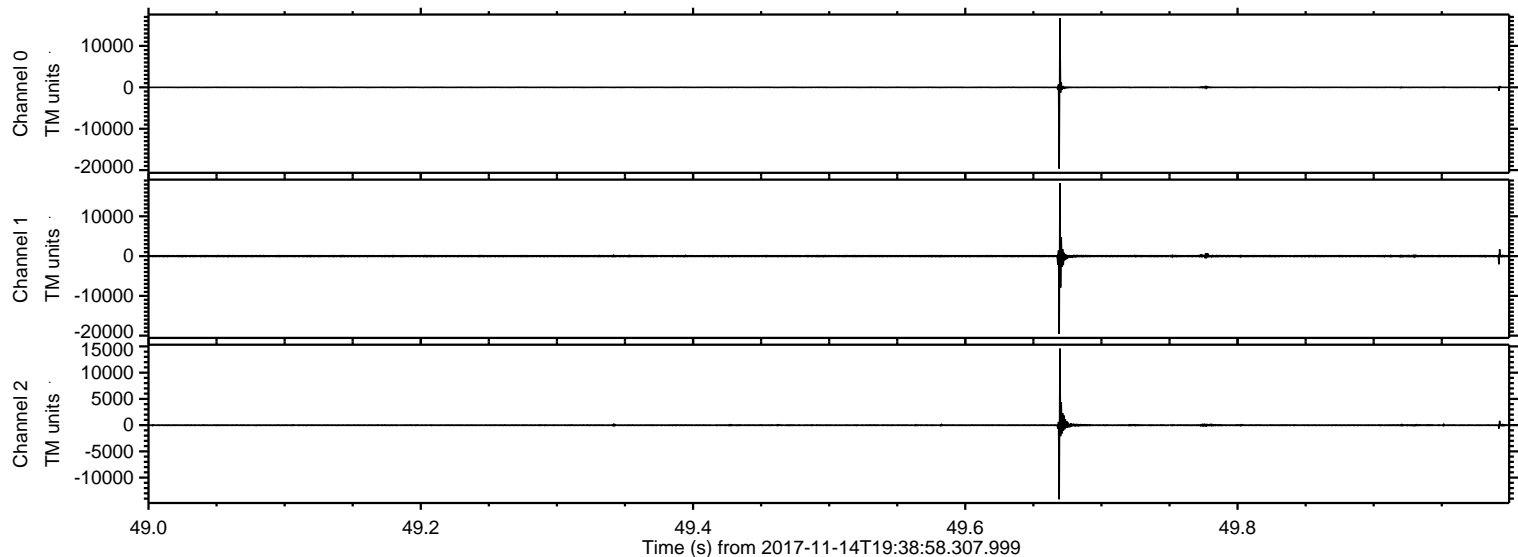


ELMAVAN 3D WAVEFORMS (Measured data sampled at 50 kHz) 51000 packets of 144 samples from 2017-11-14T19:38:58.307.999. Part 140/147

Processed Tue Nov 14 20:47:33 2017 by ELM ver.2012-10-06 from 001__elm20171114_193857__dat00.bin

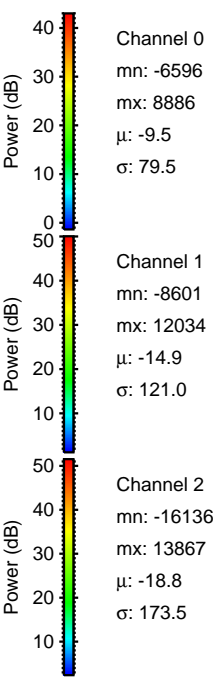
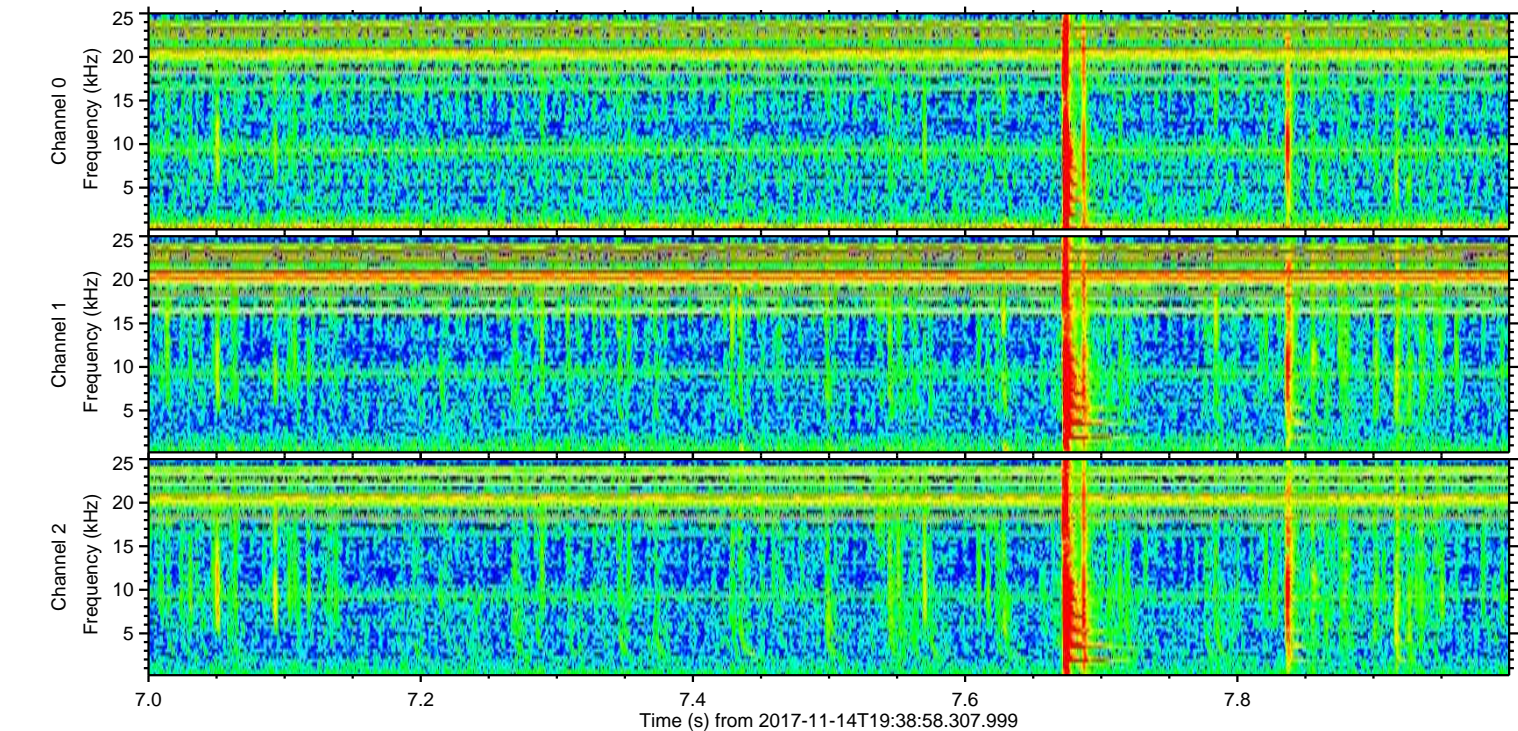
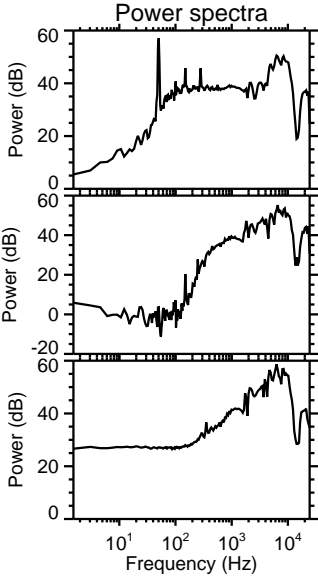
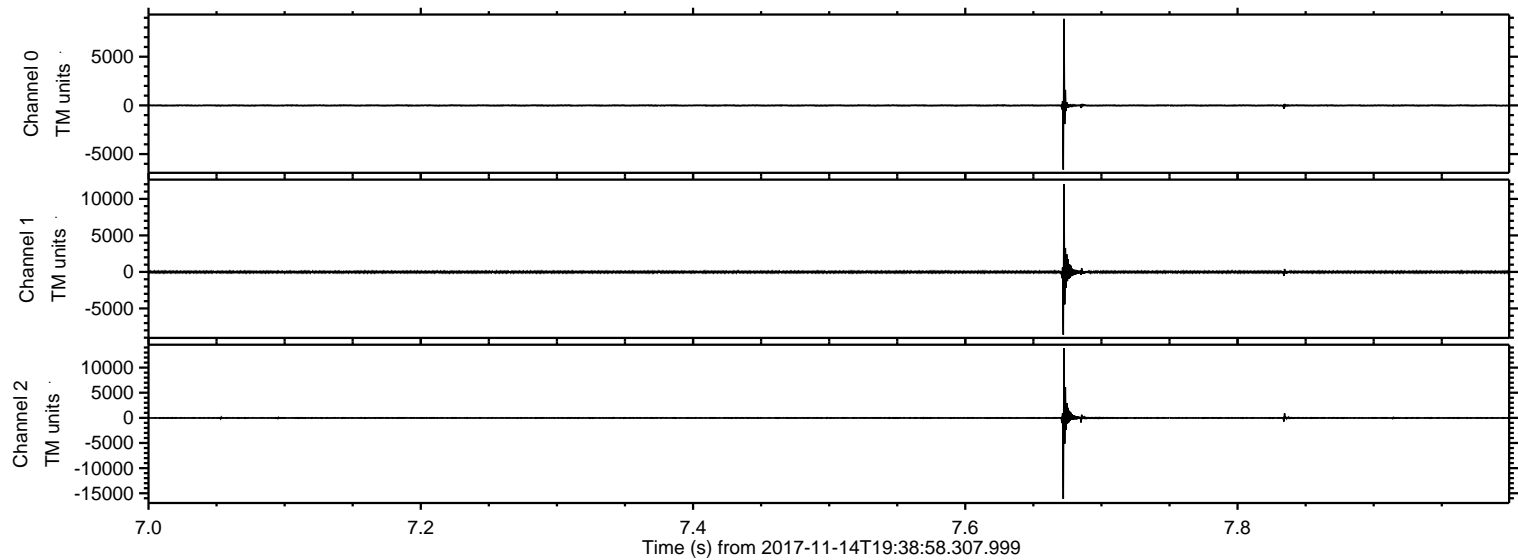


Processed Tue Nov 14 20:47:34 2017 by ELM ver.2012-10-06 from 001__elm20171114_193857__dat00.bin



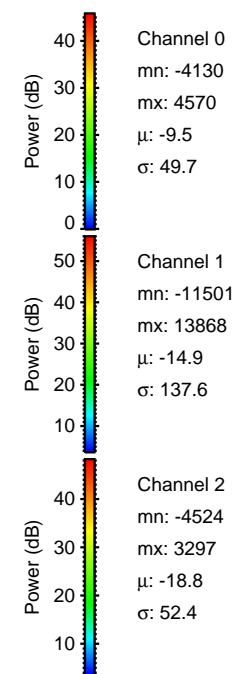
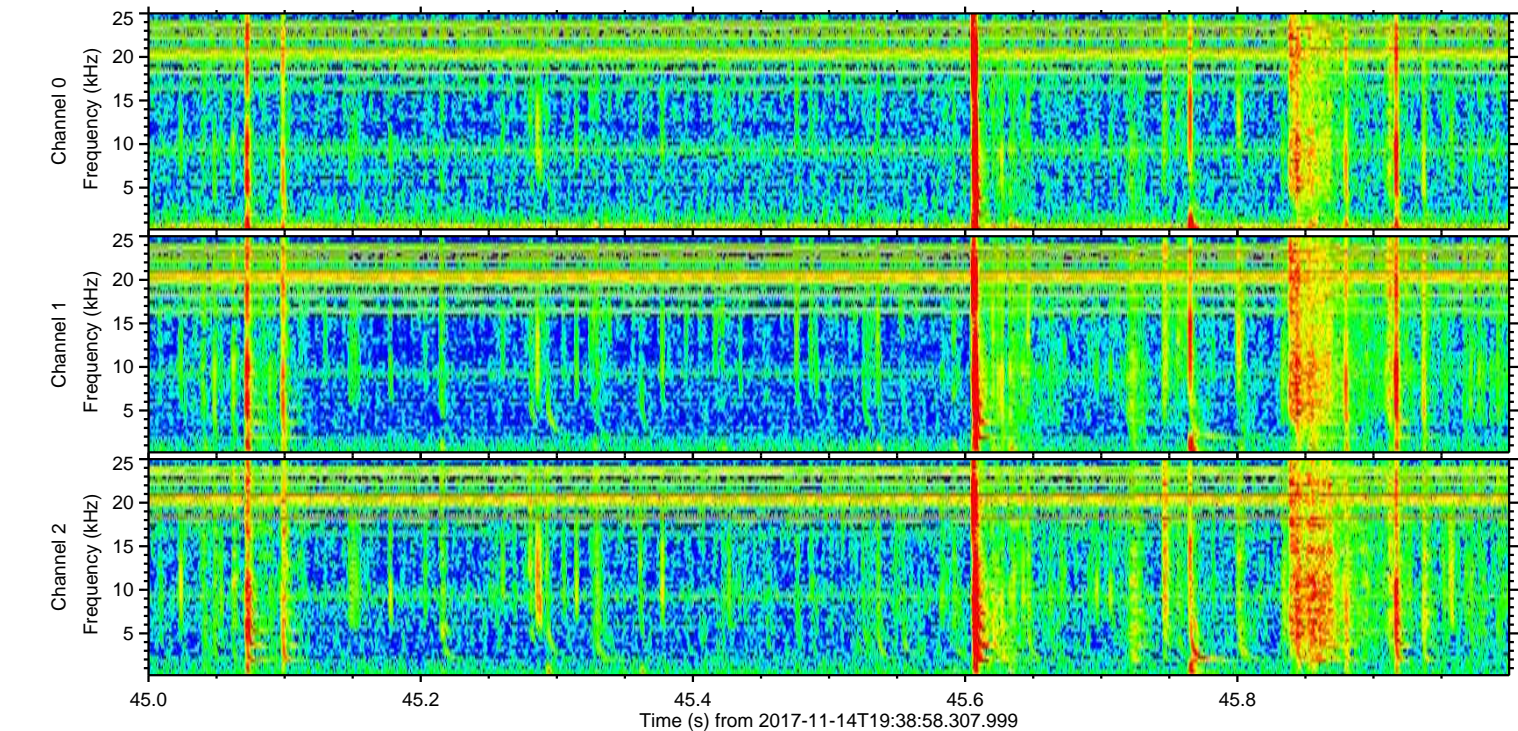
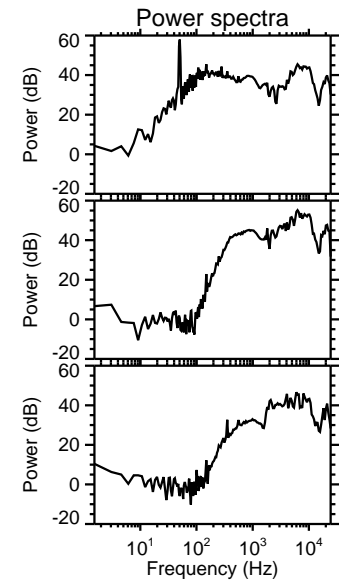
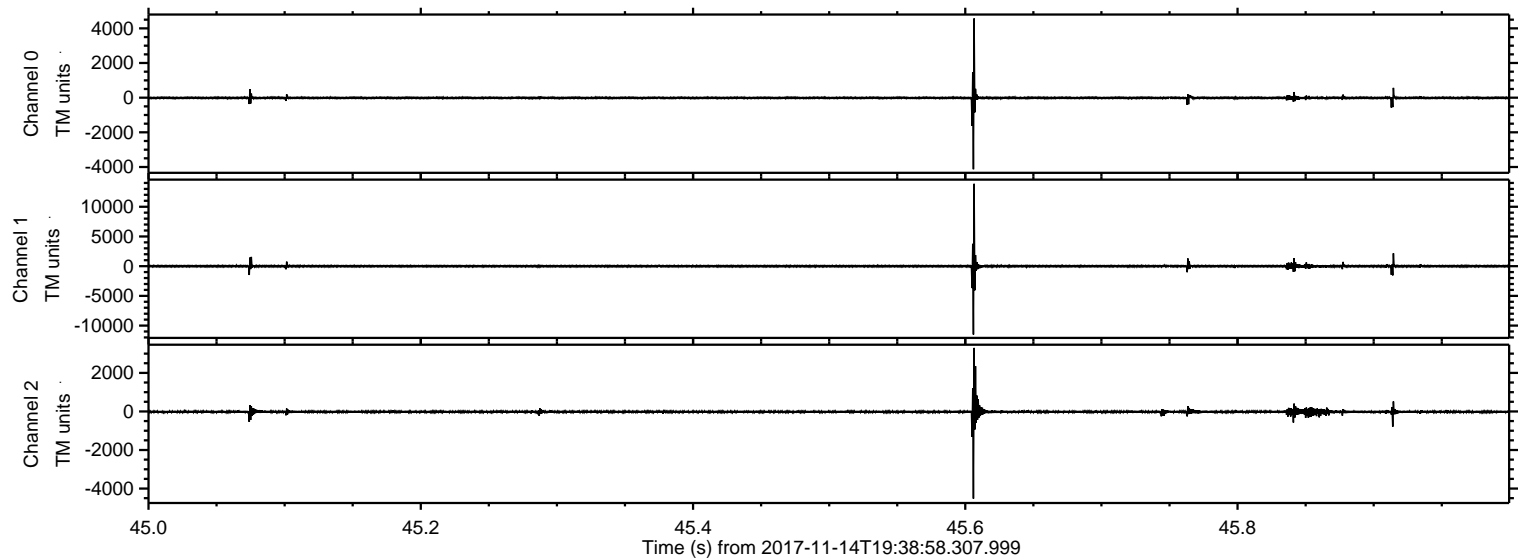
ELMAVAN 3D WAVEFORMS (Measured data sampled at 50 kHz) 51000 packets of 144 samples from 2017-11-14T19:38:58.307.999. Part 8/147

Processed Tue Nov 14 20:47:34 2017 by ELM ver.2012-10-06 from 001__elm20171114_193857__dat00.bin

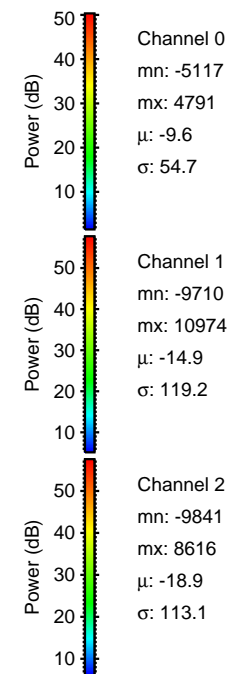
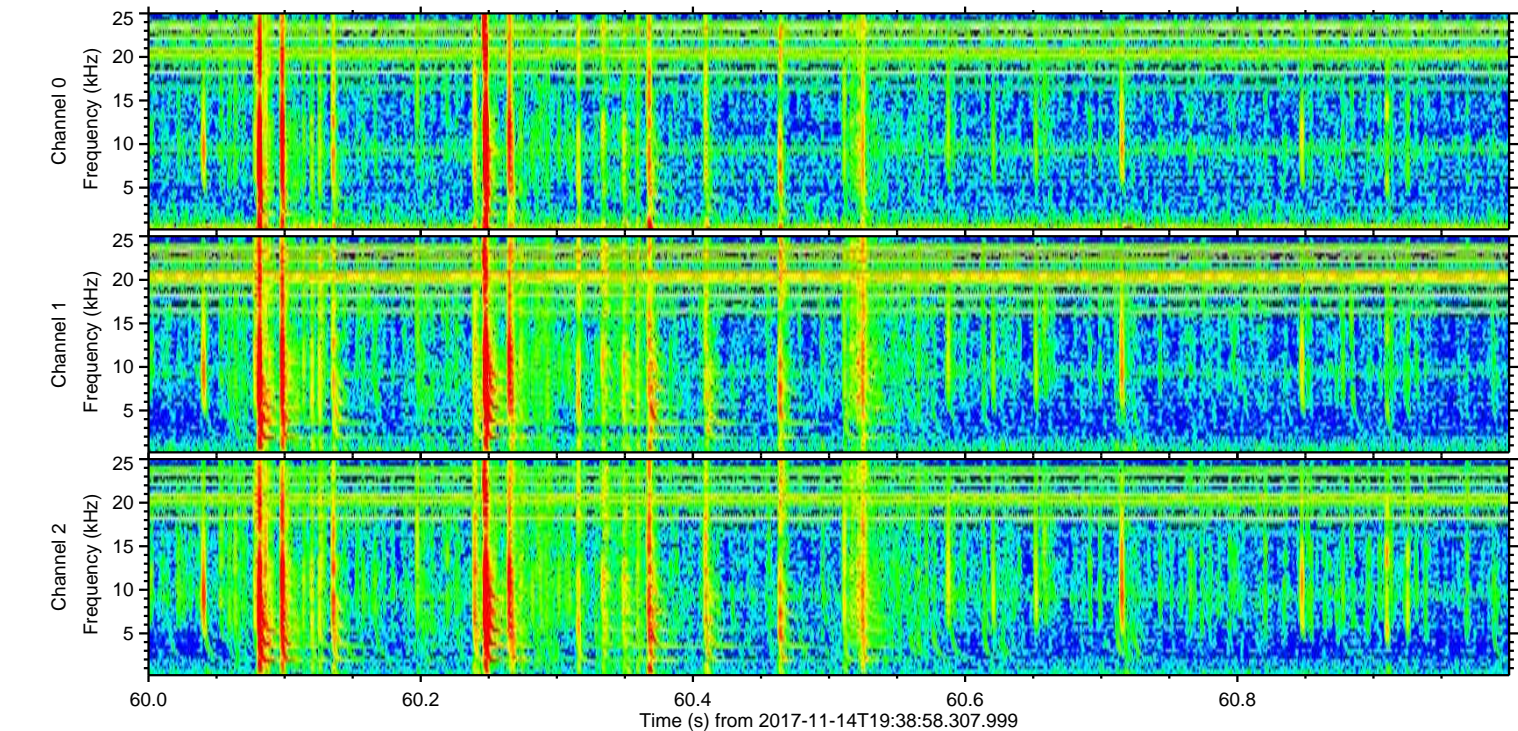
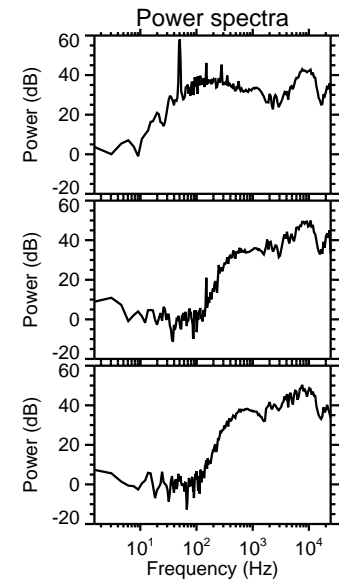
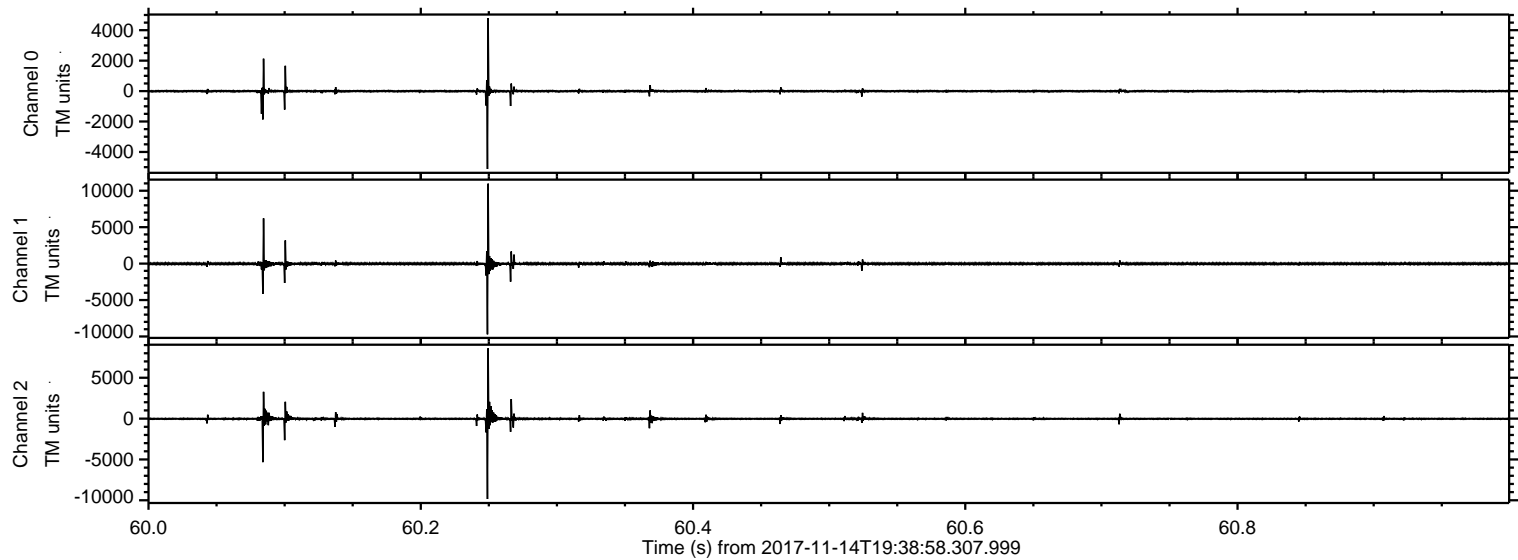


ELMAVAN 3D WAVEFORMS (Measured data sampled at 50 kHz) 51000 packets of 144 samples from 2017-11-14T19:38:58.307.999. Part 46/147

Processed Tue Nov 14 20:47:35 2017 by ELM ver.2012-10-06 from 001__elm20171114_193857__dat00.bin

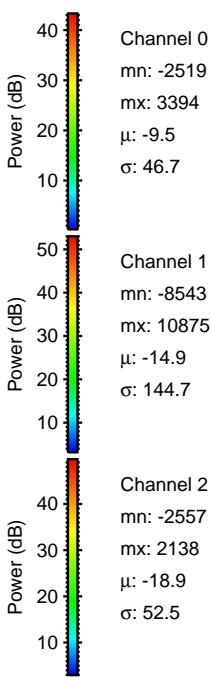
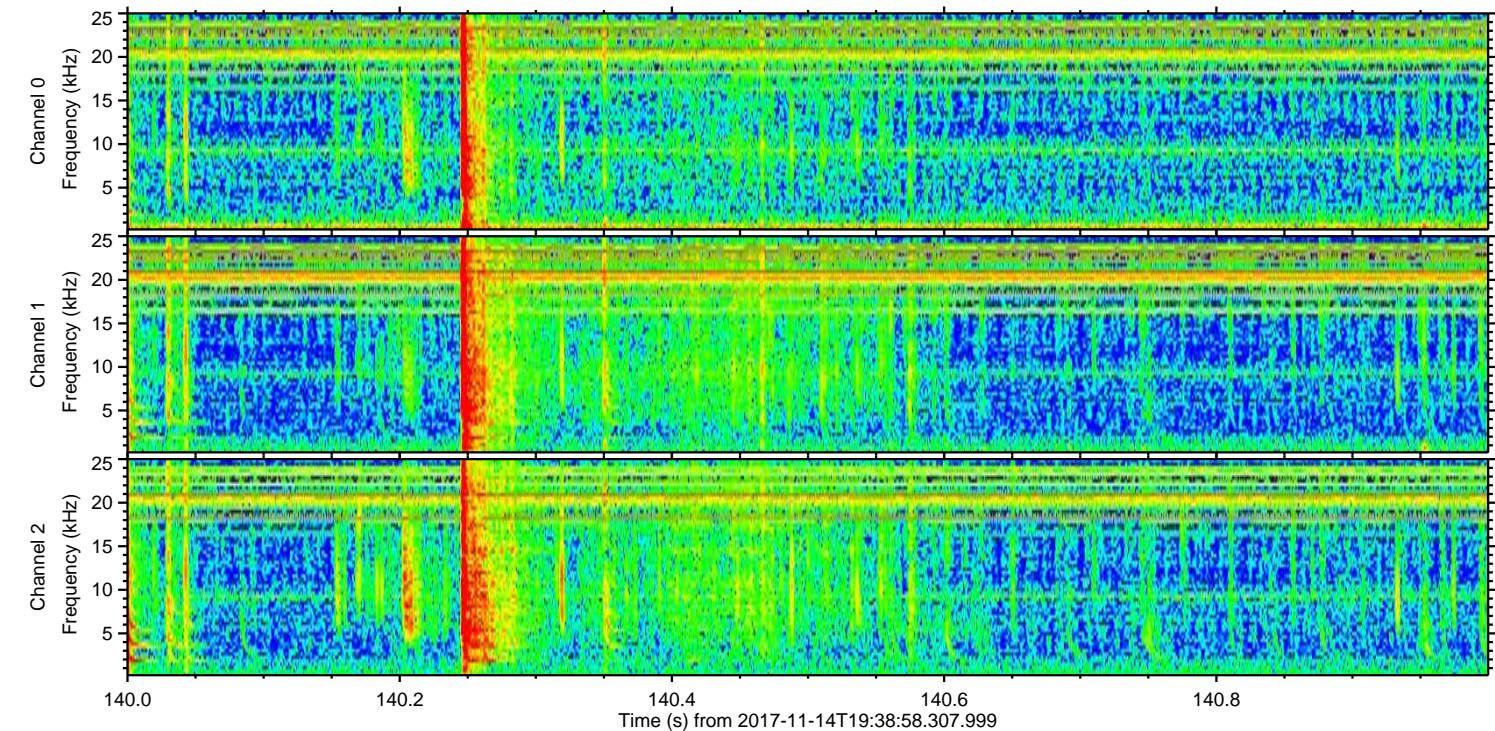
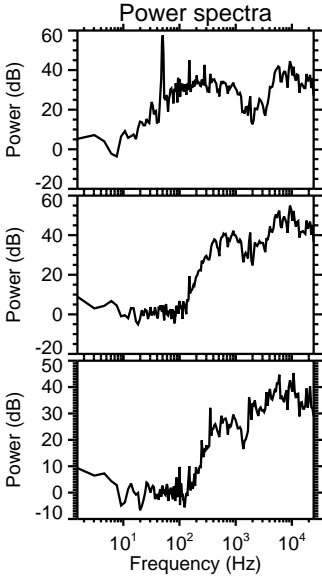
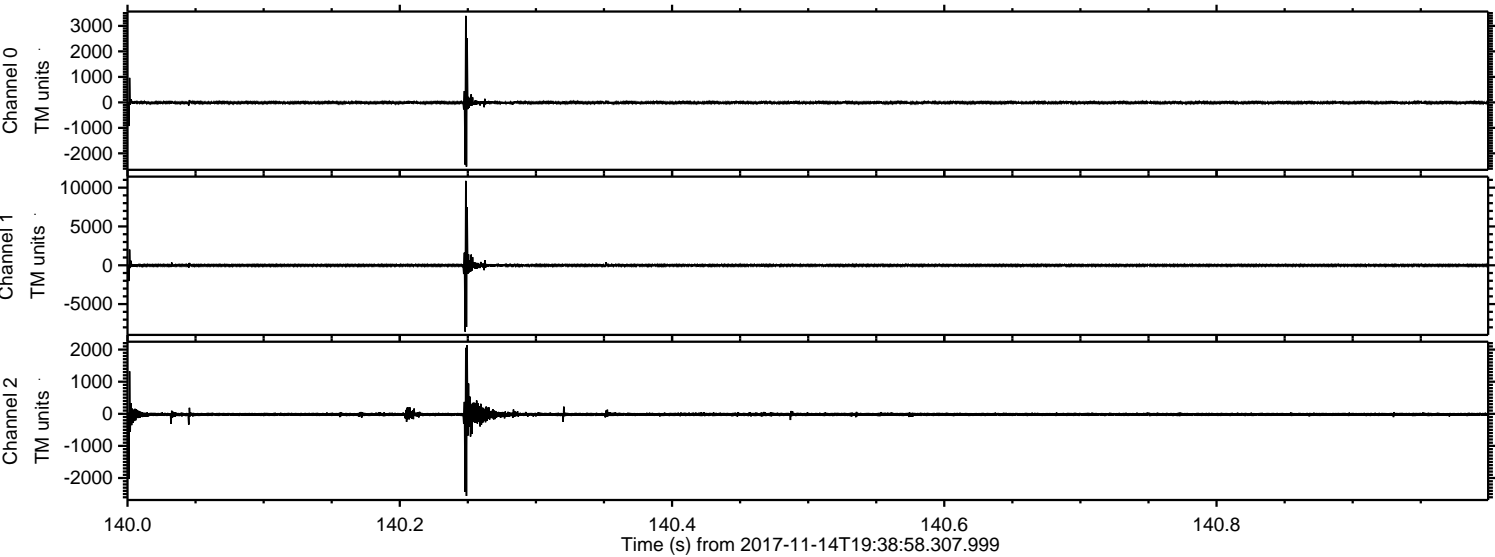


Processed Tue Nov 14 20:47:36 2017 by ELM ver.2012-10-06 from 001__elm20171114_193857__dat00.bin



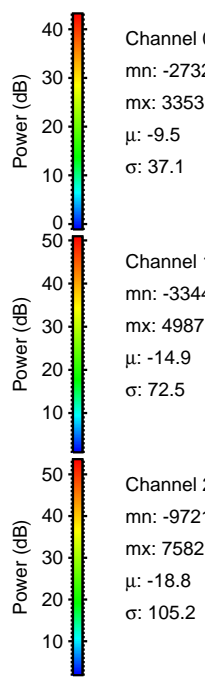
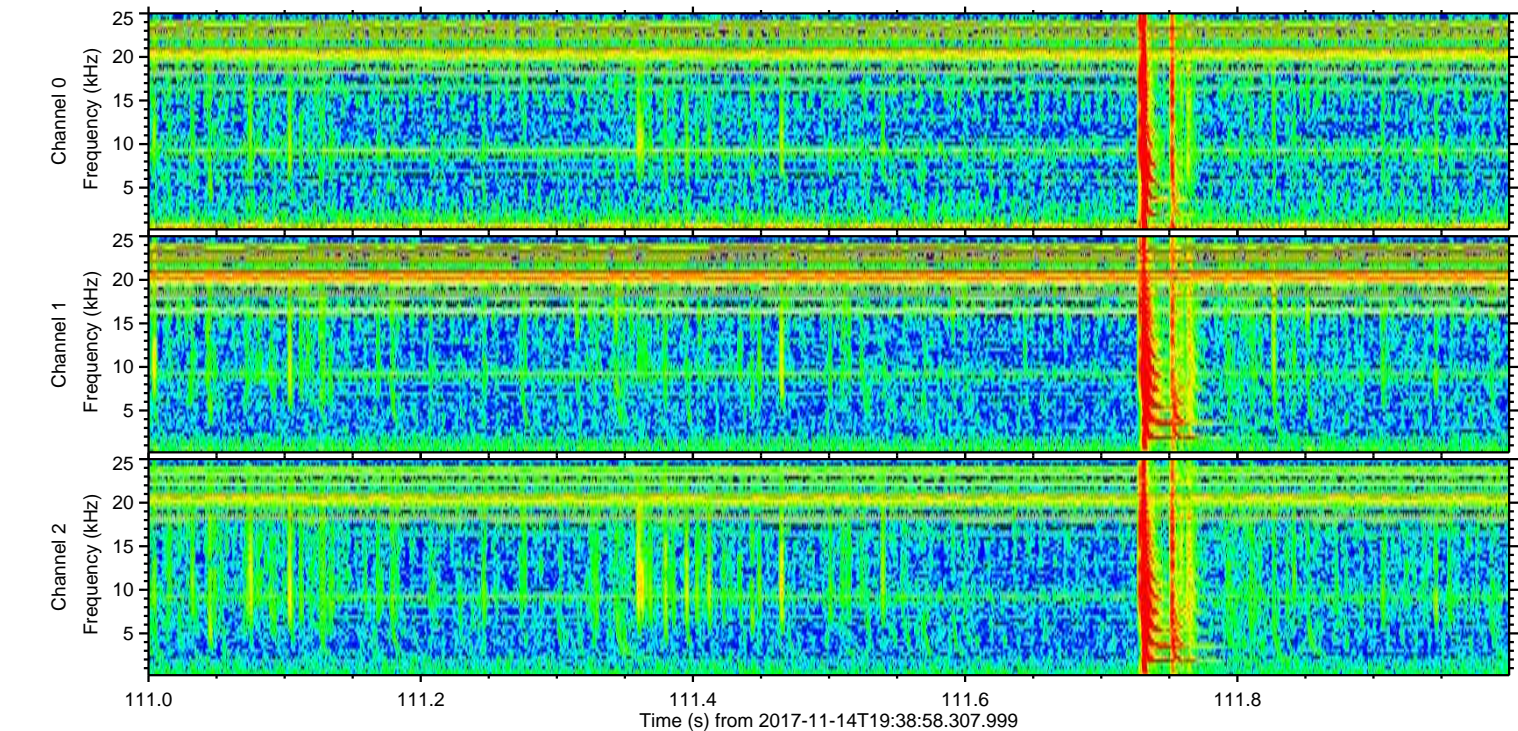
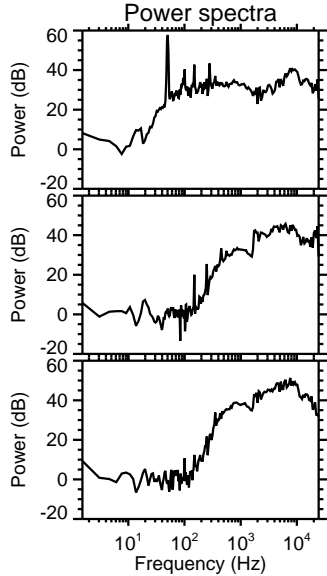
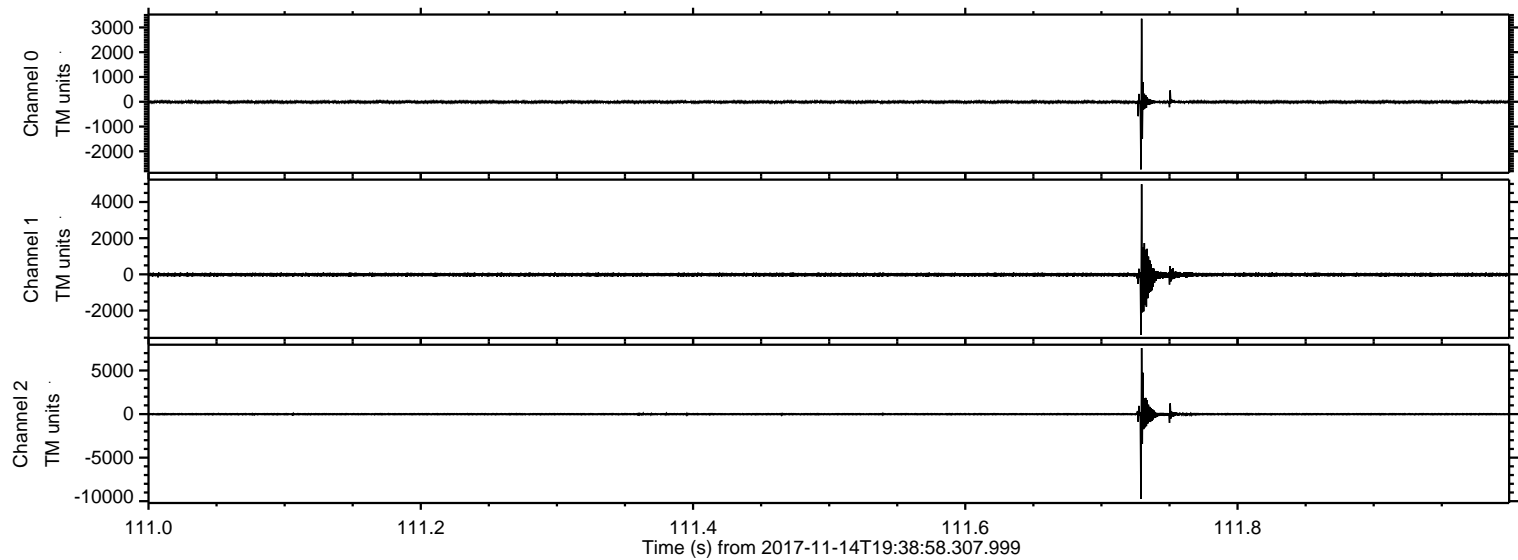
ELMAVAN 3D WAVEFORMS (Measured data sampled at 50 kHz) 51000 packets of 144 samples from 2017-11-14T19:38:58.307.999. Part 141/147

Processed Tue Nov 14 20:47:36 2017 by ELM ver.2012-10-06 from 001__elm20171114_193857__dat00.bin



ELMAVAN 3D WAVEFORMS (Measured data sampled at 50 kHz) 51000 packets of 144 samples from 2017-11-14T19:38:58.307.999. Part 112/147

Processed Tue Nov 14 20:47:37 2017 by ELM ver.2012-10-06 from 001__elm20171114_193857__dat00.bin



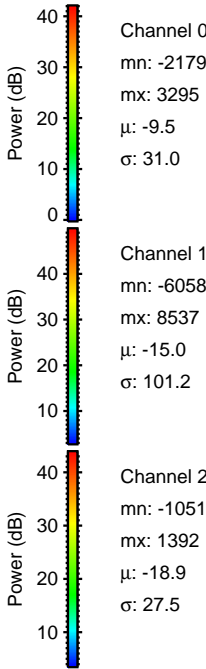
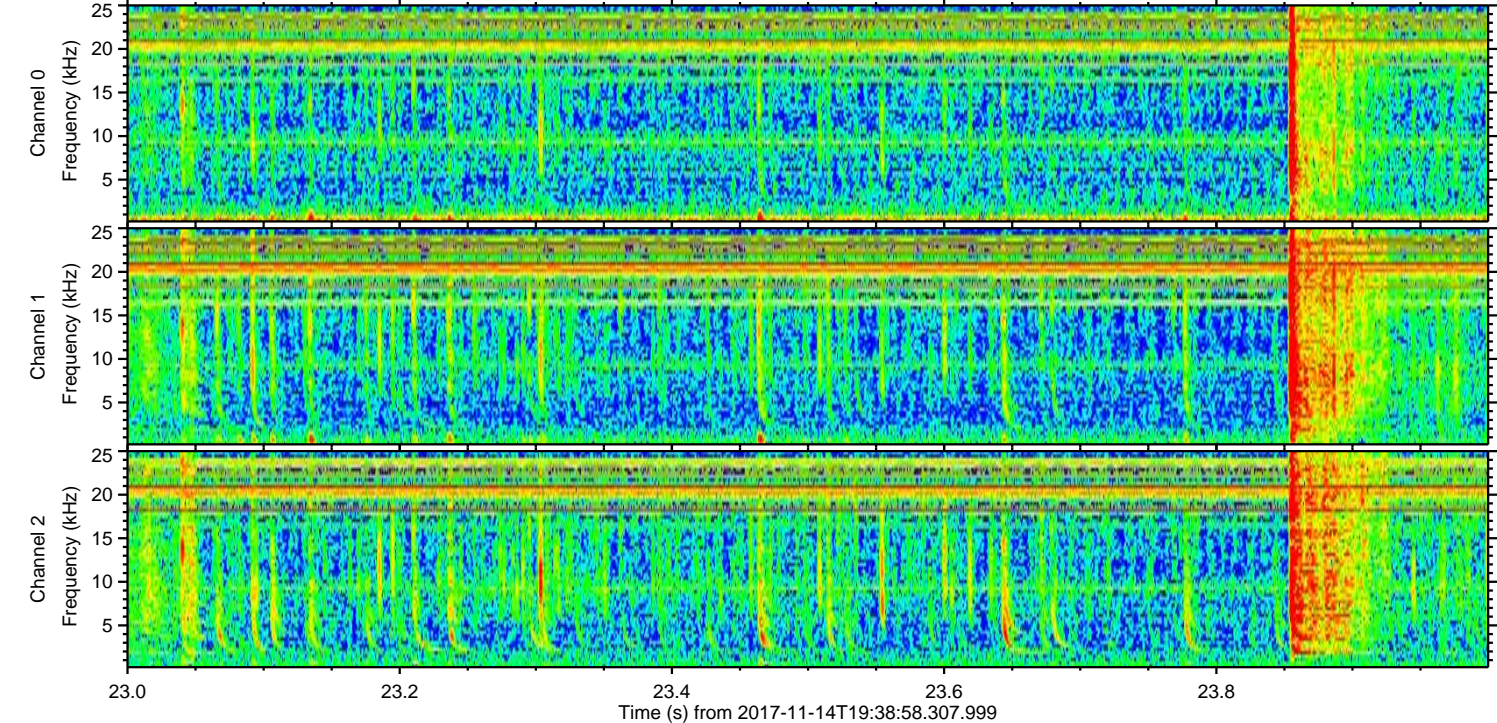
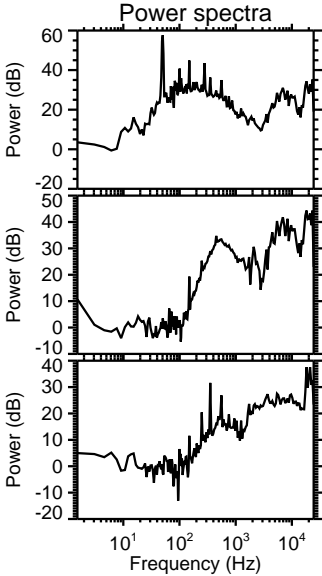
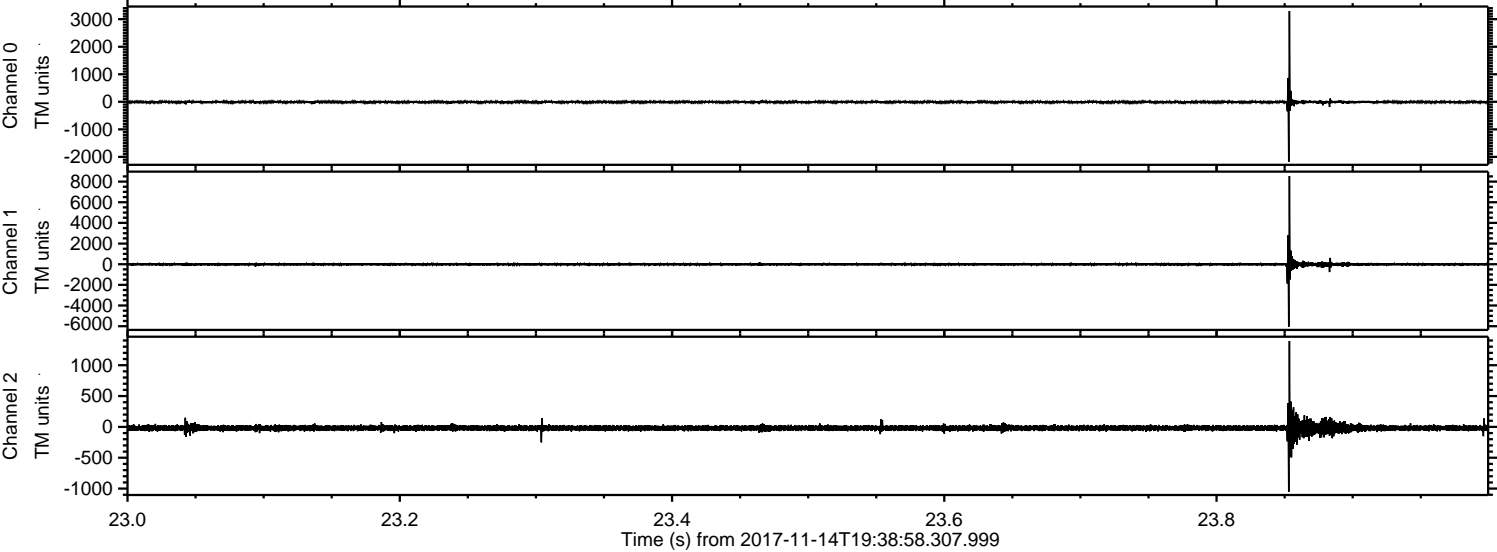
Channel 0
mn: -2732
mx: 3353
 μ : -9.5
 σ : 37.1

Channel 1
mn: -3344
mx: 4987
 μ : -14.9
 σ : 72.5

Channel 2
mn: -9721
mx: 7582
 μ : -18.8
 σ : 105.2

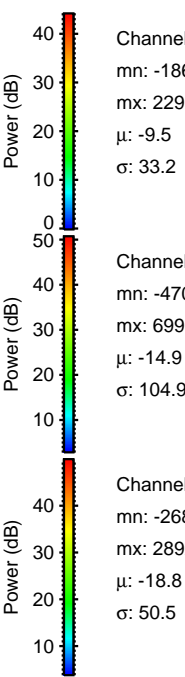
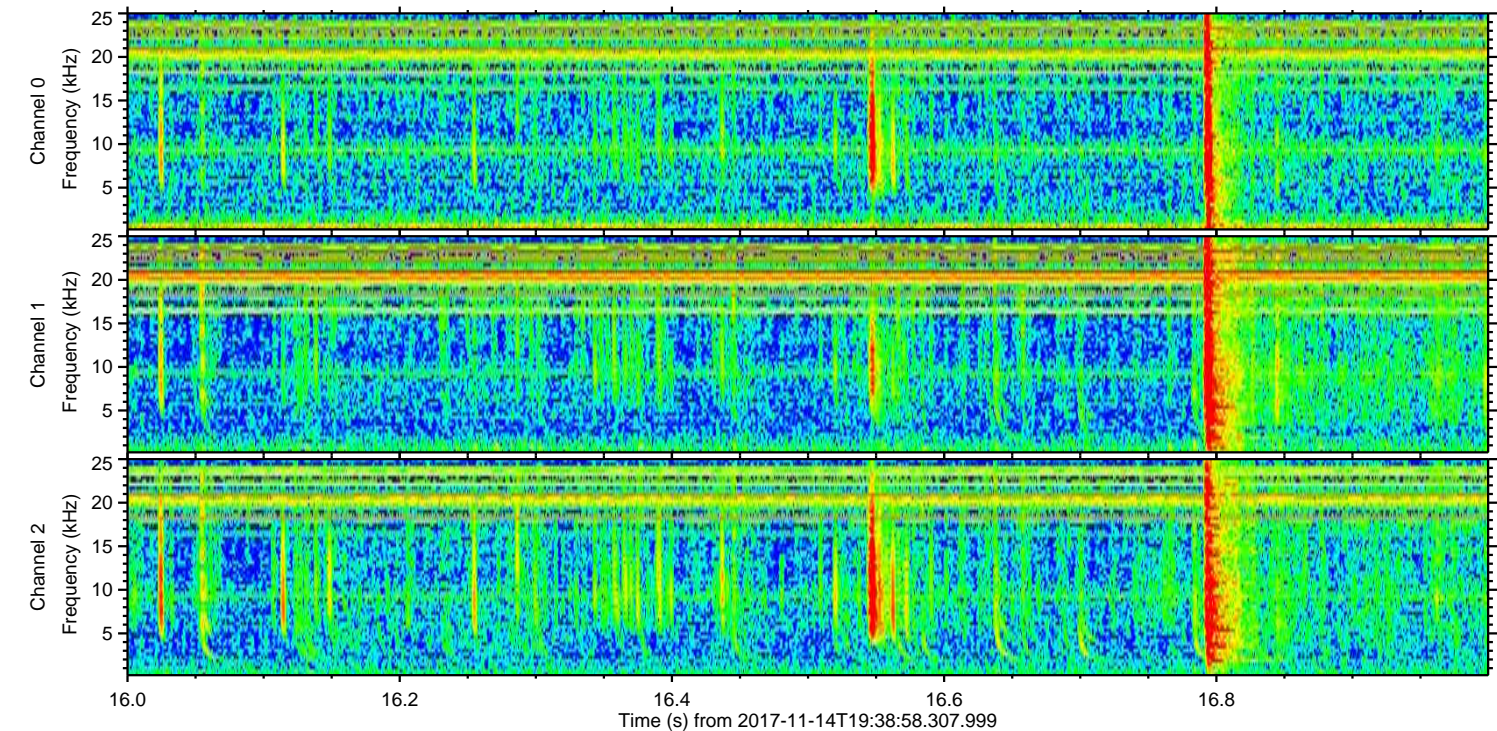
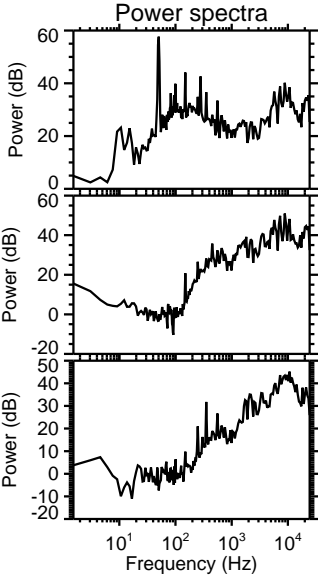
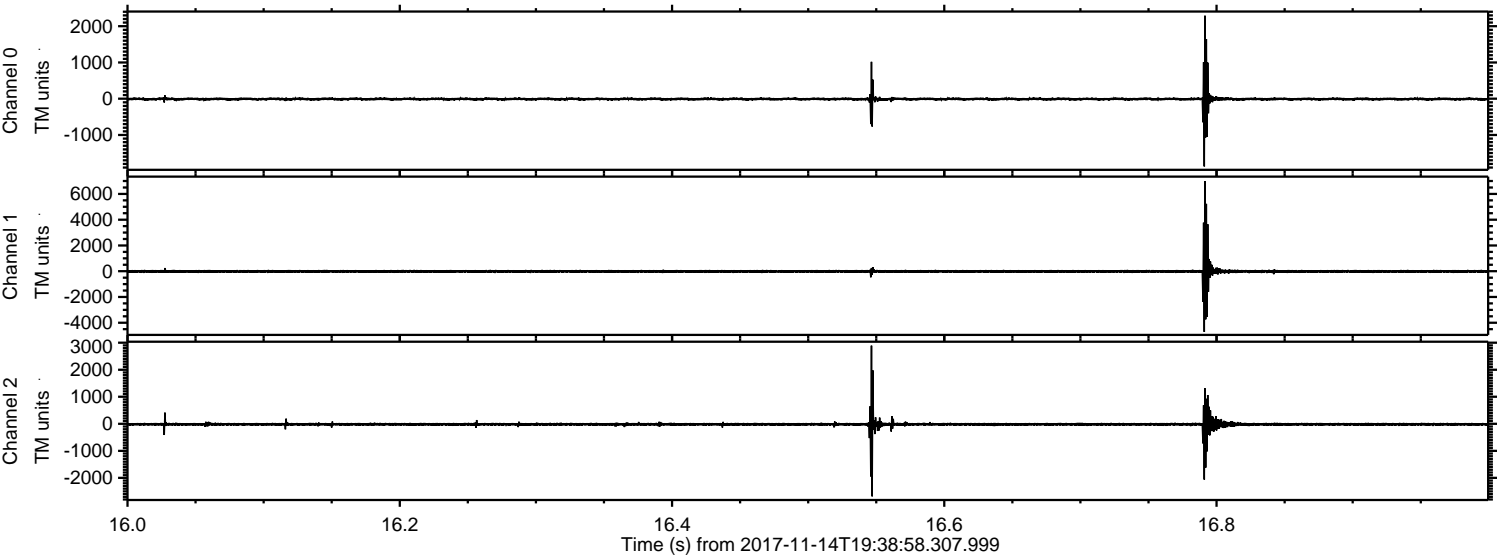
ELMAVAN 3D WAVEFORMS (Measured data sampled at 50 kHz) 51000 packets of 144 samples from 2017-11-14T19:38:58.307.999. Part 24/147

Processed Tue Nov 14 20:47:38 2017 by ELM ver.2012-10-06 from 001__elm20171114_193857__dat00.bin



ELMAVAN 3D WAVEFORMS (Measured data sampled at 50 kHz) 51000 packets of 144 samples from 2017-11-14T19:38:58.307.999. Part 17/147

Processed Tue Nov 14 20:47:39 2017 by ELM ver.2012-10-06 from 001__elm20171114_193857__dat00.bin

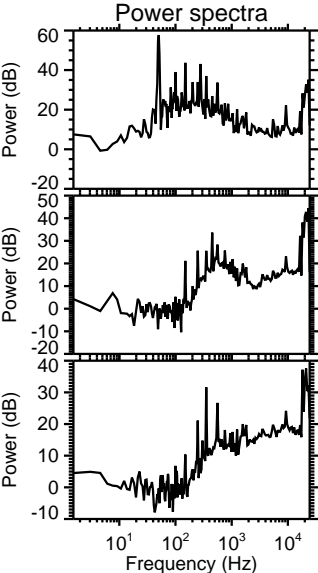
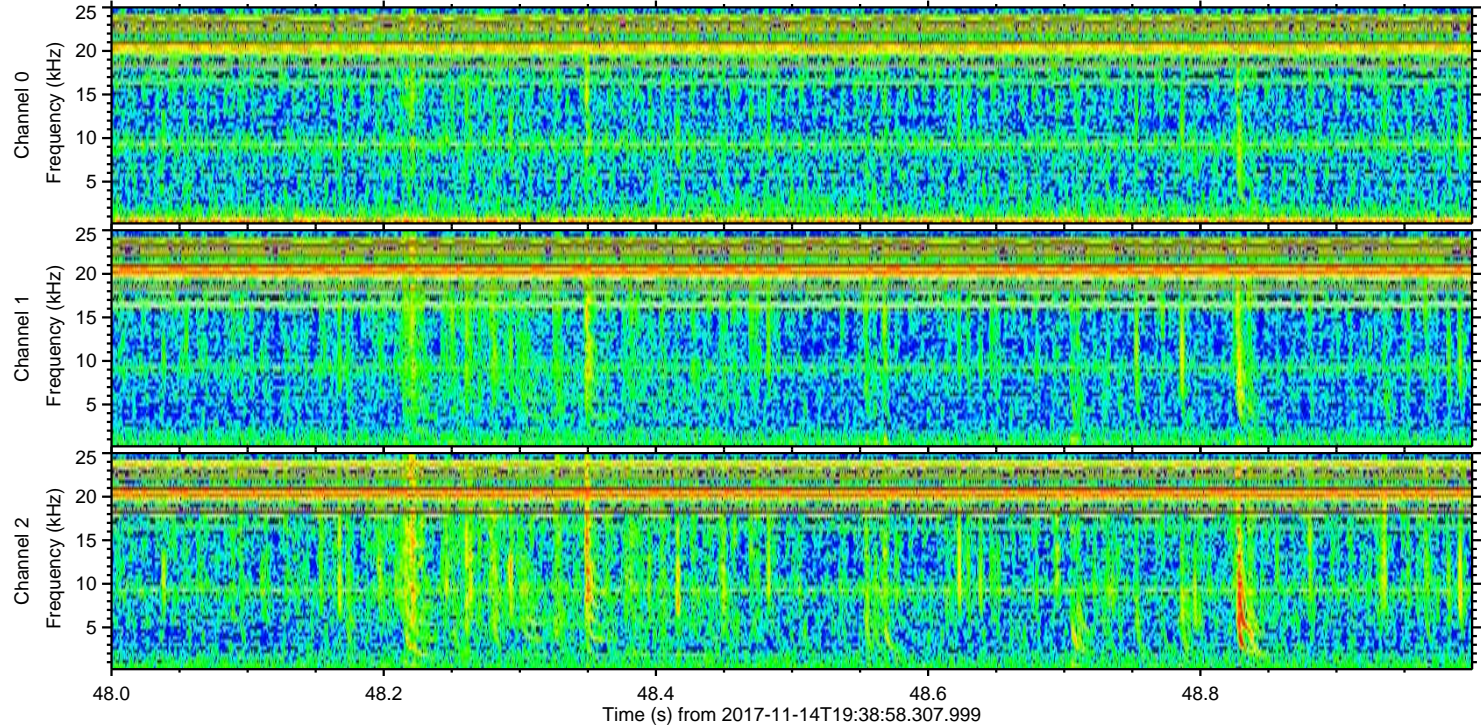
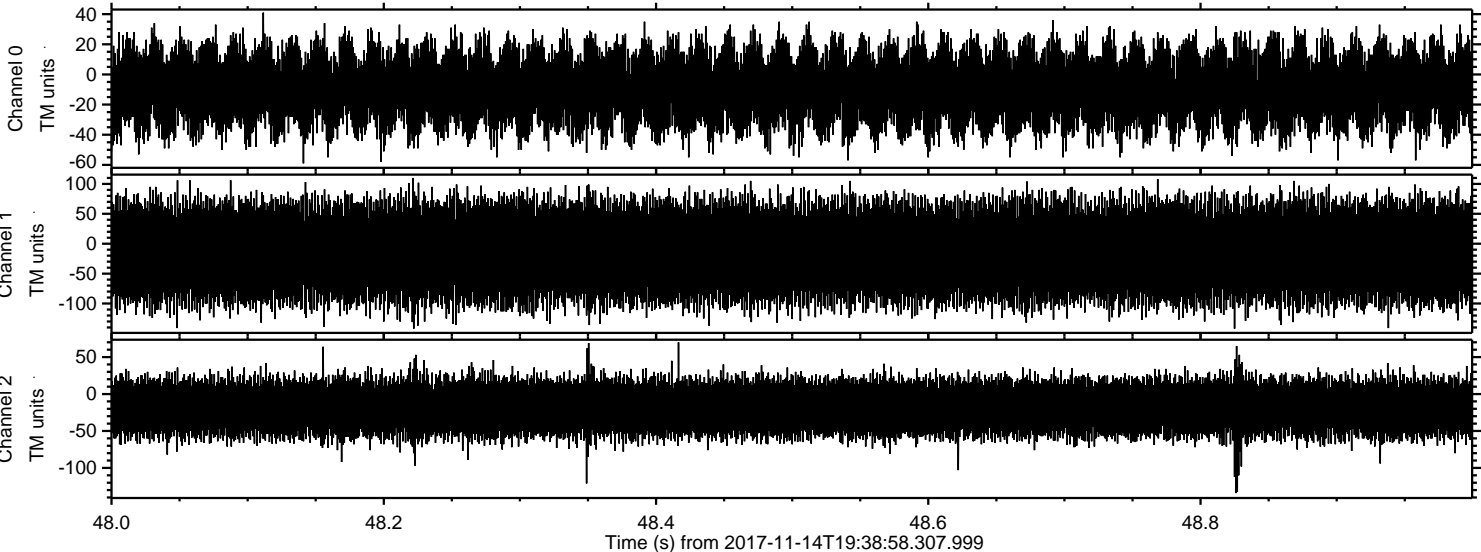


Channel 0
mn: -1869
mx: 2291
 μ : -9.5
 σ : 33.2

Channel 1
mn: -4709
mx: 6993
 μ : -14.9
 σ : 104.9

Channel 2
mn: -2684
mx: 2892
 μ : -18.8
 σ : 50.5

Processed Tue Nov 14 20:47:40 2017 by ELM ver.2012-10-06 from 001__elm20171114_193857__dat00.bin



Channel 0
mn: -59
mx: 41
 μ : -9.5
 σ : 14.2

Channel 1
mn: -142
mx: 110
 μ : -14.9
 σ : 40.0

Channel 2
mn: -134
mx: 70
 μ : -18.9
 σ : 18.7