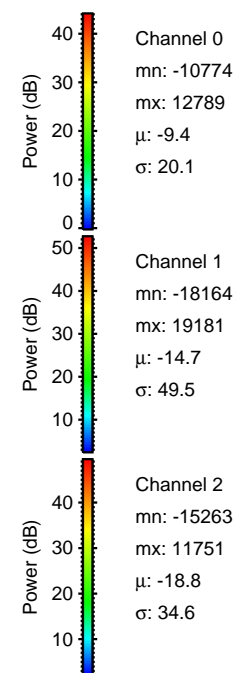
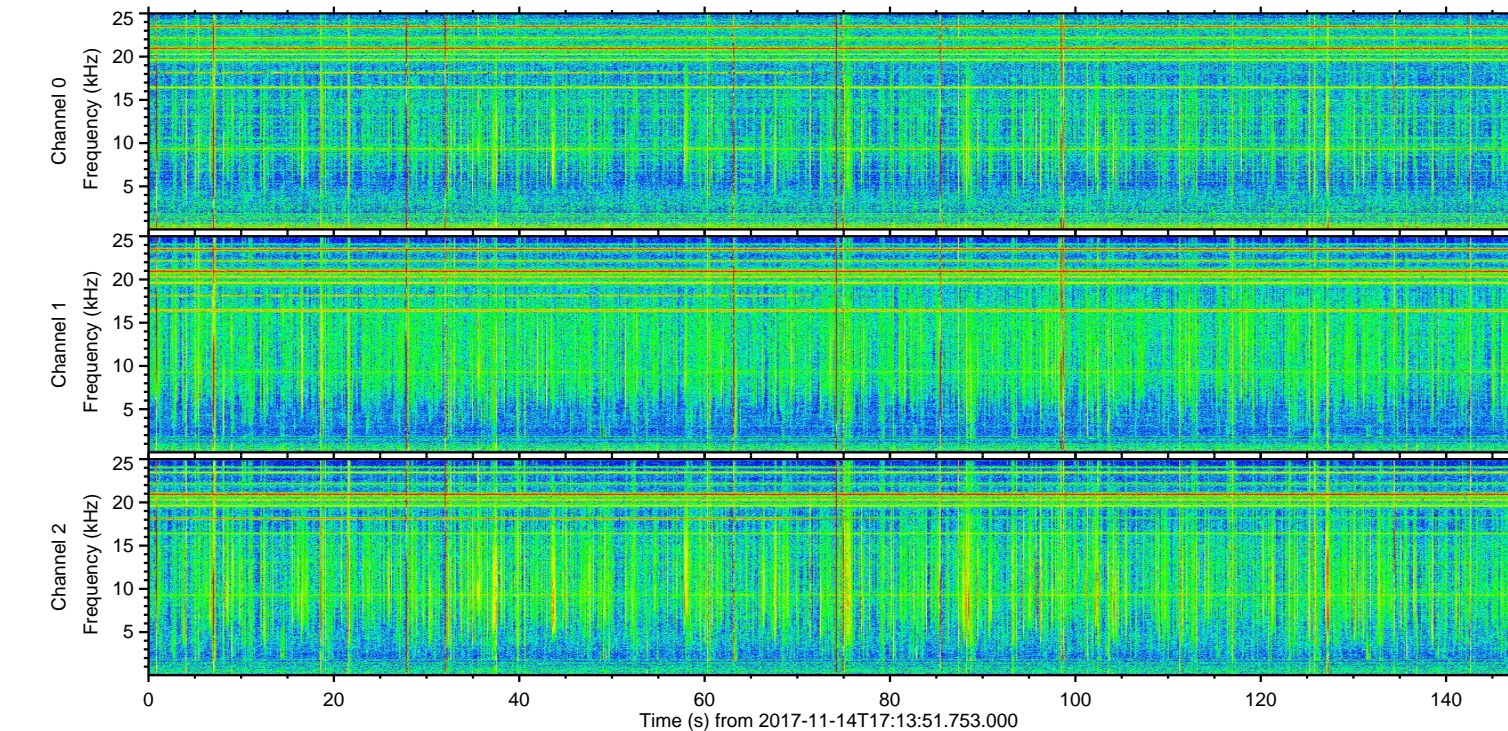
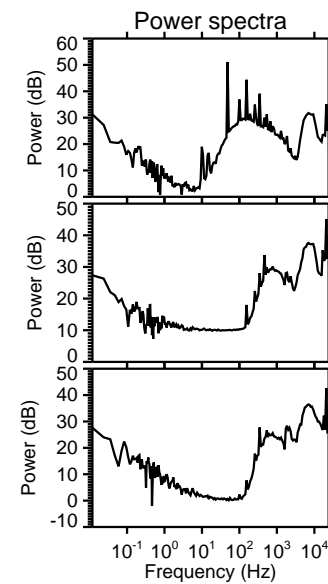
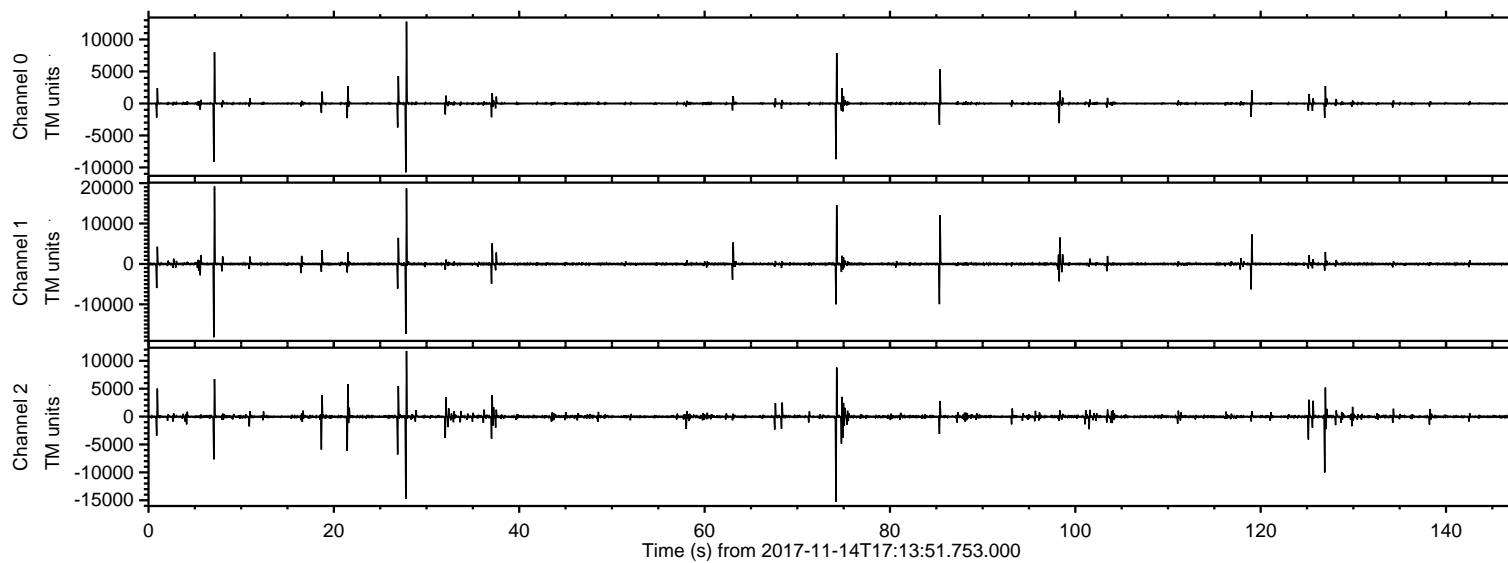


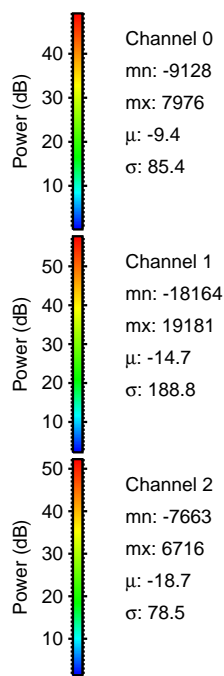
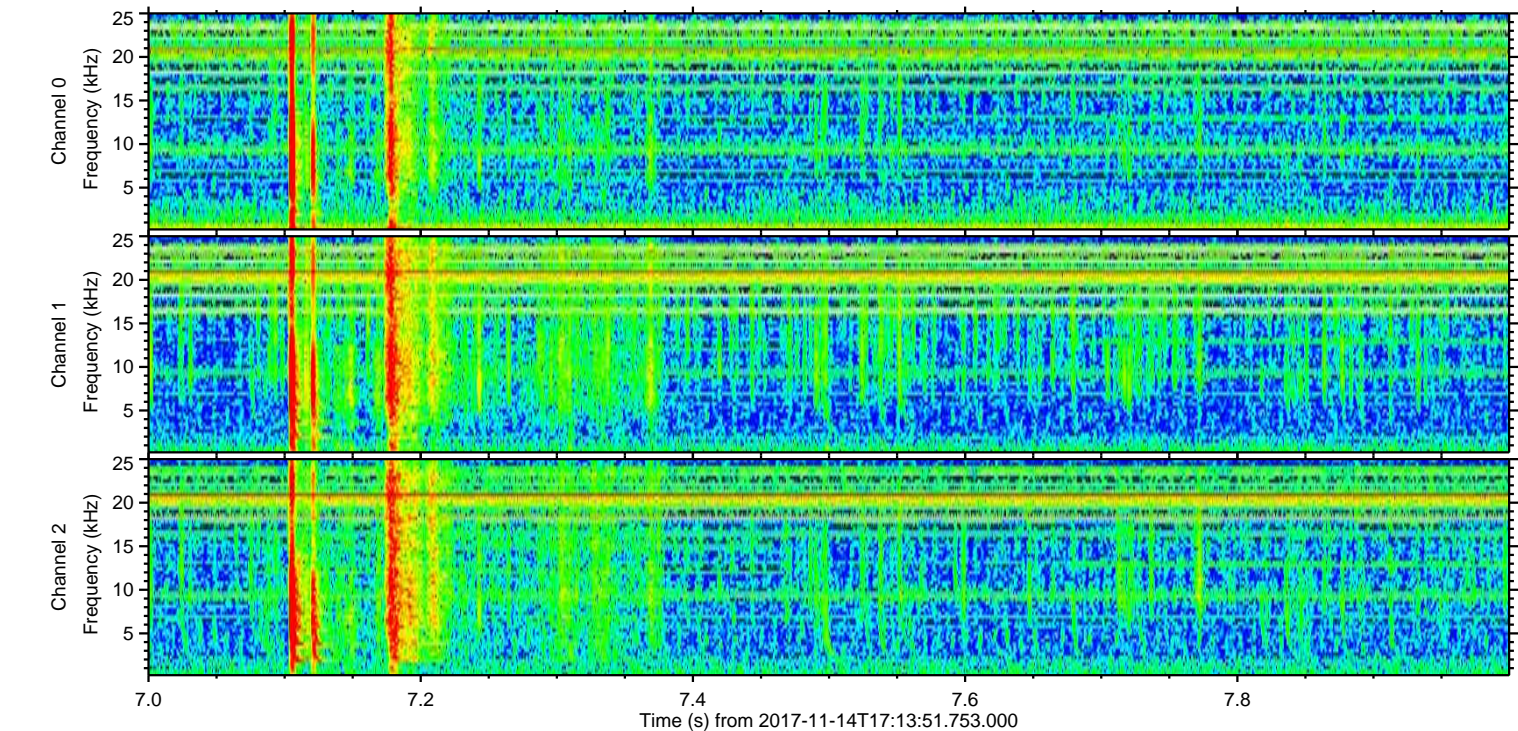
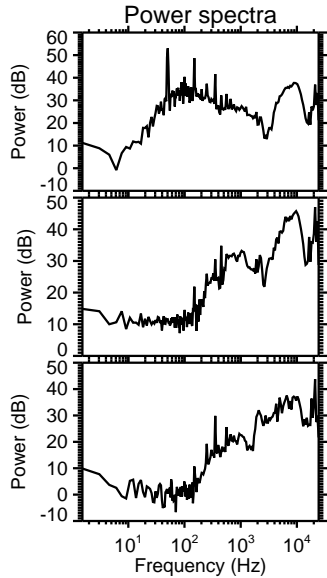
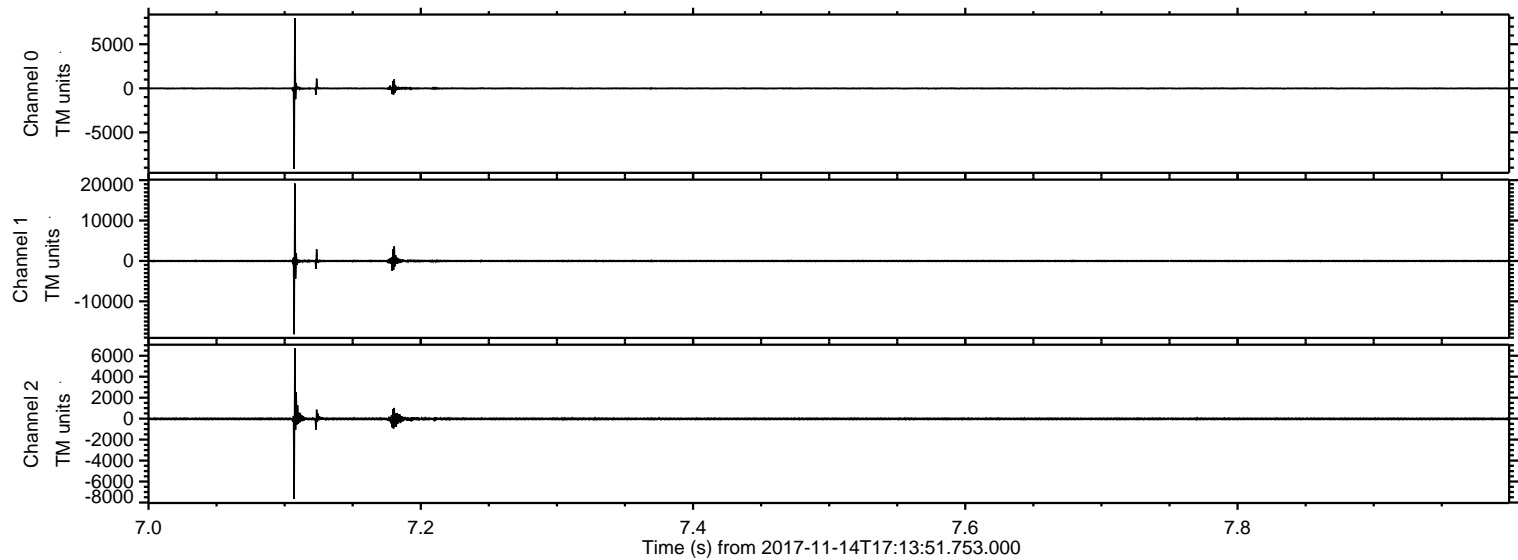
# ELMAVAN 3D WAVEFORMS (Measured data sampled at 50 kHz) 51000 packets of 144 samples from 2017-11-14T17:13:51.753.000.

Processed Tue Nov 14 18:22:55 2017 by ELM ver.2012-10-06 from 001\_\_elm20171114\_171350\_\_dat00.bin



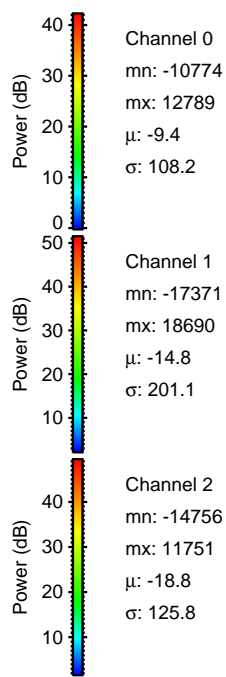
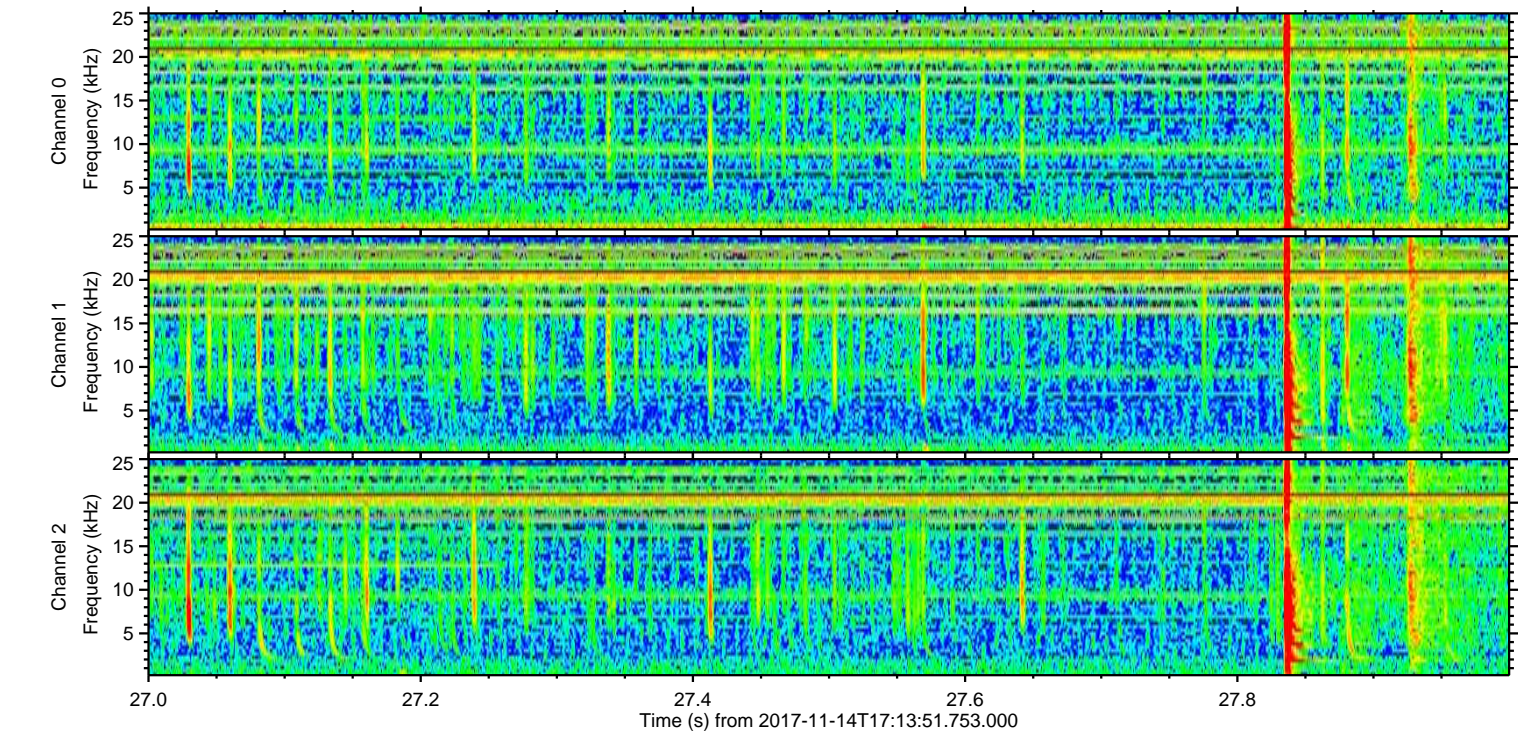
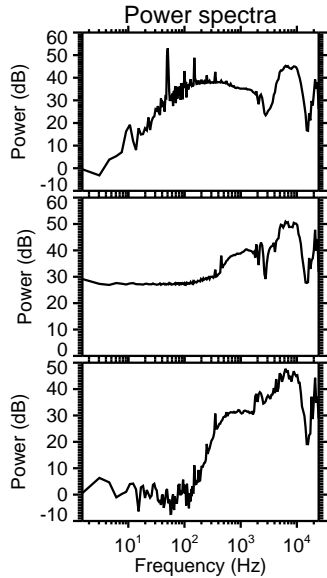
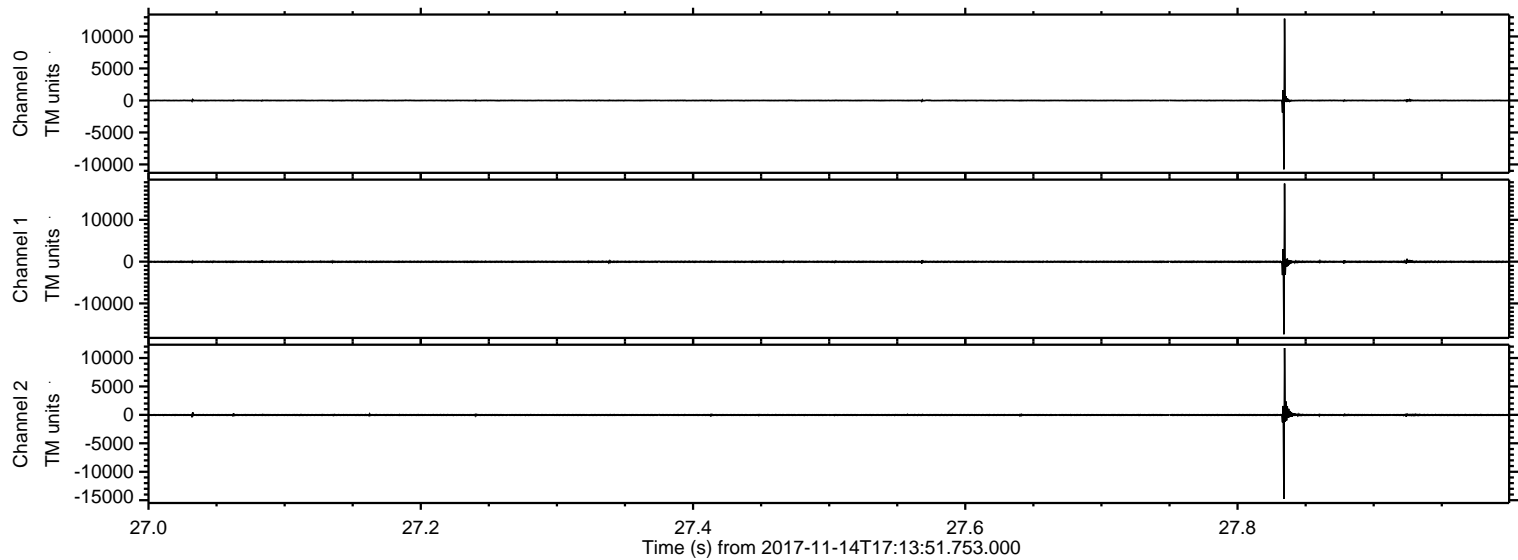


Processed Tue Nov 14 18:23:02 2017 by ELM ver.2012-10-06 from 001\_\_elm20171114\_171350\_\_dat00.bin



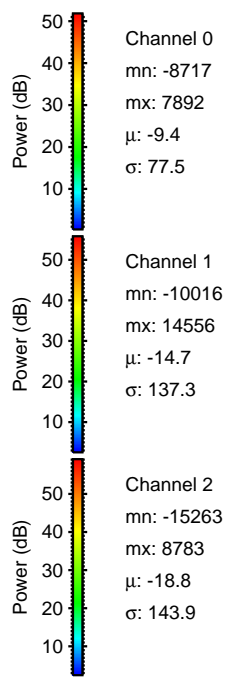
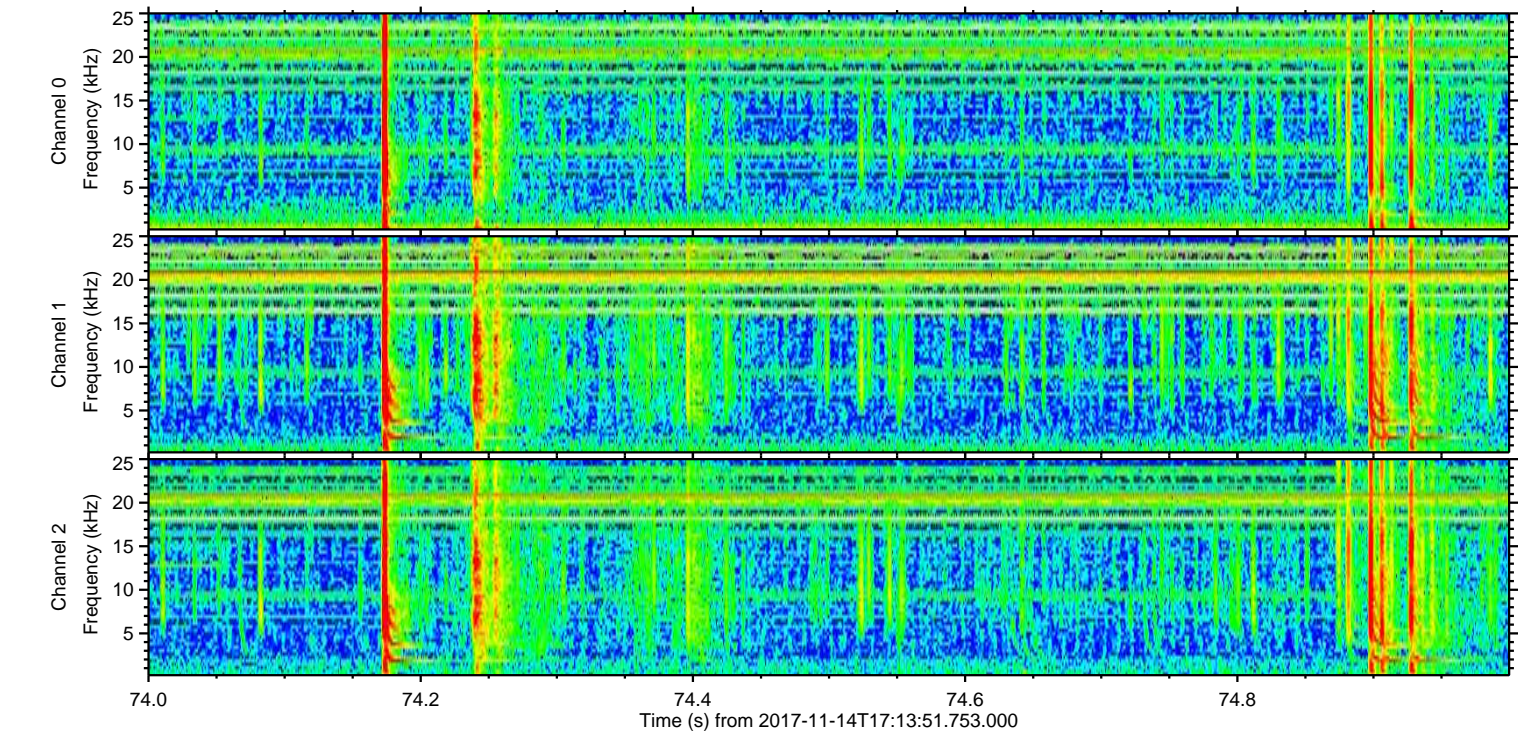
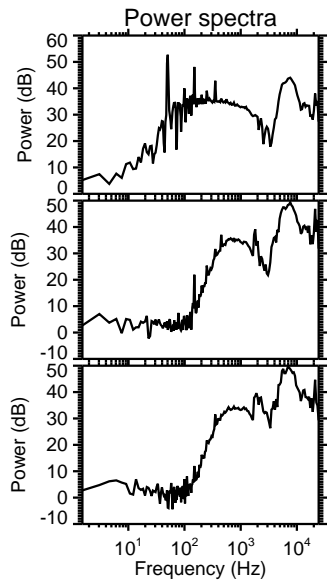
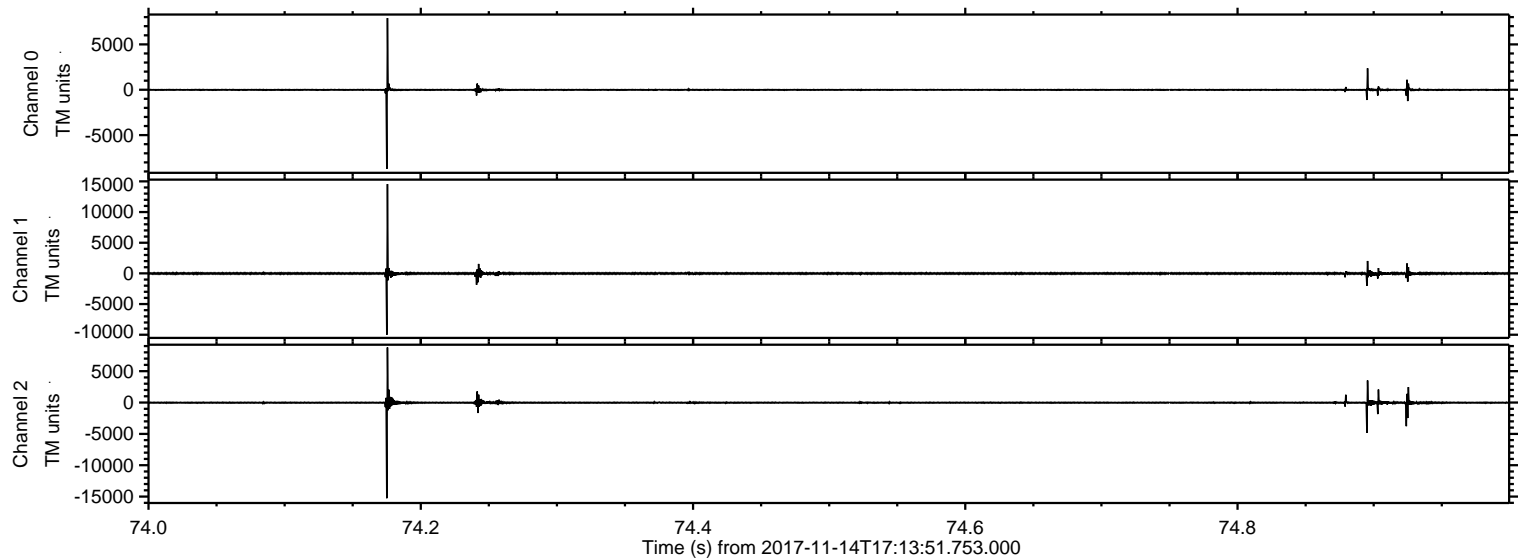


Processed Tue Nov 14 18:23:02 2017 by ELM ver.2012-10-06 from 001\_\_elm20171114\_171350\_\_dat00.bin



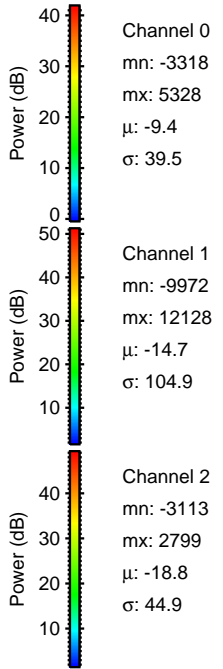
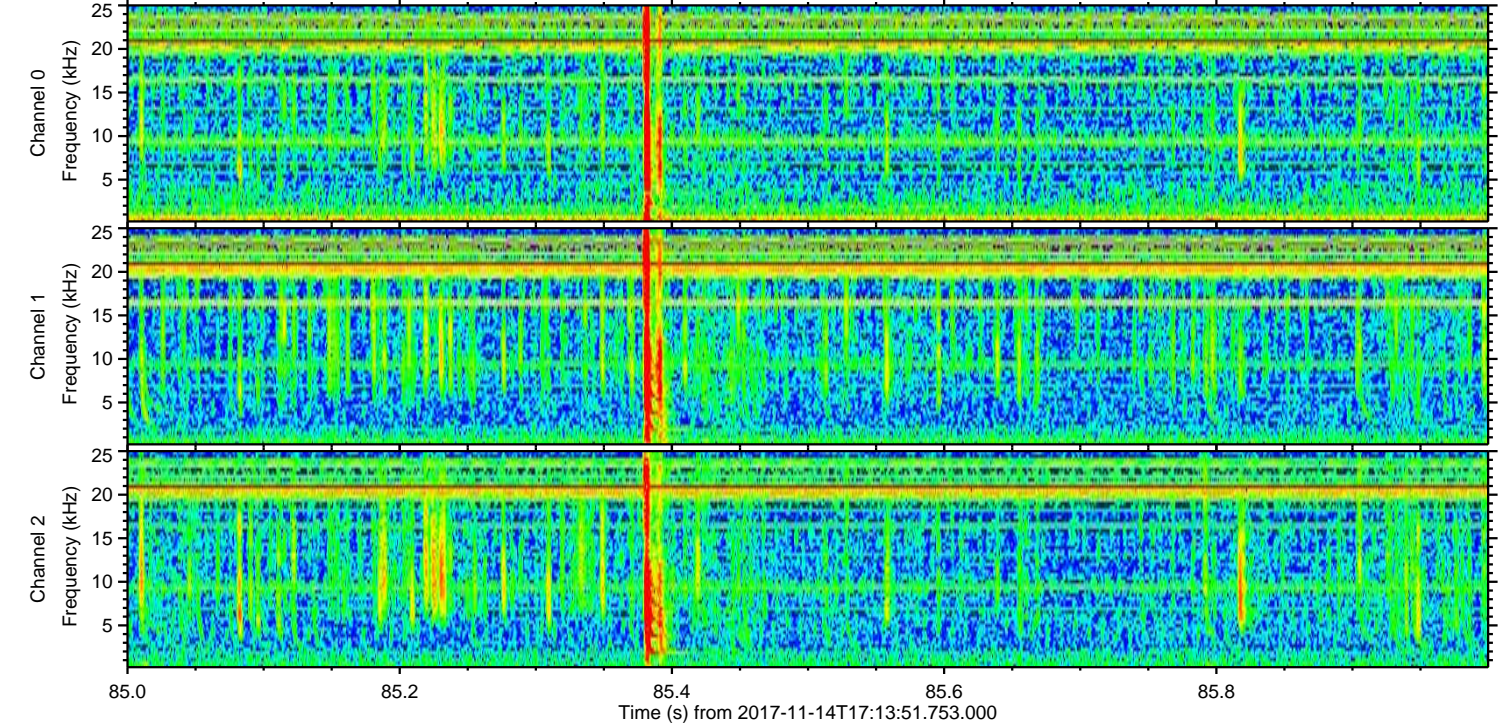
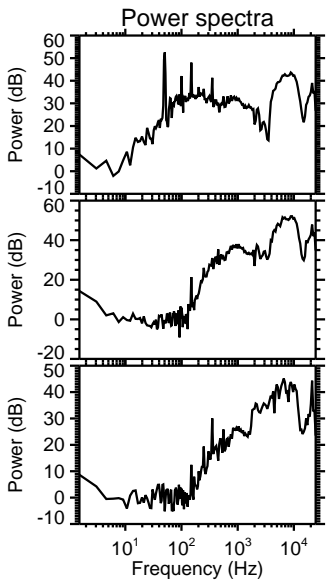
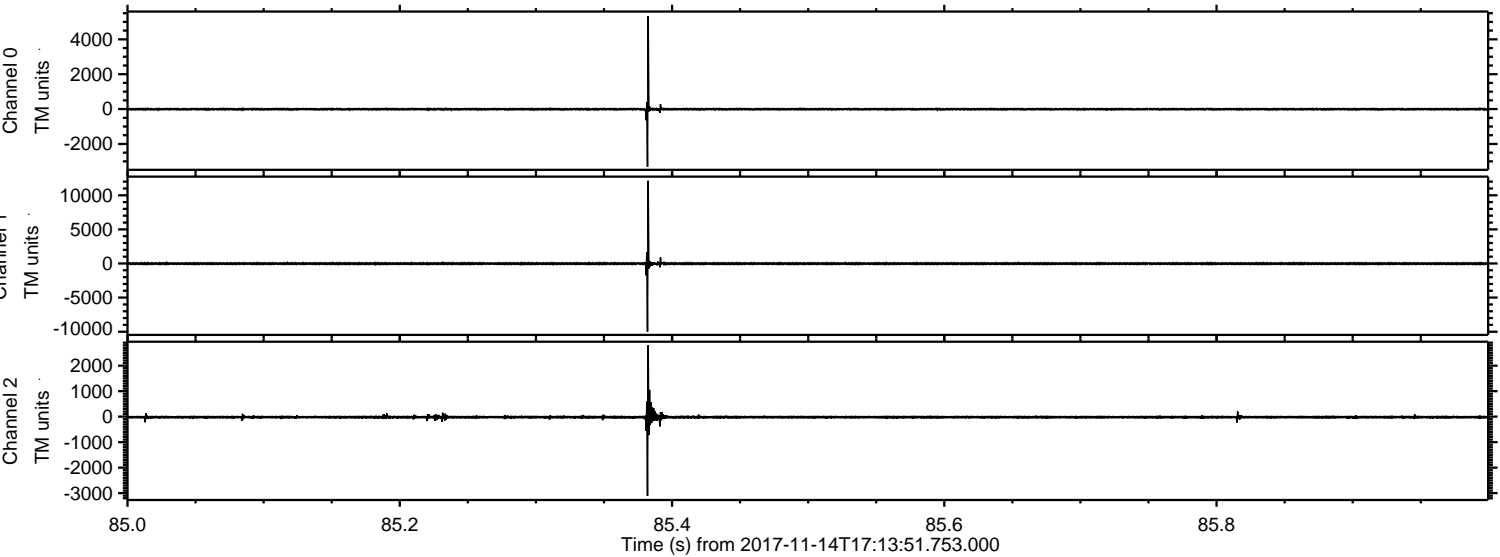


Processed Tue Nov 14 18:23:03 2017 by ELM ver.2012-10-06 from 001\_\_elm20171114\_171350\_\_dat00.bin





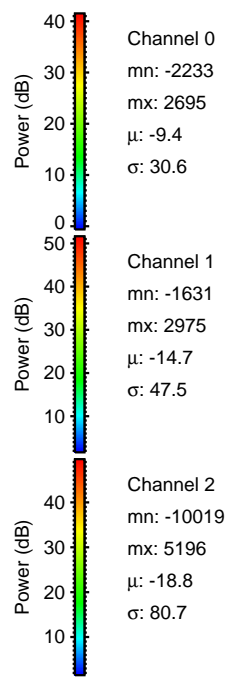
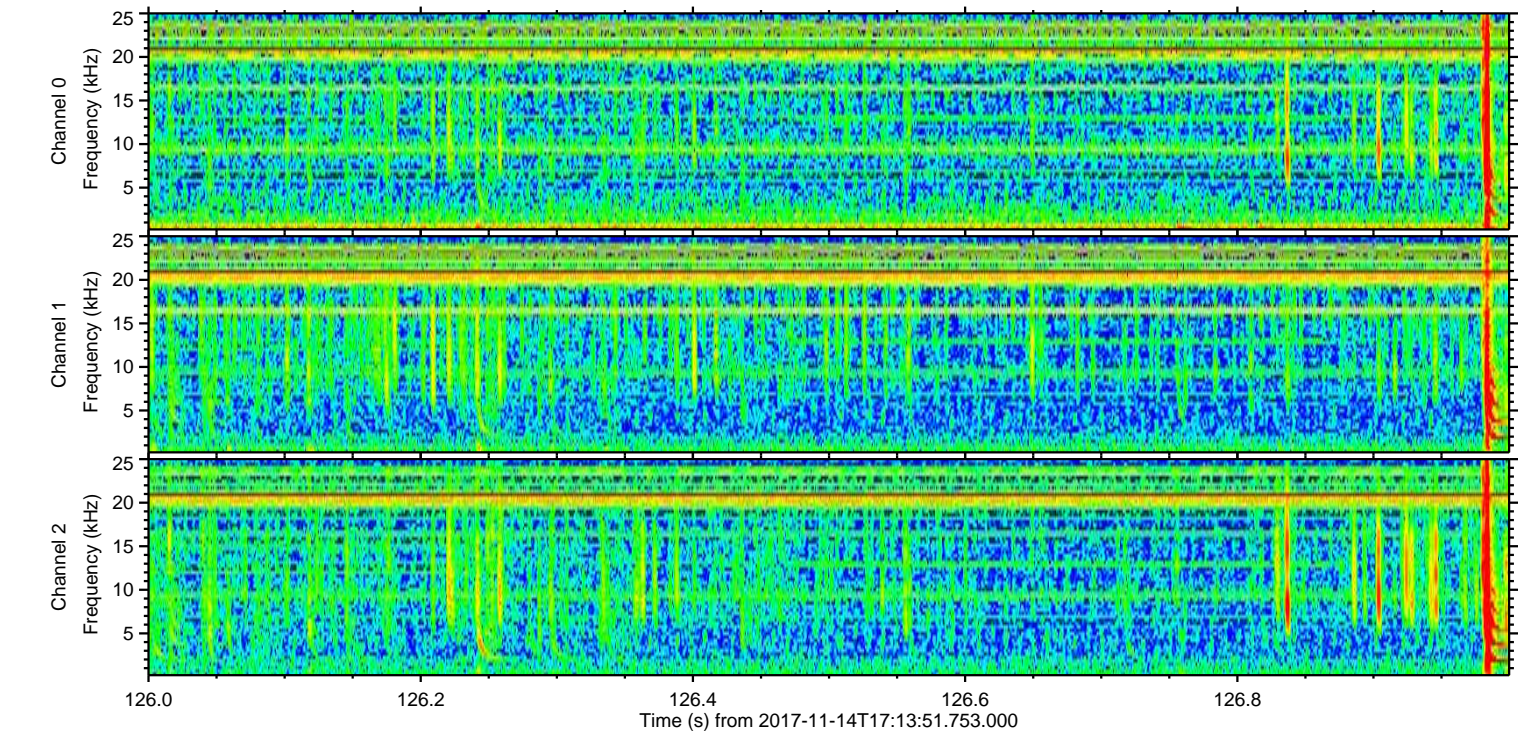
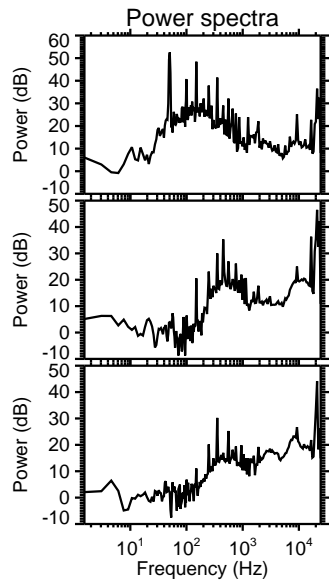
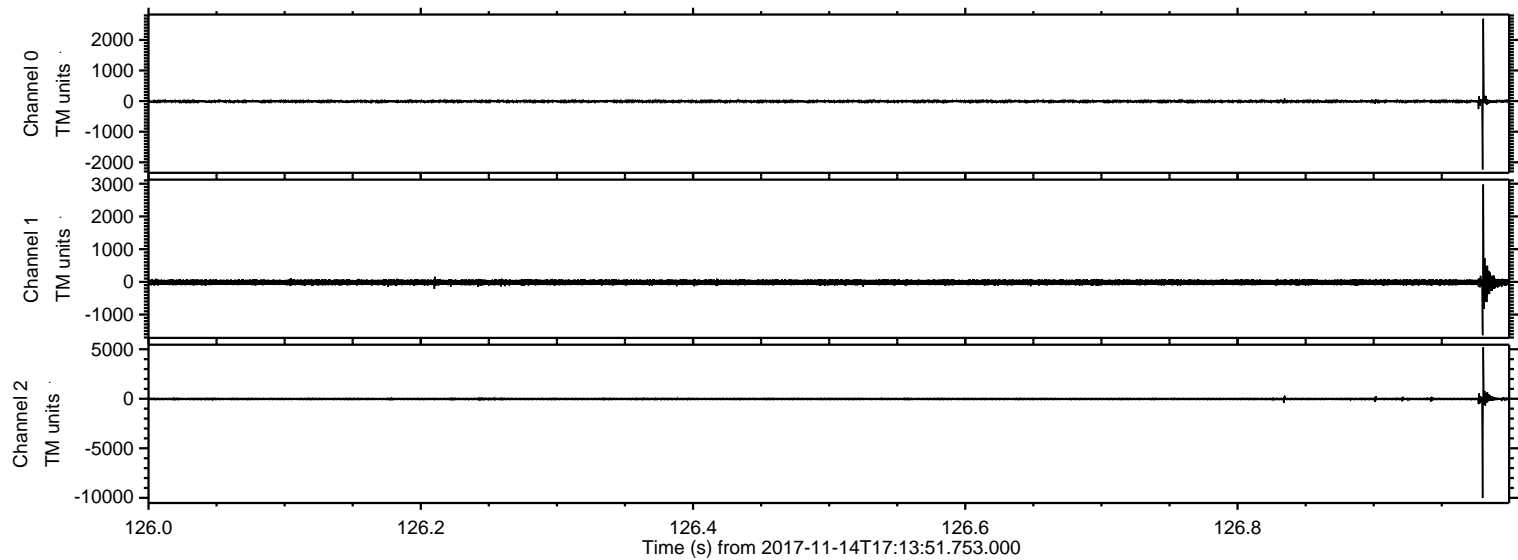
Processed Tue Nov 14 18:23:04 2017 by ELM ver.2012-10-06 from 001\_\_elm20171114\_171350\_\_dat00.bin





ELMAVAN 3D WAVEFORMS (Measured data sampled at 50 kHz) 51000 packets of 144 samples from 2017-11-14T17:13:51.753.000. Part 127/147

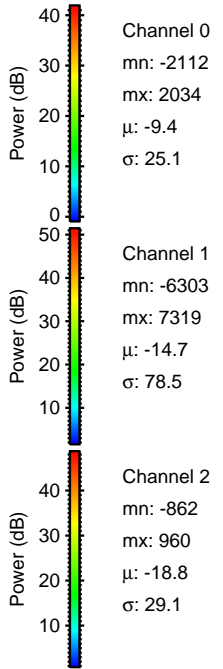
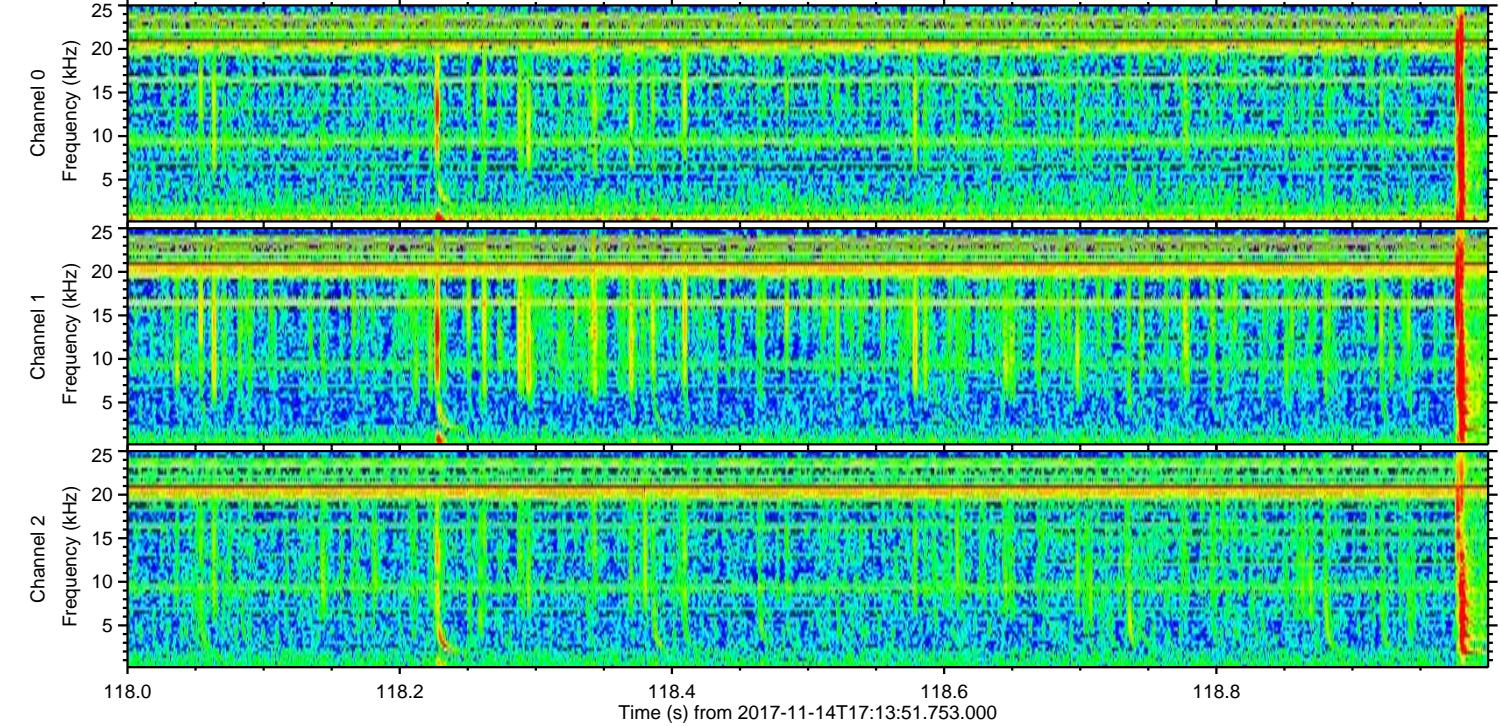
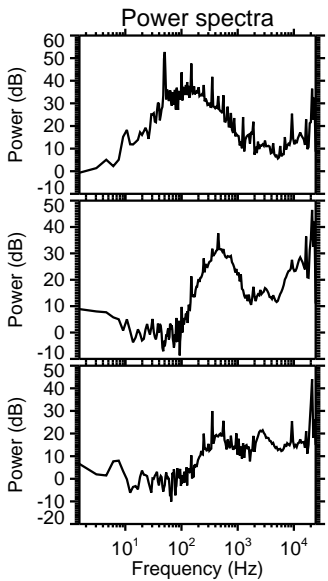
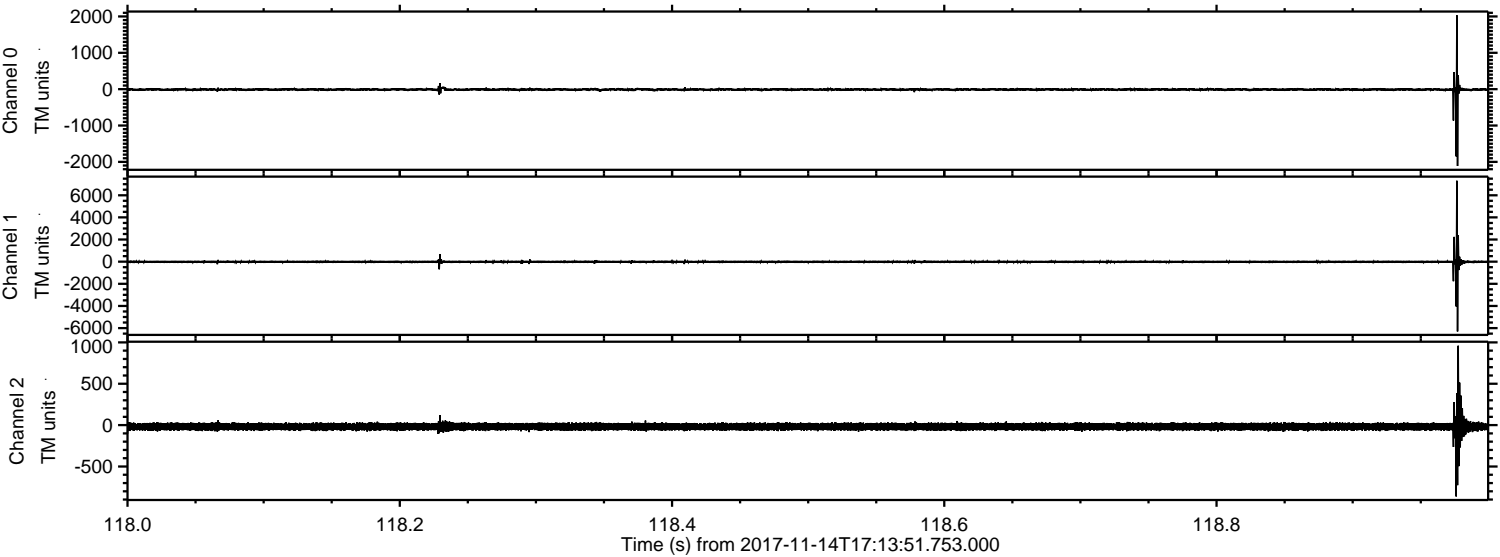
Processed Tue Nov 14 18:23:05 2017 by ELM ver.2012-10-06 from 001\_\_elm20171114\_171350\_\_dat00.bin





ELMAVAN 3D WAVEFORMS (Measured data sampled at 50 kHz) 51000 packets of 144 samples from 2017-11-14T17:13:51.753.000. Part 119/147

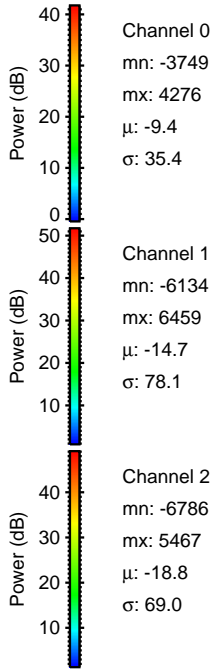
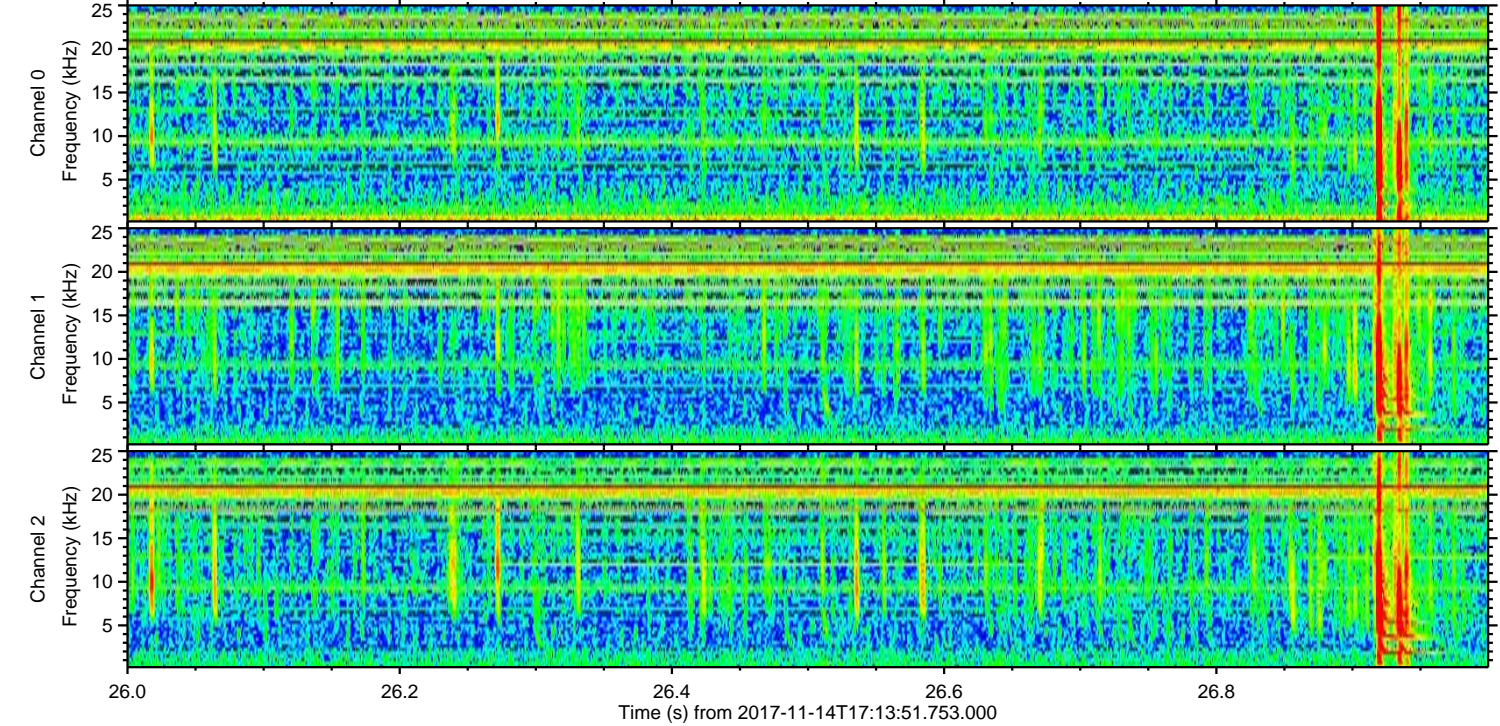
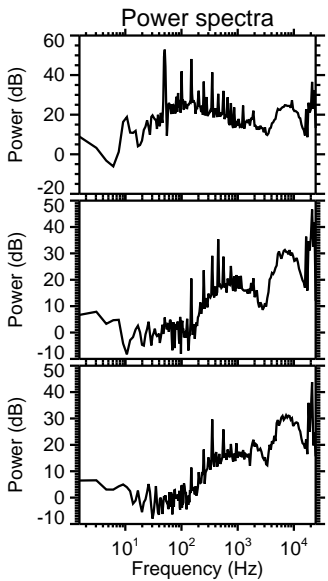
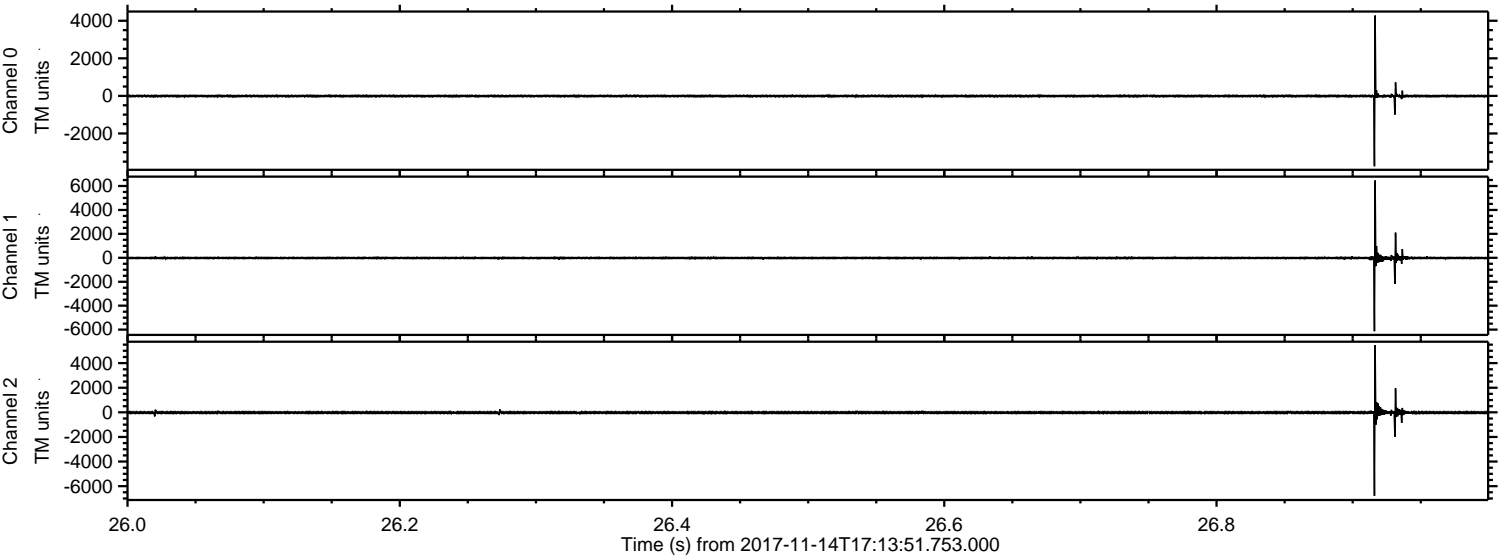
Processed Tue Nov 14 18:23:05 2017 by ELM ver.2012-10-06 from 001\_\_elm20171114\_171350\_\_dat00.bin





ELMAVAN 3D WAVEFORMS (Measured data sampled at 50 kHz) 51000 packets of 144 samples from 2017-11-14T17:13:51.753.000. Part 27/147

Processed Tue Nov 14 18:23:06 2017 by ELM ver.2012-10-06 from 001\_\_elm20171114\_171350\_\_dat00.bin



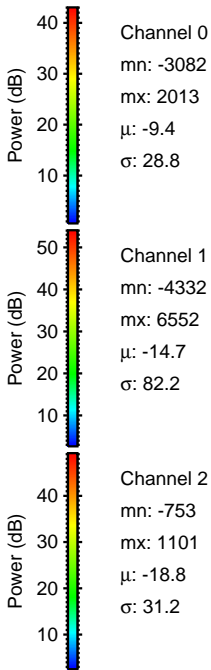
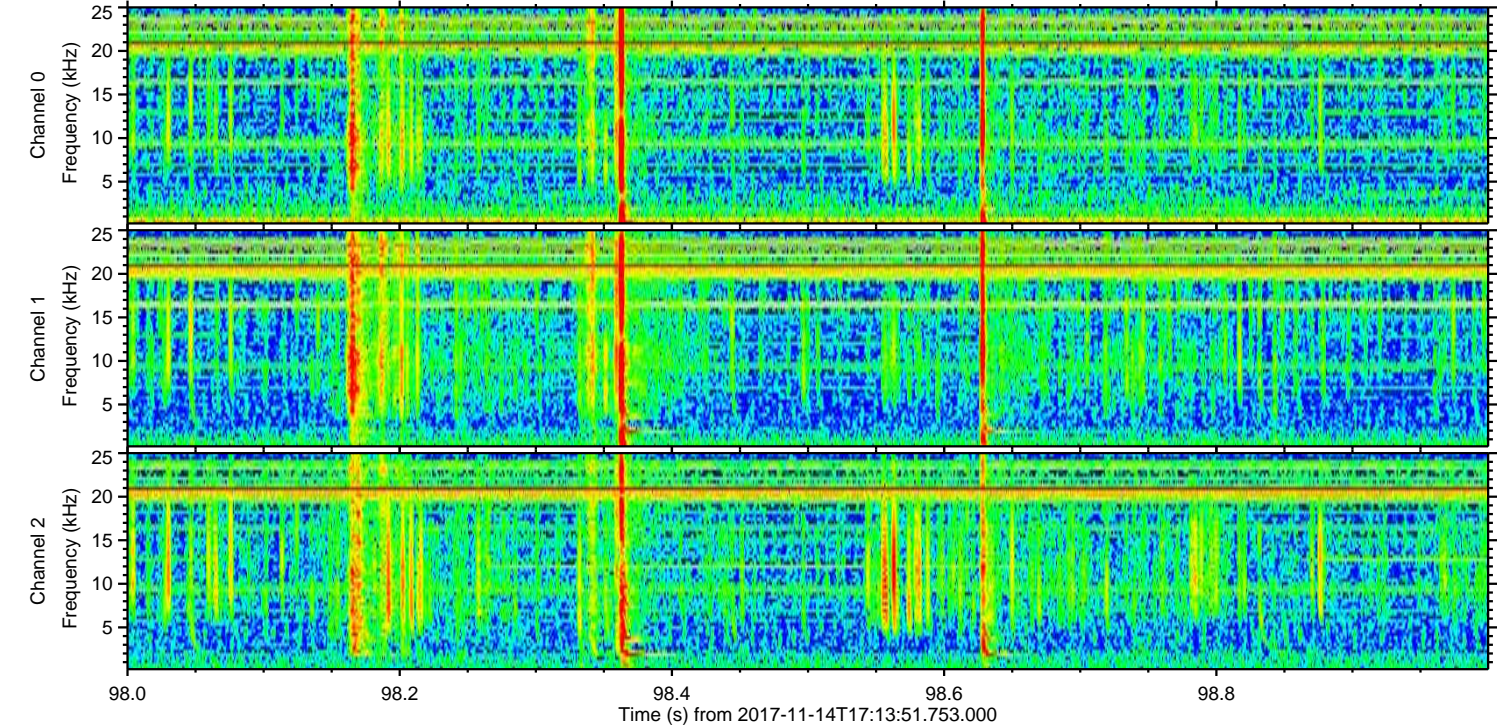
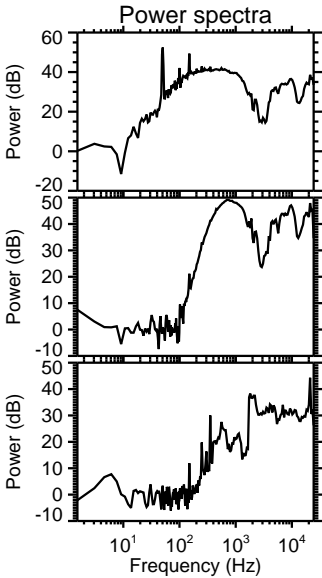
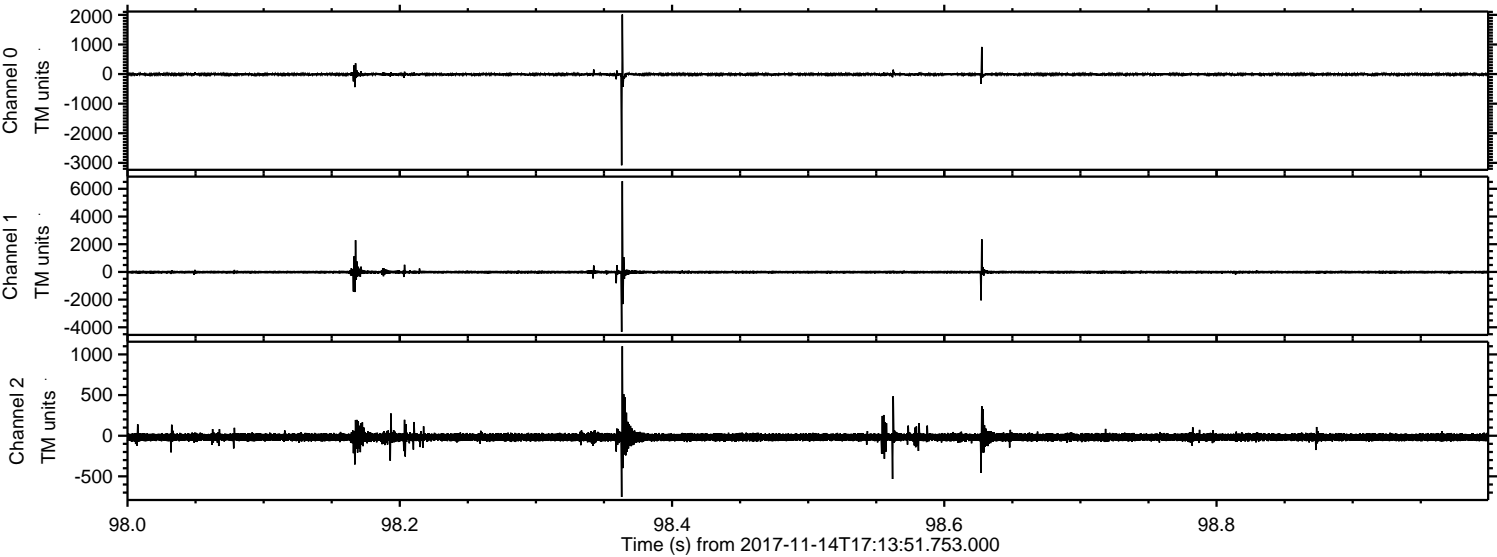
Channel 0  
mn: -3749  
mx: 4276  
 $\mu$ : -9.4  
 $\sigma$ : 35.4

Channel 1  
mn: -6134  
mx: 6459  
 $\mu$ : -14.7  
 $\sigma$ : 78.1

Channel 2  
mn: -6786  
mx: 5467  
 $\mu$ : -18.8  
 $\sigma$ : 69.0

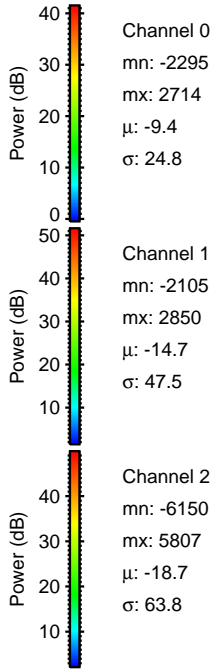
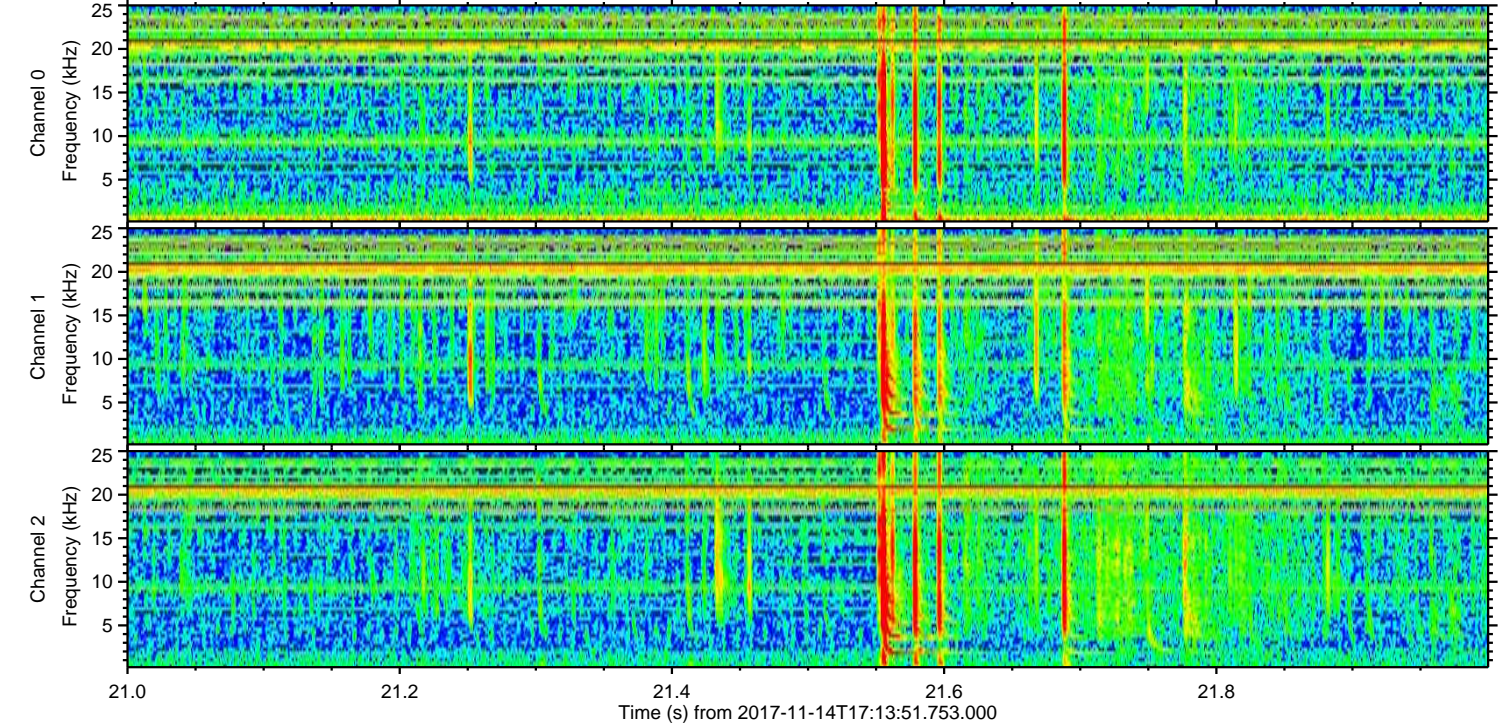
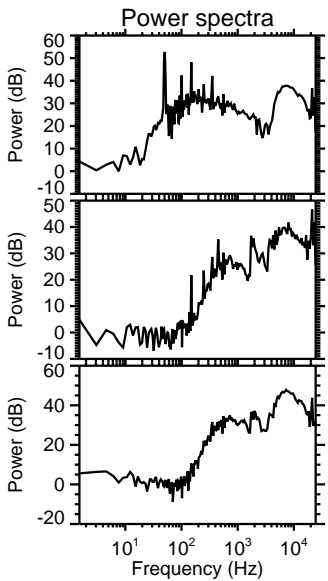
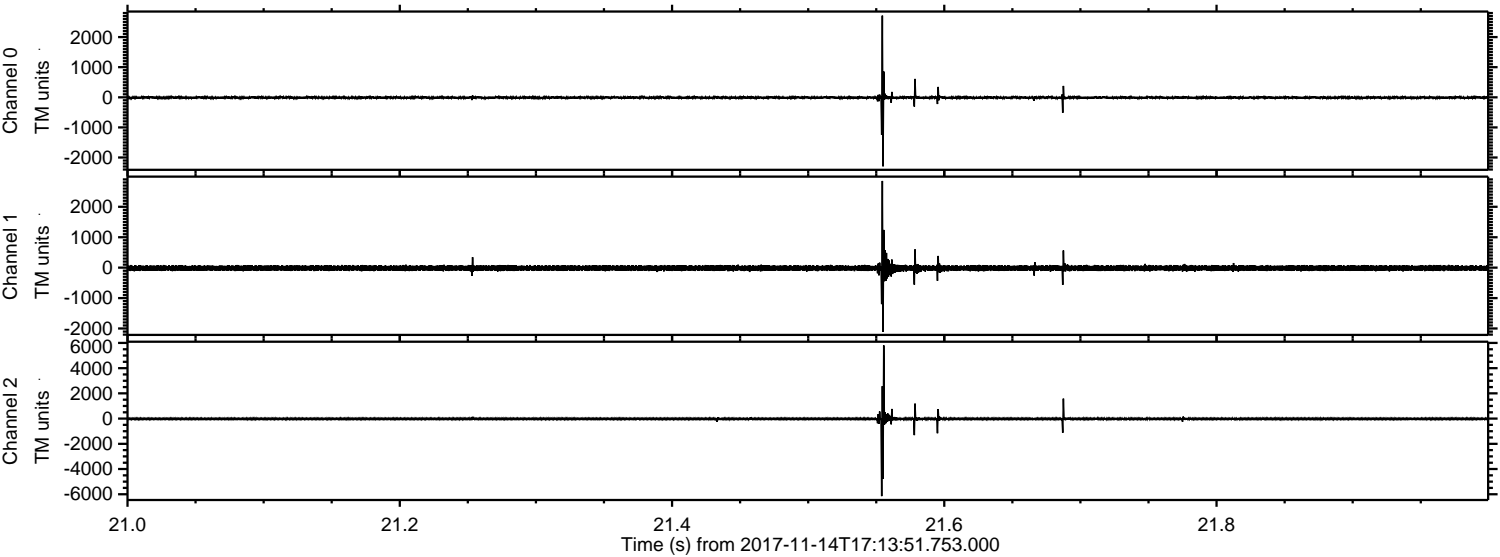


Processed Tue Nov 14 18:23:07 2017 by ELM ver.2012-10-06 from 001\_\_elm20171114\_171350\_\_dat00.bin





Processed Tue Nov 14 18:23:07 2017 by ELM ver.2012-10-06 from 001\_\_elm20171114\_171350\_\_dat00.bin



Channel 0  
mn: -2295  
mx: 2714  
 $\mu$ : -9.4  
 $\sigma$ : 24.8

Channel 1  
mn: -2105  
mx: 2850  
 $\mu$ : -14.7  
 $\sigma$ : 47.5

Channel 2  
mn: -6150  
mx: 5807  
 $\mu$ : -18.7  
 $\sigma$ : 63.8



Processed Tue Nov 14 18:23:08 2017 by ELM ver.2012-10-06 from 001\_\_elm20171114\_171350\_\_dat00.bin

