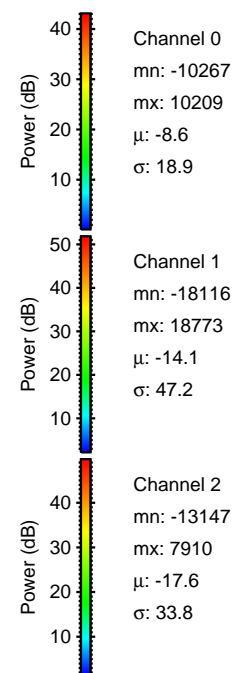
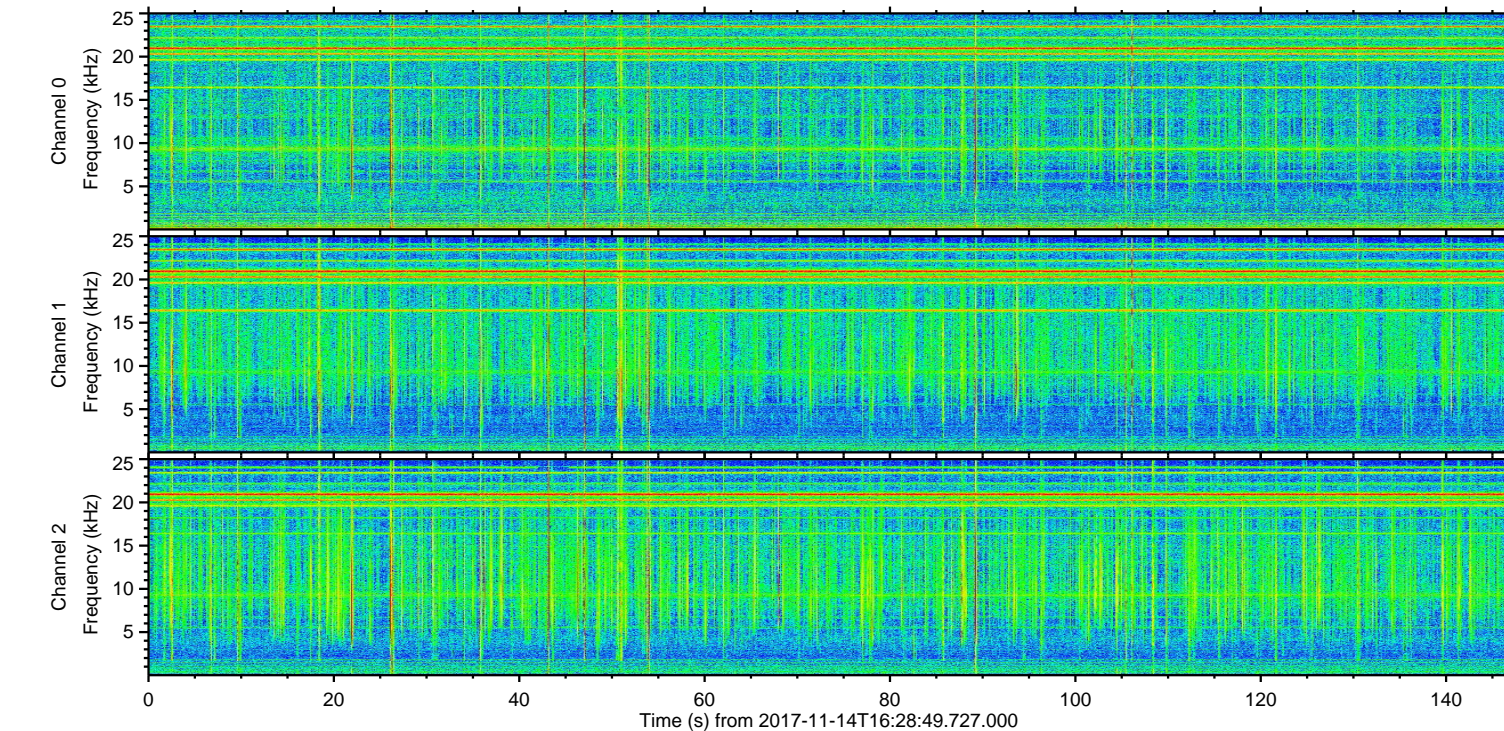
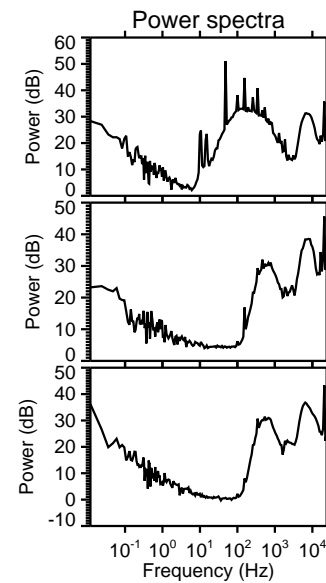
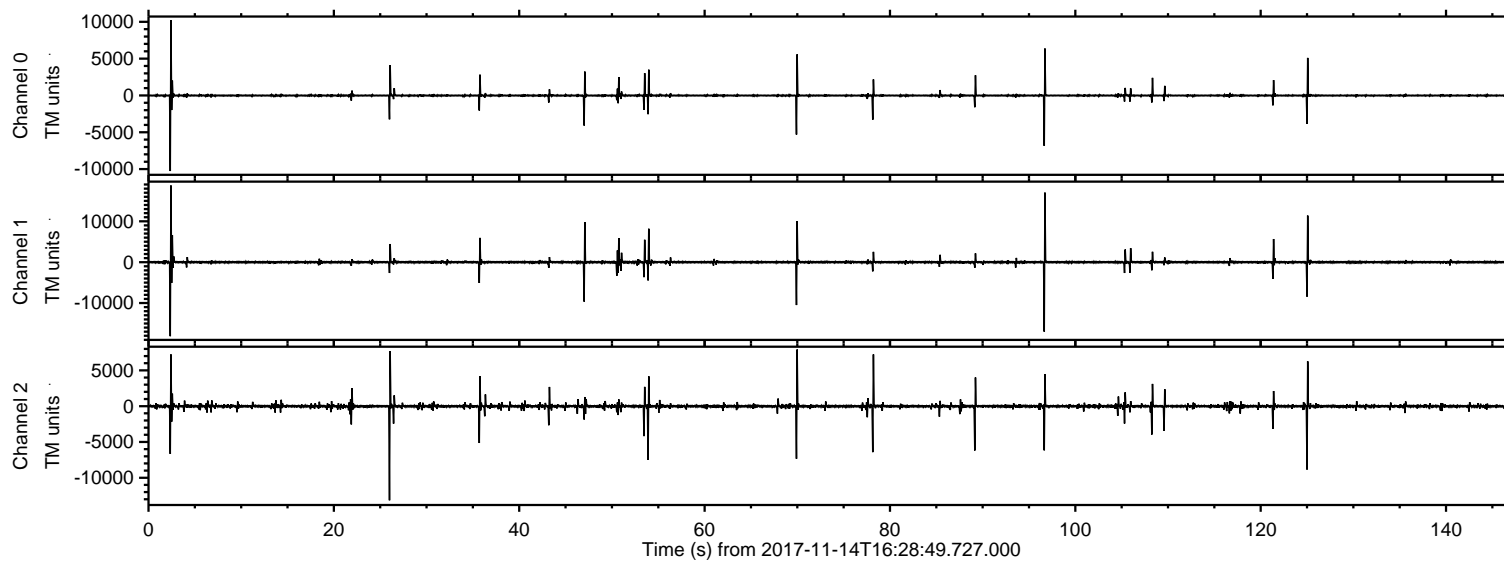


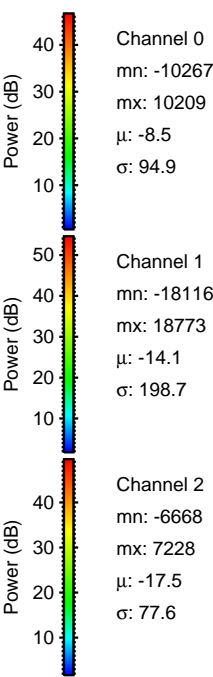
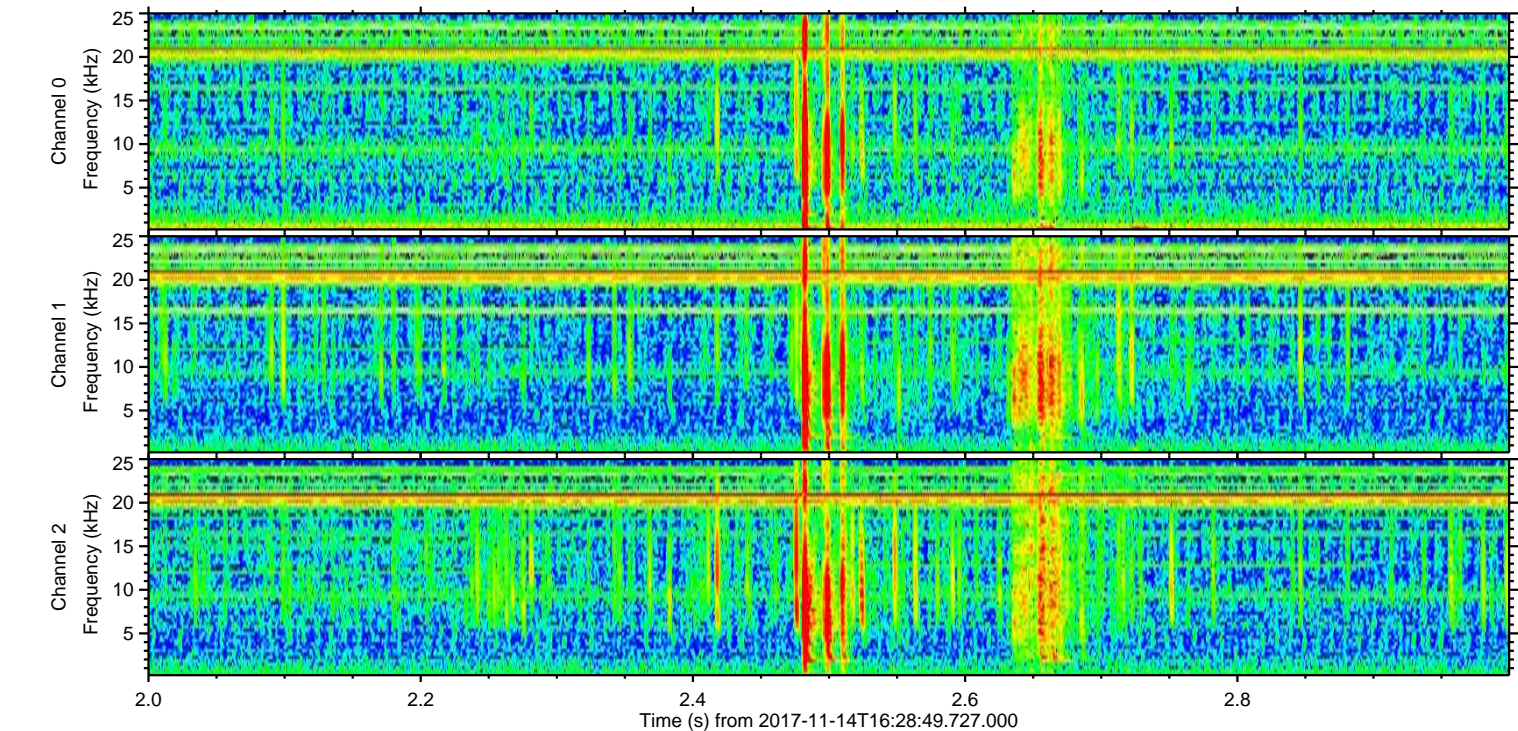
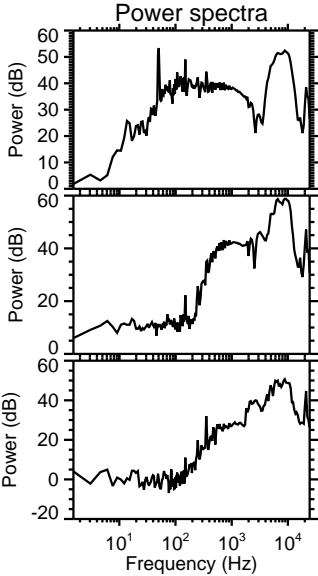
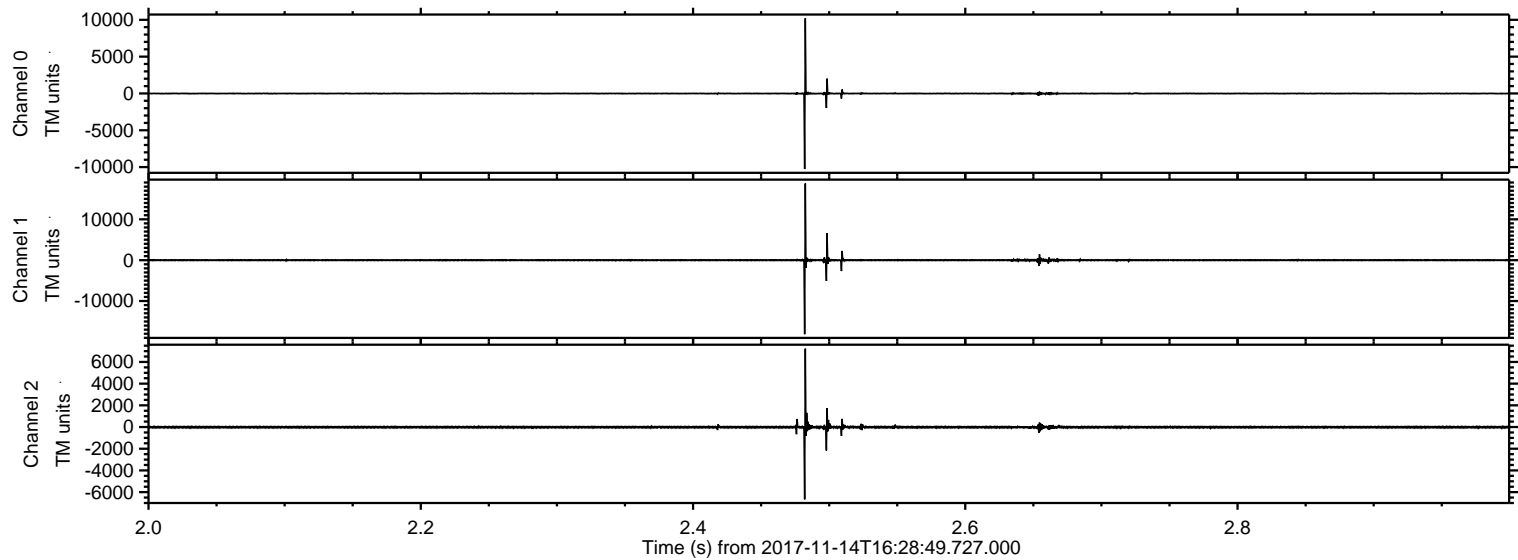
ELMAVAN 3D WAVEFORMS (Measured data sampled at 50 kHz) 51000 packets of 144 samples from 2017-11-14T16:28:49.727.000.

Processed Tue Nov 14 17:37:51 2017 by ELM ver.2012-10-06 from 001__elm20171114_162848__dat00.bin

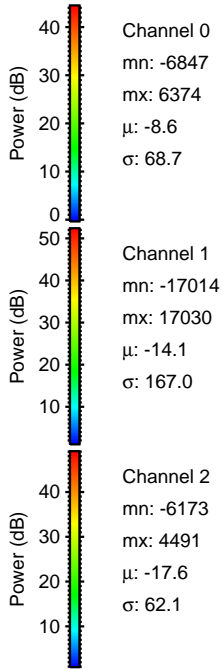
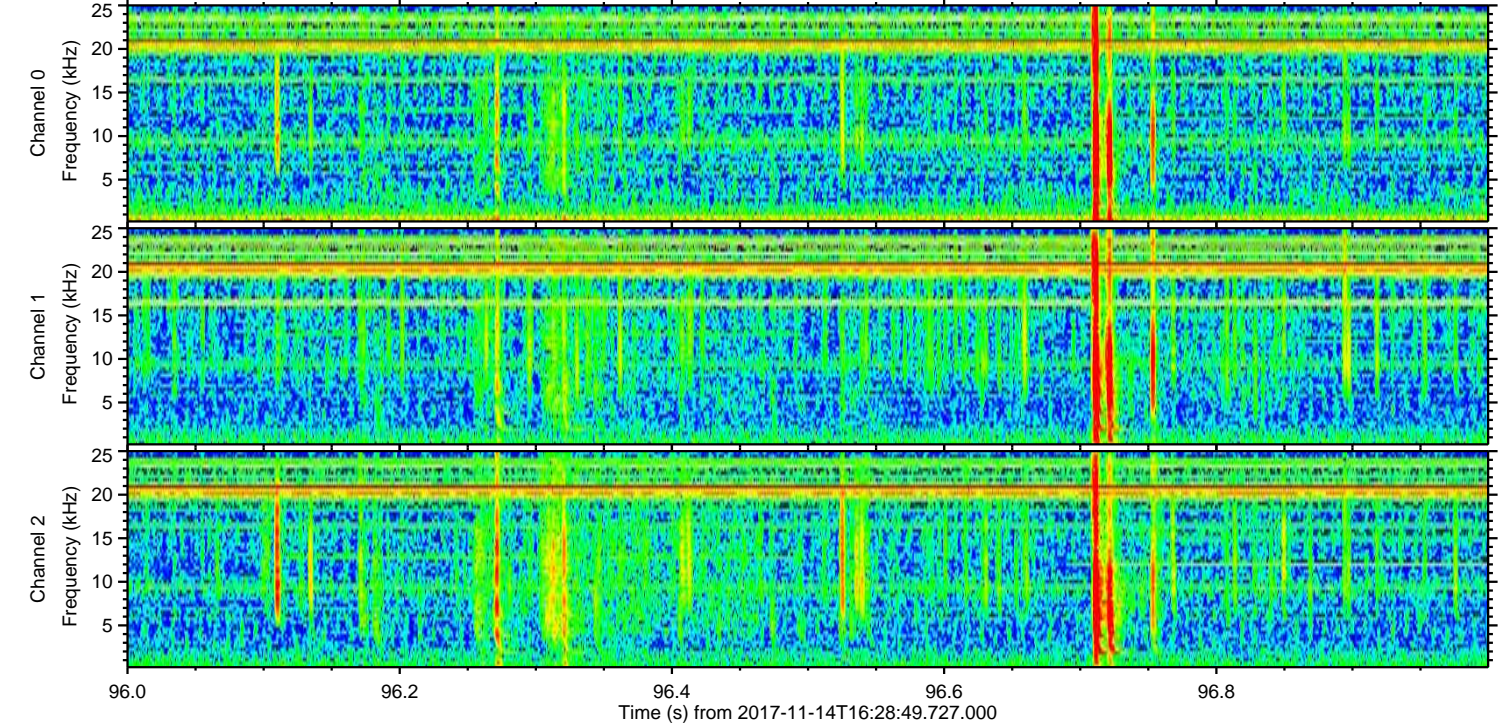
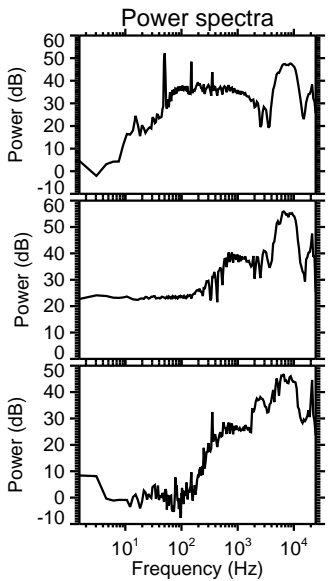
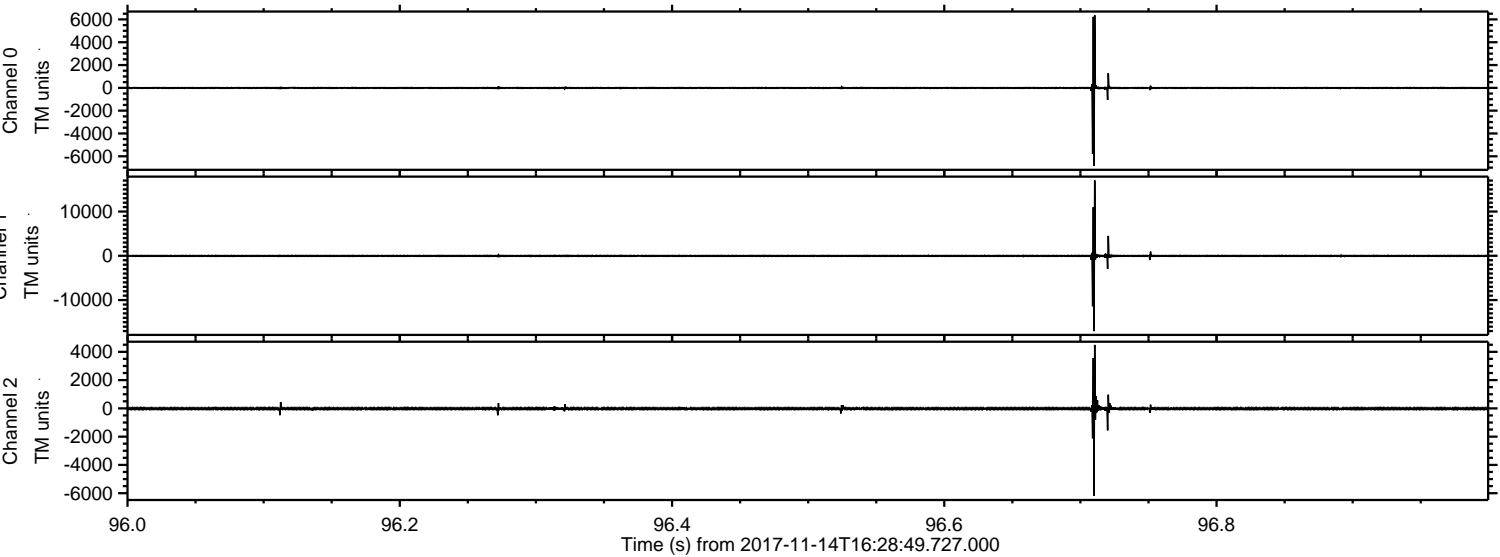


ELMAVAN 3D WAVEFORMS (Measured data sampled at 50 kHz) 51000 packets of 144 samples from 2017-11-14T16:28:49.727.000. Part 3/147

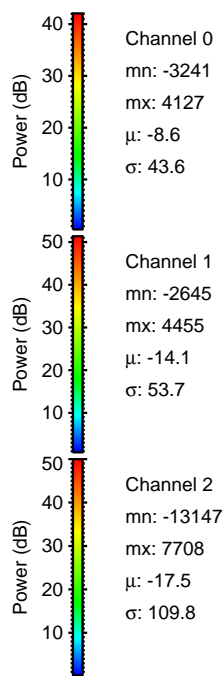
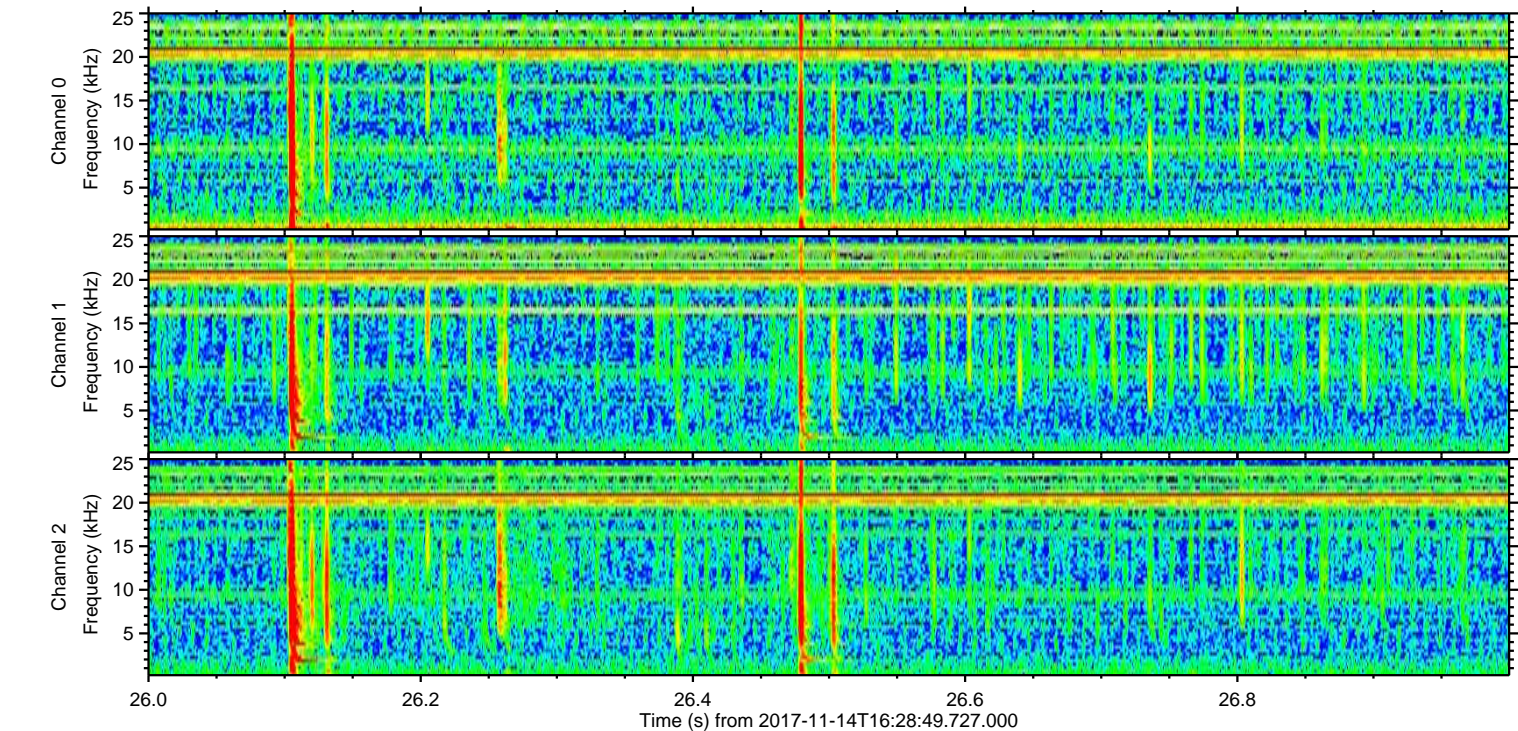
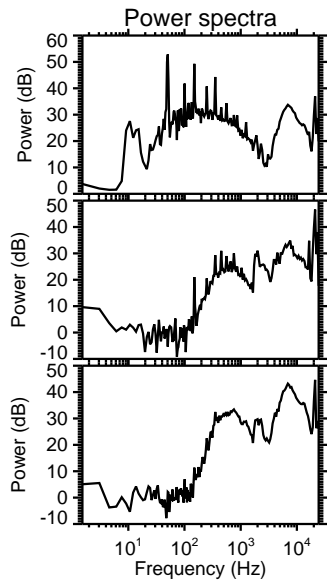
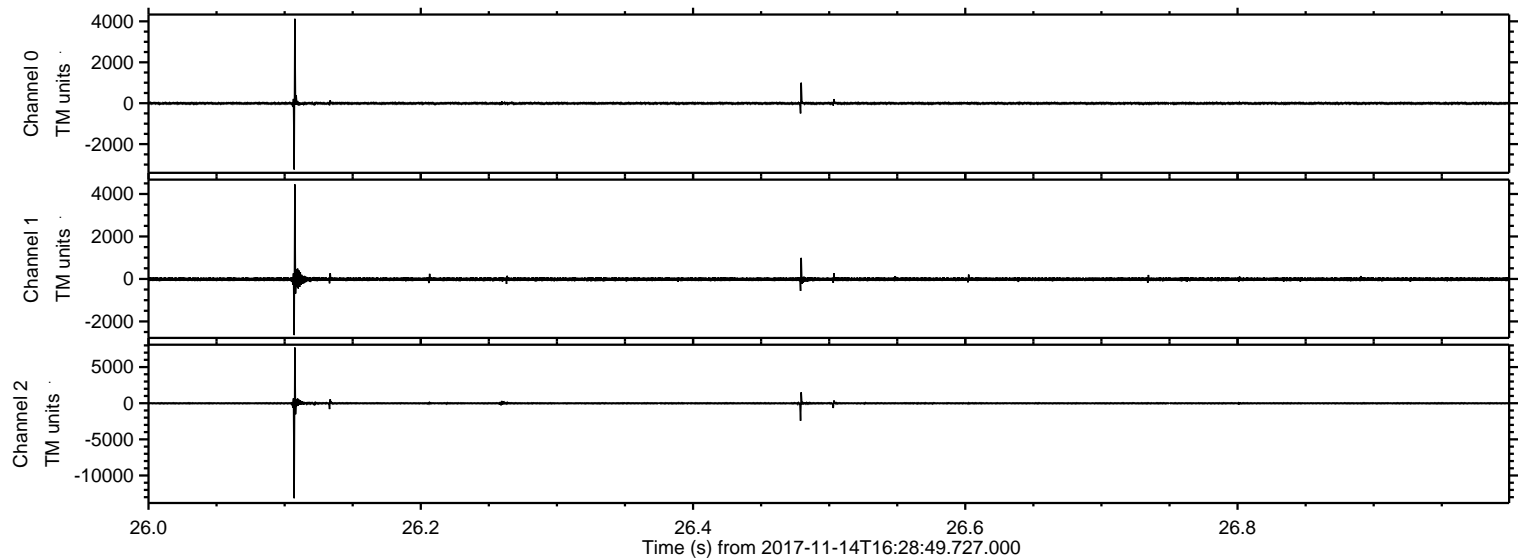
Processed Tue Nov 14 17:37:57 2017 by ELM ver.2012-10-06 from 001__elm20171114_162848__dat00.bin



Processed Tue Nov 14 17:37:58 2017 by ELM ver.2012-10-06 from 001__elm20171114_162848__dat00.bin

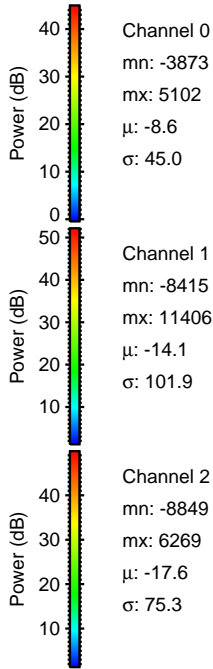
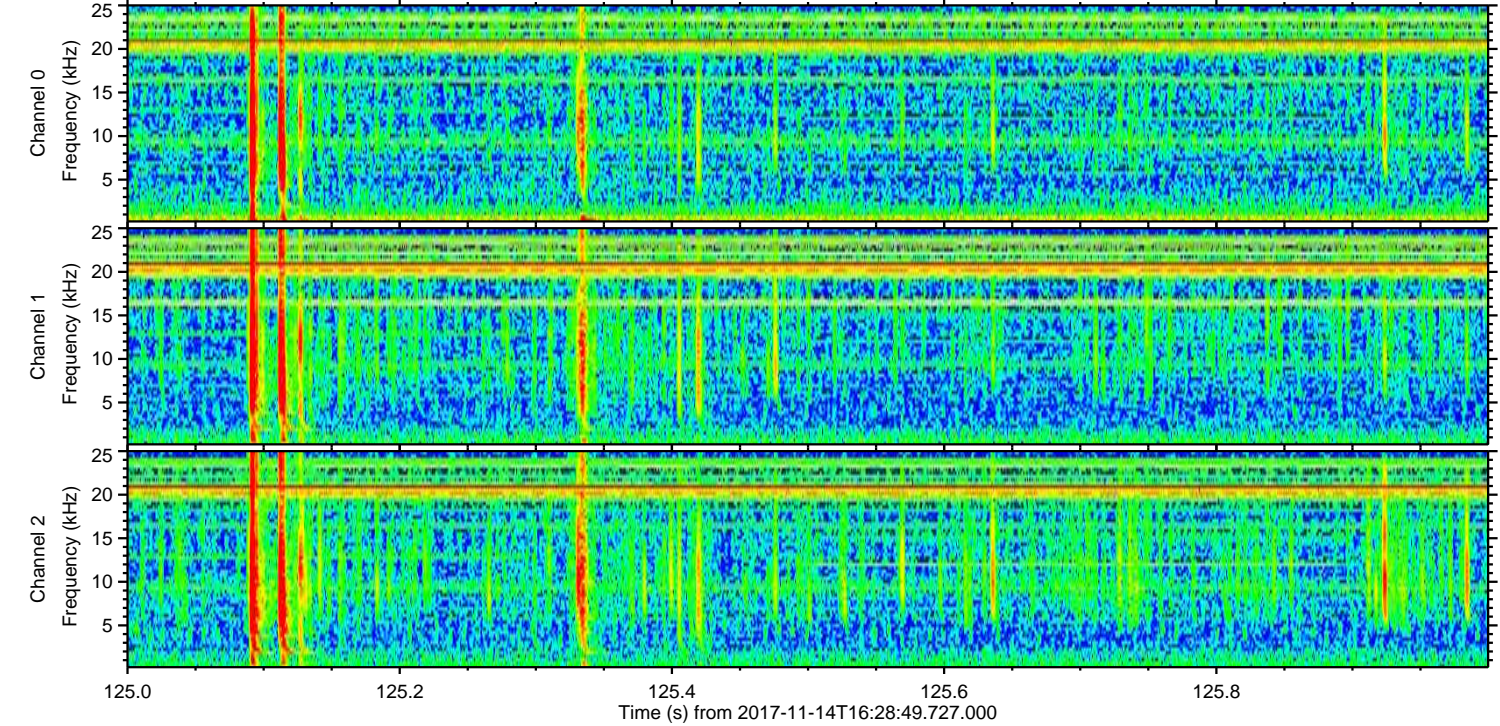
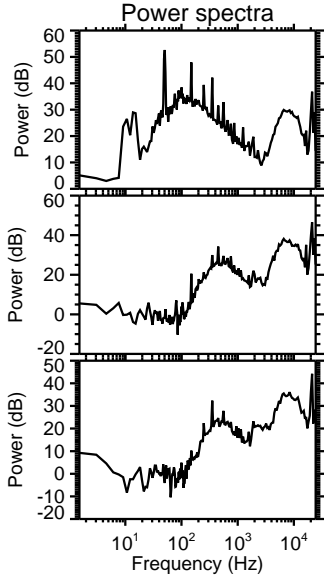
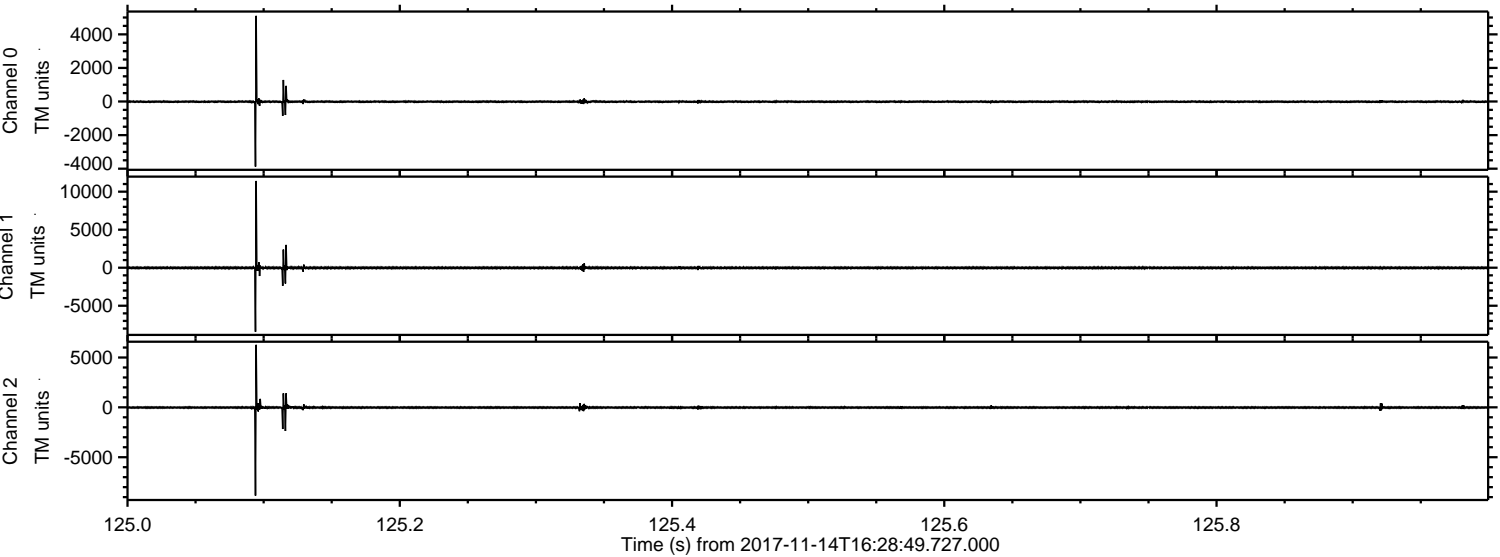


Processed Tue Nov 14 17:37:59 2017 by ELM ver.2012-10-06 from 001__elm20171114_162848__dat00.bin

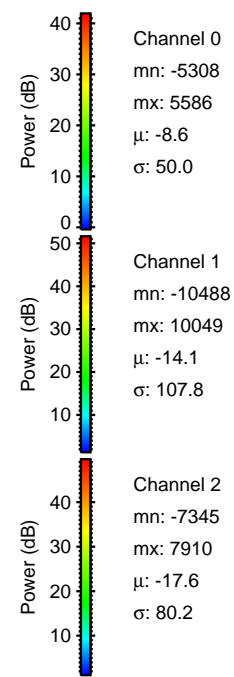
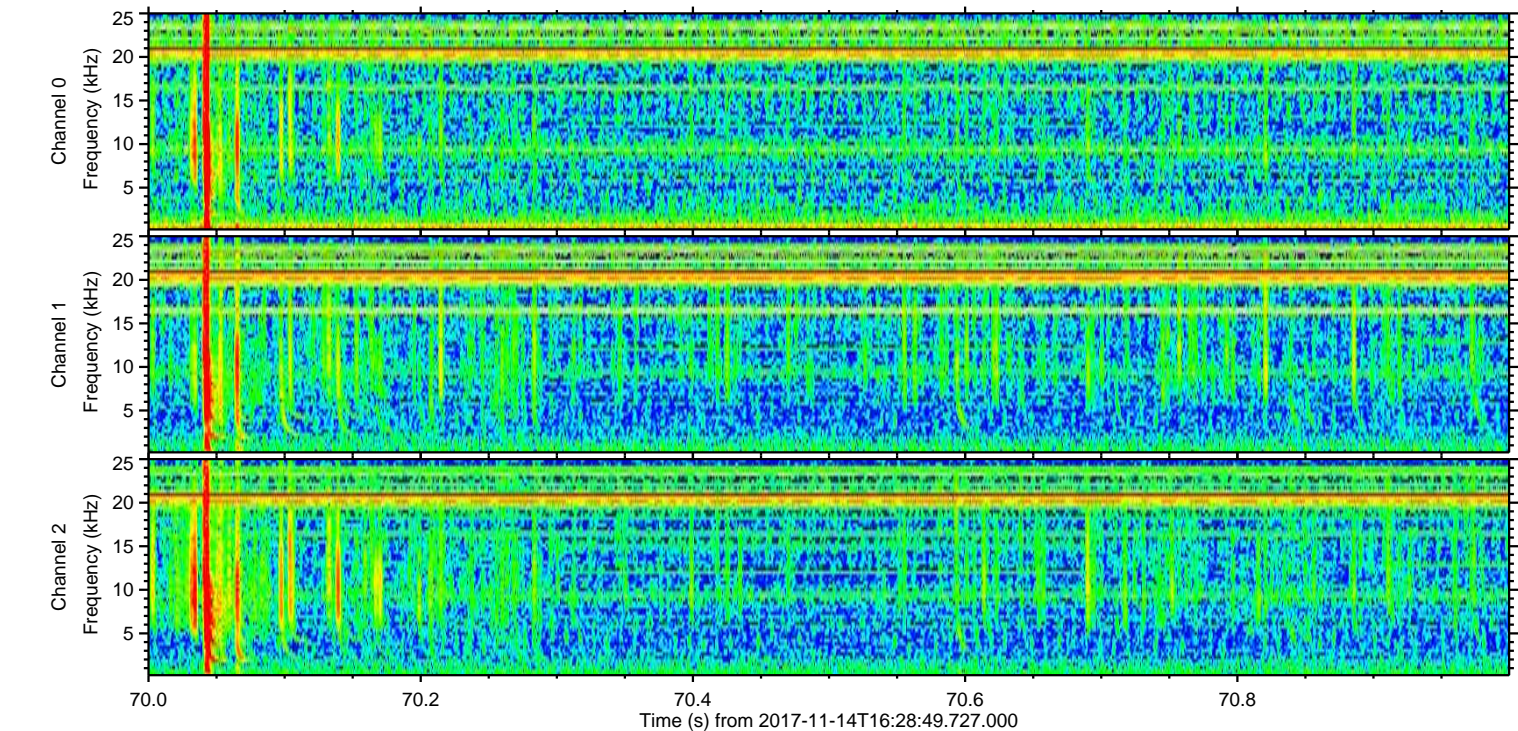
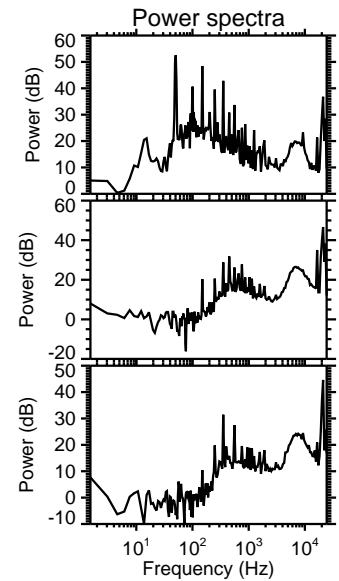
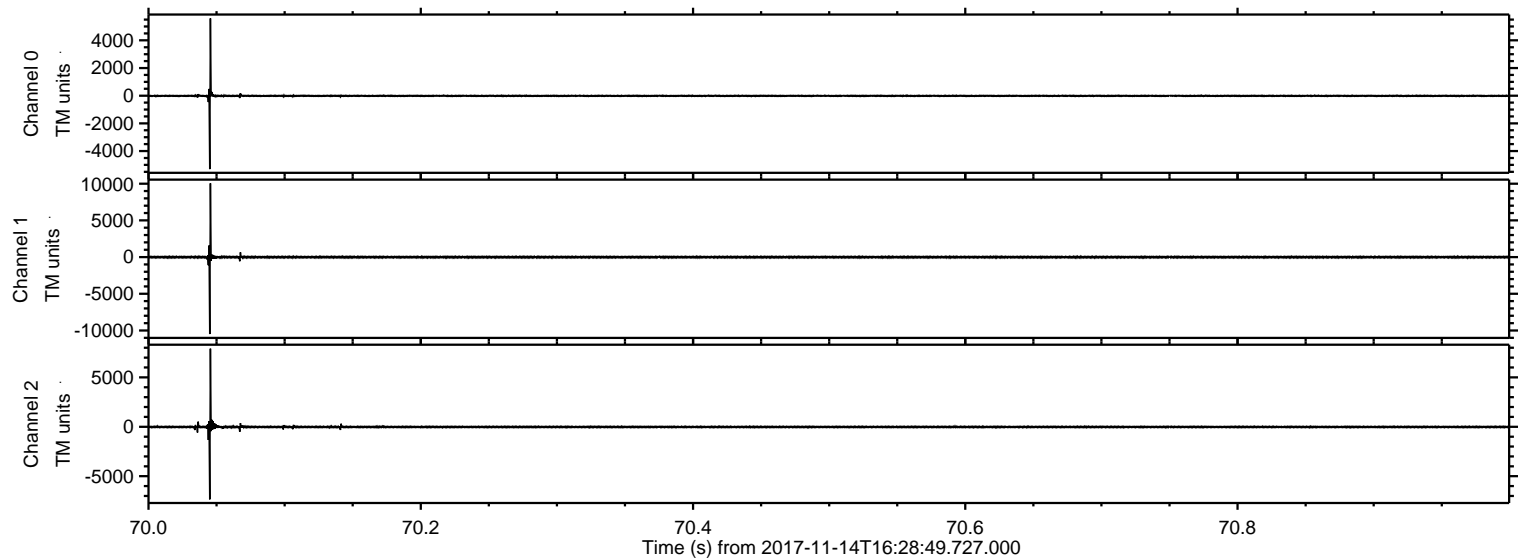


ELMAVAN 3D WAVEFORMS (Measured data sampled at 50 kHz) 51000 packets of 144 samples from 2017-11-14T16:28:49.727.000. Part 126/147

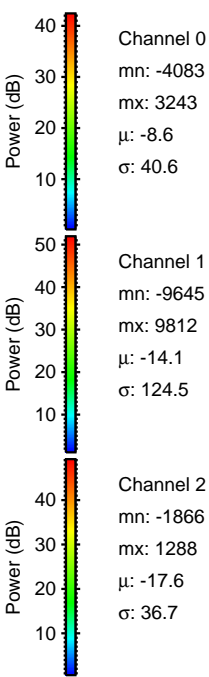
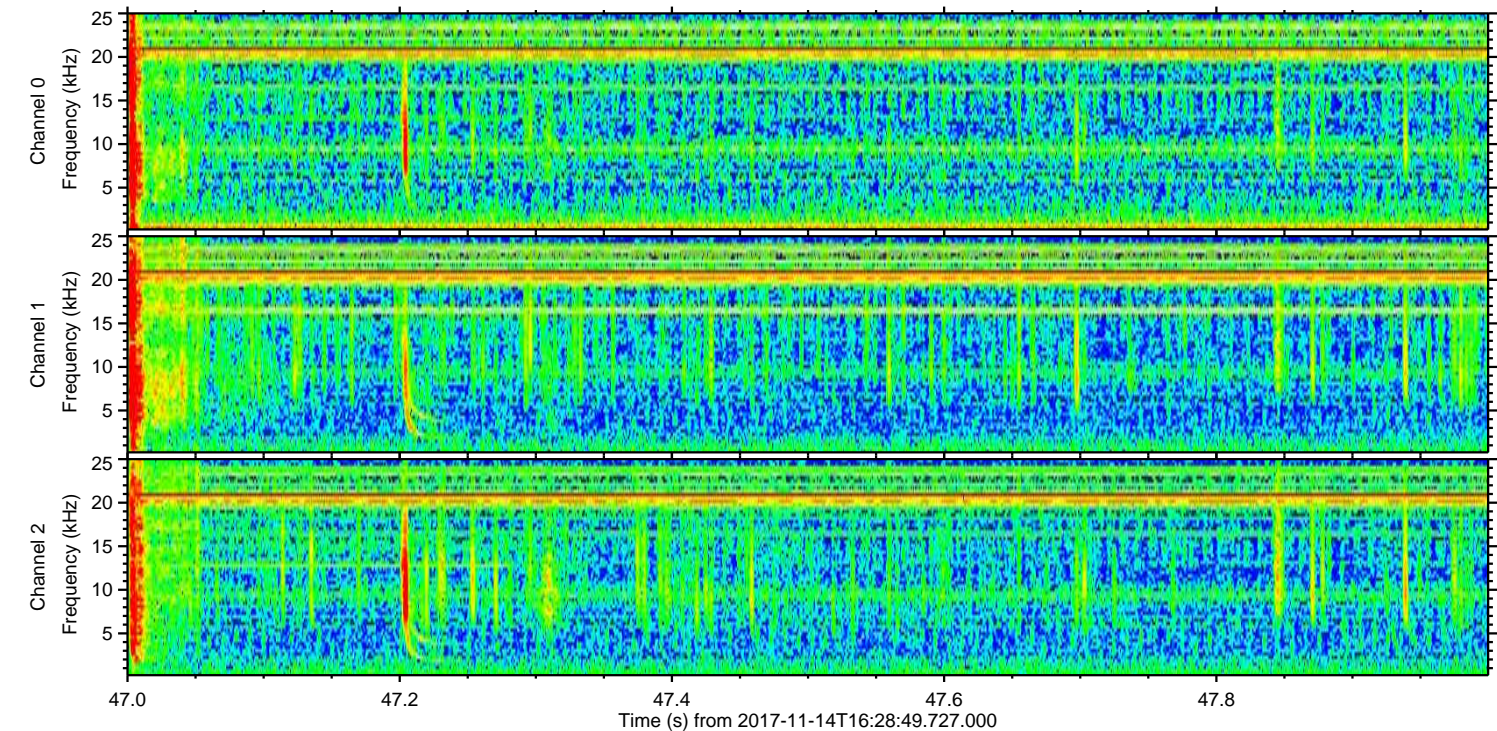
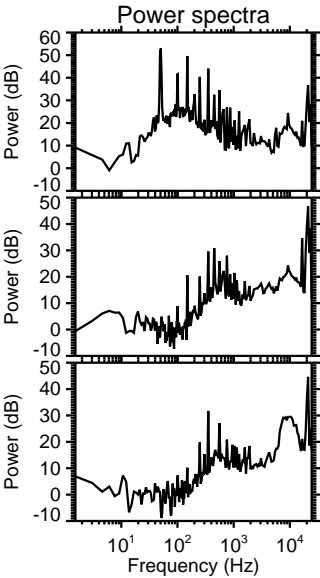
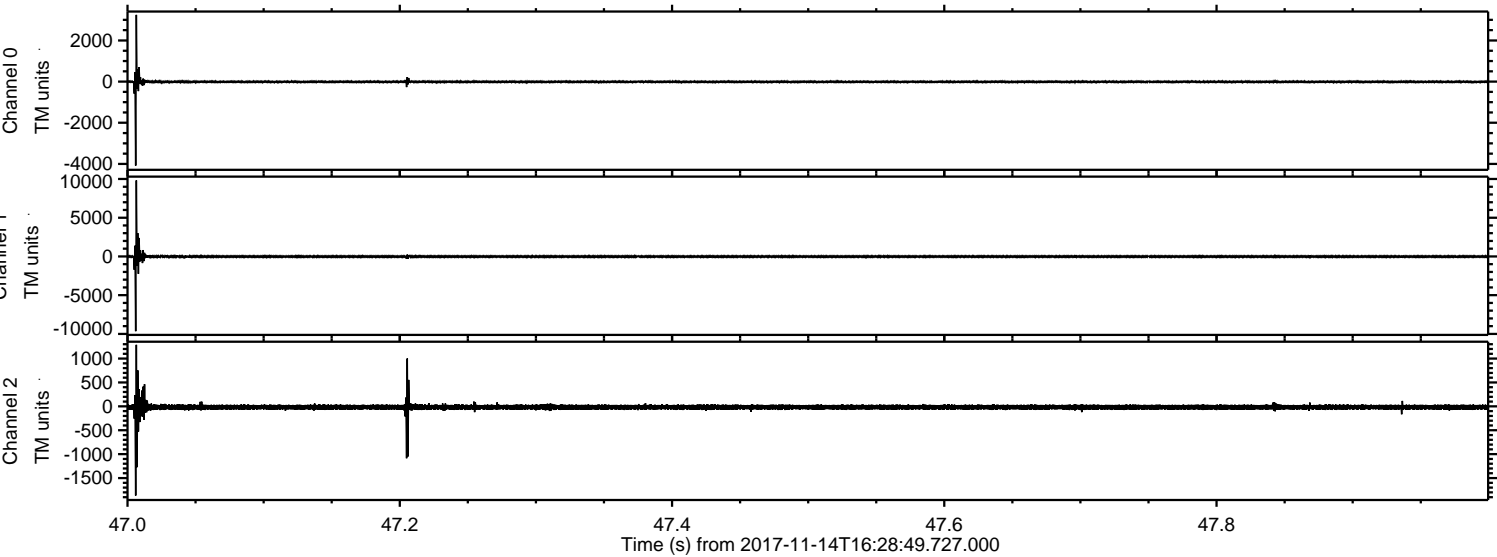
Processed Tue Nov 14 17:38:00 2017 by ELM ver.2012-10-06 from 001__elm20171114_162848__dat00.bin



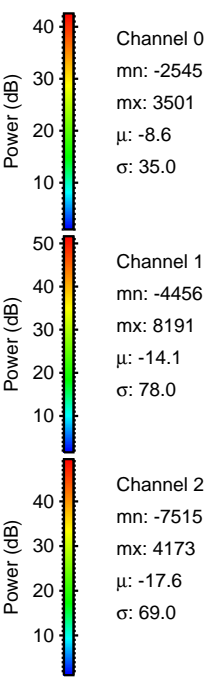
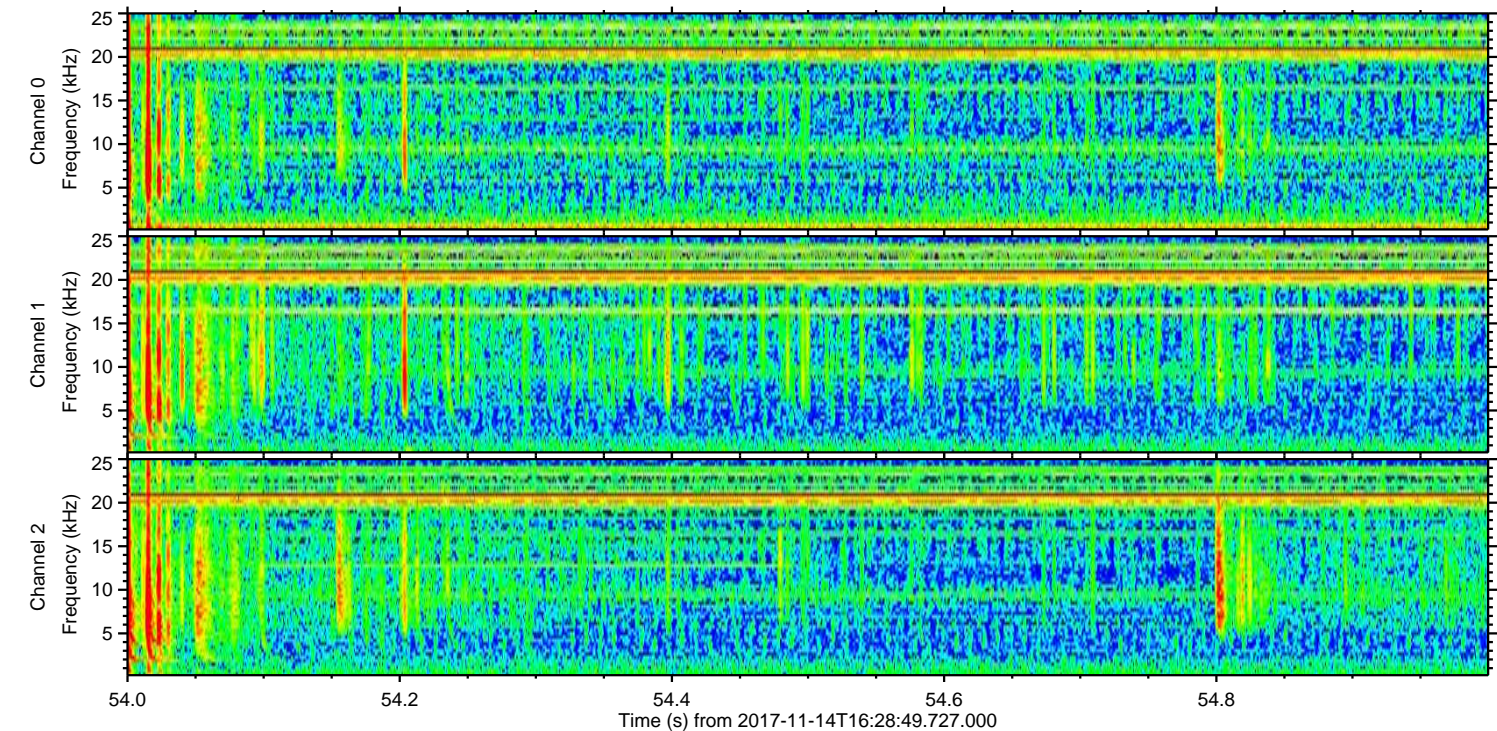
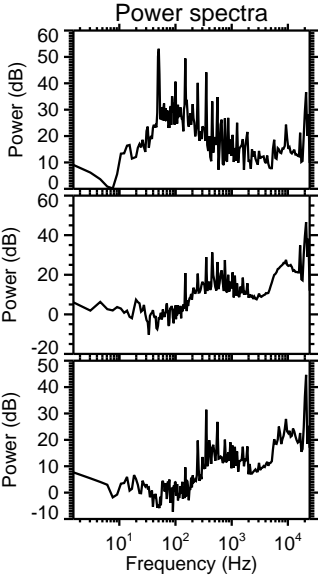
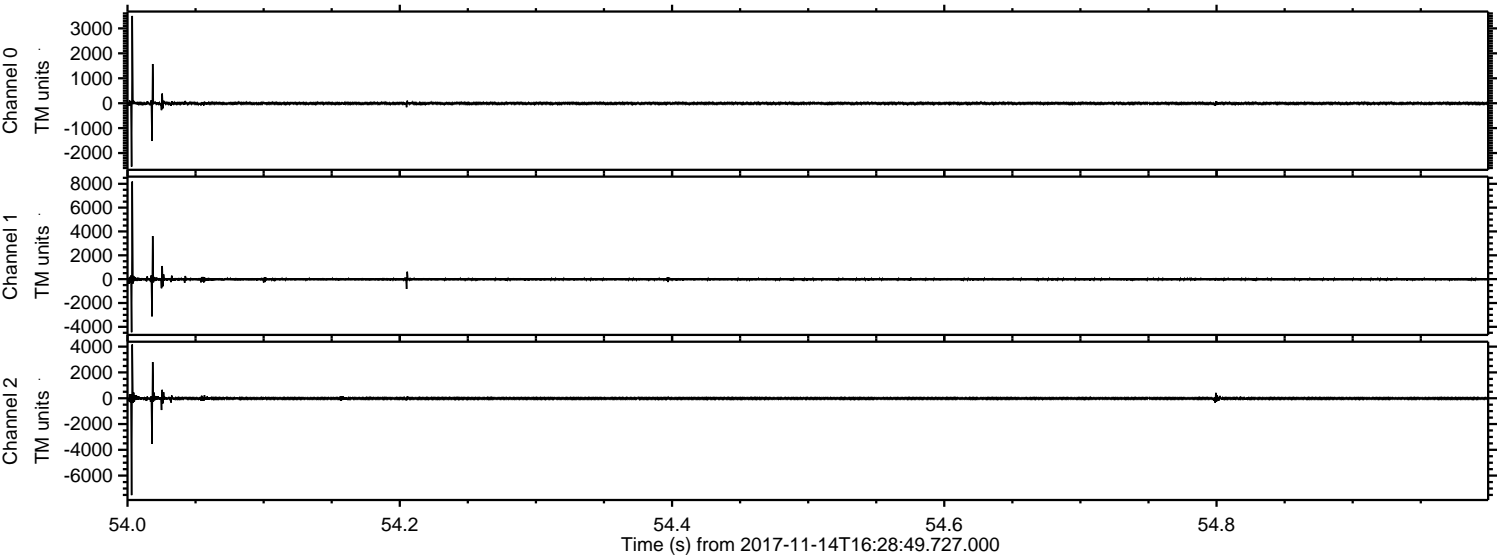
Processed Tue Nov 14 17:38:00 2017 by ELM ver.2012-10-06 from 001__elm20171114_162848__dat00.bin



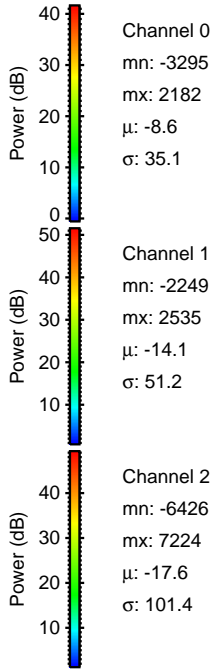
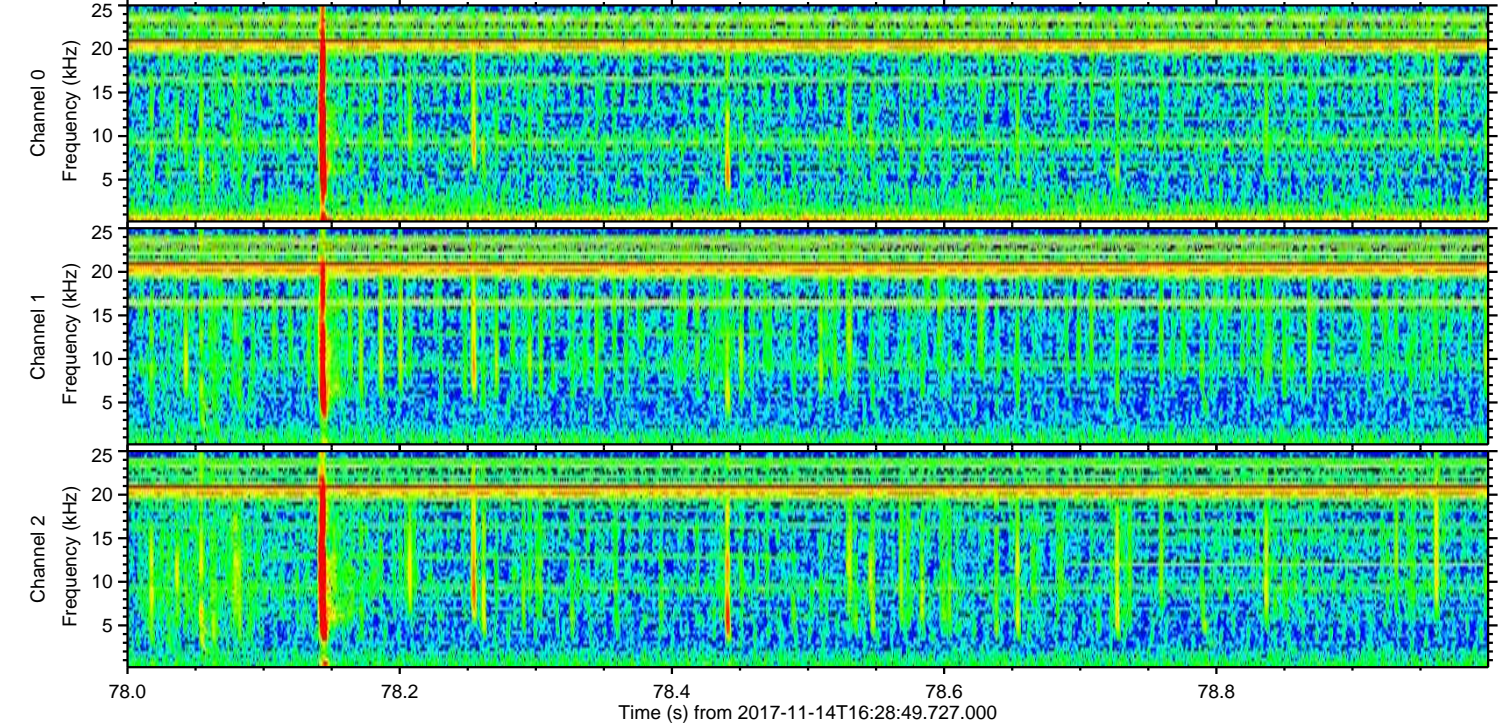
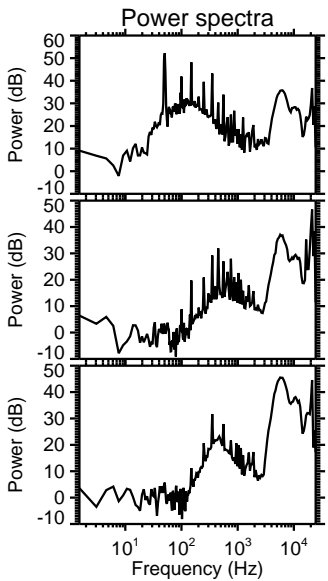
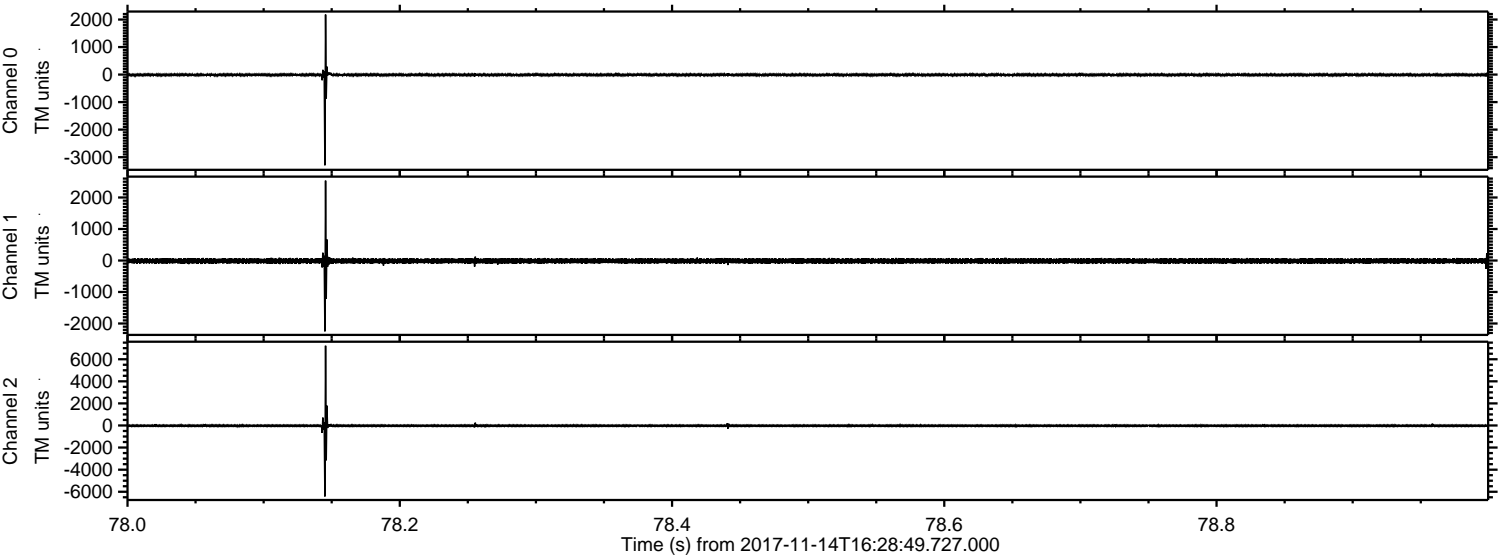
Processed Tue Nov 14 17:38:01 2017 by ELM ver.2012-10-06 from 001__elm20171114_162848__dat00.bin



Processed Tue Nov 14 17:38:02 2017 by ELM ver.2012-10-06 from 001__elm20171114_162848__dat00.bin



Processed Tue Nov 14 17:38:03 2017 by ELM ver.2012-10-06 from 001__elm20171114_162848__dat00.bin

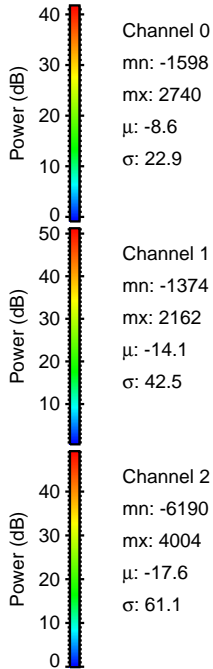
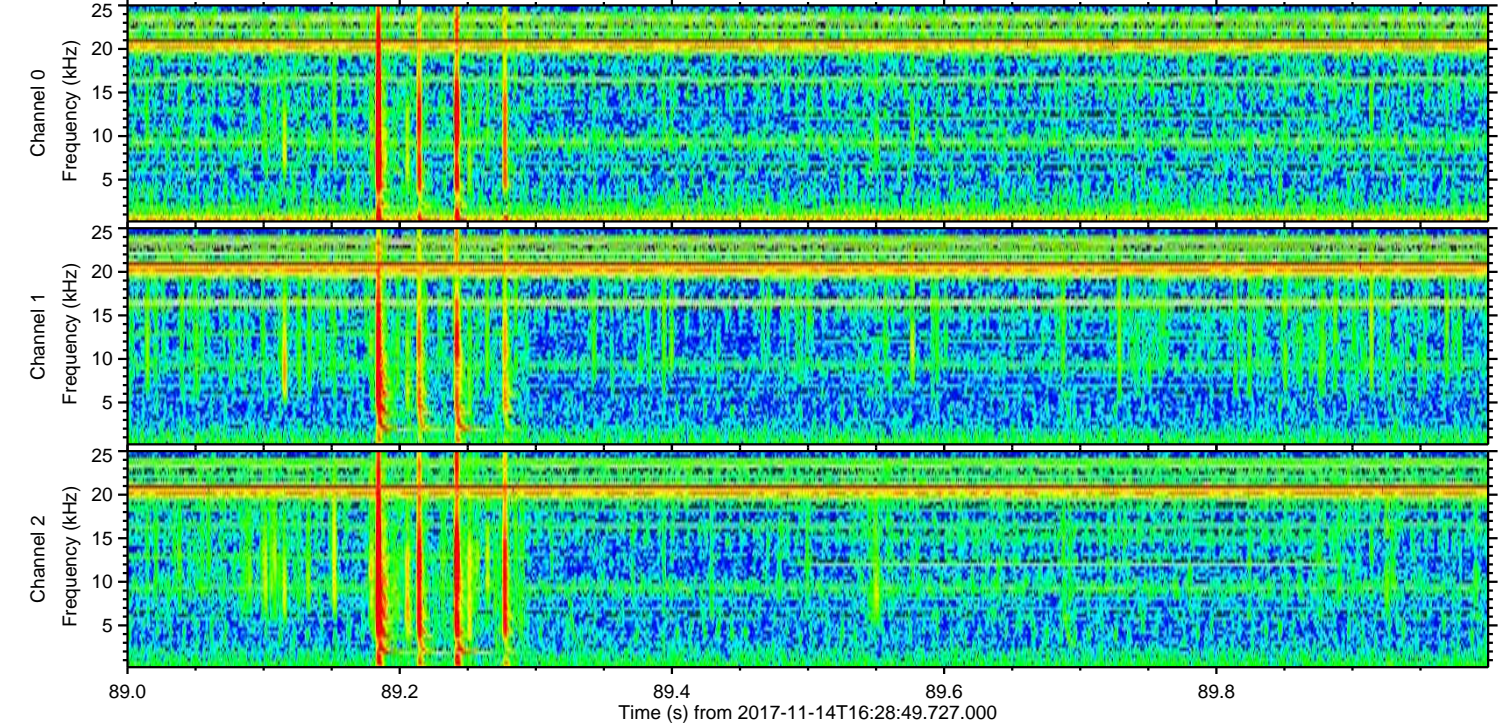
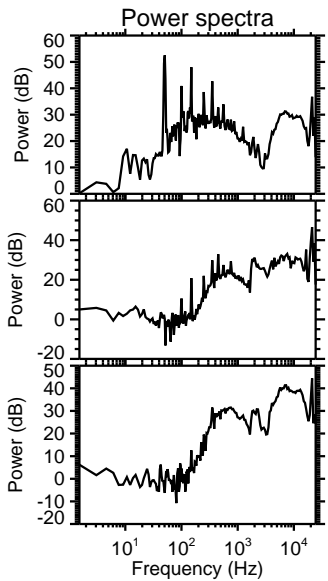
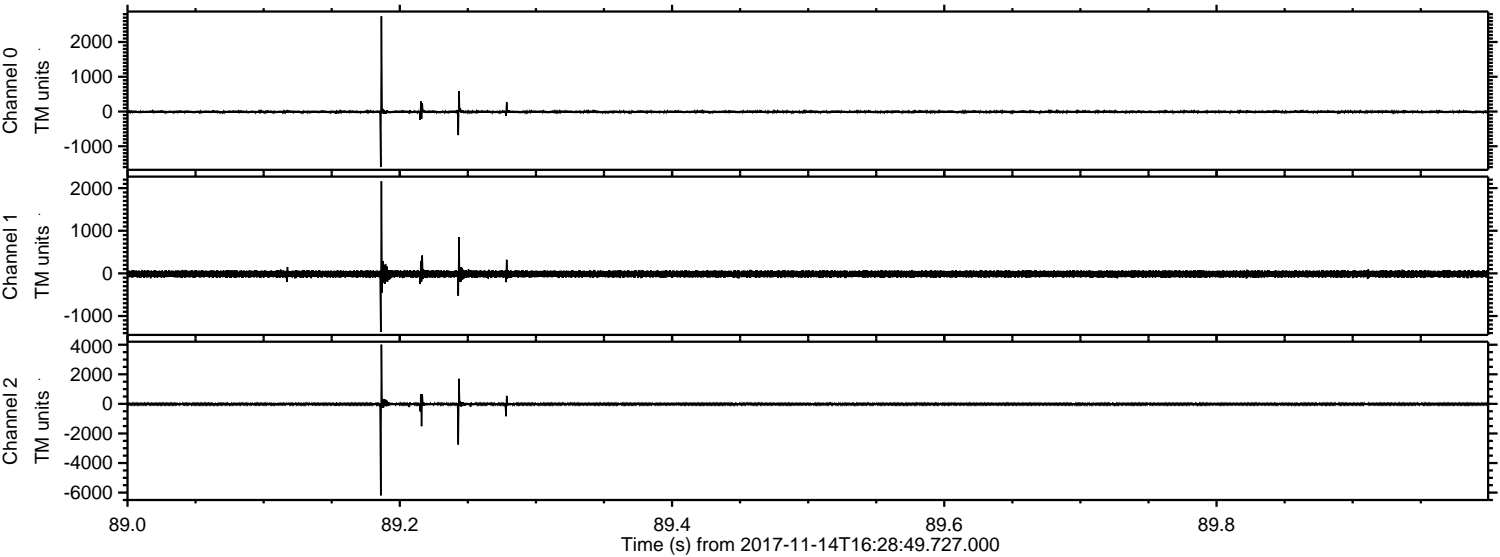


Channel 0
mn: -3295
mx: 2182
 μ : -8.6
 σ : 35.1

Channel 1
mn: -2249
mx: 2535
 μ : -14.1
 σ : 51.2

Channel 2
mn: -6426
mx: 7224
 μ : -17.6
 σ : 101.4

Processed Tue Nov 14 17:38:03 2017 by ELM ver.2012-10-06 from 001__elm20171114_162848__dat00.bin



Processed Tue Nov 14 17:38:04 2017 by ELM ver.2012-10-06 from 001__elm20171114_162848__dat00.bin

