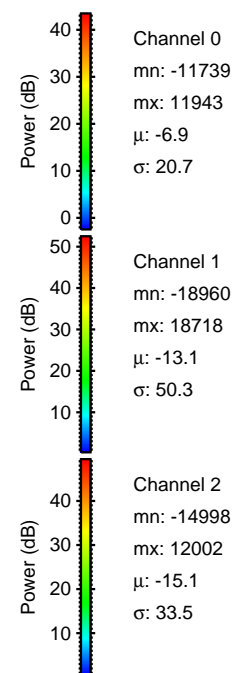
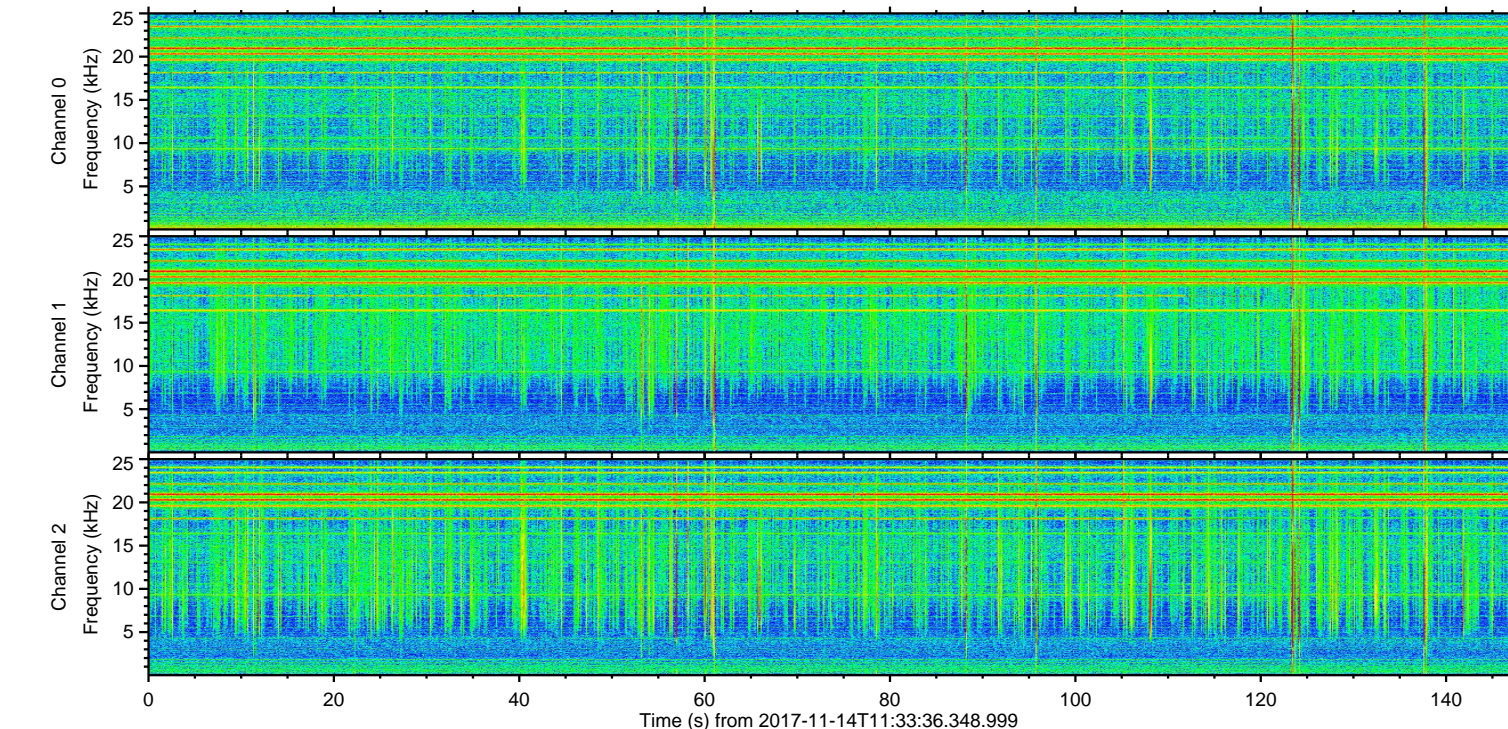
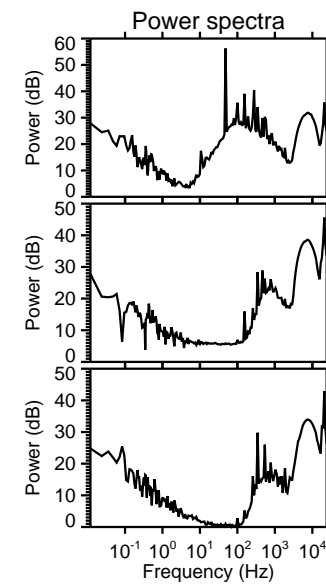
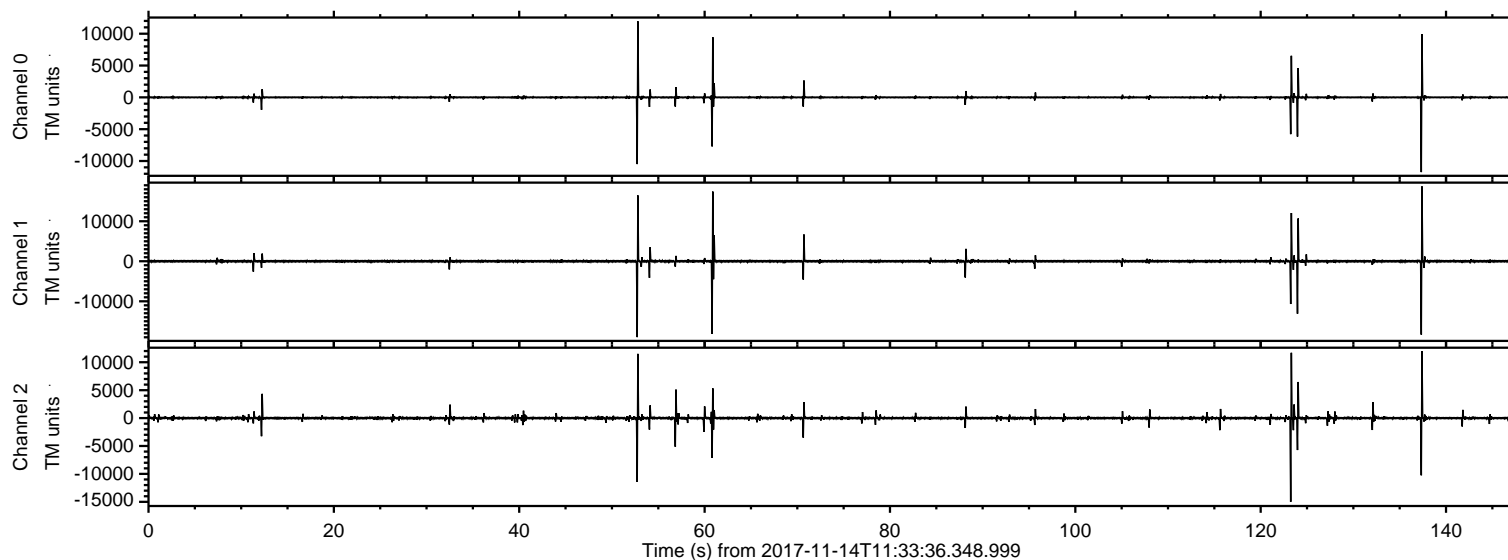
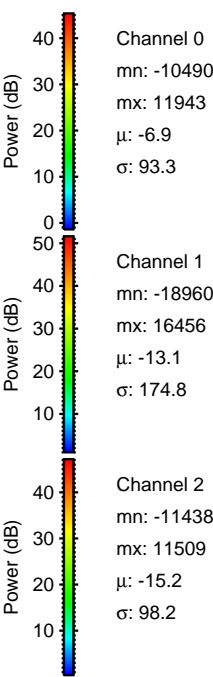
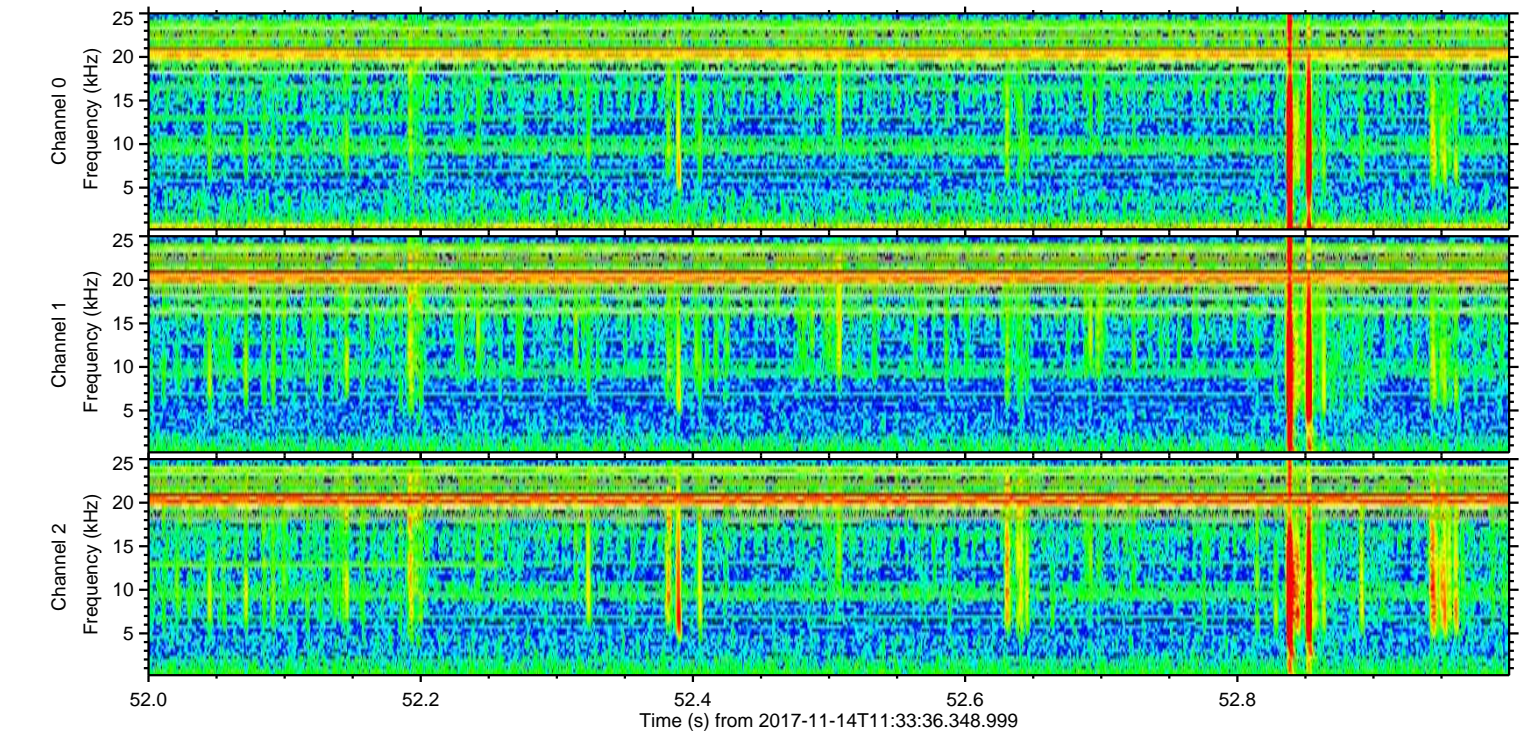
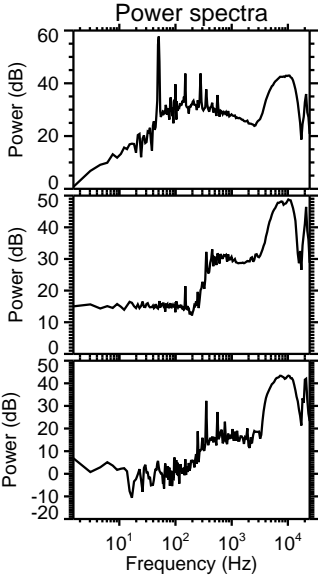
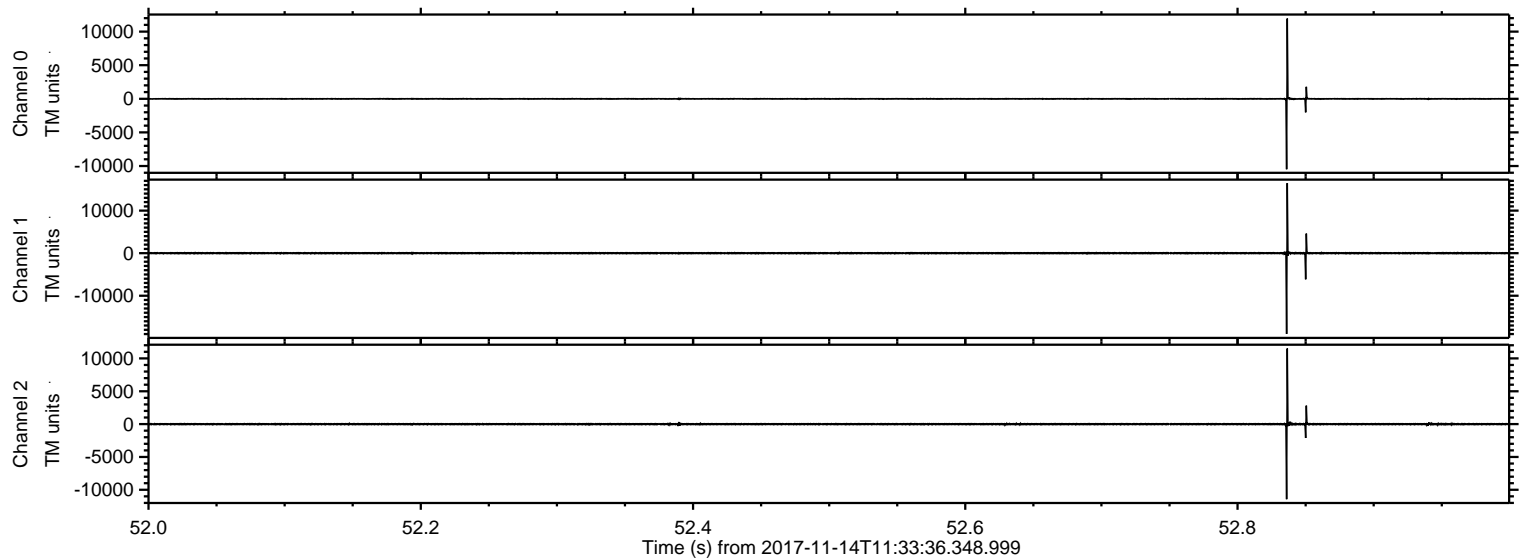


ELMAVAN 3D WAVEFORMS (Measured data sampled at 50 kHz) 51000 packets of 144 samples from 2017-11-14T11:33:36.348.999.

Processed Tue Nov 14 12:41:52 2017 by ELM ver.2012-10-06 from 001__elm20171114_113335__dat00.bin



Processed Tue Nov 14 12:41:59 2017 by ELM ver.2012-10-06 from 001__elm20171114_113335__dat00.bin



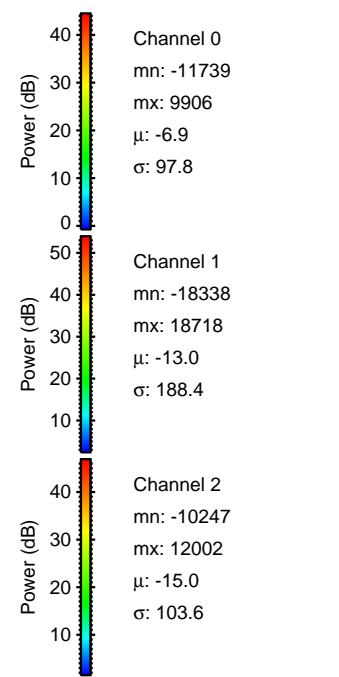
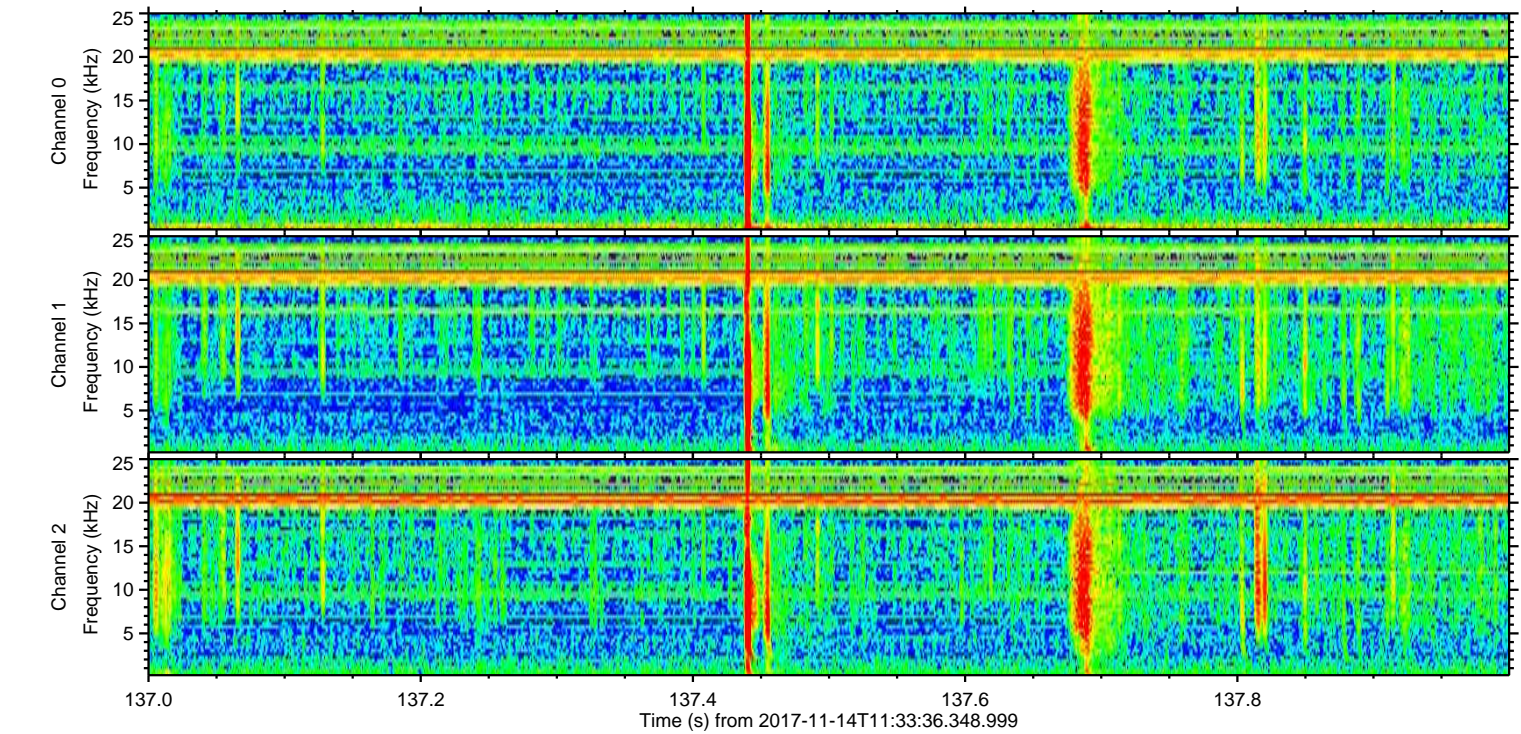
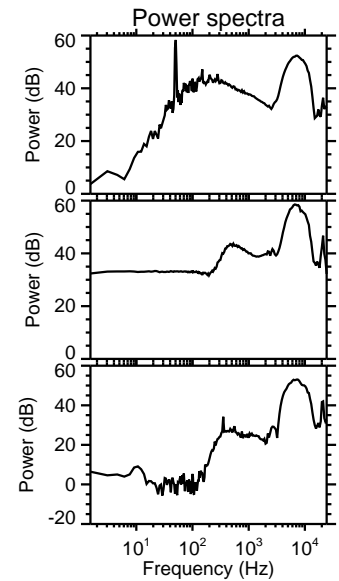
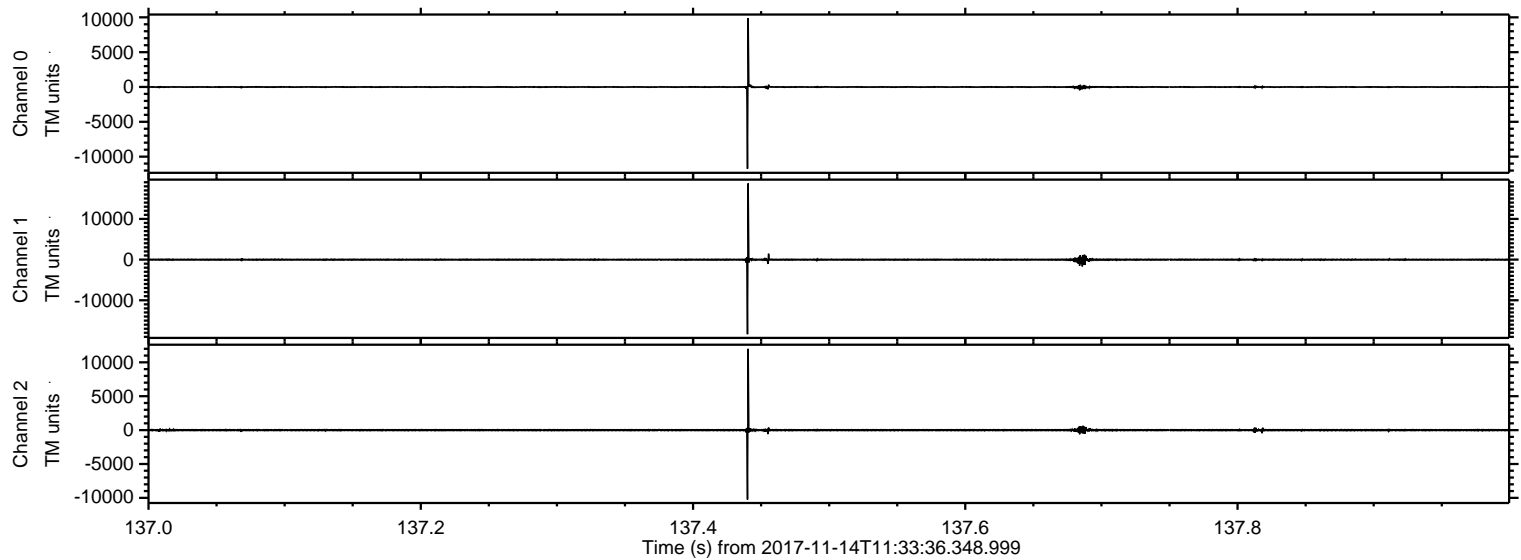
Channel 0
mn: -10490
mx: 11943
 μ : -6.9
 σ : 93.3

Channel 1
mn: -18960
mx: 16456
 μ : -13.1
 σ : 174.8

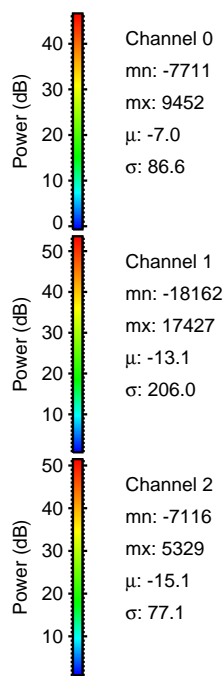
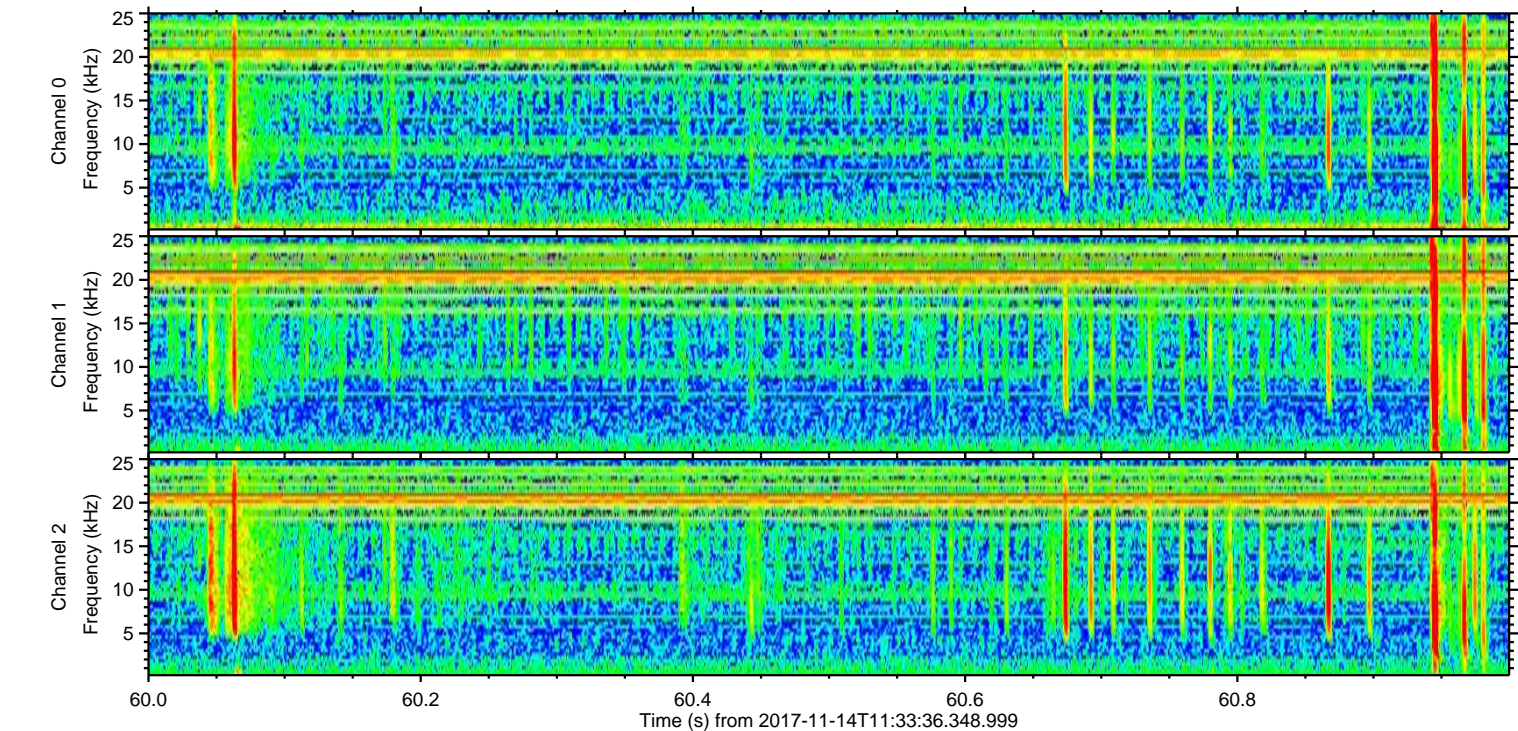
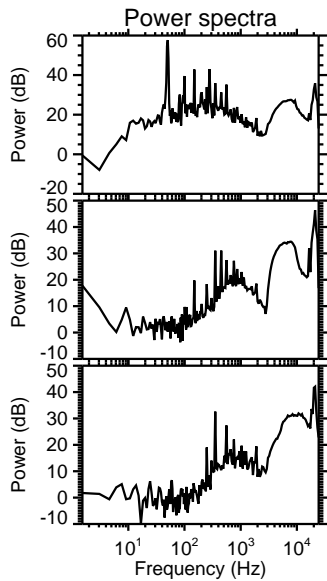
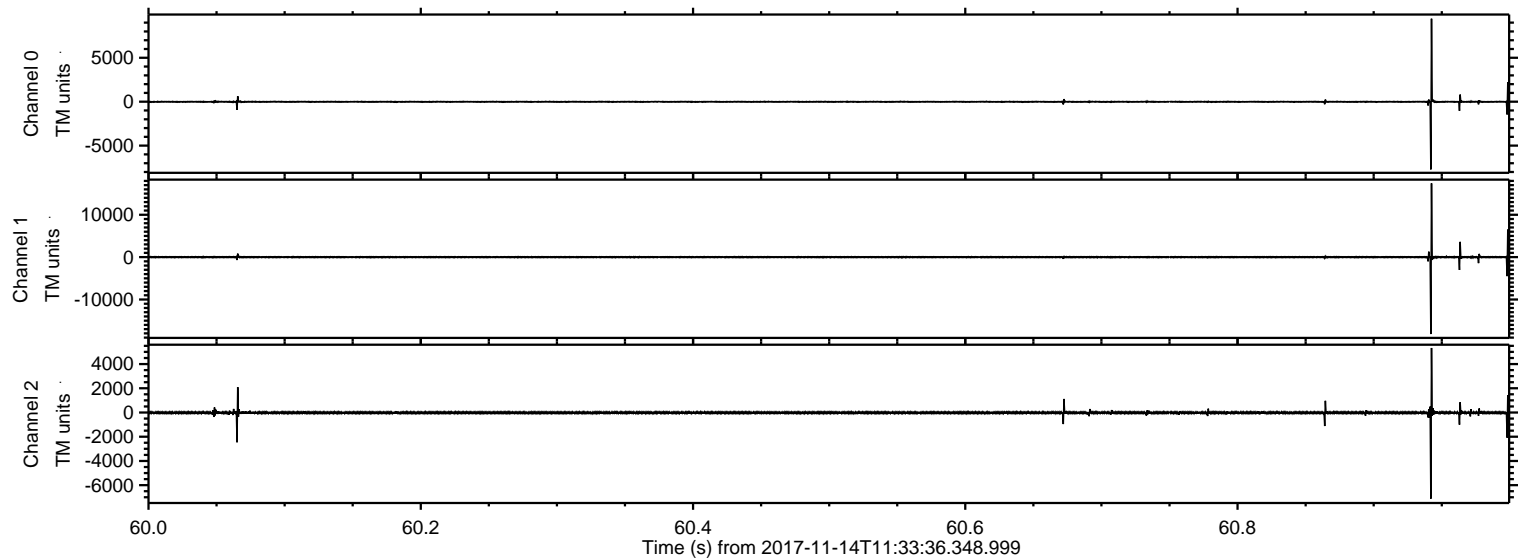
Channel 2
mn: -11438
mx: 11509
 μ : -15.2
 σ : 98.2

ELMAVAN 3D WAVEFORMS (Measured data sampled at 50 kHz) 51000 packets of 144 samples from 2017-11-14T11:33:36.348.999. Part 138/147

Processed Tue Nov 14 12:42:00 2017 by ELM ver.2012-10-06 from 001__elm20171114_113335__dat00.bin

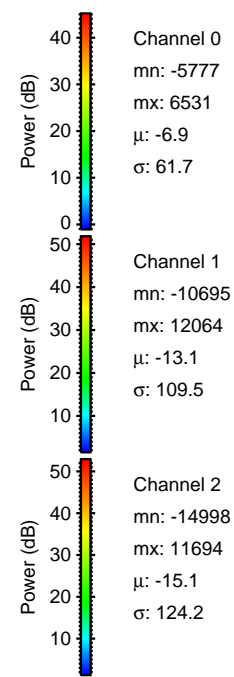
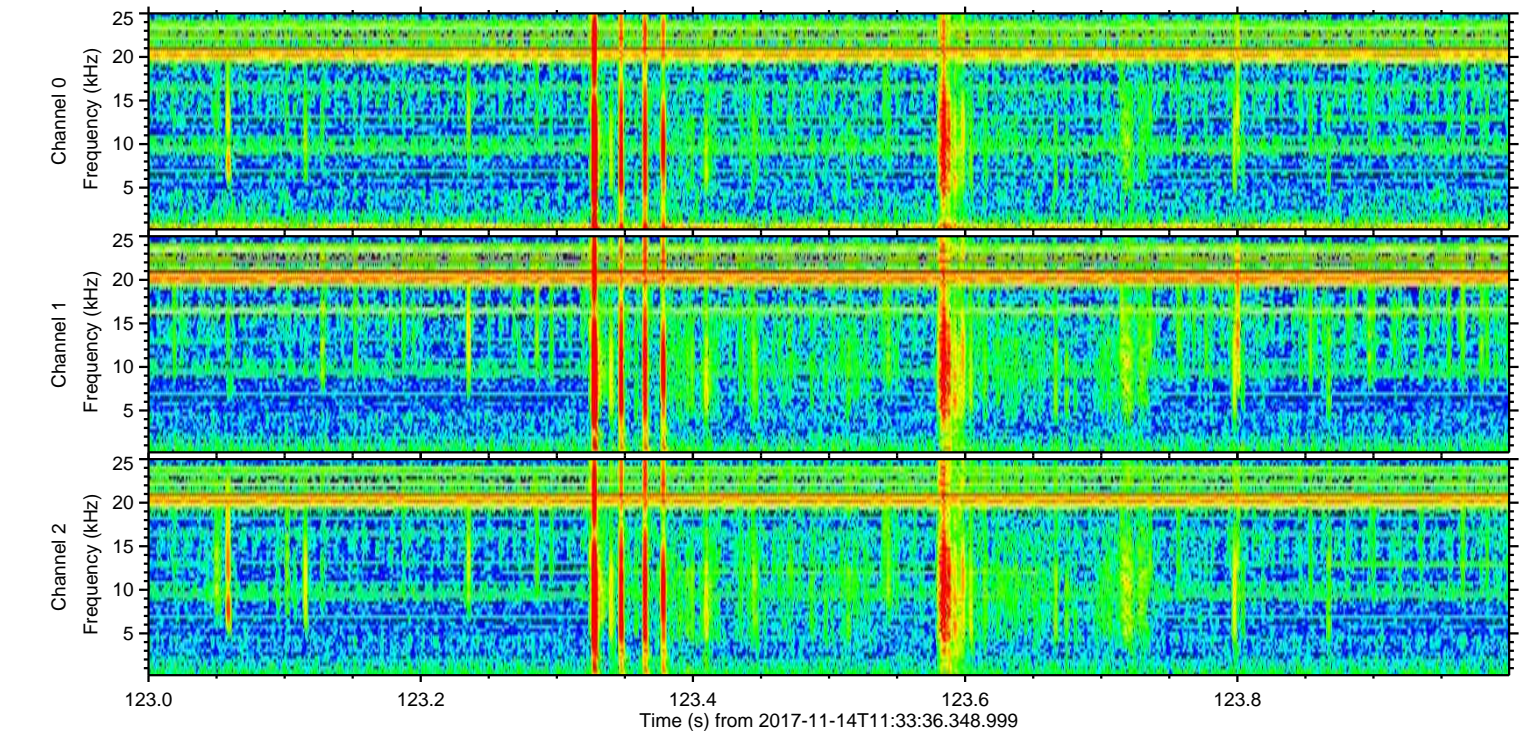
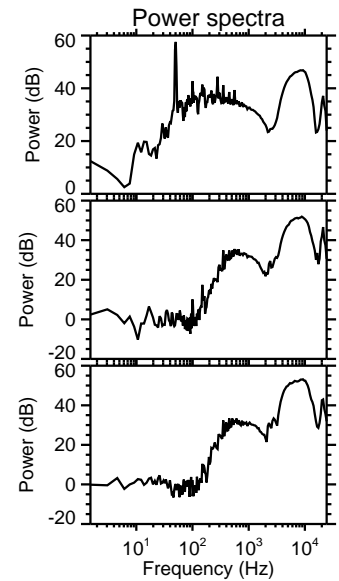
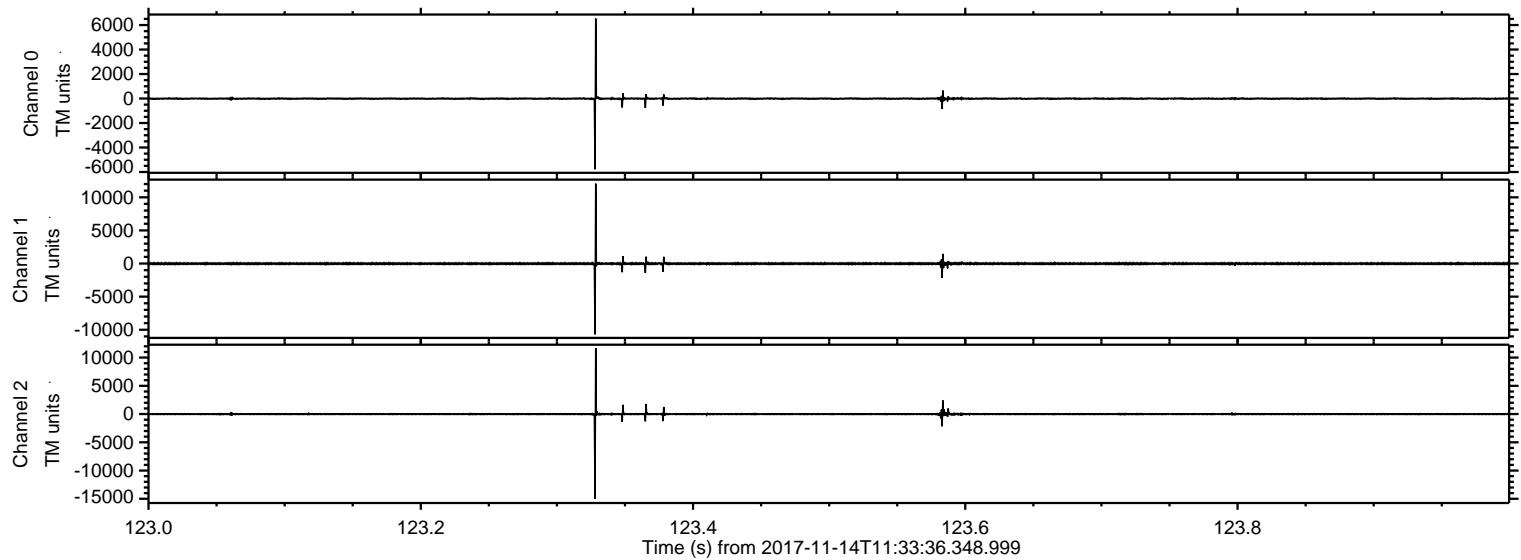


Processed Tue Nov 14 12:42:00 2017 by ELM ver.2012-10-06 from 001__elm20171114_113335__dat00.bin



ELMAVAN 3D WAVEFORMS (Measured data sampled at 50 kHz) 51000 packets of 144 samples from 2017-11-14T11:33:36.348.999. Part 124/147

Processed Tue Nov 14 12:42:01 2017 by ELM ver.2012-10-06 from 001__elm20171114_113335__dat00.bin



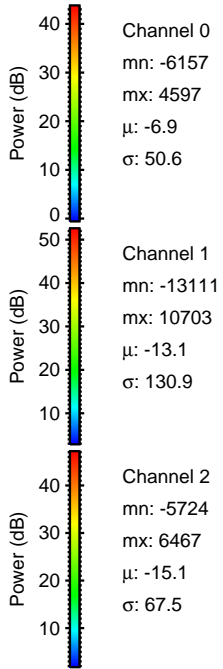
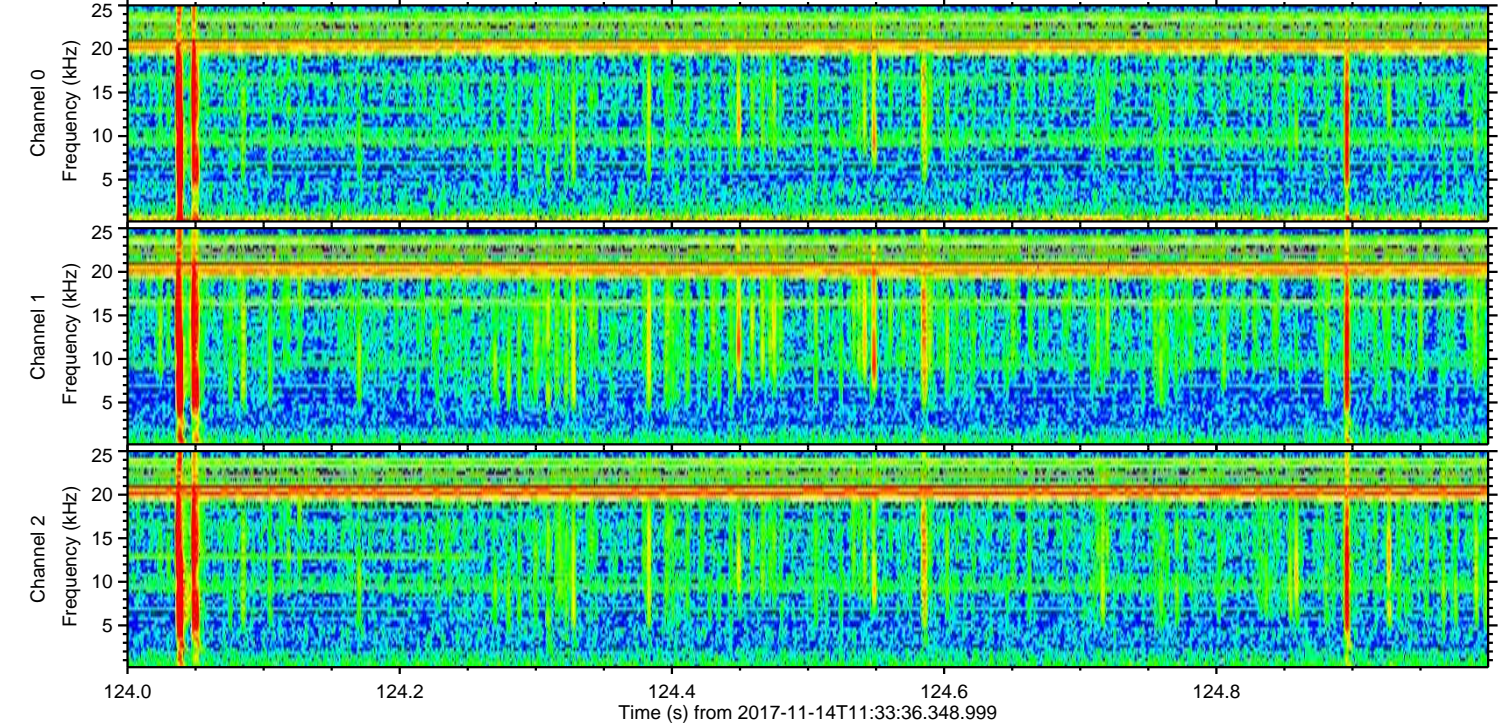
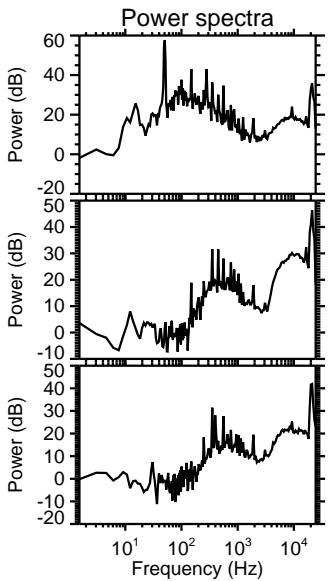
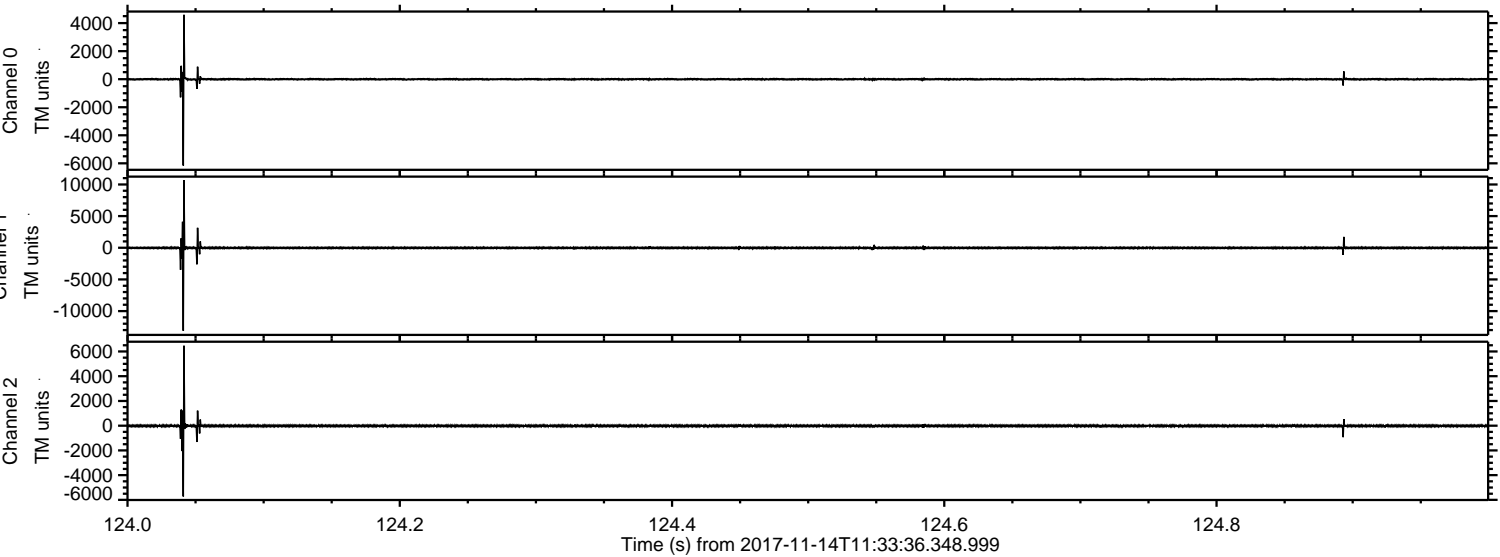
Channel 0
mn: -5777
mx: 6531
 μ : -6.9
 σ : 61.7

Channel 1
mn: -10695
mx: 12064
 μ : -13.1
 σ : 109.5

Channel 2
mn: -14998
mx: 11694
 μ : -15.1
 σ : 124.2

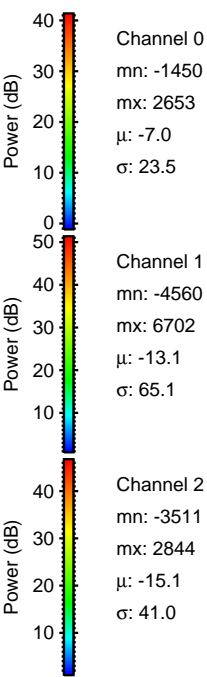
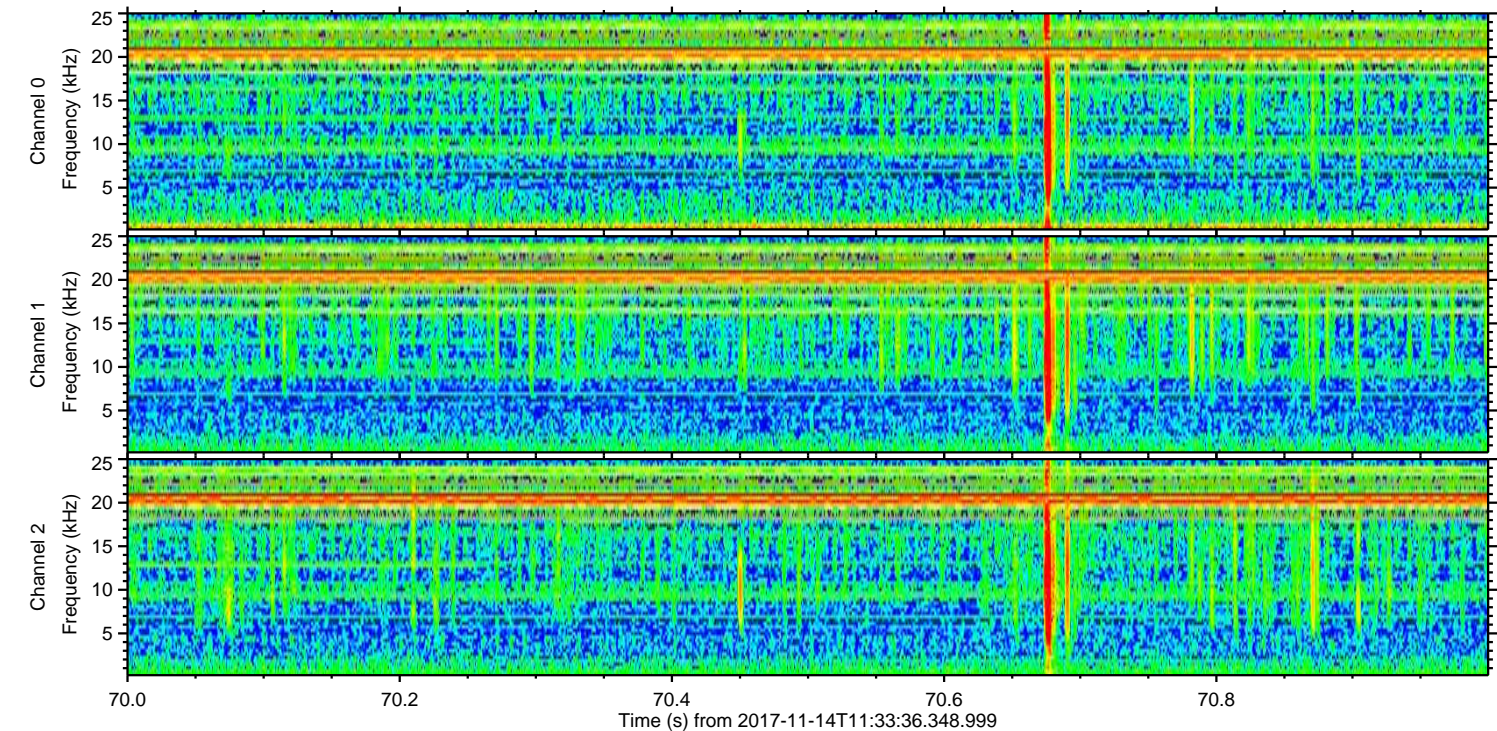
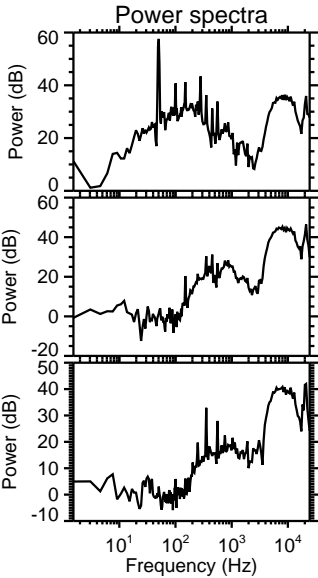
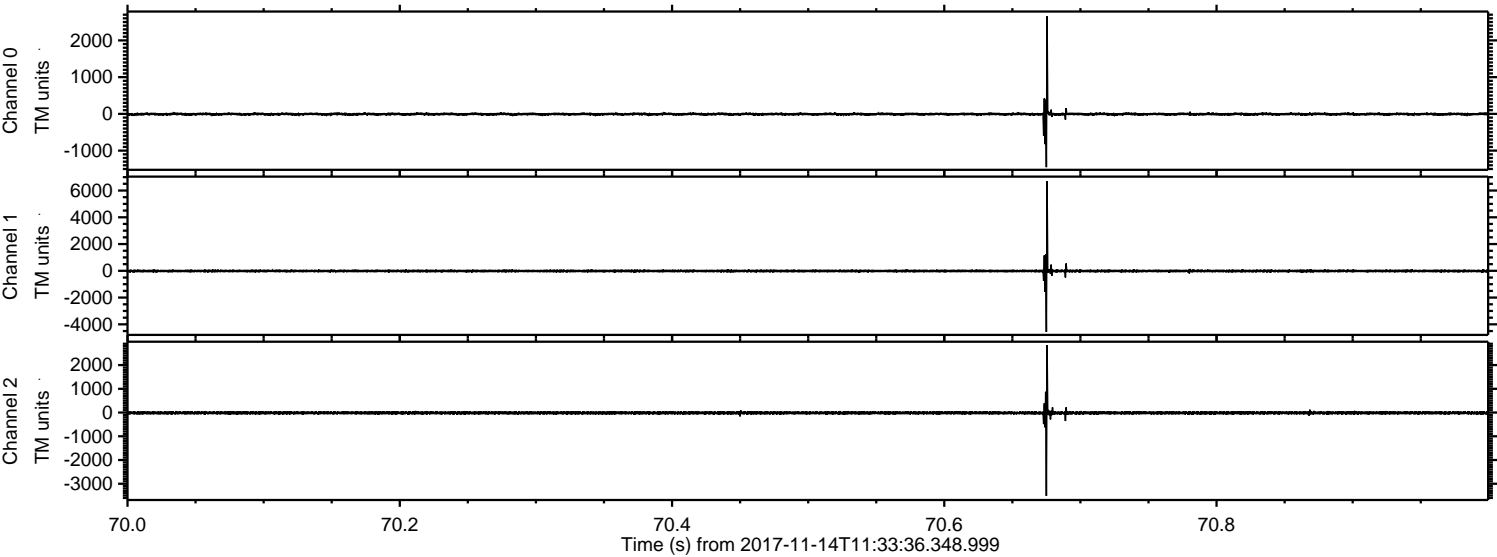
ELMAVAN 3D WAVEFORMS (Measured data sampled at 50 kHz) 51000 packets of 144 samples from 2017-11-14T11:33:36.348.999. Part 125/147

Processed Tue Nov 14 12:42:02 2017 by ELM ver.2012-10-06 from 001__elm20171114_113335__dat00.bin

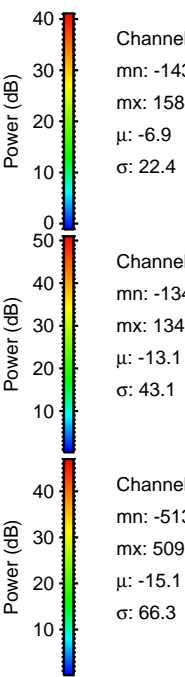
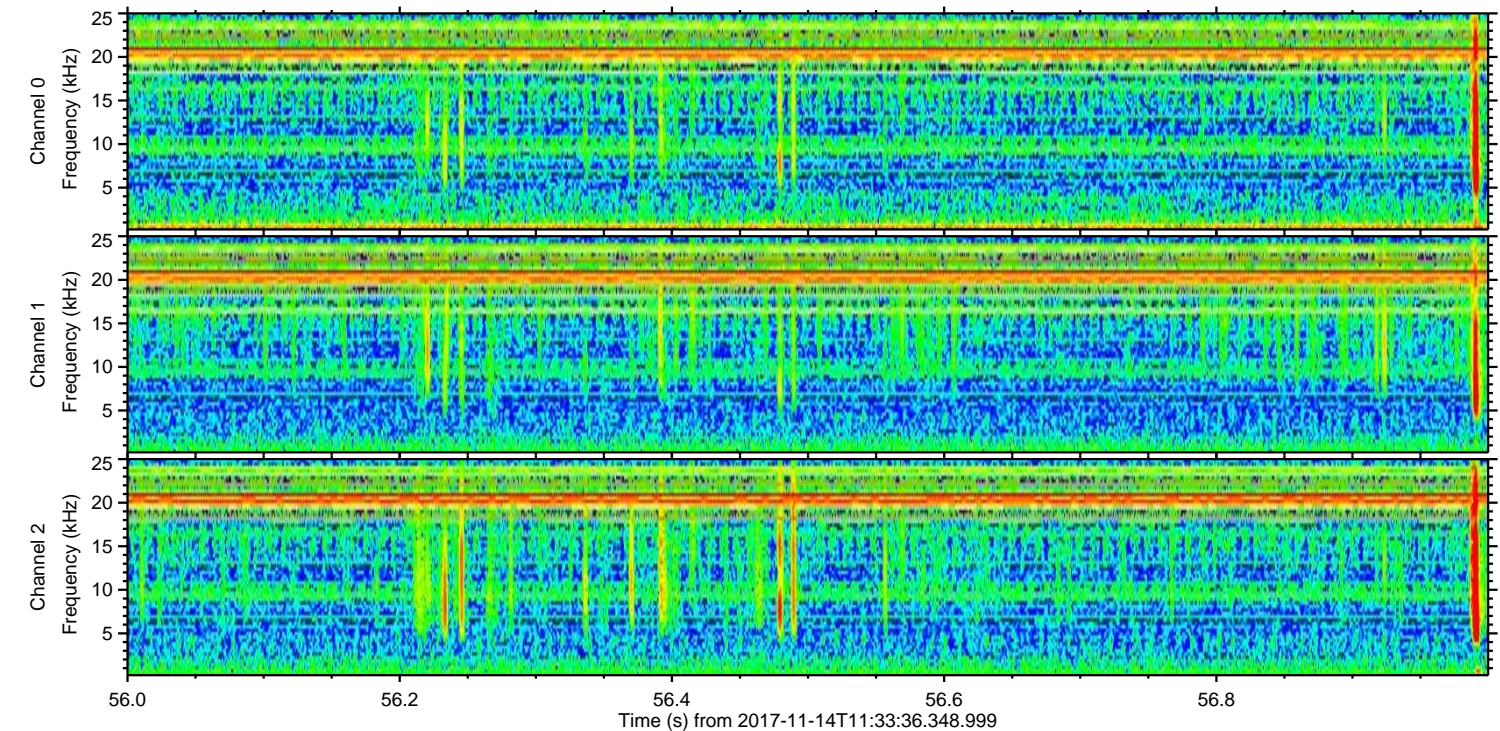
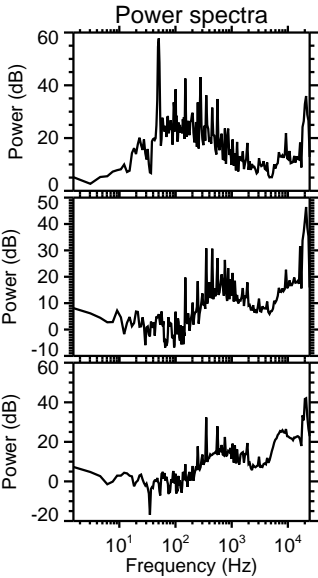
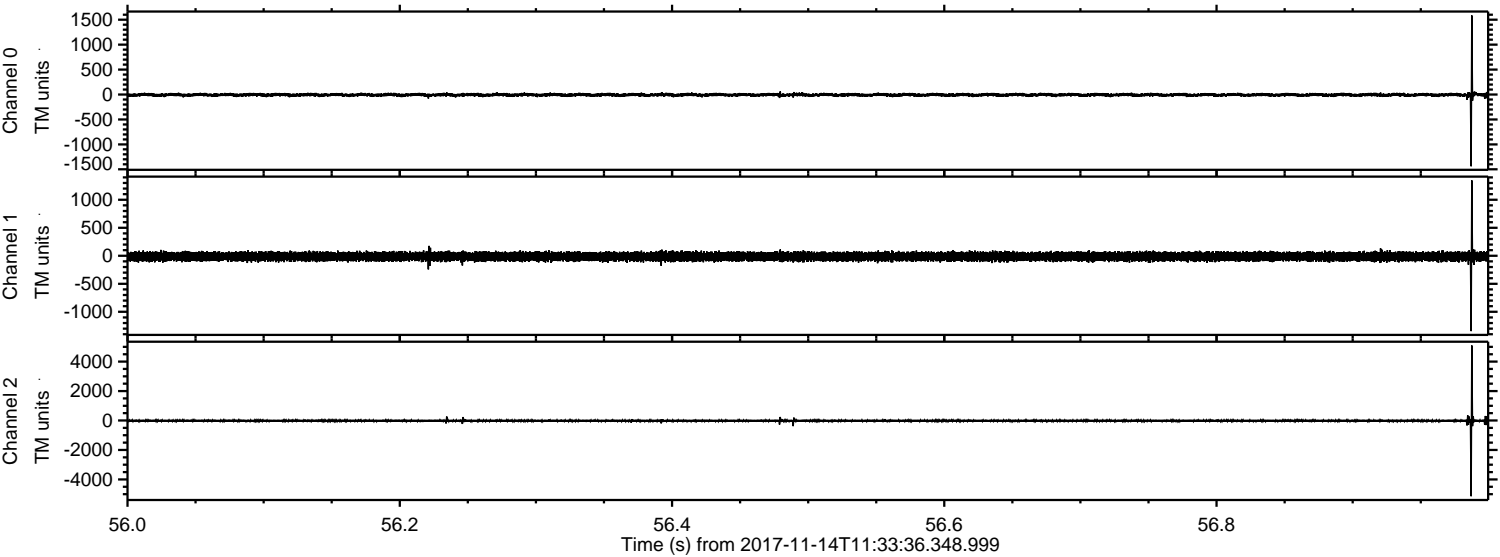


ELMAVAN 3D WAVEFORMS (Measured data sampled at 50 kHz) 51000 packets of 144 samples from 2017-11-14T11:33:36.348.999. Part 71/147

Processed Tue Nov 14 12:42:03 2017 by ELM ver.2012-10-06 from 001__elm20171114_113335__dat00.bin



Processed Tue Nov 14 12:42:03 2017 by ELM ver.2012-10-06 from 001__elm20171114_113335__dat00.bin



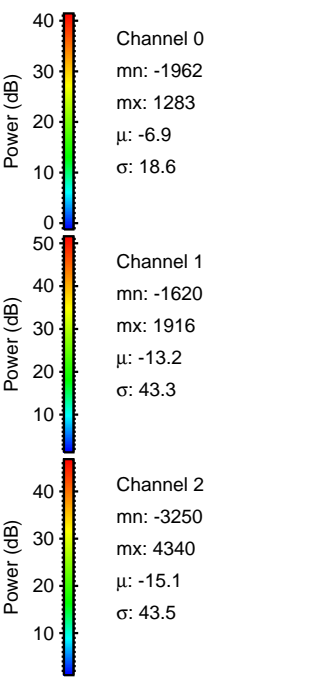
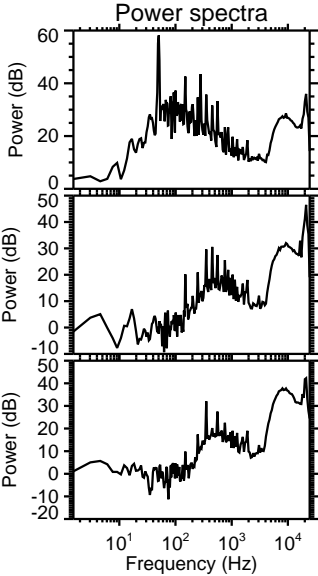
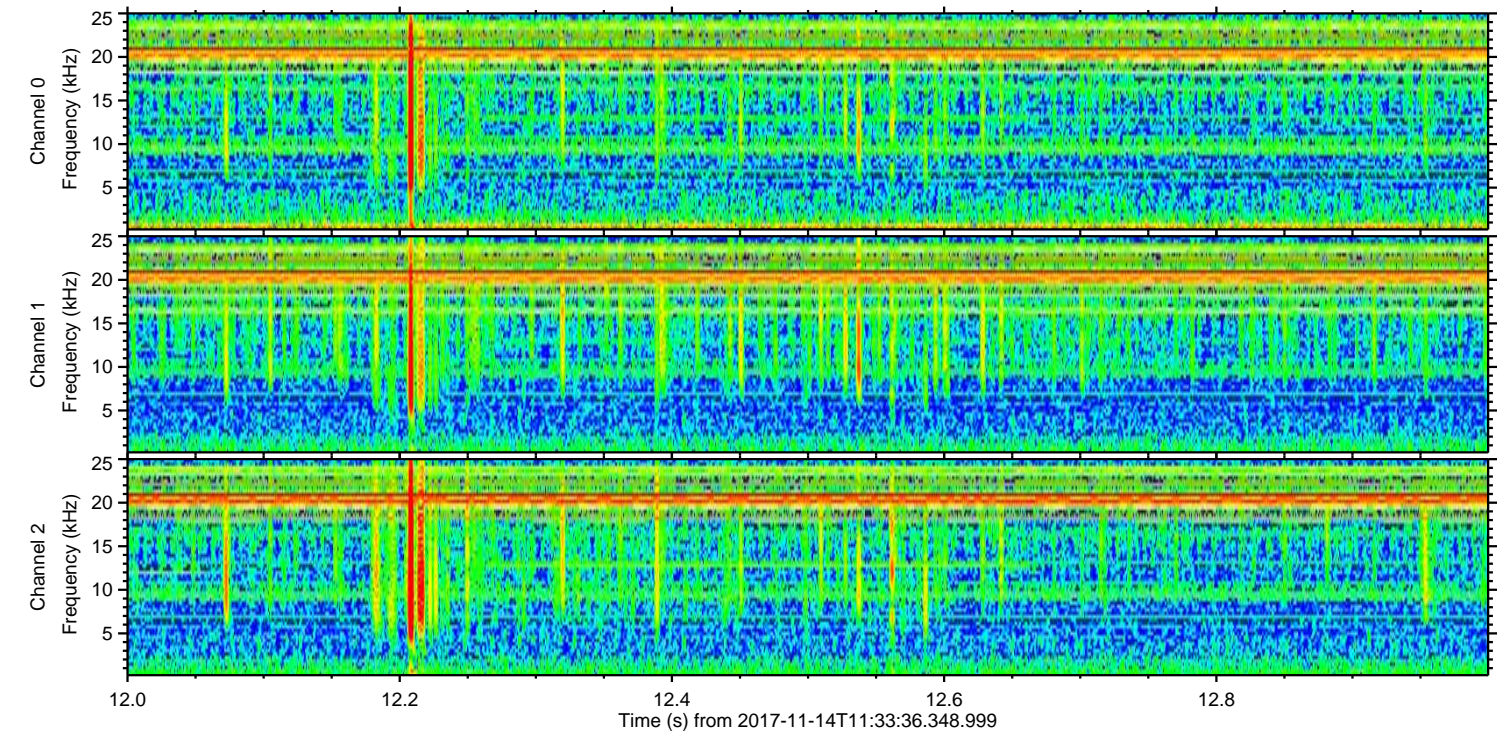
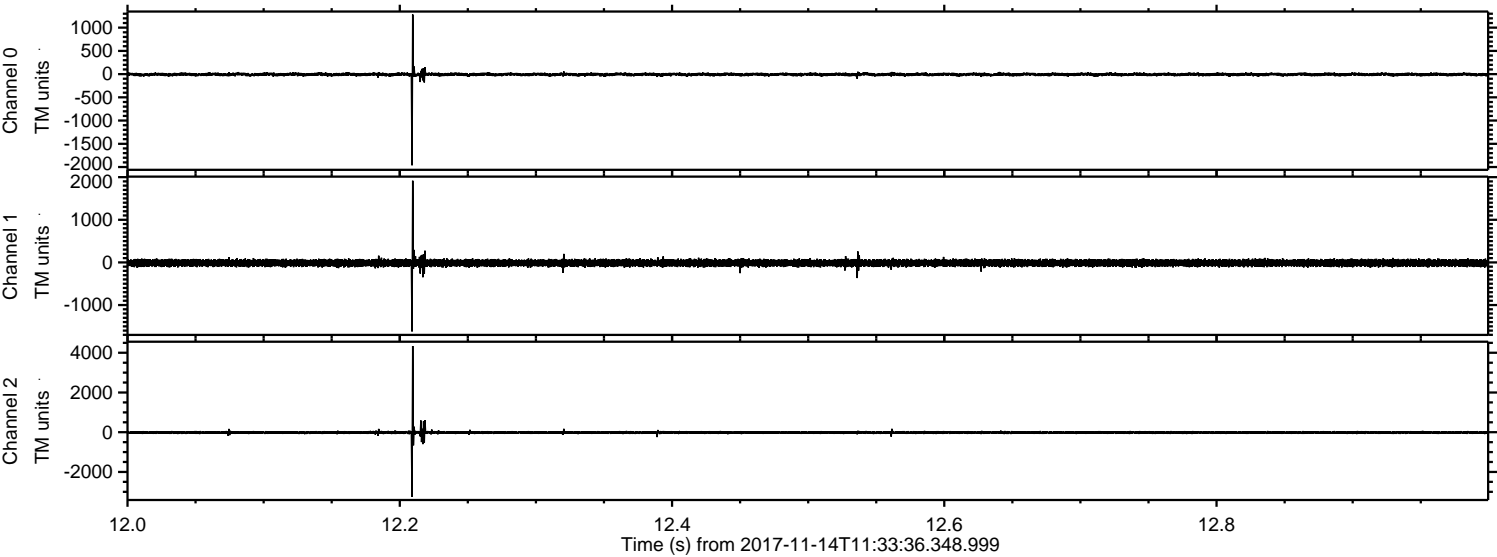
Channel 0
mn: -1438
mx: 1584
 μ : -6.9
 σ : 22.4

Channel 1
mn: -1345
mx: 1346
 μ : -13.1
 σ : 43.1

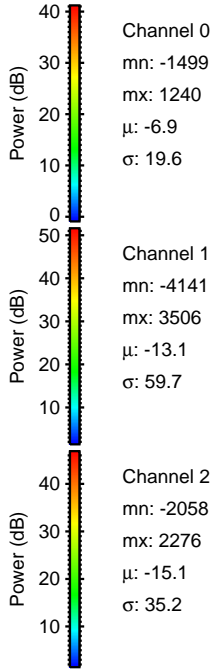
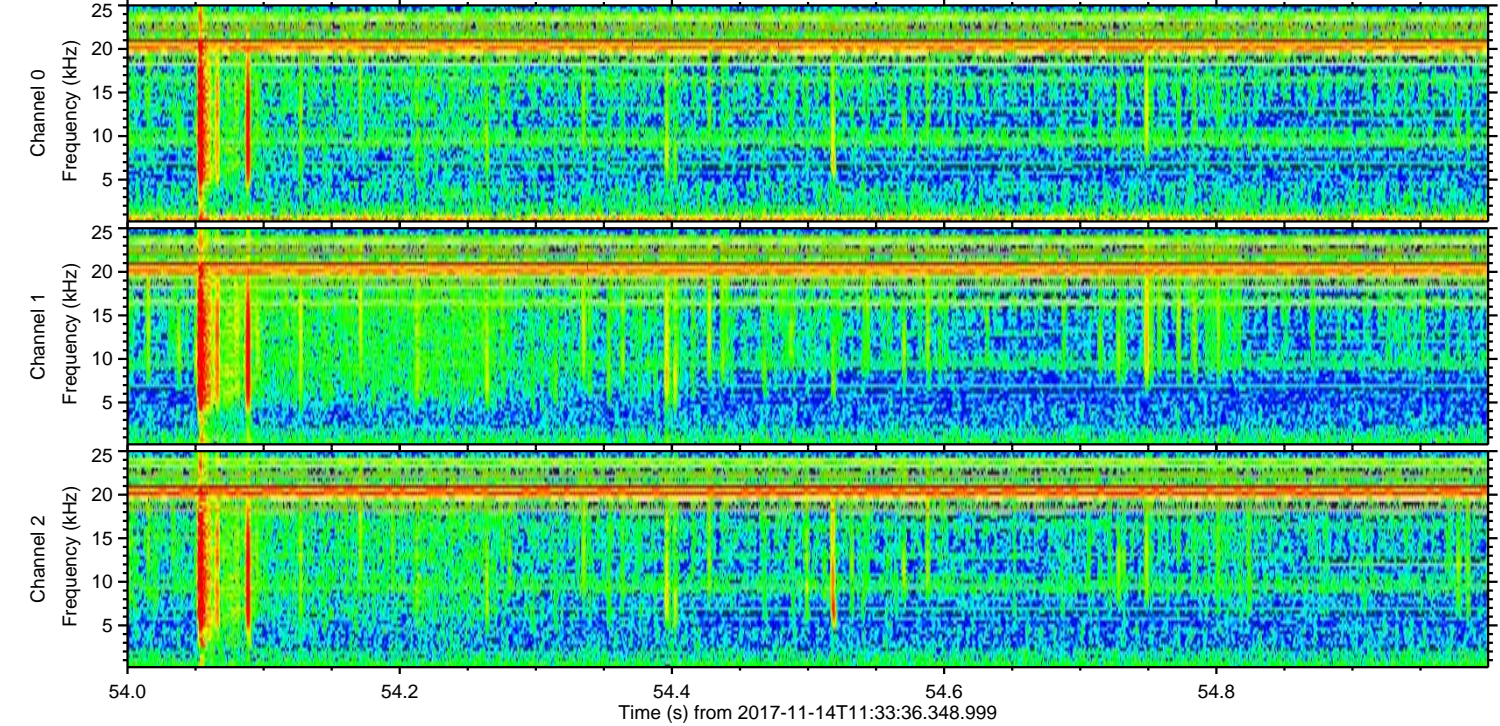
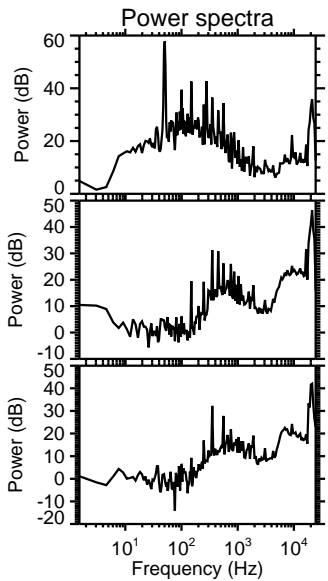
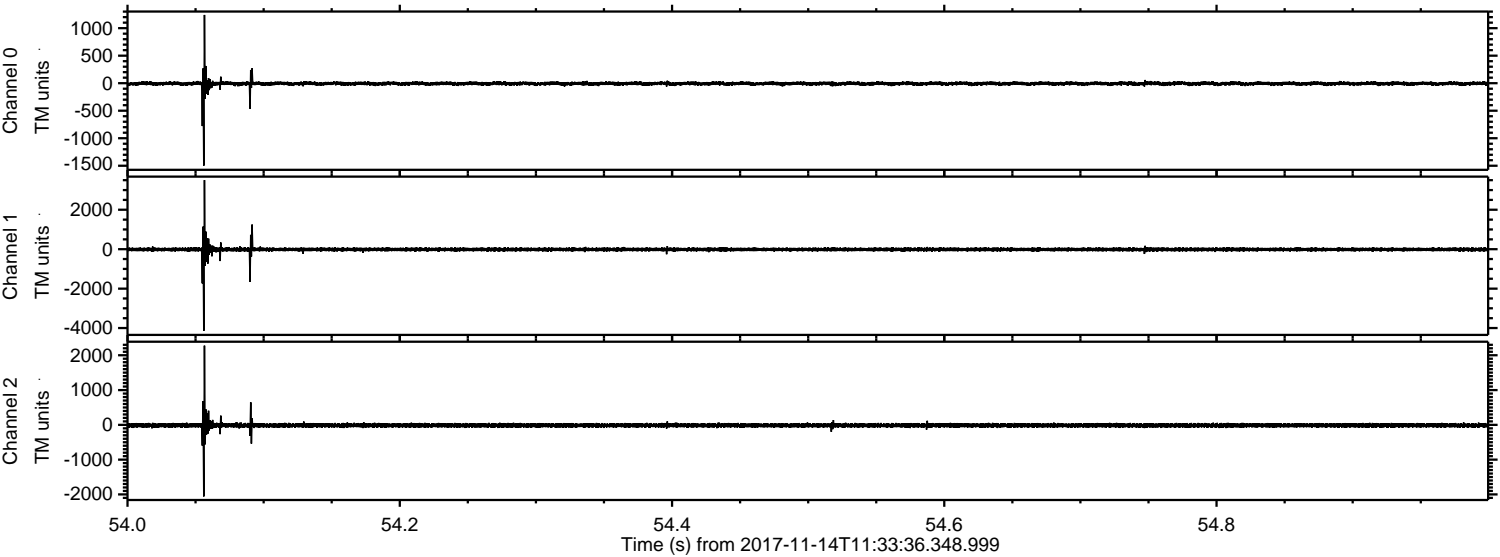
Channel 2
mn: -5139
mx: 5095
 μ : -15.1
 σ : 66.3

ELMAVAN 3D WAVEFORMS (Measured data sampled at 50 kHz) 51000 packets of 144 samples from 2017-11-14T11:33:36.348.999. Part 13/147

Processed Tue Nov 14 12:42:04 2017 by ELM ver.2012-10-06 from 001__elm20171114_113335__dat00.bin



Processed Tue Nov 14 12:42:05 2017 by ELM ver.2012-10-06 from 001__elm20171114_113335__dat00.bin



Channel 0
mn: -1499
mx: 1240
 μ : -6.9
 σ : 19.6

Channel 1
mn: -4141
mx: 3506
 μ : -13.1
 σ : 59.7

Channel 2
mn: -2058
mx: 2276
 μ : -15.1
 σ : 35.2

ELMAVAN 3D WAVEFORMS (Measured data sampled at 50 kHz) 51000 packets of 144 samples from 2017-11-14T11:33:36.348.999. Part 87/147

Processed Tue Nov 14 12:42:05 2017 by ELM ver.2012-10-06 from 001__elm20171114_113335__dat00.bin

