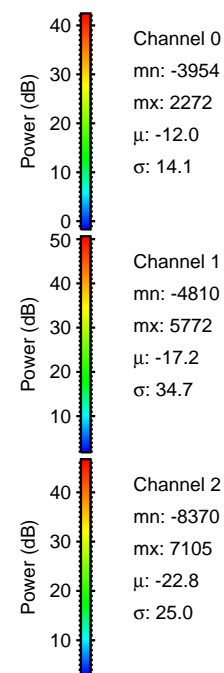
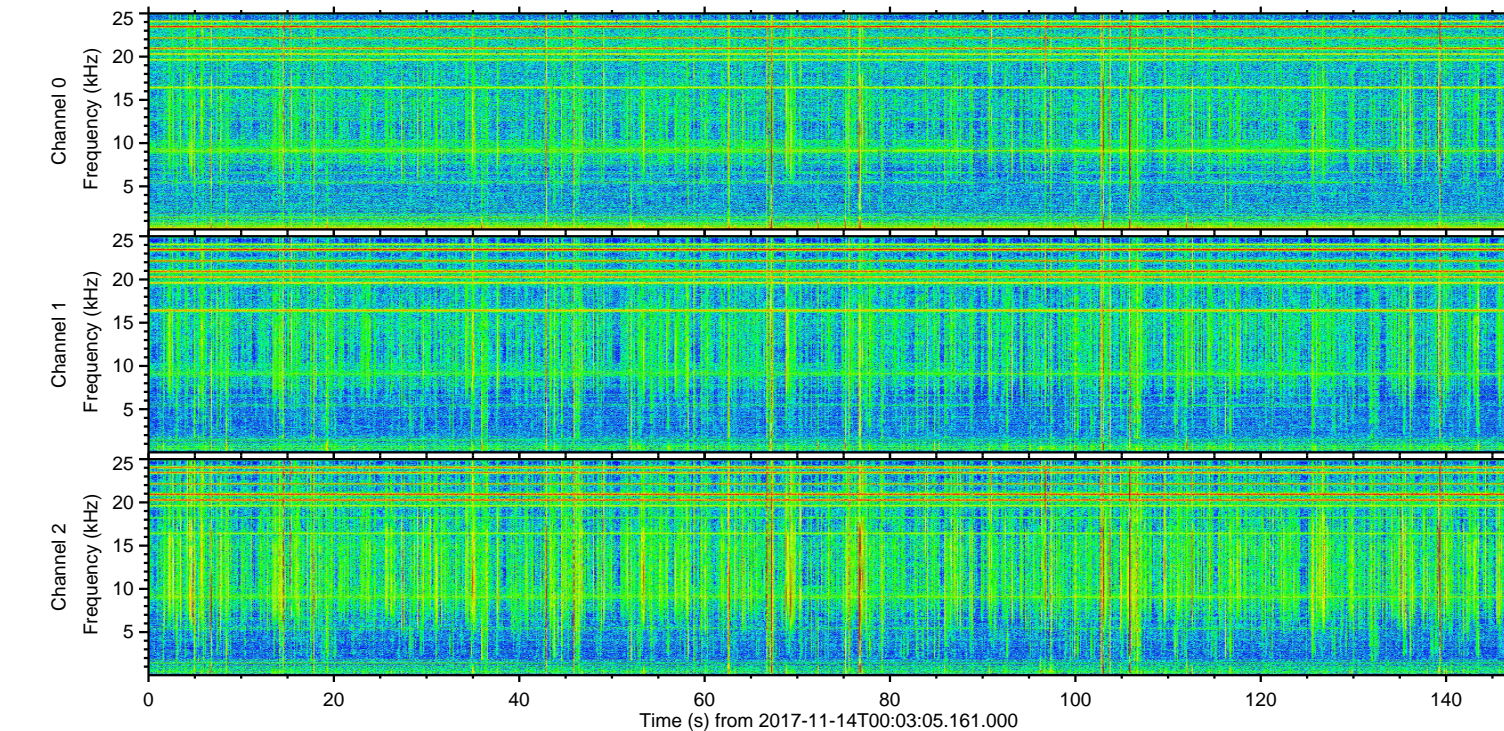
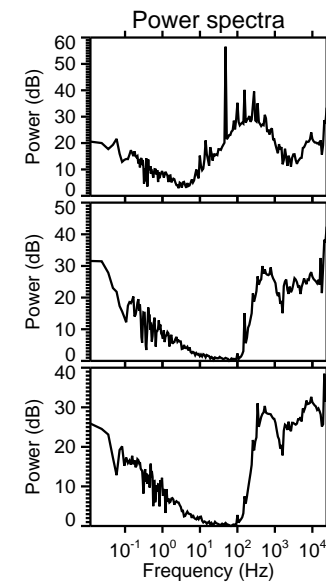
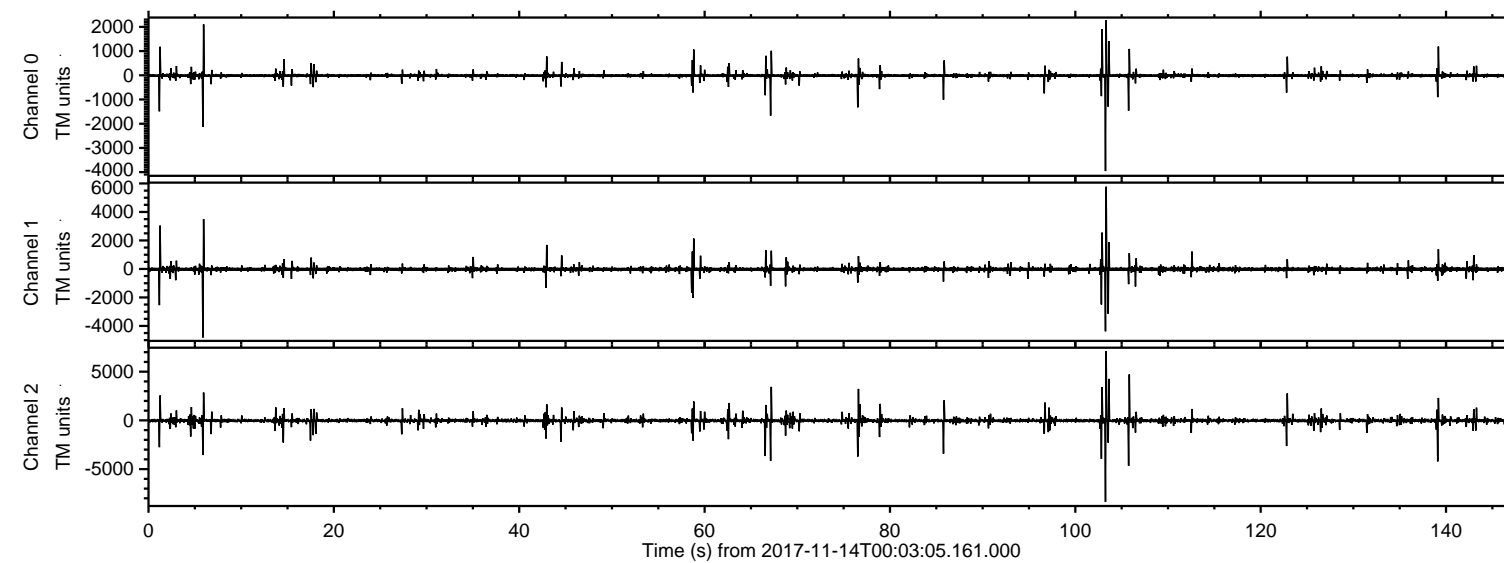


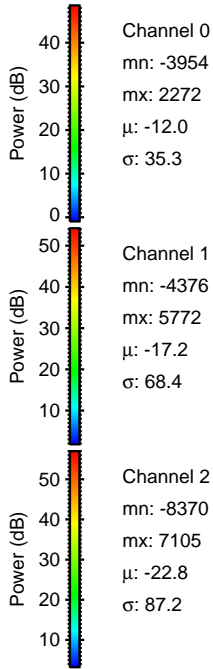
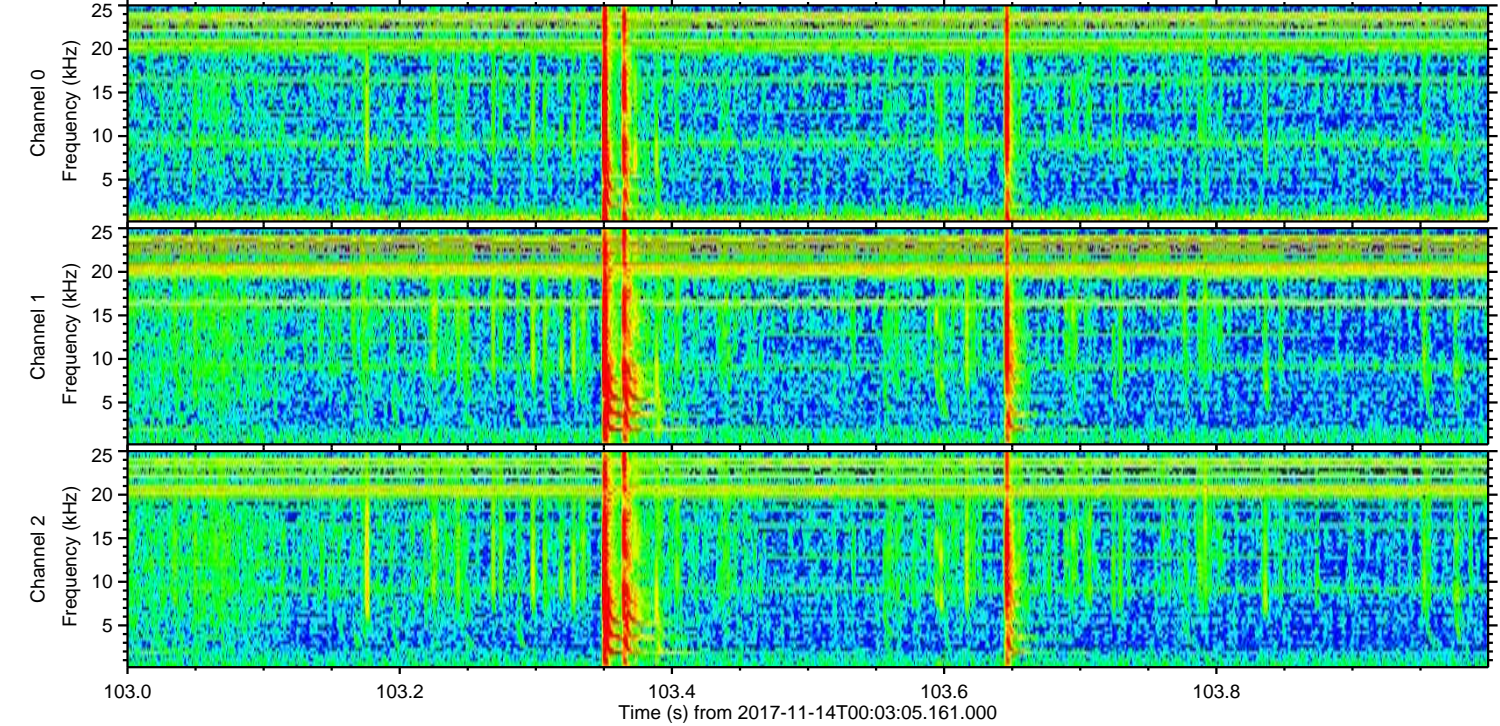
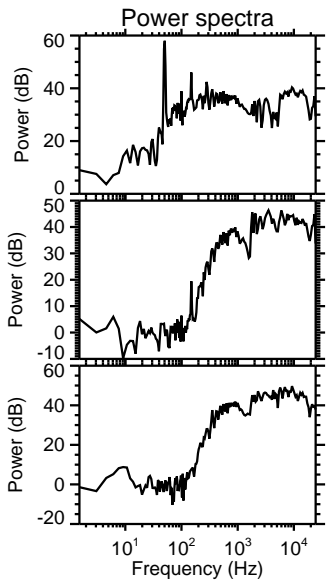
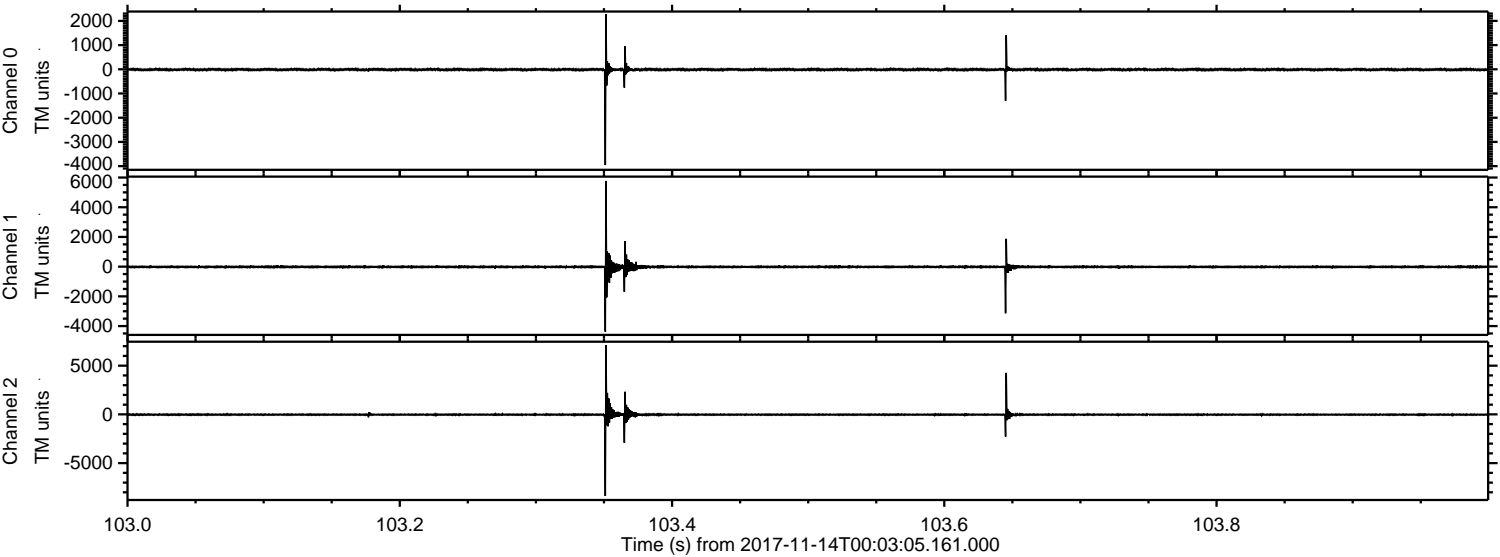
ELMAVAN 3D WAVEFORMS (Measured data sampled at 50 kHz) 51000 packets of 144 samples from 2017-11-14T00:03:05.161.000.

Processed Tue Nov 14 01:11:10 2017 by ELM ver.2012-10-06 from 001__elm20171114_000304__dat00.bin



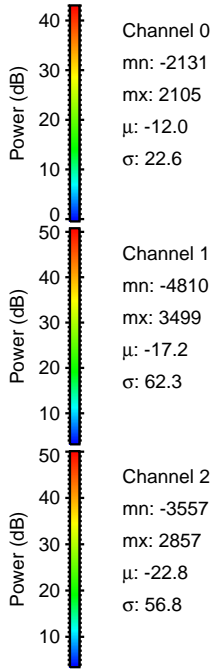
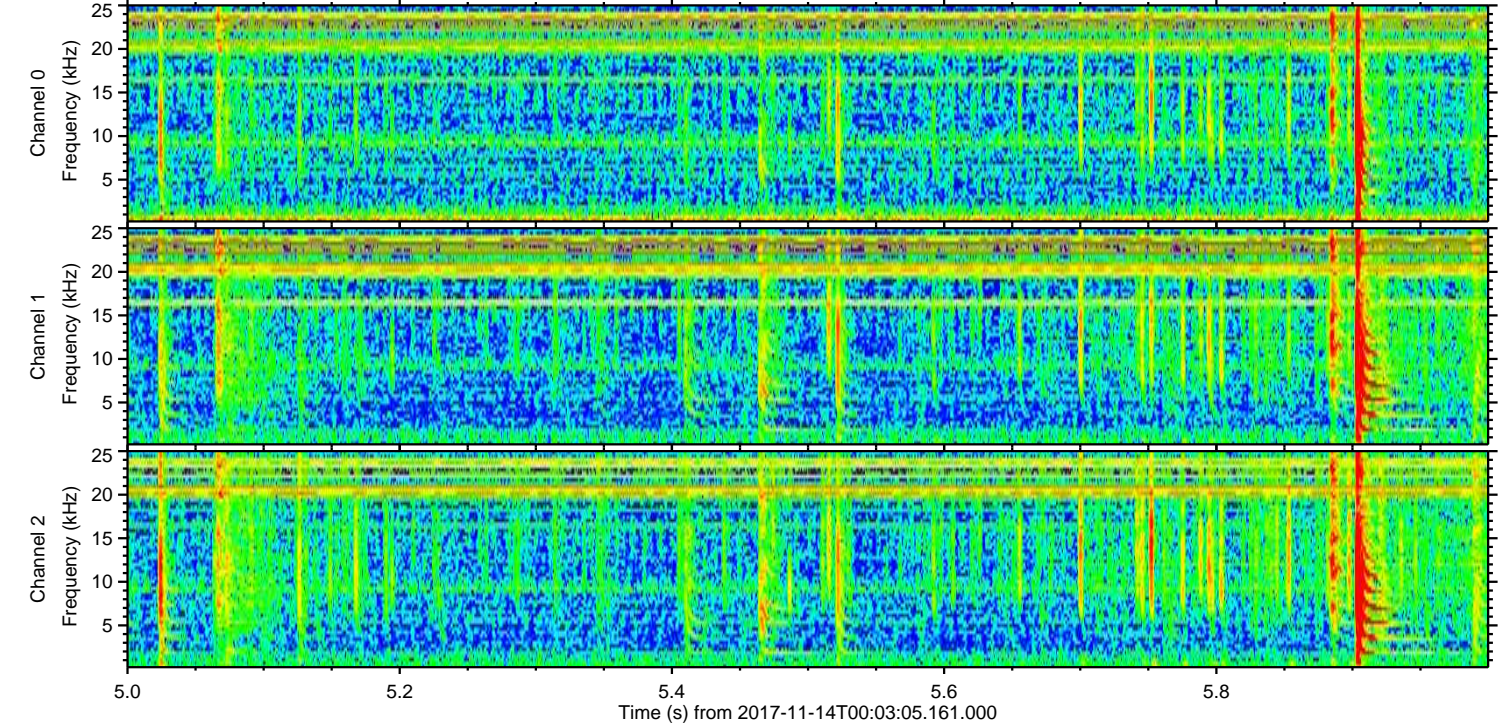
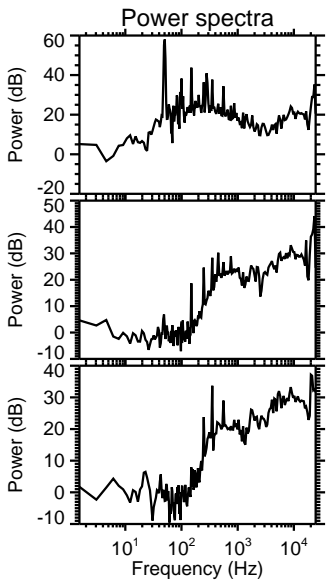
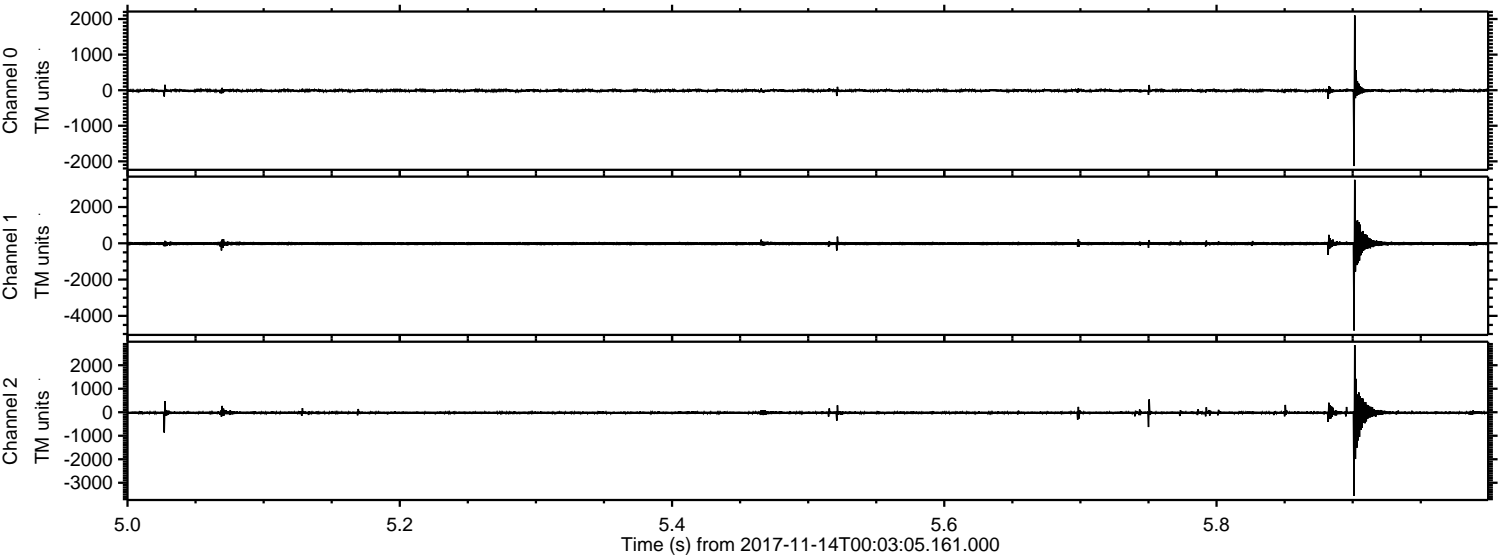
ELMAVAN 3D WAVEFORMS (Measured data sampled at 50 kHz) 51000 packets of 144 samples from 2017-11-14T00:03:05.161.000. Part 104/147

Processed Tue Nov 14 01:11:16 2017 by ELM ver.2012-10-06 from 001__elm20171114_000304__dat00.bin



ELMAVAN 3D WAVEFORMS (Measured data sampled at 50 kHz) 51000 packets of 144 samples from 2017-11-14T00:03:05.161.000. Part 6/147

Processed Tue Nov 14 01:11:17 2017 by ELM ver.2012-10-06 from 001__elm20171114_000304__dat00.bin



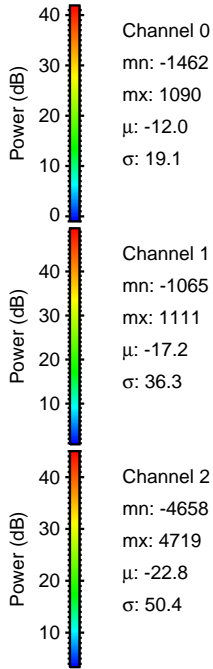
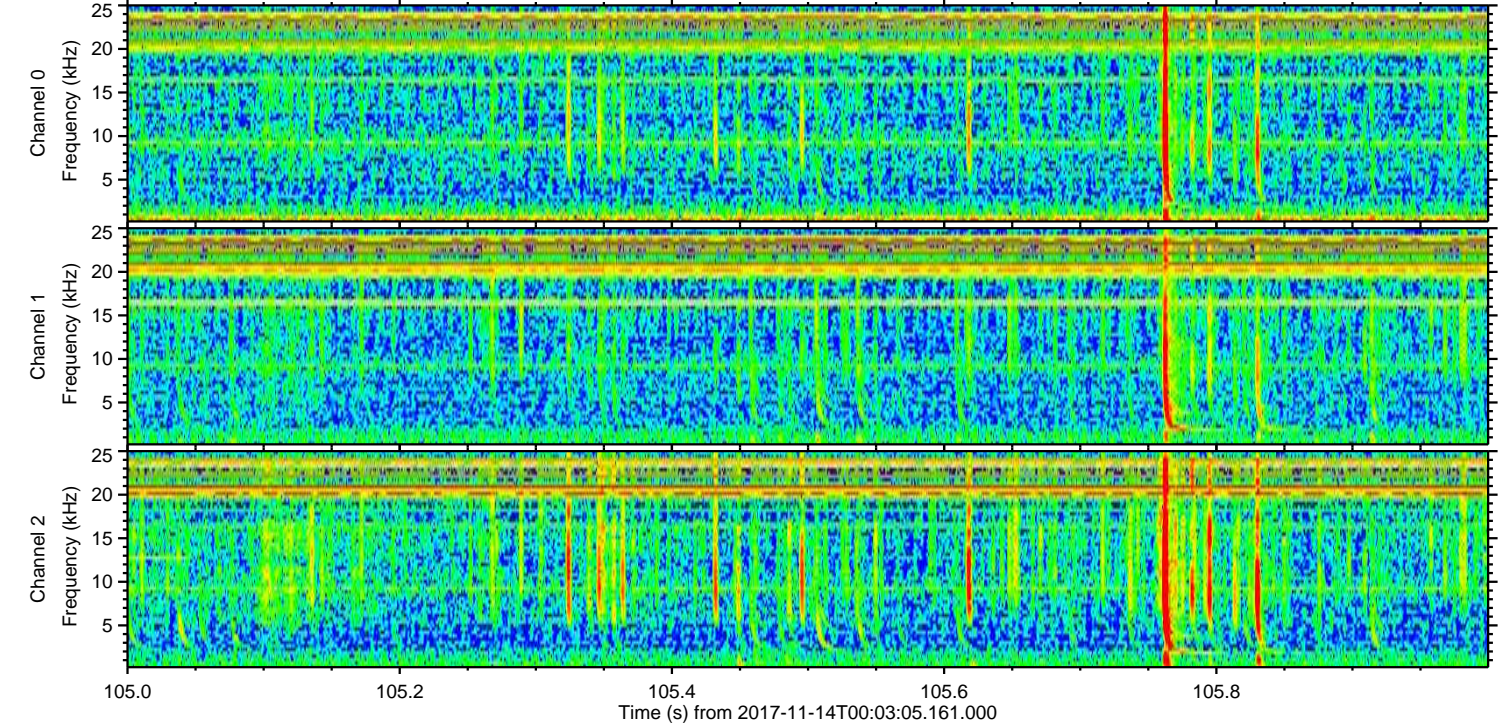
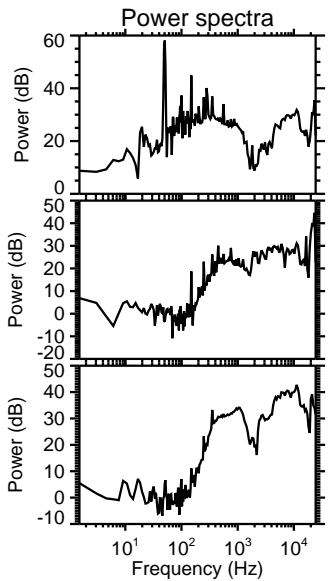
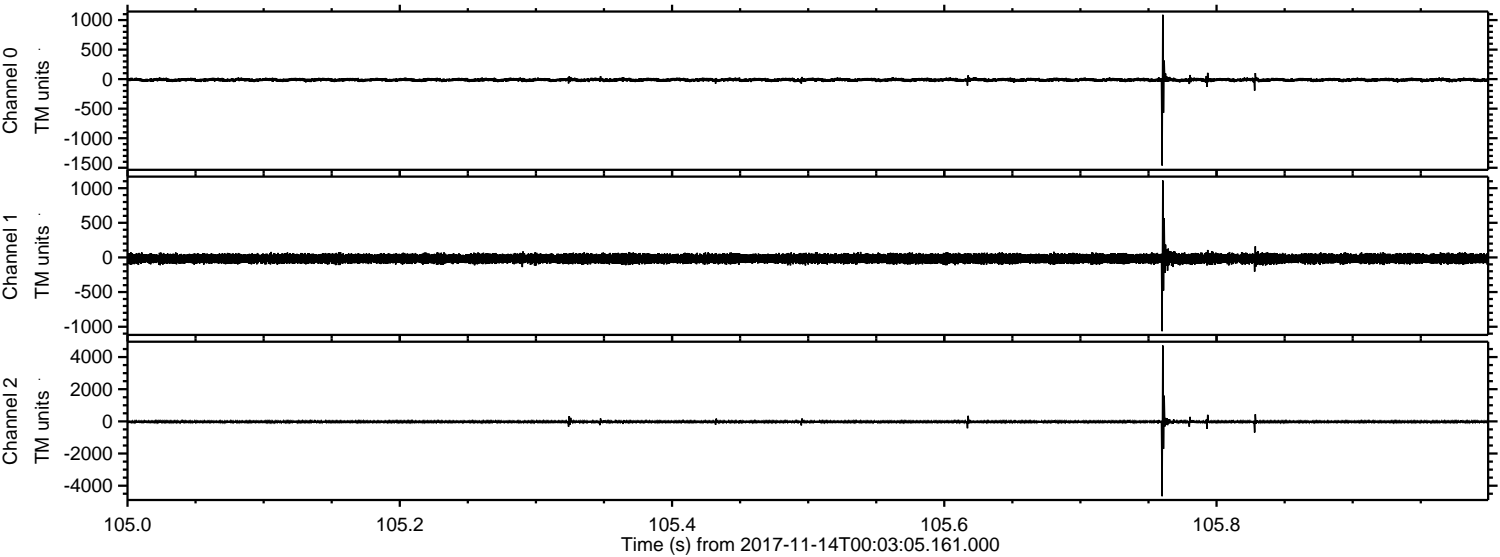
Channel 0
mn: -2131
mx: 2105
 μ : -12.0
 σ : 22.6

Channel 1
mn: -4810
mx: 3499
 μ : -17.2
 σ : 62.3

Channel 2
mn: -3557
mx: 2857
 μ : -22.8
 σ : 56.8

ELMAVAN 3D WAVEFORMS (Measured data sampled at 50 kHz) 51000 packets of 144 samples from 2017-11-14T00:03:05.161.000. Part 106/147

Processed Tue Nov 14 01:11:18 2017 by ELM ver.2012-10-06 from 001__elm20171114_000304__dat00.bin



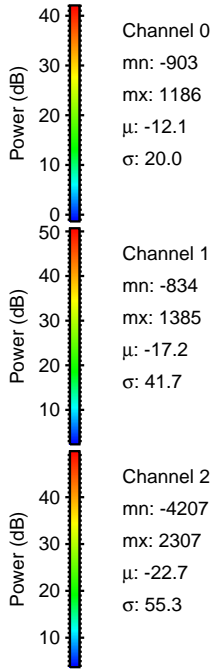
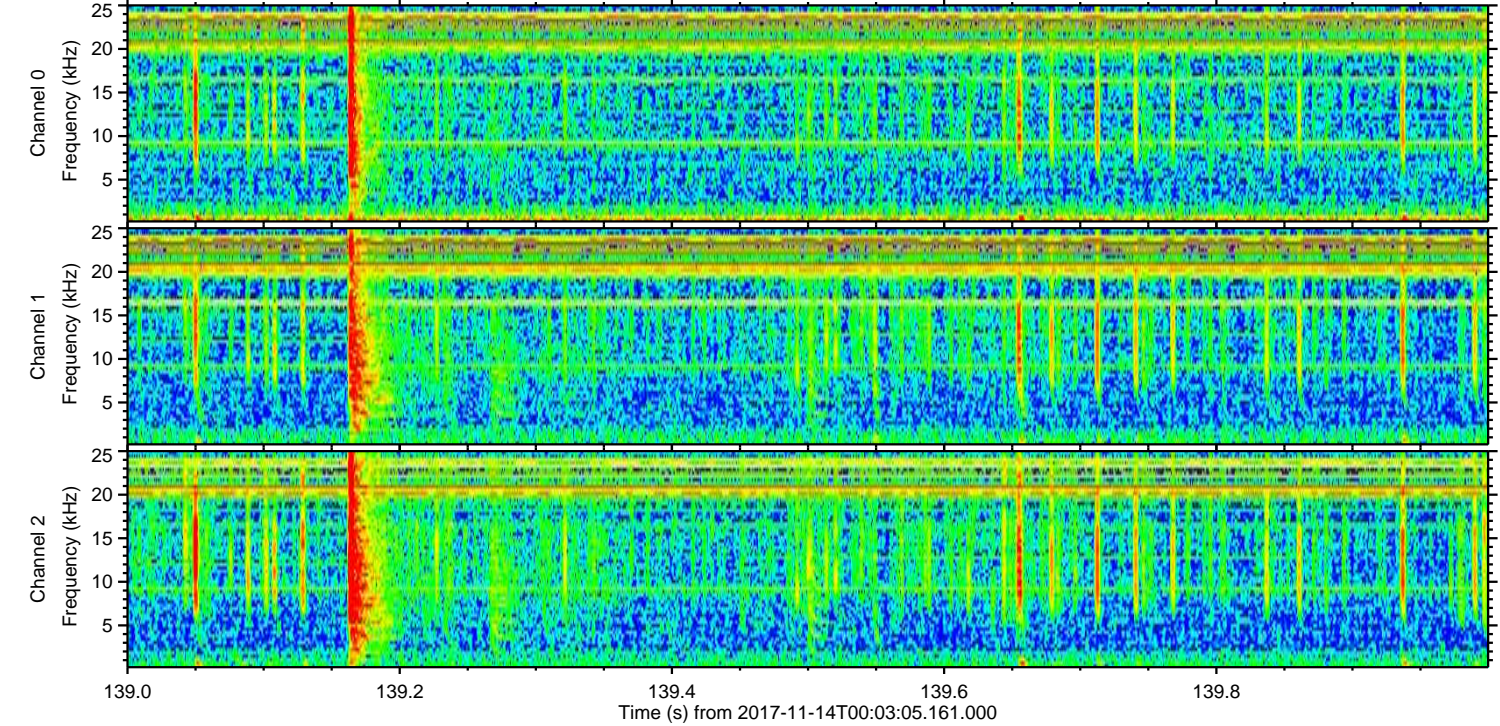
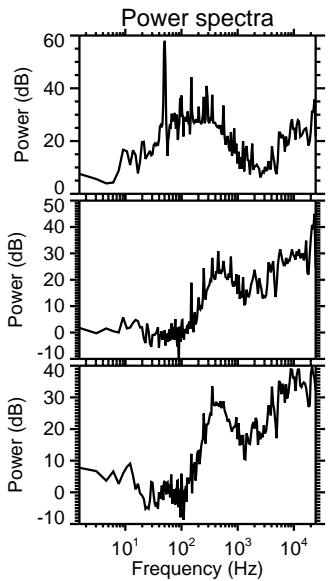
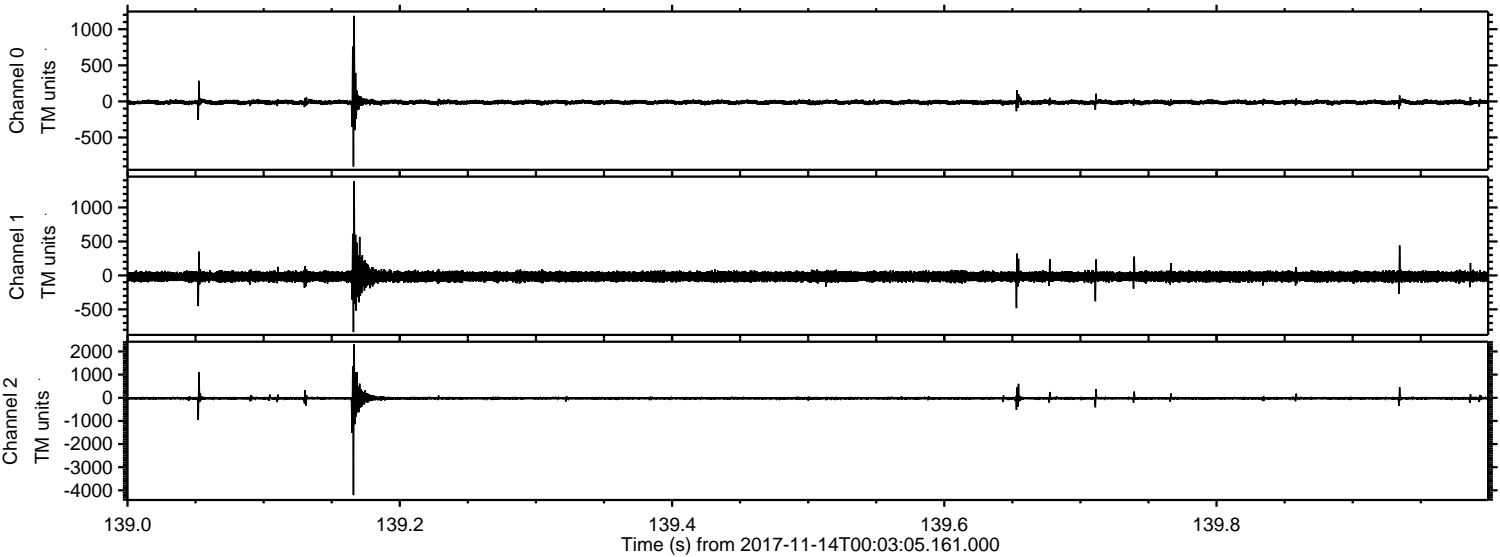
Channel 0
mn: -1462
mx: 1090
 μ : -12.0
 σ : 19.1

Channel 1
mn: -1065
mx: 1111
 μ : -17.2
 σ : 36.3

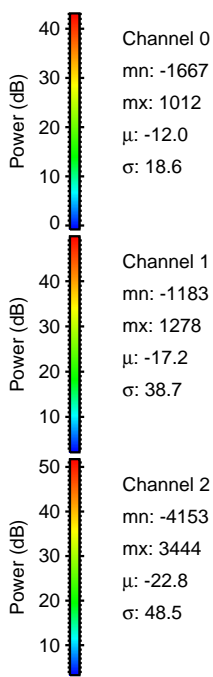
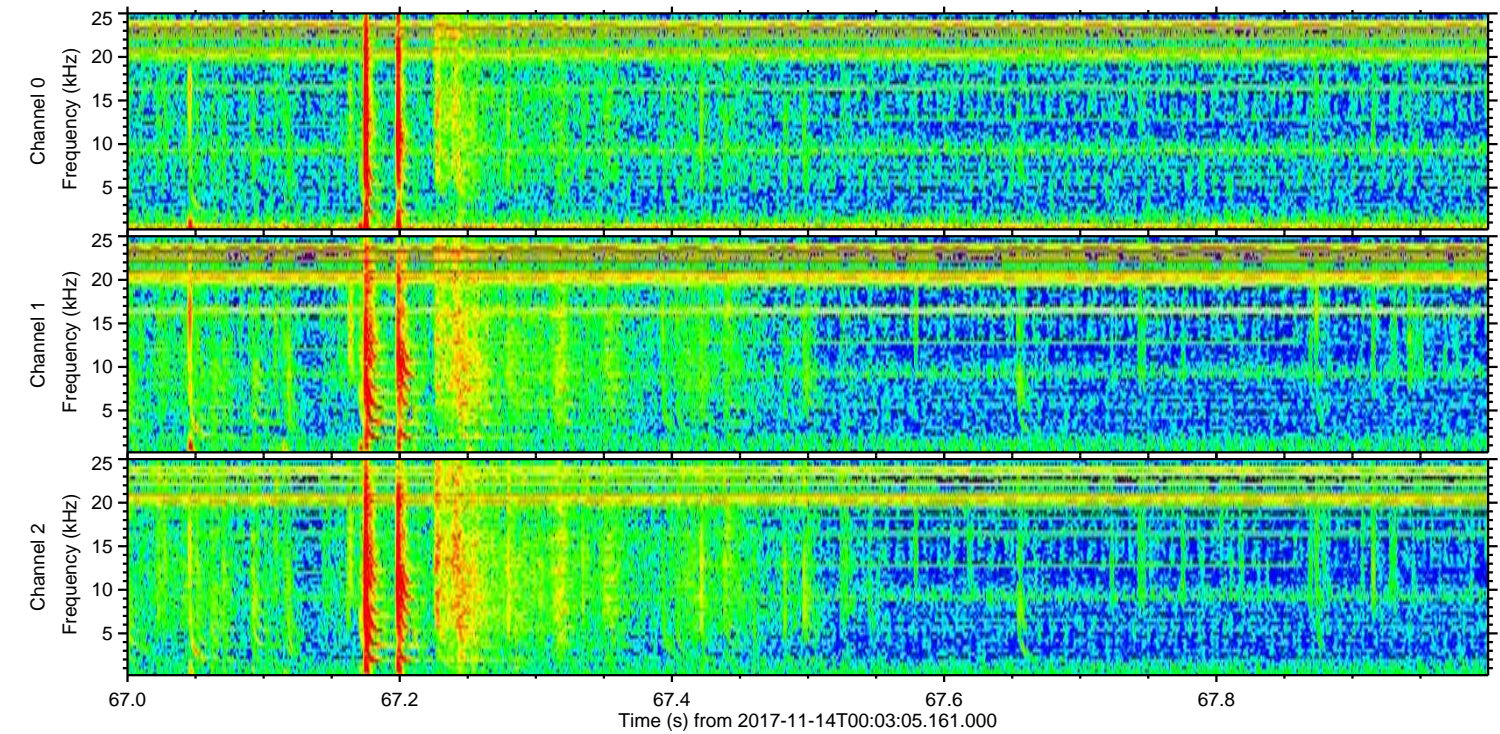
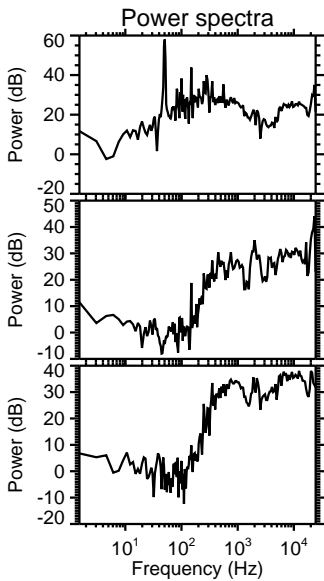
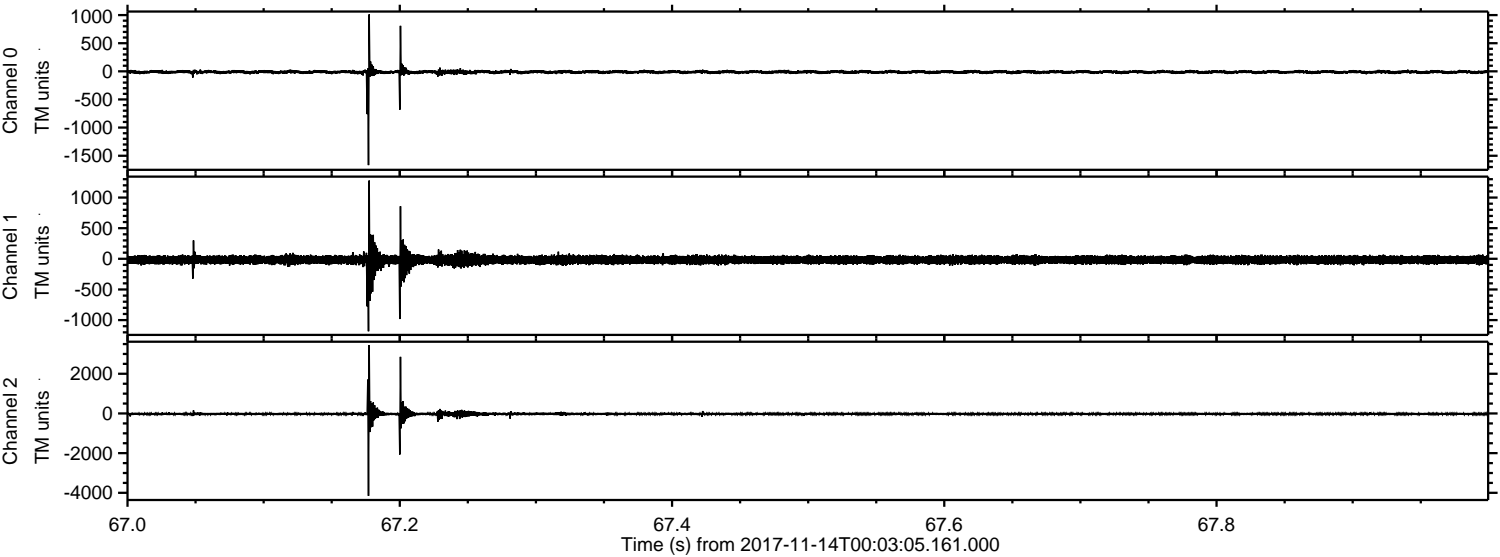
Channel 2
mn: -4658
mx: 4719
 μ : -22.8
 σ : 50.4

ELMAVAN 3D WAVEFORMS (Measured data sampled at 50 kHz) 51000 packets of 144 samples from 2017-11-14T00:03:05.161.000. Part 140/147

Processed Tue Nov 14 01:11:18 2017 by ELM ver.2012-10-06 from 001__elm20171114_000304__dat00.bin



Processed Tue Nov 14 01:11:19 2017 by ELM ver.2012-10-06 from 001__elm20171114_000304__dat00.bin



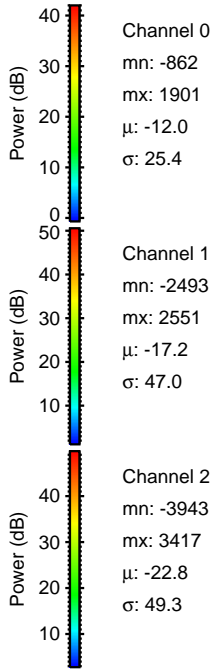
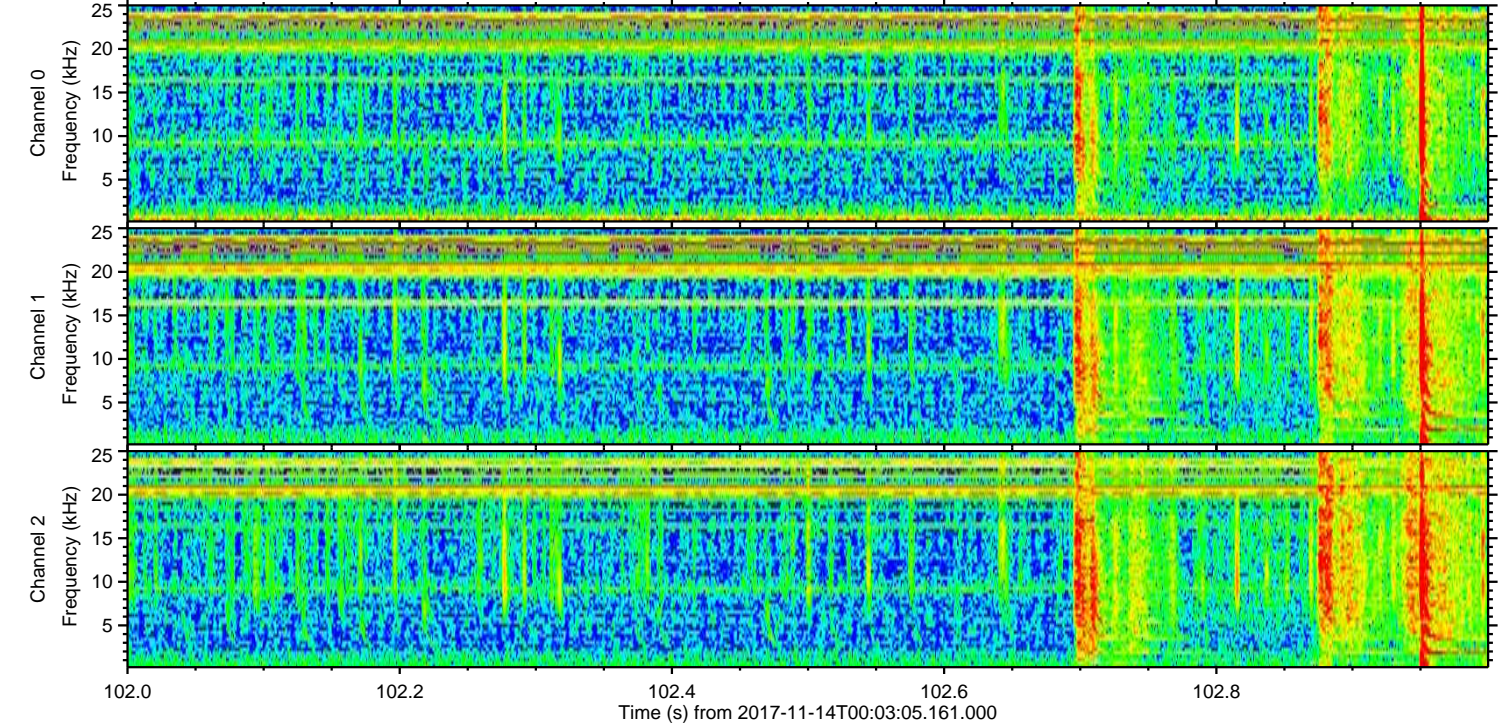
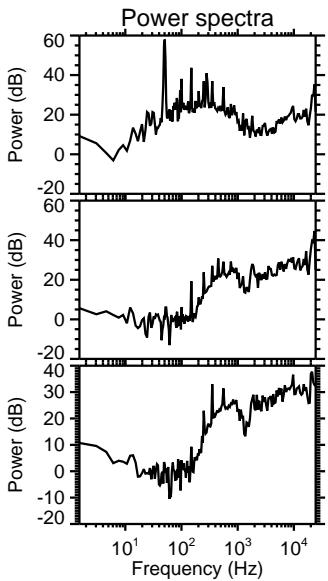
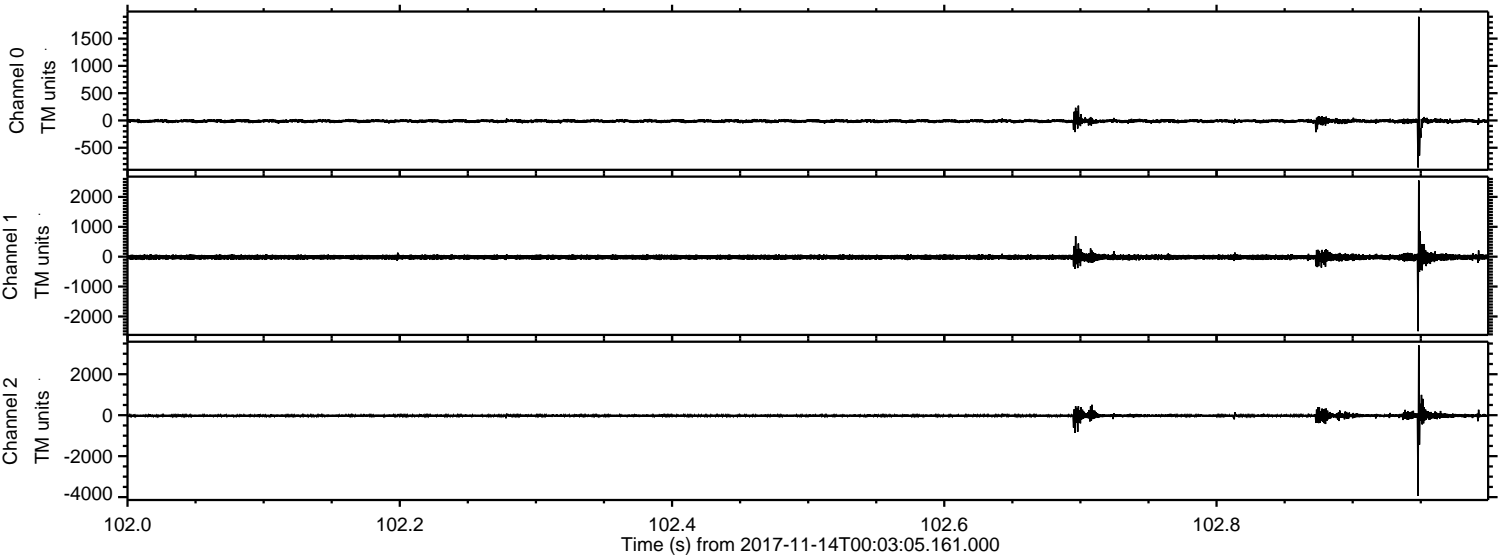
Channel 0
mn: -1667
mx: 1012
 μ : -12.0
 σ : 18.6

Channel 1
mn: -1183
mx: 1278
 μ : -17.2
 σ : 38.7

Channel 2
mn: -4153
mx: 3444
 μ : -22.8
 σ : 48.5

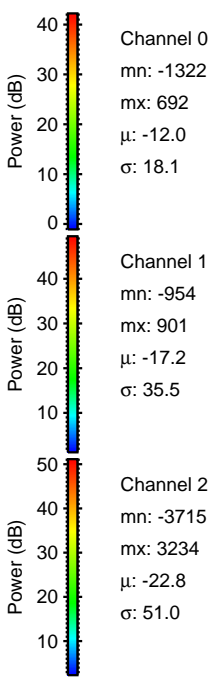
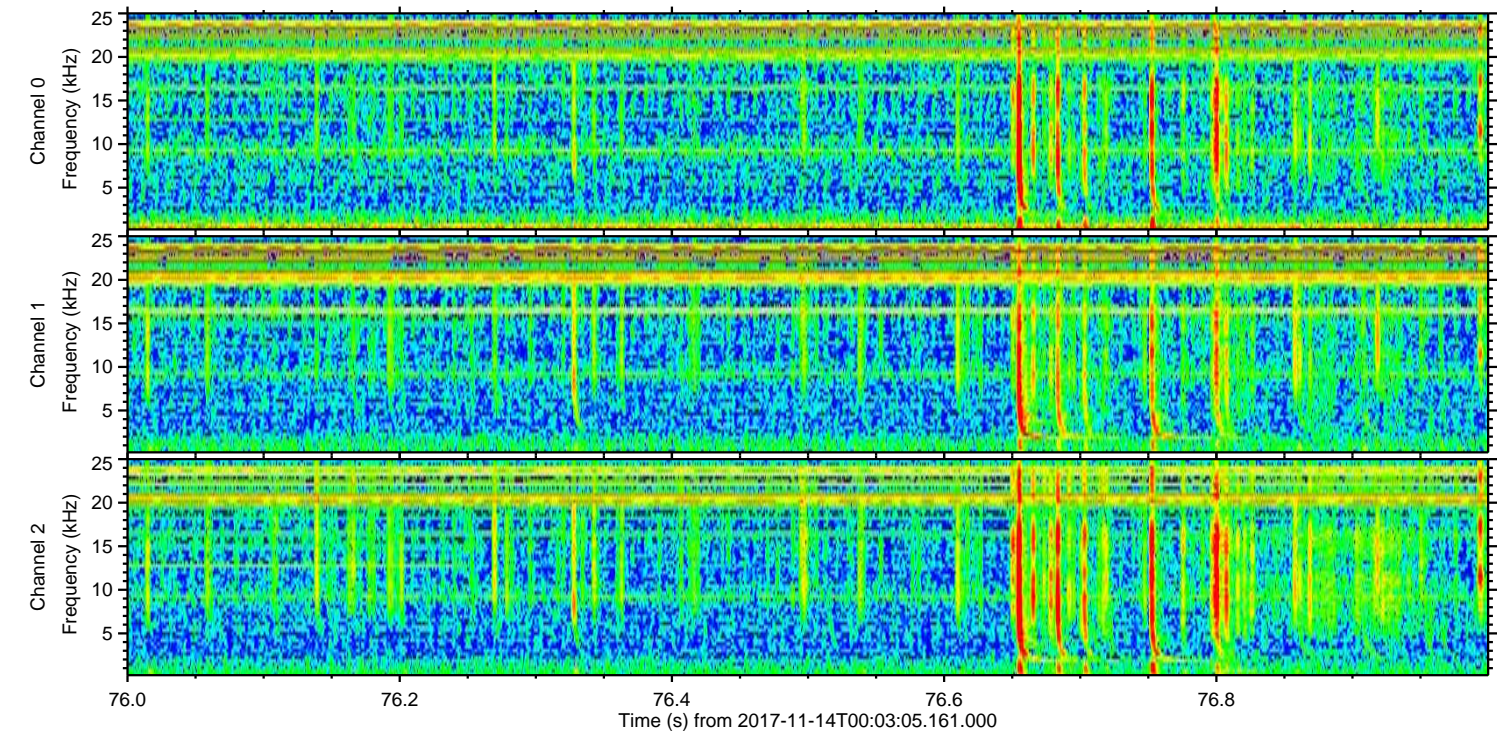
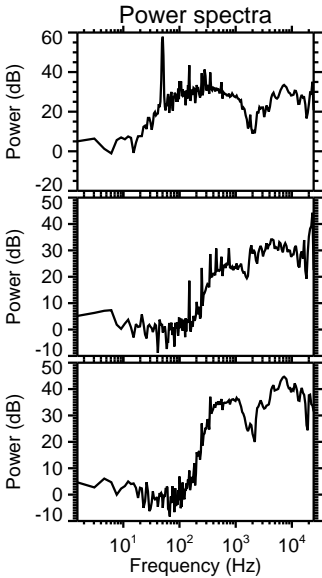
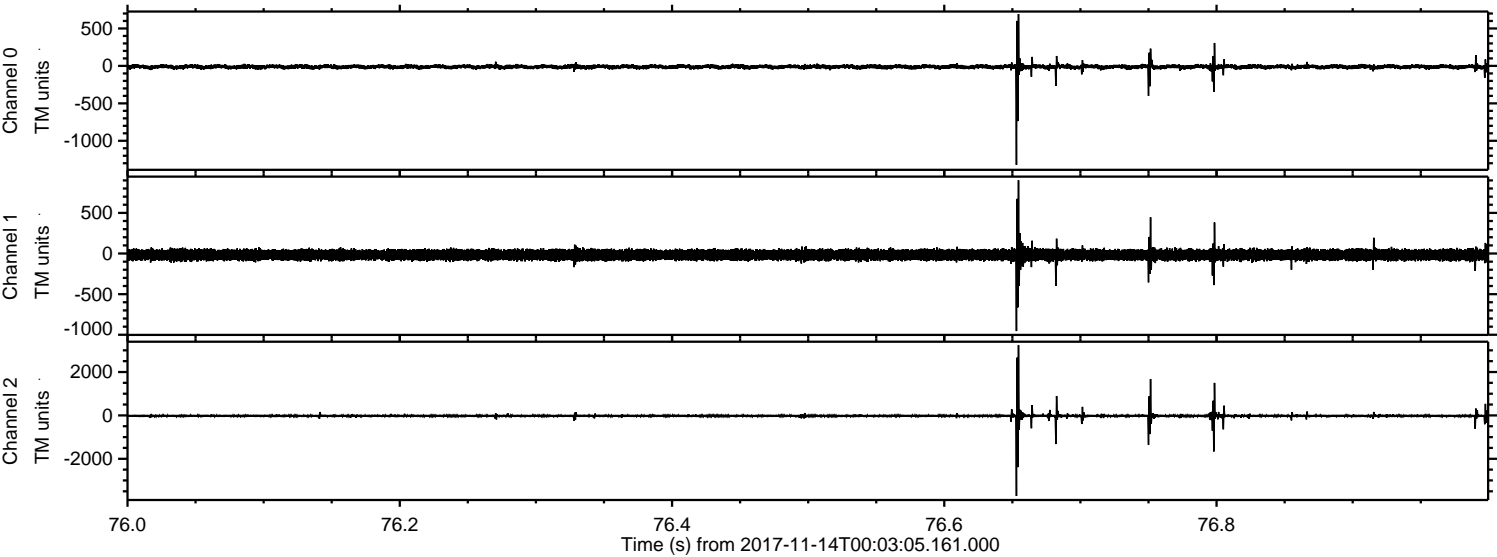
ELMAVAN 3D WAVEFORMS (Measured data sampled at 50 kHz) 51000 packets of 144 samples from 2017-11-14T00:03:05.161.000. Part 103/147

Processed Tue Nov 14 01:11:20 2017 by ELM ver.2012-10-06 from 001__elm20171114_000304__dat00.bin



ELMAVAN 3D WAVEFORMS (Measured data sampled at 50 kHz) 51000 packets of 144 samples from 2017-11-14T00:03:05.161.000. Part 77/147

Processed Tue Nov 14 01:11:20 2017 by ELM ver.2012-10-06 from 001__elm20171114_000304__dat00.bin

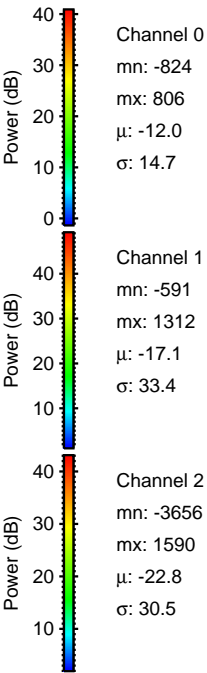
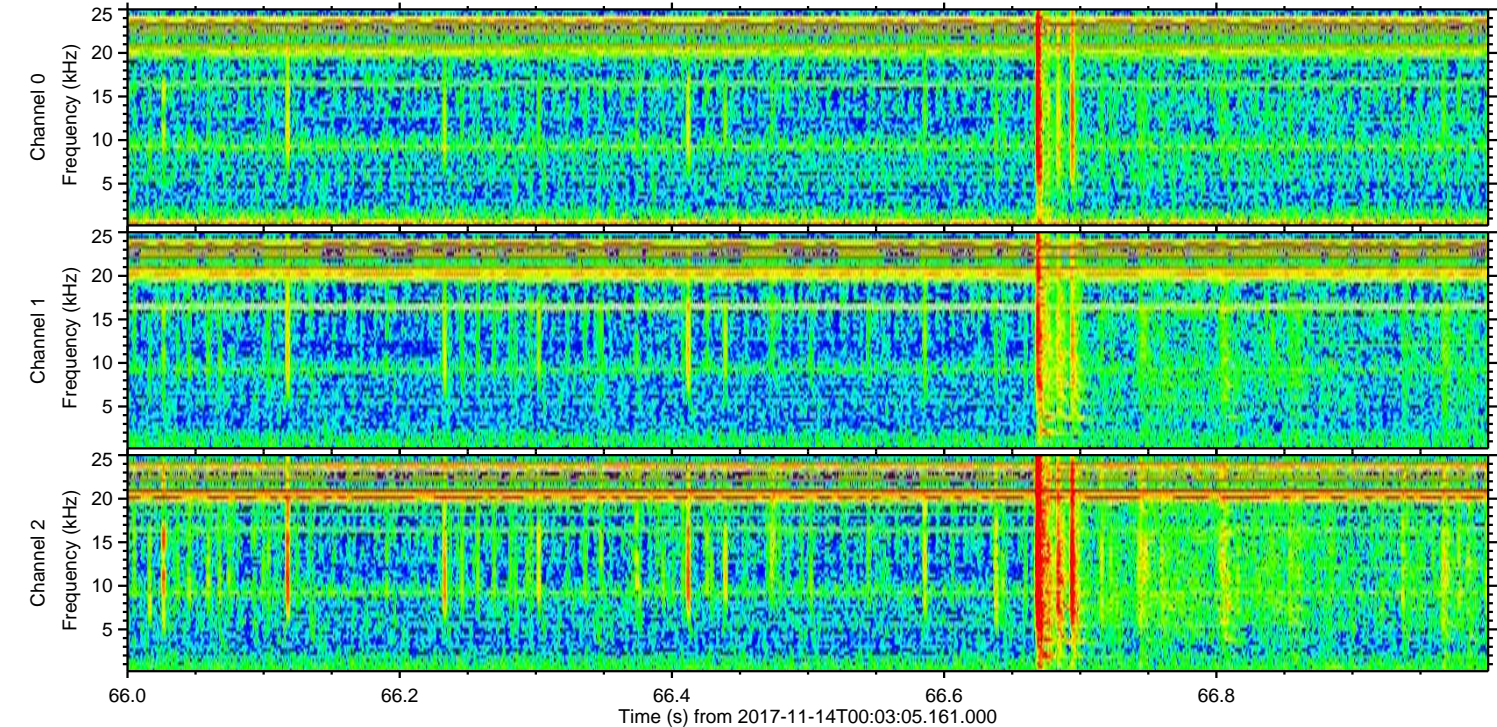
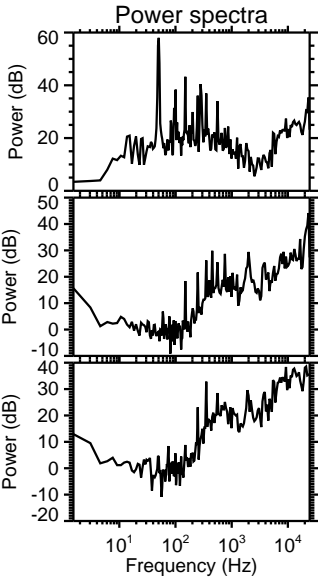
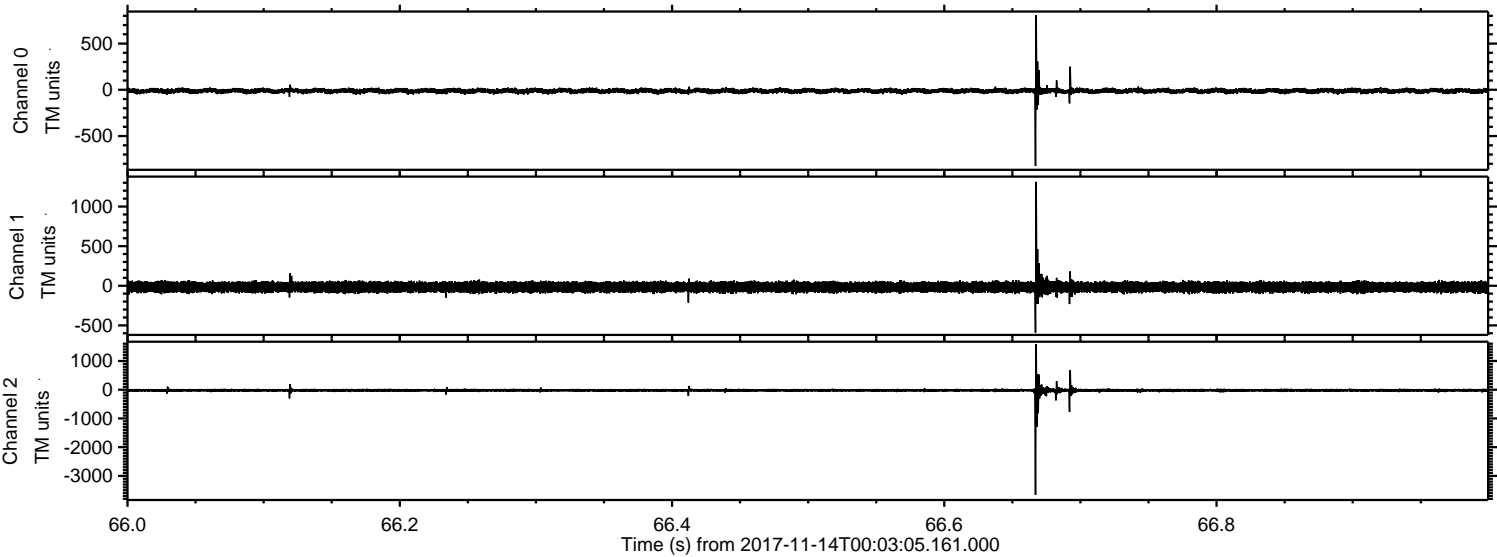


Channel 0
mn: -1322
mx: 692
 μ : -12.0
 σ : 18.1

Channel 1
mn: -954
mx: 901
 μ : -17.2
 σ : 35.5

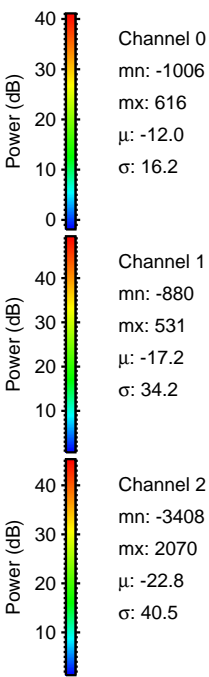
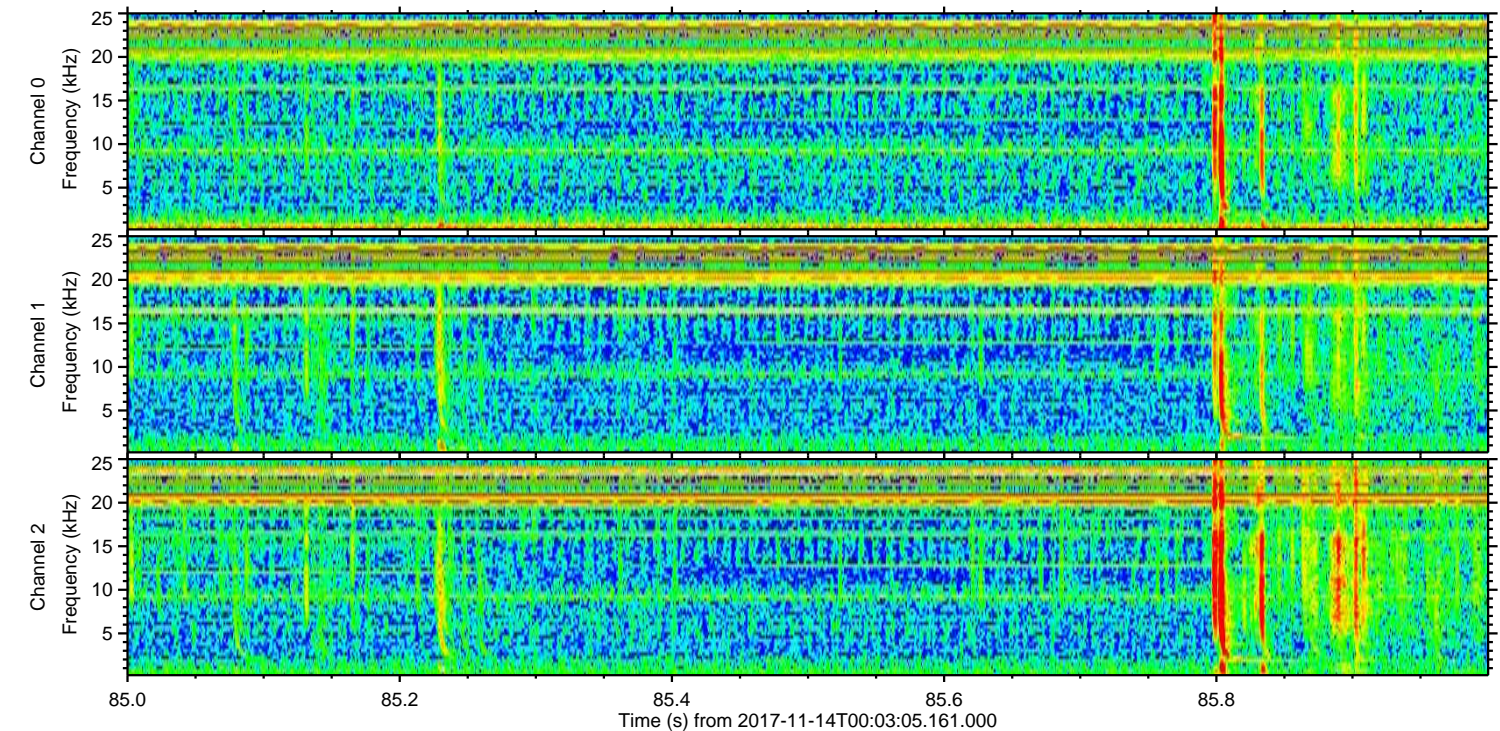
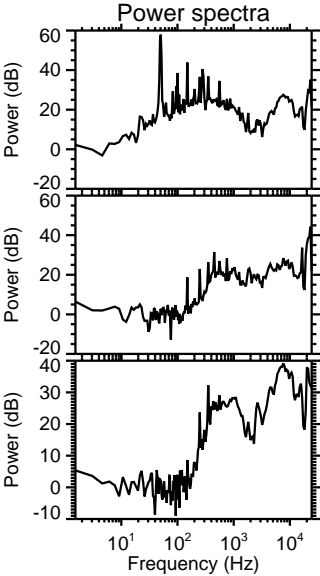
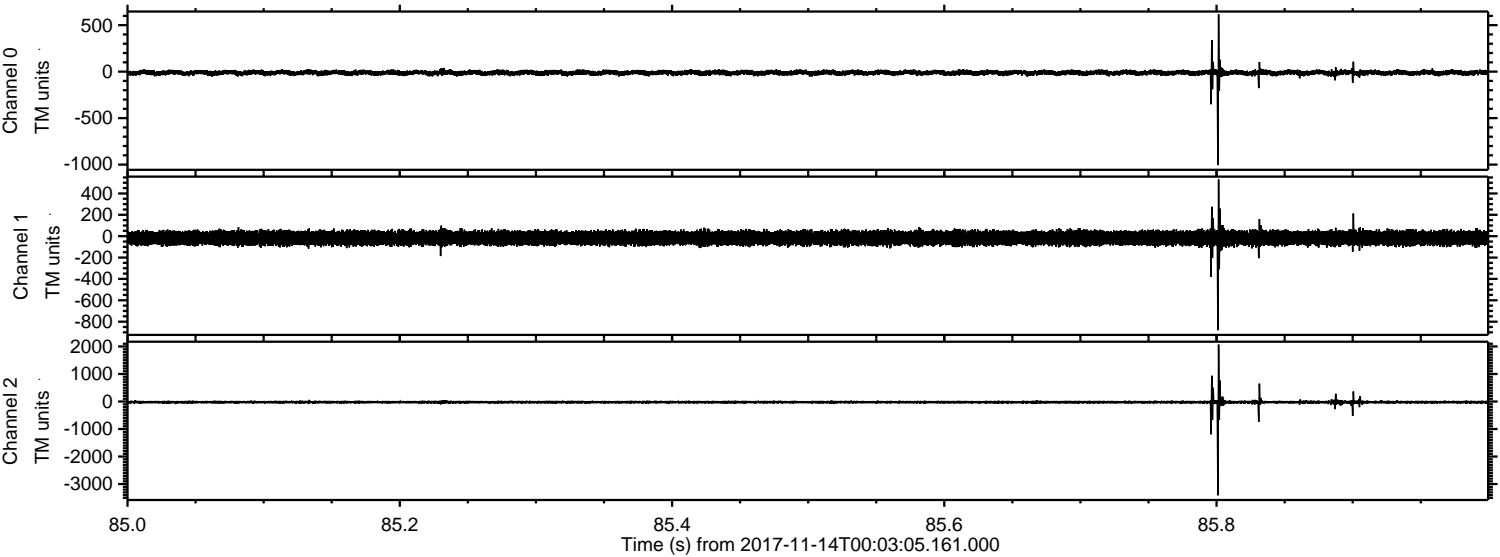
Channel 2
mn: -3715
mx: 3234
 μ : -22.8
 σ : 51.0

Processed Tue Nov 14 01:11:21 2017 by ELM ver.2012-10-06 from 001__elm20171114_000304__dat00.bin



ELMAVAN 3D WAVEFORMS (Measured data sampled at 50 kHz) 51000 packets of 144 samples from 2017-11-14T00:03:05.161.000. Part 86/147

Processed Tue Nov 14 01:11:21 2017 by ELM ver.2012-10-06 from 001__elm20171114_000304__dat00.bin



Processed Tue Nov 14 01:11:22 2017 by ELM ver.2012-10-06 from 001__elm20171114_000304__dat00.bin

