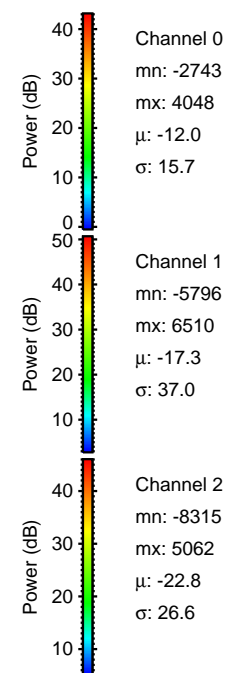
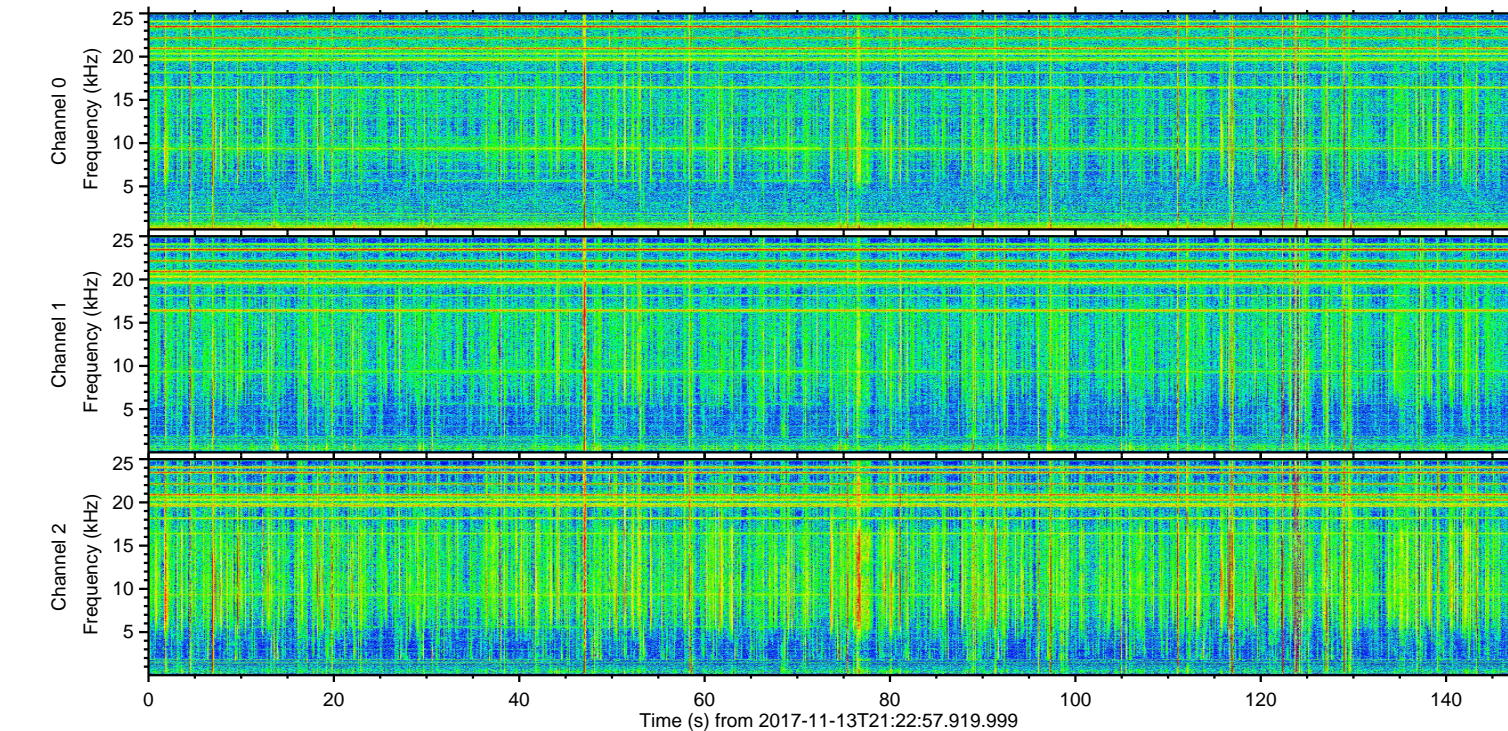
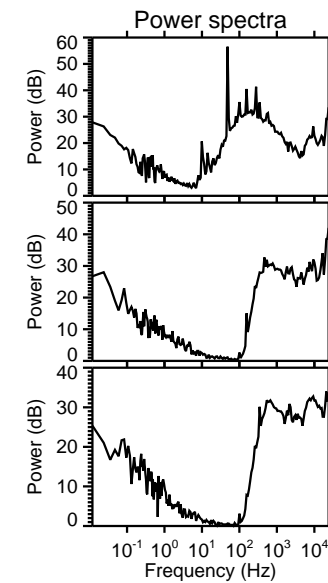
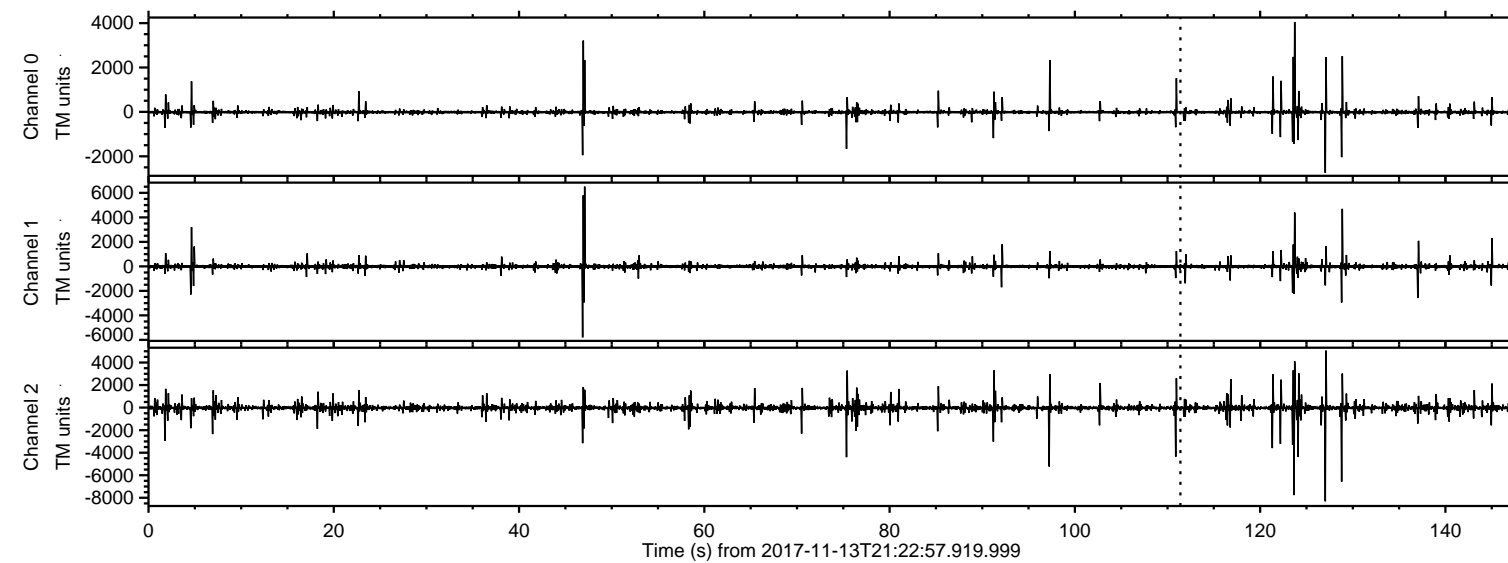


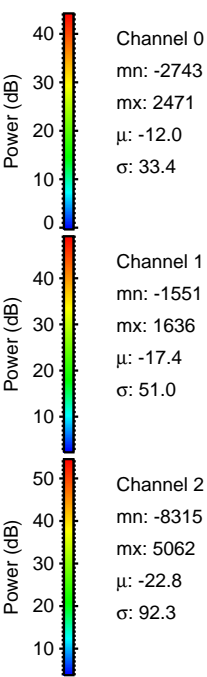
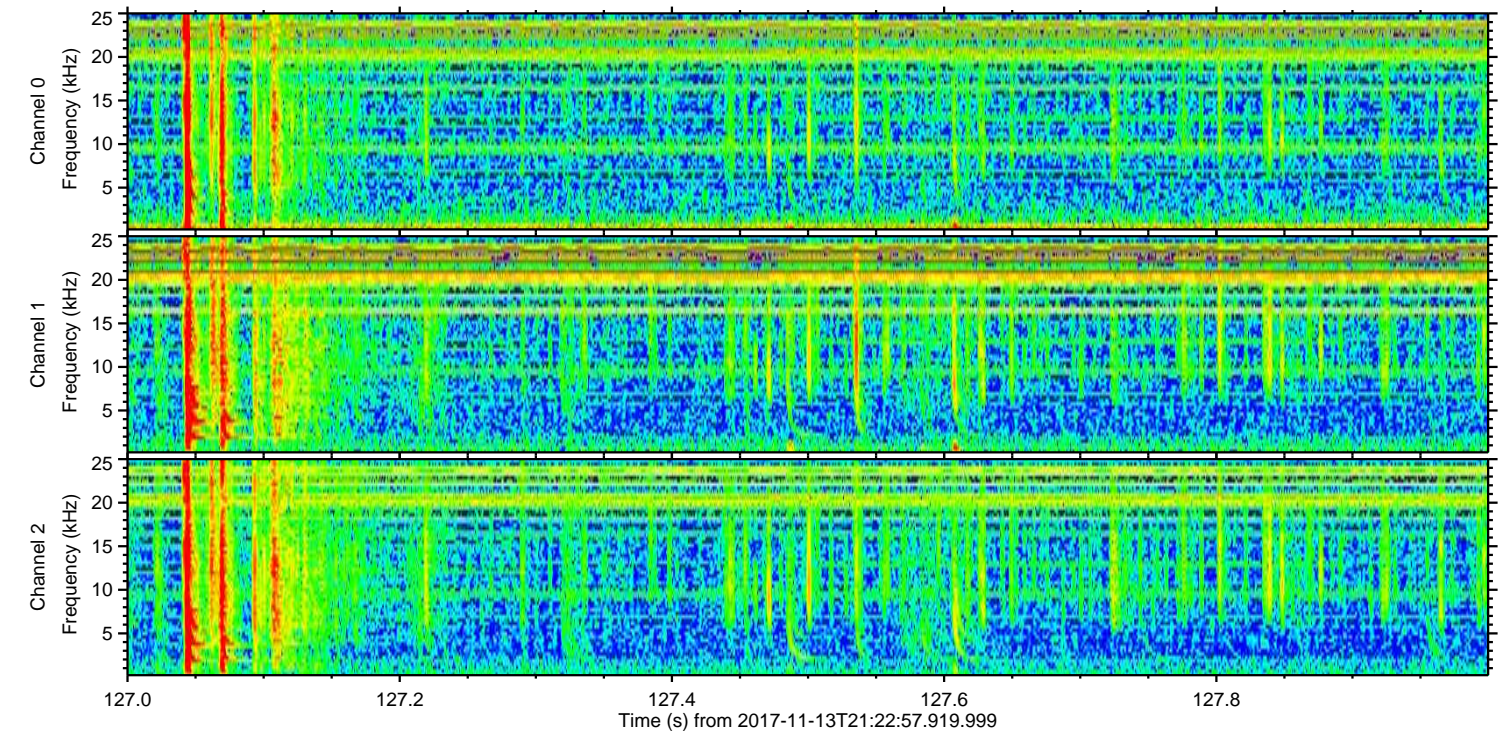
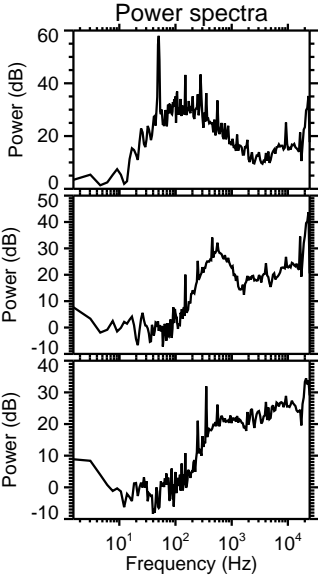
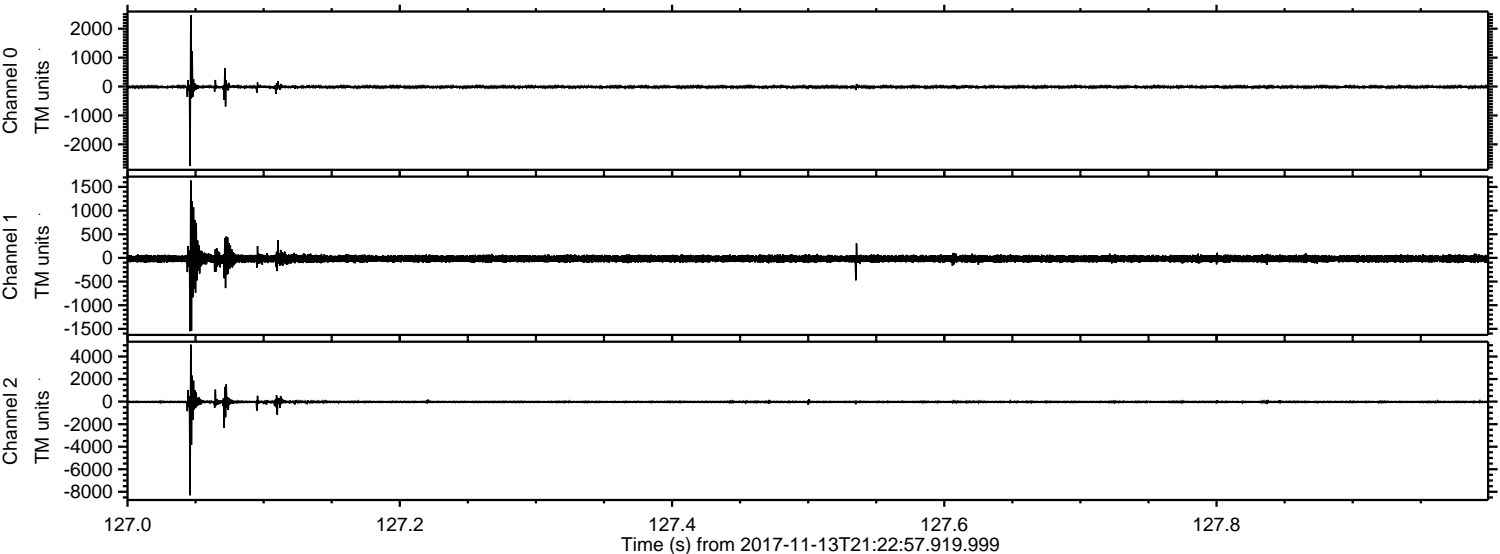
ELMAVAN 3D WAVEFORMS (Measured data sampled at 50 kHz) 50999 packets of 144 samples from 2017-11-13T21:22:57.919.999.

Processed Mon Nov 13 22:31:24 2017 by ELM ver.2012-10-06 from 001__elm20171113_212256__dat00.bin



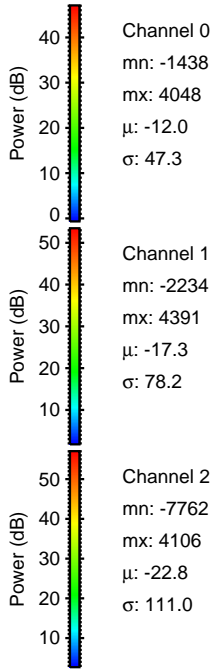
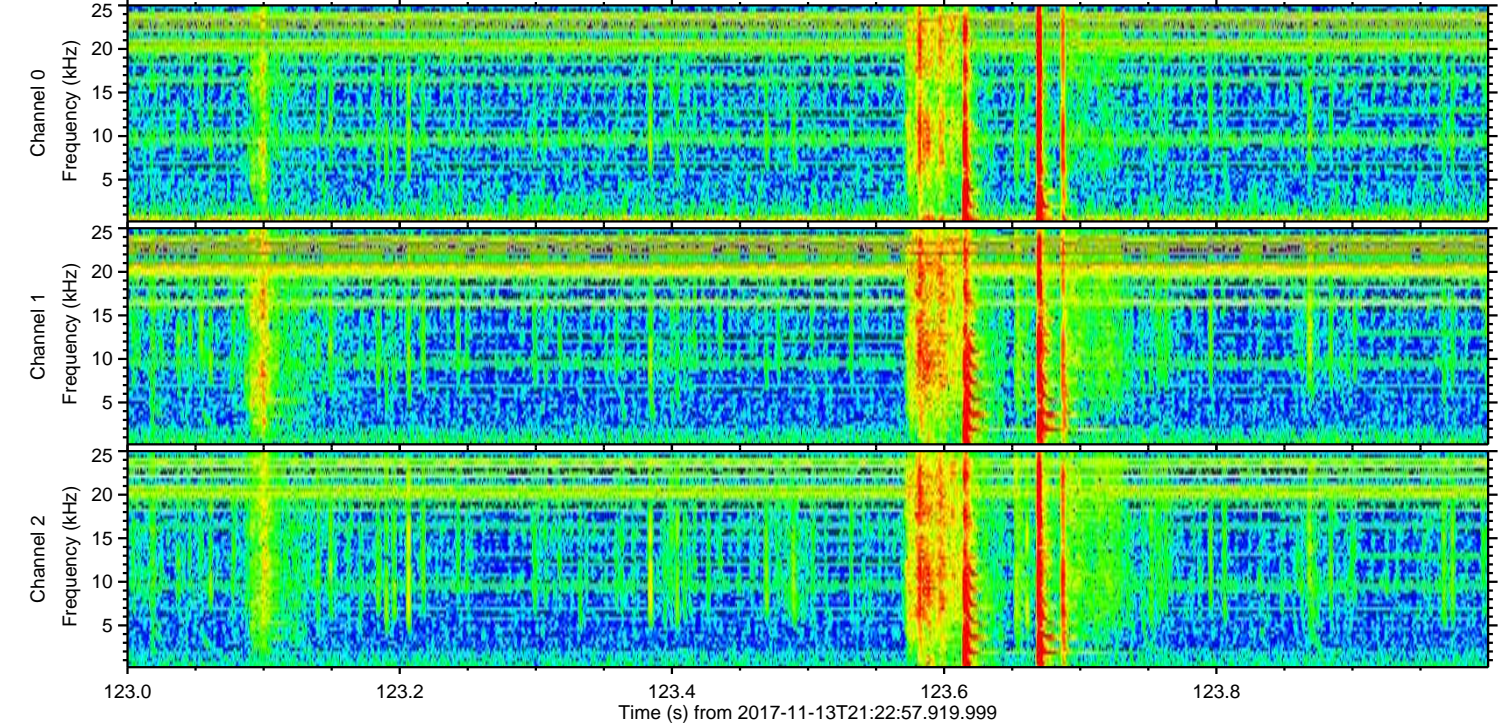
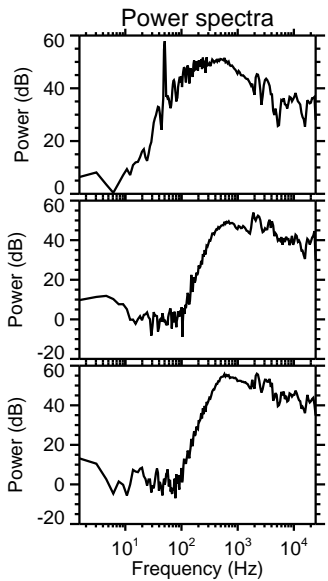
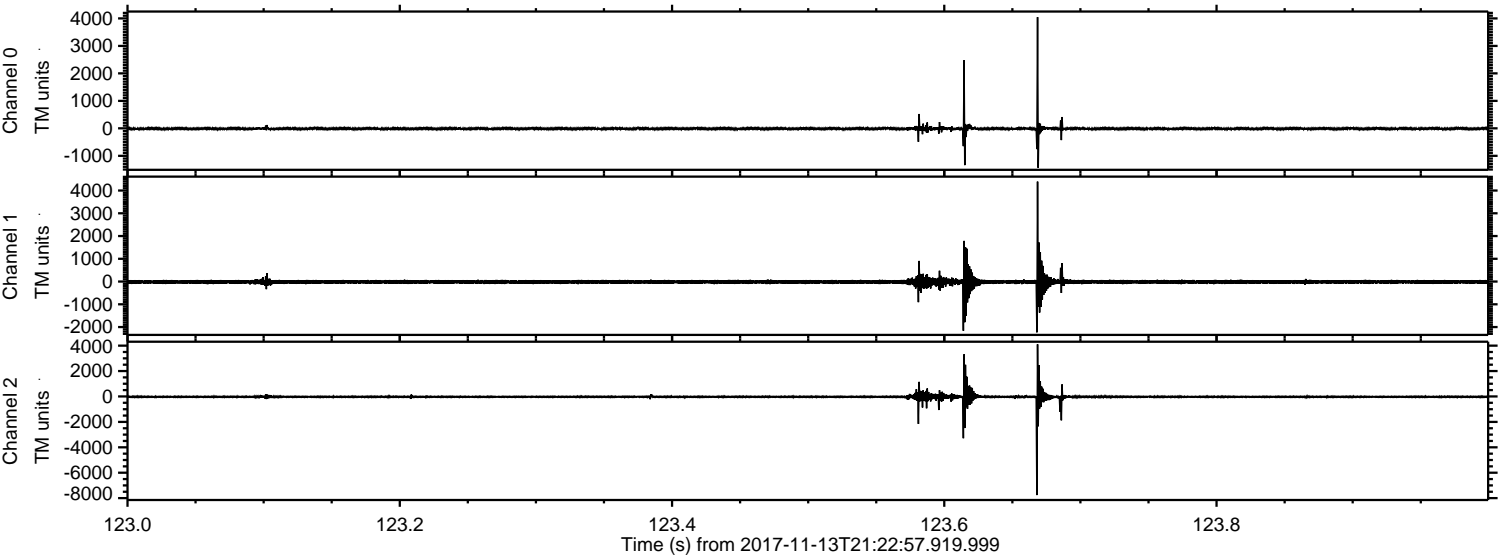
ELMAVAN 3D WAVEFORMS (Measured data sampled at 50 kHz) 50999 packets of 144 samples from 2017-11-13T21:22:57.919.999. Part 128/147

Processed Mon Nov 13 22:31:31 2017 by ELM ver.2012-10-06 from 001__elm20171113_212256__dat00.bin



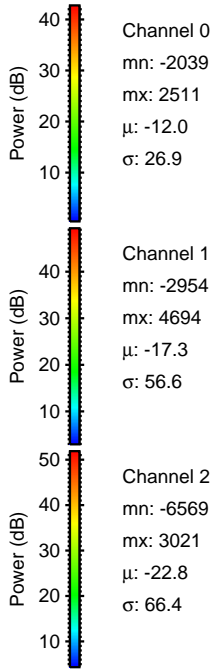
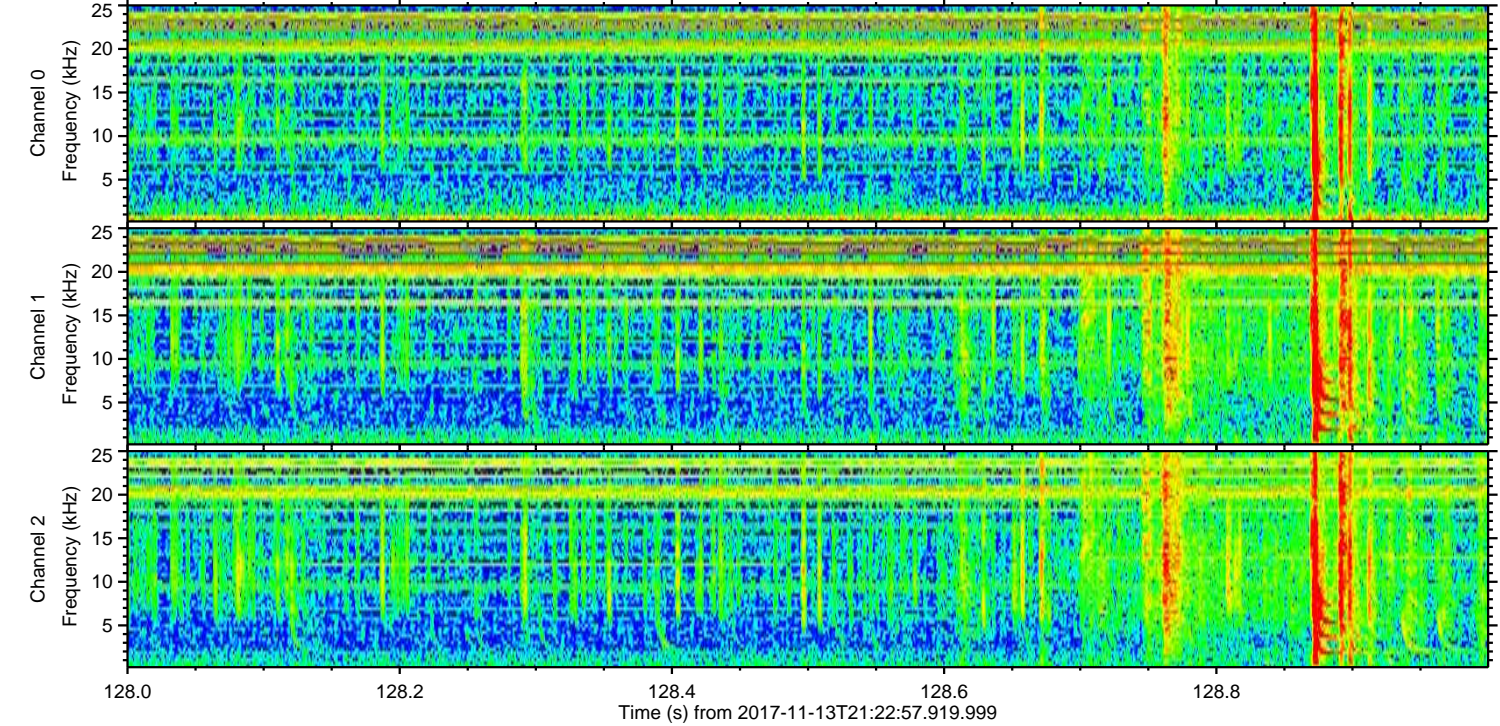
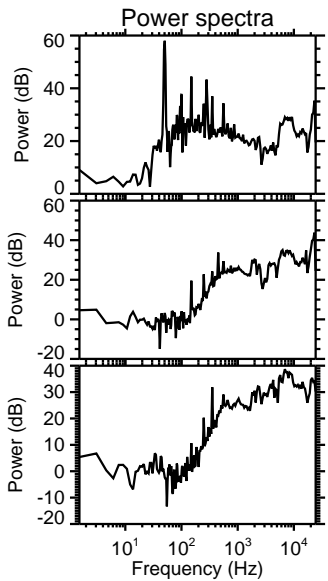
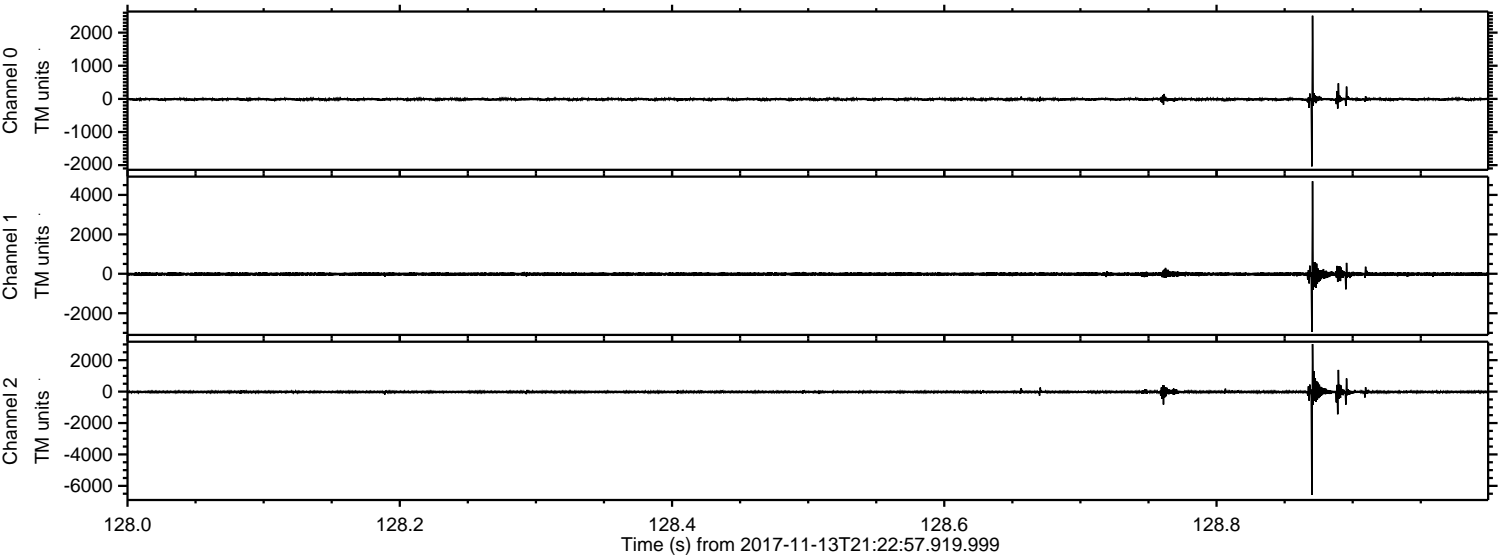
ELMAVAN 3D WAVEFORMS (Measured data sampled at 50 kHz) 50999 packets of 144 samples from 2017-11-13T21:22:57.919.999. Part 124/147

Processed Mon Nov 13 22:31:32 2017 by ELM ver.2012-10-06 from 001__elm20171113_212256__dat00.bin



ELMAVAN 3D WAVEFORMS (Measured data sampled at 50 kHz) 50999 packets of 144 samples from 2017-11-13T21:22:57.919.999. Part 129/147

Processed Mon Nov 13 22:31:33 2017 by ELM ver.2012-10-06 from 001__elm20171113_212256__dat00.bin

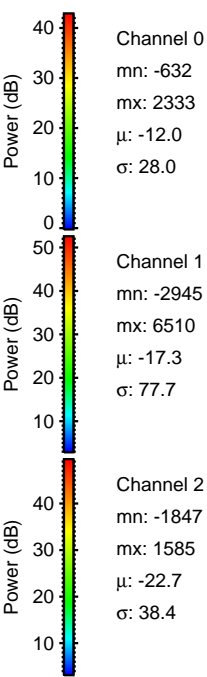
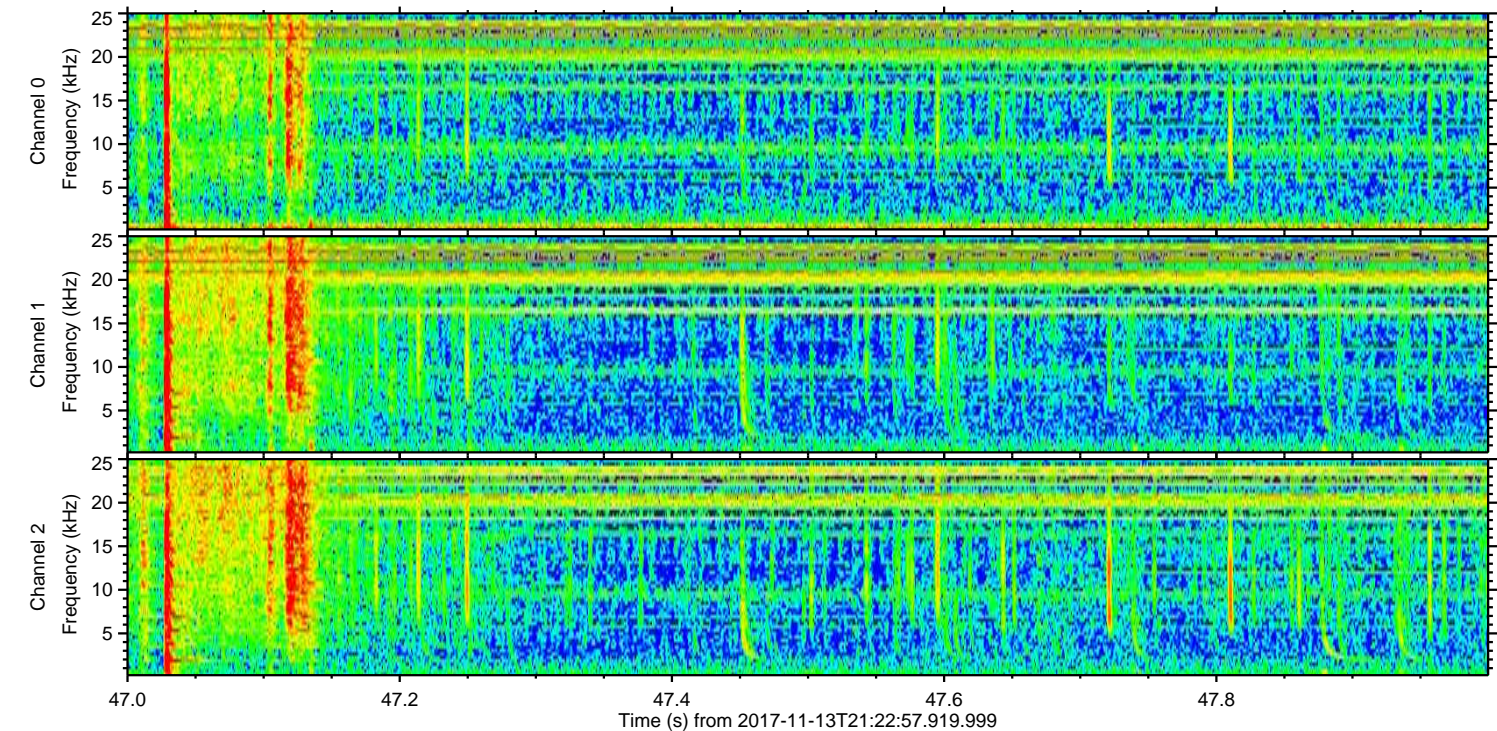
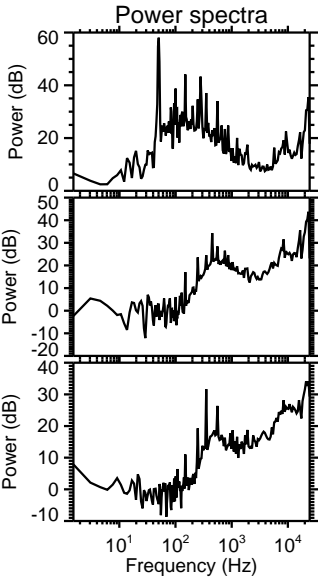
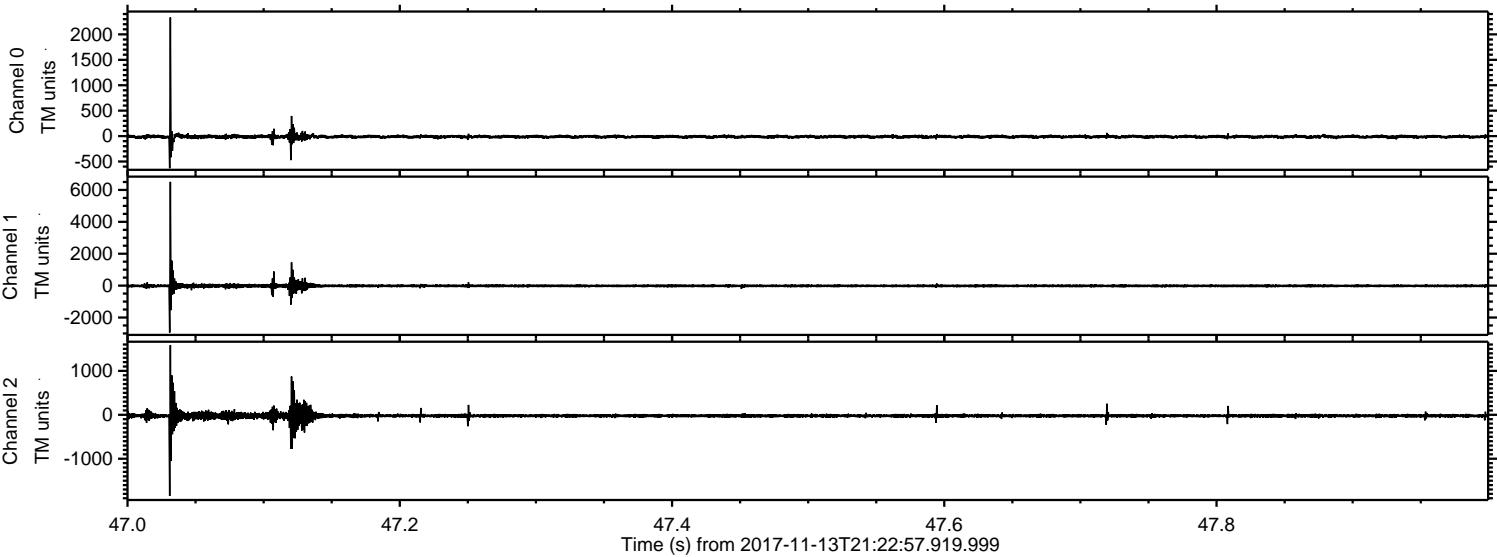


Channel 0
mn: -2039
mx: 2511
 μ : -12.0
 σ : 26.9

Channel 1
mn: -2954
mx: 4694
 μ : -17.3
 σ : 56.6

Channel 2
mn: -6569
mx: 3021
 μ : -22.8
 σ : 66.4

Processed Mon Nov 13 22:31:34 2017 by ELM ver.2012-10-06 from 001__elm20171113_212256__dat00.bin



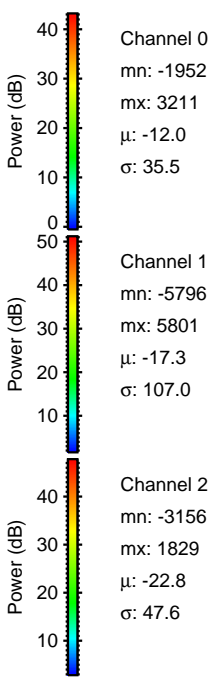
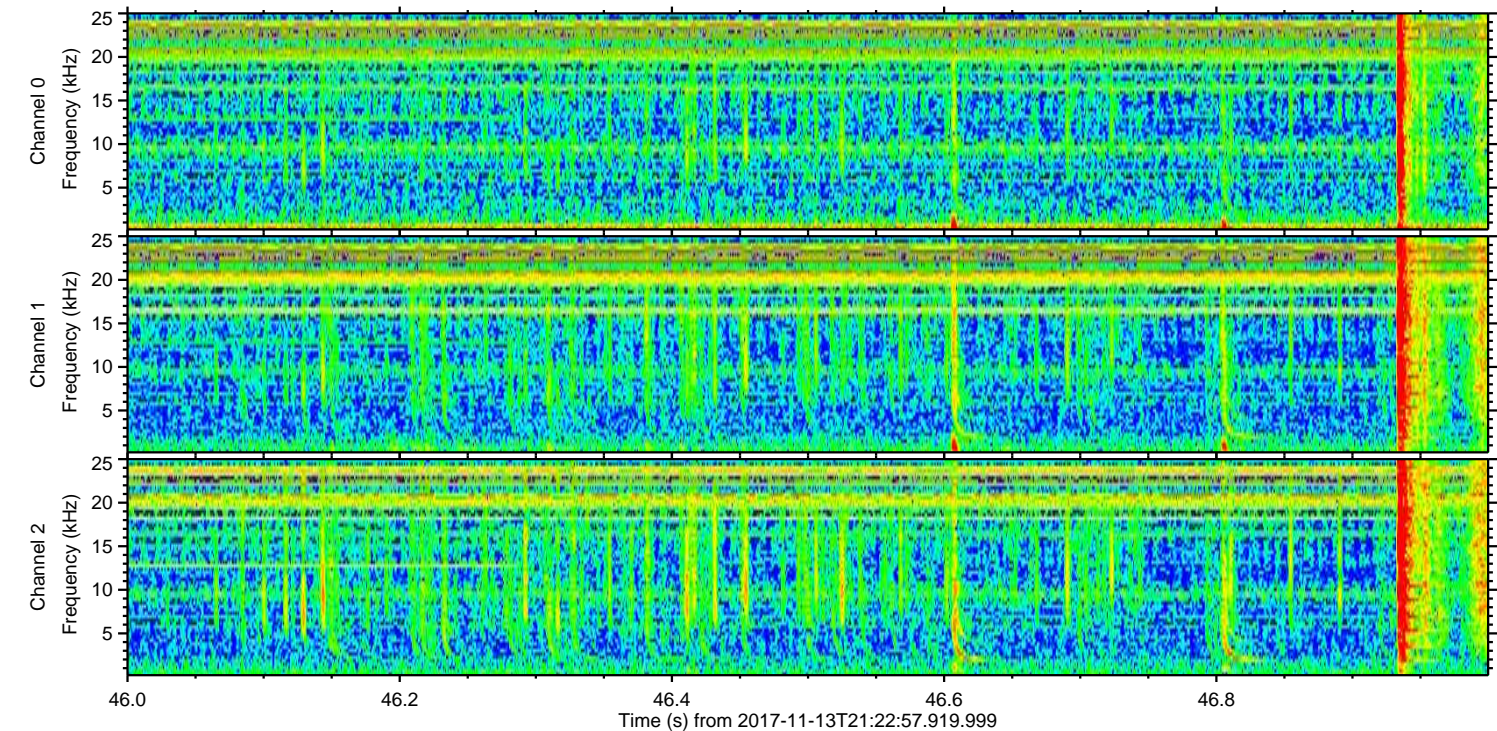
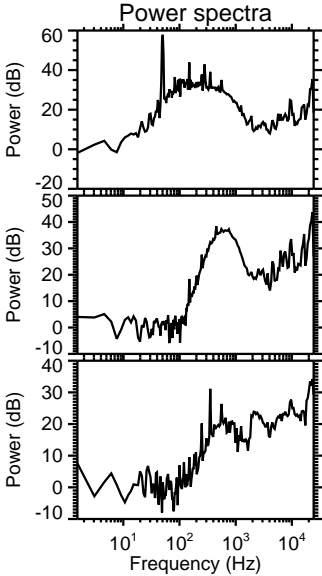
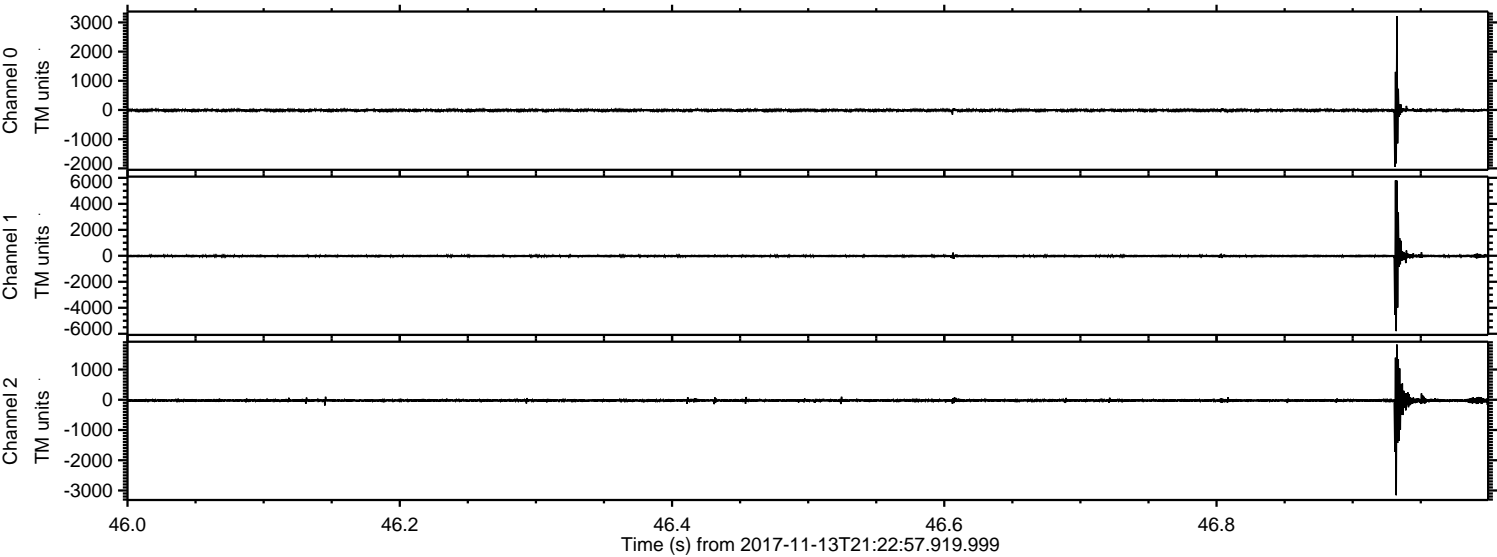
Channel 0
mn: -632
mx: 2333
 μ : -12.0
 σ : 28.0

Channel 1
mn: -2945
mx: 6510
 μ : -17.3
 σ : 77.7

Channel 2
mn: -1847
mx: 1585
 μ : -22.7
 σ : 38.4

ELMAVAN 3D WAVEFORMS (Measured data sampled at 50 kHz) 50999 packets of 144 samples from 2017-11-13T21:22:57.919.999. Part 47/147

Processed Mon Nov 13 22:31:35 2017 by ELM ver.2012-10-06 from 001__elm20171113_212256__dat00.bin

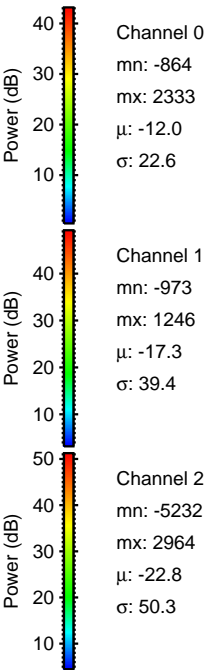
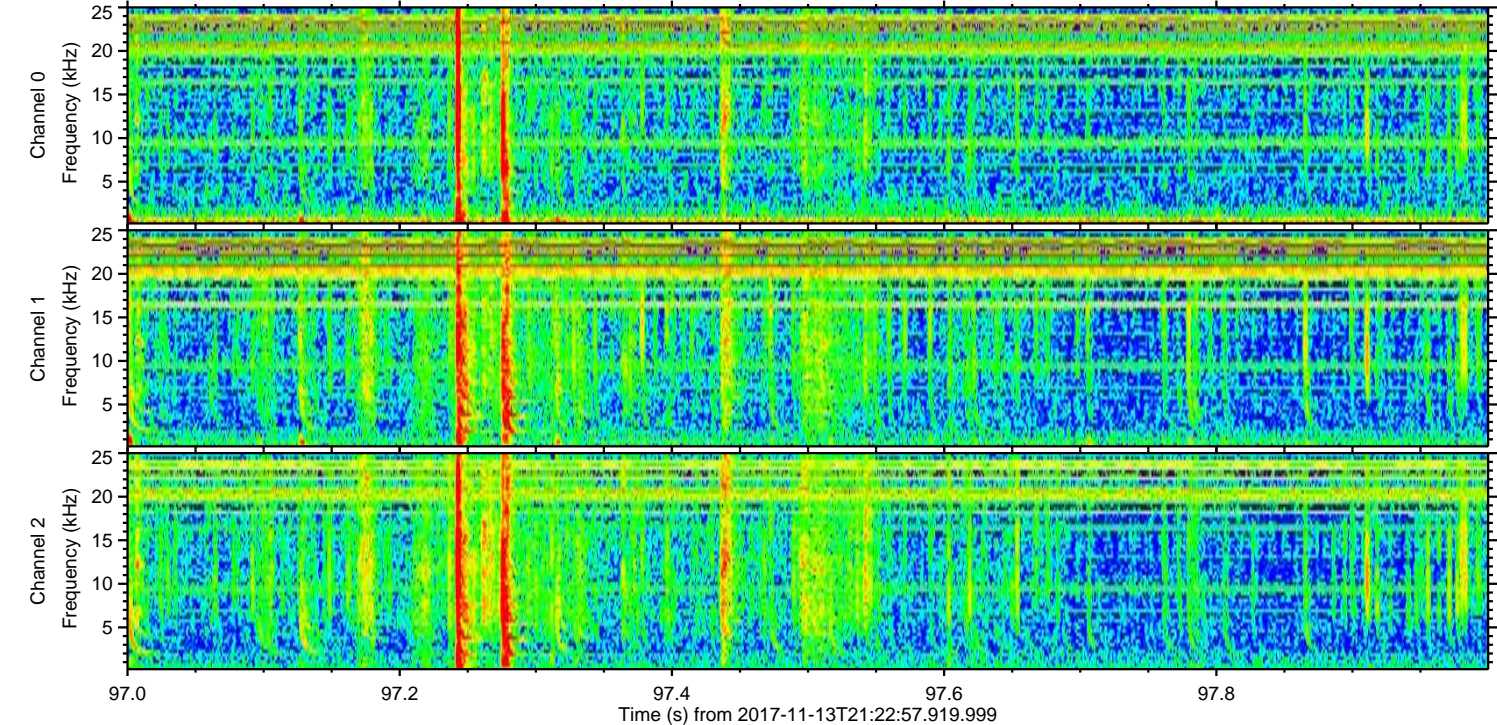
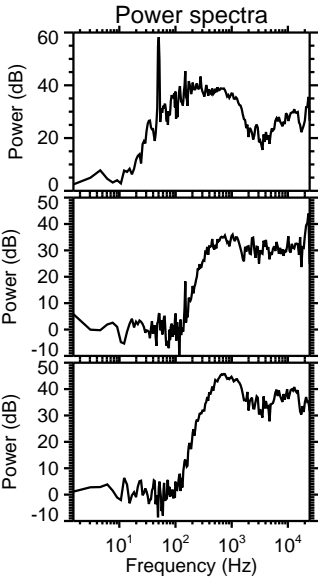
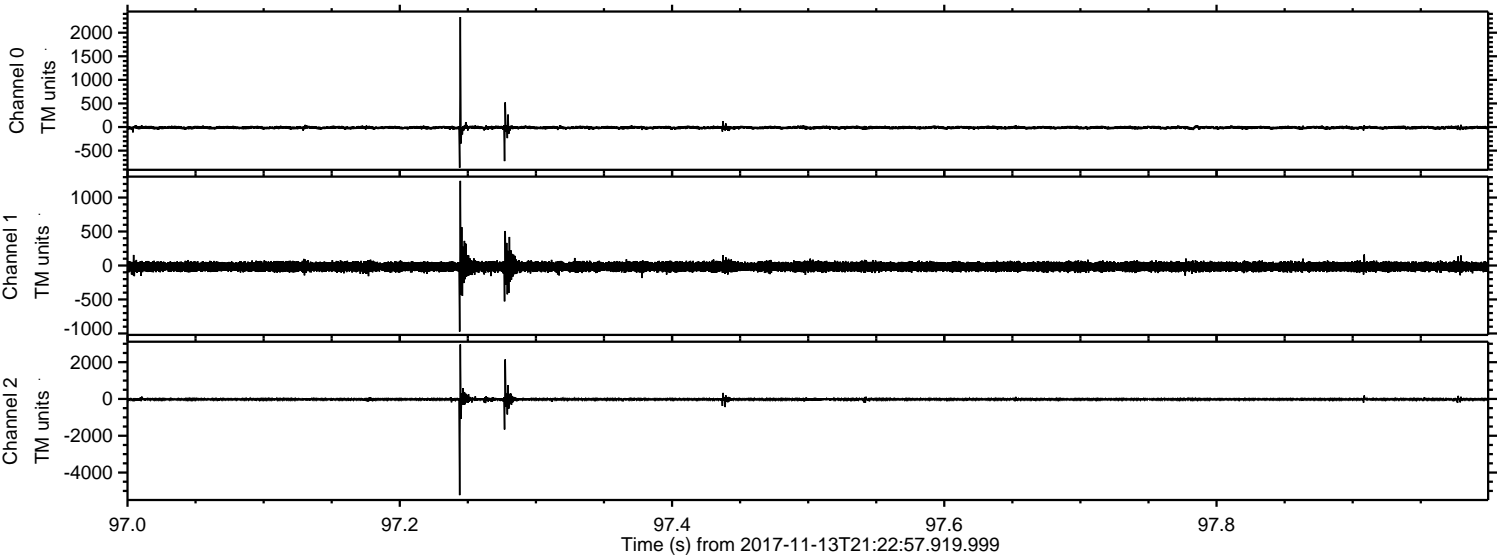


Channel 0
mn: -1952
mx: 3211
 μ : -12.0
 σ : 35.5

Channel 1
mn: -5796
mx: 5801
 μ : -17.3
 σ : 107.0

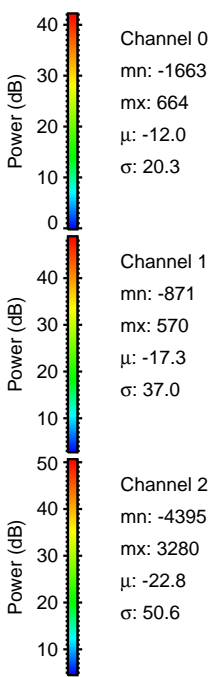
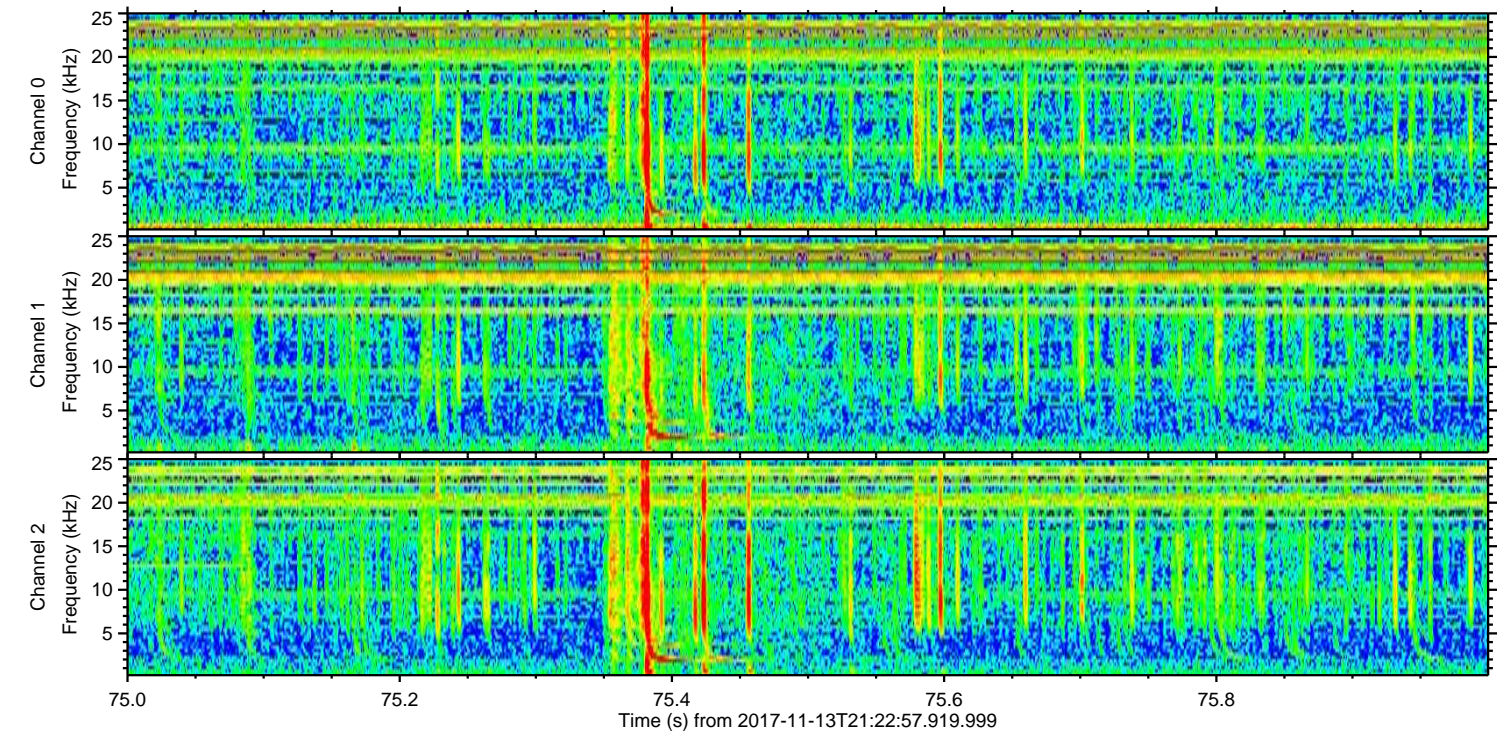
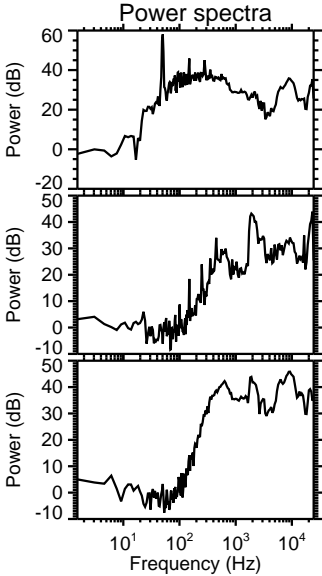
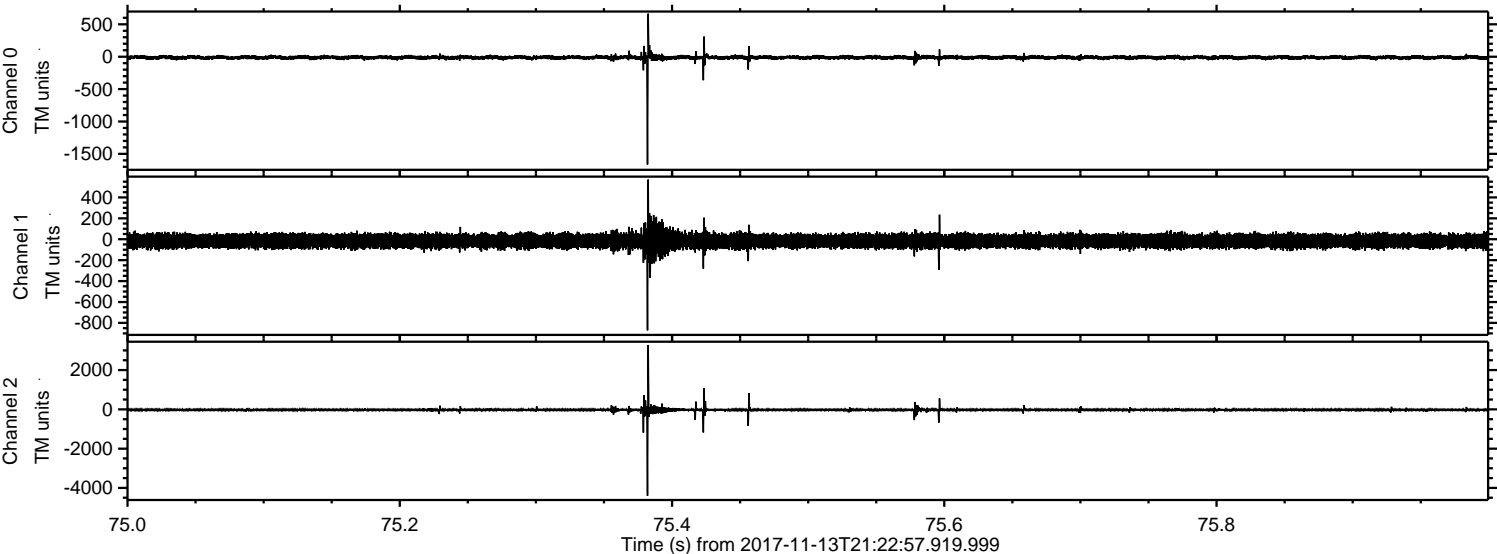
Channel 2
mn: -3156
mx: 1829
 μ : -22.8
 σ : 47.6

Processed Mon Nov 13 22:31:36 2017 by ELM ver.2012-10-06 from 001__elm20171113_212256__dat00.bin



ELMAVAN 3D WAVEFORMS (Measured data sampled at 50 kHz) 50999 packets of 144 samples from 2017-11-13T21:22:57.919.999. Part 76/147

Processed Mon Nov 13 22:31:37 2017 by ELM ver.2012-10-06 from 001__elm20171113_212256__dat00.bin



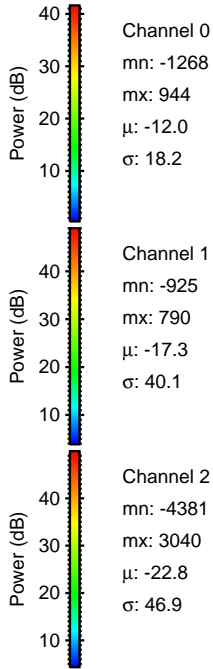
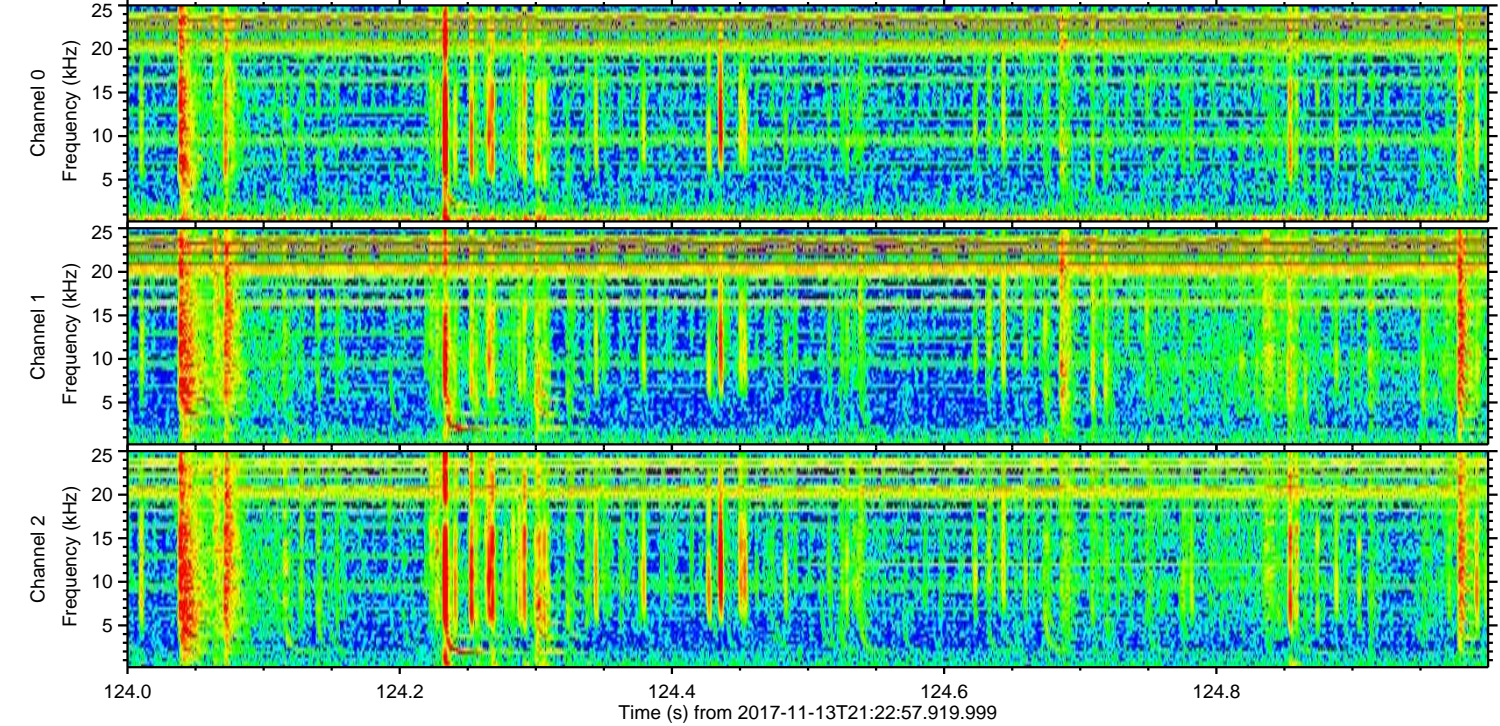
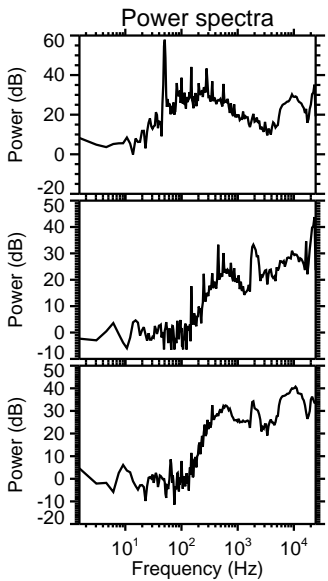
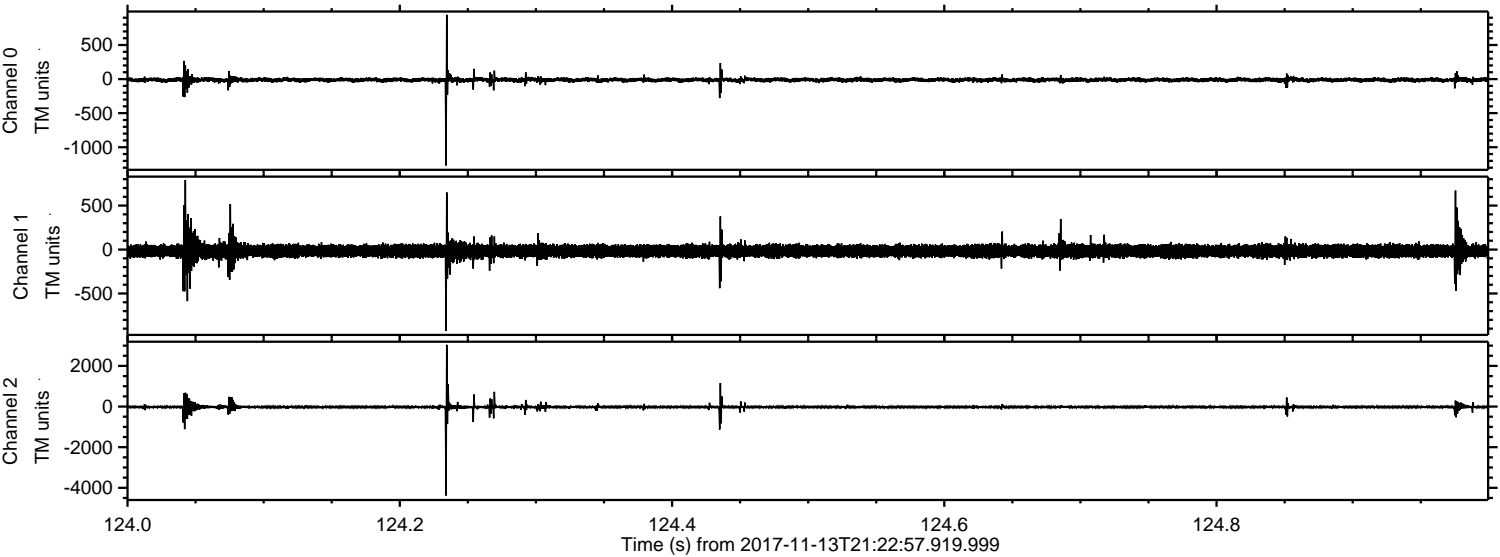
Channel 0
mn: -1663
mx: 664
 μ : -12.0
 σ : 20.3

Channel 1
mn: -871
mx: 570
 μ : -17.3
 σ : 37.0

Channel 2
mn: -4395
mx: 3280
 μ : -22.8
 σ : 50.6

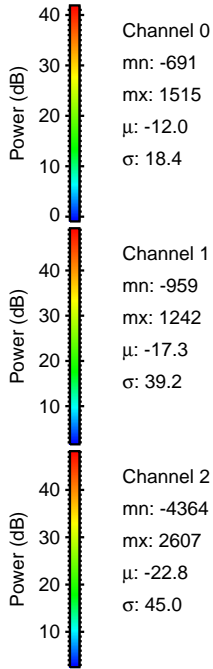
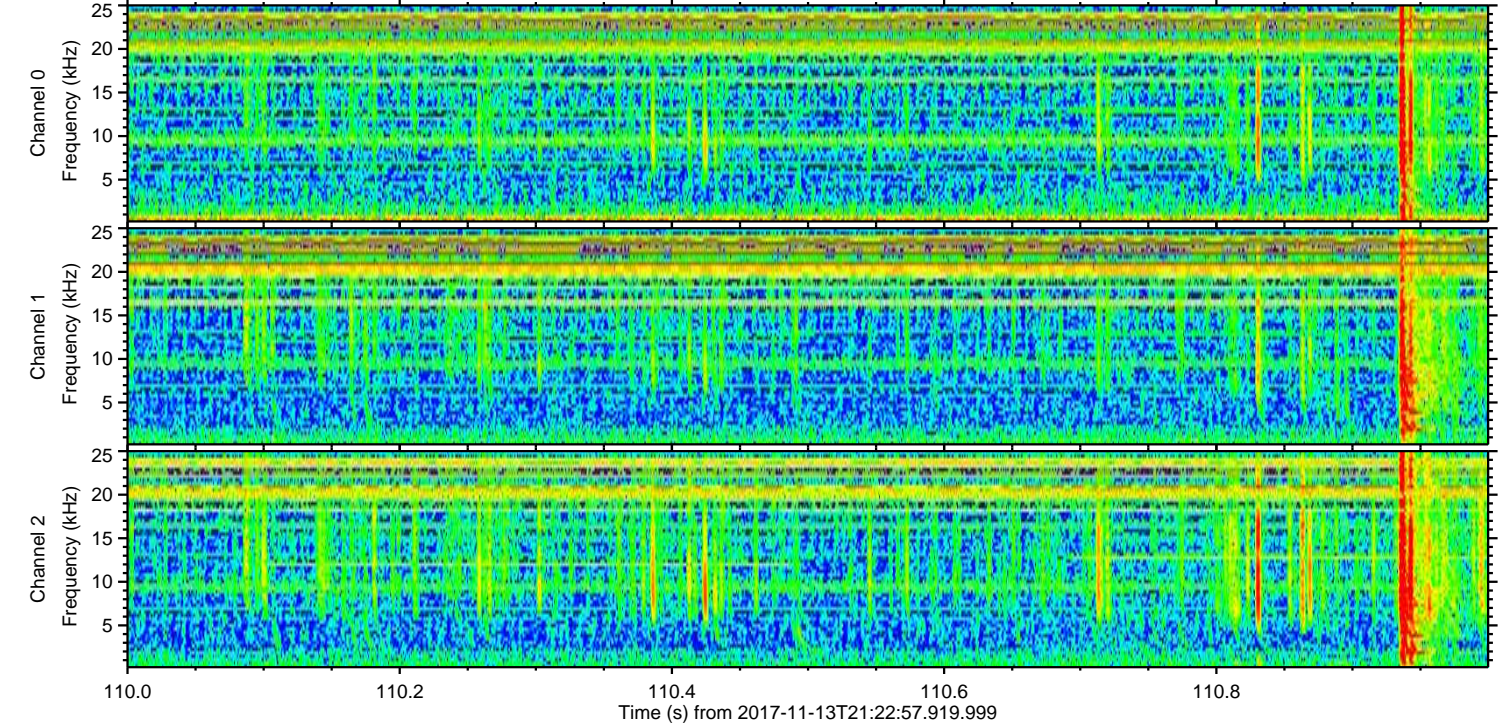
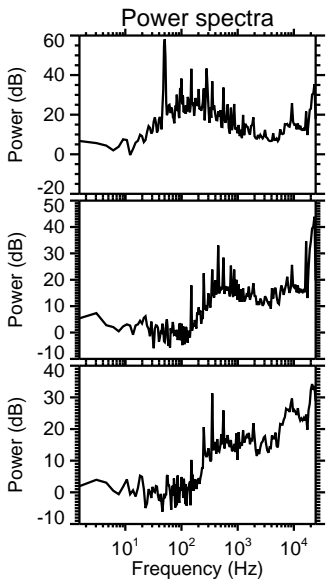
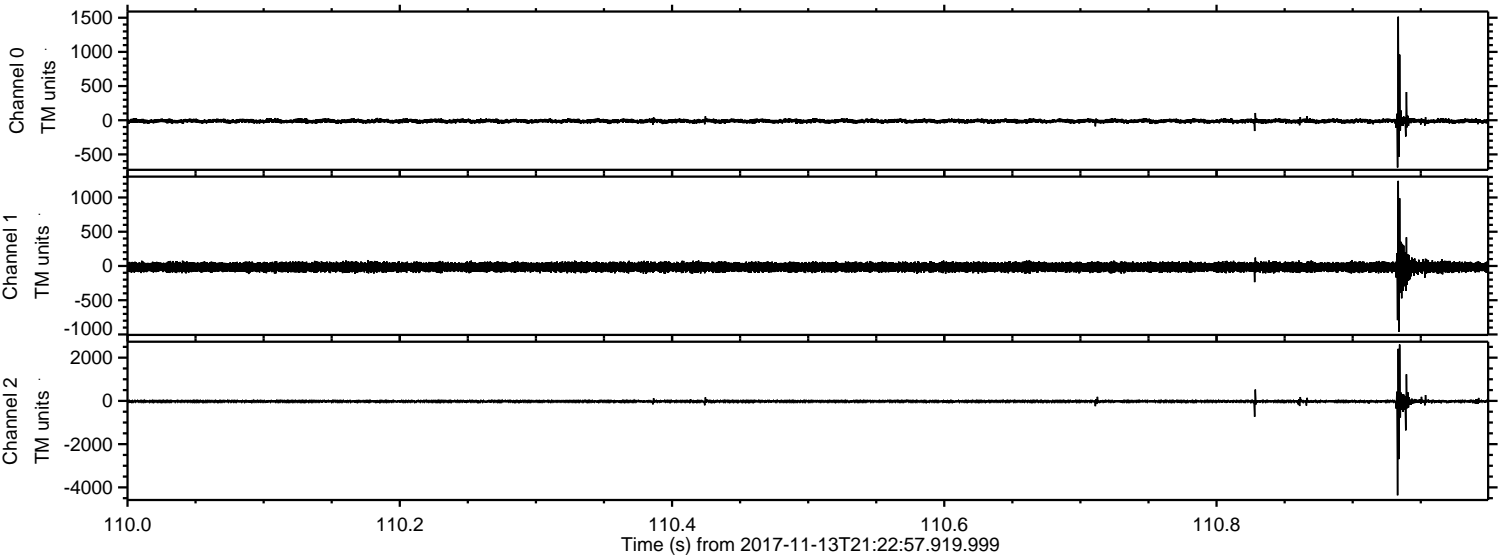
ELMAVAN 3D WAVEFORMS (Measured data sampled at 50 kHz) 50999 packets of 144 samples from 2017-11-13T21:22:57.919.999. Part 125/147

Processed Mon Nov 13 22:31:38 2017 by ELM ver.2012-10-06 from 001__elm20171113_212256__dat00.bin



ELMAVAN 3D WAVEFORMS (Measured data sampled at 50 kHz) 50999 packets of 144 samples from 2017-11-13T21:22:57.919.999. Part 111/147

Processed Mon Nov 13 22:31:38 2017 by ELM ver.2012-10-06 from 001__elm20171113_212256__dat00.bin



Channel 0
mn: -691
mx: 1515
 μ : -12.0
 σ : 18.4

Channel 1
mn: -959
mx: 1242
 μ : -17.3
 σ : 39.2

Channel 2
mn: -4364
mx: 2607
 μ : -22.8
 σ : 45.0

Processed Mon Nov 13 22:31:39 2017 by ELM ver.2012-10-06 from 001__elm20171113_212256__dat00.bin

