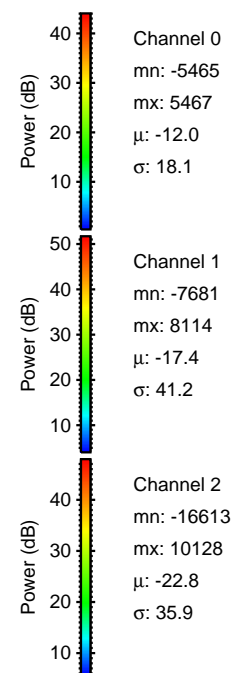
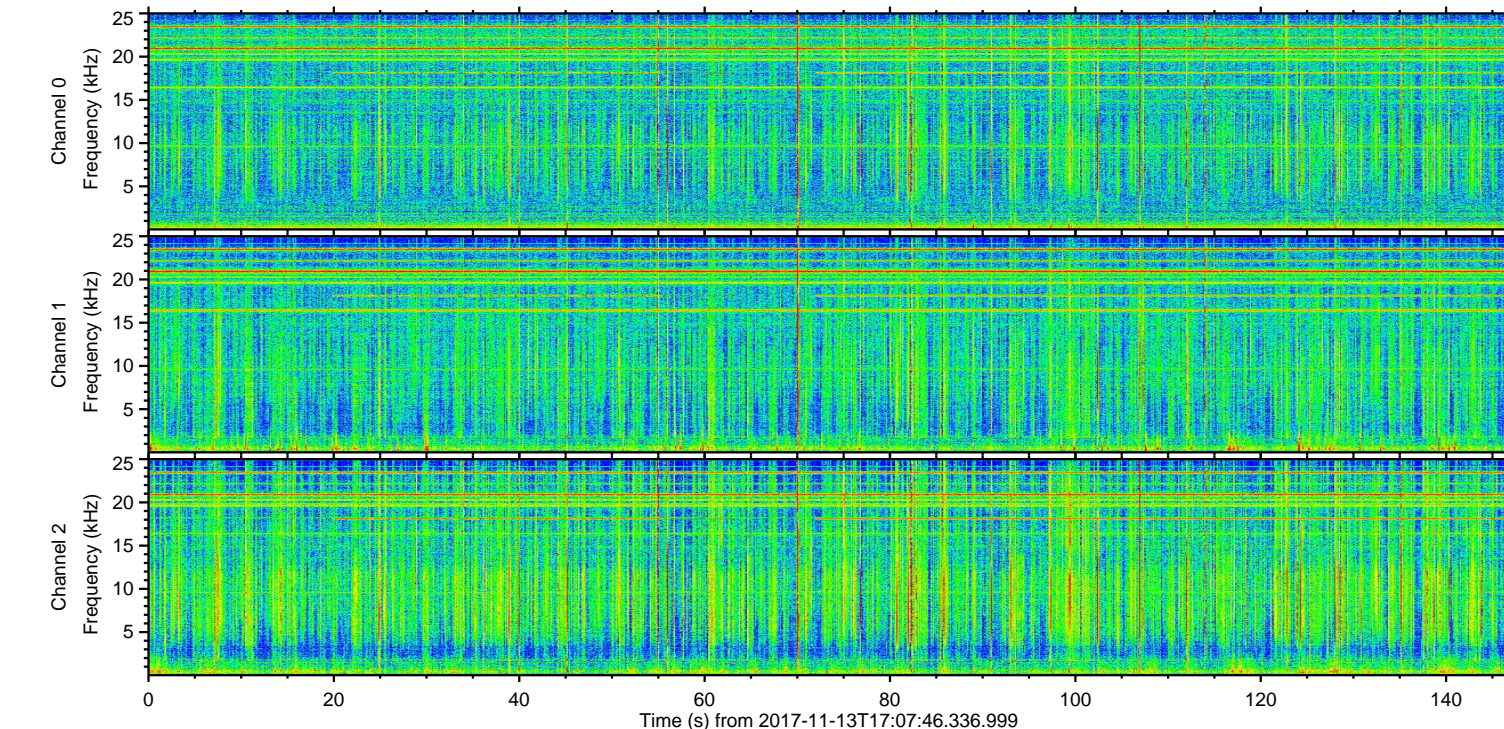
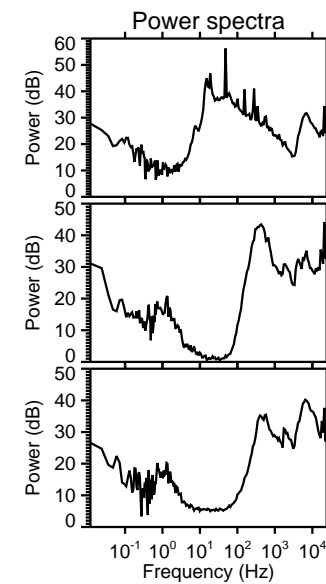
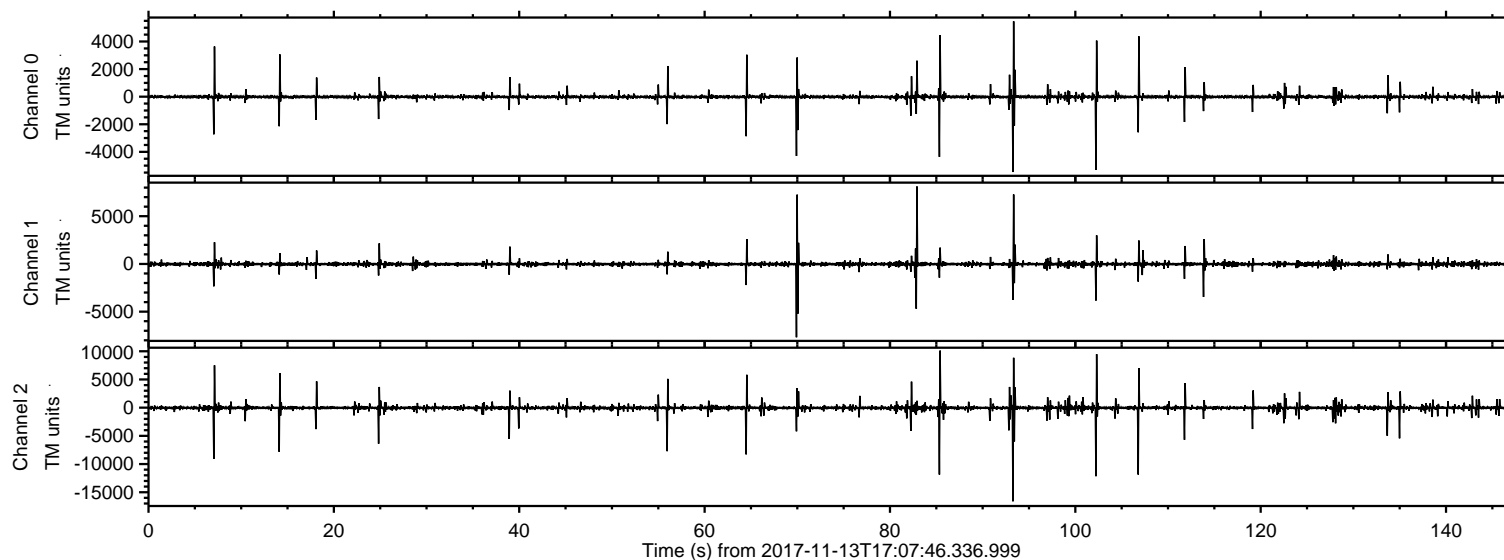
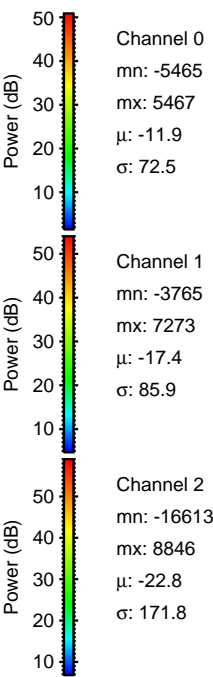
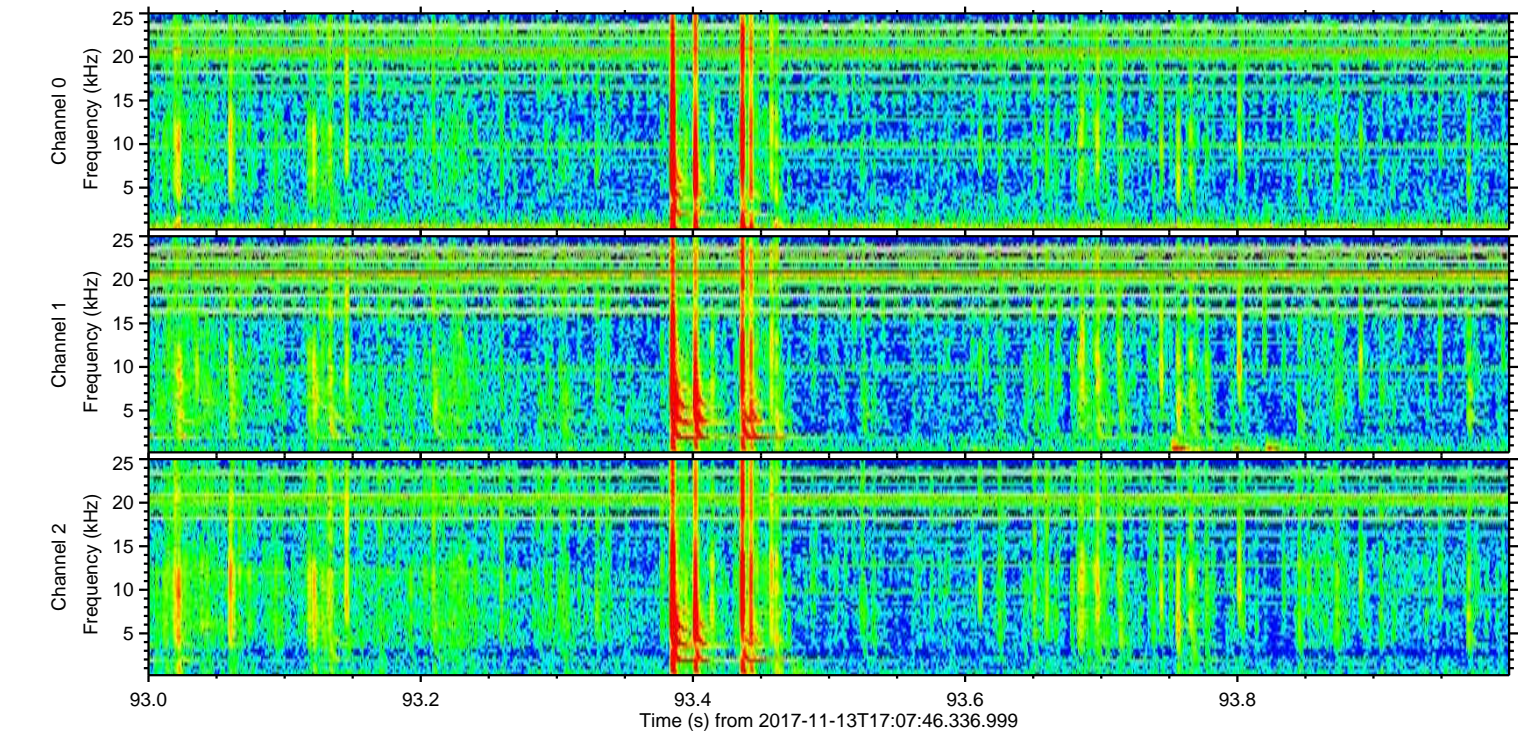
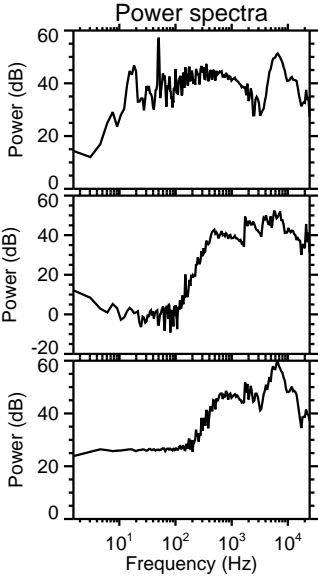
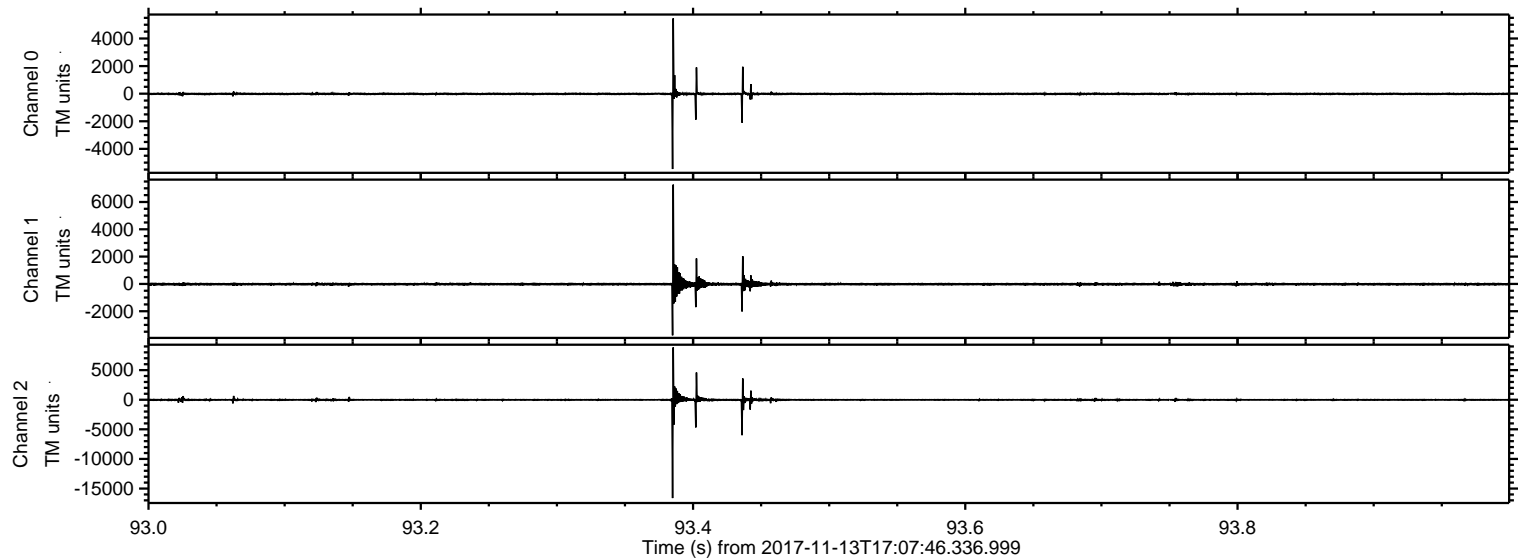


ELMAVAN 3D WAVEFORMS (Measured data sampled at 50 kHz) 51000 packets of 144 samples from 2017-11-13T17:07:46.336.999.

Processed Mon Nov 13 18:15:51 2017 by ELM ver.2012-10-06 from 001__elm20171113_170745__dat00.bin

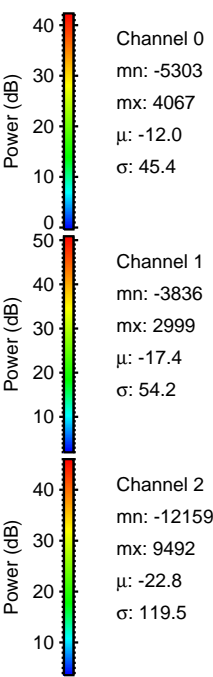
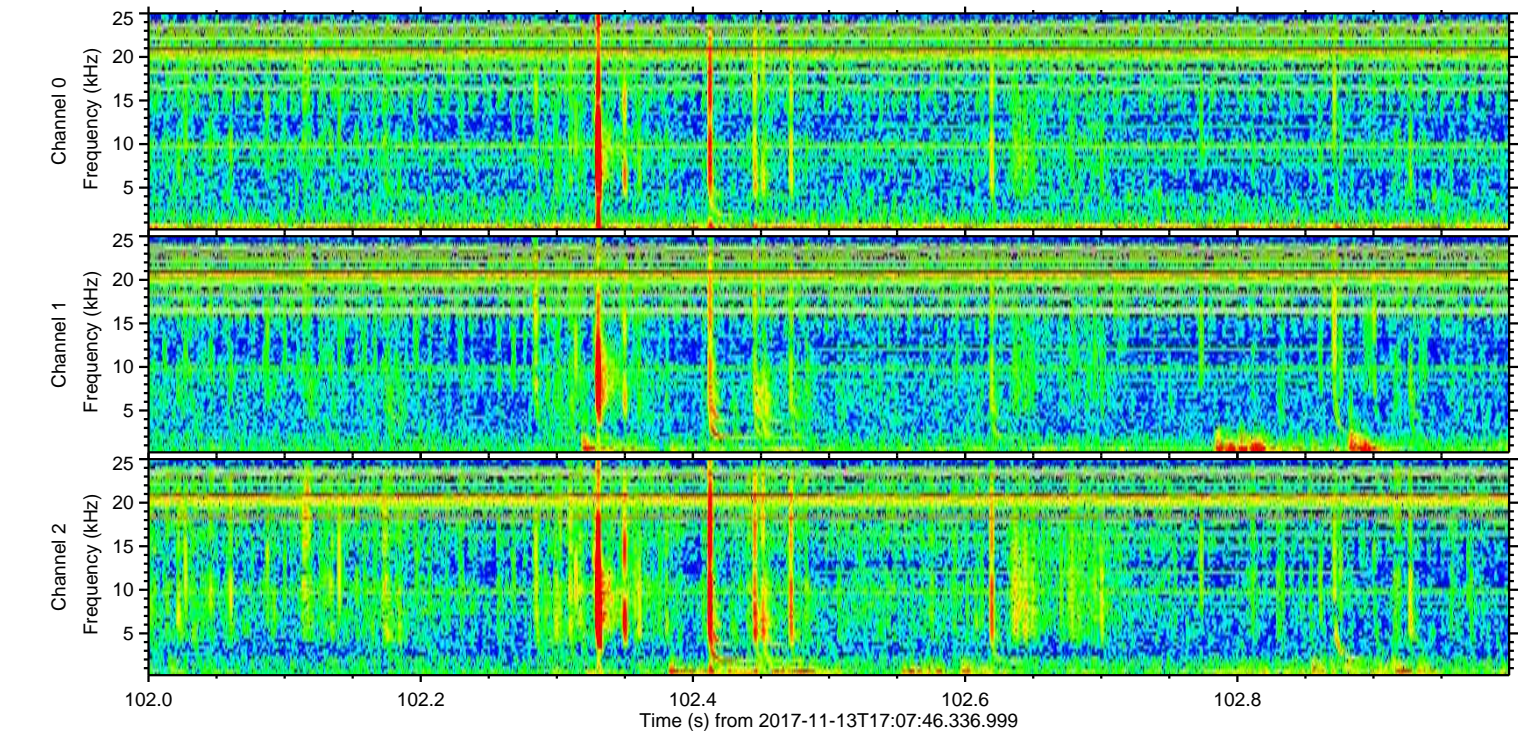
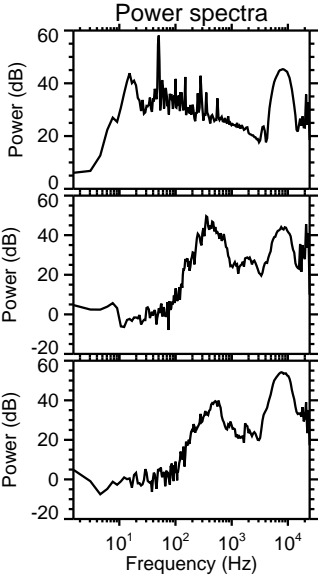
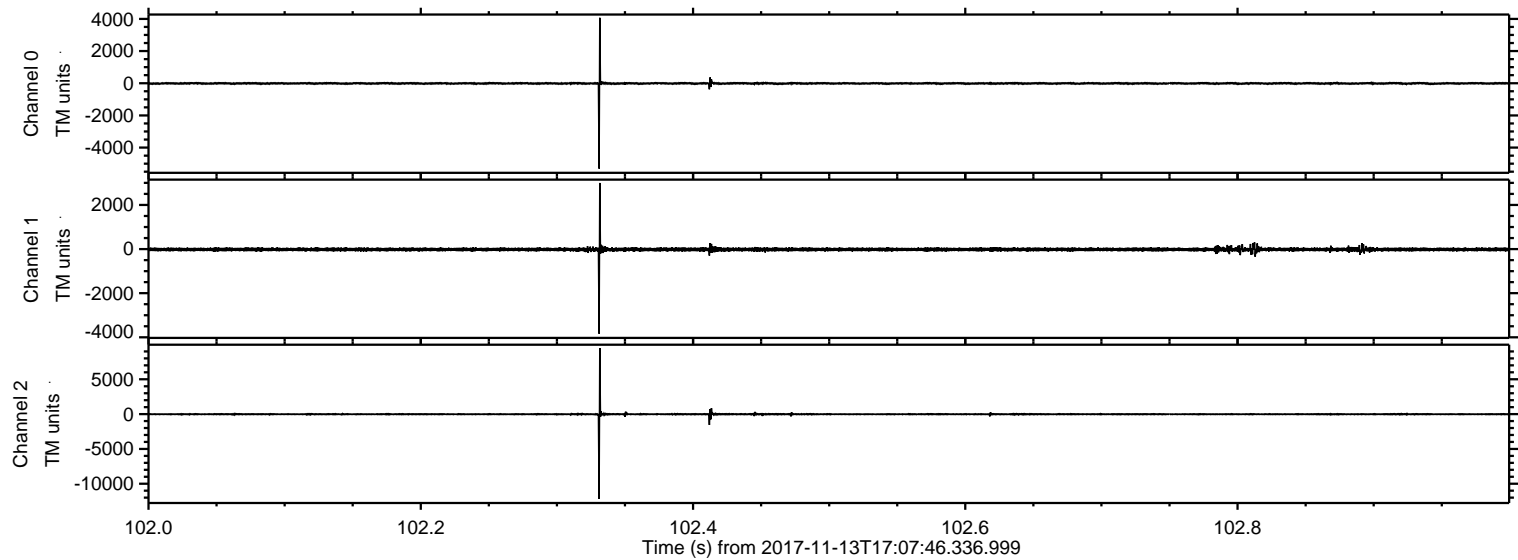


Processed Mon Nov 13 18:16:01 2017 by ELM ver.2012-10-06 from 001__elm20171113_170745__dat00.bin



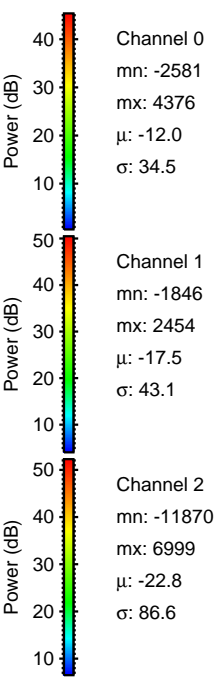
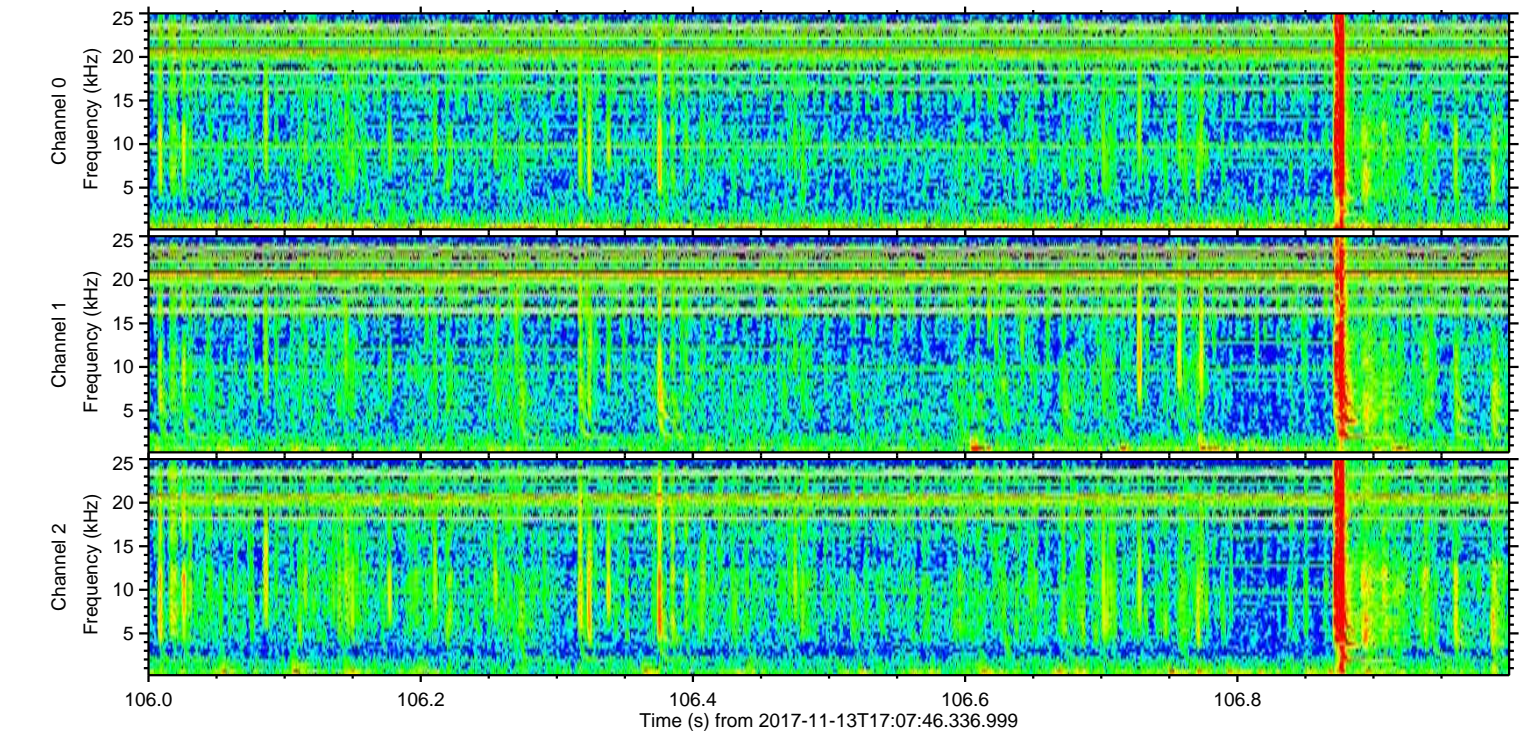
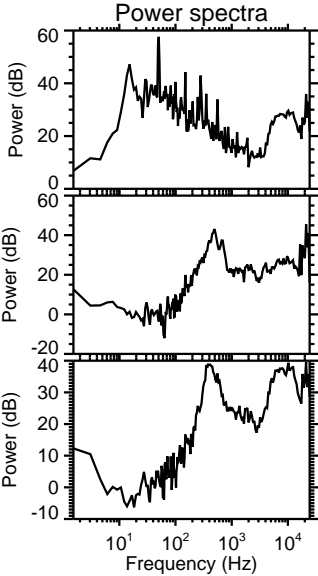
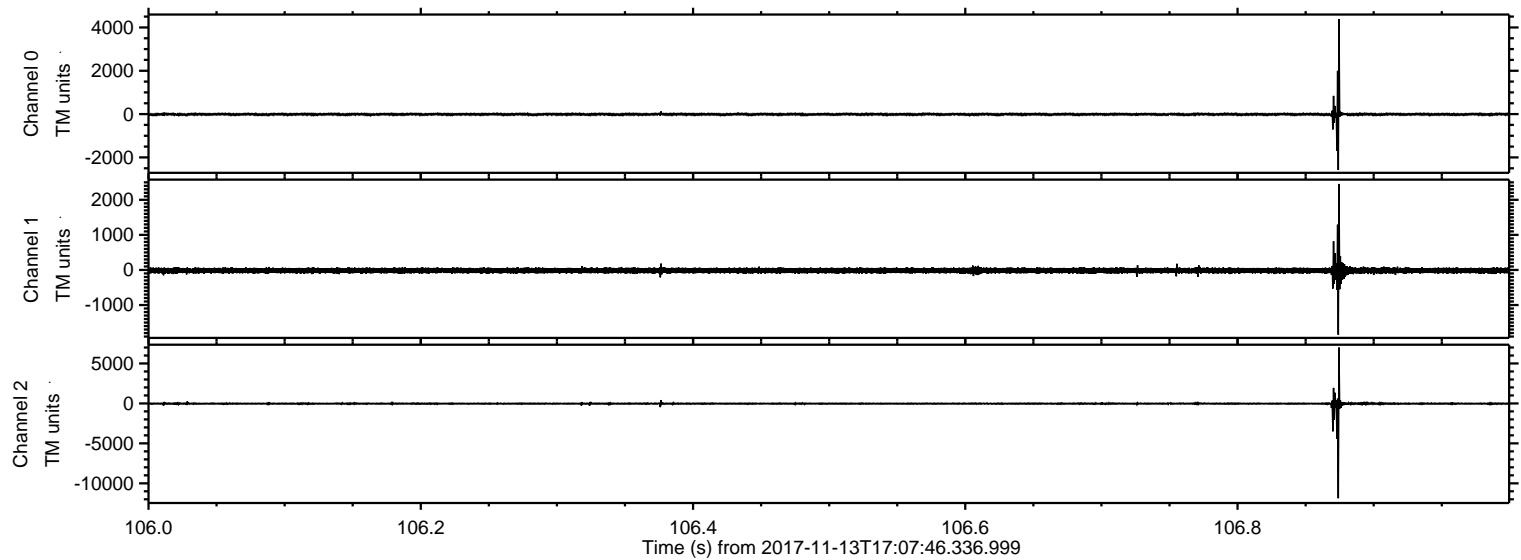
ELMAVAN 3D WAVEFORMS (Measured data sampled at 50 kHz) 51000 packets of 144 samples from 2017-11-13T17:07:46.336.999. Part 103/147

Processed Mon Nov 13 18:16:02 2017 by ELM ver.2012-10-06 from 001__elm20171113_170745__dat00.bin

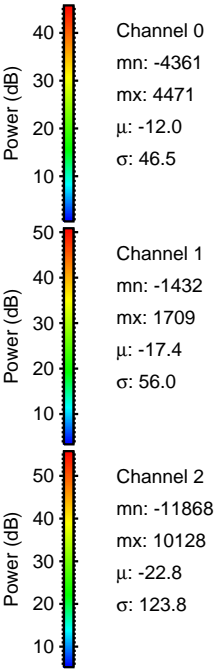
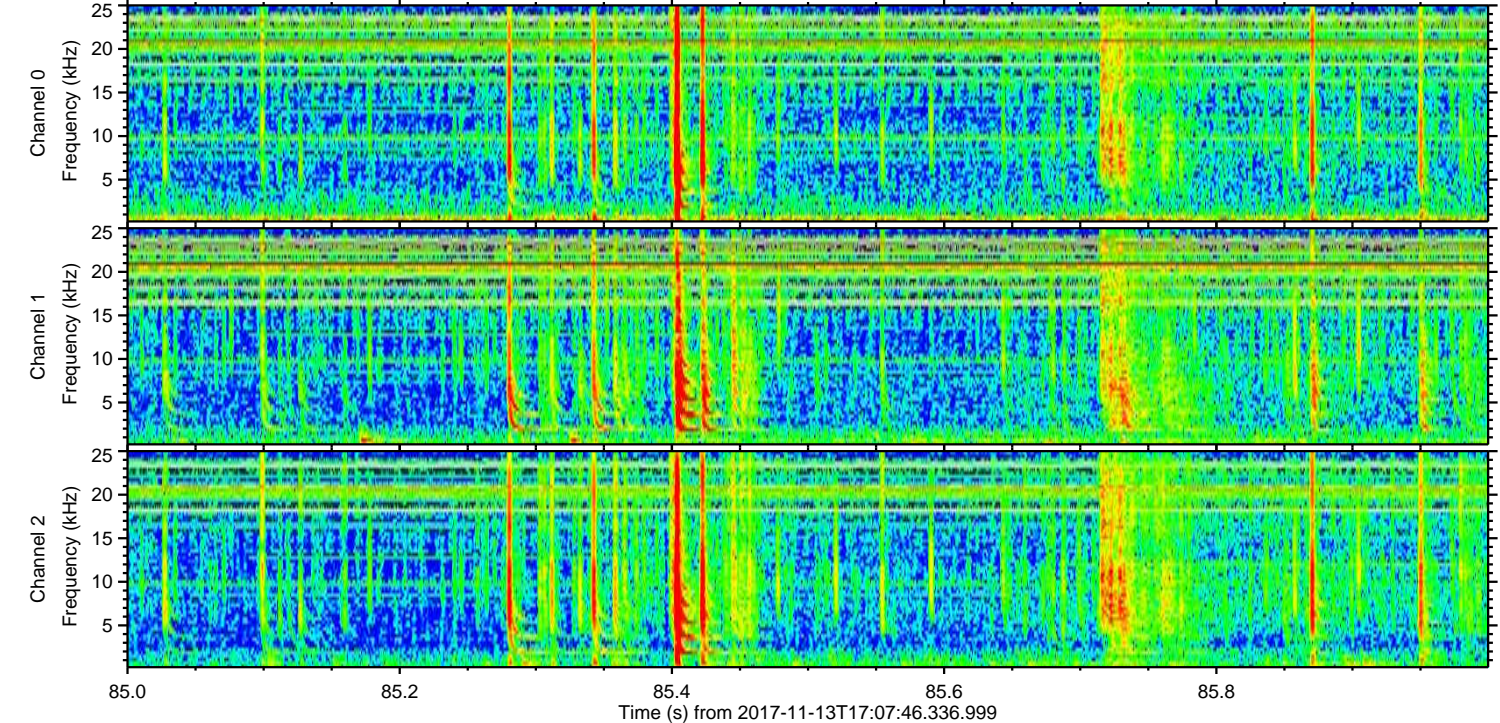
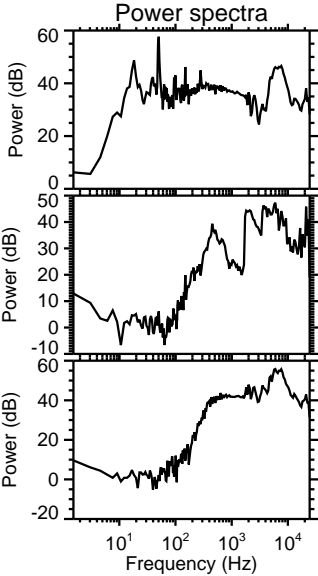
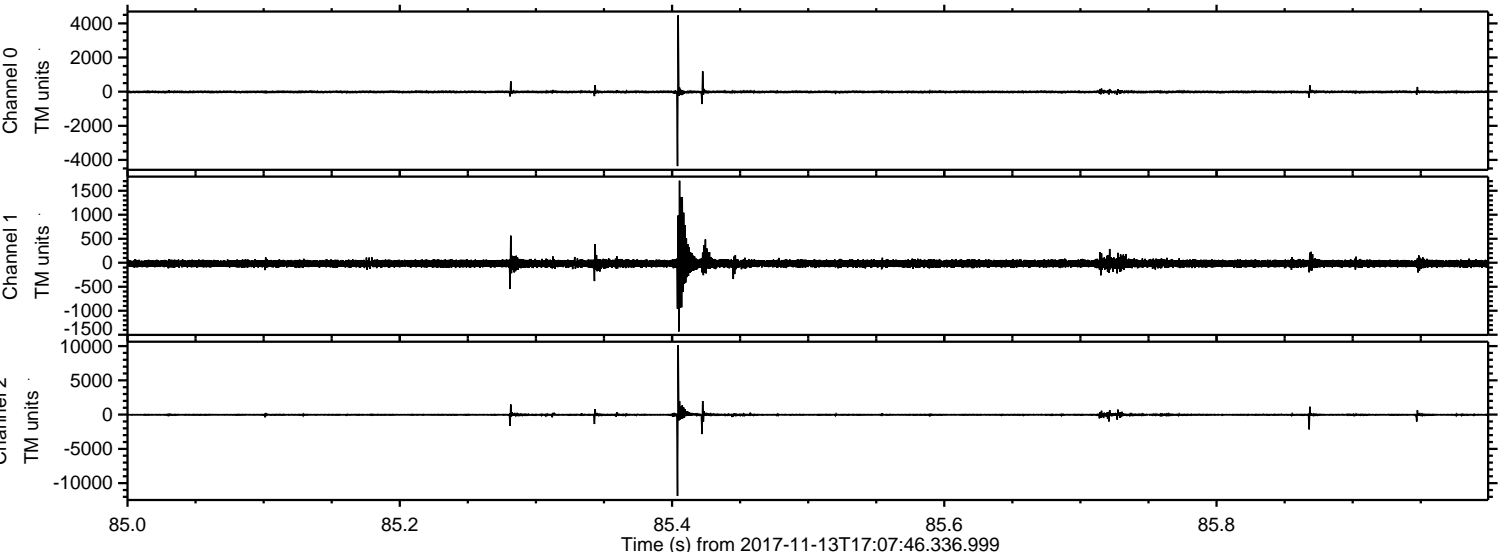


ELMAVAN 3D WAVEFORMS (Measured data sampled at 50 kHz) 51000 packets of 144 samples from 2017-11-13T17:07:46.336.999. Part 107/147

Processed Mon Nov 13 18:16:03 2017 by ELM ver.2012-10-06 from 001__elm20171113_170745__dat00.bin



Processed Mon Nov 13 18:16:04 2017 by ELM ver.2012-10-06 from 001__elm20171113_170745__dat00.bin

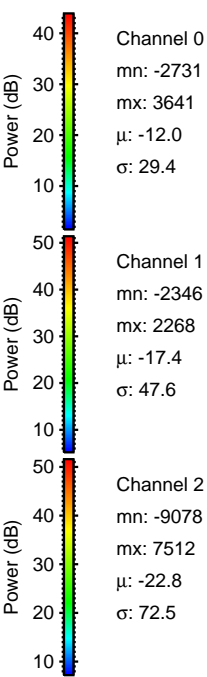
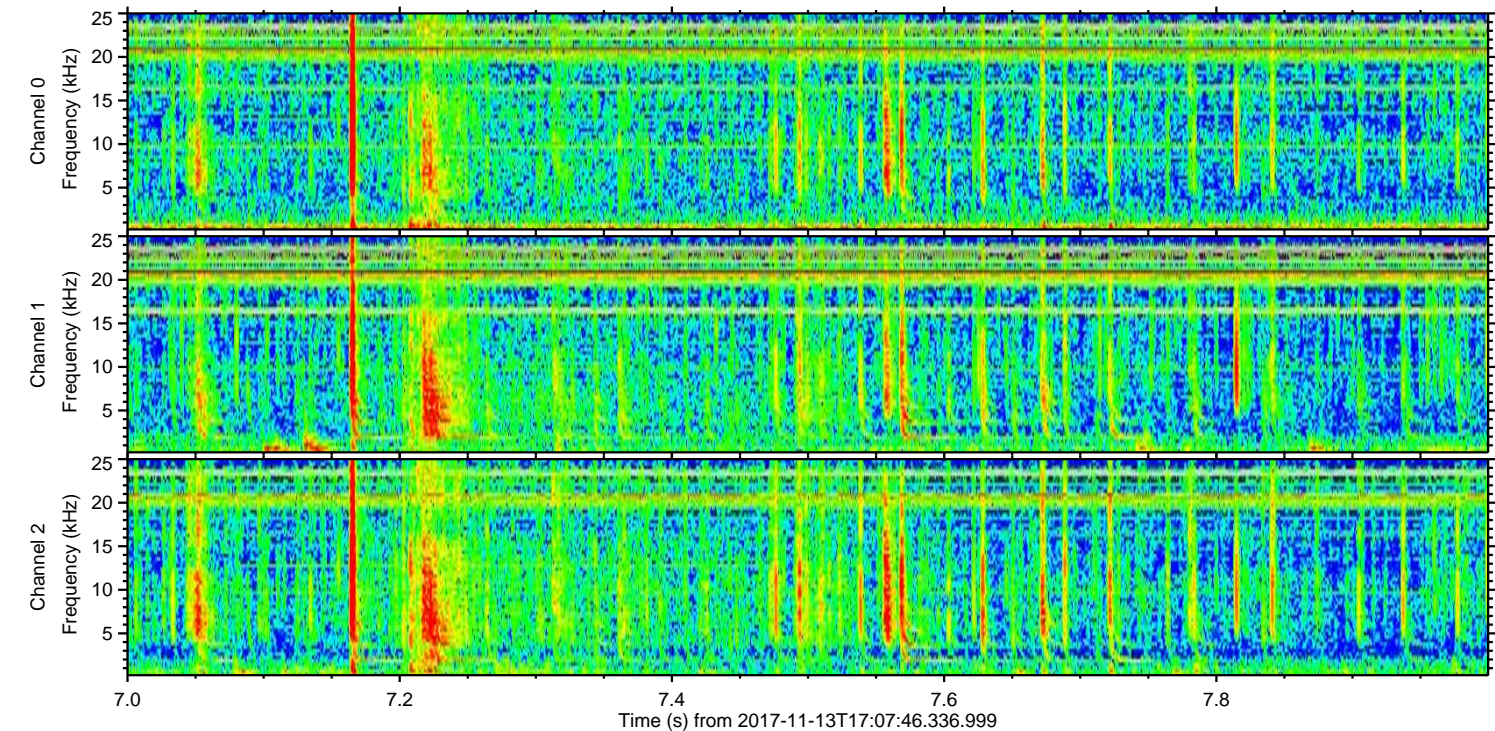
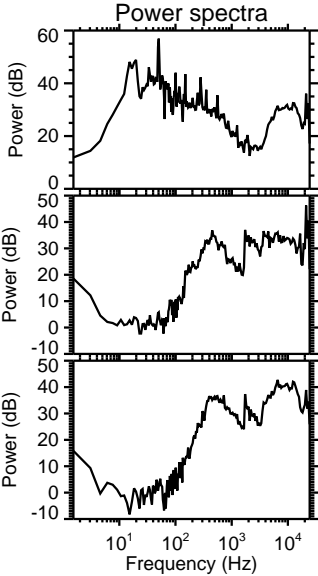
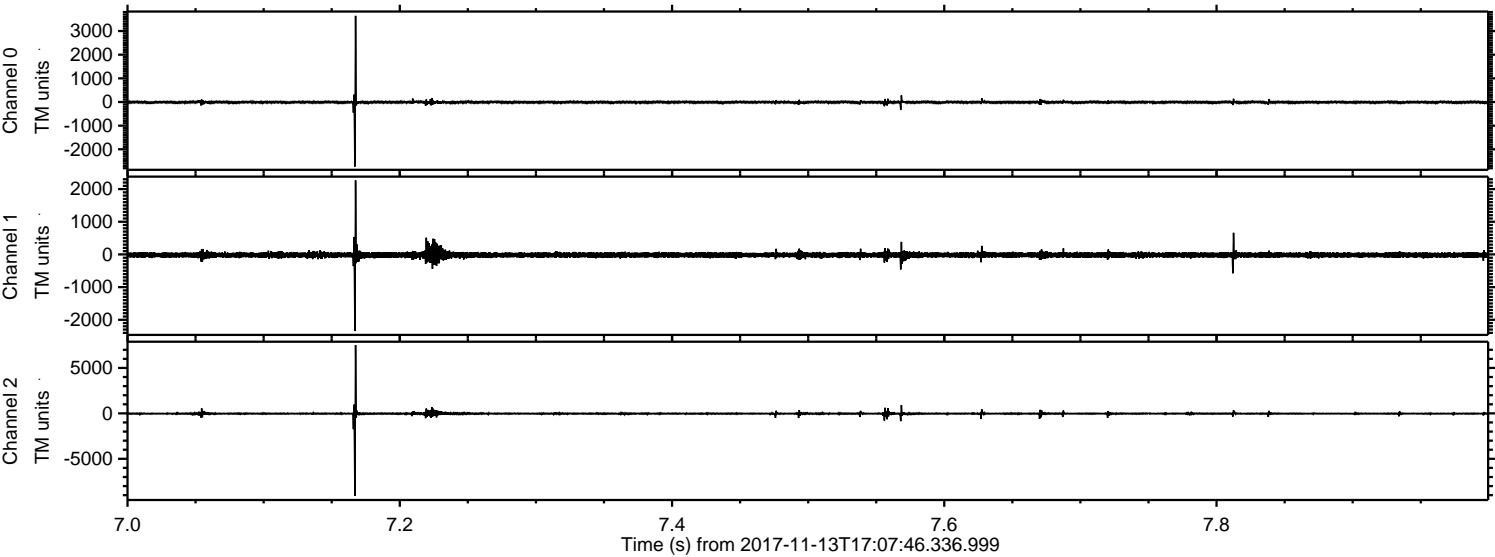


Channel 0
mn: -4361
mx: 4471
 μ : -12.0
 σ : 46.5

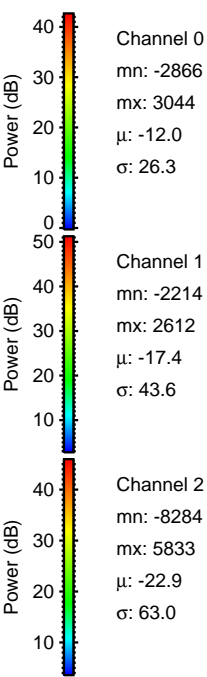
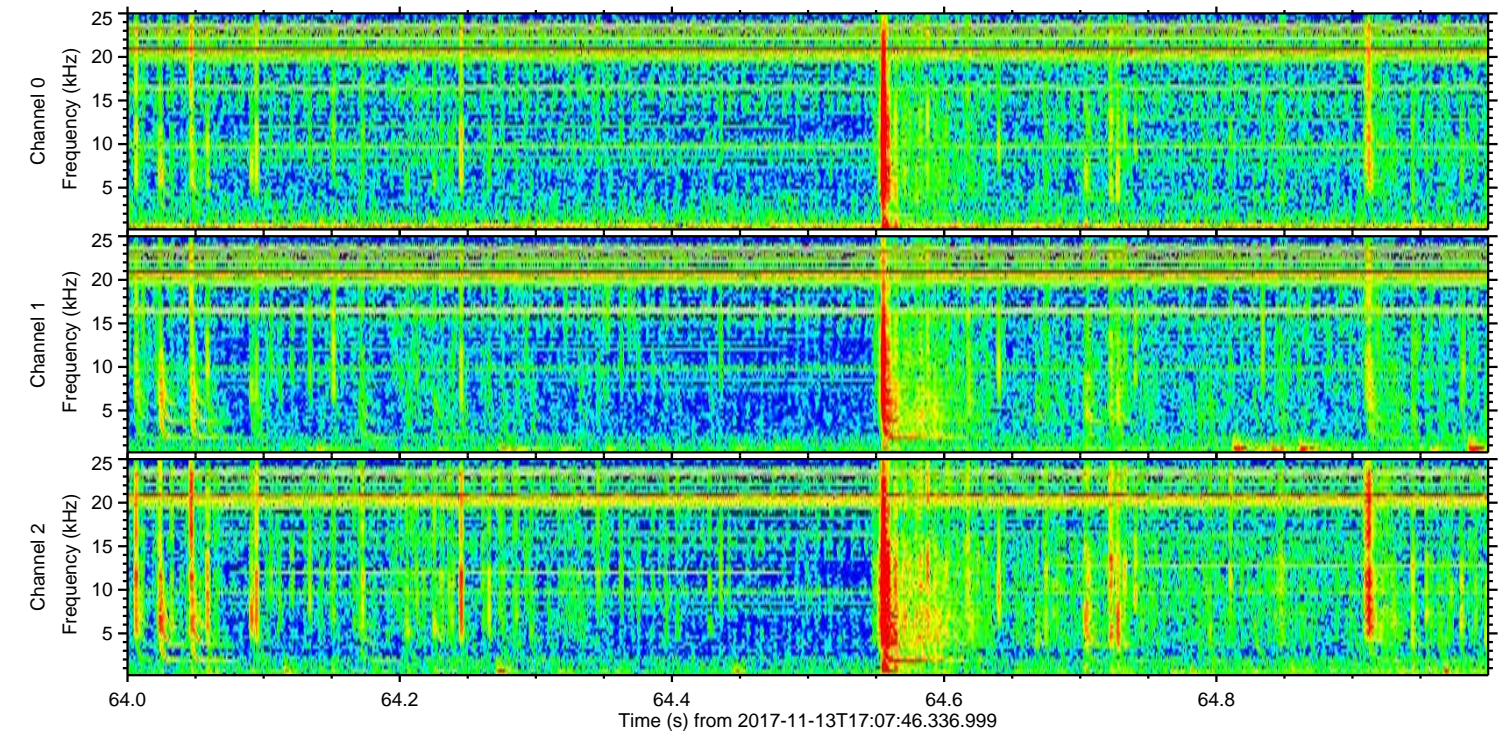
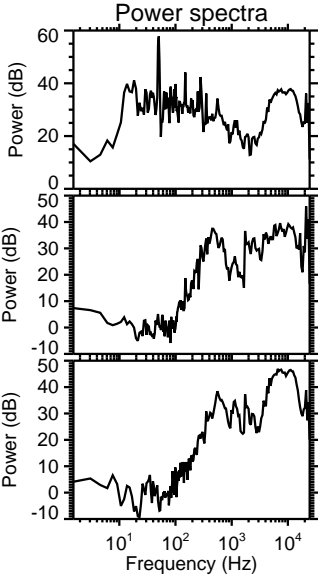
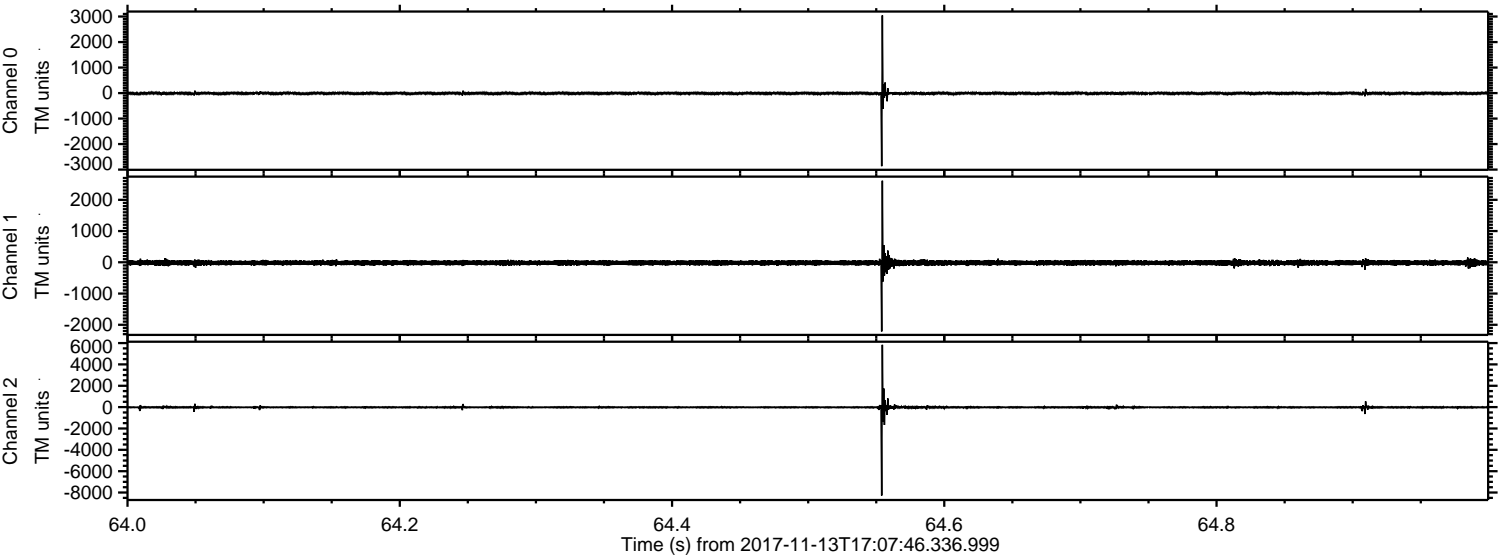
Channel 1
mn: -1432
mx: 1709
 μ : -17.4
 σ : 56.0

Channel 2
mn: -11868
mx: 10128
 μ : -22.8
 σ : 123.8

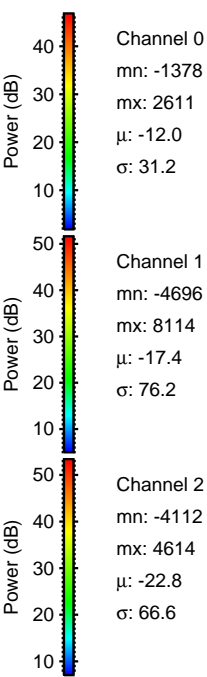
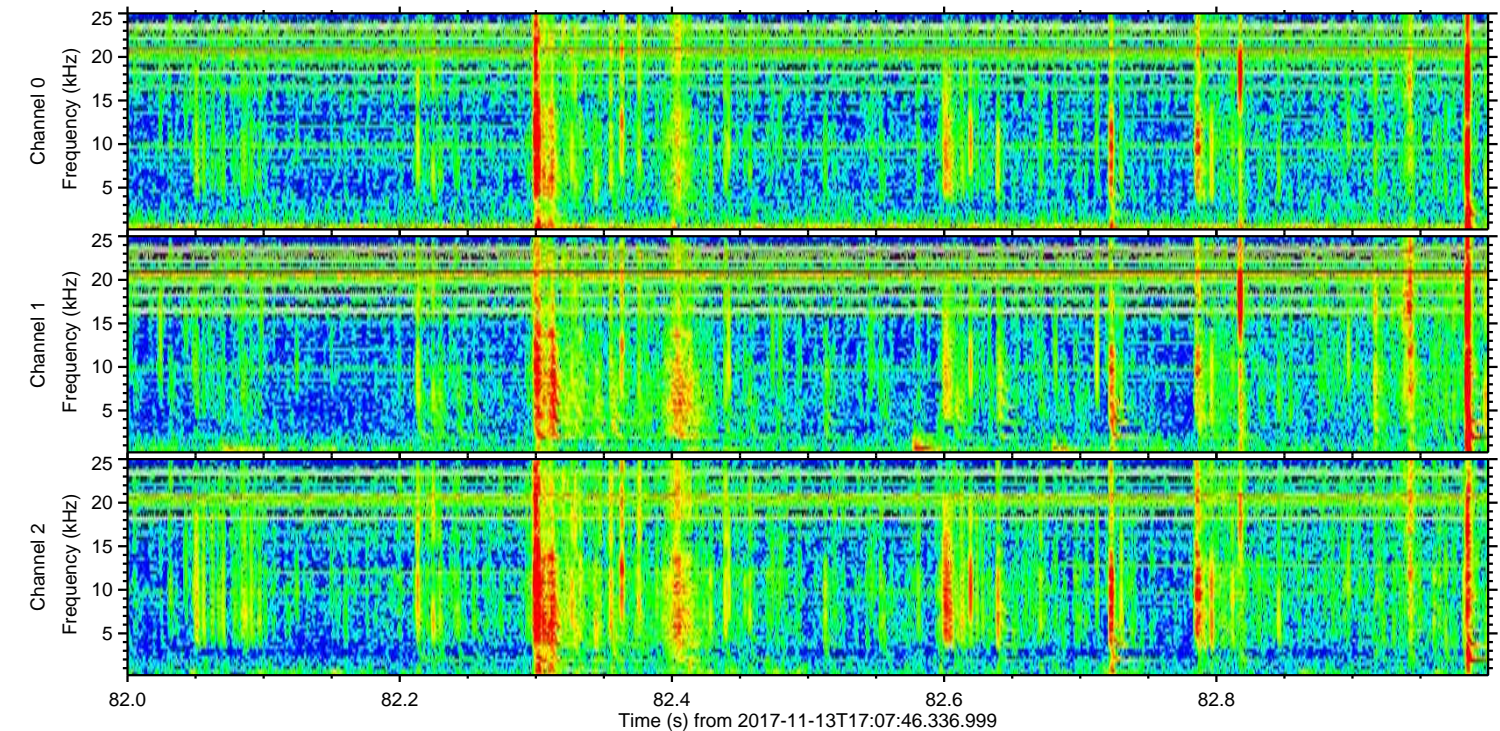
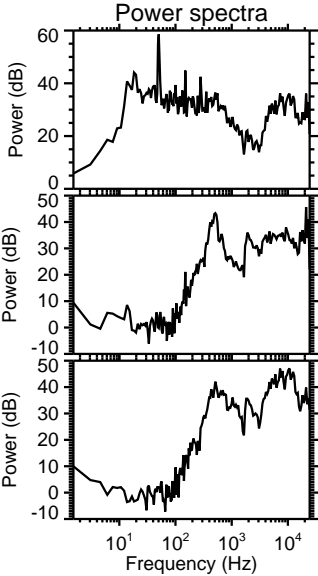
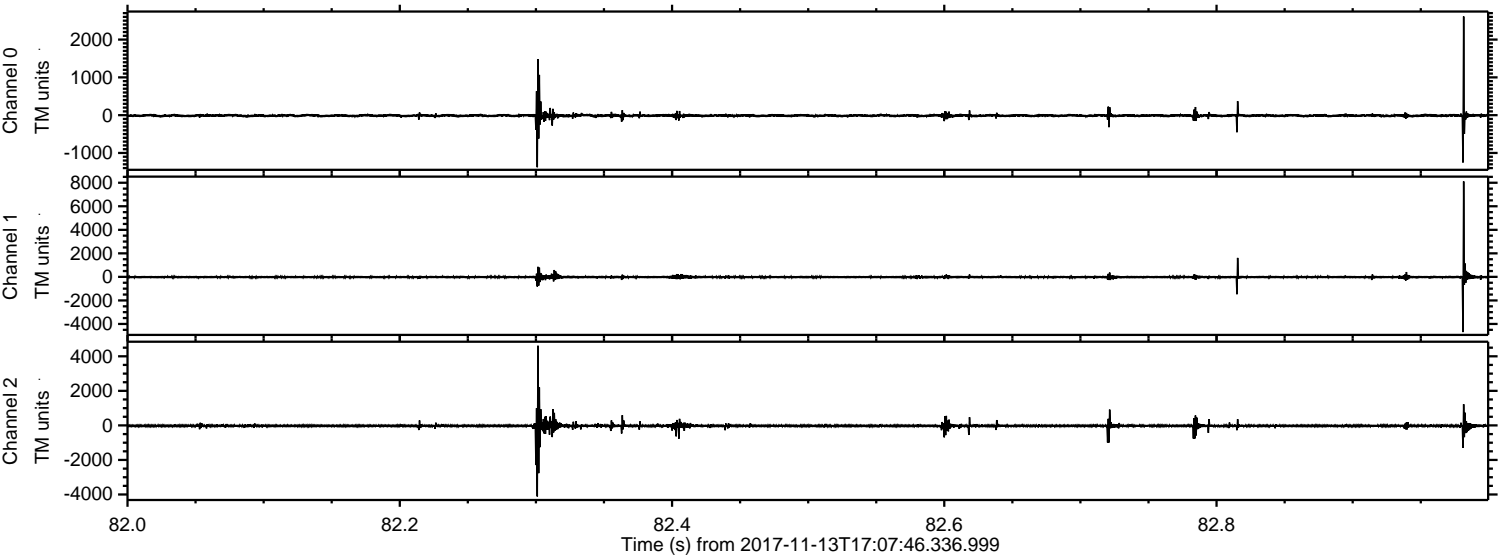
Processed Mon Nov 13 18:16:05 2017 by ELM ver.2012-10-06 from 001__elm20171113_170745__dat00.bin



Processed Mon Nov 13 18:16:05 2017 by ELM ver.2012-10-06 from 001__elm20171113_170745__dat00.bin



Processed Mon Nov 13 18:16:06 2017 by ELM ver.2012-10-06 from 001__elm20171113_170745__dat00.bin

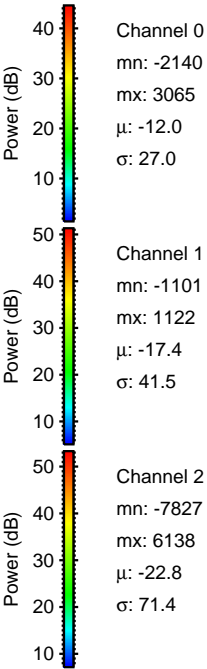
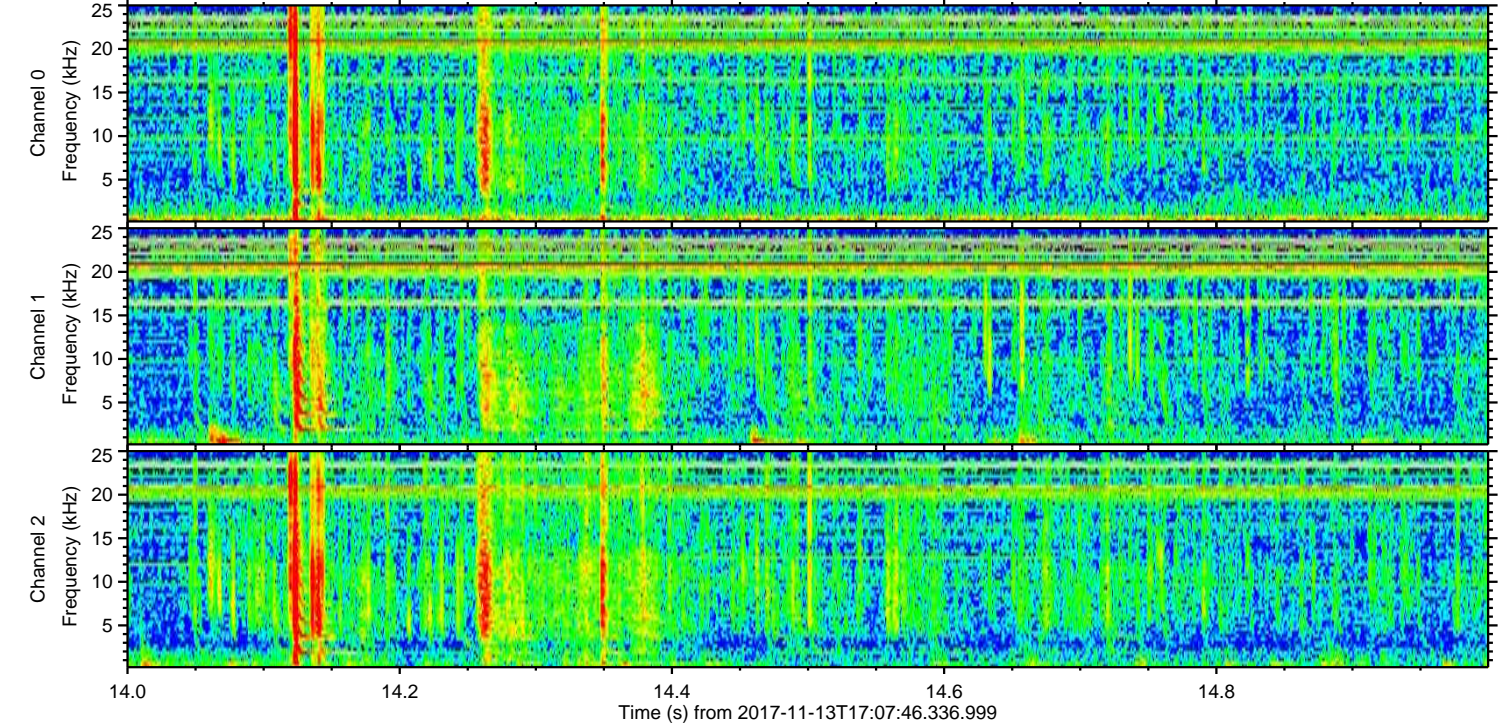
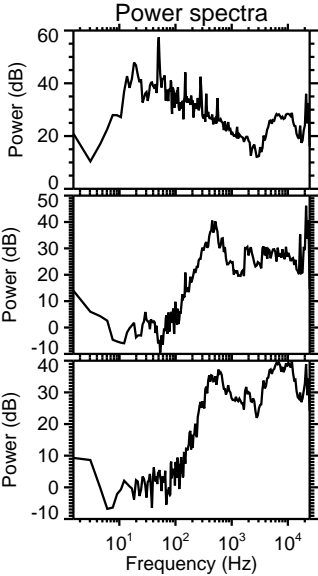
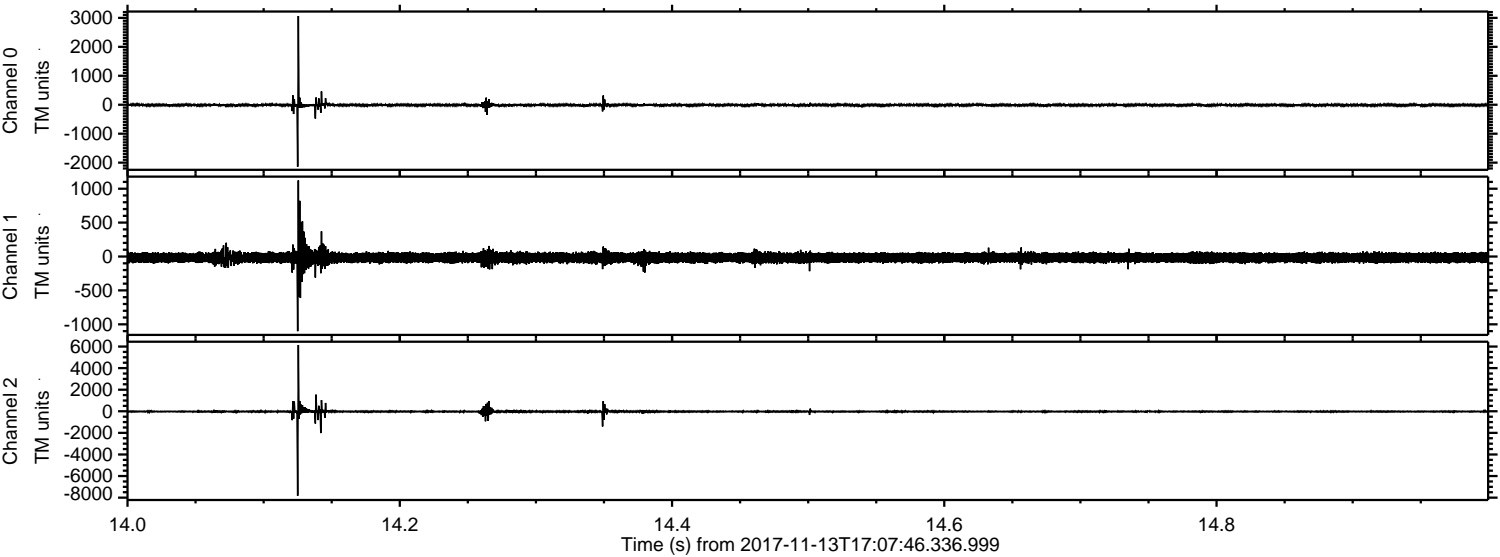


Channel 0
mn: -1378
mx: 2611
 μ : -12.0
 σ : 31.2

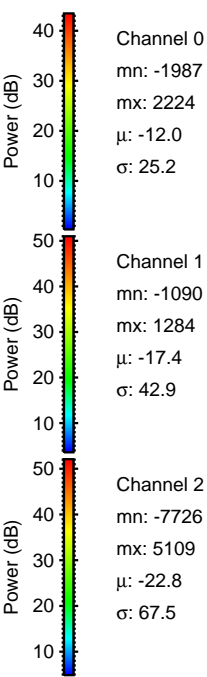
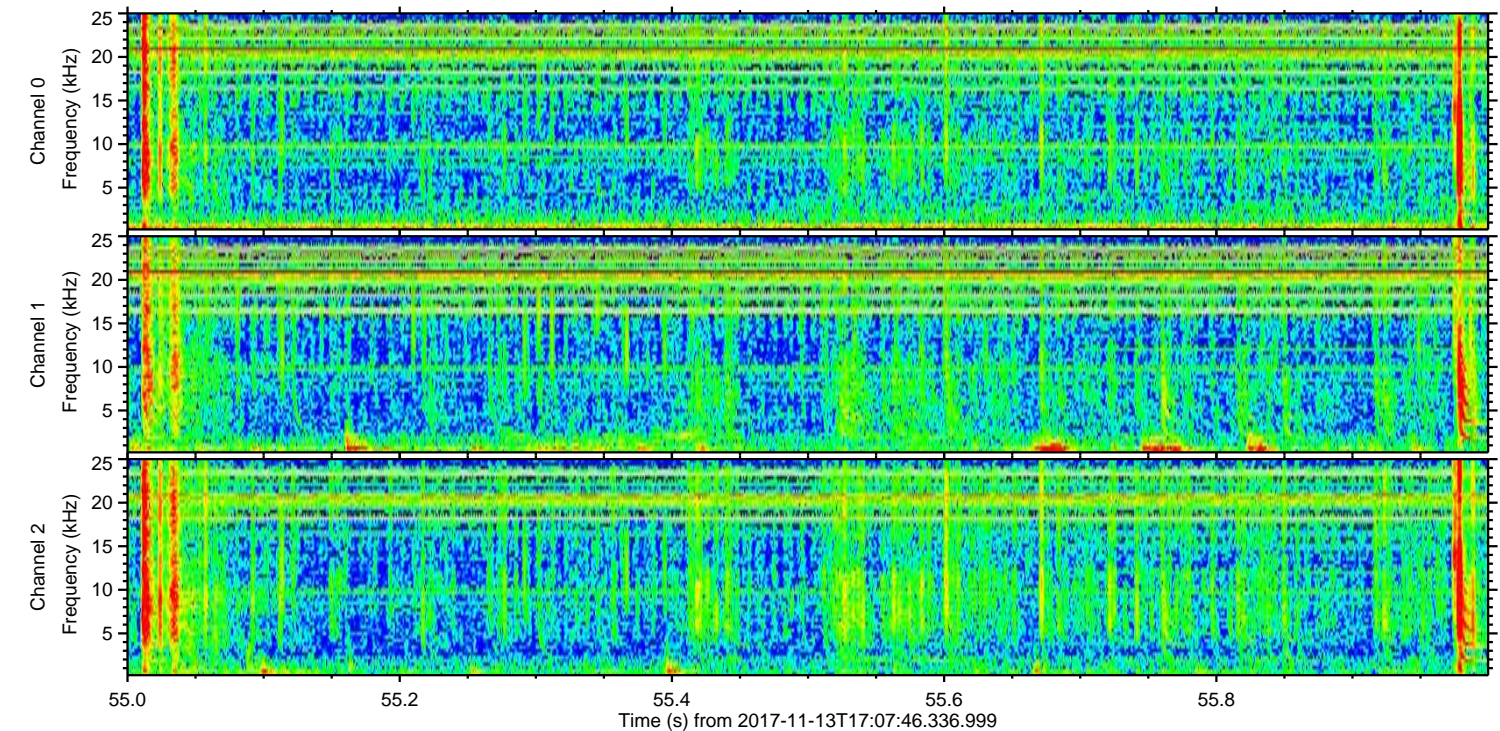
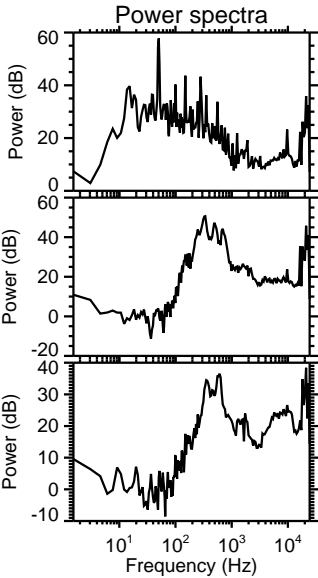
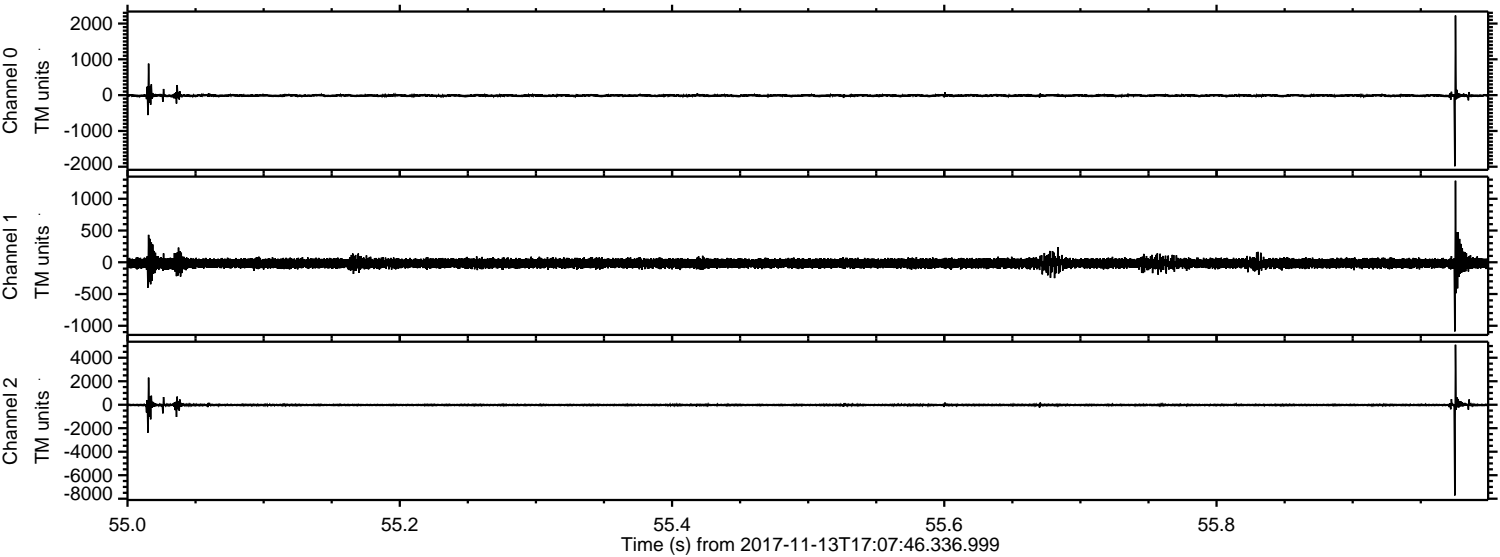
Channel 1
mn: -4696
mx: 8114
 μ : -17.4
 σ : 76.2

Channel 2
mn: -4112
mx: 4614
 μ : -22.8
 σ : 66.6

Processed Mon Nov 13 18:16:07 2017 by ELM ver.2012-10-06 from 001__elm20171113_170745__dat00.bin



Processed Mon Nov 13 18:16:08 2017 by ELM ver.2012-10-06 from 001__elm20171113_170745__dat00.bin

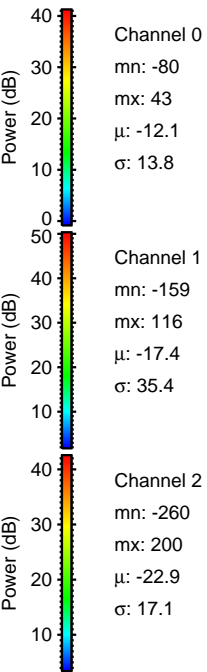
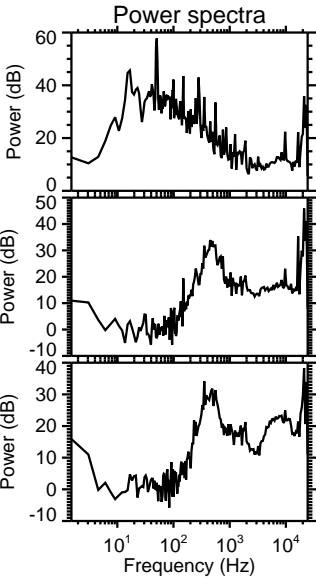
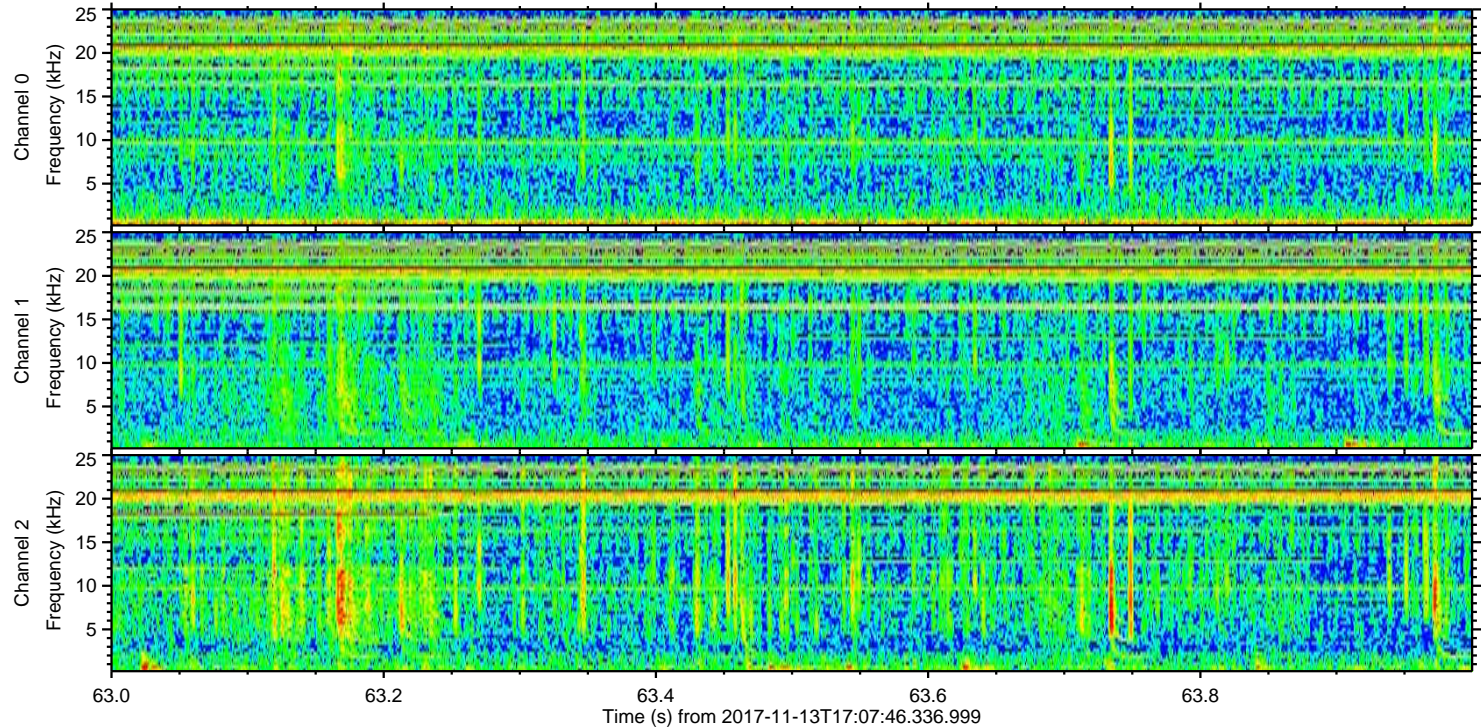
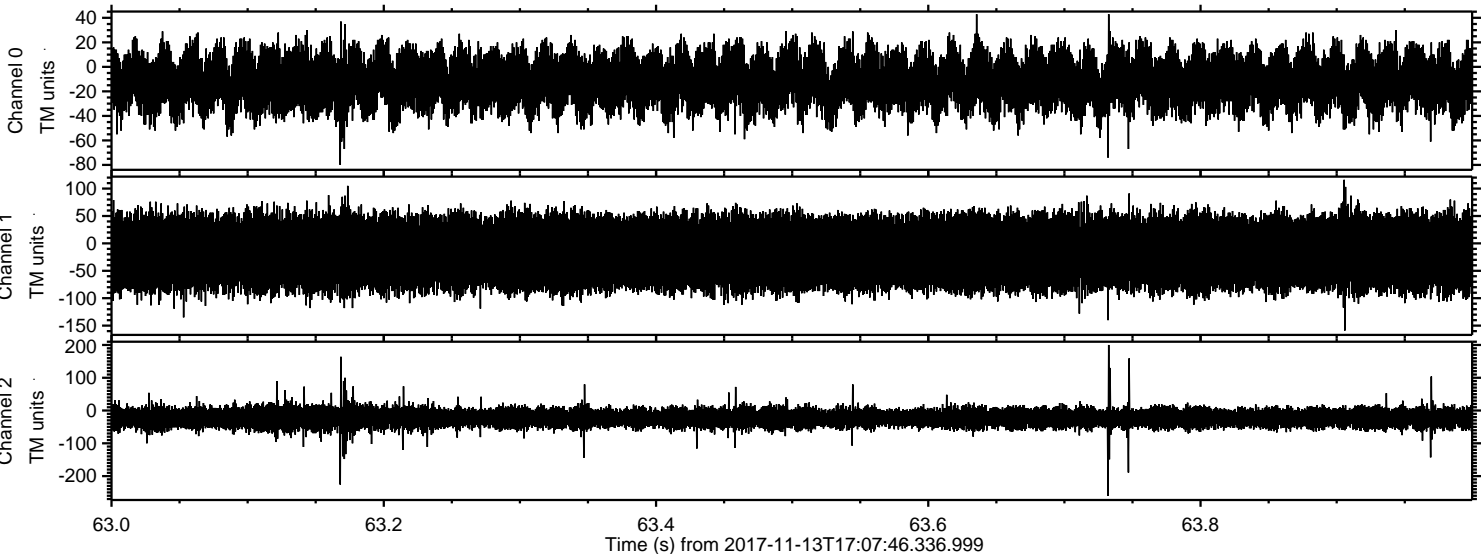


Channel 0
mn: -1987
mx: 2224
 μ : -12.0
 σ : 25.2

Channel 1
mn: -1090
mx: 1284
 μ : -17.4
 σ : 42.9

Channel 2
mn: -7726
mx: 5109
 μ : -22.8
 σ : 67.5

Processed Mon Nov 13 18:16:09 2017 by ELM ver.2012-10-06 from 001__elm20171113_170745__dat00.bin



Channel 0
mn: -80
mx: 43
 μ : -12.1
 σ : 13.8

Channel 1
mn: -159
mx: 116
 μ : -17.4
 σ : 35.4

Channel 2
mn: -260
mx: 200
 μ : -22.9
 σ : 17.1