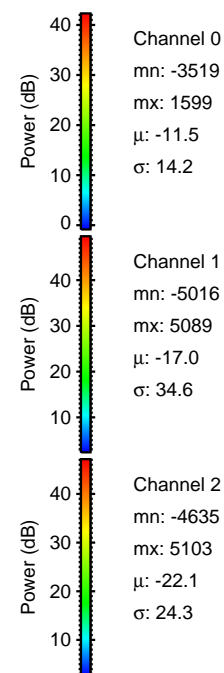
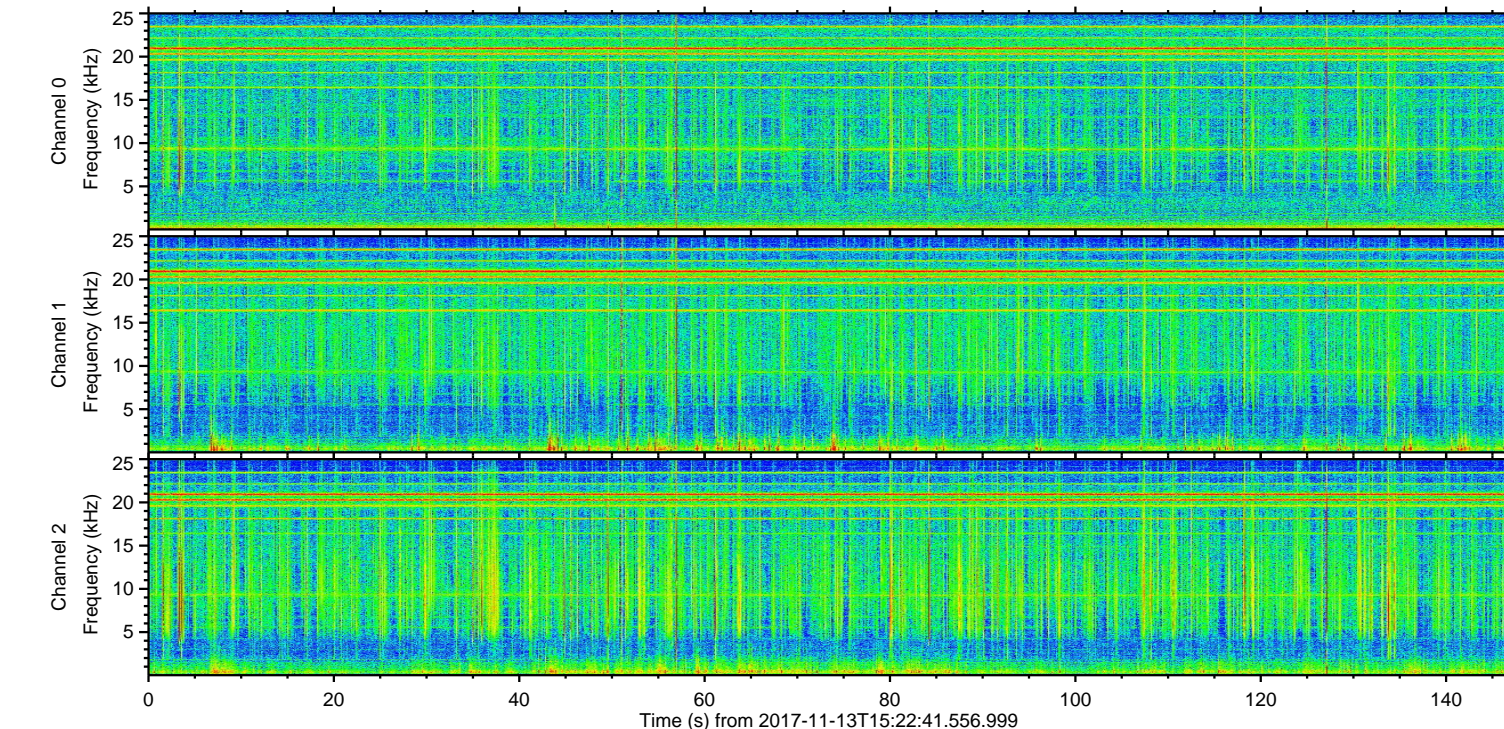
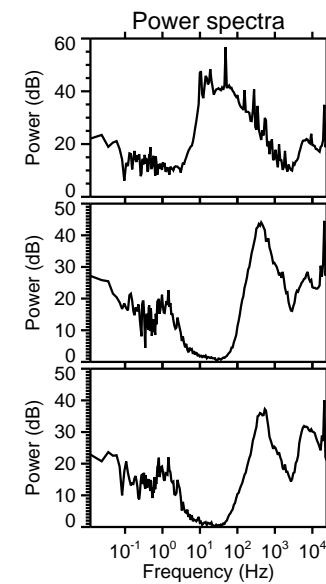
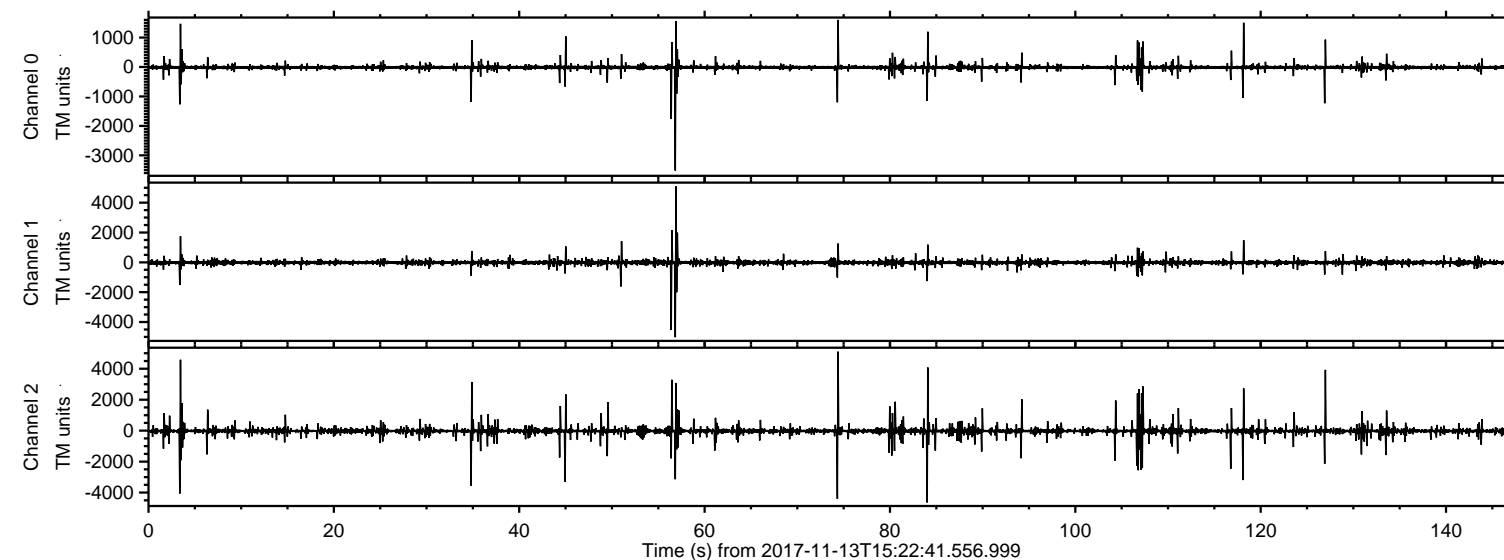
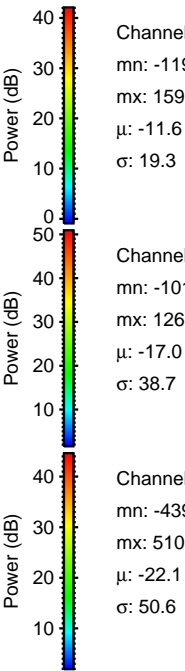
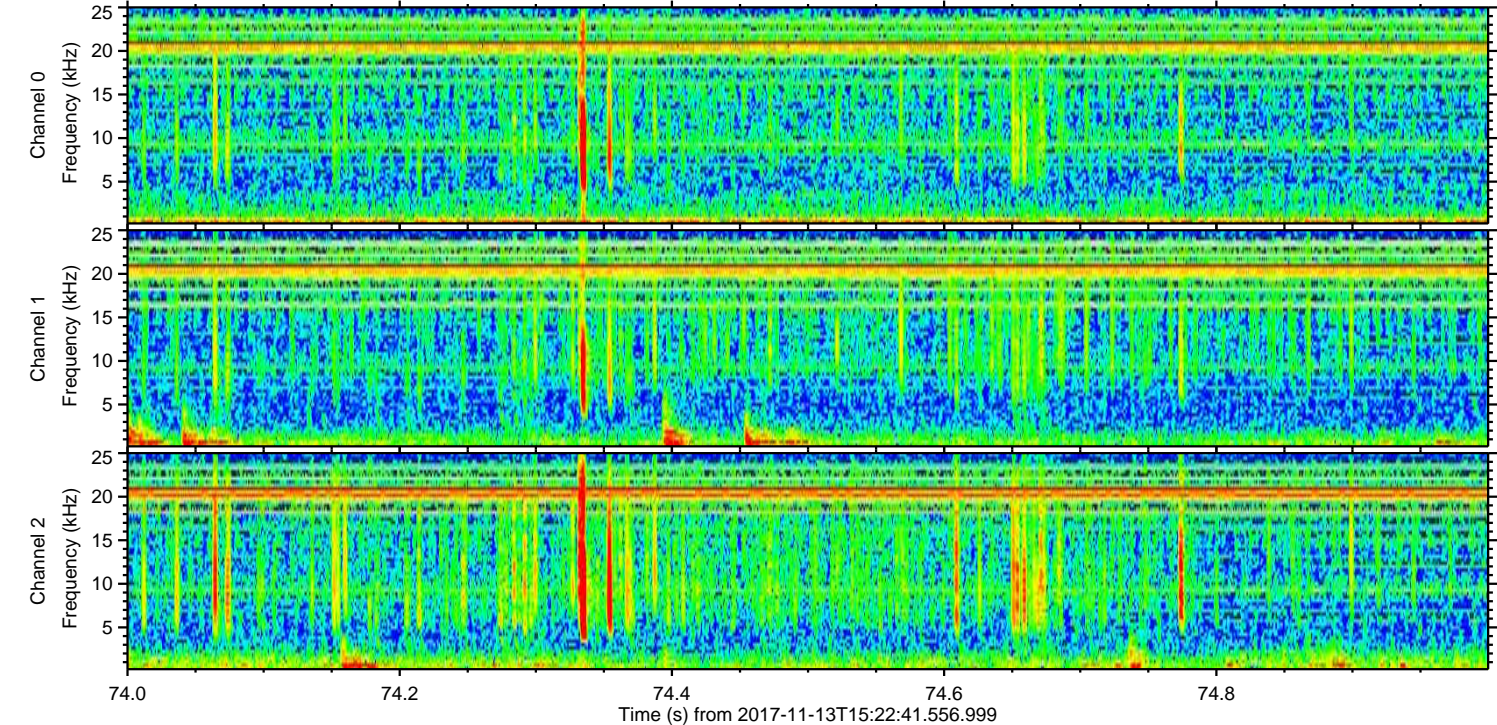
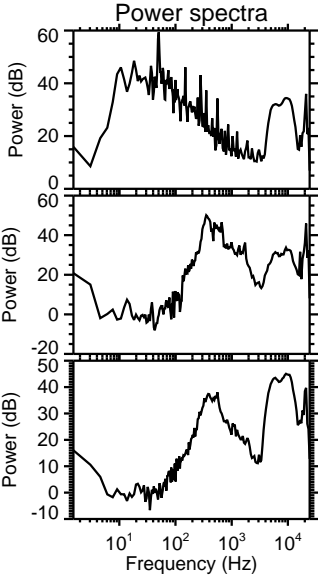
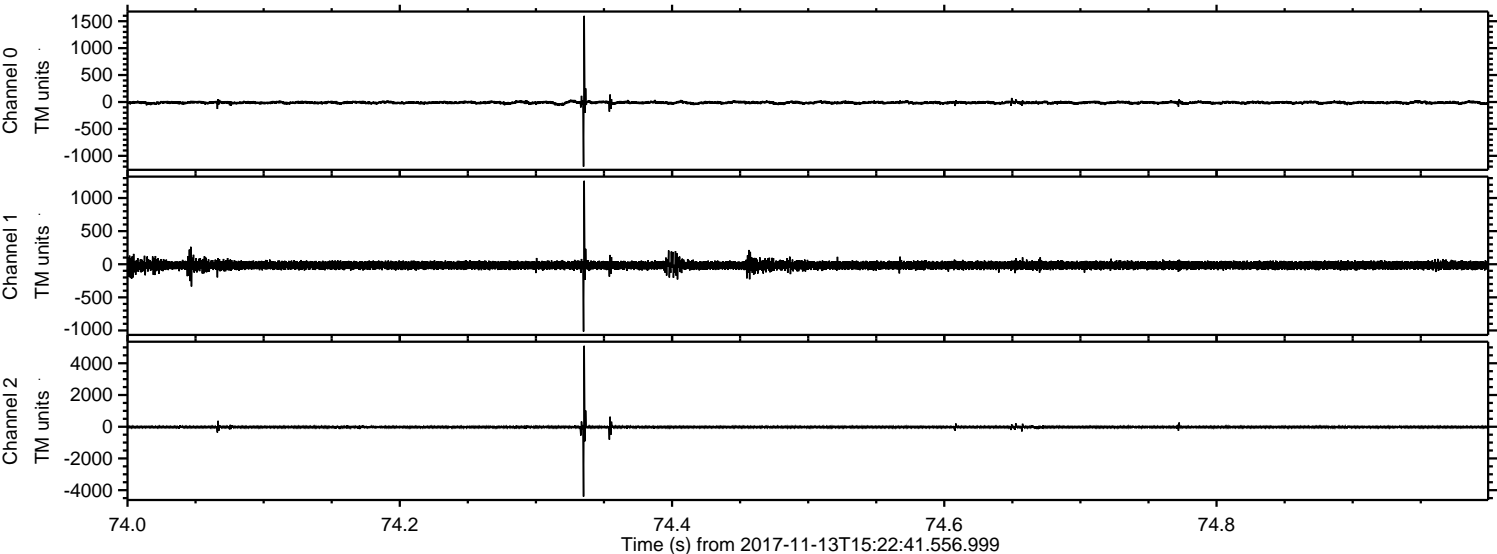


ELMAVAN 3D WAVEFORMS (Measured data sampled at 50 kHz) 51000 packets of 144 samples from 2017-11-13T15:22:41.556.999.

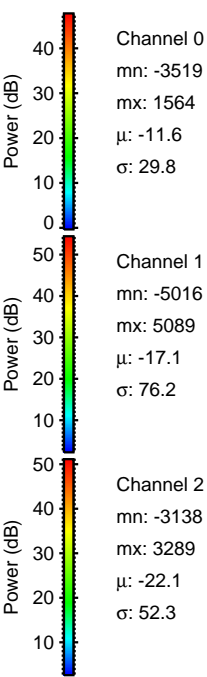
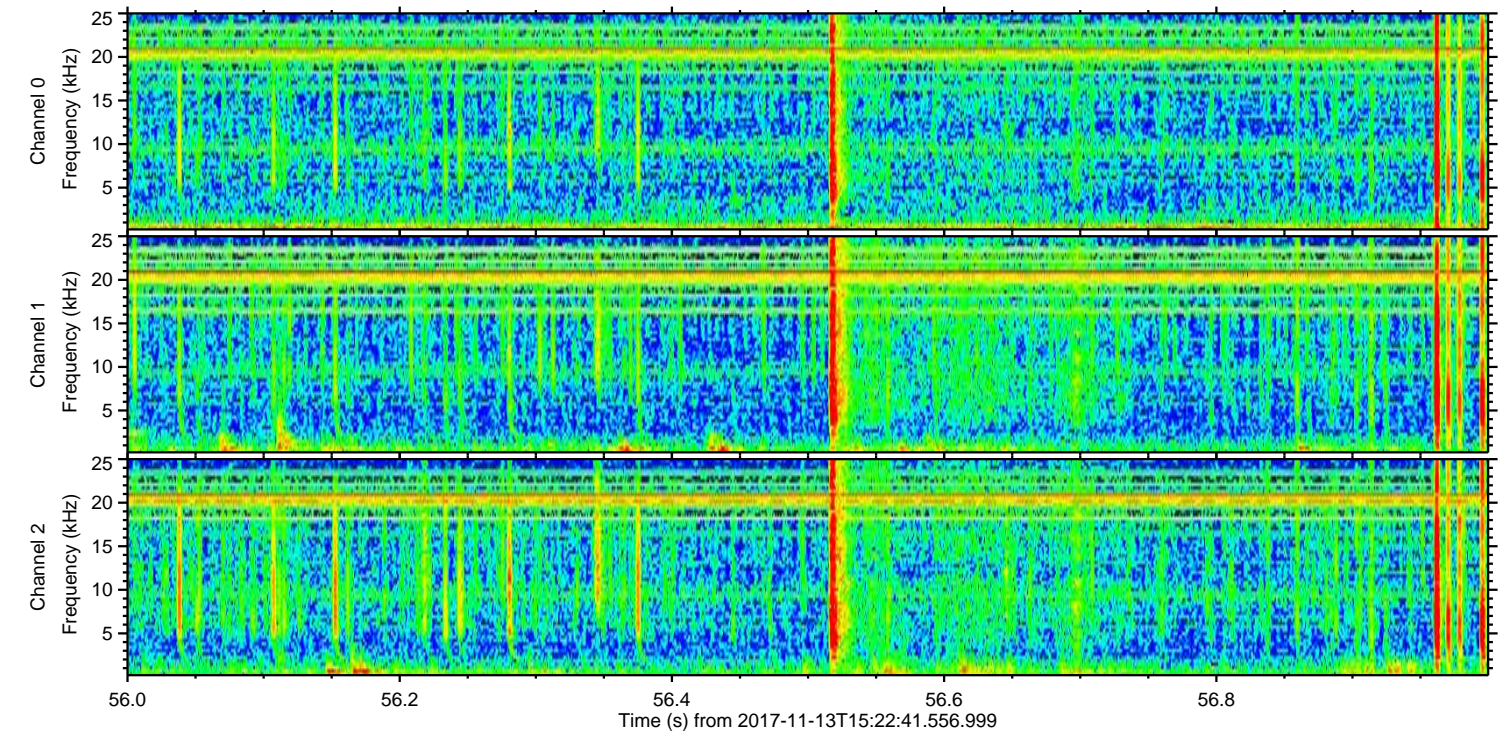
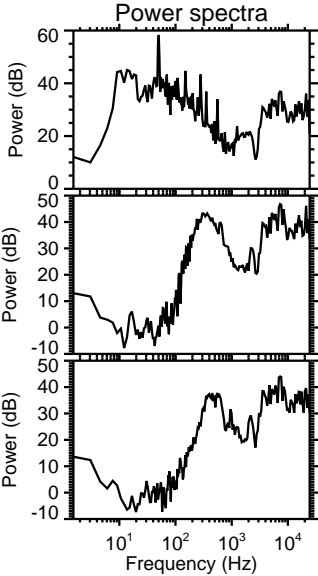
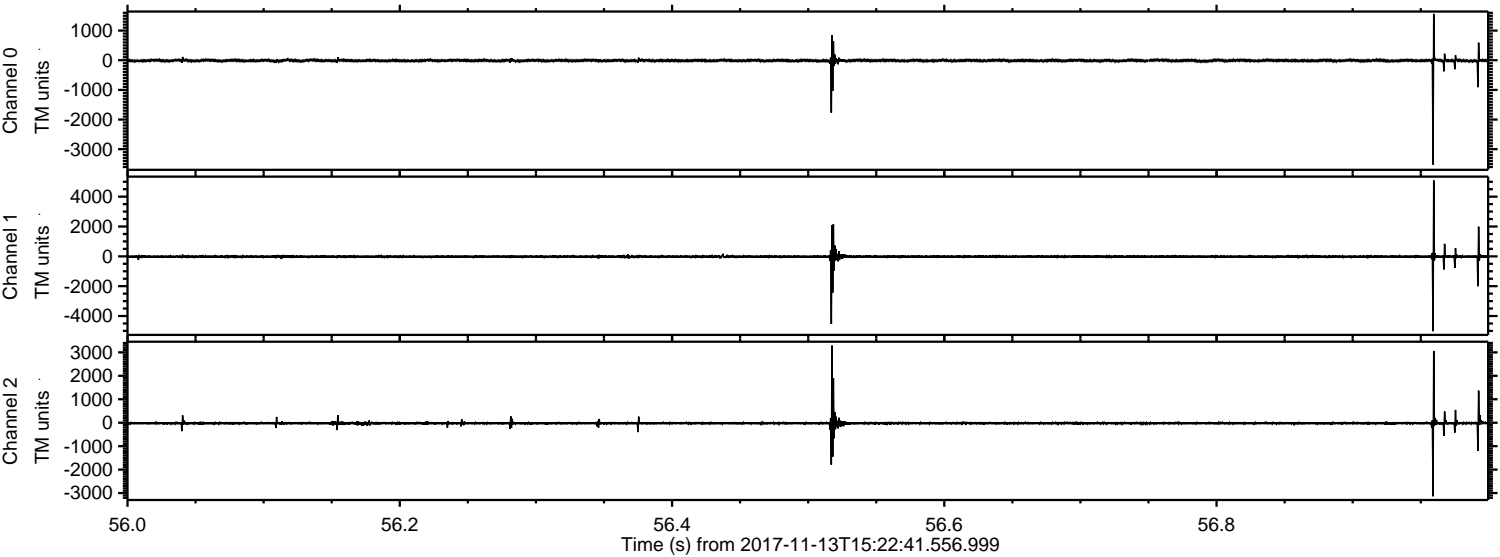
Processed Mon Nov 13 16:31:33 2017 by ELM ver.2012-10-06 from 001__elm20171113_152240__dat00.bin



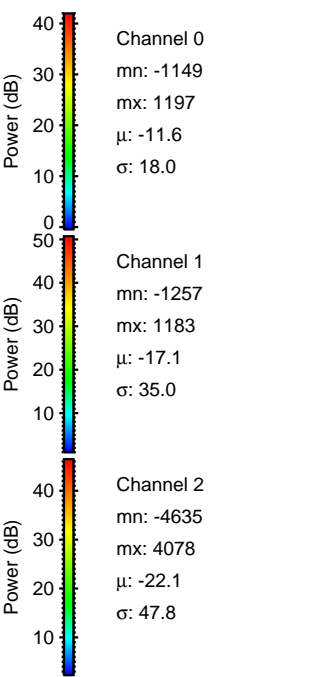
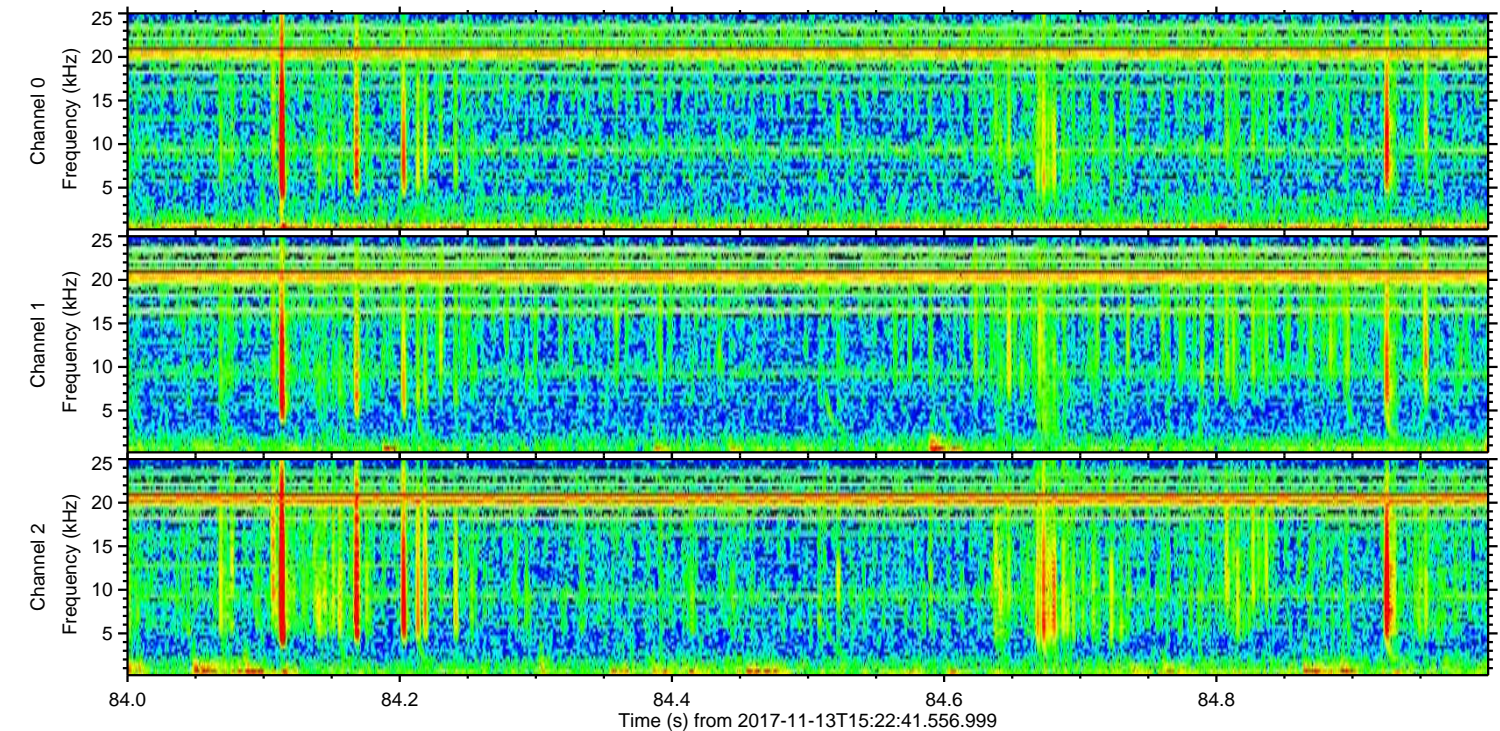
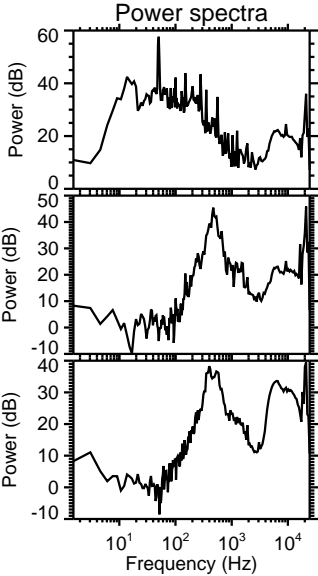
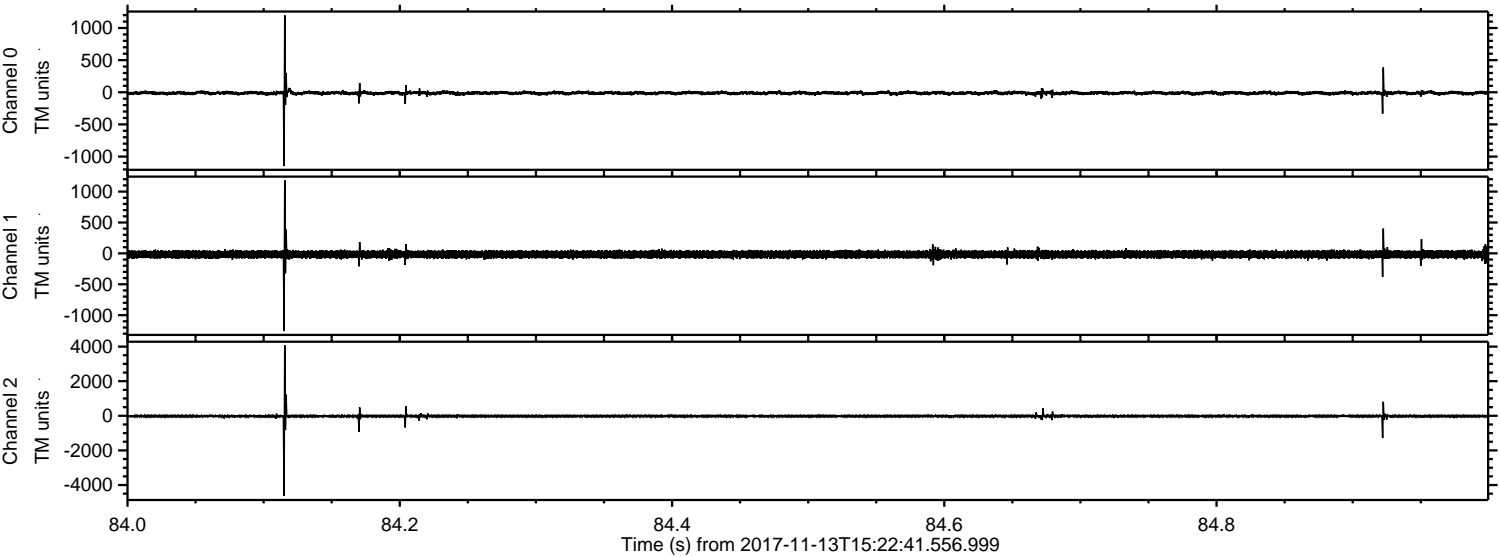
Processed Mon Nov 13 16:31:40 2017 by ELM ver.2012-10-06 from 001__elm20171113_152240__dat00.bin



Processed Mon Nov 13 16:31:41 2017 by ELM ver.2012-10-06 from 001__elm20171113_152240__dat00.bin

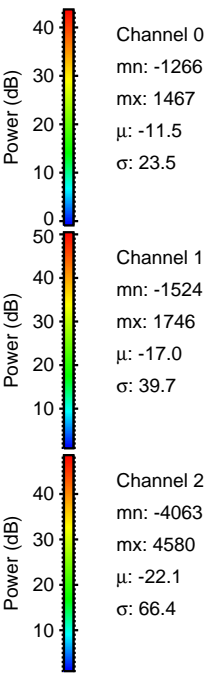
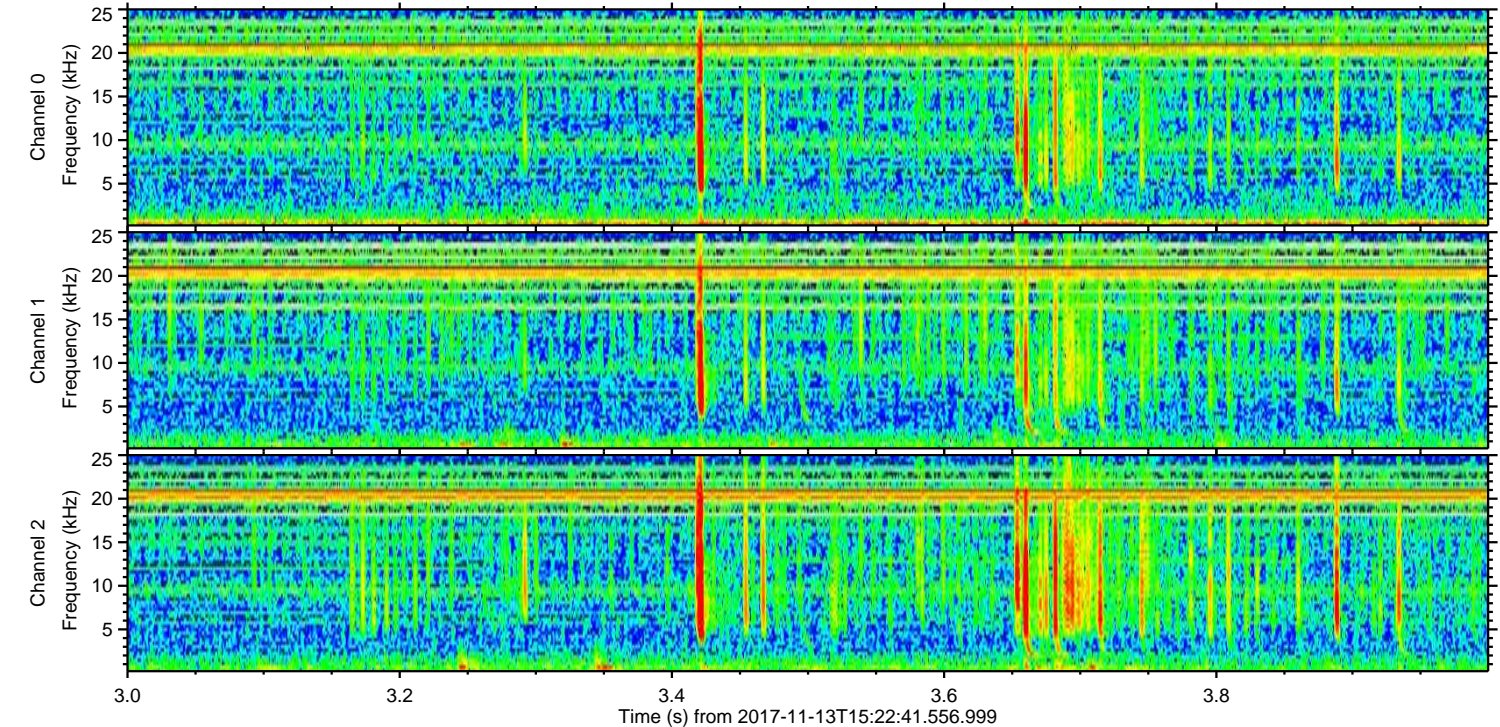
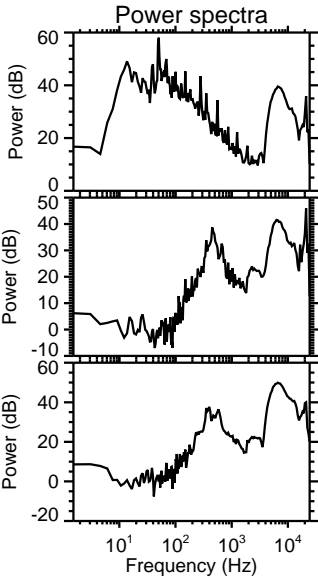
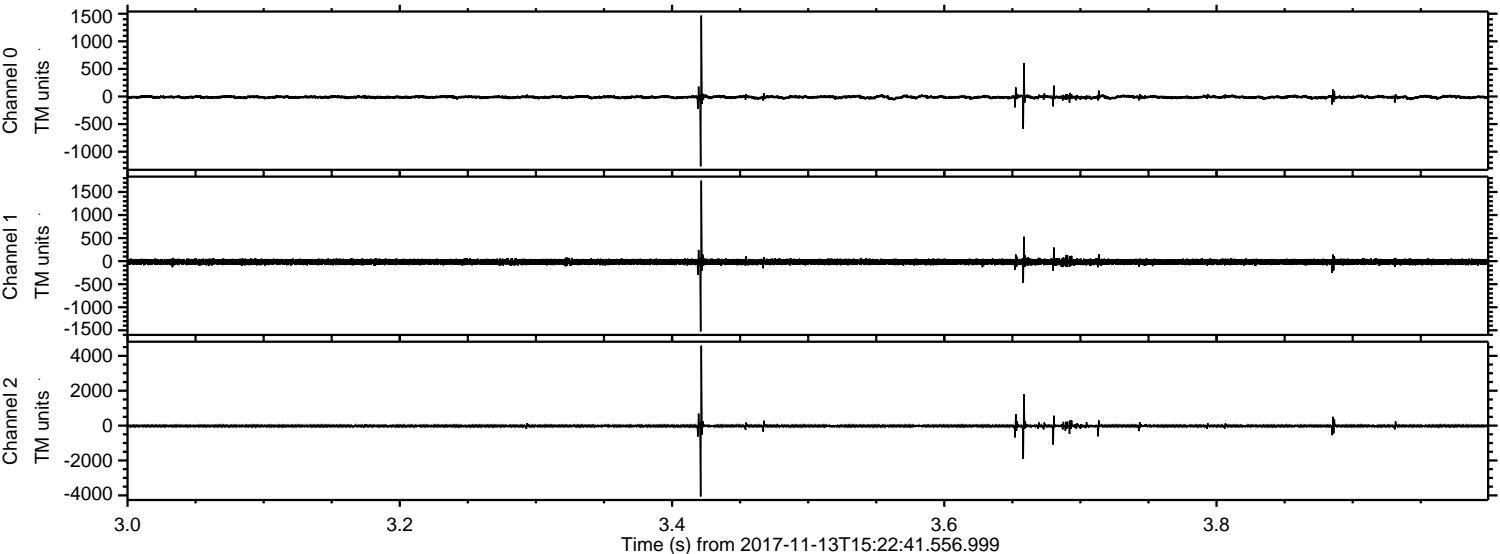


Processed Mon Nov 13 16:31:41 2017 by ELM ver.2012-10-06 from 001__elm20171113_152240__dat00.bin



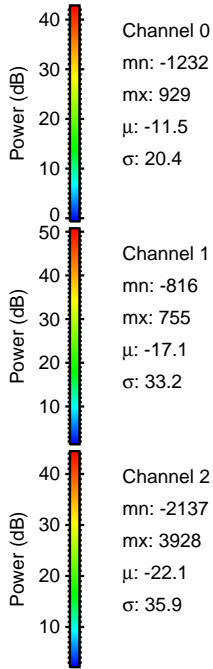
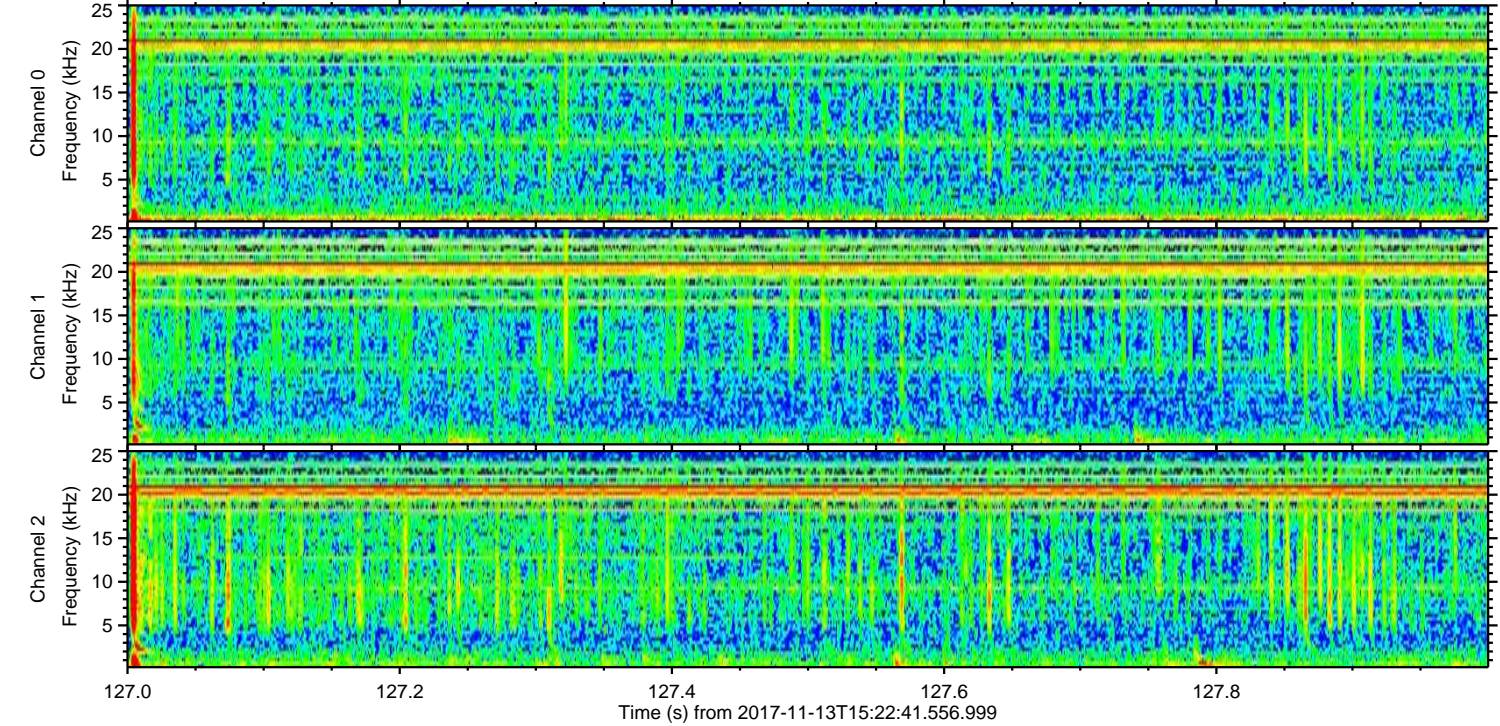
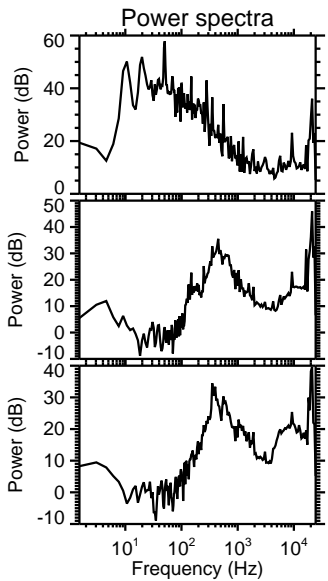
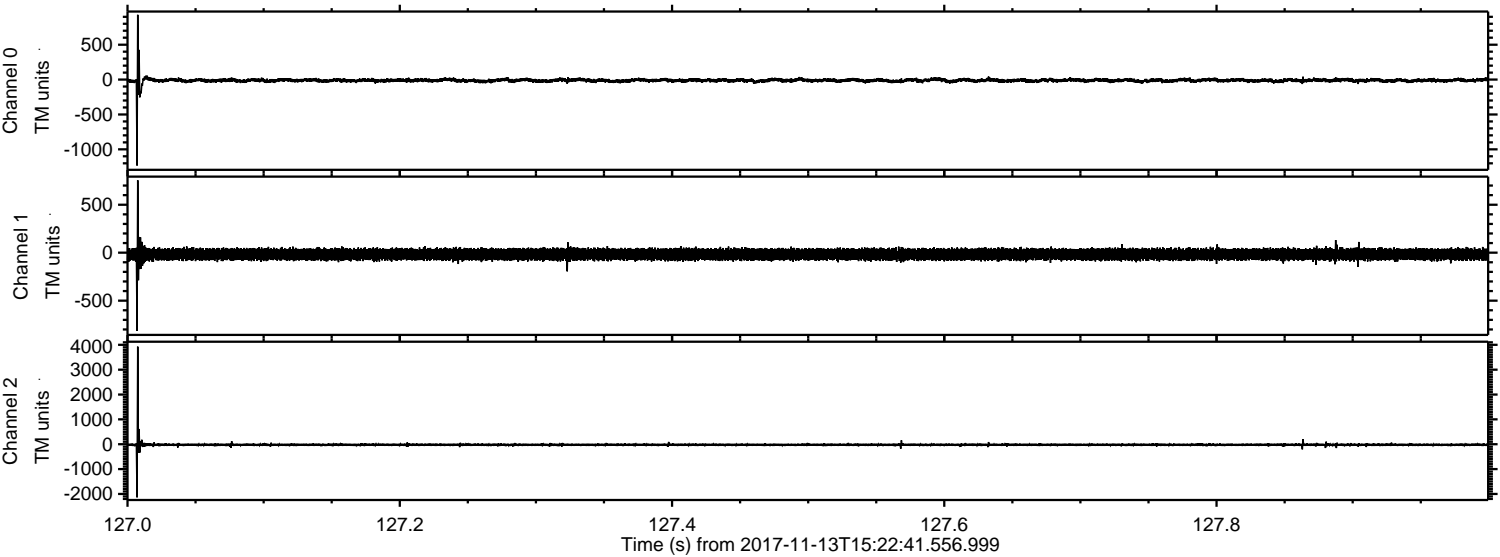
ELMAVAN 3D WAVEFORMS (Measured data sampled at 50 kHz) 51000 packets of 144 samples from 2017-11-13T15:22:41.556.999. Part 4/147

Processed Mon Nov 13 16:31:42 2017 by ELM ver.2012-10-06 from 001__elm20171113_152240__dat00.bin

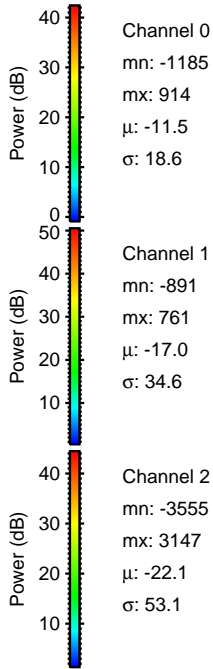
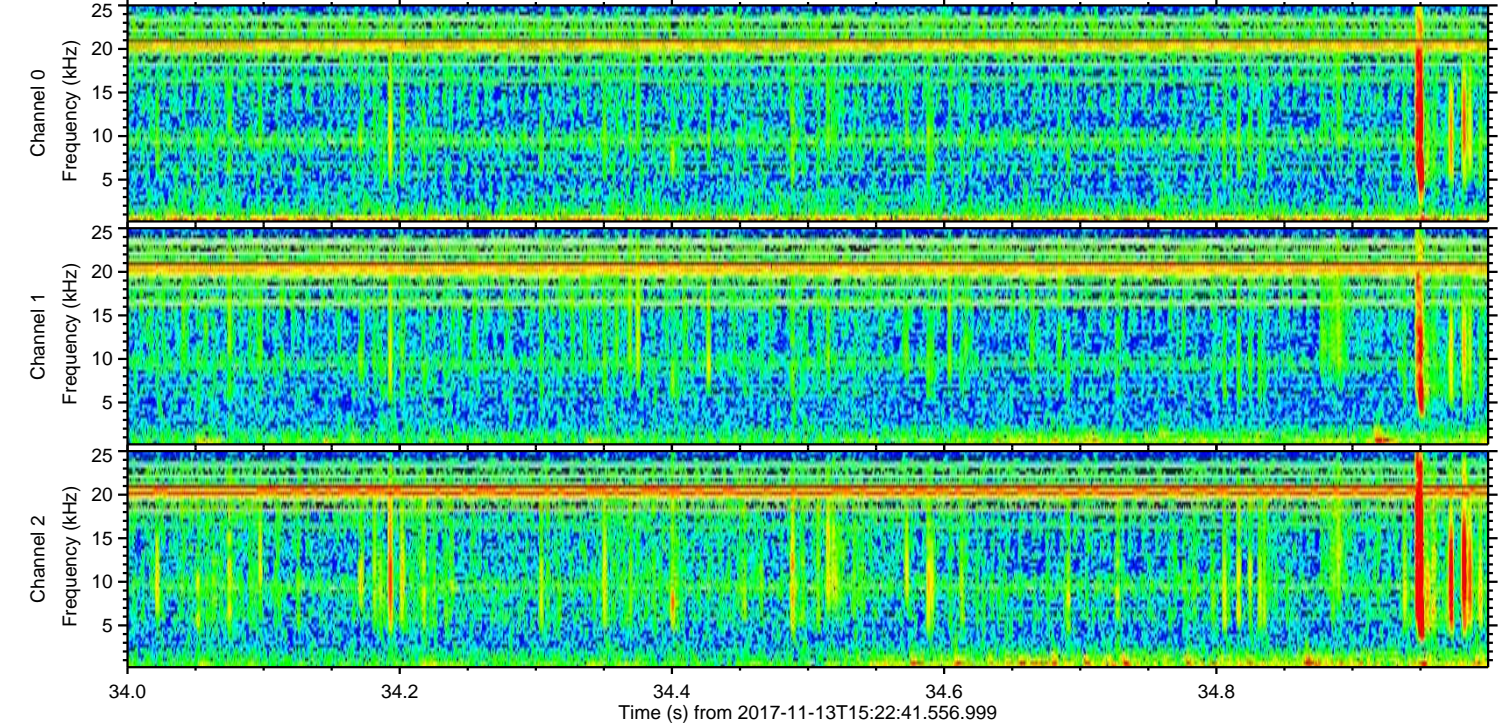
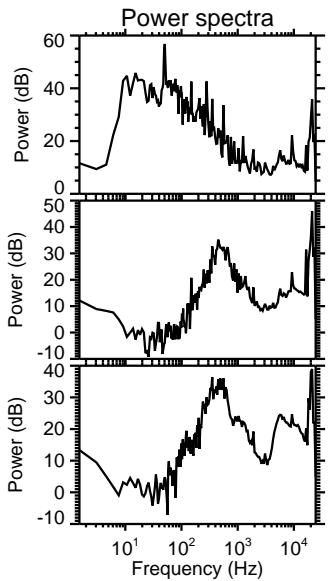
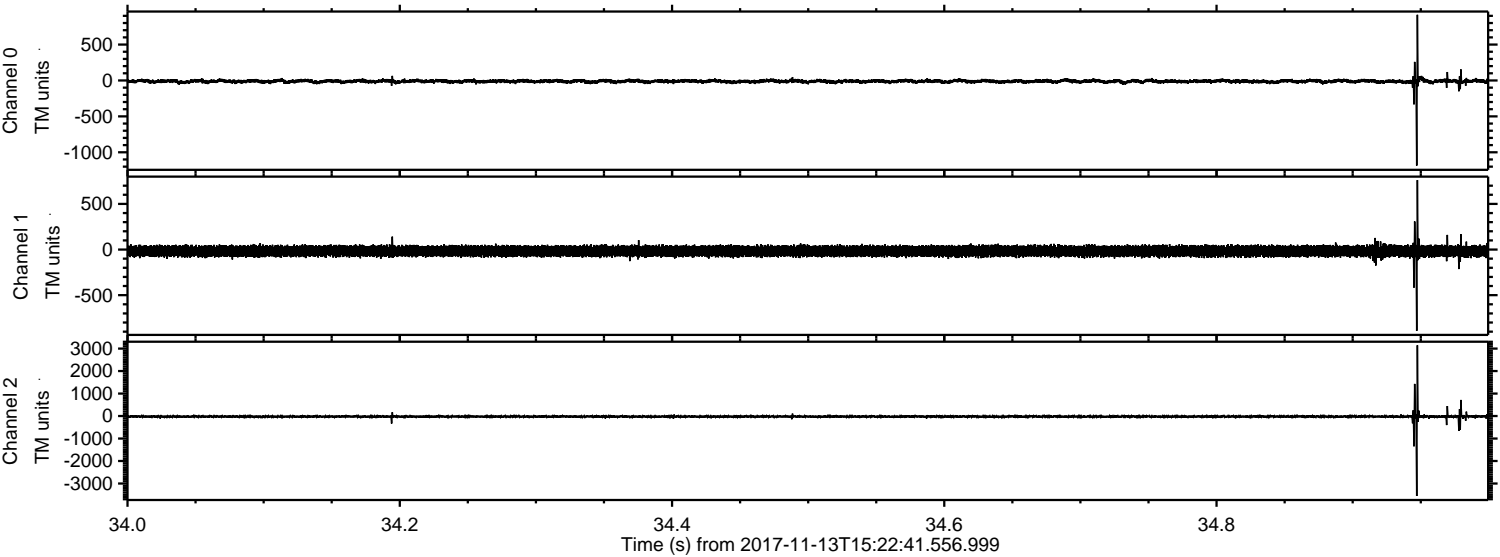


ELMAVAN 3D WAVEFORMS (Measured data sampled at 50 kHz) 51000 packets of 144 samples from 2017-11-13T15:22:41.556.999. Part 128/147

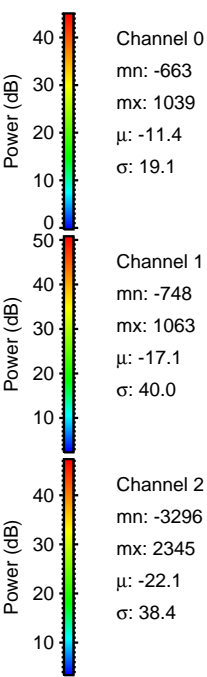
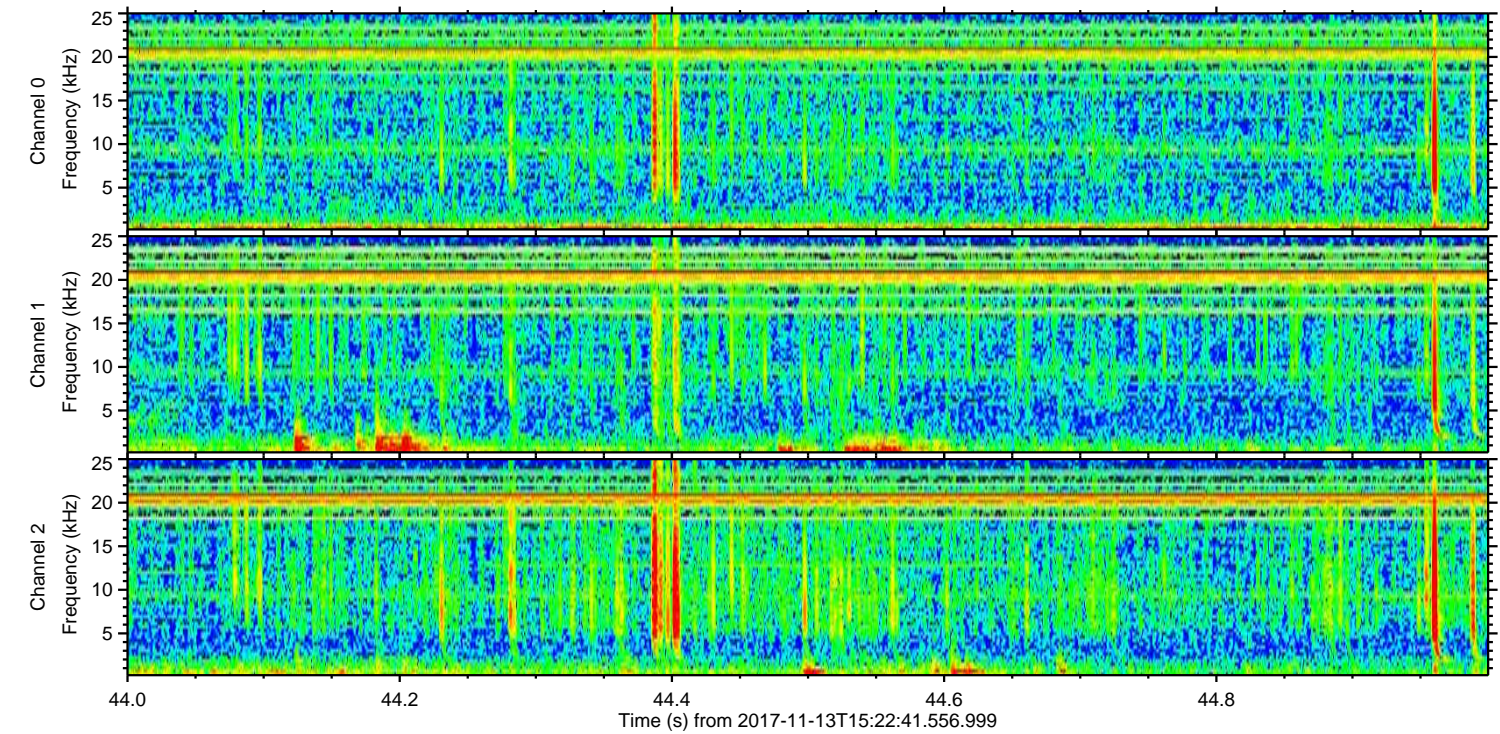
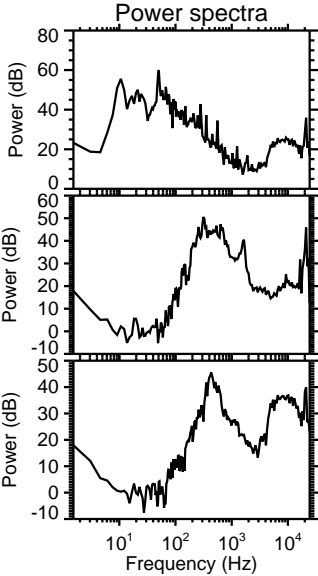
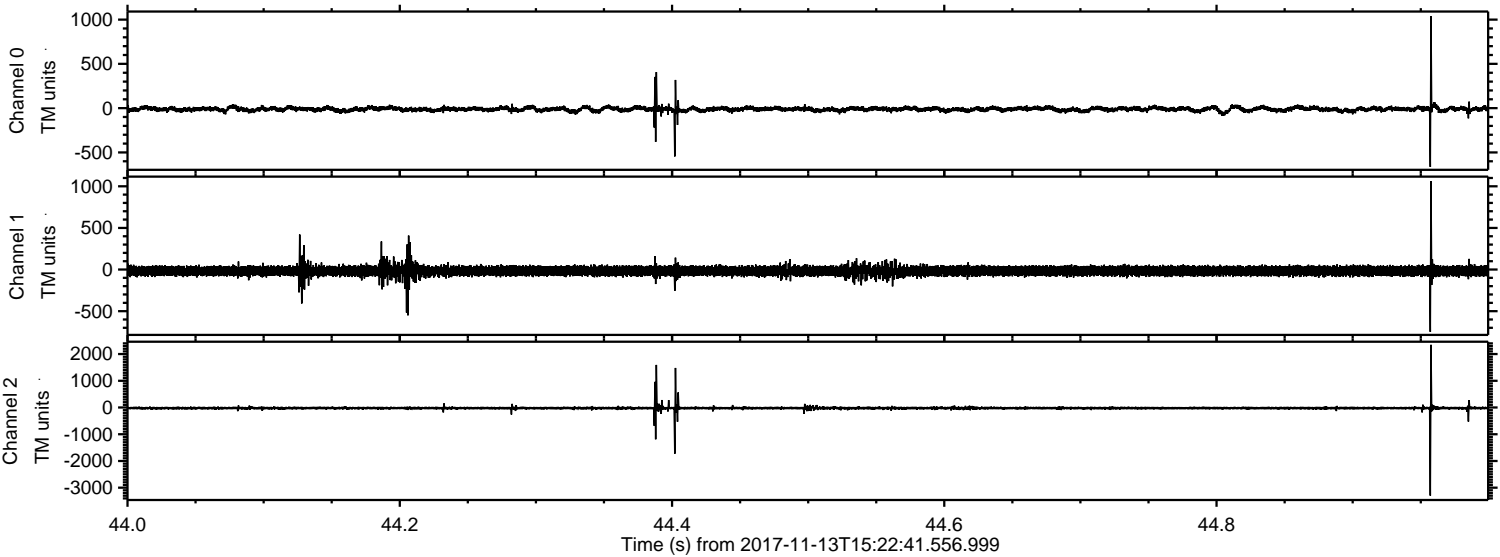
Processed Mon Nov 13 16:31:43 2017 by ELM ver.2012-10-06 from 001__elm20171113_152240__dat00.bin



Processed Mon Nov 13 16:31:44 2017 by ELM ver.2012-10-06 from 001__elm20171113_152240__dat00.bin

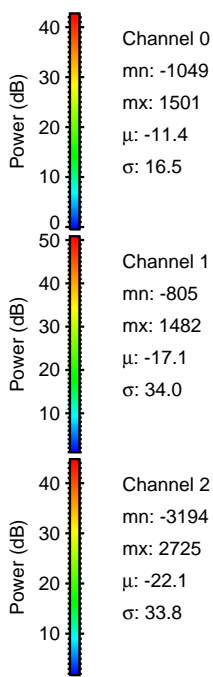
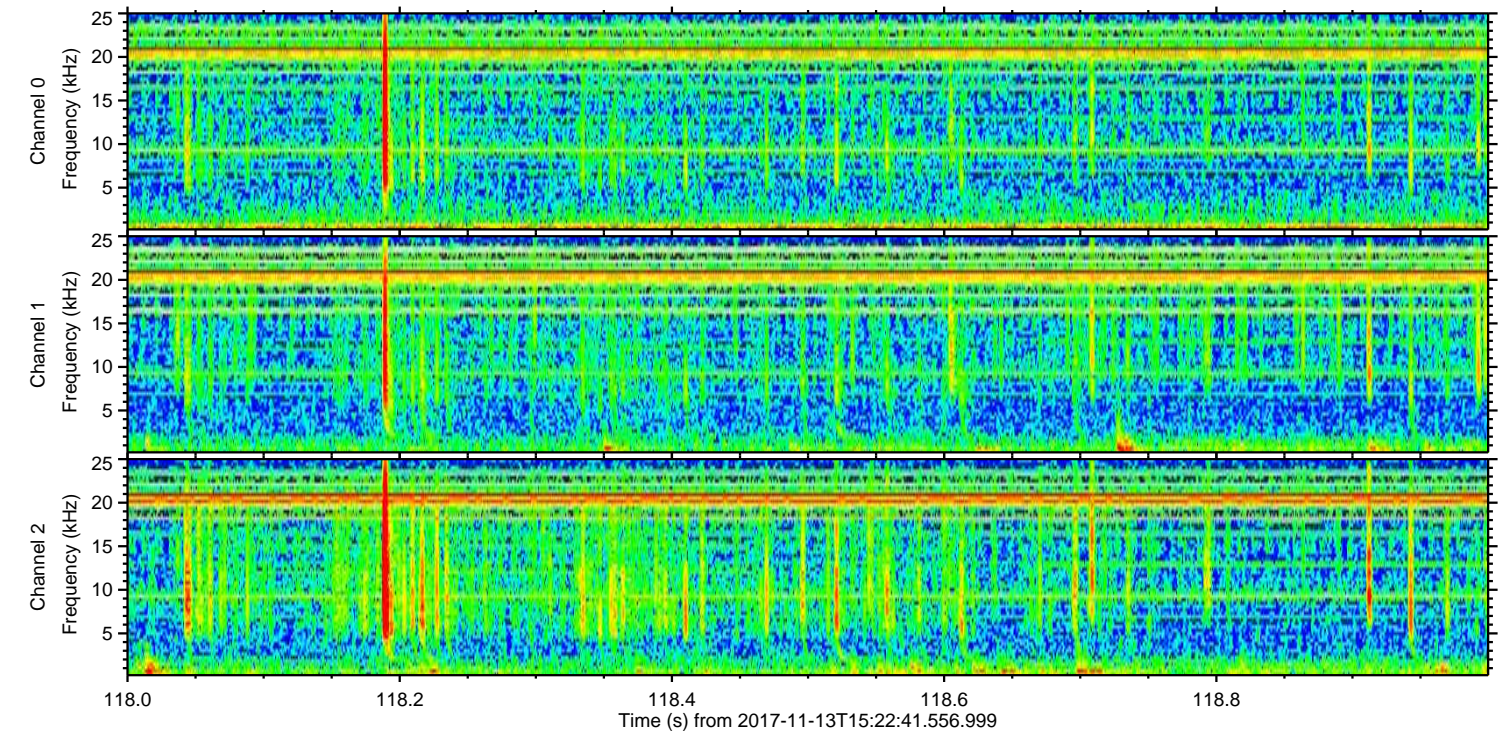
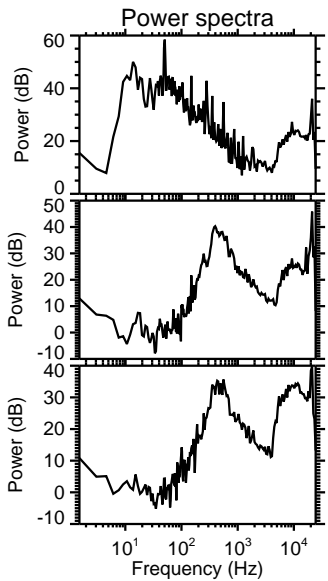
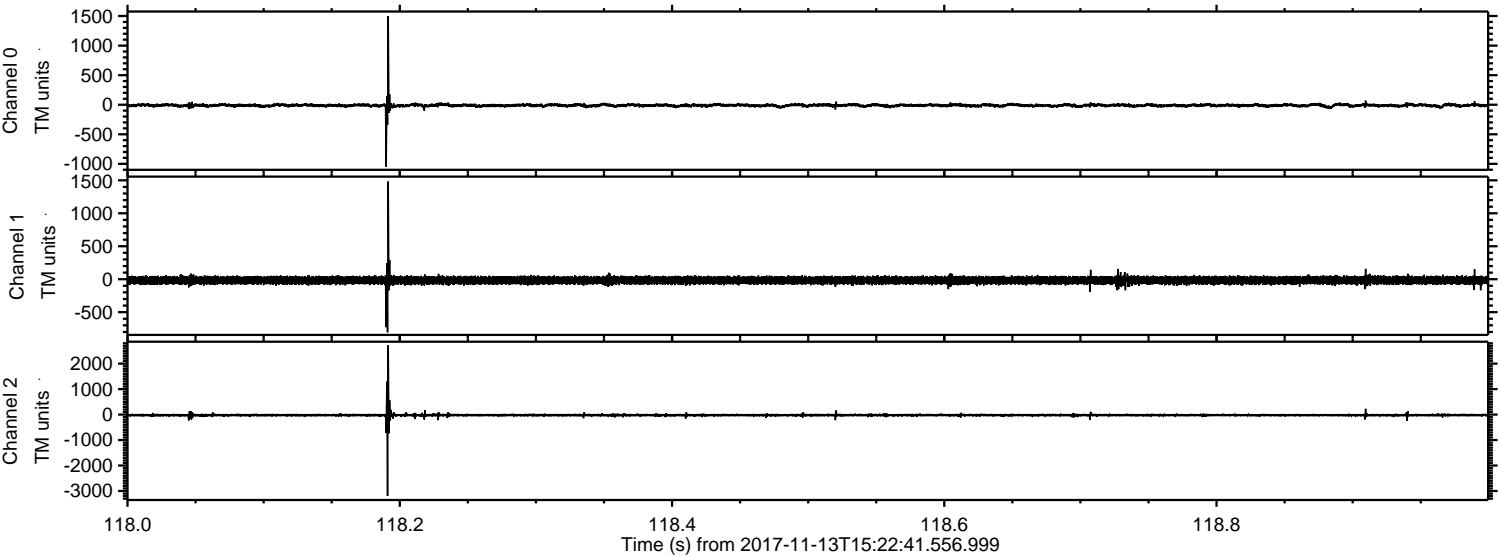


Processed Mon Nov 13 16:31:44 2017 by ELM ver.2012-10-06 from 001__elm20171113_152240__dat00.bin



ELMAVAN 3D WAVEFORMS (Measured data sampled at 50 kHz) 51000 packets of 144 samples from 2017-11-13T15:22:41.556.999. Part 119/147

Processed Mon Nov 13 16:31:45 2017 by ELM ver.2012-10-06 from 001__elm20171113_152240__dat00.bin



Channel 0
mn: -1049
mx: 1501
 μ : -11.4
 σ : 16.5

Channel 1
mn: -805
mx: 1482
 μ : -17.1
 σ : 34.0

Channel 2
mn: -3194
mx: 2725
 μ : -22.1
 σ : 33.8

Processed Mon Nov 13 16:31:46 2017 by ELM ver.2012-10-06 from 001__elm20171113_152240__dat00.bin

