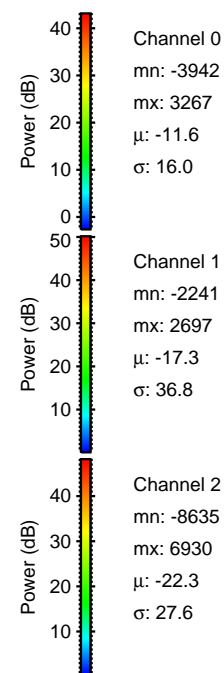
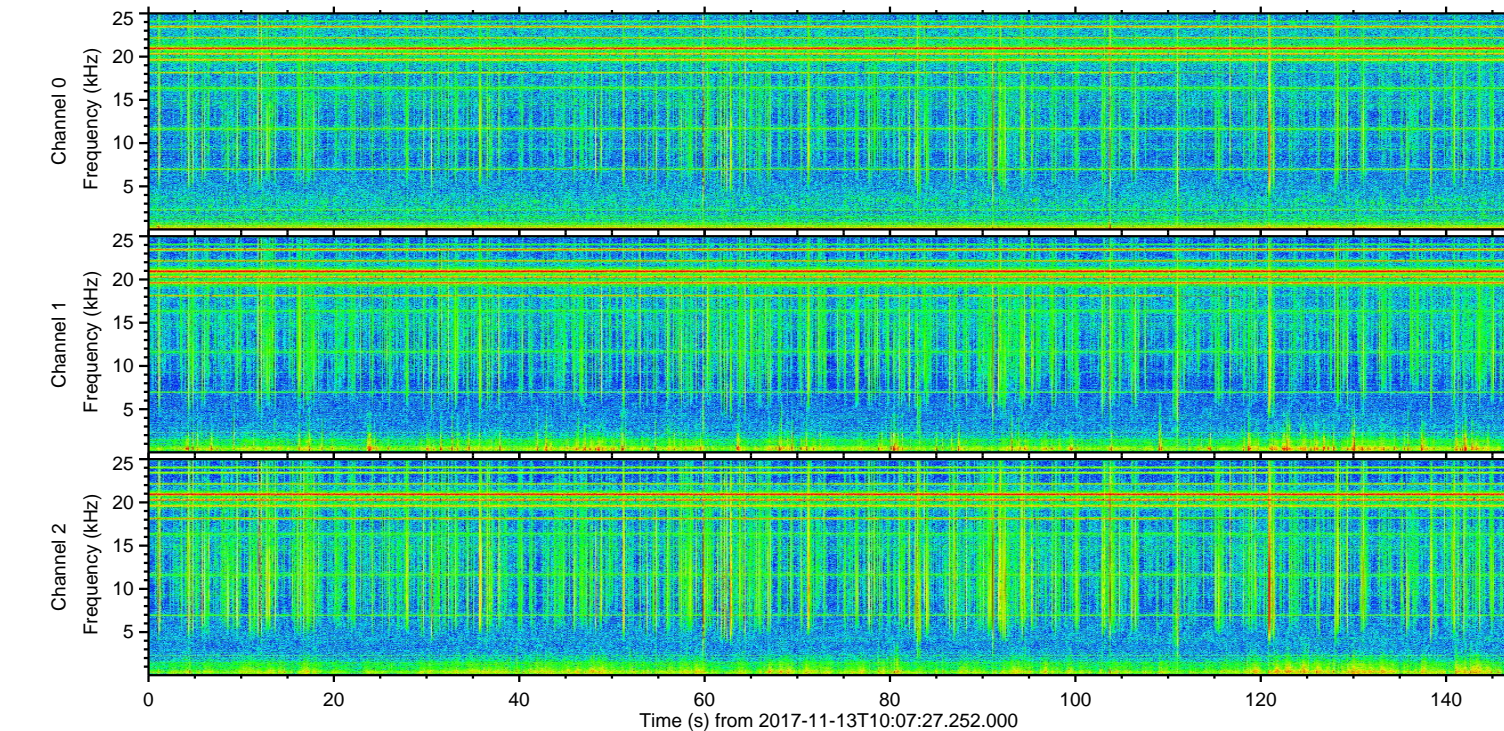
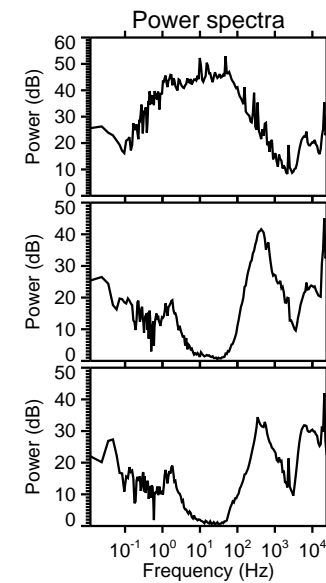
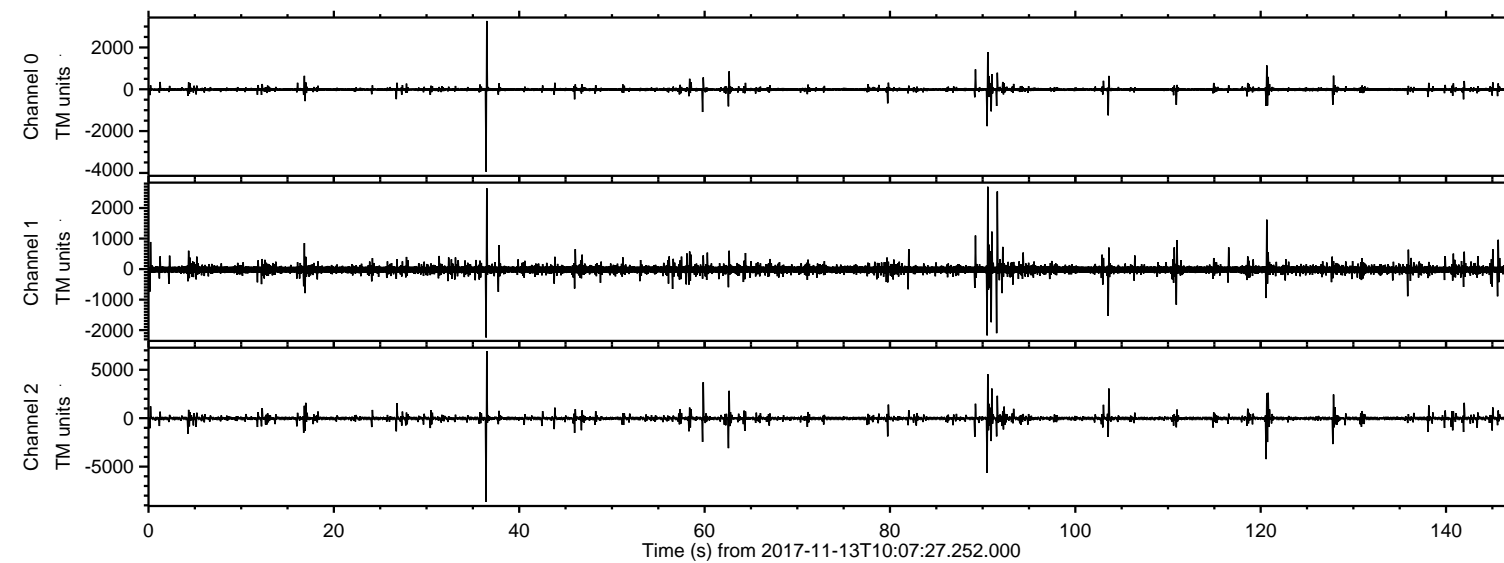
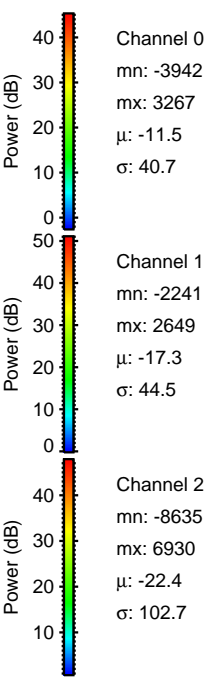
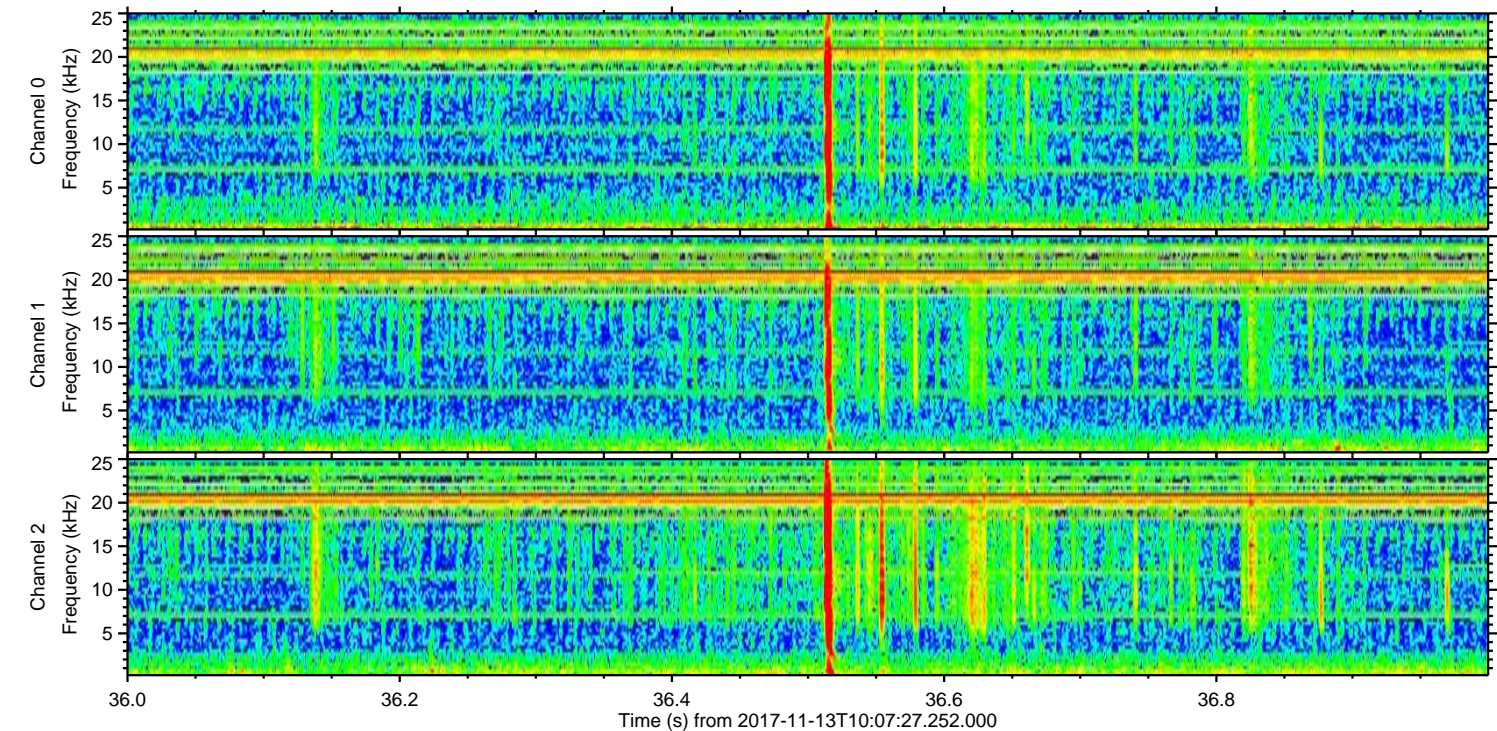
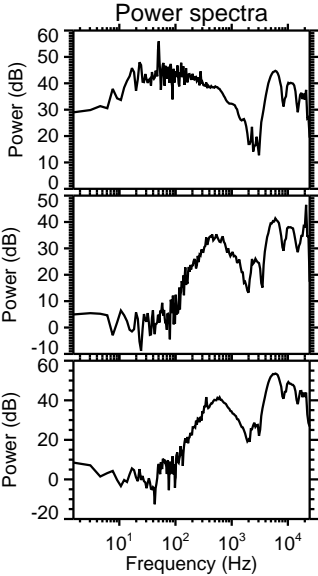
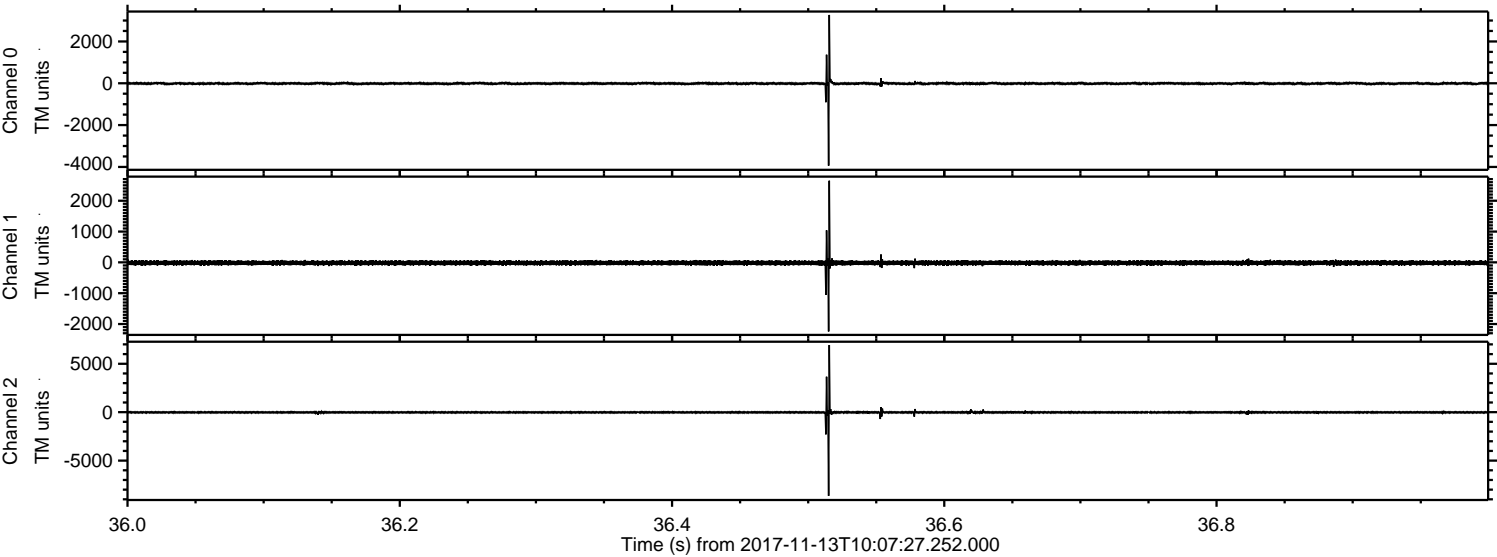


ELMAVAN 3D WAVEFORMS (Measured data sampled at 50 kHz) 51000 packets of 144 samples from 2017-11-13T10:07:27.252.000.

Processed Mon Nov 13 11:16:23 2017 by ELM ver.2012-10-06 from 001__elm20171113_100726__dat00.bin



Processed Mon Nov 13 11:16:29 2017 by ELM ver.2012-10-06 from 001__elm20171113_100726__dat00.bin

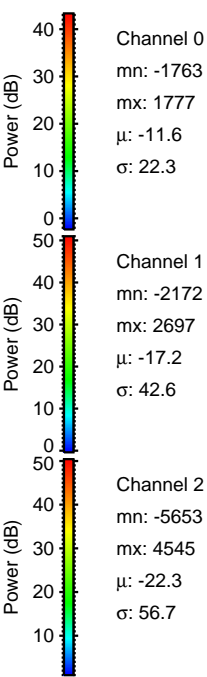
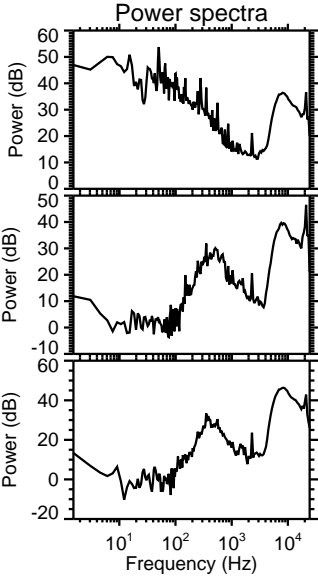
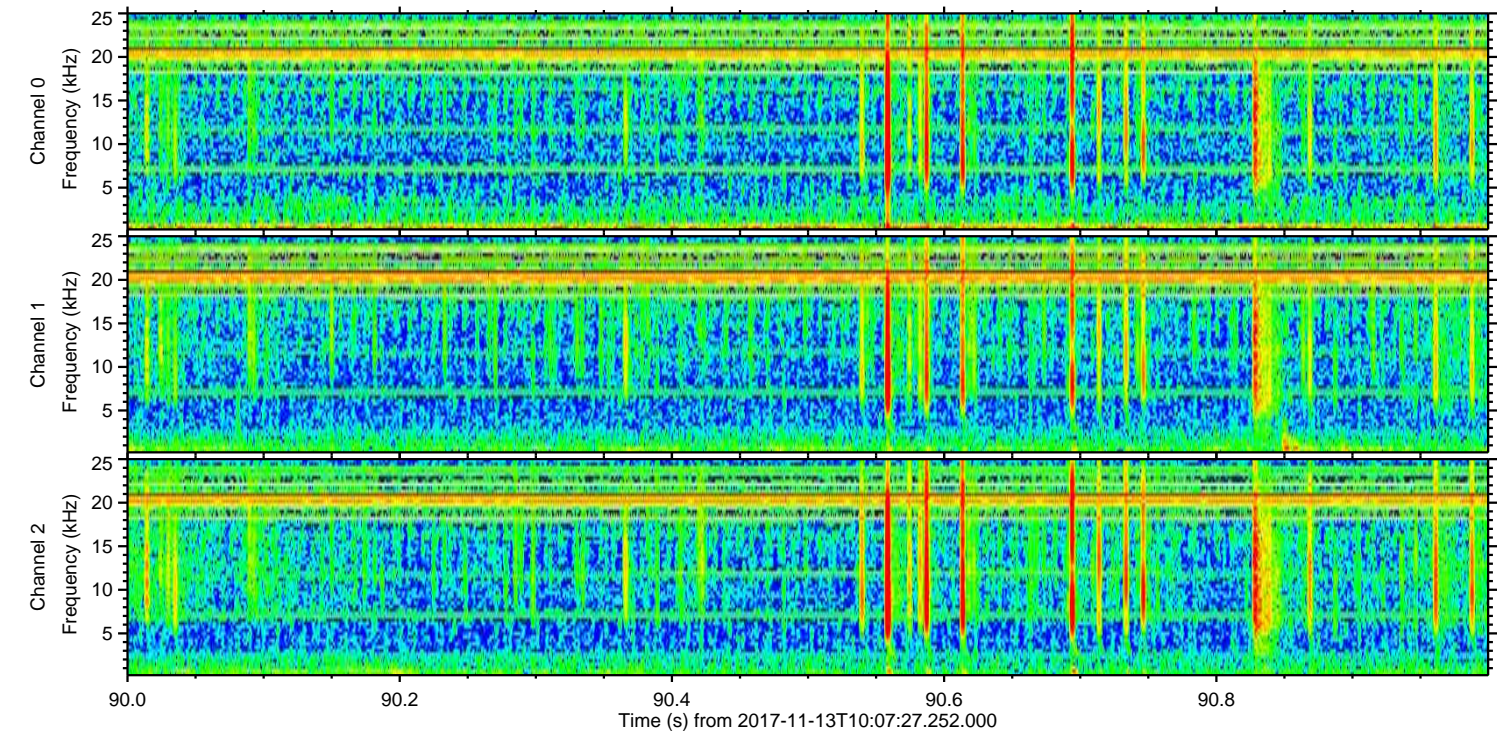
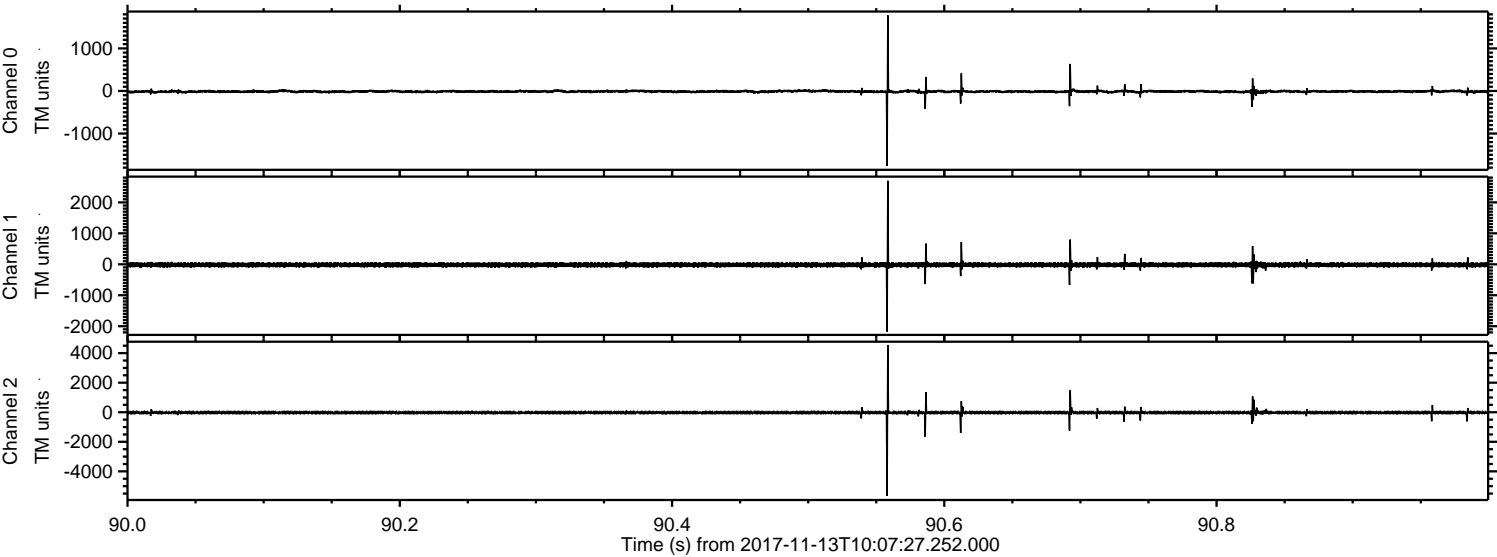


Channel 0
mn: -3942
mx: 3267
 μ : -11.5
 σ : 40.7

Channel 1
mn: -2241
mx: 2649
 μ : -17.3
 σ : 44.5

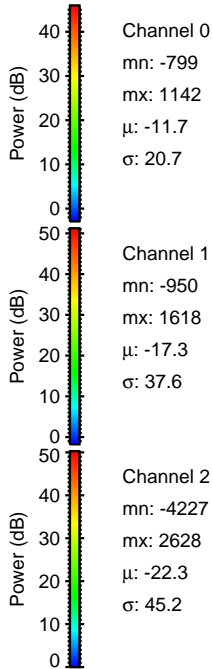
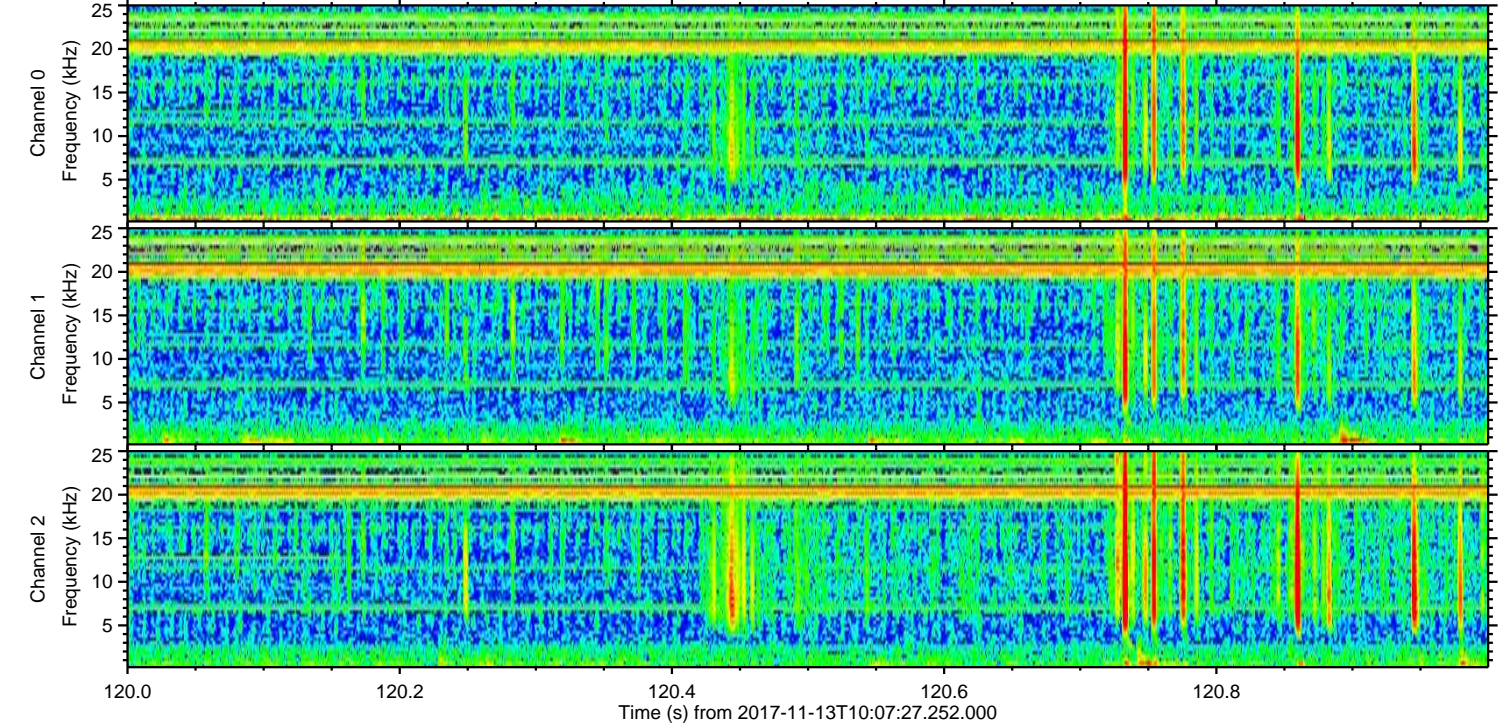
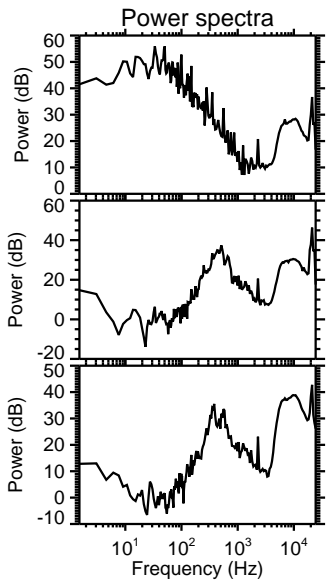
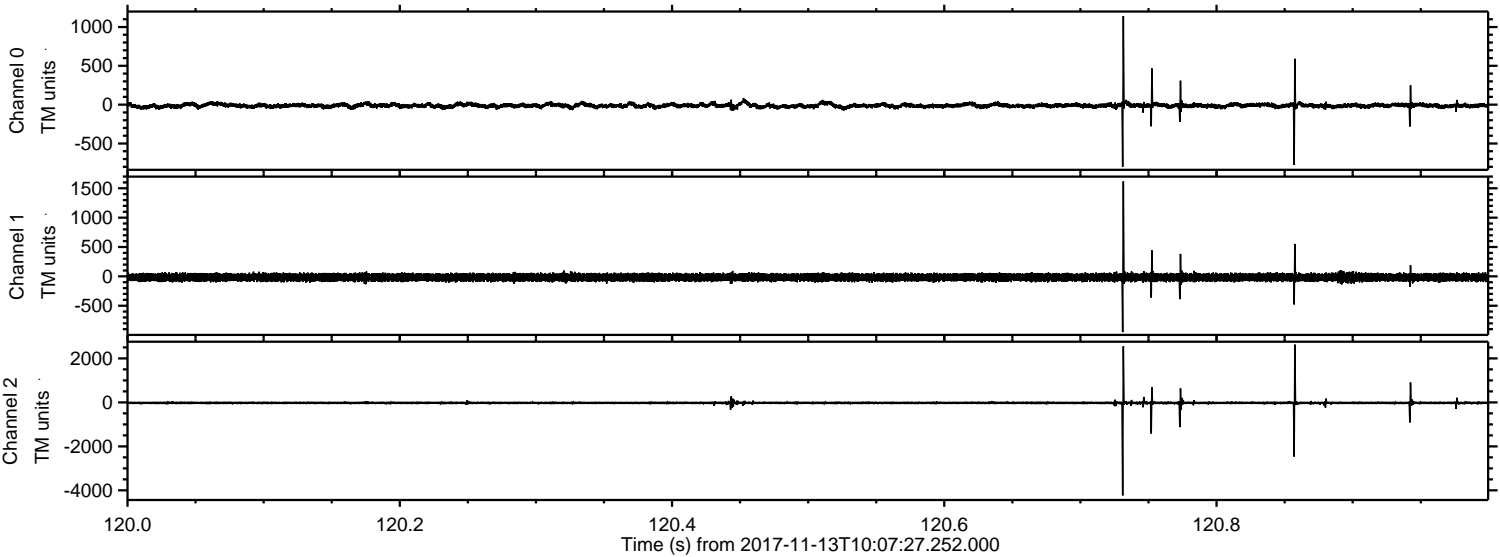
Channel 2
mn: -8635
mx: 6930
 μ : -22.4
 σ : 102.7

Processed Mon Nov 13 11:16:30 2017 by ELM ver.2012-10-06 from 001__elm20171113_100726__dat00.bin

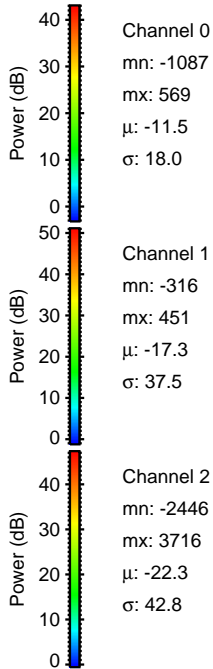
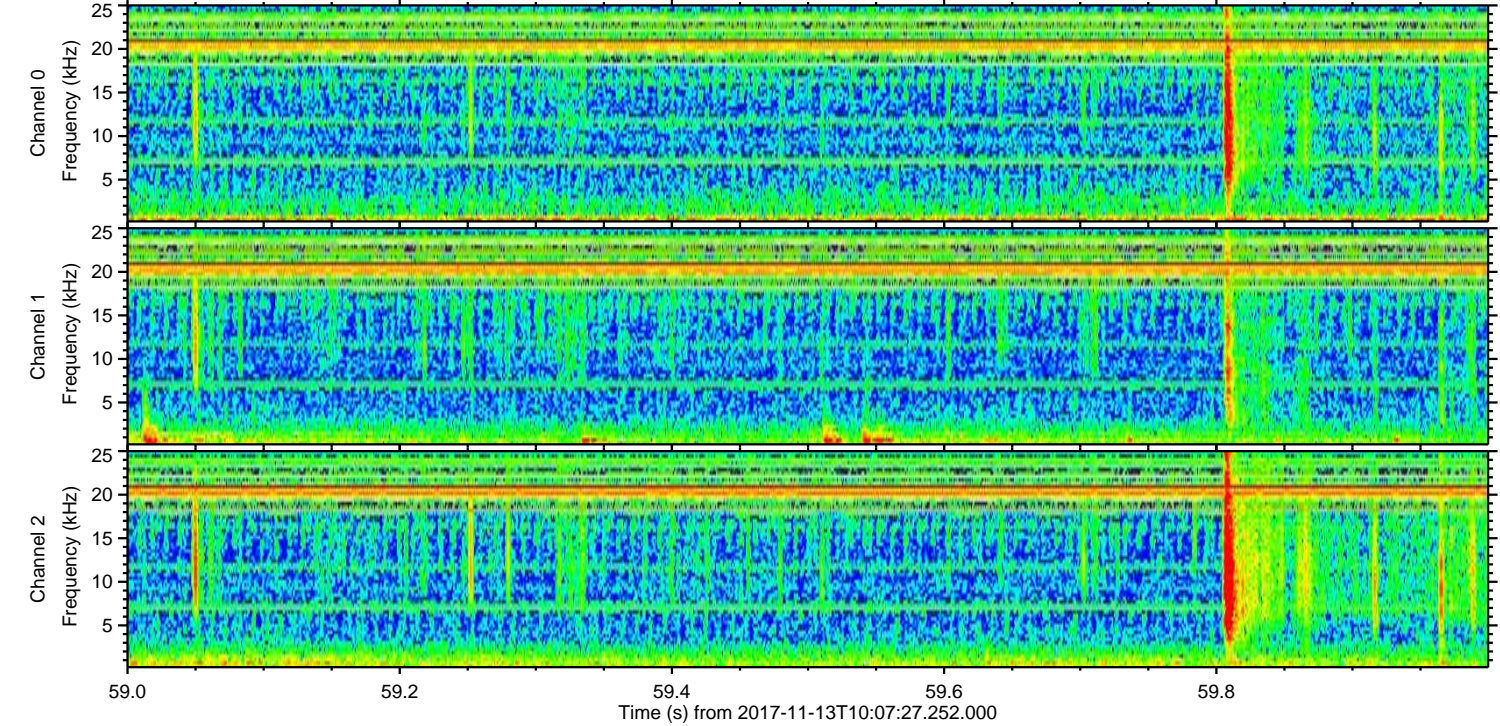
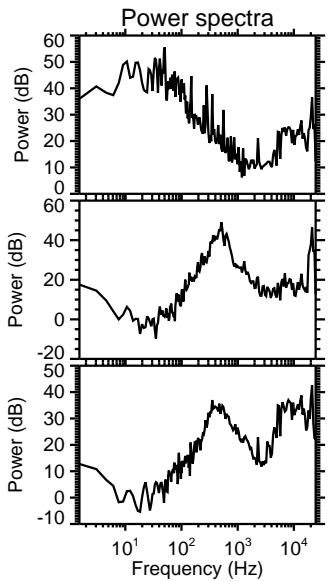
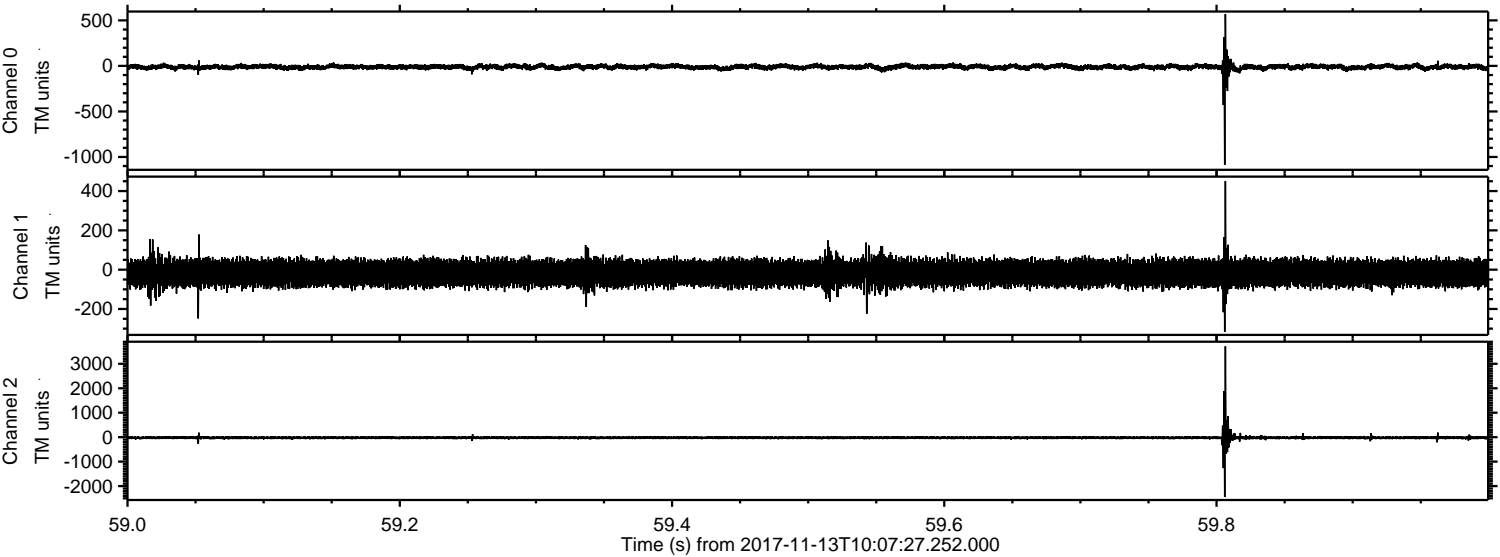


ELMAVAN 3D WAVEFORMS (Measured data sampled at 50 kHz) 51000 packets of 144 samples from 2017-11-13T10:07:27.252.000. Part 121/147

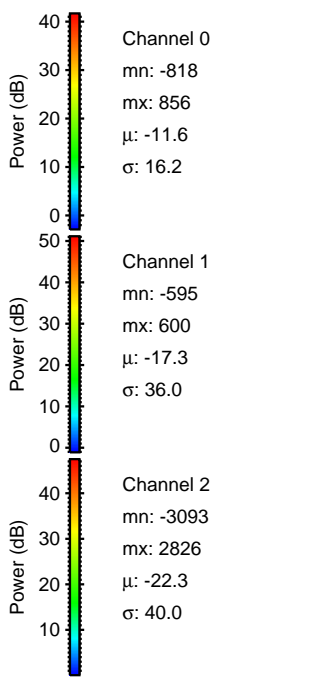
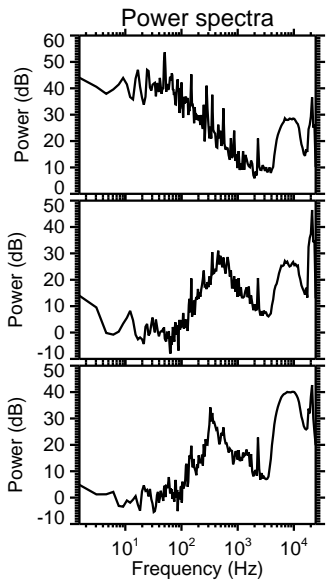
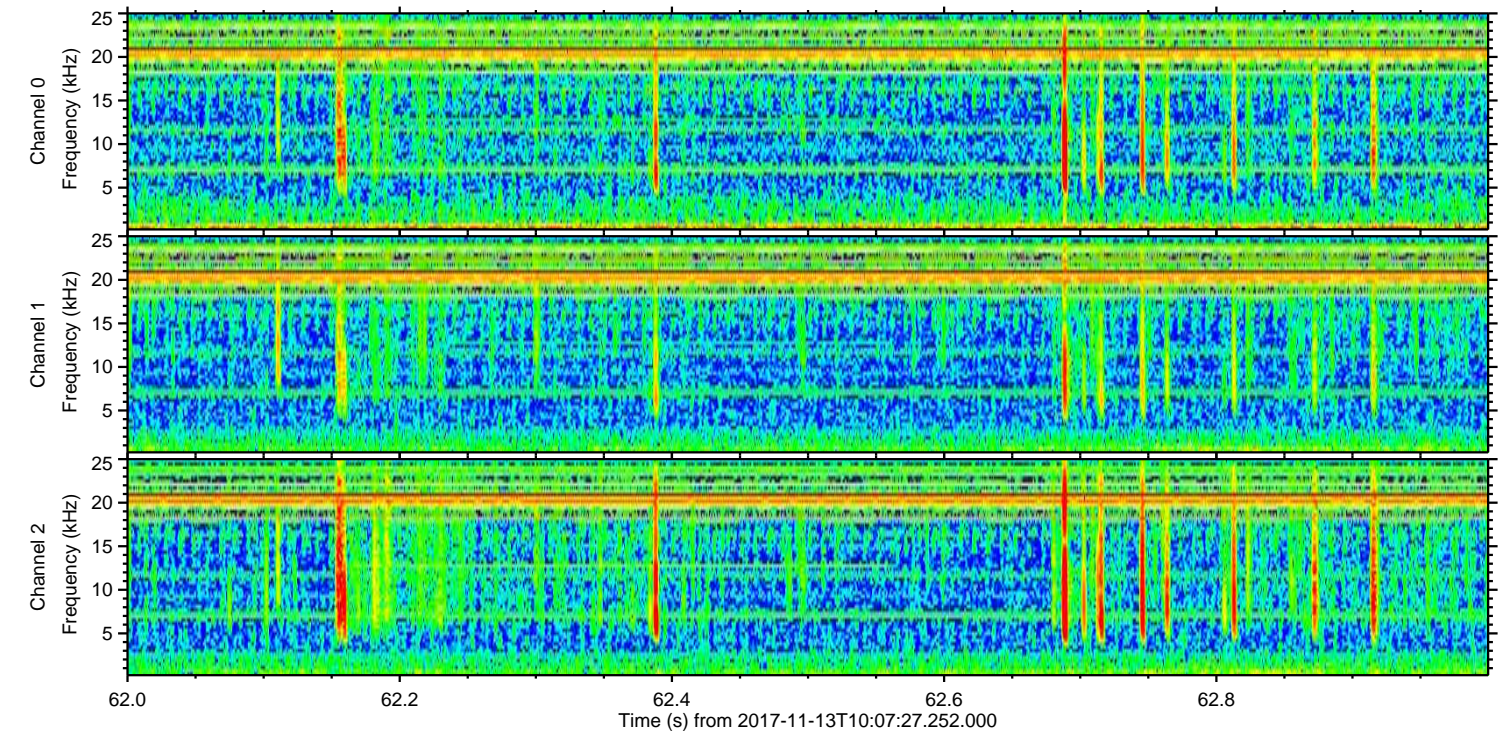
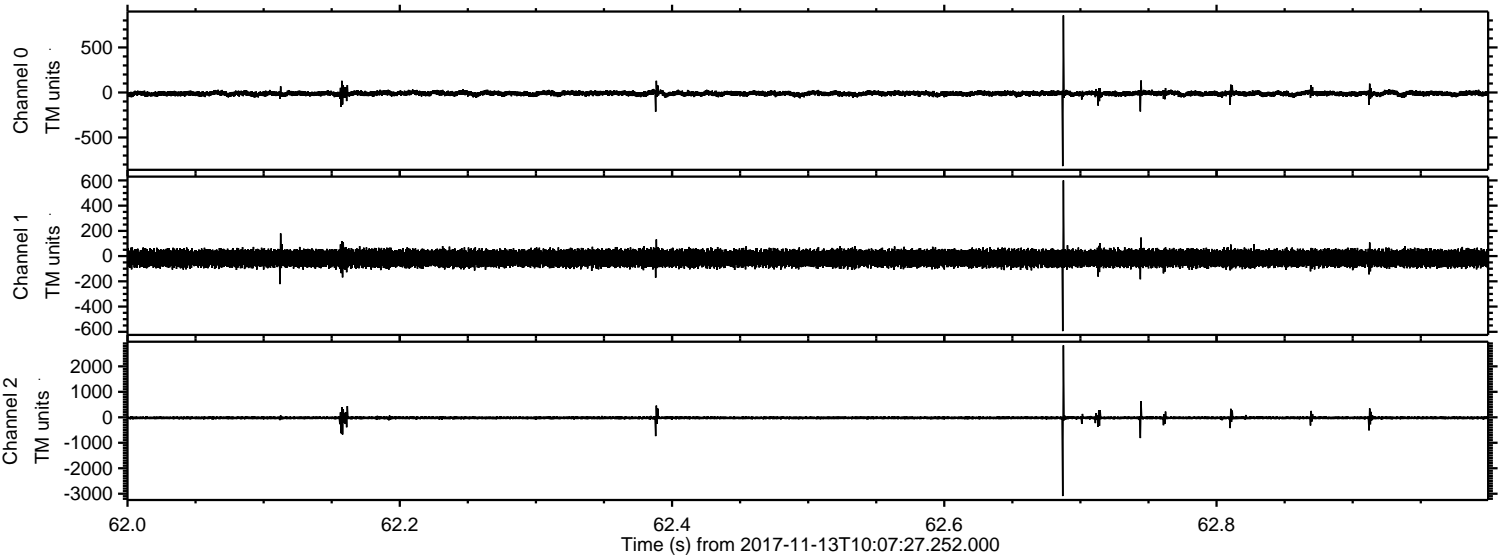
Processed Mon Nov 13 11:16:31 2017 by ELM ver.2012-10-06 from 001__elm20171113_100726__dat00.bin



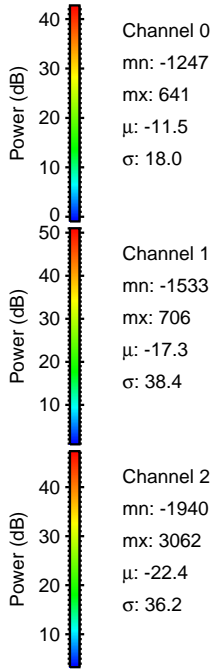
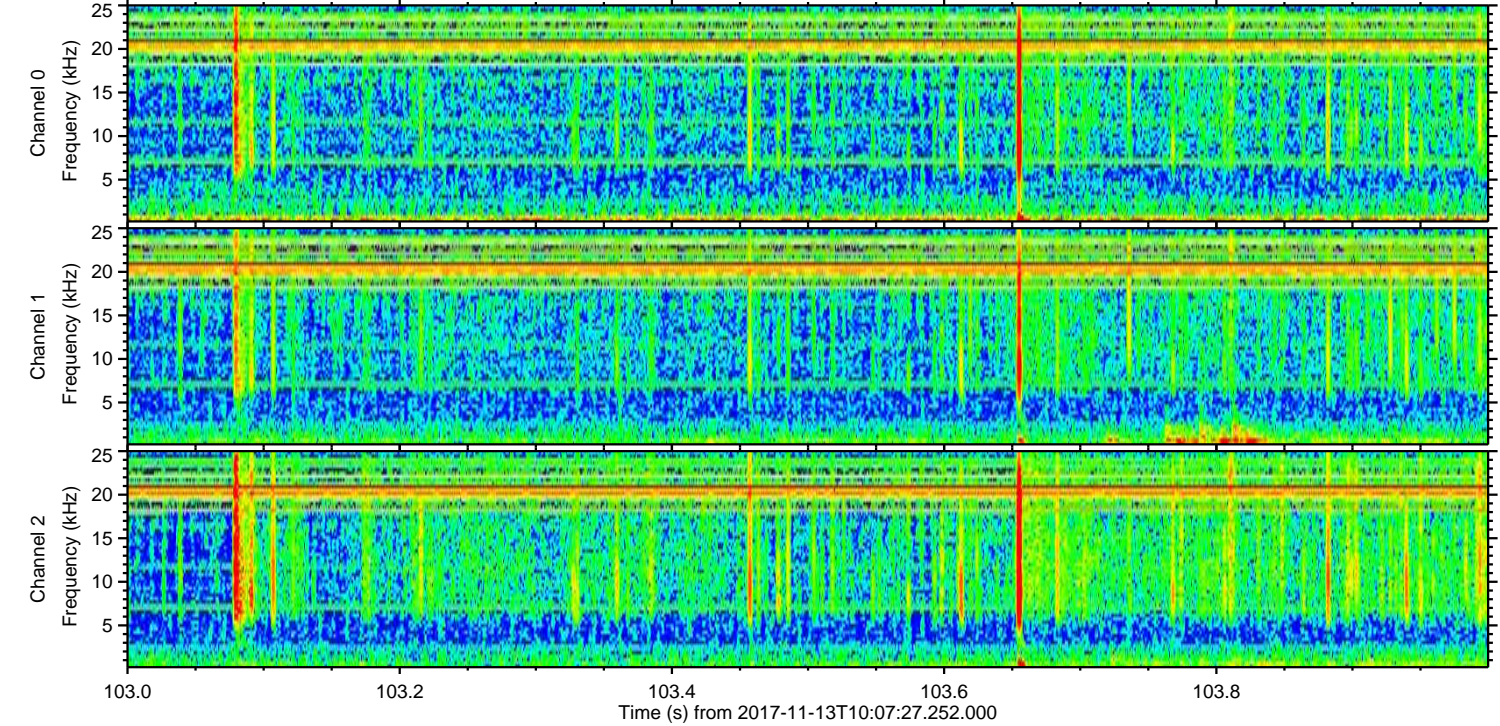
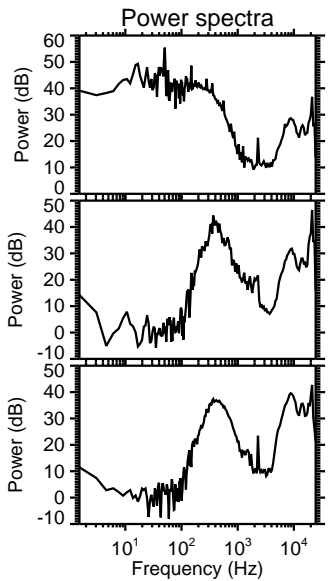
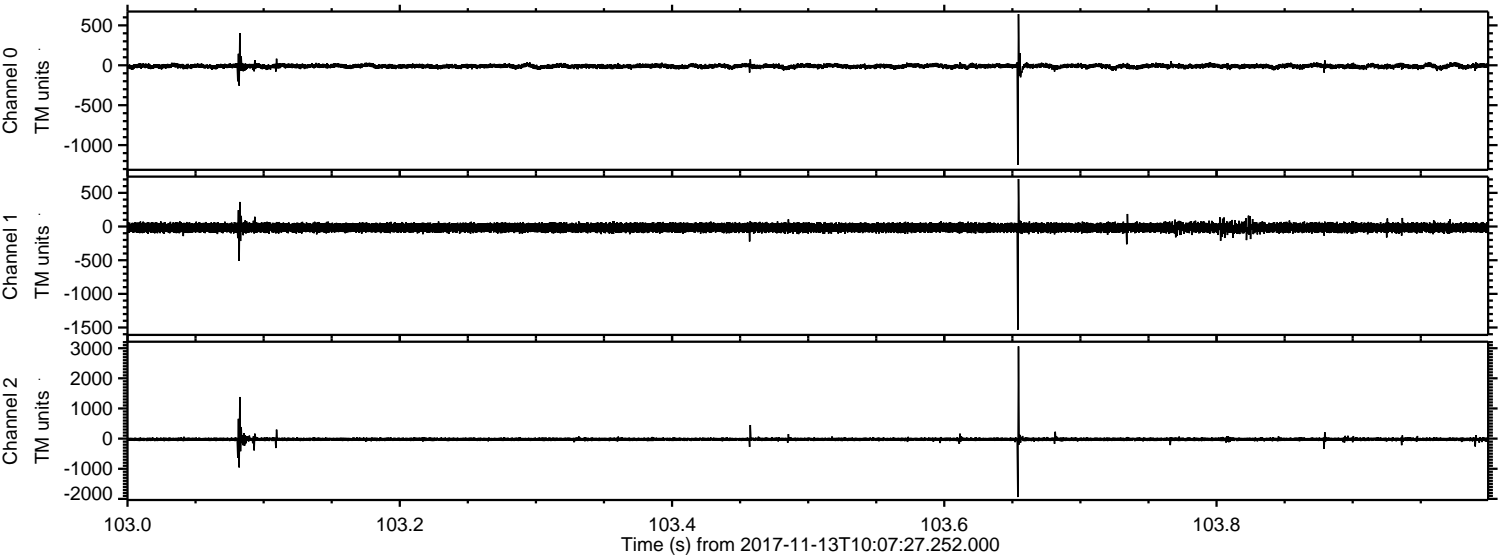
Processed Mon Nov 13 11:16:31 2017 by ELM ver.2012-10-06 from 001__elm20171113_100726__dat00.bin



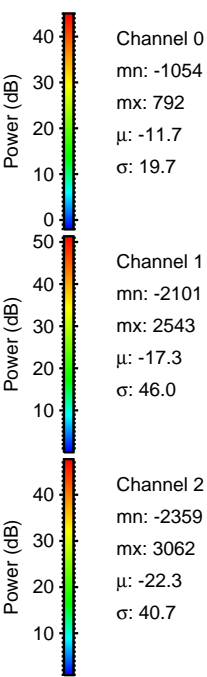
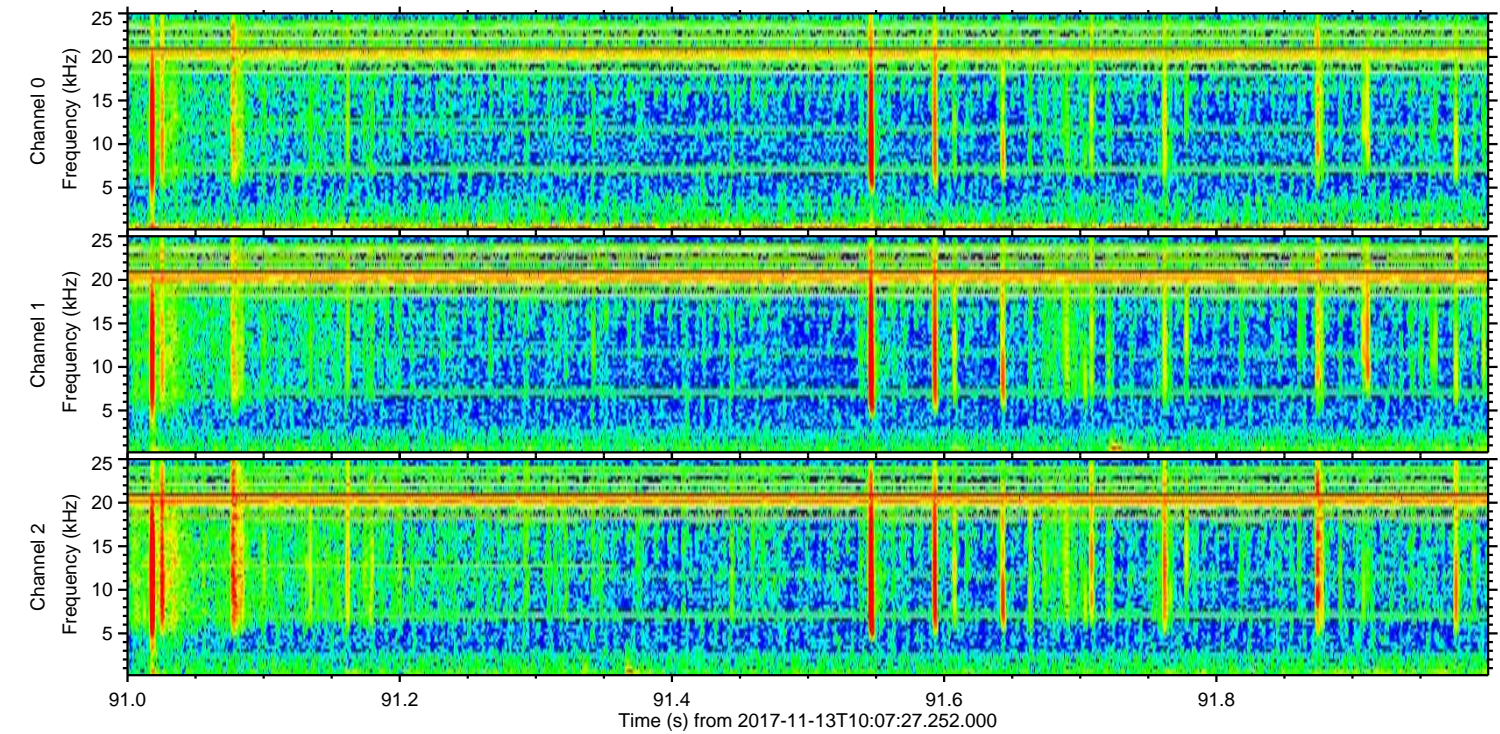
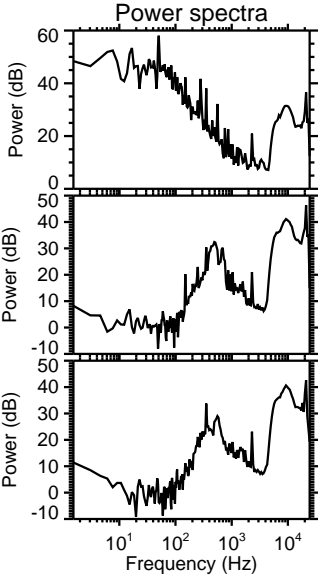
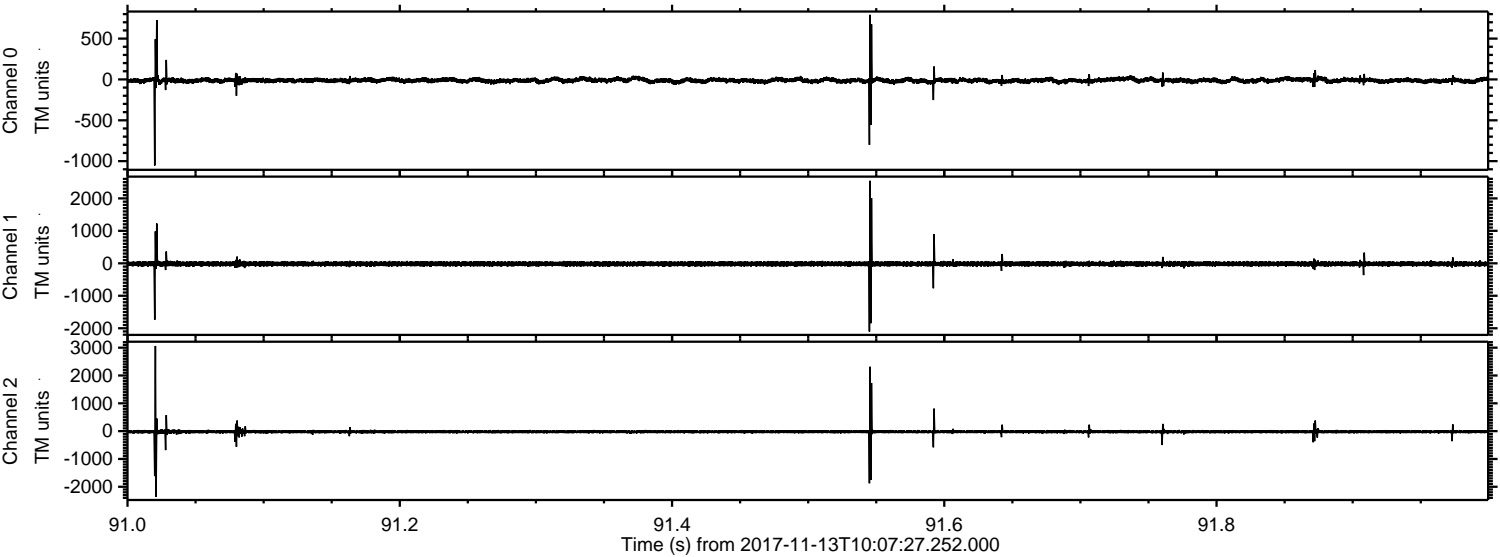
Processed Mon Nov 13 11:16:32 2017 by ELM ver.2012-10-06 from 001__elm20171113_100726__dat00.bin



Processed Mon Nov 13 11:16:33 2017 by ELM ver.2012-10-06 from 001__elm20171113_100726__dat00.bin



Processed Mon Nov 13 11:16:33 2017 by ELM ver.2012-10-06 from 001__elm20171113_100726__dat00.bin



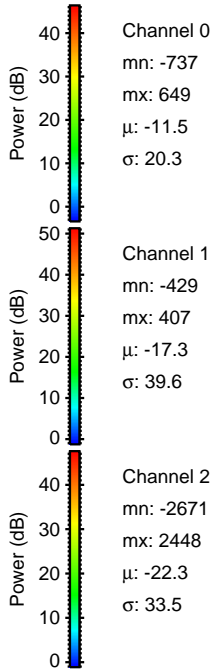
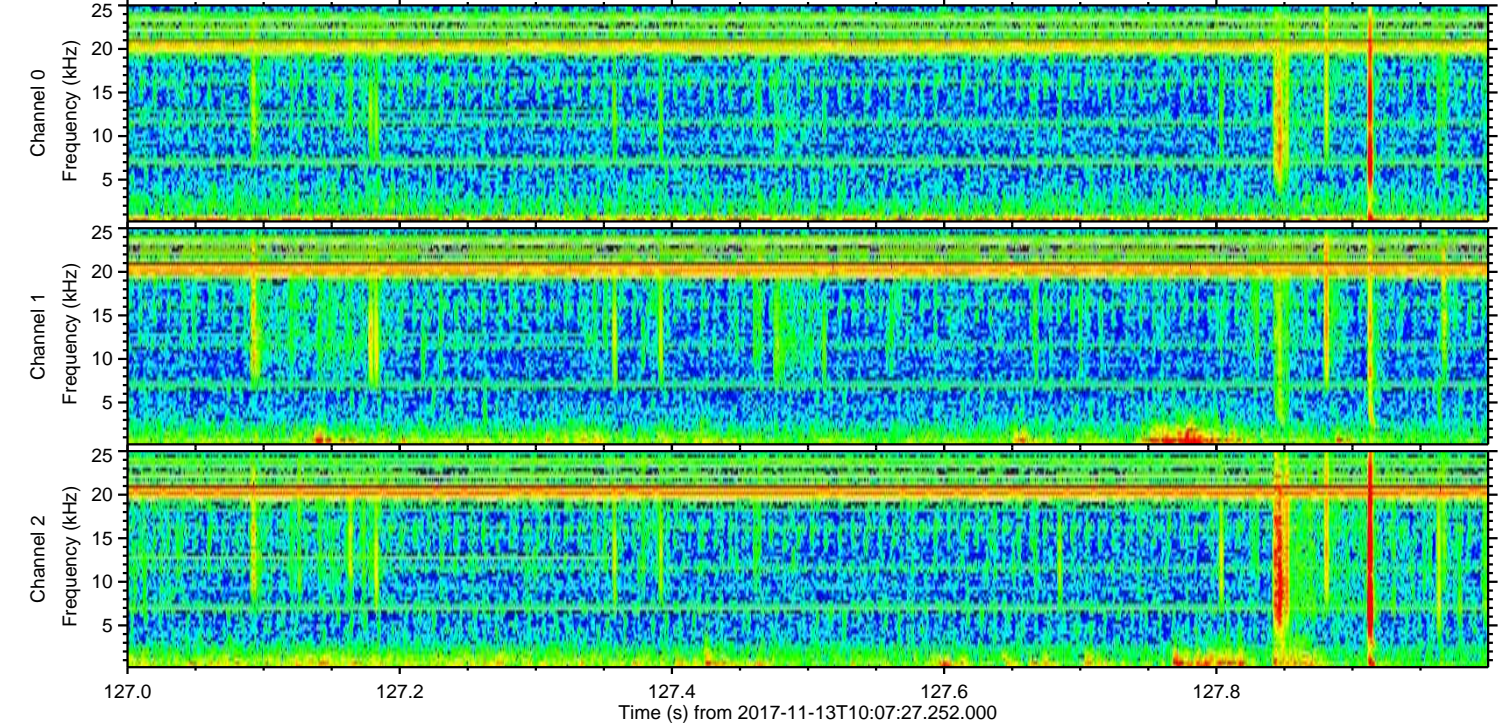
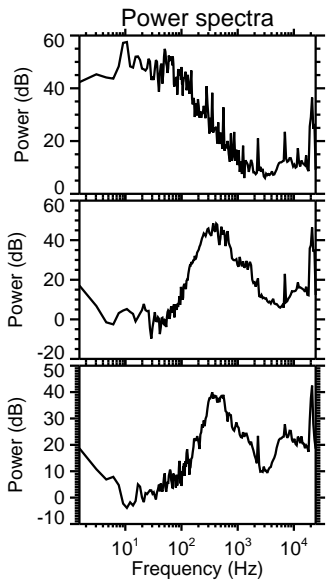
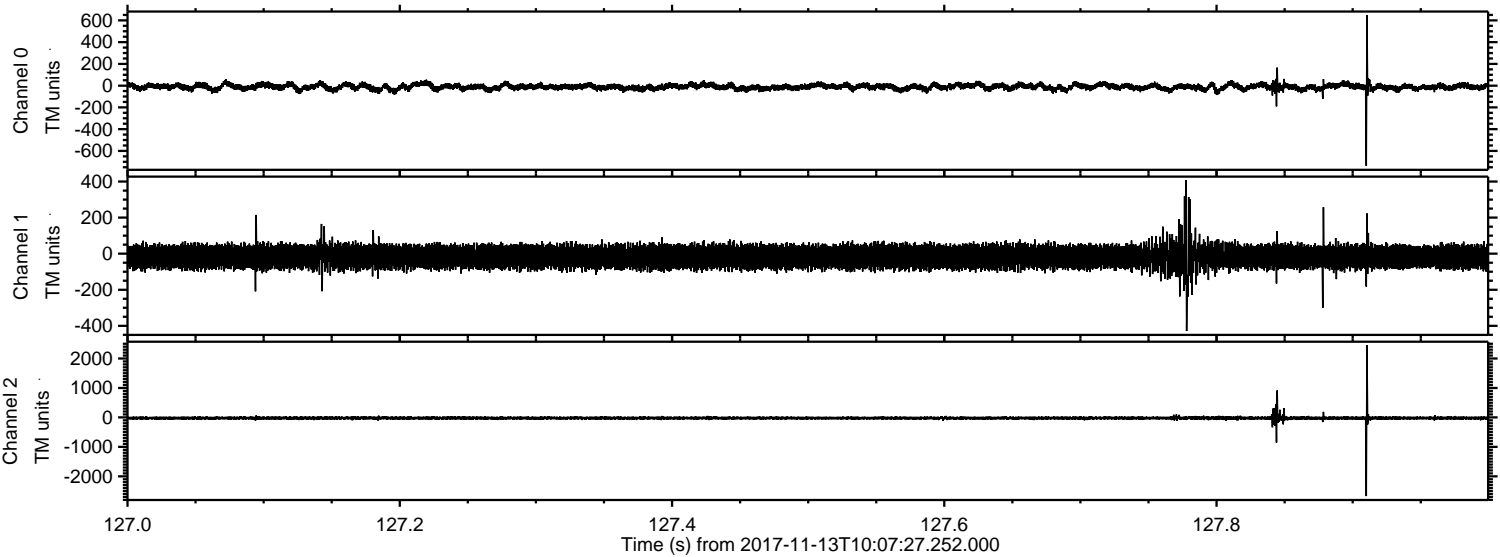
Channel 0
mn: -1054
mx: 792
 μ : -11.7
 σ : 19.7

Channel 1
mn: -2101
mx: 2543
 μ : -17.3
 σ : 46.0

Channel 2
mn: -2359
mx: 3062
 μ : -22.3
 σ : 40.7

ELMAVAN 3D WAVEFORMS (Measured data sampled at 50 kHz) 51000 packets of 144 samples from 2017-11-13T10:07:27.252.000. Part 128/147

Processed Mon Nov 13 11:16:34 2017 by ELM ver.2012-10-06 from 001__elm20171113_100726__dat00.bin



Channel 0
mn: -737
mx: 649
 μ : -11.5
 σ : 20.3

Channel 1
mn: -429
mx: 407
 μ : -17.3
 σ : 39.6

Channel 2
mn: -2671
mx: 2448
 μ : -22.3
 σ : 33.5

Processed Mon Nov 13 11:16:35 2017 by ELM ver.2012-10-06 from 001__elm20171113_100726__dat00.bin

