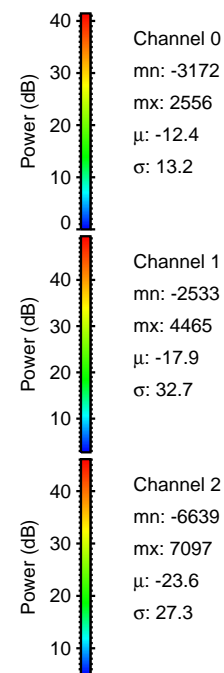
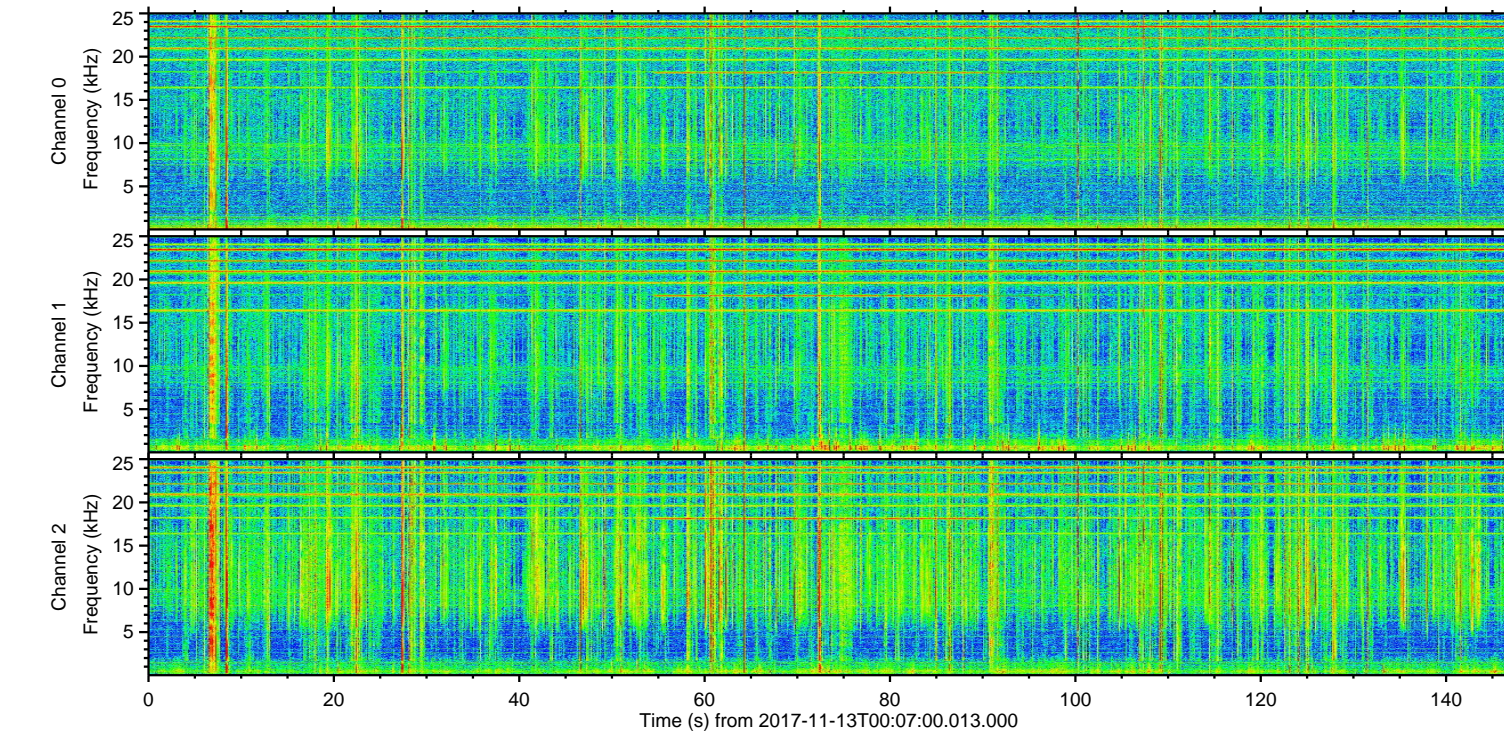
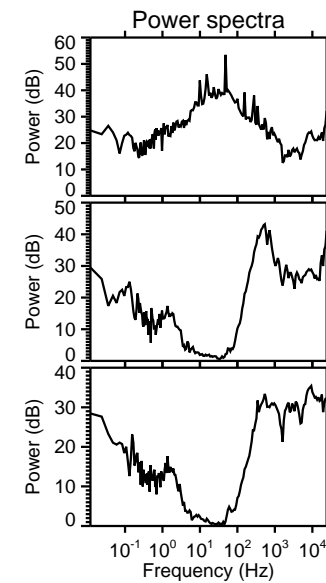
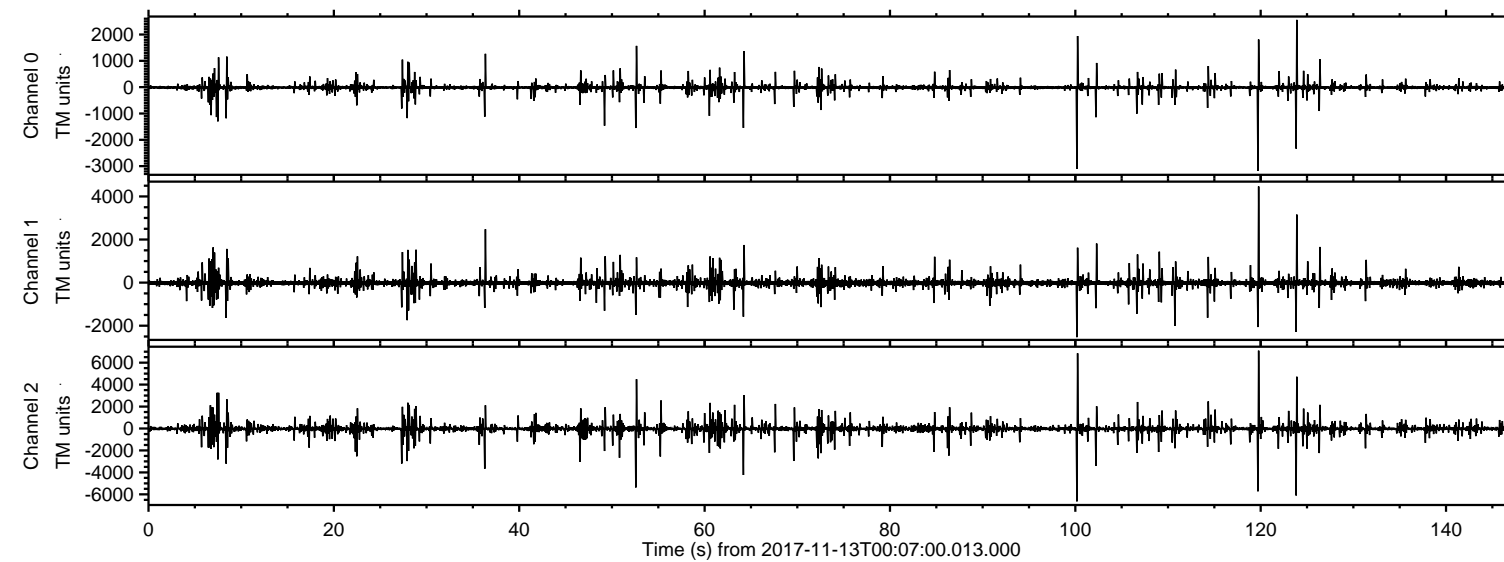


# ELMAVAN 3D WAVEFORMS (Measured data sampled at 50 kHz) 51000 packets of 144 samples from 2017-11-13T00:07:00.013.000.

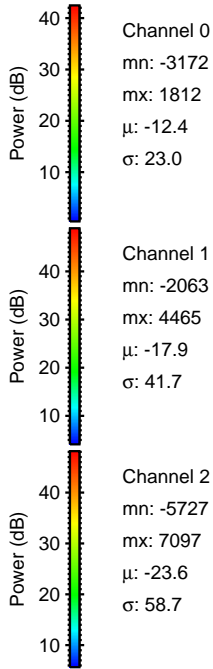
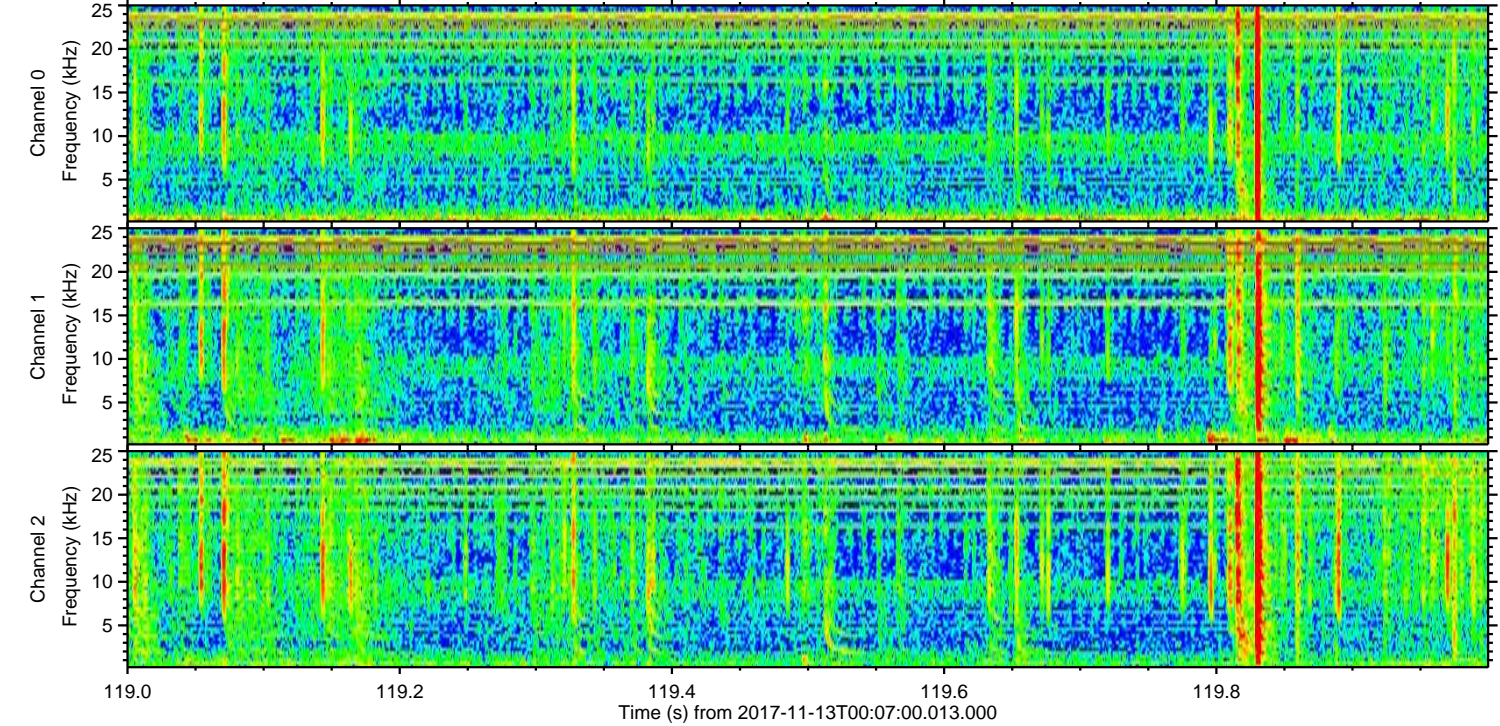
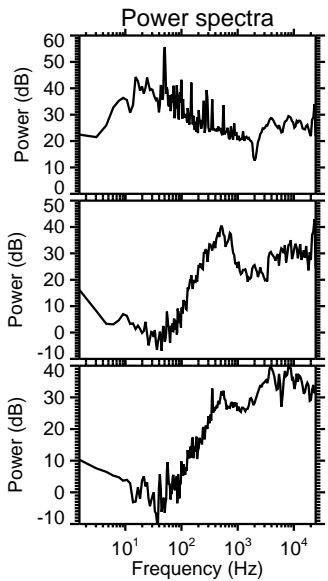
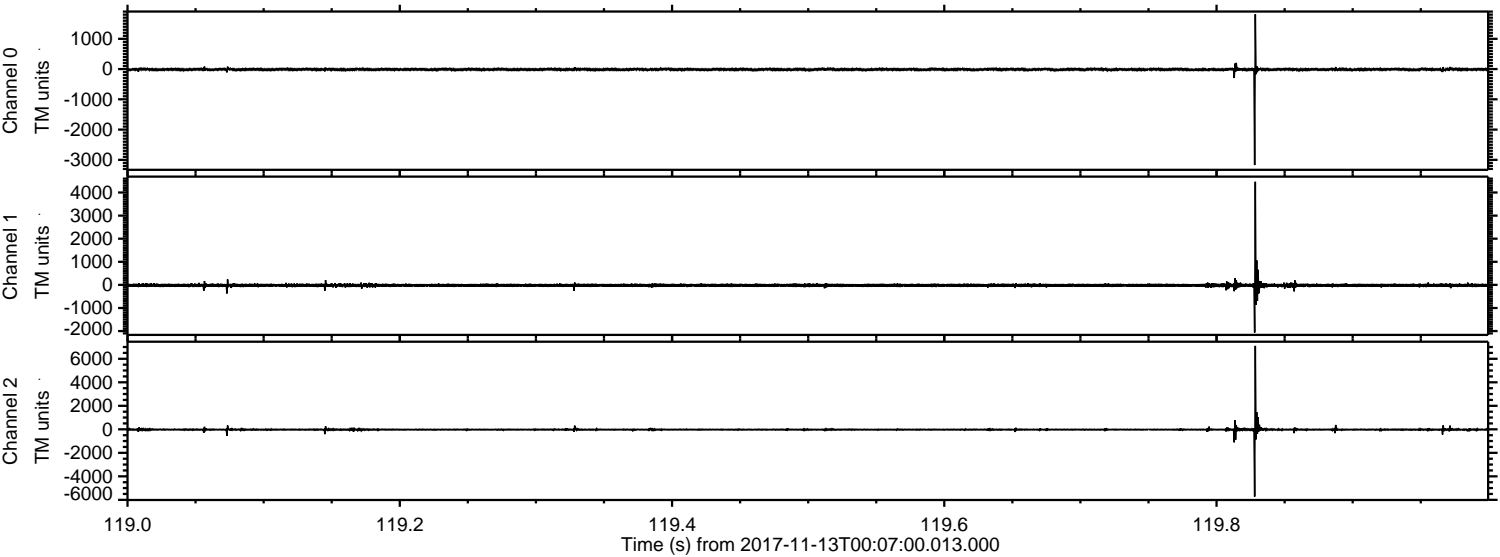
Processed Mon Nov 13 01:15:08 2017 by ELM ver.2012-10-06 from 001\_\_elm20171113\_000659\_\_dat00.bin





ELMAVAN 3D WAVEFORMS (Measured data sampled at 50 kHz) 51000 packets of 144 samples from 2017-11-13T00:07:00.013.000. Part 120/147

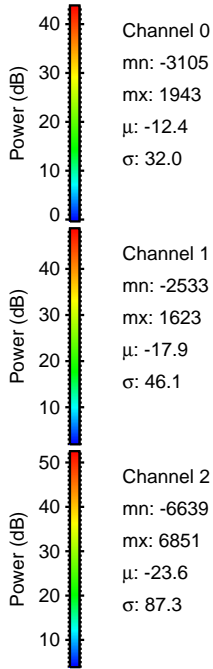
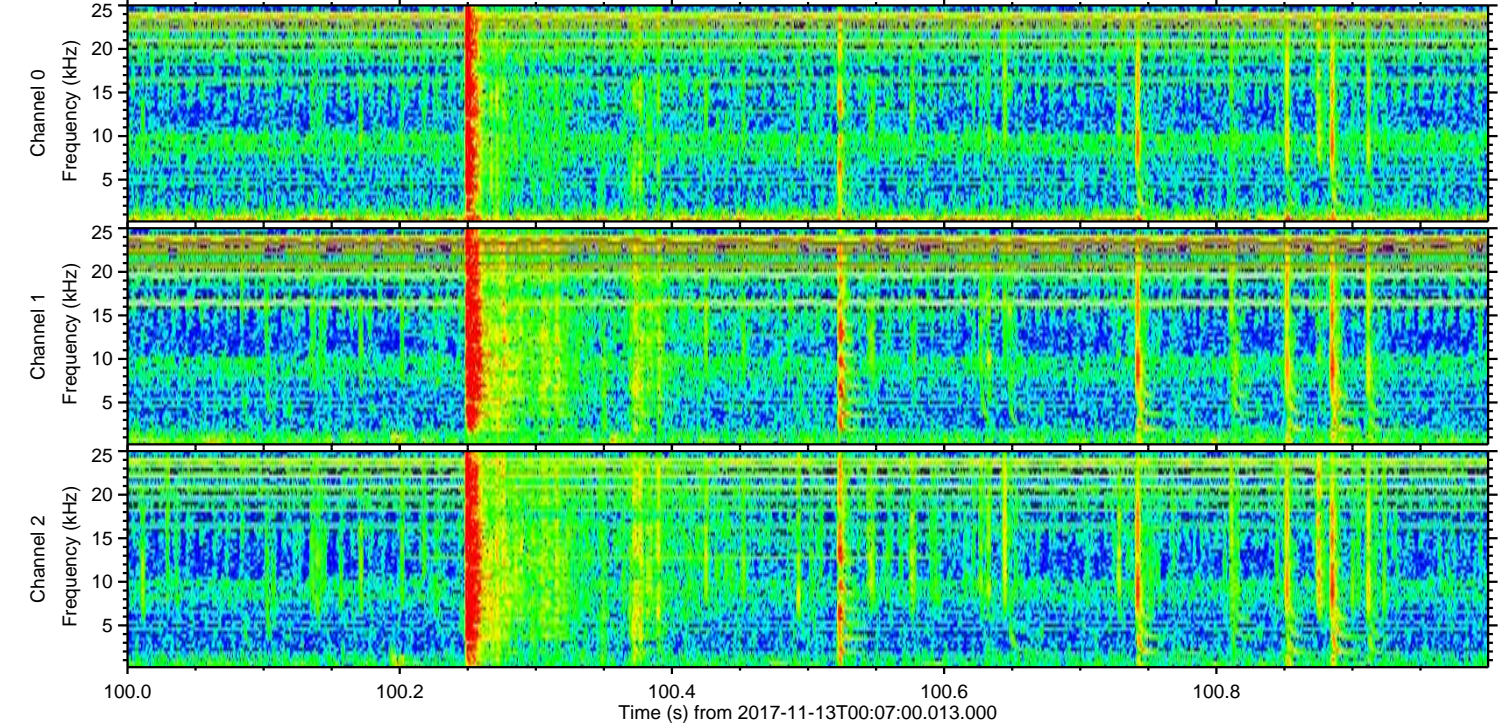
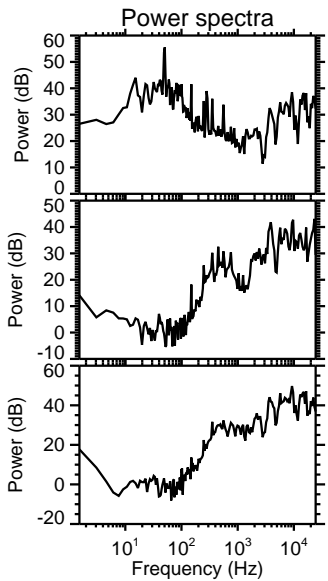
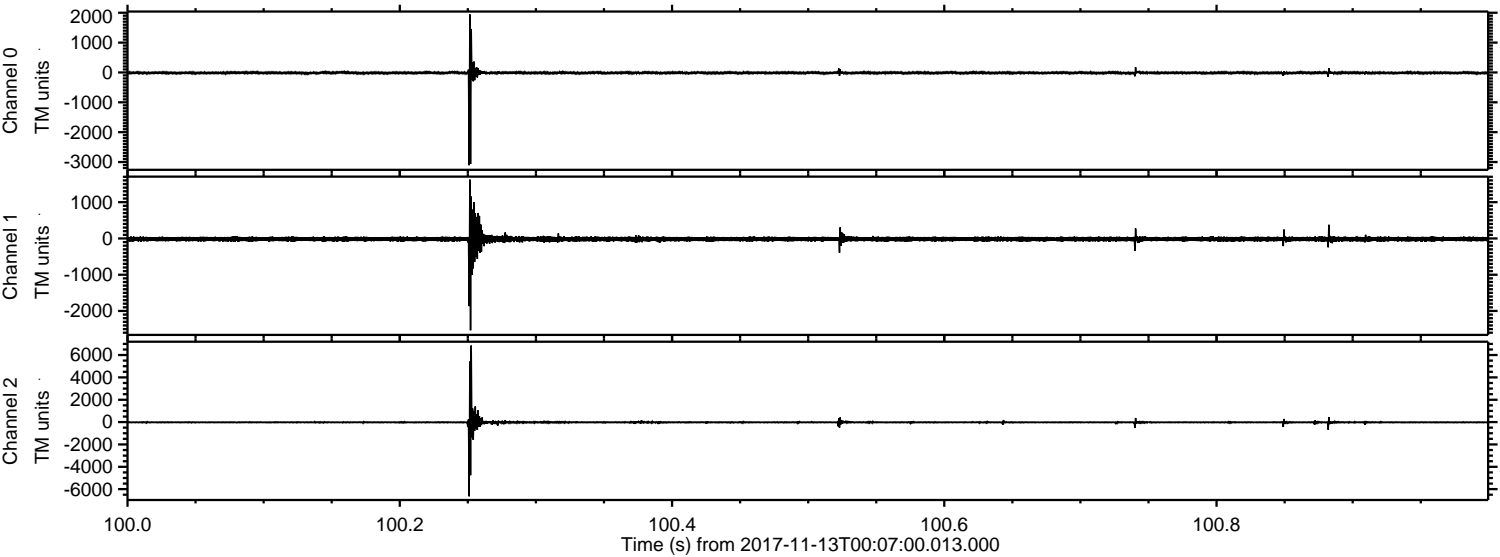
Processed Mon Nov 13 01:15:14 2017 by ELM ver.2012-10-06 from 001\_\_elm20171113\_000659\_\_dat00.bin





ELMAVAN 3D WAVEFORMS (Measured data sampled at 50 kHz) 51000 packets of 144 samples from 2017-11-13T00:07:00.013.000. Part 101/147

Processed Mon Nov 13 01:15:15 2017 by ELM ver.2012-10-06 from 001\_\_elm20171113\_000659\_\_dat00.bin



Channel 0  
mn: -3105  
mx: 1943  
 $\mu$ : -12.4  
 $\sigma$ : 32.0

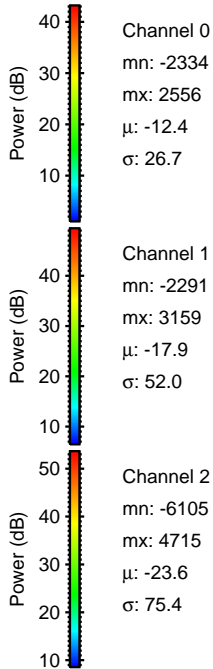
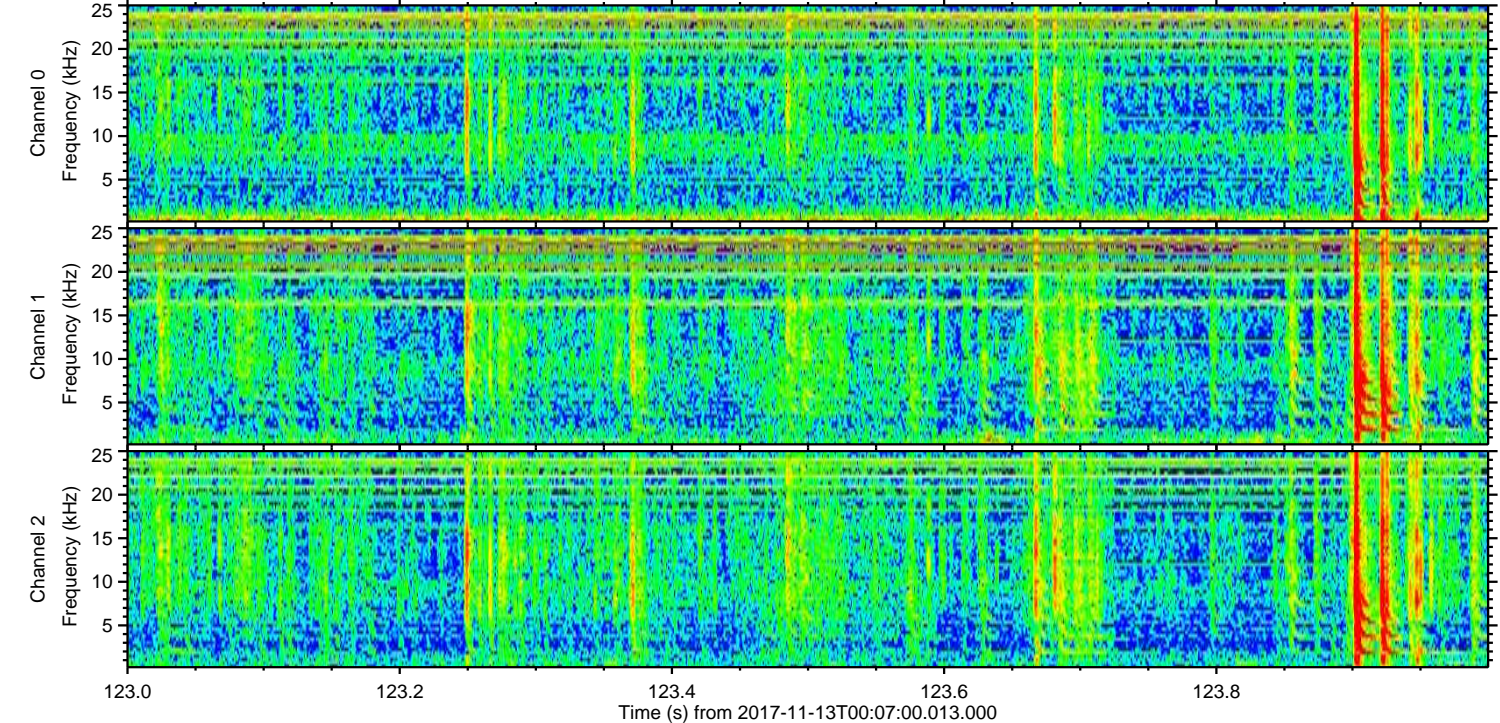
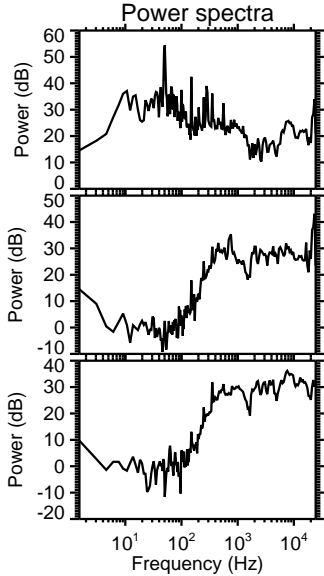
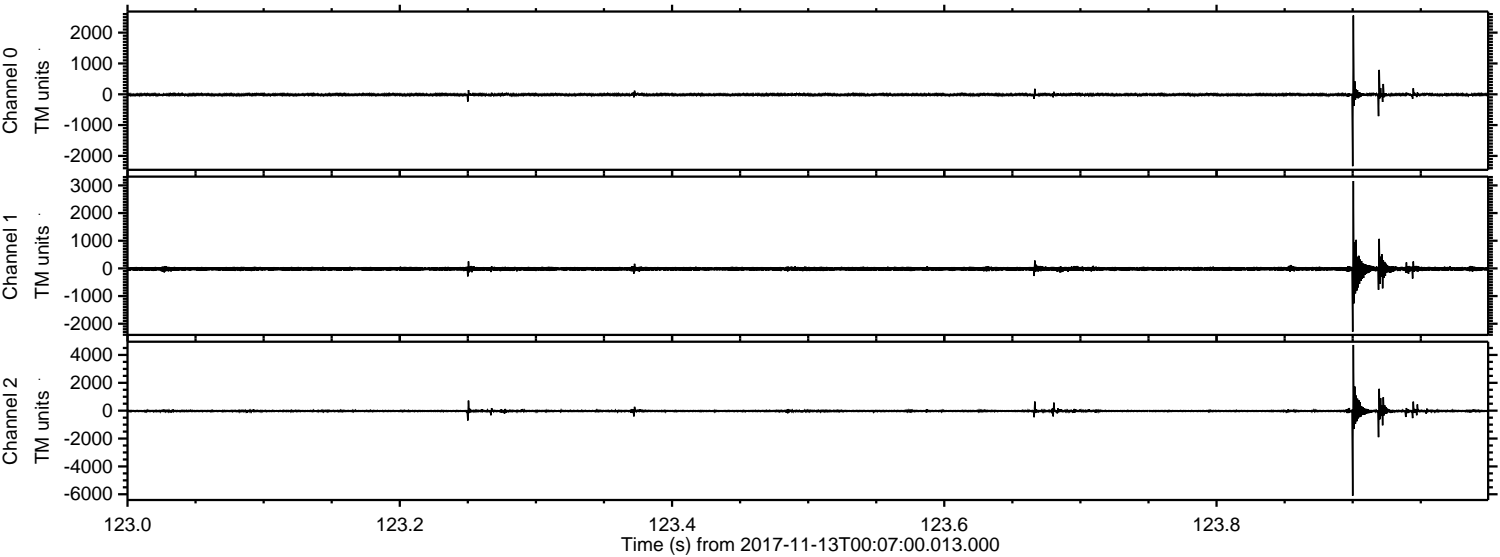
Channel 1  
mn: -2533  
mx: 1623  
 $\mu$ : -17.9  
 $\sigma$ : 46.1

Channel 2  
mn: -6639  
mx: 6851  
 $\mu$ : -23.6  
 $\sigma$ : 87.3



ELMAVAN 3D WAVEFORMS (Measured data sampled at 50 kHz) 51000 packets of 144 samples from 2017-11-13T00:07:00.013.000. Part 124/147

Processed Mon Nov 13 01:15:15 2017 by ELM ver.2012-10-06 from 001\_\_elm20171113\_000659\_\_dat00.bin



Channel 0  
mn: -2334  
mx: 2556  
 $\mu$ : -12.4  
 $\sigma$ : 26.7

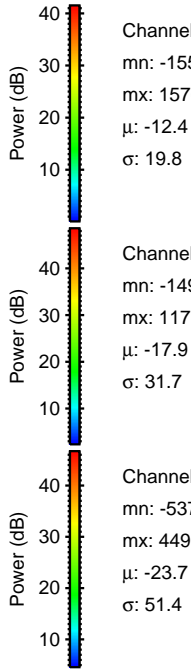
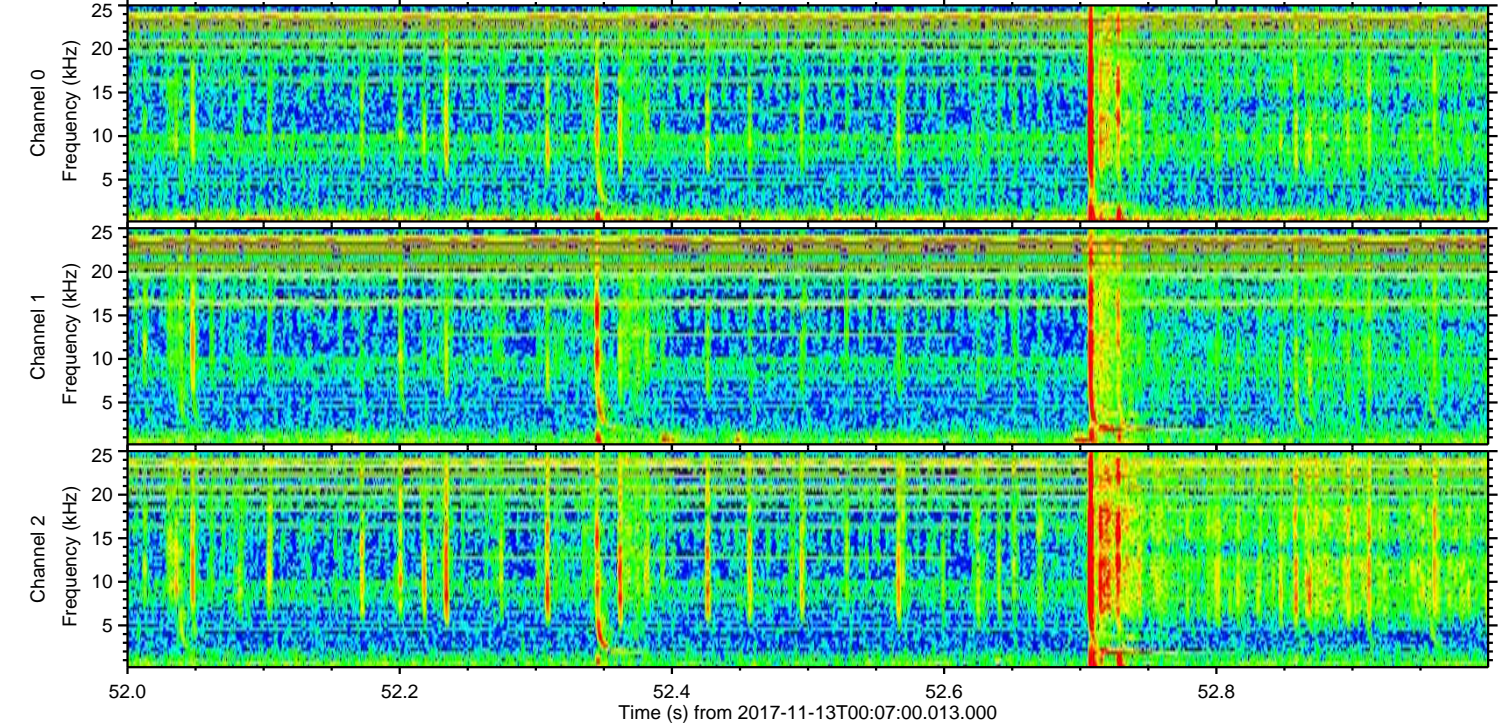
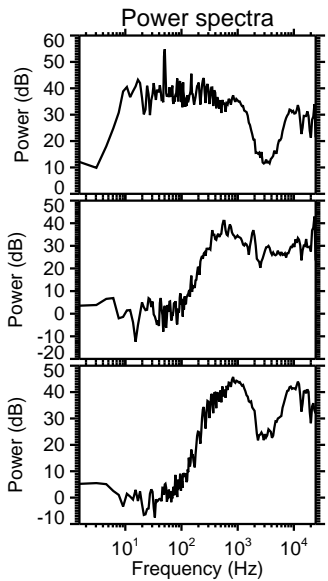
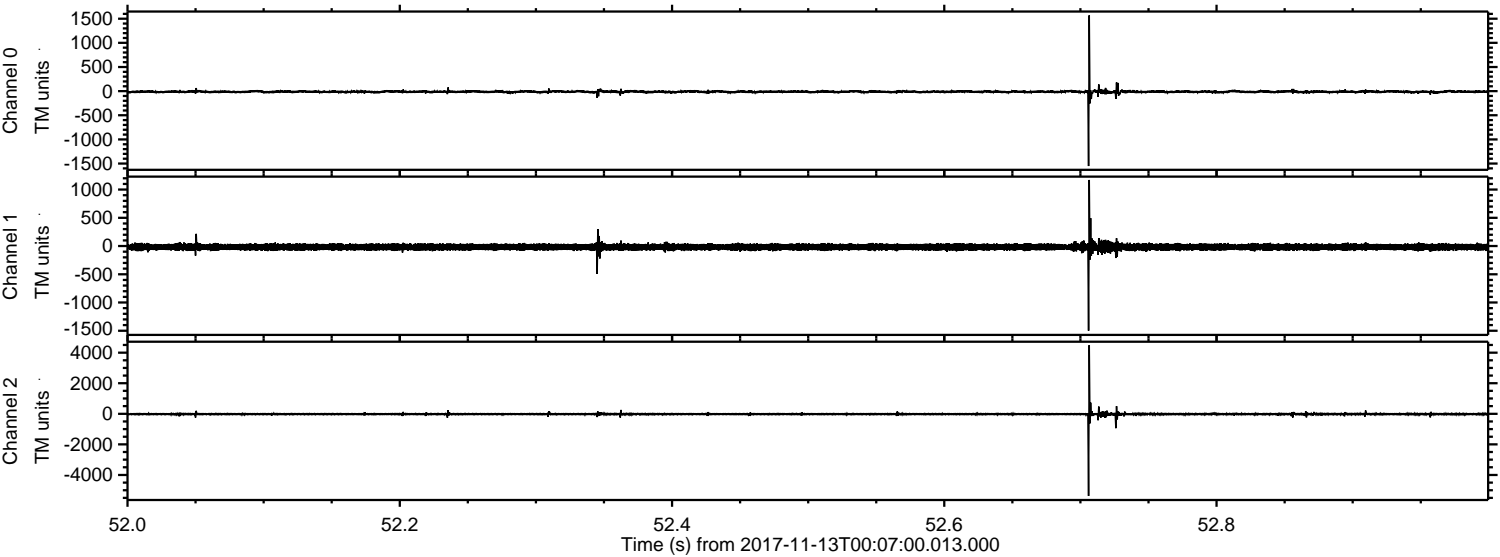
Channel 1  
mn: -2291  
mx: 3159  
 $\mu$ : -17.9  
 $\sigma$ : 52.0

Channel 2  
mn: -6105  
mx: 4715  
 $\mu$ : -23.6  
 $\sigma$ : 75.4



ELMAVAN 3D WAVEFORMS (Measured data sampled at 50 kHz) 51000 packets of 144 samples from 2017-11-13T00:07:00.013.000. Part 53/147

Processed Mon Nov 13 01:15:16 2017 by ELM ver.2012-10-06 from 001\_\_elm20171113\_000659\_\_dat00.bin



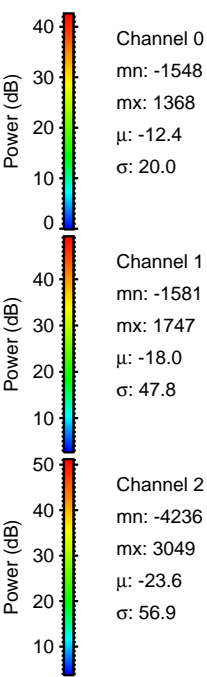
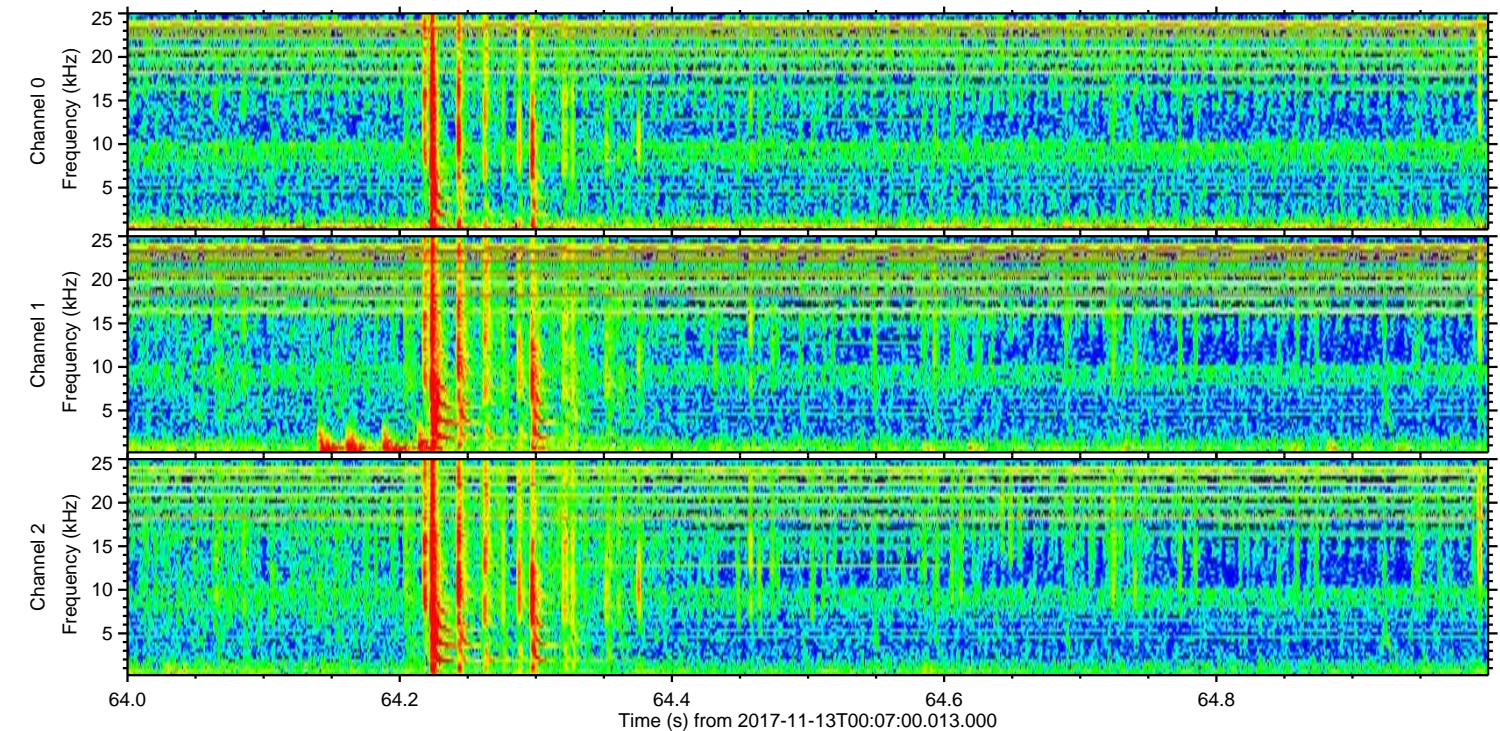
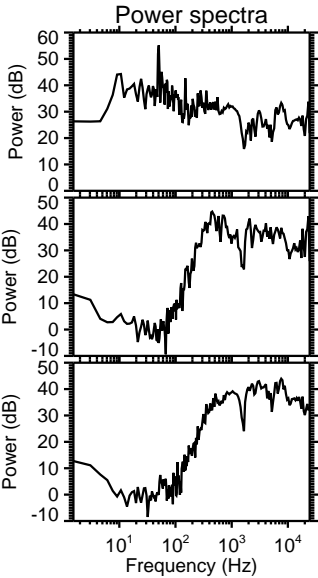
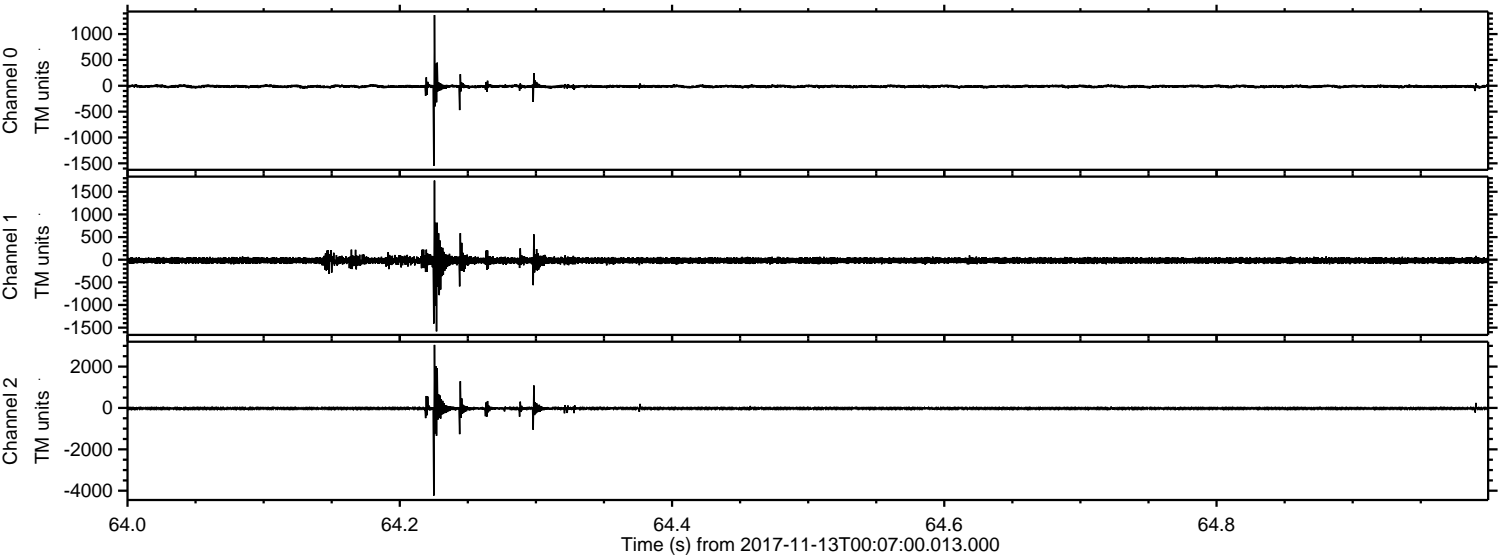
Channel 0  
mn: -1552  
mx: 1570  
 $\mu$ : -12.4  
 $\sigma$ : 19.8

Channel 1  
mn: -1499  
mx: 1171  
 $\mu$ : -17.9  
 $\sigma$ : 31.7

Channel 2  
mn: -5370  
mx: 4490  
 $\mu$ : -23.7  
 $\sigma$ : 51.4

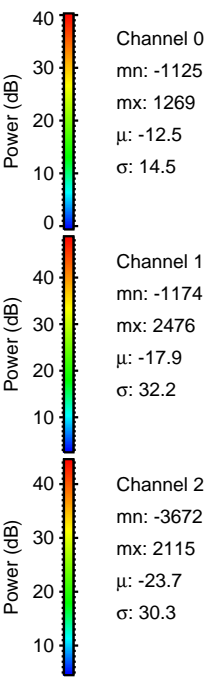
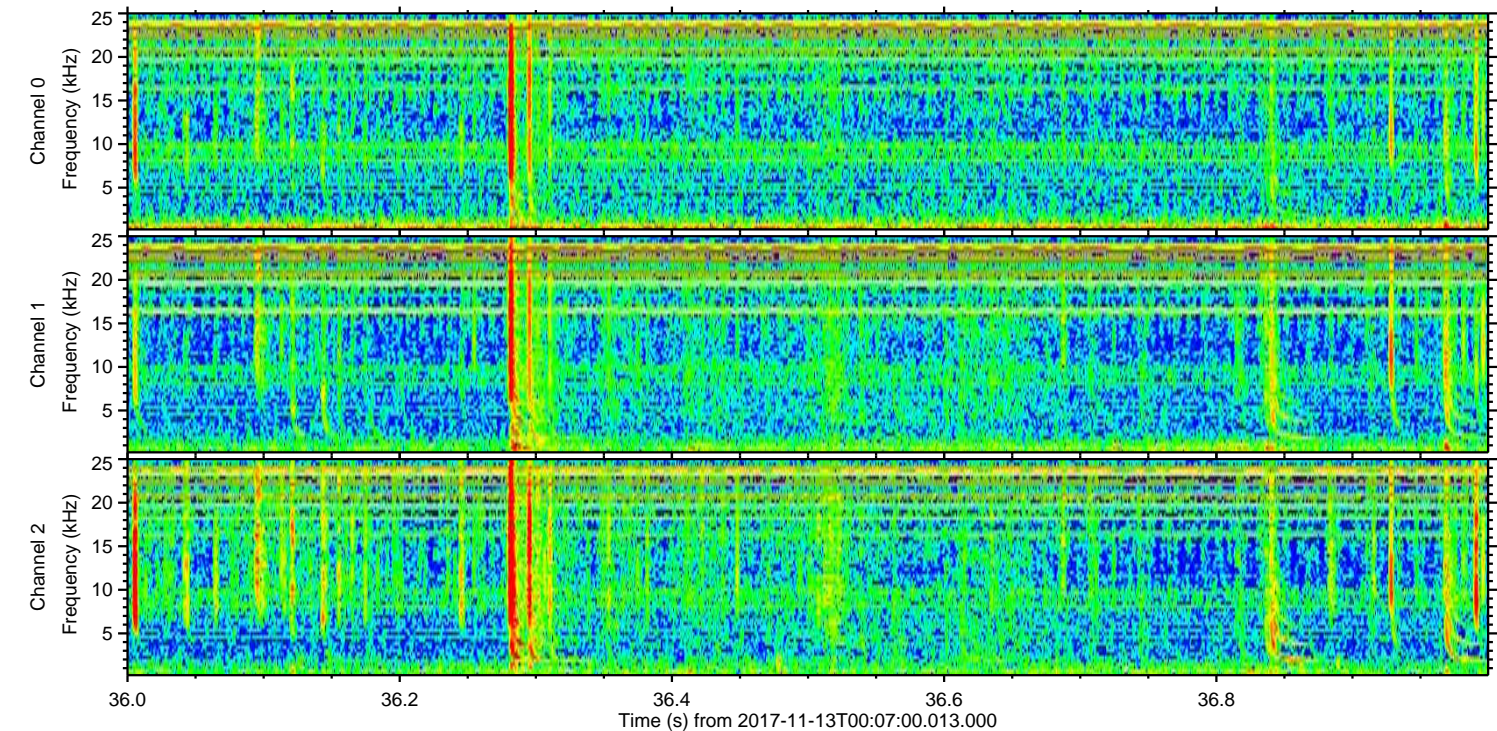
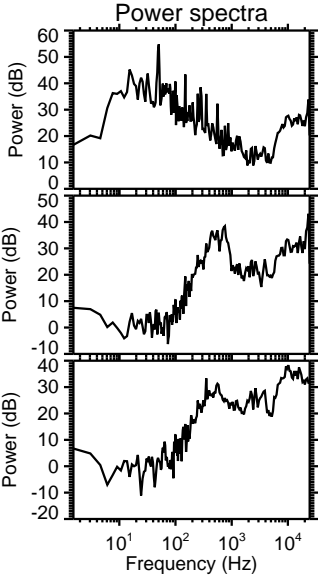
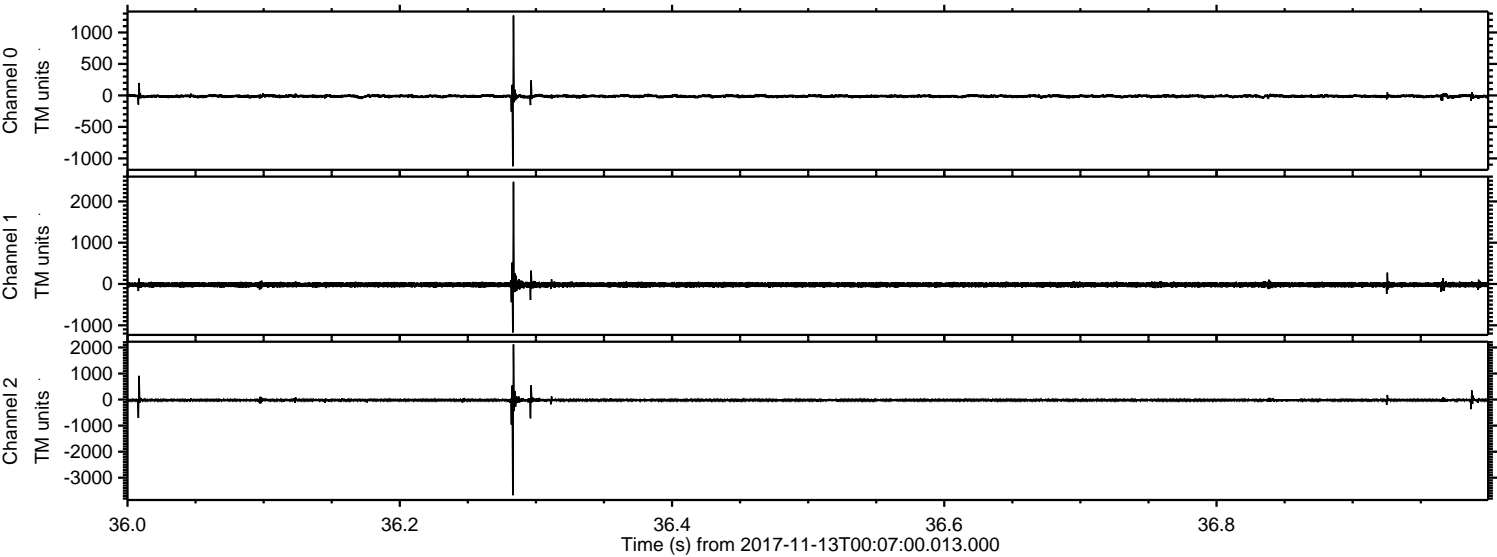


Processed Mon Nov 13 01:15:17 2017 by ELM ver.2012-10-06 from 001\_\_elm20171113\_000659\_\_dat00.bin





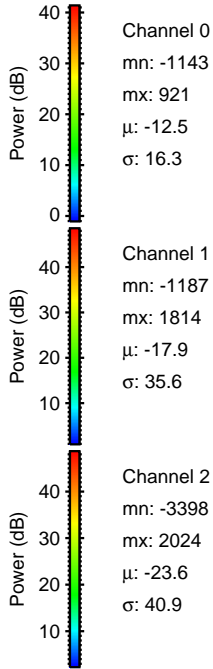
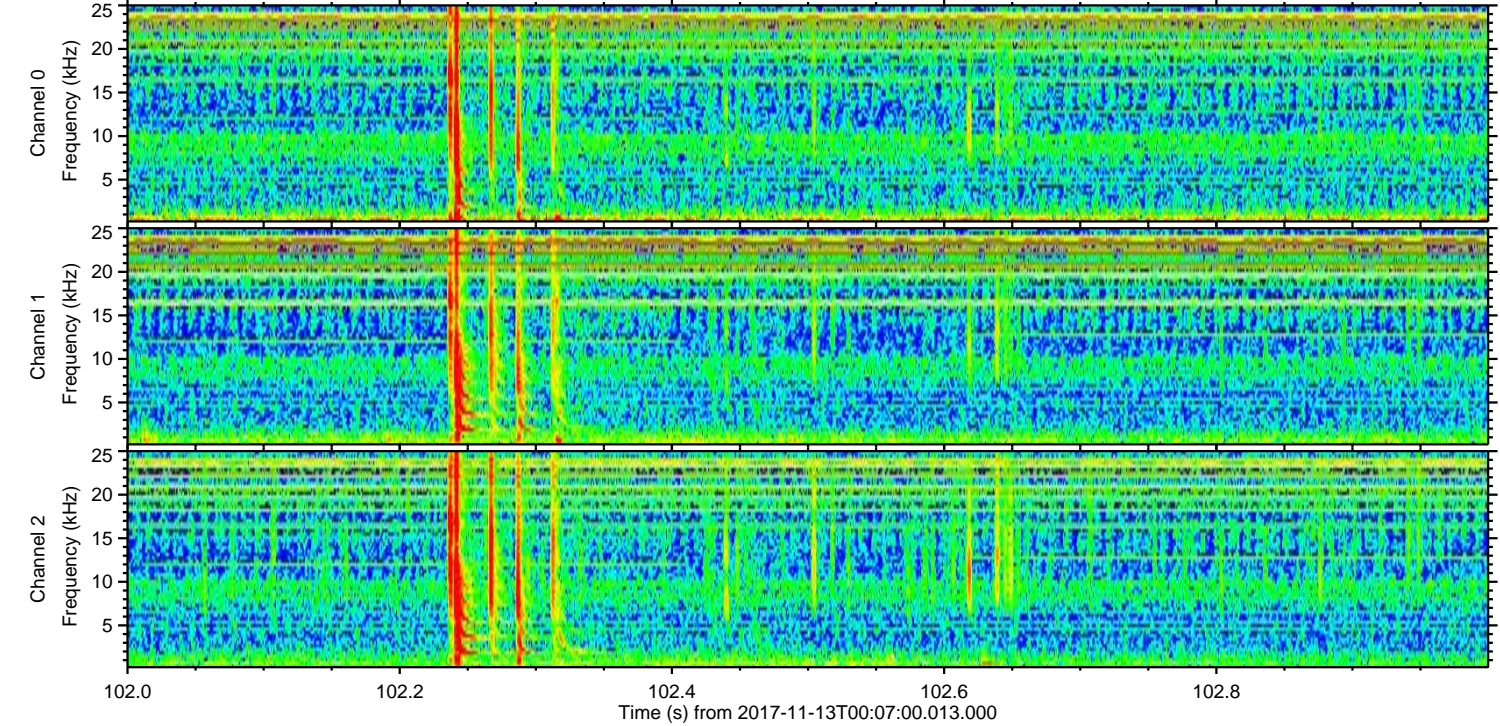
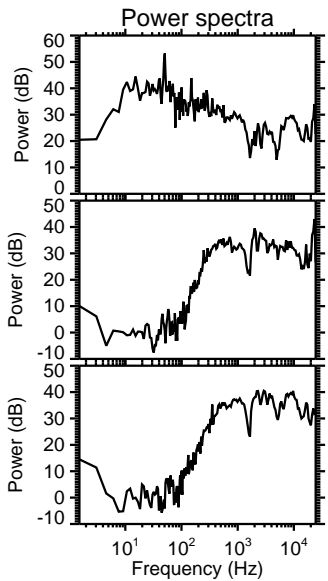
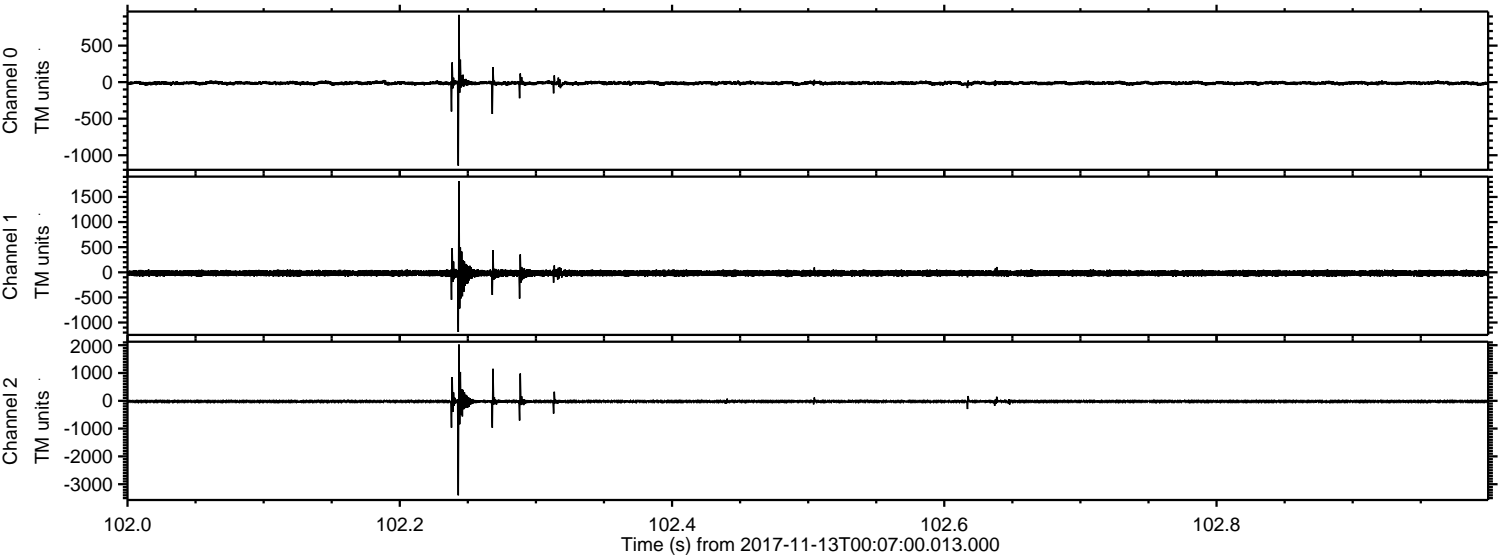
Processed Mon Nov 13 01:15:17 2017 by ELM ver.2012-10-06 from 001\_\_elm20171113\_000659\_\_dat00.bin





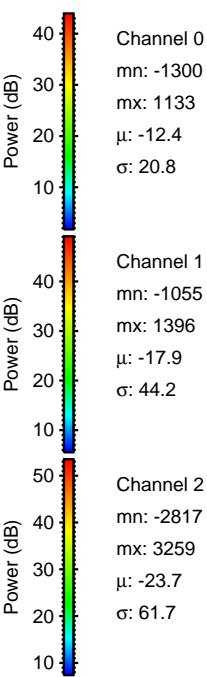
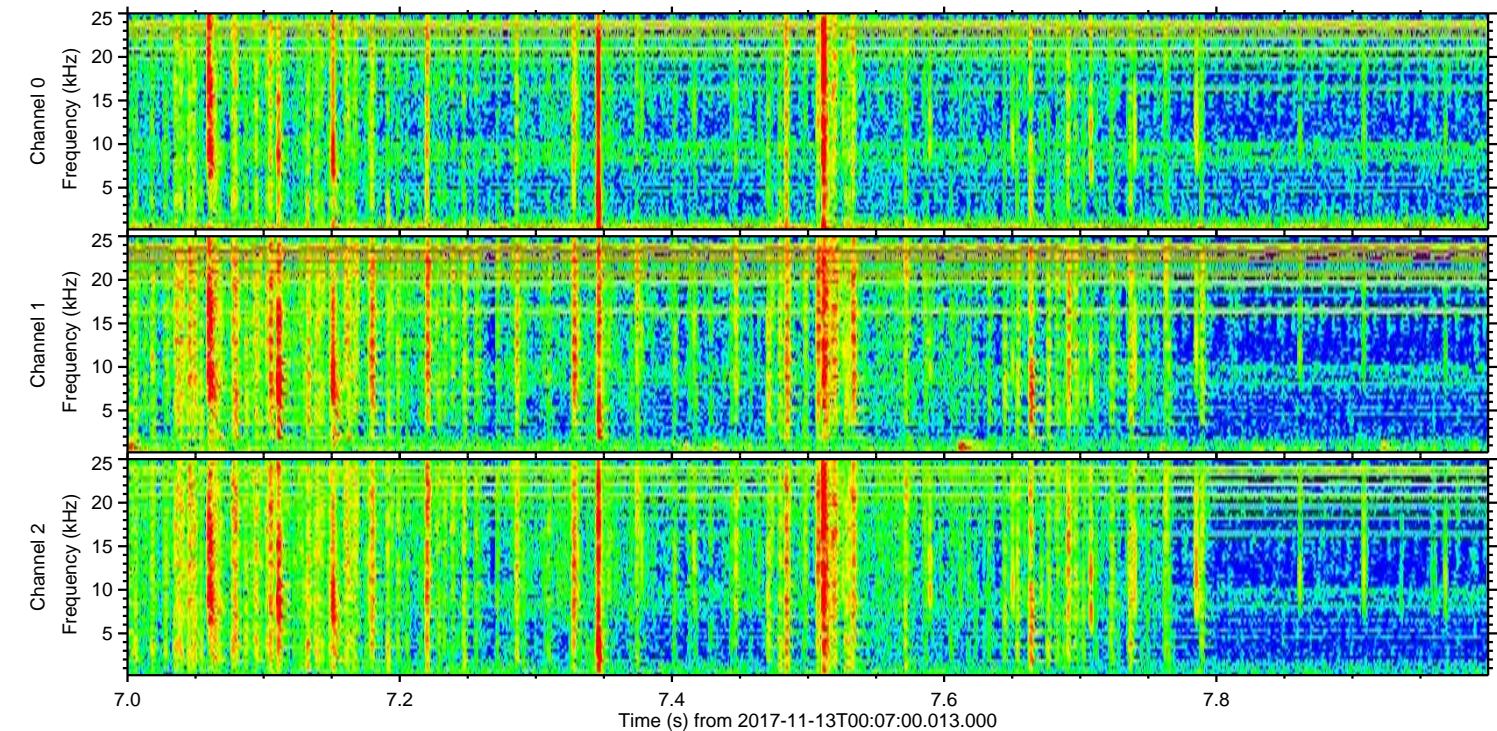
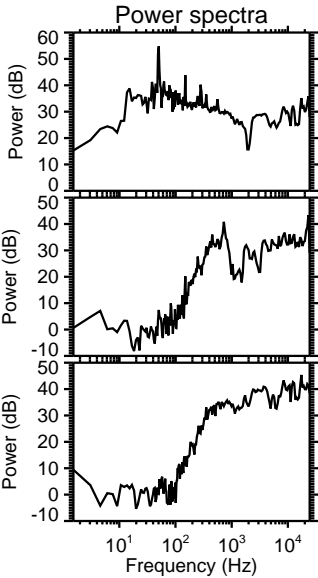
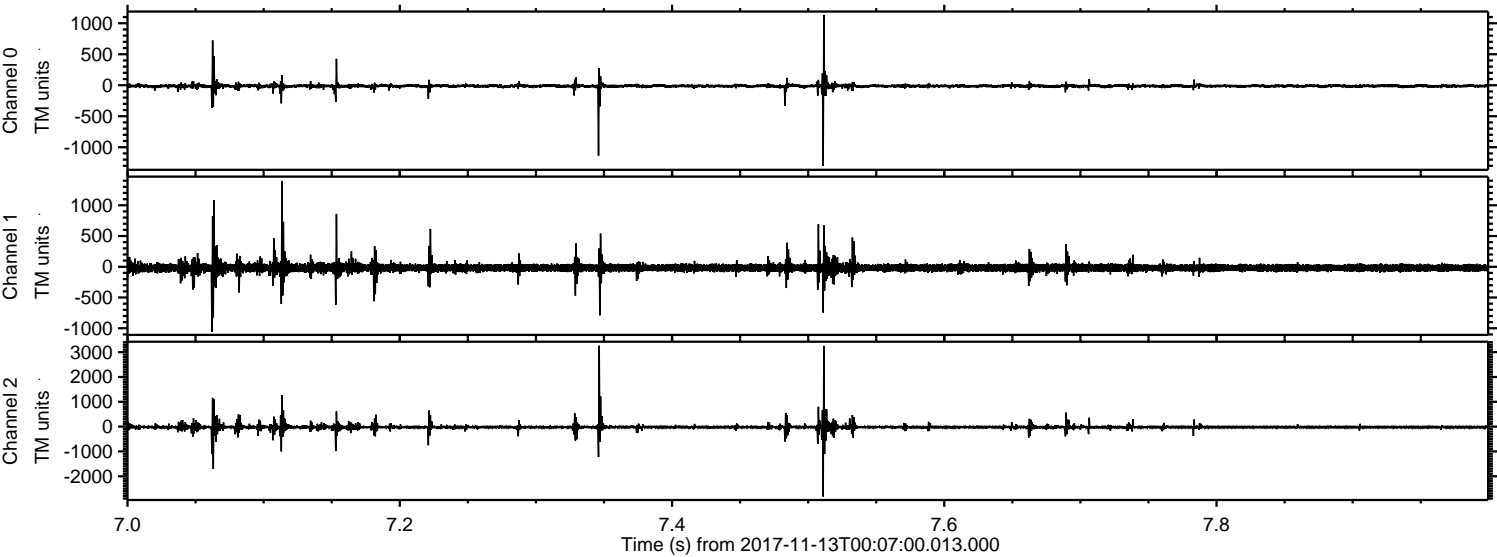
ELMAVAN 3D WAVEFORMS (Measured data sampled at 50 kHz) 51000 packets of 144 samples from 2017-11-13T00:07:00.013.000. Part 103/147

Processed Mon Nov 13 01:15:18 2017 by ELM ver.2012-10-06 from 001\_\_elm20171113\_000659\_\_dat00.bin





Processed Mon Nov 13 01:15:19 2017 by ELM ver.2012-10-06 from 001\_\_elm20171113\_000659\_\_dat00.bin



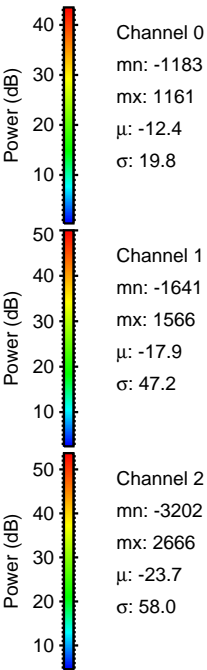
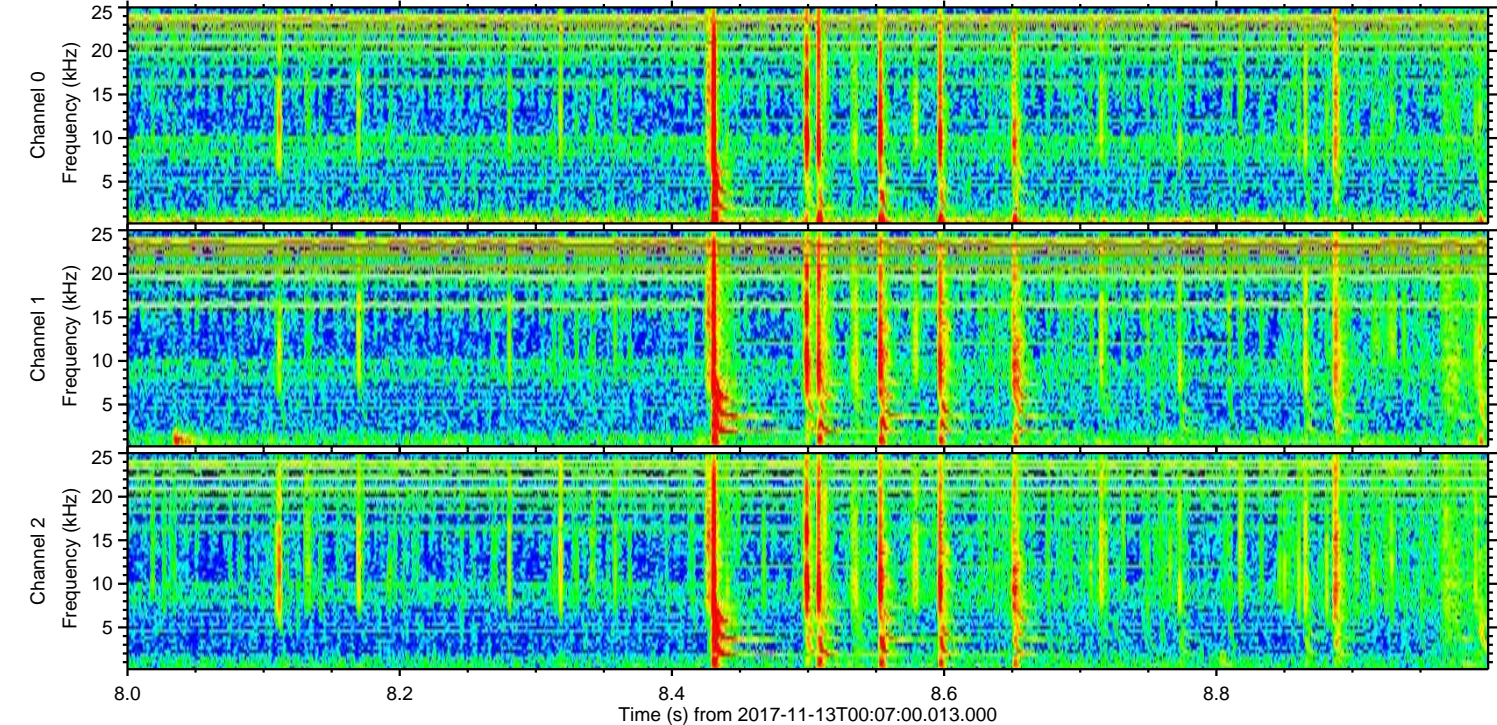
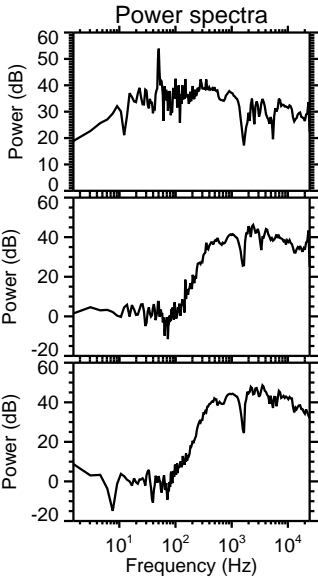
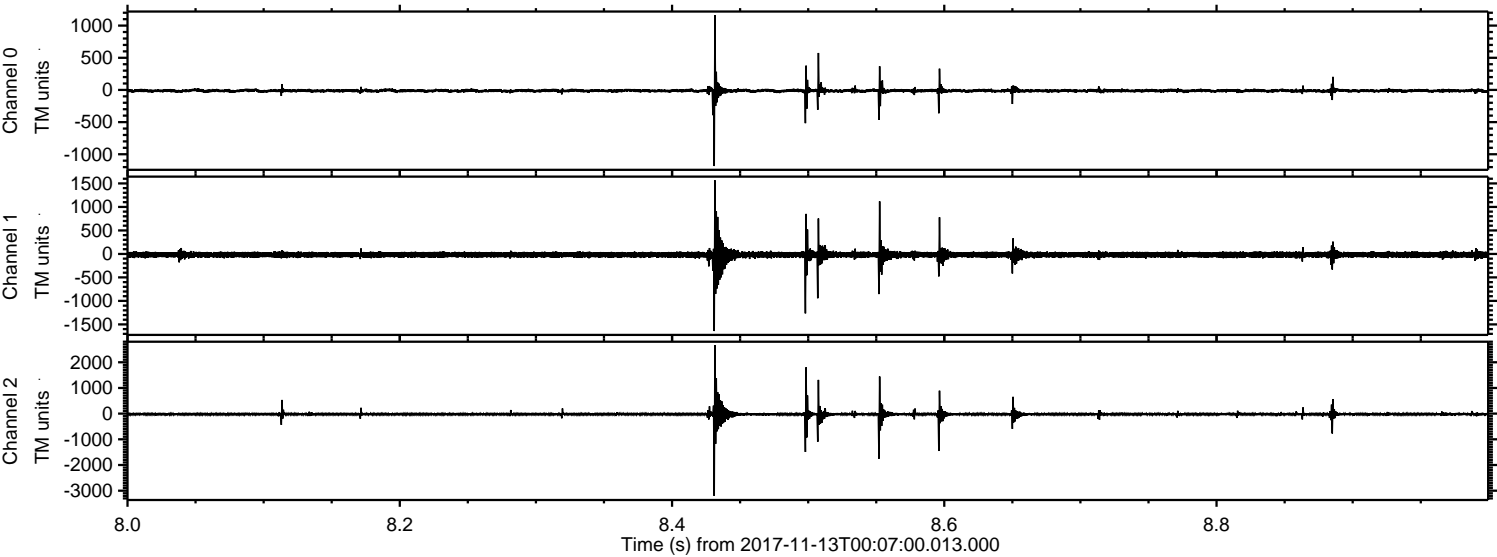
Channel 0  
mn: -1300  
mx: 1133  
 $\mu$ : -12.4  
 $\sigma$ : 20.8

Channel 1  
mn: -1055  
mx: 1396  
 $\mu$ : -17.9  
 $\sigma$ : 44.2

Channel 2  
mn: -2817  
mx: 3259  
 $\mu$ : -23.7  
 $\sigma$ : 61.7



Processed Mon Nov 13 01:15:19 2017 by ELM ver.2012-10-06 from 001\_\_elm20171113\_000659\_\_dat00.bin



Channel 0  
mn: -1183  
mx: 1161  
 $\mu$ : -12.4  
 $\sigma$ : 19.8

Channel 1  
mn: -1641  
mx: 1566  
 $\mu$ : -17.9  
 $\sigma$ : 47.2

Channel 2  
mn: -3202  
mx: 2666  
 $\mu$ : -23.7  
 $\sigma$ : 58.0



Processed Mon Nov 13 01:15:20 2017 by ELM ver.2012-10-06 from 001\_\_elm20171113\_000659\_\_dat00.bin

