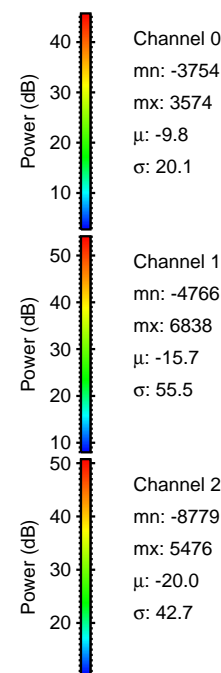
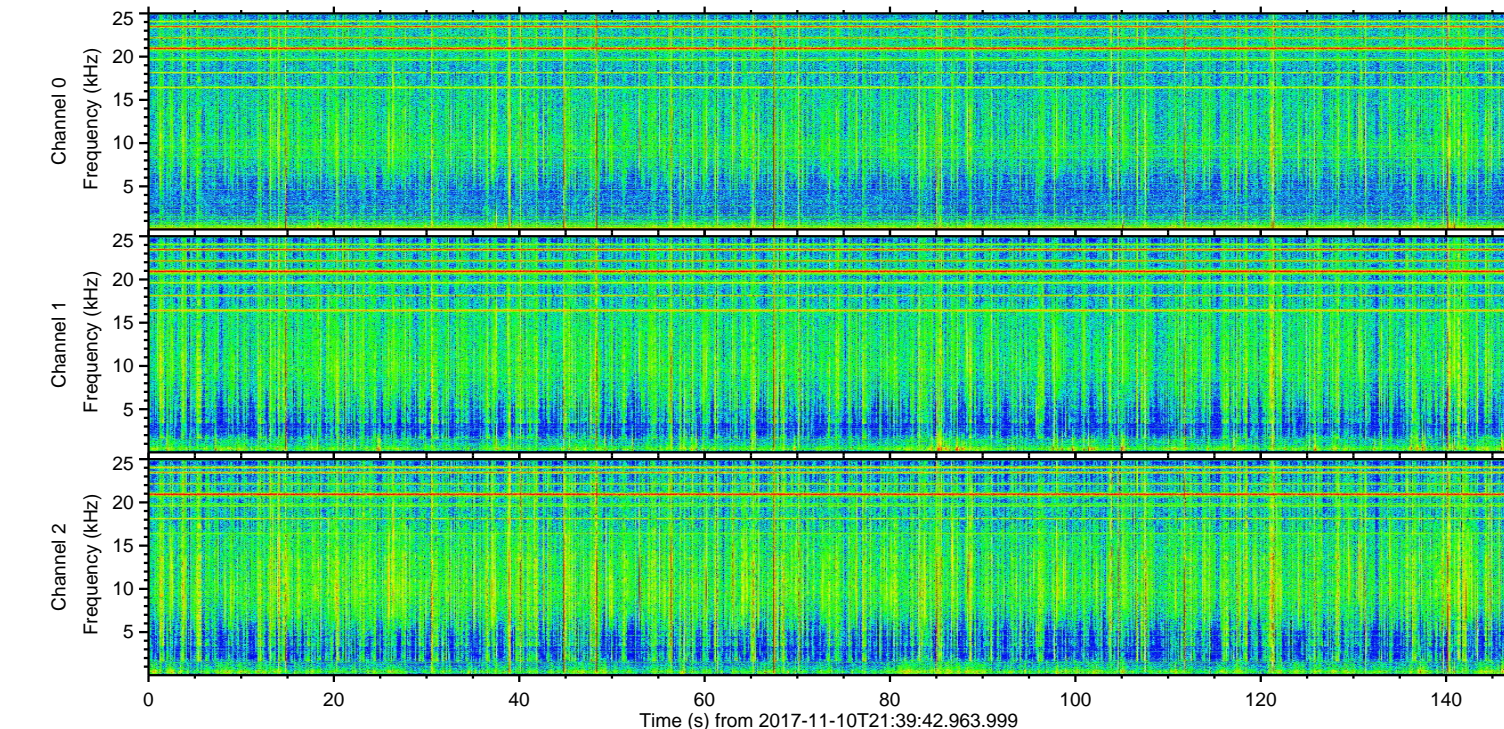
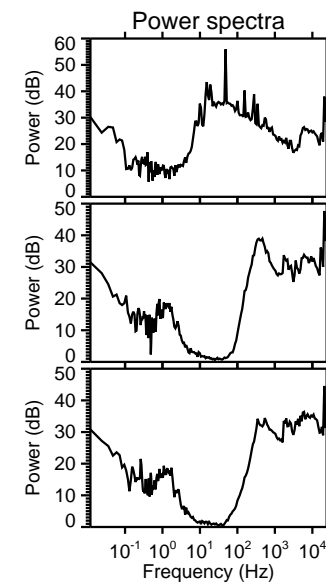
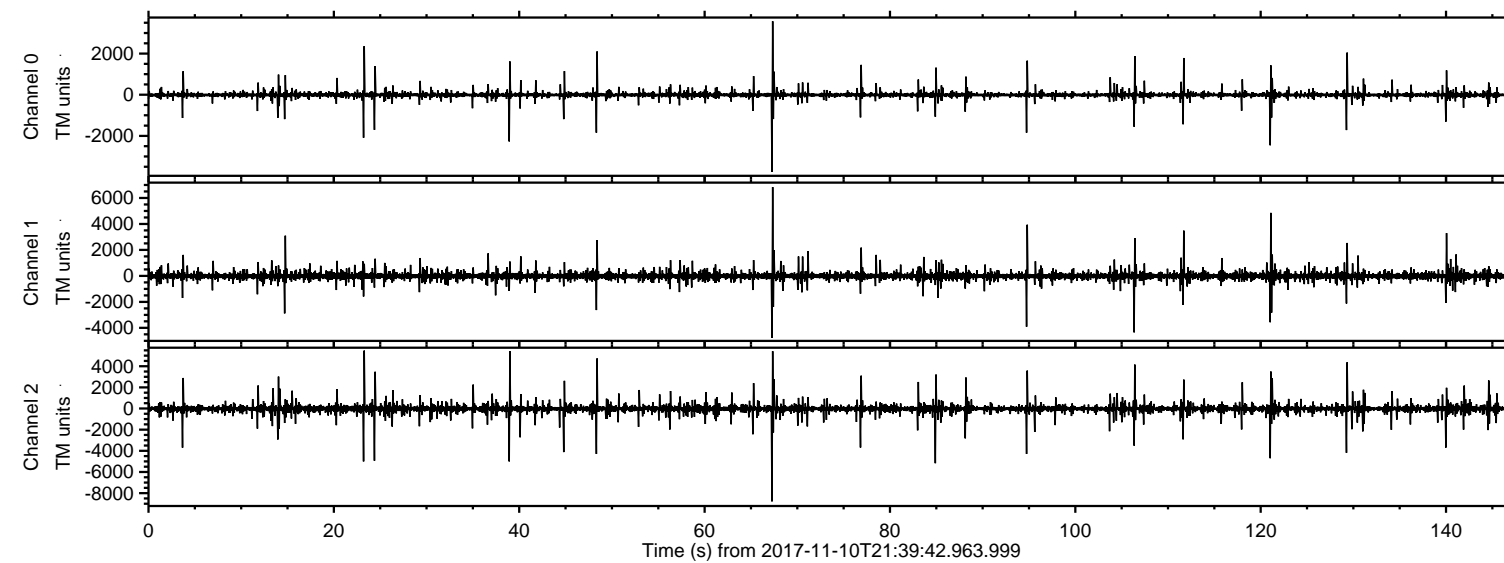


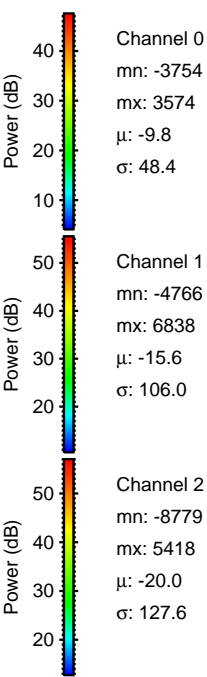
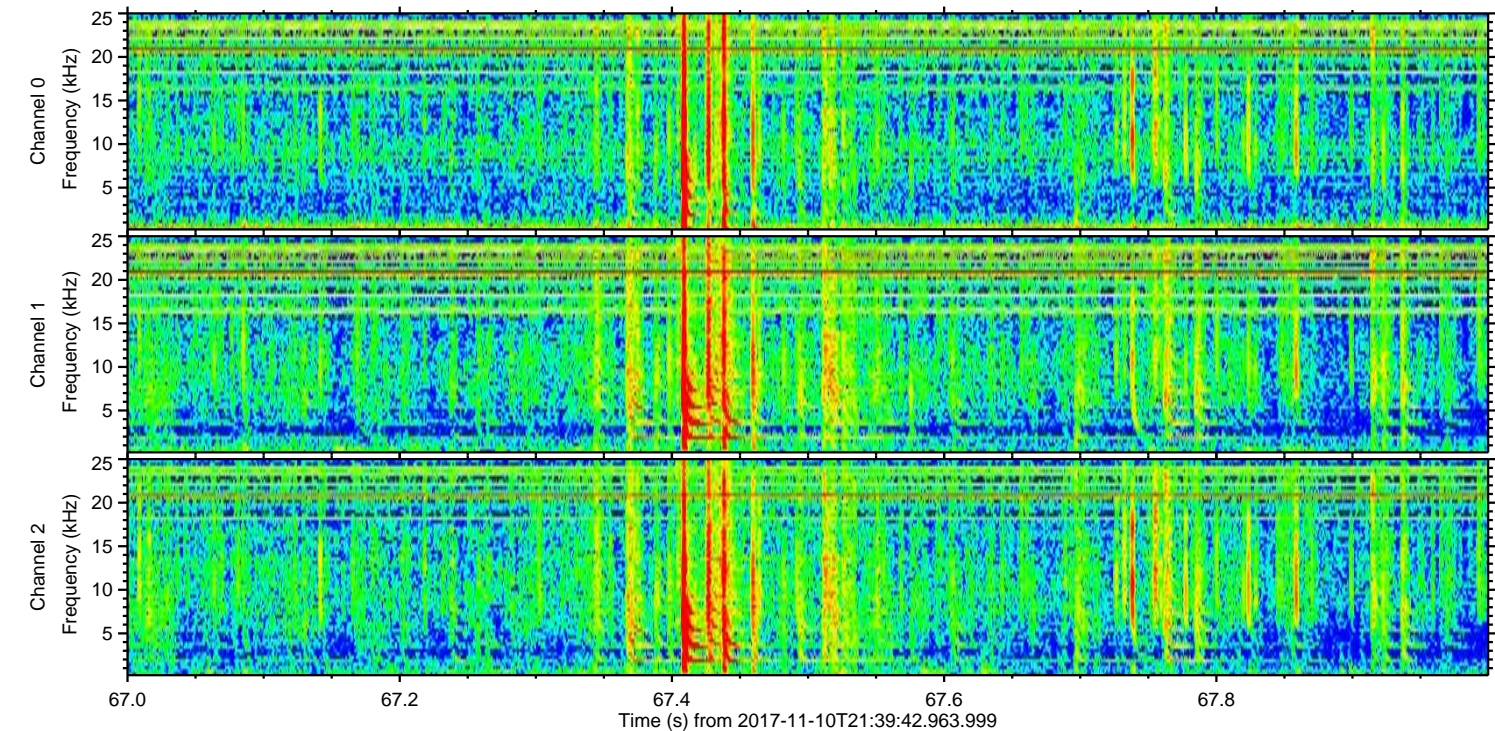
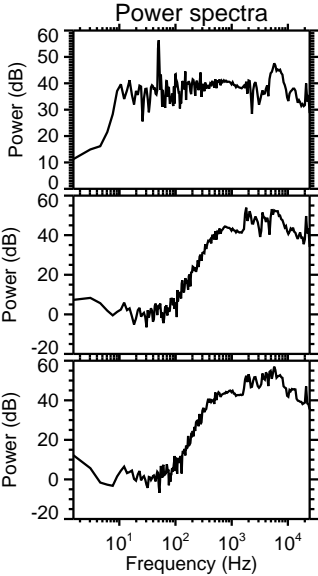
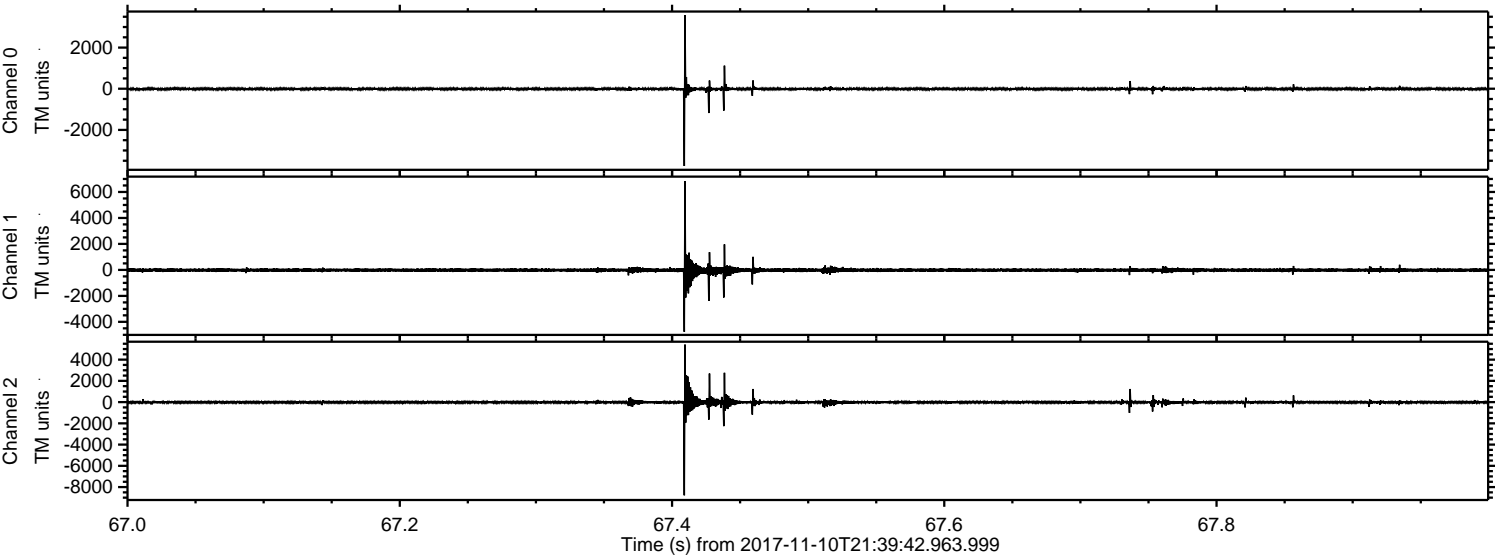
ELMAVAN 3D WAVEFORMS (Measured data sampled at 50 kHz) 51000 packets of 144 samples from 2017-11-10T21:39:42.963.999.

Processed Fri Nov 10 22:47:27 2017 by ELM ver.2012-10-06 from 001__elm20171110_213941__dat00.bin



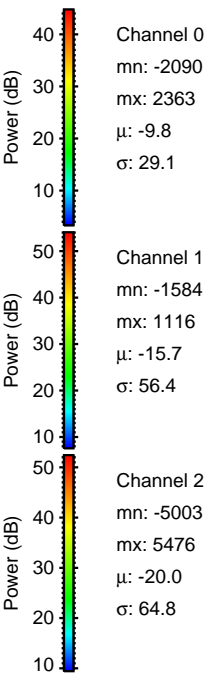
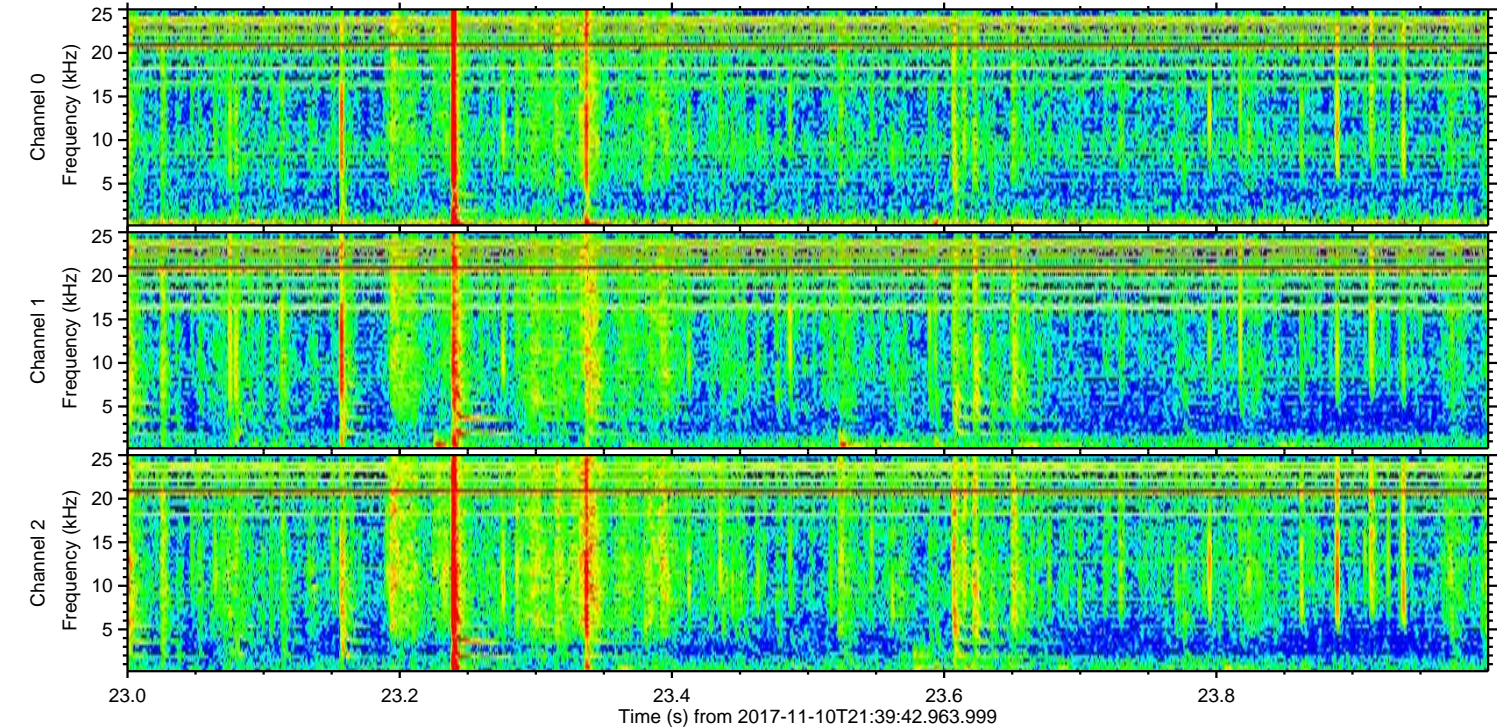
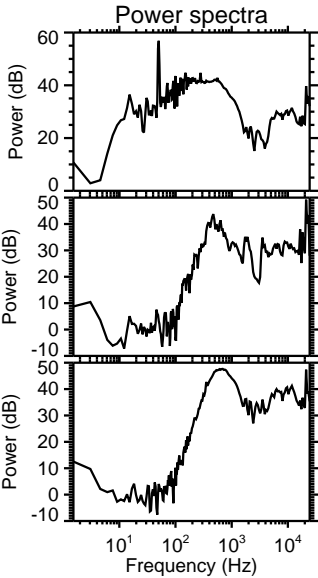
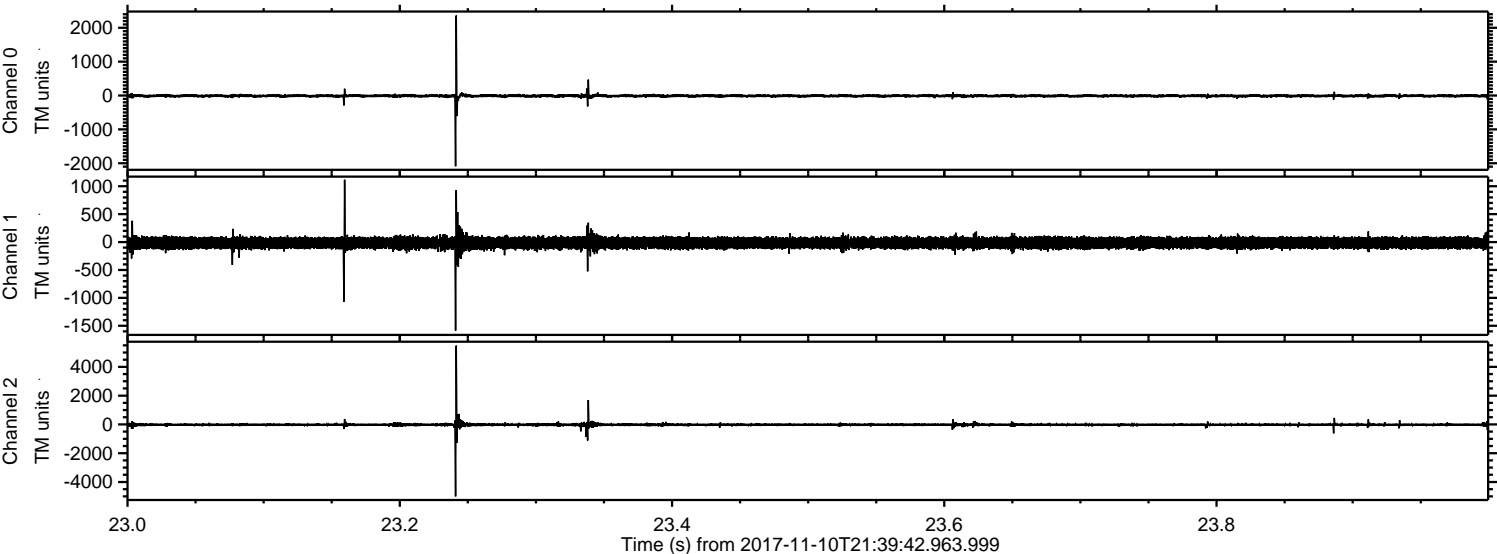
ELMAVAN 3D WAVEFORMS (Measured data sampled at 50 kHz) 51000 packets of 144 samples from 2017-11-10T21:39:42.963.999. Part 68/147

Processed Fri Nov 10 22:47:33 2017 by ELM ver.2012-10-06 from 001__elm20171110_213941__dat00.bin



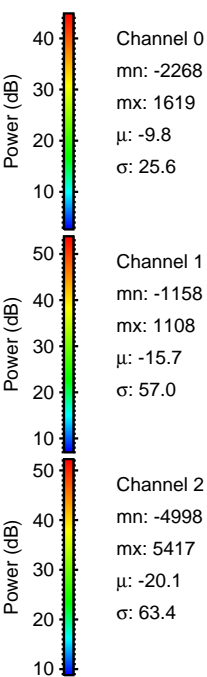
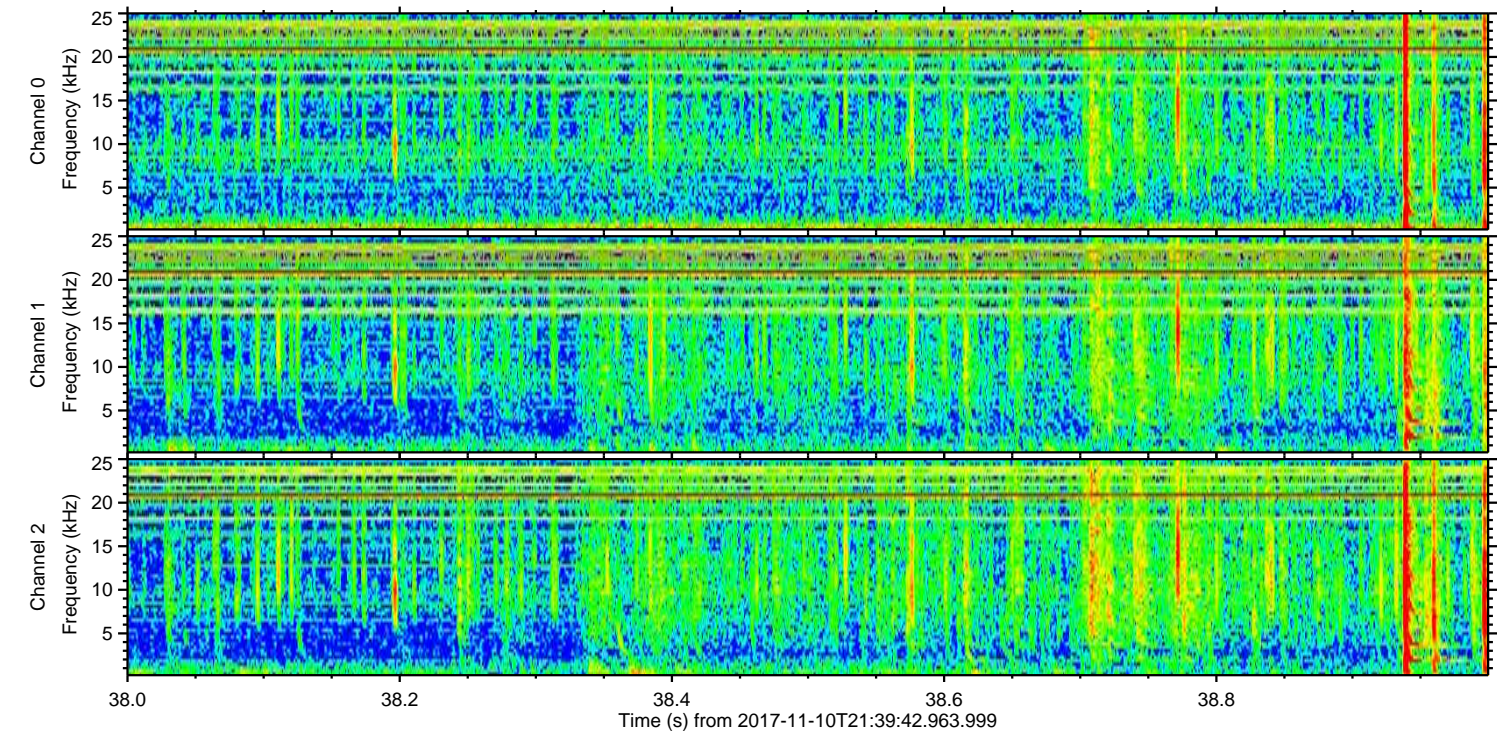
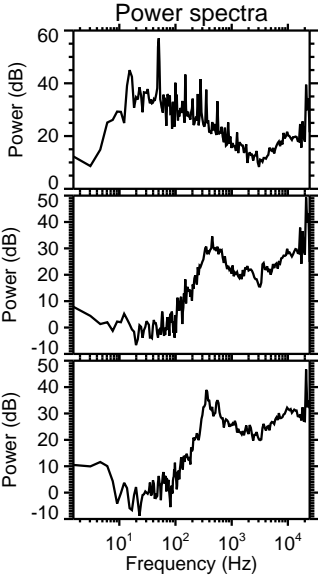
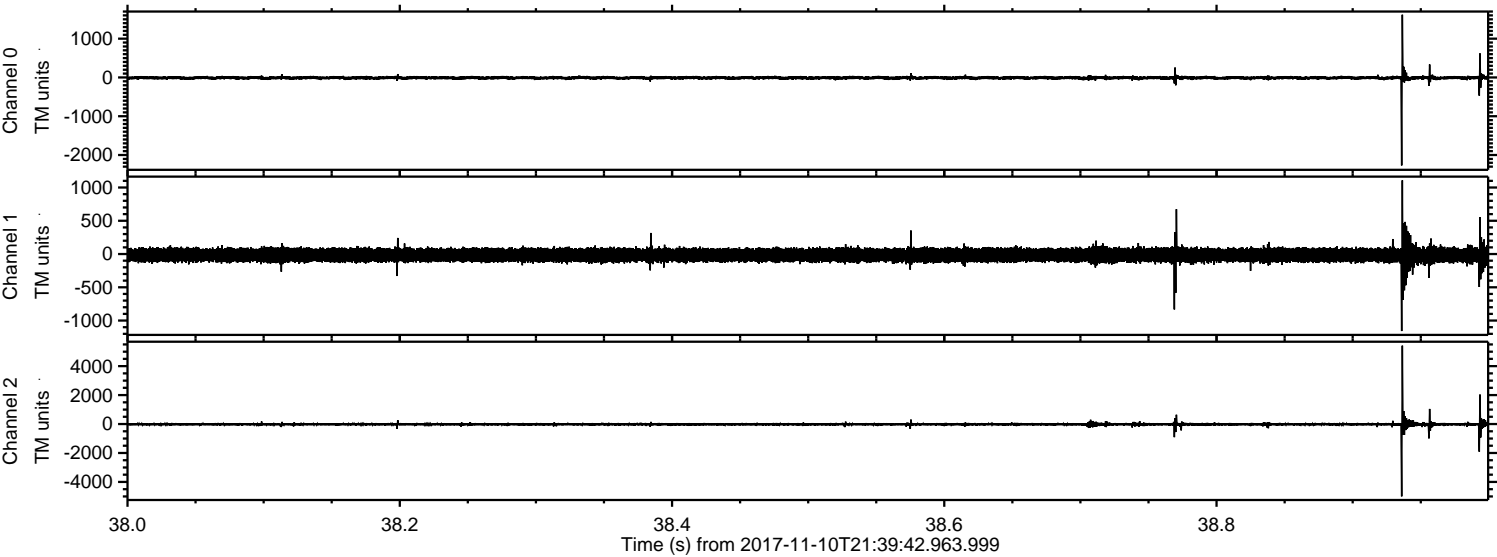
ELMAVAN 3D WAVEFORMS (Measured data sampled at 50 kHz) 51000 packets of 144 samples from 2017-11-10T21:39:42.963.999. Part 24/147

Processed Fri Nov 10 22:47:34 2017 by ELM ver.2012-10-06 from 001__elm20171110_213941__dat00.bin



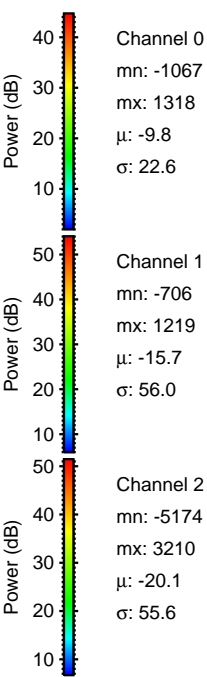
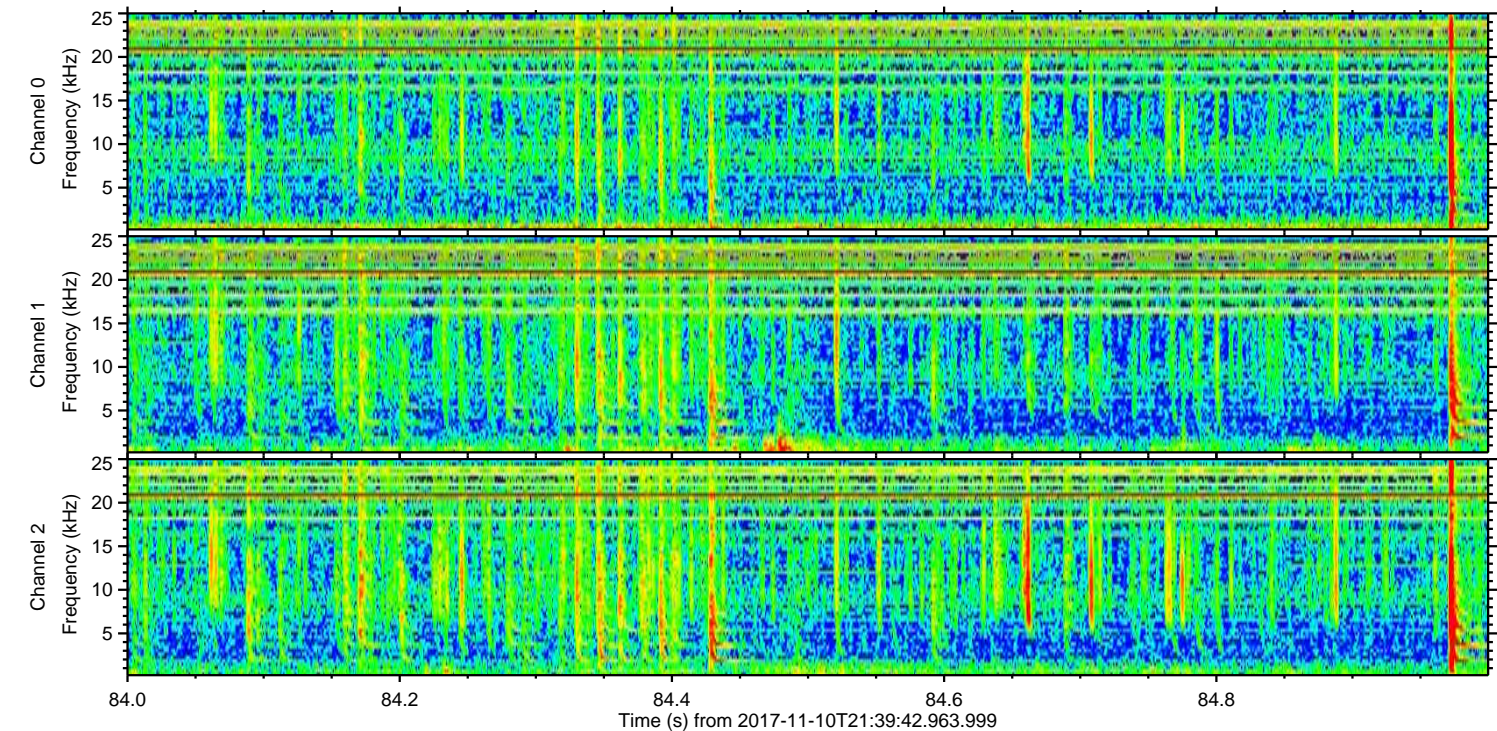
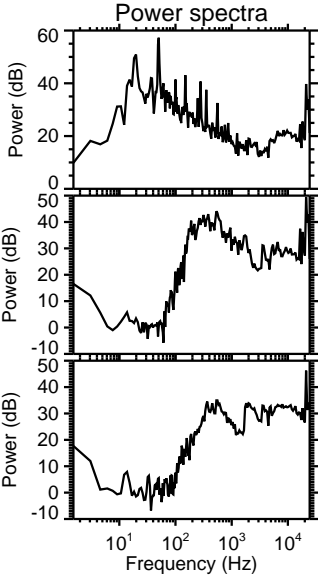
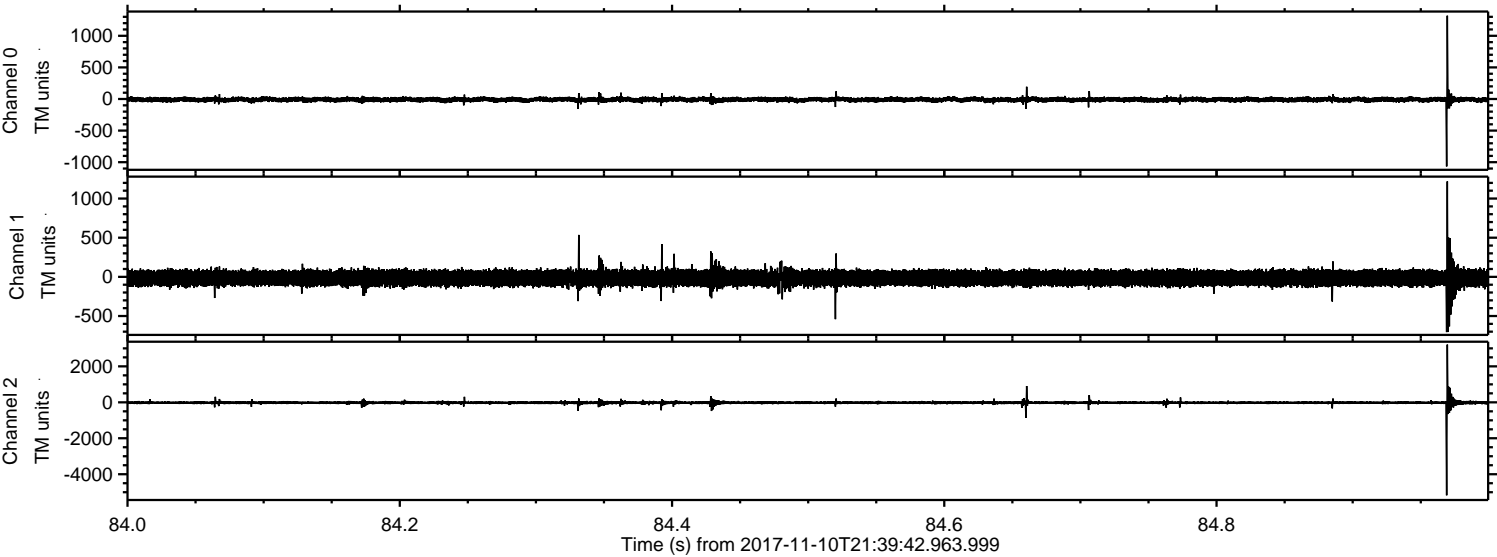
ELMAVAN 3D WAVEFORMS (Measured data sampled at 50 kHz) 51000 packets of 144 samples from 2017-11-10T21:39:42.963.999. Part 39/147

Processed Fri Nov 10 22:47:34 2017 by ELM ver.2012-10-06 from 001__elm20171110_213941__dat00.bin



ELMAVAN 3D WAVEFORMS (Measured data sampled at 50 kHz) 51000 packets of 144 samples from 2017-11-10T21:39:42.963.999. Part 85/147

Processed Fri Nov 10 22:47:35 2017 by ELM ver.2012-10-06 from 001__elm20171110_213941__dat00.bin

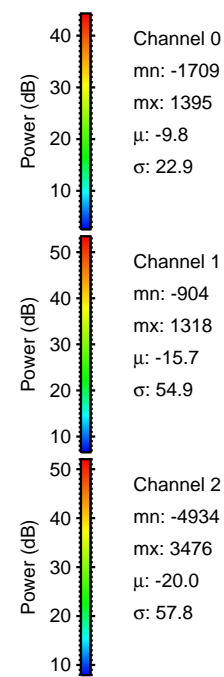
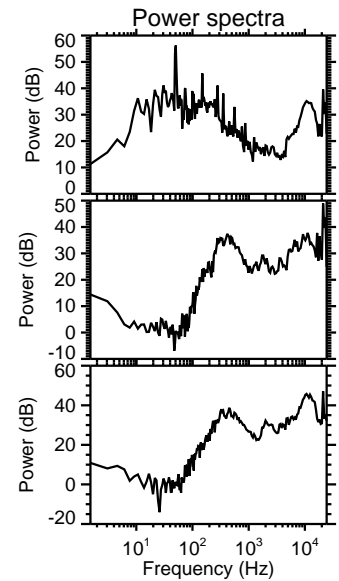
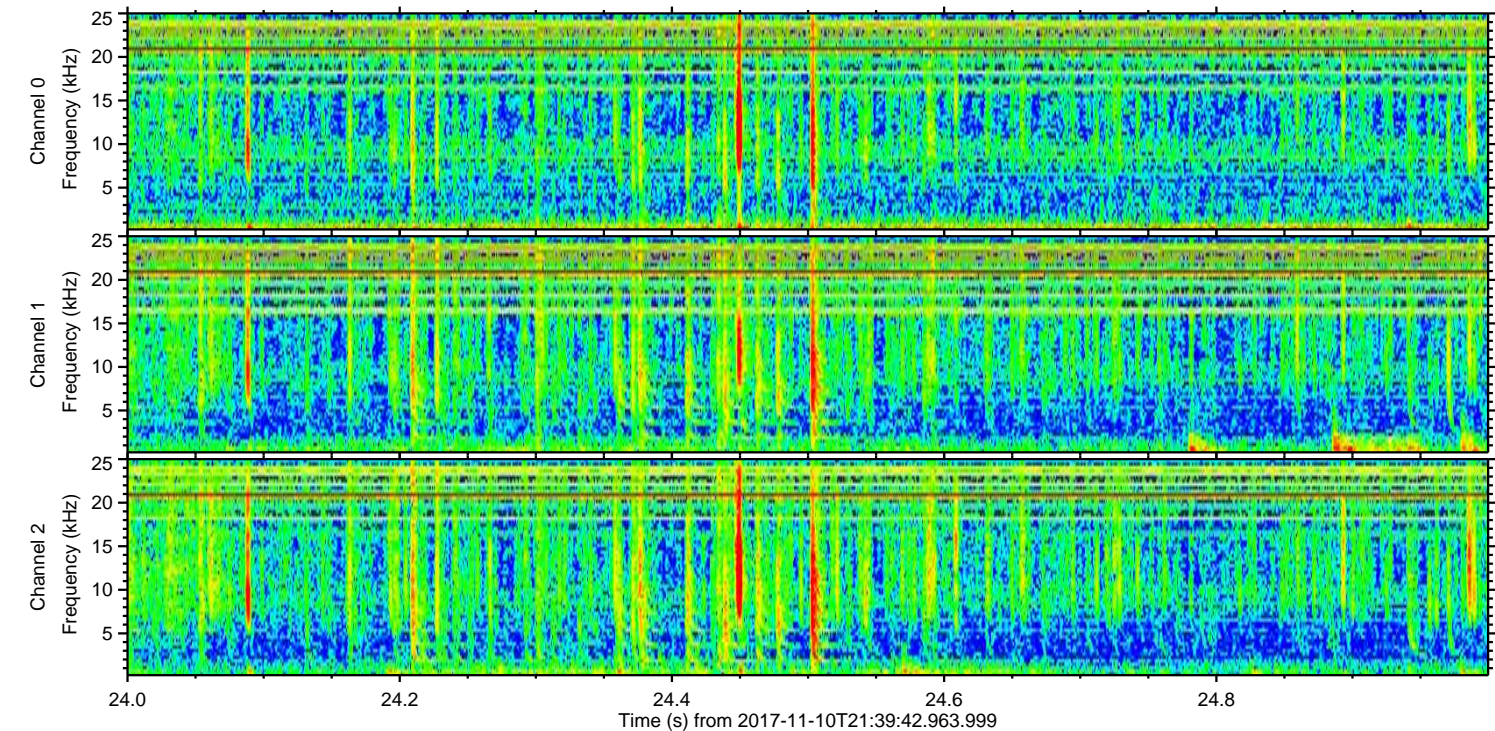
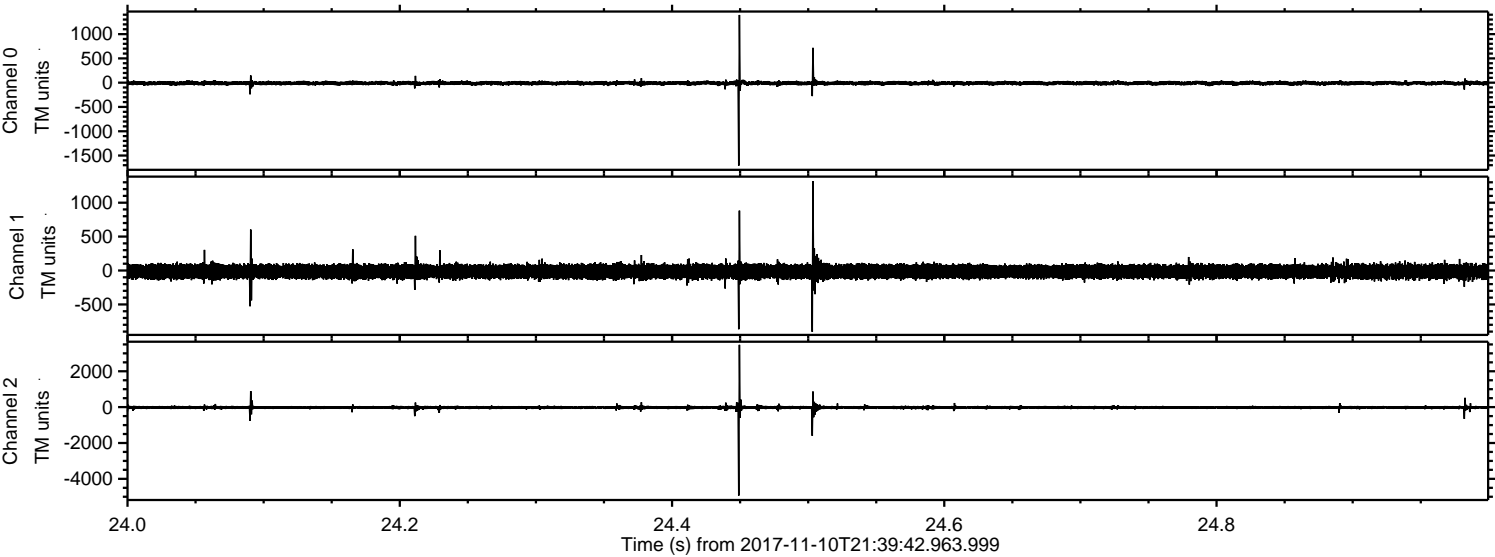


Channel 0
mn: -1067
mx: 1318
 μ : -9.8
 σ : 22.6

Channel 1
mn: -706
mx: 1219
 μ : -15.7
 σ : 56.0

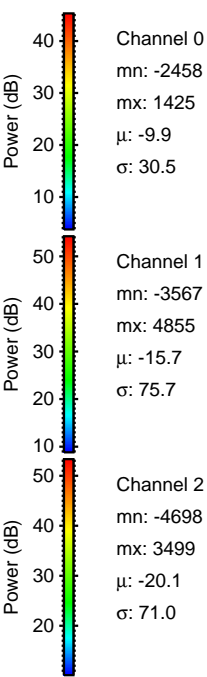
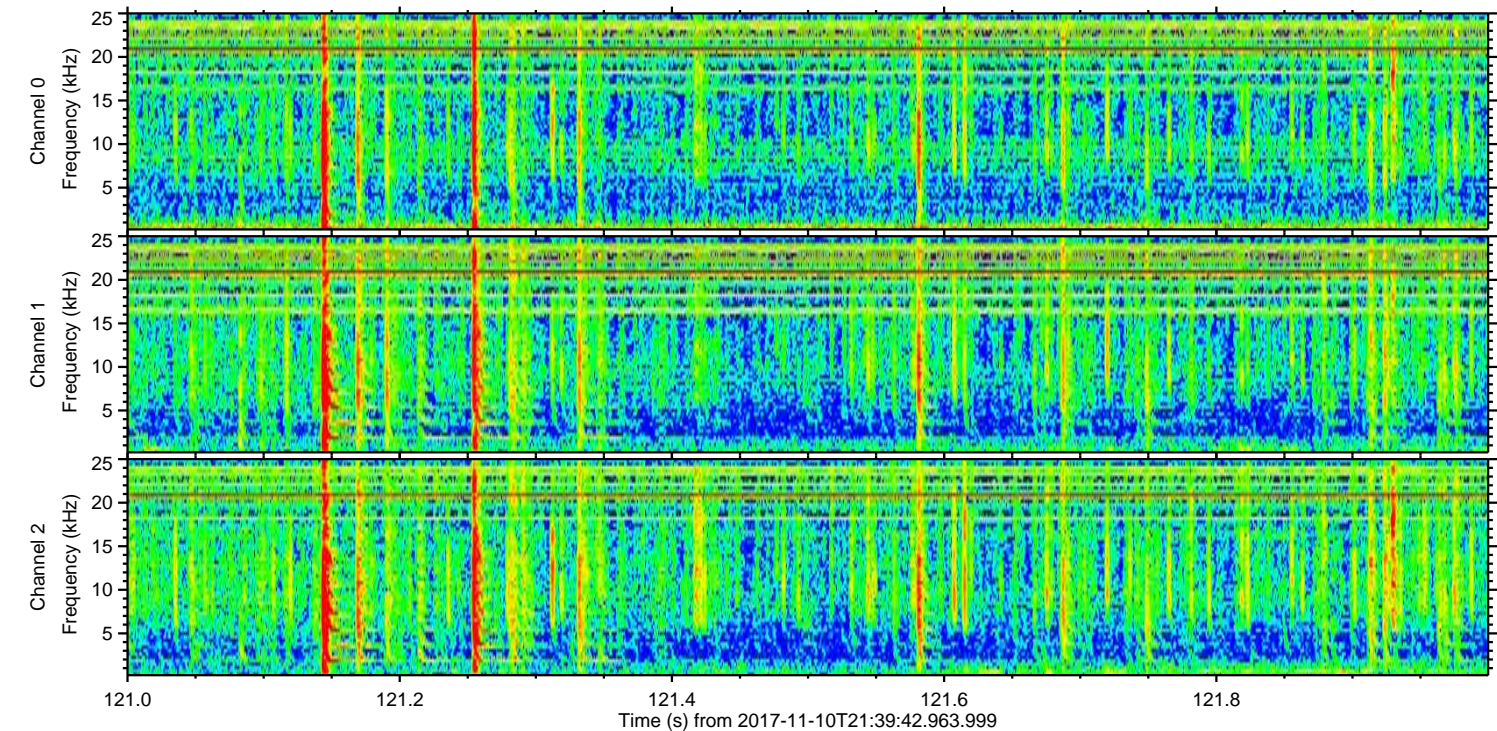
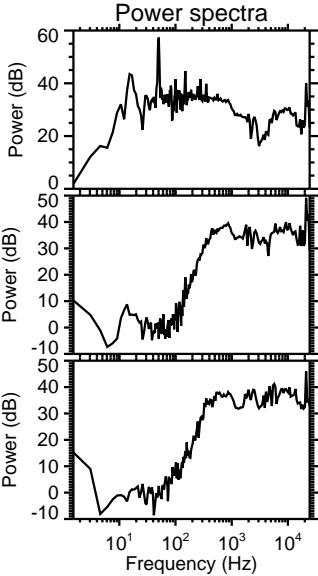
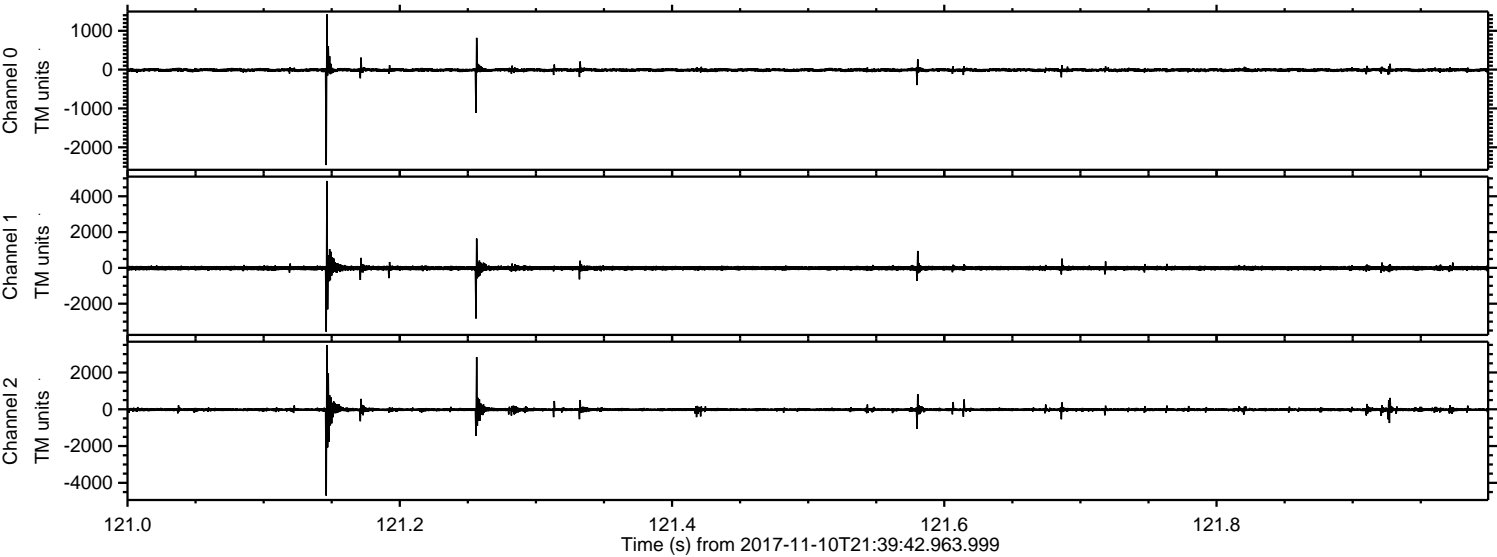
Channel 2
mn: -5174
mx: 3210
 μ : -20.1
 σ : 55.6

Processed Fri Nov 10 22:47:36 2017 by ELM ver.2012-10-06 from 001__elm20171110_213941__dat00.bin

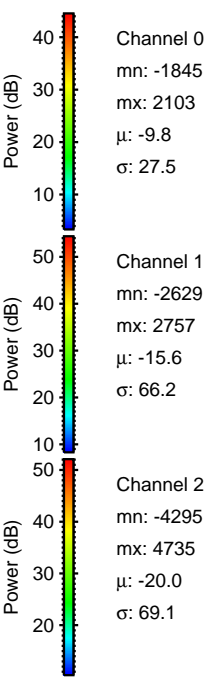
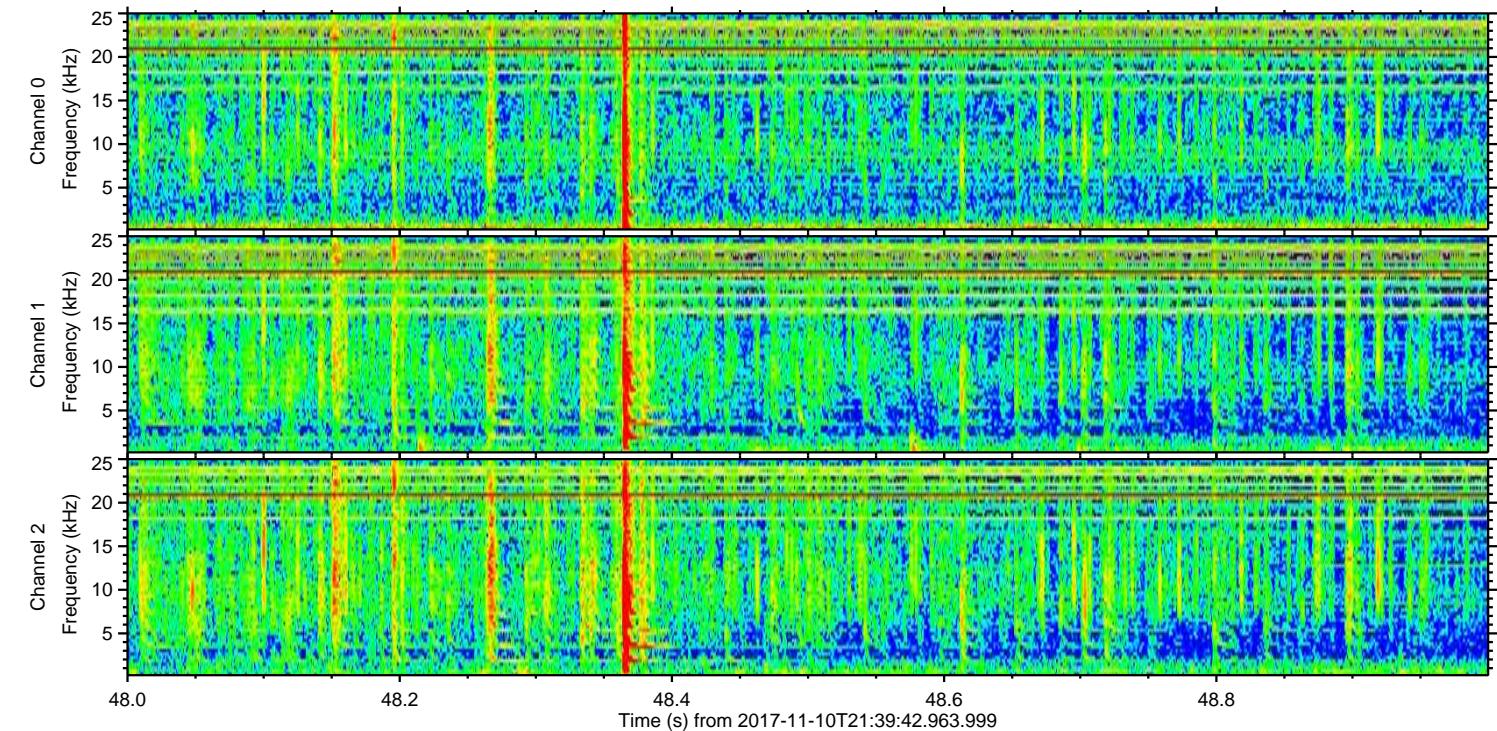
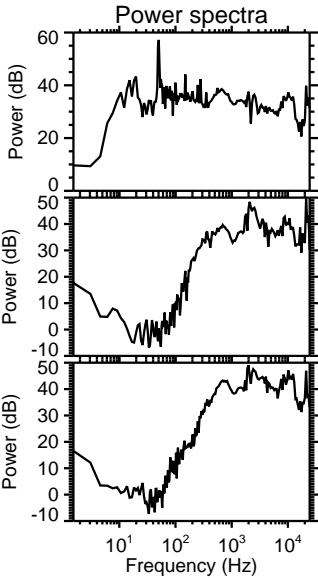
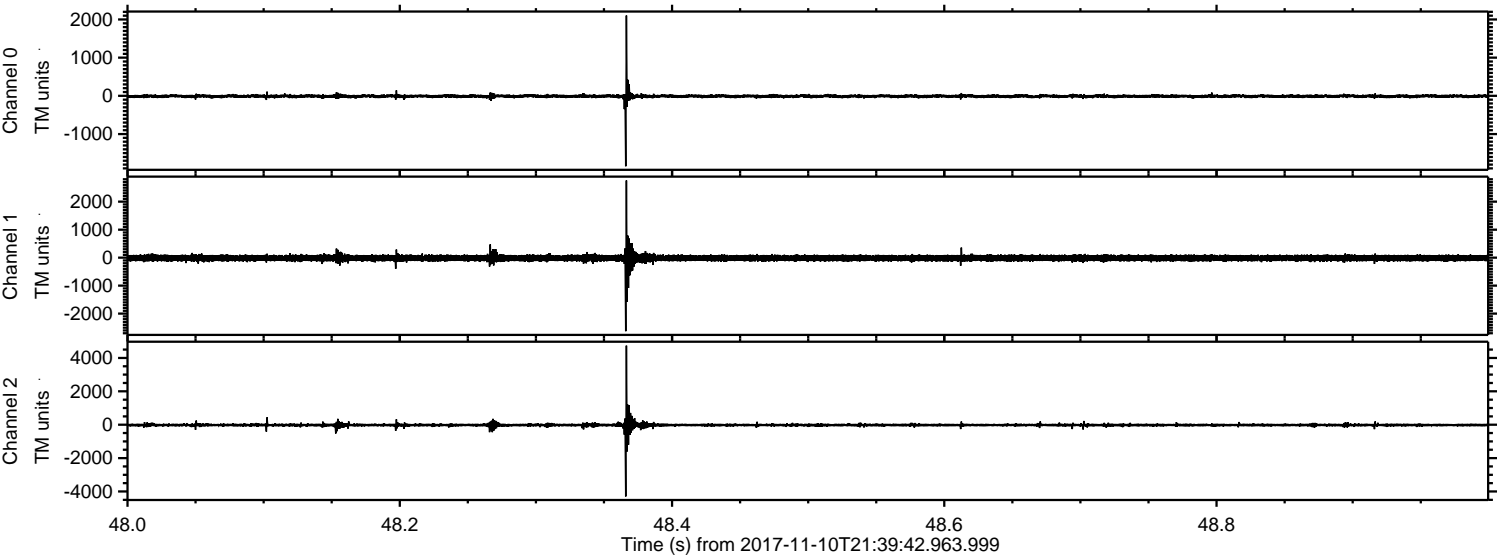


ELMAVAN 3D WAVEFORMS (Measured data sampled at 50 kHz) 51000 packets of 144 samples from 2017-11-10T21:39:42.963.999. Part 122/147

Processed Fri Nov 10 22:47:36 2017 by ELM ver.2012-10-06 from 001__elm20171110_213941__dat00.bin

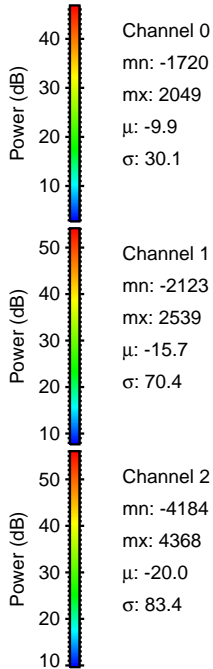
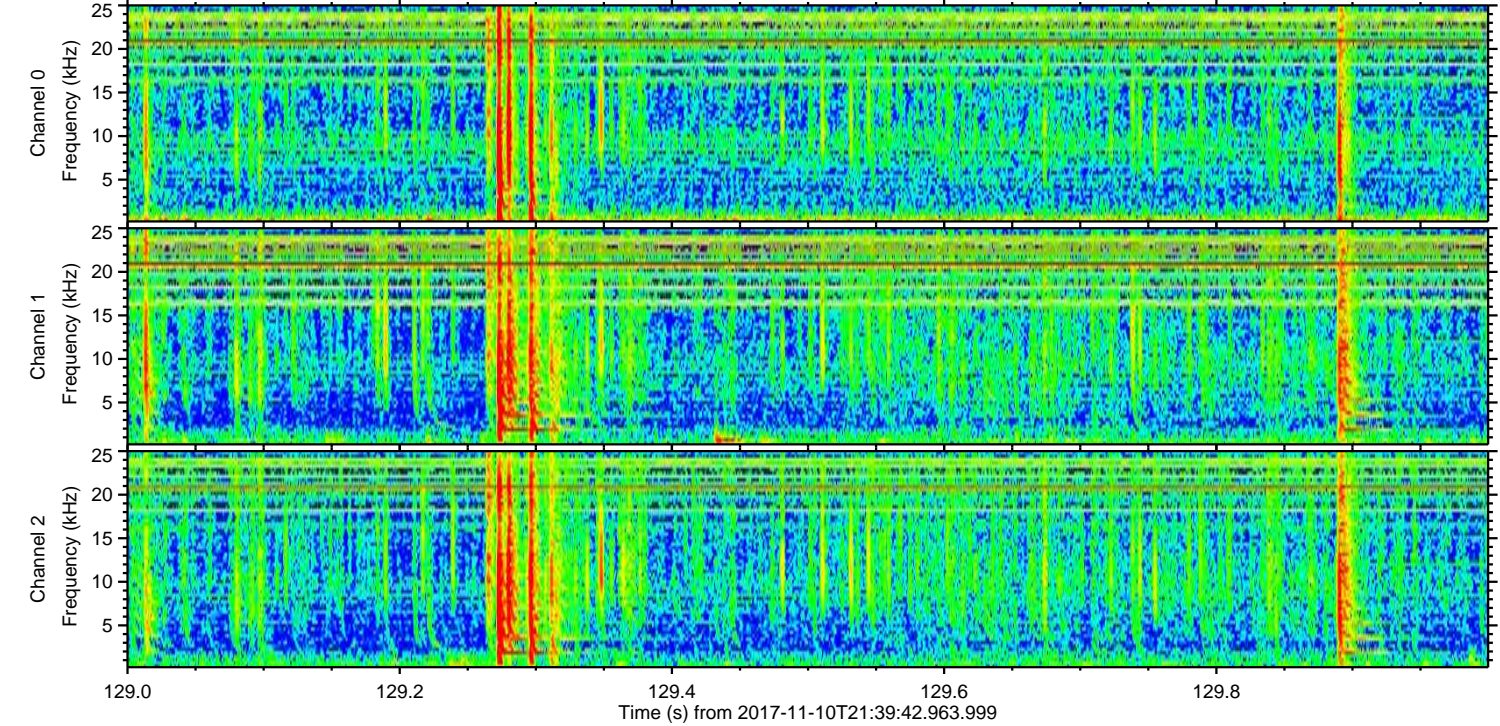
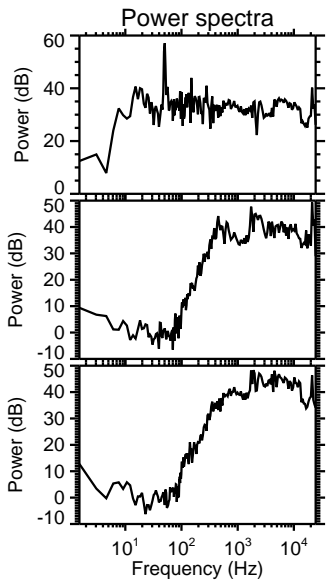
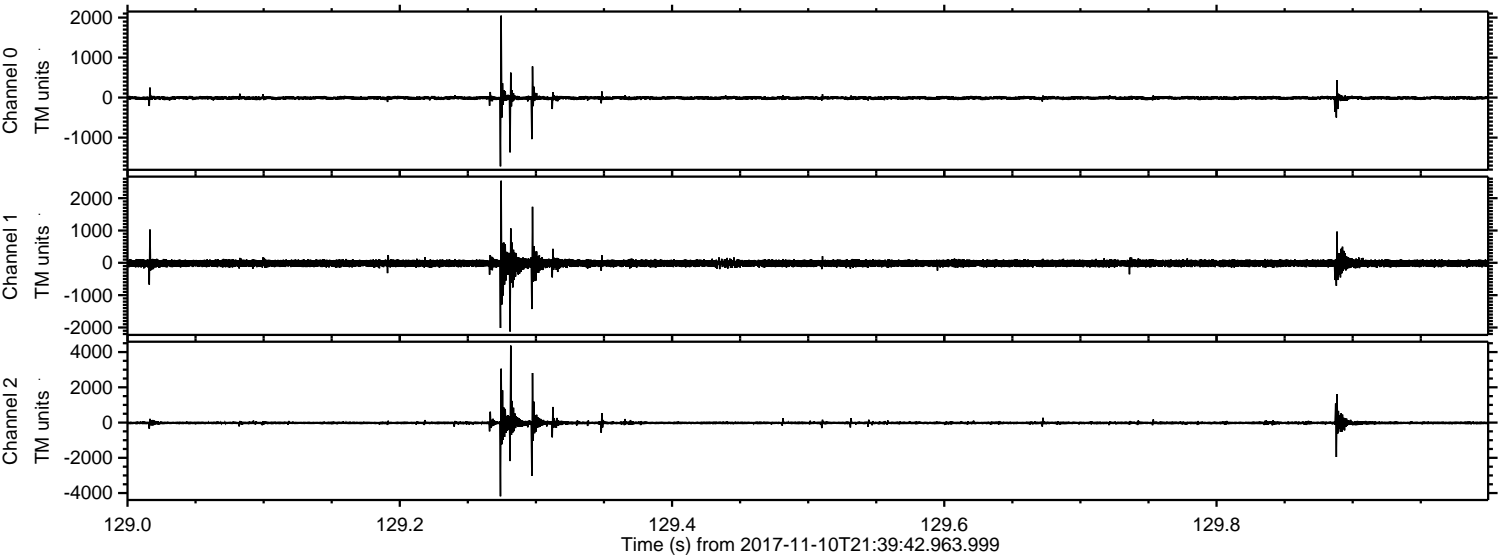


Processed Fri Nov 10 22:47:37 2017 by ELM ver.2012-10-06 from 001__elm20171110_213941__dat00.bin



ELMAVAN 3D WAVEFORMS (Measured data sampled at 50 kHz) 51000 packets of 144 samples from 2017-11-10T21:39:42.963.999. Part 130/147

Processed Fri Nov 10 22:47:38 2017 by ELM ver.2012-10-06 from 001__elm20171110_213941__dat00.bin



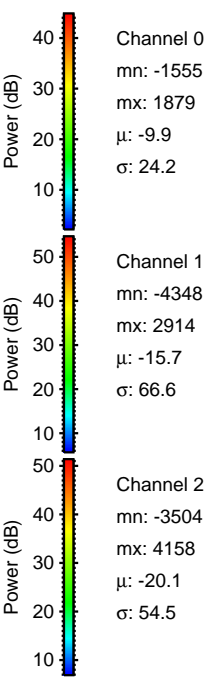
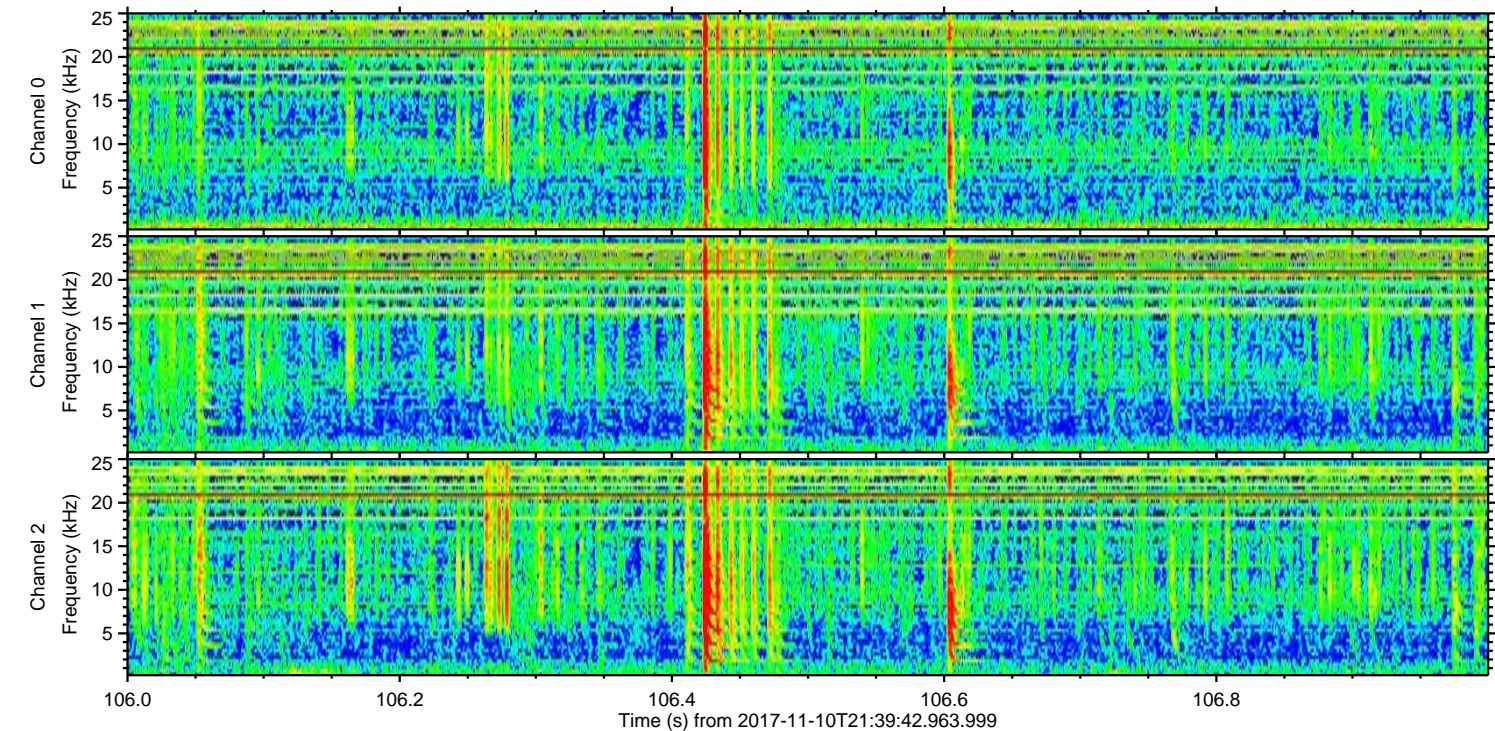
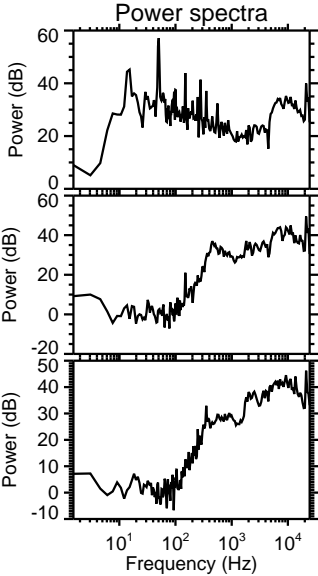
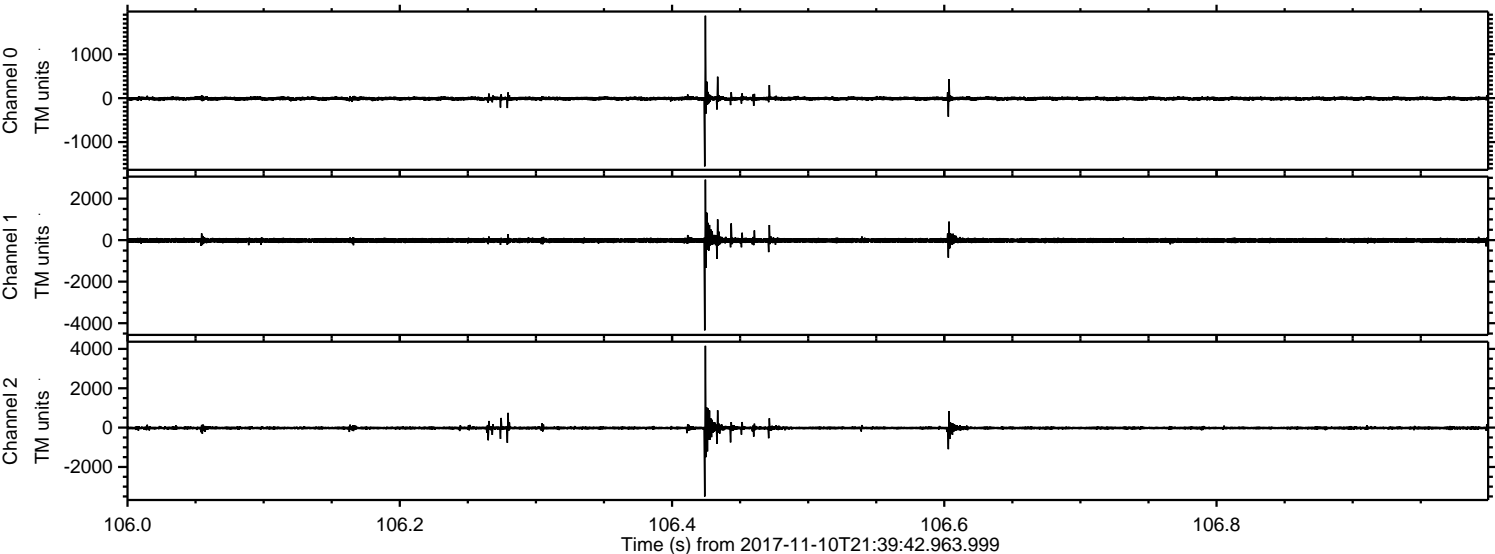
Channel 0
mn: -1720
mx: 2049
 μ : -9.9
 σ : 30.1

Channel 1
mn: -2123
mx: 2539
 μ : -15.7
 σ : 70.4

Channel 2
mn: -4184
mx: 4368
 μ : -20.0
 σ : 83.4

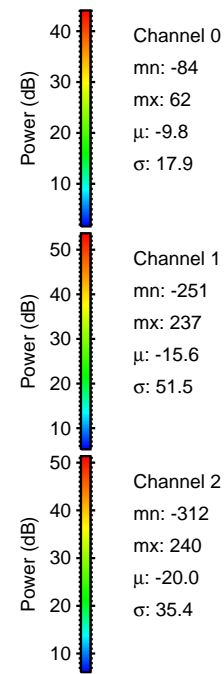
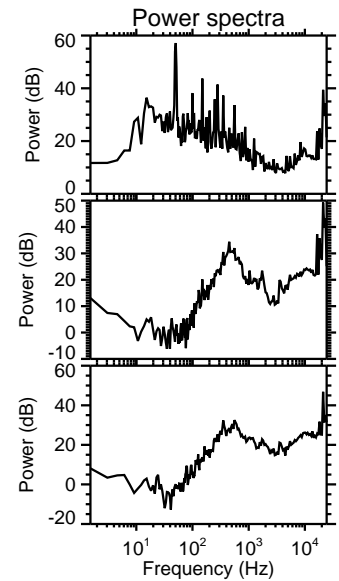
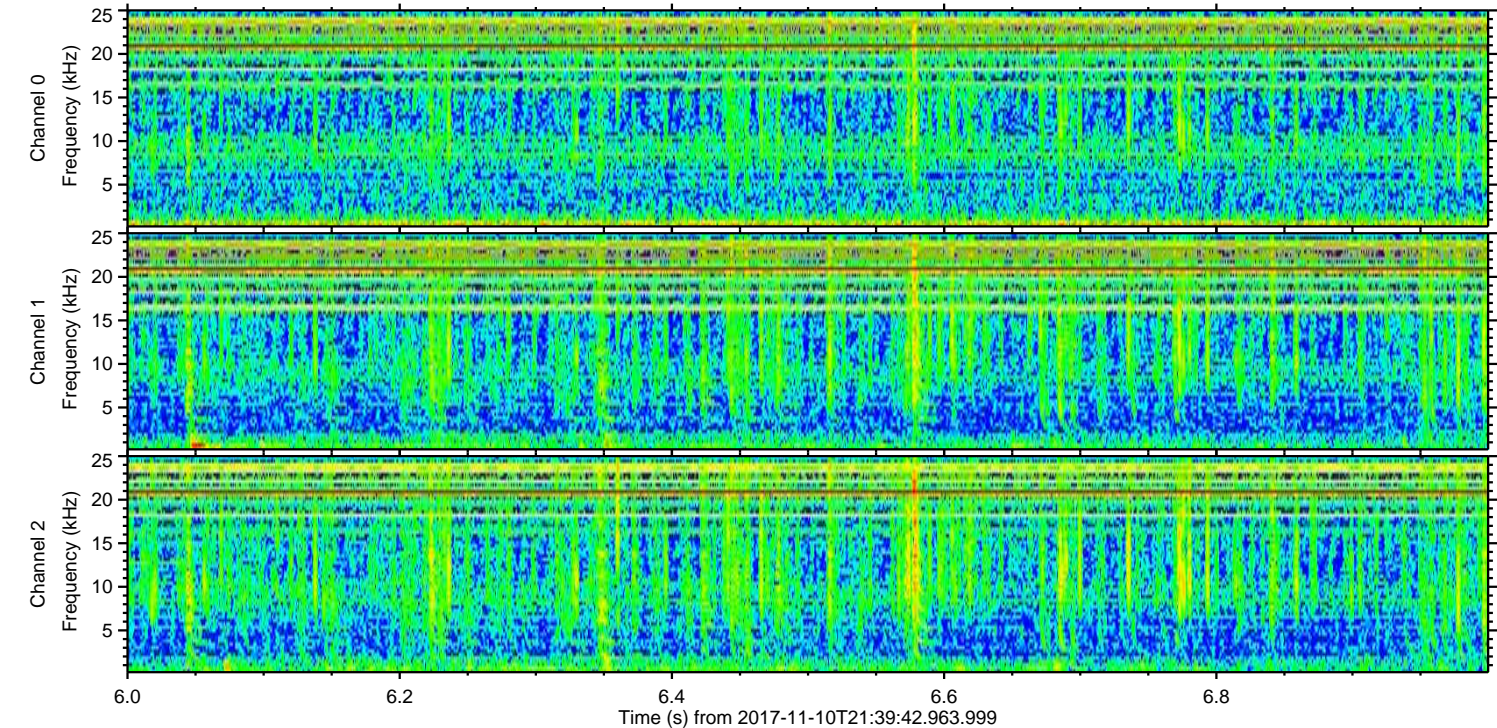
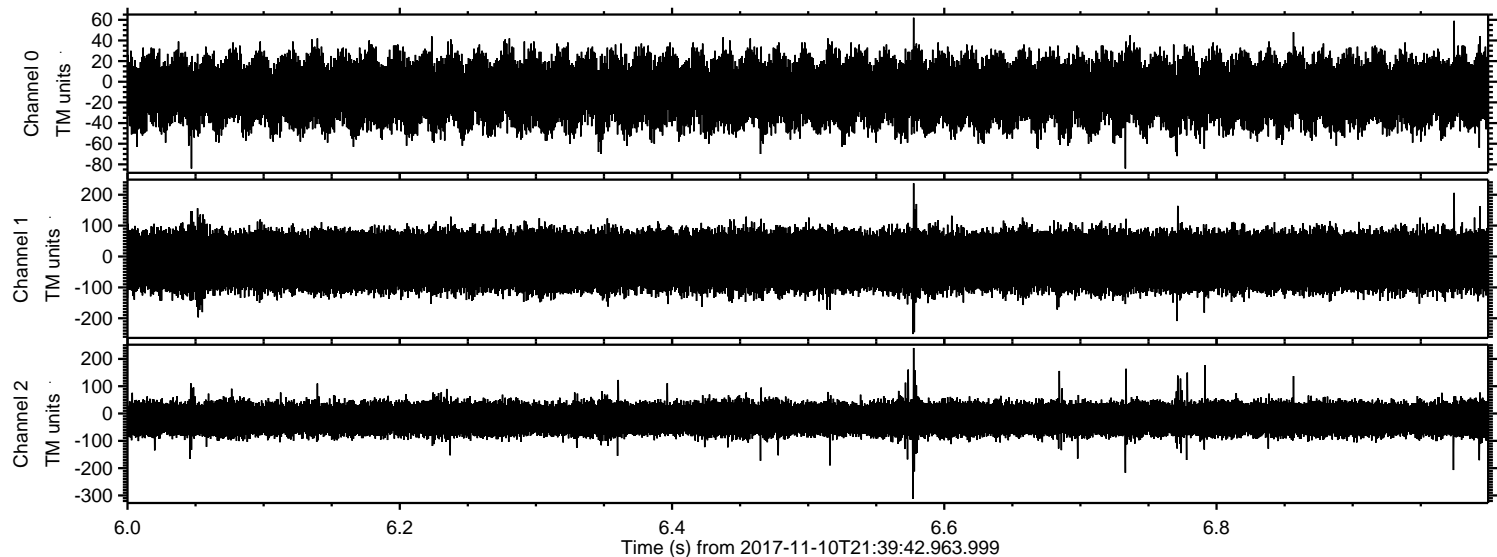
ELMAVAN 3D WAVEFORMS (Measured data sampled at 50 kHz) 51000 packets of 144 samples from 2017-11-10T21:39:42.963.999. Part 107/147

Processed Fri Nov 10 22:47:38 2017 by ELM ver.2012-10-06 from 001__elm20171110_213941__dat00.bin



ELMAVAN 3D WAVEFORMS (Measured data sampled at 50 kHz) 51000 packets of 144 samples from 2017-11-10T21:39:42.963.999. Part 7/147

Processed Fri Nov 10 22:47:39 2017 by ELM ver.2012-10-06 from 001__elm20171110_213941__dat00.bin



Channel 0
mn: -84
mx: 62
 μ : -9.8
 σ : 17.9

Channel 1
mn: -251
mx: 237
 μ : -15.6
 σ : 51.5

Channel 2
mn: -312
mx: 240
 μ : -20.0
 σ : 35.4