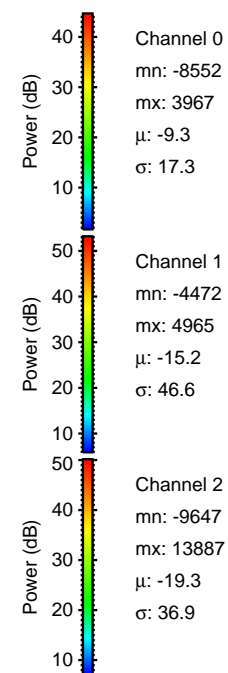
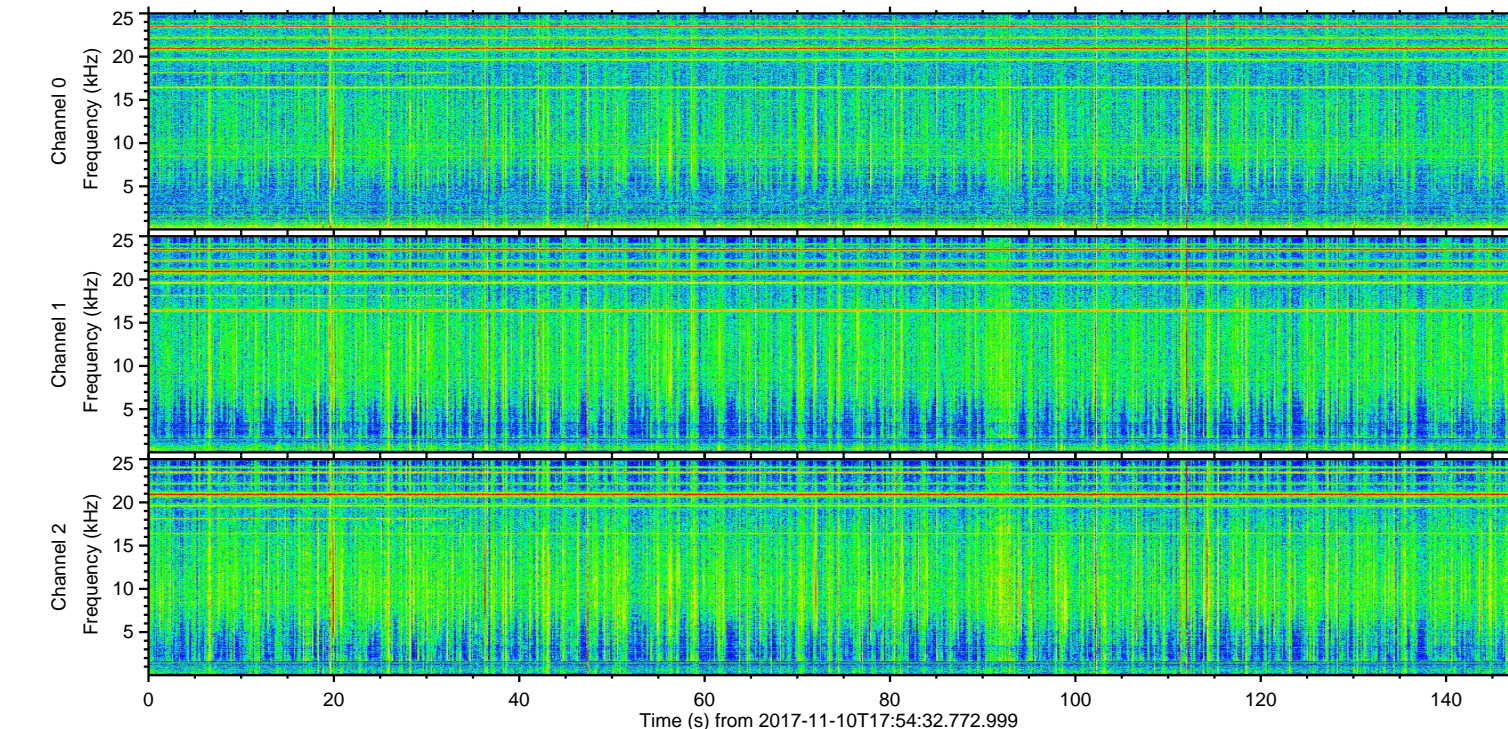
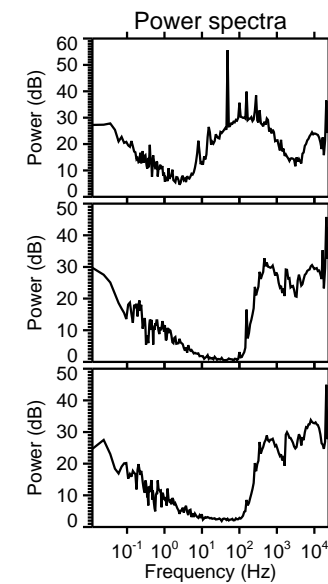
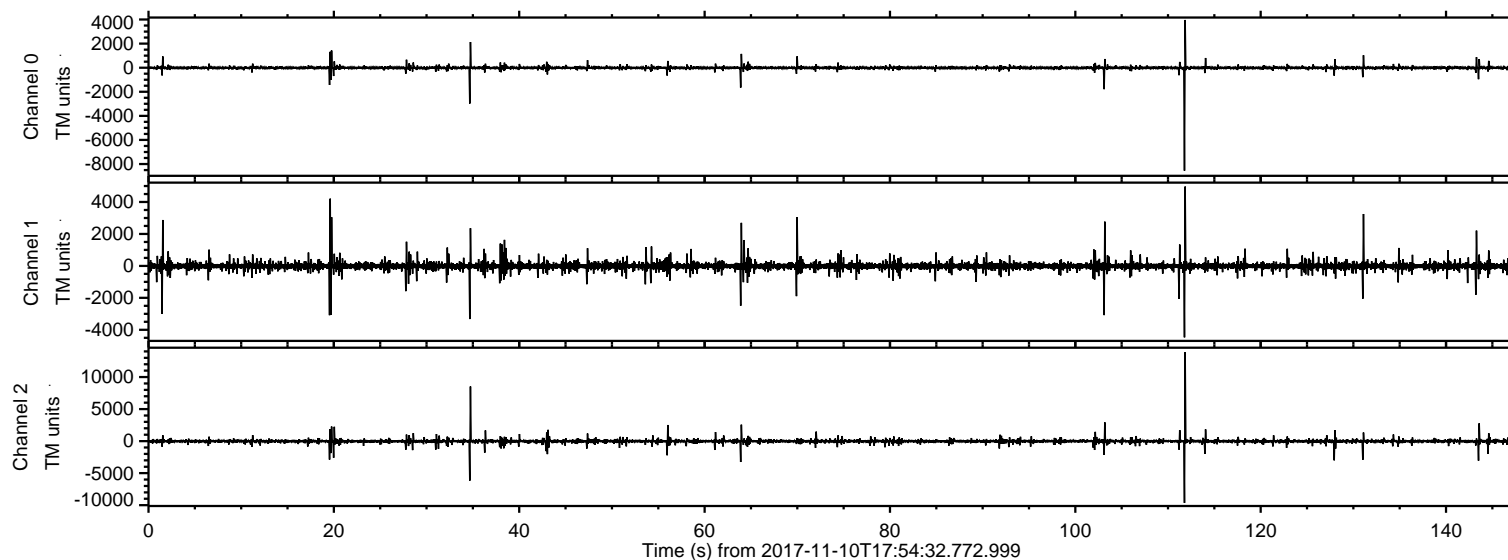


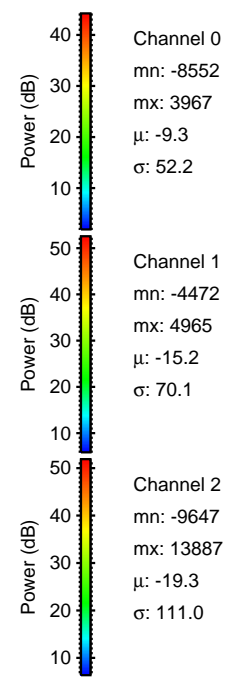
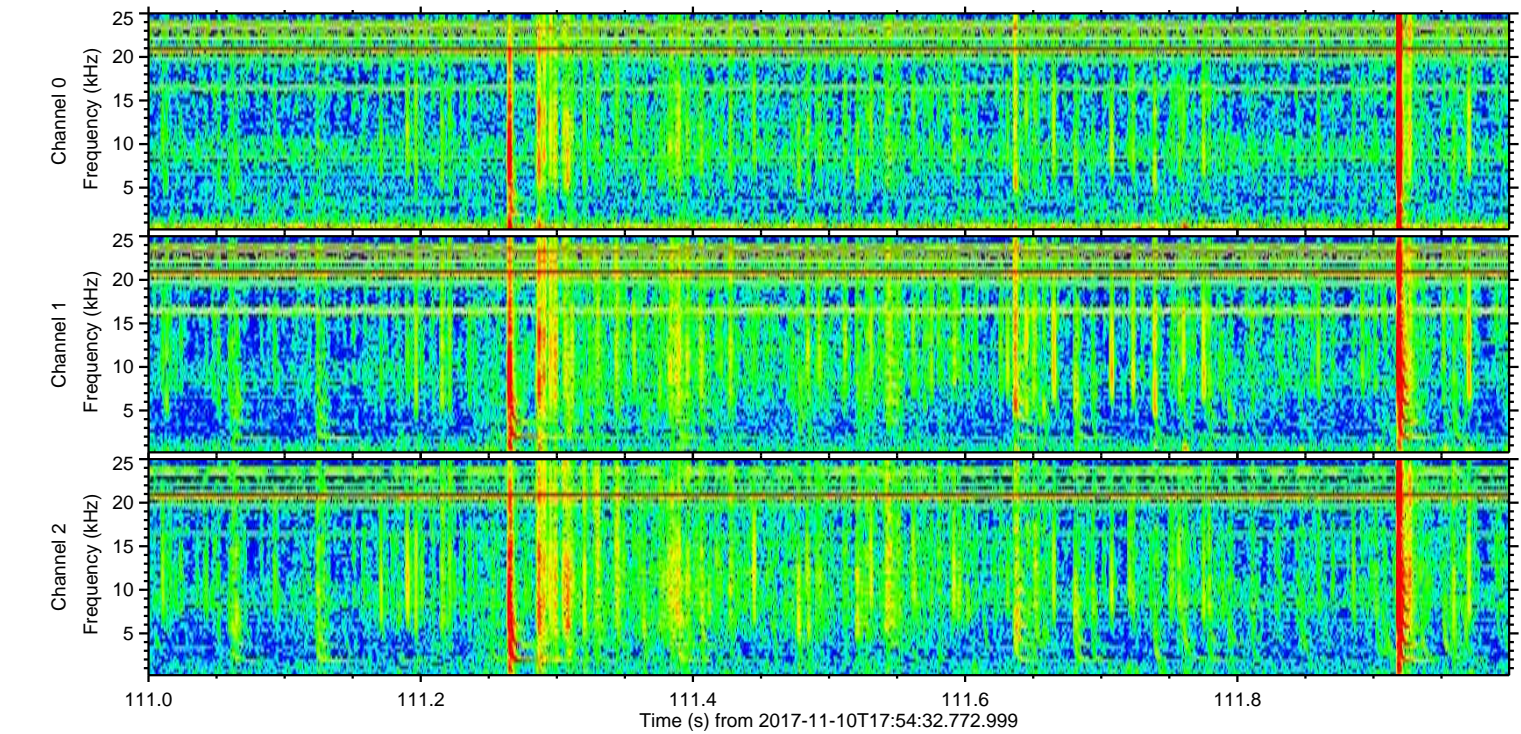
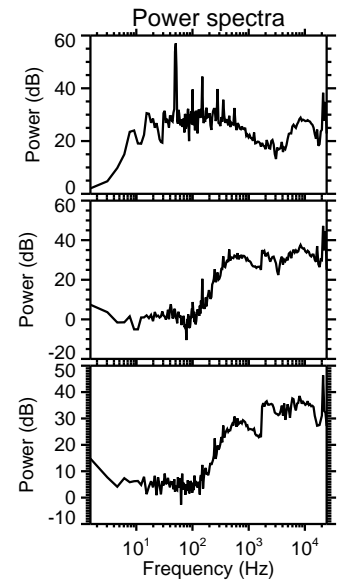
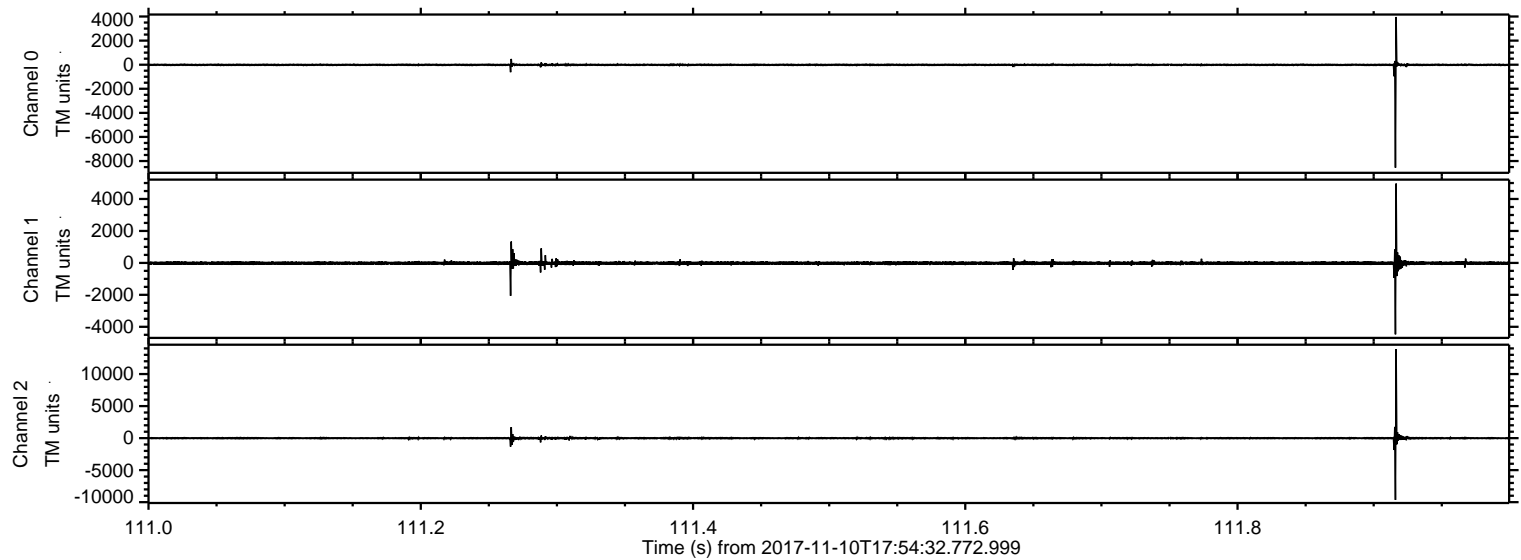
ELMAVAN 3D WAVEFORMS (Measured data sampled at 50 kHz) 51000 packets of 144 samples from 2017-11-10T17:54:32.772.999.

Processed Fri Nov 10 19:02:09 2017 by ELM ver.2012-10-06 from 001__elm20171110_175431__dat00.bin



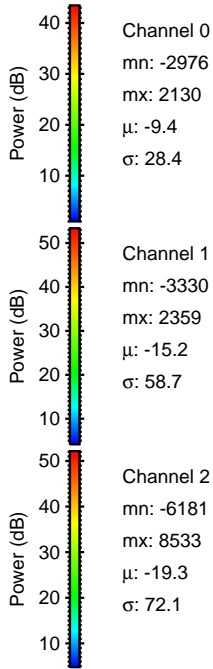
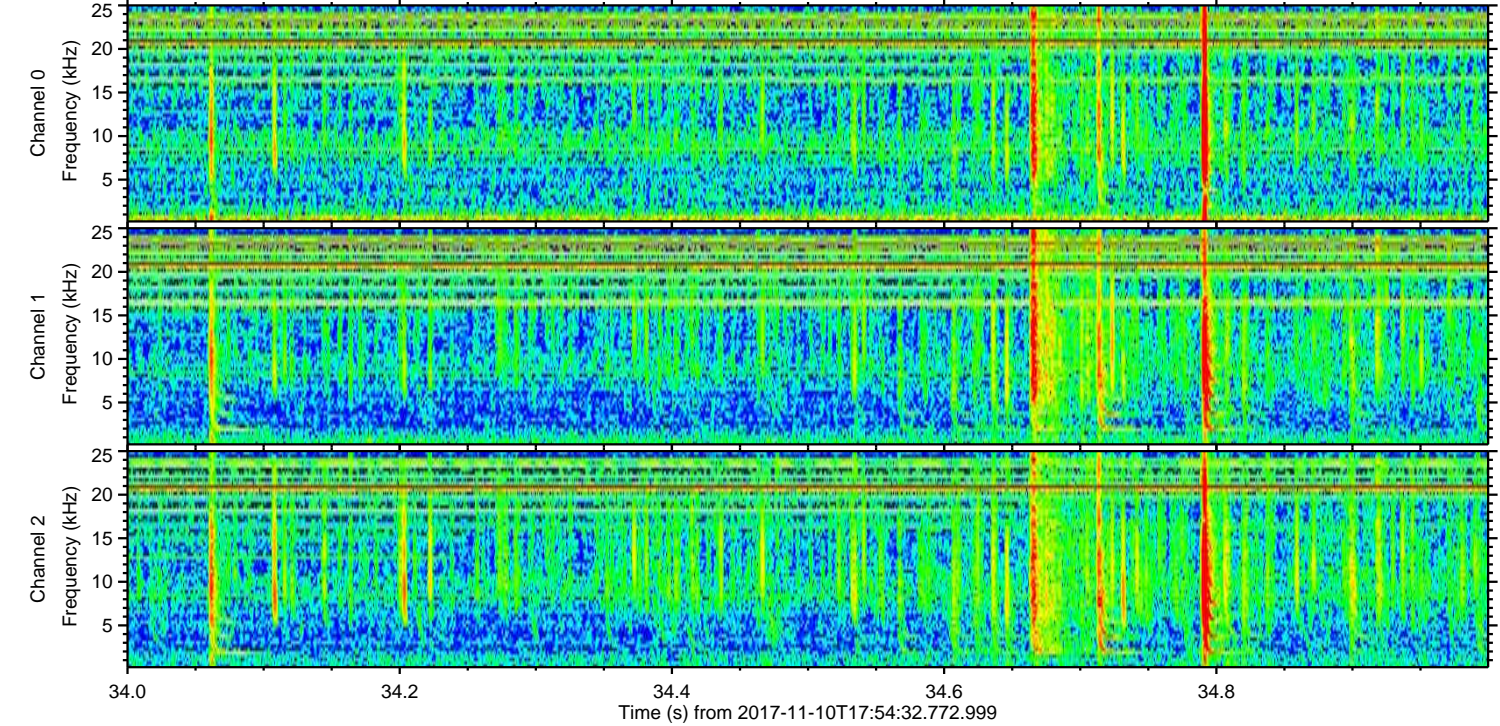
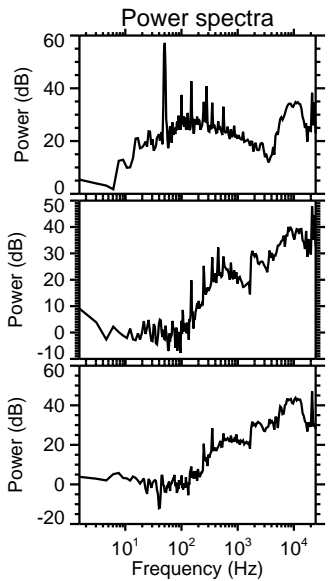
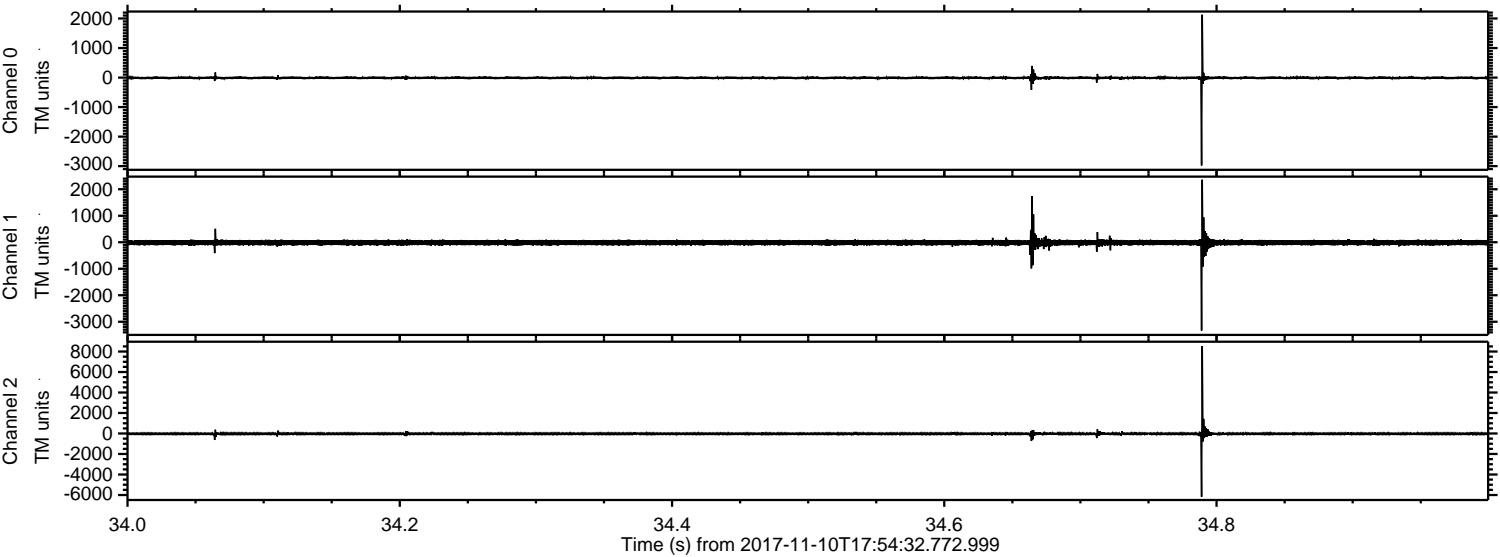
ELMAVAN 3D WAVEFORMS (Measured data sampled at 50 kHz) 51000 packets of 144 samples from 2017-11-10T17:54:32.772.999. Part 112/147

Processed Fri Nov 10 19:02:17 2017 by ELM ver.2012-10-06 from 001__elm20171110_175431__dat00.bin



ELMAVAN 3D WAVEFORMS (Measured data sampled at 50 kHz) 51000 packets of 144 samples from 2017-11-10T17:54:32.772.999. Part 35/147

Processed Fri Nov 10 19:02:18 2017 by ELM ver.2012-10-06 from 001__elm20171110_175431__dat00.bin



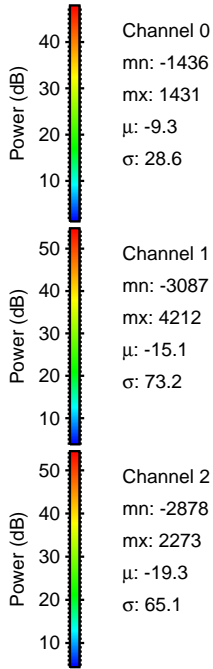
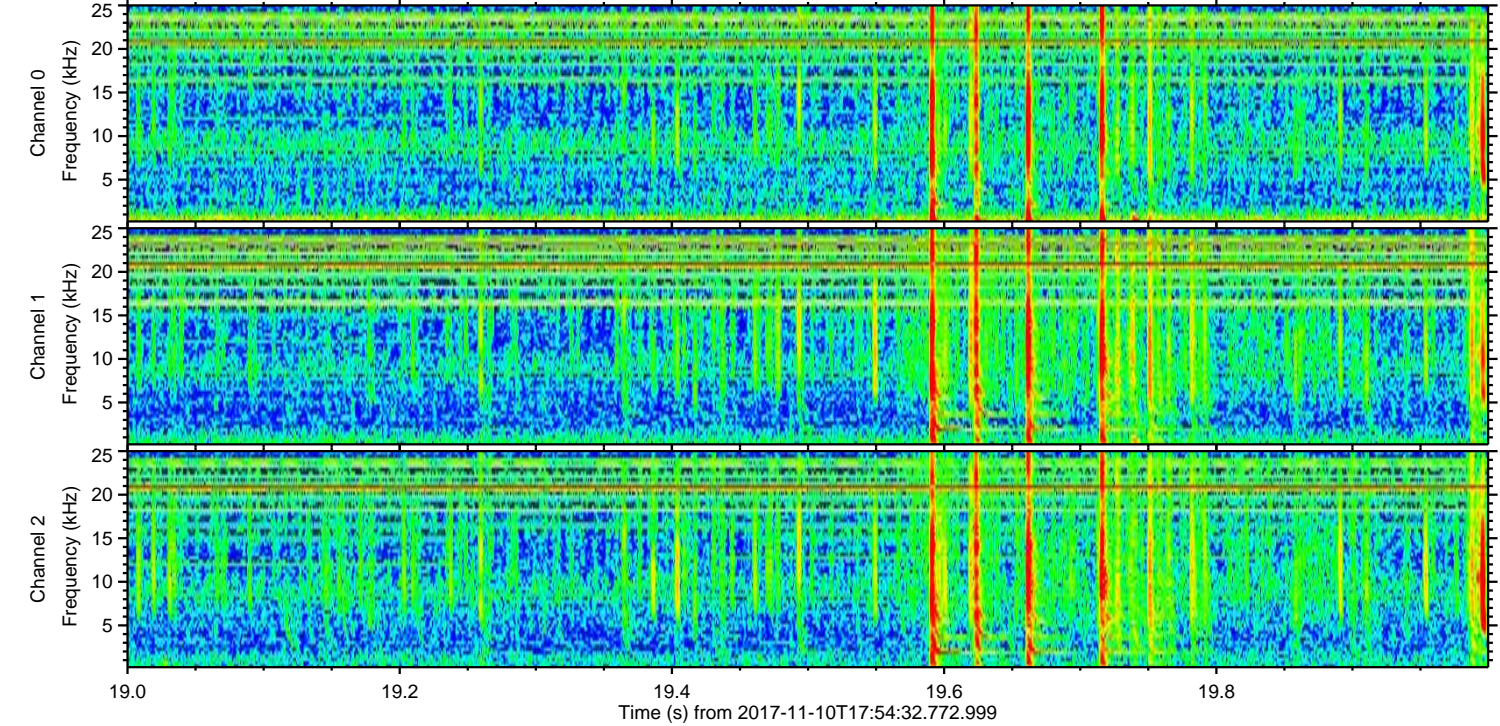
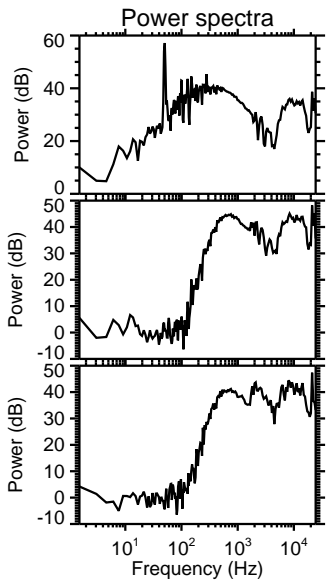
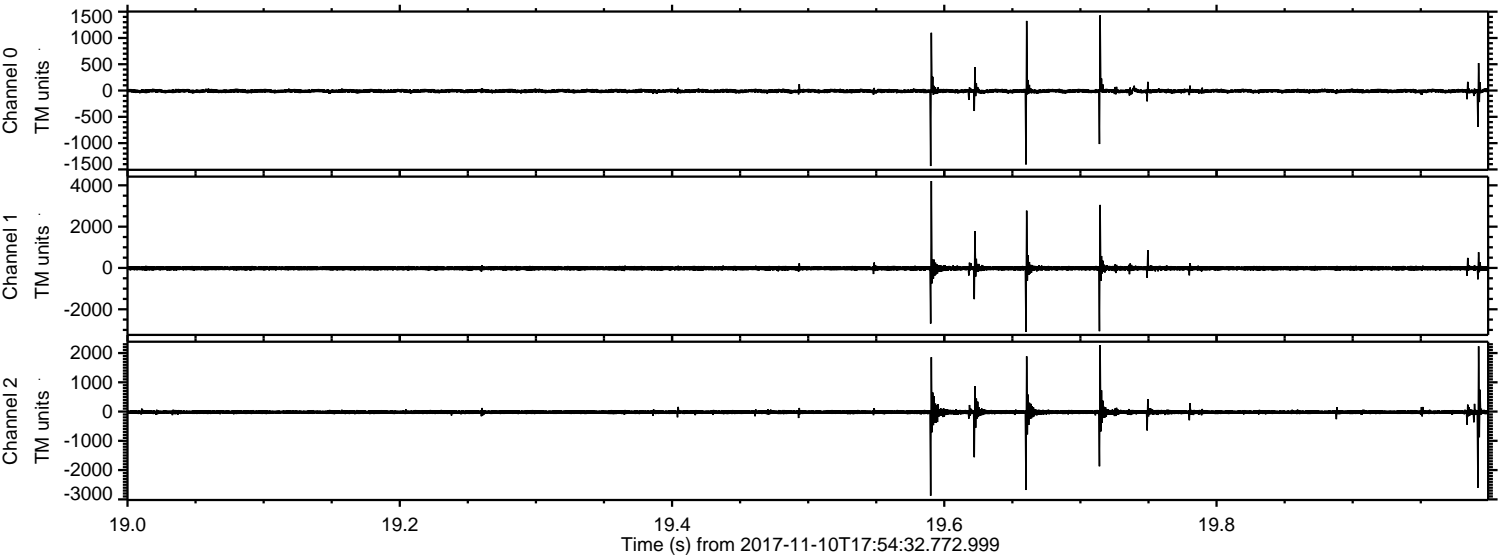
Channel 0
mn: -2976
mx: 2130
 μ : -9.4
 σ : 28.4

Channel 1
mn: -3330
mx: 2359
 μ : -15.2
 σ : 58.7

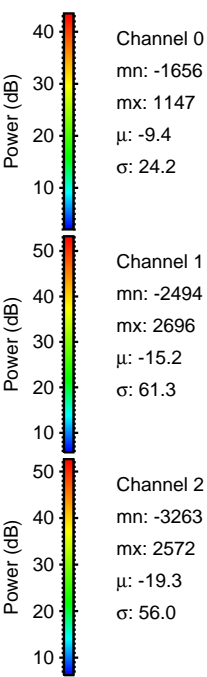
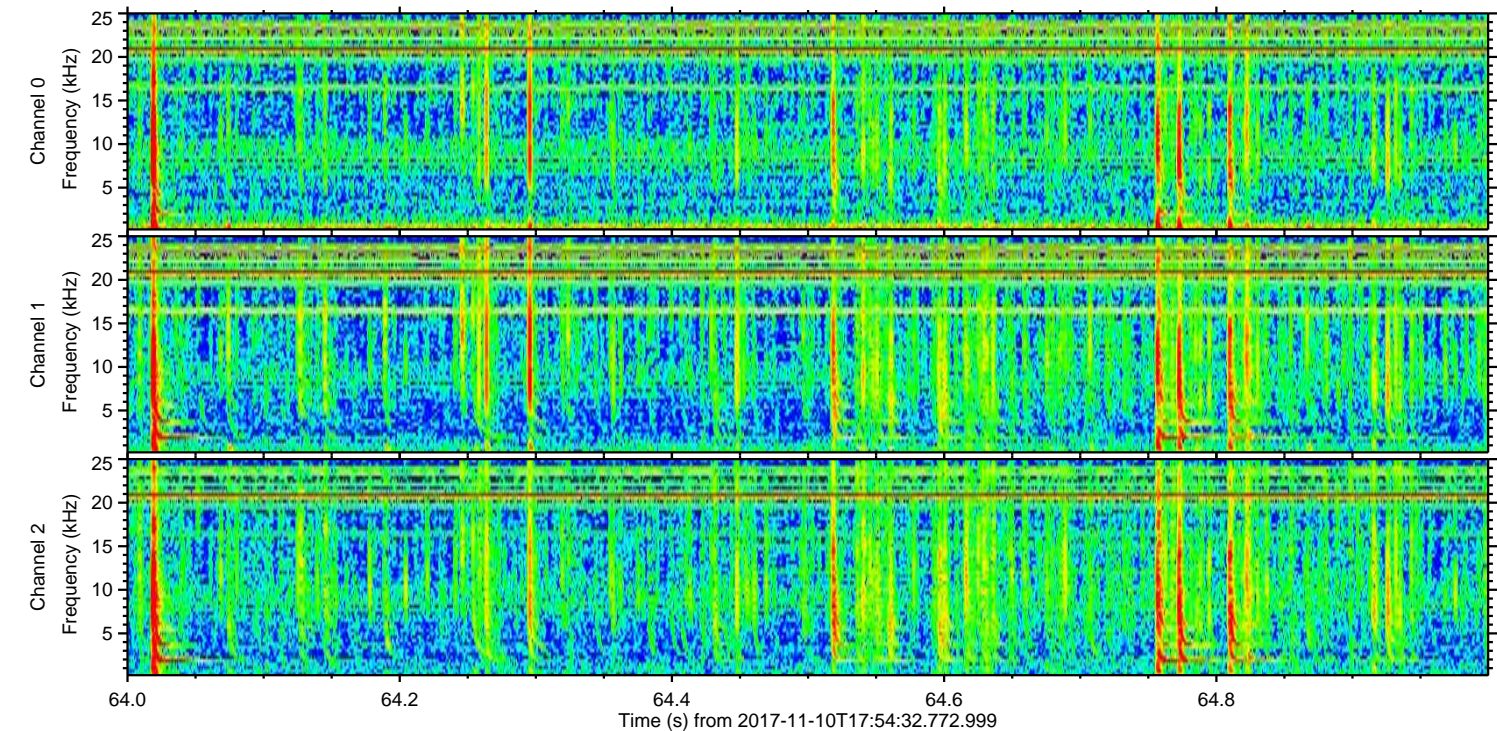
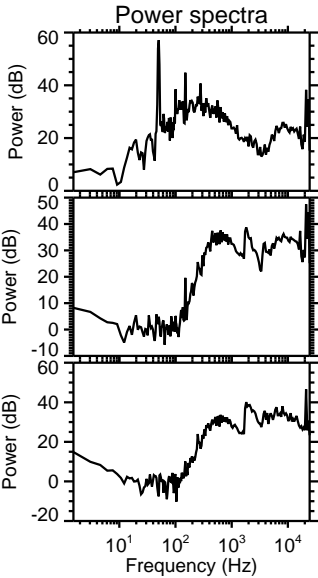
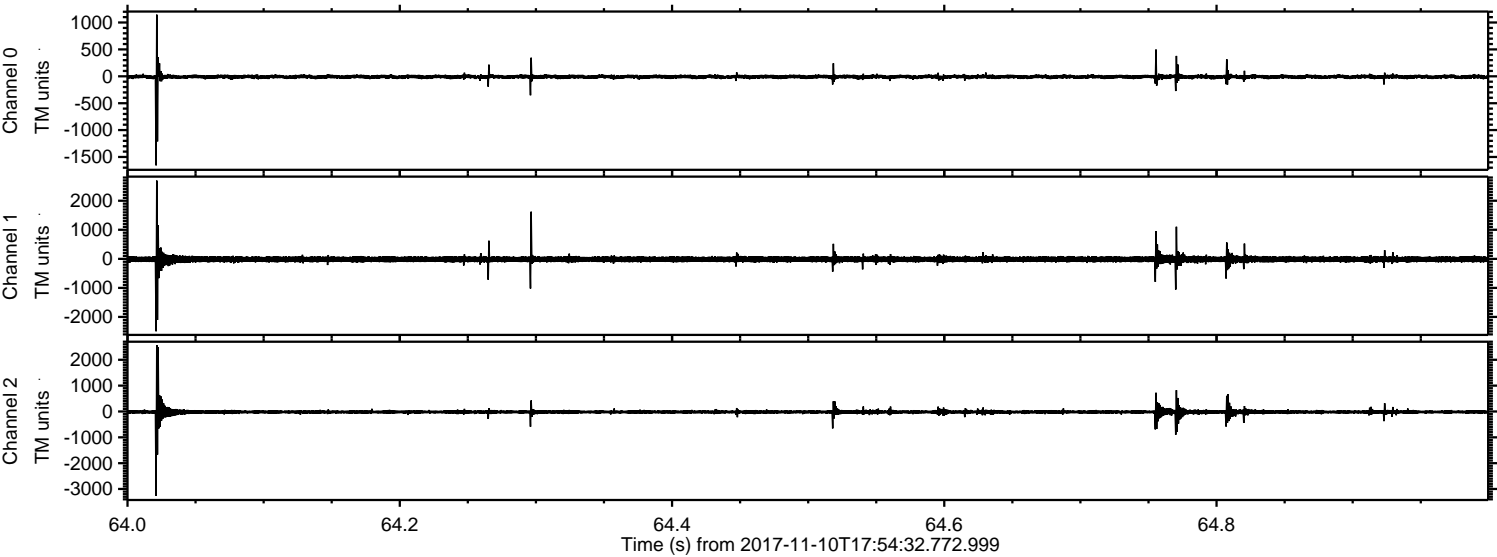
Channel 2
mn: -6181
mx: 8533
 μ : -19.3
 σ : 72.1

ELMAVAN 3D WAVEFORMS (Measured data sampled at 50 kHz) 51000 packets of 144 samples from 2017-11-10T17:54:32.772.999. Part 20/147

Processed Fri Nov 10 19:02:18 2017 by ELM ver.2012-10-06 from 001__elm20171110_175431__dat00.bin

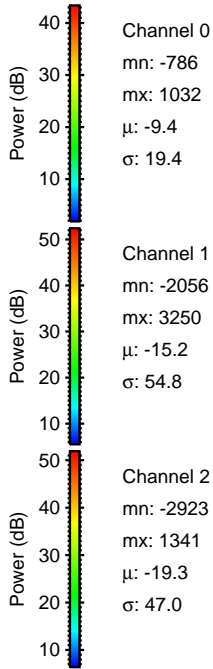
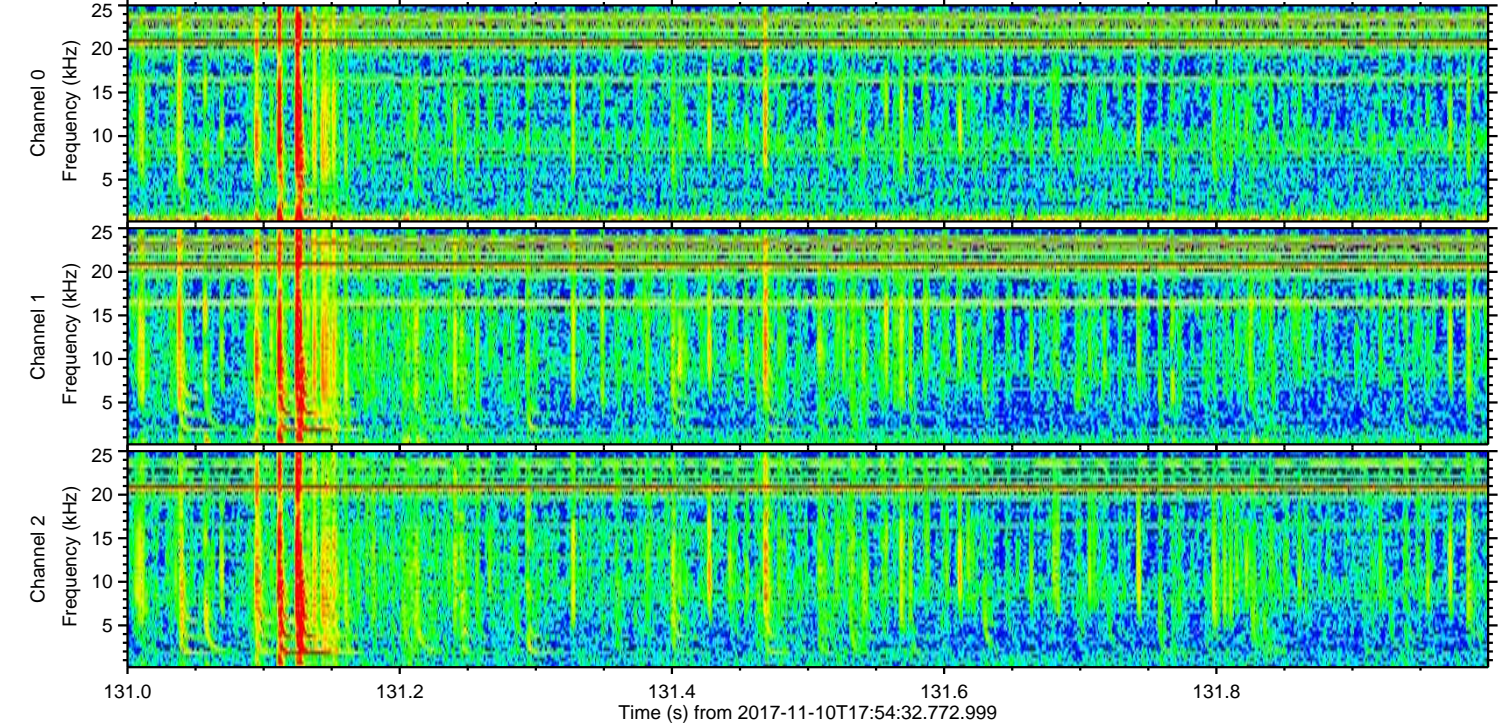
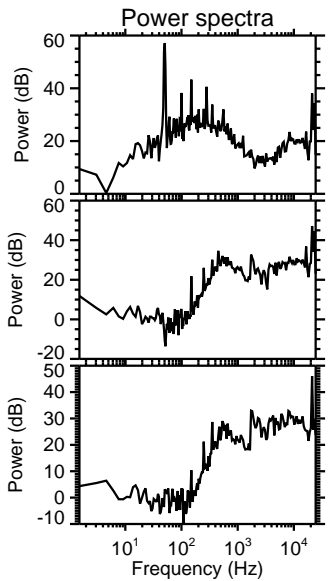
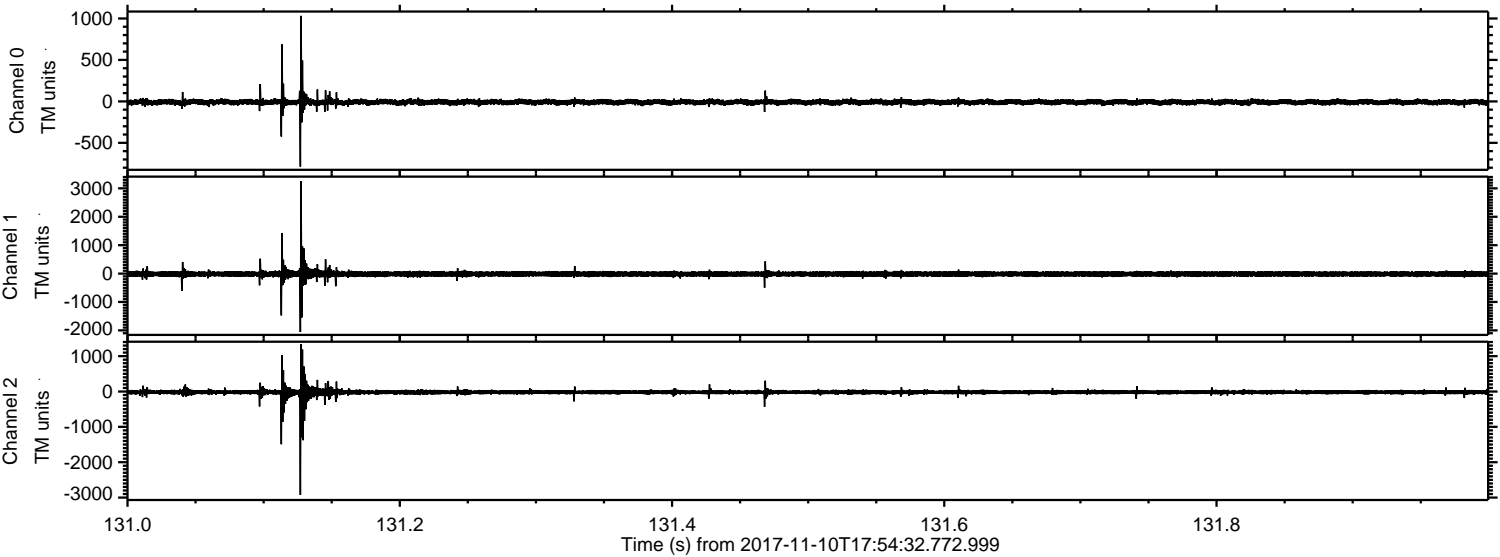


Processed Fri Nov 10 19:02:19 2017 by ELM ver.2012-10-06 from 001__elm20171110_175431__dat00.bin



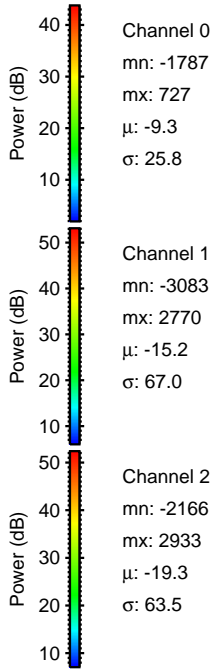
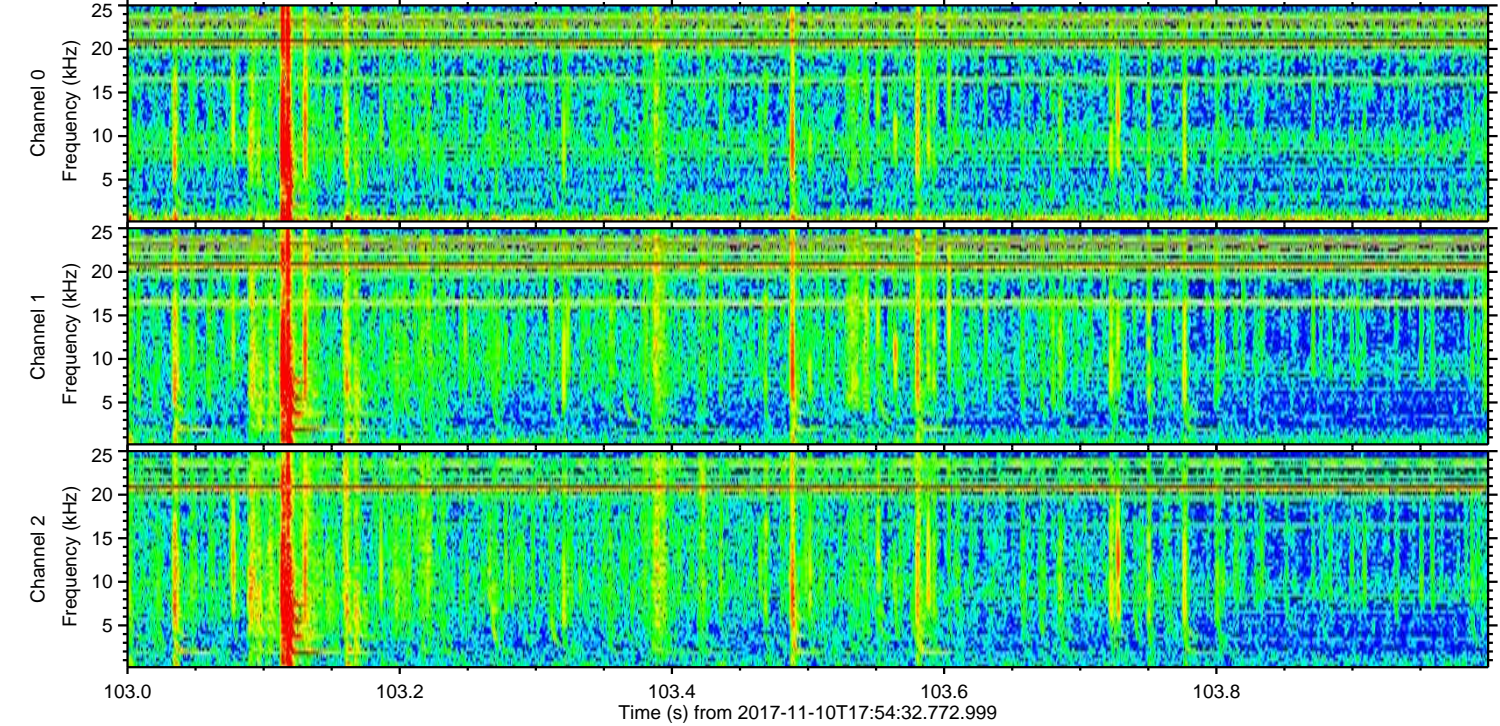
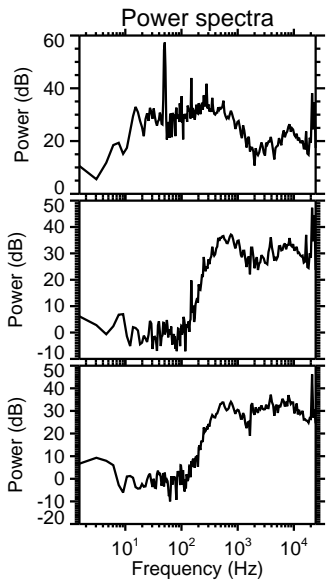
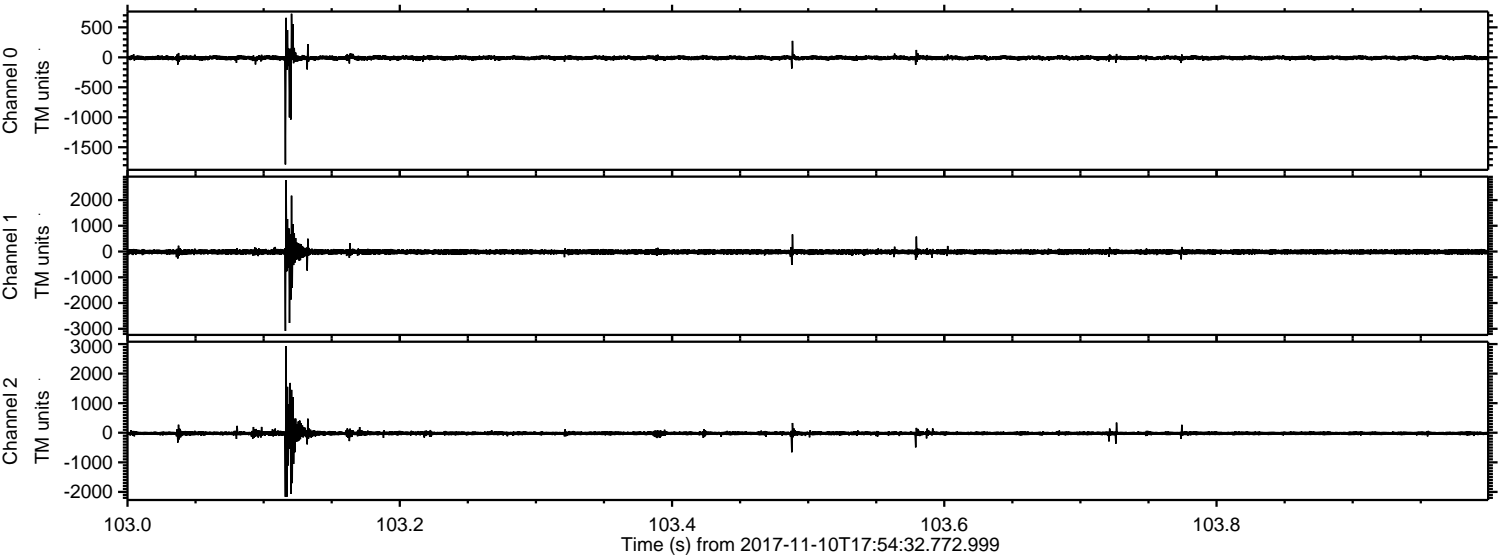
ELMAVAN 3D WAVEFORMS (Measured data sampled at 50 kHz) 51000 packets of 144 samples from 2017-11-10T17:54:32.772.999. Part 132/147

Processed Fri Nov 10 19:02:20 2017 by ELM ver.2012-10-06 from 001__elm20171110_175431__dat00.bin

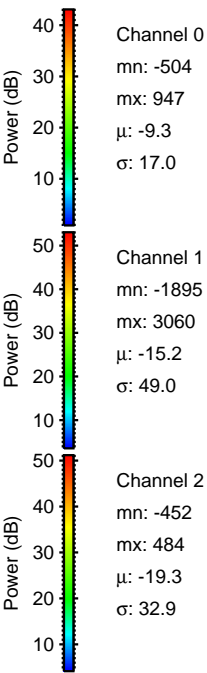
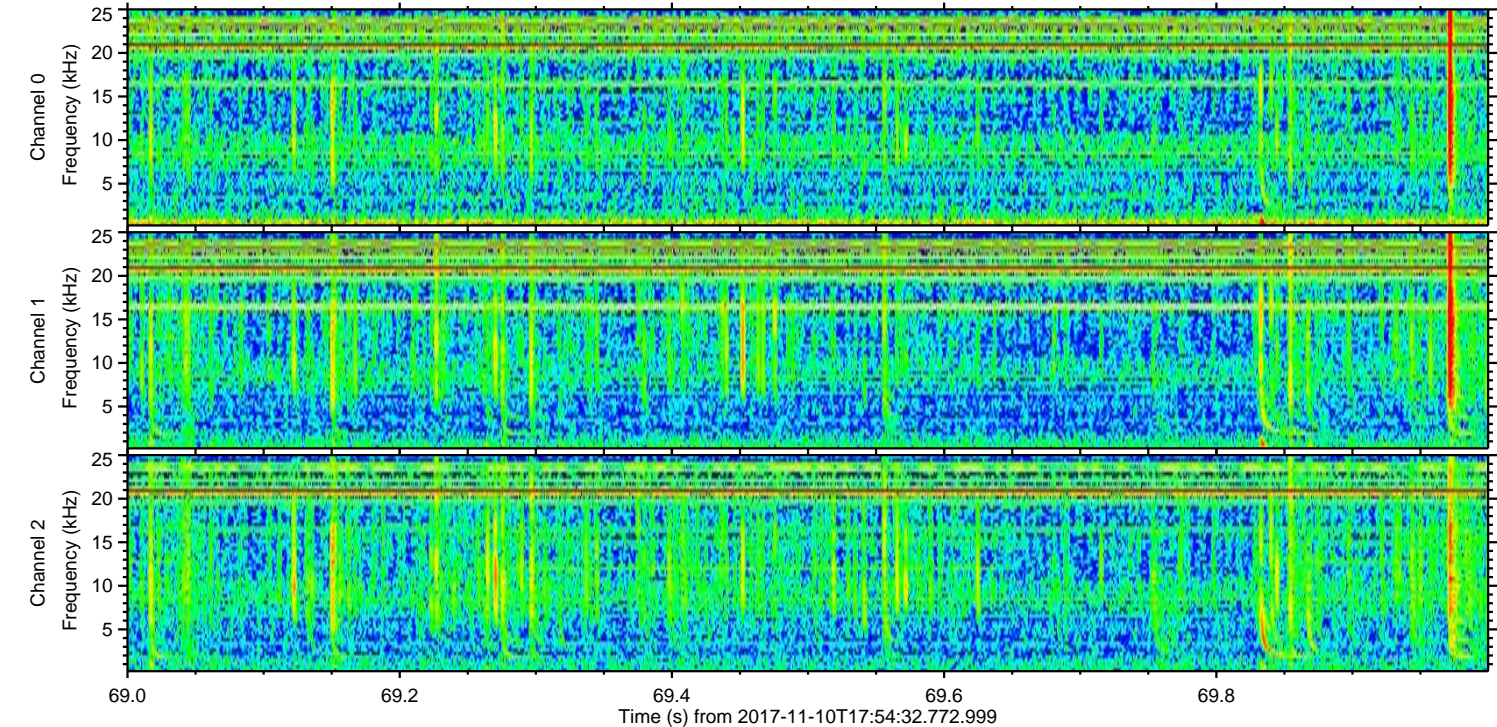
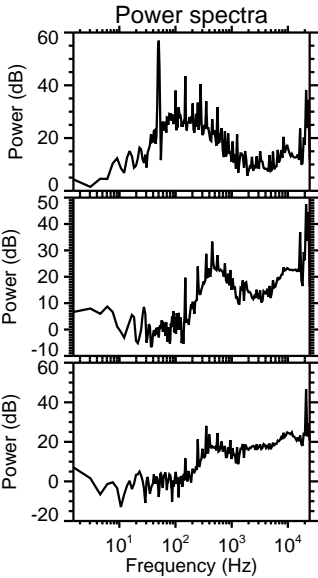
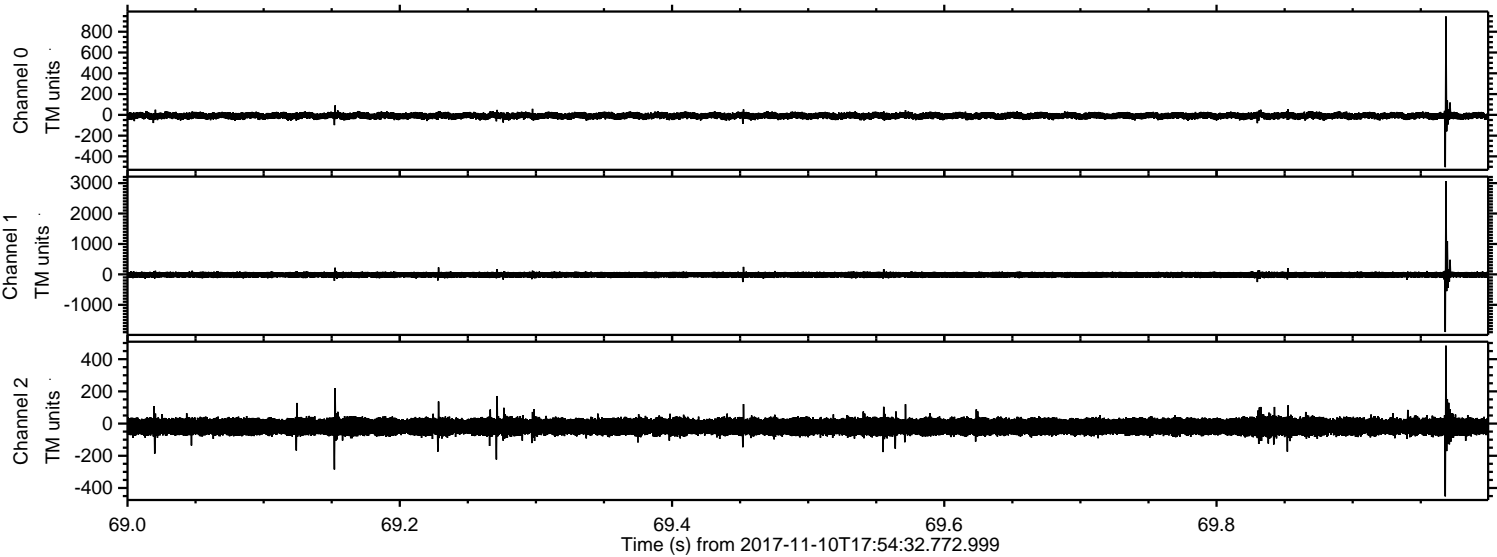


ELMAVAN 3D WAVEFORMS (Measured data sampled at 50 kHz) 51000 packets of 144 samples from 2017-11-10T17:54:32.772.999. Part 104/147

Processed Fri Nov 10 19:02:21 2017 by ELM ver.2012-10-06 from 001__elm20171110_175431__dat00.bin

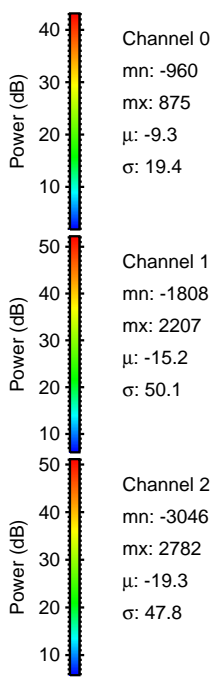
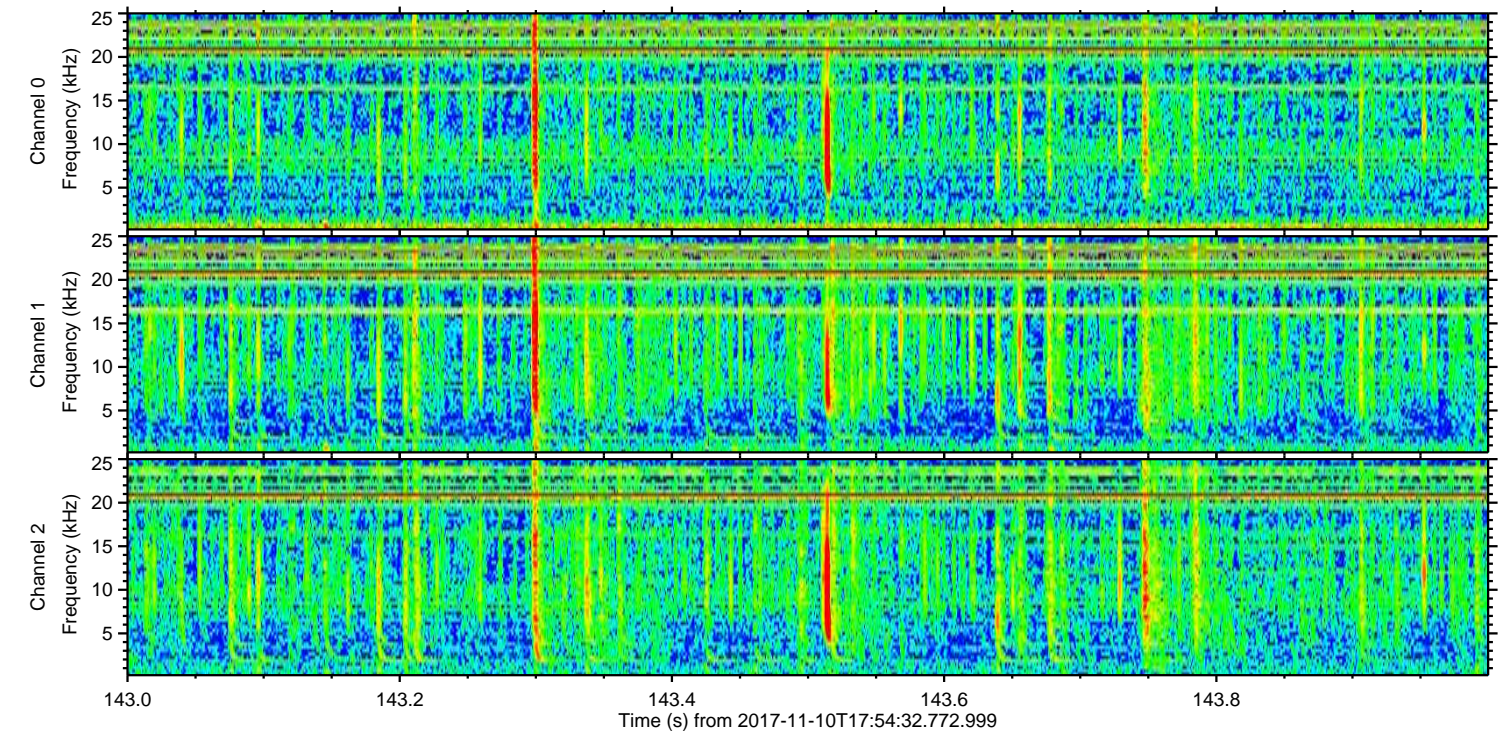
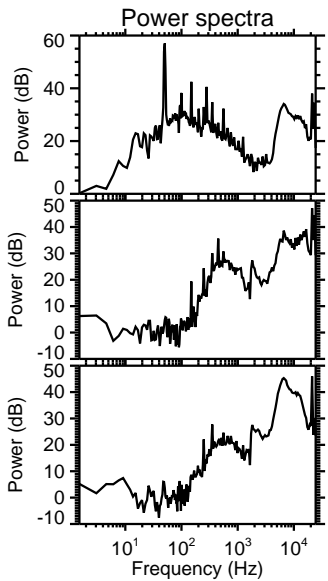
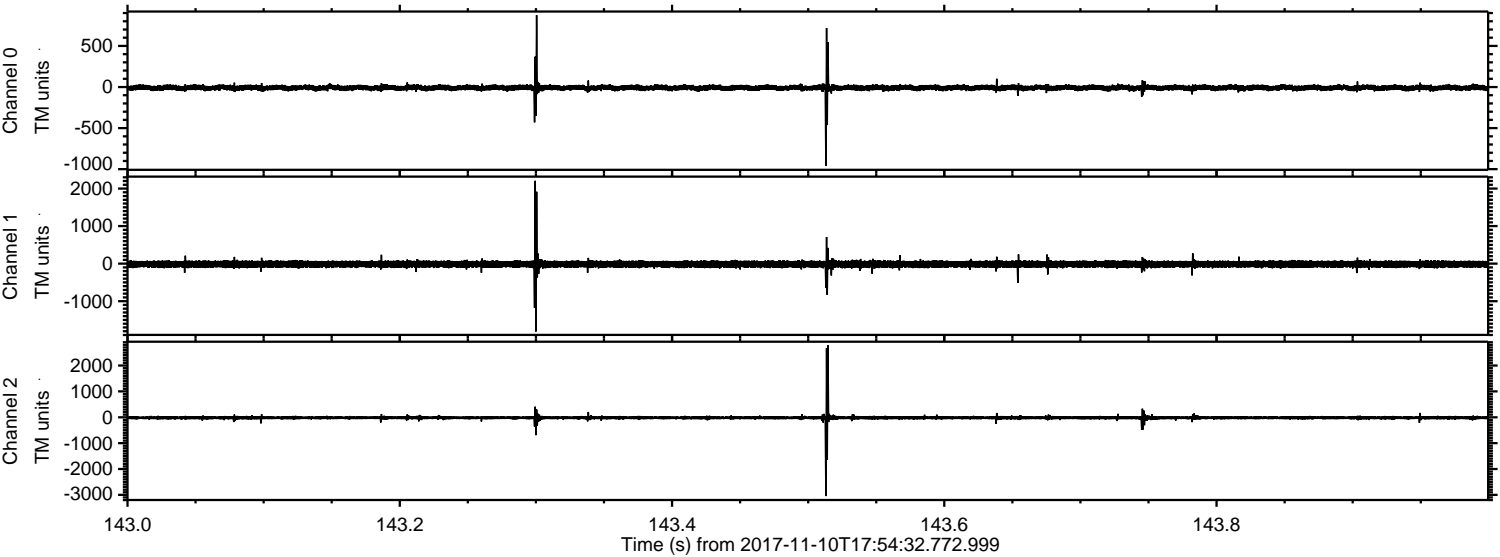


Processed Fri Nov 10 19:02:22 2017 by ELM ver.2012-10-06 from 001__elm20171110_175431__dat00.bin



ELMAVAN 3D WAVEFORMS (Measured data sampled at 50 kHz) 51000 packets of 144 samples from 2017-11-10T17:54:32.772.999. Part 144/147

Processed Fri Nov 10 19:02:23 2017 by ELM ver.2012-10-06 from 001__elm20171110_175431__dat00.bin



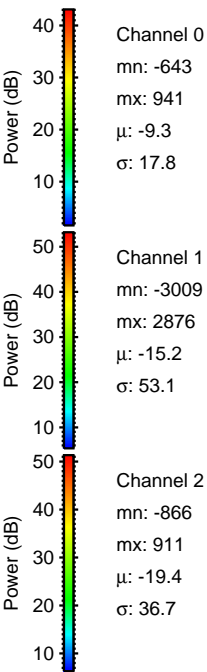
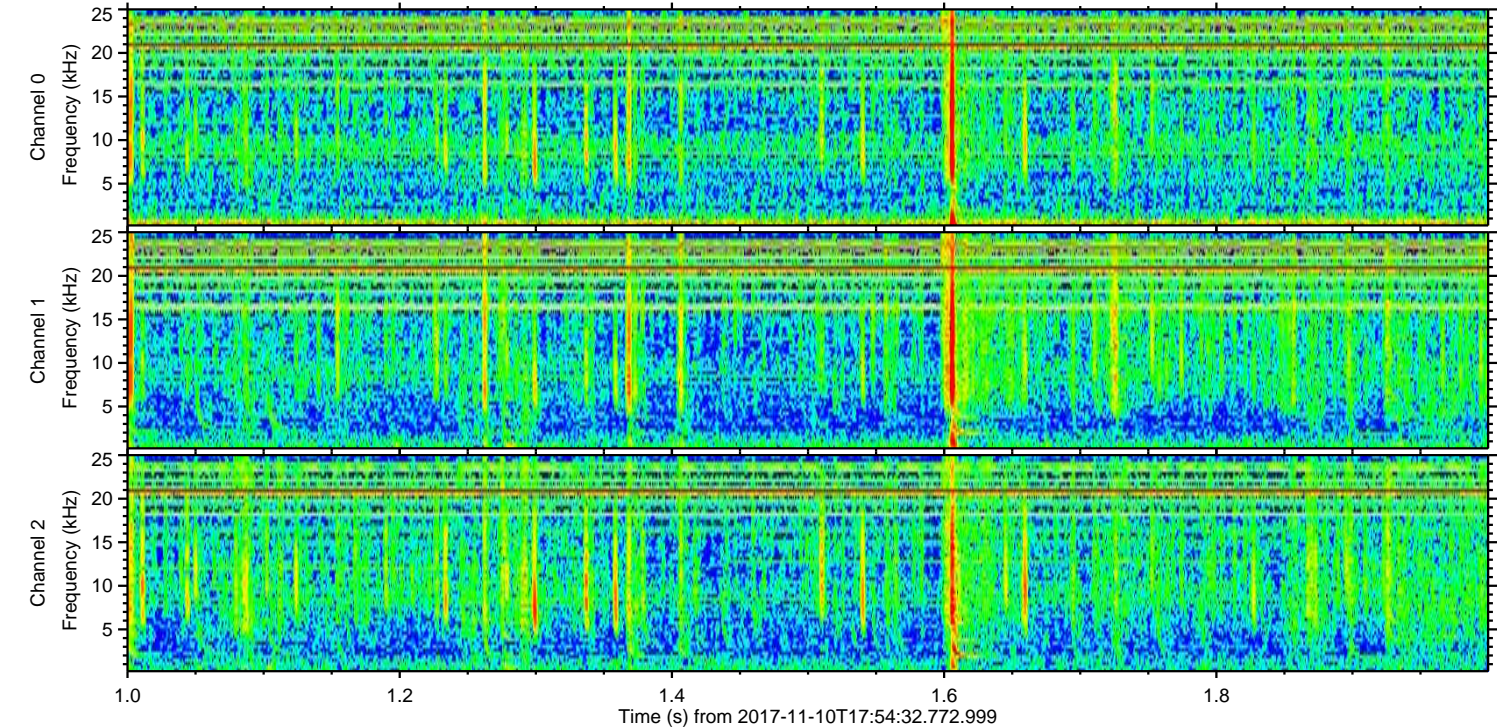
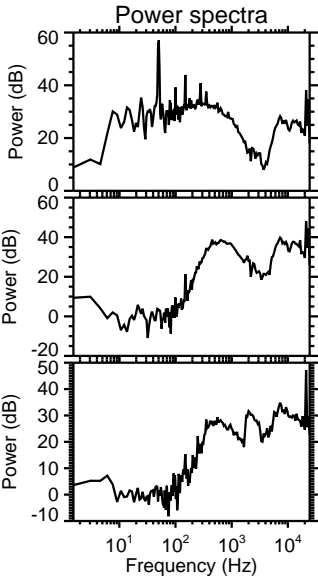
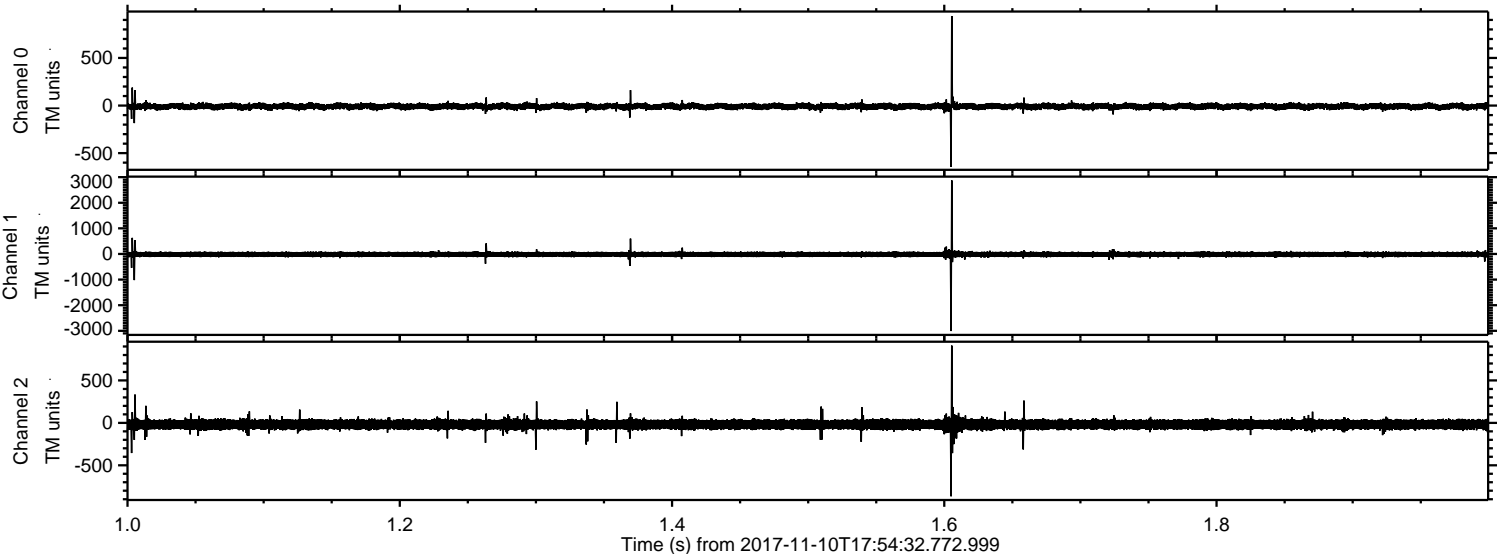
Channel 0
mn: -960
mx: 875
 μ : -9.3
 σ : 19.4

Channel 1
mn: -1808
mx: 2207
 μ : -15.2
 σ : 50.1

Channel 2
mn: -3046
mx: 2782
 μ : -19.3
 σ : 47.8

ELMAVAN 3D WAVEFORMS (Measured data sampled at 50 kHz) 51000 packets of 144 samples from 2017-11-10T17:54:32.772.999. Part 2/147

Processed Fri Nov 10 19:02:23 2017 by ELM ver.2012-10-06 from 001__elm20171110_175431__dat00.bin



Processed Fri Nov 10 19:02:24 2017 by ELM ver.2012-10-06 from 001__elm20171110_175431__dat00.bin

