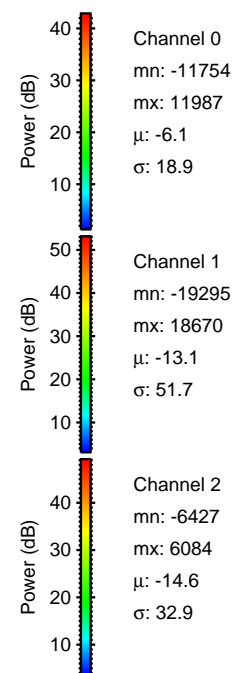
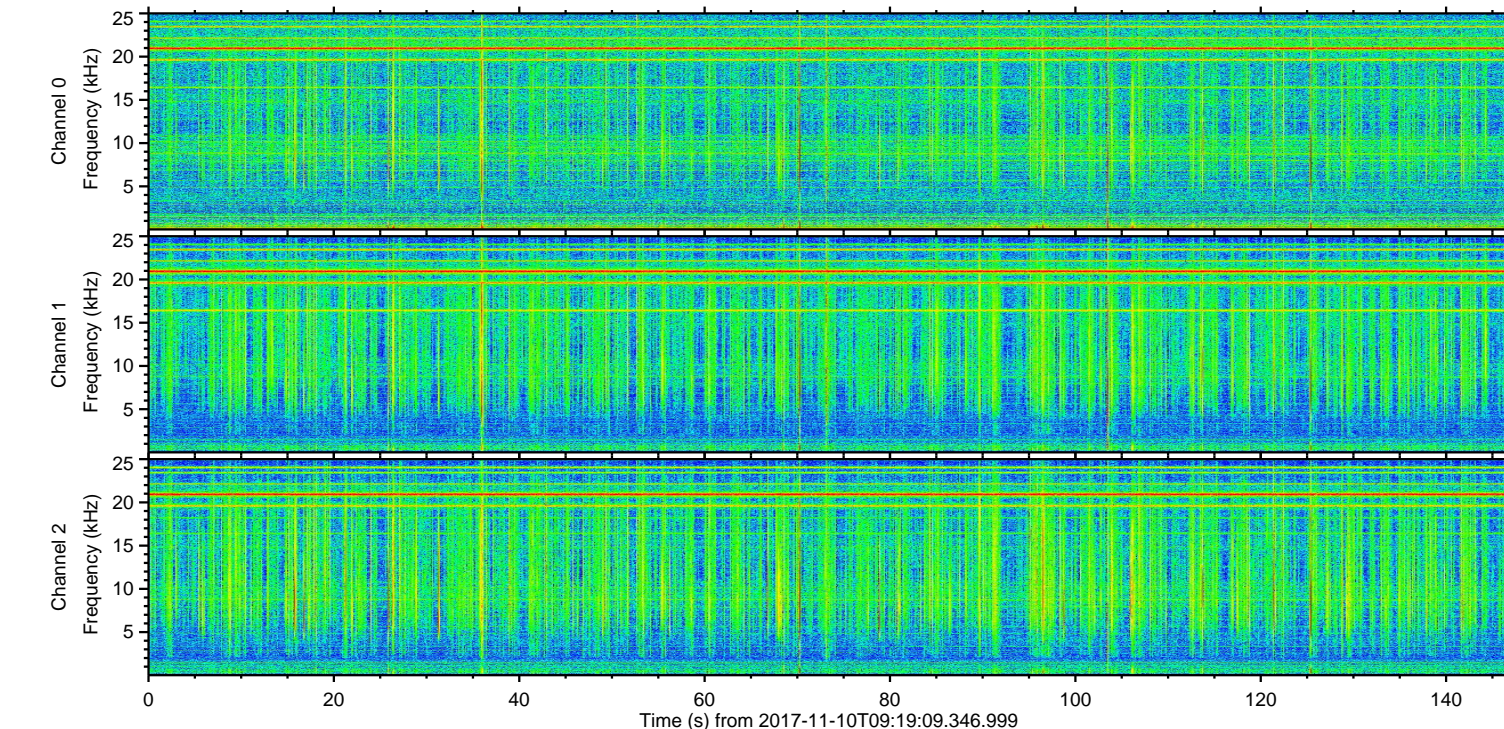
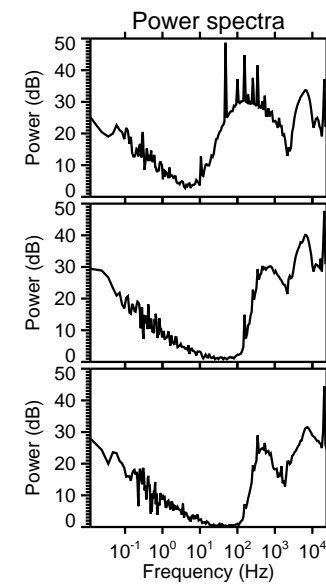
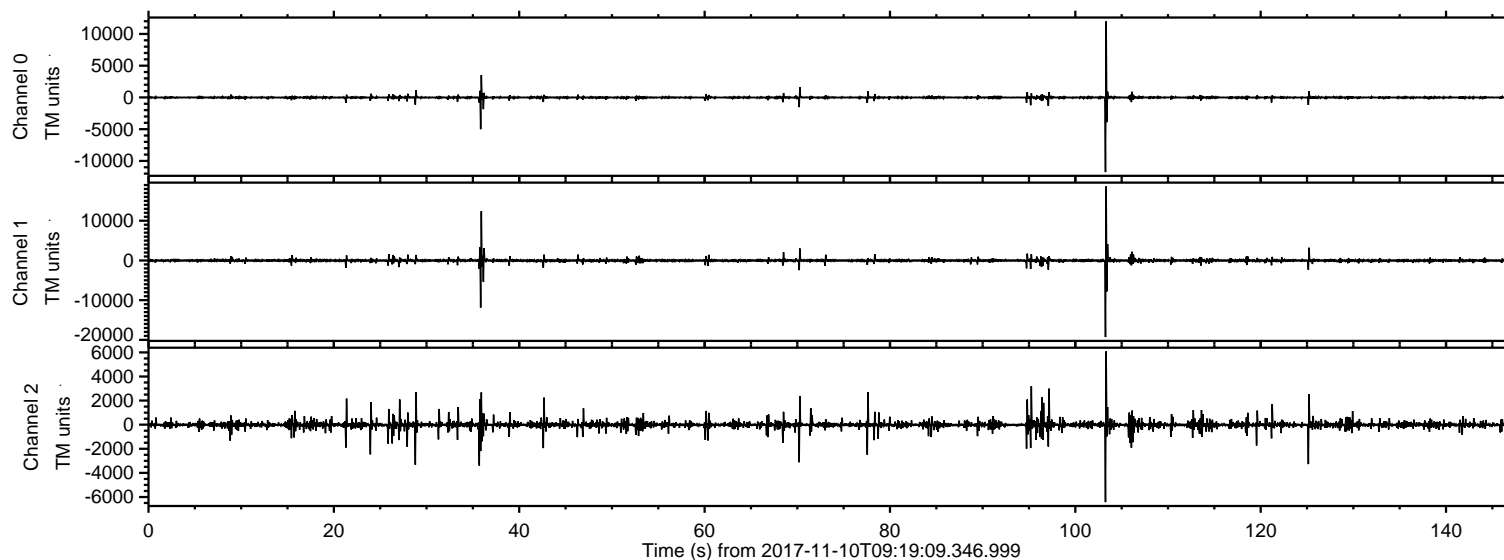


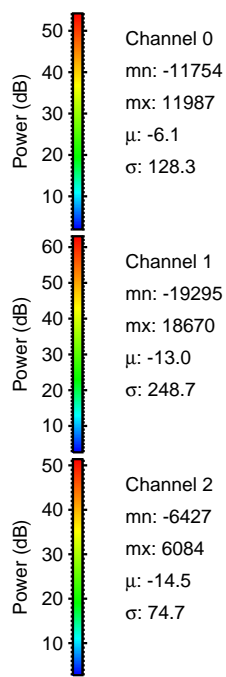
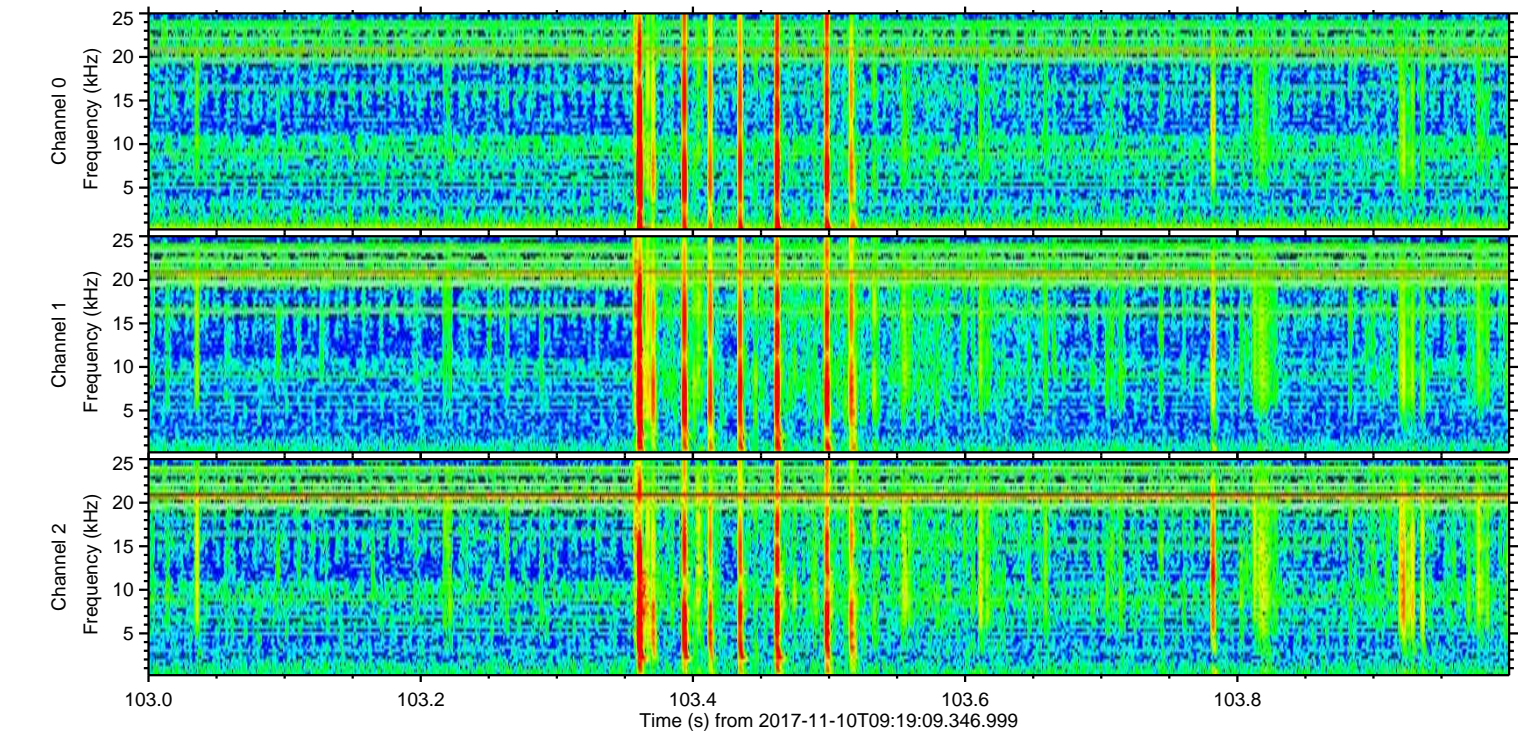
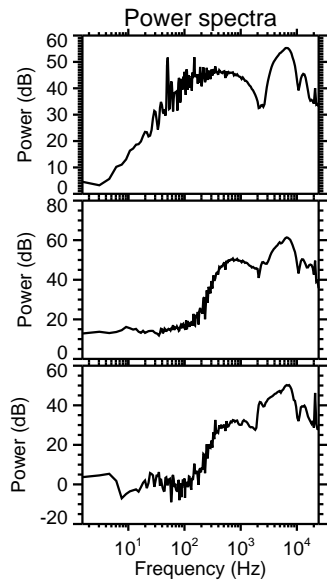
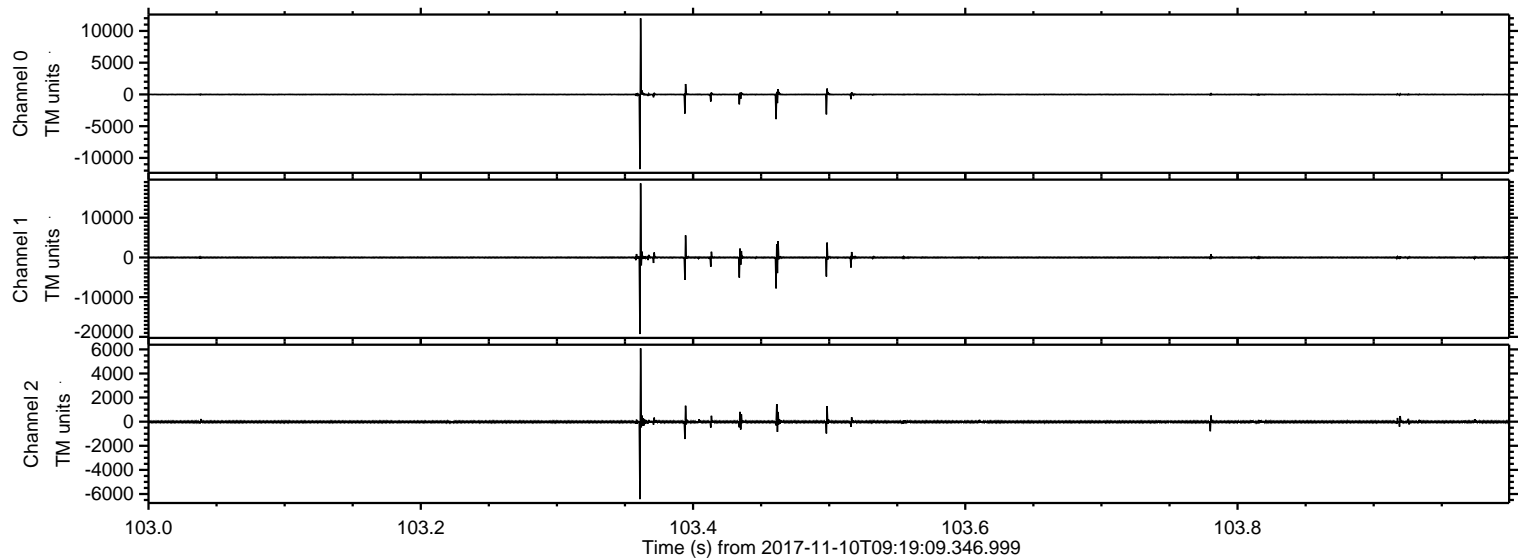
ELMAVAN 3D WAVEFORMS (Measured data sampled at 50 kHz) 51000 packets of 144 samples from 2017-11-10T09:19:09.346.999.

Processed Fri Nov 10 10:27:24 2017 by ELM ver.2012-10-06 from 001__elm20171110_091908__dat00.bin



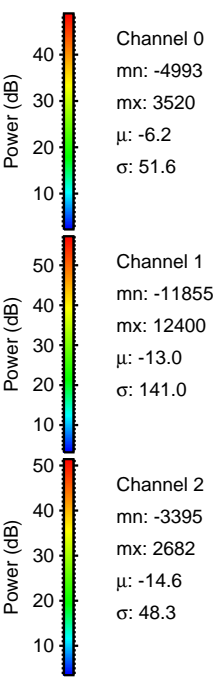
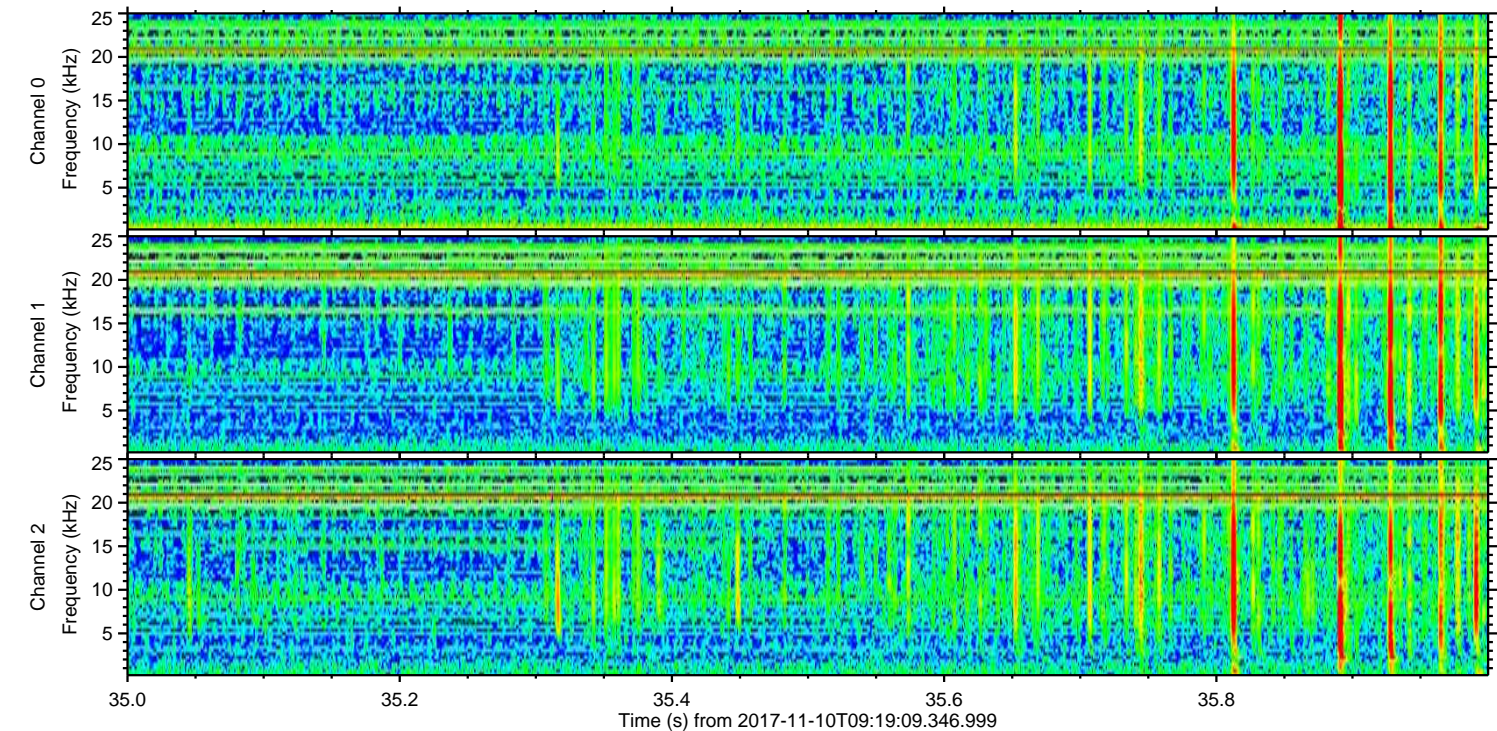
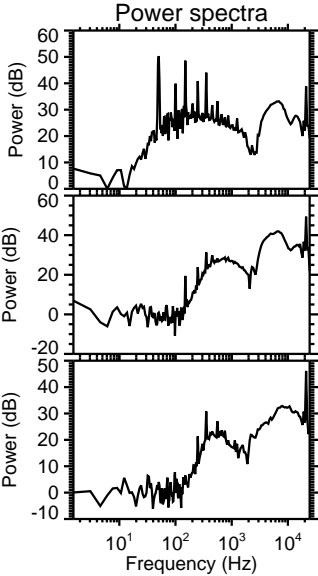
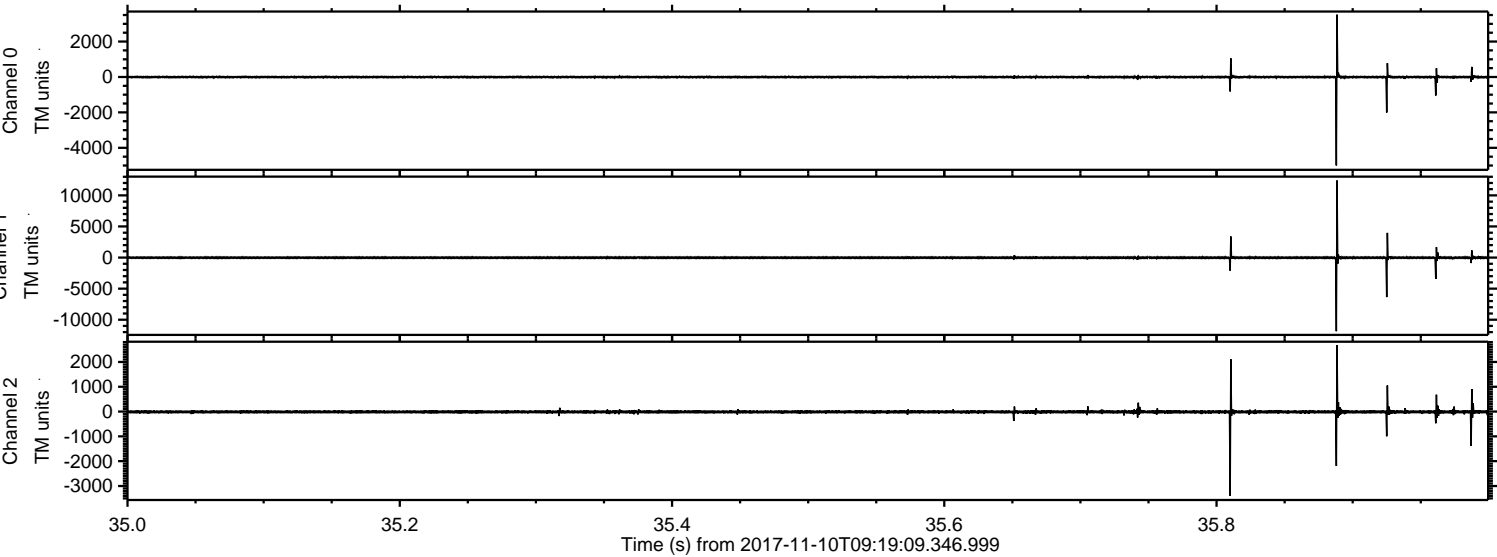
ELMAVAN 3D WAVEFORMS (Measured data sampled at 50 kHz) 51000 packets of 144 samples from 2017-11-10T09:19:09.346.999. Part 104/147

Processed Fri Nov 10 10:27:29 2017 by ELM ver.2012-10-06 from 001__elm20171110_091908__dat00.bin

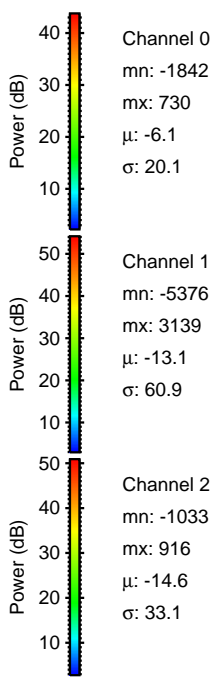
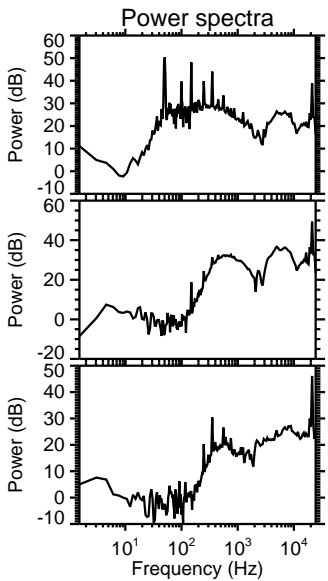
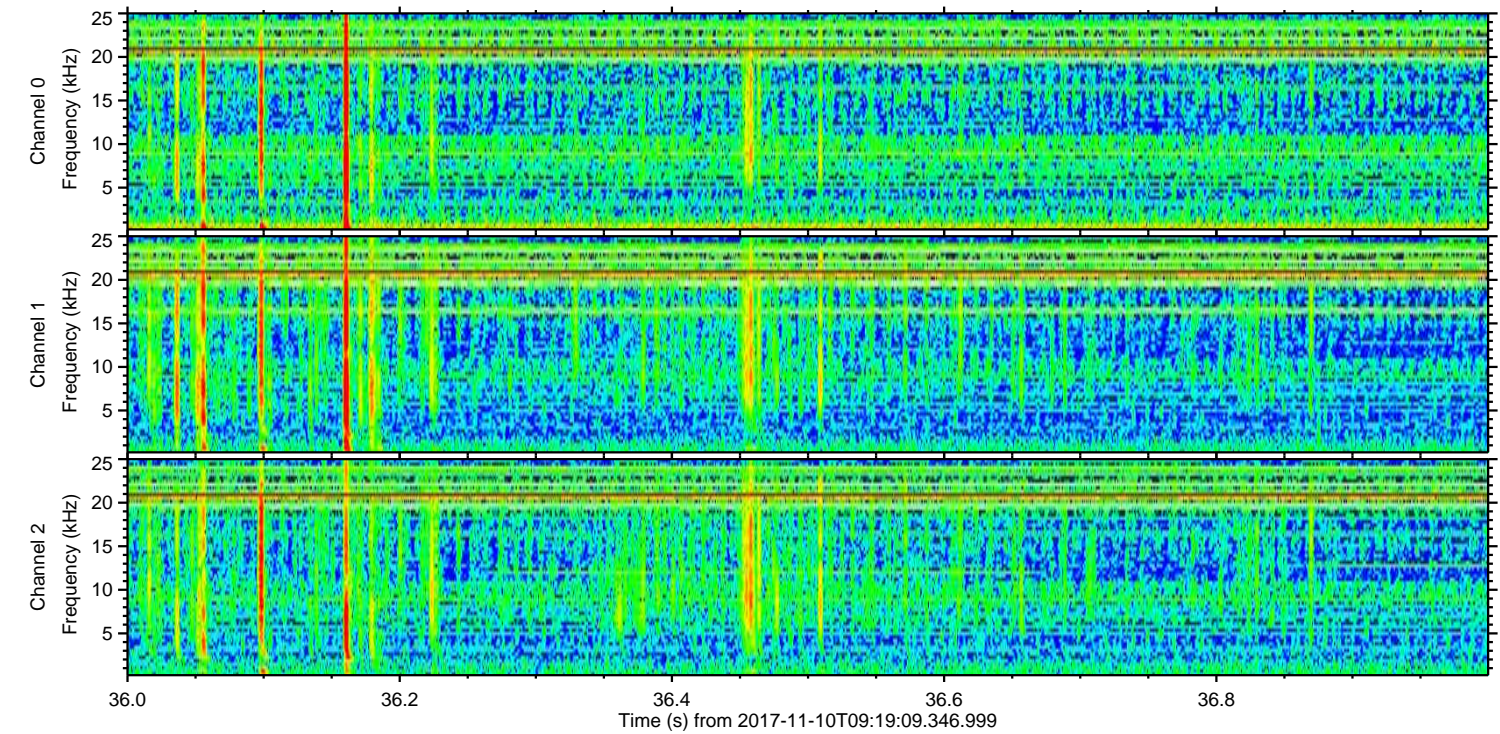
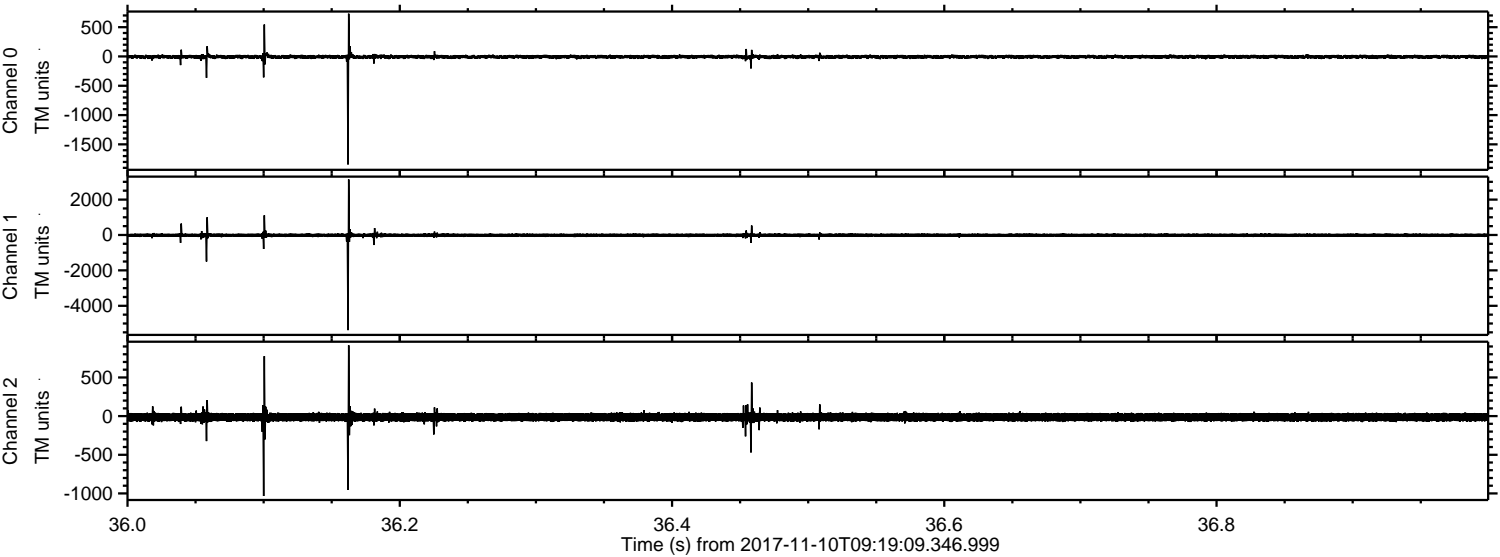


ELMAVAN 3D WAVEFORMS (Measured data sampled at 50 kHz) 51000 packets of 144 samples from 2017-11-10T09:19:09.346.999. Part 36/147

Processed Fri Nov 10 10:27:30 2017 by ELM ver.2012-10-06 from 001__elm20171110_091908__dat00.bin

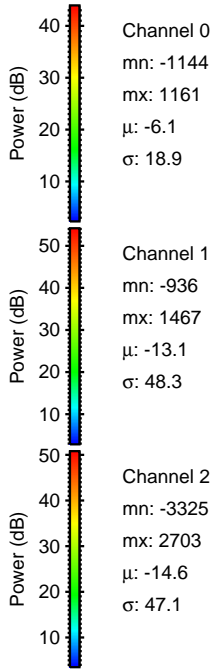
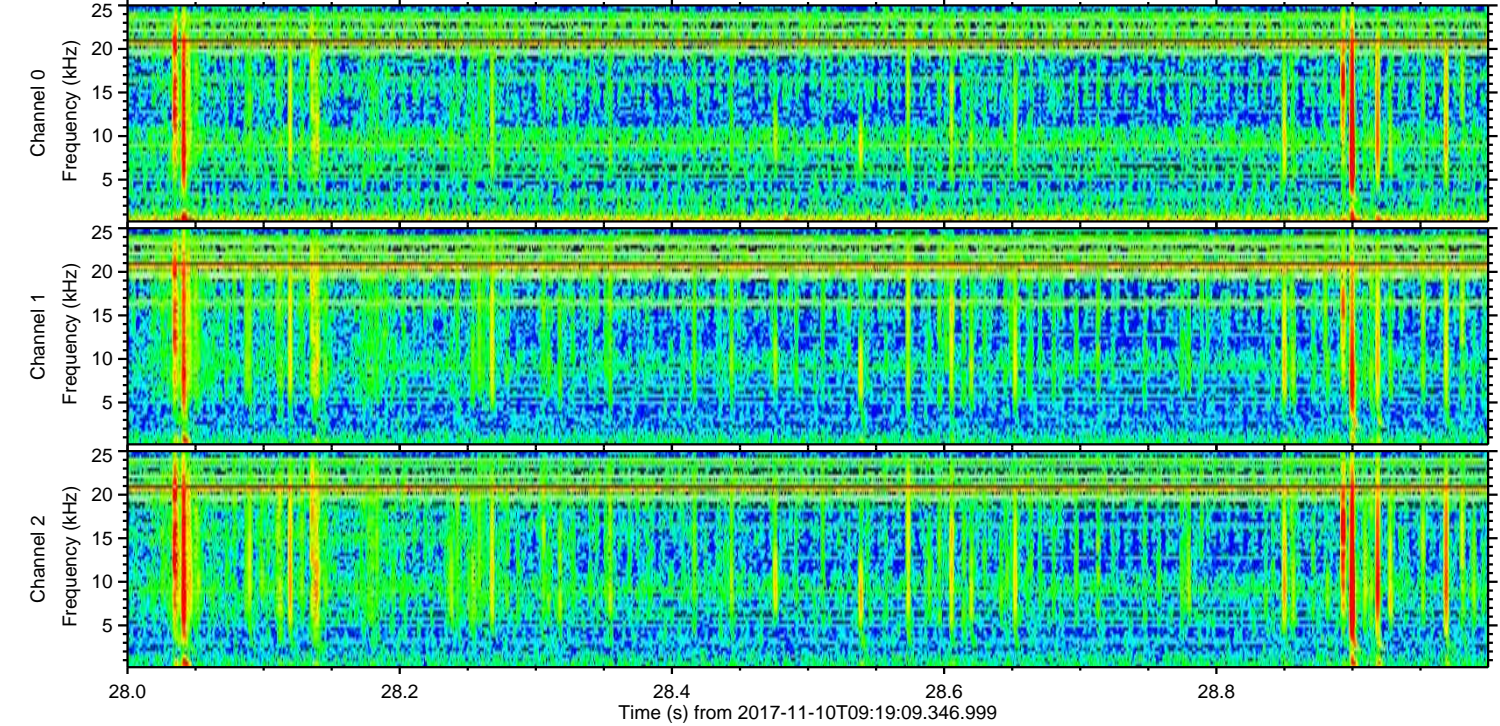
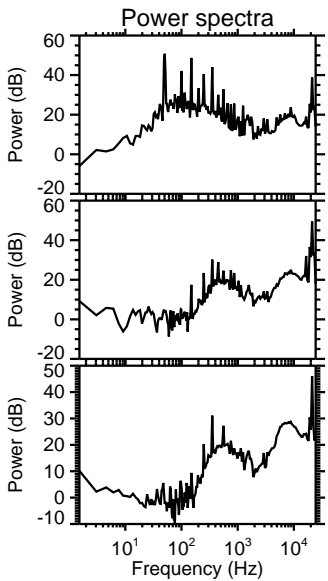
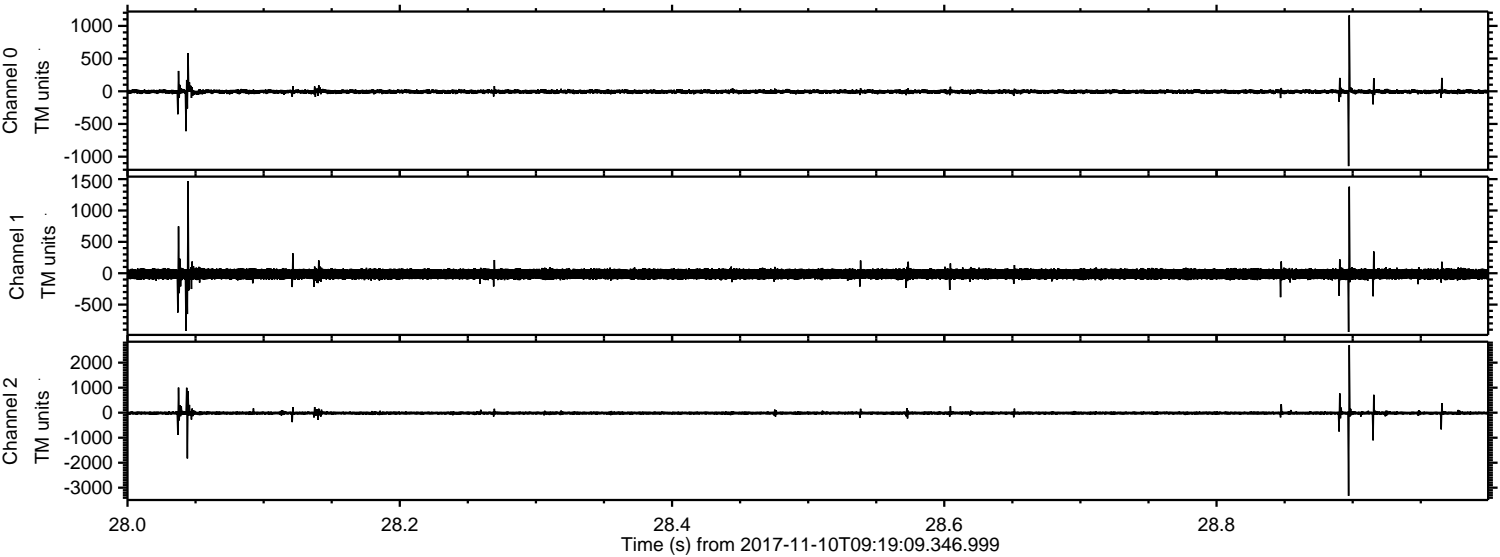


Processed Fri Nov 10 10:27:31 2017 by ELM ver.2012-10-06 from 001__elm20171110_091908__dat00.bin



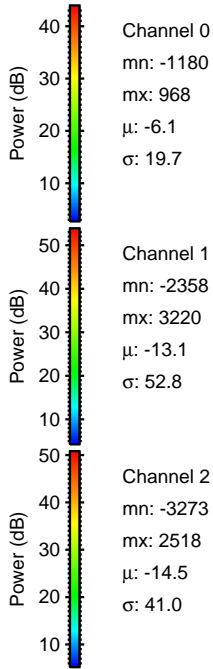
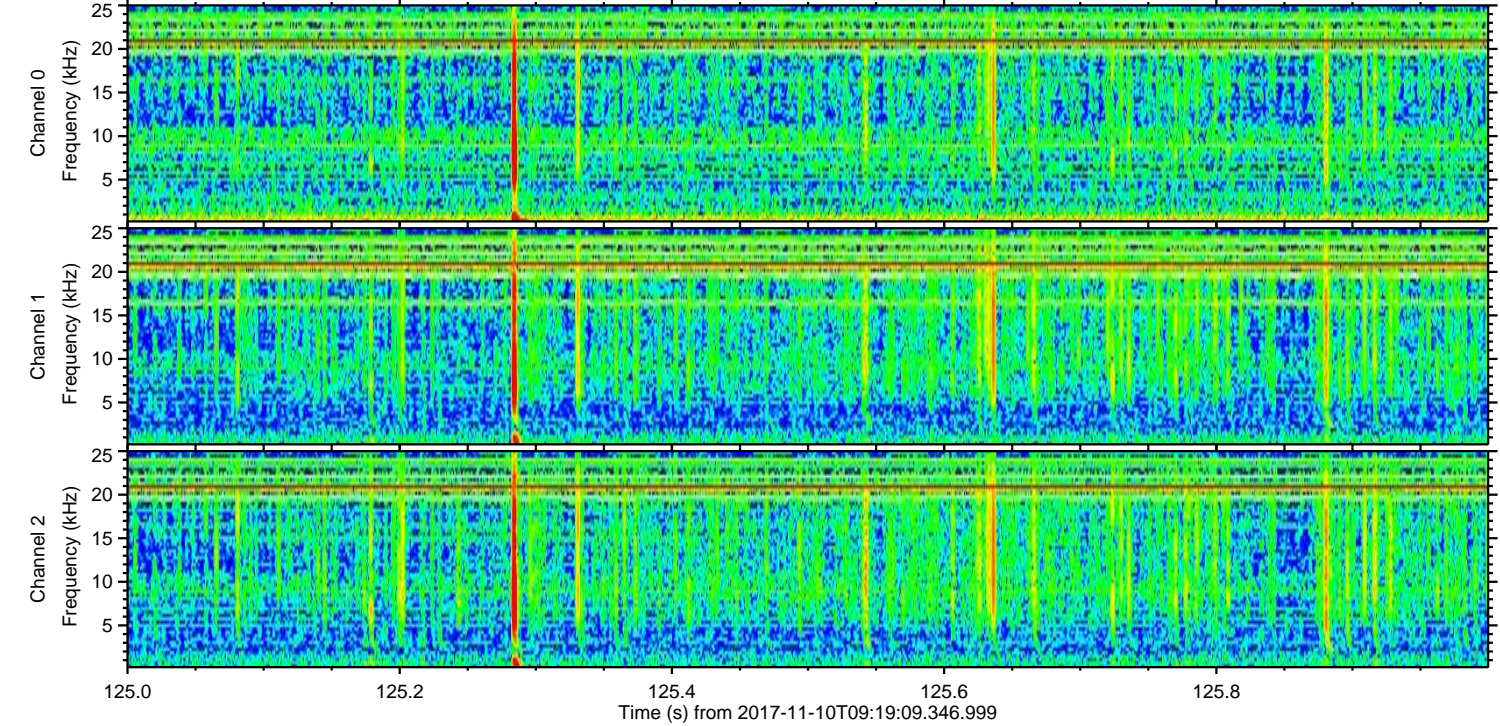
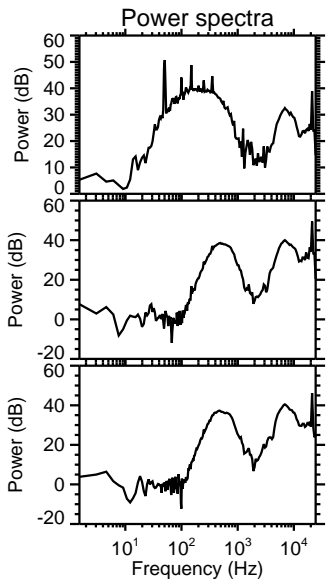
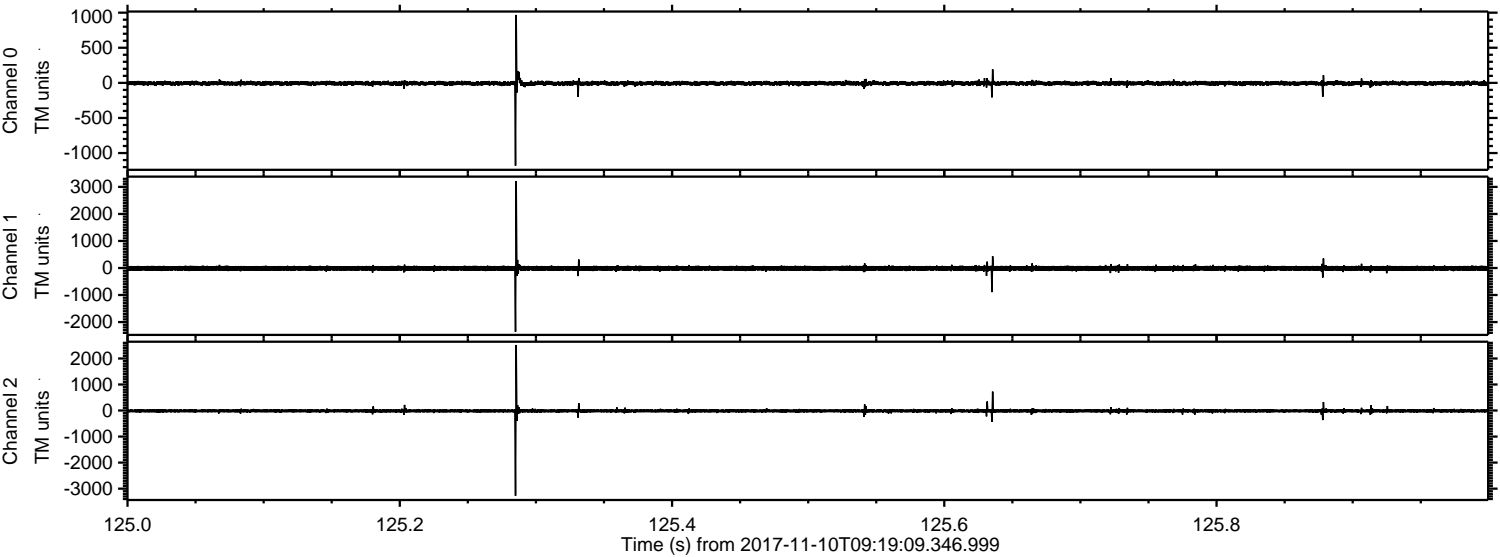
ELMAVAN 3D WAVEFORMS (Measured data sampled at 50 kHz) 51000 packets of 144 samples from 2017-11-10T09:19:09.346.999. Part 29/147

Processed Fri Nov 10 10:27:32 2017 by ELM ver.2012-10-06 from 001__elm20171110_091908__dat00.bin

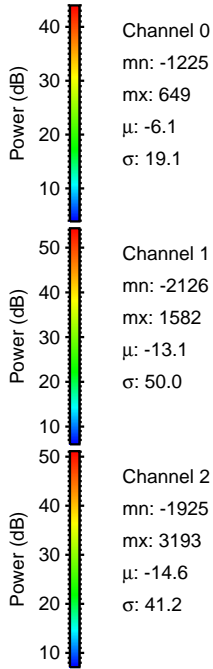
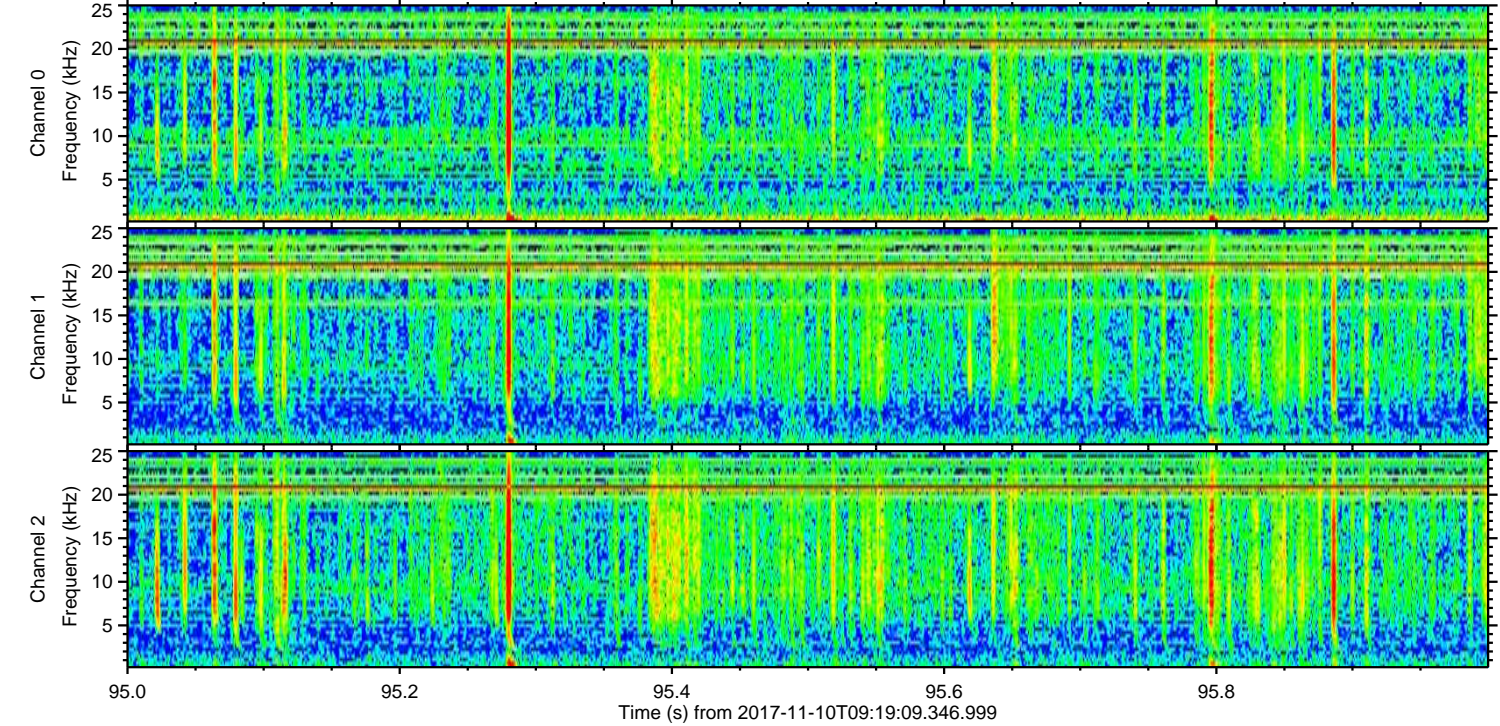
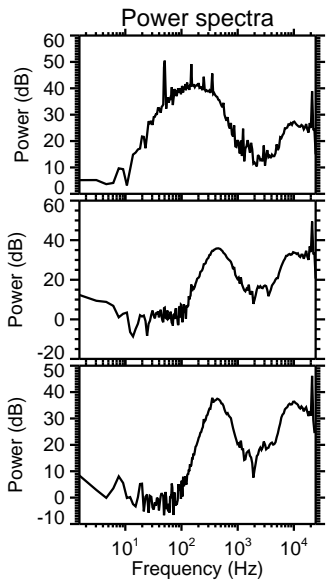
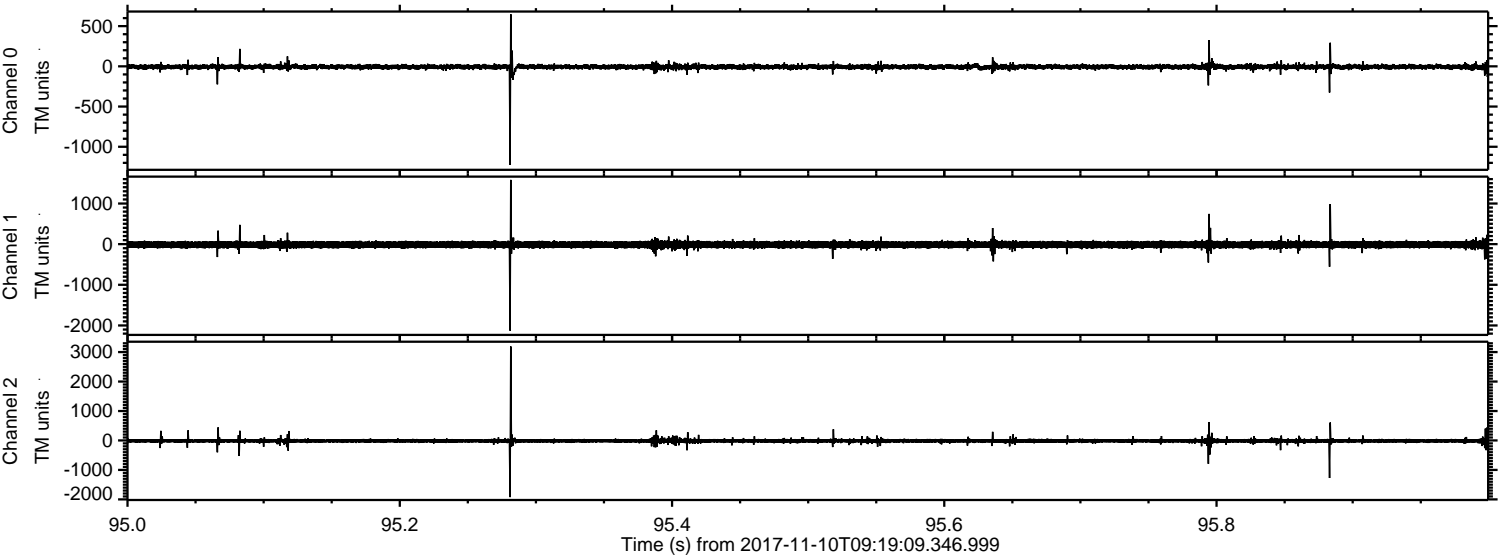


ELMAVAN 3D WAVEFORMS (Measured data sampled at 50 kHz) 51000 packets of 144 samples from 2017-11-10T09:19:09.346.999. Part 126/147

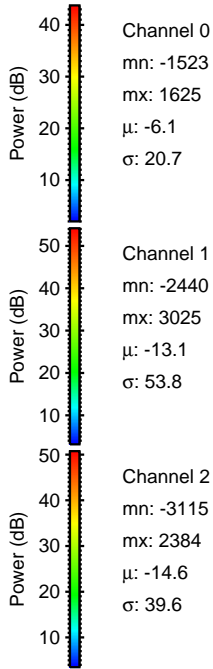
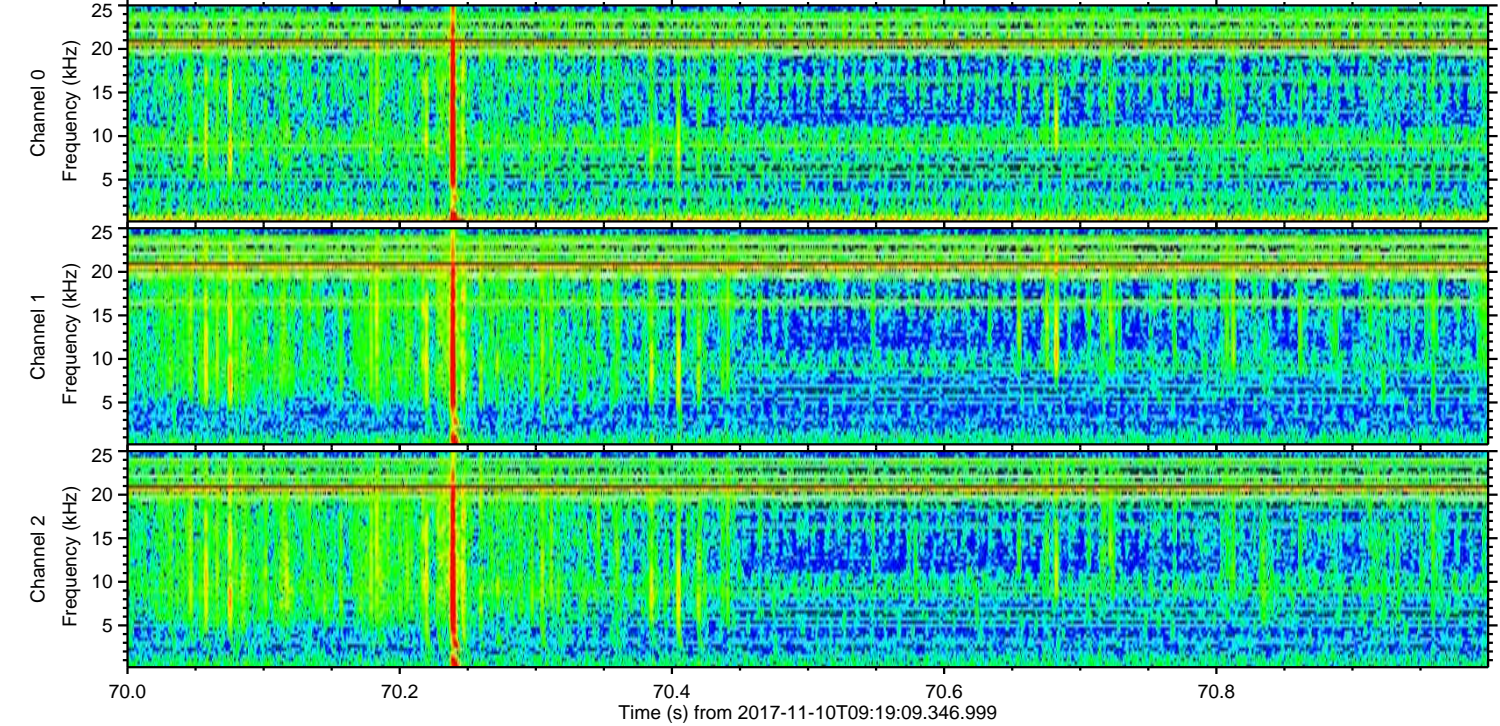
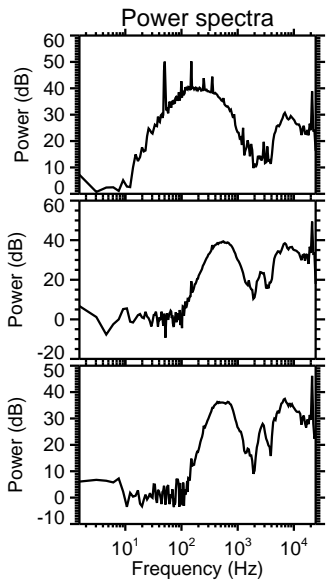
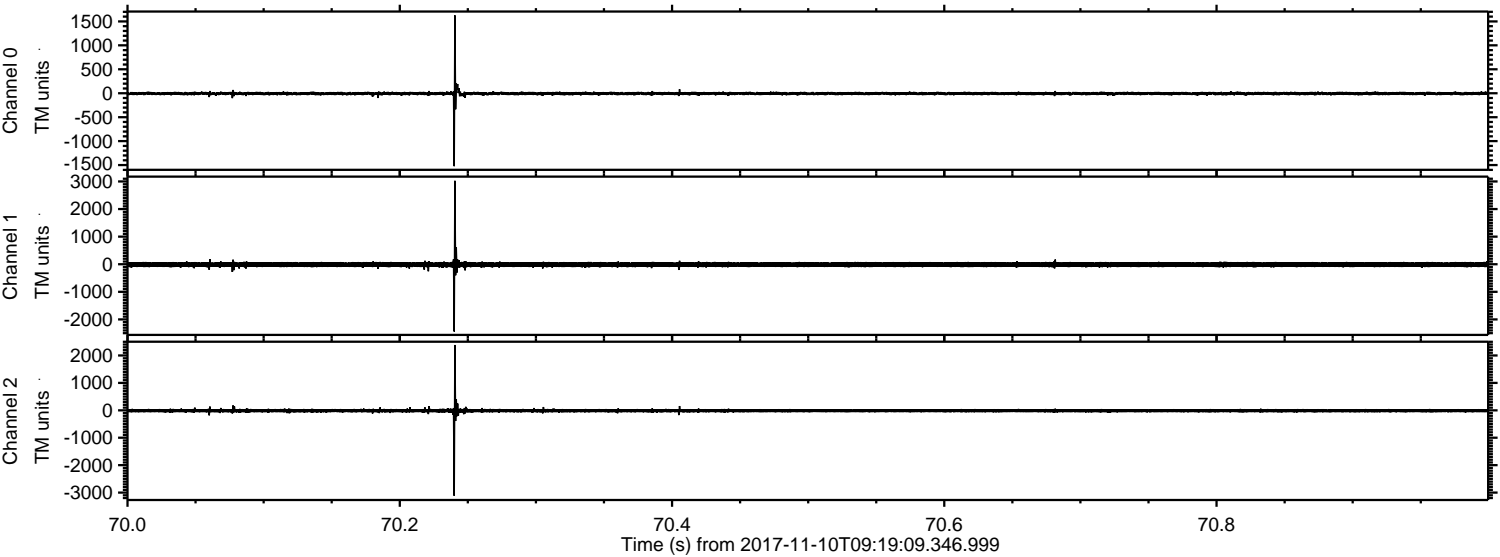
Processed Fri Nov 10 10:27:32 2017 by ELM ver.2012-10-06 from 001__elm20171110_091908__dat00.bin



Processed Fri Nov 10 10:27:33 2017 by ELM ver.2012-10-06 from 001__elm20171110_091908__dat00.bin



Processed Fri Nov 10 10:27:34 2017 by ELM ver.2012-10-06 from 001__elm20171110_091908__dat00.bin

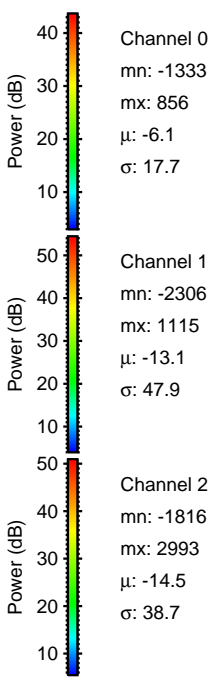
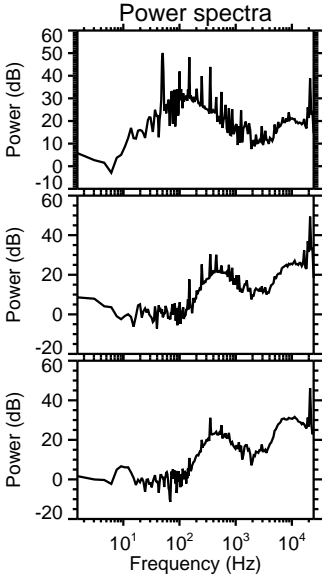
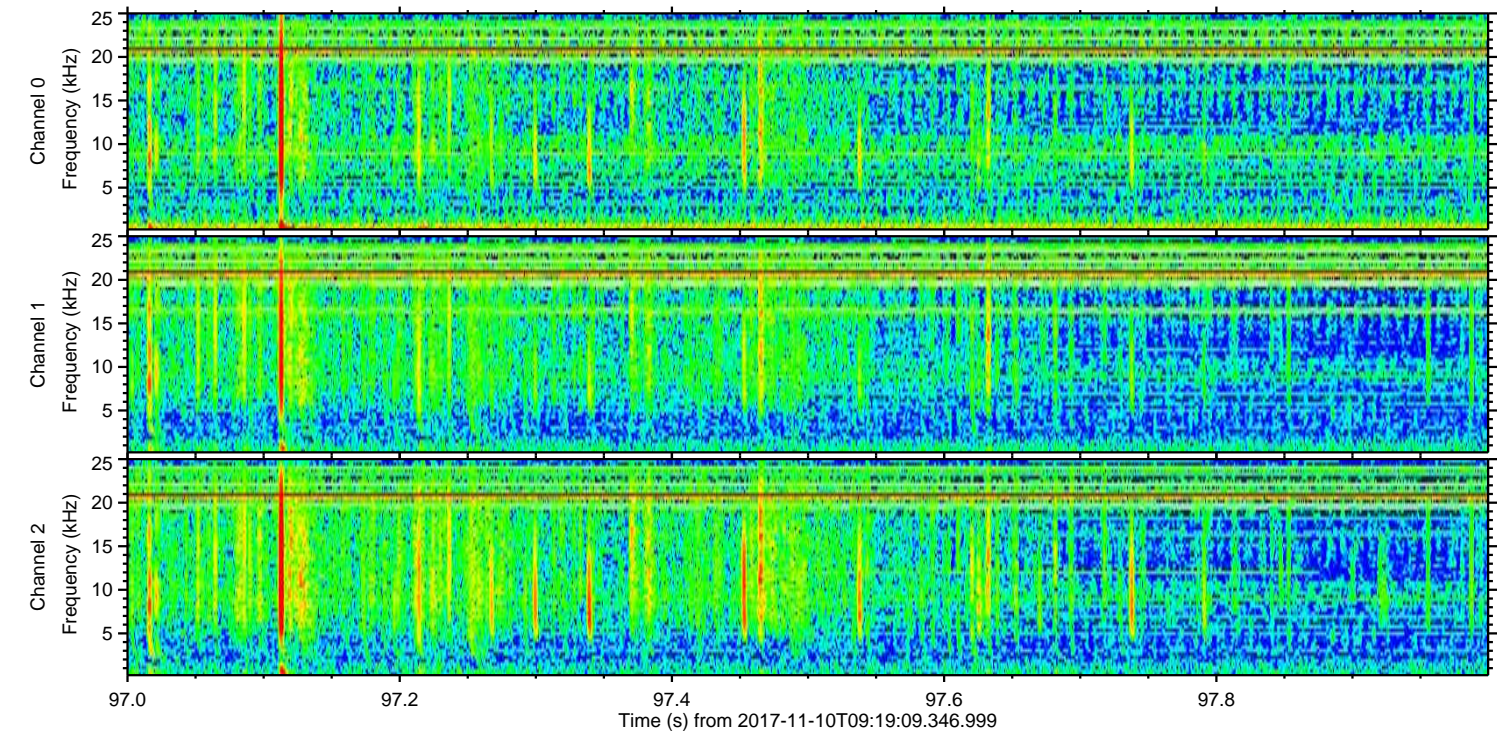
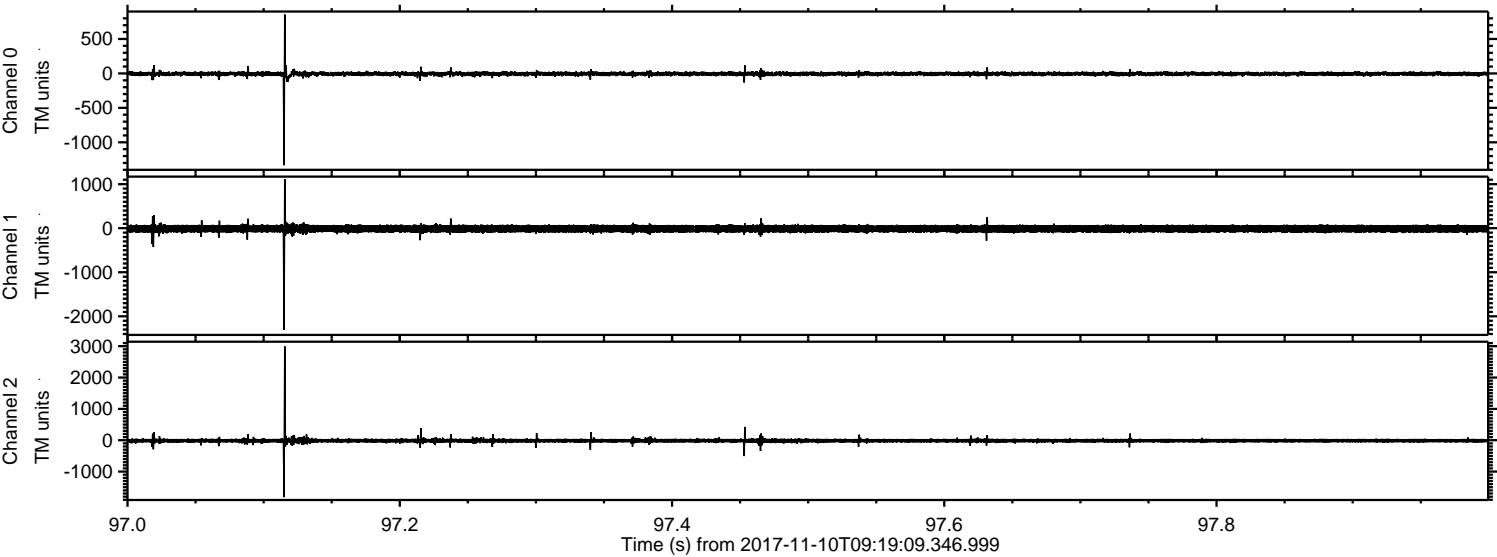


Channel 0
mn: -1523
mx: 1625
 μ : -6.1
 σ : 20.7

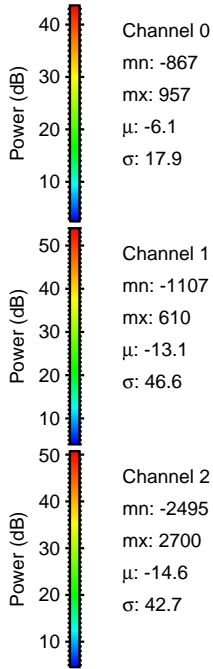
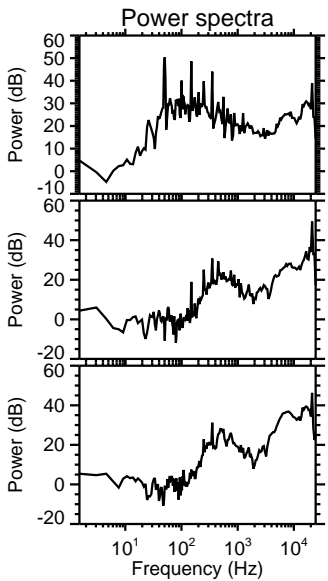
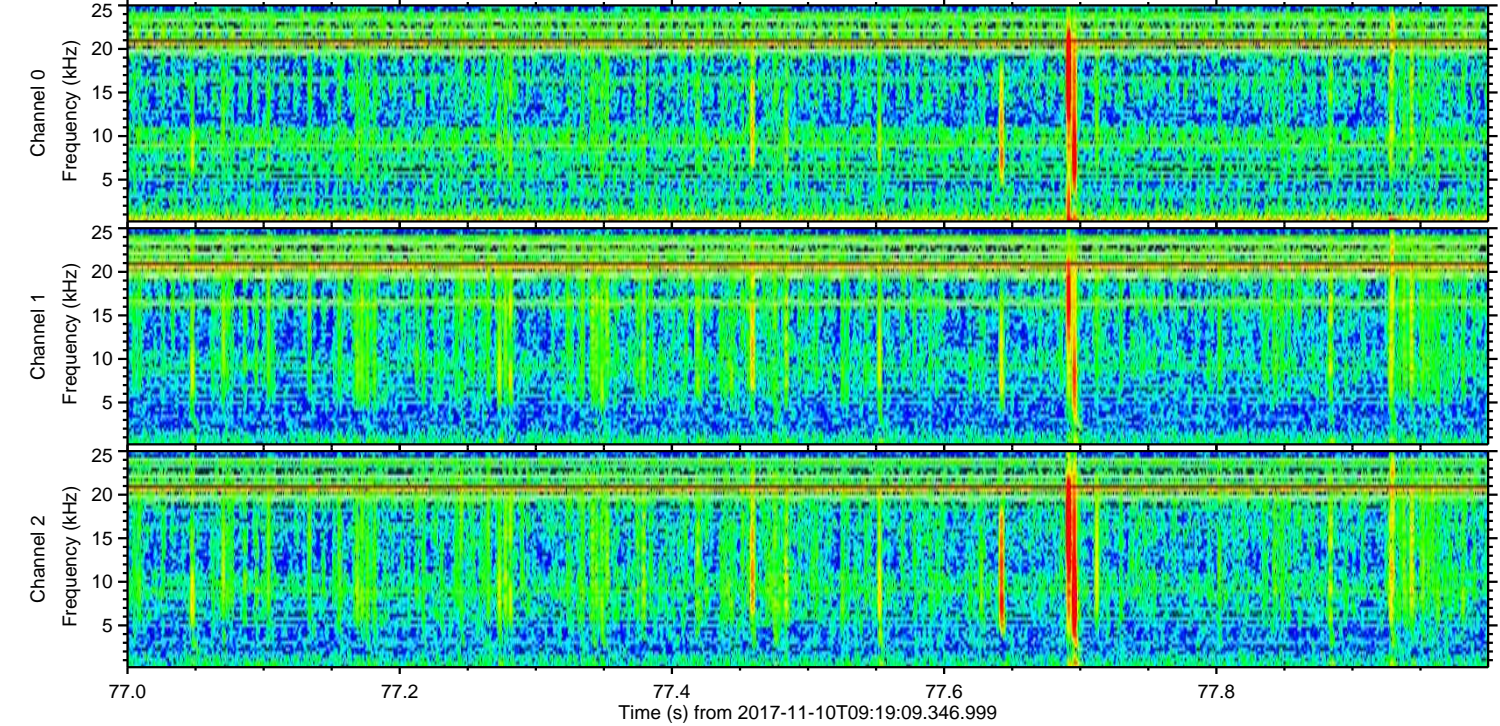
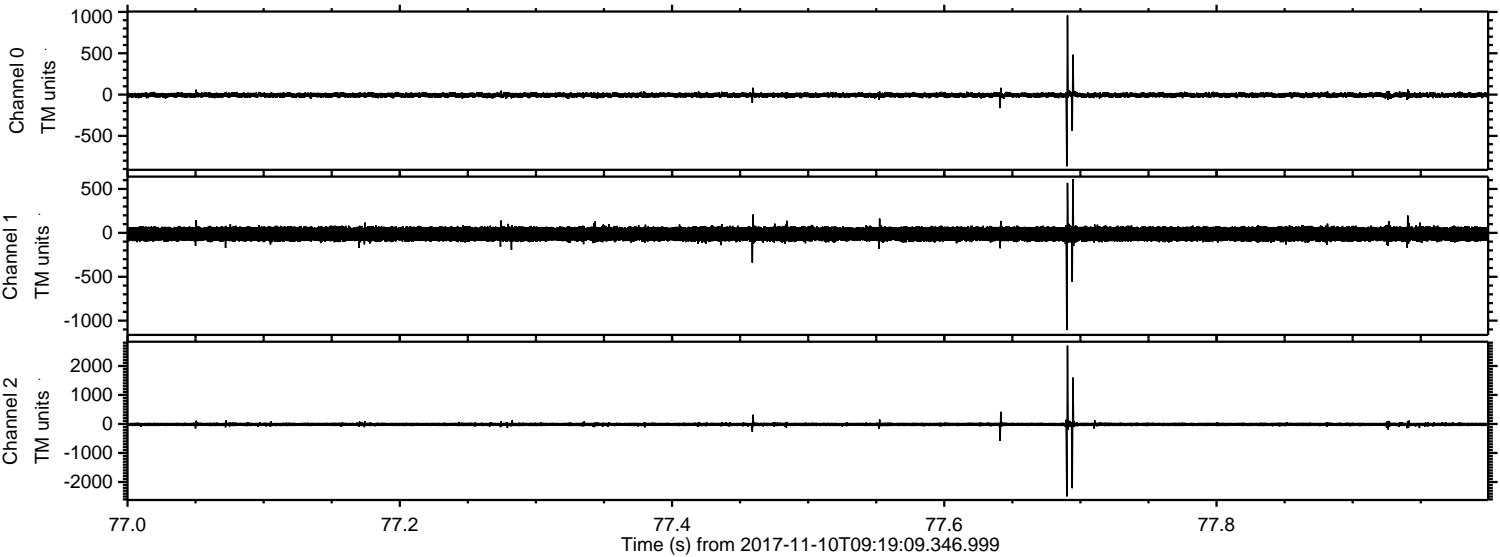
Channel 1
mn: -2440
mx: 3025
 μ : -13.1
 σ : 53.8

Channel 2
mn: -3115
mx: 2384
 μ : -14.6
 σ : 39.6

Processed Fri Nov 10 10:27:34 2017 by ELM ver.2012-10-06 from 001__elm20171110_091908__dat00.bin



Processed Fri Nov 10 10:27:35 2017 by ELM ver.2012-10-06 from 001__elm20171110_091908__dat00.bin



Processed Fri Nov 10 10:27:36 2017 by ELM ver.2012-10-06 from 001__elm20171110_091908__dat00.bin

