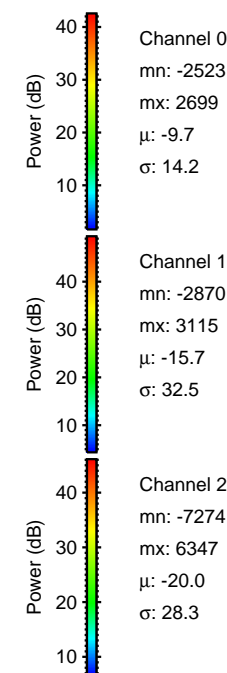
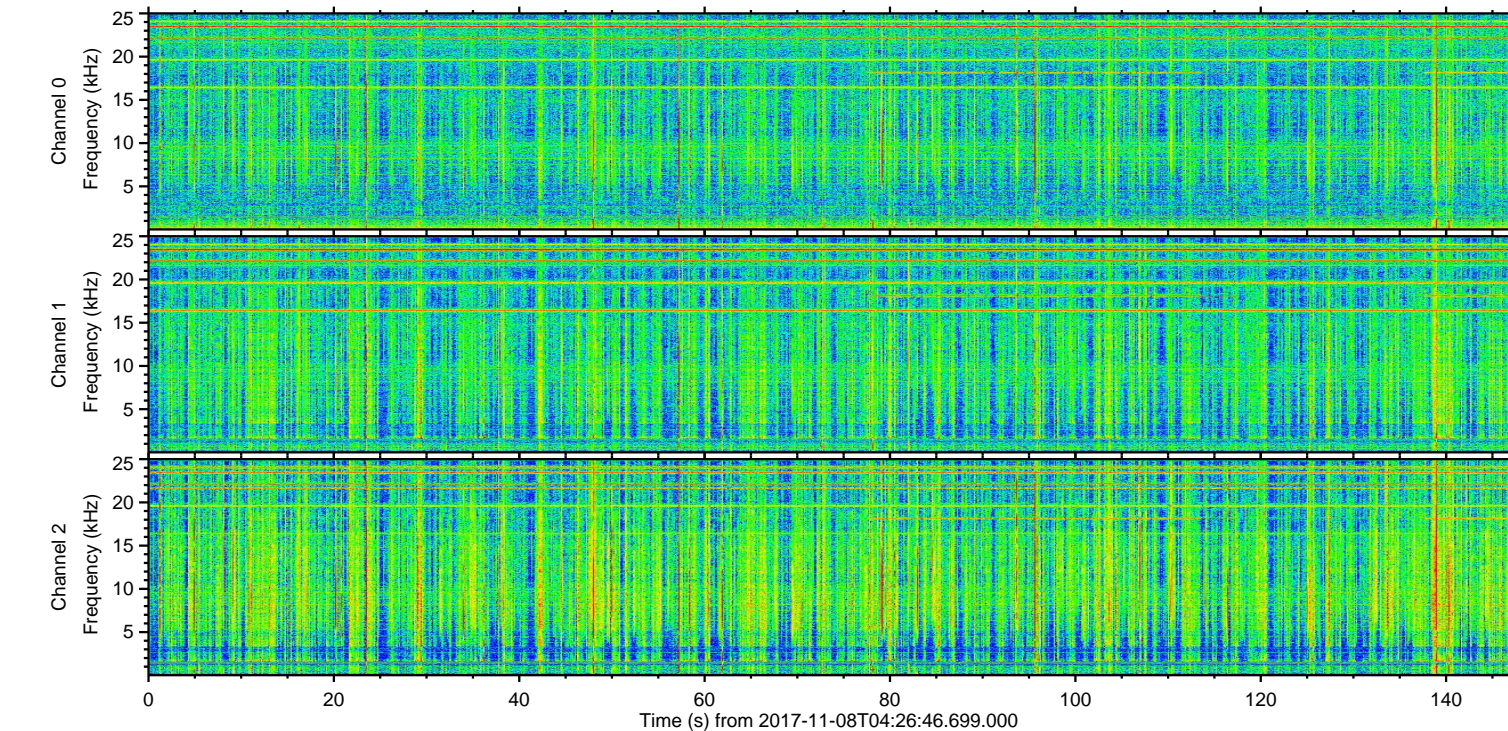
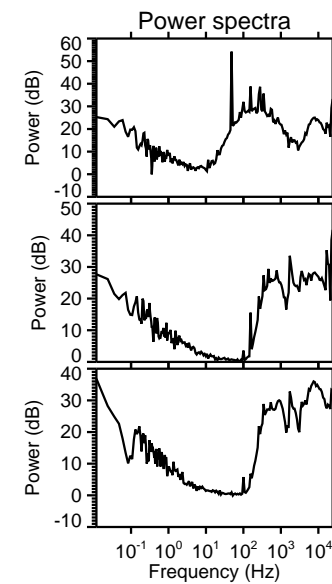
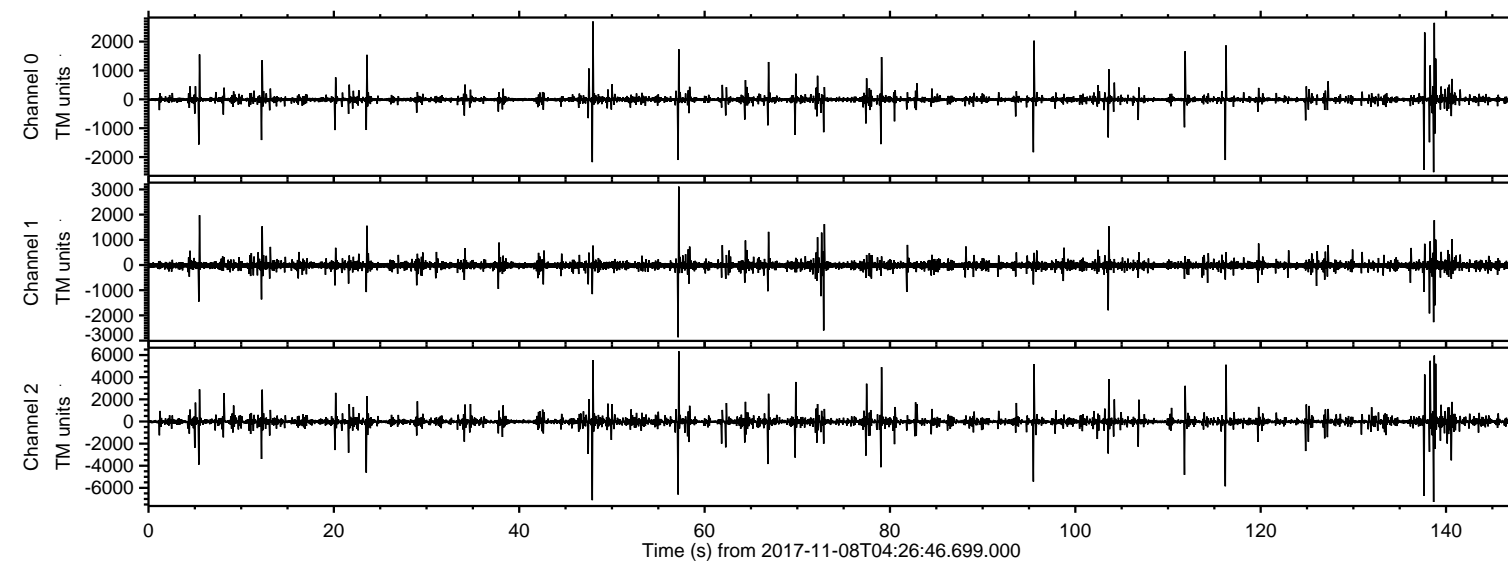


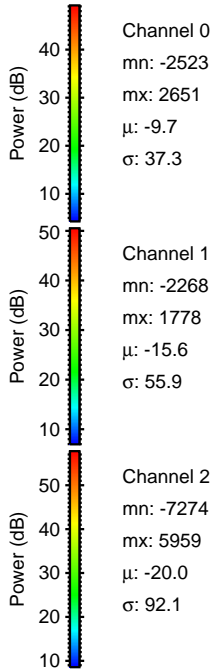
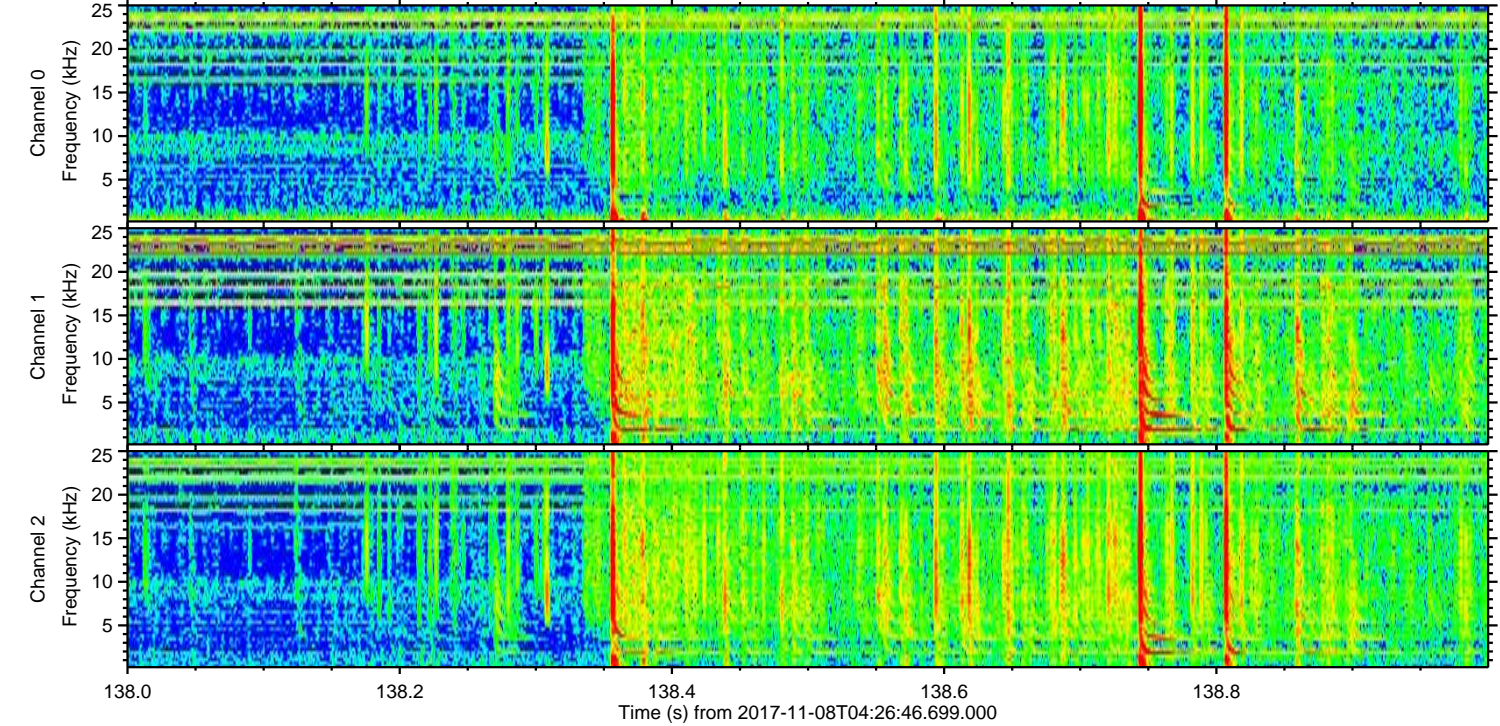
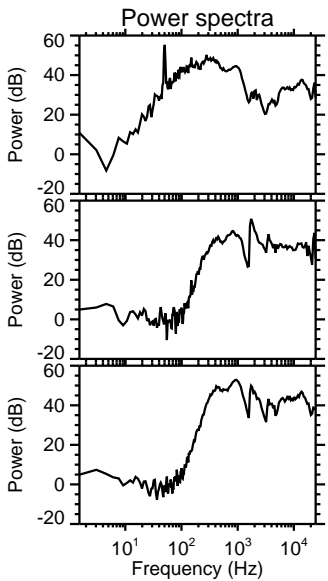
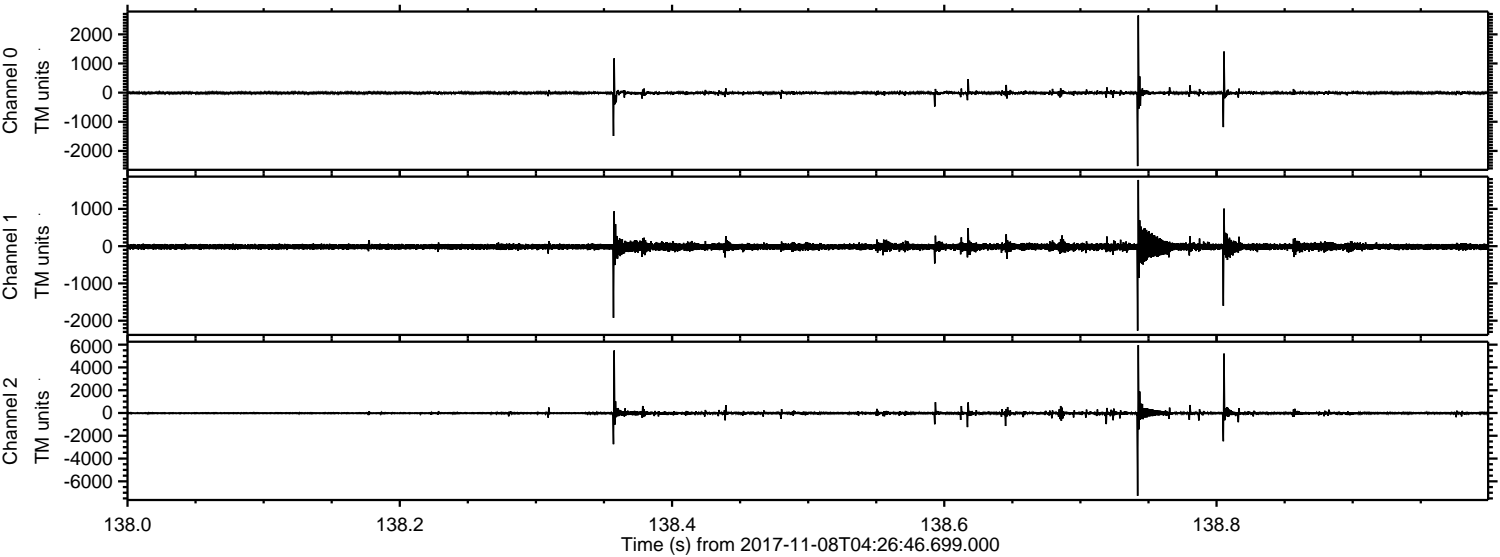
ELMAVAN 3D WAVEFORMS (Measured data sampled at 50 kHz) 51000 packets of 144 samples from 2017-11-08T04:26:46.699.000.

Processed Wed Nov 8 05:35:14 2017 by ELM ver.2012-10-06 from 001__elm20171108_042645__dat00.bin

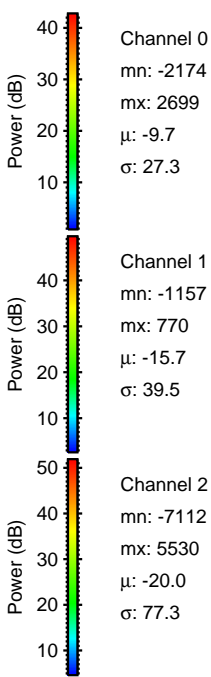
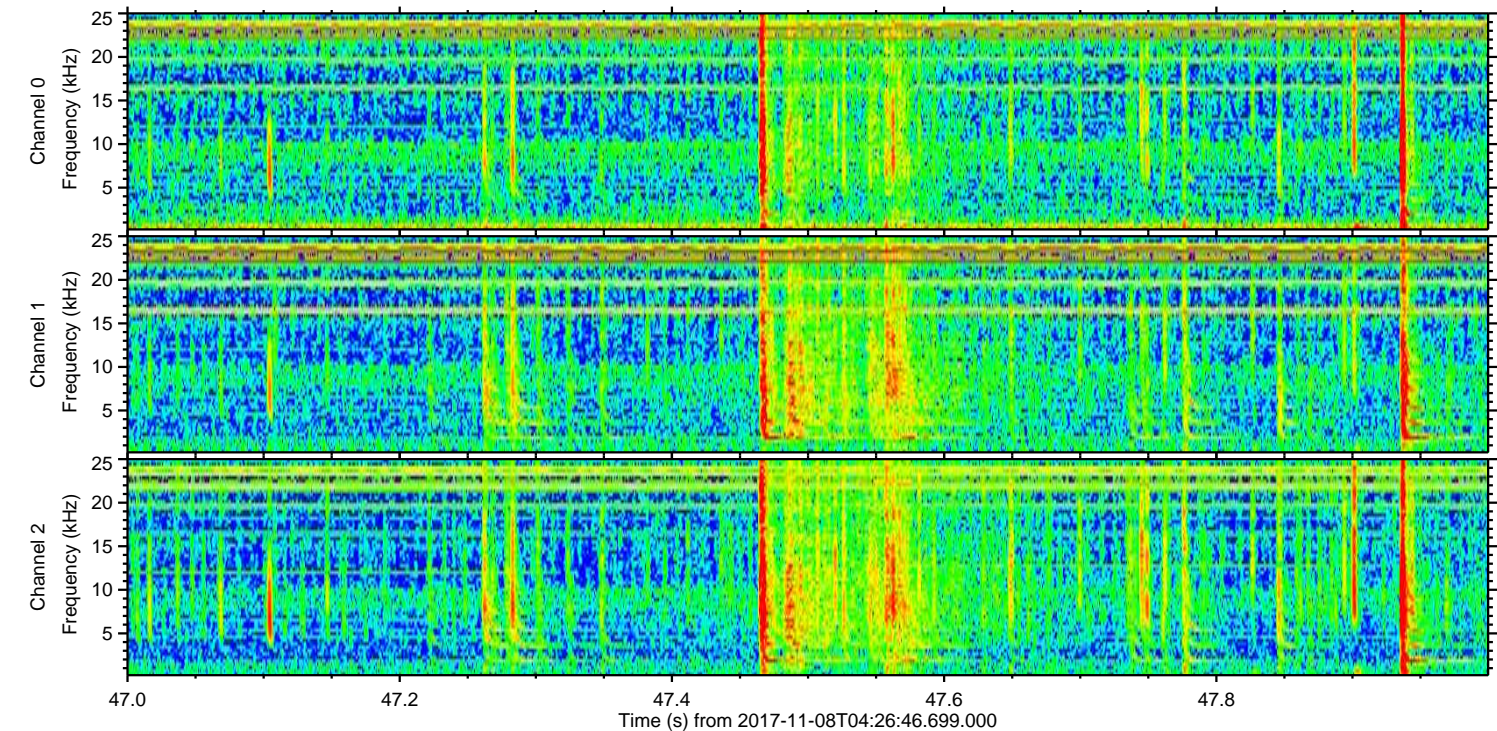
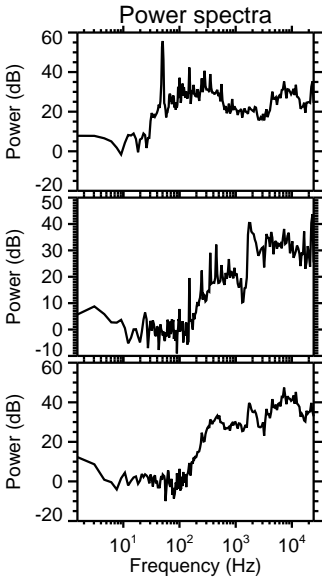
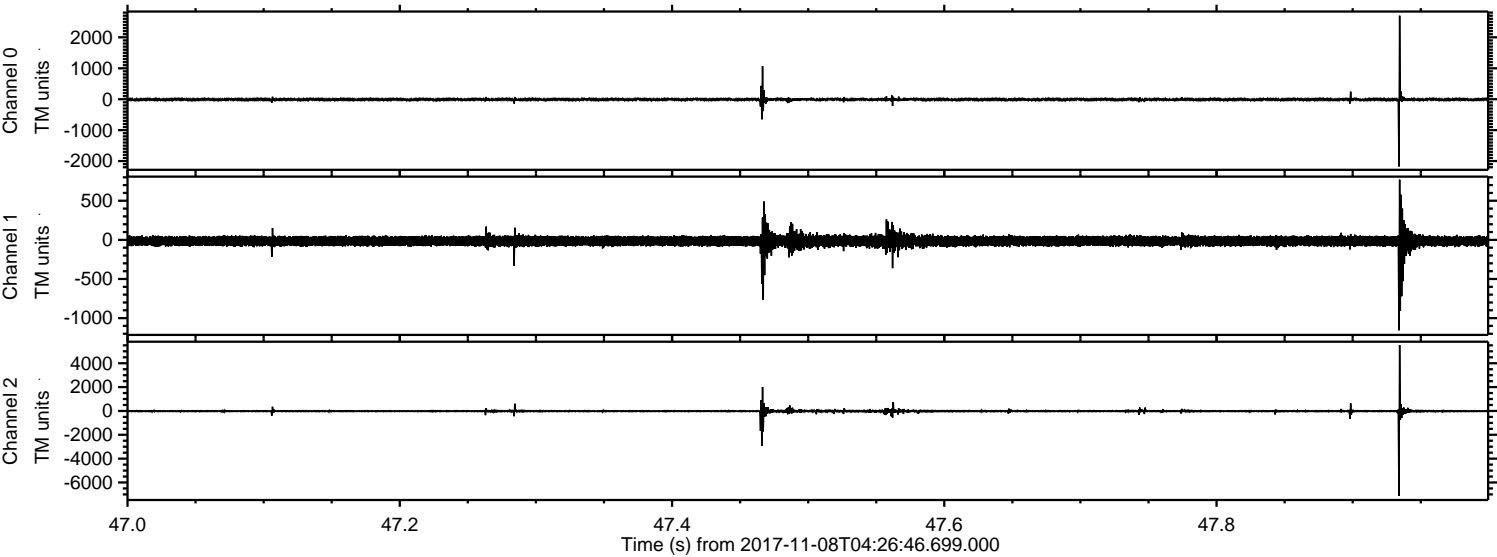


ELMAVAN 3D WAVEFORMS (Measured data sampled at 50 kHz) 51000 packets of 144 samples from 2017-11-08T04:26:46.699.000. Part 139/147

Processed Wed Nov 8 05:35:20 2017 by ELM ver.2012-10-06 from 001__elm20171108_042645__dat00.bin

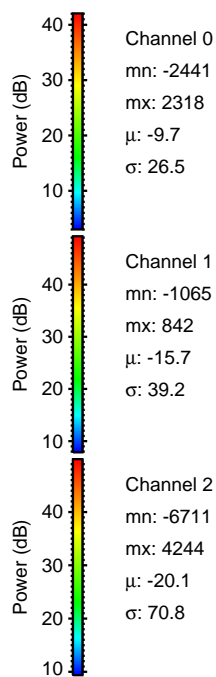
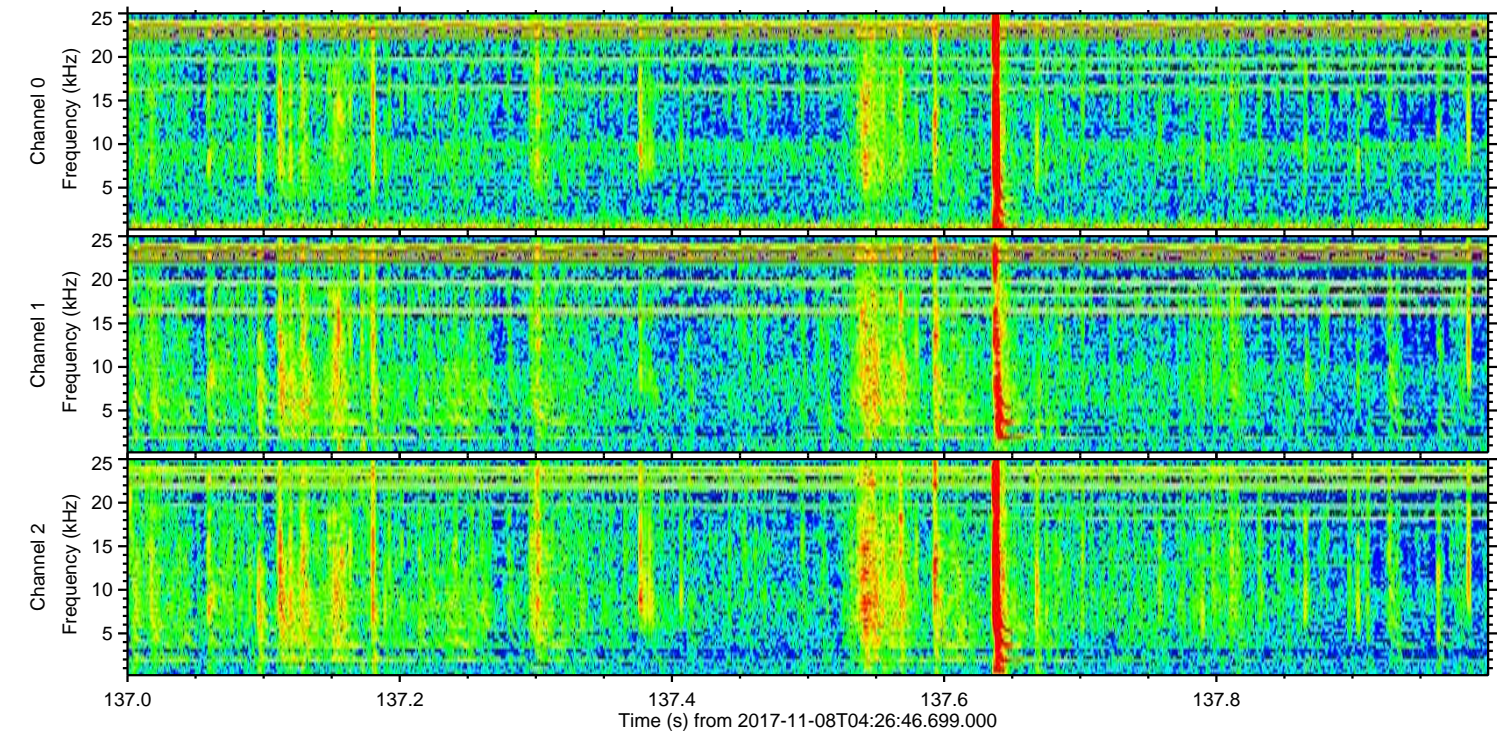
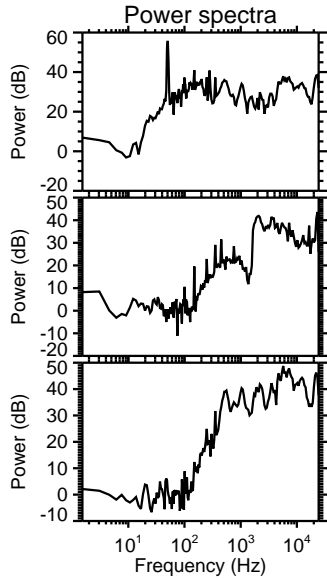
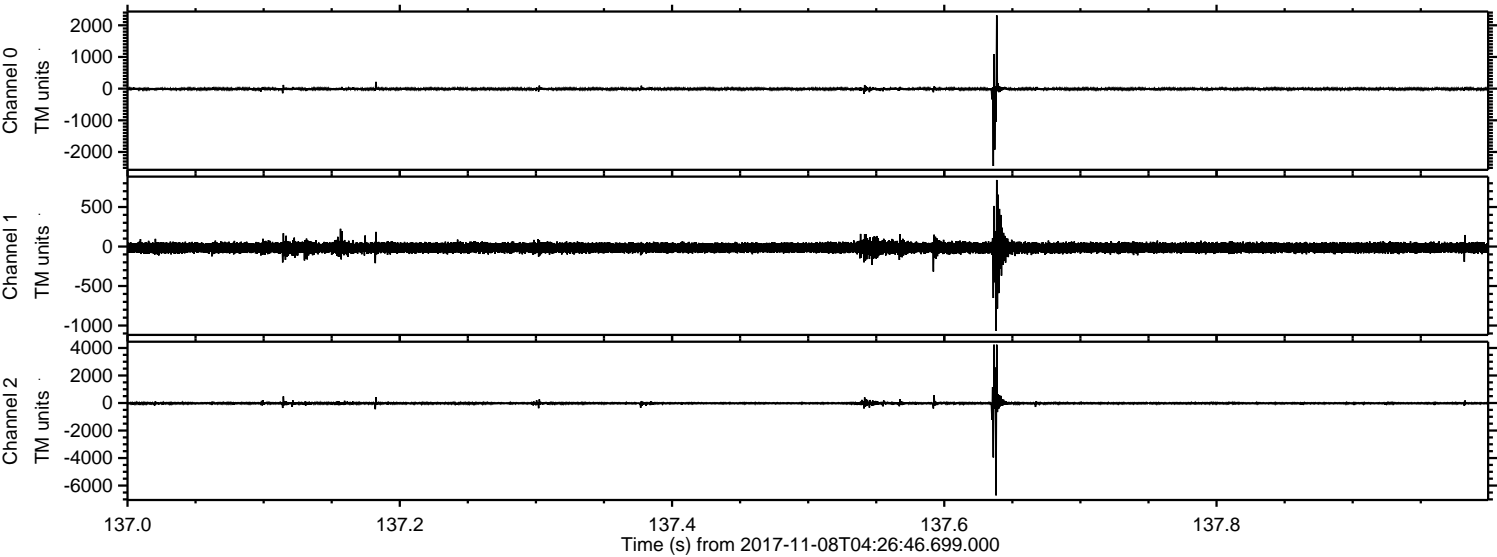


Processed Wed Nov 8 05:35:21 2017 by ELM ver.2012-10-06 from 001__elm20171108_042645__dat00.bin



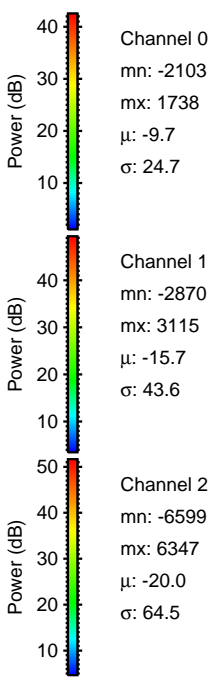
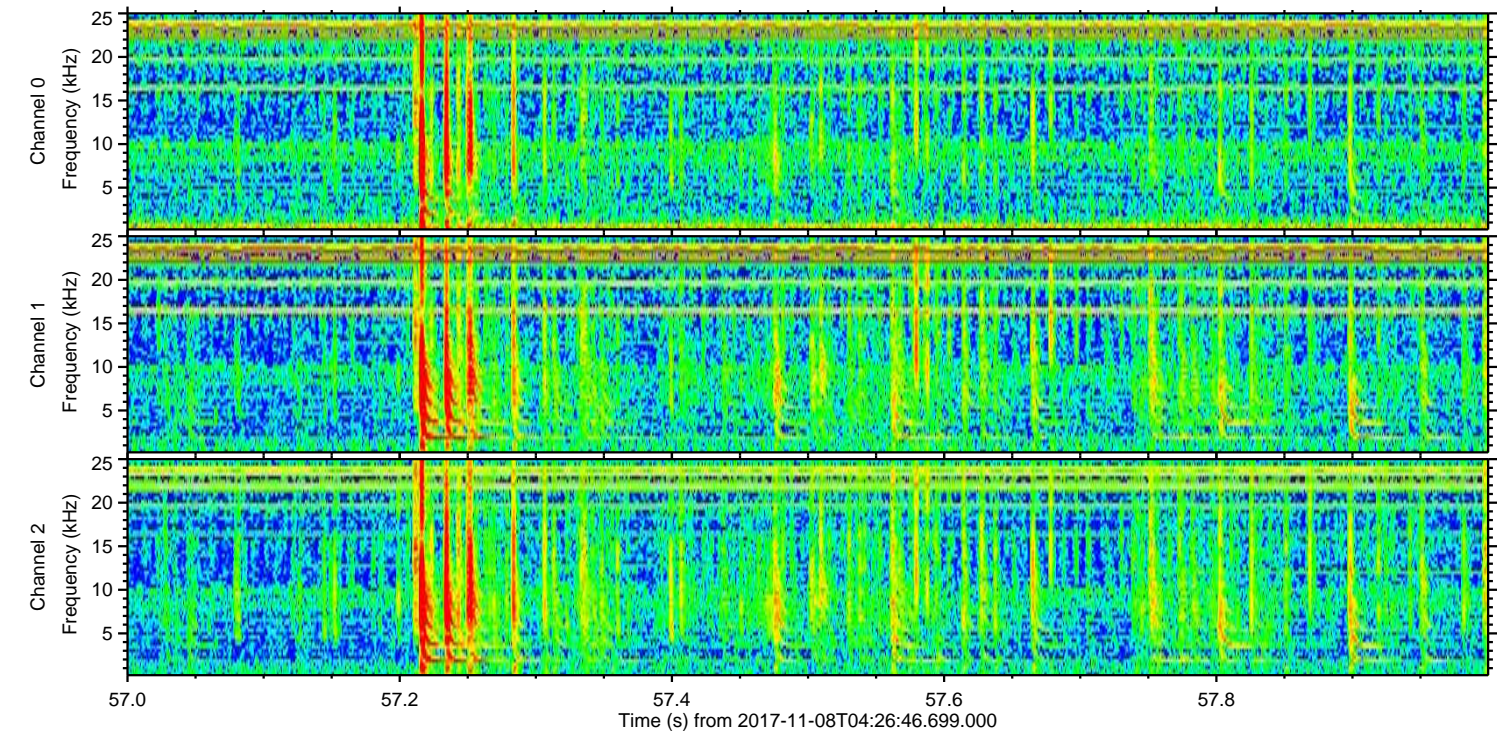
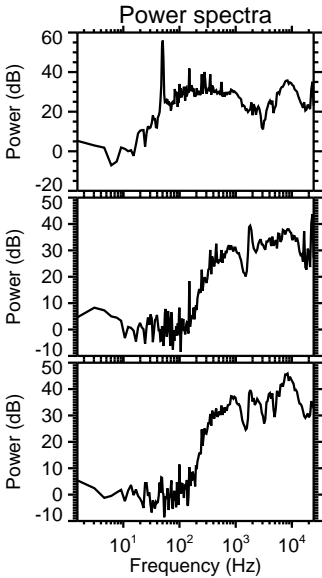
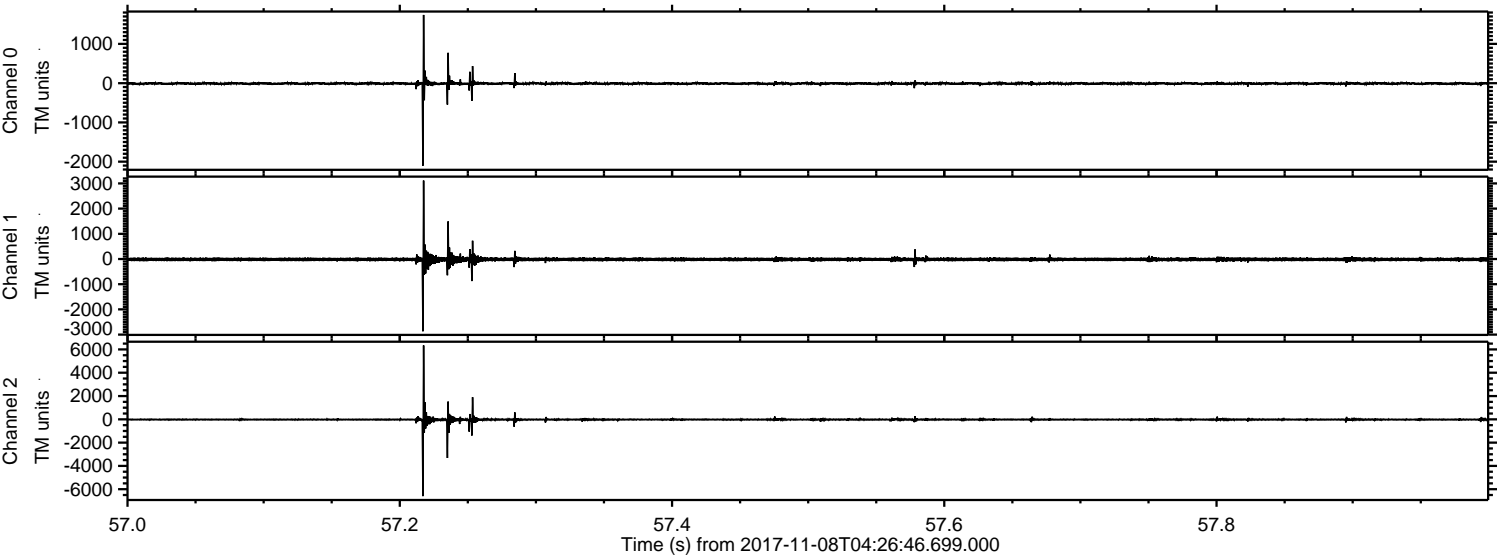
ELMAVAN 3D WAVEFORMS (Measured data sampled at 50 kHz) 51000 packets of 144 samples from 2017-11-08T04:26:46.699.000. Part 138/147

Processed Wed Nov 8 05:35:22 2017 by ELM ver.2012-10-06 from 001__elm20171108_042645__dat00.bin



ELMAVAN 3D WAVEFORMS (Measured data sampled at 50 kHz) 51000 packets of 144 samples from 2017-11-08T04:26:46.699.000. Part 58/147

Processed Wed Nov 8 05:35:22 2017 by ELM ver.2012-10-06 from 001__elm20171108_042645__dat00.bin



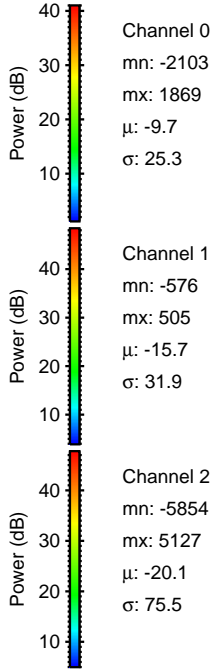
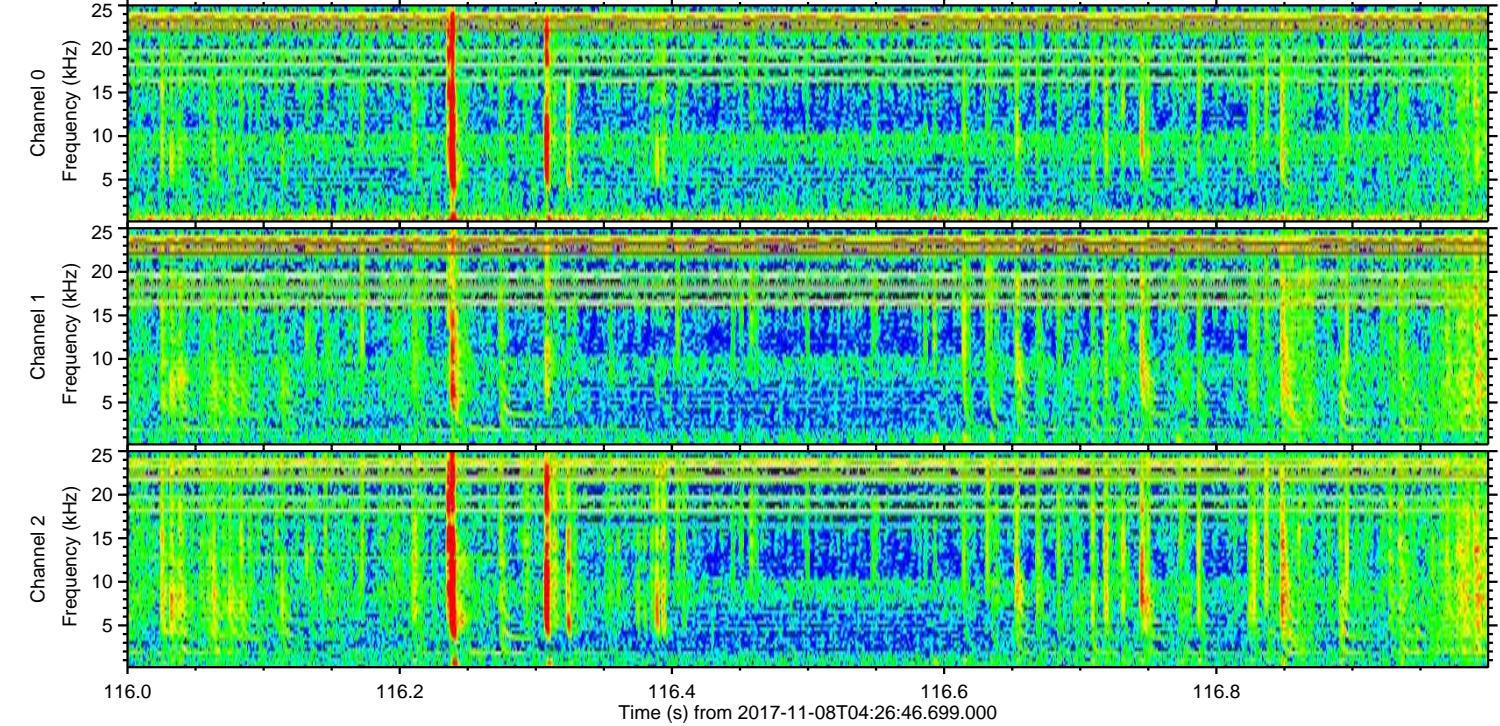
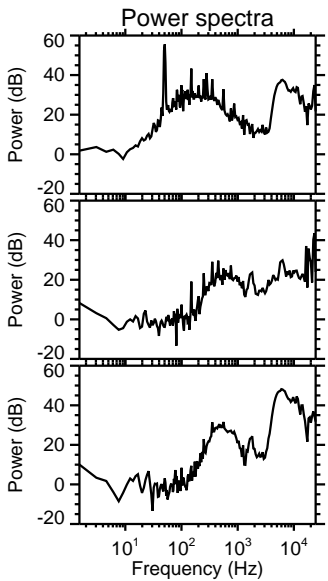
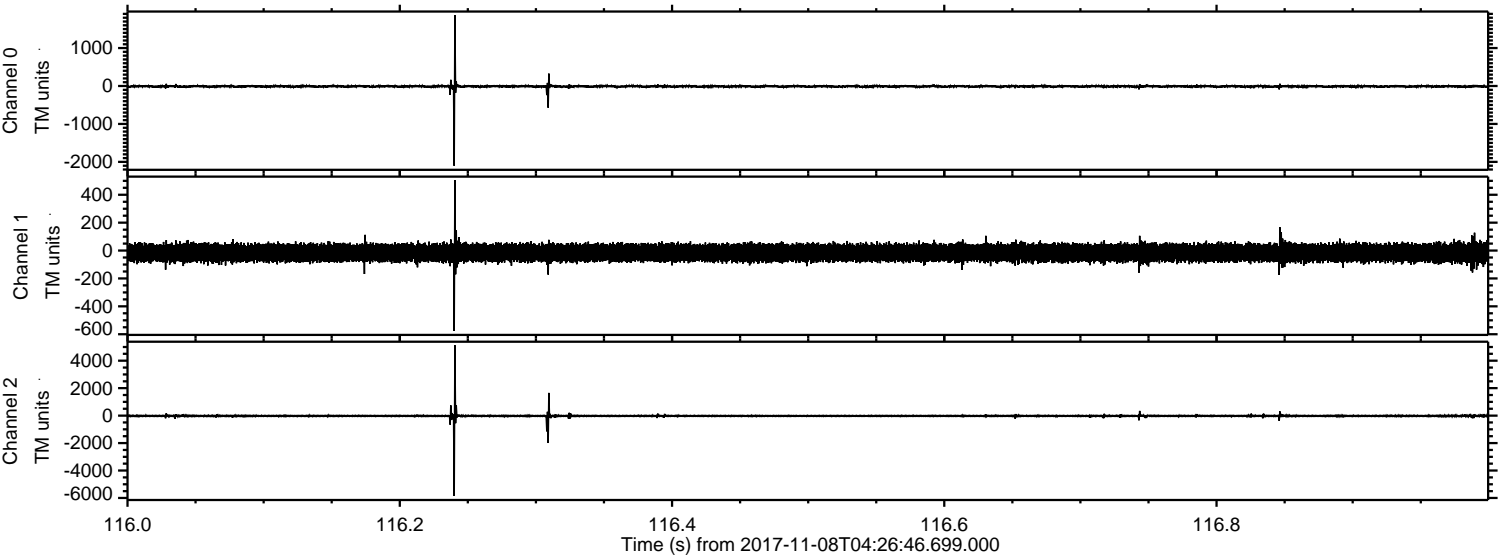
Channel 0
mn: -2103
mx: 1738
 μ : -9.7
 σ : 24.7

Channel 1
mn: -2870
mx: 3115
 μ : -15.7
 σ : 43.6

Channel 2
mn: -6599
mx: 6347
 μ : -20.0
 σ : 64.5

ELMAVAN 3D WAVEFORMS (Measured data sampled at 50 kHz) 51000 packets of 144 samples from 2017-11-08T04:26:46.699.000. Part 117/147

Processed Wed Nov 8 05:35:23 2017 by ELM ver.2012-10-06 from 001__elm20171108_042645__dat00.bin



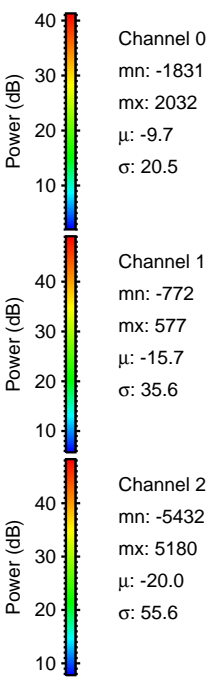
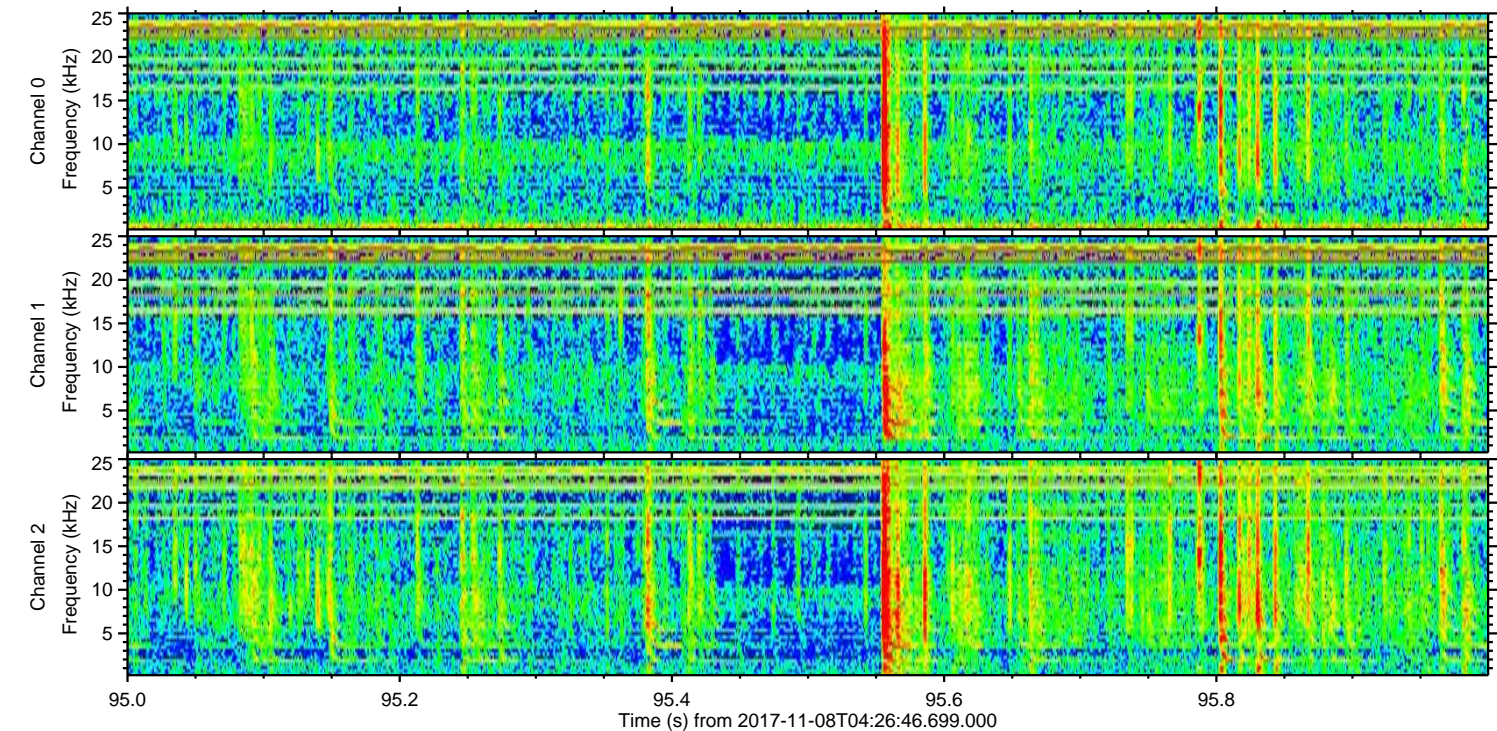
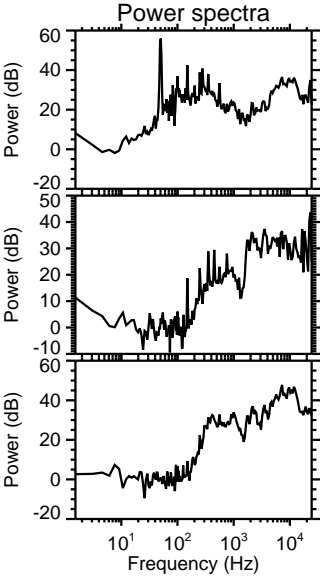
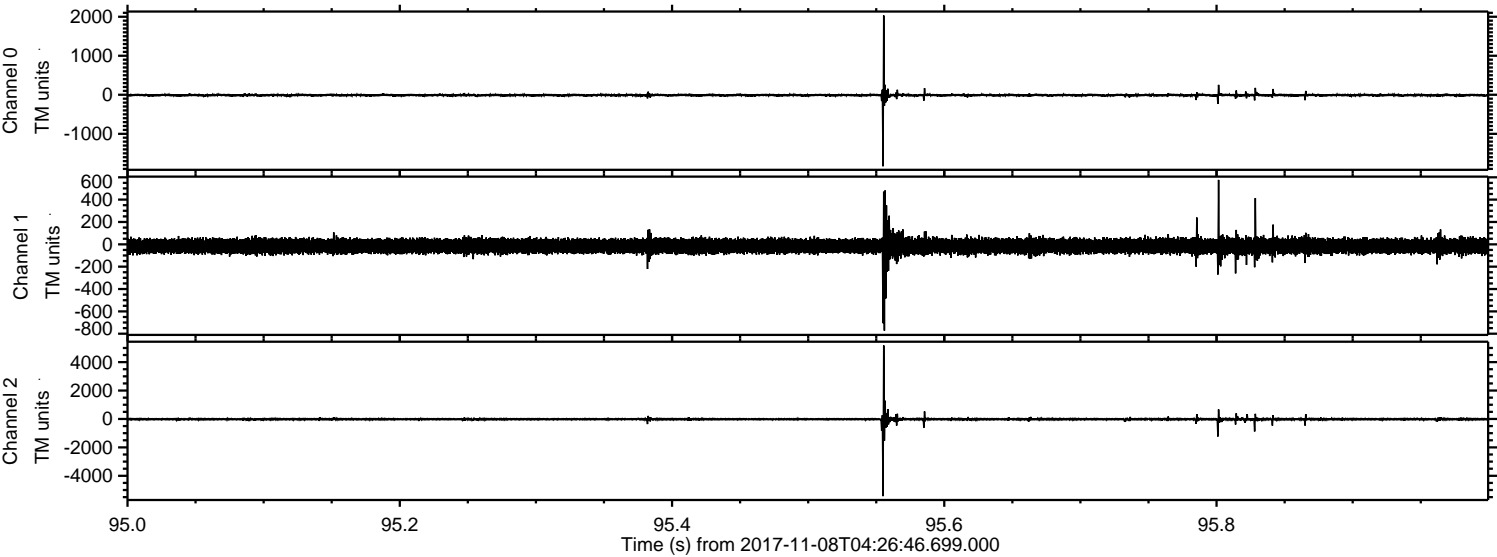
Channel 0
mn: -2103
mx: 1869
 μ : -9.7
 σ : 25.3

Channel 1
mn: -576
mx: 505
 μ : -15.7
 σ : 31.9

Channel 2
mn: -5854
mx: 5127
 μ : -20.1
 σ : 75.5

ELMAVAN 3D WAVEFORMS (Measured data sampled at 50 kHz) 51000 packets of 144 samples from 2017-11-08T04:26:46.699.000. Part 96/147

Processed Wed Nov 8 05:35:23 2017 by ELM ver.2012-10-06 from 001__elm20171108_042645__dat00.bin



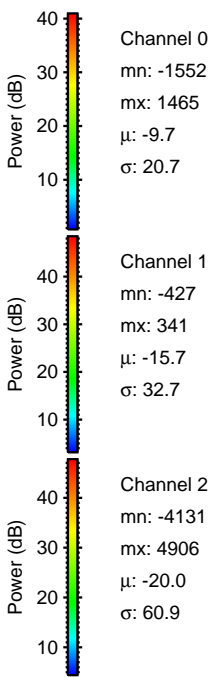
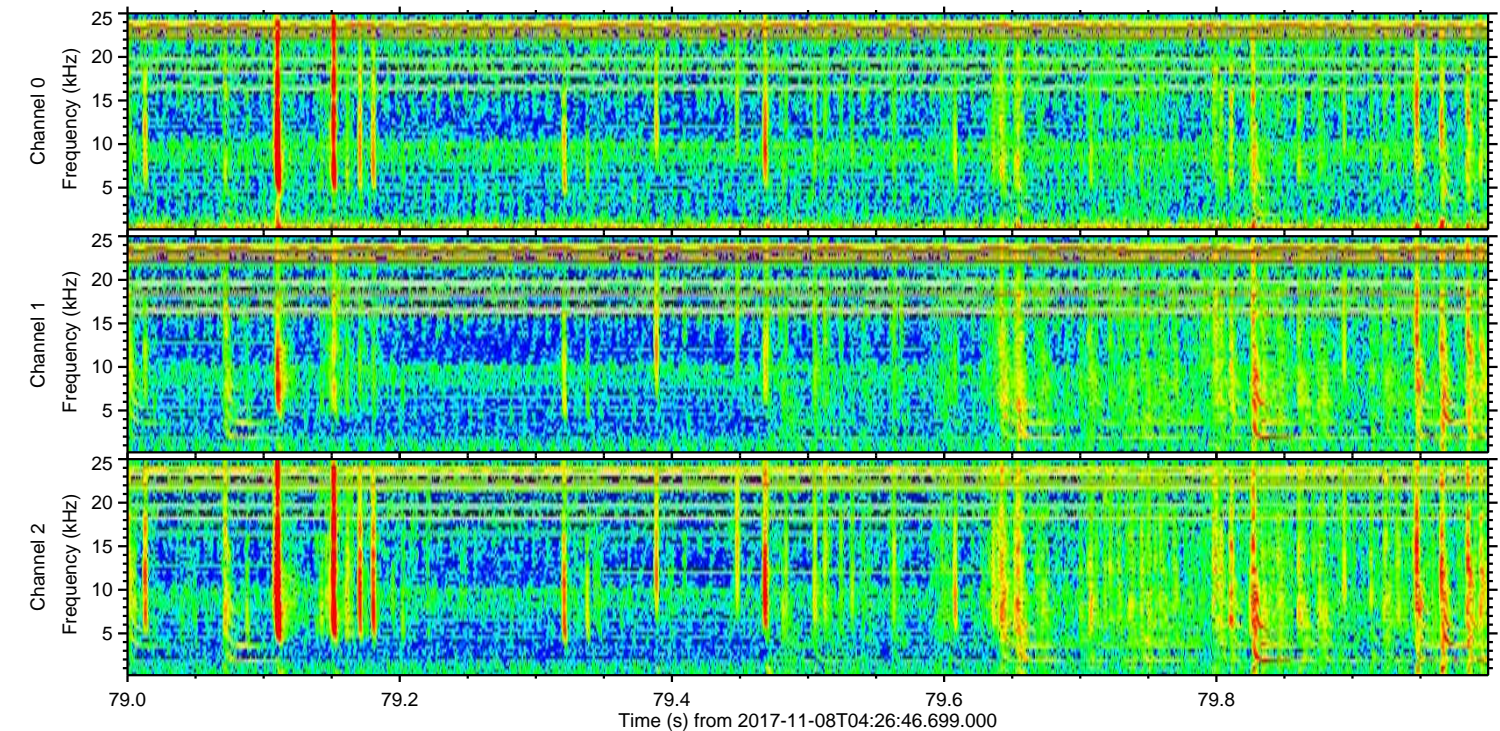
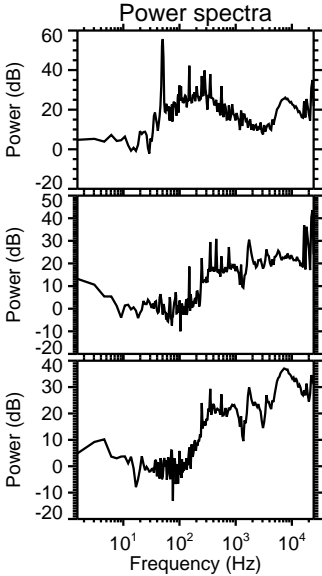
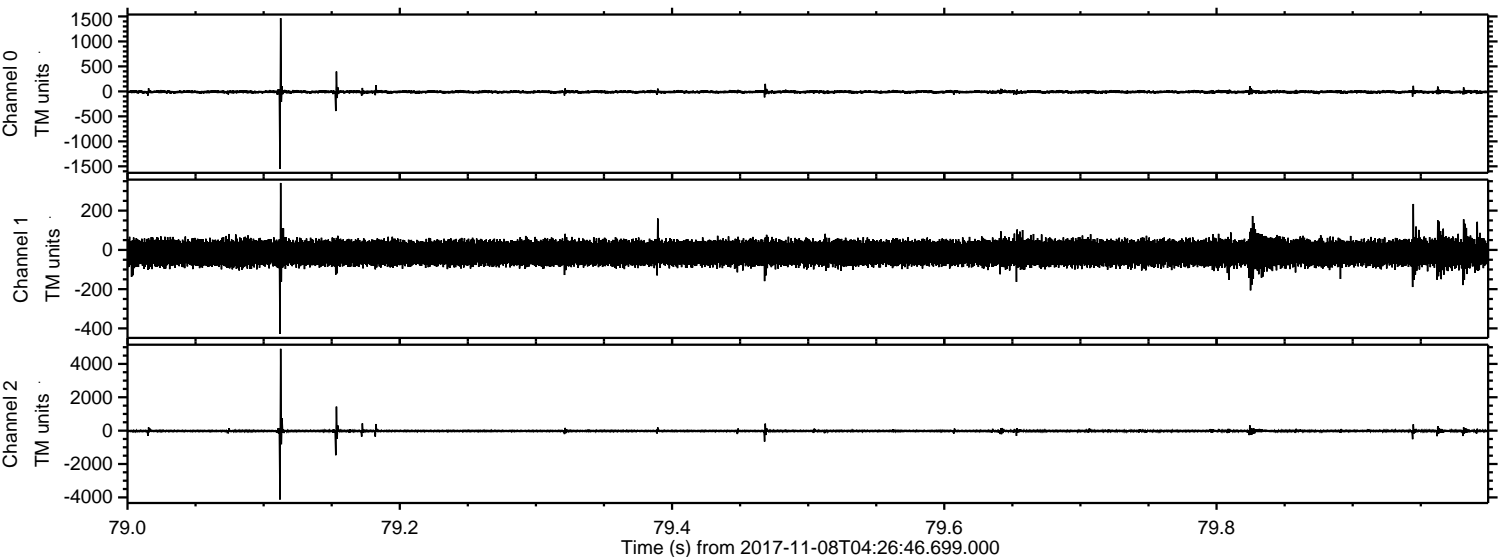
Channel 0
mn: -1831
mx: 2032
 μ : -9.7
 σ : 20.5

Channel 1
mn: -772
mx: 577
 μ : -15.7
 σ : 35.6

Channel 2
mn: -5432
mx: 5180
 μ : -20.0
 σ : 55.6

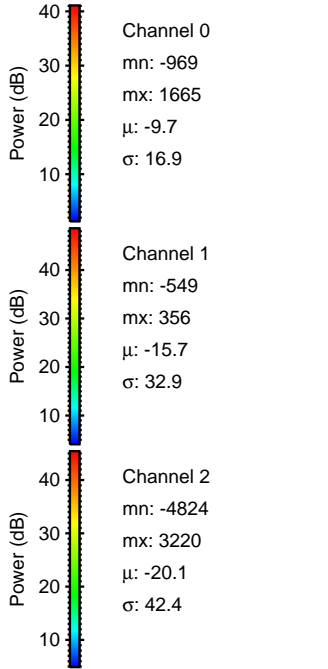
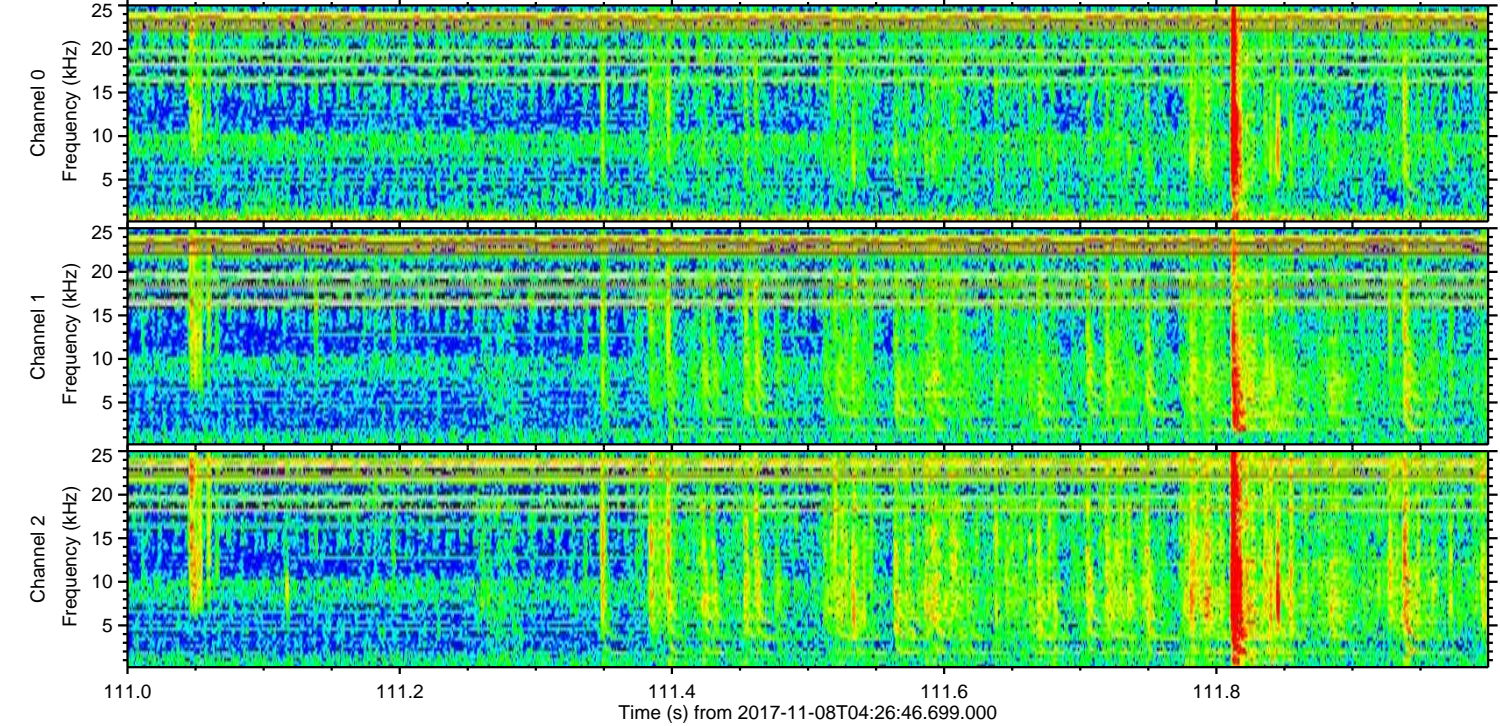
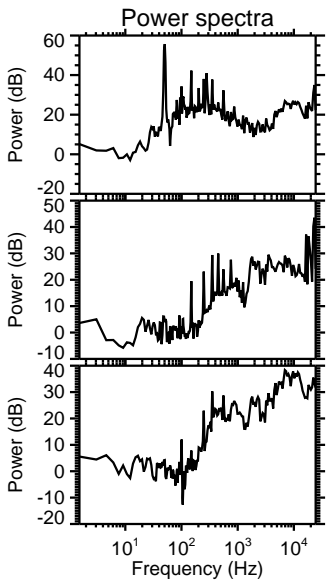
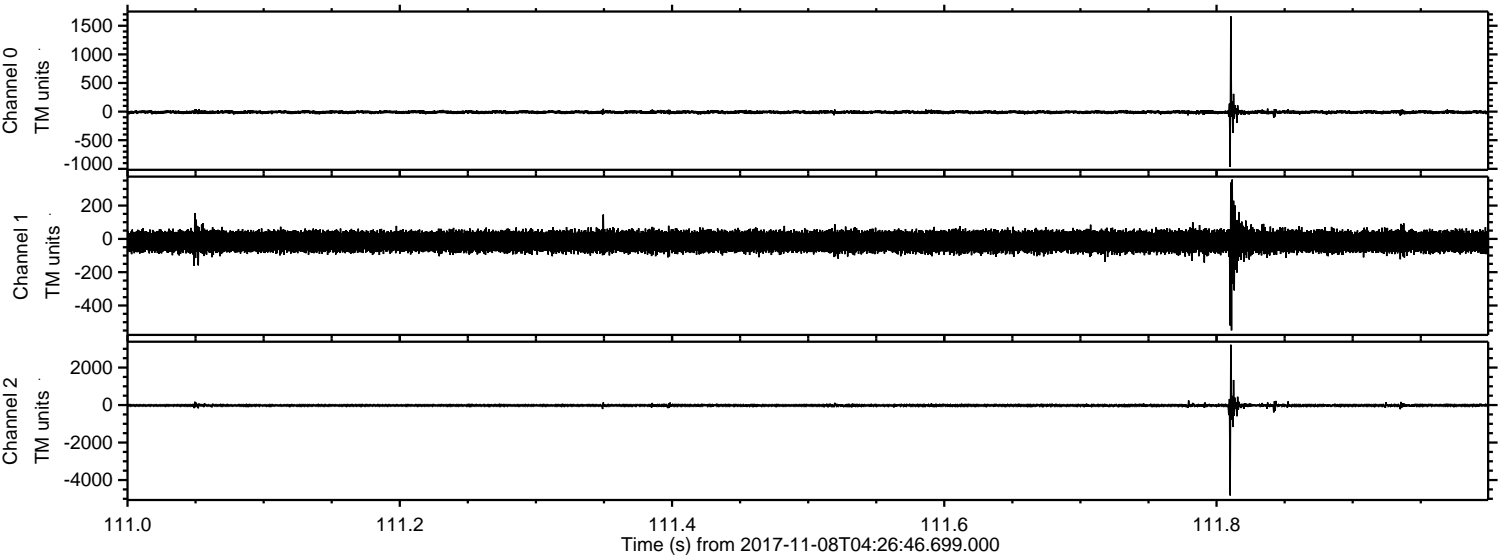
ELMAVAN 3D WAVEFORMS (Measured data sampled at 50 kHz) 51000 packets of 144 samples from 2017-11-08T04:26:46.699.000. Part 80/147

Processed Wed Nov 8 05:35:24 2017 by ELM ver.2012-10-06 from 001__elm20171108_042645__dat00.bin



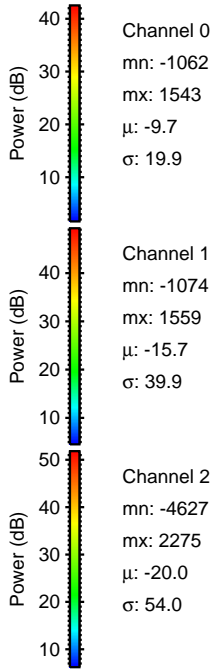
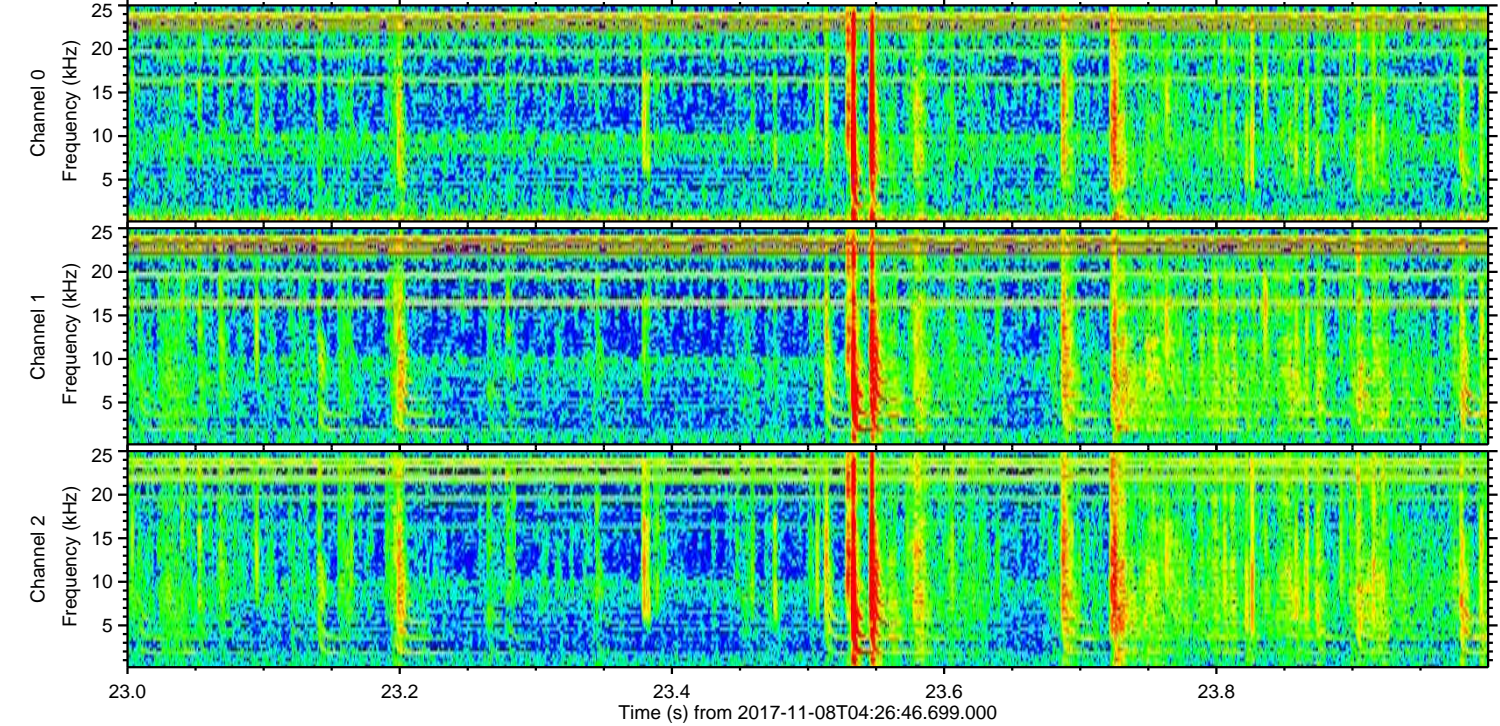
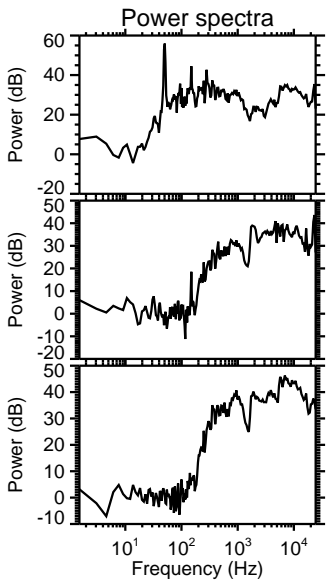
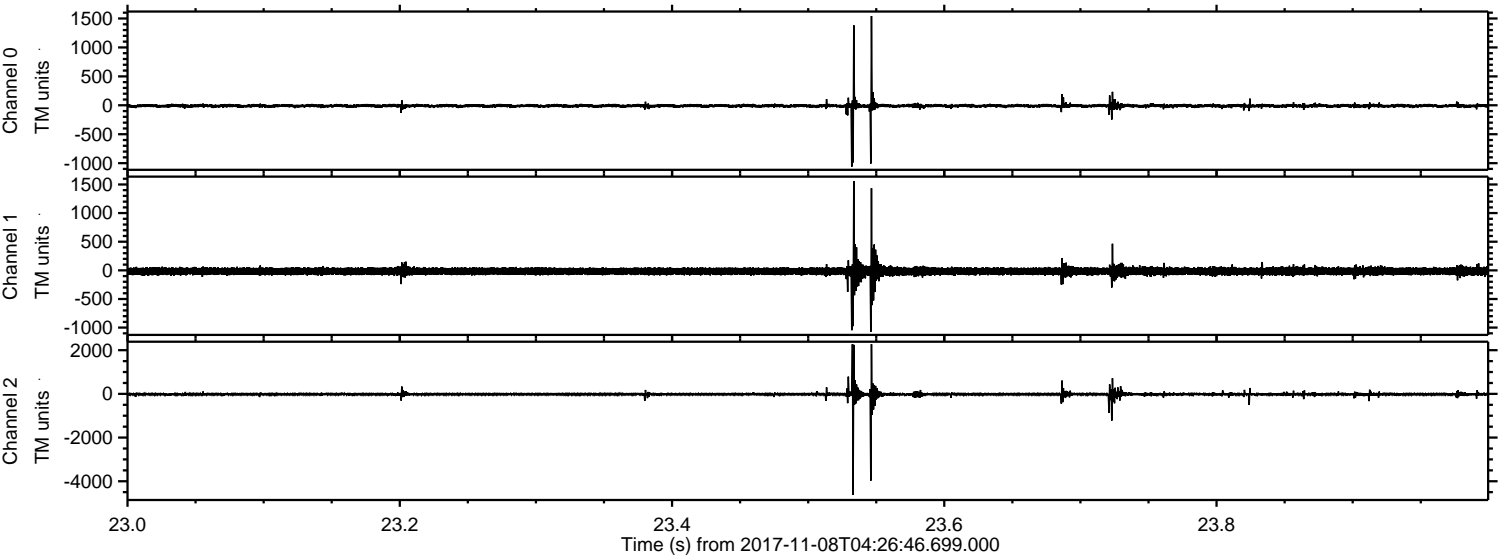
ELMAVAN 3D WAVEFORMS (Measured data sampled at 50 kHz) 51000 packets of 144 samples from 2017-11-08T04:26:46.699.000. Part 112/147

Processed Wed Nov 8 05:35:25 2017 by ELM ver.2012-10-06 from 001__elm20171108_042645__dat00.bin



ELMAVAN 3D WAVEFORMS (Measured data sampled at 50 kHz) 51000 packets of 144 samples from 2017-11-08T04:26:46.699.000. Part 24/147

Processed Wed Nov 8 05:35:25 2017 by ELM ver.2012-10-06 from 001__elm20171108_042645__dat00.bin



Channel 0
mn: -1062
mx: 1543
 μ : -9.7
 σ : 19.9

Channel 1
mn: -1074
mx: 1559
 μ : -15.7
 σ : 39.9

Channel 2
mn: -4627
mx: 2275
 μ : -20.0
 σ : 54.0

Processed Wed Nov 8 05:35:26 2017 by ELM ver.2012-10-06 from 001__elm20171108_042645__dat00.bin

