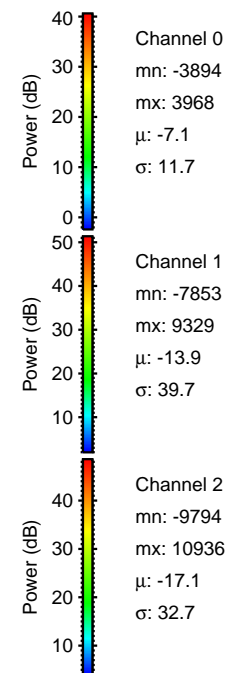
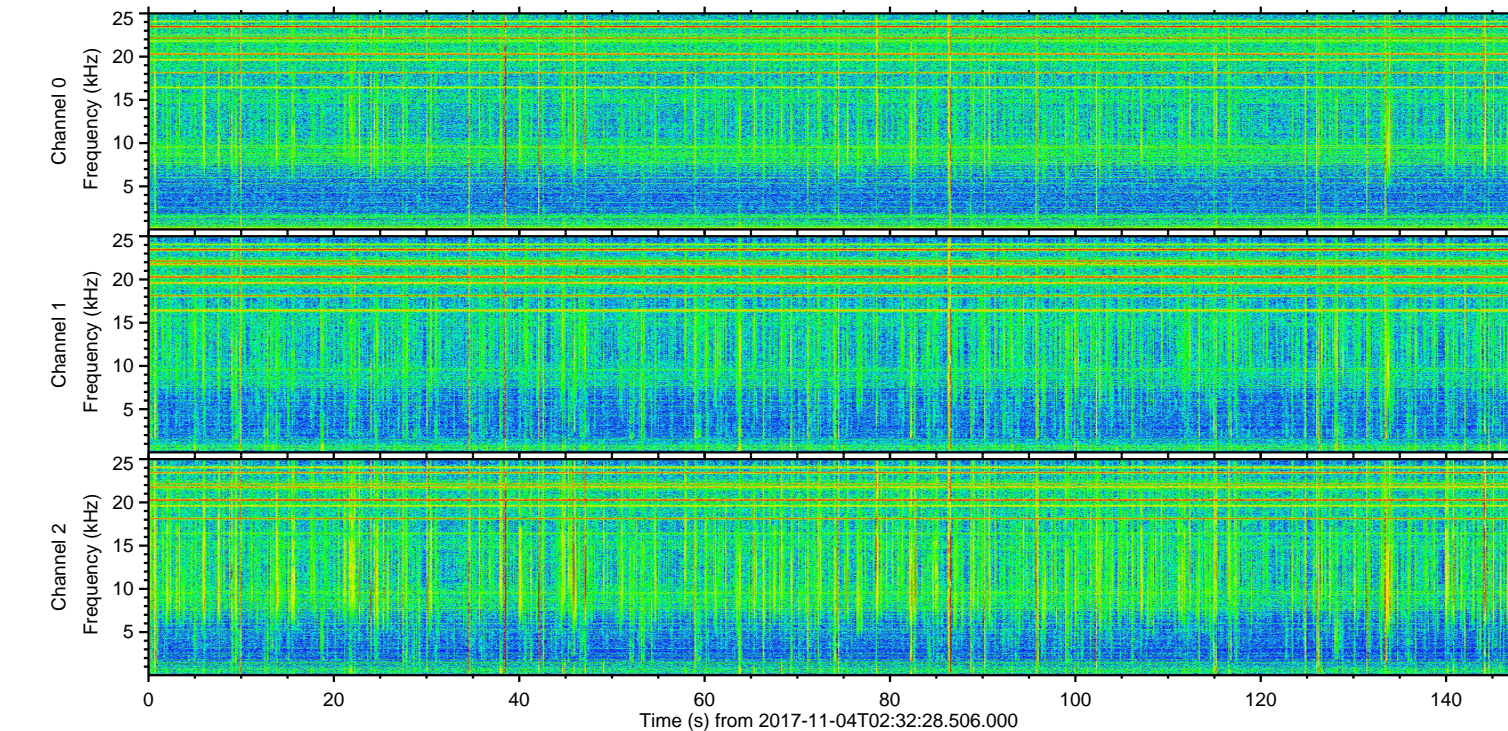
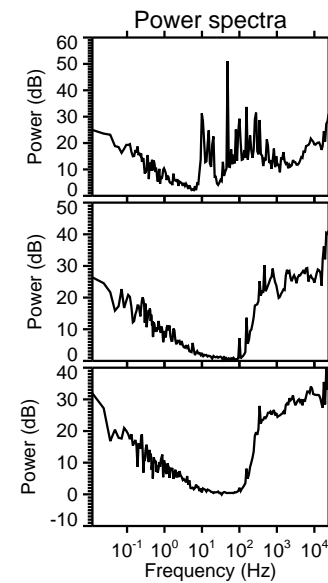
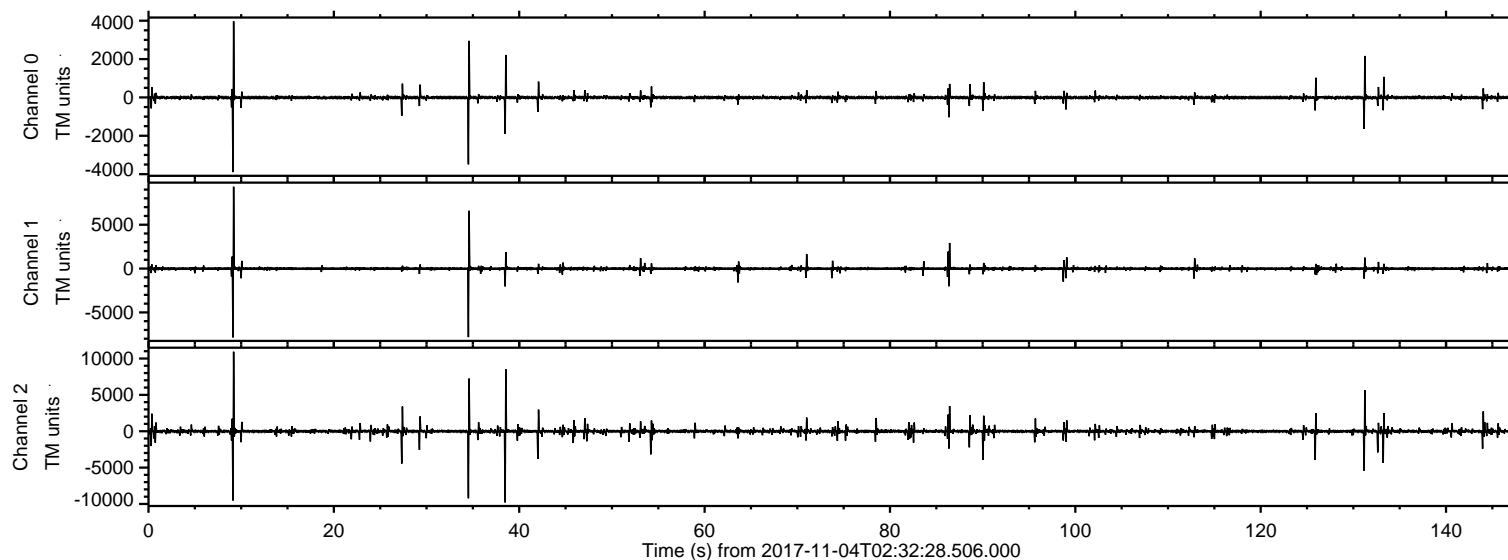


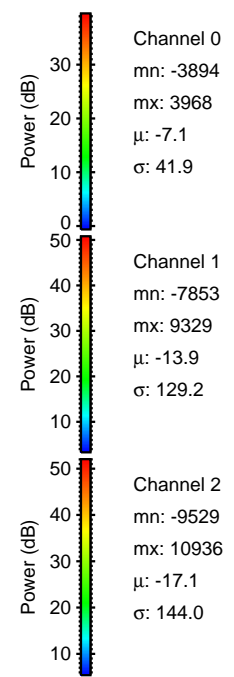
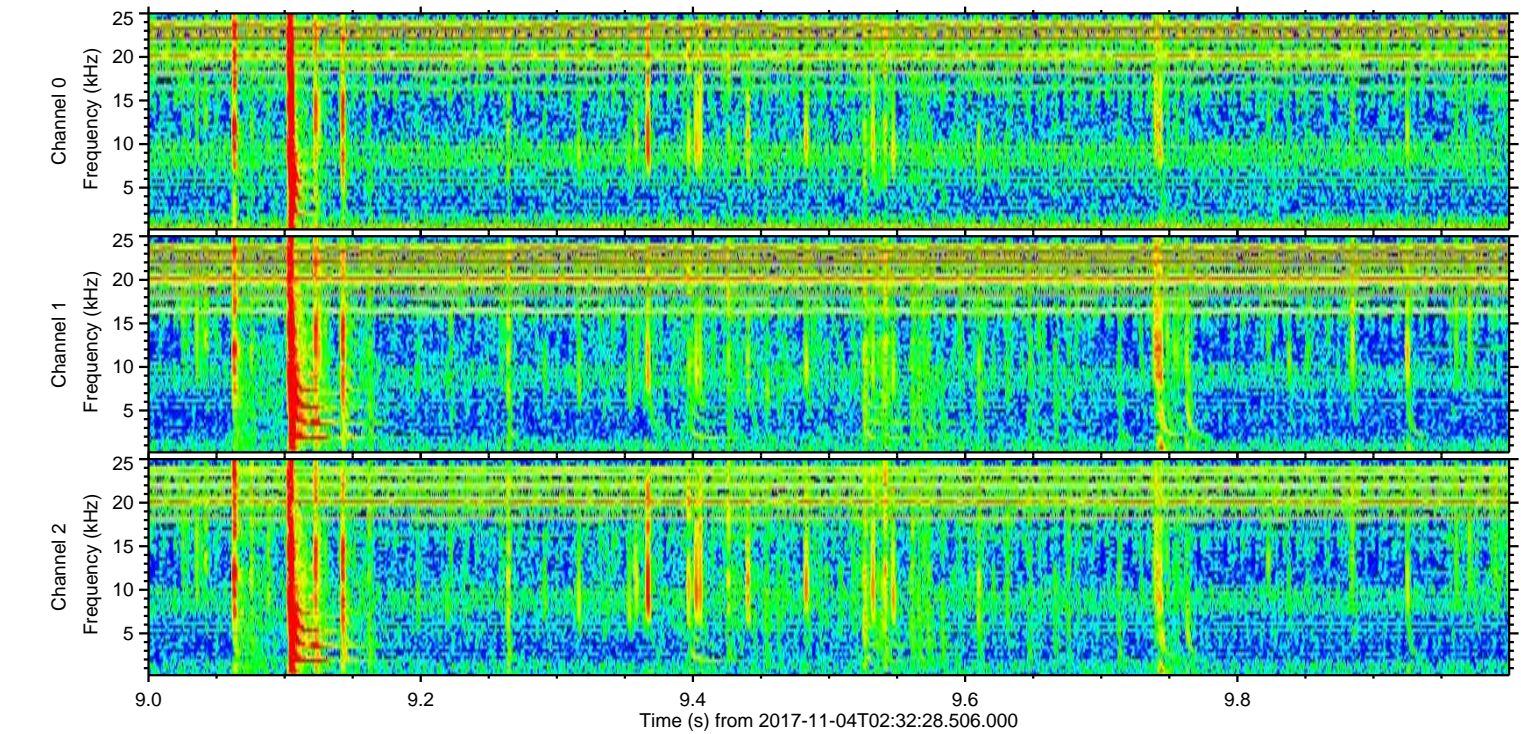
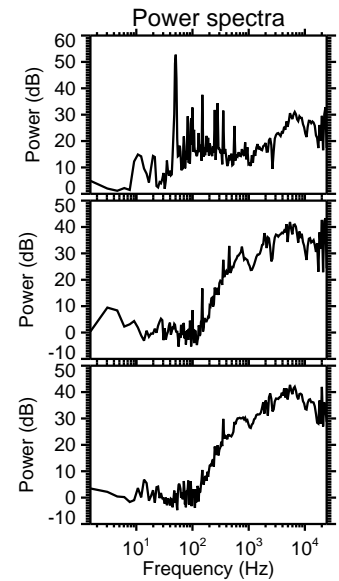
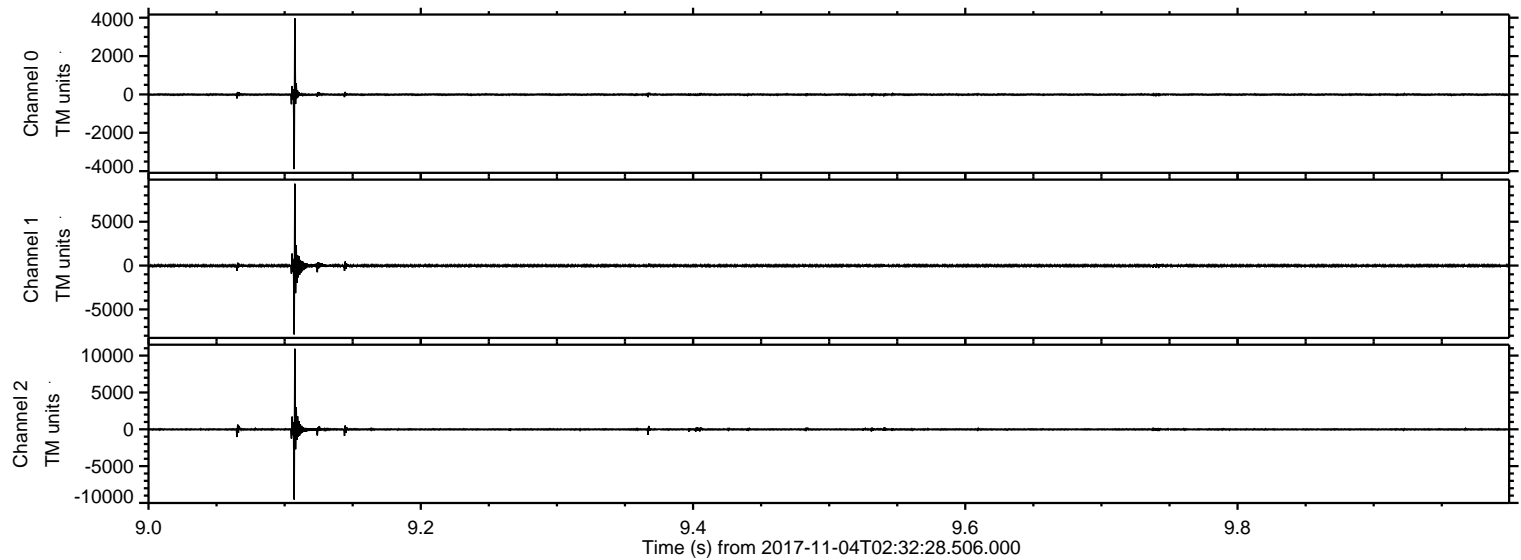
ELMAVAN 3D WAVEFORMS (Measured data sampled at 50 kHz) 51000 packets of 144 samples from 2017-11-04T02:32:28.506.000.

Processed Sat Nov 4 03:40:53 2017 by ELM ver.2012-10-06 from 001__elm20171104_023227__dat00.bin



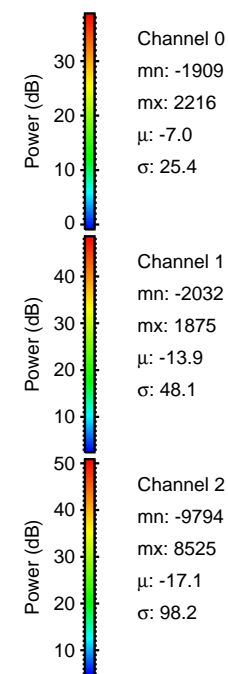
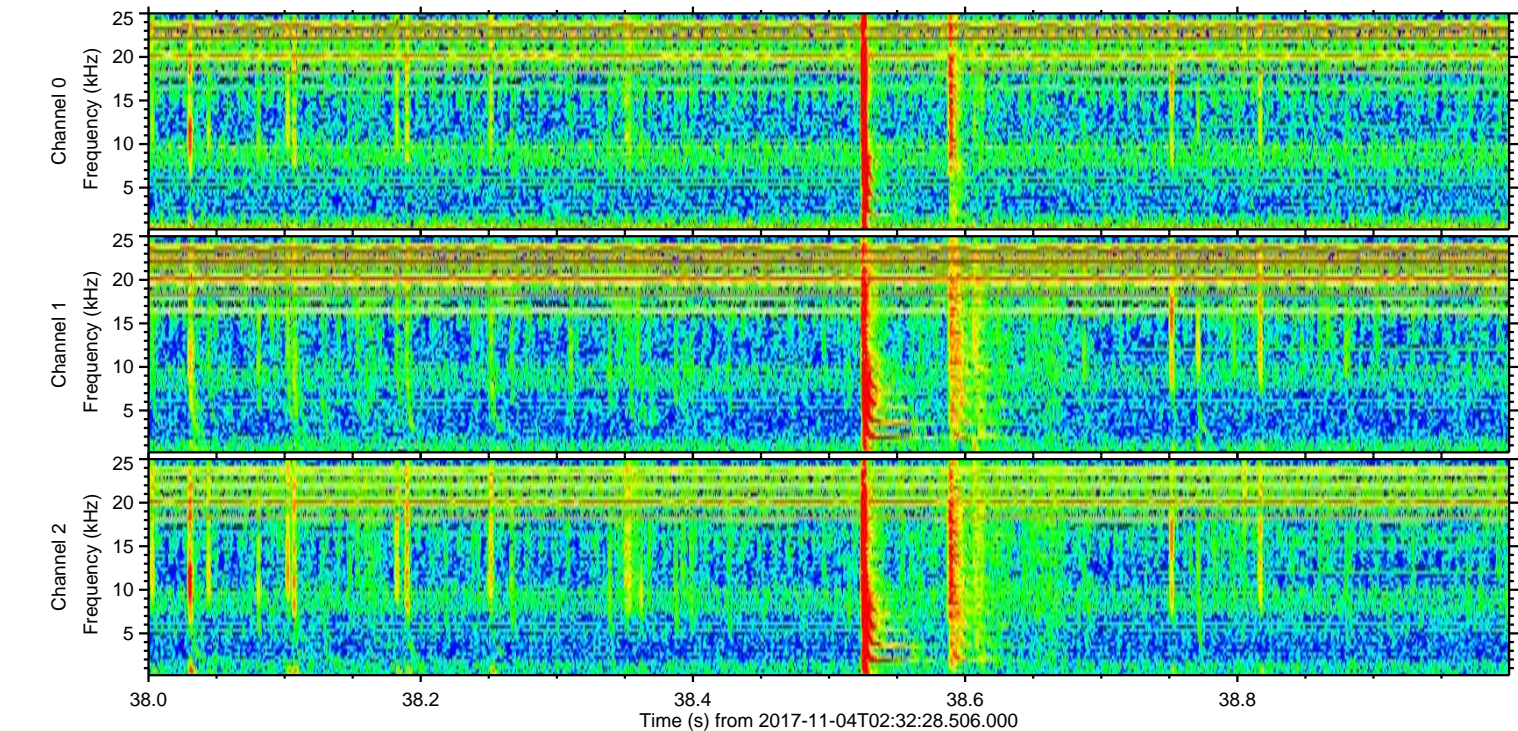
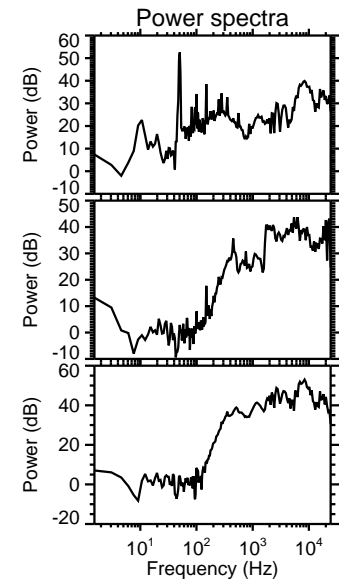
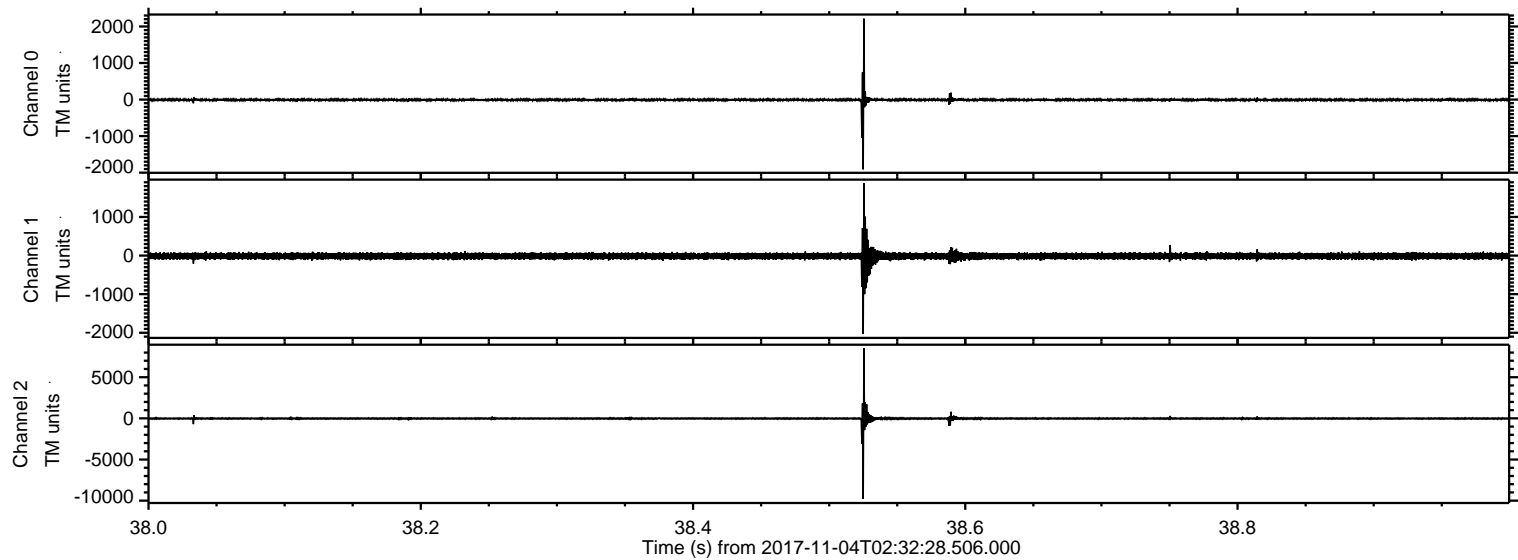
ELMAVAN 3D WAVEFORMS (Measured data sampled at 50 kHz) 51000 packets of 144 samples from 2017-11-04T02:32:28.506.000. Part 10/147

Processed Sat Nov 4 03:40:59 2017 by ELM ver.2012-10-06 from 001__elm20171104_023227__dat00.bin



ELMAVAN 3D WAVEFORMS (Measured data sampled at 50 kHz) 51000 packets of 144 samples from 2017-11-04T02:32:28.506.000. Part 39/147

Processed Sat Nov 4 03:41:00 2017 by ELM ver.2012-10-06 from 001__elm20171104_023227__dat00.bin



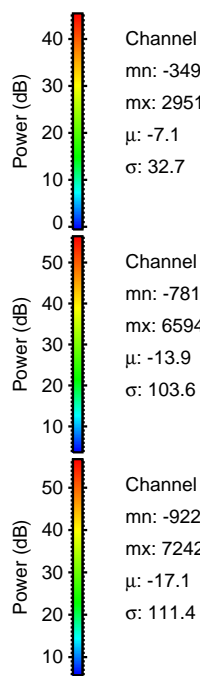
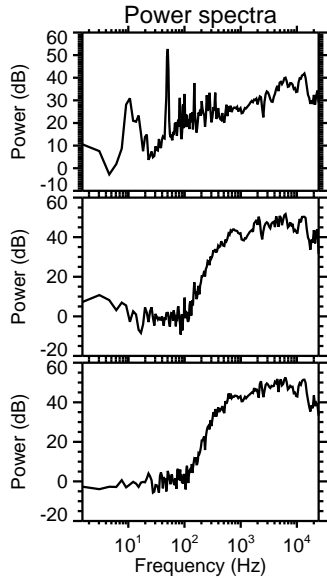
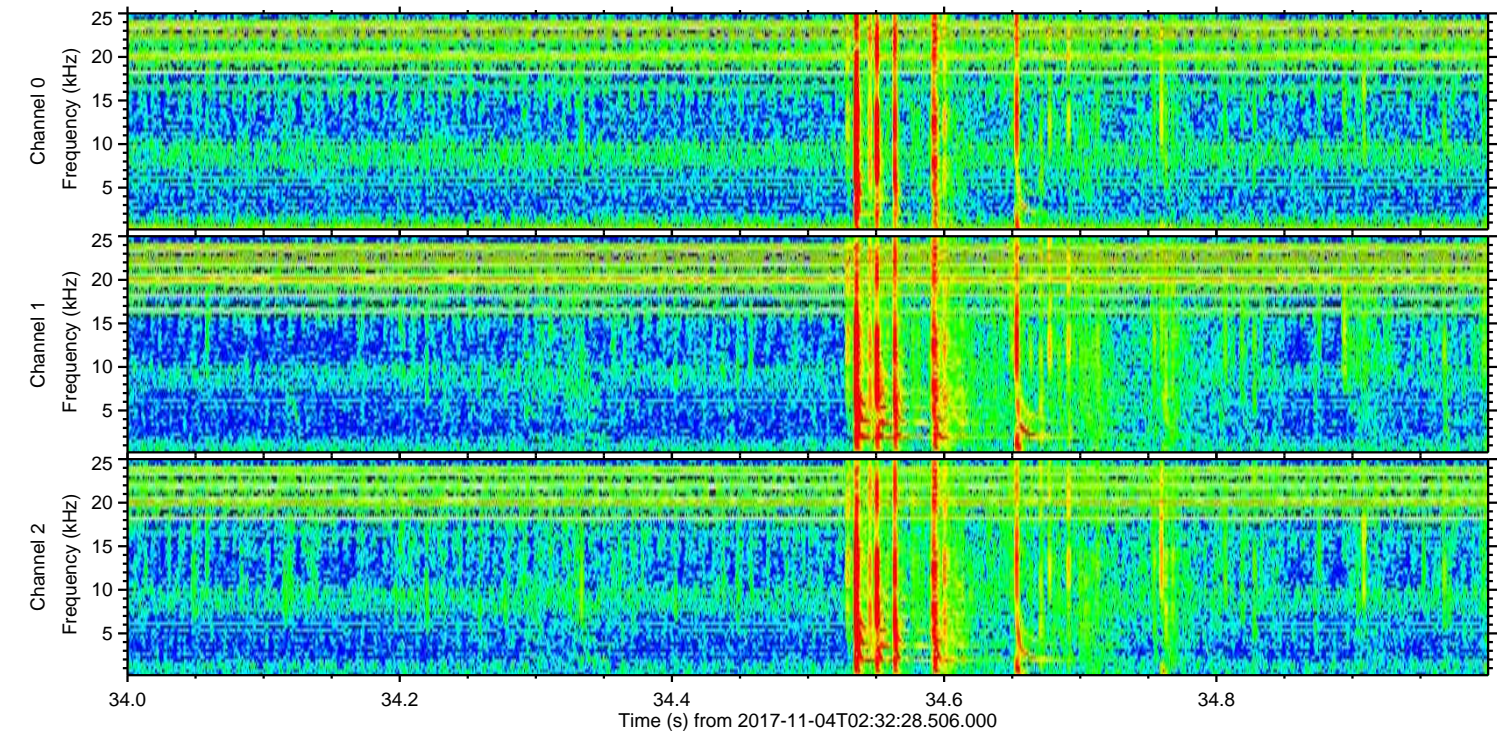
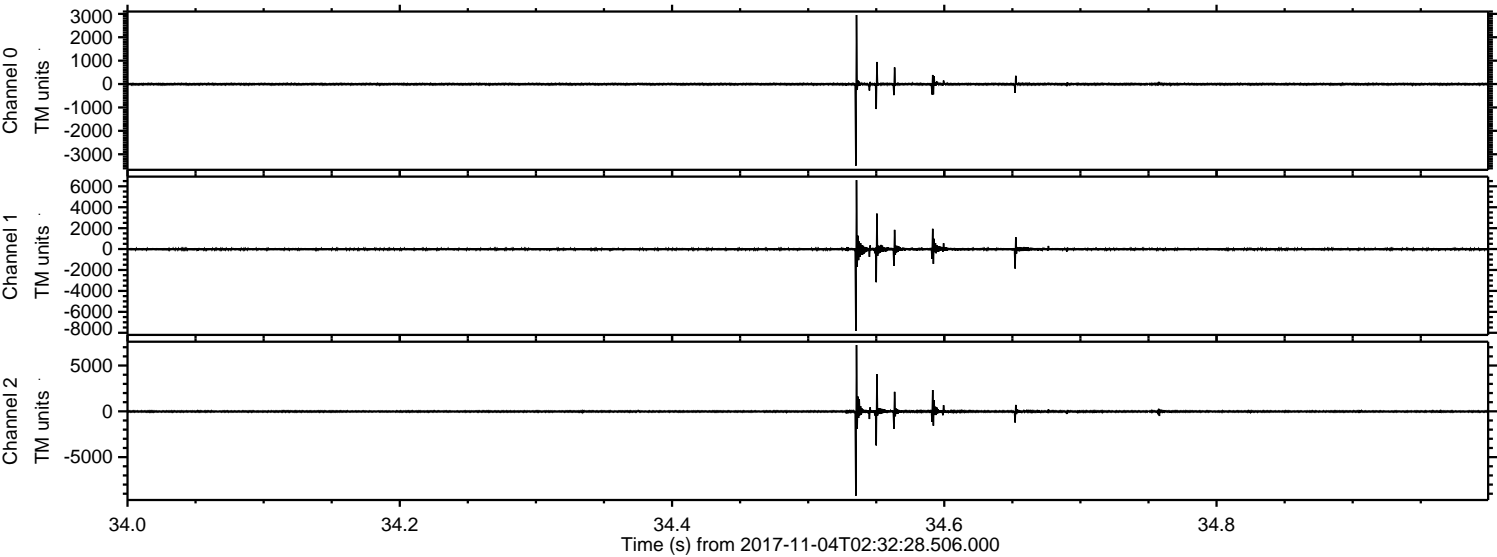
Channel 0
mn: -1909
mx: 2216
 μ : -7.0
 σ : 25.4

Channel 1
mn: -2032
mx: 1875
 μ : -13.9
 σ : 48.1

Channel 2
mn: -9794
mx: 8525
 μ : -17.1
 σ : 98.2

ELMAVAN 3D WAVEFORMS (Measured data sampled at 50 kHz) 51000 packets of 144 samples from 2017-11-04T02:32:28.506.000. Part 35/147

Processed Sat Nov 4 03:41:00 2017 by ELM ver.2012-10-06 from 001__elm20171104_023227__dat00.bin



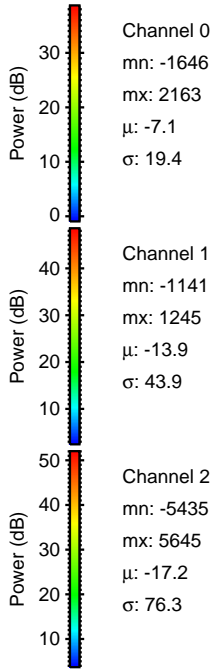
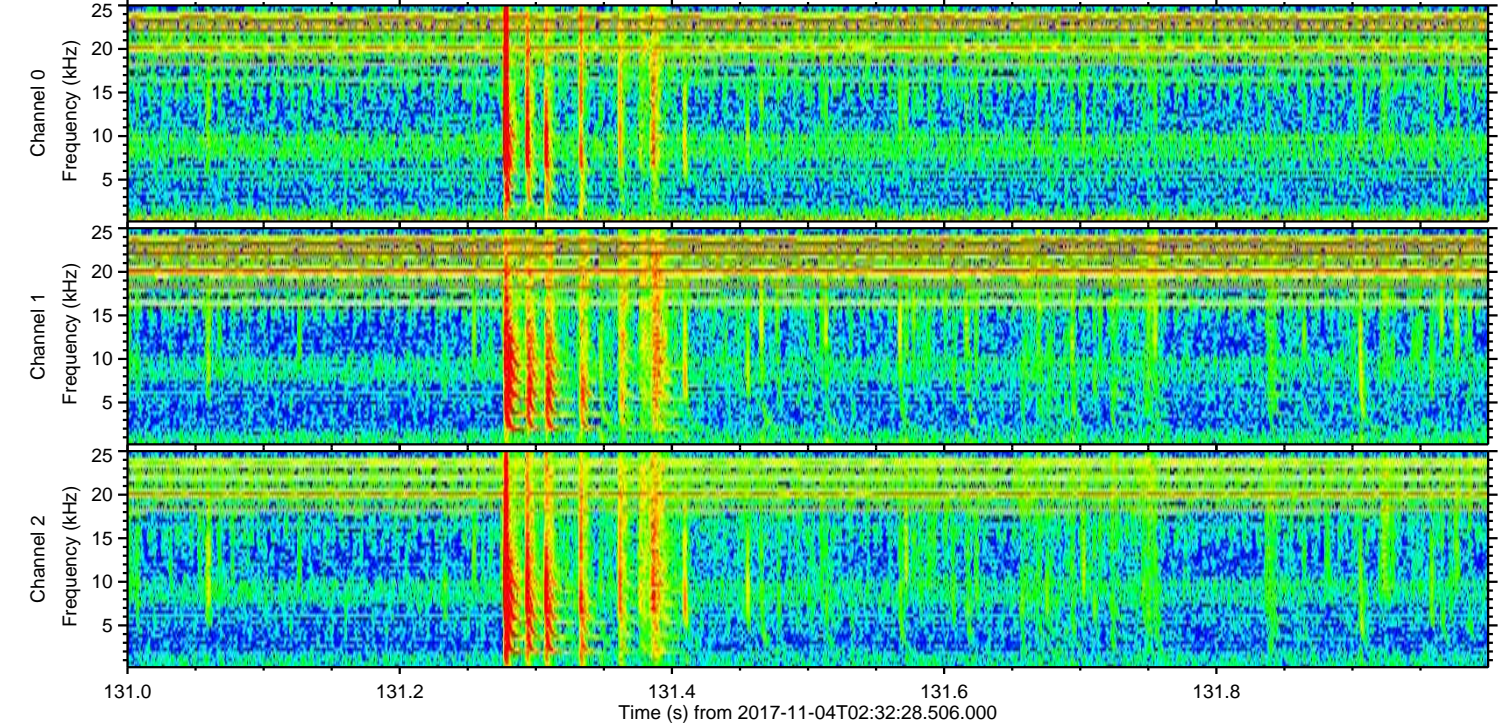
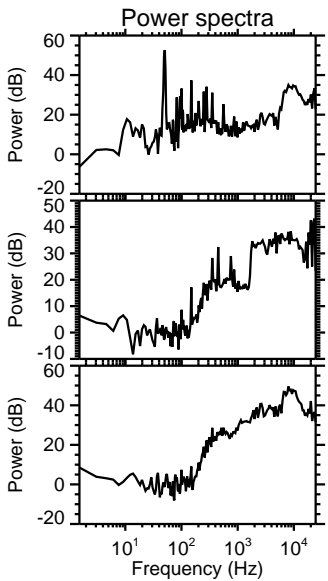
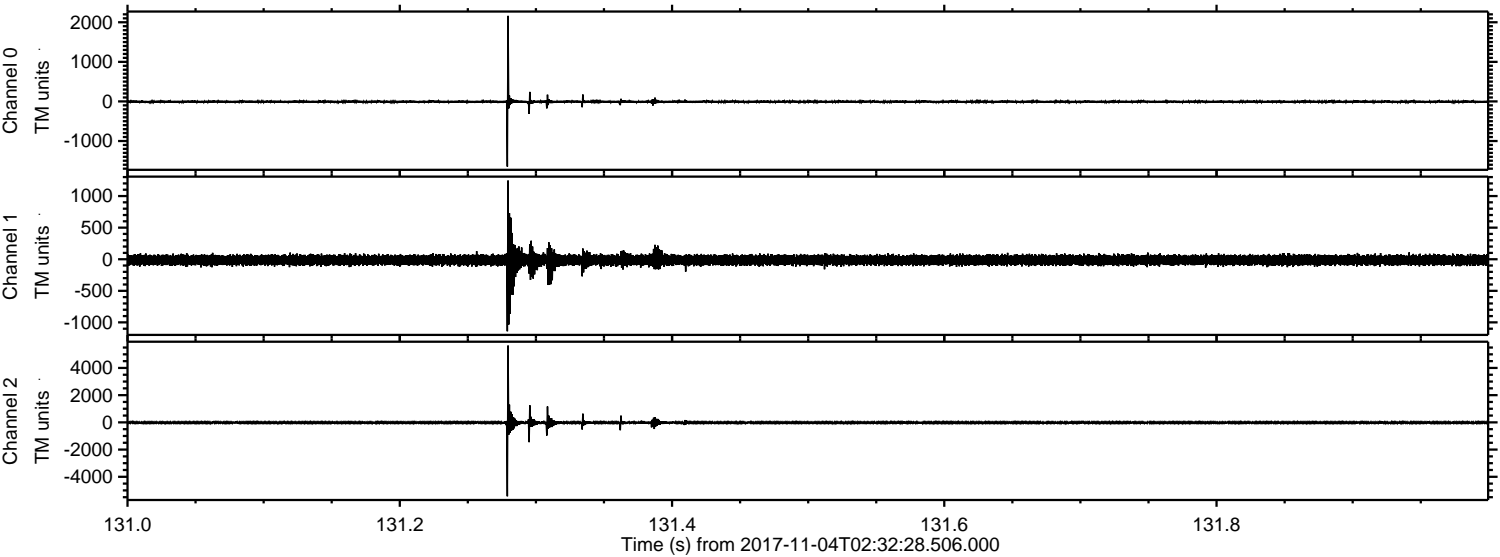
Channel 0
mn: -3491
mx: 2951
 μ : -7.1
 σ : 32.7

Channel 1
mn: -7814
mx: 6594
 μ : -13.9
 σ : 103.6

Channel 2
mn: -9222
mx: 7242
 μ : -17.1
 σ : 111.4

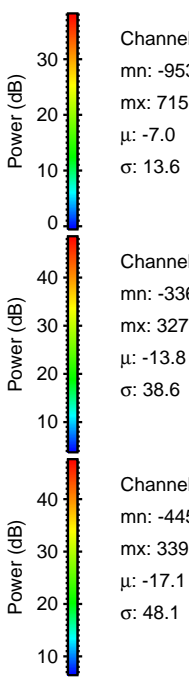
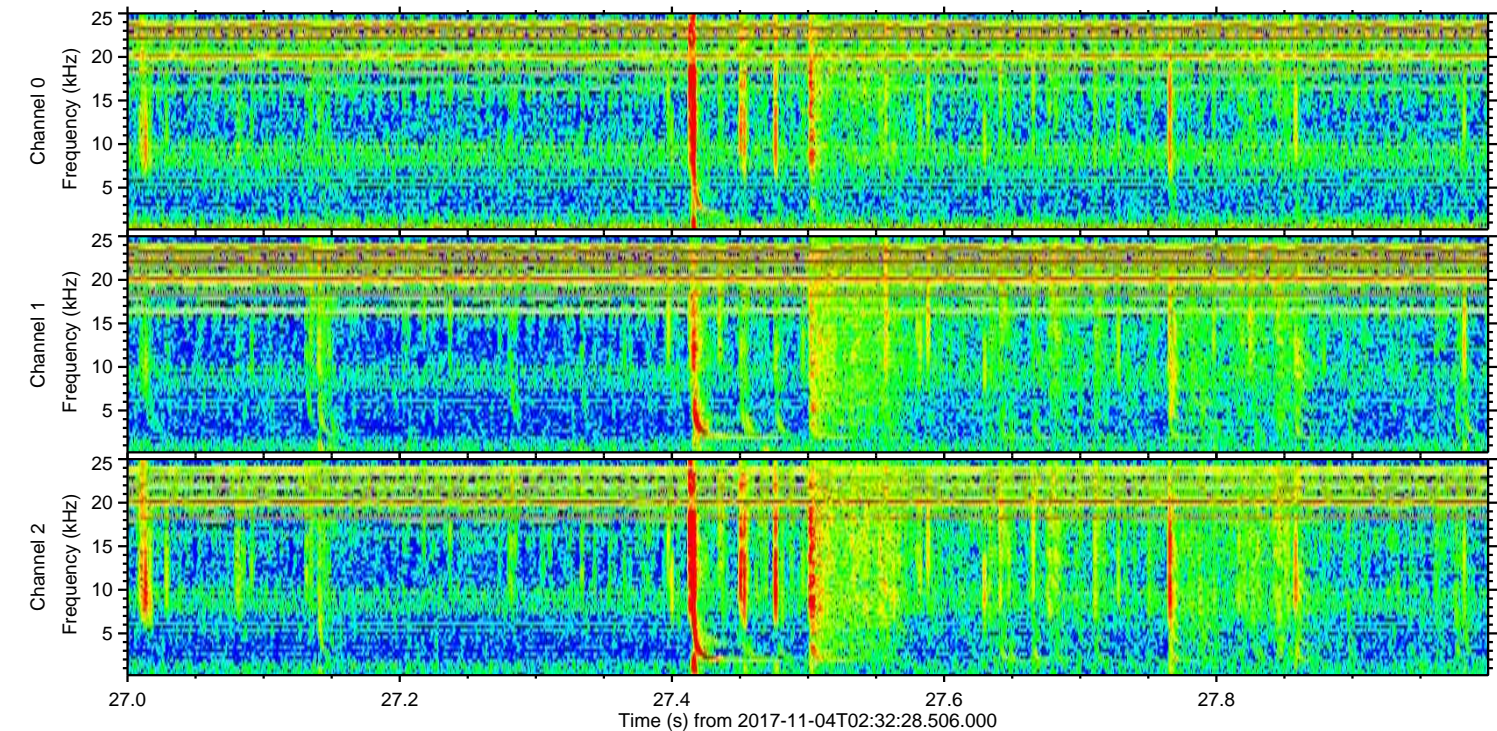
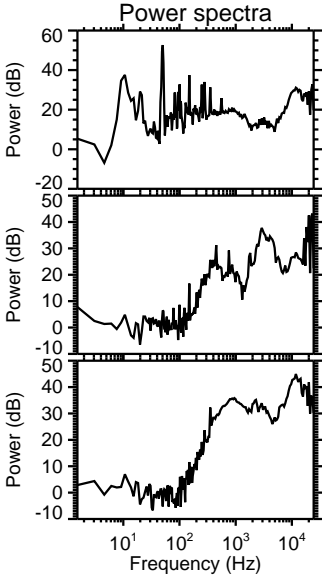
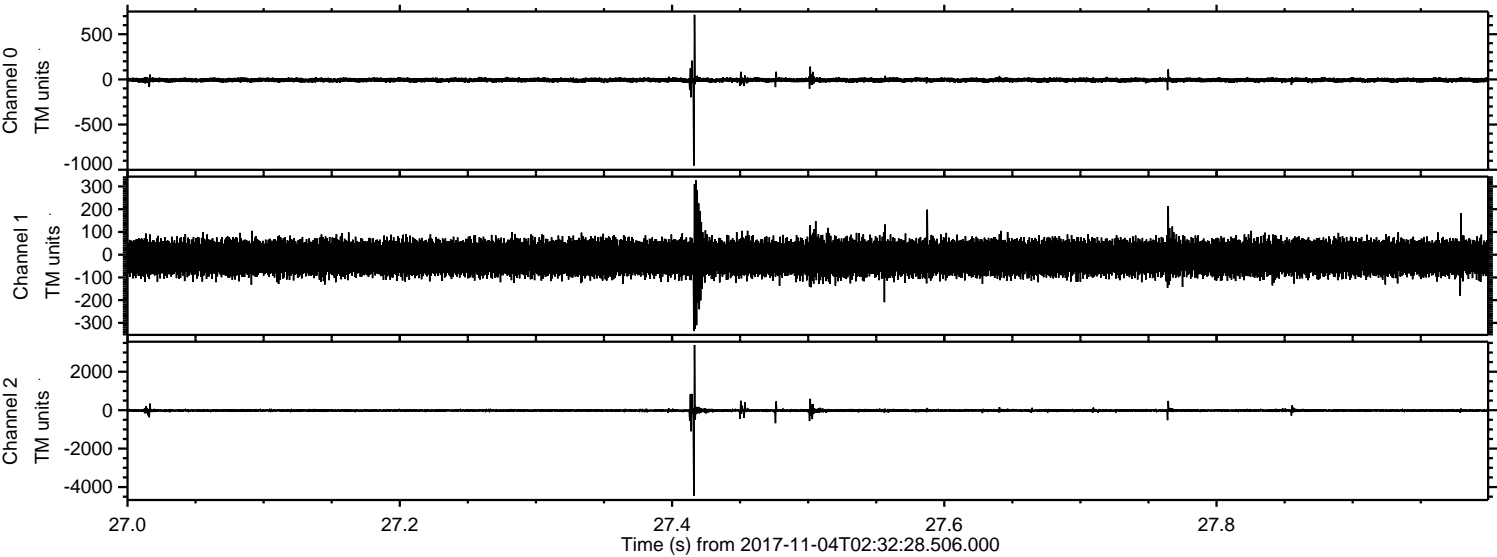
ELMAVAN 3D WAVEFORMS (Measured data sampled at 50 kHz) 51000 packets of 144 samples from 2017-11-04T02:32:28.506.000. Part 132/147

Processed Sat Nov 4 03:41:01 2017 by ELM ver.2012-10-06 from 001__elm20171104_023227__dat00.bin



ELMAVAN 3D WAVEFORMS (Measured data sampled at 50 kHz) 51000 packets of 144 samples from 2017-11-04T02:32:28.506.000. Part 28/147

Processed Sat Nov 4 03:41:02 2017 by ELM ver.2012-10-06 from 001__elm20171104_023227__dat00.bin



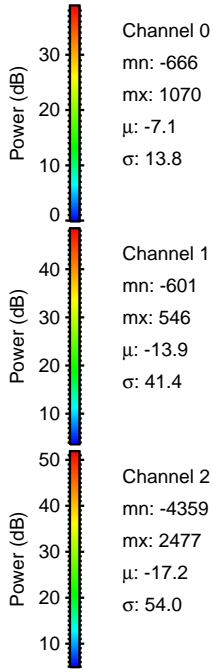
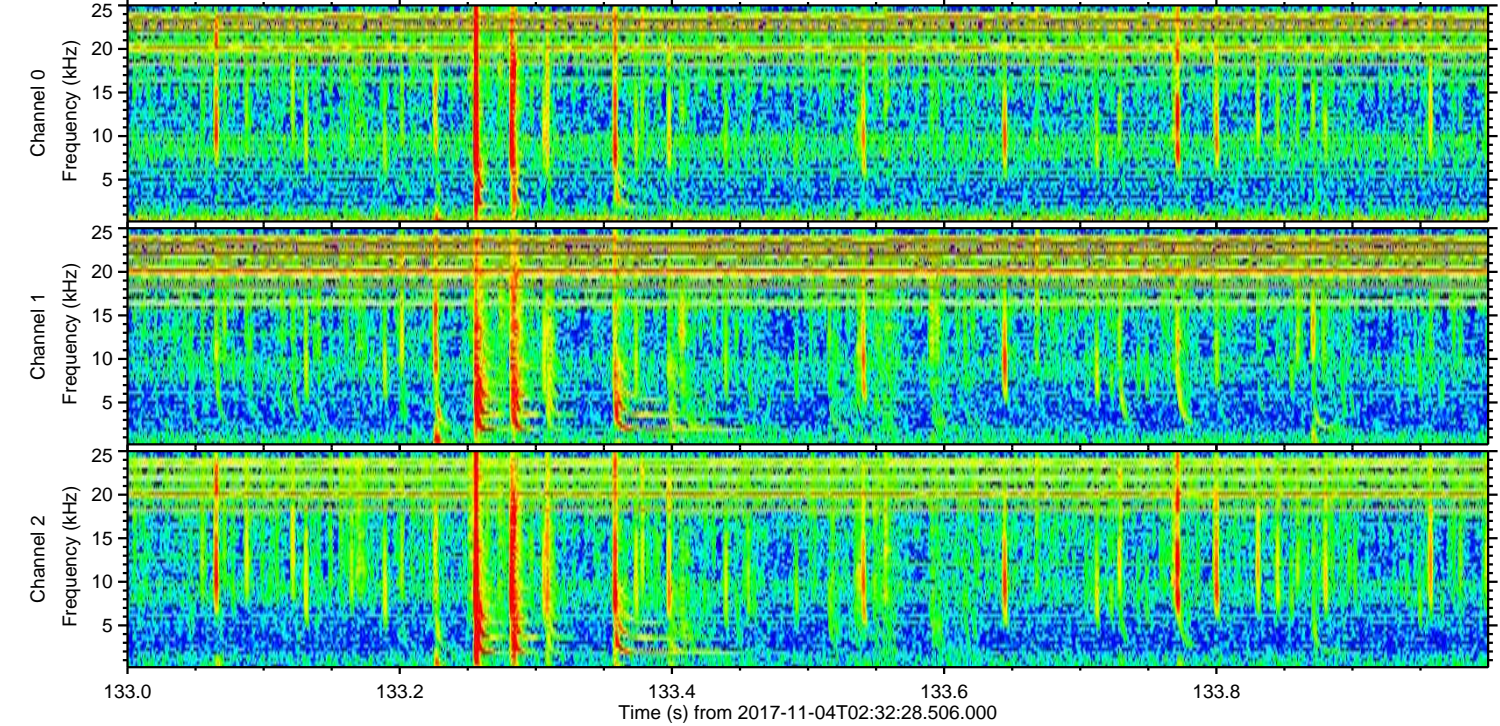
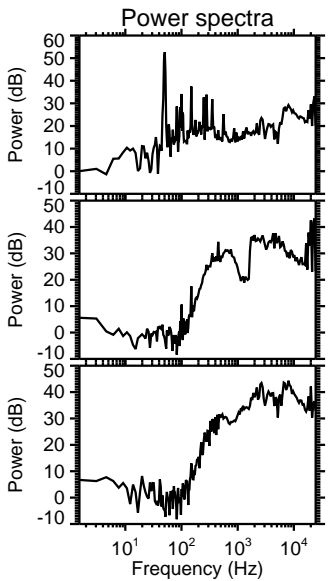
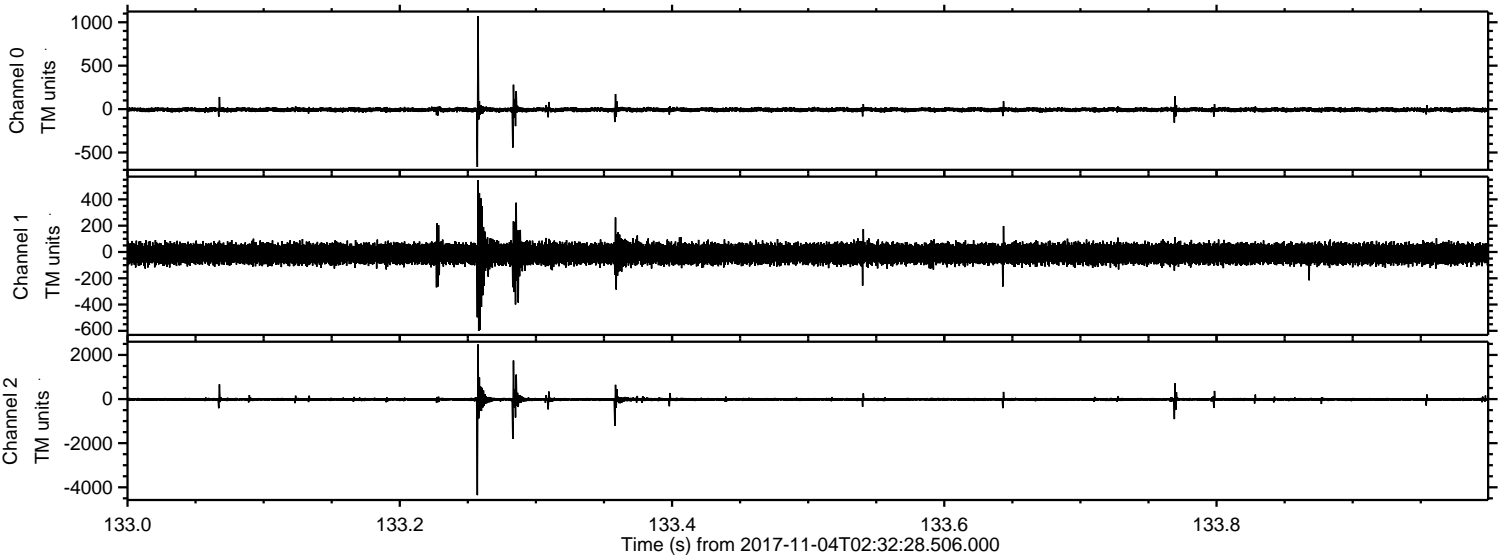
Channel 0
mn: -953
mx: 715
 μ : -7.0
 σ : 13.6

Channel 1
mn: -336
mx: 327
 μ : -13.8
 σ : 38.6

Channel 2
mn: -4452
mx: 3393
 μ : -17.1
 σ : 48.1

ELMAVAN 3D WAVEFORMS (Measured data sampled at 50 kHz) 51000 packets of 144 samples from 2017-11-04T02:32:28.506.000. Part 134/147

Processed Sat Nov 4 03:41:02 2017 by ELM ver.2012-10-06 from 001__elm20171104_023227__dat00.bin



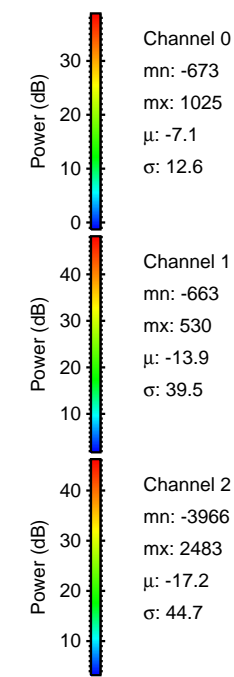
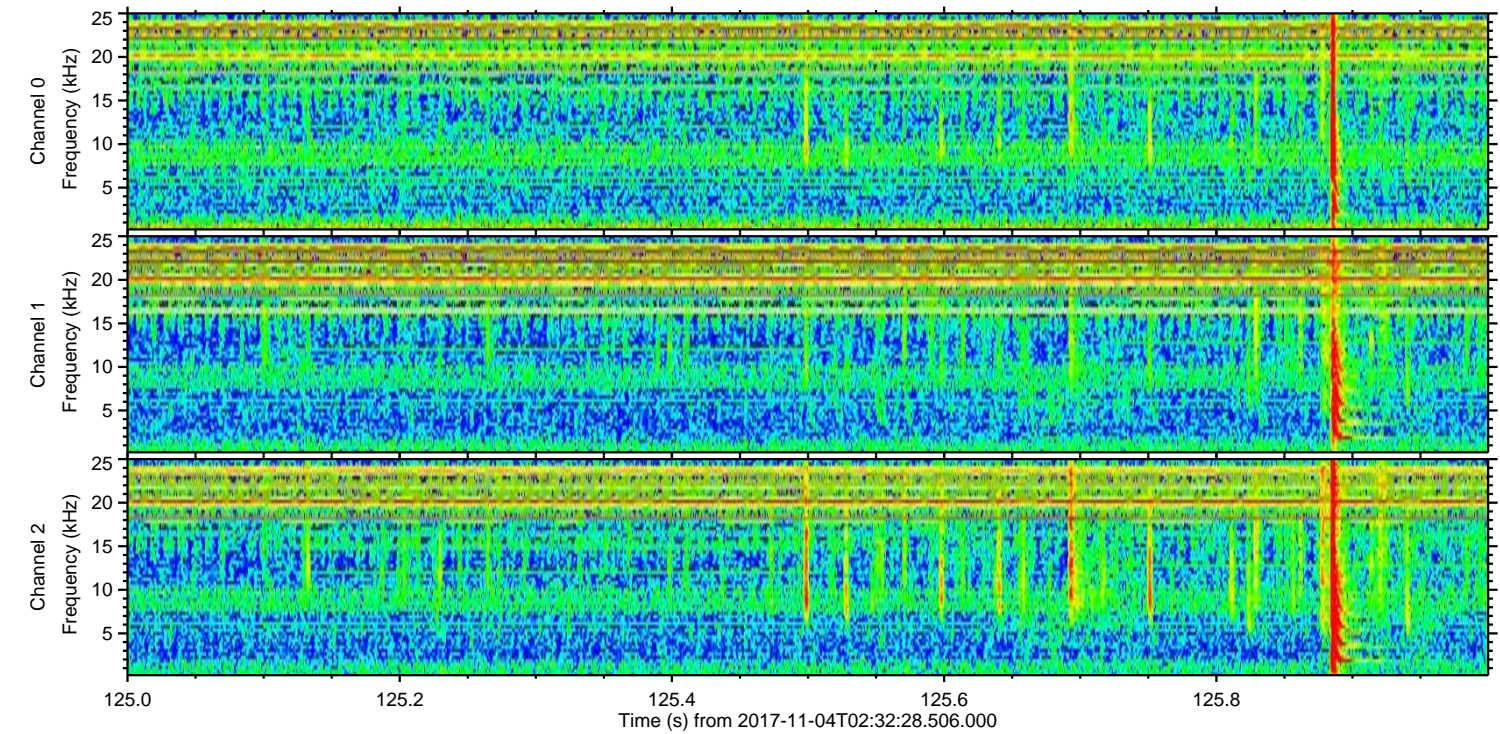
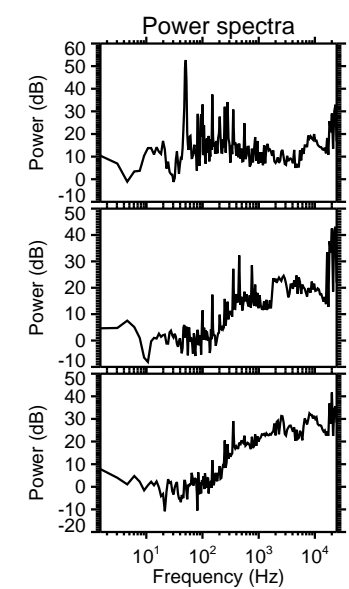
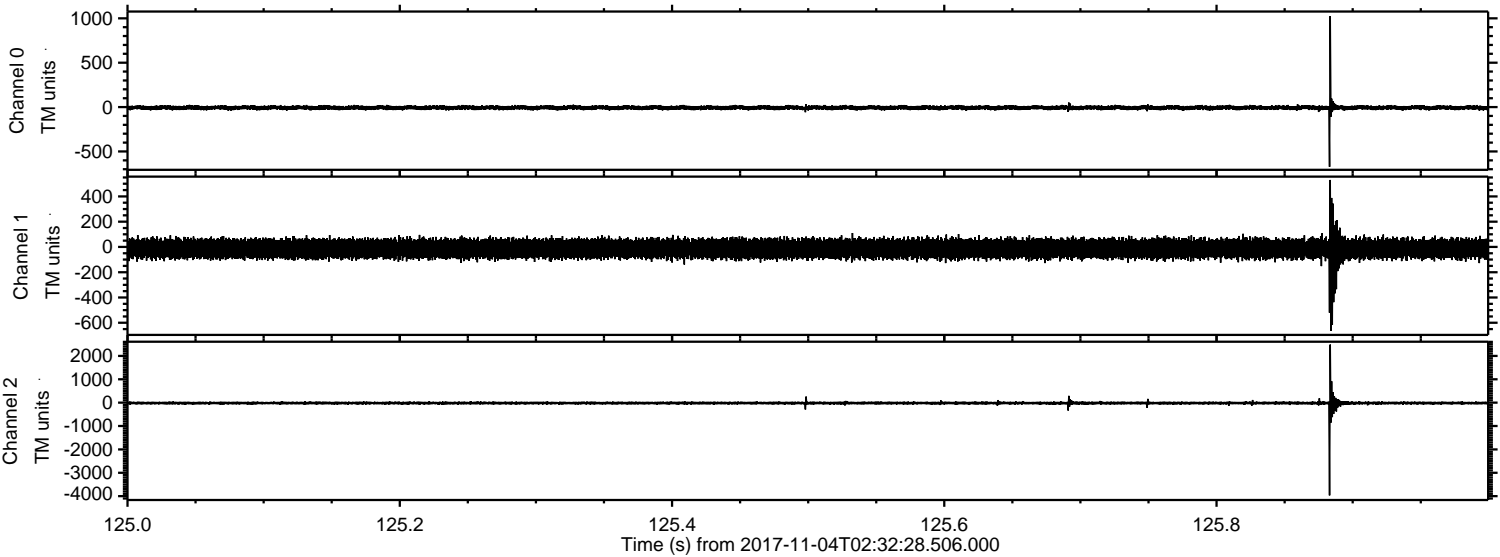
Channel 0
mn: -666
mx: 1070
 μ : -7.1
 σ : 13.8

Channel 1
mn: -601
mx: 546
 μ : -13.9
 σ : 41.4

Channel 2
mn: -4359
mx: 2477
 μ : -17.2
 σ : 54.0

ELMAVAN 3D WAVEFORMS (Measured data sampled at 50 kHz) 51000 packets of 144 samples from 2017-11-04T02:32:28.506.000. Part 126/147

Processed Sat Nov 4 03:41:03 2017 by ELM ver.2012-10-06 from 001__elm20171104_023227__dat00.bin



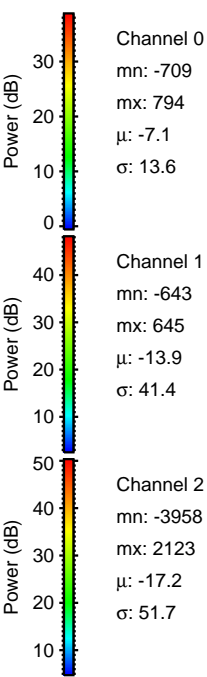
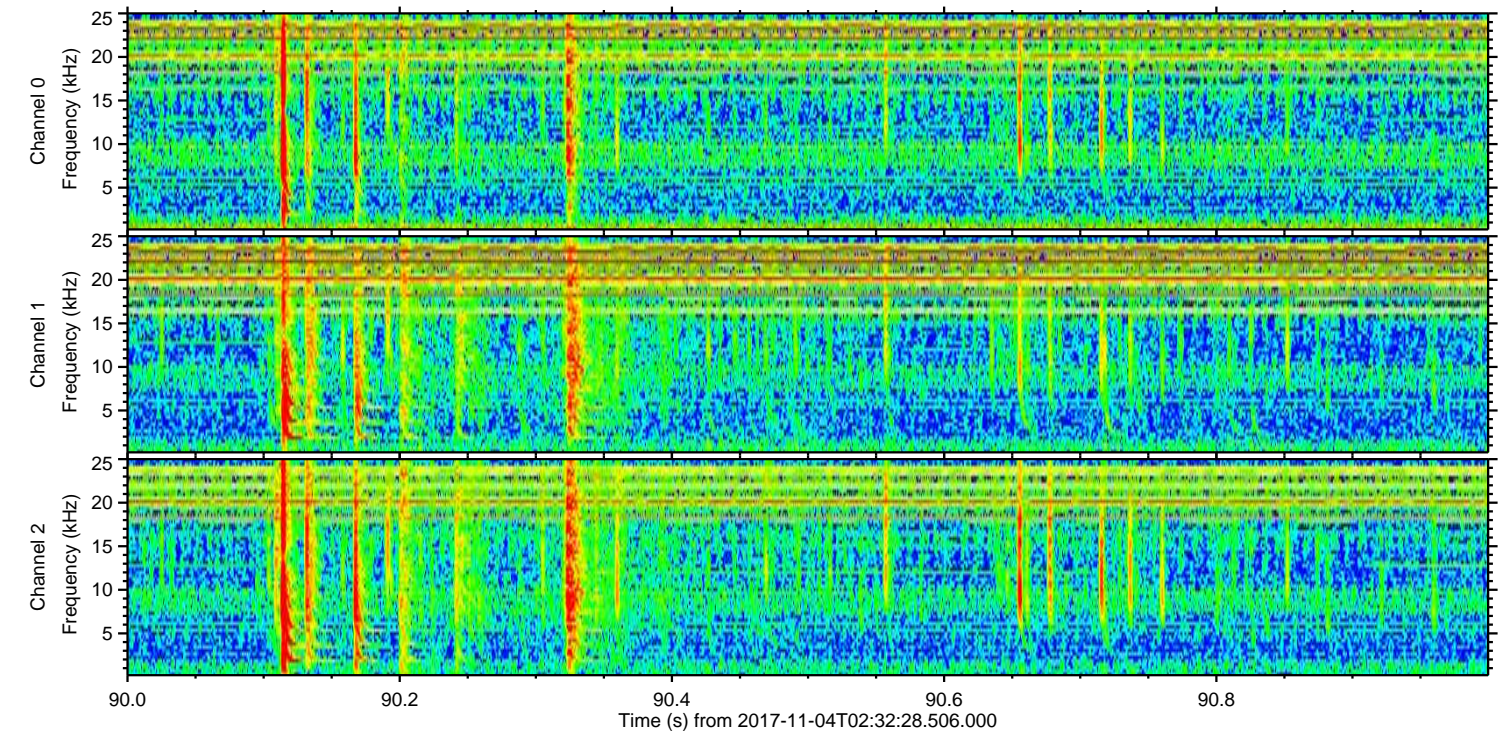
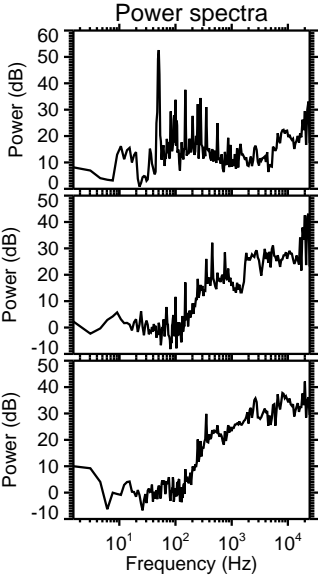
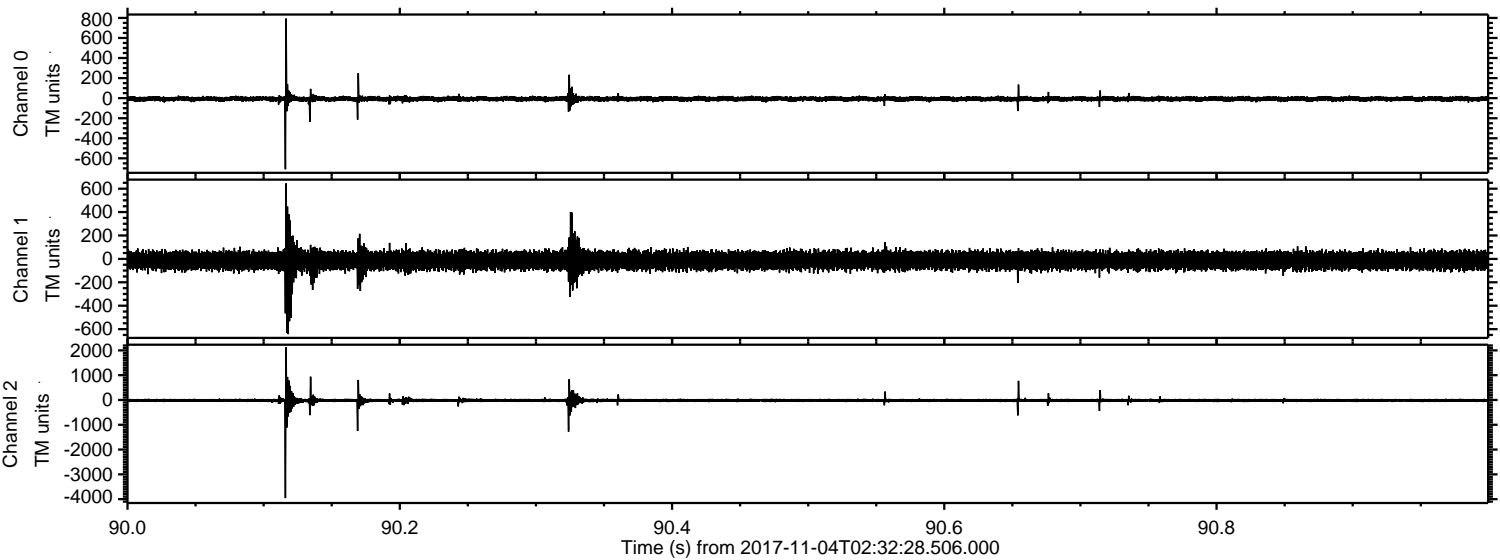
Channel 0
mn: -673
mx: 1025
 μ : -7.1
 σ : 12.6

Channel 1
mn: -663
mx: 530
 μ : -13.9
 σ : 39.5

Channel 2
mn: -3966
mx: 2483
 μ : -17.2
 σ : 44.7

ELMAVAN 3D WAVEFORMS (Measured data sampled at 50 kHz) 51000 packets of 144 samples from 2017-11-04T02:32:28.506.000. Part 91/147

Processed Sat Nov 4 03:41:04 2017 by ELM ver.2012-10-06 from 001__elm20171104_023227__dat00.bin



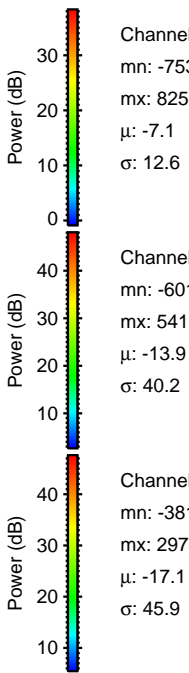
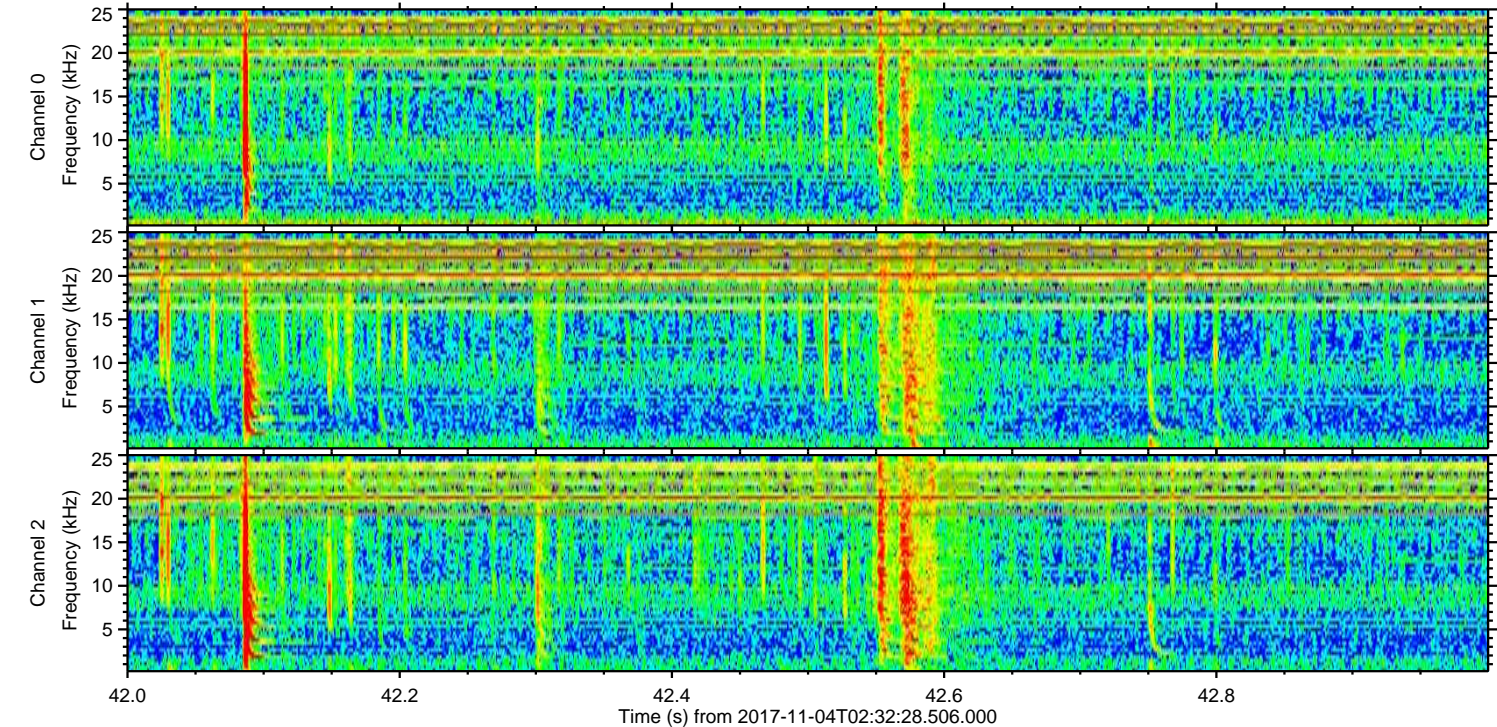
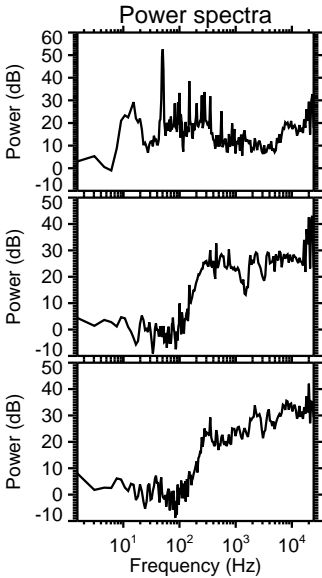
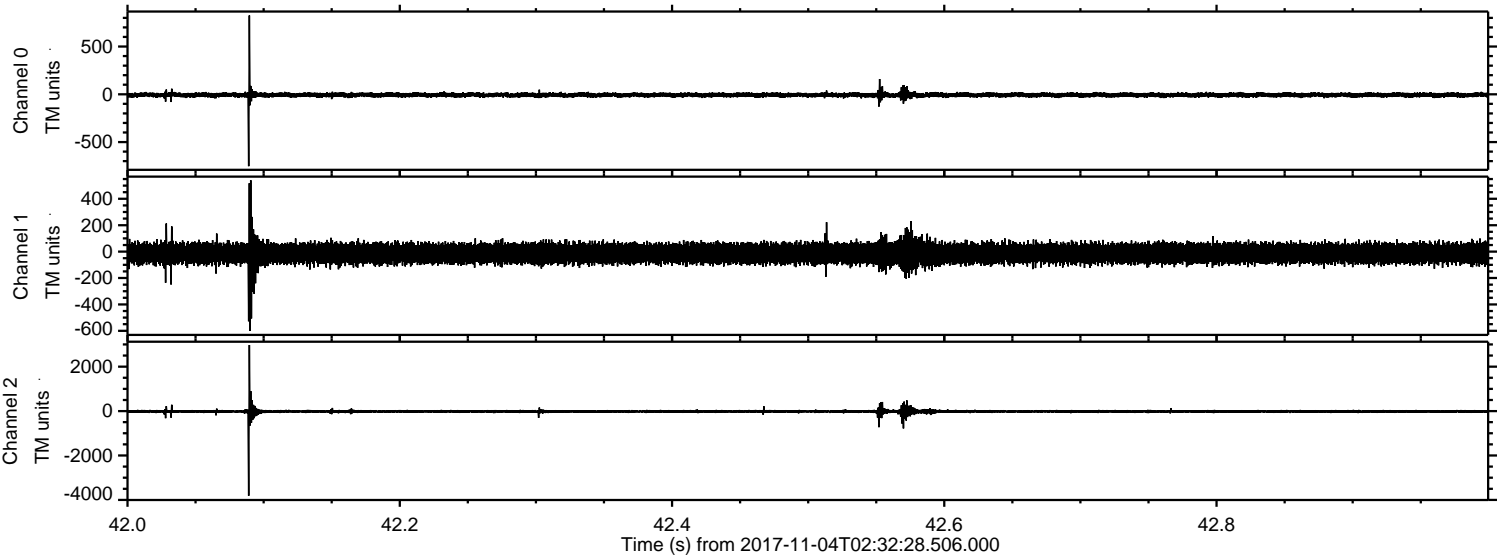
Channel 0
mn: -709
mx: 794
 μ : -7.1
 σ : 13.6

Channel 1
mn: -643
mx: 645
 μ : -13.9
 σ : 41.4

Channel 2
mn: -3958
mx: 2123
 μ : -17.2
 σ : 51.7

ELMAVAN 3D WAVEFORMS (Measured data sampled at 50 kHz) 51000 packets of 144 samples from 2017-11-04T02:32:28.506.000. Part 43/147

Processed Sat Nov 4 03:41:04 2017 by ELM ver.2012-10-06 from 001__elm20171104_023227__dat00.bin



Processed Sat Nov 4 03:41:05 2017 by ELM ver.2012-10-06 from 001__elm20171104_023227__dat00.bin

