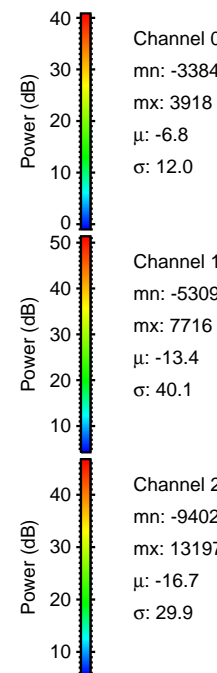
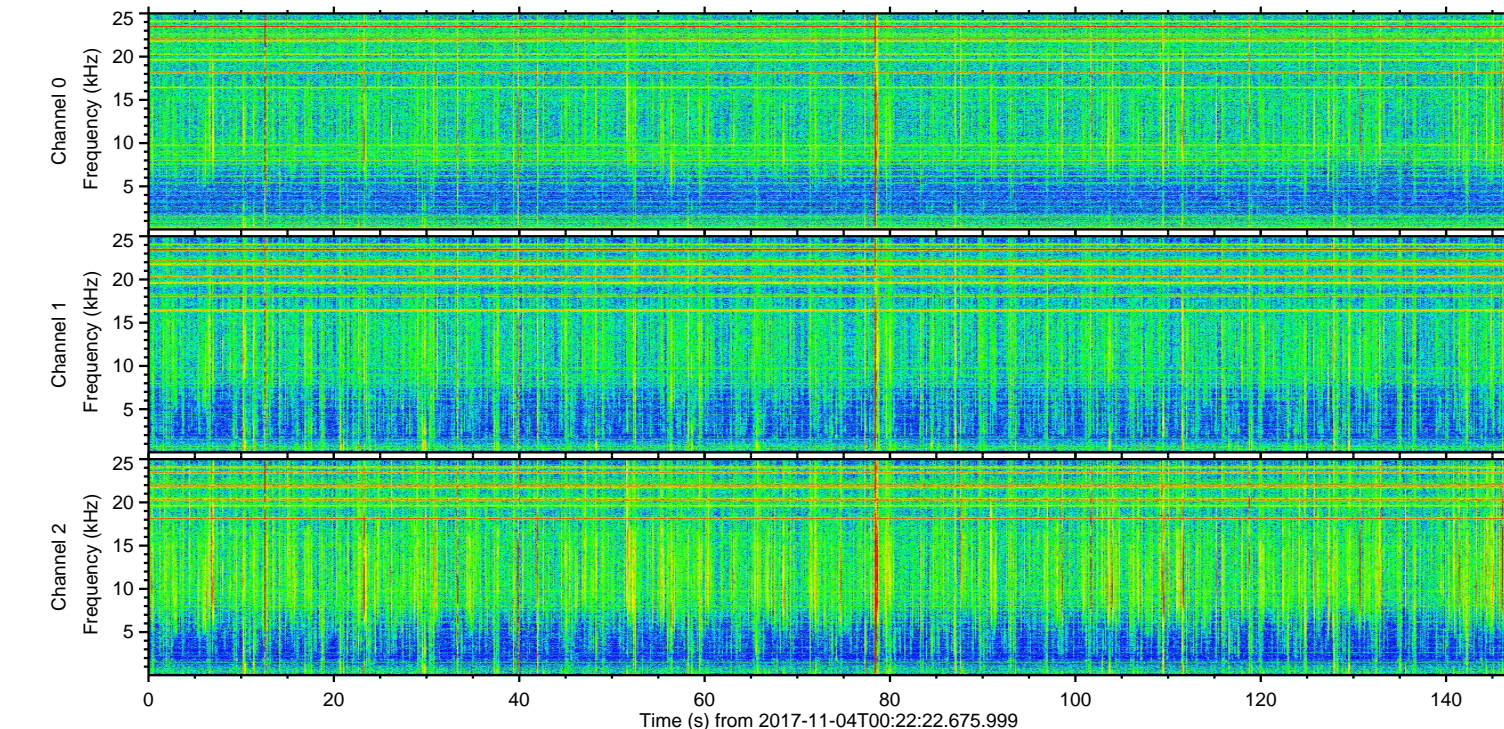
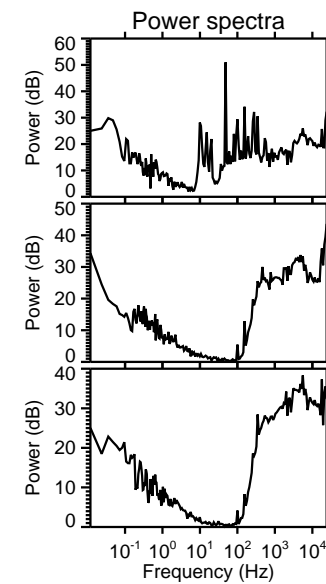
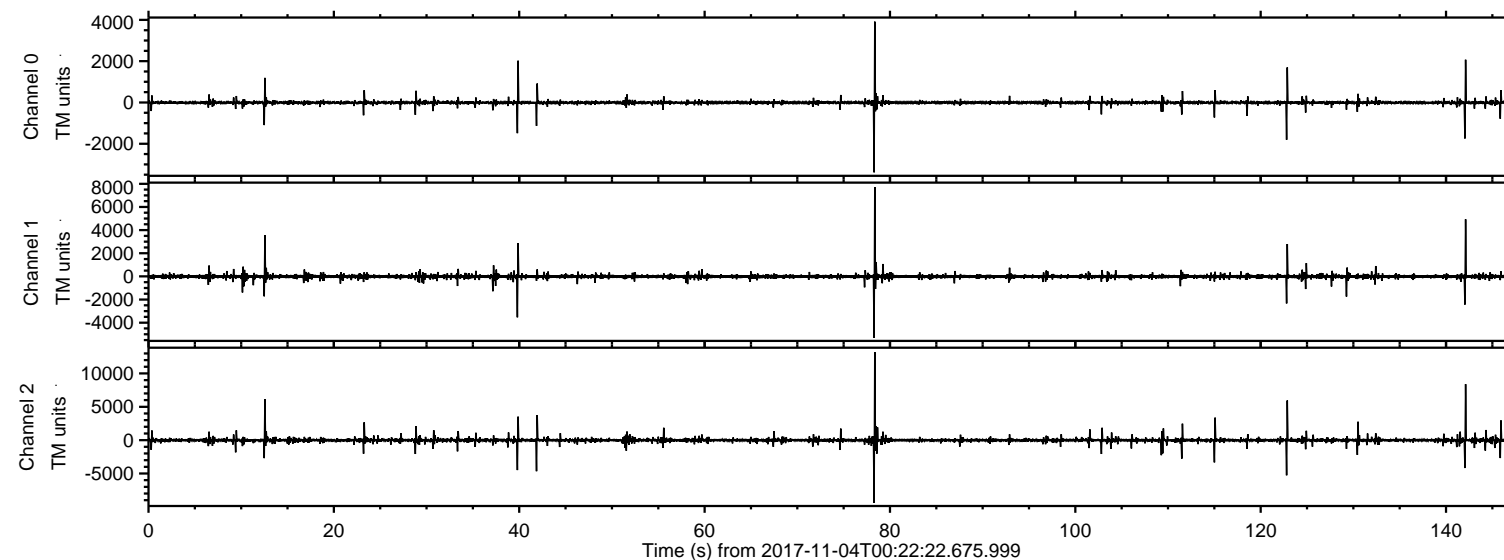


# ELMAVAN 3D WAVEFORMS (Measured data sampled at 50 kHz) 51000 packets of 144 samples from 2017-11-04T00:22:22.675.999.

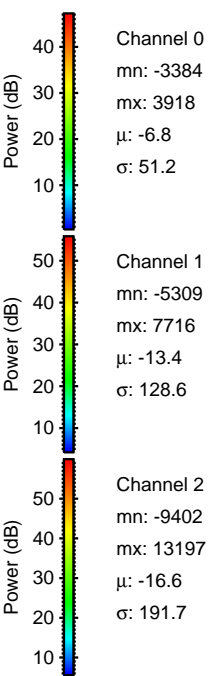
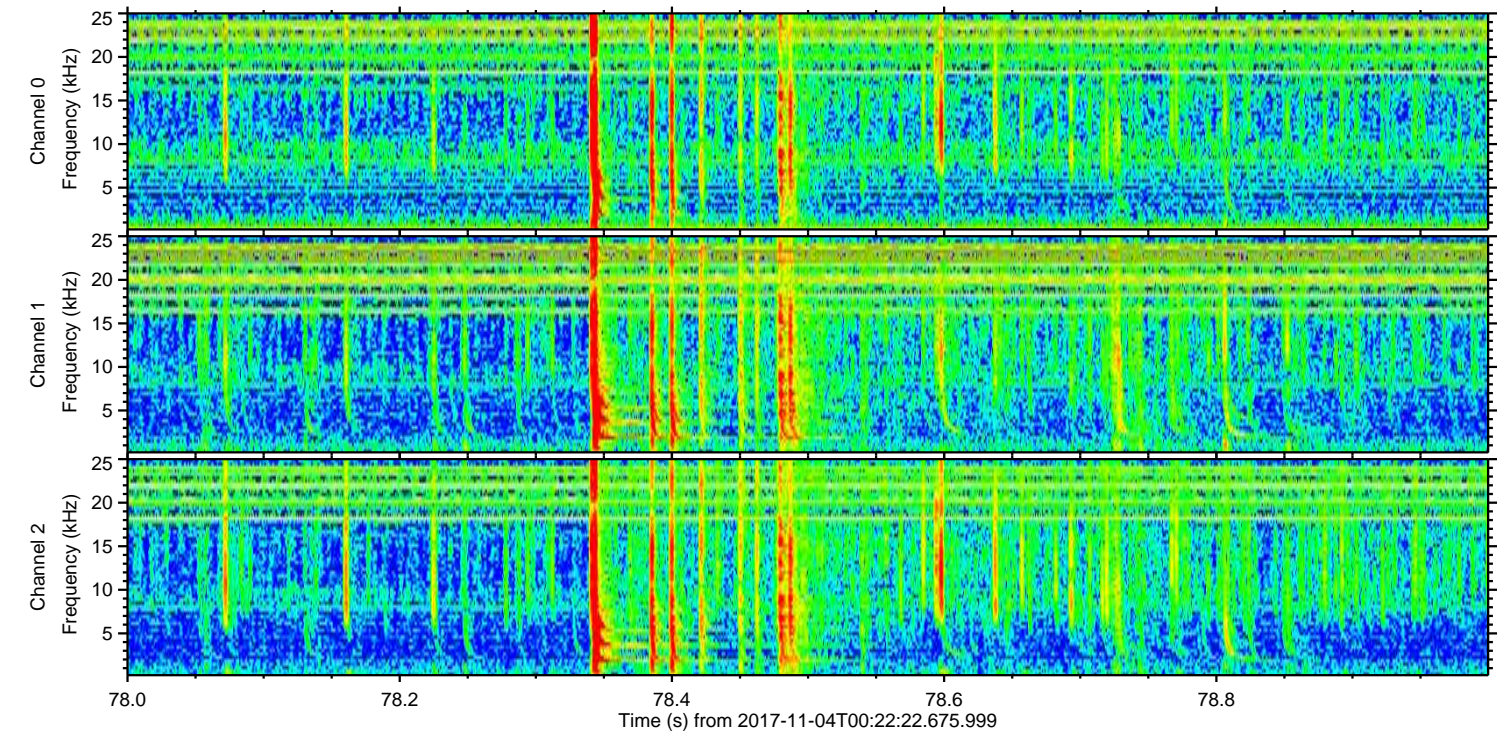
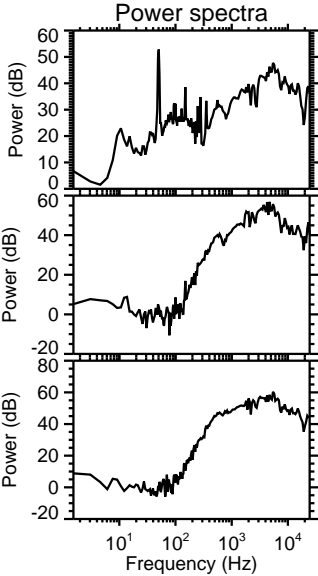
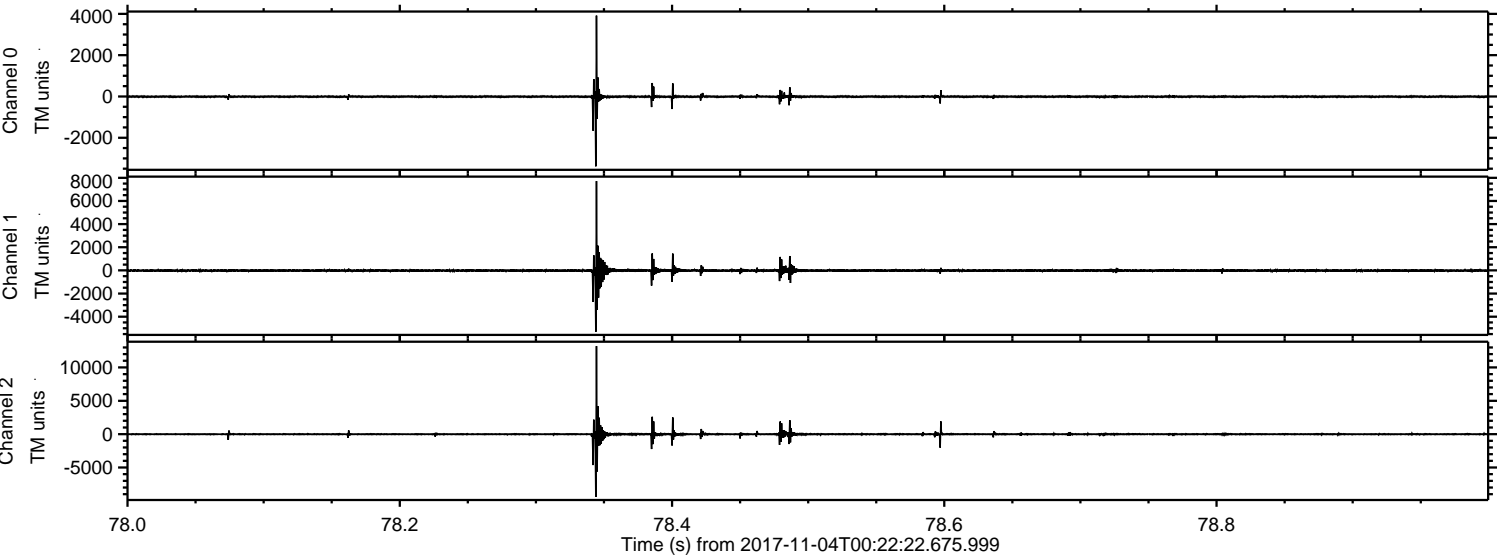
Processed Sat Nov 4 01:31:03 2017 by ELM ver.2012-10-06 from 001\_\_elm201711104\_002221\_\_dat00.bin





ELMAVAN 3D WAVEFORMS (Measured data sampled at 50 kHz) 51000 packets of 144 samples from 2017-11-04T00:22:22.675.999. Part 79/147

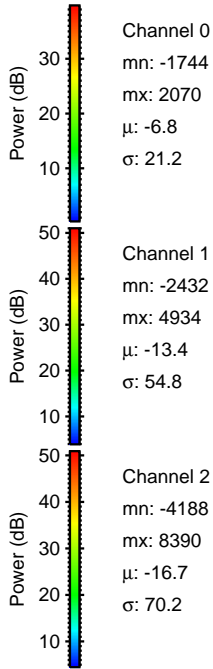
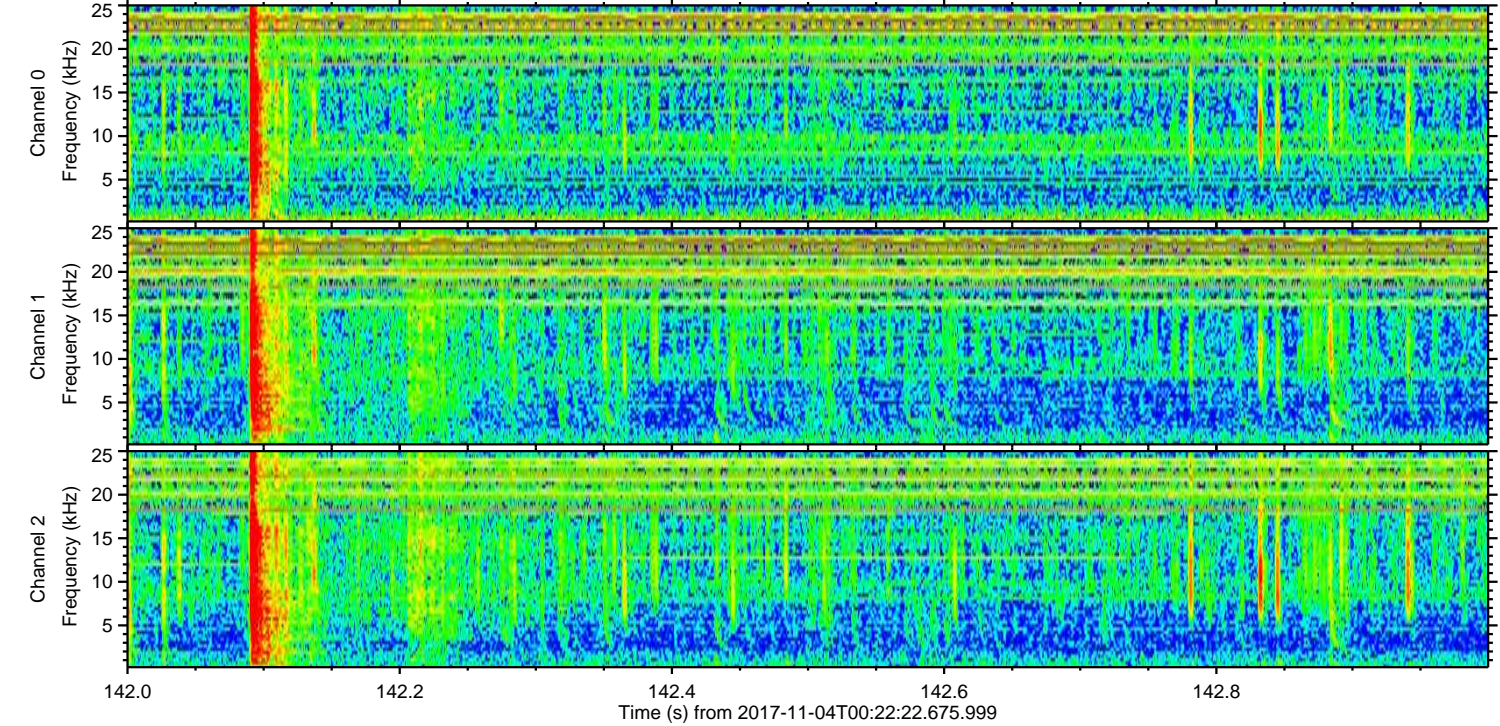
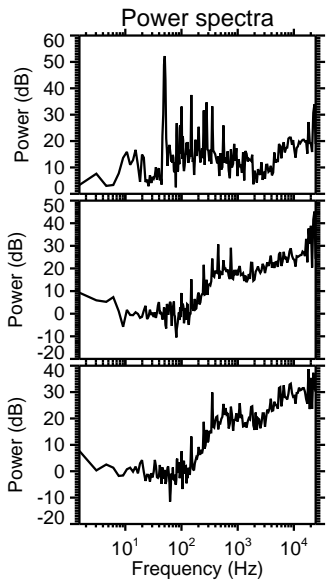
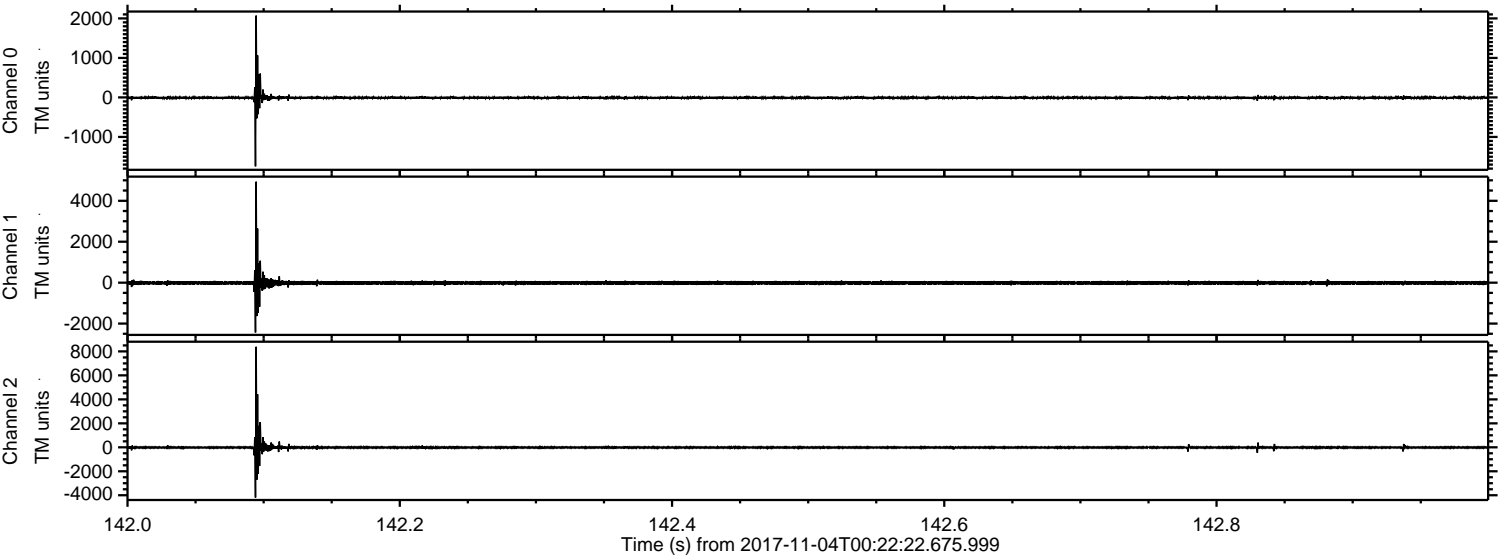
Processed Sat Nov 4 01:31:09 2017 by ELM ver.2012-10-06 from 001\_\_elm20171104\_002221\_\_dat00.bin





ELMAVAN 3D WAVEFORMS (Measured data sampled at 50 kHz) 51000 packets of 144 samples from 2017-11-04T00:22:22.675.999. Part 143/147

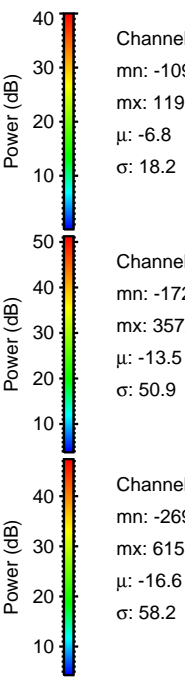
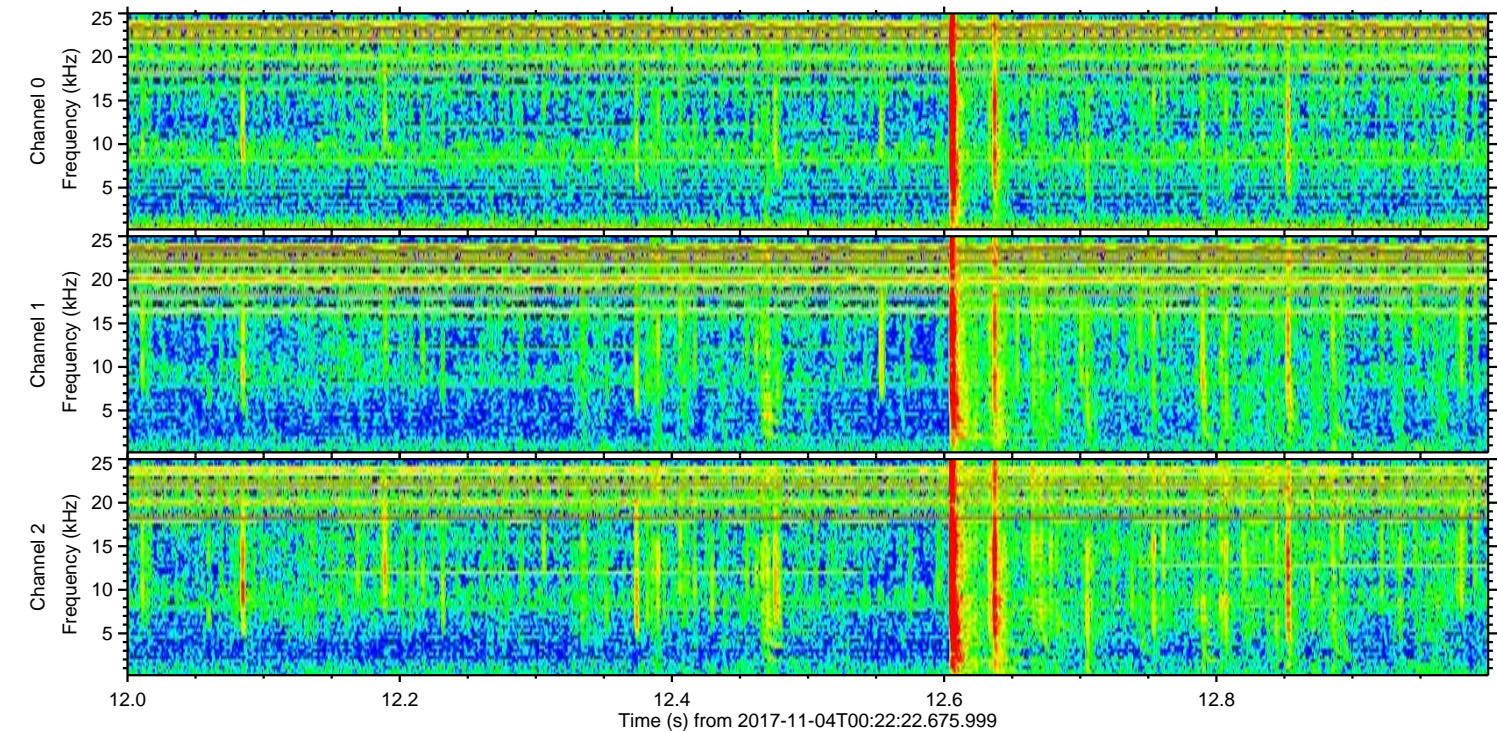
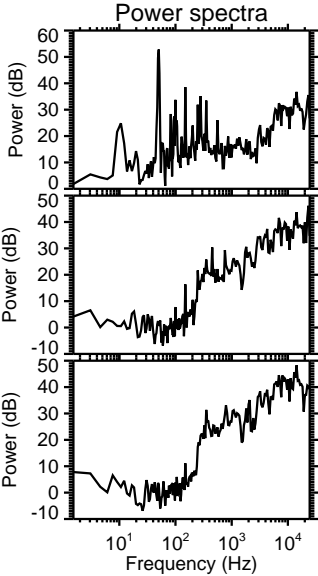
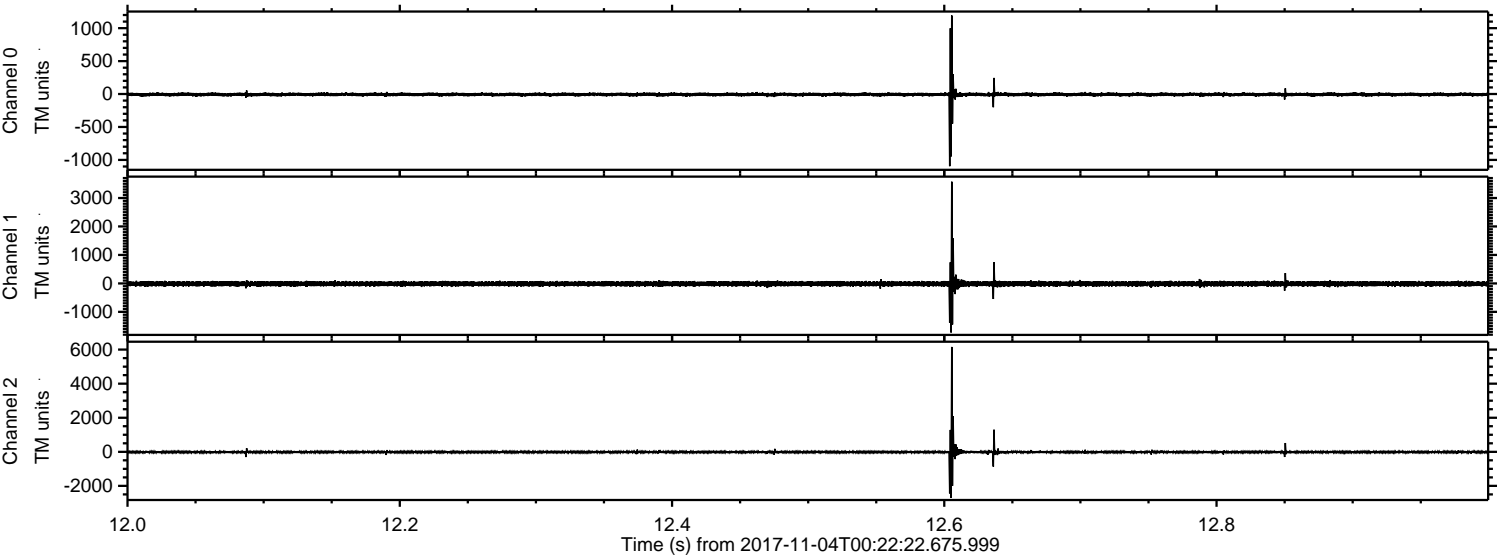
Processed Sat Nov 4 01:31:10 2017 by ELM ver.2012-10-06 from 001\_\_elm20171104\_002221\_\_dat00.bin





ELMAVAN 3D WAVEFORMS (Measured data sampled at 50 kHz) 51000 packets of 144 samples from 2017-11-04T00:22:22.675.999. Part 13/147

Processed Sat Nov 4 01:31:11 2017 by ELM ver.2012-10-06 from 001\_\_elm20171104\_002221\_\_dat00.bin



Channel 0  
mn: -1096  
mx: 1193  
 $\mu$ : -6.8  
 $\sigma$ : 18.2

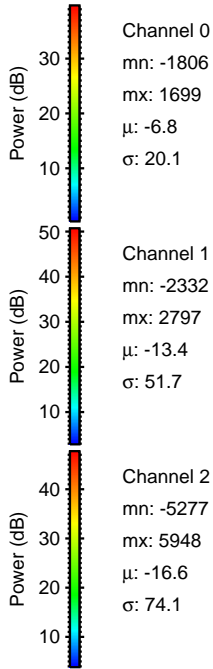
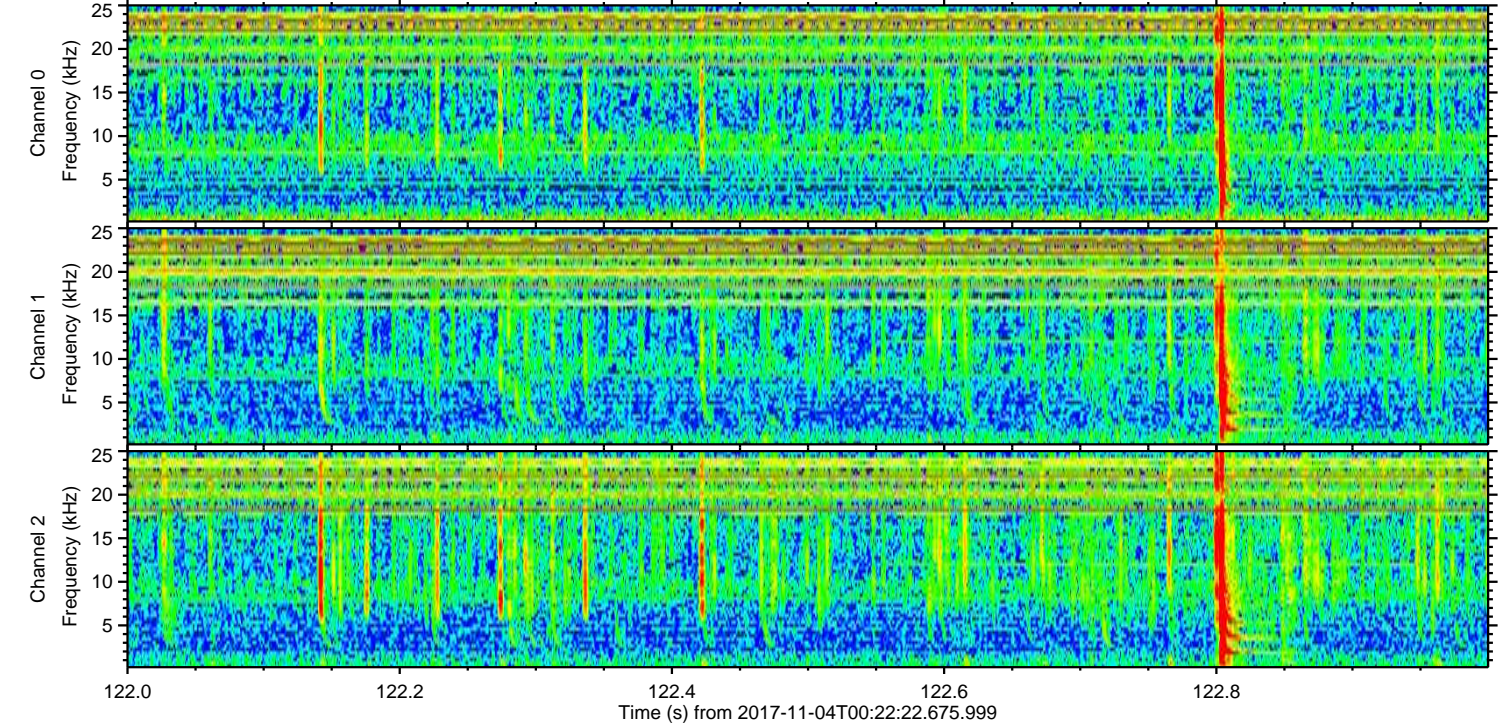
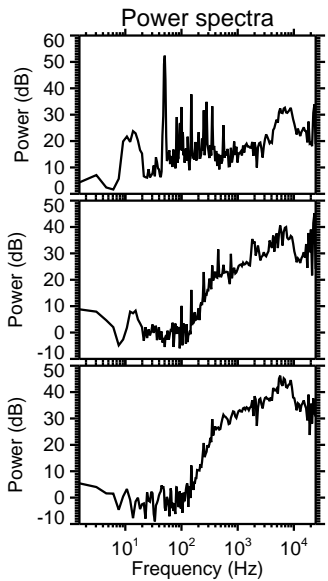
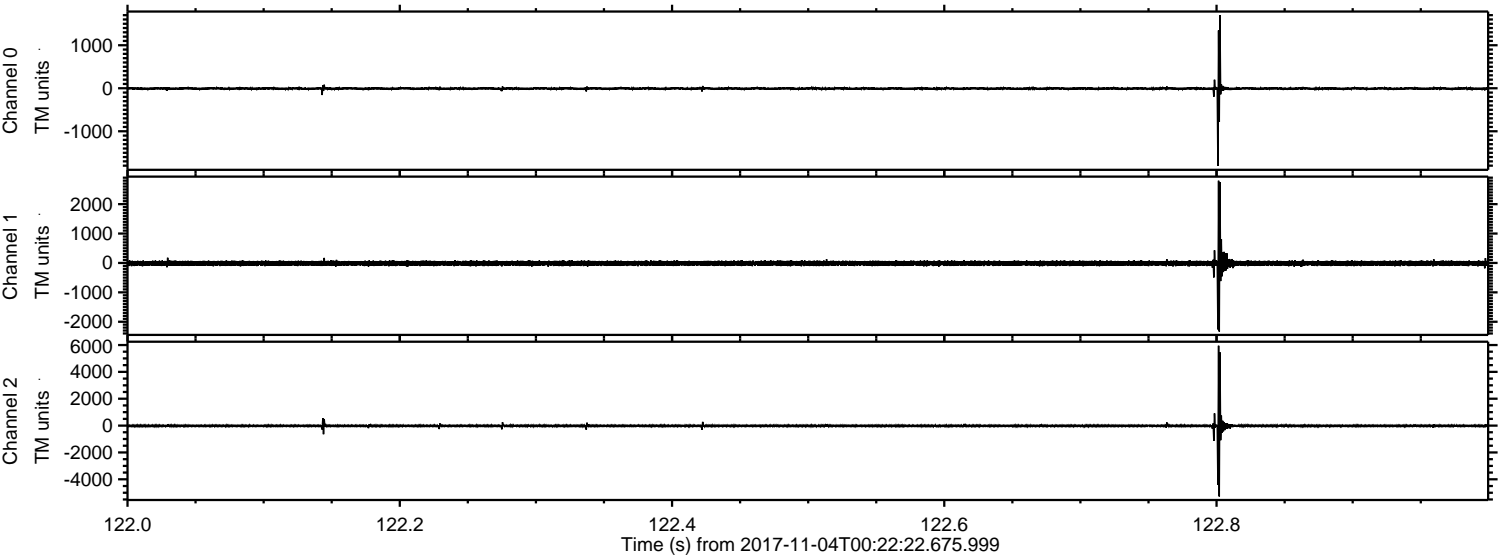
Channel 1  
mn: -1723  
mx: 3572  
 $\mu$ : -13.5  
 $\sigma$ : 50.9

Channel 2  
mn: -2694  
mx: 6155  
 $\mu$ : -16.6  
 $\sigma$ : 58.2



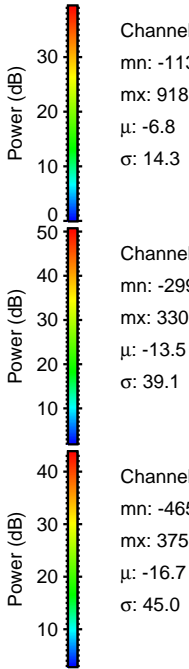
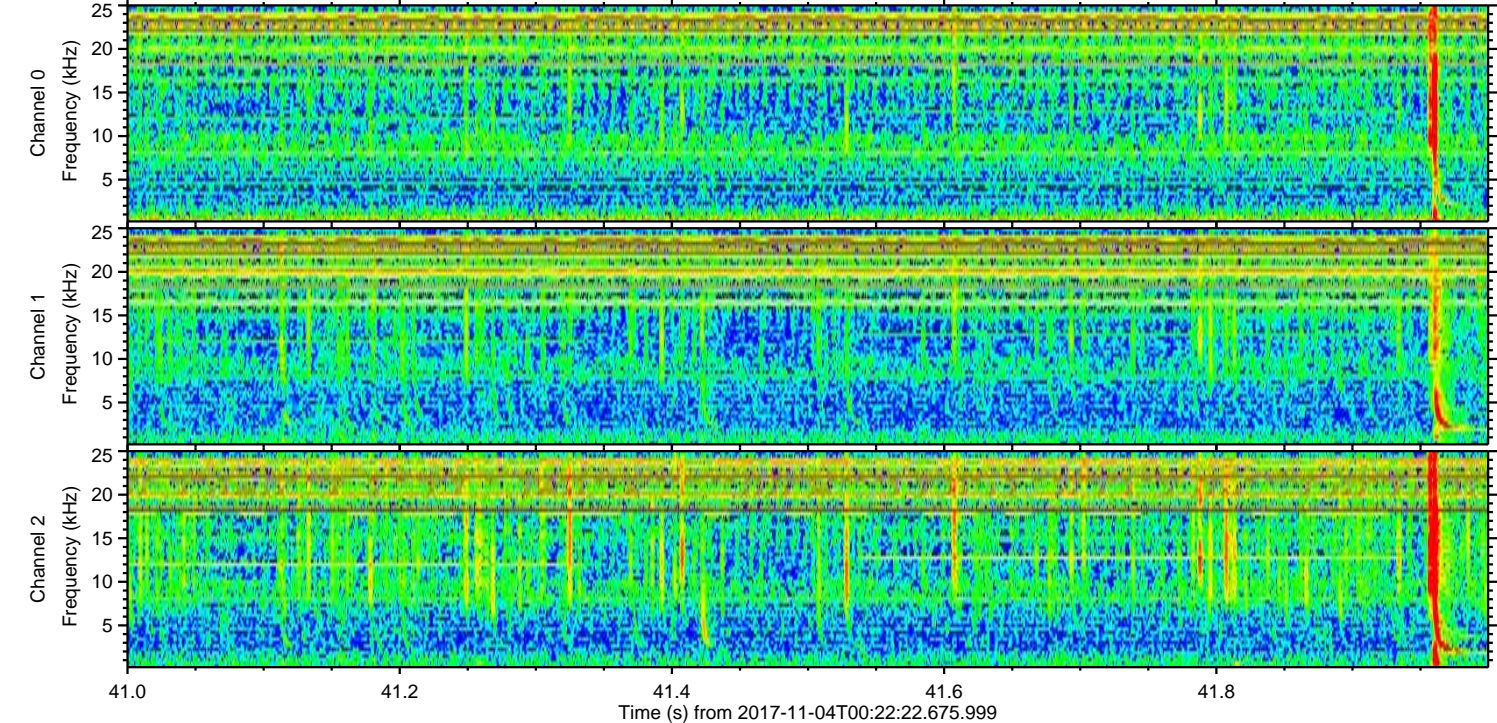
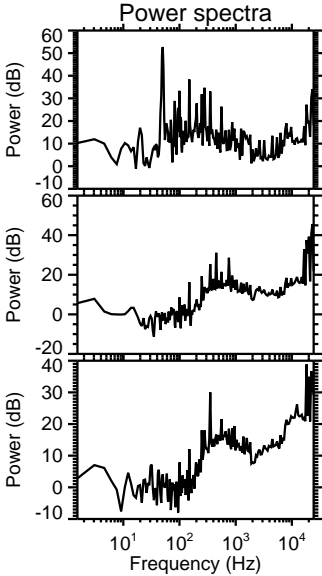
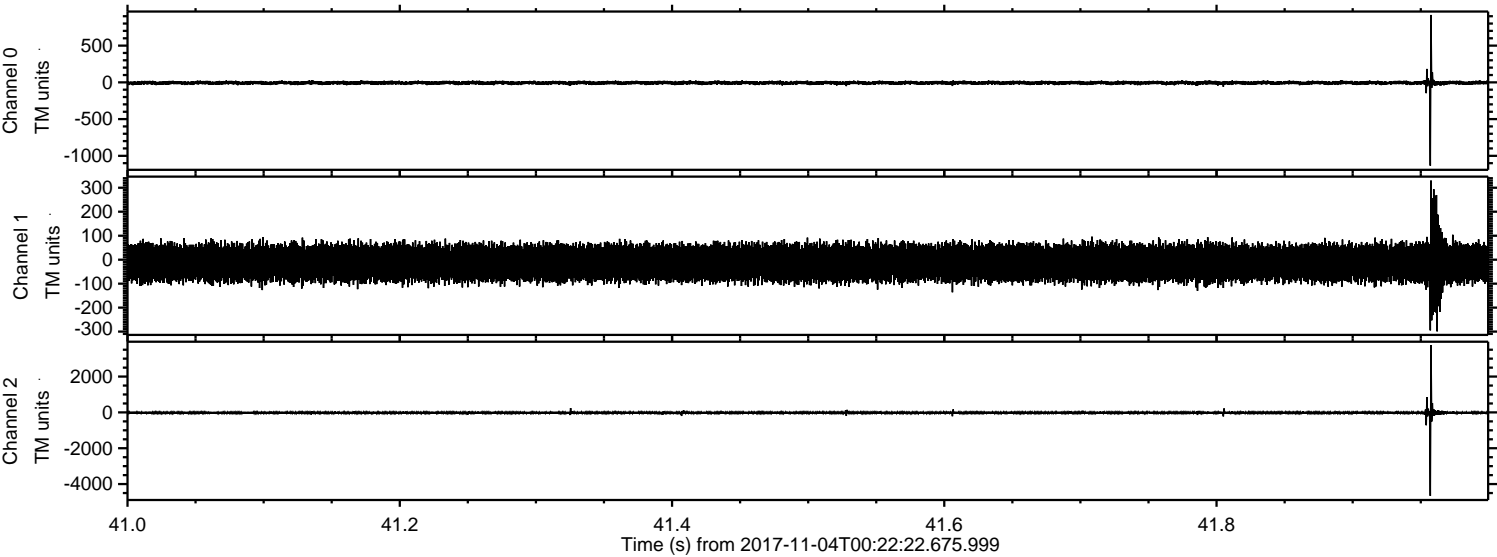
ELMAVAN 3D WAVEFORMS (Measured data sampled at 50 kHz) 51000 packets of 144 samples from 2017-11-04T00:22:22.675.999. Part 123/147

Processed Sat Nov 4 01:31:12 2017 by ELM ver.2012-10-06 from 001\_\_elm20171104\_002221\_\_dat00.bin





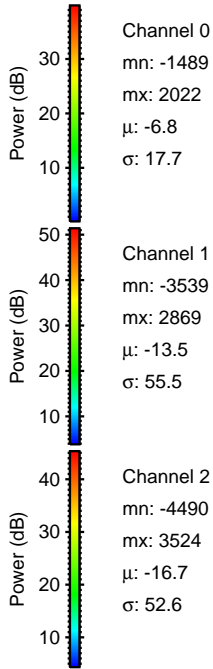
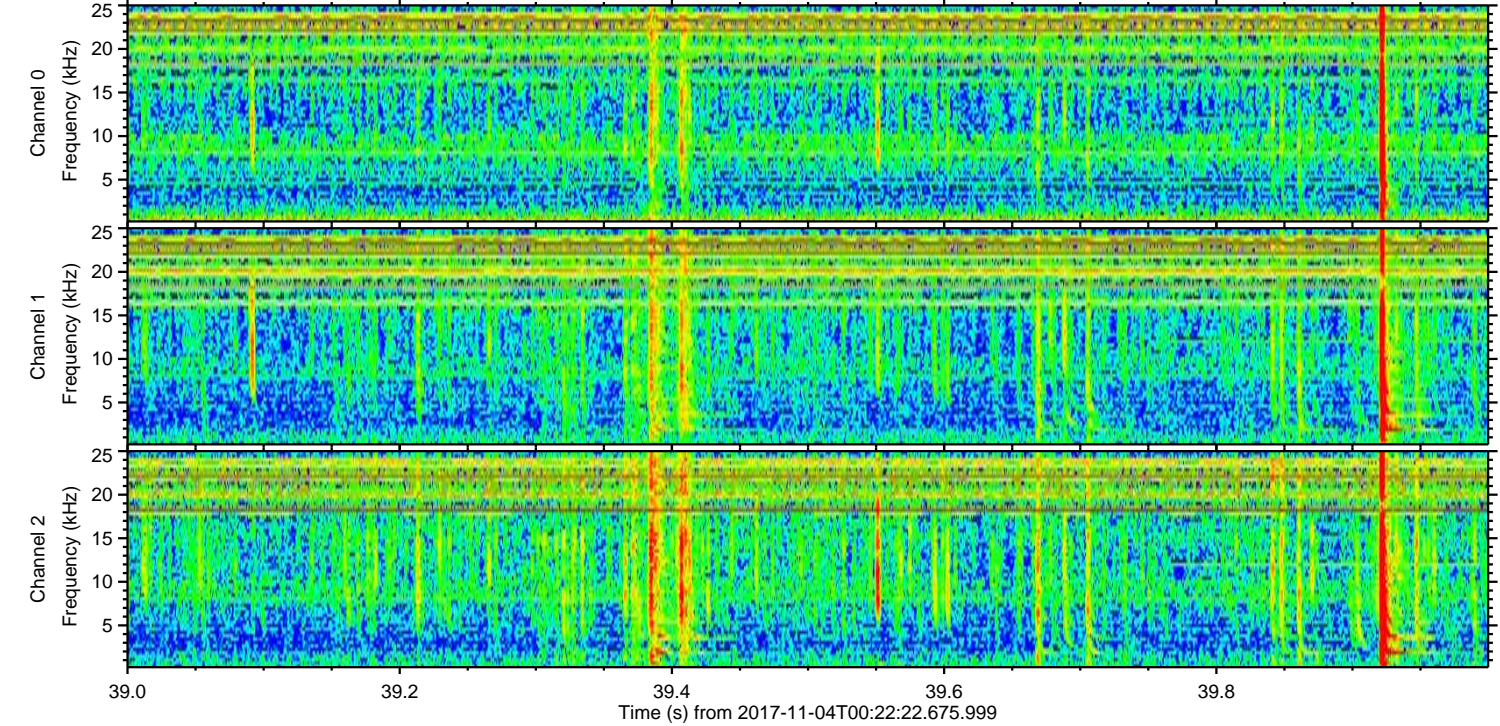
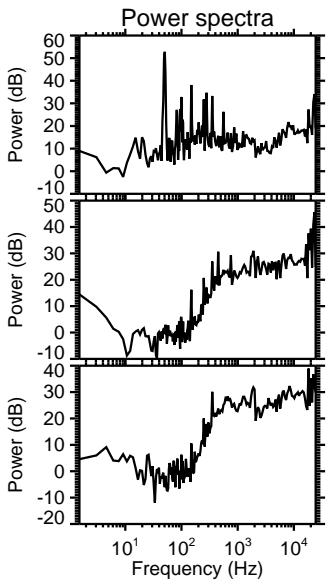
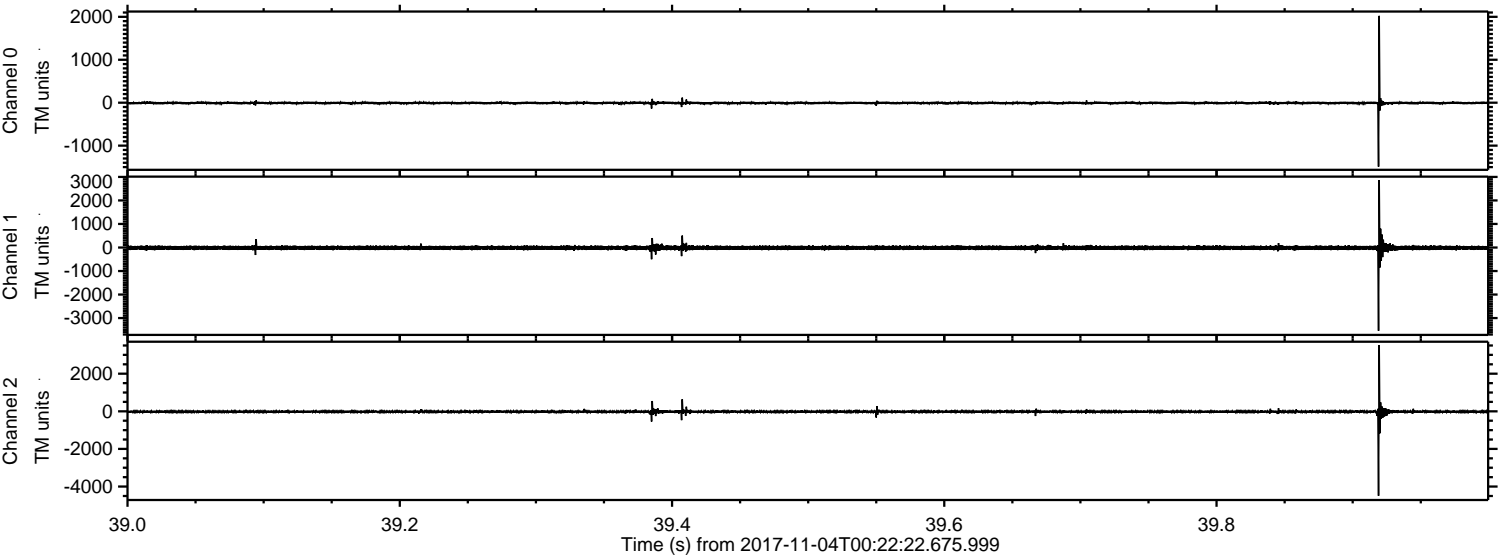
Processed Sat Nov 4 01:31:12 2017 by ELM ver.2012-10-06 from 001\_\_elm20171104\_002221\_\_dat00.bin





ELMAVAN 3D WAVEFORMS (Measured data sampled at 50 kHz) 51000 packets of 144 samples from 2017-11-04T00:22:22.675.999. Part 40/147

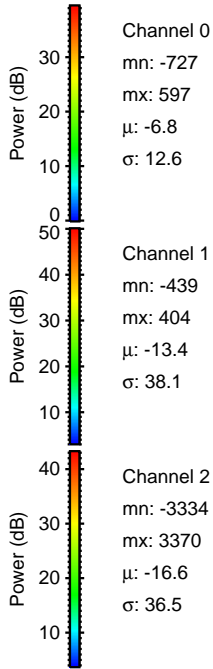
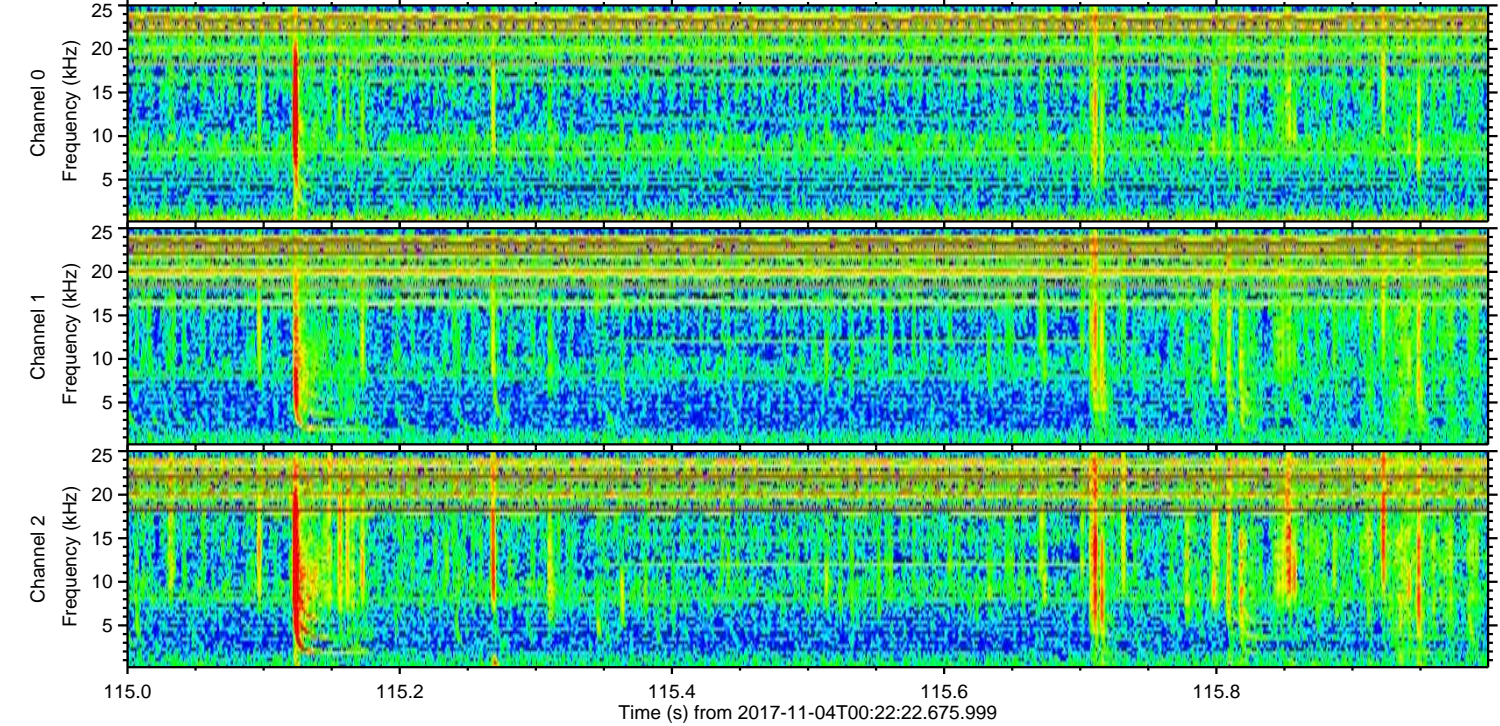
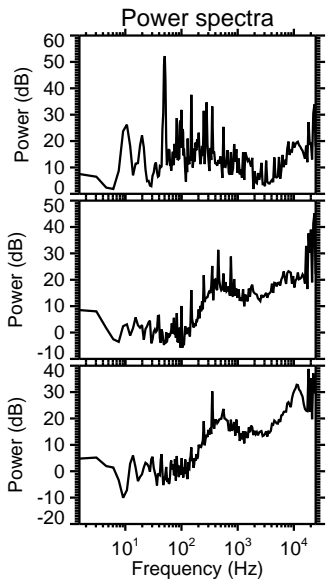
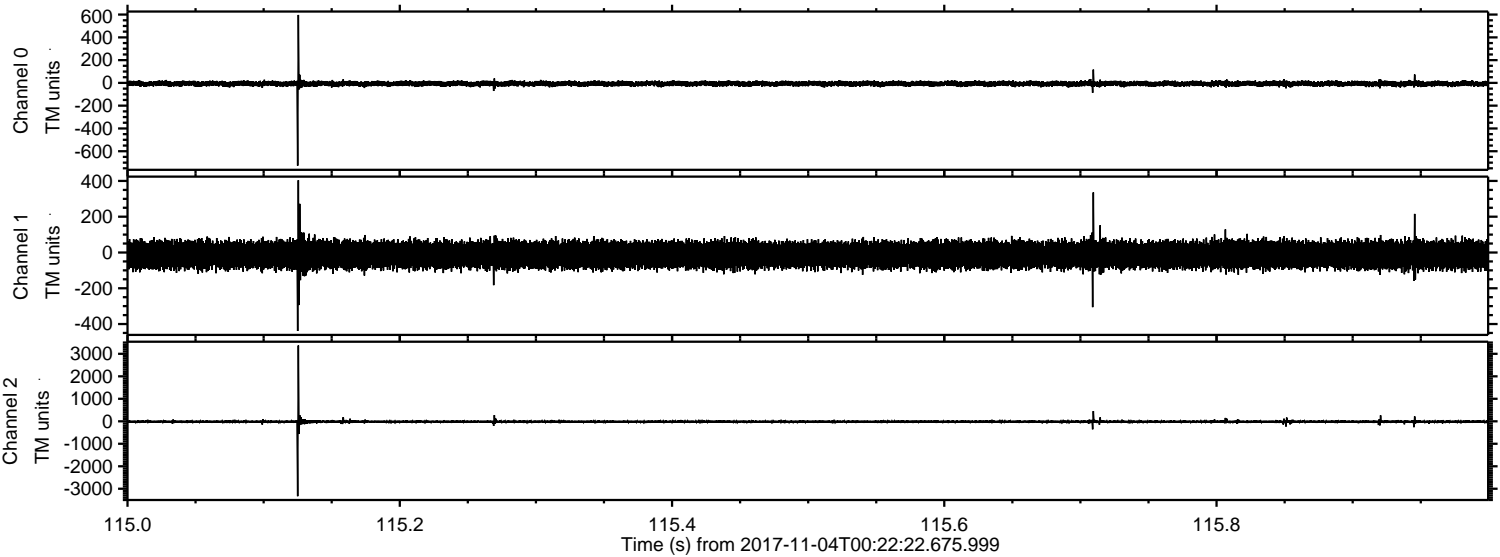
Processed Sat Nov 4 01:31:13 2017 by ELM ver.2012-10-06 from 001\_\_elm20171104\_002221\_\_dat00.bin





ELMAVAN 3D WAVEFORMS (Measured data sampled at 50 kHz) 51000 packets of 144 samples from 2017-11-04T00:22:22.675.999. Part 116/147

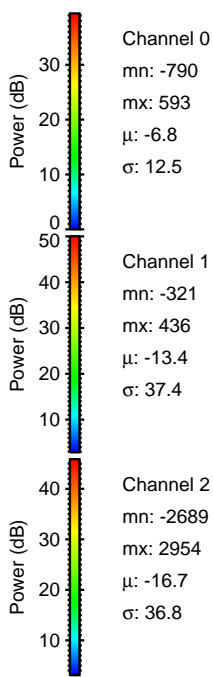
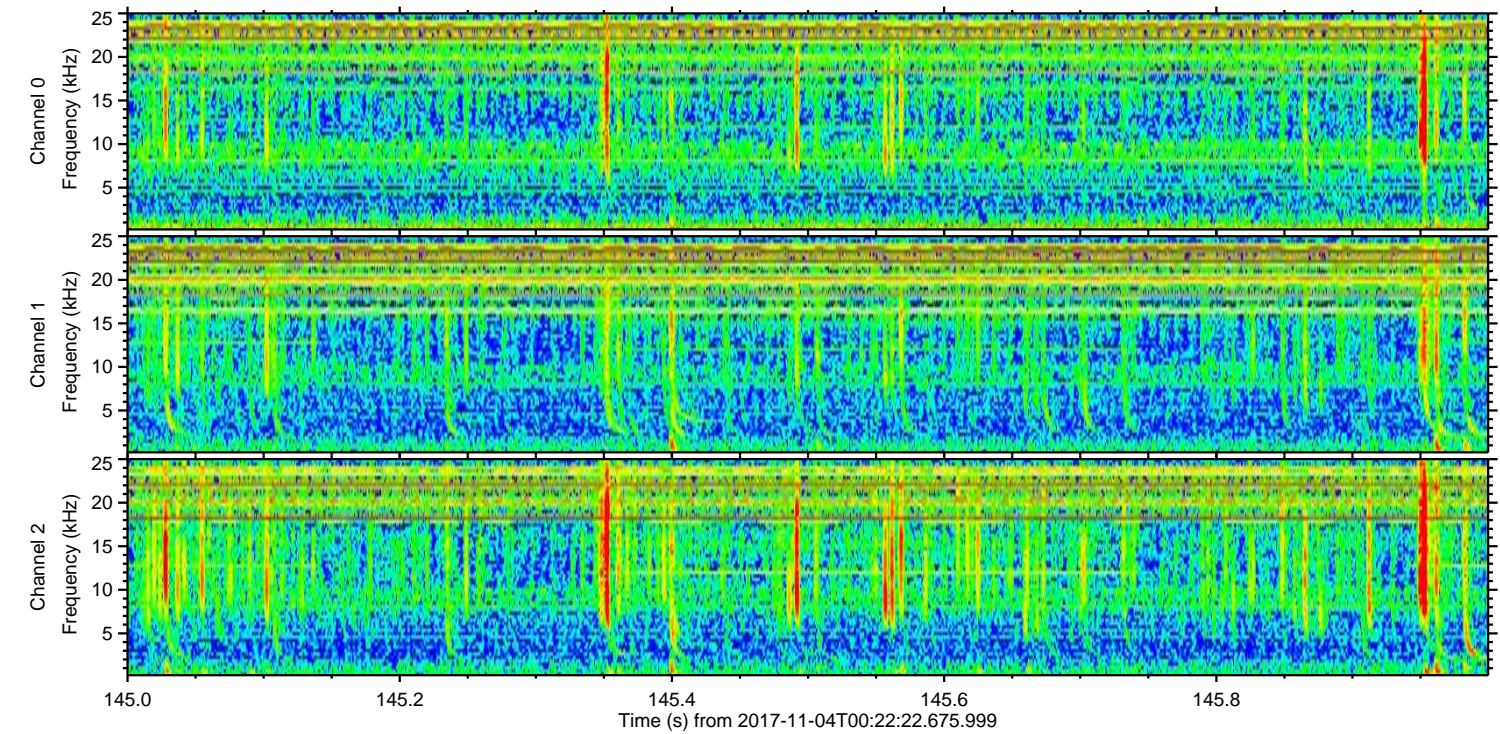
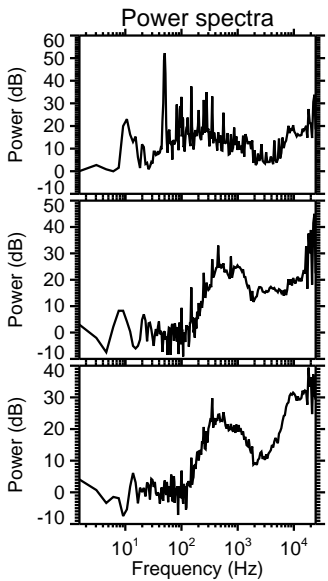
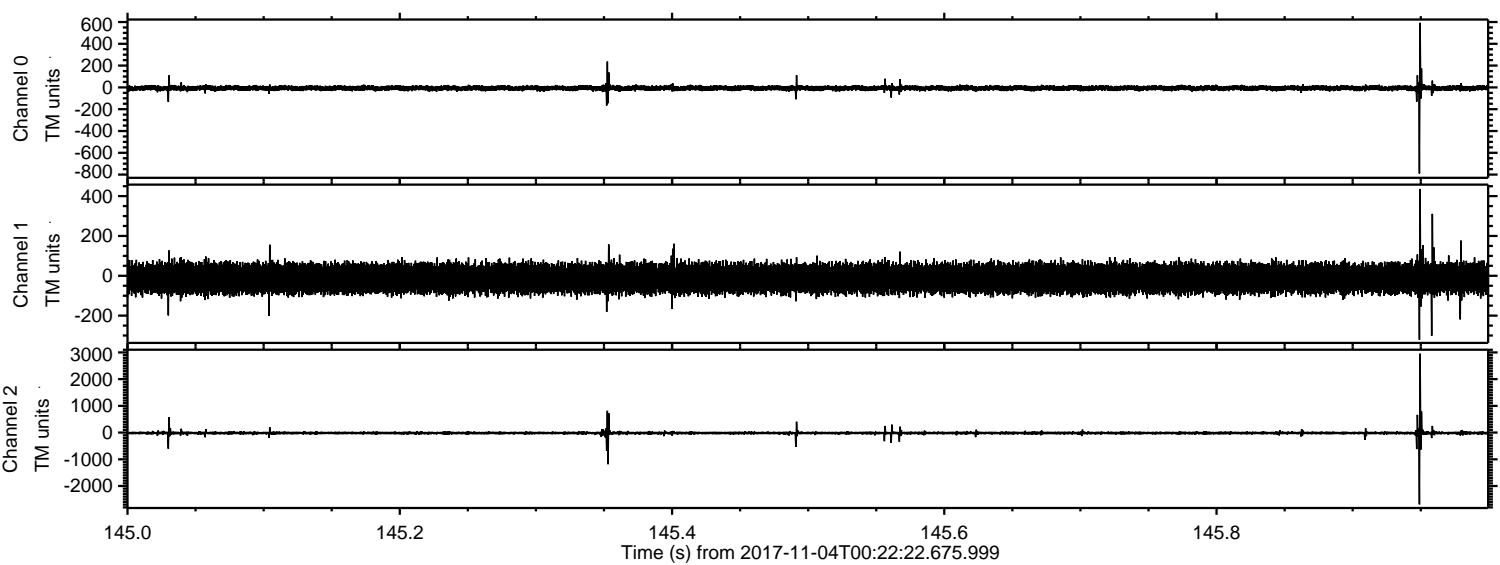
Processed Sat Nov 4 01:31:14 2017 by ELM ver.2012-10-06 from 001\_\_elm20171104\_002221\_\_dat00.bin





ELMAVAN 3D WAVEFORMS (Measured data sampled at 50 kHz) 51000 packets of 144 samples from 2017-11-04T00:22:22.675.999. Part 146/147

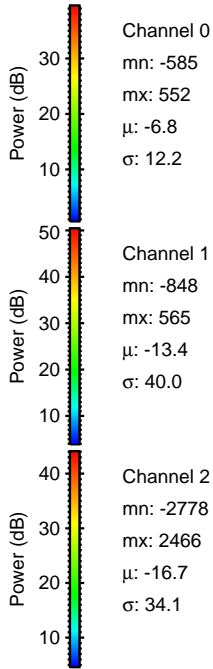
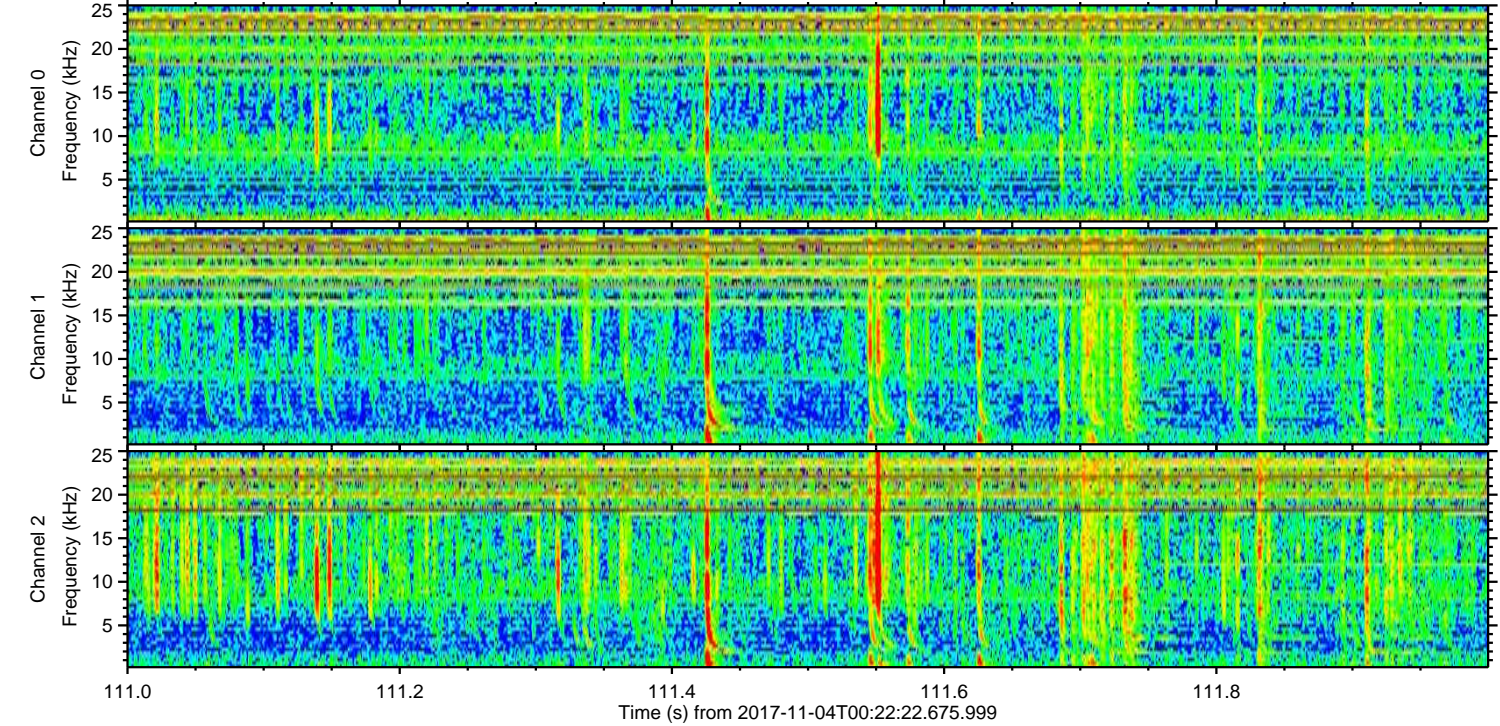
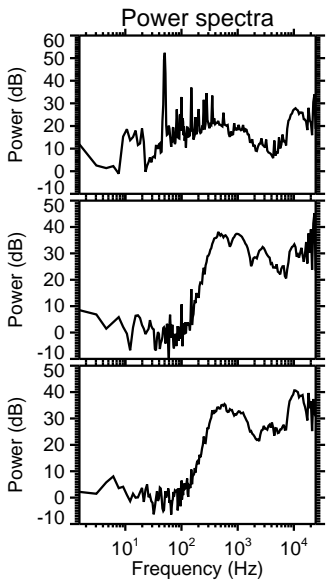
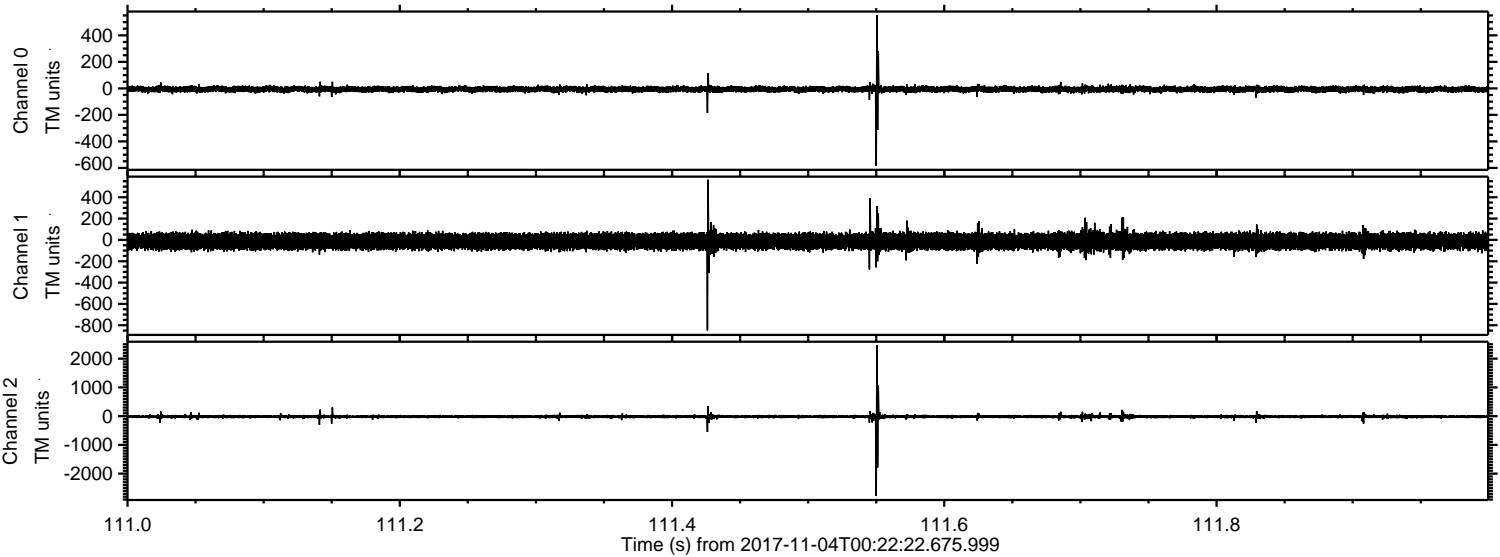
Processed Sat Nov 4 01:31:14 2017 by ELM ver.2012-10-06 from 001\_\_elm20171104\_002221\_\_dat00.bin





ELMAVAN 3D WAVEFORMS (Measured data sampled at 50 kHz) 51000 packets of 144 samples from 2017-11-04T00:22:22.675.999. Part 112/147

Processed Sat Nov 4 01:31:15 2017 by ELM ver.2012-10-06 from 001\_\_elm20171104\_002221\_\_dat00.bin





Processed Sat Nov 4 01:31:16 2017 by ELM ver.2012-10-06 from 001\_\_elm20171104\_002221\_\_dat00.bin

