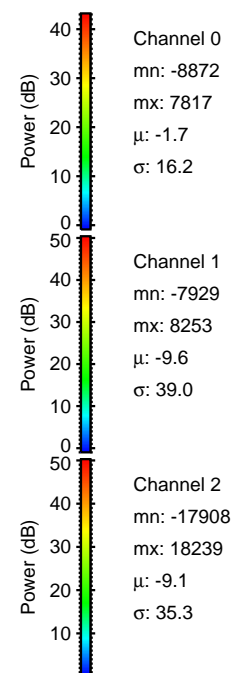
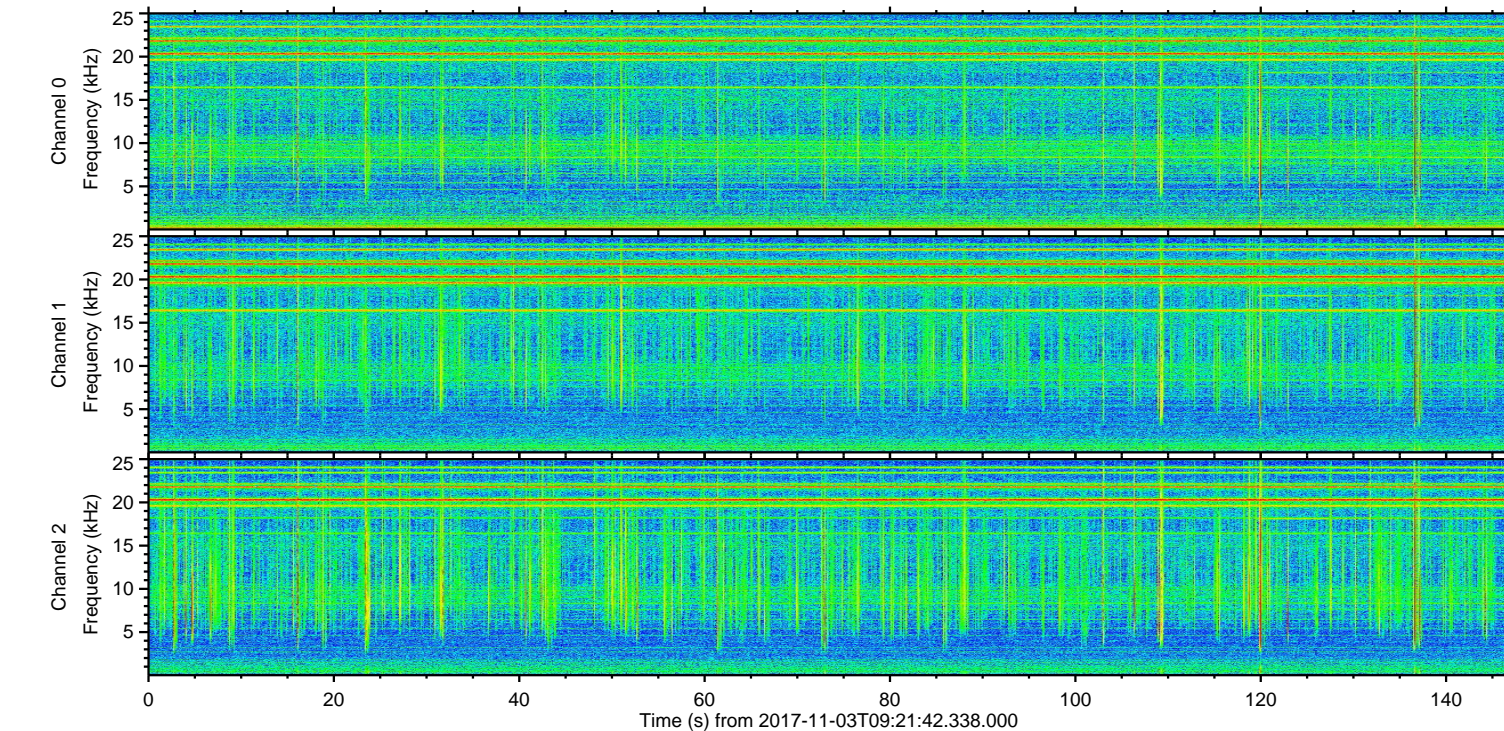
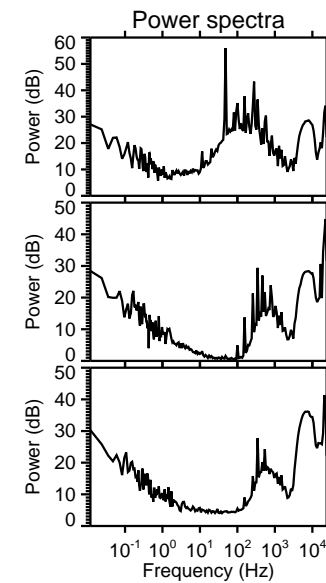
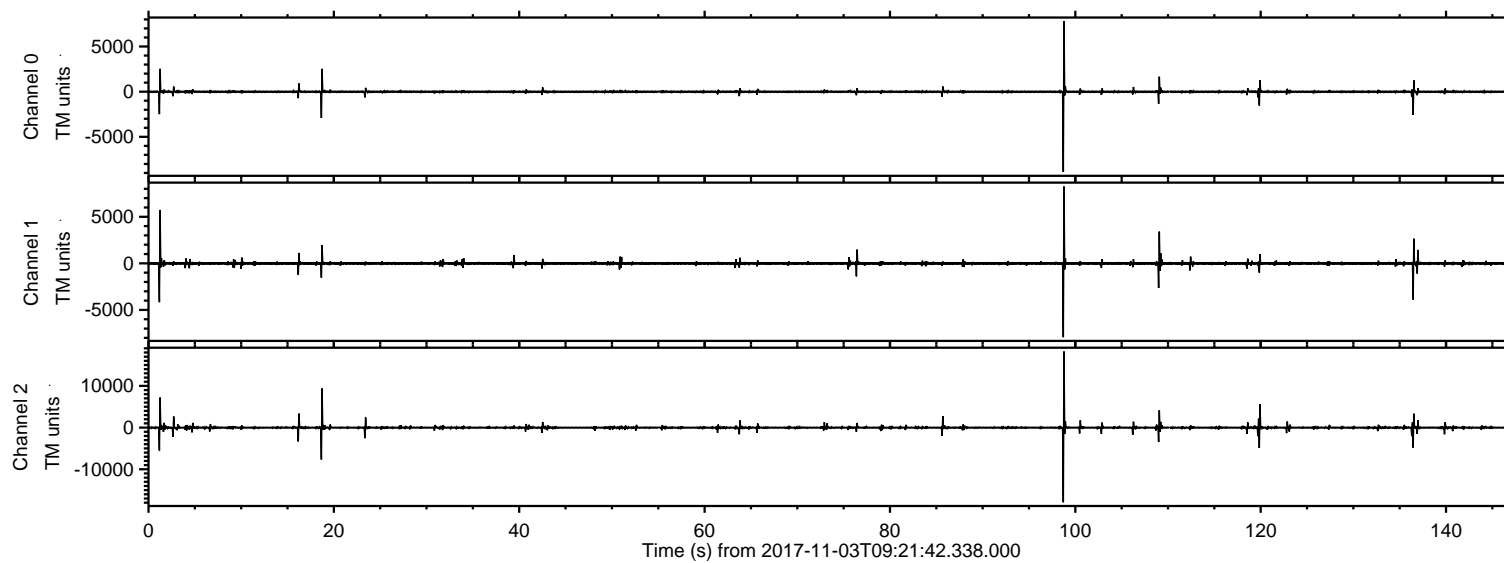


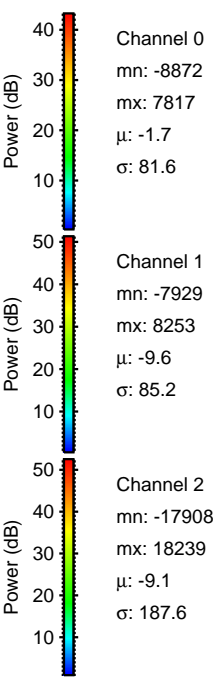
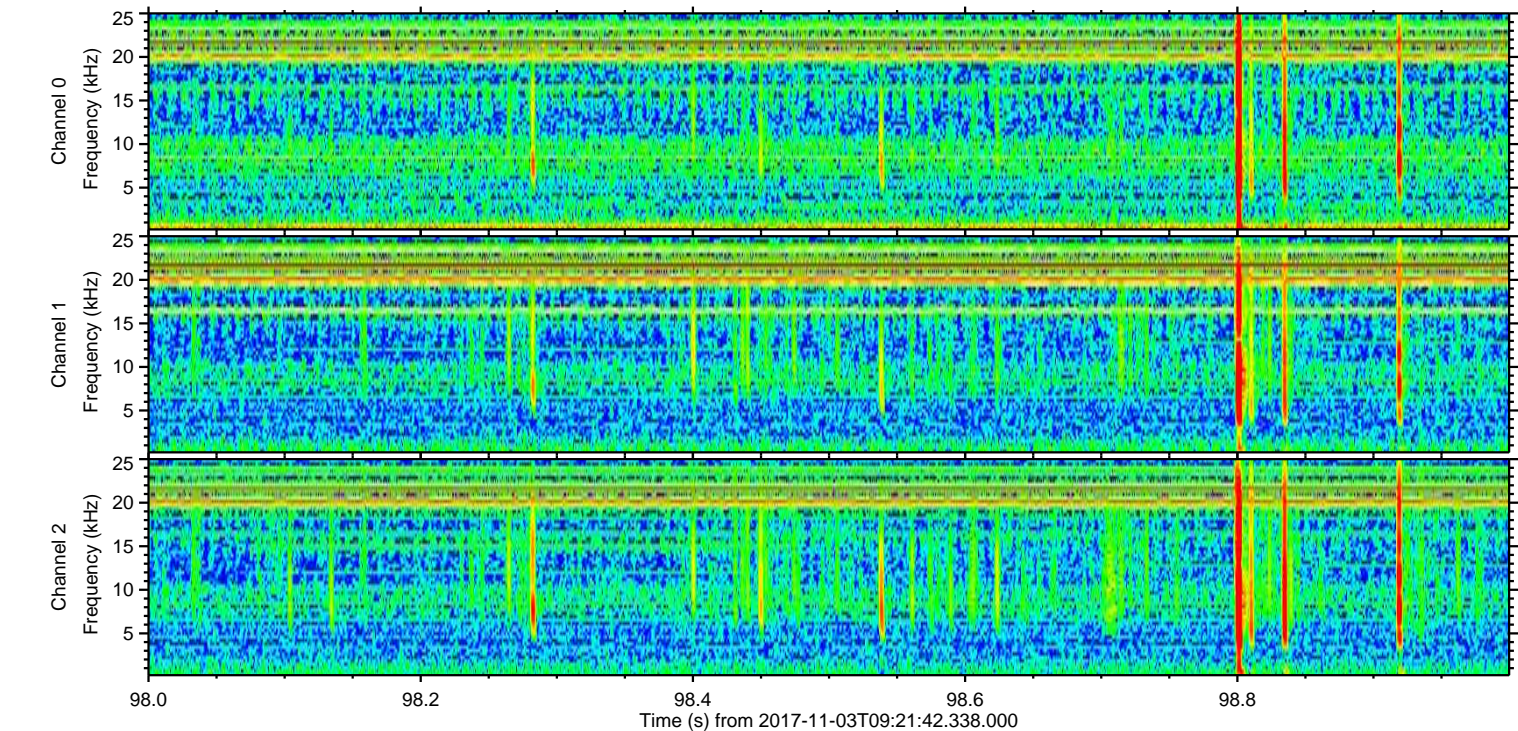
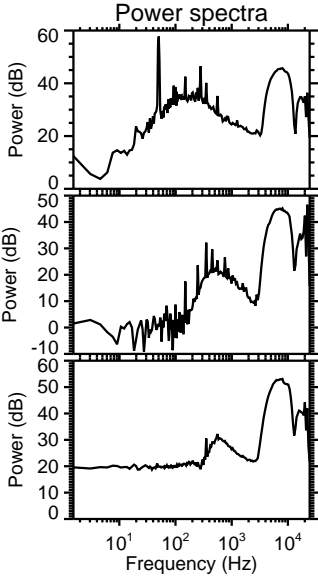
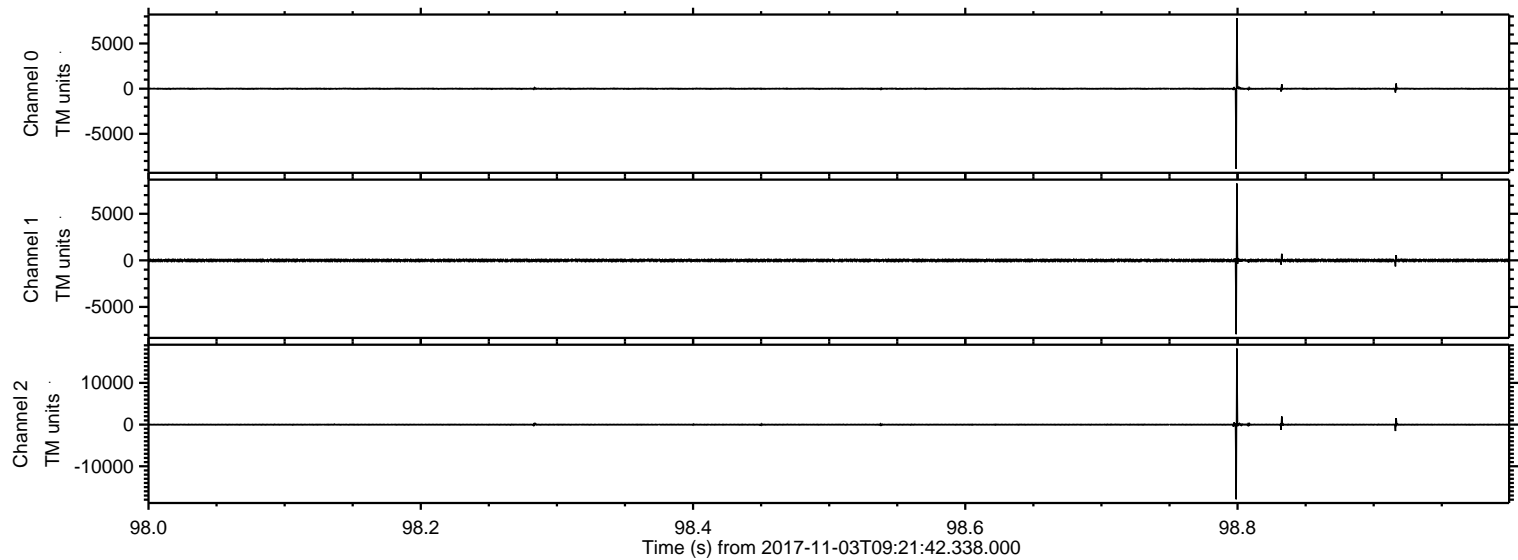
# ELMAVAN 3D WAVEFORMS (Measured data sampled at 50 kHz) 51000 packets of 144 samples from 2017-11-03T09:21:42.338.000.

Processed Fri Nov 3 10:29:16 2017 by ELM ver.2012-10-06 from 001\_\_elm20171103\_092141\_\_dat00.bin





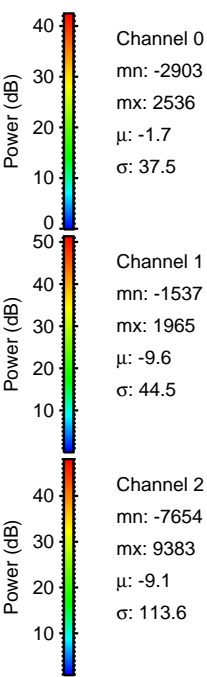
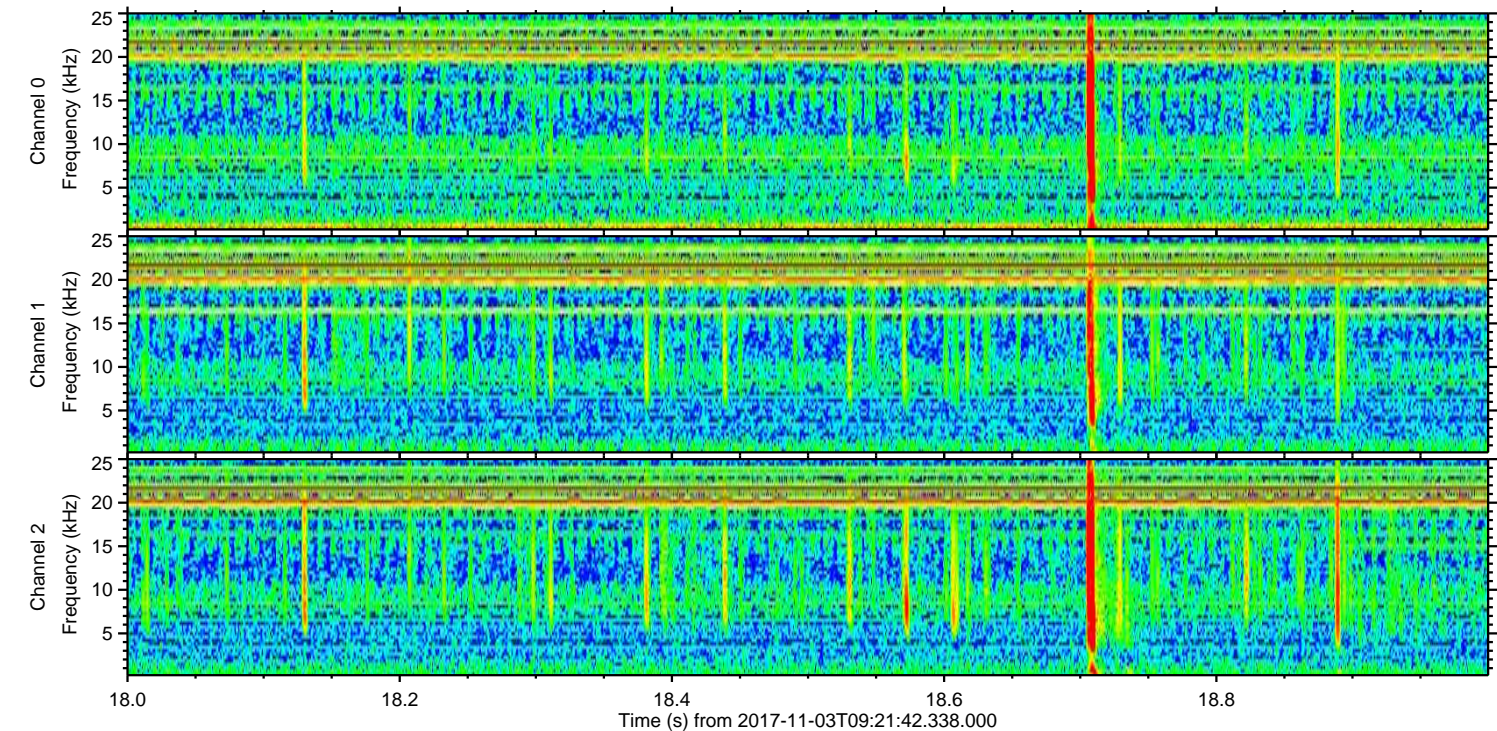
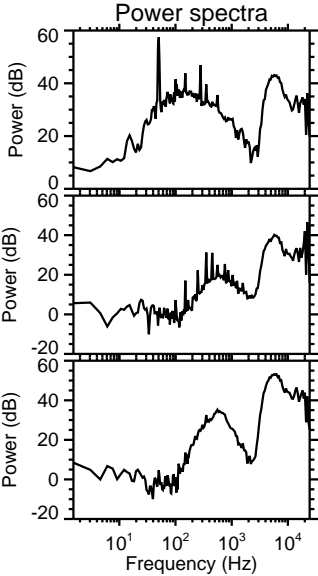
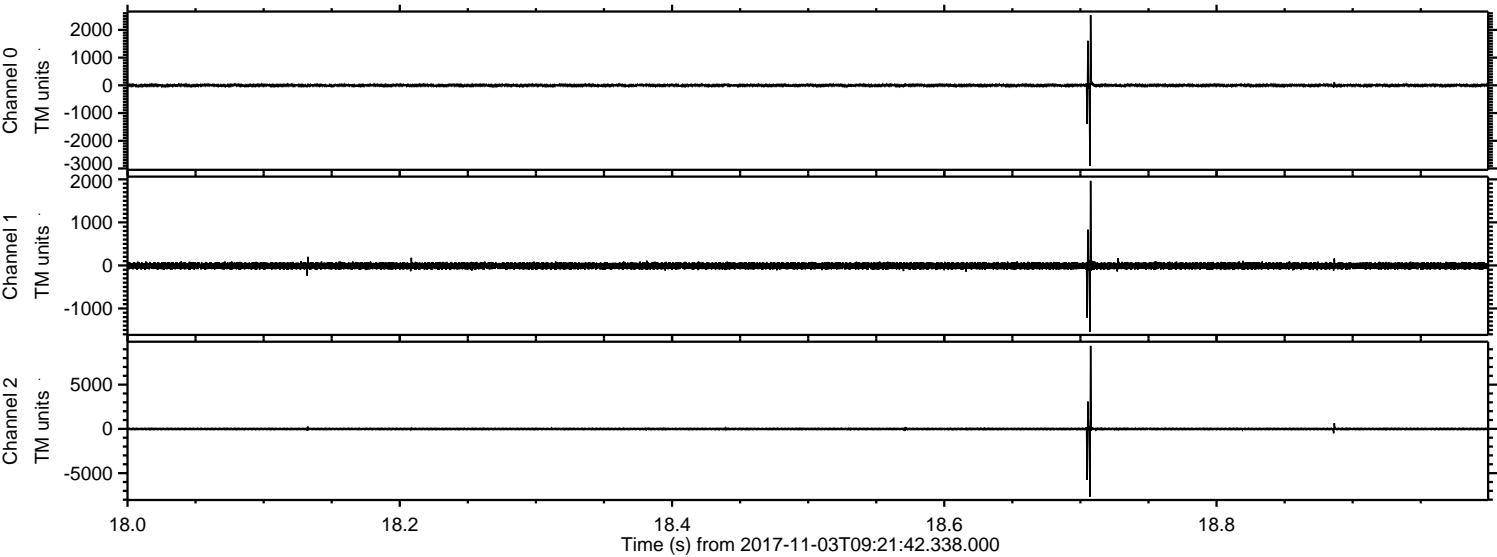
Processed Fri Nov 3 10:29:22 2017 by ELM ver.2012-10-06 from 001\_\_elm20171103\_092141\_\_dat00.bin





ELMAVAN 3D WAVEFORMS (Measured data sampled at 50 kHz) 51000 packets of 144 samples from 2017-11-03T09:21:42.338.000. Part 19/147

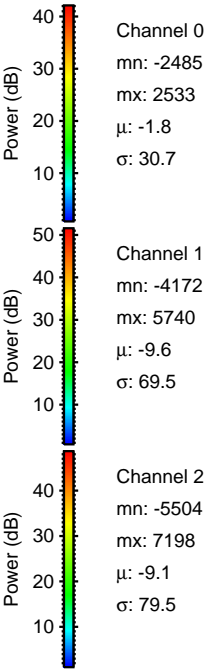
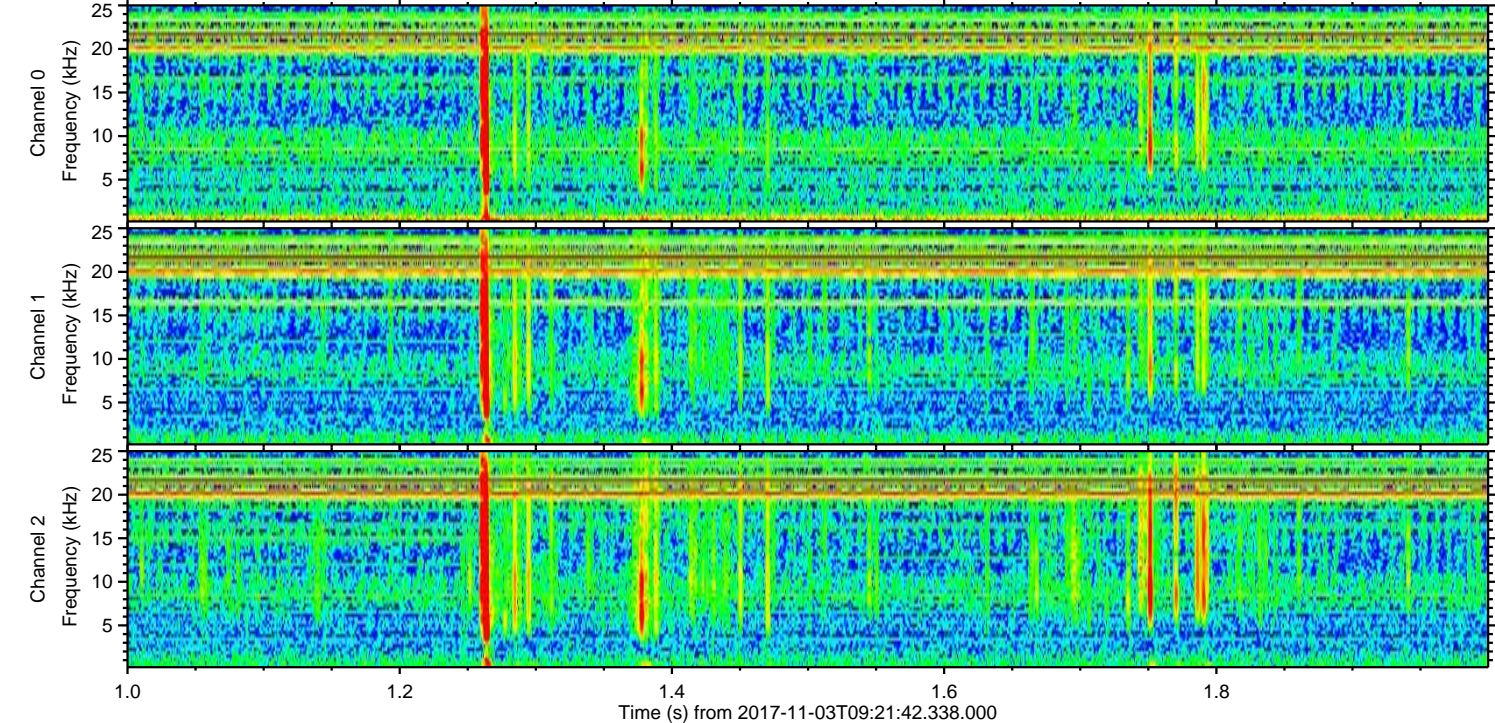
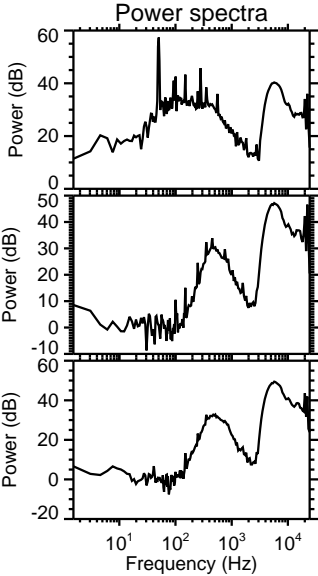
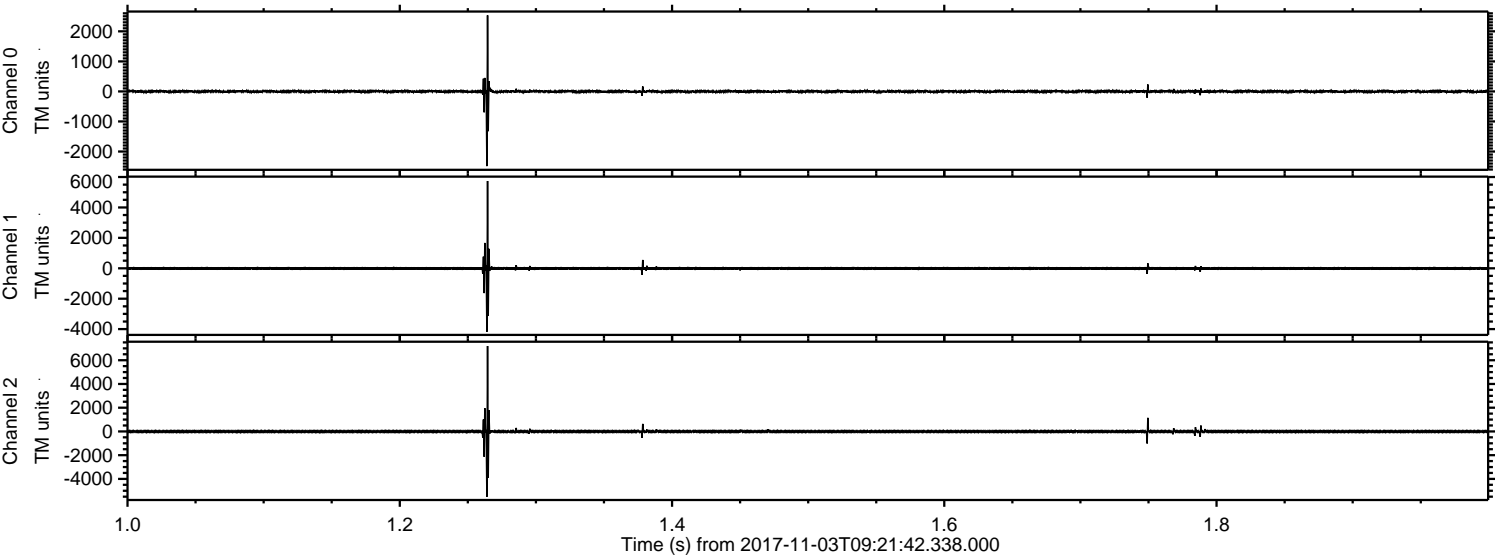
Processed Fri Nov 3 10:29:23 2017 by ELM ver.2012-10-06 from 001\_\_elm20171103\_092141\_\_dat00.bin





ELMAVAN 3D WAVEFORMS (Measured data sampled at 50 kHz) 51000 packets of 144 samples from 2017-11-03T09:21:42.338.000. Part 2/147

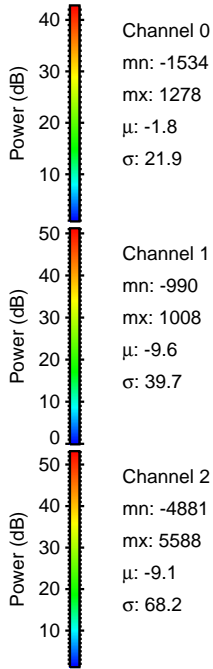
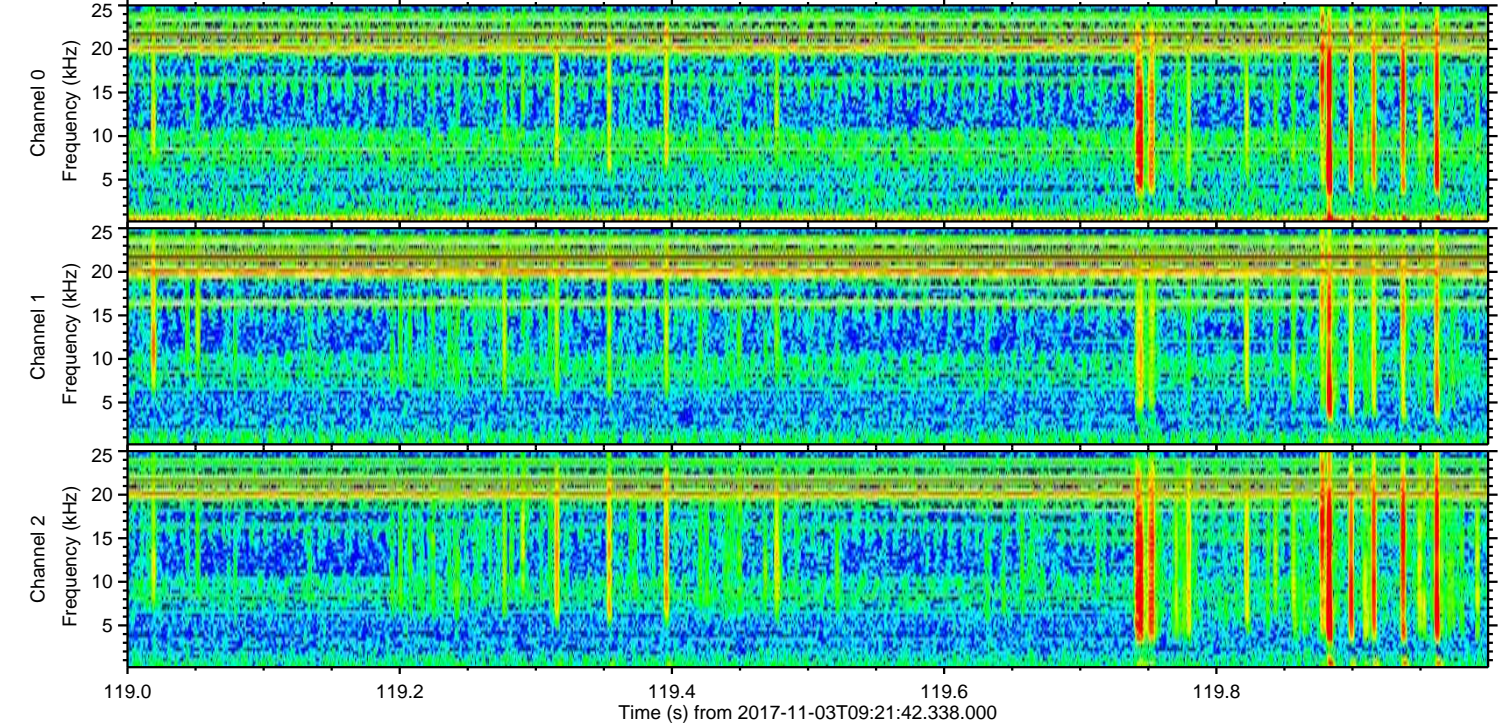
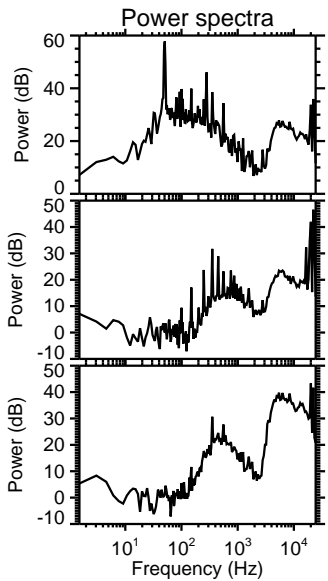
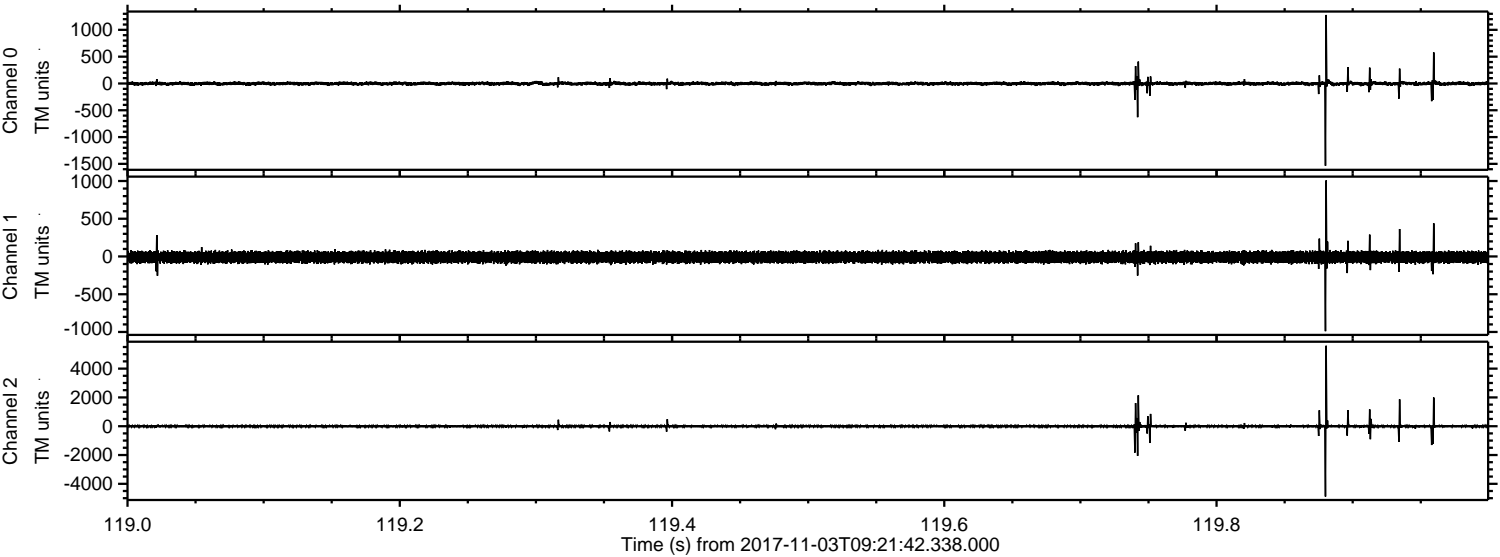
Processed Fri Nov 3 10:29:24 2017 by ELM ver.2012-10-06 from 001\_\_elm201711103\_092141\_\_dat00.bin





ELMAVAN 3D WAVEFORMS (Measured data sampled at 50 kHz) 51000 packets of 144 samples from 2017-11-03T09:21:42.338.000. Part 120/147

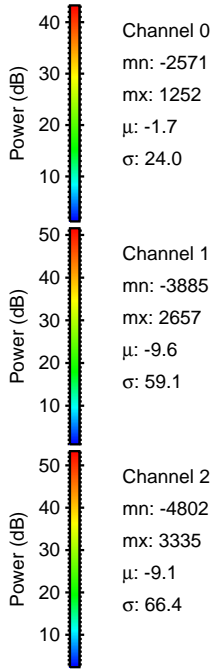
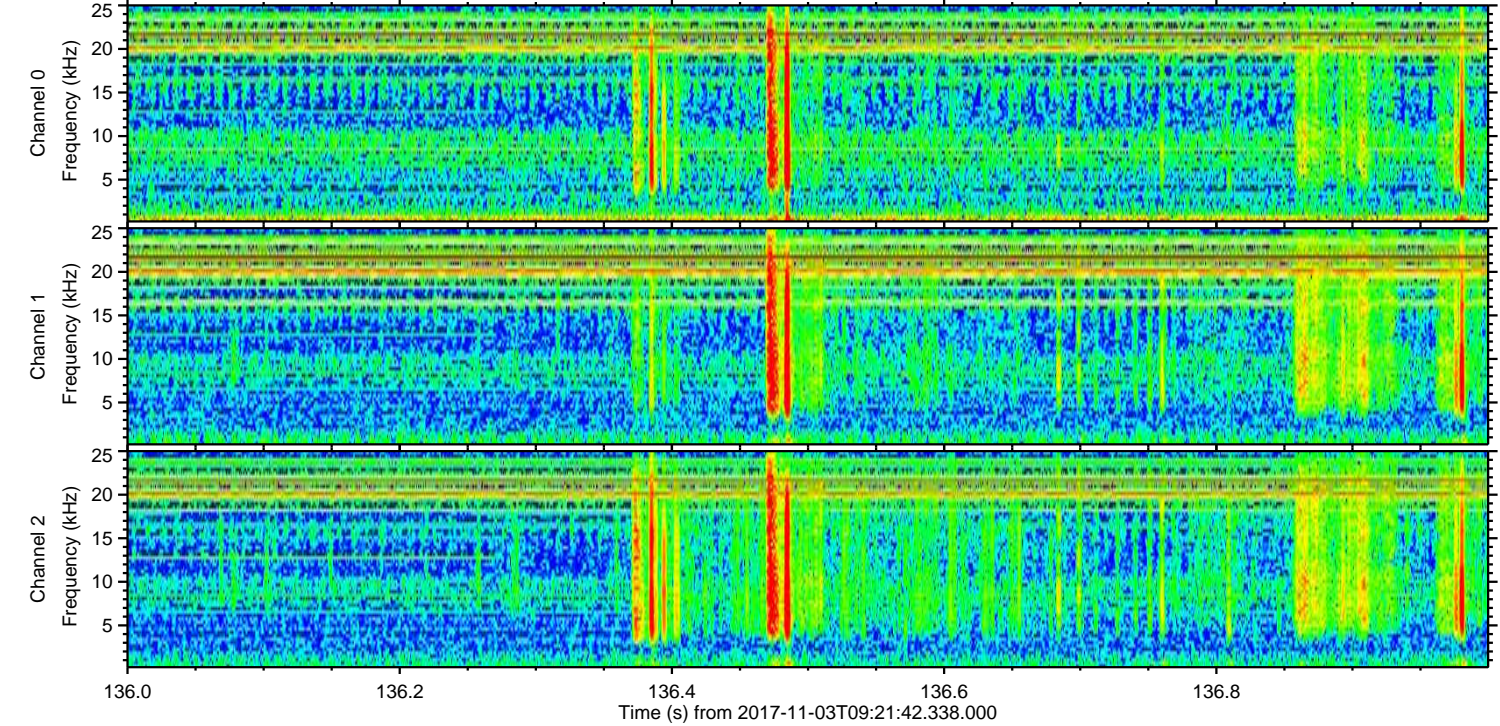
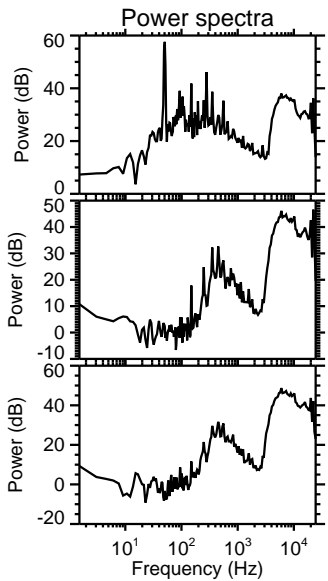
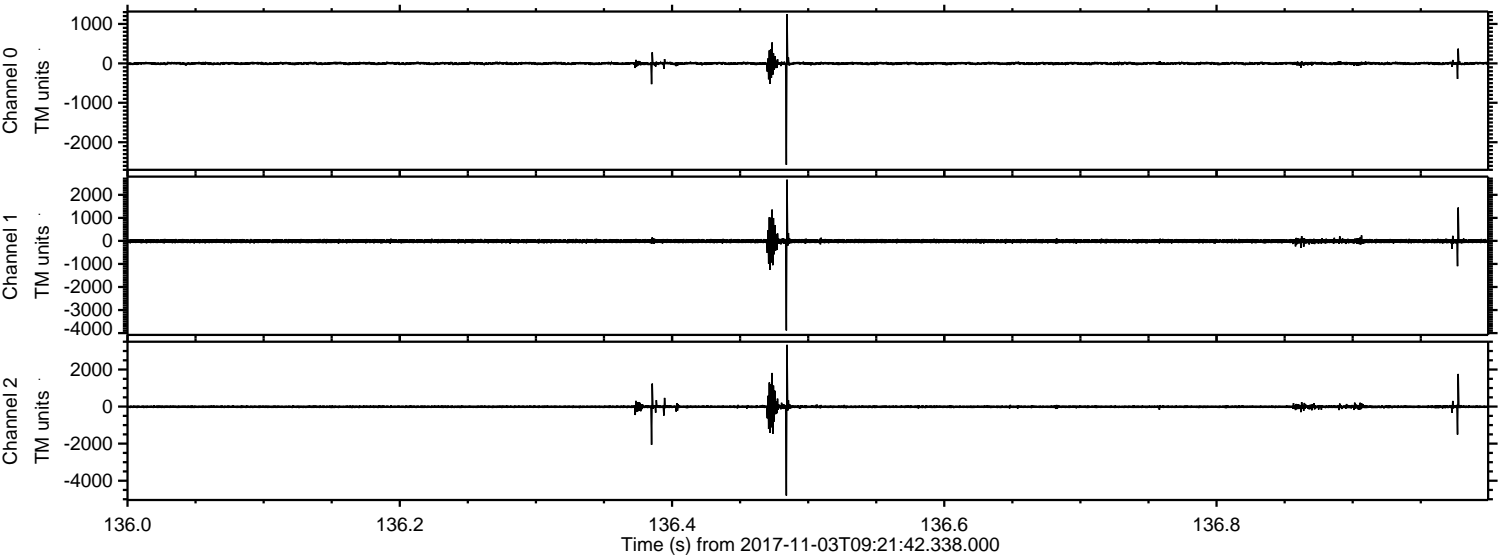
Processed Fri Nov 3 10:29:25 2017 by ELM ver.2012-10-06 from 001\_\_elm20171103\_092141\_\_dat00.bin





ELMAVAN 3D WAVEFORMS (Measured data sampled at 50 kHz) 51000 packets of 144 samples from 2017-11-03T09:21:42.338.000. Part 137/147

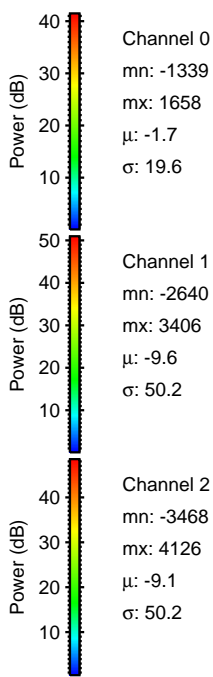
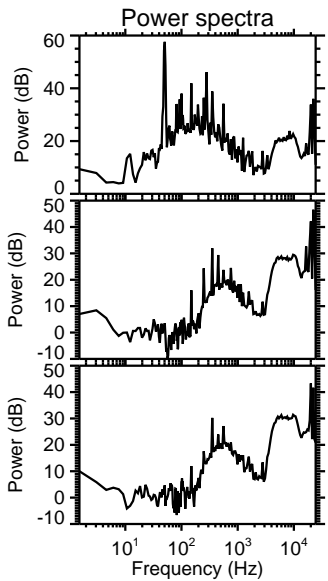
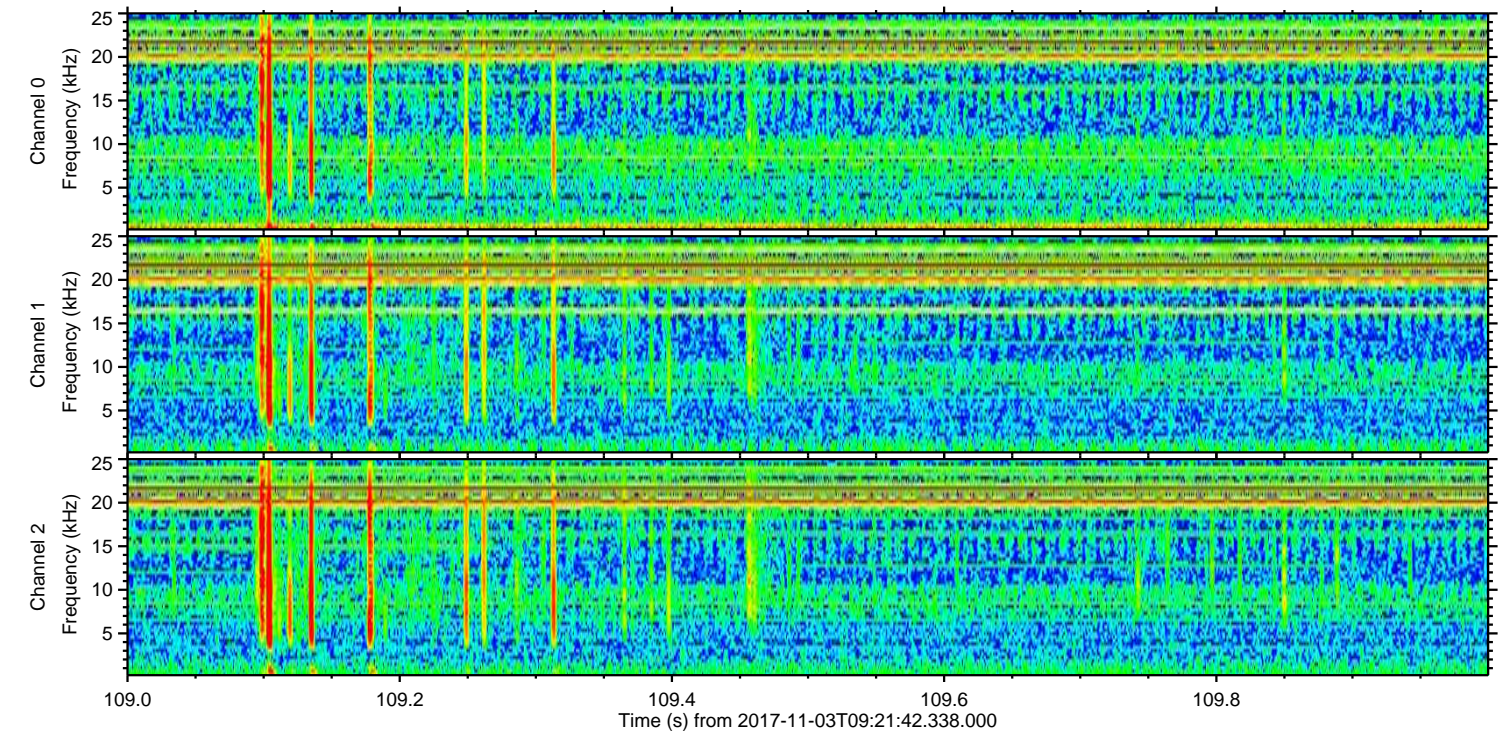
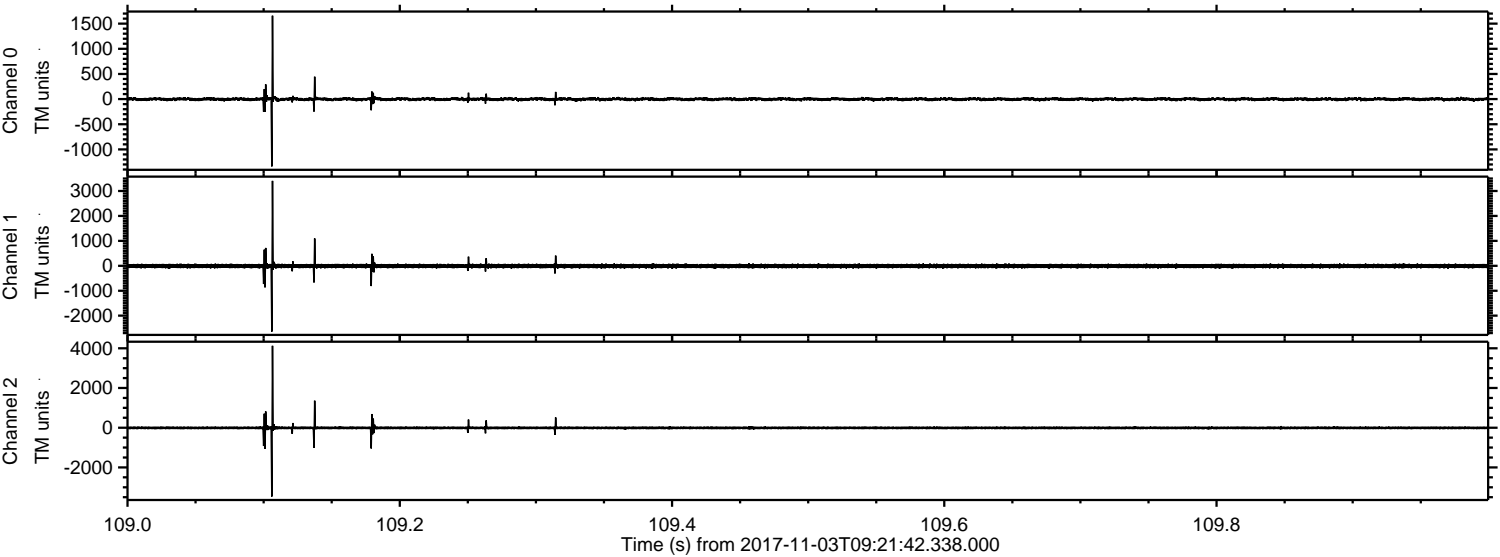
Processed Fri Nov 3 10:29:26 2017 by ELM ver.2012-10-06 from 001\_\_elm20171103\_092141\_\_dat00.bin





ELMAVAN 3D WAVEFORMS (Measured data sampled at 50 kHz) 51000 packets of 144 samples from 2017-11-03T09:21:42.338.000. Part 110/147

Processed Fri Nov 3 10:29:26 2017 by ELM ver.2012-10-06 from 001\_\_elm20171103\_092141\_\_dat00.bin



Channel 0  
mn: -1339  
mx: 1658  
 $\mu$ : -1.7  
 $\sigma$ : 19.6

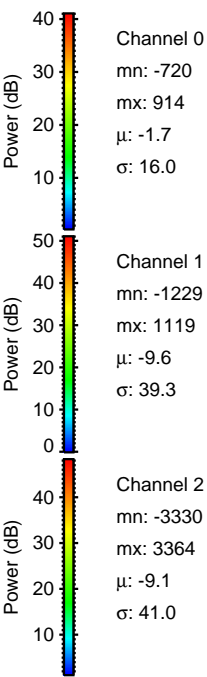
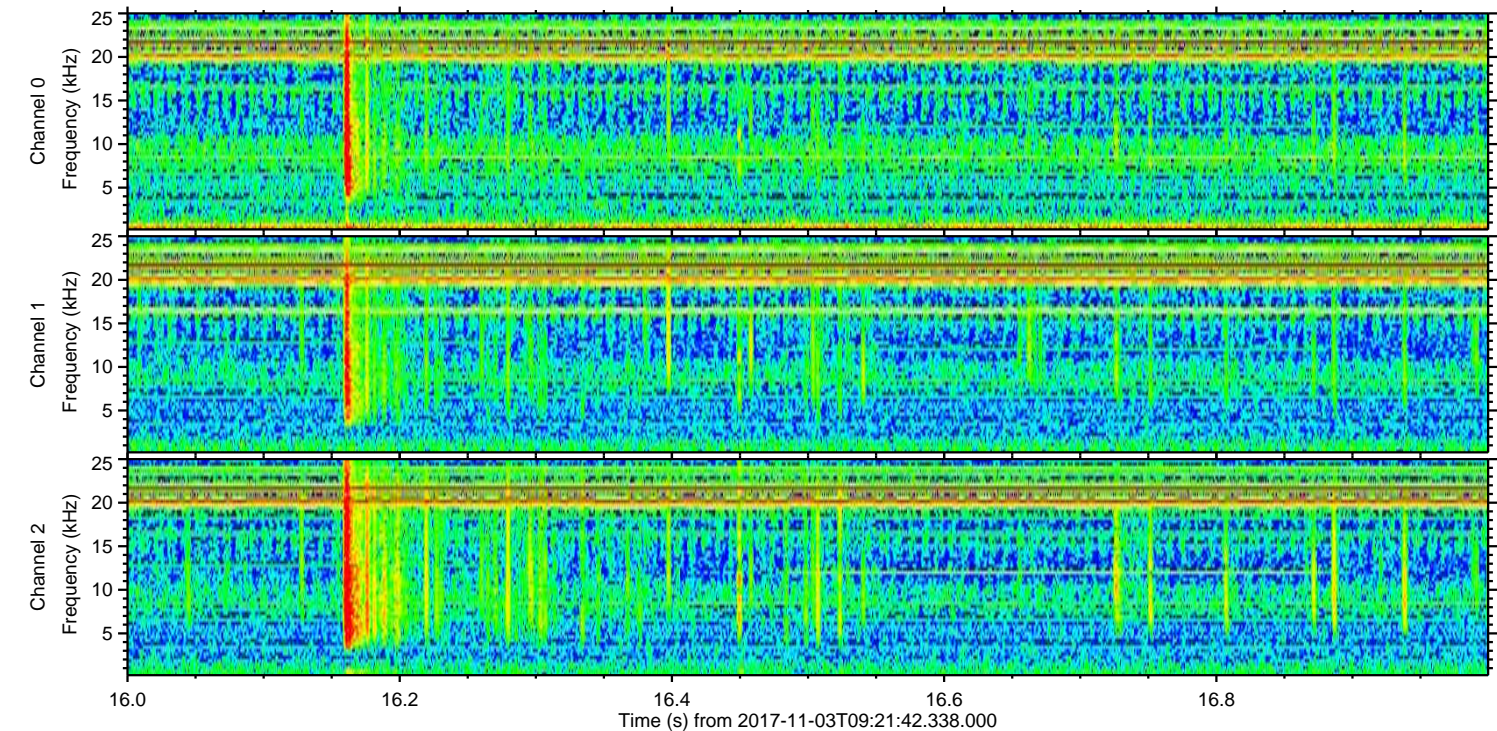
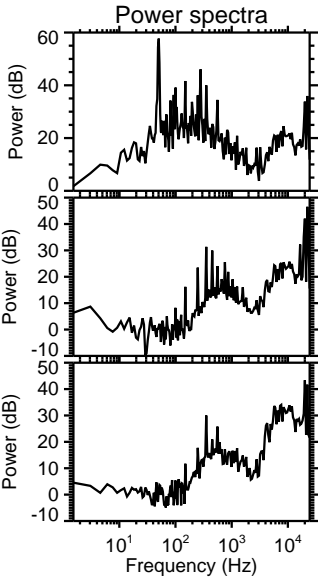
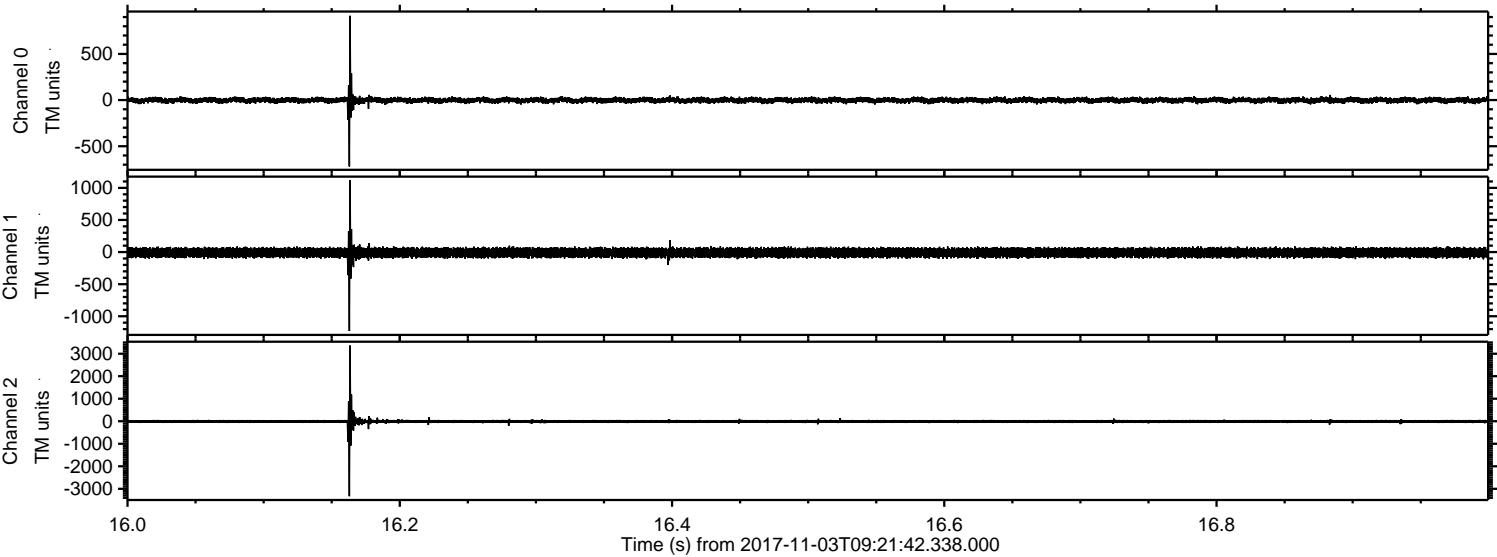
Channel 1  
mn: -2640  
mx: 3406  
 $\mu$ : -9.6  
 $\sigma$ : 50.2

Channel 2  
mn: -3468  
mx: 4126  
 $\mu$ : -9.1  
 $\sigma$ : 50.2



ELMAVAN 3D WAVEFORMS (Measured data sampled at 50 kHz) 51000 packets of 144 samples from 2017-11-03T09:21:42.338.000. Part 17/147

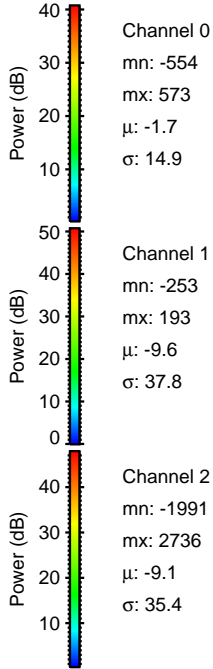
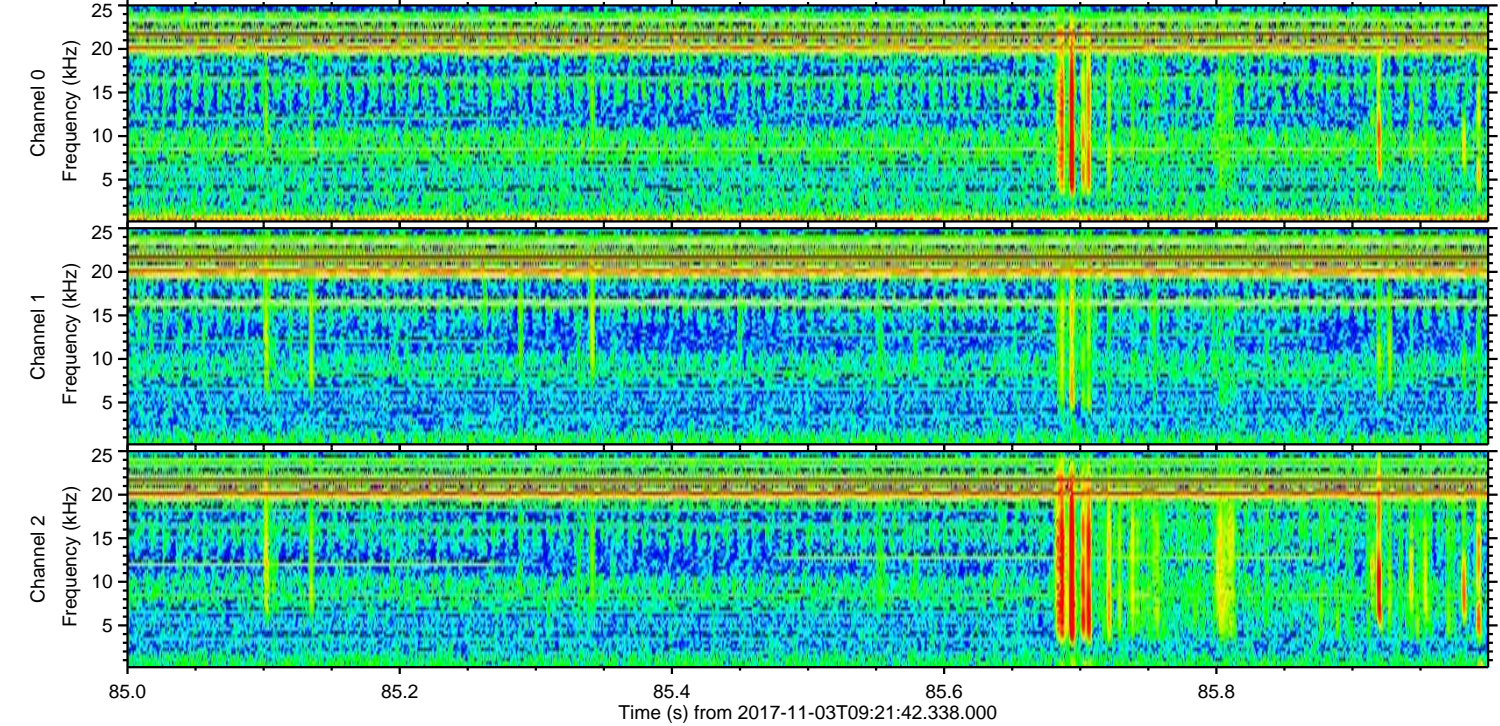
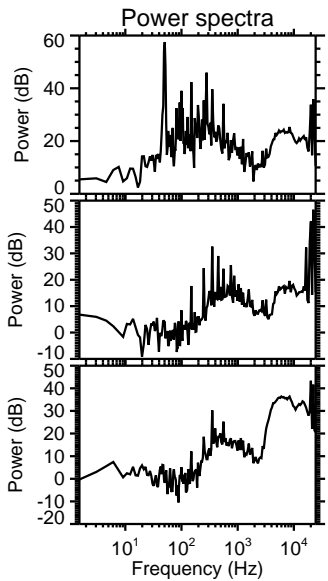
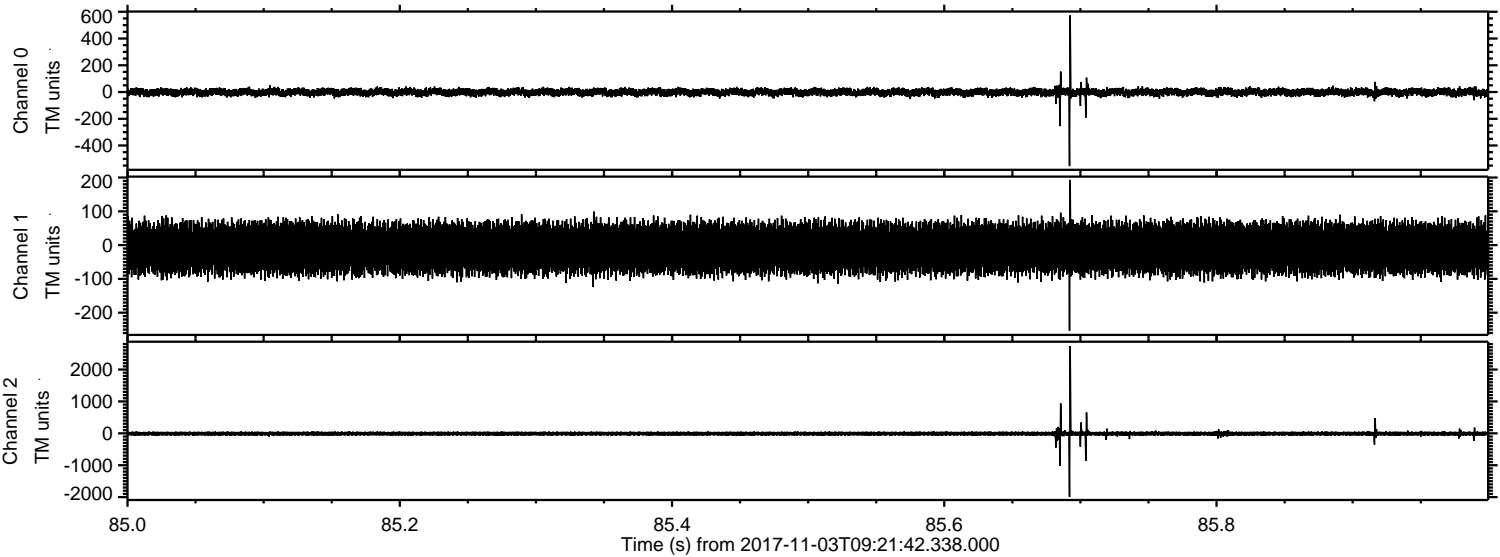
Processed Fri Nov 3 10:29:27 2017 by ELM ver.2012-10-06 from 001\_\_elm20171103\_092141\_\_dat00.bin





ELMAVAN 3D WAVEFORMS (Measured data sampled at 50 kHz) 51000 packets of 144 samples from 2017-11-03T09:21:42.338.000. Part 86/147

Processed Fri Nov 3 10:29:28 2017 by ELM ver.2012-10-06 from 001\_\_elm20171103\_092141\_\_dat00.bin



Channel 0  
mn: -554  
mx: 573  
 $\mu$ : -1.7  
 $\sigma$ : 14.9

Channel 1  
mn: -253  
mx: 193  
 $\mu$ : -9.6  
 $\sigma$ : 37.8

Channel 2  
mn: -1991  
mx: 2736  
 $\mu$ : -9.1  
 $\sigma$ : 35.4



ELMAVAN 3D WAVEFORMS (Measured data sampled at 50 kHz) 51000 packets of 144 samples from 2017-11-03T09:21:42.338.000. Part 3/147

Processed Fri Nov 3 10:29:29 2017 by ELM ver.2012-10-06 from 001\_\_elm20171103\_092141\_\_dat00.bin

