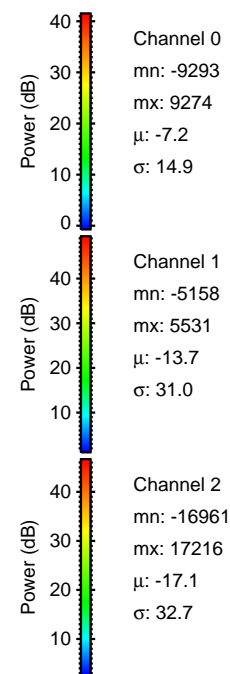
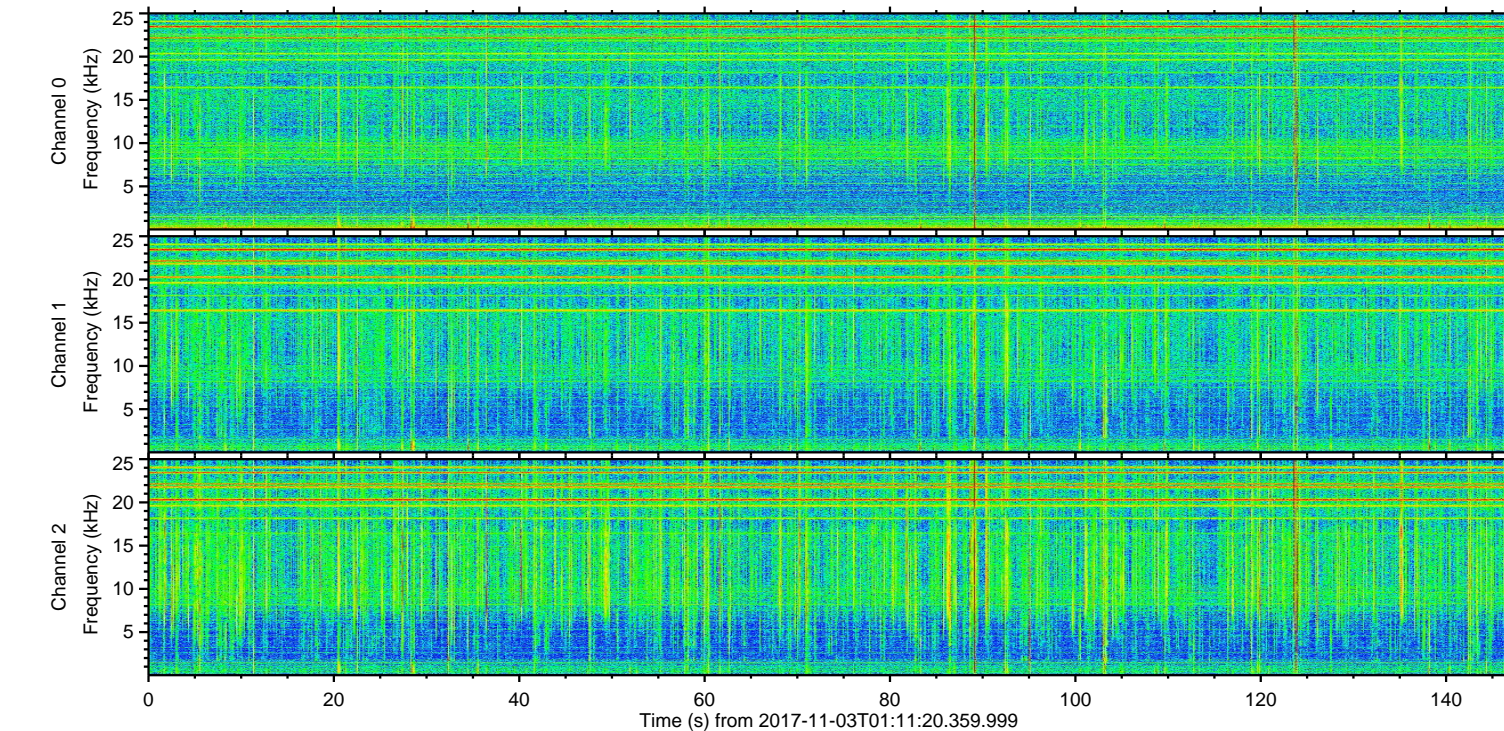
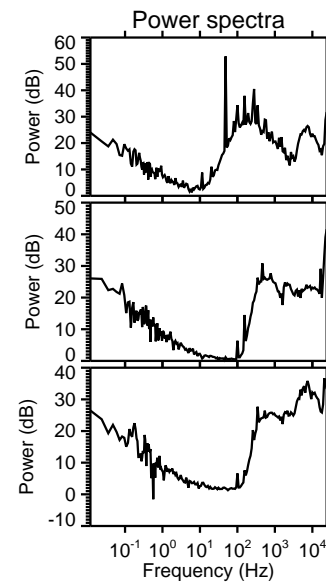
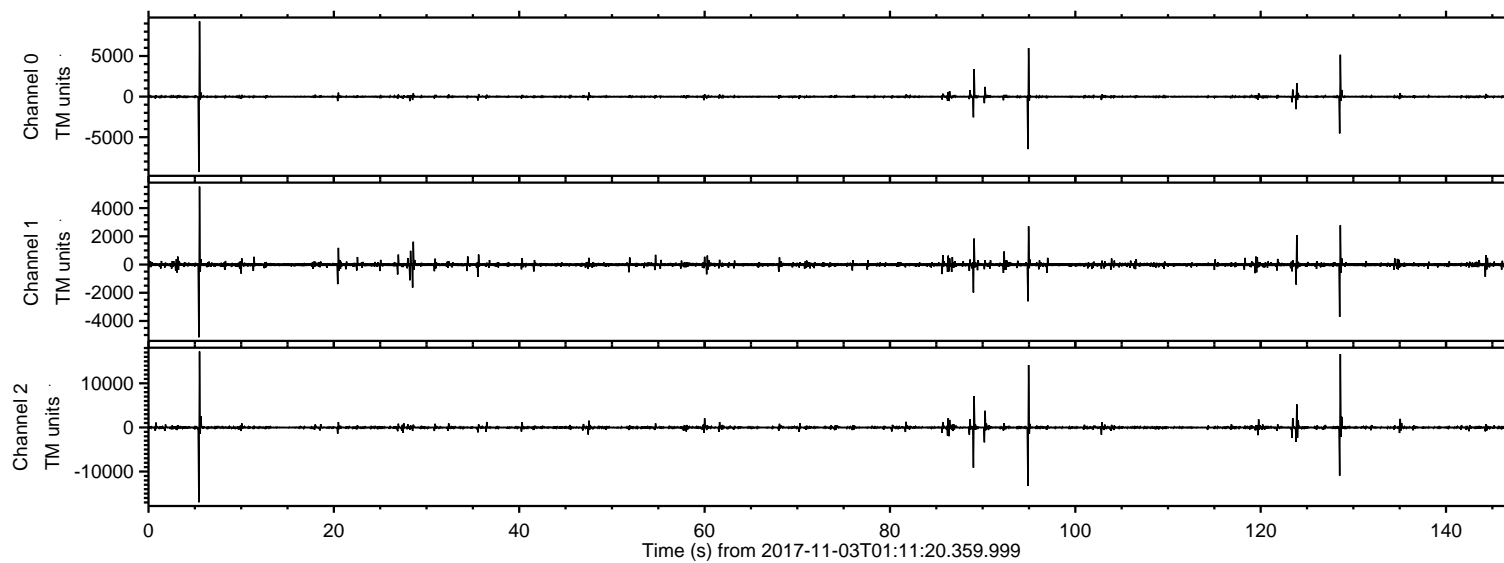


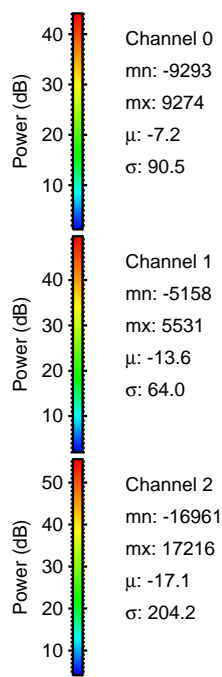
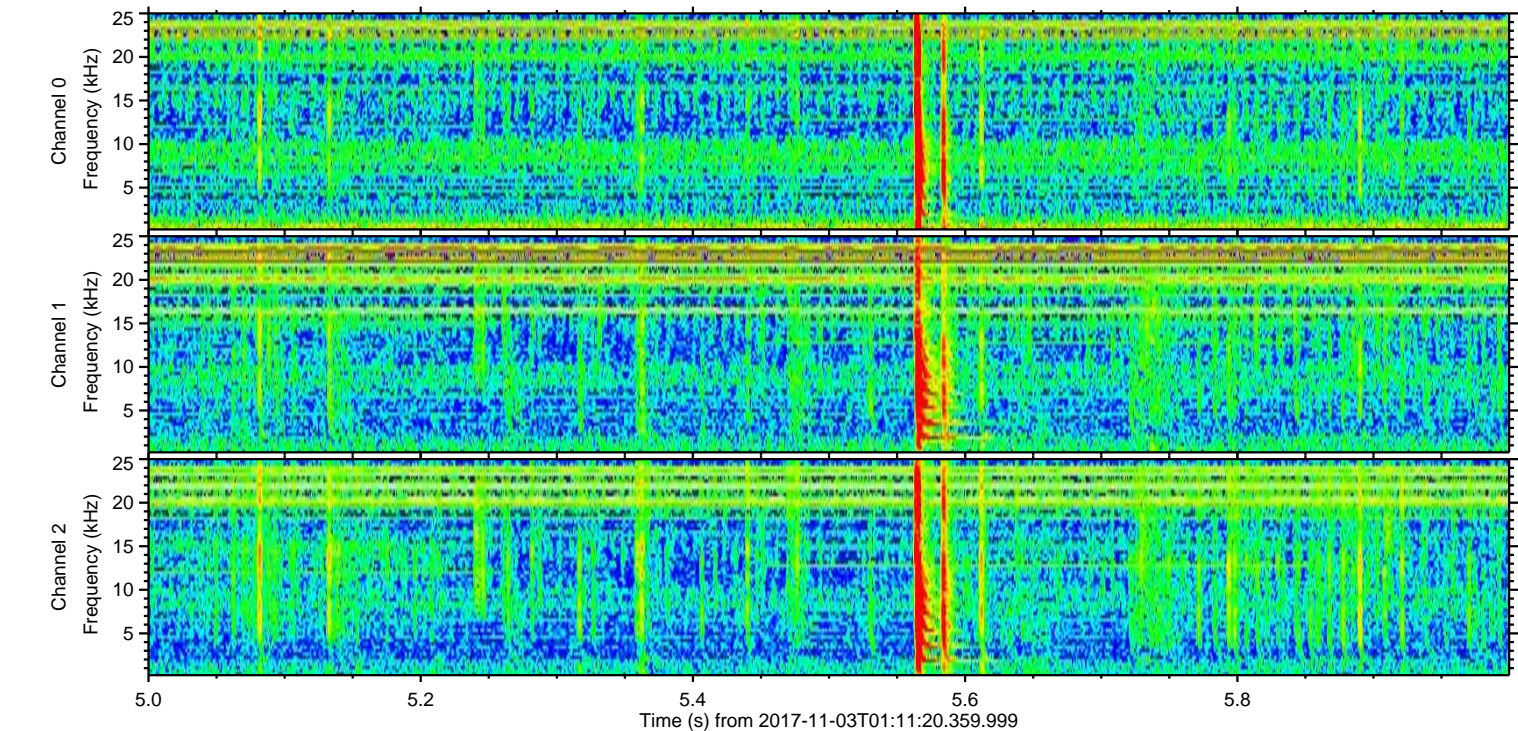
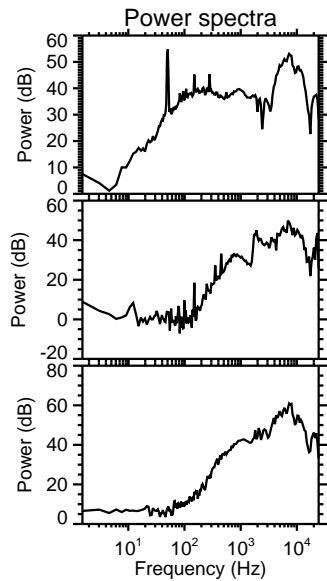
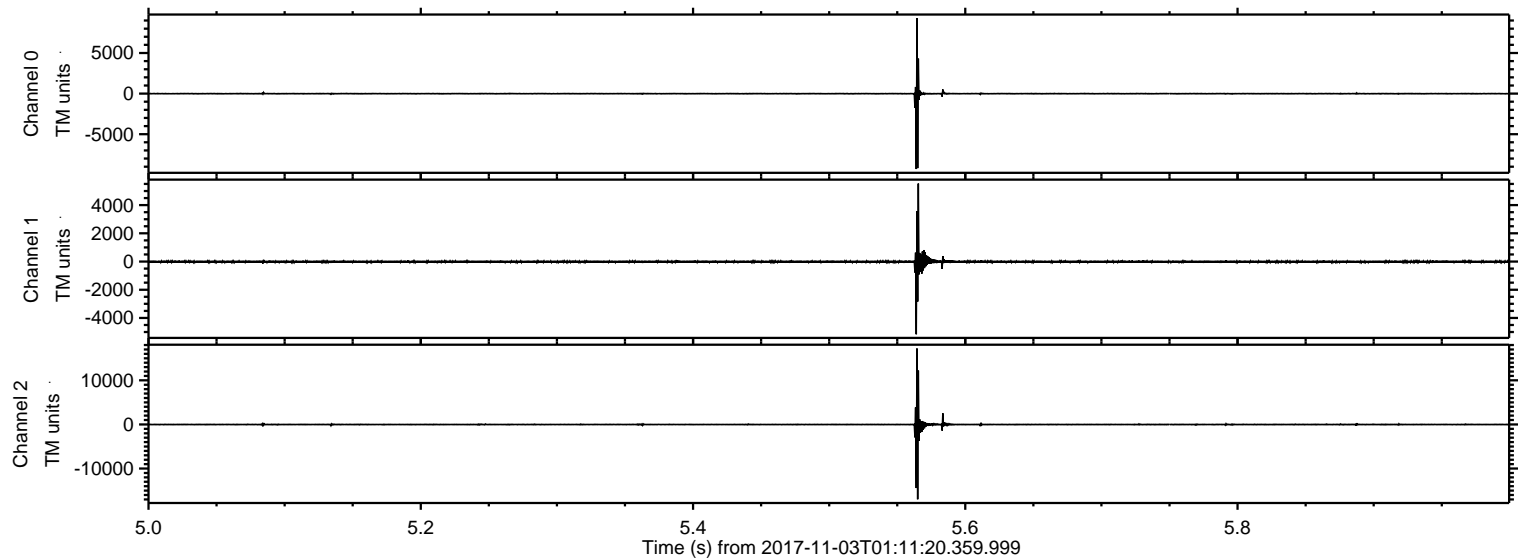
ELMAVAN 3D WAVEFORMS (Measured data sampled at 50 kHz) 51000 packets of 144 samples from 2017-11-03T01:11:20.359.999.

Processed Fri Nov 3 02:18:56 2017 by ELM ver.2012-10-06 from 001__elm201711103_011119__dat00.bin



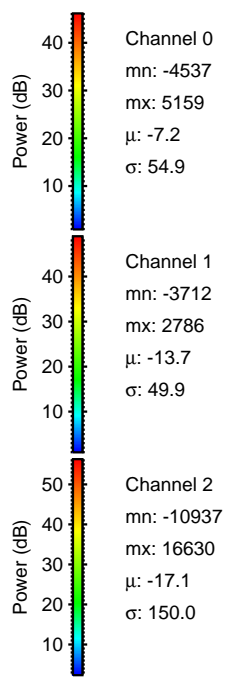
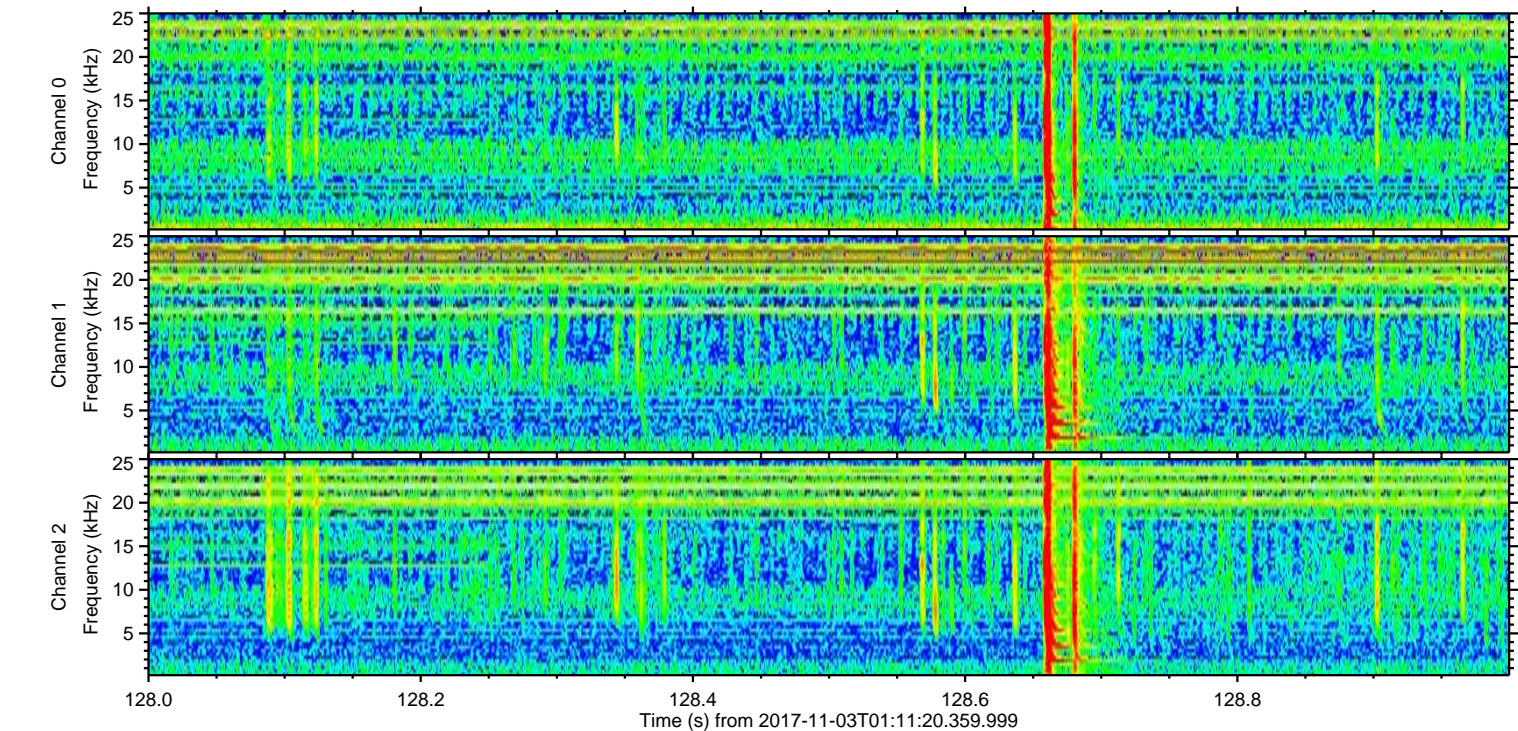
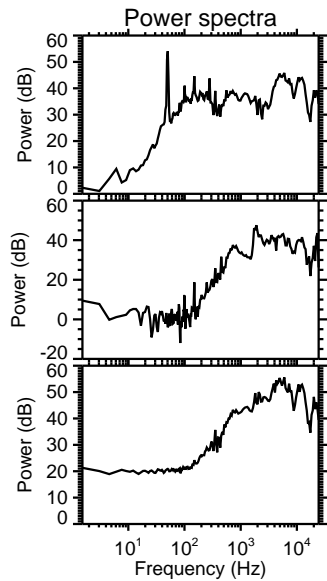
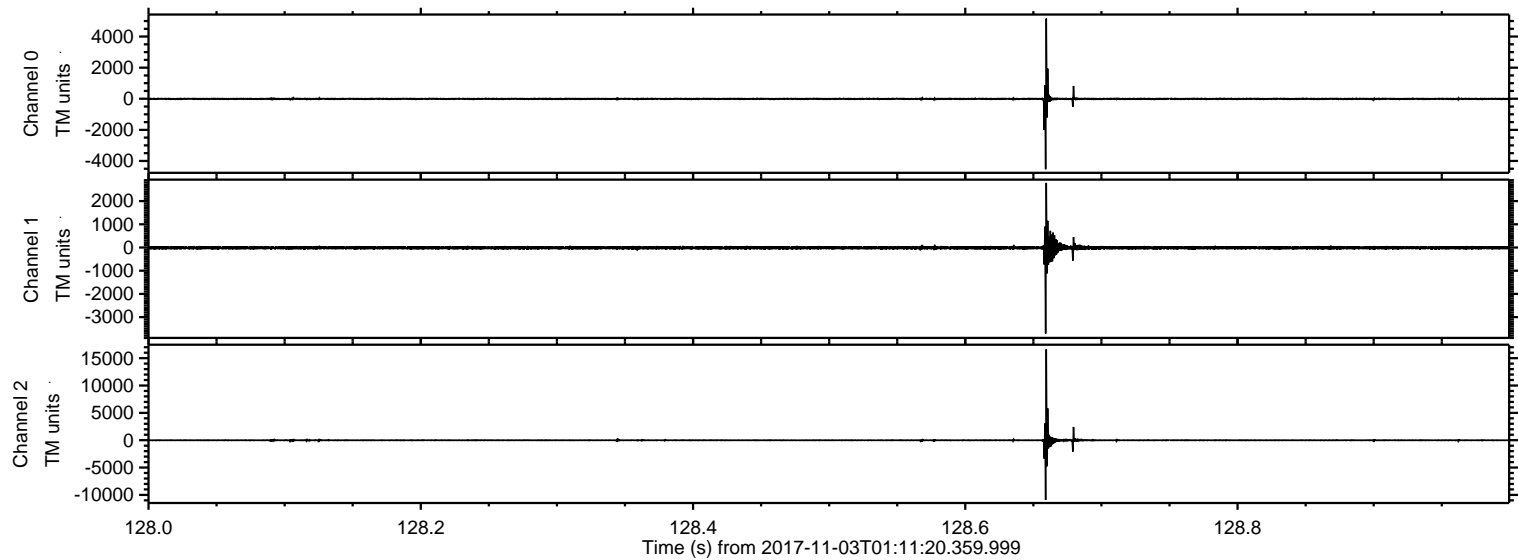
ELMAVAN 3D WAVEFORMS (Measured data sampled at 50 kHz) 51000 packets of 144 samples from 2017-11-03T01:11:20.359.999. Part 6/147

Processed Fri Nov 3 02:19:02 2017 by ELM ver.2012-10-06 from 001__elm20171103_011119__dat00.bin

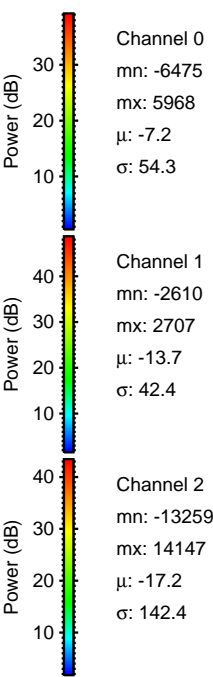
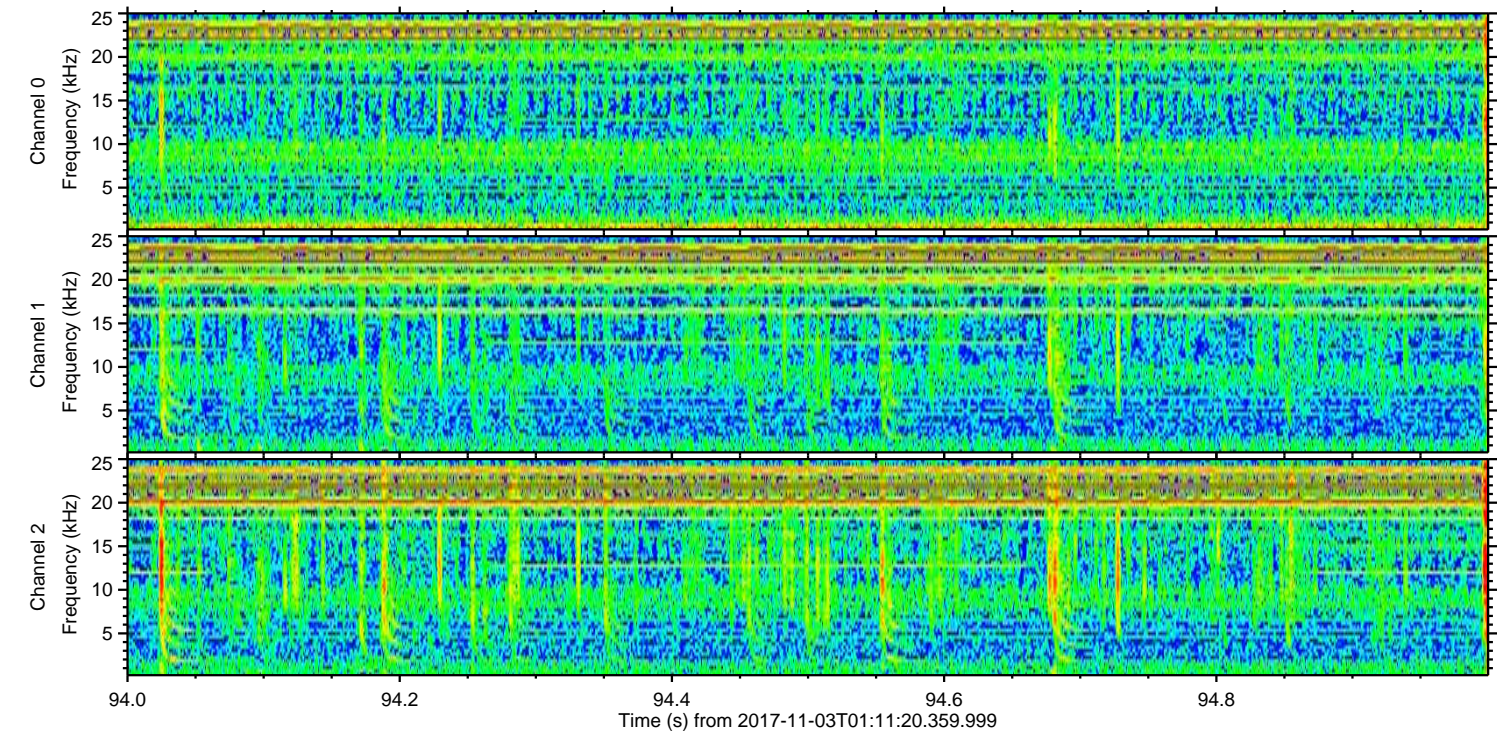
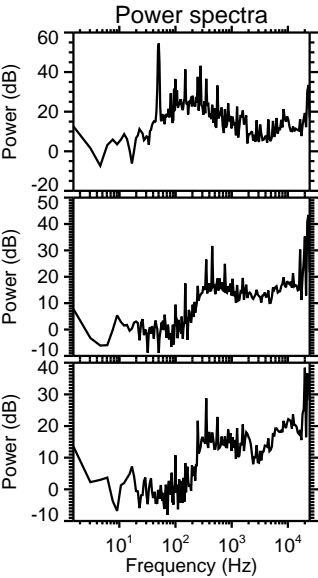
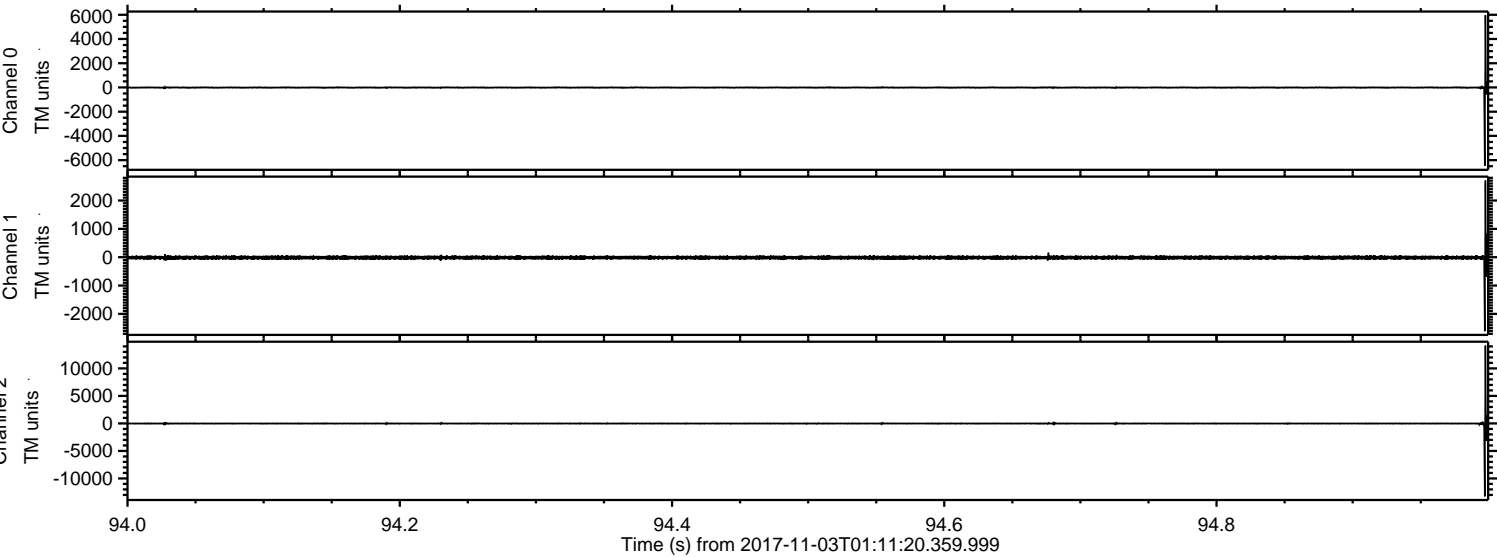


ELMAVAN 3D WAVEFORMS (Measured data sampled at 50 kHz) 51000 packets of 144 samples from 2017-11-03T01:11:20.359.999. Part 129/147

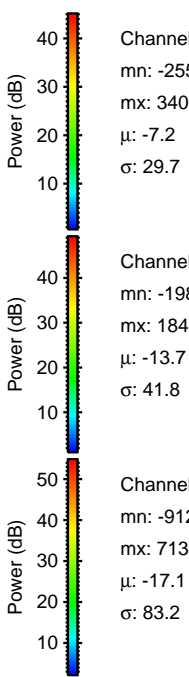
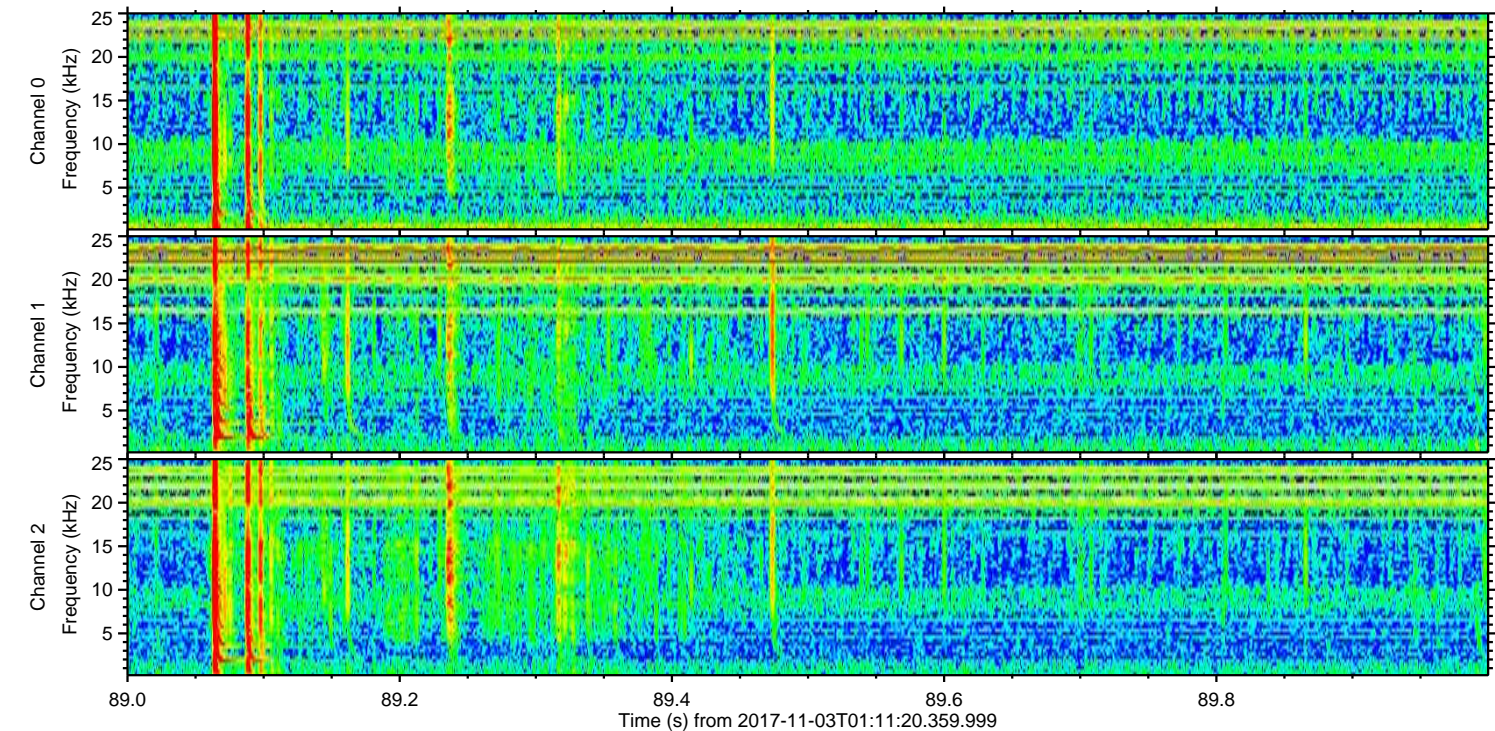
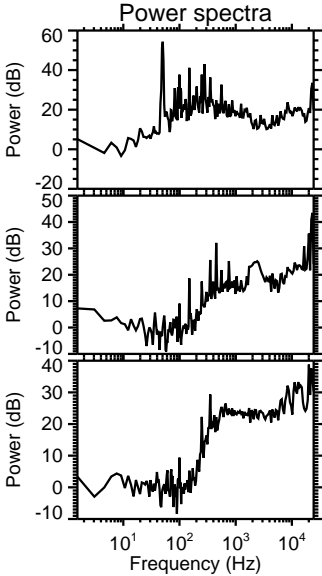
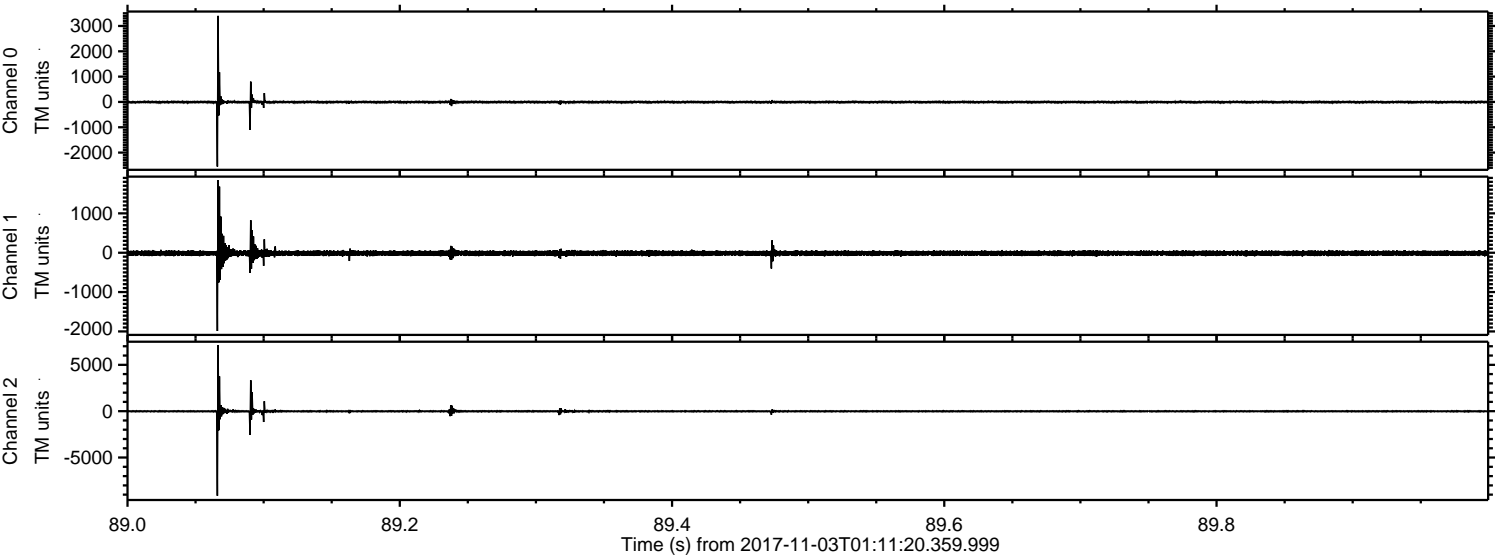
Processed Fri Nov 3 02:19:03 2017 by ELM ver.2012-10-06 from 001__elm20171103_011119__dat00.bin



Processed Fri Nov 3 02:19:03 2017 by ELM ver.2012-10-06 from 001__elm201711103_011119__dat00.bin



Processed Fri Nov 3 02:19:04 2017 by ELM ver.2012-10-06 from 001__elm20171103_011119__dat00.bin



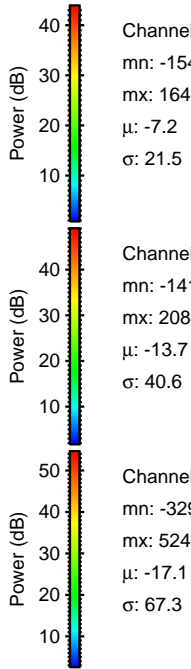
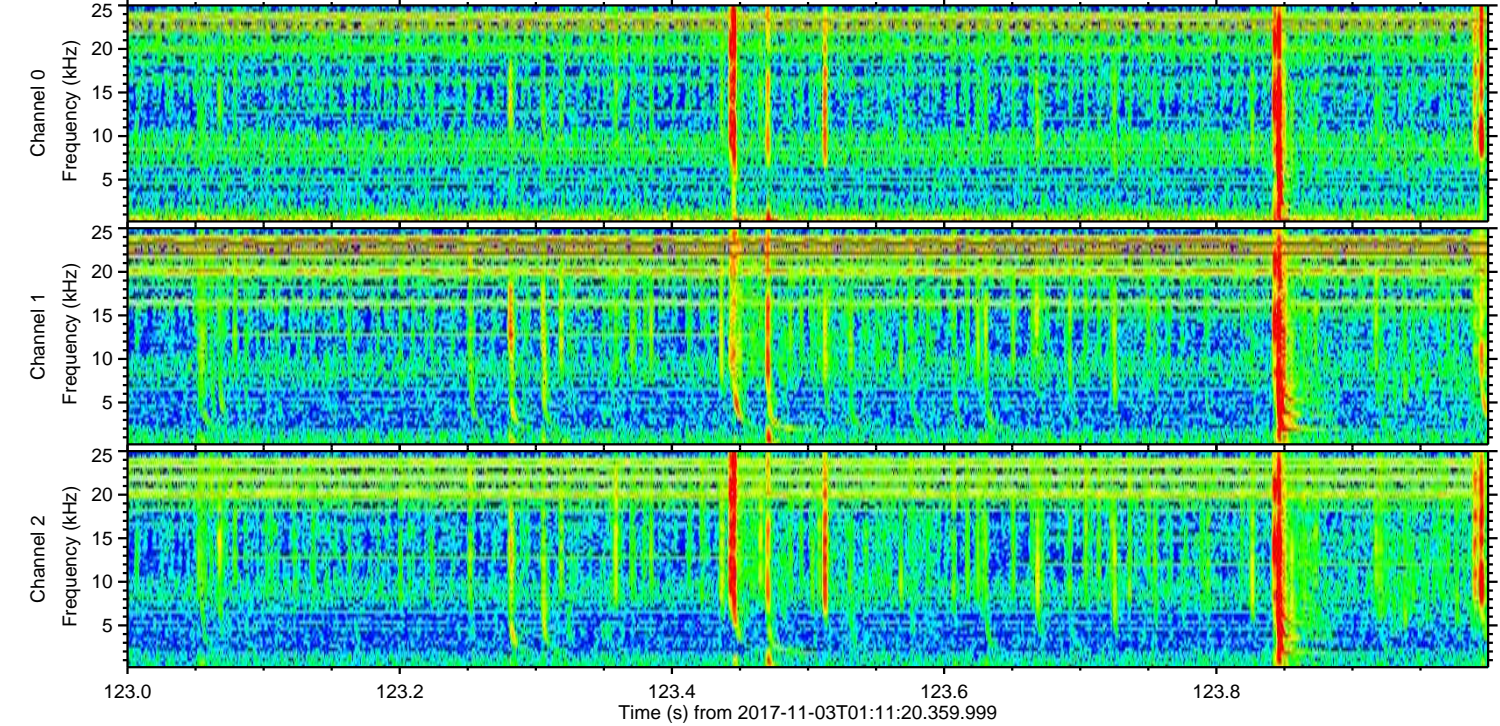
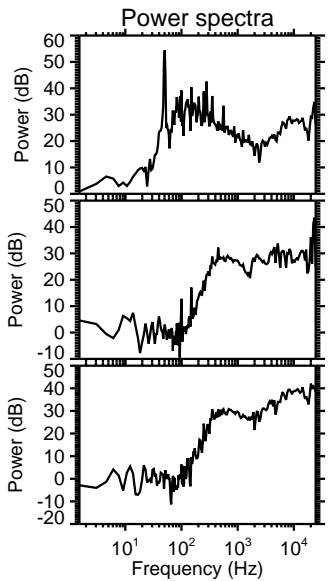
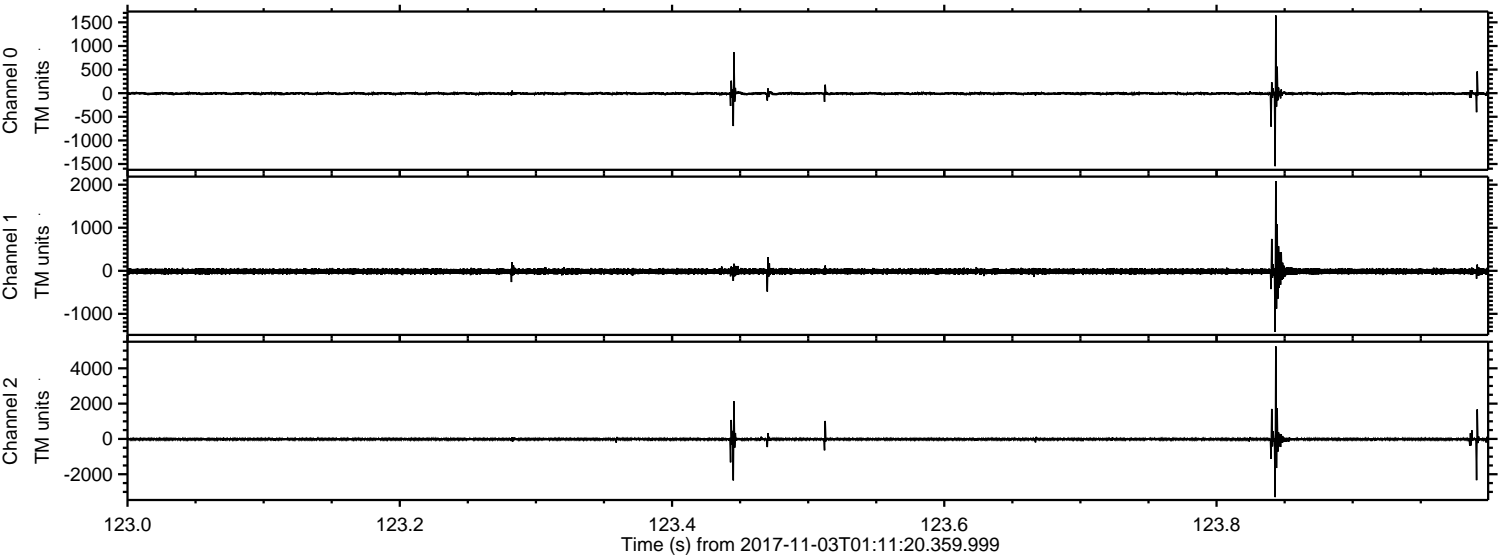
Channel 0
mn: -2553
mx: 3400
 μ : -7.2
 σ : 29.7

Channel 1
mn: -1988
mx: 1840
 μ : -13.7
 σ : 41.8

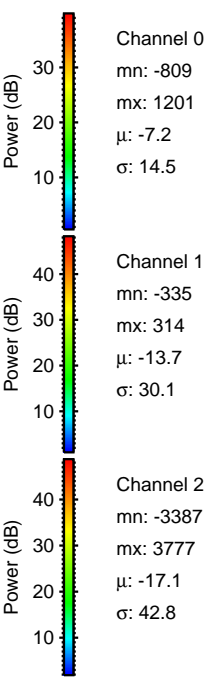
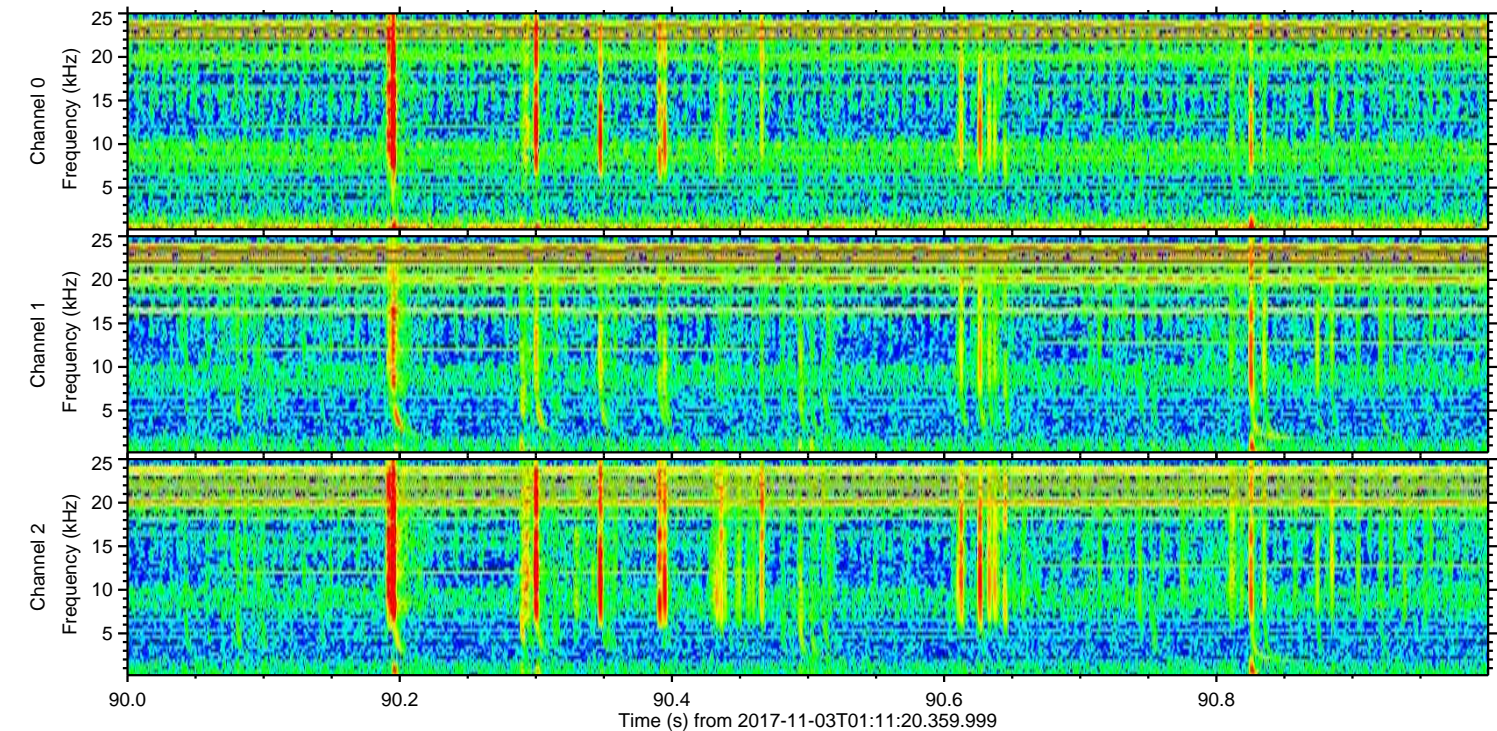
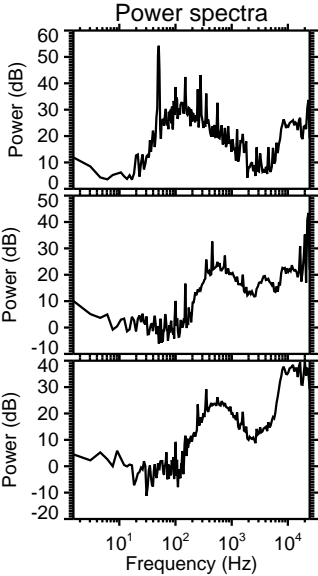
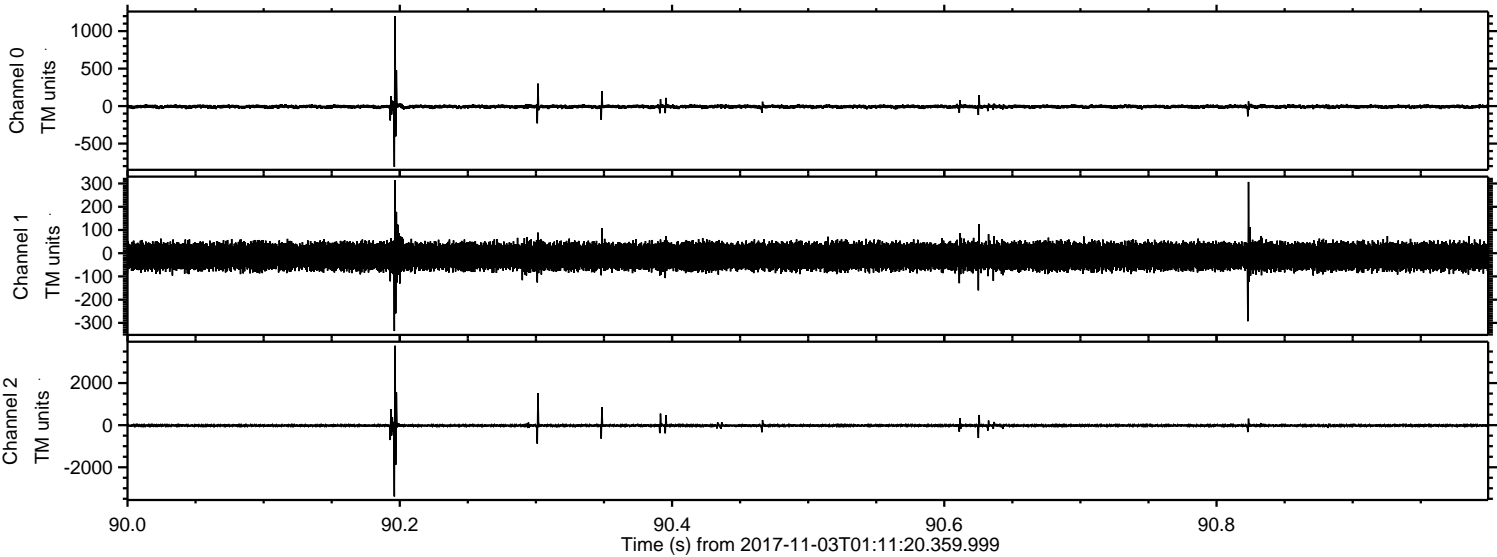
Channel 2
mn: -9121
mx: 7134
 μ : -17.1
 σ : 83.2

ELMAVAN 3D WAVEFORMS (Measured data sampled at 50 kHz) 51000 packets of 144 samples from 2017-11-03T01:11:20.359.999. Part 124/147

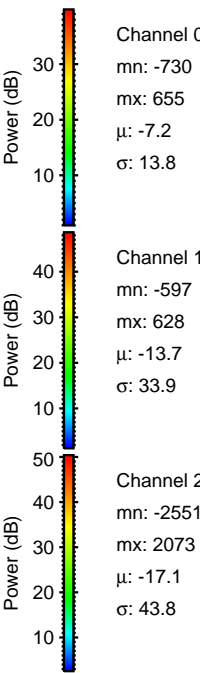
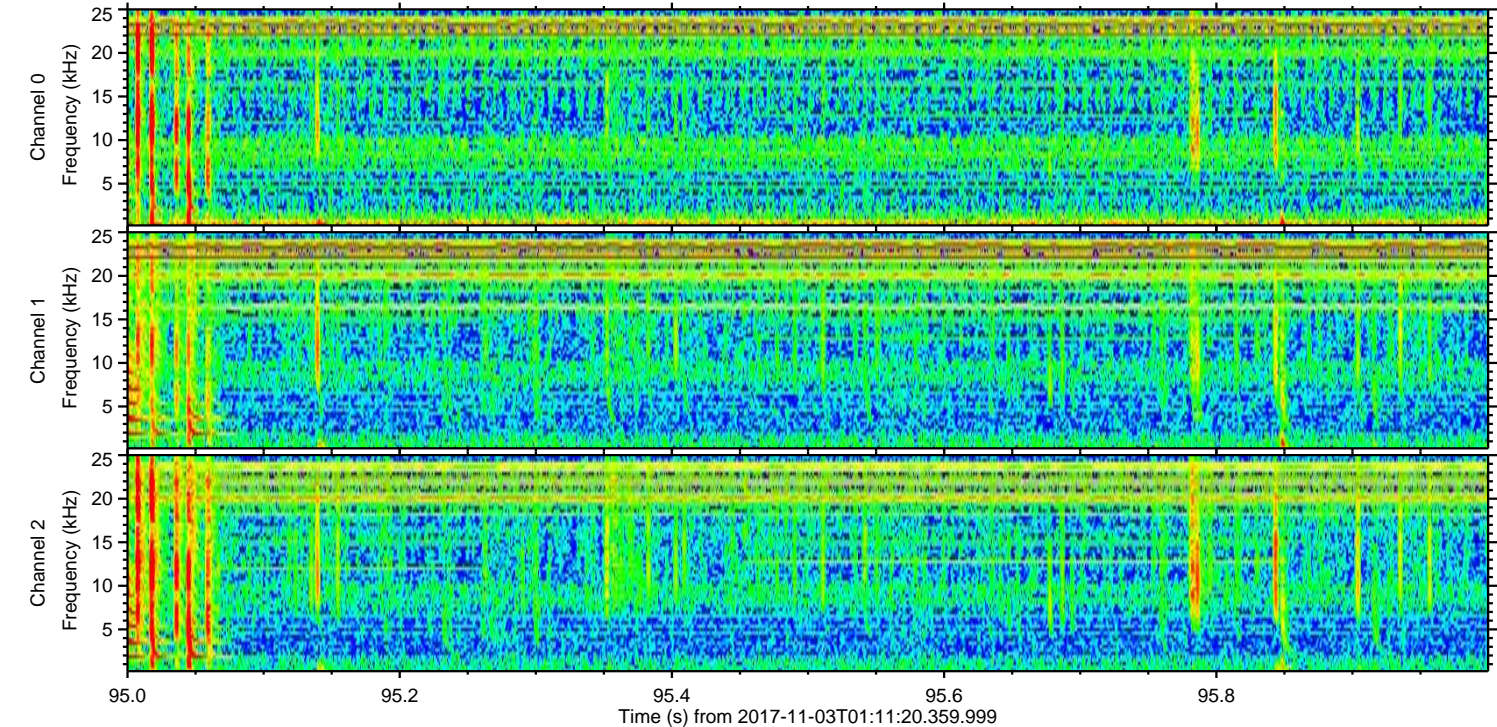
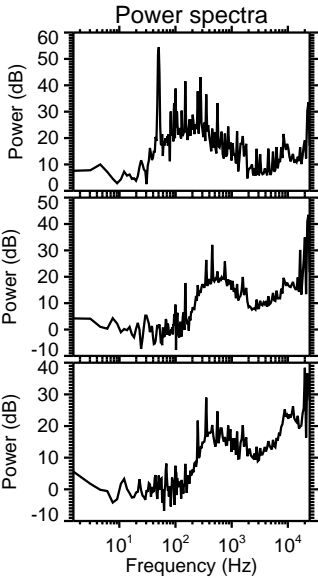
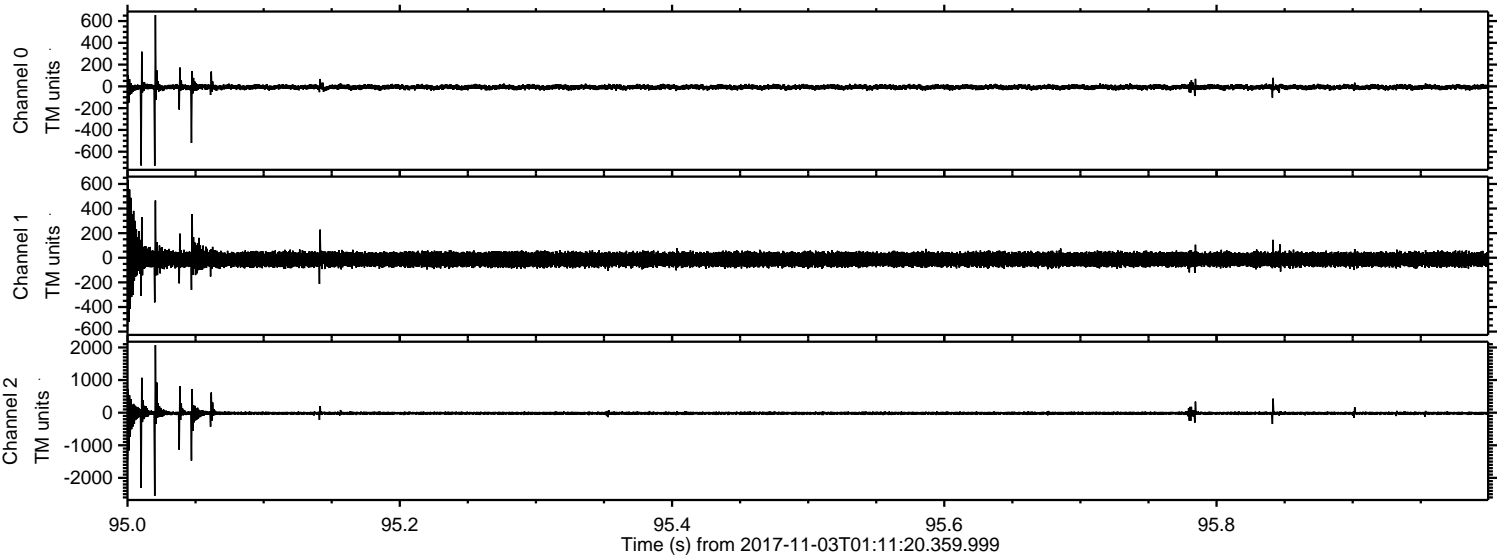
Processed Fri Nov 3 02:19:05 2017 by ELM ver.2012-10-06 from 001__elm201711103_011119__dat00.bin



Processed Fri Nov 3 02:19:05 2017 by ELM ver.2012-10-06 from 001__elm20171103_011119__dat00.bin



Processed Fri Nov 3 02:19:06 2017 by ELM ver.2012-10-06 from 001__elm20171103_011119__dat00.bin

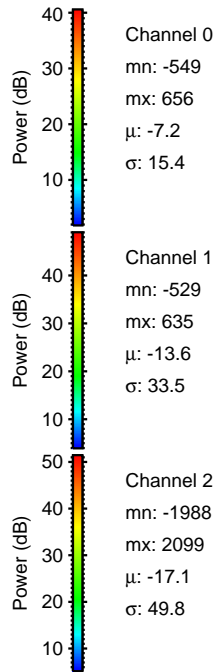
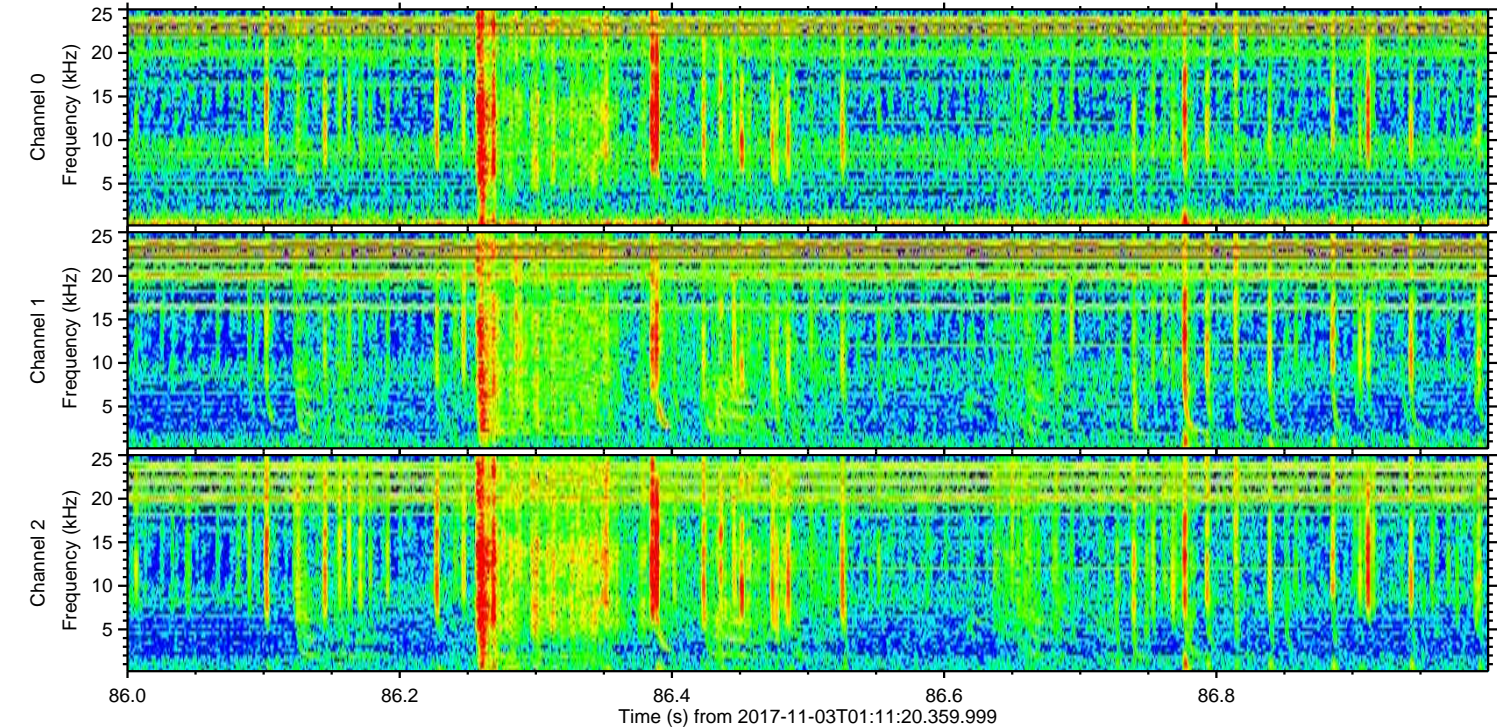
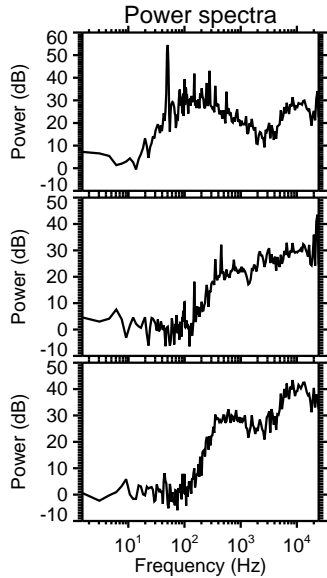
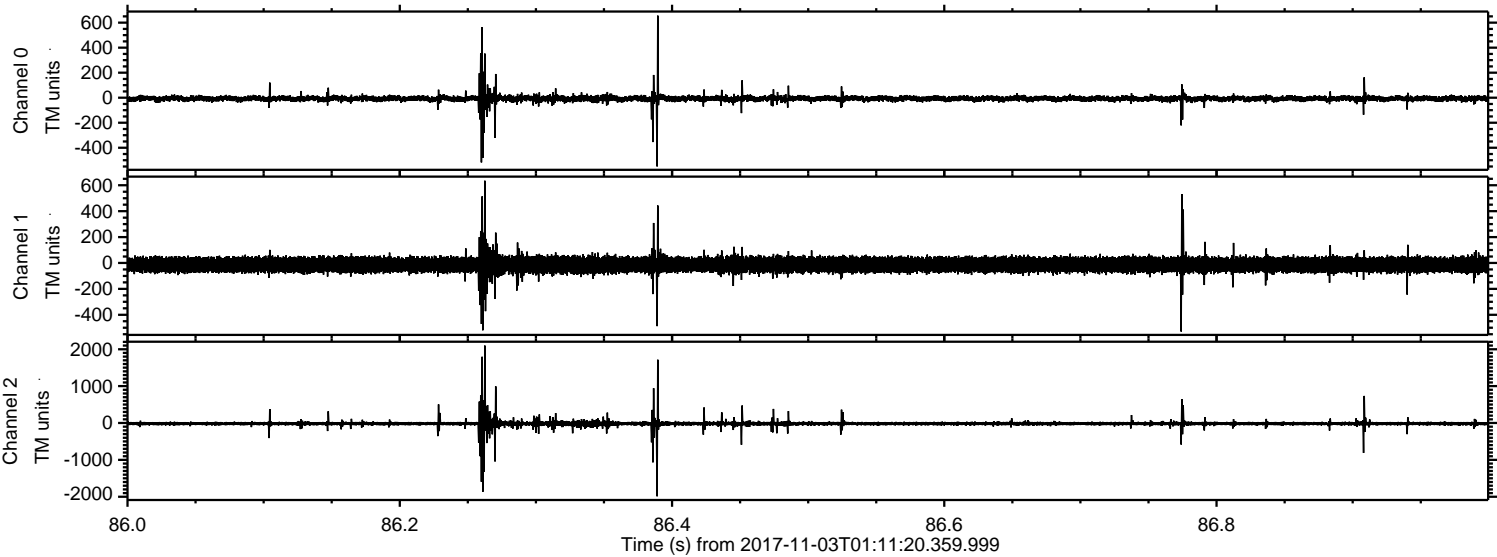


Channel 0
mn: -730
mx: 655
 μ : -7.2
 σ : 13.8

Channel 1
mn: -597
mx: 628
 μ : -13.7
 σ : 33.9

Channel 2
mn: -2551
mx: 2073
 μ : -17.1
 σ : 43.8

Processed Fri Nov 3 02:19:07 2017 by ELM ver.2012-10-06 from 001__elm20171103_011119__dat00.bin



Processed Fri Nov 3 02:19:07 2017 by ELM ver.2012-10-06 from 001__elm20171103_011119__dat00.bin

