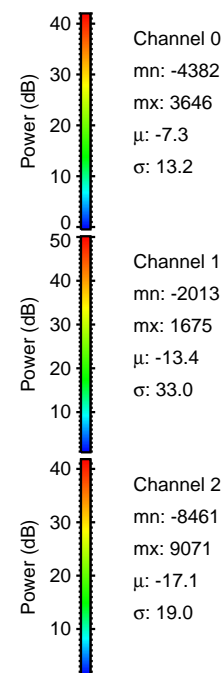
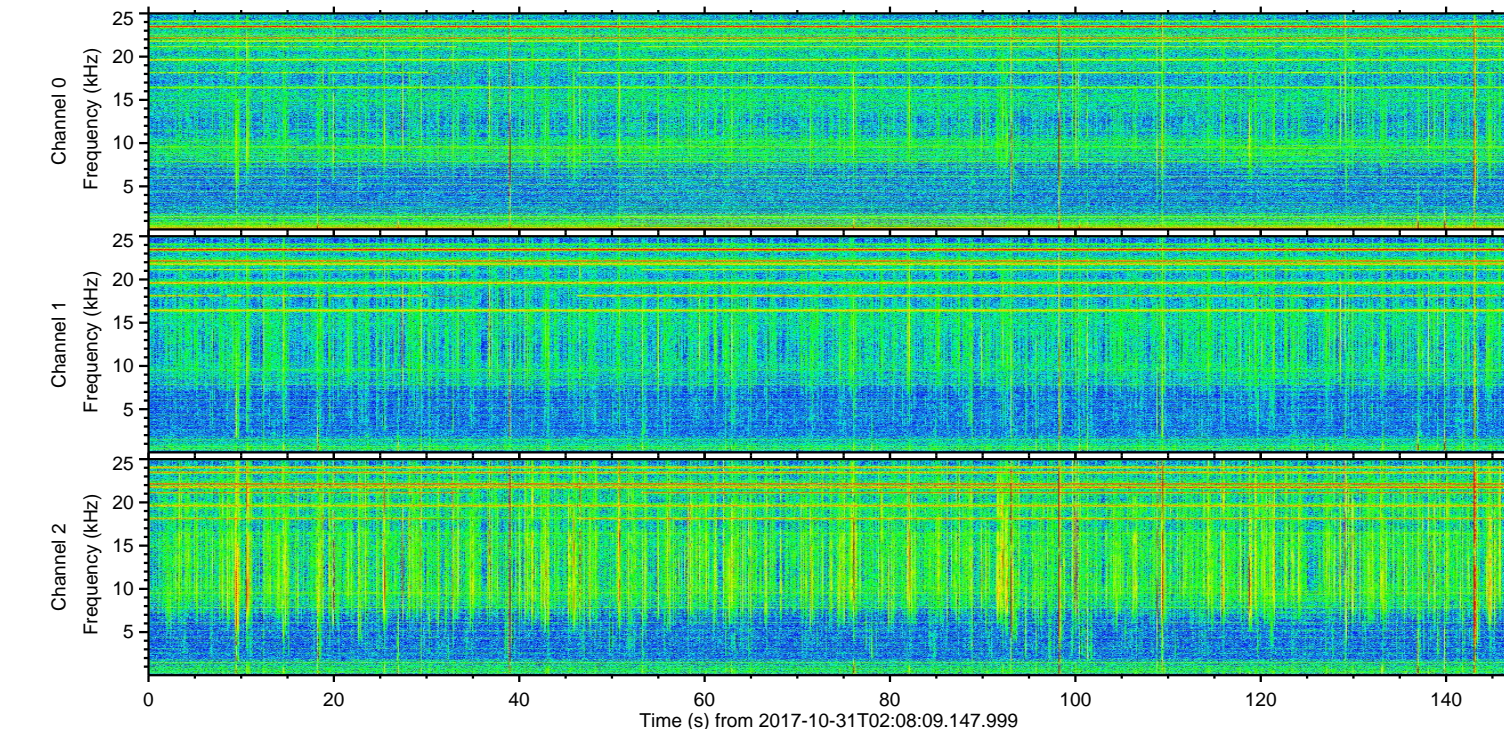
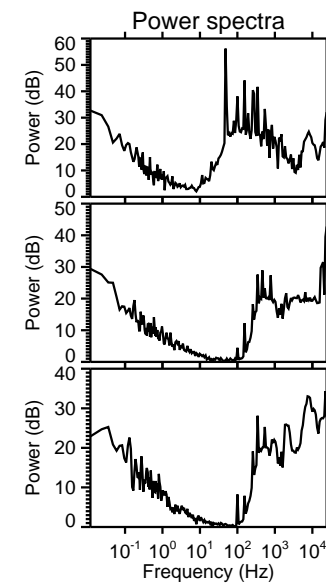
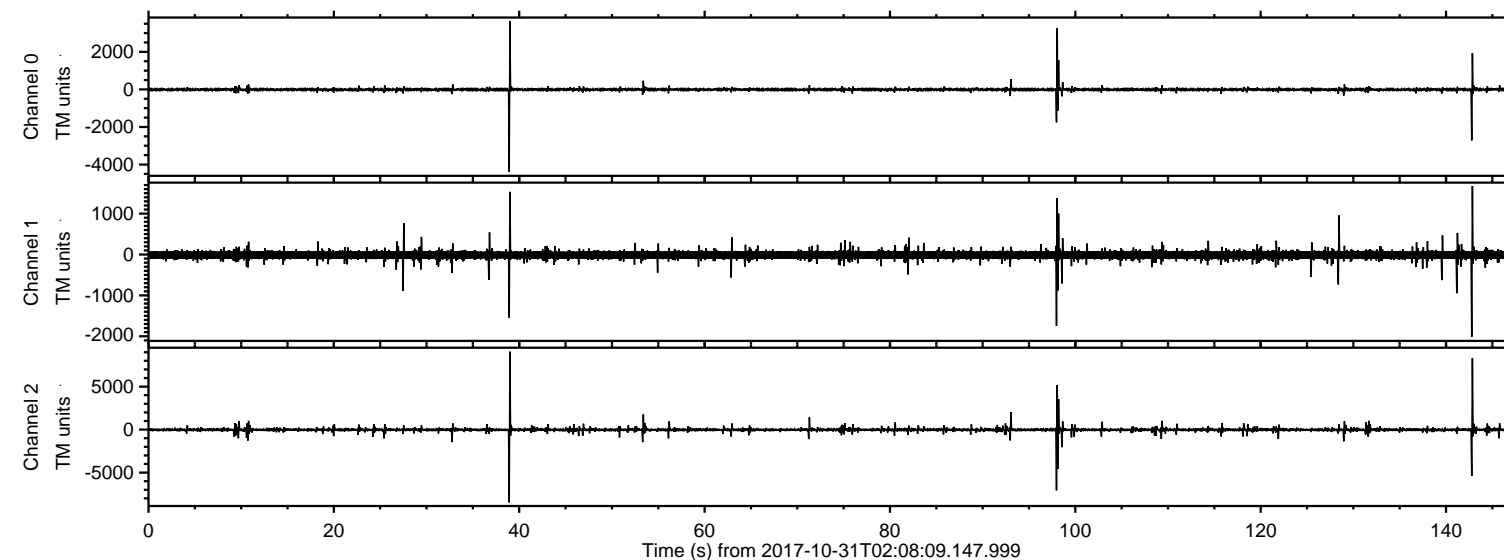
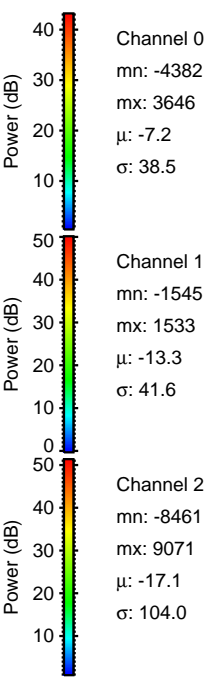
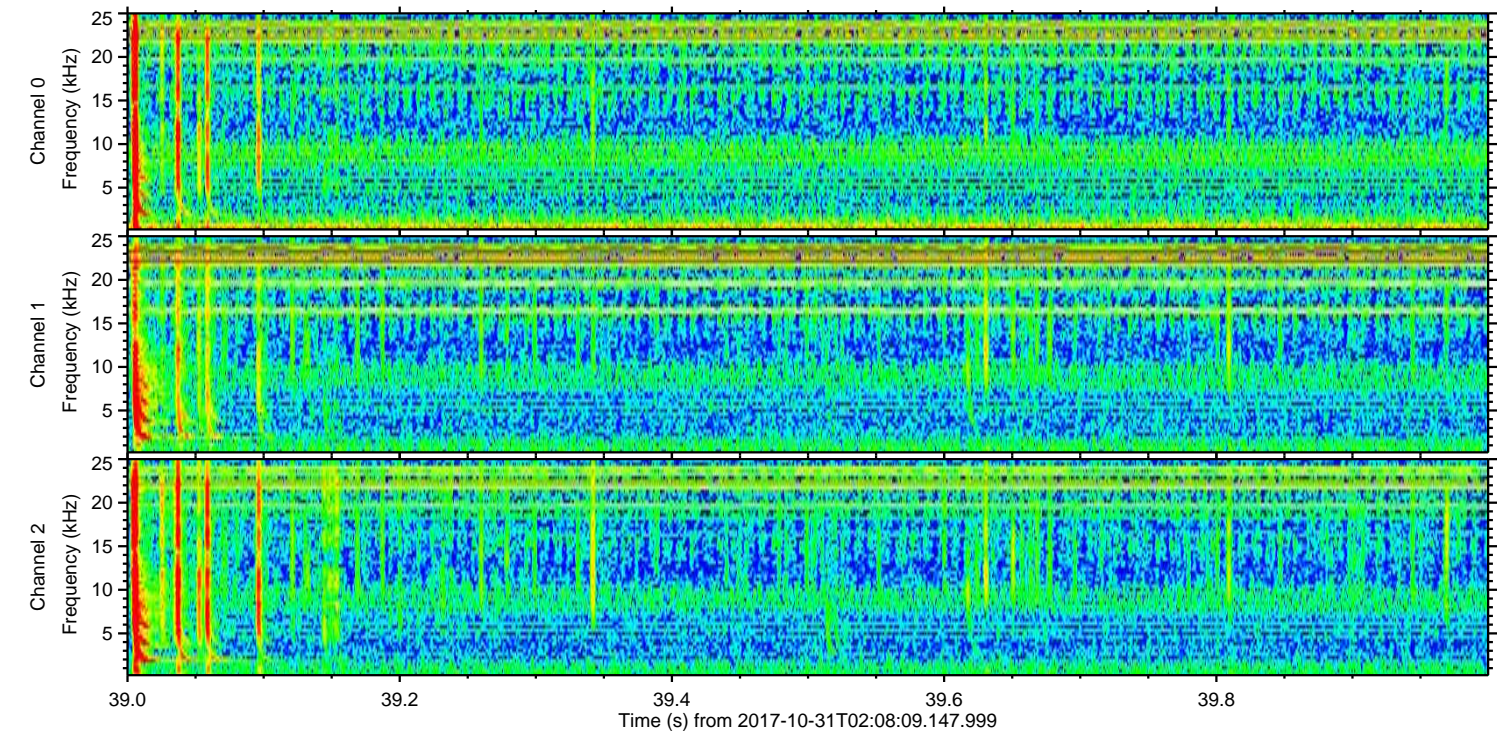
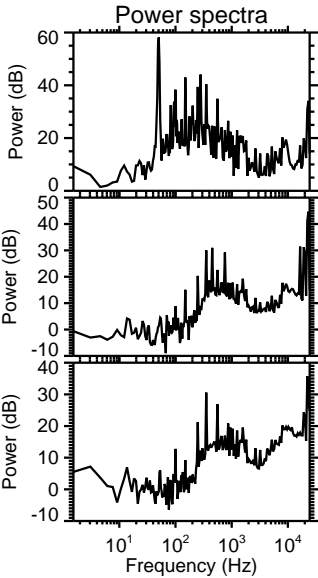
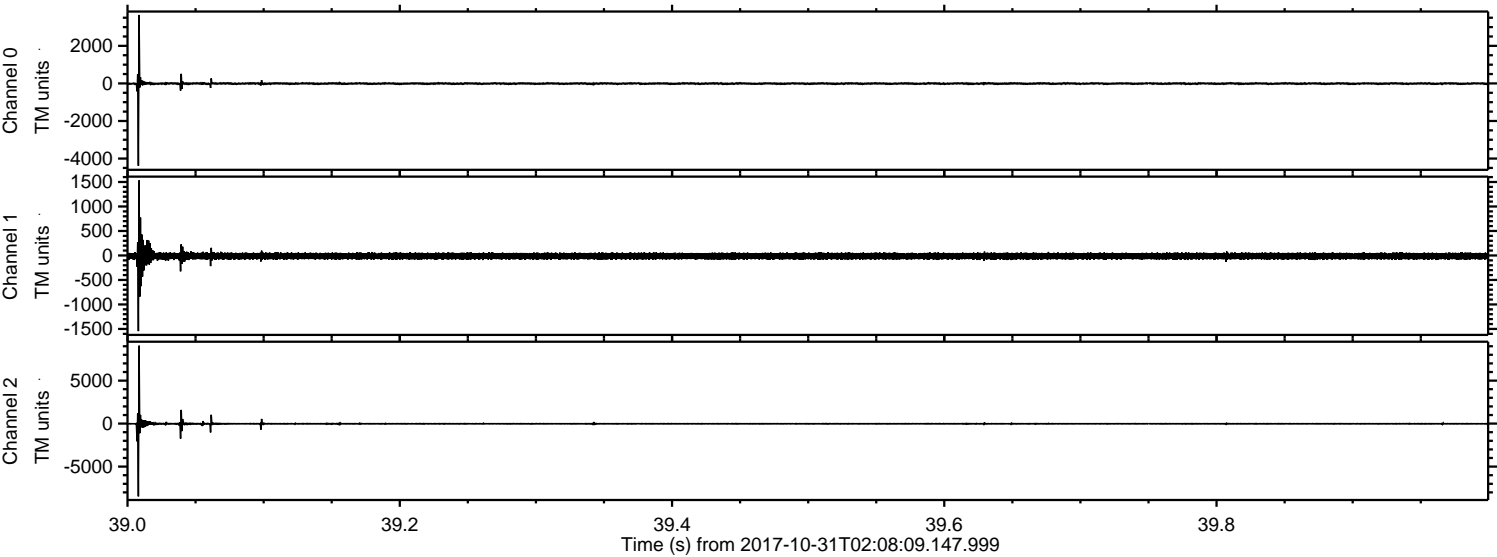


ELMAVAN 3D WAVEFORMS (Measured data sampled at 50 kHz) 51000 packets of 144 samples from 2017-10-31T02:08:09.147.999.

Processed Tue Oct 31 03:16:14 2017 by ELM ver.2012-10-06 from 001__elm20171031_020808__dat00.bin

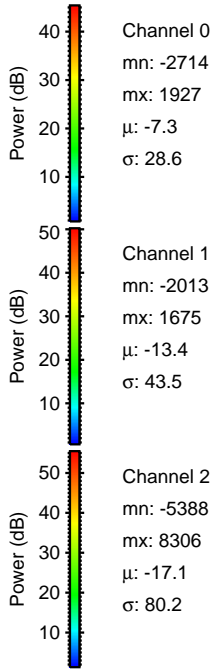
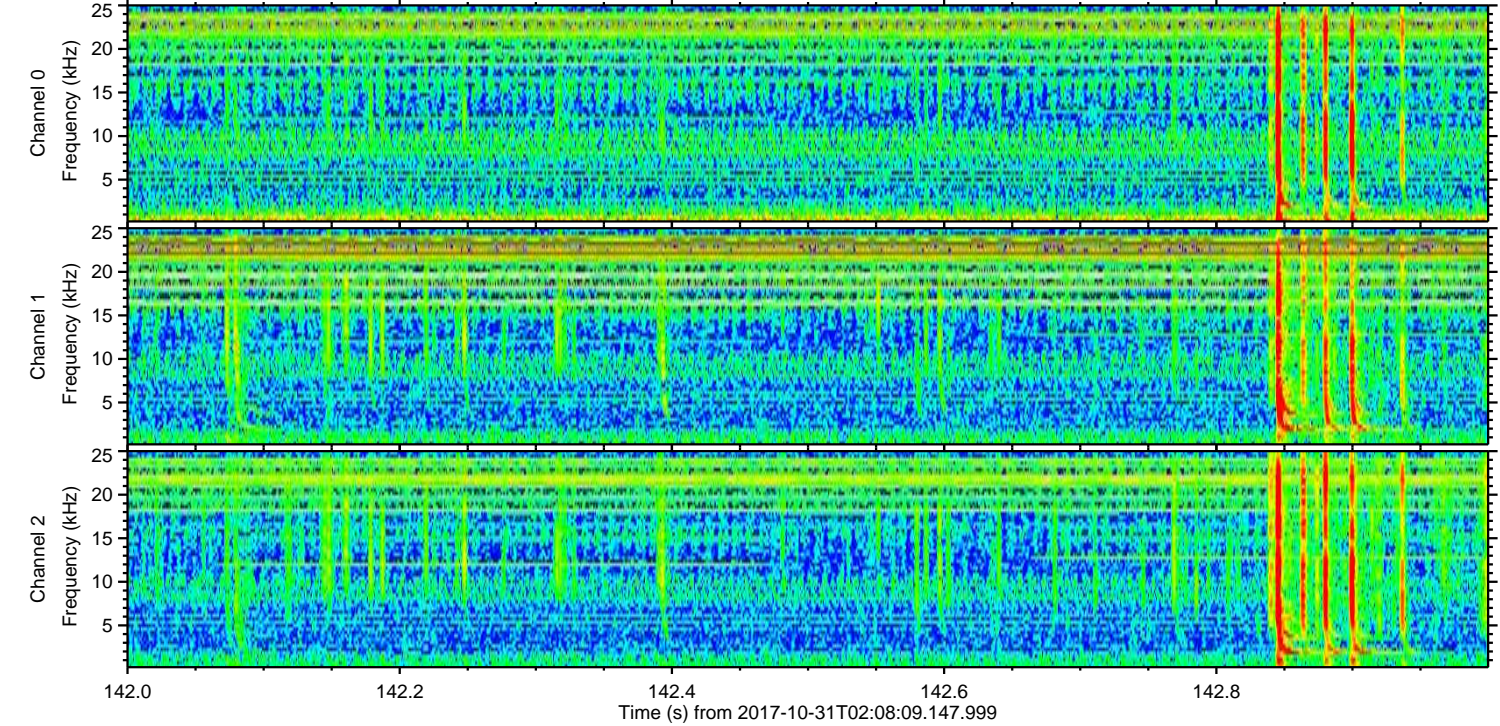
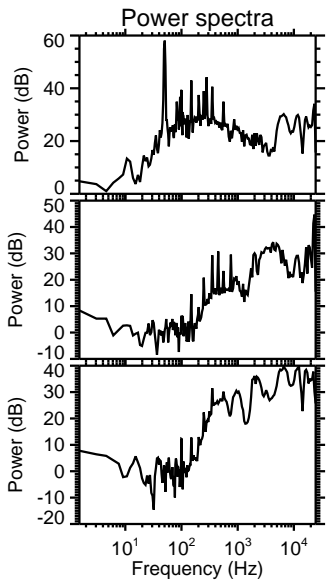
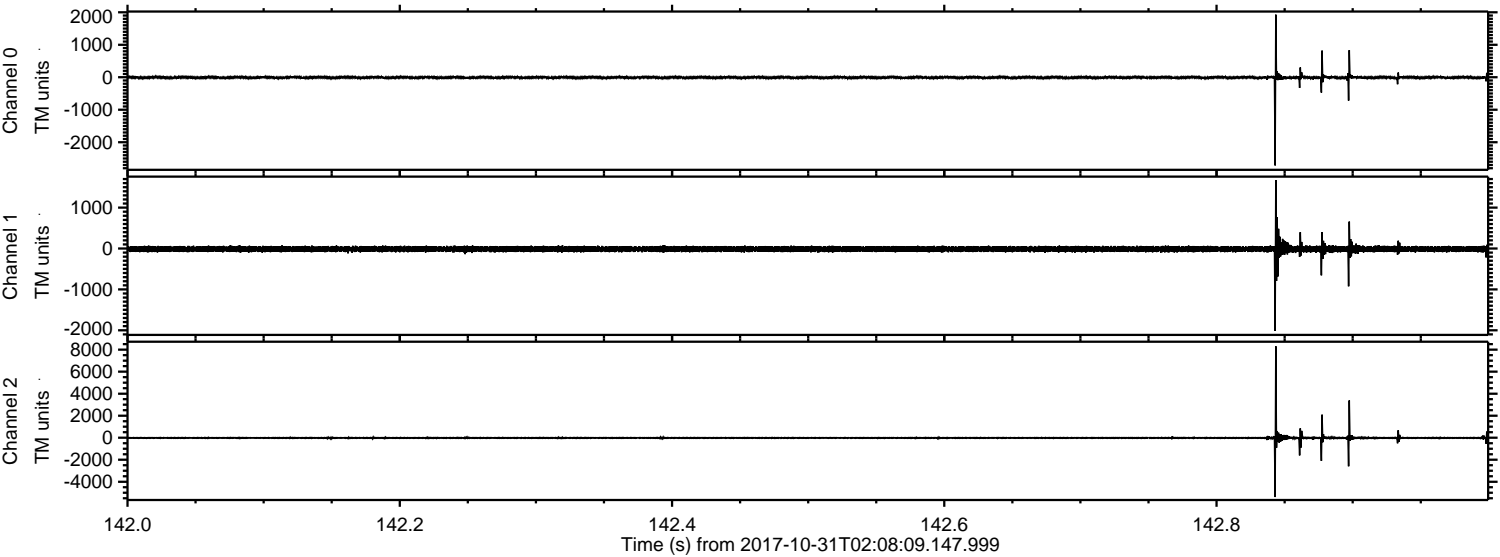


Processed Tue Oct 31 03:16:23 2017 by ELM ver.2012-10-06 from 001__elm20171031_020808__dat00.bin



ELMAVAN 3D WAVEFORMS (Measured data sampled at 50 kHz) 51000 packets of 144 samples from 2017-10-31T02:08:09.147.999. Part 143/147

Processed Tue Oct 31 03:16:24 2017 by ELM ver.2012-10-06 from 001__elm20171031_020808__dat00.bin



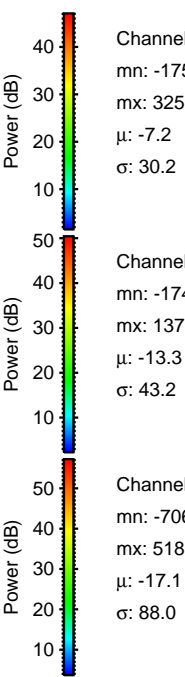
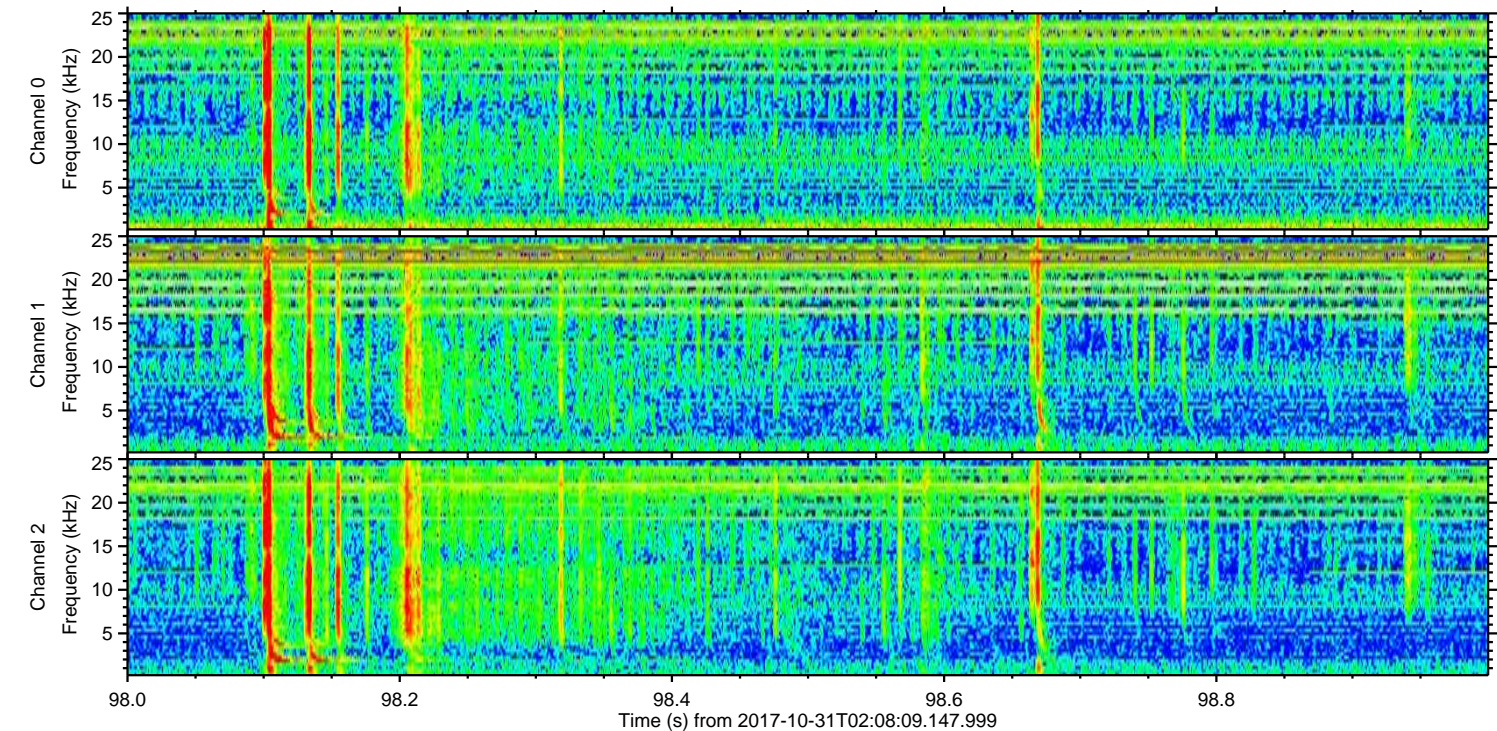
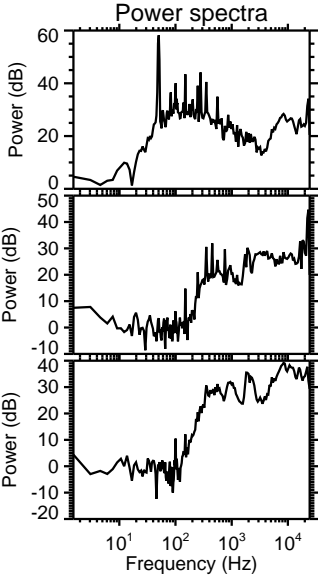
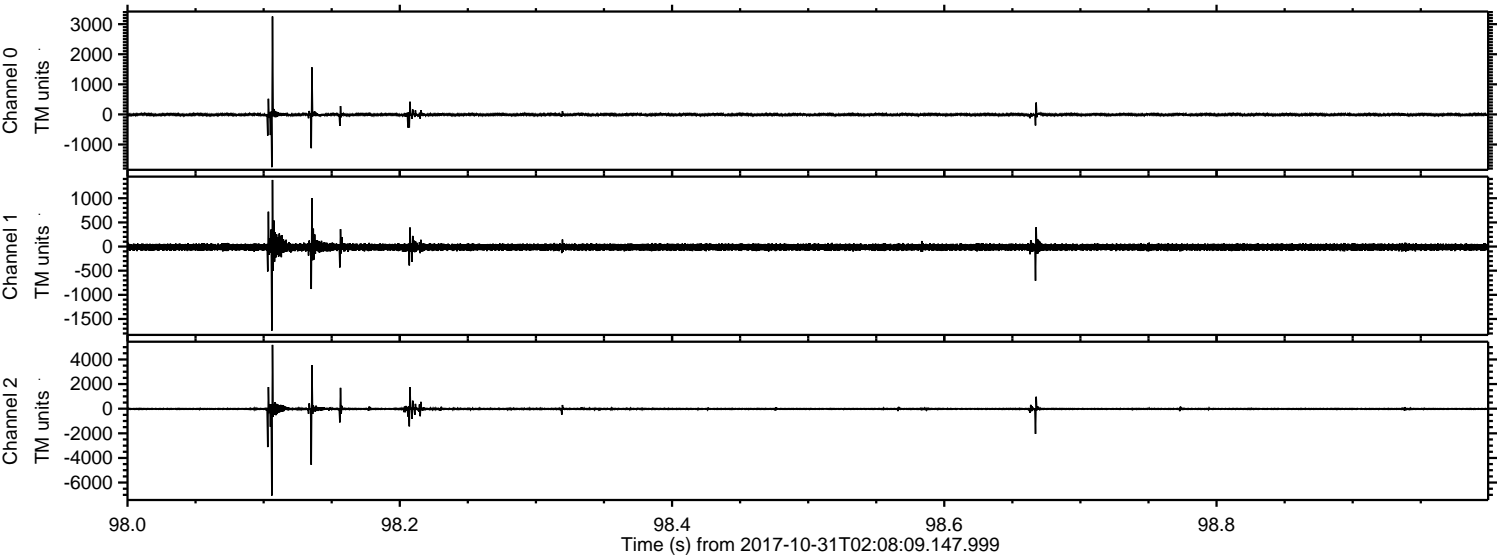
Channel 0
mn: -2714
mx: 1927
 μ : -7.3
 σ : 28.6

Channel 1
mn: -2013
mx: 1675
 μ : -13.4
 σ : 43.5

Channel 2
mn: -5388
mx: 8306
 μ : -17.1
 σ : 80.2

ELMAVAN 3D WAVEFORMS (Measured data sampled at 50 kHz) 51000 packets of 144 samples from 2017-10-31T02:08:09.147.999. Part 99/147

Processed Tue Oct 31 03:16:25 2017 by ELM ver.2012-10-06 from 001__elm20171031_020808__dat00.bin

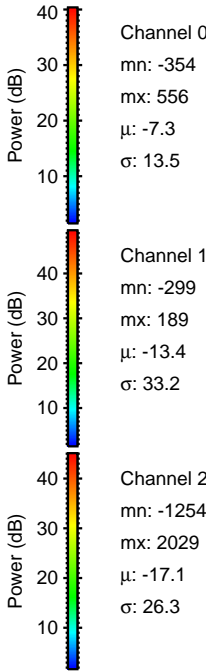
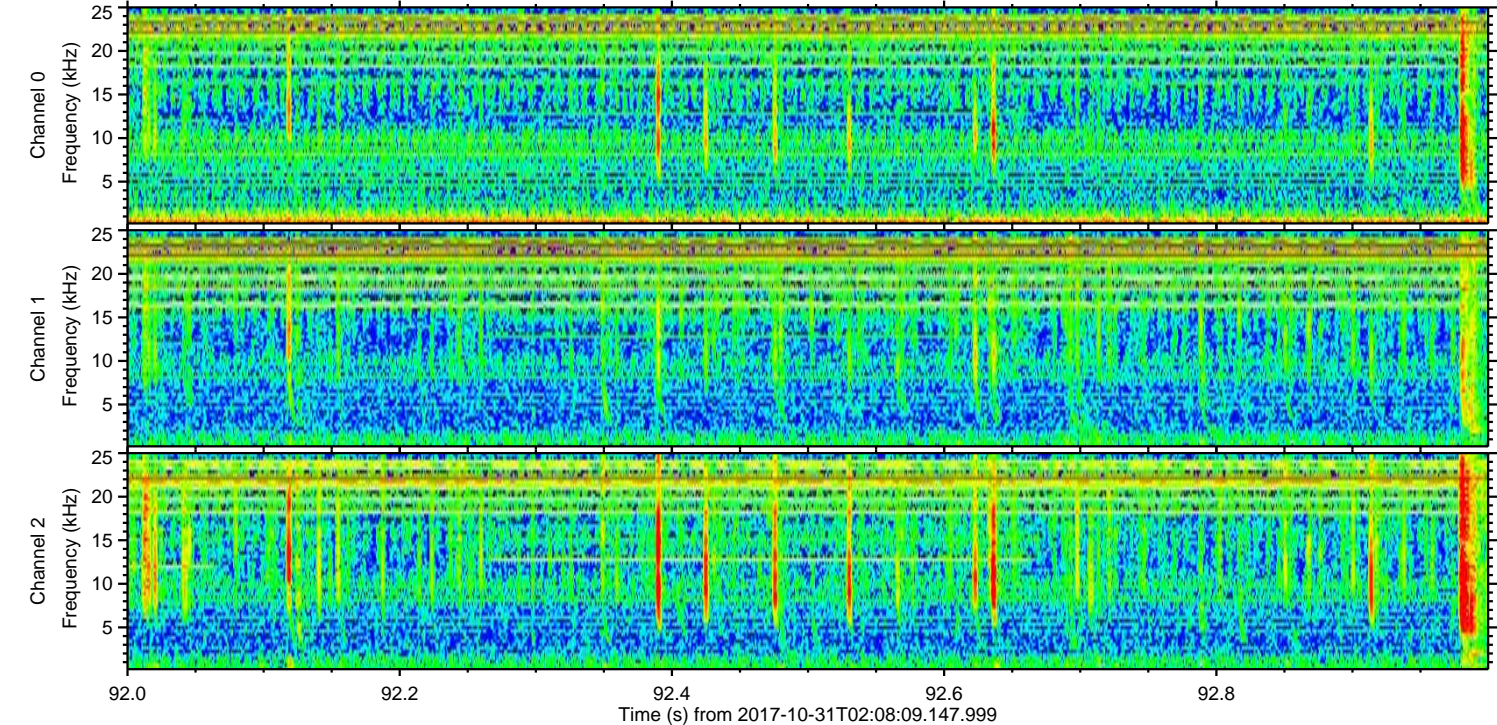
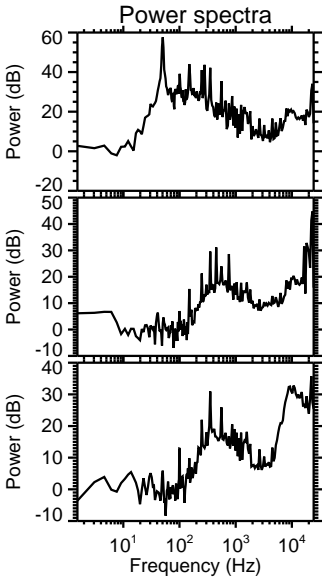
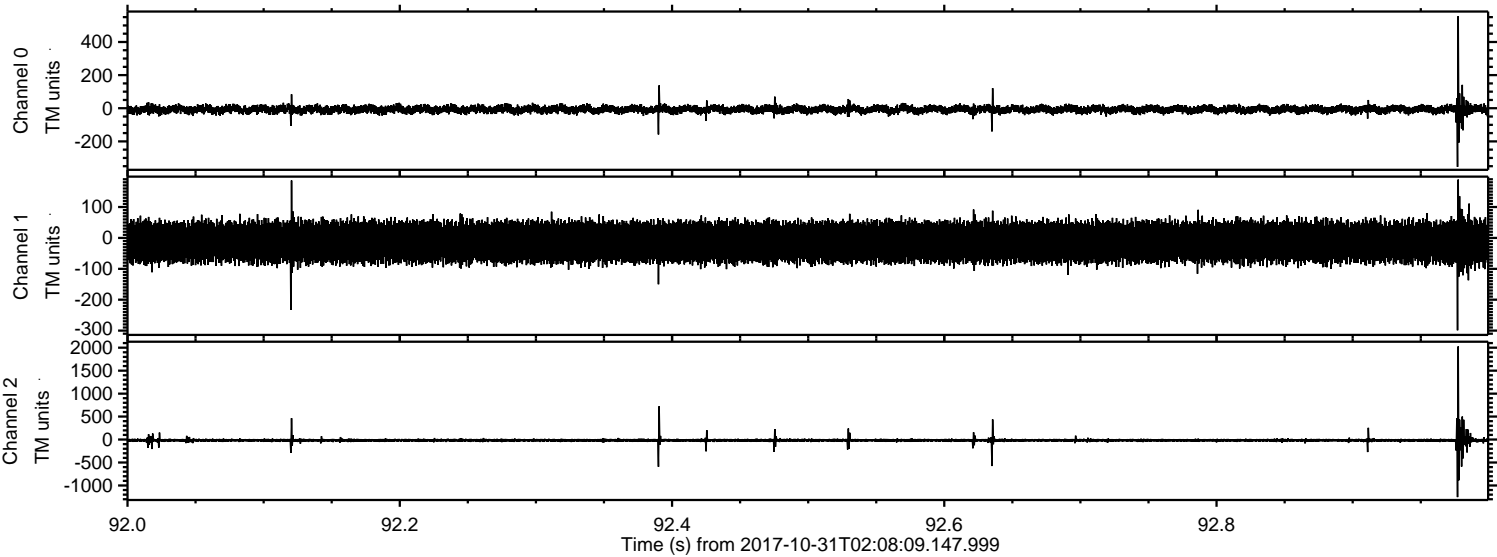


Channel 0
mn: -1754
mx: 3257
 μ : -7.2
 σ : 30.2

Channel 1
mn: -1743
mx: 1379
 μ : -13.3
 σ : 43.2

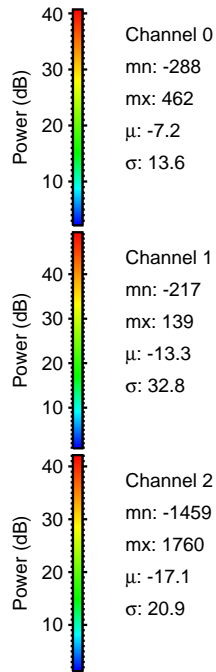
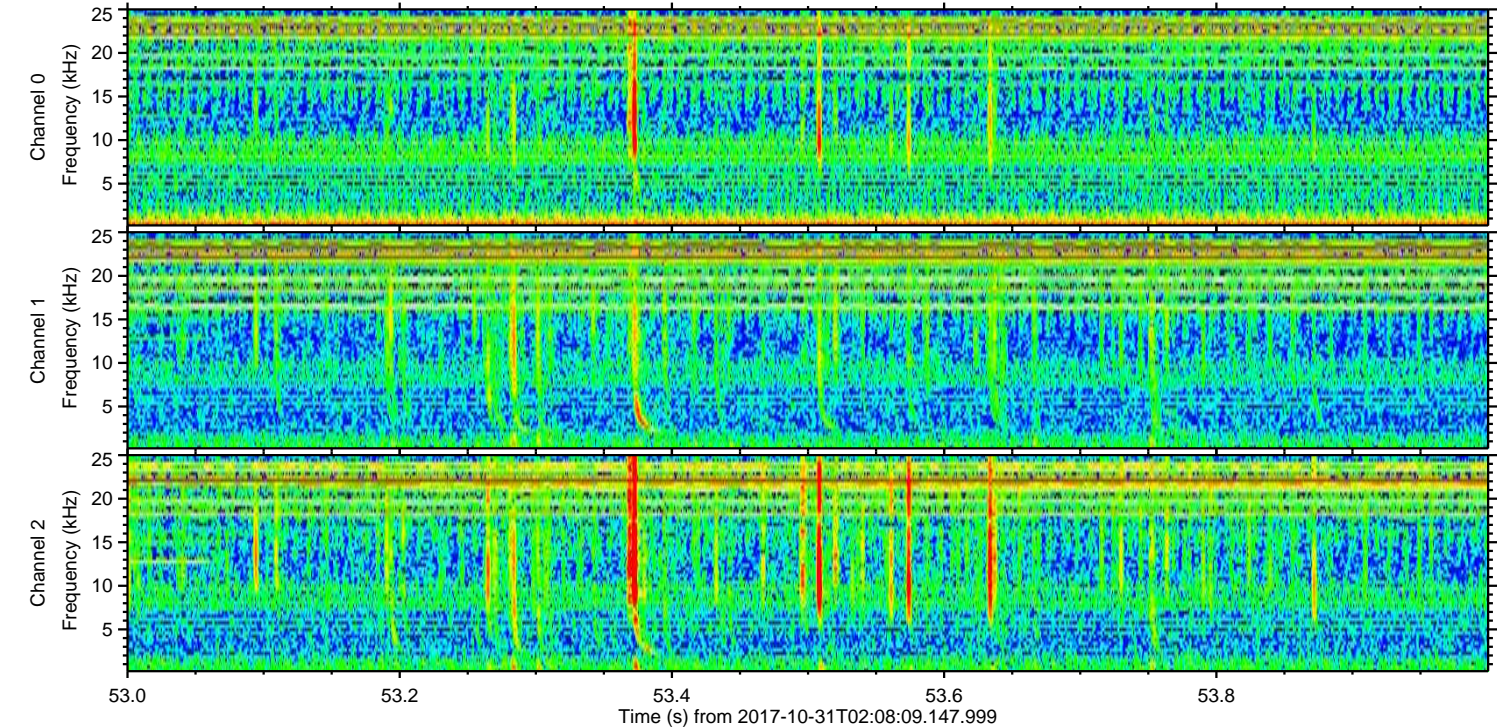
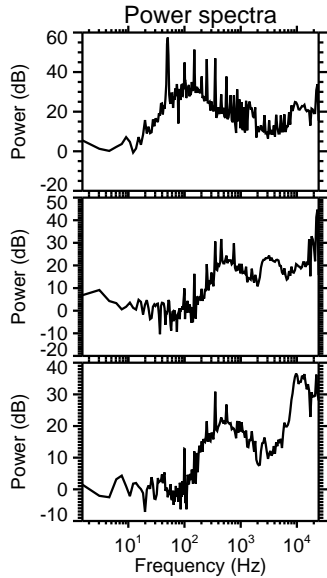
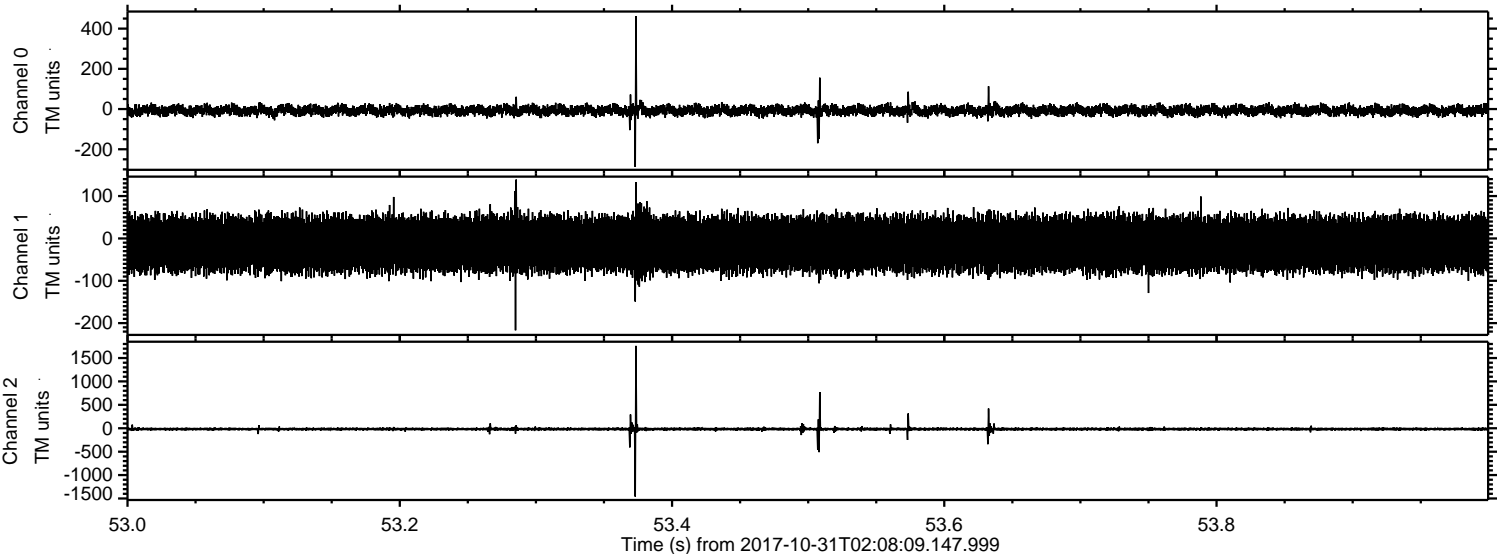
Channel 2
mn: -7063
mx: 5181
 μ : -17.1
 σ : 88.0

Processed Tue Oct 31 03:16:25 2017 by ELM ver.2012-10-06 from 001__elm20171031_020808__dat00.bin



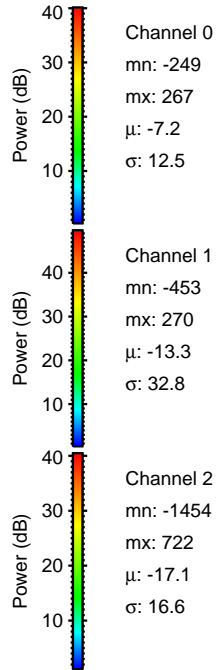
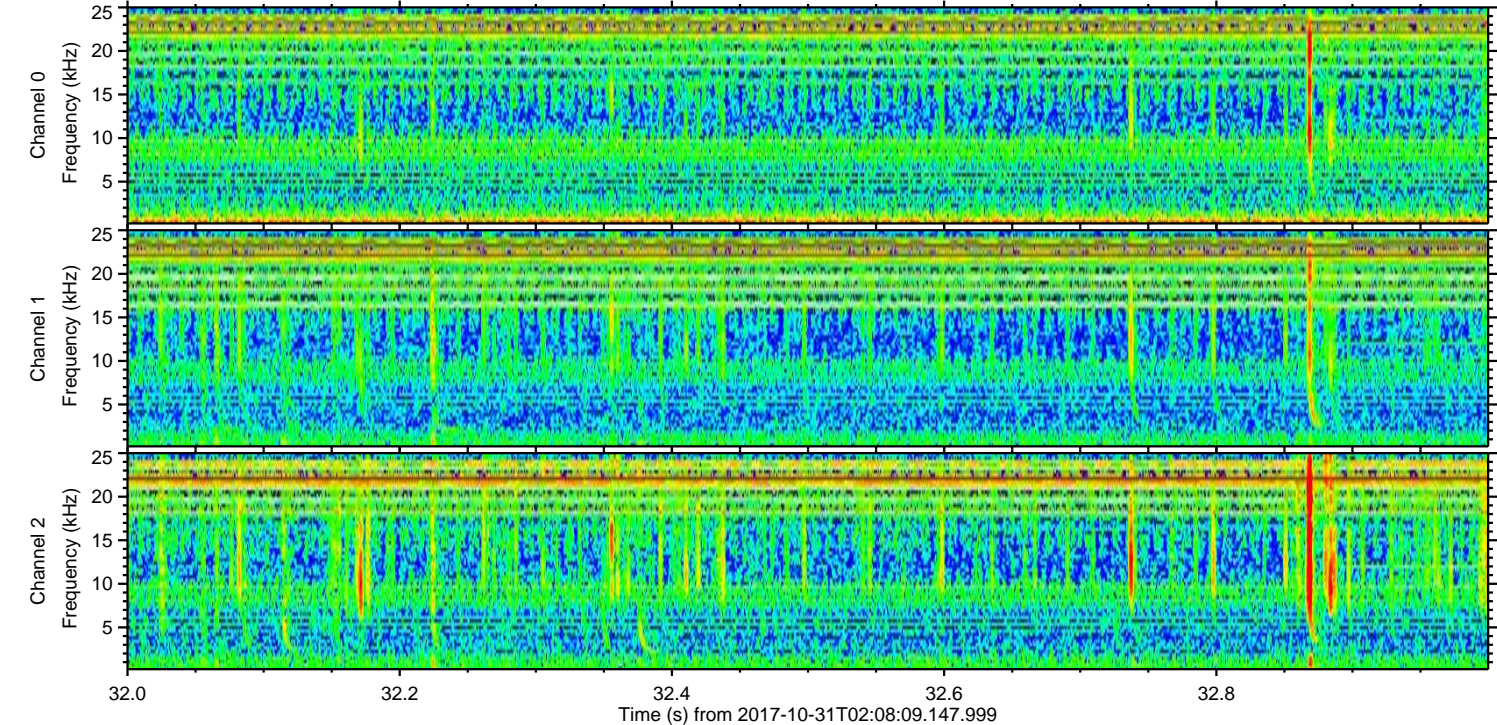
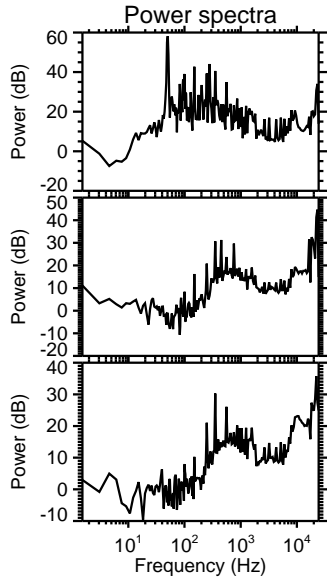
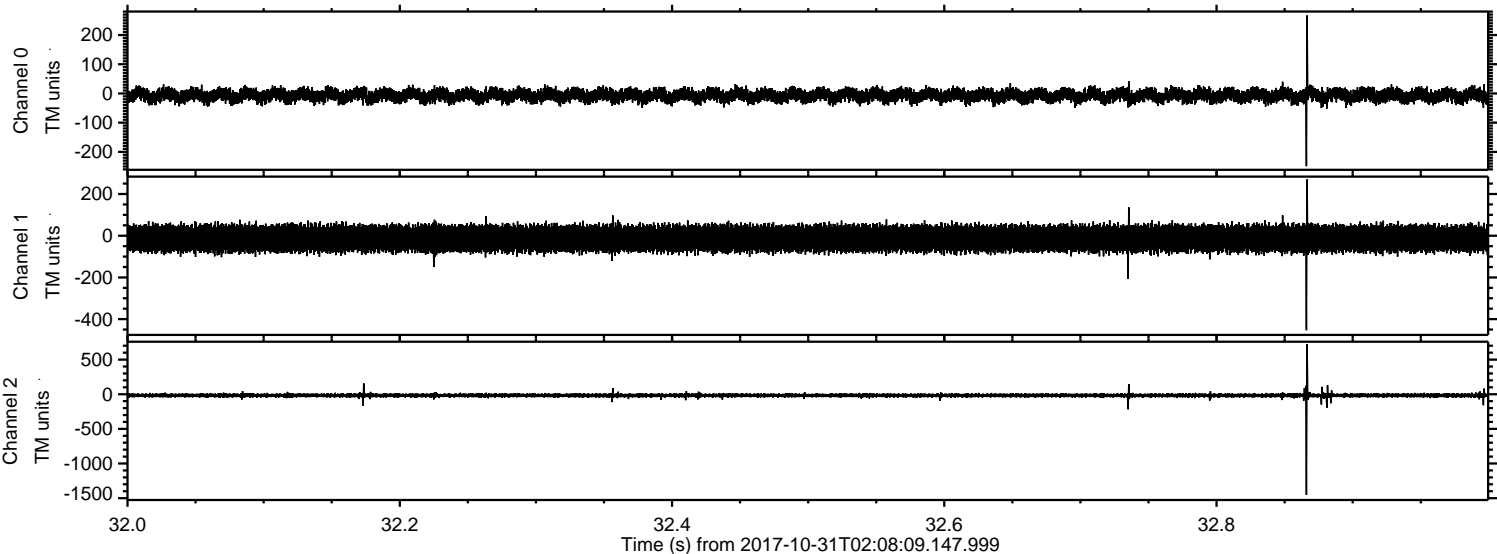
ELMAVAN 3D WAVEFORMS (Measured data sampled at 50 kHz) 51000 packets of 144 samples from 2017-10-31T02:08:09.147.999. Part 54/147

Processed Tue Oct 31 03:16:26 2017 by ELM ver.2012-10-06 from 001__elm20171031_020808__dat00.bin



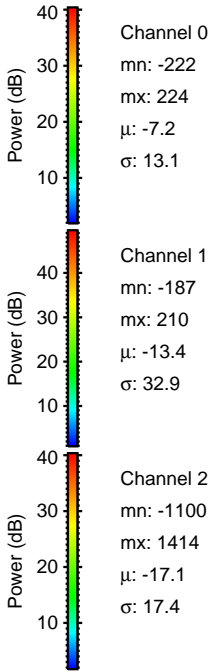
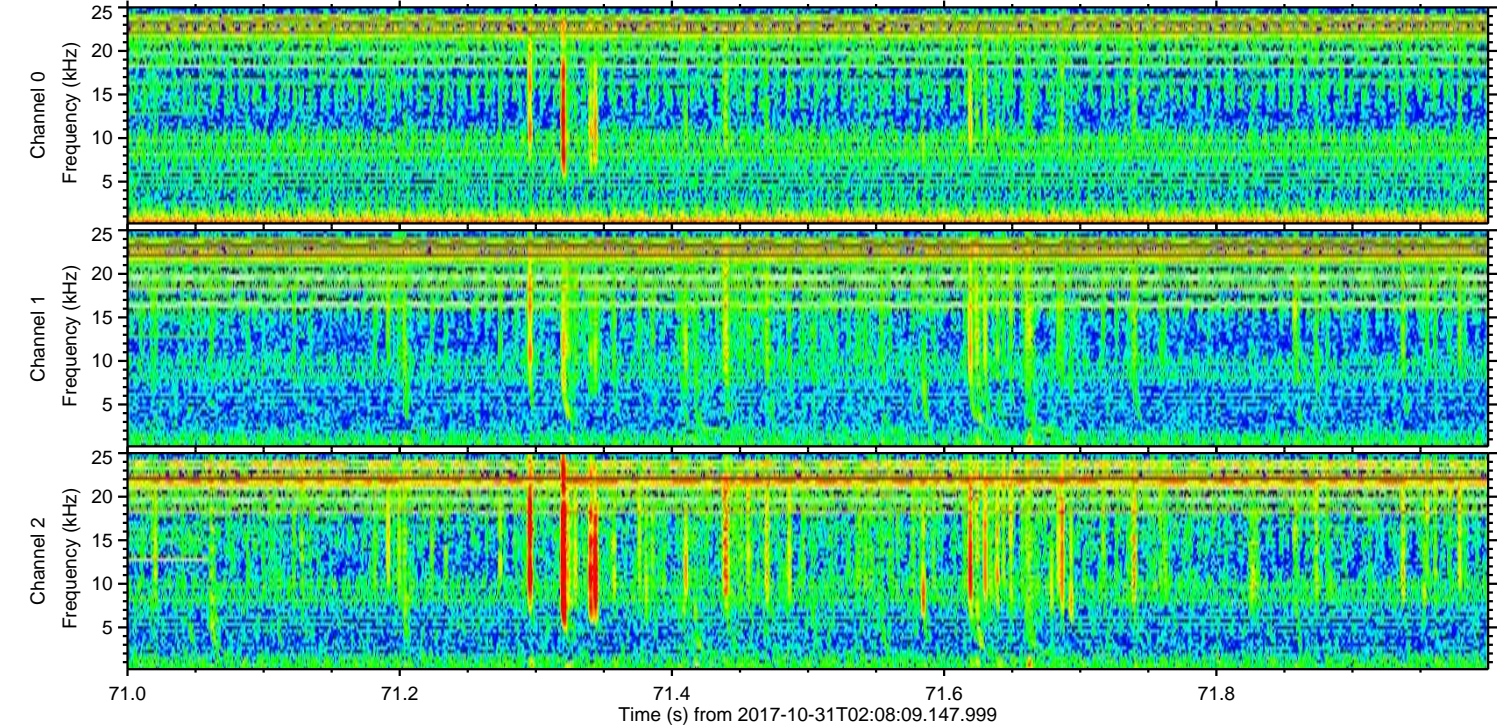
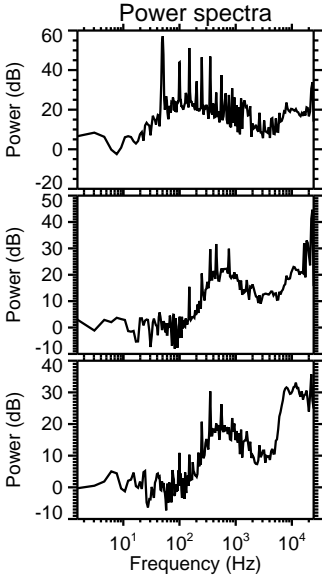
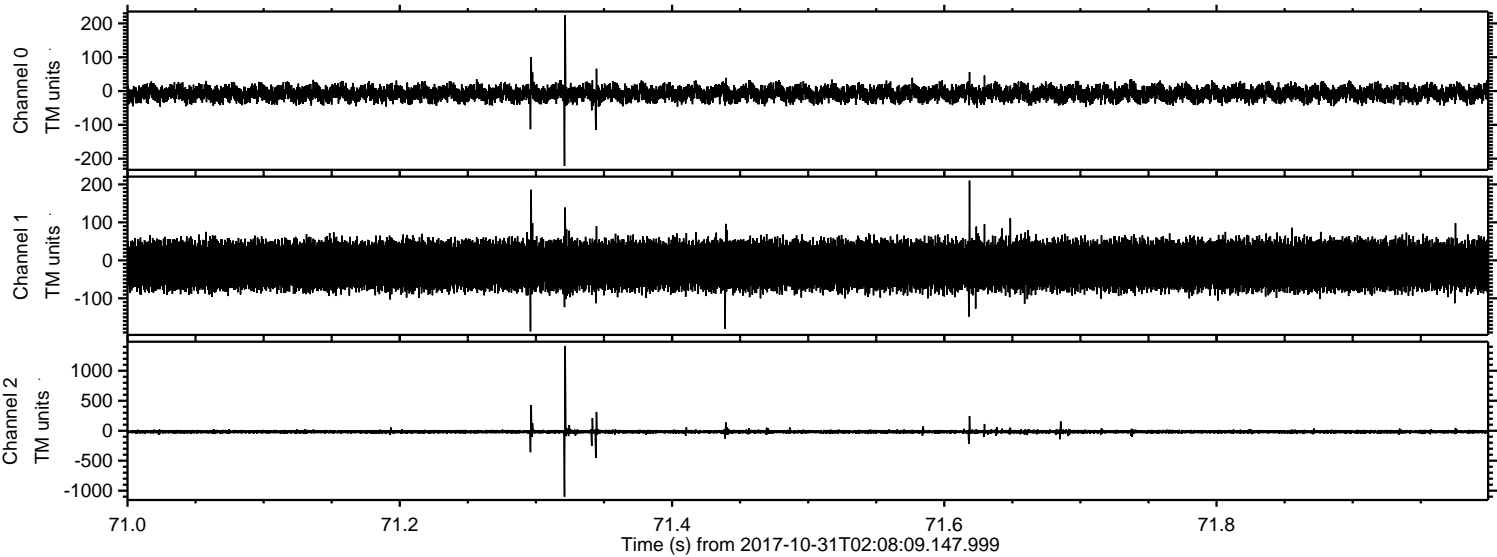
ELMAVAN 3D WAVEFORMS (Measured data sampled at 50 kHz) 51000 packets of 144 samples from 2017-10-31T02:08:09.147.999. Part 33/147

Processed Tue Oct 31 03:16:27 2017 by ELM ver.2012-10-06 from 001__elm20171031_020808__dat00.bin



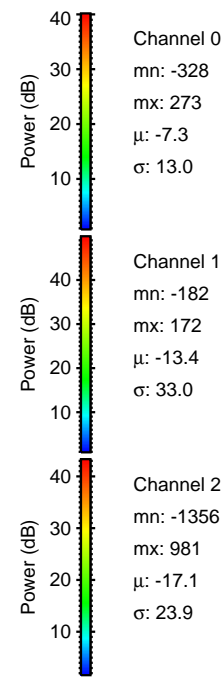
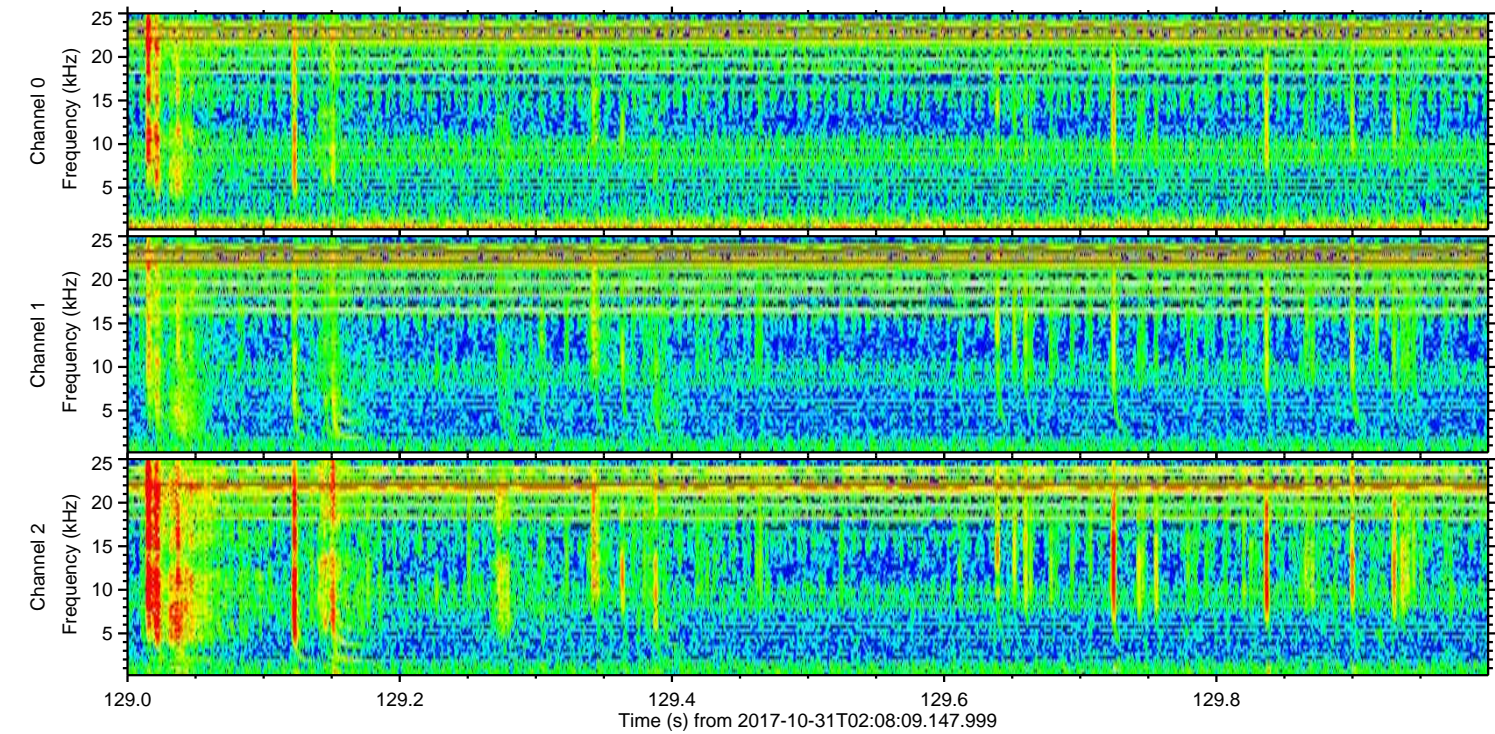
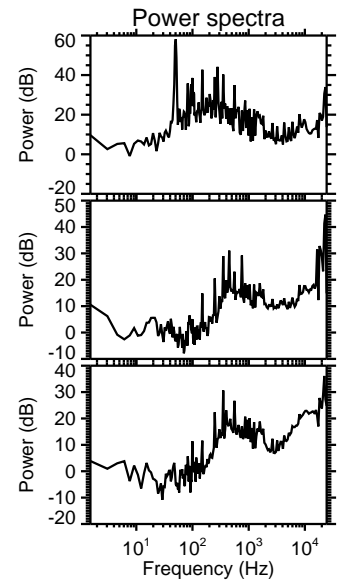
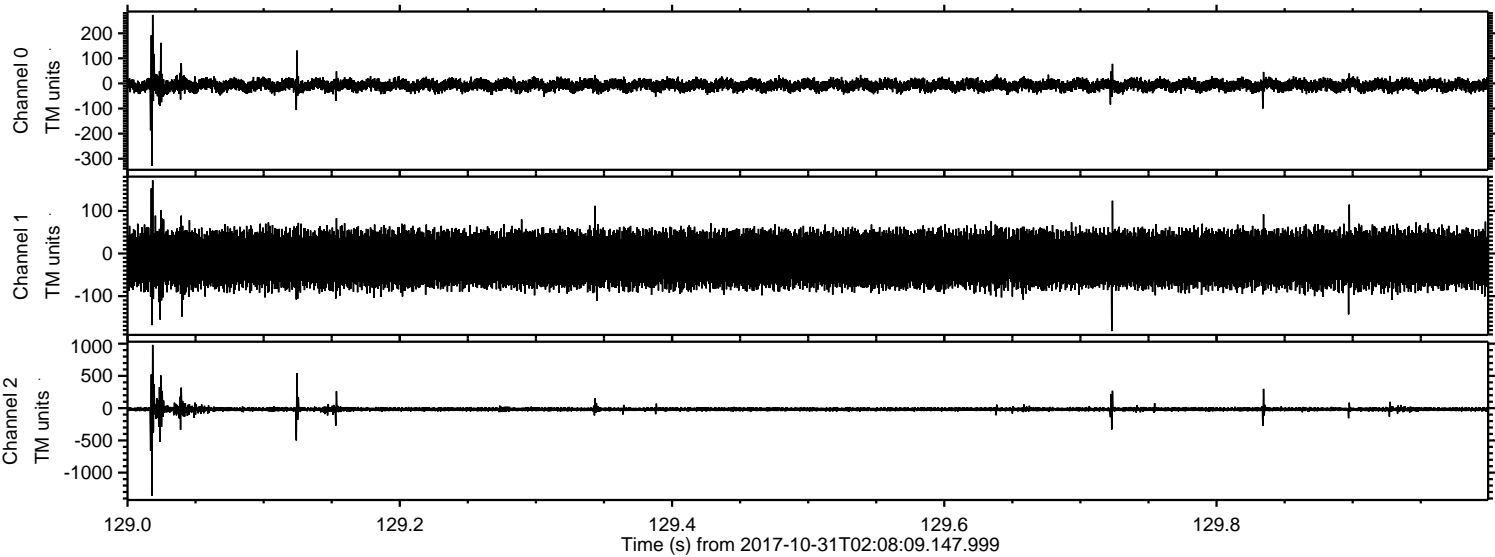
ELMAVAN 3D WAVEFORMS (Measured data sampled at 50 kHz) 51000 packets of 144 samples from 2017-10-31T02:08:09.147.999. Part 72/147

Processed Tue Oct 31 03:16:28 2017 by ELM ver.2012-10-06 from 001__elm20171031_020808__dat00.bin



ELMAVAN 3D WAVEFORMS (Measured data sampled at 50 kHz) 51000 packets of 144 samples from 2017-10-31T02:08:09.147.999. Part 130/147

Processed Tue Oct 31 03:16:29 2017 by ELM ver.2012-10-06 from 001__elm20171031_020808__dat00.bin



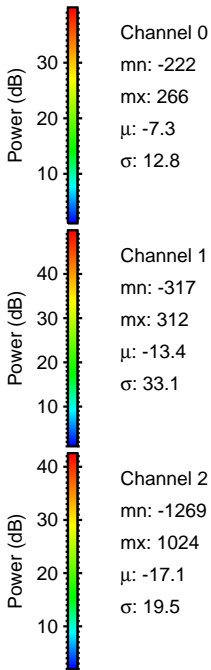
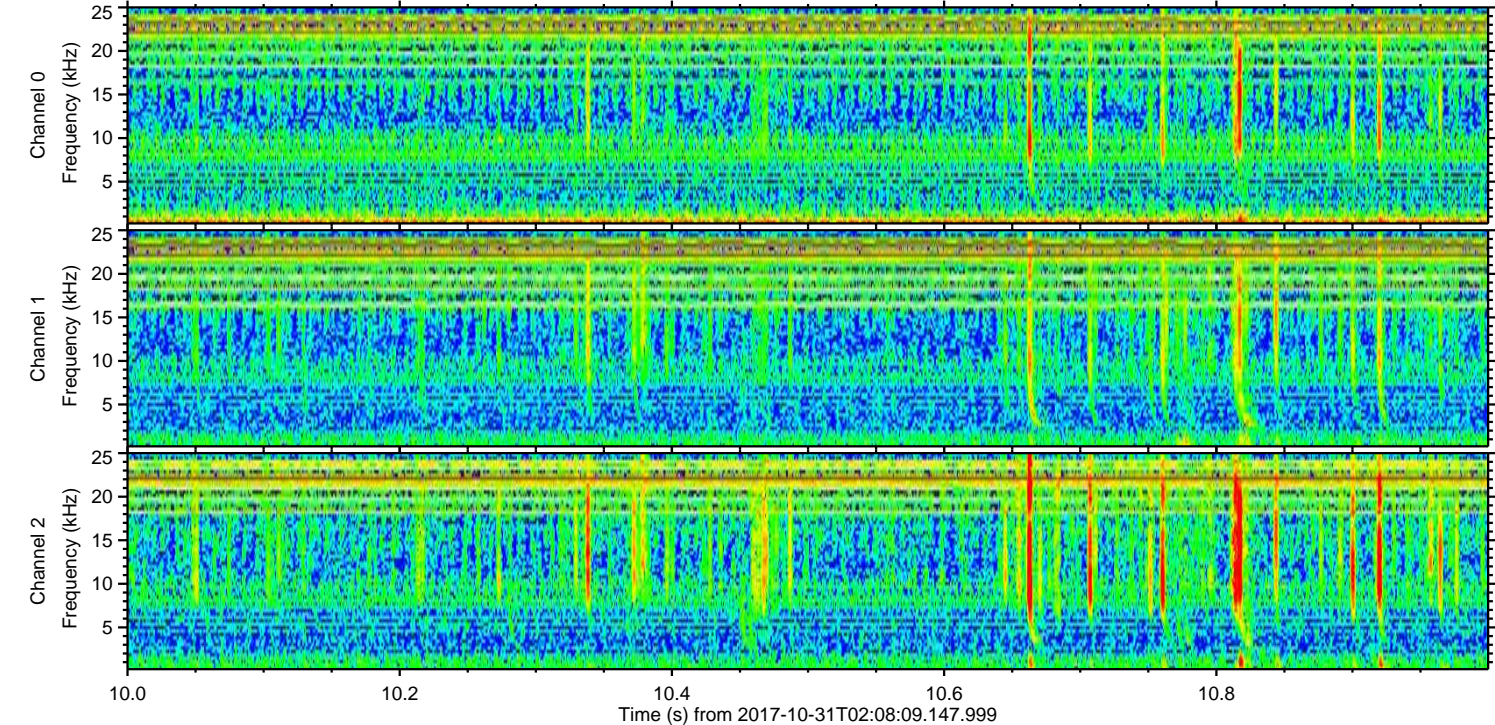
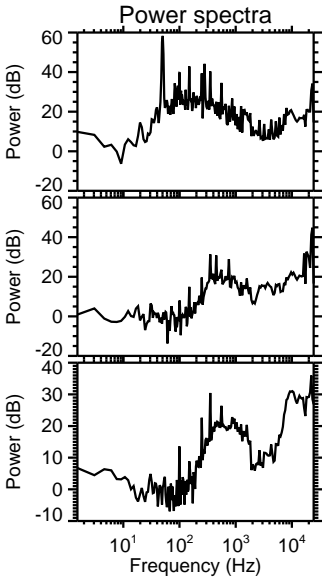
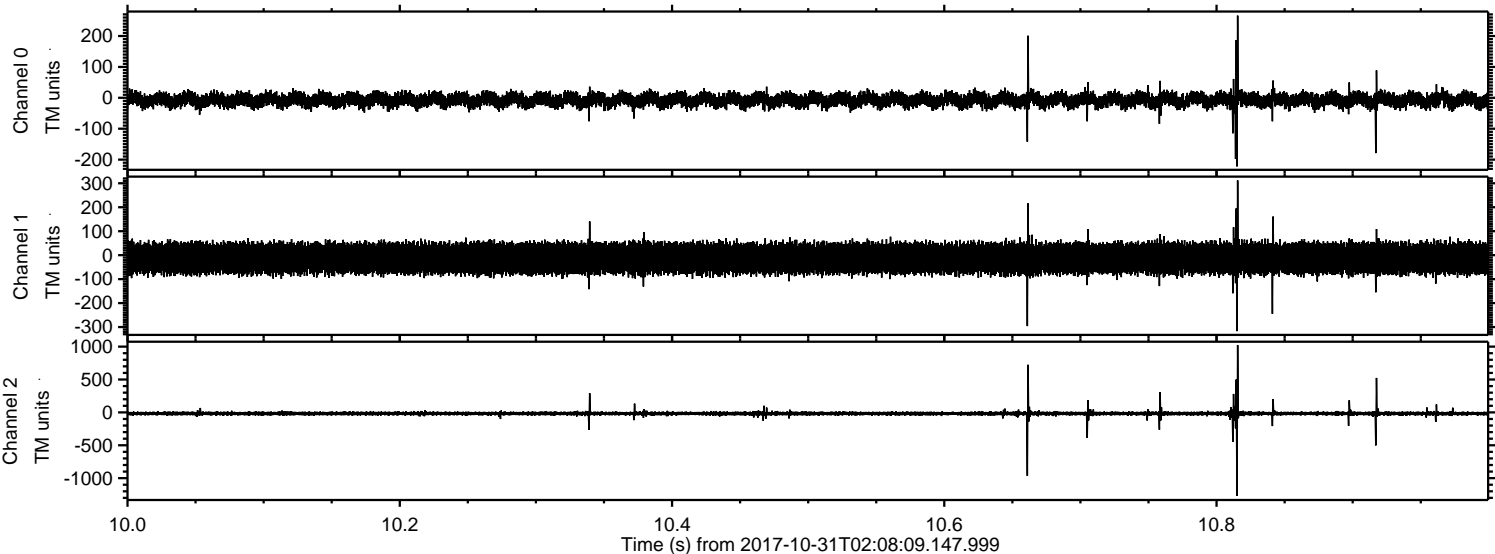
Channel 0
mn: -328
mx: 273
 μ : -7.3
 σ : 13.0

Channel 1
mn: -182
mx: 172
 μ : -13.4
 σ : 33.0

Channel 2
mn: -1356
mx: 981
 μ : -17.1
 σ : 23.9

ELMAVAN 3D WAVEFORMS (Measured data sampled at 50 kHz) 51000 packets of 144 samples from 2017-10-31T02:08:09.147.999. Part 11/147

Processed Tue Oct 31 03:16:30 2017 by ELM ver.2012-10-06 from 001__elm20171031_020808__dat00.bin



ELMAVAN 3D WAVEFORMS (Measured data sampled at 50 kHz) 51000 packets of 144 samples from 2017-10-31T02:08:09.147.999. Part 78/147

Processed Tue Oct 31 03:16:31 2017 by ELM ver.2012-10-06 from 001__elm20171031_020808__dat00.bin

