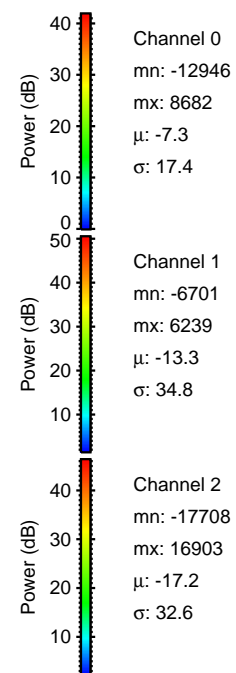
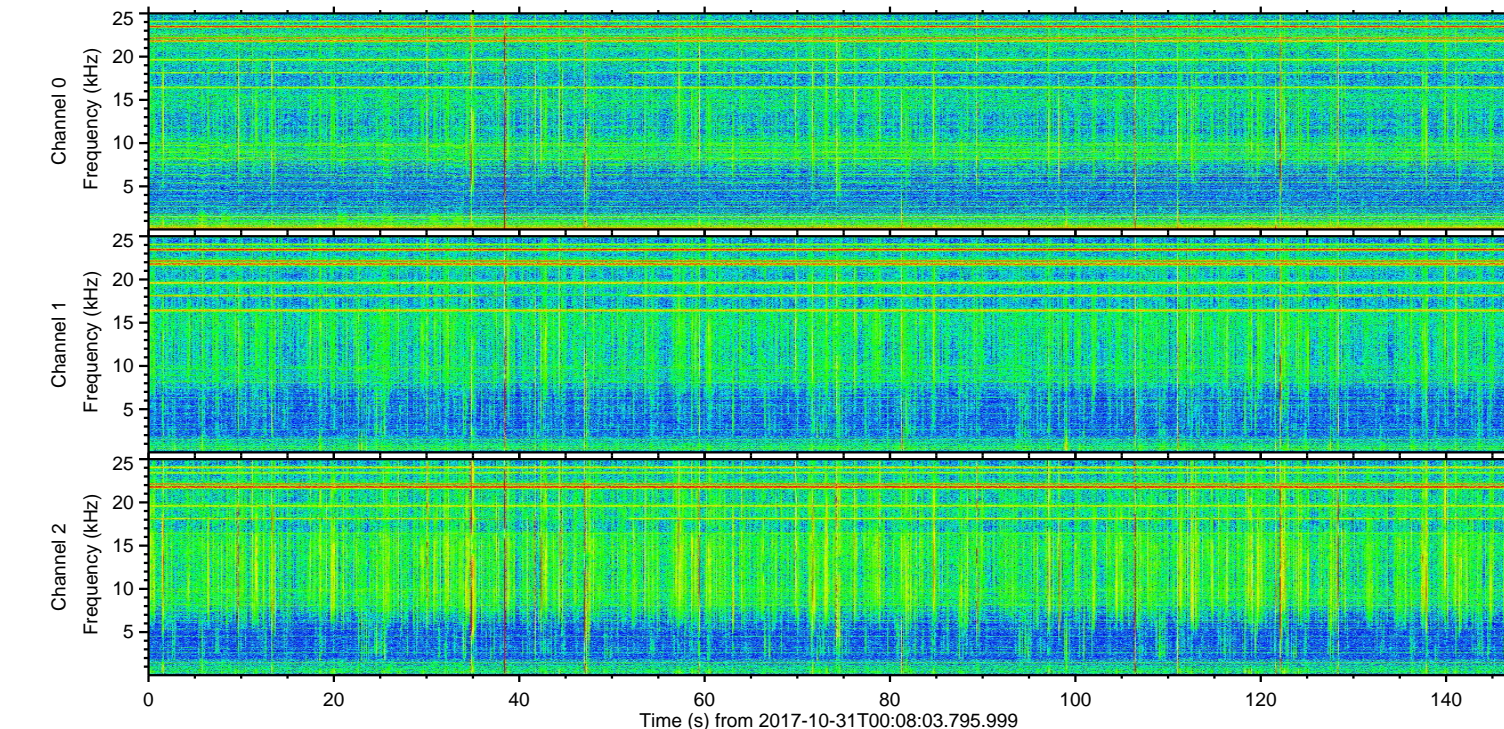
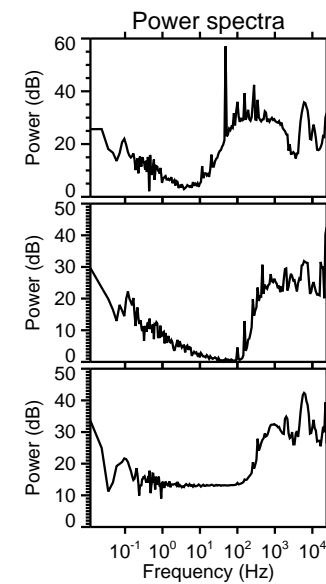
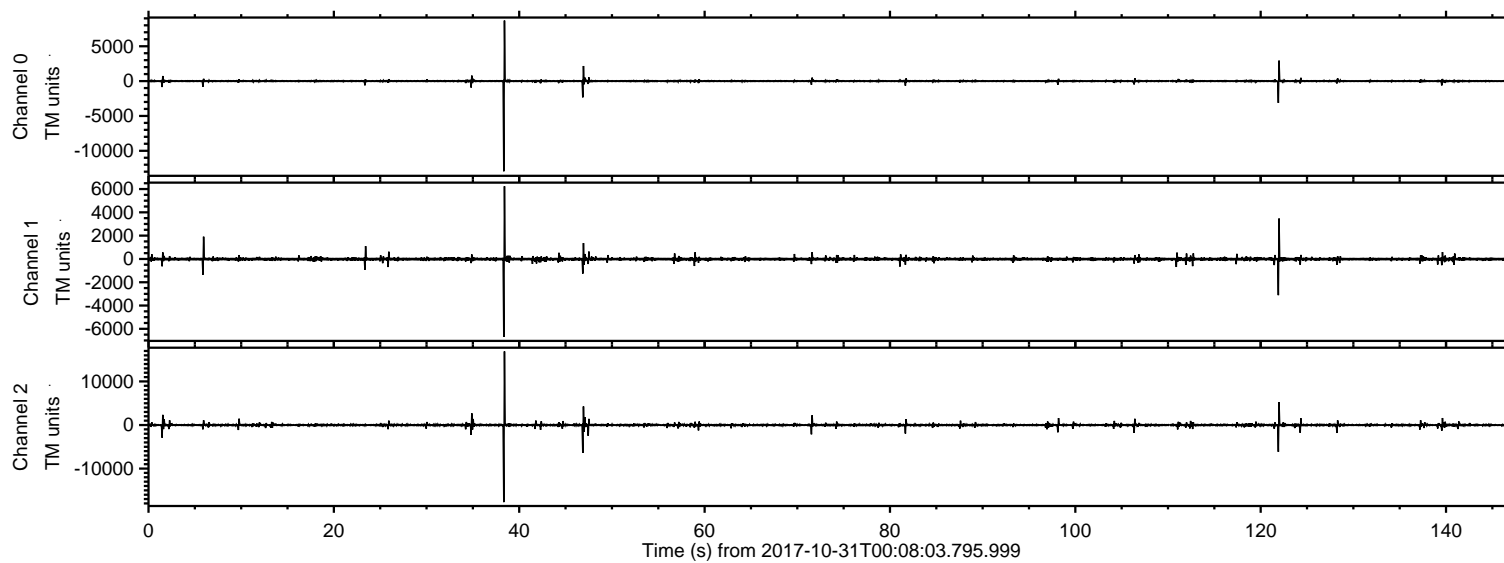


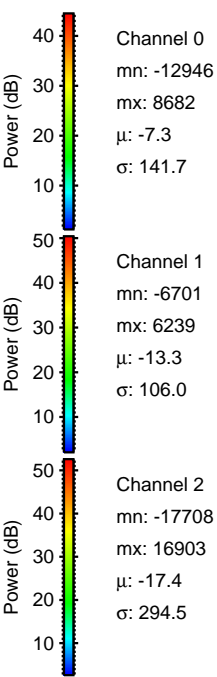
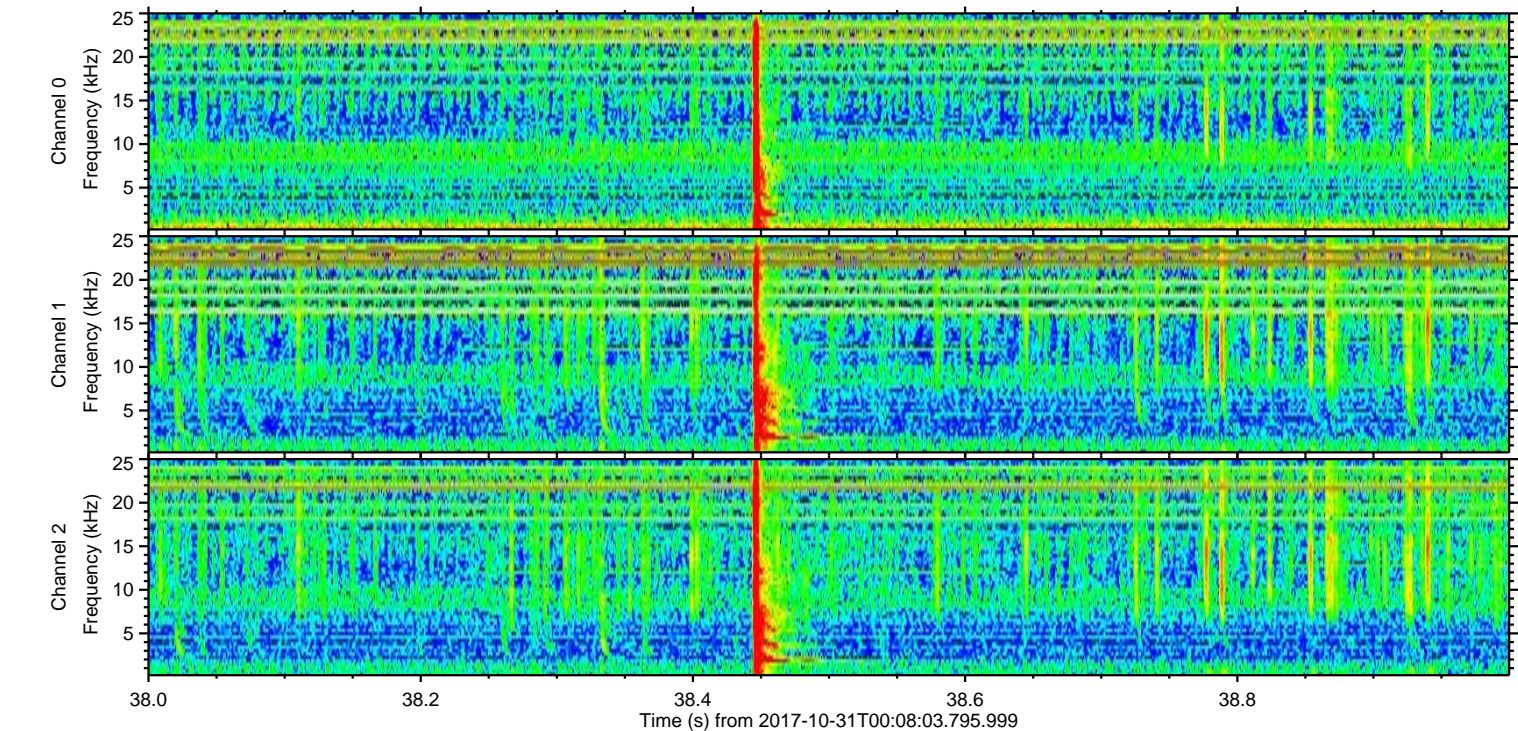
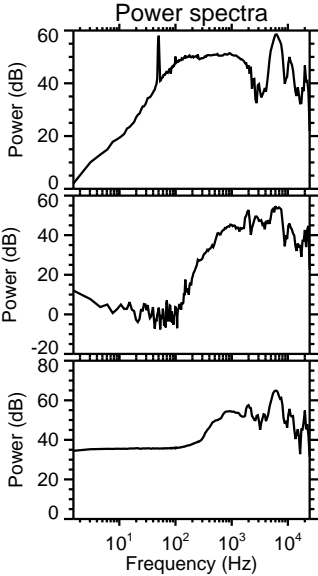
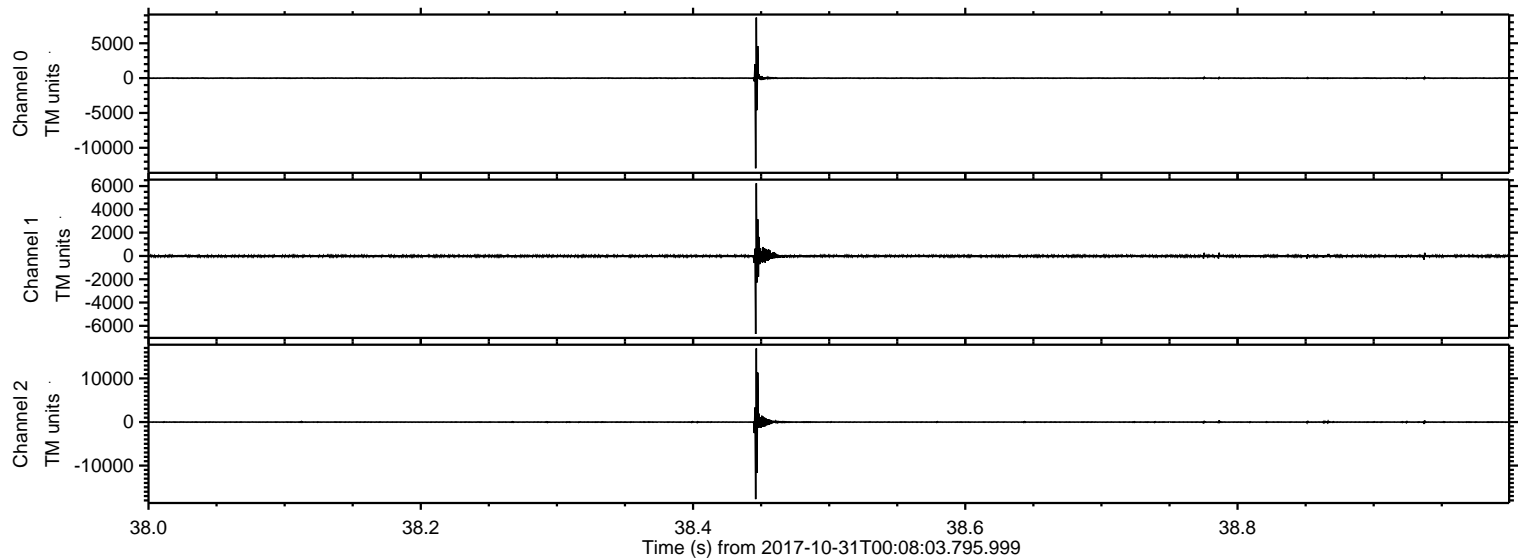
# ELMAVAN 3D WAVEFORMS (Measured data sampled at 50 kHz) 51000 packets of 144 samples from 2017-10-31T00:08:03.795.999.

Processed Tue Oct 31 01:16:07 2017 by ELM ver.2012-10-06 from 001\_\_elm20171031\_000802\_\_dat00.bin





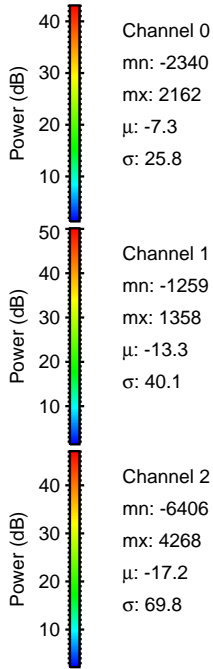
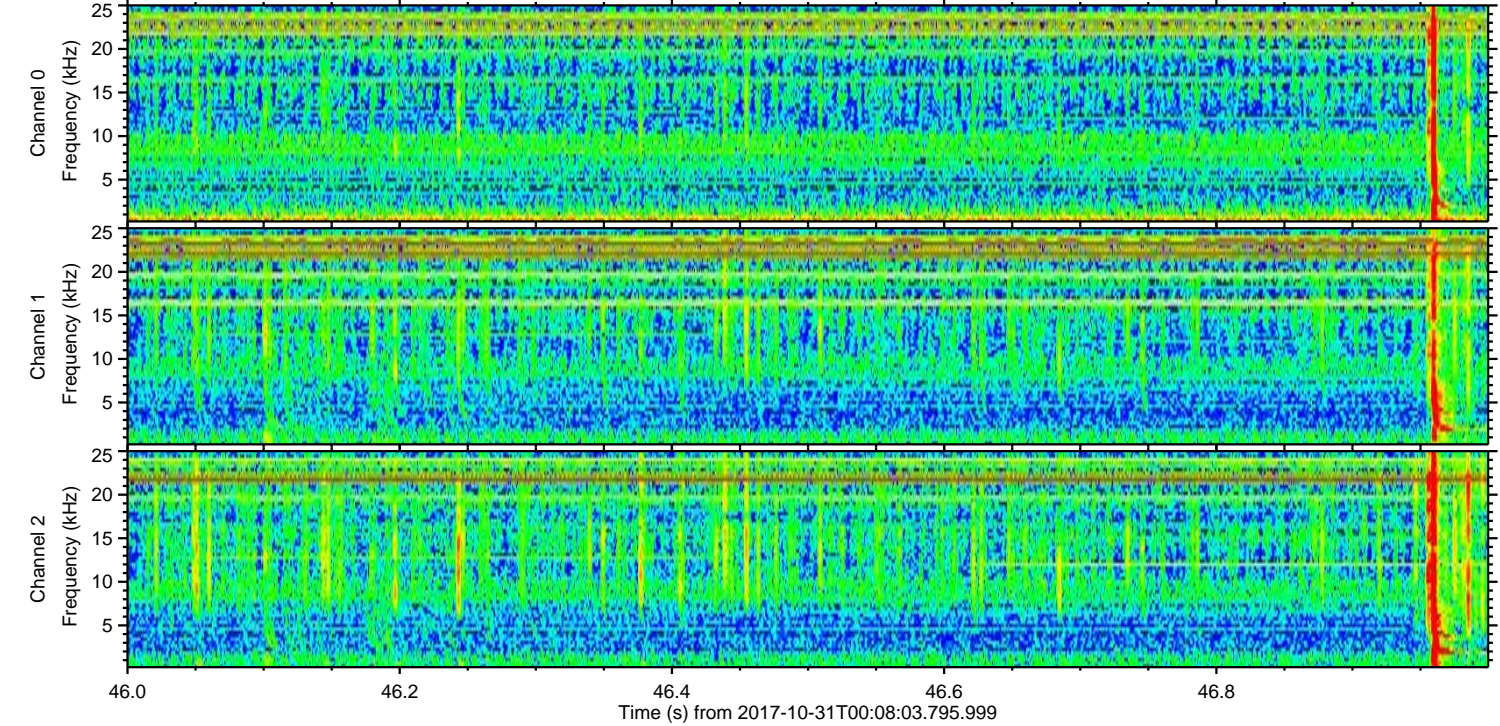
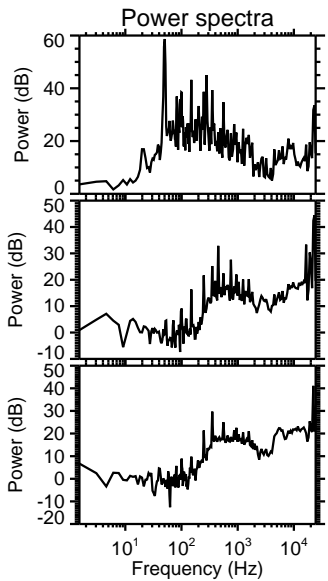
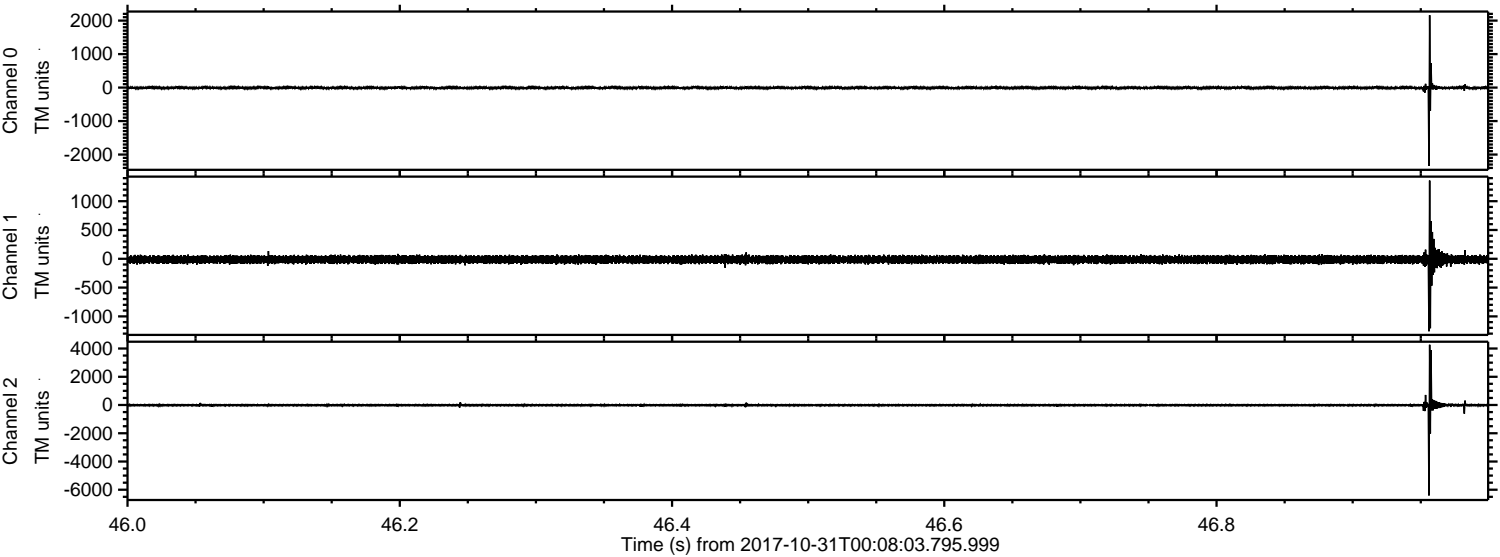
Processed Tue Oct 31 01:16:16 2017 by ELM ver.2012-10-06 from 001\_\_elm20171031\_000802\_\_dat00.bin





ELMAVAN 3D WAVEFORMS (Measured data sampled at 50 kHz) 51000 packets of 144 samples from 2017-10-31T00:08:03.795.999. Part 47/147

Processed Tue Oct 31 01:16:17 2017 by ELM ver.2012-10-06 from 001\_\_elm20171031\_000802\_\_dat00.bin



Channel 0  
mn: -2340  
mx: 2162  
 $\mu$ : -7.3  
 $\sigma$ : 25.8

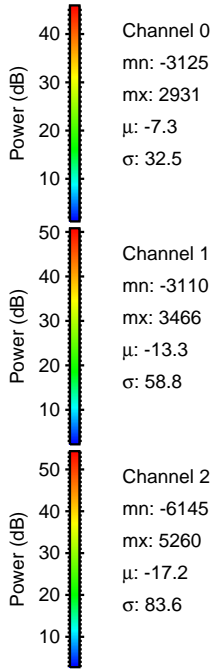
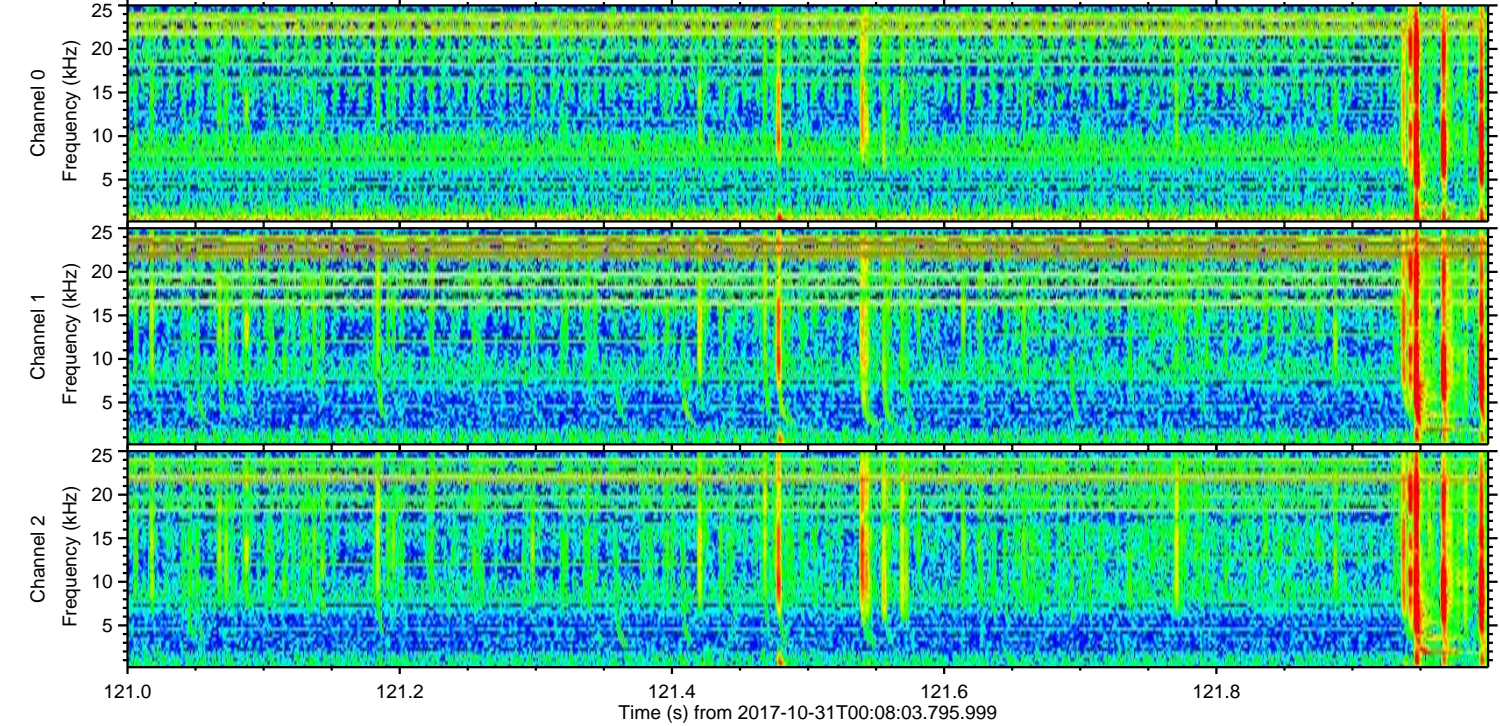
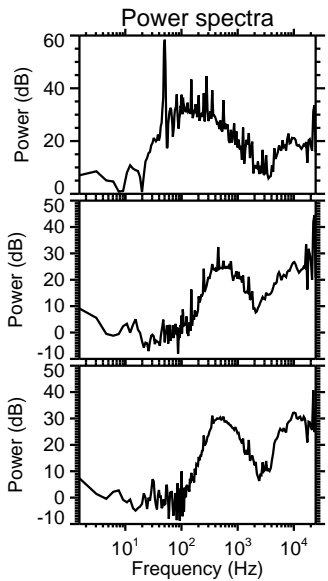
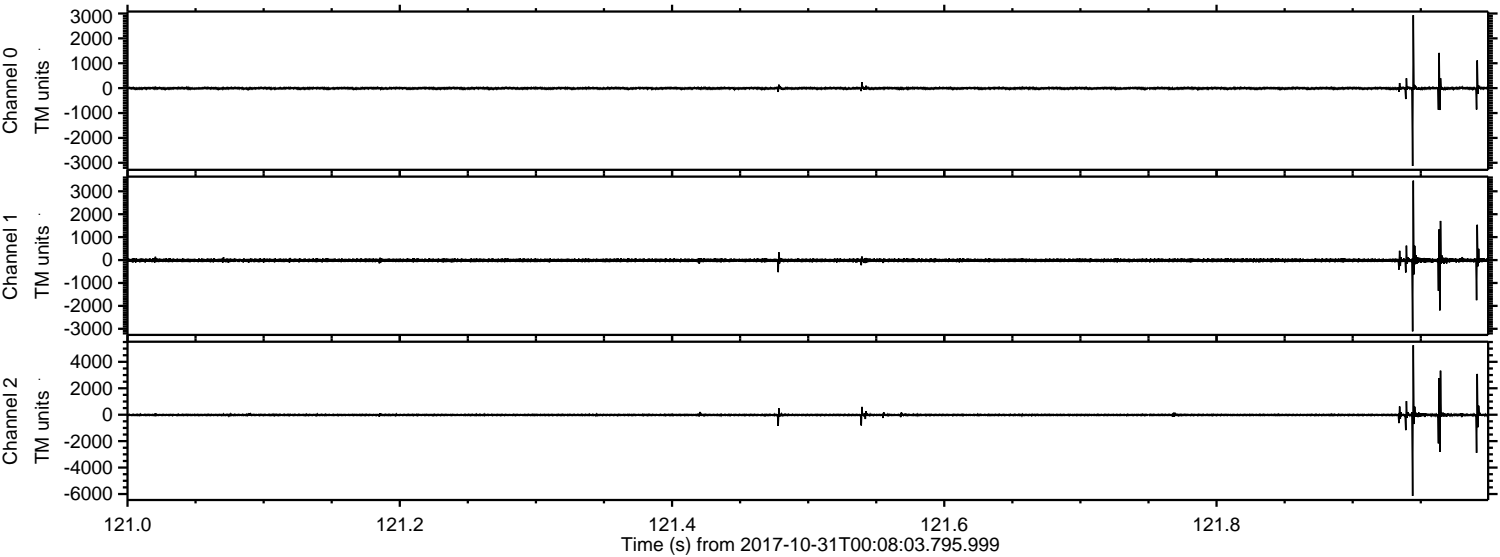
Channel 1  
mn: -1259  
mx: 1358  
 $\mu$ : -13.3  
 $\sigma$ : 40.1

Channel 2  
mn: -6406  
mx: 4268  
 $\mu$ : -17.2  
 $\sigma$ : 69.8



ELMAVAN 3D WAVEFORMS (Measured data sampled at 50 kHz) 51000 packets of 144 samples from 2017-10-31T00:08:03.795.999. Part 122/147

Processed Tue Oct 31 01:16:18 2017 by ELM ver.2012-10-06 from 001\_\_elm20171031\_000802\_\_dat00.bin



Channel 0  
mn: -3125  
mx: 2931  
 $\mu$ : -7.3  
 $\sigma$ : 32.5

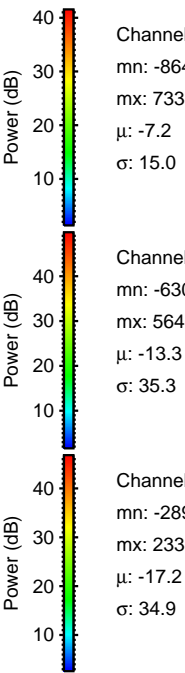
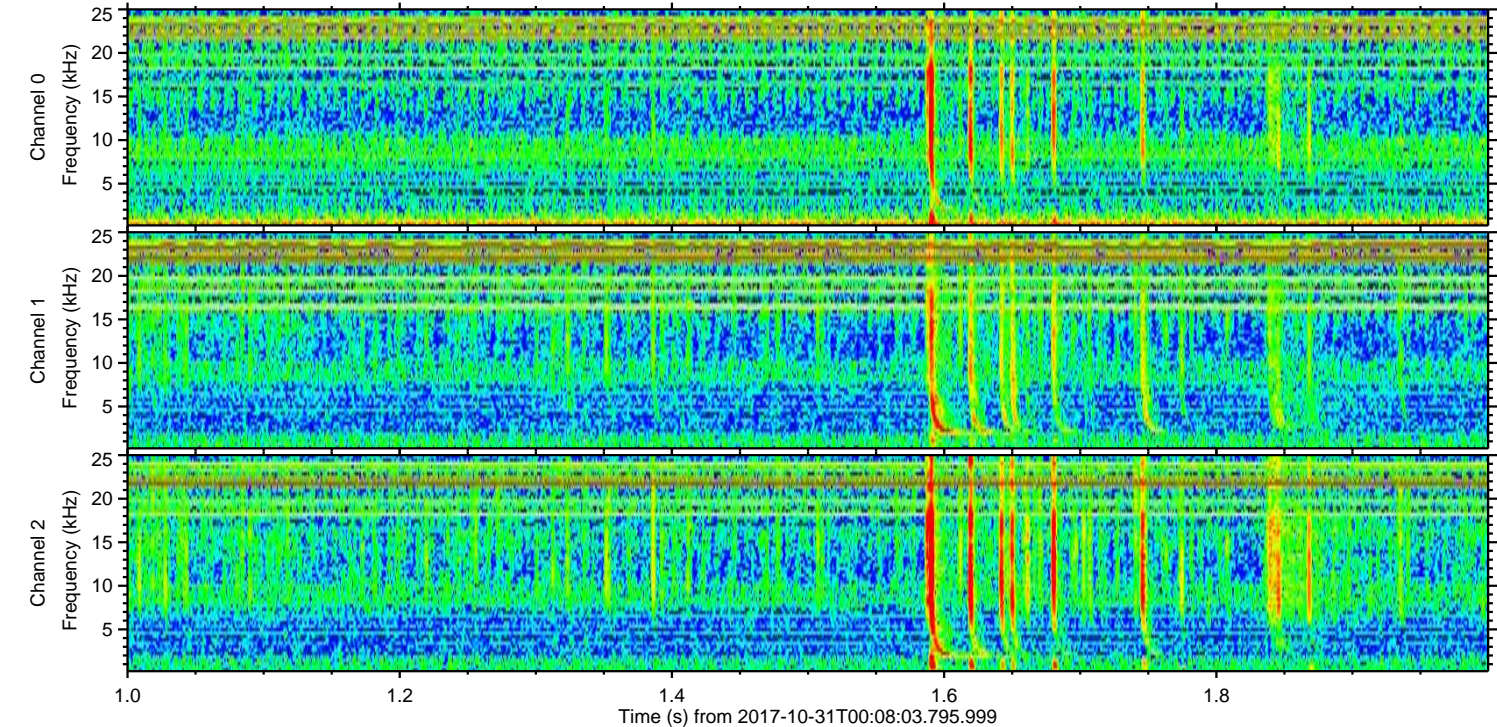
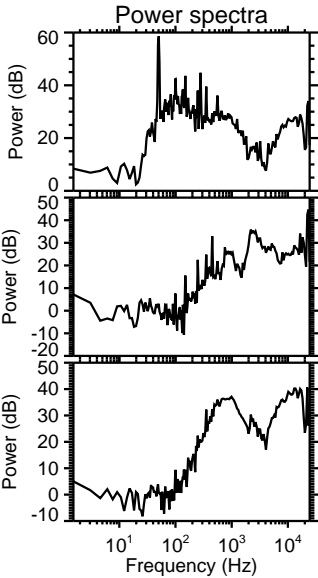
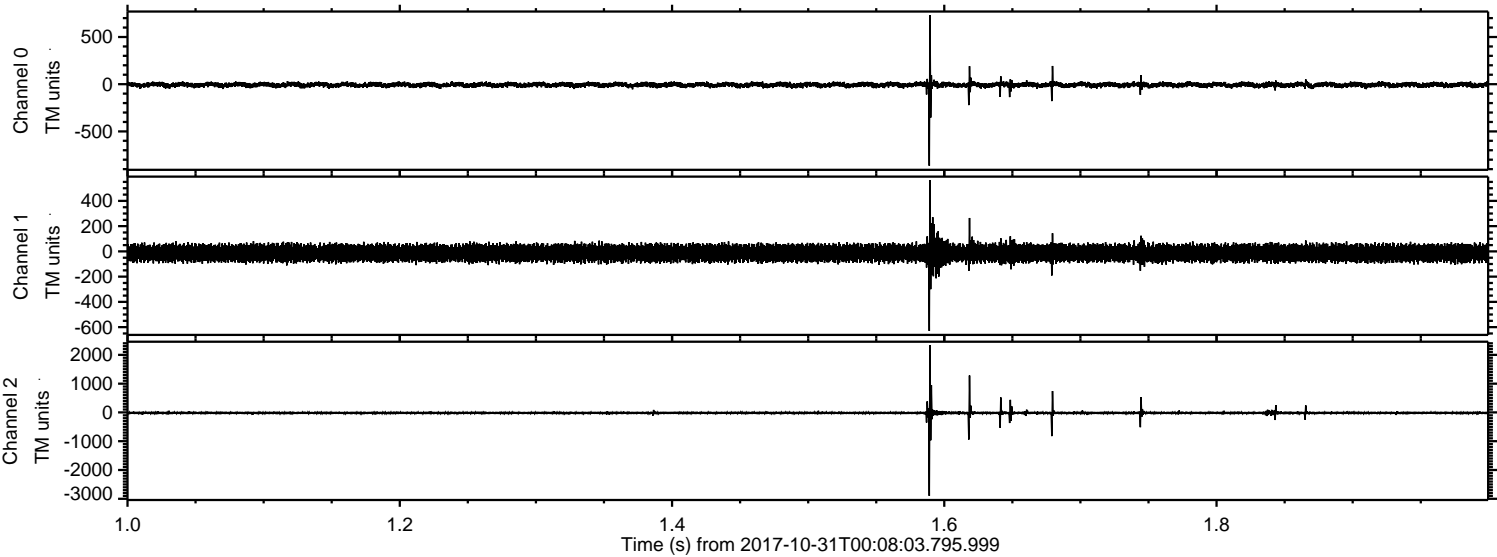
Channel 1  
mn: -3110  
mx: 3466  
 $\mu$ : -13.3  
 $\sigma$ : 58.8

Channel 2  
mn: -6145  
mx: 5260  
 $\mu$ : -17.2  
 $\sigma$ : 83.6



ELMAVAN 3D WAVEFORMS (Measured data sampled at 50 kHz) 51000 packets of 144 samples from 2017-10-31T00:08:03.795.999. Part 2/147

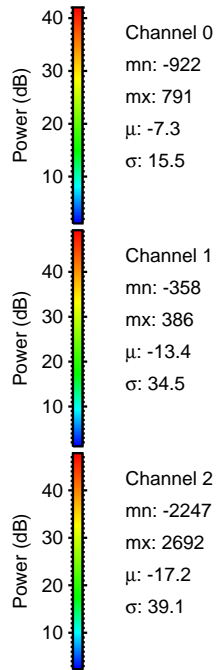
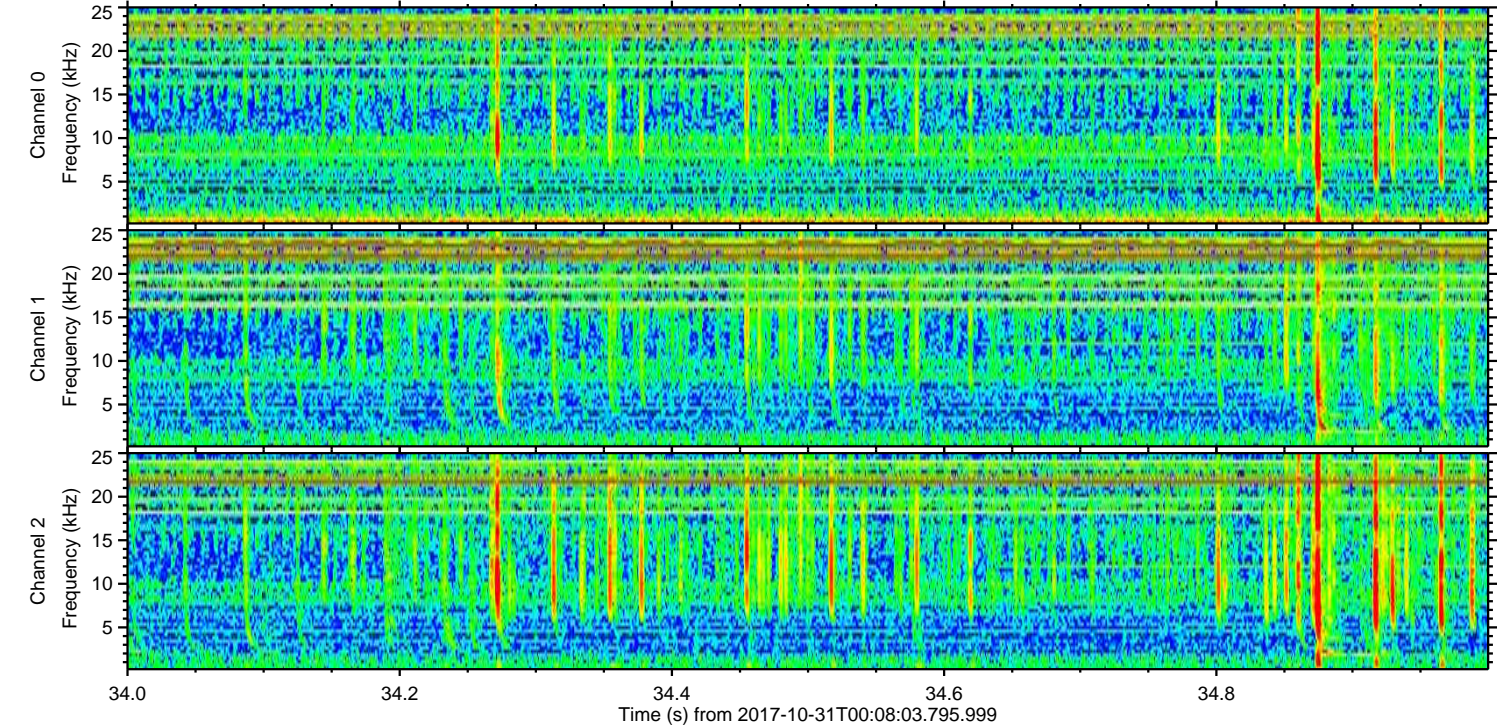
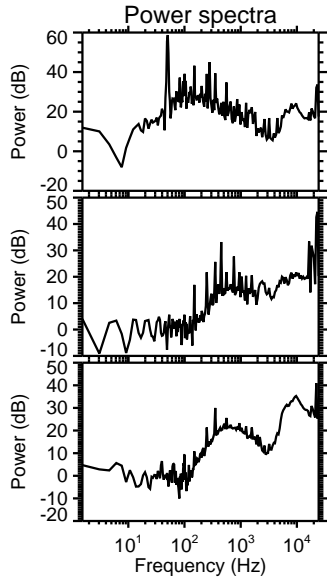
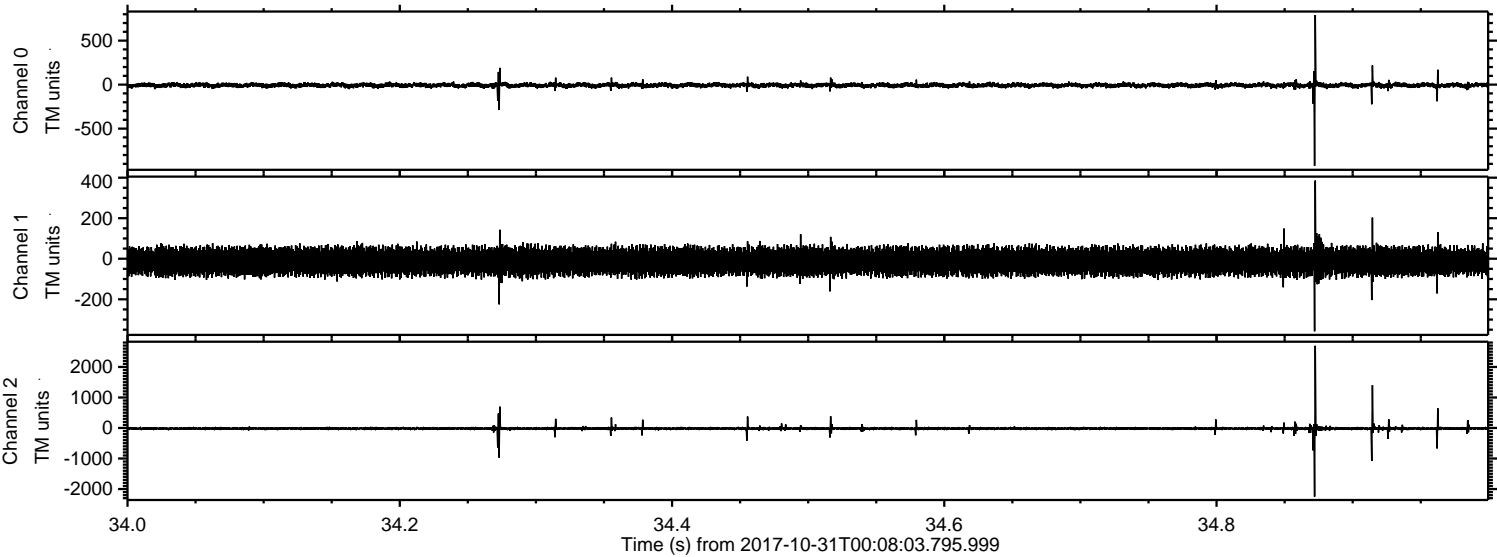
Processed Tue Oct 31 01:16:19 2017 by ELM ver.2012-10-06 from 001\_\_elm20171031\_000802\_\_dat00.bin





ELMAVAN 3D WAVEFORMS (Measured data sampled at 50 kHz) 51000 packets of 144 samples from 2017-10-31T00:08:03.795.999. Part 35/147

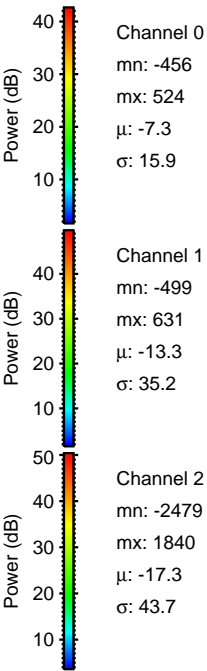
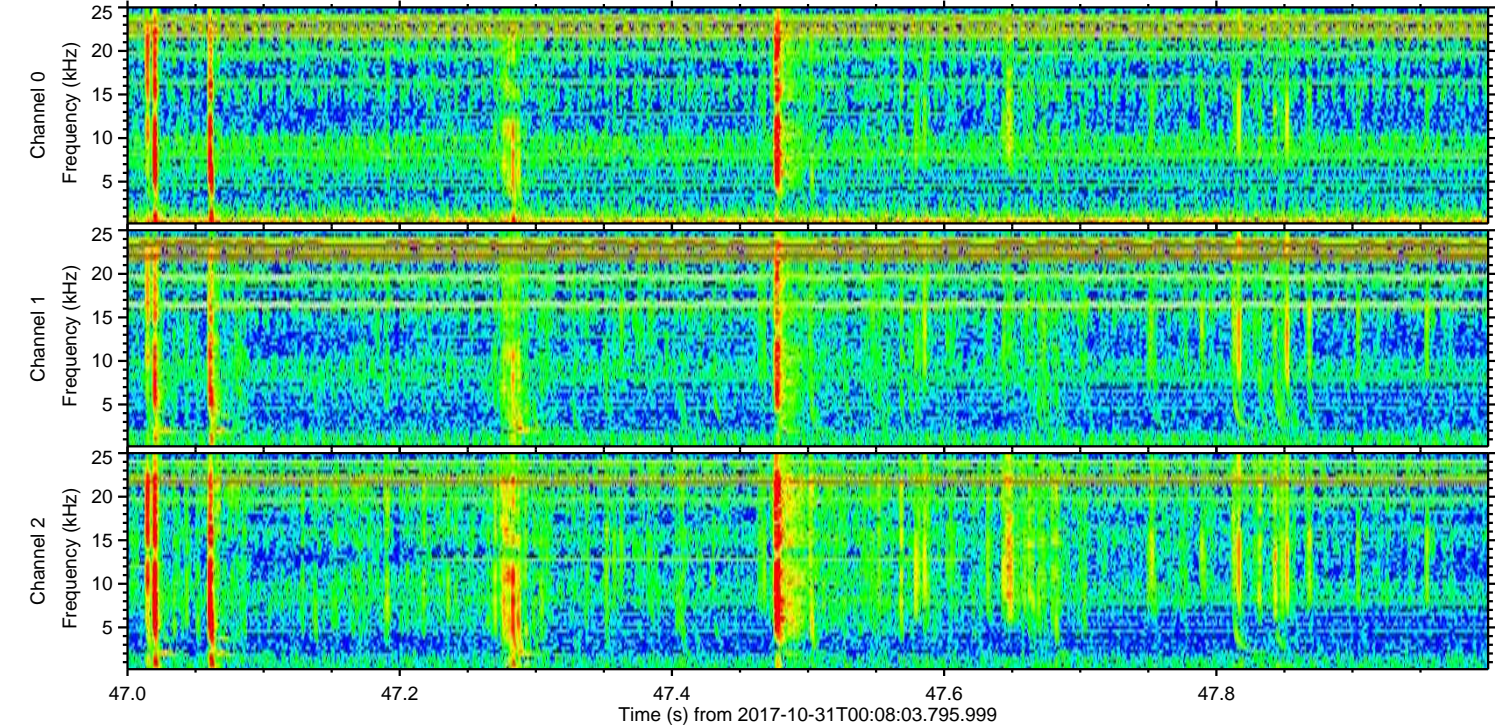
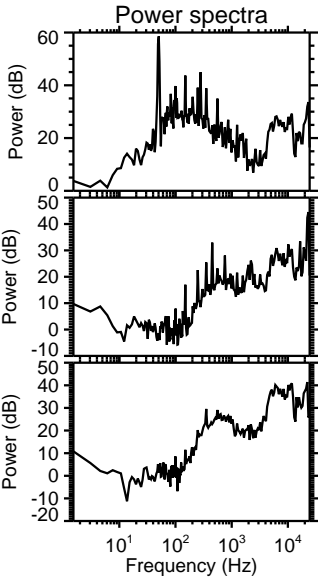
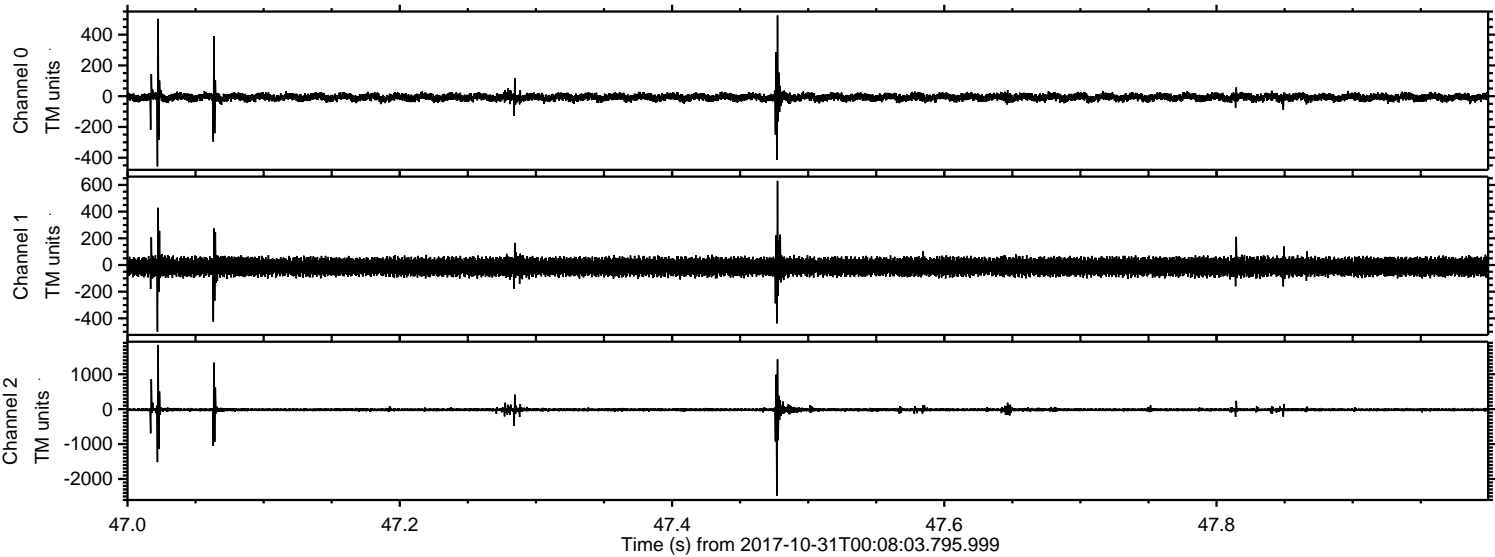
Processed Tue Oct 31 01:16:19 2017 by ELM ver.2012-10-06 from 001\_\_elm20171031\_000802\_\_dat00.bin





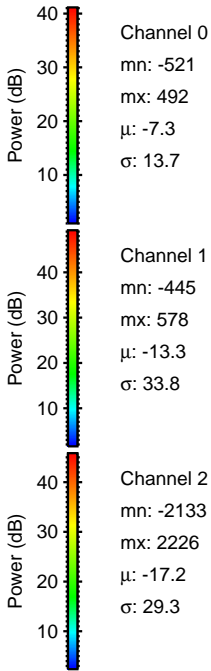
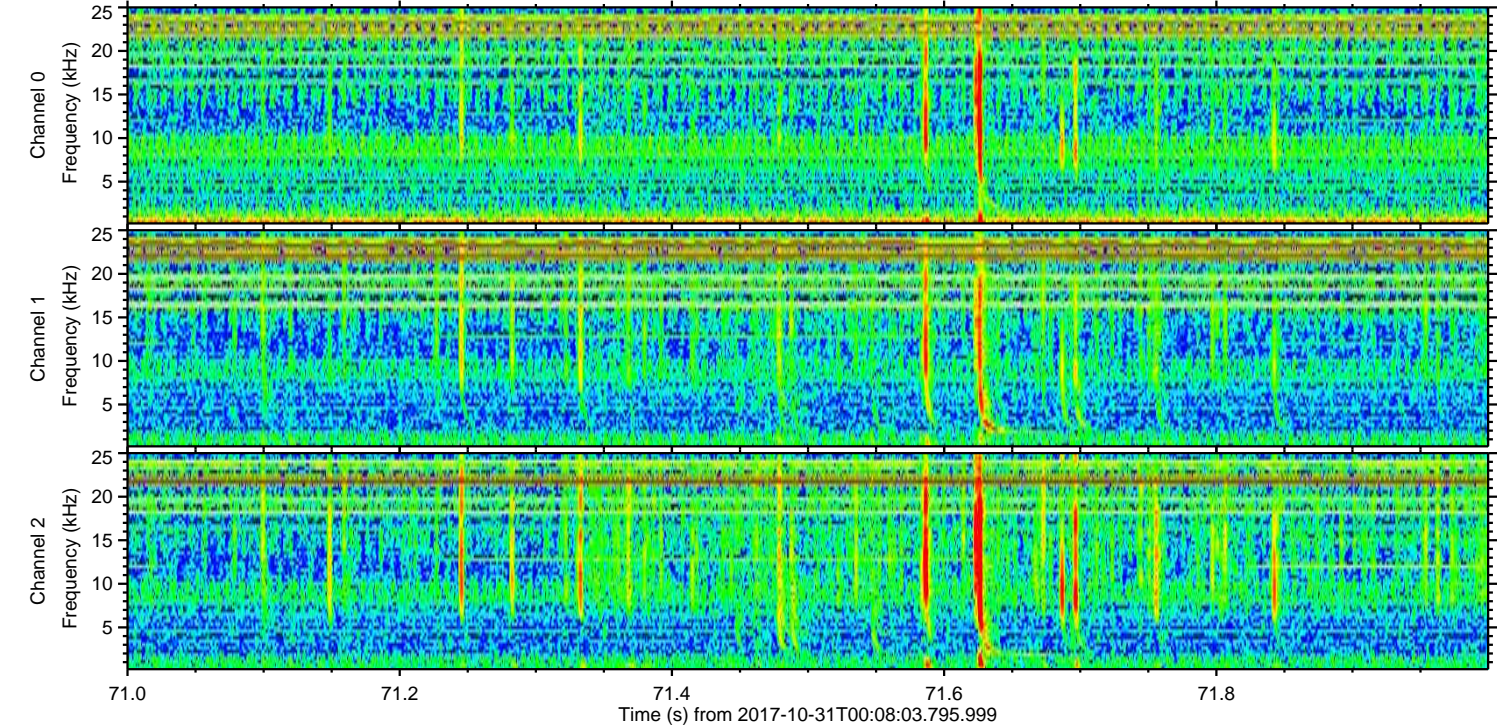
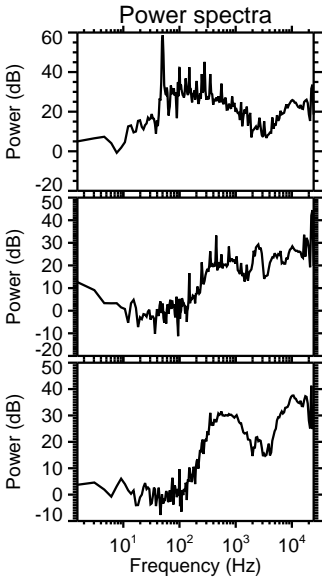
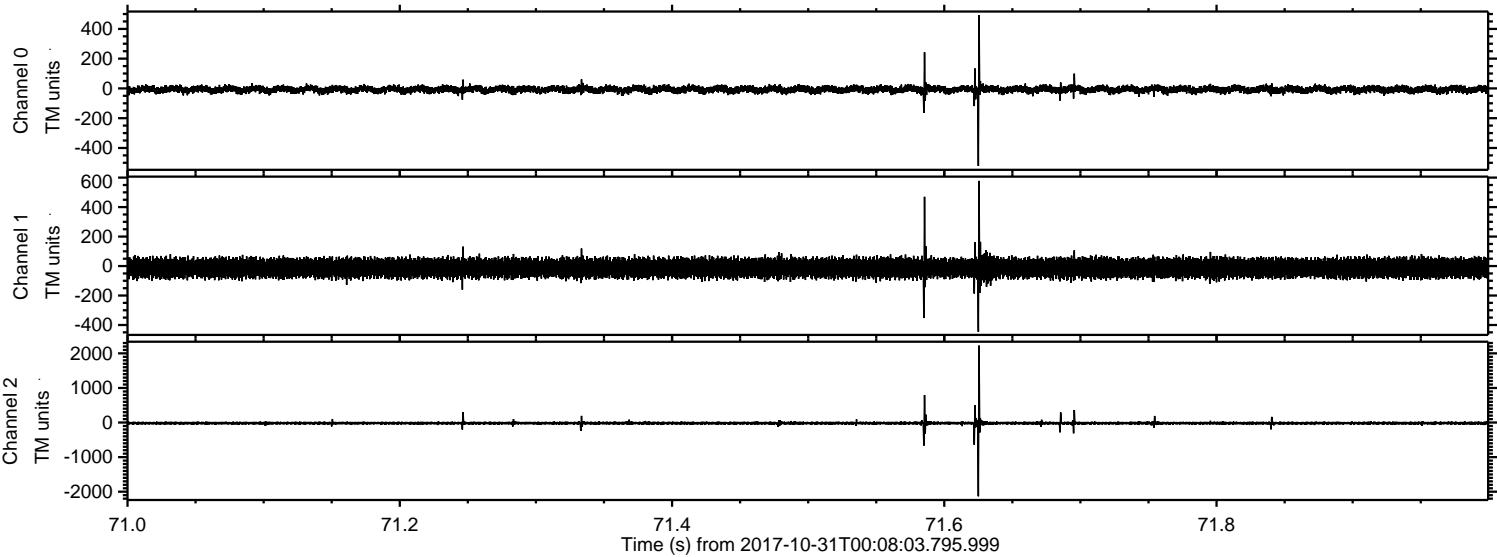
ELMAVAN 3D WAVEFORMS (Measured data sampled at 50 kHz) 51000 packets of 144 samples from 2017-10-31T00:08:03.795.999. Part 48/147

Processed Tue Oct 31 01:16:20 2017 by ELM ver.2012-10-06 from 001\_\_elm20171031\_000802\_\_dat00.bin





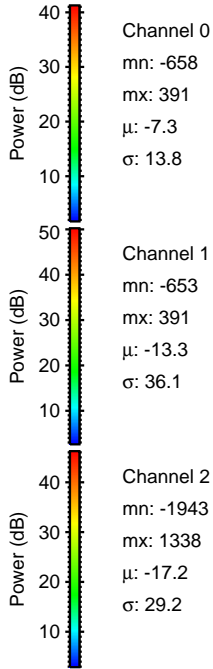
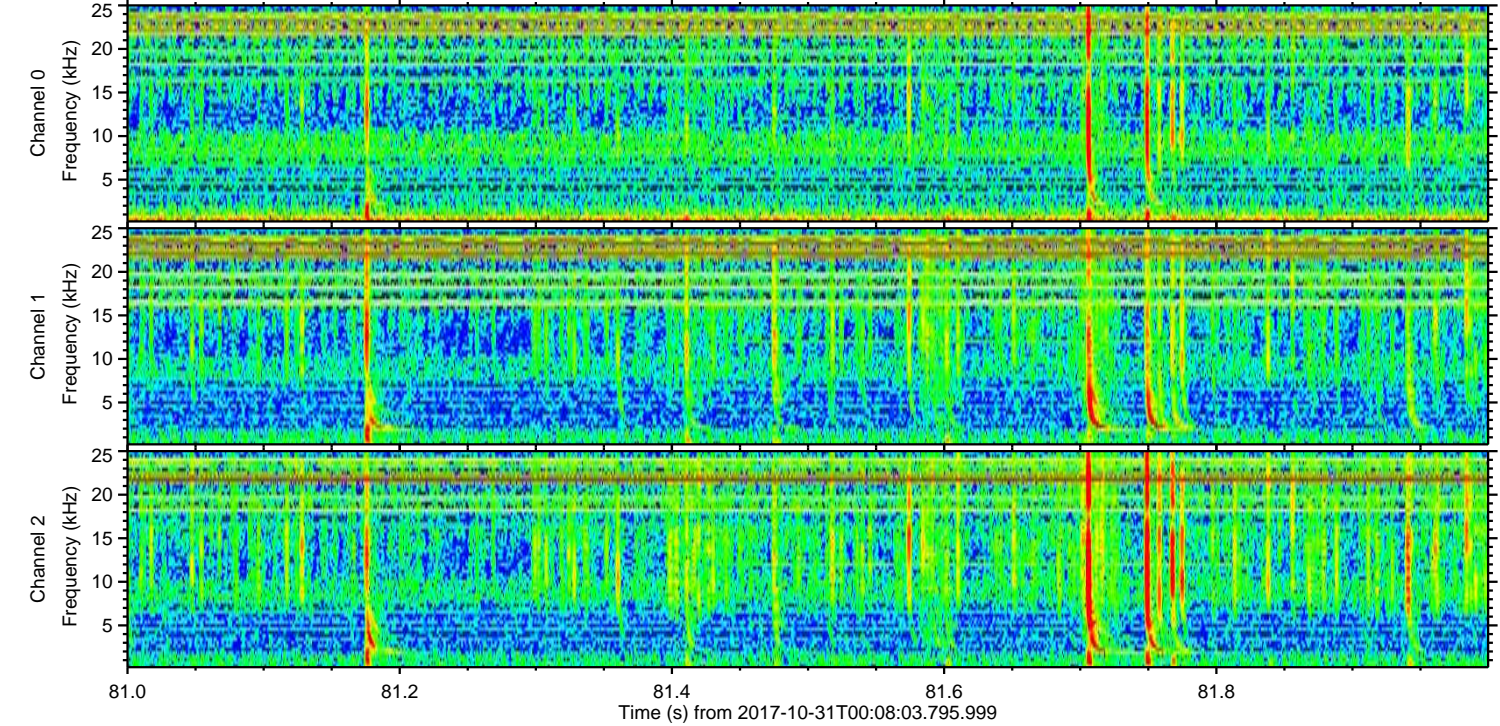
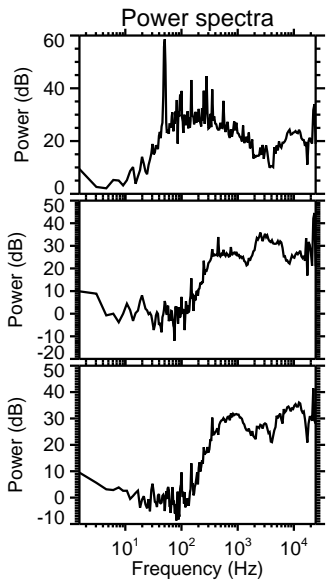
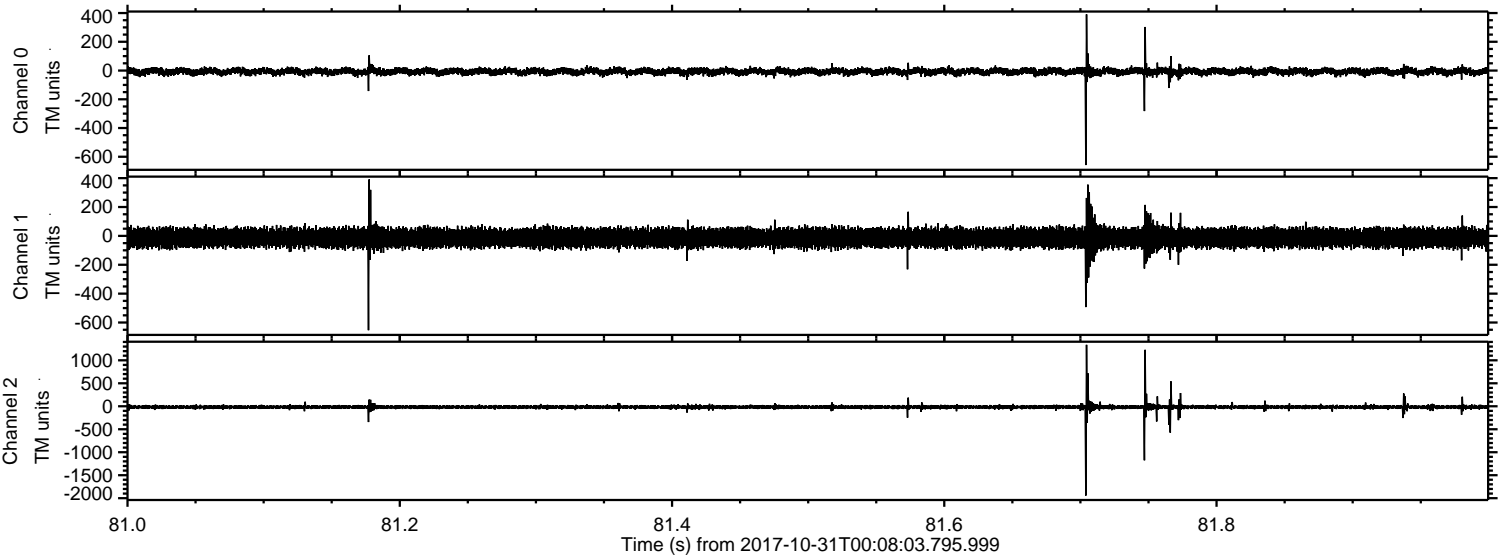
Processed Tue Oct 31 01:16:21 2017 by ELM ver.2012-10-06 from 001\_\_elm20171031\_000802\_\_dat00.bin





ELMAVAN 3D WAVEFORMS (Measured data sampled at 50 kHz) 51000 packets of 144 samples from 2017-10-31T00:08:03.795.999. Part 82/147

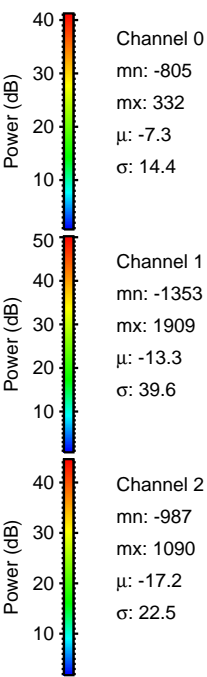
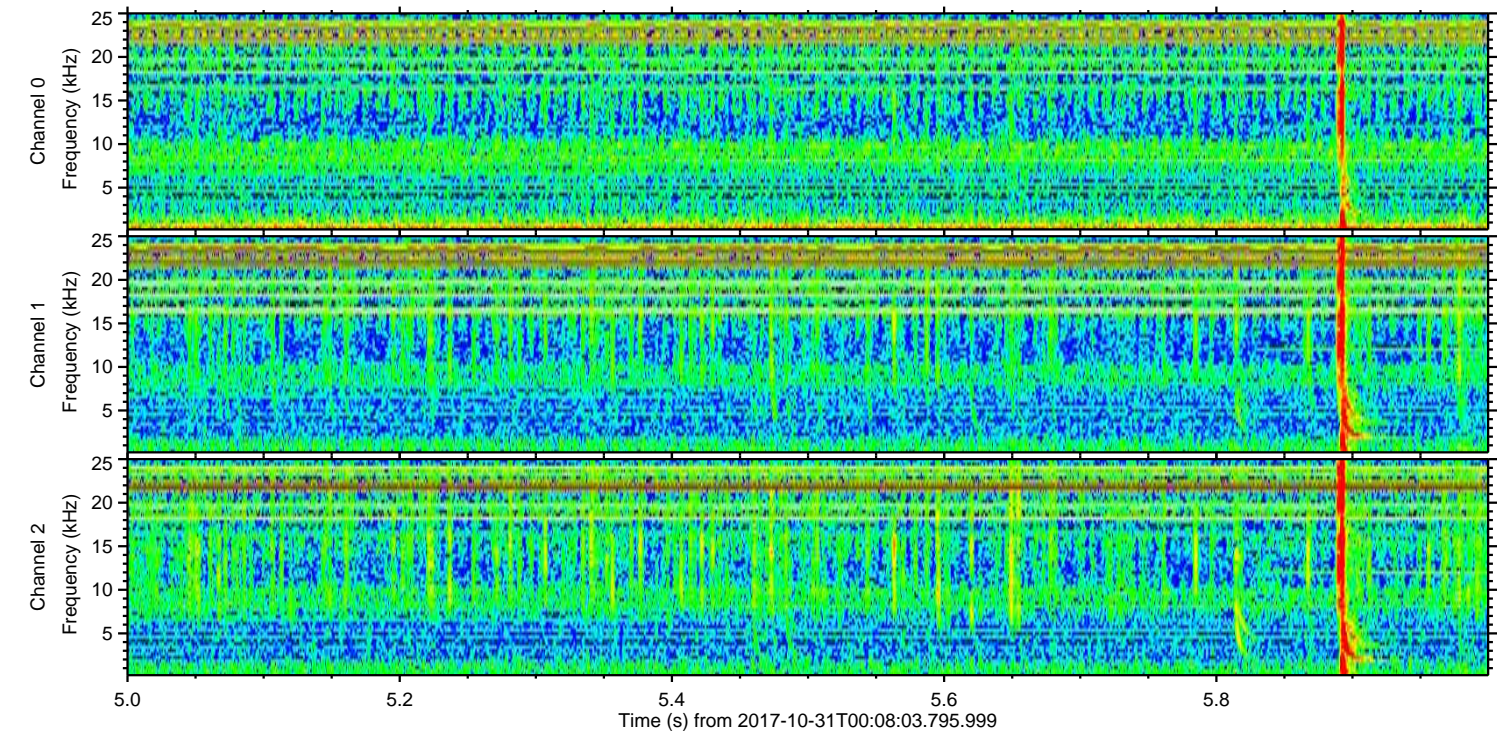
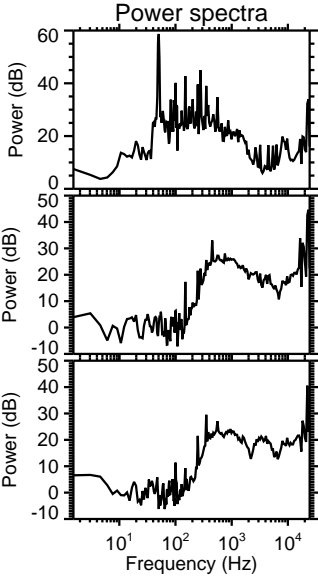
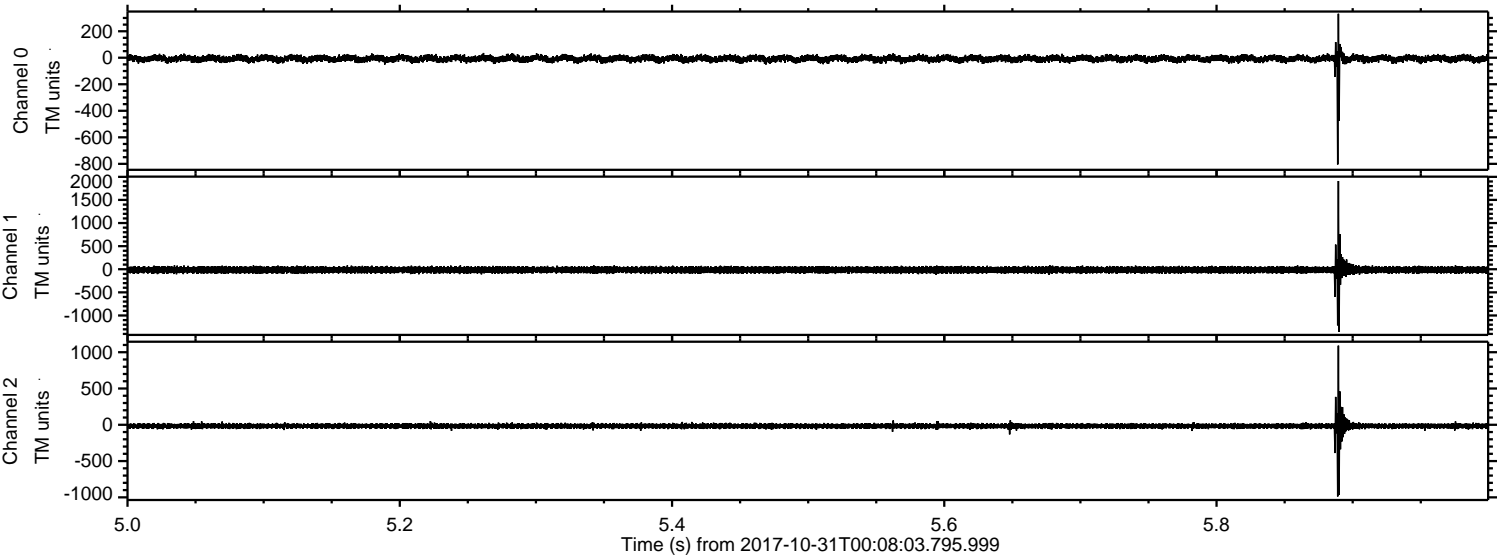
Processed Tue Oct 31 01:16:22 2017 by ELM ver.2012-10-06 from 001\_\_elm20171031\_000802\_\_dat00.bin





ELMAVAN 3D WAVEFORMS (Measured data sampled at 50 kHz) 51000 packets of 144 samples from 2017-10-31T00:08:03.795.999. Part 6/147

Processed Tue Oct 31 01:16:22 2017 by ELM ver.2012-10-06 from 001\_\_elm20171031\_000802\_\_dat00.bin





ELMAVAN 3D WAVEFORMS (Measured data sampled at 50 kHz) 51000 packets of 144 samples from 2017-10-31T00:08:03.795.999. Part 131/147

