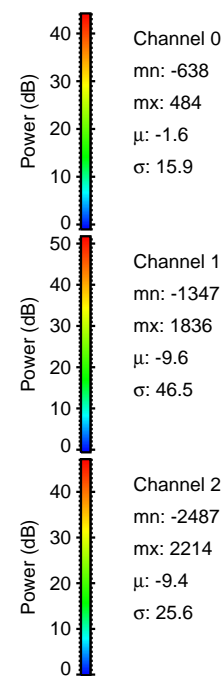
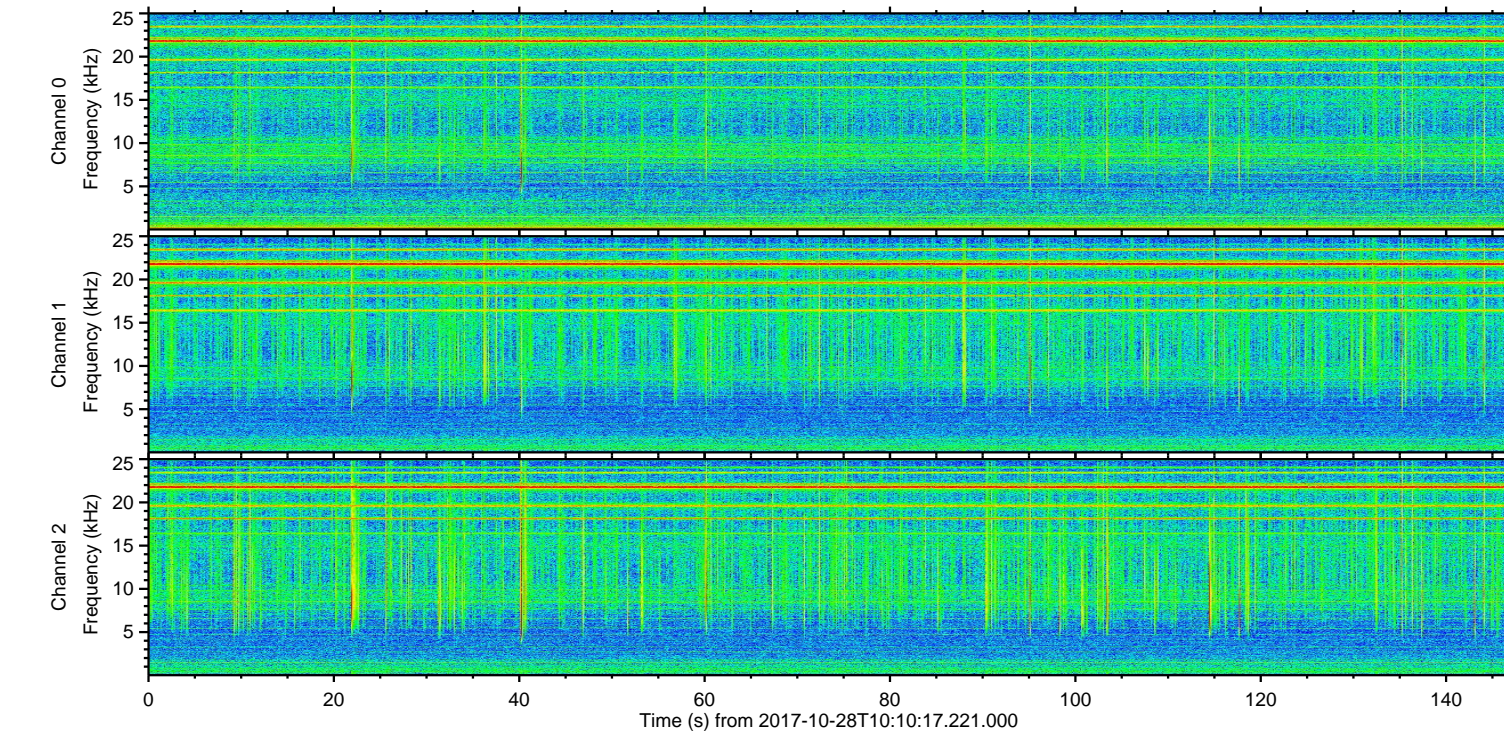
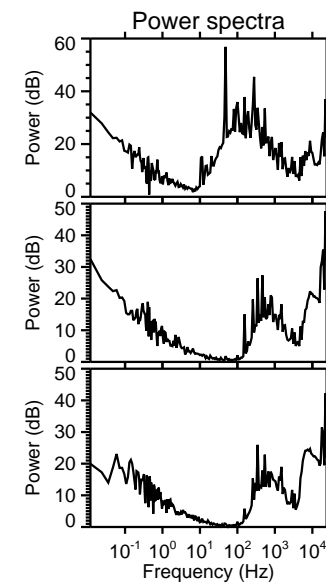
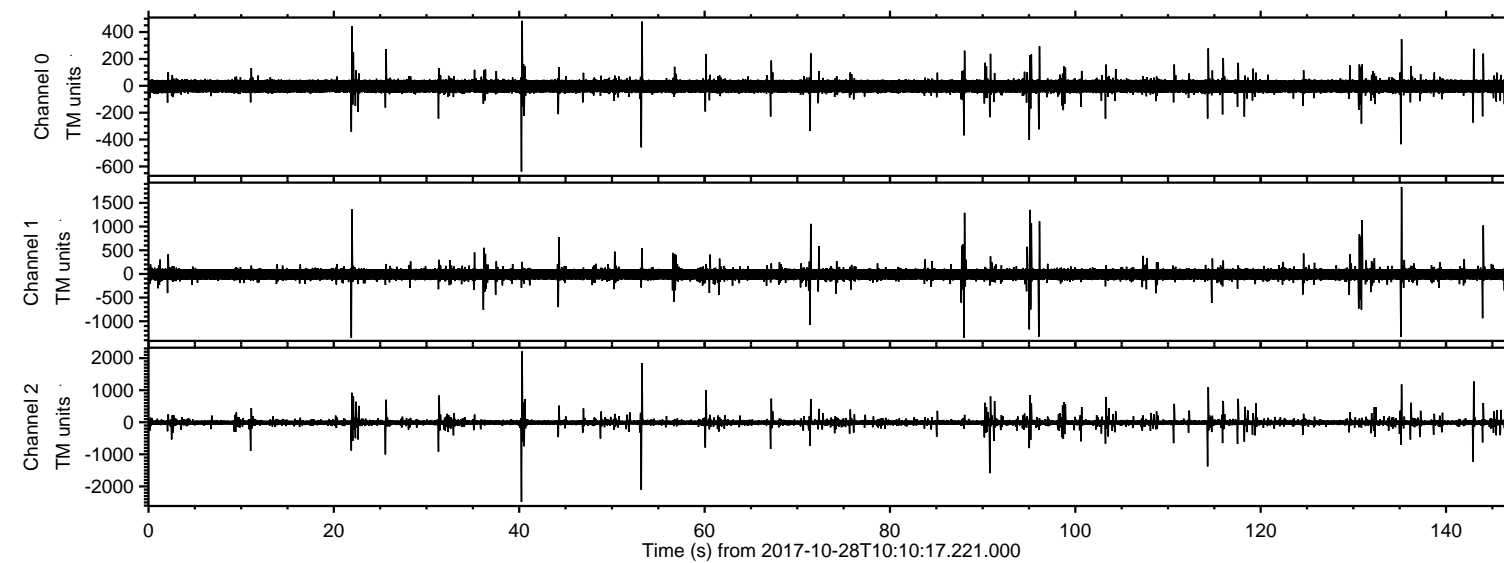
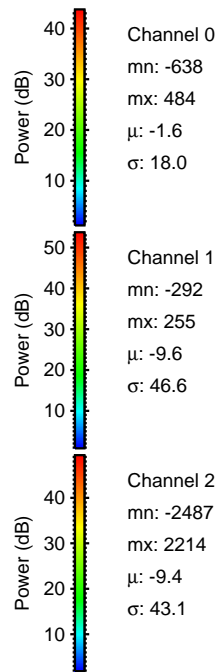
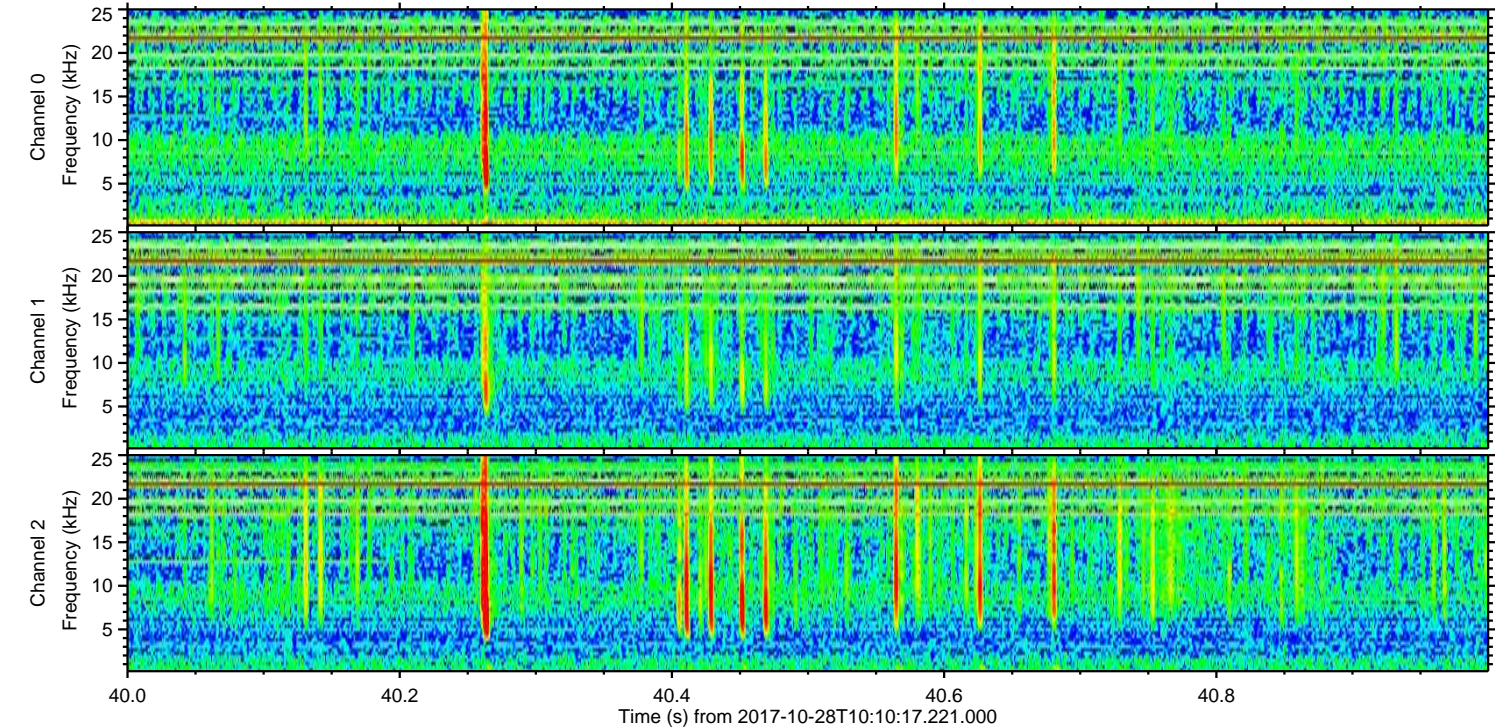
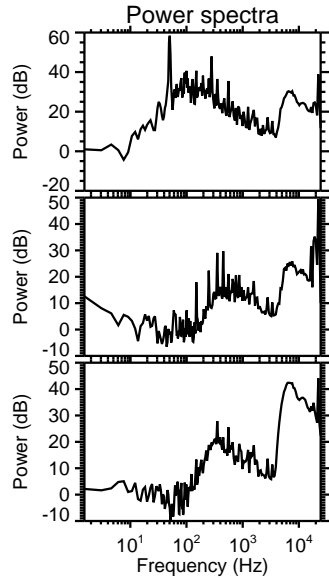
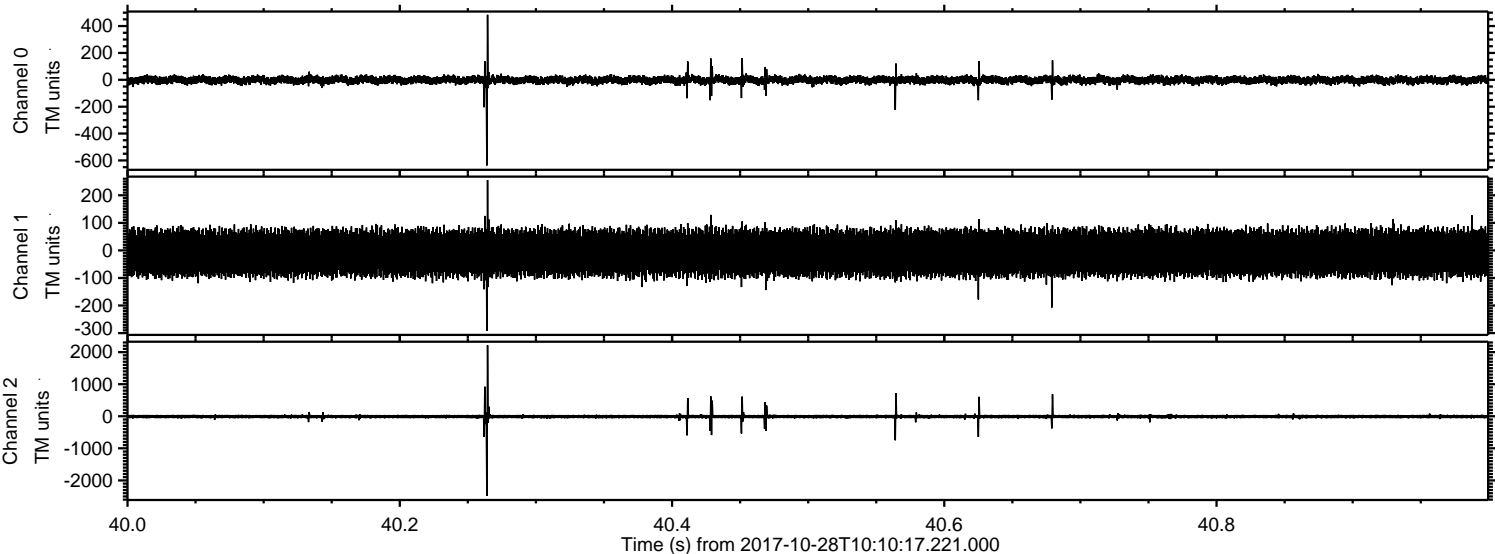


ELMAVAN 3D WAVEFORMS (Measured data sampled at 50 kHz) 51000 packets of 144 samples from 2017-10-28T10:10:17.221.000.

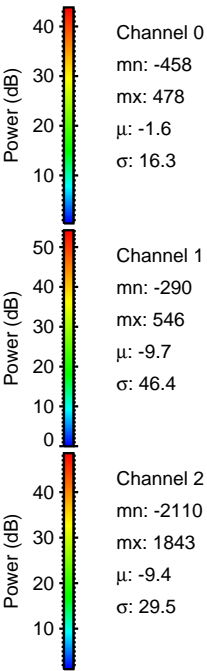
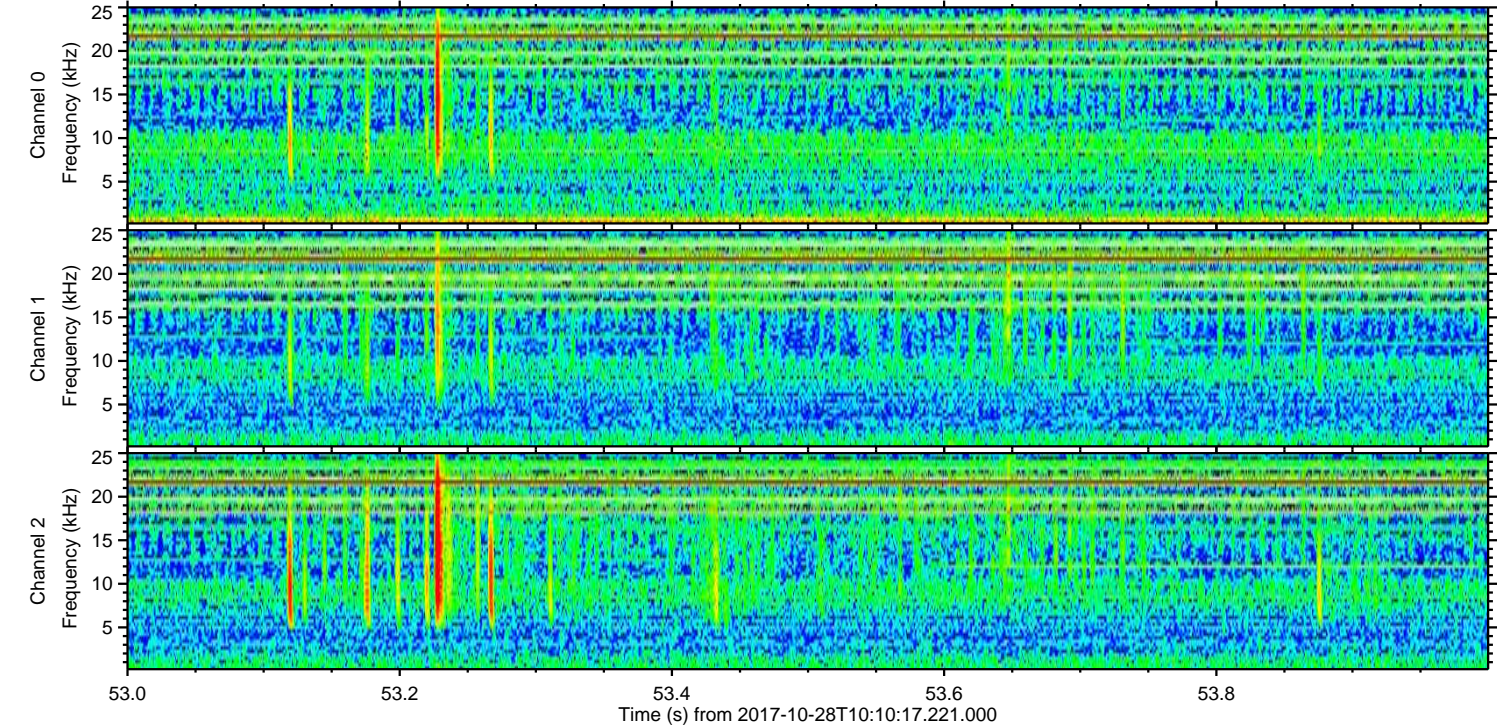
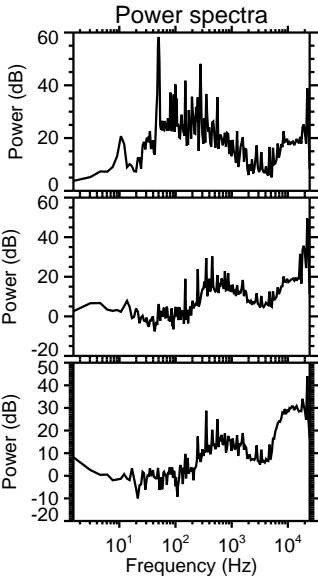
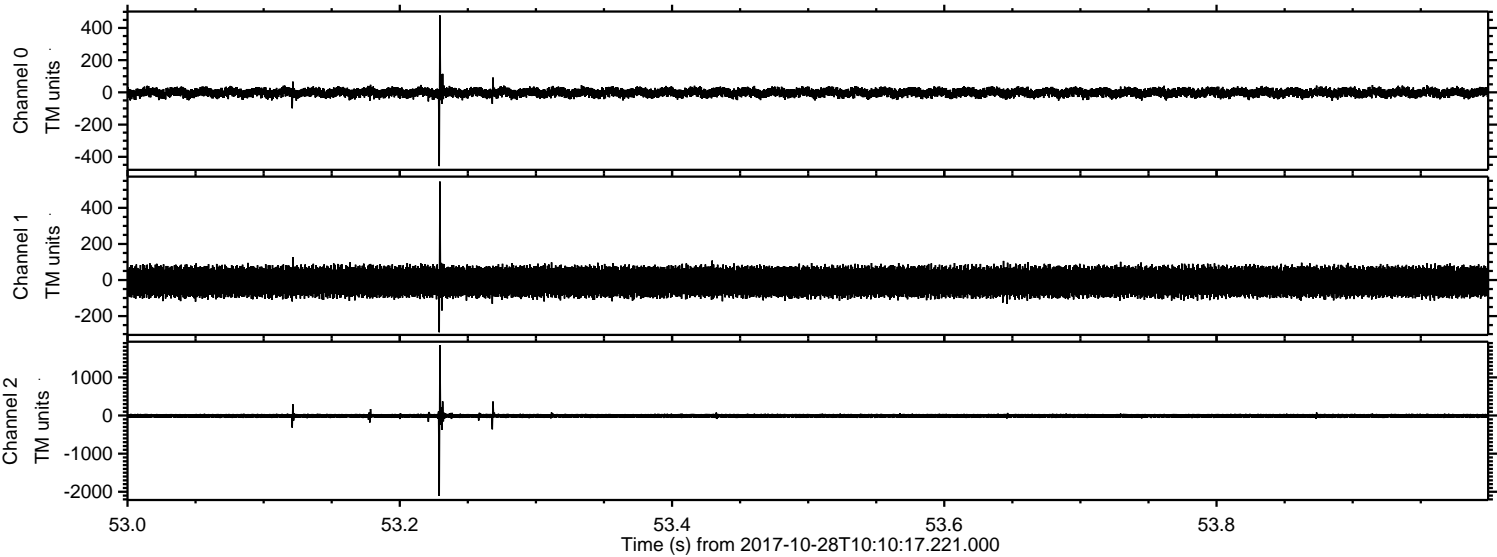
Processed Sat Oct 28 12:17:58 2017 by ELM ver.2012-10-06 from 001__elm20171028_101016__dat00.bin



Processed Sat Oct 28 12:18:04 2017 by ELM ver.2012-10-06 from 001__elm20171028_101016__dat00.bin

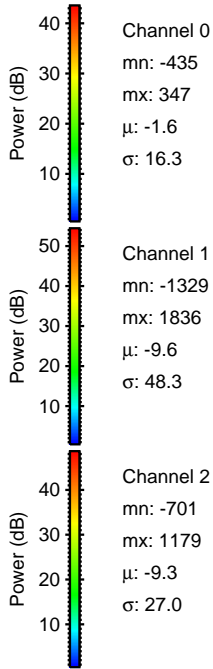
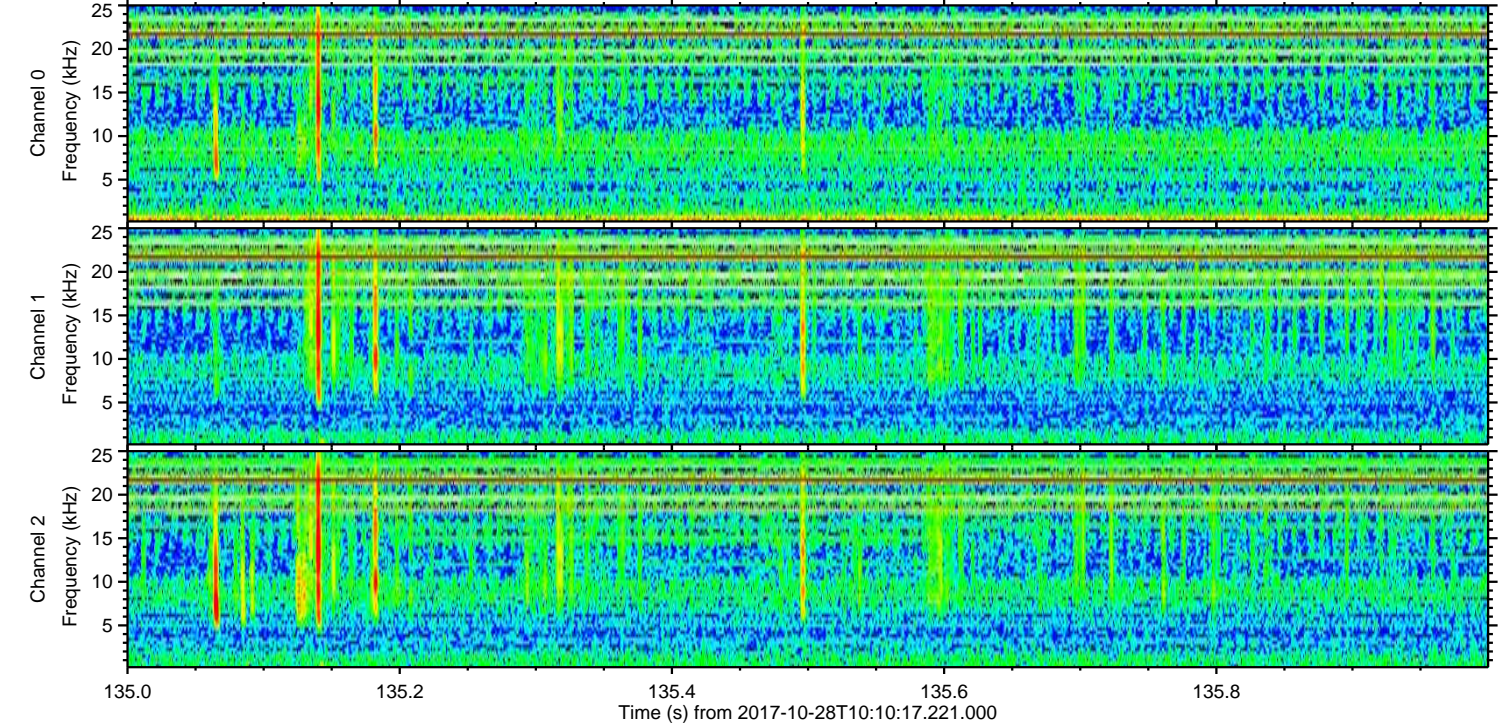
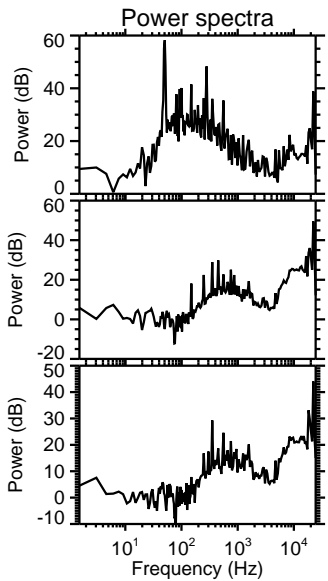
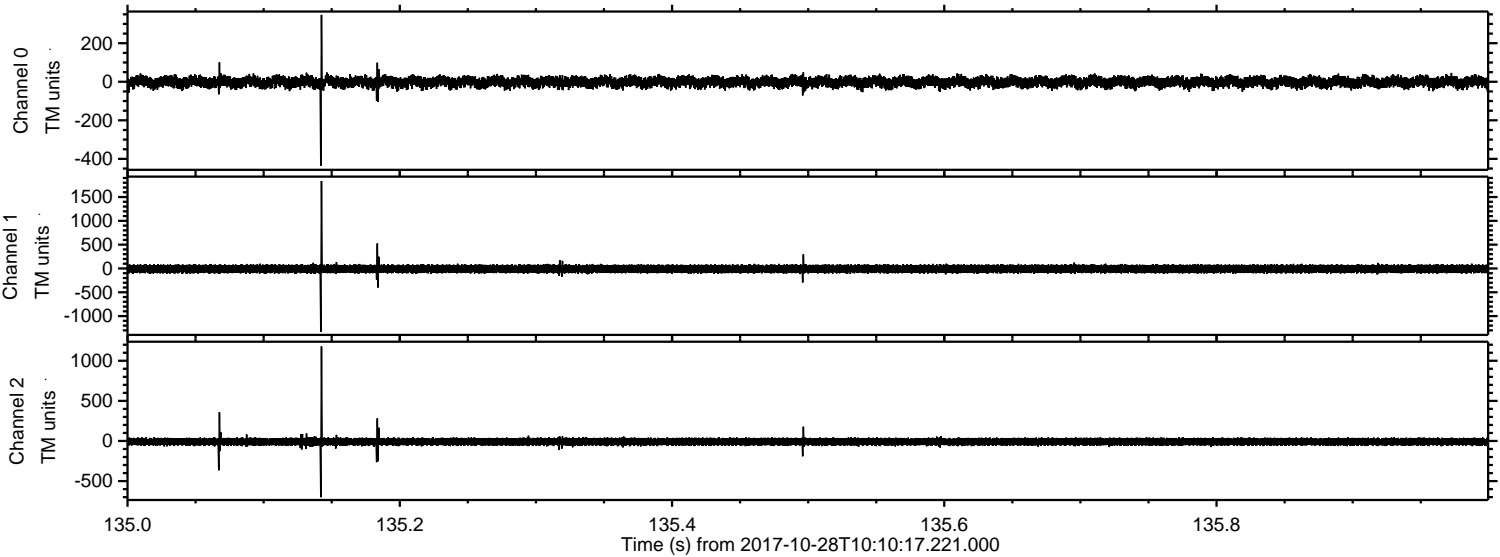


Processed Sat Oct 28 12:18:05 2017 by ELM ver.2012-10-06 from 001__elm20171028_101016__dat00.bin

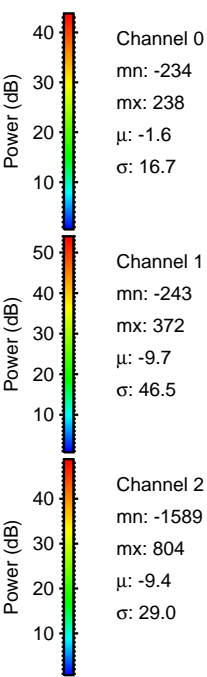
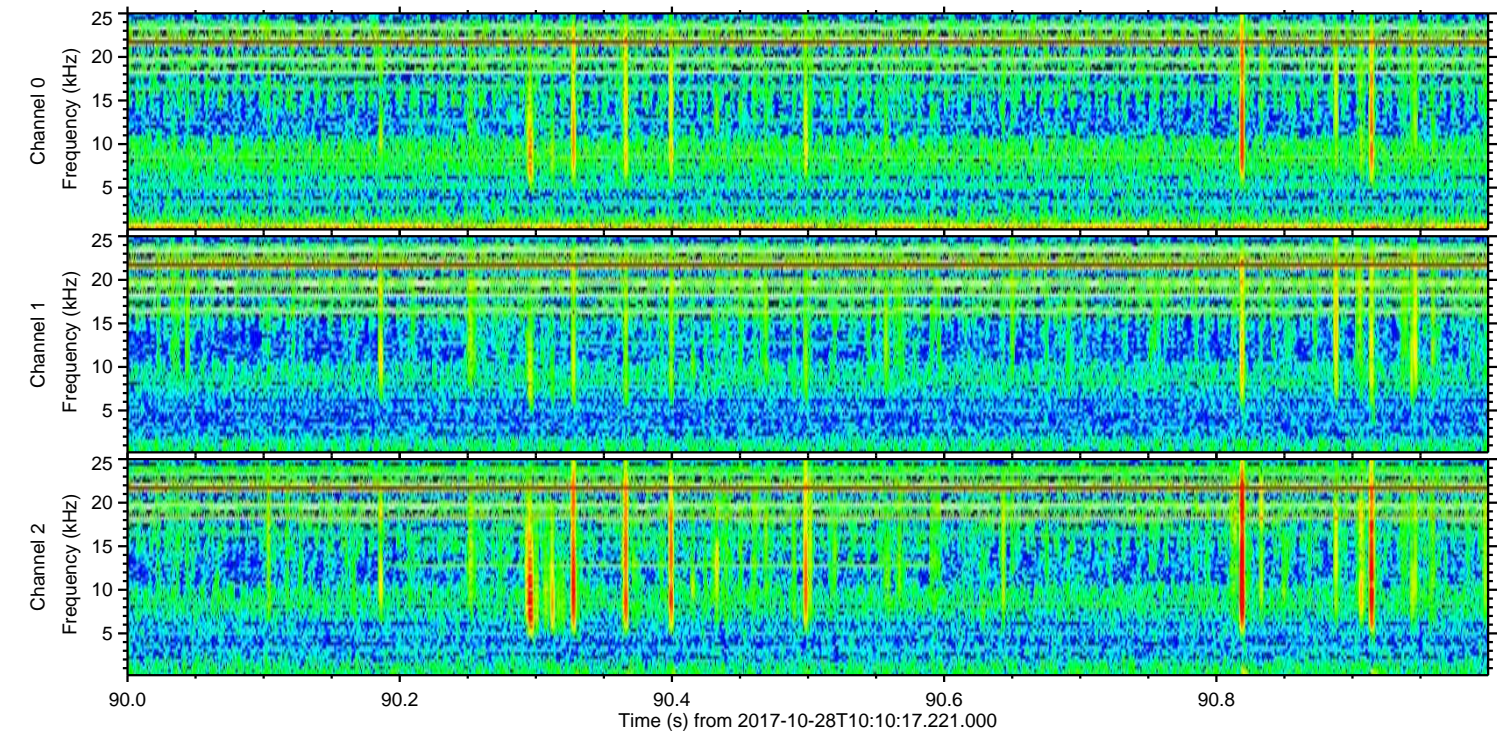
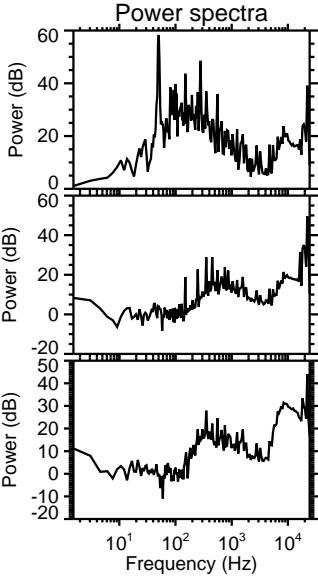
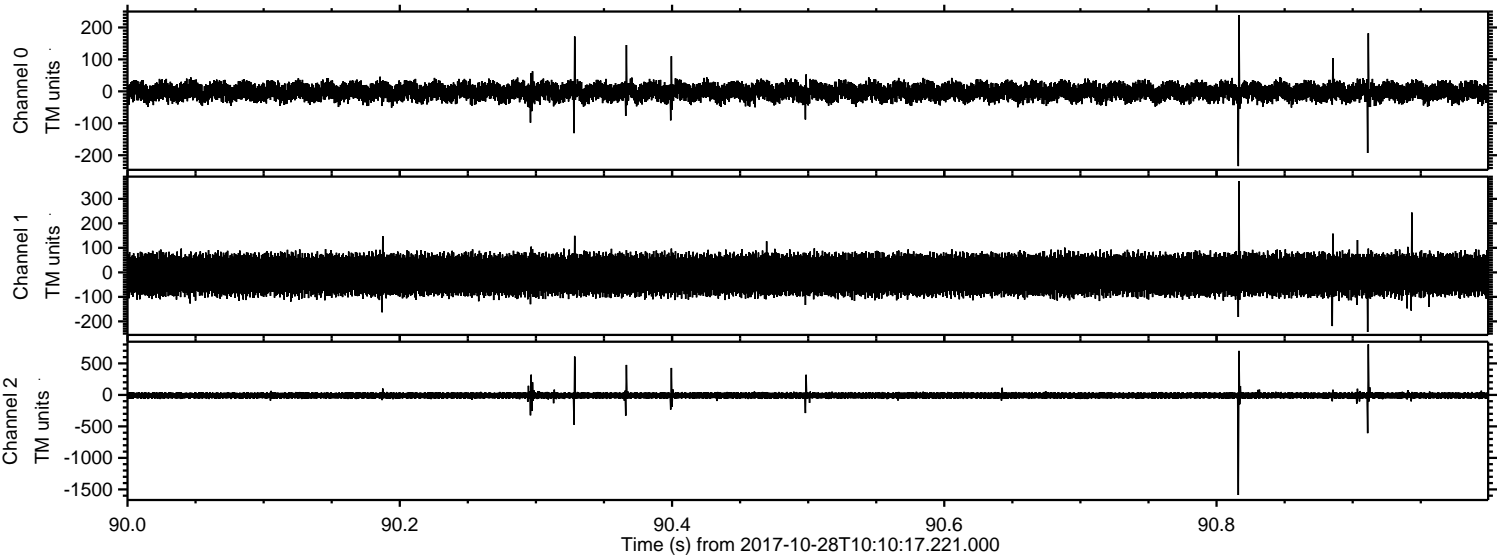


ELMAVAN 3D WAVEFORMS (Measured data sampled at 50 kHz) 51000 packets of 144 samples from 2017-10-28T10:10:17.221.000. Part 136/147

Processed Sat Oct 28 12:18:05 2017 by ELM ver.2012-10-06 from 001__elm20171028_101016__dat00.bin



Processed Sat Oct 28 12:18:06 2017 by ELM ver.2012-10-06 from 001__elm20171028_101016__dat00.bin



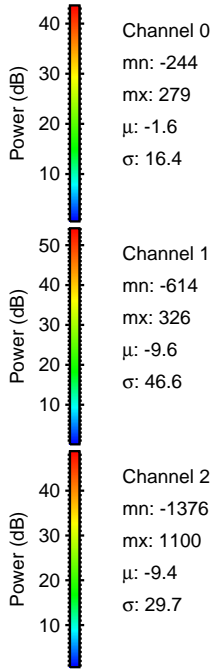
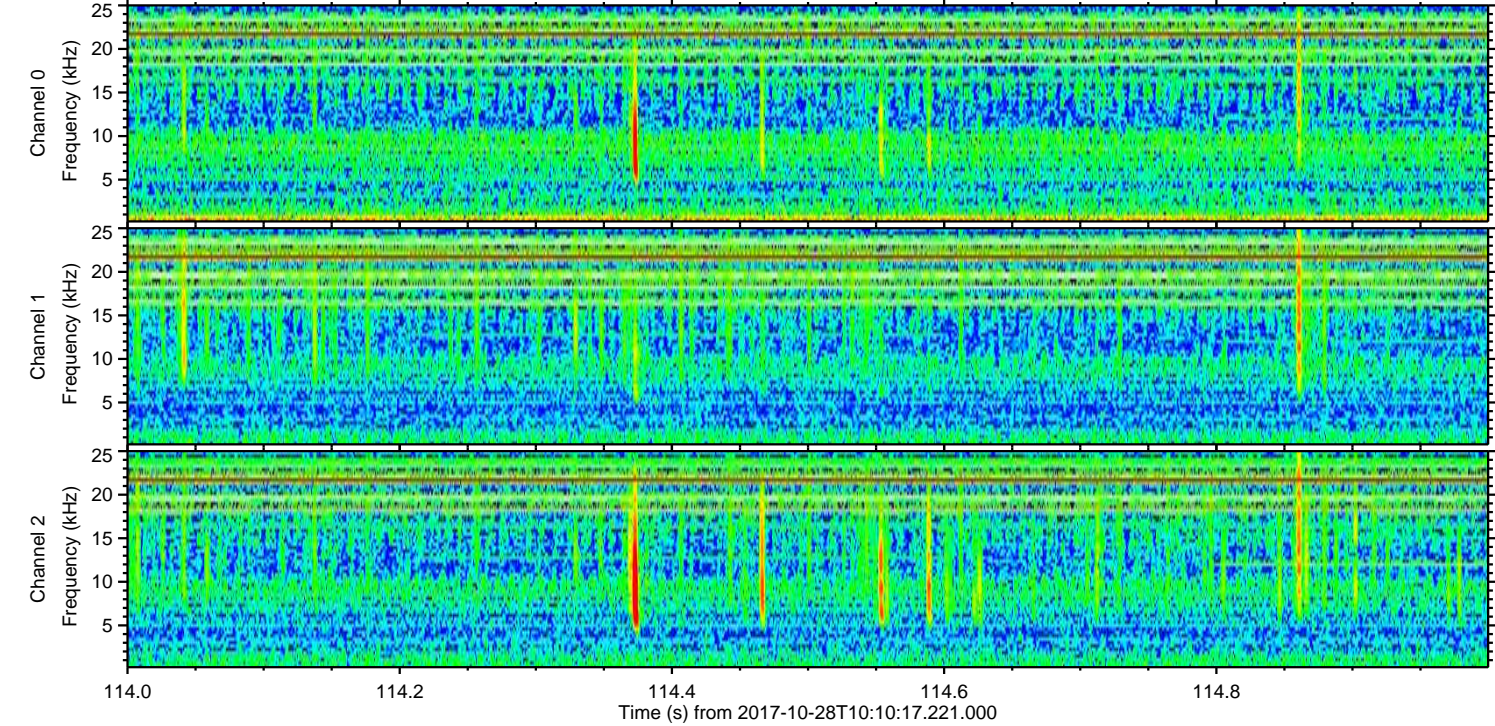
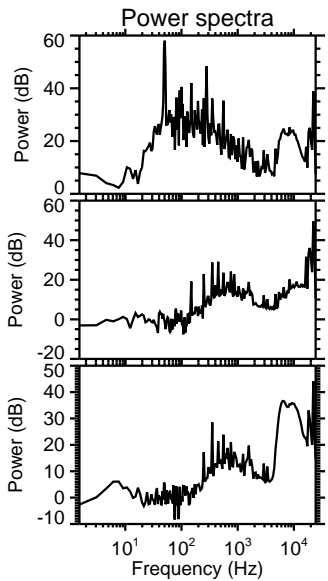
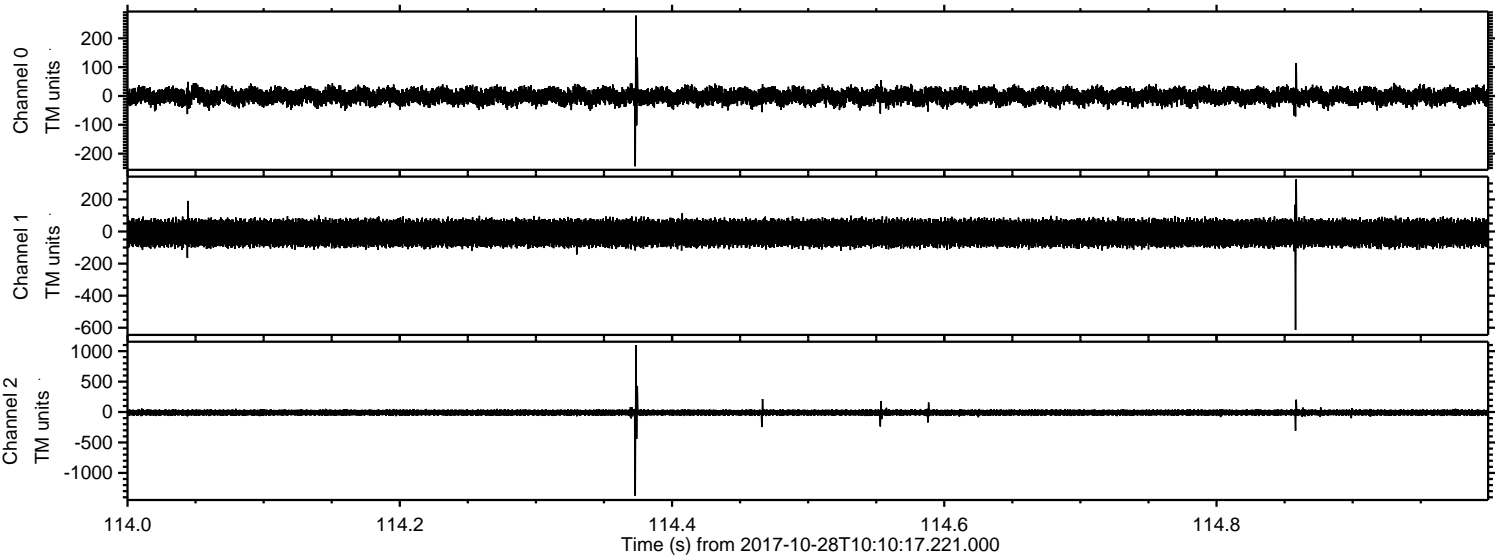
Channel 0
mn: -234
mx: 238
 μ : -1.6
 σ : 16.7

Channel 1
mn: -243
mx: 372
 μ : -9.7
 σ : 46.5

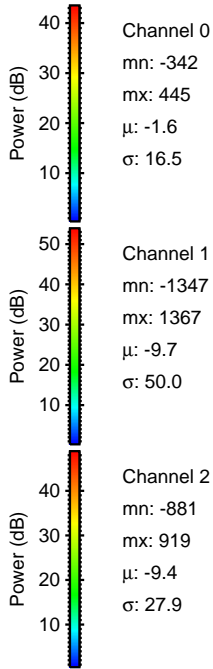
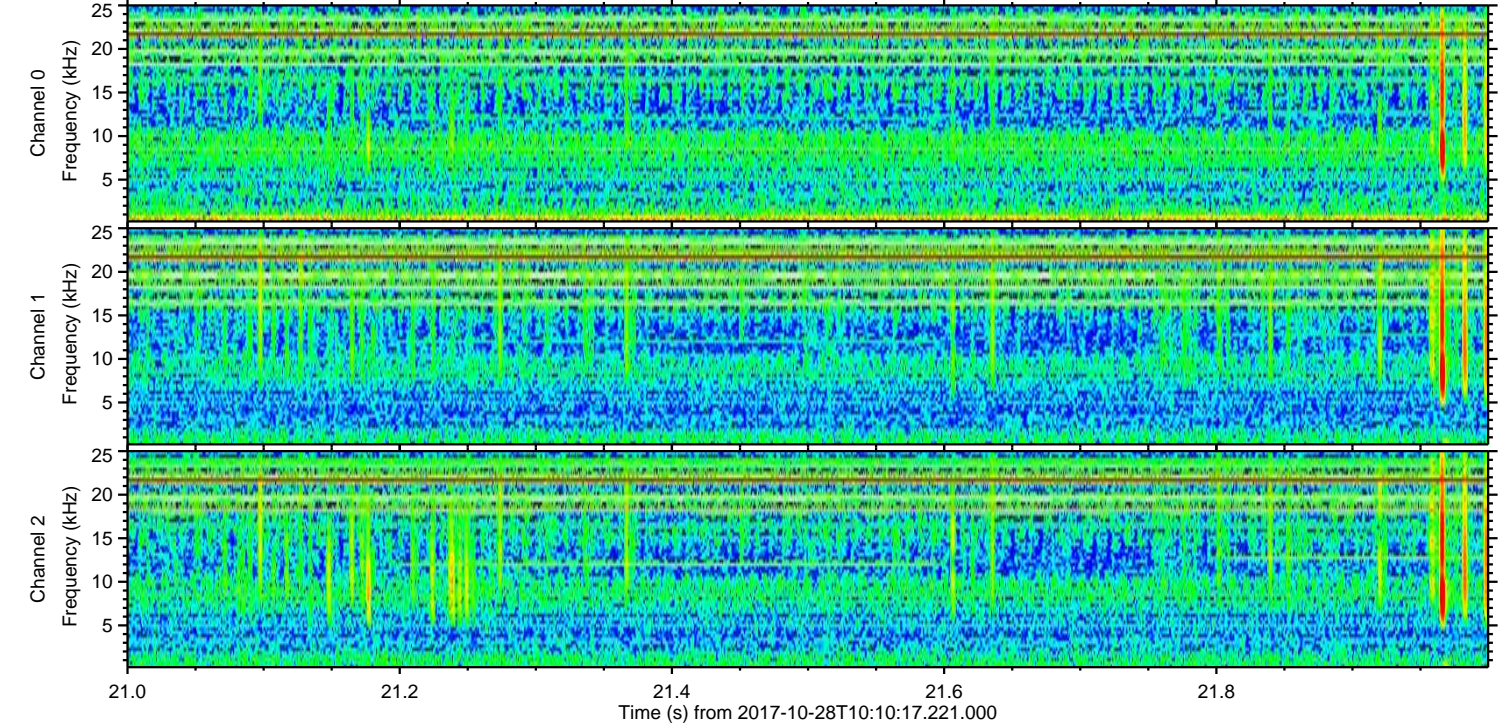
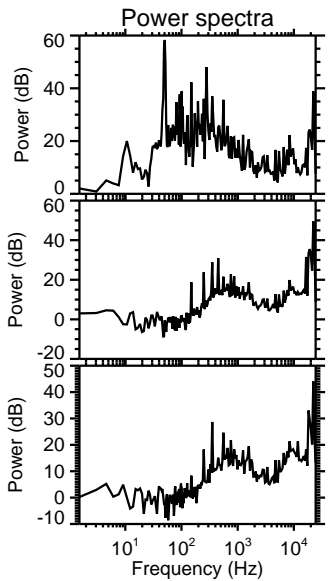
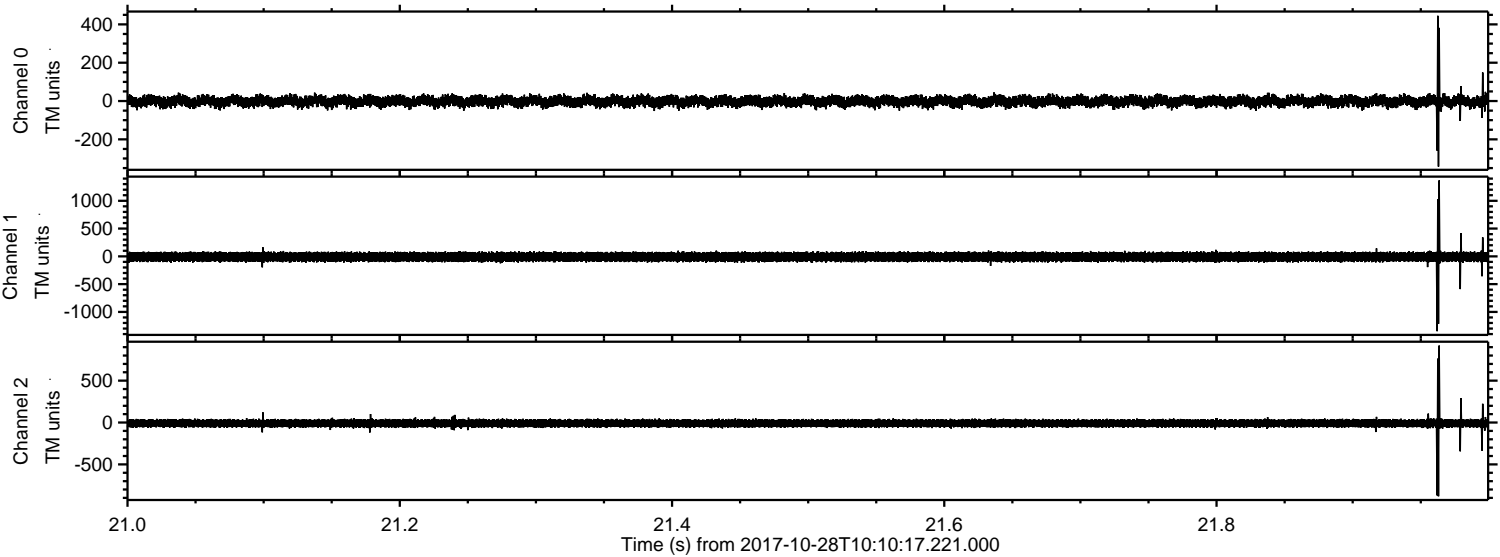
Channel 2
mn: -1589
mx: 804
 μ : -9.4
 σ : 29.0

ELMAVAN 3D WAVEFORMS (Measured data sampled at 50 kHz) 51000 packets of 144 samples from 2017-10-28T10:10:17.221.000. Part 115/147

Processed Sat Oct 28 12:18:07 2017 by ELM ver.2012-10-06 from 001__elm20171028_101016__dat00.bin



Processed Sat Oct 28 12:18:07 2017 by ELM ver.2012-10-06 from 001__elm20171028_101016__dat00.bin

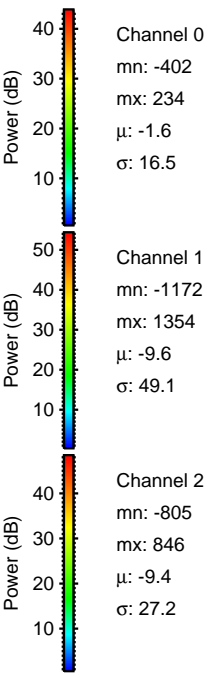
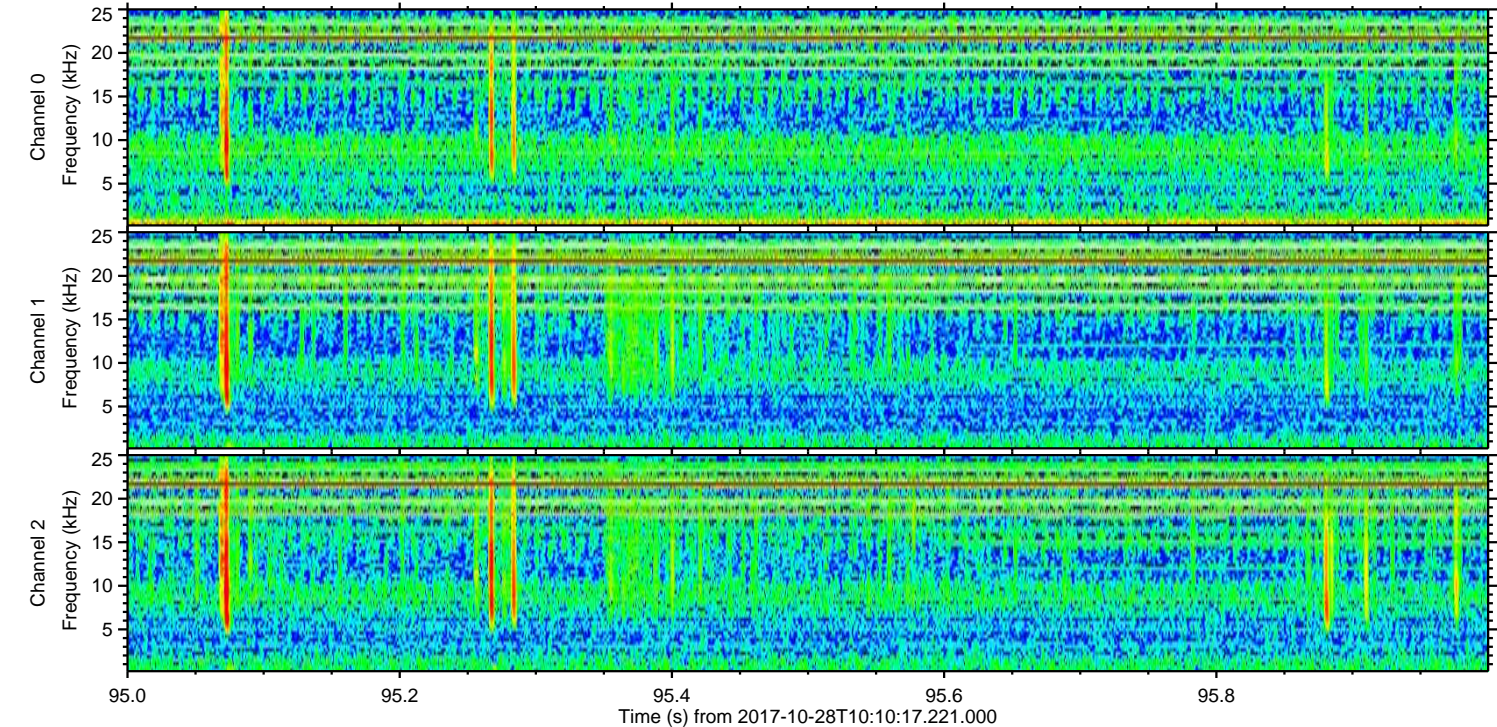
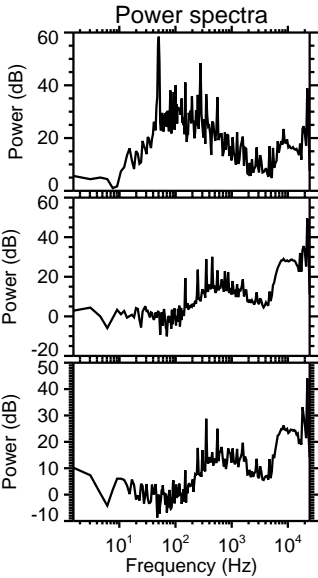
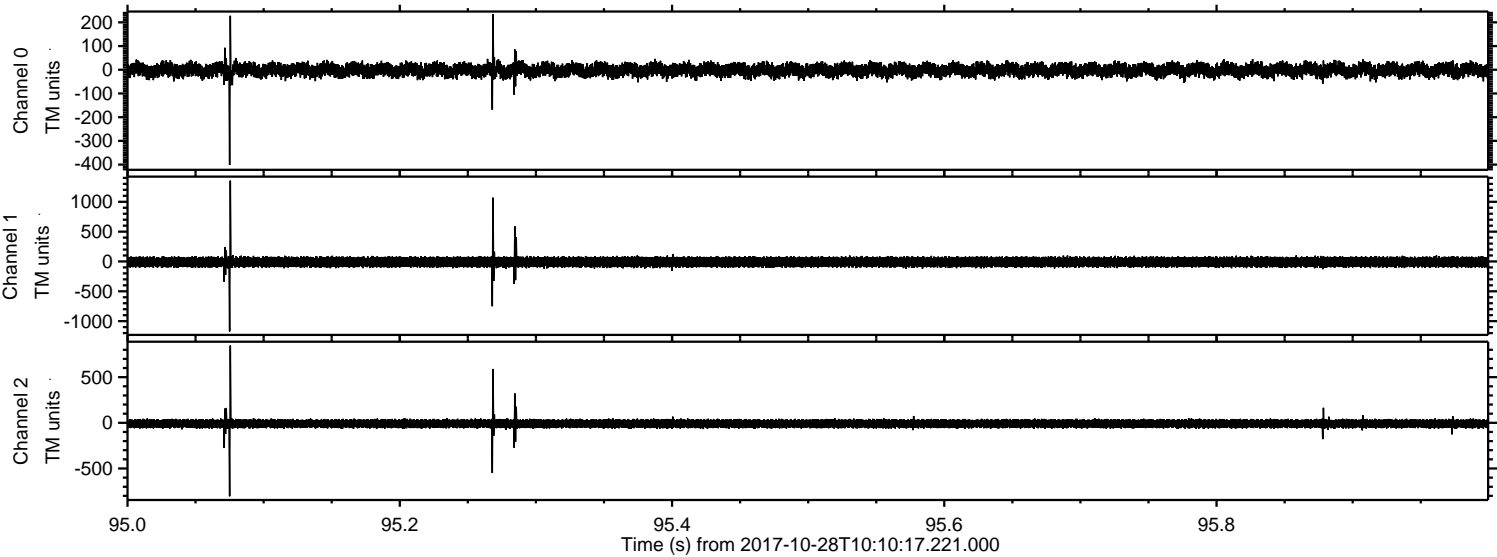


Channel 0
mn: -342
mx: 445
 μ : -1.6
 σ : 16.5

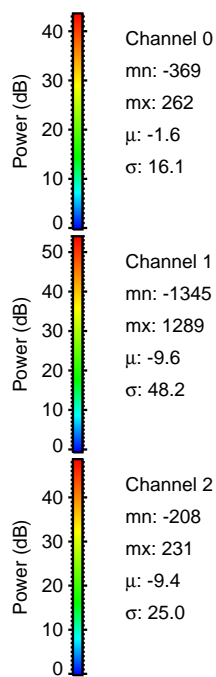
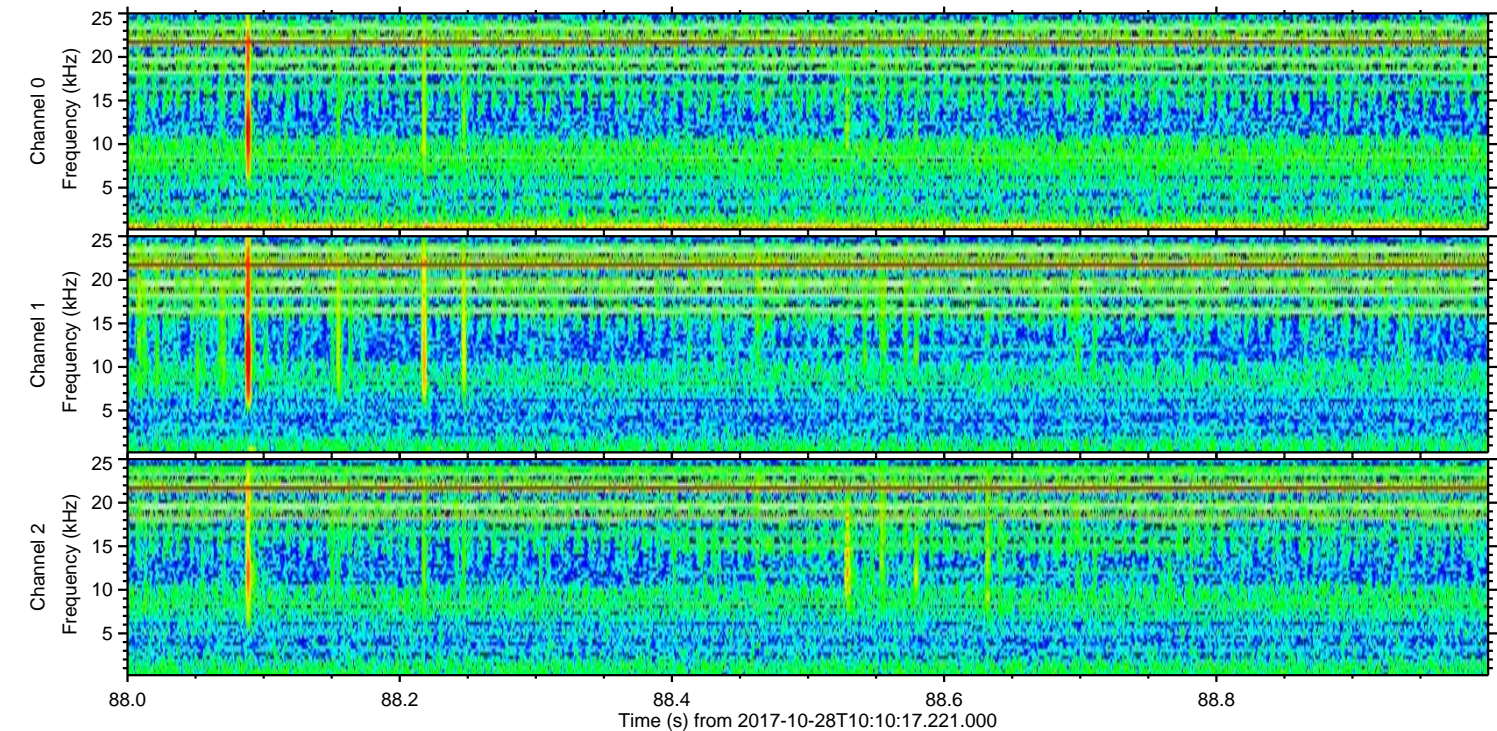
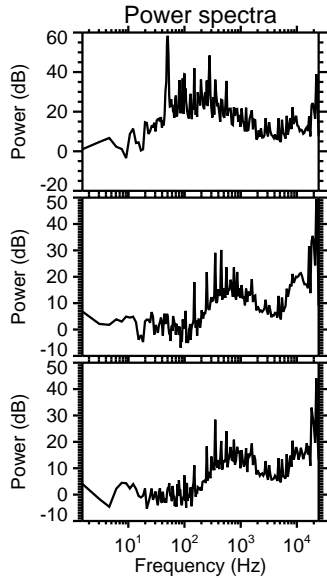
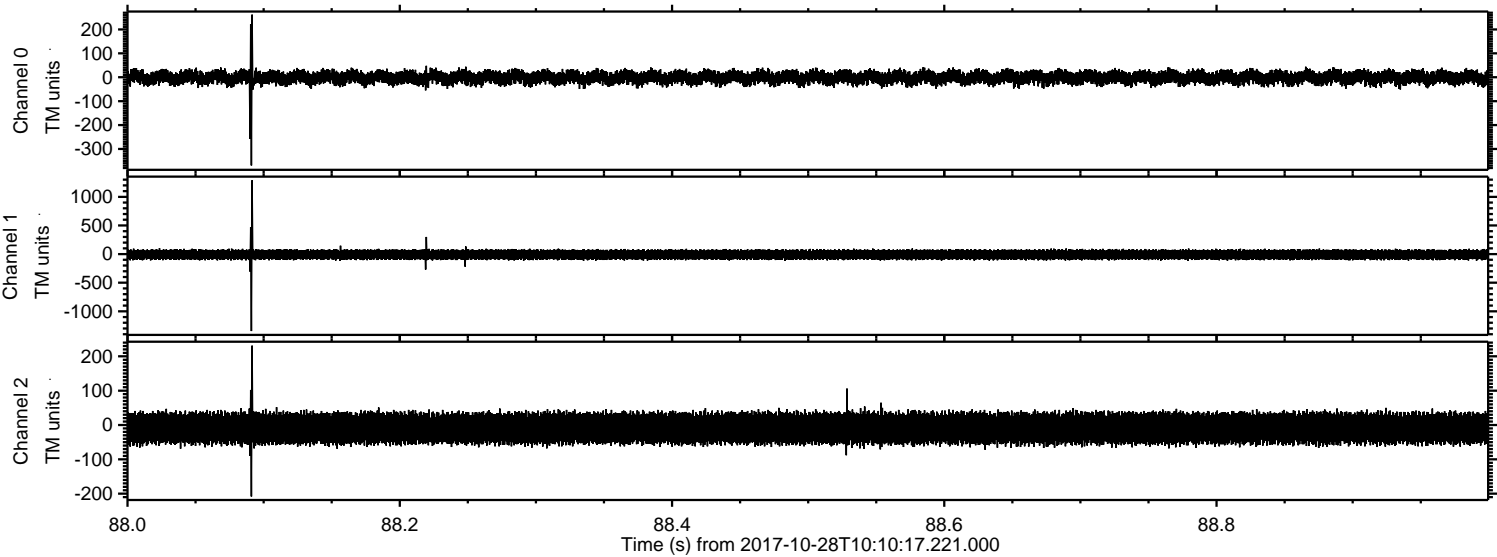
Channel 1
mn: -1347
mx: 1367
 μ : -9.7
 σ : 50.0

Channel 2
mn: -881
mx: 919
 μ : -9.4
 σ : 27.9

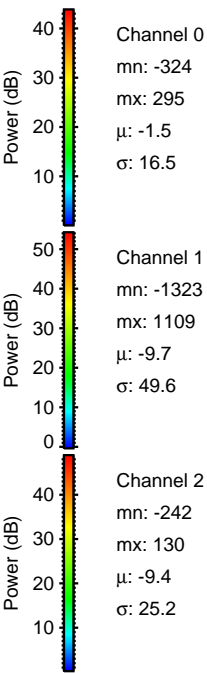
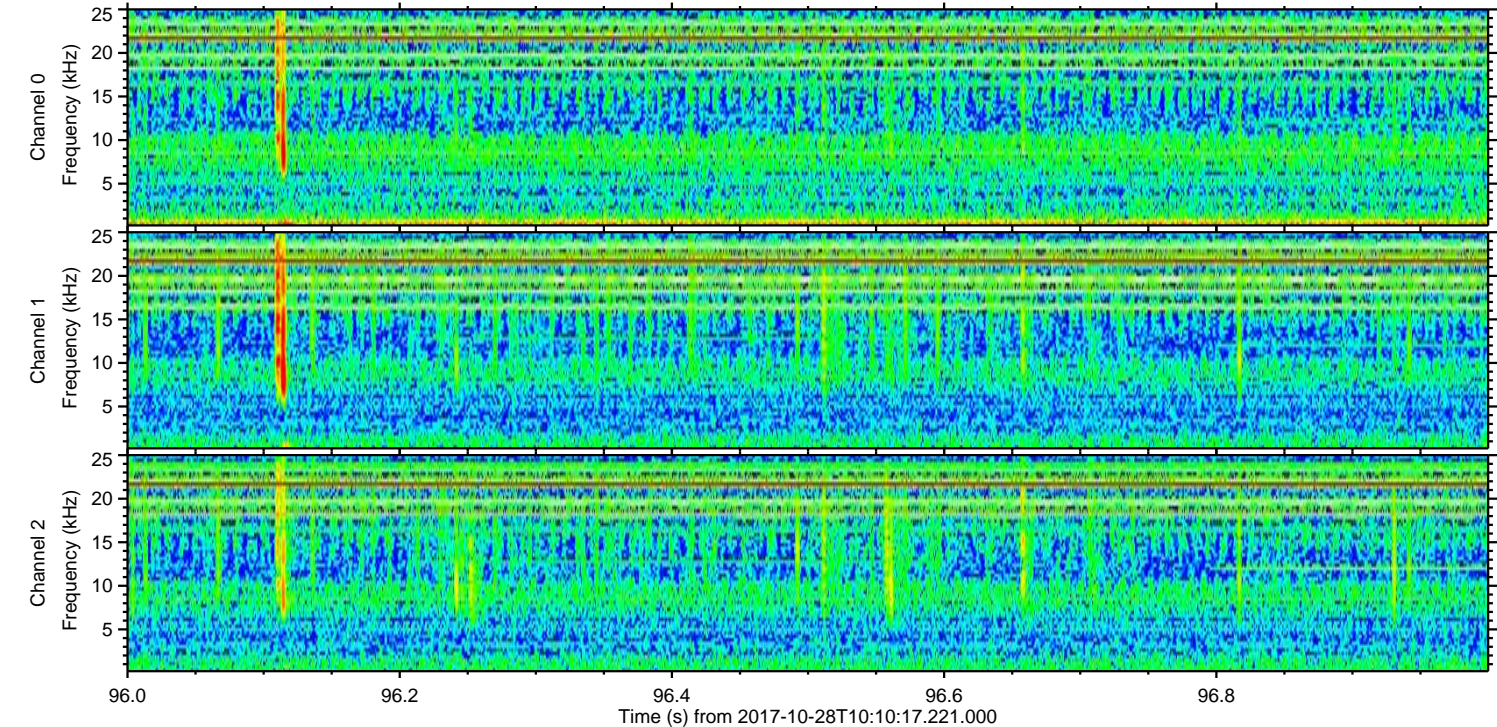
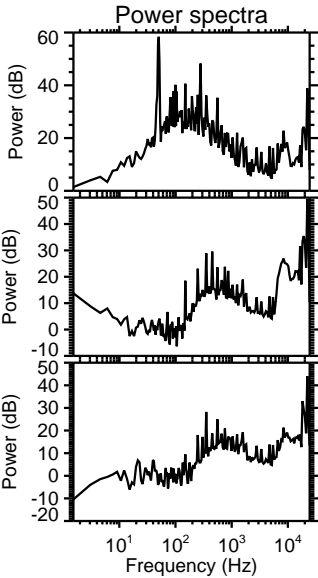
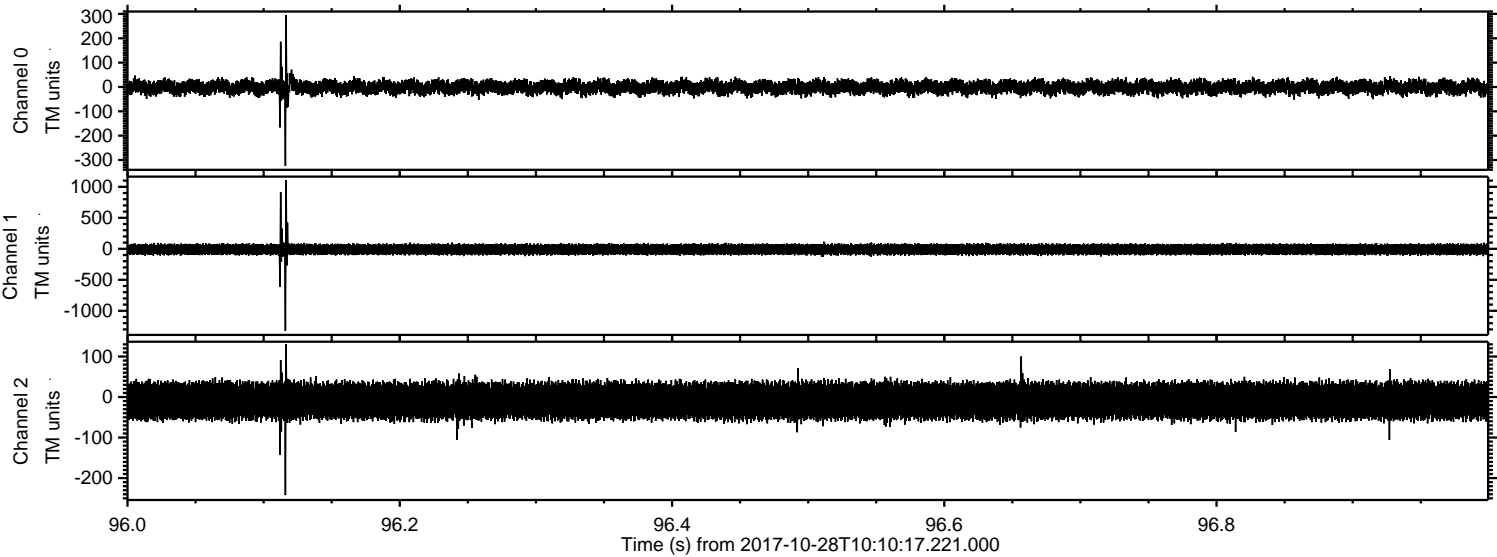
Processed Sat Oct 28 12:18:08 2017 by ELM ver.2012-10-06 from 001__elm20171028_101016__dat00.bin



Processed Sat Oct 28 12:18:08 2017 by ELM ver.2012-10-06 from 001__elm20171028_101016__dat00.bin



Processed Sat Oct 28 12:18:09 2017 by ELM ver.2012-10-06 from 001__elm20171028_101016__dat00.bin



Channel 0
mn: -324
mx: 295
 μ : -1.5
 σ : 16.5

Channel 1
mn: -1323
mx: 1109
 μ : -9.7
 σ : 49.6

Channel 2
mn: -242
mx: 130
 μ : -9.4
 σ : 25.2

Processed Sat Oct 28 12:18:10 2017 by ELM ver.2012-10-06 from 001__elm20171028_101016__dat00.bin

