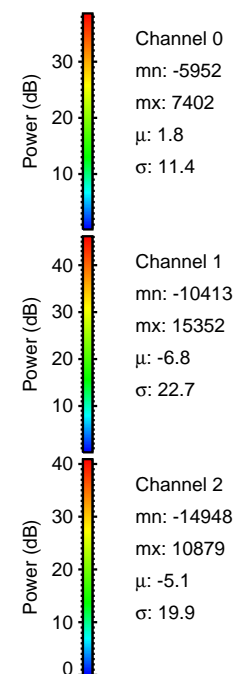
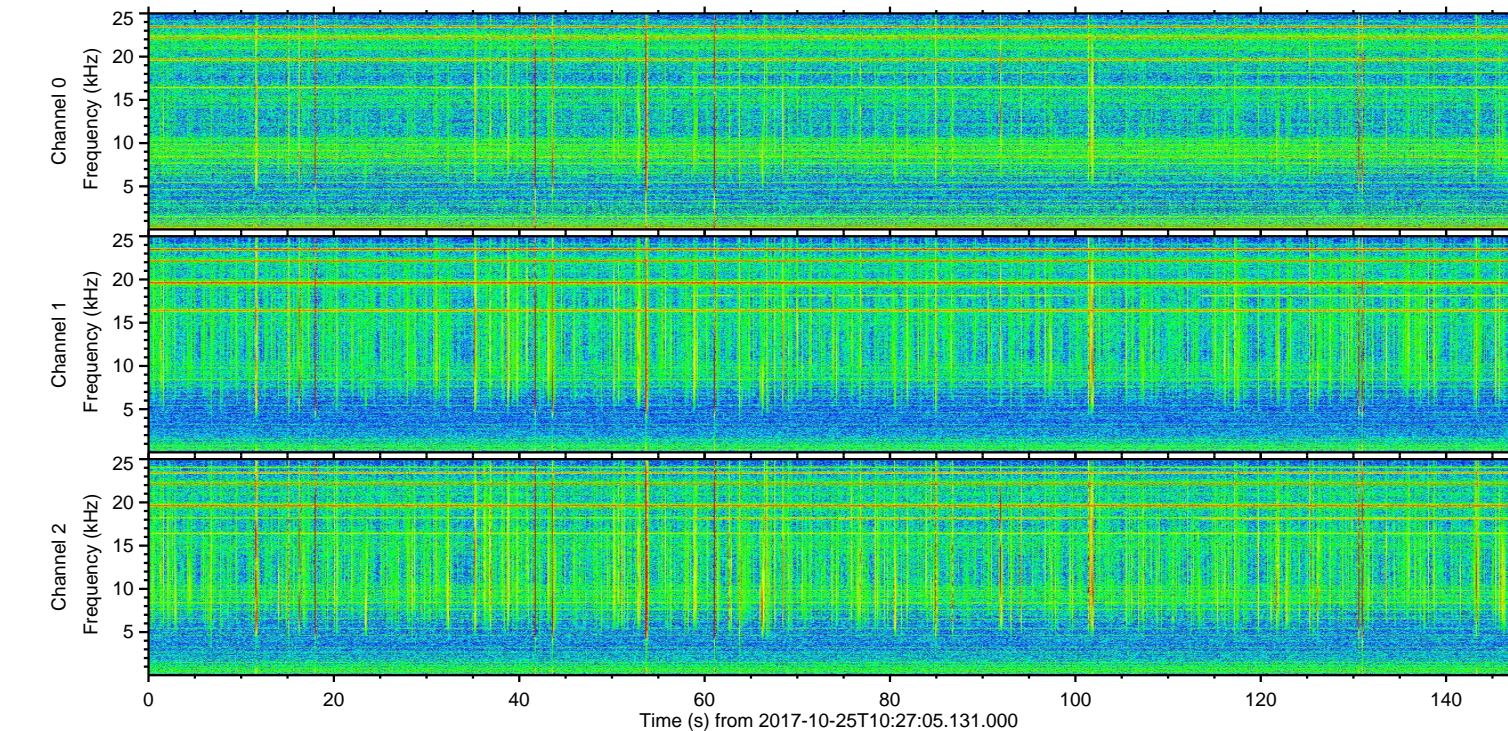
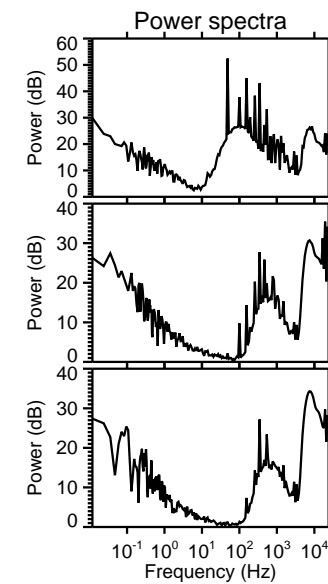
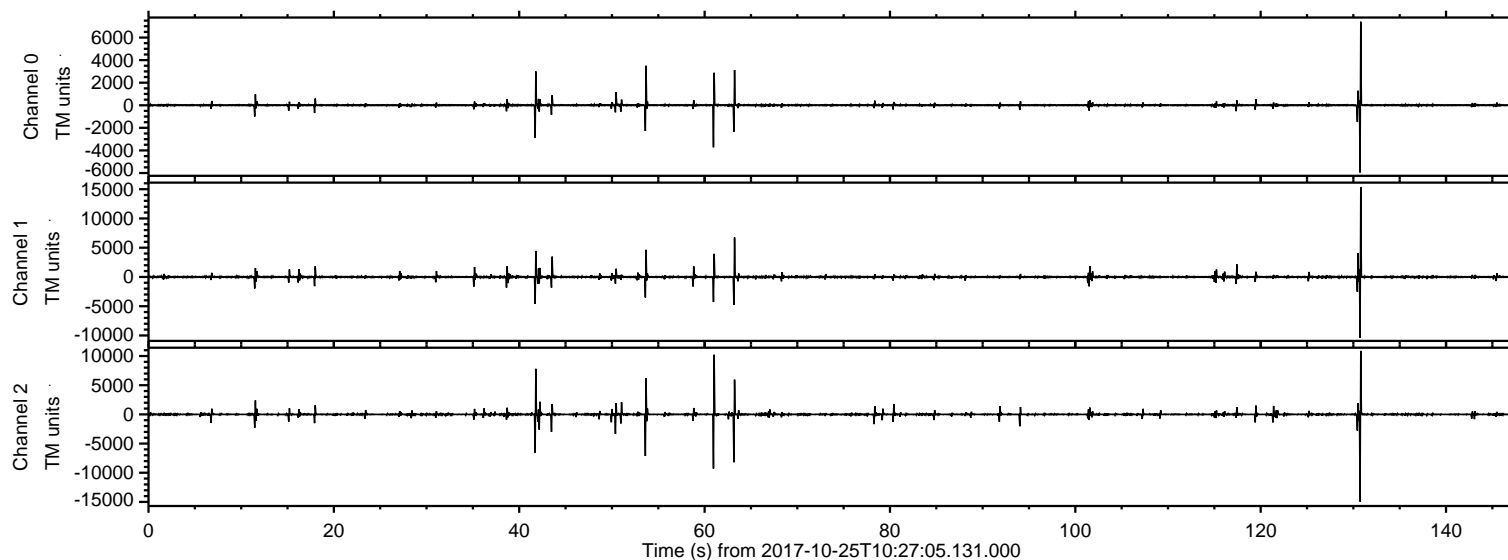


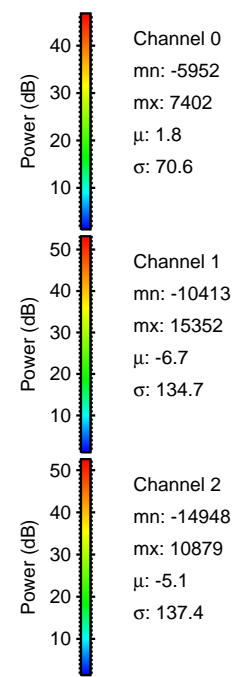
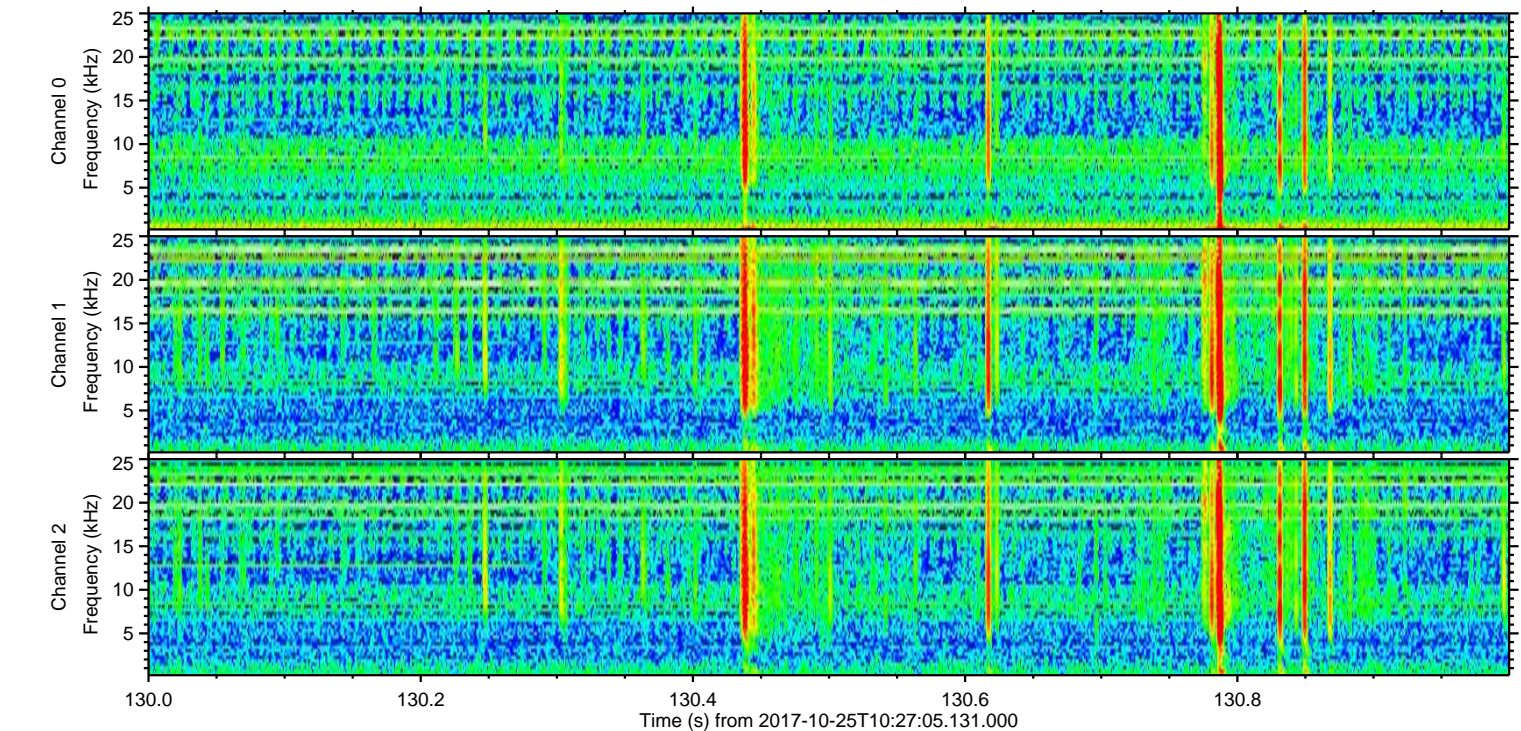
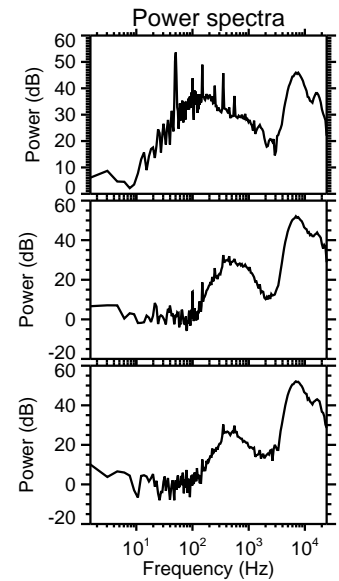
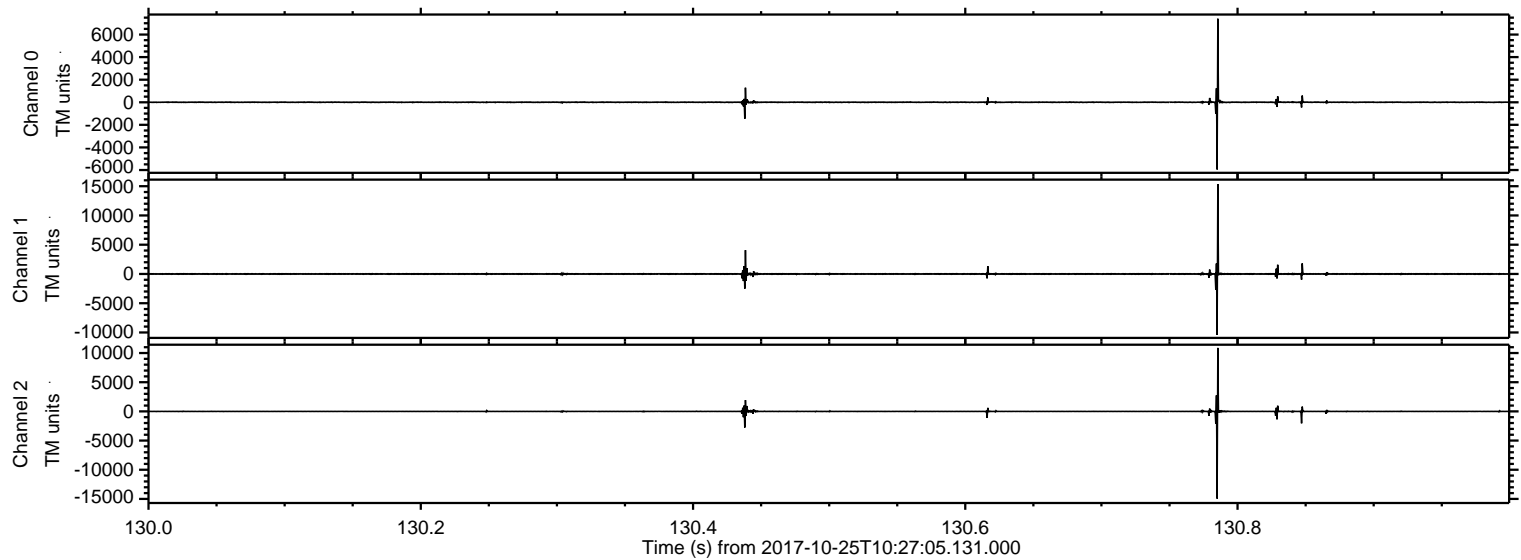
ELMAVAN 3D WAVEFORMS (Measured data sampled at 50 kHz) 51000 packets of 144 samples from 2017-10-25T10:27:05.131.000.

Processed Wed Oct 25 12:35:31 2017 by ELM ver.2012-10-06 from 001__elm20171025_102704__dat00.bin

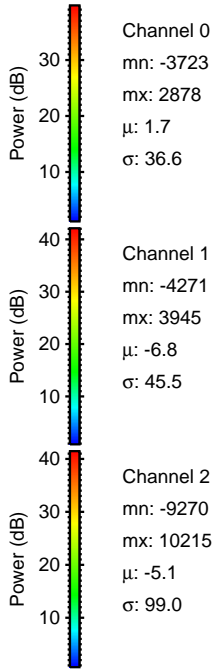
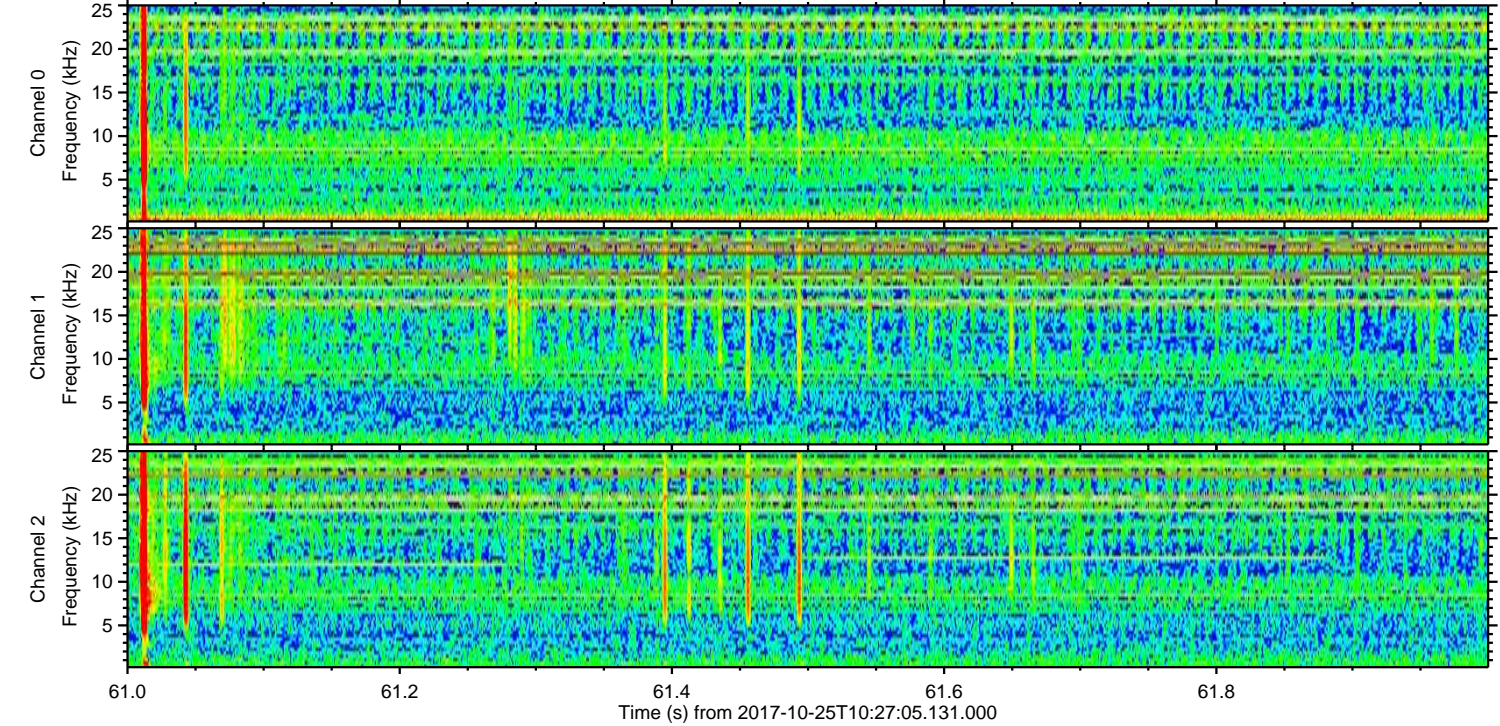
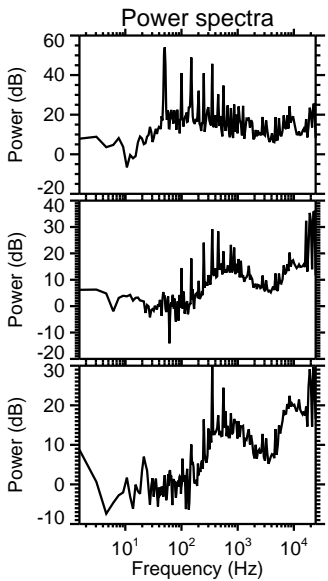
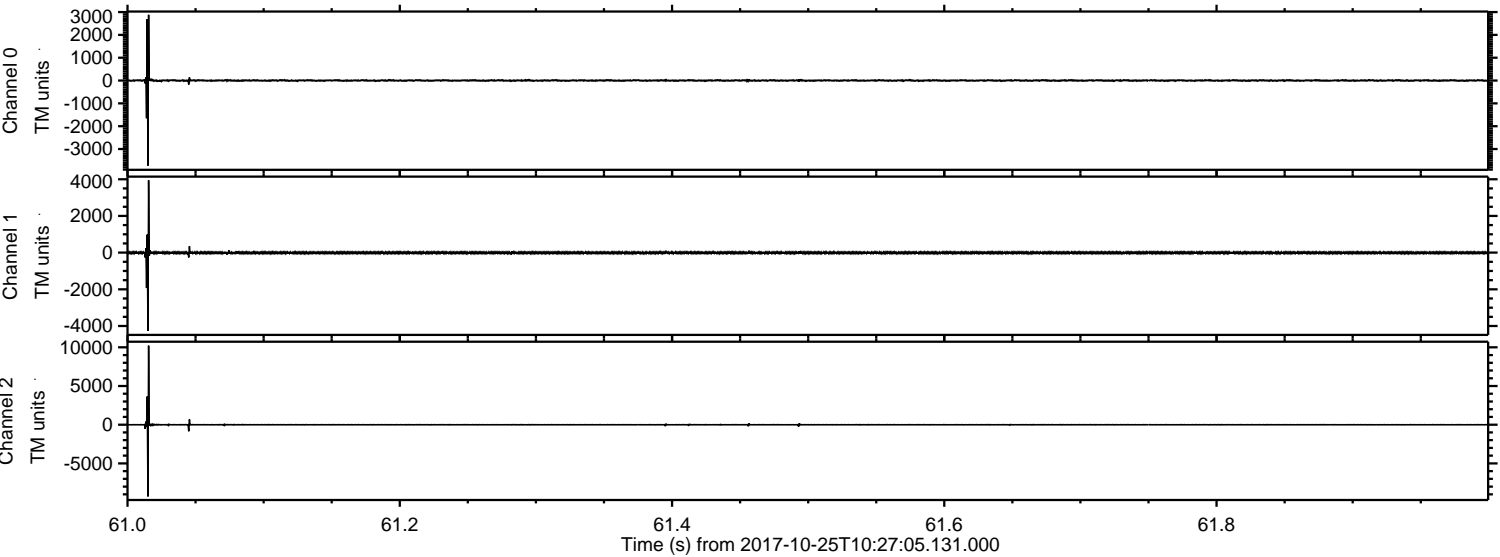


ELMAVAN 3D WAVEFORMS (Measured data sampled at 50 kHz) 51000 packets of 144 samples from 2017-10-25T10:27:05.131.000. Part 131/147

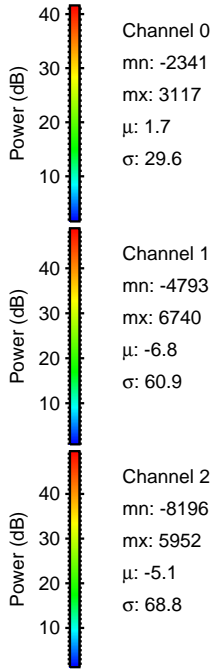
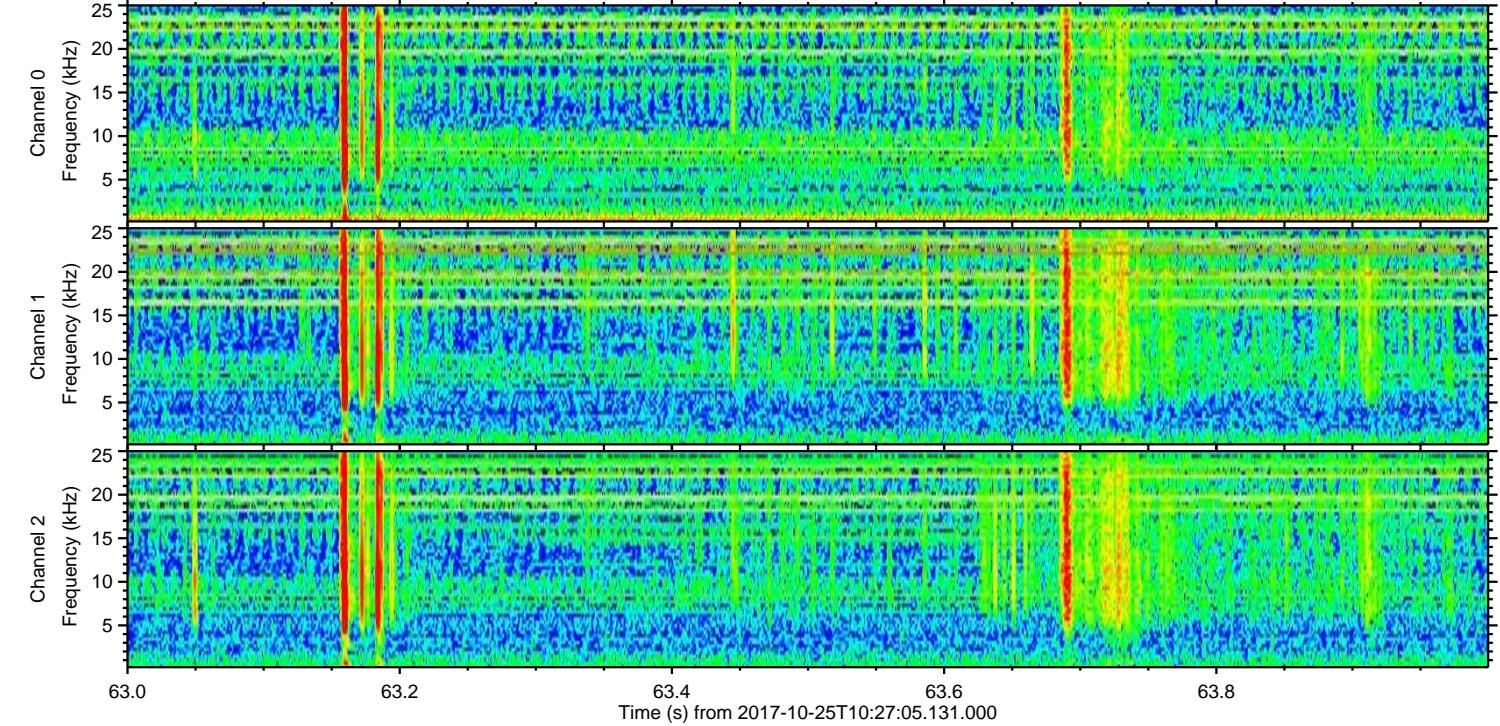
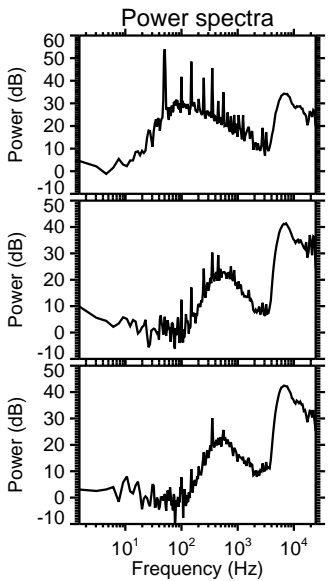
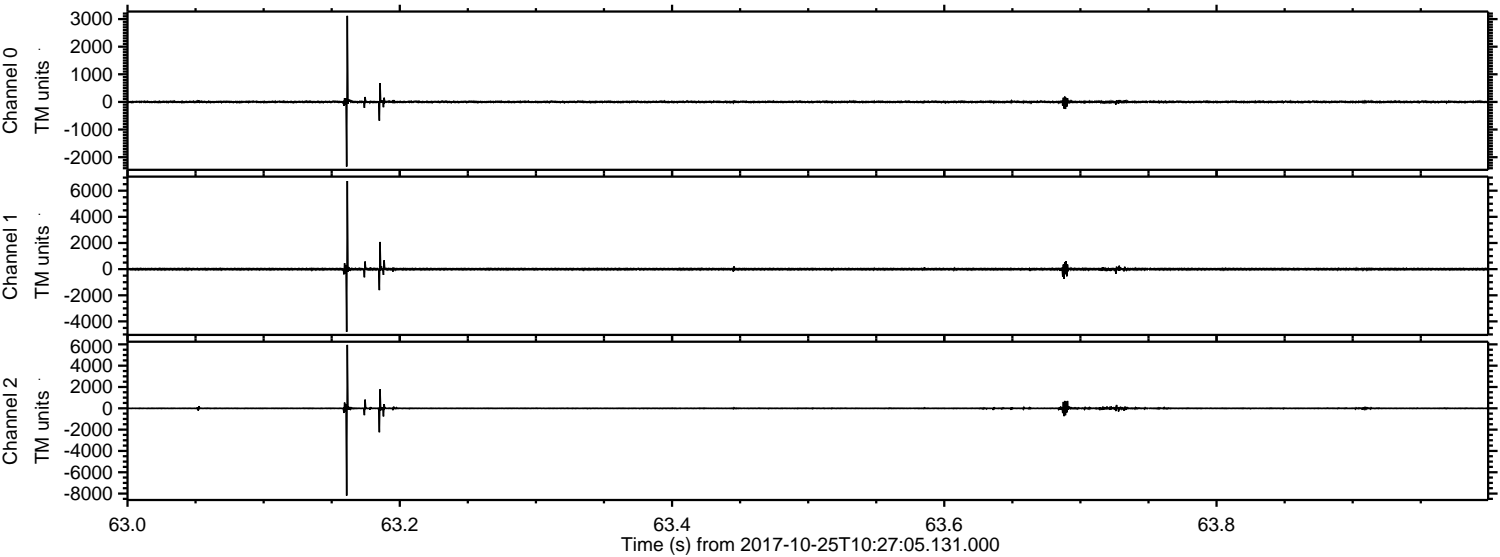
Processed Wed Oct 25 12:35:37 2017 by ELM ver.2012-10-06 from 001__elm20171025_102704__dat00.bin



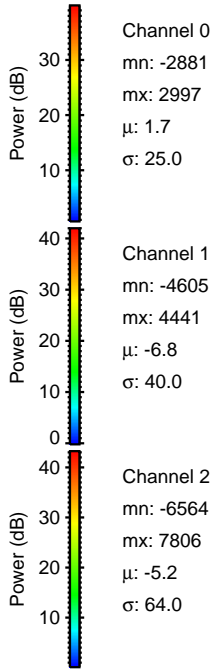
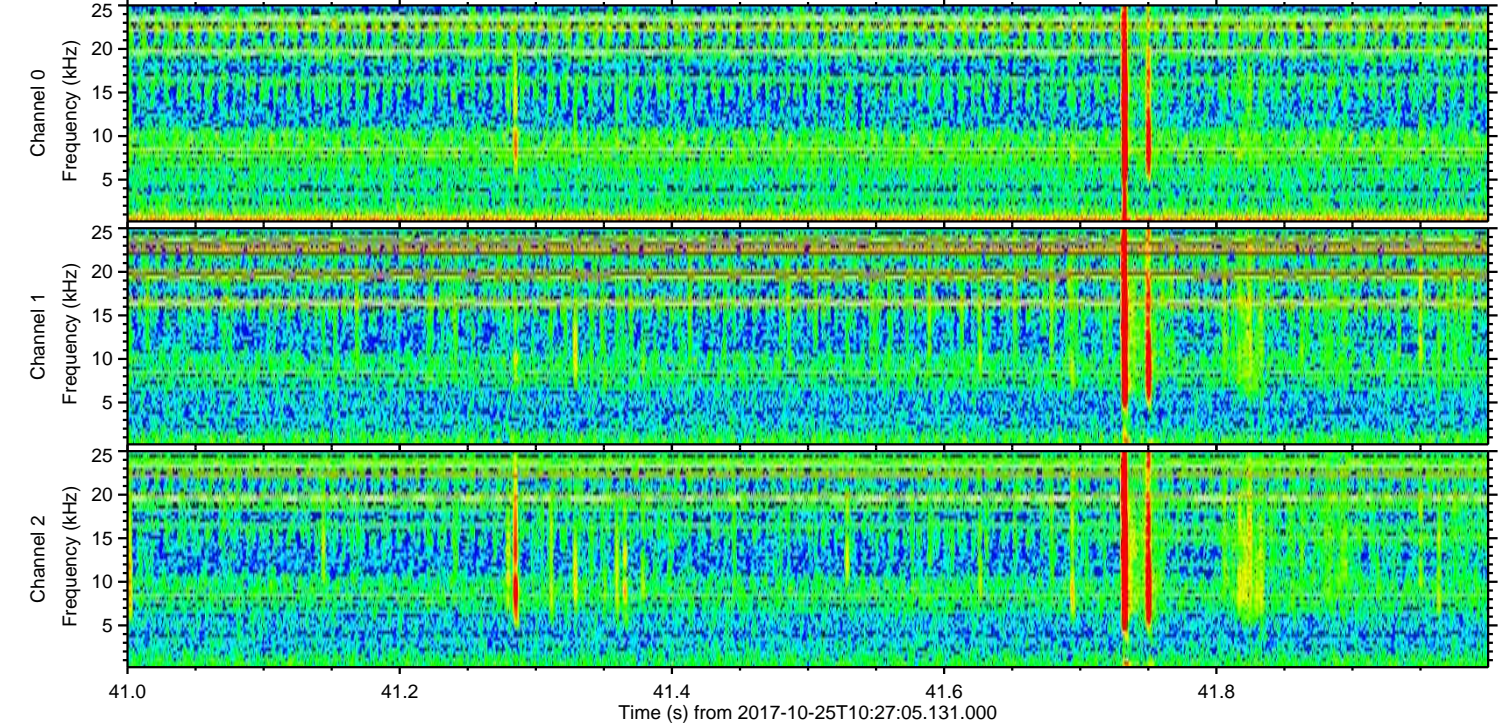
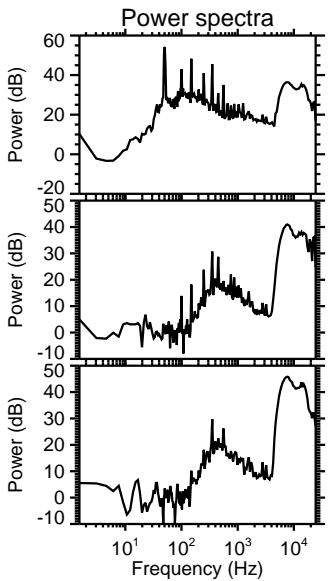
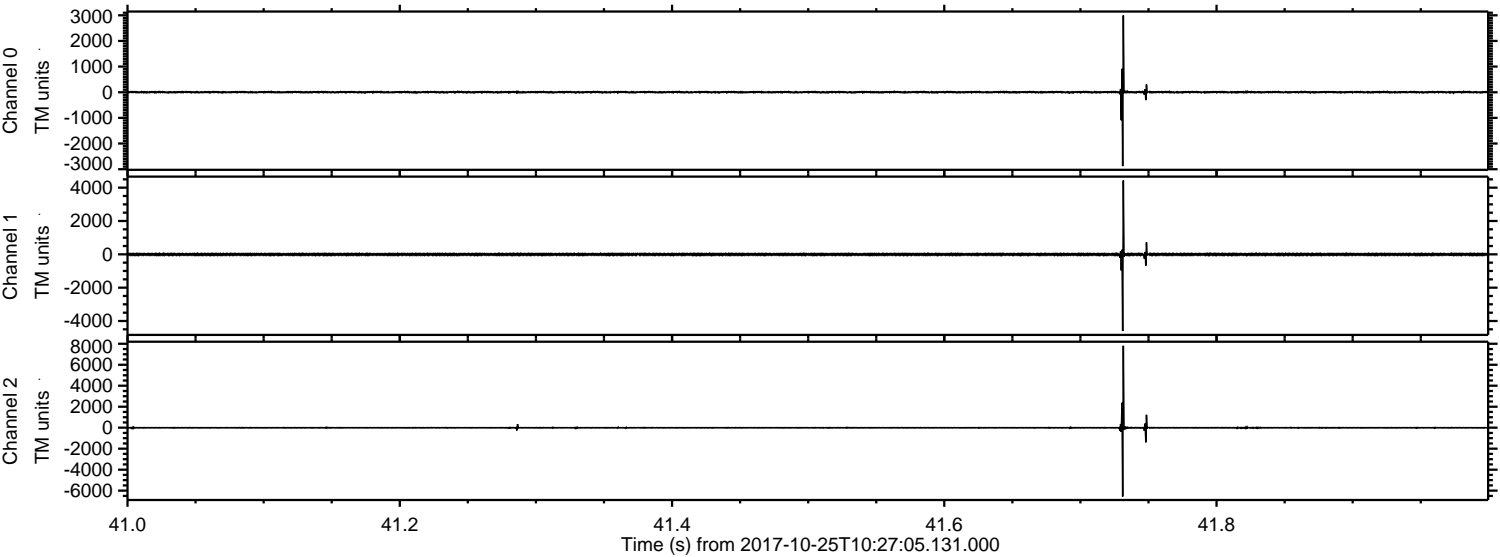
Processed Wed Oct 25 12:35:38 2017 by ELM ver.2012-10-06 from 001__elm20171025_102704__dat00.bin



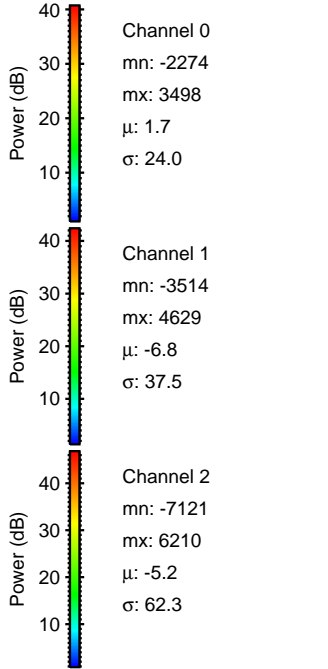
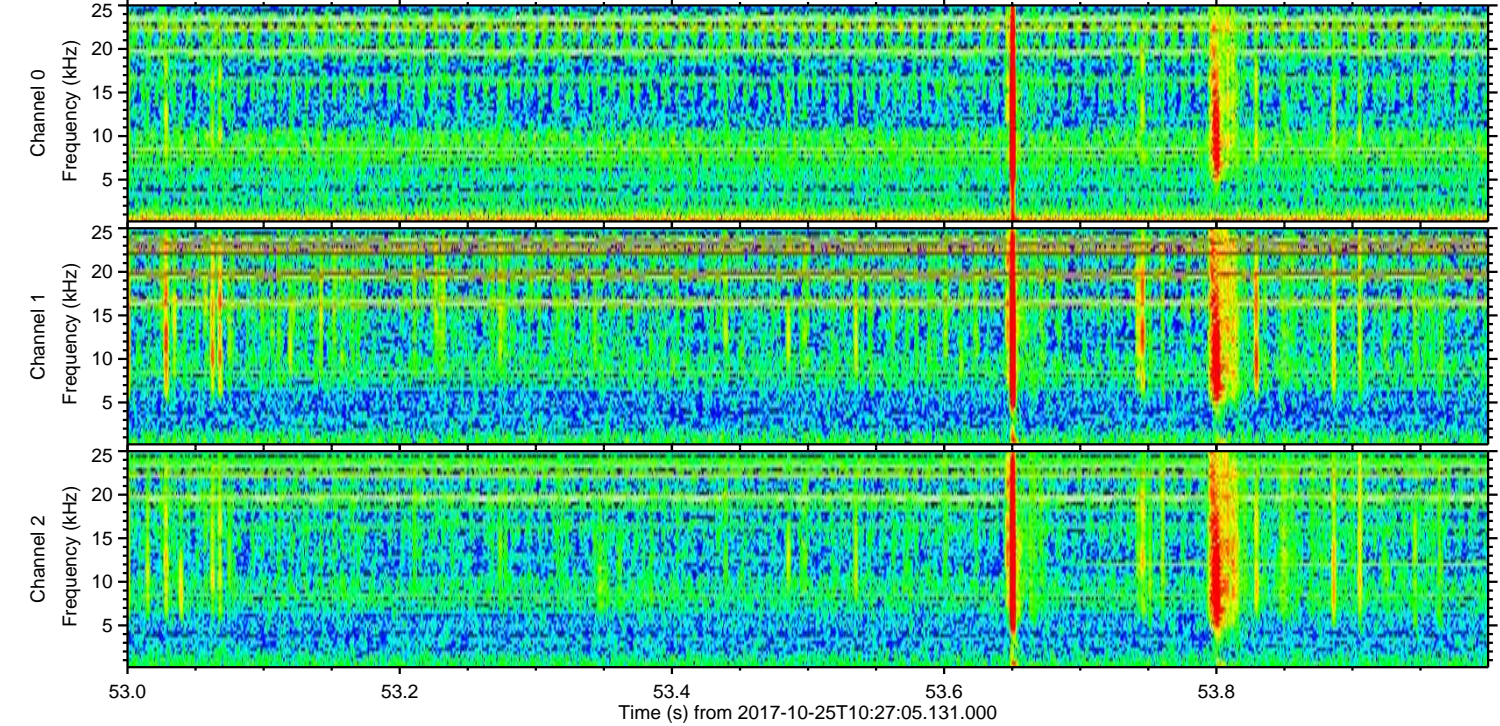
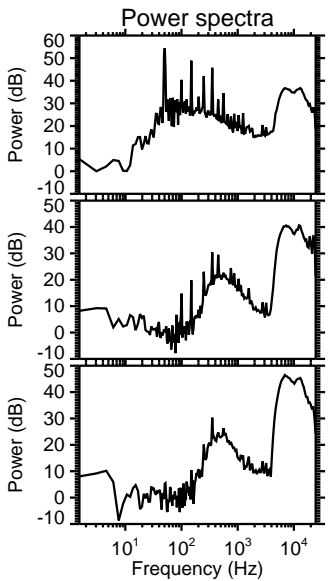
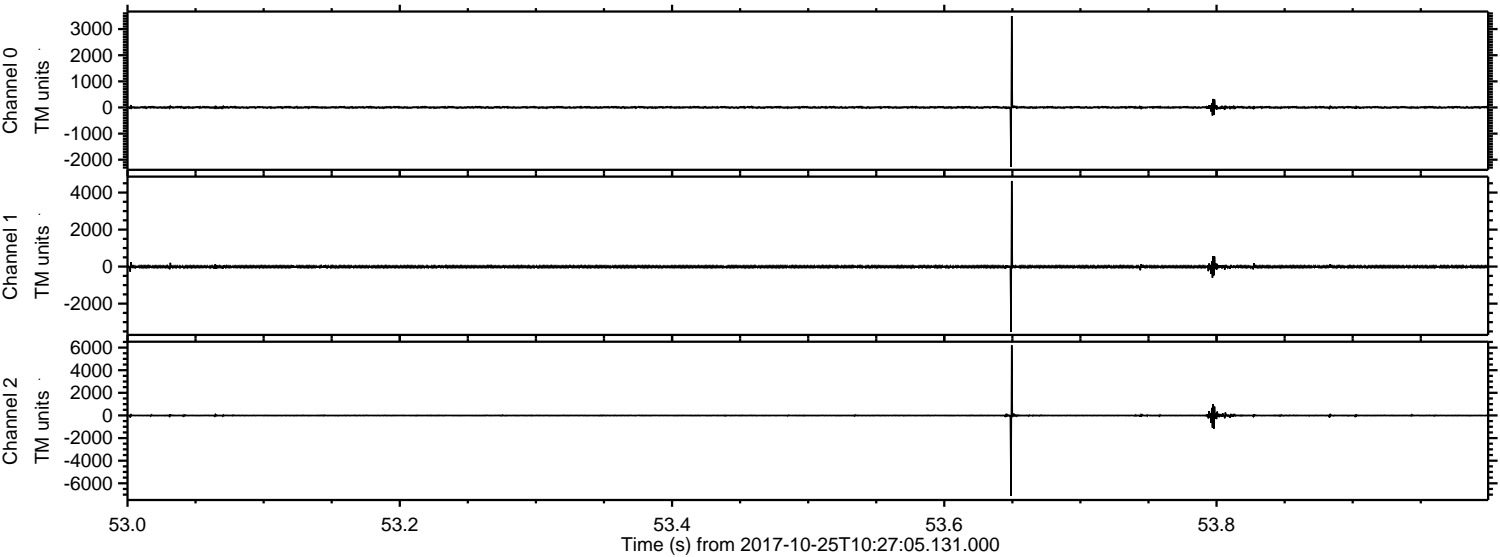
Processed Wed Oct 25 12:35:39 2017 by ELM ver.2012-10-06 from 001__elm20171025_102704__dat00.bin



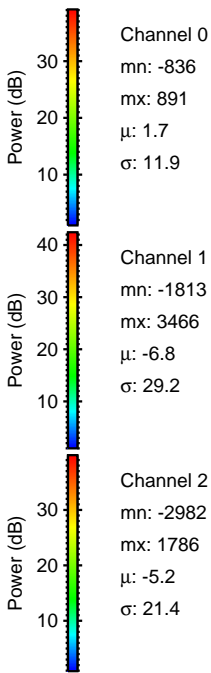
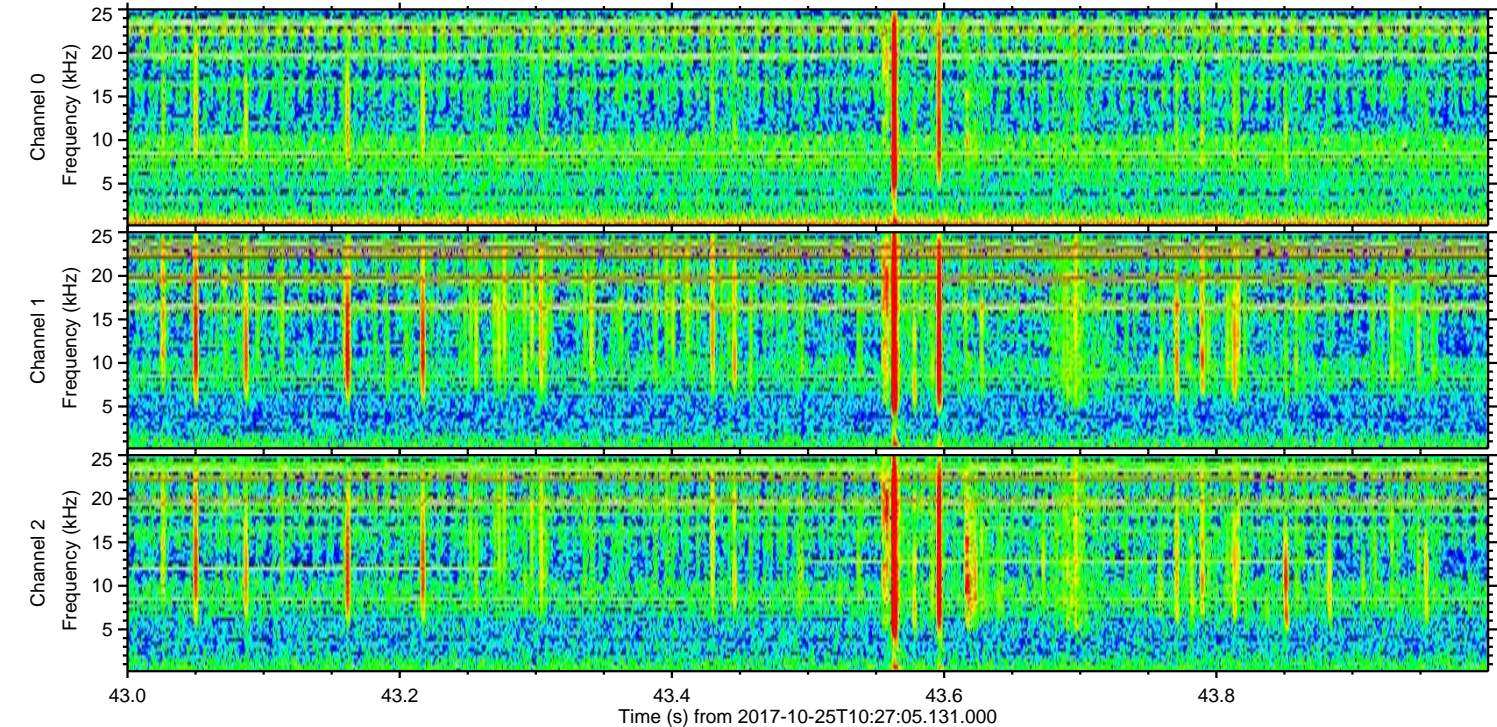
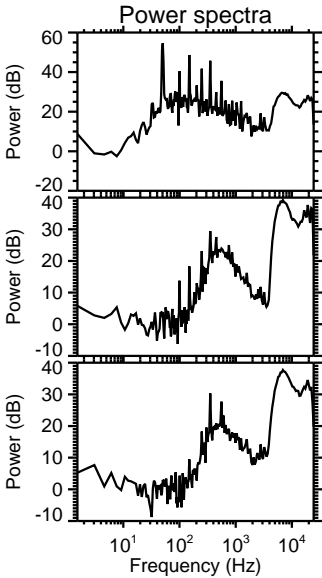
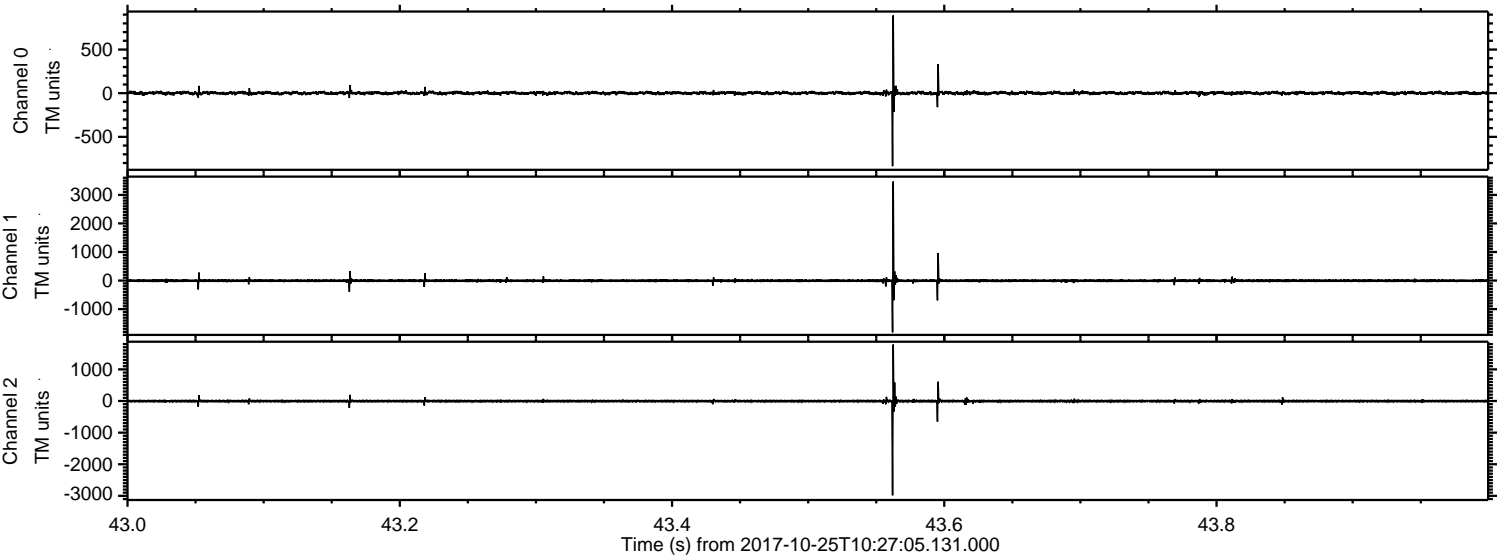
Processed Wed Oct 25 12:35:40 2017 by ELM ver.2012-10-06 from 001__elm20171025_102704__dat00.bin



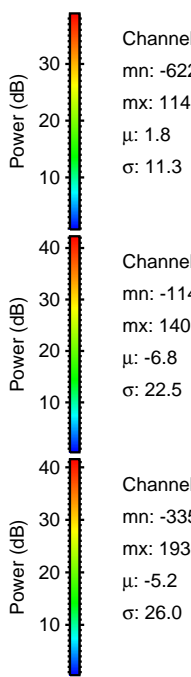
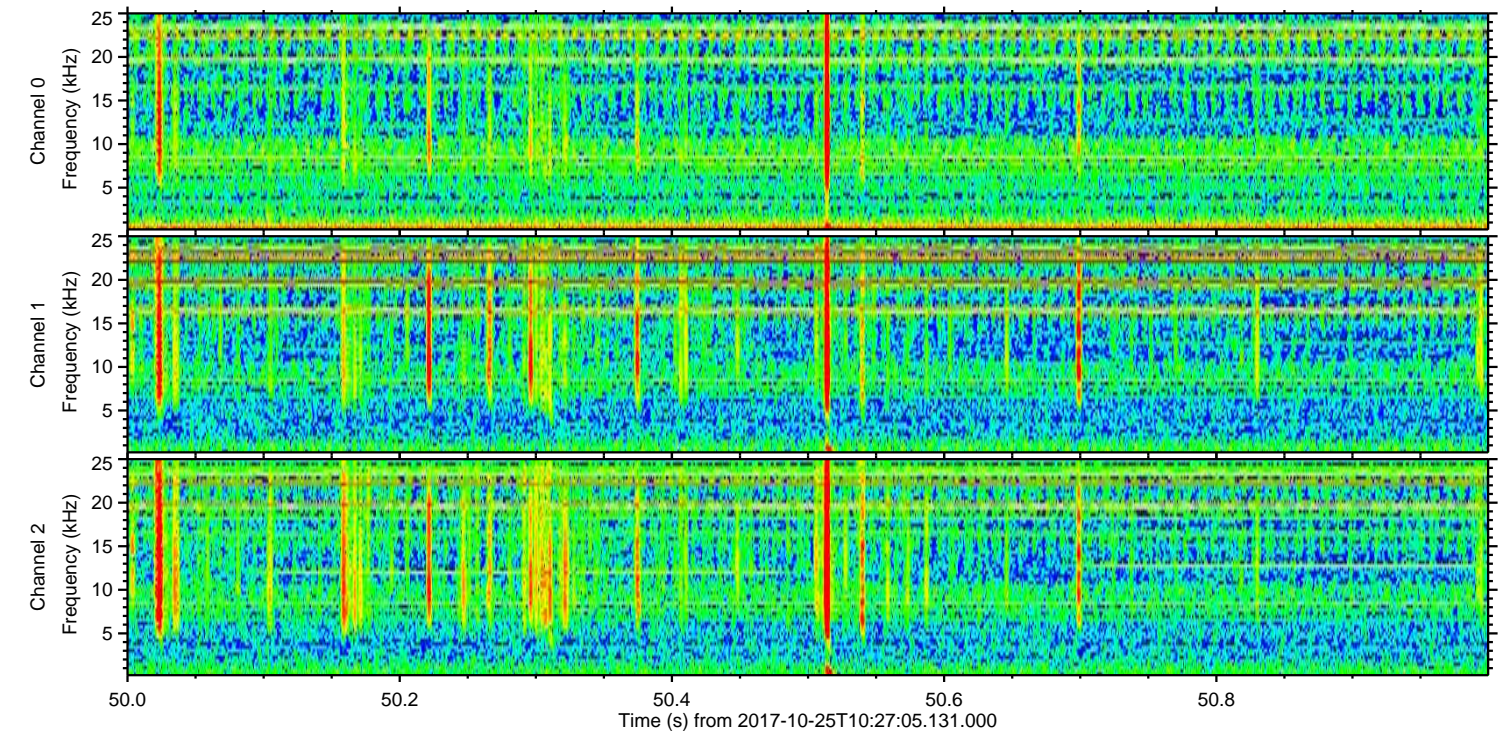
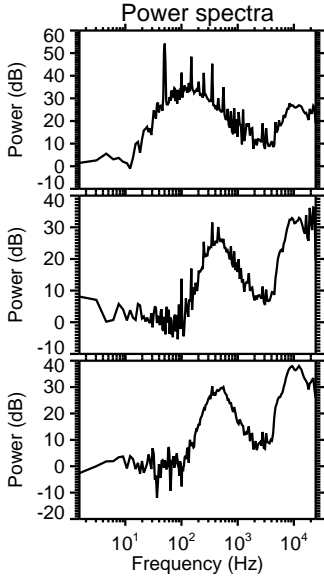
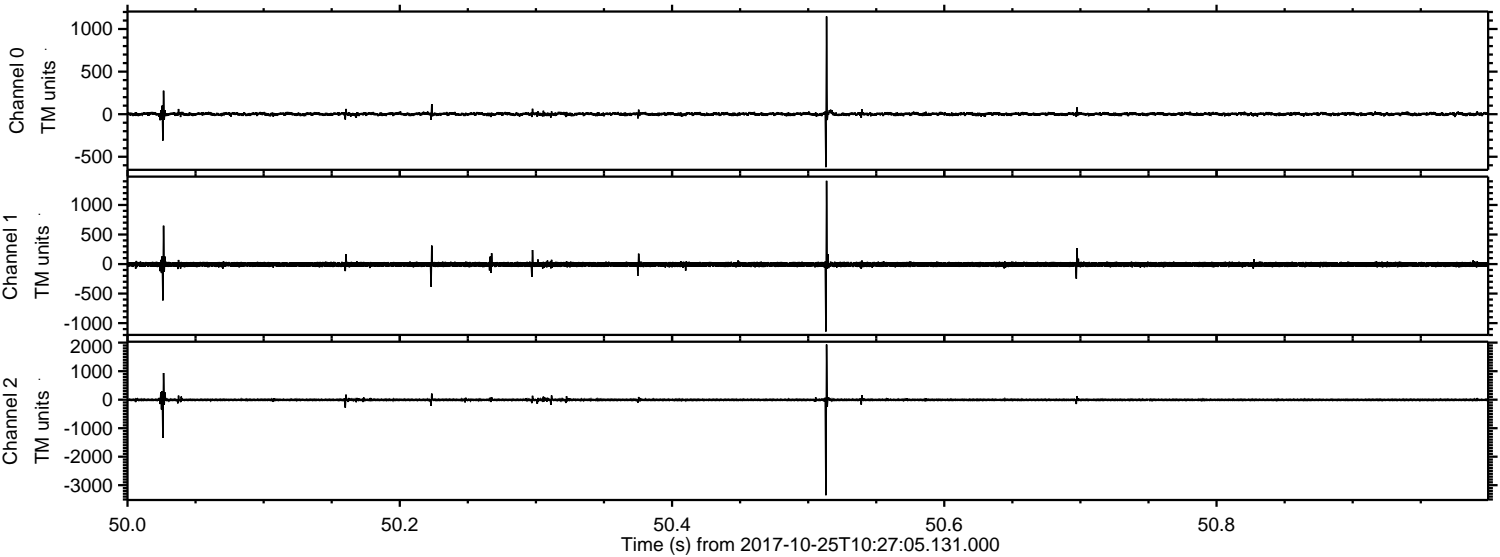
Processed Wed Oct 25 12:35:40 2017 by ELM ver.2012-10-06 from 001__elm20171025_102704__dat00.bin



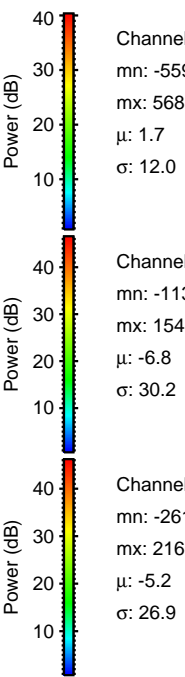
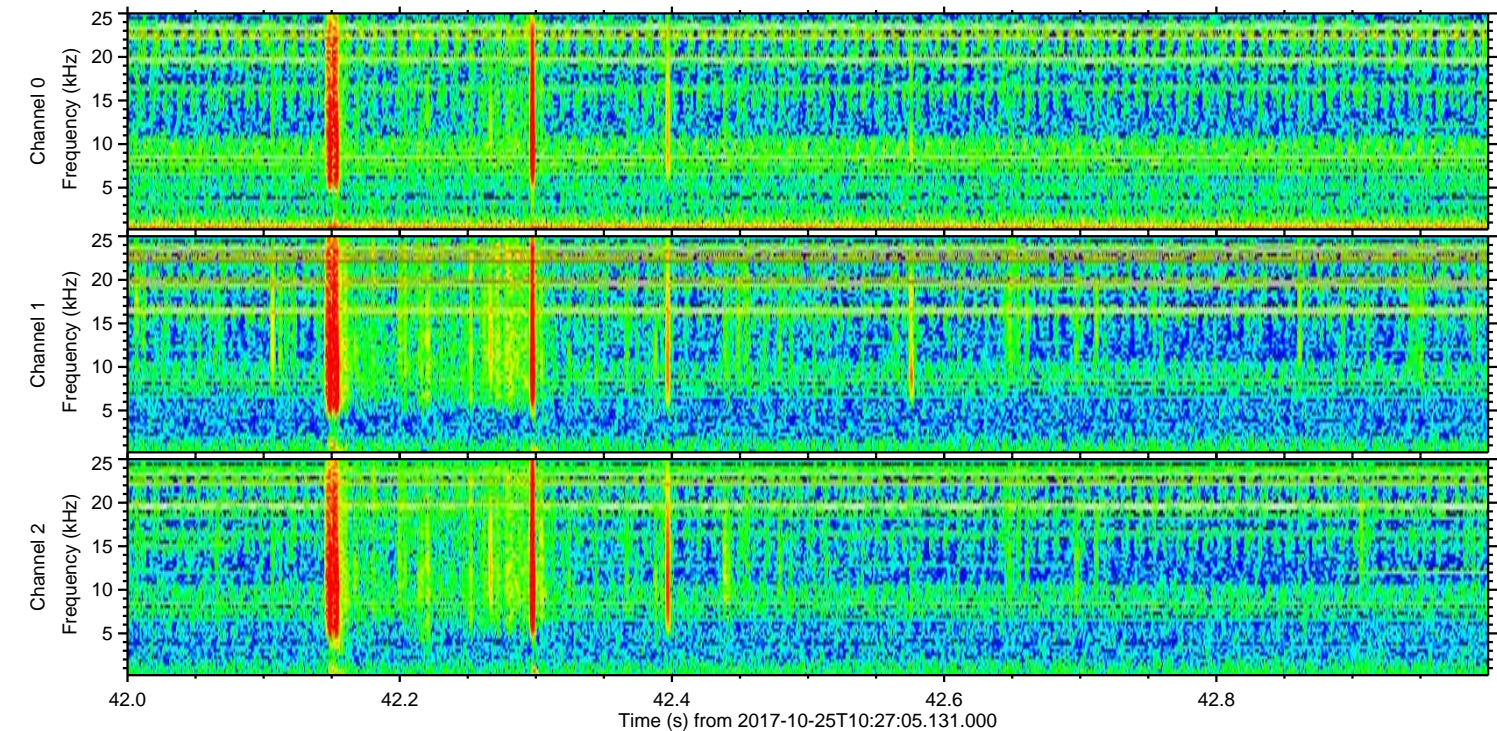
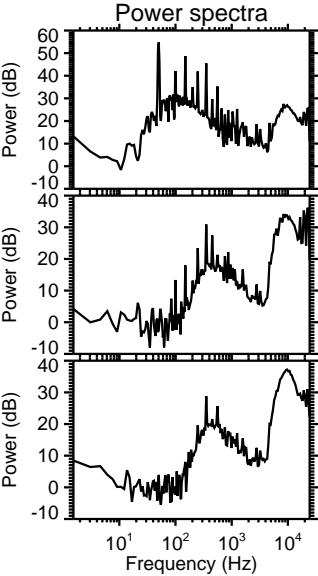
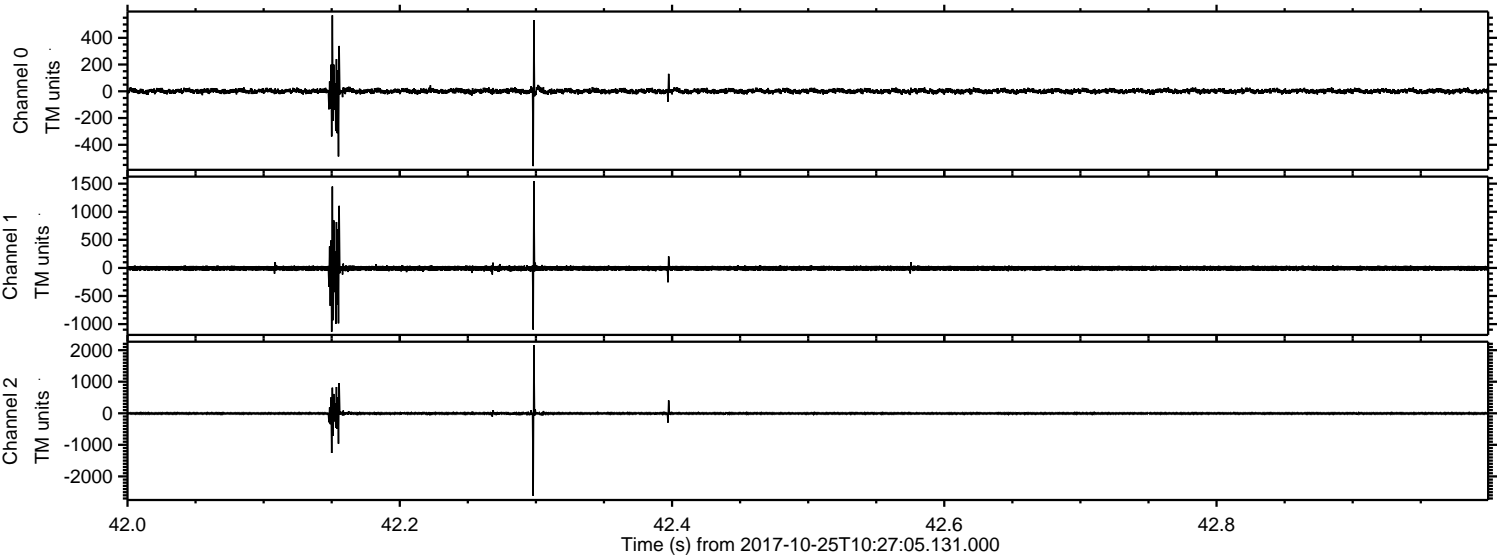
Processed Wed Oct 25 12:35:41 2017 by ELM ver.2012-10-06 from 001__elm20171025_102704__dat00.bin



Processed Wed Oct 25 12:35:42 2017 by ELM ver.2012-10-06 from 001__elm20171025_102704__dat00.bin

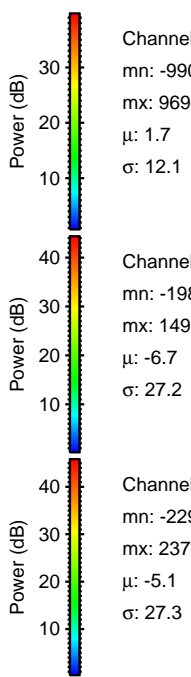
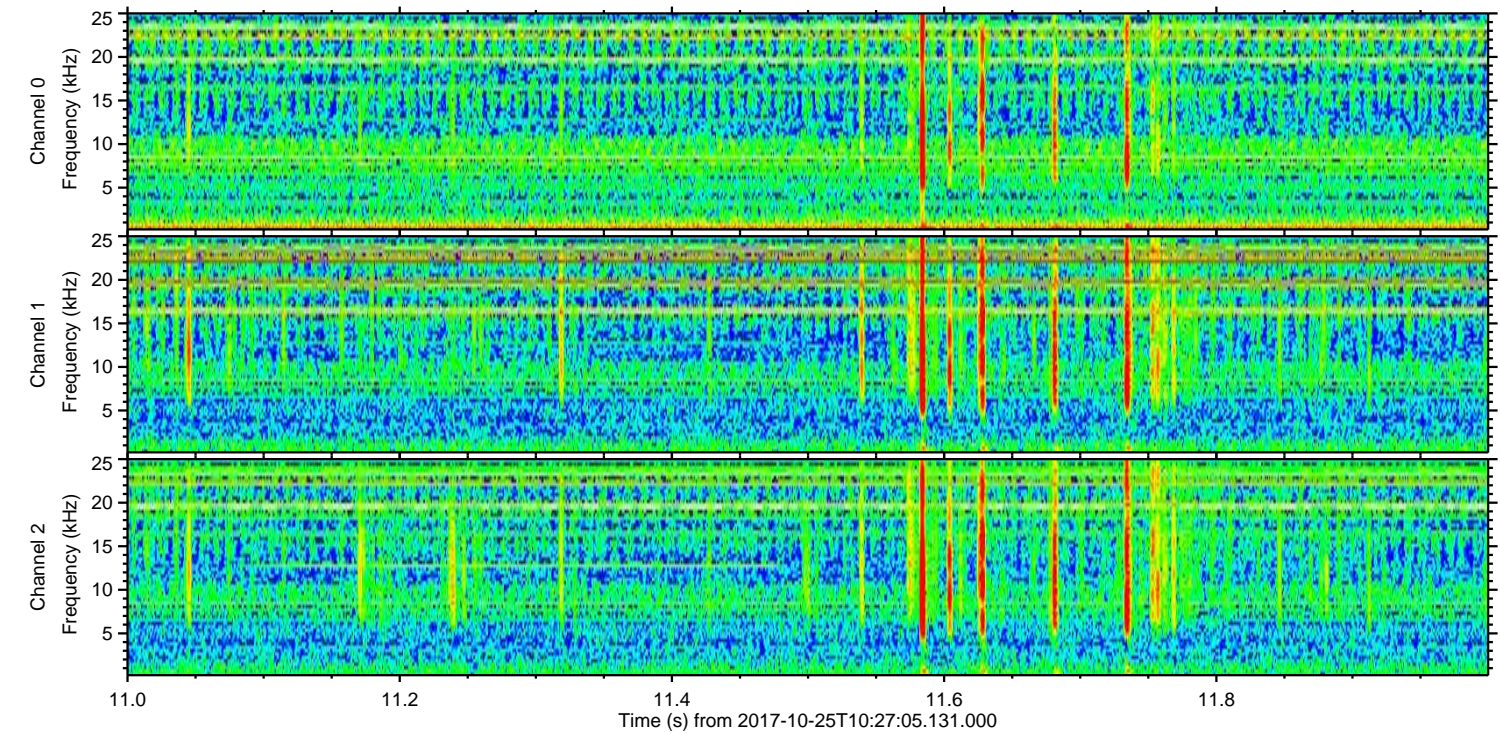
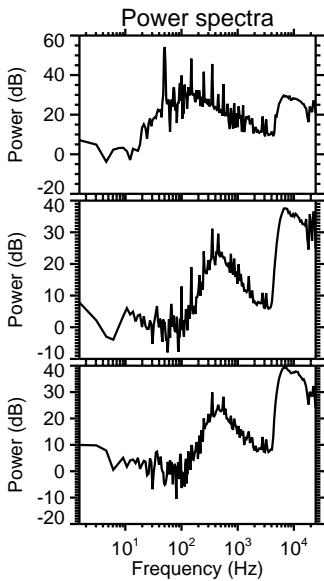
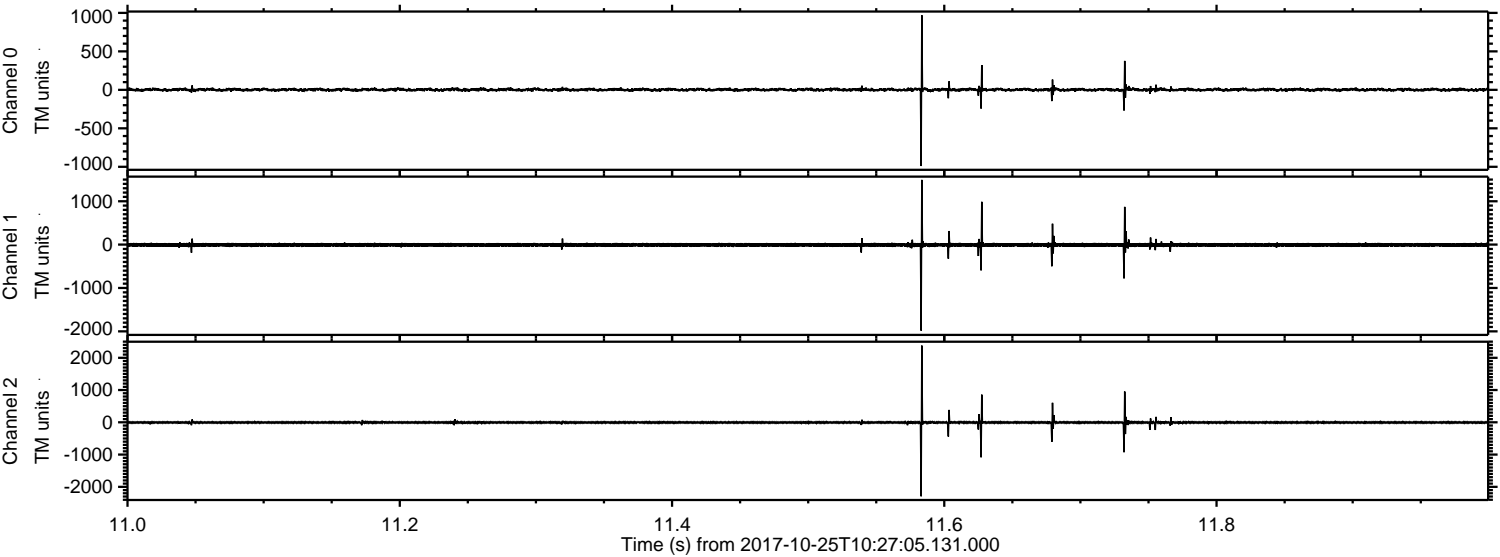


Processed Wed Oct 25 12:35:43 2017 by ELM ver.2012-10-06 from 001__elm20171025_102704__dat00.bin



ELMAVAN 3D WAVEFORMS (Measured data sampled at 50 kHz) 51000 packets of 144 samples from 2017-10-25T10:27:05.131.000. Part 12/147

Processed Wed Oct 25 12:35:43 2017 by ELM ver.2012-10-06 from 001__elm20171025_102704__dat00.bin



Channel 0
mn: -990
mx: 969
 μ : 1.7
 σ : 12.1

Channel 1
mn: -1983
mx: 1493
 μ : -6.7
 σ : 27.2

Channel 2
mn: -2293
mx: 2379
 μ : -5.1
 σ : 27.3

Processed Wed Oct 25 12:35:44 2017 by ELM ver.2012-10-06 from 001__elm20171025_102704__dat00.bin

