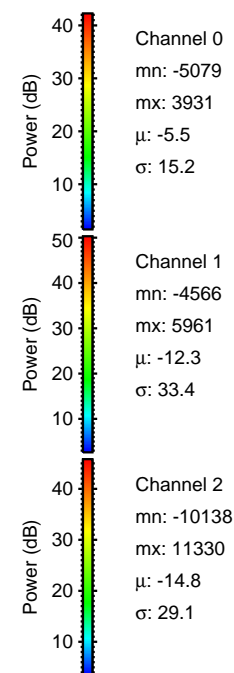
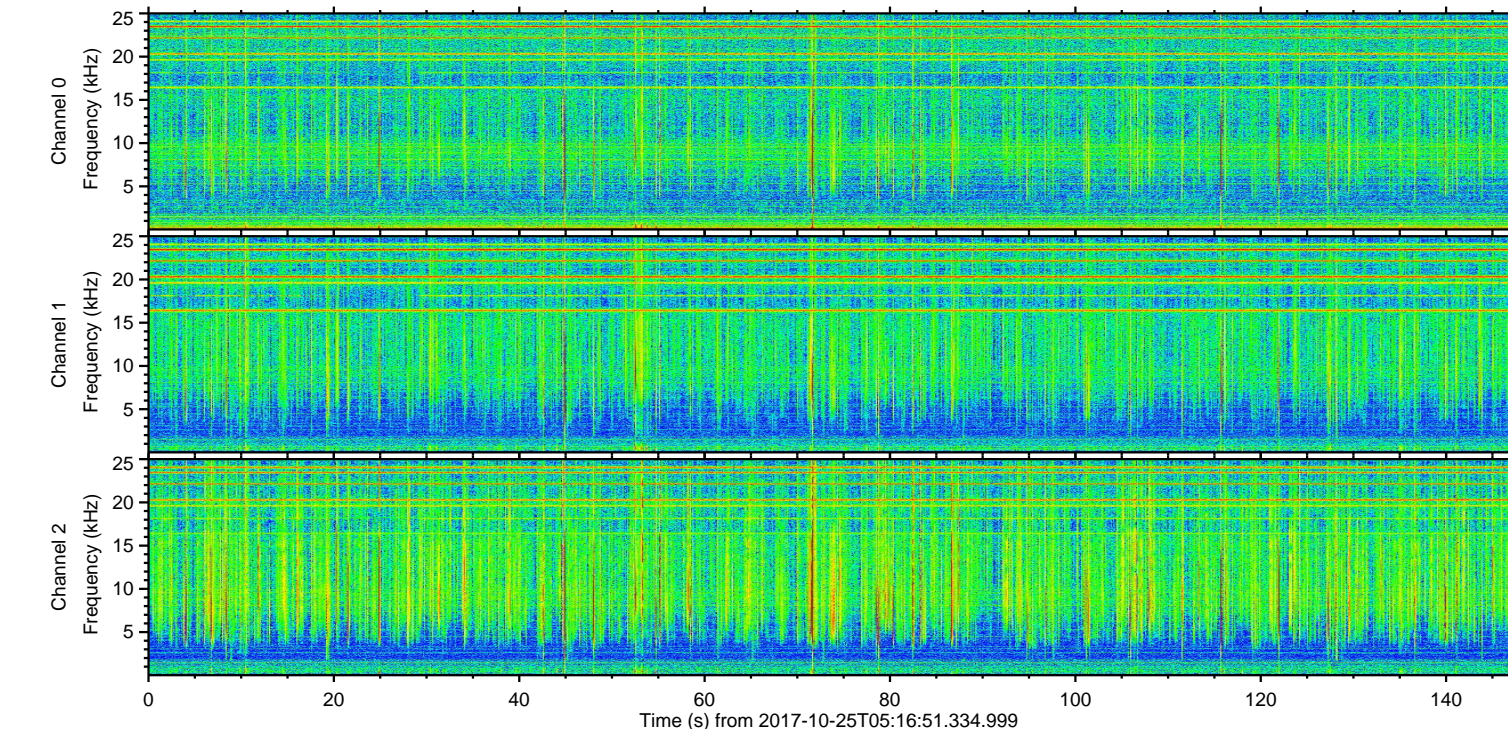
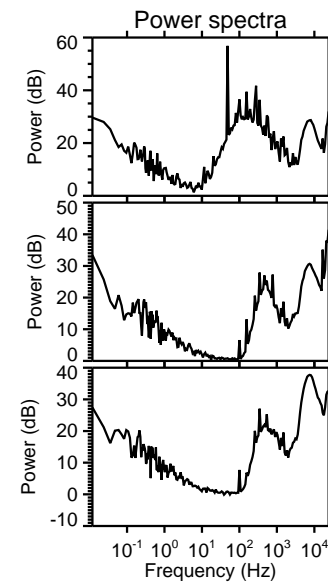
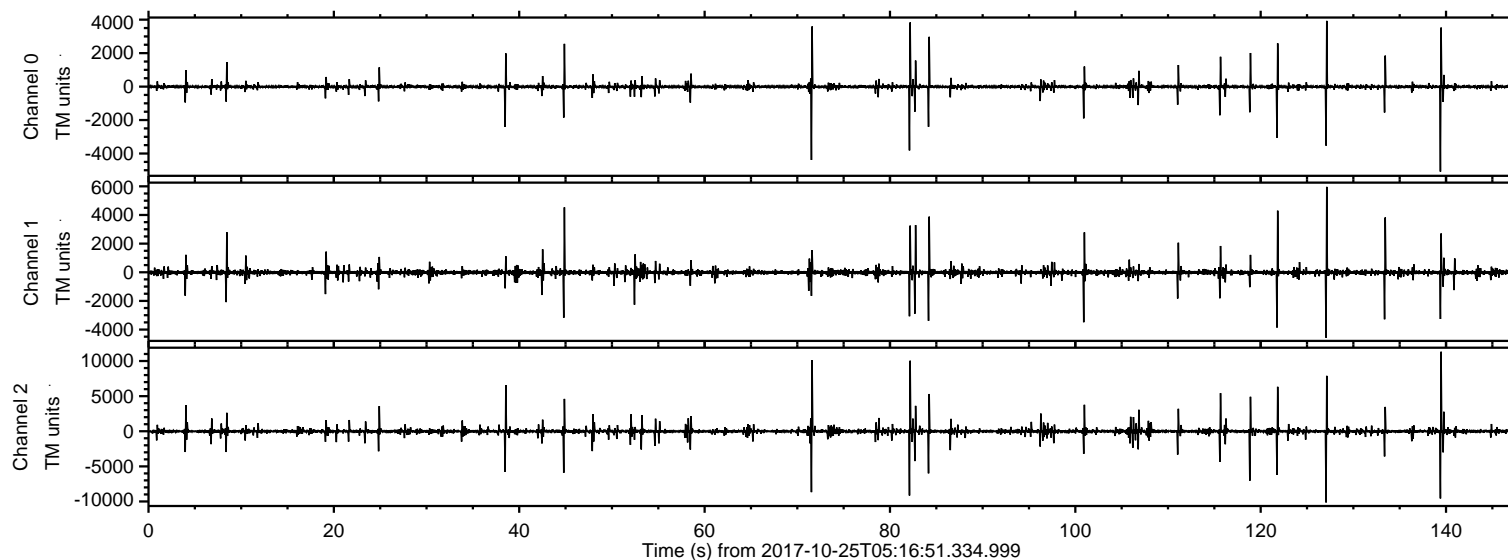


ELMAVAN 3D WAVEFORMS (Measured data sampled at 50 kHz) 51000 packets of 144 samples from 2017-10-25T05:16:51.334.999.

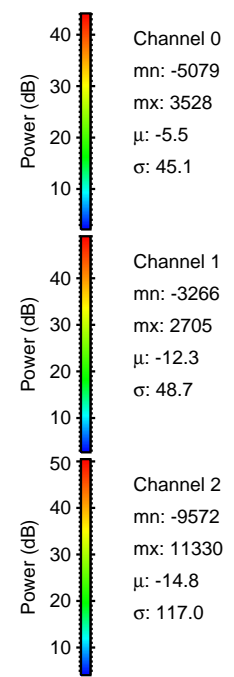
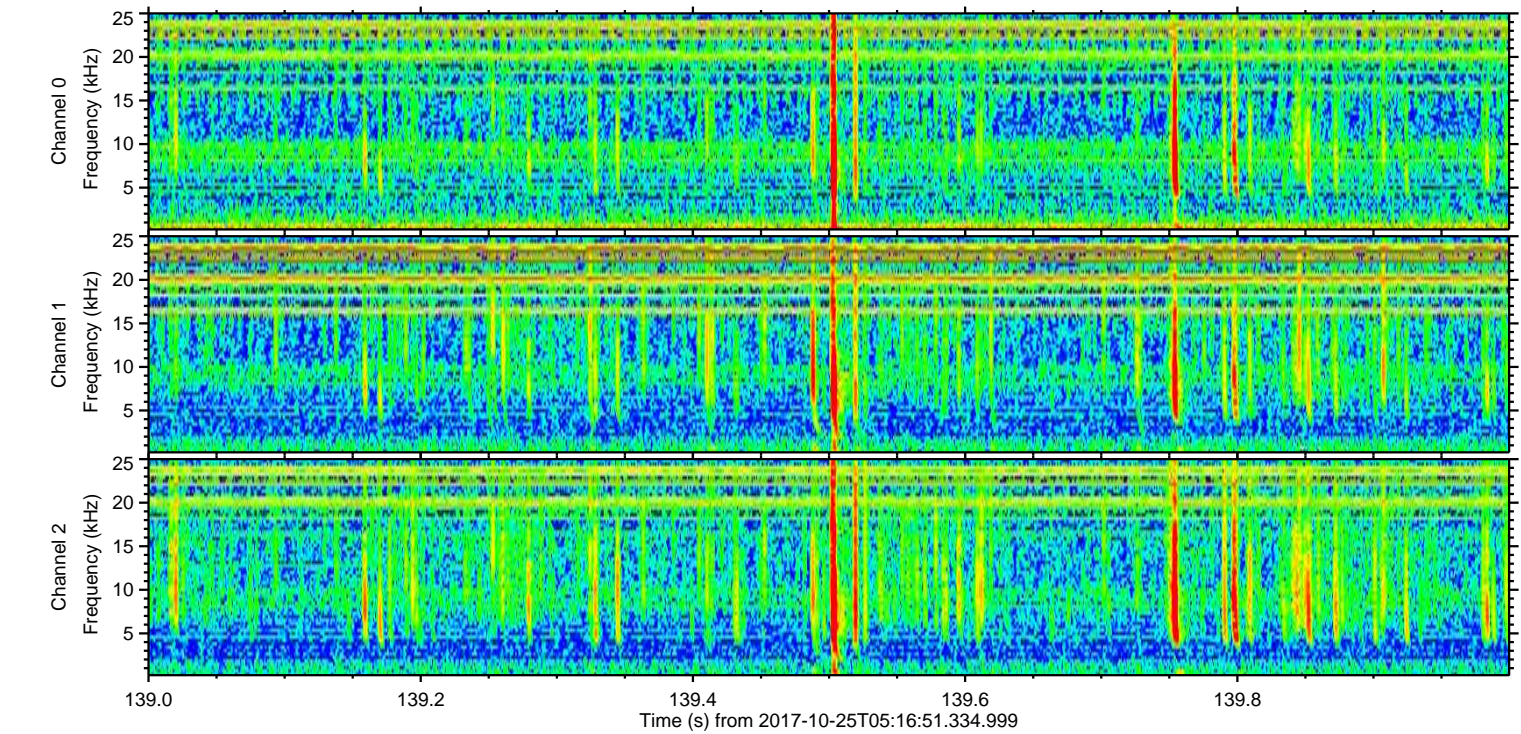
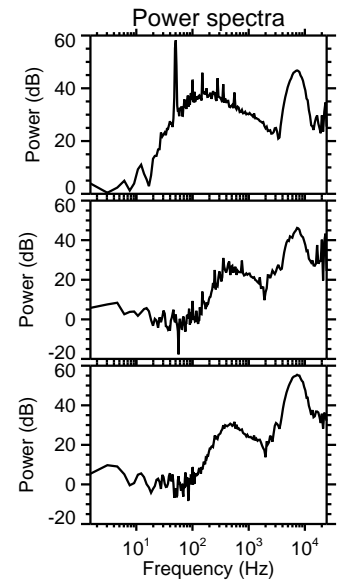
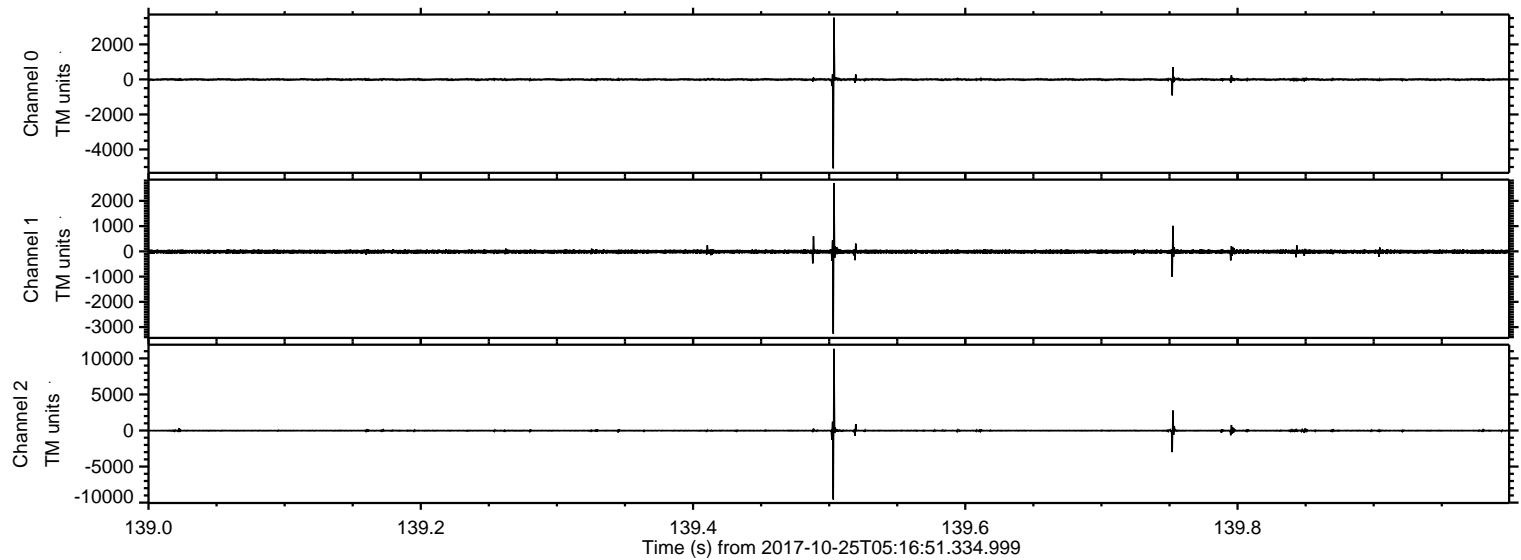
Processed Wed Oct 25 07:24:54 2017 by ELM ver.2012-10-06 from 001\_\_elm20171025\_051650\_\_dat00.bin





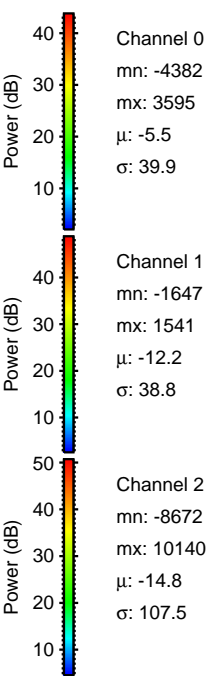
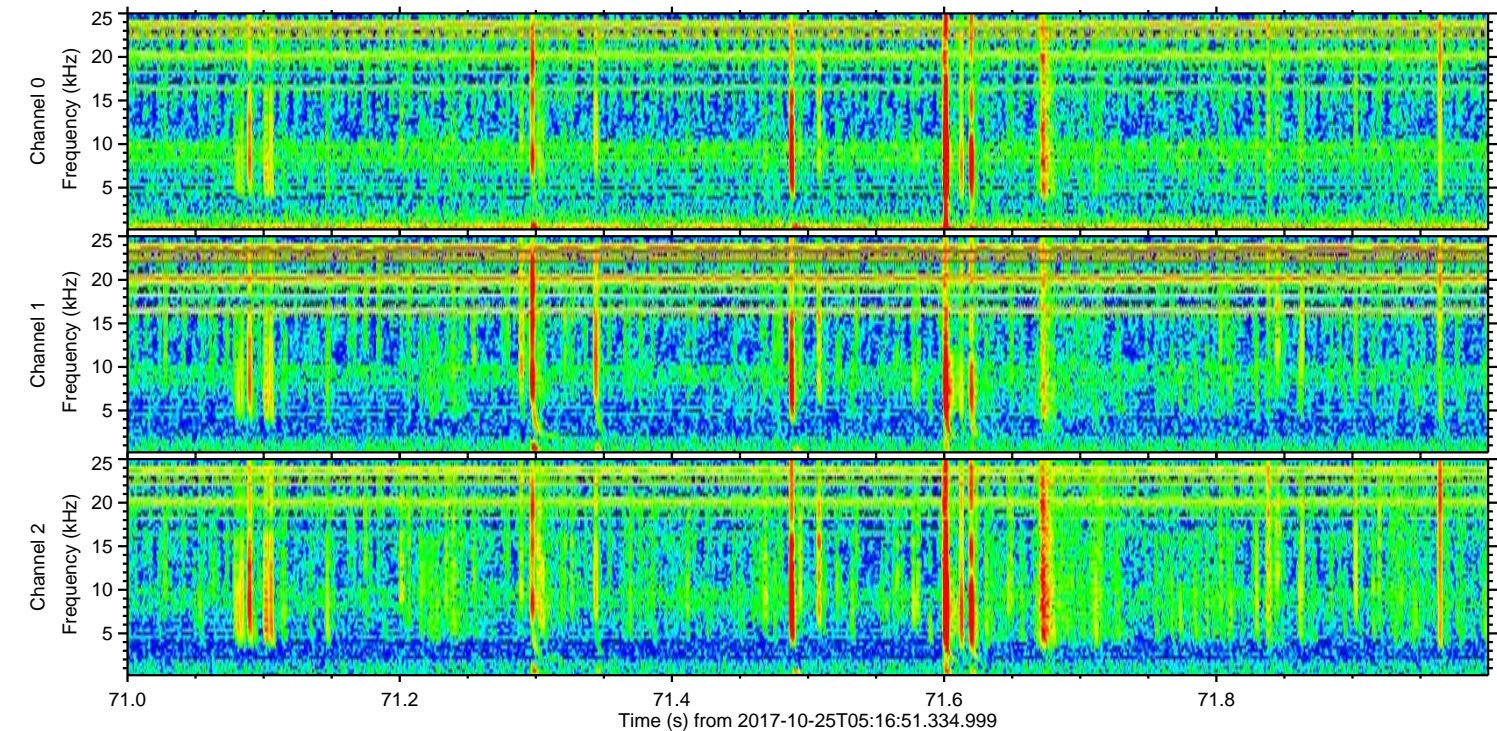
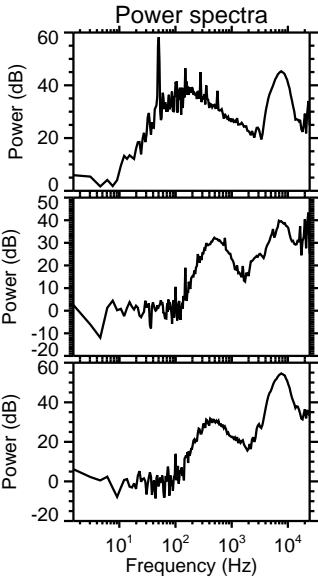
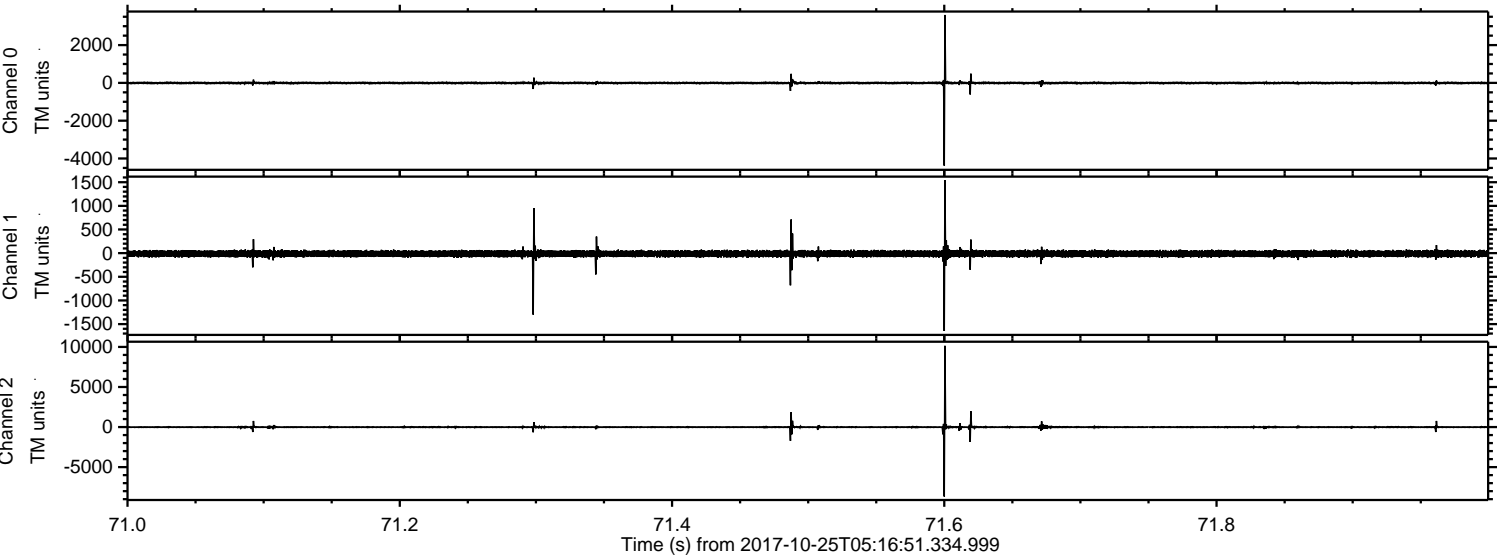
ELMAVAN 3D WAVEFORMS (Measured data sampled at 50 kHz) 51000 packets of 144 samples from 2017-10-25T05:16:51.334.999. Part 140/147

Processed Wed Oct 25 07:25:00 2017 by ELM ver.2012-10-06 from 001\_\_elm20171025\_051650\_\_dat00.bin





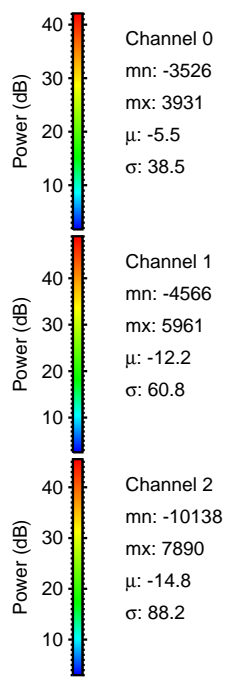
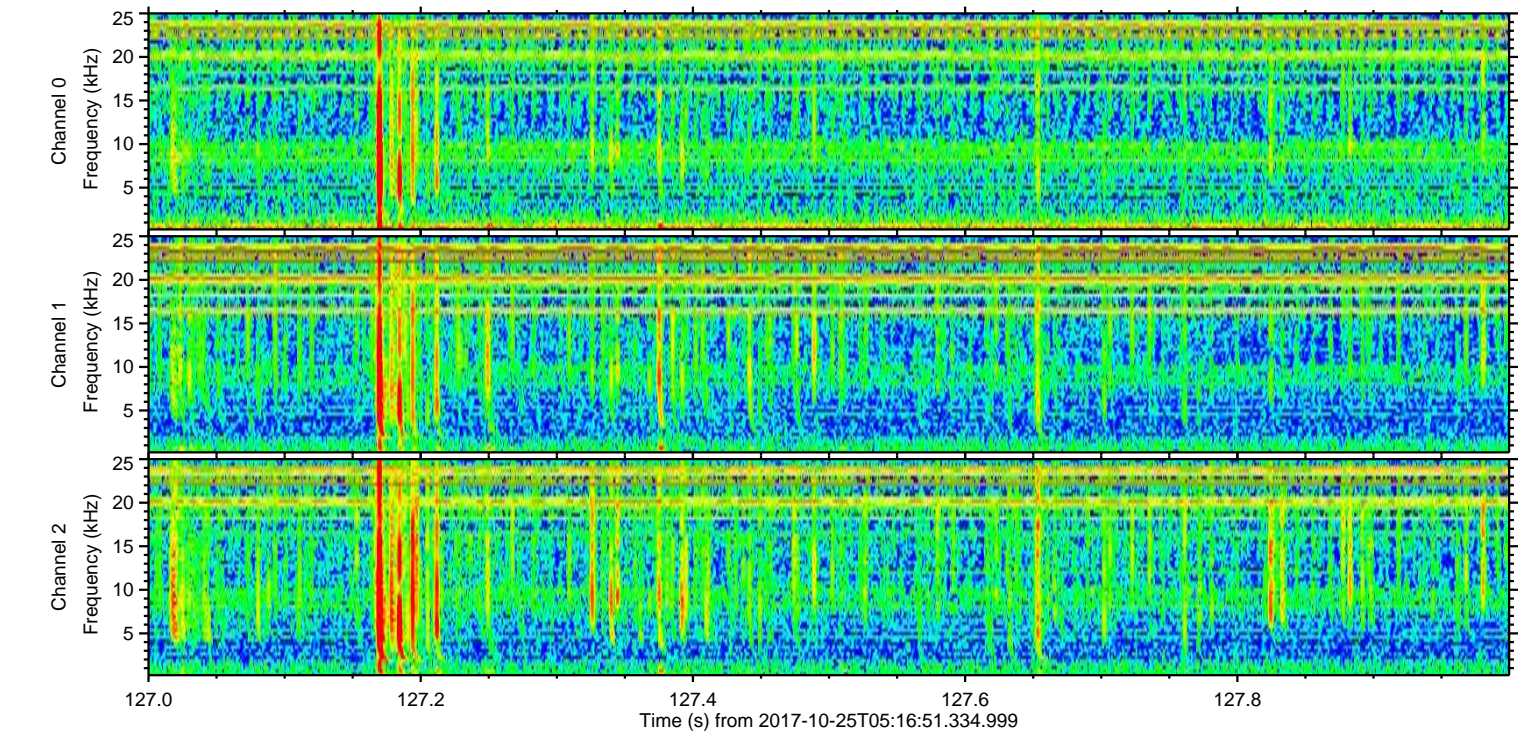
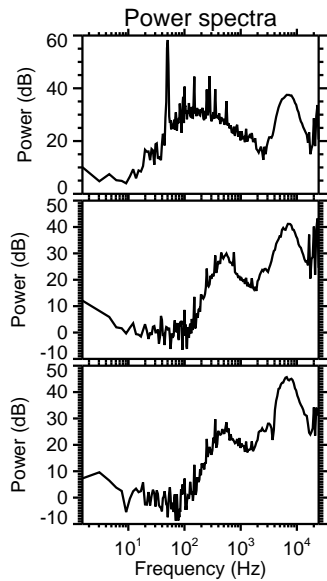
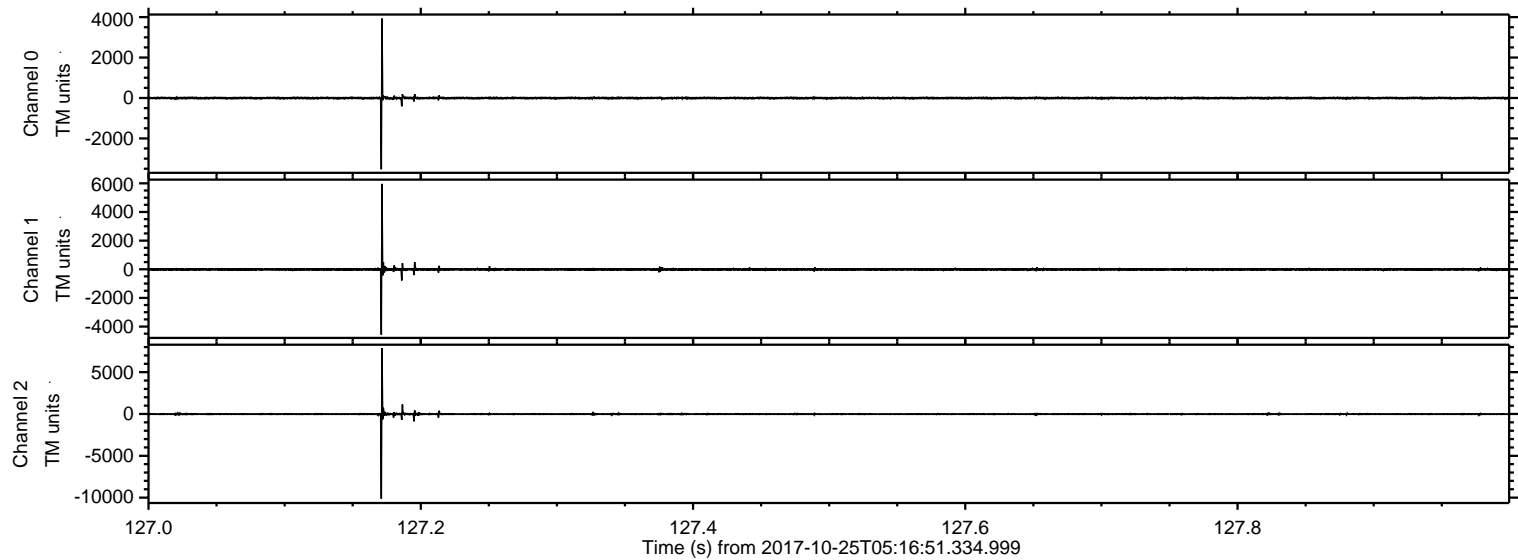
Processed Wed Oct 25 07:25:00 2017 by ELM ver.2012-10-06 from 001\_\_elm20171025\_051650\_\_dat00.bin





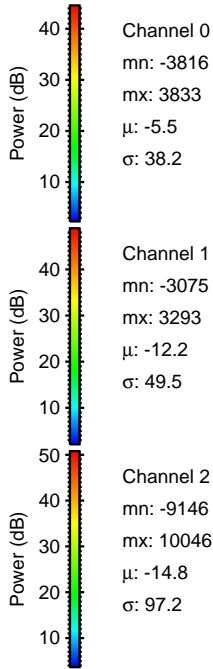
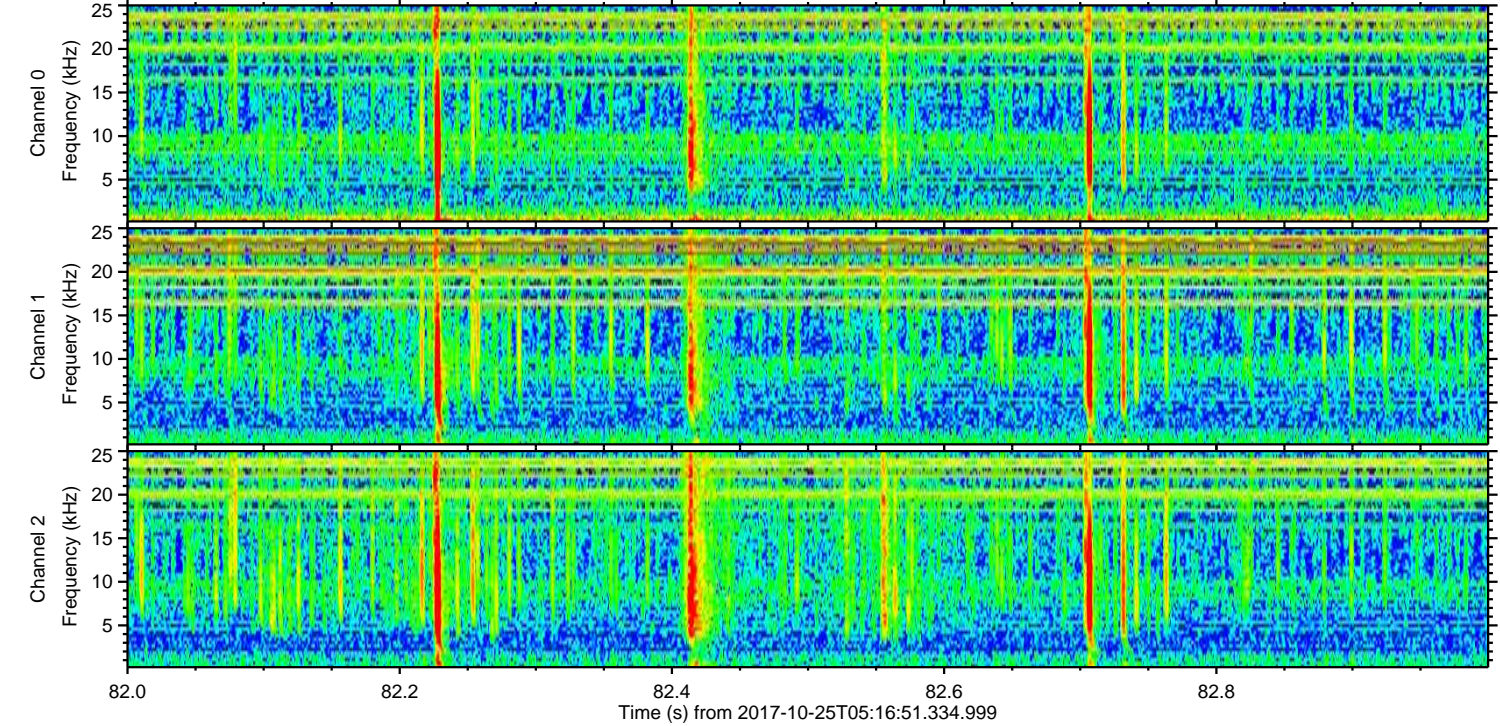
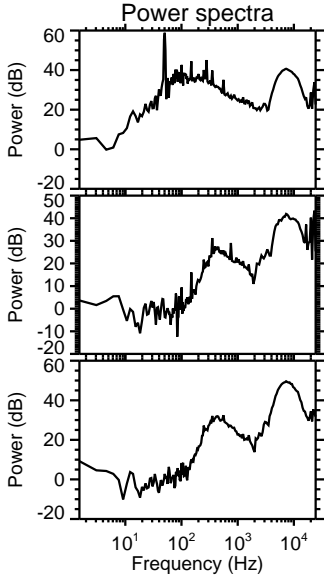
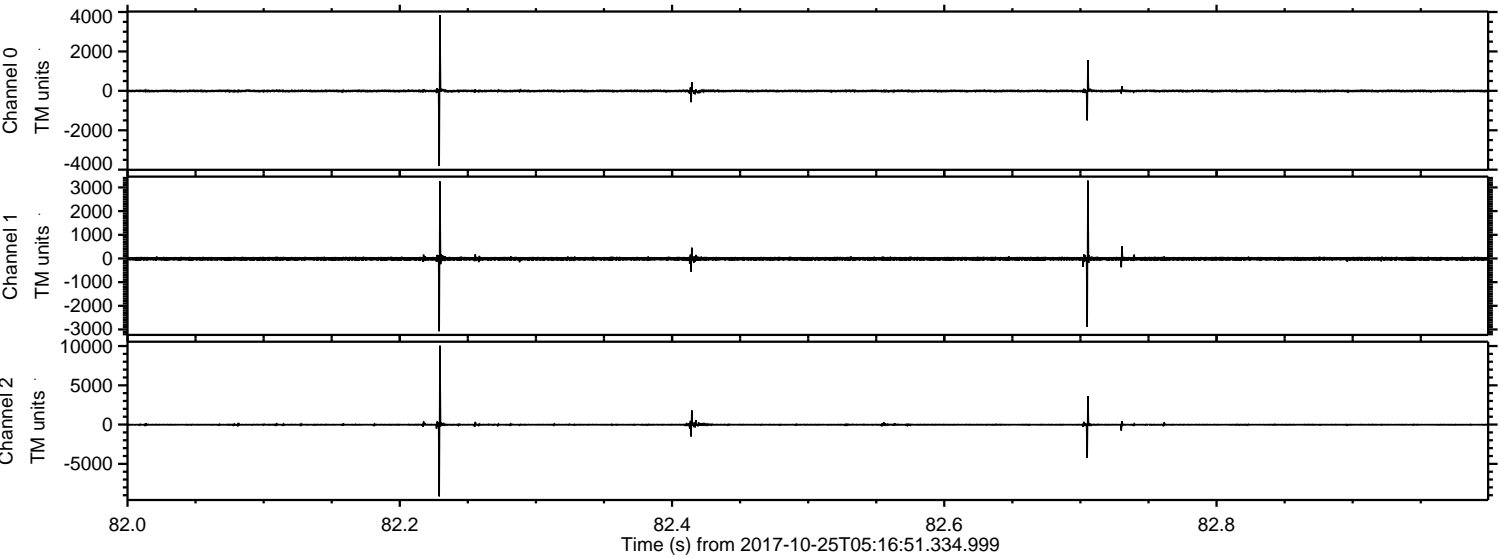
ELMAVAN 3D WAVEFORMS (Measured data sampled at 50 kHz) 51000 packets of 144 samples from 2017-10-25T05:16:51.334.999. Part 128/147

Processed Wed Oct 25 07:25:01 2017 by ELM ver.2012-10-06 from 001\_\_elm20171025\_051650\_\_dat00.bin





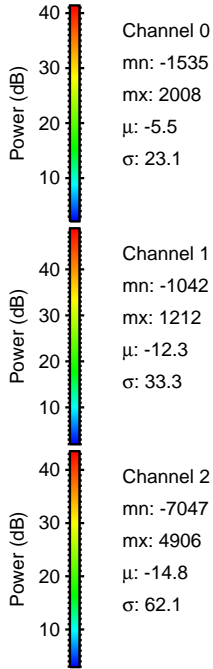
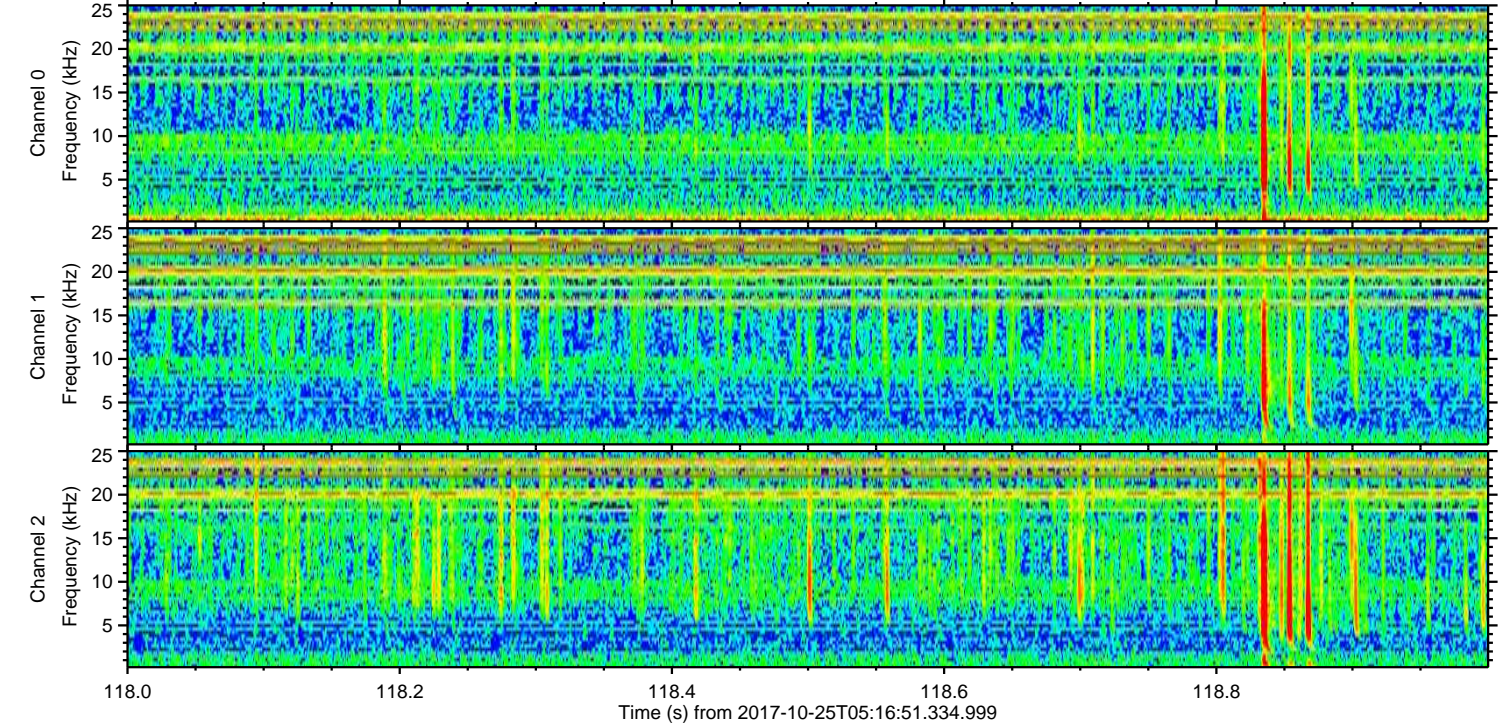
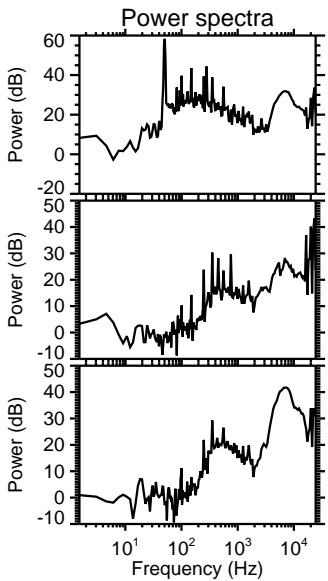
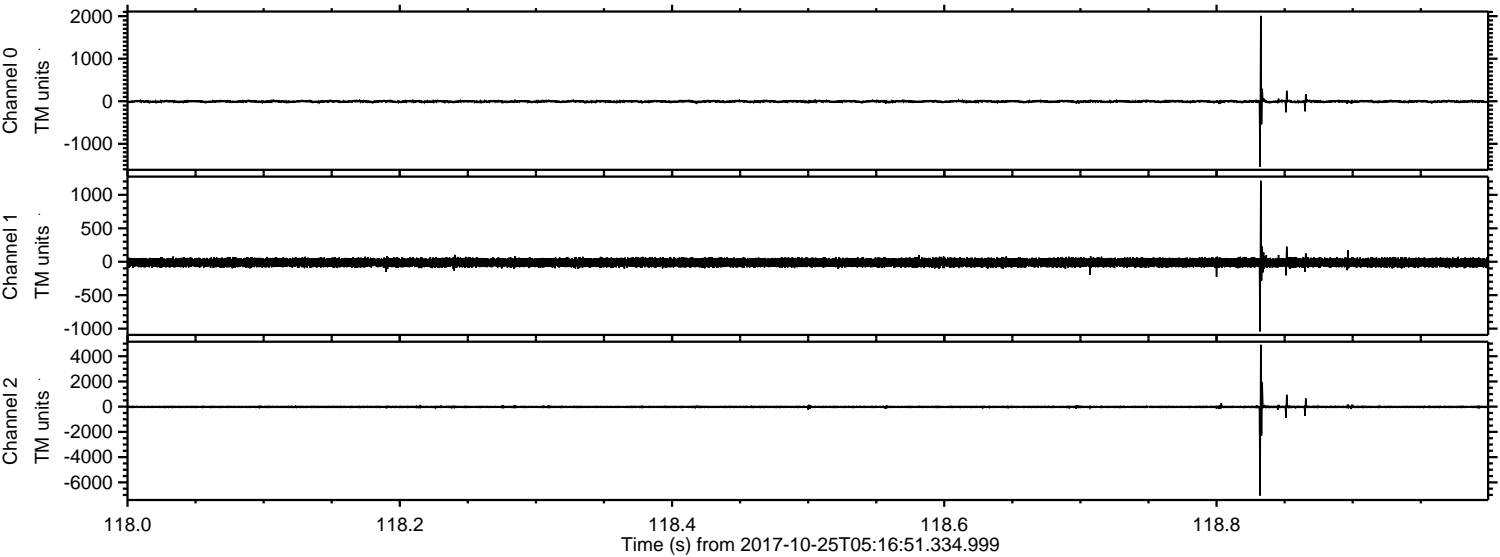
Processed Wed Oct 25 07:25:02 2017 by ELM ver.2012-10-06 from 001\_\_elm20171025\_051650\_\_dat00.bin





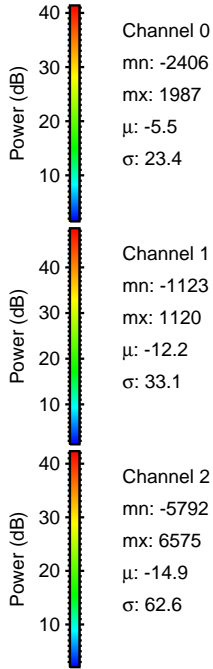
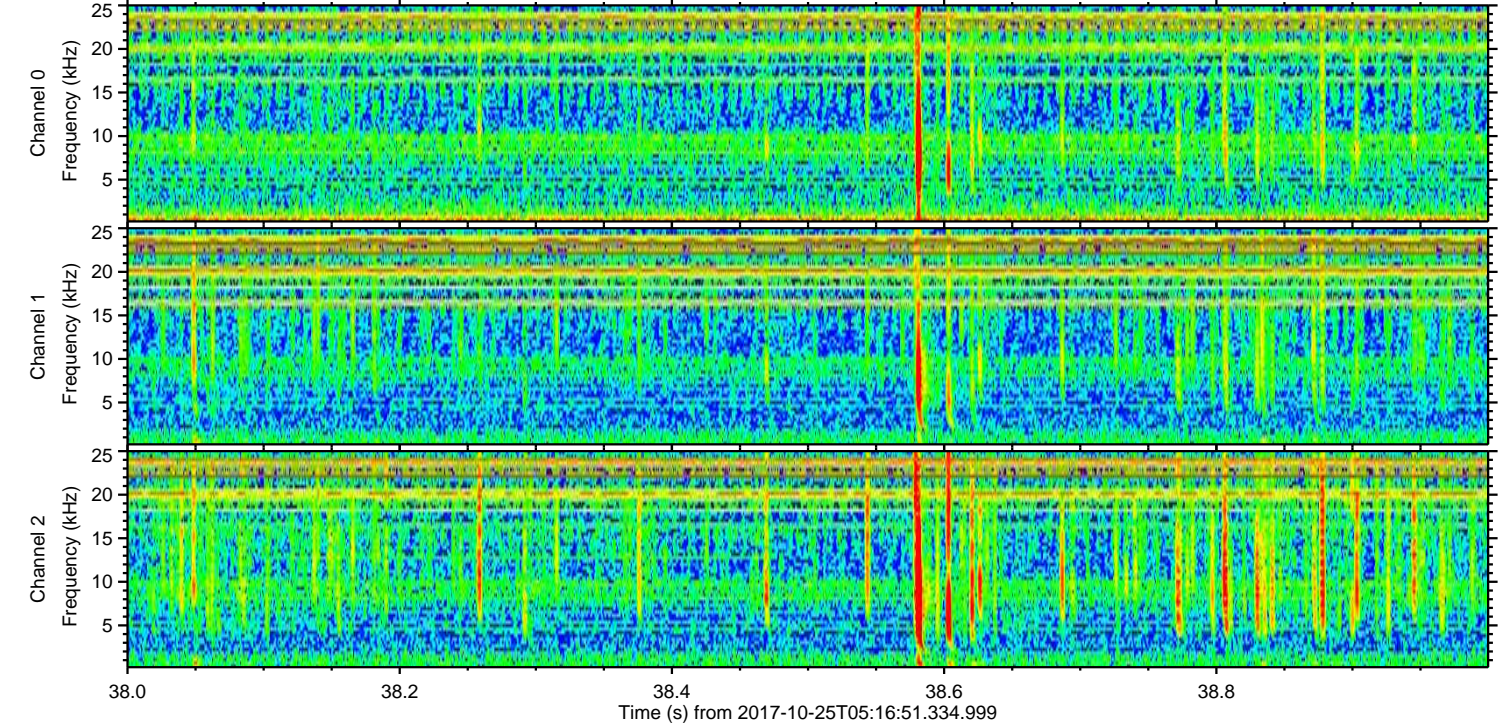
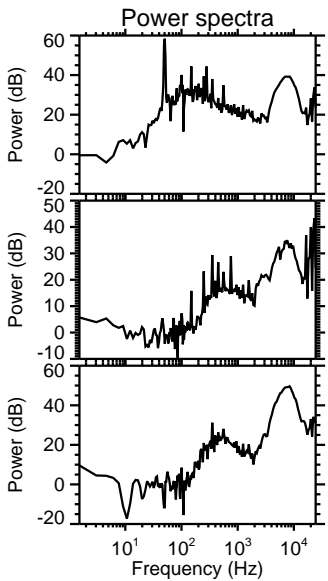
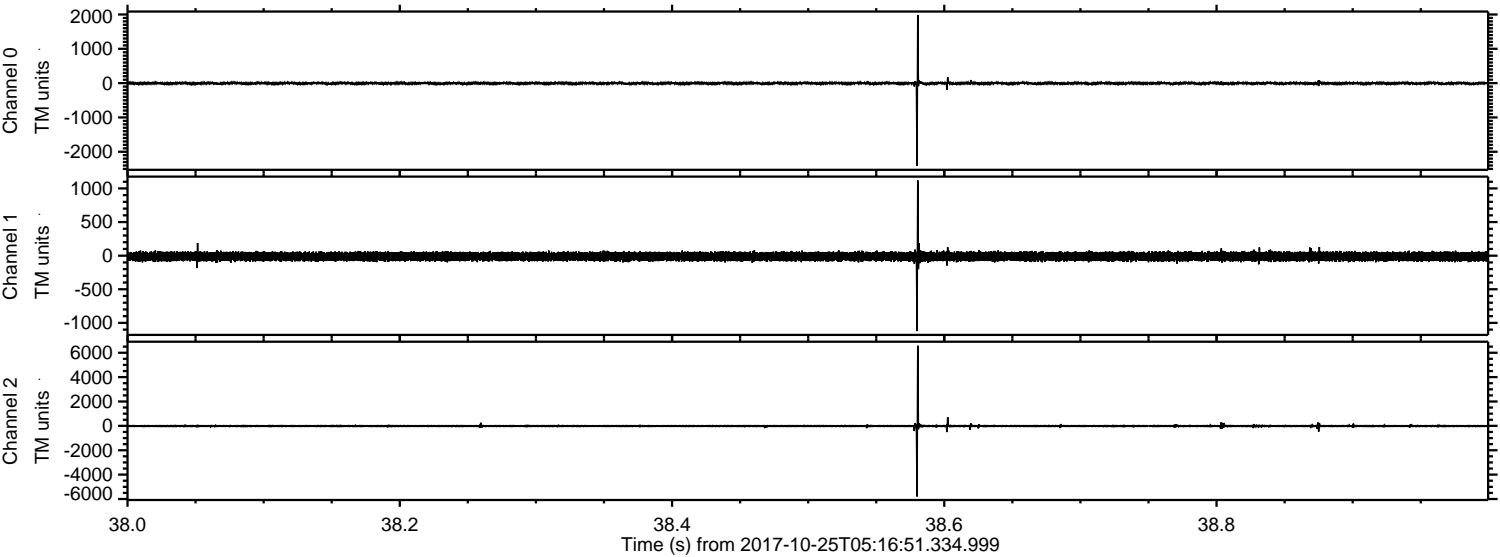
ELMAVAN 3D WAVEFORMS (Measured data sampled at 50 kHz) 51000 packets of 144 samples from 2017-10-25T05:16:51.334.999. Part 119/147

Processed Wed Oct 25 07:25:02 2017 by ELM ver.2012-10-06 from 001\_\_elm20171025\_051650\_\_dat00.bin





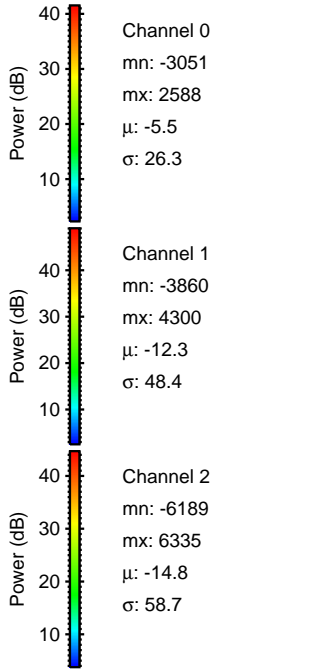
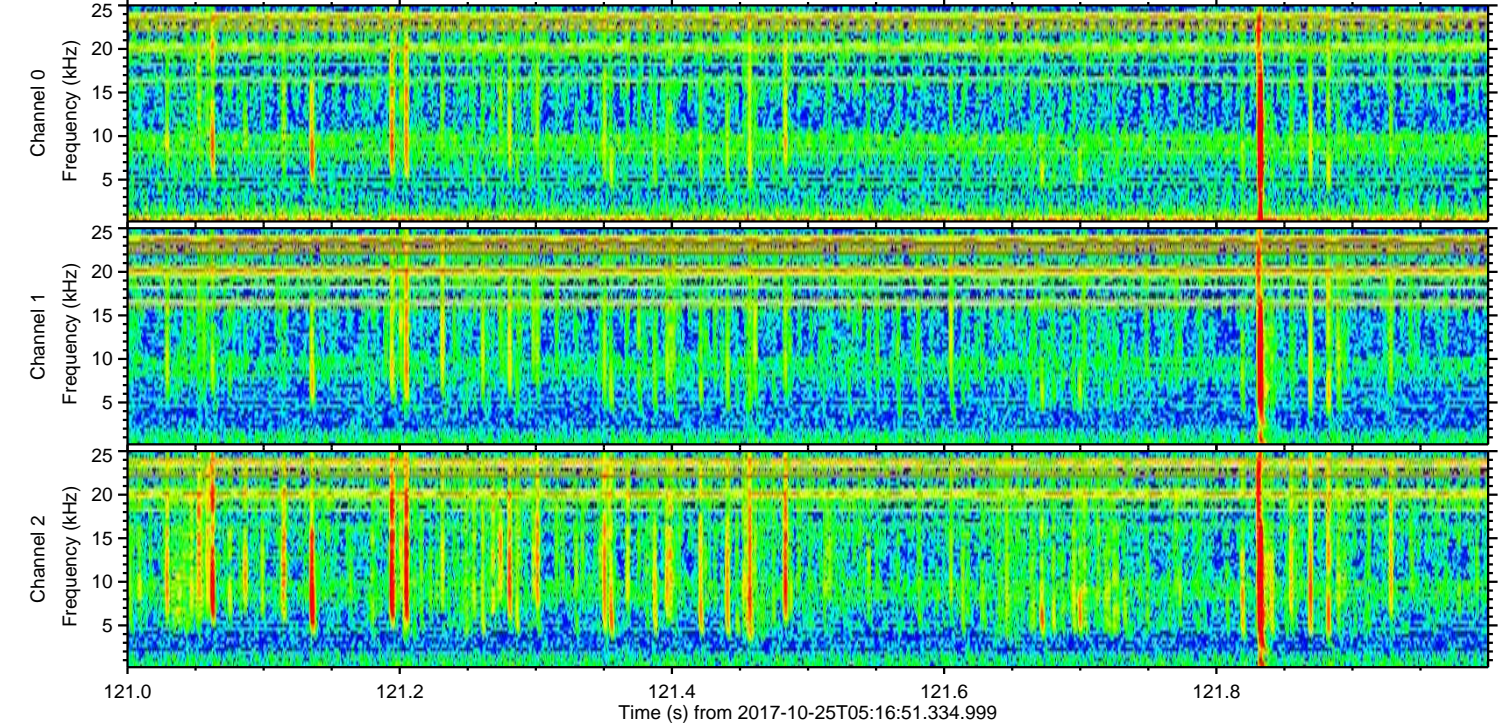
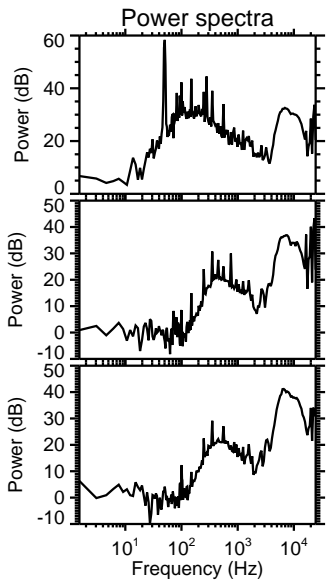
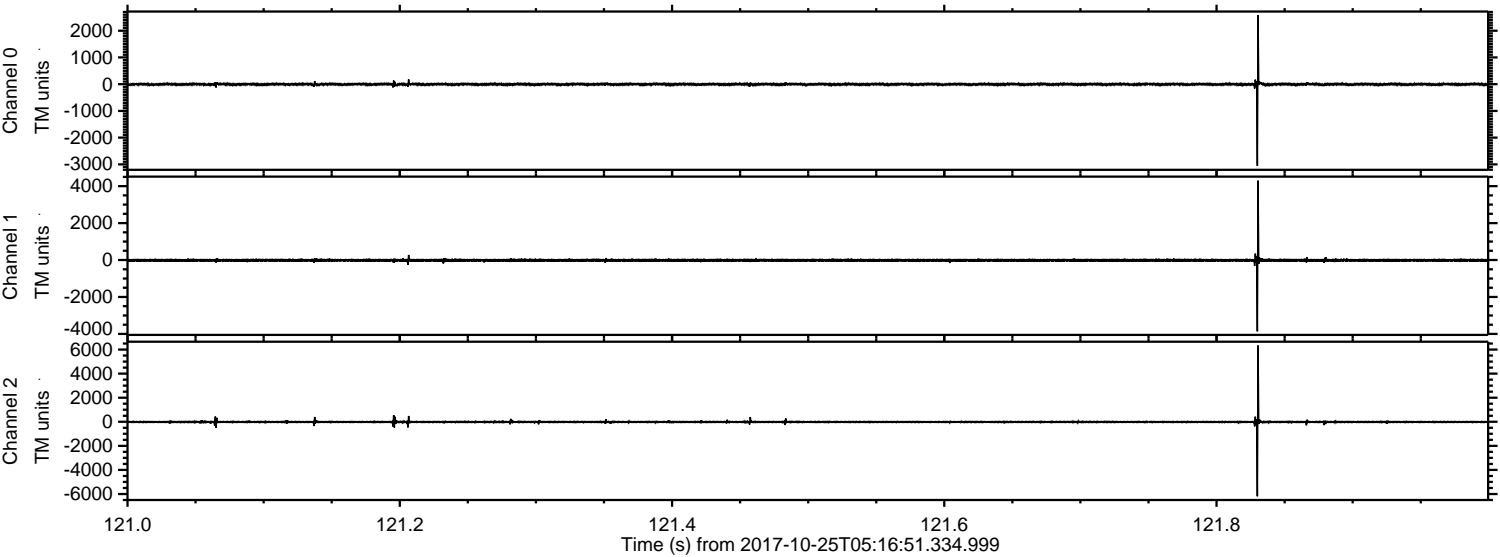
Processed Wed Oct 25 07:25:03 2017 by ELM ver.2012-10-06 from 001\_\_elm20171025\_051650\_\_dat00.bin





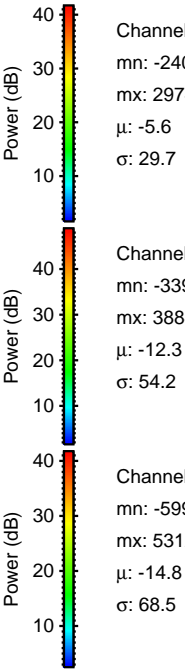
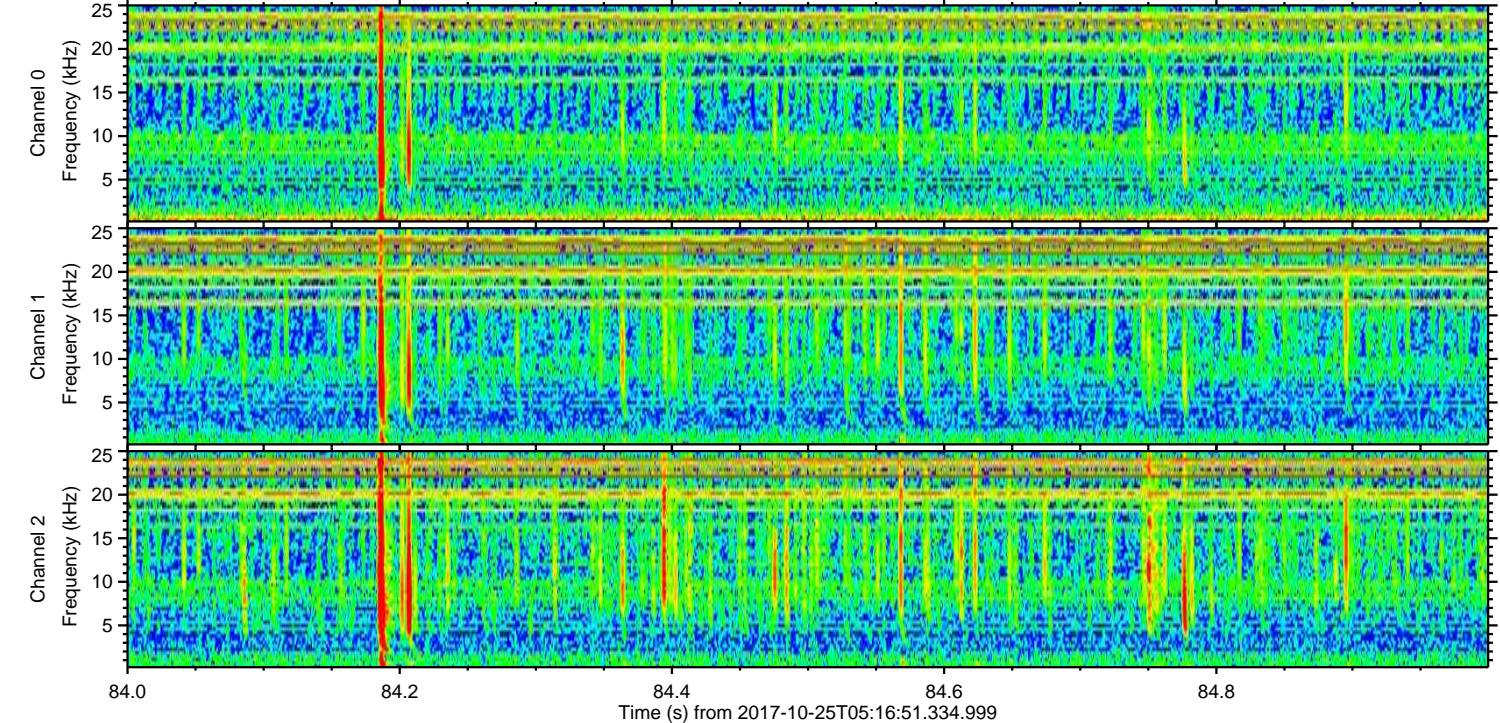
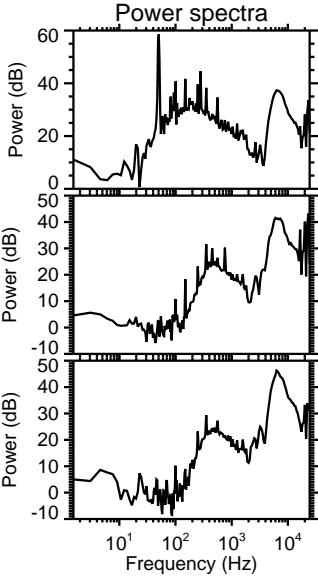
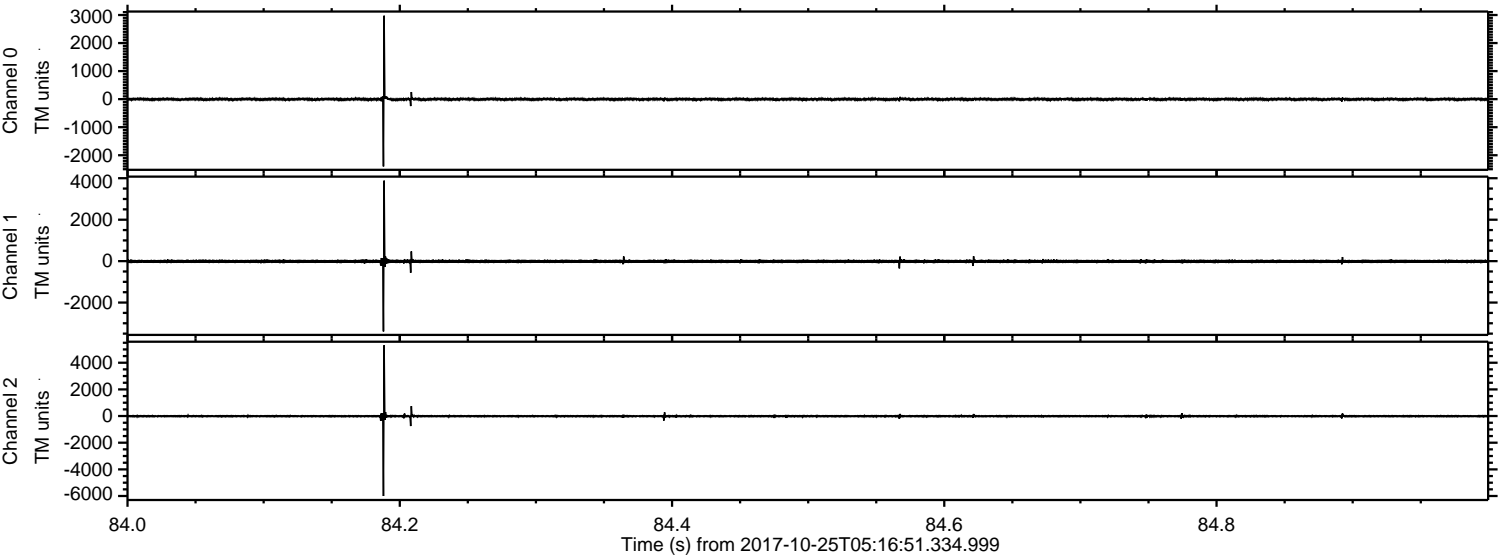
ELMAVAN 3D WAVEFORMS (Measured data sampled at 50 kHz) 51000 packets of 144 samples from 2017-10-25T05:16:51.334.999. Part 122/147

Processed Wed Oct 25 07:25:03 2017 by ELM ver.2012-10-06 from 001\_\_elm20171025\_051650\_\_dat00.bin



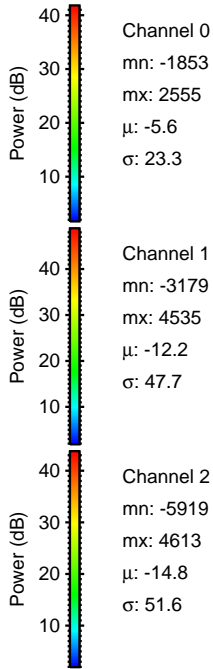
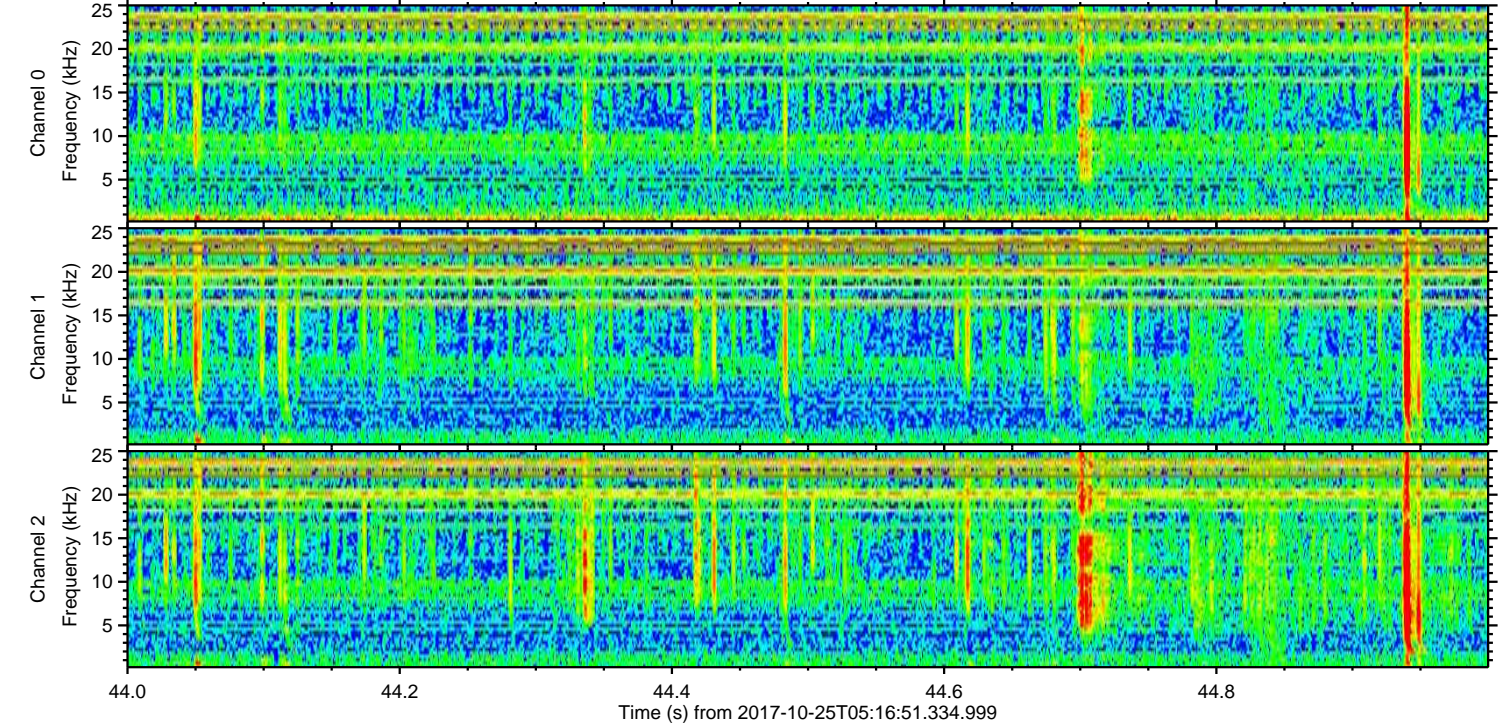
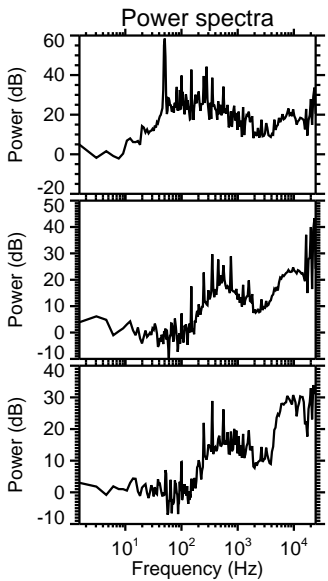
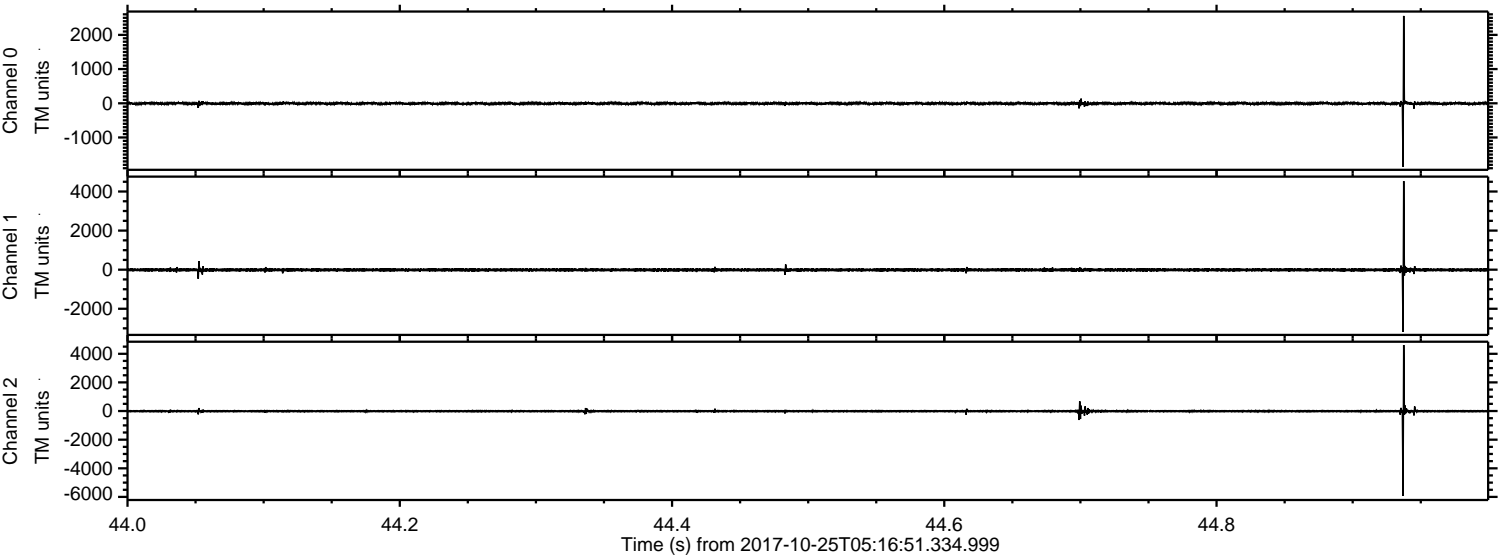


Processed Wed Oct 25 07:25:04 2017 by ELM ver.2012-10-06 from 001\_\_elm20171025\_051650\_\_dat00.bin





Processed Wed Oct 25 07:25:05 2017 by ELM ver.2012-10-06 from 001\_\_elm20171025\_051650\_\_dat00.bin



Channel 0  
mn: -1853  
mx: 2555  
 $\mu$ : -5.6  
 $\sigma$ : 23.3

Channel 1  
mn: -3179  
mx: 4535  
 $\mu$ : -12.2  
 $\sigma$ : 47.7

Channel 2  
mn: -5919  
mx: 4613  
 $\mu$ : -14.8  
 $\sigma$ : 51.6



Processed Wed Oct 25 07:25:05 2017 by ELM ver.2012-10-06 from 001\_\_elm20171025\_051650\_\_dat00.bin

