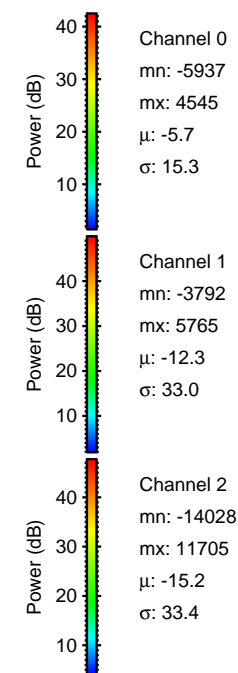
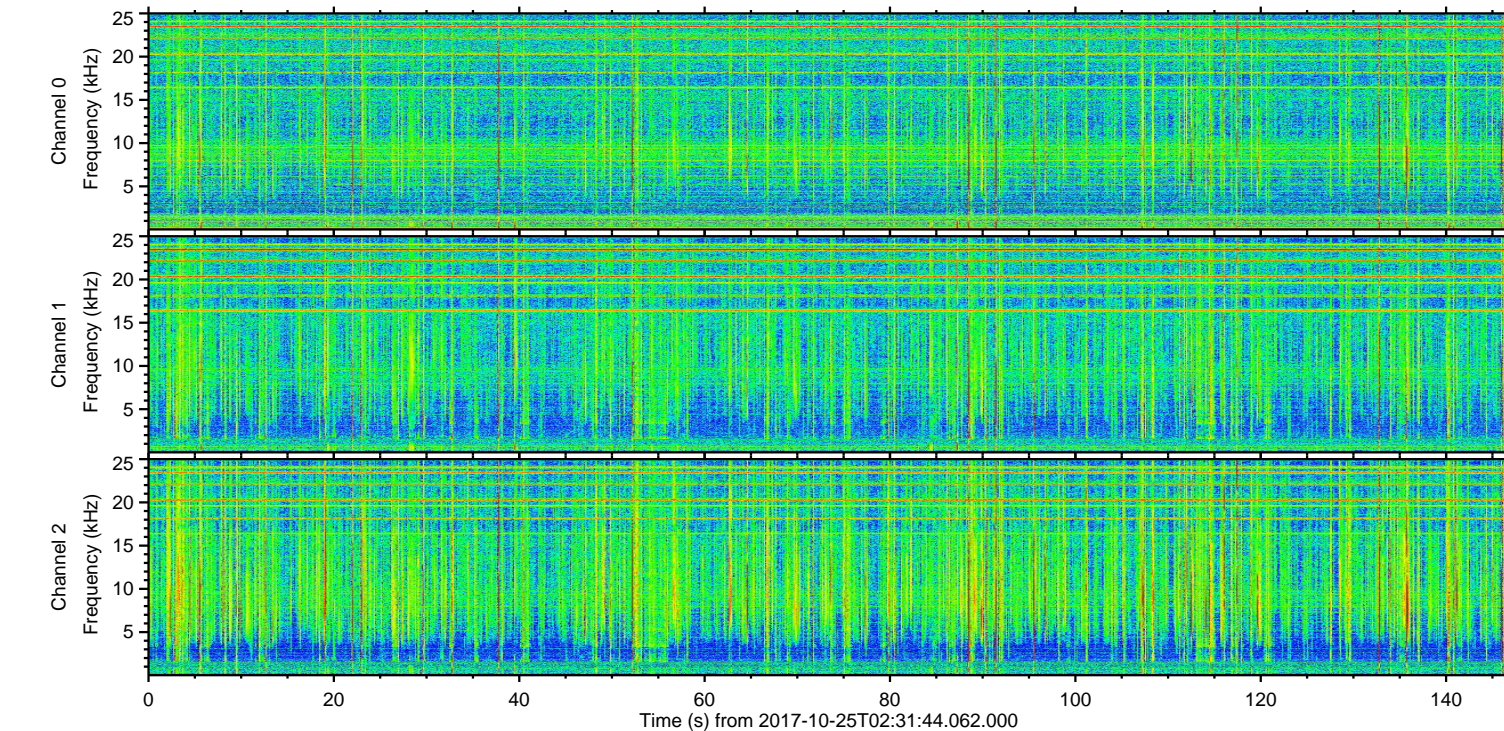
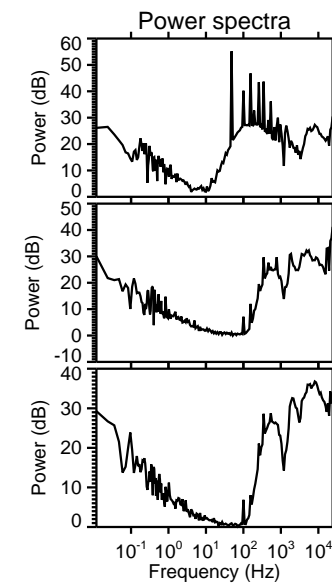
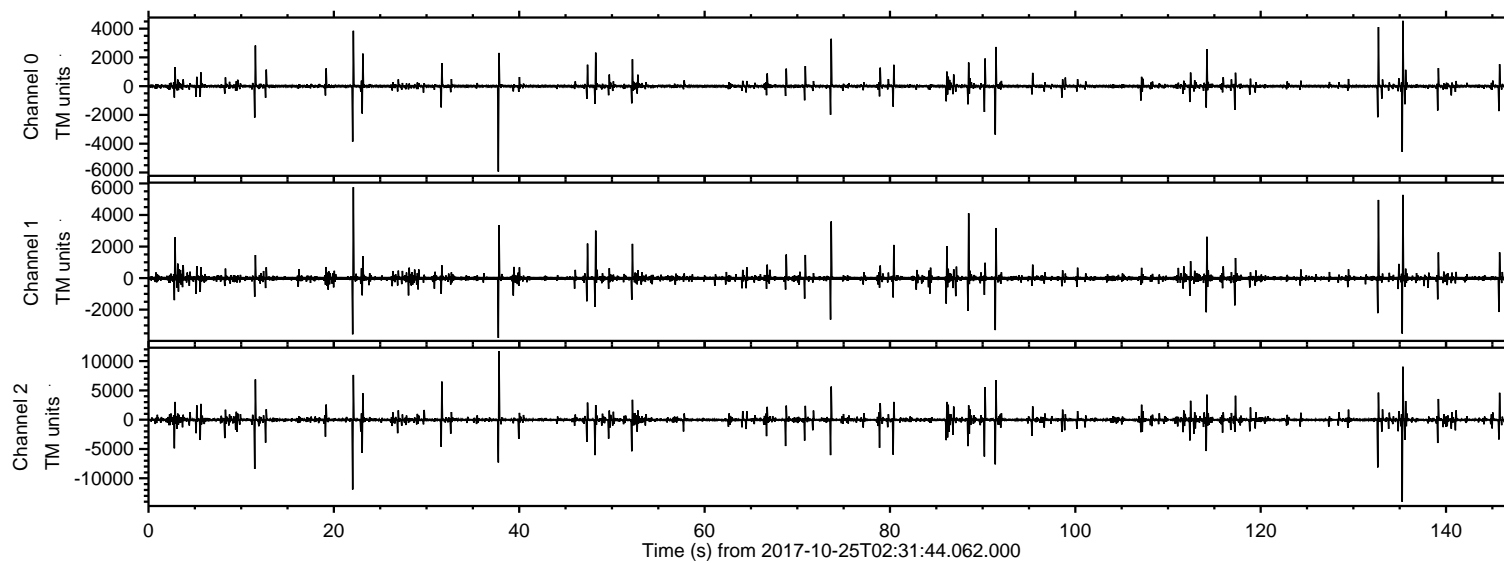


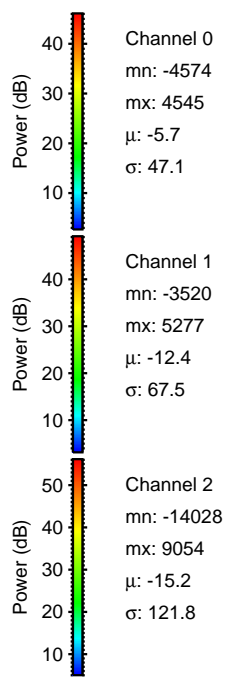
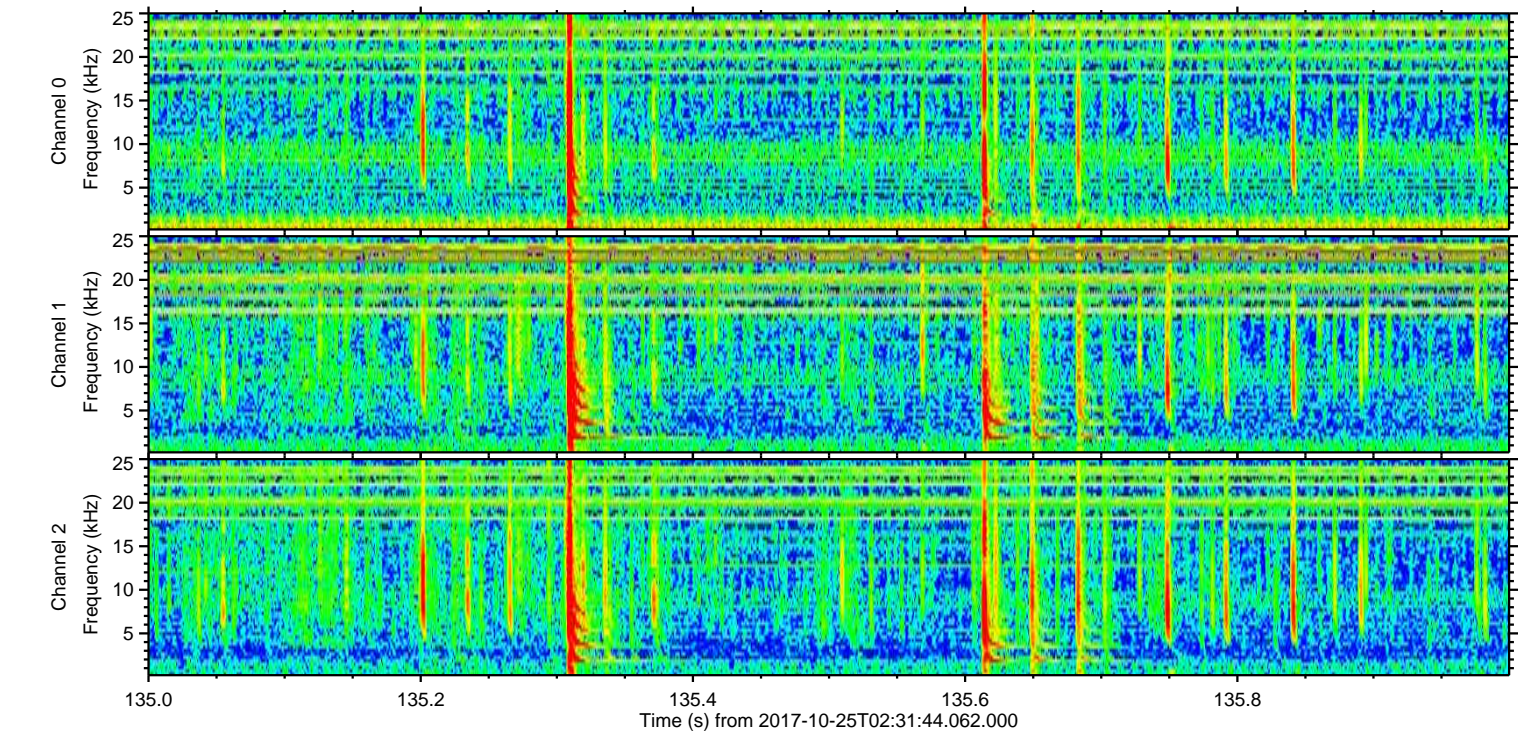
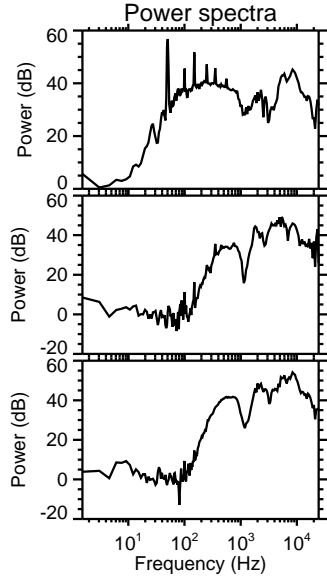
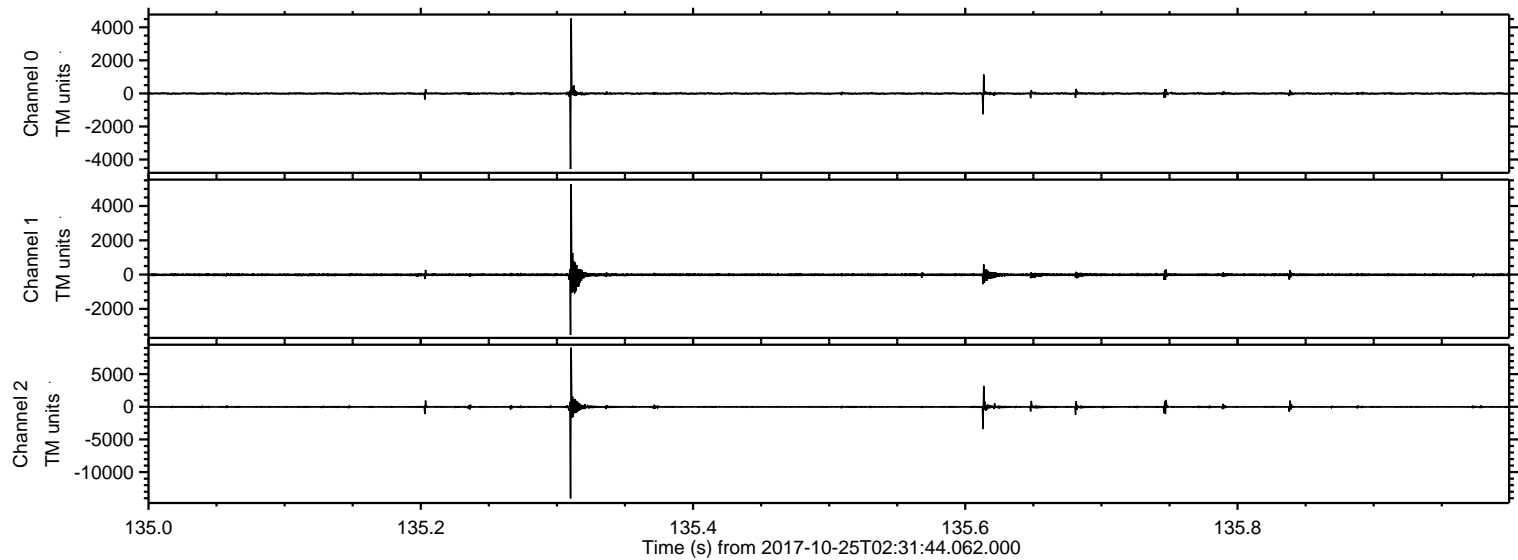
ELMAVAN 3D WAVEFORMS (Measured data sampled at 50 kHz) 51000 packets of 144 samples from 2017-10-25T02:31:44.062.000.

Processed Wed Oct 25 04:40:05 2017 by ELM ver.2012-10-06 from 001__elm20171025_023143__dat00.bin



ELMAVAN 3D WAVEFORMS (Measured data sampled at 50 kHz) 51000 packets of 144 samples from 2017-10-25T02:31:44.062.000. Part 136/147

Processed Wed Oct 25 04:40:11 2017 by ELM ver.2012-10-06 from 001__elm20171025_023143__dat00.bin



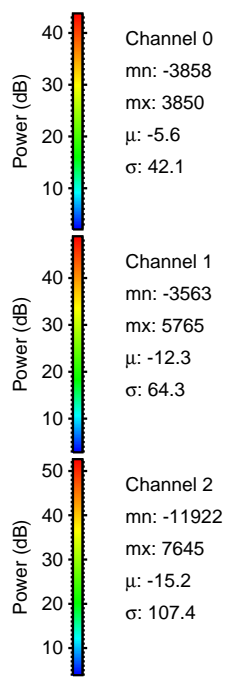
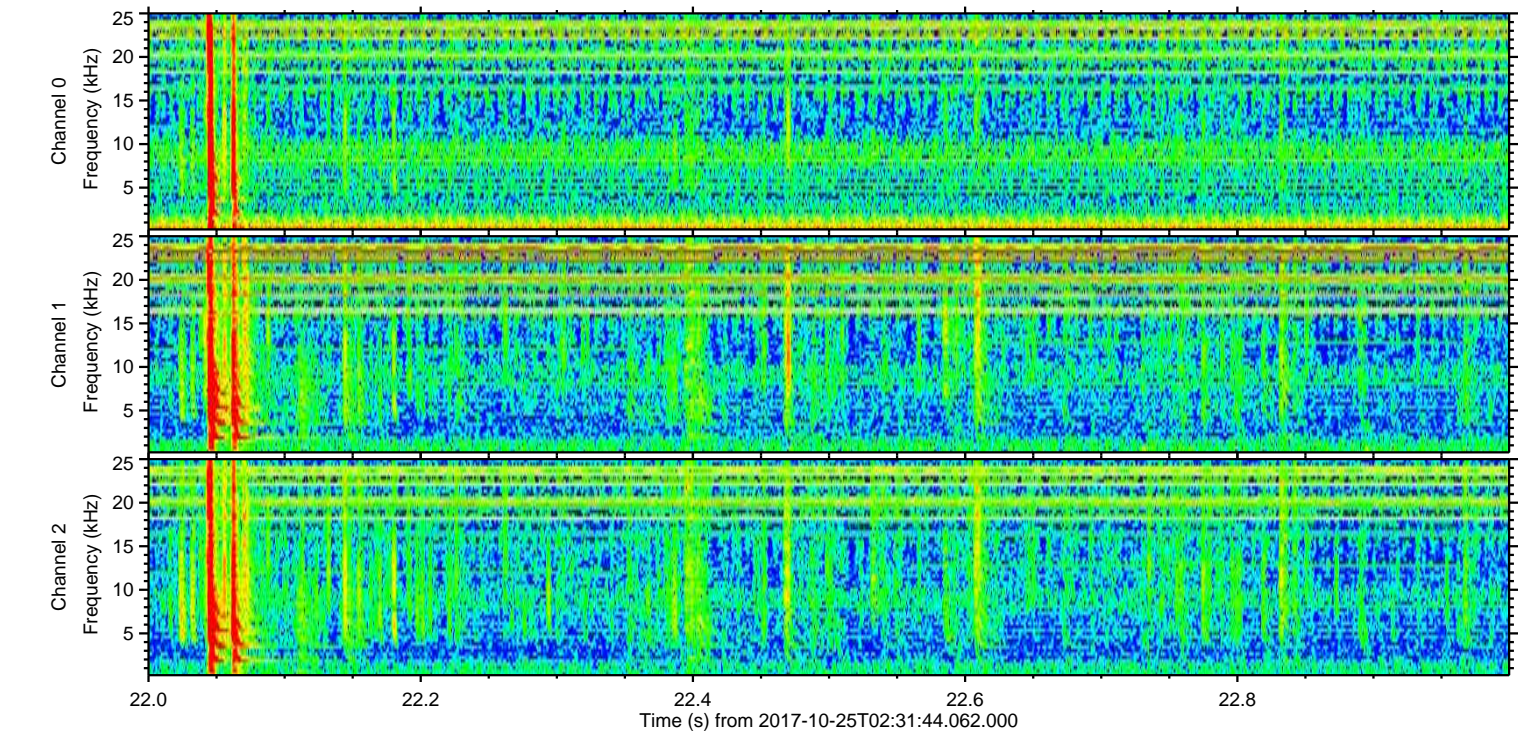
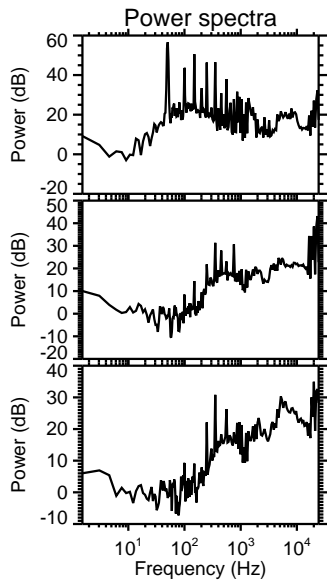
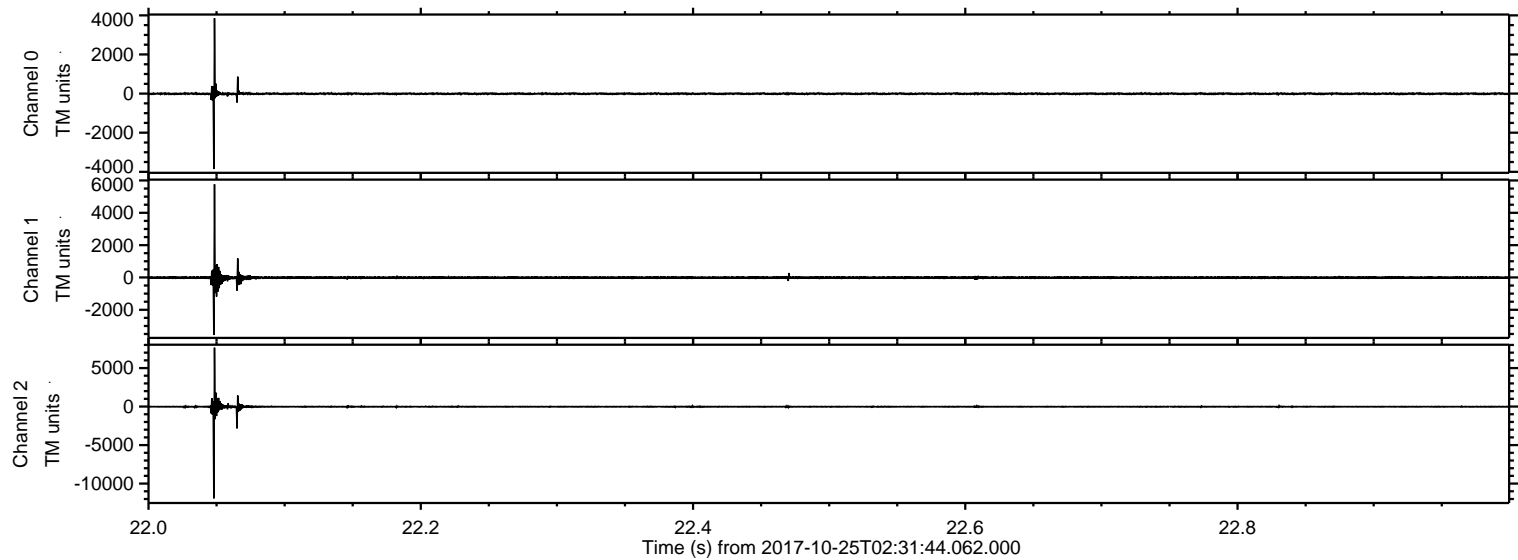
Channel 0
mn: -4574
mx: 4545
 μ : -5.7
 σ : 47.1

Channel 1
mn: -3520
mx: 5277
 μ : -12.4
 σ : 67.5

Channel 2
mn: -14028
mx: 9054
 μ : -15.2
 σ : 121.8

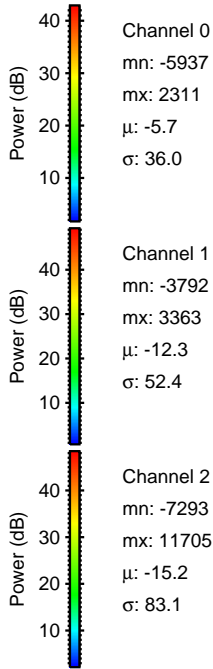
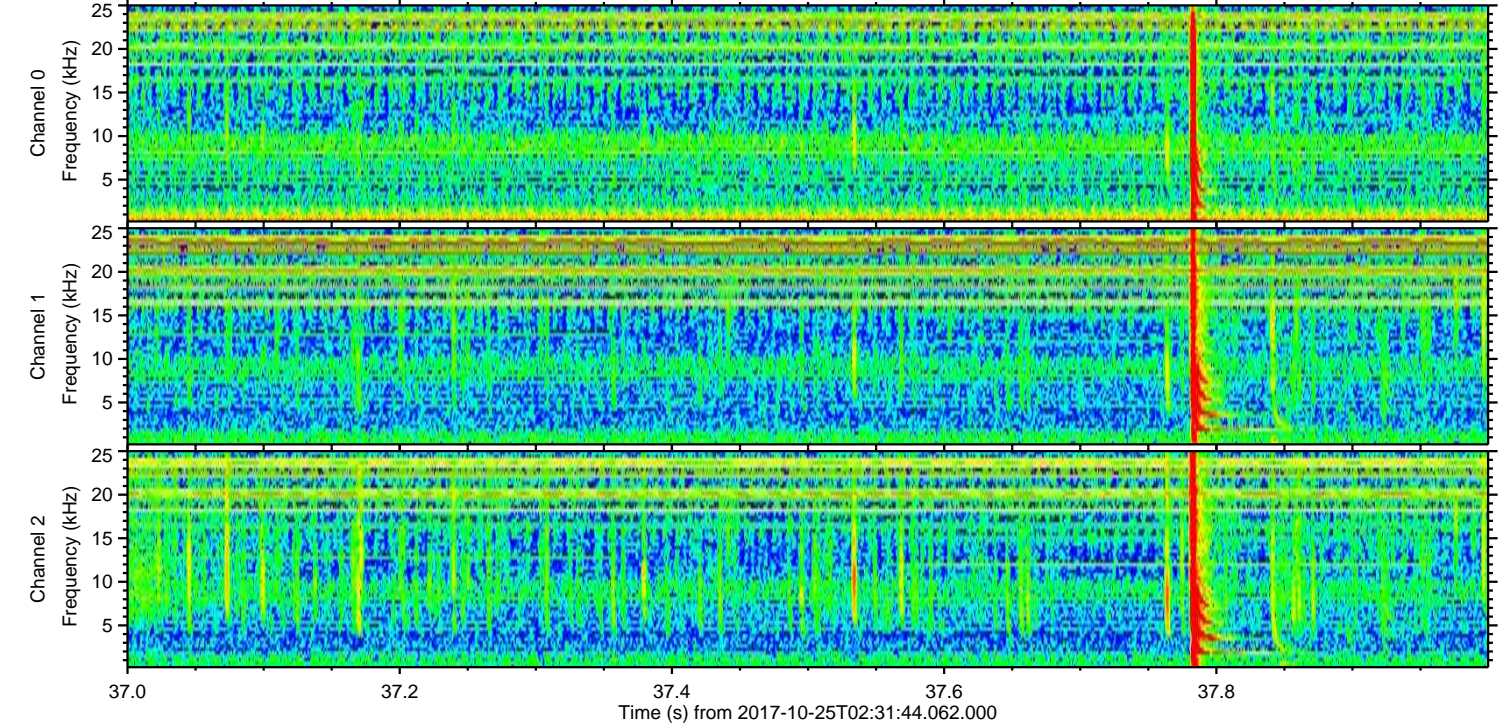
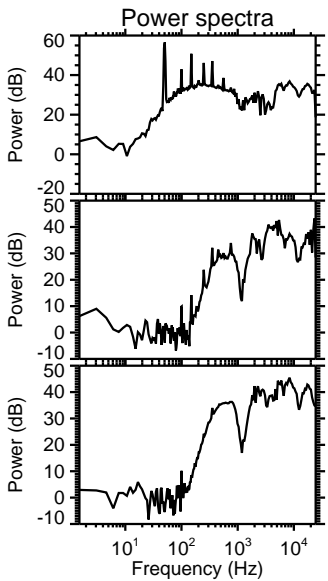
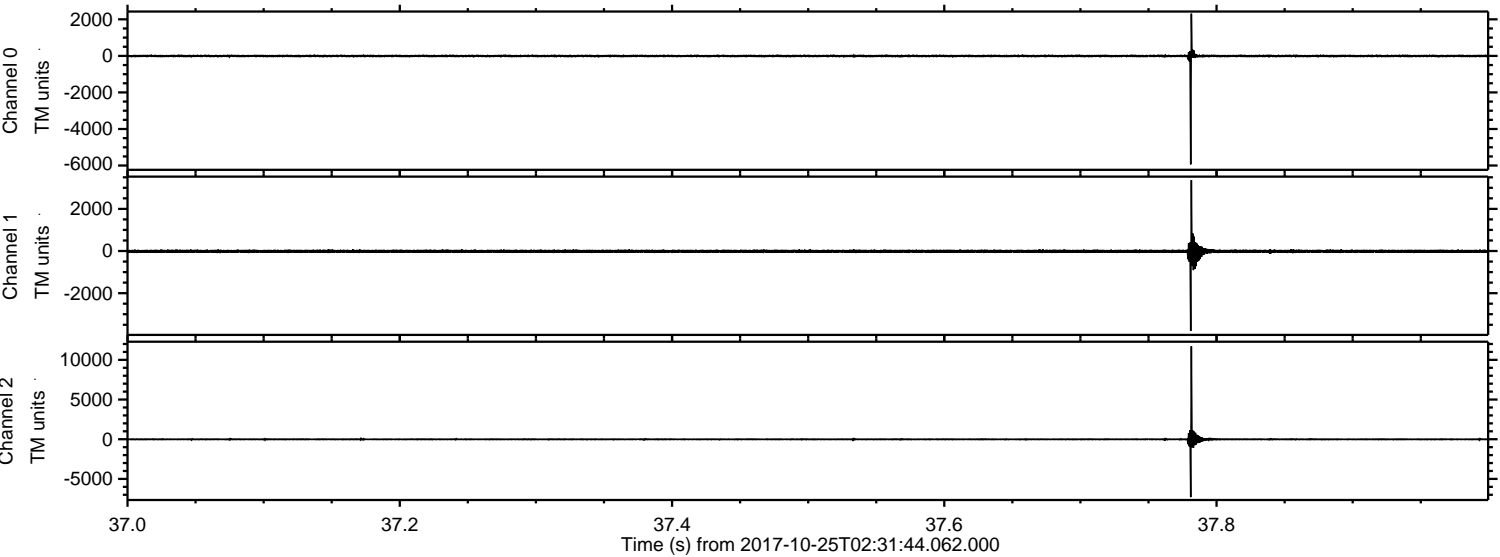
ELMAVAN 3D WAVEFORMS (Measured data sampled at 50 kHz) 51000 packets of 144 samples from 2017-10-25T02:31:44.062.000. Part 23/147

Processed Wed Oct 25 04:40:12 2017 by ELM ver.2012-10-06 from 001__elm20171025_023143__dat00.bin

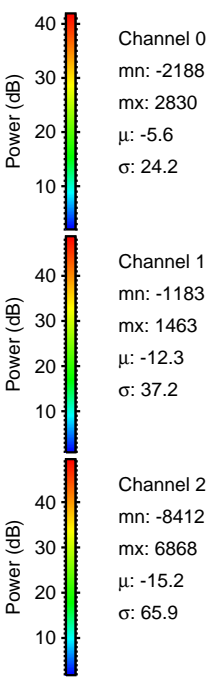
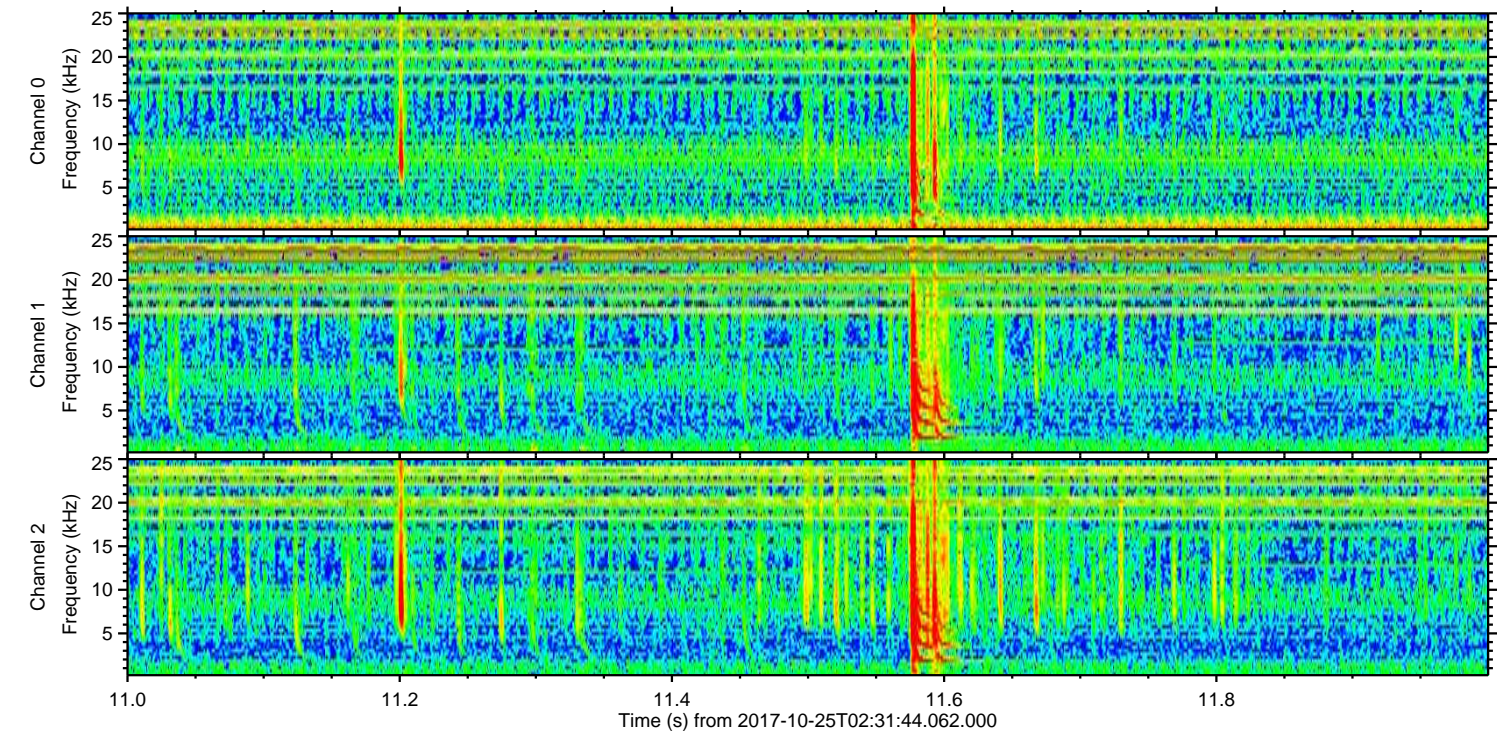
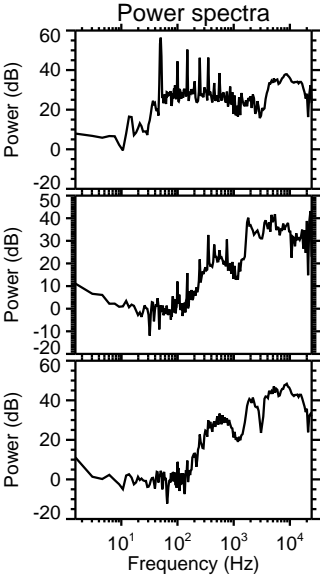
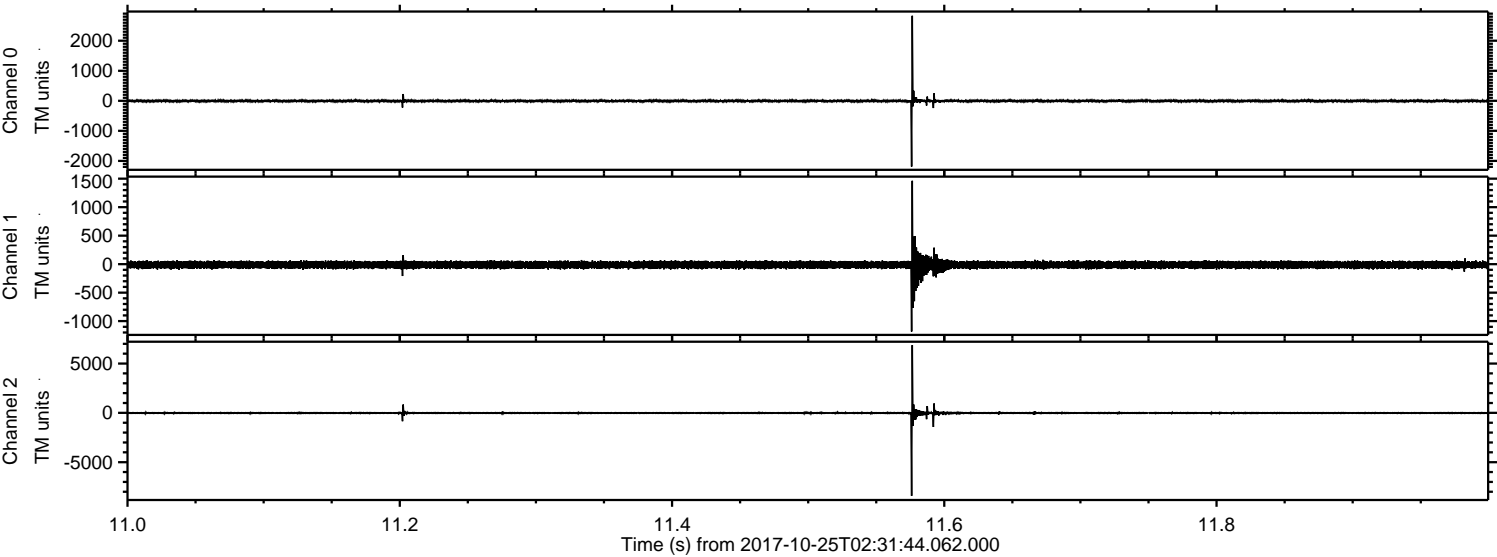


ELMAVAN 3D WAVEFORMS (Measured data sampled at 50 kHz) 51000 packets of 144 samples from 2017-10-25T02:31:44.062.000. Part 38/147

Processed Wed Oct 25 04:40:12 2017 by ELM ver.2012-10-06 from 001__elm20171025_023143__dat00.bin



Processed Wed Oct 25 04:40:13 2017 by ELM ver.2012-10-06 from 001__elm20171025_023143__dat00.bin



Power spectra

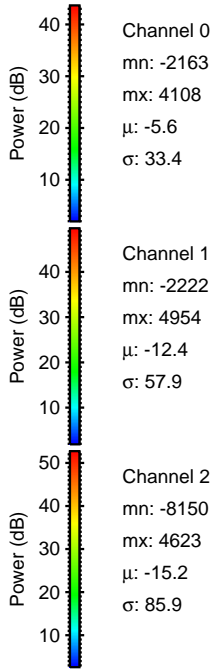
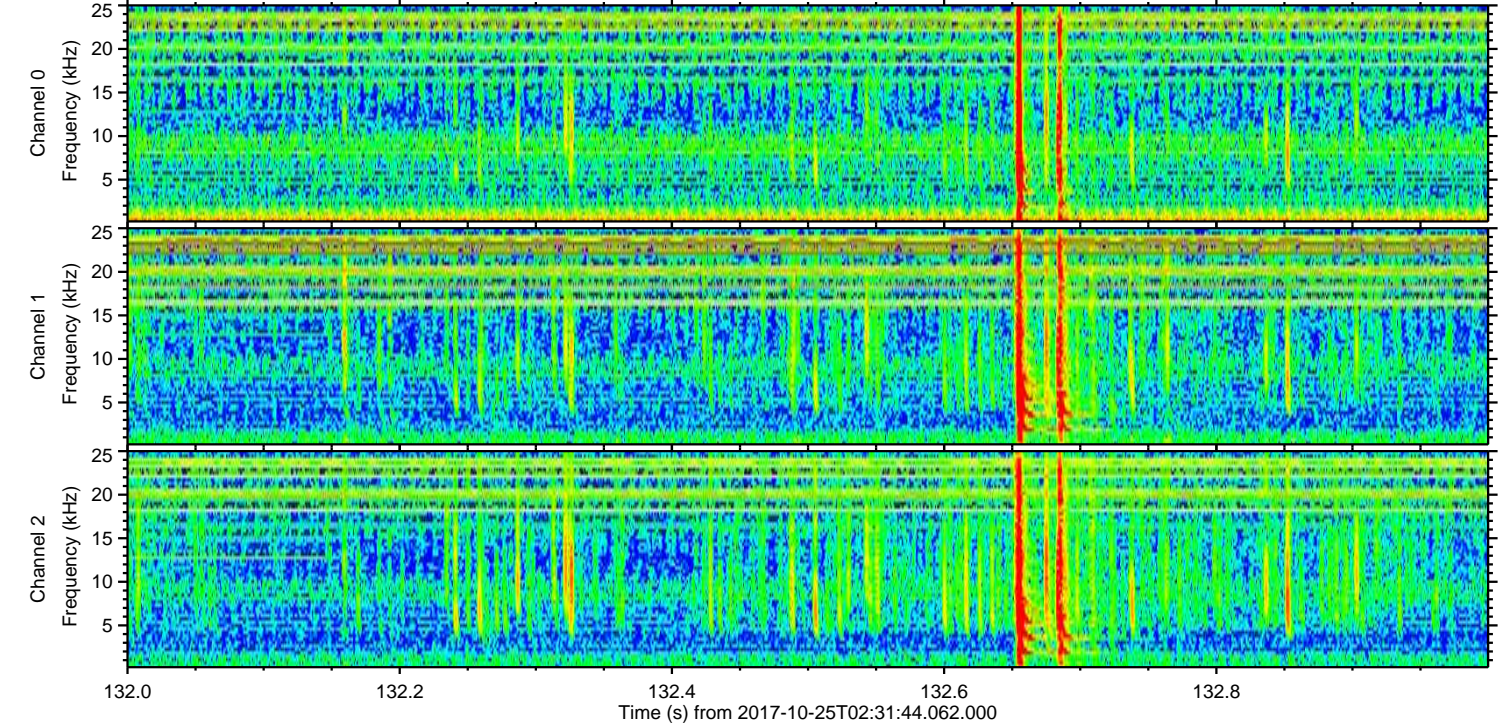
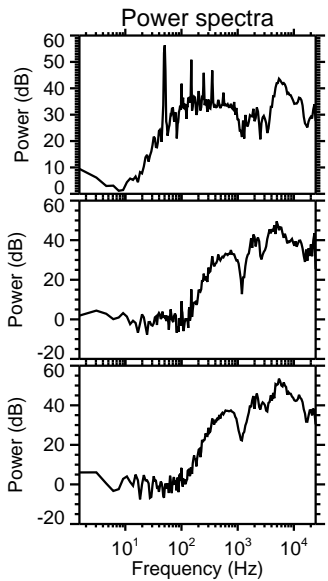
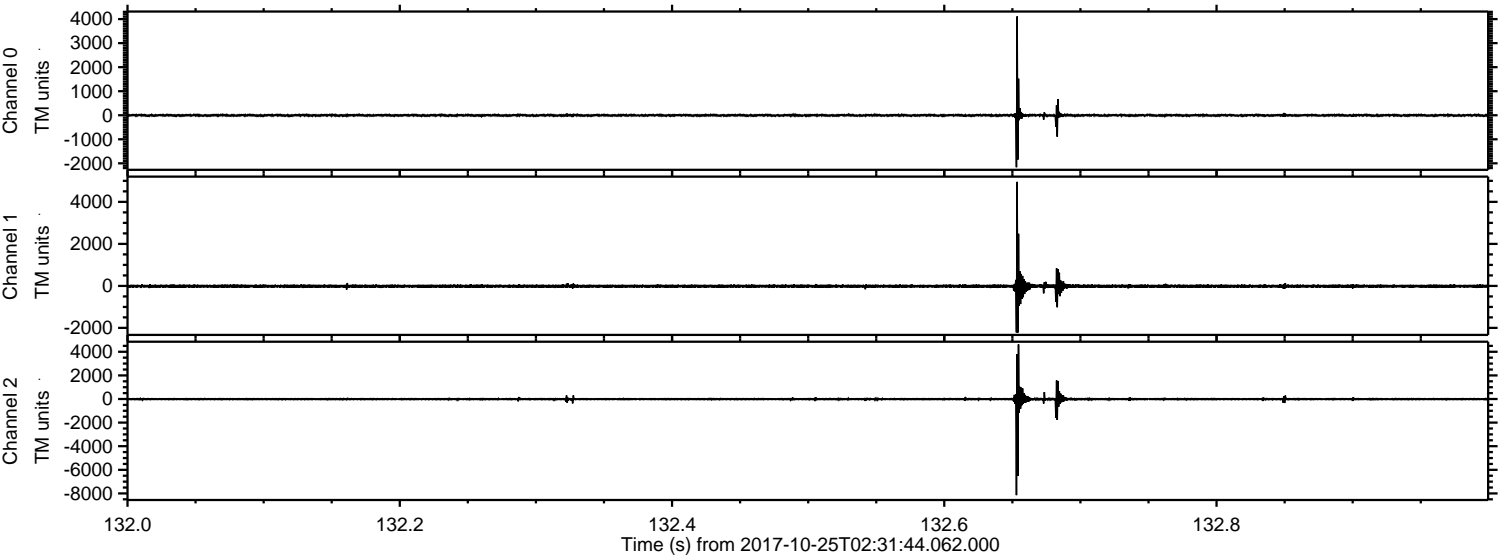
Channel 0
mn: -2188
mx: 2830
 μ : -5.6
 σ : 24.2

Channel 1
mn: -1183
mx: 1463
 μ : -12.3
 σ : 37.2

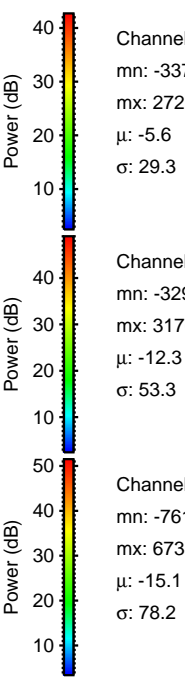
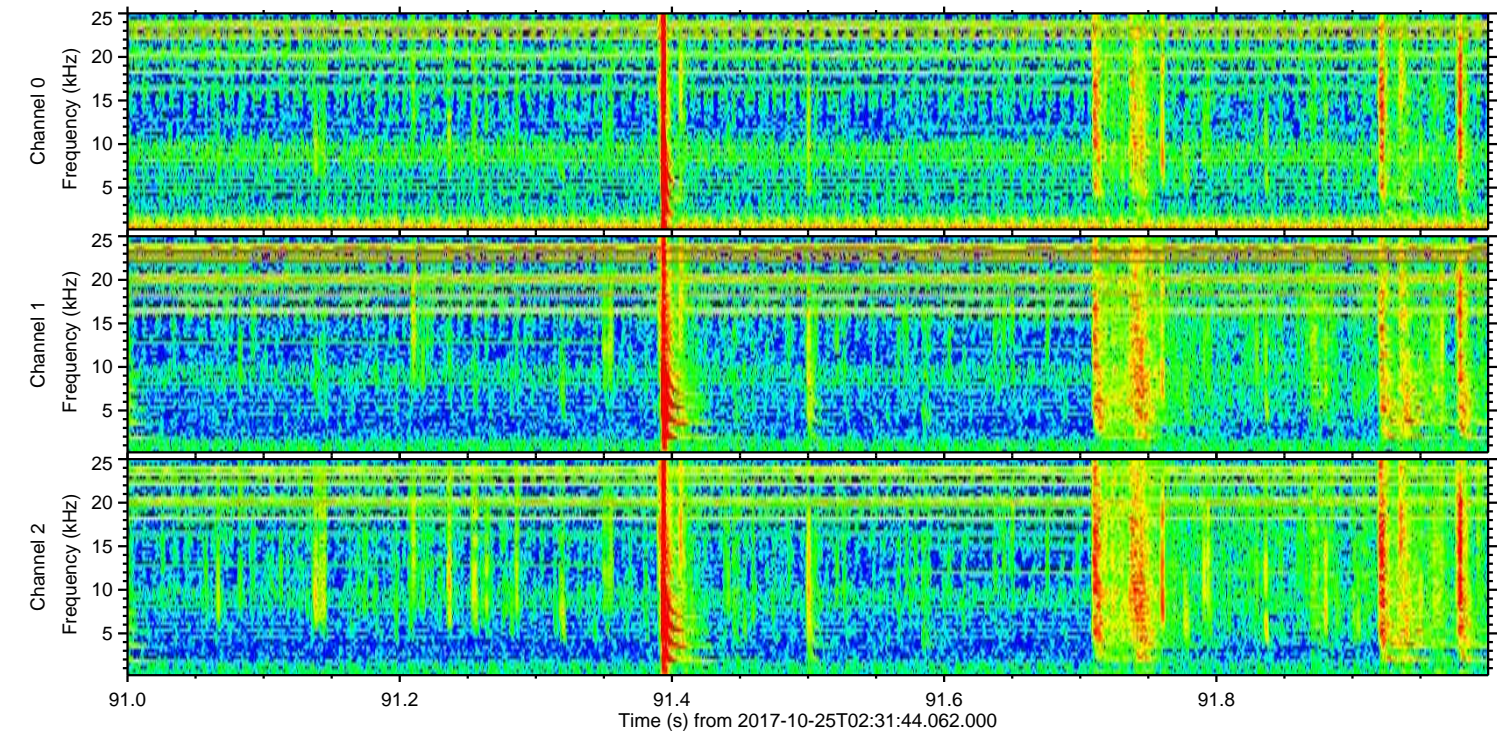
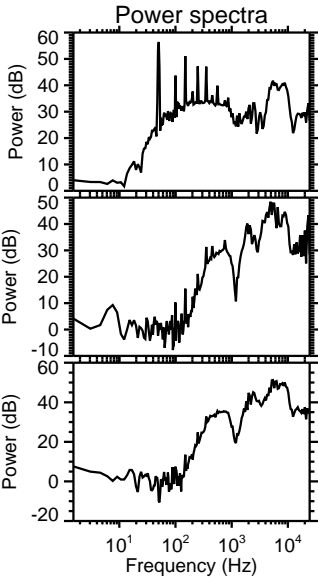
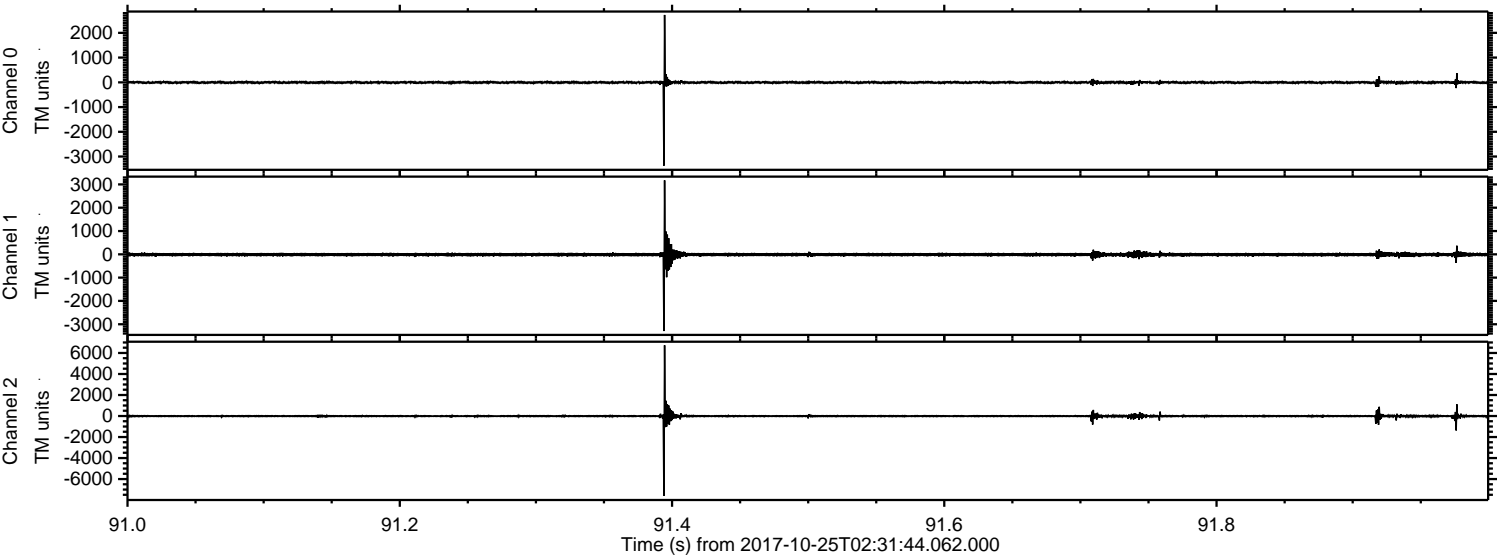
Channel 2
mn: -8412
mx: 6868
 μ : -15.2
 σ : 65.9

ELMAVAN 3D WAVEFORMS (Measured data sampled at 50 kHz) 51000 packets of 144 samples from 2017-10-25T02:31:44.062.000. Part 133/147

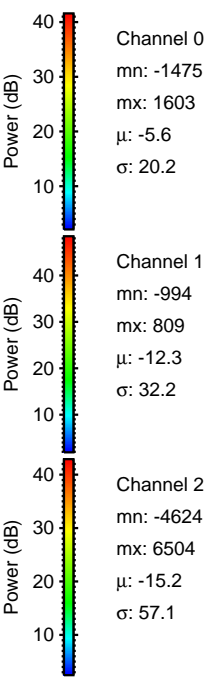
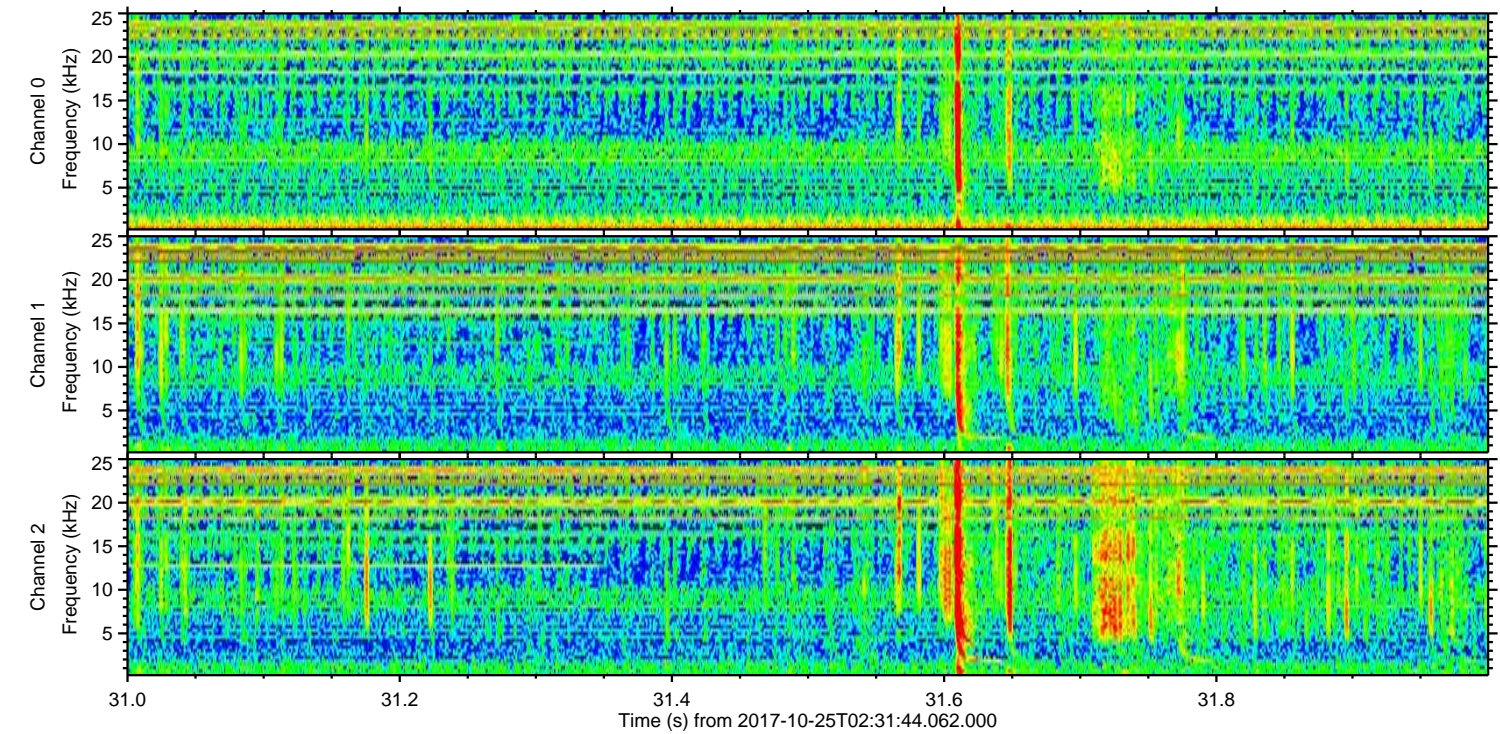
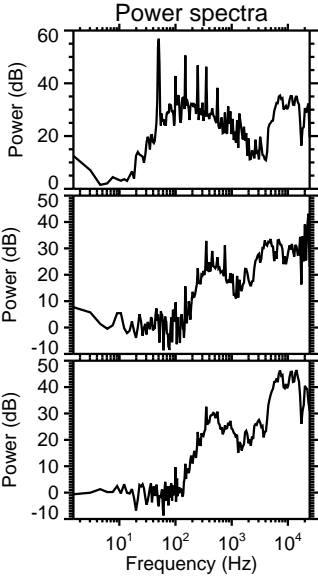
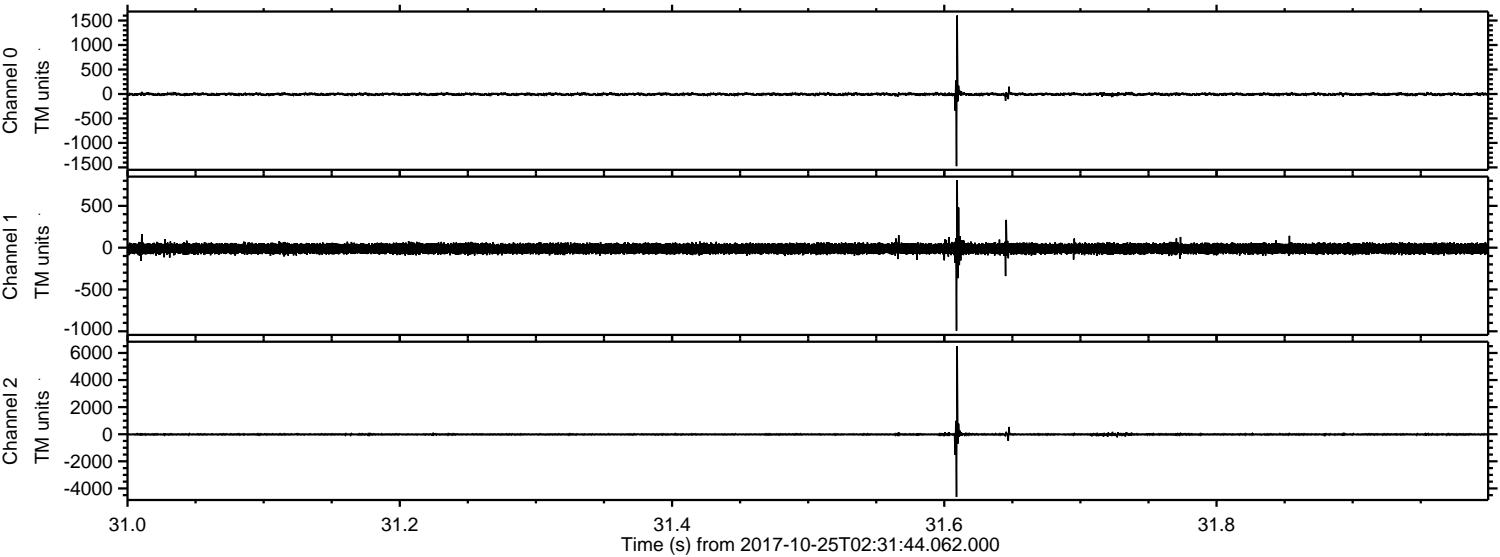
Processed Wed Oct 25 04:40:14 2017 by ELM ver.2012-10-06 from 001__elm20171025_023143__dat00.bin



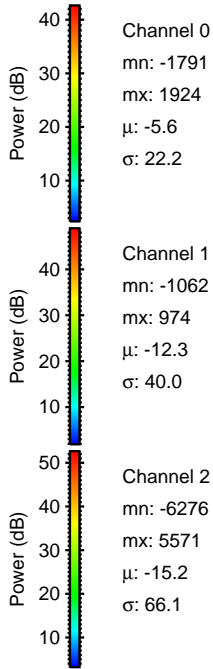
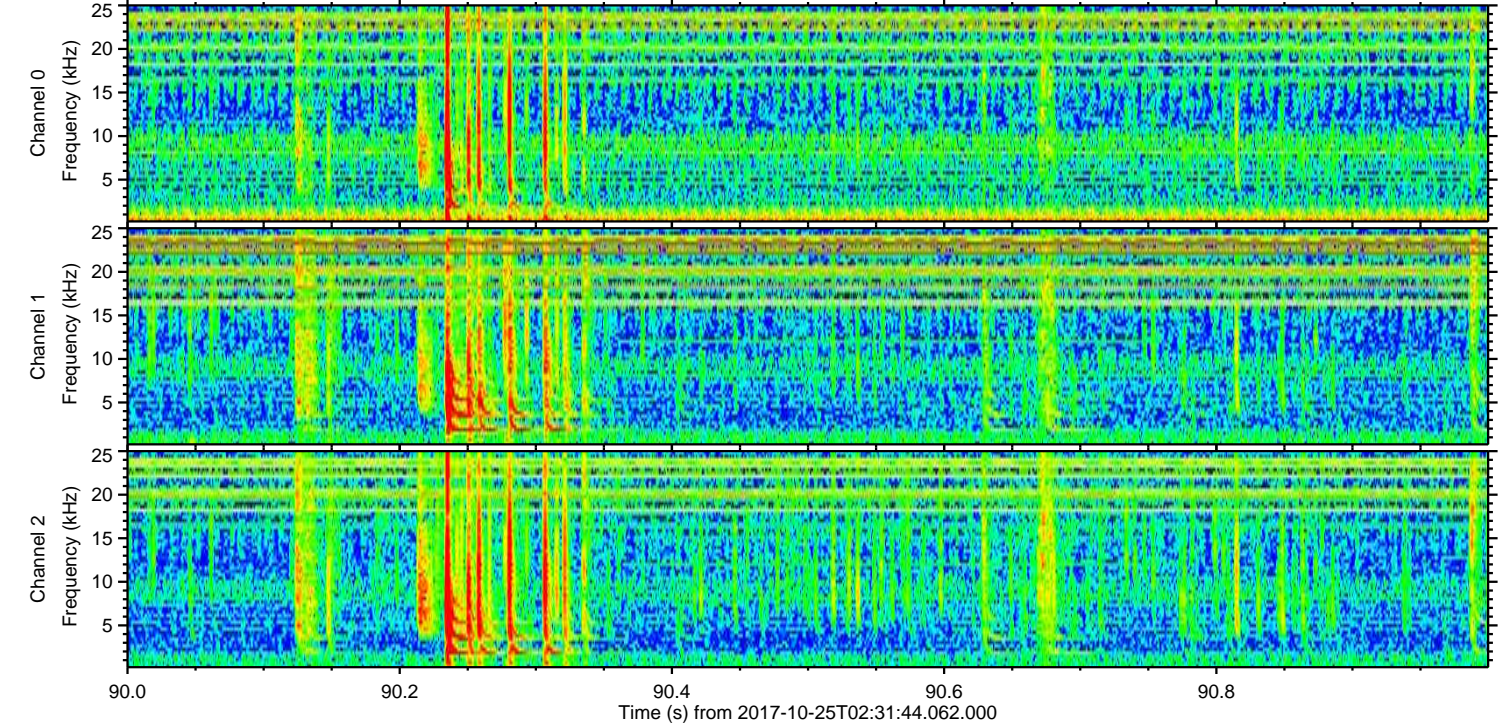
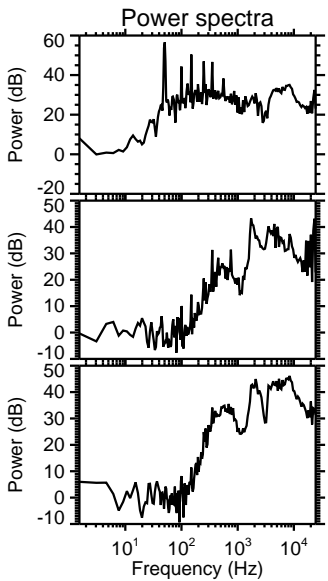
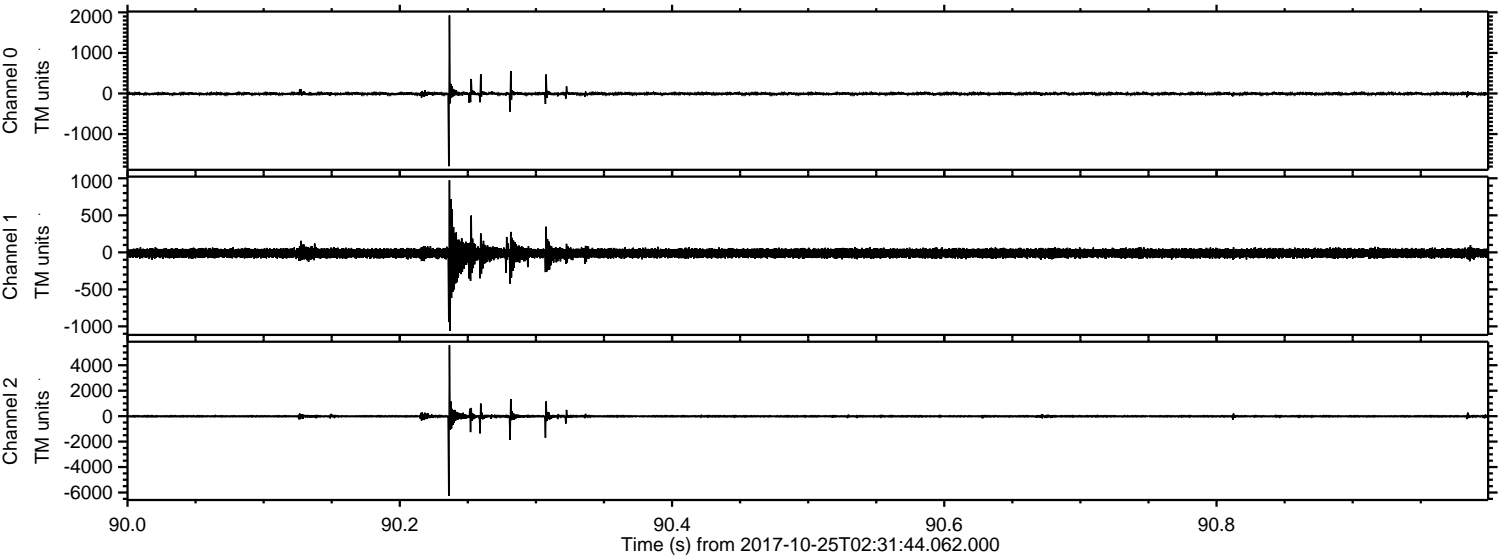
Processed Wed Oct 25 04:40:14 2017 by ELM ver.2012-10-06 from 001__elm20171025_023143__dat00.bin



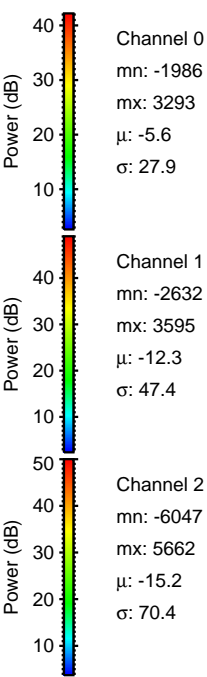
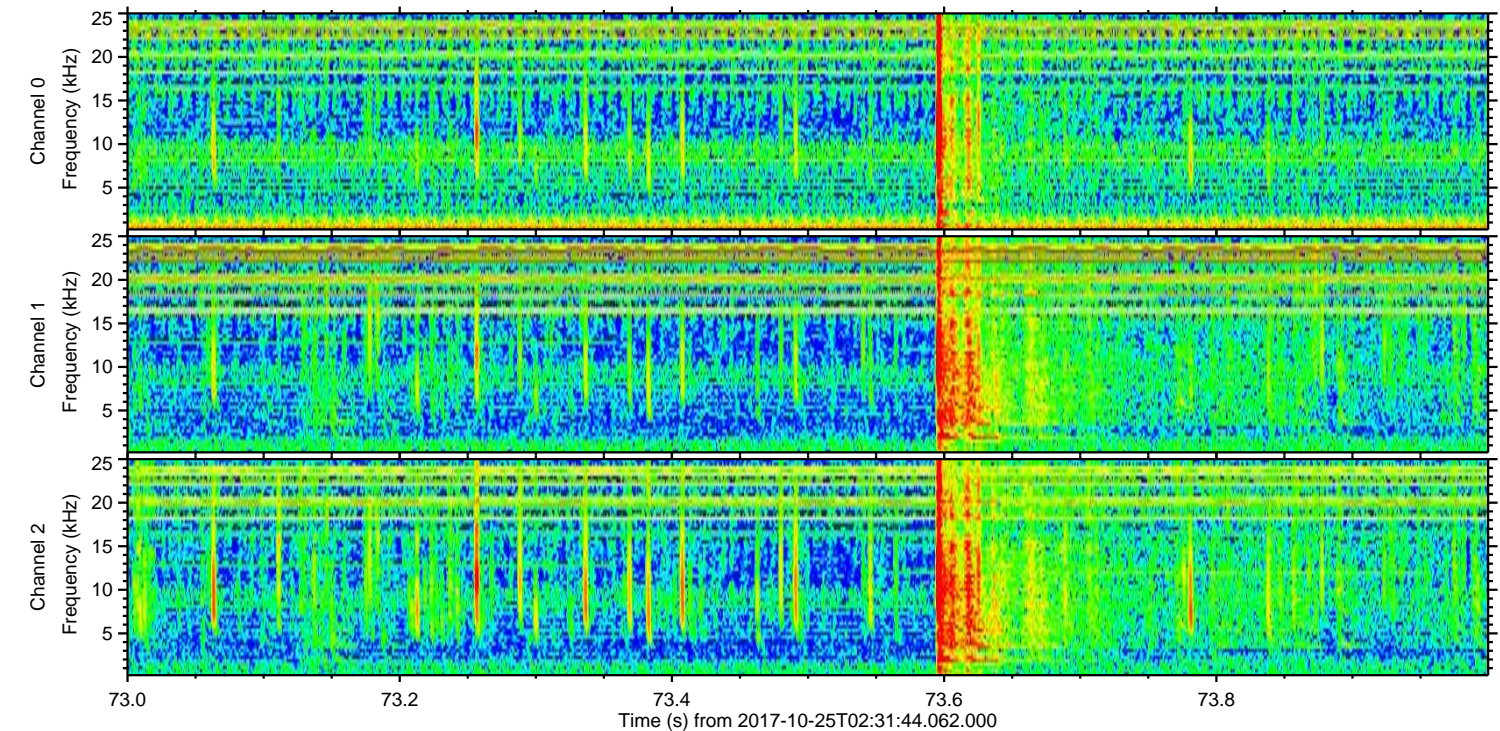
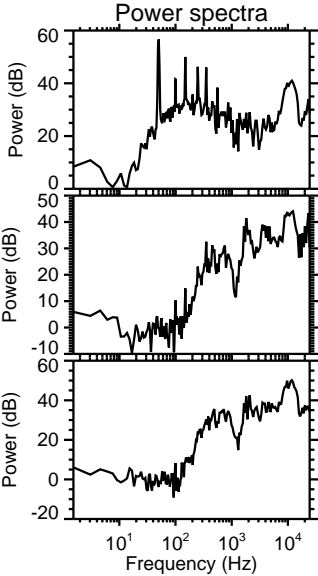
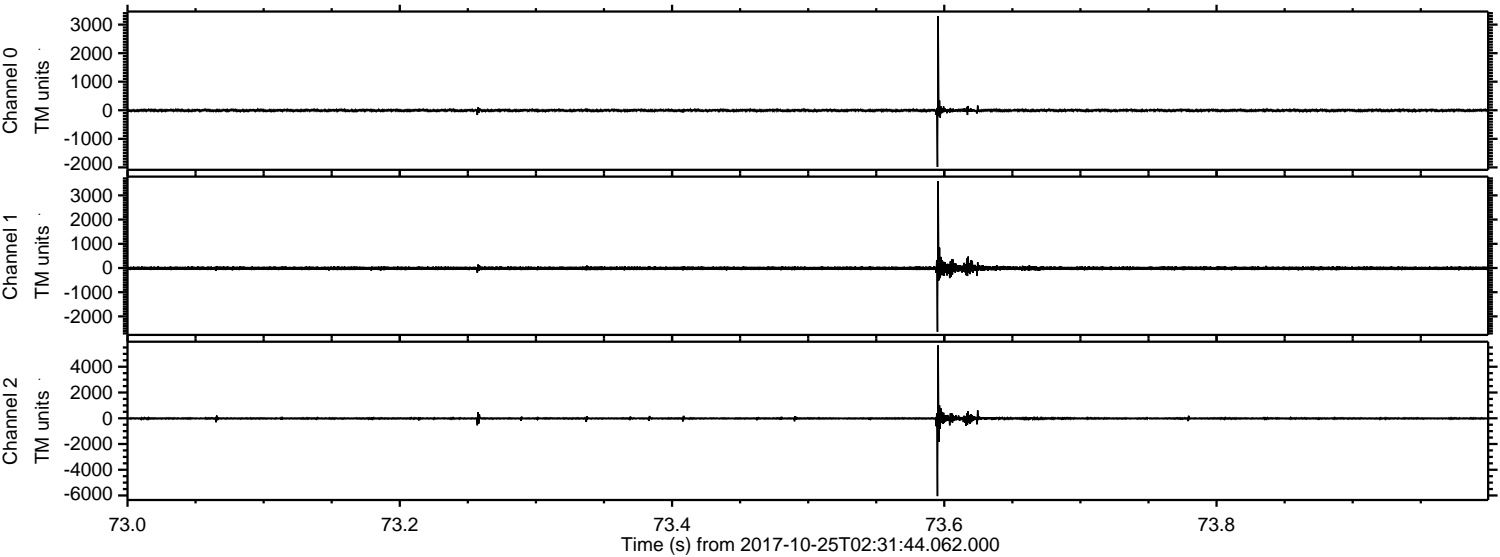
Processed Wed Oct 25 04:40:15 2017 by ELM ver.2012-10-06 from 001__elm20171025_023143__dat00.bin



Processed Wed Oct 25 04:40:15 2017 by ELM ver.2012-10-06 from 001__elm20171025_023143__dat00.bin



Processed Wed Oct 25 04:40:16 2017 by ELM ver.2012-10-06 from 001__elm20171025_023143__dat00.bin



Channel 0
mn: -1986
mx: 3293
 μ : -5.6
 σ : 27.9

Channel 1
mn: -2632
mx: 3595
 μ : -12.3
 σ : 47.4

Channel 2
mn: -6047
mx: 5662
 μ : -15.2
 σ : 70.4

Processed Wed Oct 25 04:40:17 2017 by ELM ver.2012-10-06 from 001__elm20171025_023143__dat00.bin

