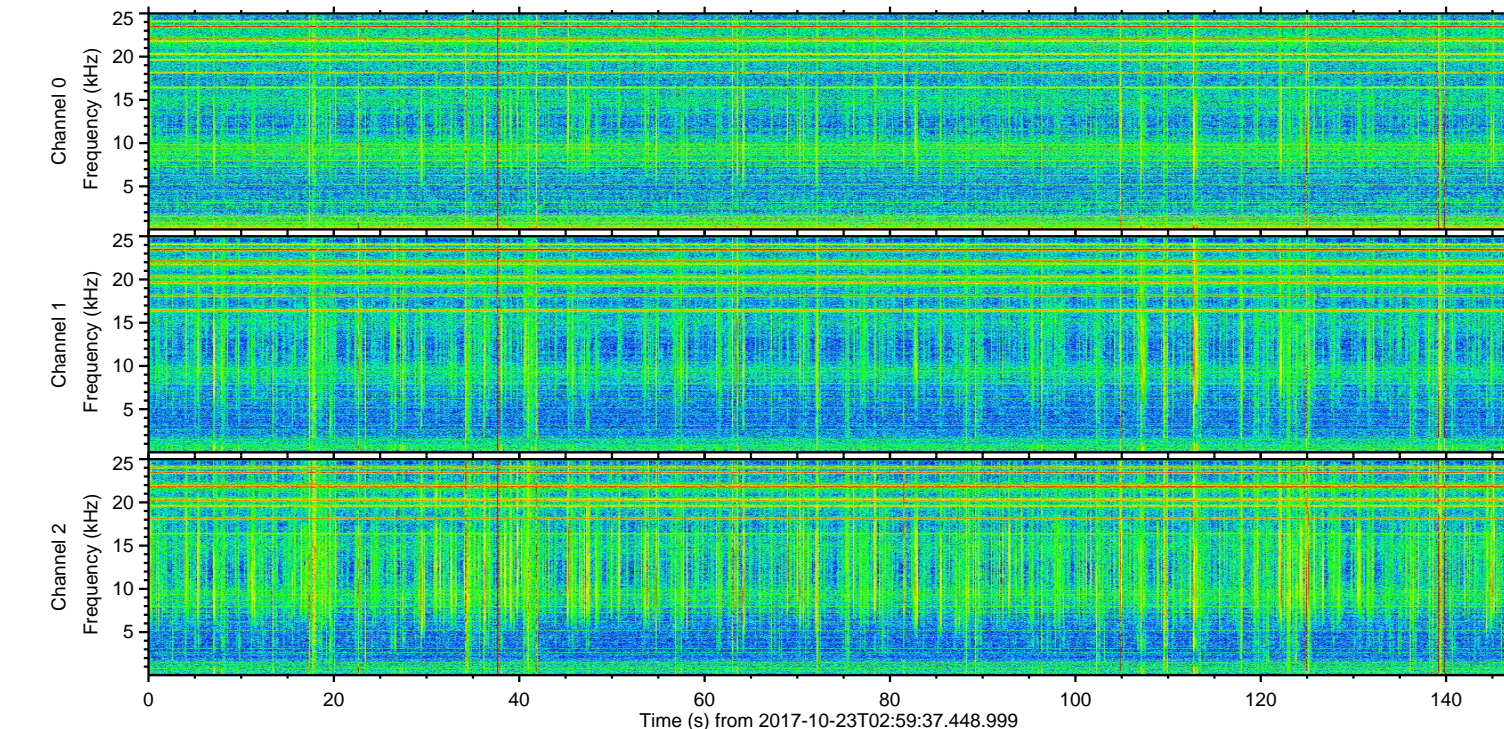
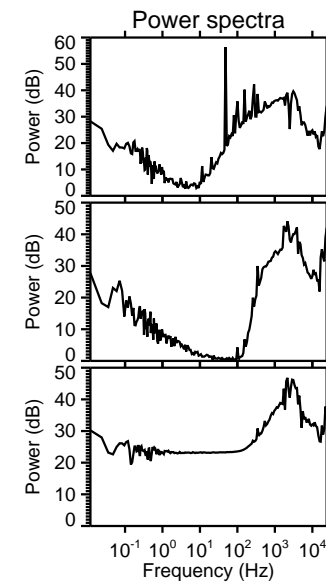
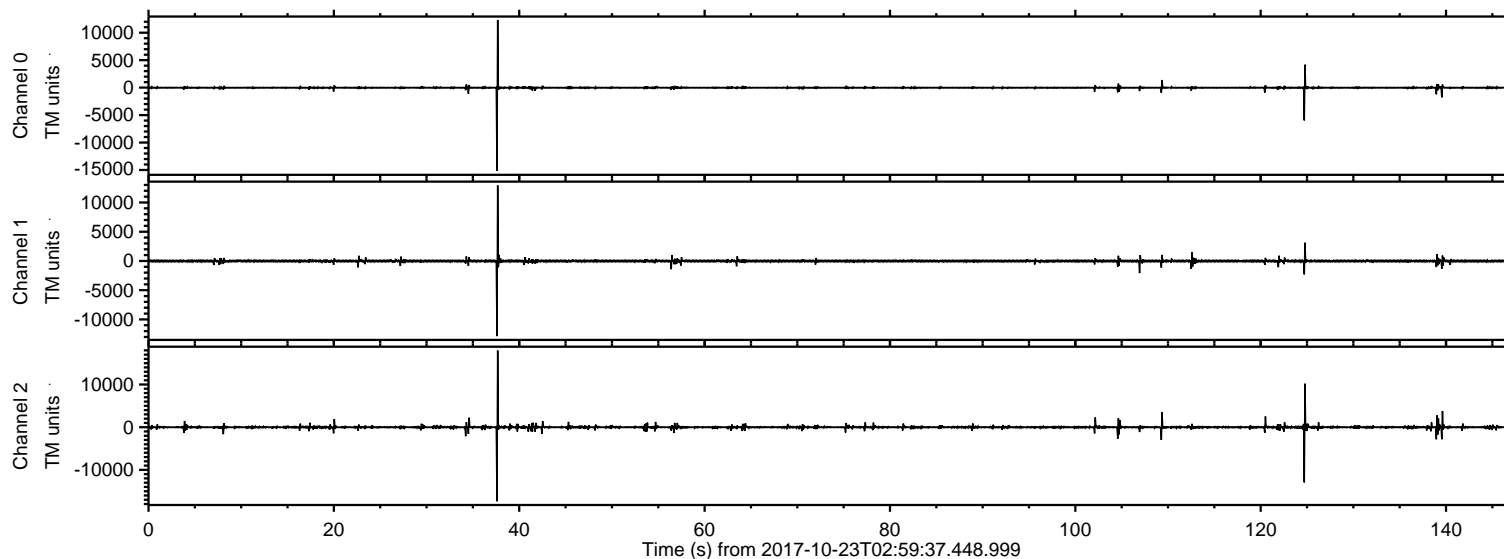


ELMAVAN 3D WAVEFORMS (Measured data sampled at 50 kHz) 51000 packets of 144 samples from 2017-10-23T02:59:37.448.999.

Processed Mon Oct 23 05:06:55 2017 by ELM ver.2012-10-06 from 001__elm20171023_025936__dat00.bin



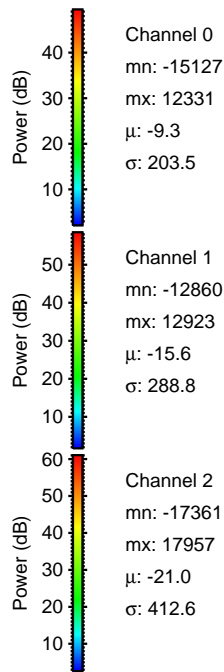
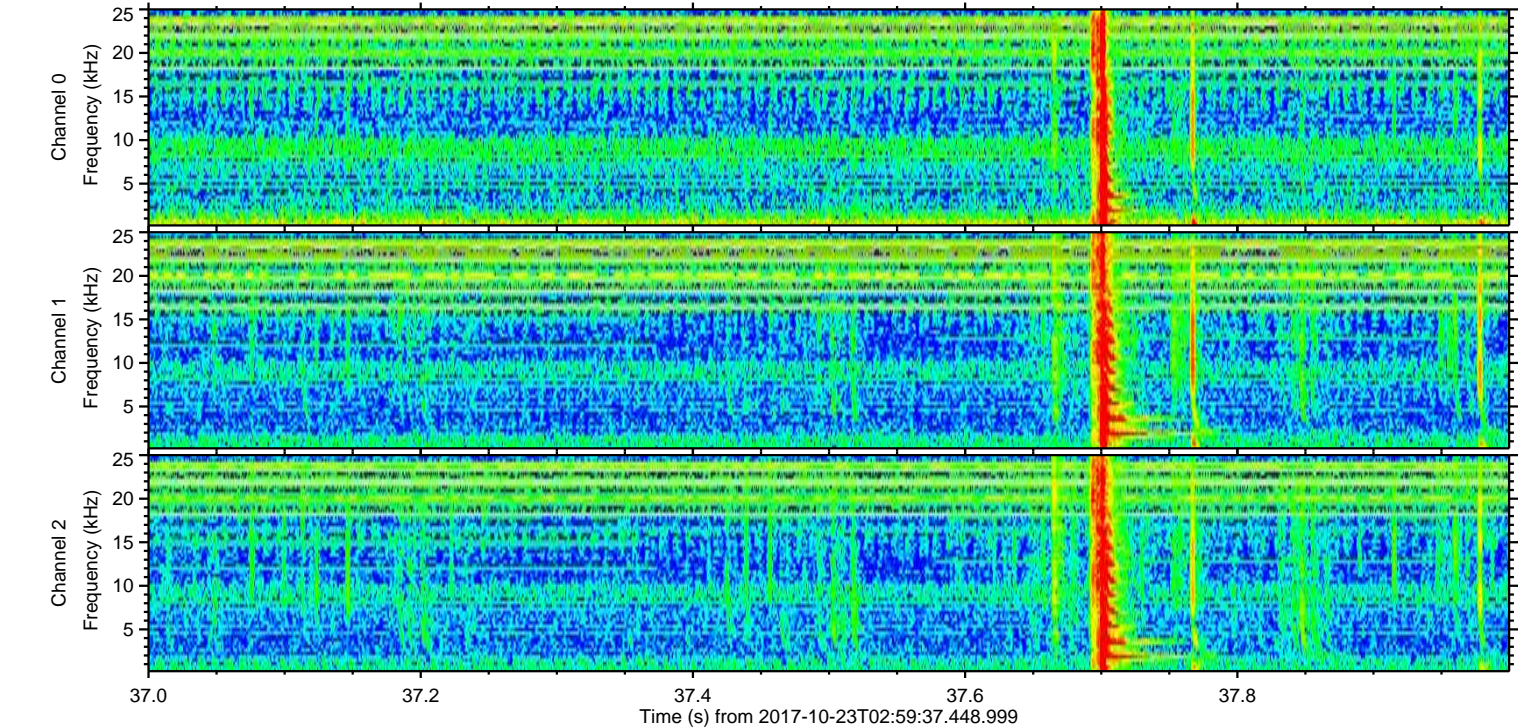
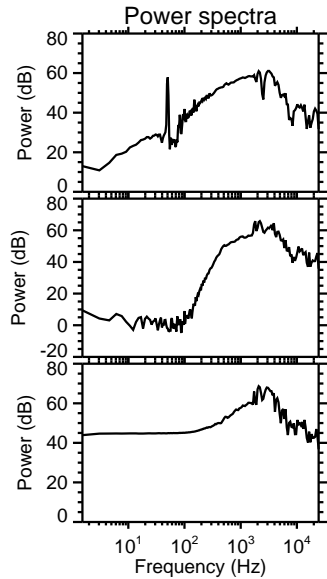
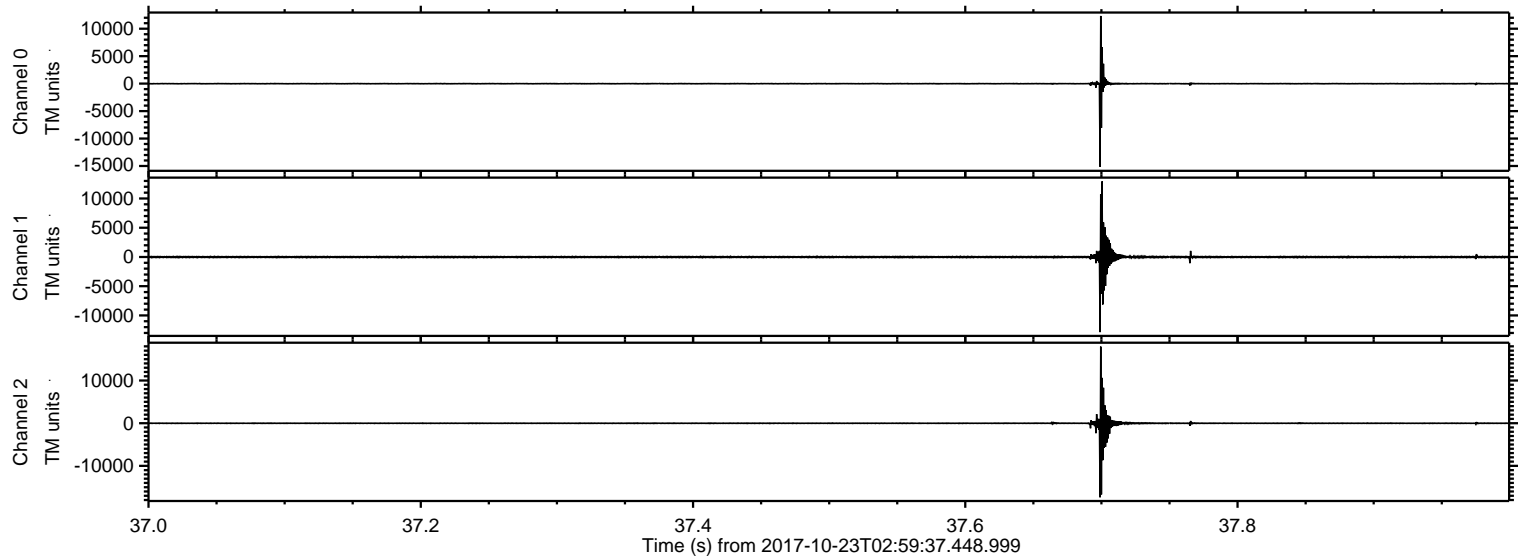
Channel 0
mn: -15127
mx: 12331
 μ : -9.3
 σ : 22.6

Channel 1
mn: -12860
mx: 12923
 μ : -15.5
 σ : 41.0

Channel 2
mn: -17361
mx: 17957
 μ : -20.5
 σ : 43.2

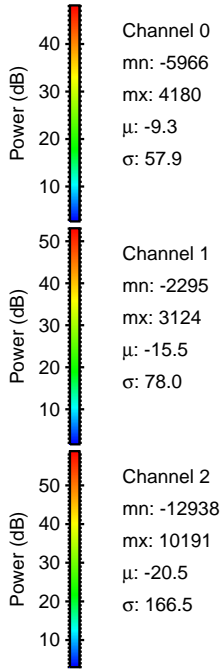
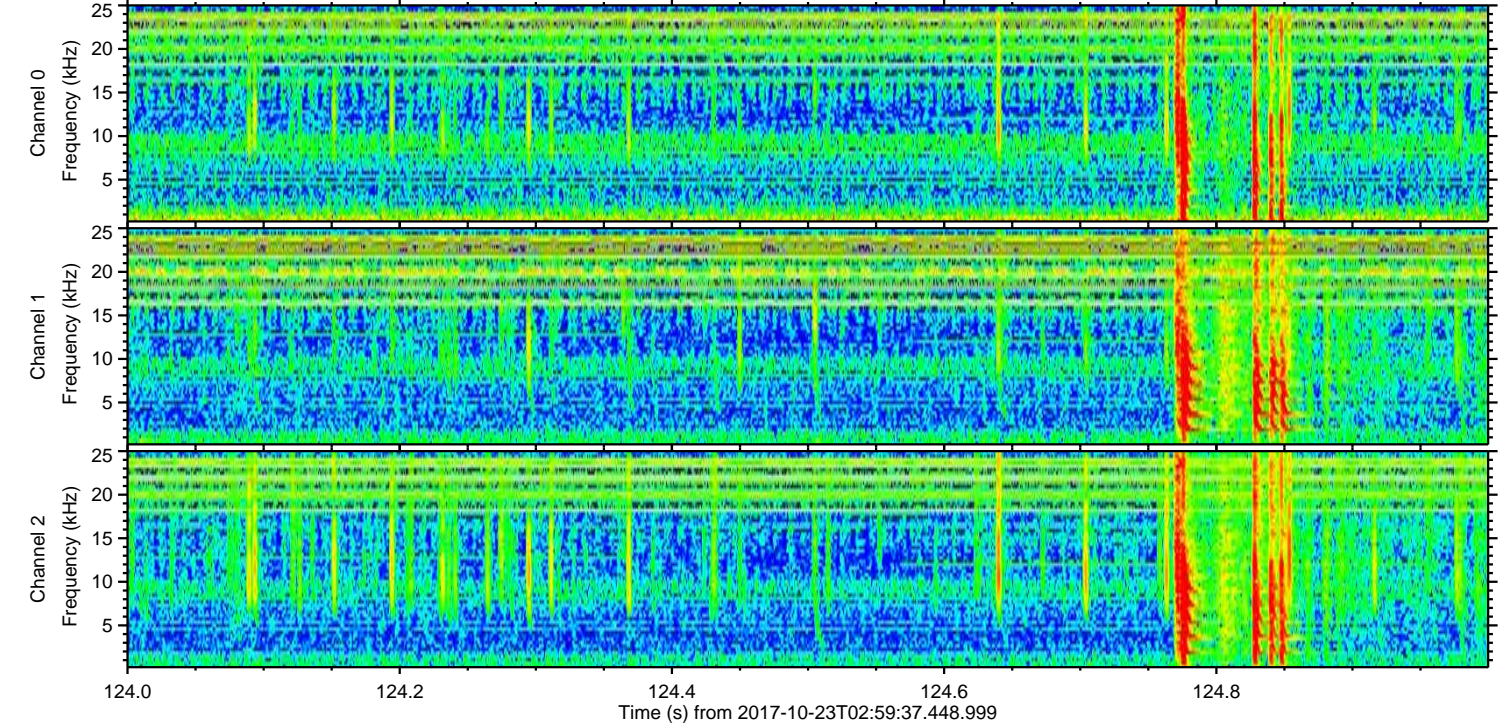
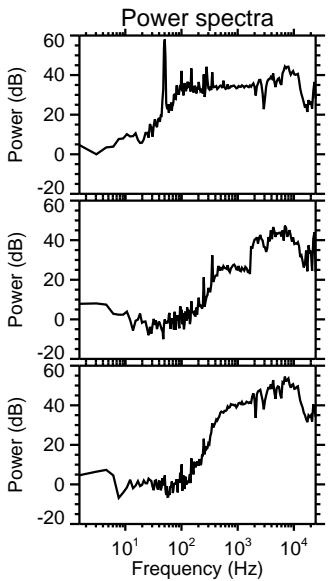
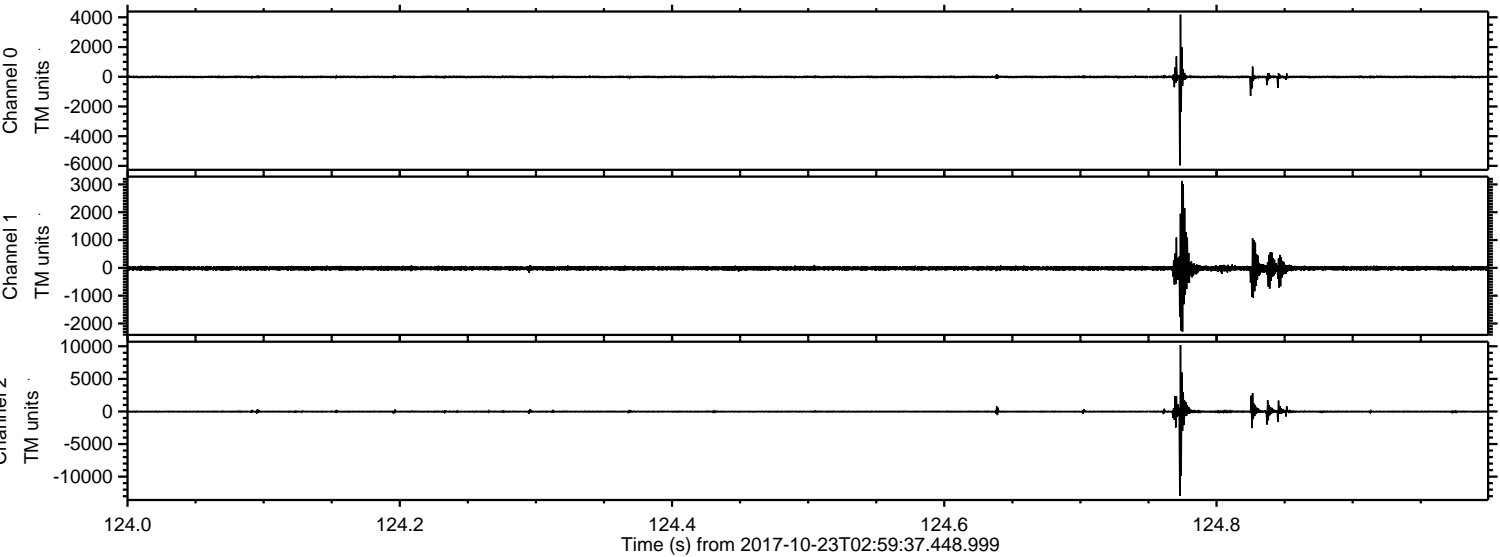
ELMAVAN 3D WAVEFORMS (Measured data sampled at 50 kHz) 51000 packets of 144 samples from 2017-10-23T02:59:37.448.999. Part 38/147

Processed Mon Oct 23 05:07:01 2017 by ELM ver.2012-10-06 from 001__elm20171023_025936__dat00.bin



ELMAVAN 3D WAVEFORMS (Measured data sampled at 50 kHz) 51000 packets of 144 samples from 2017-10-23T02:59:37.448.999. Part 125/147

Processed Mon Oct 23 05:07:02 2017 by ELM ver.2012-10-06 from 001__elm20171023_025936__dat00.bin



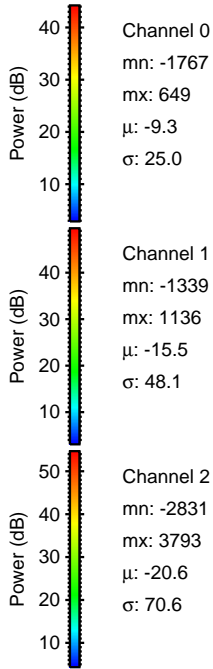
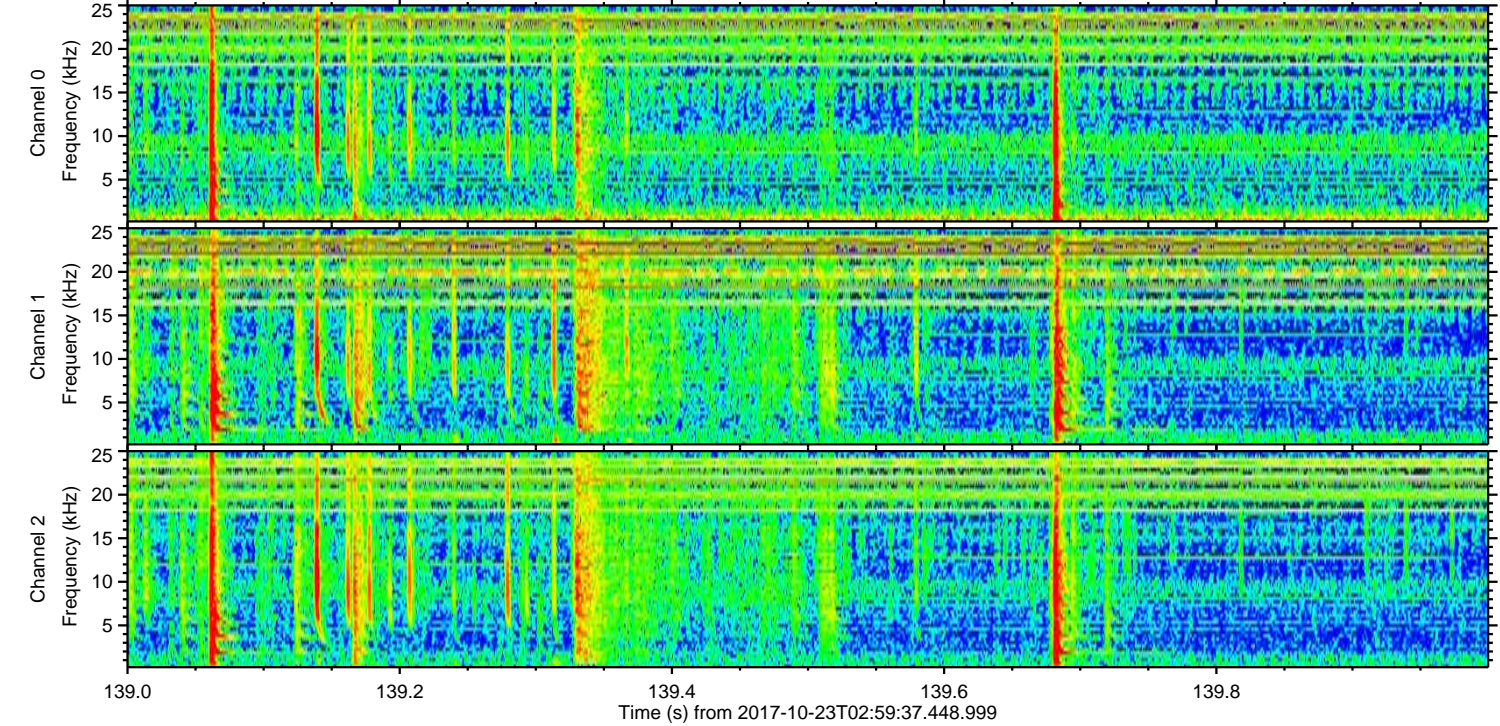
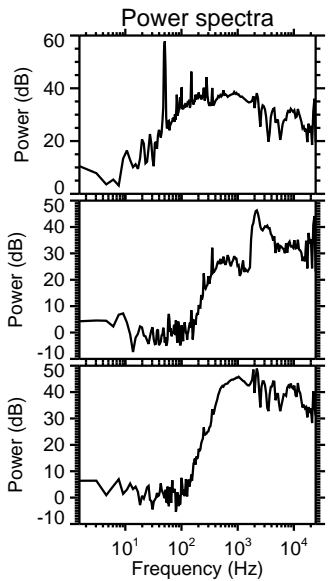
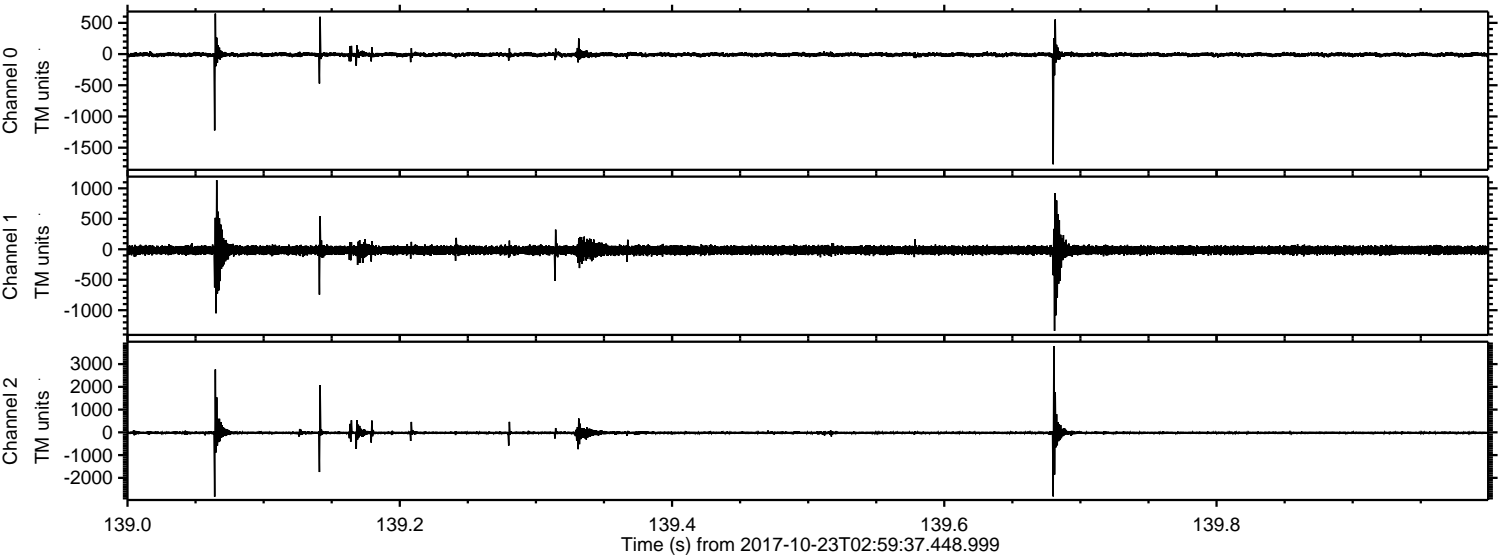
Channel 0
mn: -5966
mx: 4180
 μ : -9.3
 σ : 57.9

Channel 1
mn: -2295
mx: 3124
 μ : -15.5
 σ : 78.0

Channel 2
mn: -12938
mx: 10191
 μ : -20.5
 σ : 166.5

ELMAVAN 3D WAVEFORMS (Measured data sampled at 50 kHz) 51000 packets of 144 samples from 2017-10-23T02:59:37.448.999. Part 140/147

Processed Mon Oct 23 05:07:02 2017 by ELM ver.2012-10-06 from 001__elm20171023_025936__dat00.bin



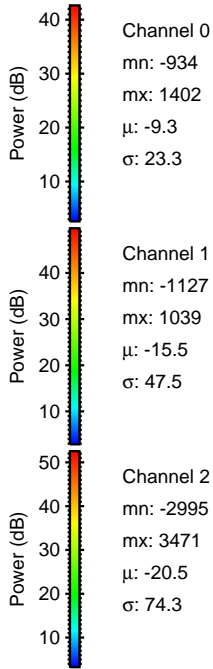
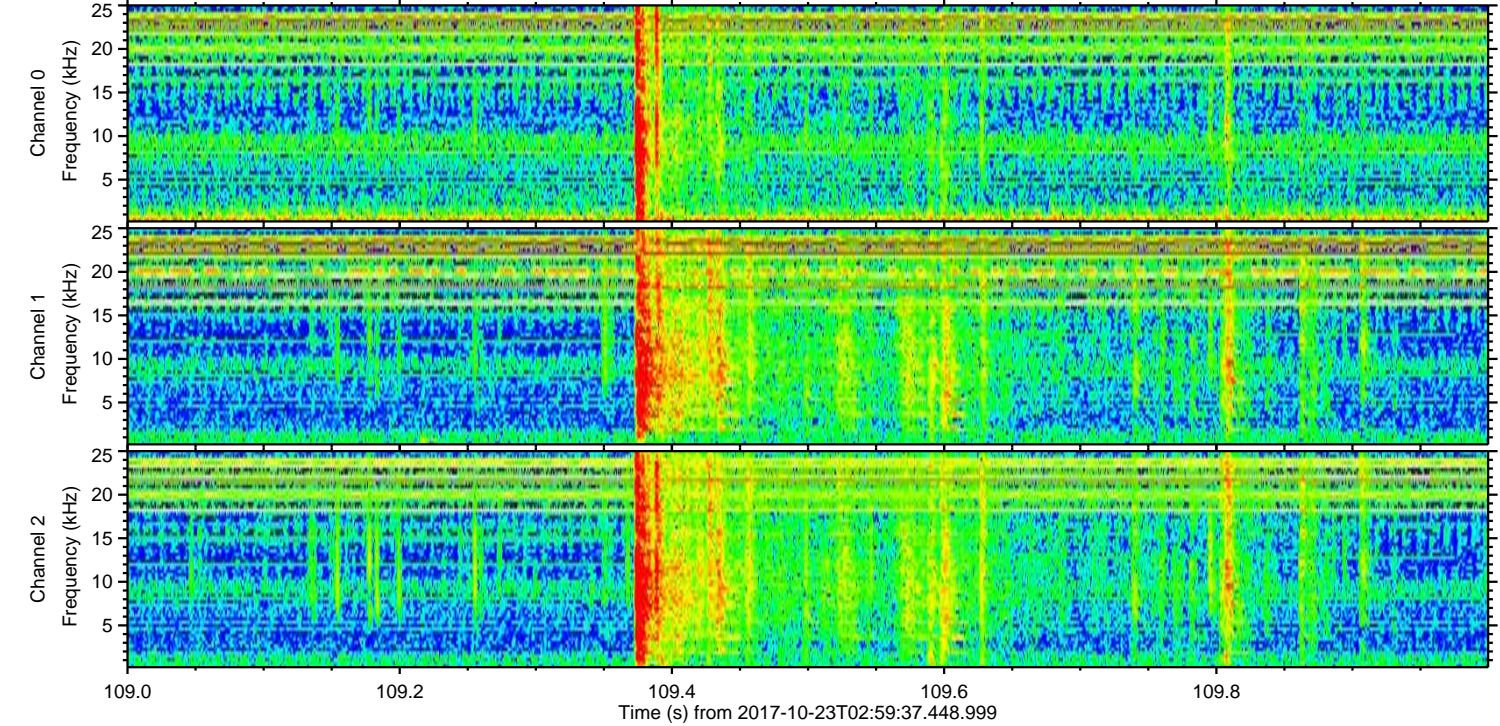
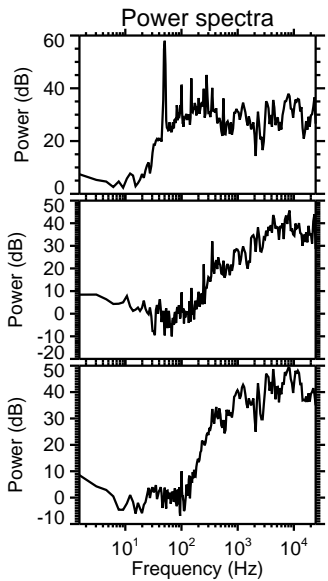
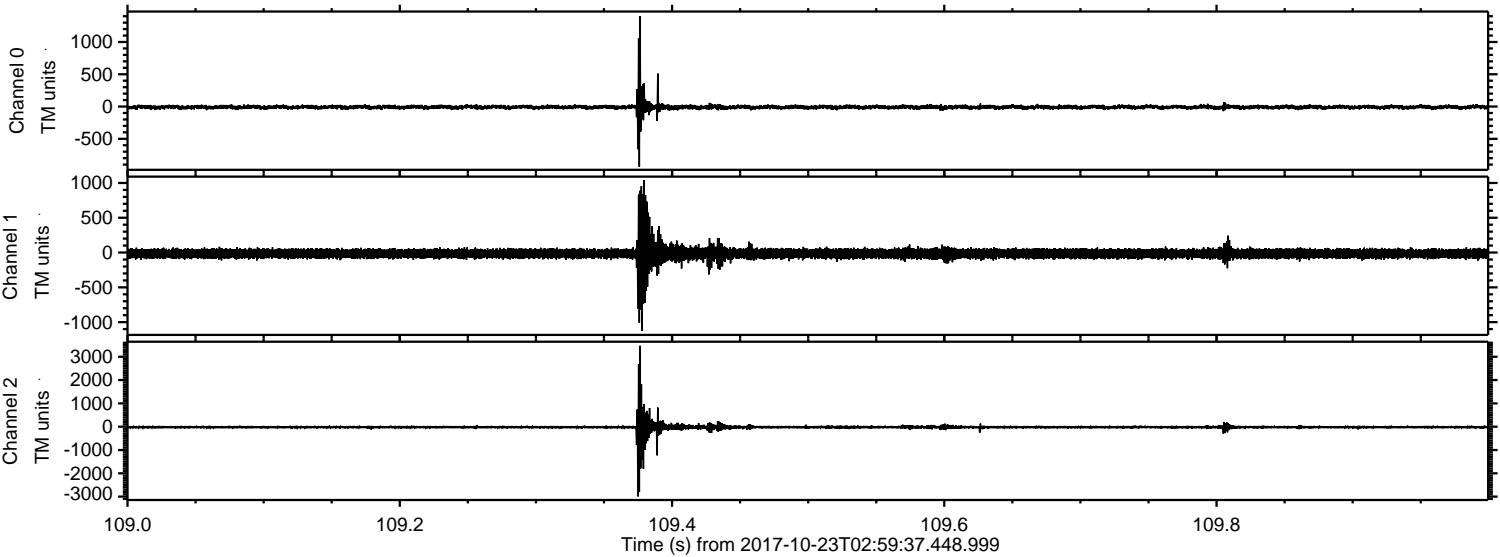
Channel 0
mn: -1767
mx: 649
 μ : -9.3
 σ : 25.0

Channel 1
mn: -1339
mx: 1136
 μ : -15.5
 σ : 48.1

Channel 2
mn: -2831
mx: 3793
 μ : -20.6
 σ : 70.6

ELMAVAN 3D WAVEFORMS (Measured data sampled at 50 kHz) 51000 packets of 144 samples from 2017-10-23T02:59:37.448.999. Part 110/147

Processed Mon Oct 23 05:07:03 2017 by ELM ver.2012-10-06 from 001__elm20171023_025936__dat00.bin



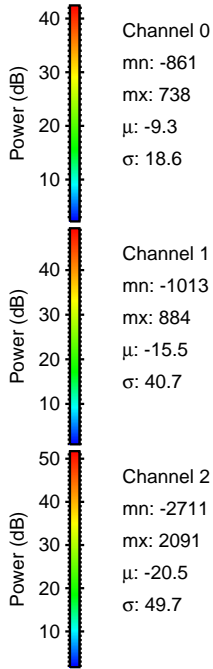
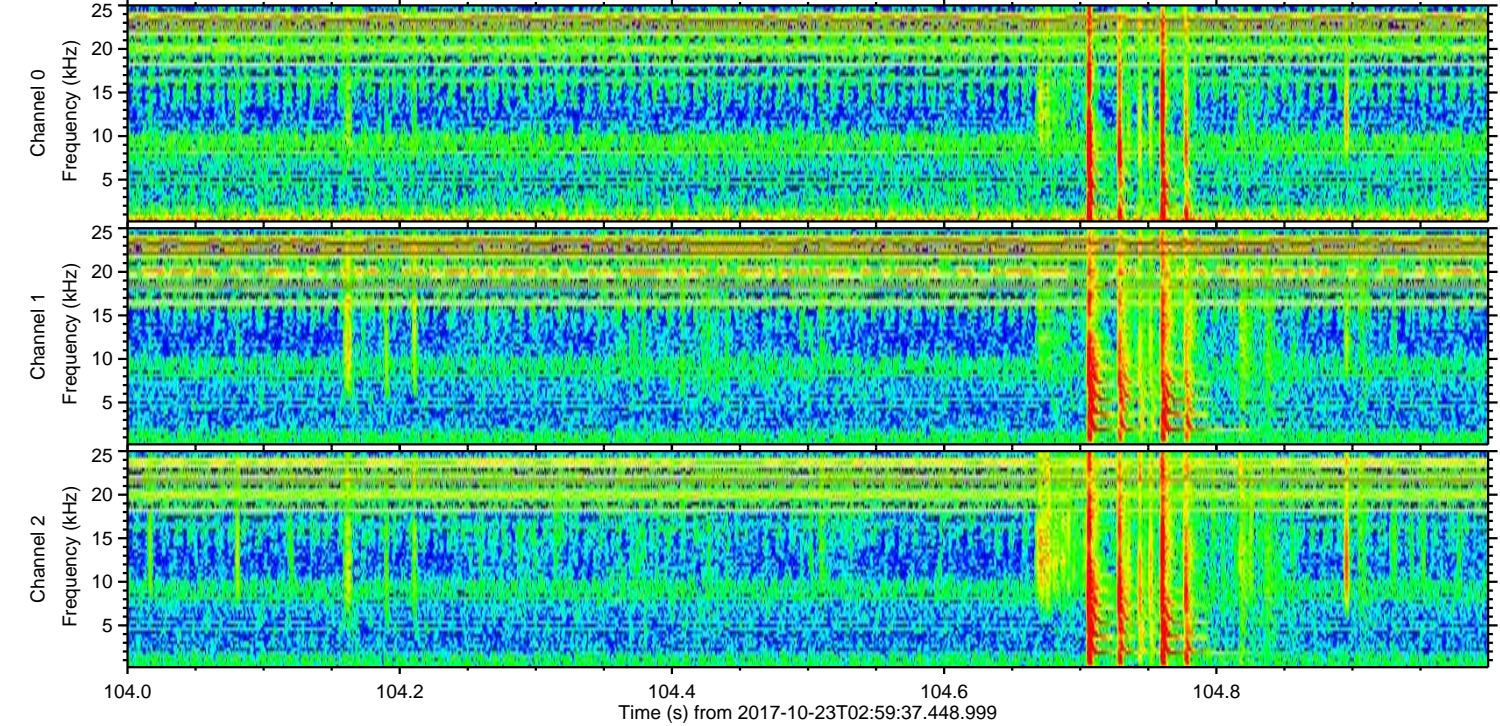
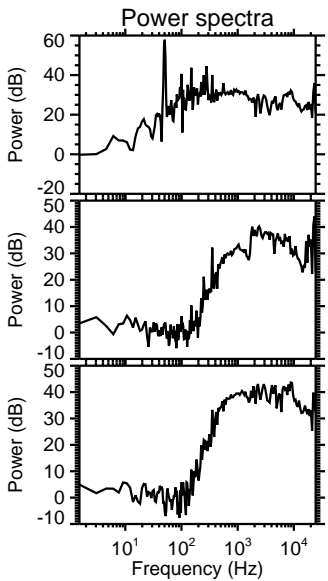
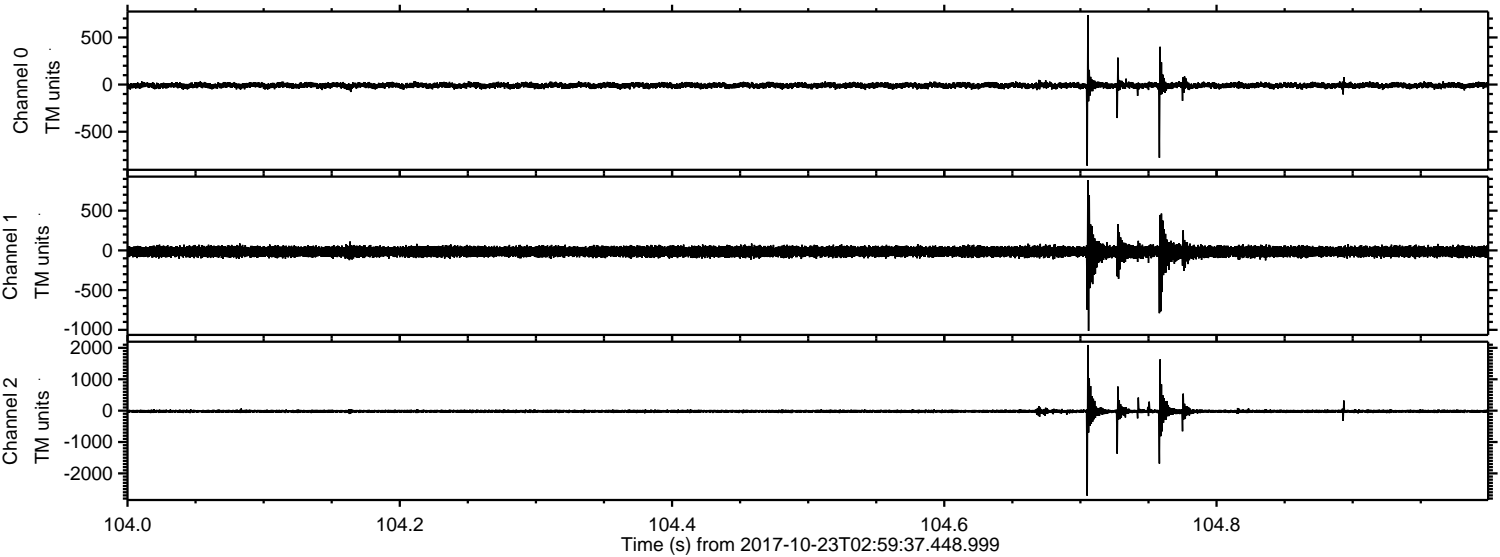
Channel 0
mn: -934
mx: 1402
 μ : -9.3
 σ : 23.3

Channel 1
mn: -1127
mx: 1039
 μ : -15.5
 σ : 47.5

Channel 2
mn: -2995
mx: 3471
 μ : -20.5
 σ : 74.3

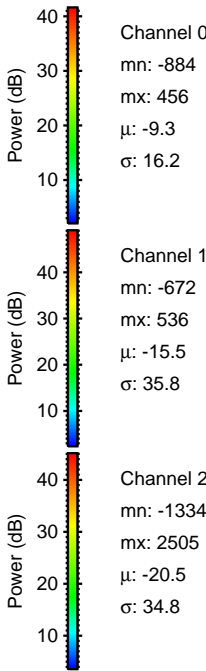
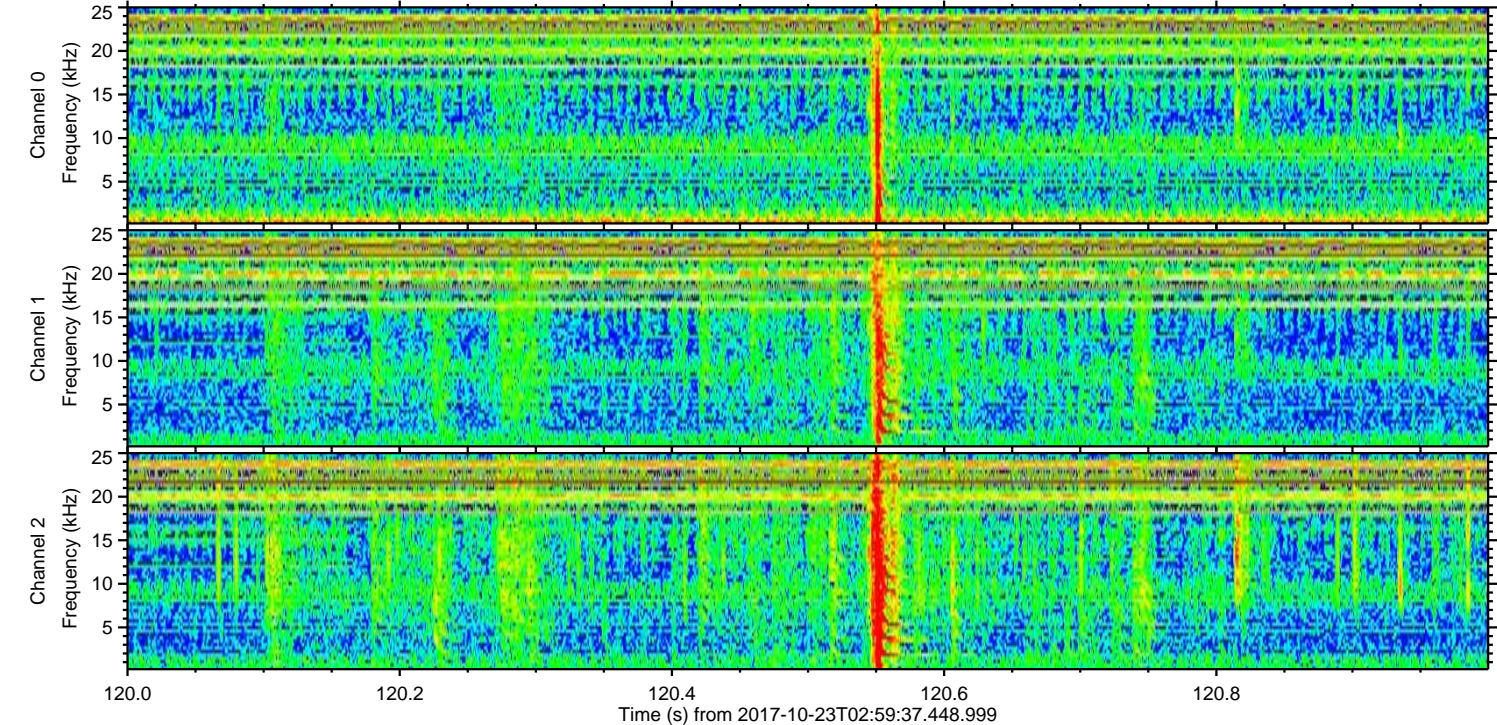
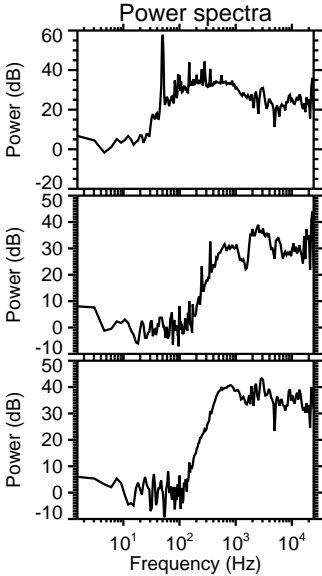
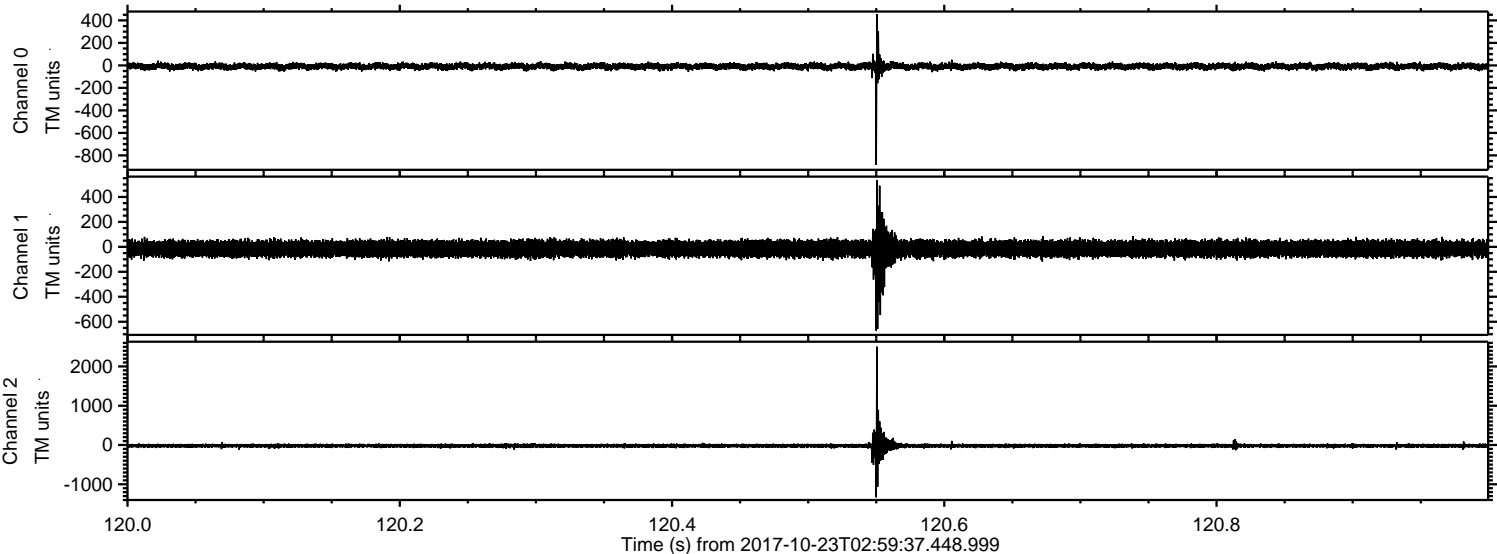
ELMAVAN 3D WAVEFORMS (Measured data sampled at 50 kHz) 51000 packets of 144 samples from 2017-10-23T02:59:37.448.999. Part 105/147

Processed Mon Oct 23 05:07:03 2017 by ELM ver.2012-10-06 from 001__elm20171023_025936__dat00.bin



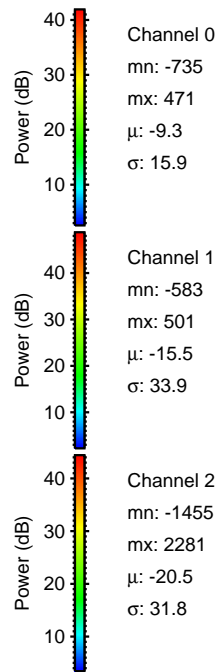
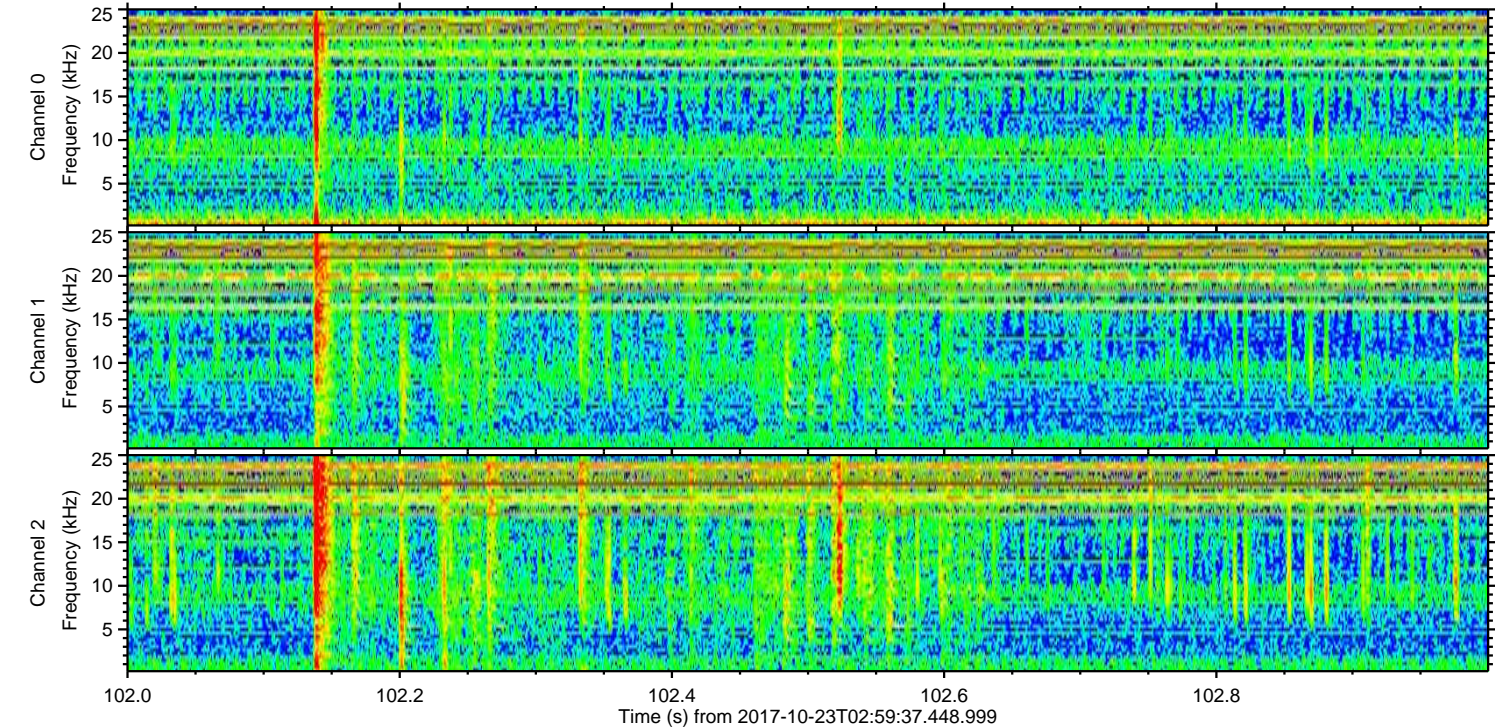
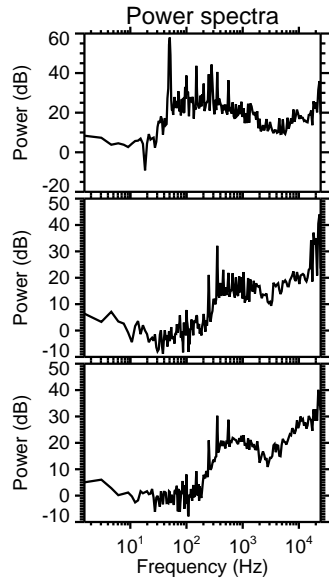
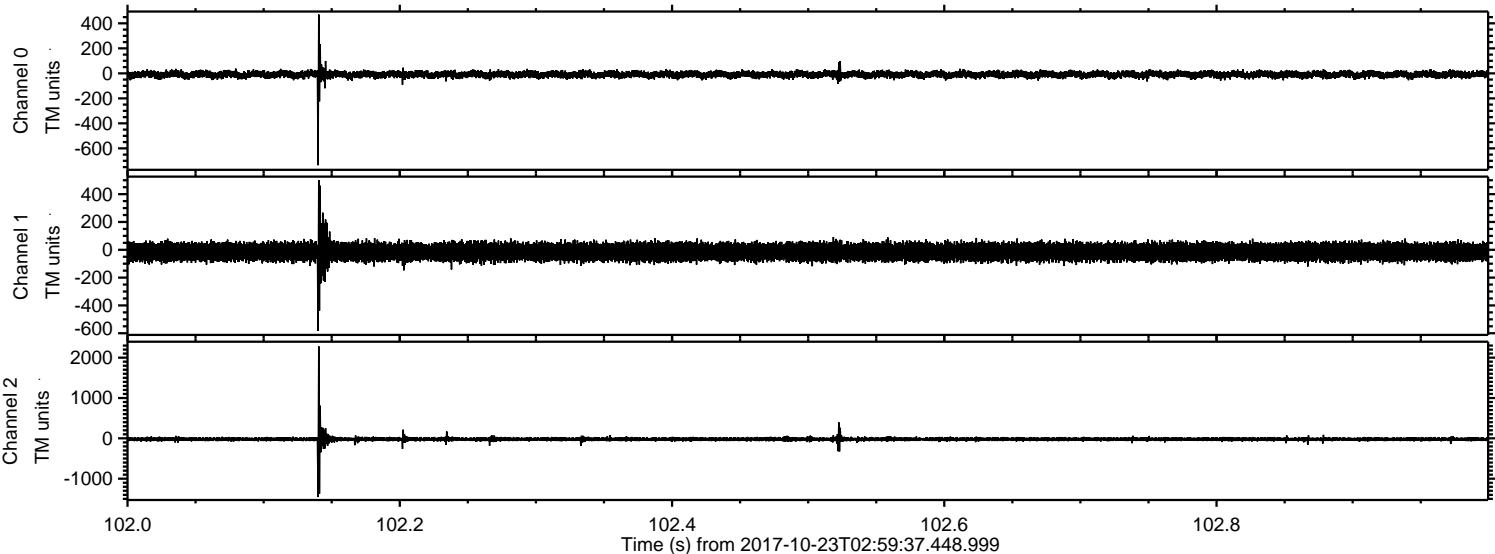
ELMAVAN 3D WAVEFORMS (Measured data sampled at 50 kHz) 51000 packets of 144 samples from 2017-10-23T02:59:37.448.999. Part 121/147

Processed Mon Oct 23 05:07:04 2017 by ELM ver.2012-10-06 from 001__elm20171023_025936__dat00.bin



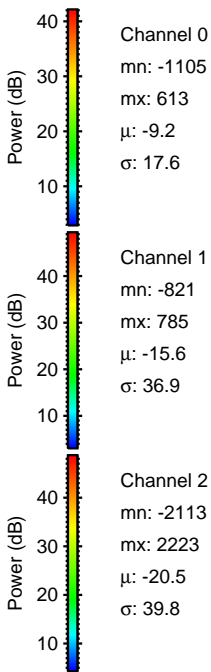
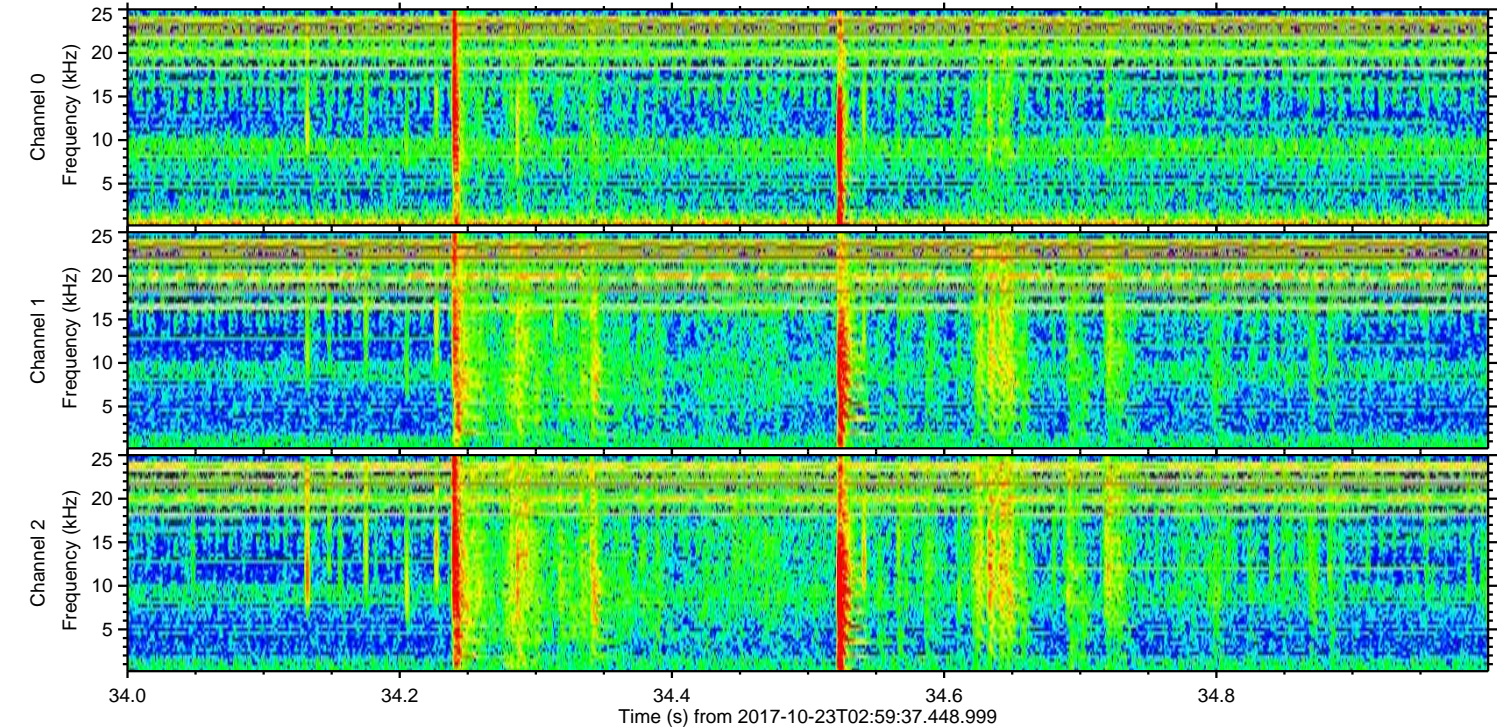
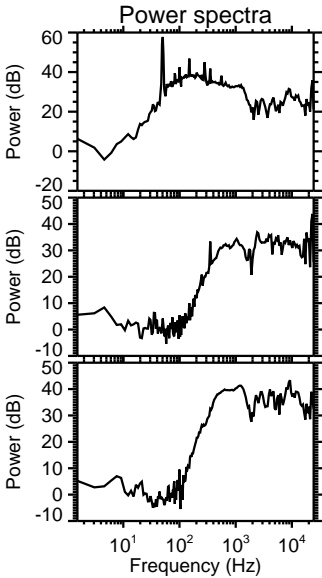
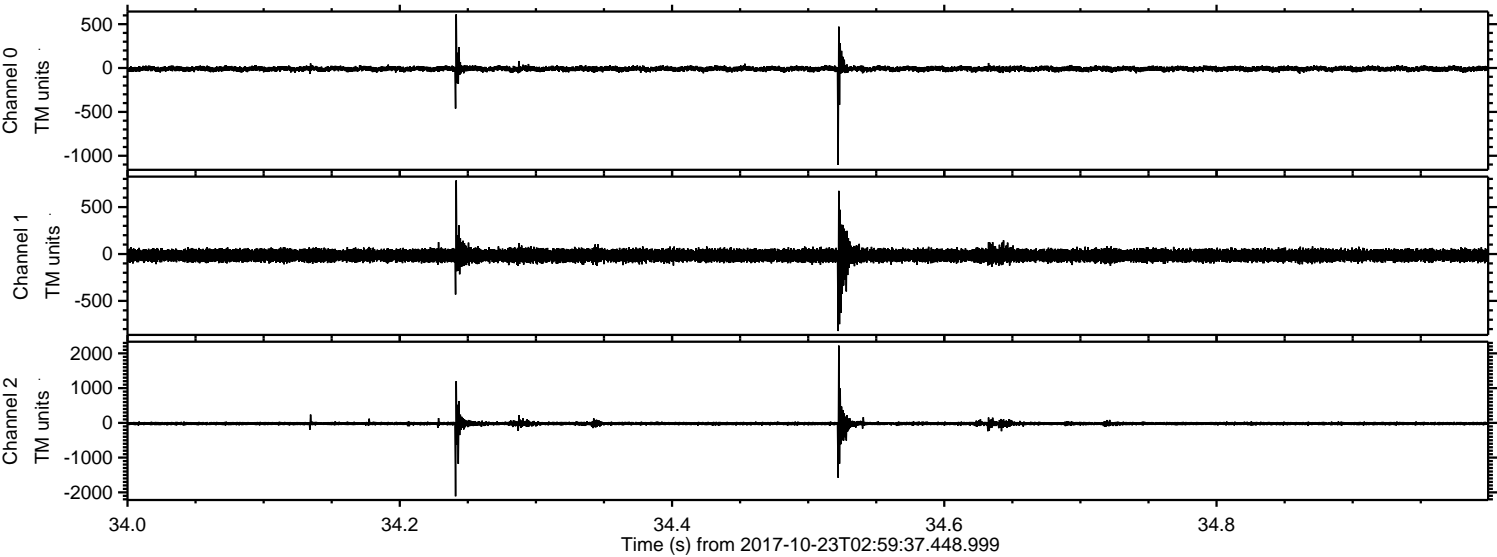
ELMAVAN 3D WAVEFORMS (Measured data sampled at 50 kHz) 51000 packets of 144 samples from 2017-10-23T02:59:37.448.999. Part 103/147

Processed Mon Oct 23 05:07:05 2017 by ELM ver.2012-10-06 from 001__elm20171023_025936__dat00.bin



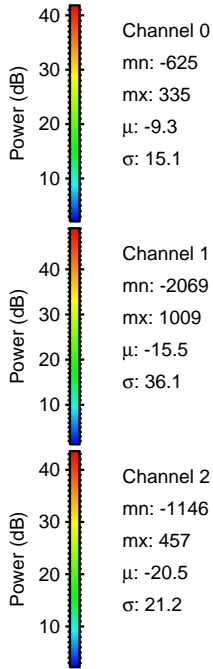
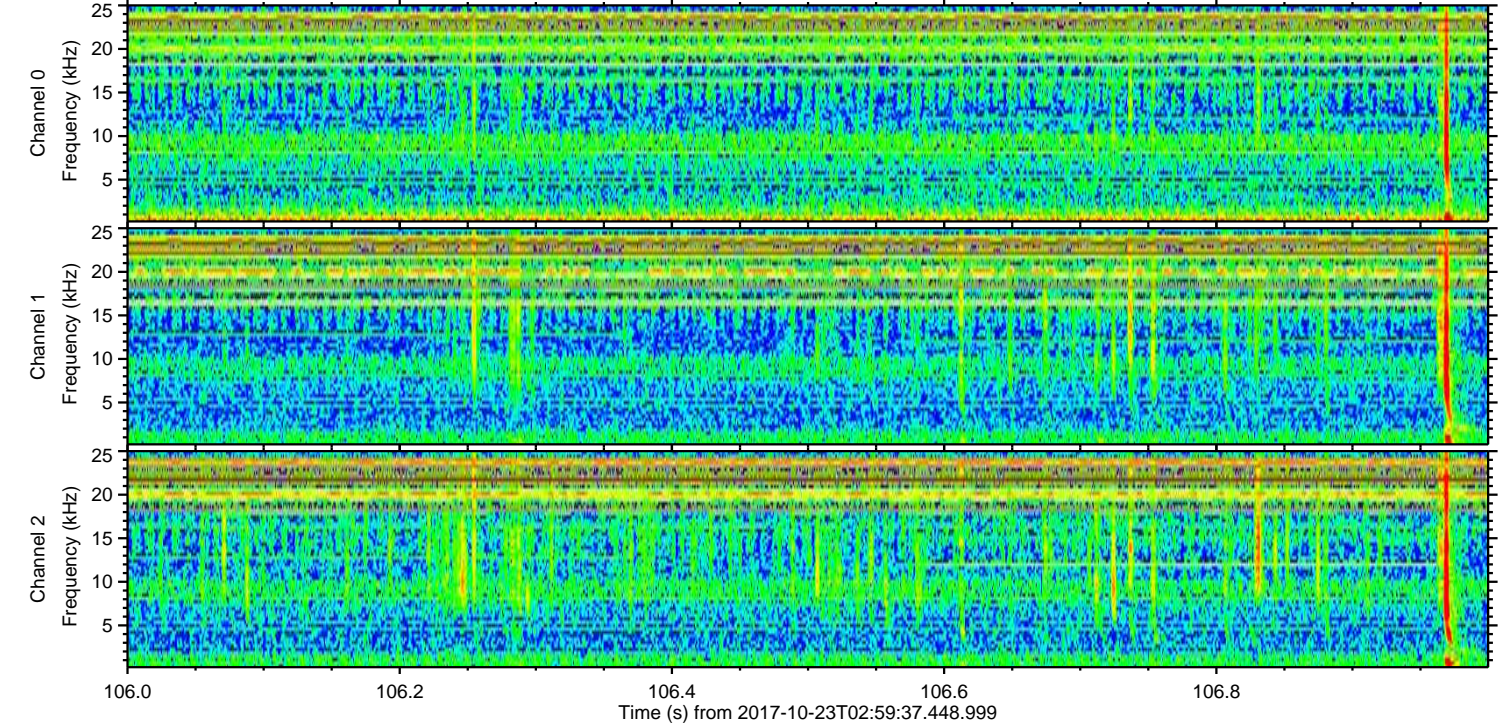
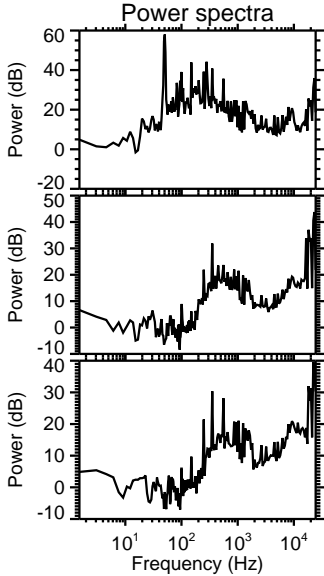
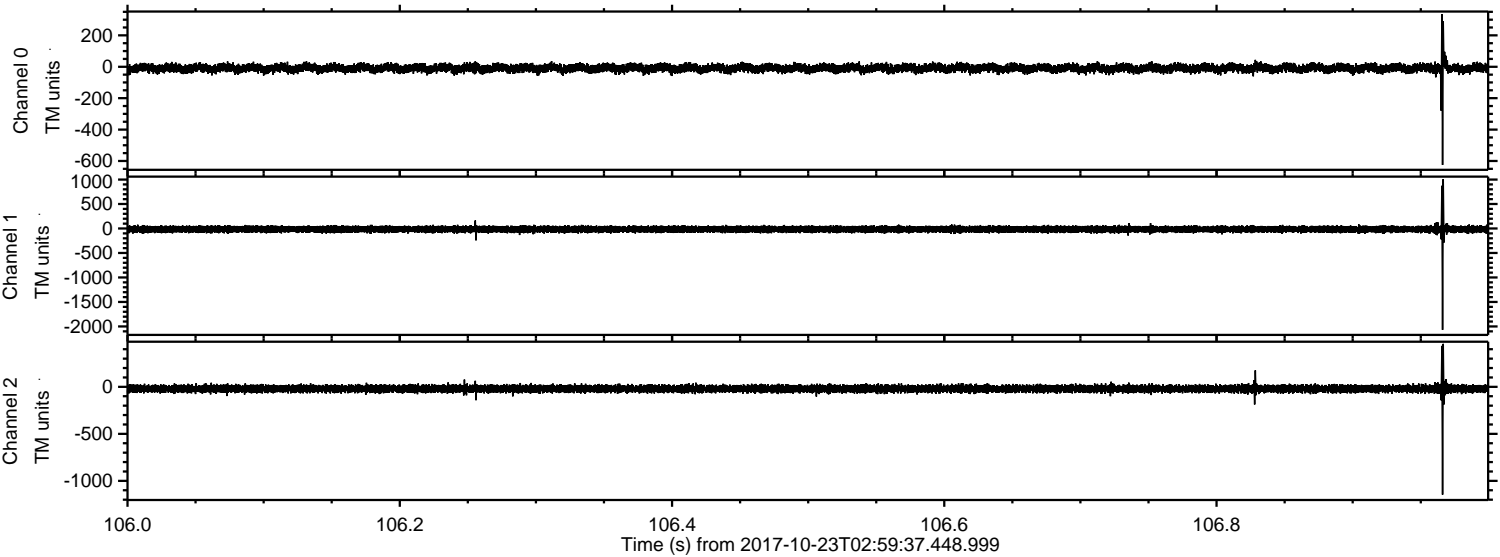
ELMAVAN 3D WAVEFORMS (Measured data sampled at 50 kHz) 51000 packets of 144 samples from 2017-10-23T02:59:37.448.999. Part 35/147

Processed Mon Oct 23 05:07:05 2017 by ELM ver.2012-10-06 from 001__elm20171023_025936__dat00.bin



ELMAVAN 3D WAVEFORMS (Measured data sampled at 50 kHz) 51000 packets of 144 samples from 2017-10-23T02:59:37.448.999. Part 107/147

Processed Mon Oct 23 05:07:06 2017 by ELM ver.2012-10-06 from 001__elm20171023_025936__dat00.bin



Channel 0
mn: -625
mx: 335
 μ : -9.3
 σ : 15.1

Channel 1
mn: -2069
mx: 1009
 μ : -15.5
 σ : 36.1

Channel 2
mn: -1146
mx: 457
 μ : -20.5
 σ : 21.2

ELMAVAN 3D WAVEFORMS (Measured data sampled at 50 kHz) 51000 packets of 144 samples from 2017-10-23T02:59:37.448.999. Part 100/147

