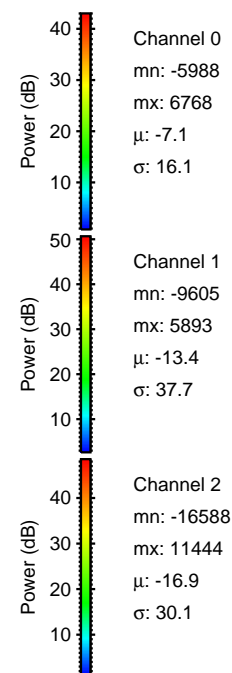
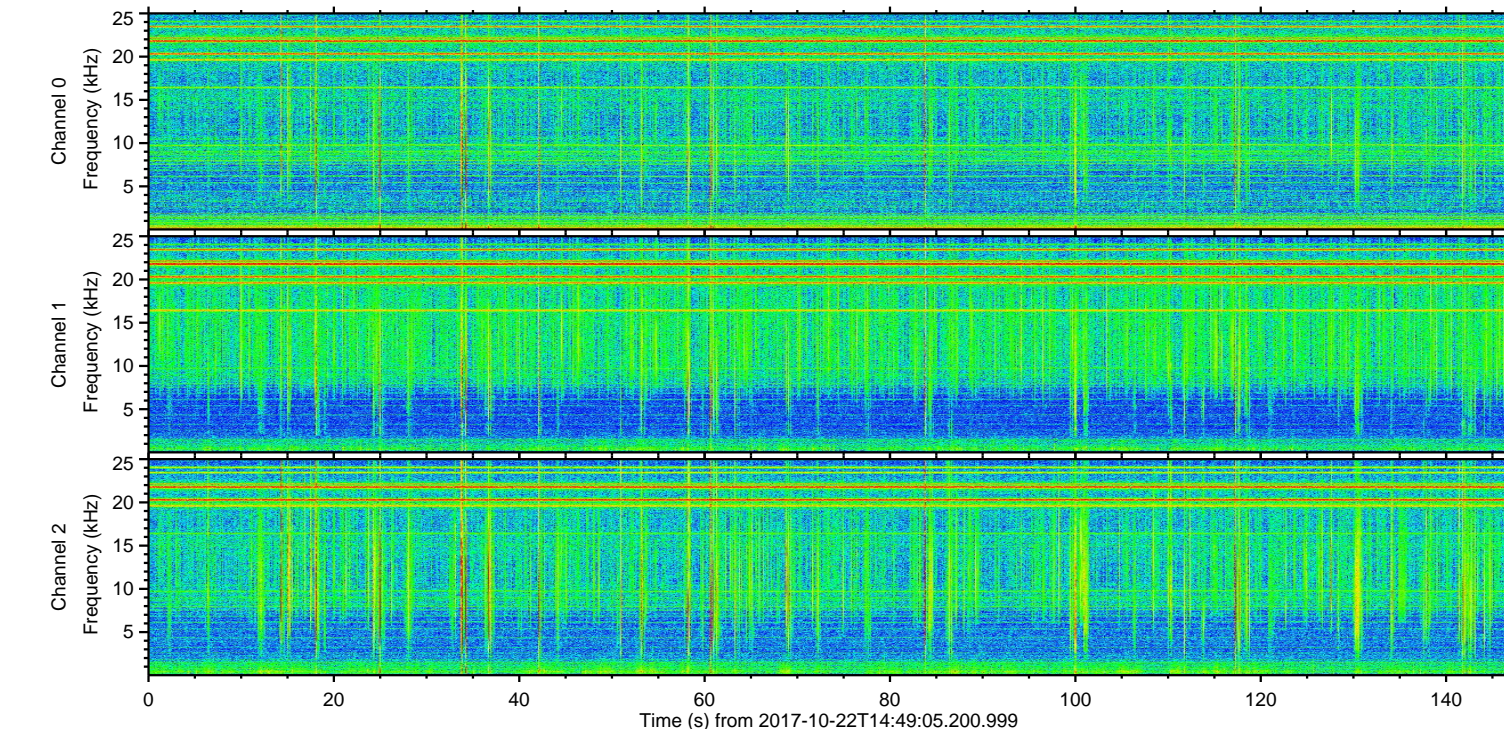
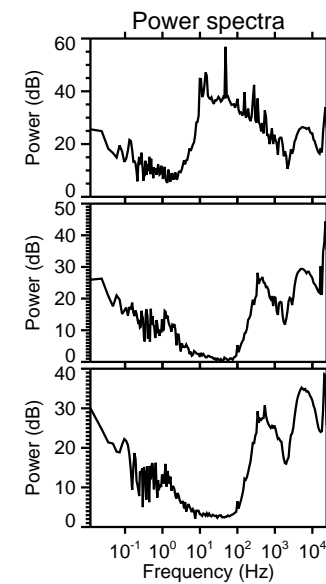
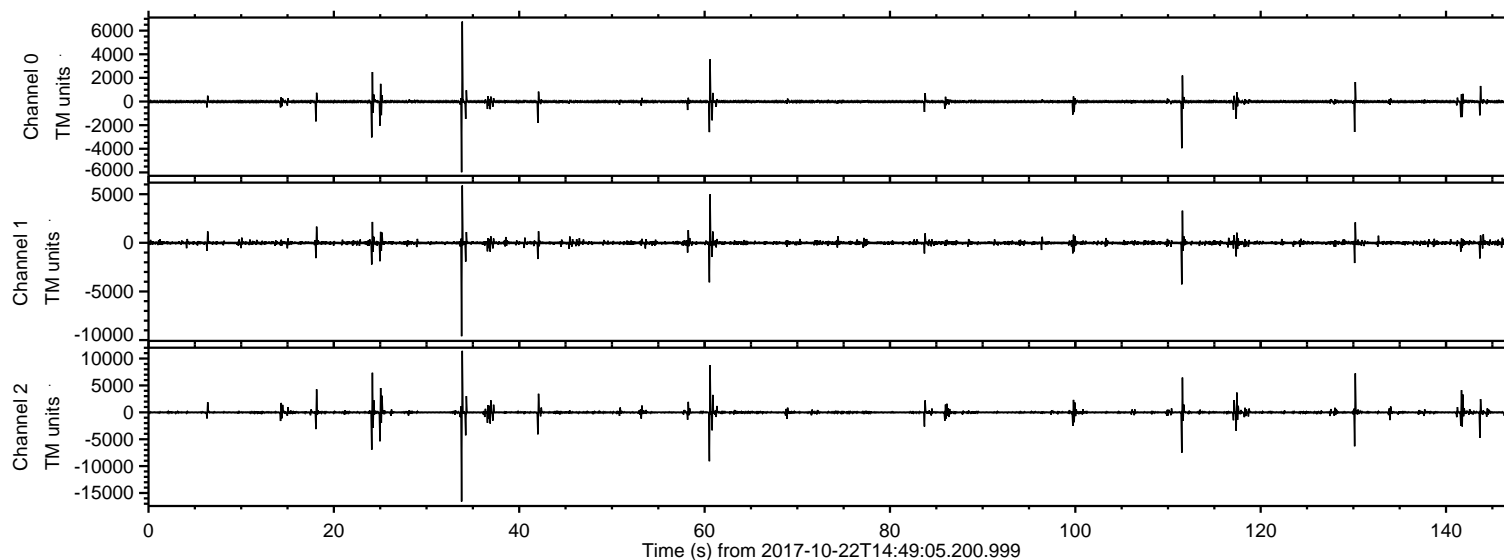


# ELMAVAN 3D WAVEFORMS (Measured data sampled at 50 kHz) 51000 packets of 144 samples from 2017-10-22T14:49:05.200.999.

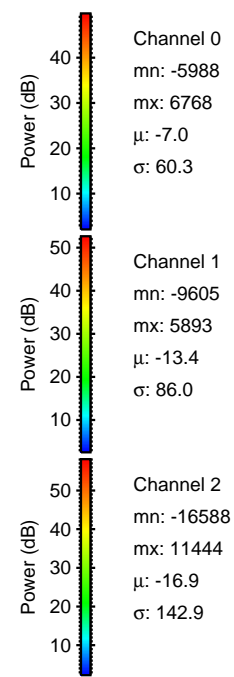
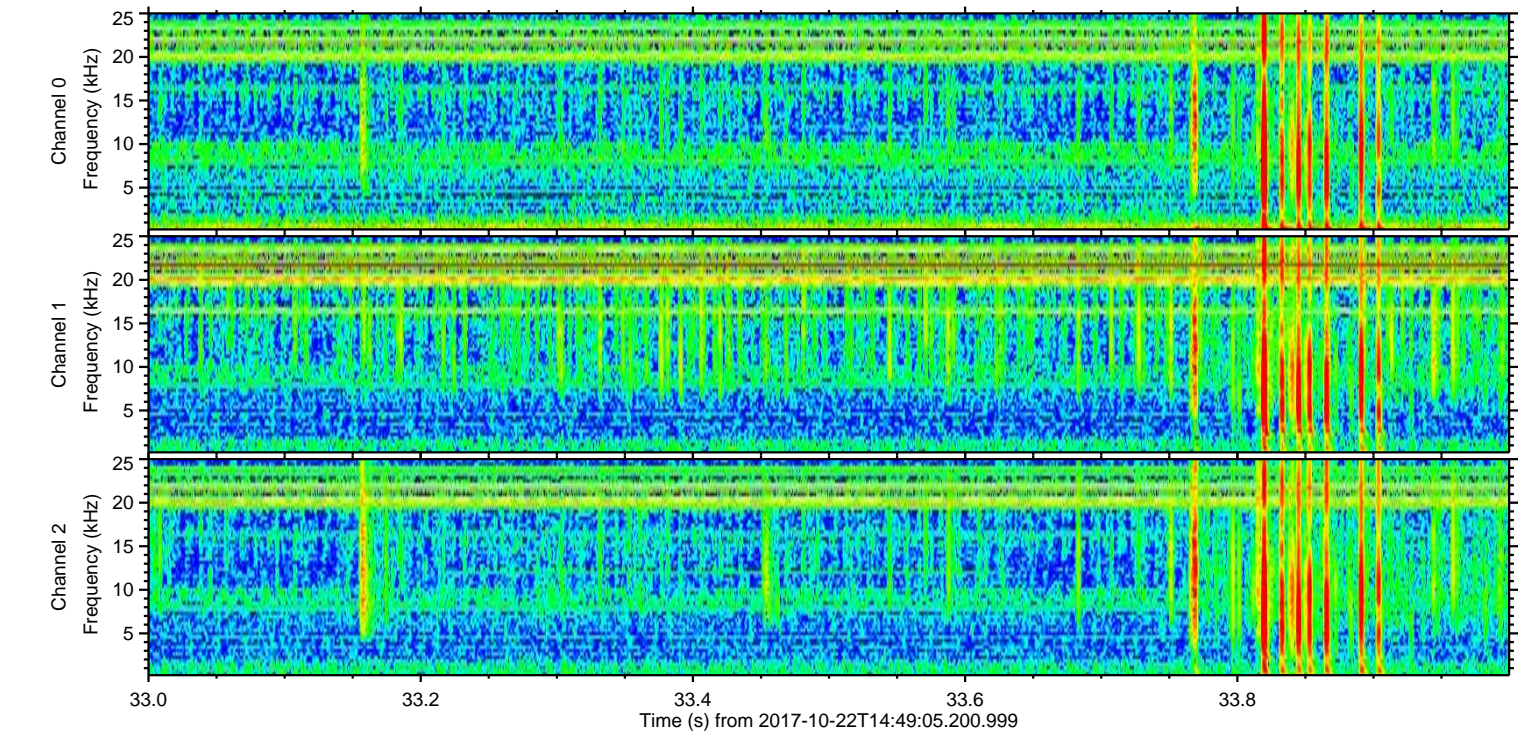
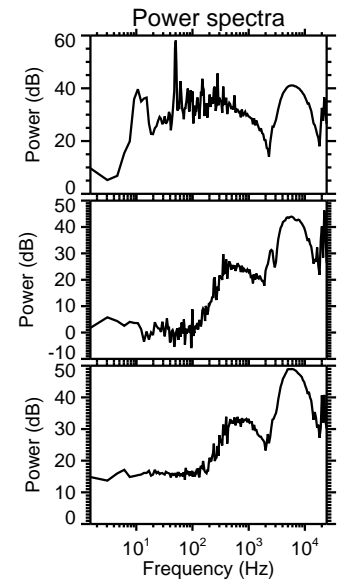
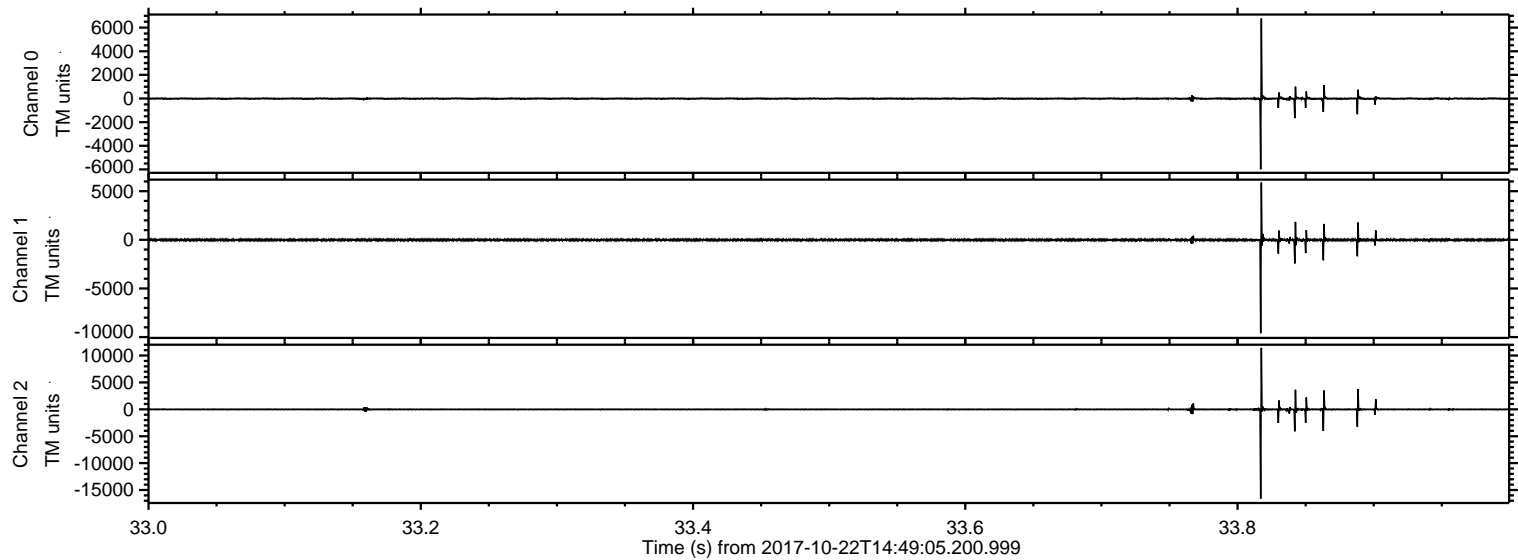
Processed Sun Oct 22 16:56:46 2017 by ELM ver.2012-10-06 from 001\_\_elm20171022\_144904\_\_dat00.bin





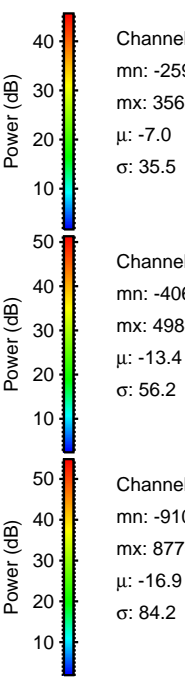
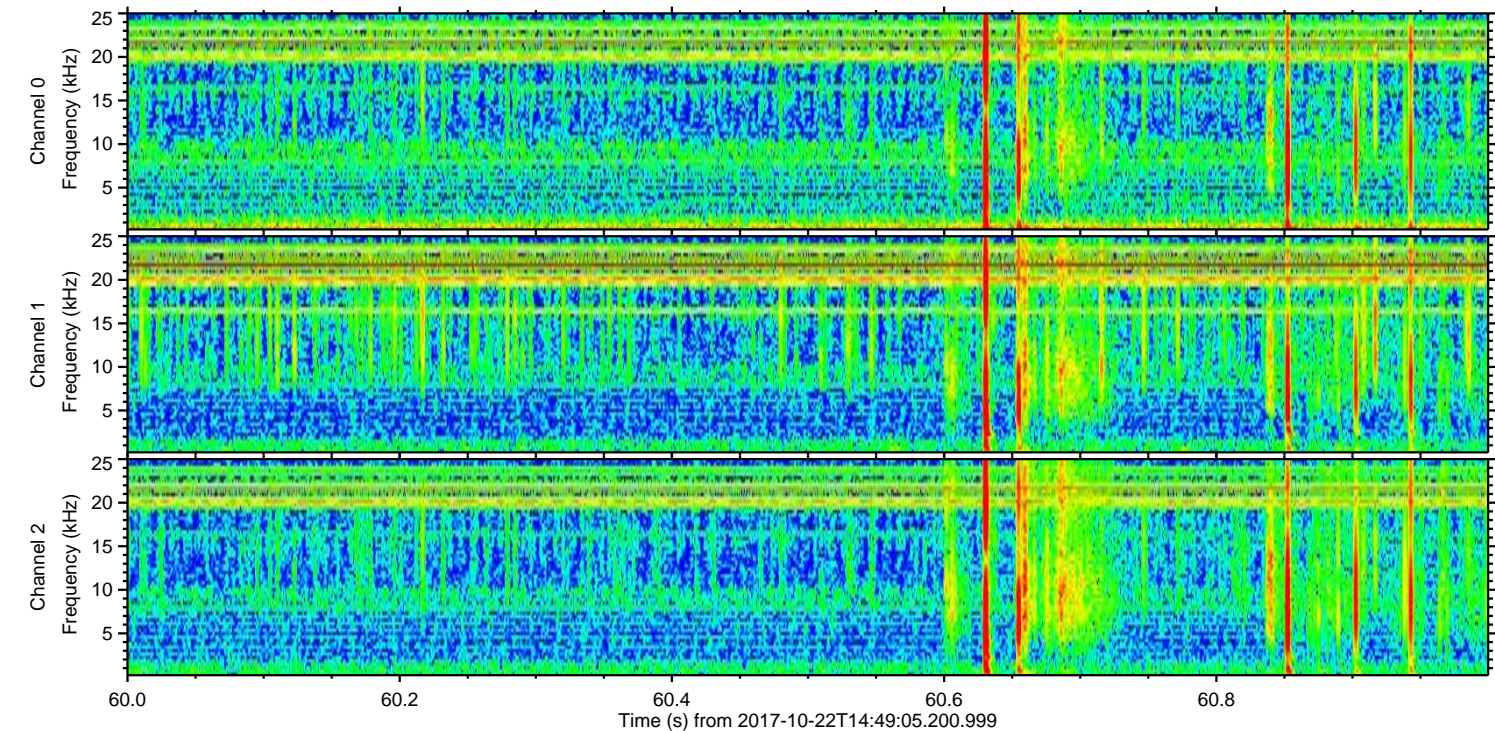
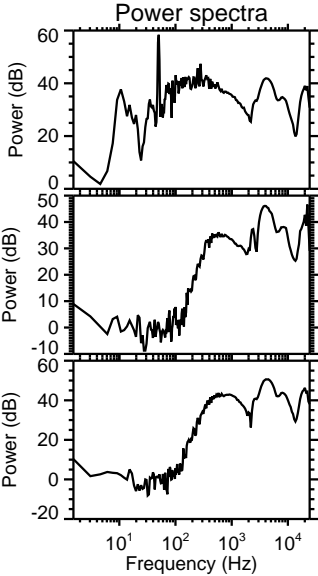
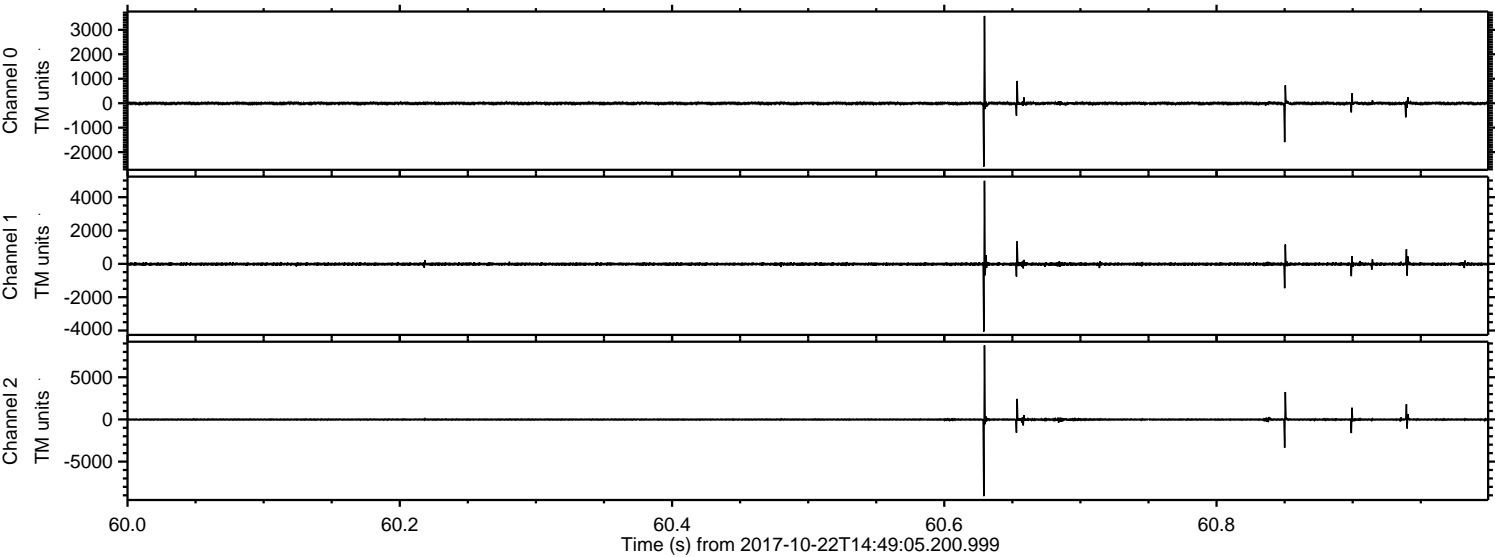
ELMAVAN 3D WAVEFORMS (Measured data sampled at 50 kHz) 51000 packets of 144 samples from 2017-10-22T14:49:05.200.999. Part 34/147

Processed Sun Oct 22 16:56:53 2017 by ELM ver.2012-10-06 from 001\_\_elm20171022\_144904\_\_dat00.bin





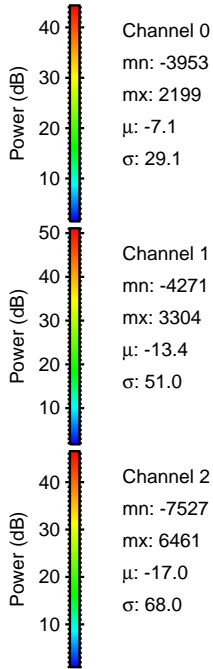
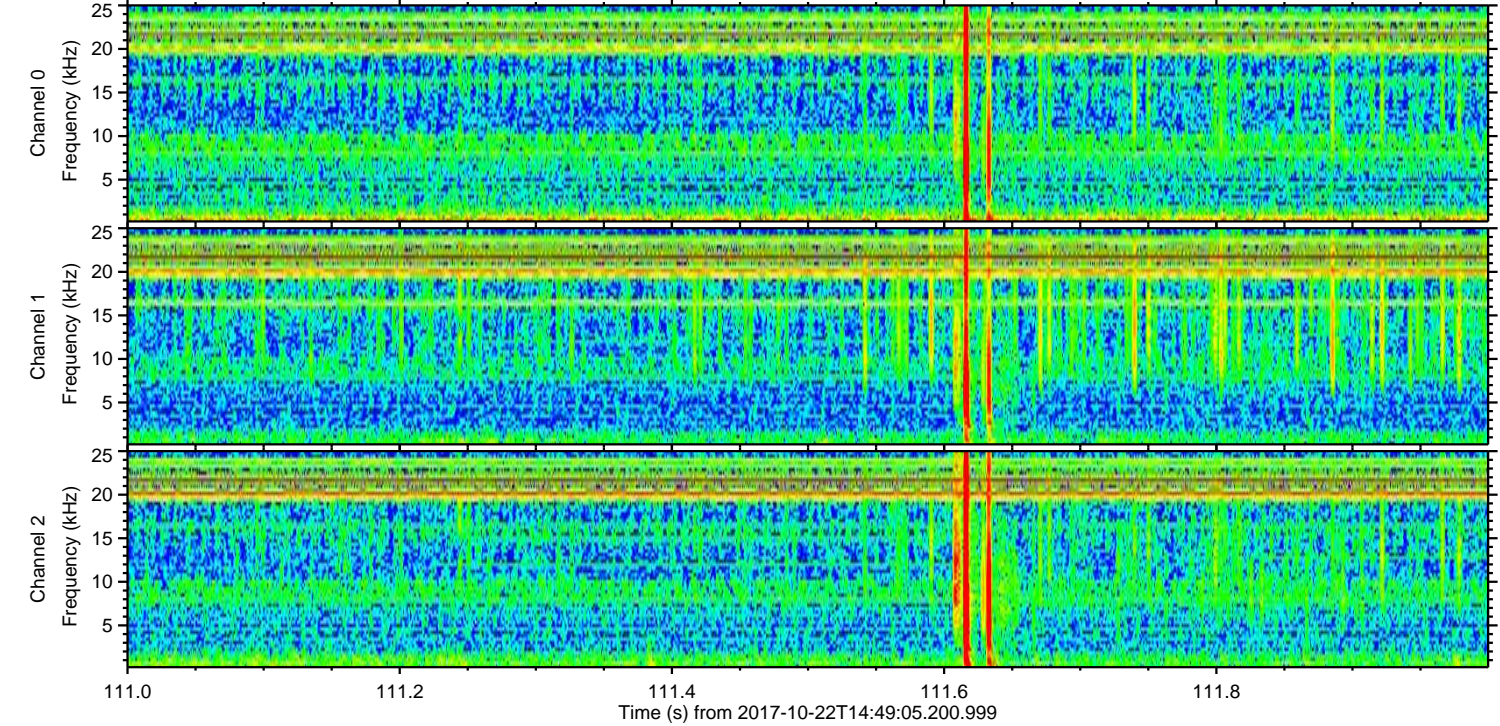
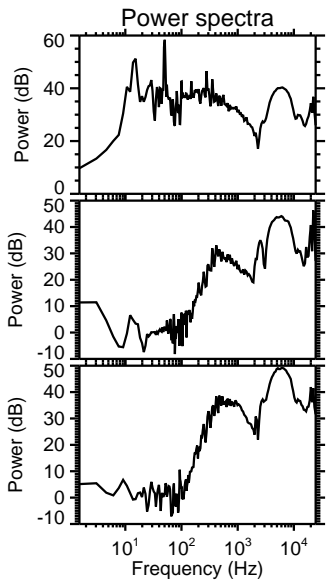
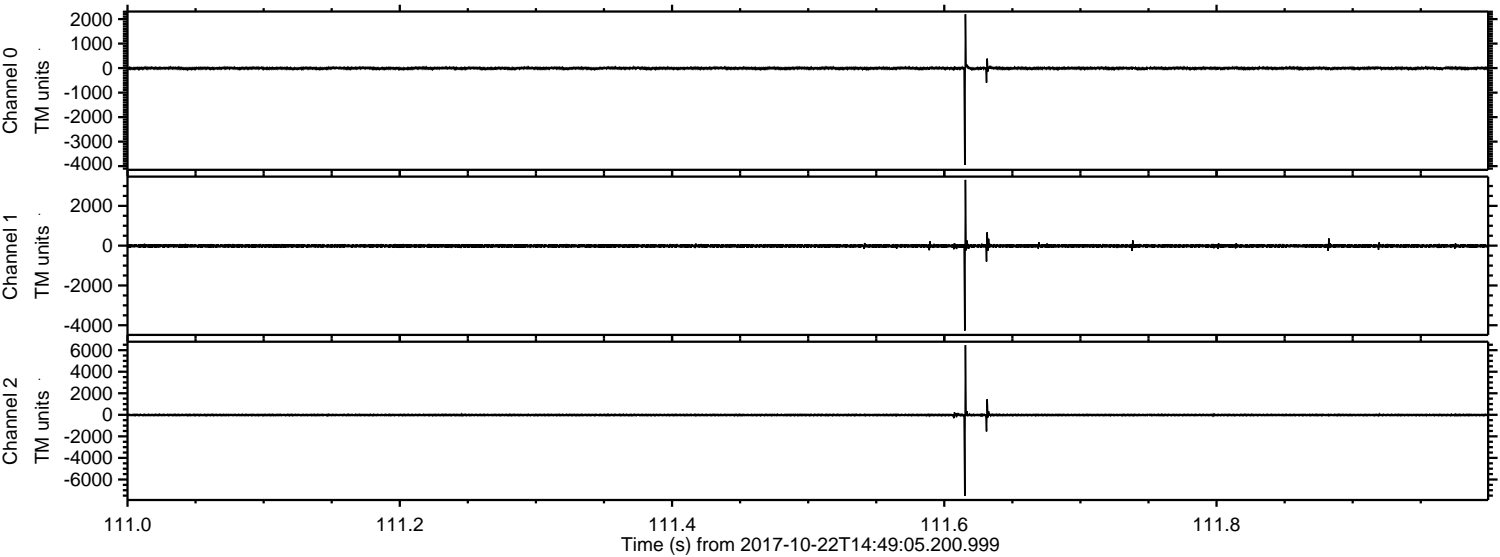
Processed Sun Oct 22 16:56:53 2017 by ELM ver.2012-10-06 from 001\_\_elm20171022\_144904\_\_dat00.bin





ELMAVAN 3D WAVEFORMS (Measured data sampled at 50 kHz) 51000 packets of 144 samples from 2017-10-22T14:49:05.200.999. Part 112/147

Processed Sun Oct 22 16:56:54 2017 by ELM ver.2012-10-06 from 001\_\_elm20171022\_144904\_\_dat00.bin



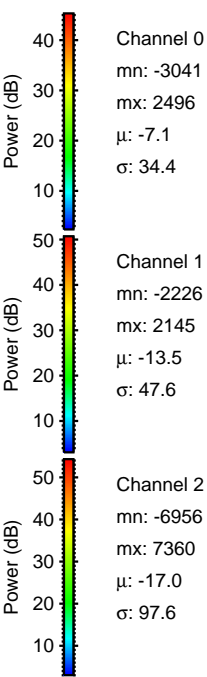
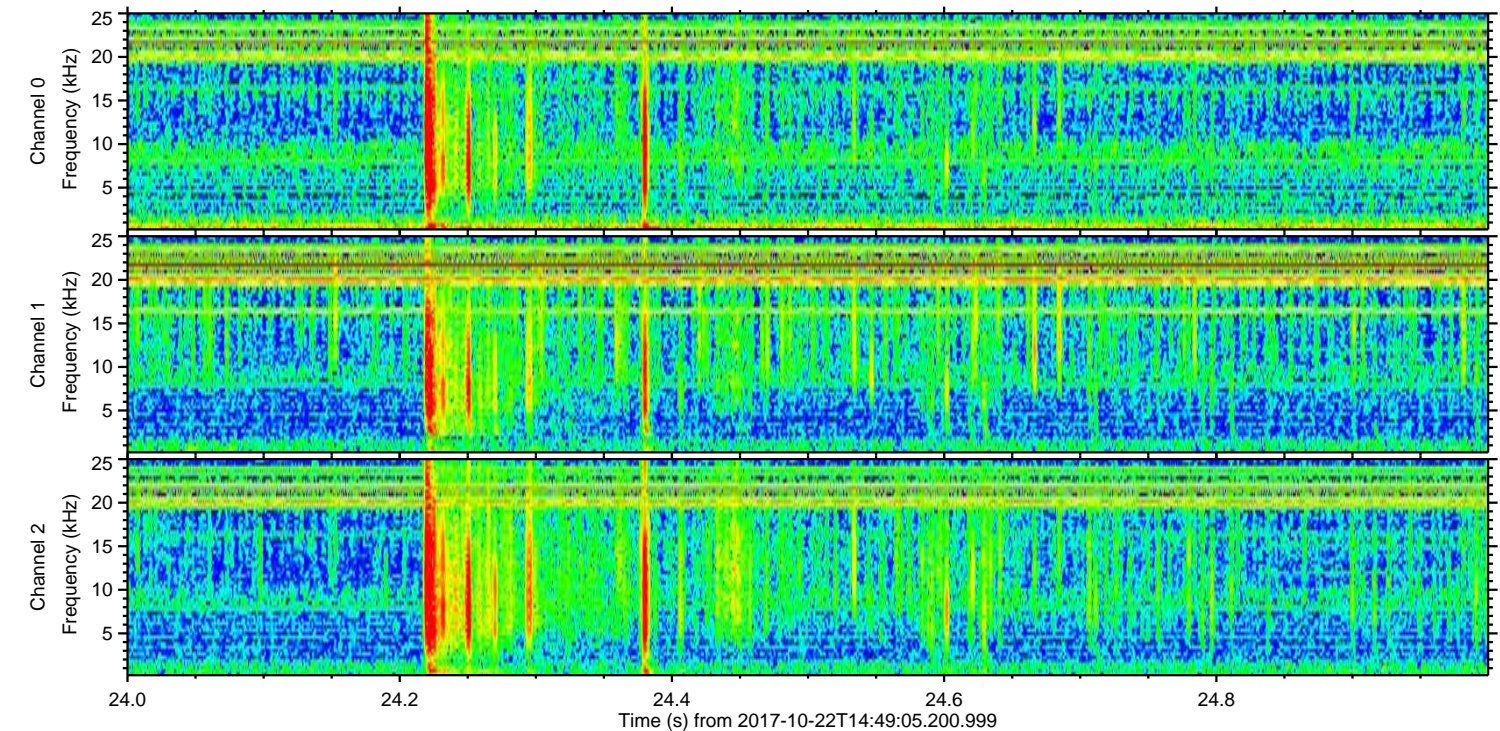
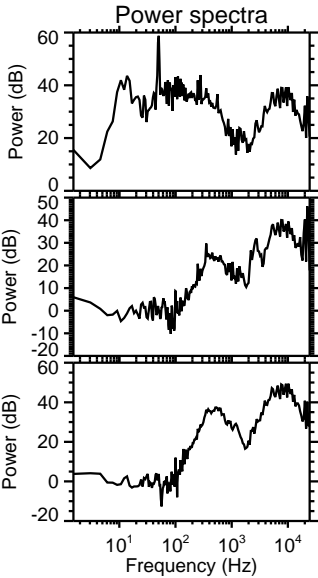
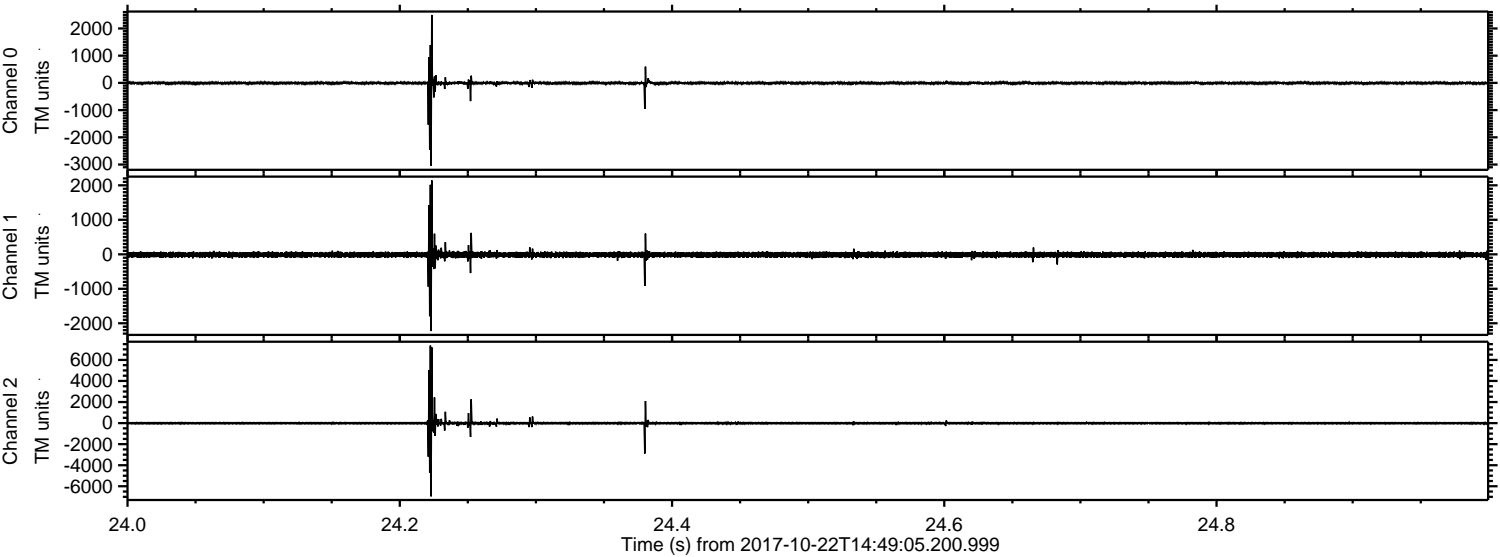
Channel 0  
mn: -3953  
mx: 2199  
 $\mu$ : -7.1  
 $\sigma$ : 29.1

Channel 1  
mn: -4271  
mx: 3304  
 $\mu$ : -13.4  
 $\sigma$ : 51.0

Channel 2  
mn: -7527  
mx: 6461  
 $\mu$ : -17.0  
 $\sigma$ : 68.0



Processed Sun Oct 22 16:56:55 2017 by ELM ver.2012-10-06 from 001\_\_elm20171022\_144904\_\_dat00.bin



Channel 0  
mn: -3041  
mx: 2496  
 $\mu$ : -7.1  
 $\sigma$ : 34.4

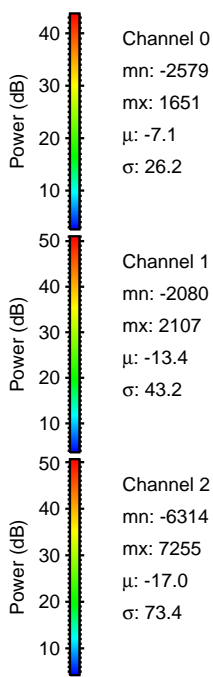
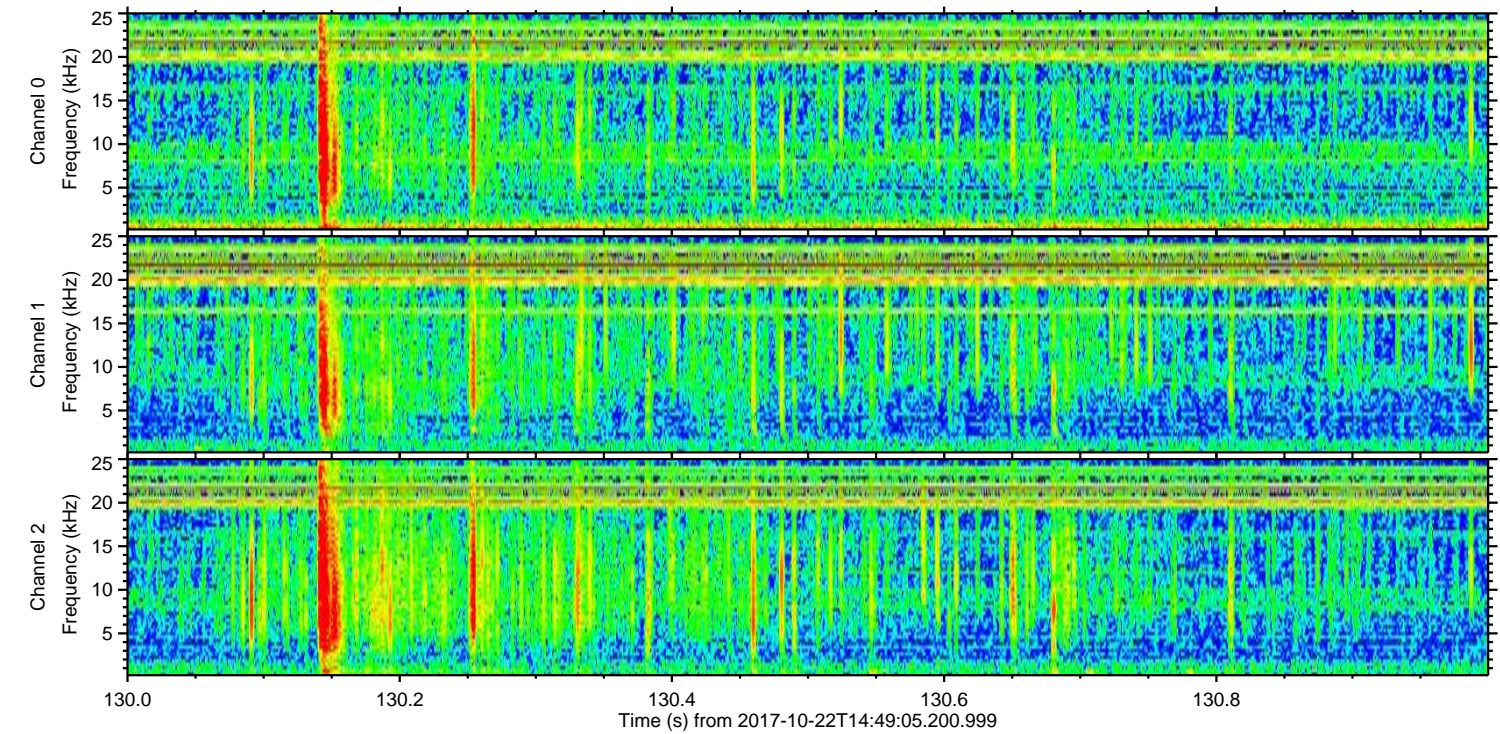
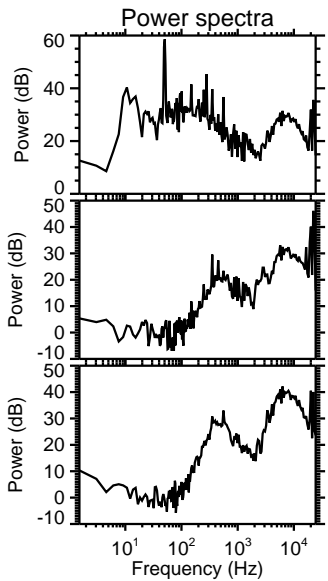
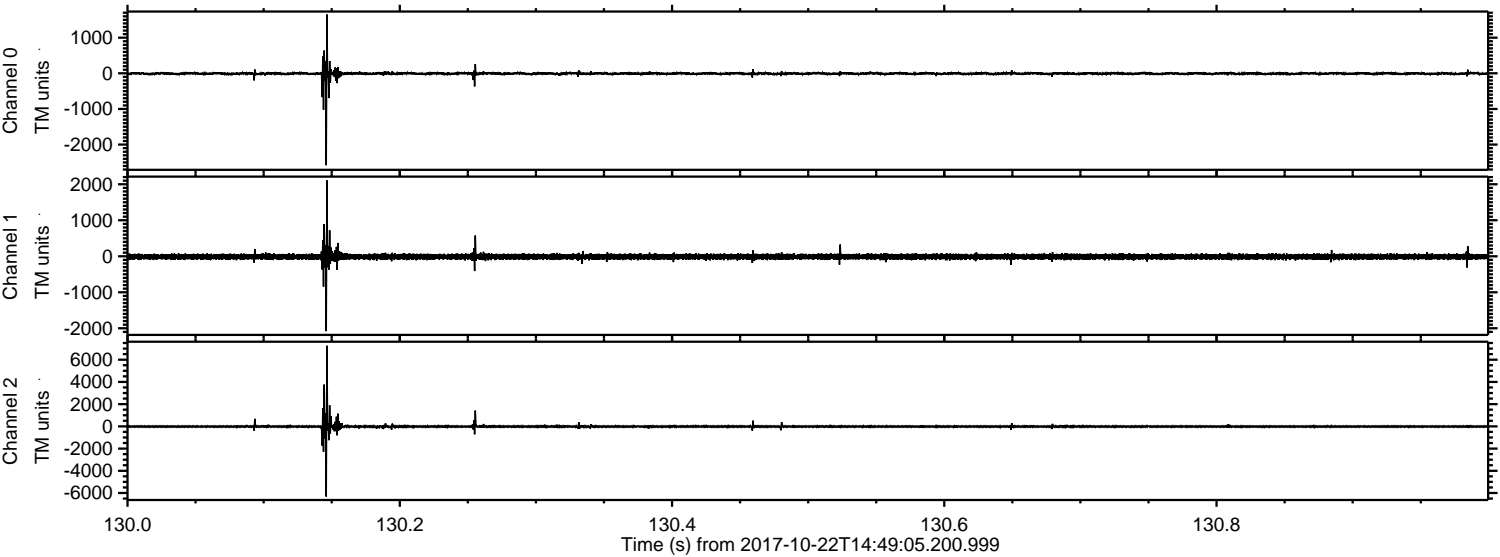
Channel 1  
mn: -2226  
mx: 2145  
 $\mu$ : -13.5  
 $\sigma$ : 47.6

Channel 2  
mn: -6956  
mx: 7360  
 $\mu$ : -17.0  
 $\sigma$ : 97.6



ELMAVAN 3D WAVEFORMS (Measured data sampled at 50 kHz) 51000 packets of 144 samples from 2017-10-22T14:49:05.200.999. Part 131/147

Processed Sun Oct 22 16:56:56 2017 by ELM ver.2012-10-06 from 001\_\_elm20171022\_144904\_\_dat00.bin



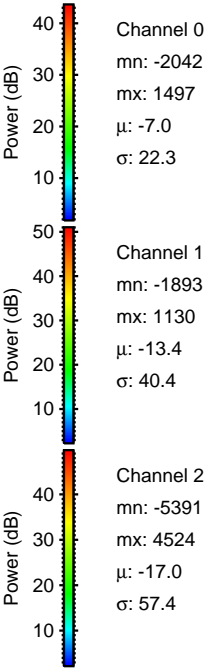
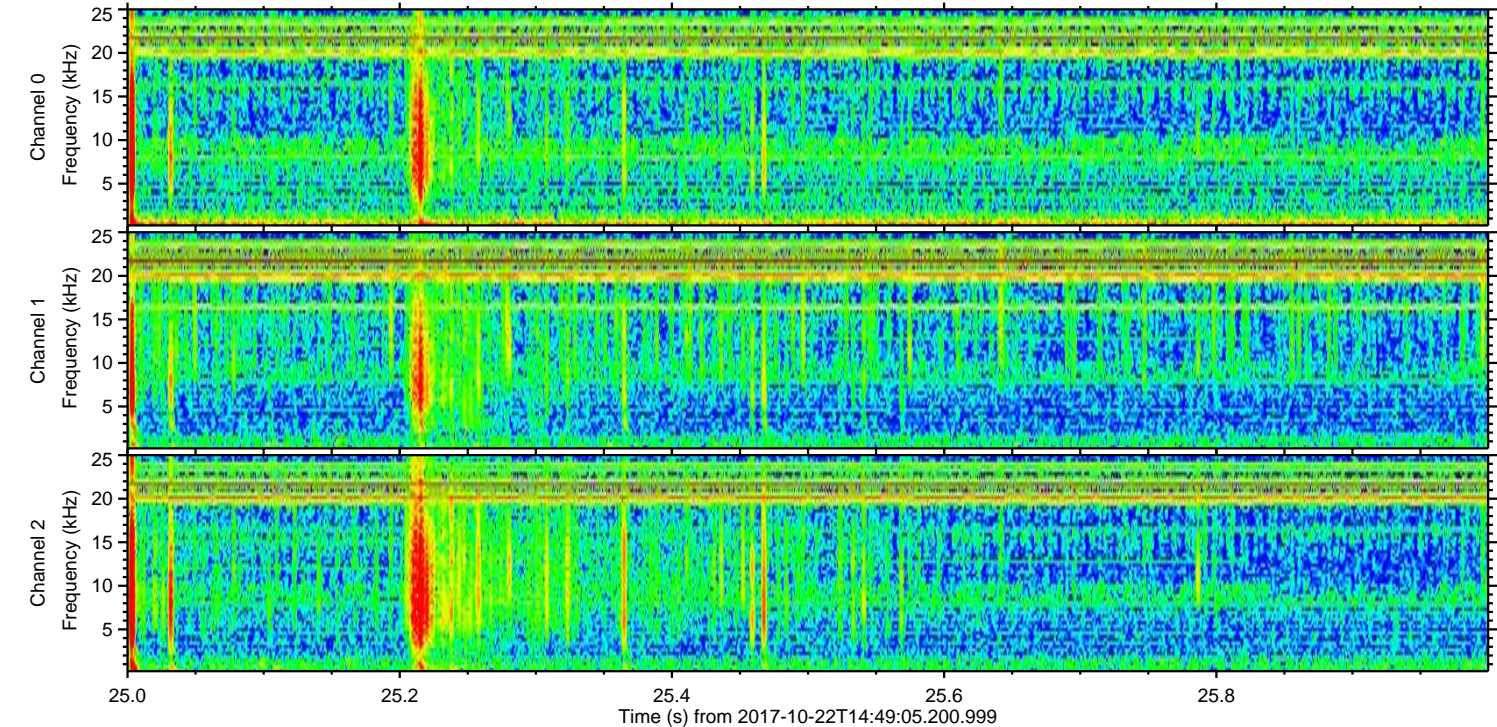
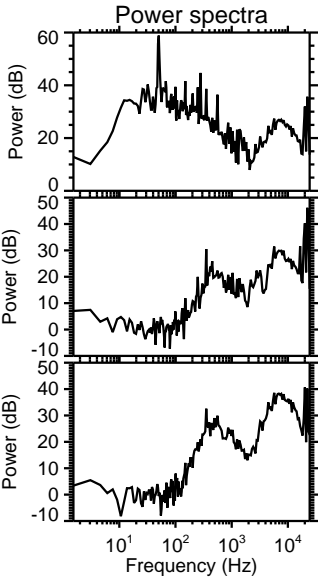
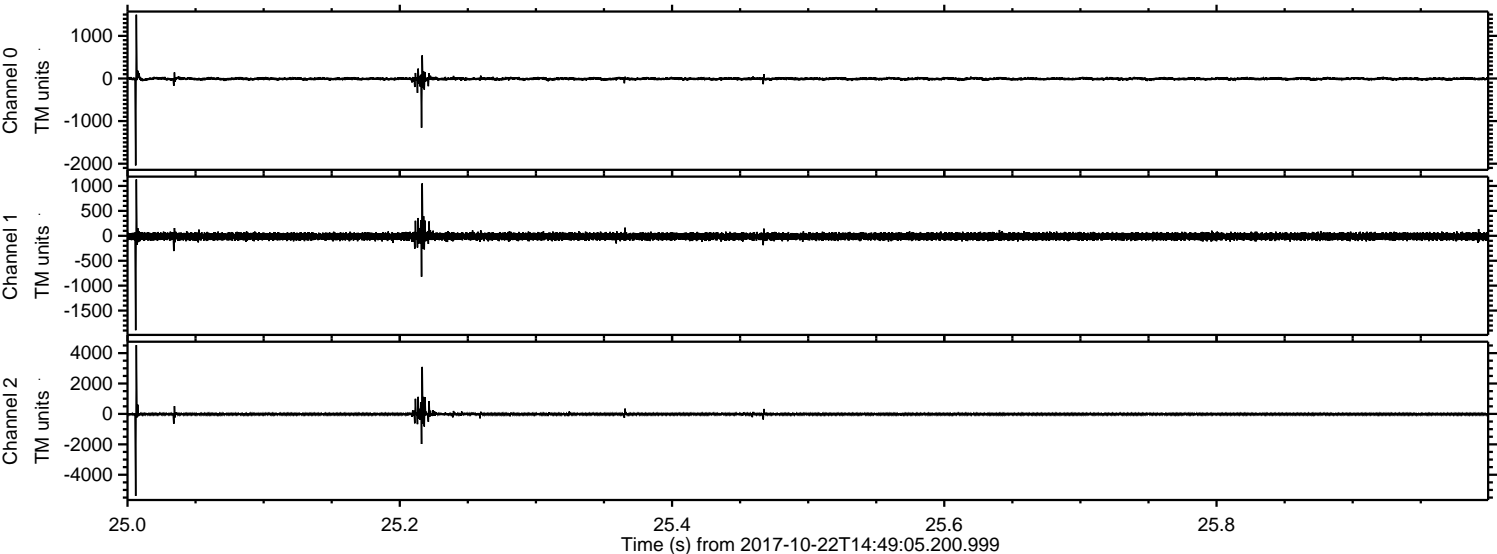
Channel 0  
mn: -2579  
mx: 1651  
μ: -7.1  
σ: 26.2

Channel 1  
mn: -2080  
mx: 2107  
μ: -13.4  
σ: 43.2

Channel 2  
mn: -6314  
mx: 7255  
μ: -17.0  
σ: 73.4



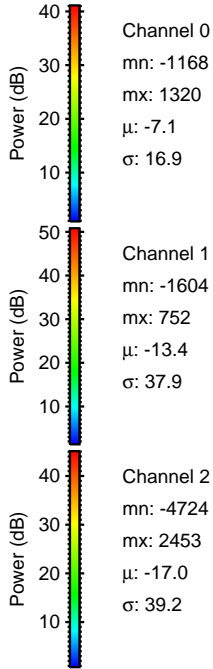
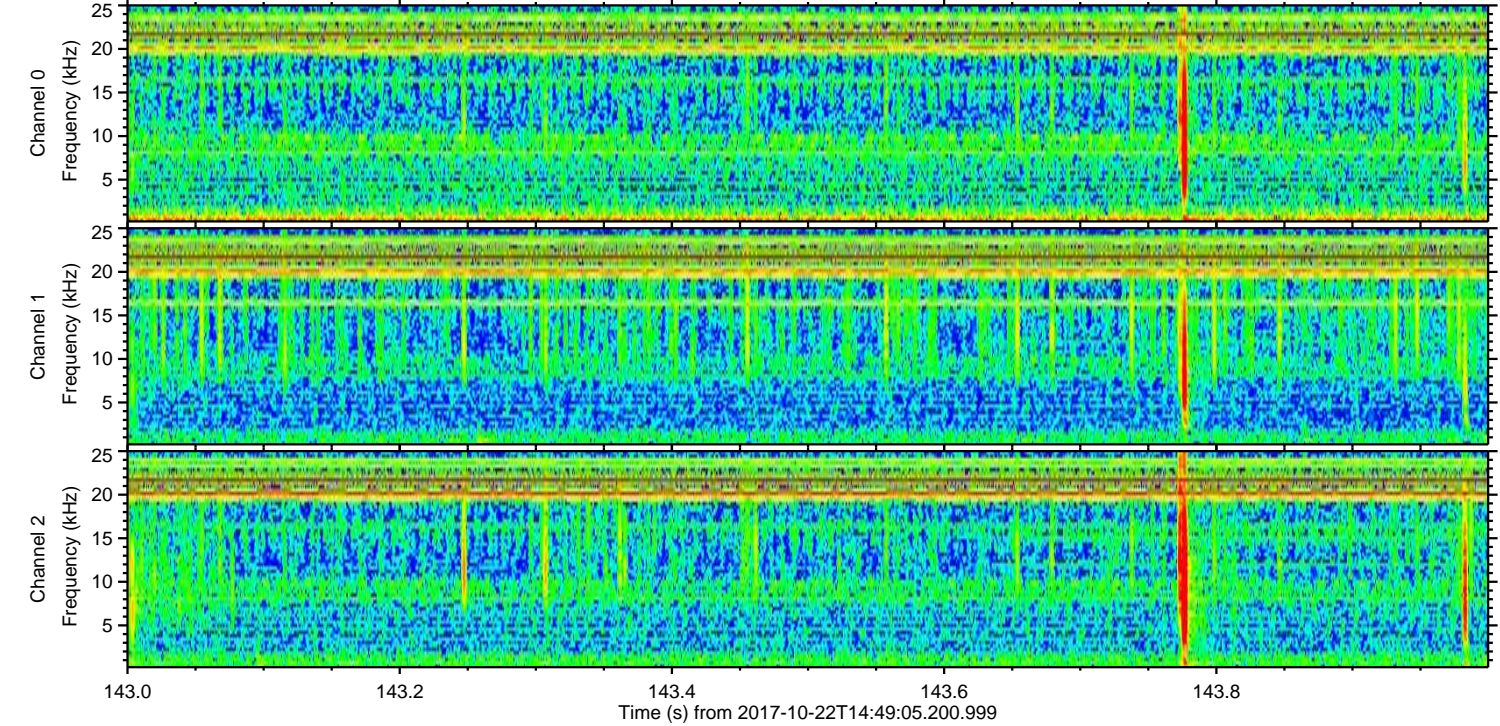
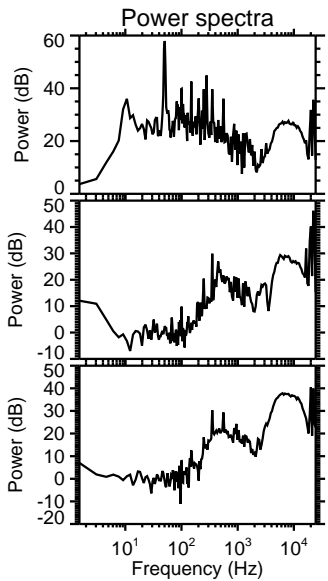
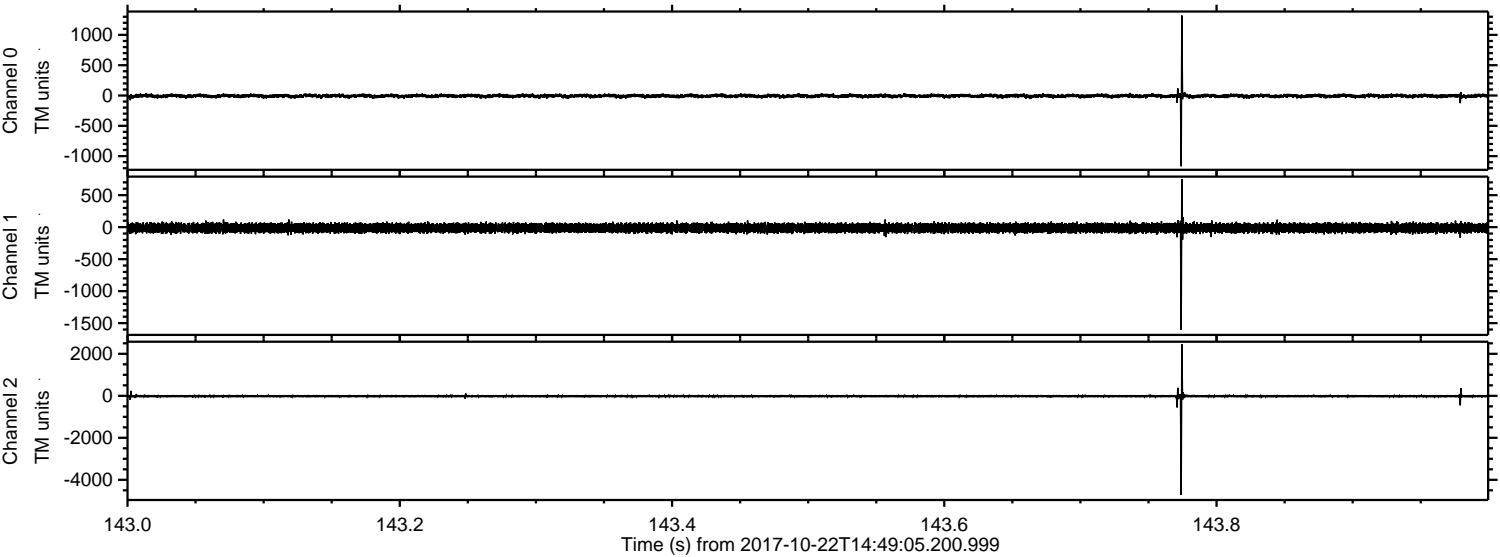
Processed Sun Oct 22 16:56:56 2017 by ELM ver.2012-10-06 from 001\_\_elm20171022\_144904\_\_dat00.bin





ELMAVAN 3D WAVEFORMS (Measured data sampled at 50 kHz) 51000 packets of 144 samples from 2017-10-22T14:49:05.200.999. Part 144/147

Processed Sun Oct 22 16:56:57 2017 by ELM ver.2012-10-06 from 001\_\_elm20171022\_144904\_\_dat00.bin



Channel 0  
mn: -1168  
mx: 1320  
 $\mu$ : -7.1  
 $\sigma$ : 16.9

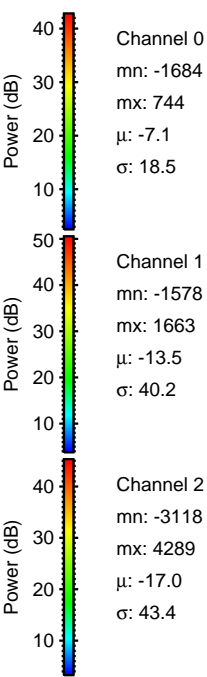
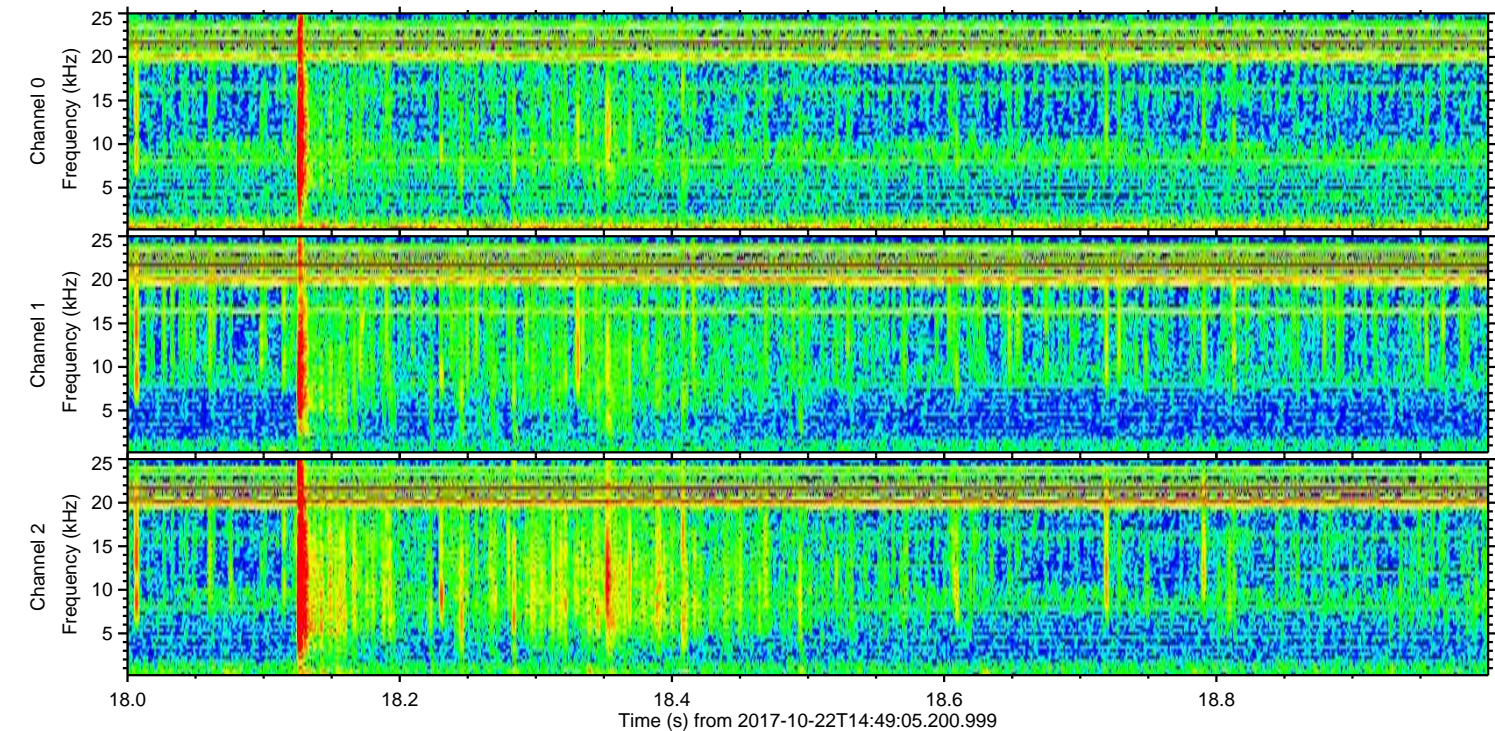
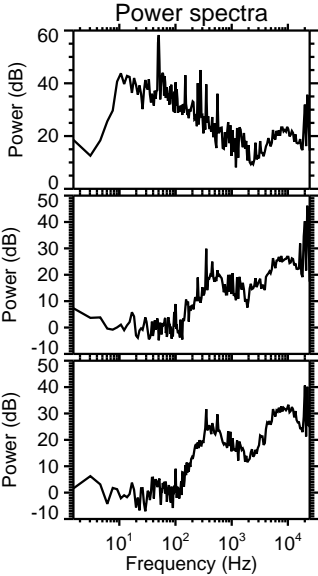
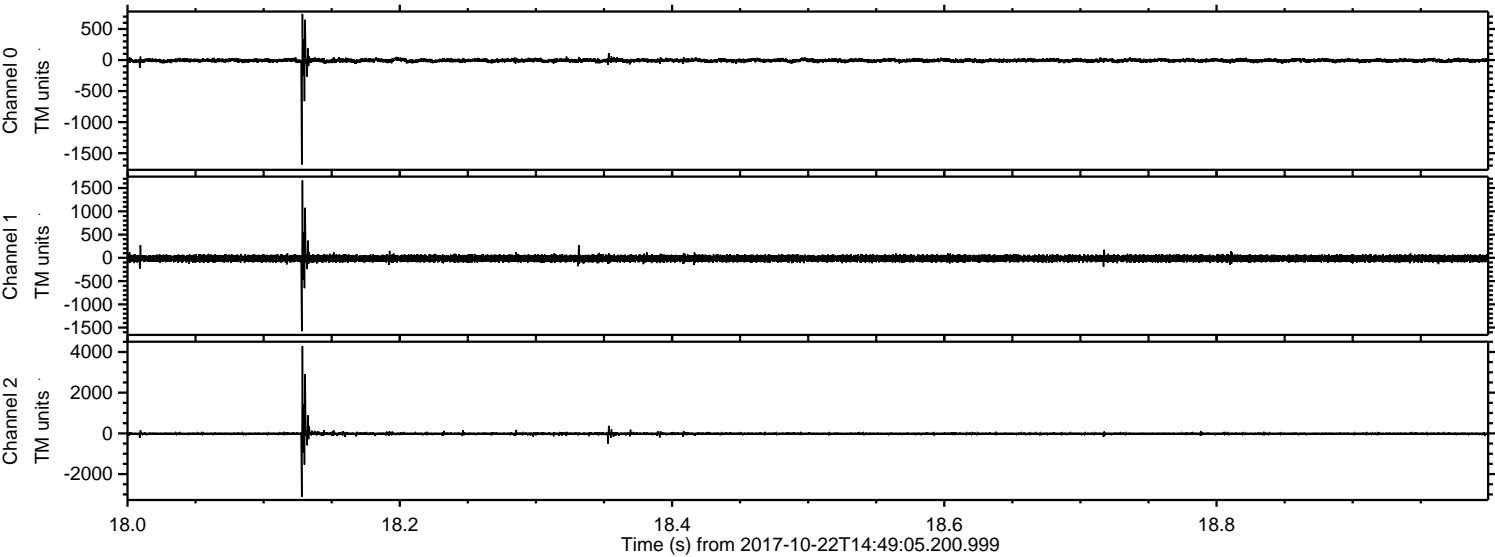
Channel 1  
mn: -1604  
mx: 752  
 $\mu$ : -13.4  
 $\sigma$ : 37.9

Channel 2  
mn: -4724  
mx: 2453  
 $\mu$ : -17.0  
 $\sigma$ : 39.2



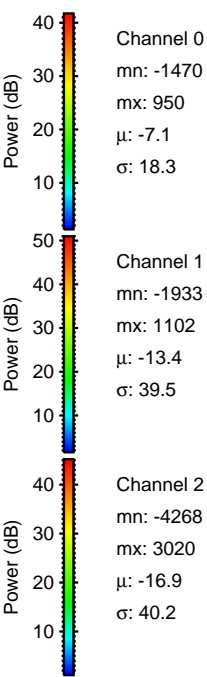
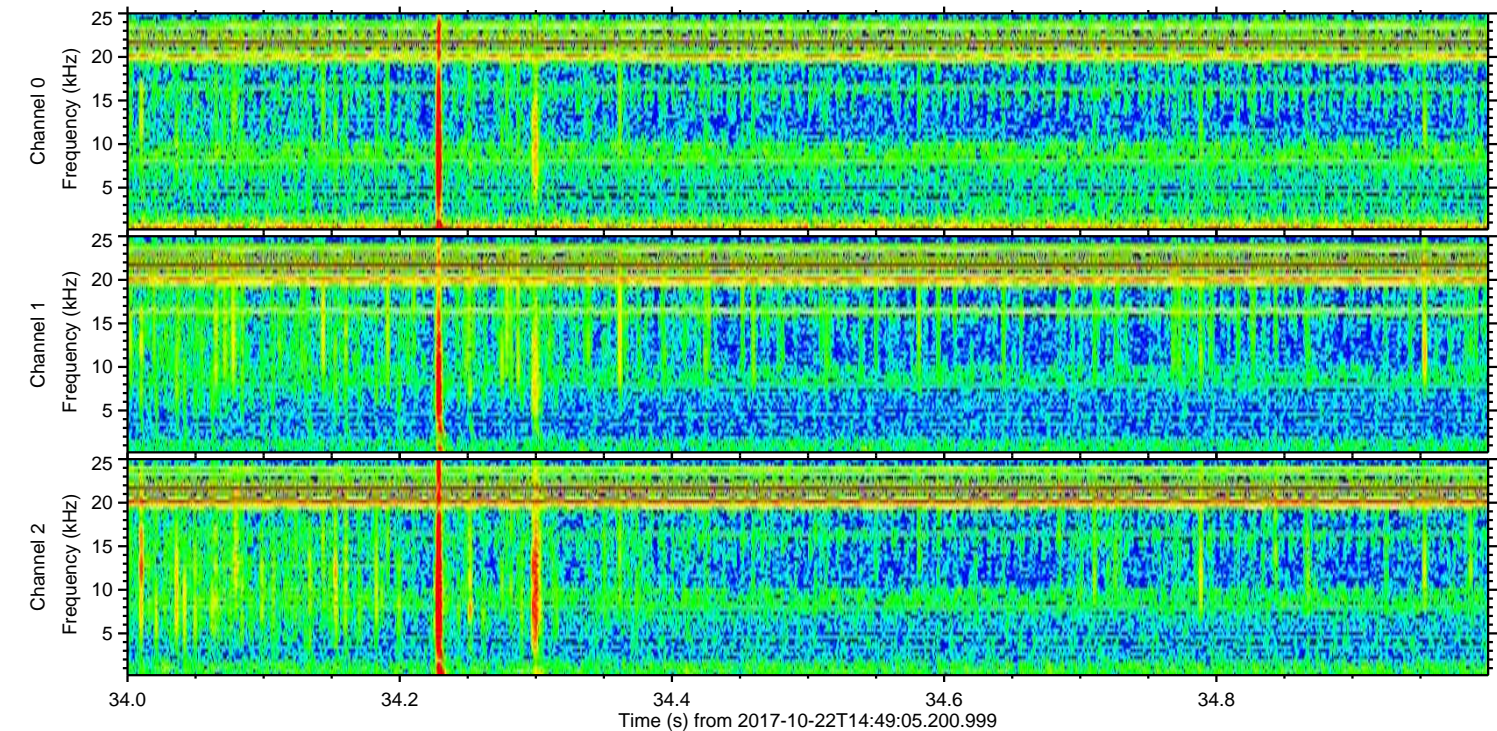
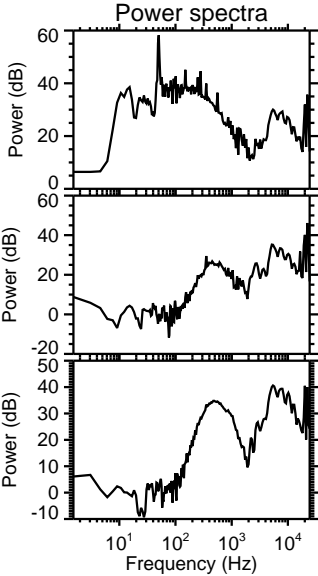
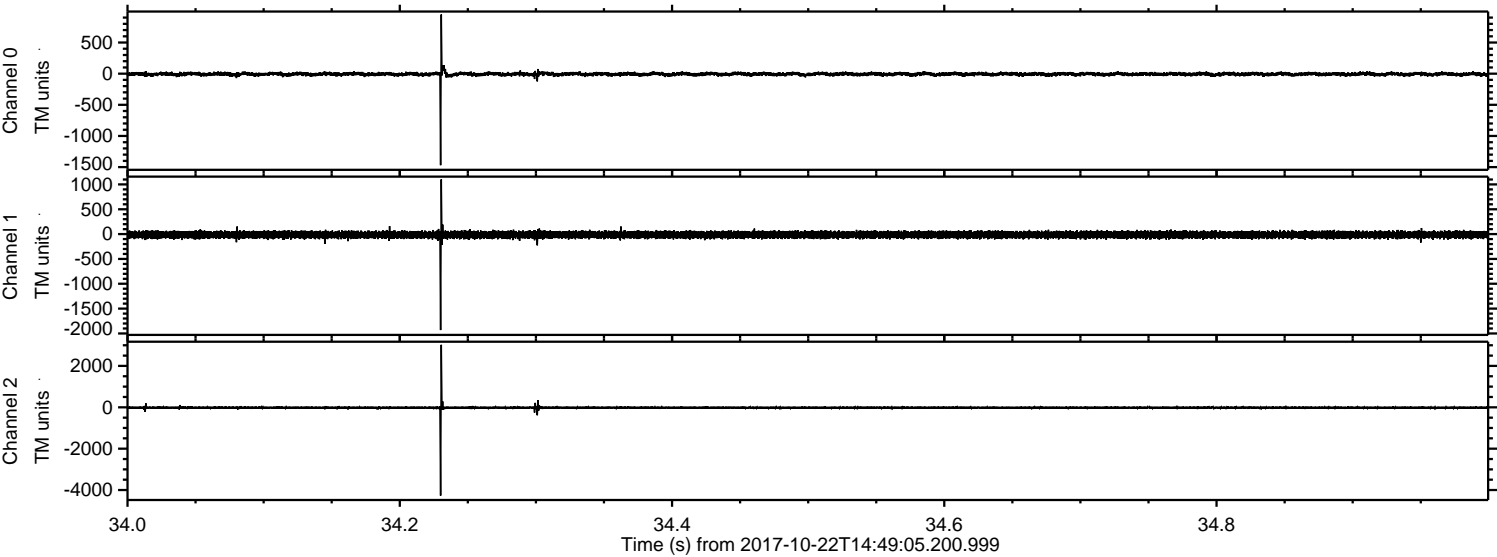
ELMAVAN 3D WAVEFORMS (Measured data sampled at 50 kHz) 51000 packets of 144 samples from 2017-10-22T14:49:05.200.999. Part 19/147

Processed Sun Oct 22 16:56:58 2017 by ELM ver.2012-10-06 from 001\_\_elm20171022\_144904\_\_dat00.bin





Processed Sun Oct 22 16:56:59 2017 by ELM ver.2012-10-06 from 001\_\_elm20171022\_144904\_\_dat00.bin



Channel 0  
mn: -1470  
mx: 950  
 $\mu$ : -7.1  
 $\sigma$ : 18.3

Channel 1  
mn: -1933  
mx: 1102  
 $\mu$ : -13.4  
 $\sigma$ : 39.5

Channel 2  
mn: -4268  
mx: 3020  
 $\mu$ : -16.9  
 $\sigma$ : 40.2



