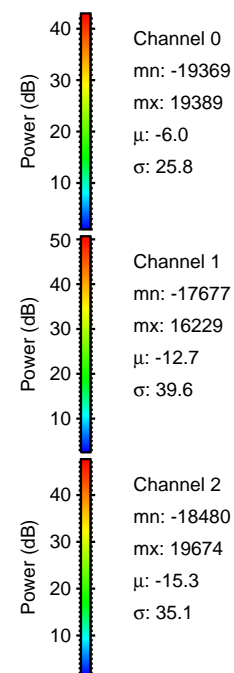
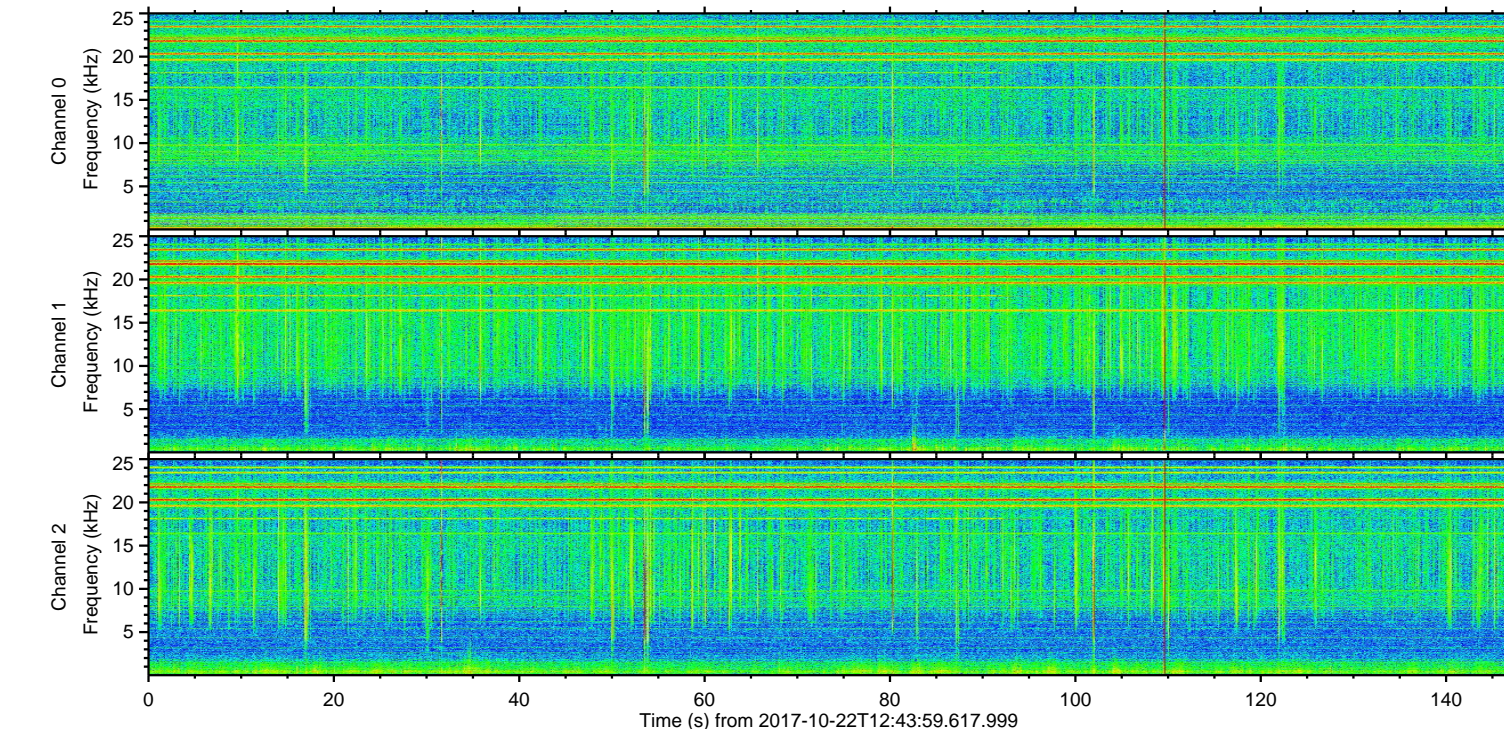
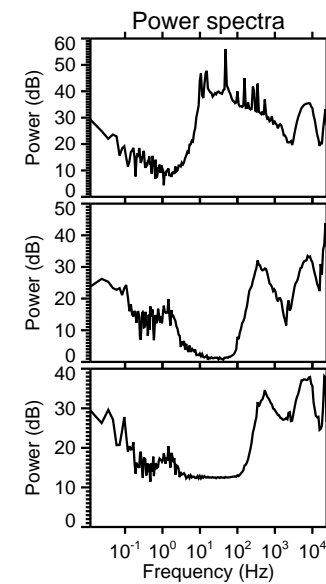
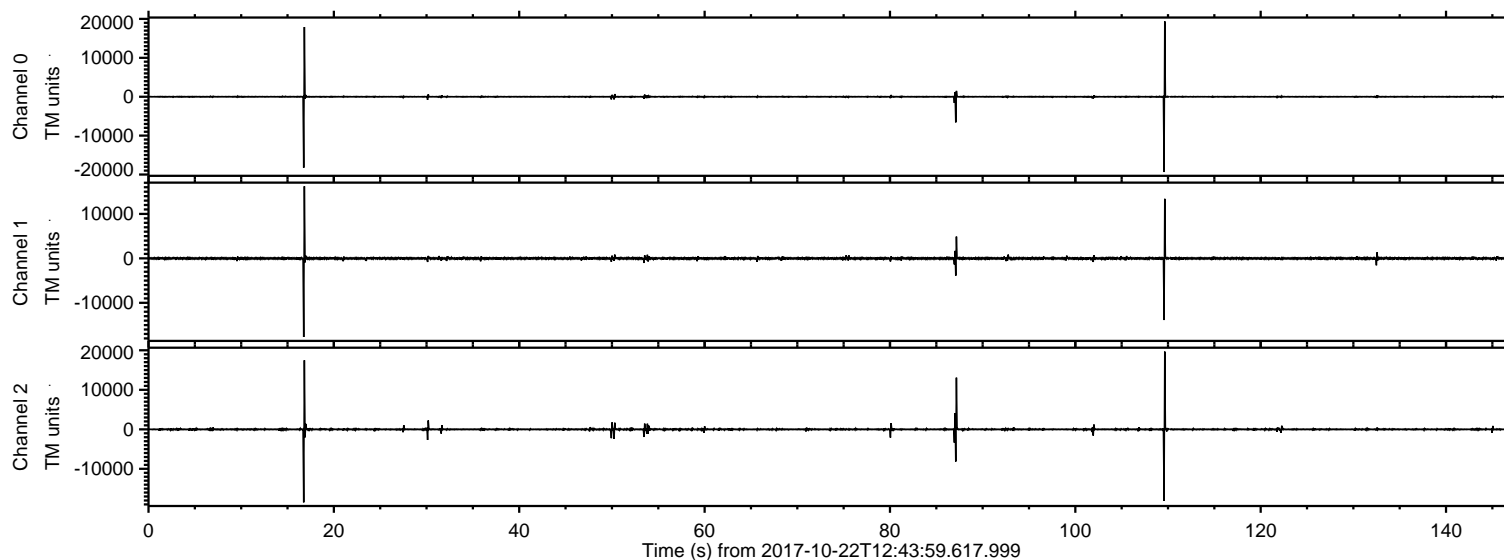


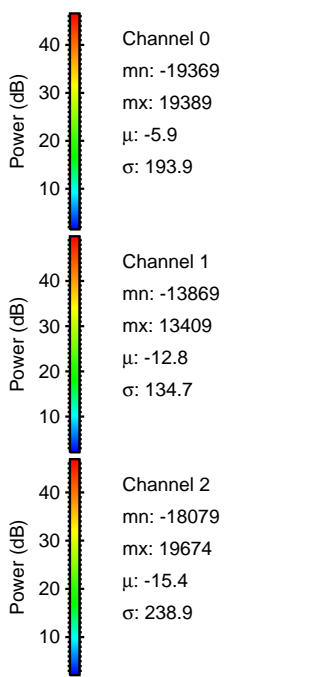
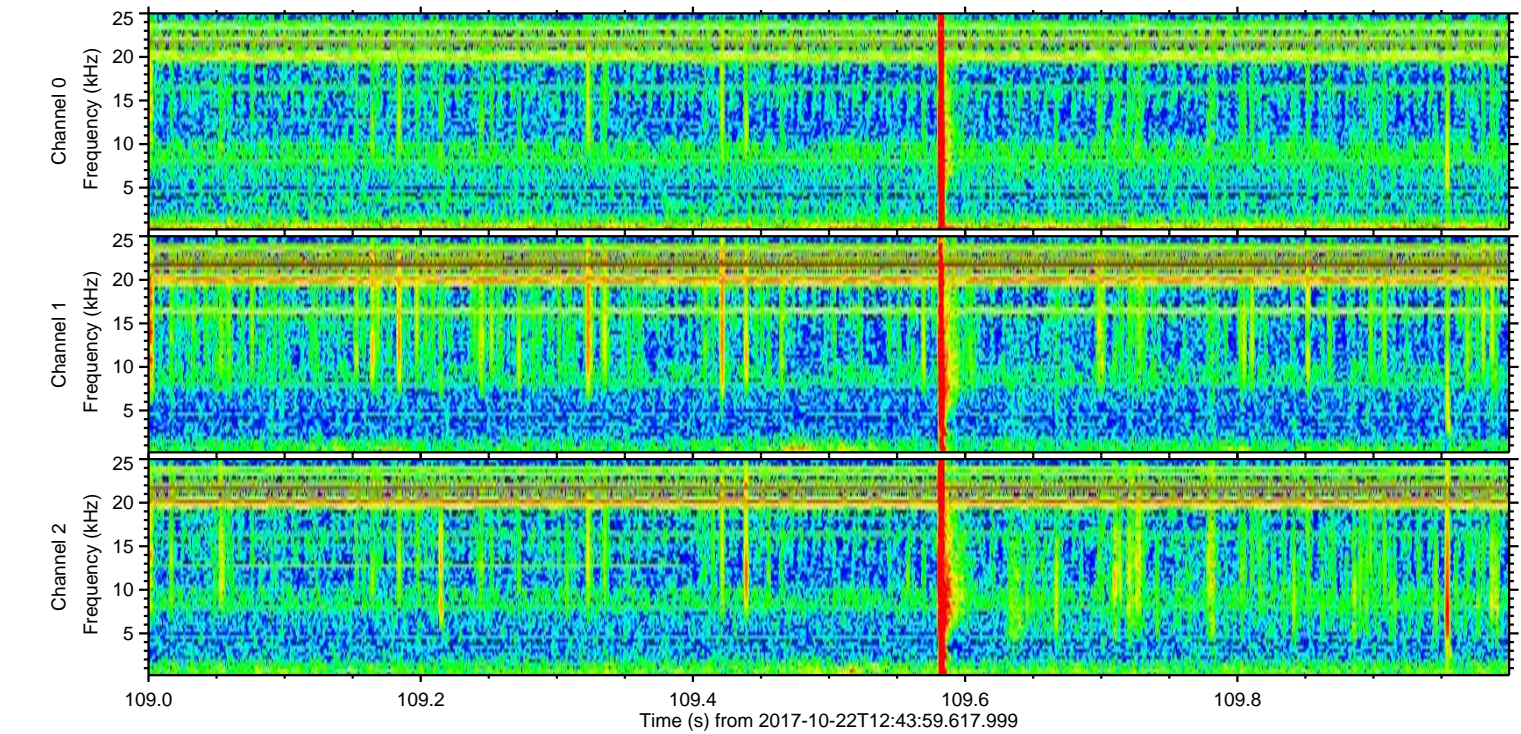
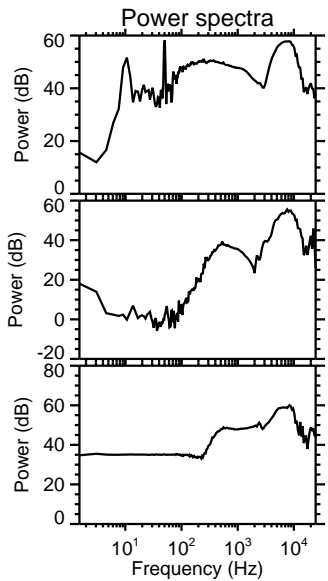
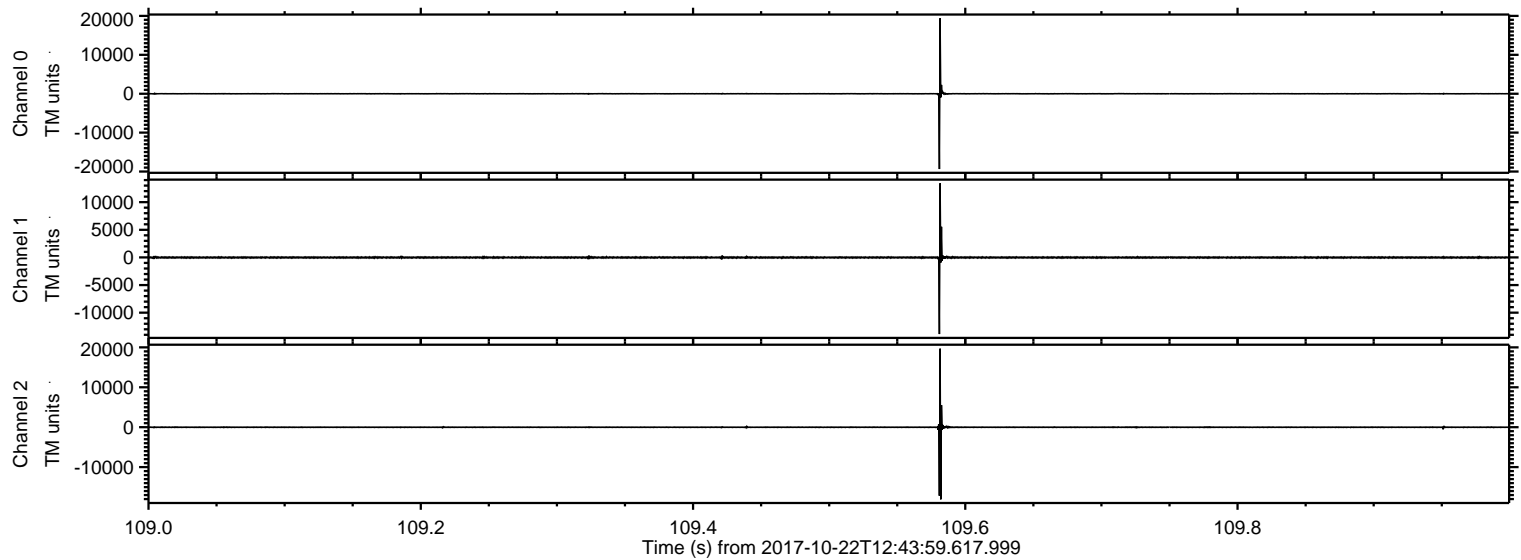
ELMAVAN 3D WAVEFORMS (Measured data sampled at 50 kHz) 51000 packets of 144 samples from 2017-10-22T12:43:59.617.999.

Processed Sun Oct 22 14:52:06 2017 by ELM ver.2012-10-06 from 001__elm20171022_124358__dat00.bin

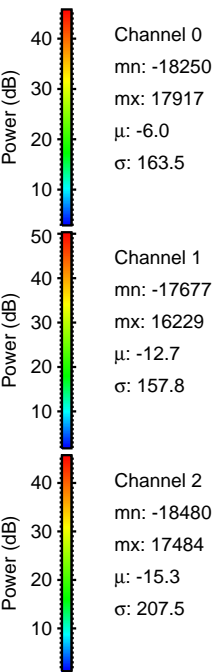
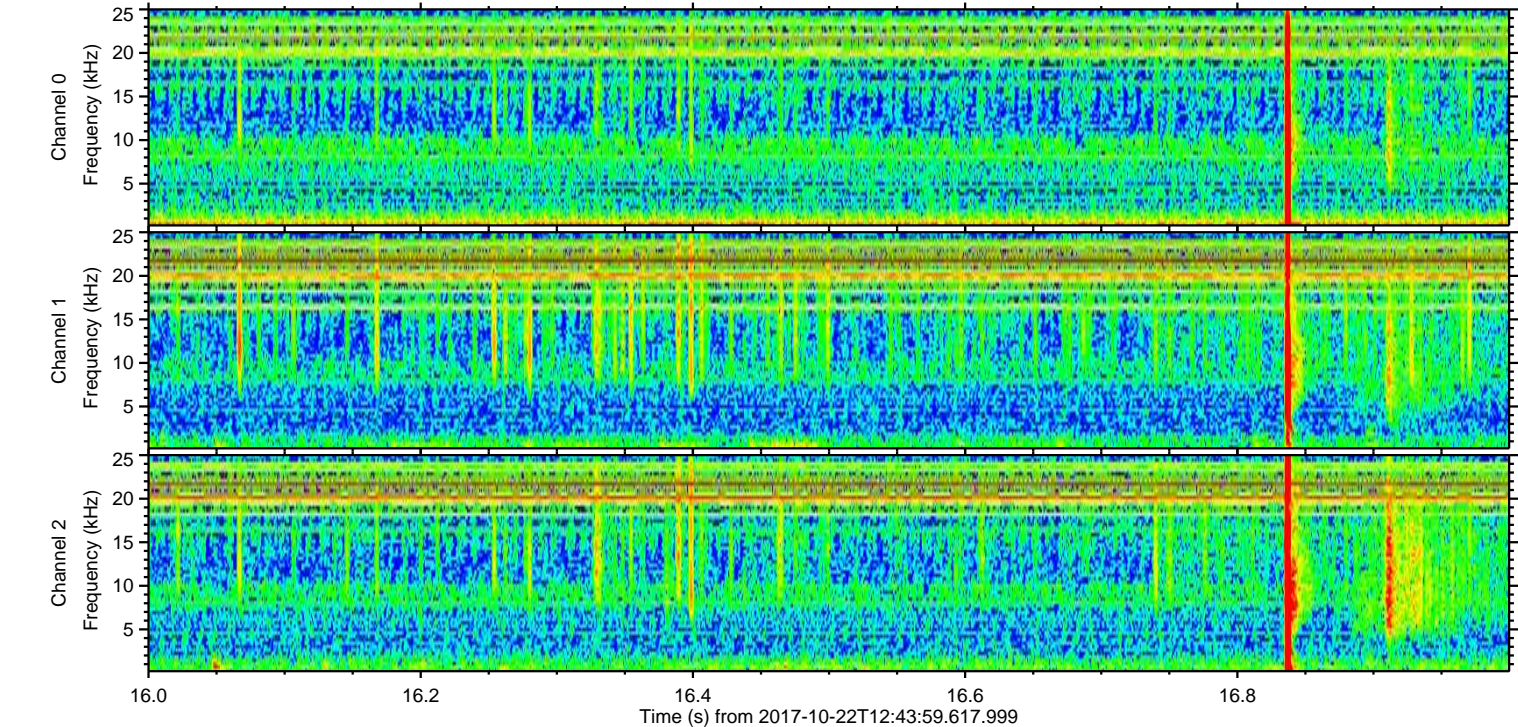
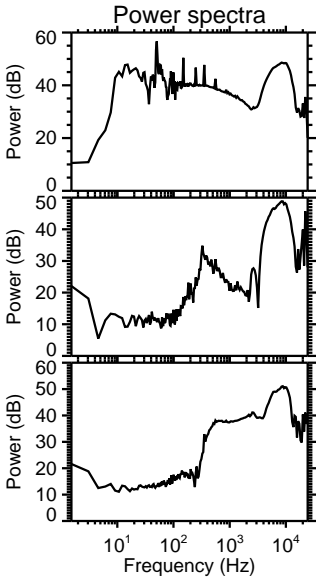
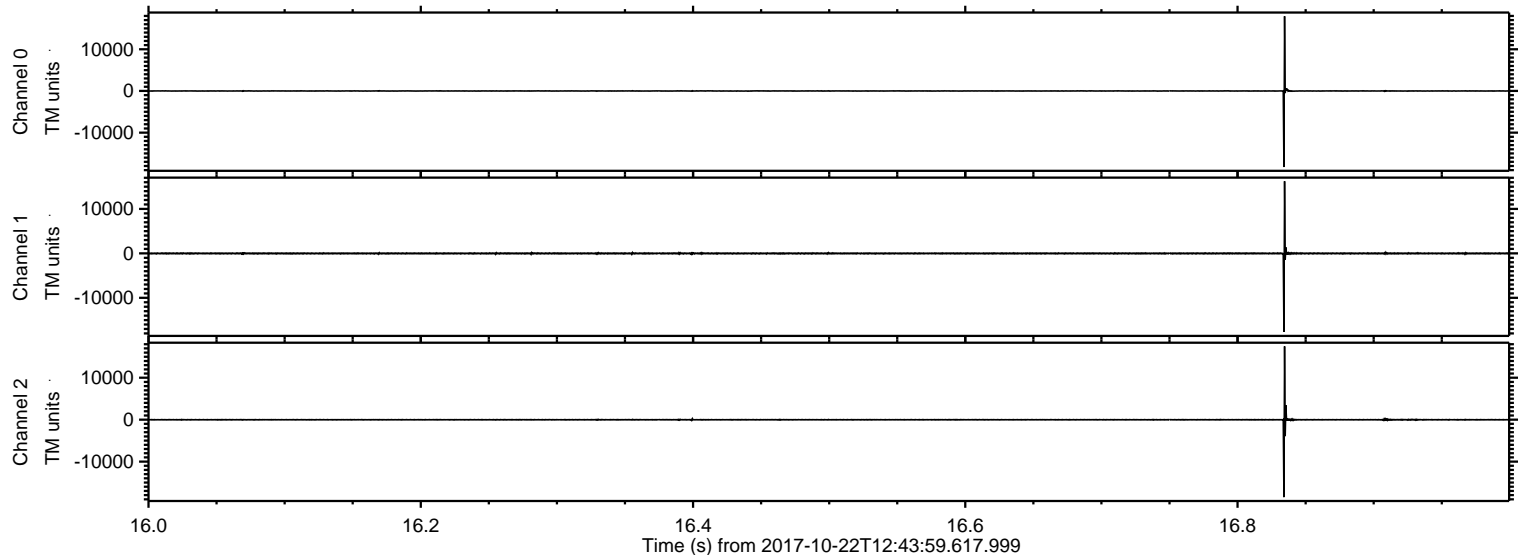


ELMAVAN 3D WAVEFORMS (Measured data sampled at 50 kHz) 51000 packets of 144 samples from 2017-10-22T12:43:59.617.999. Part 110/147

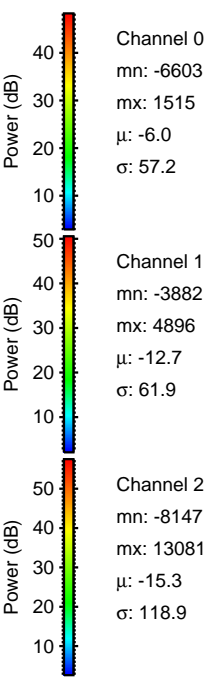
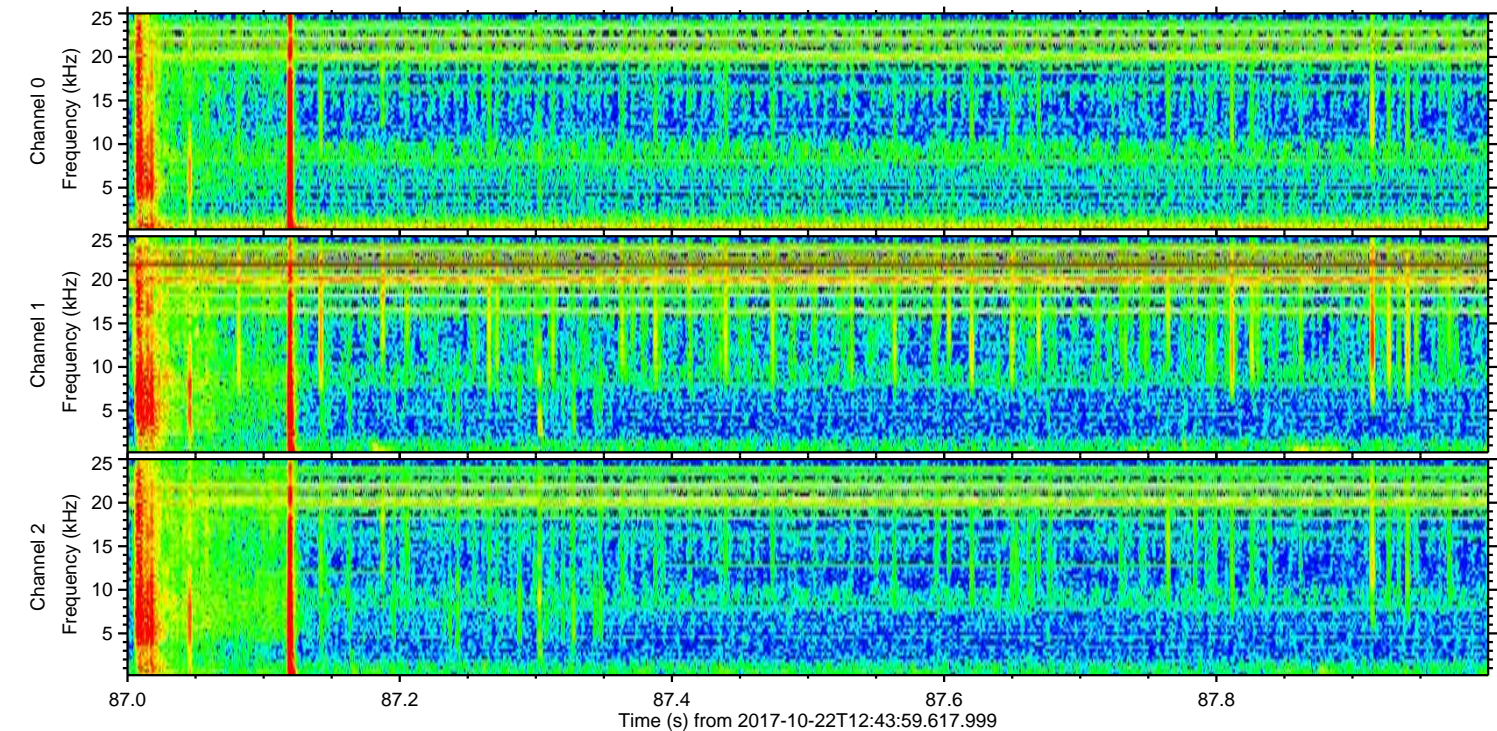
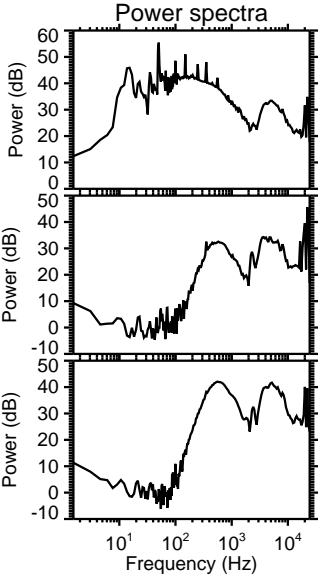
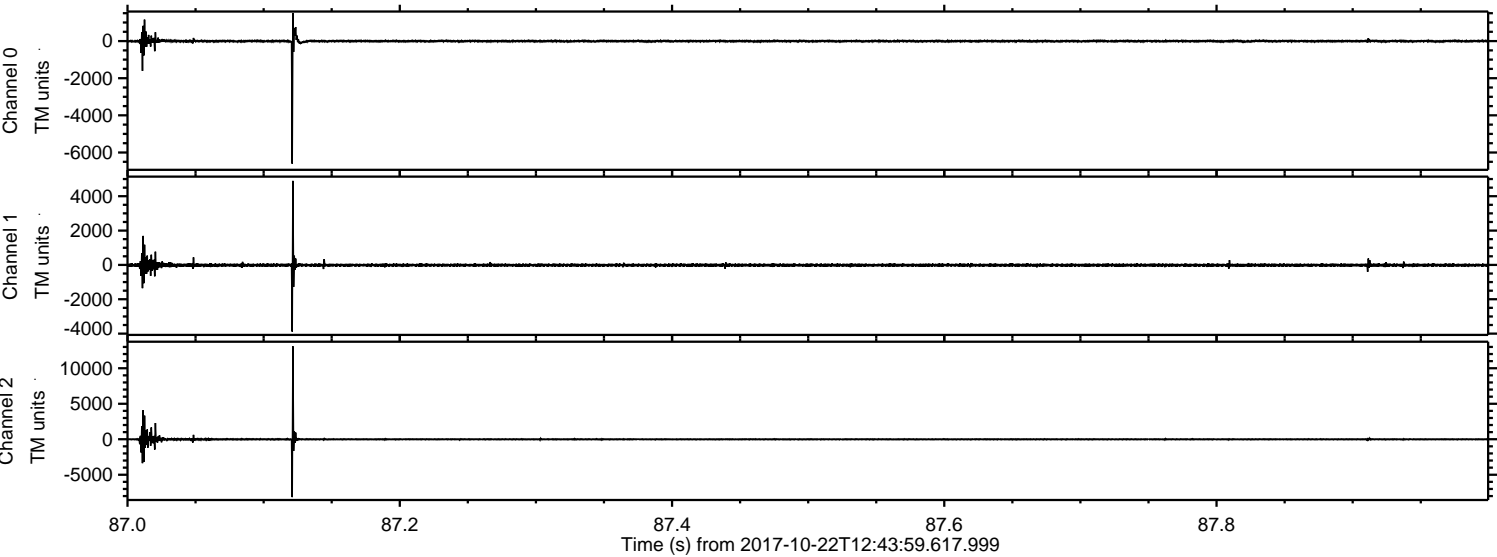
Processed Sun Oct 22 14:52:12 2017 by ELM ver.2012-10-06 from 001__elm20171022_124358__dat00.bin



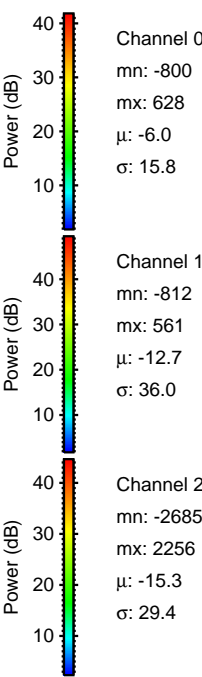
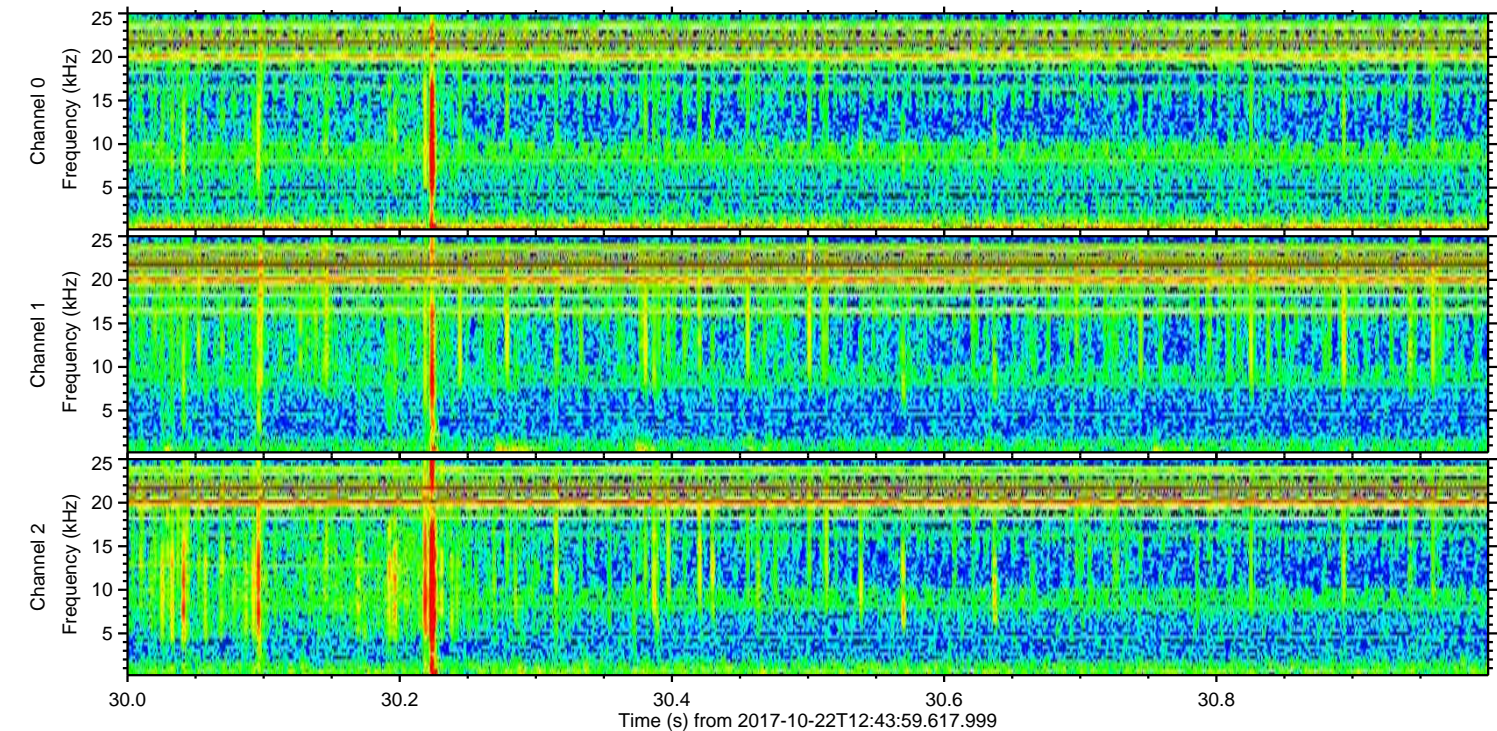
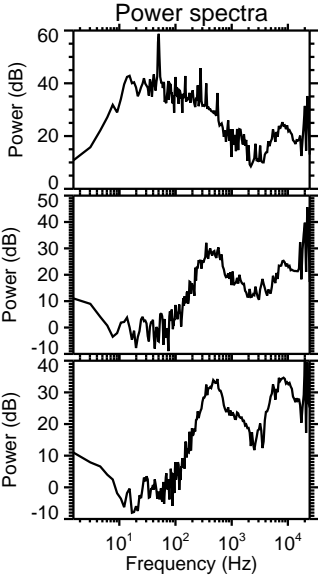
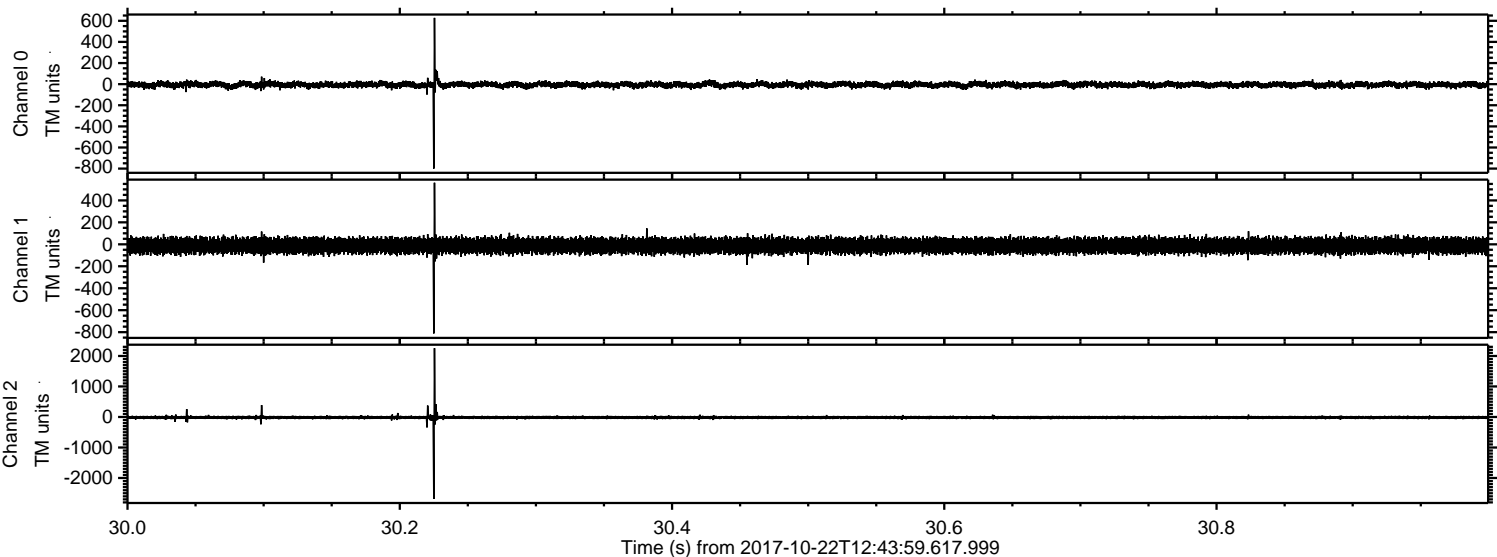
Processed Sun Oct 22 14:52:13 2017 by ELM ver.2012-10-06 from 001__elm20171022_124358__dat00.bin



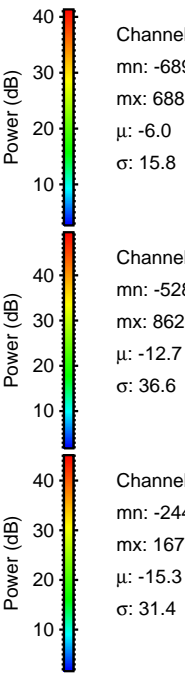
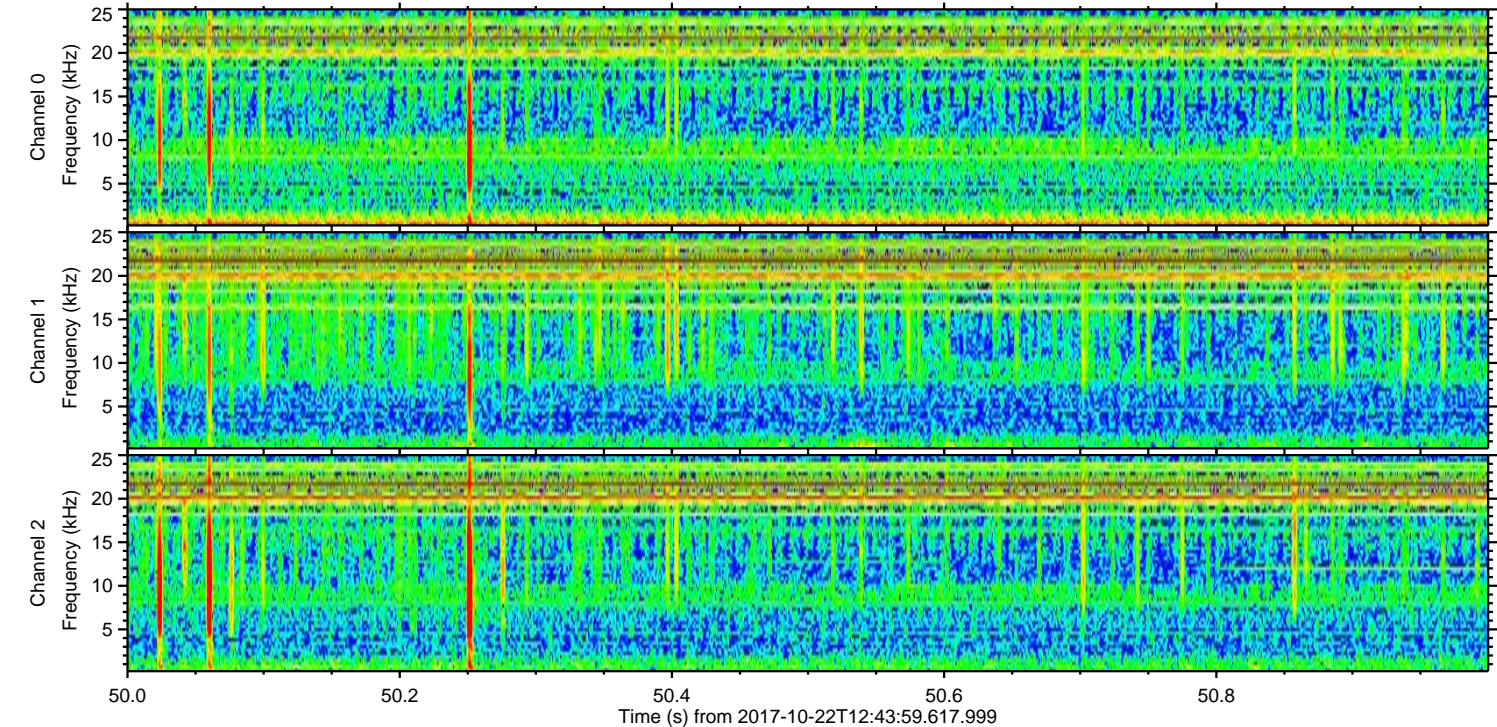
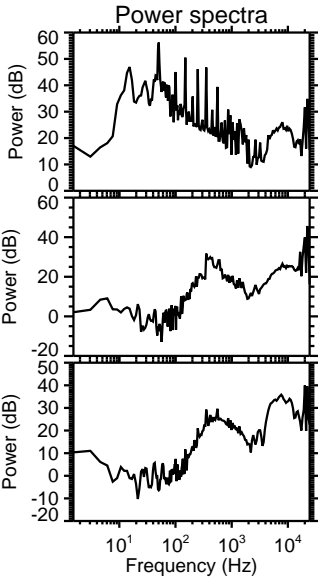
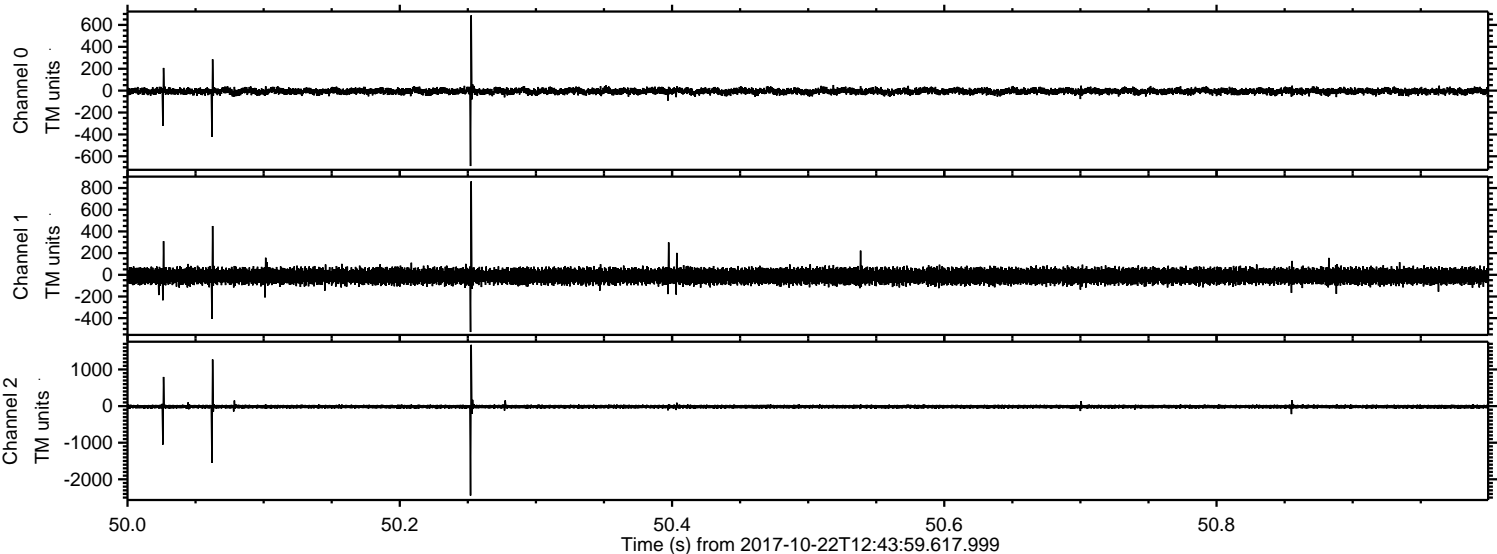
Processed Sun Oct 22 14:52:14 2017 by ELM ver.2012-10-06 from 001__elm20171022_124358__dat00.bin



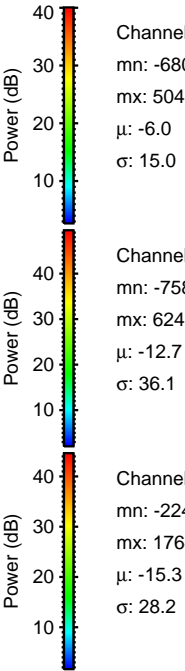
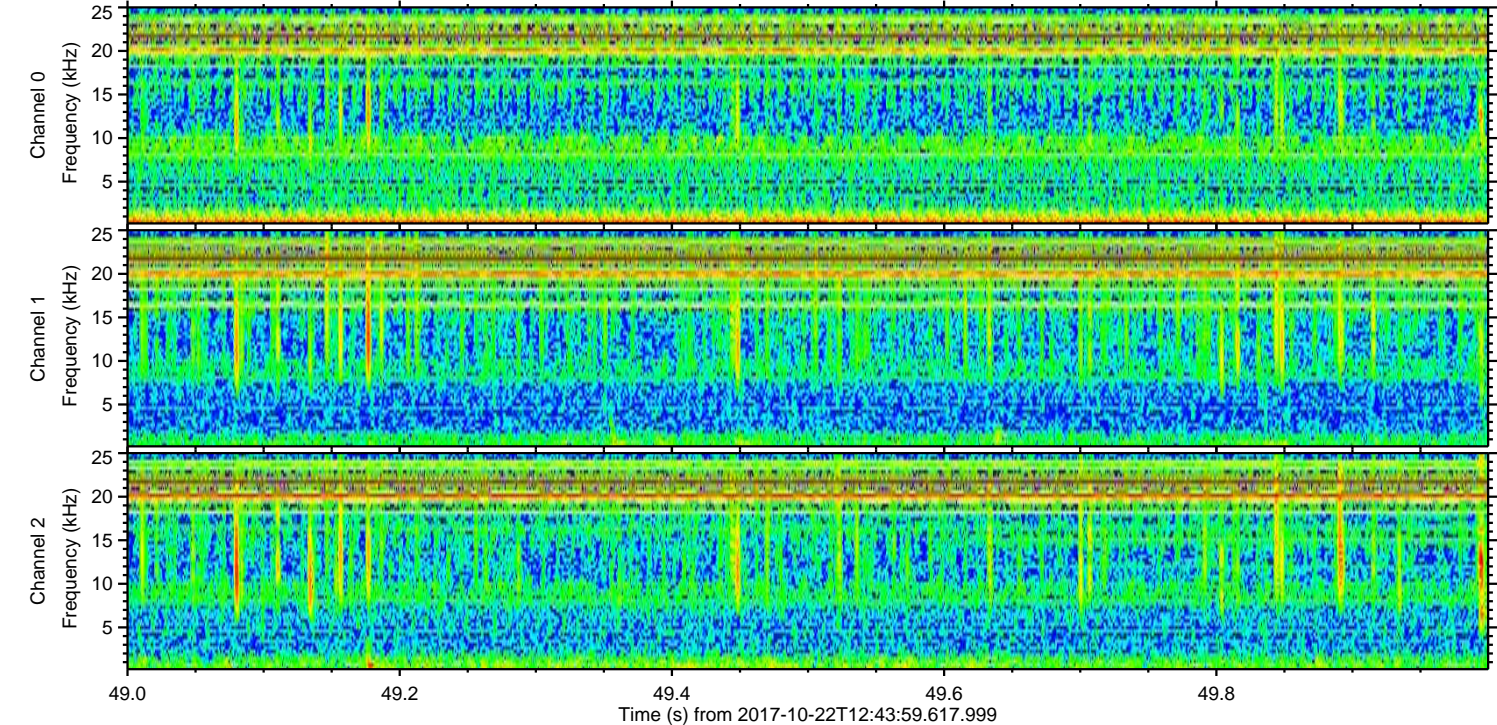
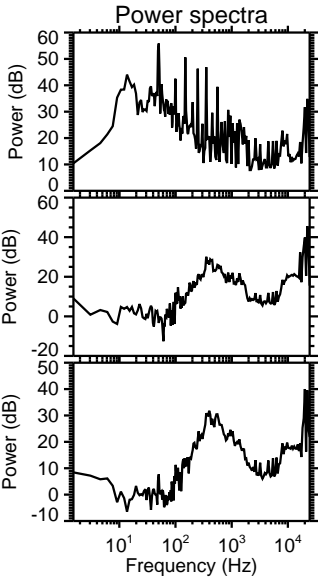
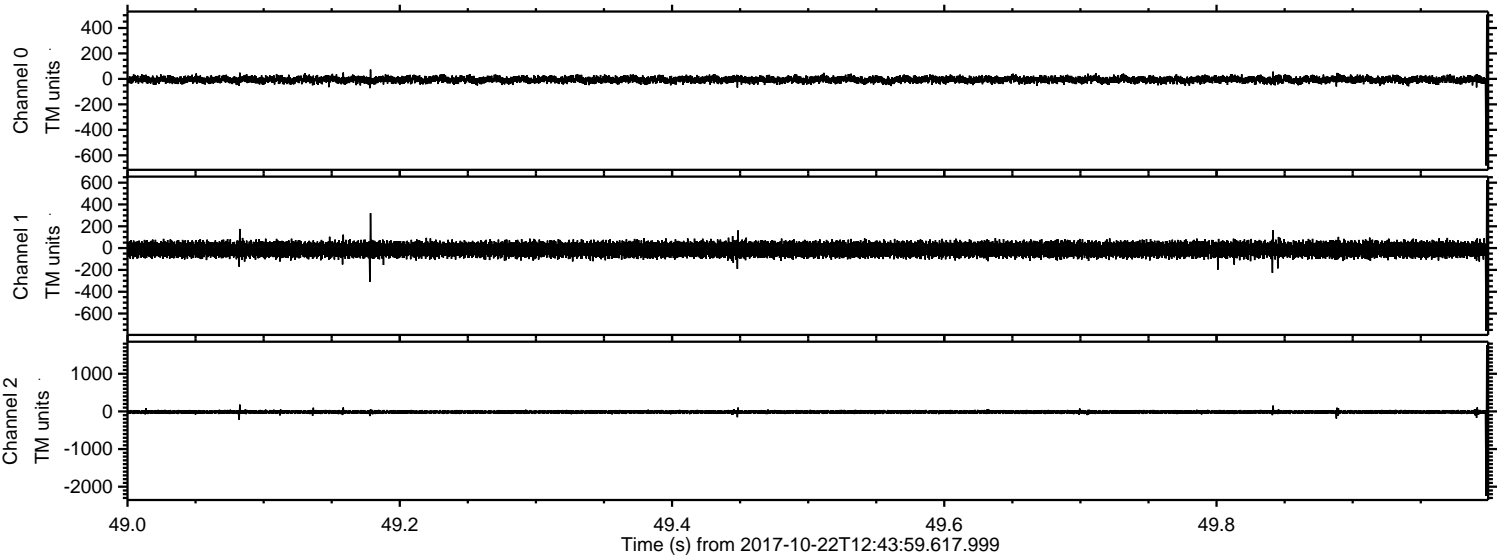
Processed Sun Oct 22 14:52:15 2017 by ELM ver.2012-10-06 from 001__elm20171022_124358__dat00.bin



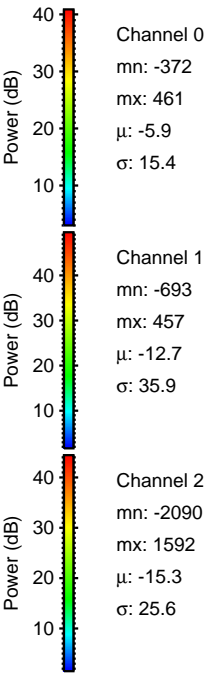
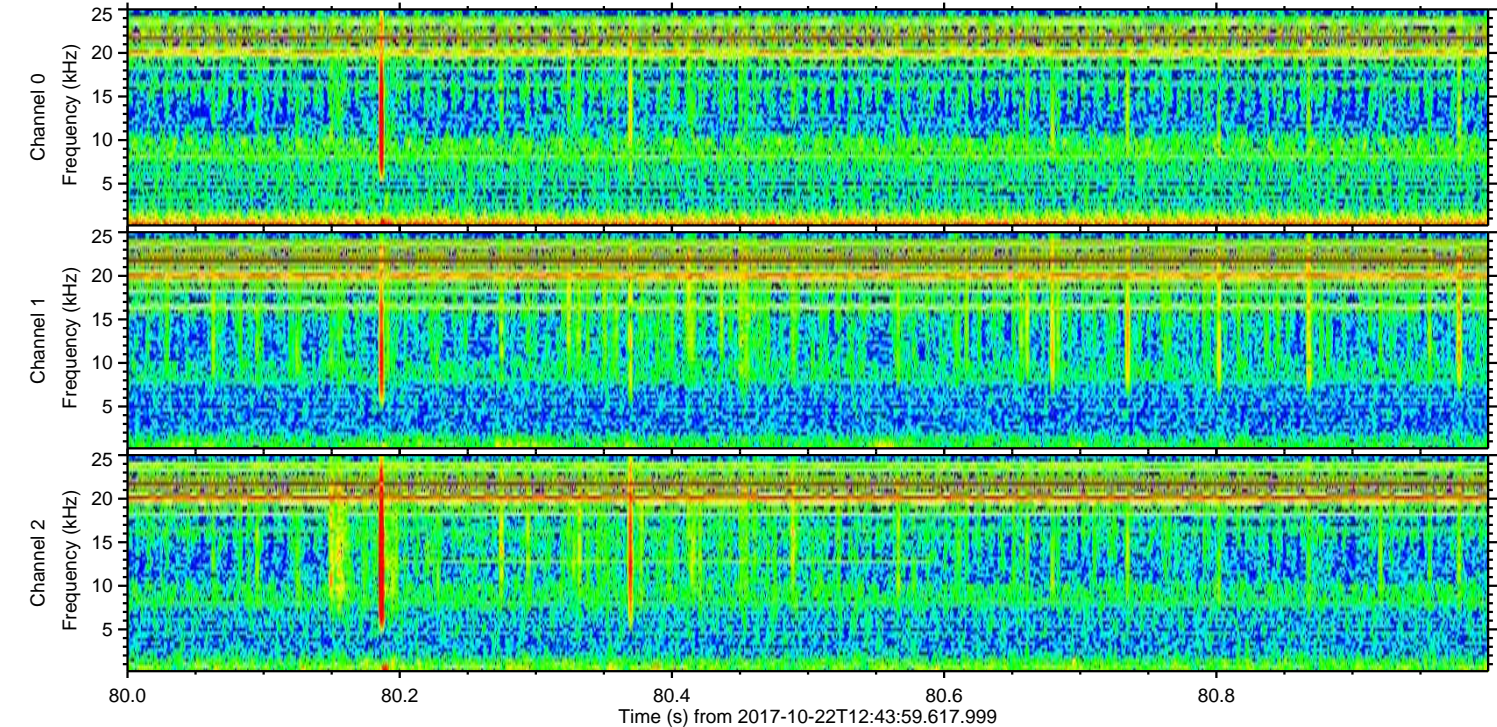
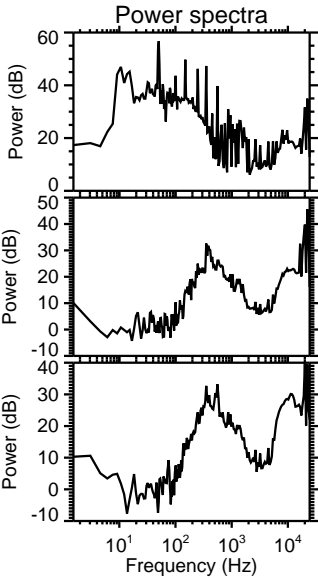
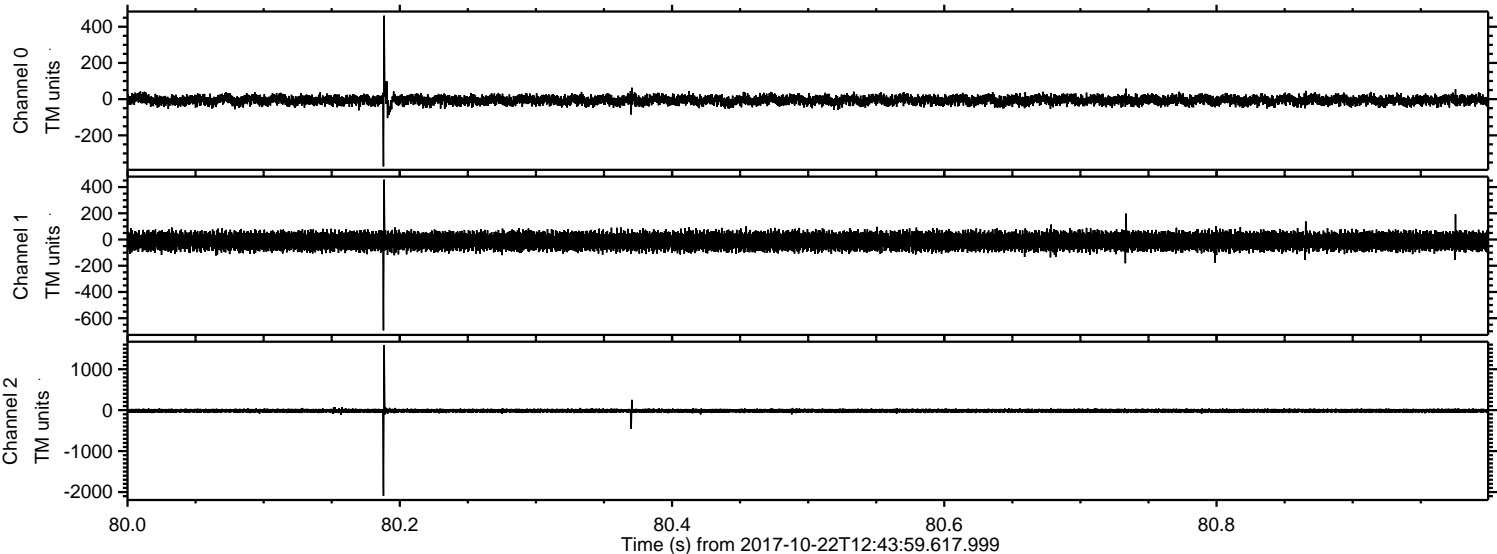
Processed Sun Oct 22 14:52:15 2017 by ELM ver.2012-10-06 from 001__elm20171022_124358__dat00.bin



Processed Sun Oct 22 14:52:16 2017 by ELM ver.2012-10-06 from 001__elm20171022_124358__dat00.bin

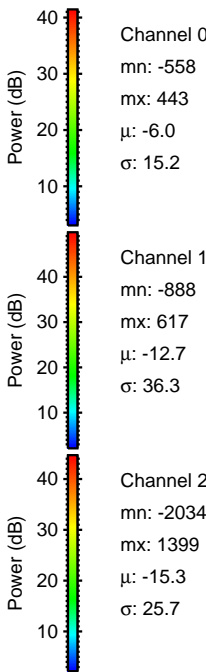
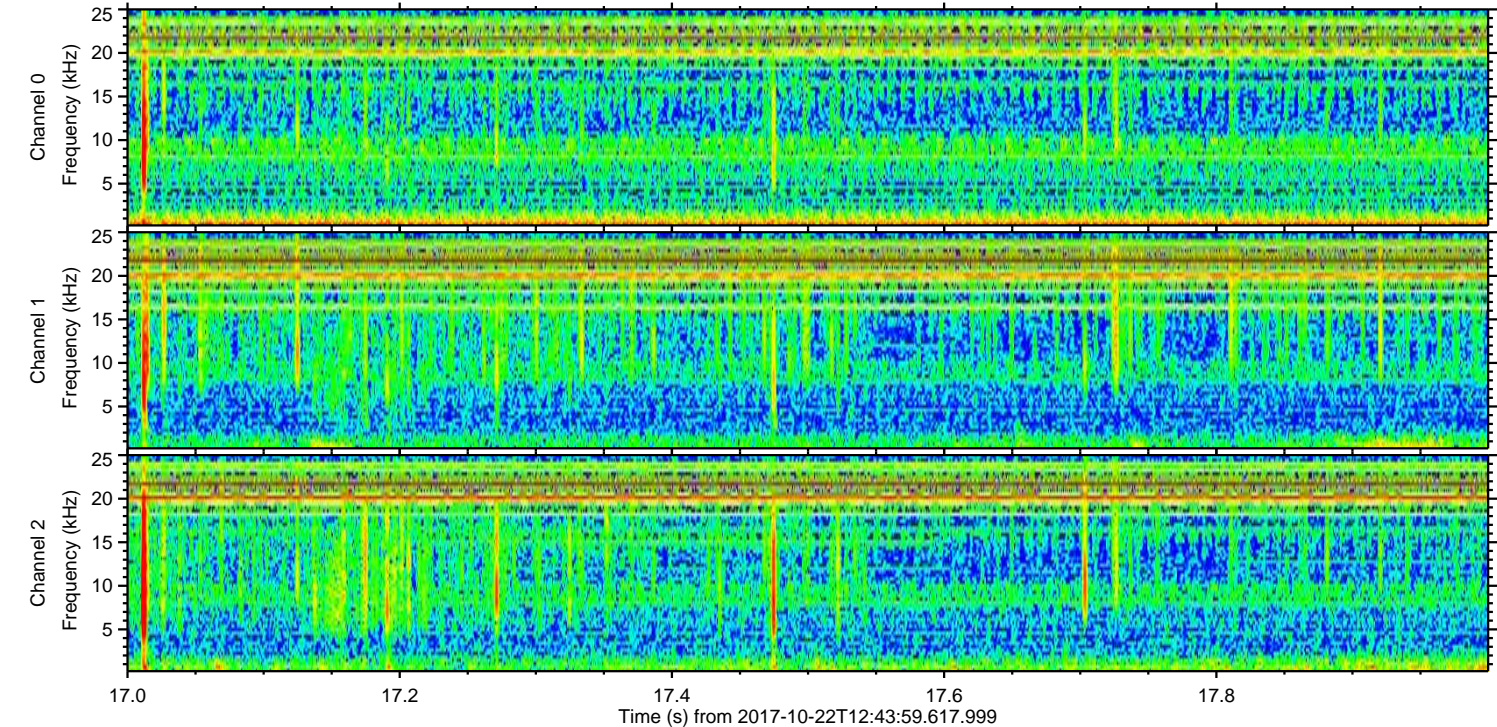
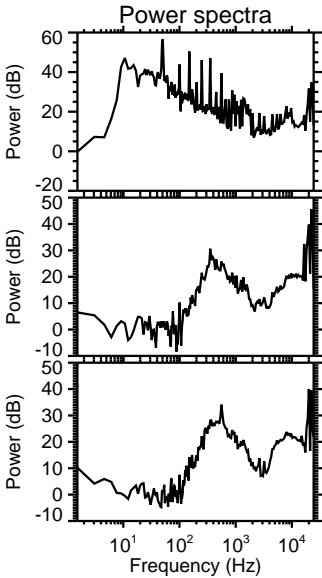
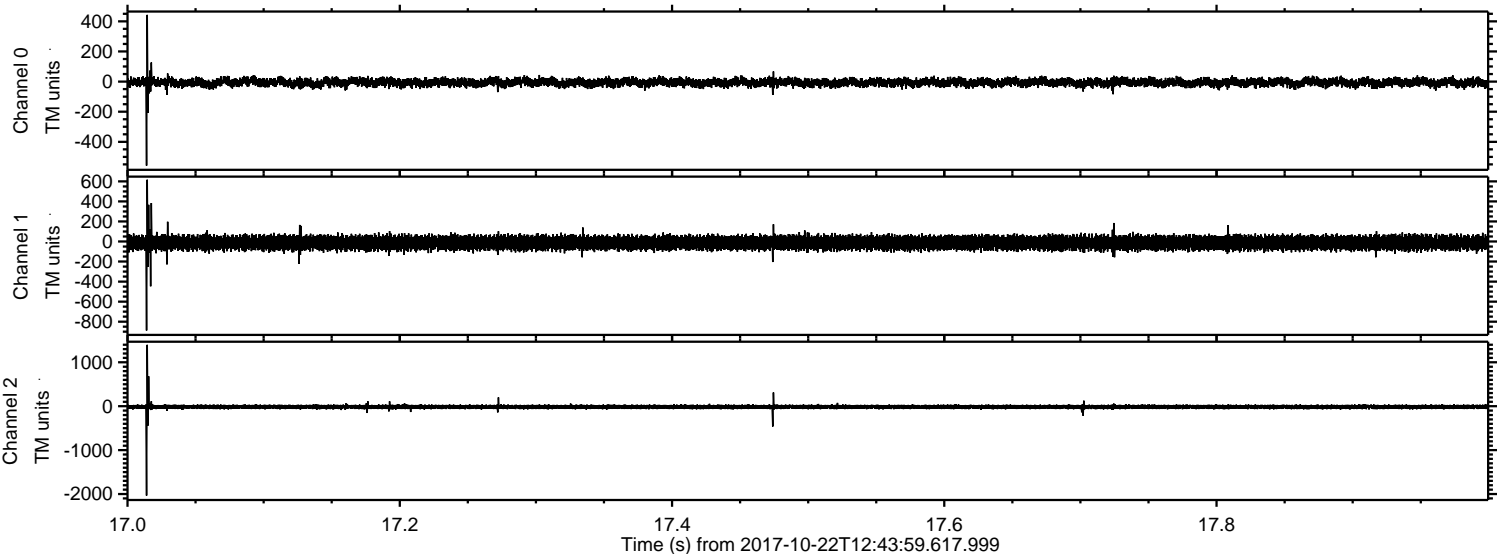


Processed Sun Oct 22 14:52:17 2017 by ELM ver.2012-10-06 from 001__elm20171022_124358__dat00.bin

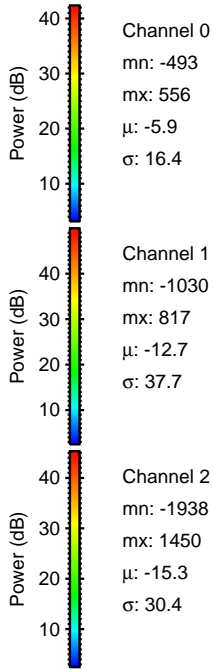
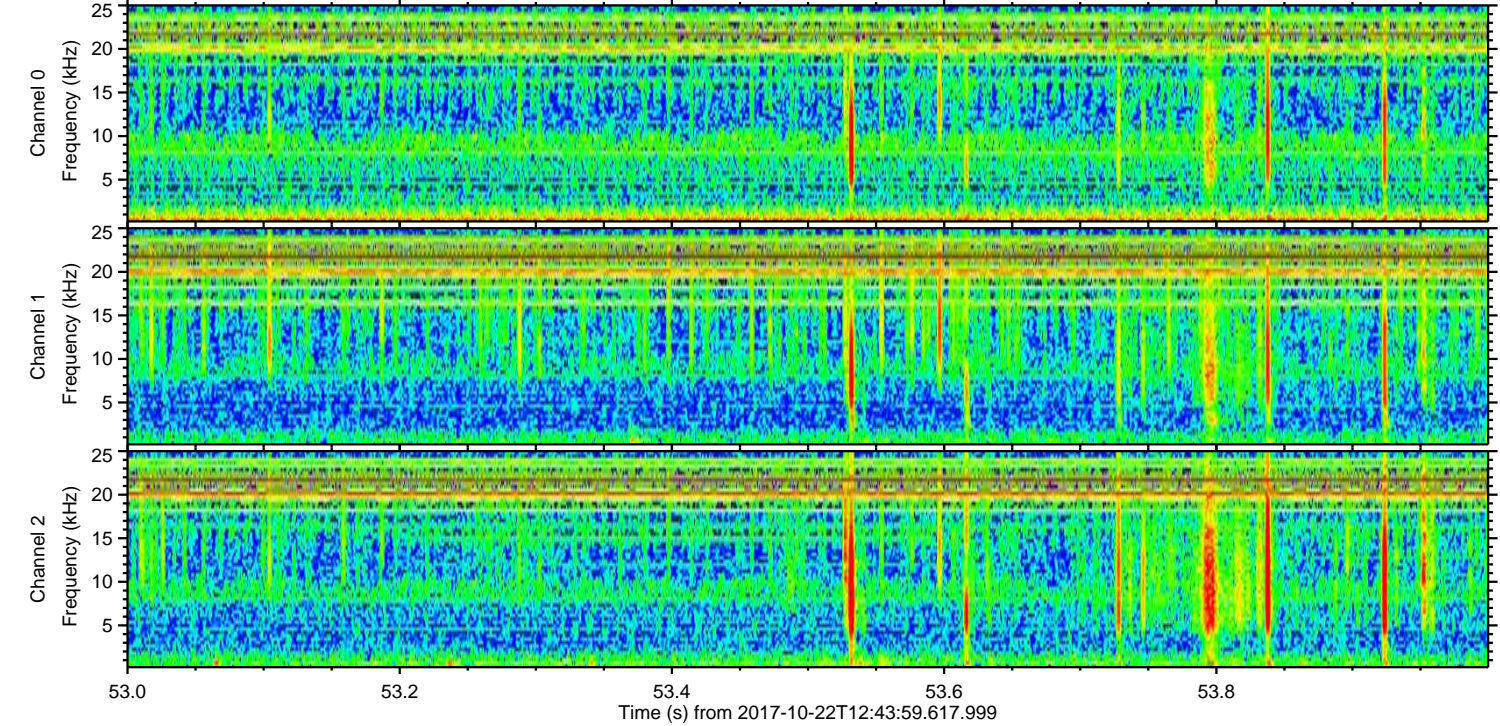
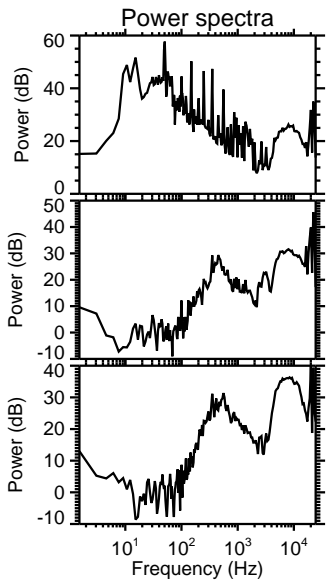
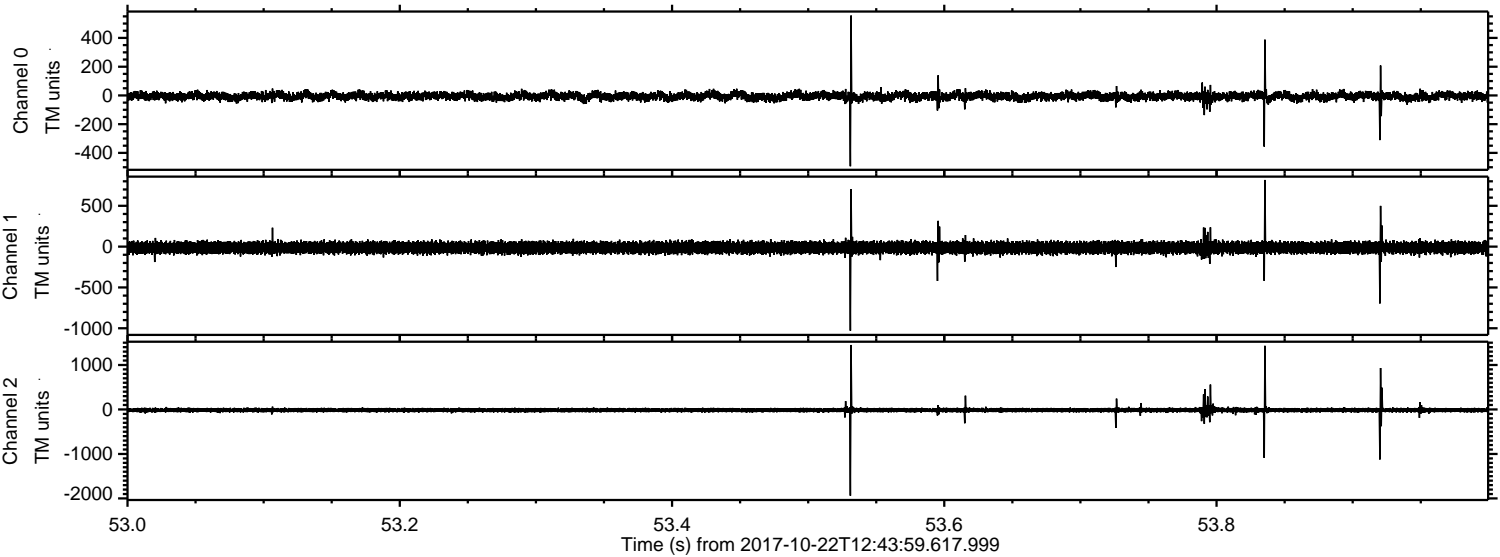


ELMAVAN 3D WAVEFORMS (Measured data sampled at 50 kHz) 51000 packets of 144 samples from 2017-10-22T12:43:59.617.999. Part 18/147

Processed Sun Oct 22 14:52:18 2017 by ELM ver.2012-10-06 from 001__elm20171022_124358__dat00.bin



Processed Sun Oct 22 14:52:18 2017 by ELM ver.2012-10-06 from 001__elm20171022_124358__dat00.bin



Channel 0
mn: -493
mx: 556
 μ : -5.9
 σ : 16.4

Channel 1
mn: -1030
mx: 817
 μ : -12.7
 σ : 37.7

Channel 2
mn: -1938
mx: 1450
 μ : -15.3
 σ : 30.4

Processed Sun Oct 22 14:52:19 2017 by ELM ver.2012-10-06 from 001__elm20171022_124358__dat00.bin

