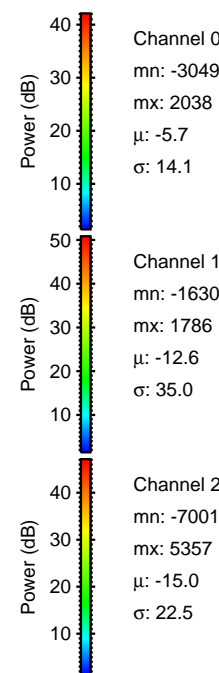
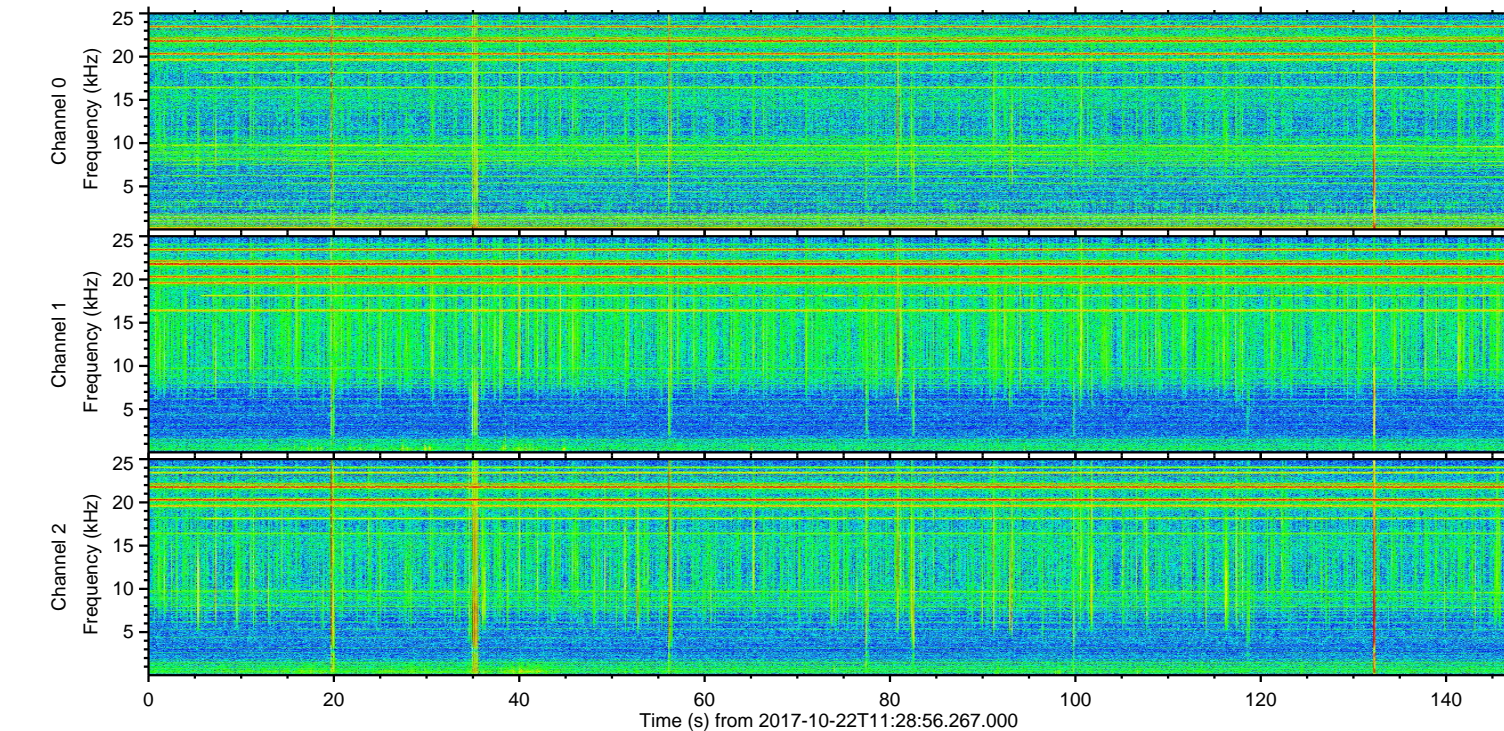
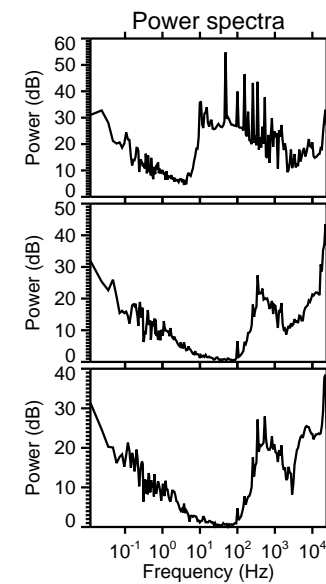
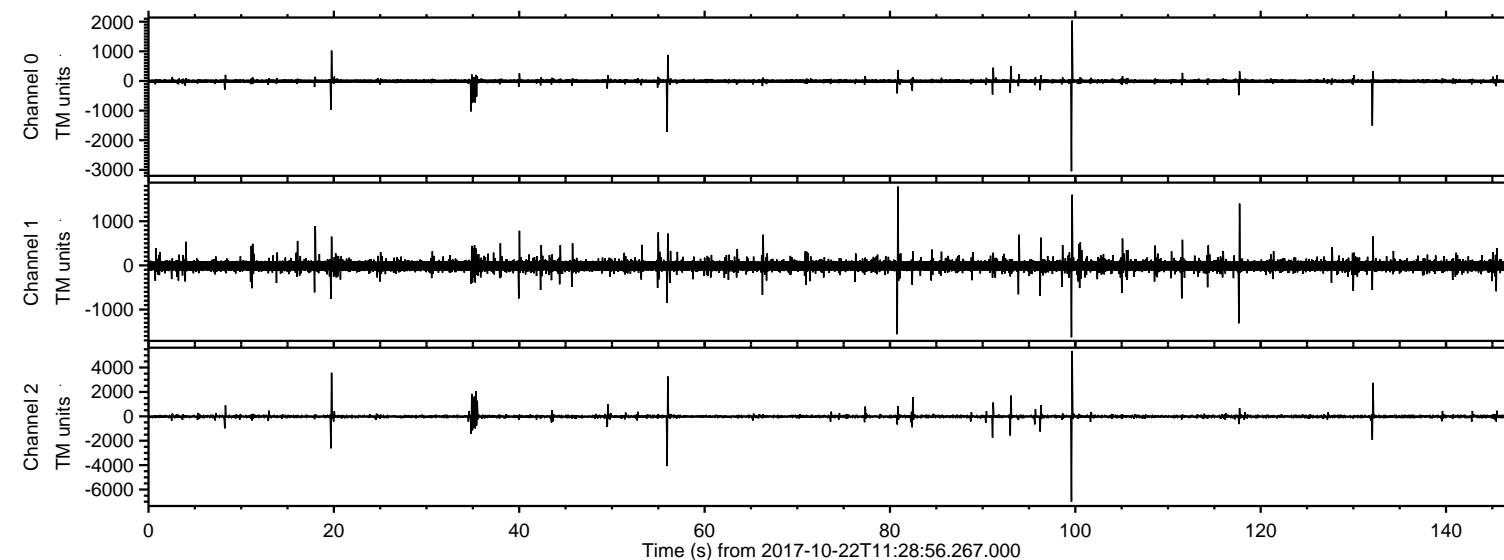


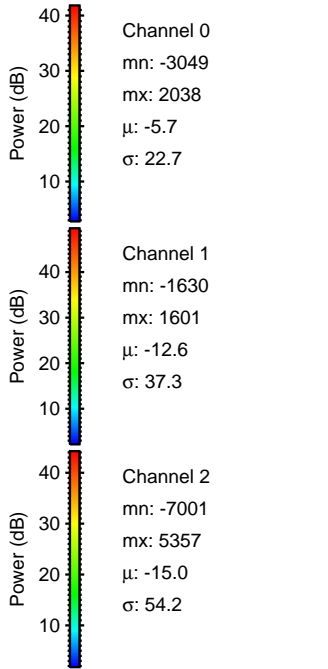
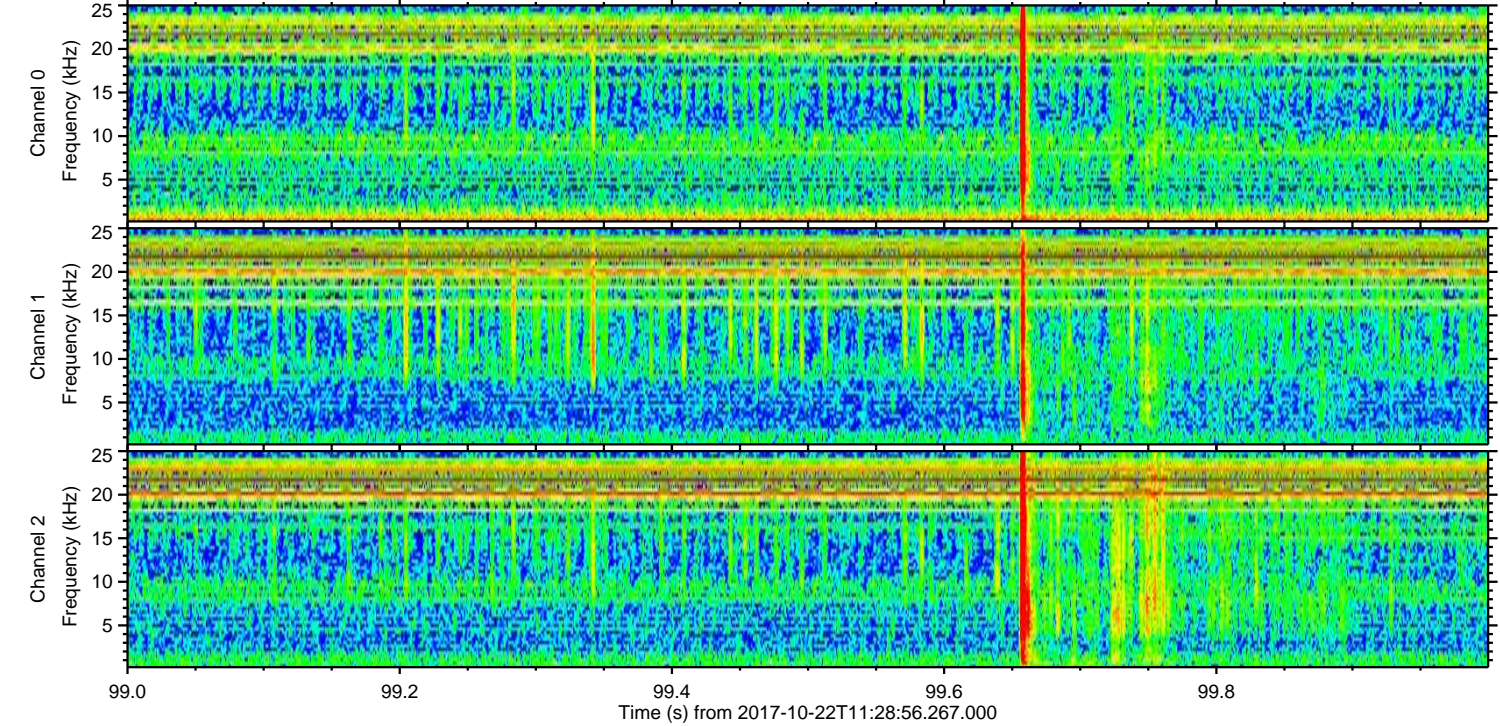
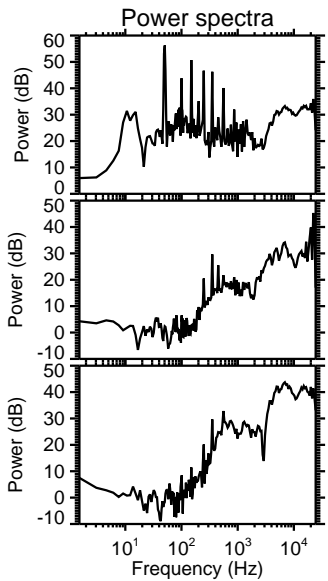
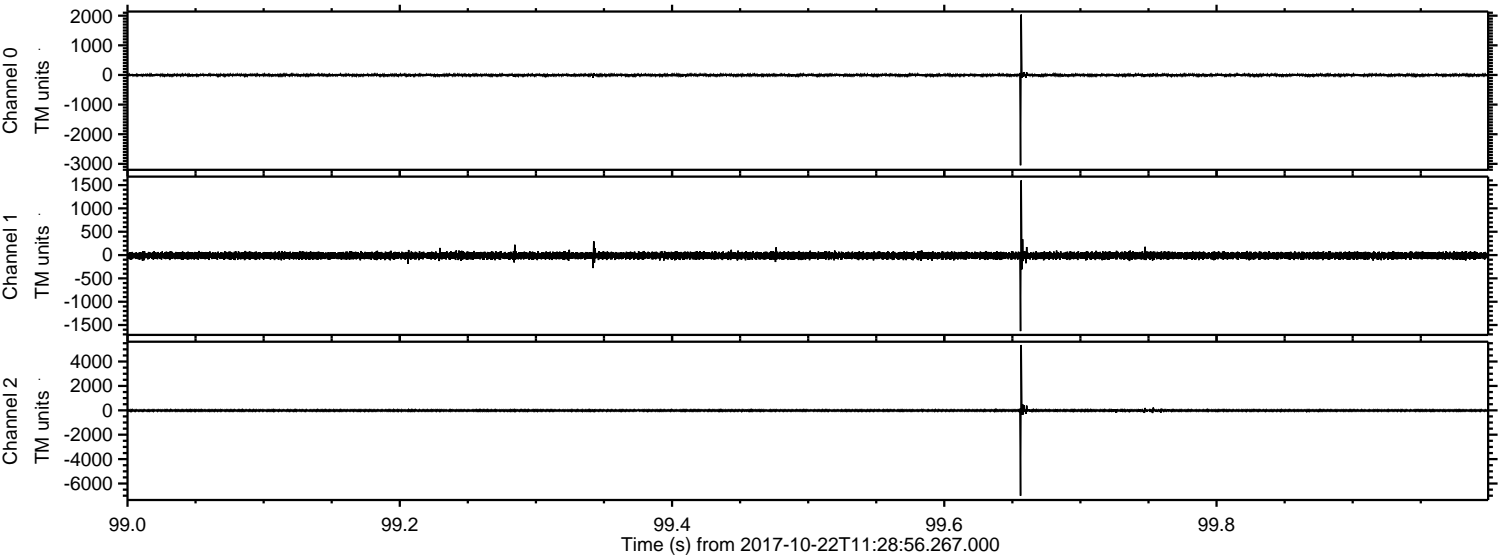
ELMAVAN 3D WAVEFORMS (Measured data sampled at 50 kHz) 51000 packets of 144 samples from 2017-10-22T11:28:56.267.000.

Processed Sun Oct 22 13:36:30 2017 by ELM ver.2012-10-06 from 001__elm20171022_112855__dat00.bin

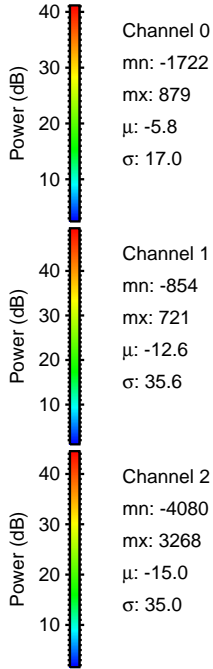
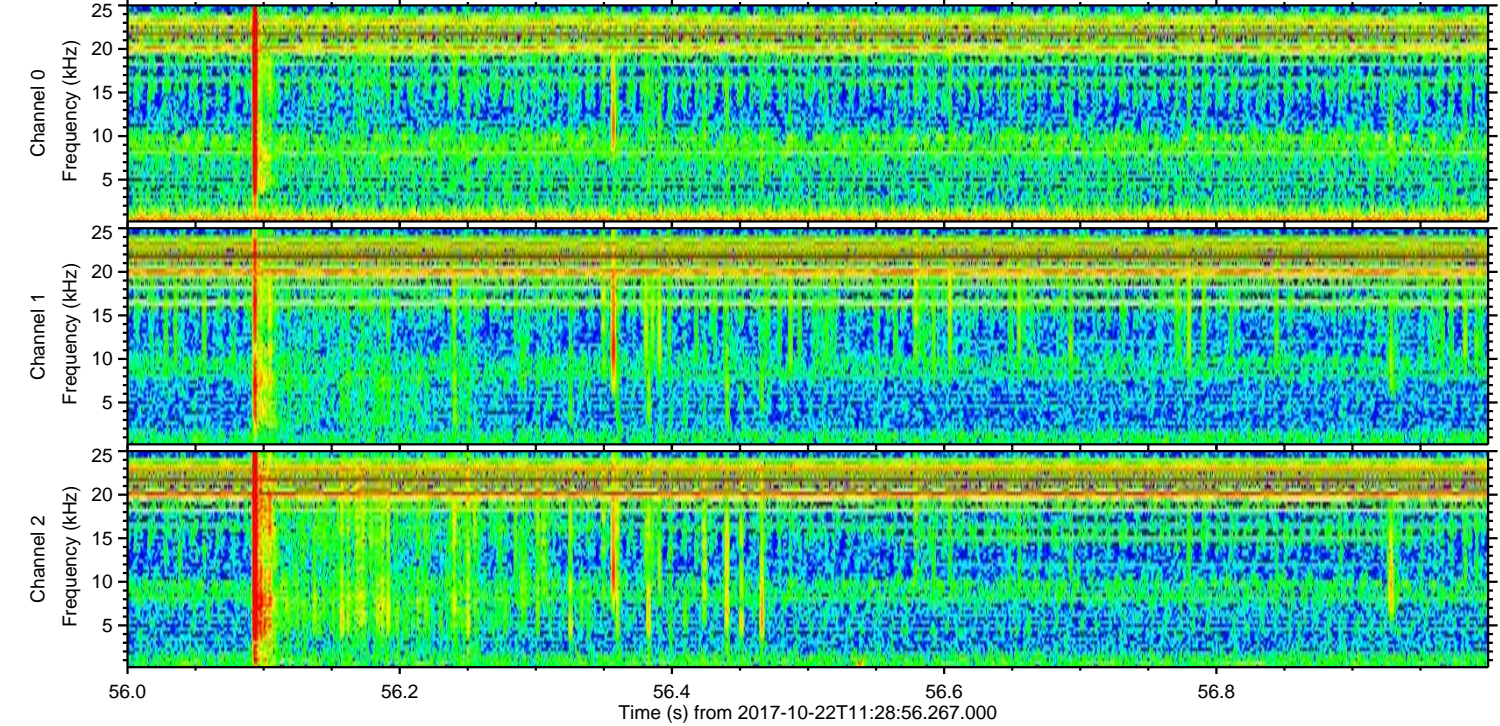
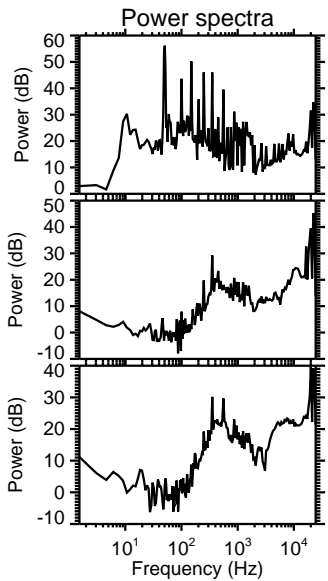
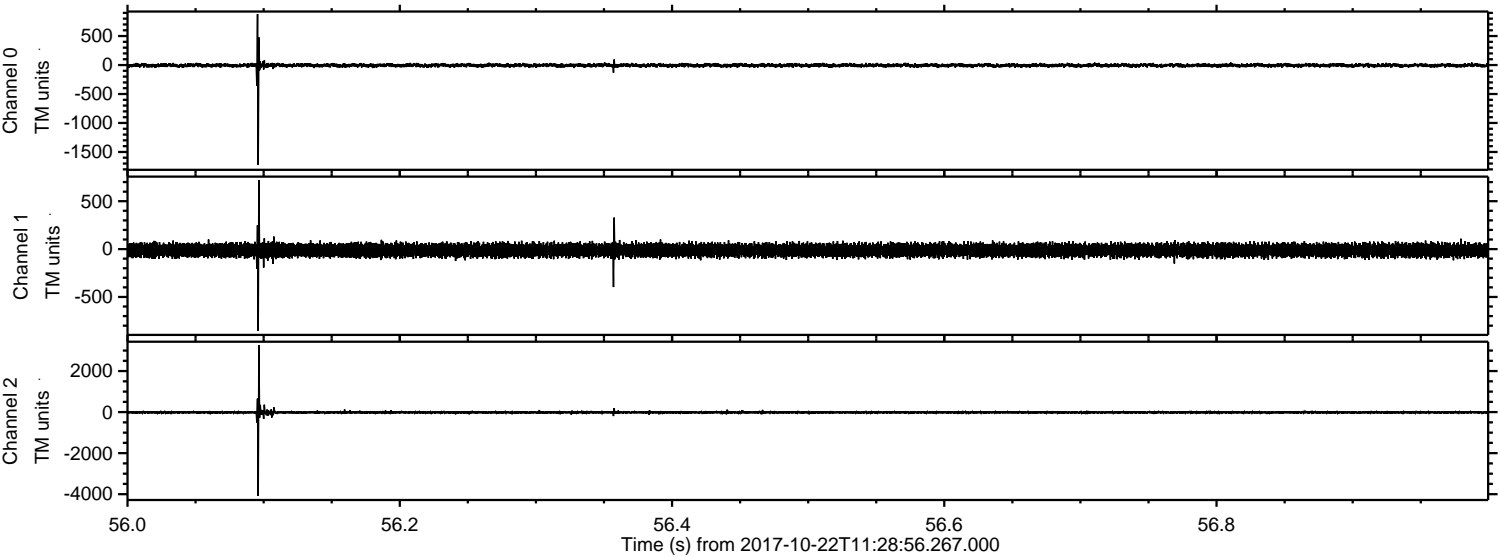


ELMAVAN 3D WAVEFORMS (Measured data sampled at 50 kHz) 51000 packets of 144 samples from 2017-10-22T11:28:56.267.000. Part 100/147

Processed Sun Oct 22 13:36:37 2017 by ELM ver.2012-10-06 from 001__elm20171022_112855__dat00.bin

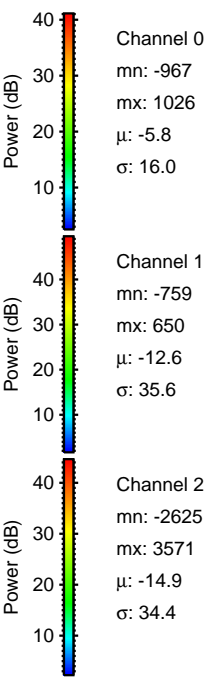
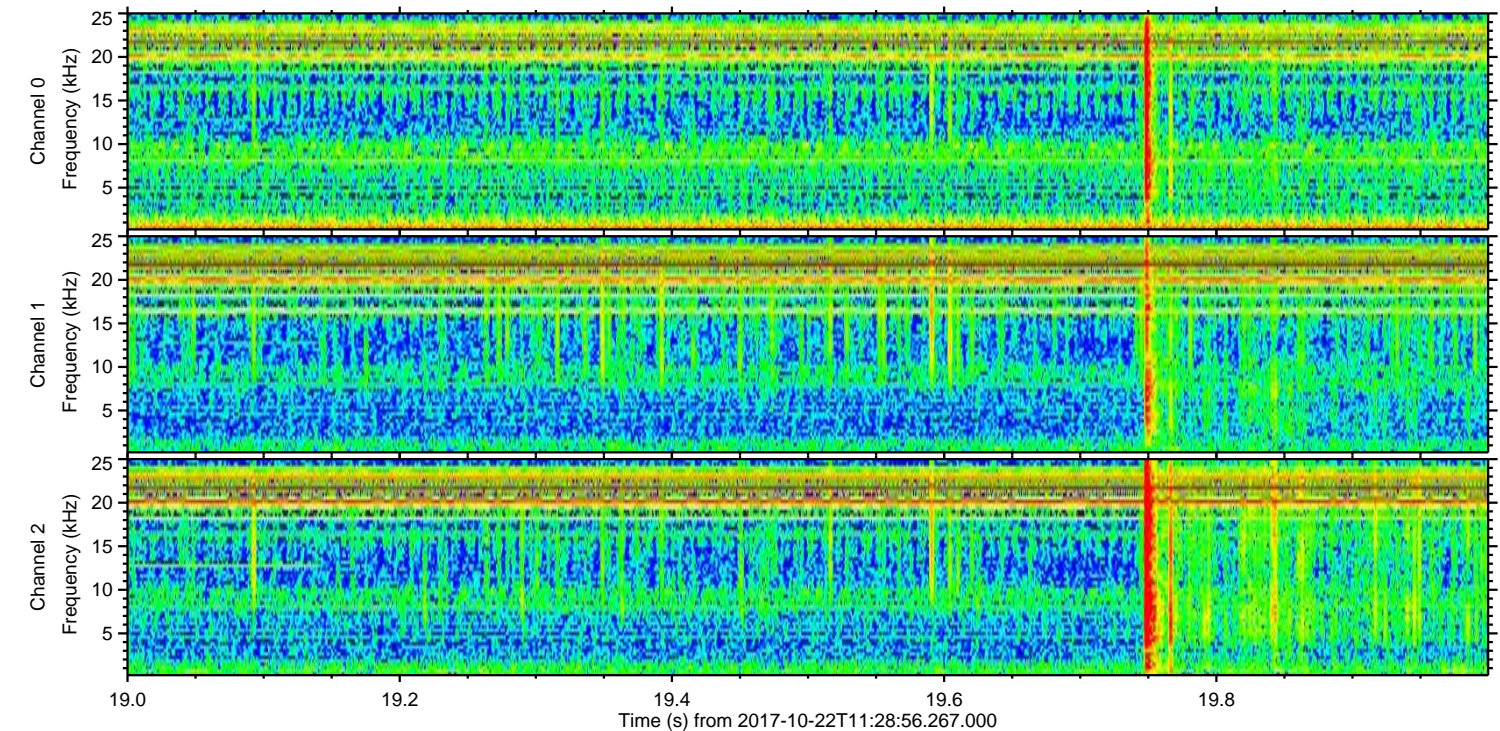
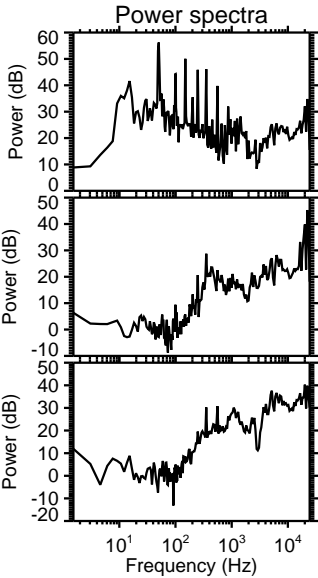
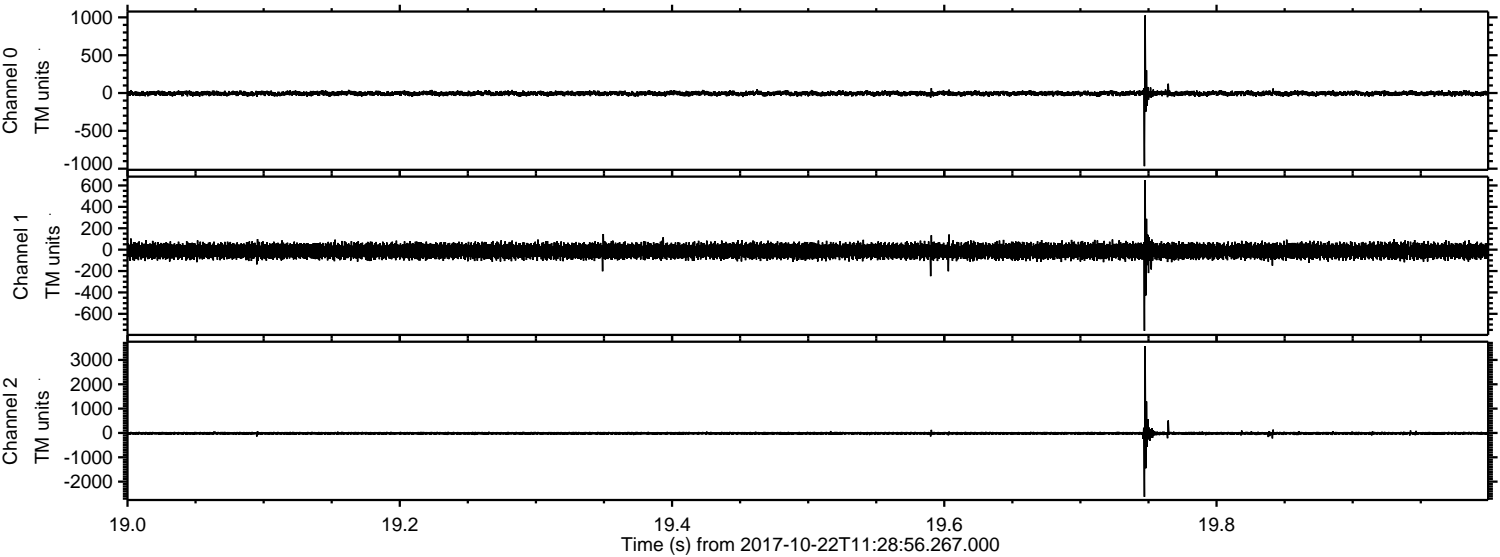


Processed Sun Oct 22 13:36:38 2017 by ELM ver.2012-10-06 from 001__elm20171022_112855__dat00.bin



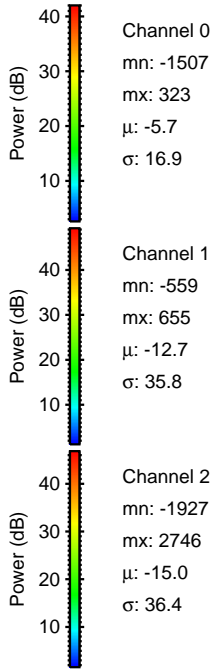
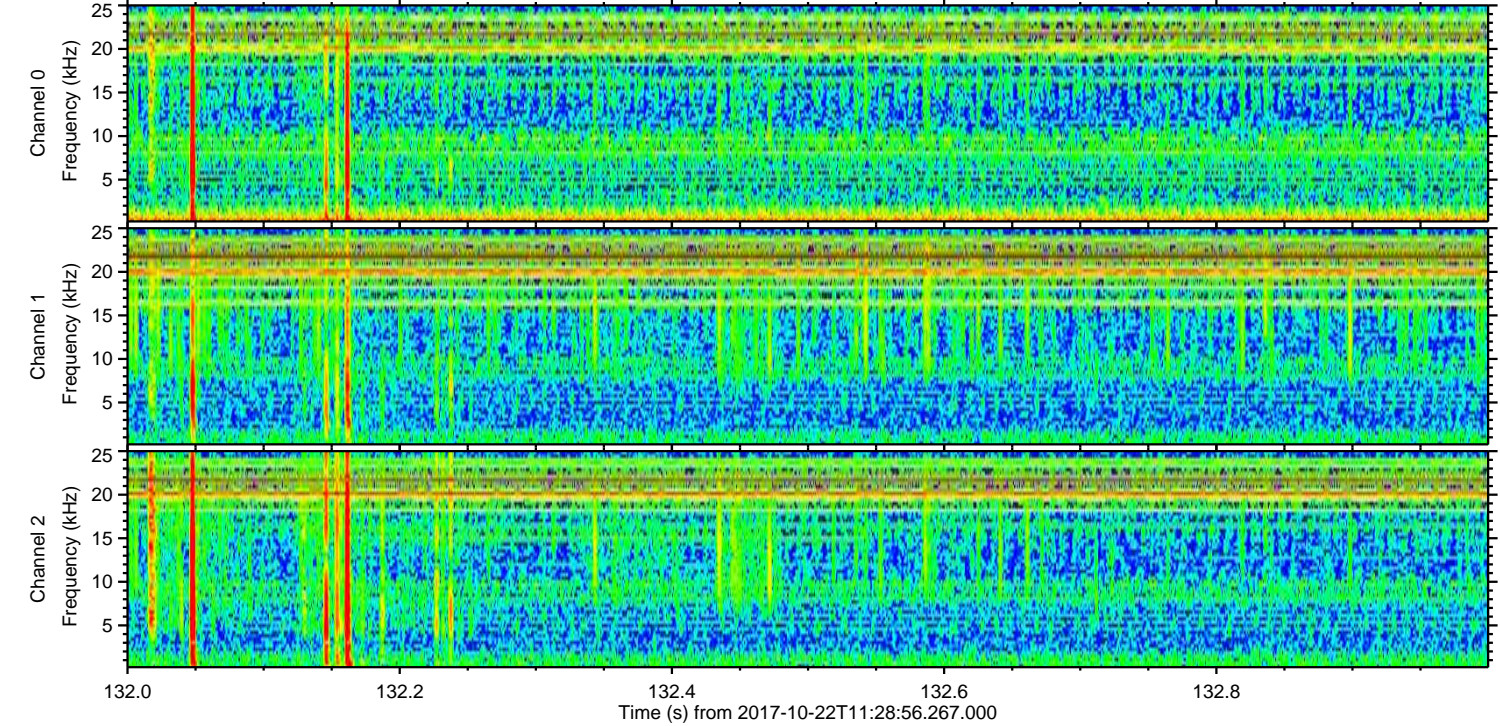
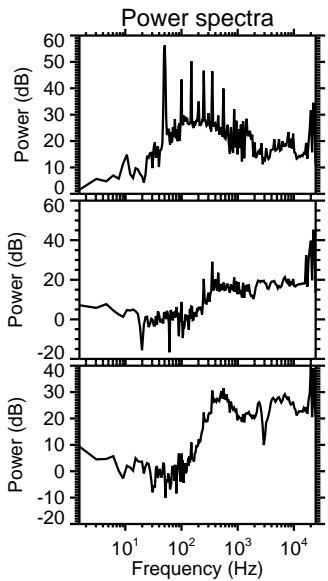
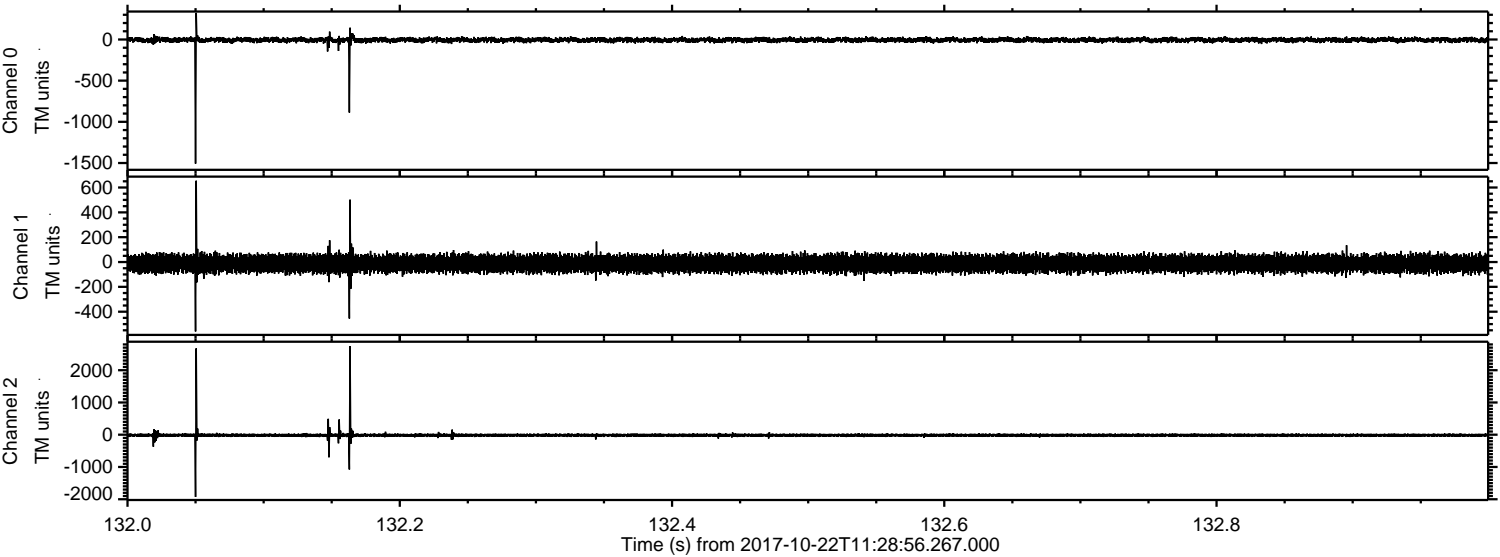
ELMAVAN 3D WAVEFORMS (Measured data sampled at 50 kHz) 51000 packets of 144 samples from 2017-10-22T11:28:56.267.000. Part 20/147

Processed Sun Oct 22 13:36:39 2017 by ELM ver.2012-10-06 from 001__elm20171022_112855__dat00.bin

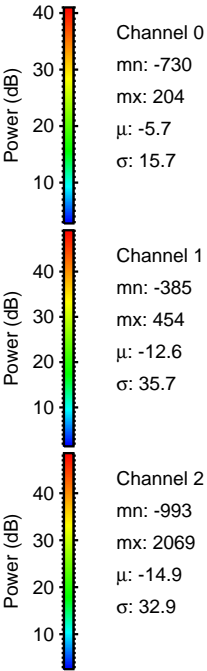
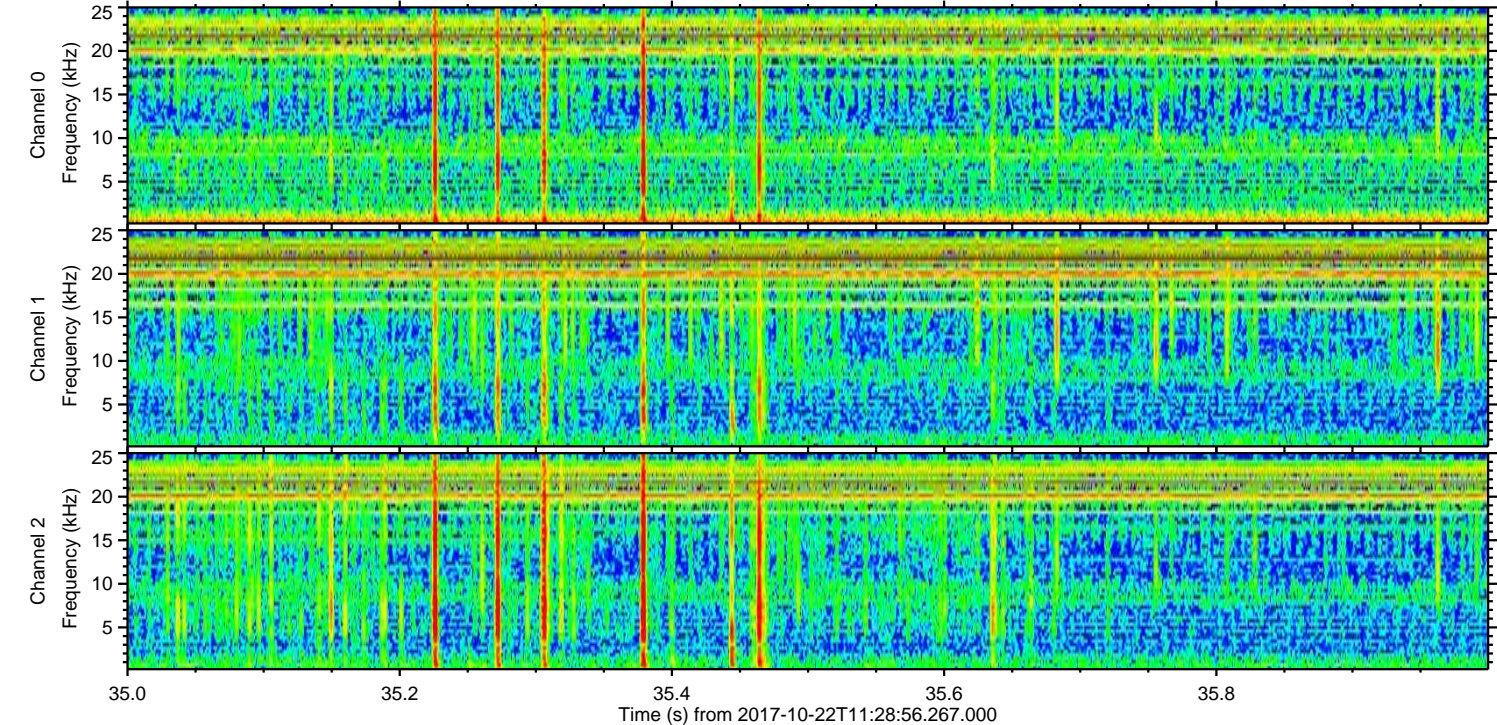
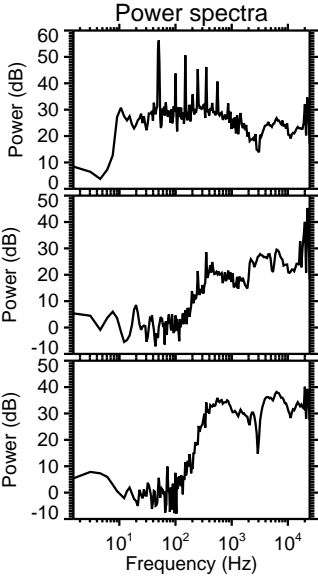
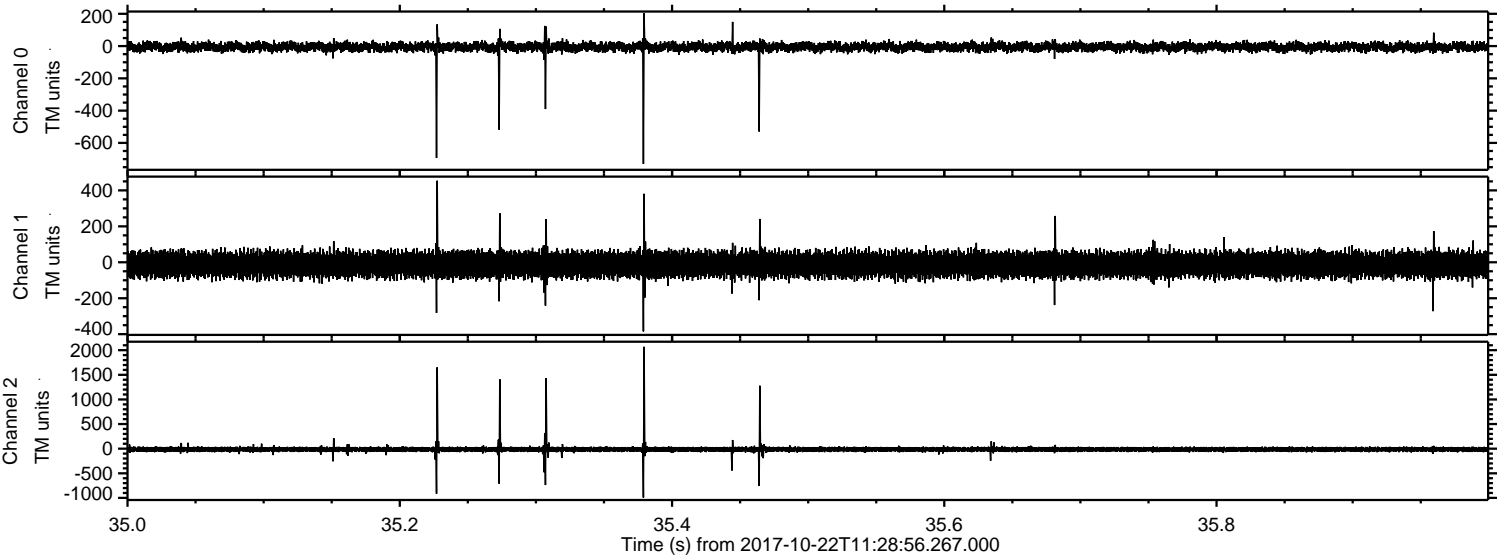


ELMAVAN 3D WAVEFORMS (Measured data sampled at 50 kHz) 51000 packets of 144 samples from 2017-10-22T11:28:56.267.000. Part 133/147

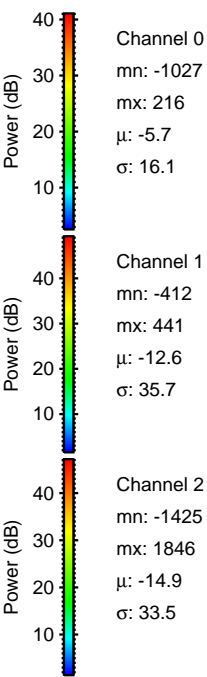
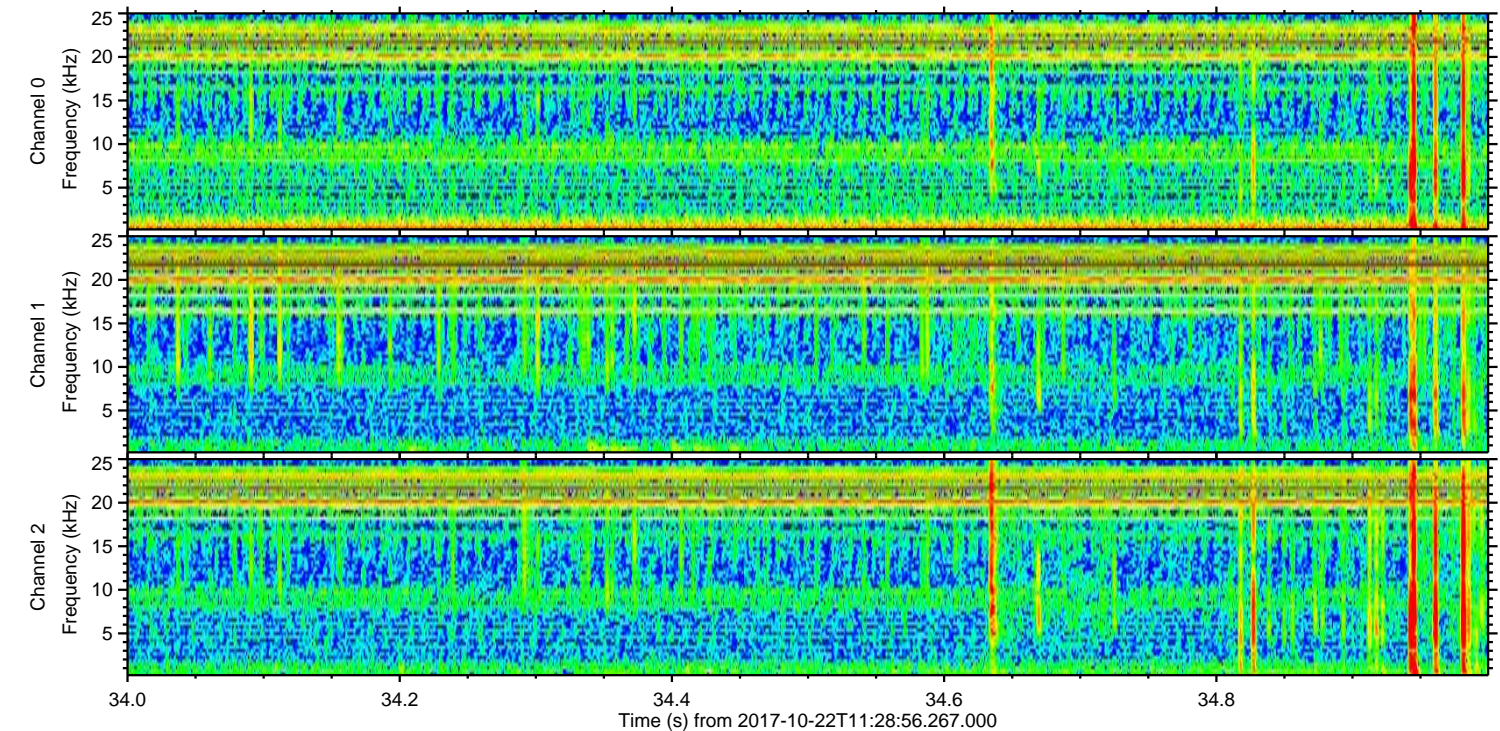
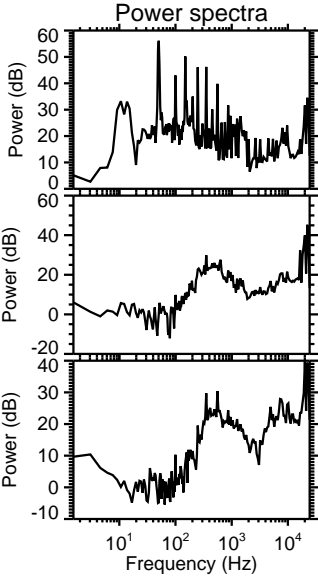
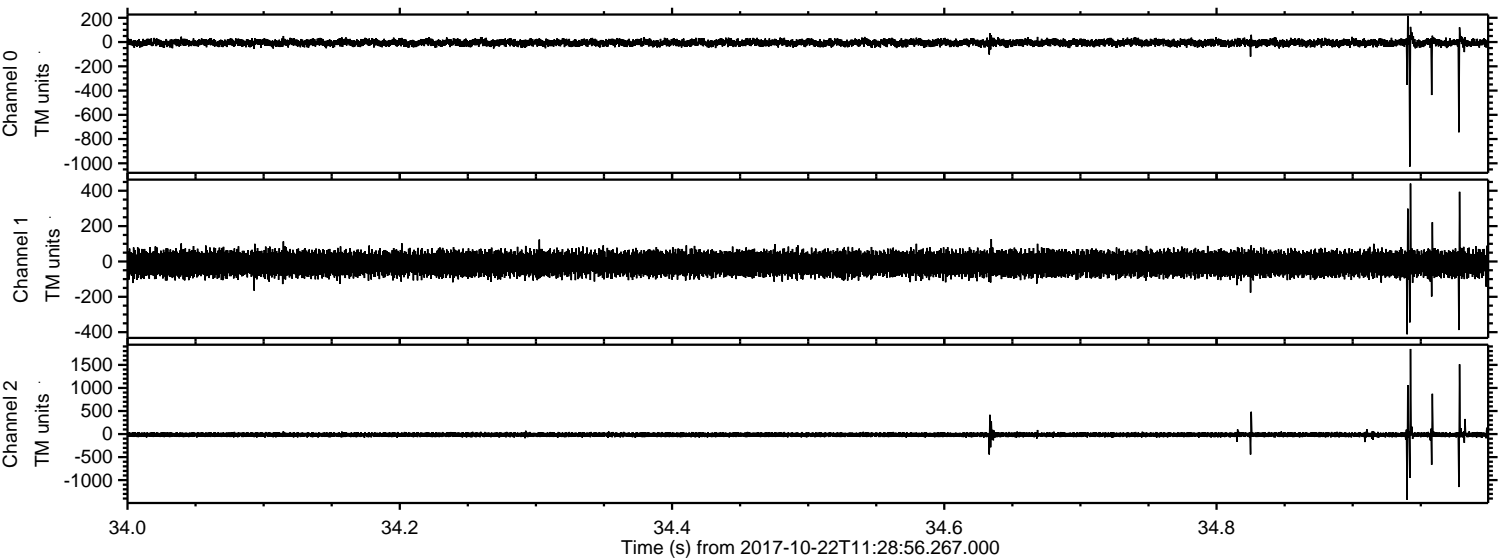
Processed Sun Oct 22 13:36:39 2017 by ELM ver.2012-10-06 from 001__elm20171022_112855__dat00.bin



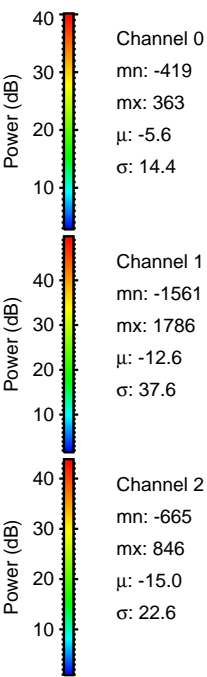
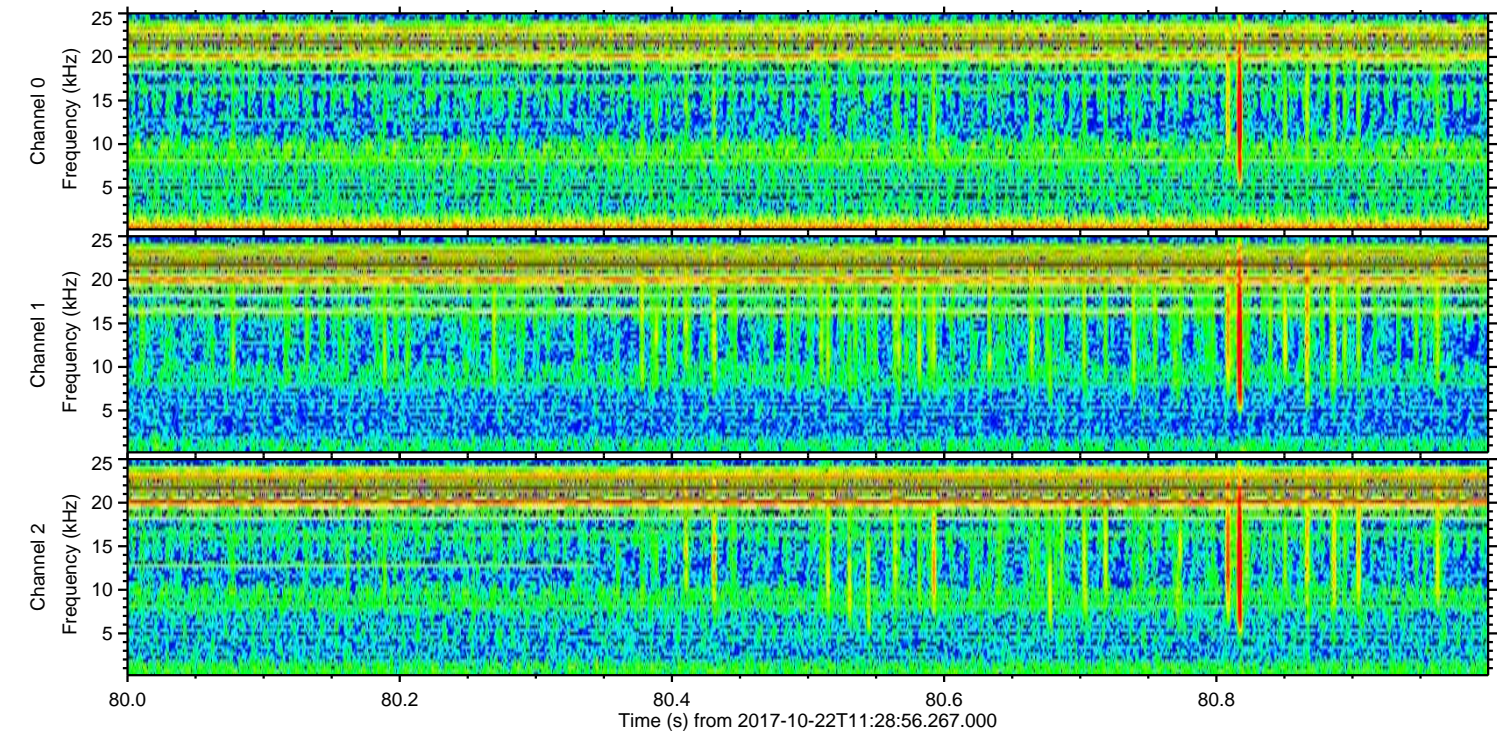
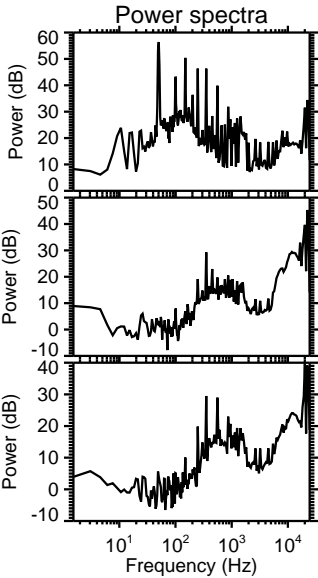
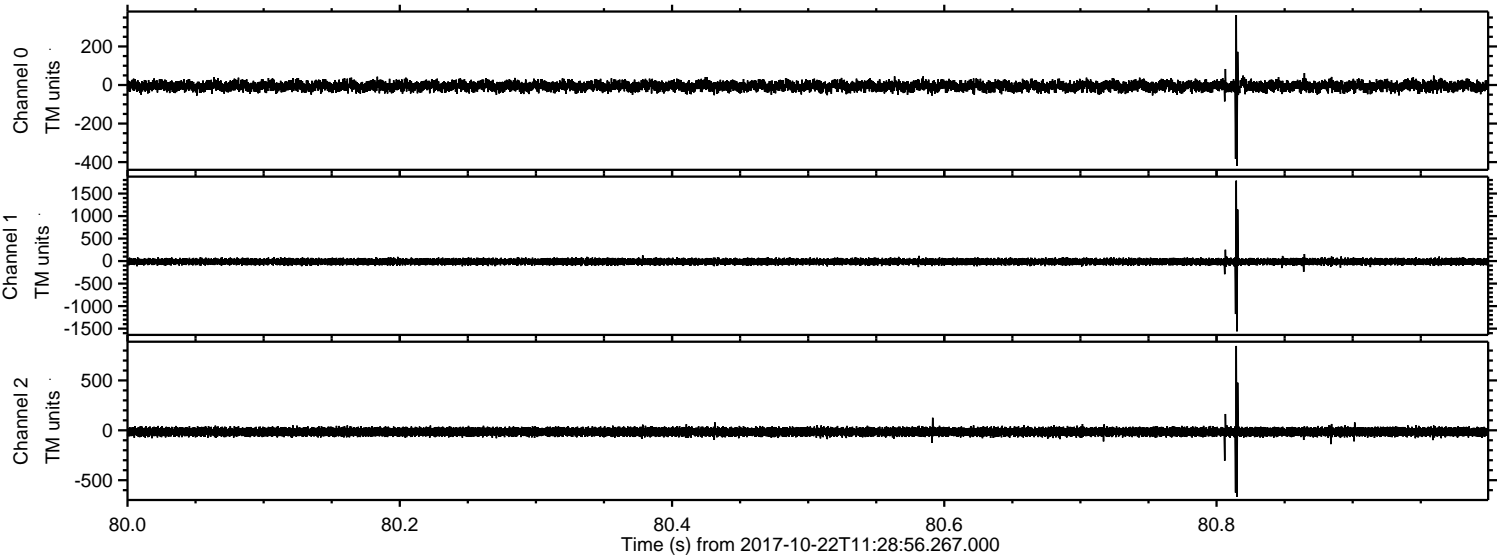
Processed Sun Oct 22 13:36:40 2017 by ELM ver.2012-10-06 from 001__elm20171022_112855__dat00.bin



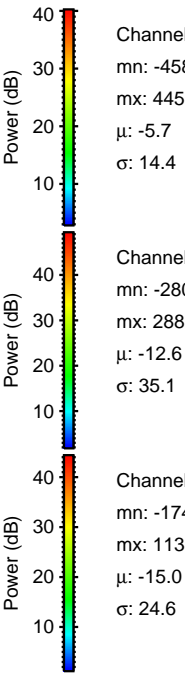
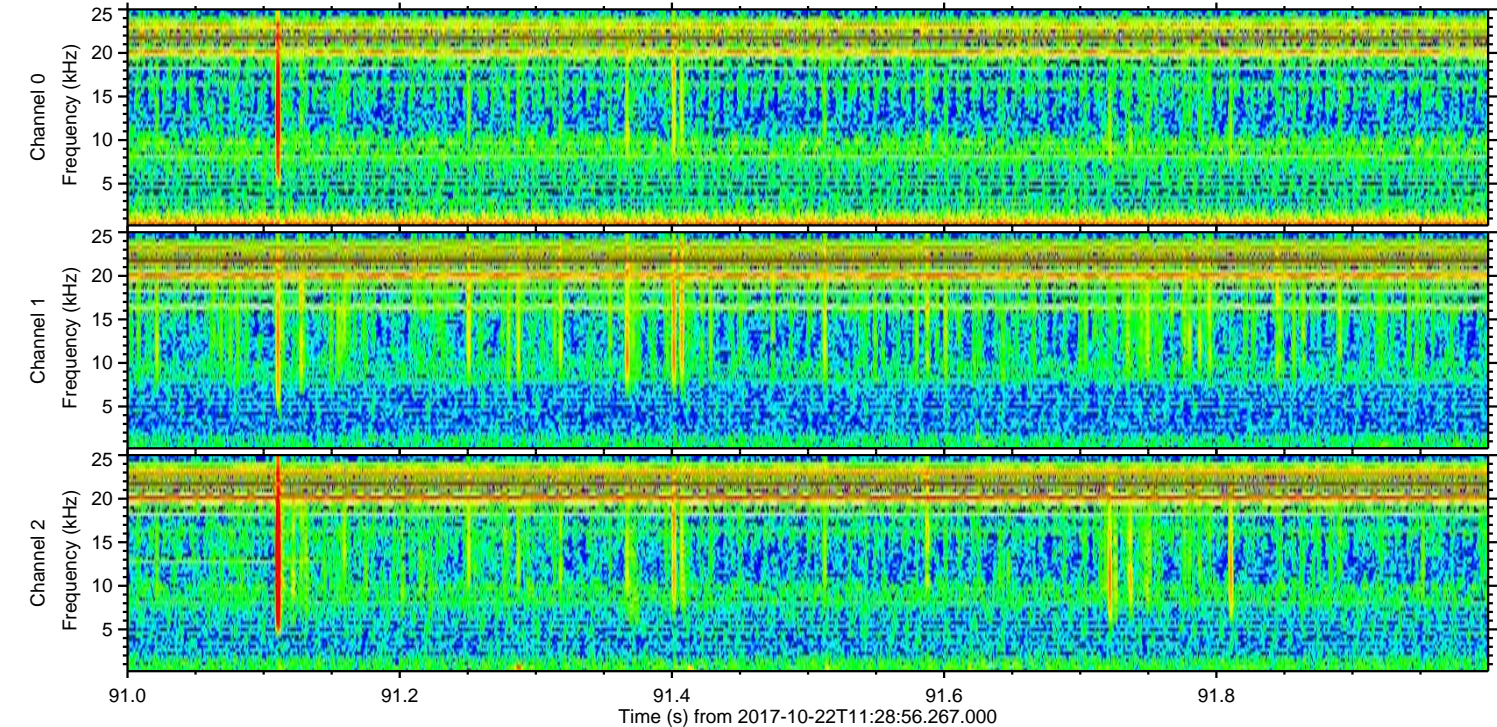
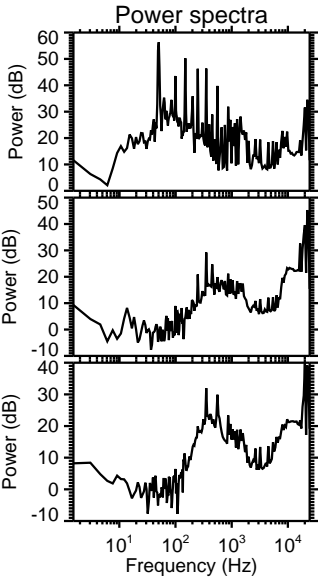
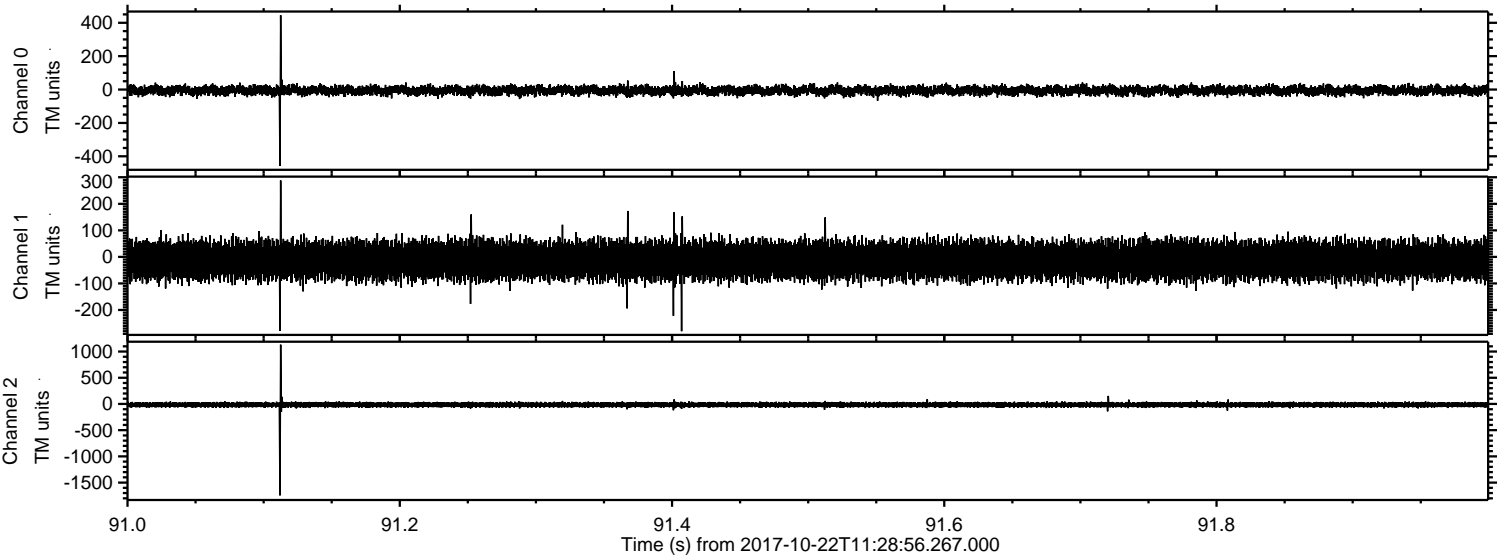
Processed Sun Oct 22 13:36:41 2017 by ELM ver.2012-10-06 from 001__elm20171022_112855__dat00.bin



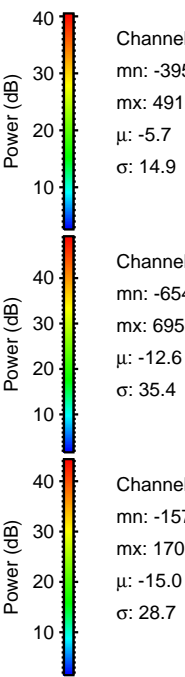
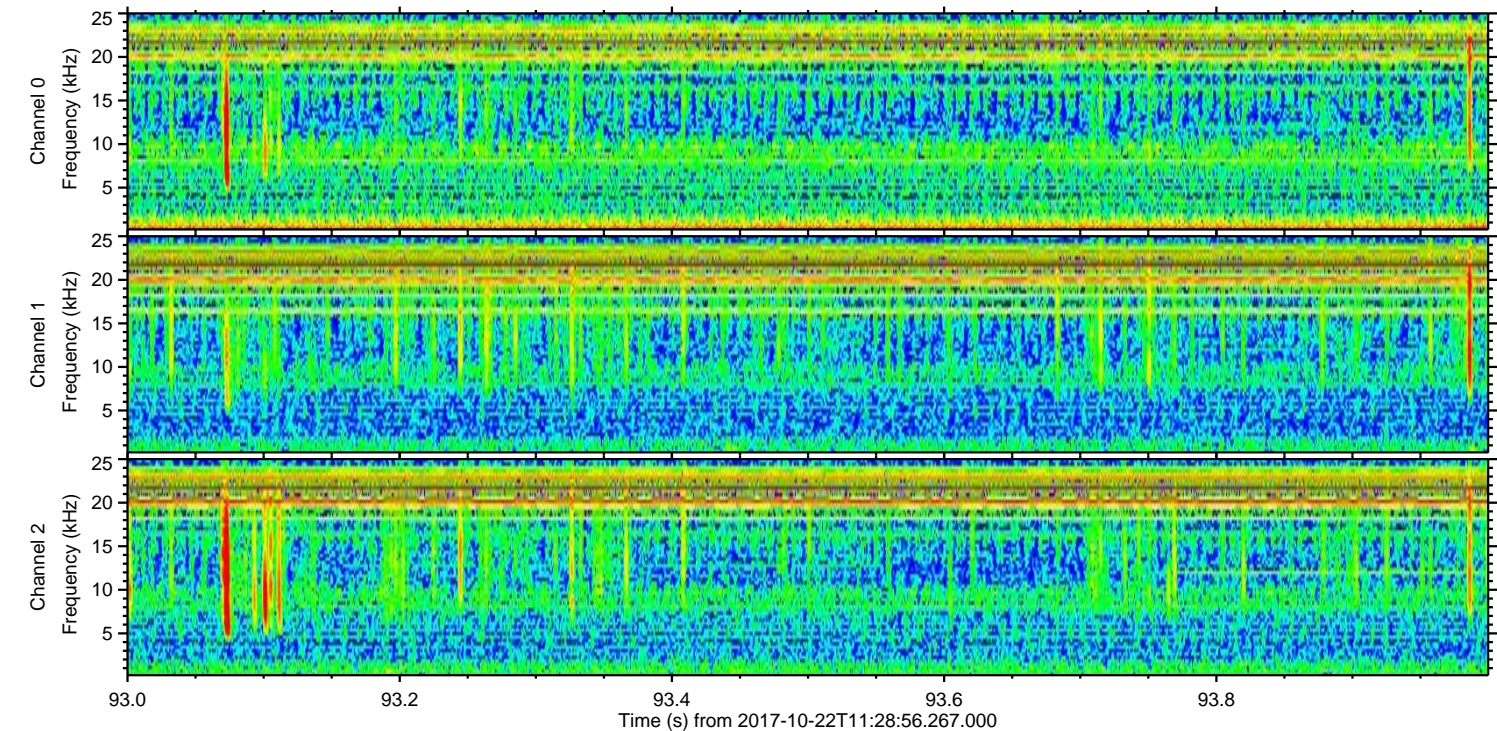
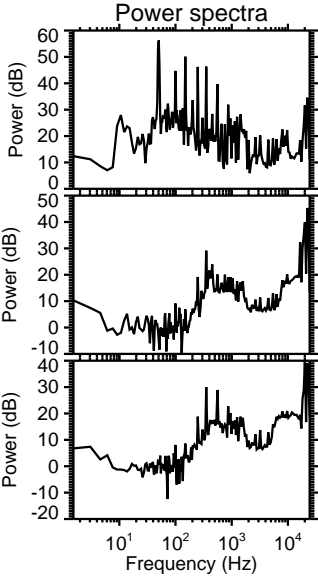
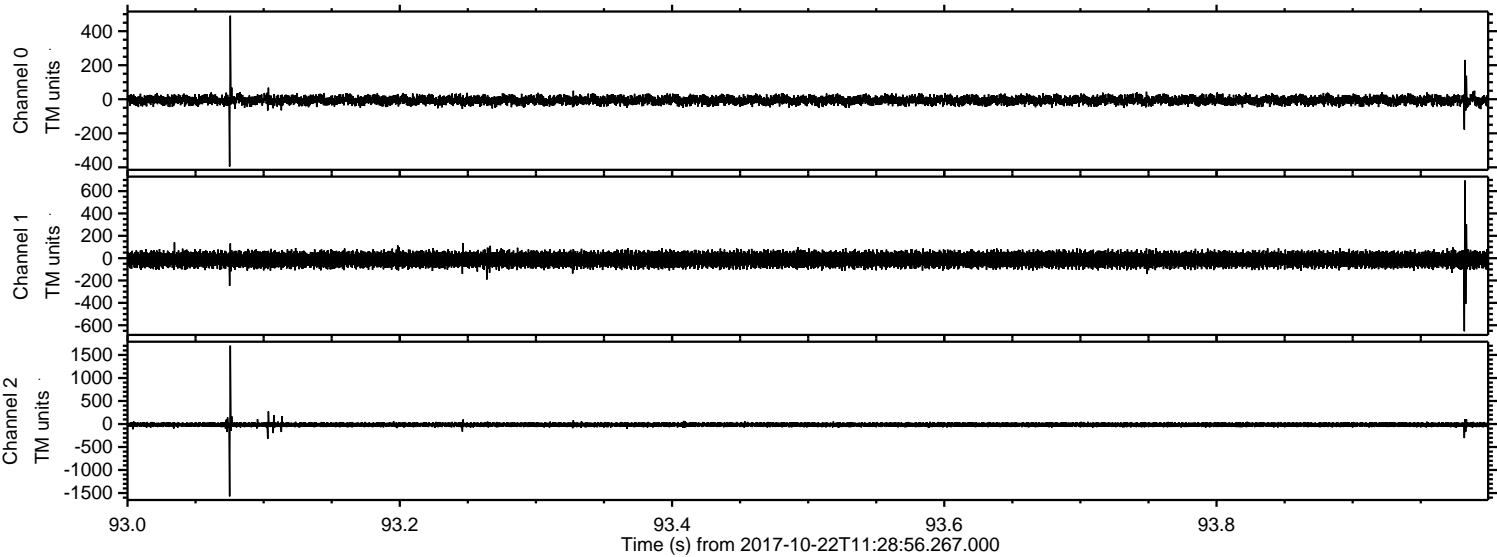
Processed Sun Oct 22 13:36:41 2017 by ELM ver.2012-10-06 from 001__elm20171022_112855__dat00.bin



Processed Sun Oct 22 13:36:42 2017 by ELM ver.2012-10-06 from 001__elm20171022_112855__dat00.bin



Processed Sun Oct 22 13:36:43 2017 by ELM ver.2012-10-06 from 001__elm20171022_112855__dat00.bin



Channel 0
mn: -395
mx: 491
 μ : -5.7
 σ : 14.9

Channel 1
mn: -654
mx: 695
 μ : -12.6
 σ : 35.4

Channel 2
mn: -1573
mx: 1703
 μ : -15.0
 σ : 28.7

Processed Sun Oct 22 13:36:44 2017 by ELM ver.2012-10-06 from 001__elm20171022_112855__dat00.bin

