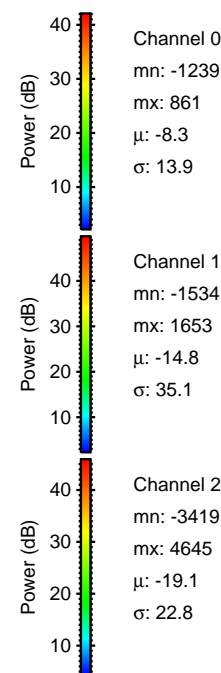
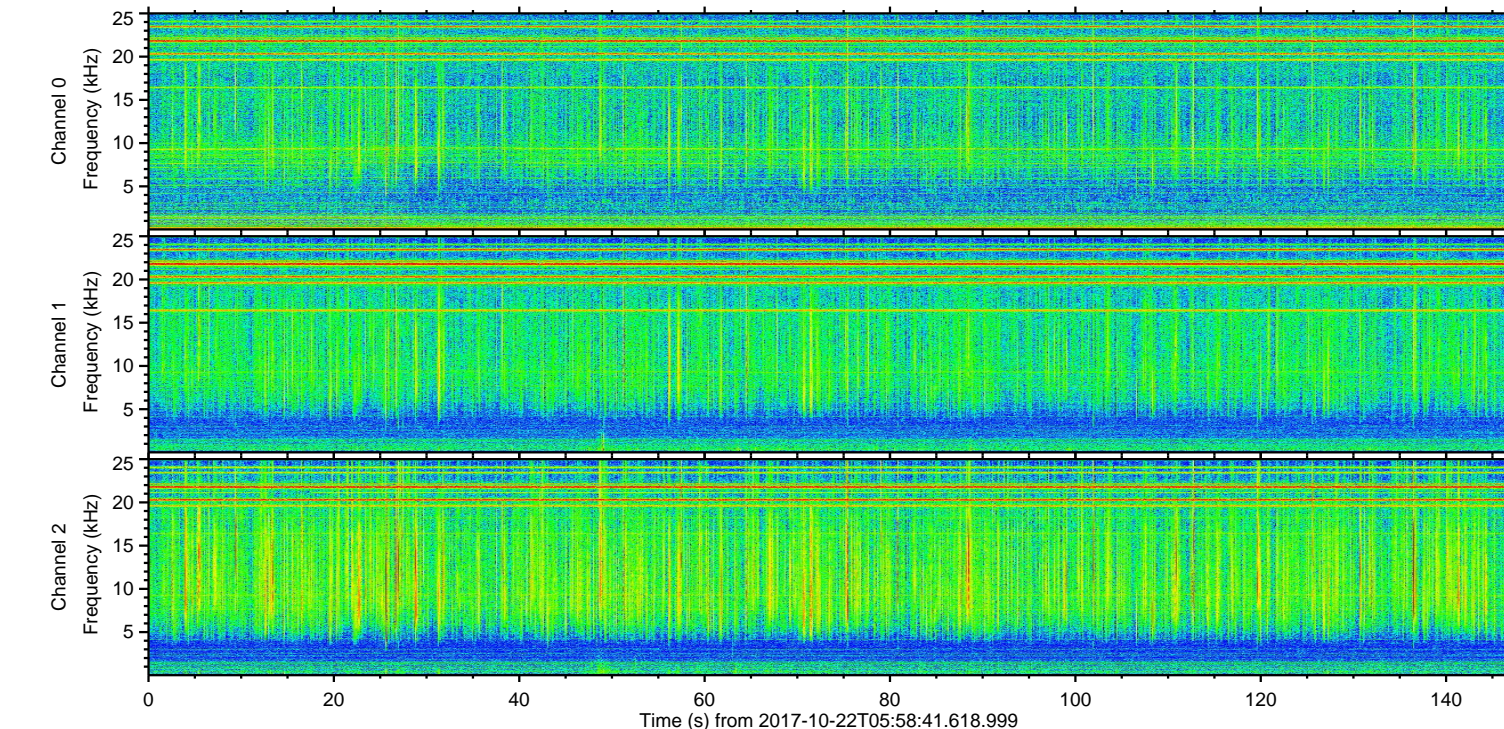
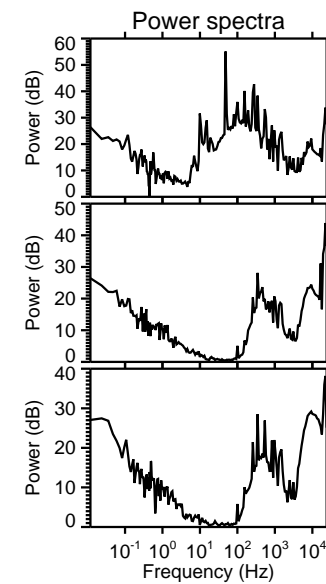
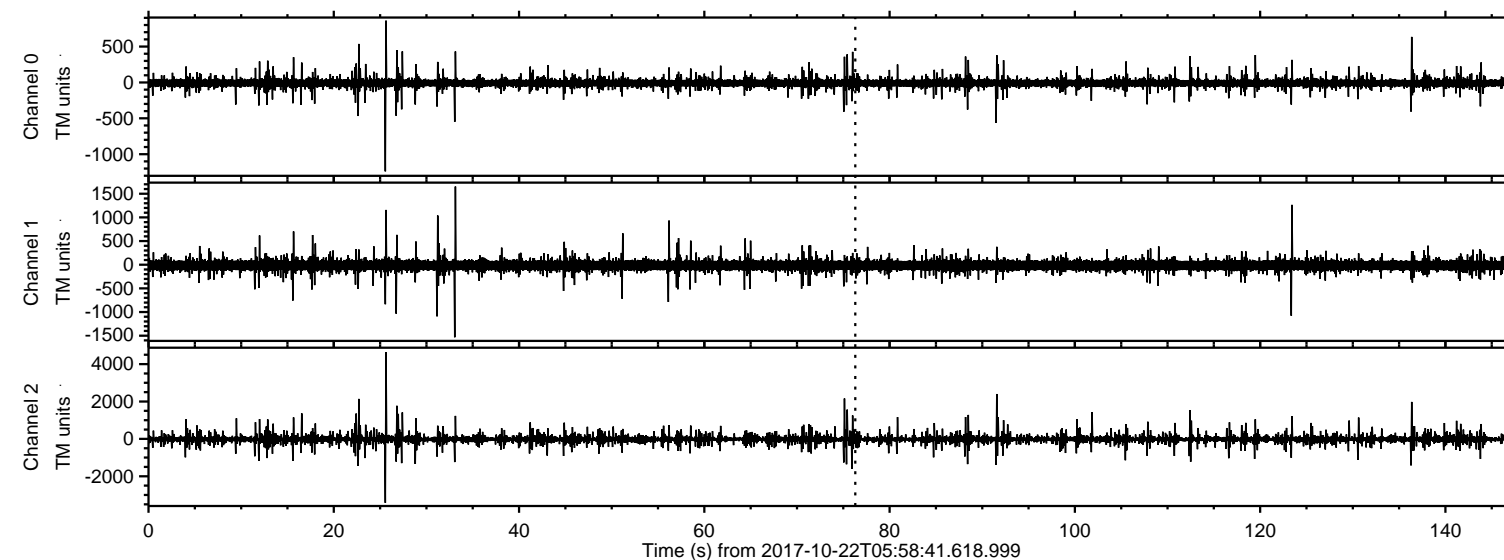
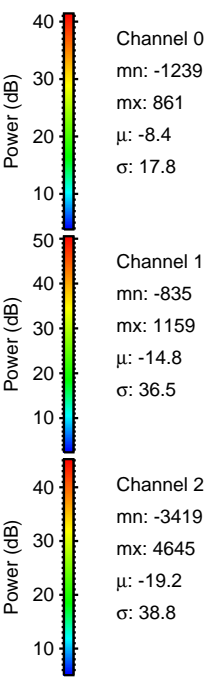
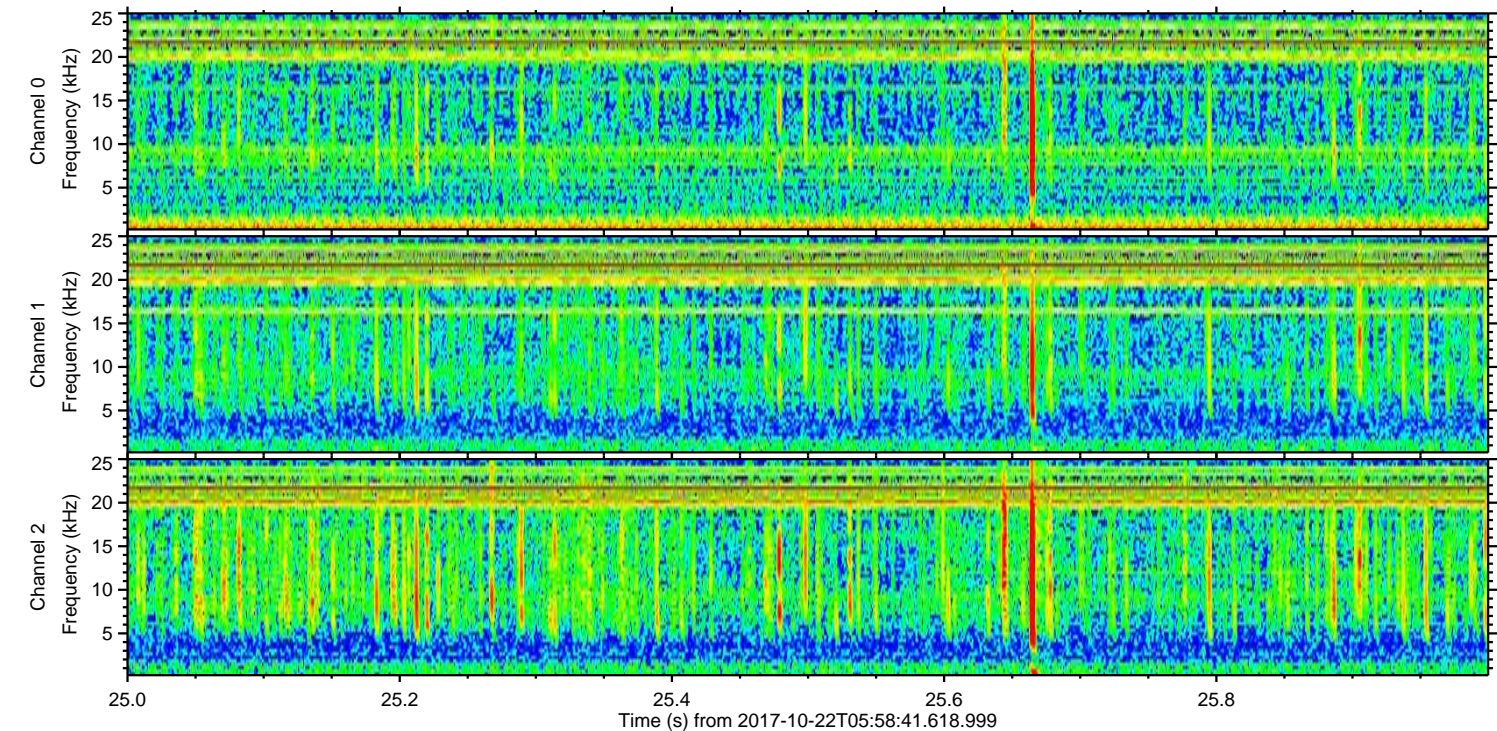
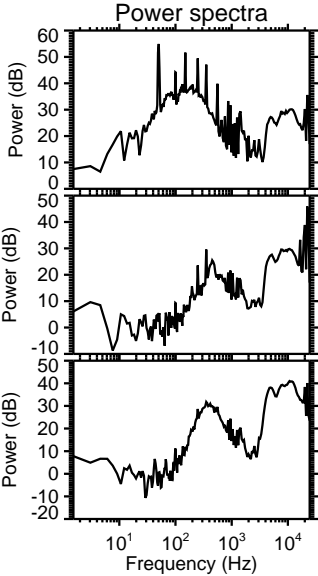
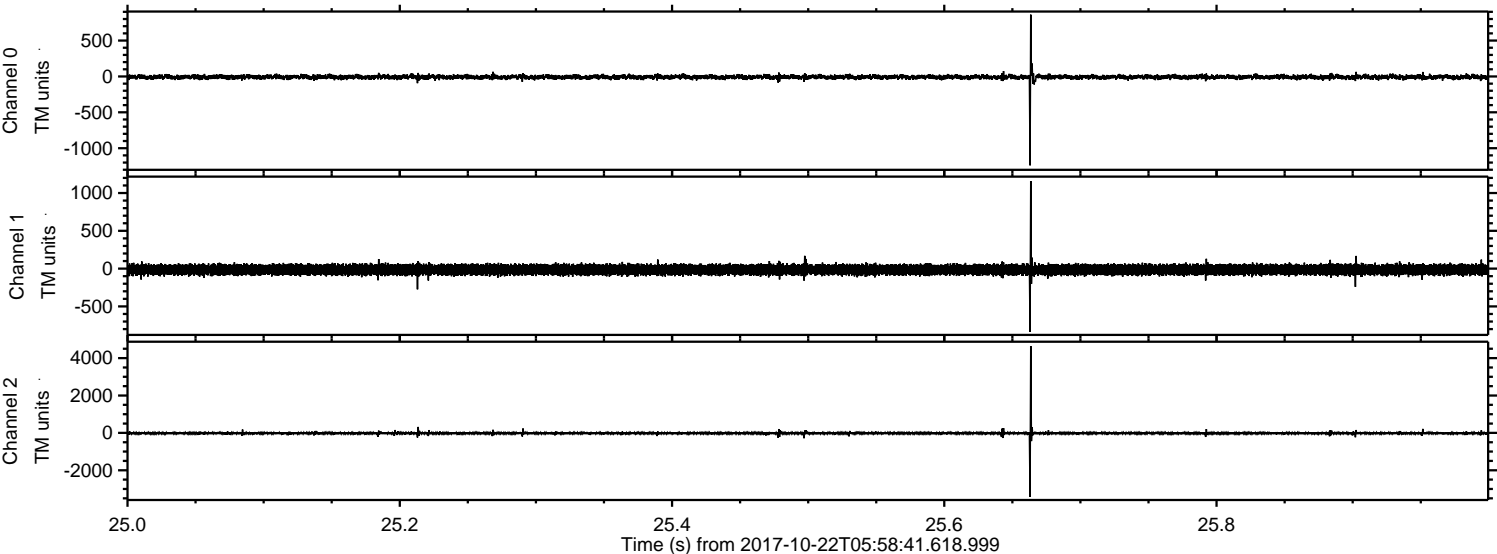


ELMAVAN 3D WAVEFORMS (Measured data sampled at 50 kHz) 50999 packets of 144 samples from 2017-10-22T05:58:41.618.999.

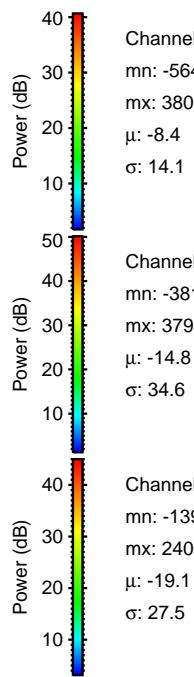
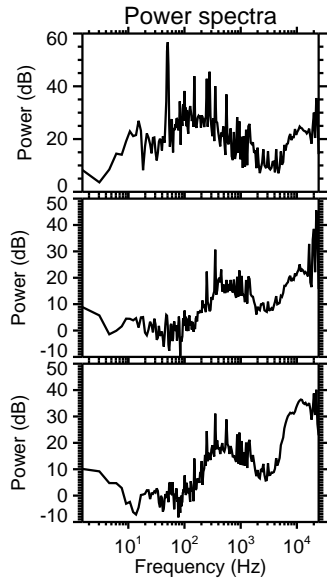
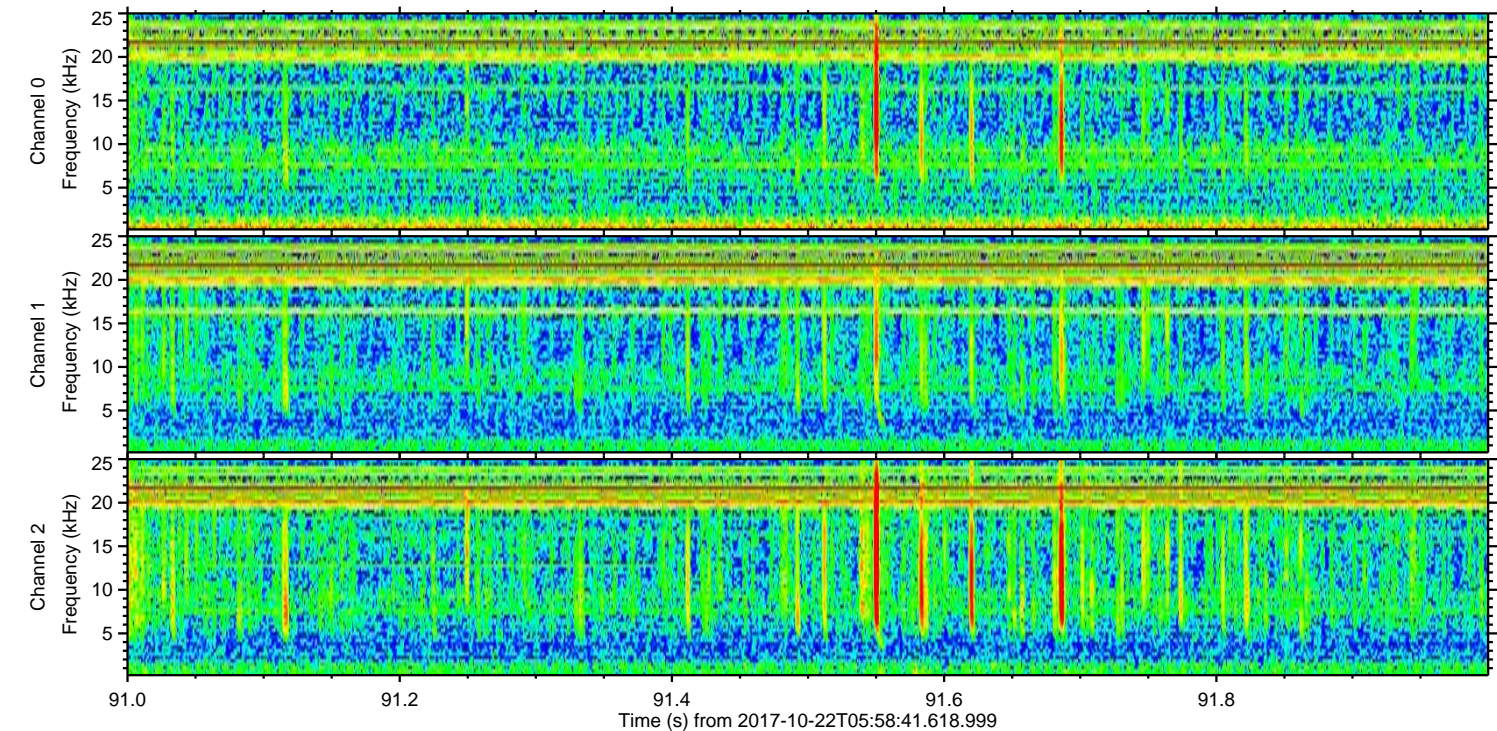
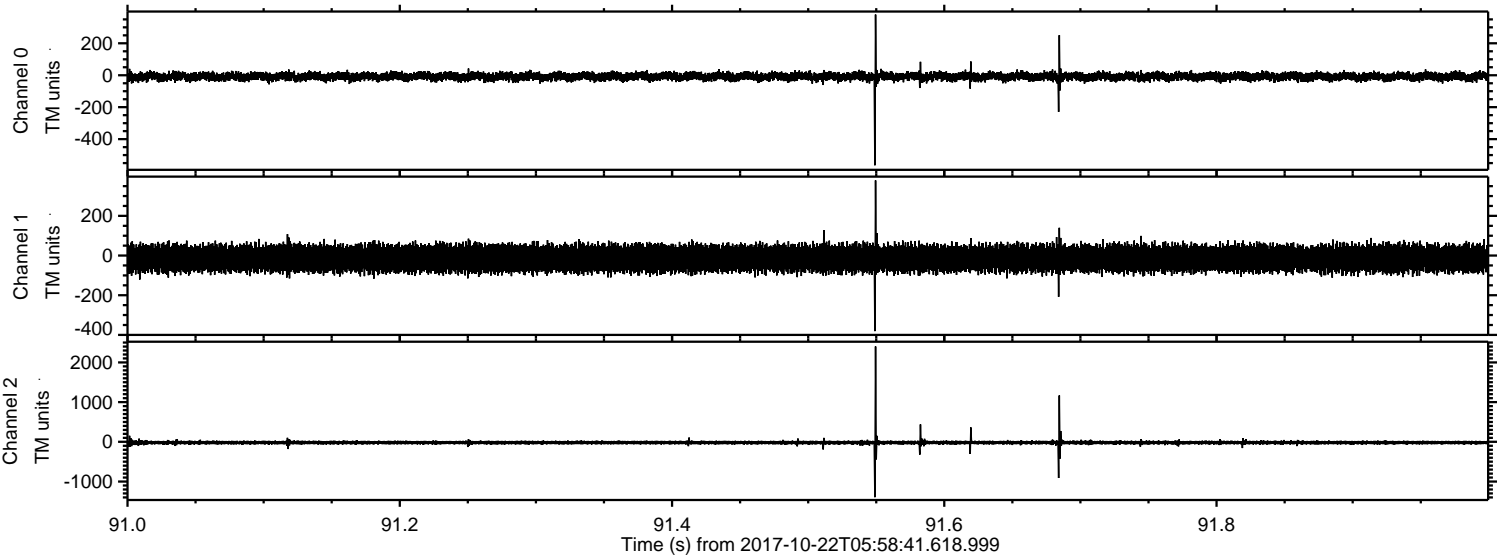
Processed Sun Oct 22 08:06:22 2017 by ELM ver.2012-10-06 from 001__elm20171022_055840__dat00.bin



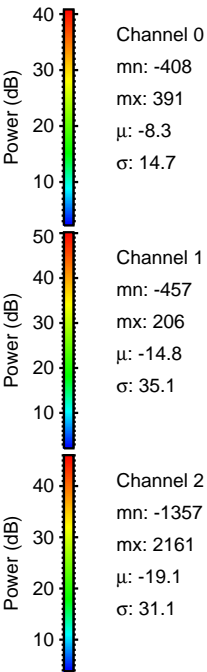
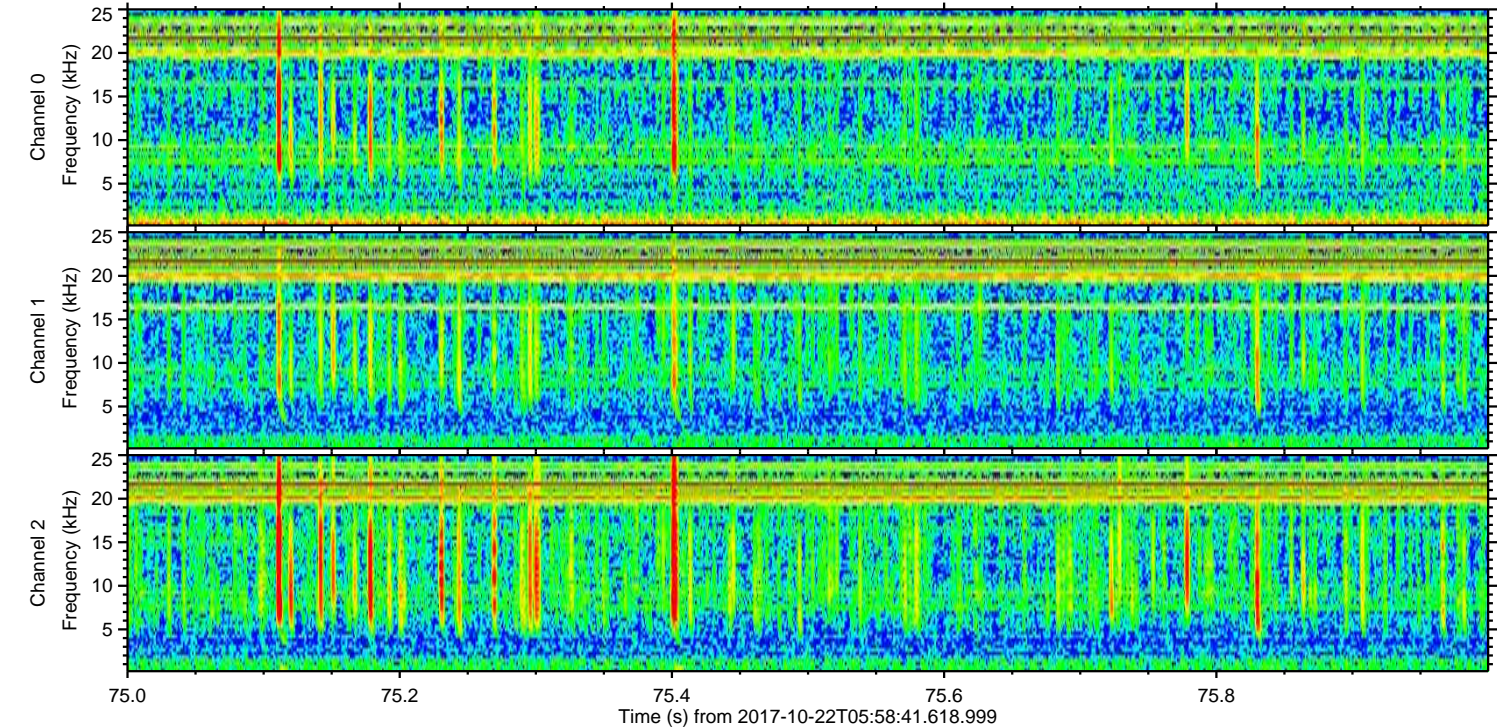
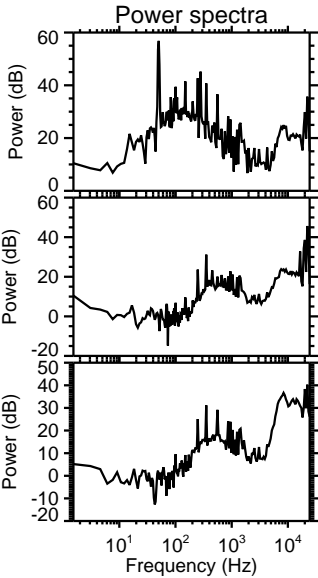
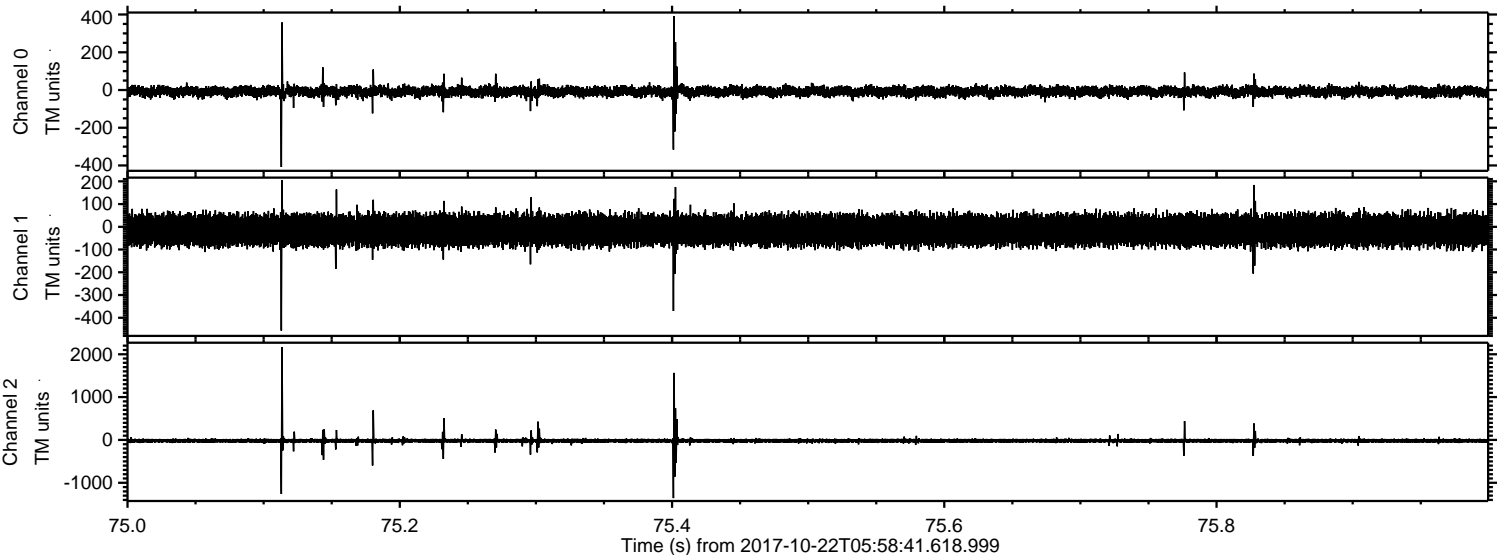
Processed Sun Oct 22 08:06:29 2017 by ELM ver.2012-10-06 from 001__elm20171022_055840__dat00.bin



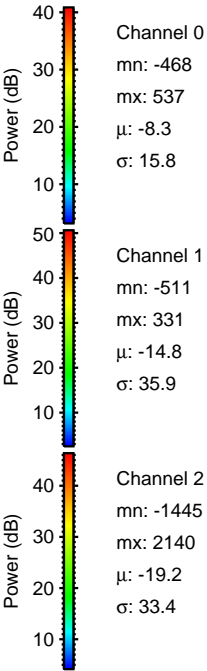
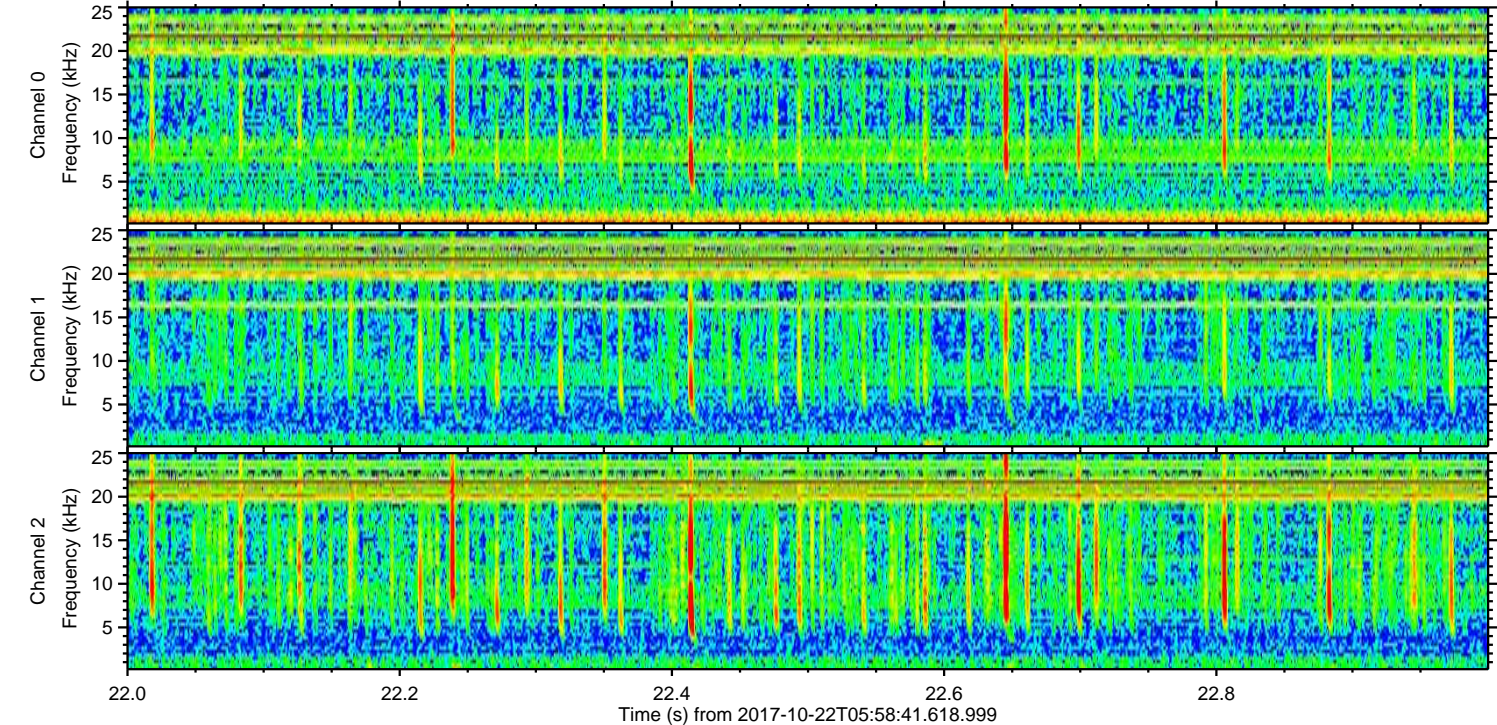
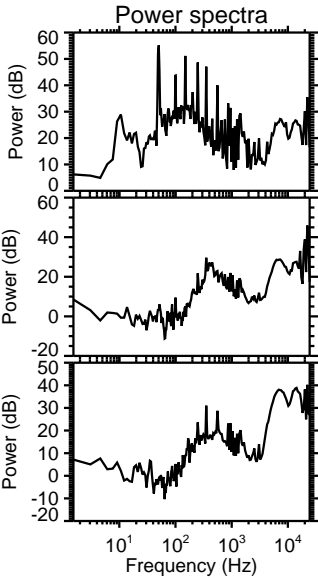
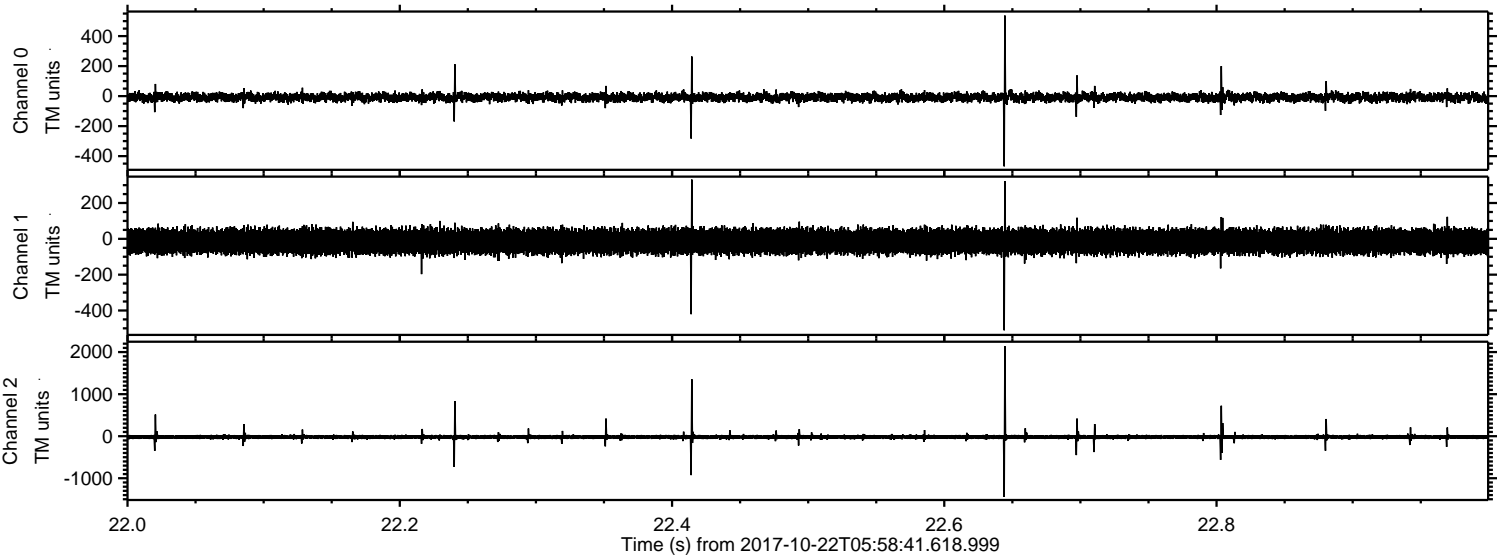
Processed Sun Oct 22 08:06:30 2017 by ELM ver.2012-10-06 from 001__elm20171022_055840__dat00.bin



Processed Sun Oct 22 08:06:31 2017 by ELM ver.2012-10-06 from 001__elm20171022_055840__dat00.bin

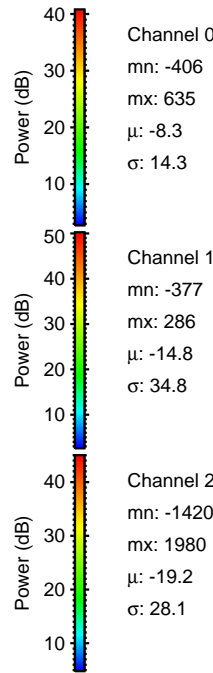
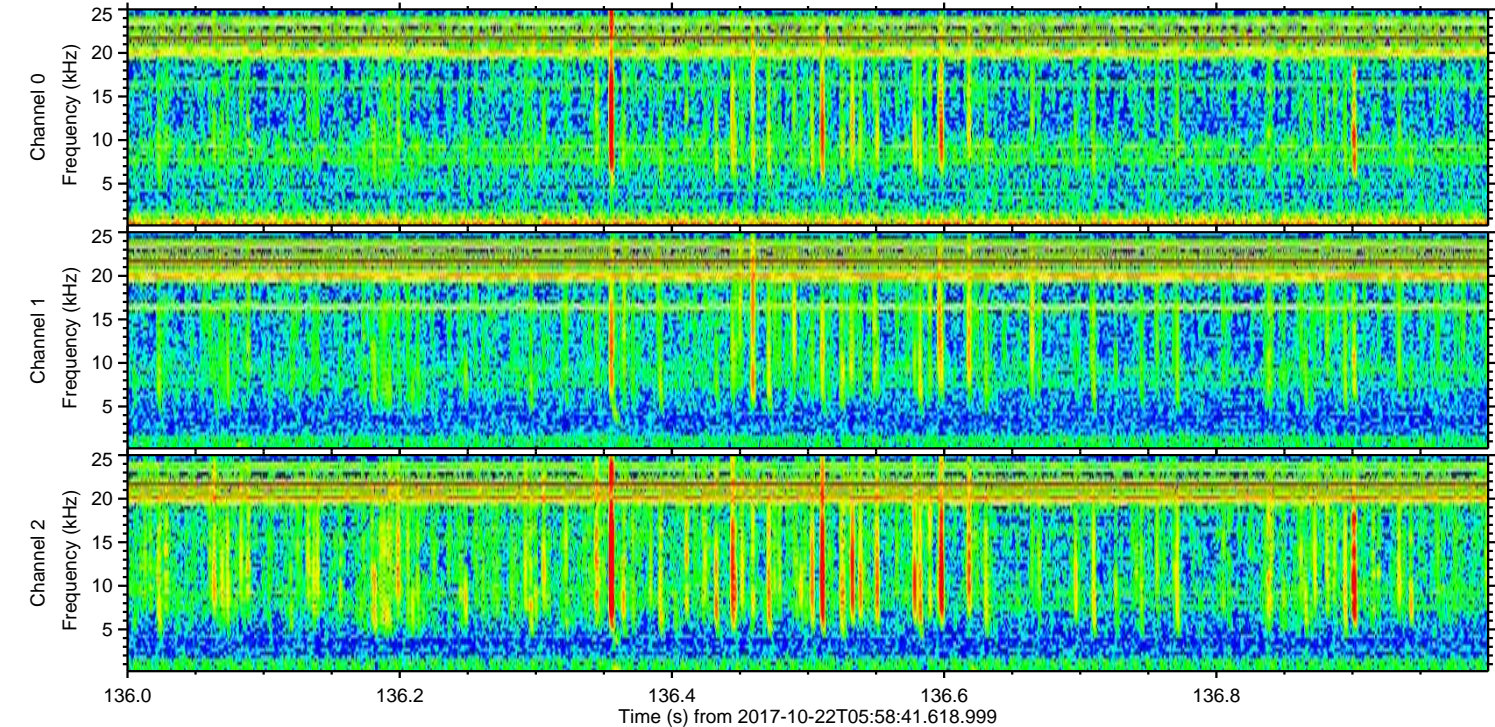
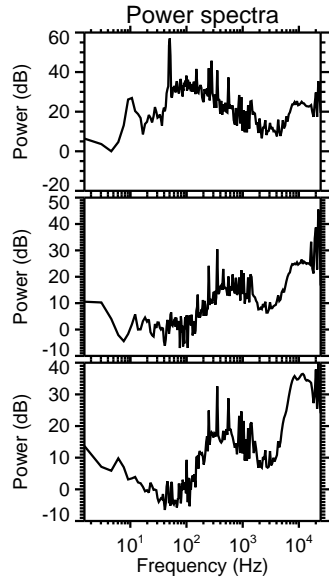
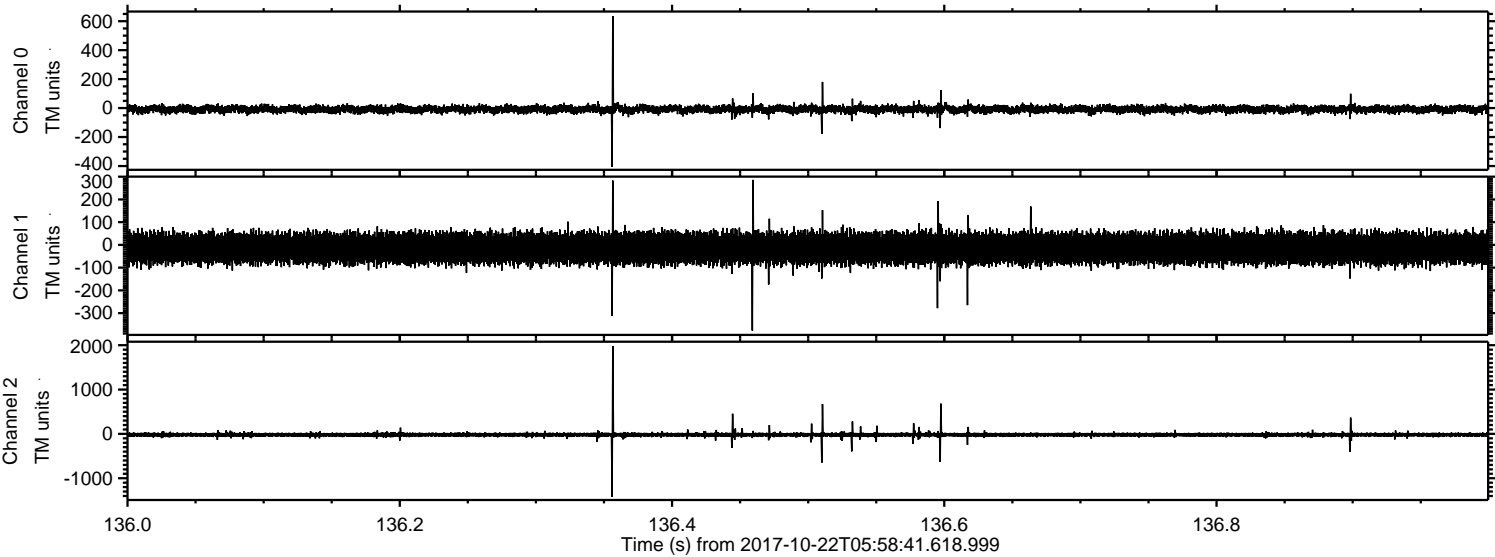


Processed Sun Oct 22 08:06:31 2017 by ELM ver.2012-10-06 from 001__elm20171022_055840__dat00.bin

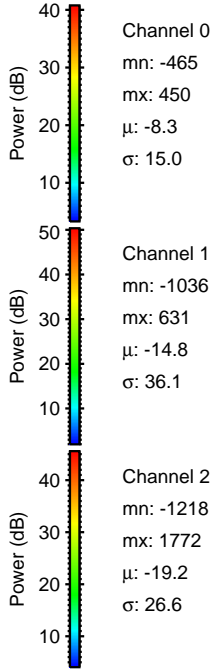
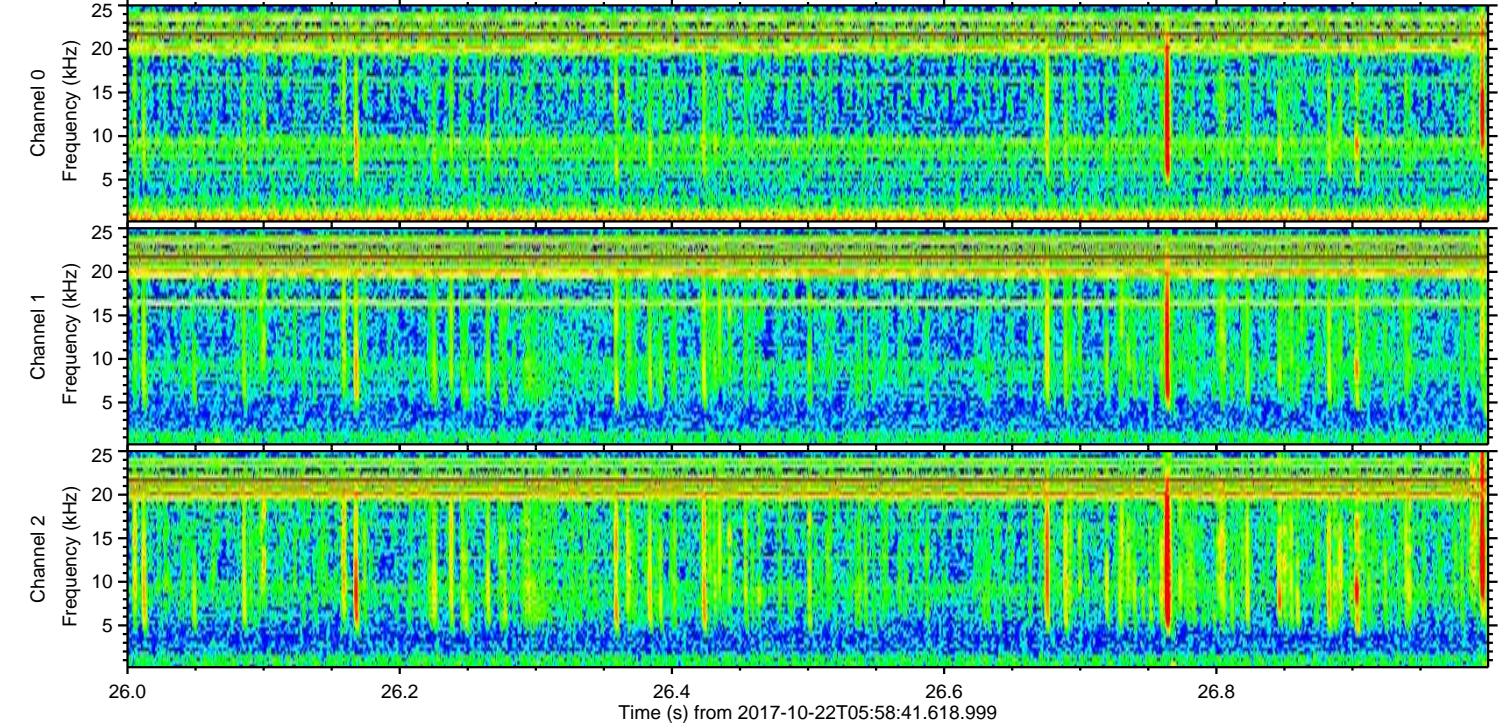
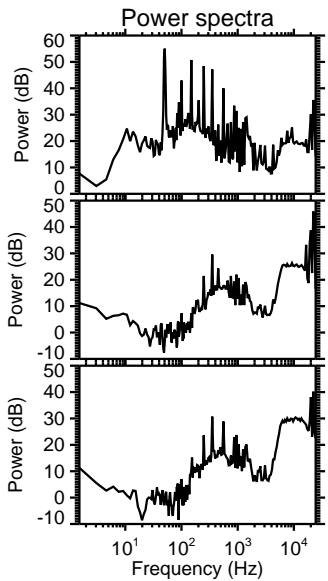
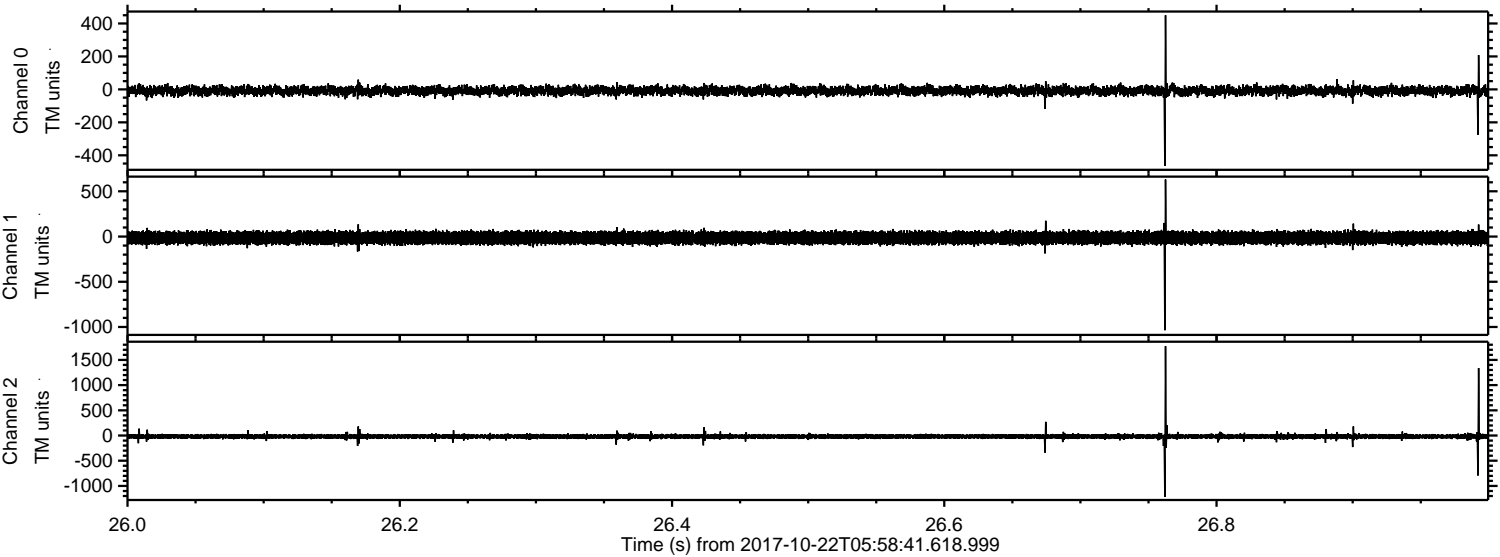


ELMAVAN 3D WAVEFORMS (Measured data sampled at 50 kHz) 50999 packets of 144 samples from 2017-10-22T05:58:41.618.999. Part 137/147

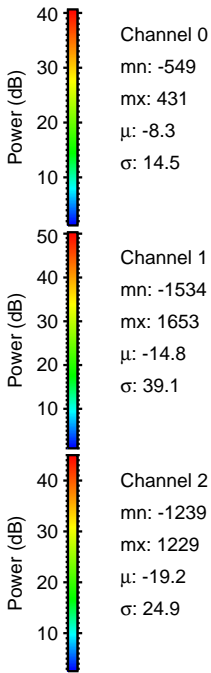
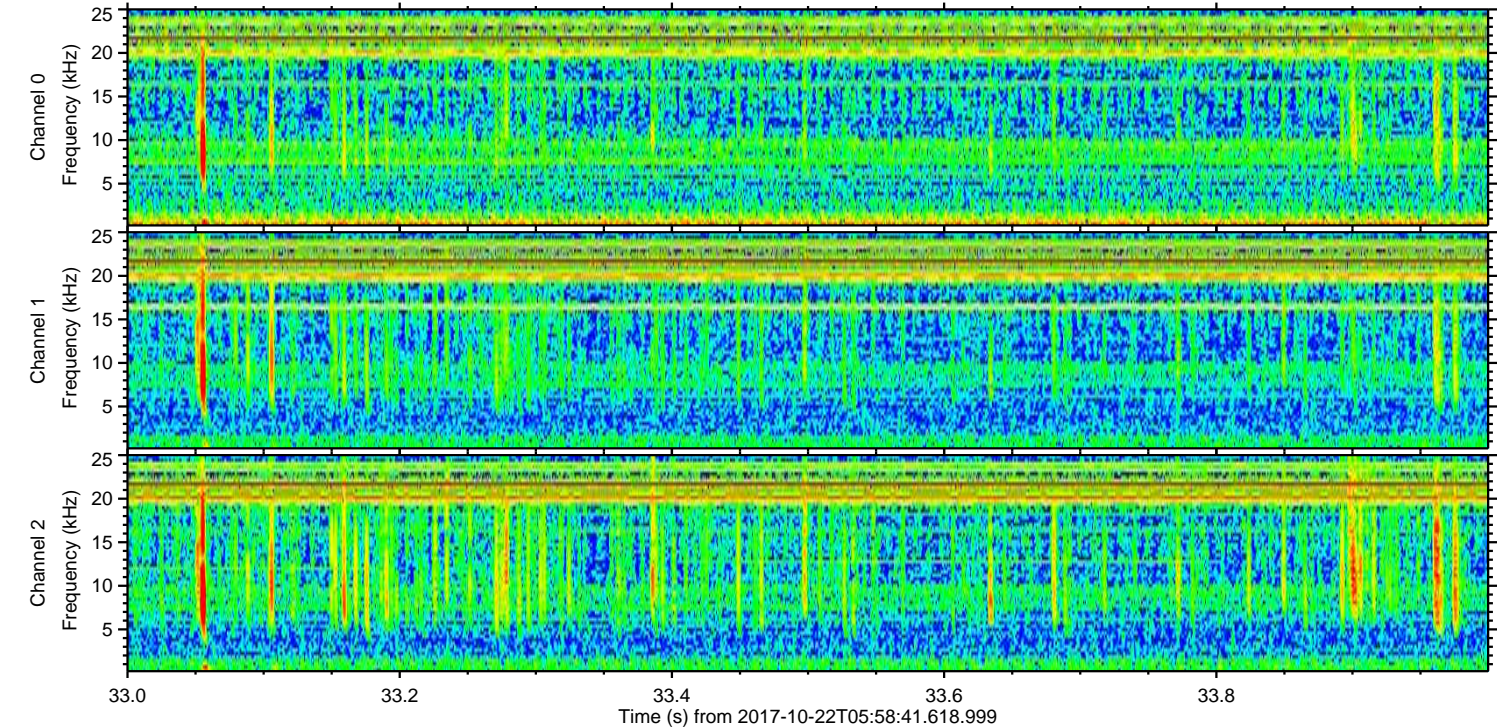
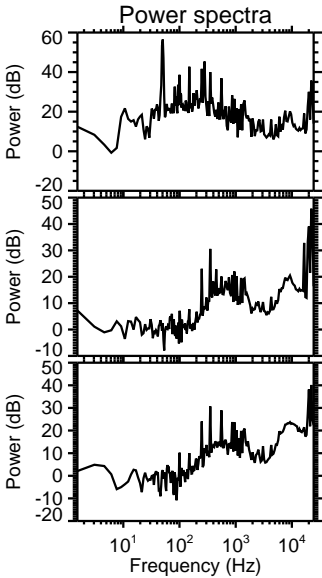
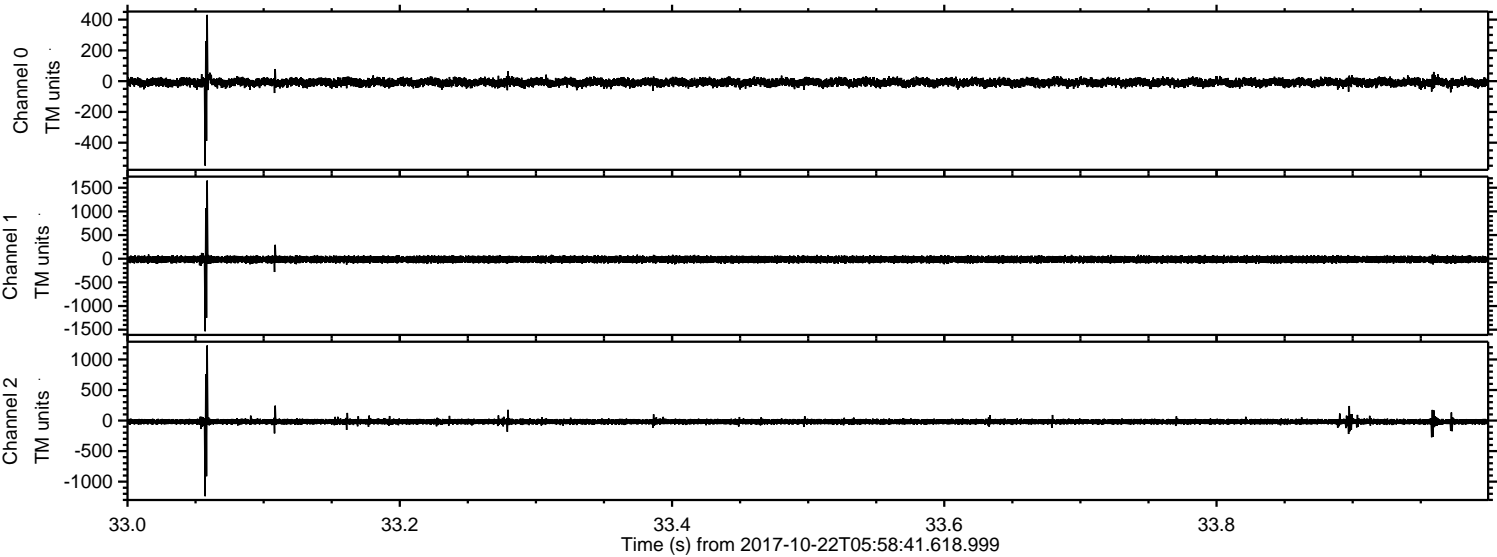
Processed Sun Oct 22 08:06:32 2017 by ELM ver.2012-10-06 from 001__elm20171022_055840__dat00.bin



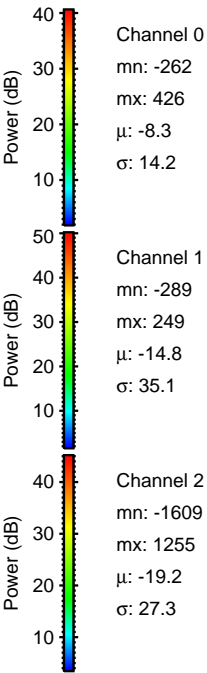
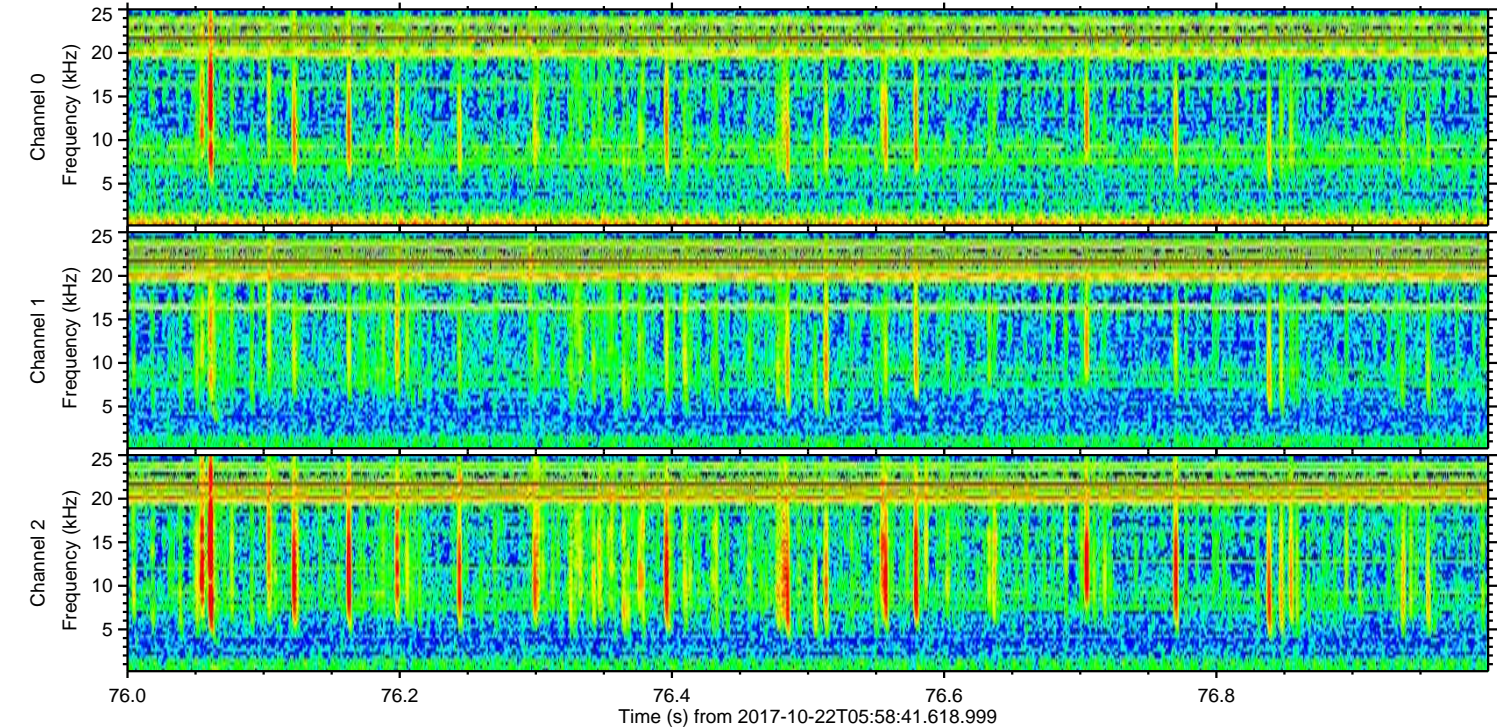
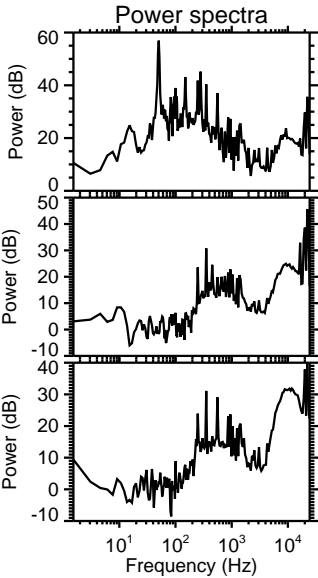
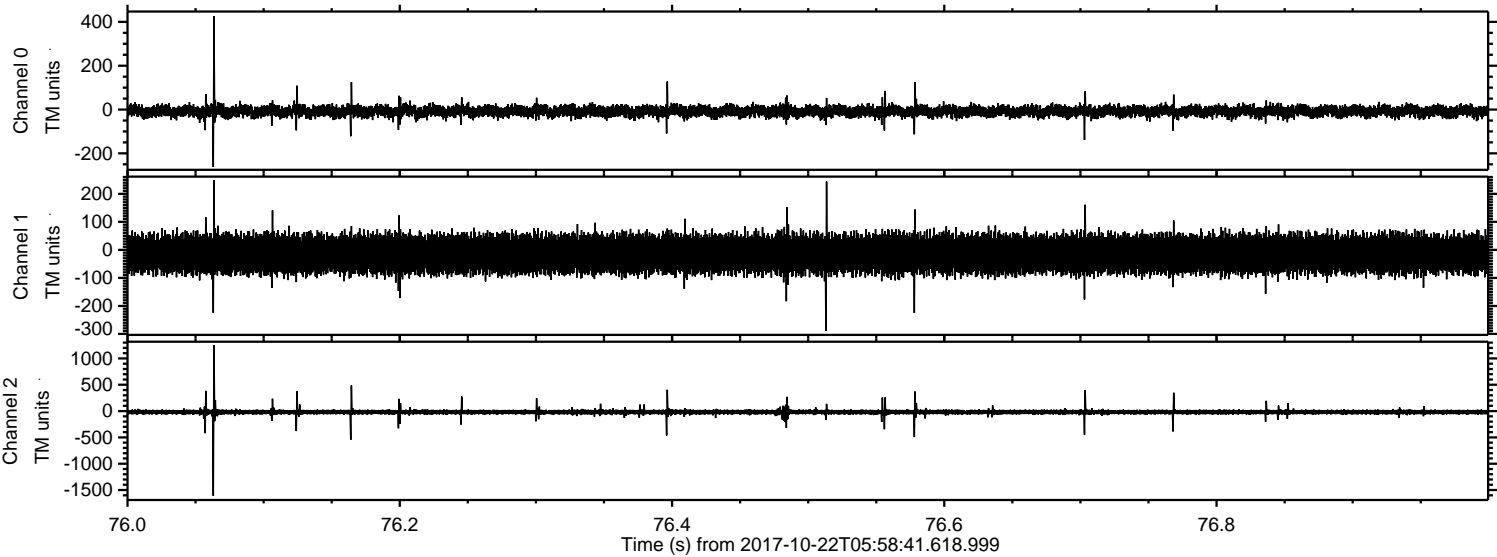
Processed Sun Oct 22 08:06:33 2017 by ELM ver.2012-10-06 from 001__elm20171022_055840__dat00.bin



Processed Sun Oct 22 08:06:34 2017 by ELM ver.2012-10-06 from 001__elm20171022_055840__dat00.bin

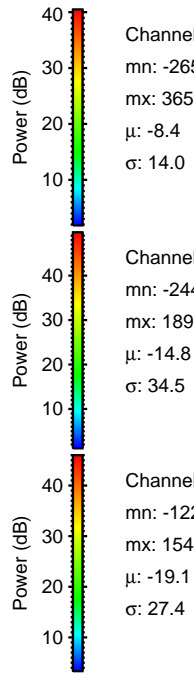
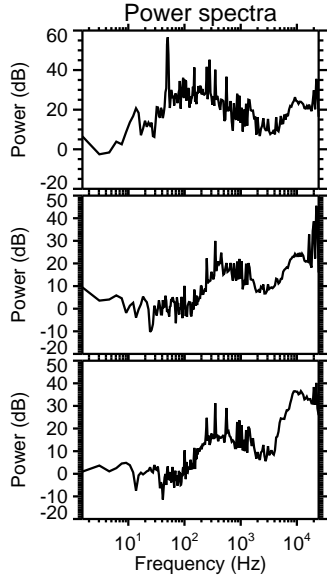
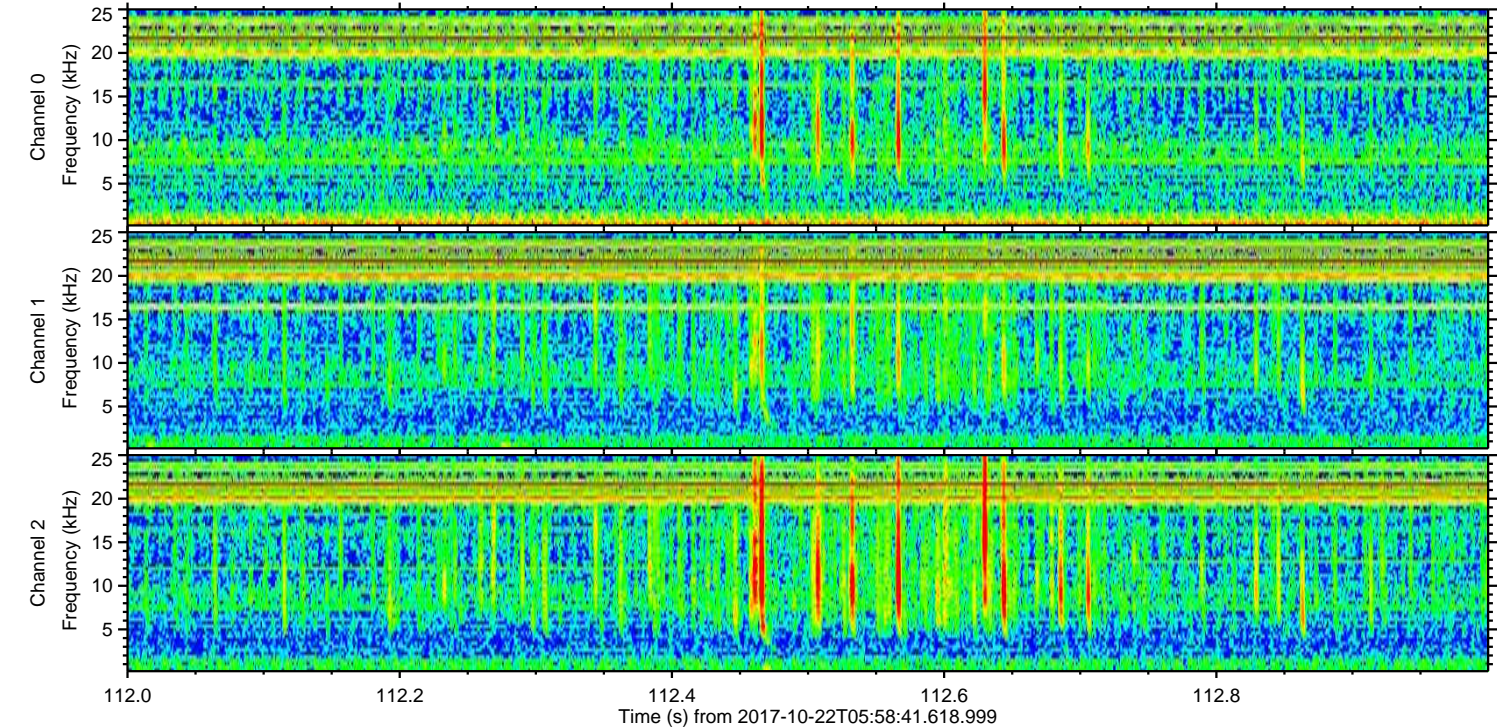
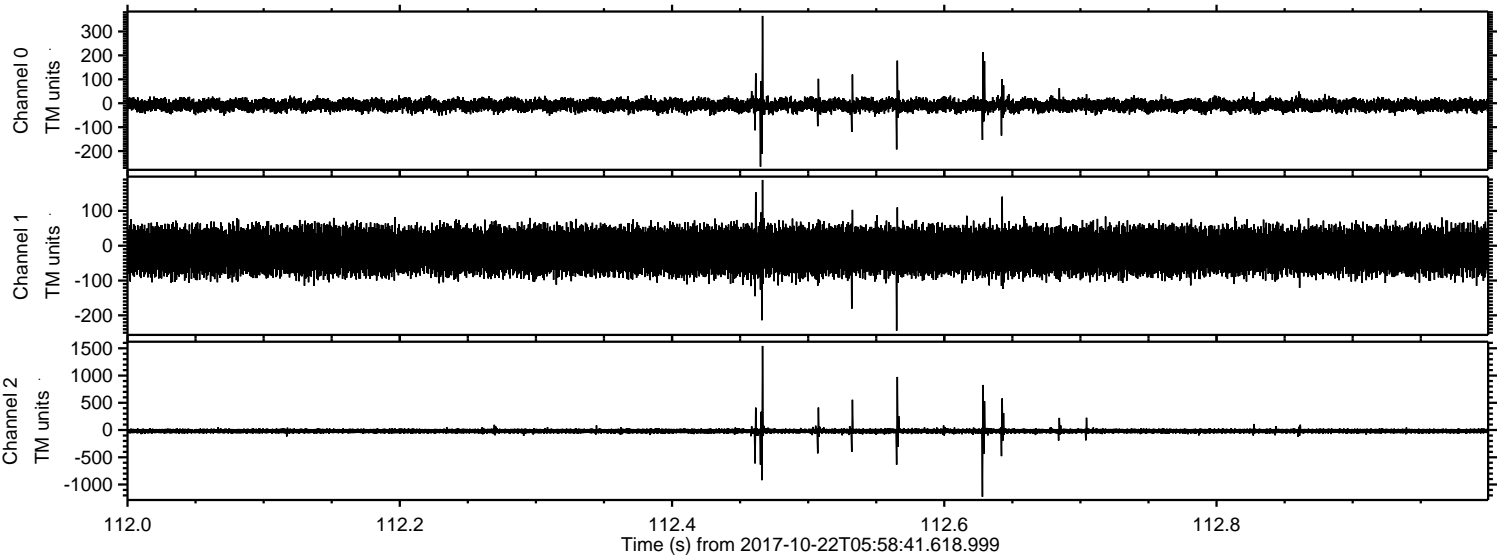


Processed Sun Oct 22 08:06:34 2017 by ELM ver.2012-10-06 from 001__elm20171022_055840__dat00.bin



ELMAVAN 3D WAVEFORMS (Measured data sampled at 50 kHz) 50999 packets of 144 samples from 2017-10-22T05:58:41.618.999. Part 113/147

Processed Sun Oct 22 08:06:35 2017 by ELM ver.2012-10-06 from 001__elm20171022_055840__dat00.bin



Channel 0
mn: -265
mx: 365
 μ : -8.4
 σ : 14.0

Channel 1
mn: -244
mx: 189
 μ : -14.8
 σ : 34.5

Channel 2
mn: -1223
mx: 1544
 μ : -19.1
 σ : 27.4

Processed Sun Oct 22 08:06:36 2017 by ELM ver.2012-10-06 from 001__elm20171022_055840__dat00.bin

