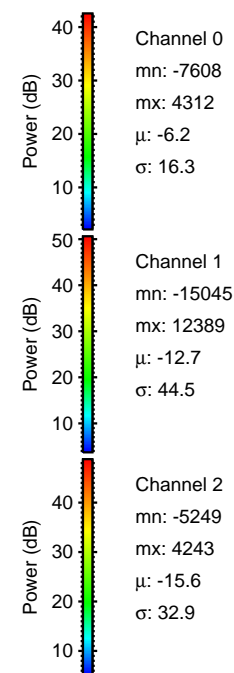
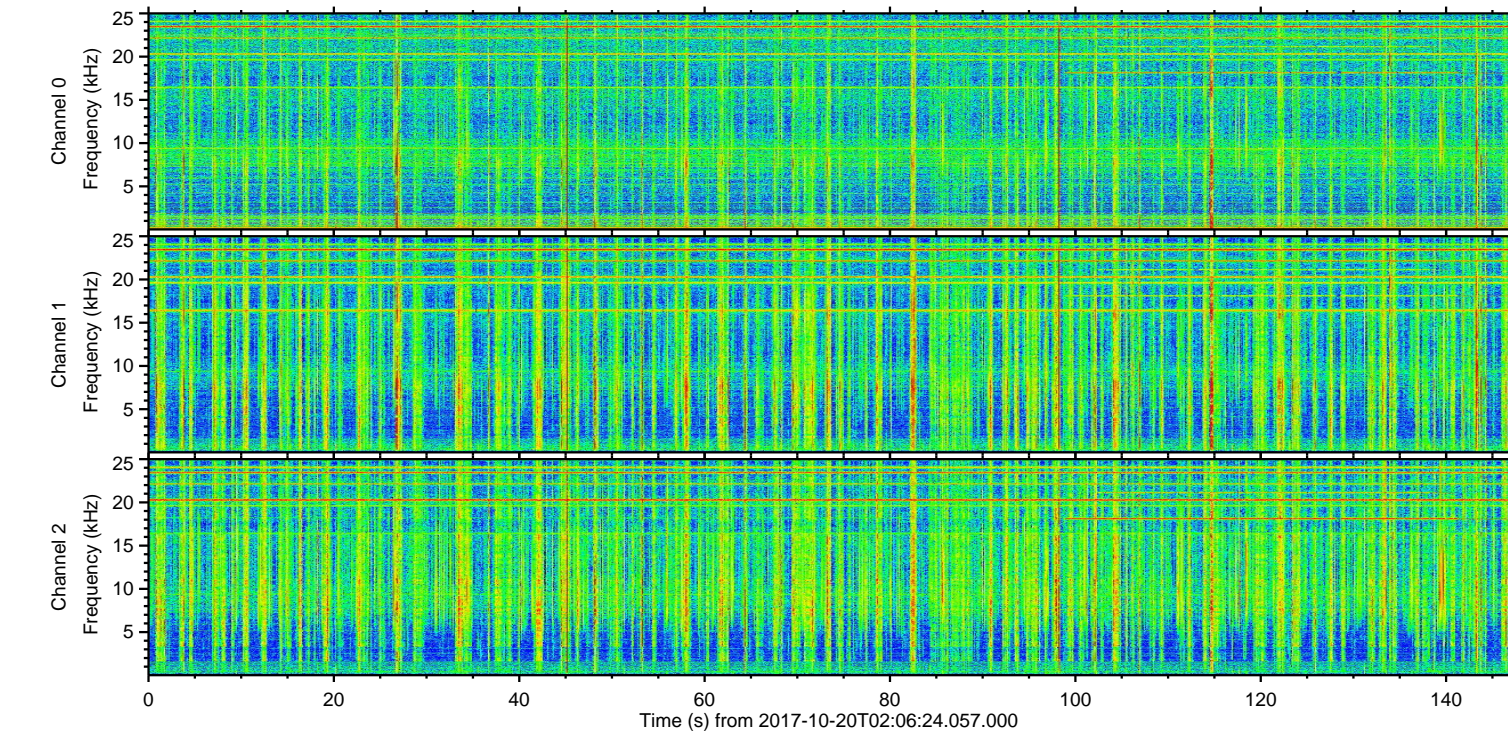
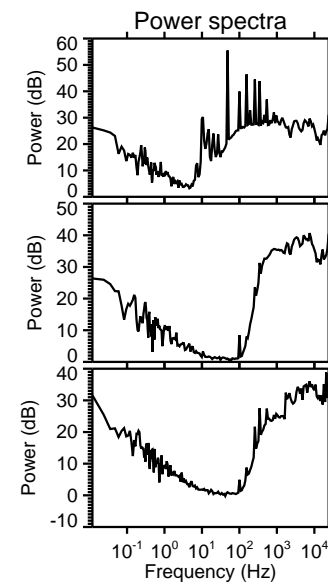
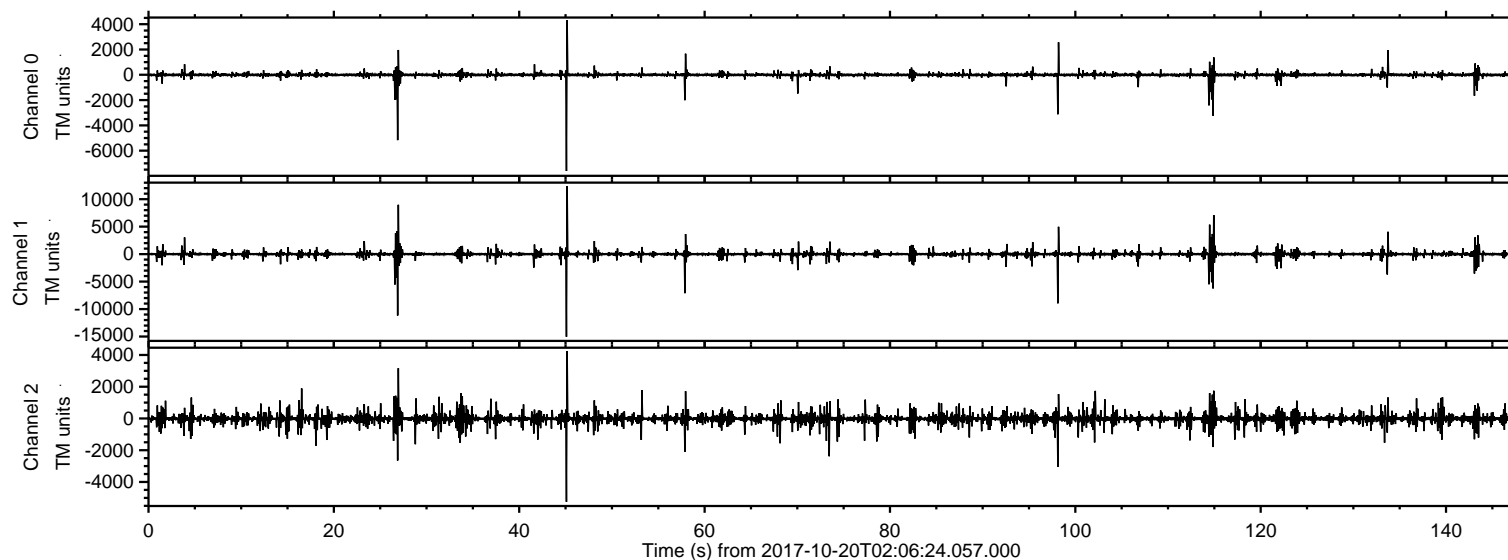
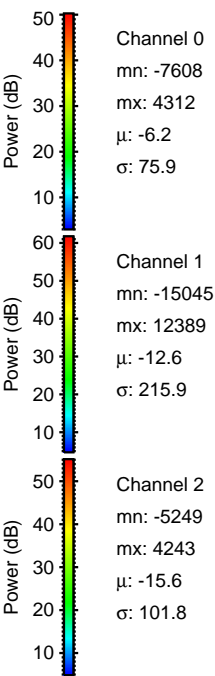
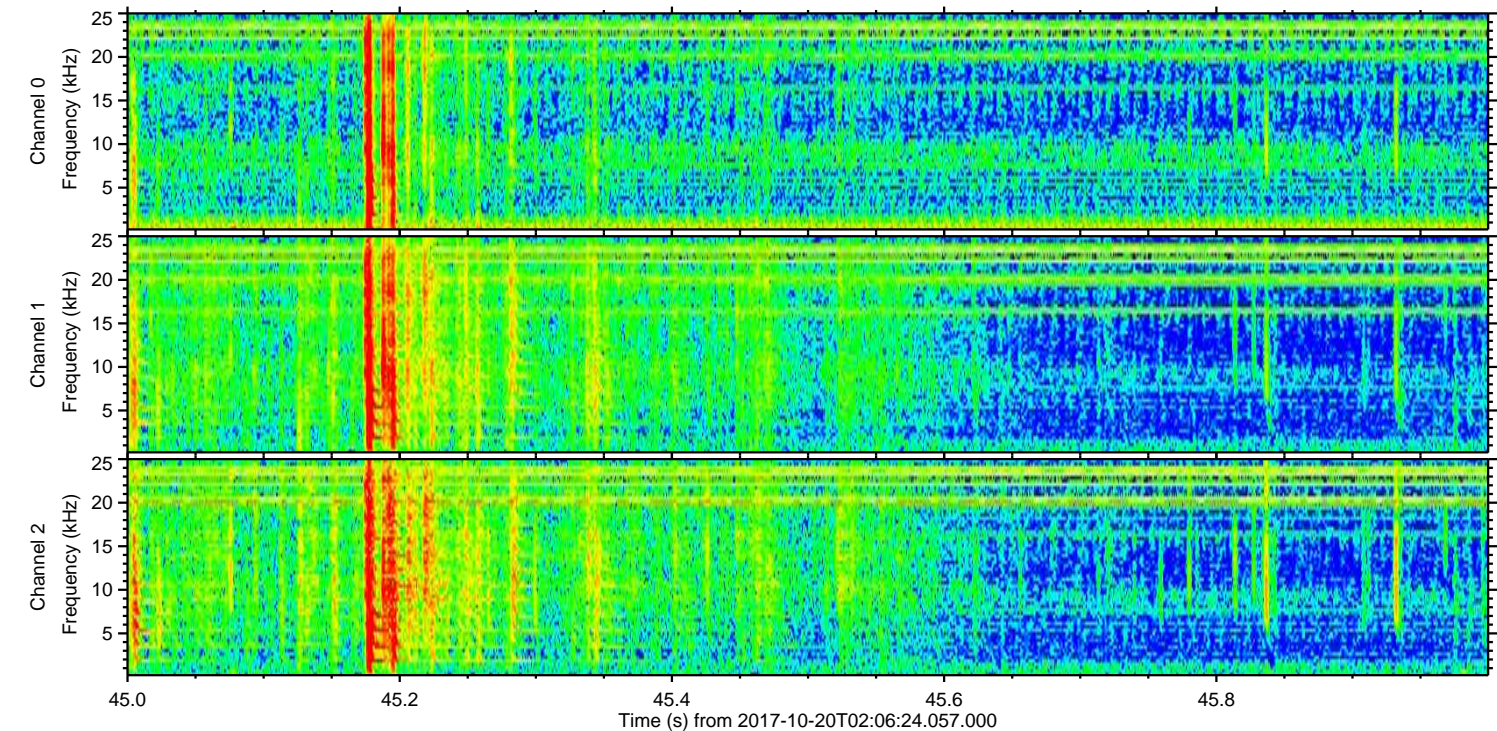
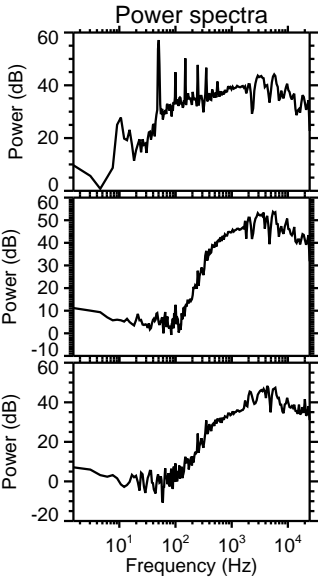
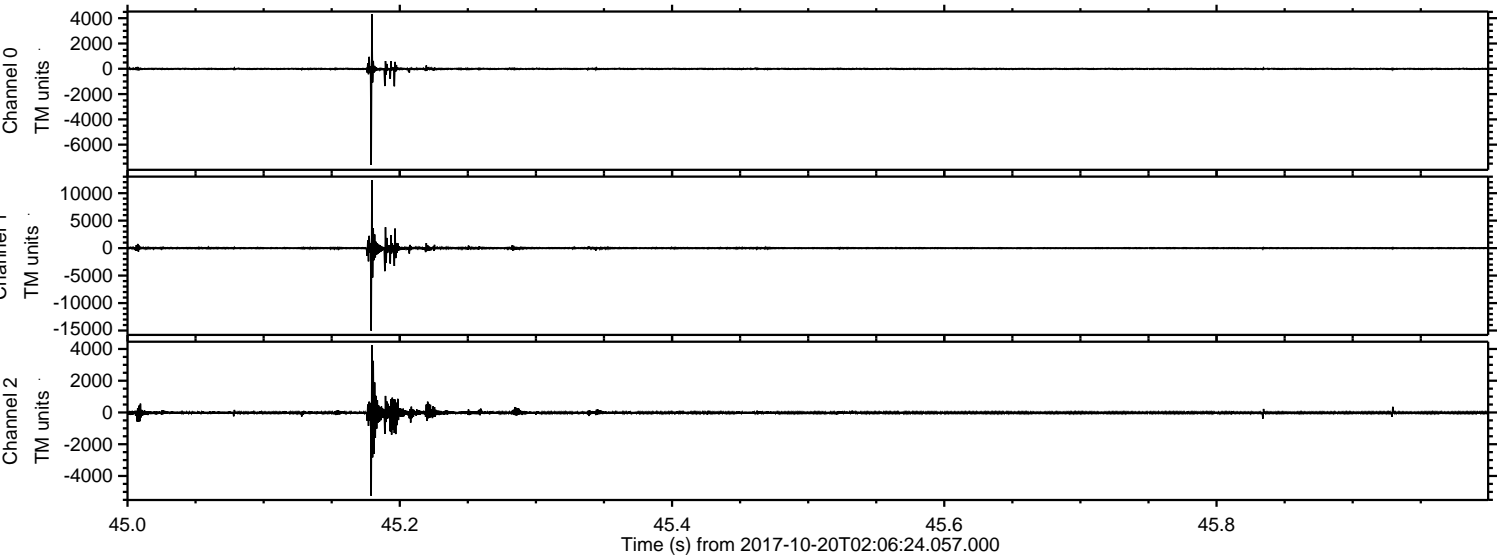


ELMAVAN 3D WAVEFORMS (Measured data sampled at 50 kHz) 51000 packets of 144 samples from 2017-10-20T02:06:24.057.000.

Processed Fri Oct 04 04:13:55 2017 by ELM ver.2012-10-06 from 001__elm20171020_020623__dat00.bin

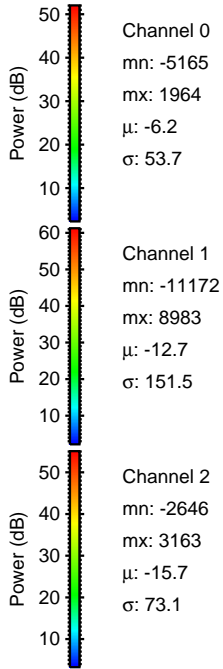
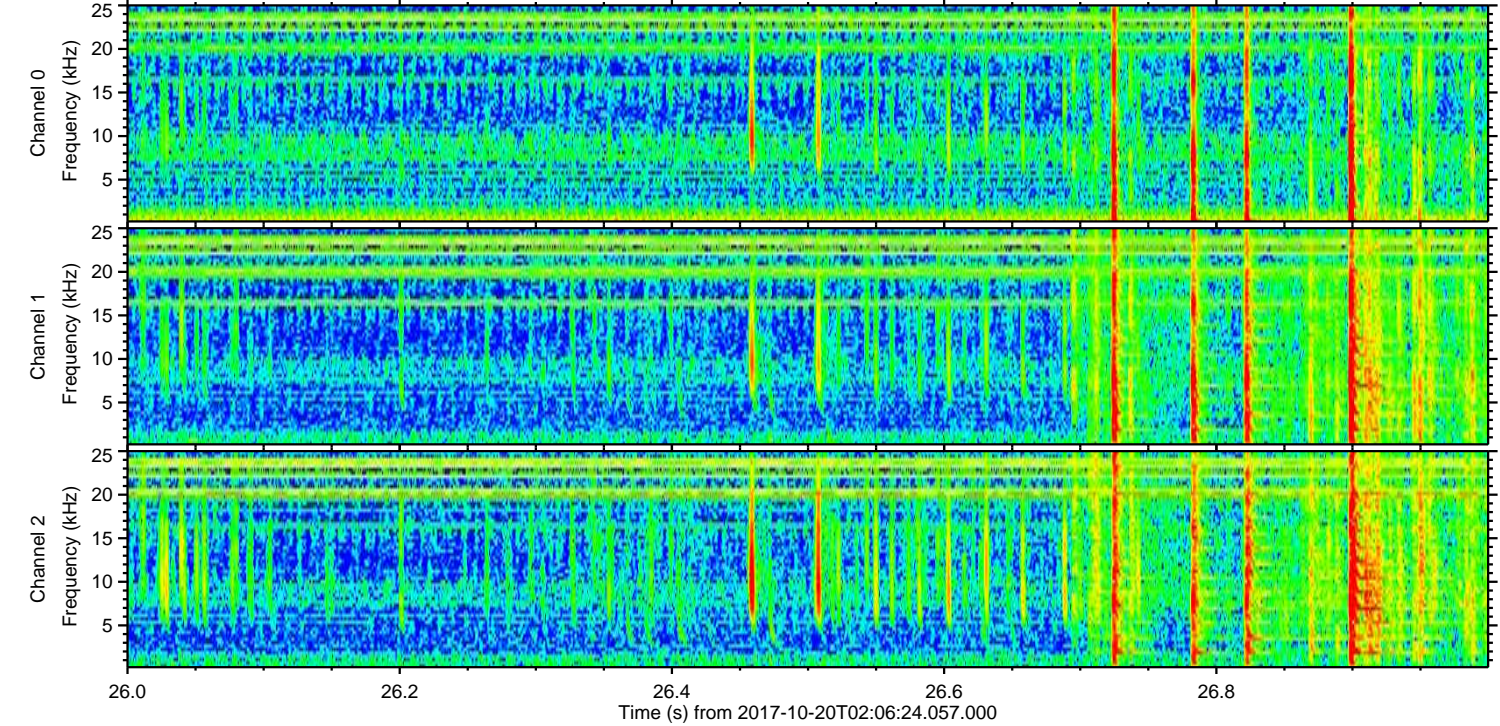
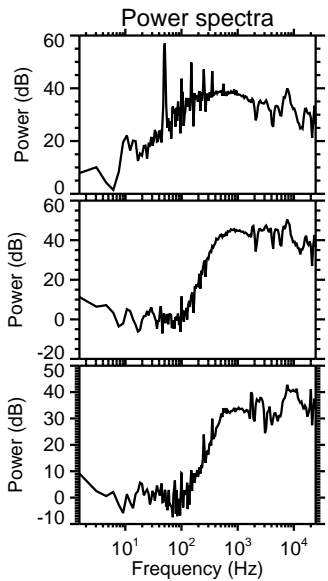
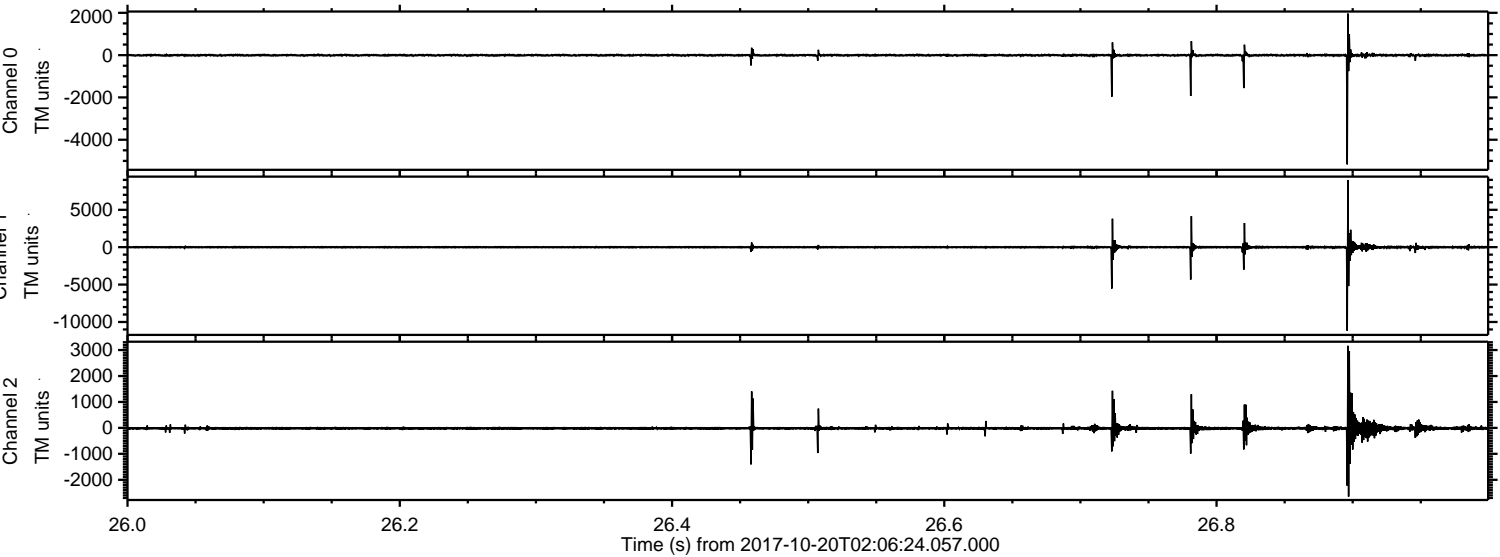


Processed Fri Oct 20 04:14:04 2017 by ELM ver.2012-10-06 from 001__elm20171020_020623__dat00.bin

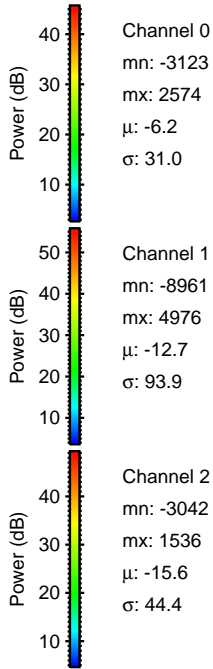
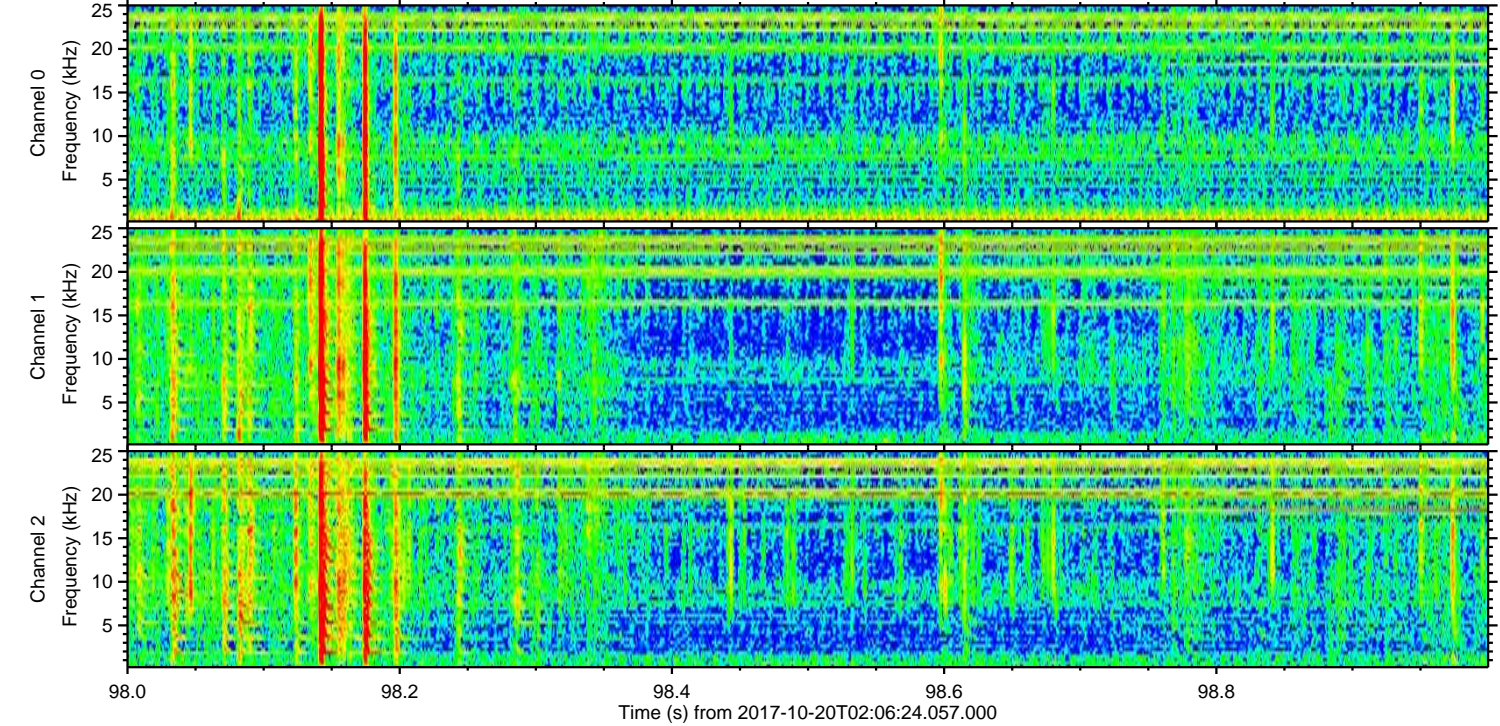
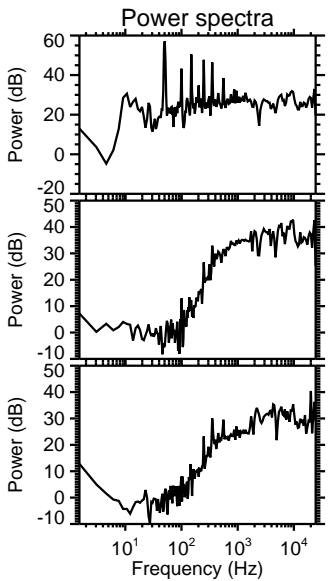
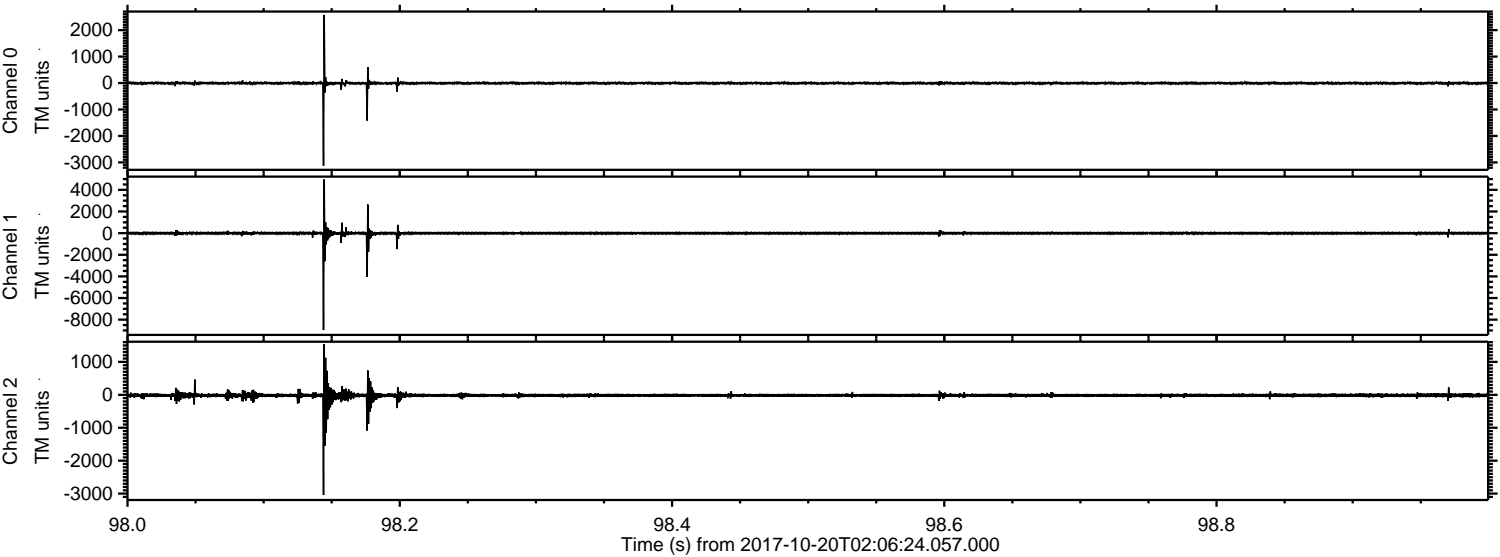


ELMAVAN 3D WAVEFORMS (Measured data sampled at 50 kHz) 51000 packets of 144 samples from 2017-10-20T02:06:24.057.000. Part 27/147

Processed Fri Oct 20 04:14:04 2017 by ELM ver.2012-10-06 from 001__elm20171020_020623__dat00.bin



Processed Fri Oct 20 04:14:05 2017 by ELM ver.2012-10-06 from 001__elm20171020_020623__dat00.bin



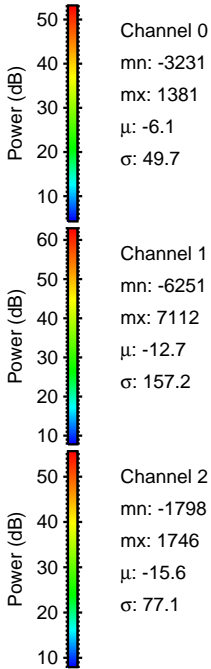
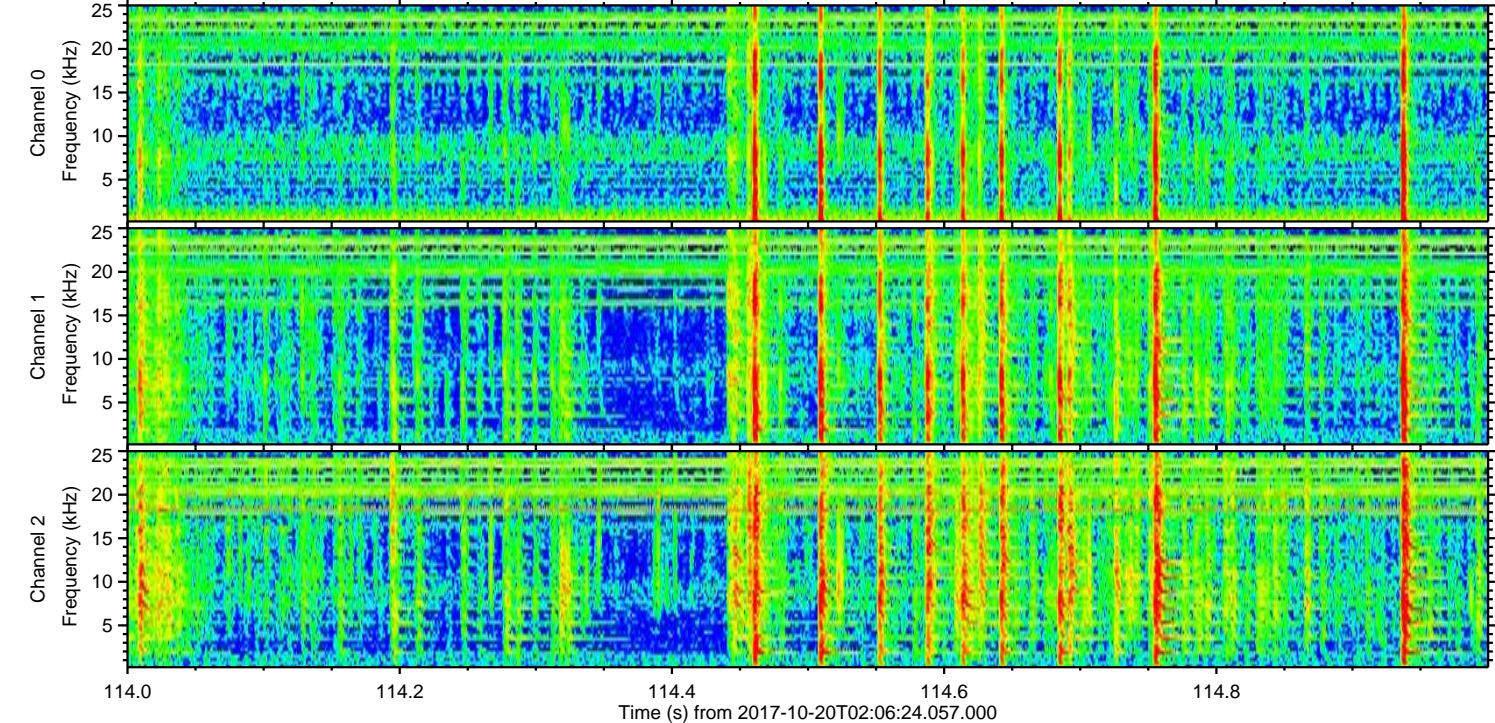
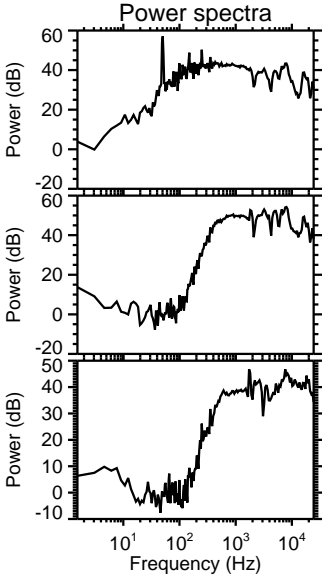
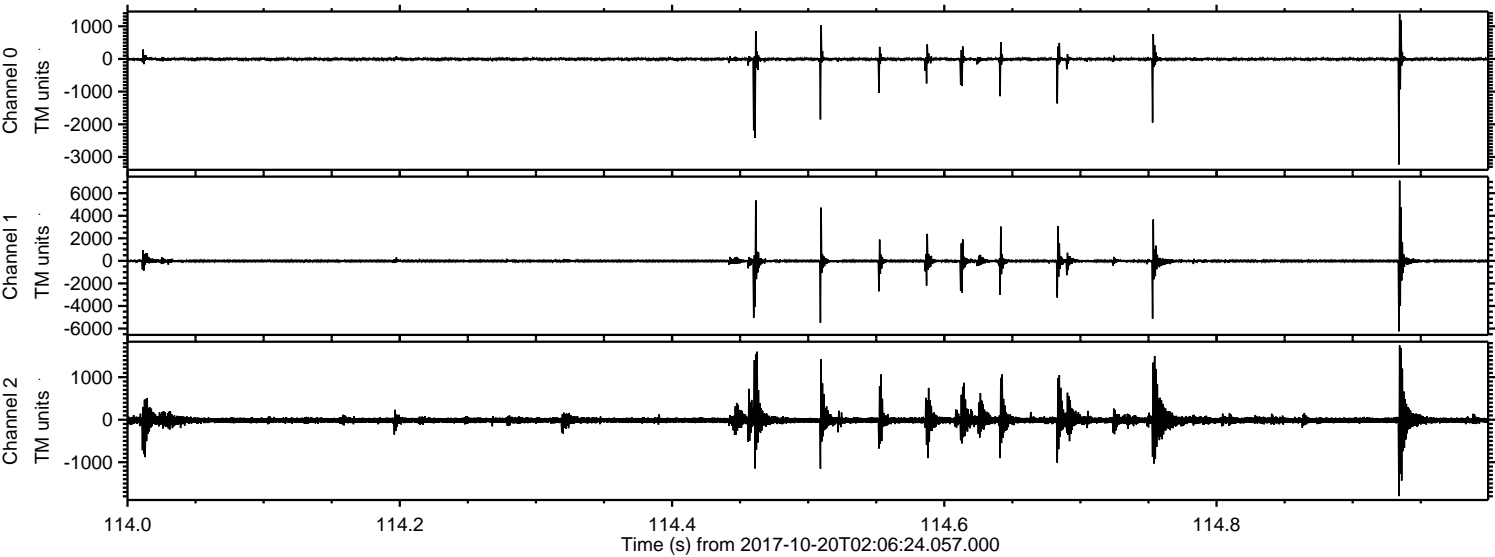
Channel 0
mn: -3123
mx: 2574
 μ : -6.2
 σ : 31.0

Channel 1
mn: -8961
mx: 4976
 μ : -12.7
 σ : 93.9

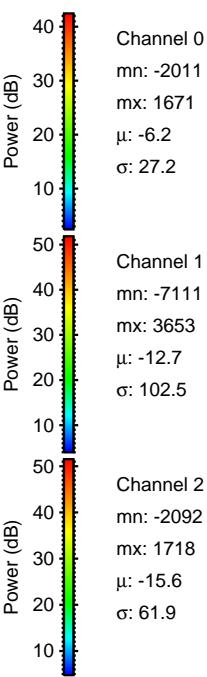
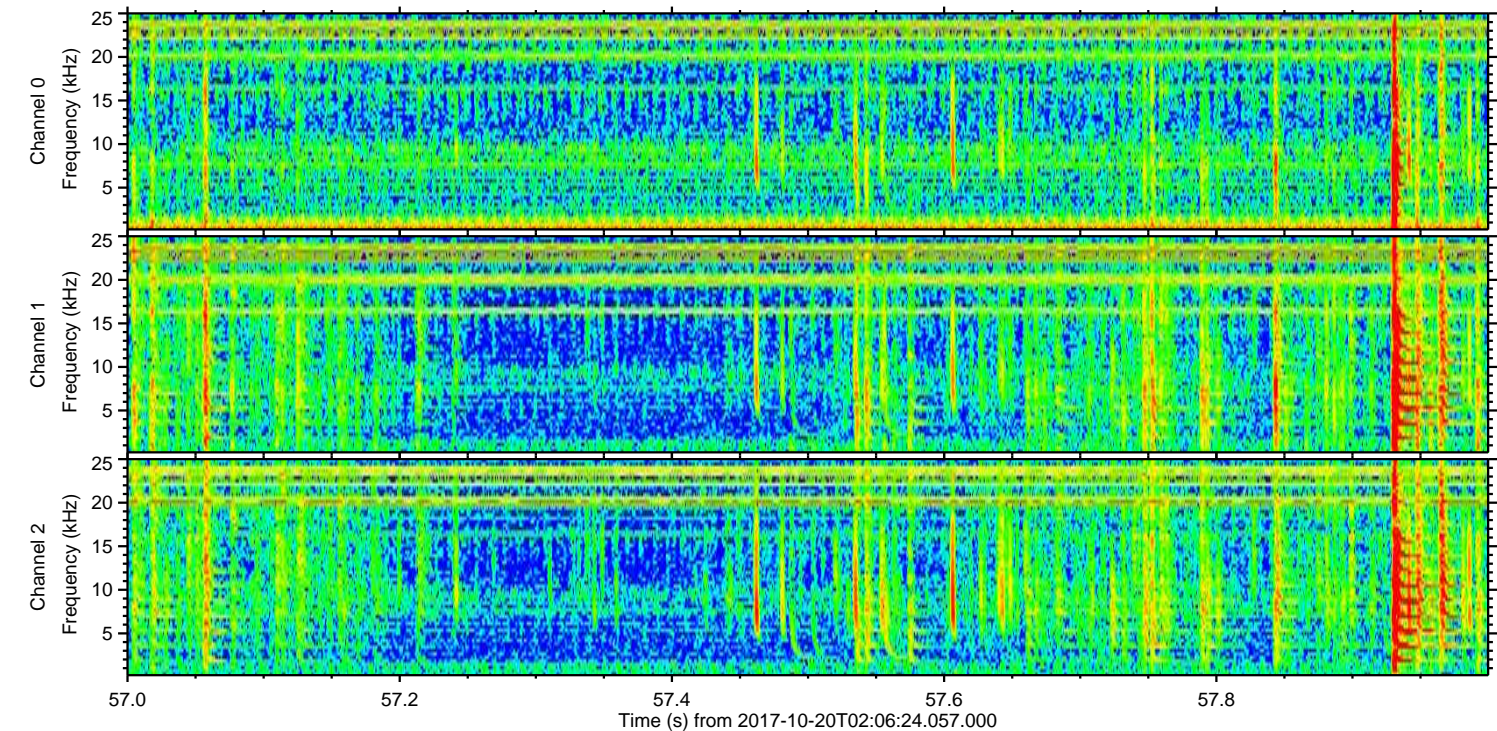
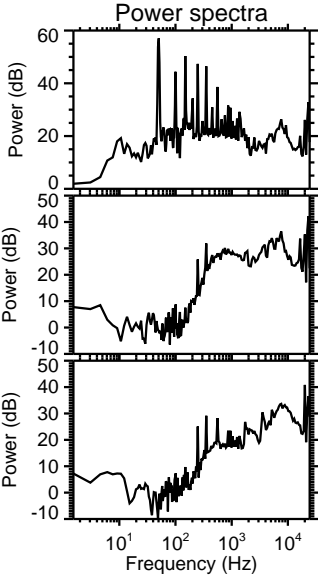
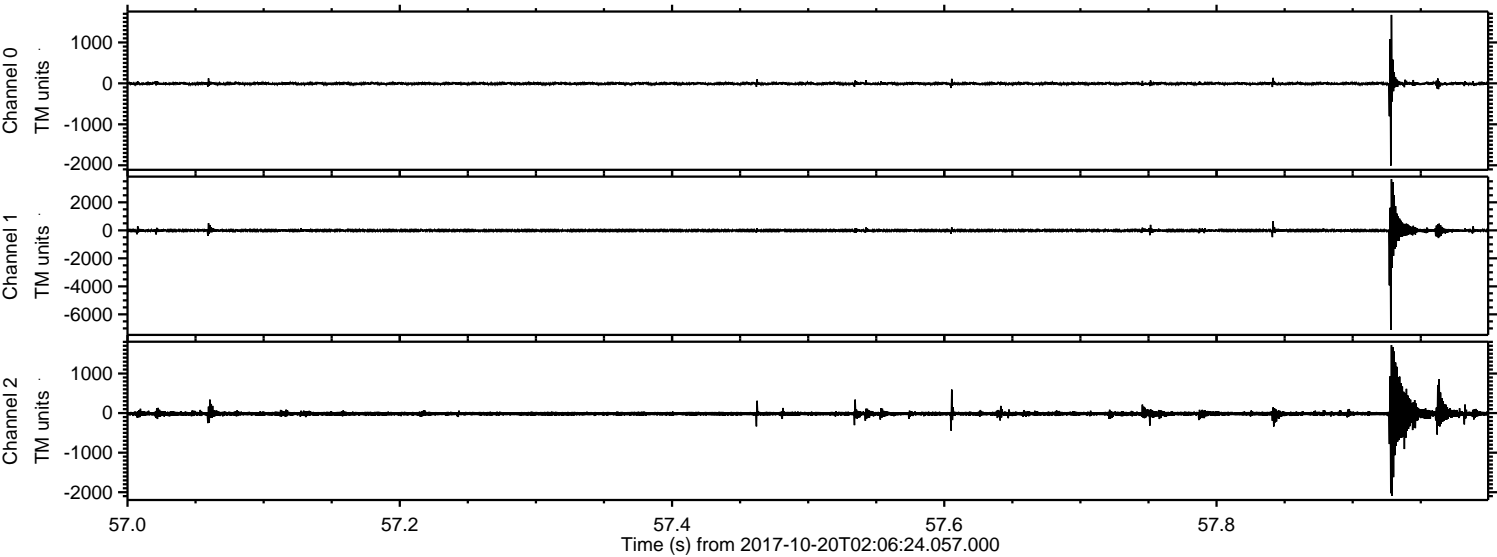
Channel 2
mn: -3042
mx: 1536
 μ : -15.6
 σ : 44.4

ELMAVAN 3D WAVEFORMS (Measured data sampled at 50 kHz) 51000 packets of 144 samples from 2017-10-20T02:06:24.057.000. Part 115/147

Processed Fri Oct 20 04:14:06 2017 by ELM ver.2012-10-06 from 001__elm20171020_020623__dat00.bin

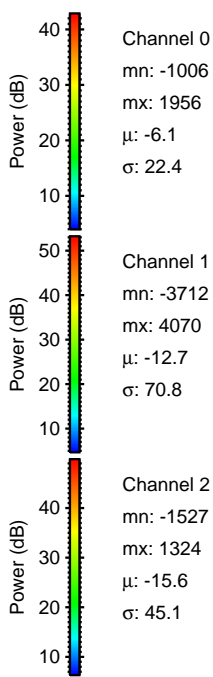
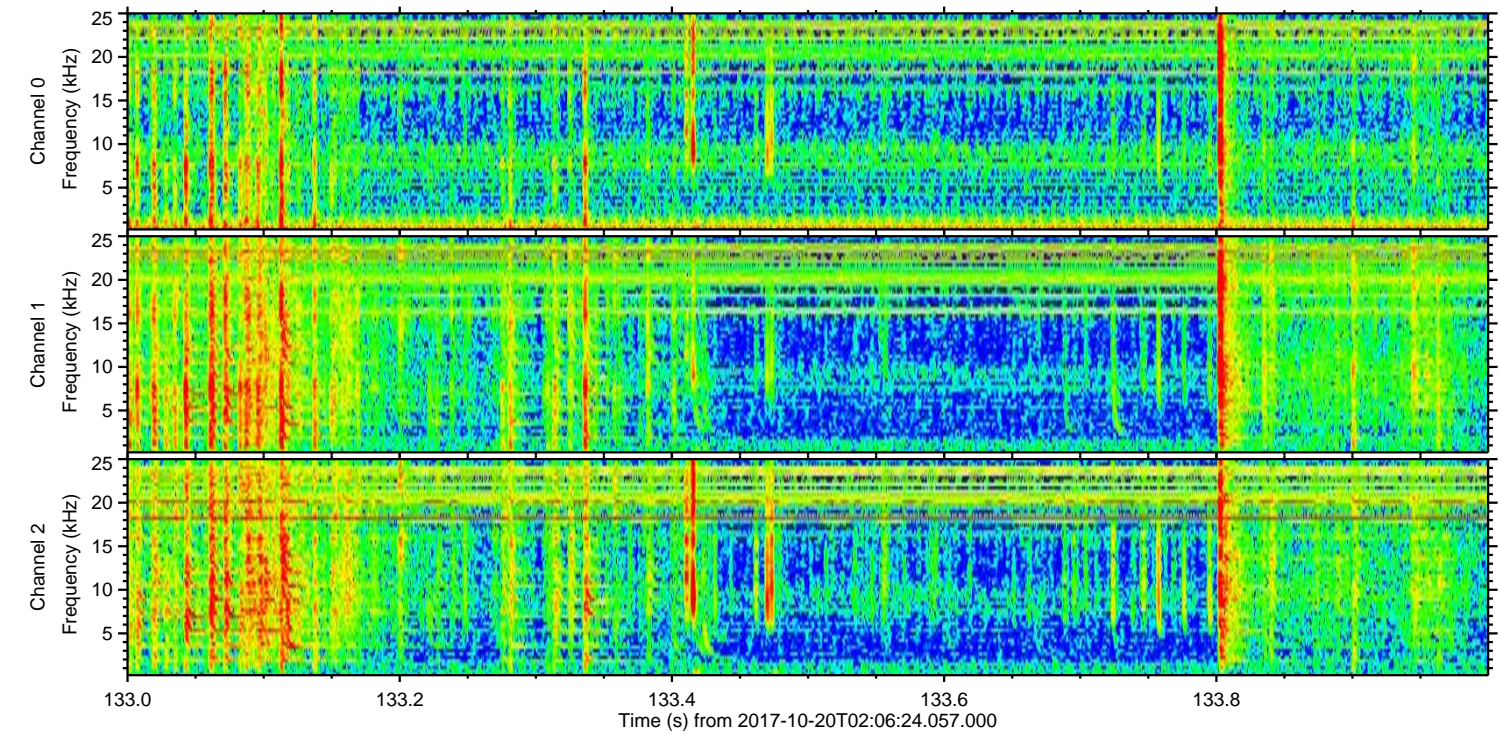
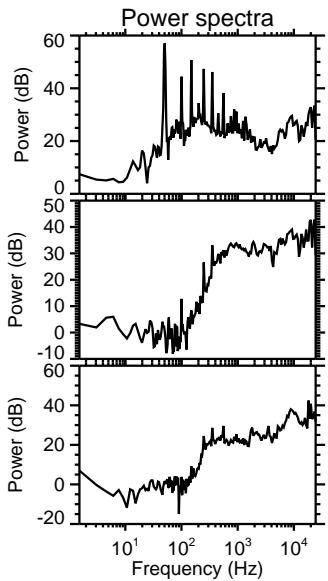
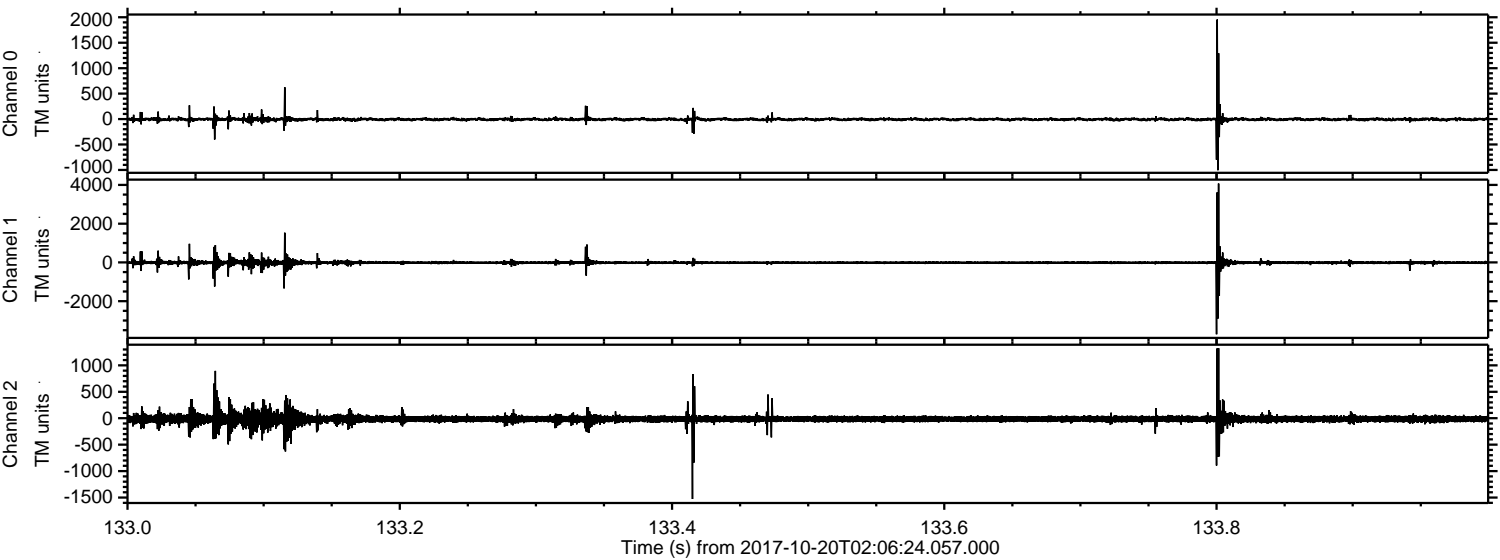


Processed Fri Oct 20 04:14:06 2017 by ELM ver.2012-10-06 from 001__elm20171020_020623__dat00.bin



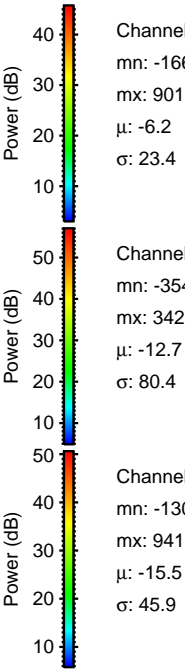
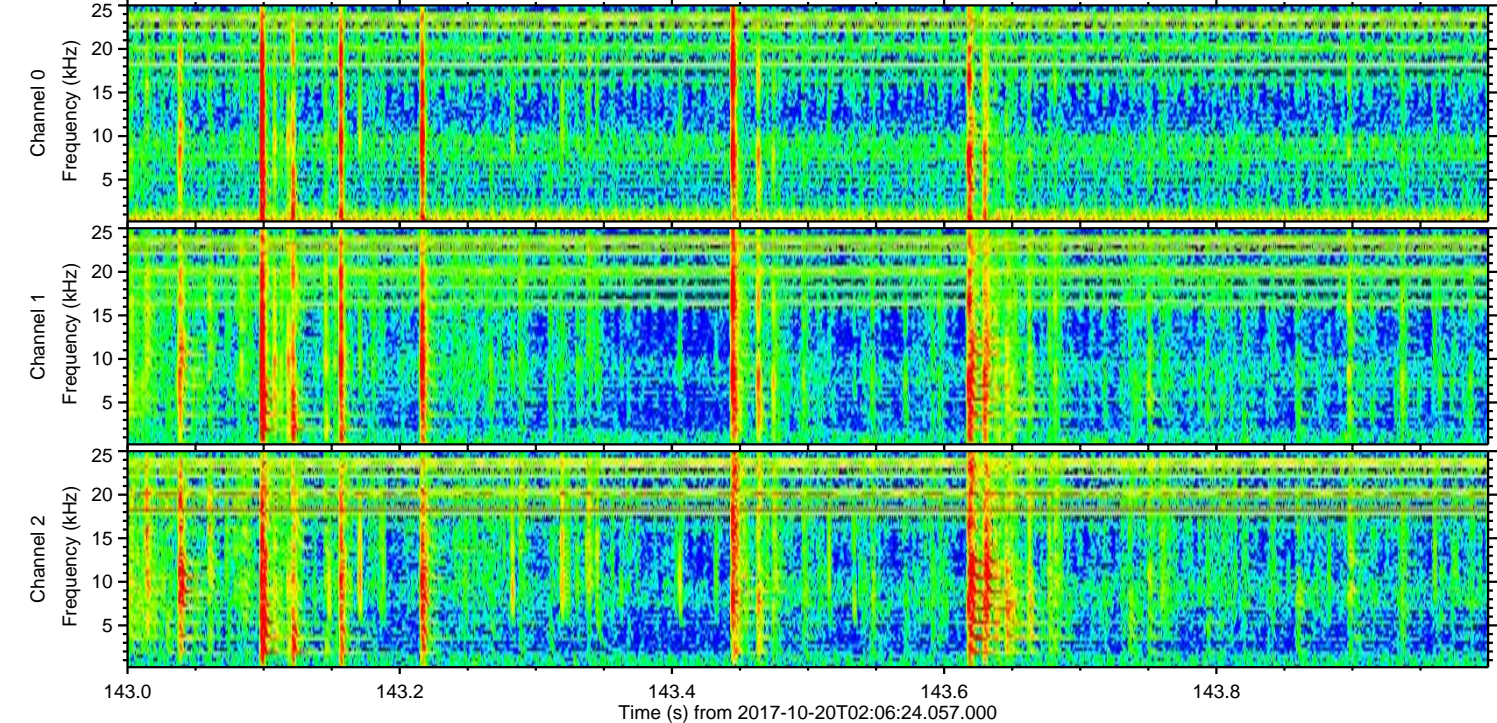
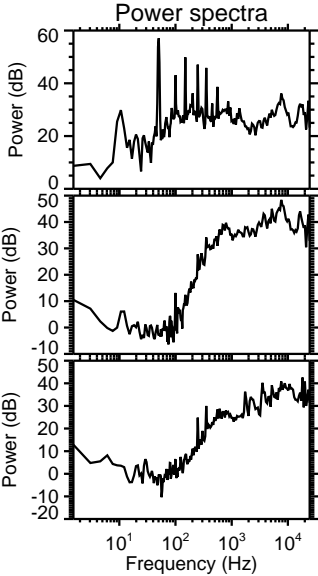
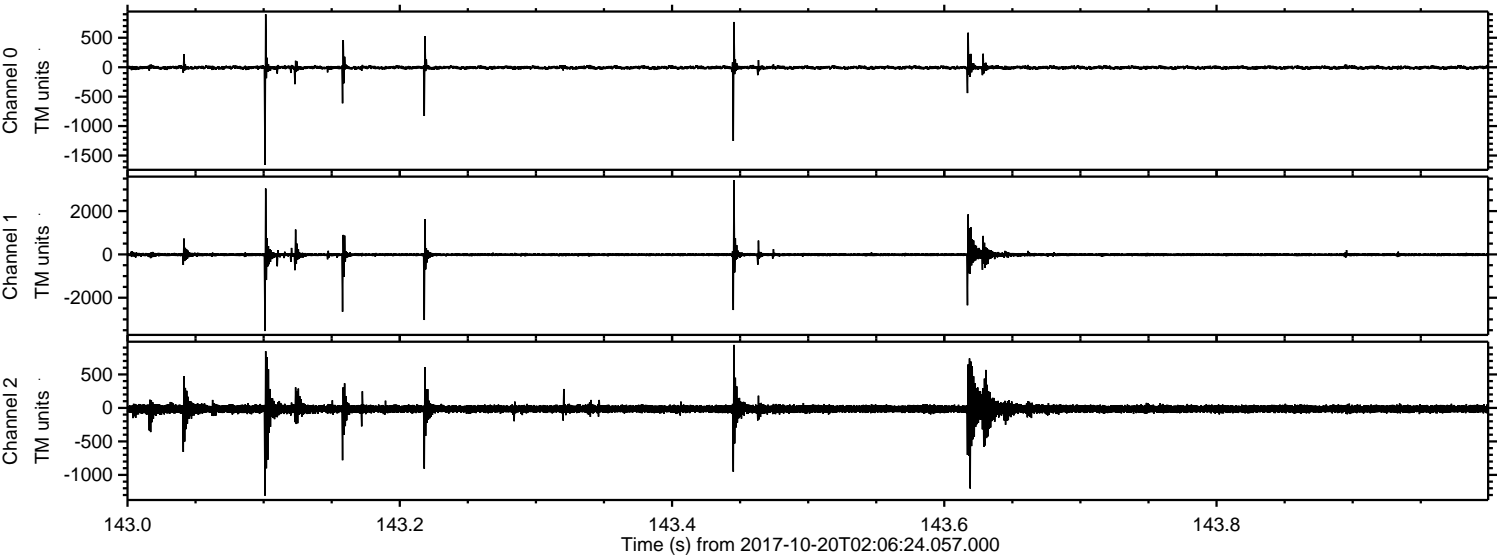
ELMAVAN 3D WAVEFORMS (Measured data sampled at 50 kHz) 51000 packets of 144 samples from 2017-10-20T02:06:24.057.000. Part 134/147

Processed Fri Oct 20 04:14:07 2017 by ELM ver.2012-10-06 from 001__elm20171020_020623__dat00.bin



ELMAVAN 3D WAVEFORMS (Measured data sampled at 50 kHz) 51000 packets of 144 samples from 2017-10-20T02:06:24.057.000. Part 144/147

Processed Fri Oct 20 04:14:08 2017 by ELM ver.2012-10-06 from 001__elm20171020_020623__dat00.bin

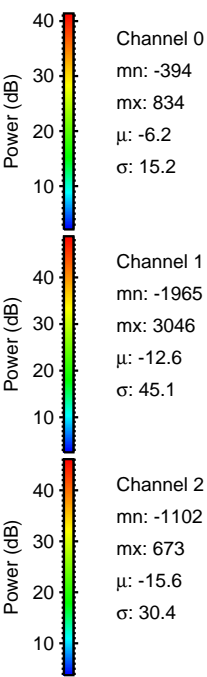
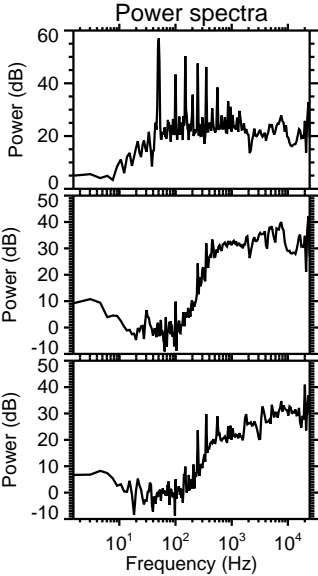
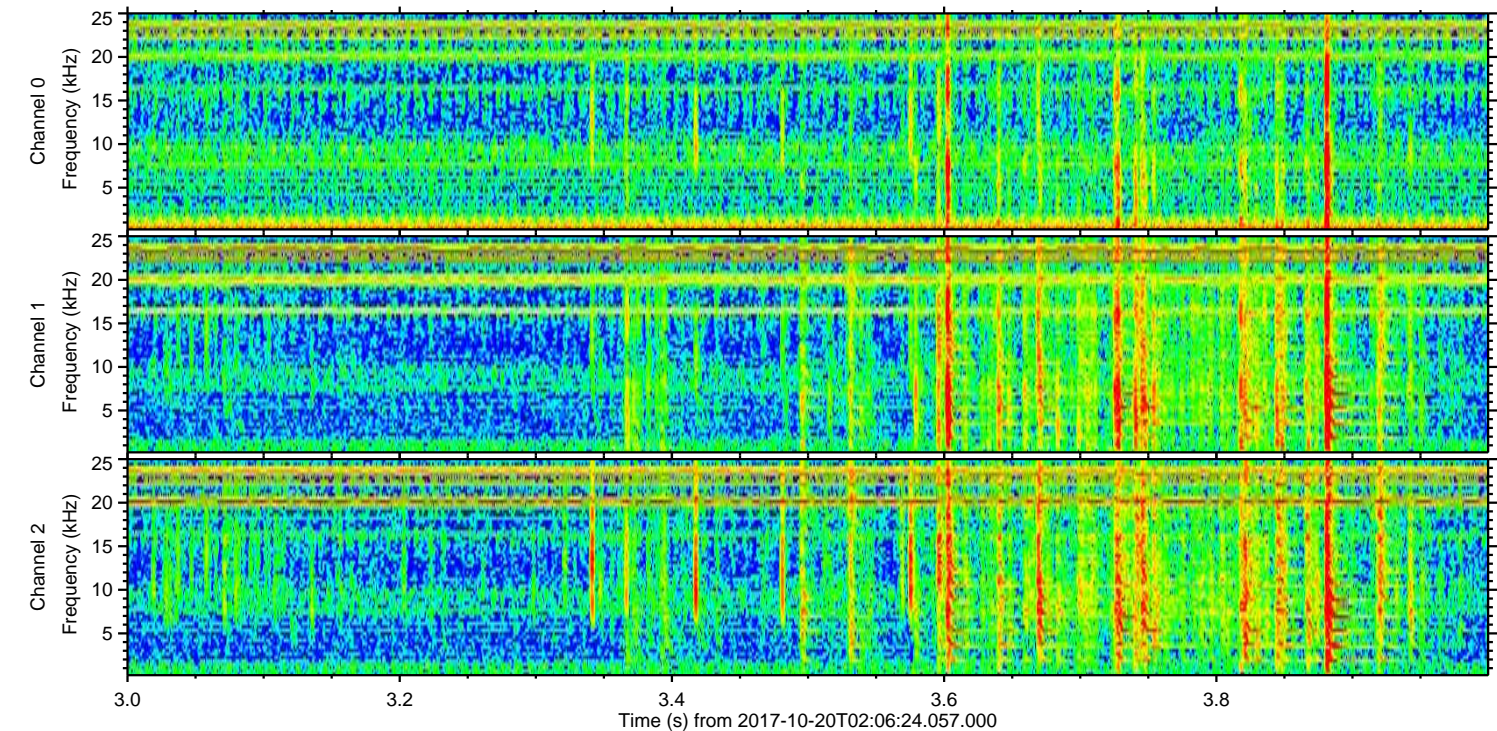
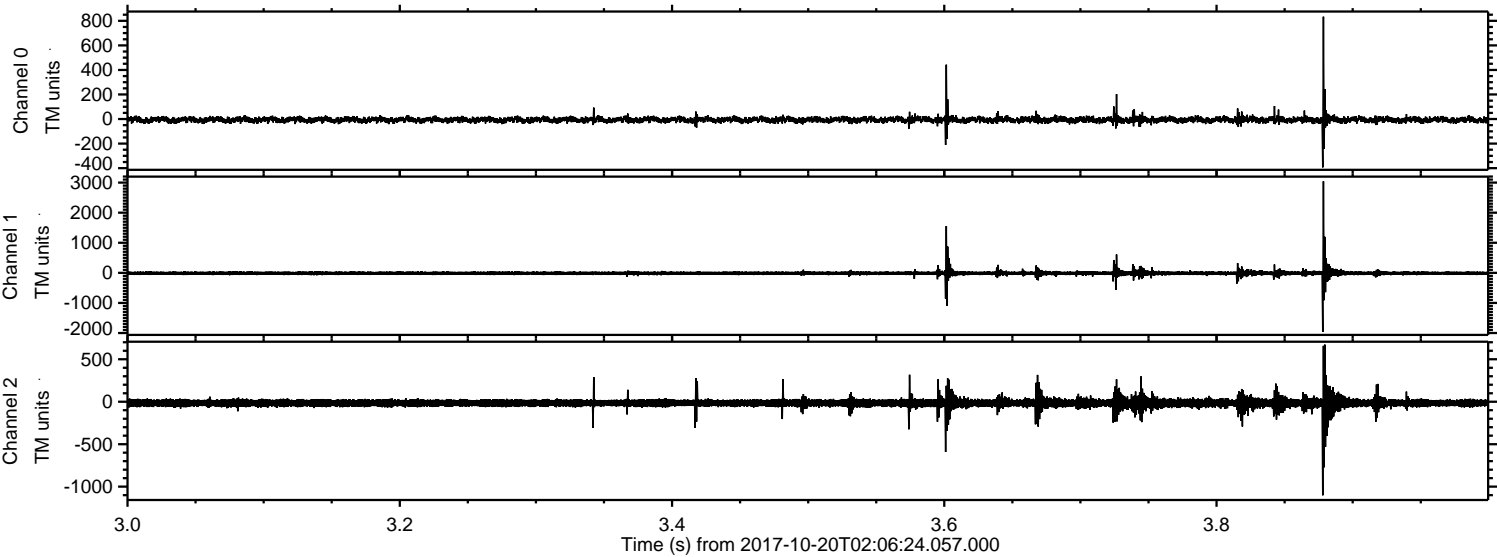


Channel 0
mn: -1660
mx: 901
 μ : -6.2
 σ : 23.4

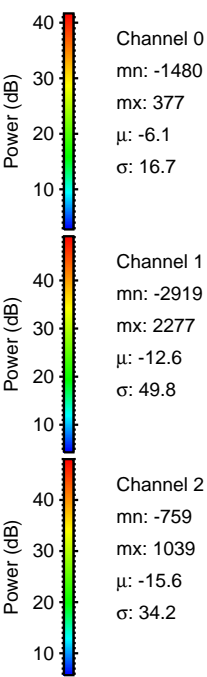
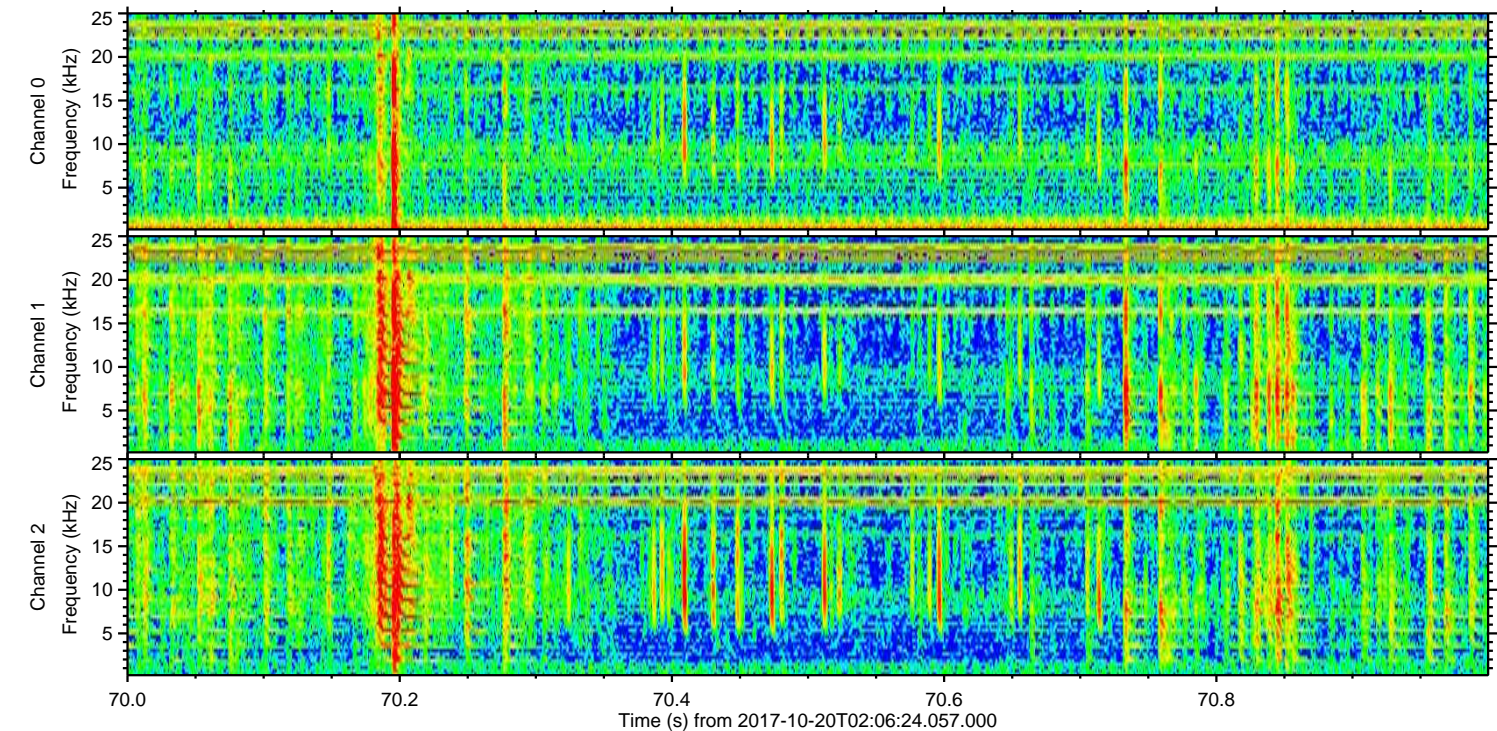
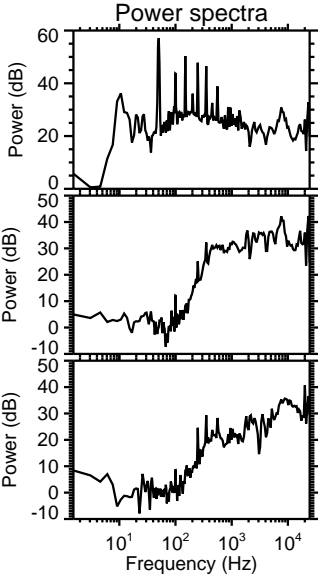
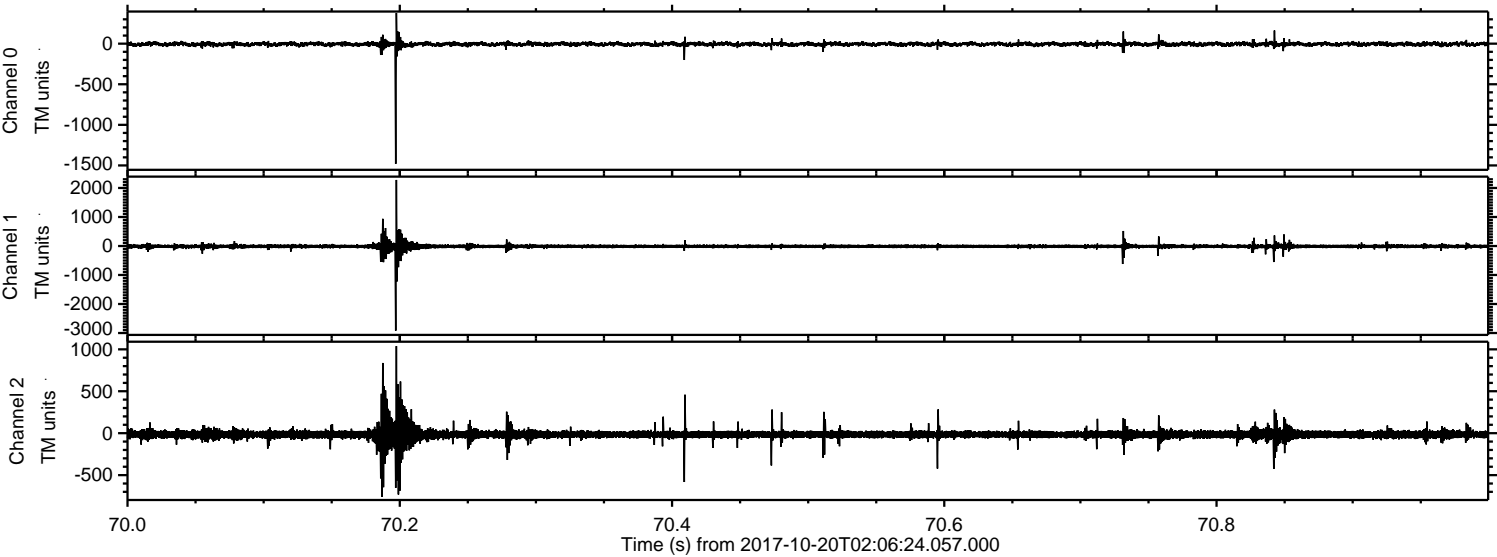
Channel 1
mn: -3540
mx: 3421
 μ : -12.7
 σ : 80.4

Channel 2
mn: -1309
mx: 941
 μ : -15.5
 σ : 45.9

Processed Fri Oct 20 04:14:08 2017 by ELM ver.2012-10-06 from 001__elm20171020_020623__dat00.bin



Processed Fri Oct 20 04:14:09 2017 by ELM ver.2012-10-06 from 001__elm20171020_020623__dat00.bin



Processed Fri Oct 20 04:14:09 2017 by ELM ver.2012-10-06 from 001__elm20171020_020623__dat00.bin

