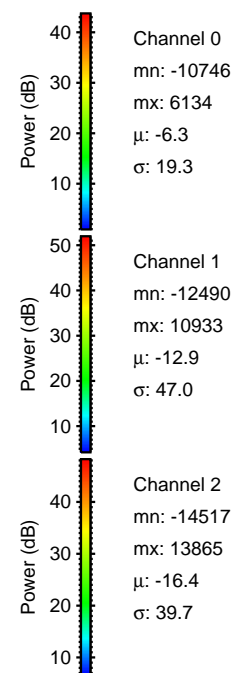
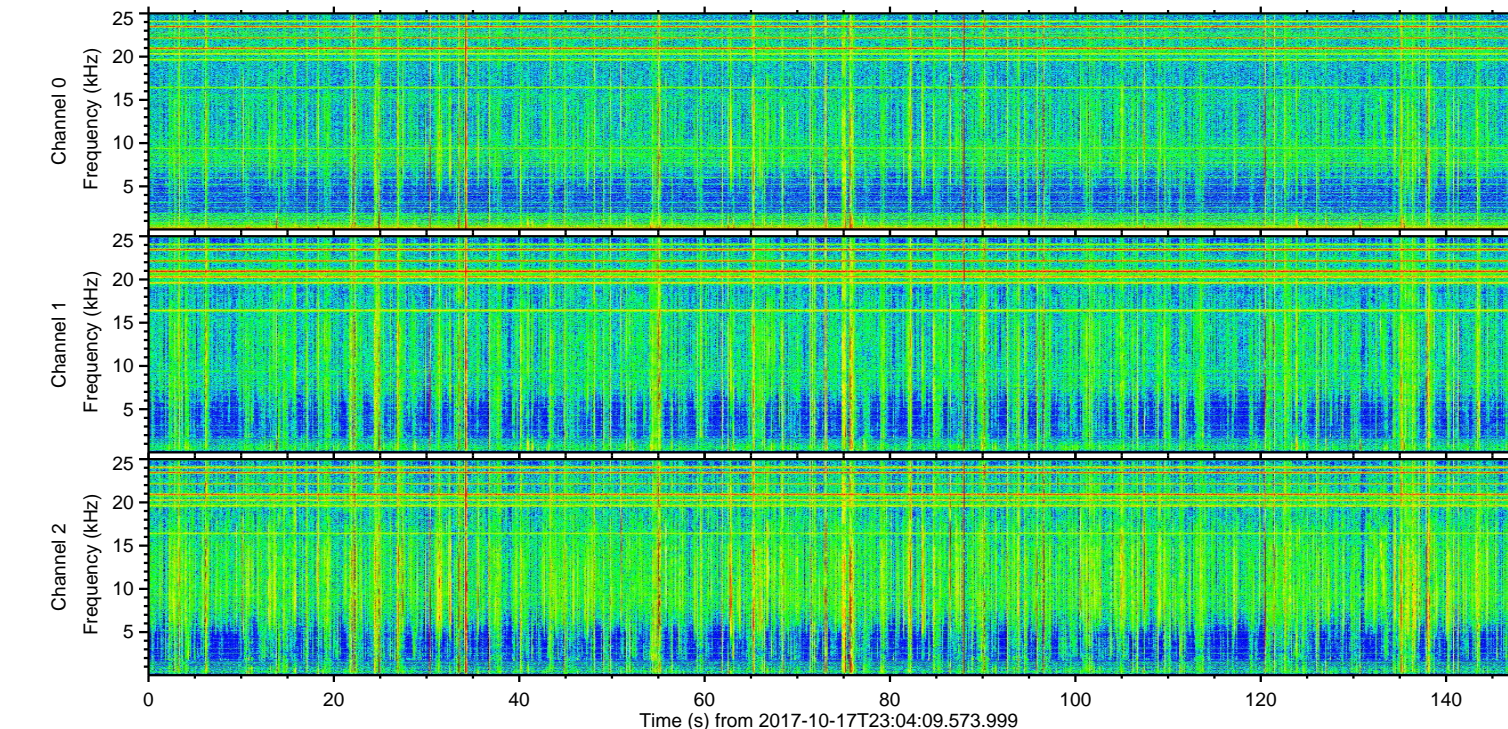
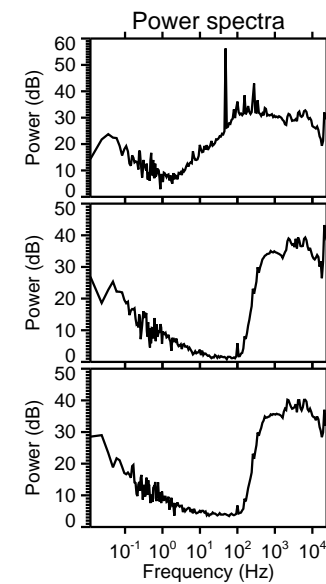
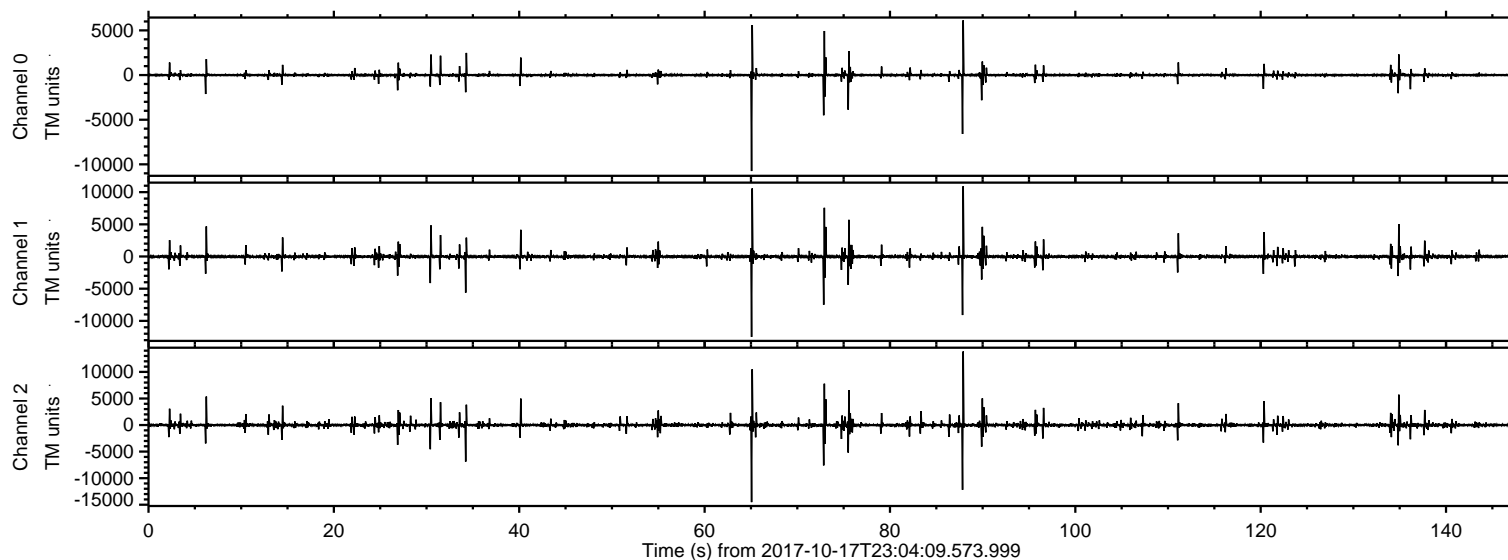
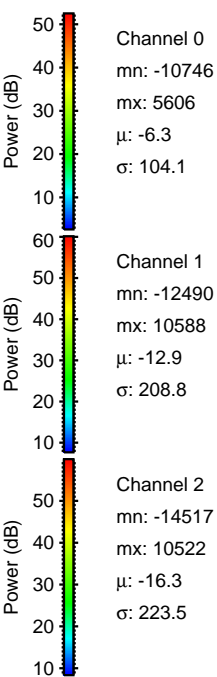
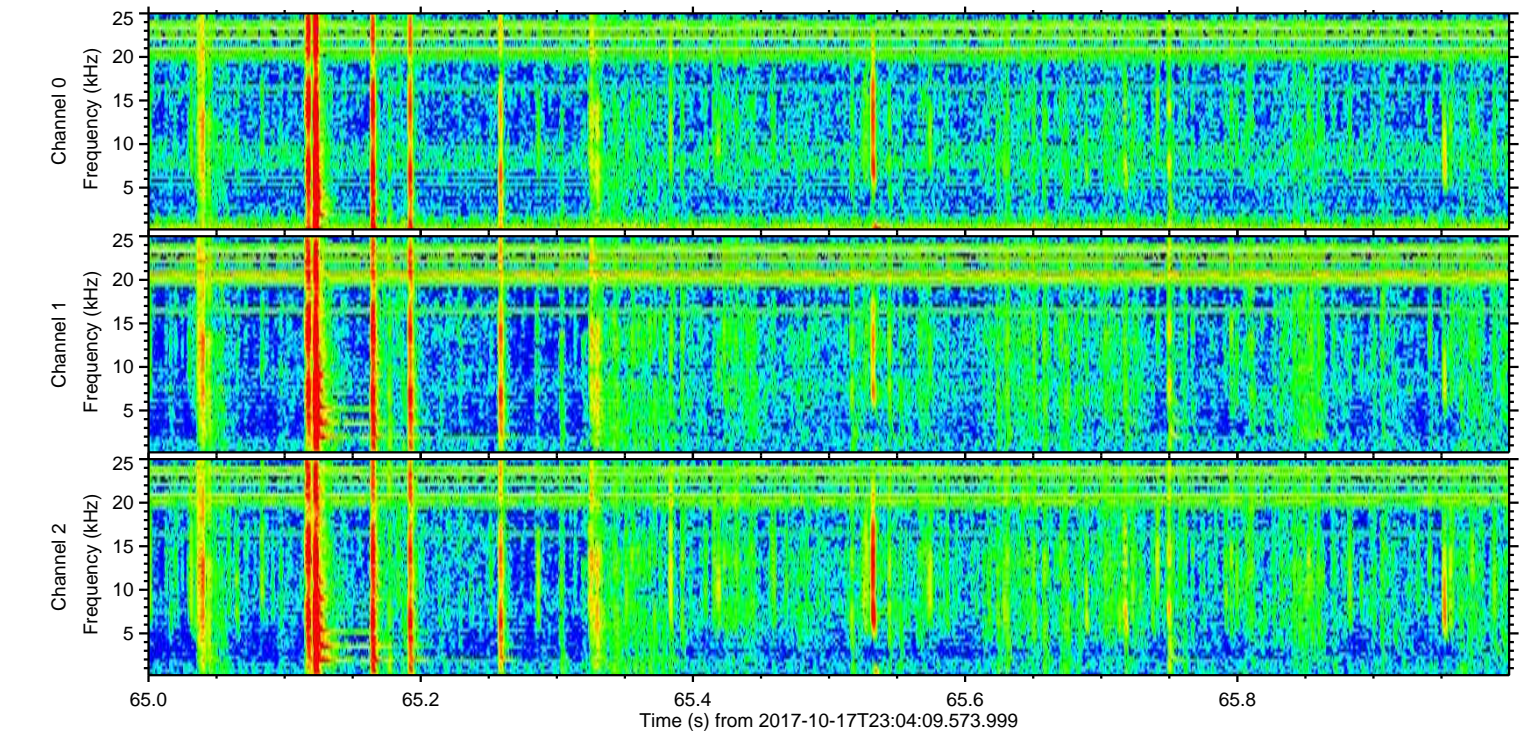
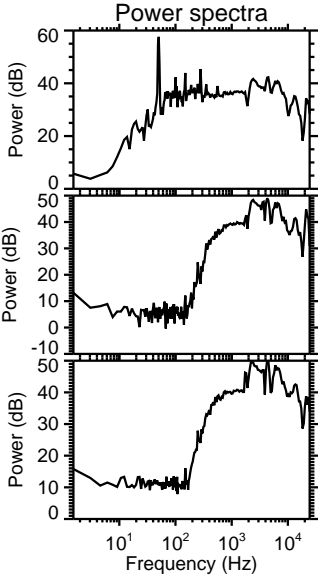
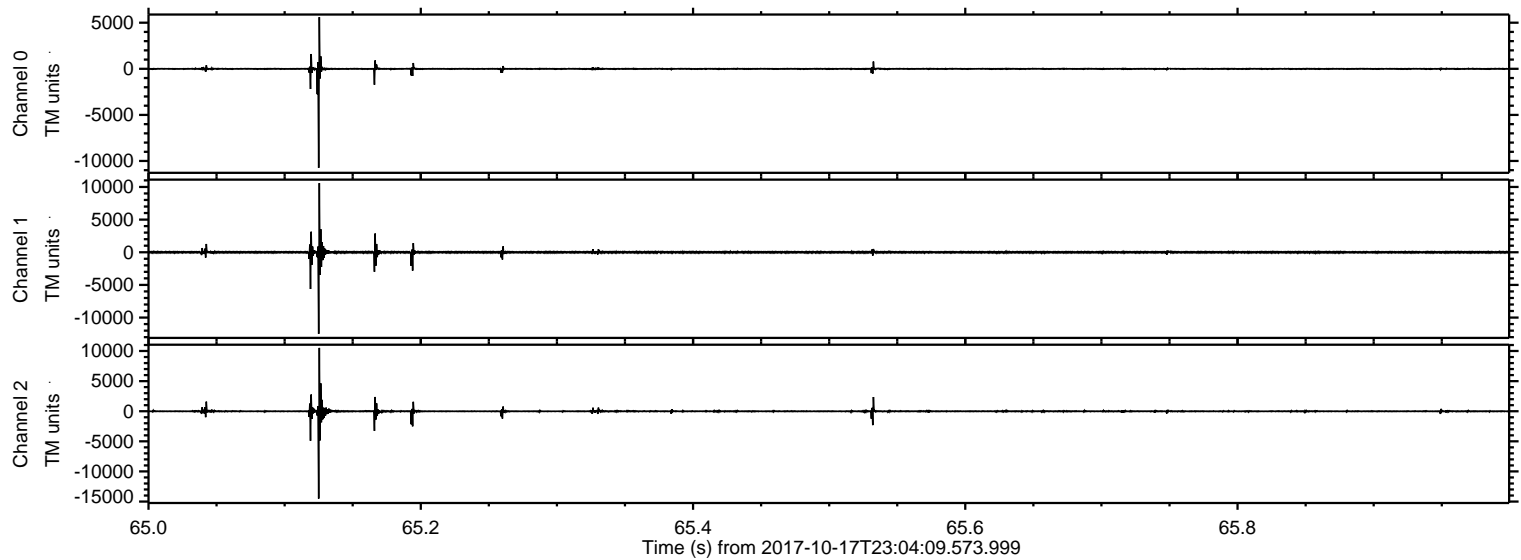


ELMAVAN 3D WAVEFORMS (Measured data sampled at 50 kHz) 51000 packets of 144 samples from 2017-10-17T23:04:09.573.999.

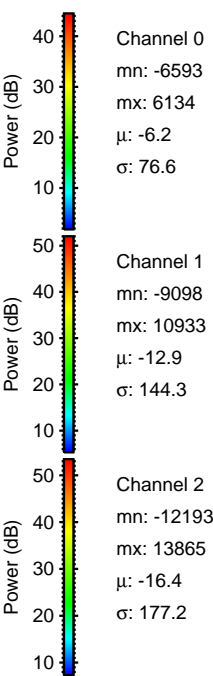
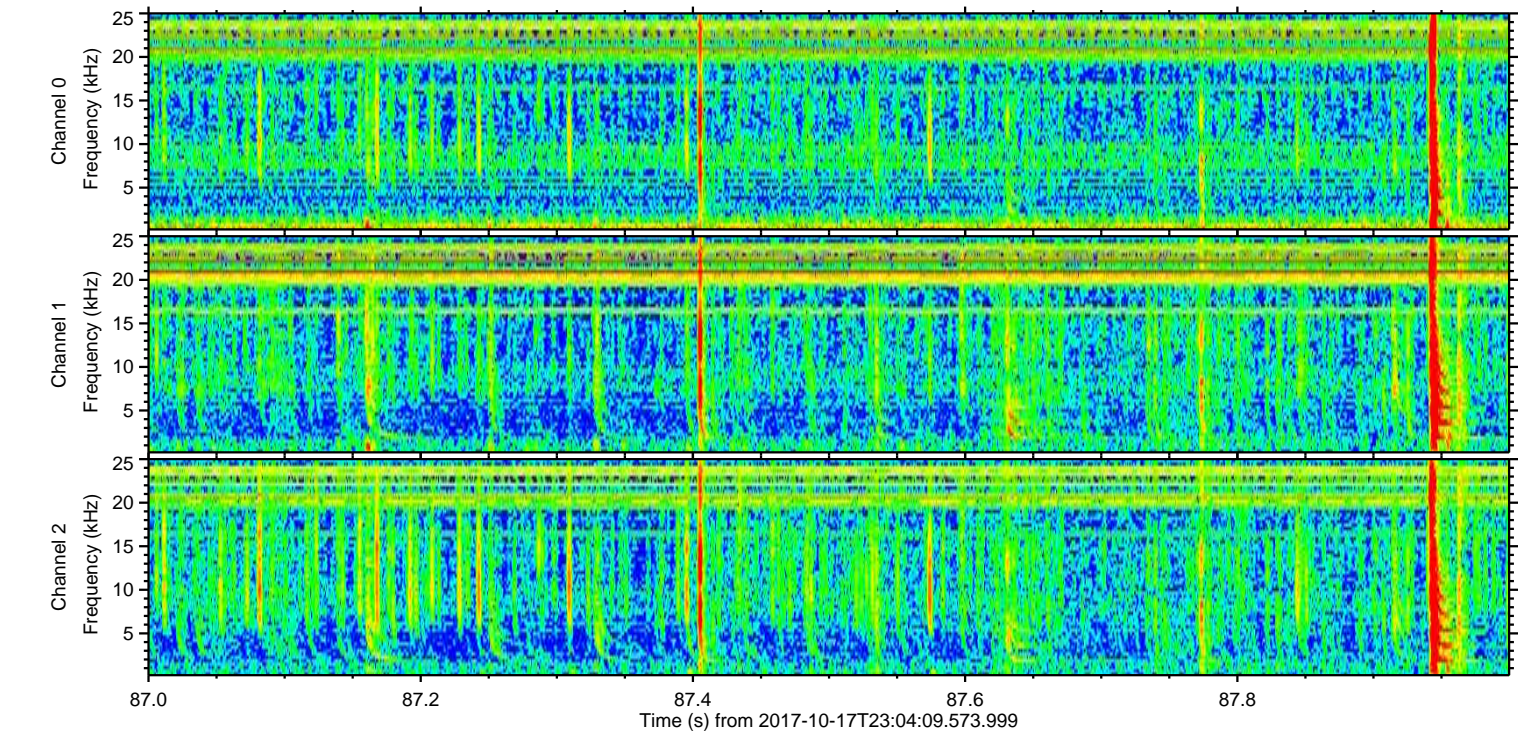
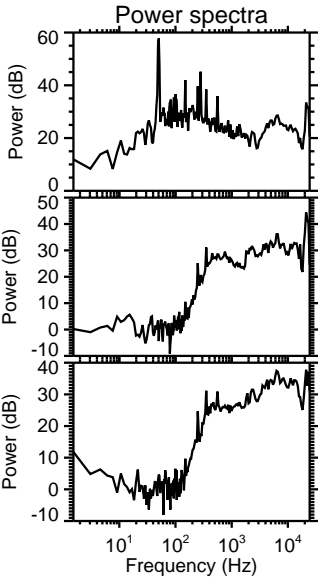
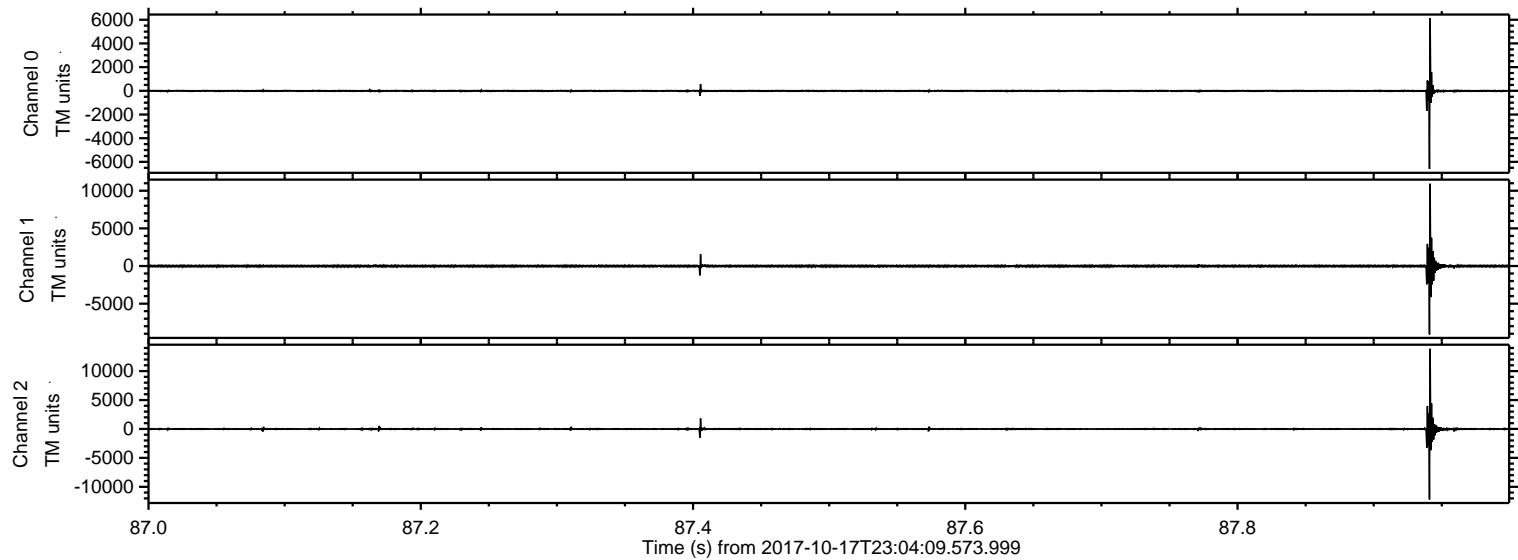
Processed Wed Oct 18 01:12:05 2017 by ELM ver.2012-10-06 from 001__elm20171017_230408__dat00.bin



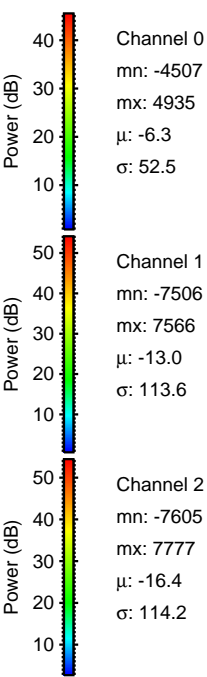
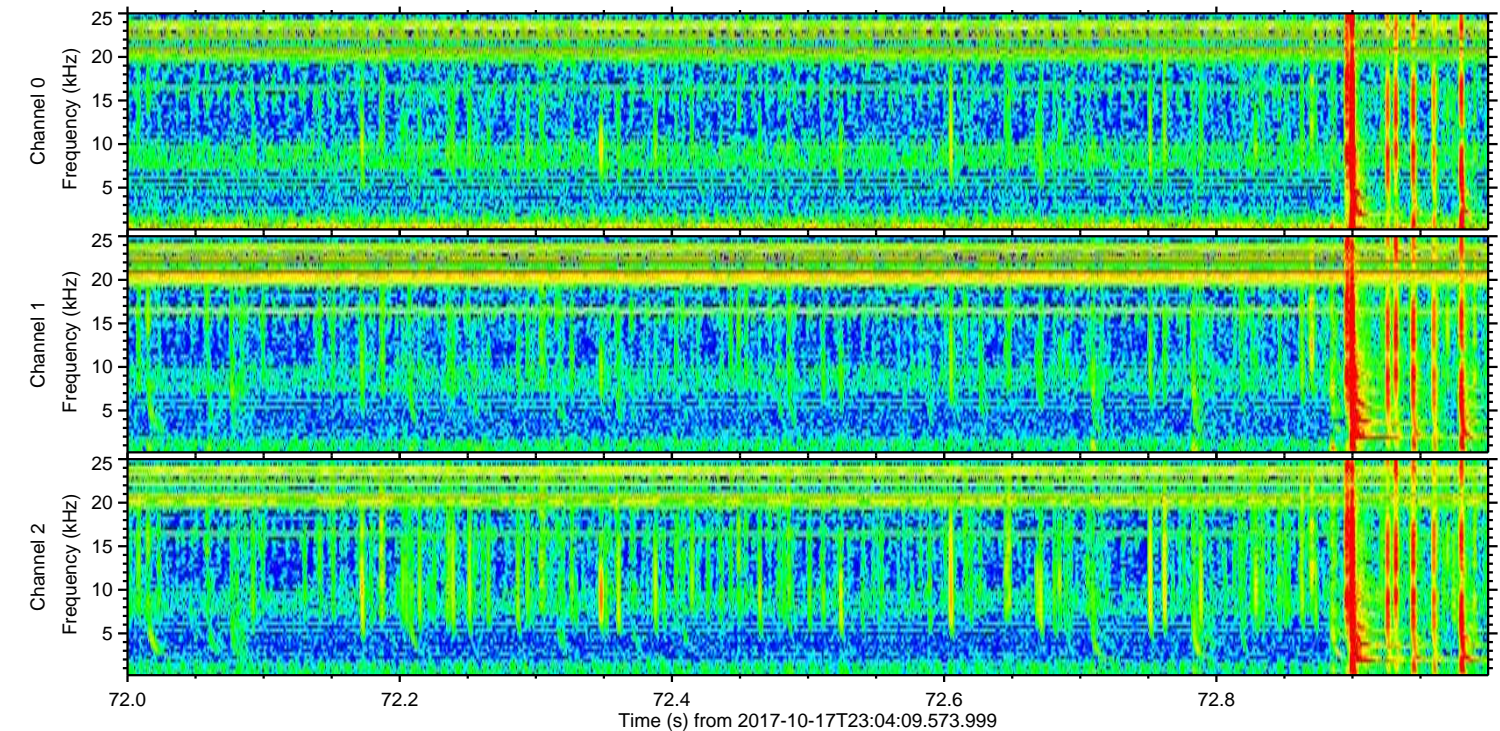
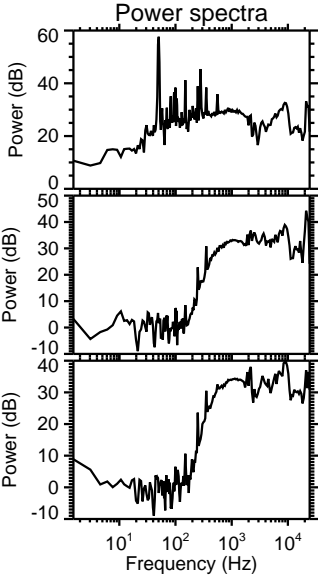
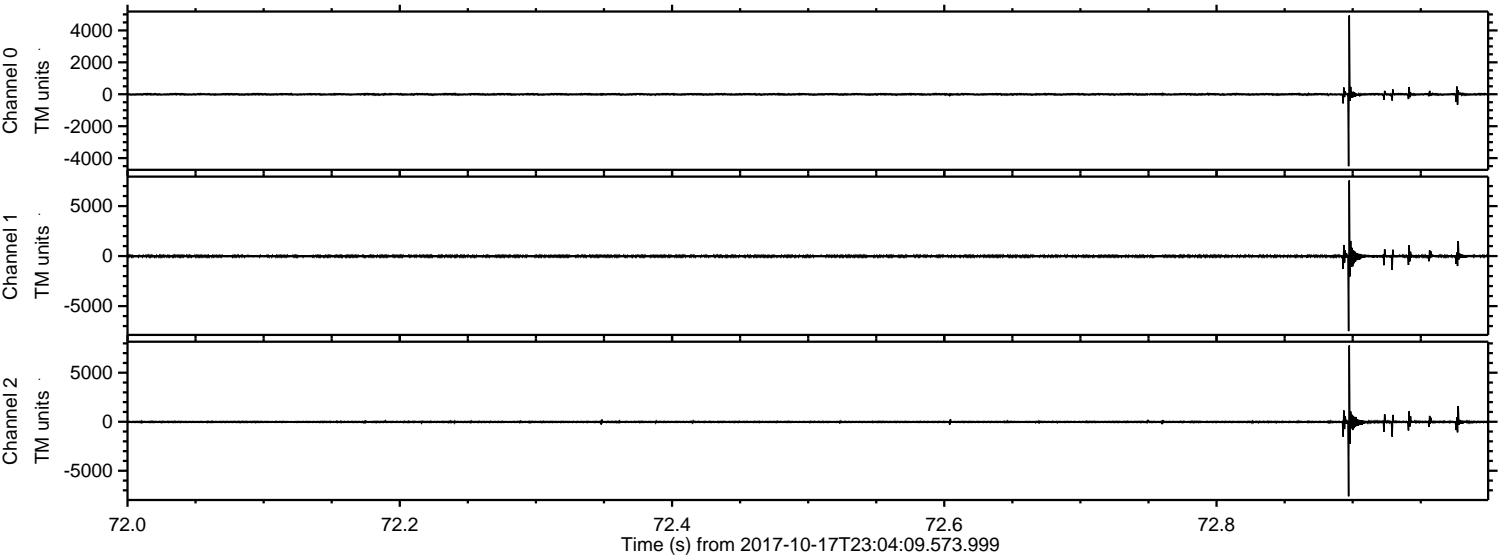
Processed Wed Oct 18 01:12:11 2017 by ELM ver.2012-10-06 from 001__elm20171017_230408__dat00.bin



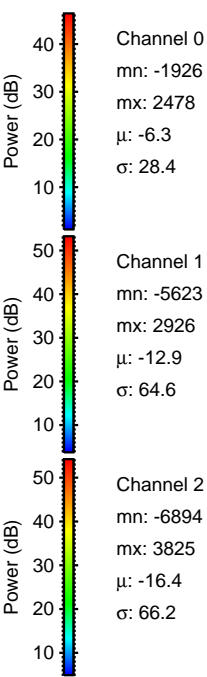
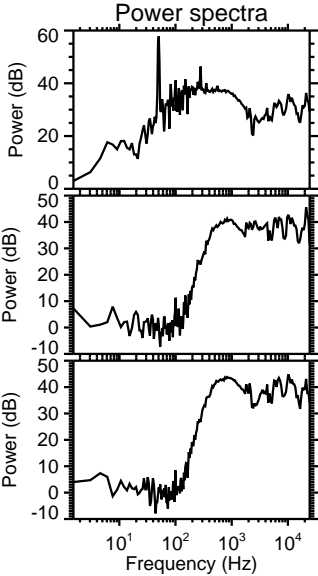
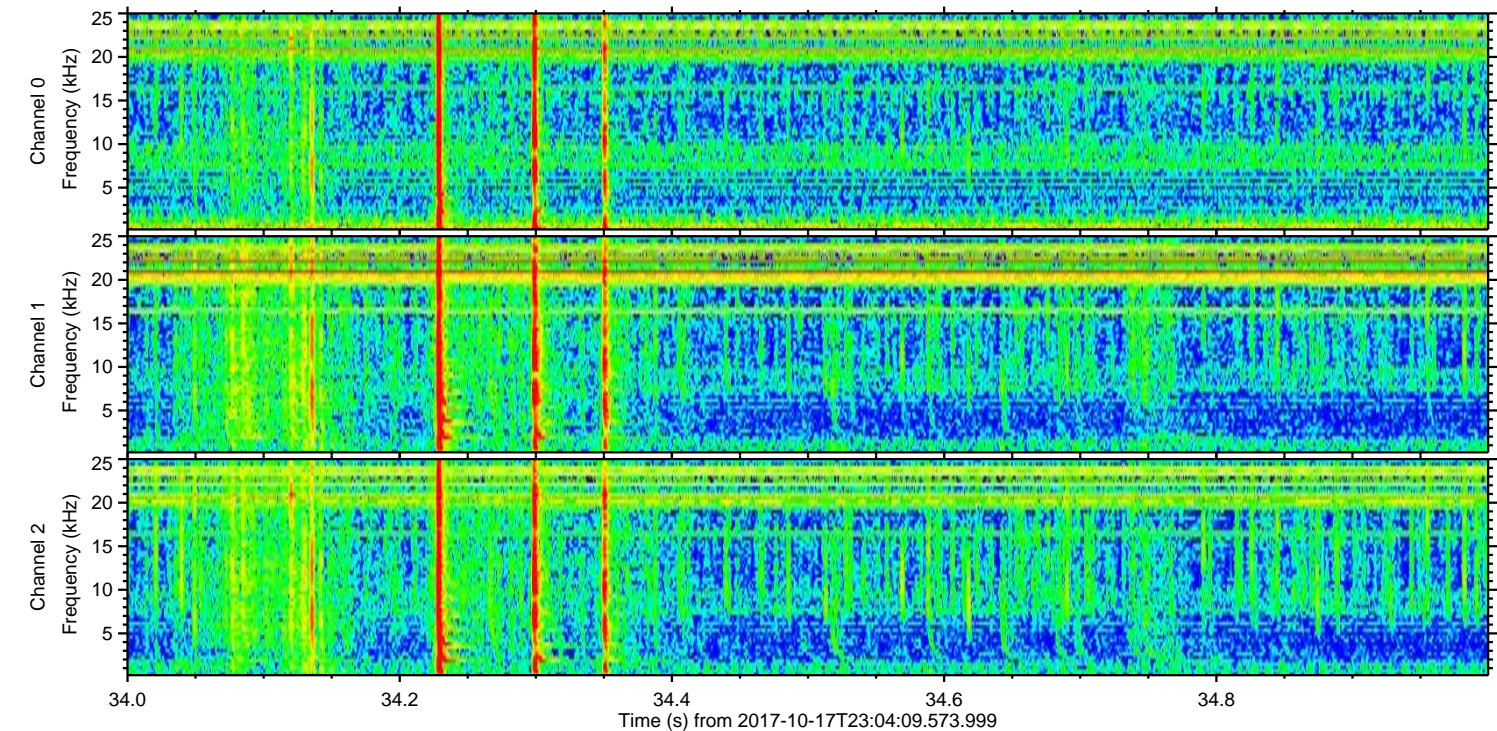
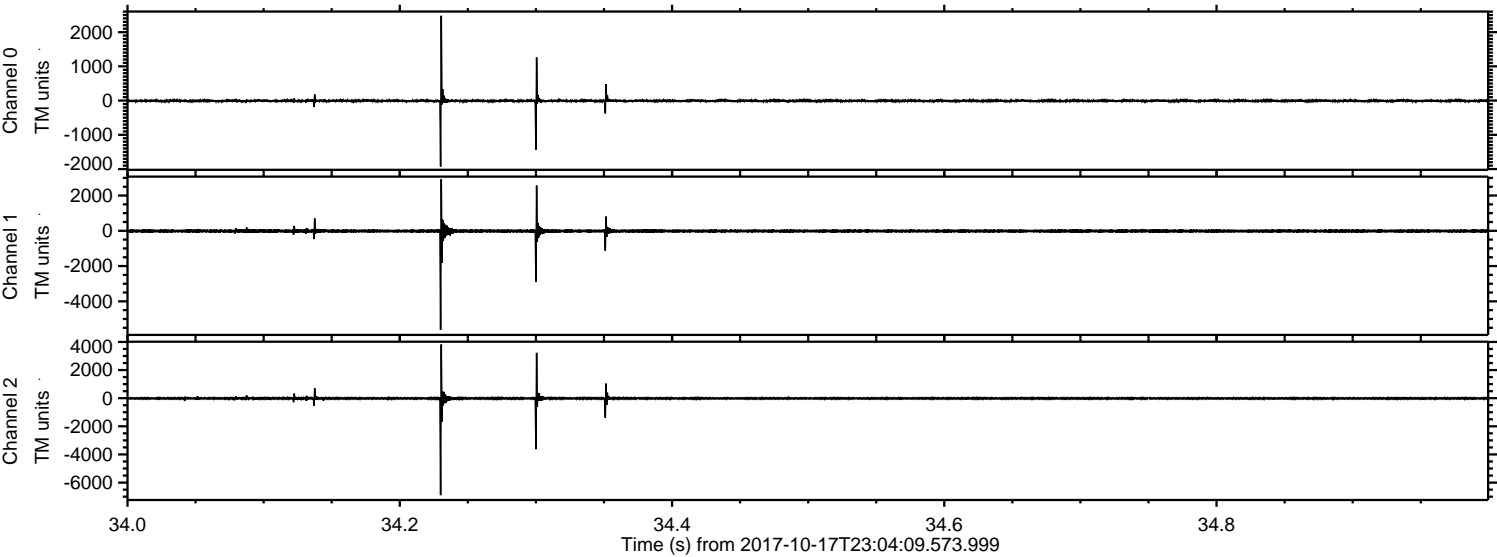
Processed Wed Oct 18 01:12:11 2017 by ELM ver.2012-10-06 from 001__elm20171017_230408__dat00.bin



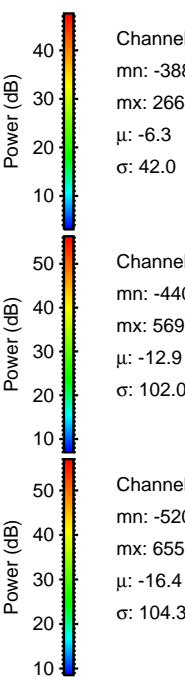
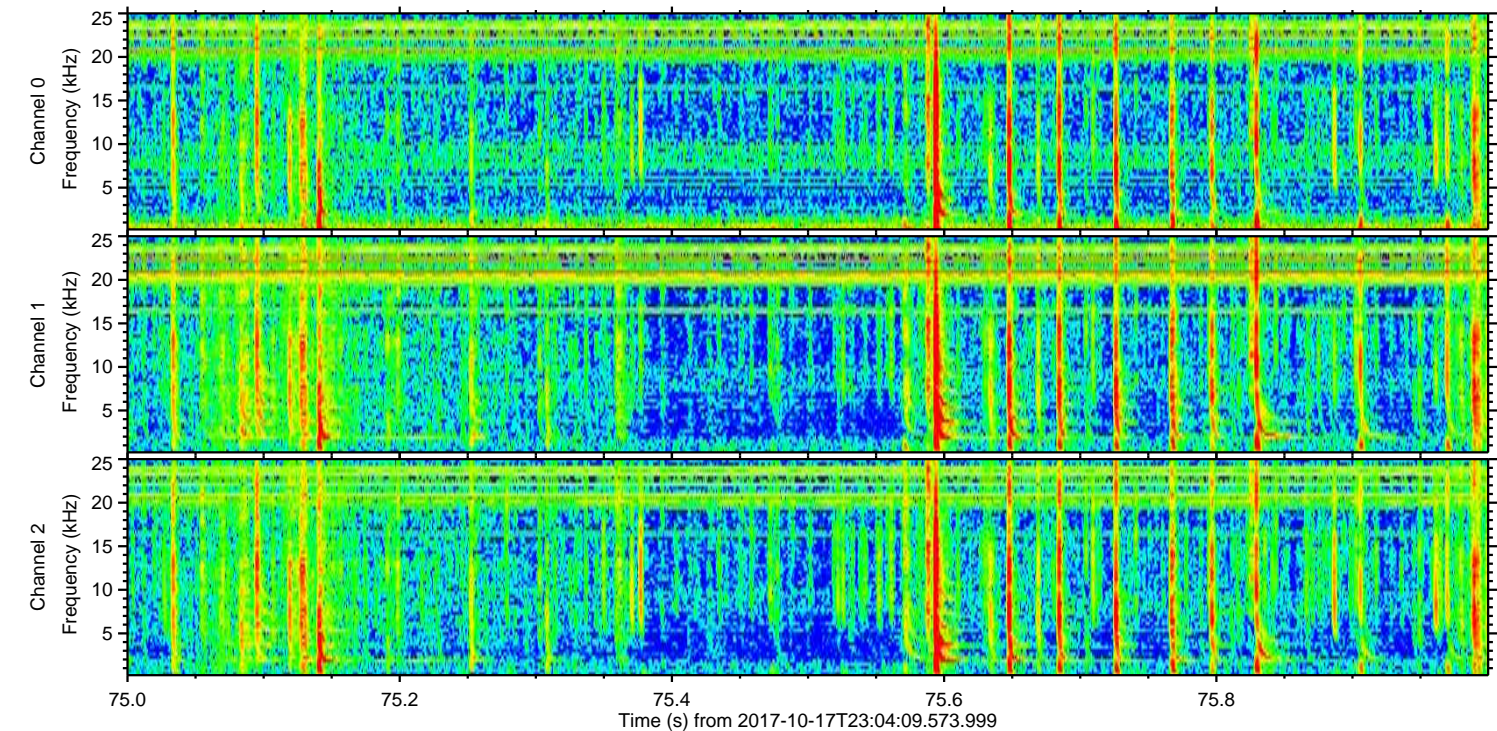
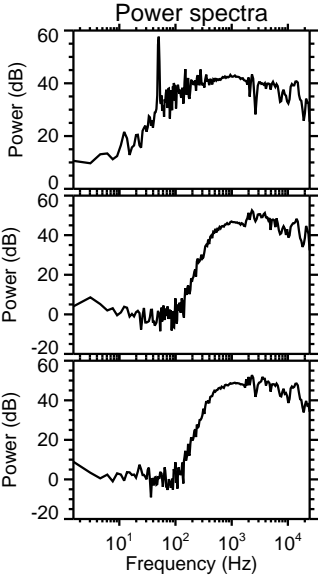
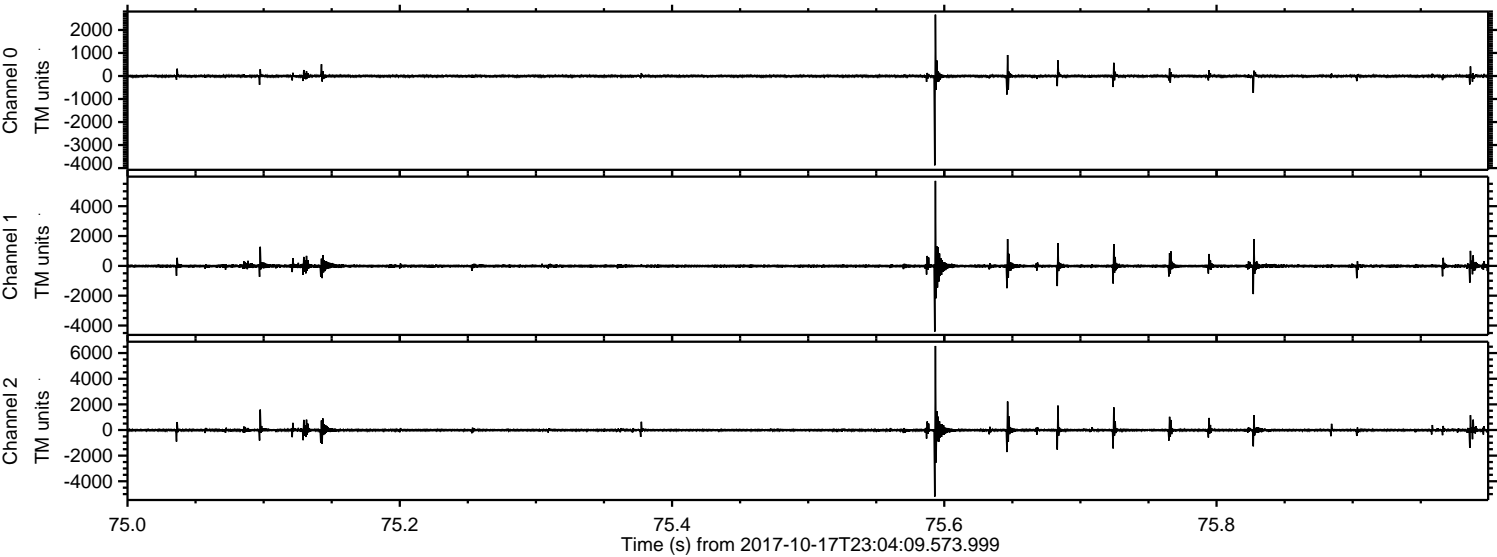
Processed Wed Oct 18 01:12:12 2017 by ELM ver.2012-10-06 from 001__elm20171017_230408__dat00.bin



Processed Wed Oct 18 01:12:13 2017 by ELM ver.2012-10-06 from 001__elm20171017_230408__dat00.bin



Processed Wed Oct 18 01:12:13 2017 by ELM ver.2012-10-06 from 001__elm20171017_230408__dat00.bin



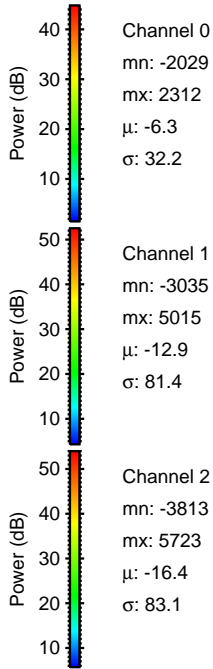
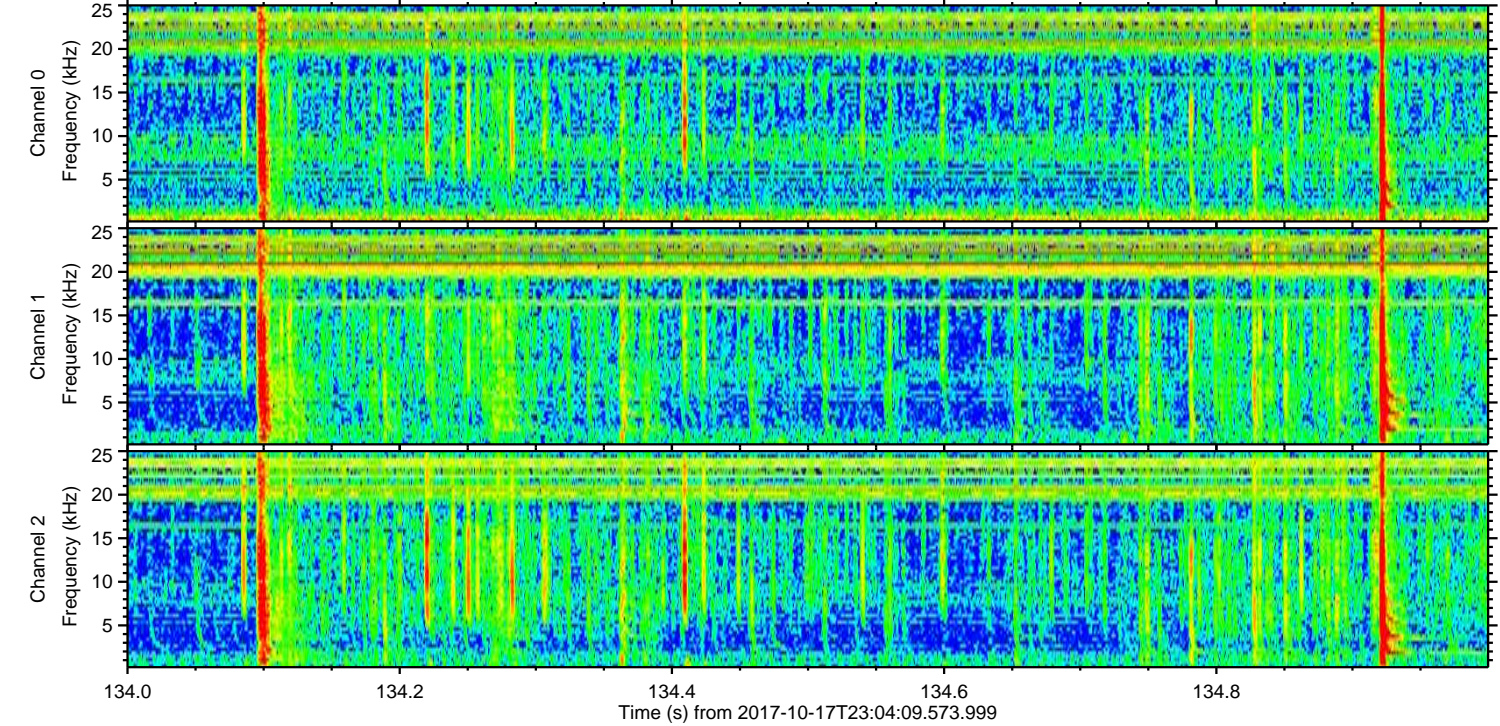
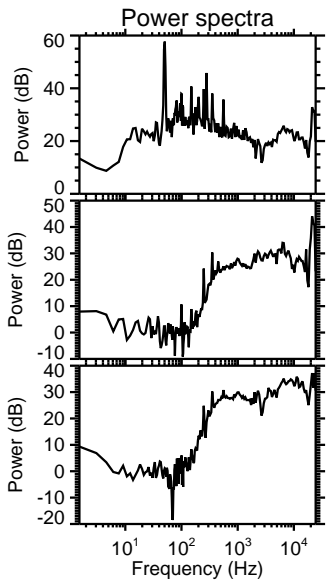
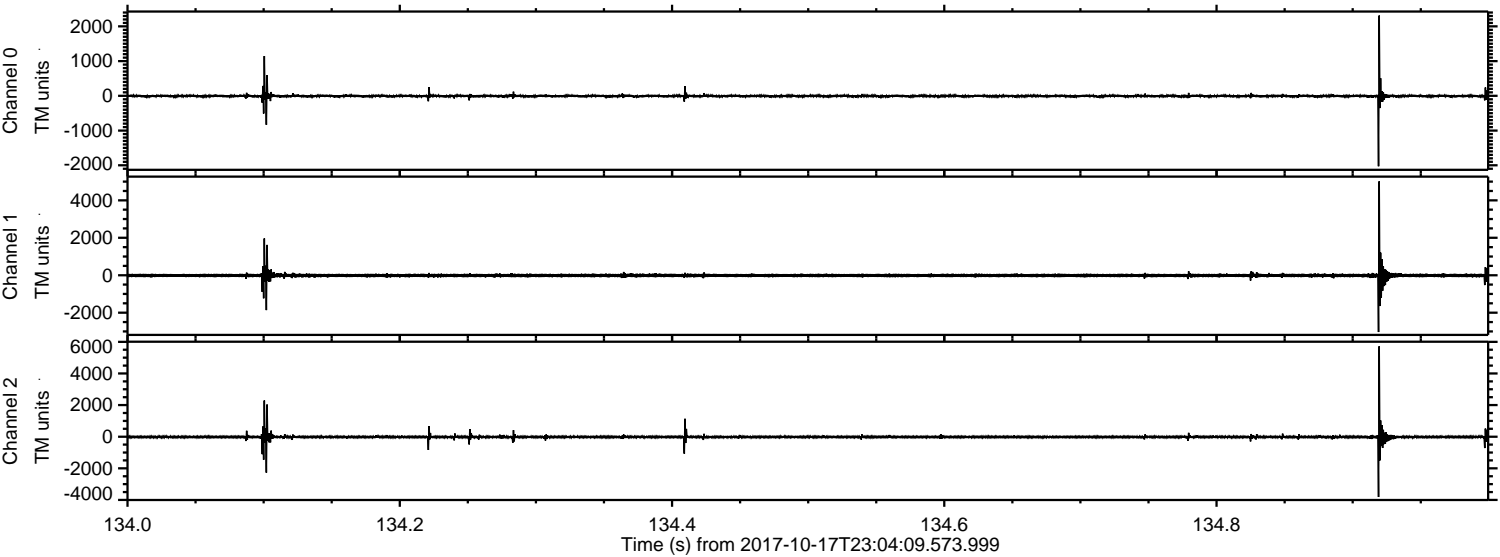
Channel 0
mn: -3883
mx: 2668
 μ : -6.3
 σ : 42.0

Channel 1
mn: -4407
mx: 5697
 μ : -12.9
 σ : 102.0

Channel 2
mn: -5202
mx: 6559
 μ : -16.4
 σ : 104.3

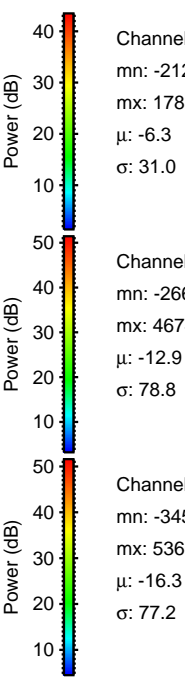
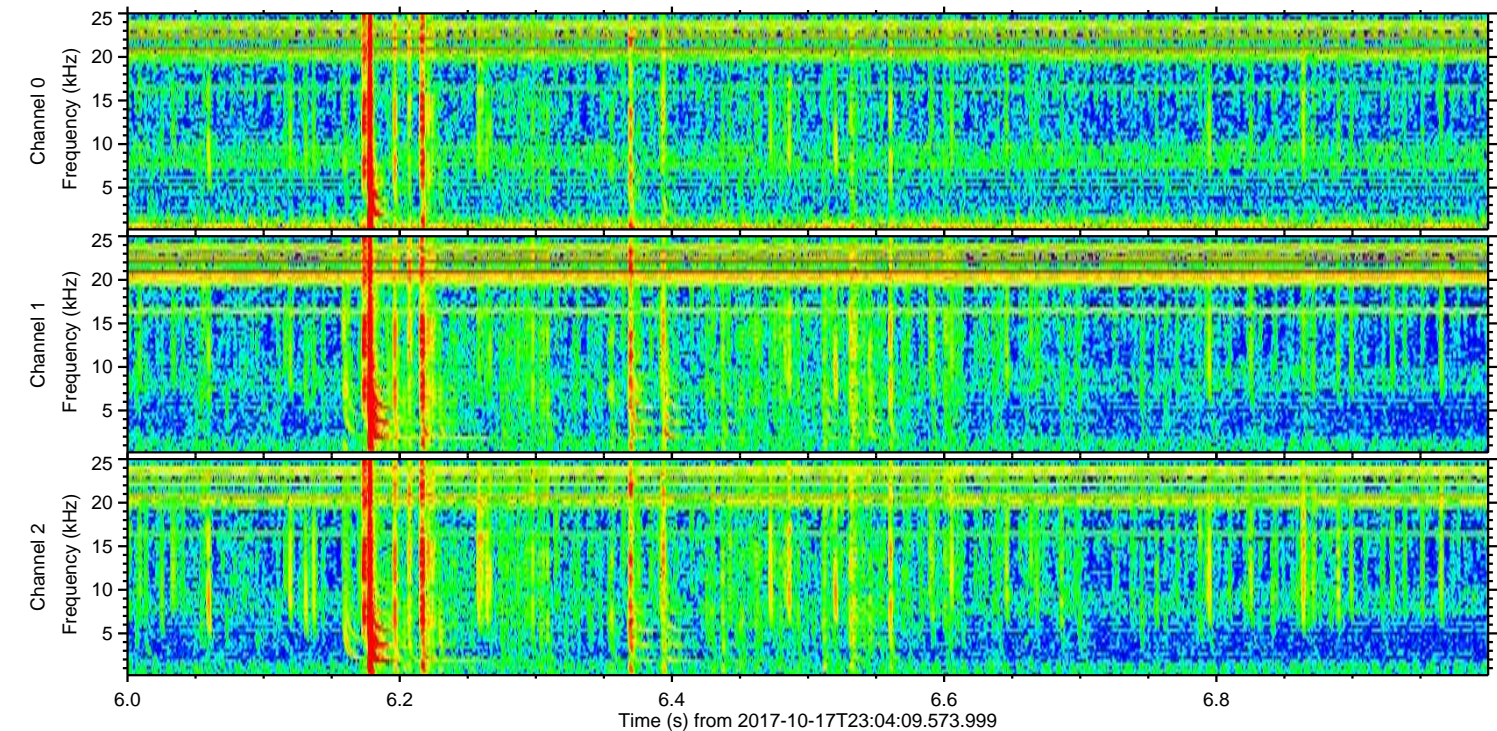
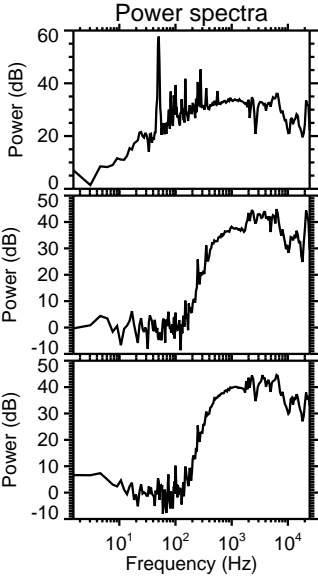
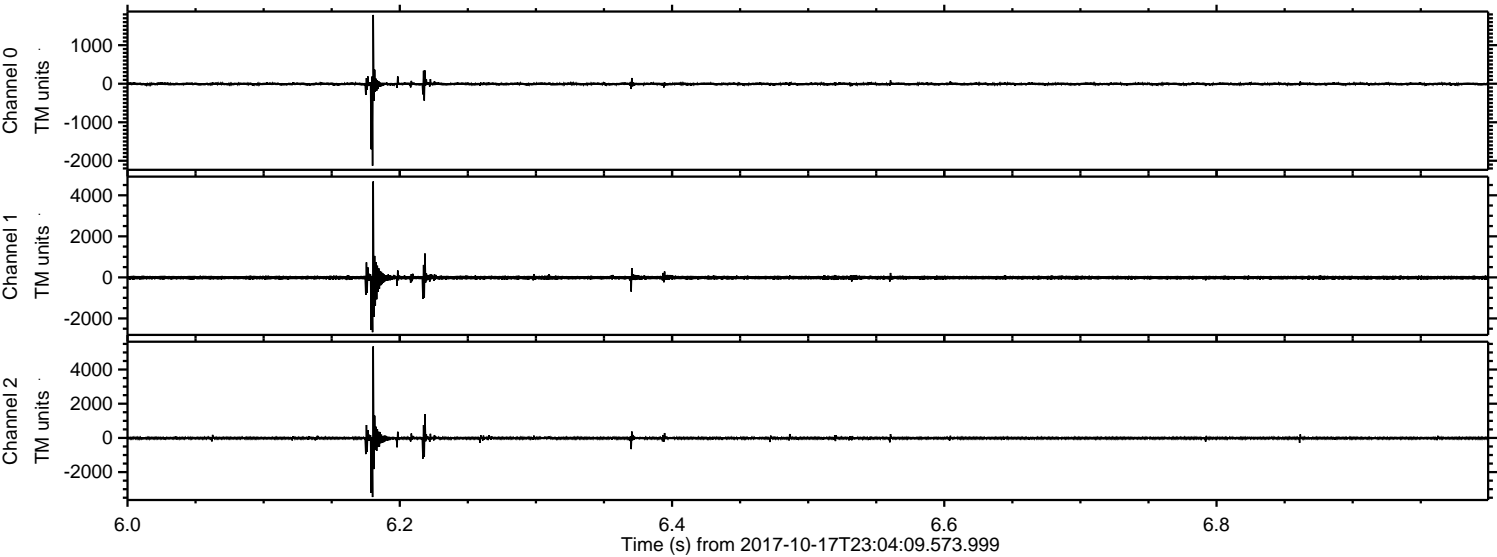
ELMAVAN 3D WAVEFORMS (Measured data sampled at 50 kHz) 51000 packets of 144 samples from 2017-10-17T23:04:09.573.999. Part 135/147

Processed Wed Oct 18 01:12:14 2017 by ELM ver.2012-10-06 from 001__elm20171017_230408__dat00.bin



ELMAVAN 3D WAVEFORMS (Measured data sampled at 50 kHz) 51000 packets of 144 samples from 2017-10-17T23:04:09.573.999. Part 7/147

Processed Wed Oct 18 01:12:15 2017 by ELM ver.2012-10-06 from 001__elm20171017_230408__dat00.bin

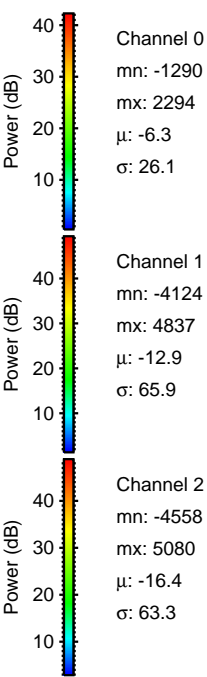
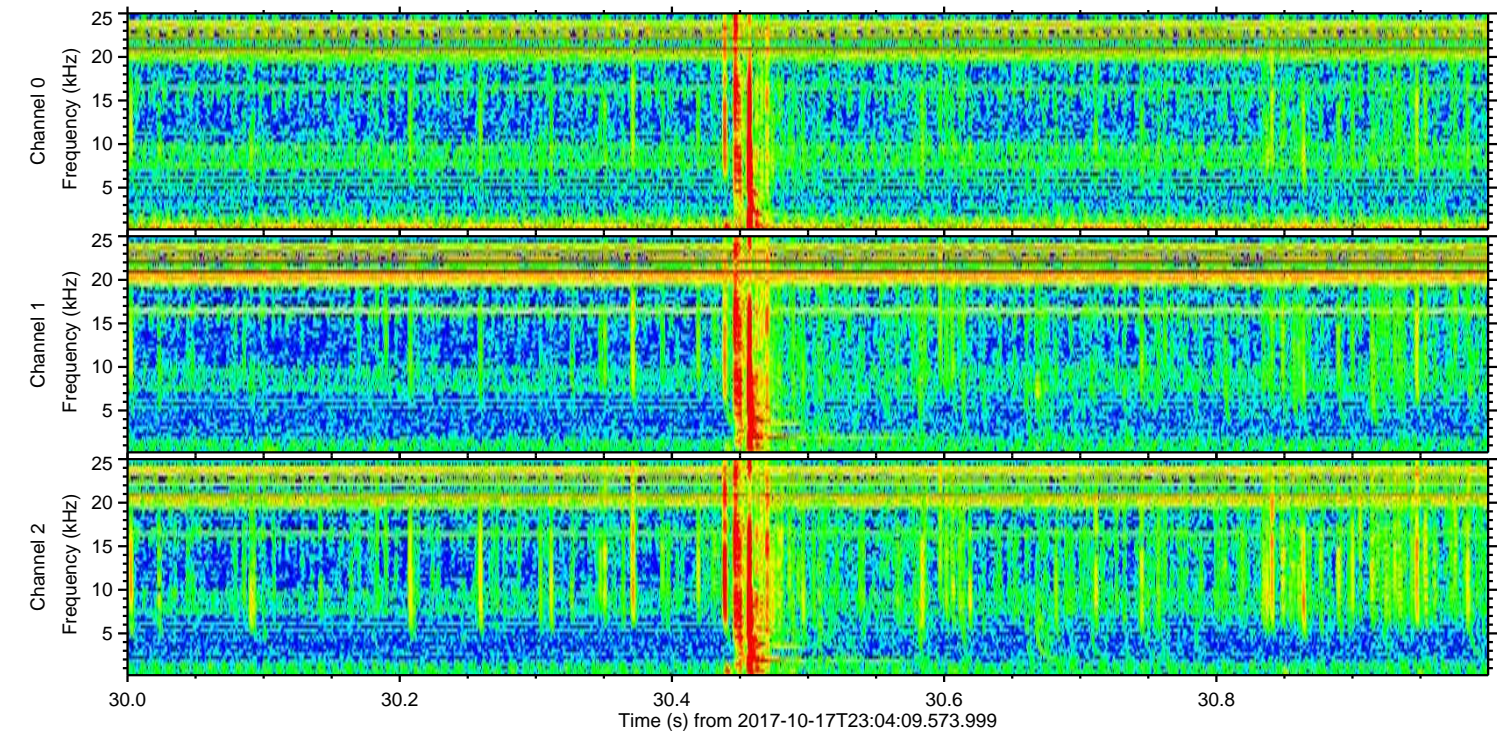
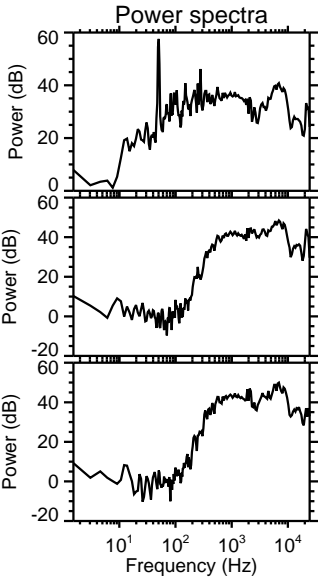
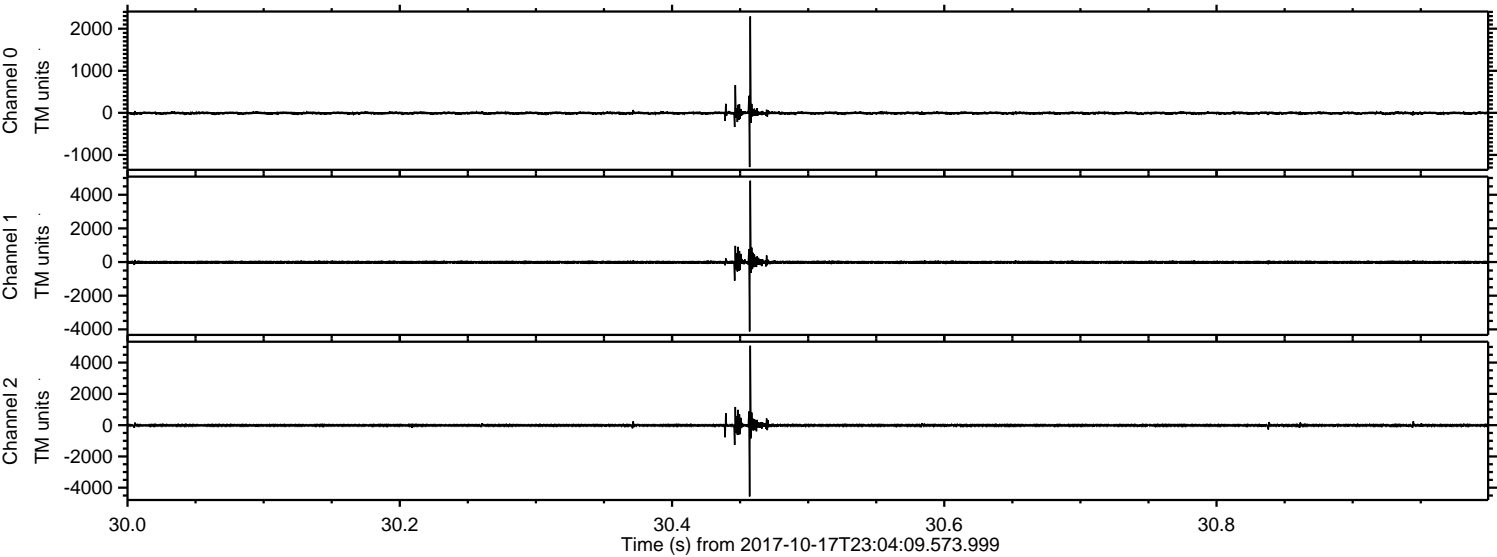


Channel 0
mn: -2129
mx: 1785
 μ : -6.3
 σ : 31.0

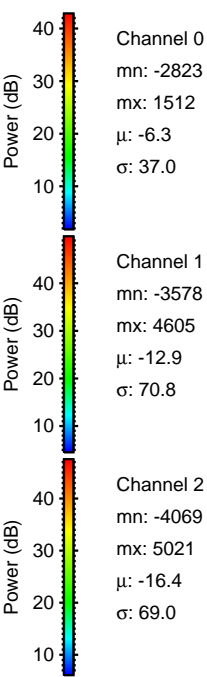
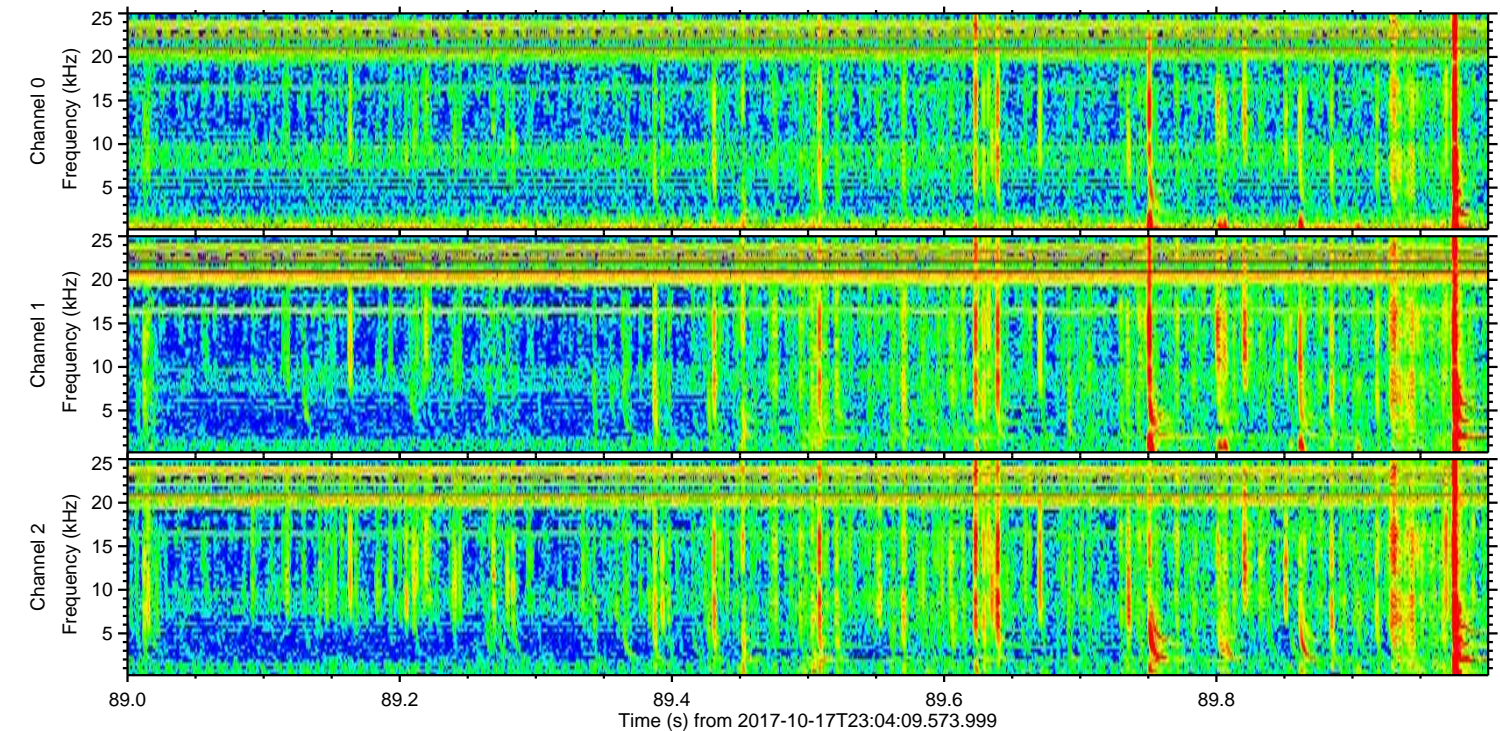
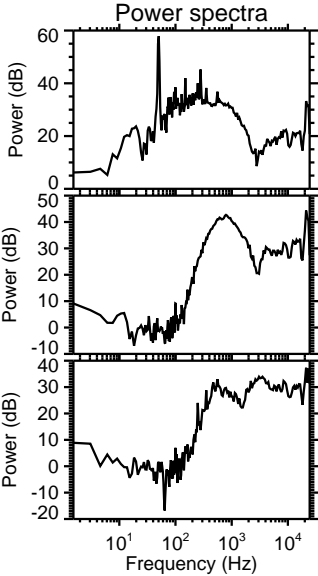
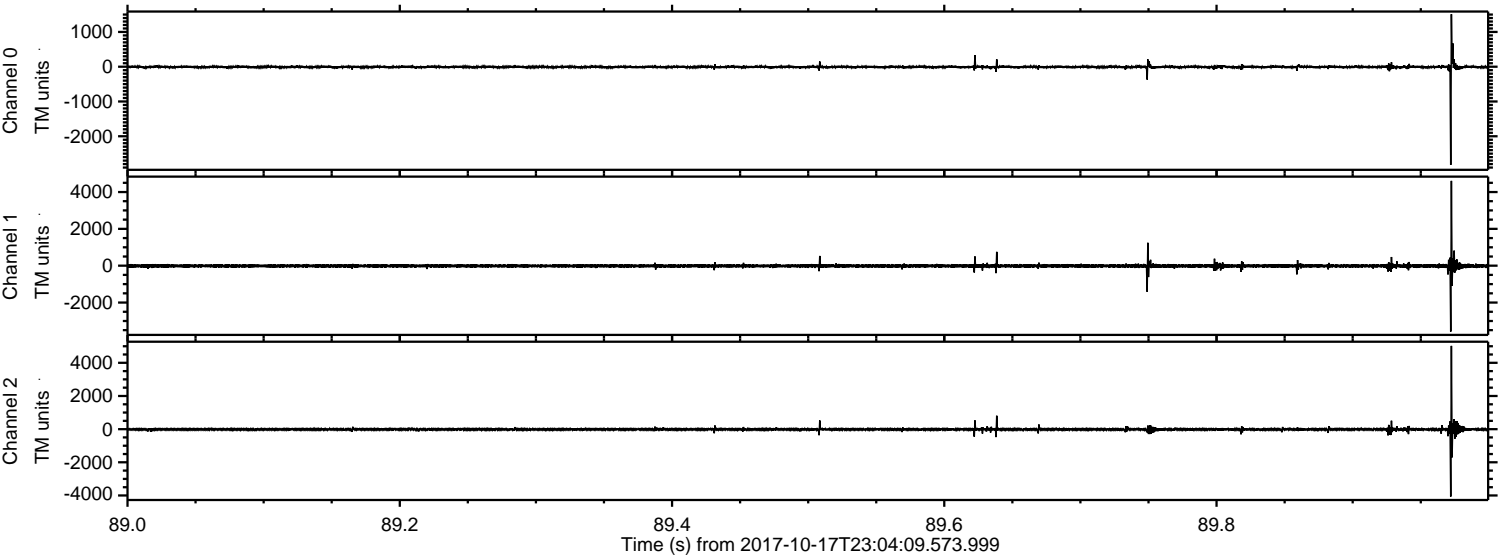
Channel 1
mn: -2669
mx: 4674
 μ : -12.9
 σ : 78.8

Channel 2
mn: -3459
mx: 5360
 μ : -16.3
 σ : 77.2

Processed Wed Oct 18 01:12:15 2017 by ELM ver.2012-10-06 from 001__elm20171017_230408__dat00.bin



Processed Wed Oct 18 01:12:16 2017 by ELM ver.2012-10-06 from 001__elm20171017_230408__dat00.bin



Processed Wed Oct 18 01:12:17 2017 by ELM ver.2012-10-06 from 001__elm20171017_230408__dat00.bin

