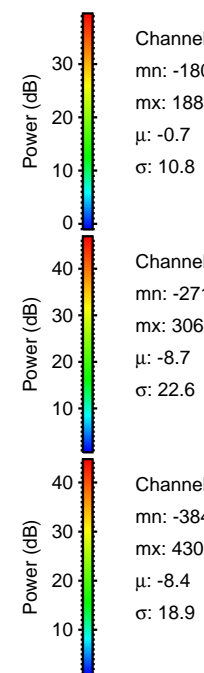
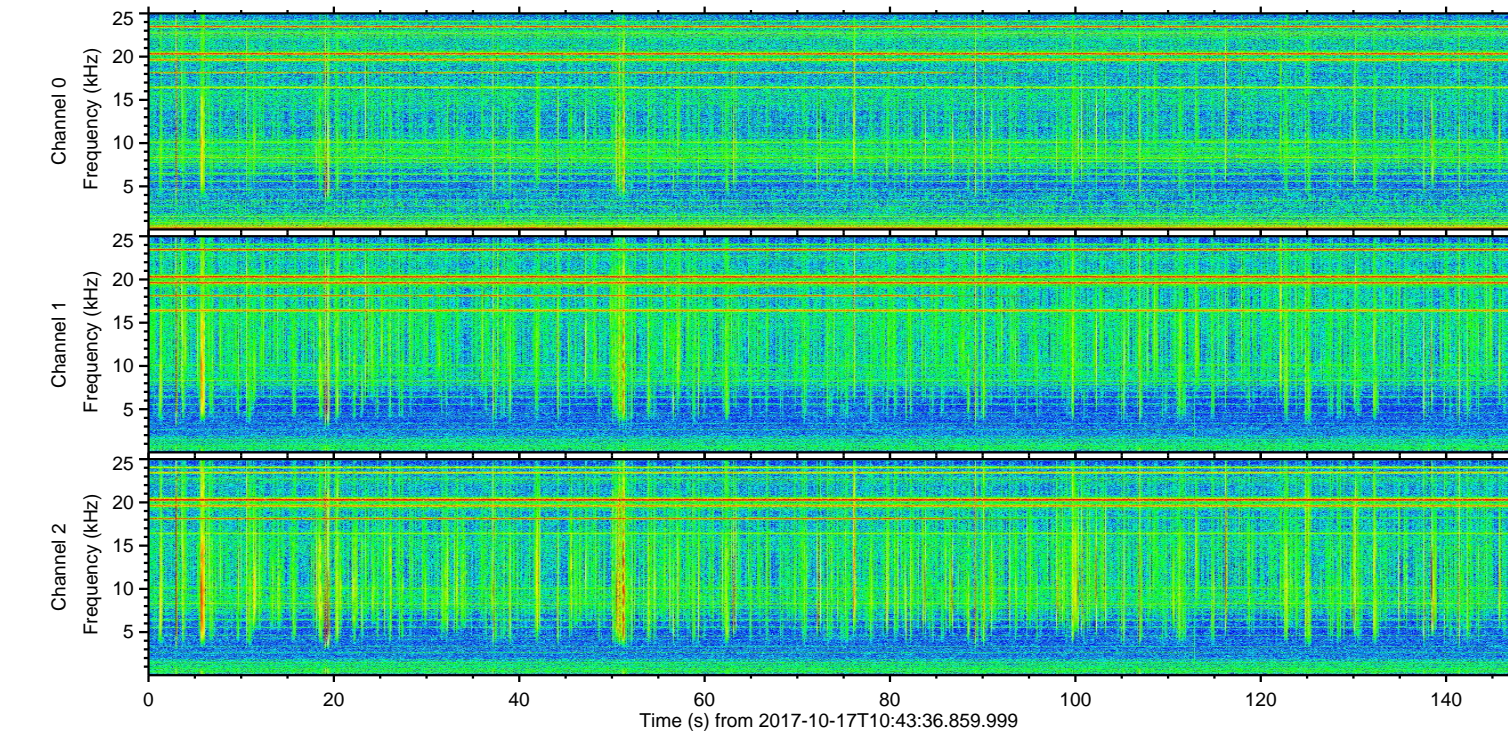
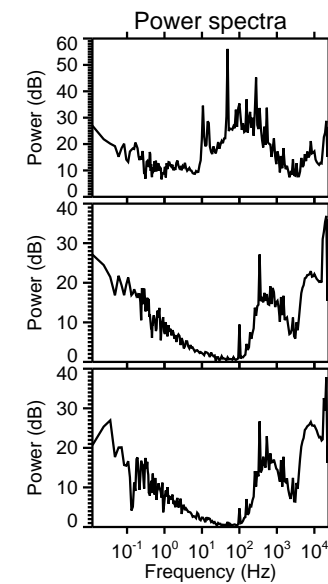
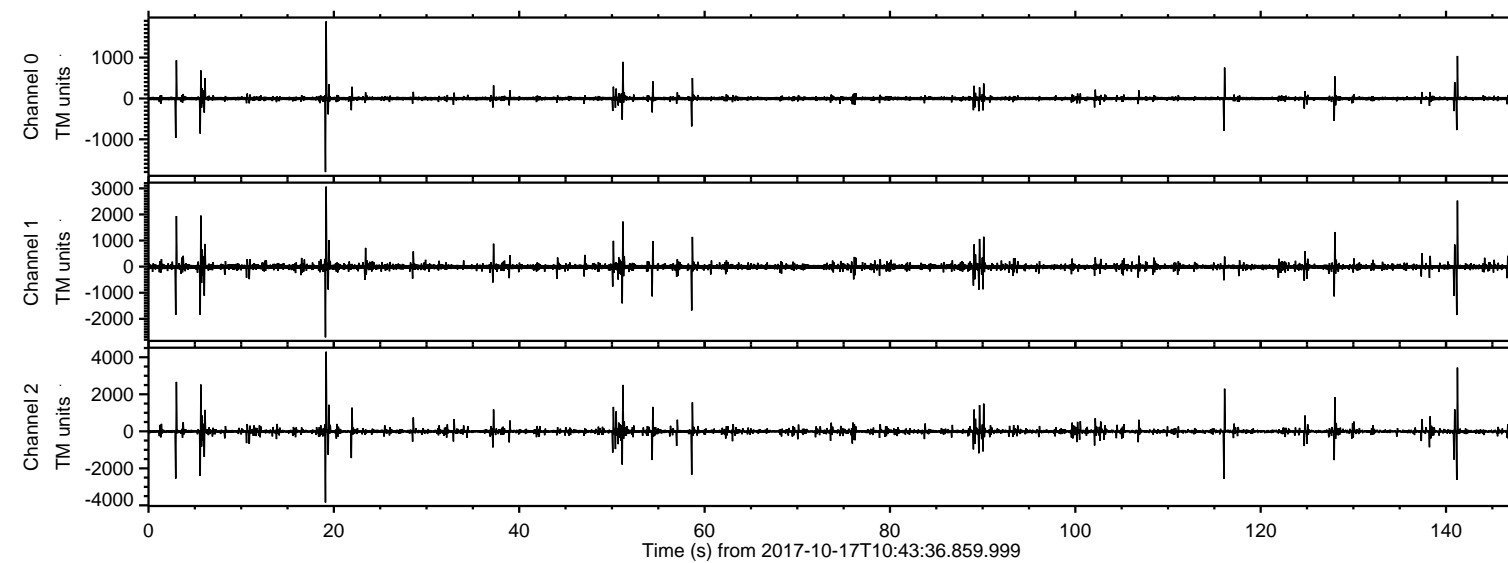
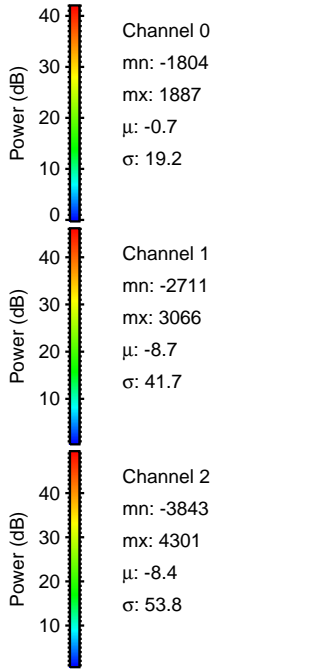
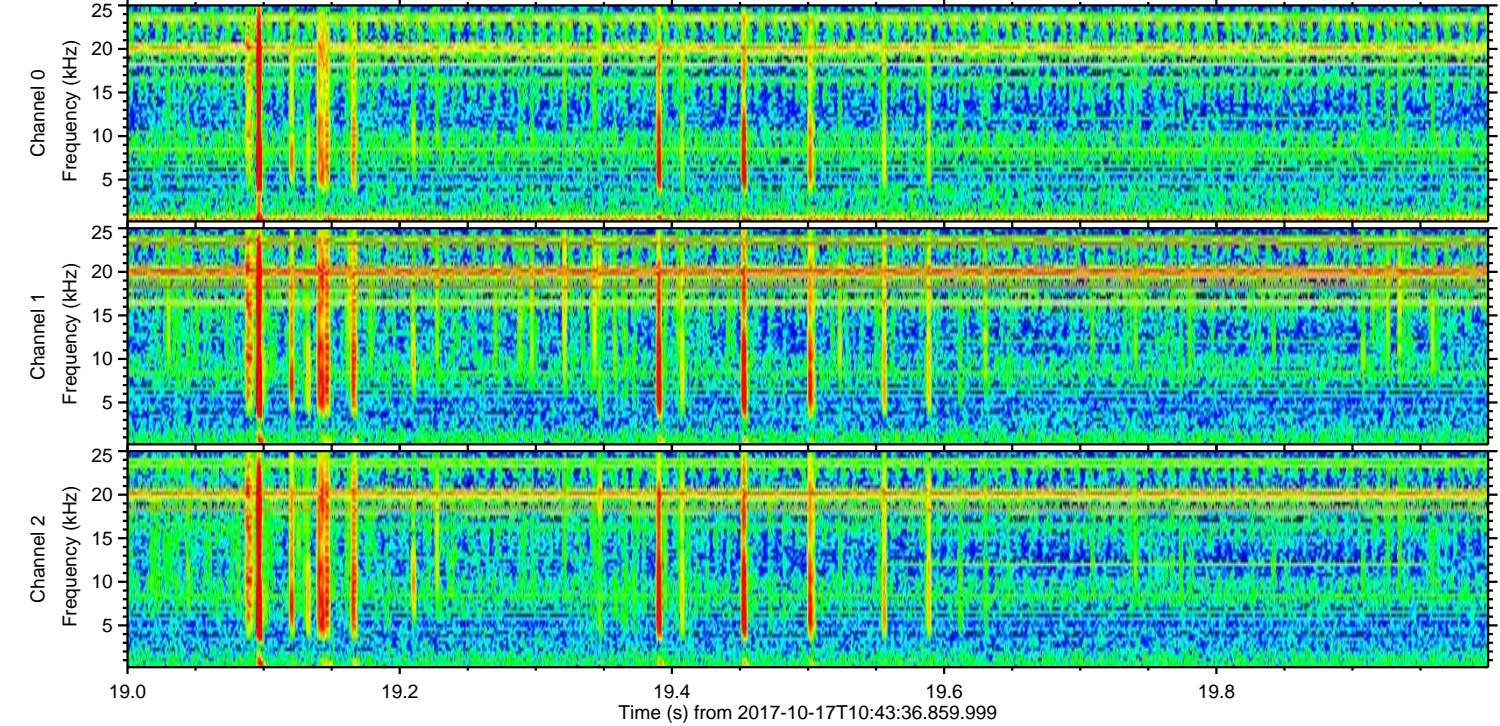
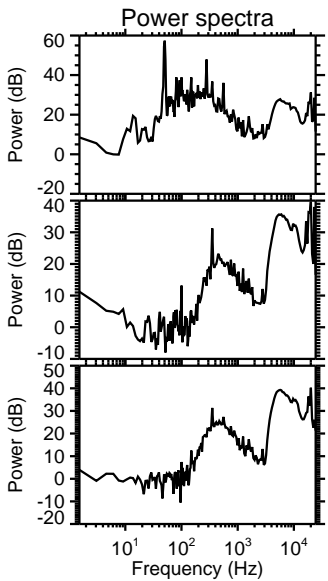
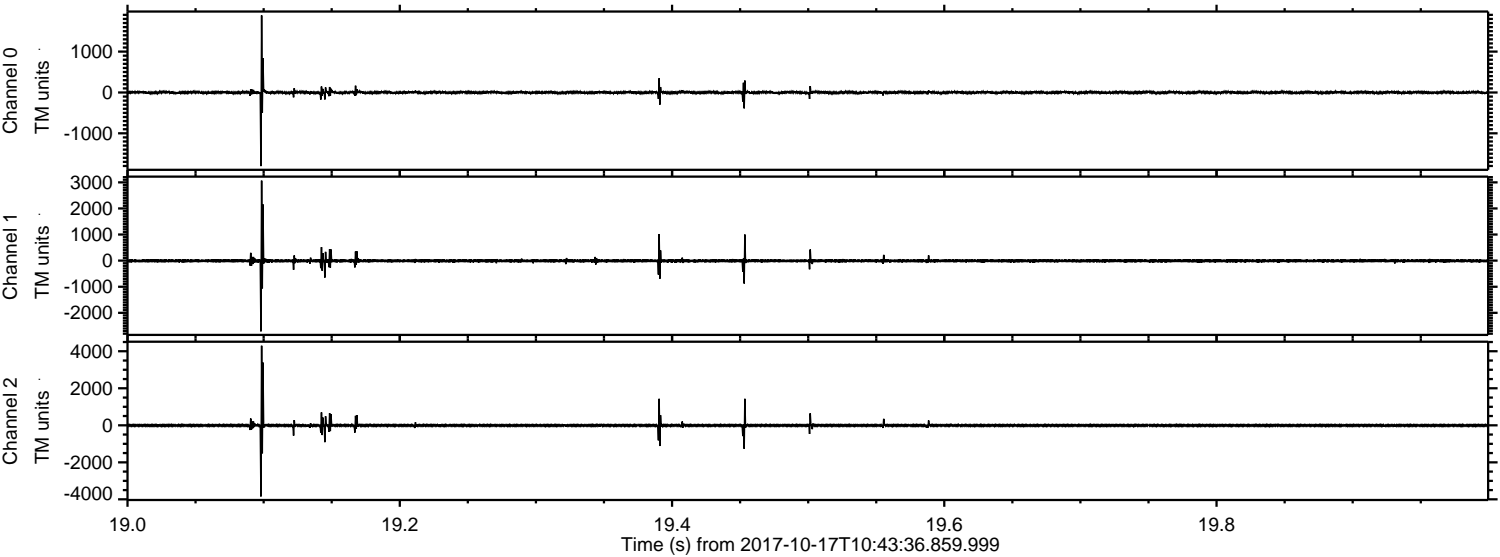


ELMAVAN 3D WAVEFORMS (Measured data sampled at 50 kHz) 51000 packets of 144 samples from 2017-10-17T10:43:36.859.999.

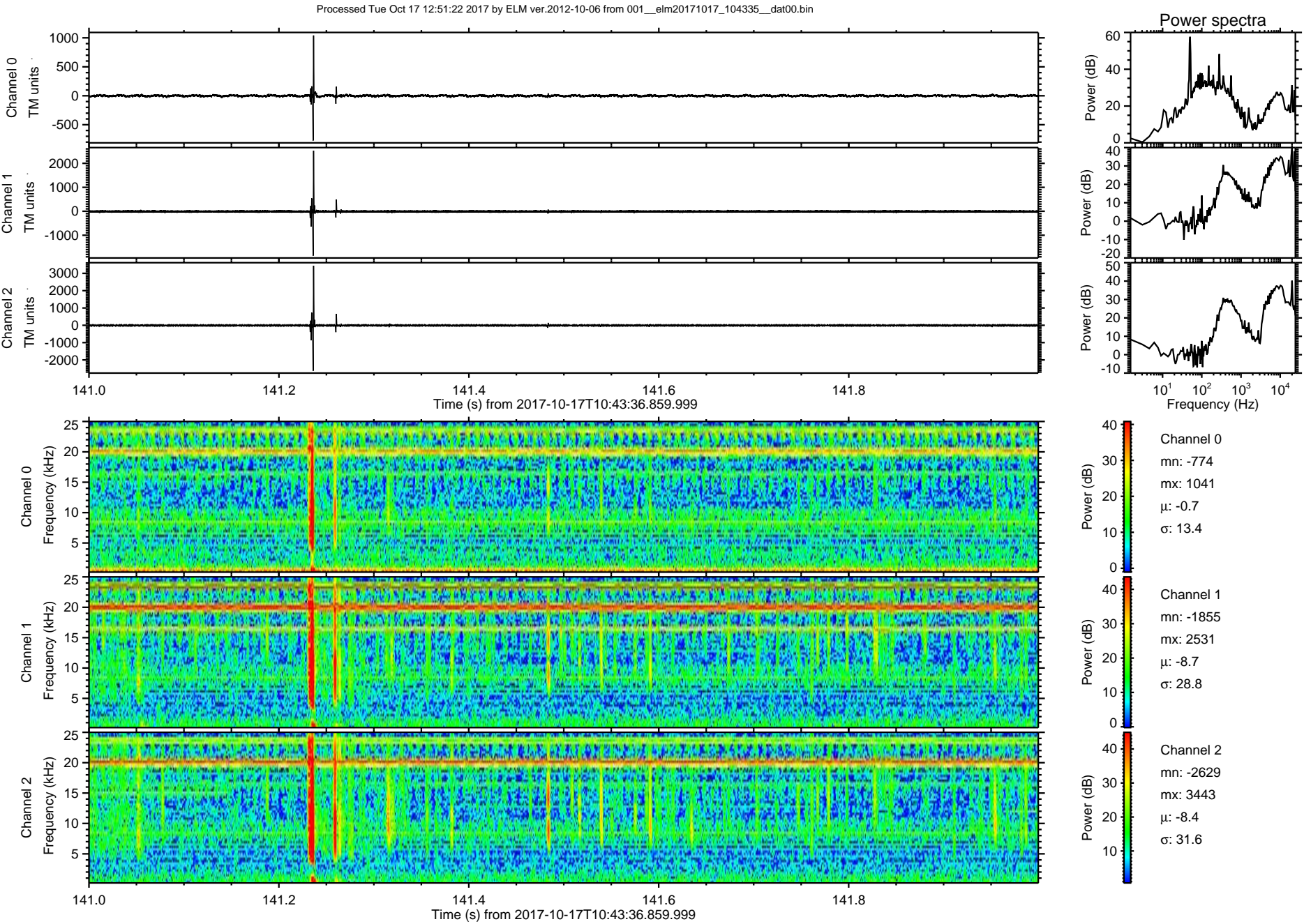
Processed Tue Oct 17 12:51:16 2017 by ELM ver.2012-10-06 from 001__elm20171017_104335__dat00.bin



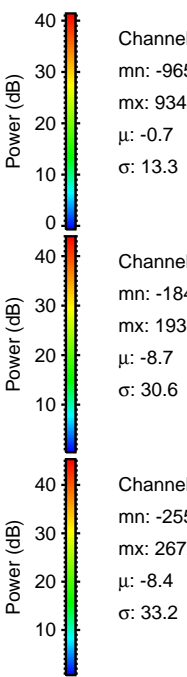
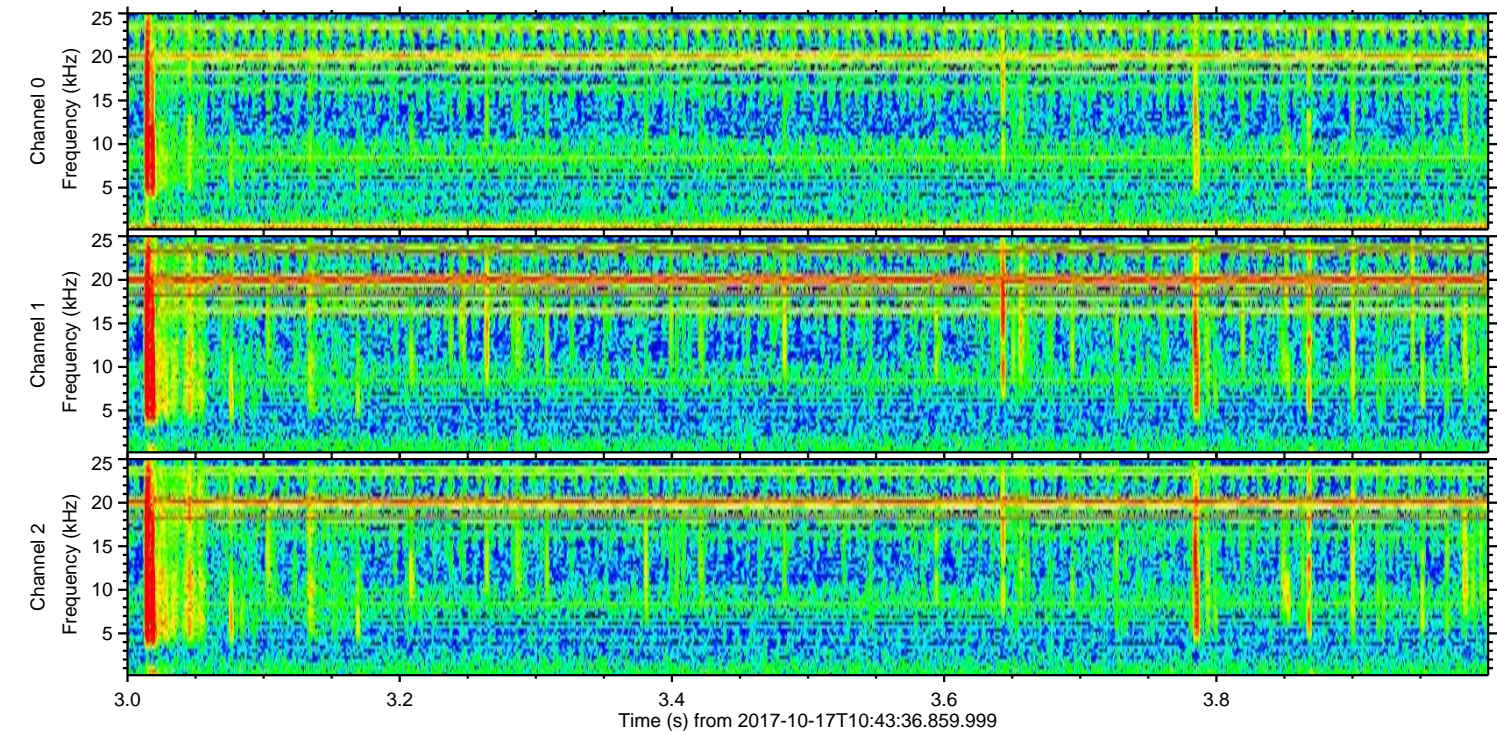
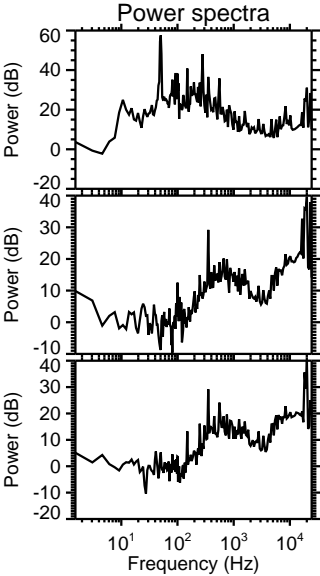
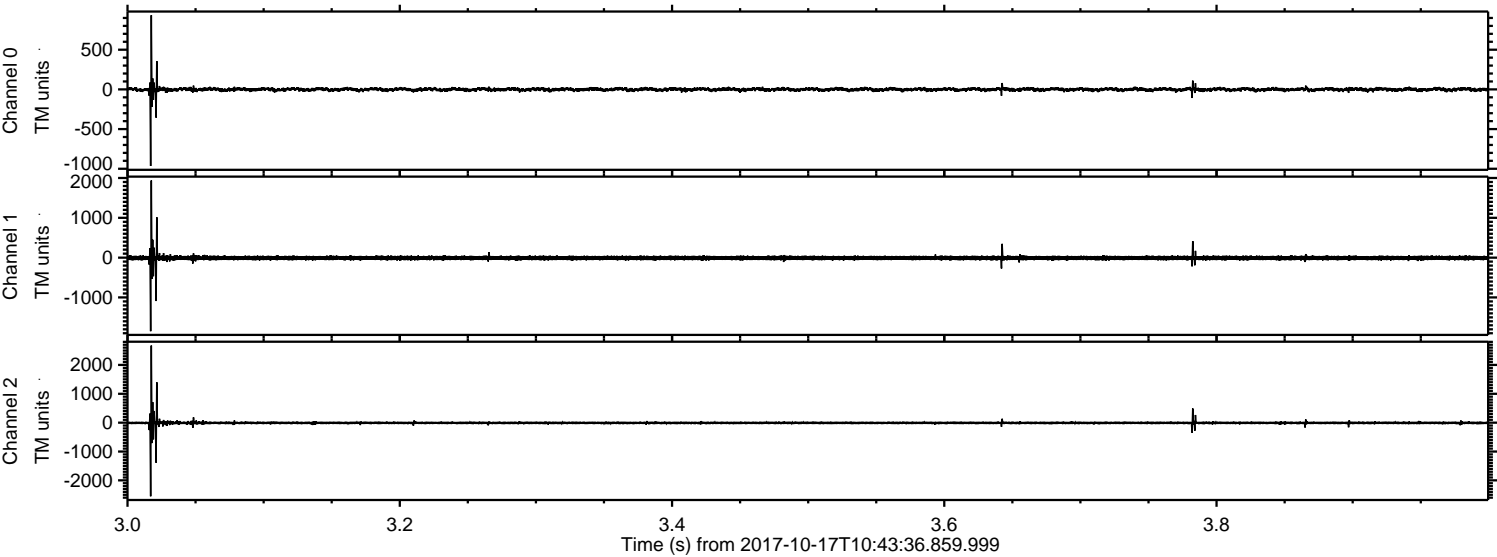
Processed Tue Oct 17 12:51:21 2017 by ELM ver.2012-10-06 from 001__elm20171017_104335__dat00.bin



ELMAVAN 3D WAVEFORMS (Measured data sampled at 50 kHz) 51000 packets of 144 samples from 2017-10-17T10:43:36.859.999. Part 142/147

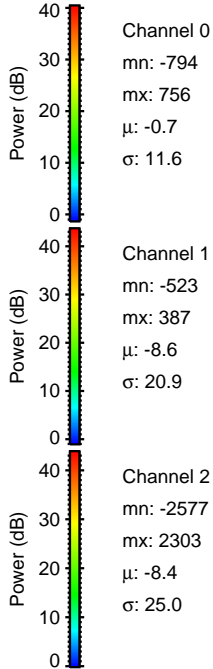
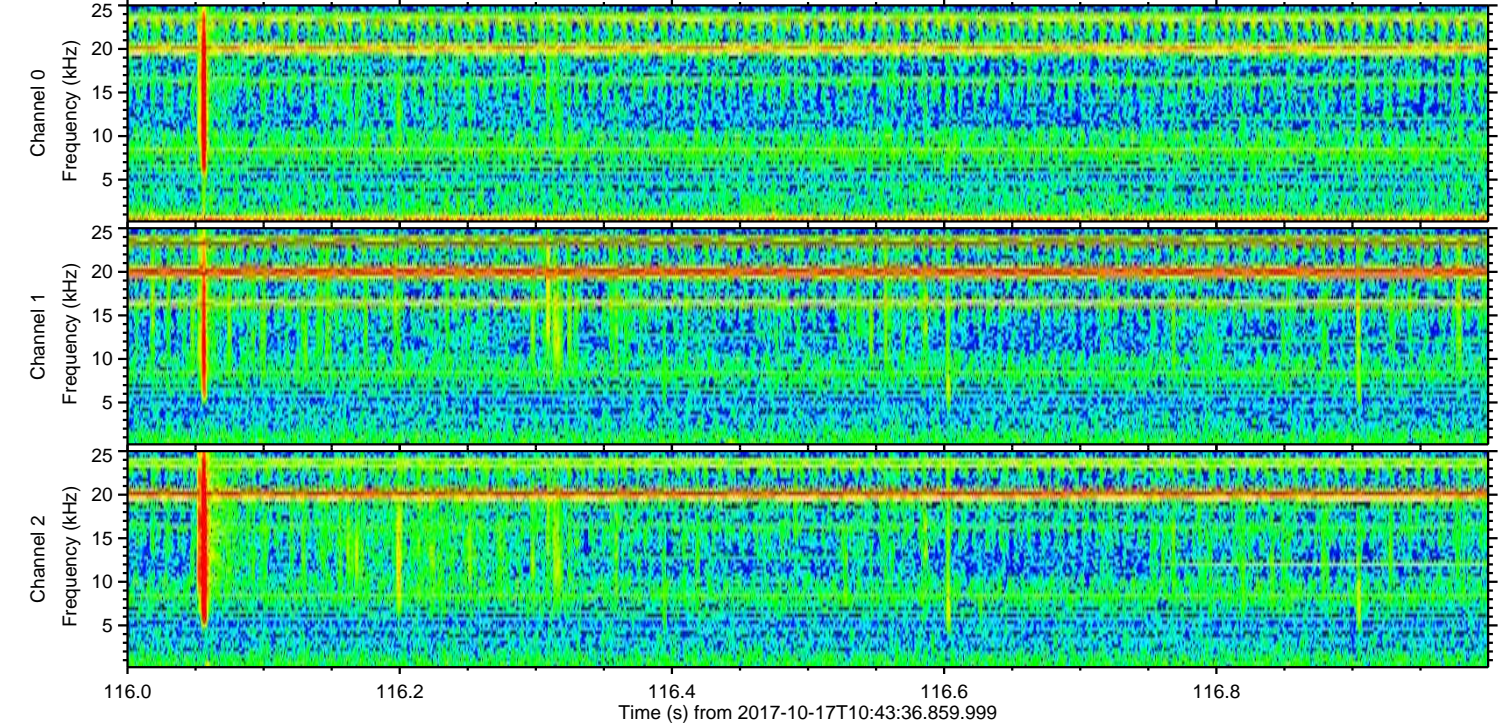
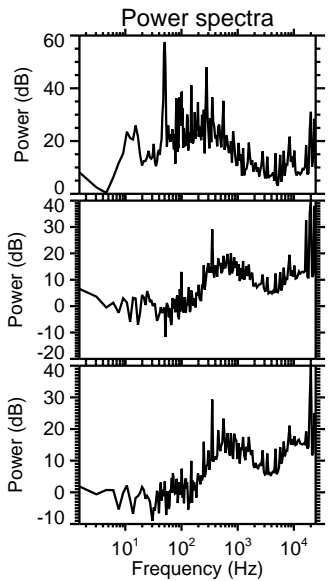
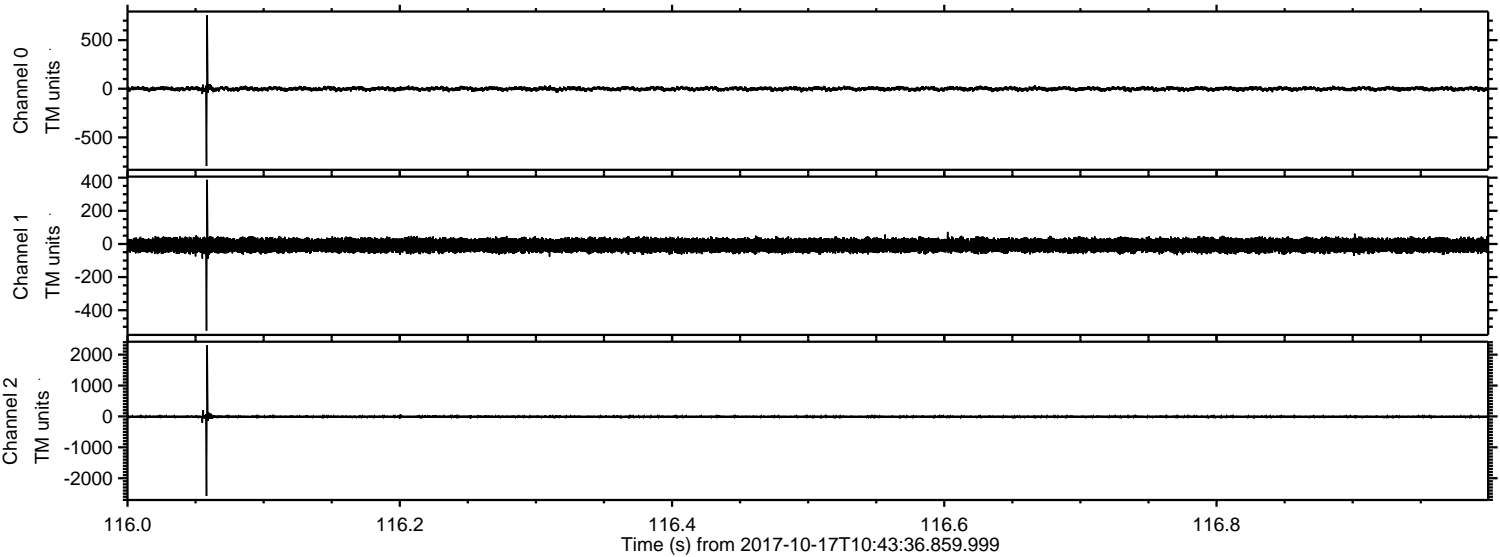


Processed Tue Oct 17 12:51:23 2017 by ELM ver.2012-10-06 from 001__elm20171017_104335__dat00.bin

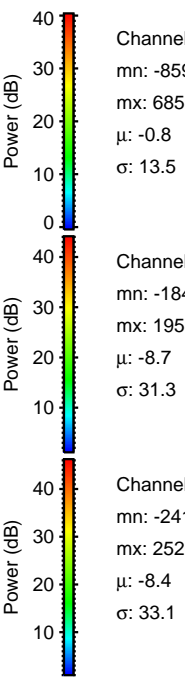
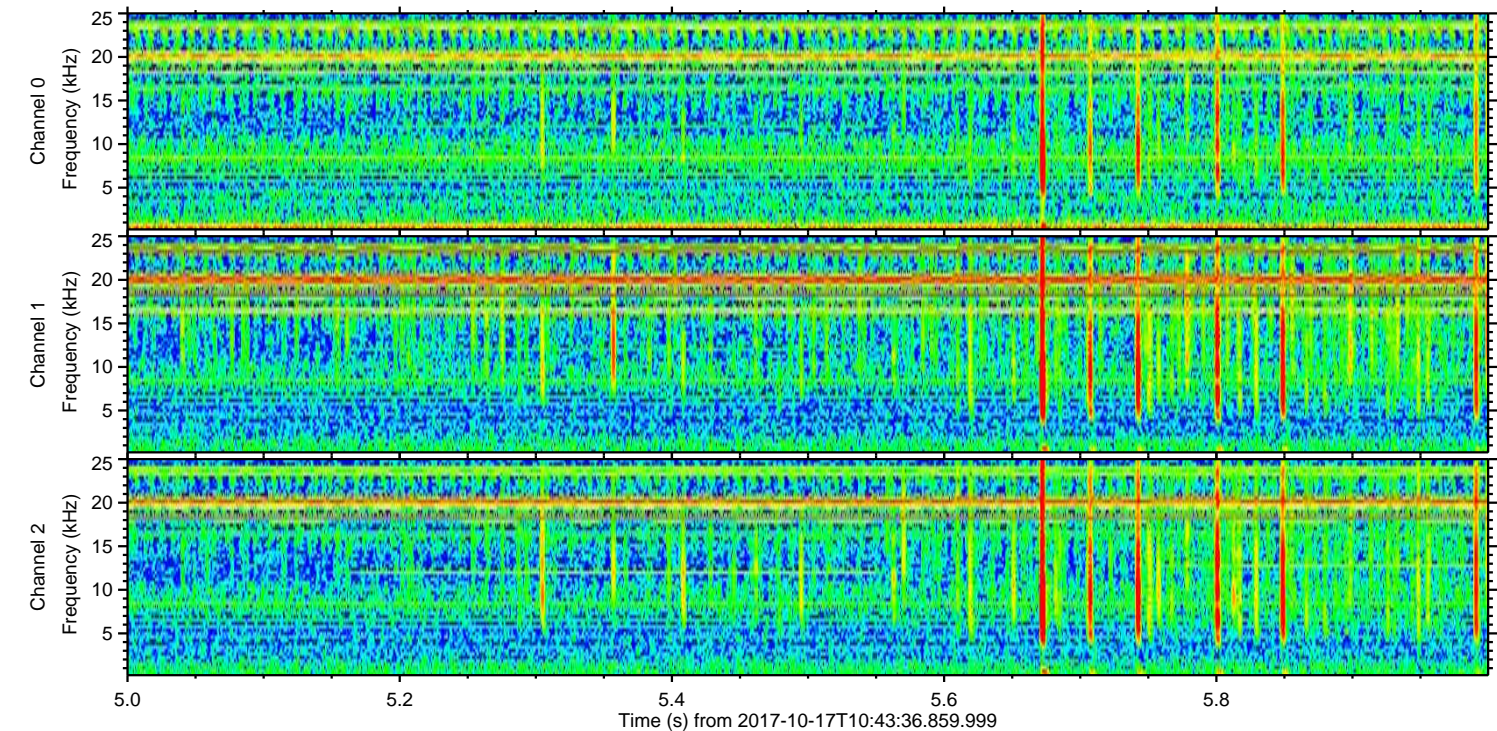
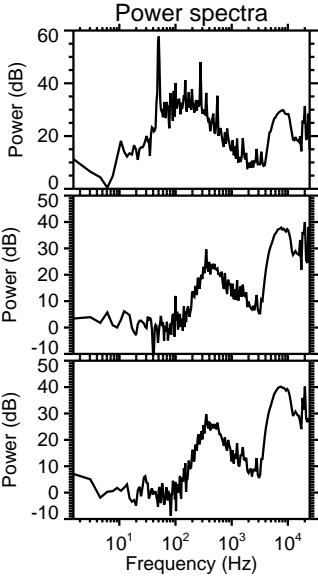
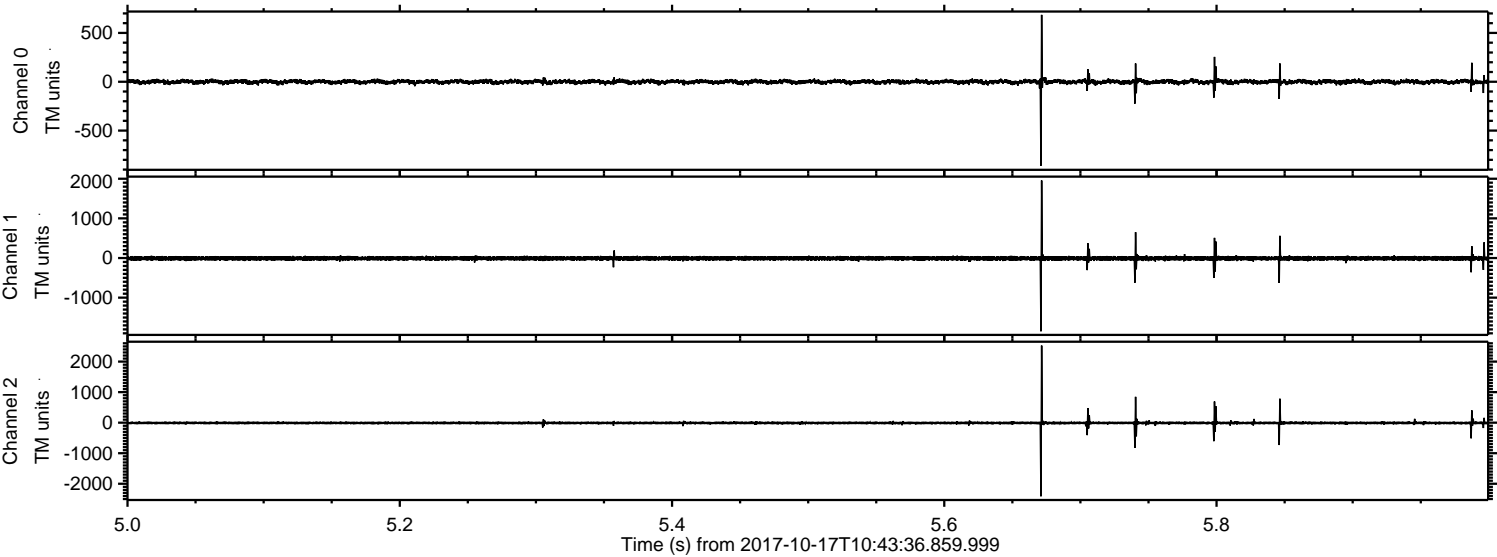


ELMAVAN 3D WAVEFORMS (Measured data sampled at 50 kHz) 51000 packets of 144 samples from 2017-10-17T10:43:36.859.999. Part 117/147

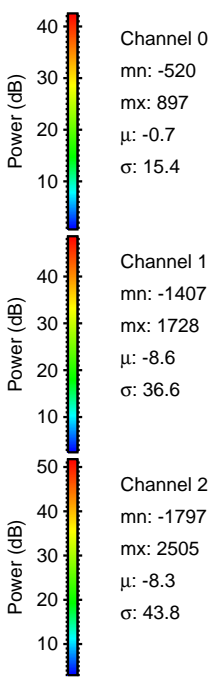
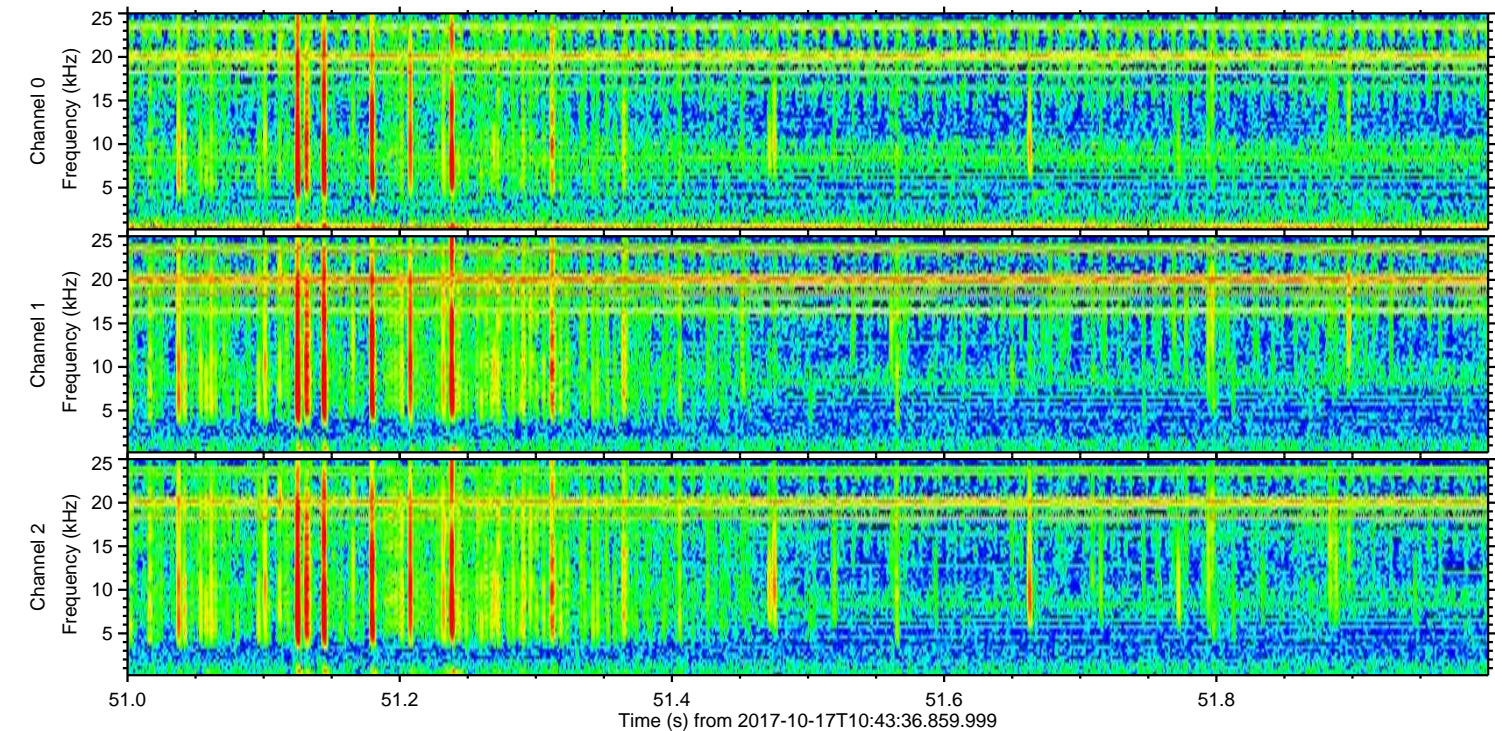
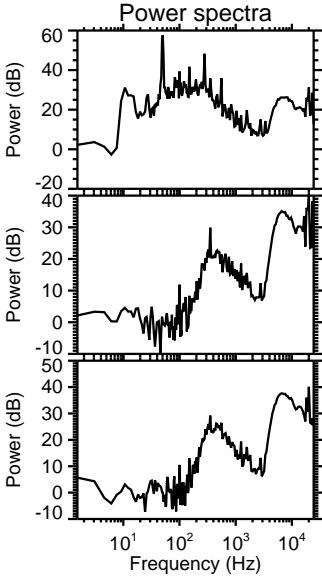
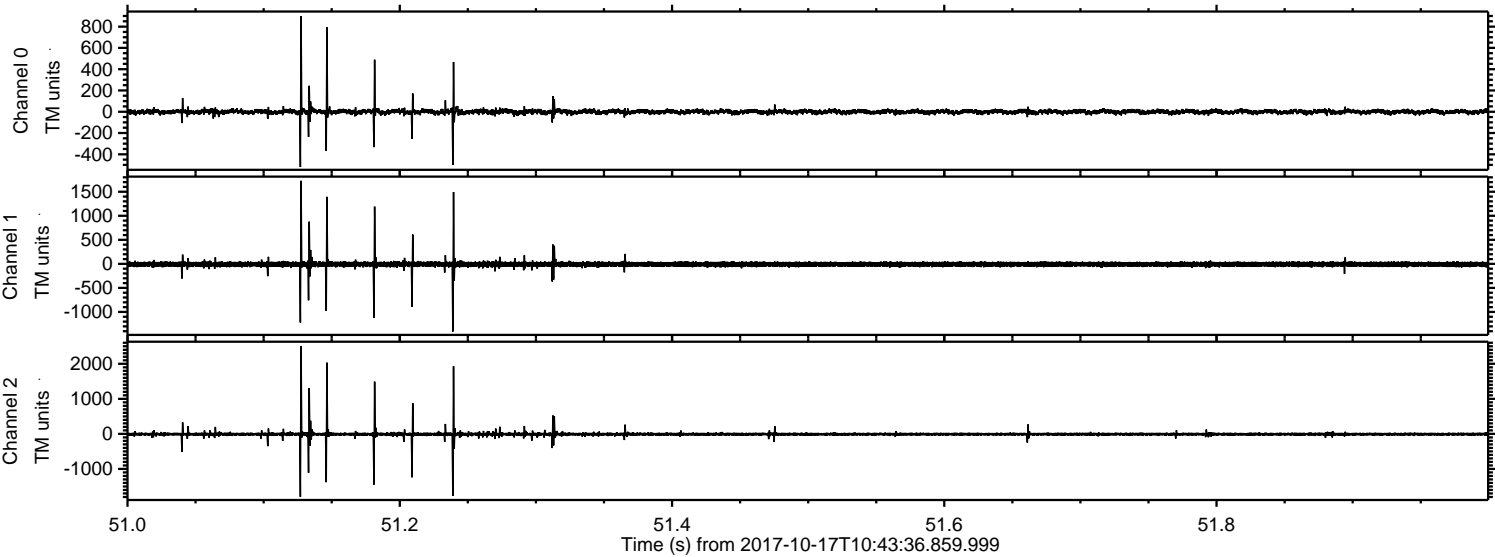
Processed Tue Oct 17 12:51:24 2017 by ELM ver.2012-10-06 from 001__elm20171017_104335__dat00.bin



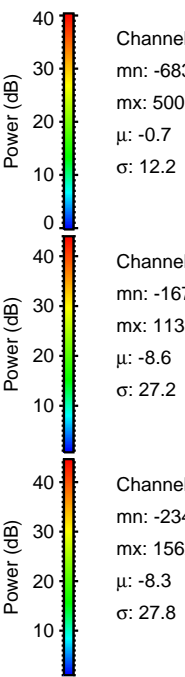
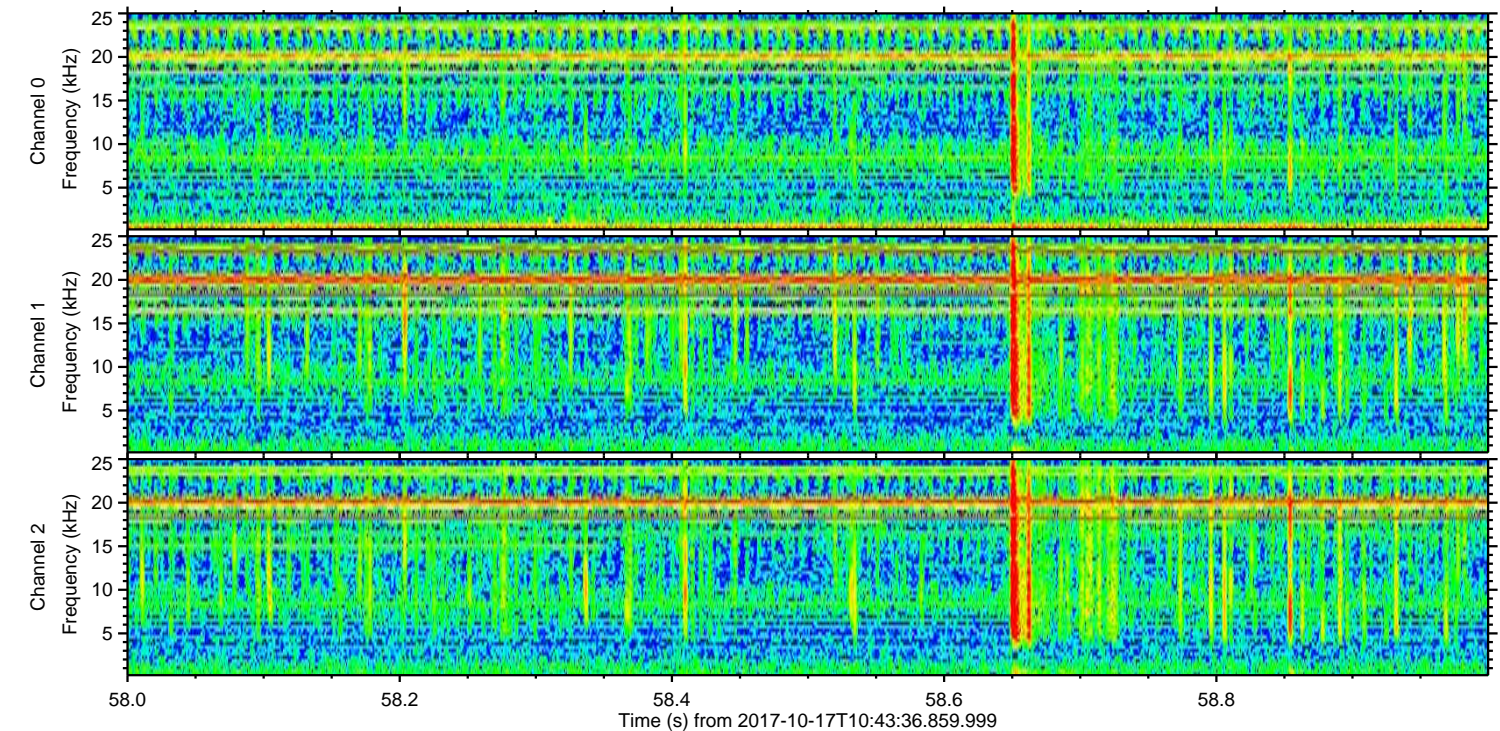
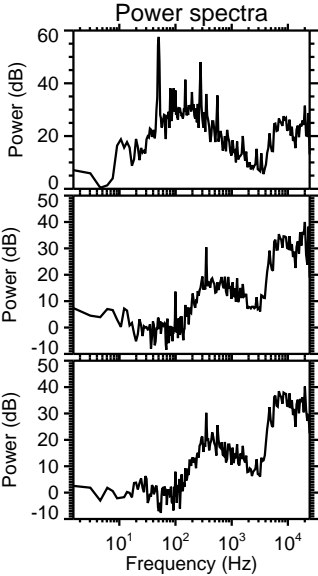
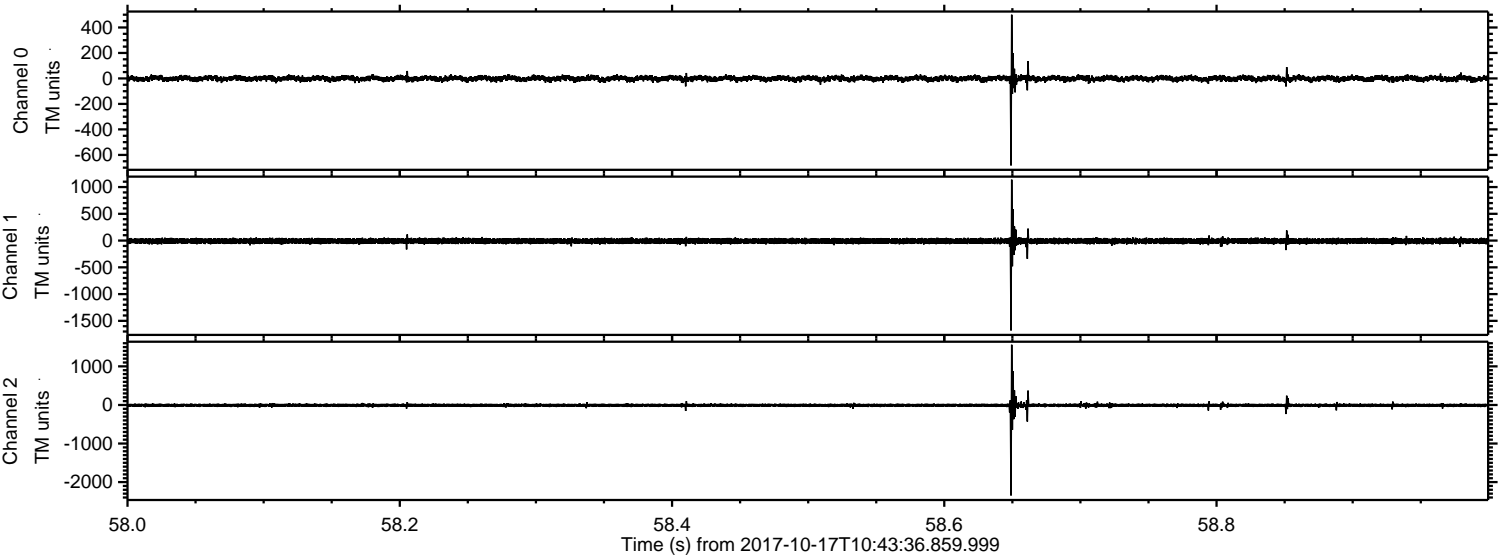
Processed Tue Oct 17 12:51:24 2017 by ELM ver.2012-10-06 from 001__elm20171017_104335__dat00.bin



Processed Tue Oct 17 12:51:25 2017 by ELM ver.2012-10-06 from 001__elm20171017_104335__dat00.bin

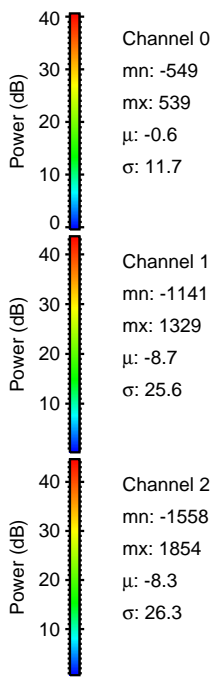
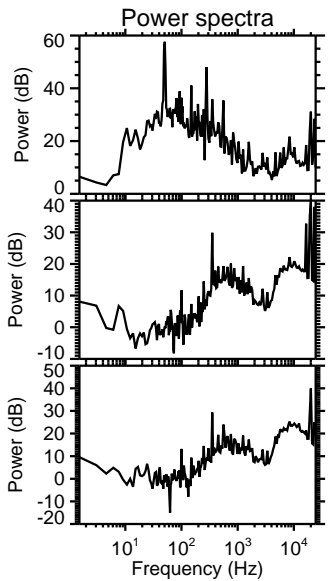
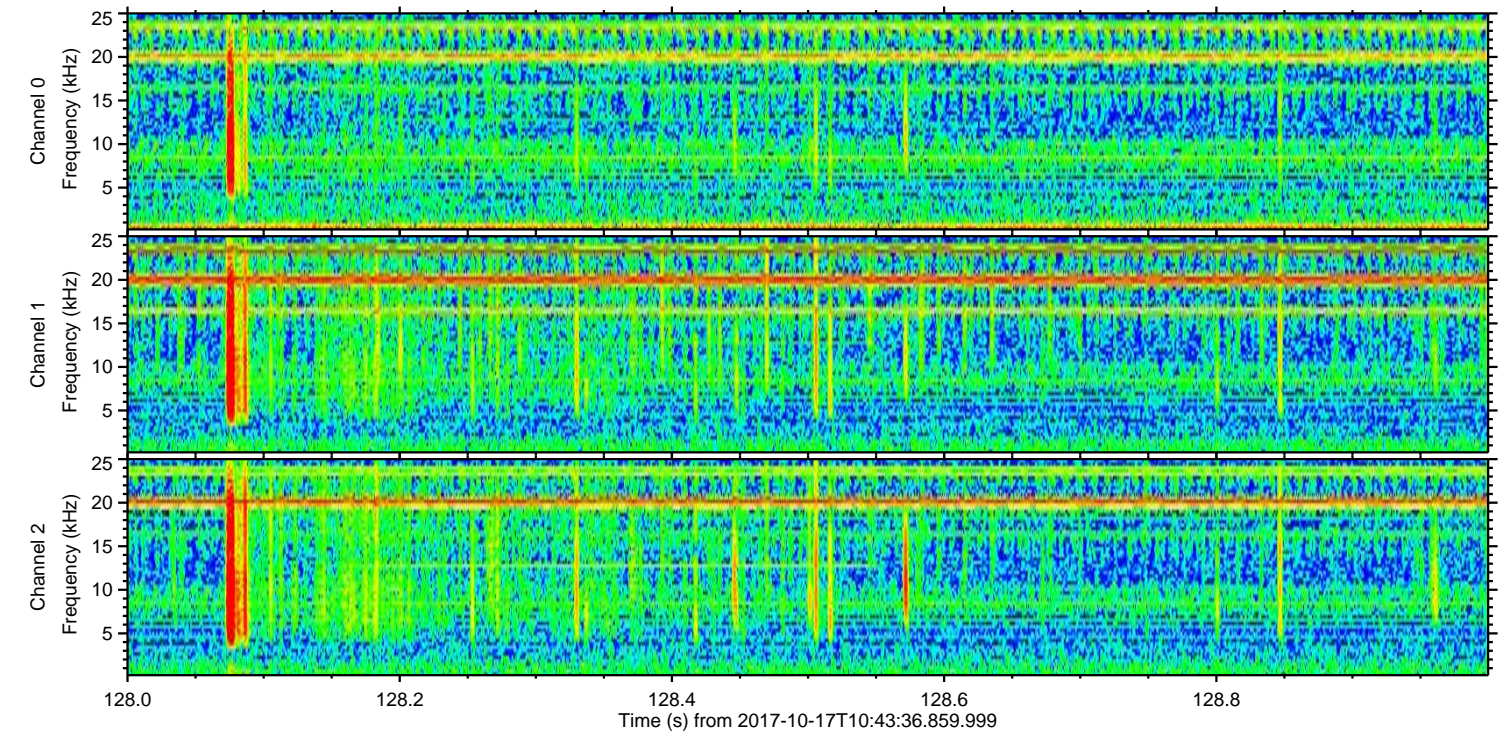
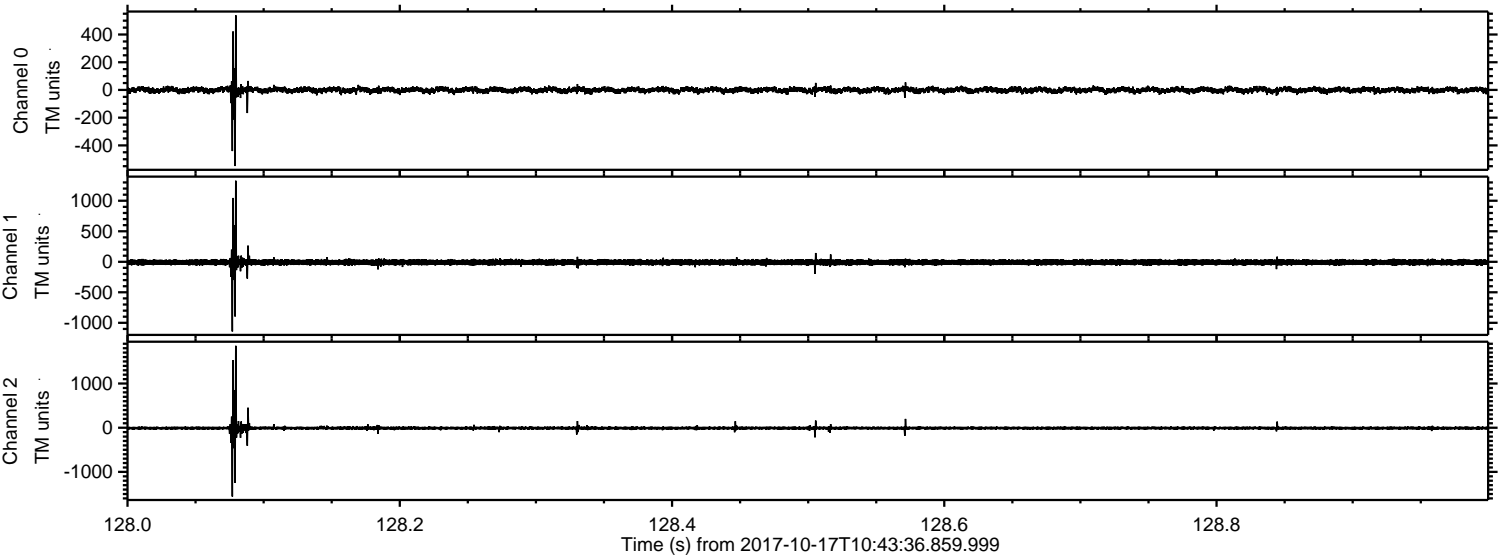


Processed Tue Oct 17 12:51:26 2017 by ELM ver.2012-10-06 from 001__elm20171017_104335__dat00.bin

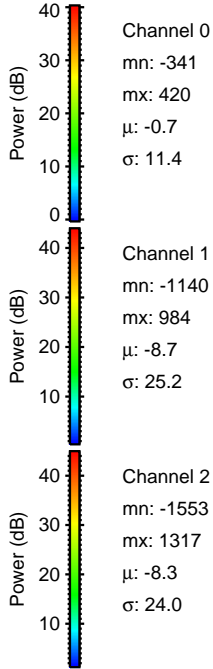
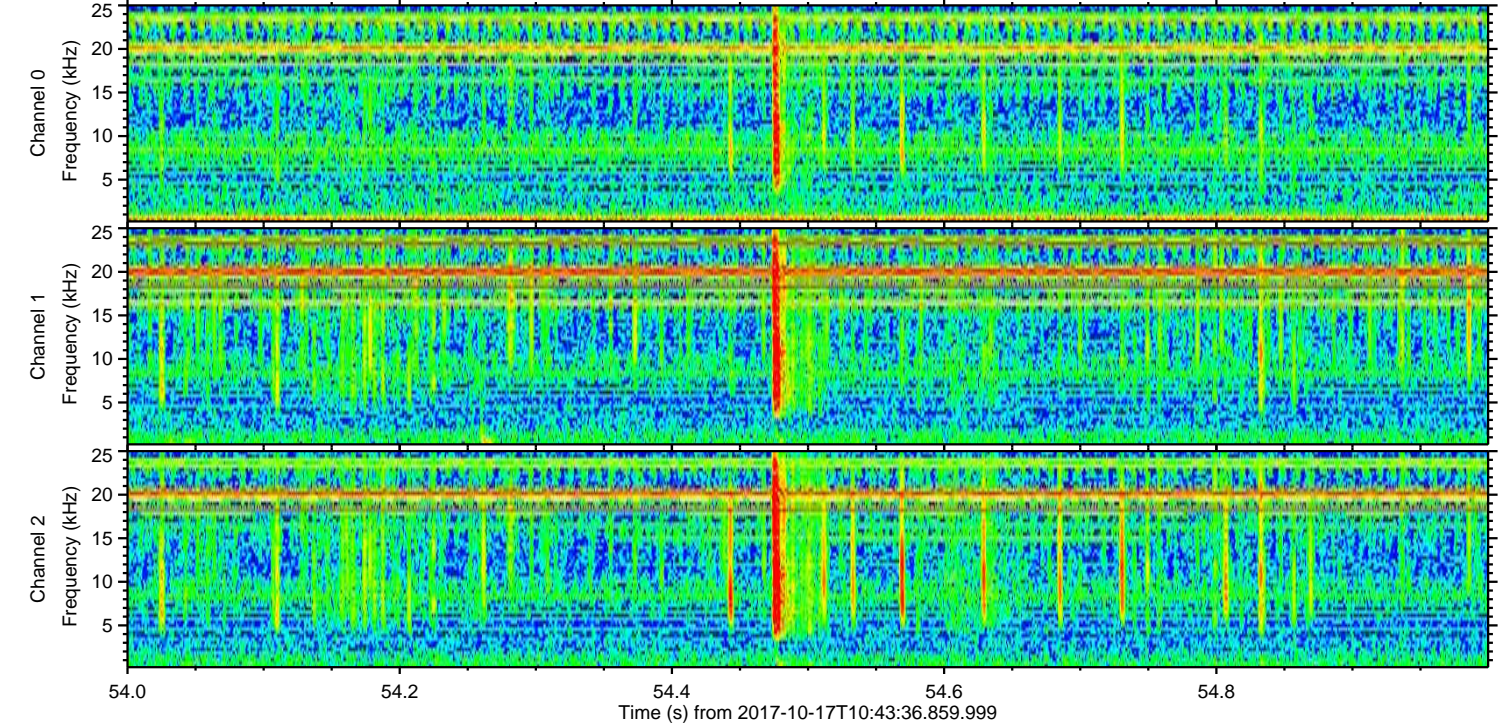
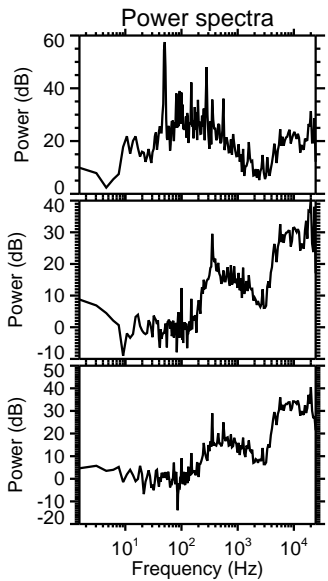
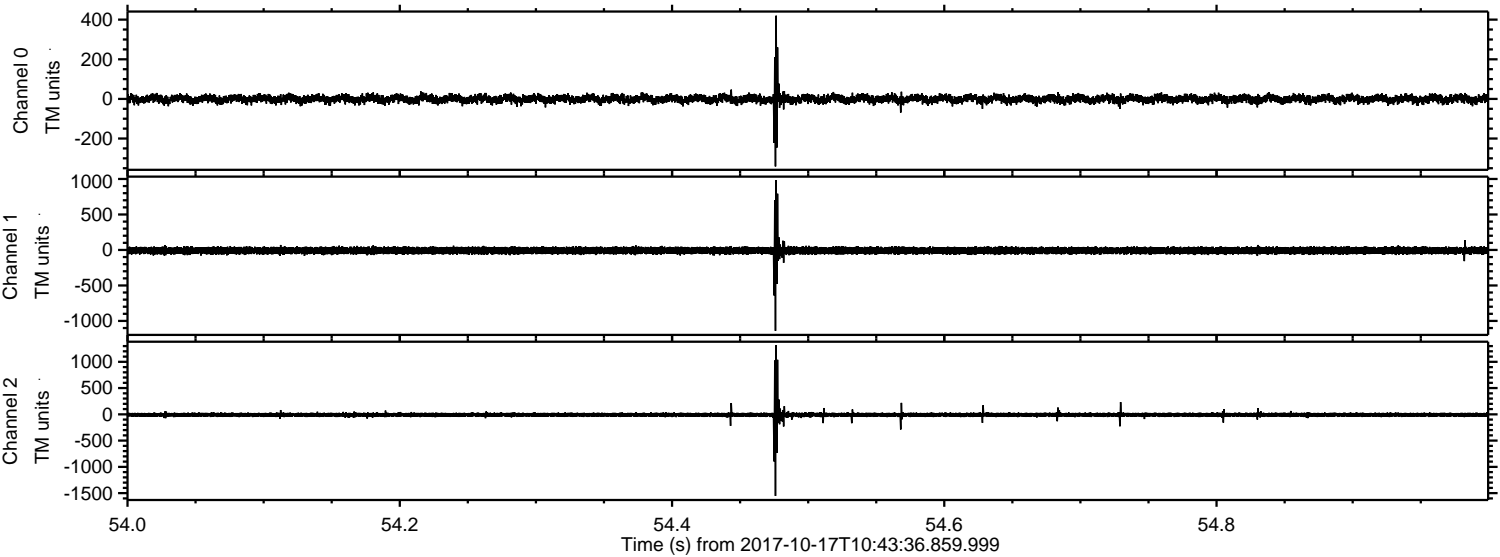


ELMAVAN 3D WAVEFORMS (Measured data sampled at 50 kHz) 51000 packets of 144 samples from 2017-10-17T10:43:36.859.999. Part 129/147

Processed Tue Oct 17 12:51:26 2017 by ELM ver.2012-10-06 from 001__elm20171017_104335__dat00.bin



Processed Tue Oct 17 12:51:27 2017 by ELM ver.2012-10-06 from 001__elm20171017_104335__dat00.bin



Channel 0
mn: -341
mx: 420
 μ : -0.7
 σ : 11.4

Channel 1
mn: -1140
mx: 984
 μ : -8.7
 σ : 25.2

Channel 2
mn: -1553
mx: 1317
 μ : -8.3
 σ : 24.0

Processed Tue Oct 17 12:51:27 2017 by ELM ver.2012-10-06 from 001__elm20171017_104335__dat00.bin

