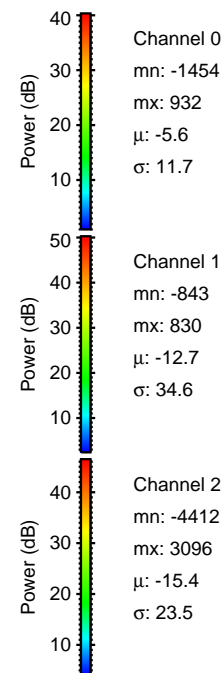
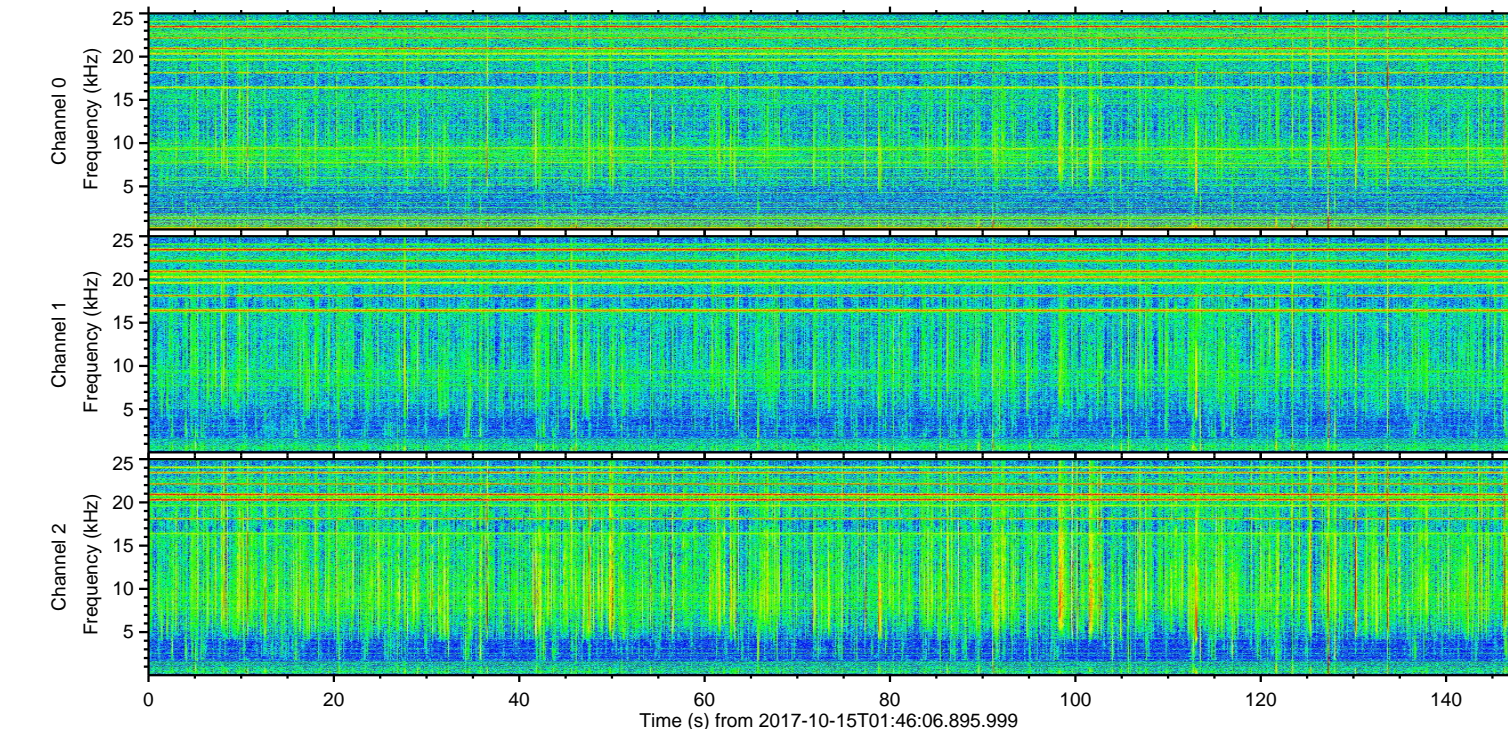
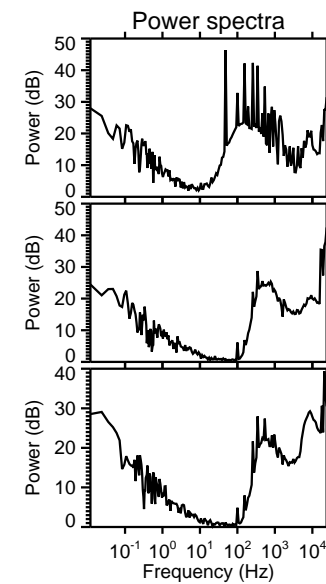
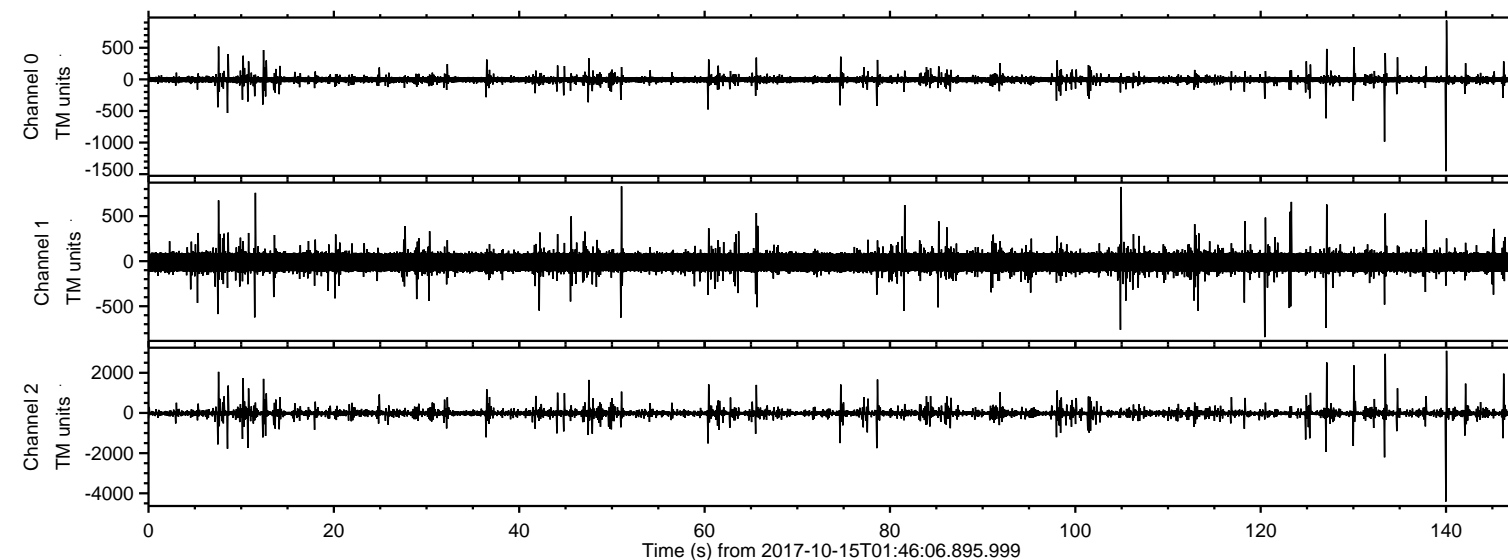


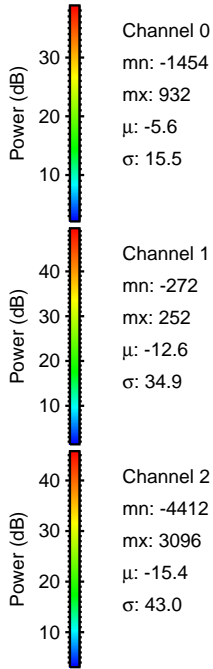
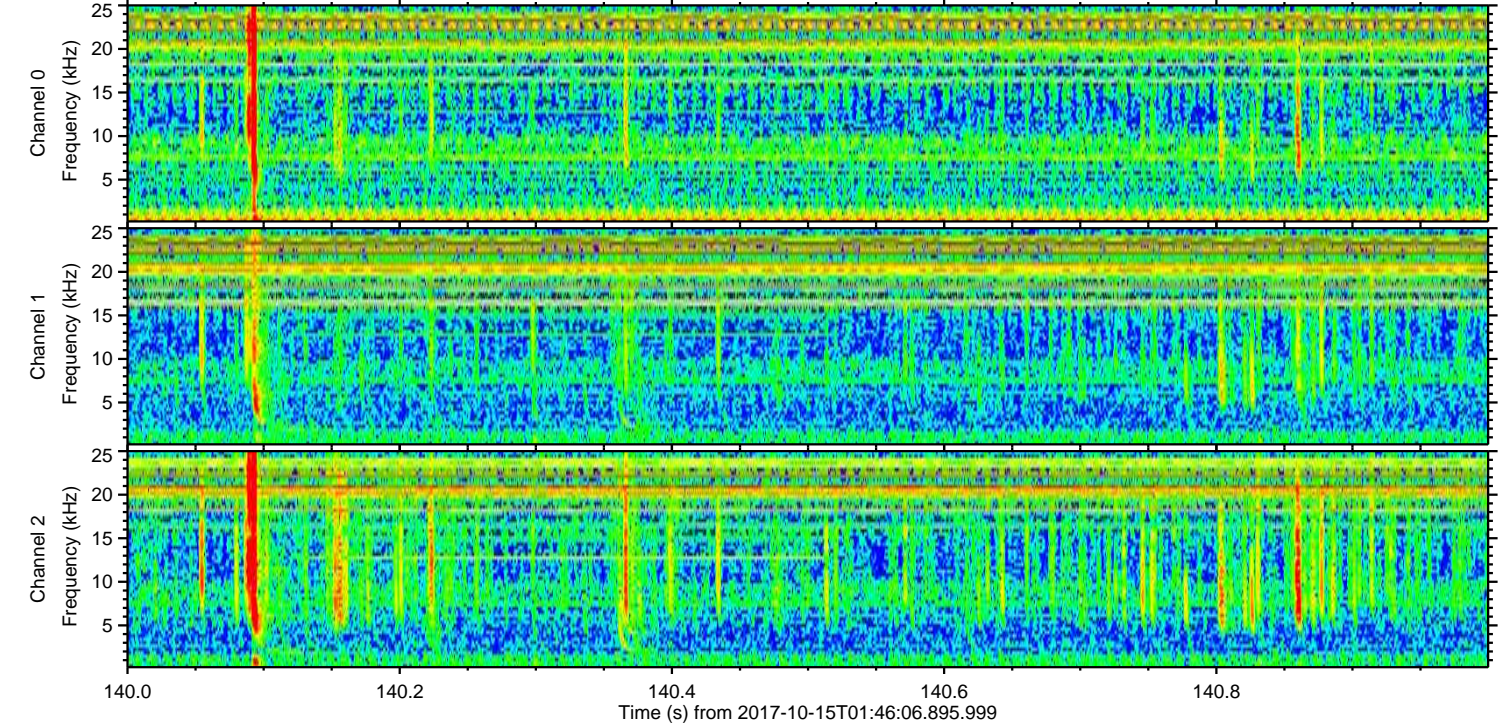
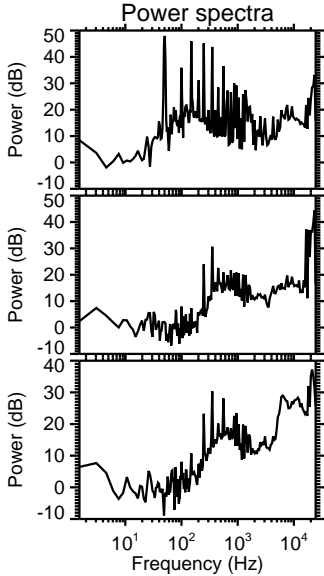
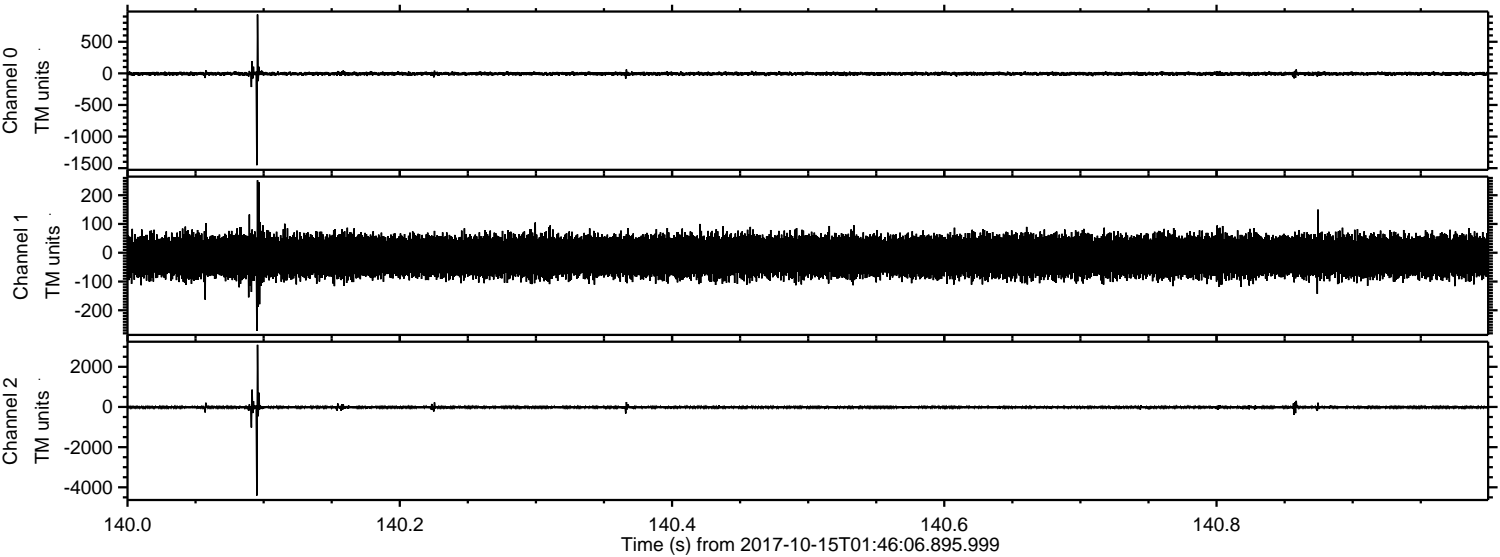
ELMAVAN 3D WAVEFORMS (Measured data sampled at 50 kHz) 51000 packets of 144 samples from 2017-10-15T01:46:06.895.999.

Processed Sun Oct 15 03:53:40 2017 by ELM ver.2012-10-06 from 001__elm20171015_014605__dat00.bin



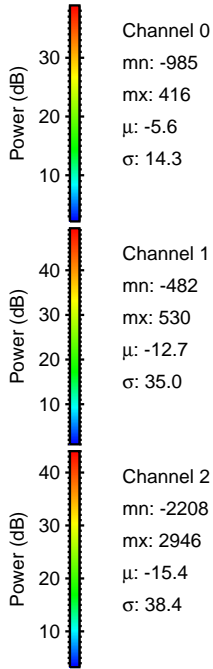
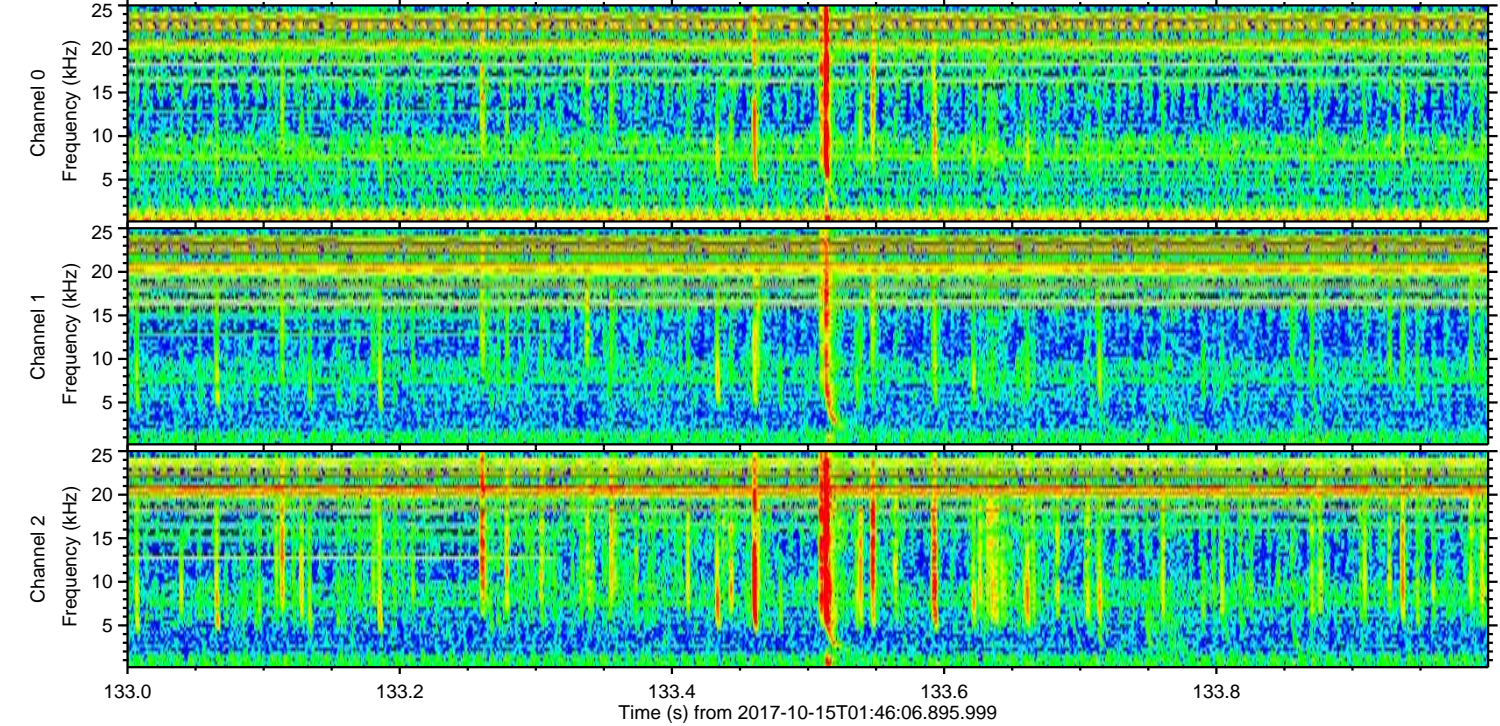
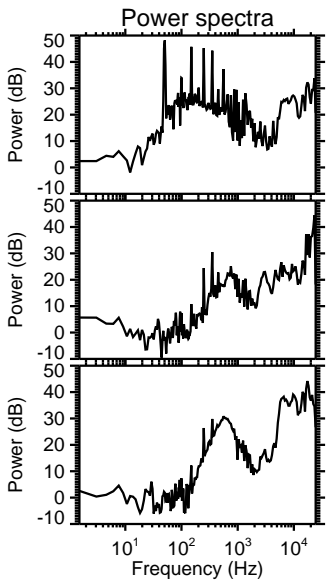
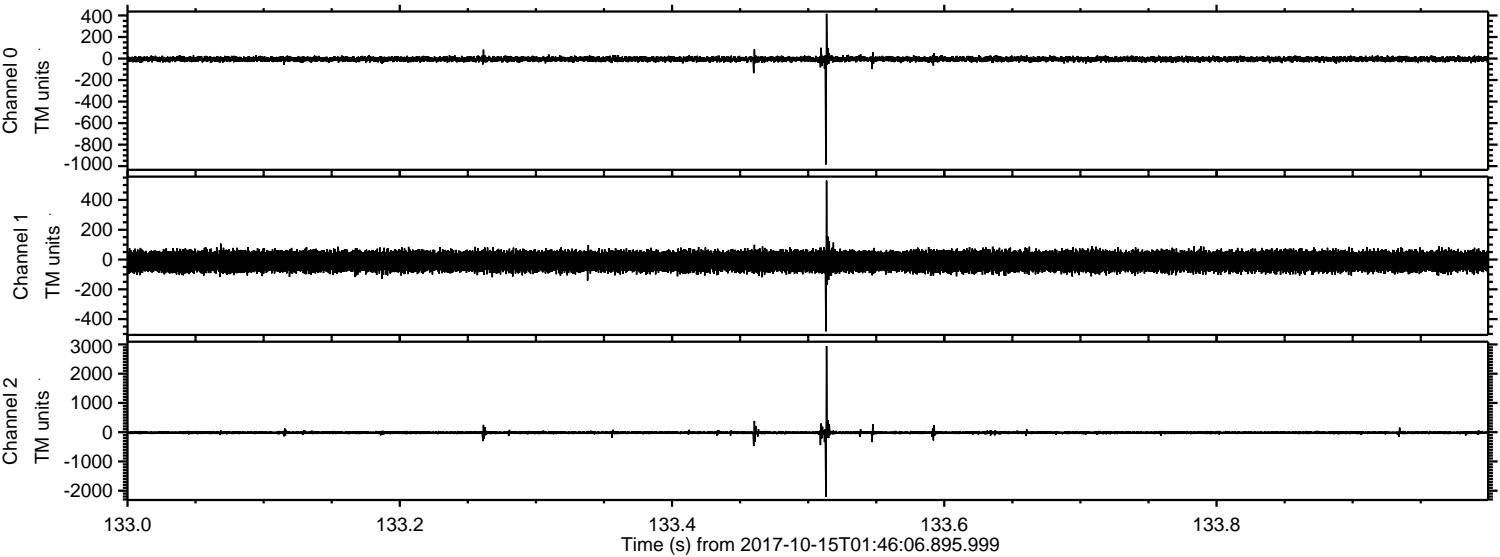
ELMAVAN 3D WAVEFORMS (Measured data sampled at 50 kHz) 51000 packets of 144 samples from 2017-10-15T01:46:06.895.999. Part 141/147

Processed Sun Oct 15 03:53:47 2017 by ELM ver.2012-10-06 from 001__elm20171015_014605__dat00.bin



ELMAVAN 3D WAVEFORMS (Measured data sampled at 50 kHz) 51000 packets of 144 samples from 2017-10-15T01:46:06.895.999. Part 134/147

Processed Sun Oct 15 03:53:48 2017 by ELM ver.2012-10-06 from 001__elm20171015_014605__dat00.bin



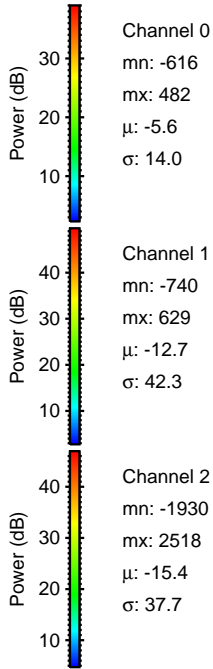
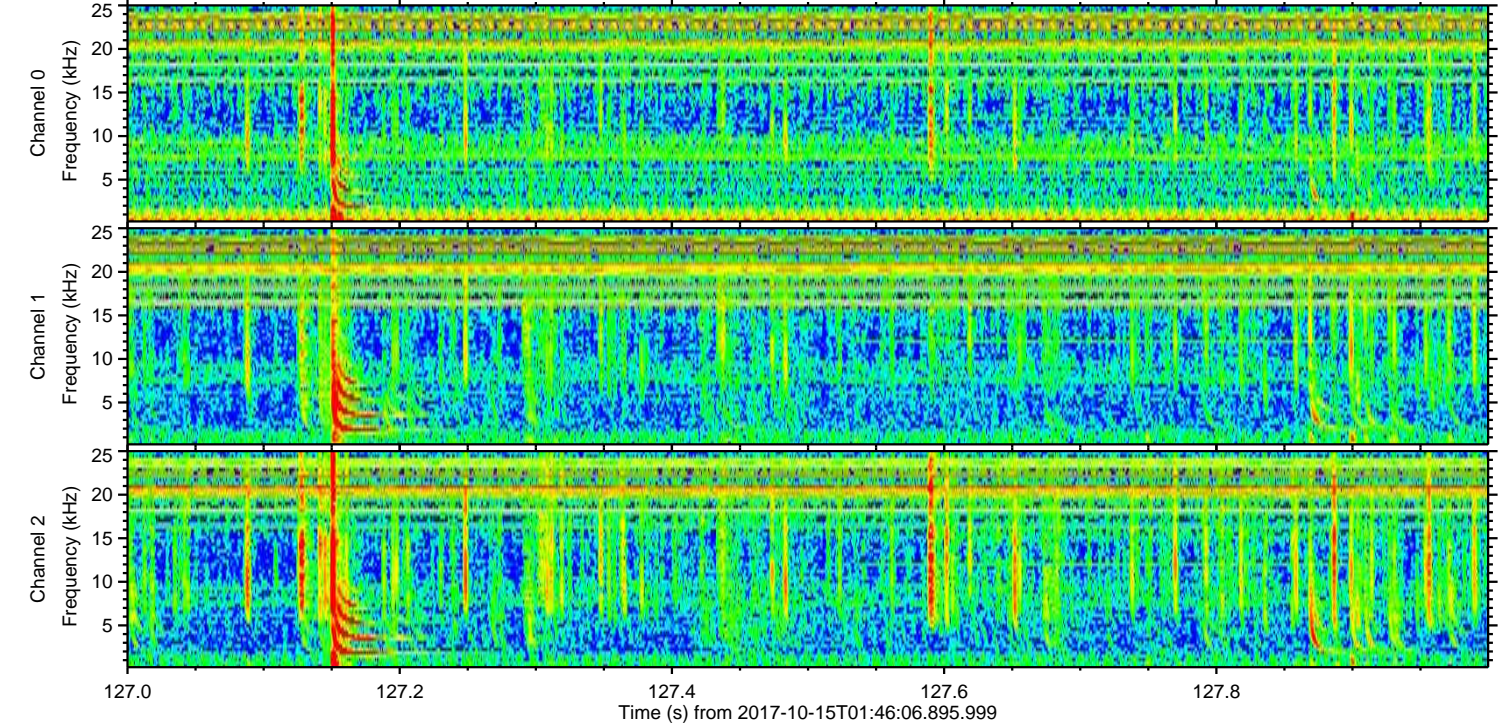
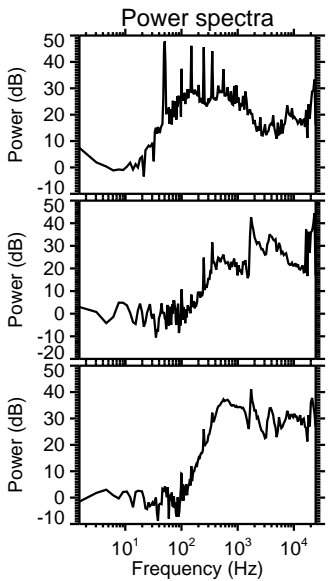
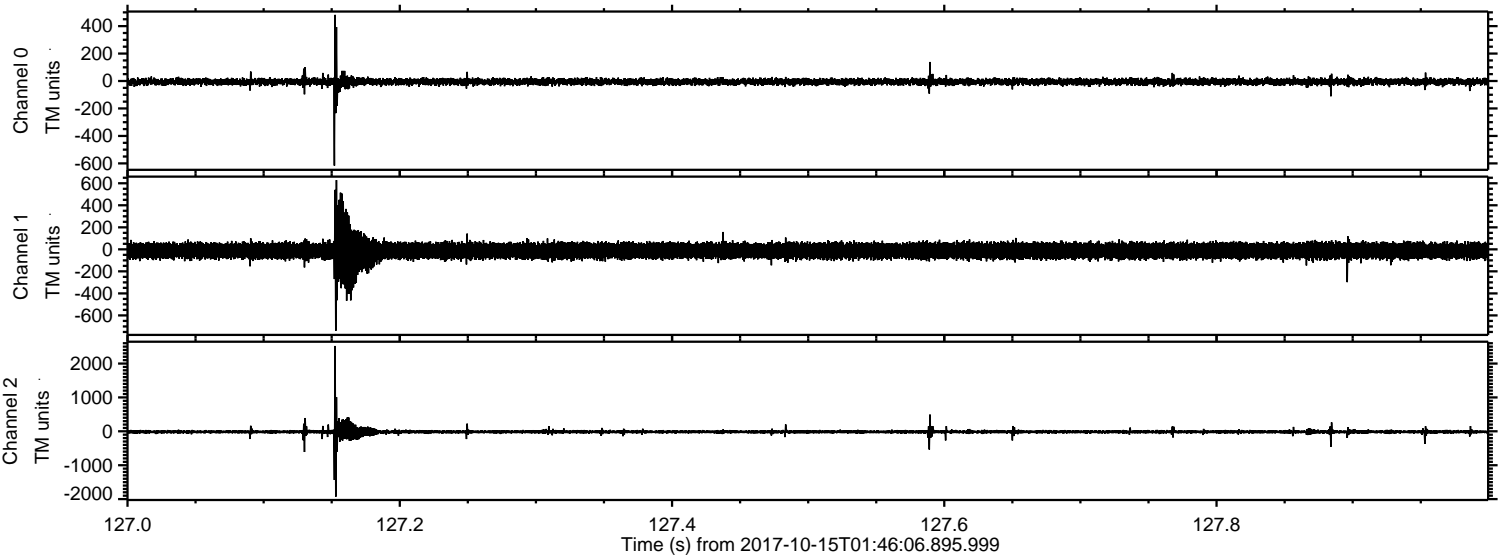
Channel 0
mn: -985
mx: 416
 μ : -5.6
 σ : 14.3

Channel 1
mn: -482
mx: 530
 μ : -12.7
 σ : 35.0

Channel 2
mn: -2208
mx: 2946
 μ : -15.4
 σ : 38.4

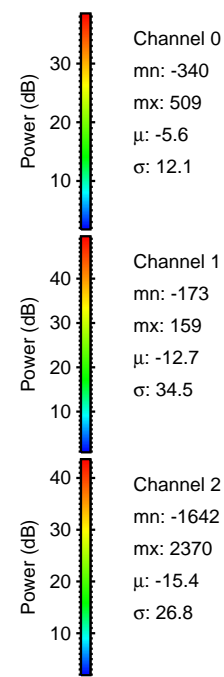
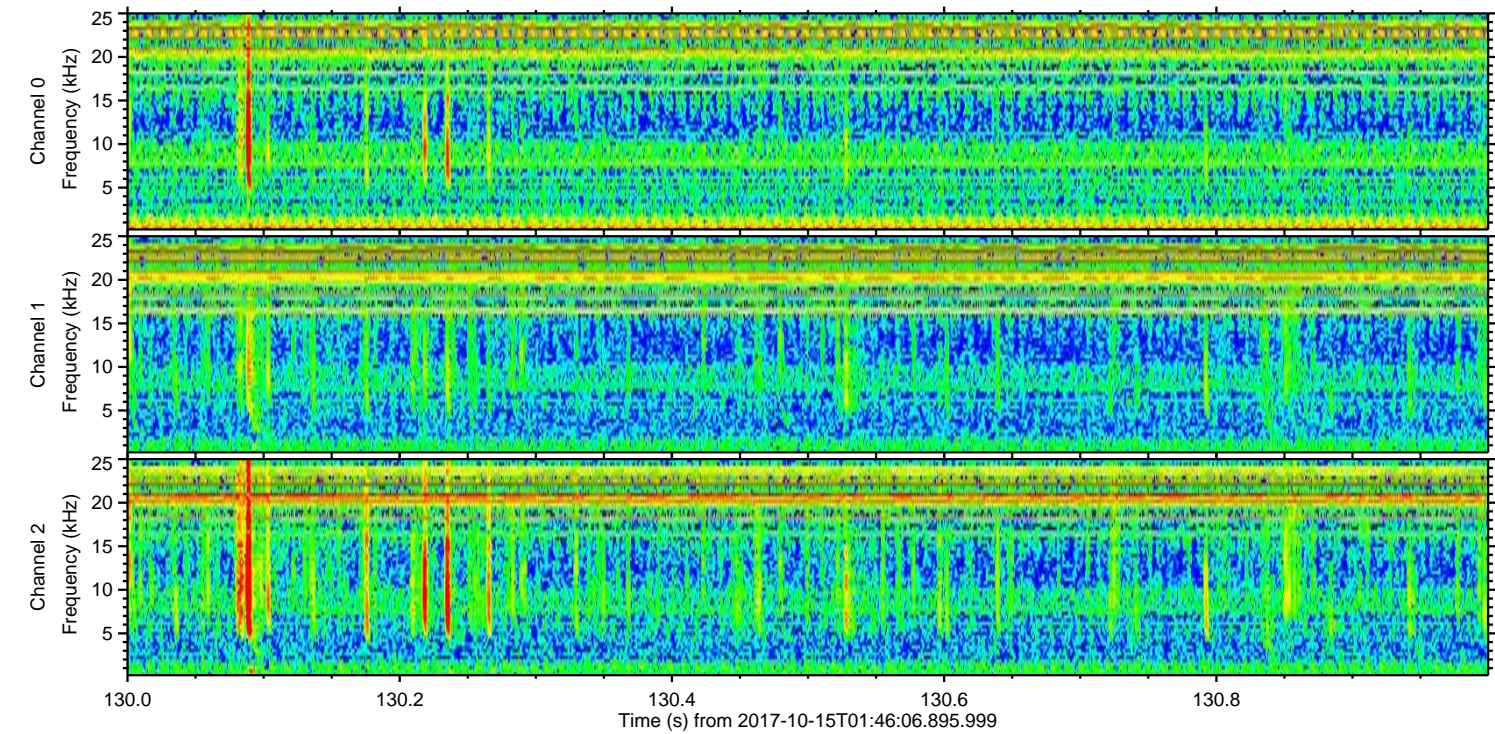
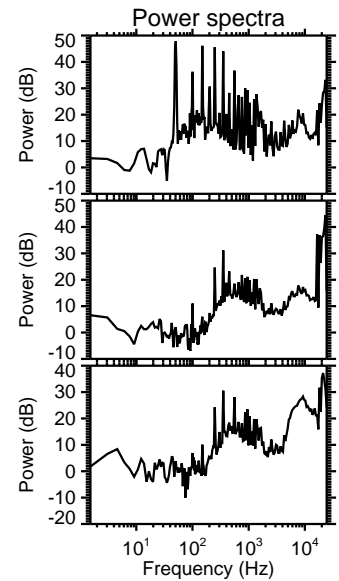
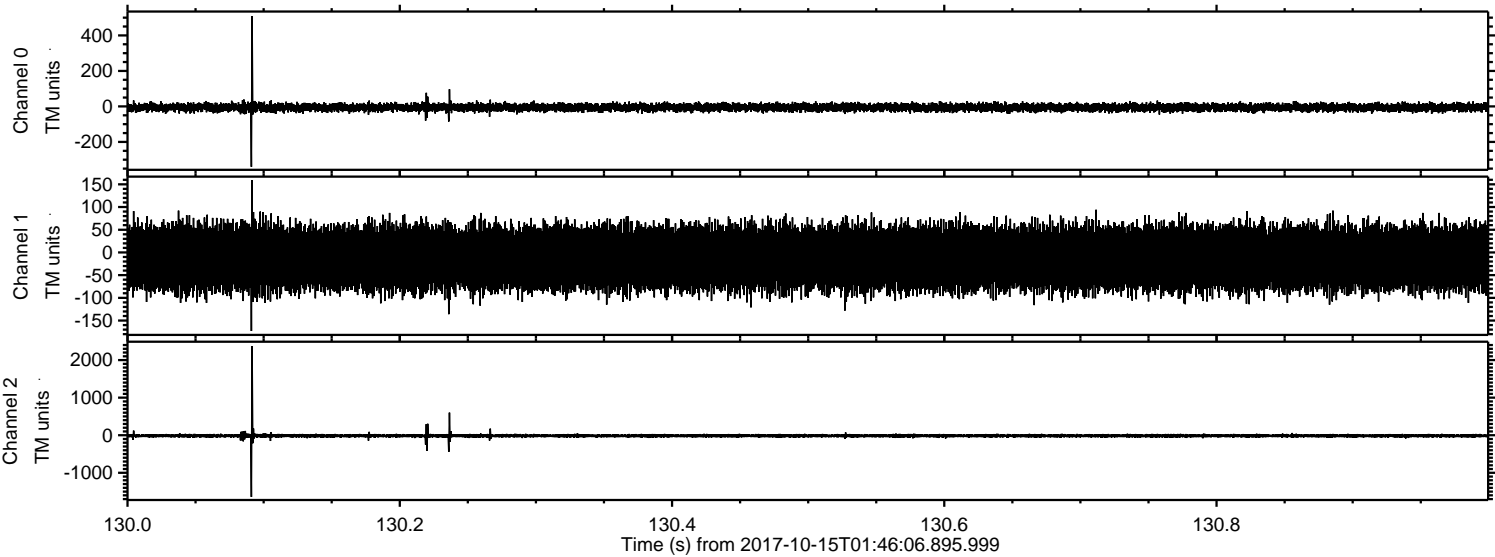
ELMAVAN 3D WAVEFORMS (Measured data sampled at 50 kHz) 51000 packets of 144 samples from 2017-10-15T01:46:06.895.999. Part 128/147

Processed Sun Oct 15 03:53:49 2017 by ELM ver.2012-10-06 from 001__elm20171015_014605__dat00.bin



ELMAVAN 3D WAVEFORMS (Measured data sampled at 50 kHz) 51000 packets of 144 samples from 2017-10-15T01:46:06.895.999. Part 131/147

Processed Sun Oct 15 03:53:49 2017 by ELM ver.2012-10-06 from 001__elm20171015_014605__dat00.bin



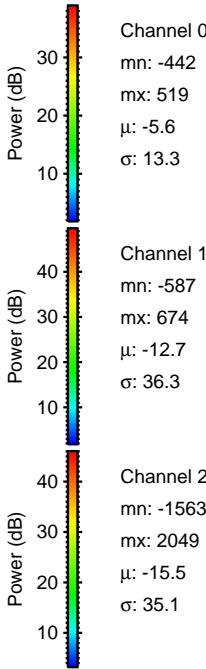
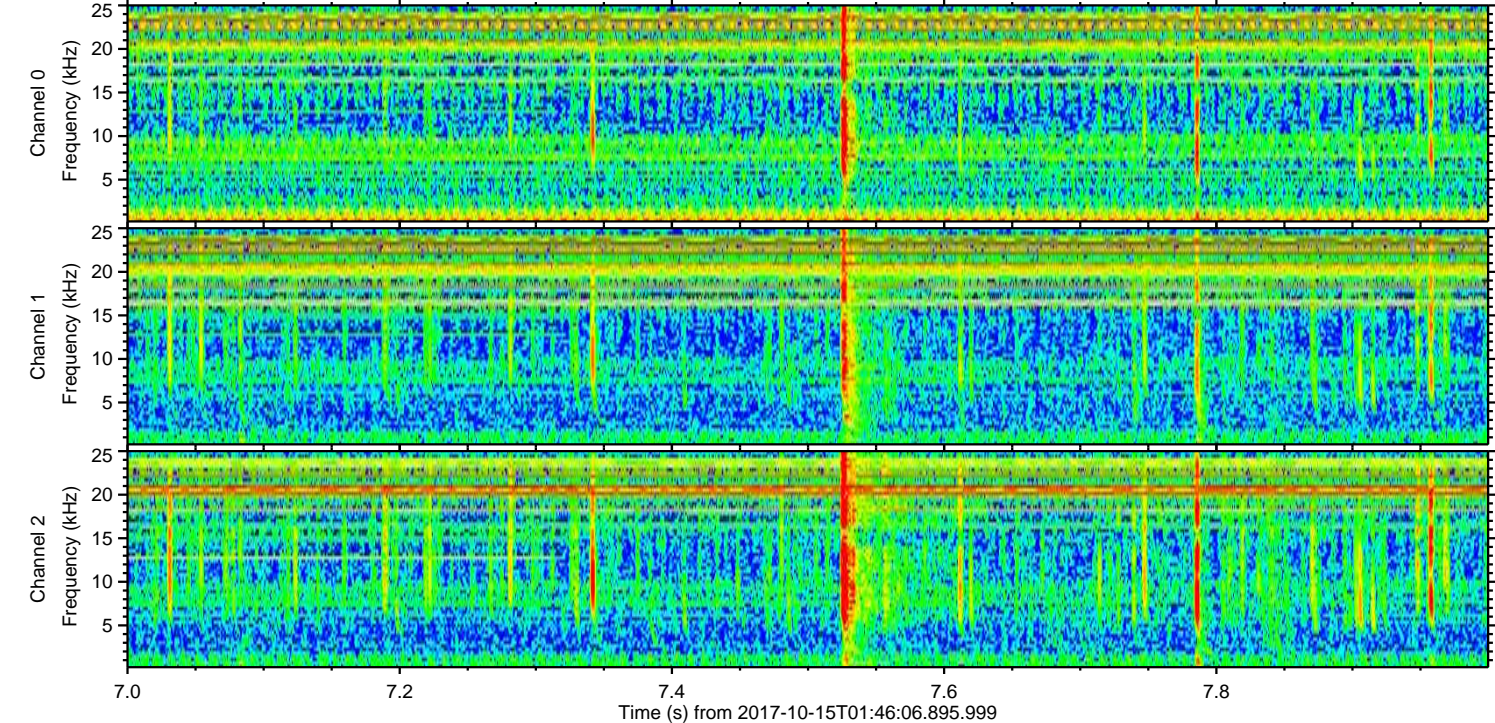
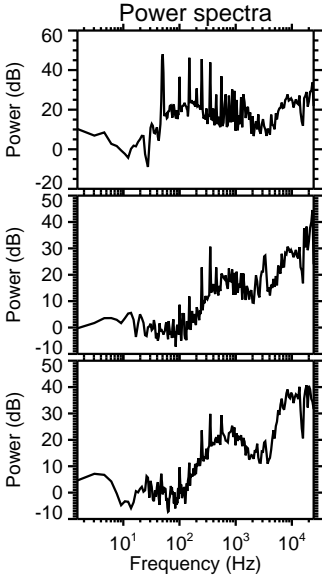
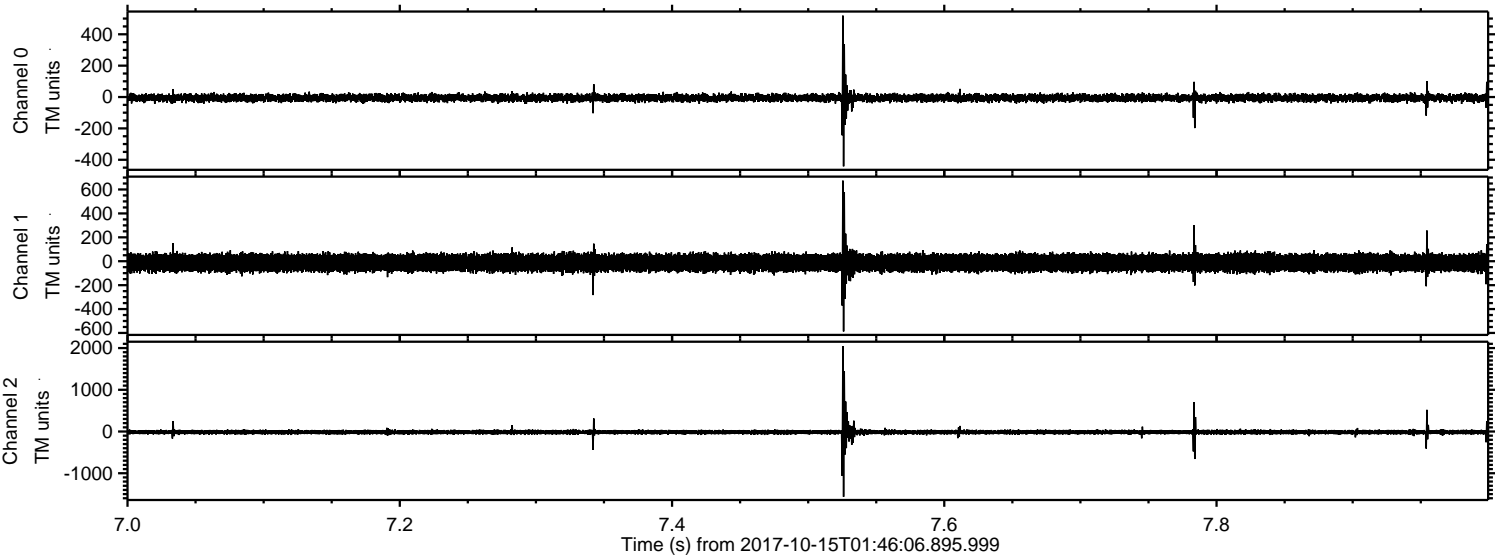
Channel 0
mn: -340
mx: 509
 μ : -5.6
 σ : 12.1

Channel 1
mn: -173
mx: 159
 μ : -12.7
 σ : 34.5

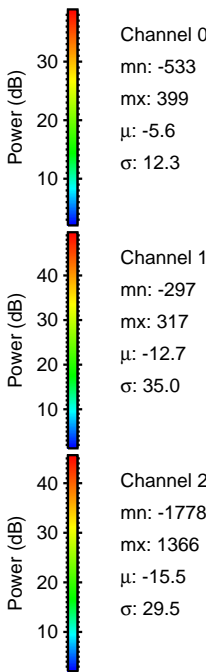
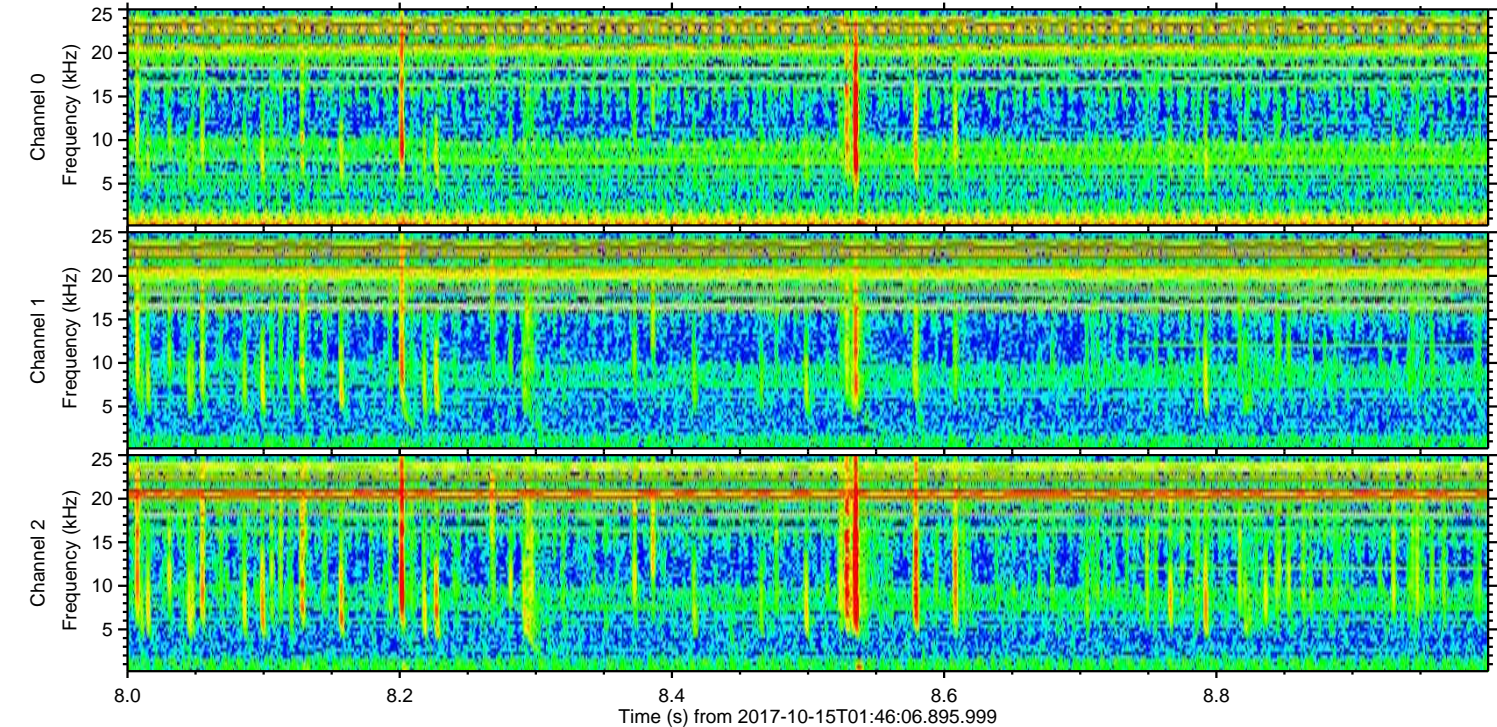
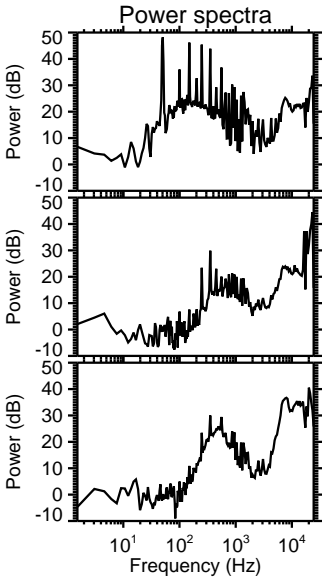
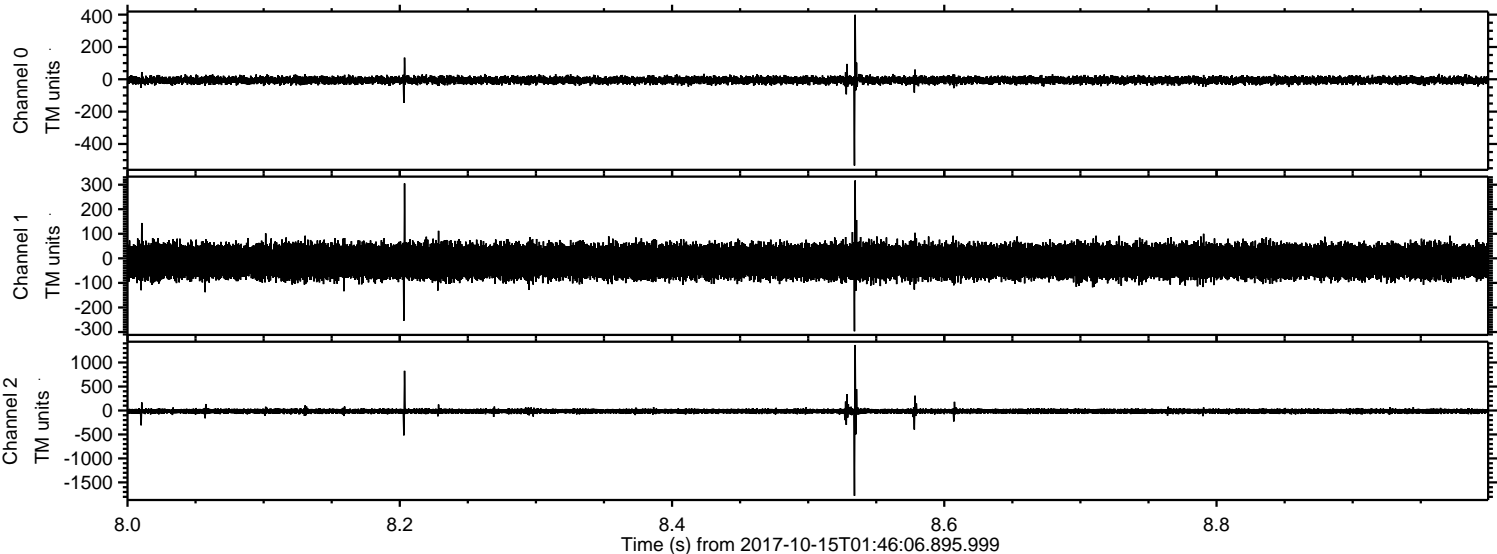
Channel 2
mn: -1642
mx: 2370
 μ : -15.4
 σ : 26.8

ELMAVAN 3D WAVEFORMS (Measured data sampled at 50 kHz) 51000 packets of 144 samples from 2017-10-15T01:46:06.895.999. Part 8/147

Processed Sun Oct 15 03:53:50 2017 by ELM ver.2012-10-06 from 001__elm20171015_014605__dat00.bin



Processed Sun Oct 15 03:53:51 2017 by ELM ver.2012-10-06 from 001__elm20171015_014605__dat00.bin

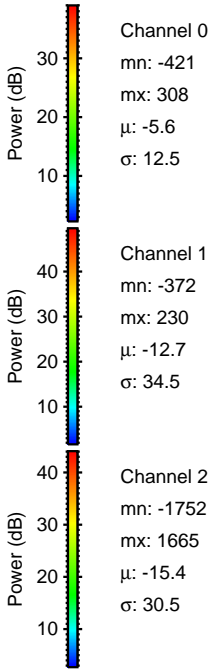
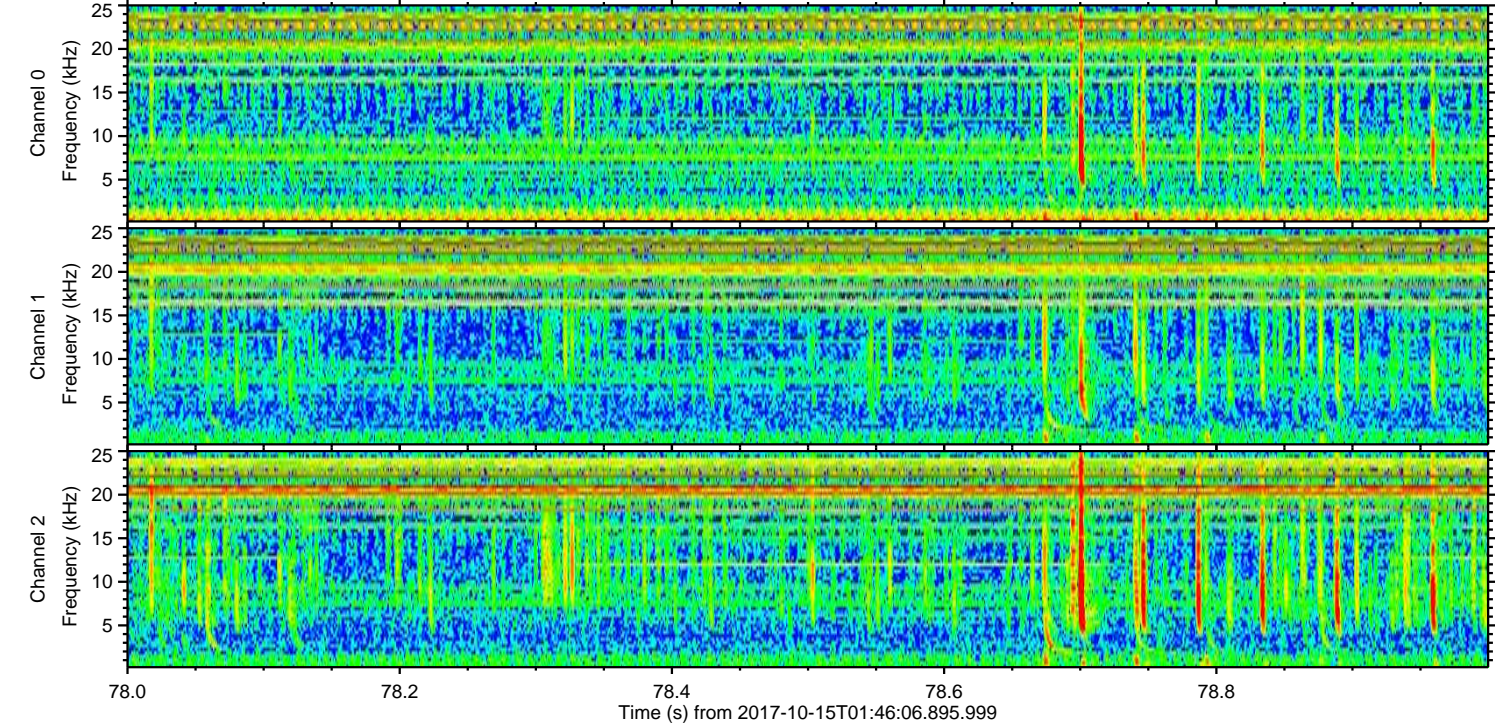
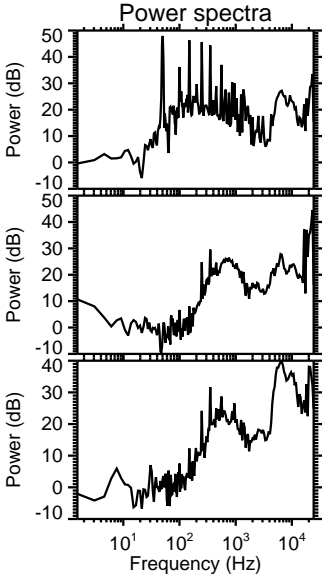
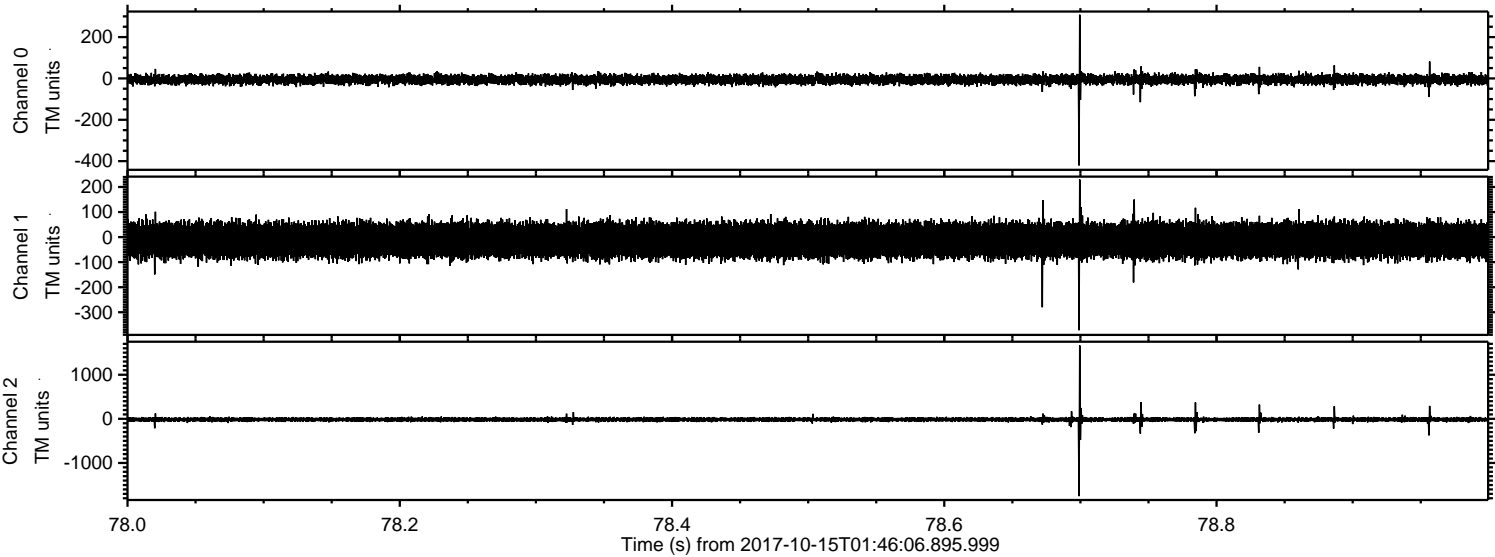


Channel 0
mn: -533
mx: 399
 μ : -5.6
 σ : 12.3

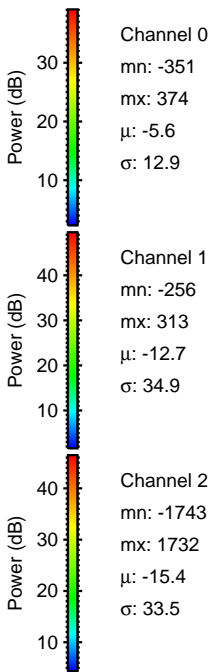
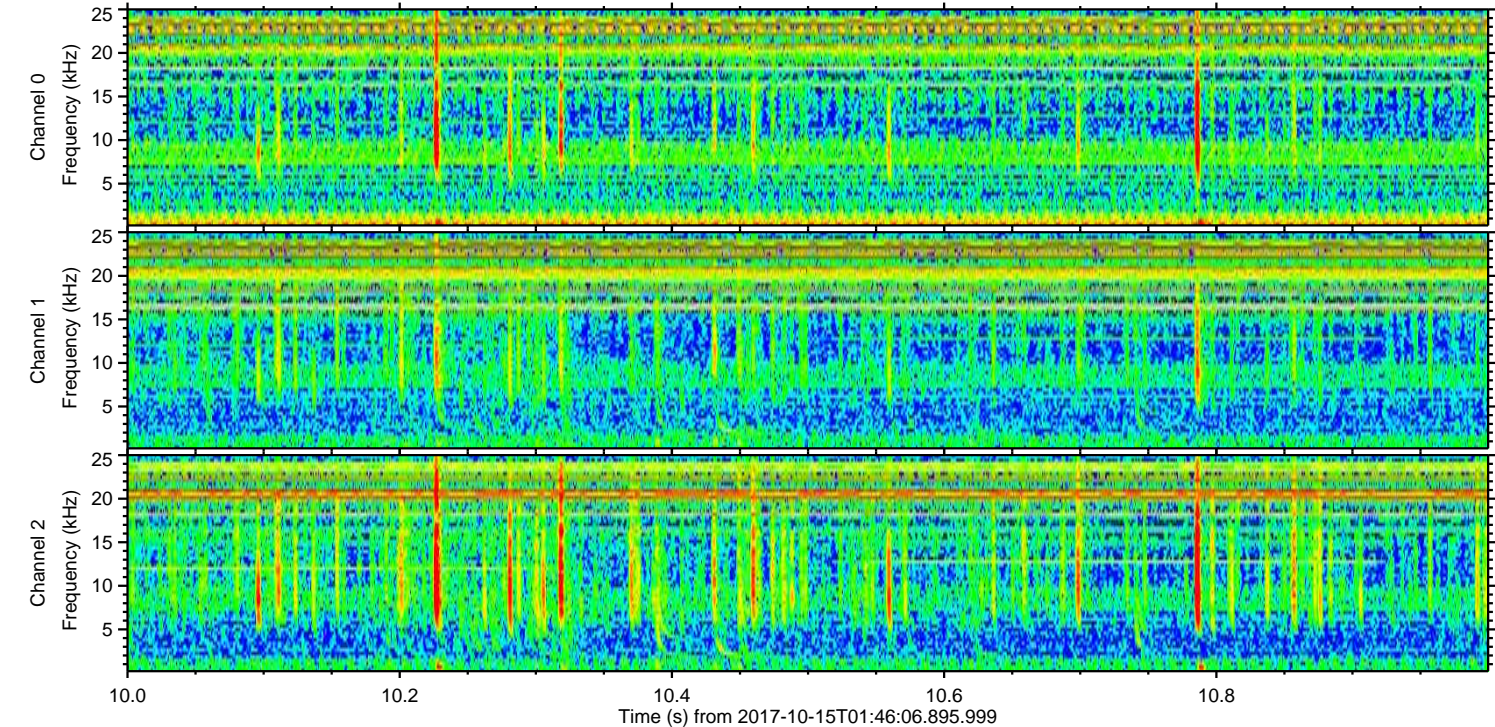
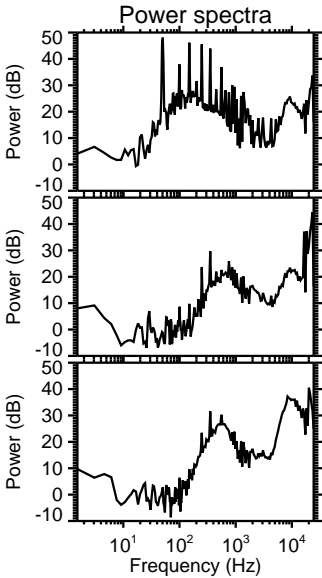
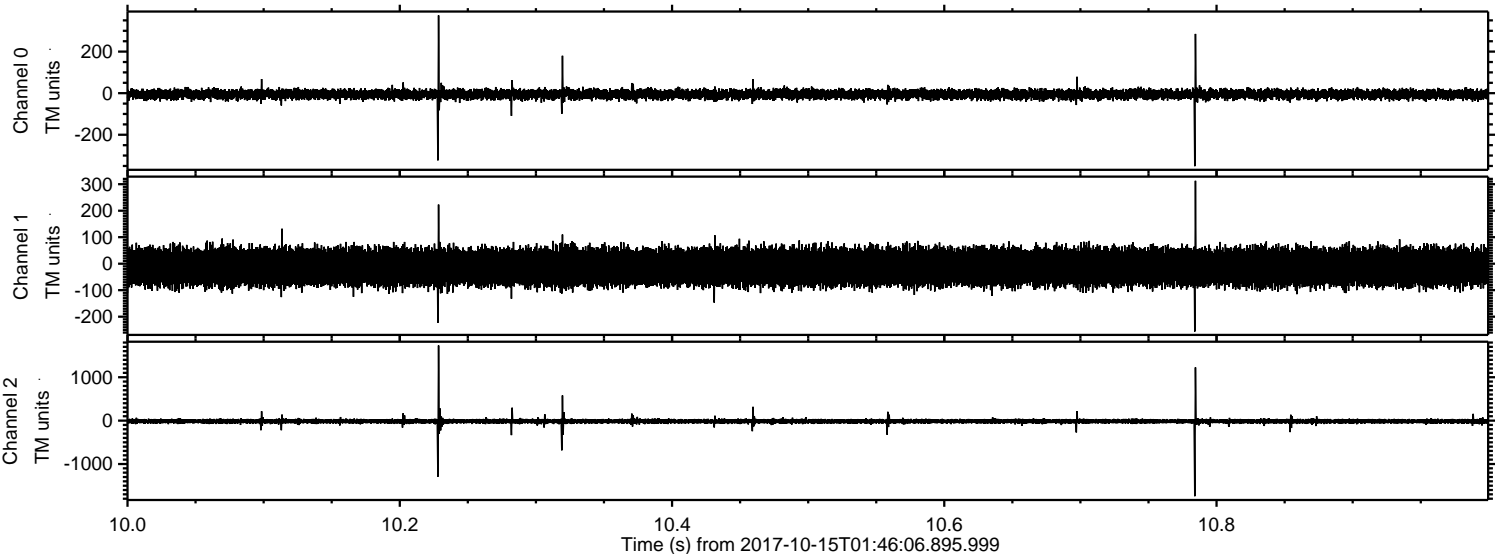
Channel 1
mn: -297
mx: 317
 μ : -12.7
 σ : 35.0

Channel 2
mn: -1778
mx: 1366
 μ : -15.5
 σ : 29.5

Processed Sun Oct 15 03:53:52 2017 by ELM ver.2012-10-06 from 001__elm20171015_014605__dat00.bin

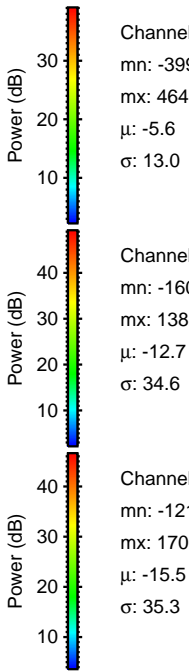
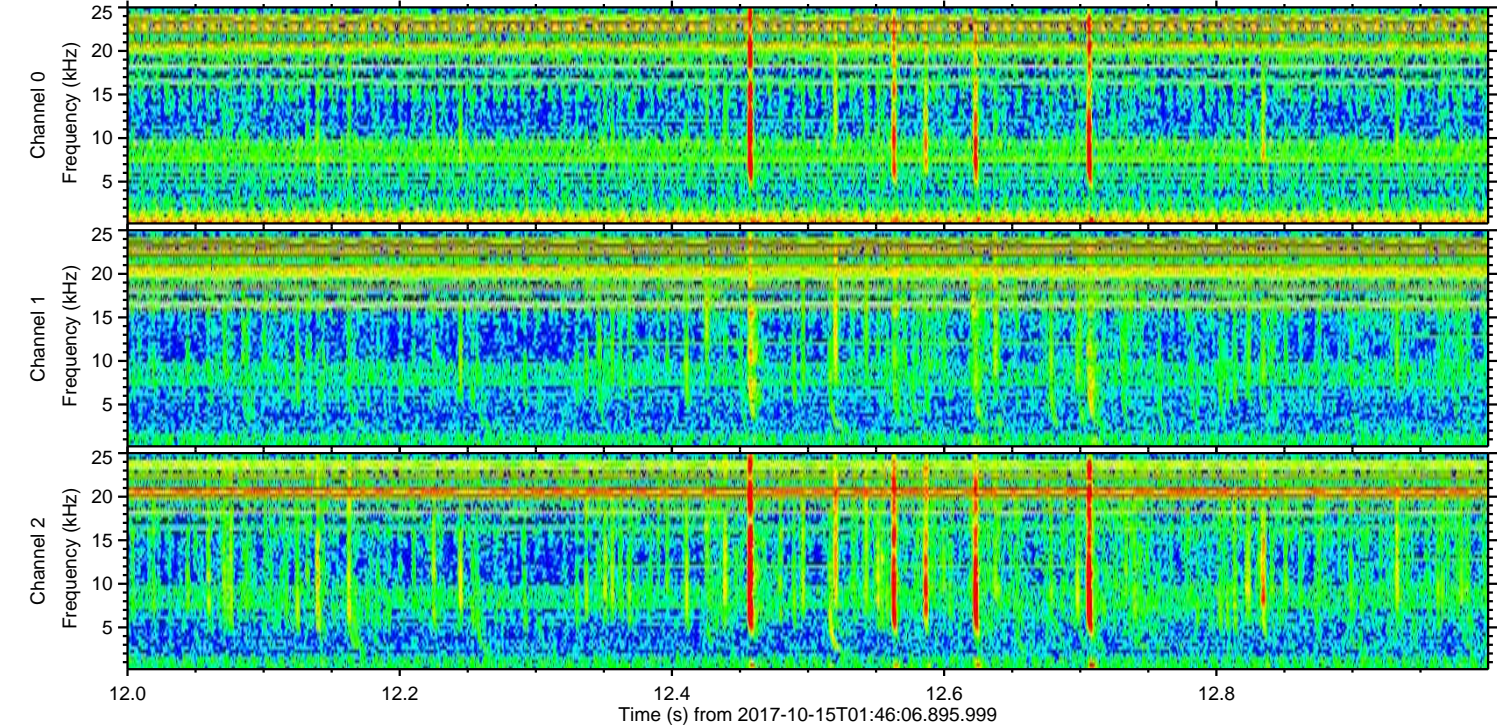
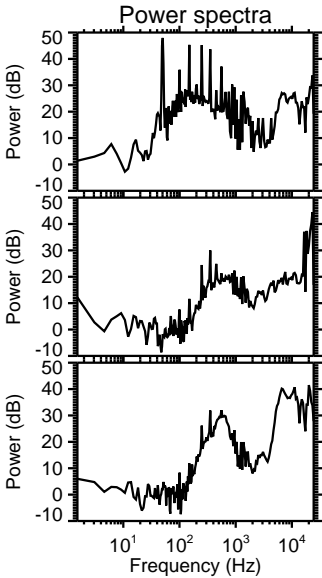
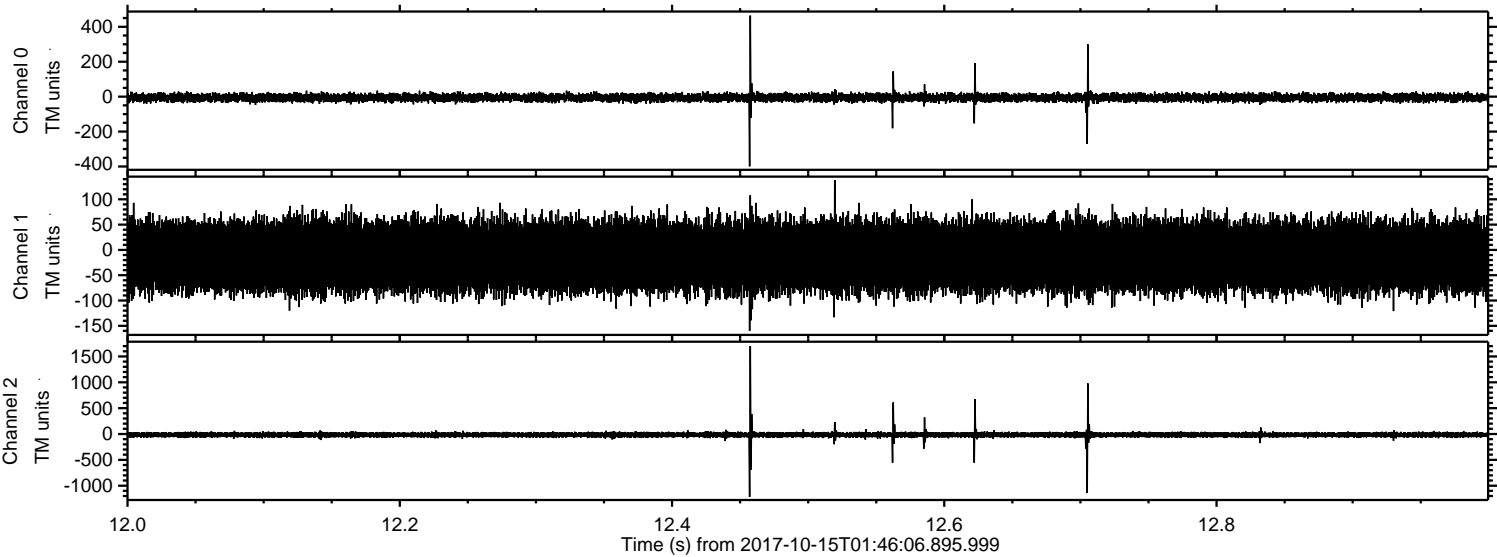


Processed Sun Oct 15 03:53:52 2017 by ELM ver.2012-10-06 from 001__elm20171015_014605__dat00.bin



ELMAVAN 3D WAVEFORMS (Measured data sampled at 50 kHz) 51000 packets of 144 samples from 2017-10-15T01:46:06.895.999. Part 13/147

Processed Sun Oct 15 03:53:53 2017 by ELM ver.2012-10-06 from 001__elm20171015_014605__dat00.bin



Processed Sun Oct 15 03:53:54 2017 by ELM ver.2012-10-06 from 001__elm20171015_014605__dat00.bin

