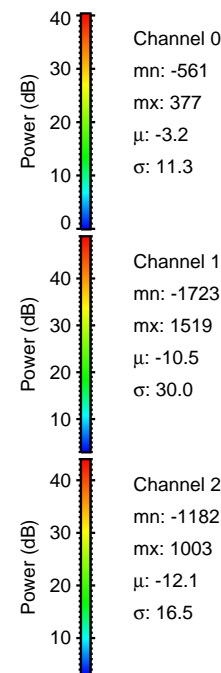
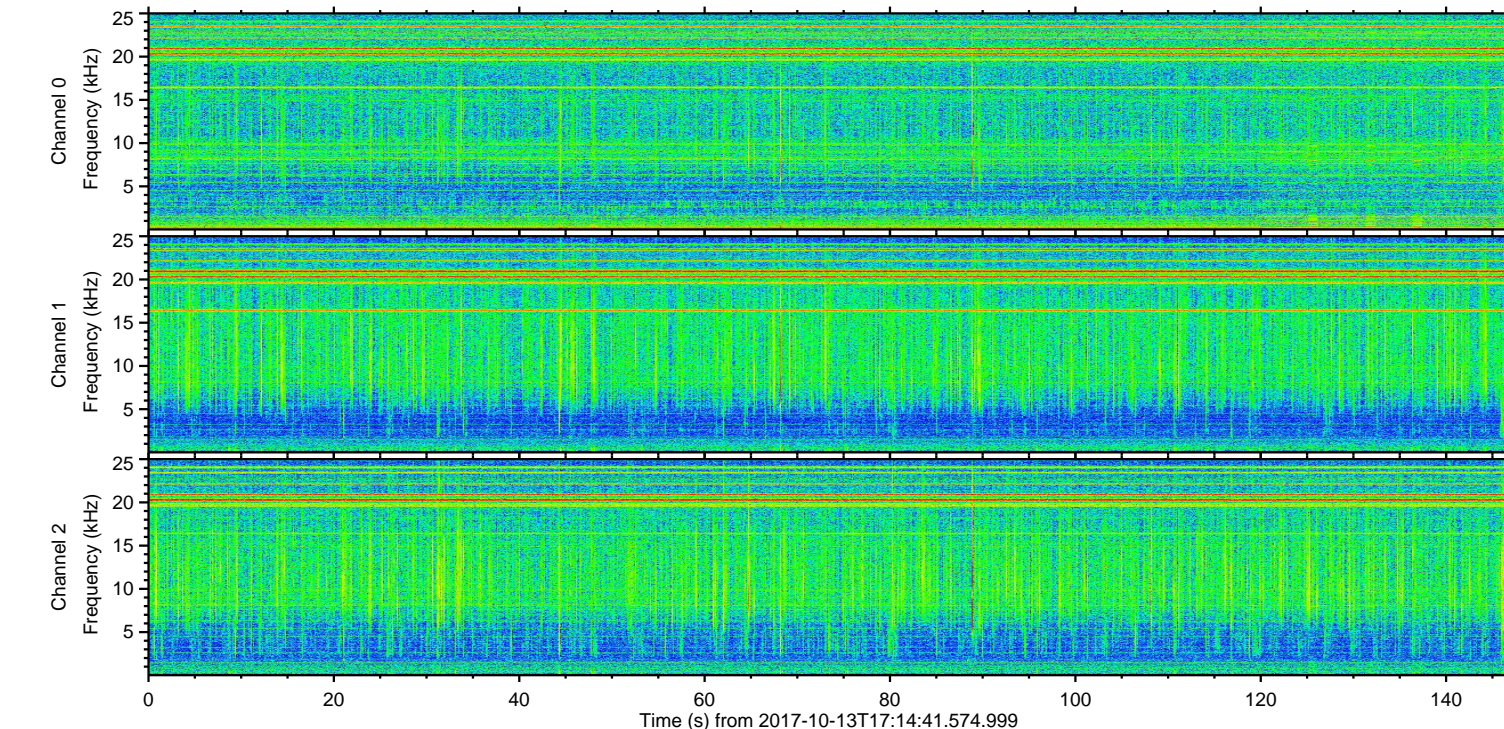
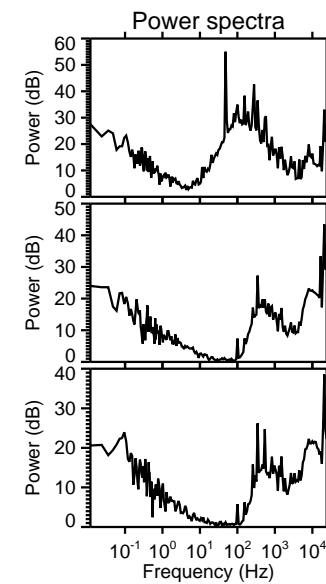
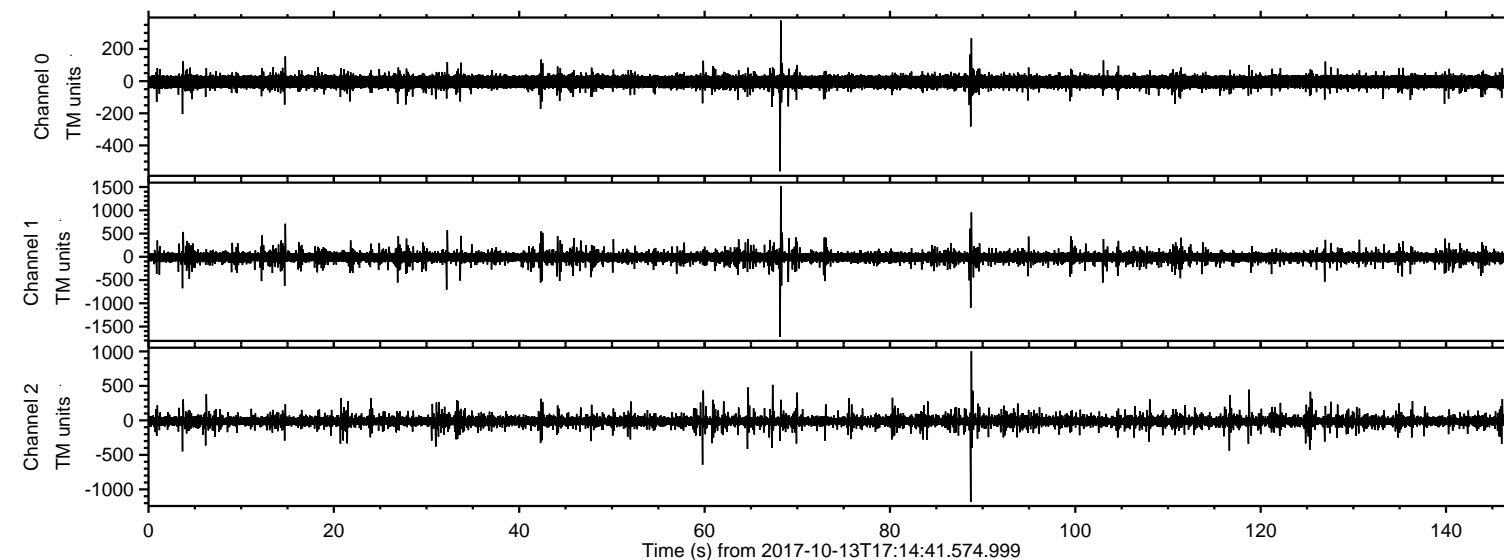


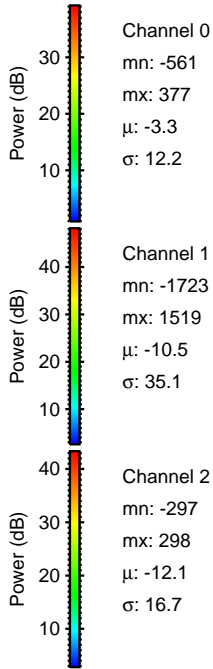
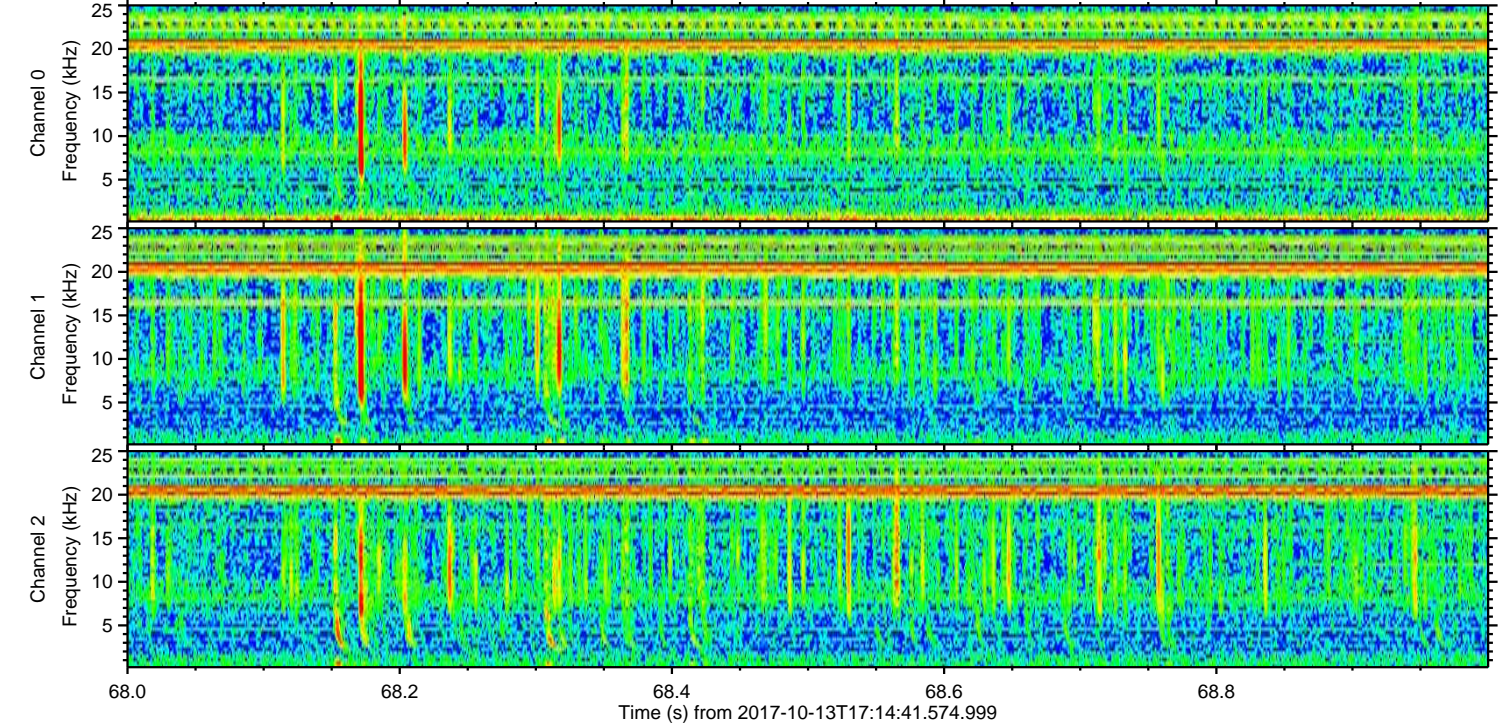
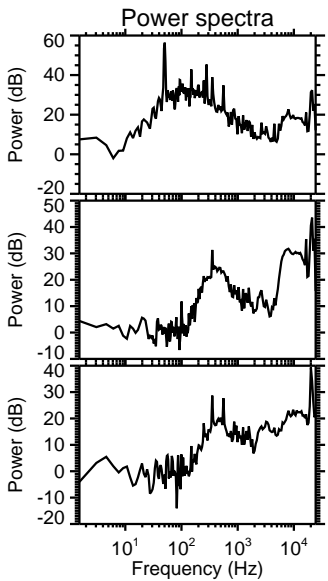
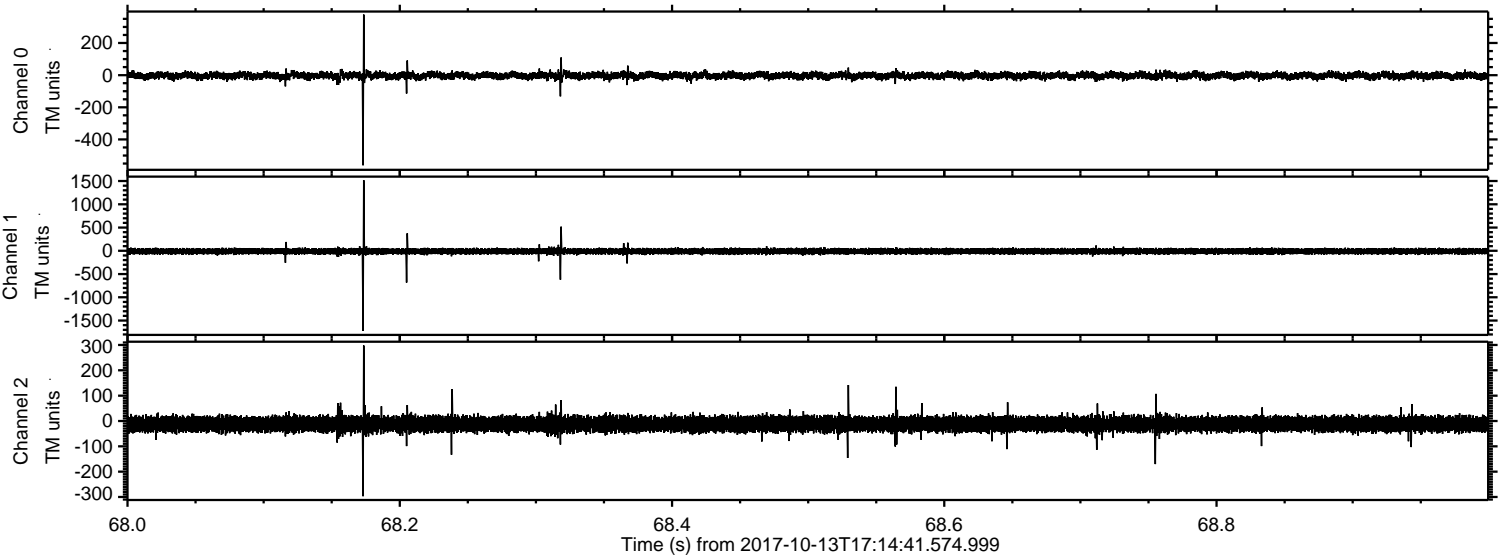
# ELMAVAN 3D WAVEFORMS (Measured data sampled at 50 kHz) 51000 packets of 144 samples from 2017-10-13T17:14:41.574.999.

Processed Fri Oct 13 19:22:09 2017 by ELM ver.2012-10-06 from 001\_\_elm20171013\_171440\_\_dat00.bin



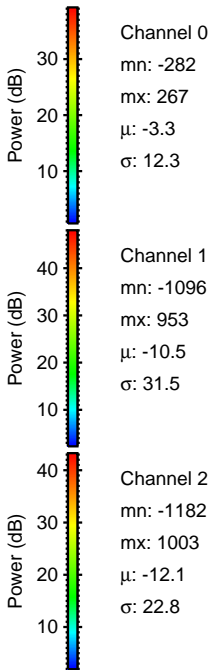
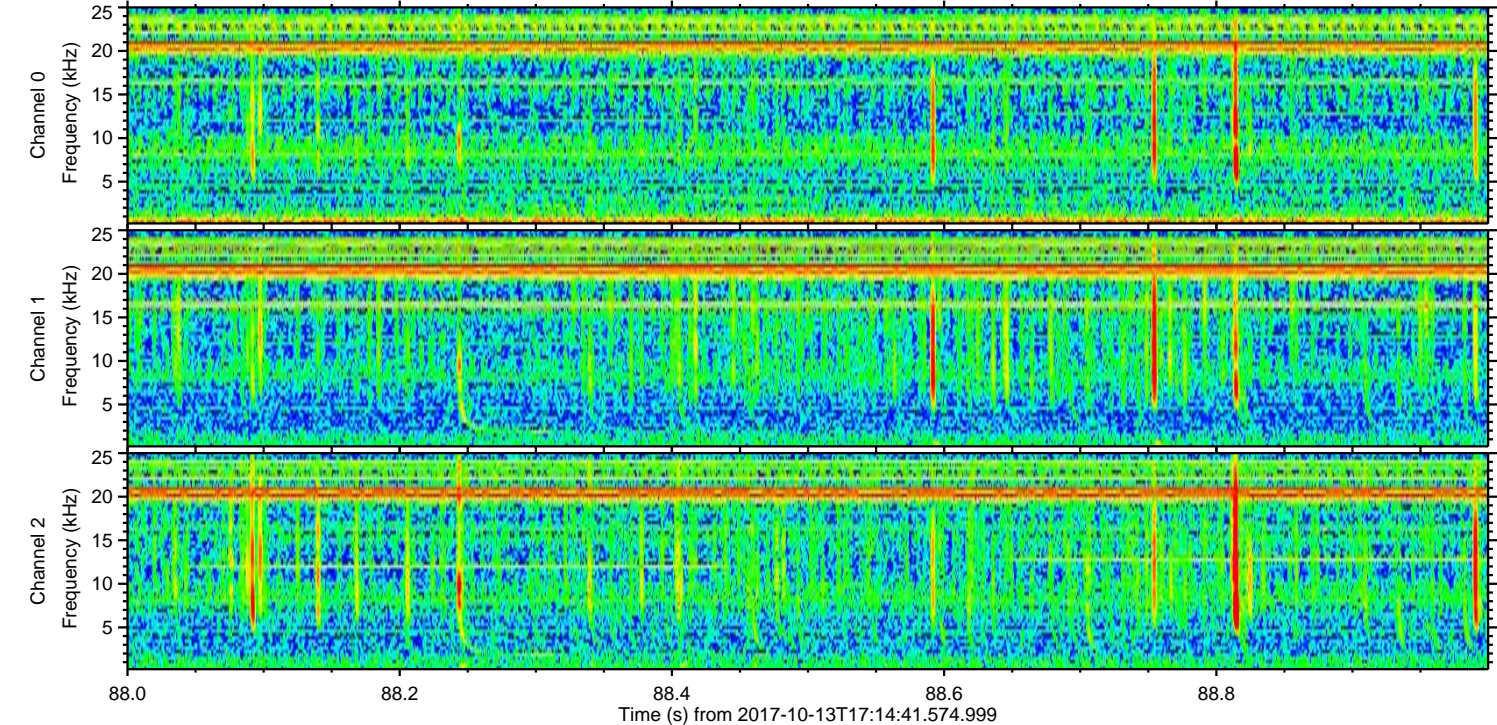
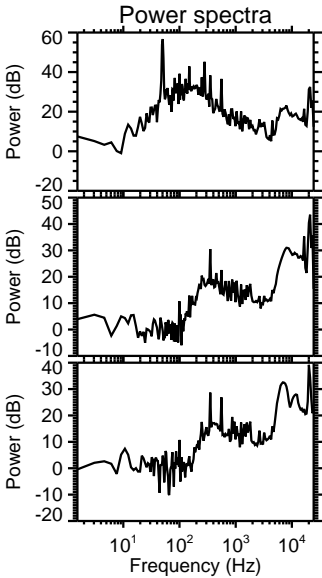
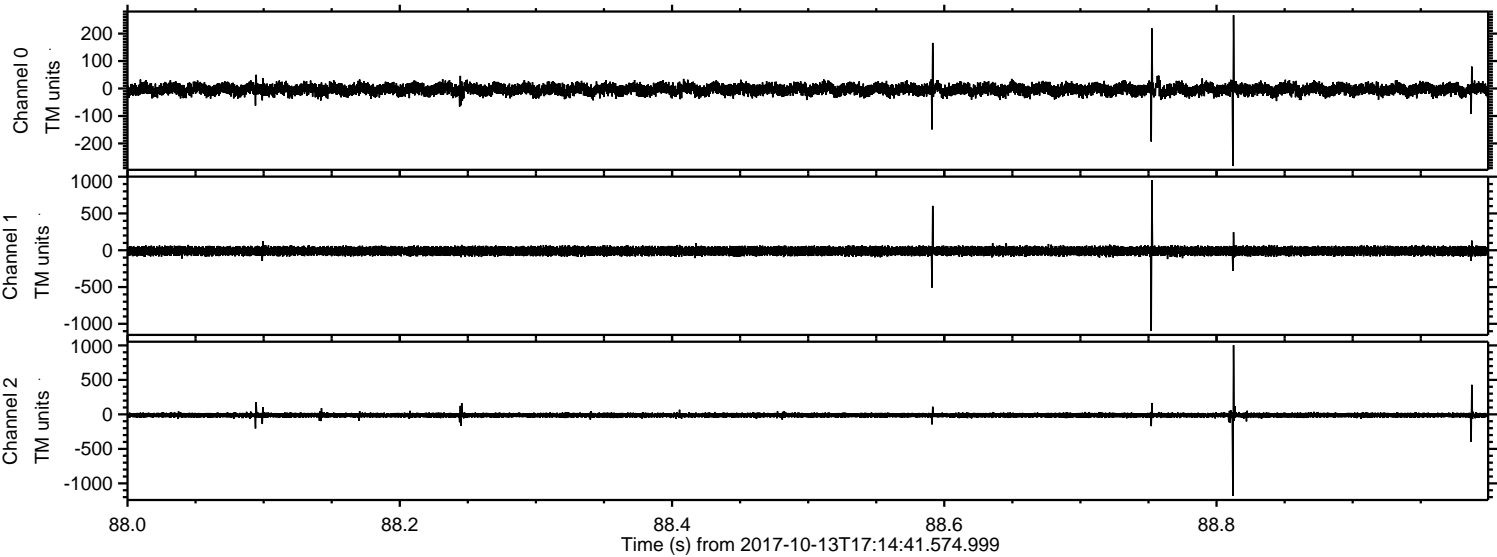


Processed Fri Oct 13 19:22:15 2017 by ELM ver.2012-10-06 from 001\_\_elm20171013\_171440\_\_dat00.bin



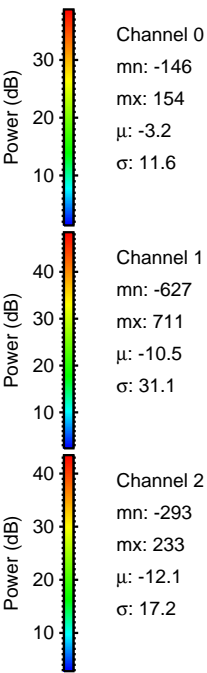
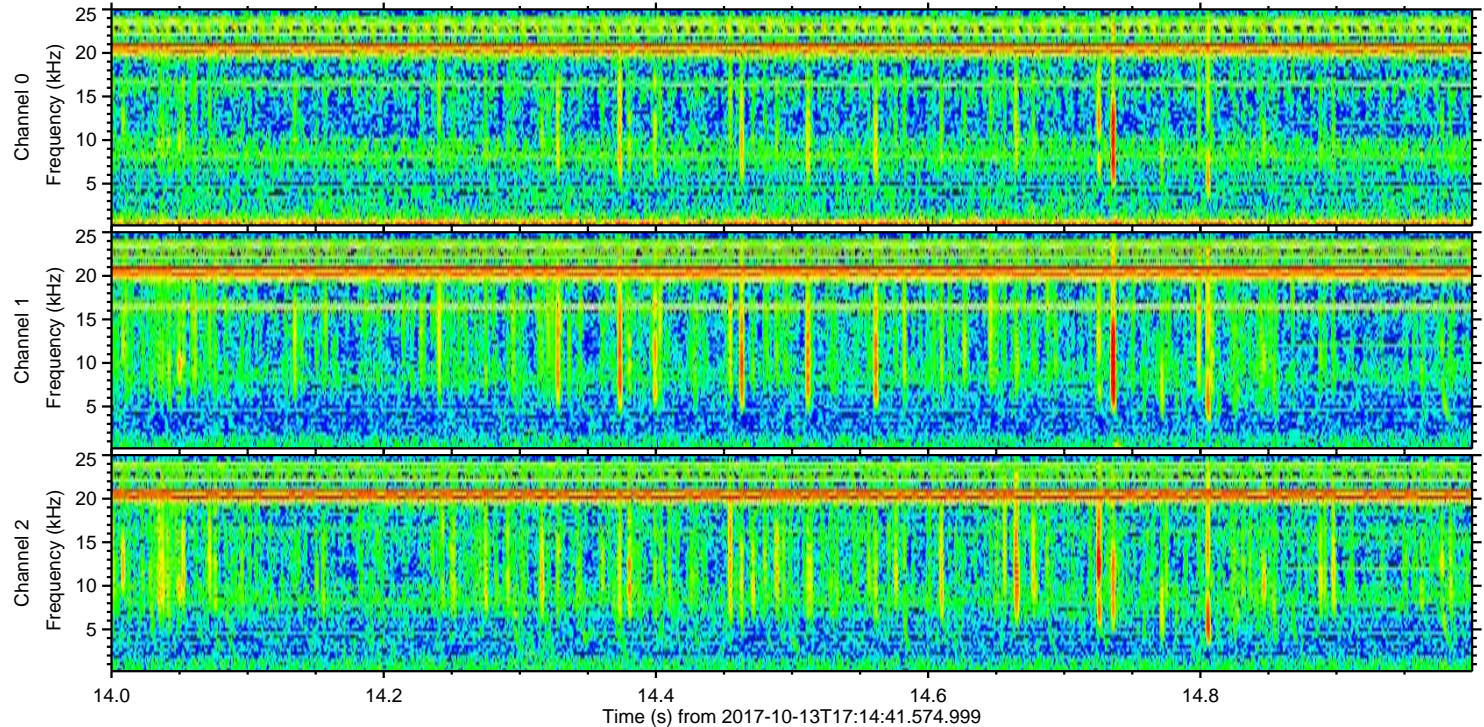
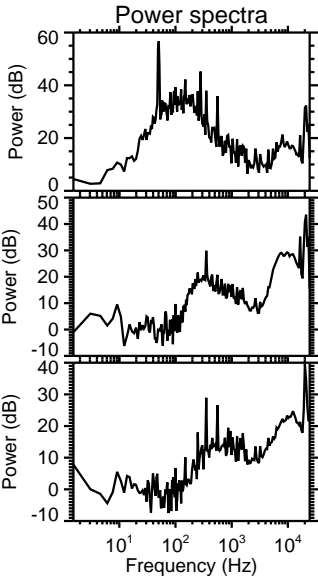
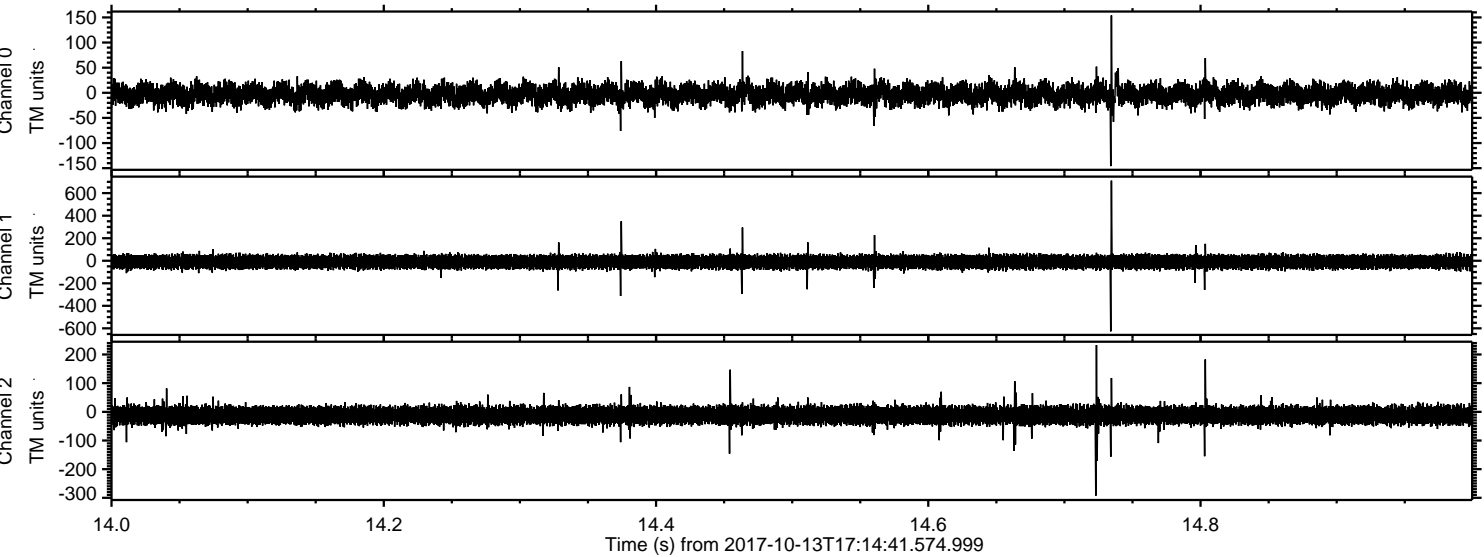


Processed Fri Oct 13 19:22:16 2017 by ELM ver.2012-10-06 from 001\_\_elm20171013\_171440\_\_dat00.bin



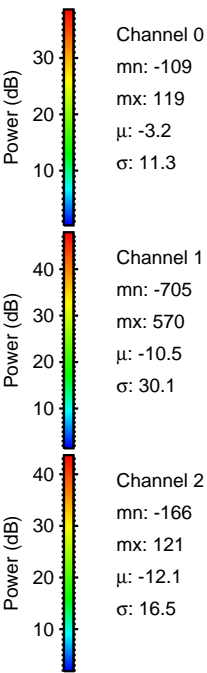
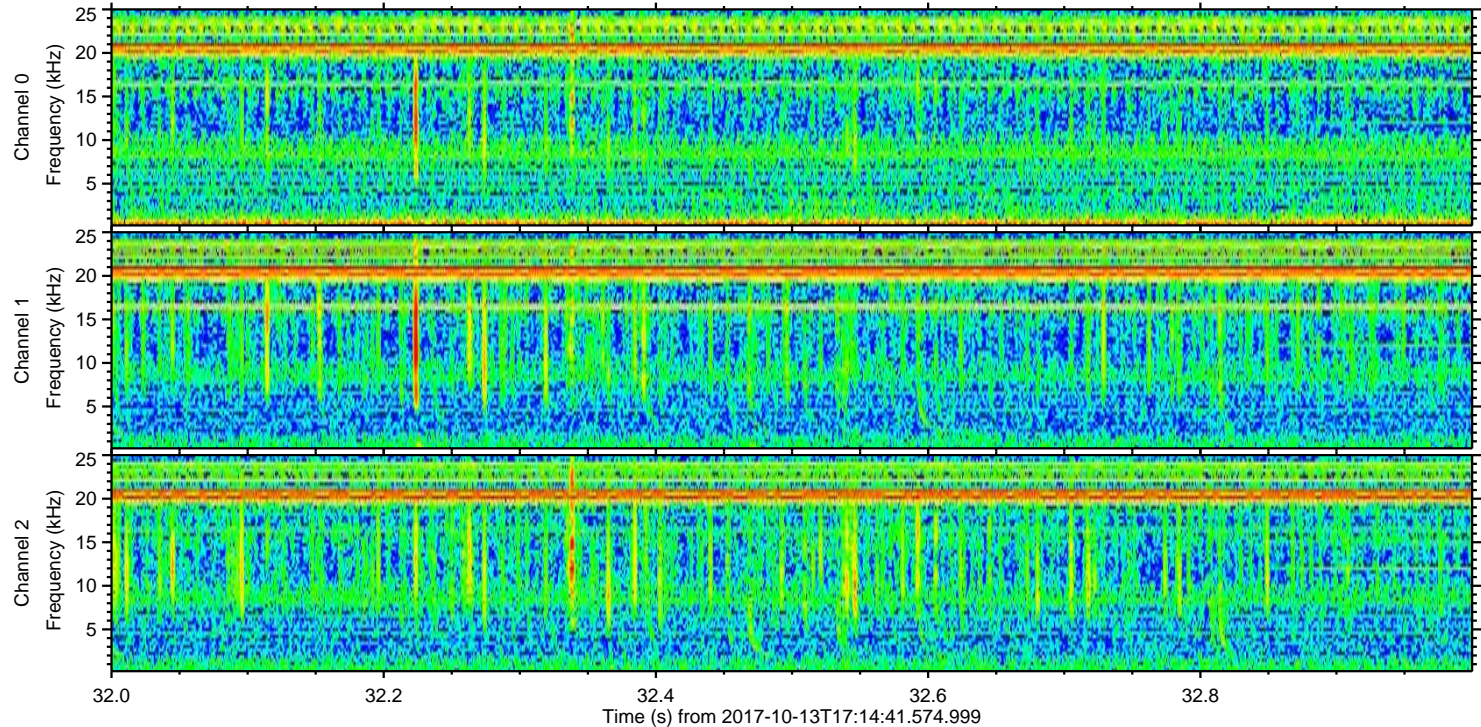
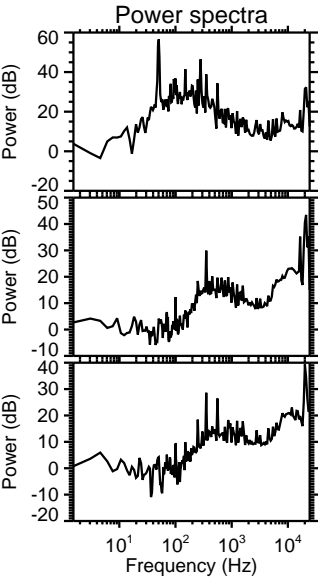
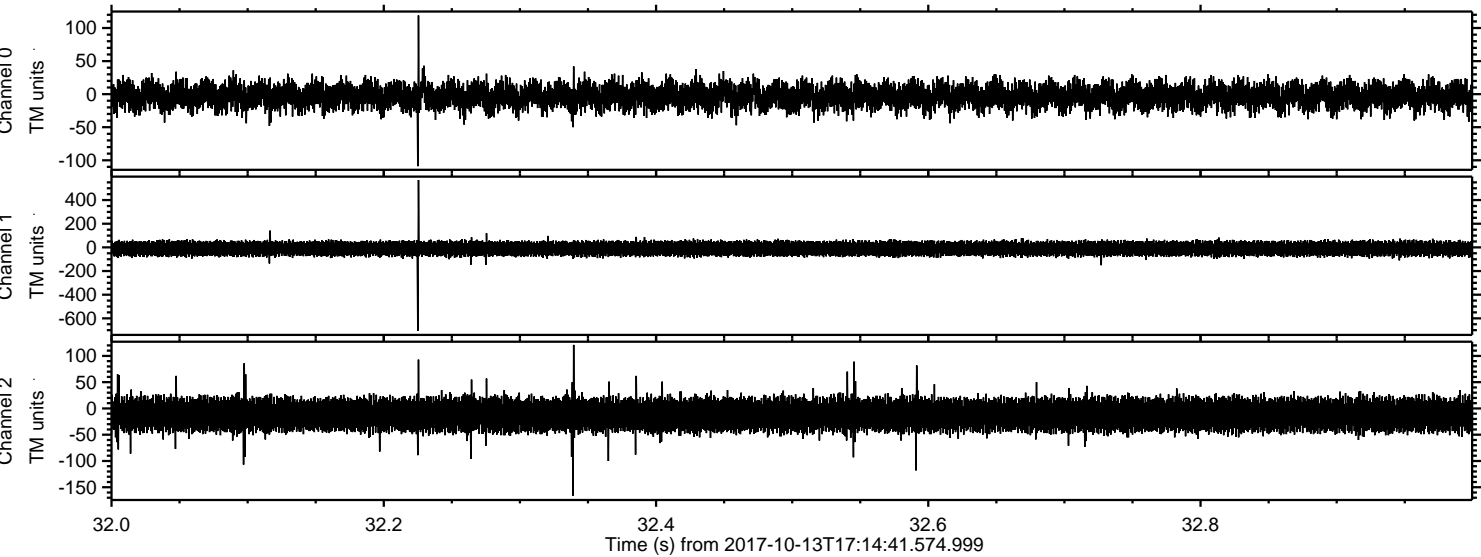


Processed Fri Oct 13 19:22:17 2017 by ELM ver.2012-10-06 from 001\_\_elm20171013\_171440\_\_dat00.bin





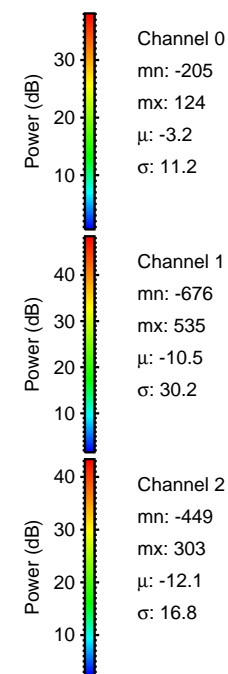
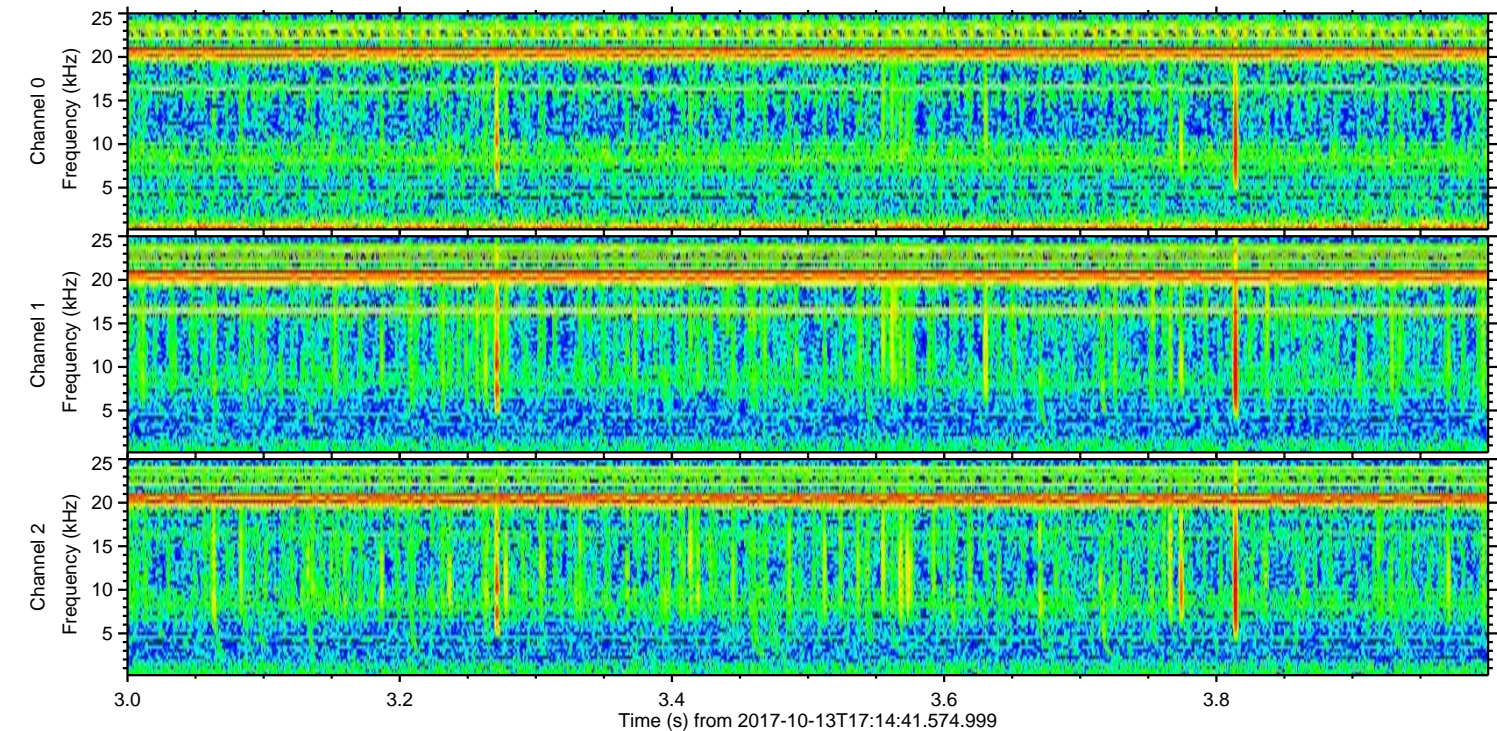
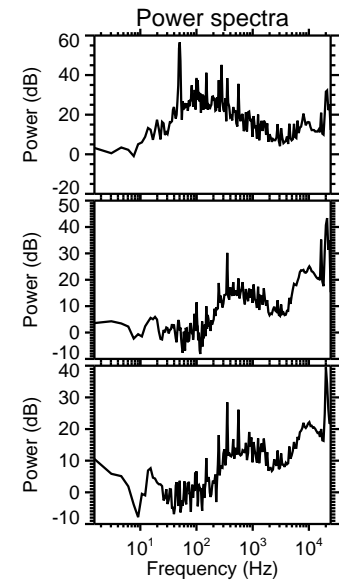
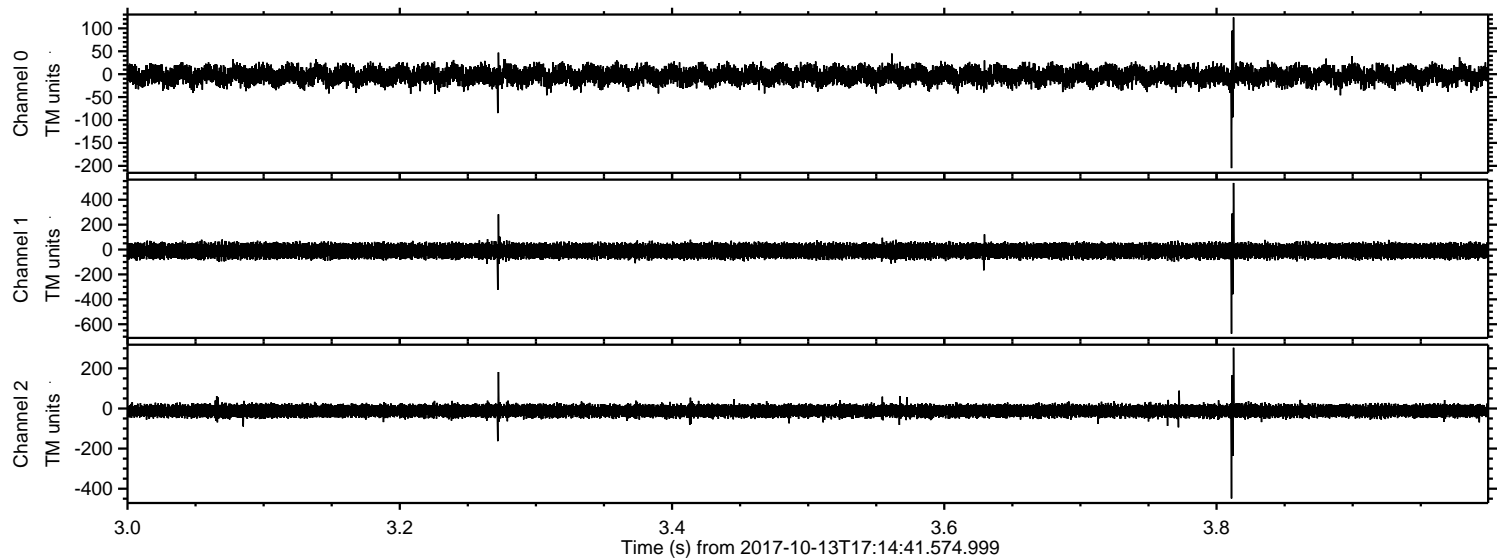
Processed Fri Oct 13 19:22:17 2017 by ELM ver.2012-10-06 from 001\_\_elm20171013\_171440\_\_dat00.bin





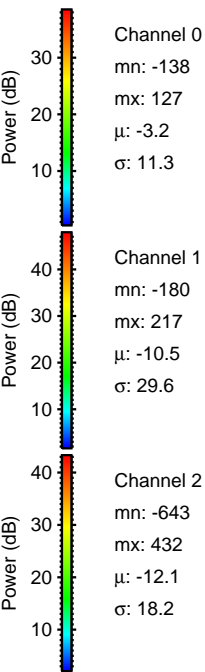
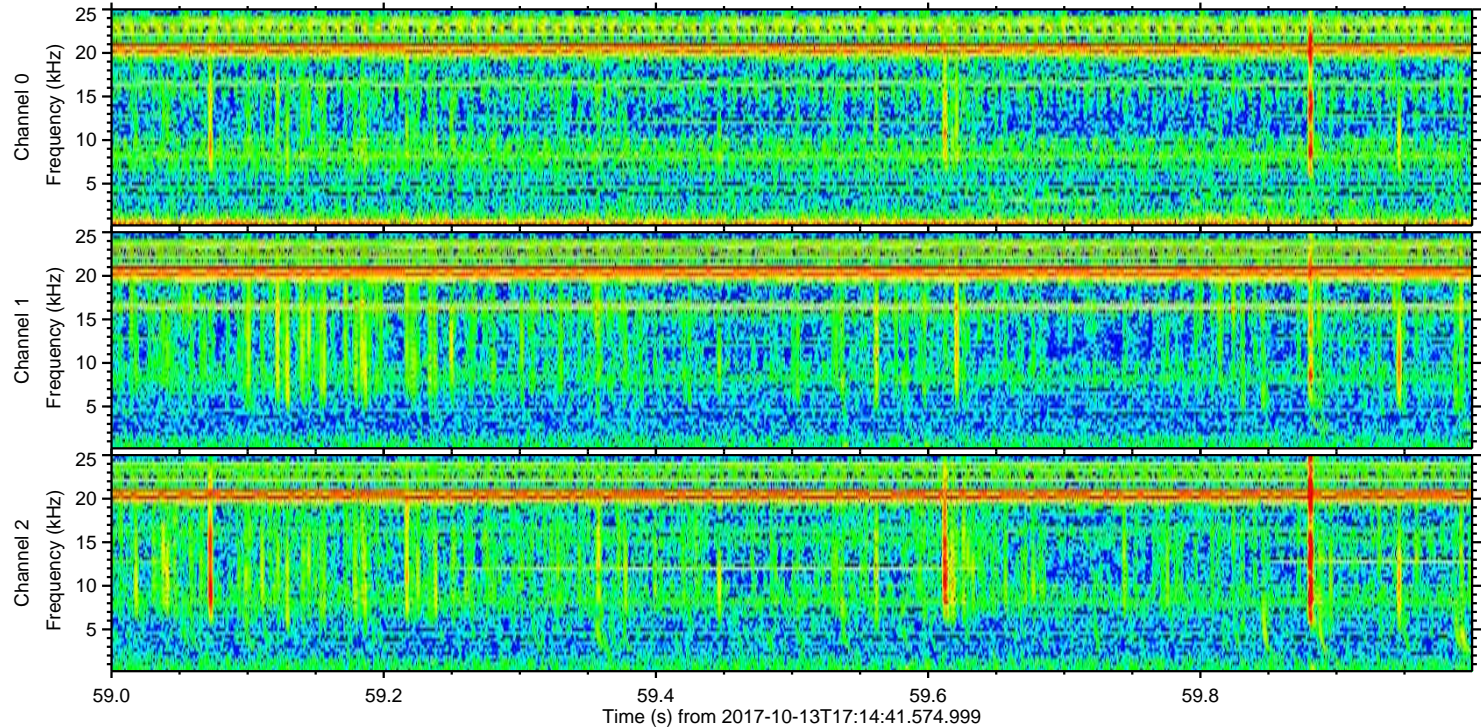
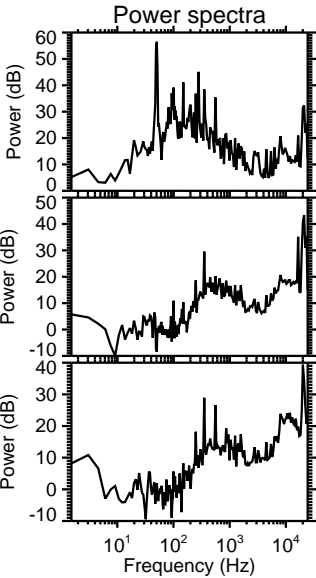
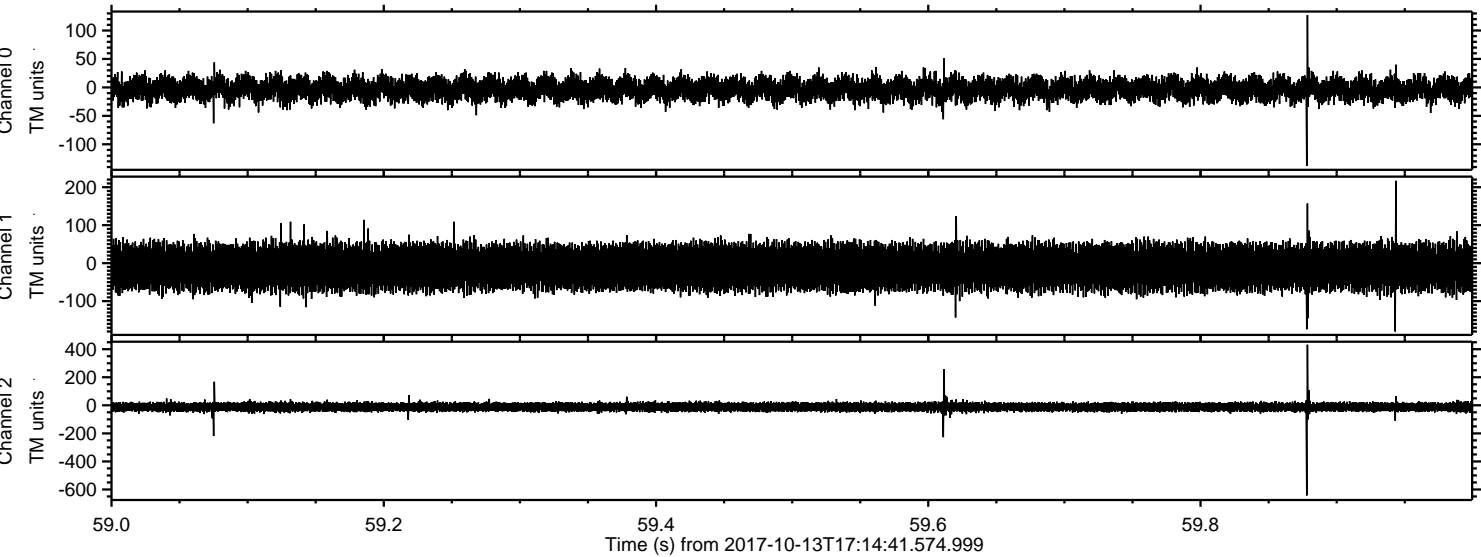
ELMAVAN 3D WAVEFORMS (Measured data sampled at 50 kHz) 51000 packets of 144 samples from 2017-10-13T17:14:41.574.999. Part 4/147

Processed Fri Oct 13 19:22:18 2017 by ELM ver.2012-10-06 from 001\_\_elm20171013\_171440\_\_dat00.bin



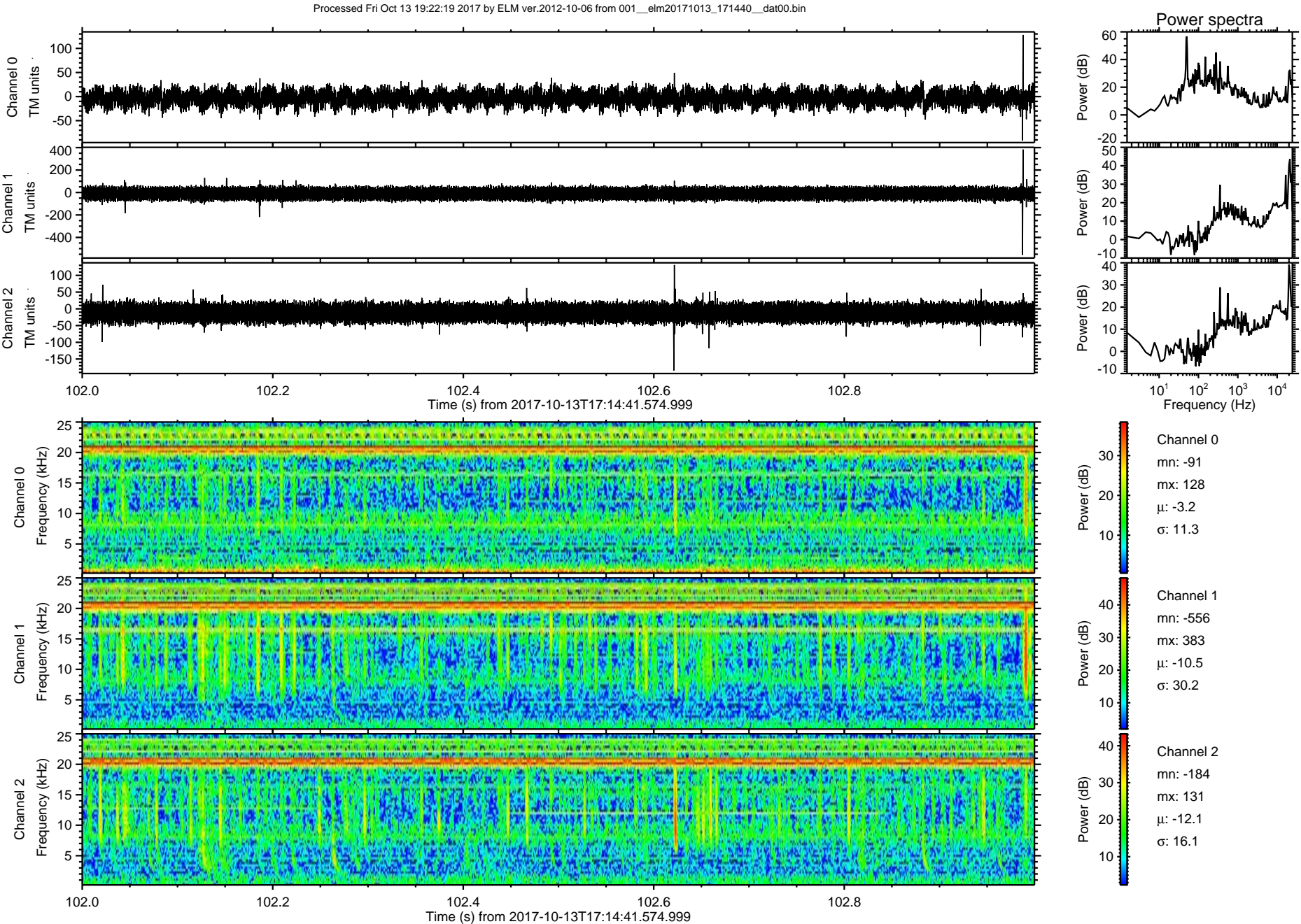


Processed Fri Oct 13 19:22:18 2017 by ELM ver.2012-10-06 from 001\_\_elm20171013\_171440\_\_dat00.bin



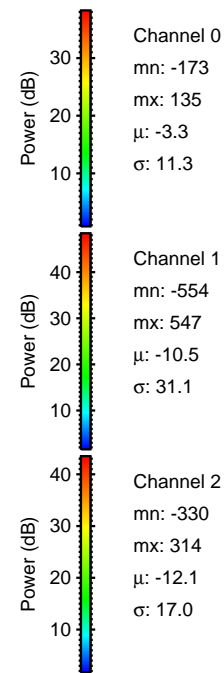
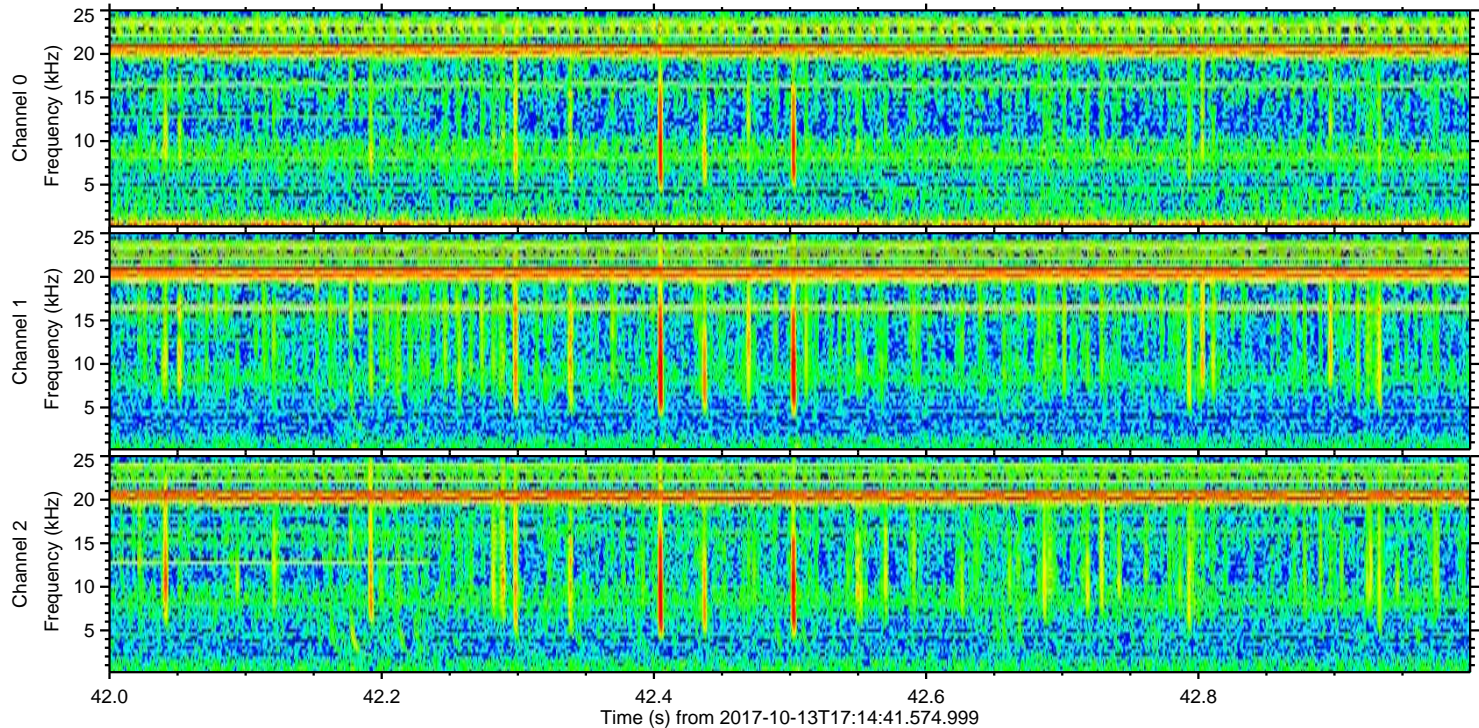
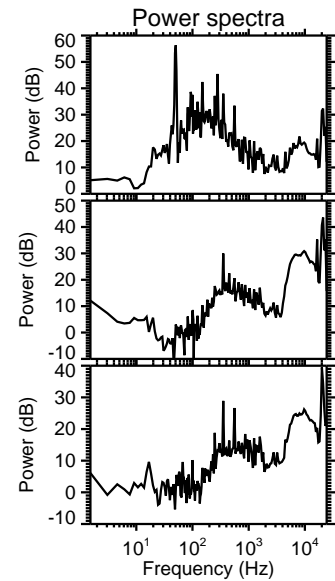
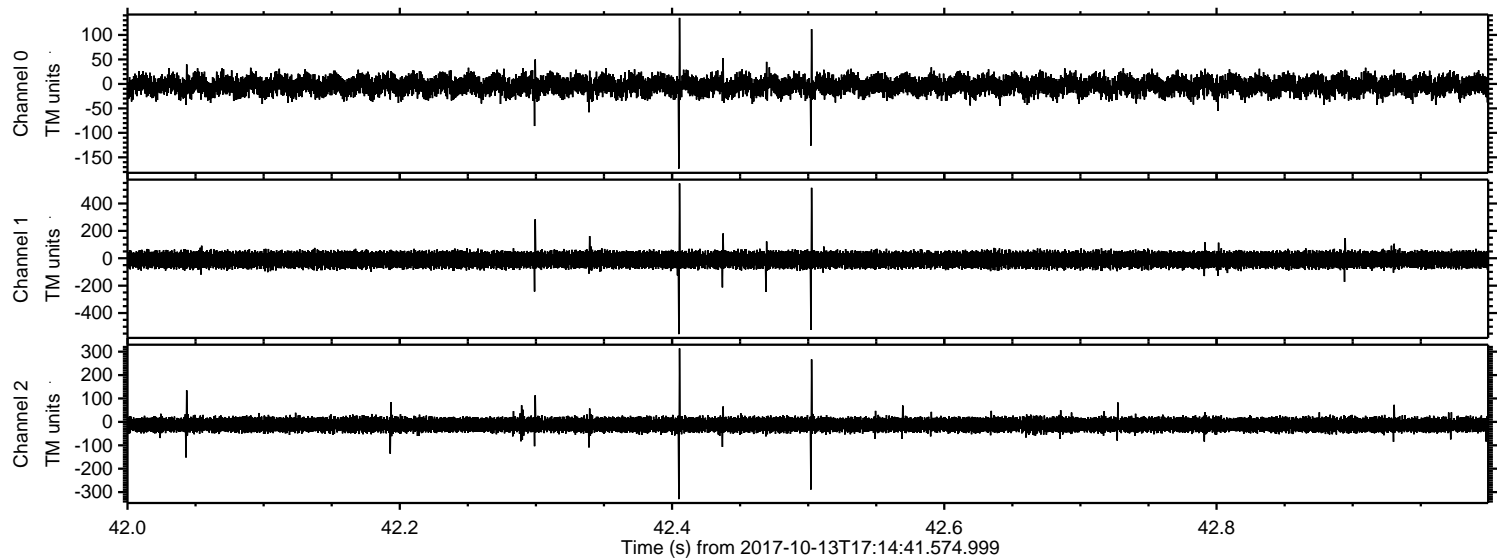


ELMAVAN 3D WAVEFORMS (Measured data sampled at 50 kHz) 51000 packets of 144 samples from 2017-10-13T17:14:41.574.999. Part 103/147





Processed Fri Oct 13 19:22:20 2017 by ELM ver.2012-10-06 from 001\_\_elm20171013\_171440\_\_dat00.bin





ELMAVAN 3D WAVEFORMS (Measured data sampled at 50 kHz) 51000 packets of 144 samples from 2017-10-13T17:14:41.574.999. Part 27/147

Processed Fri Oct 13 19:22:20 2017 by ELM ver.2012-10-06 from 001\_\_elm20171013\_171440\_\_dat00.bin

