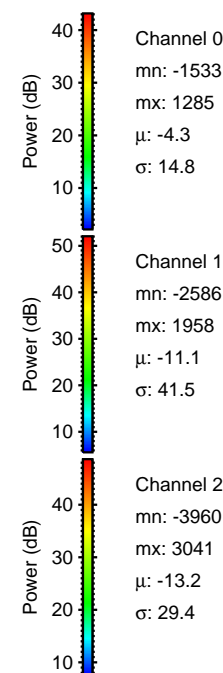
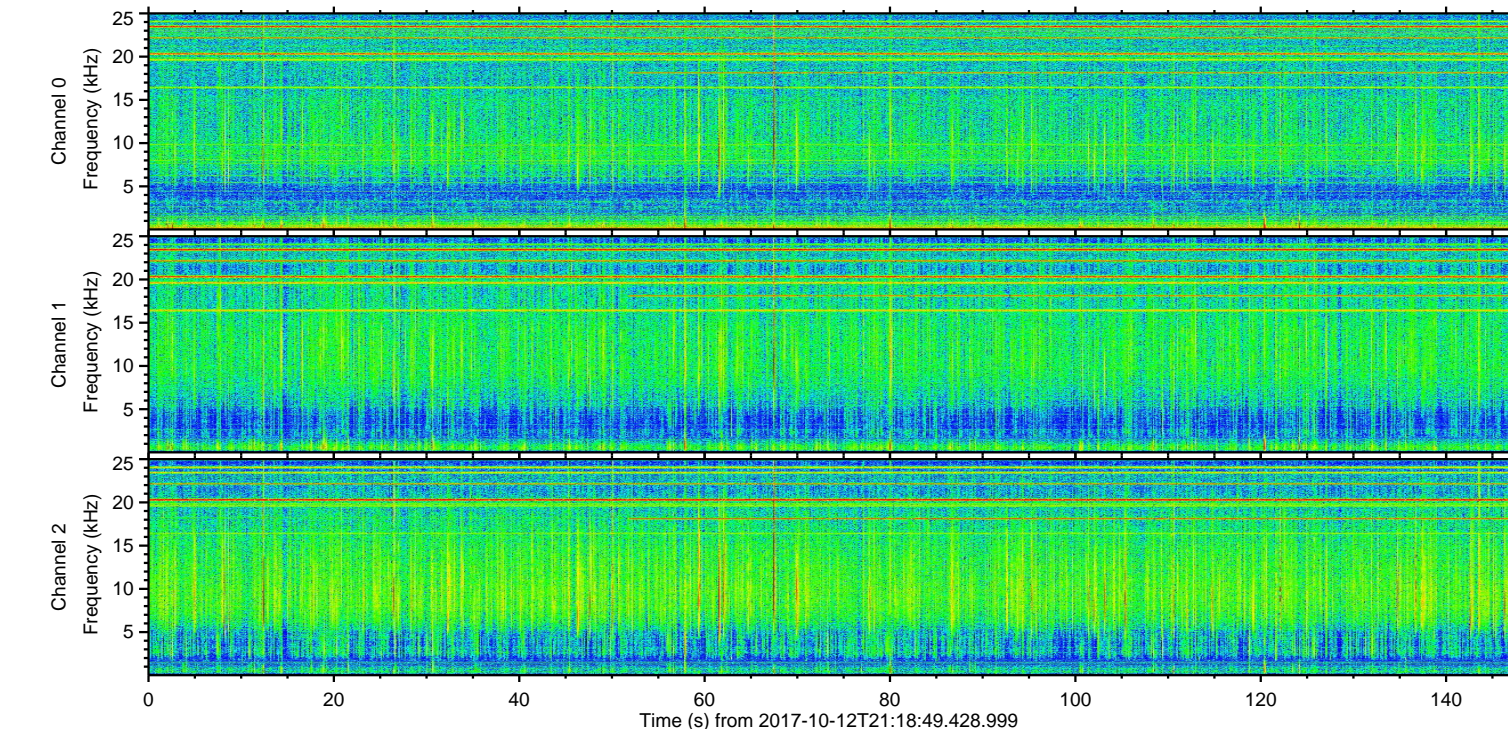
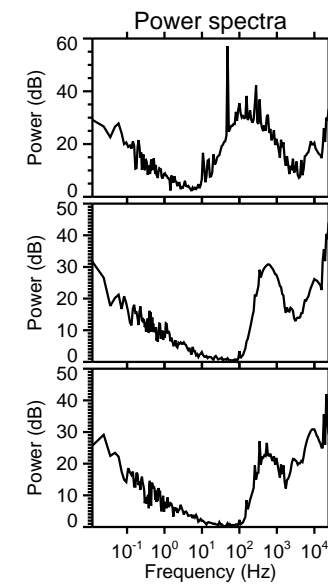
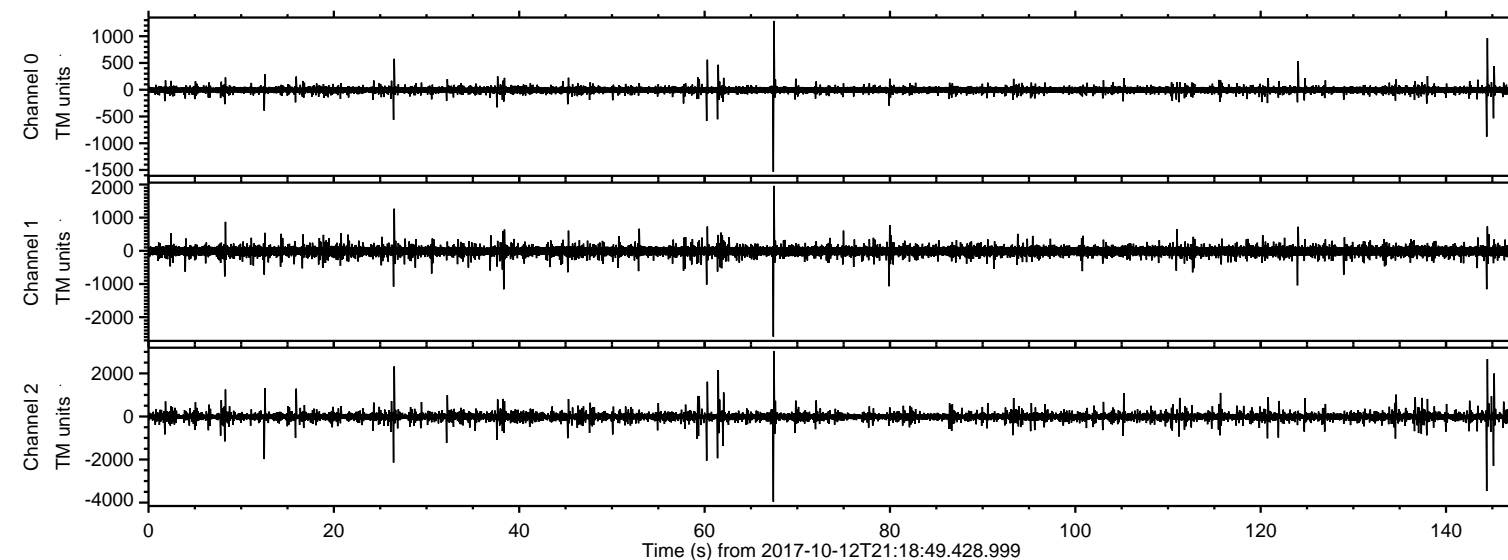


# ELMAVAN 3D WAVEFORMS (Measured data sampled at 50 kHz) 51000 packets of 144 samples from 2017-10-12T21:18:49.428.999.

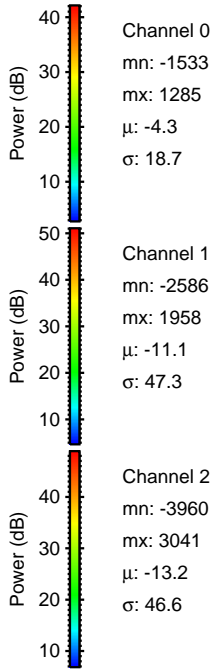
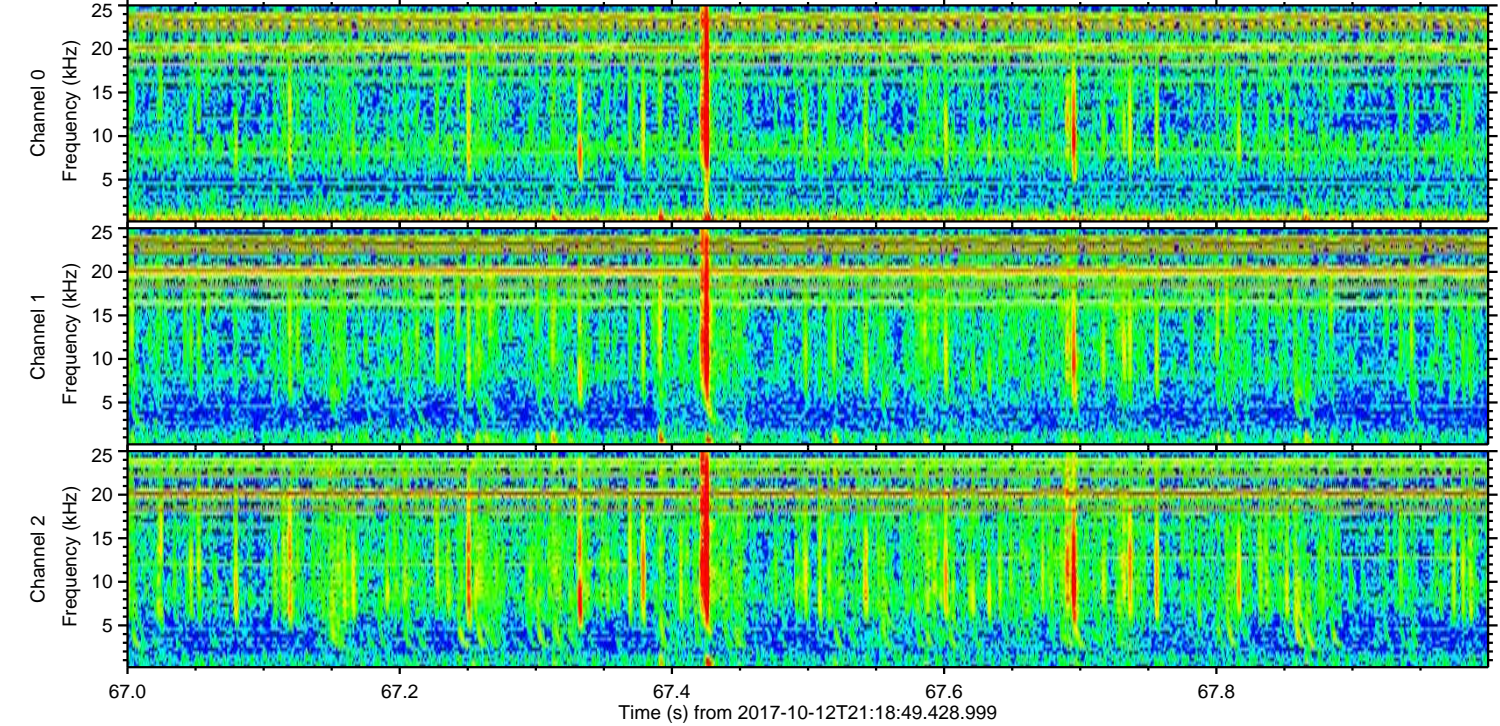
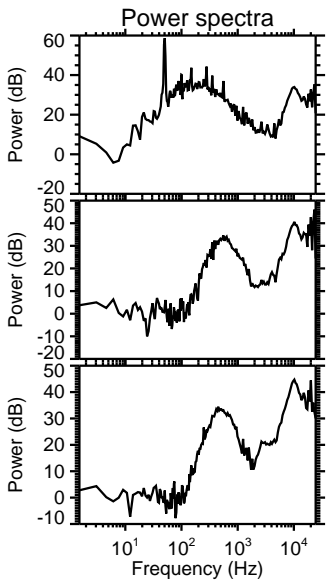
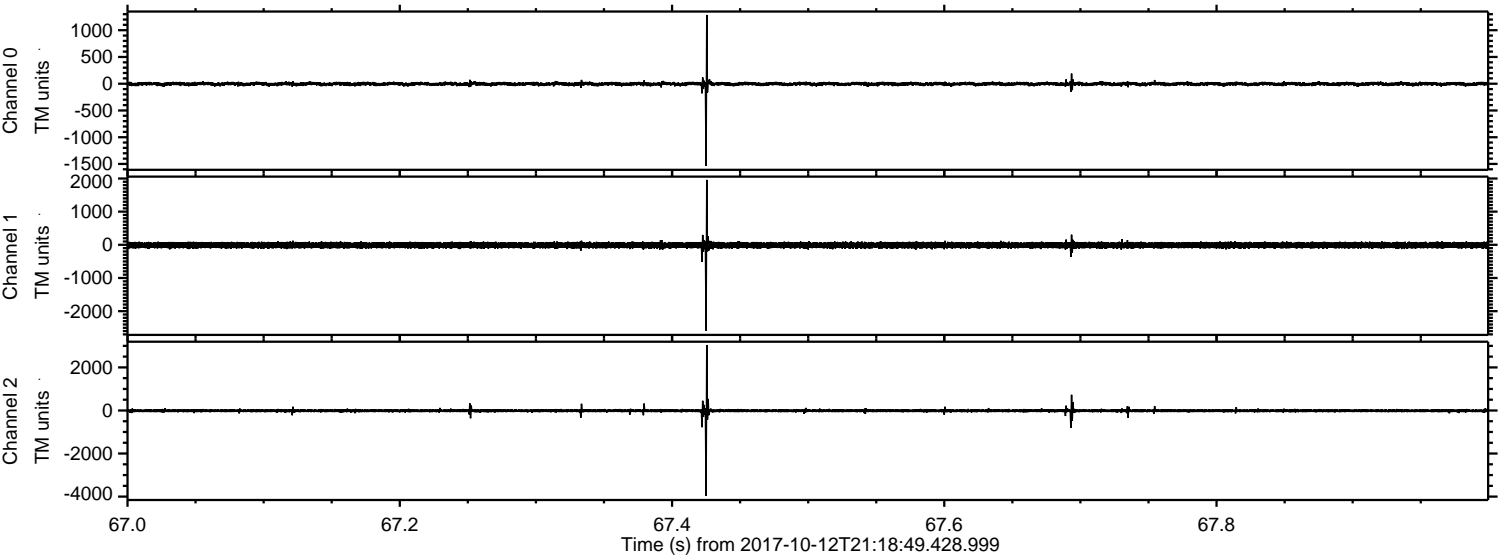
Processed Thu Oct 12 23:26:25 2017 by ELM ver.2012-10-06 from 001\_\_elm20171012\_211848\_\_dat00.bin





ELMAVAN 3D WAVEFORMS (Measured data sampled at 50 kHz) 51000 packets of 144 samples from 2017-10-12T21:18:49.428.999. Part 68/147

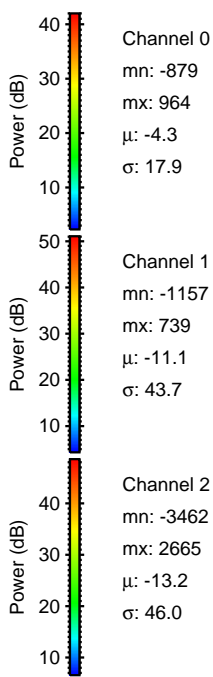
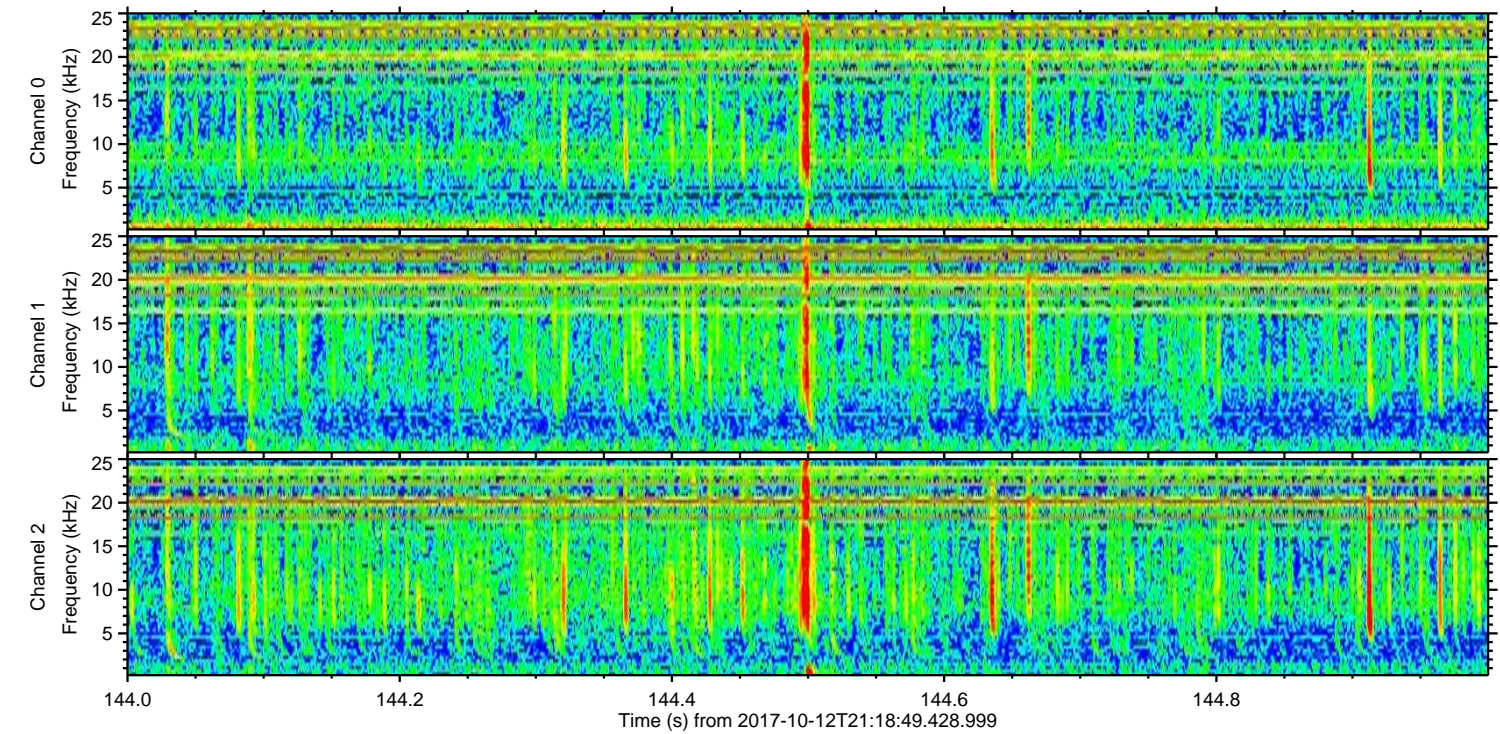
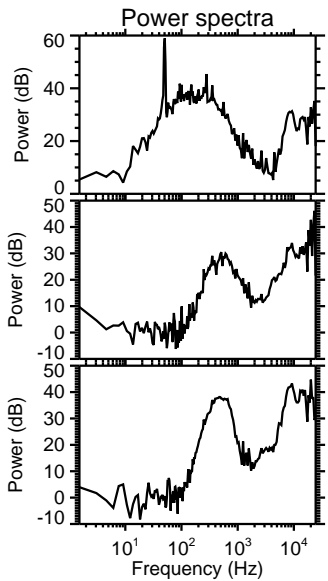
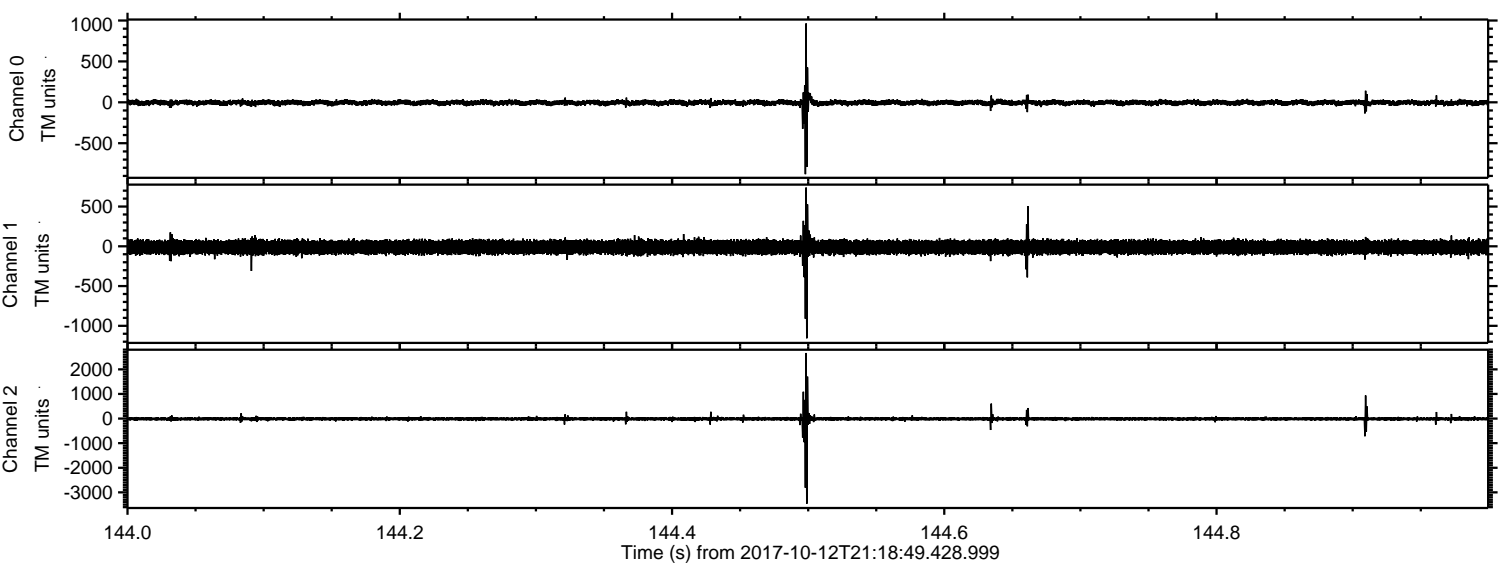
Processed Thu Oct 12 23:26:30 2017 by ELM ver.2012-10-06 from 001\_\_elm20171012\_211848\_\_dat00.bin





ELMAVAN 3D WAVEFORMS (Measured data sampled at 50 kHz) 51000 packets of 144 samples from 2017-10-12T21:18:49.428.999. Part 145/147

Processed Thu Oct 12 23:26:31 2017 by ELM ver.2012-10-06 from 001\_\_elm20171012\_211848\_\_dat00.bin



Channel 0  
mn: -879  
mx: 964  
 $\mu$ : -4.3  
 $\sigma$ : 17.9

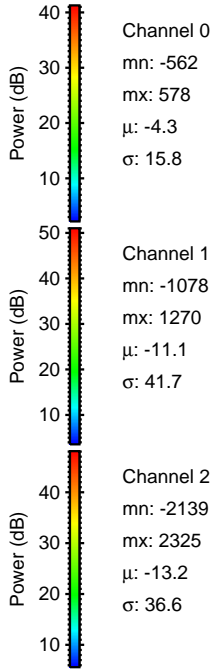
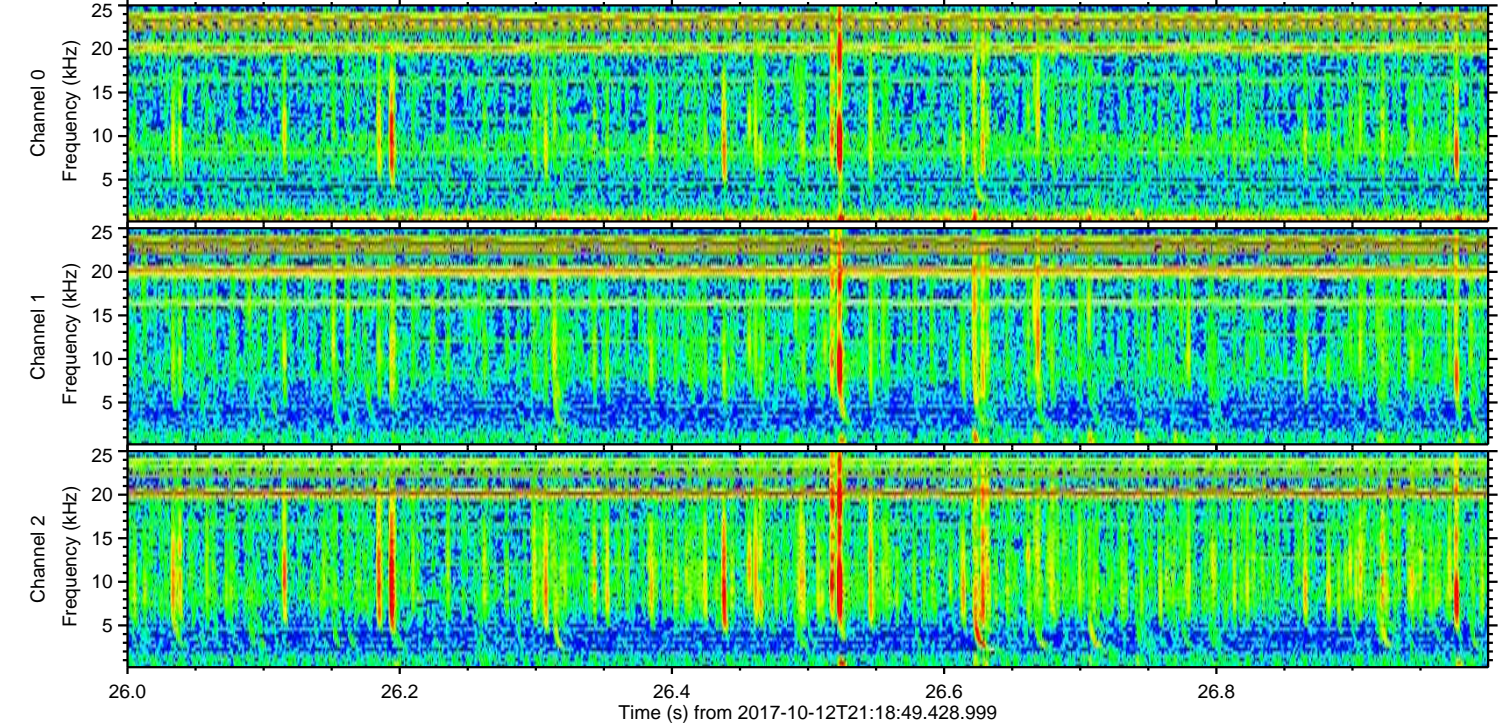
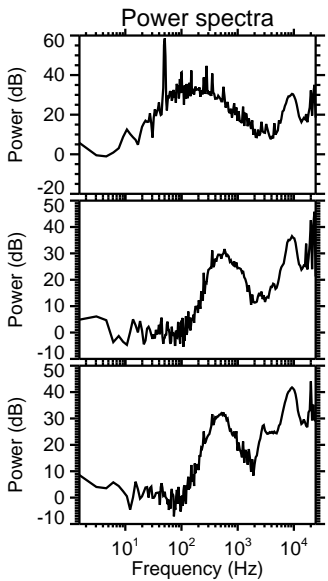
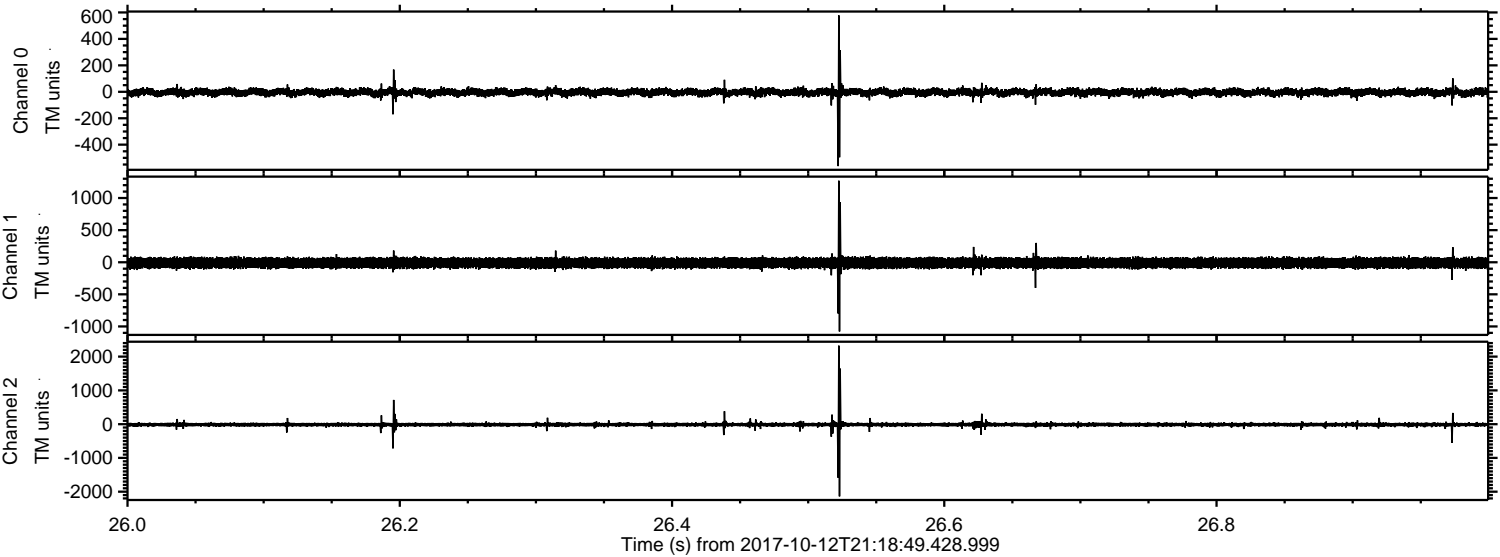
Channel 1  
mn: -1157  
mx: 739  
 $\mu$ : -11.1  
 $\sigma$ : 43.7

Channel 2  
mn: -3462  
mx: 2665  
 $\mu$ : -13.2  
 $\sigma$ : 46.0



ELMAVAN 3D WAVEFORMS (Measured data sampled at 50 kHz) 51000 packets of 144 samples from 2017-10-12T21:18:49.428.999. Part 27/147

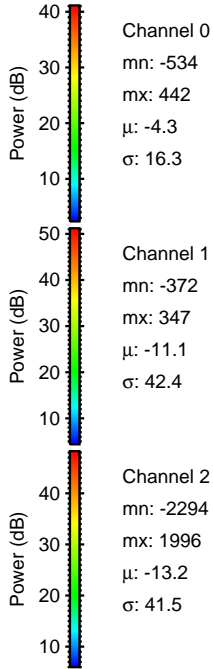
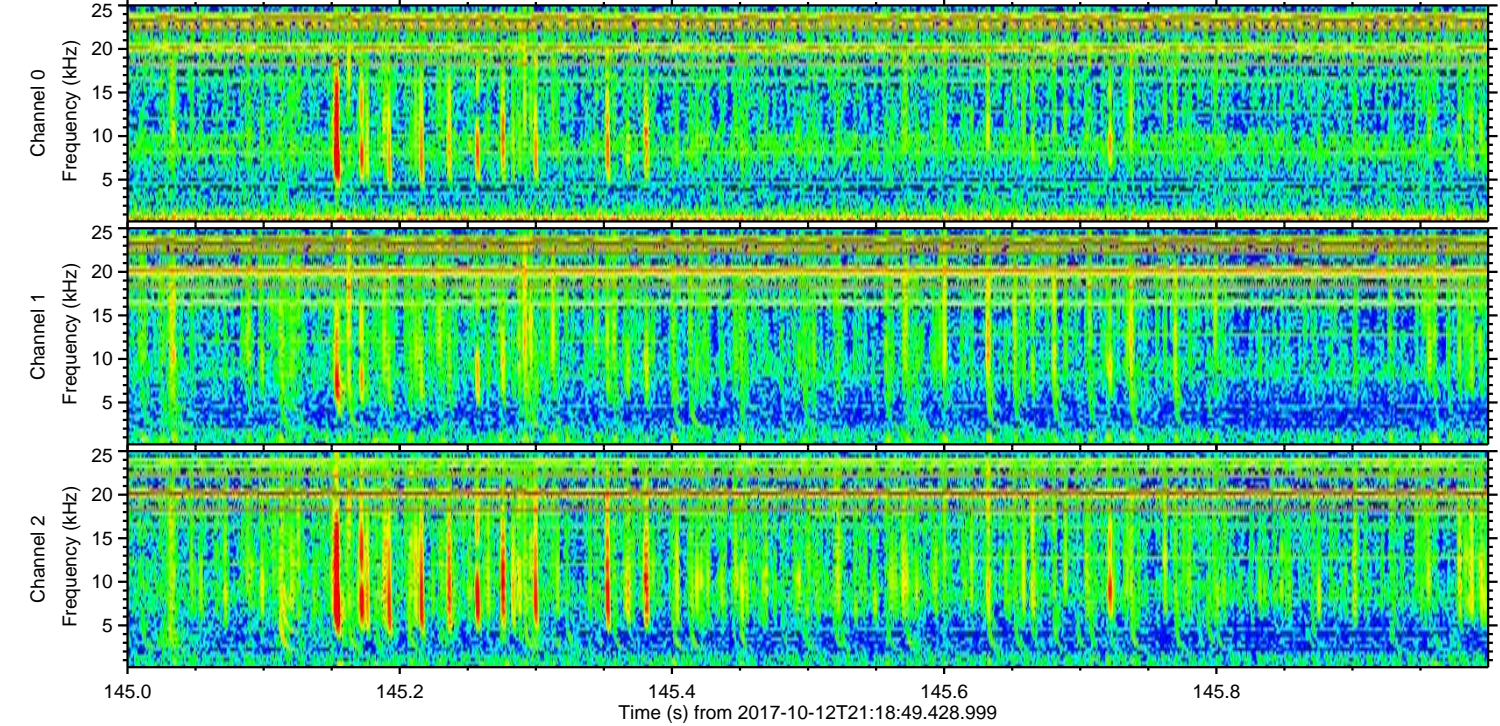
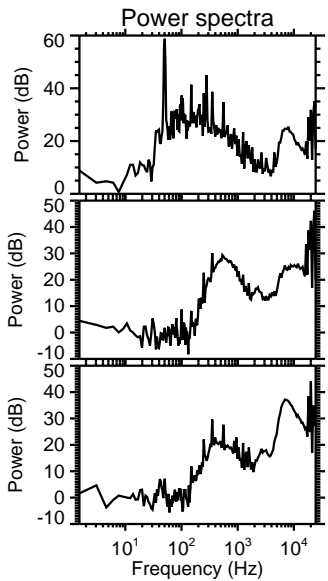
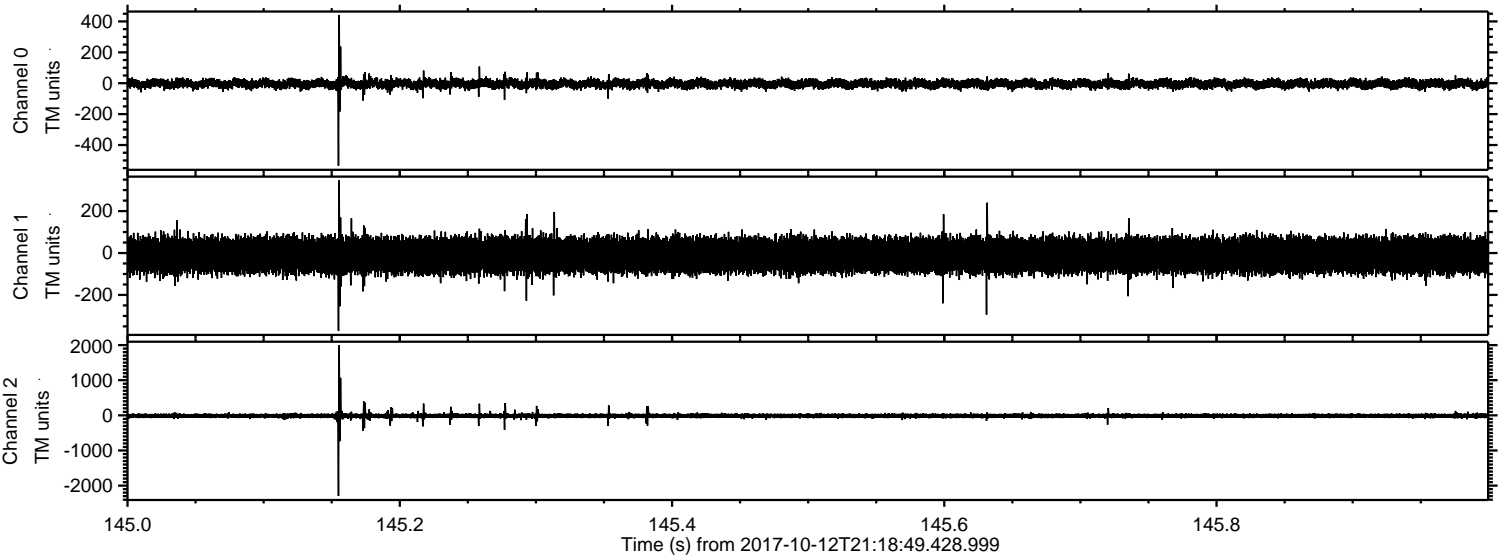
Processed Thu Oct 12 23:26:32 2017 by ELM ver.2012-10-06 from 001\_\_elm20171012\_211848\_\_dat00.bin





ELMAVAN 3D WAVEFORMS (Measured data sampled at 50 kHz) 51000 packets of 144 samples from 2017-10-12T21:18:49.428.999. Part 146/147

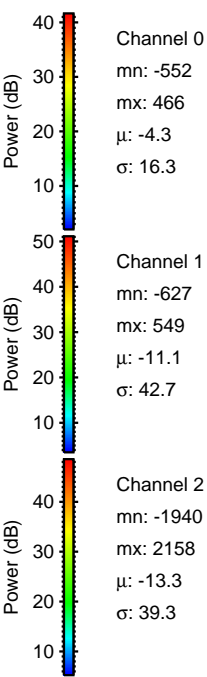
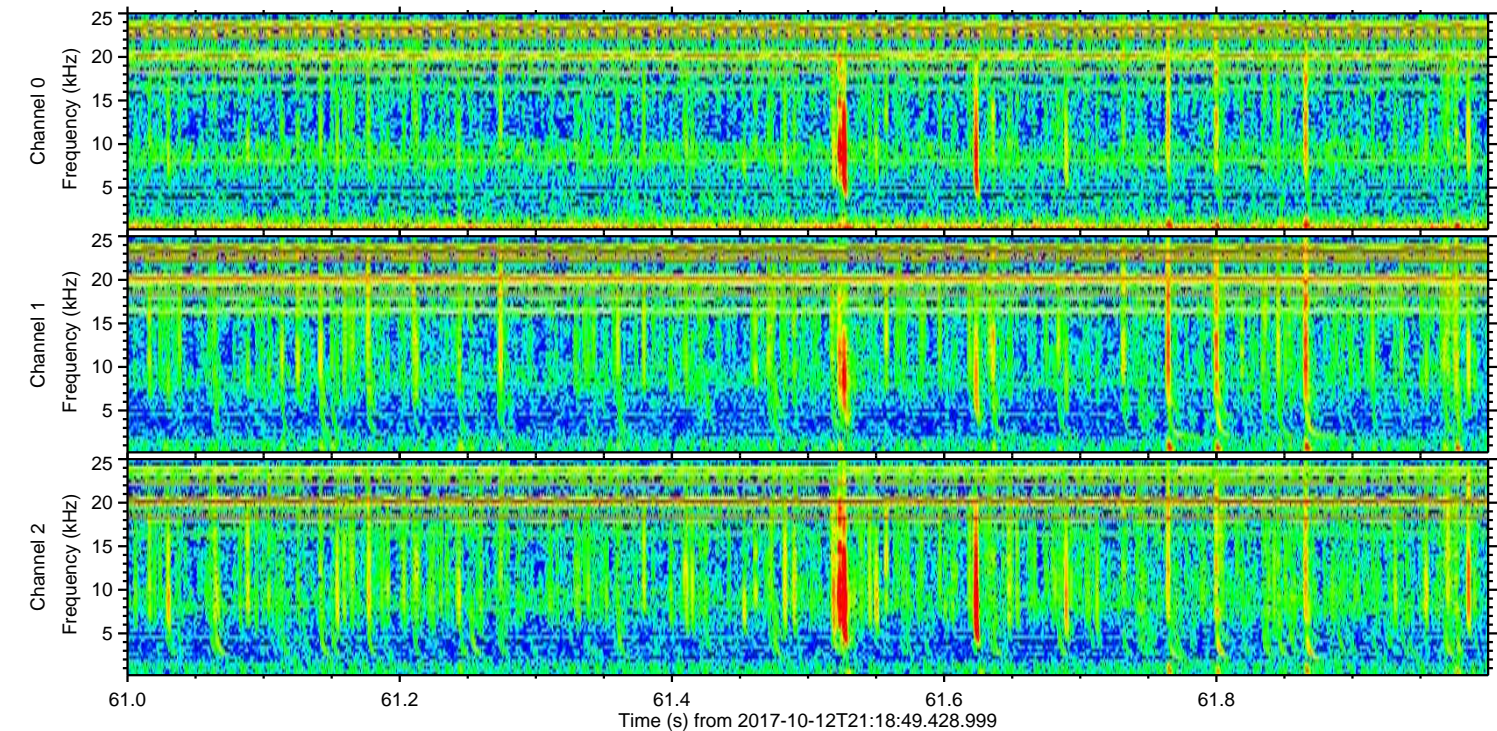
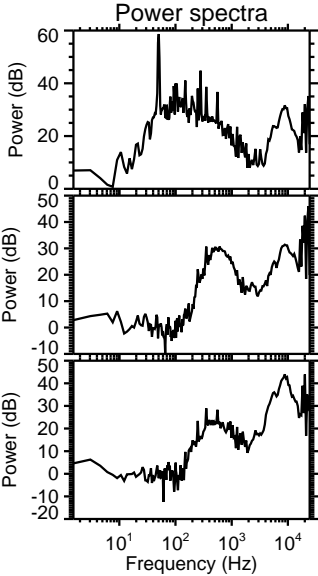
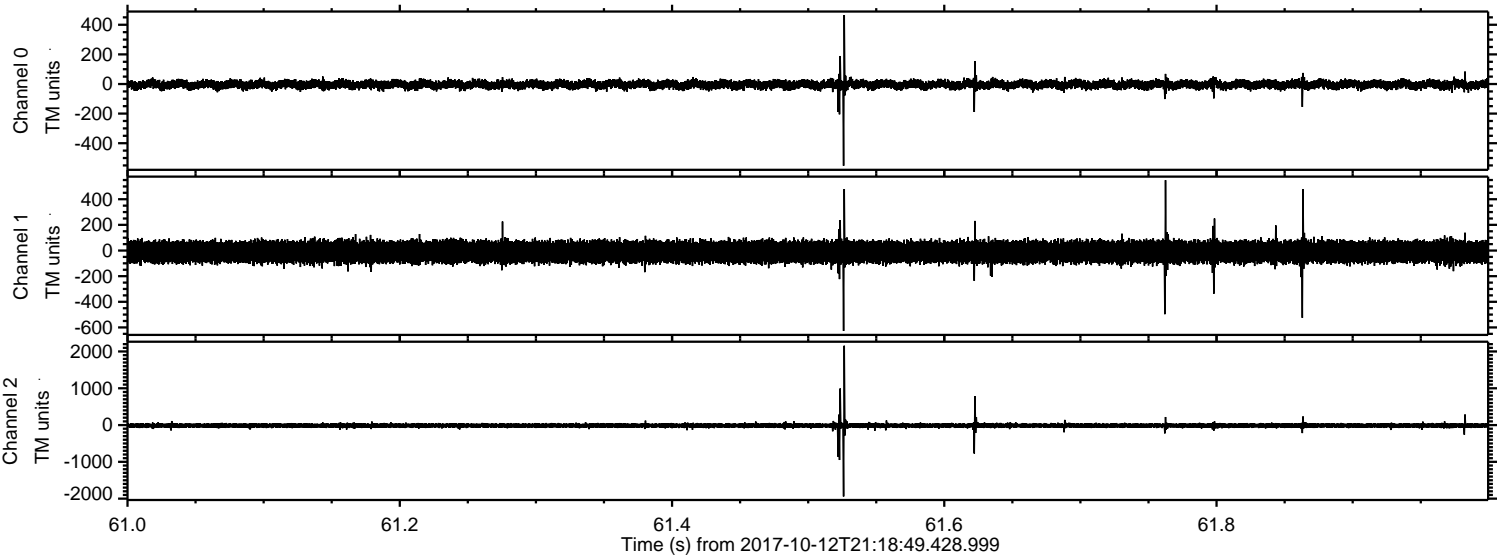
Processed Thu Oct 12 23:26:33 2017 by ELM ver.2012-10-06 from 001\_\_elm20171012\_211848\_\_dat00.bin





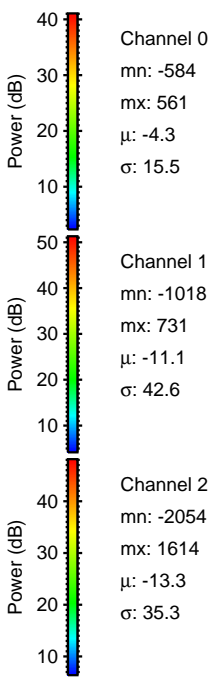
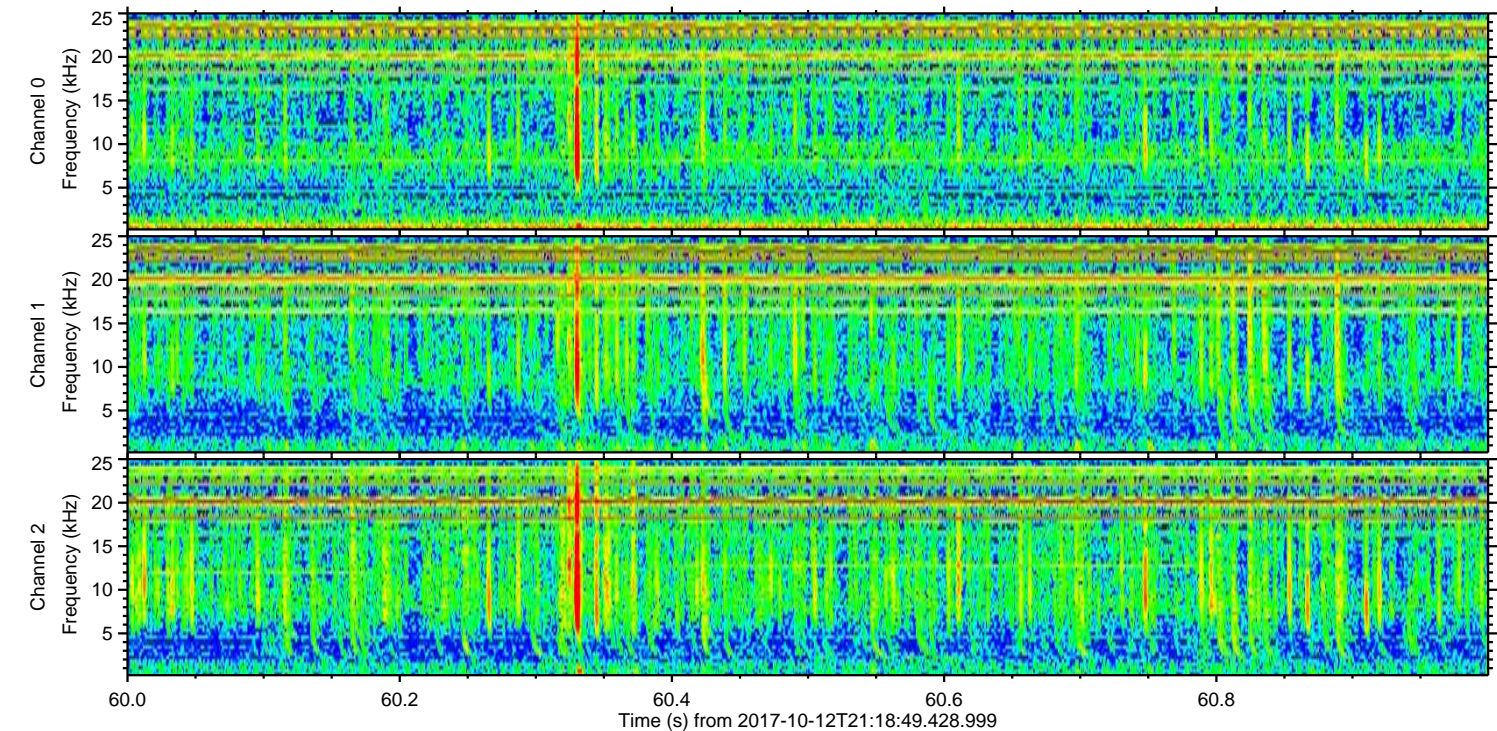
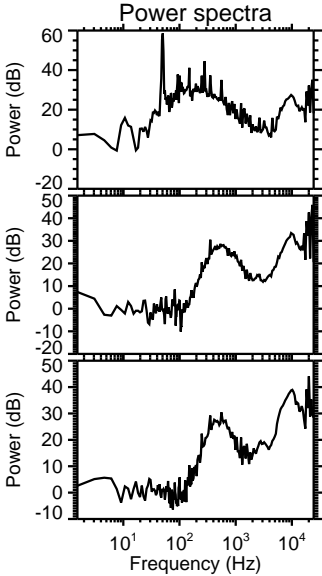
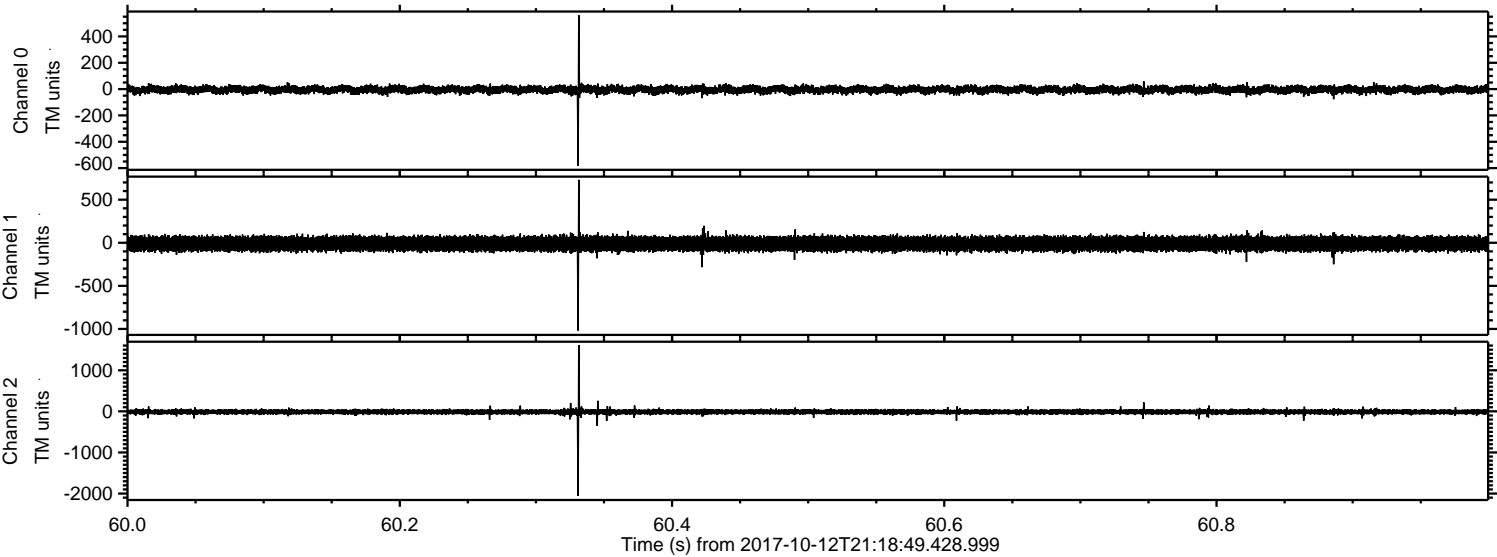
ELMAVAN 3D WAVEFORMS (Measured data sampled at 50 kHz) 51000 packets of 144 samples from 2017-10-12T21:18:49.428.999. Part 62/147

Processed Thu Oct 12 23:26:33 2017 by ELM ver.2012-10-06 from 001\_\_elm20171012\_211848\_\_dat00.bin





Processed Thu Oct 12 23:26:34 2017 by ELM ver.2012-10-06 from 001\_\_elm20171012\_211848\_\_dat00.bin



Channel 0  
mn: -584  
mx: 561  
 $\mu$ : -4.3  
 $\sigma$ : 15.5

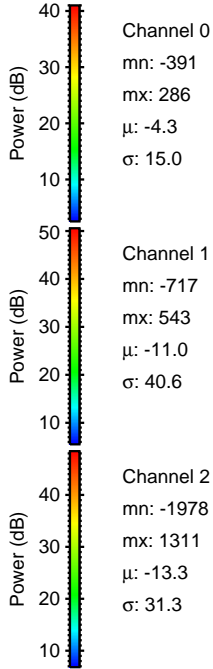
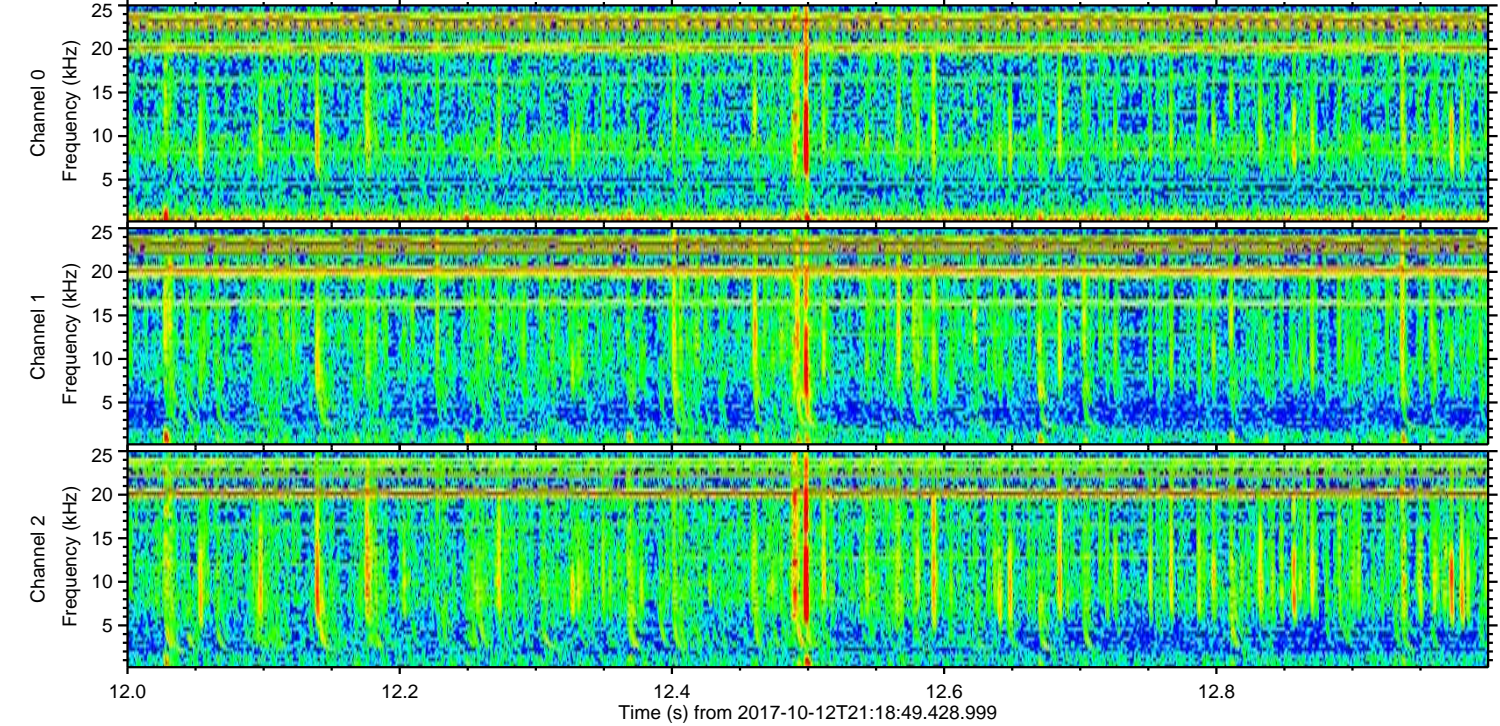
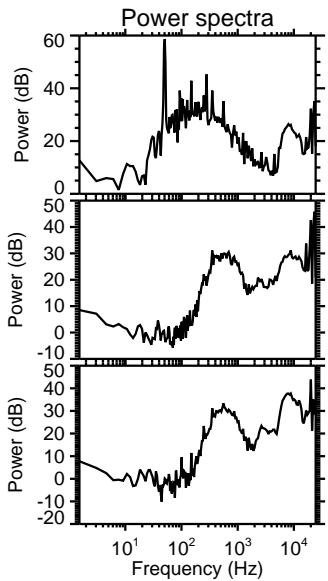
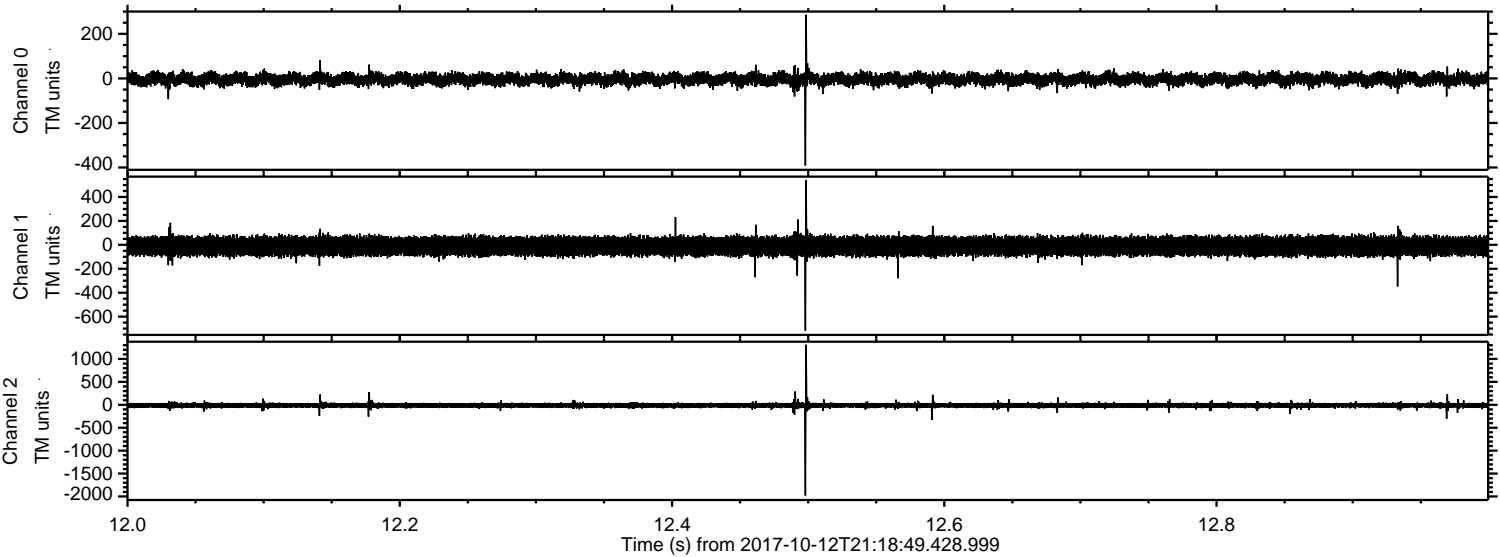
Channel 1  
mn: -1018  
mx: 731  
 $\mu$ : -11.1  
 $\sigma$ : 42.6

Channel 2  
mn: -2054  
mx: 1614  
 $\mu$ : -13.3  
 $\sigma$ : 35.3



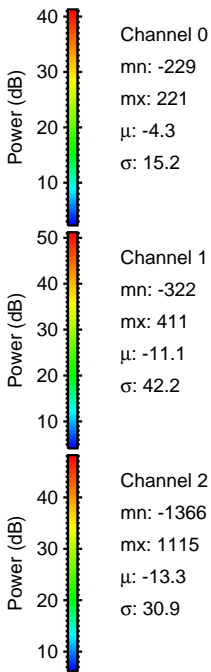
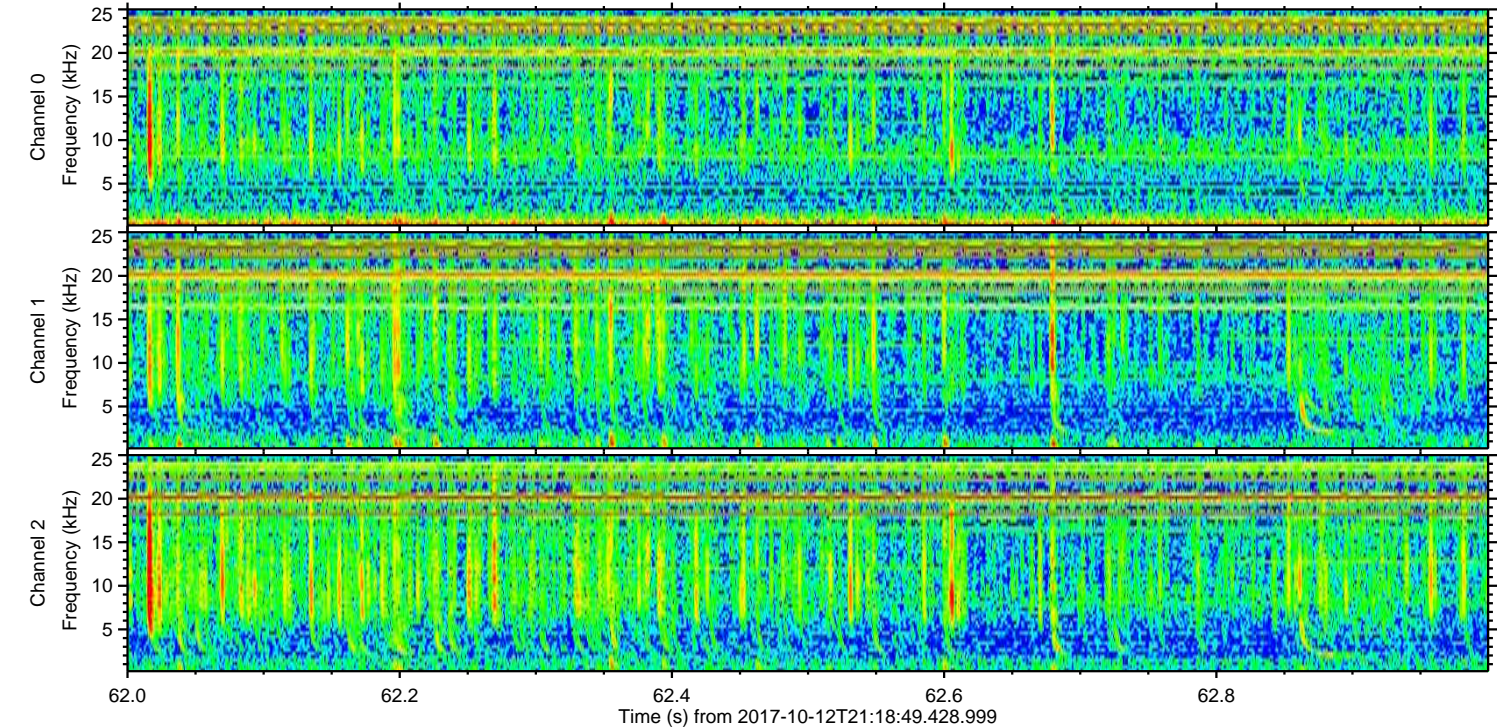
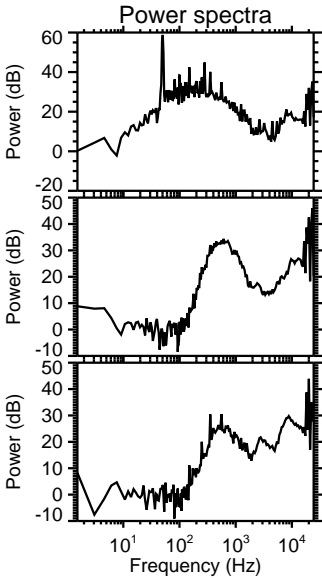
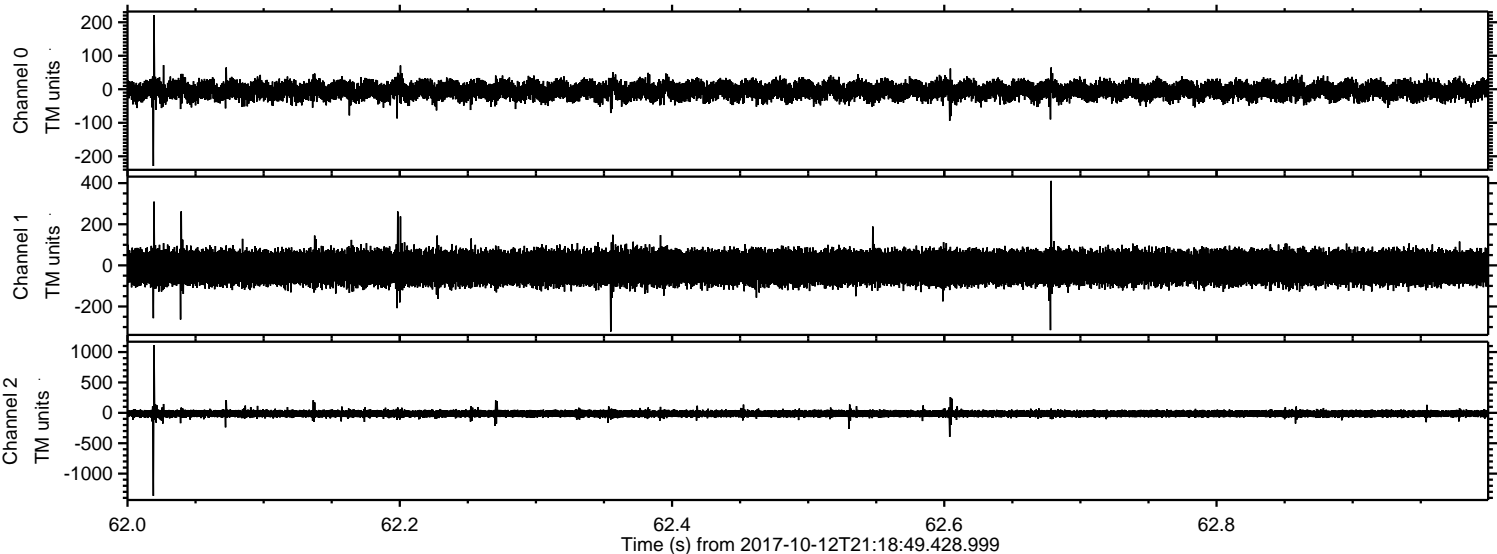
ELMAVAN 3D WAVEFORMS (Measured data sampled at 50 kHz) 51000 packets of 144 samples from 2017-10-12T21:18:49.428.999. Part 13/147

Processed Thu Oct 12 23:26:34 2017 by ELM ver.2012-10-06 from 001\_\_elm20171012\_211848\_\_dat00.bin





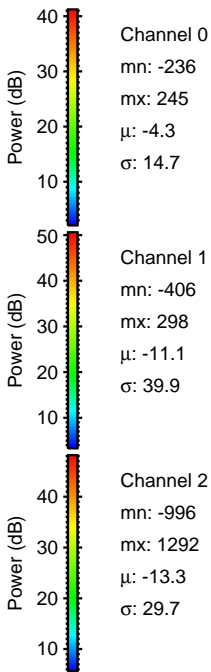
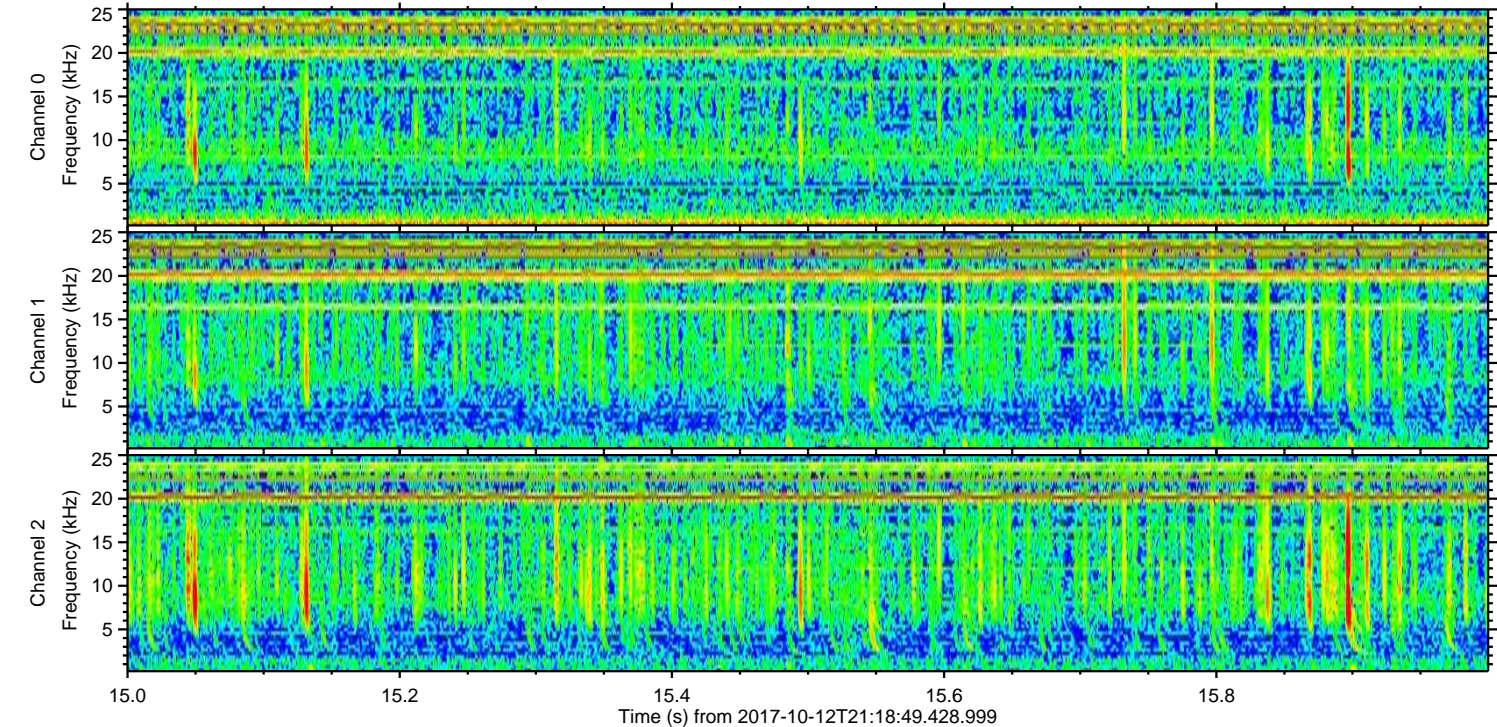
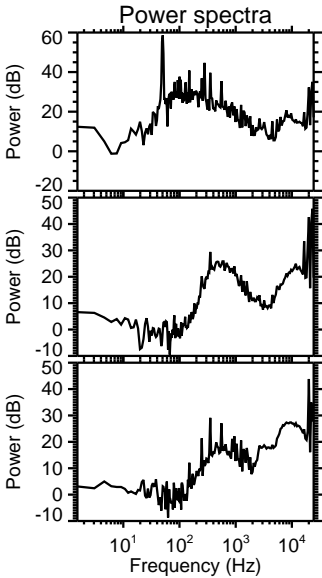
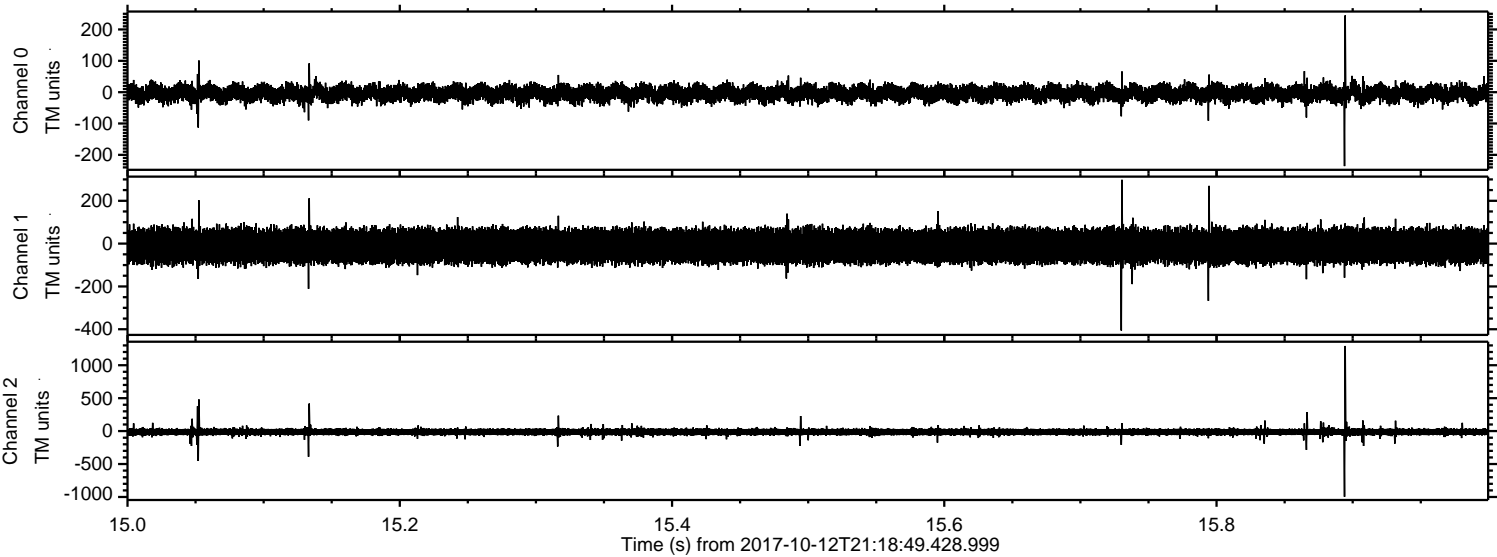
Processed Thu Oct 12 23:26:35 2017 by ELM ver.2012-10-06 from 001\_\_elm20171012\_211848\_\_dat00.bin





ELMAVAN 3D WAVEFORMS (Measured data sampled at 50 kHz) 51000 packets of 144 samples from 2017-10-12T21:18:49.428.999. Part 16/147

Processed Thu Oct 12 23:26:36 2017 by ELM ver.2012-10-06 from 001\_\_elm20171012\_211848\_\_dat00.bin





ELMAVAN 3D WAVEFORMS (Measured data sampled at 50 kHz) 51000 packets of 144 samples from 2017-10-12T21:18:49.428.999. Part 129/147

