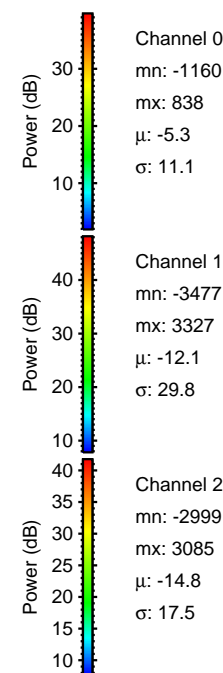
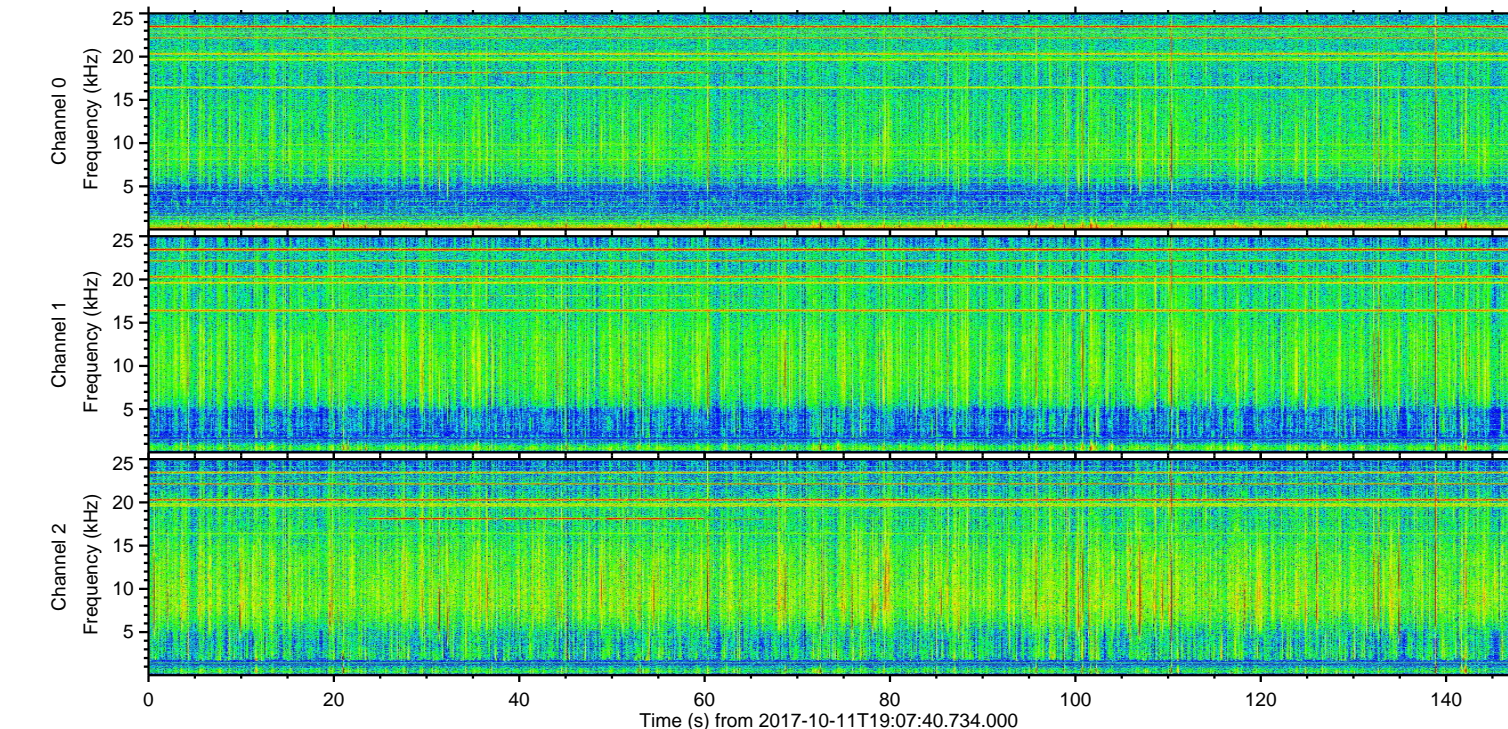
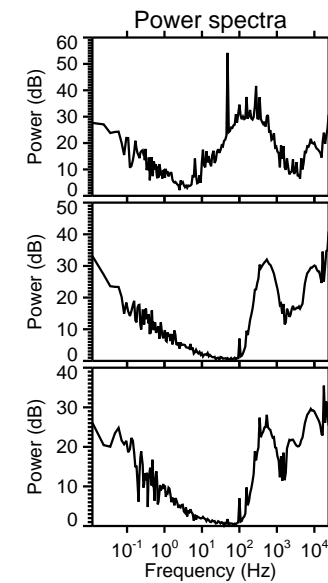
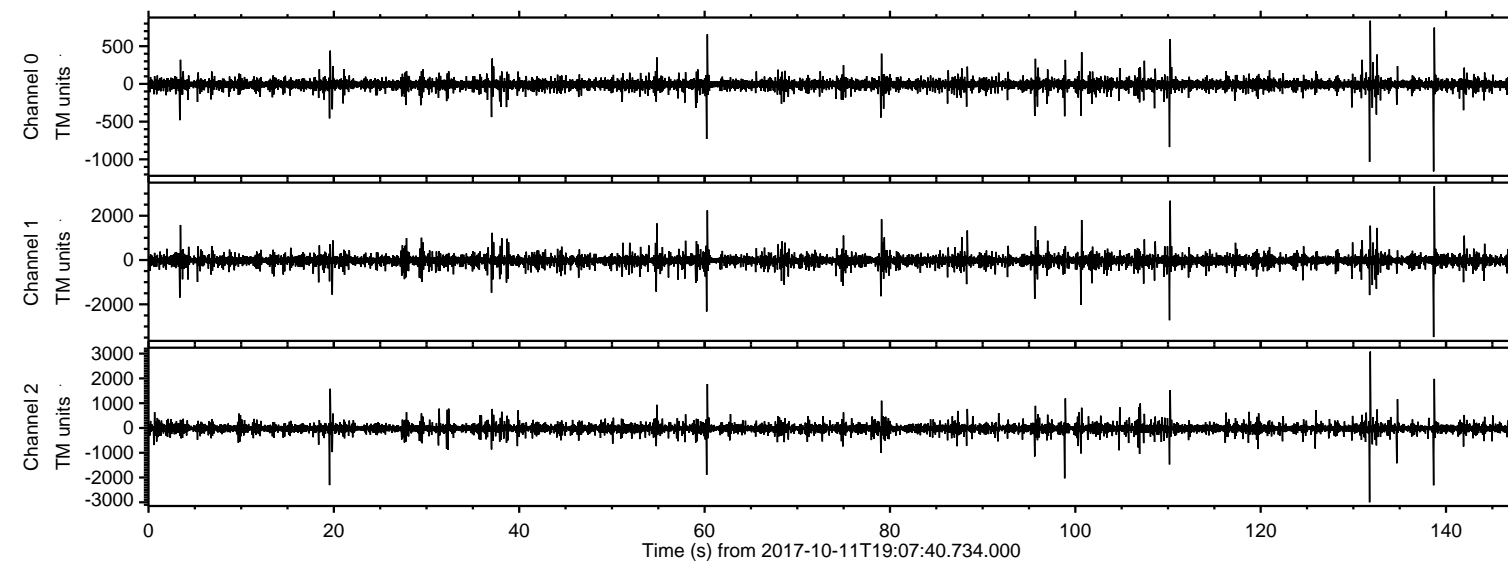


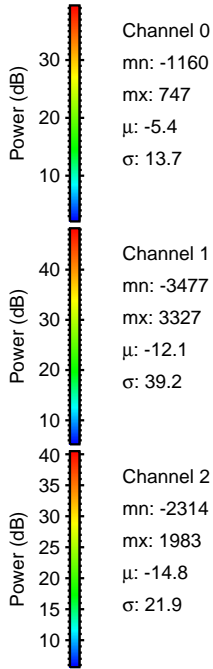
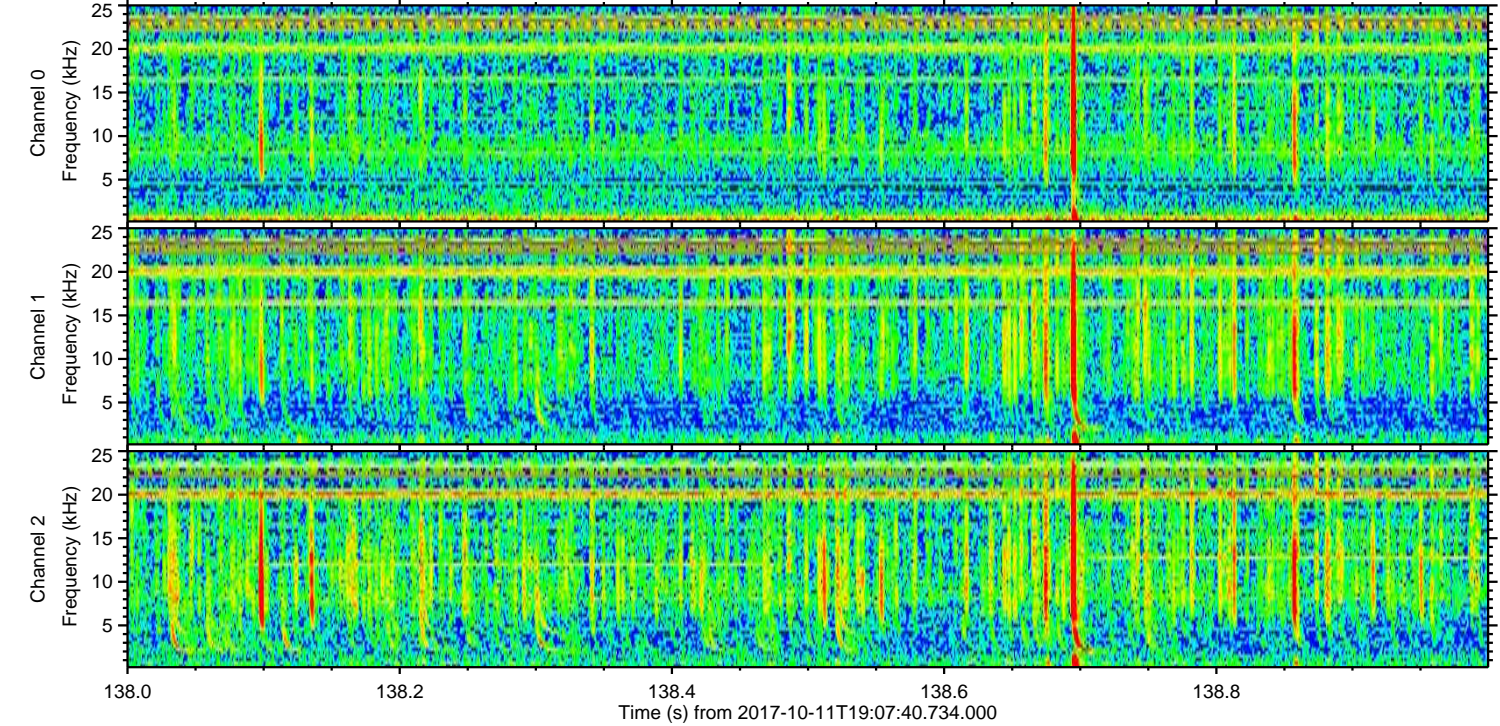
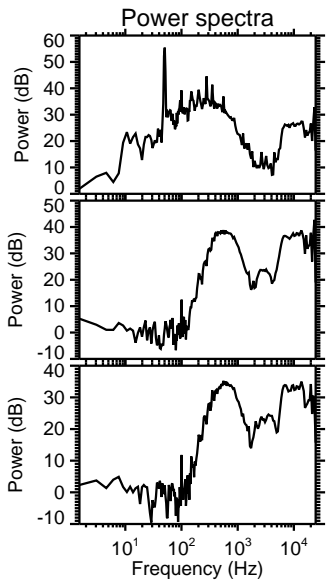
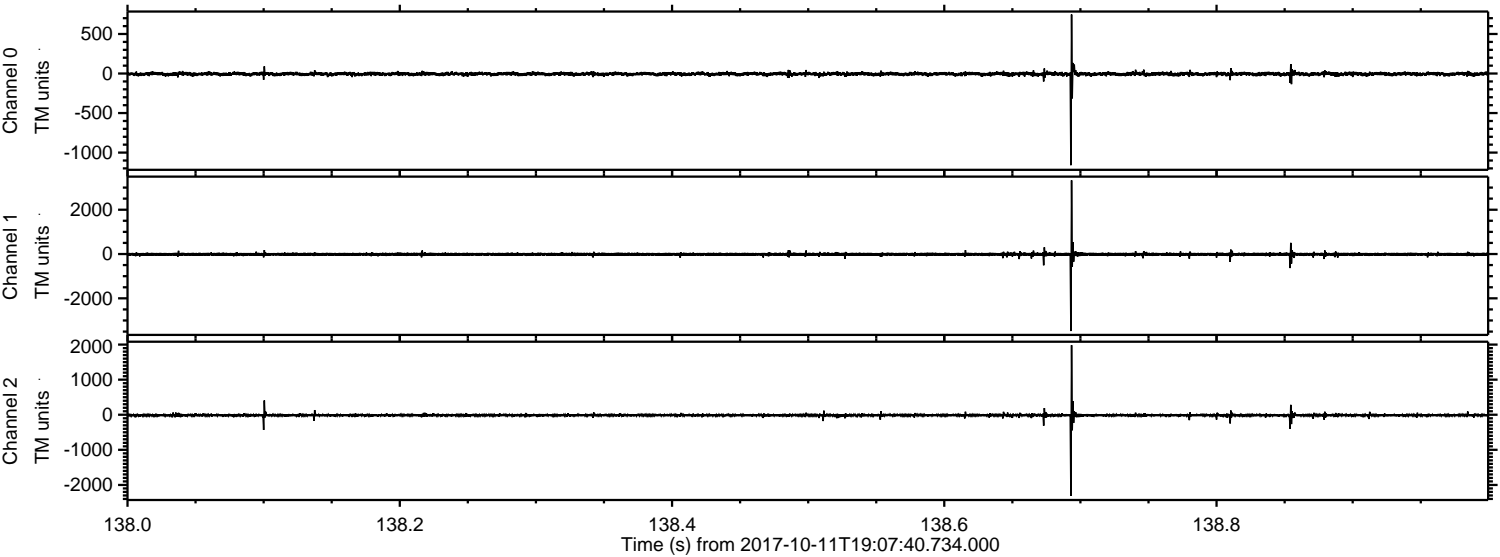
ELMAVAN 3D WAVEFORMS (Measured data sampled at 50 kHz) 51000 packets of 144 samples from 2017-10-11T19:07:40.734.000.

Processed Wed Oct 11 21:15:19 2017 by ELM ver.2012-10-06 from 001__elm20171011_190739__dat00.bin



ELMAVAN 3D WAVEFORMS (Measured data sampled at 50 kHz) 51000 packets of 144 samples from 2017-10-11T19:07:40.734.000. Part 139/147

Processed Wed Oct 11 21:15:24 2017 by ELM ver.2012-10-06 from 001__elm20171011_190739__dat00.bin



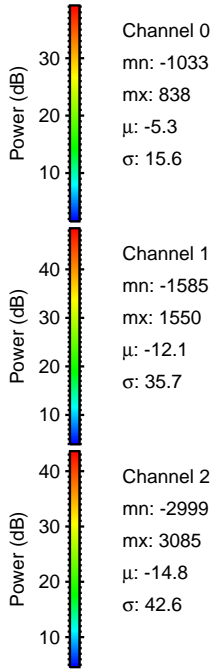
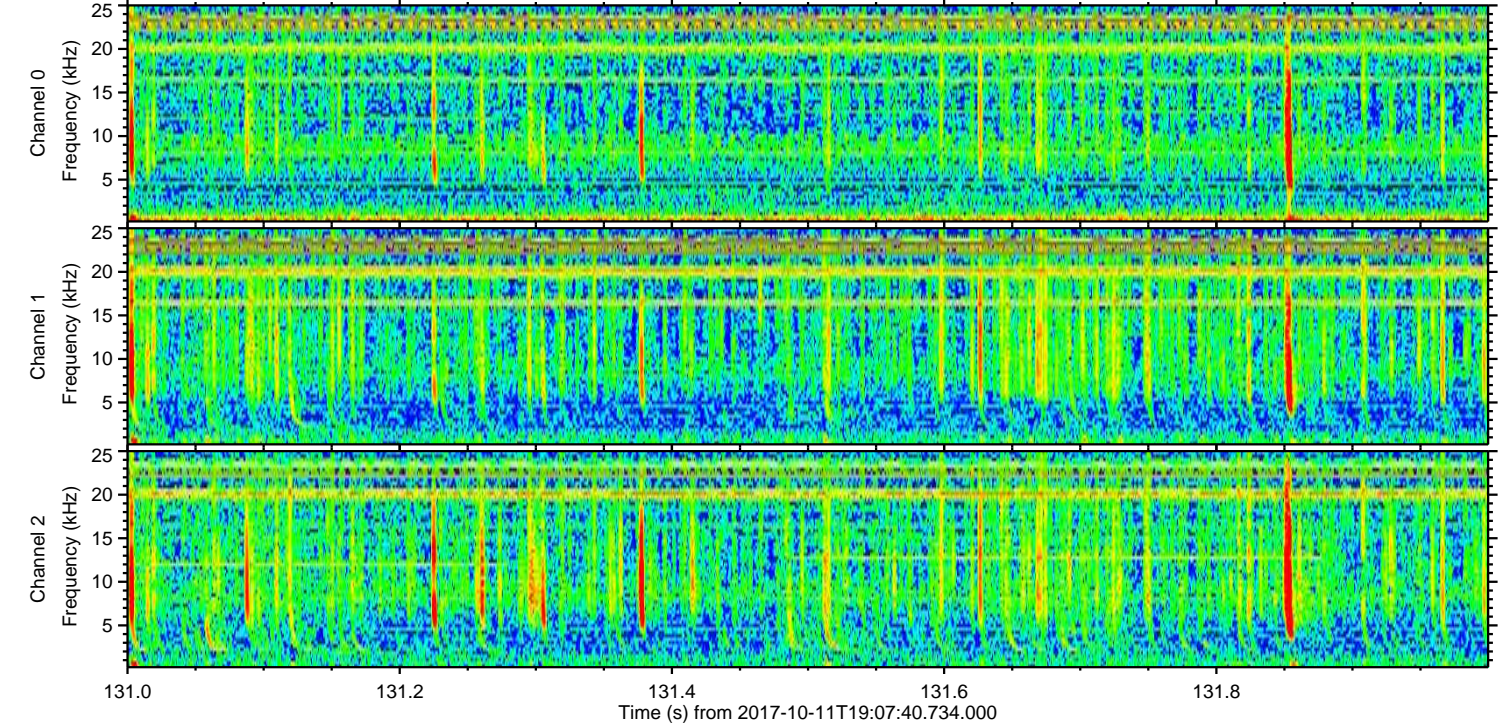
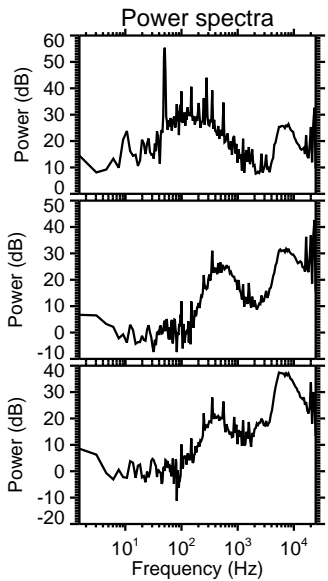
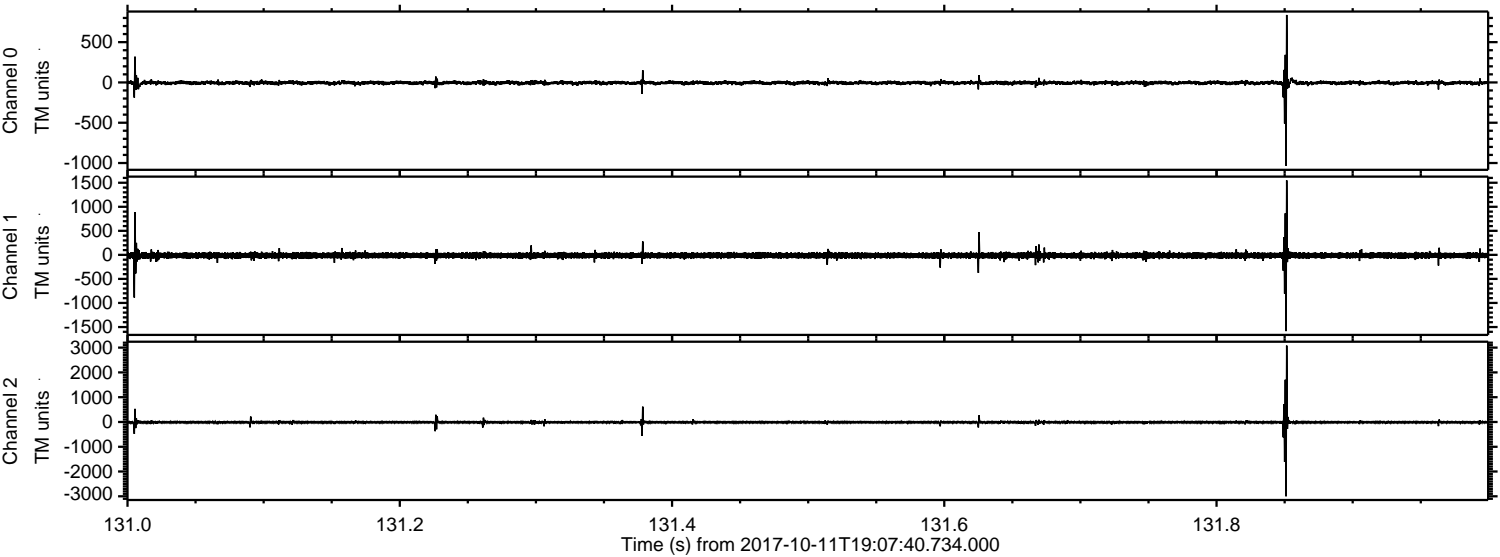
Channel 0
mn: -1160
mx: 747
 μ : -5.4
 σ : 13.7

Channel 1
mn: -3477
mx: 3327
 μ : -12.1
 σ : 39.2

Channel 2
mn: -2314
mx: 1983
 μ : -14.8
 σ : 21.9

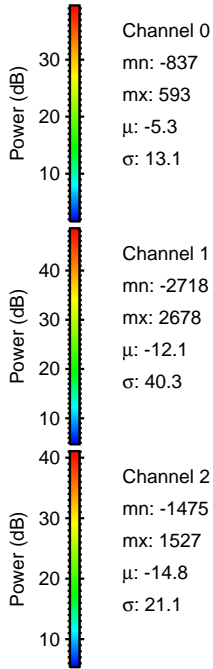
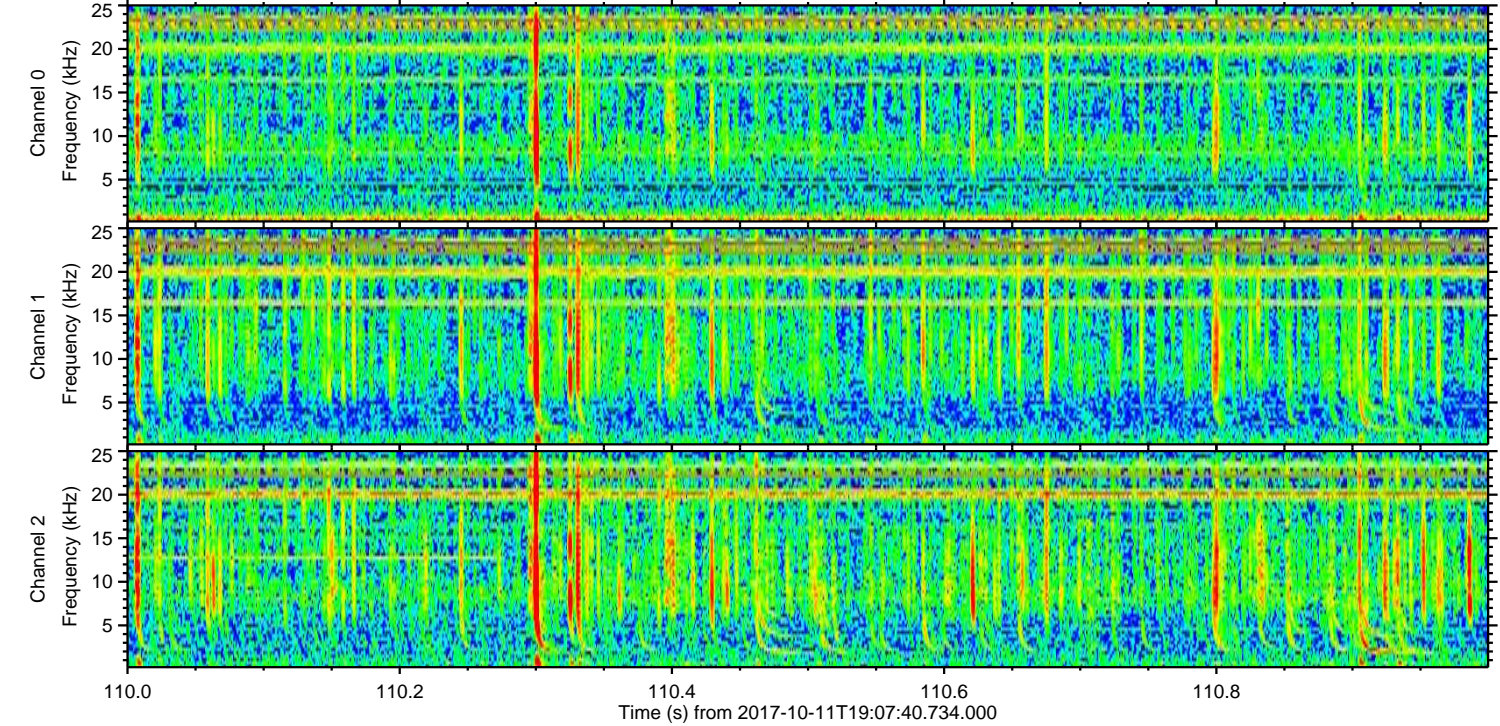
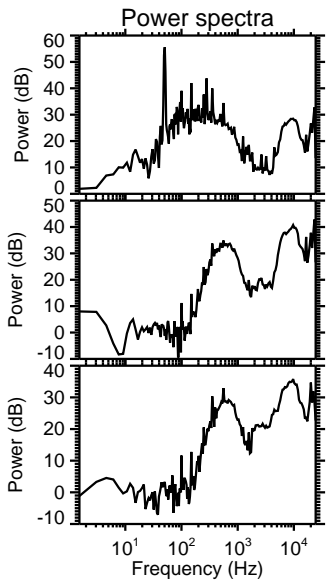
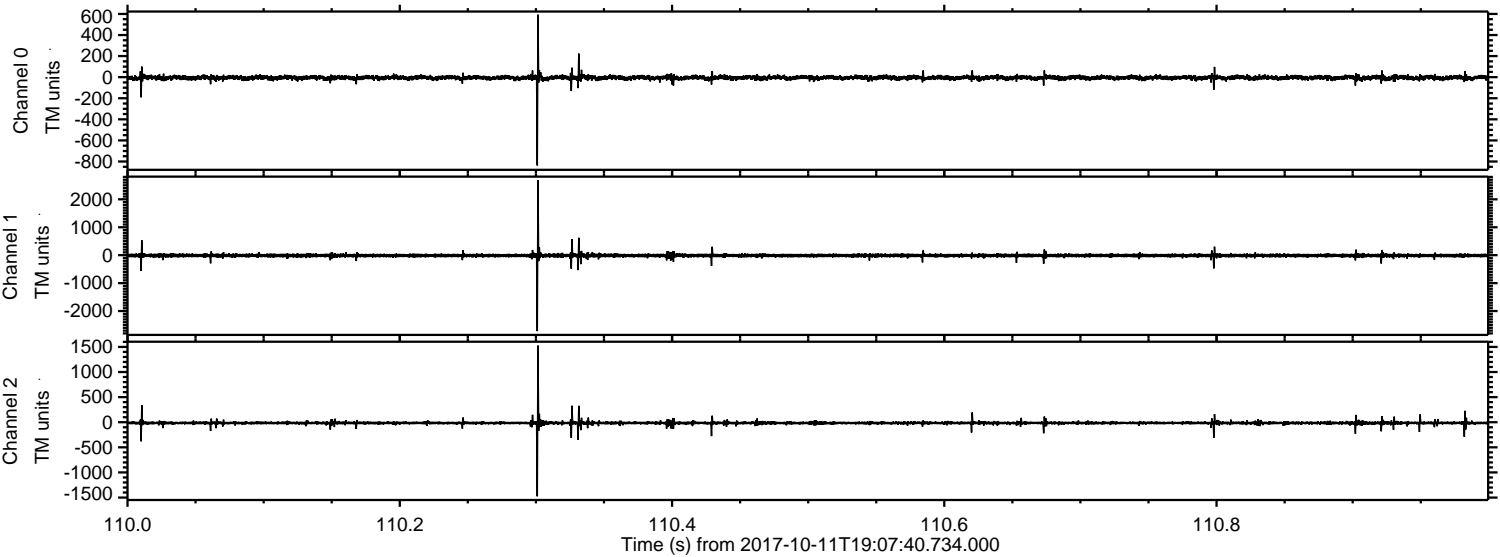
ELMAVAN 3D WAVEFORMS (Measured data sampled at 50 kHz) 51000 packets of 144 samples from 2017-10-11T19:07:40.734.000. Part 132/147

Processed Wed Oct 11 21:15:25 2017 by ELM ver.2012-10-06 from 001__elm20171011_190739__dat00.bin

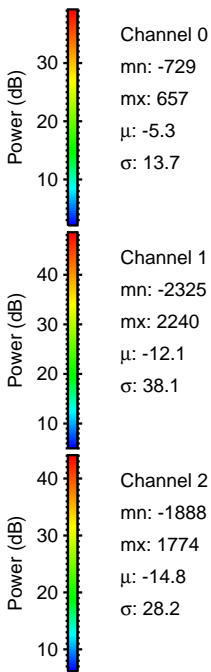
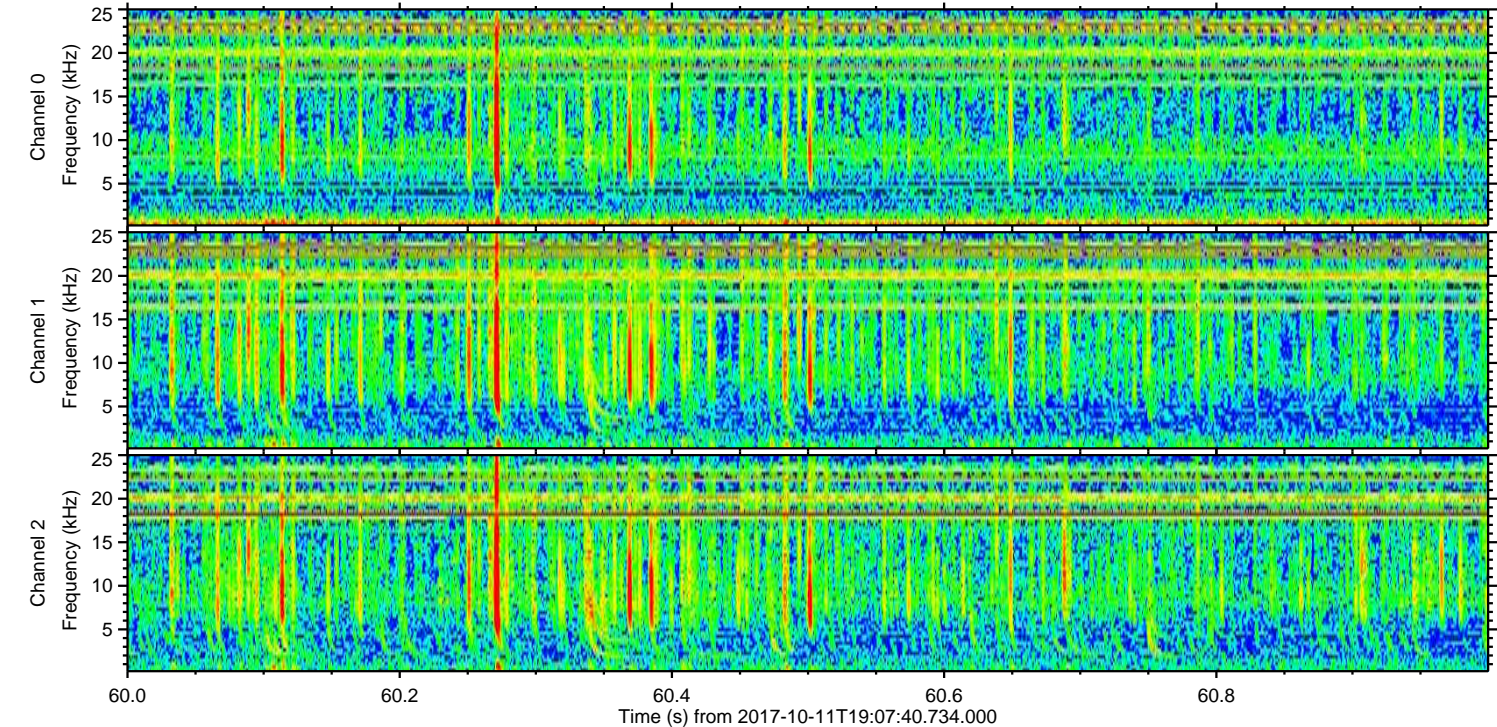
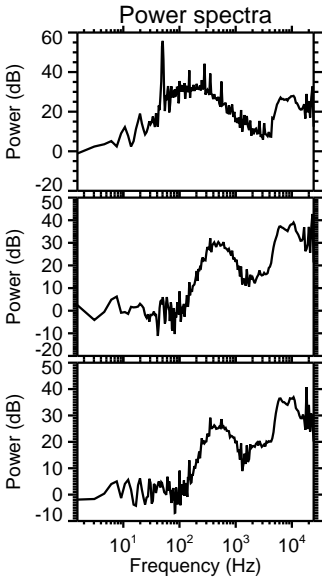
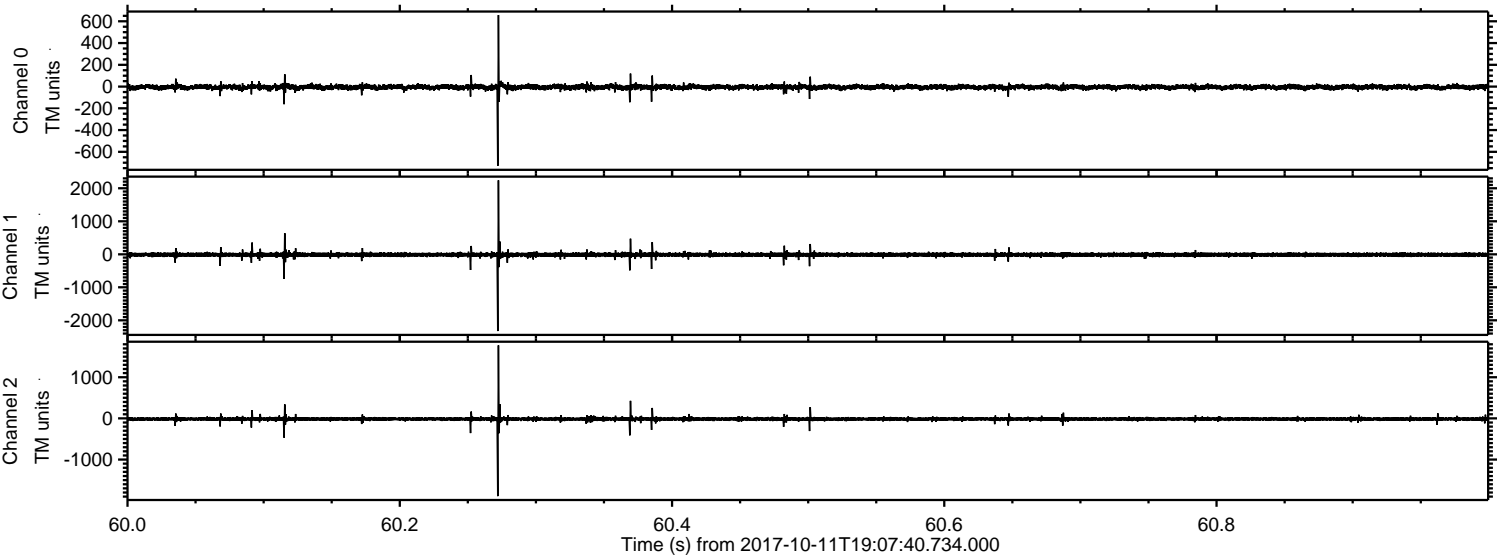


ELMAVAN 3D WAVEFORMS (Measured data sampled at 50 kHz) 51000 packets of 144 samples from 2017-10-11T19:07:40.734.000. Part 111/147

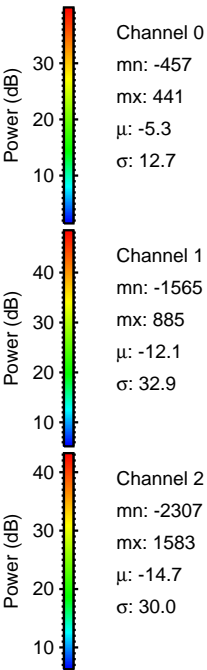
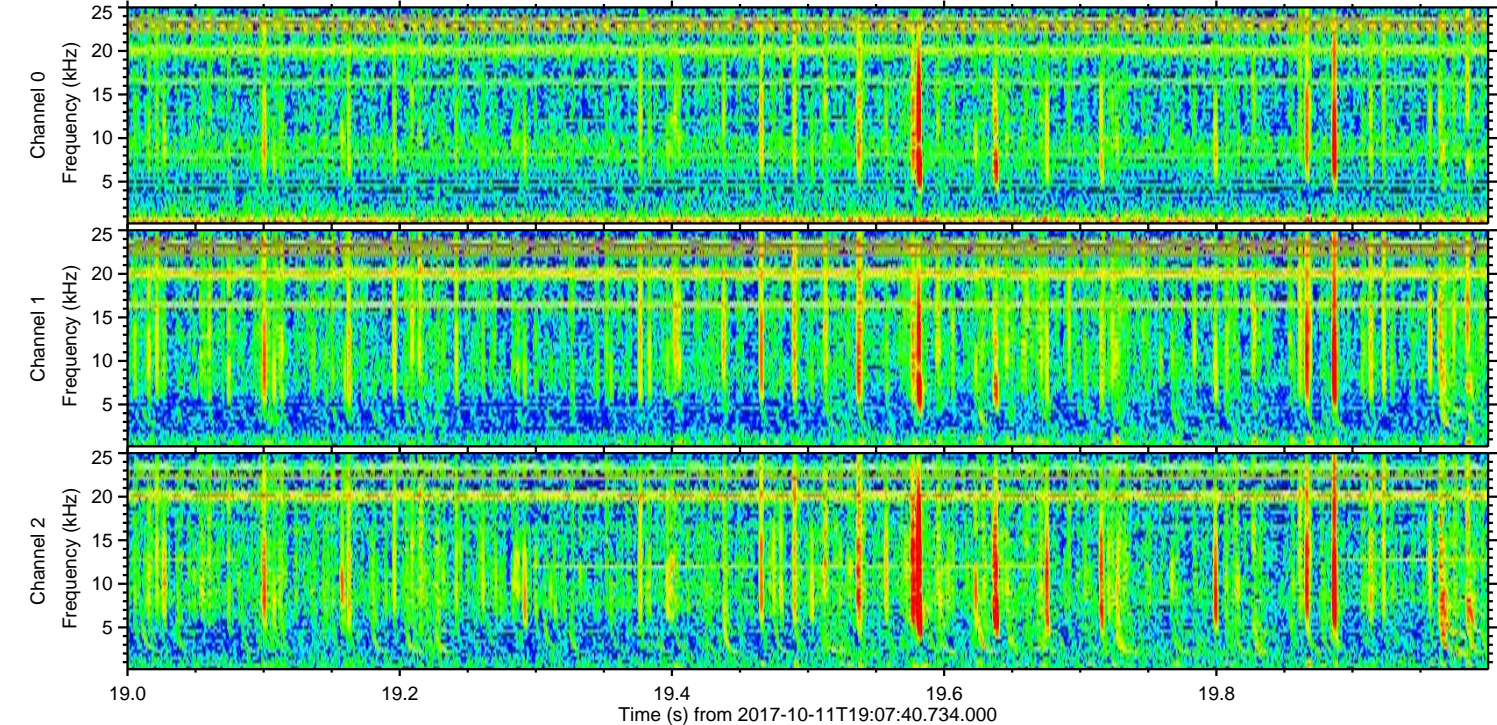
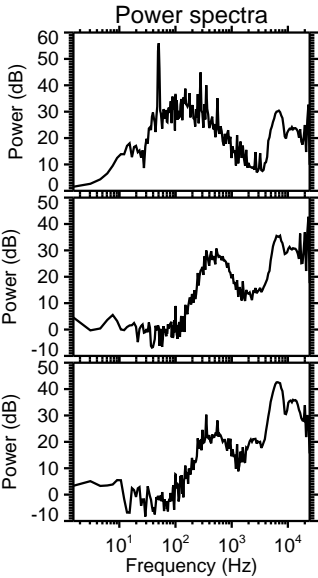
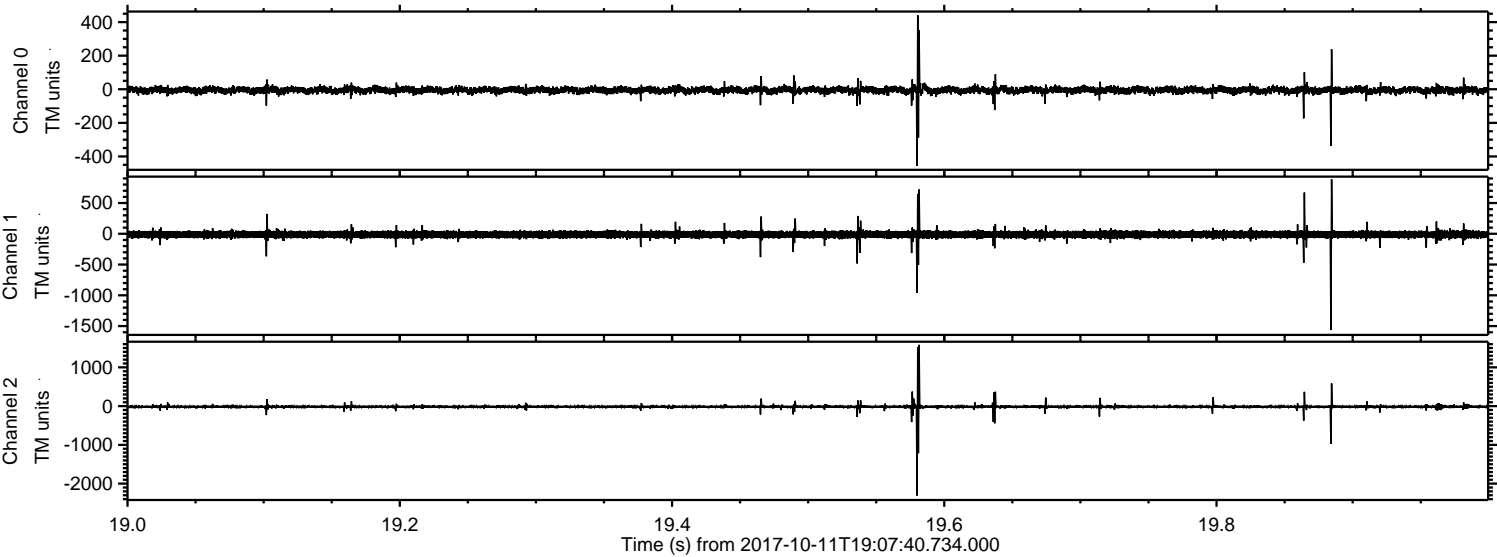
Processed Wed Oct 11 21:15:26 2017 by ELM ver.2012-10-06 from 001__elm20171011_190739__dat00.bin



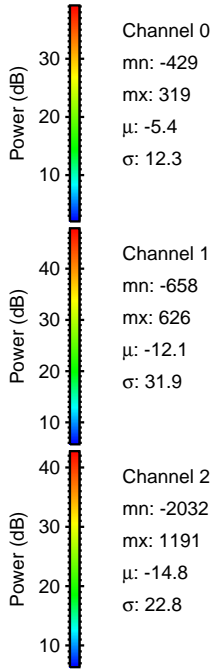
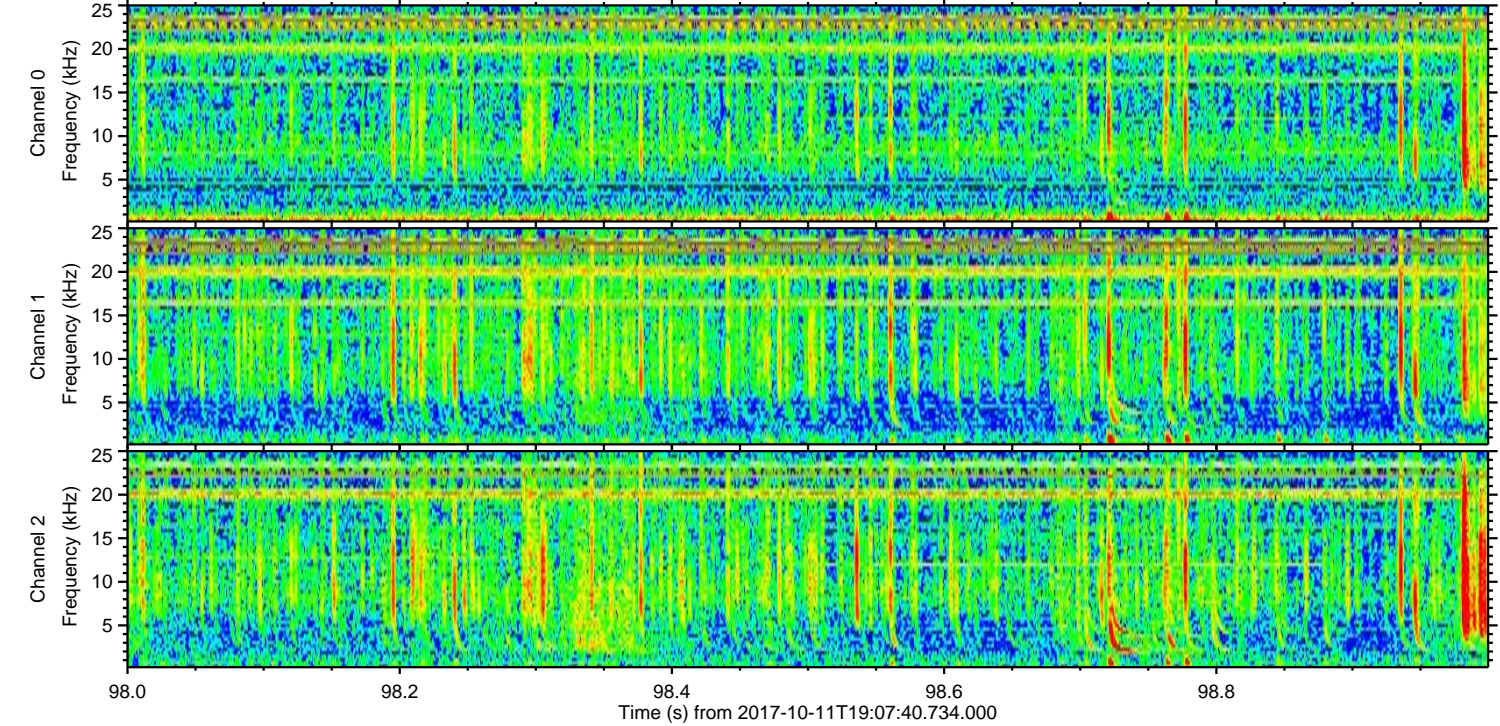
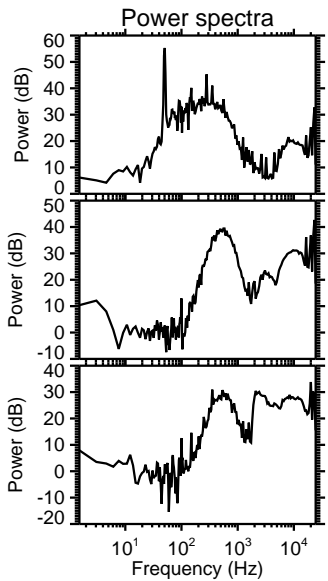
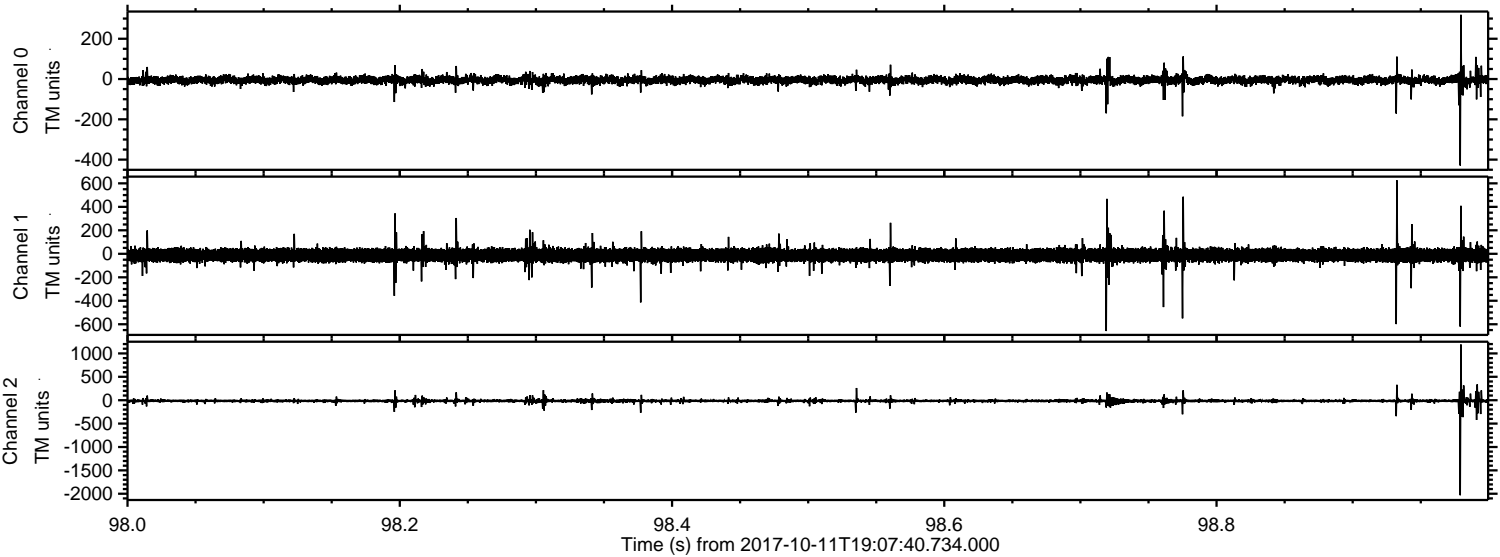
Processed Wed Oct 11 21:15:26 2017 by ELM ver.2012-10-06 from 001__elm20171011_190739__dat00.bin



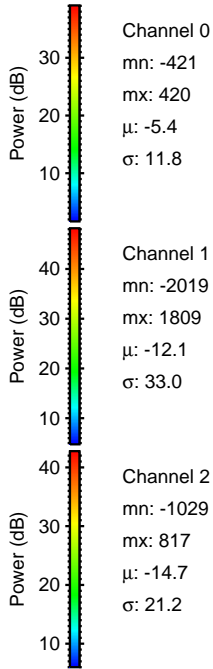
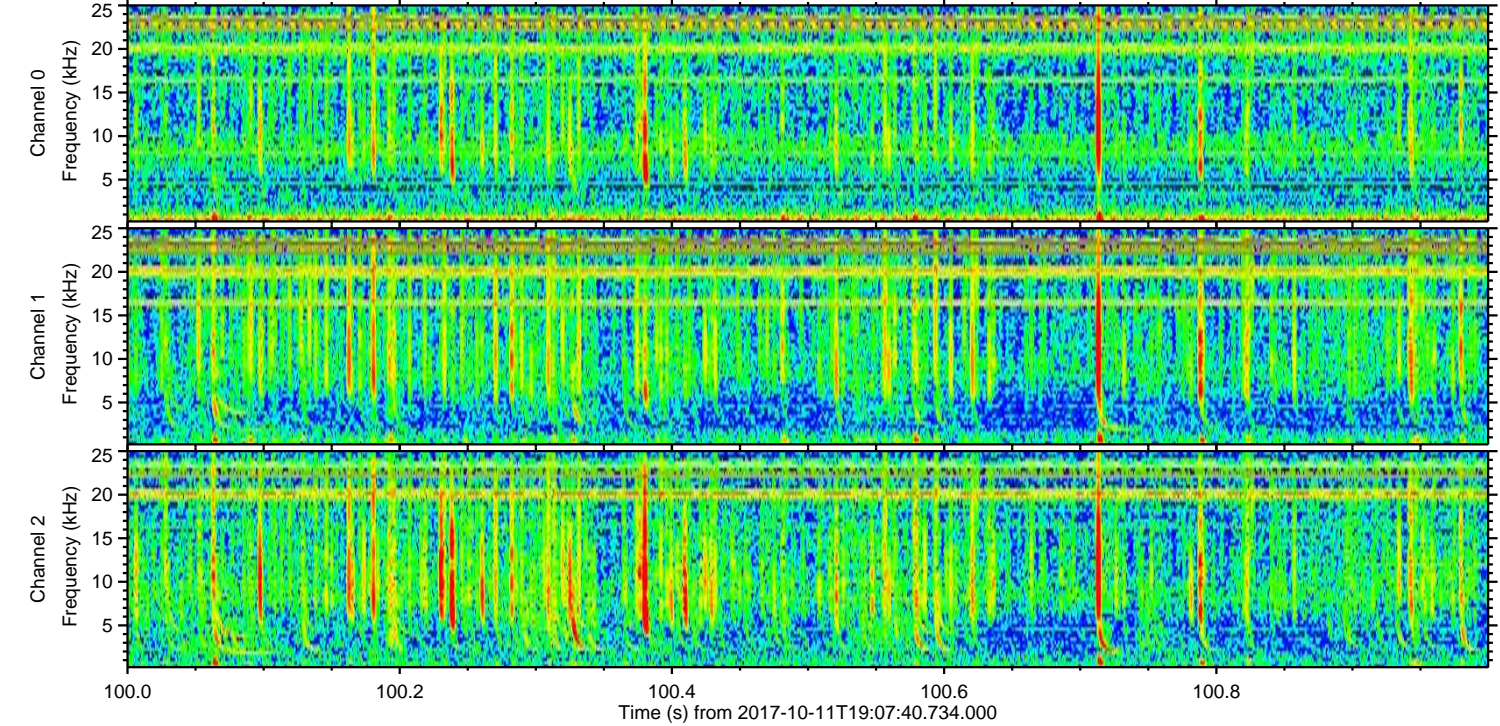
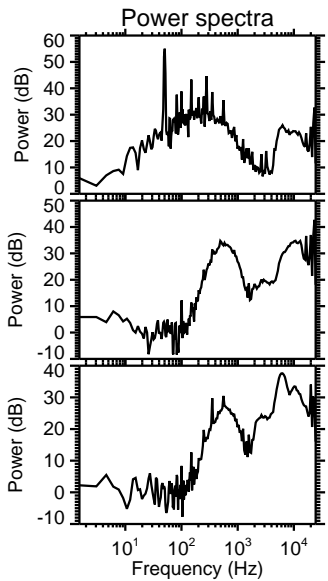
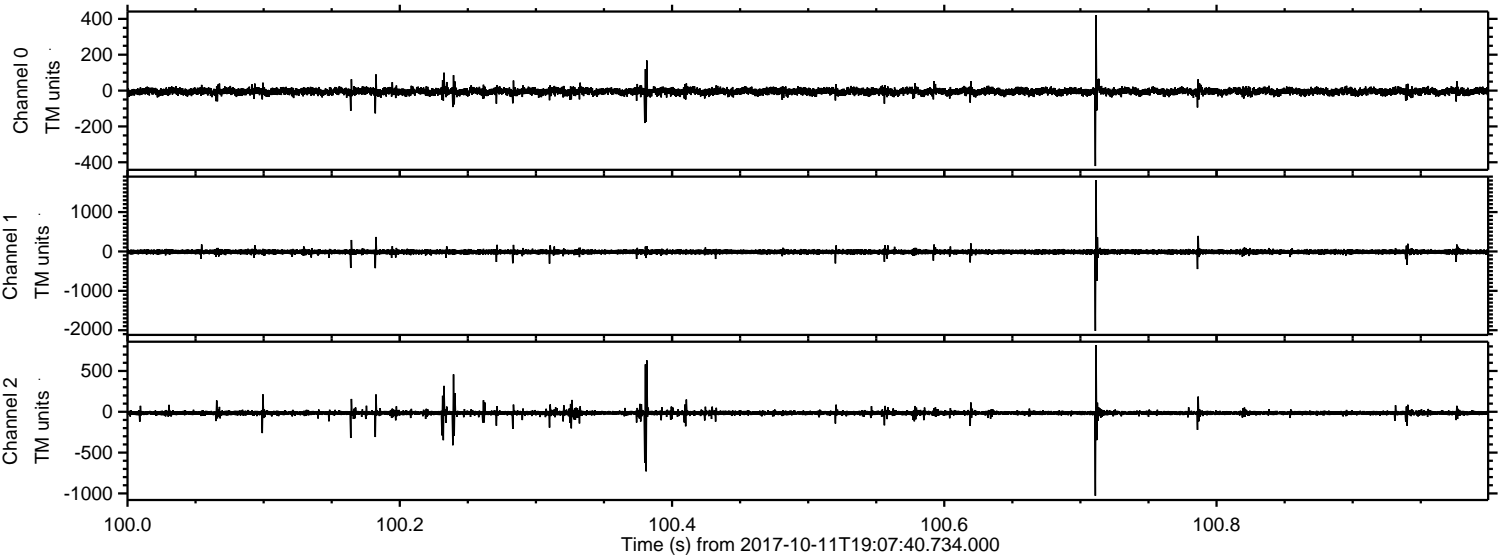
Processed Wed Oct 11 21:15:27 2017 by ELM ver.2012-10-06 from 001__elm20171011_190739__dat00.bin



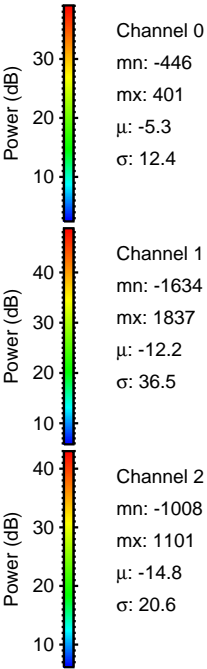
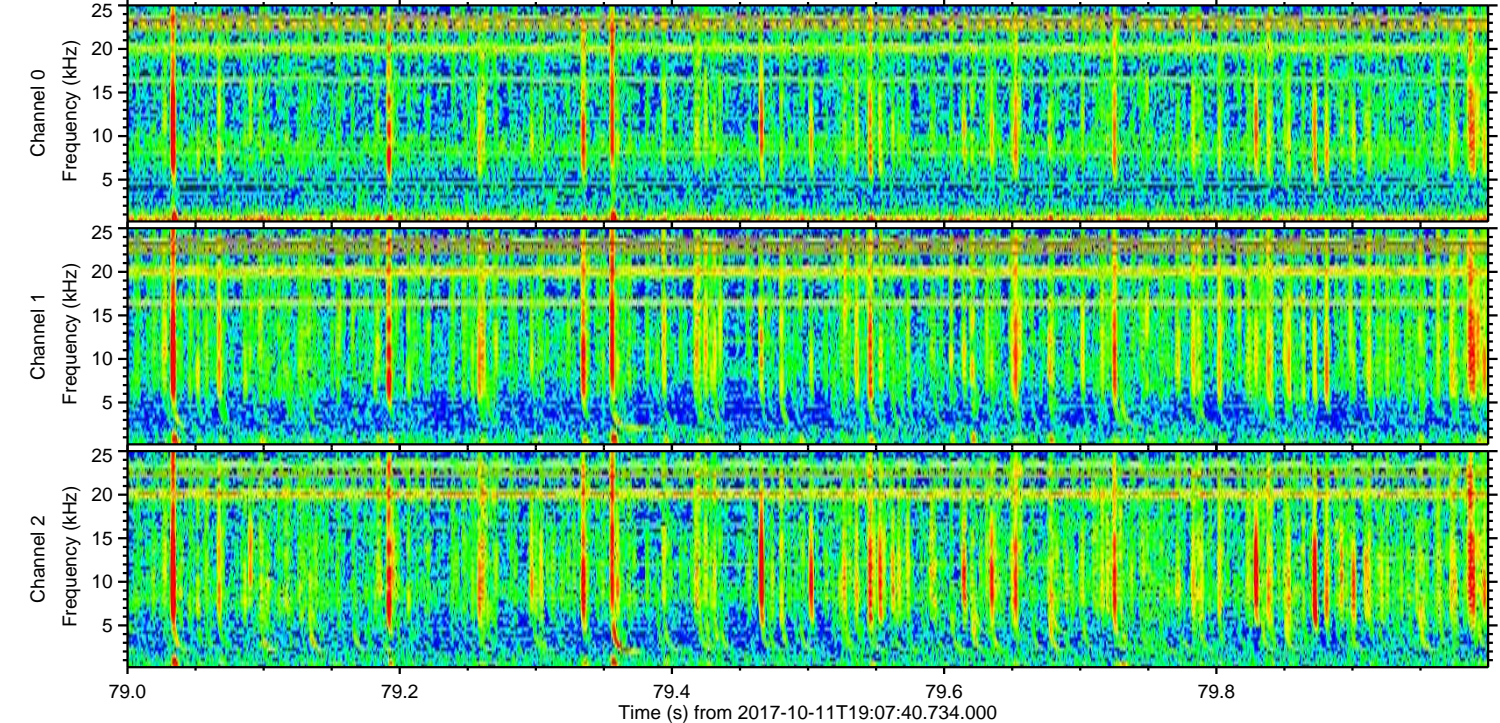
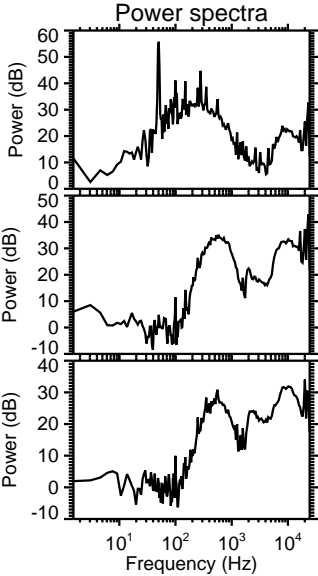
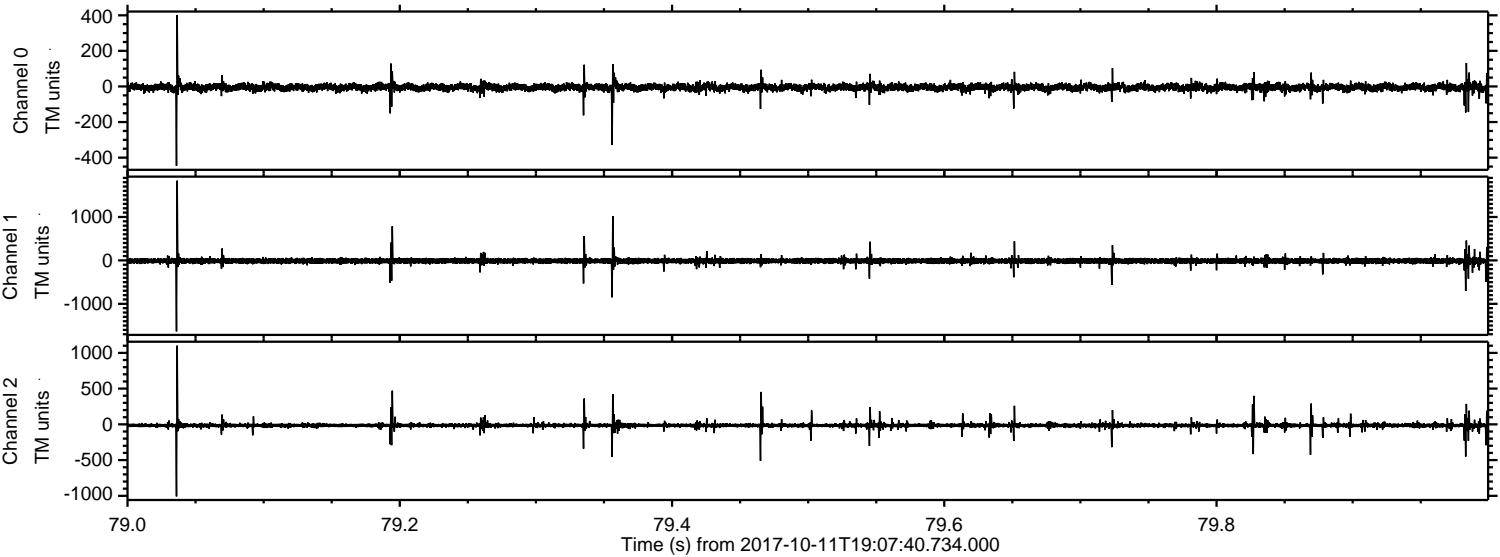
Processed Wed Oct 11 21:15:28 2017 by ELM ver.2012-10-06 from 001__elm20171011_190739__dat00.bin



Processed Wed Oct 11 21:15:29 2017 by ELM ver.2012-10-06 from 001__elm20171011_190739__dat00.bin



Processed Wed Oct 11 21:15:29 2017 by ELM ver.2012-10-06 from 001__elm20171011_190739__dat00.bin



Channel 0
mn: -446
mx: 401
 μ : -5.3
 σ : 12.4

Channel 1
mn: -1634
mx: 1837
 μ : -12.2
 σ : 36.5

Channel 2
mn: -1008
mx: 1101
 μ : -14.8
 σ : 20.6

Processed Wed Oct 11 21:15:30 2017 by ELM ver.2012-10-06 from 001__elm20171011_190739__dat00.bin

