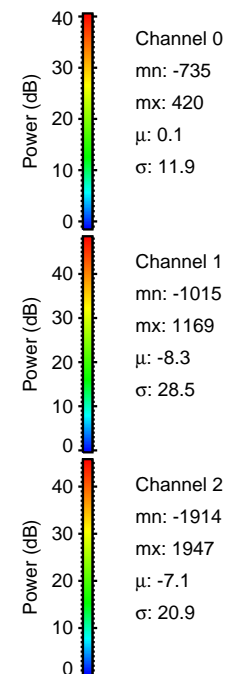
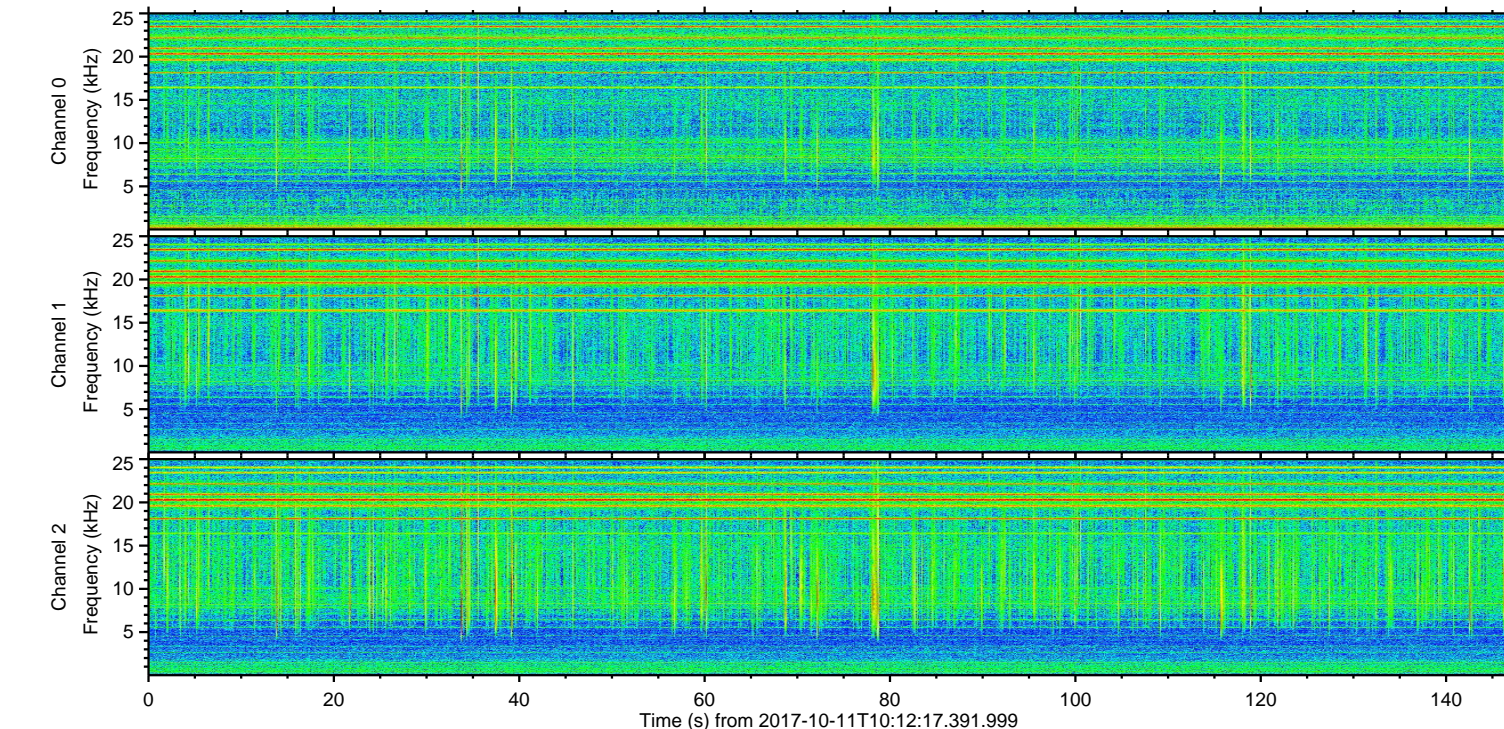
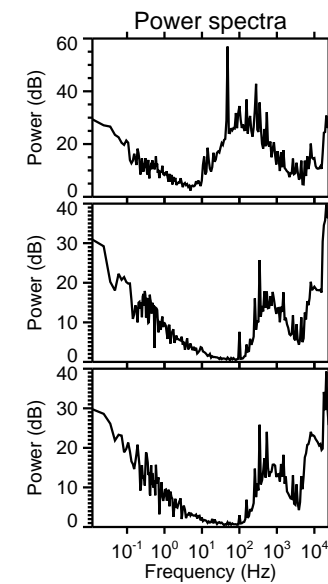
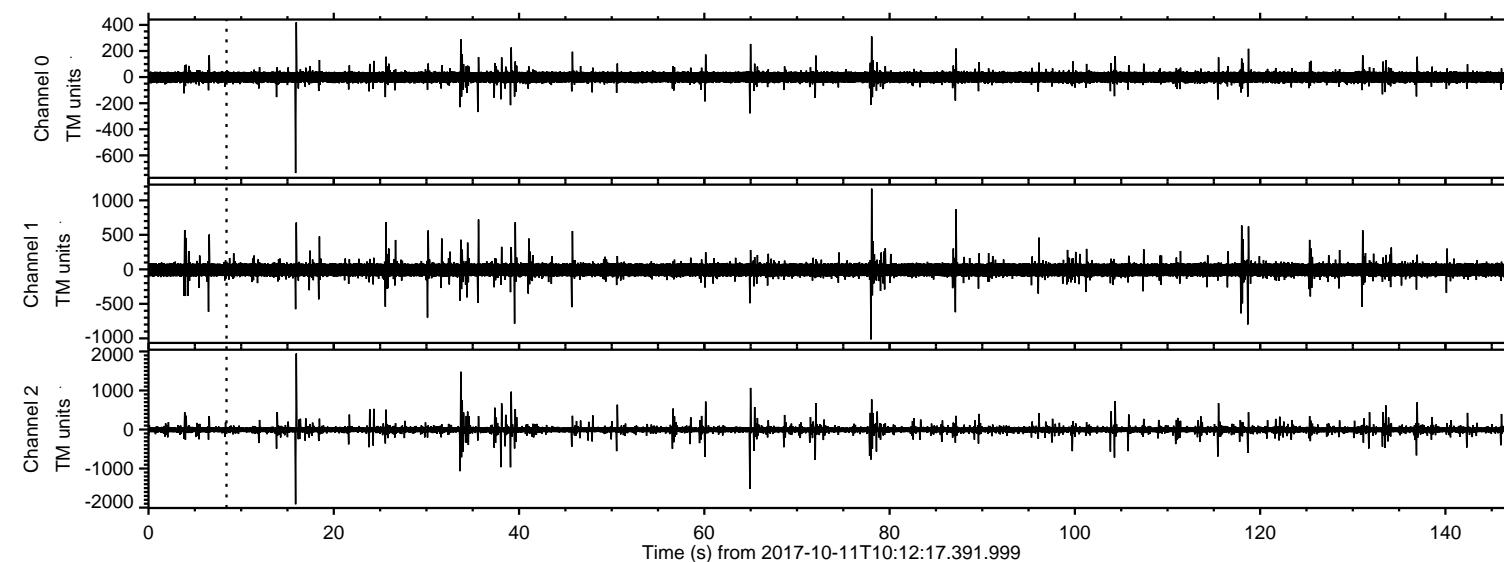
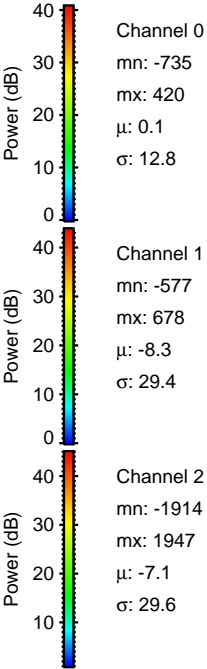
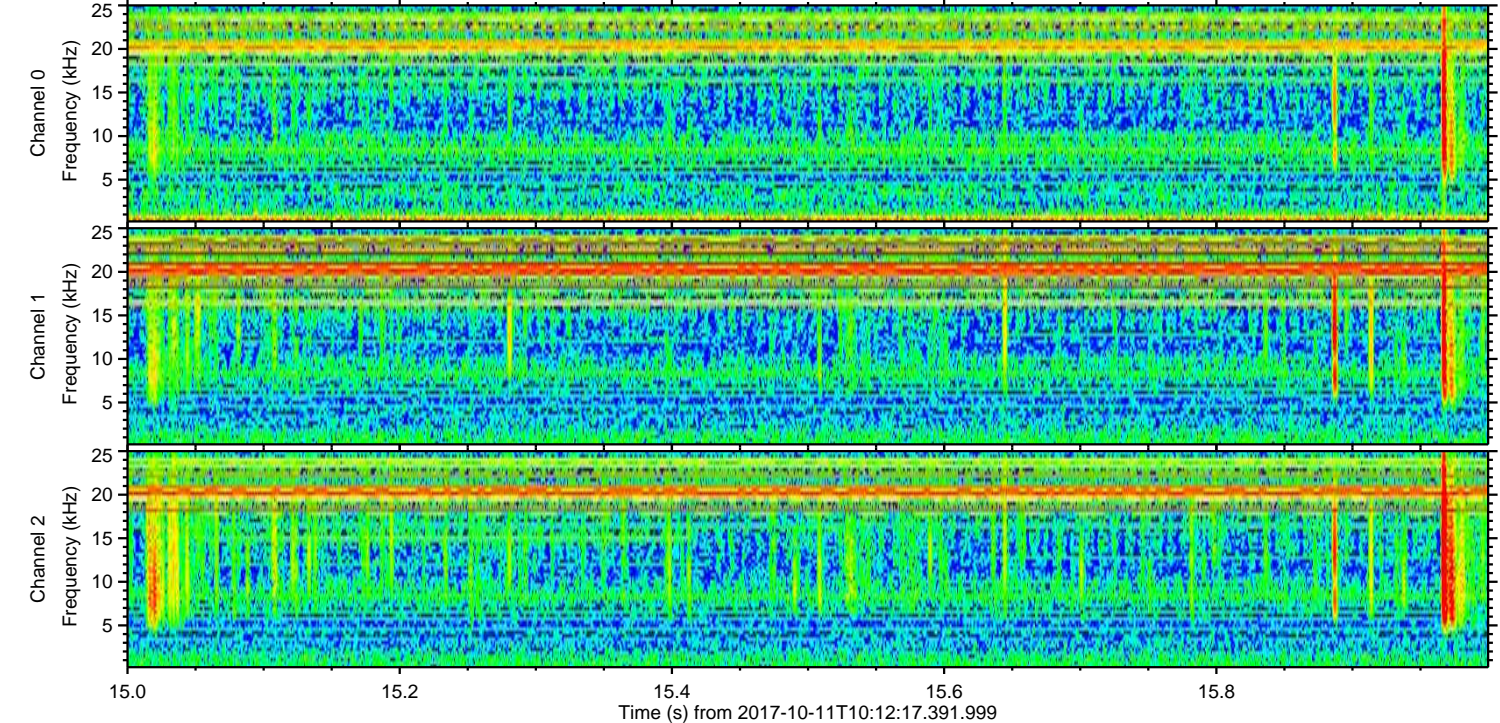
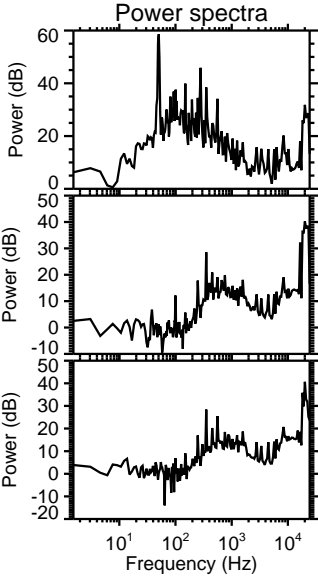
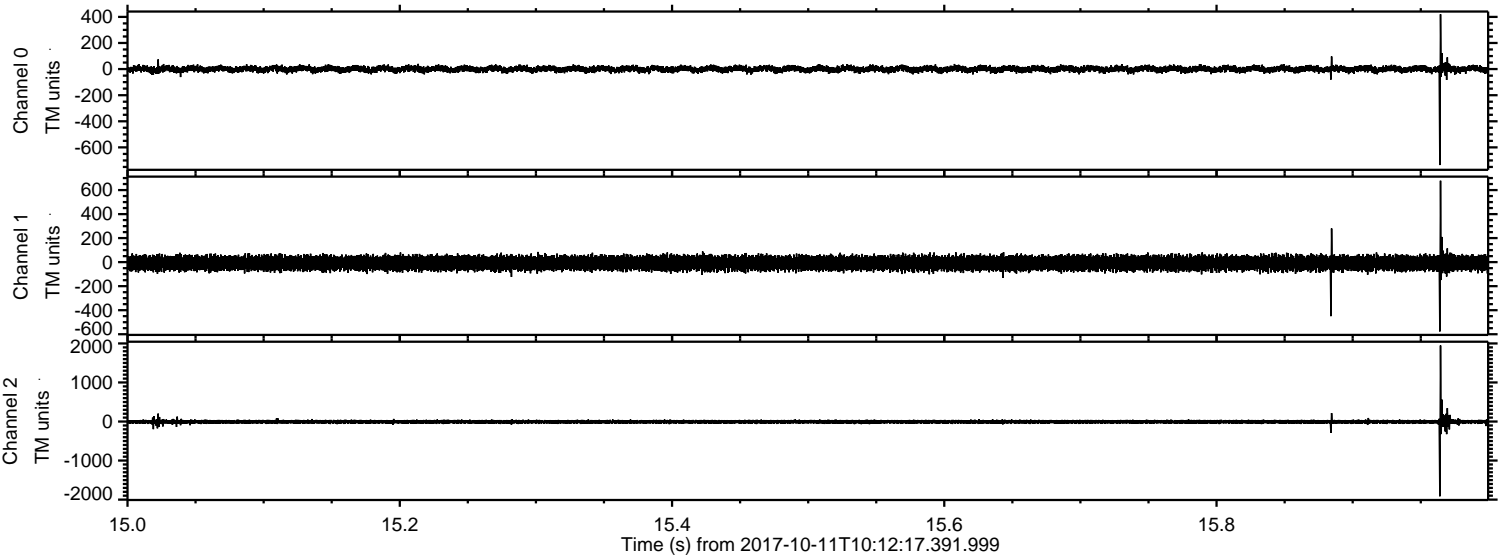


ELMAVAN 3D WAVEFORMS (Measured data sampled at 50 kHz) 50999 packets of 144 samples from 2017-10-11T10:12:17.391.999.

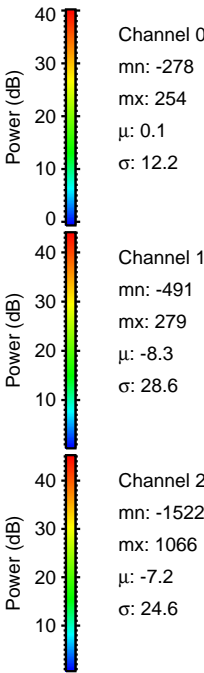
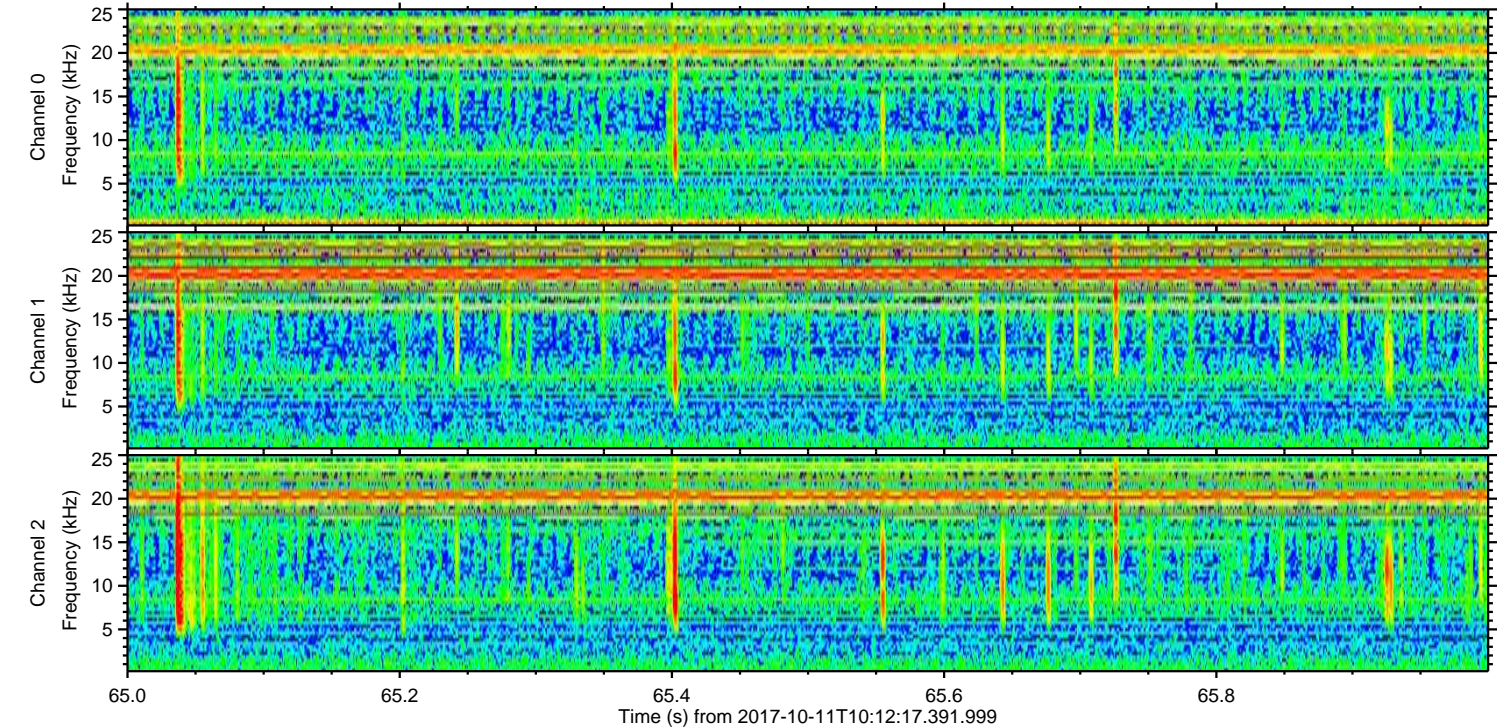
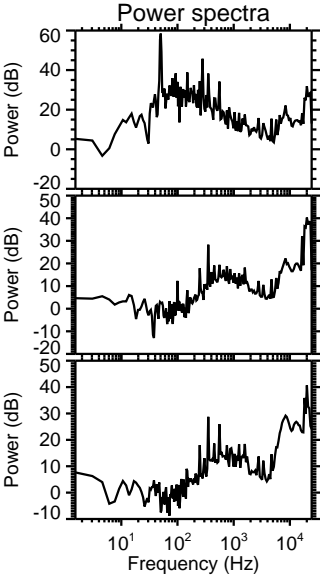
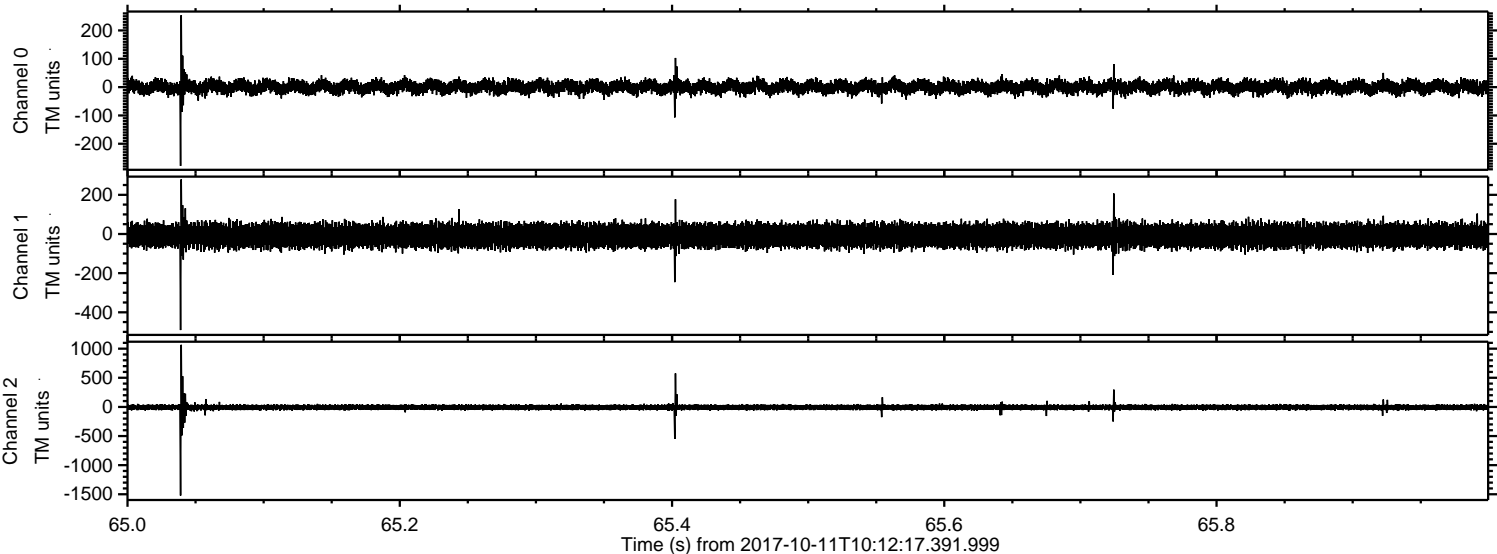
Processed Wed Oct 11 12:20:02 2017 by ELM ver.2012-10-06 from 001__elm20171011_101216__dat00.bin



Processed Wed Oct 11 12:20:09 2017 by ELM ver.2012-10-06 from 001__elm20171011_101216__dat00.bin

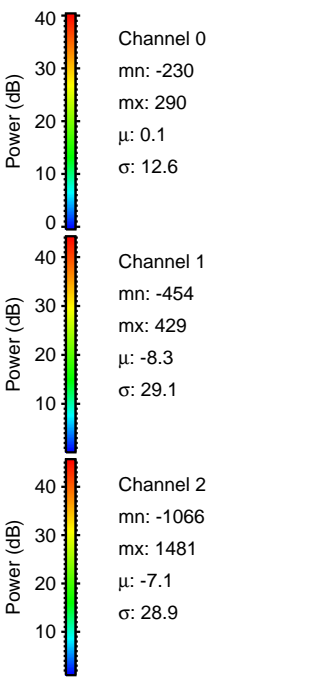
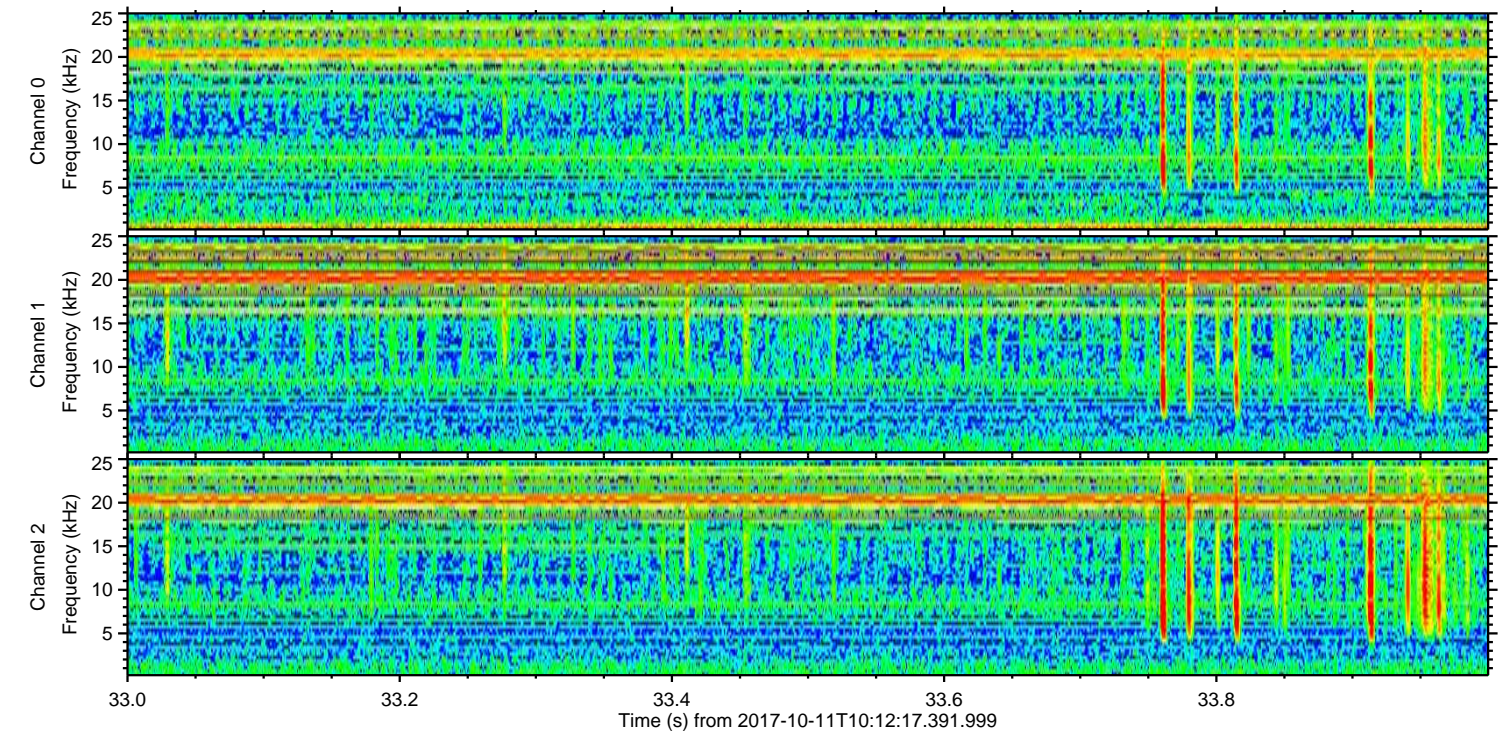
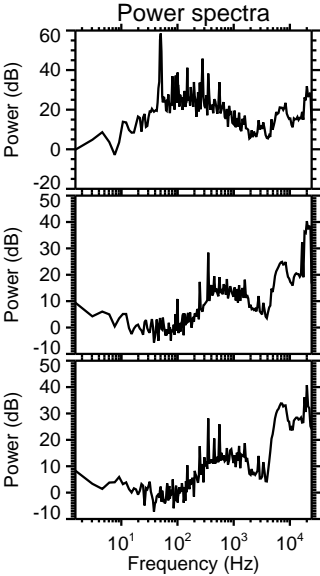
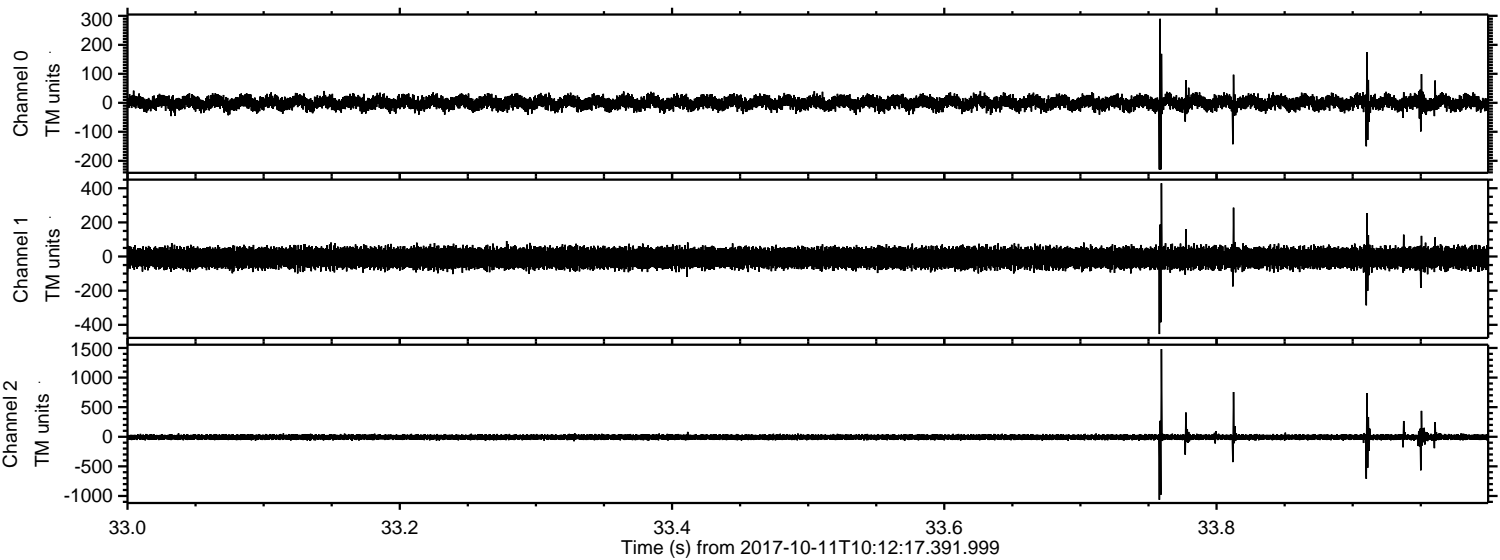


Processed Wed Oct 11 12:20:10 2017 by ELM ver.2012-10-06 from 001_elm20171011_101216__dat00.bin



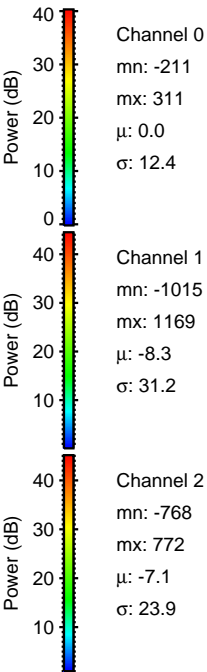
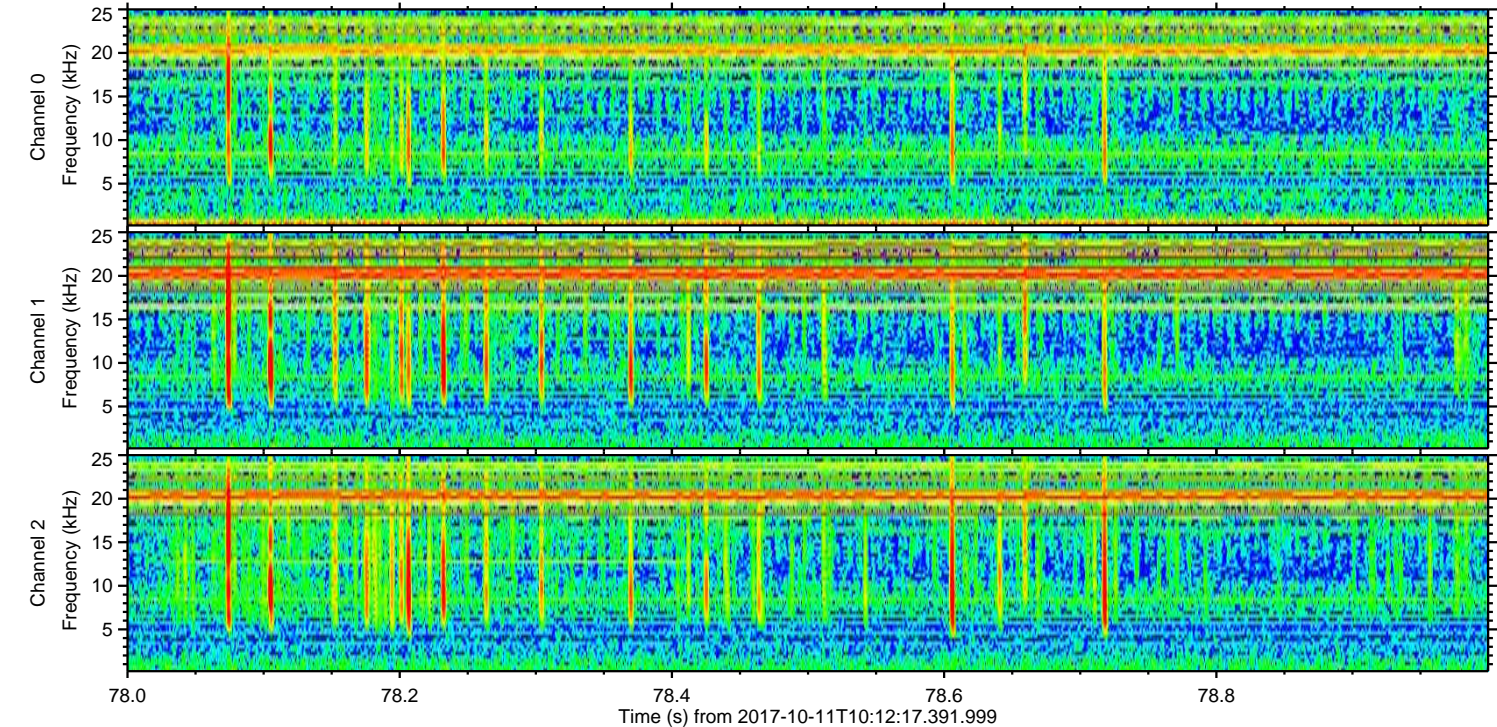
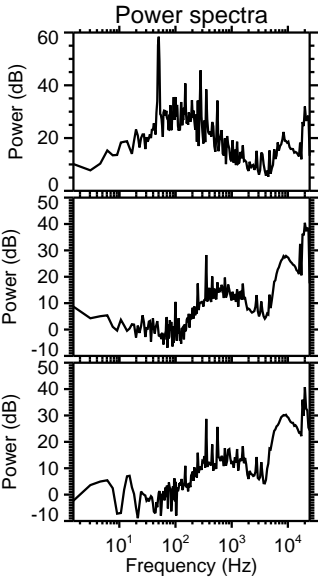
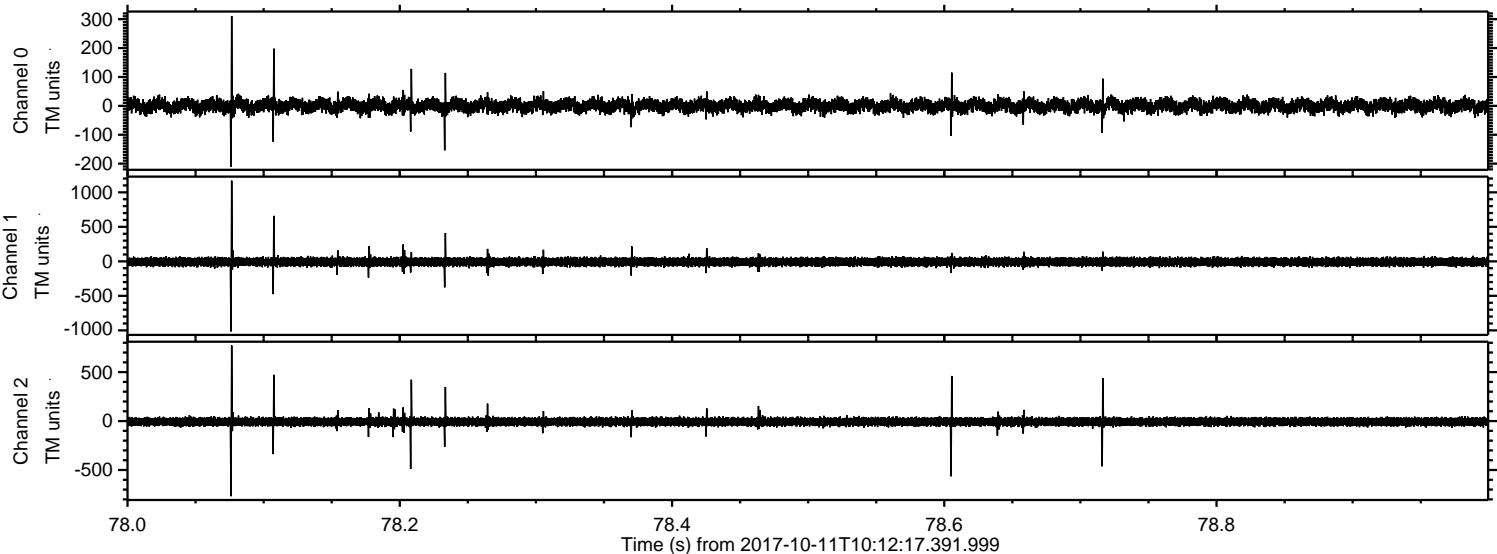
ELMAVAN 3D WAVEFORMS (Measured data sampled at 50 kHz) 50999 packets of 144 samples from 2017-10-11T10:12:17.391.999. Part 34/147

Processed Wed Oct 11 12:20:10 2017 by ELM ver.2012-10-06 from 001__elm20171011_101216__dat00.bin



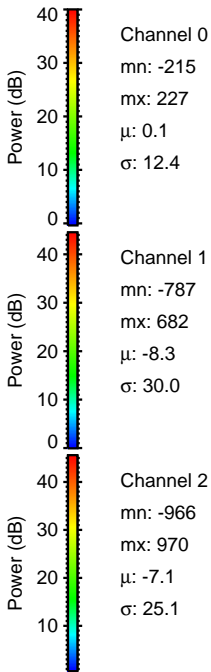
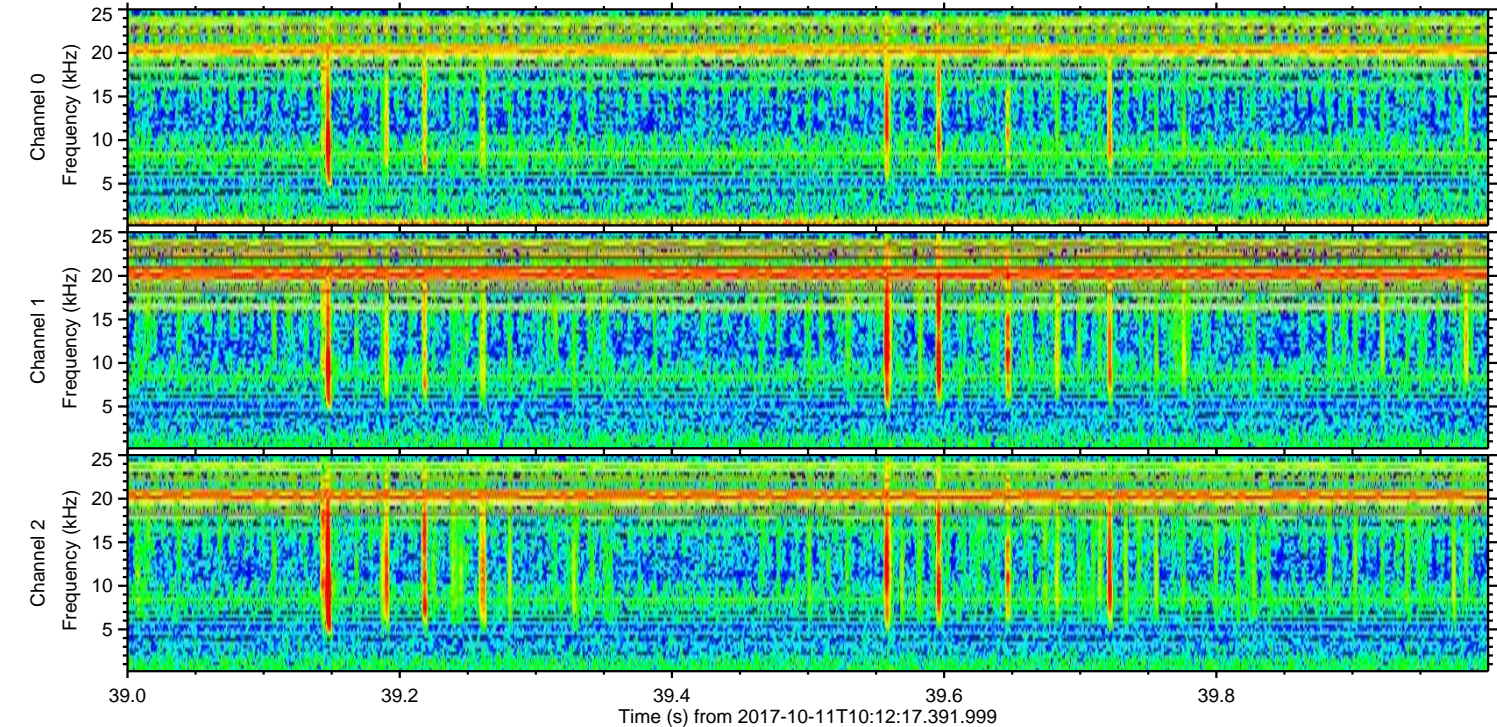
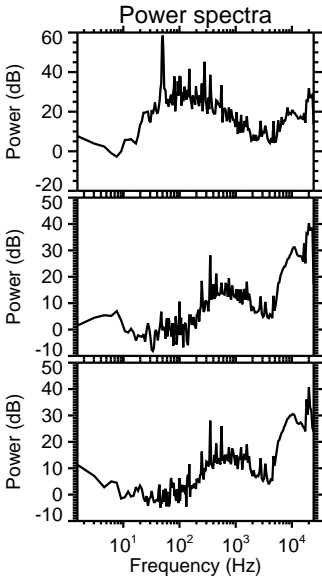
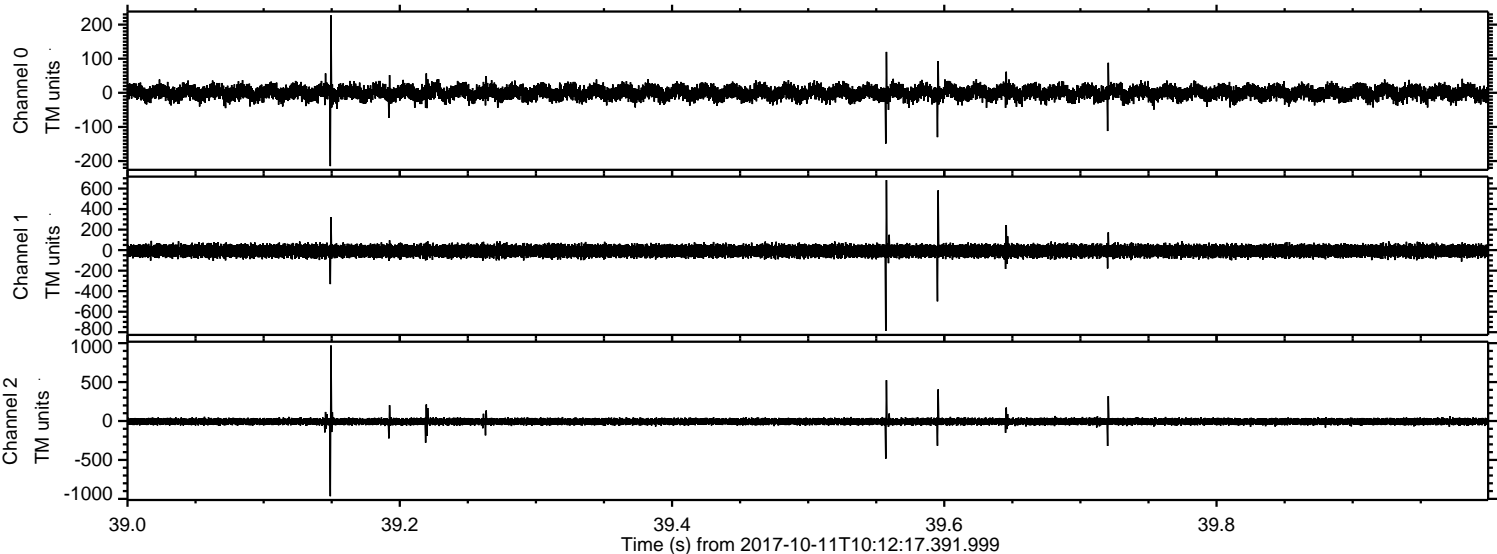
ELMAVAN 3D WAVEFORMS (Measured data sampled at 50 kHz) 50999 packets of 144 samples from 2017-10-11T10:12:17.391.999. Part 79/147

Processed Wed Oct 11 12:20:11 2017 by ELM ver.2012-10-06 from 001__elm20171011_101216__dat00.bin

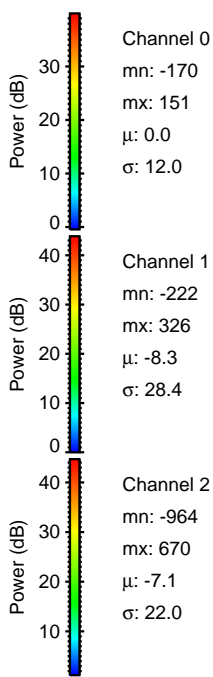
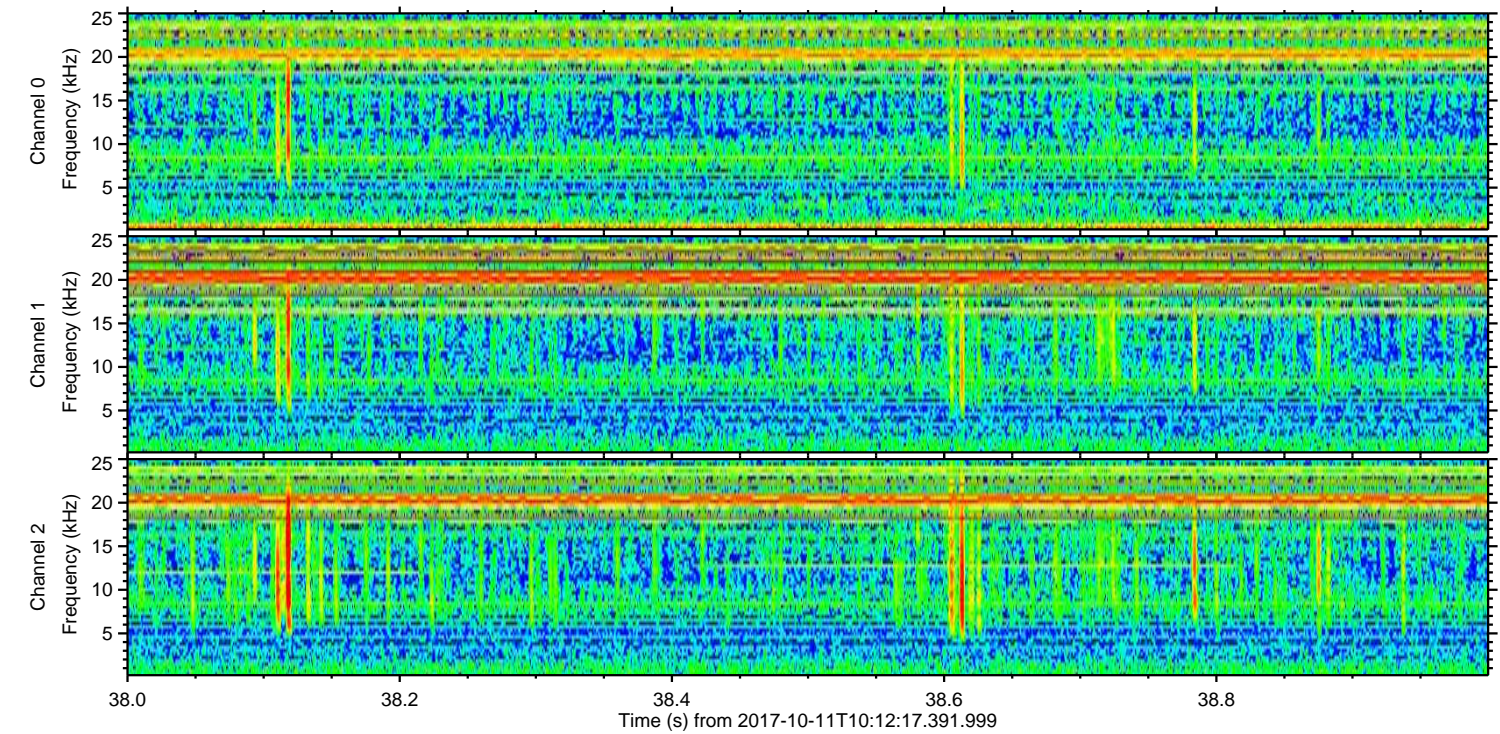
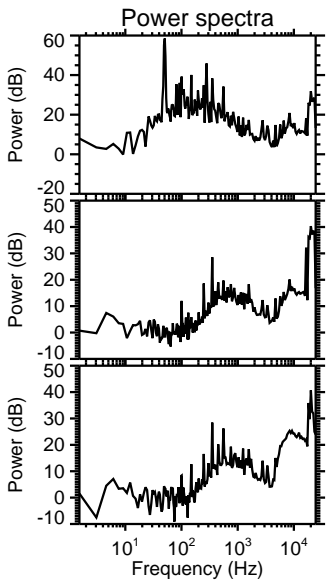
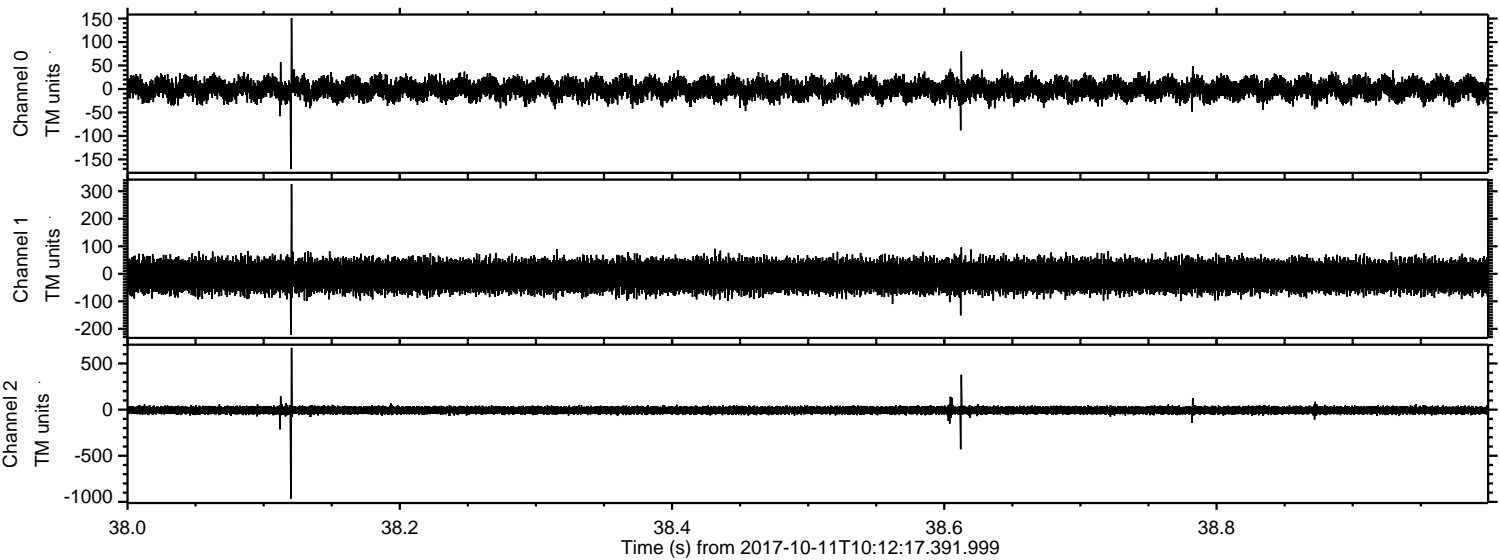


ELMAVAN 3D WAVEFORMS (Measured data sampled at 50 kHz) 50999 packets of 144 samples from 2017-10-11T10:12:17.391.999. Part 40/147

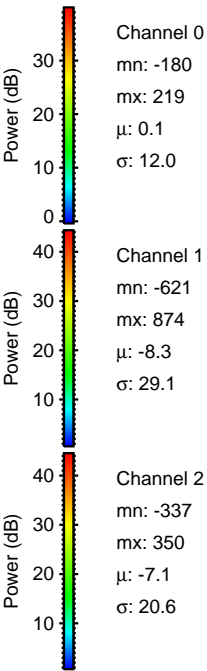
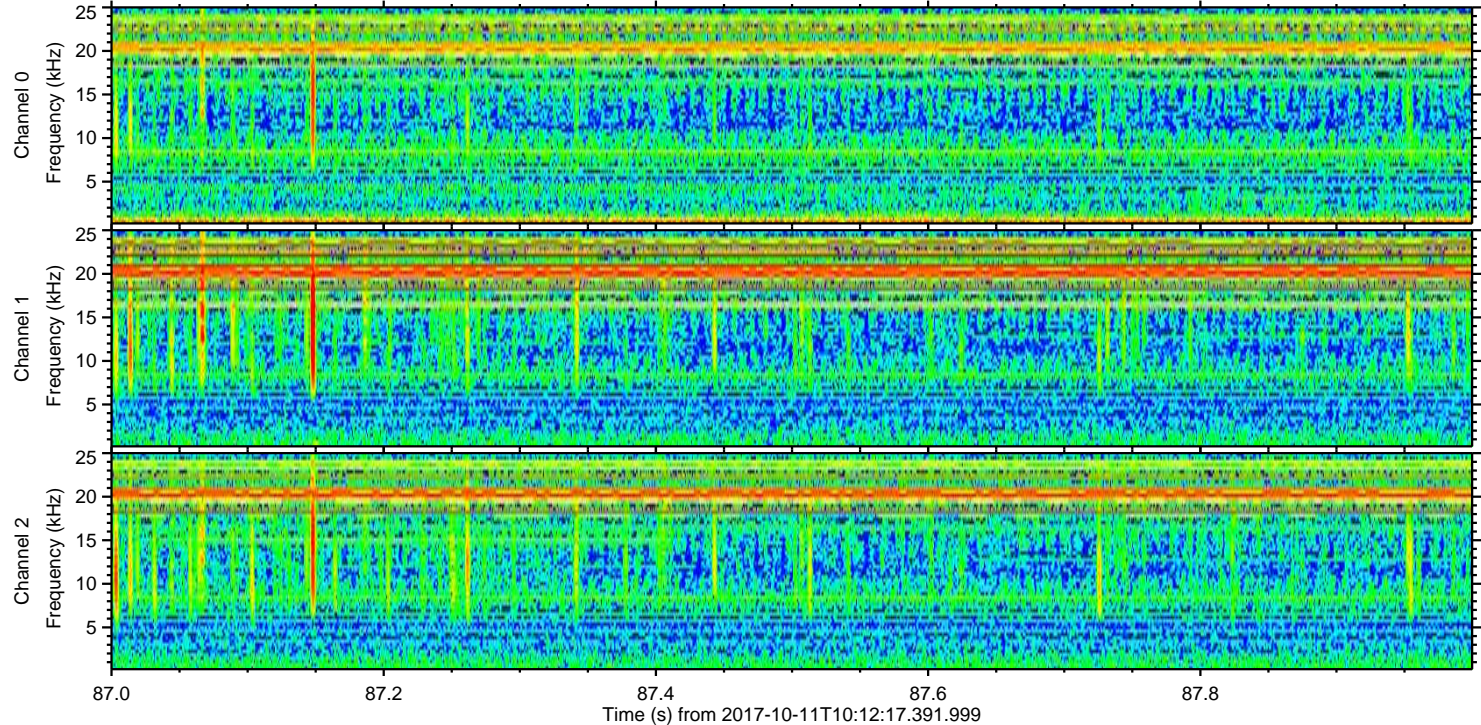
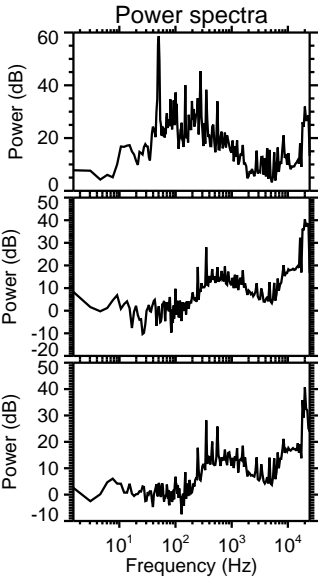
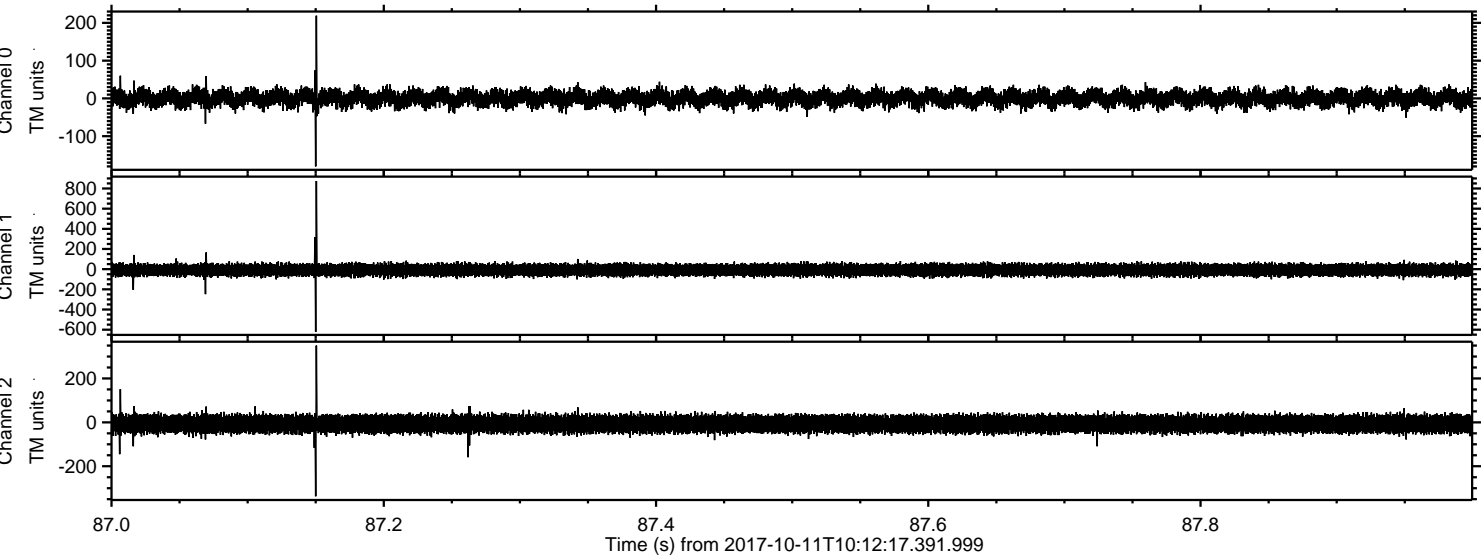
Processed Wed Oct 11 12:20:12 2017 by ELM ver.2012-10-06 from 001__elm20171011_101216__dat00.bin



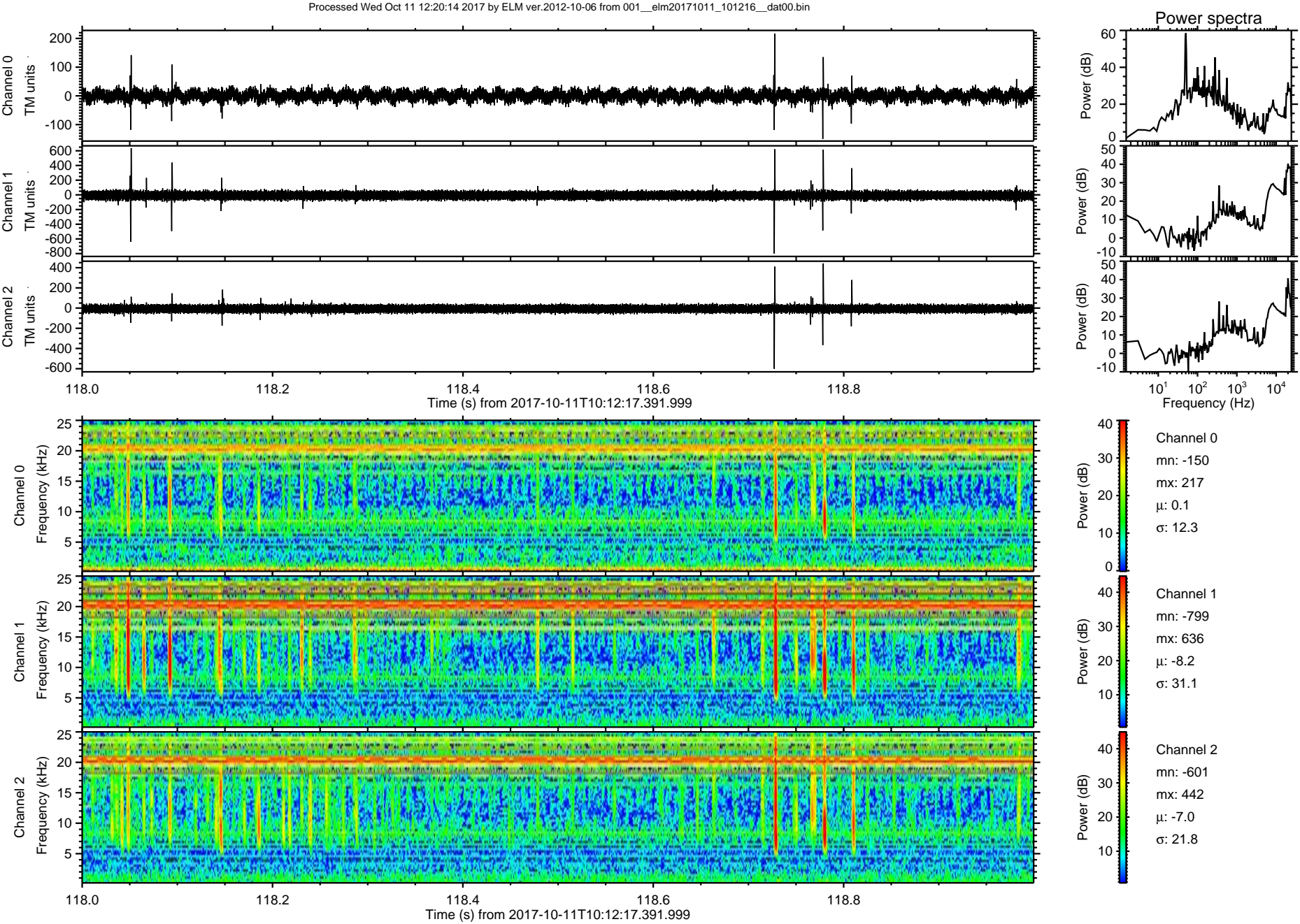
Processed Wed Oct 11 12:20:13 2017 by ELM ver.2012-10-06 from 001__elm20171011_101216__dat00.bin



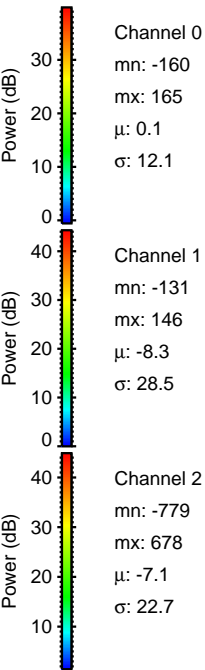
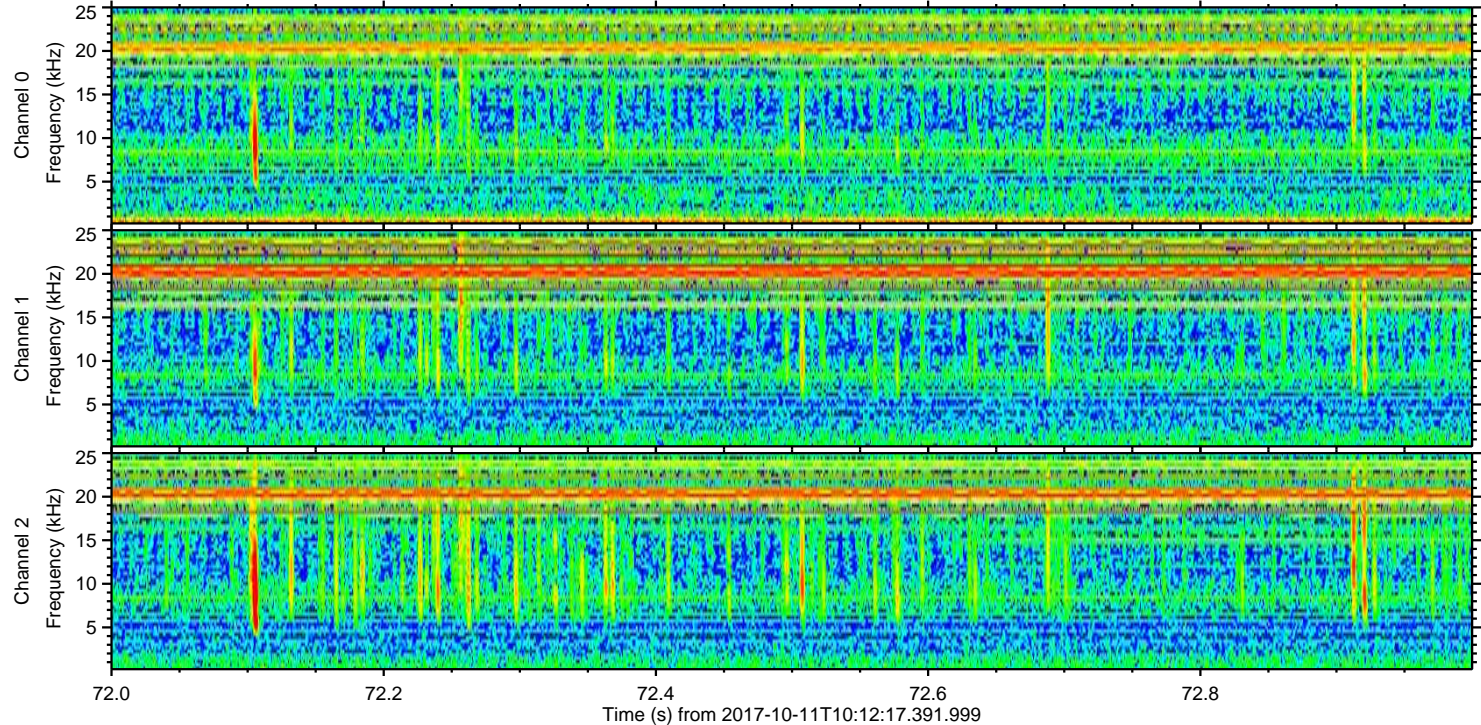
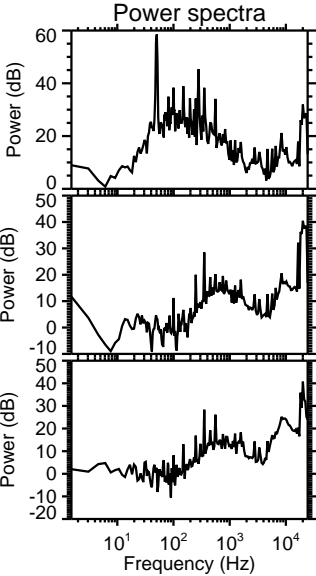
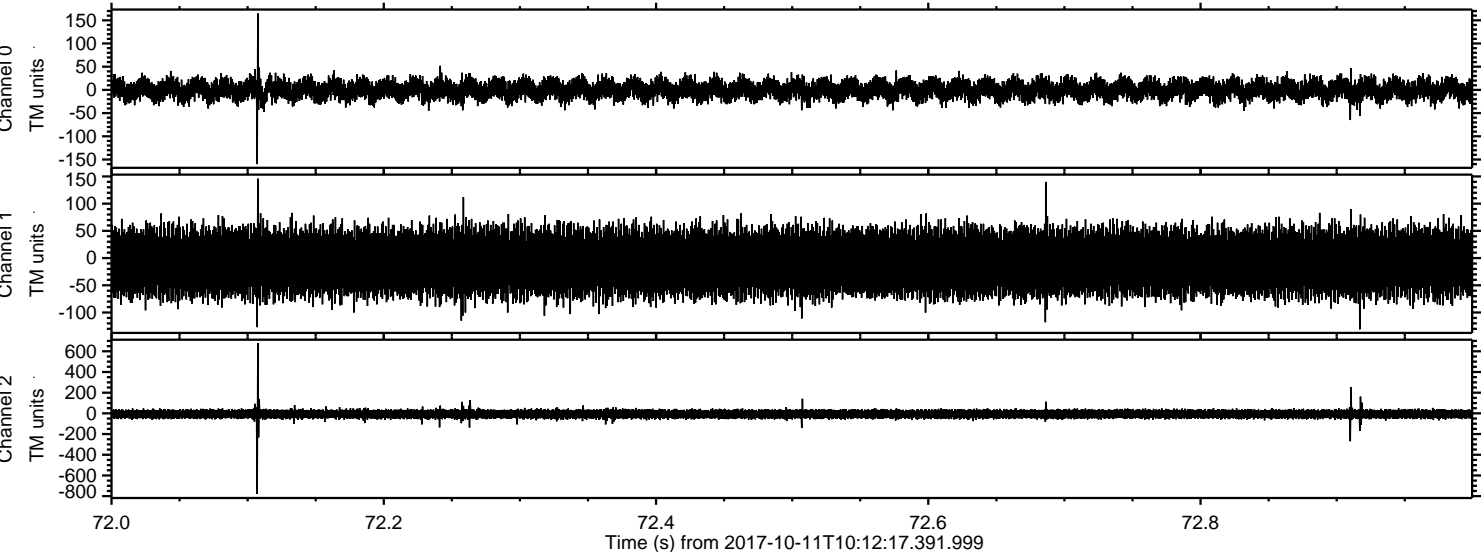
Processed Wed Oct 11 12:20:13 2017 by ELM ver.2012-10-06 from 001__elm20171011_101216__dat00.bin



ELMAVAN 3D WAVEFORMS (Measured data sampled at 50 kHz) 50999 packets of 144 samples from 2017-10-11T10:12:17.391.999. Part 119/147



Processed Wed Oct 11 12:20:15 2017 by ELM ver.2012-10-06 from 001__elm20171011_101216__dat00.bin



Channel 0
mn: -160
mx: 165
 μ : 0.1
 σ : 12.1

Channel 1
mn: -131
mx: 146
 μ : -8.3
 σ : 28.5

Channel 2
mn: -779
mx: 678
 μ : -7.1
 σ : 22.7

Processed Wed Oct 11 12:20:16 2017 by ELM ver.2012-10-06 from 001__elm20171011_101216__dat00.bin

