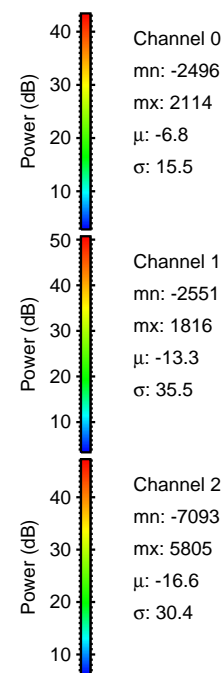
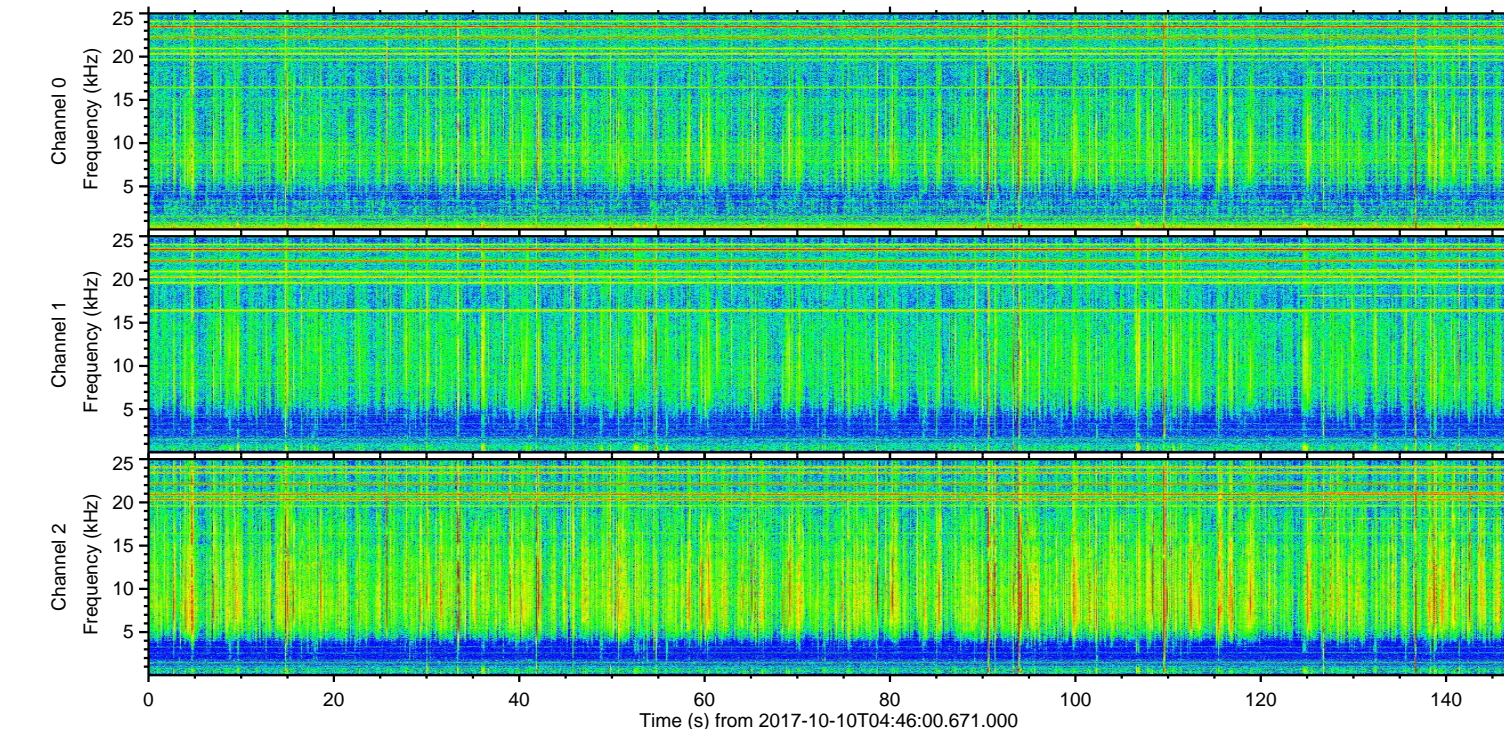
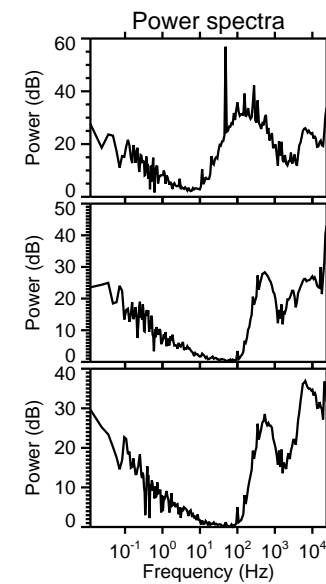
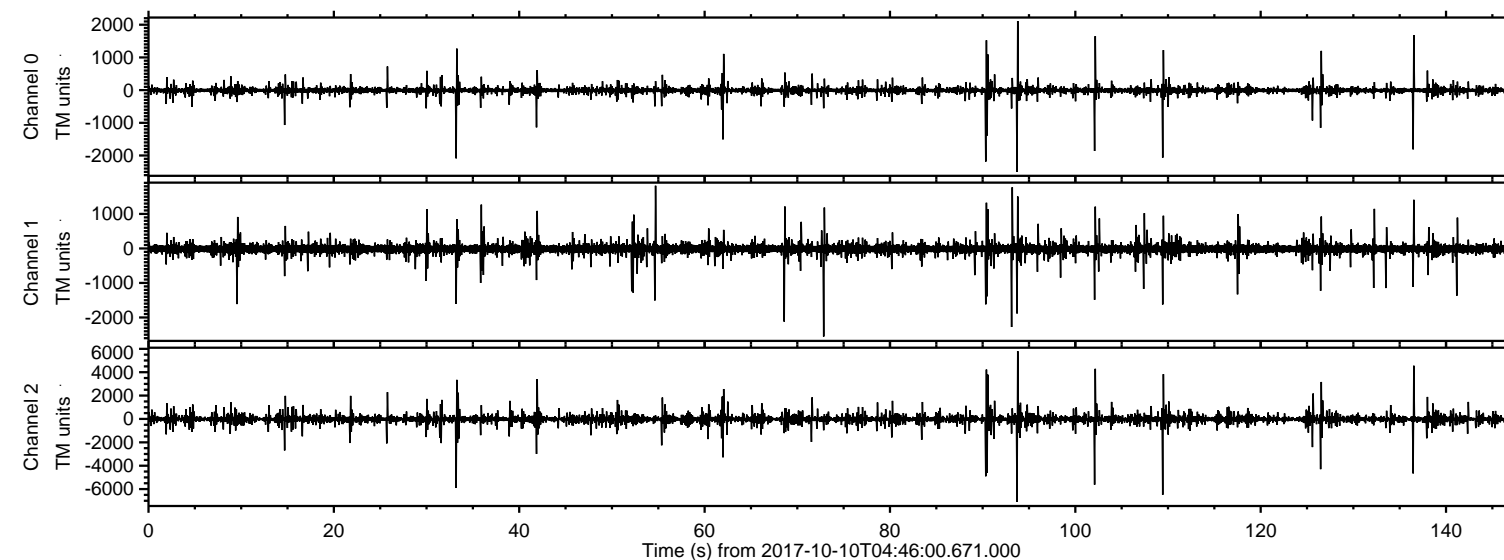
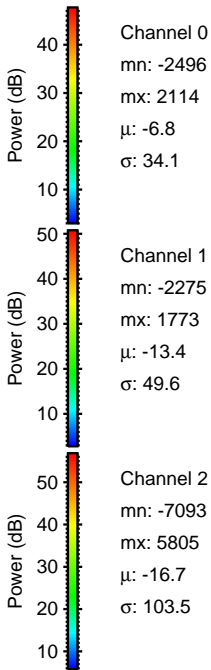
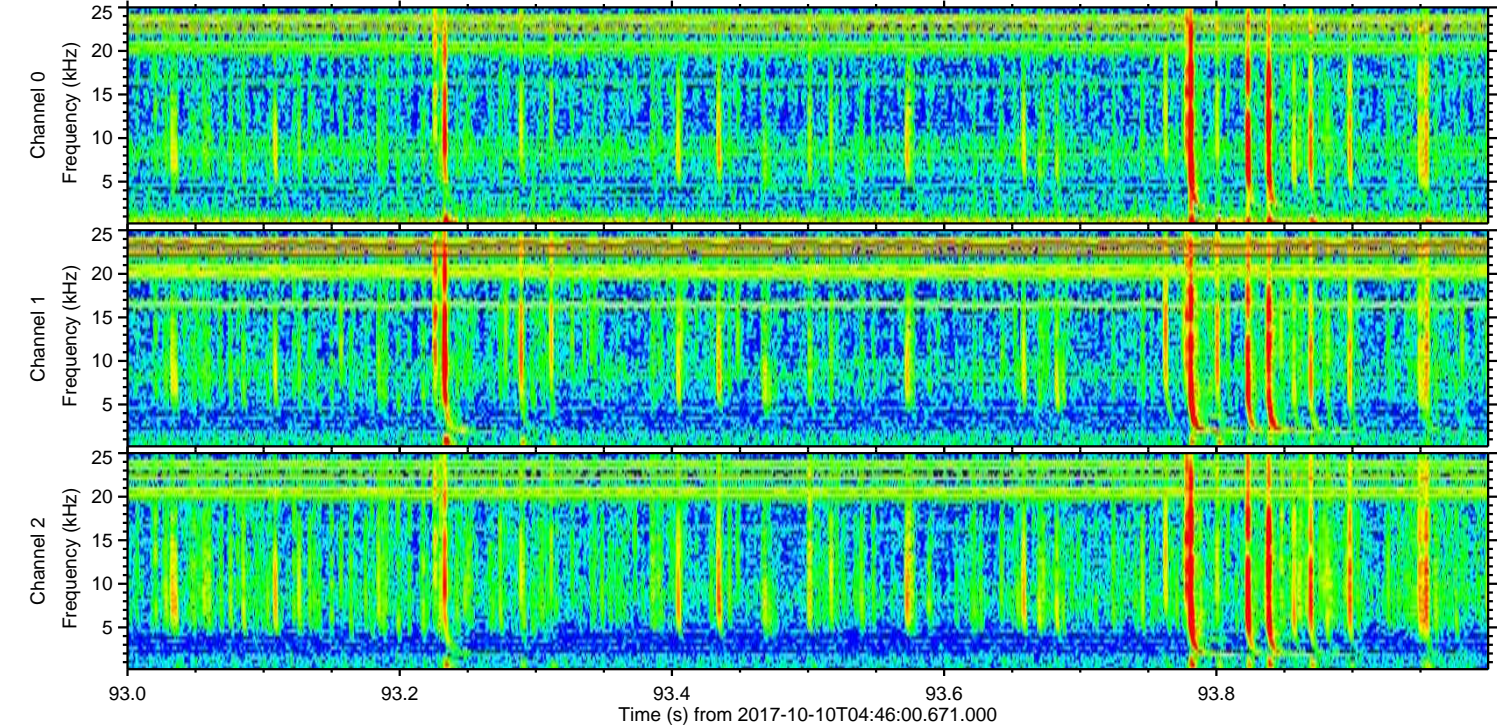
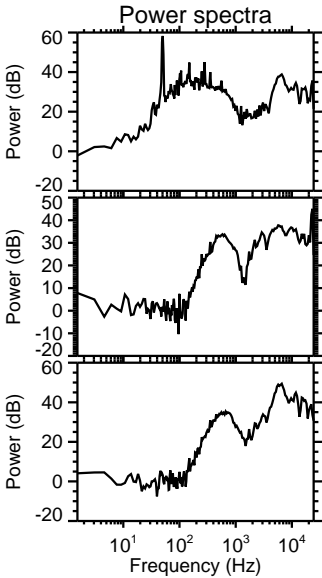
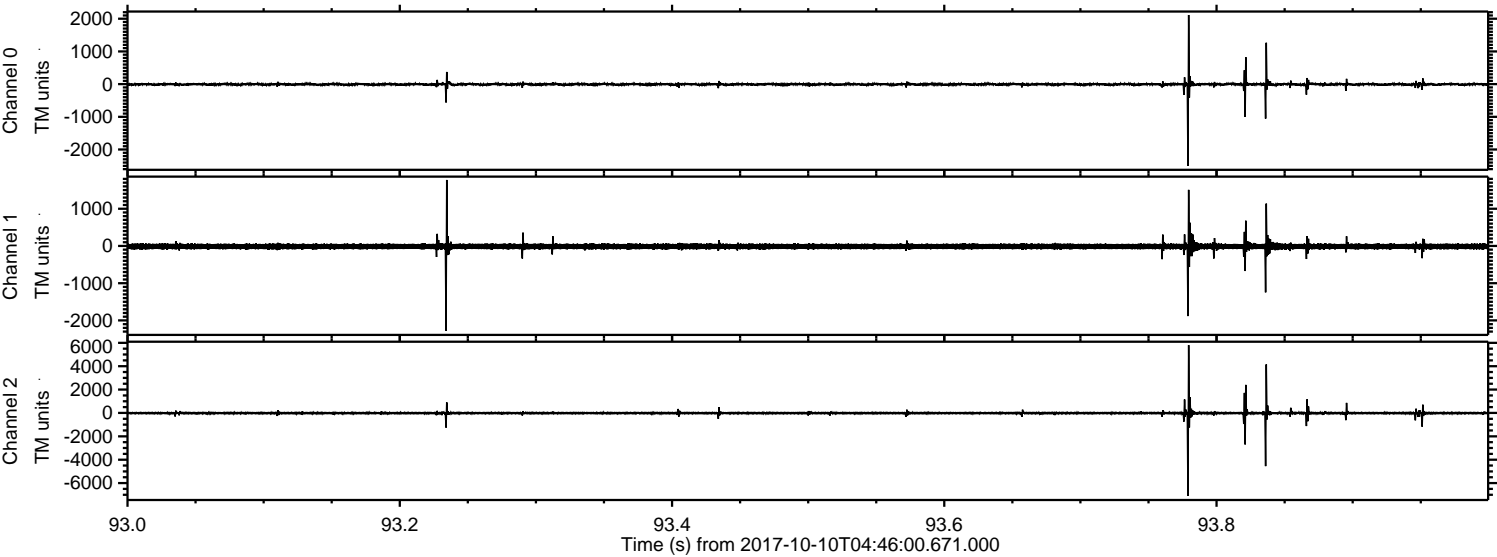


ELMAVAN 3D WAVEFORMS (Measured data sampled at 50 kHz) 51000 packets of 144 samples from 2017-10-10T04:46:00.671.000.

Processed Tue Oct 10 06:54:05 2017 by ELM ver.2012-10-06 from 001__elm20171010_044559__dat00.bin

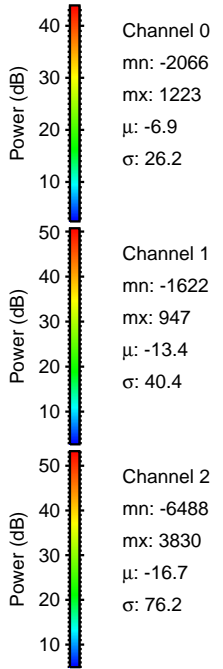
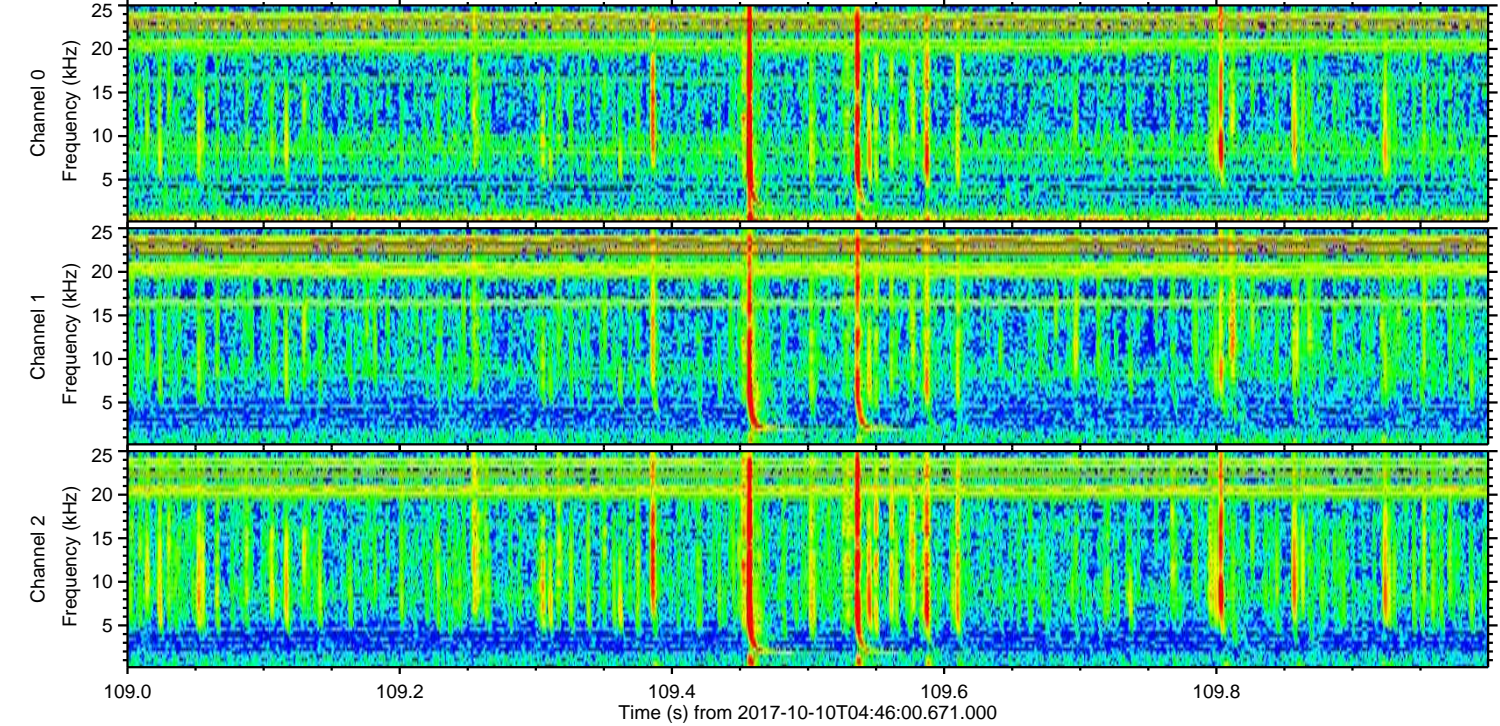
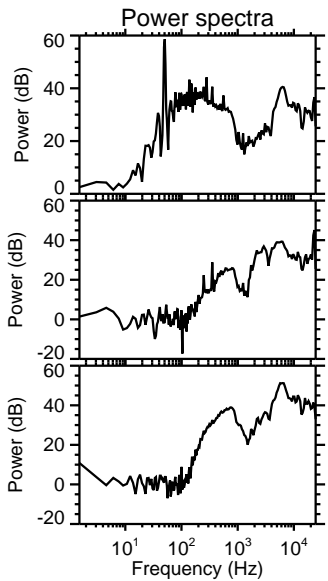
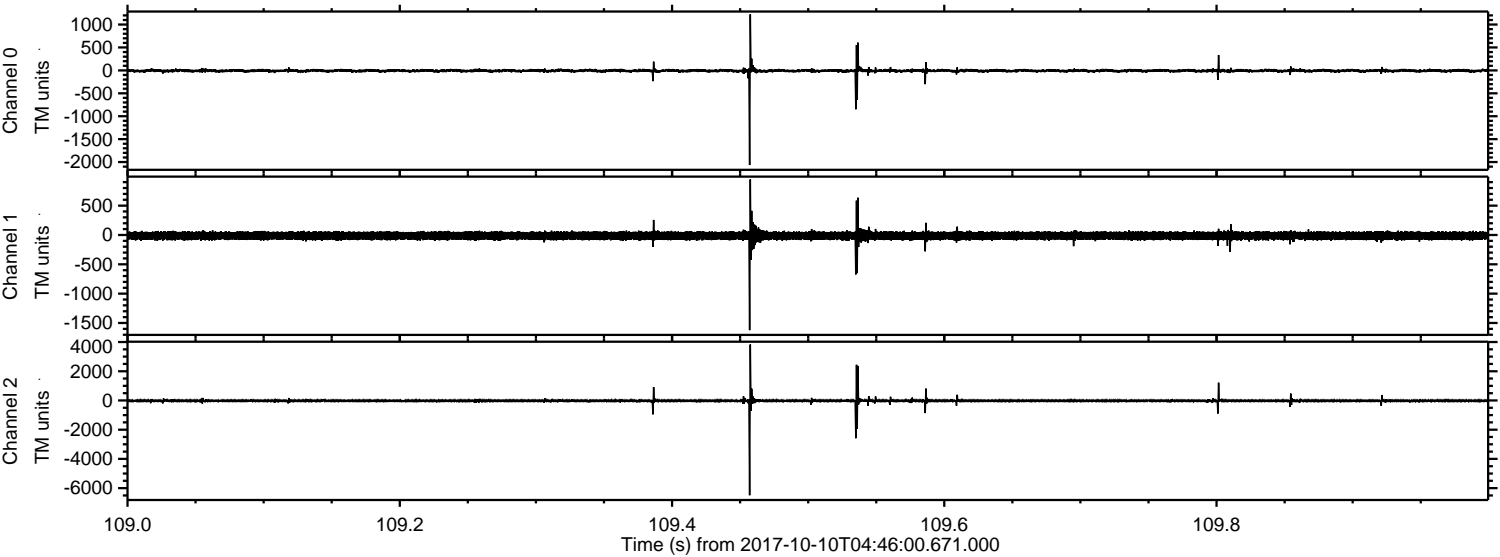


Processed Tue Oct 10 06:54:12 2017 by ELM ver.2012-10-06 from 001__elm20171010_044559__dat00.bin

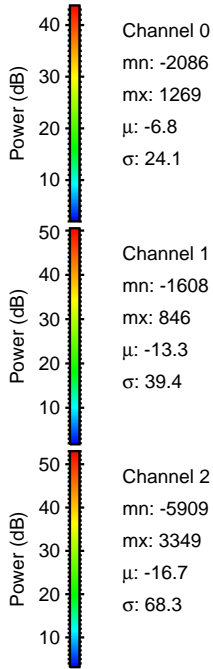
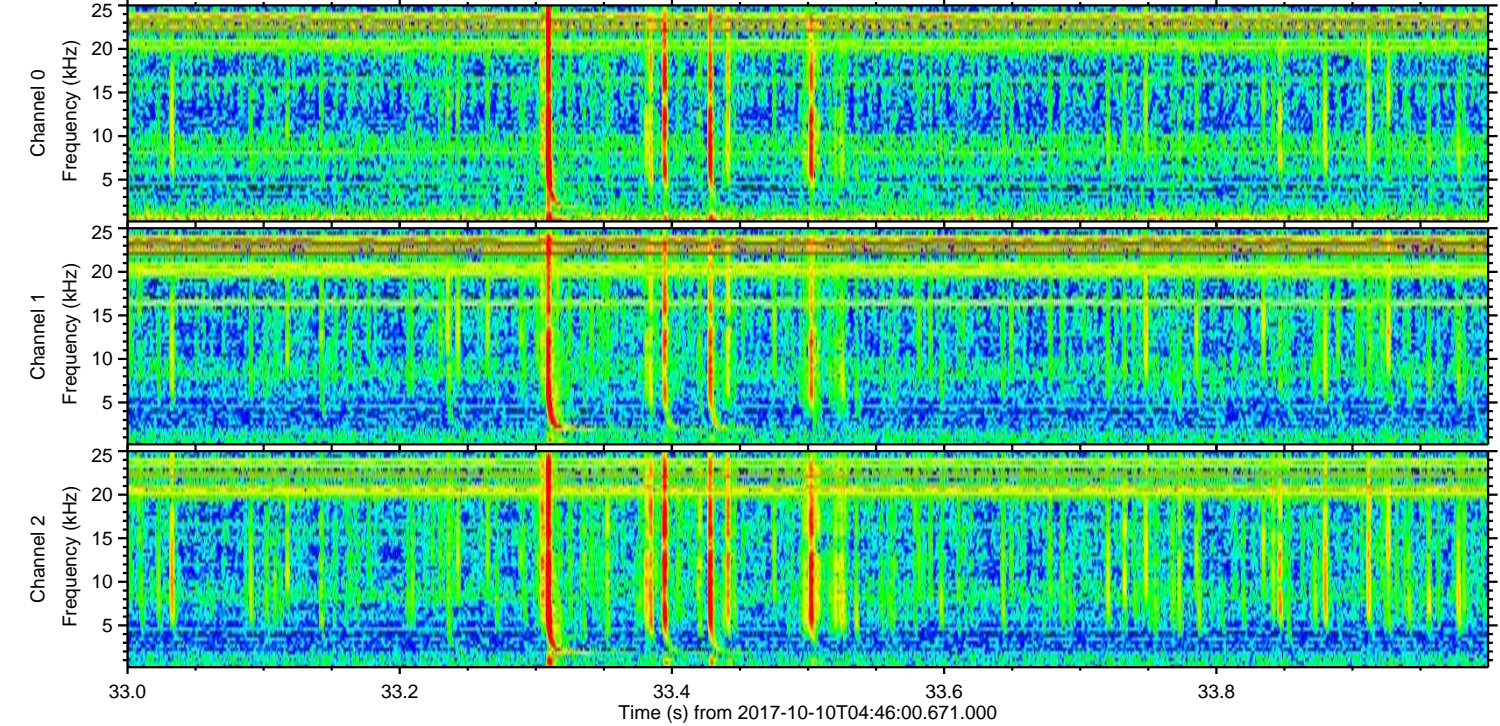
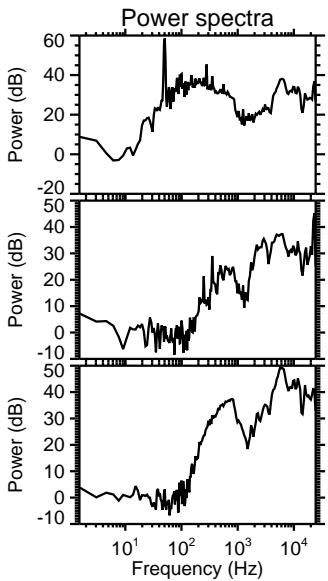
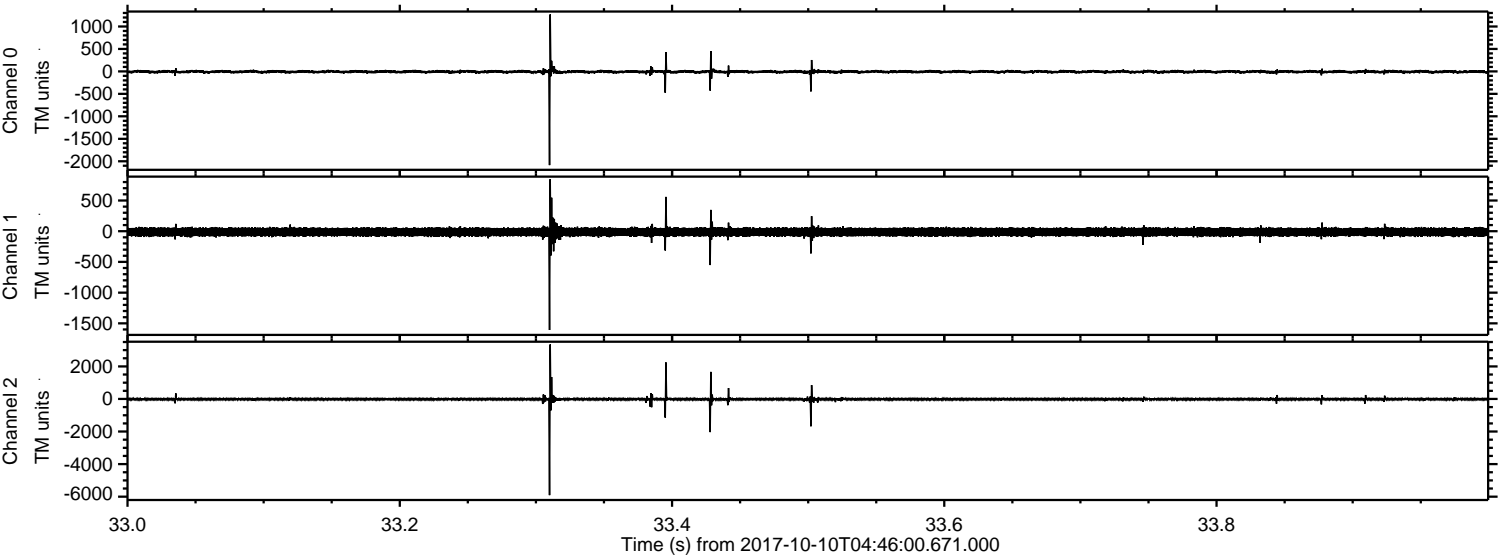


ELMAVAN 3D WAVEFORMS (Measured data sampled at 50 kHz) 51000 packets of 144 samples from 2017-10-10T04:46:00.671.000. Part 110/147

Processed Tue Oct 10 06:54:13 2017 by ELM ver.2012-10-06 from 001__elm20171010_044559__dat00.bin

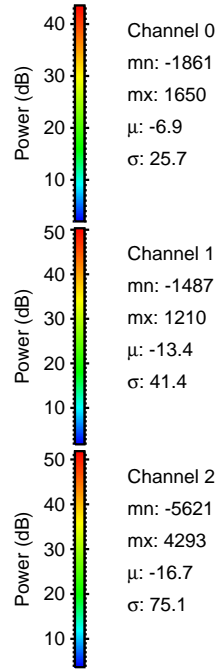
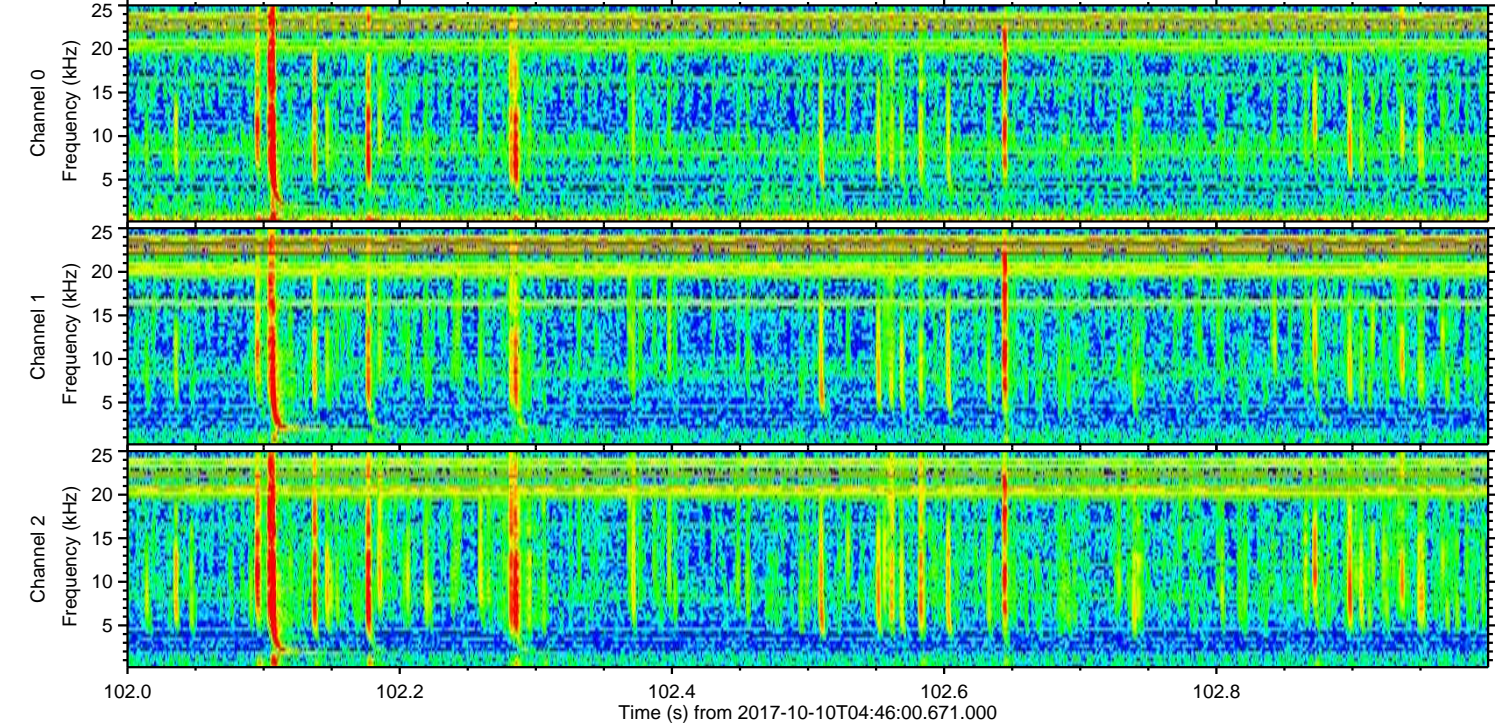
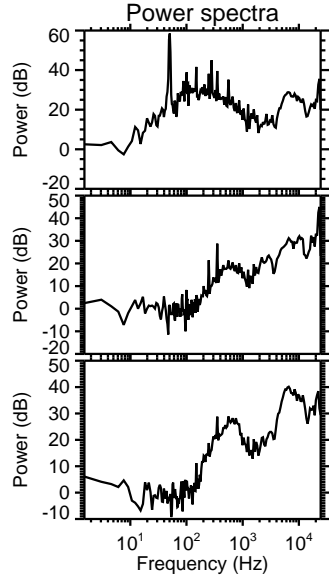
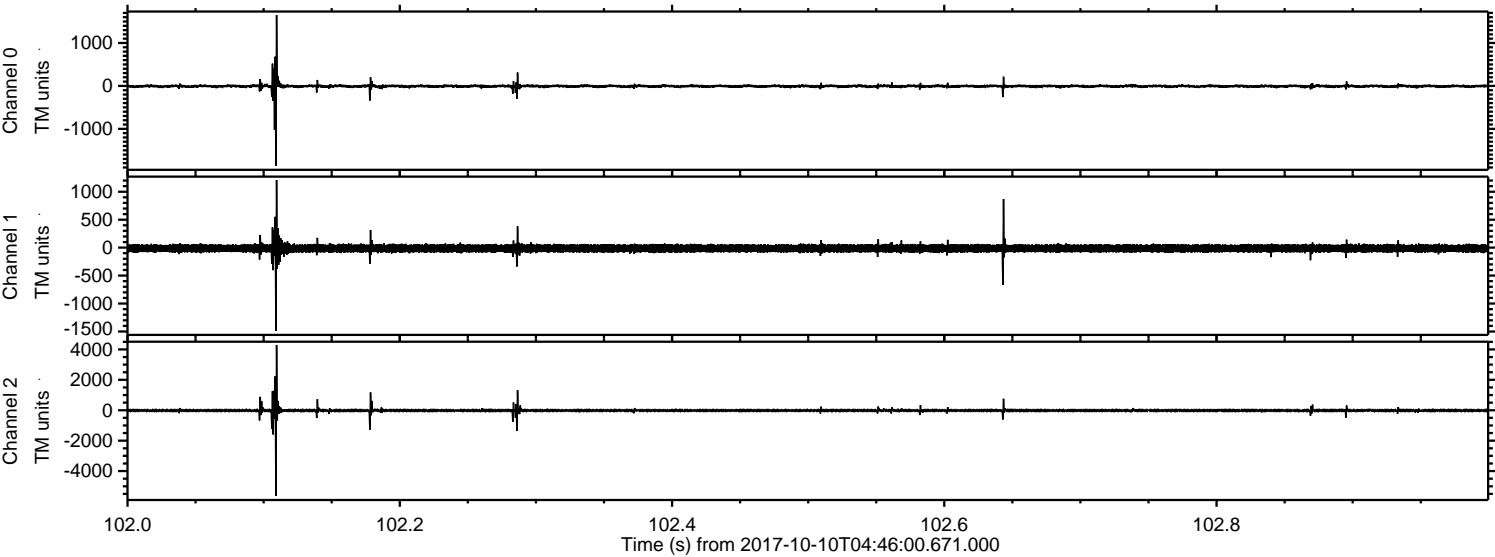


Processed Tue Oct 10 06:54:13 2017 by ELM ver.2012-10-06 from 001__elm20171010_044559__dat00.bin

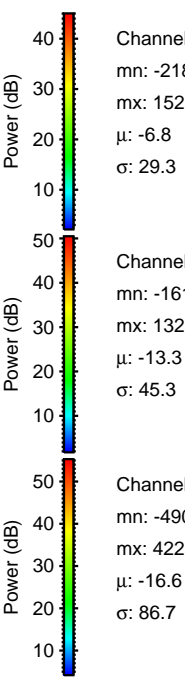
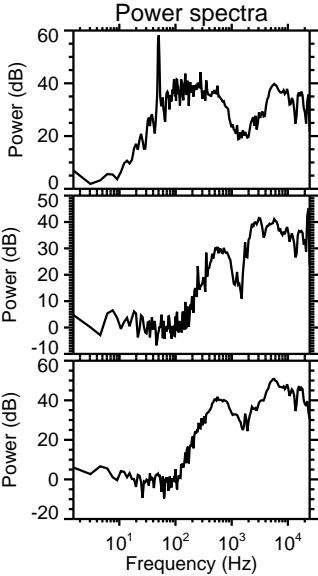
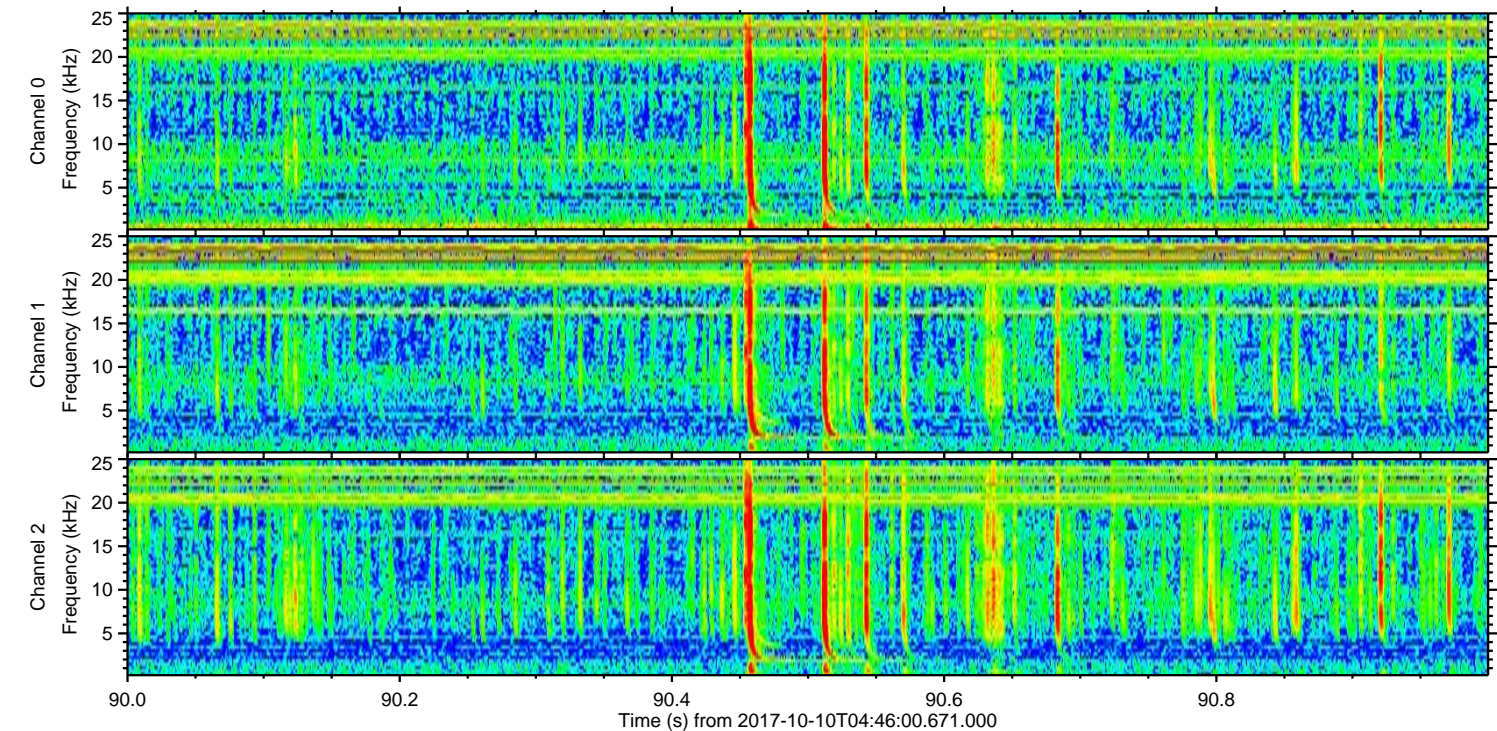
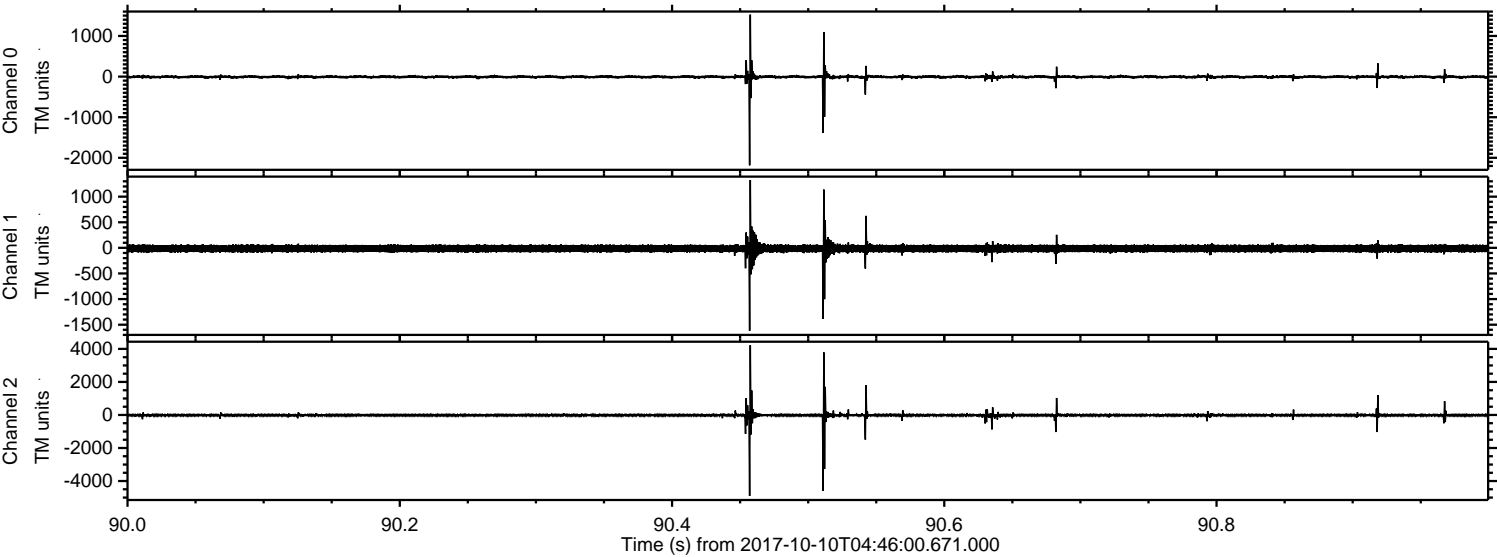


ELMAVAN 3D WAVEFORMS (Measured data sampled at 50 kHz) 51000 packets of 144 samples from 2017-10-10T04:46:00.671.000. Part 103/147

Processed Tue Oct 10 06:54:14 2017 by ELM ver.2012-10-06 from 001__elm20171010_044559__dat00.bin



Processed Tue Oct 10 06:54:15 2017 by ELM ver.2012-10-06 from 001__elm20171010_044559__dat00.bin



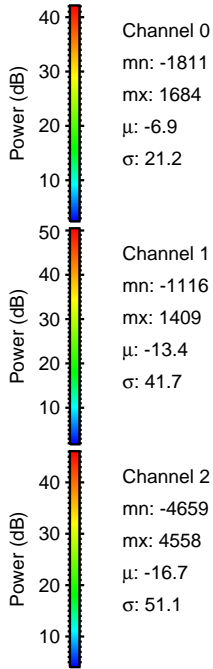
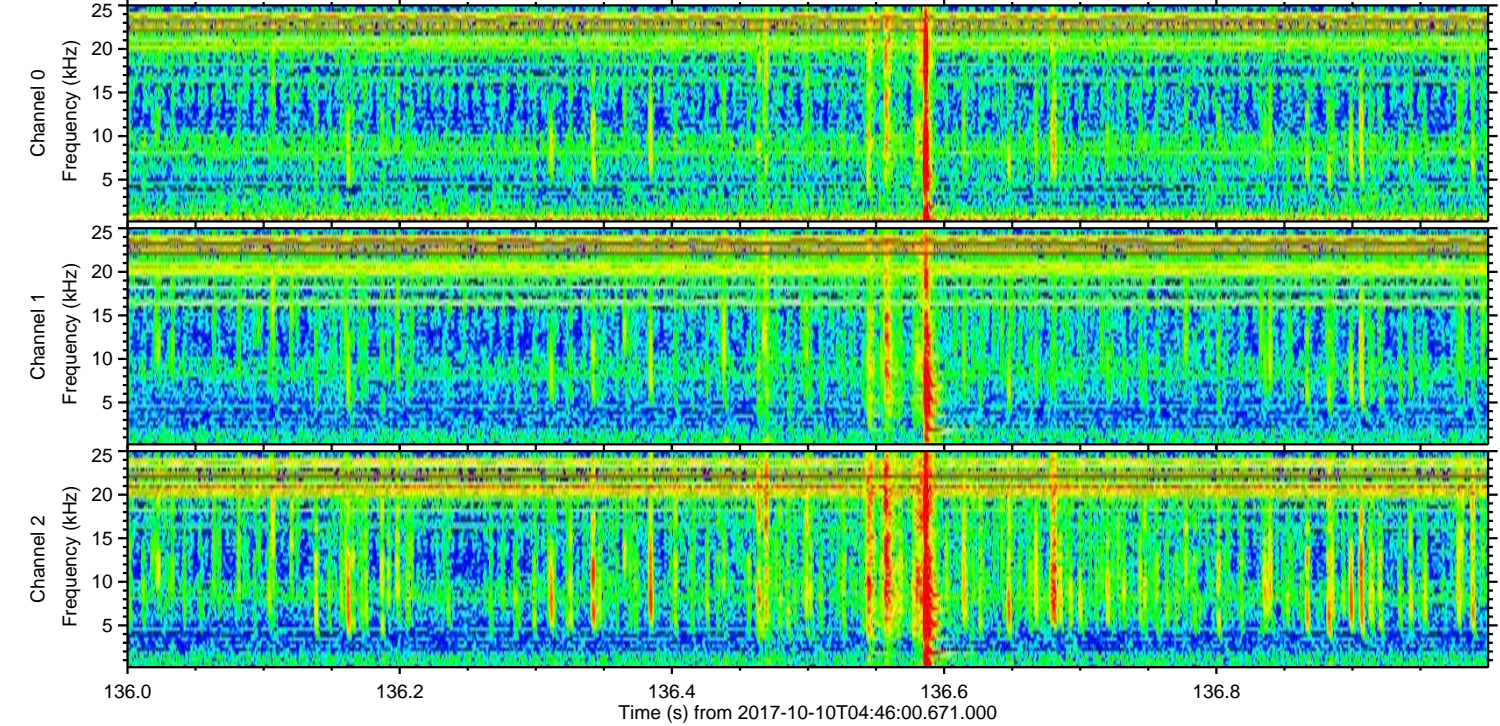
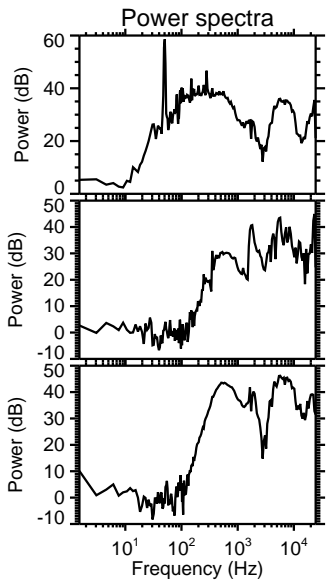
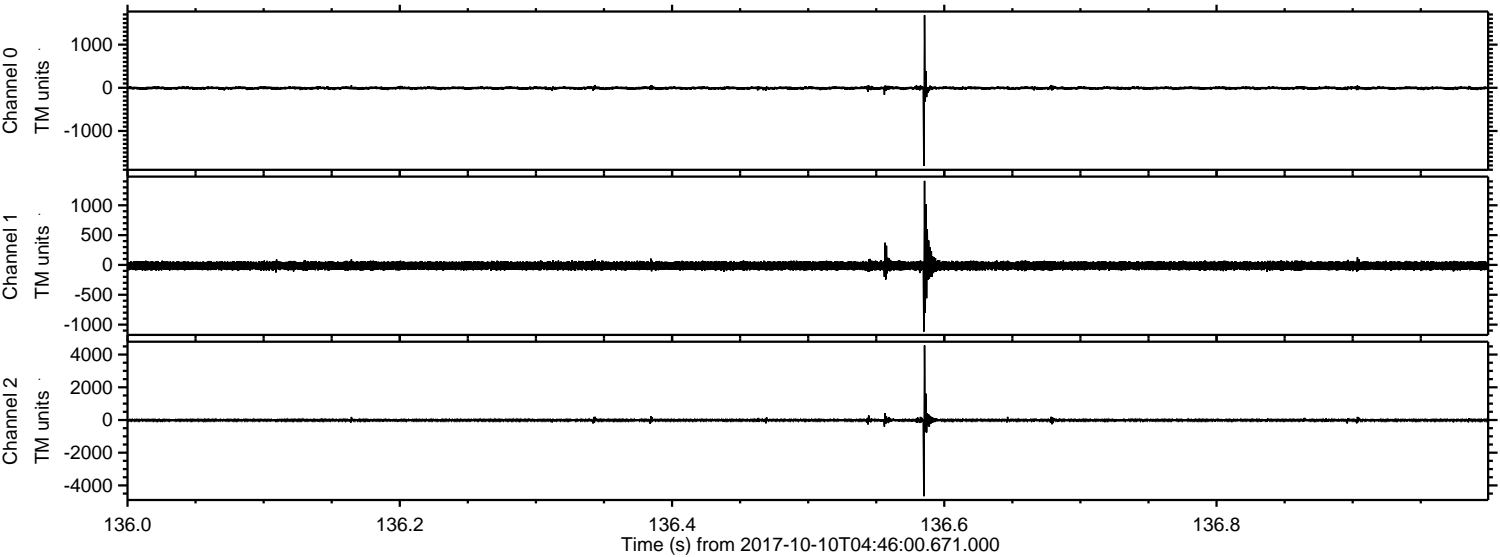
Channel 0
mn: -2186
mx: 1525
 μ : -6.8
 σ : 29.3

Channel 1
mn: -1619
mx: 1325
 μ : -13.3
 σ : 45.3

Channel 2
mn: -4903
mx: 4225
 μ : -16.6
 σ : 86.7

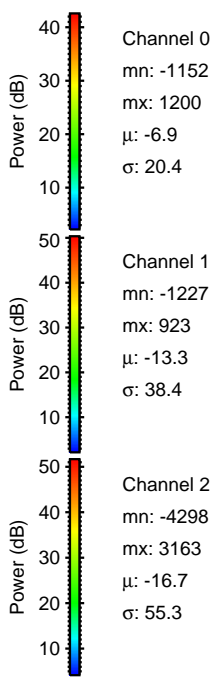
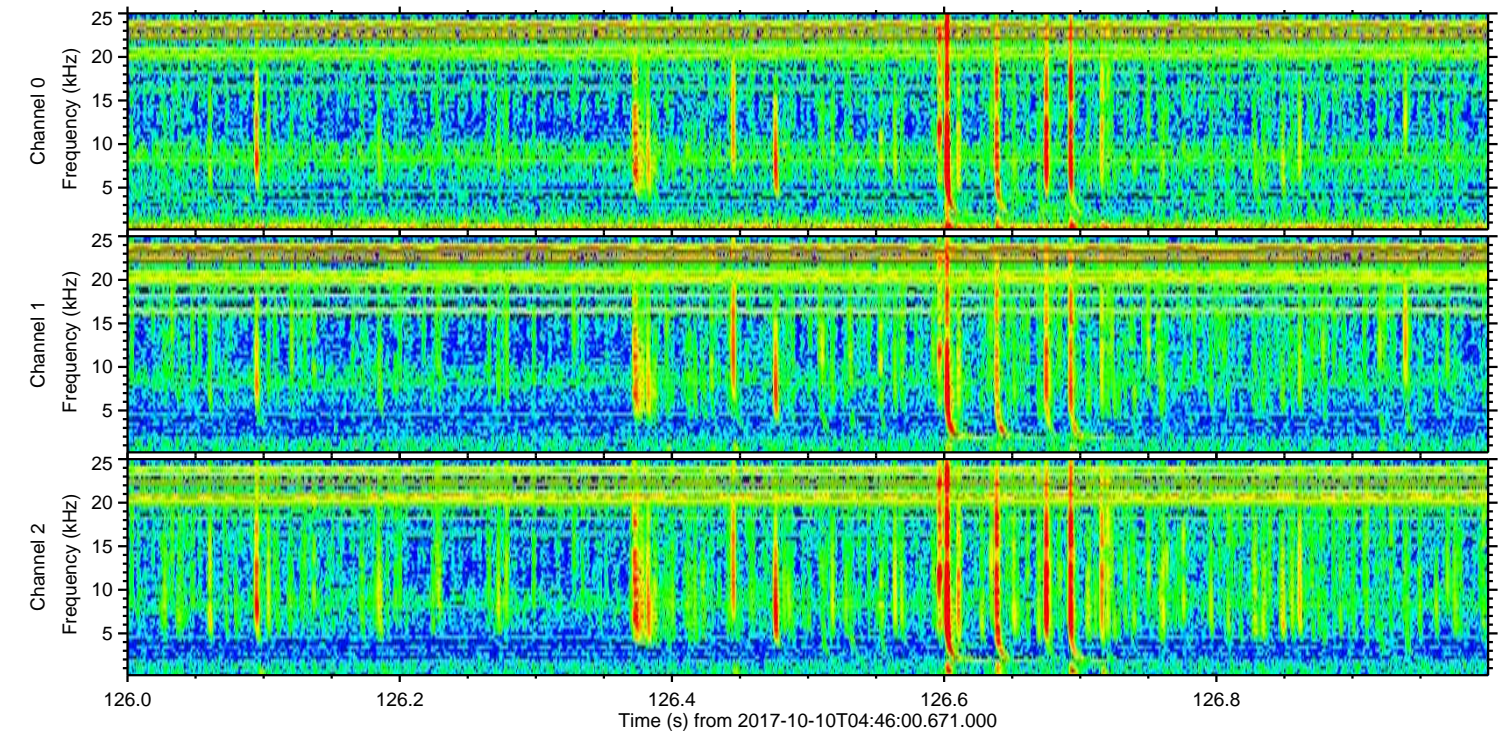
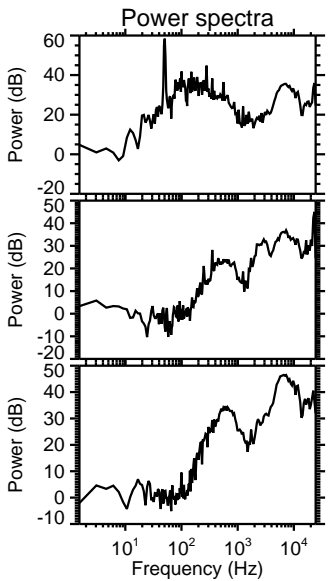
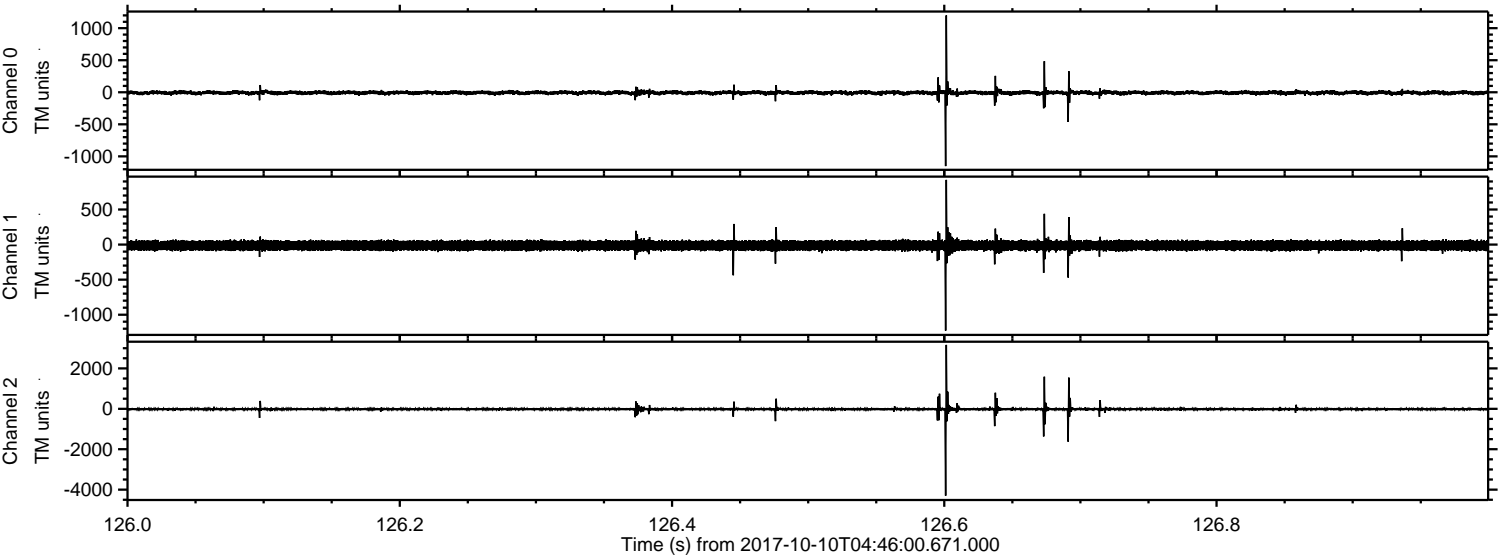
ELMAVAN 3D WAVEFORMS (Measured data sampled at 50 kHz) 51000 packets of 144 samples from 2017-10-10T04:46:00.671.000. Part 137/147

Processed Tue Oct 10 06:54:16 2017 by ELM ver.2012-10-06 from 001__elm20171010_044559__dat00.bin



ELMAVAN 3D WAVEFORMS (Measured data sampled at 50 kHz) 51000 packets of 144 samples from 2017-10-10T04:46:00.671.000. Part 127/147

Processed Tue Oct 10 06:54:16 2017 by ELM ver.2012-10-06 from 001__elm20171010_044559__dat00.bin

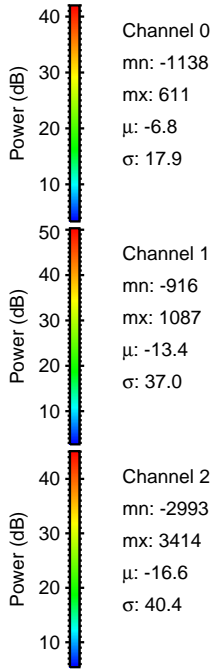
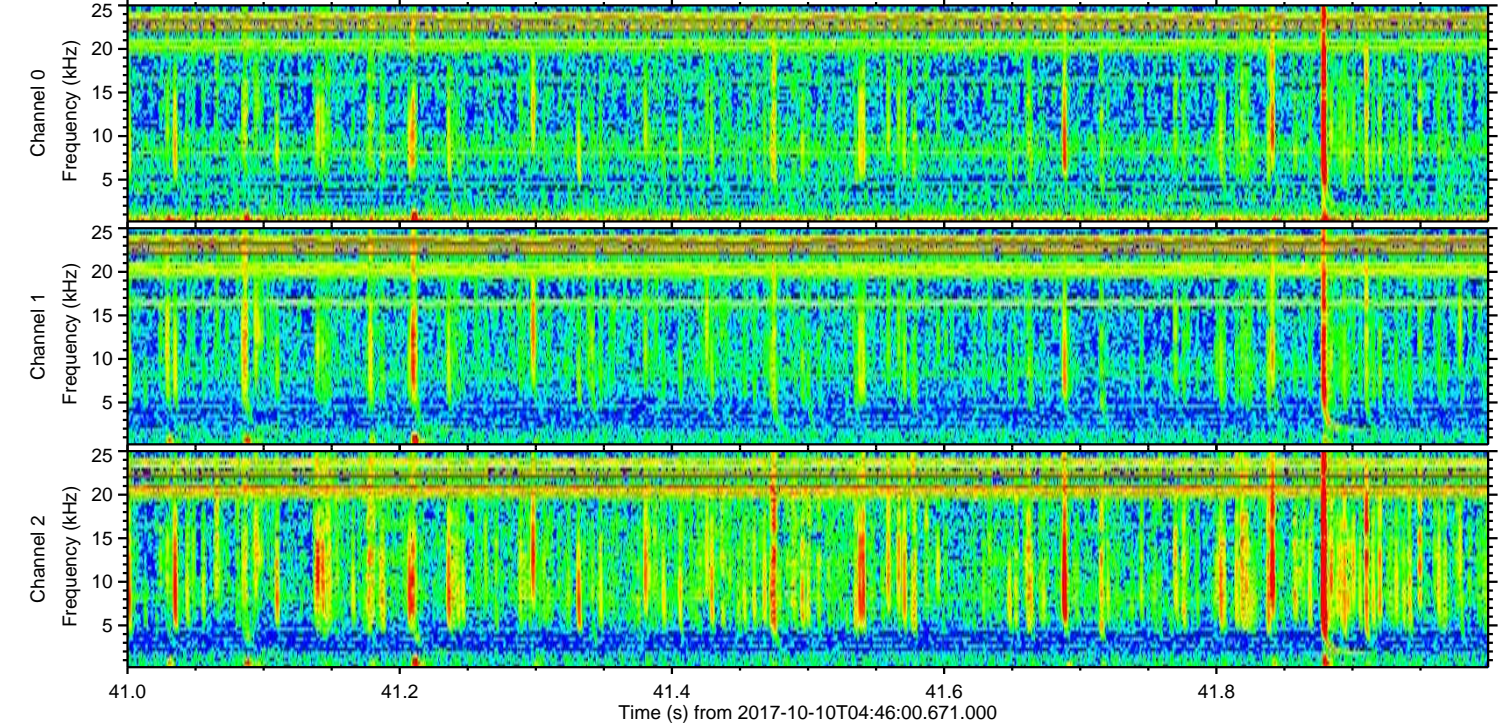
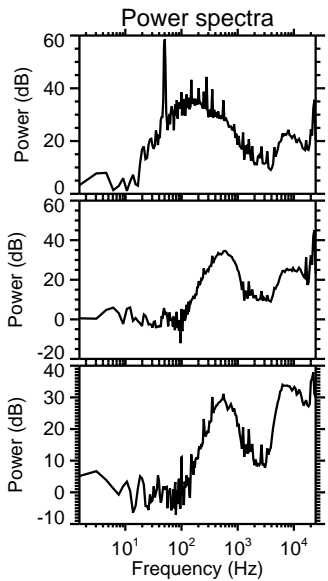
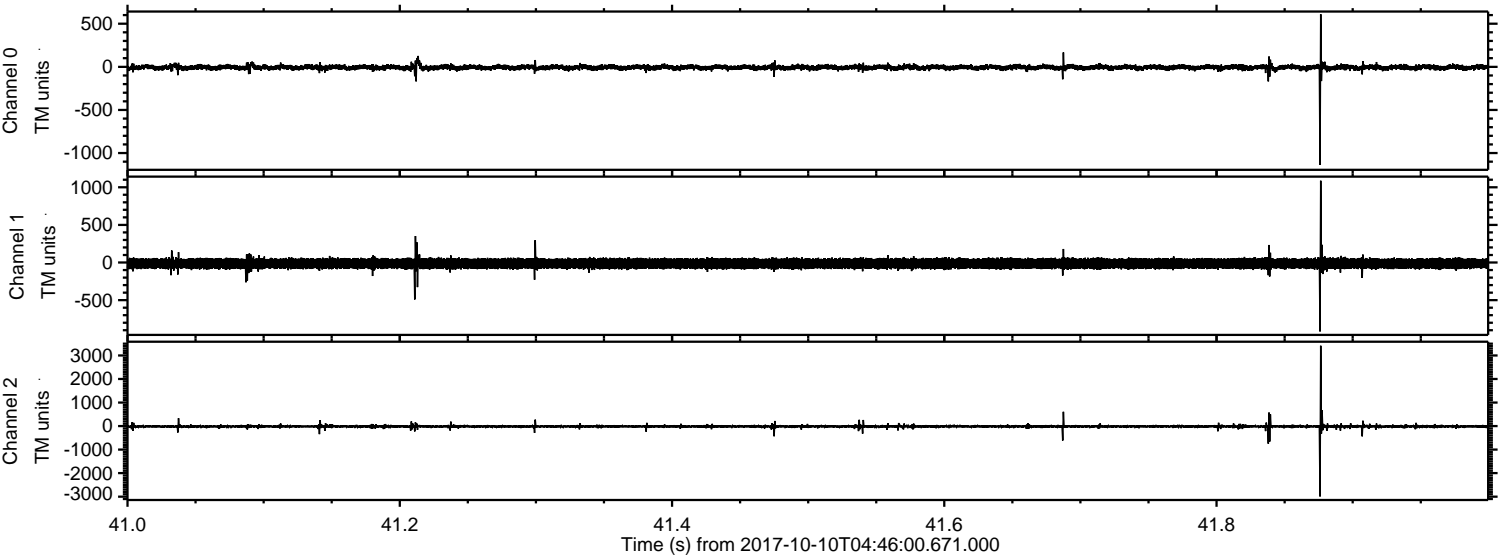


Channel 0
mn: -1152
mx: 1200
 μ : -6.9
 σ : 20.4

Channel 1
mn: -1227
mx: 923
 μ : -13.3
 σ : 38.4

Channel 2
mn: -4298
mx: 3163
 μ : -16.7
 σ : 55.3

Processed Tue Oct 10 06:54:17 2017 by ELM ver.2012-10-06 from 001__elm20171010_044559__dat00.bin

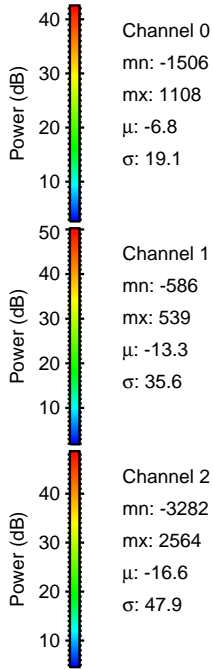
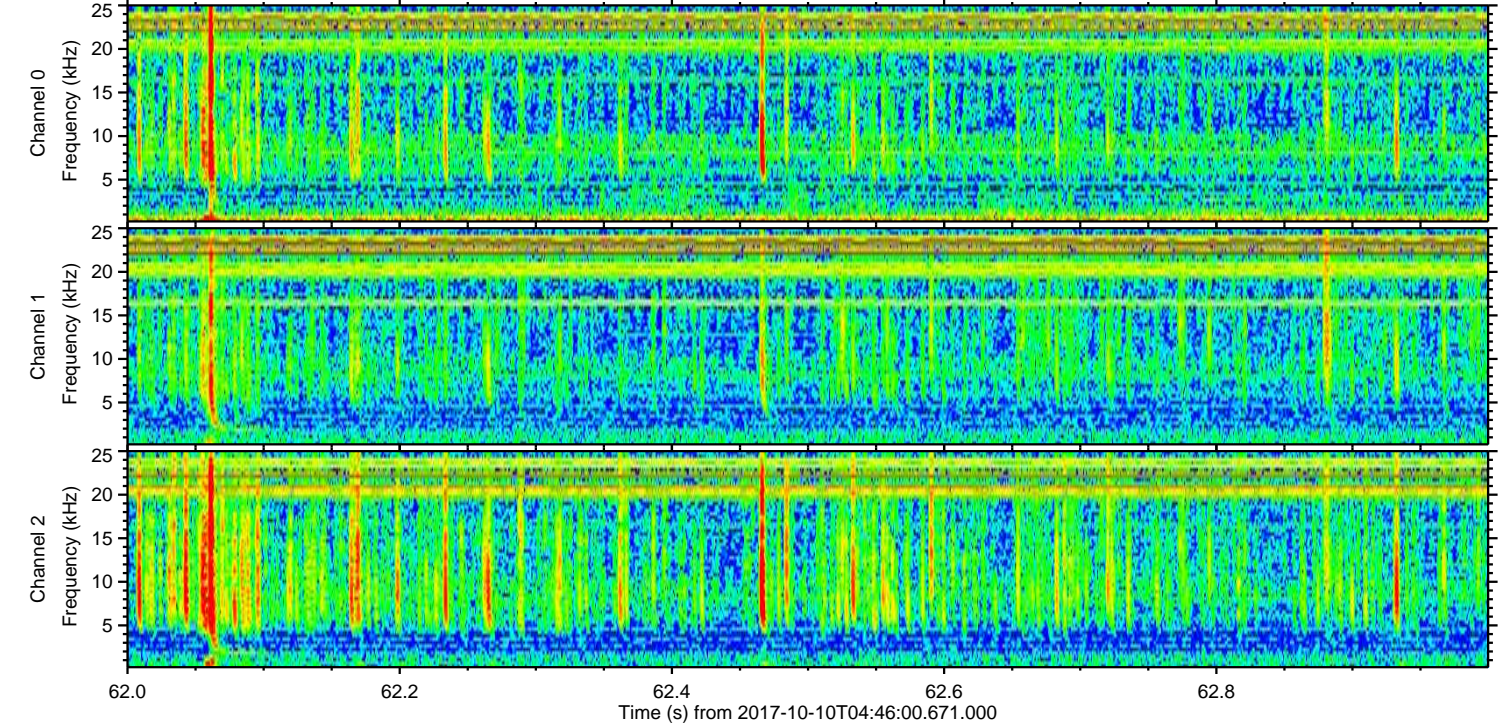
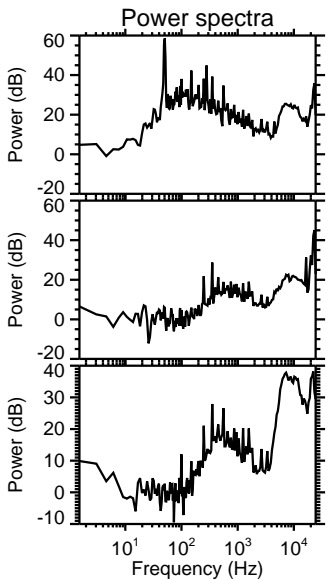
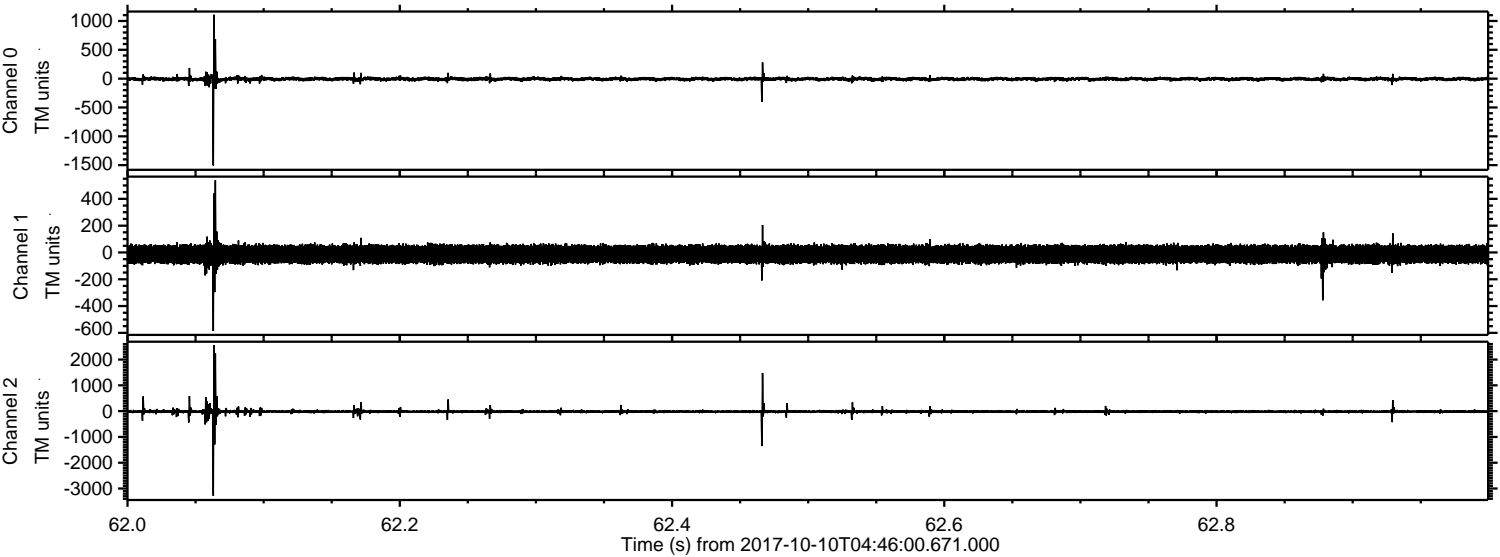


Channel 0
mn: -1138
mx: 611
 μ : -6.8
 σ : 17.9

Channel 1
mn: -916
mx: 1087
 μ : -13.4
 σ : 37.0

Channel 2
mn: -2993
mx: 3414
 μ : -16.6
 σ : 40.4

Processed Tue Oct 10 06:54:18 2017 by ELM ver.2012-10-06 from 001__elm20171010_044559__dat00.bin



Processed Tue Oct 10 06:54:19 2017 by ELM ver.2012-10-06 from 001__elm20171010_044559__dat00.bin

