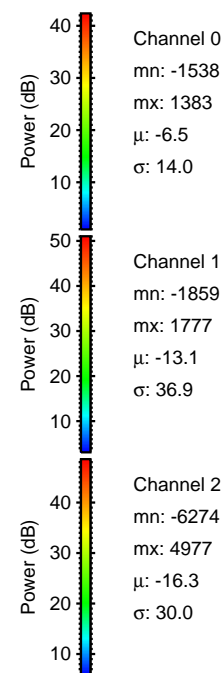
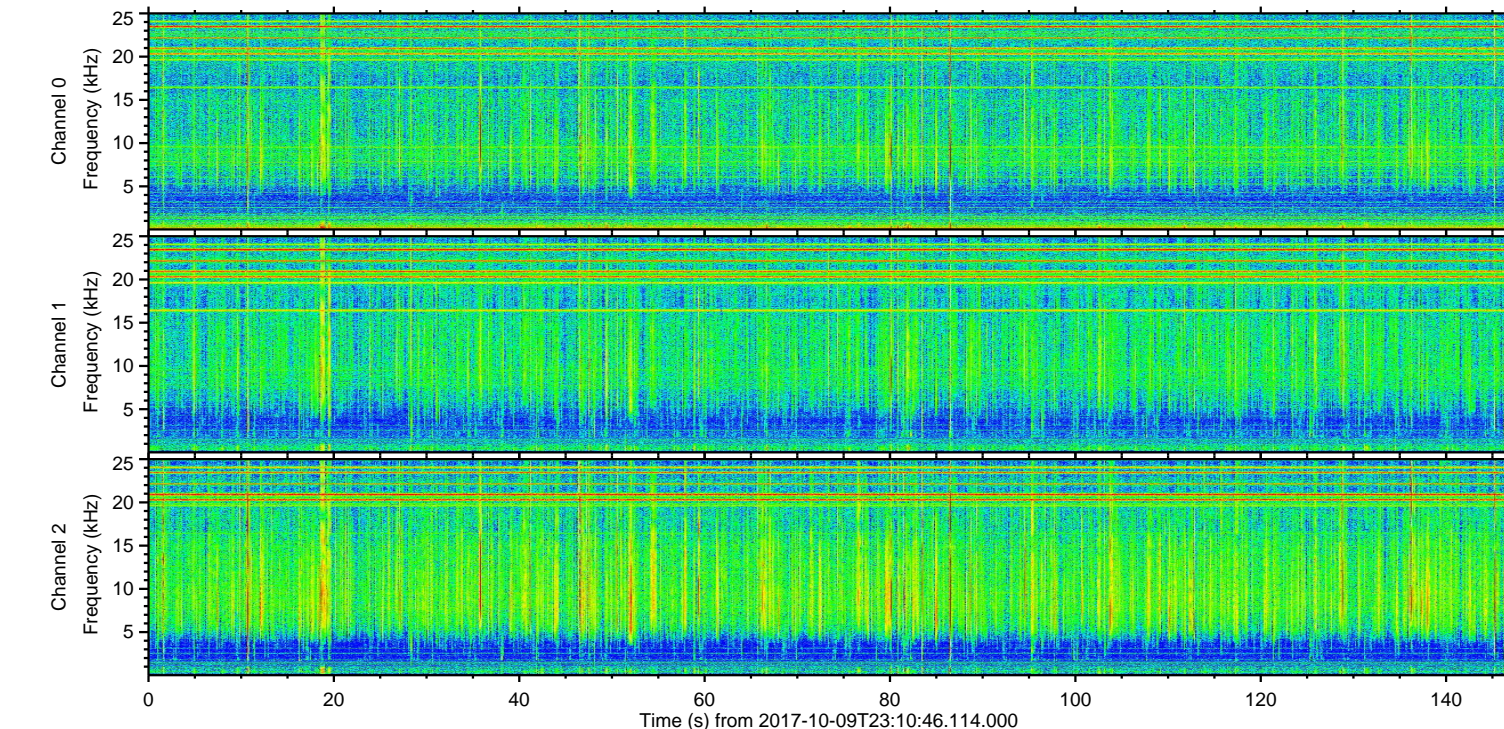
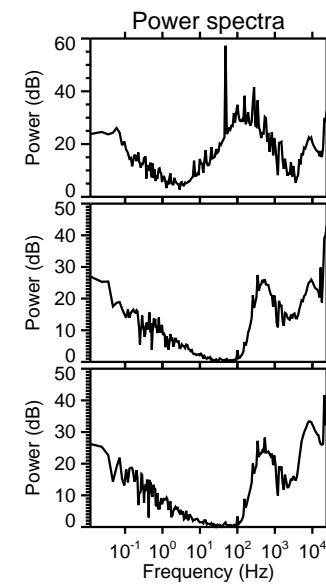
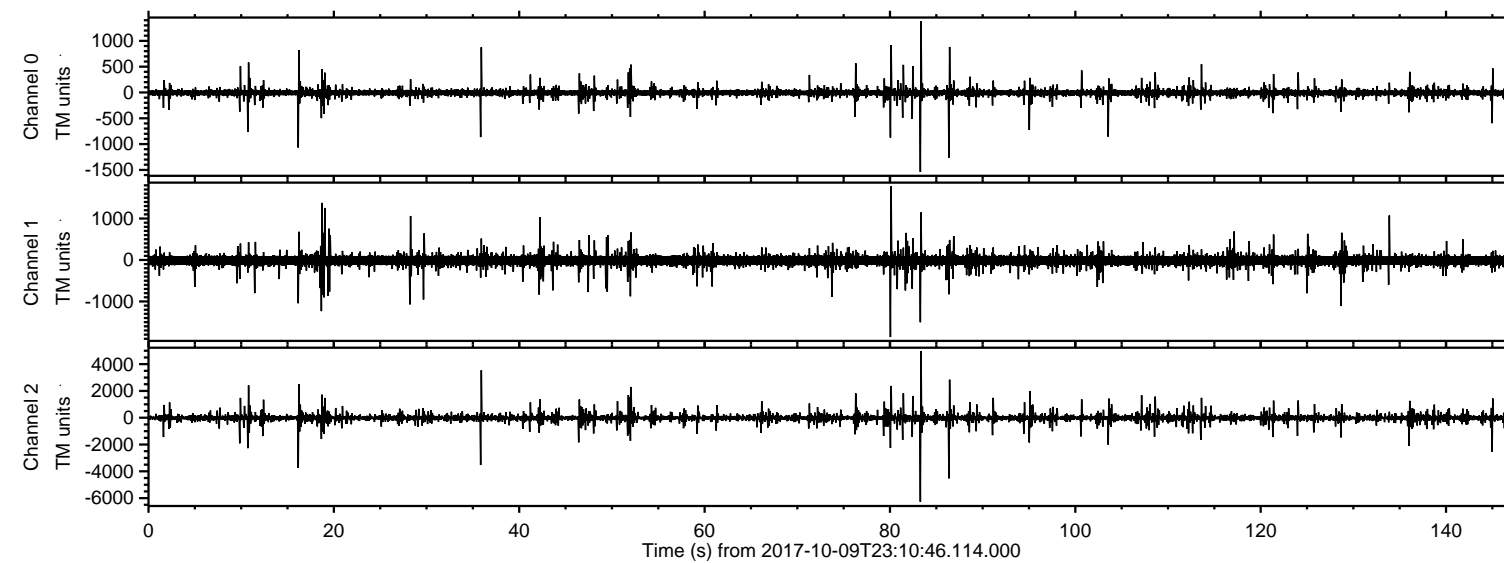
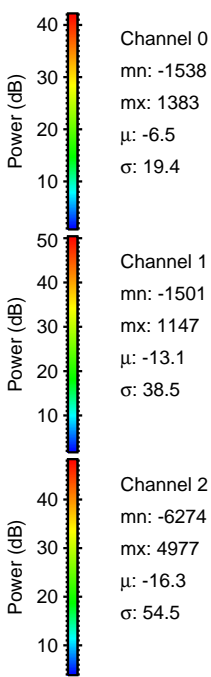
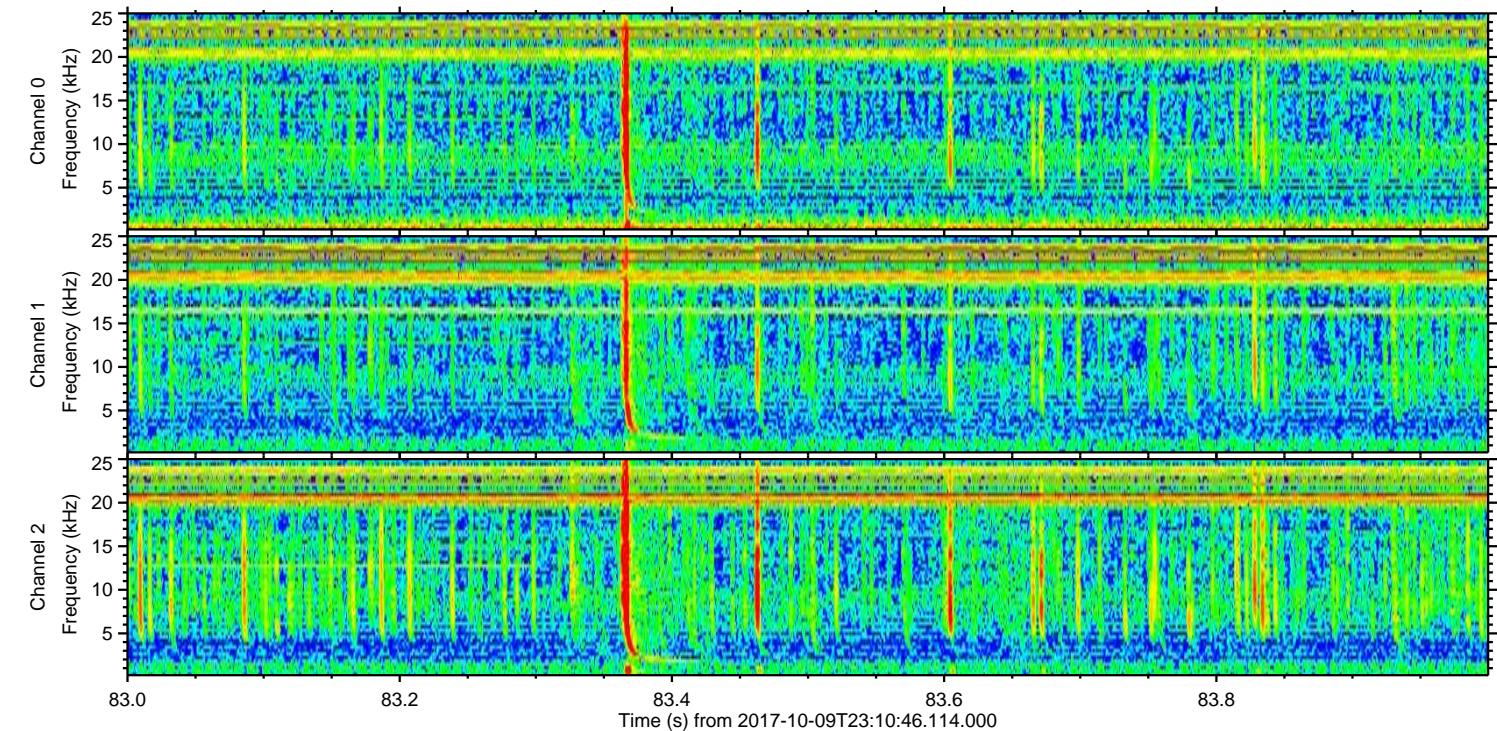
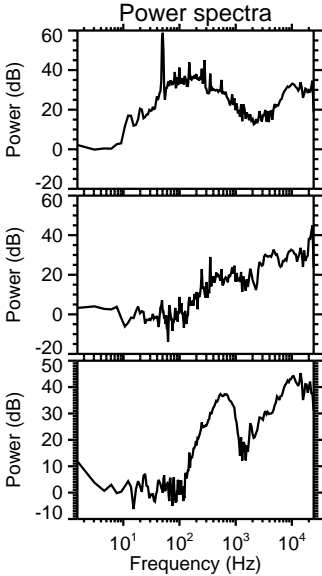
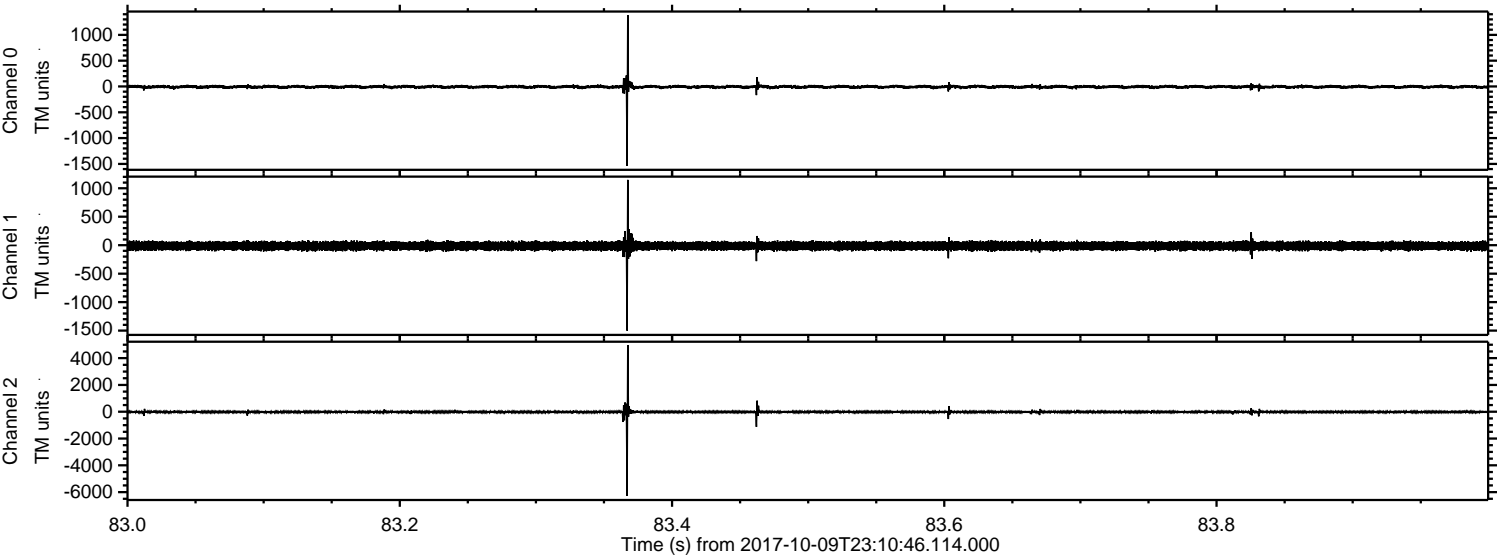


ELMAVAN 3D WAVEFORMS (Measured data sampled at 50 kHz) 51000 packets of 144 samples from 2017-10-09T23:10:46.114.000.

Processed Tue Oct 10 01:18:34 2017 by ELM ver.2012-10-06 from 001__elm20171009_231045__dat00.bin

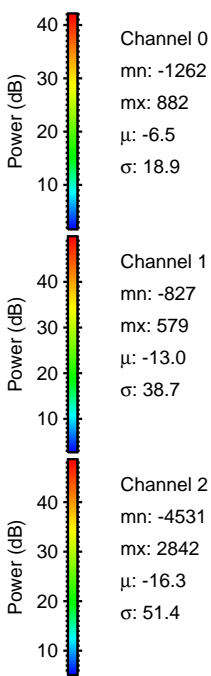
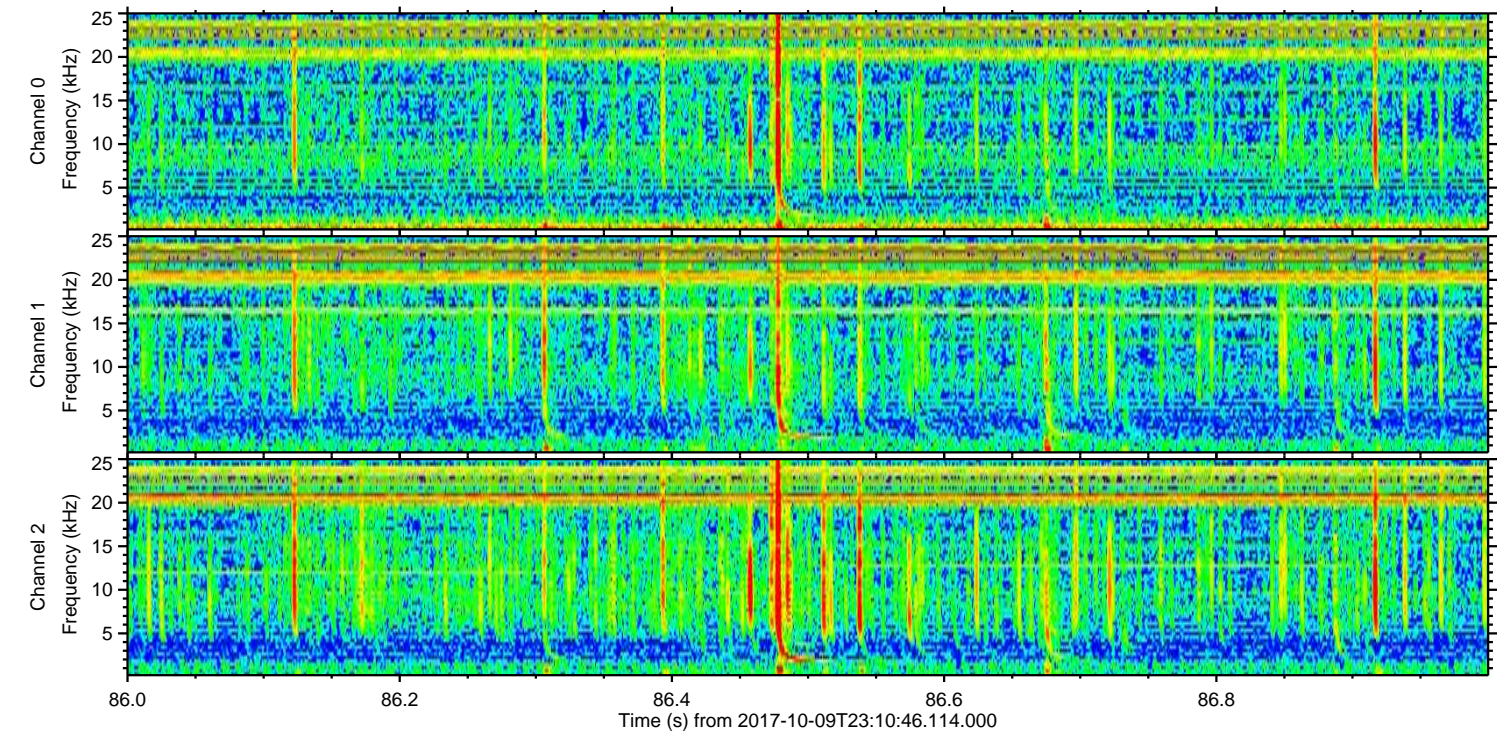
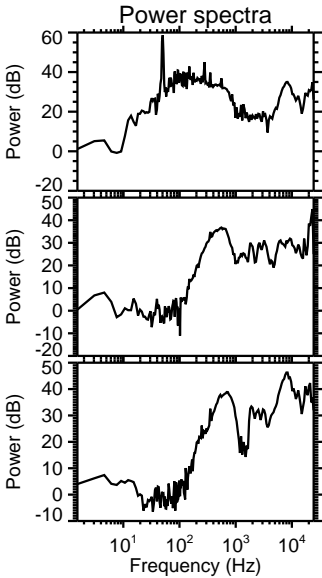
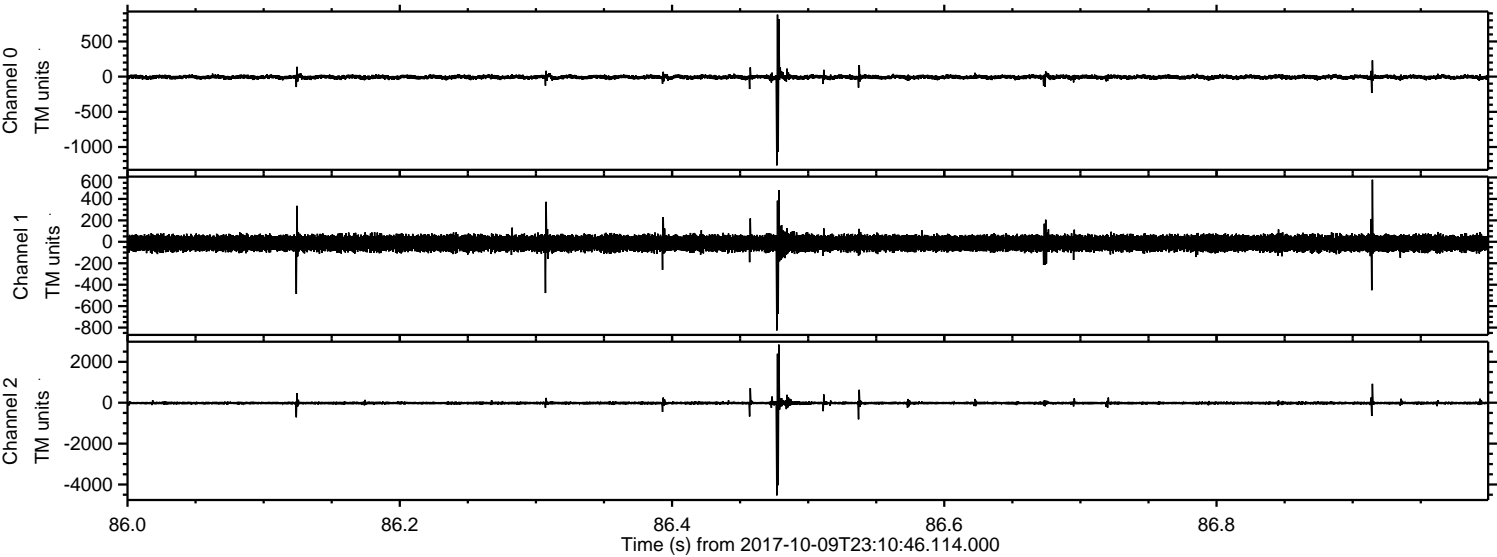


Processed Tue Oct 10 01:18:41 2017 by ELM ver.2012-10-06 from 001__elm20171009_231045__dat00.bin



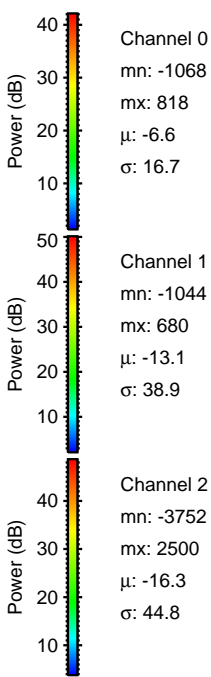
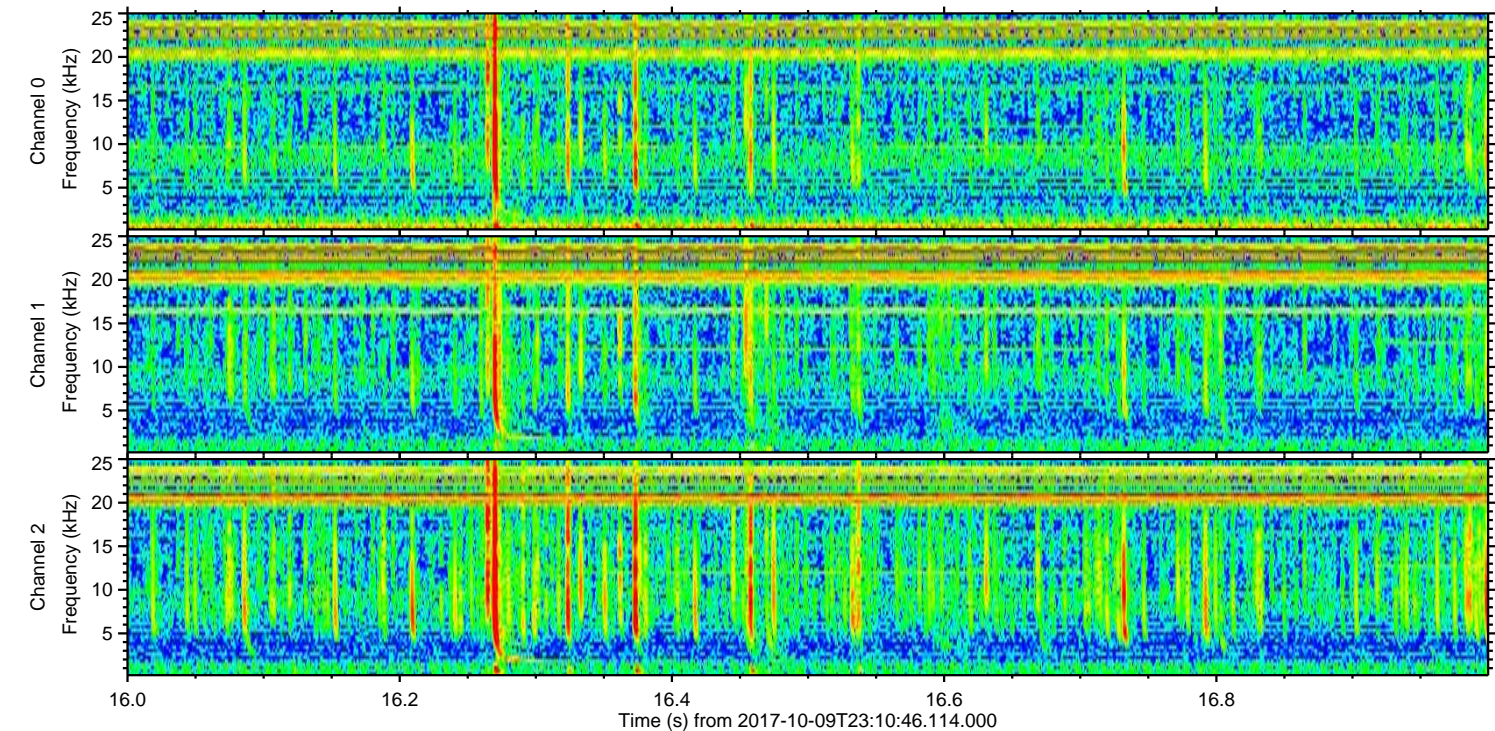
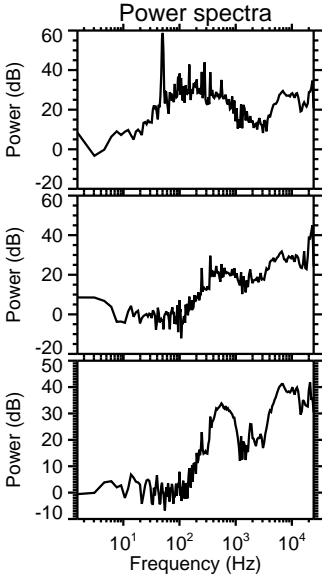
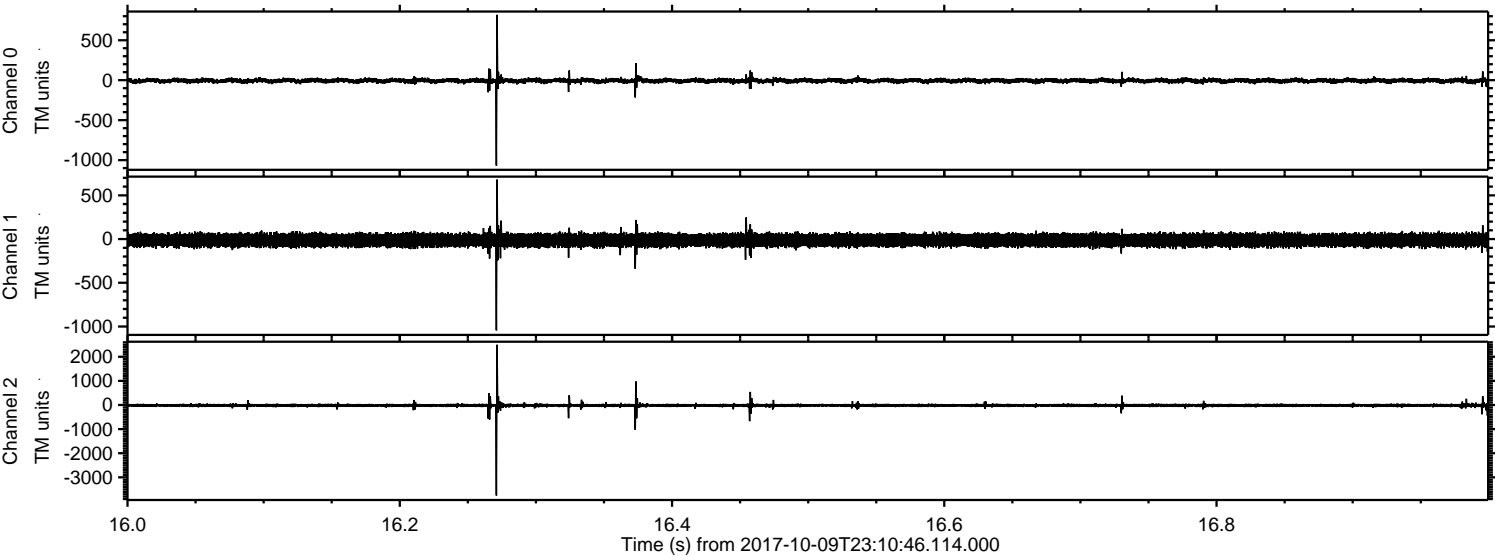
ELMAVAN 3D WAVEFORMS (Measured data sampled at 50 kHz) 51000 packets of 144 samples from 2017-10-09T23:10:46.114.000. Part 87/147

Processed Tue Oct 10 01:18:41 2017 by ELM ver.2012-10-06 from 001__elm20171009_231045__dat00.bin



ELMAVAN 3D WAVEFORMS (Measured data sampled at 50 kHz) 51000 packets of 144 samples from 2017-10-09T23:10:46.114.000. Part 17/147

Processed Tue Oct 10 01:18:42 2017 by ELM ver.2012-10-06 from 001__elm20171009_231045__dat00.bin

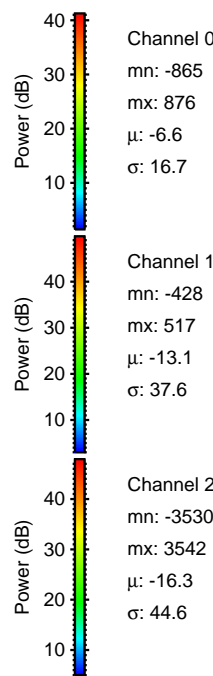
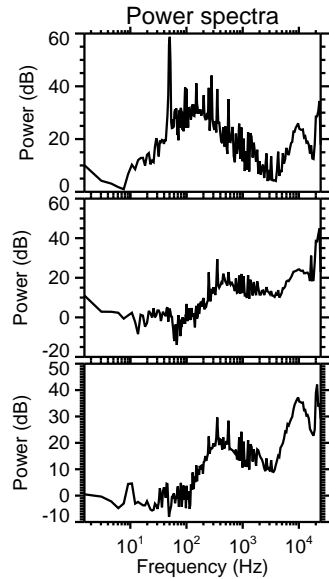
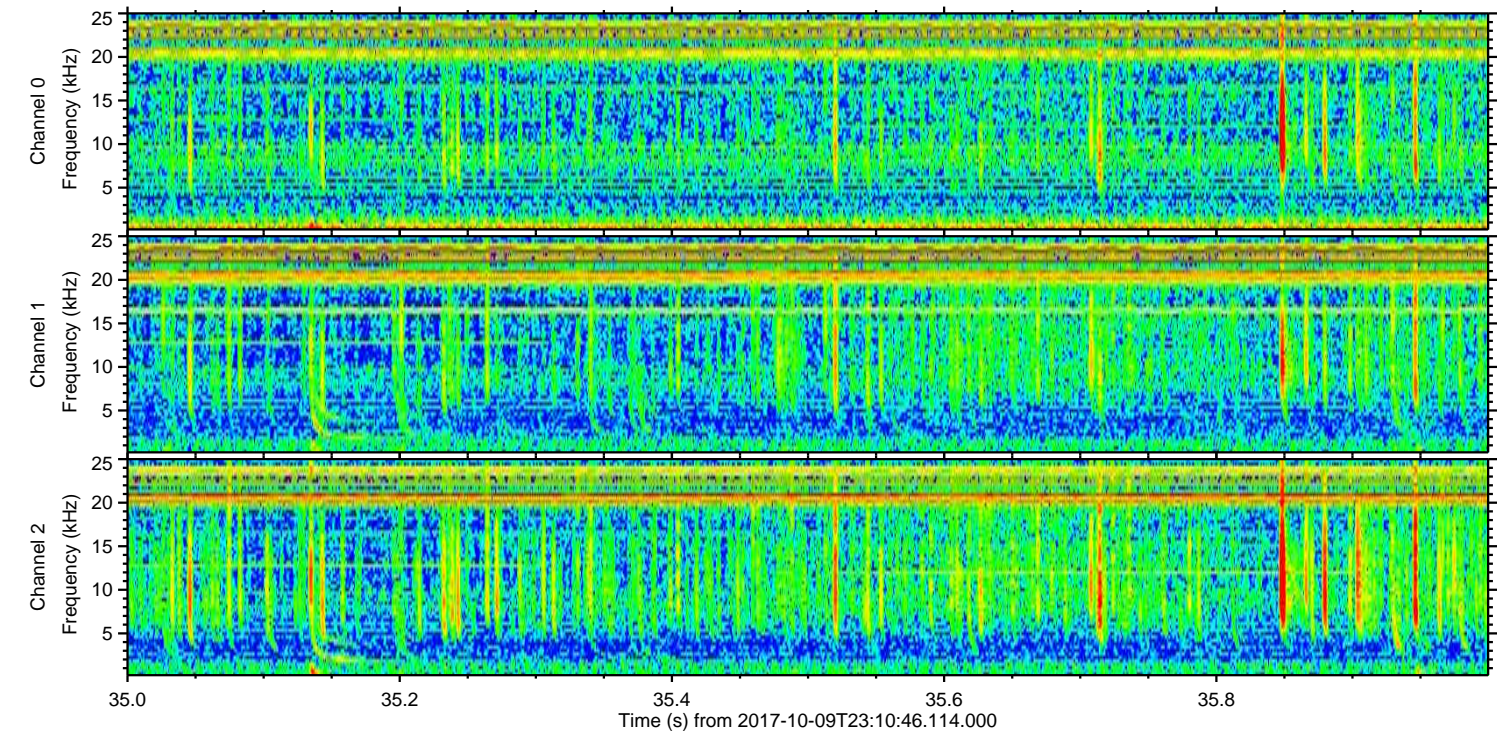
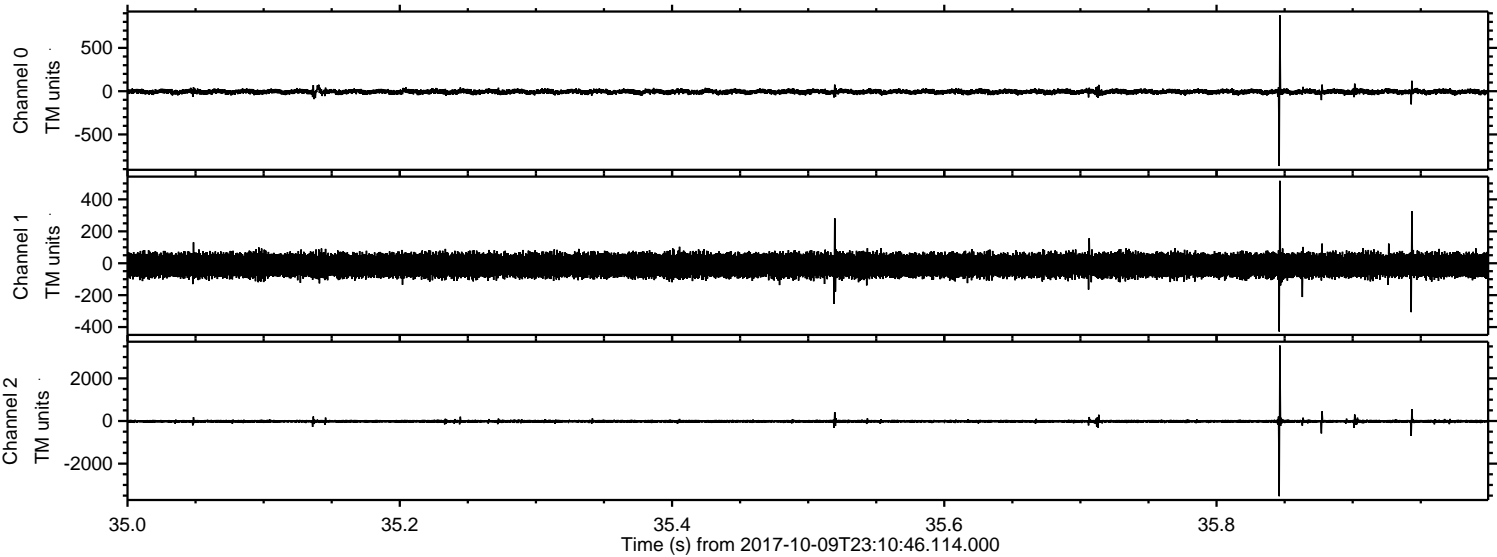


Channel 0
mn: -1068
mx: 818
 μ : -6.6
 σ : 16.7

Channel 1
mn: -1044
mx: 680
 μ : -13.1
 σ : 38.9

Channel 2
mn: -3752
mx: 2500
 μ : -16.3
 σ : 44.8

Processed Tue Oct 10 01:18:43 2017 by ELM ver.2012-10-06 from 001__elm20171009_231045__dat00.bin



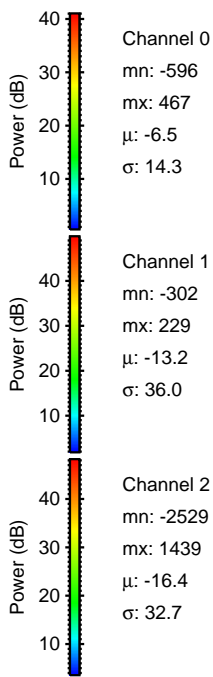
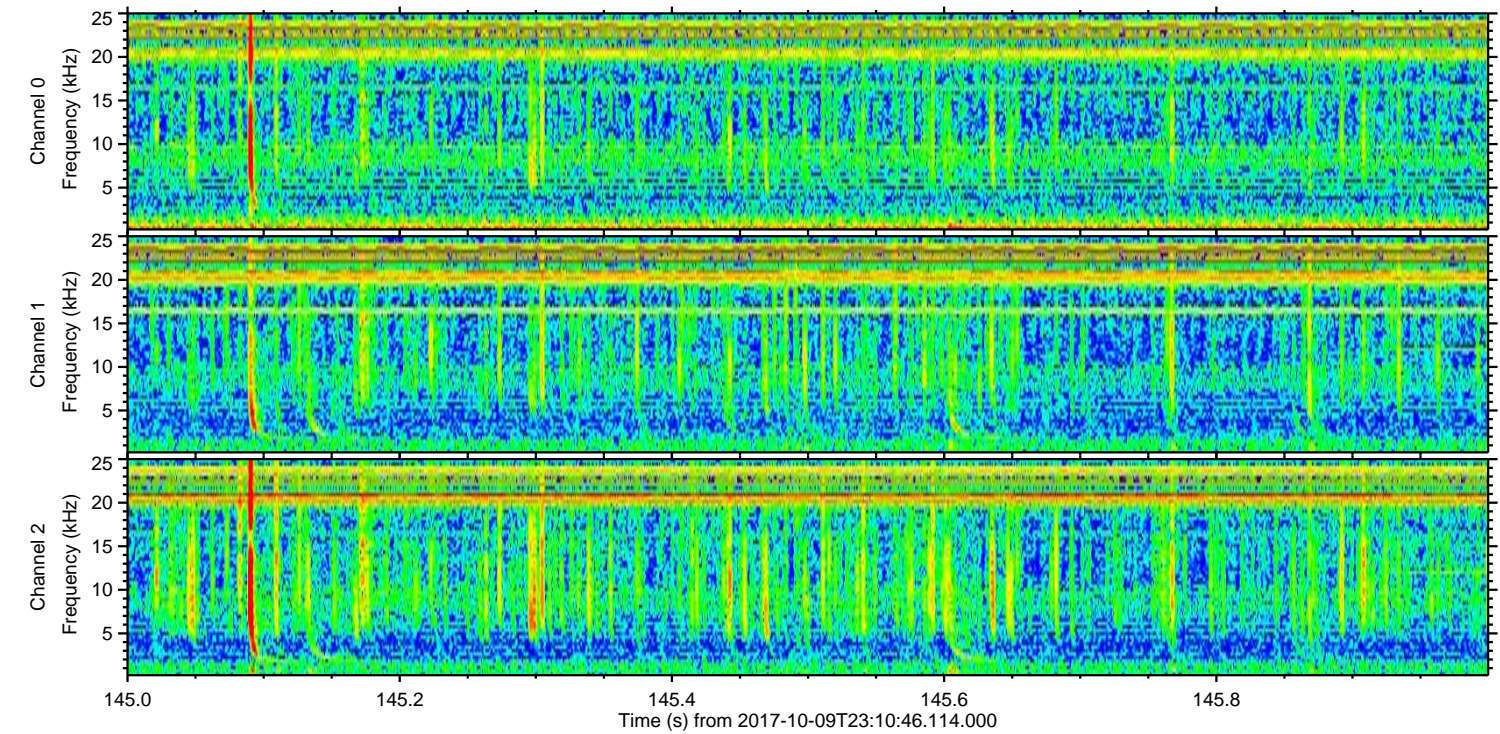
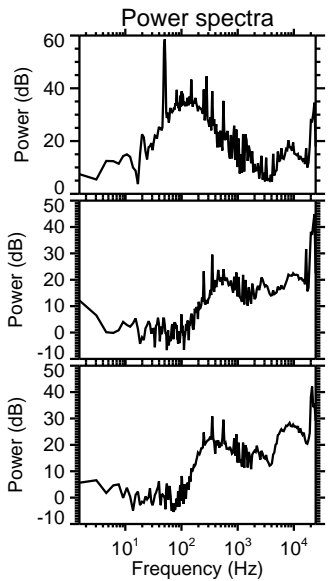
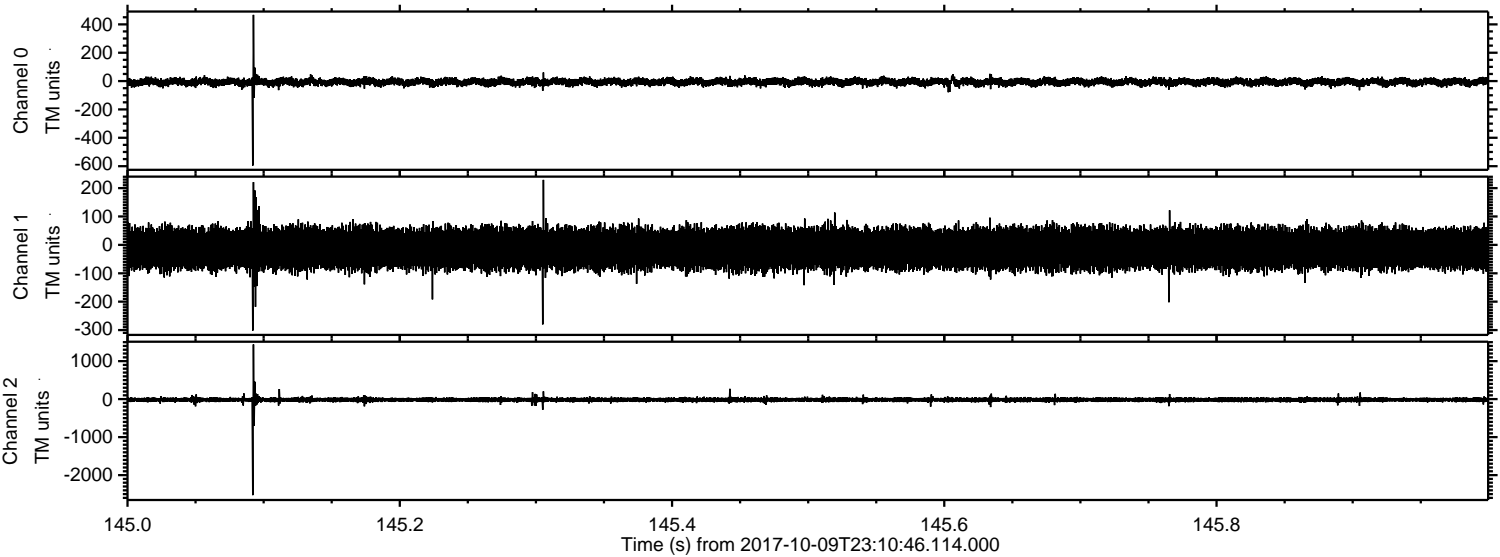
Channel 0
mn: -865
mx: 876
 μ : -6.6
 σ : 16.7

Channel 1
mn: -428
mx: 517
 μ : -13.1
 σ : 37.6

Channel 2
mn: -3530
mx: 3542
 μ : -16.3
 σ : 44.6

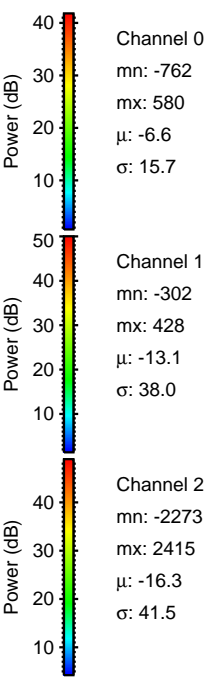
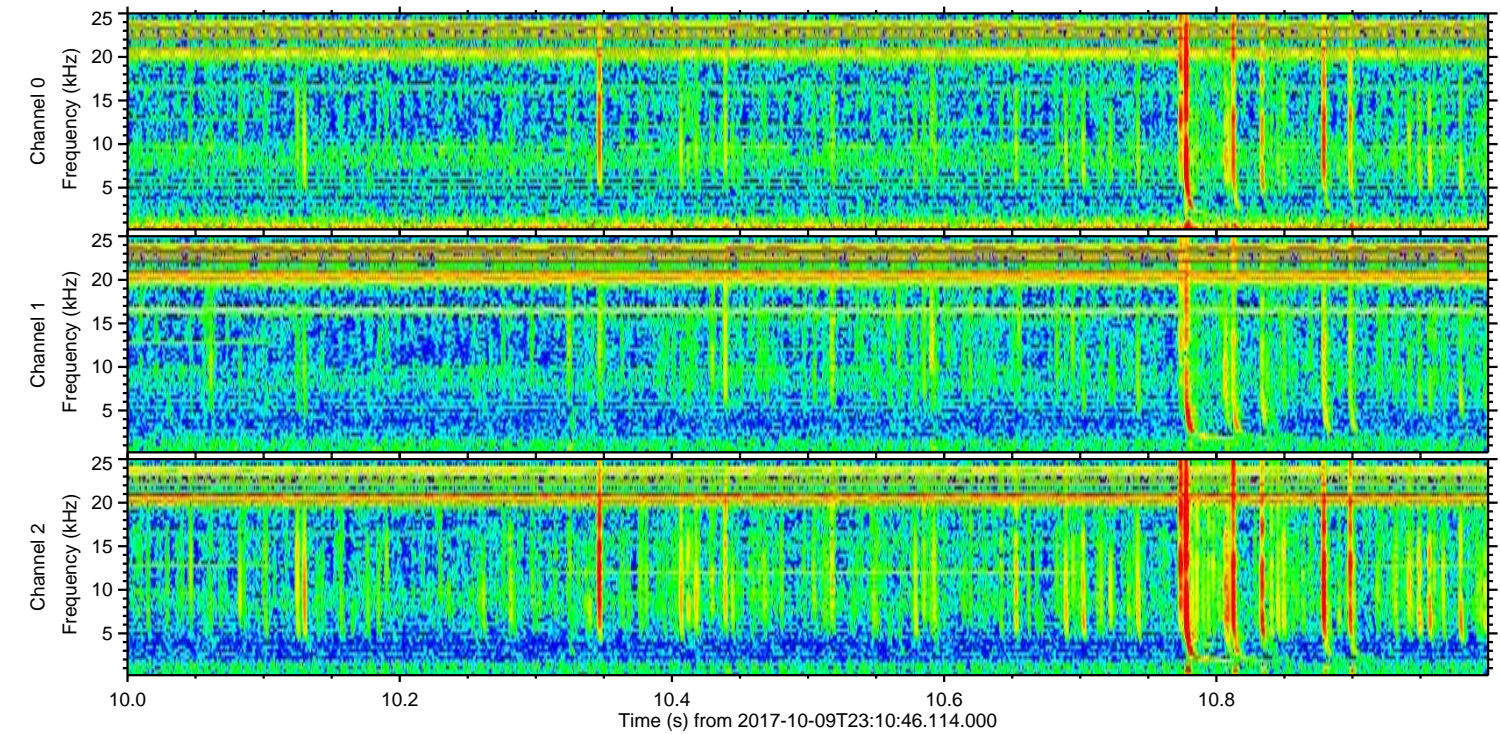
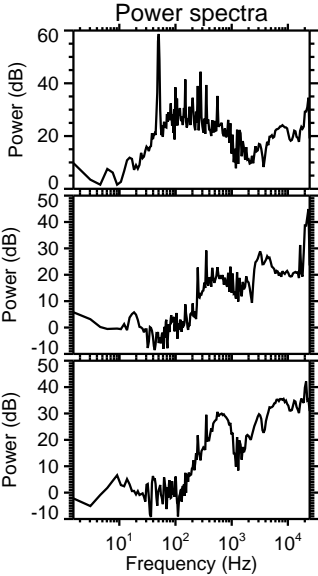
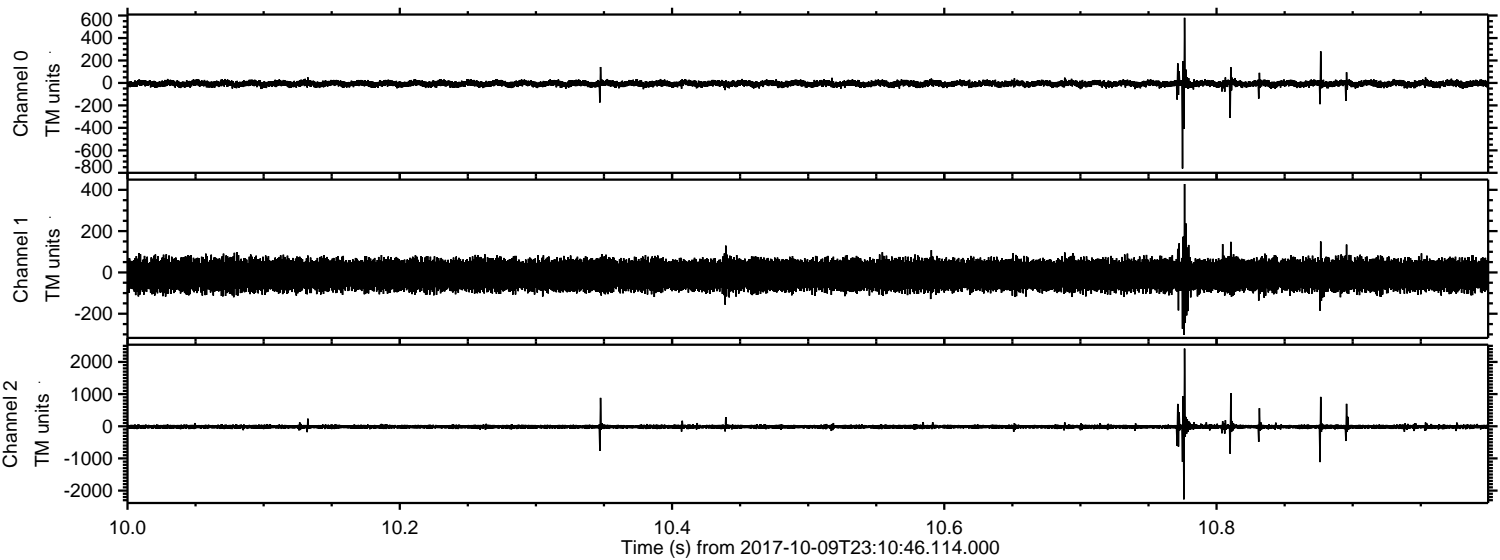
ELMAVAN 3D WAVEFORMS (Measured data sampled at 50 kHz) 51000 packets of 144 samples from 2017-10-09T23:10:46.114.000. Part 146/147

Processed Tue Oct 10 01:18:44 2017 by ELM ver.2012-10-06 from 001__elm20171009_231045__dat00.bin



ELMAVAN 3D WAVEFORMS (Measured data sampled at 50 kHz) 51000 packets of 144 samples from 2017-10-09T23:10:46.114.000. Part 11/147

Processed Tue Oct 10 01:18:44 2017 by ELM ver.2012-10-06 from 001__elm20171009_231045__dat00.bin

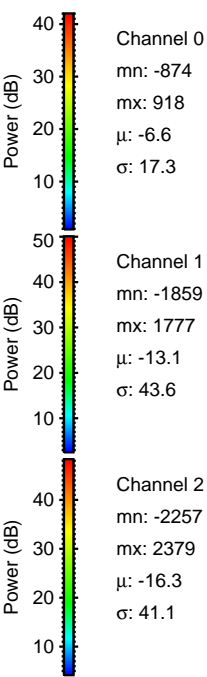
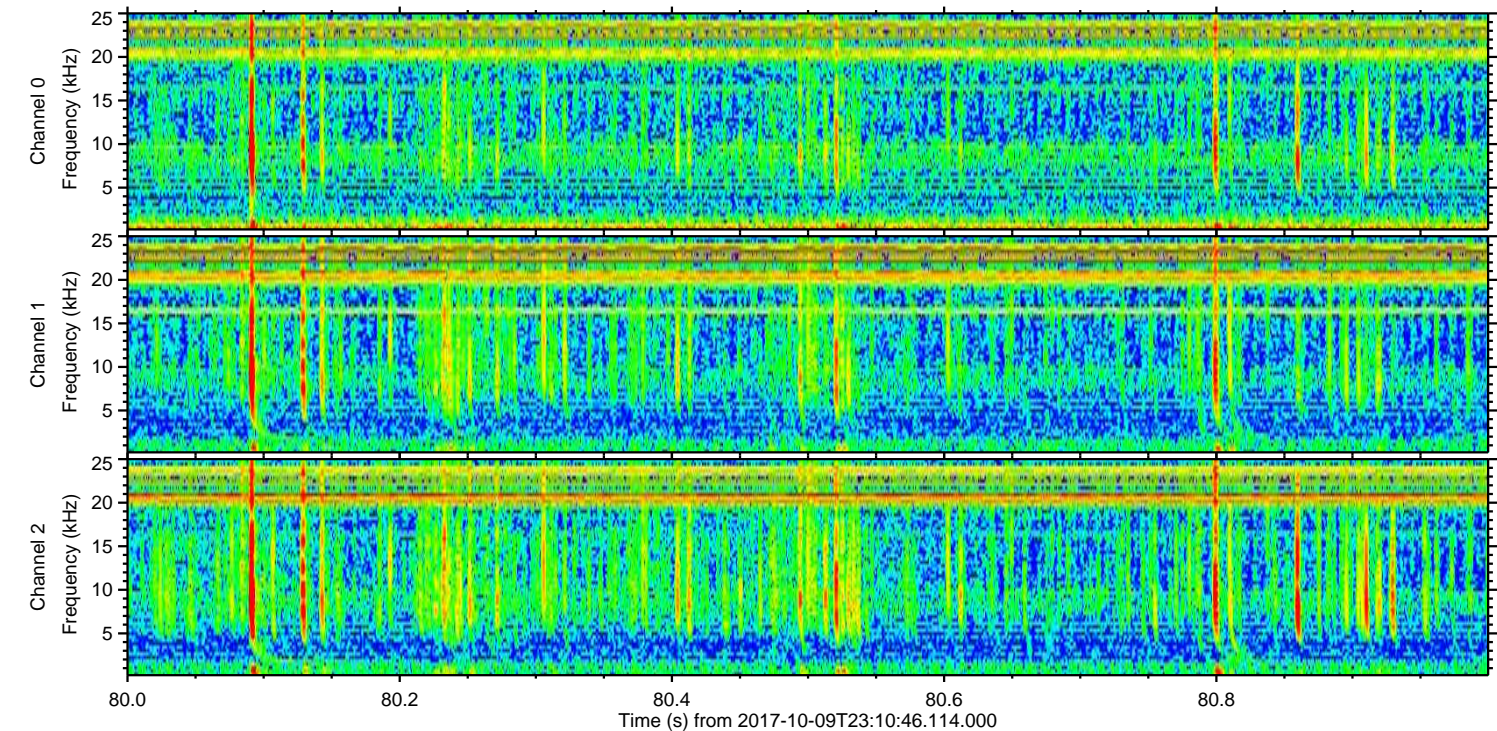
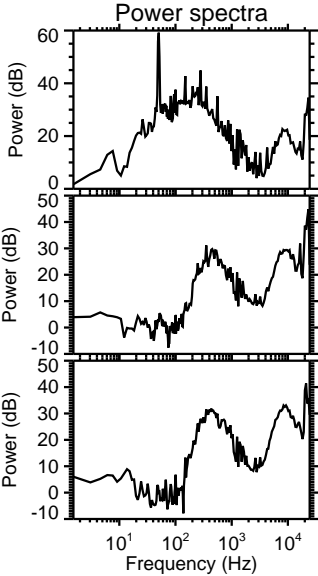
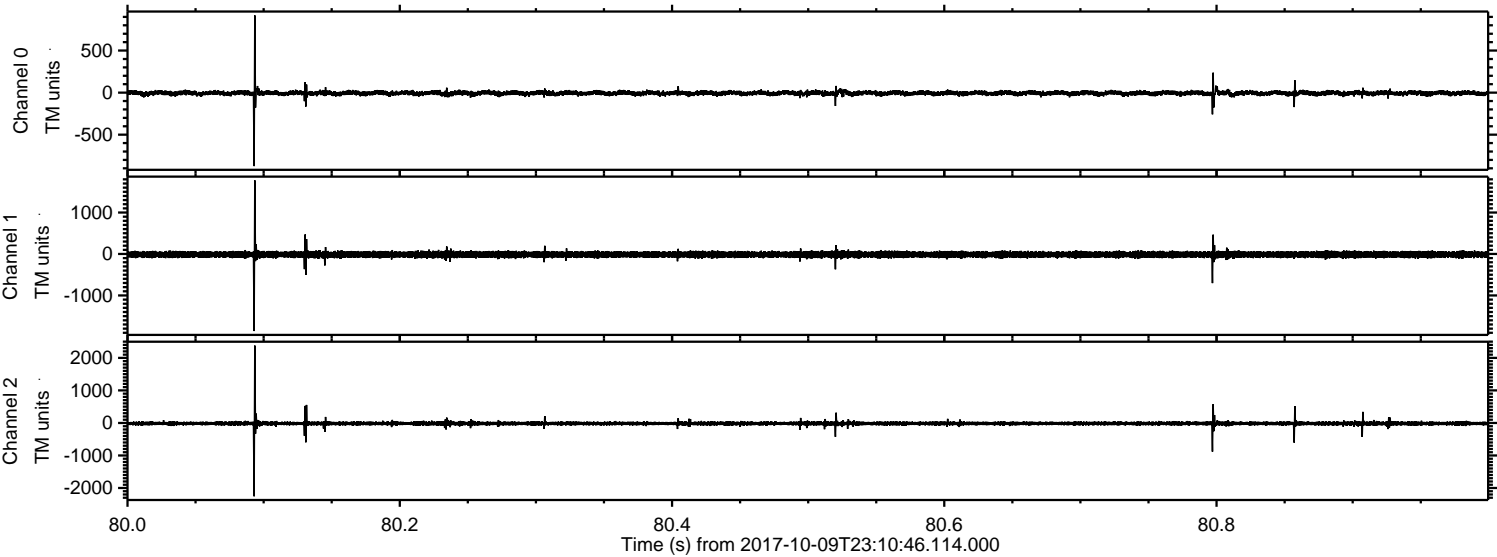


Channel 0
mn: -762
mx: 580
 μ : -6.6
 σ : 15.7

Channel 1
mn: -302
mx: 428
 μ : -13.1
 σ : 38.0

Channel 2
mn: -2273
mx: 2415
 μ : -16.3
 σ : 41.5

Processed Tue Oct 10 01:18:45 2017 by ELM ver.2012-10-06 from 001__elm20171009_231045__dat00.bin

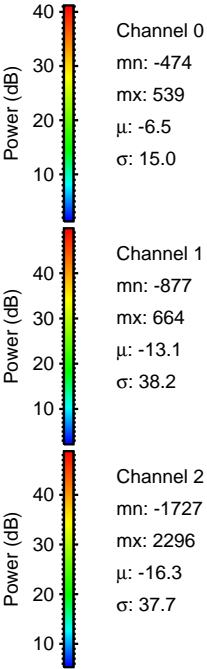
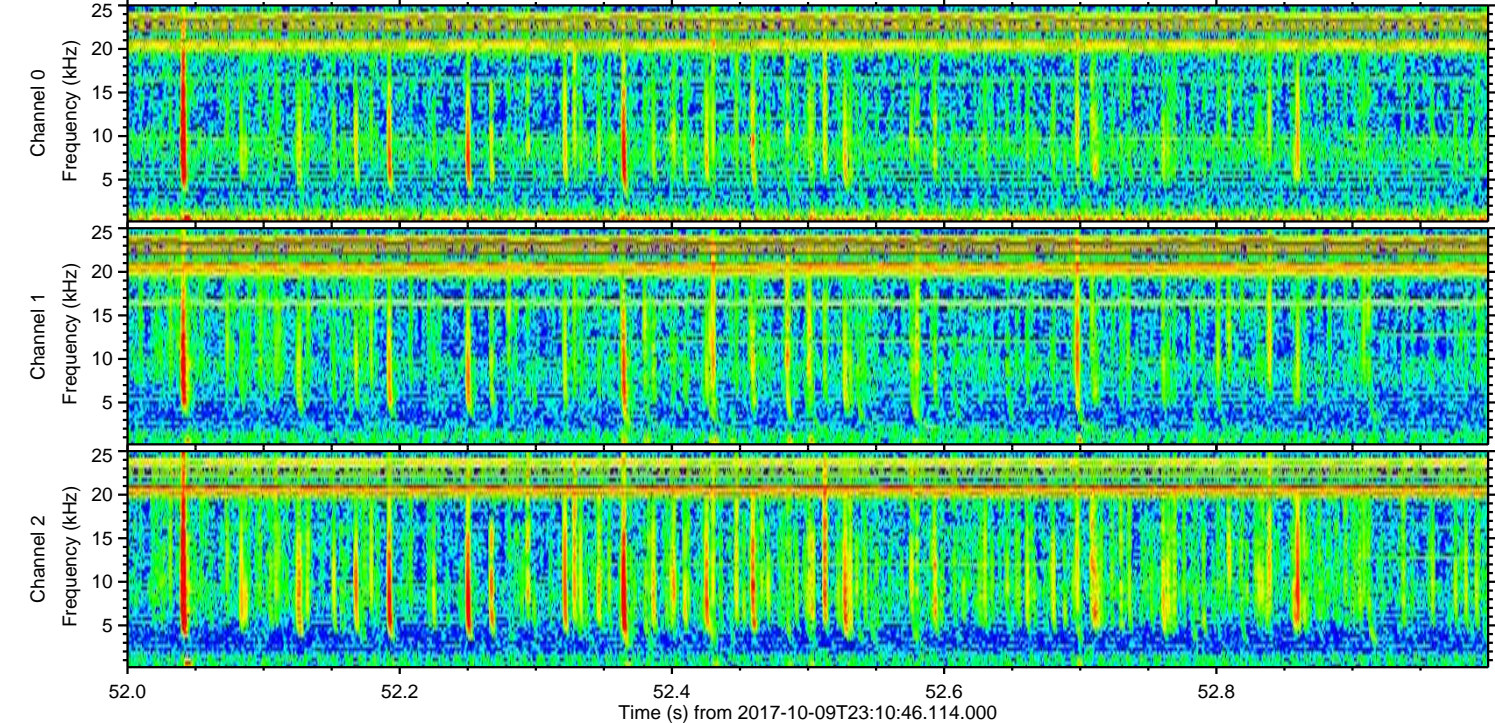
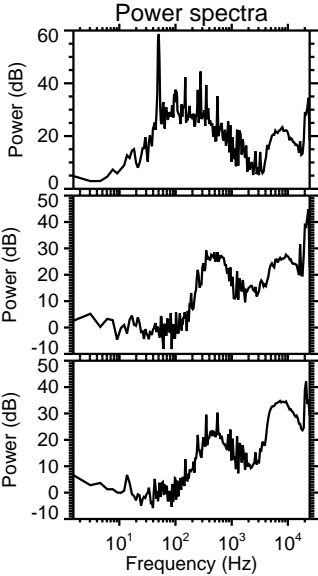
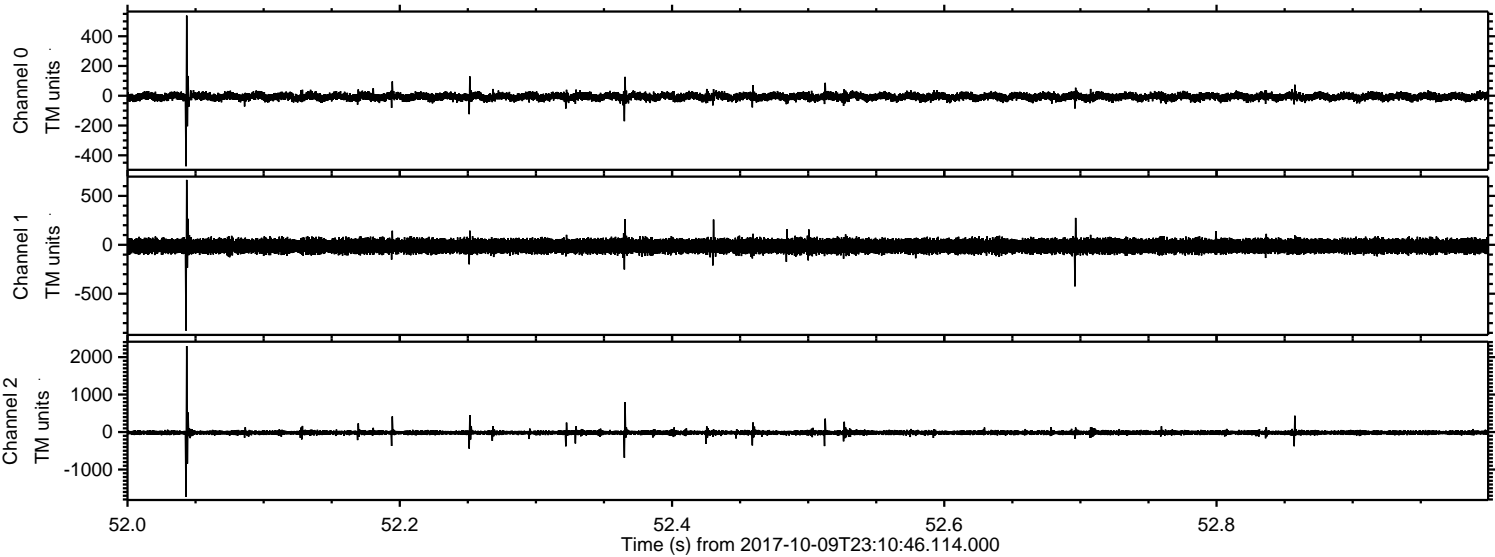


Channel 0
mn: -874
mx: 918
 μ : -6.6
 σ : 17.3

Channel 1
mn: -1859
mx: 1777
 μ : -13.1
 σ : 43.6

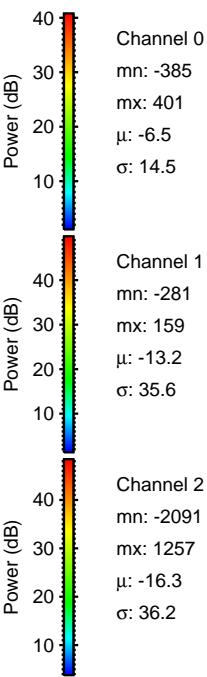
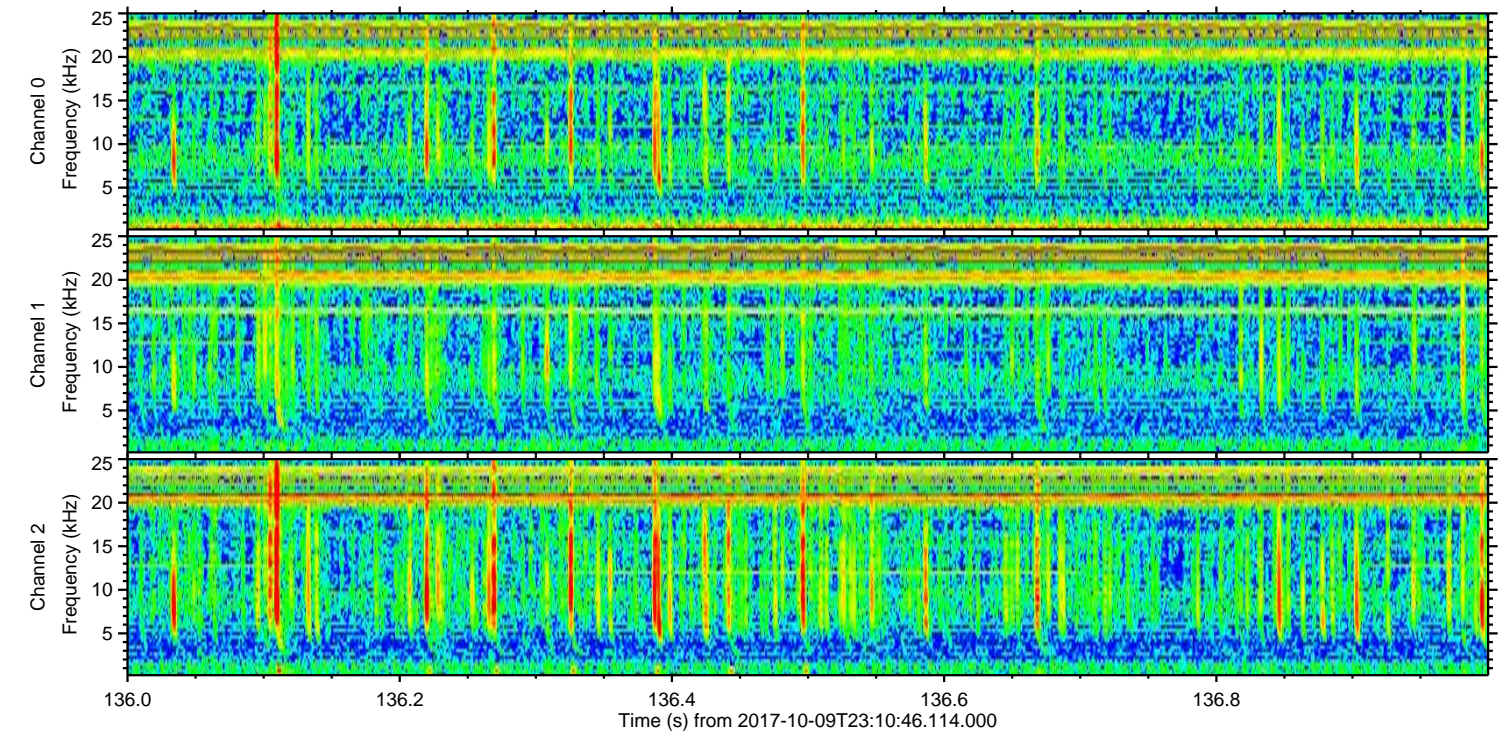
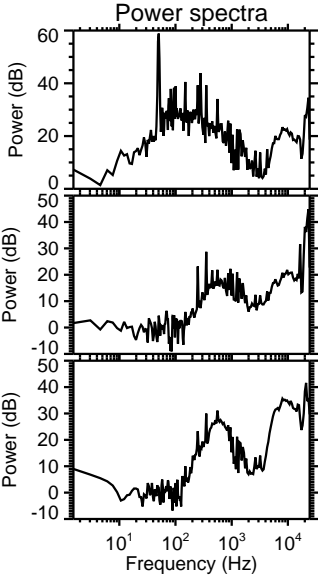
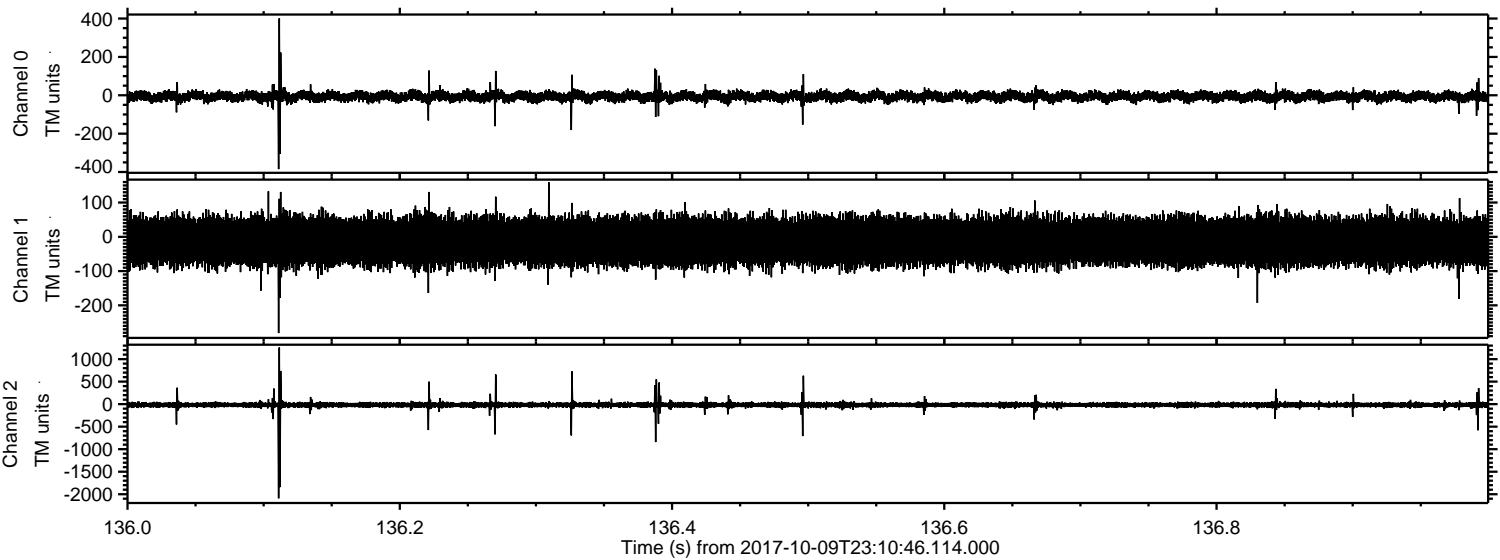
Channel 2
mn: -2257
mx: 2379
 μ : -16.3
 σ : 41.1

Processed Tue Oct 10 01:18:46 2017 by ELM ver.2012-10-06 from 001__elm20171009_231045__dat00.bin



ELMAVAN 3D WAVEFORMS (Measured data sampled at 50 kHz) 51000 packets of 144 samples from 2017-10-09T23:10:46.114.000. Part 137/147

Processed Tue Oct 10 01:18:46 2017 by ELM ver.2012-10-06 from 001__elm20171009_231045__dat00.bin



ELMAVAN 3D WAVEFORMS (Measured data sampled at 50 kHz) 51000 packets of 144 samples from 2017-10-09T23:10:46.114.000. Part 16/147

Processed Tue Oct 10 01:18:47 2017 by ELM ver.2012-10-06 from 001__elm20171009_231045__dat00.bin

