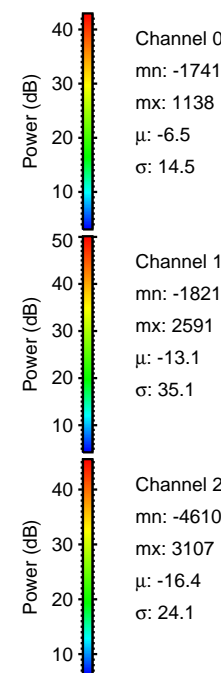
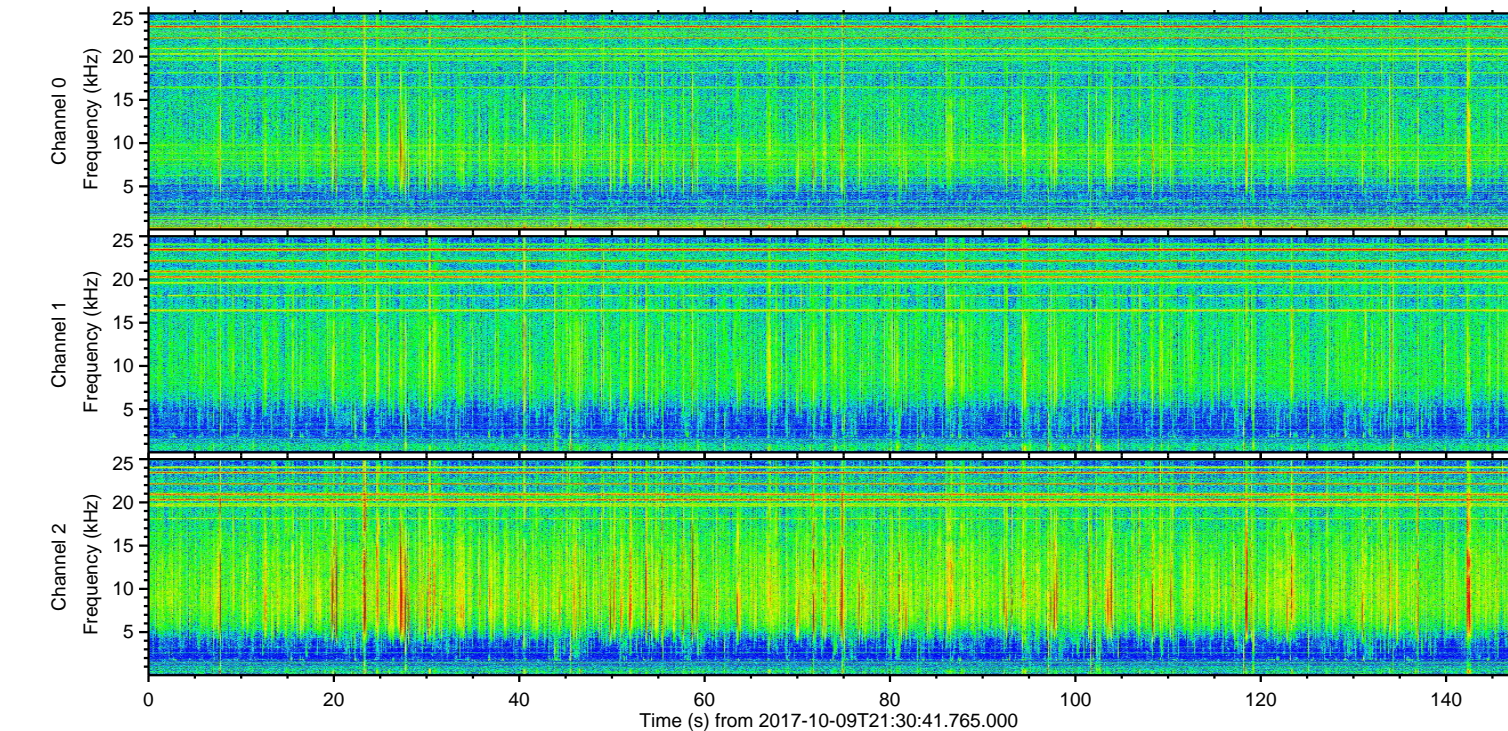
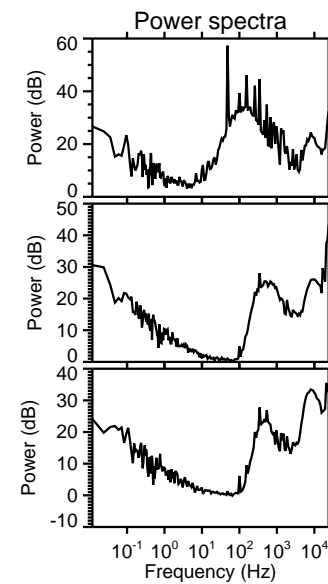
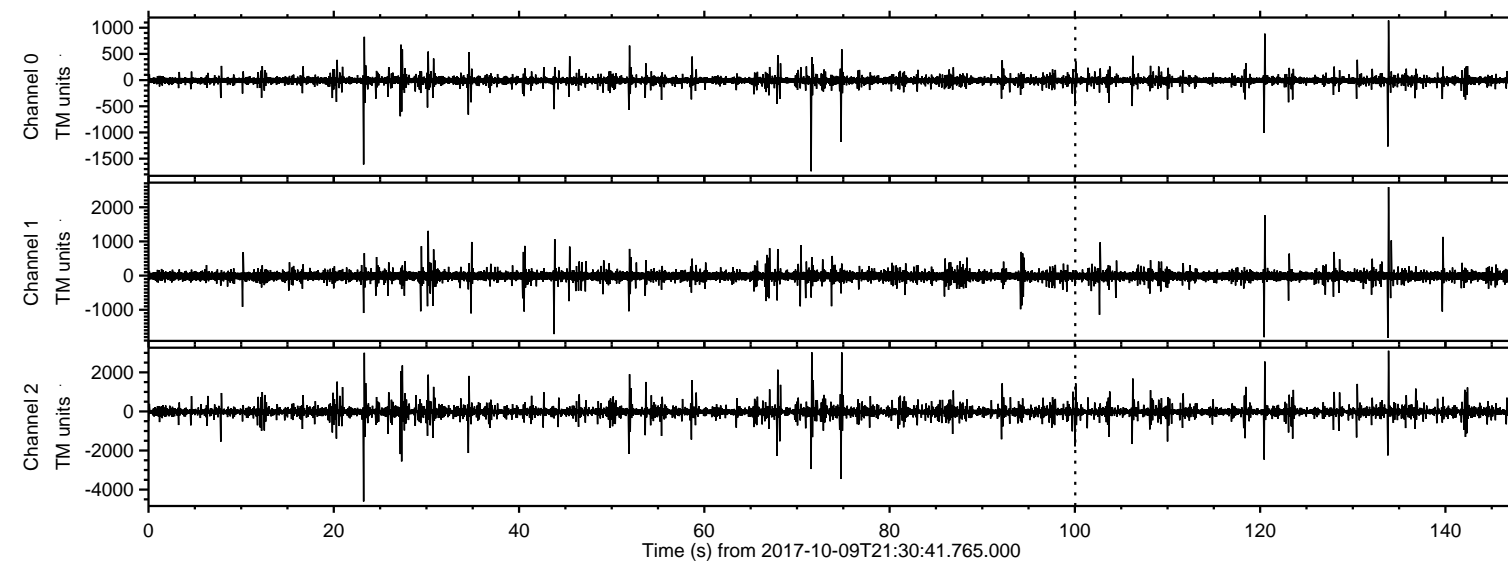


# ELMAVAN 3D WAVEFORMS (Measured data sampled at 50 kHz) 50999 packets of 144 samples from 2017-10-09T21:30:41.765.000.

Processed Mon Oct 9 23:38:42 2017 by ELM ver.2012-10-06 from 001\_\_elm20171009\_213040\_\_dat00.bin



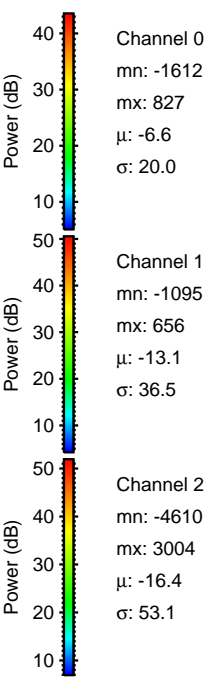
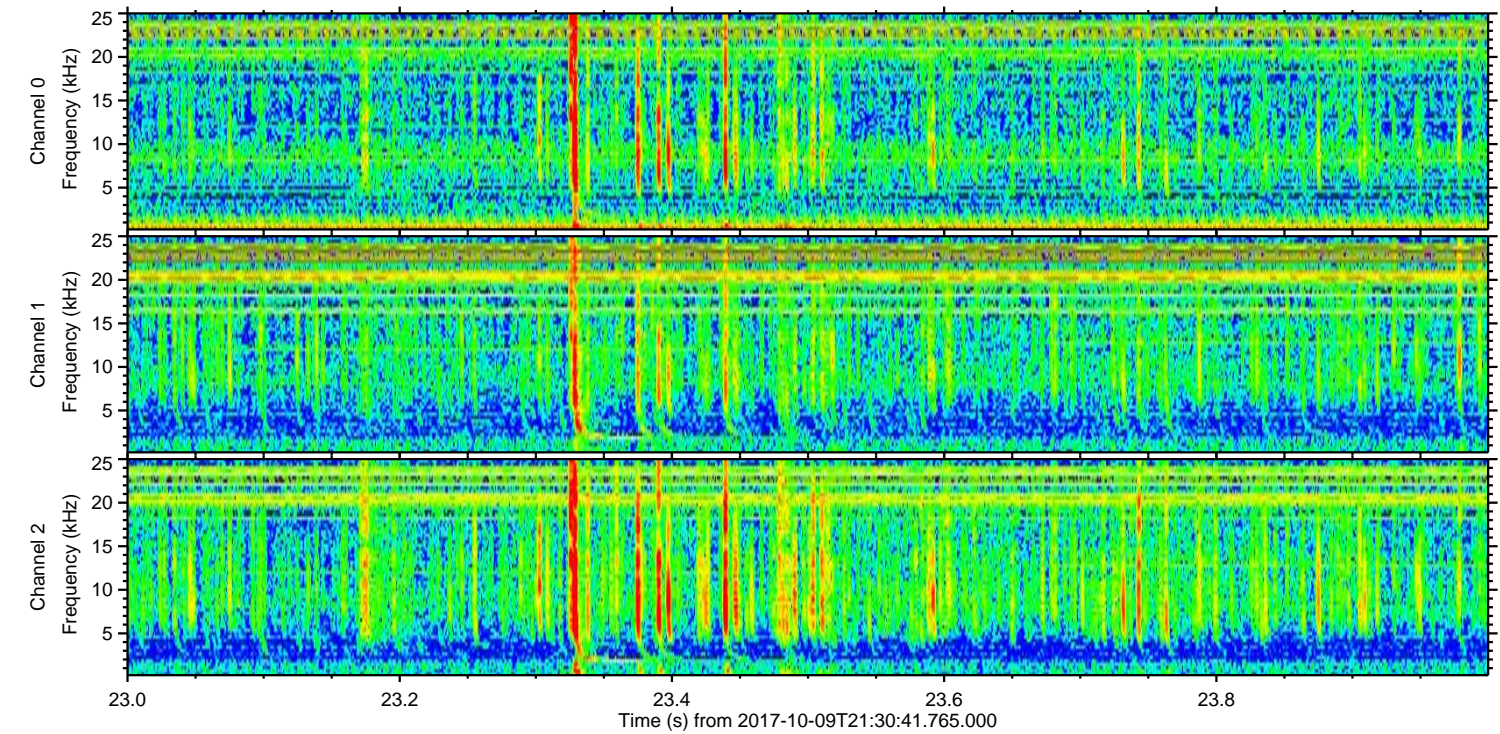
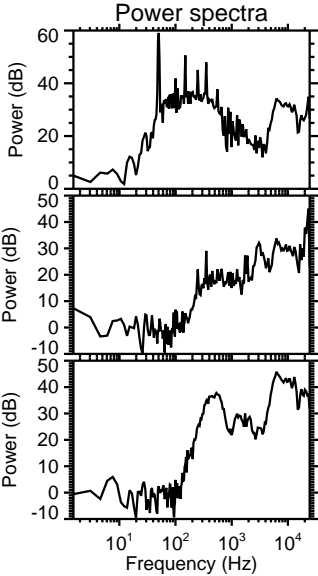
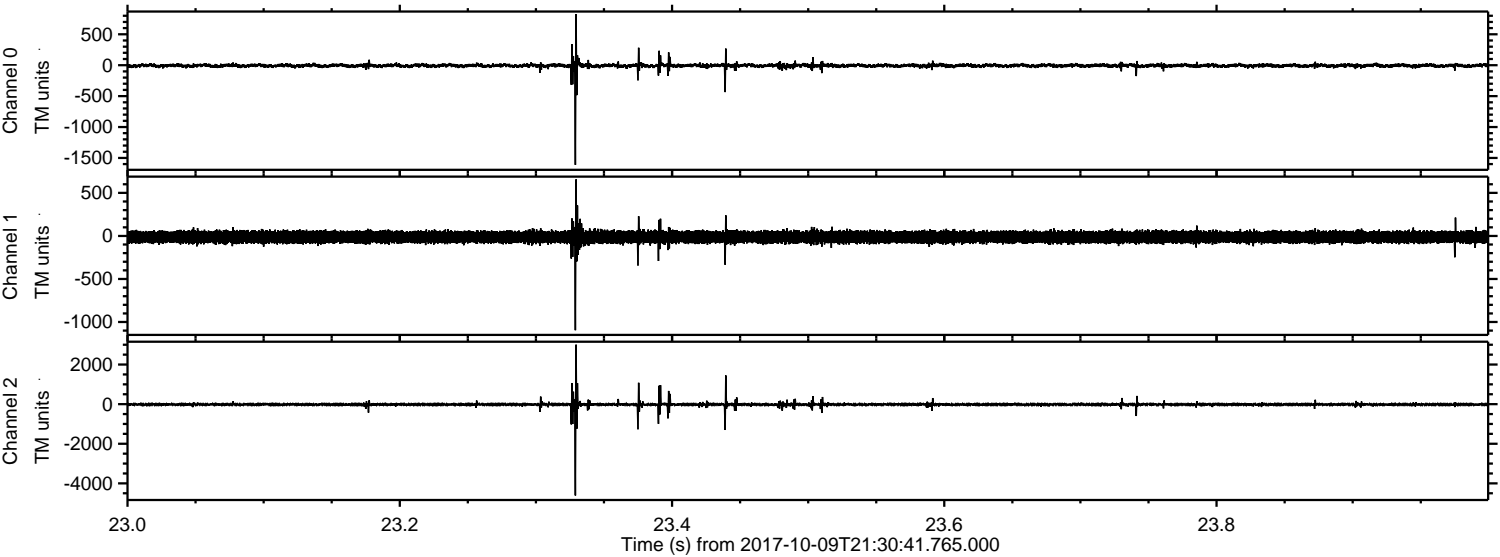
Channel 0  
mn: -1741  
mx: 1138  
 $\mu$ : -6.5  
 $\sigma$ : 14.5

Channel 1  
mn: -1821  
mx: 2591  
 $\mu$ : -13.1  
 $\sigma$ : 35.1

Channel 2  
mn: -4610  
mx: 3107  
 $\mu$ : -16.4  
 $\sigma$ : 24.1



Processed Mon Oct 9 23:38:49 2017 by ELM ver.2012-10-06 from 001\_\_elm20171009\_213040\_\_dat00.bin



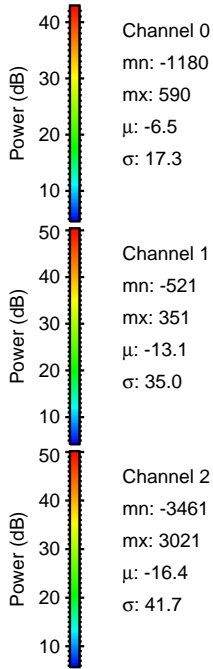
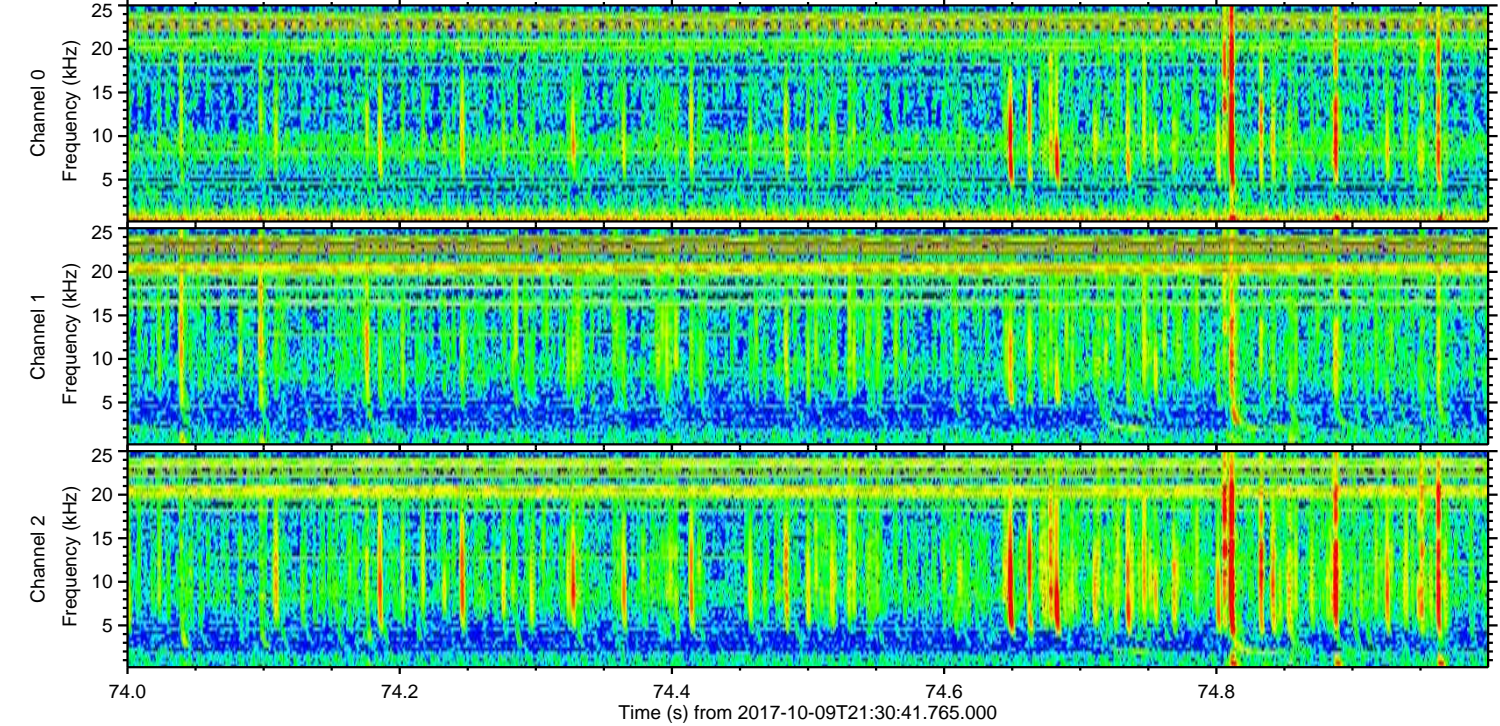
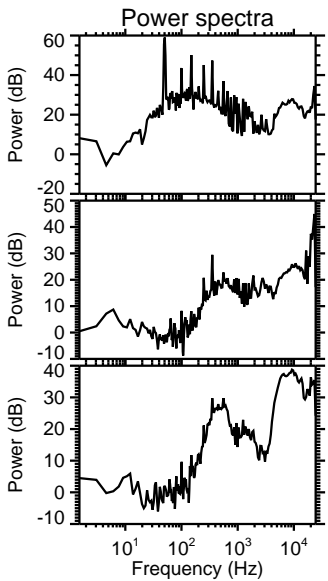
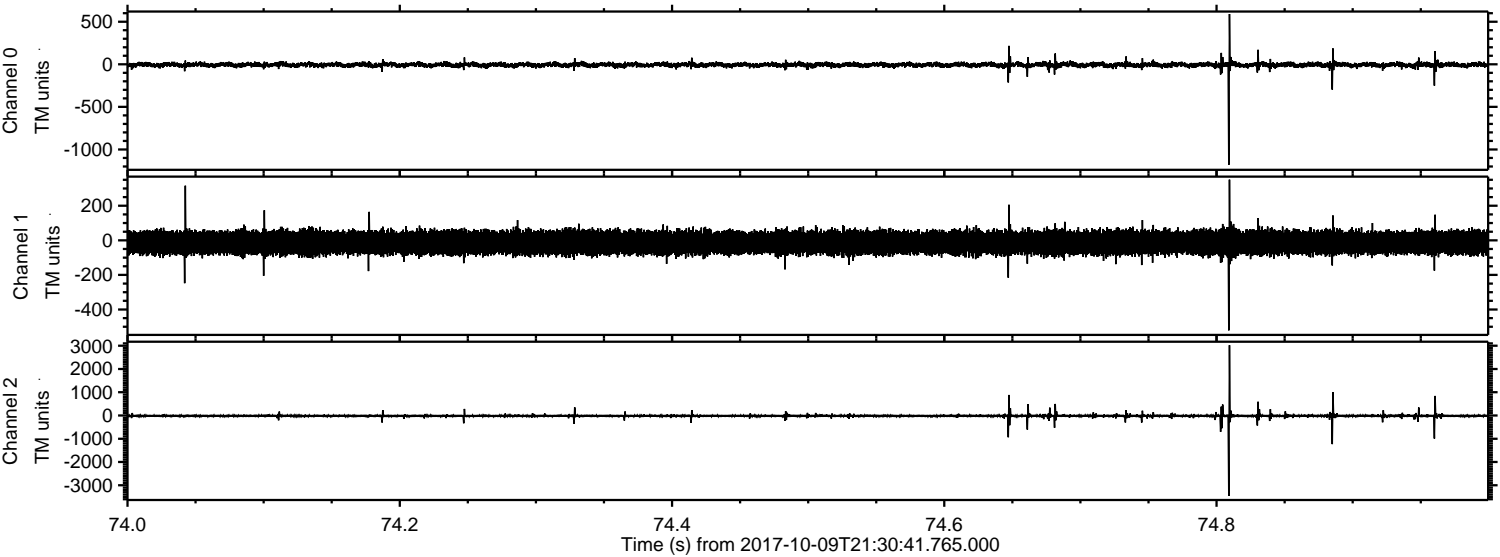
Channel 0  
mn: -1612  
mx: 827  
 $\mu$ : -6.6  
 $\sigma$ : 20.0

Channel 1  
mn: -1095  
mx: 656  
 $\mu$ : -13.1  
 $\sigma$ : 36.5

Channel 2  
mn: -4610  
mx: 3004  
 $\mu$ : -16.4  
 $\sigma$ : 53.1



Processed Mon Oct 9 23:38:49 2017 by ELM ver.2012-10-06 from 001\_\_elm20171009\_213040\_\_dat00.bin



Channel 0  
mn: -1180  
mx: 590  
 $\mu$ : -6.5  
 $\sigma$ : 17.3

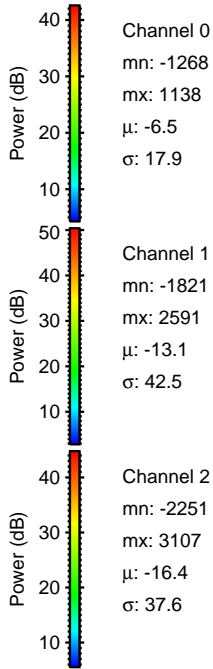
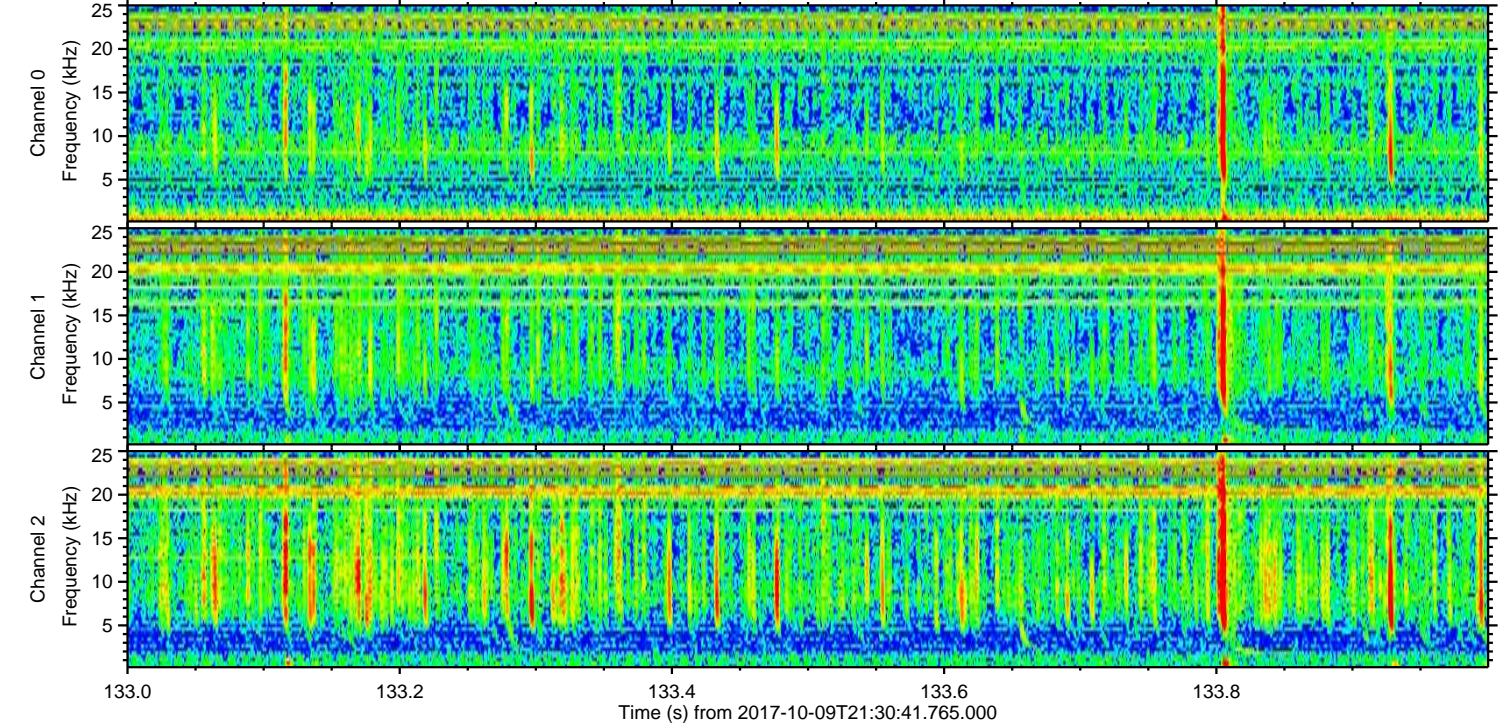
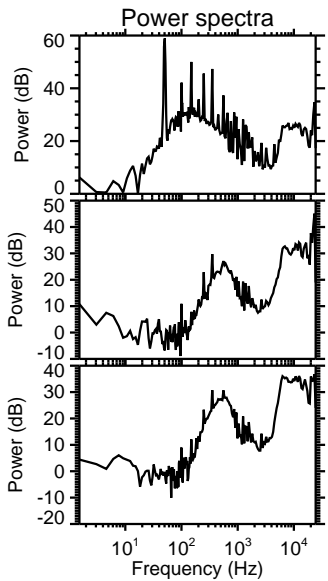
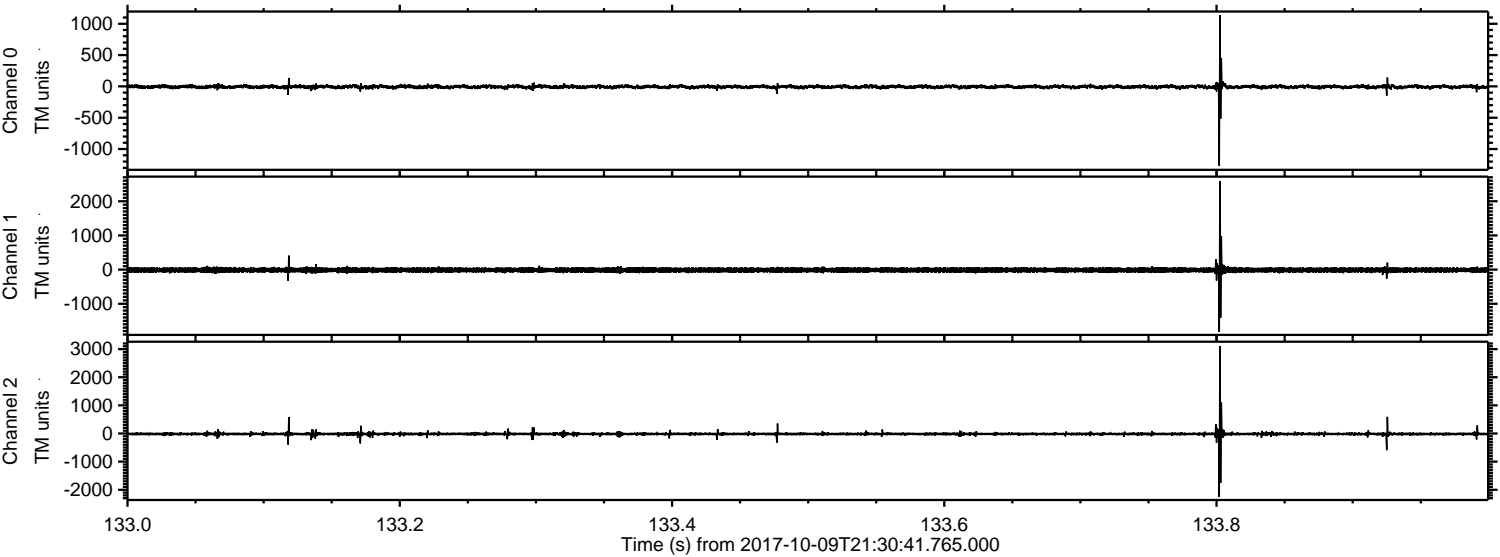
Channel 1  
mn: -521  
mx: 351  
 $\mu$ : -13.1  
 $\sigma$ : 35.0

Channel 2  
mn: -3461  
mx: 3021  
 $\mu$ : -16.4  
 $\sigma$ : 41.7



ELMAVAN 3D WAVEFORMS (Measured data sampled at 50 kHz) 50999 packets of 144 samples from 2017-10-09T21:30:41.765.000. Part 134/147

Processed Mon Oct 9 23:38:50 2017 by ELM ver.2012-10-06 from 001\_\_elm20171009\_213040\_\_dat00.bin



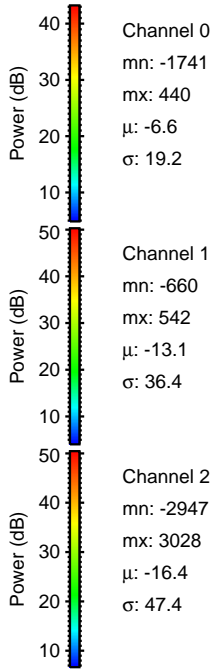
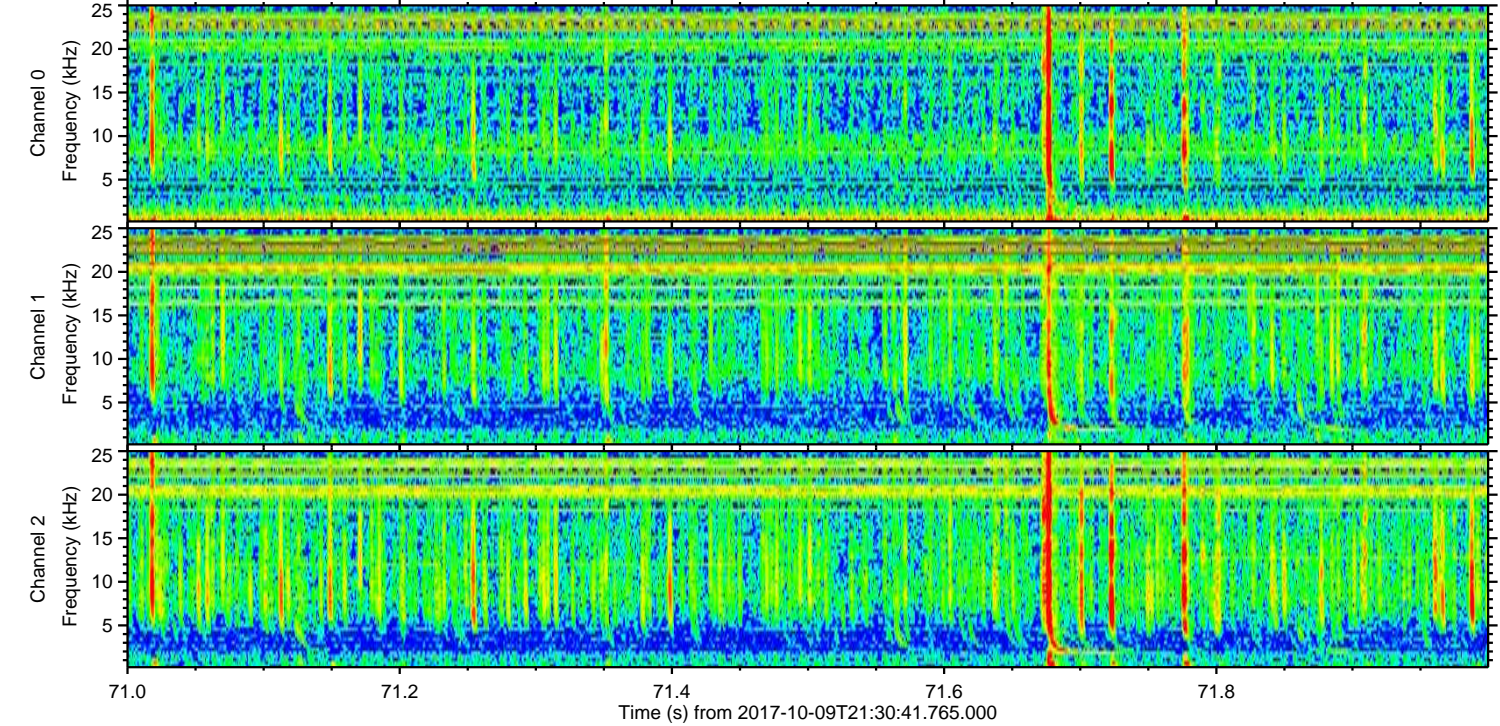
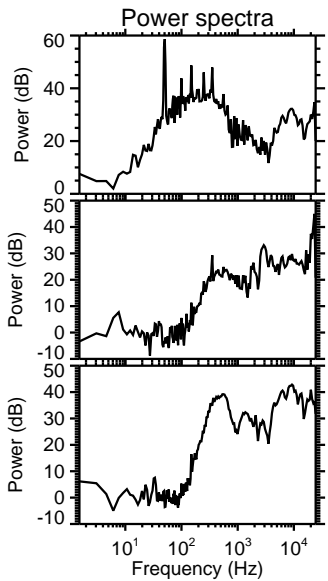
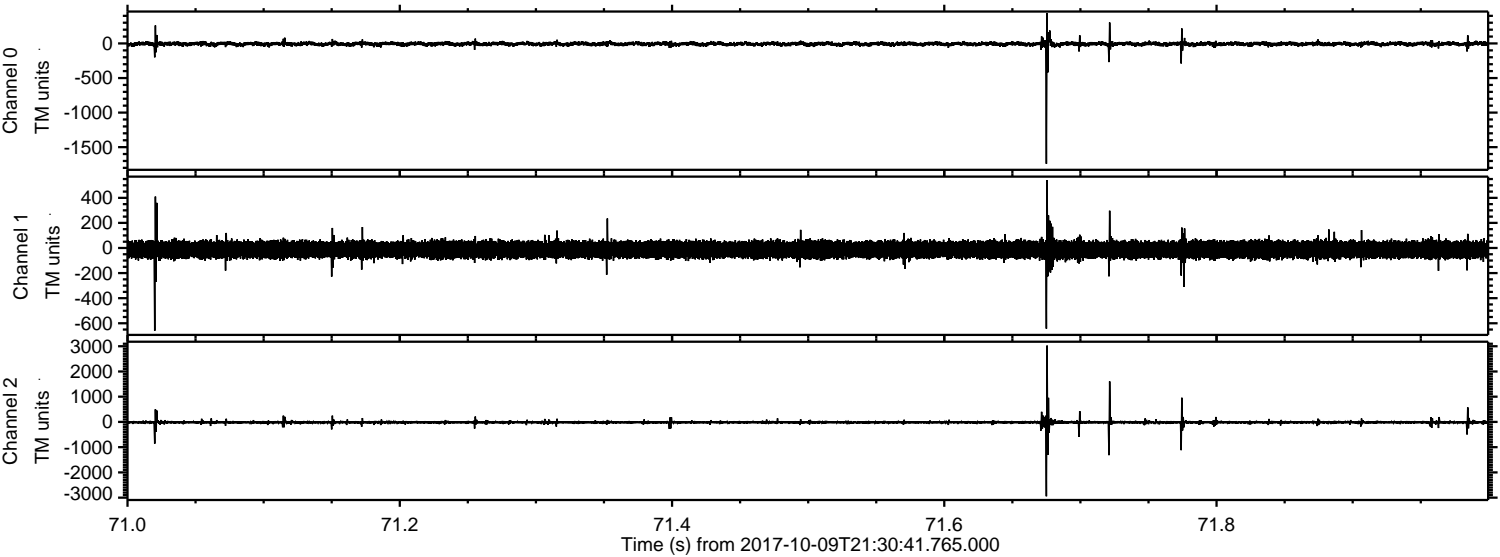
Channel 0  
mn: -1268  
mx: 1138  
 $\mu$ : -6.5  
 $\sigma$ : 17.9

Channel 1  
mn: -1821  
mx: 2591  
 $\mu$ : -13.1  
 $\sigma$ : 42.5

Channel 2  
mn: -2251  
mx: 3107  
 $\mu$ : -16.4  
 $\sigma$ : 37.6



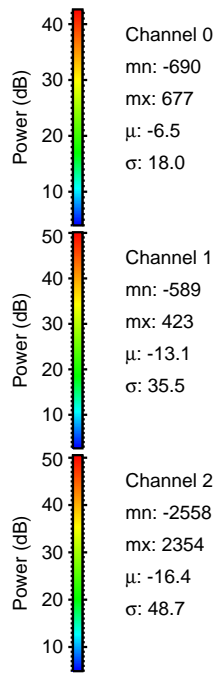
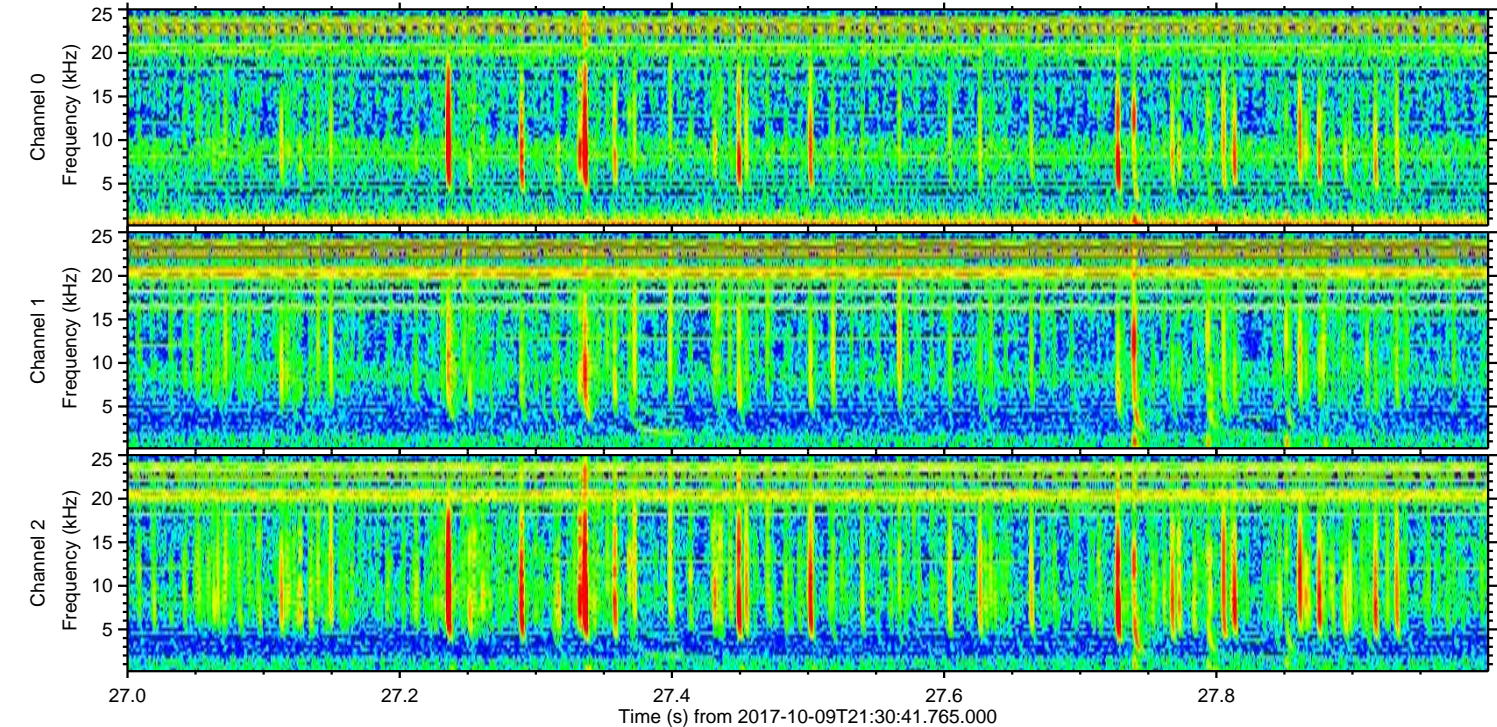
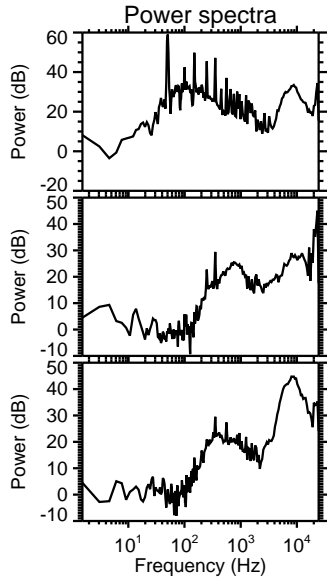
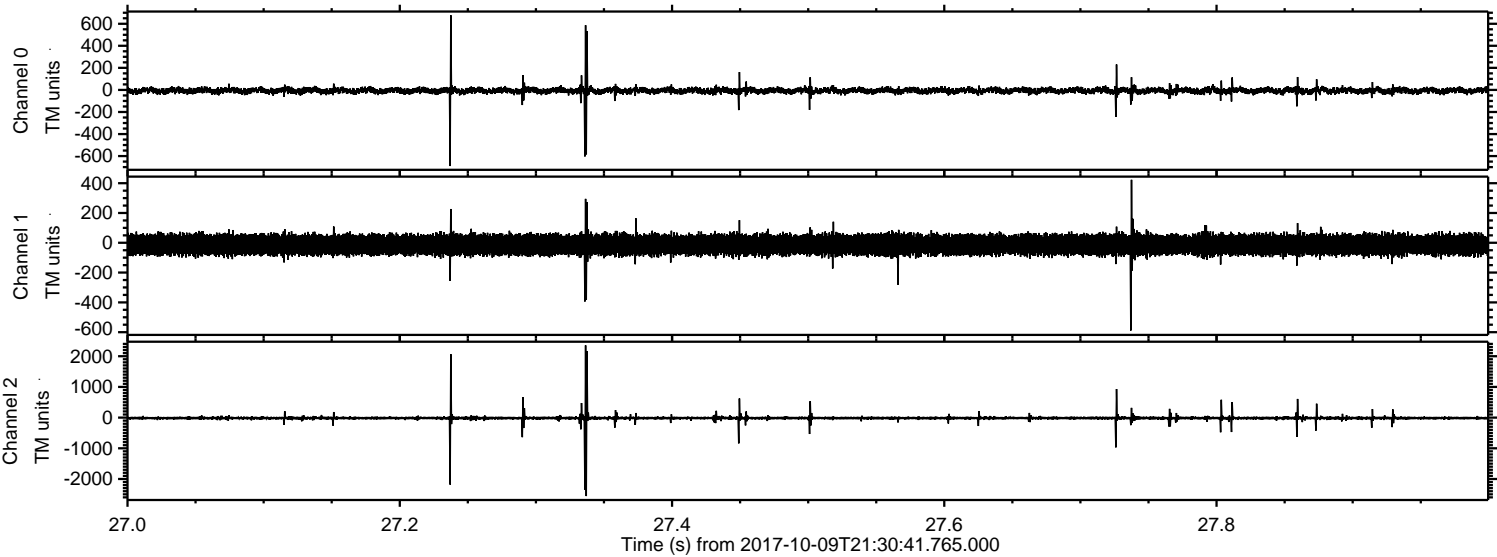
Processed Mon Oct 9 23:38:51 2017 by ELM ver.2012-10-06 from 001\_\_elm20171009\_213040\_\_dat00.bin





ELMAVAN 3D WAVEFORMS (Measured data sampled at 50 kHz) 50999 packets of 144 samples from 2017-10-09T21:30:41.765.000. Part 28/147

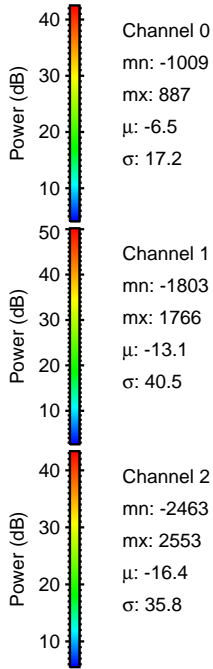
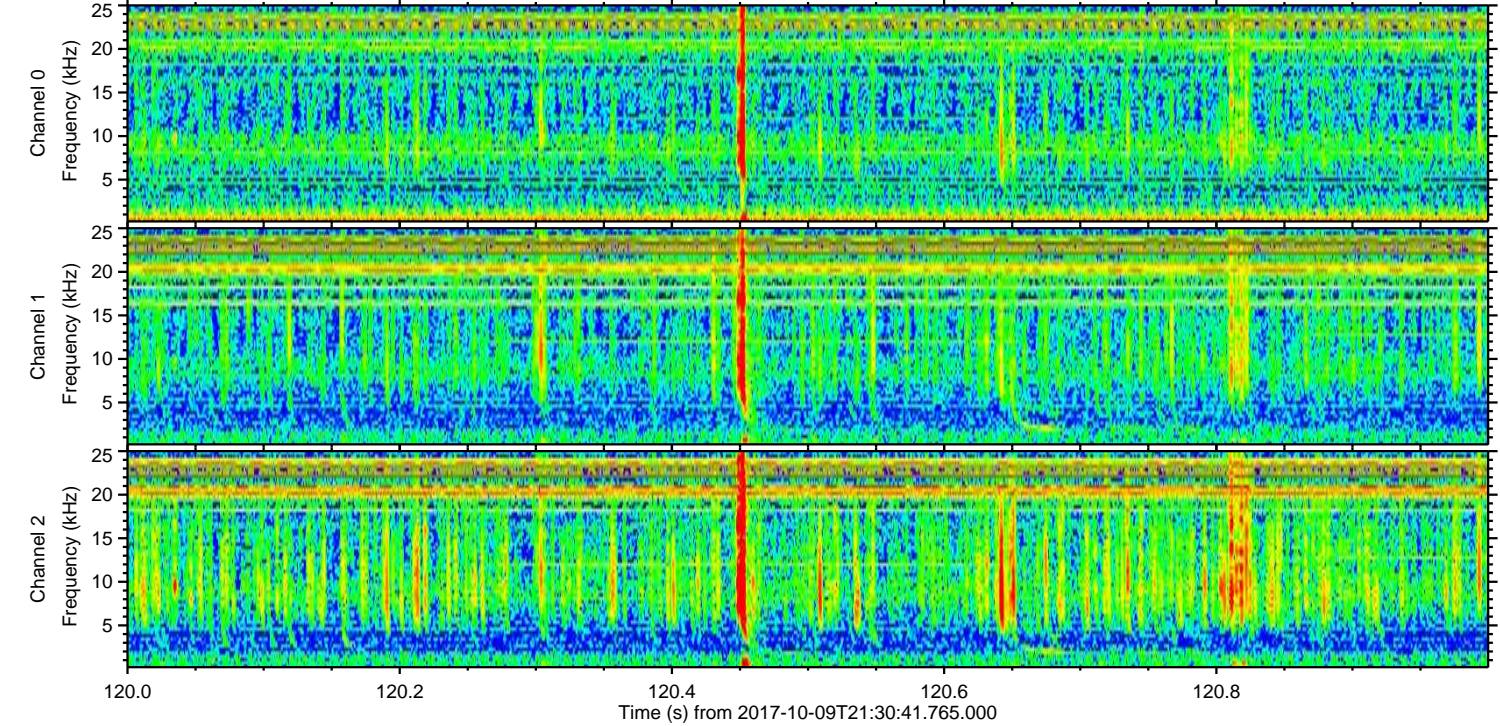
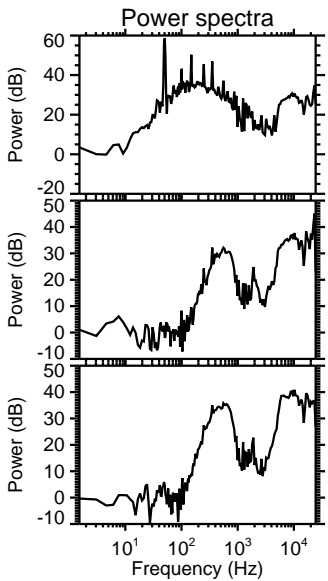
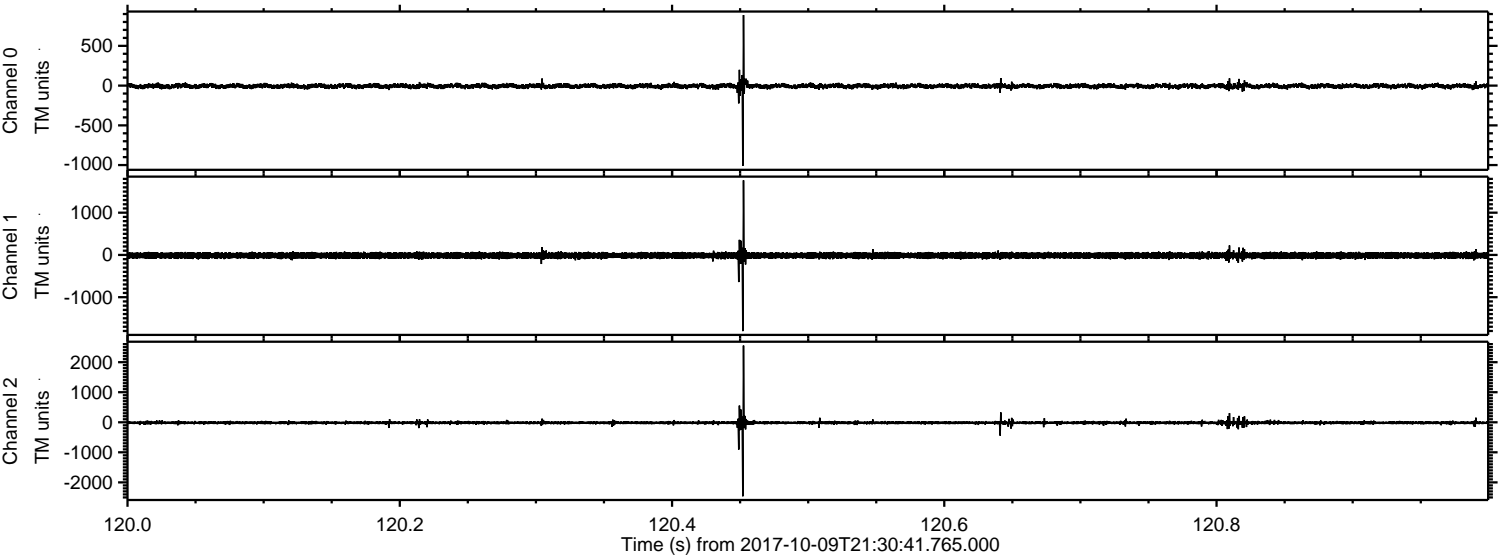
Processed Mon Oct 9 23:38:52 2017 by ELM ver.2012-10-06 from 001\_\_elm20171009\_213040\_\_dat00.bin





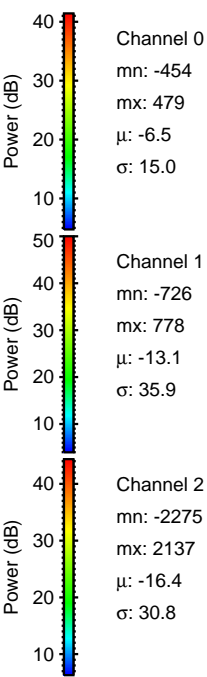
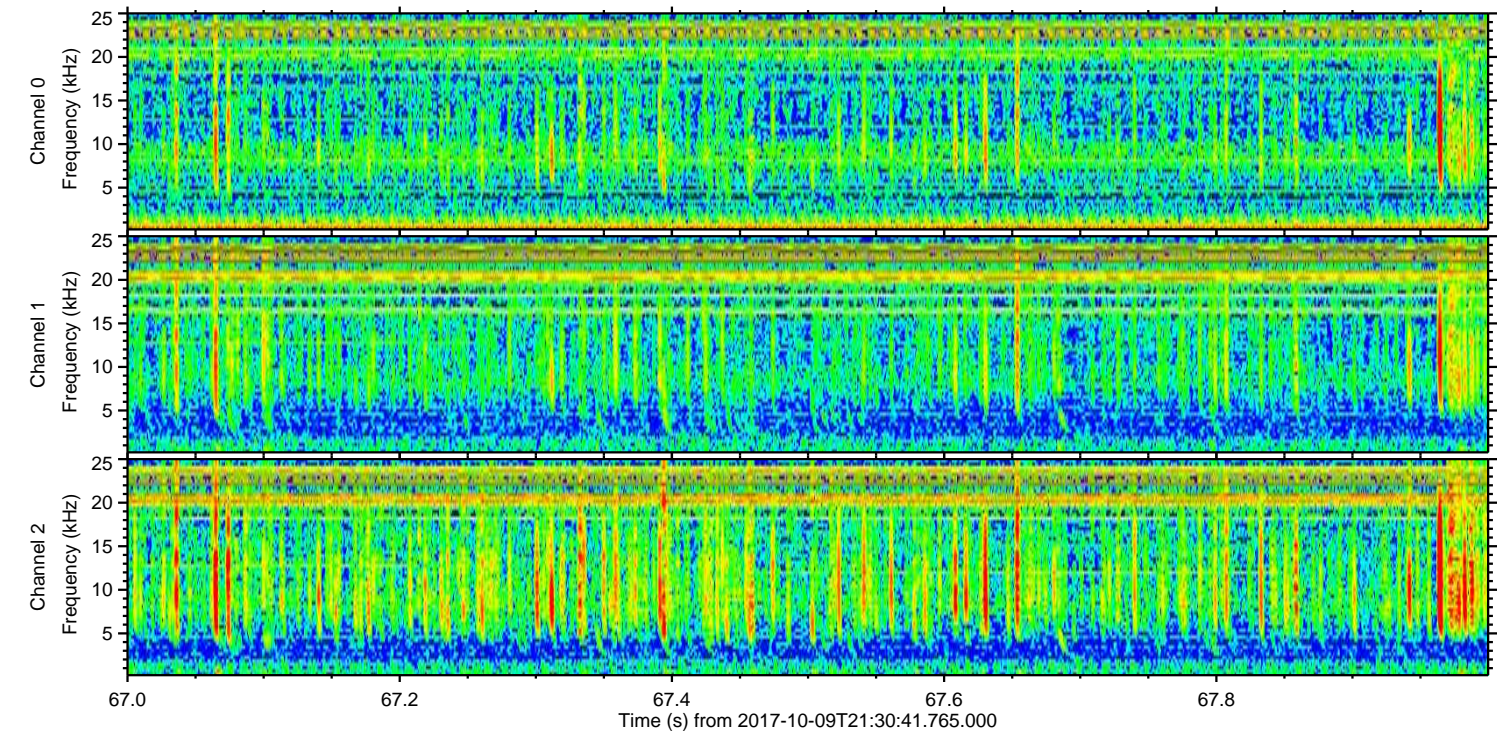
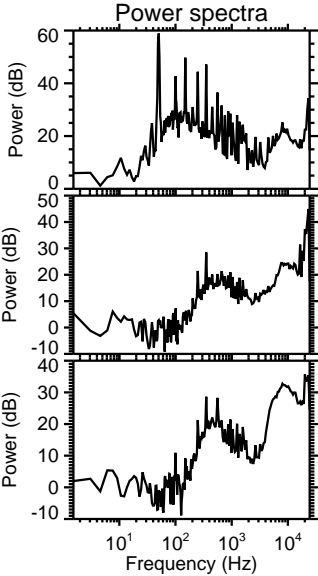
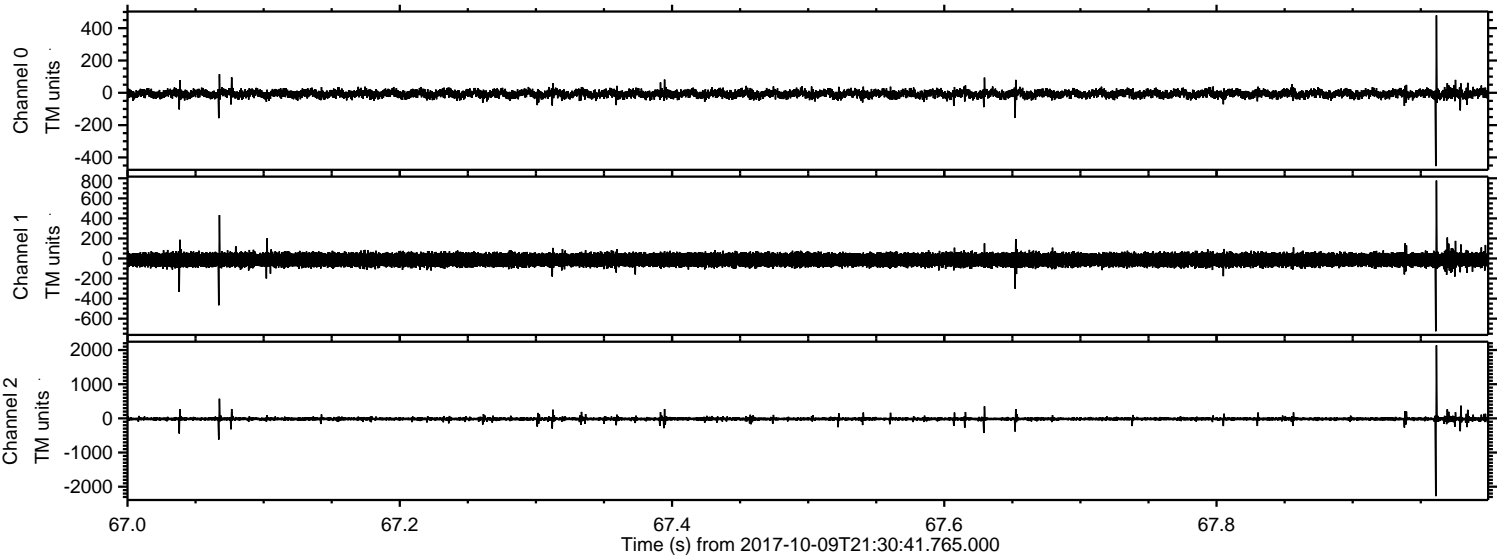
ELMAVAN 3D WAVEFORMS (Measured data sampled at 50 kHz) 50999 packets of 144 samples from 2017-10-09T21:30:41.765.000. Part 121/147

Processed Mon Oct 9 23:38:52 2017 by ELM ver.2012-10-06 from 001\_\_elm20171009\_213040\_\_dat00.bin





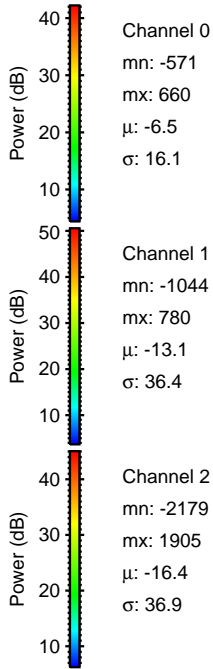
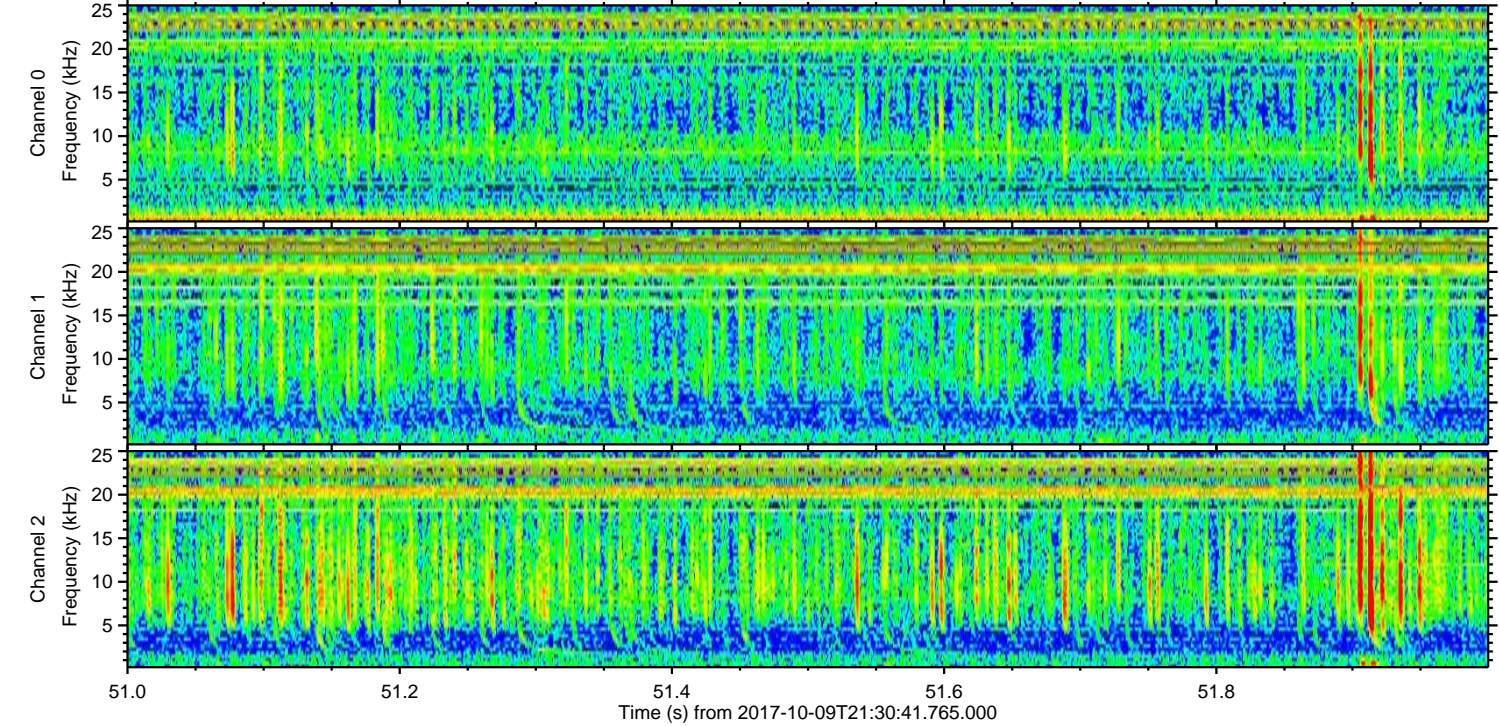
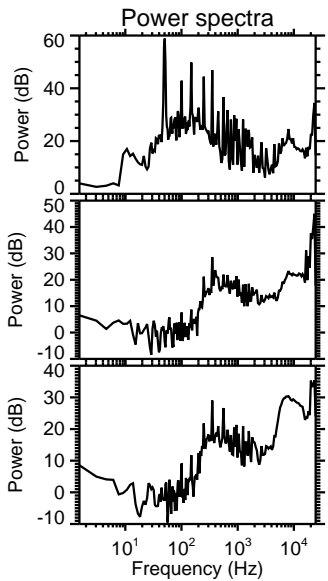
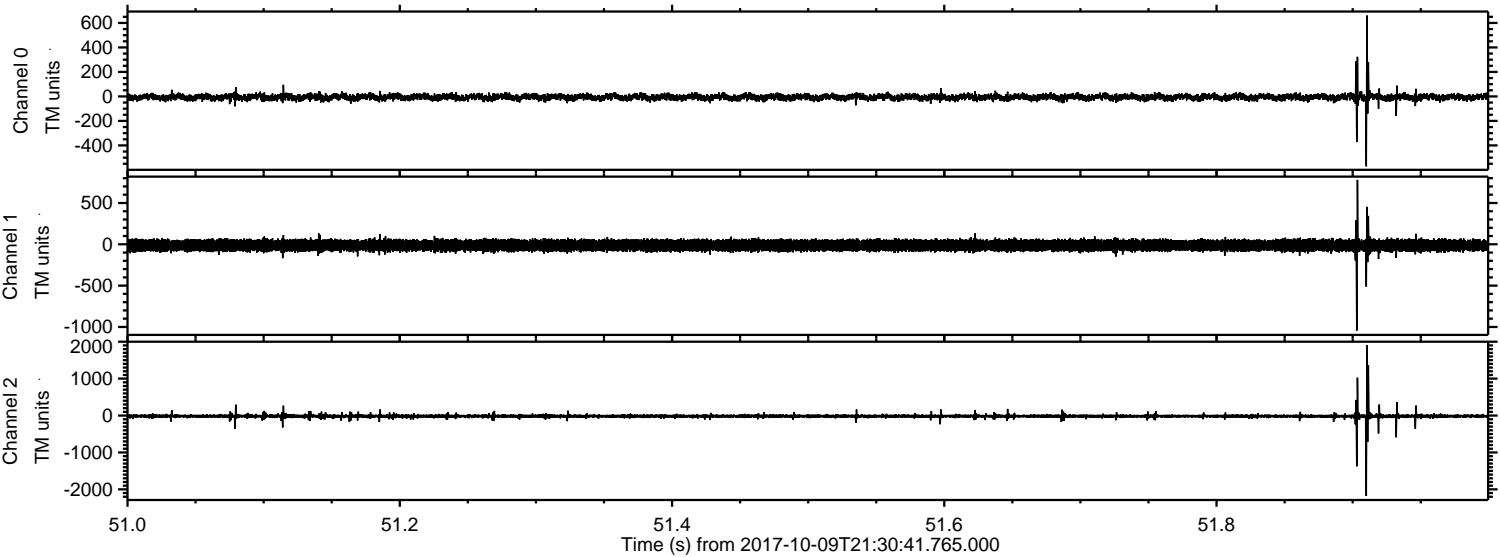
Processed Mon Oct 9 23:38:53 2017 by ELM ver.2012-10-06 from 001\_\_elm20171009\_213040\_\_dat00.bin





ELMAVAN 3D WAVEFORMS (Measured data sampled at 50 kHz) 50999 packets of 144 samples from 2017-10-09T21:30:41.765.000. Part 52/147

Processed Mon Oct 9 23:38:54 2017 by ELM ver.2012-10-06 from 001\_\_elm20171009\_213040\_\_dat00.bin



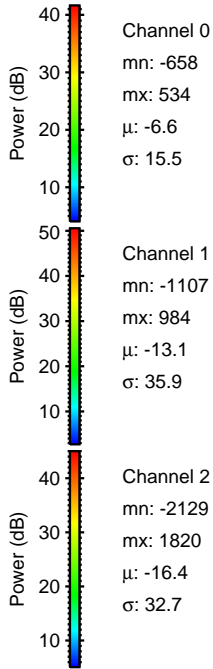
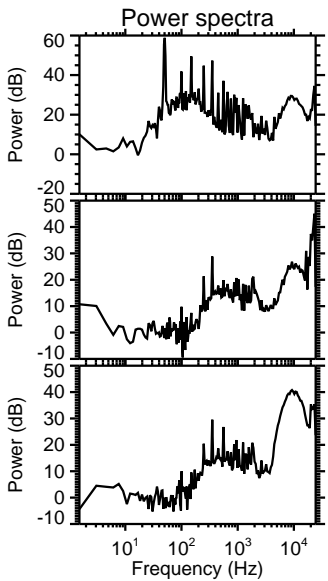
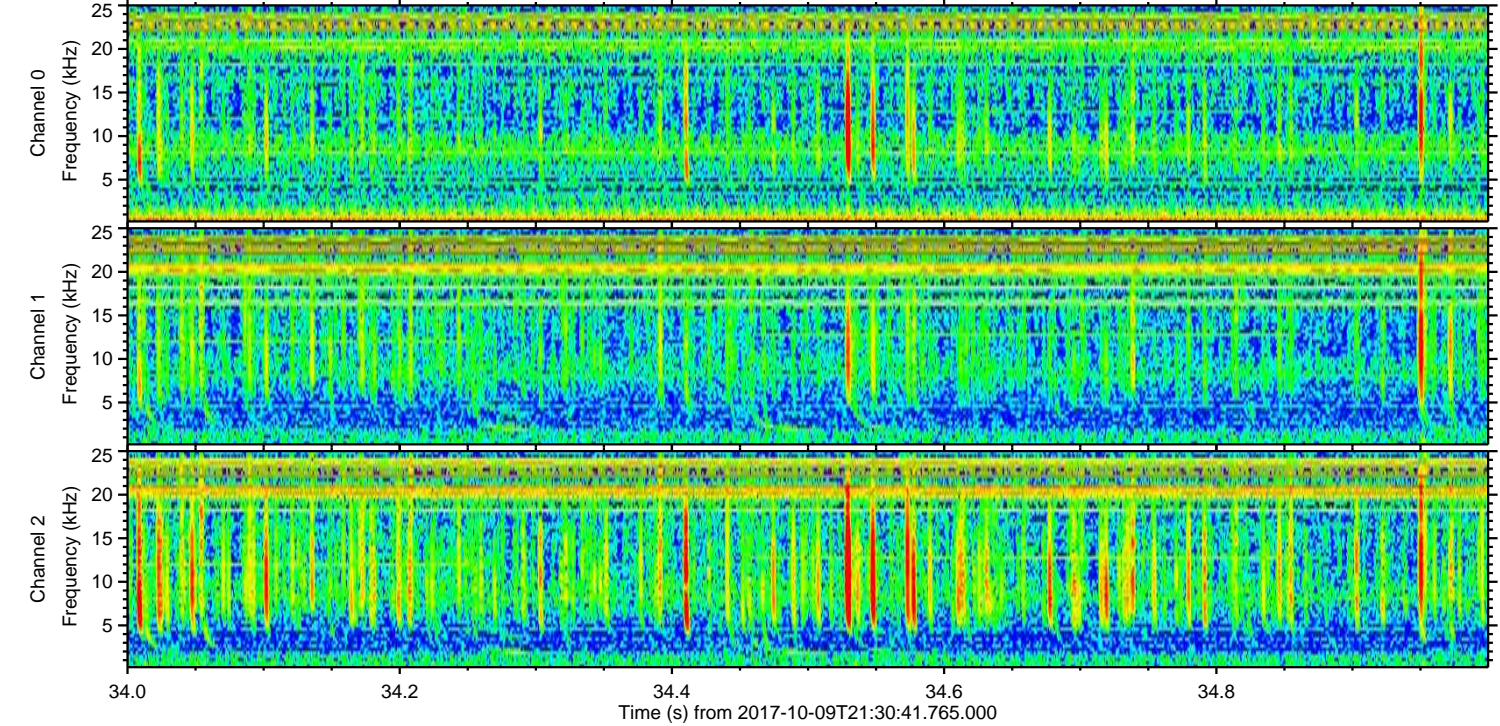
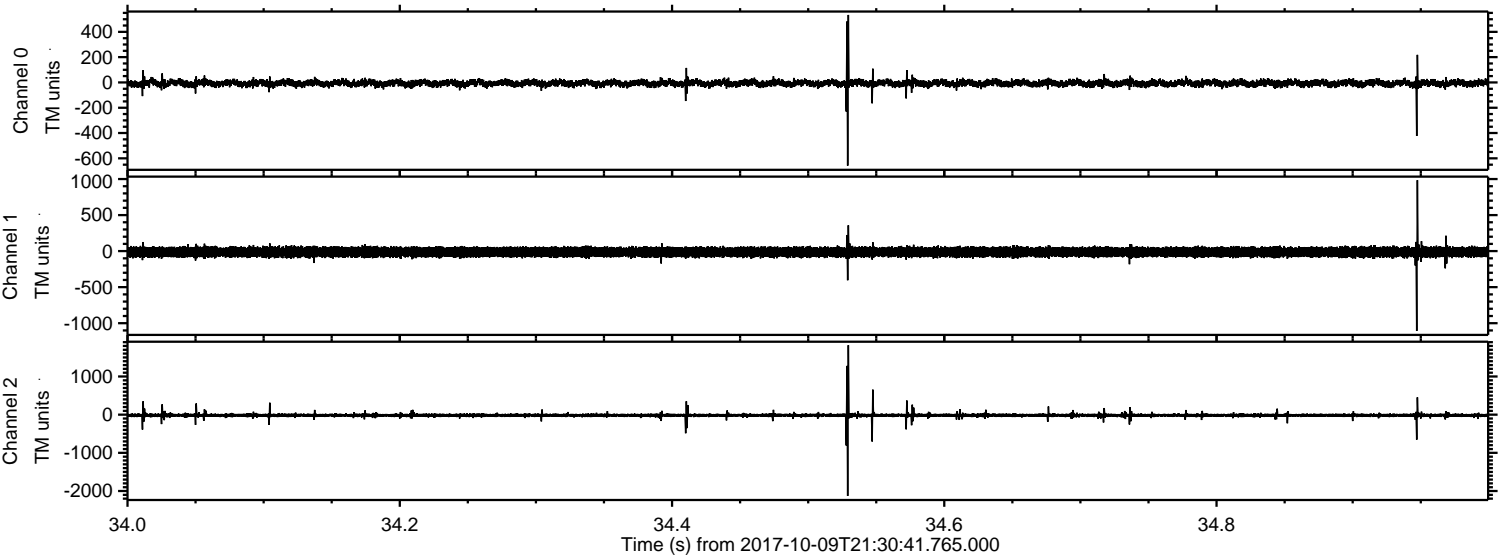
Channel 0  
mn: -571  
mx: 660  
 $\mu$ : -6.5  
 $\sigma$ : 16.1

Channel 1  
mn: -1044  
mx: 780  
 $\mu$ : -13.1  
 $\sigma$ : 36.4

Channel 2  
mn: -2179  
mx: 1905  
 $\mu$ : -16.4  
 $\sigma$ : 36.9



Processed Mon Oct 9 23:38:55 2017 by ELM ver.2012-10-06 from 001\_\_elm20171009\_213040\_\_dat00.bin



Channel 0  
mn: -658  
mx: 534  
 $\mu$ : -6.6  
 $\sigma$ : 15.5

Channel 1  
mn: -1107  
mx: 984  
 $\mu$ : -13.1  
 $\sigma$ : 35.9

Channel 2  
mn: -2129  
mx: 1820  
 $\mu$ : -16.4  
 $\sigma$ : 32.7



ELMAVAN 3D WAVEFORMS (Measured data sampled at 50 kHz) 50999 packets of 144 samples from 2017-10-09T21:30:41.765.000. Part 125/147

