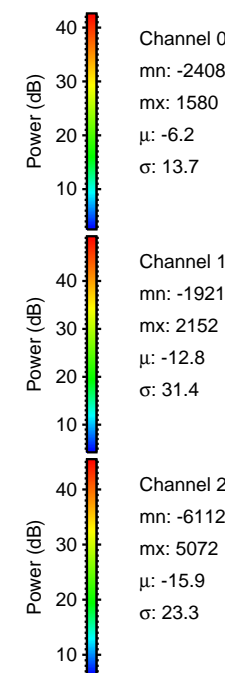
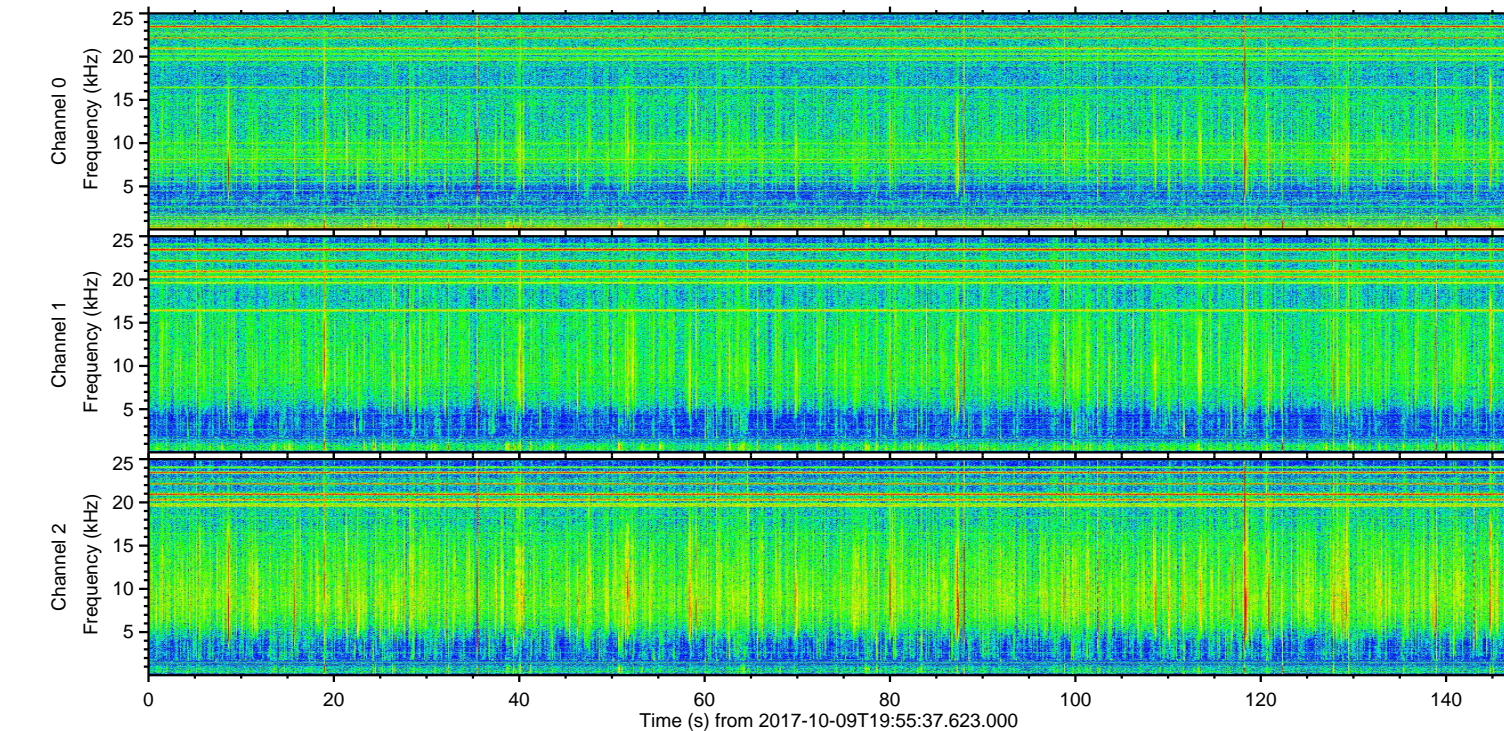
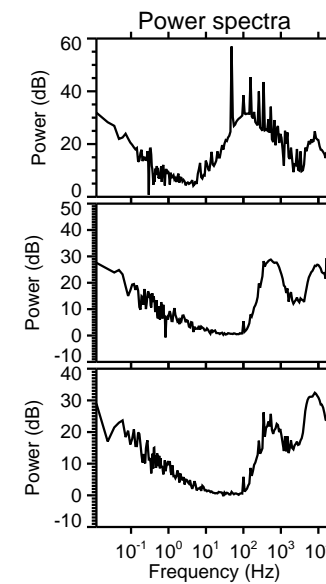
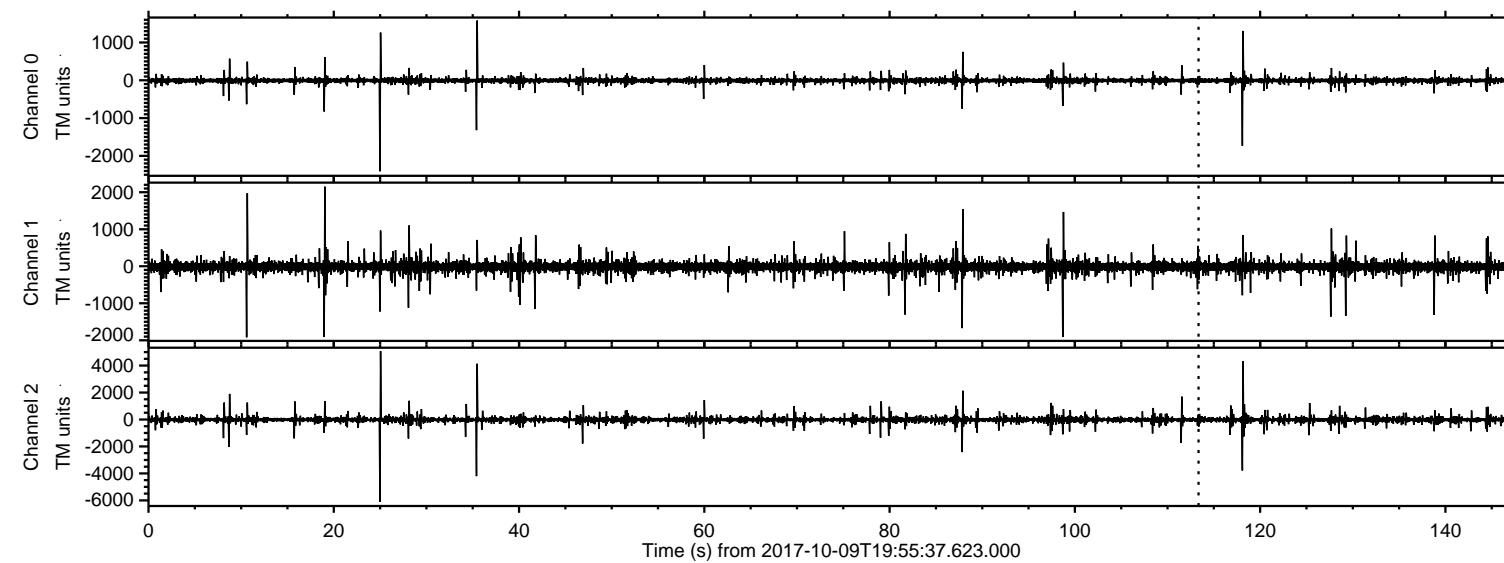


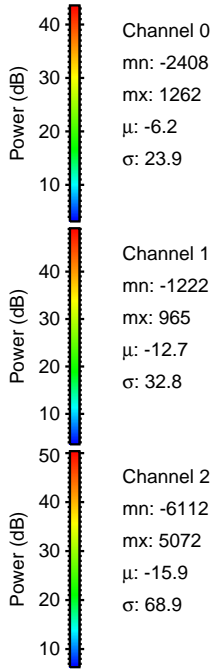
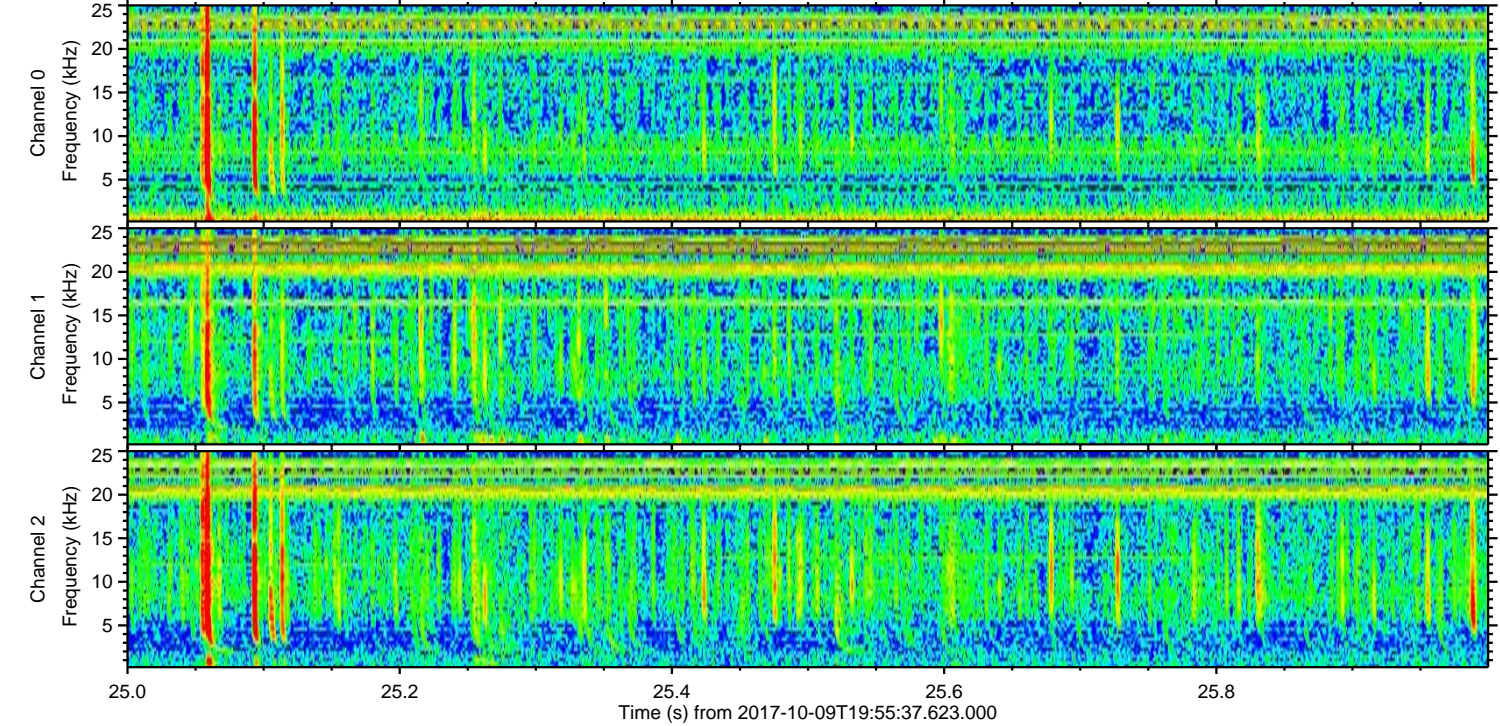
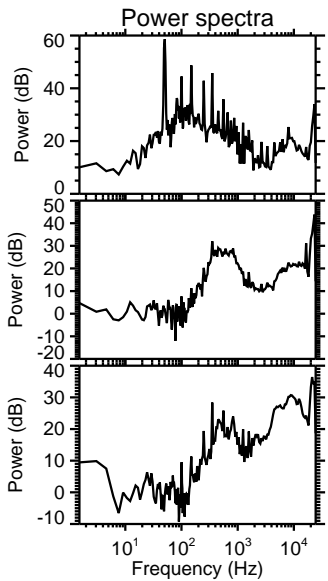
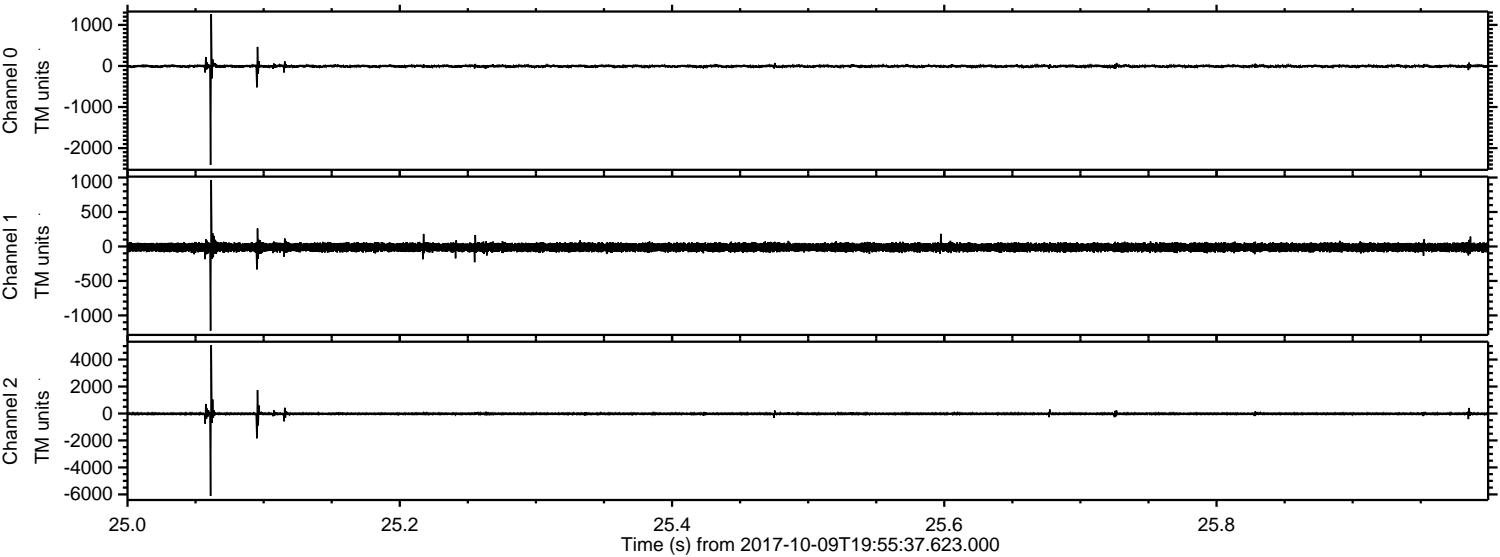
ELMAVAN 3D WAVEFORMS (Measured data sampled at 50 kHz) 50999 packets of 144 samples from 2017-10-09T19:55:37.623.000.

Processed Mon Oct 9 22:03:49 2017 by ELM ver.2012-10-06 from 001__elm20171009_195536__dat00.bin



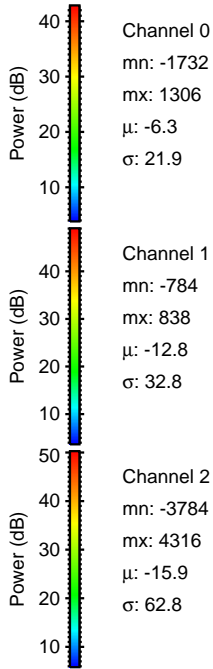
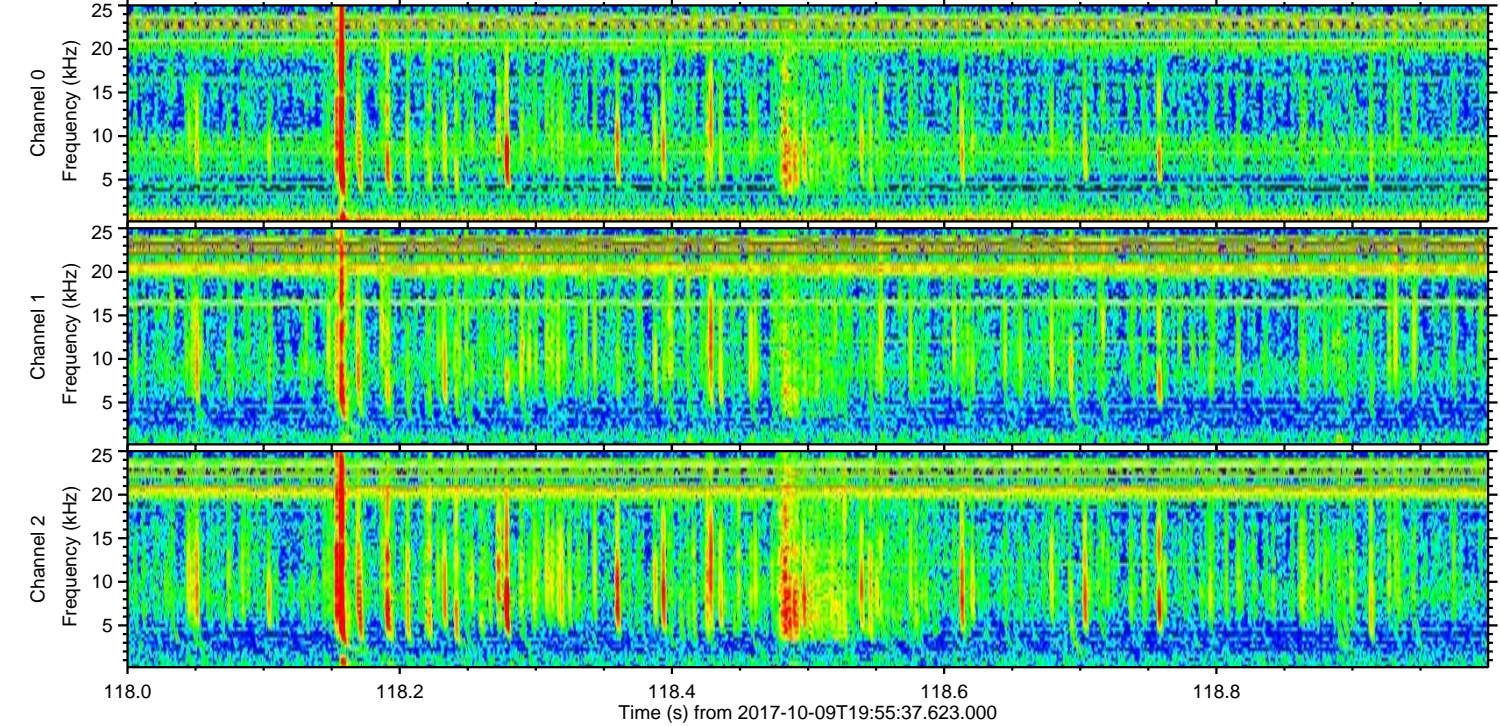
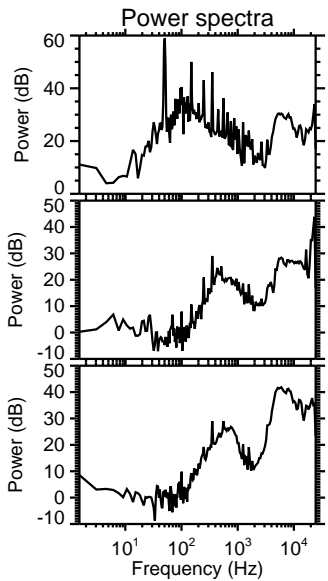
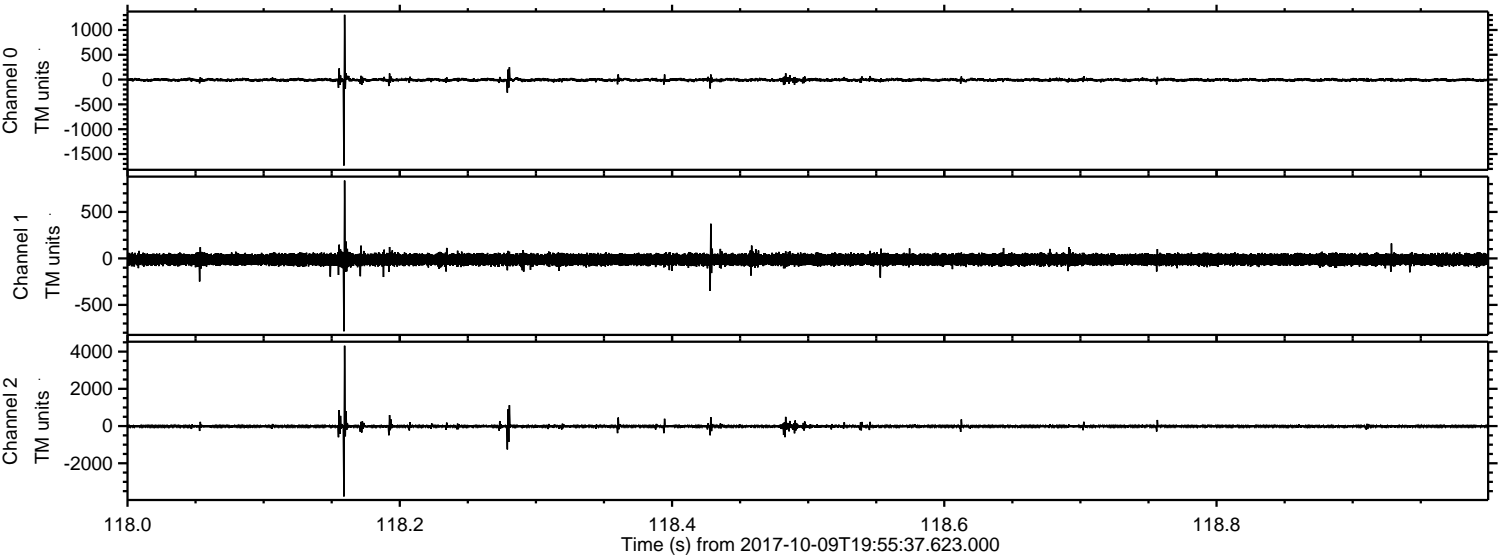
ELMAVAN 3D WAVEFORMS (Measured data sampled at 50 kHz) 50999 packets of 144 samples from 2017-10-09T19:55:37.623.000. Part 26/147

Processed Mon Oct 9 22:03:56 2017 by ELM ver.2012-10-06 from 001__elm20171009_195536__dat00.bin

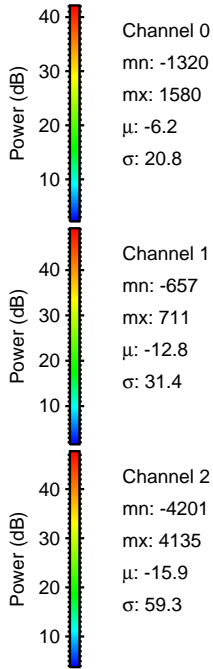
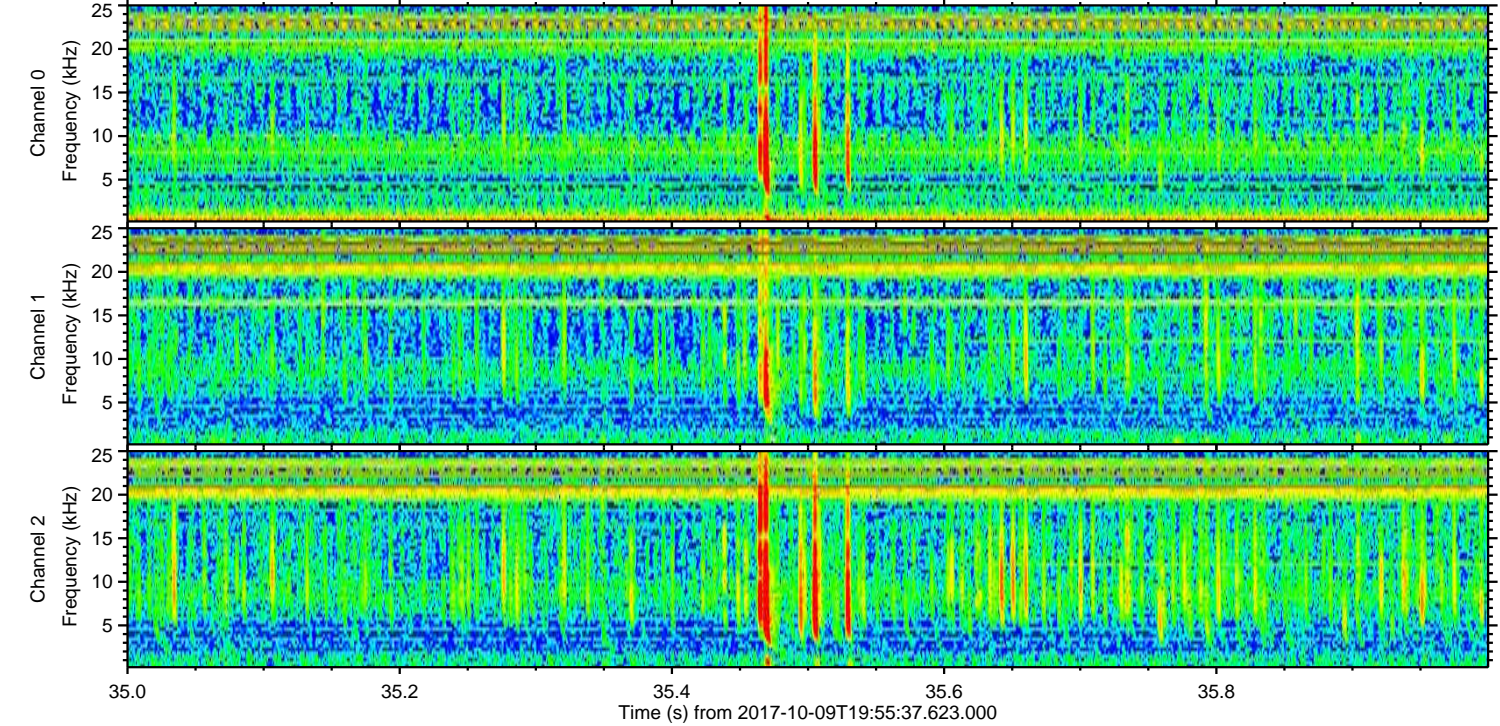
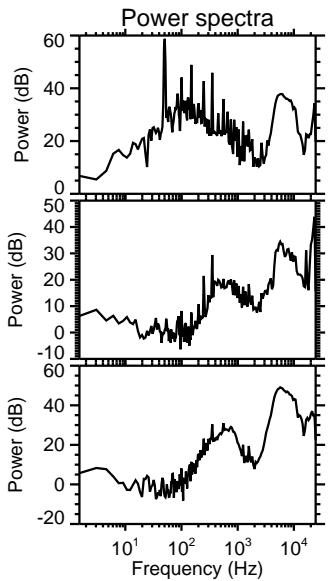
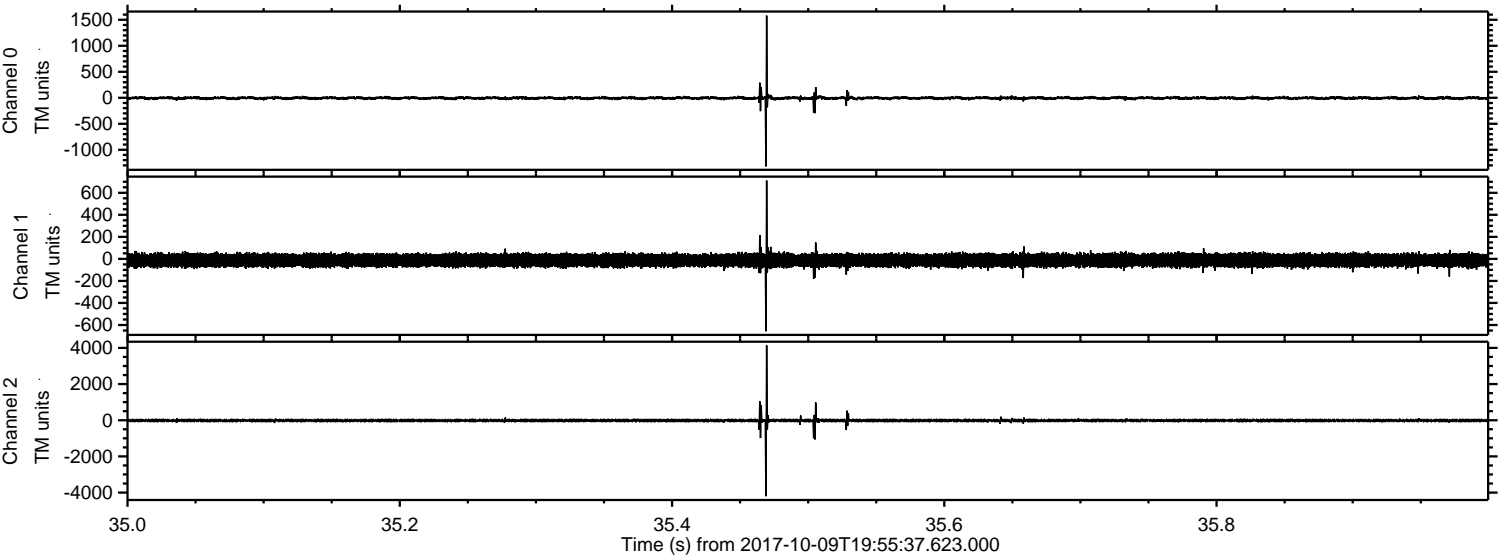


ELMAVAN 3D WAVEFORMS (Measured data sampled at 50 kHz) 50999 packets of 144 samples from 2017-10-09T19:55:37.623.000. Part 119/147

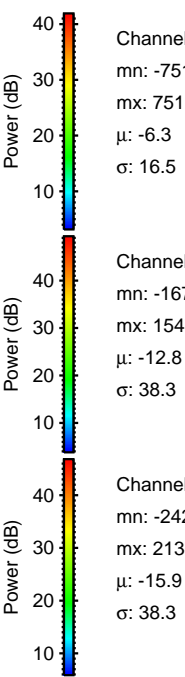
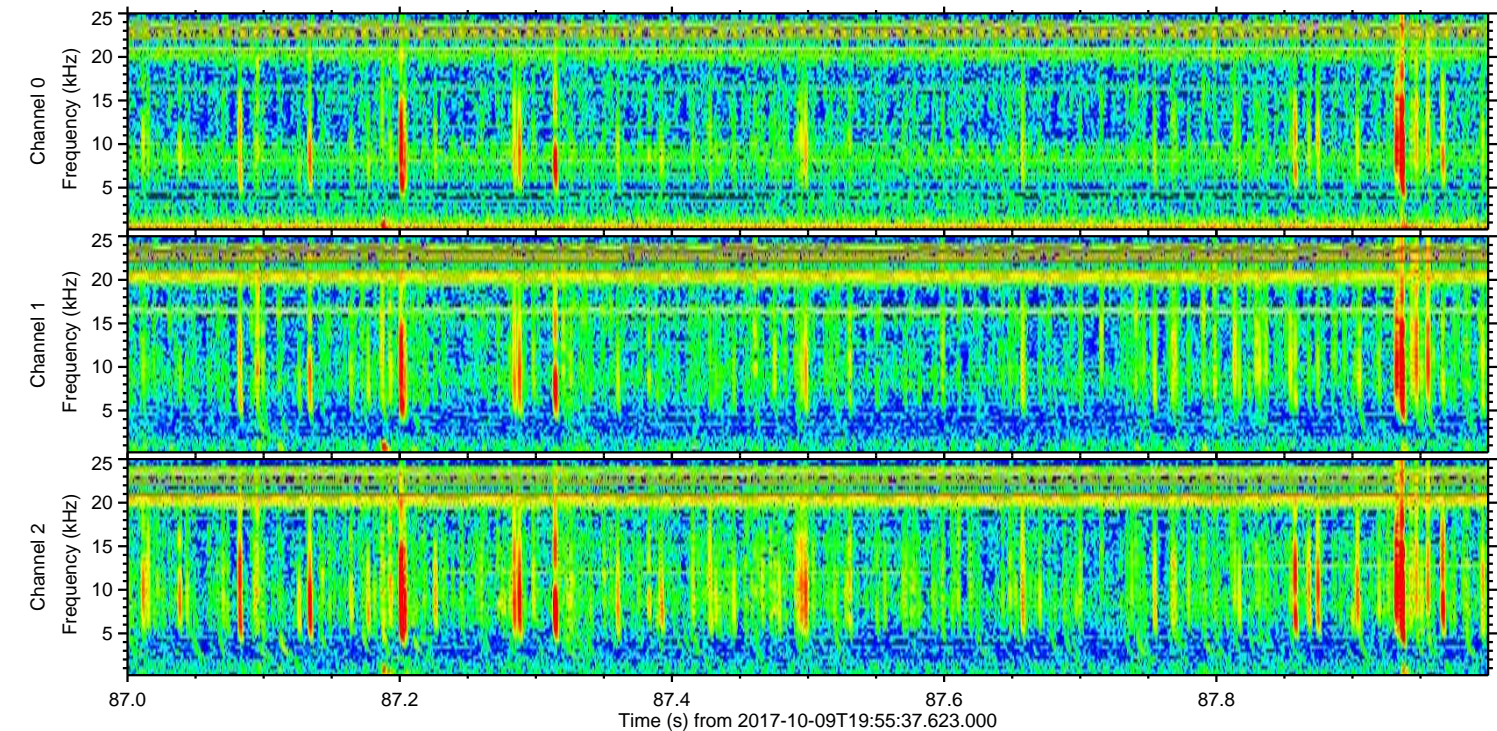
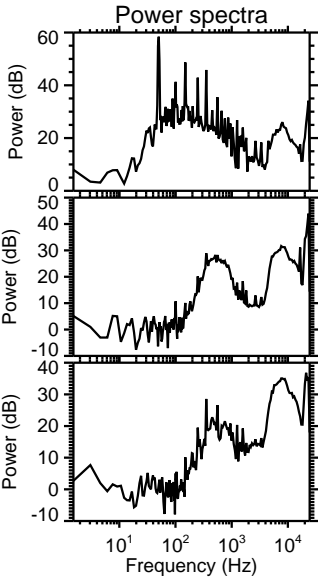
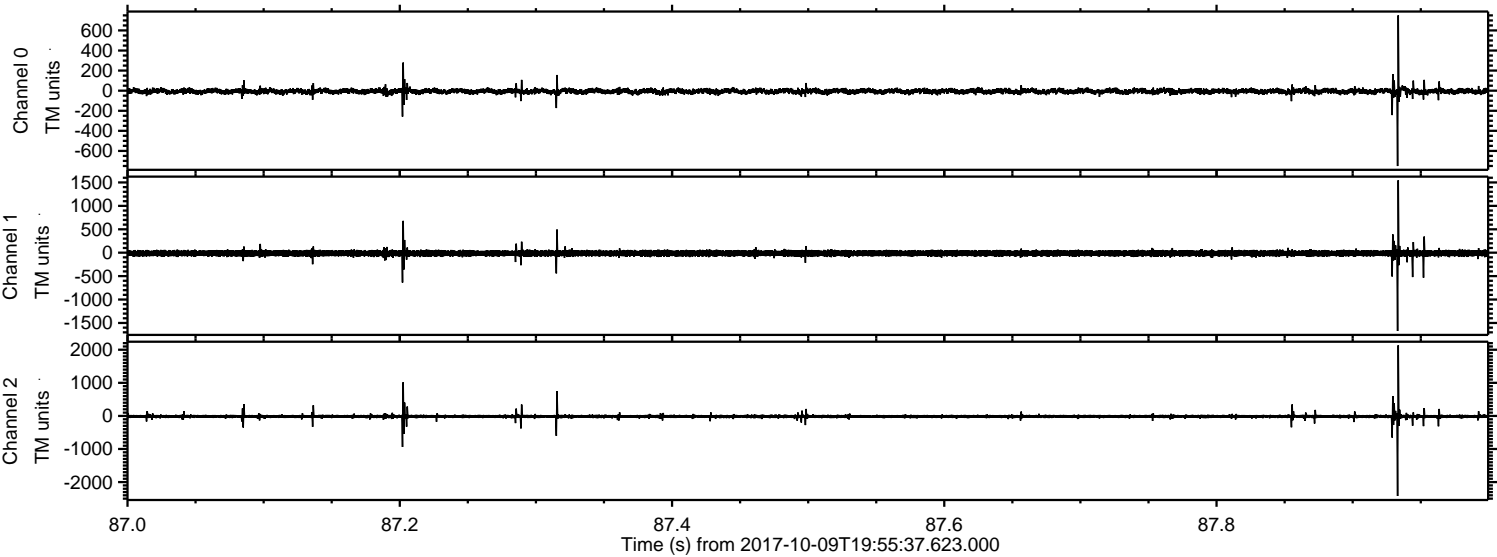
Processed Mon Oct 9 22:03:57 2017 by ELM ver.2012-10-06 from 001__elm20171009_195536__dat00.bin



Processed Mon Oct 9 22:03:57 2017 by ELM ver.2012-10-06 from 001__elm20171009_195536__dat00.bin

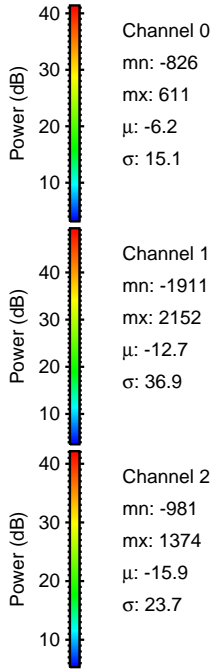
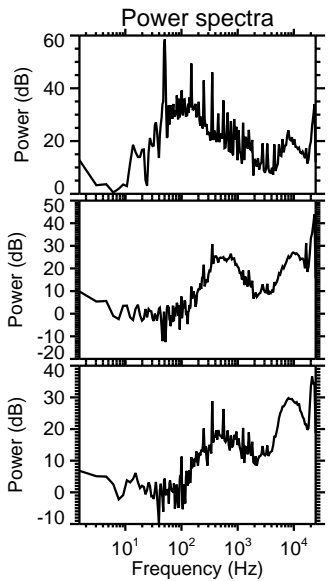
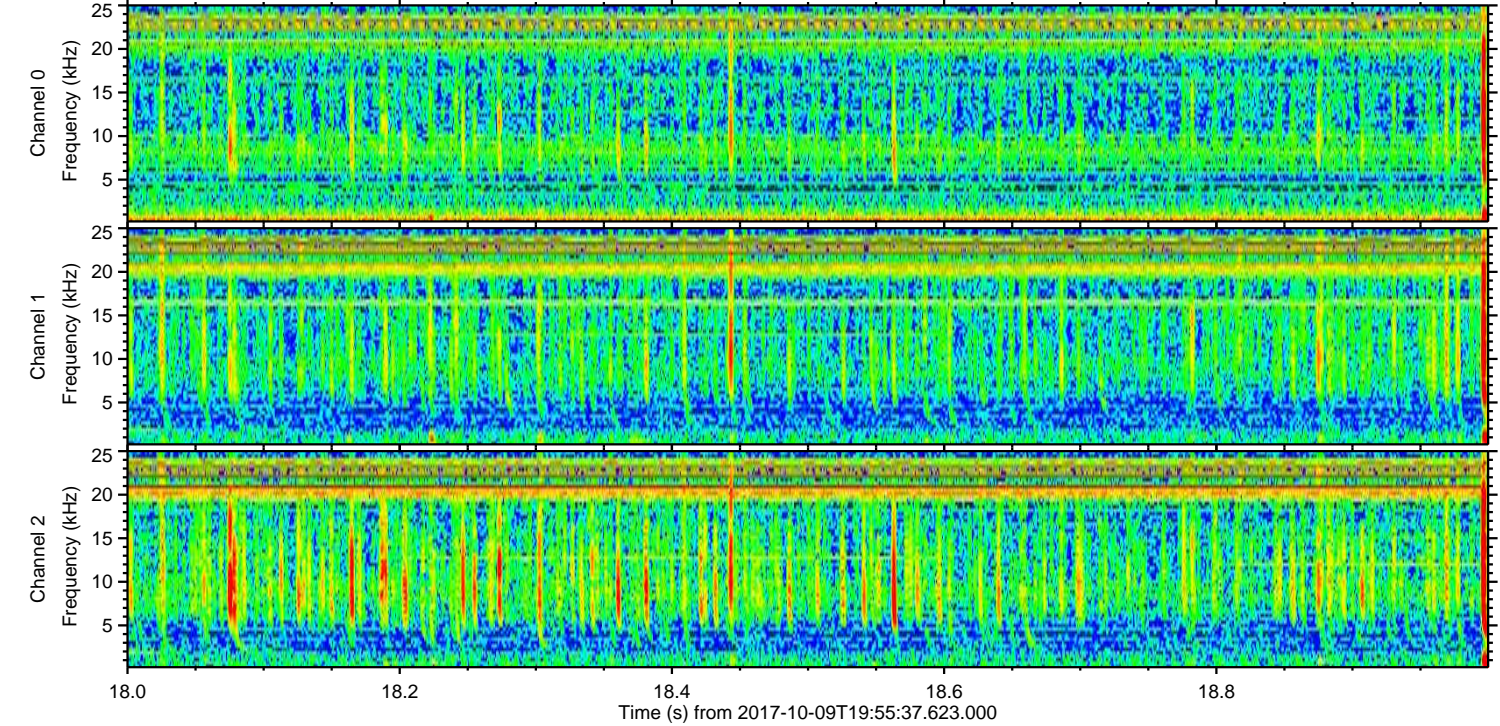
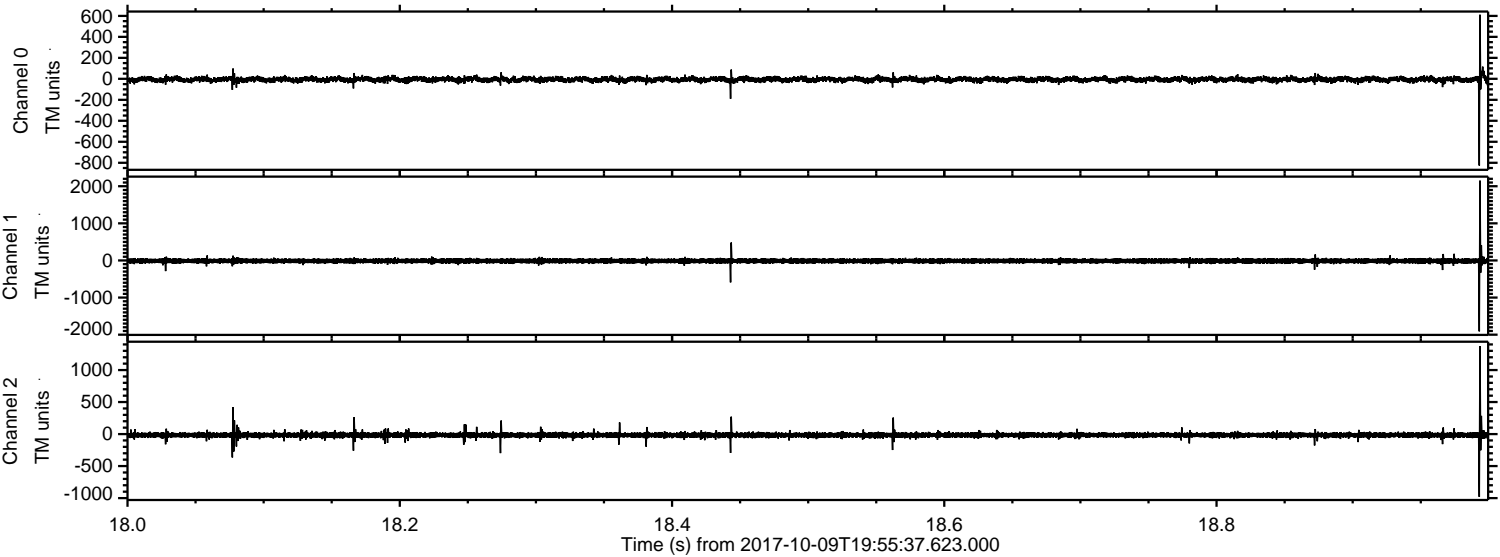


Processed Mon Oct 9 22:03:58 2017 by ELM ver.2012-10-06 from 001__elm20171009_195536__dat00.bin

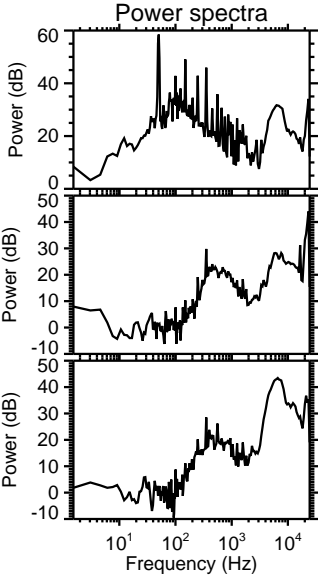
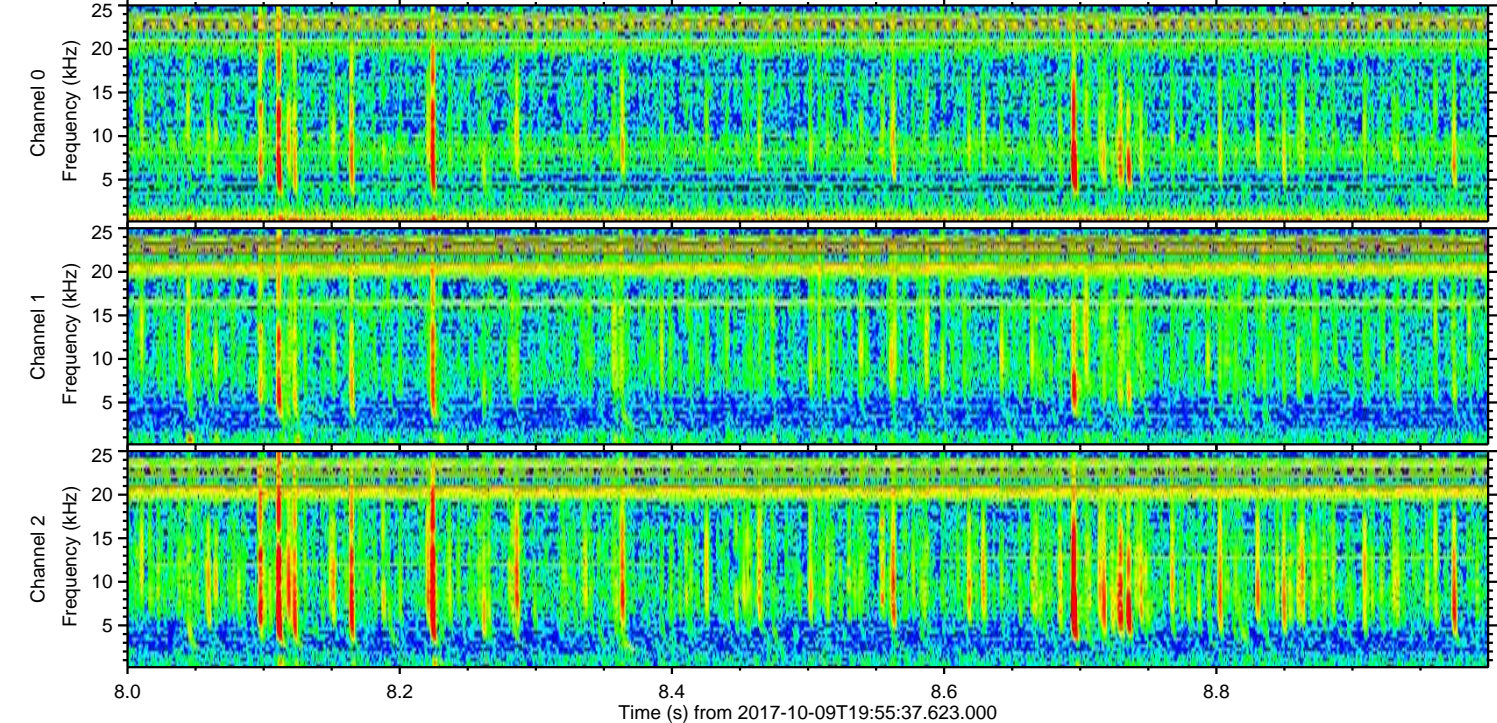
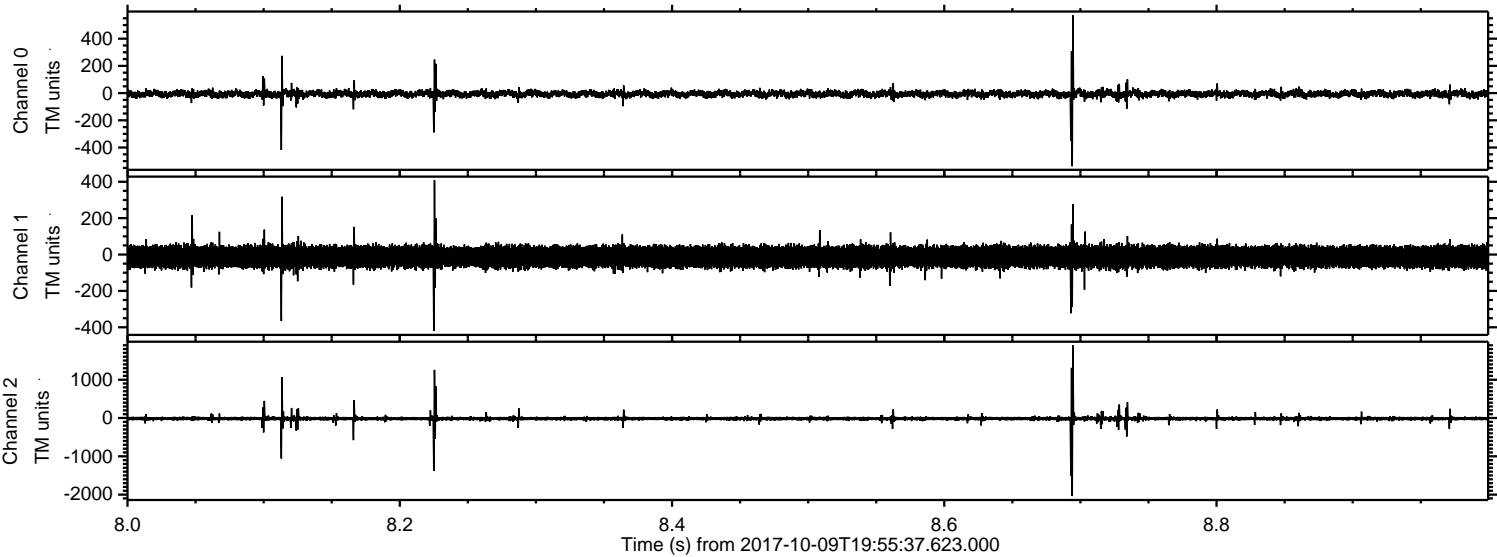


ELMAVAN 3D WAVEFORMS (Measured data sampled at 50 kHz) 50999 packets of 144 samples from 2017-10-09T19:55:37.623.000. Part 19/147

Processed Mon Oct 9 22:03:59 2017 by ELM ver.2012-10-06 from 001__elm20171009_195536__dat00.bin



Processed Mon Oct 9 22:04:00 2017 by ELM ver.2012-10-06 from 001__elm20171009_195536__dat00.bin

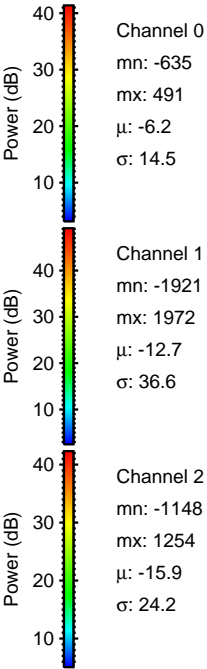
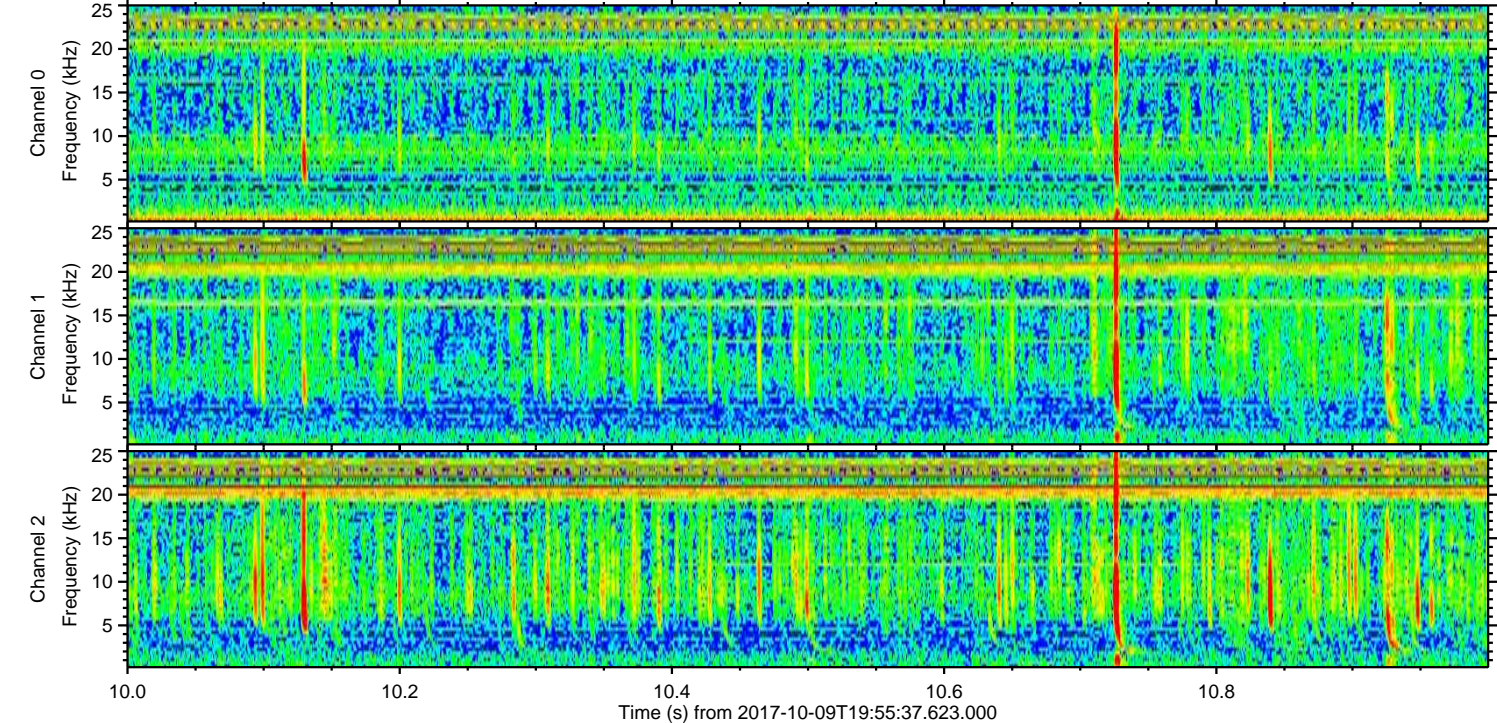
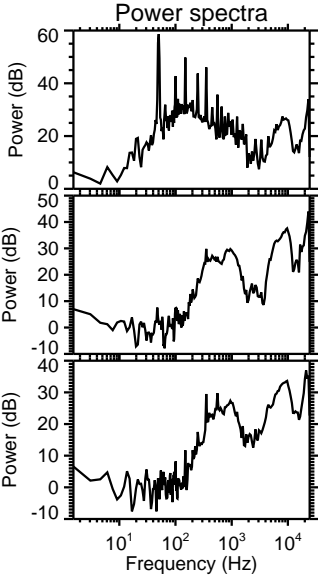
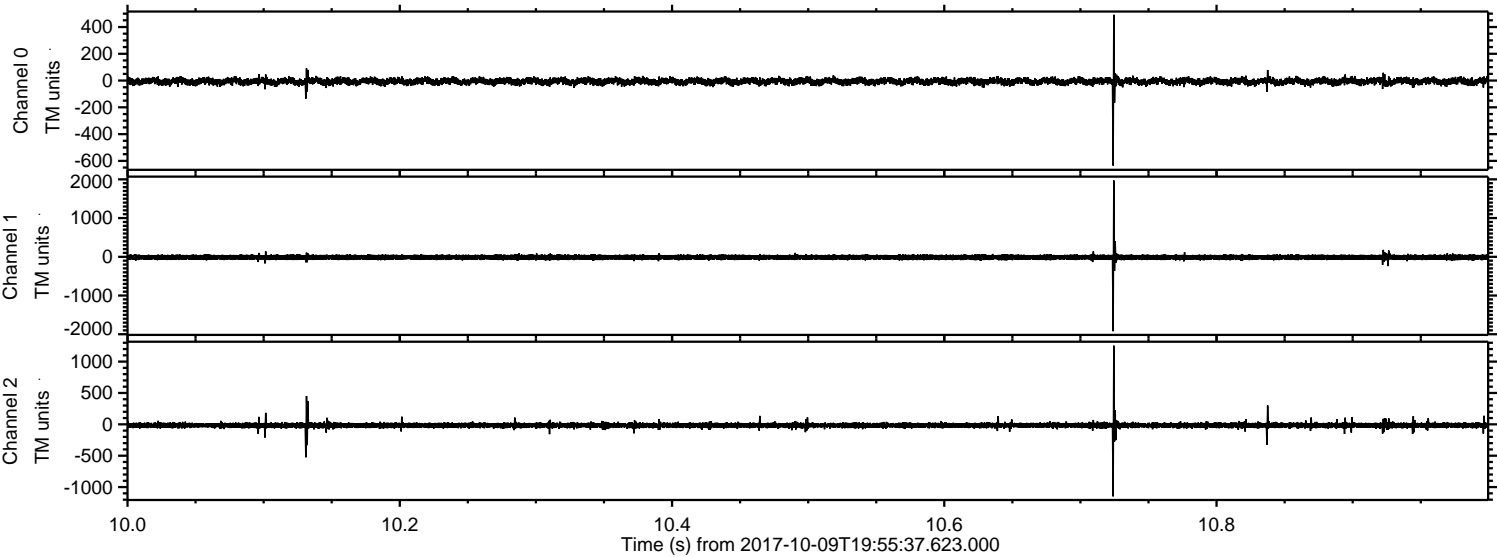


Channel 0
mn: -537
mx: 571
 μ : -6.2
 σ : 16.3

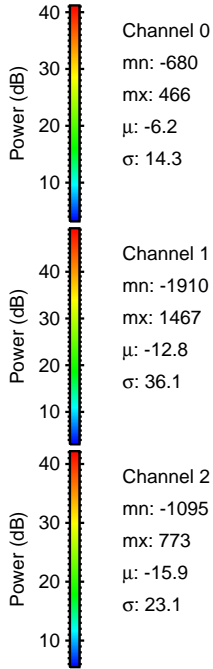
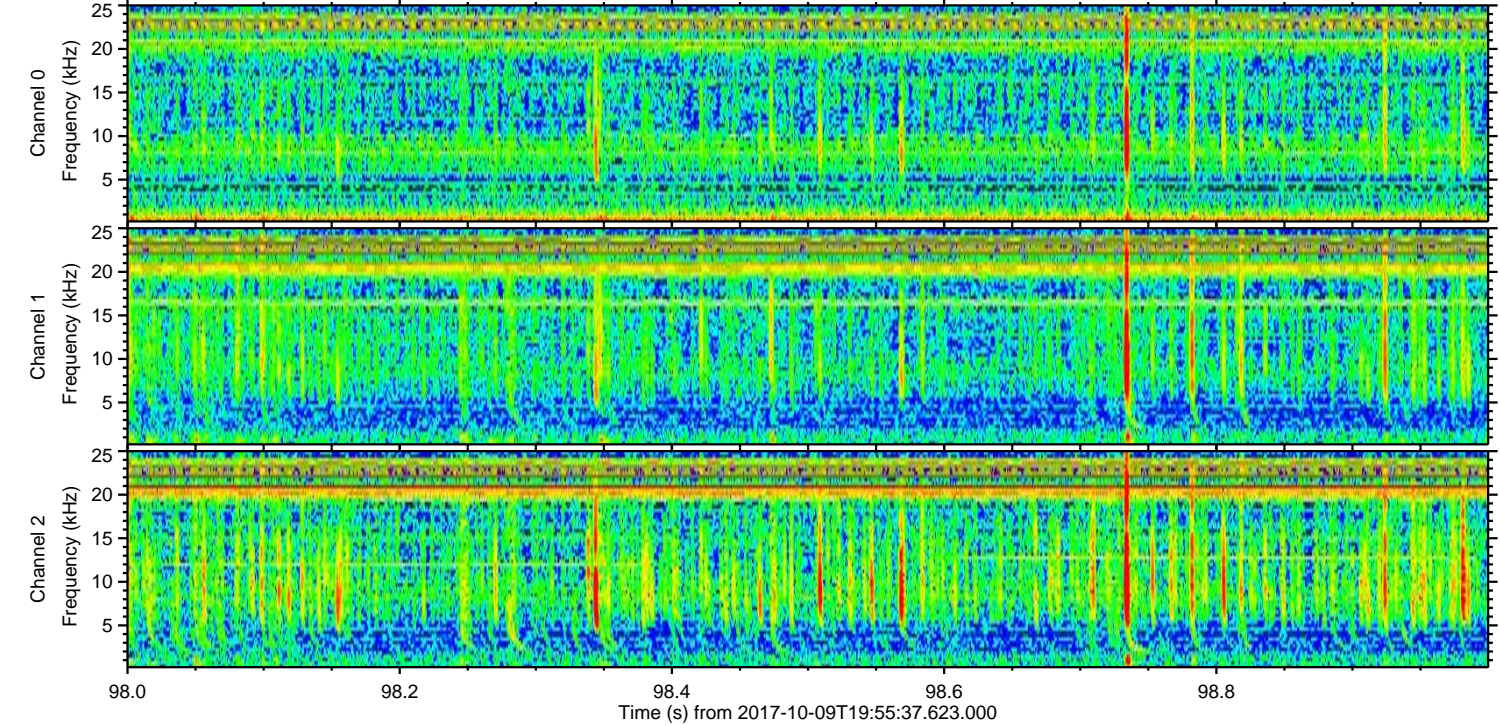
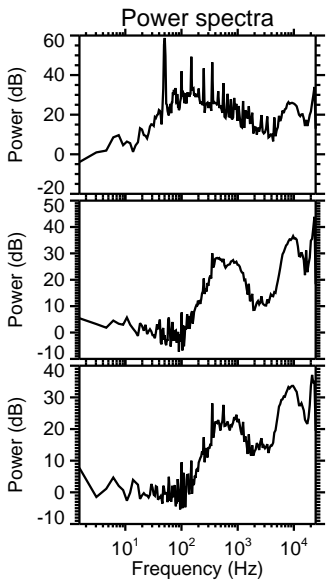
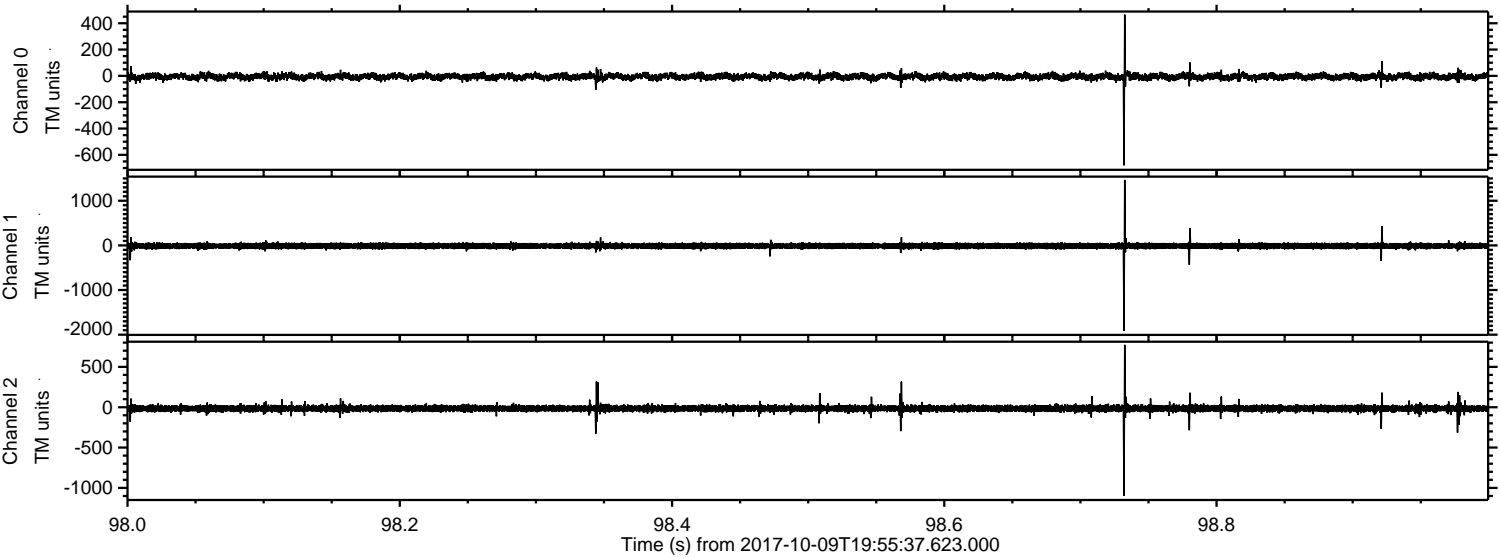
Channel 1
mn: -421
mx: 408
 μ : -12.8
 σ : 31.6

Channel 2
mn: -2039
mx: 1897
 μ : -15.9
 σ : 42.3

Processed Mon Oct 9 22:04:00 2017 by ELM ver.2012-10-06 from 001__elm20171009_195536__dat00.bin



Processed Mon Oct 9 22:04:01 2017 by ELM ver.2012-10-06 from 001__elm20171009_195536__dat00.bin



Channel 0
mn: -680
mx: 466
 μ : -6.2
 σ : 14.3

Channel 1
mn: -1910
mx: 1467
 μ : -12.8
 σ : 36.1

Channel 2
mn: -1095
mx: 773
 μ : -15.9
 σ : 23.1

Processed Mon Oct 9 22:04:02 2017 by ELM ver.2012-10-06 from 001__elm20171009_195536__dat00.bin

