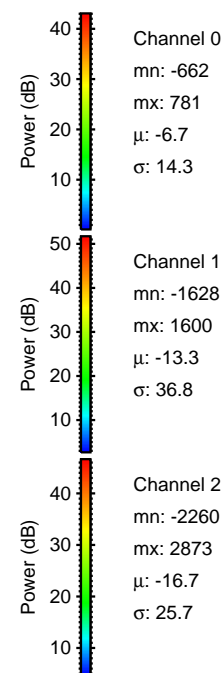
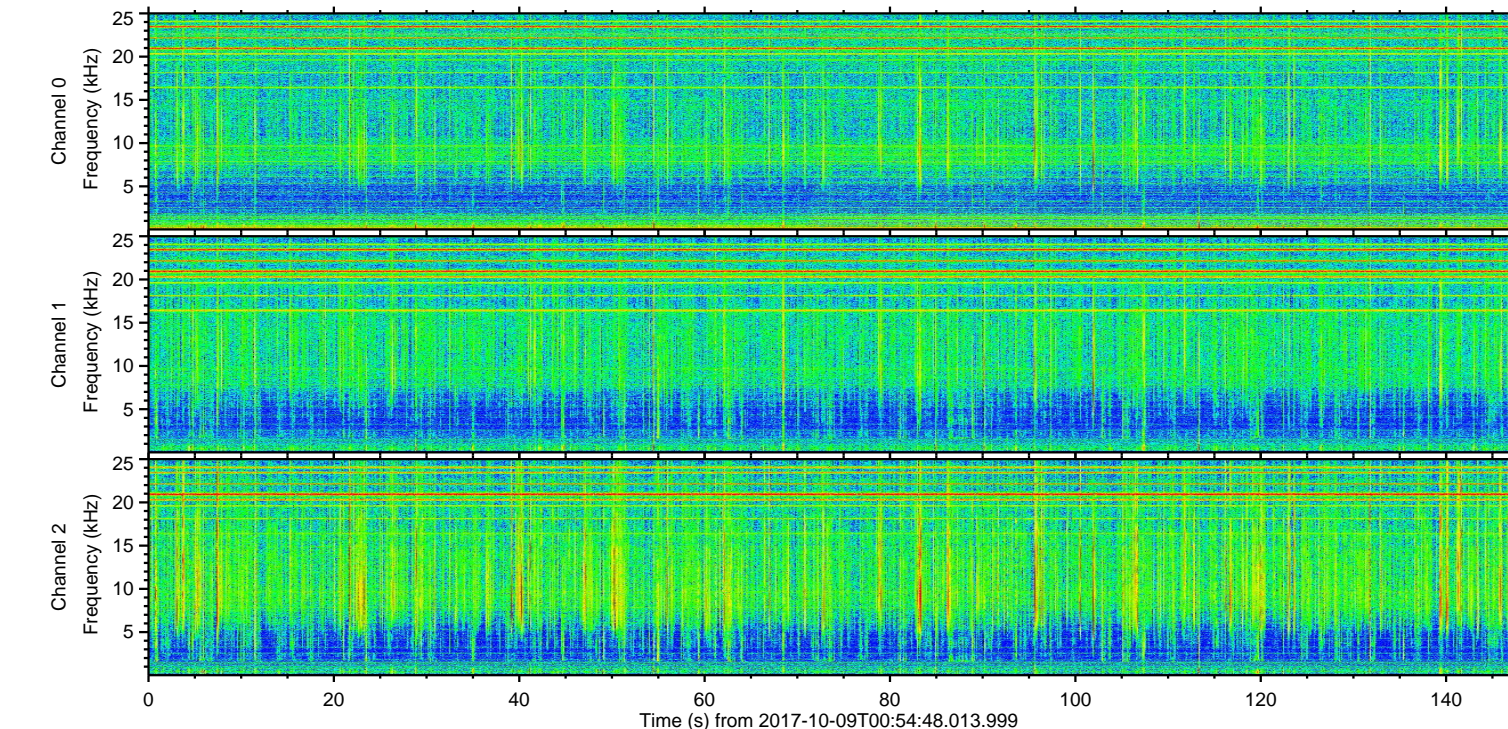
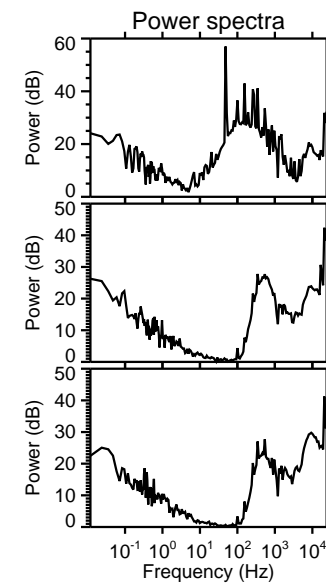
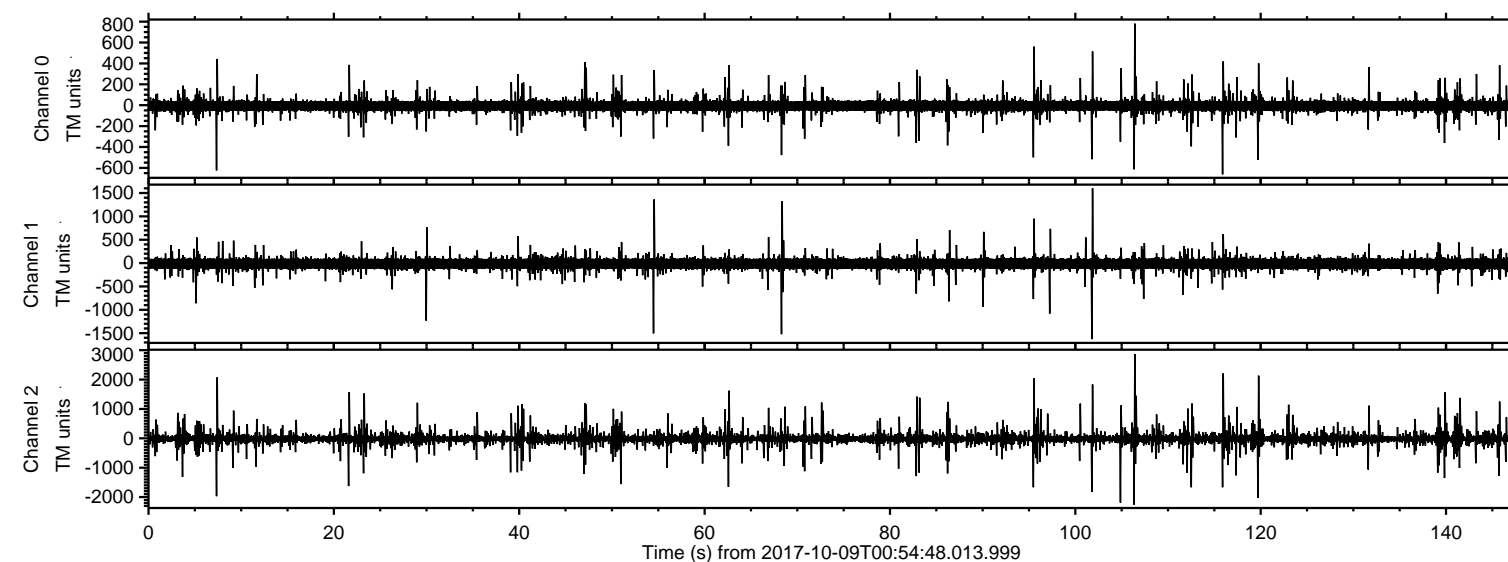


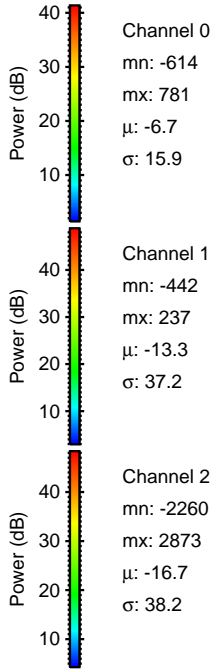
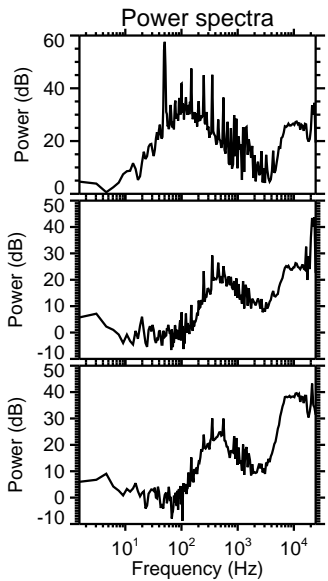
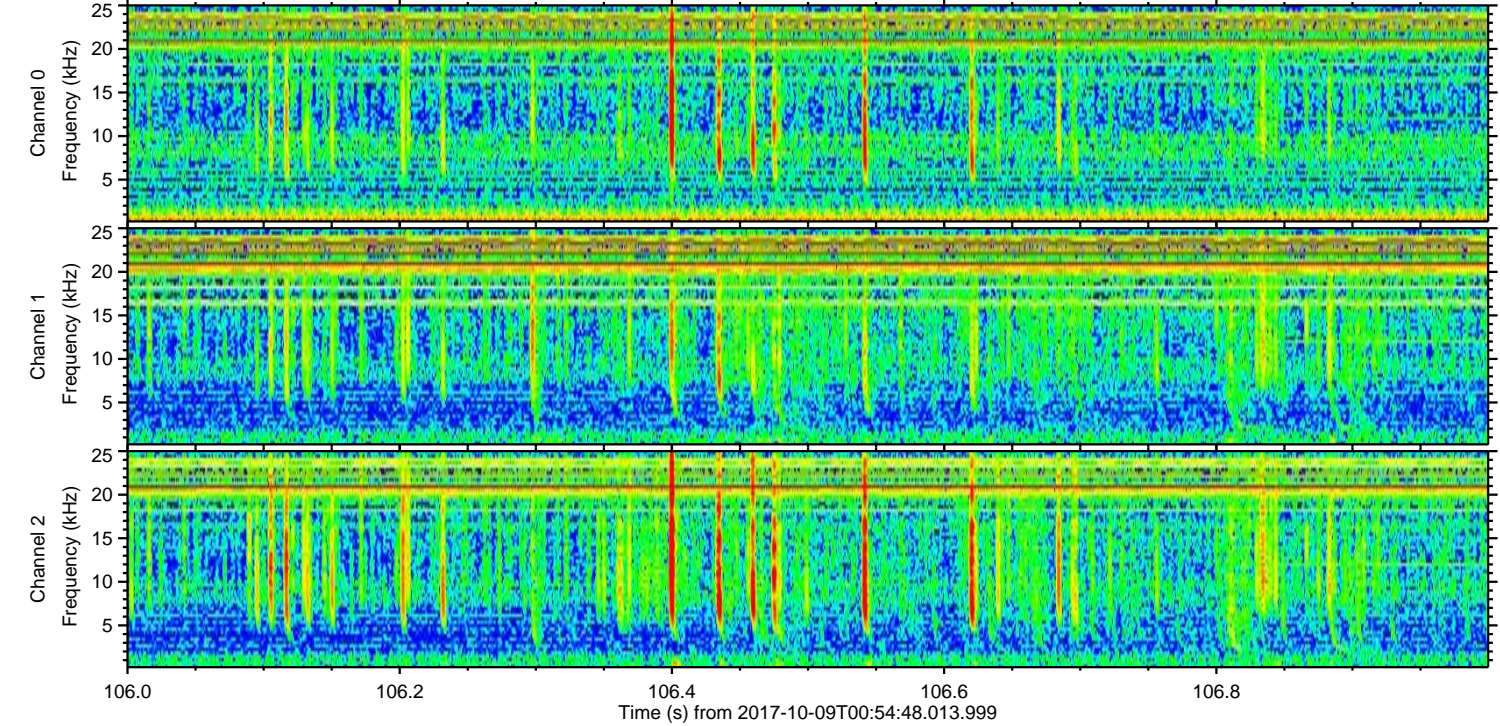
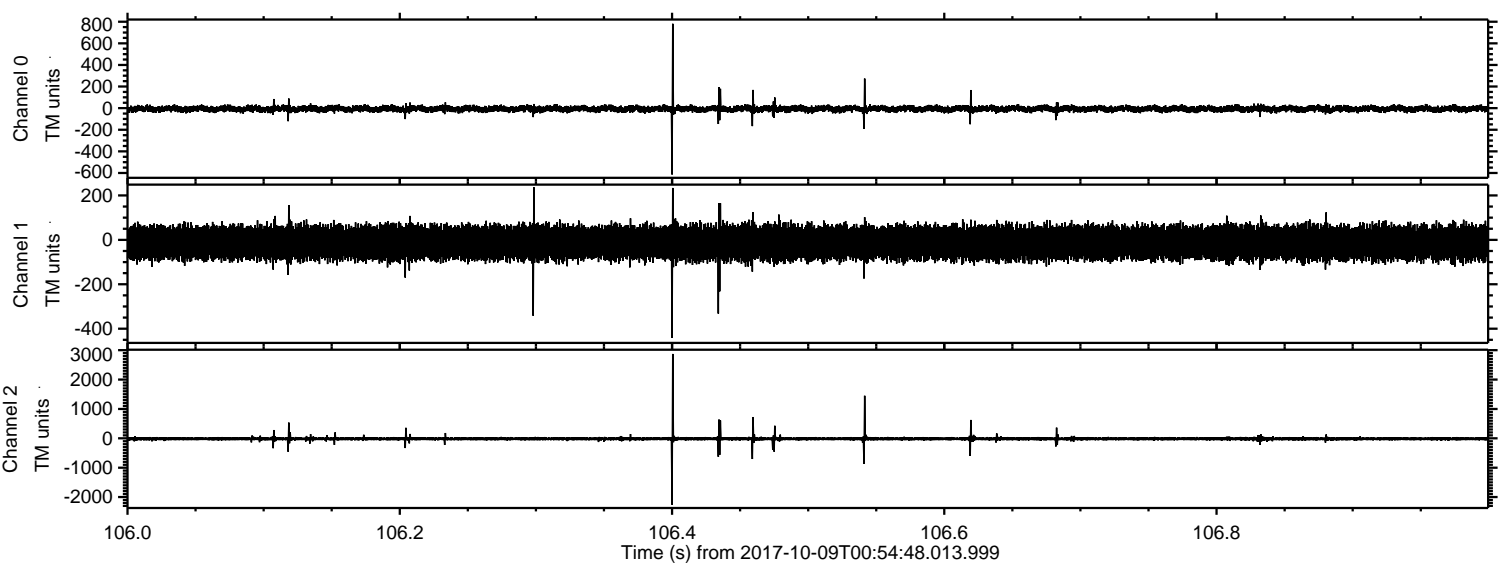
ELMAVAN 3D WAVEFORMS (Measured data sampled at 50 kHz) 51000 packets of 144 samples from 2017-10-09T00:54:48.013.999.

Processed Mon Oct 9 03:03:06 2017 by ELM ver.2012-10-06 from 001__elm20171009_005447__dat00.bin



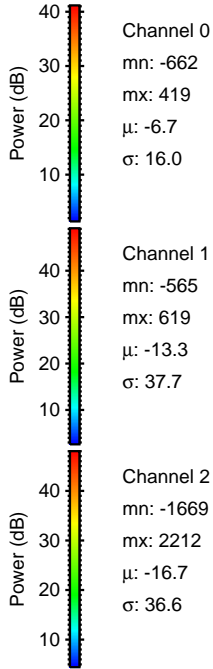
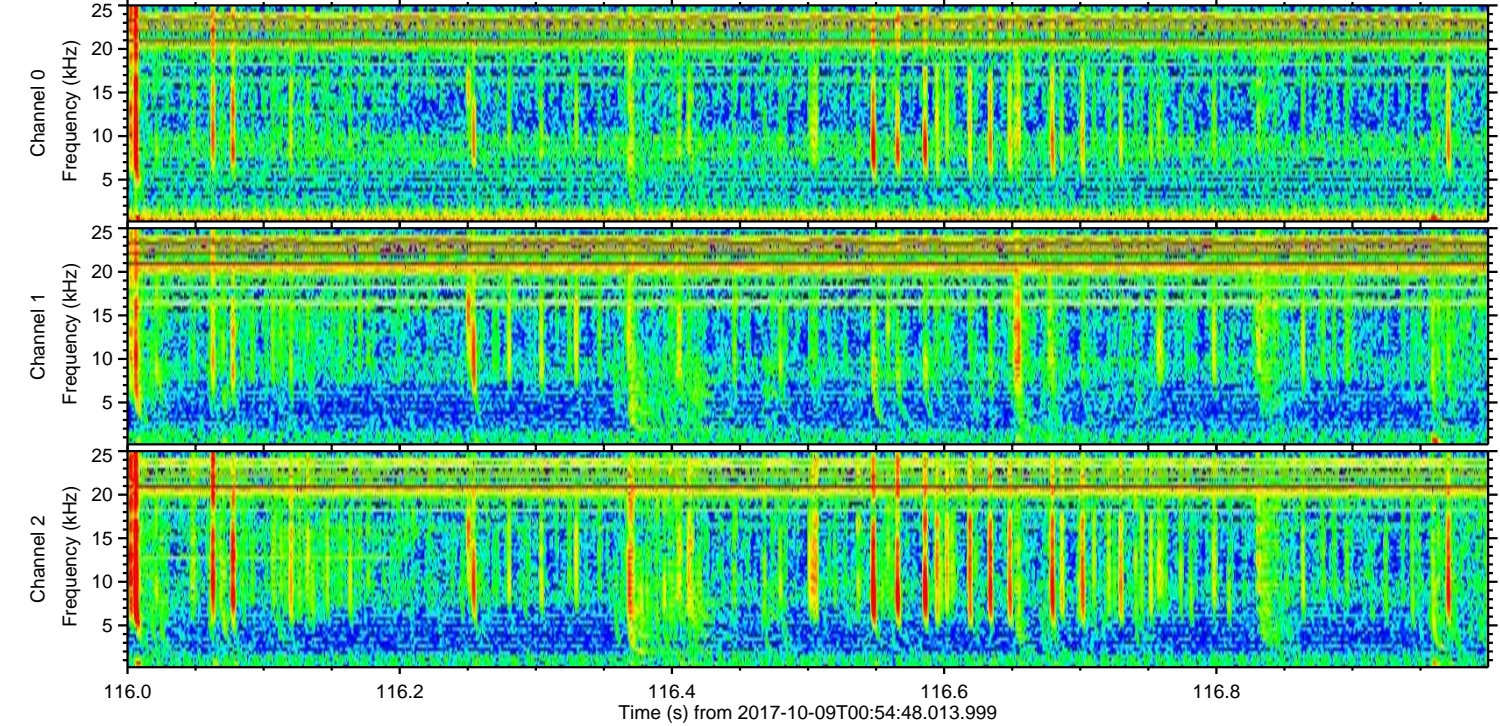
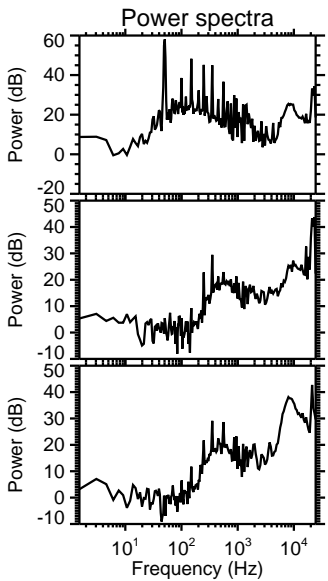
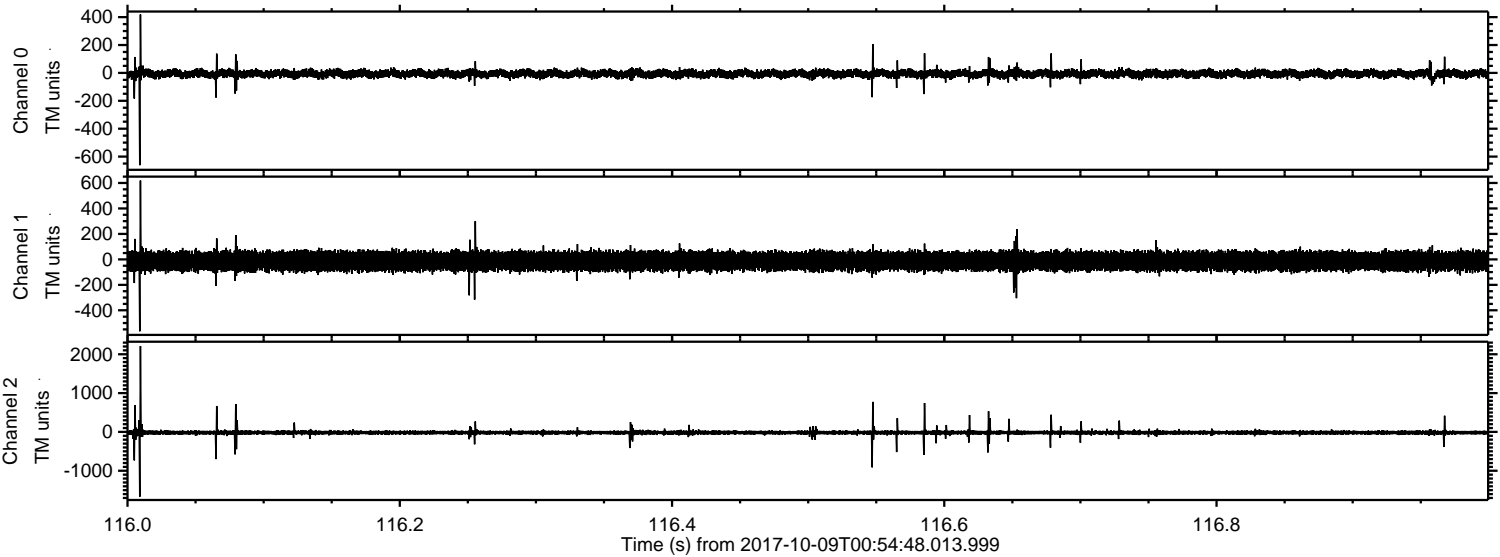
ELMAVAN 3D WAVEFORMS (Measured data sampled at 50 kHz) 51000 packets of 144 samples from 2017-10-09T00:54:48.013.999. Part 107/147

Processed Mon Oct 9 03:03:12 2017 by ELM ver.2012-10-06 from 001__elm20171009_005447__dat00.bin



ELMAVAN 3D WAVEFORMS (Measured data sampled at 50 kHz) 51000 packets of 144 samples from 2017-10-09T00:54:48.013.999. Part 117/147

Processed Mon Oct 9 03:03:13 2017 by ELM ver.2012-10-06 from 001__elm20171009_005447__dat00.bin



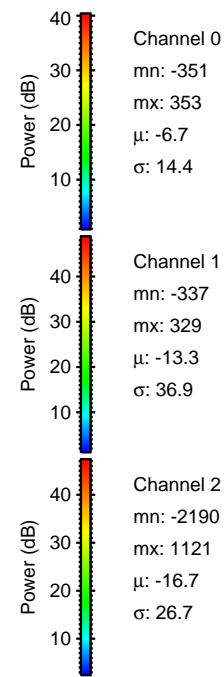
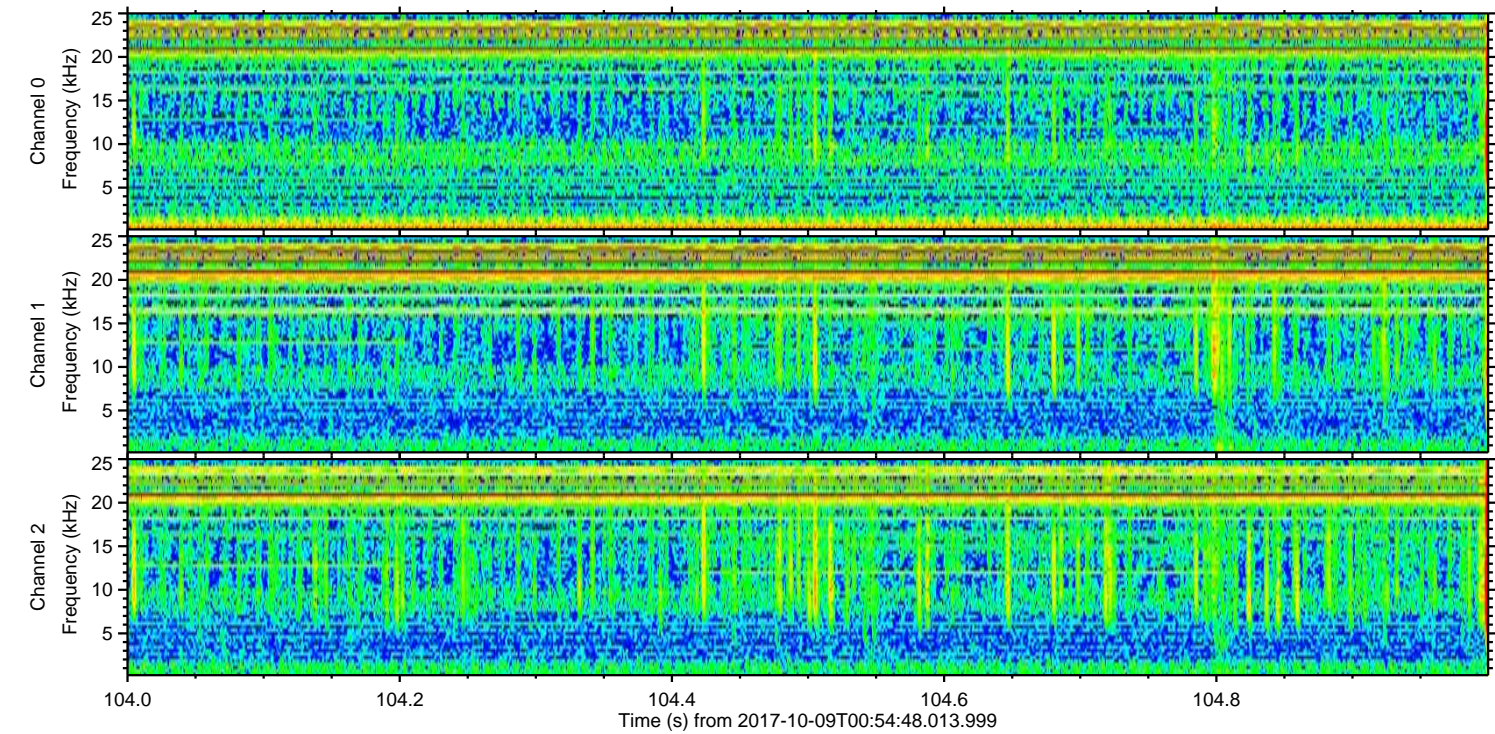
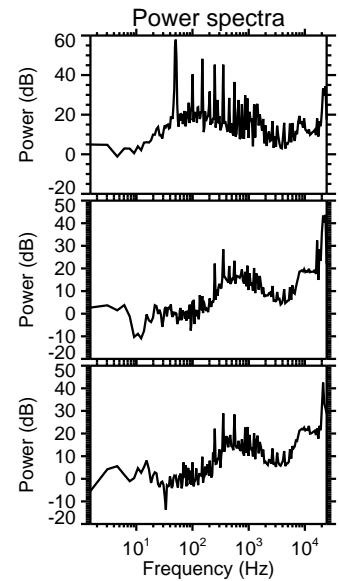
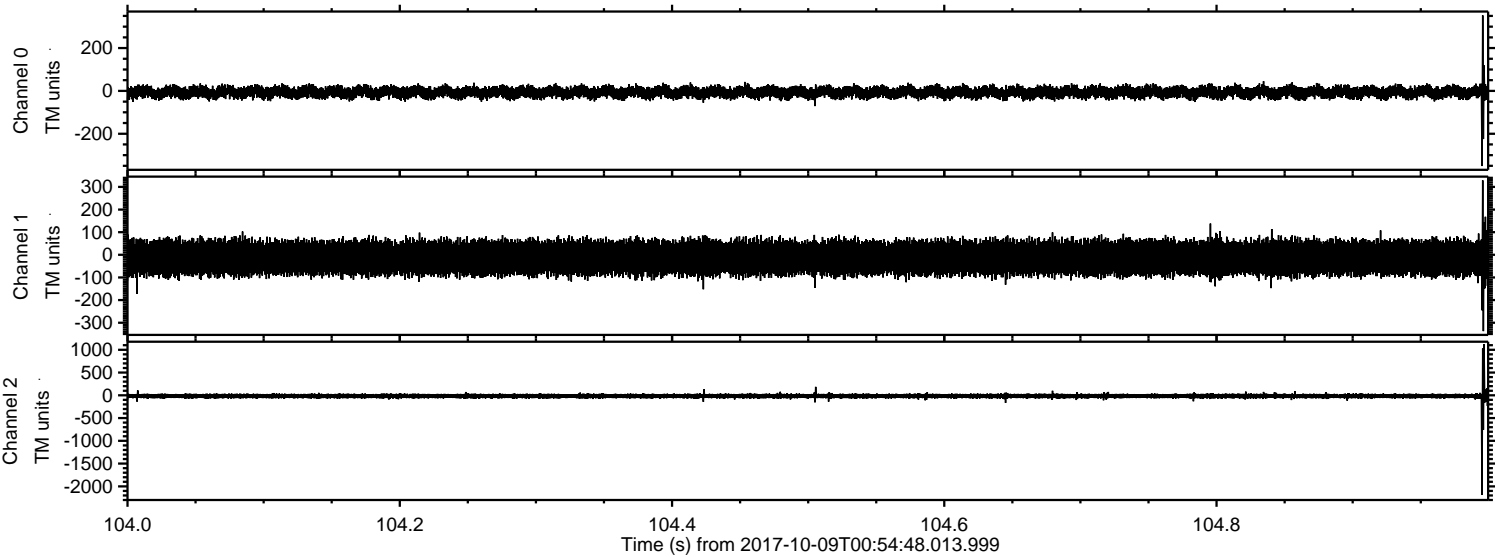
Channel 0
mn: -662
mx: 419
 μ : -6.7
 σ : 16.0

Channel 1
mn: -565
mx: 619
 μ : -13.3
 σ : 37.7

Channel 2
mn: -1669
mx: 2212
 μ : -16.7
 σ : 36.6

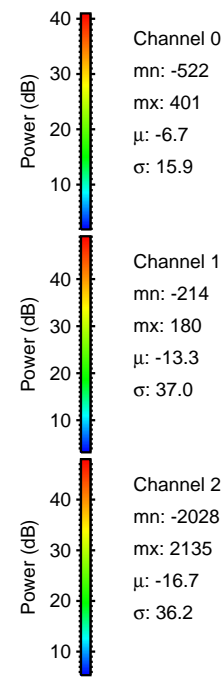
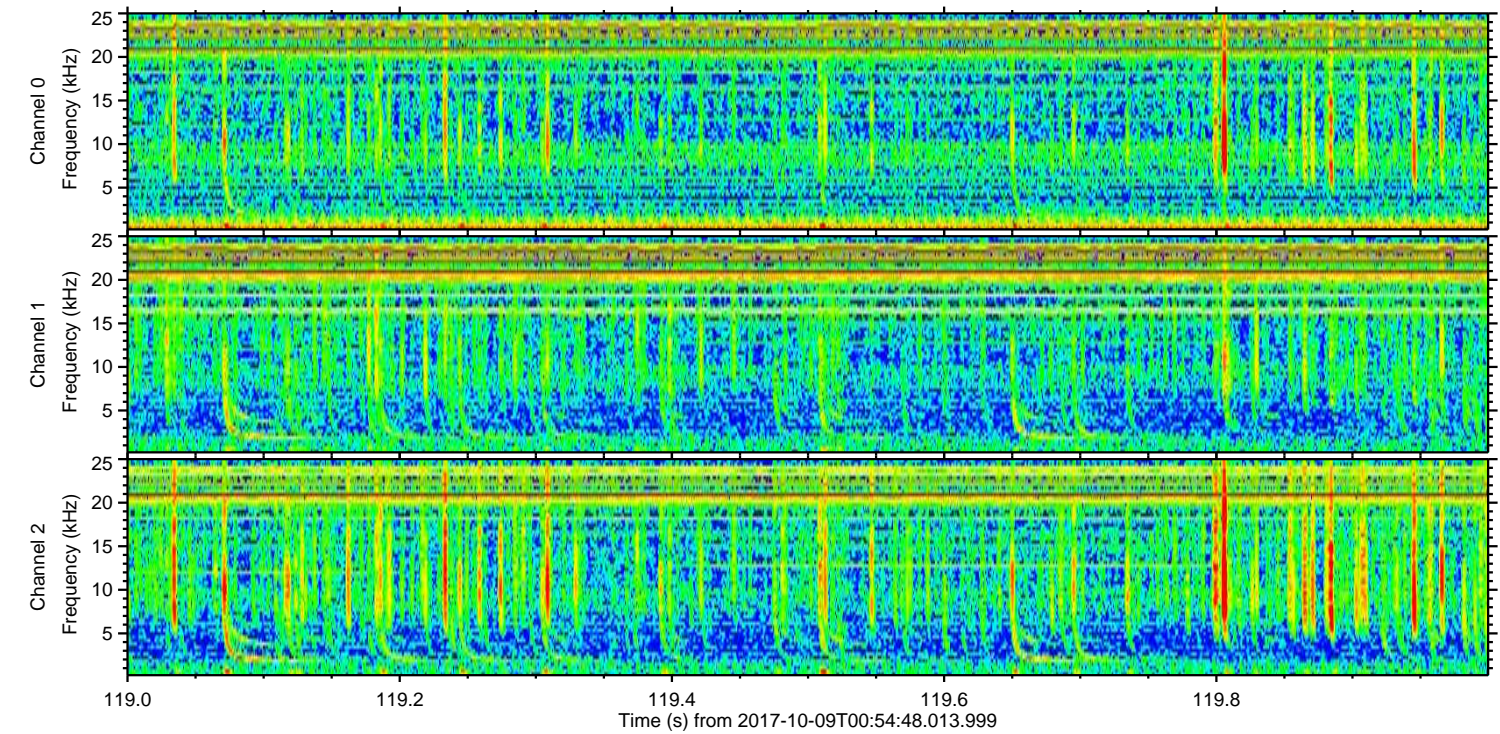
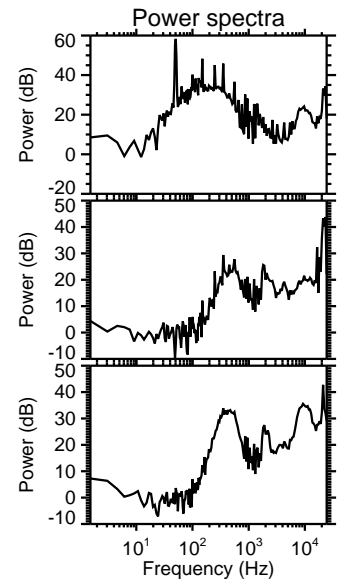
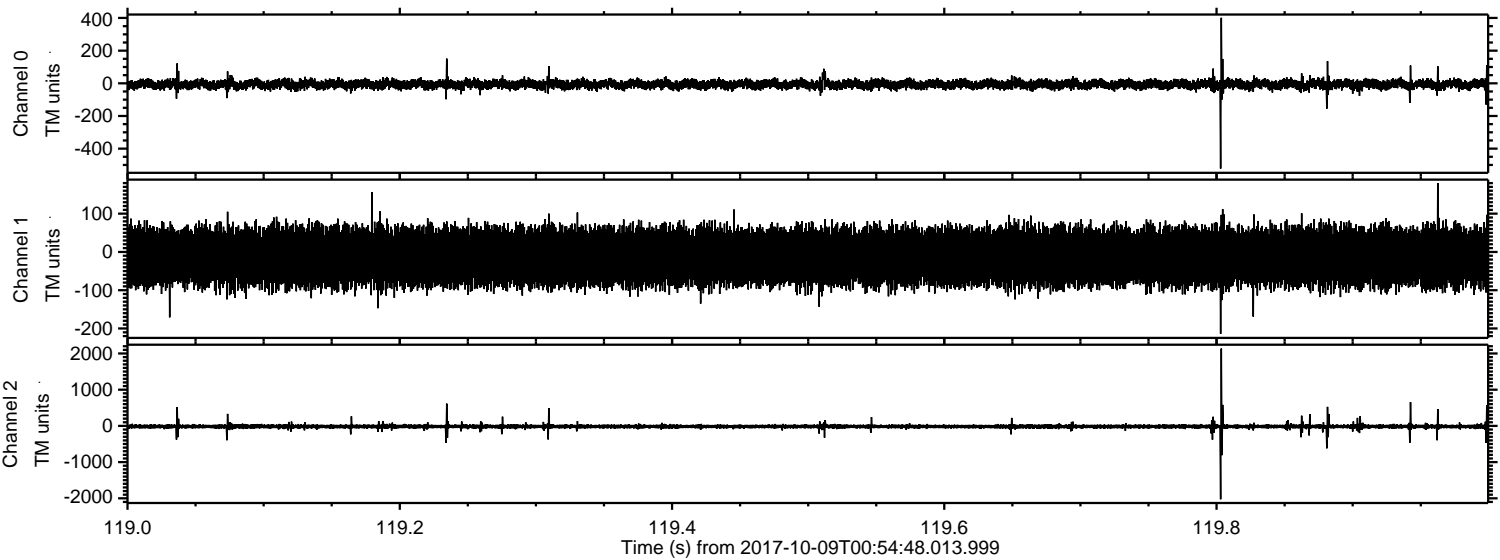
ELMAVAN 3D WAVEFORMS (Measured data sampled at 50 kHz) 51000 packets of 144 samples from 2017-10-09T00:54:48.013.999. Part 105/147

Processed Mon Oct 9 03:03:13 2017 by ELM ver.2012-10-06 from 001__elm20171009_005447__dat00.bin



ELMAVAN 3D WAVEFORMS (Measured data sampled at 50 kHz) 51000 packets of 144 samples from 2017-10-09T00:54:48.013.999. Part 120/147

Processed Mon Oct 9 03:03:14 2017 by ELM ver.2012-10-06 from 001__elm20171009_005447__dat00.bin



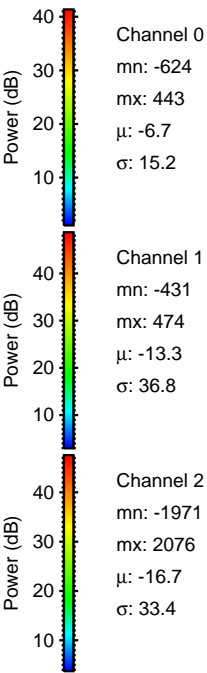
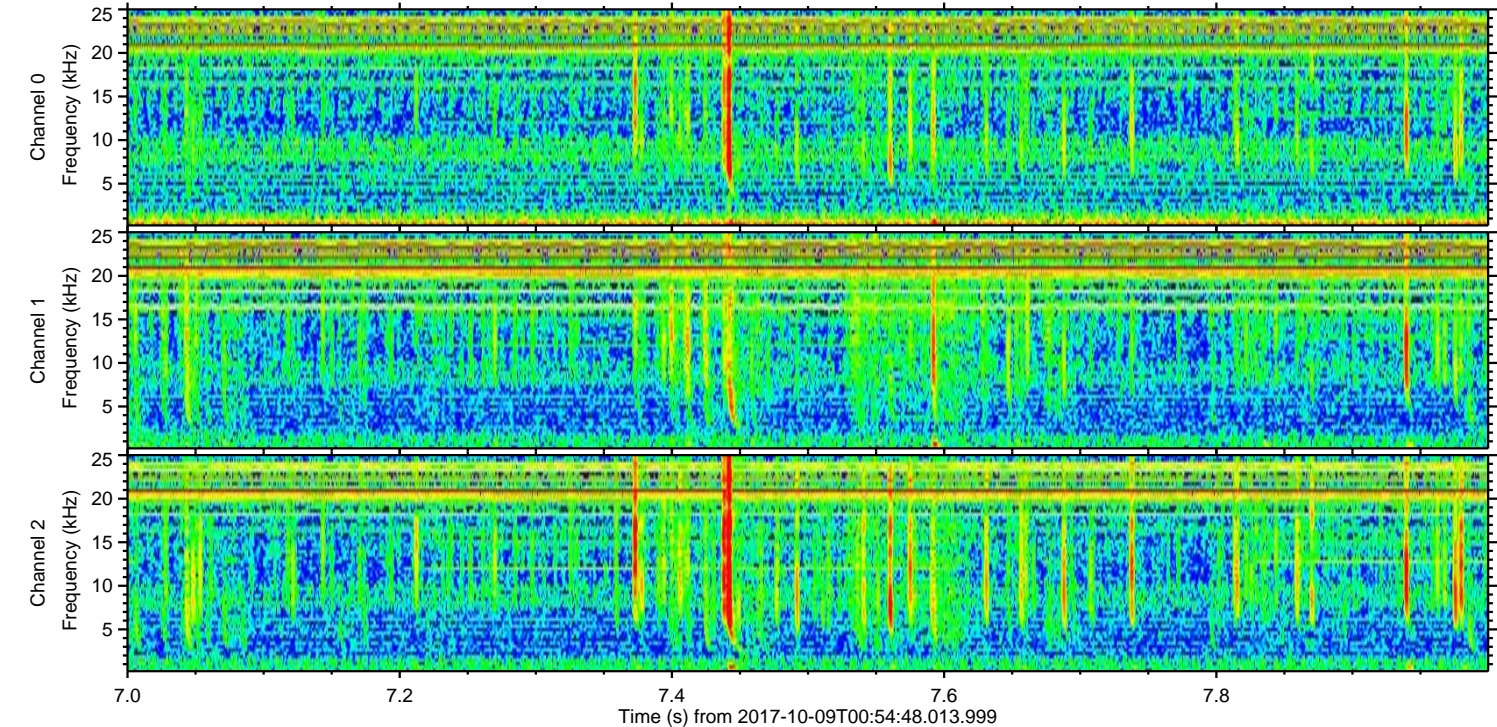
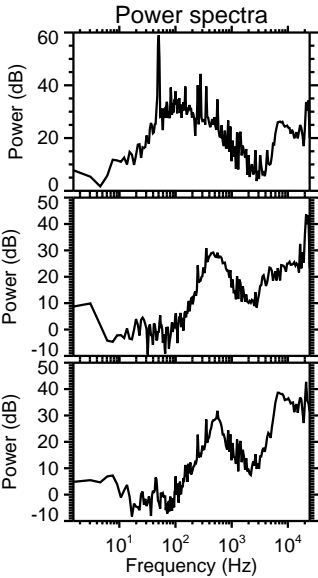
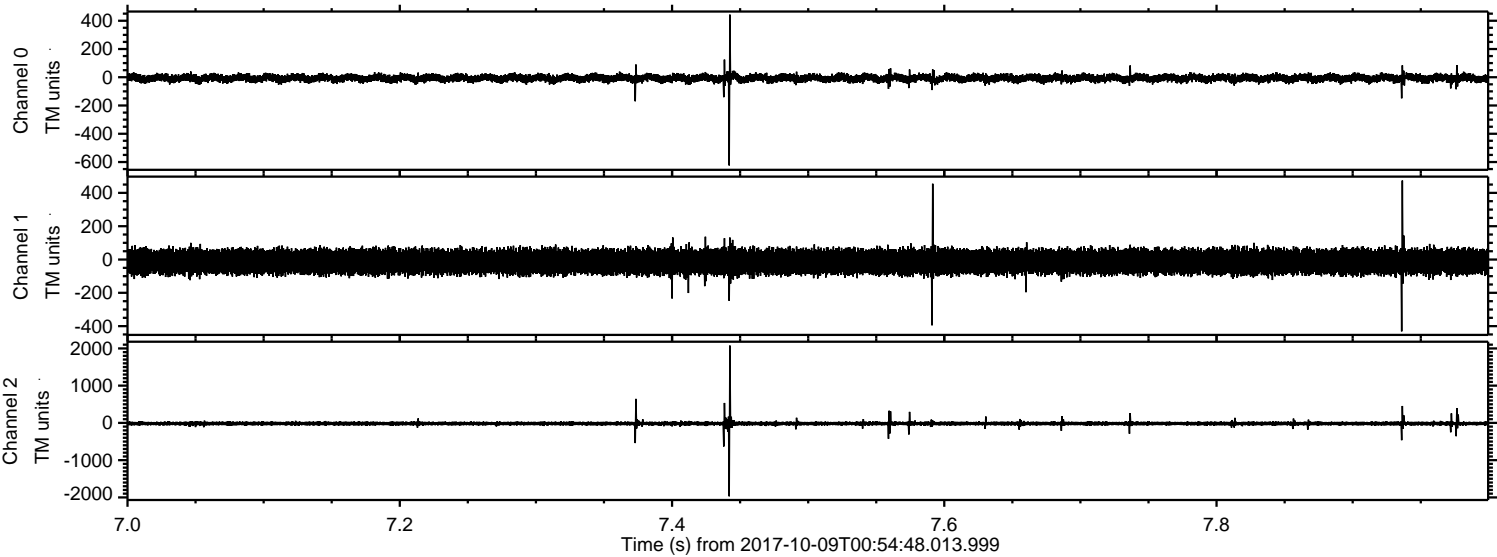
Channel 0
mn: -522
mx: 401
 μ : -6.7
 σ : 15.9

Channel 1
mn: -214
mx: 180
 μ : -13.3
 σ : 37.0

Channel 2
mn: -2028
mx: 2135
 μ : -16.7
 σ : 36.2

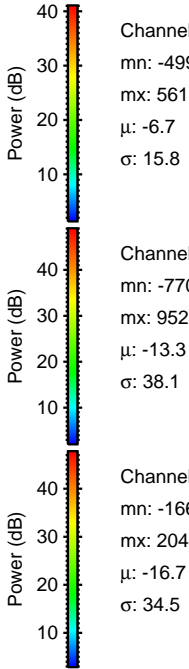
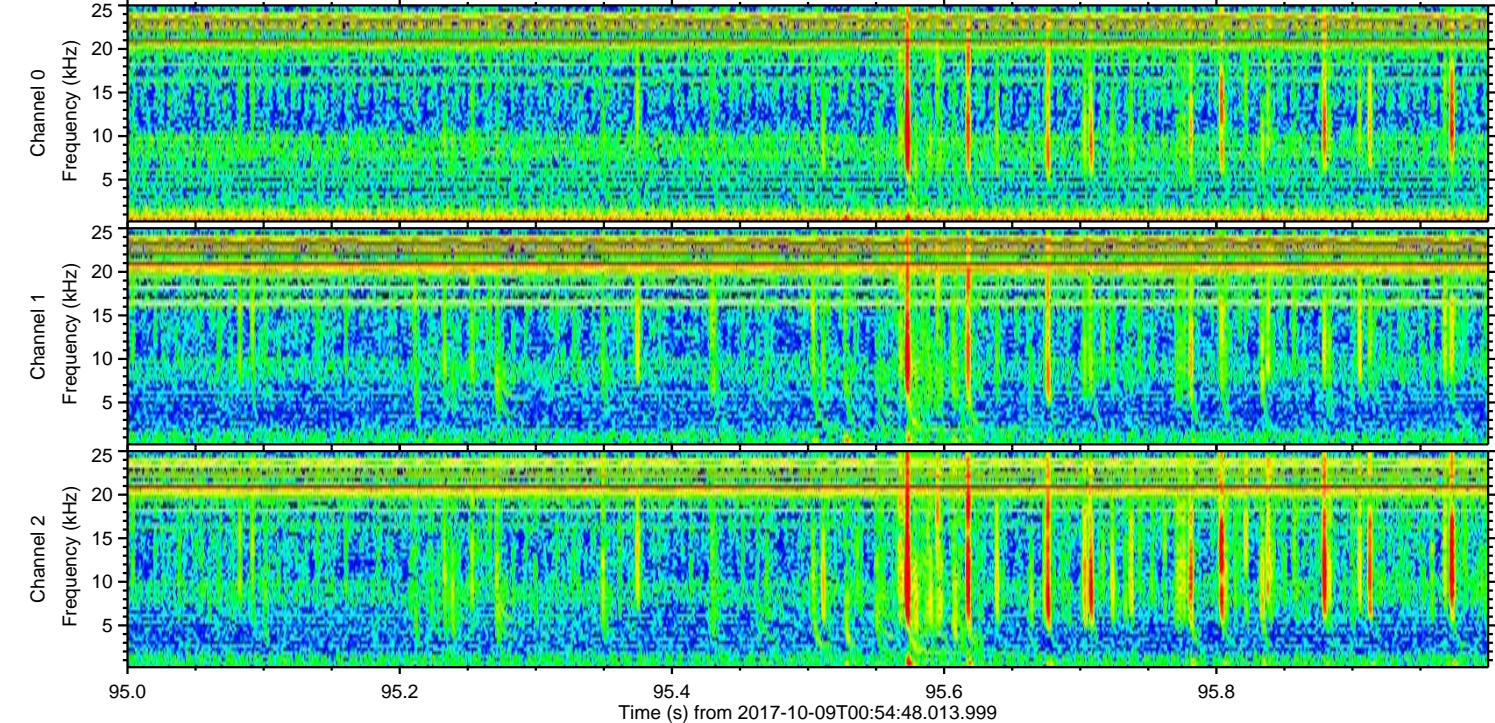
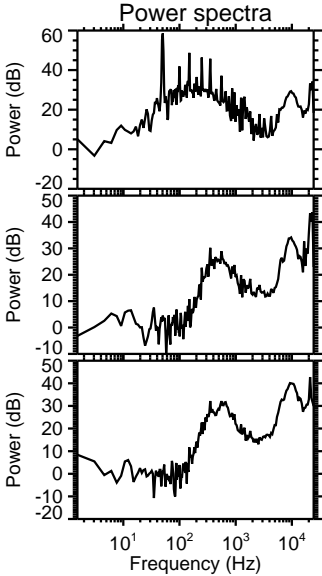
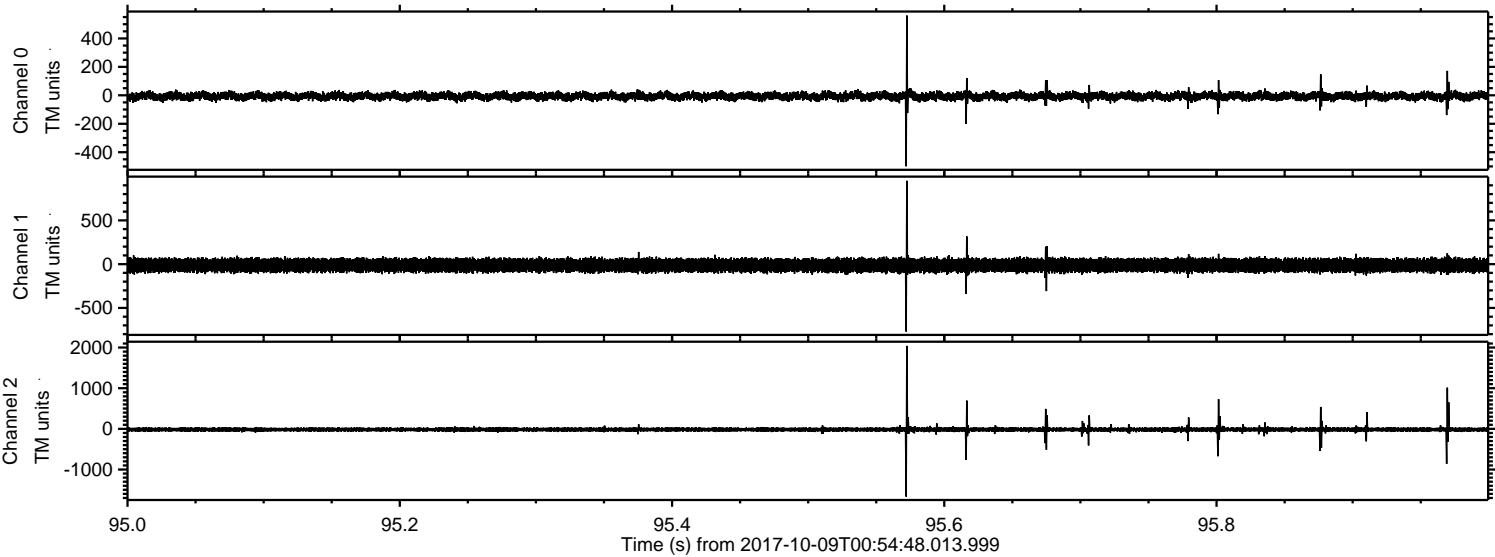
ELMAVAN 3D WAVEFORMS (Measured data sampled at 50 kHz) 51000 packets of 144 samples from 2017-10-09T00:54:48.013.999. Part 8/147

Processed Mon Oct 9 03:03:15 2017 by ELM ver.2012-10-06 from 001__elm20171009_005447__dat00.bin



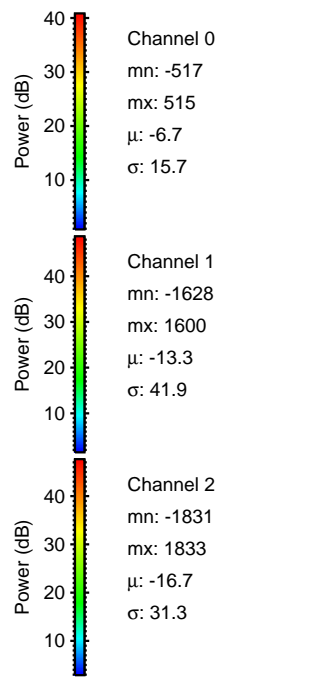
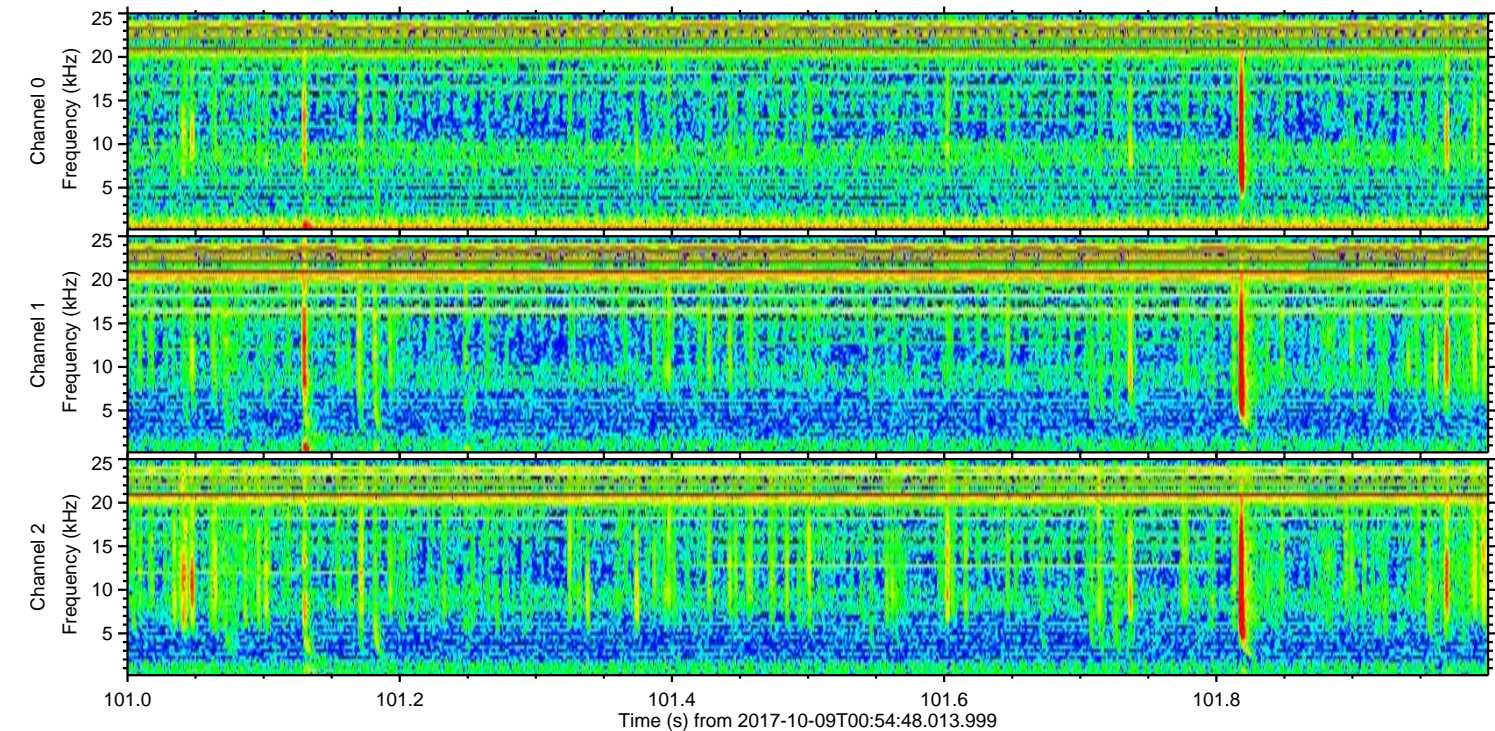
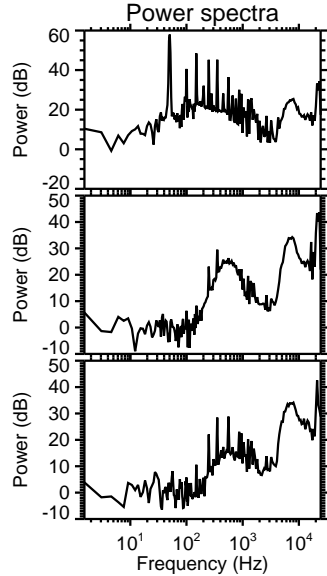
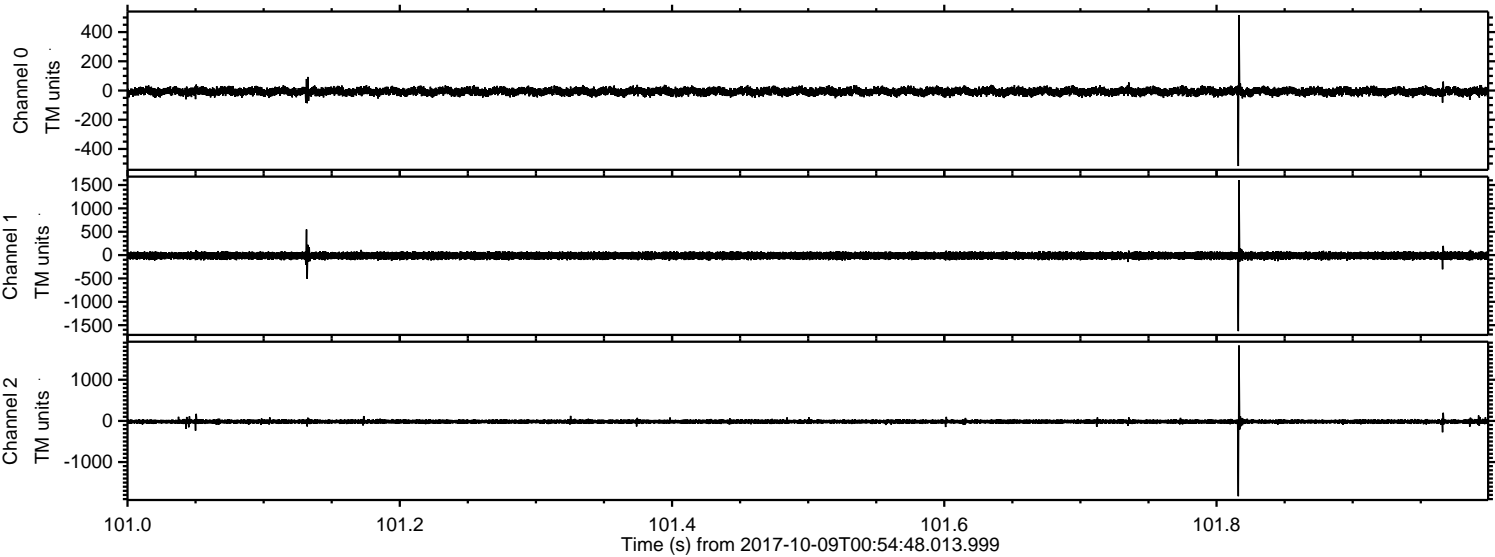
ELMAVAN 3D WAVEFORMS (Measured data sampled at 50 kHz) 51000 packets of 144 samples from 2017-10-09T00:54:48.013.999. Part 96/147

Processed Mon Oct 9 03:03:15 2017 by ELM ver.2012-10-06 from 001__elm20171009_005447__dat00.bin



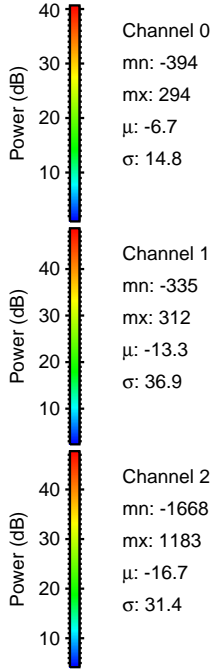
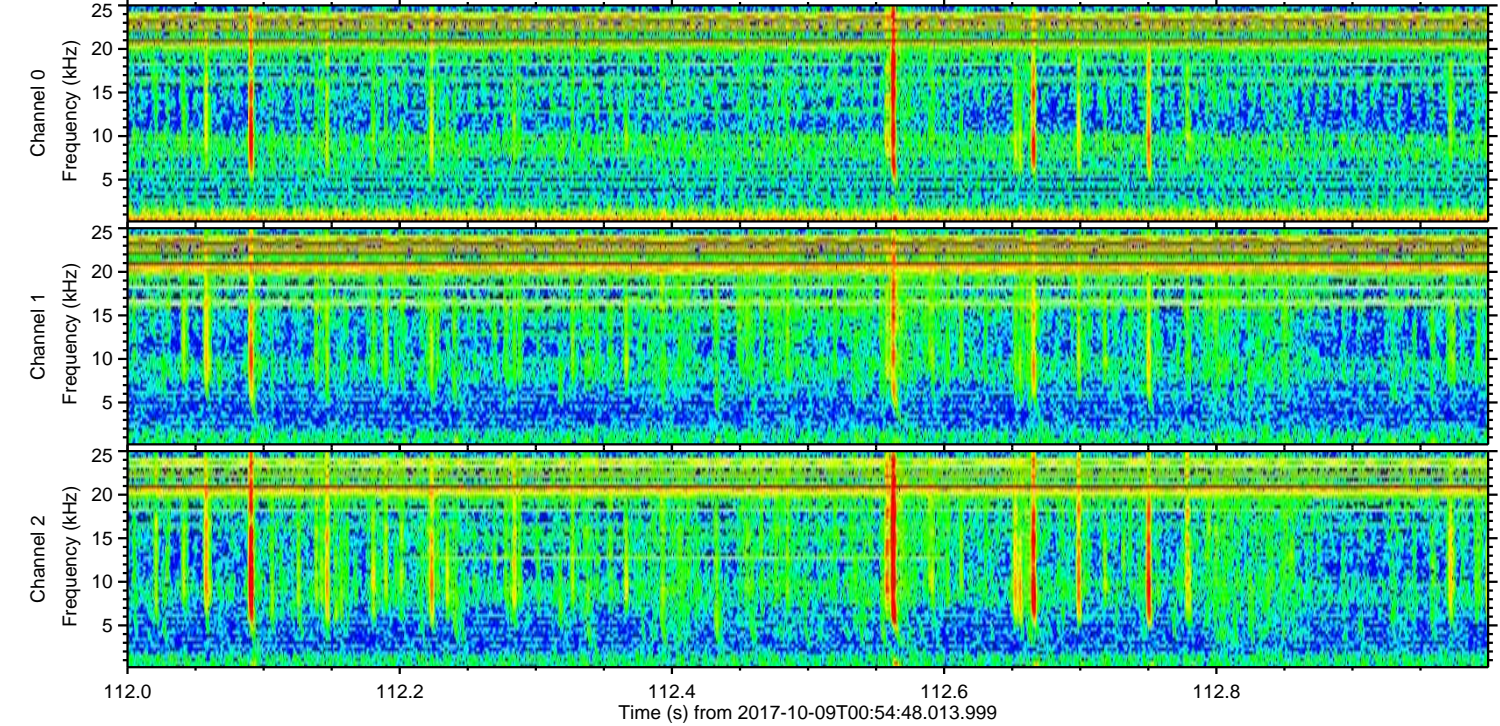
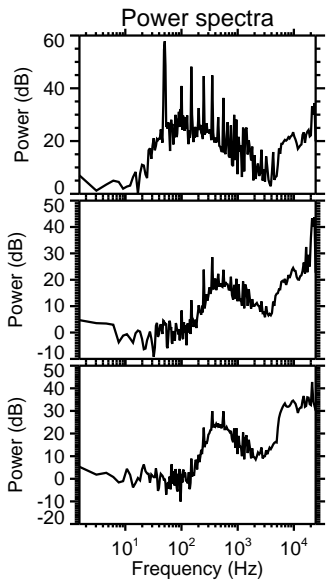
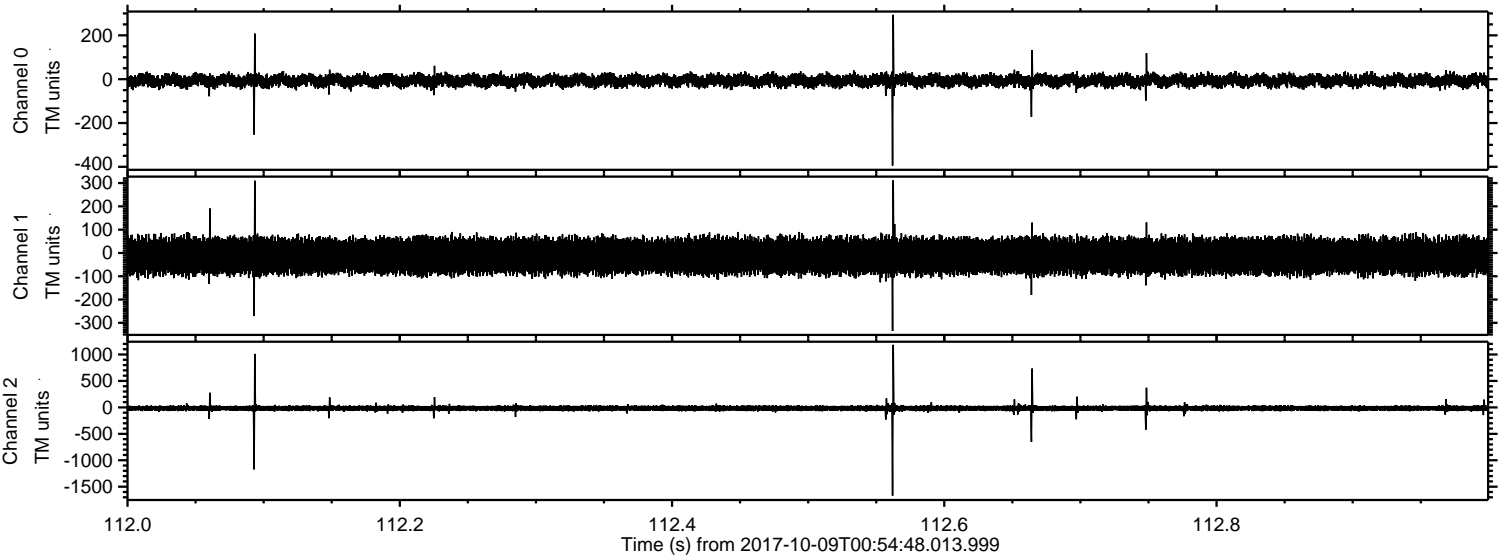
ELMAVAN 3D WAVEFORMS (Measured data sampled at 50 kHz) 51000 packets of 144 samples from 2017-10-09T00:54:48.013.999. Part 102/147

Processed Mon Oct 9 03:03:16 2017 by ELM ver.2012-10-06 from 001__elm20171009_005447__dat00.bin



ELMAVAN 3D WAVEFORMS (Measured data sampled at 50 kHz) 51000 packets of 144 samples from 2017-10-09T00:54:48.013.999. Part 113/147

Processed Mon Oct 9 03:03:17 2017 by ELM ver.2012-10-06 from 001__elm20171009_005447__dat00.bin

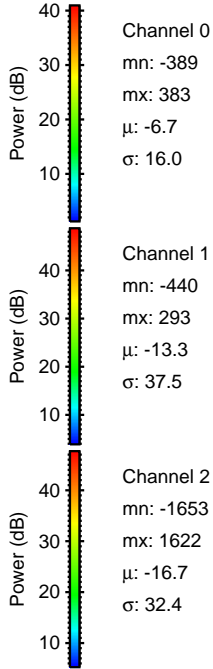
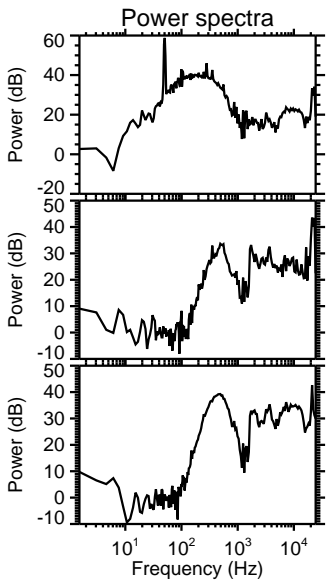
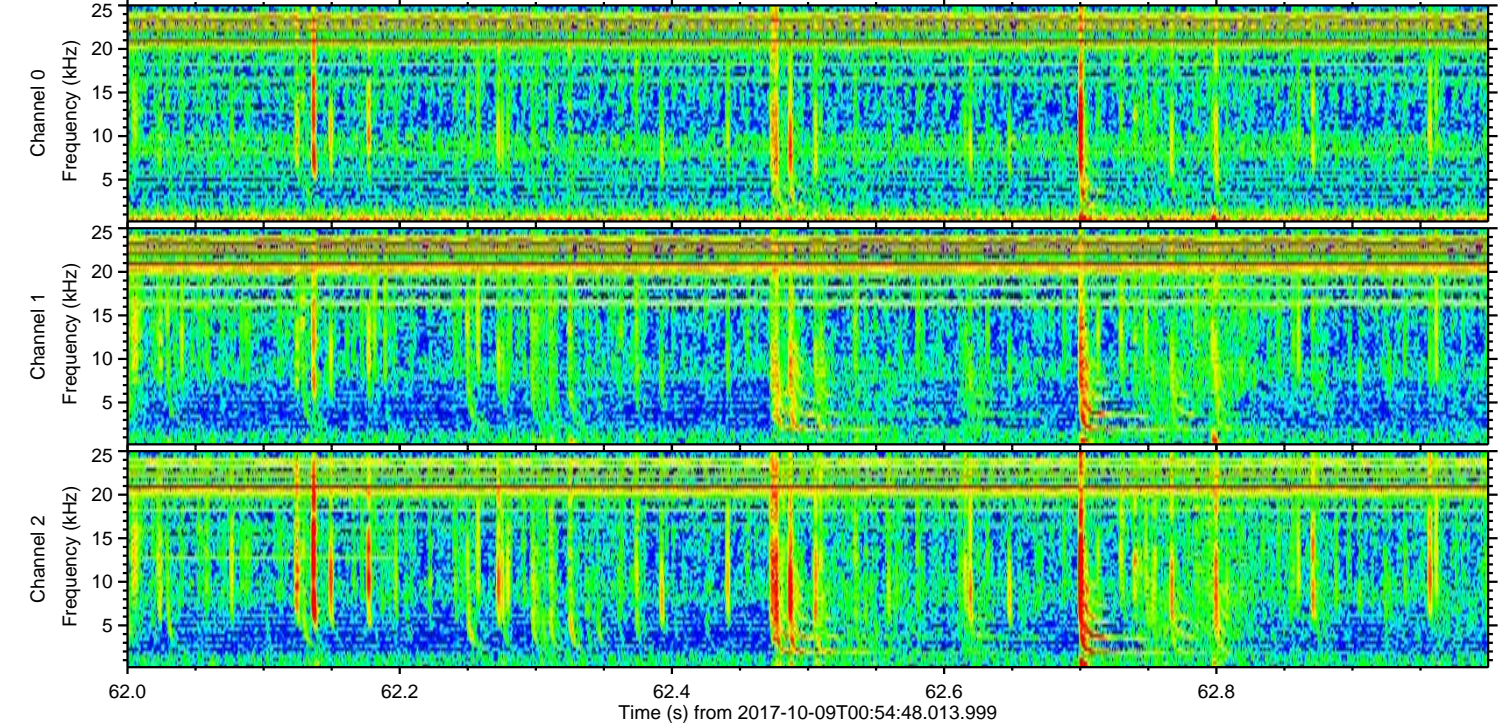
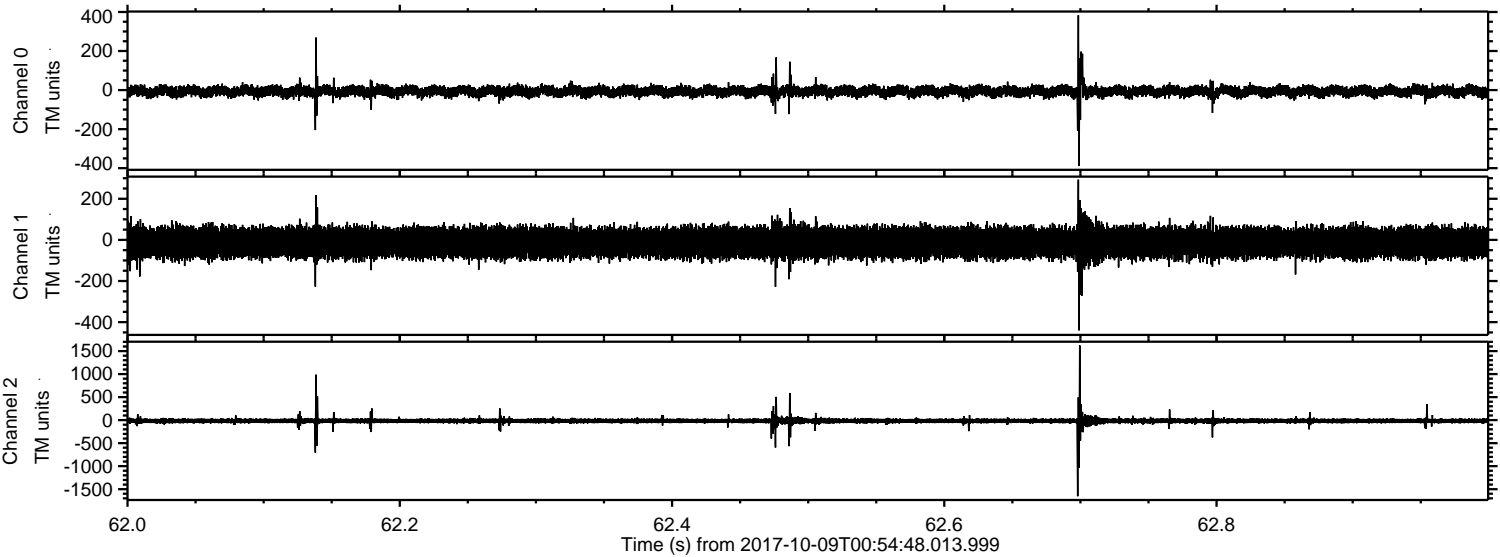


Channel 0
mn: -394
mx: 294
 μ : -6.7
 σ : 14.8

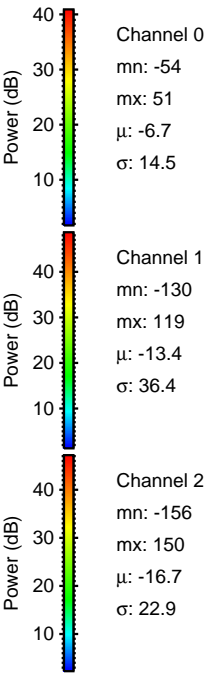
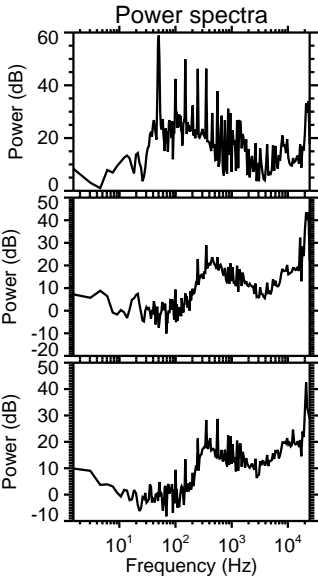
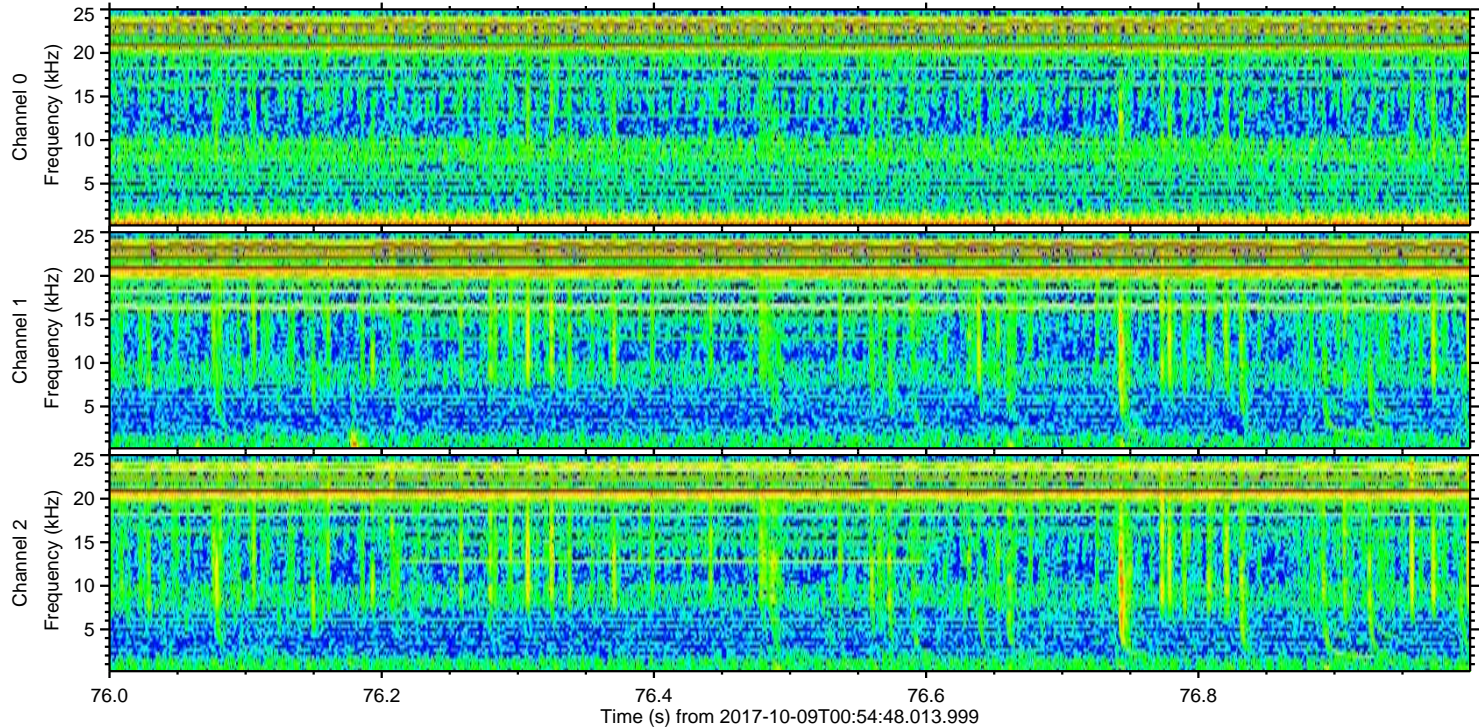
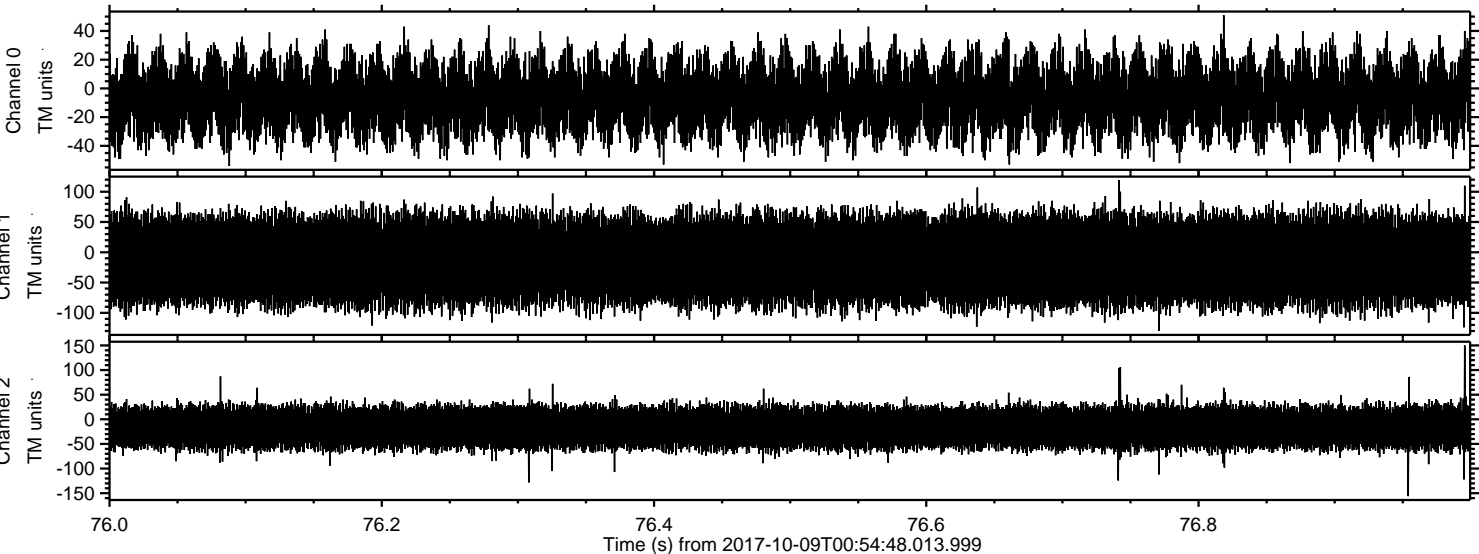
Channel 1
mn: -335
mx: 312
 μ : -13.3
 σ : 36.9

Channel 2
mn: -1668
mx: 1183
 μ : -16.7
 σ : 31.4

Processed Mon Oct 9 03:03:17 2017 by ELM ver.2012-10-06 from 001__elm20171009_005447__dat00.bin



Processed Mon Oct 9 03:03:18 2017 by ELM ver.2012-10-06 from 001__elm20171009_005447__dat00.bin



Channel 0
mn: -54
mx: 51
 μ : -6.7
 σ : 14.5

Channel 1
mn: -130
mx: 119
 μ : -13.4
 σ : 36.4

Channel 2
mn: -156
mx: 150
 μ : -16.7
 σ : 22.9