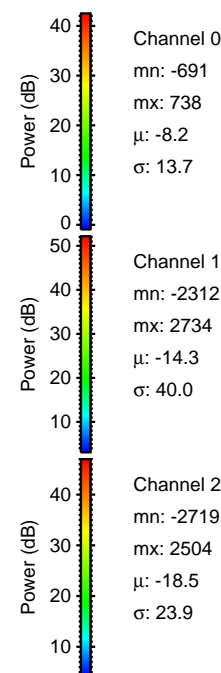
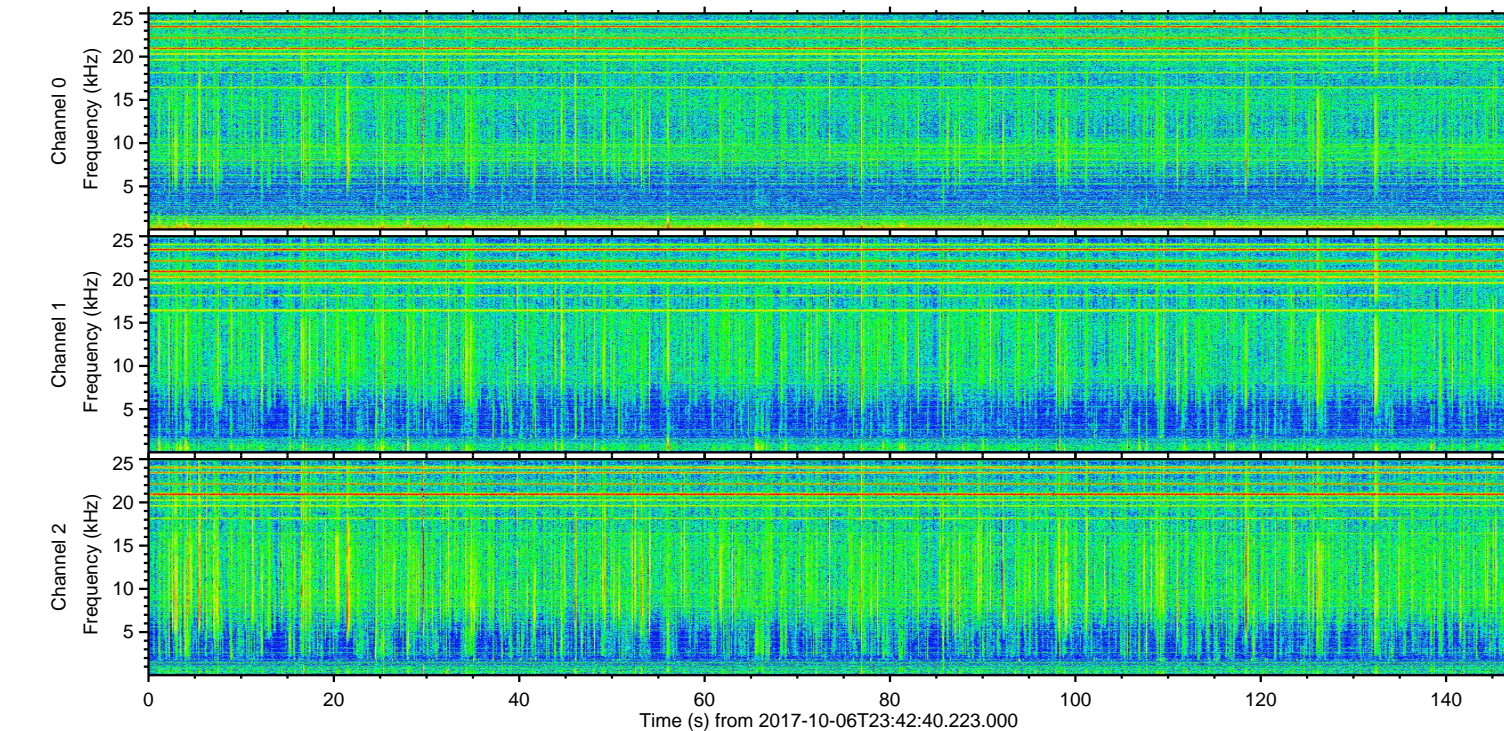
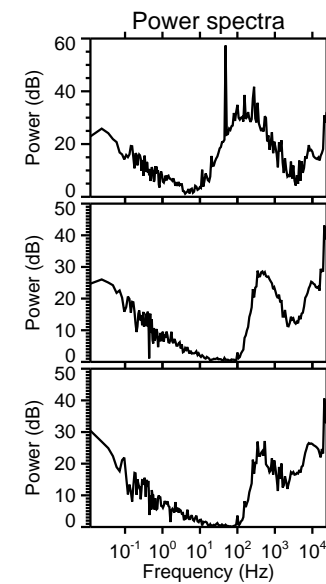
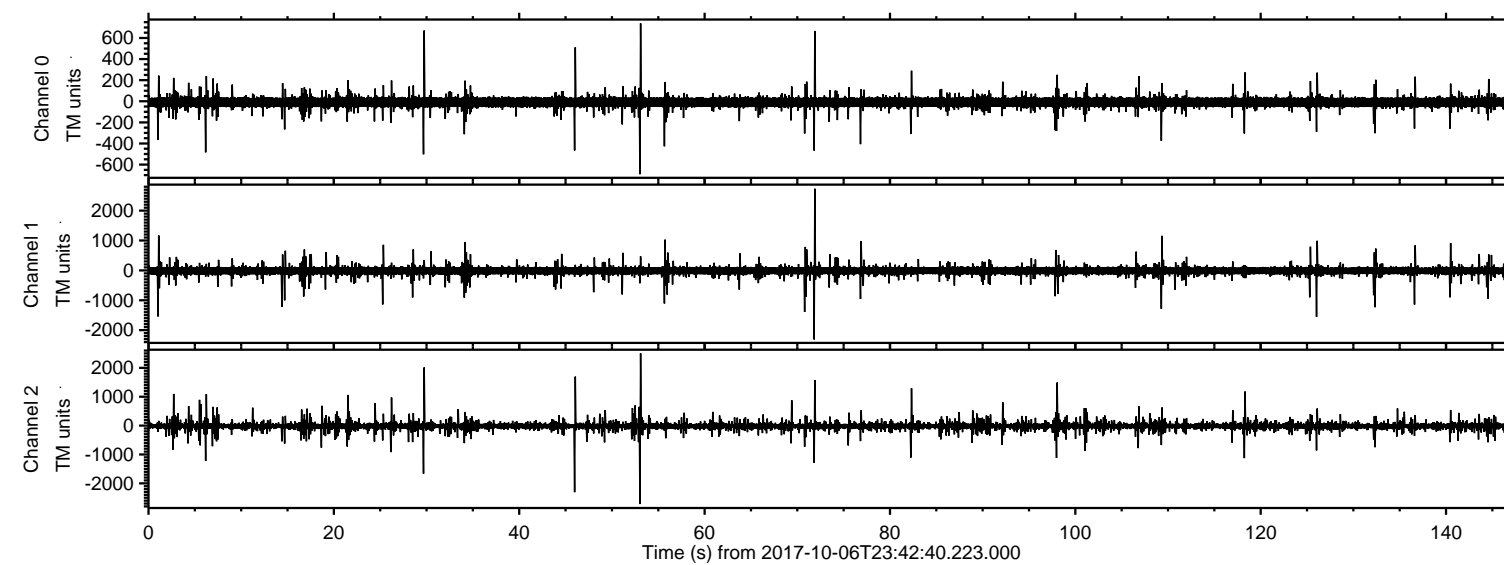


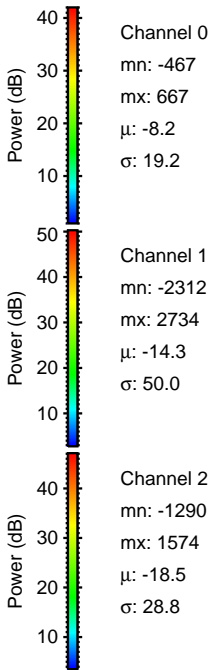
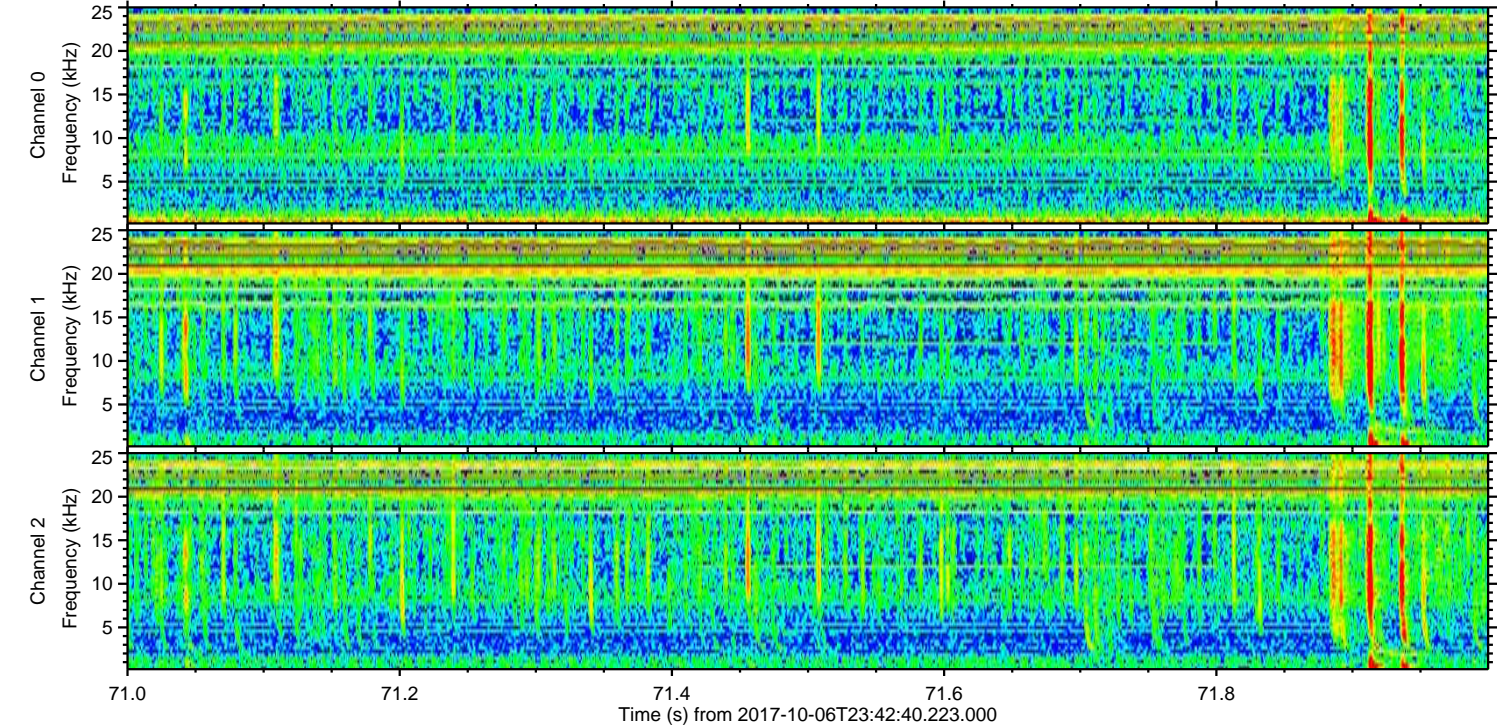
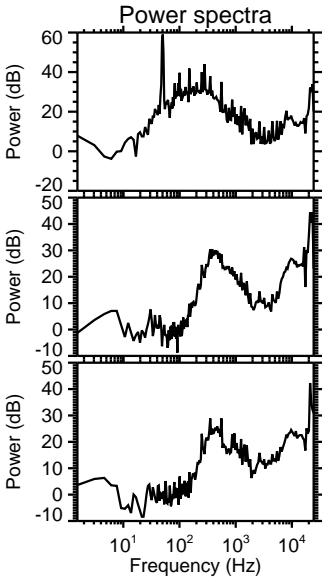
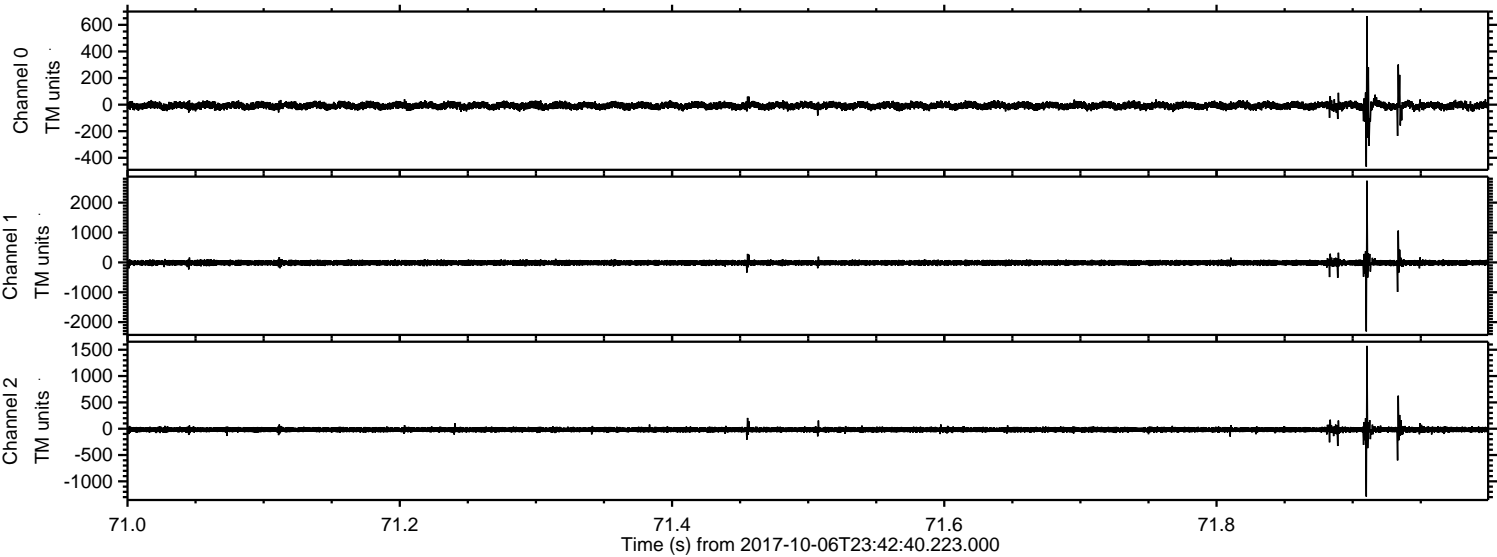
ELMAVAN 3D WAVEFORMS (Measured data sampled at 50 kHz) 51000 packets of 144 samples from 2017-10-06T23:42:40.223.000.

Processed Sat Oct 7 01:50:21 2017 by ELM ver.2012-10-06 from 001__elm20171006_234239__dat00.bin

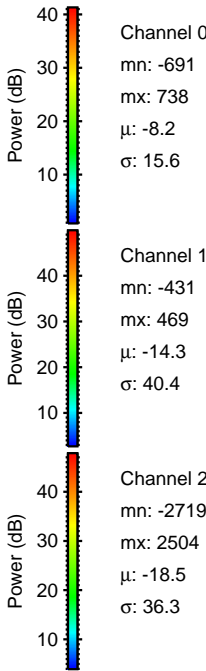
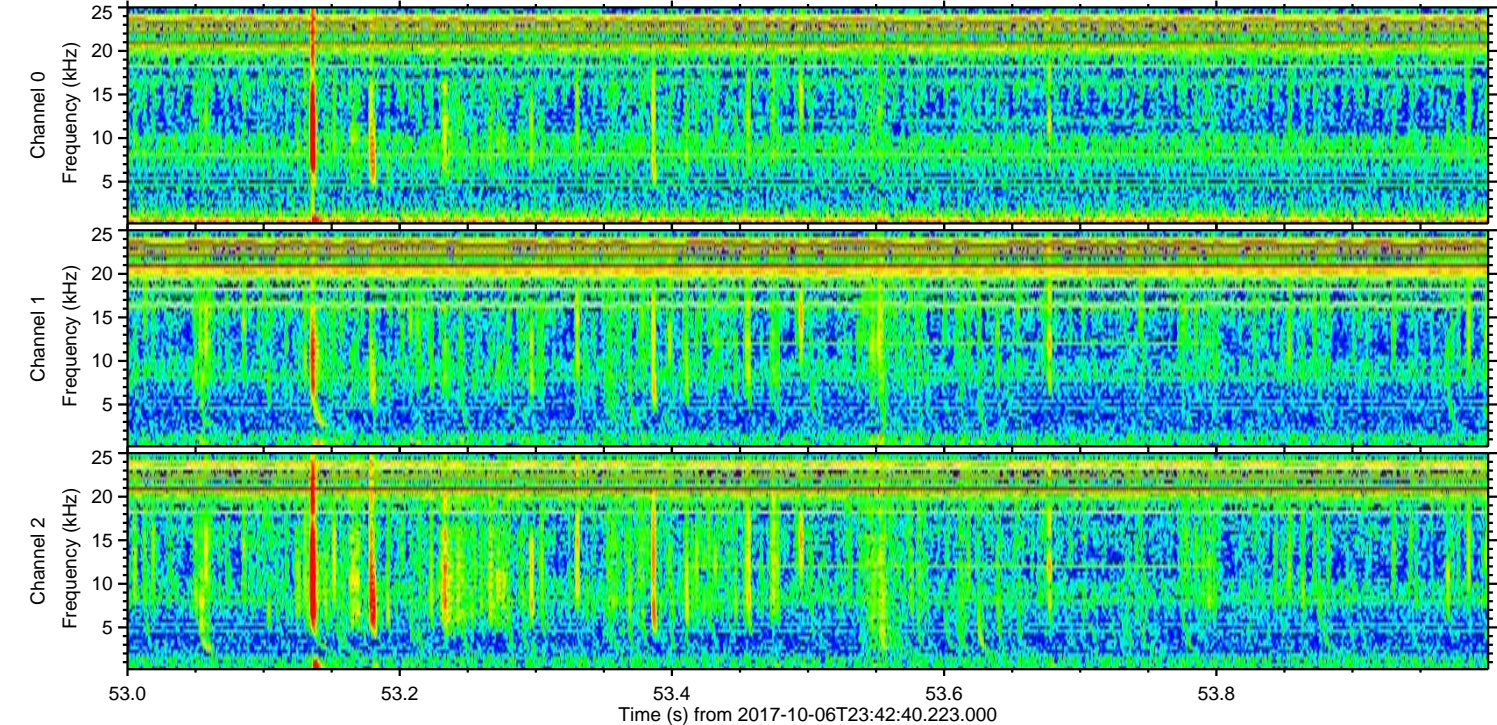
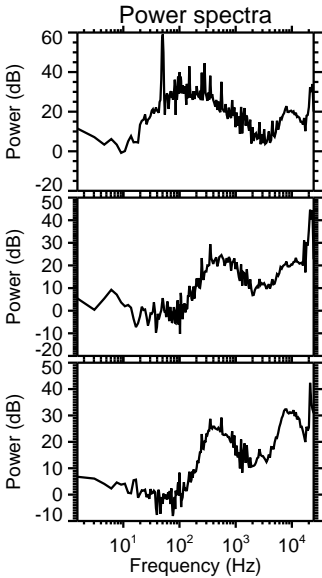
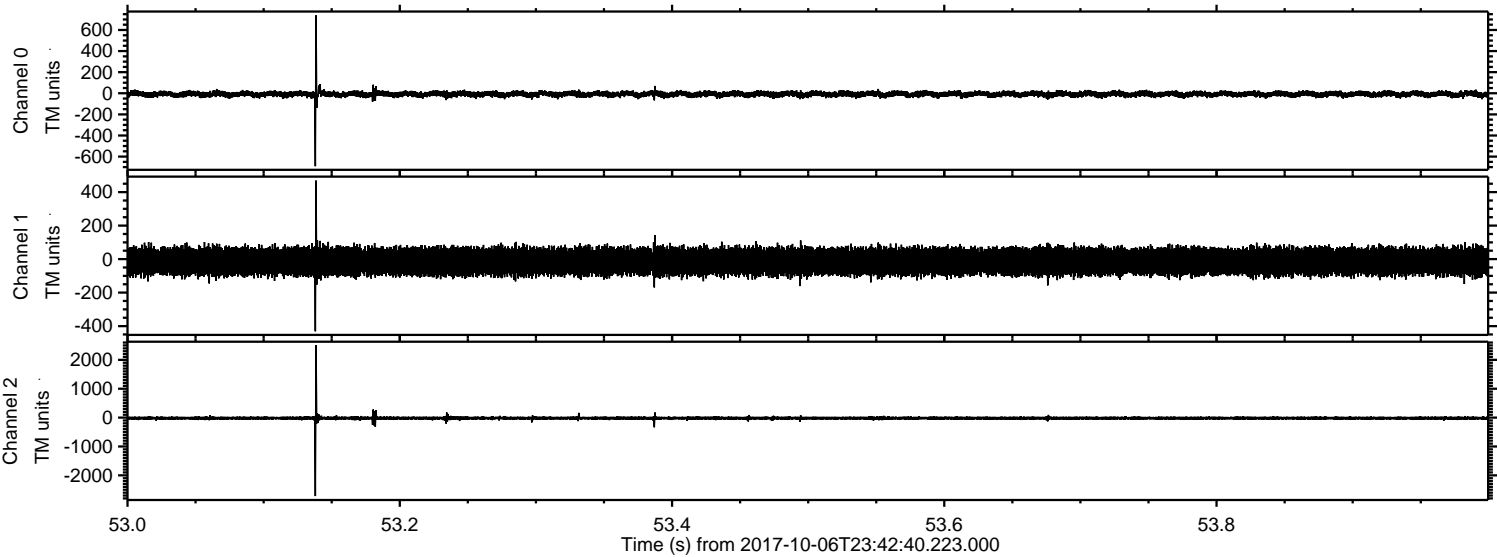


ELMAVAN 3D WAVEFORMS (Measured data sampled at 50 kHz) 51000 packets of 144 samples from 2017-10-06T23:42:40.223.000. Part 72/147

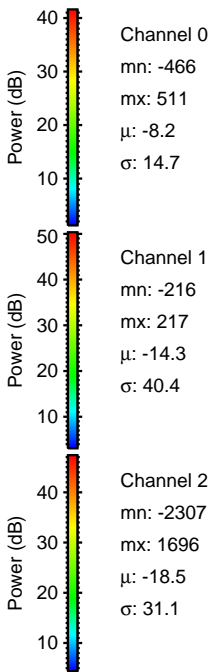
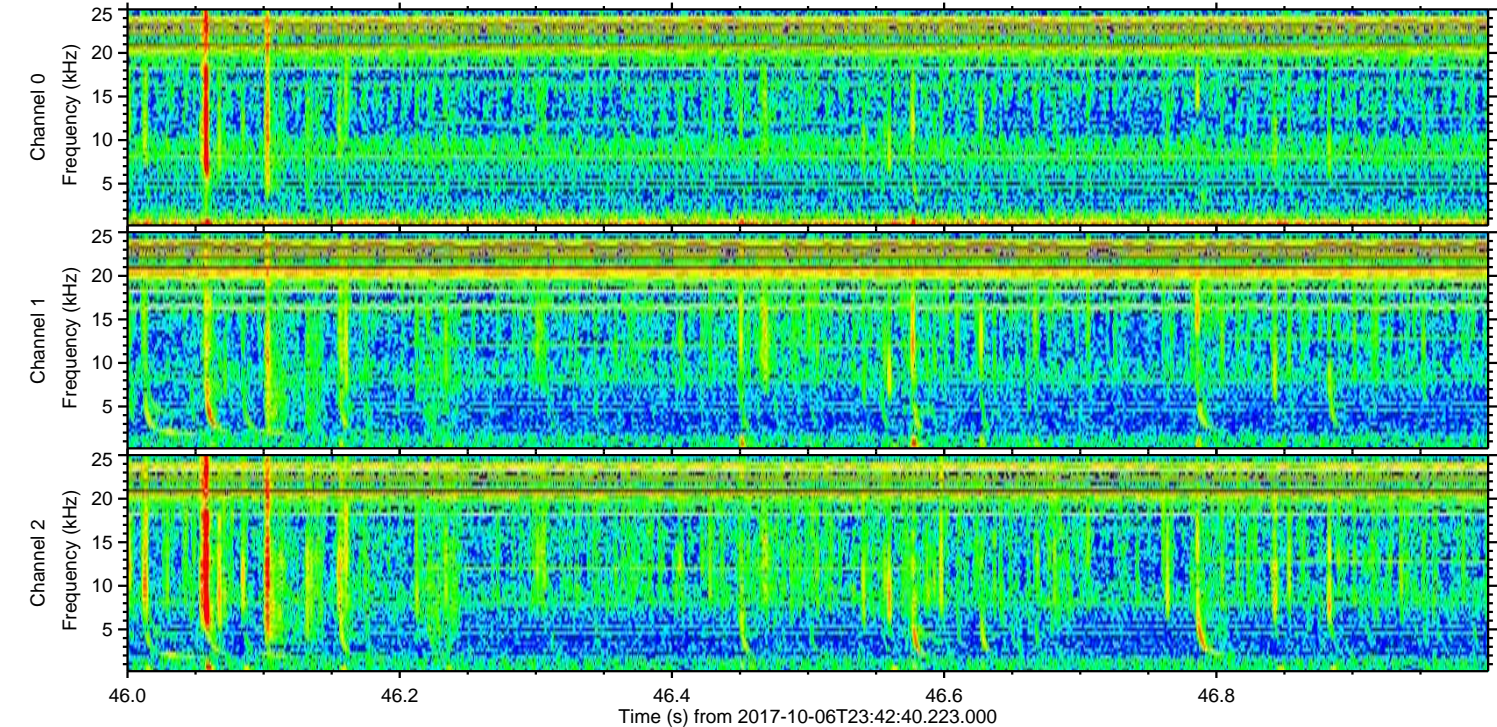
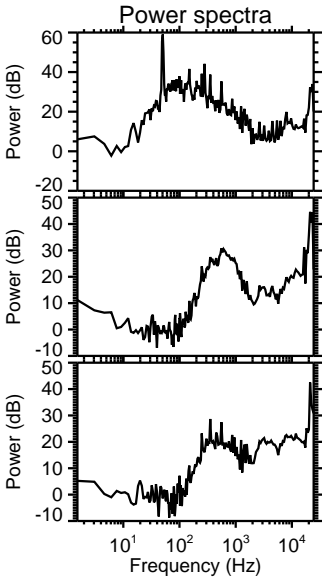
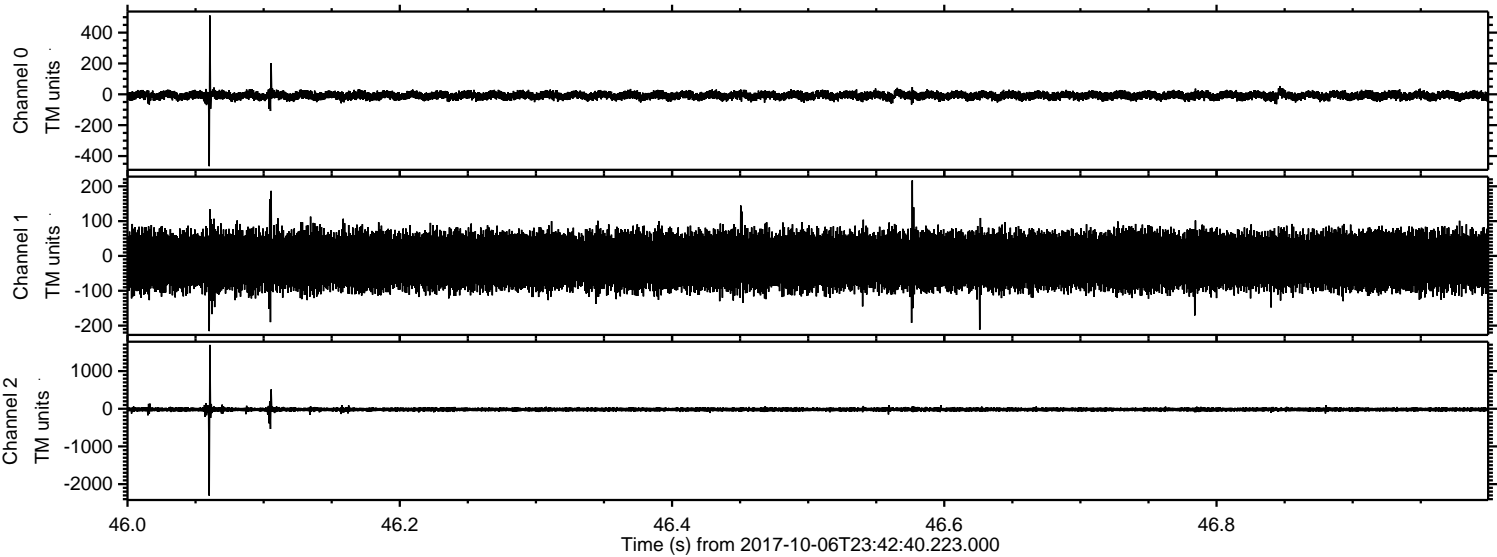
Processed Sat Oct 7 01:50:27 2017 by ELM ver.2012-10-06 from 001__elm20171006_234239__dat00.bin



Processed Sat Oct 7 01:50:28 2017 by ELM ver.2012-10-06 from 001__elm20171006_234239__dat00.bin

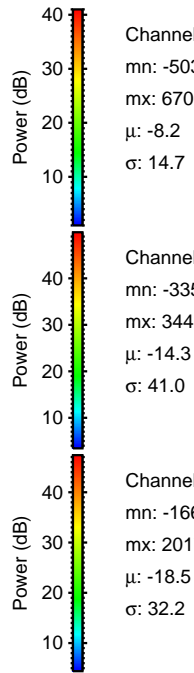
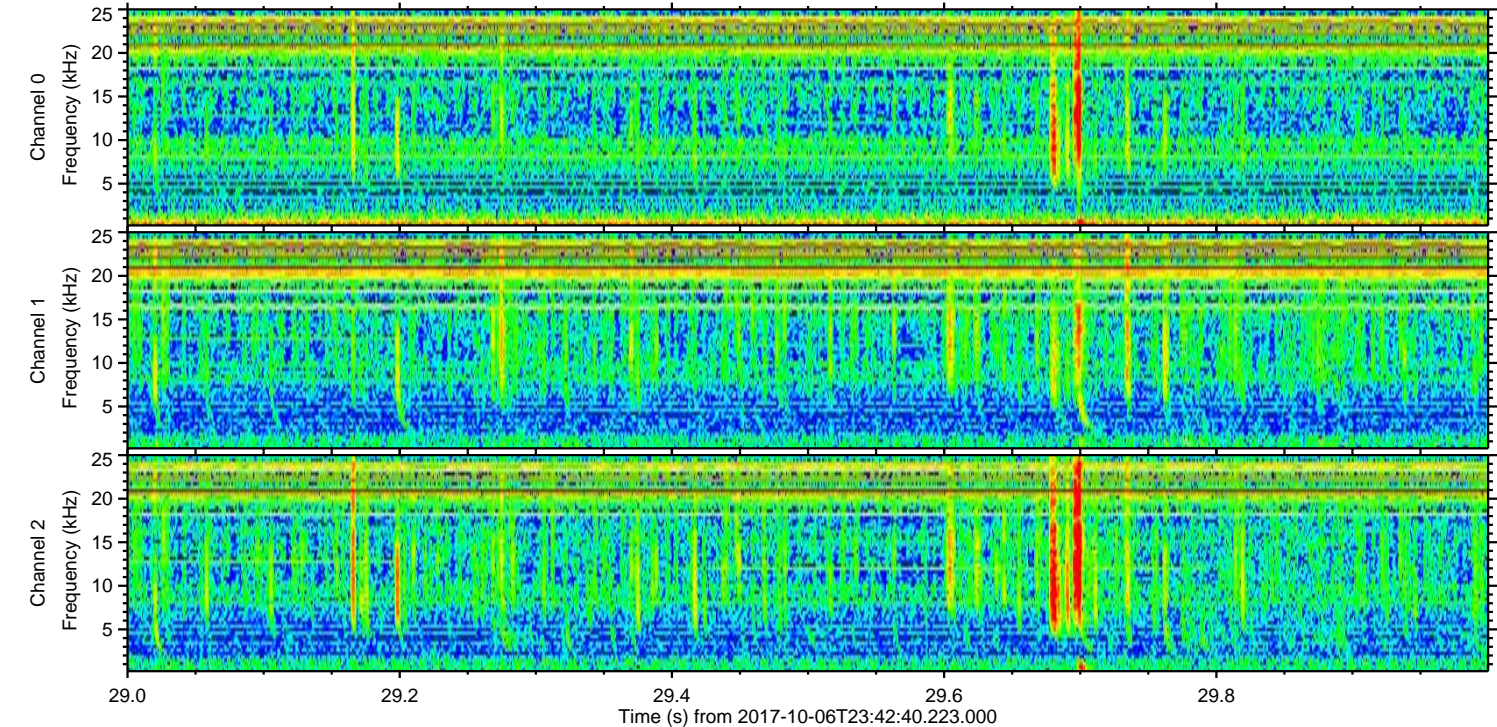
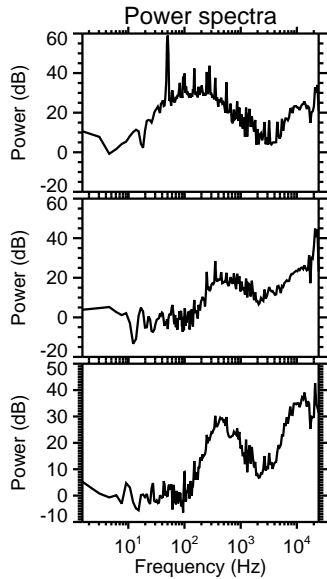
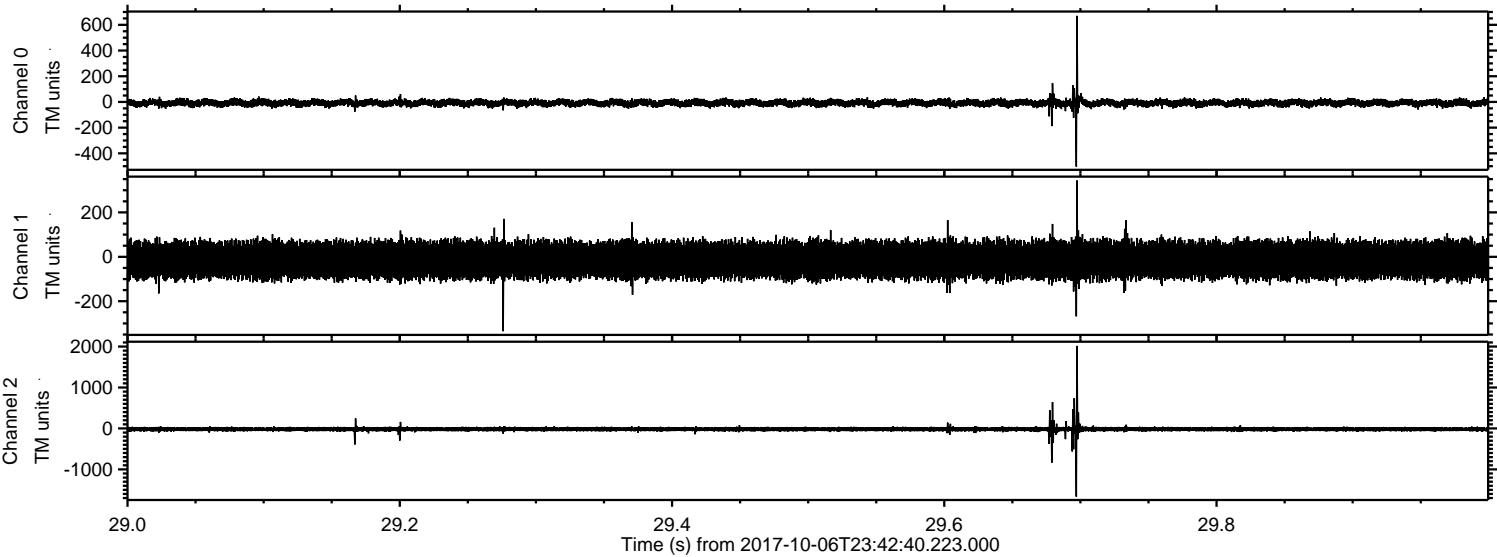


Processed Sat Oct 7 01:50:28 2017 by ELM ver.2012-10-06 from 001__elm20171006_234239__dat00.bin



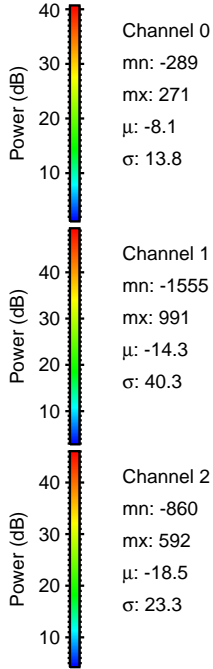
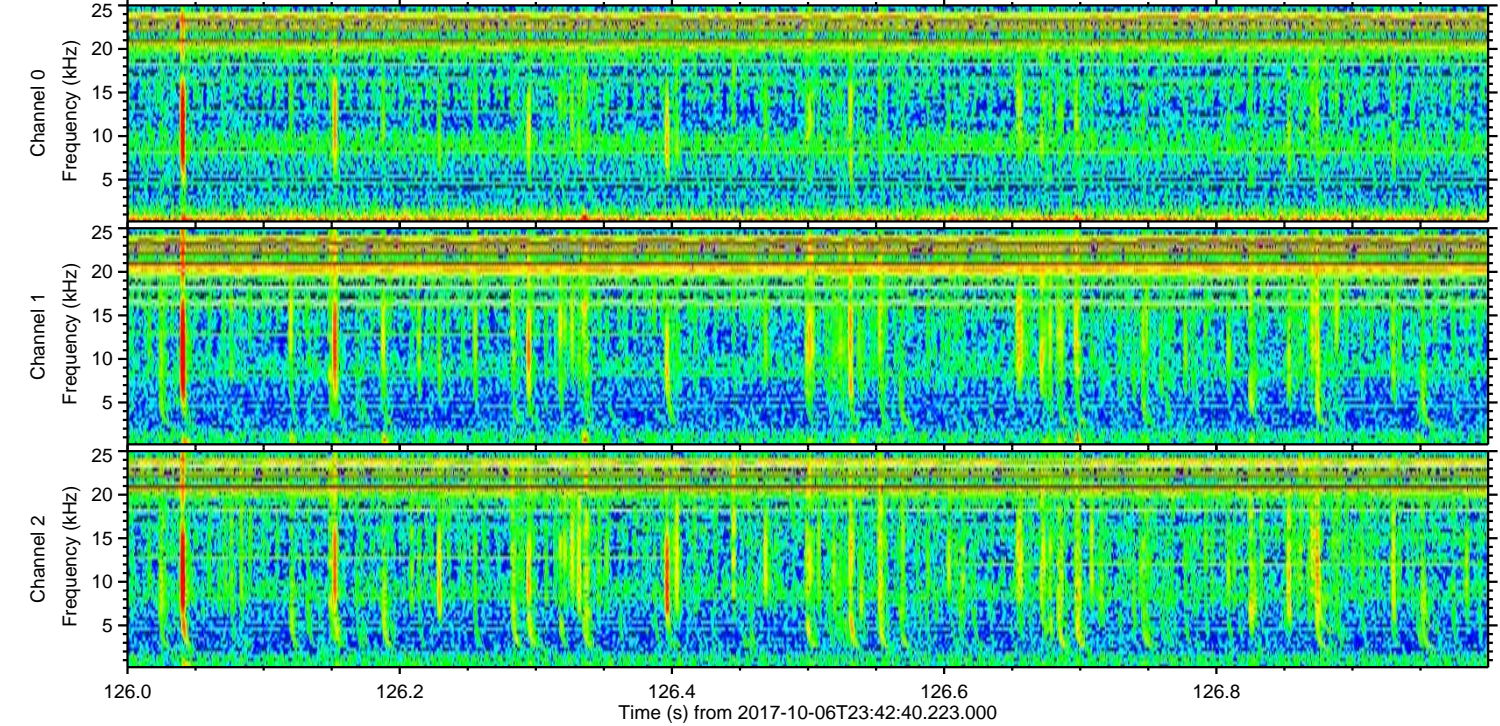
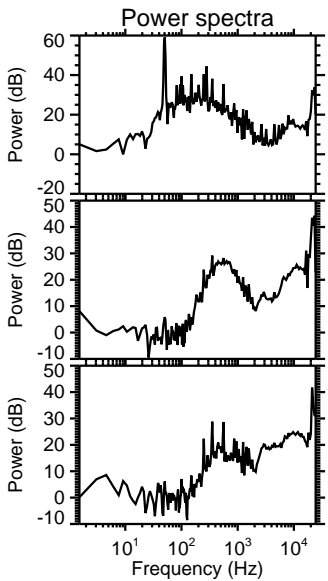
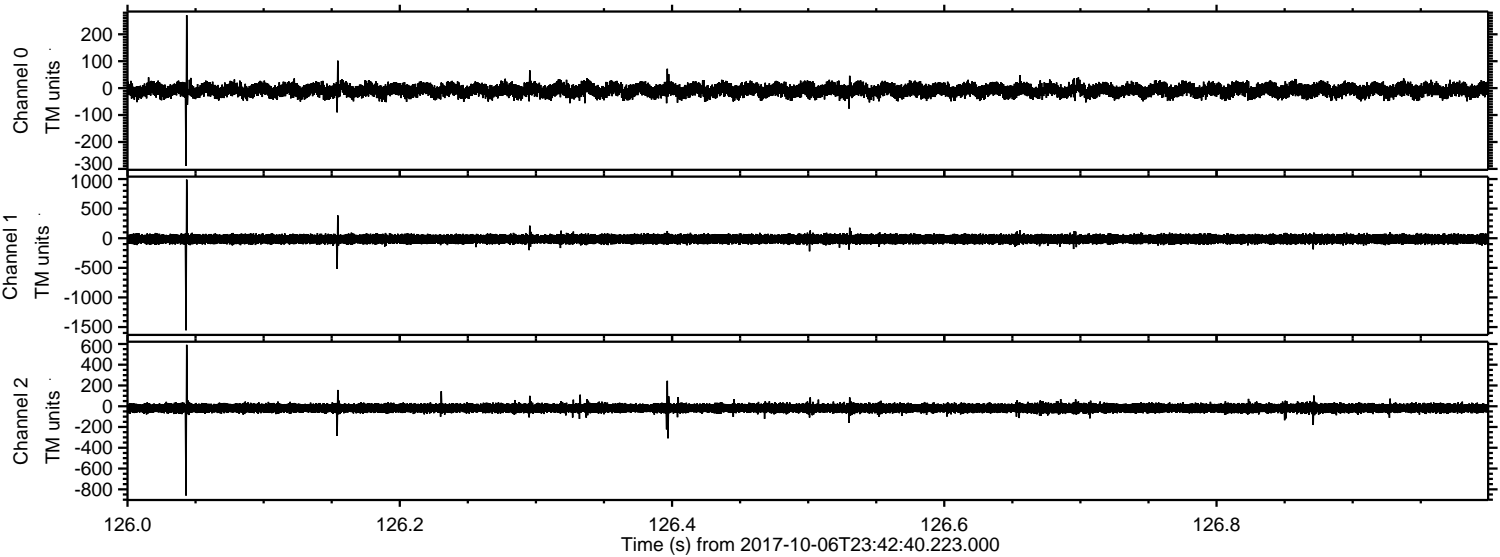
ELMAVAN 3D WAVEFORMS (Measured data sampled at 50 kHz) 51000 packets of 144 samples from 2017-10-06T23:42:40.223.000. Part 30/147

Processed Sat Oct 7 01:50:29 2017 by ELM ver.2012-10-06 from 001__elm20171006_234239__dat00.bin



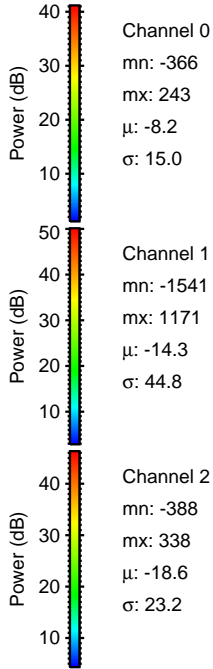
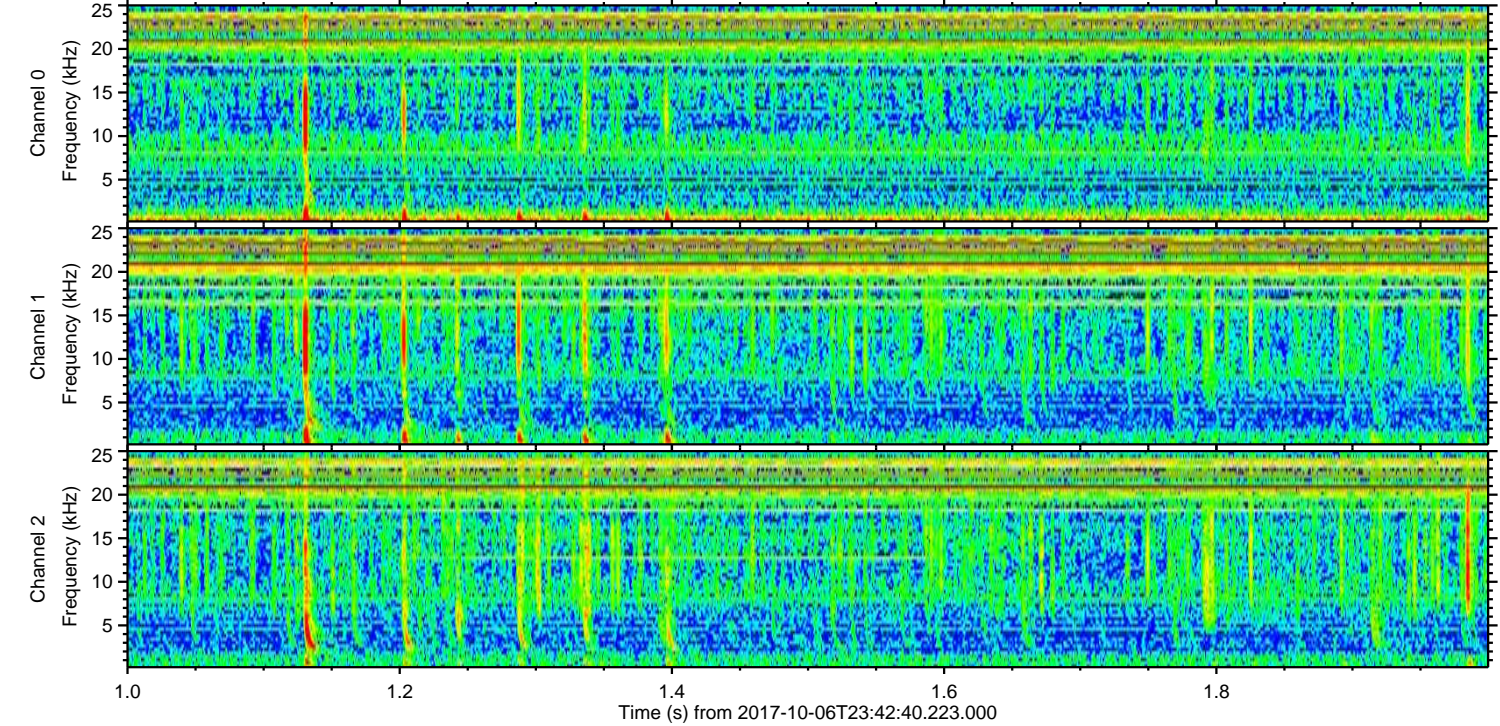
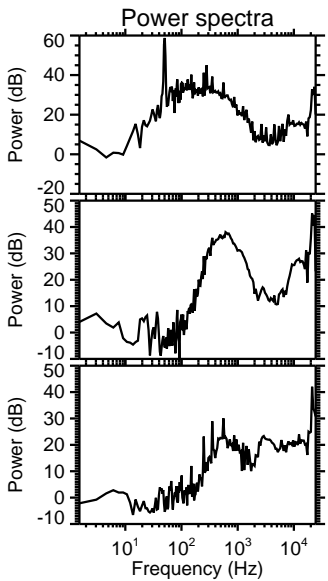
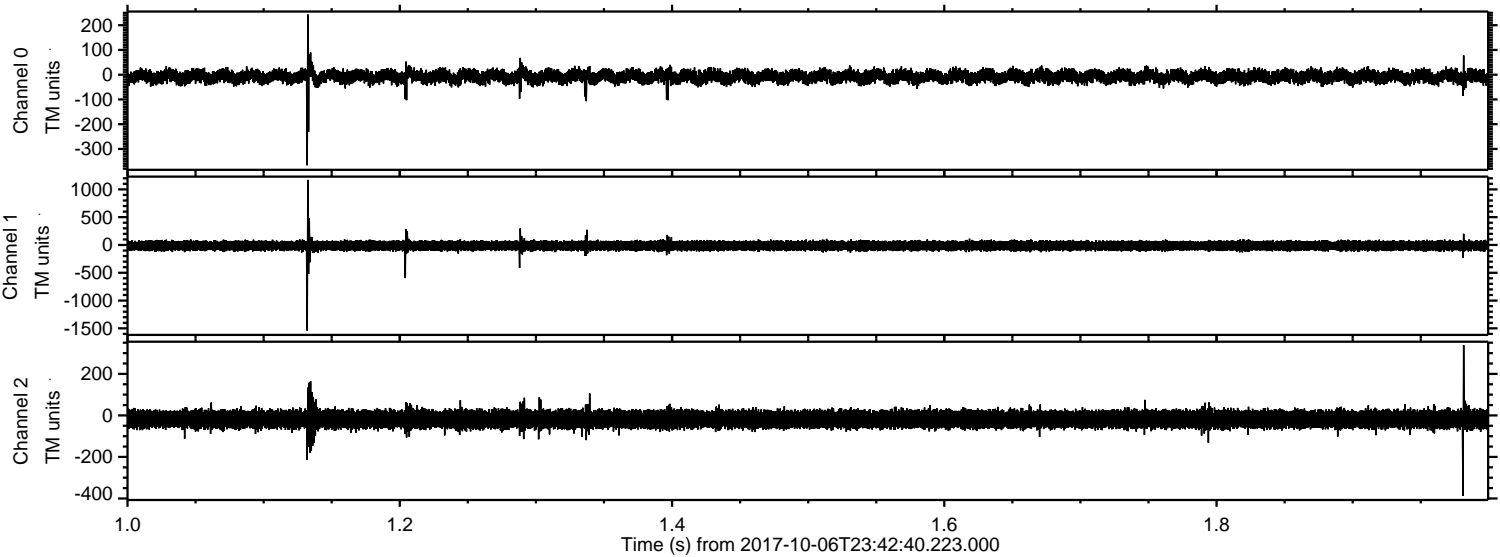
ELMAVAN 3D WAVEFORMS (Measured data sampled at 50 kHz) 51000 packets of 144 samples from 2017-10-06T23:42:40.223.000. Part 127/147

Processed Sat Oct 7 01:50:30 2017 by ELM ver.2012-10-06 from 001__elm20171006_234239__dat00.bin

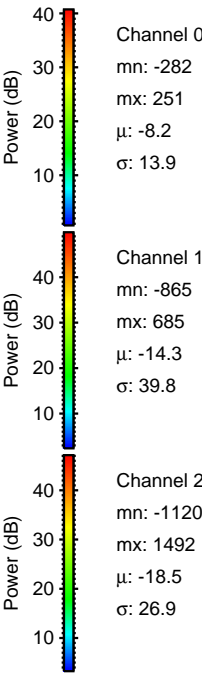
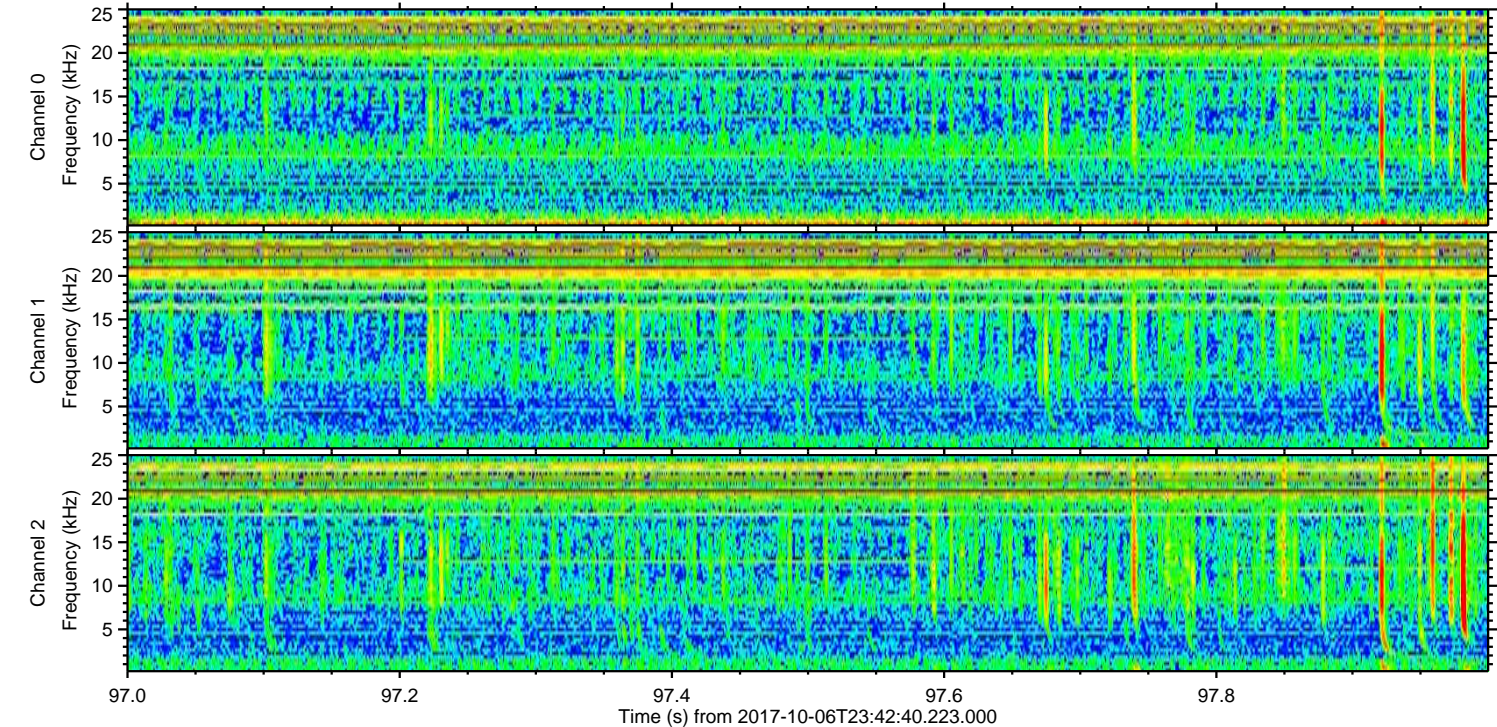
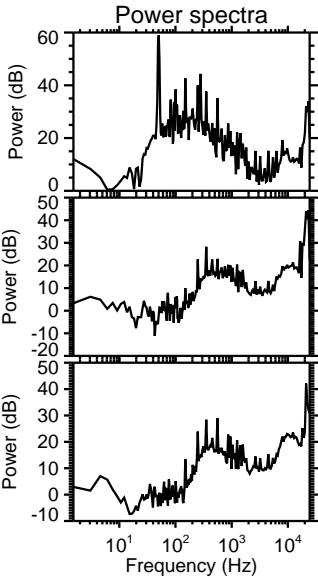
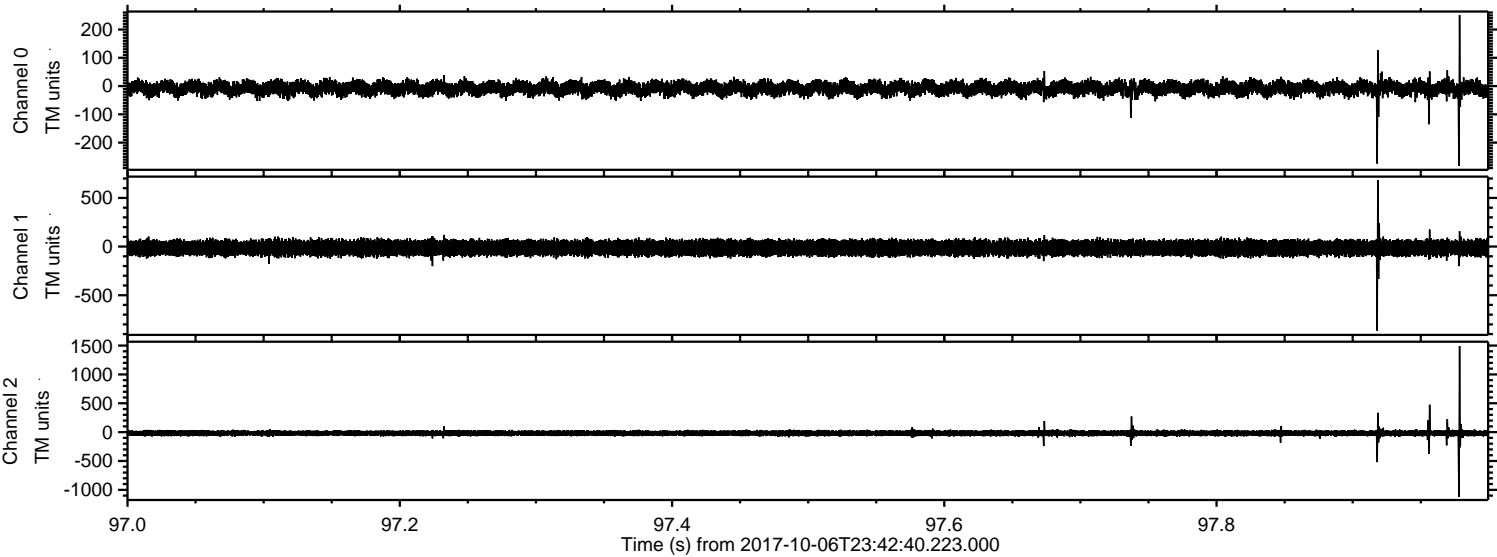


ELMAVAN 3D WAVEFORMS (Measured data sampled at 50 kHz) 51000 packets of 144 samples from 2017-10-06T23:42:40.223.000. Part 2/147

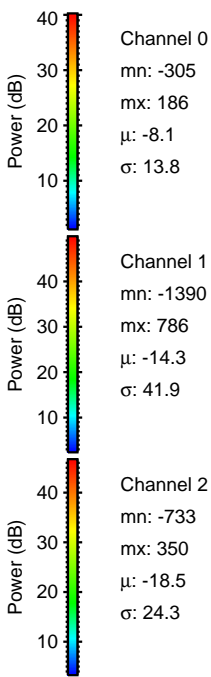
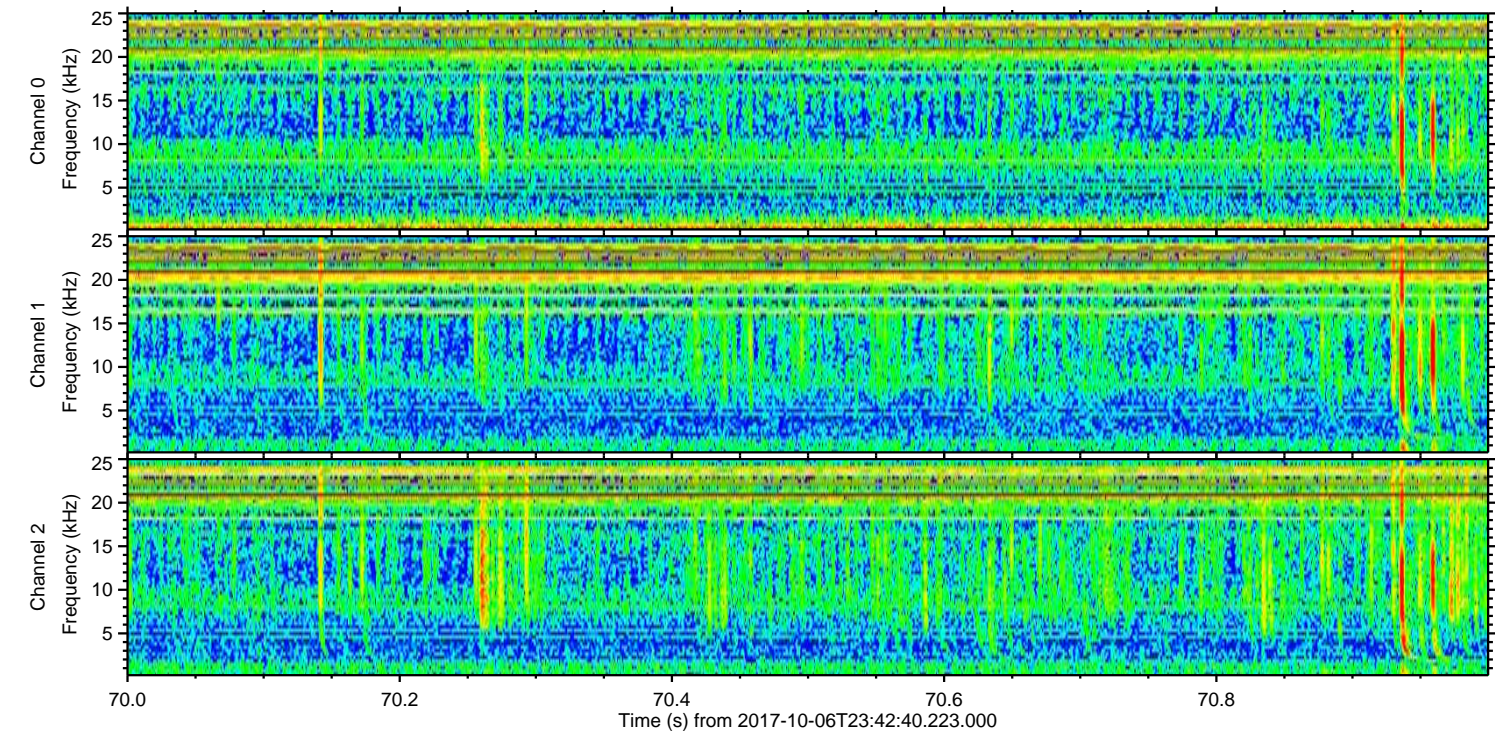
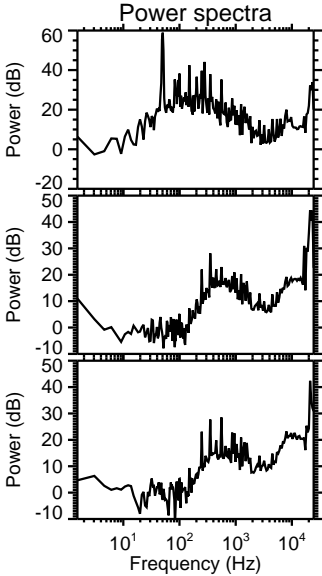
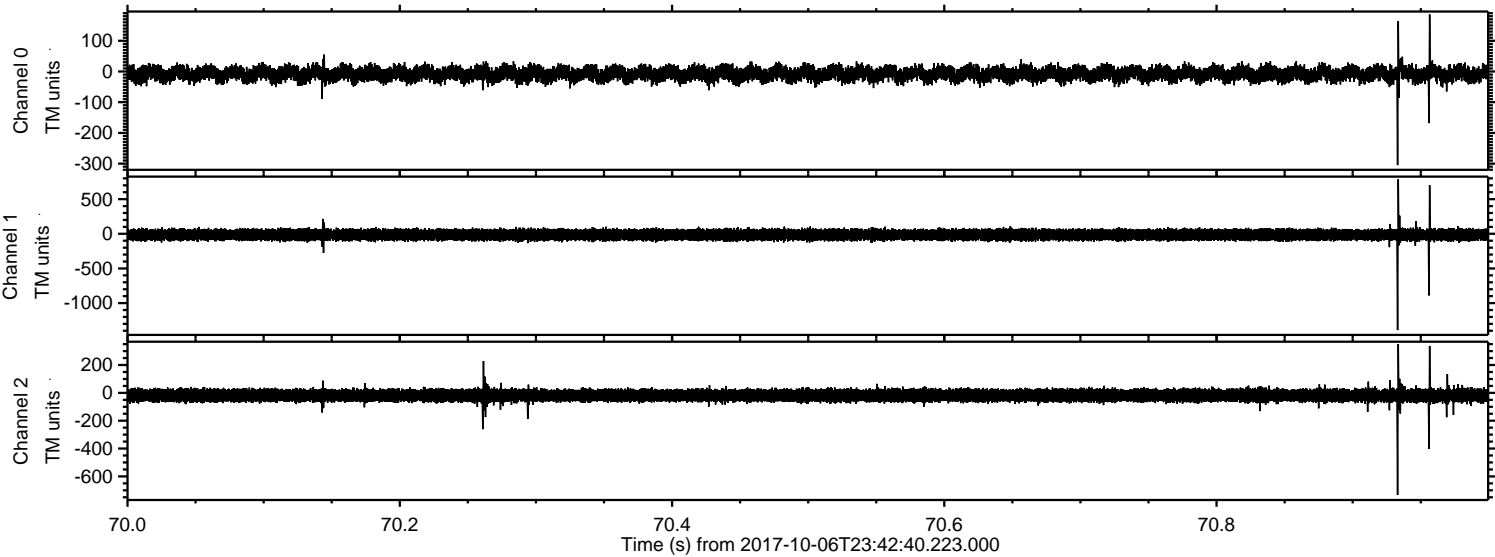
Processed Sat Oct 7 01:50:31 2017 by ELM ver.2012-10-06 from 001__elm20171006_234239__dat00.bin



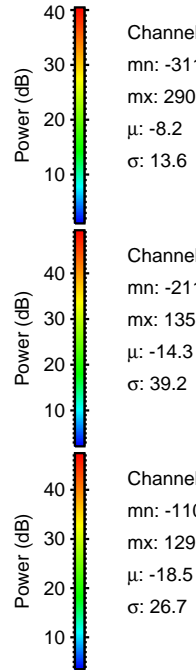
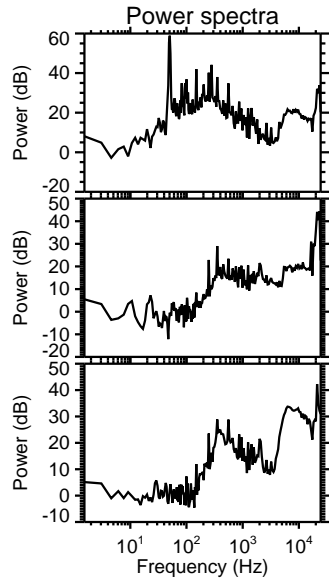
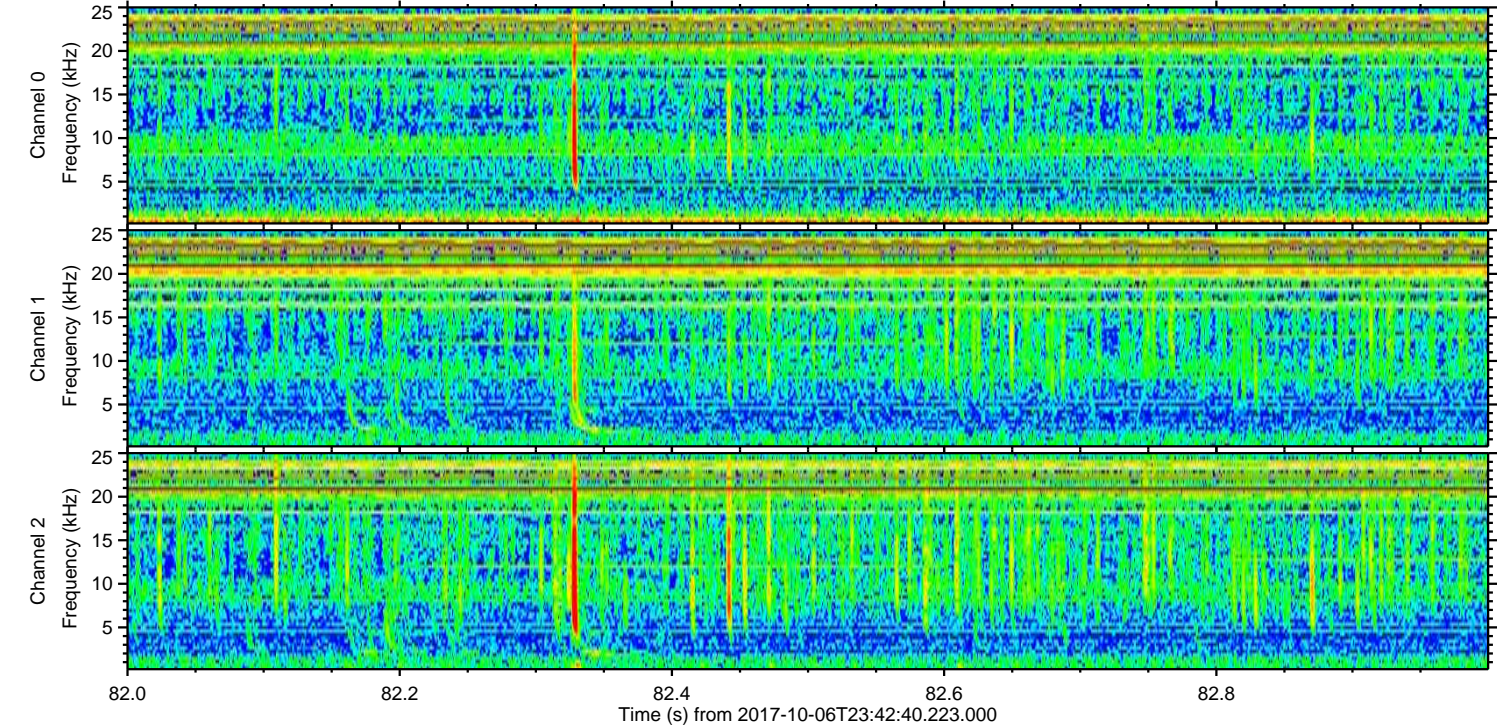
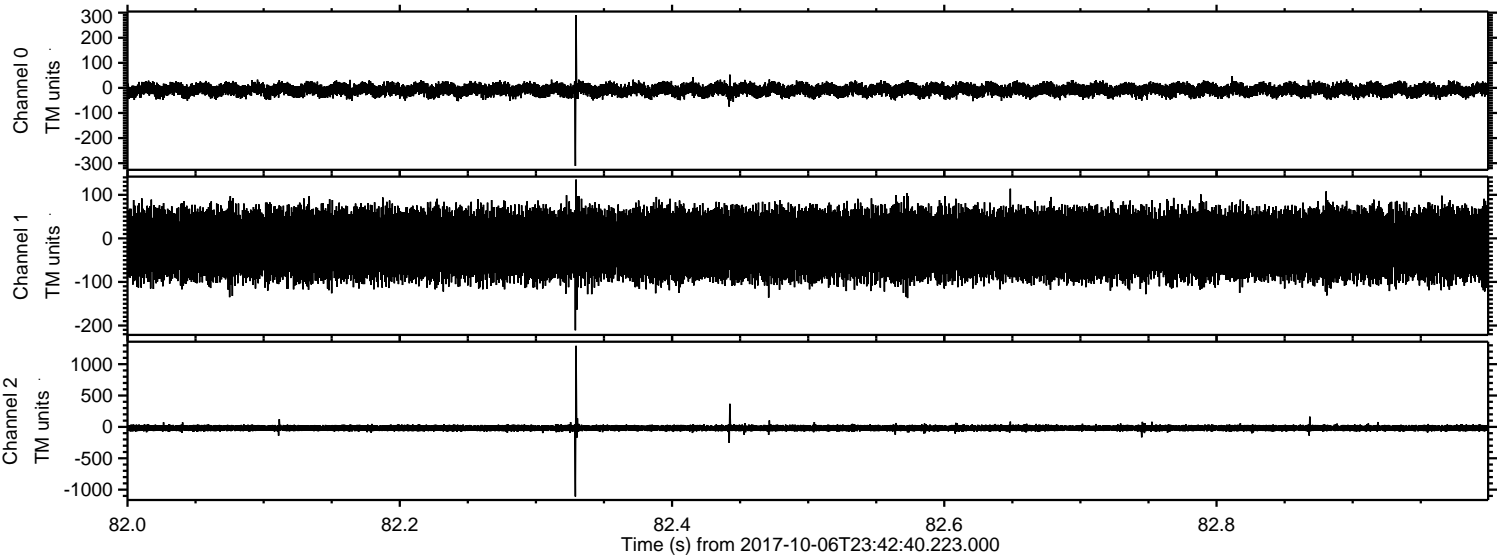
Processed Sat Oct 7 01:50:31 2017 by ELM ver.2012-10-06 from 001__elm20171006_234239__dat00.bin



Processed Sat Oct 7 01:50:32 2017 by ELM ver.2012-10-06 from 001__elm20171006_234239__dat00.bin



Processed Sat Oct 7 01:50:33 2017 by ELM ver.2012-10-06 from 001__elm20171006_234239__dat00.bin



Channel 0
mn: -311
mx: 290
 μ : -8.2
 σ : 13.6

Channel 1
mn: -211
mx: 135
 μ : -14.3
 σ : 39.2

Channel 2
mn: -1109
mx: 1293
 μ : -18.5
 σ : 26.7

Processed Sat Oct 7 01:50:33 2017 by ELM ver.2012-10-06 from 001__elm20171006_234239__dat00.bin

