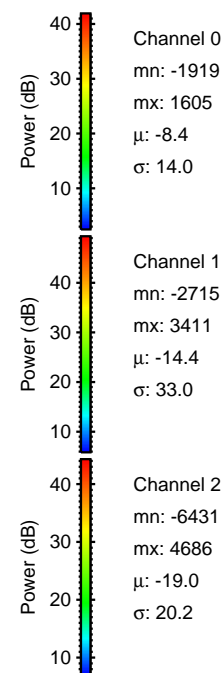
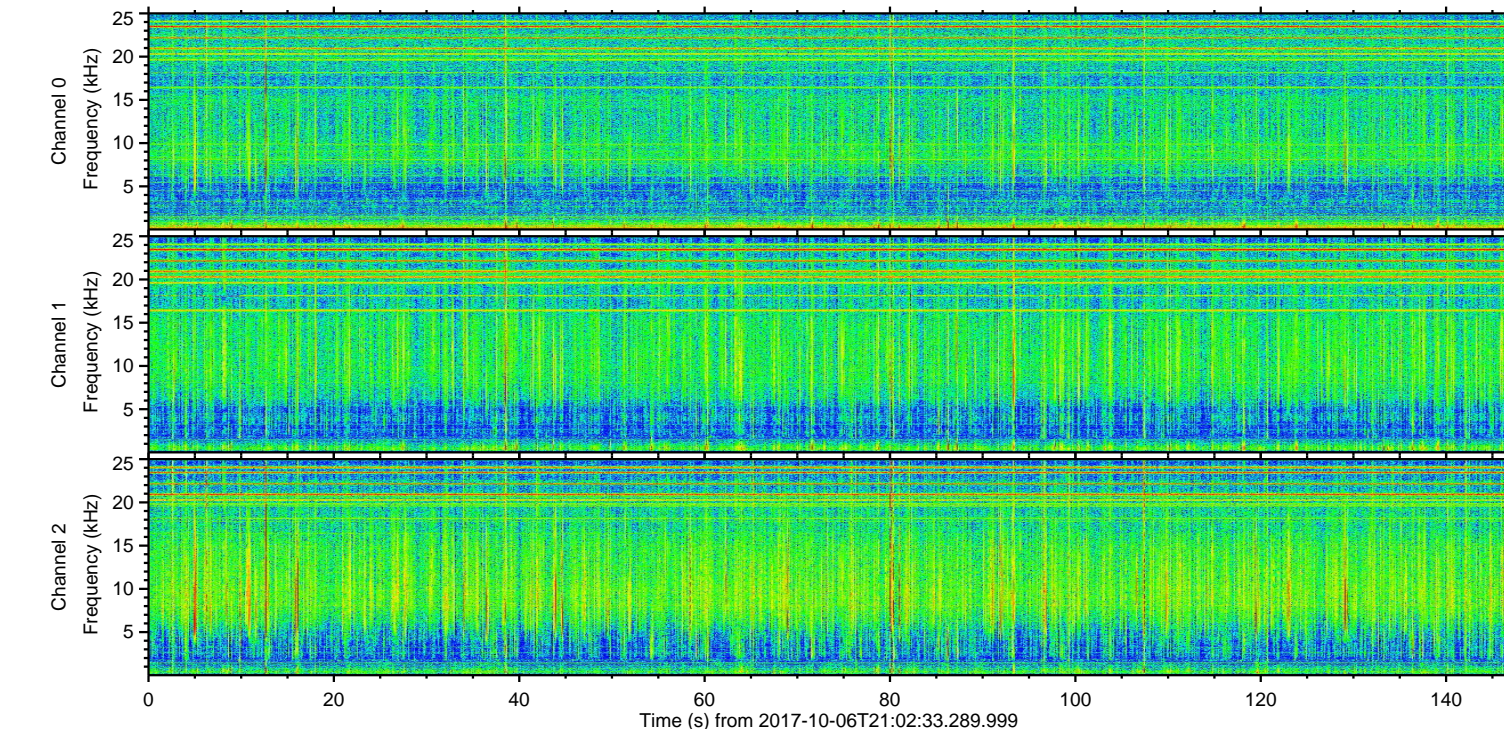
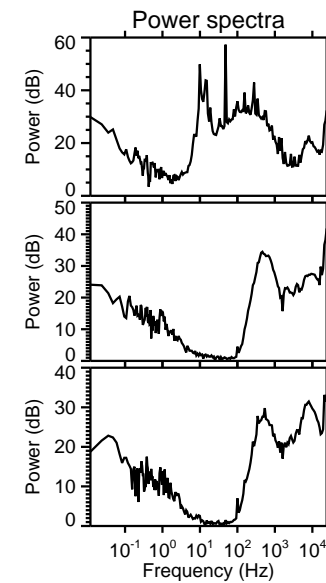
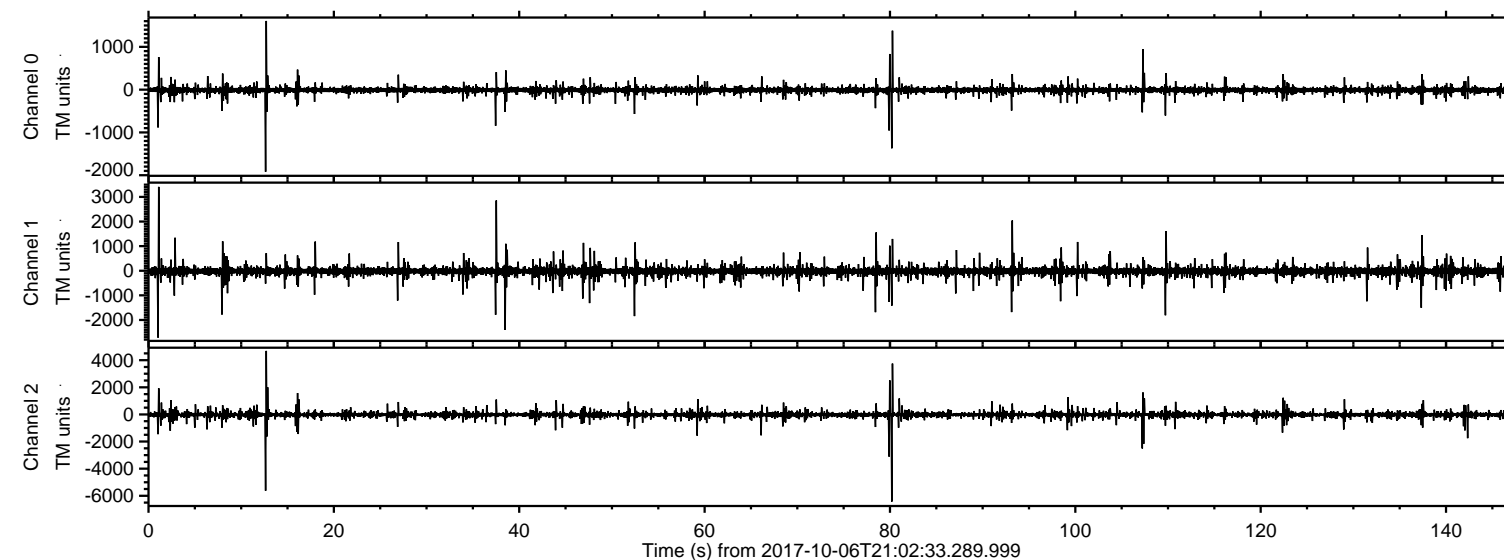


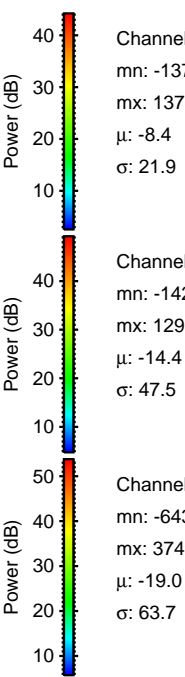
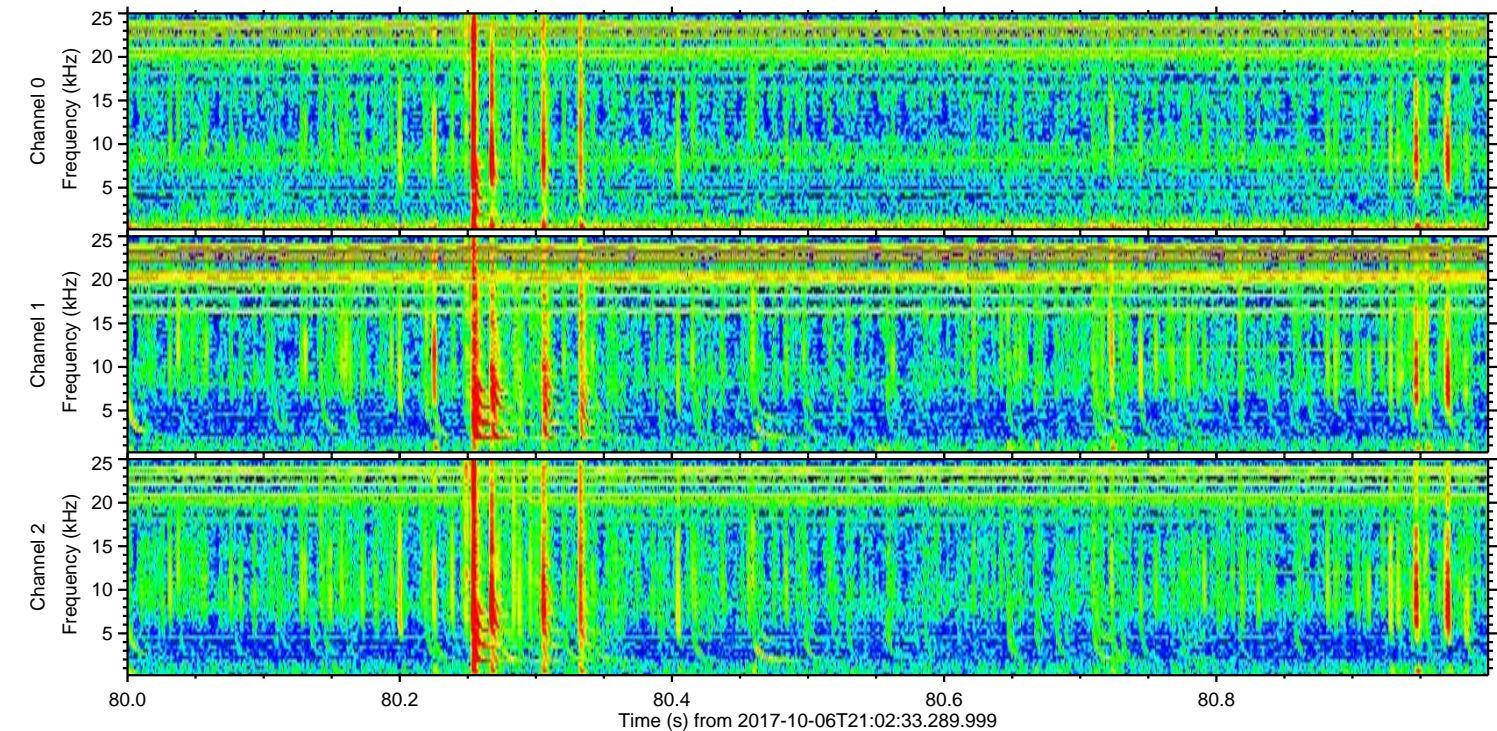
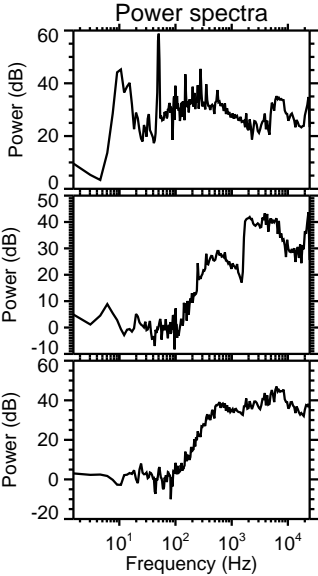
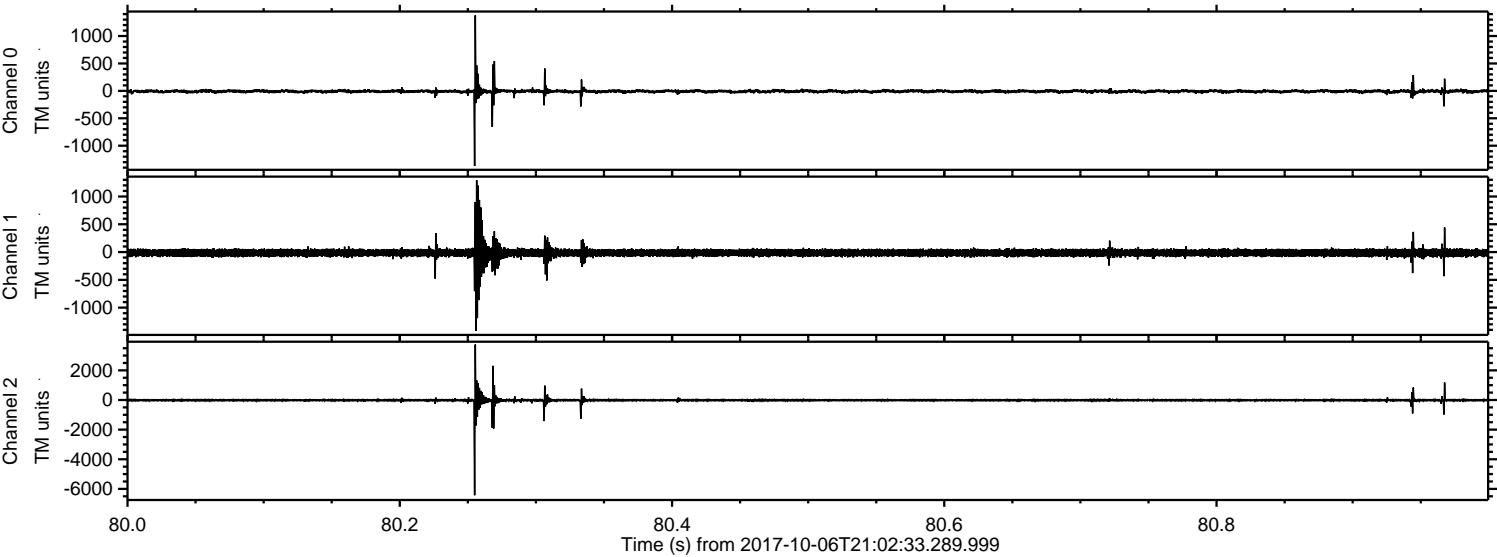
ELMAVAN 3D WAVEFORMS (Measured data sampled at 50 kHz) 51000 packets of 144 samples from 2017-10-06T21:02:33.289.999.

Processed Fri Oct 6 23:09:59 2017 by ELM ver.2012-10-06 from 001__elm20171006_210232__dat00.bin



ELMAVAN 3D WAVEFORMS (Measured data sampled at 50 kHz) 51000 packets of 144 samples from 2017-10-06T21:02:33.289.999. Part 81/147

Processed Fri Oct 6 23:10:06 2017 by ELM ver.2012-10-06 from 001__elm20171006_210232__dat00.bin

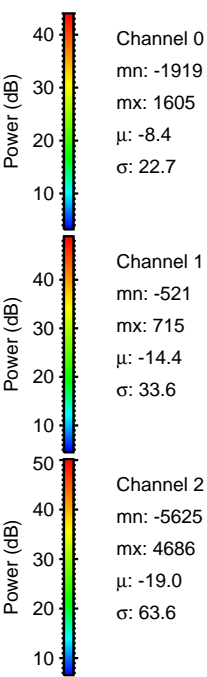
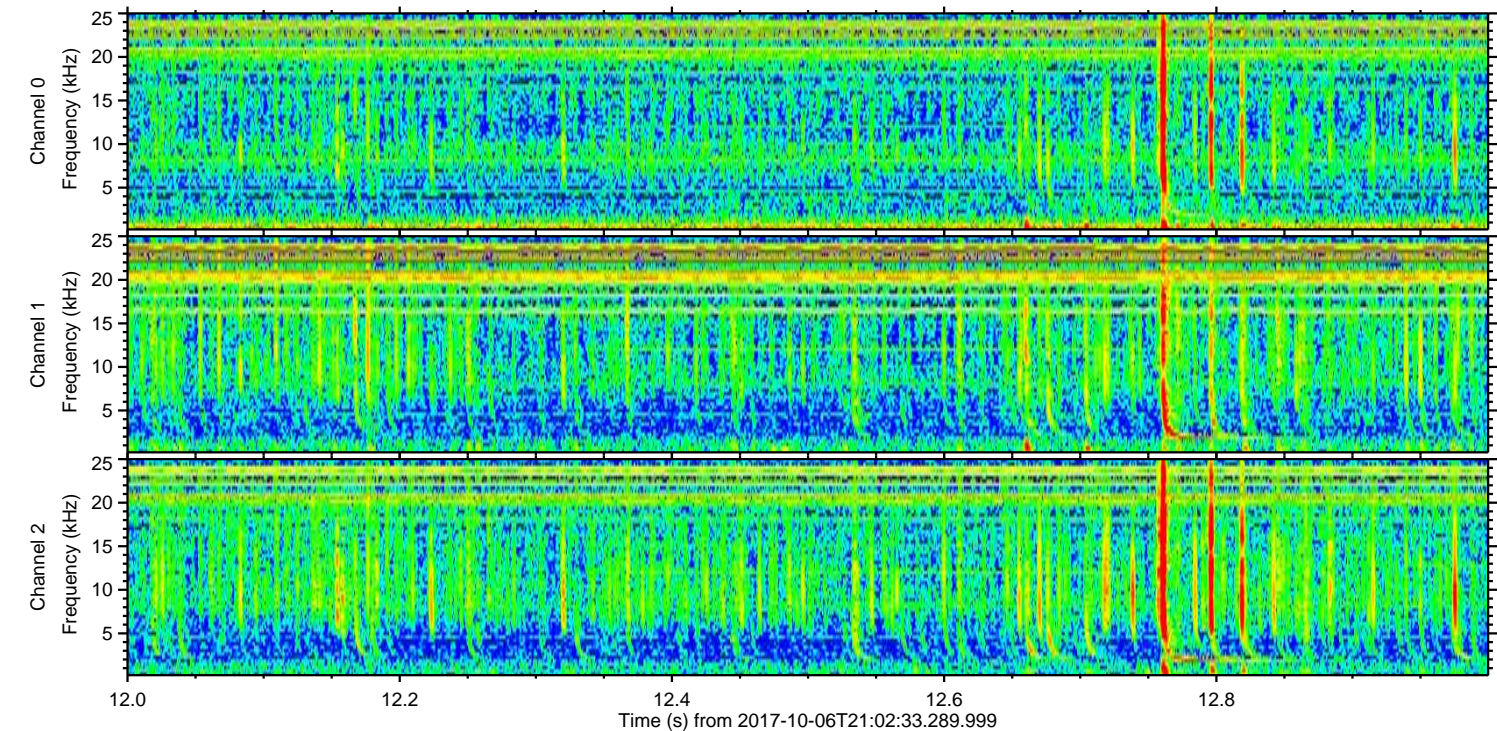
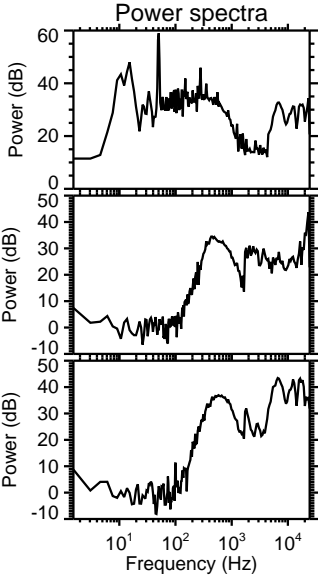
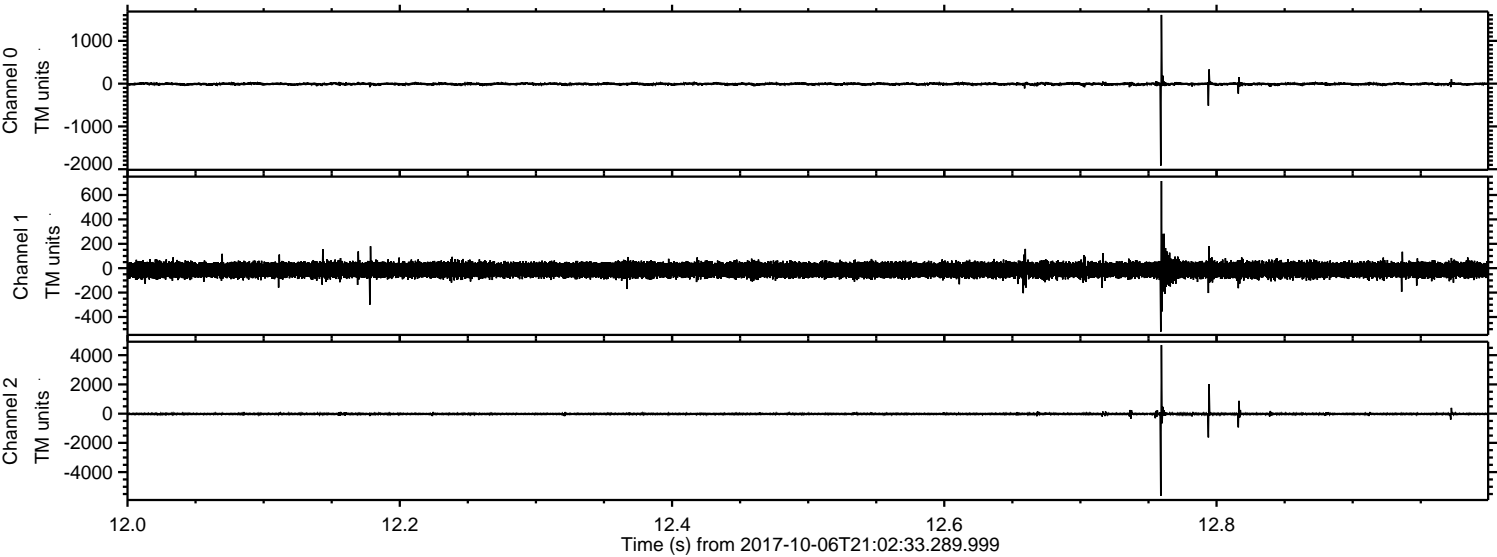


Channel 0
mn: -1371
mx: 1378
 μ : -8.4
 σ : 21.9

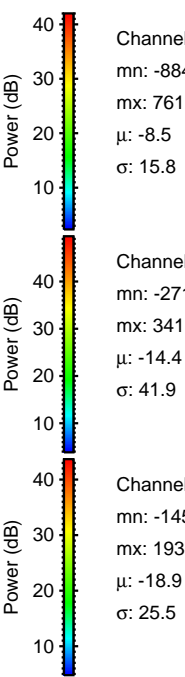
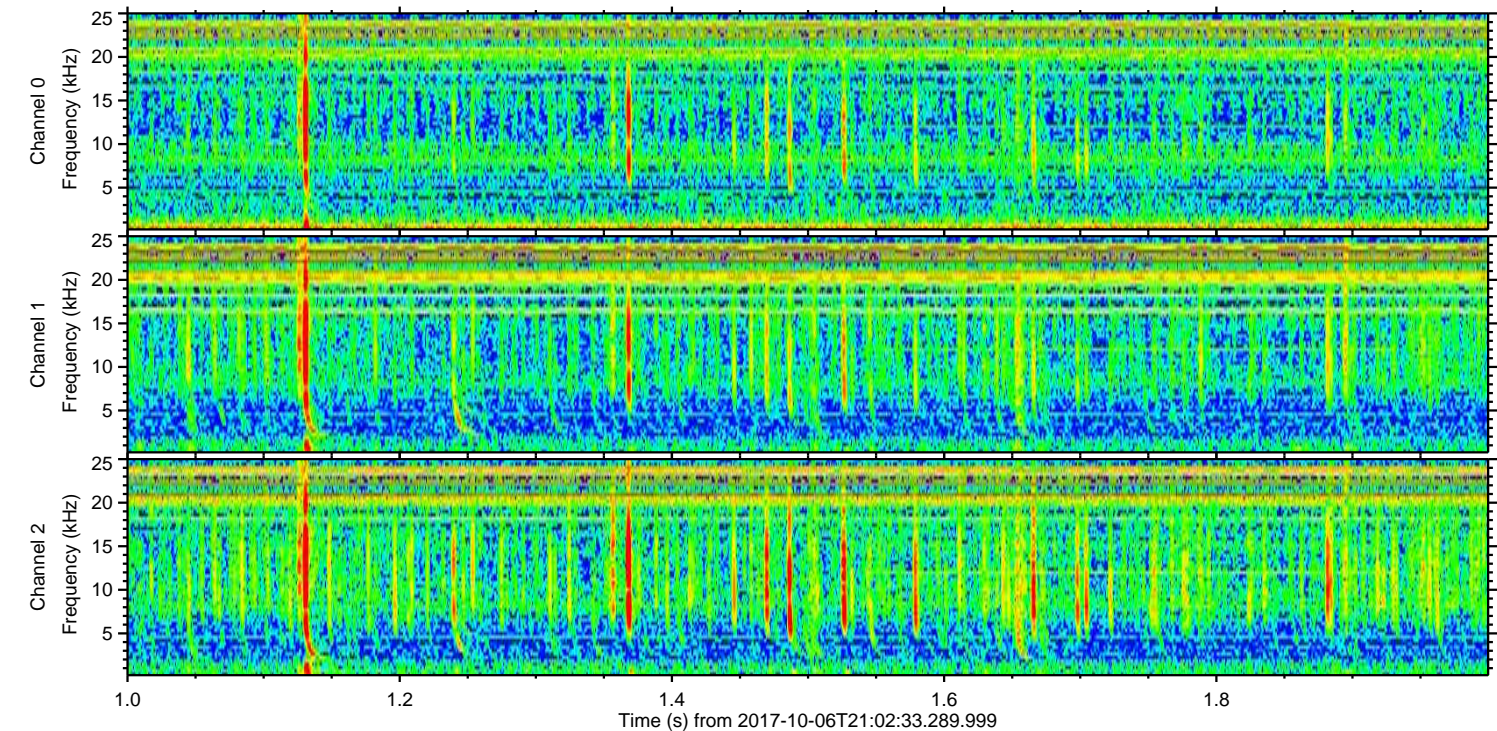
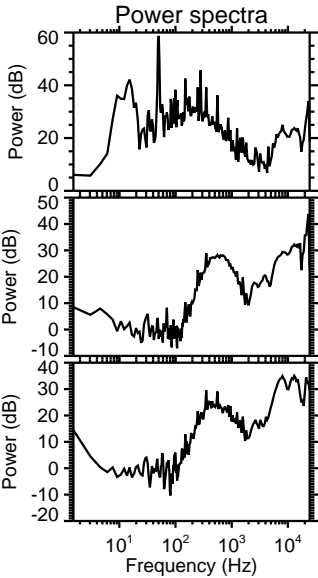
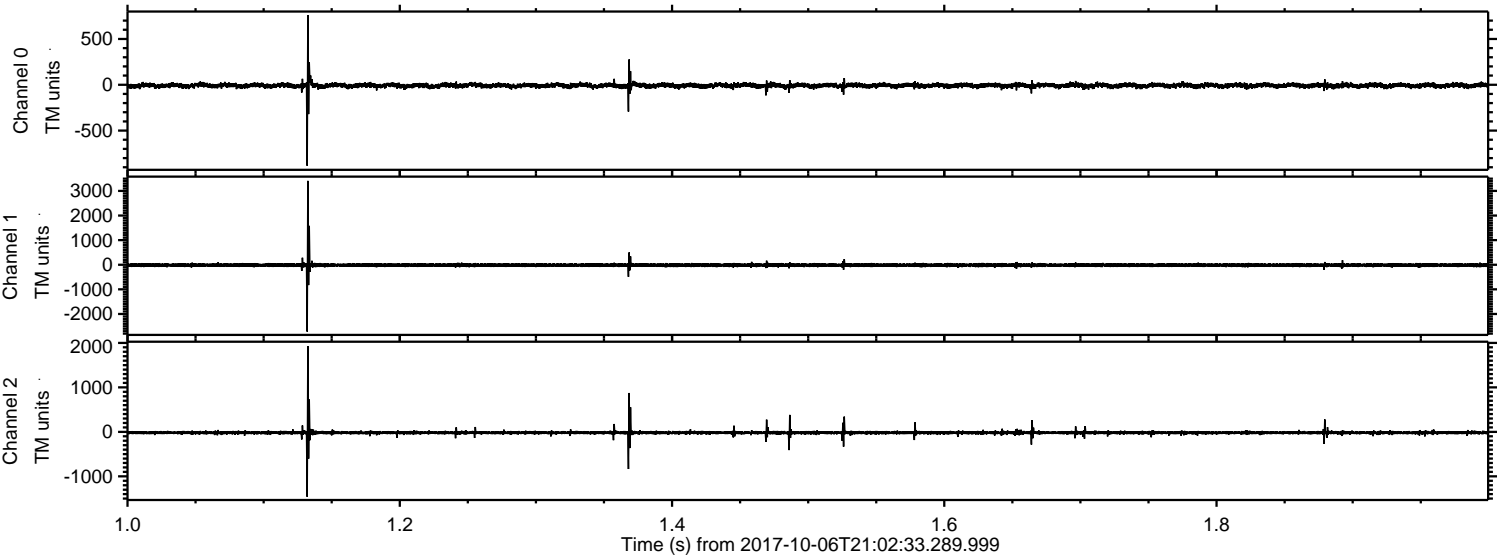
Channel 1
mn: -1420
mx: 1293
 μ : -14.4
 σ : 47.5

Channel 2
mn: -6431
mx: 3749
 μ : -19.0
 σ : 63.7

Processed Fri Oct 6 23:10:06 2017 by ELM ver.2012-10-06 from 001__elm20171006_210232__dat00.bin



Processed Fri Oct 6 23:10:07 2017 by ELM ver.2012-10-06 from 001__elm20171006_210232__dat00.bin



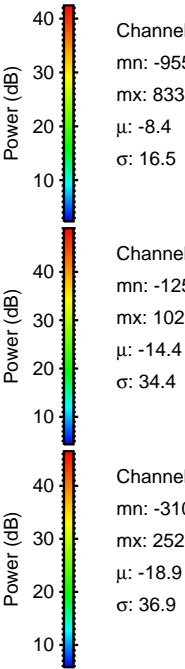
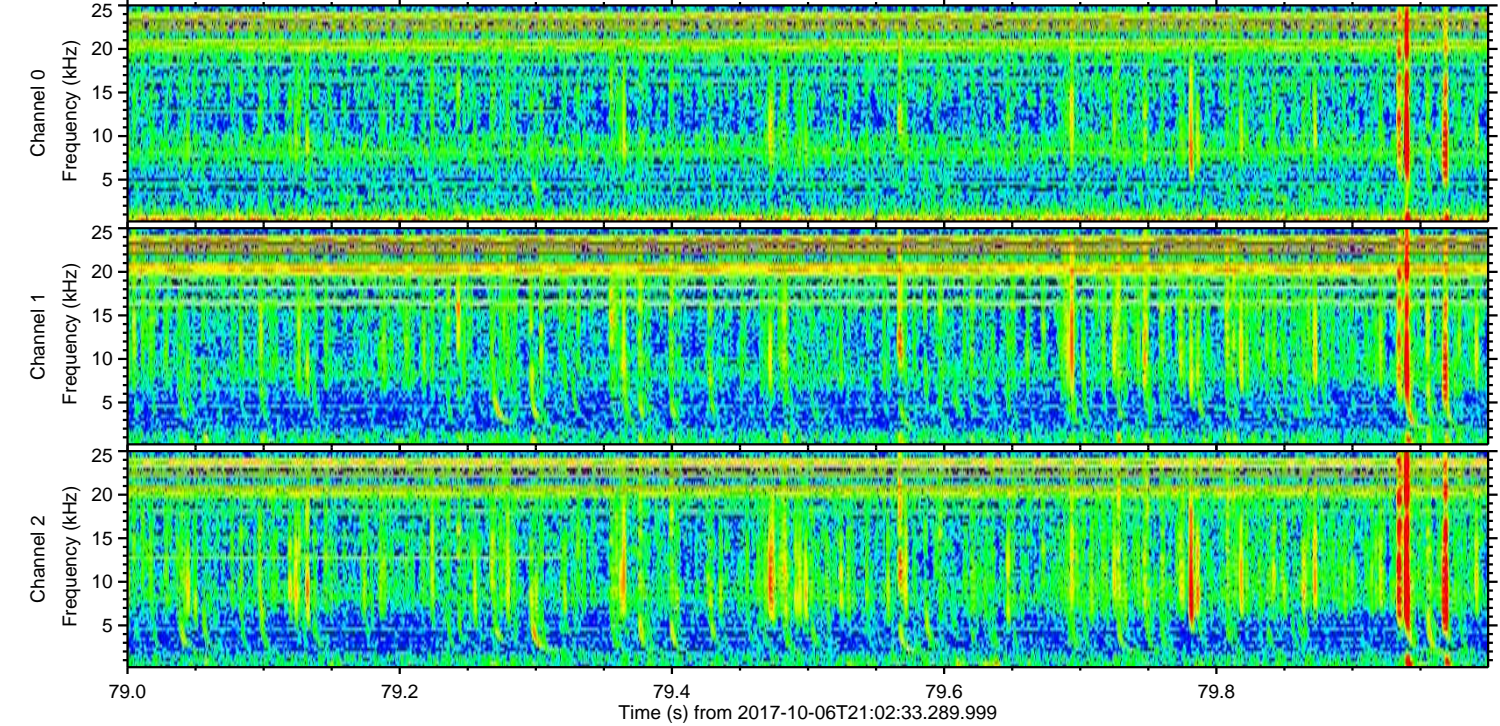
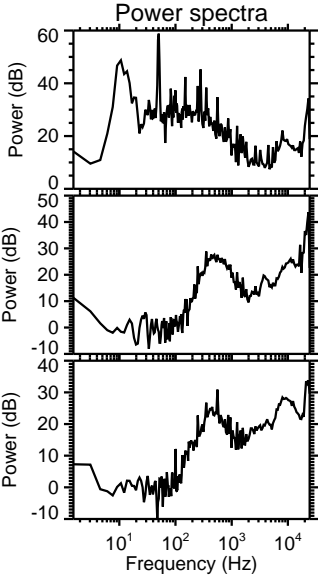
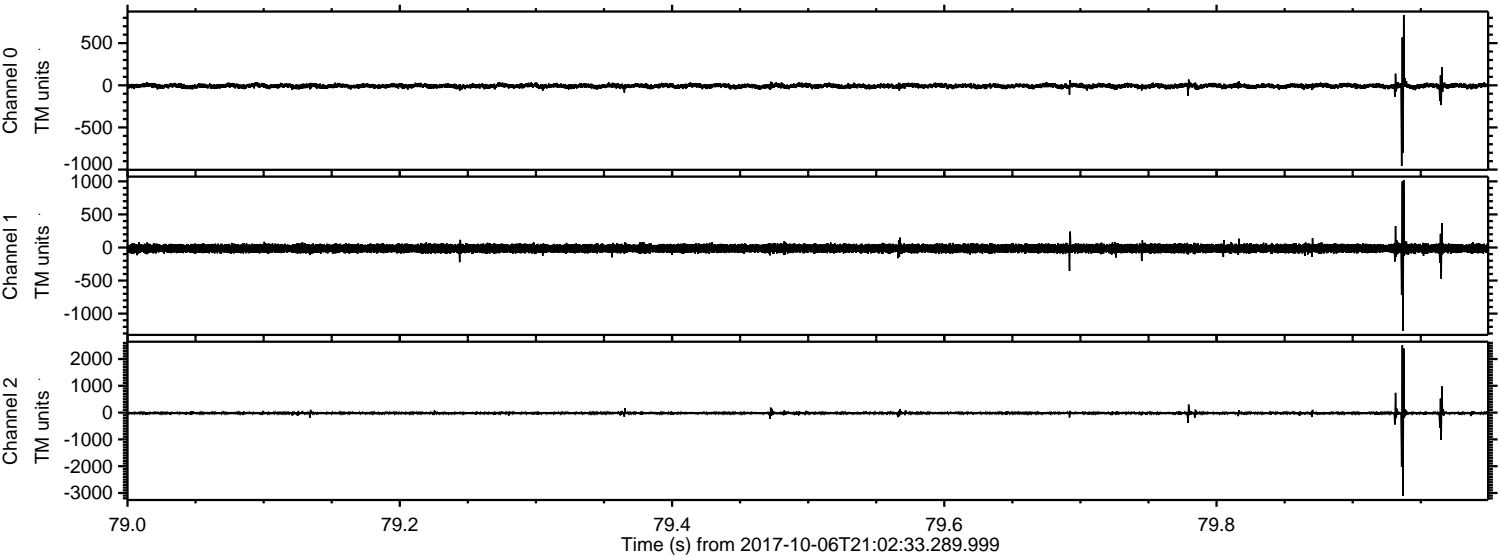
Channel 0
mn: -884
mx: 761
 μ : -8.5
 σ : 15.8

Channel 1
mn: -2715
mx: 3411
 μ : -14.4
 σ : 41.9

Channel 2
mn: -1459
mx: 1930
 μ : -18.9
 σ : 25.5

ELMAVAN 3D WAVEFORMS (Measured data sampled at 50 kHz) 51000 packets of 144 samples from 2017-10-06T21:02:33.289.999. Part 80/147

Processed Fri Oct 6 23:10:08 2017 by ELM ver.2012-10-06 from 001__elm20171006_210232__dat00.bin

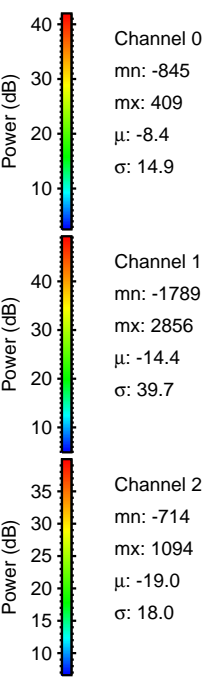
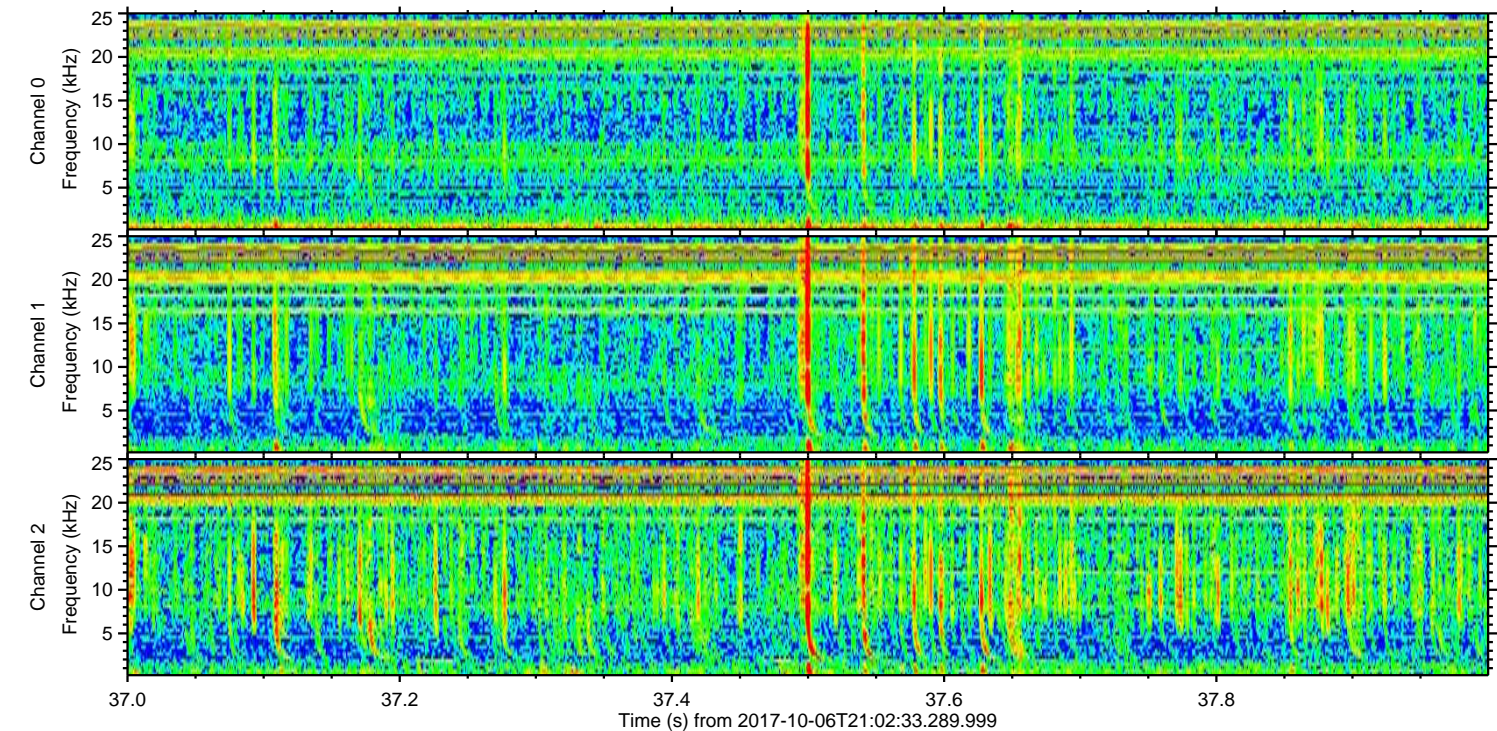
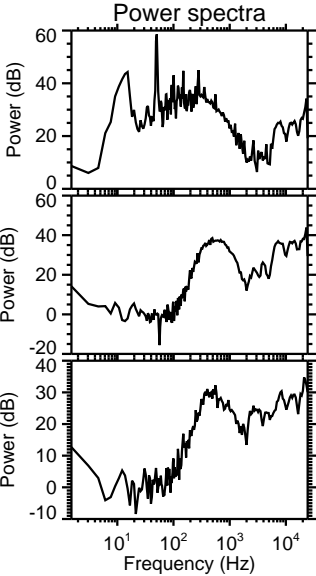
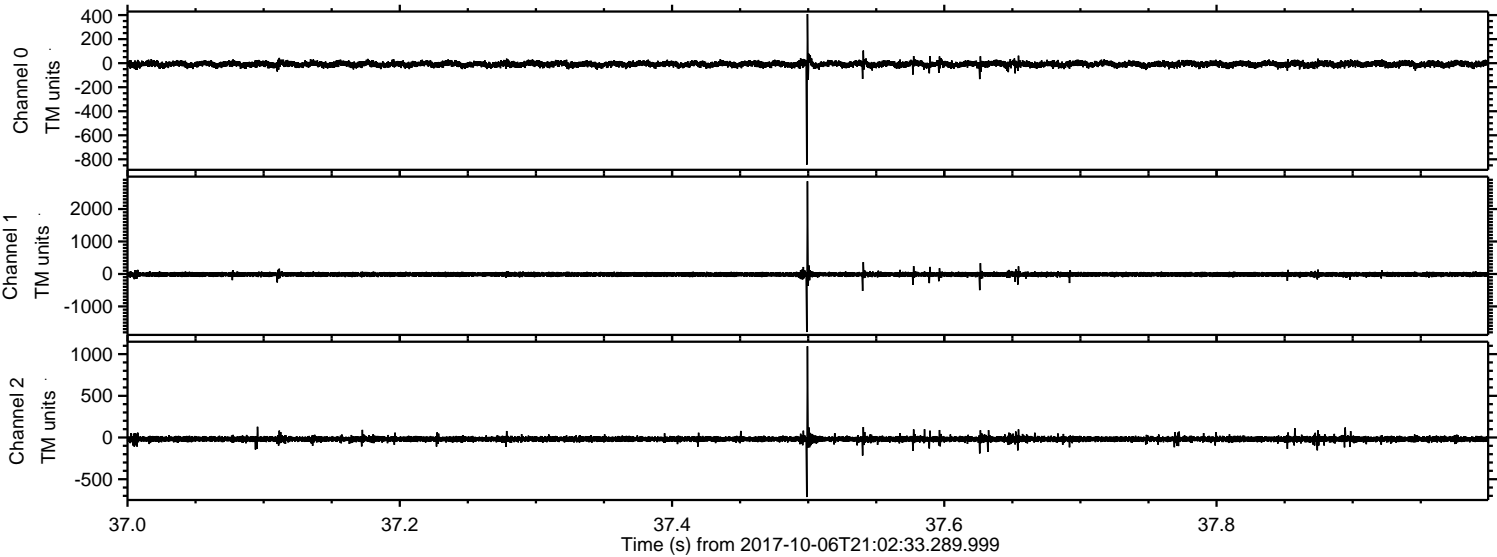


Channel 0
mn: -955
mx: 833
 μ : -8.4
 σ : 16.5

Channel 1
mn: -1259
mx: 1021
 μ : -14.4
 σ : 34.4

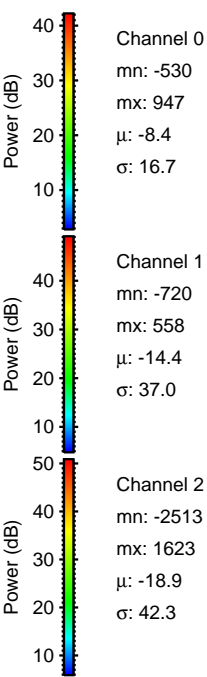
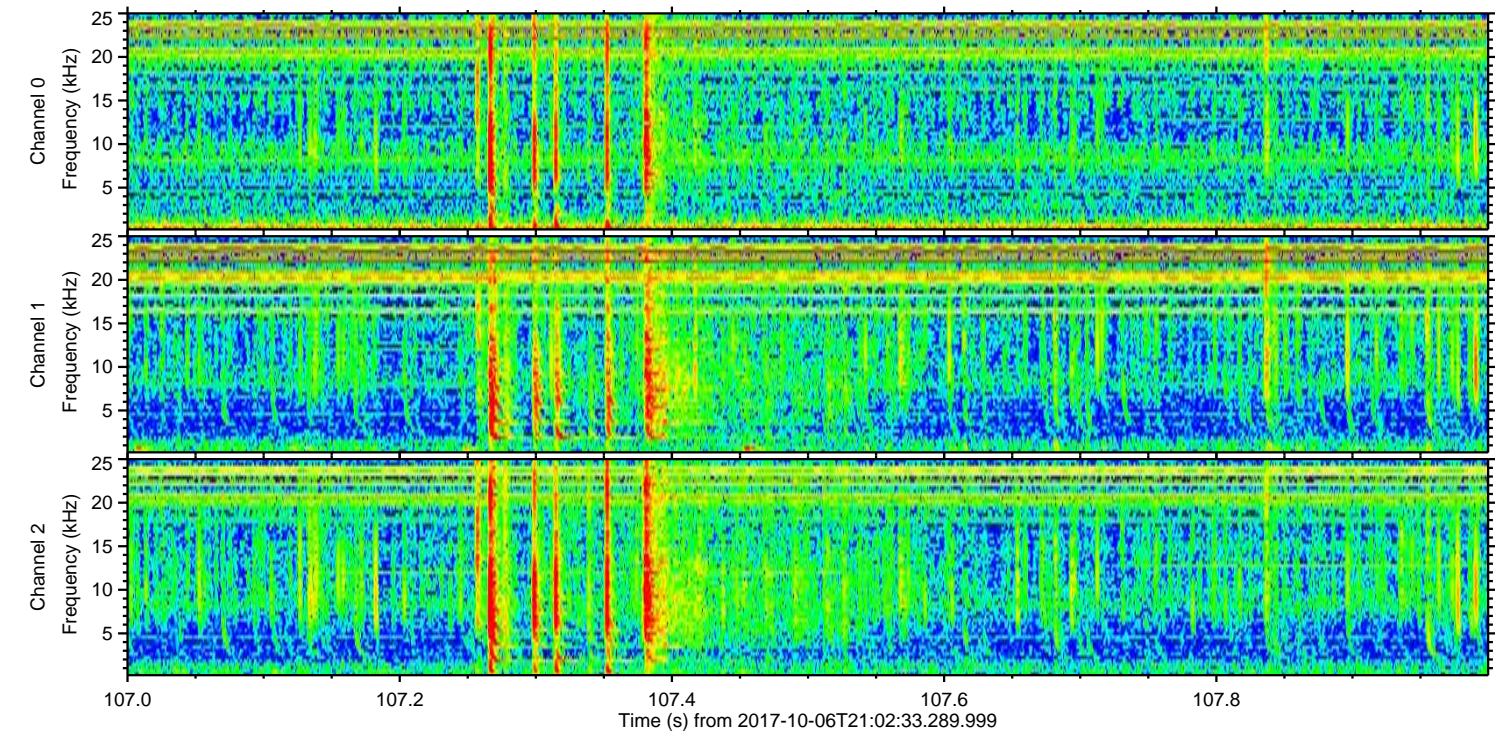
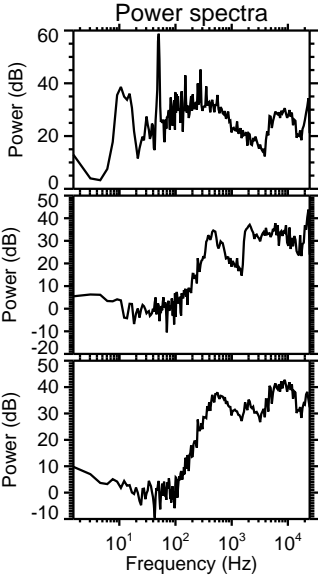
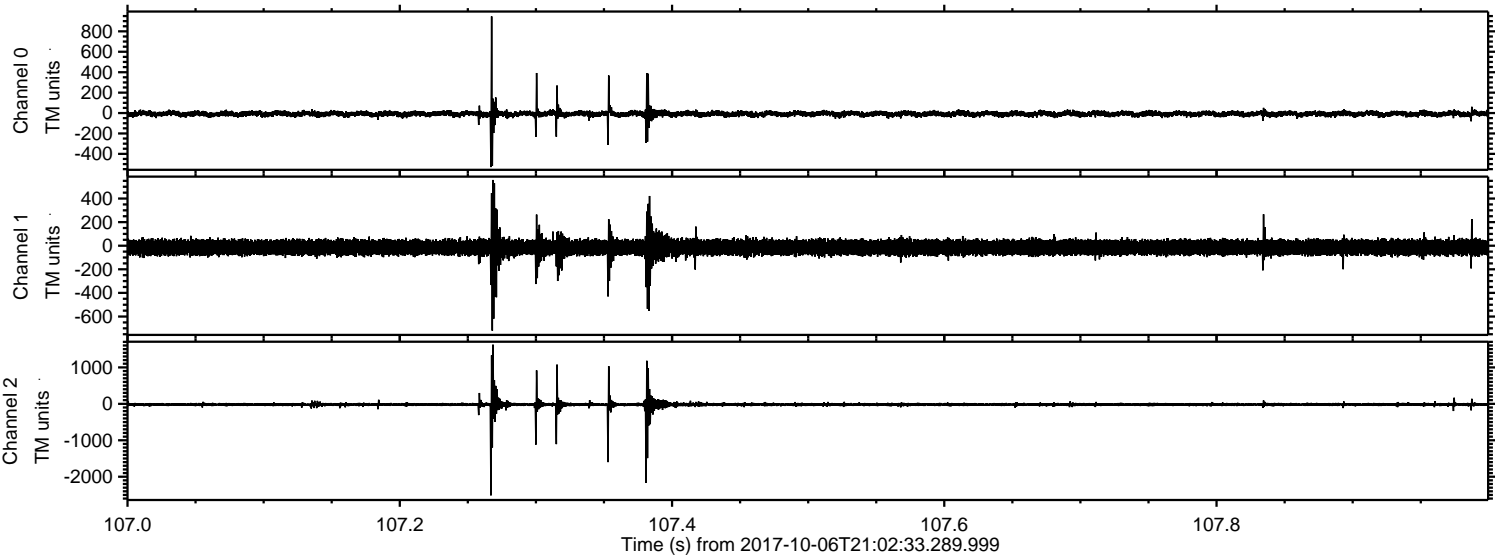
Channel 2
mn: -3107
mx: 2520
 μ : -18.9
 σ : 36.9

Processed Fri Oct 6 23:10:09 2017 by ELM ver.2012-10-06 from 001__elm20171006_210232__dat00.bin

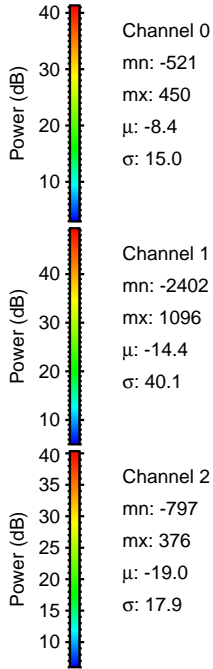
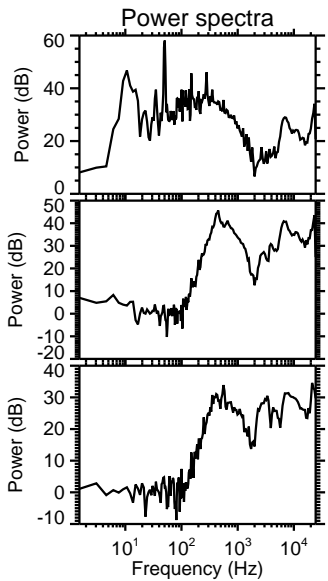
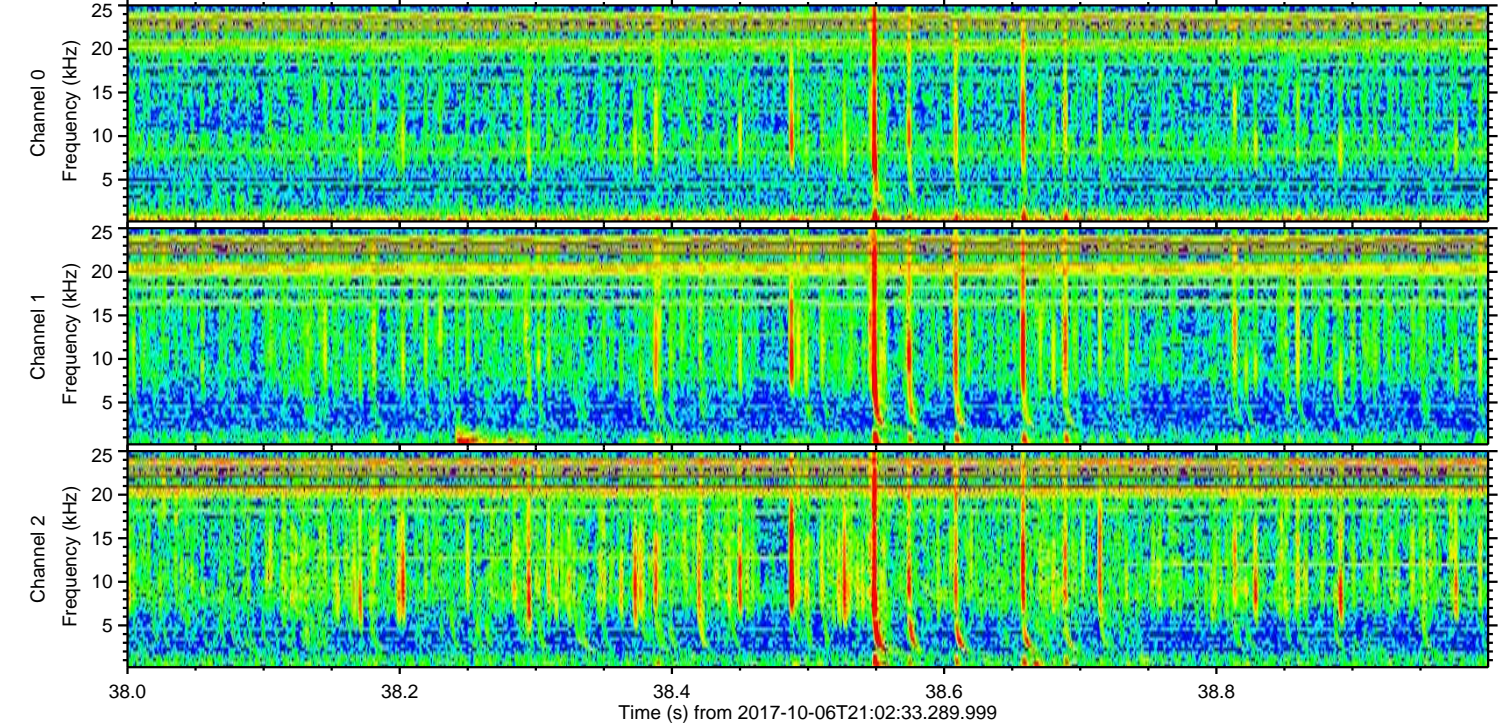
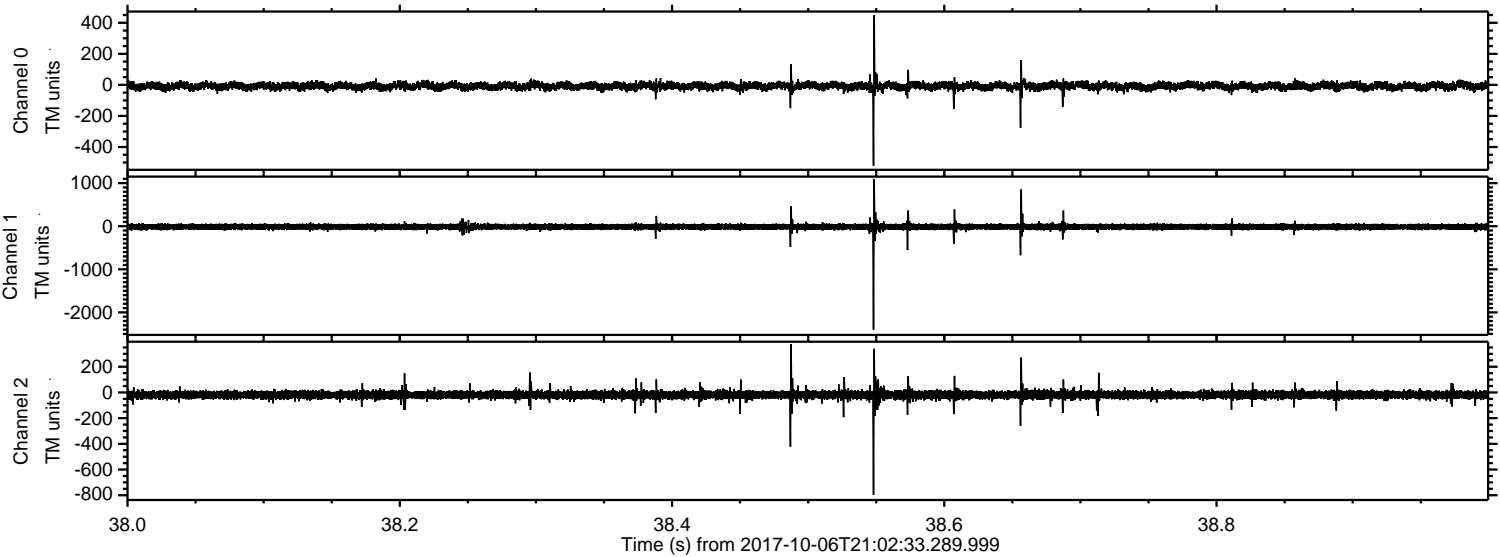


ELMAVAN 3D WAVEFORMS (Measured data sampled at 50 kHz) 51000 packets of 144 samples from 2017-10-06T21:02:33.289.999. Part 108/147

Processed Fri Oct 6 23:10:09 2017 by ELM ver.2012-10-06 from 001__elm20171006_210232__dat00.bin



Processed Fri Oct 6 23:10:10 2017 by ELM ver.2012-10-06 from 001__elm20171006_210232__dat00.bin

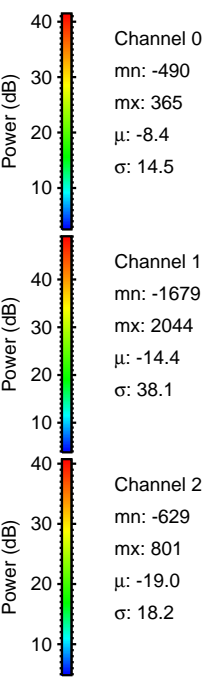
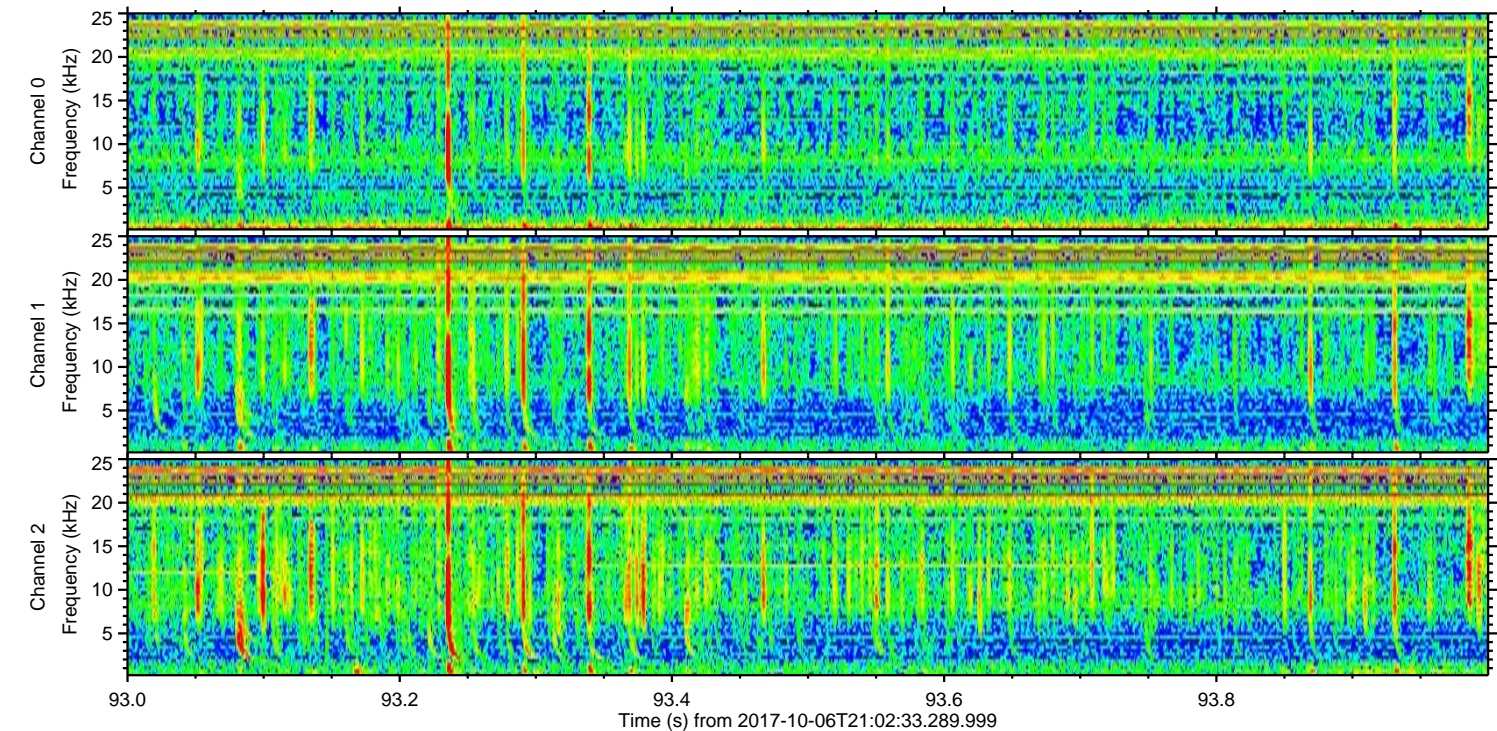
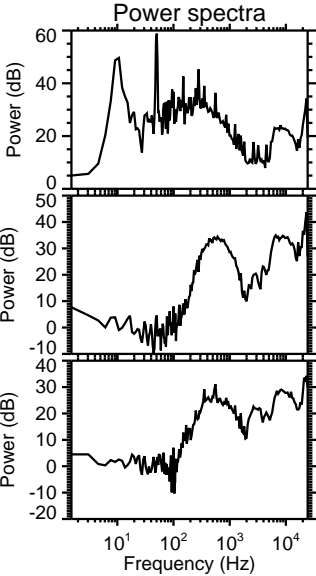
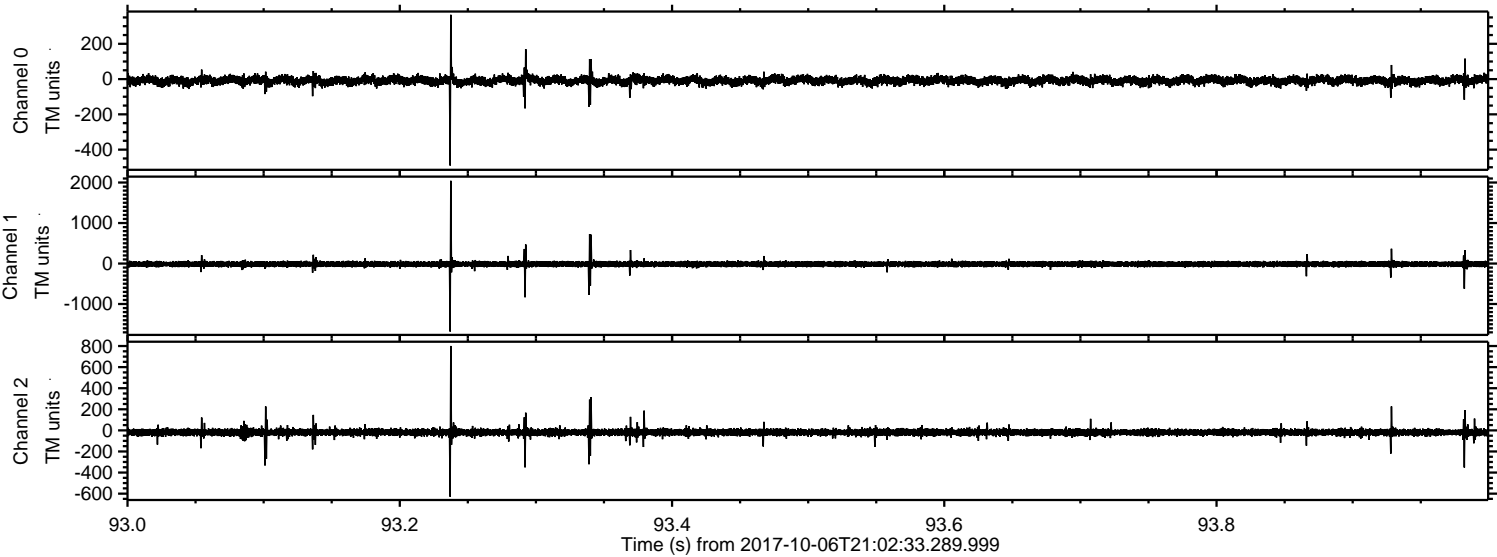


Channel 0
mn: -521
mx: 450
 μ : -8.4
 σ : 15.0

Channel 1
mn: -2402
mx: 1096
 μ : -14.4
 σ : 40.1

Channel 2
mn: -797
mx: 376
 μ : -19.0
 σ : 17.9

Processed Fri Oct 6 23:10:11 2017 by ELM ver.2012-10-06 from 001__elm20171006_210232__dat00.bin



Processed Fri Oct 6 23:10:12 2017 by ELM ver.2012-10-06 from 001__elm20171006_210232__dat00.bin

