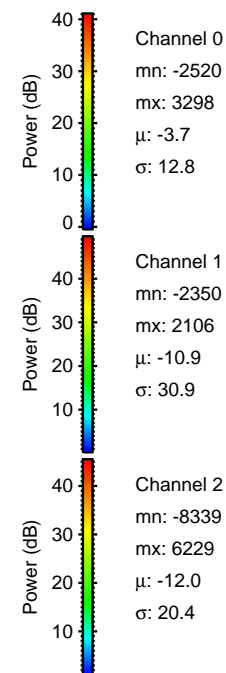
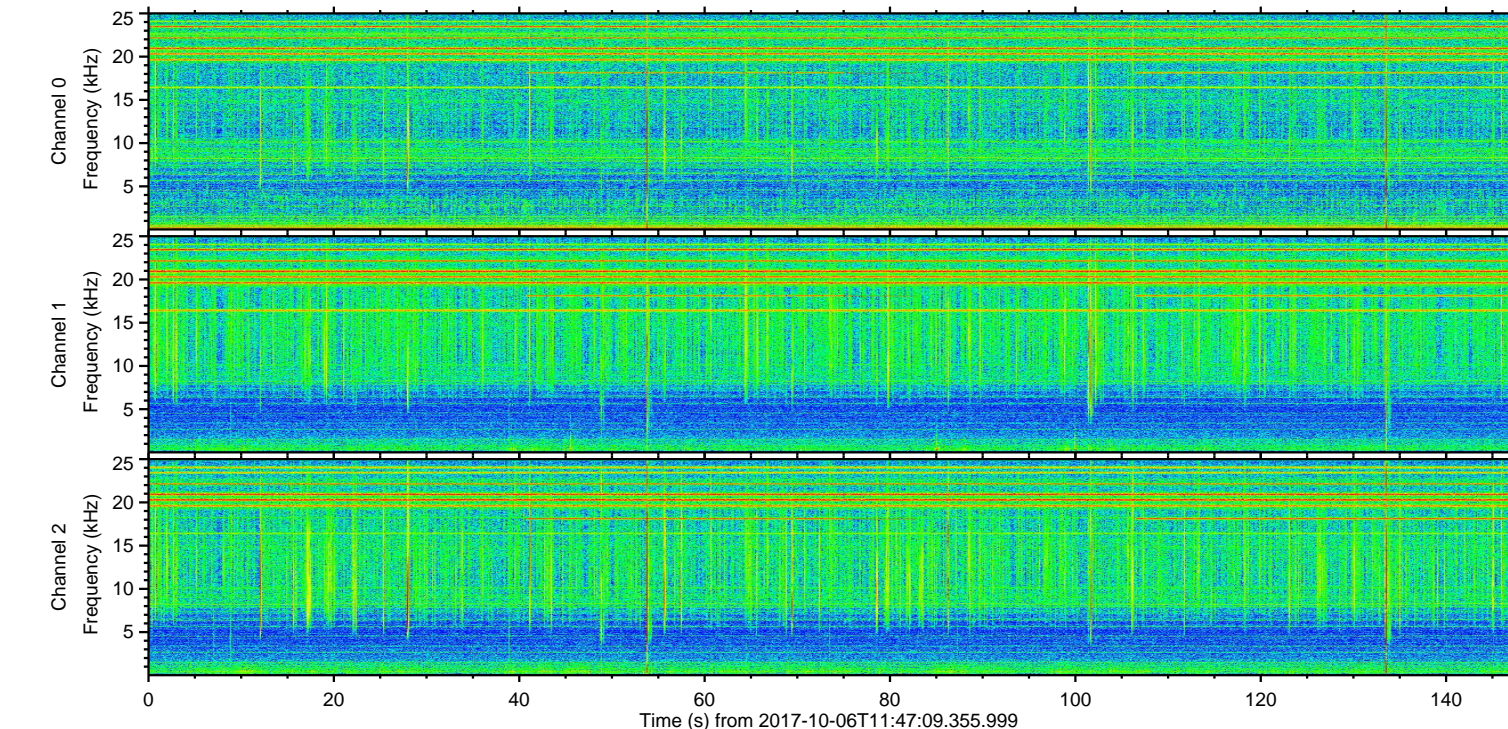
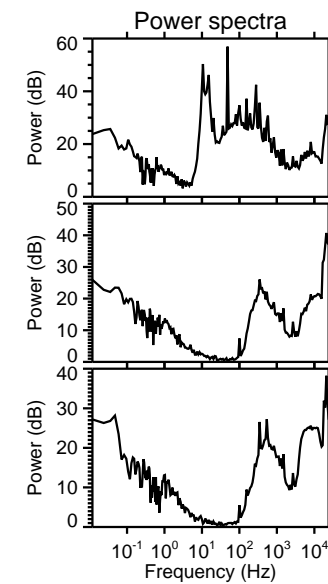
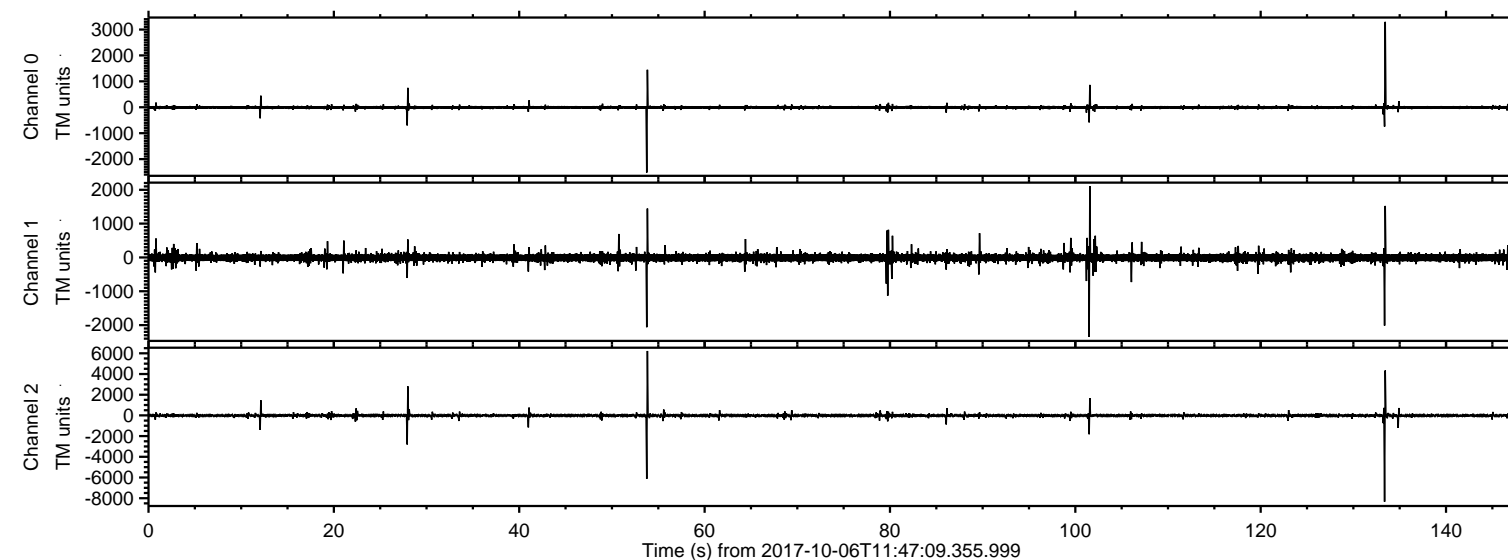


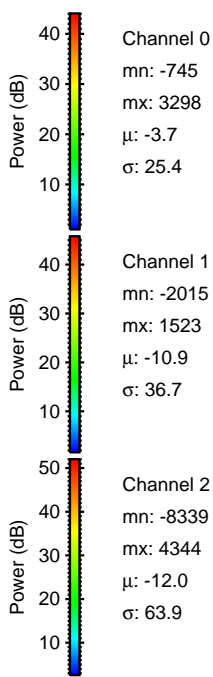
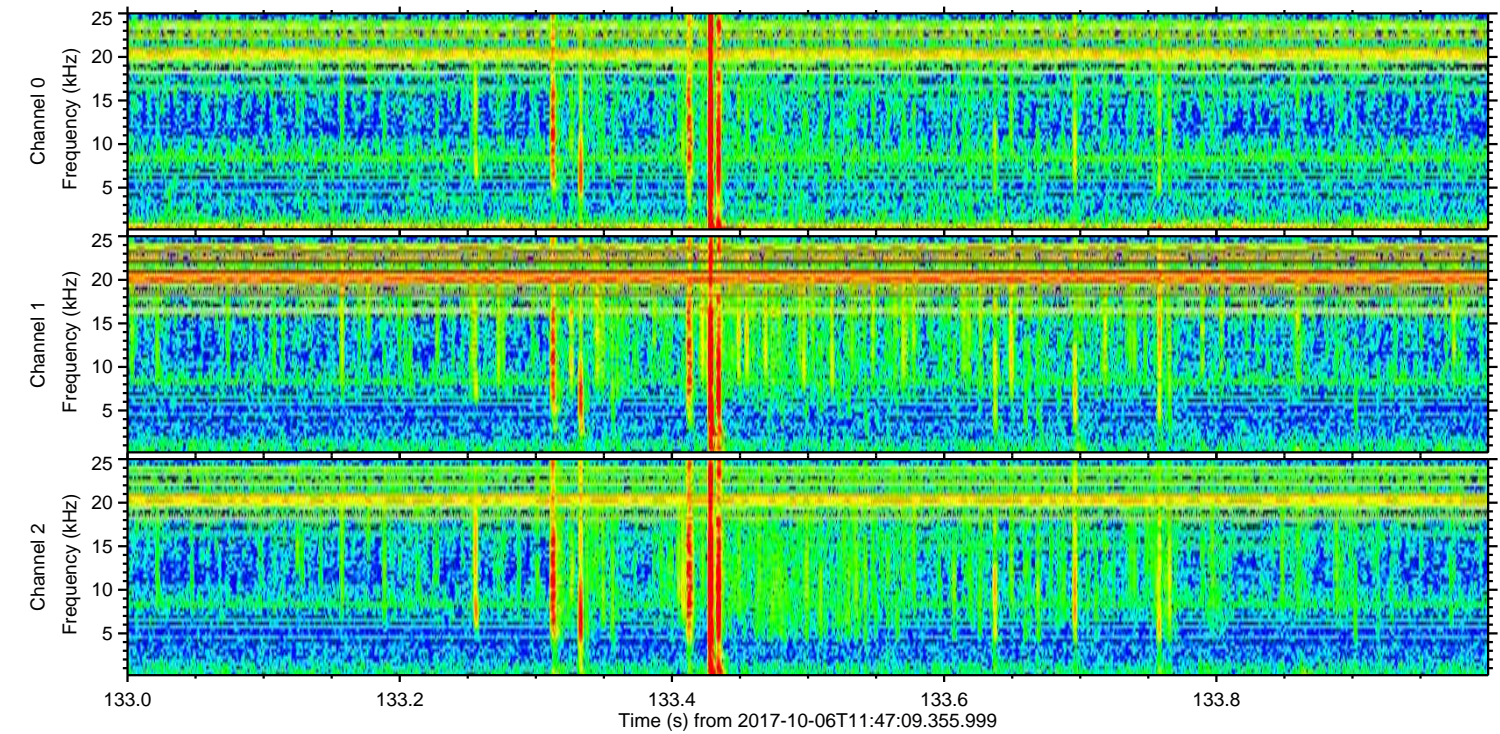
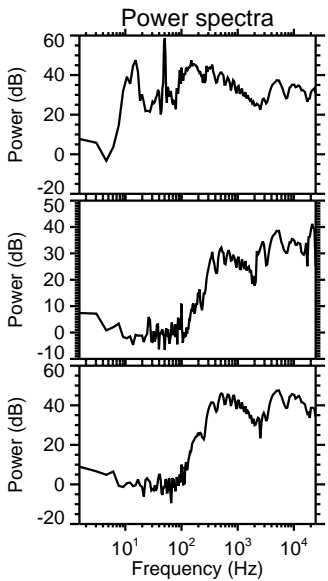
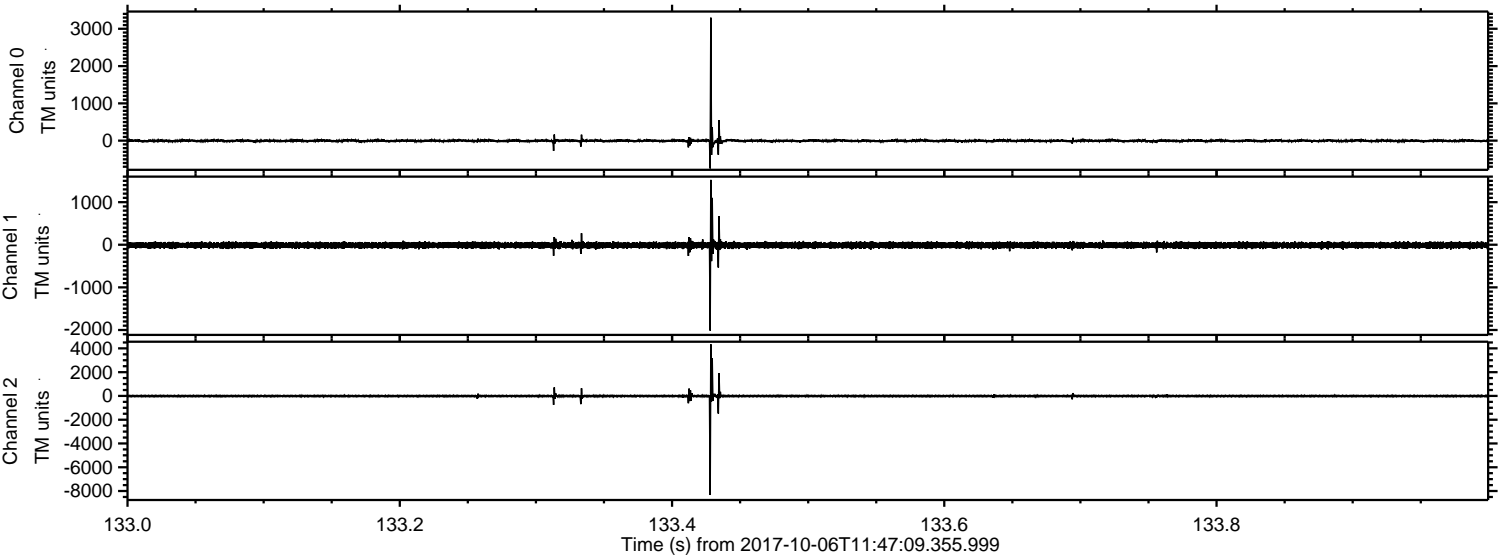
ELMAVAN 3D WAVEFORMS (Measured data sampled at 50 kHz) 51000 packets of 144 samples from 2017-10-06T11:47:09.355.999.

Processed Fri Oct 6 13:55:21 2017 by ELM ver.2012-10-06 from 001__elm20171006_114708__dat00.bin

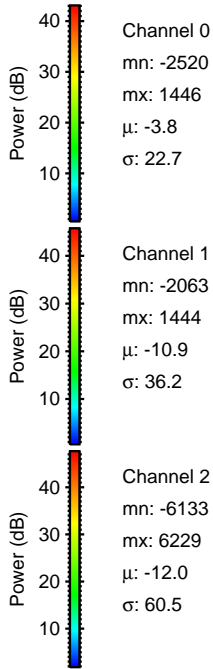
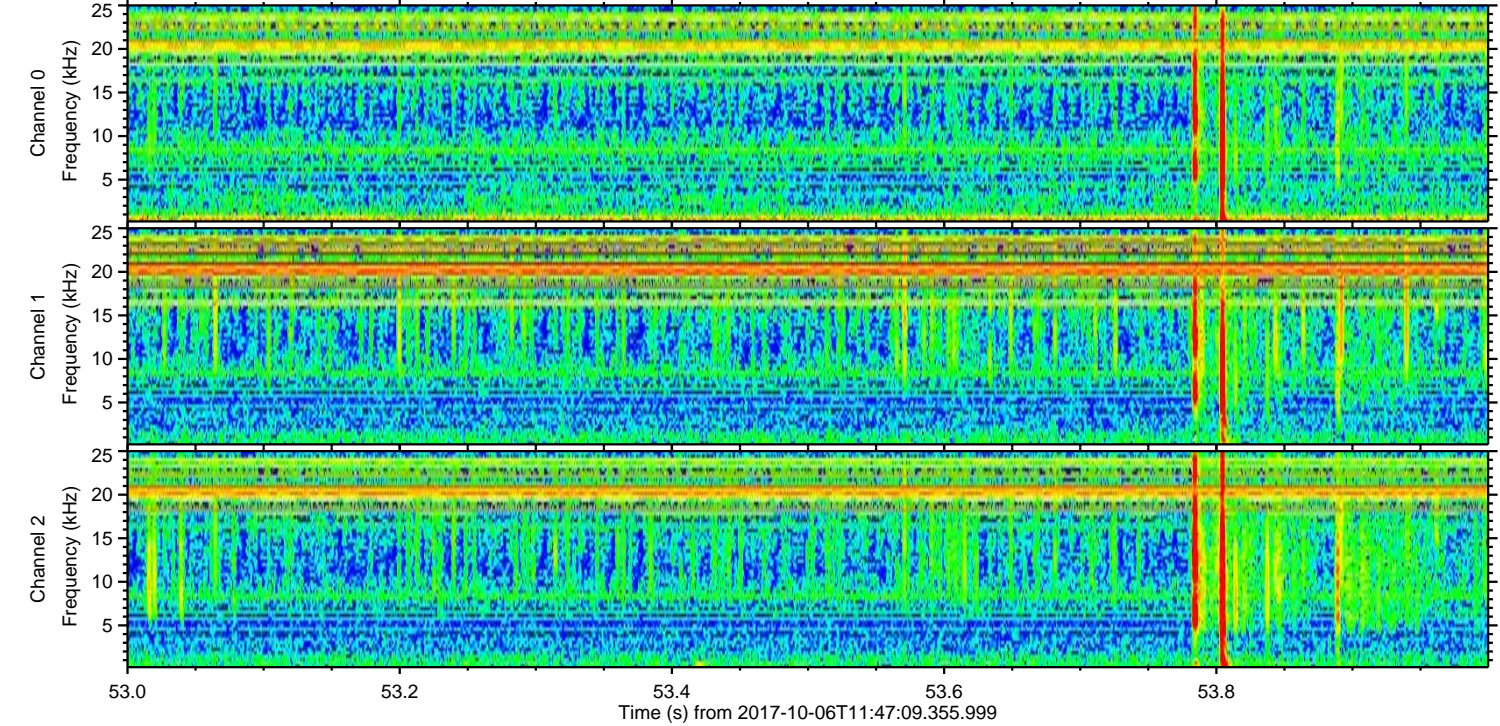
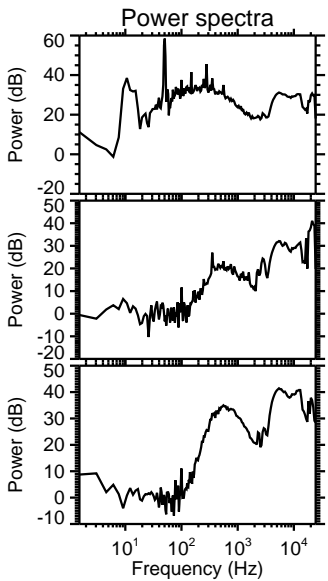
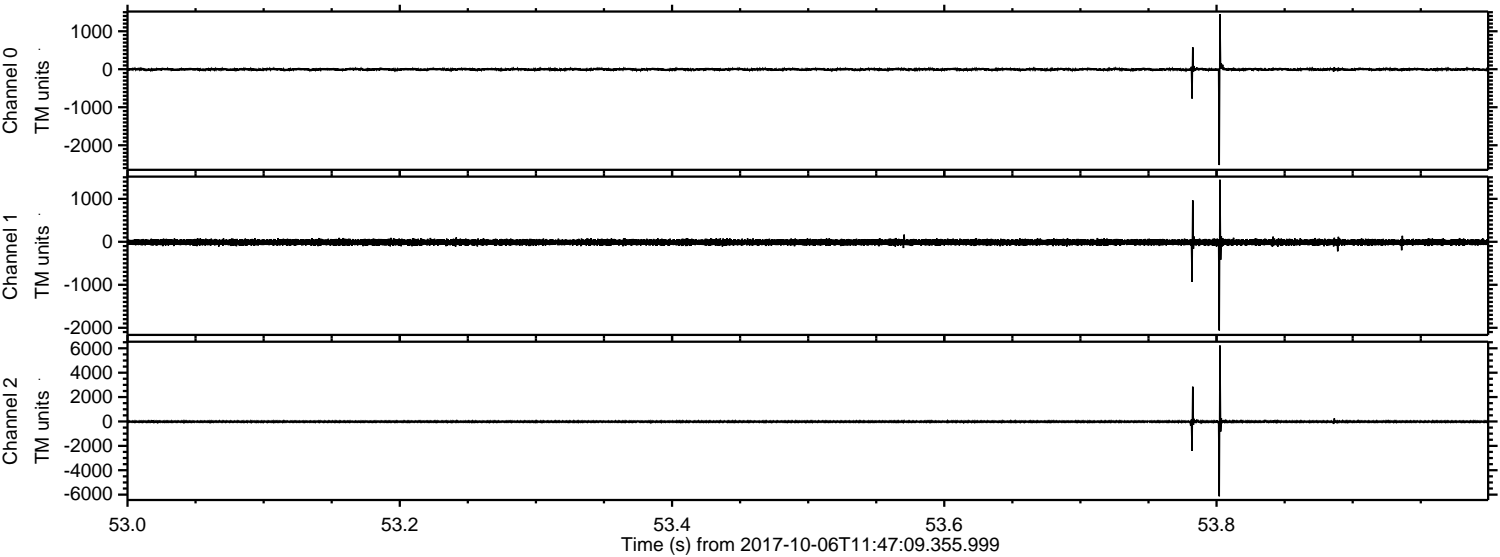


ELMAVAN 3D WAVEFORMS (Measured data sampled at 50 kHz) 51000 packets of 144 samples from 2017-10-06T11:47:09.355.999. Part 134/147

Processed Fri Oct 6 13:55:28 2017 by ELM ver.2012-10-06 from 001__elm20171006_114708__dat00.bin



Processed Fri Oct 6 13:55:29 2017 by ELM ver.2012-10-06 from 001__elm20171006_114708__dat00.bin

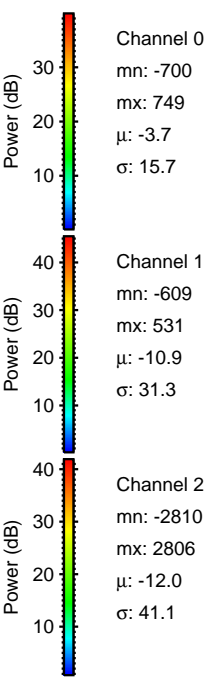
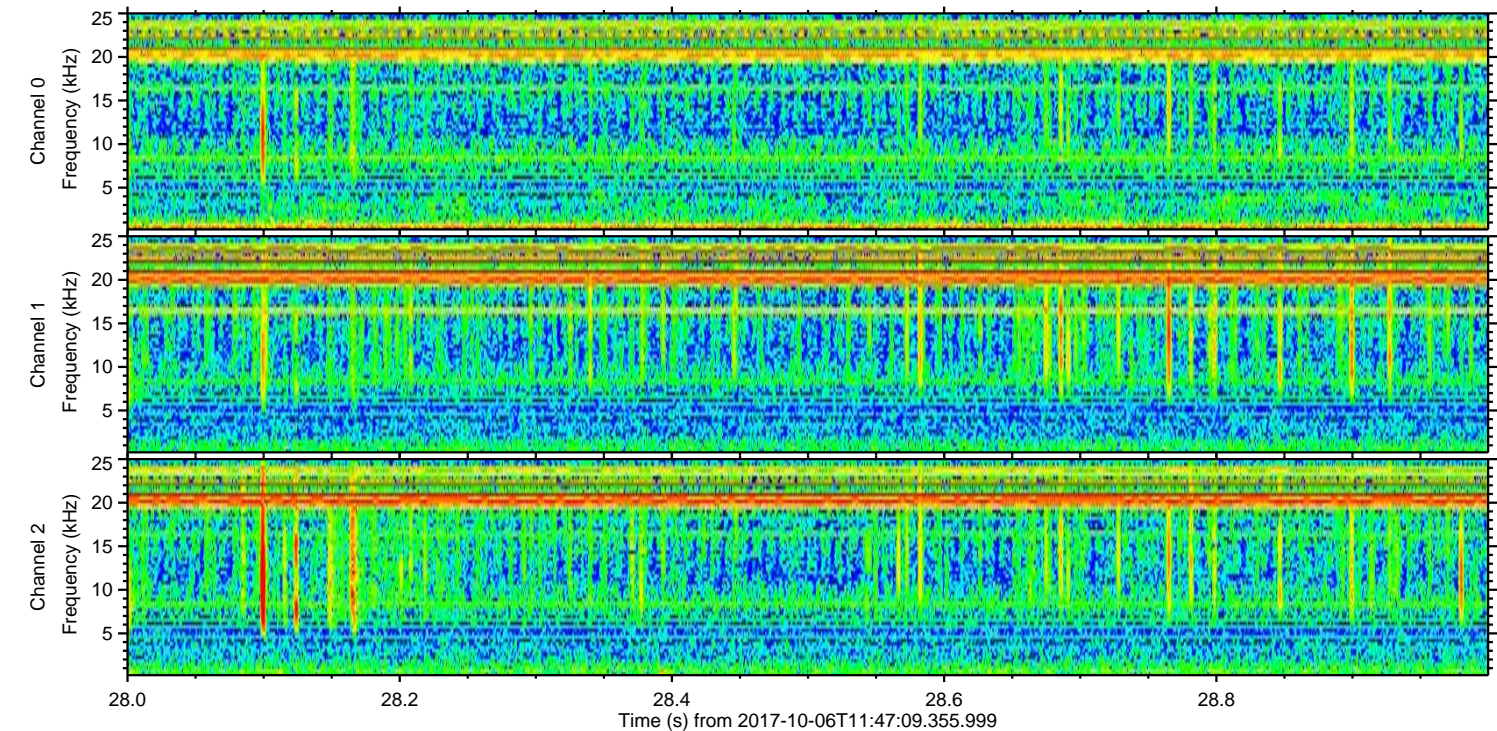
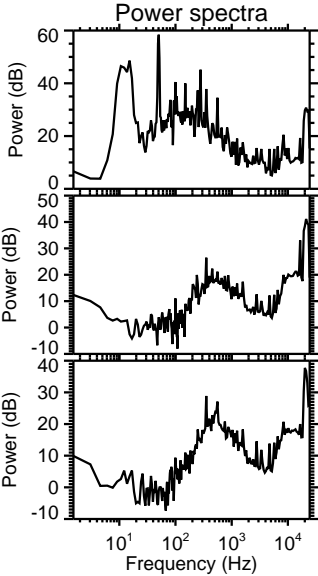
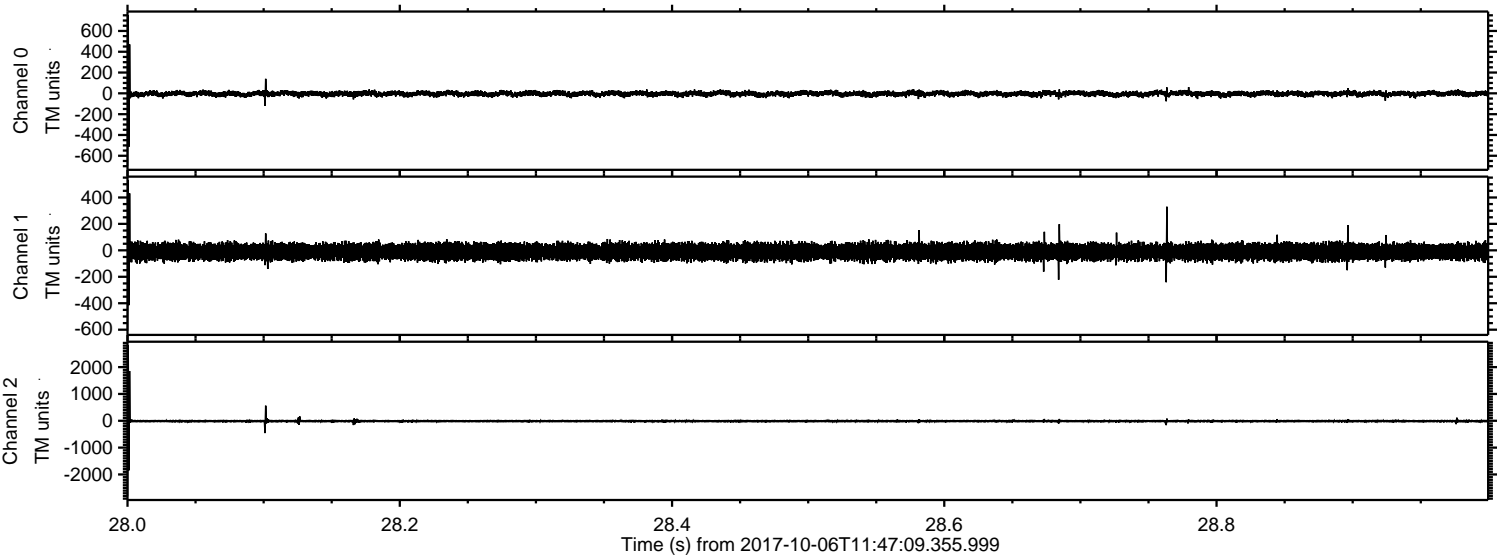


Channel 0
mn: -2520
mx: 1446
 μ : -3.8
 σ : 22.7

Channel 1
mn: -2063
mx: 1444
 μ : -10.9
 σ : 36.2

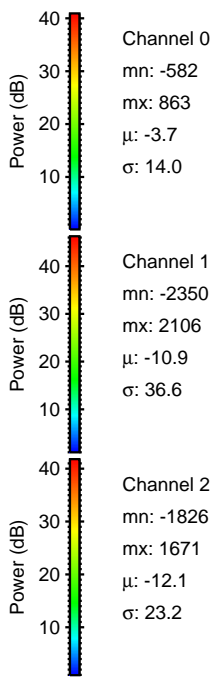
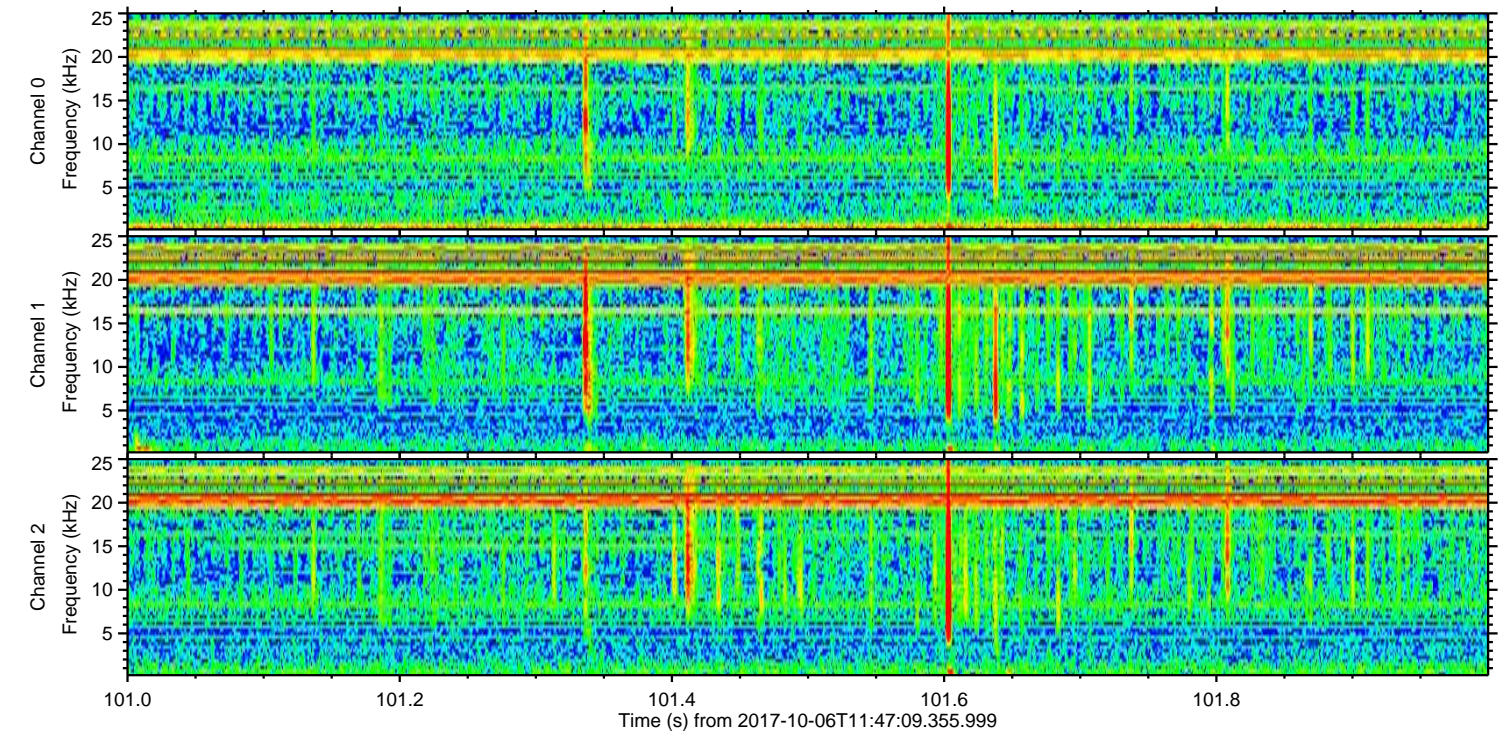
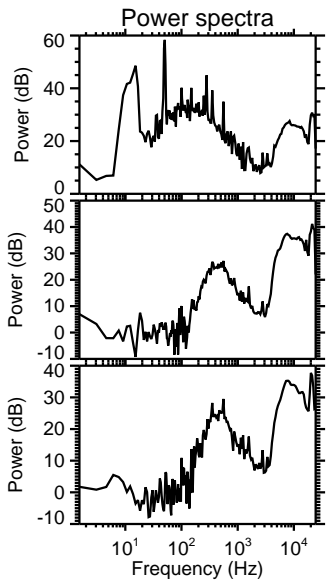
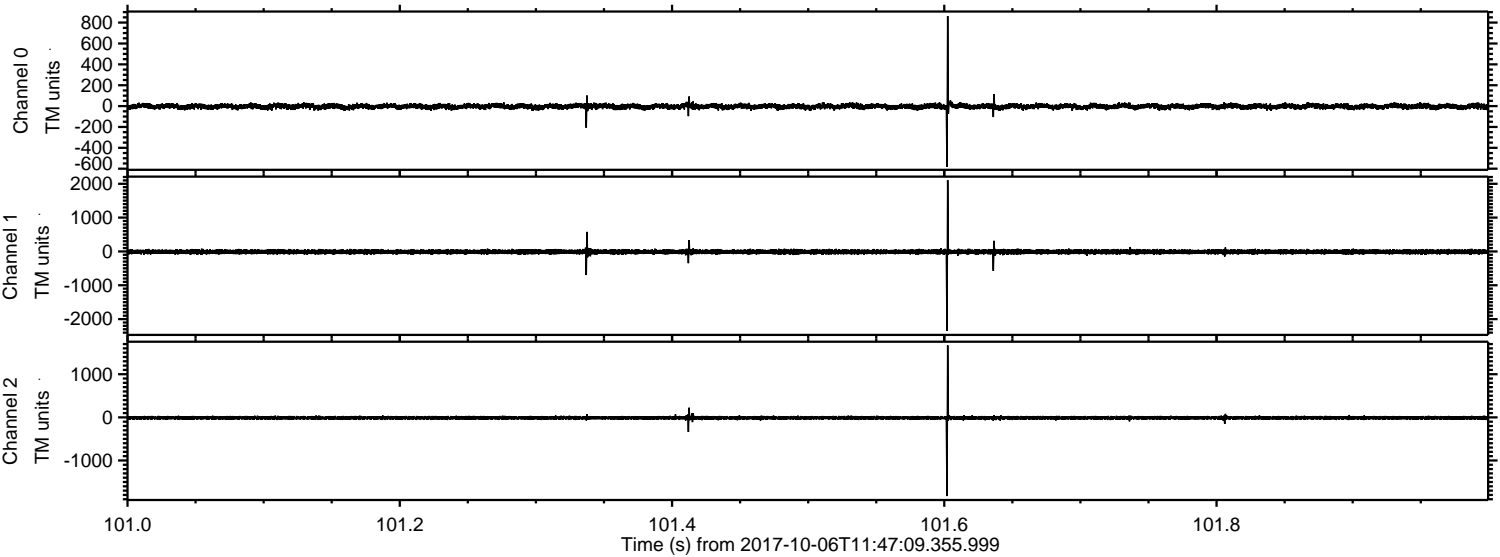
Channel 2
mn: -6133
mx: 6229
 μ : -12.0
 σ : 60.5

Processed Fri Oct 6 13:55:29 2017 by ELM ver.2012-10-06 from 001__elm20171006_114708__dat00.bin



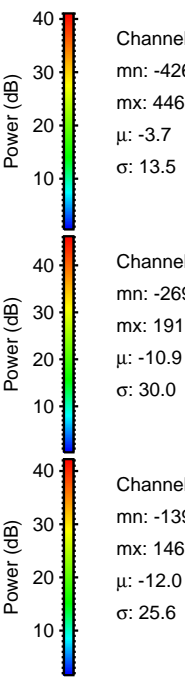
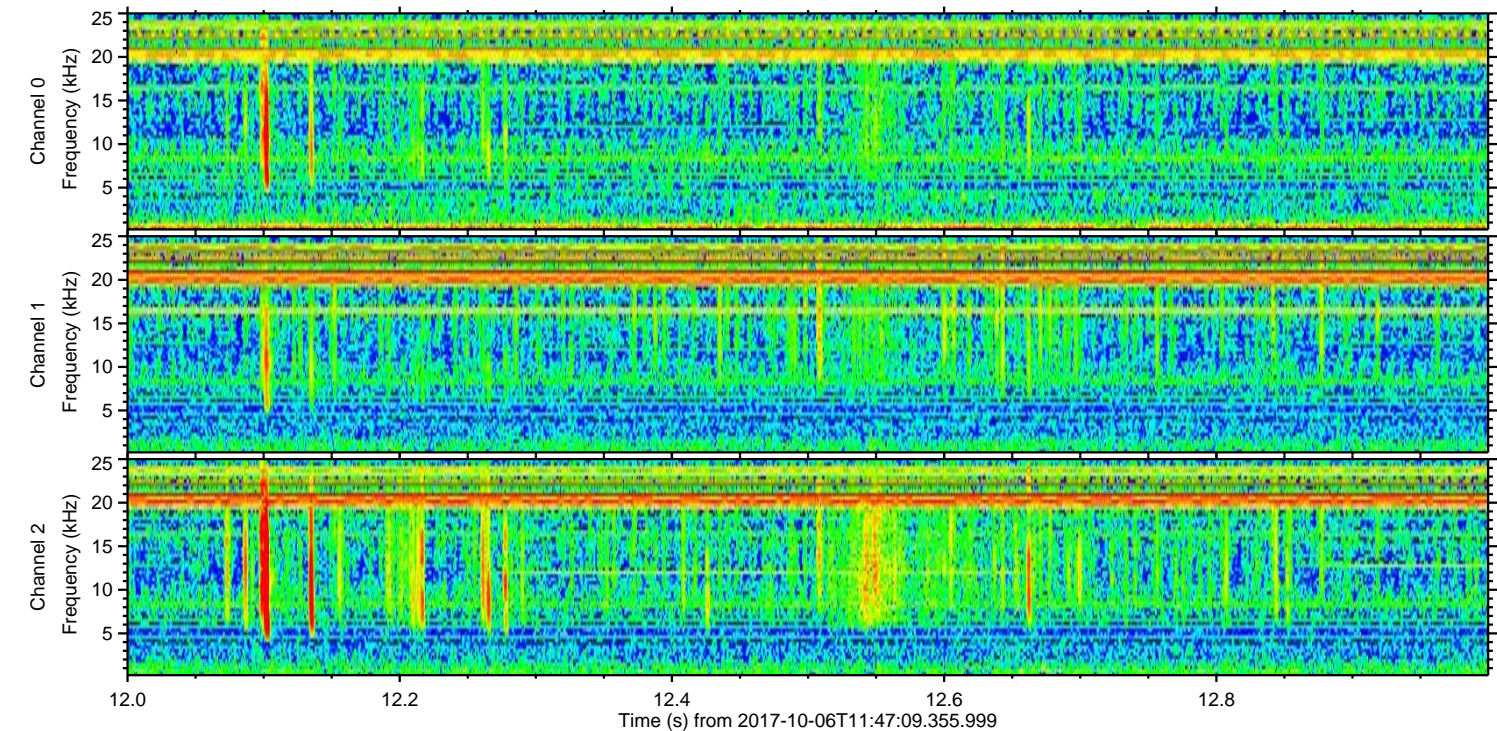
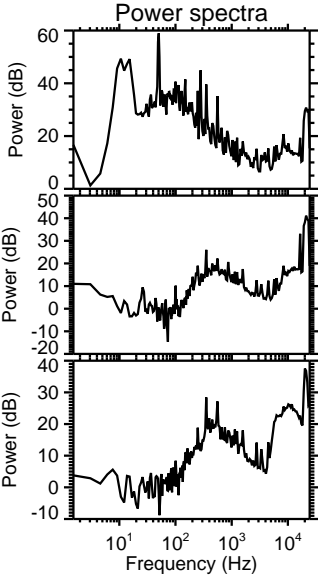
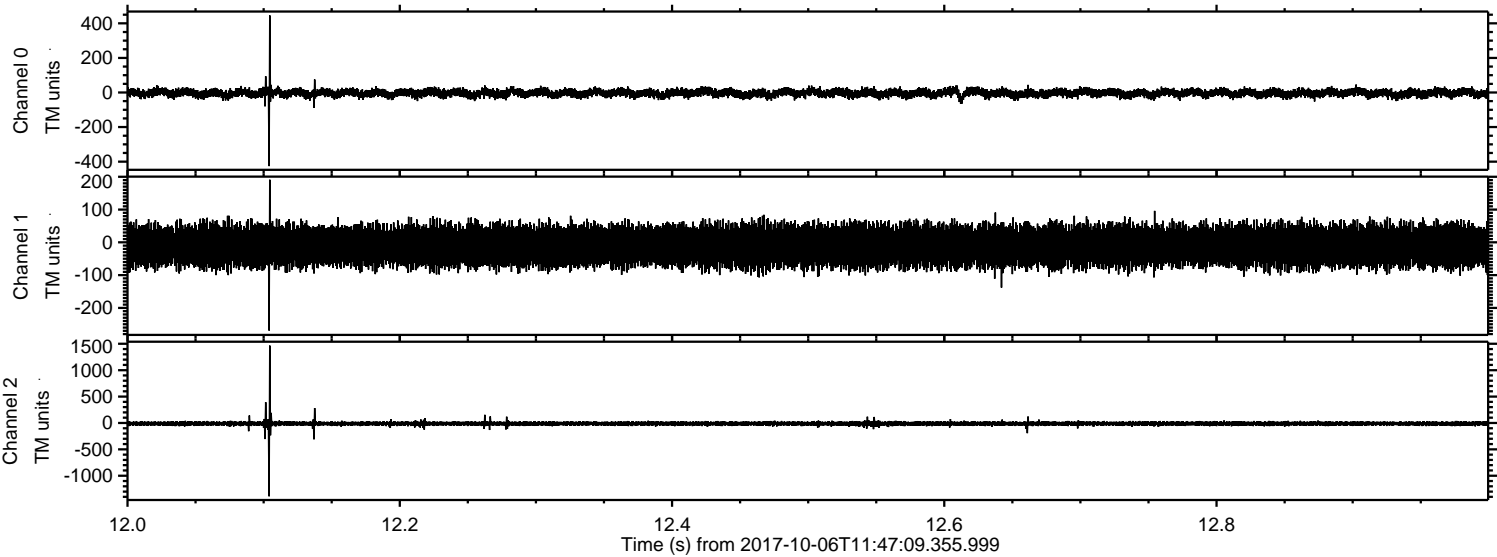
ELMAVAN 3D WAVEFORMS (Measured data sampled at 50 kHz) 51000 packets of 144 samples from 2017-10-06T11:47:09.355.999. Part 102/147

Processed Fri Oct 6 13:55:30 2017 by ELM ver.2012-10-06 from 001__elm20171006_114708__dat00.bin

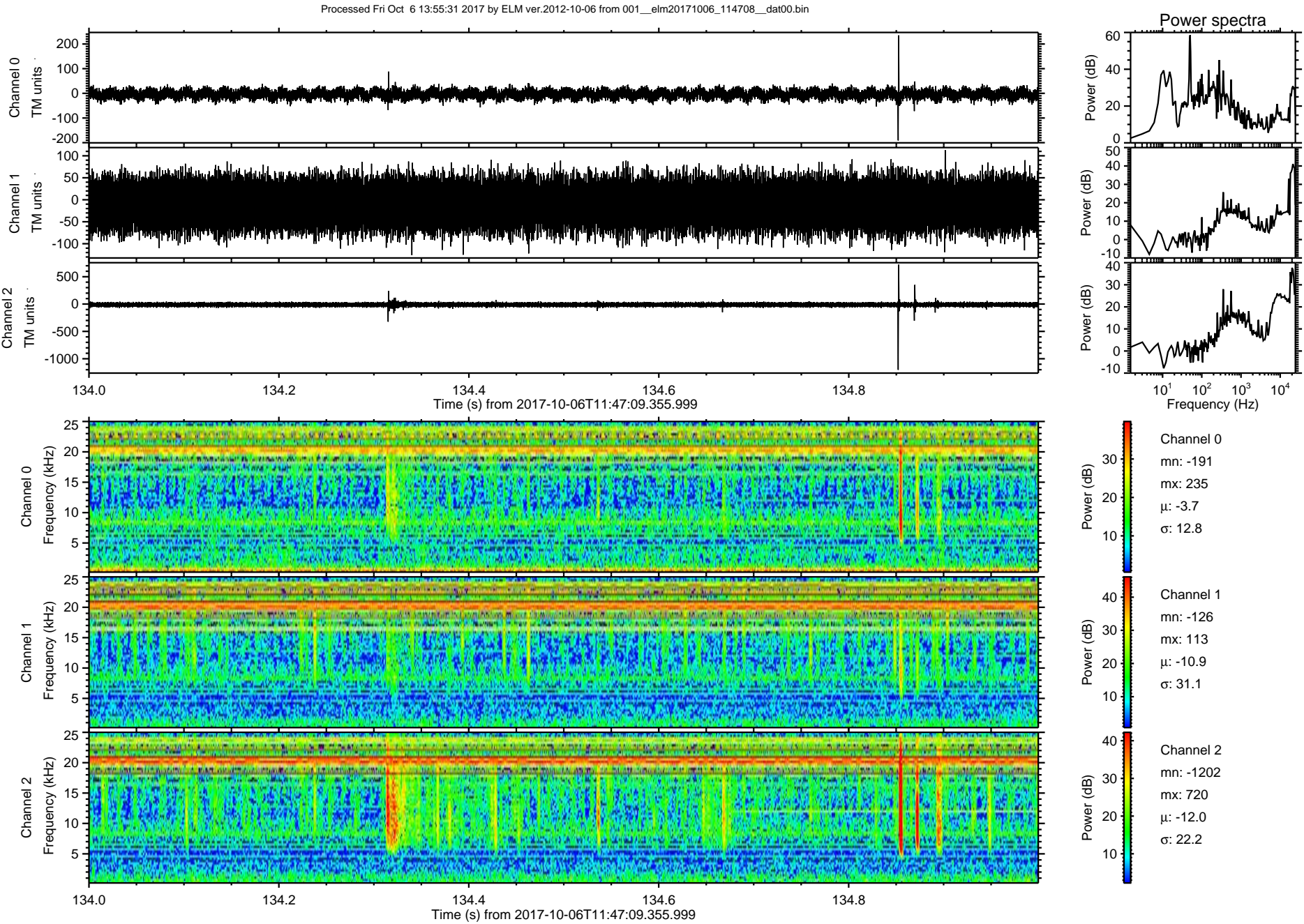


ELMAVAN 3D WAVEFORMS (Measured data sampled at 50 kHz) 51000 packets of 144 samples from 2017-10-06T11:47:09.355.999. Part 13/147

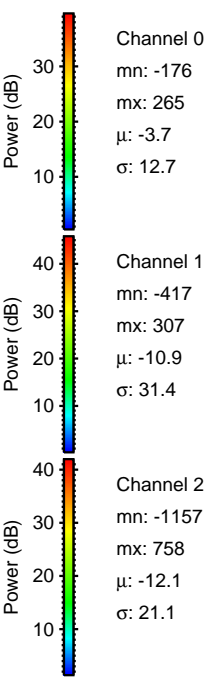
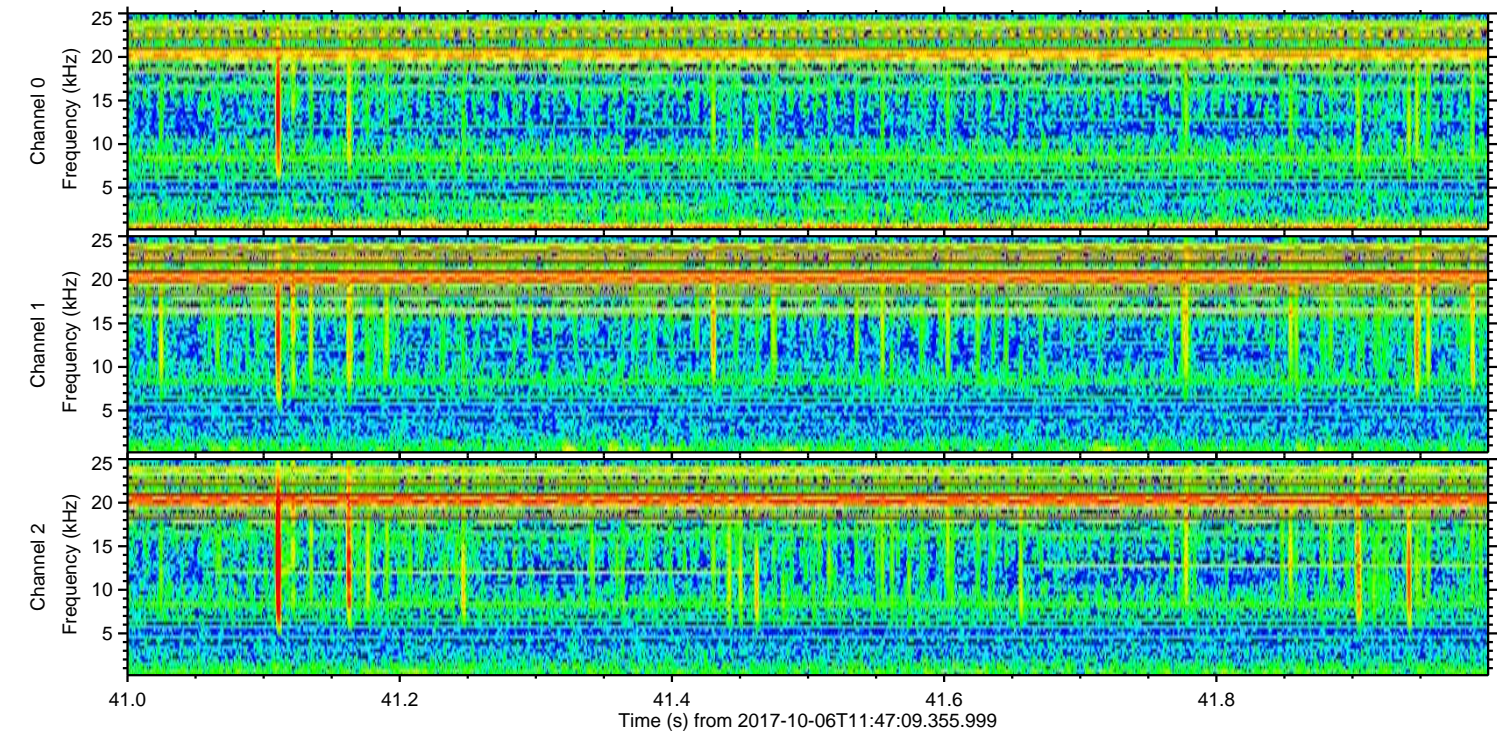
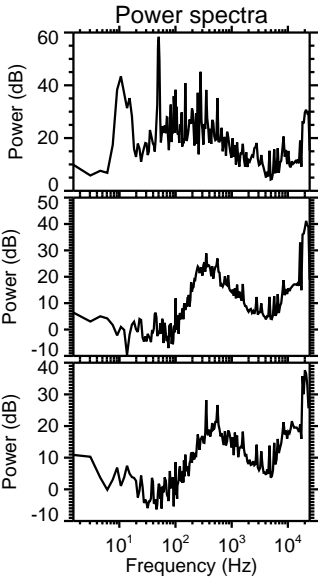
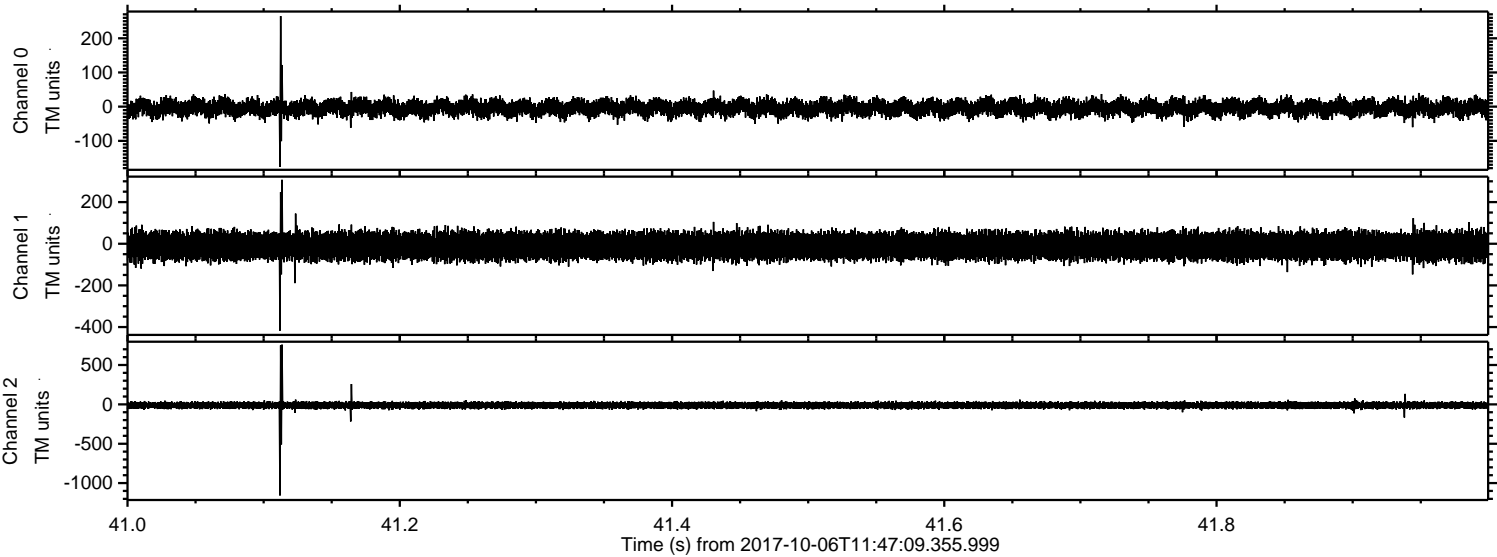
Processed Fri Oct 6 13:55:31 2017 by ELM ver.2012-10-06 from 001__elm20171006_114708__dat00.bin



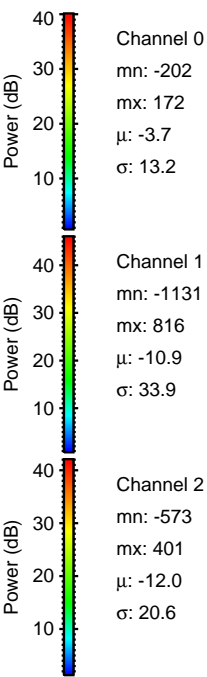
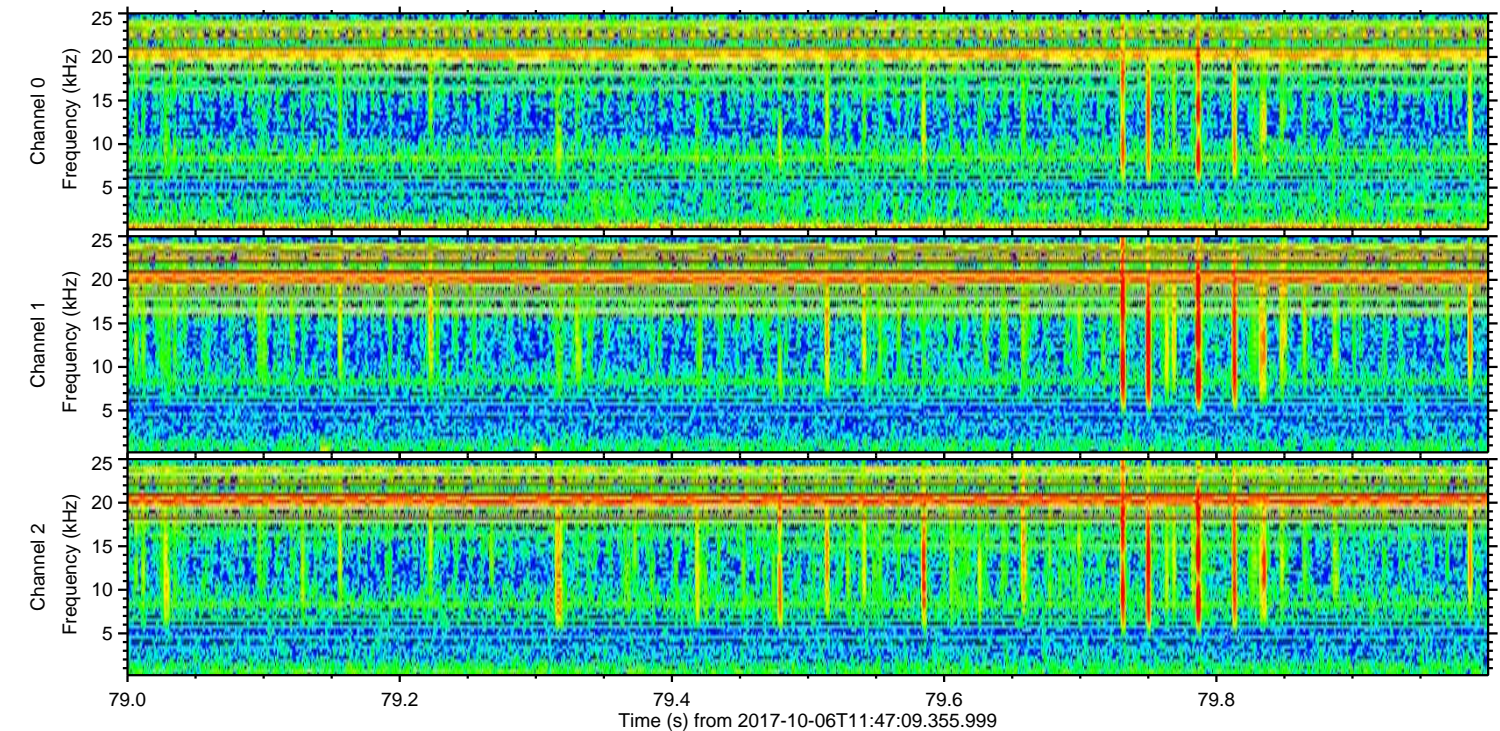
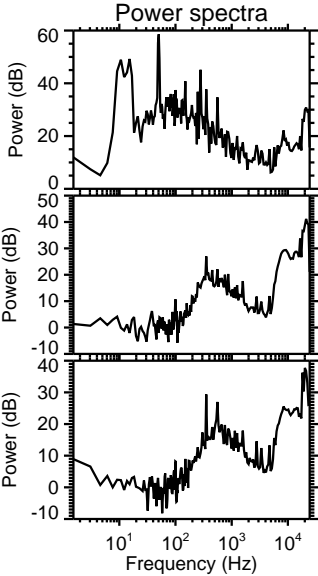
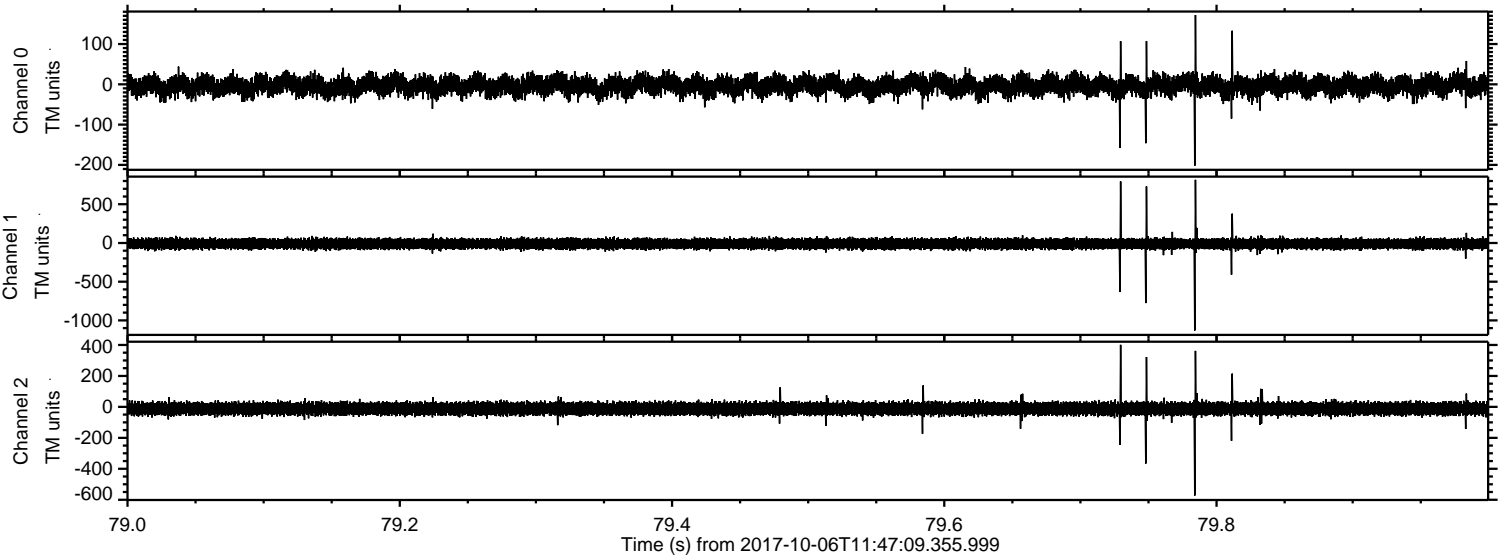
ELMAVAN 3D WAVEFORMS (Measured data sampled at 50 kHz) 51000 packets of 144 samples from 2017-10-06T11:47:09.355.999. Part 135/147



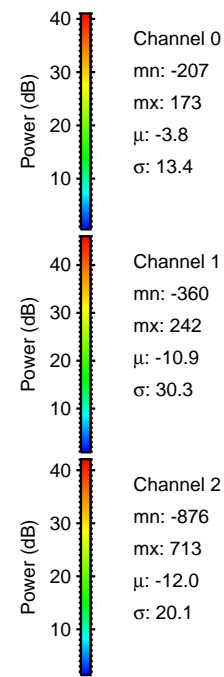
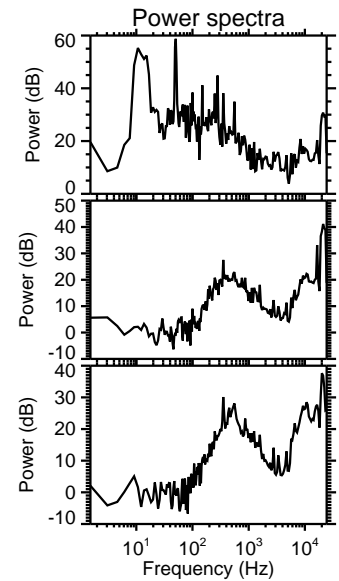
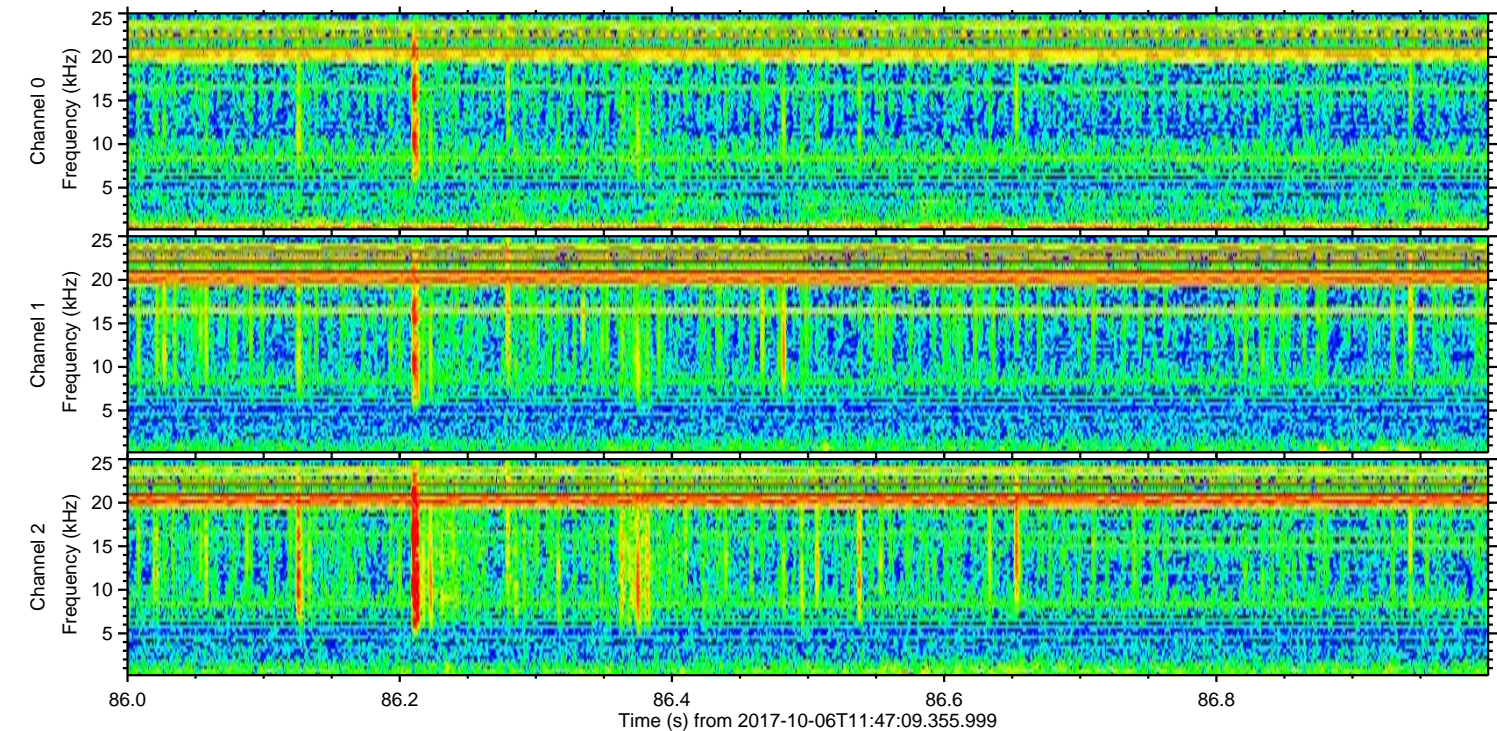
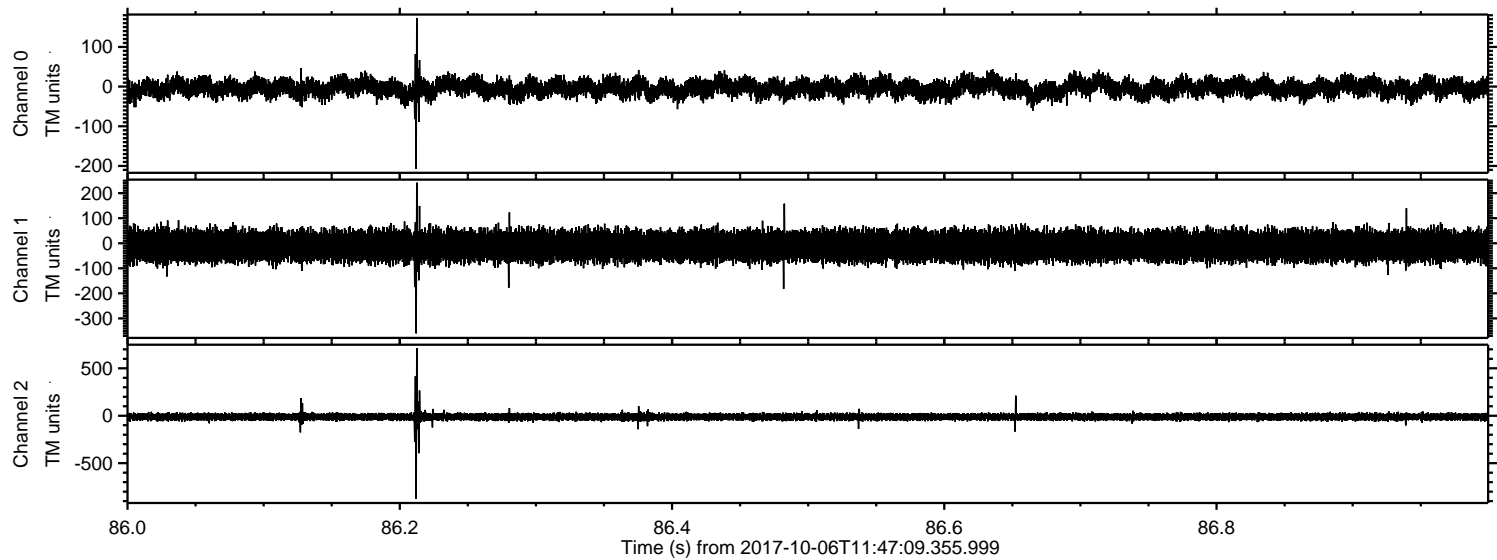
Processed Fri Oct 6 13:55:32 2017 by ELM ver.2012-10-06 from 001__elm20171006_114708__dat00.bin



Processed Fri Oct 6 13:55:33 2017 by ELM ver.2012-10-06 from 001__elm20171006_114708__dat00.bin



Processed Fri Oct 6 13:55:33 2017 by ELM ver.2012-10-06 from 001__elm20171006_114708__dat00.bin



Channel 0
mn: -207
mx: 173
 μ : -3.8
 σ : 13.4

Channel 1
mn: -360
mx: 242
 μ : -10.9
 σ : 30.3

Channel 2
mn: -876
mx: 713
 μ : -12.0
 σ : 20.1

