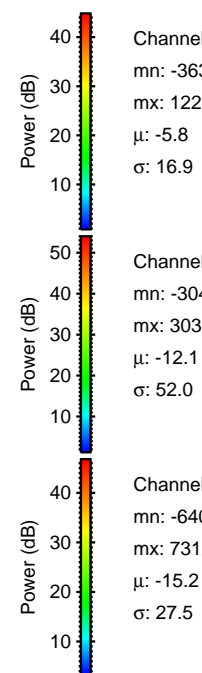
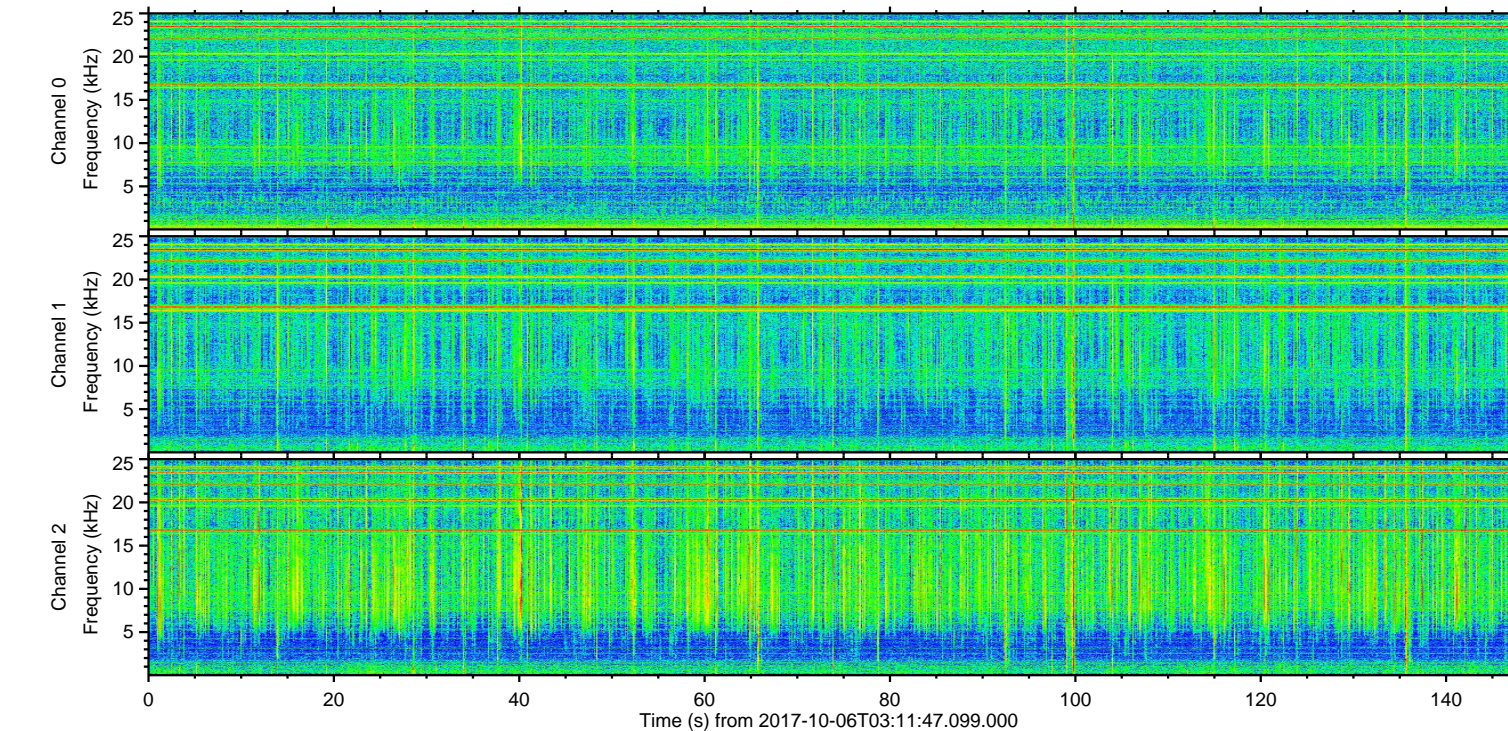
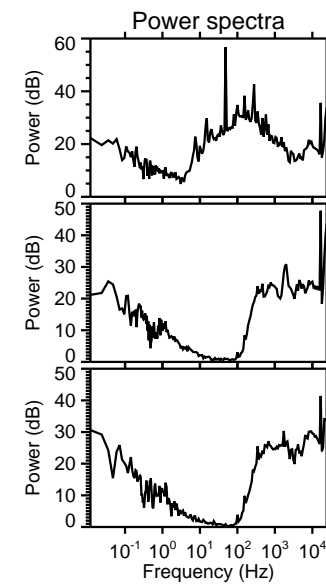
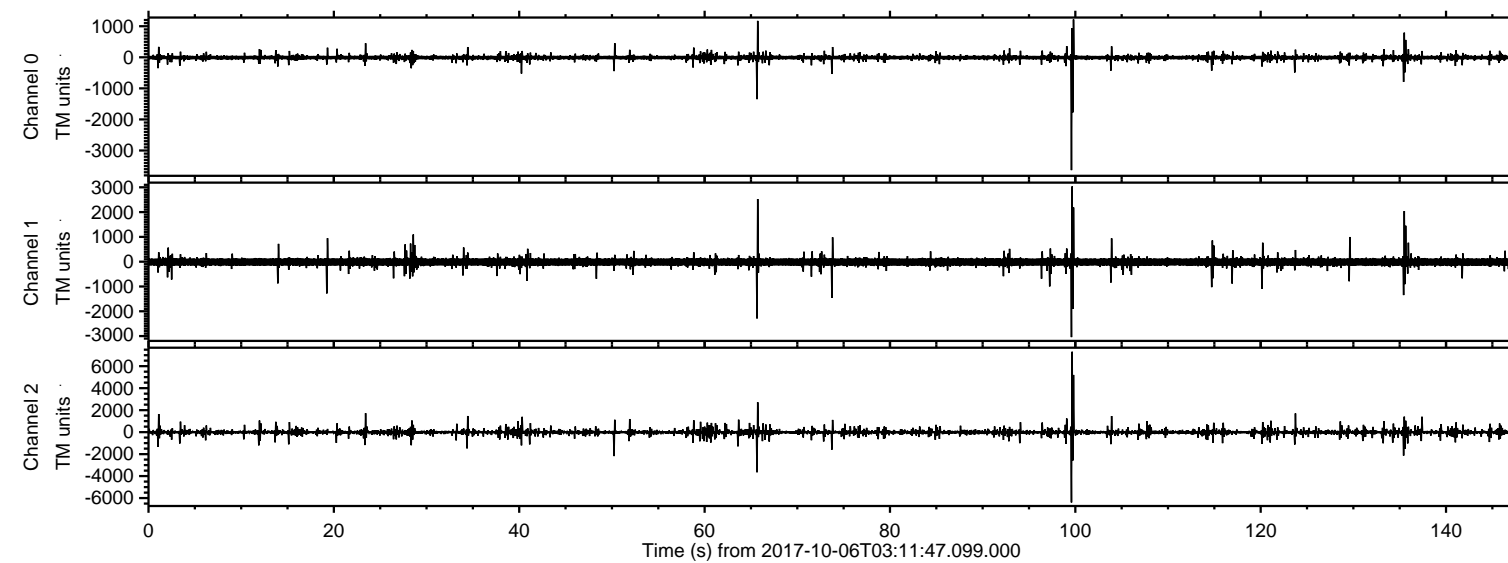


# ELMAVAN 3D WAVEFORMS (Measured data sampled at 50 kHz) 51000 packets of 144 samples from 2017-10-06T03:11:47.099.000.

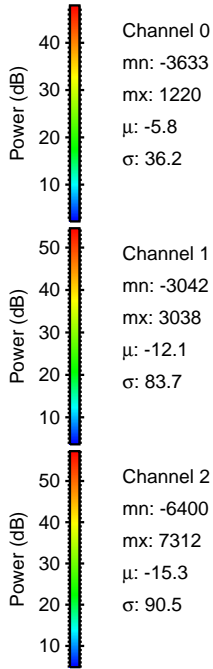
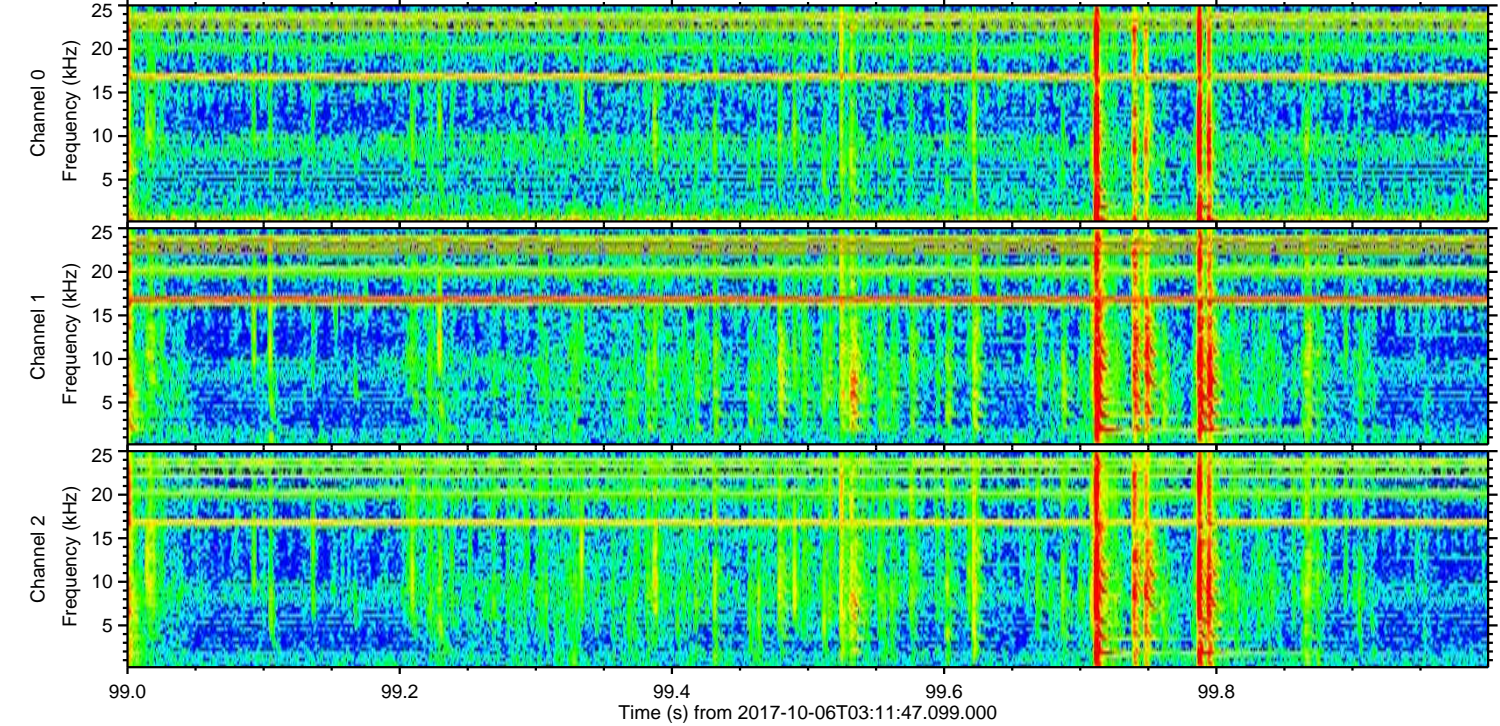
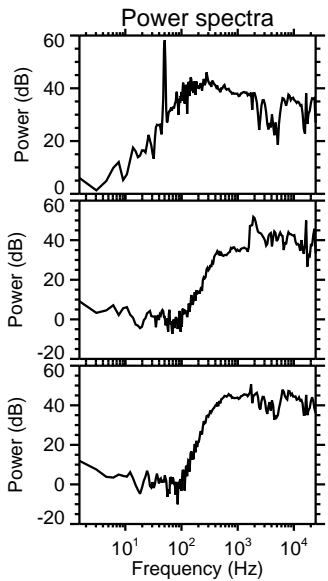
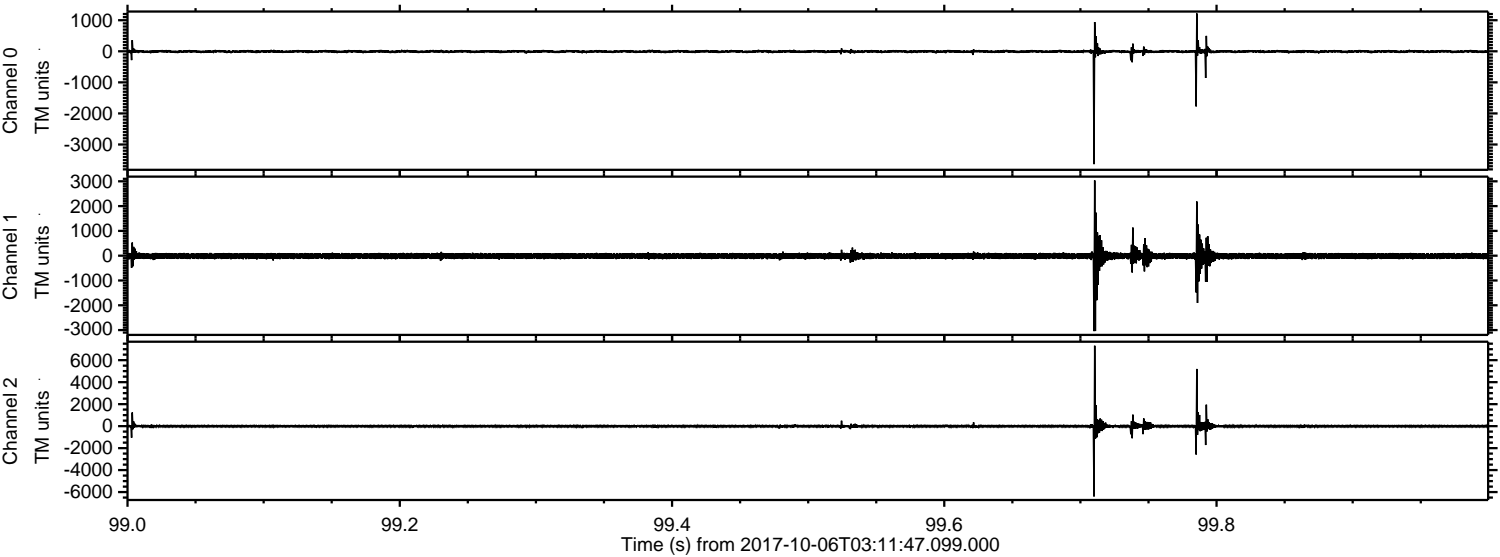
Processed Fri Oct 6 05:19:03 2017 by ELM ver.2012-10-06 from 001\_\_elm20171006\_031146\_\_dat00.bin





ELMAVAN 3D WAVEFORMS (Measured data sampled at 50 kHz) 51000 packets of 144 samples from 2017-10-06T03:11:47.099.000. Part 100/147

Processed Fri Oct 6 05:19:09 2017 by ELM ver.2012-10-06 from 001\_\_elm20171006\_031146\_\_dat00.bin



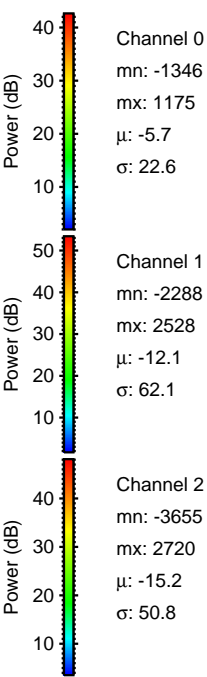
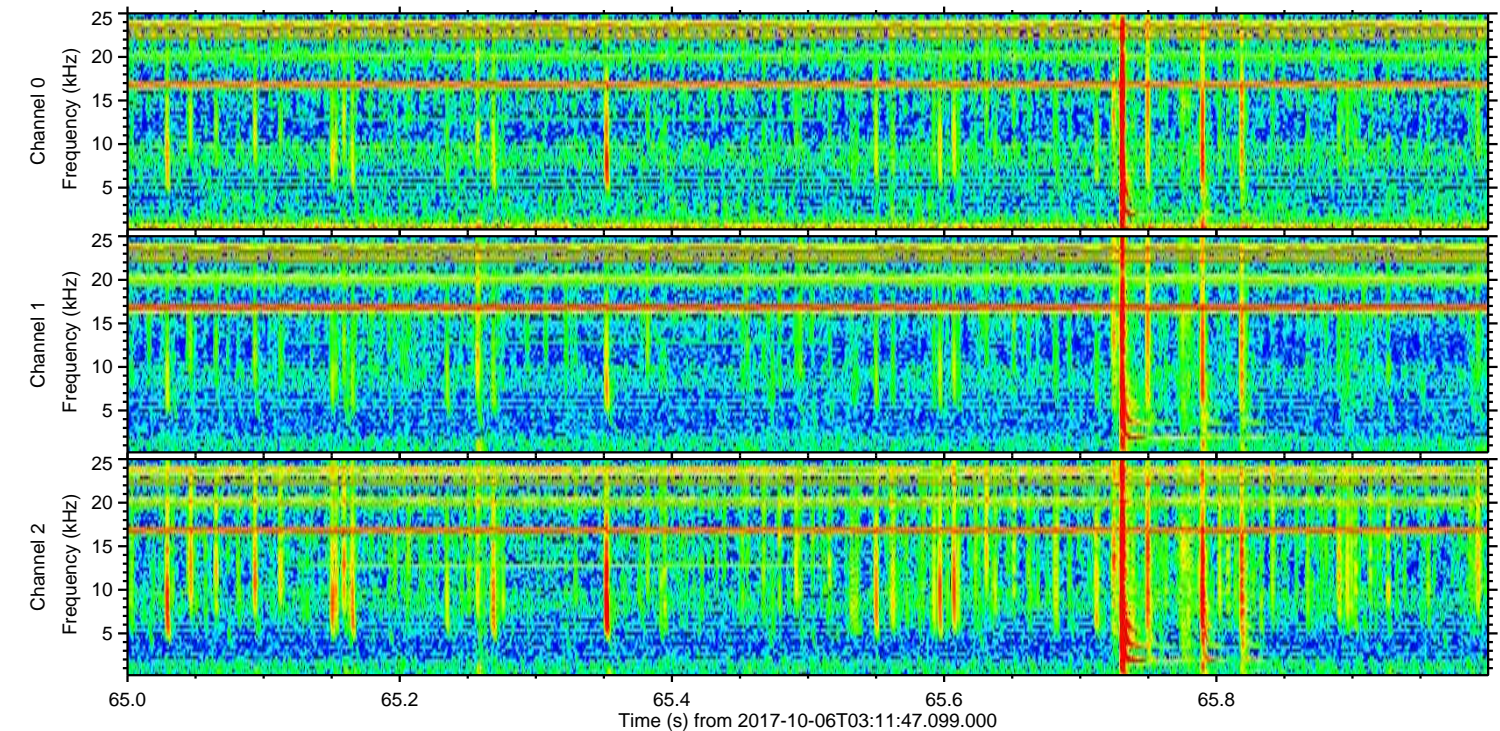
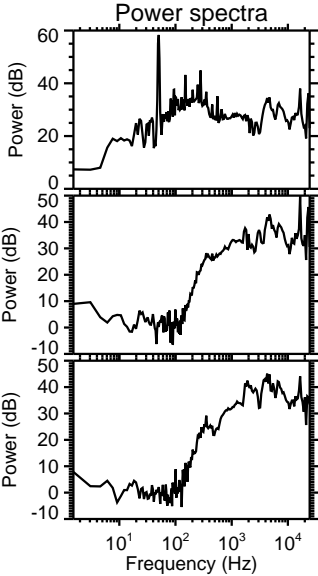
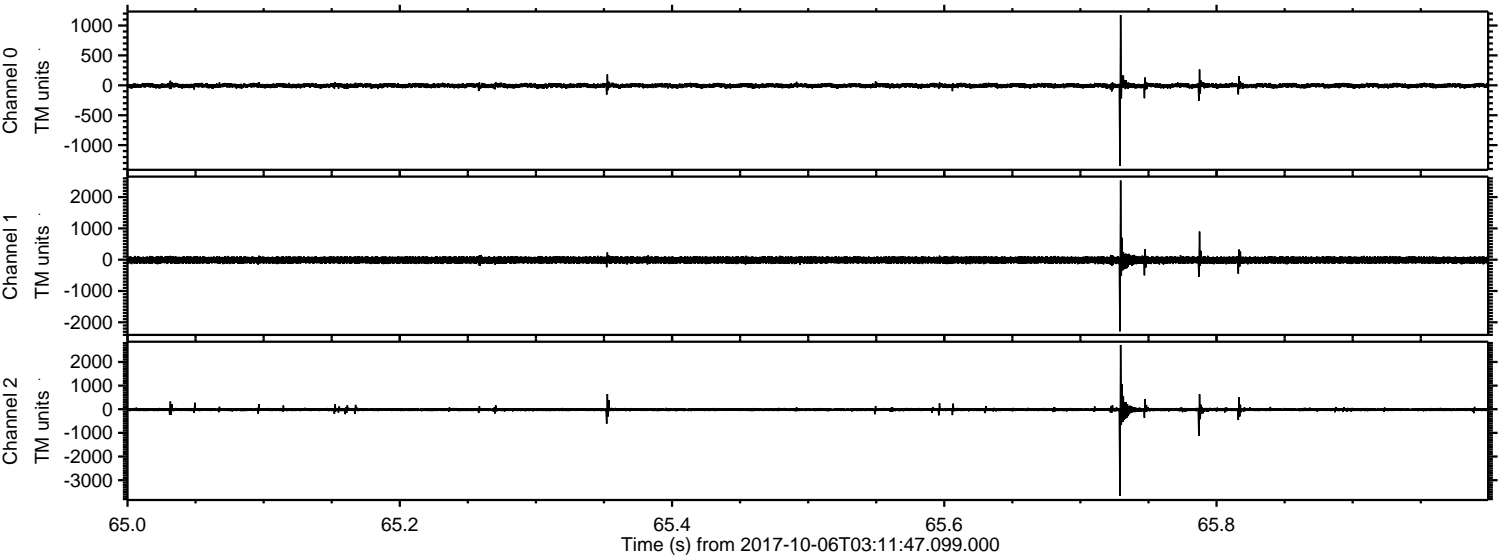
Channel 0  
mn: -3633  
mx: 1220  
 $\mu$ : -5.8  
 $\sigma$ : 36.2

Channel 1  
mn: -3042  
mx: 3038  
 $\mu$ : -12.1  
 $\sigma$ : 83.7

Channel 2  
mn: -6400  
mx: 7312  
 $\mu$ : -15.3  
 $\sigma$ : 90.5

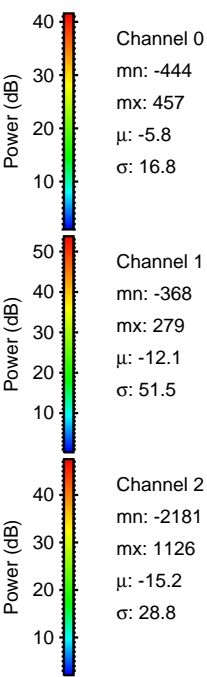
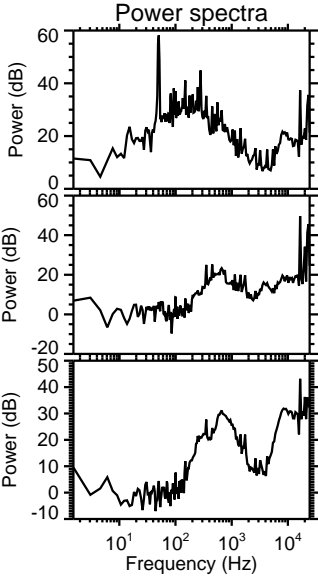
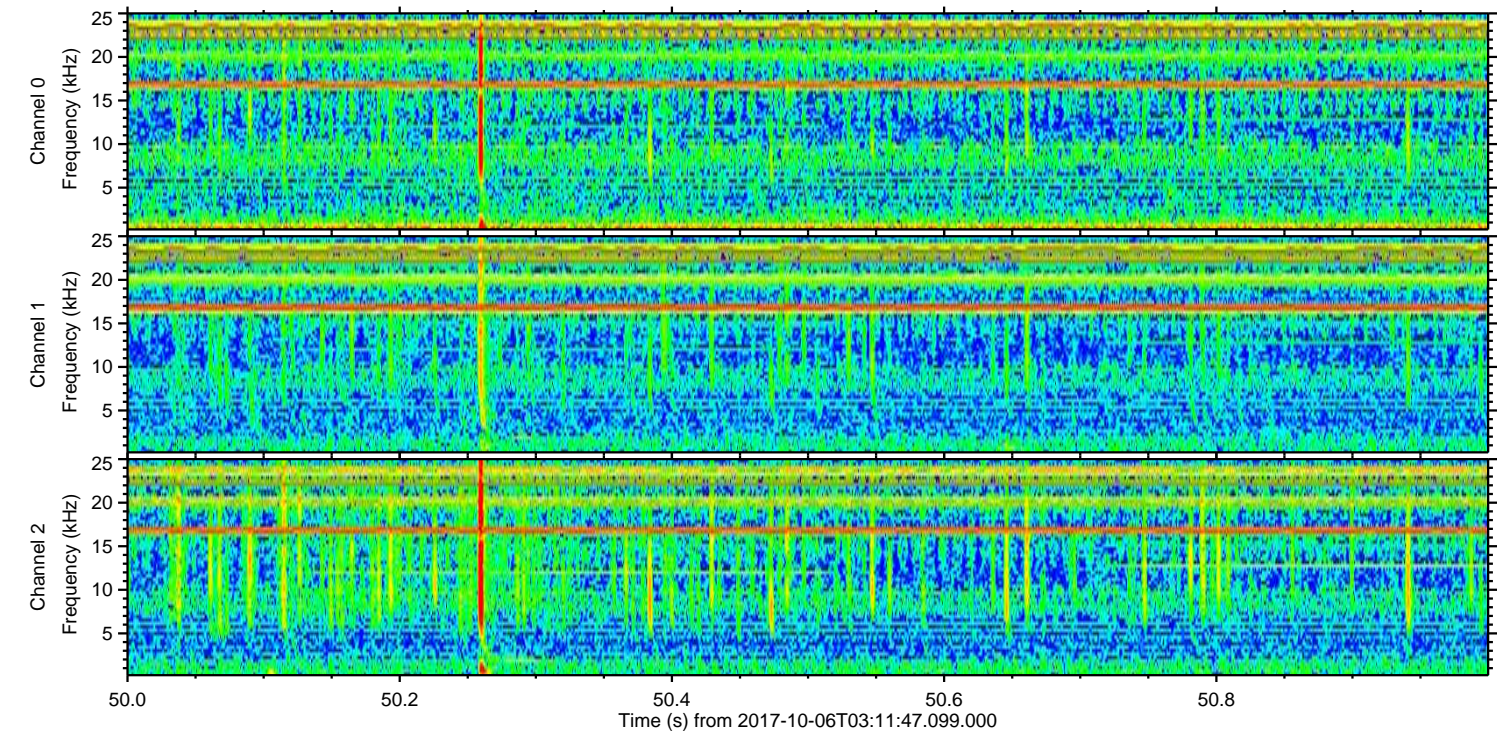
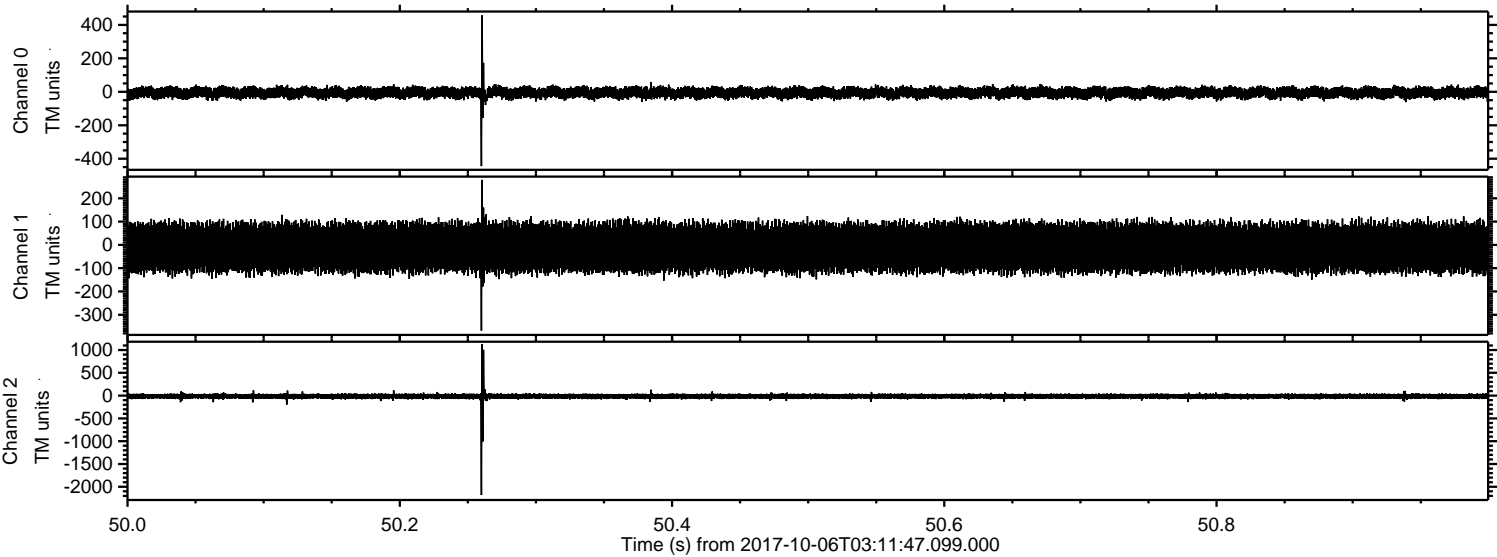


Processed Fri Oct 6 05:19:09 2017 by ELM ver.2012-10-06 from 001\_\_elm20171006\_031146\_\_dat00.bin





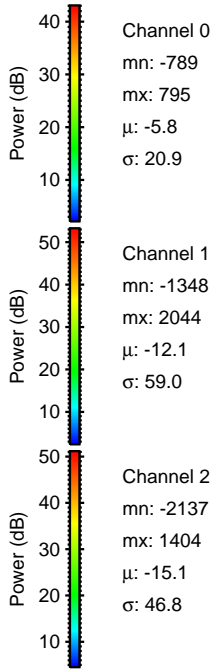
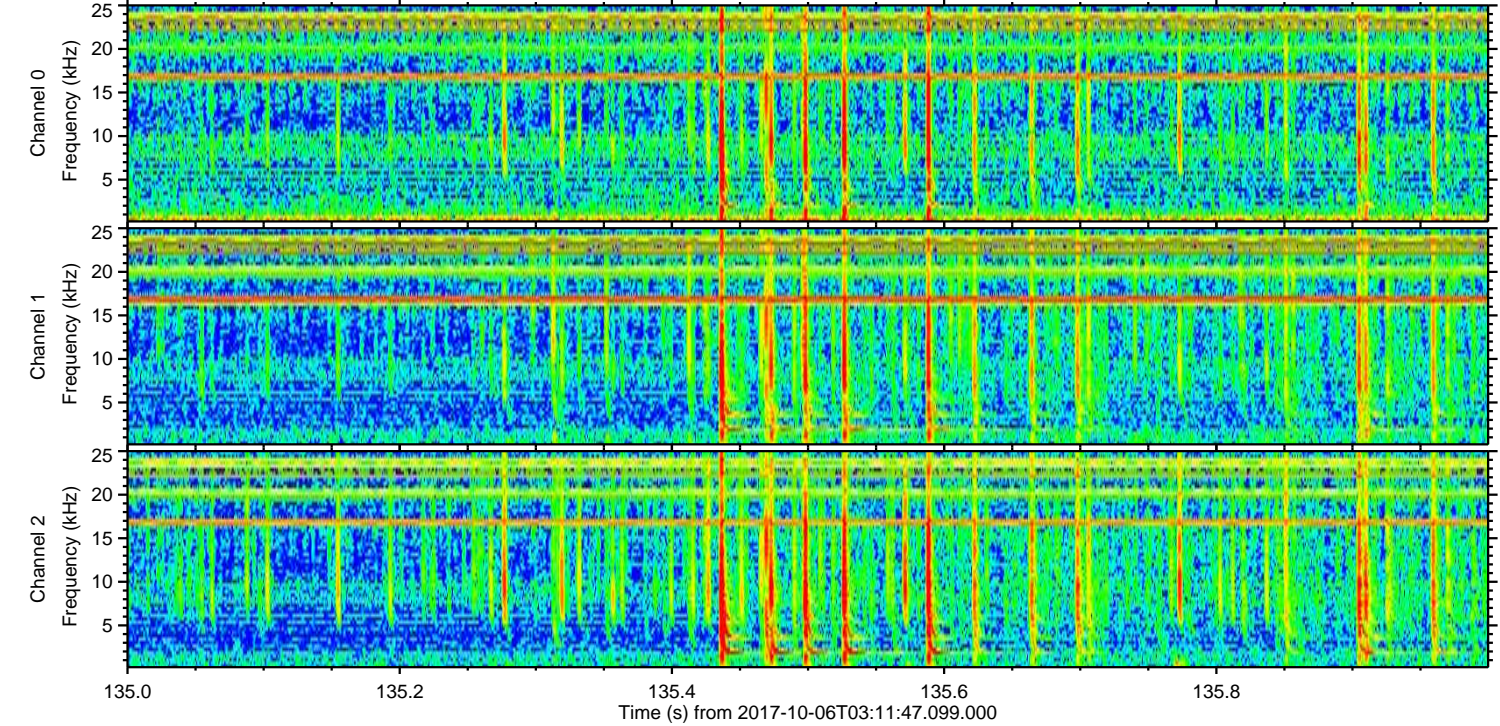
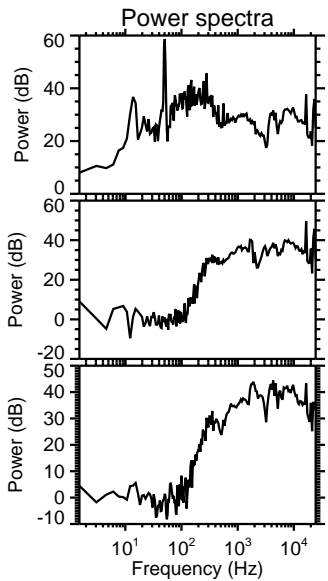
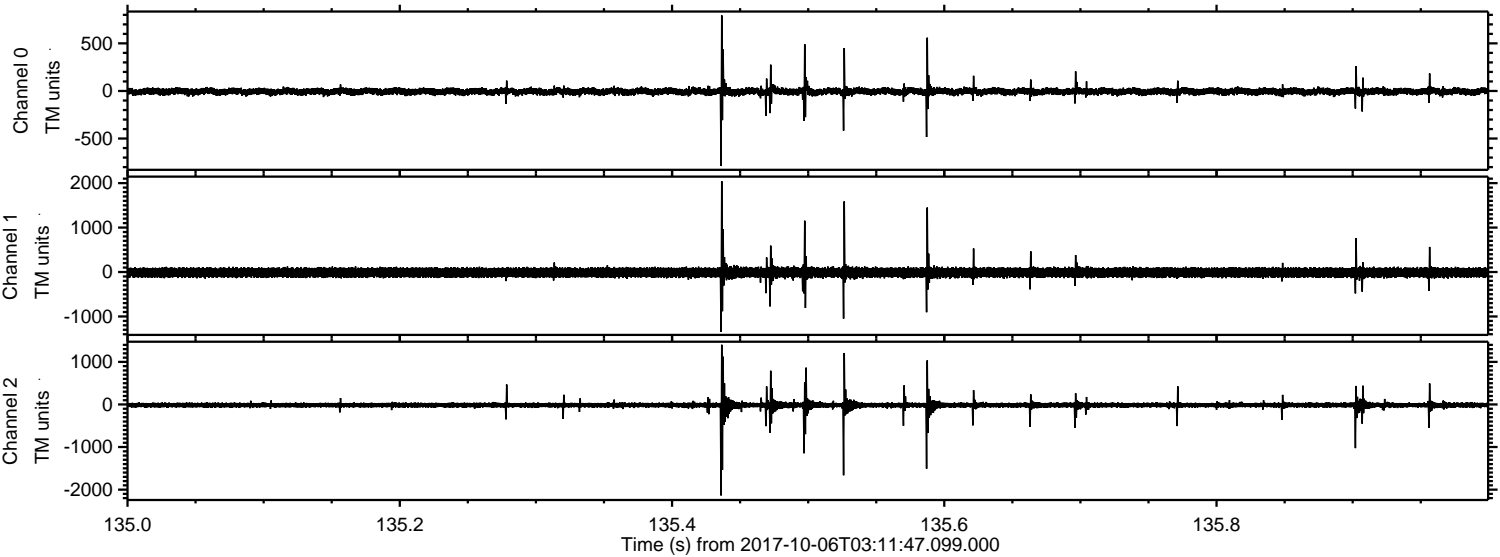
Processed Fri Oct 6 05:19:10 2017 by ELM ver.2012-10-06 from 001\_\_elm20171006\_031146\_\_dat00.bin





ELMAVAN 3D WAVEFORMS (Measured data sampled at 50 kHz) 51000 packets of 144 samples from 2017-10-06T03:11:47.099.000. Part 136/147

Processed Fri Oct 6 05:19:11 2017 by ELM ver.2012-10-06 from 001\_\_elm20171006\_031146\_\_dat00.bin



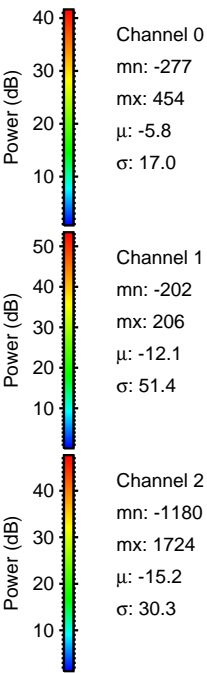
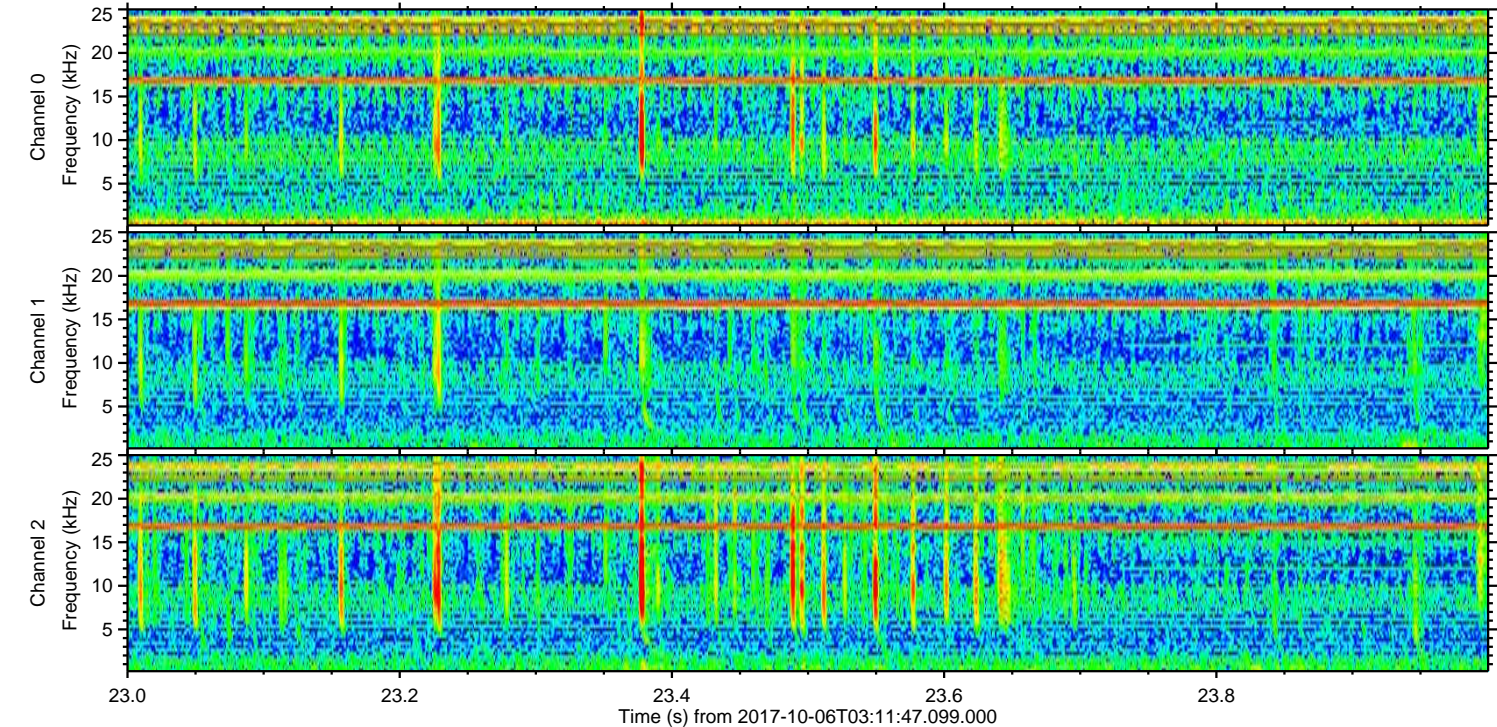
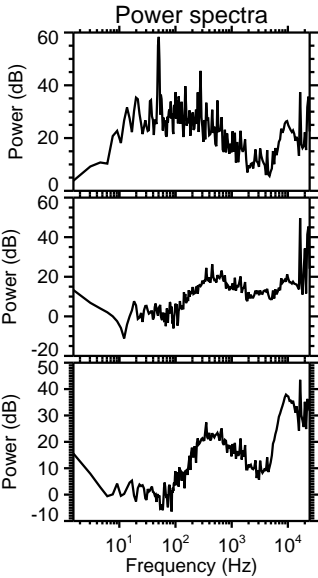
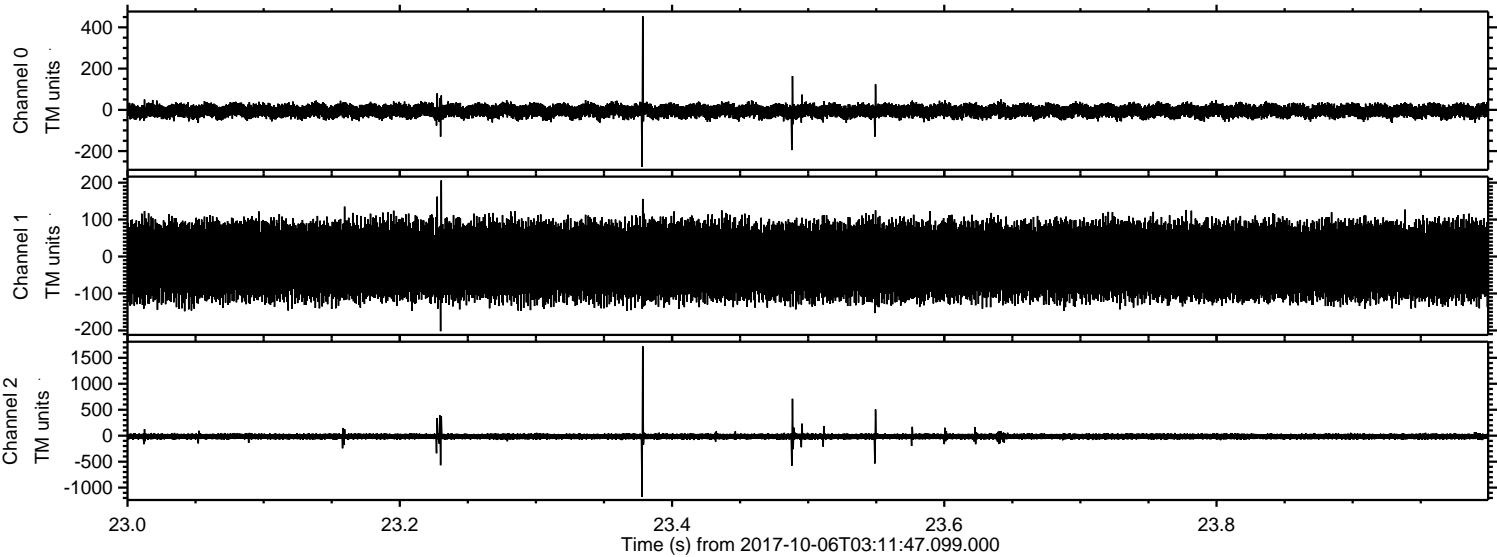
Channel 0  
mn: -789  
mx: 795  
 $\mu$ : -5.8  
 $\sigma$ : 20.9

Channel 1  
mn: -1348  
mx: 2044  
 $\mu$ : -12.1  
 $\sigma$ : 59.0

Channel 2  
mn: -2137  
mx: 1404  
 $\mu$ : -15.1  
 $\sigma$ : 46.8

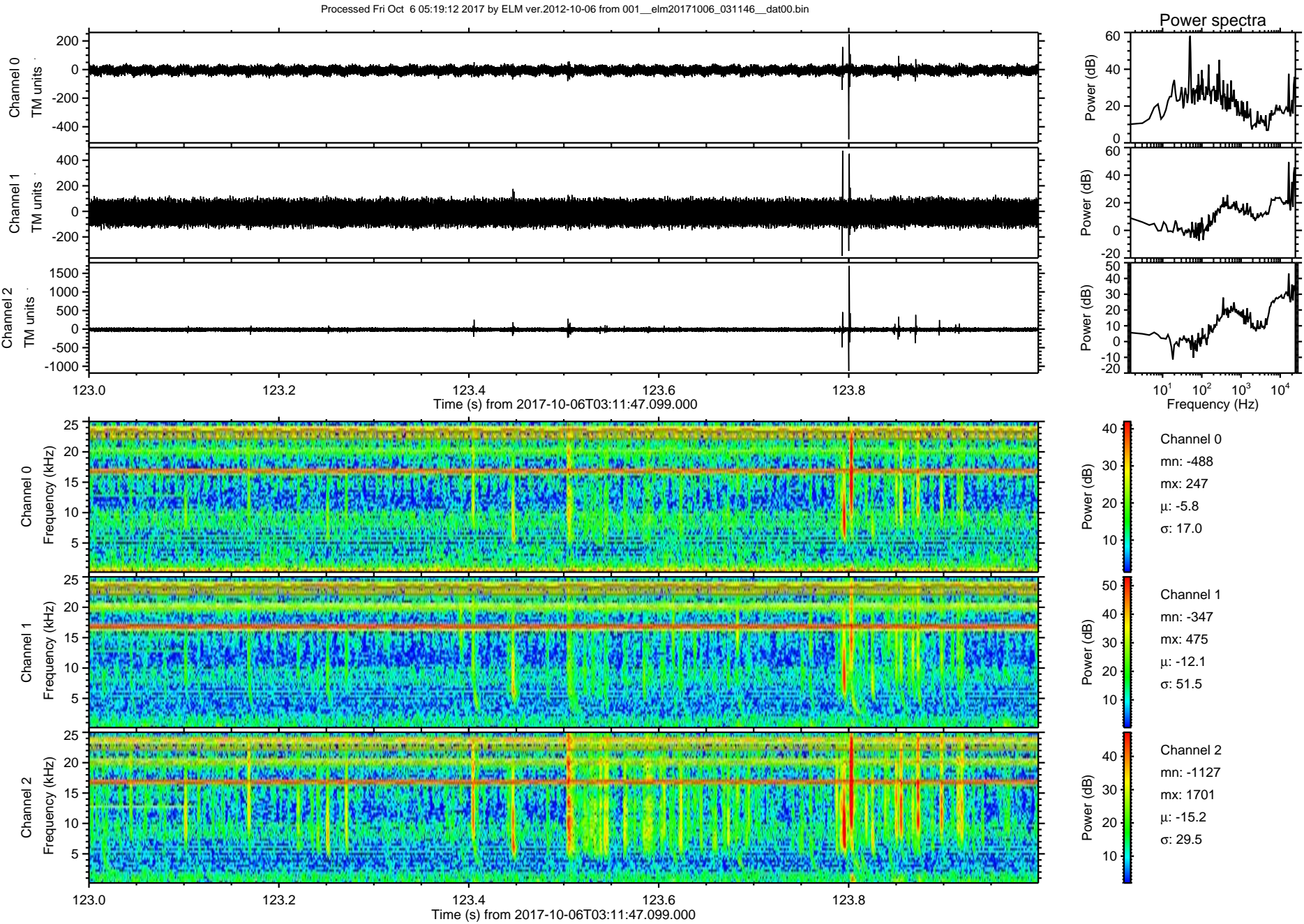


Processed Fri Oct 6 05:19:11 2017 by ELM ver.2012-10-06 from 001\_\_elm20171006\_031146\_\_dat00.bin



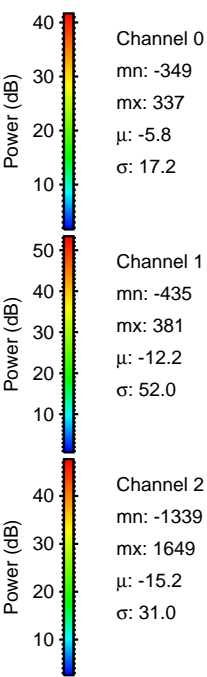
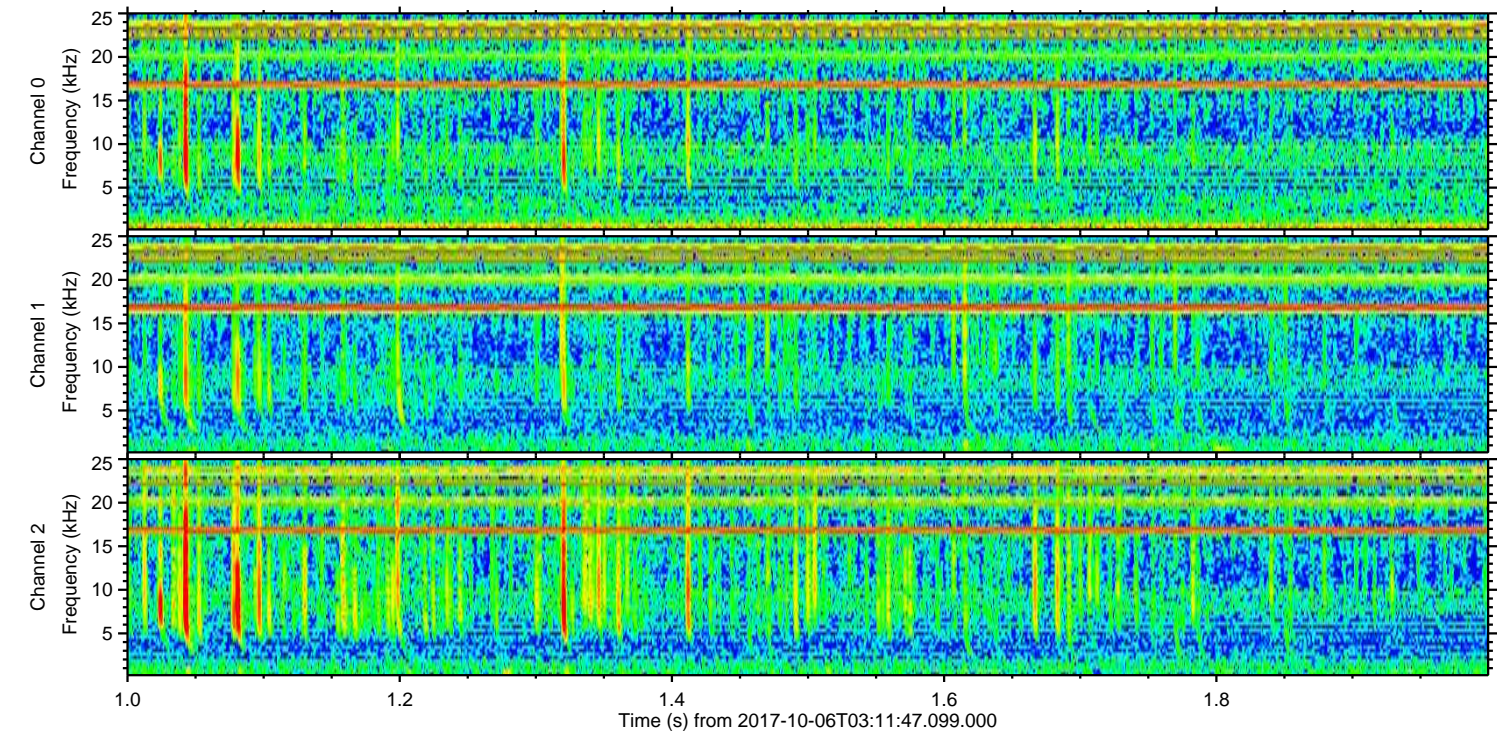
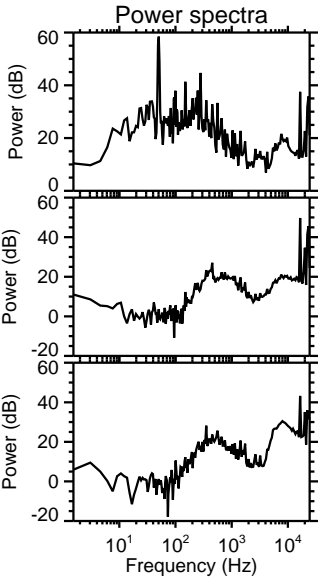
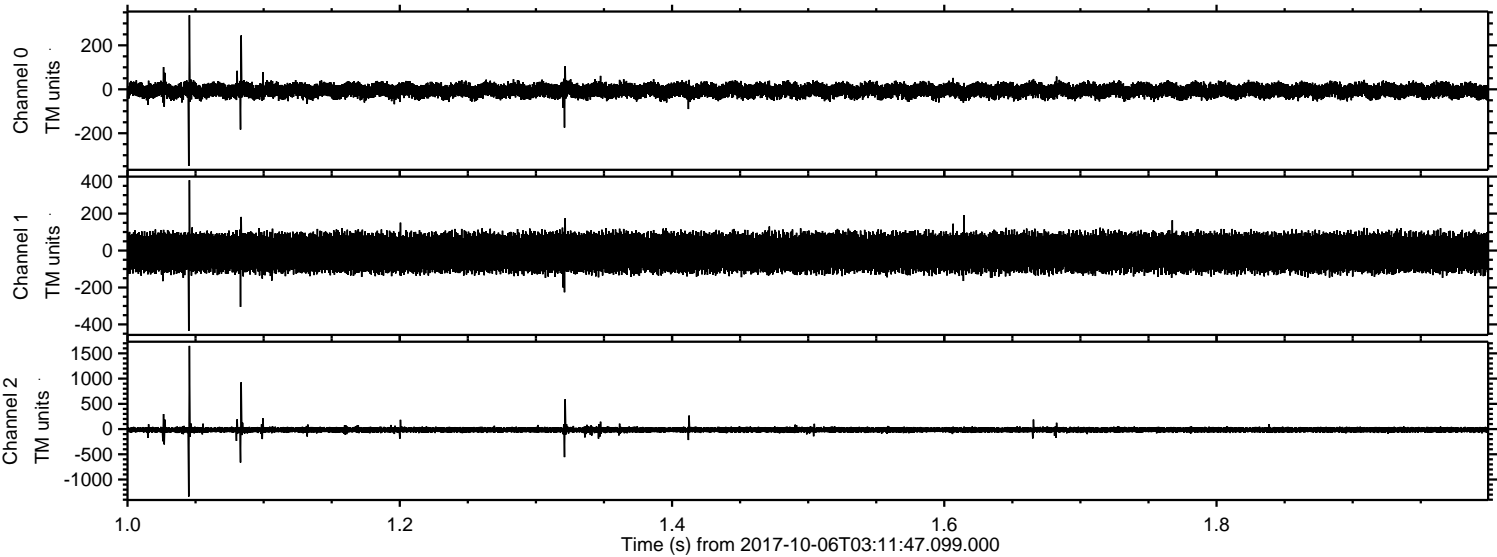


ELMAVAN 3D WAVEFORMS (Measured data sampled at 50 kHz) 51000 packets of 144 samples from 2017-10-06T03:11:47.099.000. Part 124/147



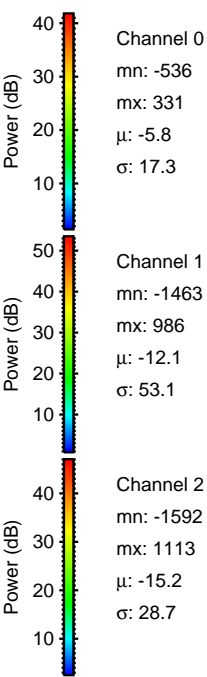
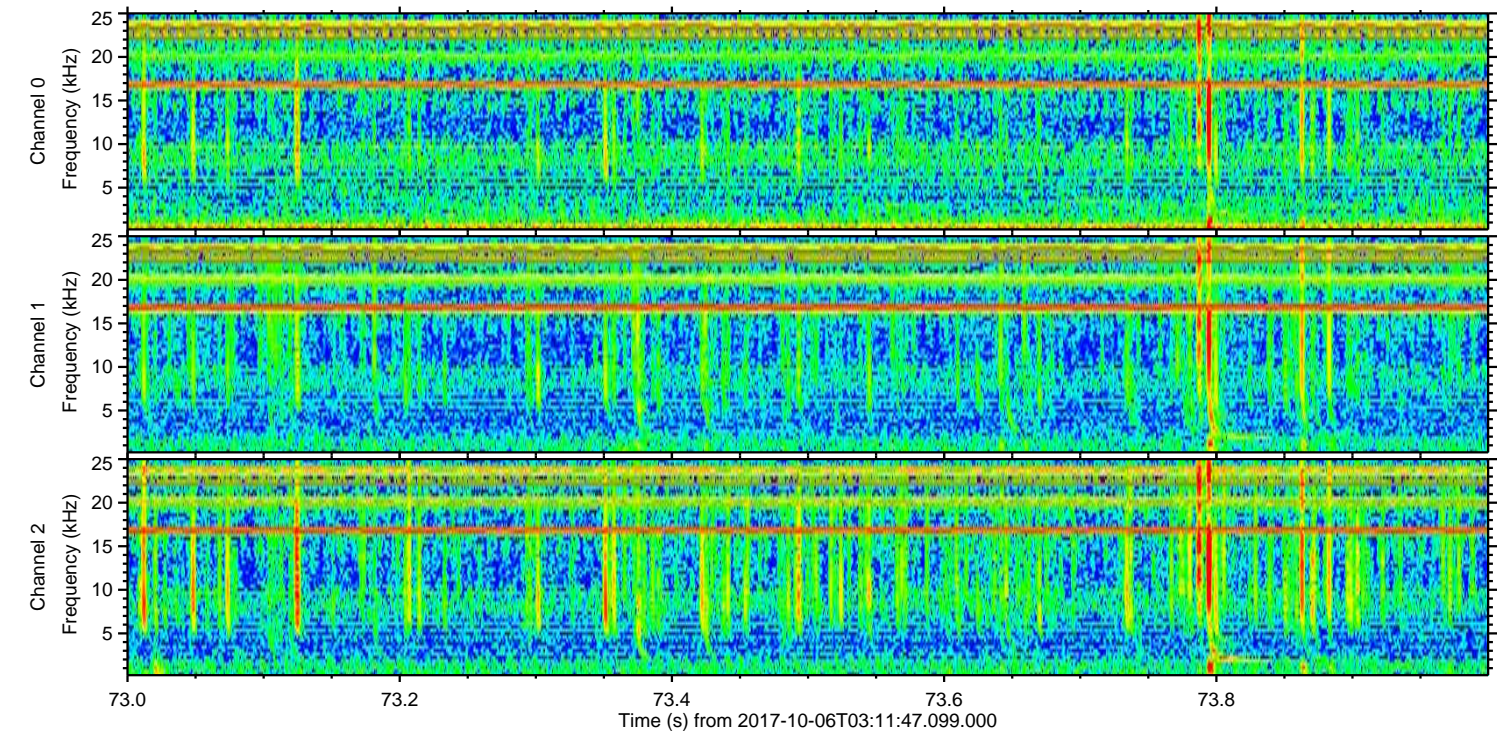
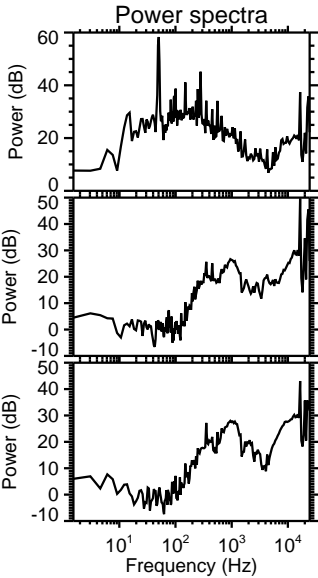
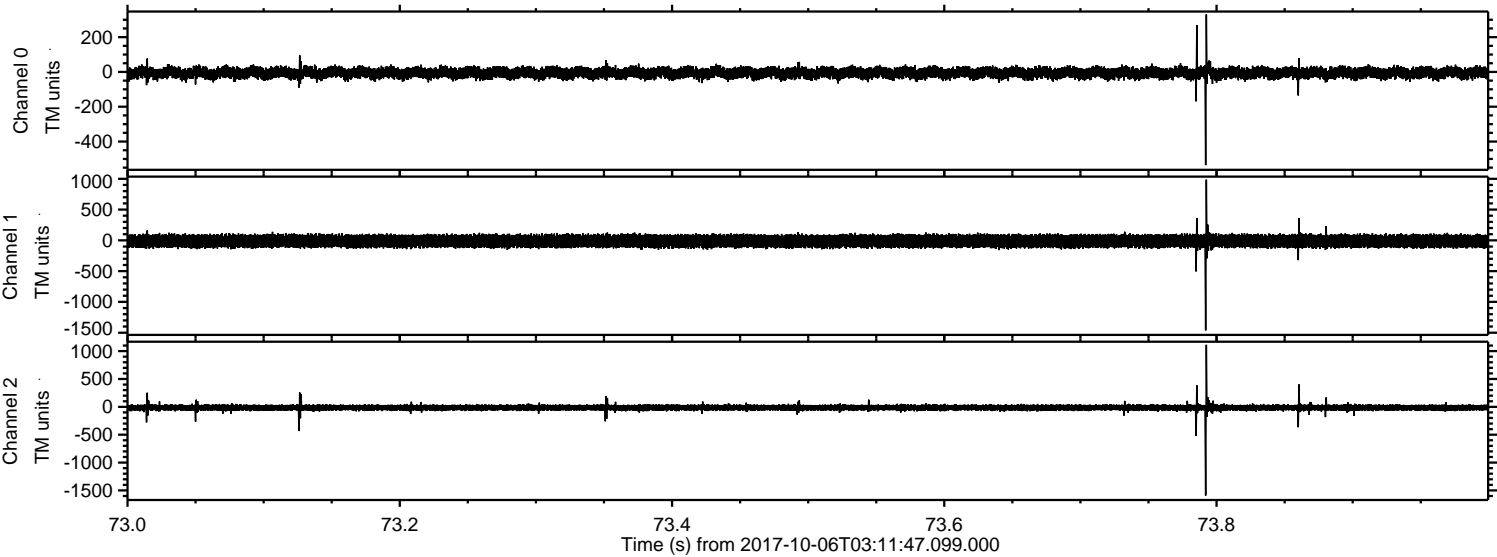


Processed Fri Oct 6 05:19:12 2017 by ELM ver.2012-10-06 from 001\_\_elm20171006\_031146\_\_dat00.bin





Processed Fri Oct 6 05:19:13 2017 by ELM ver.2012-10-06 from 001\_\_elm20171006\_031146\_\_dat00.bin



Channel 0  
mn: -536  
mx: 331  
 $\mu$ : -5.8  
 $\sigma$ : 17.3

Channel 1  
mn: -1463  
mx: 986  
 $\mu$ : -12.1  
 $\sigma$ : 53.1

Channel 2  
mn: -1592  
mx: 1113  
 $\mu$ : -15.2  
 $\sigma$ : 28.7



Processed Fri Oct 6 05:19:14 2017 by ELM ver.2012-10-06 from 001\_\_elm20171006\_031146\_\_dat00.bin

