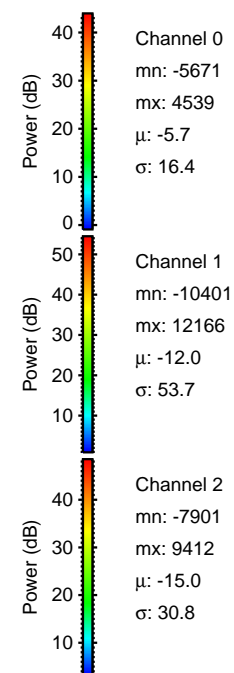
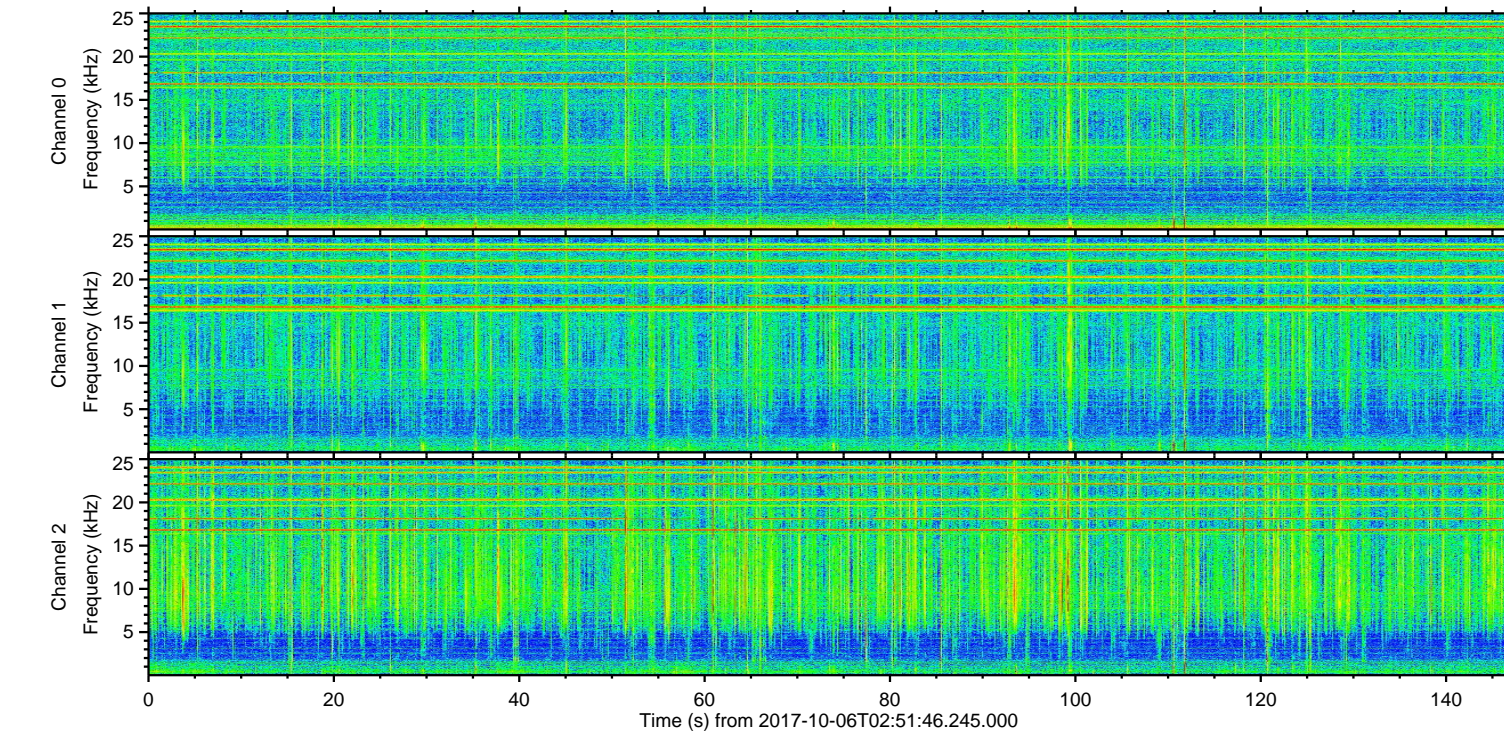
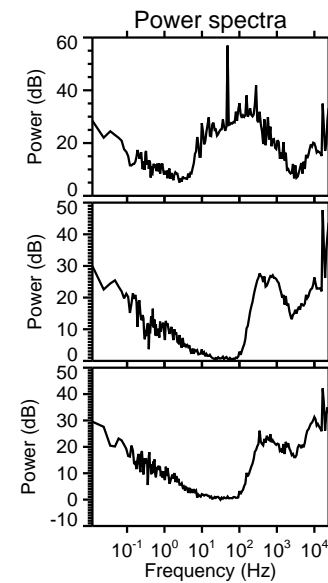
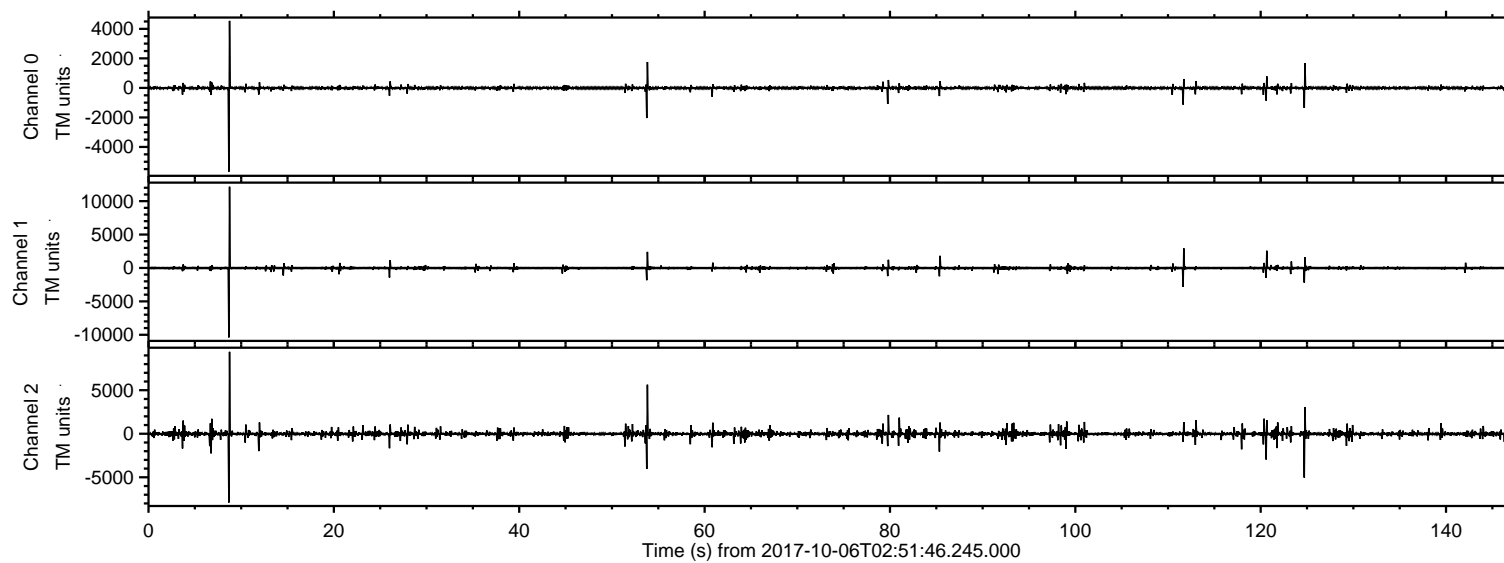
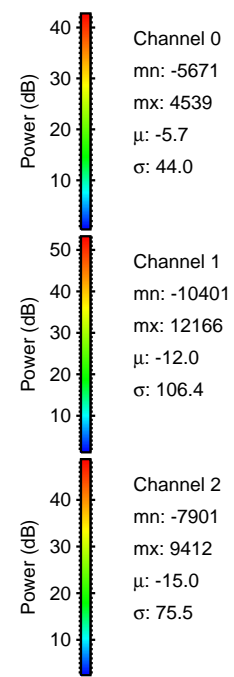
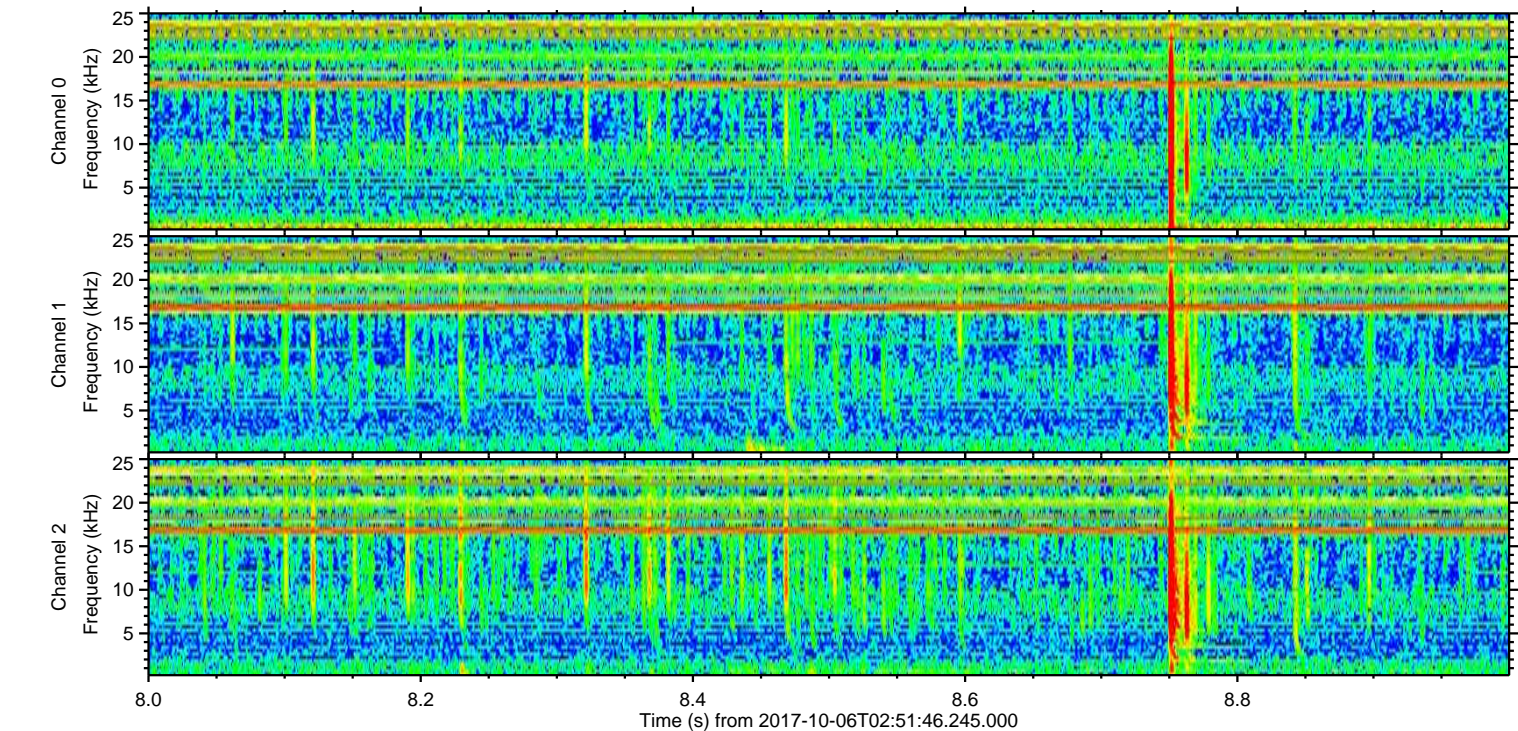
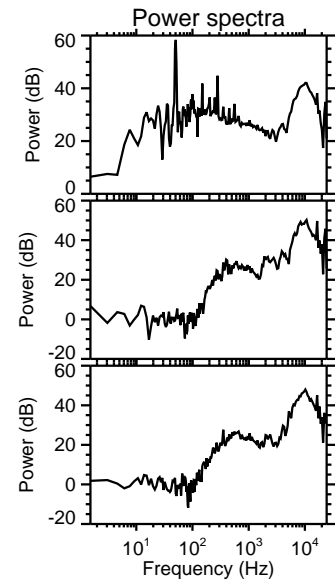
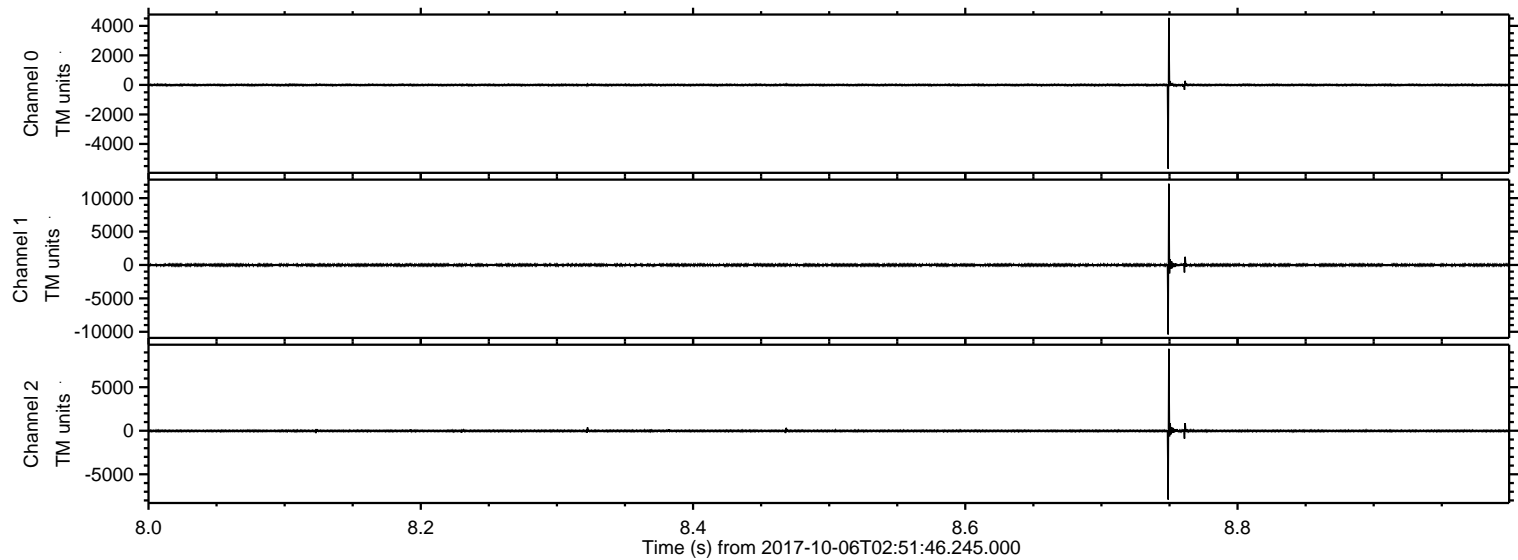


ELMAVAN 3D WAVEFORMS (Measured data sampled at 50 kHz) 51000 packets of 144 samples from 2017-10-06T02:51:46.245.000.

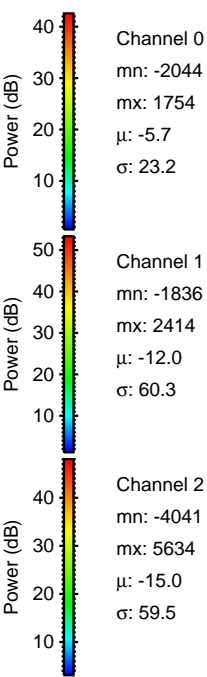
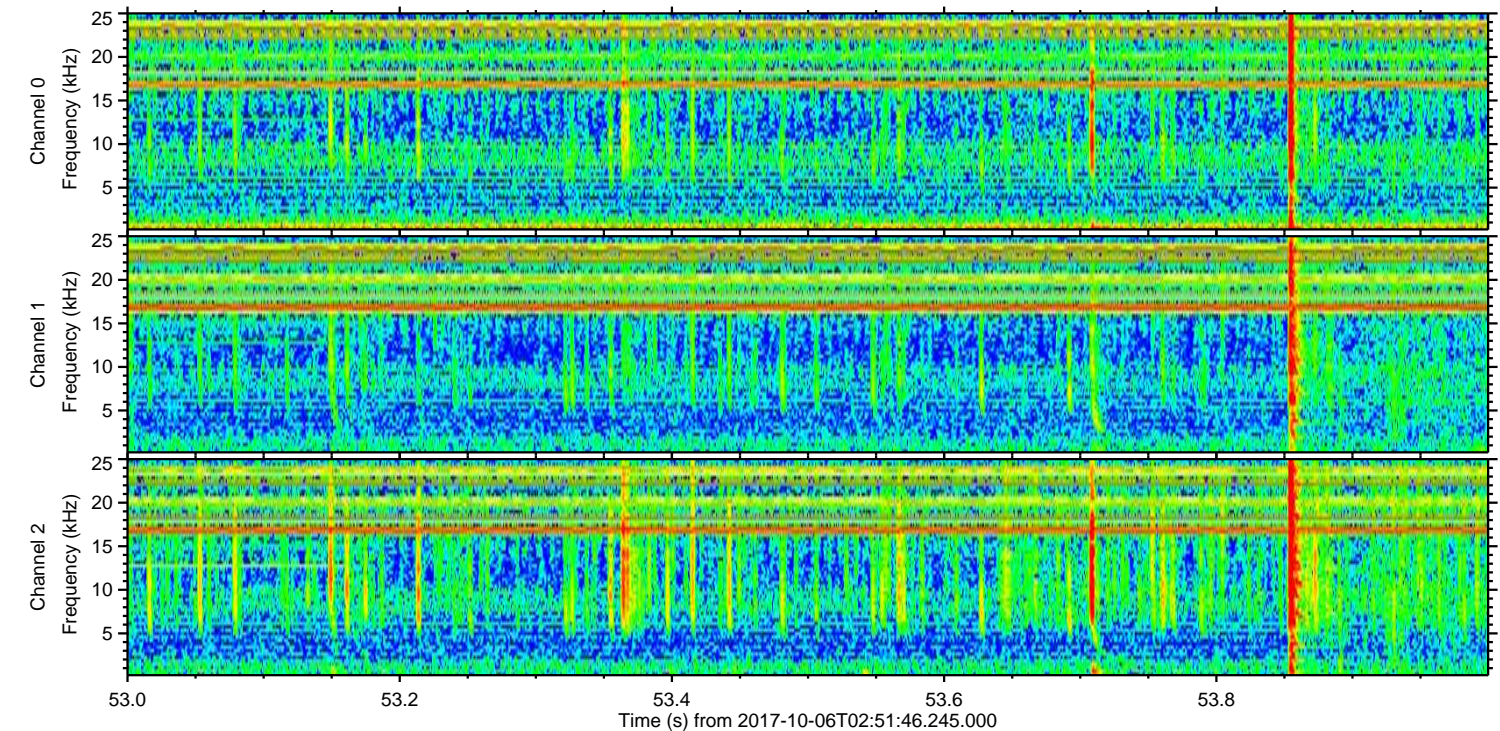
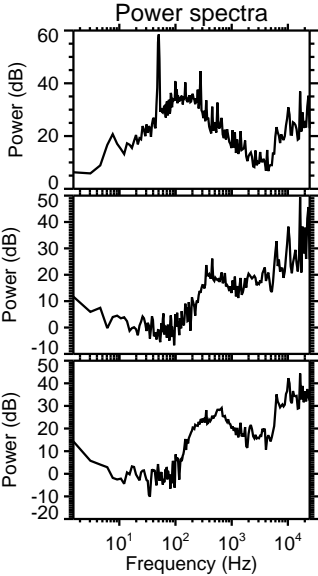
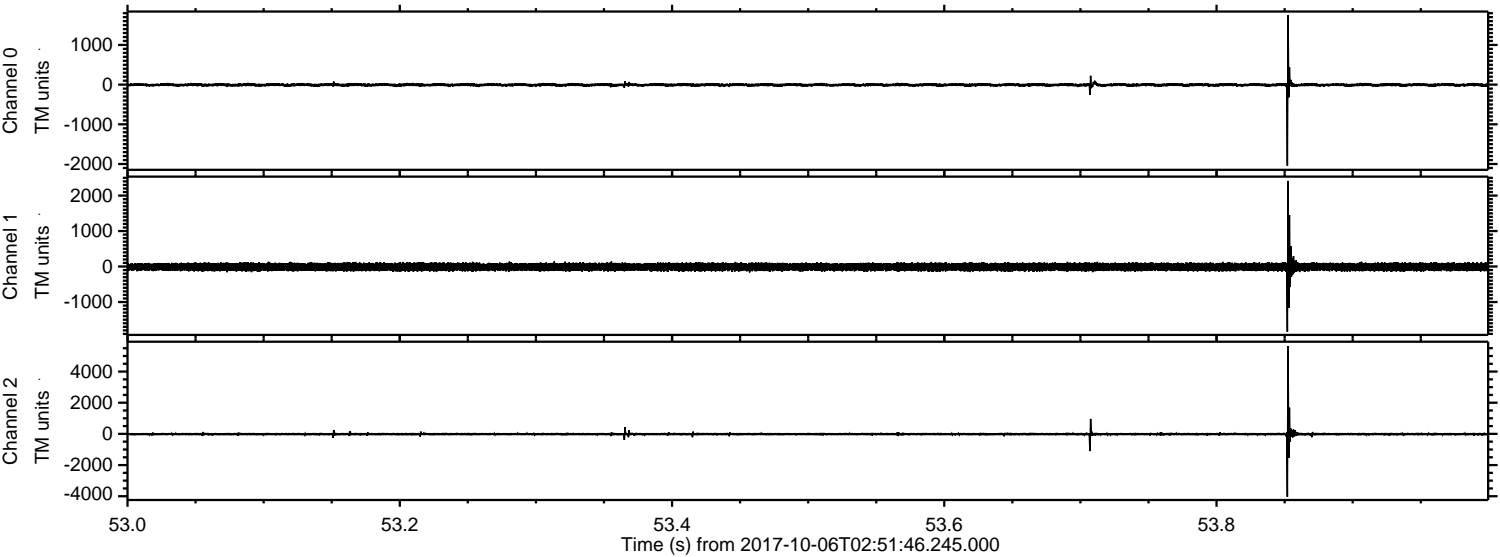
Processed Fri Oct 6 04:59:23 2017 by ELM ver.2012-10-06 from 001__elm20171006_025145__dat00.bin



Processed Fri Oct 6 04:59:29 2017 by ELM ver.2012-10-06 from 001__elm20171006_025145__dat00.bin

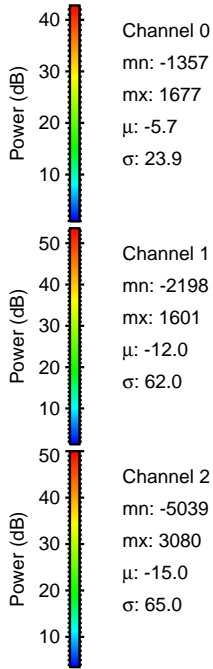
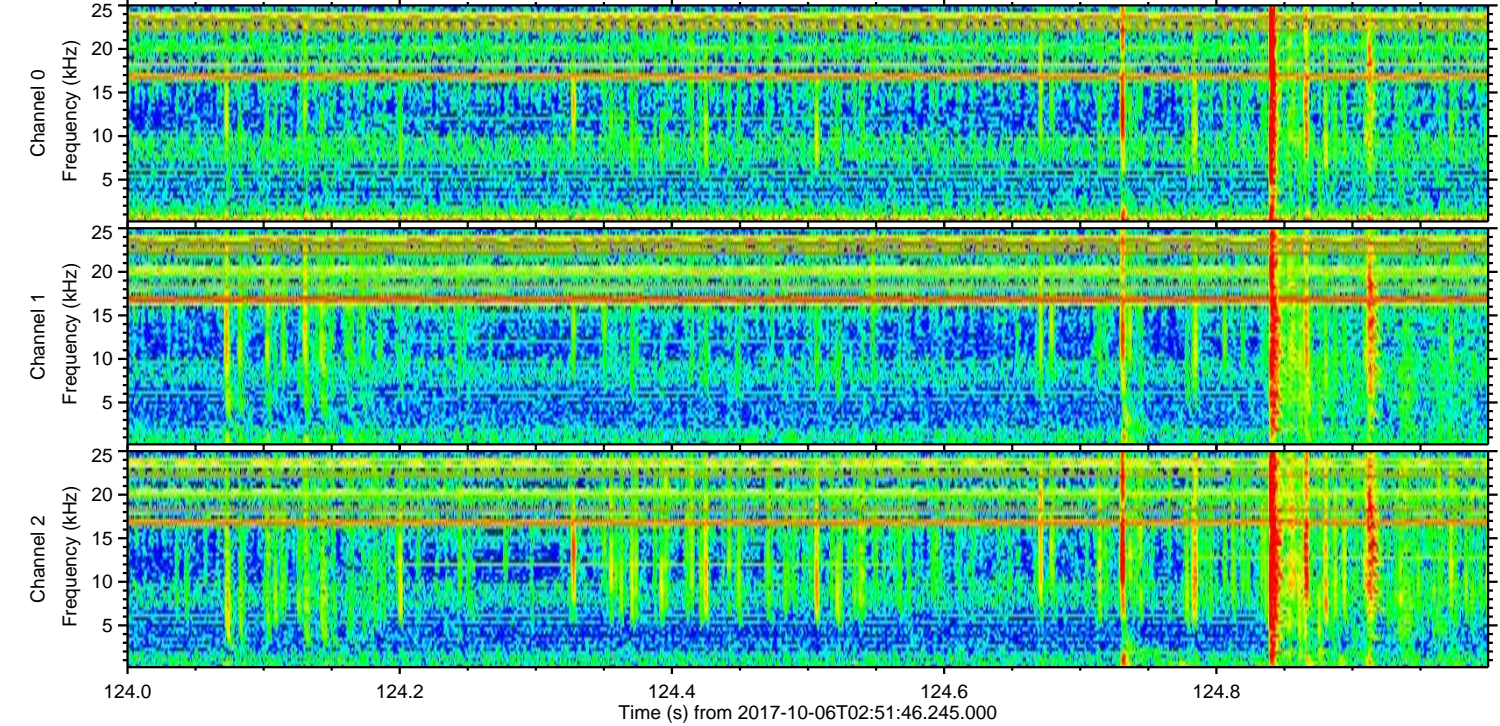
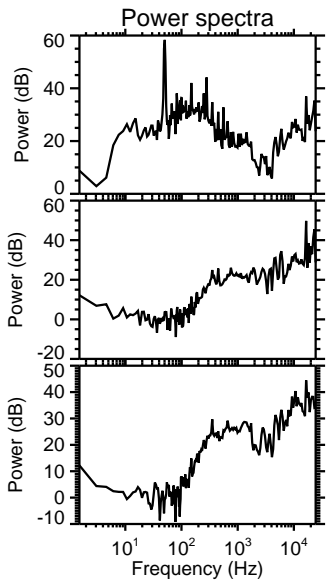
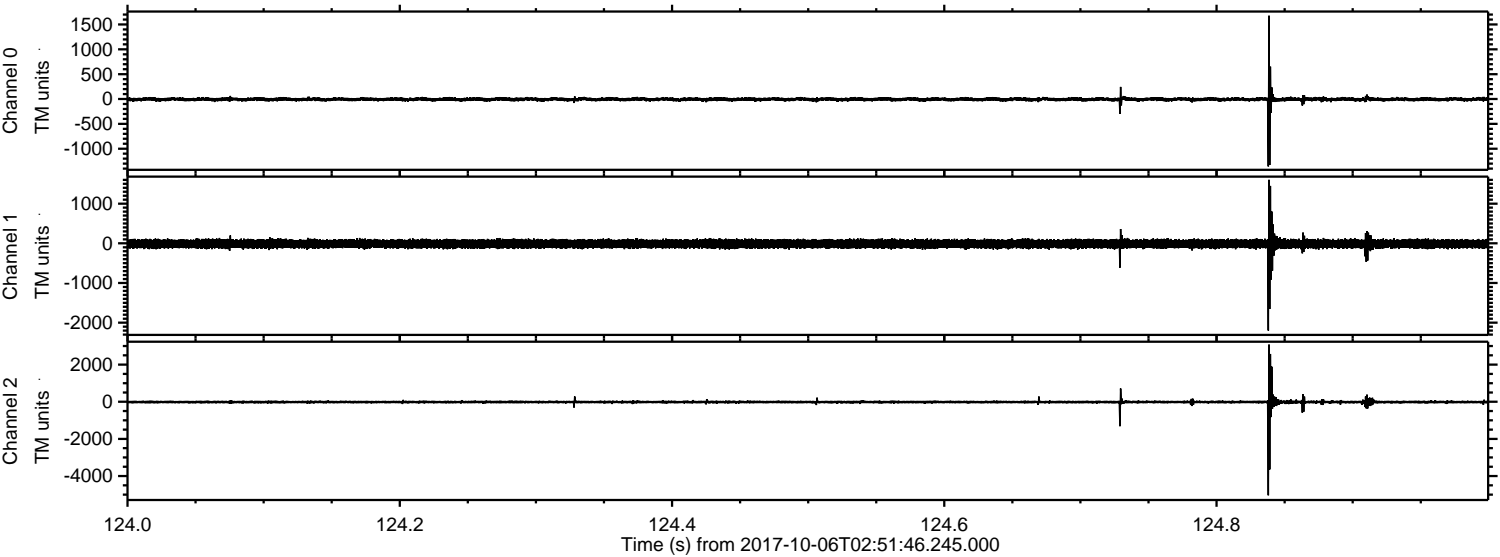


Processed Fri Oct 6 04:59:30 2017 by ELM ver.2012-10-06 from 001__elm20171006_025145__dat00.bin



ELMAVAN 3D WAVEFORMS (Measured data sampled at 50 kHz) 51000 packets of 144 samples from 2017-10-06T02:51:46.245.000. Part 125/147

Processed Fri Oct 6 04:59:30 2017 by ELM ver.2012-10-06 from 001__elm20171006_025145__dat00.bin



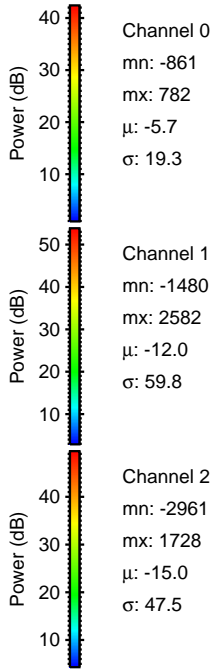
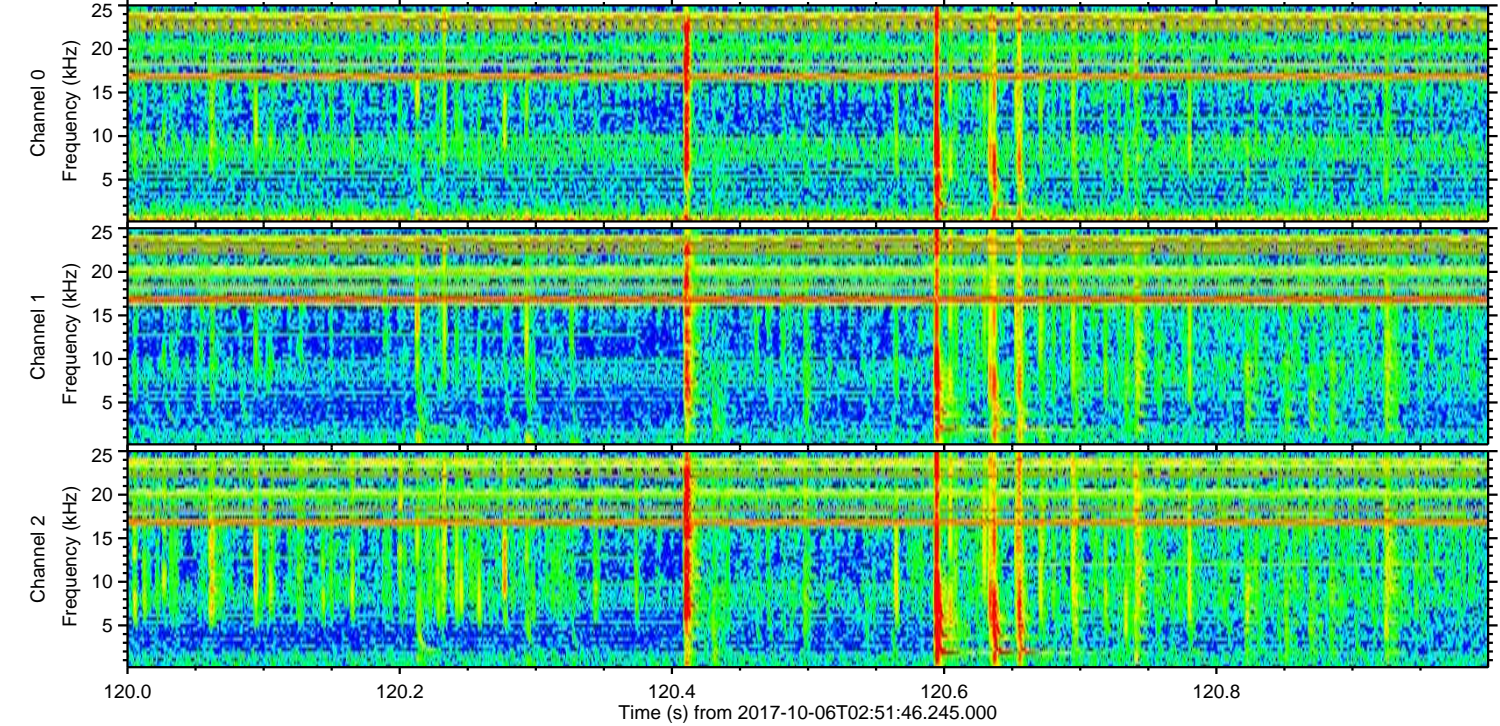
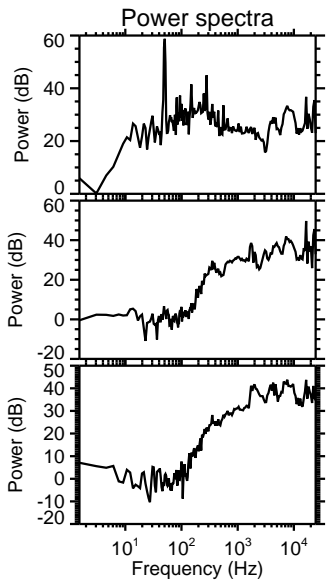
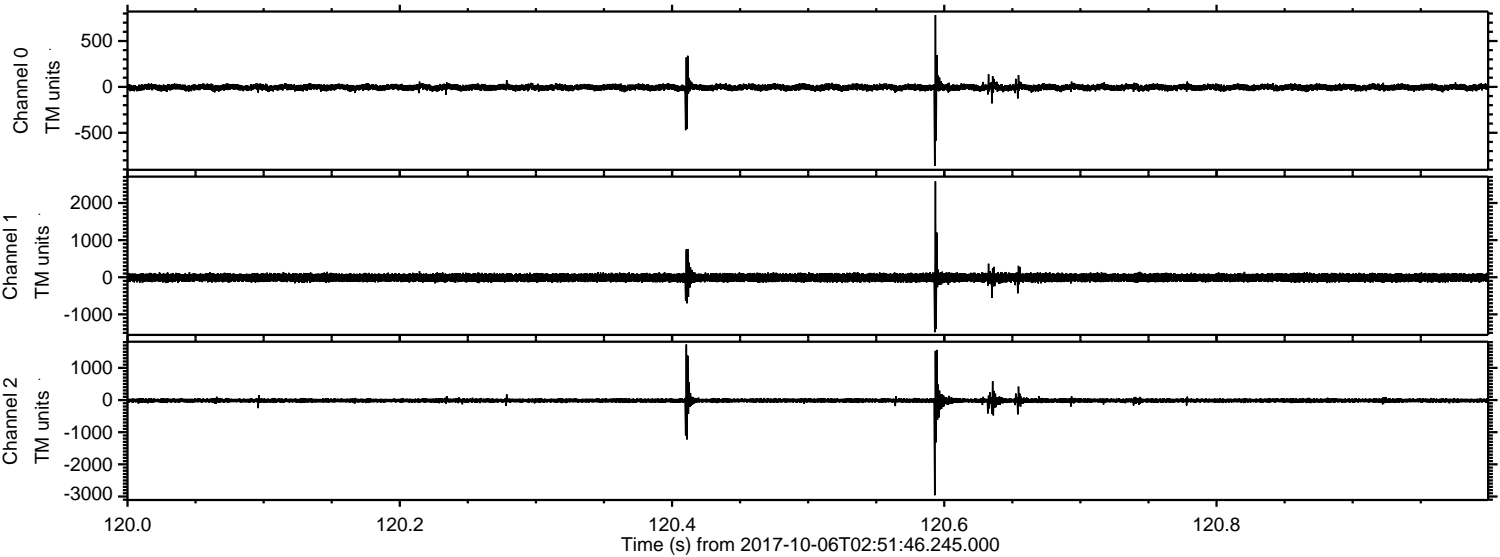
Channel 0
mn: -1357
mx: 1677
 μ : -5.7
 σ : 23.9

Channel 1
mn: -2198
mx: 1601
 μ : -12.0
 σ : 62.0

Channel 2
mn: -5039
mx: 3080
 μ : -15.0
 σ : 65.0

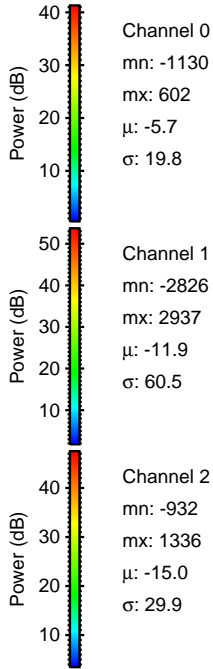
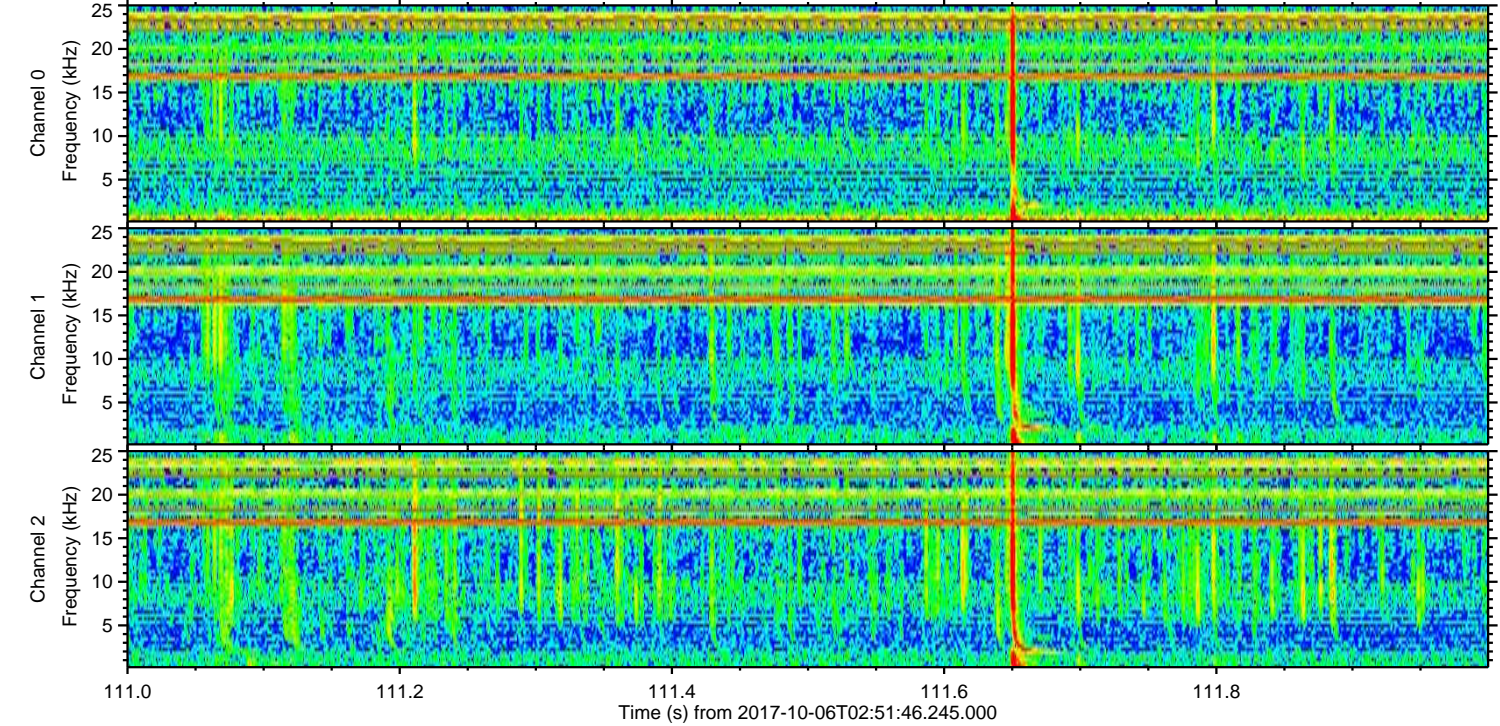
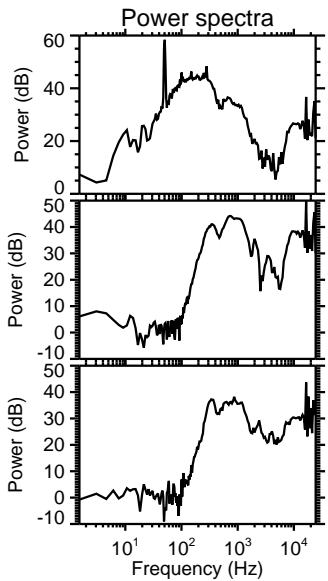
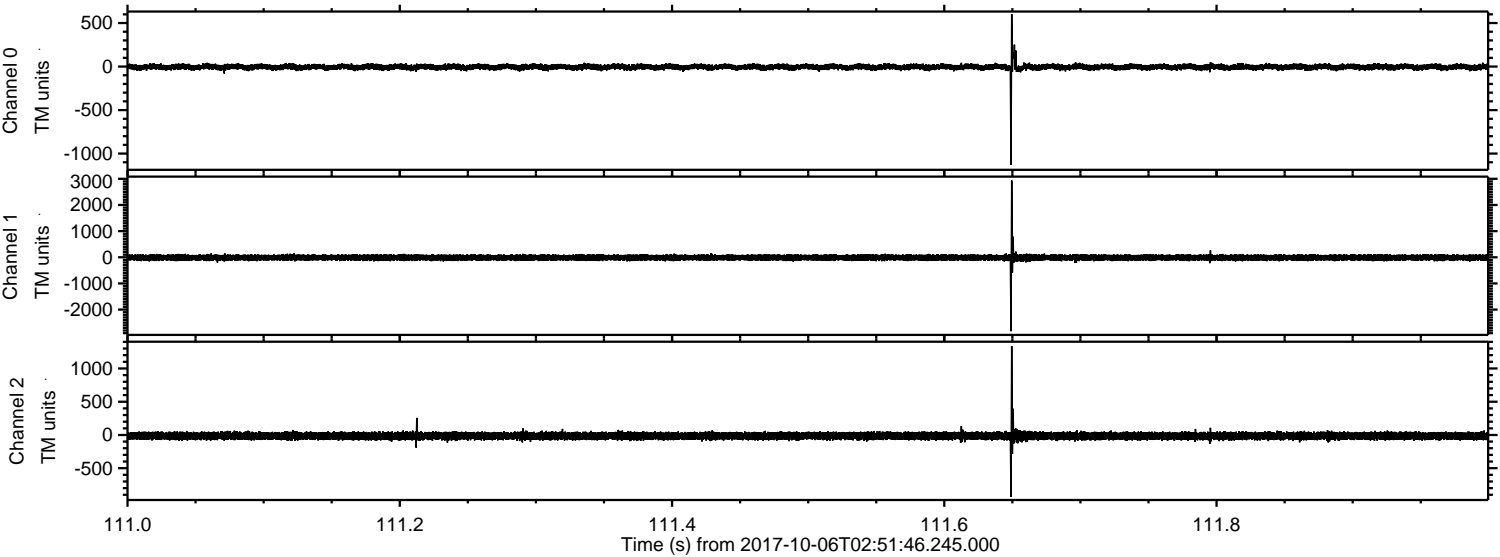
ELMAVAN 3D WAVEFORMS (Measured data sampled at 50 kHz) 51000 packets of 144 samples from 2017-10-06T02:51:46.245.000. Part 121/147

Processed Fri Oct 6 04:59:31 2017 by ELM ver.2012-10-06 from 001__elm20171006_025145__dat00.bin



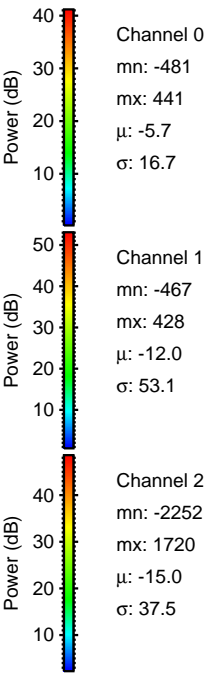
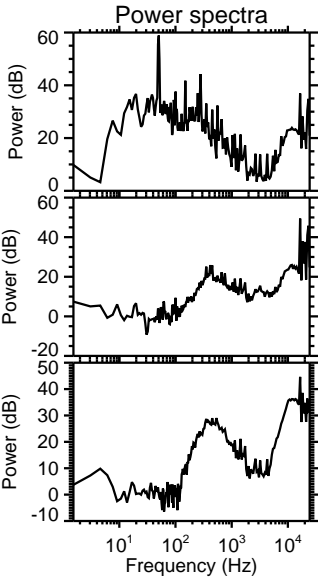
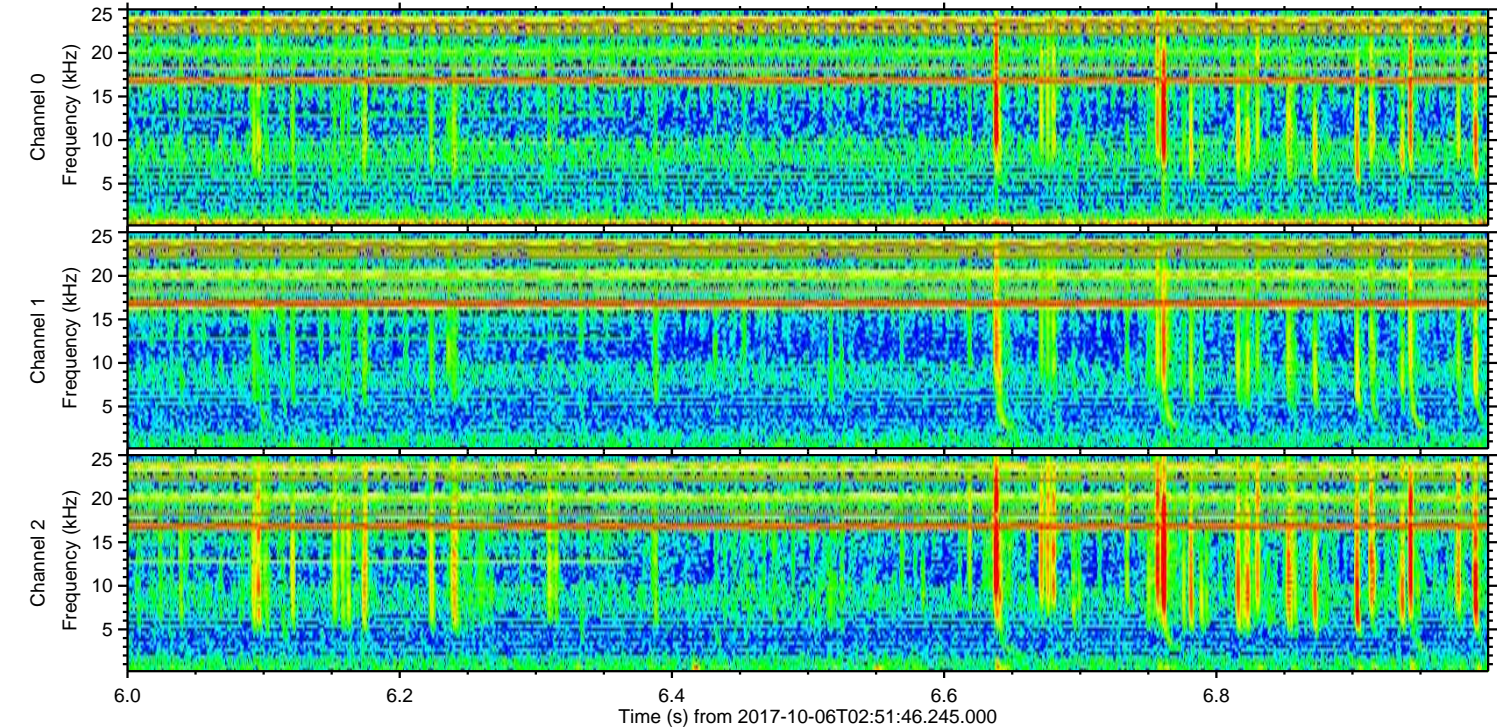
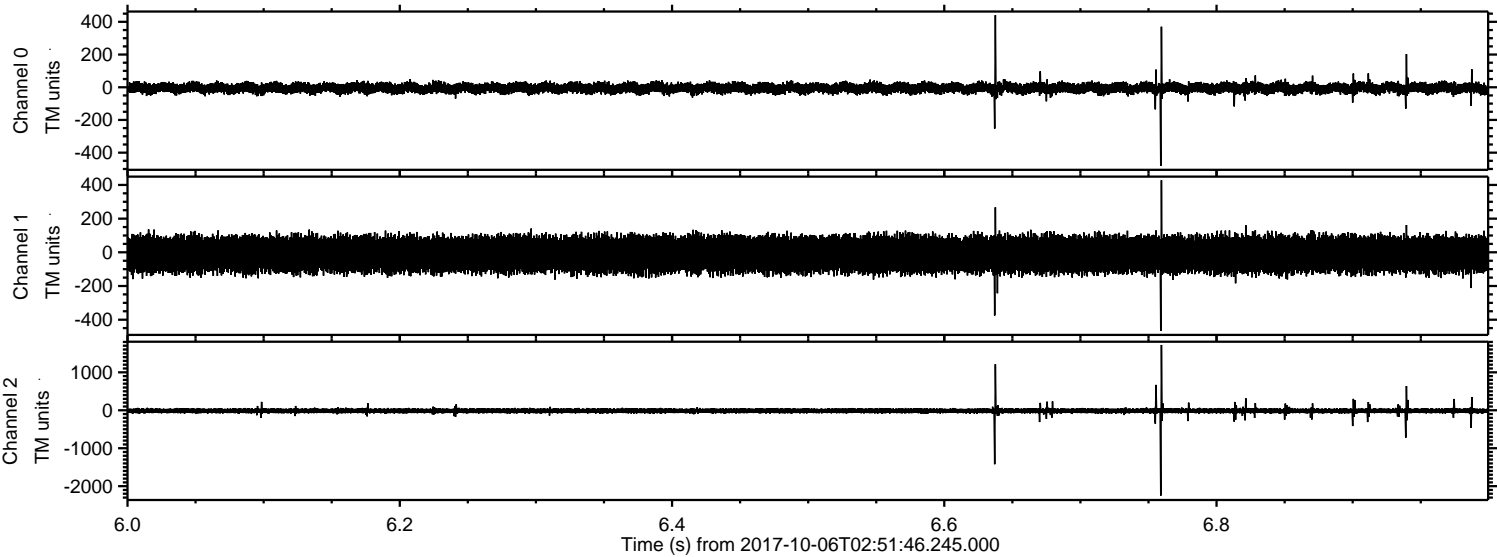
ELMAVAN 3D WAVEFORMS (Measured data sampled at 50 kHz) 51000 packets of 144 samples from 2017-10-06T02:51:46.245.000. Part 112/147

Processed Fri Oct 6 04:59:32 2017 by ELM ver.2012-10-06 from 001__elm20171006_025145__dat00.bin

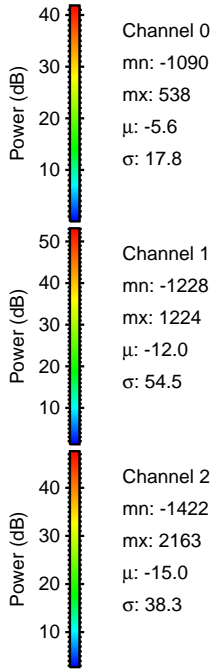
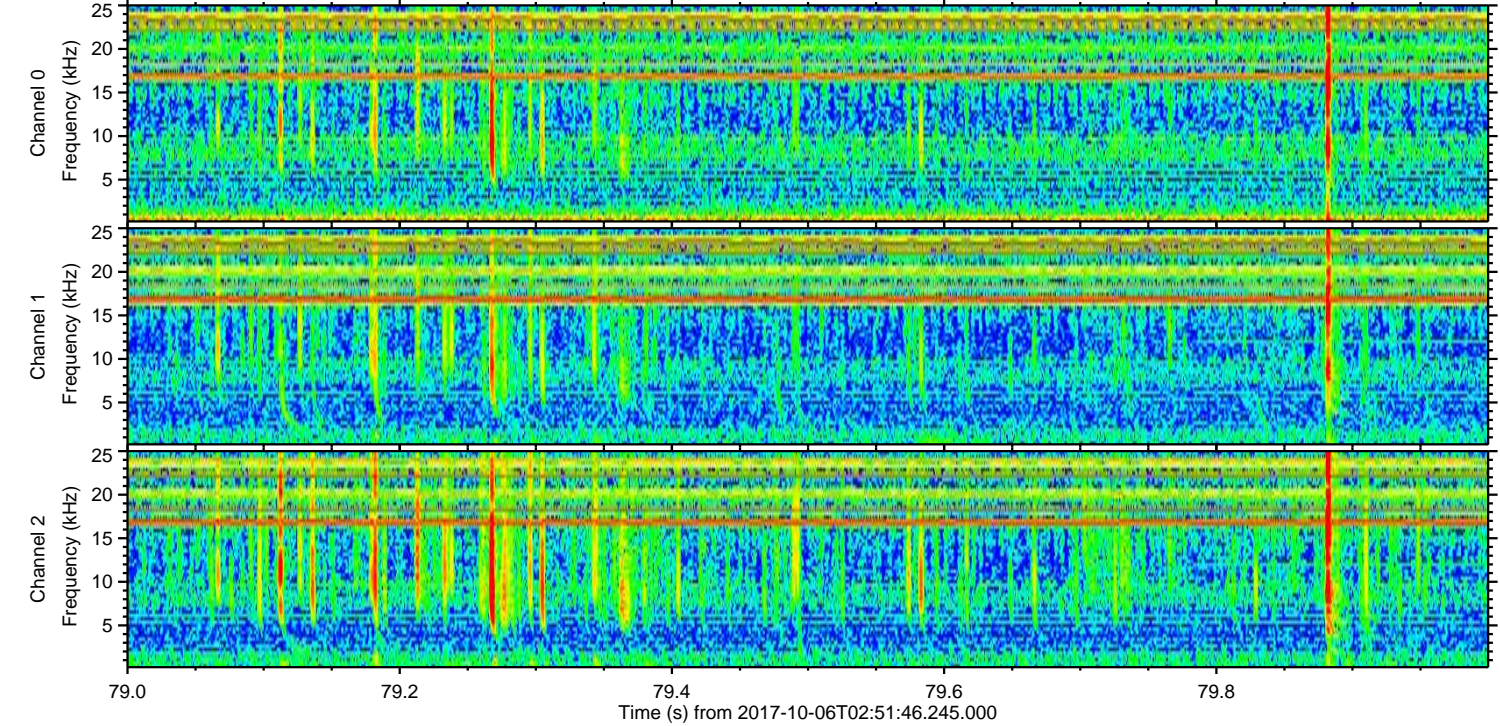
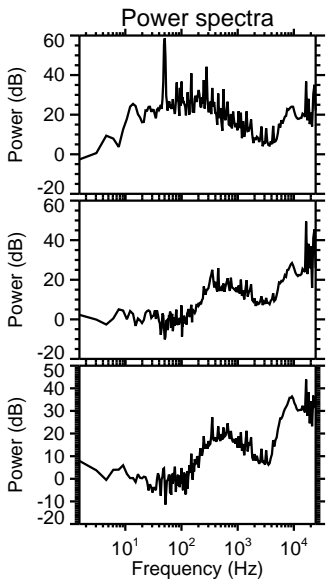
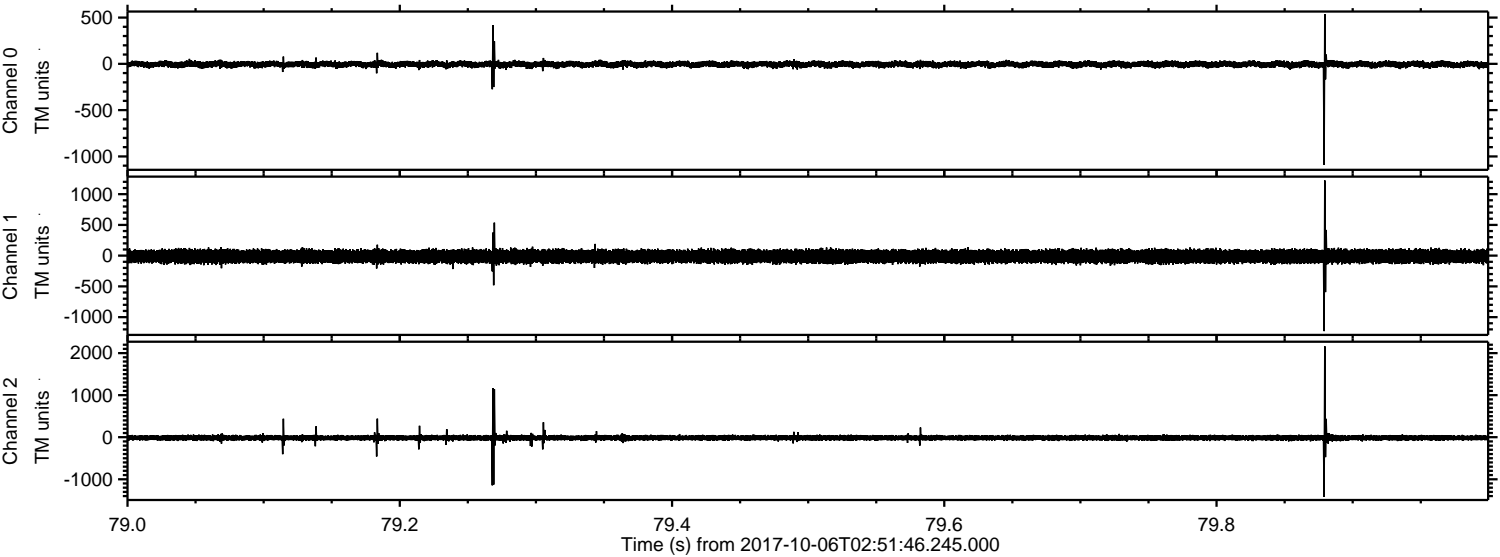


ELMAVAN 3D WAVEFORMS (Measured data sampled at 50 kHz) 51000 packets of 144 samples from 2017-10-06T02:51:46.245.000. Part 7/147

Processed Fri Oct 6 04:59:32 2017 by ELM ver.2012-10-06 from 001__elm20171006_025145__dat00.bin



Processed Fri Oct 6 04:59:33 2017 by ELM ver.2012-10-06 from 001__elm20171006_025145__dat00.bin

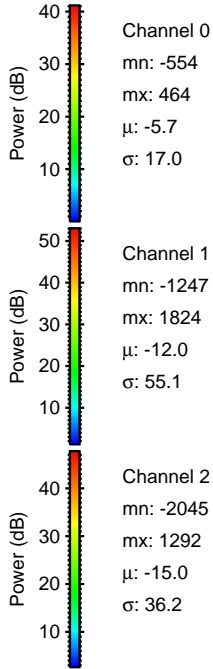
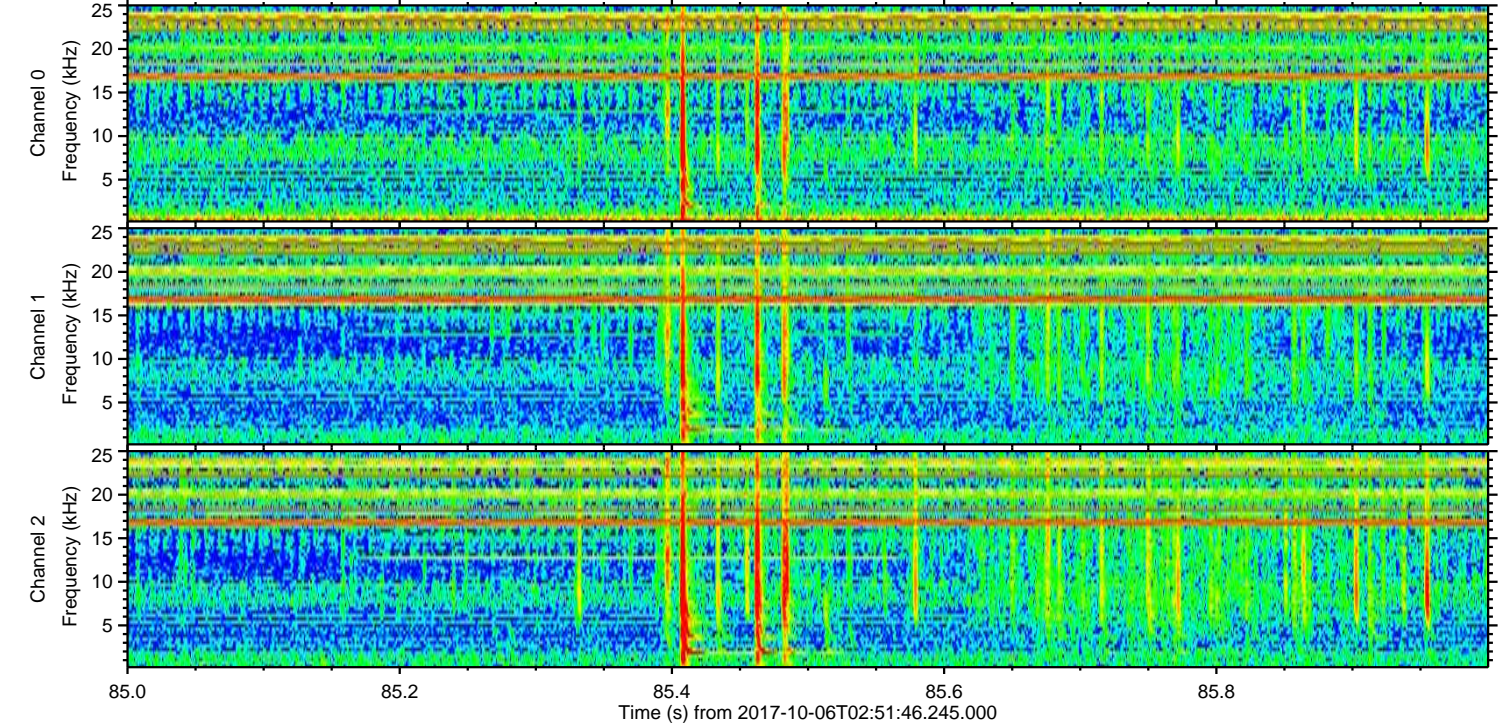
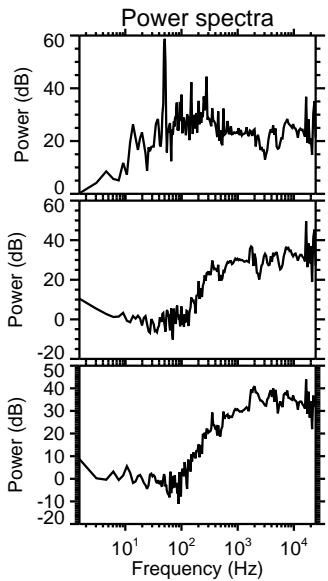
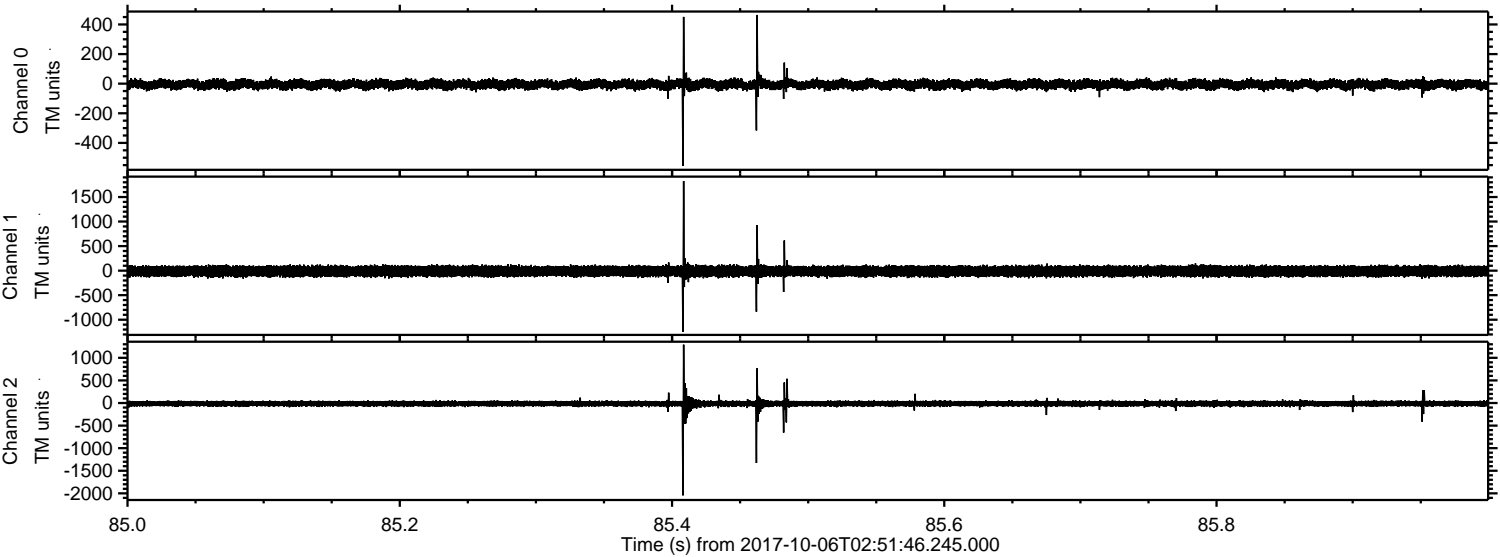


Channel 0
mn: -1090
mx: 538
 μ : -5.6
 σ : 17.8

Channel 1
mn: -1228
mx: 1224
 μ : -12.0
 σ : 54.5

Channel 2
mn: -1422
mx: 2163
 μ : -15.0
 σ : 38.3

Processed Fri Oct 6 04:59:34 2017 by ELM ver.2012-10-06 from 001__elm20171006_025145__dat00.bin



Channel 0
mn: -554
mx: 464
 μ : -5.7
 σ : 17.0

Channel 1
mn: -1247
mx: 1824
 μ : -12.0
 σ : 55.1

Channel 2
mn: -2045
mx: 1292
 μ : -15.0
 σ : 36.2

Processed Fri Oct 6 04:59:34 2017 by ELM ver.2012-10-06 from 001__elm20171006_025145__dat00.bin

